



MCNEESE

Women's Basketball

2024-25

JANUARY 9
Houston Christian (6 p.m./ESPN+)
Houston, Texas
Sharp Gym



McNEESE Cowgirls

(6-8, 1-2 SLC)

HEAD COACH

Lynn Kennedy
 4th yr. at McNeese |
 Career: 380-338 (24th season)

PTS	REB	AST
Guillory 16.6 ppg.	Yepes 7.4 rpg.	Williams 3.1 apg.

BROADCAST INFO

STREAM/TV
 ESPN+

RADIO (SLC Road Games)
 Talk Radio 1470

Live Stats
 mcneesesports.com

SOCIAL MEDIA

Twitter: McNeeseWBB
Instagram: msucowgirlbball
Facebook: msucowgirlbball

THE MATCH UP

McN		HCU
66.1	POINTS	48.0
38.9	FG PCT.	35.3
29.4	3PT PCT	22.3
67.5	FT PCT	65.4
41.3	REBOUNDS	37.1
12.91	ASSISTS	8.4
19.1	TURNOVERS	20.2
10.3	STEALS	5.2
3.4	BLOCKS	2.9

PROBABLE STARTERS (based on previous game)

		PPG	RPG
4	Paris Guillory	16.6	5.6
7	Ty Williams	5.5	3.4
14	Mireia Yepes	8.6	7.4
22	Kiayra Ellis	8.5	2.8
35	Wilnie Joseph	2.8	4.1

mcneesesports.com

Houston Christian Huskies

(4-9, 1-3 SLC)



HEAD COACH

Donna Finnie
 12th season at HCU

PTS	REB	AST
Maguire 10.1 ppg.	Tullis 8.7 rpg.	Maguire 2.2 apg.

A
T

- It's the third of three straight Southland Conference road games for the Cowgirls
- It will be the 25th meeting between the teams
- McNeese leads the series 14-10 and has won three of the last four meetings
- The teams split their games last year with each winning on its home court.
- Will return home Saturday against Nicholls to start a three-game home stand
- Picked up their first SLC win of the season last Saturday at East Texas A&M
- The six wins for the Cowgirls this season equals to total amount of wins last season
- McNeese leads the SLC in rebounds with 41.3 per game.
- Cowgirls are second in the SLC in offensive rebounds with 14.1 per game.
- Paris Guillory scored a career high 26 points and eight rebounds at NW State last Thursday then followed that with her first double double (17 pts., 10 reb.) of the season against East Texas A&M .
- Since joining the team on Dec. 8, Guillory has scored in double figures in all five games she has played
- Senior Mireia Yepes leads the team in rebounds with 7.4 rpg., ranking her fourth in the SLC
- Ty Williams leads the team with 3.1 apg.
- The Cowgirls were picked to finish 11th in the SLC race
- In the win over College of Biblical Studies, the Cowgirls set a school record with 77 first half points and ended the game with a single game record 28 steals
- McNeese returns six players (Azjah

Sports Information

Pam LaFosse (Asst. SID)
 plafosse@mcneese.edu
 (337) 475-5926

W-L	SLC	H	A	N
6-8	1-2	4-2	1-5	1-1

2024-25 SCHEDULE

DATE	OPP.	TIME/RESULT
NOVEMBER (4-3)		
4	SE Baptist College (Kid's Game)	W 99-19
7	College of Biblical Studies	W 105-35
10	North American Univ.	W 77-52
18	at Utah (ESPN+)	L 118-50
19	at BYU (ESPN+)	L 85-64
23	Utah Tech (ESPN+)	L 79-69
27	St. Thomas (Tx.)	W 81-43
DECEMBER (1-4)		
6	!William&Mary (ESPN+)	L 57-48
7	!South Carolina St. (ESPN+)	W 62-38
8	!at Longwood (ESPN+)	L 81-54
16	at Oklahoma State (ESPN+)	L 92-41
21	*Southeastern (ESPN+)	L 82-56
JANUARY (1-1)		
2	* at NW State (ESPN+)	L 70-55
4	*at East Texas A&M (ESPN+)	W 64-55
9	*at Houston Christian (ESPN+)	6 p.m.
11	*Nicholls (ESPN+)	1 p.m.
16	*Stephen F. Austin (ESPN+)	6 p.m.
18	*Lamar (ESPN+)	1 p.m.
23	*at Texas A&M-CC (ESPN+)	7 p.m.
25	*at UTRGV (ESPN+)	2 p.m.
30	*Incarnate Word (ESPN+)	6 p.m.
FEBRUARY (0-0)		
1	*at Nicholls	1 p.m.
6	*East Texas A&M (ESPN+)	6 p.m.
8	*NW State (ESPN+)	1 p.m.
13	*at Southeastern (ESPN+)	6 p.m.
15	*at New Orleans (ESPN+)	2 p.m.
20	*UTRGV (ESPN+)	6 p.m.
22	*Texas A&M-CC (ESPN+)	1 p.m.
27	*at Stephen F. Austin (ESPN+)	6:30 p.m.
MARCH (0-0)		
1	*at Lamar (ESPN+)	3 p.m.
4	*New Orleans (ESPN+)	11 a.m.
10-13 SLC Tournament		
		TBD

!- Shirley Duncan Classic
 *-SLC GAME
 **- SLC Tourn. (Lake Charles- Legacy Center)

#geauxpokes

McNEESE SPORTS INFORMATION

Women's Basketball Contact Pam LaFosse
 Office Phone.....(337) 475-5926
 Cell Phone.....(337) 274-9981
 E-mail address.....plafosse@mcneese.edu
 Website.....www.mcneesports.com

INTERVIEW POLICY

McNeese players and coaches are available to the media after practice. All interviews should be coordinated by calling Pam LaFosse, assistant SID at least 24 hrs prior.

QUICK FACTS

LocationLake Charles, LA.
 Founded.....1939
 Enrollment.....6,693
 NicknameCowgirls
 Colors.....Royal Blue/Sunflower Gold
 ConferenceSouthland
 President.....Dr. Wade Rouse
 Vice President/Athletics DirectorHeath Schroyer
 Deputy AD/SWA.....Bridget Martin
 Sr. Associate ADMatt Fontenot
 Sr. Assoc. AD/Ath. Comm.Matthew Bonnette
 Faculty Athletic RepresentativeDr. Jeff Lemke
 Head Coach.....Lynn Kennedy
 Alma Mater (Year)Northwest Univ., 1995)
 Career Record (Years)..... 380-338 (24th yr.)
 Record at McNeese 37-67 (4th yr.)
 Assistant Coaches:Mike Pittman, Sydney Schults, Kylie Jimenez, Le'Shenae Stubblefield, Desirae Hansen
 WBB Office Phone(337) 475-5473
 Arena..... Legacy Center (4,242)
 2024-25 Overall Record.....6-8
 2024-25 SLC Record (Finish)..... 1-2
 Letterwinners Returning/lost 5/6
 Starters Returning/lost 3/2
 Newcomers 8 (7 transfers/1 freshman)
 SLC Regular Season Title (s).....2 (2011, 1986)
 Years in Southland Tournament23
 SLC Tournament Titles2 (2011, 2012)
 NCAA Tournament Appearances.....2 (2011, 2012)
 WNIT Appearances.....None
 WBI Appearances4 (2013, 2014, 2015, 2016)

WEEKLY SCHEDULE

12 Sunday	13 Monday	14 Tuesday	8 Wednesday	9 Thursday	10 Friday	11 Saturday
OFF	Practice (7 a.m.)	Practice (2 p.m.)	Travel Day	at HCU (6 p.m.) ESPN+	Practice (1:30 p.m.)	Nicholls (1 p.m.) ESPN+

Reeves, Julia Puente, Alva Mofalk, Mireia Yespes, and Boston Berry) from a season ago including redshirt Daniela Vallecilla

- The Cowgirls have eight newcomers, seven of which are transfers.
- Lyla Kahrmanovic is the only freshman on the team

THE OPPONENT

- Picked to finish 12th in the preseason poll
- It's the first of four straight home games for the Huskies
- Enter the game on a four game losing streak
- Enter the game averaging 48.0 ppg. overall
- Have one player averaging in double figures (Erin Maguire/10.1 ppg.)
- Tiffany Tullis leads the team with 10.1 rpg.

QUICK NOTES

- The Cowgirls were picked to finish 11th in the Southland Conference preseason poll
- McNeese returns five letterwinners from last season including three starters
- Have eight newcomers including seven transfers and one freshman
- The four female assistants on Kennedy's staff all played for him. Sydney Schultz and Kylie Jimenez played for him at Portland State. Le'Shenae Stubblefield played for him at McNeese and Desirae Hansen played for him at both Portland State and McNeese.
- McNeese will host the 2025 Southland Conference Tournament (March 10-13) for the third straight year.

2024-25 Southland Standings (as of Jan. 4)

SCHOOL	SLC	OVERALL
Southeastern	4-0	10-3
Lamar	3-0	8-4
SFA	3-1	13-2
Northwestern State	3-1	6-7
UIW	2-2	7-6
UTRGV	2-2	7-8
Texas A&M-CC	1-2	9-5
McNeese	1-2	6-8
Nicholls	1-3	8-5
East Texas A&M	1-3	4-9
Houston Christian	1-3	4-9
New Orleans	0-3	0-12

2024-25 SLC PRESEASON POLL

1. Lamar
2. Southeastern
3. Texas A&M-Corpus Christi
4. SFA
5. UIW
6. East Texas A&M
7. Nicholls
8. New Orleans
9. UTRGV
10. Northwestern State
11. McNeese
12. Houston Christian

2024-25 McNEESE COWGIRL NUMERICAL ROSTER

NO.	NAME	POS.	HT.	CL.	HOMETOWN/PREVIOUS SCHOOL
1	Azjah Reeves	G	5-8	So.	Oklahoma City, Okla./Harding Prep
2	Julia Puente	F	6-2	Jr.	Barcelona, Spain/Murray State
4	Paris Guillory	G	5-7	So.	Lake Charles, La./La. Tech
6	Avery Young	G	5-7	Jr.	Iota, La./Pearl River CC
7	Ty Williams	G	5-7	Jr.	New Orleans, La./South Alabama
12	Alva Mofalk	F	6-4	So.	Lulea, Sweden/Lulea Academy
13	Lyla Kahrmanovic	G	5-11	Fr.	Woodinville, Wash./Woodinville High
14	Mireia Yespes	G	6-2	Sr.	Barcelona, Spain/Cirvianum De Torrello' Intsitute
20	Sydney McQuieter	C	6-2	Sr.	Keller, Texas/Boise State
21	Boston Berry	G	5-7	So.	Jones, Okla./Jones High
22	Kiayra Ellis	F	6-0	Sr.	Shreveport, La./Arkansas State
35	Wilnie Joseph	C	6-5	Sr.	Greenwood, Ind./UL-Lafayette
41	Kyla Davis	G	5-9	Sr.	Forth Worth, Texas/UNO
44	Daniela Vallecilla	F	6-4	R-Fr.	Houston, Texas/Cypress Ranch High

COACHING STAFF

Head Coach: Lynn Kennedy (4th season at McNeese, 24th overall)

Associate Head Coach: Mike Pittman

Assistant Coaches: Sydney Schultz, Kylie Jimenez, Le'Shenae Stubblefield, Desirae Hansen

PRONUNCIATION GUIDE

AZJAH (asia) Reeves

Julie **PUENTE** (poo-in-tay)

TY (tie) Williams

ALVA (al-vuh) **MOFALK** (mo-faulk)

Lyla **KAHRIMANOVIC** (car-monovich)

MIREIA (mear-ray-uh) **YESPES** (yes-pis)

Sydney **MCQUIETOR** (mac-qwy-ter)

KIAYRA (key-air-ugh) Ellis

WILNIE (will-knee) Joseph

Daniella **VALLECILLA** (vye-ugh-see-ugh)

Kylie **JIMENEZ** (him-in-ez)

LE'SHENAE (luh-shuh-nay) Stubblefield

SQUAD BREAKDOWN

BY CLASS

Seniors (5): Yespes, McQuieter, Ellis, Joseph, Davis

Juniors (3): Puente, Young, Williams

Sophomores (4): Reeves, Guillory, Mofalk, Berry

Freshmen (1): Kahrmanovic

Redshirt Freshmen (1): Vallecilla

BY STATE/COUNTRY

Indiana (1): Joseph

Louisiana (4): Guillory, Young, Williams, Ellis

Oklahoma (2): Reeves, Berry

Spain (2): Puente, Yespes

Sweden (1): Mofalk

Texas (3): McQuieter, Davis, Vallecilla

Washington (1): Kahrmanovic



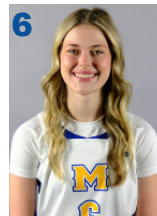
1
Azjah Reeves
G, 5-8, So.
Oklahoma City, OK.



2
Julia Puente
F, 6-2, Jr.
Barcelona, Spain



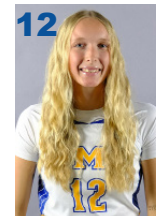
4
Paris Guillory
G, 5-7, So.
Lake Charles, LA.



6
Avery Young
G, 5-7, Jr.
Iota, LA.



7
Ty Williams
G, 5-7, Gr.
New Orleans, LA.



12
Alva Mofalk
F, 6-4, So.
Lulea, Sweden



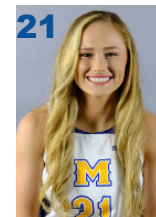
13
Lyla Kahrmanovic
G, 5-11, Fr.
Woodinville, WA.



14
Mireia Yespes
G, 6-2, Sr.
Barcelona, Spain



20
Sydney McQuieter
C, 6-2, Sr.
Jones, OK.



21
Boston Berry
G, 5-7, So.
Jones, OK.



22
Kiayra Ellis
F, 6-0, Sr.
Shreveport, LA.



35
Wilnie Joseph
C, 6-5, Sr.
Greenwood, IN.



41
Kyla Davis
G, 5-9, Sr.
Fort Worth, TX.



44
Daniela Vallecilla
F, 6-4, R-Fr.
Houston, TX.



Lynn Kennedy
Head Coach



Mike Pittman
Associate Head Coach



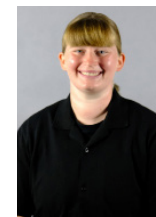
Sydney Schultz
Assistant Coach



Kylie Jimenez
Assistant Coach



Le'Shenae Stubblefield
Assistant Coach



Desirae Hansen
Assistant Coach

HEAD COACH LYNN KENNEDY



Lynn Kennedy is in his fourth season at the helm of the Cowgirl program where he led McNeese to its most wins (13) and highest conference finish (4th) during the 2021-22 season. The 13 wins is the most since the 2016-17 season and the conference finish is the highest since the 2015-16 season.

In his first season (2021-22), Kennedy produced the league's Freshman of the Year in Kaili Chamberlin, only the third McNeese player to earn the honor in program history.

In his second season (2022-23), a season where the Cowgirls struggled with injuries throughout the season, McNeese posted a 12-19 overall record and an 8-10 conference record, finishing in sixth place. The Cowgirls advanced to the Southland Conference Tournament quarterfinals where they were eliminated by Lamar in overtime.

Last season (2023-24), the Cowgirls posted a 6-25 overall, averaged 65.2 ppg., which ranked the Cowgirls third in the league. The Cowgirls also ranked fourth in the SLC in three-point field goal percent (28.7), free throw percent (72.2), assists (12.10 apg.).

Kennedy, who in a short amount of time turned a 4-win Portland State program into a Big Sky Conference champion and NCAA Tournament qualifier, was named the ninth McNeese Cowgirls basketball head coach on March 30, 2021.

Kennedy spent six seasons at Portland State where he won over 340 games in his career, ranked as high as No. 8 in the ESPN Mid-Major Top 25 poll, coached 20 Big Sky Conference All-Academic selections, set a school record with 25 wins in the 2018-19 season while winning the regular season and conference tournament, qualified for the league tournament the last four years including semifinal appearances in 2016-17 and 2017-18 while winning it in 2018-19, and has coached nine all-conference selections and five players who earned league top awards.

Kennedy arrived at Portland State with 14 years of experience as a collegiate head coach and more than 20 years coaching experience overall. In 10 seasons, he led the Southern Oregon women's basketball program to outstanding success. The Raiders went 27-5 in his final season, ranked in the Top 10 in the nation, and reached the NAIA Division II Sweet 16. In all, Kennedy was 208-105 as head coach at Southern Oregon, leading three teams to the NAIA National Tournament.

Kennedy's Raider program had six 20-win seasons, including each of his last three seasons at the school. Kennedy's players earned 22 All-Conference honors, four All-American honors, and eight Academic All-American honors.

In 2014-15, Southern Oregon led the Cascade Collegiate Conference in eight statistical categories, including scoring, field goal percentage, three-point percentage, and rebounding.

The Southern Oregon Raiders were 4-25 the year before Kennedy took over the women's basketball program. His first season they won 12 games, followed by 18 in 2006-07, and then a school-record 29-5 mark in 2007-08.

As the head coach at NCAA II New Mexico Highlands from 2002-05, Kennedy took a team that won only four games the season before his arrival and within three seasons led it to the Rocky Mountain Athletic Conference Western Division title.

Kennedy had previous Division I coaching experience in the Big Sky Conference as well. He was an assistant coach at Eastern Washington (1999-2001) and Idaho State (2001-02). Kennedy was named the interim head coach at Idaho State for the final seven games of that season.

Kennedy's first head coaching position was at his alma mater, Northwest University, where he directed the Kirkland, Wash., team to the 1998-99 National Christian College Athletic Association West Regional tournament title and to the highest national tournament finish in school history (sixth).

His coaching career began in 1995 as an assistant at Northwest University in Kirkland, Wash. He was the head coach for one season (1998-99) before moving on to Eastern Washington.

Kennedy, a native of Eugene, Ore., prepped at Cascade High School in Everett, Wash., and then played collegiately at Northwest Christian College and Northwest University.

Lynn and his wife, Amy, have two sons, Graycen and Parker.

SCHOOL (YRS.)

McNeese (4th season)

Portland State (6 yrs.)

Southern Oregon (10 yrs.)

New Mexico Highlands (3 yrs.)

Northwest University (1 yr.)

KENNEDY HIGHLIGHTS

Portland State

- Average team GPA 3.40
- Won Big Sky tournament in fourth season as head coach in 2018-19 (only second Big Sky tournament title in program history)
- Led the Vikings to the NCAA tournament in 2018-19, only the program's second appearance in the tournament
- Set Big Sky era program record with 25 wins in 2018-19
- 8-4 at the Big Sky Tournament (Won tournament in 2018-19, advanced to semifinals in 2016-17, 2017-18)
- 20 Academic All-Big Sky honorees
- Ranked as high as #8 ESPNW Mid-Major Poll (Dec. 11, 2018)
- Big Sky Defensive Player of the Year (Courtney West in 2018-19)
- Big Sky Co-Top Reserve (Desirae Hansen in 2018-19)
- Big Sky Tournament MVP (Ashley Bolston in 2018-19)
- Big Sky Newcomer of the Year (Ashley Bolston in 2016-17)
- Big Sky Freshman of the Year (Kylie Jimenez in 2017-18)
- 1 All-Big Sky first-team selection (Sidney Rielly in 2018-19)
- 3 All-Big Sky second-team selections
- 6 All-Big Sky third-team selections
- 1 All-Big Sky honorable mention
- 4 Big Sky All-Tournament Team selections
- #1 Catch & Shoot Team in the NCAA (Synergy 2019-20)
- 12-win improvement from 2015-16 to 2016-17
- NCAA Most Improved Field Goal Percentage (.450 in 2016-17 from .358 in 2015-16)
- Set single-season program record for three-pointers made (261 in 2019-20)
- Set Division I-era program records for blocked shots (174 in 2018-19) and rebounds per game (42.5 in 2015-16)
- Set Big Sky-era program records for three-point field goal percentage (.373 in 2019-20), field goal percentage (.450 in 2016-17), assists (569 in 2018-19) and rebounds (1,289 in 2018-19)

Southern Oregon

- Three NAIA National Tournament appearances
- Team GPA 3.2
- Eight Academic All-Americans
- 208 wins in 10 years at SOU – 2nd in all-time wins (66% winning percentage)
- 25-8 during the 2013-14 season. Broke conference and school records for scoring in a season. CCC Championship game.
- 22-10 record (2012-13)
- 20 wins and ranked as high as #9 in the nation (2009-10)
- Ranked #23 in the nation with a 25-7 record (2008-09)
- Cascade Conference Champions, ranked 18th in the final NAIA poll and finished the season 29-5, breaking the school record for most wins (2007-08)
- 2007-08 Cascade Conference Coach of the Year
- Undefeated home schedule at 16-0 in 2007-08
- Nationally ranked 3rd (2012-13), 5th (2007-08) and 9th (2008-09) in scoring offense; 2nd in FG % (2012-13); 1st (2012-13) in defensive rebounds; 5th (2012-13), 8th (2008-09), 2nd (2009-10) and 9th (2011-12) in overall rebounding
- Four NAIA All-Americans (2007-08, 2008-09, 2009-10, 2012-13)
- Recruited two CCC Players of the Year and fifteen additional CCC All-Conference players

New Mexico Highlands

- RMAC West Division Champions (2004-05)
- Ranked #9 in the nation for Most Improved Teams (NCAA II)
- Seeded #2 in the Wells Fargo Shootout and advanced to the RMAC semi-finals
- One game away from the NCAA National Tournament
- Ranked #38 in the nation in scoring offense

McNeese

- Two Southland Conference Tournament Appearances (2022, 2023)
- Led McNeese to its most wins (13) since 2016-17 season and highest conference finish (4th) since 2015-16 season in his first season (2021-22) as head coach
- Advanced to the second round of the SLC Tournament (2024)

KENNEDY'S RECORD

**Career Record 380-338 (24th yr.)
(including 2024-25 Season)**

RECORD AT McNEESE (4th Season)

OVERALL: 37-67 SLC: 19-34

Kennedy Against All Opponents (while at McNeese)

	<u>W</u>	<u>L</u>
Arkansas-Pine Bluff	1	1
Arkansas State	0	2
Baylor	0	1
Bradley	0	1
BYU	0	1
California	0	1
Centenary	2	0
College of Biblical Studies	1	0
Dillard	1	0
East Texas A&M	2	3
Ecclesia	3	0
Houston Christian	3	3
Illinois	0	1
Incarnate Word	3	4
Kansas State	0	1
Lamar	0	6
Longwood	0	1
Louisiana Tech	0	1
LSU	0	1
Mississippi State	0	1
Mississippi Valley State	0	1
New Orleans	4	3
Nicholls	5	1
North American Univ.	3	0
Northwestern State	2	5
Ohio State	0	1
Oklahoma State	0	1
Ole Miss	0	1
Oregon	0	1
Prairie View	0	1
South Carolina State	1	0
Southeastern	0	7
Southeastern Baptist College	1	0
SW Assemblies of God	1	0
St. Thomas	1	0
Tarleton State	0	1
Texas A&M-CC	1	5
Texas Tech	0	1
UL-Lafayette	0	1
UL-Monroe	2	1
Utah	0	1
Utah Tech	0	1
William & Mary	0	1
Rio Grande Valley	0	2
Wisconsin-Milwaukee	0	1
Xavier	0	1
TOTAL	37	67

2023-24 SEASON/CAREER HIGHS



1 AZJAH REEVES So. • G • 5-8 • Oklahoma City, Okla.

SEASON		CAREER
15 vs. Biblical Studies.....	Pts.	16 vs. Southeastern (1/13/24)
6 vs. Southeastern Baptist.....	Rebs	6 vs. several
4 vs. several.....	Asts	6 vs. Southeastern (1/13/24)
6 vs. Biblical Studies.....	Stls	6 vs. Biblical Studies (11/7/24)
1 vs. Utah.....	Blks	1 vs. several



2 JULIA PUENTE Jr. • F • 6-2 • Barcelona Spain

SEASON		CAREER
13 Biblical Studies.....	Pts.	19 at Southeastern (2/3/24)
5 vs. several.....	Rebs	14 vs. N. Am. Univ. (11/21/23)
none.....	Asts	4 vs. Nicholls (3/2/24)
2 vs. several.....	Stls	4 vs. Ecclesia (11/26/23)
2 vs. North American.....	Blks	3 at Incarnate Word (1/20/24)



4 PARIS GUILLORY So. • G • 5-7 • Lake Charles, La.

SEASON		CAREER
26 at NW State.....	Pts.	26 at NW State (1/2/25)
10 at East Texas A&M.....	Rebs	10 at East Texas A&M (1/4/25)
2 at NW State.....	Asts	2 at NW State
1 vs. several.....	Stls	1 vs. several
none.....	Blks	none



6 AVERY YOUNG Jr. • G • 5-7 • Iota, La.

SEASON		CAREER
8 vs. Southeastern Baptist.....	Pts.	8 vs. SE Baptist (11/4/24)
4 vs. several.....	Rebs	4 vs. several
3 vs. St. Thomas.....	Asts	3 vs. St. Thomas (11/27/24)
3 vs. William & Mary.....	Stls	3 vs. William & Mary (12/6/24)
1 vs. Southeastern Baptist.....	Blks	1 vs. SE Baptist (11/4/24)



7 TY WILLIAMS Jr. • G • 5-7 • New Orleans, La.

SEASON		CAREER
11 vs. several.....	Pts.	11 vs. several
7 vs. several.....	Rebs	7 vs. several
6 vs. several.....	Asts	6 vs. several
3 vs. North American.....	Stls	3 vs. North American (11/10/24)
1 vs. several.....	Blks	1 vs. several



12 ALVA MOFALK So. • F • 6-4 • Lulea, Sweden

SEASON		CAREER
12 vs. Biblical Studies.....	Pts.	12 vs. several
3 vs. Biblical Studies.....	Rebs	3 vs. Biblical Studies (11/7/24)
1 vs. several.....	Asts	1 vs. several
2 vs. Biblical Studies.....	Stls	2 vs. Biblical Studies (11/7/24)
2 vs. Biblical Studies.....	Blks	2 vs. several



13 LYLA KAHRIMANOVIC Fr. • G • 5-11 • Woodinville, Wash.

SEASON		CAREER
17 vs. Southeastern Baptist.....	Pts.	17 vs. SE Baptist (11/4/24)
7 vs. several.....	Rebs	7 vs. several
4 vs. Southeastern Baptist.....	Asts	4 vs. SE Baptist (11/4/24)
6 vs. several.....	Stls	6 vs. several
3 vs. Biblical College.....	Blks	3 vs. Biblical College (11/7/24)



14 MIREIA YESPES Sr. • G • 6-2 • Barcelona, Spain

SEASON		CAREER
14 vs. North American.....	Pts.	35 vs. Centenary (12/14/23)
14 at East Texas A&M.....	Rebs	14 vs. several
4 at Longwood.....	Asts	4 vs. several
3 vs. several.....	Stls	5 vs. Milwaukee (11/17/23)
none.....	Blks	1 vs. several

DOUBLE FIGURE SCORING

	'24-25	Career
Mireia Yespes	19.....	19
Azjah Reeves	17.....	17
Boston Berry	6.....	6
Alva Mofalk	4.....	4
Julia Puente	7.....	7
Lyla Kahrmanovic	6.....	6
Ty Williams	4.....	4
Kiara Ellis	2.....	2
Kyla Davis	3.....	3
Paris Guillory	5.....	5

DOUBLE FIGURE REBOUNDS

	'24-25	Career
Mireia Yespes	9.....	9
Julia Puente	5.....	5
Paris Guillory	1.....	1

DOUBLE DOUBLES

	'24-25	Career
Mireia Yespes	6.....	6
Julia Puente	2.....	2
Paris Guillory	1.....	1

GAME SCORING LEADER

Paris Guillory.....	5
Lyla Kahrmanovic.....	3
Azjah Reeves.....	2
Mireia Yespes.....	1
Kiayra Ellis.....	2
Kyla Davis.....	1
Boston Berry.....	1

GAME REBOUND LEADER

Mireia Yespes.....	9
Lyla Kahrmanovic.....	1
Julie Puente.....	0
Azjah Reeves.....	0
Alva Mofalk.....	0
Boston Berry.....	1
sydney McQuietor.....	1
Wilnie Joseph.....	3
Paris Guillory.....	1

GAME ASSISTS LEADER

Ty Williams.....	8
Lyla Kahrmanovic.....	4
Boston Berry.....	3
Azjah Reeves.....	2
Mireia Yespes.....	1
Avery Young.....	1
Kiayra Ellis.....	1

GAME STEAL LEADER

Mireia Yespes.....	6
Lyla Kahrmanovic.....	4
Boston Berry.....	3
Julia Puente.....	1
Azjah Reeves.....	1
Ty Williams.....	3
Kyla Davis.....	3
Avery Young.....	1
Wilnie Joseph.....	1
Paris Guillory.....	1
Kiayra Ellis.....	1

CAREER HIGH 3-PTS. MADE IN A GAME

Reeves: 4 vs. Dillard (11/6/23)
Yespes: 2 vs. several
Mofalk: 3 vs. UIW (1/20/24)
Berry: 2 vs. several
Julia Puente: 1 vs. several
Davis: 4 vs. Utah Tech (11/23/24)
Kahrmanovic: 2 vs. Biblical Studies (11/7/24)
Ellis: 5 vs. BYU (11/19/24)
Williams: 2 vs. several
Guillory: 4 at NW State (1/4/25)

2023-24 SEASON/CAREER HIGHS



20 SYDNEY MCQUIETOR Sr. • C • 6-2 • Keller, Texas

SEASON	CAREER
6 at NW State Pts.	6 at NW State (1/4)
6 at BYU Rebs	6 at BYU (11/19/24)
3 vs. Southeastern Baptist Asts	3 vs. SE Baptist (11/4/24)
3 vs. Southeastern Baptist Stls	3 vs. SE Baptist (11/4/24)
1 vs. several Blks	1 vs. several



21 BOSTON BERRY So. • G • 5-7 • Jones, Okla.

SEASON	CAREER
15 vs. St. Thomas Pts.	17 vs. A&M-Commerce (2/1/24)
7 vs. Biblical Studies Rebs	8 vs. Southeastern (1/13/24)
6 vs. Biblical Studies Asts	8 vs. Ark.-Pine Bluff (12/31/23)
3 vs. Biblical Studies Stls	7 vs. Dillard (11/6/23)
1 at Oklahoma State Blks	1 vs. several



22 KIAYRA ELLIS Sr. • F • 6-0 • Shreveport, La.

SEASON	CAREER
20 at BYU Pts.	20 at BYU (11/19/24)
6 vs. William & Mary Rebs	6 vs. William & Mary (12/6)
4 vs. Biblical Studies Asts	4 vs. Biblical Studies (11/7/24)
2 vs. several Stls	2 vs. several
3 at East Texas A&M Blks	3 at East Texas A&M (1/4/25)



35 WILNIE JOSEPH Sr. • C • 6-5 • Greenwood, Ind.

SEASON	CAREER
6 vs. North American Pts.	6 vs. North American (11/10/24)
9 vs. South Carolina State Rebs	9 vs. S. Carolina St. (12/7/24)
2 vs. Southeastern Baptist Asts	2 vs. SE Baptist (11/4/24)
4 vs. South Carolina State Stls	4 vs. S. Carolina St. (12/7/24)
1 vs. several Blks	1 vs. several



41 KYLA DAVIS Sr. • G • 5-9 • Fort Worth, Texas

SEASON	CAREER
16 vs. Utah Tech Pts.	16 vs. Utah Tech (11/23/24)
6 vs. North American Rebs	6 vs. North American (11/10/24)
4 vs. Utah Tech Asts	4 vs. Utah Tech (11/23/24)
3 vs. st. Thomas Stls	3 vs. St. Thomas (11/27/24)
1 vs. several Blks	1 vs. several



44 DANIELA VALLECILLA R-Fr. • F • 6-4 • Houston, Texas

SEASON	CAREER
8 vs. several Pts.	8 vs. several
6 vs. Southeastern Baptist Rebs	6 vs. SE Baptist (11/4/24)
2 vs. Southeastern Baptist Asts	2 vs. SE Baptist (11/4/24)
1 vs. several Stls	1 vs. several
2 vs. several Blks	2 vs. several

THE LAST TIME A McNEESE TEAM...

Scored 100 or more points

McN: 105, 11/7/24 vs. Biblical Studies, W 105-35

Opp: 118, 11/18/24 vs. Utah, L 118-50

Scored 90 or more points

McN: 99, 11/4/24 vs. Southeastern Baptist, W 99-19

Opp: 96, 11/15/18 at No. 11 Texas, L 96-40

Scored 50 or fewer points

McN: 41, 12/16/24 at Oklahoma State, L 92-41

Opp: 38, 12/7/24, vs. South Carolina State, W 62-48

Played a Top 25 team (AP)

12/2/2023, at No. 6 LSU, L 133-44

Defeated a Top 25 Team (AP)

def. SFA 83-81 (1994-95)

Played An Overtime Game

1/13/24 vs. Southeastern, L 77-63

Won An Overtime Game

3/6/23 vs. UNO, W 87-82

Played A Double Overtime Game

11/22/15, at Incarnate Word, W 104-101

Played A Triple Overtime Game

12/3/17 at UL-Lafayette, L 98-86

GAME/QUARTER RECORDS

MOST POINTS SCORED

Game: 116 vs. Centenary (11/8/19); W 116-37

Quarter

41 vs. Ecclesia (1/9/22); W 108-39)

40 vs. Centenary (11/8/19); W 116-37

40 vs. LSUA (11/27/16); W 100-66

Half

77 vs. College of Biblical Studies (11/7/24)

FEWEST POINTS SCORED

Quarter

0 (2nd Qtr.) at No. 6 LSU (12/12/23); L 133-44

Game

24 at No. 7 Baylor (12/19/20); L 117-24

MOST POINTS ALLOWED

Quarter

42 vs. Arkansas St. (11/29/22); L 102-83

Game

133 at No. 6 LSU (12/2/23); L 133-44

FEWEST POINTS ALLOWED

Quarter

1 vs. North American Univ. (12/1/22); W 81-46

Game

19 vs. Southeastern Baptist (11/4/24); W 99-19

MOST 3-POINTERS MADE

Game

17 vs. Ecclesia (Jan. 9, 2022)

MOST 3-POINTERS ATTEMPTED

Game

41 vs. Central Arkansas (2007-2008)

LARGEST MARGIN OF VICTORY

+84 vs. Ecclesia (11/7/22); W 110-26

LARGEST MARGIN OF DEFEAT

-93 at #7 Baylor (12/19/20); L 117-24

THE LAST TIME A McNEESE PLAYER...

Scored 20 or more points

26, Paris Guillory at NW State (1/4/25), L 70-55

Scored 30 or more points

35, Mireia Yespes vs. Centenary (12/14/23), W 93-46

Scored 40 or more points

40, Emilia Tenbrock at A&M-Commerce (1/6/24), L 87-78

Had 15 or more rebounds

16, Divine Tanks vs. UL-Lafayette (11/28/21), L 67-57

Had 20 or more rebounds

23, Frederica Haywood vs. Nicholls

(3/9/17), W 79-58

Had 10 or more assists

10, Kyla Hamilton at NW State, (2/15/20), L 70-60

Had 5 or more blocks

6, Alicja Falkowska at UNO (2/11/23), L 65-59

Two Players With Double Doubles

2/17/22 at Nicholls, W 63-53

Divine Tanks (11 pts. 11 reb.);Zuzanna Kulinska (10 pts., 10 reb.)

Five or More Players With 10+points

11/7/24 vs. College of Biblical Studies, W 105-35

Emilia Tenbrock (22), Helena Galunic (14), Azjah Reeves 911),

Julia Puente (11), Alva Molfalk (10)

Four Players With 10+points

11/27/24 vs. St. Thomas (TX.), W 81-43

Azjah Reeves (15), Julia Puente (13), Mireia Yespes (12), Lyla

Kahrmanovic (12), Boston Berry (12)

2024-25 POINTS BY QUARTERS

Most Points Scored In First Quarter 38 vs. Biblical Studies

Most Points Scored In Second Quarter 39 vs. Biblical Studies

Most Points Scored In Third Quarter27 vs. Southeastern Baptist

Most Points Scored In Fourth Quarter29 vs. Southeastern Baptist

Most Points Scored In OvertimeN/A

Fewest Points Scored In First Quarter 8 vs. several

Fewest Points Scored In Second Quarter6 at Longwood

Fewest Points Scored In Third Quarter11 at Oklahoma State

Fewest Points Scored In Fourth Quarter 9 vs. several

Fewest Points Scored In OvertimeN/A

Most Points Allowed In First Quarter 24 vs. Southeastern, at Utah

Most Points Allowed In Second Quarter38 at Utah

Most Points Allowed In Third Quarter37 at Utah

Most Points Allowed In Fourth Quarter36 at Oklahoma State

Most Points Allowed In OvertimeN/A

Fewest Points Allowed In First Quarter4 vs. Southeastern Baptist

Fewest Points Allowed In Second Quarter4 at NW State

Fewest Points Allowed In Third Quarter 6 vs. several

Fewest Points Allowed In Fourth Quarter 4 vs. several

Fewest Points Allowed In OvertimeN/A

MISCELLANEOUS RECORDS

100 POINT GAMES

McN	Opp.	Opponent	Date	Margin	
1.	110	26	Ecclesia	11/7/22	+84
2.	113	32	UTRGV	1/27/88	+81
3.	116	37	Centenary	11/8/19	+79
4.	102	28	Ecclesia	11/26/23	+74
5.	105	35	Coll. of Biblical Studies	11/7/24	+70
6.	108	39	Ecclesia College	1/9/22	+69
7.	101	40	Paul Quinn College	12/9/09	+61
8.	106	54	Southern (N.O.)	12/17/18	+52
9.	100	50	Texas College	11/20/10	+50
10.	103	54	Spring Hill ²	12/13/91	+49
11.	106	63	New Orleans ¹	2/24/78	+43
12.	114	80	Lamar	2/9/81	+41
13.	108	72	Southwestern Texas	1/14/88	+36
14.	100	66	LSU-Alexandria	11/27/16	+34
15.	108	72	Lamar	2/8/93	+34
16.	107	77	North American Univ.	11/21/23	+30
17.	102	83	UL-Monroe	2/3/78	+19
18.	100	90	at Northwestern St.	12/17/77	+10
19.	104	101	at Incarnate Word	1/22/15	+3

1- LAIAW State Tourn.

2- South Alabama Tourn.

100 POINT GAMES AGAINST

McN	Opp.	Opponent	Date	Margin	
1.	24	117	at #7 Baylor	12/19/20	-93
2.	44	133	at #6 LSU	12/12/23	-89
3.	26	109	at #12 Texas A&M	11/21/06	-83
4.	44	124	at #14 Baylor	11/24/23	-80
5.	38	109	at Oregon (RV)	12/13/21	-71
6.	50	118	at Utah (RV)	11/19/24	-68
7.	34	100	at #2 Baylor	11/15/17	-66
8.	39	101	at #13 Kansas State	12/6/23	-62
9.	38	100	at Illinois	11/16/22	-62
10.	50	111	at #8 Stephen F. Austin	2/3/90	-61
11.	41	101	at #19 Stephen F. Austin	2/28/91	-60
12.	45	104	at Houston	11/17/00	-59
13.	46	105	at #3 Baylor	12/13/15	-59
14.	52	109	at Abilene Christian	1/9/19	-57
15.	48	105	at Texas	12/19/90	-57
16.	46	102	at Stephen F. Austin	1/27/96	-56
17.	46	101	at La. Tech	1/23/79	-55
18.	56	110	Southeastern ¹	2/26/77	-54
19.	50	103	at Duke	12/11/93	-53
20.	60	113	at La. Tech	2/17/82	-53
21.	48	101	at La. Tech	12/5/80	-53
22.	55	102	at Mississippi State	12/1/21	-47
23.	56	101	at San Diego St.	11/23/90	-45
24.	57	101	Wayland Baptist ²	3/8/78	-44
25.	58	101	at #22 Arkansas	11/11/19	-43
26.	60	102	at California	12/11/21	-42
27.	70	109	Stephen F. Austin	2/2/91	-39
28.	70	109	at Southeastern	12/2/77	-39
29.	70	105	#3 LSU	1/16/78	-35
30.	70	105	at Southeastern	12/4/78	-35
31.	68	101	Southeastern	1/21/78	-33
32.	77	109	at Southern	12/10/83	-32
33.	76	102	at La. Tech	12/5/79	-26
34.	83	102	Arkansas St.	11/29/22	-19
35.	85	102	Northwestern St.	2/10/90	-17
36.	87	103	Ark.-Pine Bluff	12/31/23	-16

1- LAIAW State Tourn.

2- South Alabama Tourn.

OVERTIME GAMES

Date	Opponent	W/L	Score	Site
1.	2/21/75	UL-Monroe ¹	W 74-73	Baton Rouge
2.	2/24/76	UL-Monroe ²	W 75-73	Lafayette
3.	1/4/81	Northwestern St.	W 73-72	Lake Charles
4.	1/19/81	Oklahoma	W 82-77	Lake Charles
5.	1/12/82	Baylor	L 82-79	Lake Charles
6.	2/6/84	Arkansas State	L 70-67	Jonesboro, AR.
7.	2/25/85	Lamar	L 80-76	Lake Charles
8.	1/4/87	South Florida ³	L 83-81	Orlando, FL.
9.	2/6/88	UT-Arlington	W 74-71	Lake Charles
10.	1/19/89	Texas St.	W 78-77	San Marcos, TX.
11.	1/7/95	Texas St.	W 73-68	Lake Charles
12.	2/22/97	#19 Stephen F. Austin	L 71-65	Lake Charles
13.	1/24/98	Texas St.	L 68-66	Lake Charles
14.	1/18/99	Nicholls	L 50-47	Thibodaux
15.	1/21/99	UT-Arlington	L 68-63	Lake Charles
16.	1/8/00	Lamar	L 61-58	Beaumont, TX.
17.	2/19/00	Southeastern	L 61-58	Hammond
18.	11/24/00	Arkansas State	L 79-74	Lake Charles
19.	12/20/00	Navy	L 74-65	Annapolis, MD.
20.	2/8/03	Stephen F. Austin	W 68-61	Lake Charles
21.	2/7/04	UTSA	L 64-56	San Antonio, TX.
22.	2/18/04	Stephen F. Austin	W 68-61	Lake Charles
23.	2/5/05	Northwestern St.	L 85-80	Lake Charles
24.	3/7/05	Texas State ⁴	W 78-71	San Marcos, TX.
25.	12/5/07	Centenary	W 81-79 (2OT)	Shreveport
26.	12/13/07	UTRGV	L 71-64	Edinburg, TX.
27.	3/8/08	Nicholls	W 67-64	Lake Charles
28.	1/17/08	Lamar	L 67-58	Beaumont, TX.
29.	2/4/09	Northwestern St.	L 77-64	Natchitoches
30.	12/18/10	Norfolk St.	L 75-70	Norfolk, VA.
31.	1/29/11	Central Arkansas	L 74-73	Conway, AR.
32.	2/5/11	Stephen F. Austin	W 68-66	Lake Charles
33.	11/19/11	UAB ⁵	W 61-56	Lake Charles
34.	1/28/12	Central Arkansas	L 71-70 (2OT)	Conway, AR.
35.	11/24/12	Southern Miss ⁶	L 68-59	Hattiesburg, MS.
36.	3/2/13	Central Arkansas	L 77-69	Lake Charles
37.	12/19/14	Rice	L 57-55	Houston, TX.
38.	1/22/15	Incarnate Word	W 104-101 (2OT)	San Antonio, TX.
39.	2/5/15	New Orleans	L 90-86 (3OT)	New Orleans
40.	2/14/15	Northwestern St.	W 68-57	Lake Charles
41.	11/23/16	Northwestern St.	W 78-74	Lake Charles
42.	1/15/17	Southeastern	W 86-83	Hammond
43.	12/3/18	UL-Lafayette	L 98-86 (3OT)	Lafayette
44.	2/24/18	Houston Baptist	L 67-61	Lake Charles
45.	2/9/23	Southeastern	L 72-64	Lake Charles
46.	3/6/23	New Orleans ⁷	W 87-82	Lake Charles
47.	3/7/23	Lamar ⁷	L 80-75	Lake Charles
48.	1/13/24	Southeastern	L 77-63	Lake Charles

1- LAIAW State Tourn. (Baton Rouge)

2- USL Invitational (Lafayette, LA.)

3- Central Floriday Tourn. (Orlando, FL.)

4- SLC Tourn. (San Marcos, TX.)

5- Preseason NIT (Lake Charles)

6- Southern Miss Lady Eagle Thanksgiving Classic (Hattiesburg, Miss.)

7- Southland Conference Tournament (Lake Charles)

TOP 5 LARGEST MARGIN OF VICTORY

McN	Opp.	Opponent	Date	Margin	
1.	110	26	Ecclesia	11/7/22	+84
2.	113	32	UTRGV	1/27/88	+81
3.	99	19	SE Baptist College	11/4/24	+80
4.	116	37	Centenary	11/8/19	+79
5.	102	28	Ecclesia	11/26/23	+74



2024-25 McNeese Women's Basketball Combined Team Statistics All games

Game Records

Record	Overall	Home	Away	Neutral
ALL GAMES	6-8	4-2	1-5	1-1
CONFERENCE	1-2	0-1	1-1	0-0
NON-CONFERENCE	5-6	4-1	0-4	1-1

Score by Periods

Team	1st	2nd	3rd	4th	OT	TOT
McNeese	241	246	226	212	0	925
Opponents	211	211	263	221	0	906

Team Box Score

No.	Player	Total					3-Point		F-Throw		Rebounds				Other							
		GP-GS	MIN	AVG	FG-FGA	FG%	3FG-3FGA	3FG%	FT-FTA	FT%	OFF	DEF	TOT	AVG	PF	DQ	A	TO	BLK	STL	PTS	AVG
4	GUILLORY, Paris	5-3	134:44	26.9	26-71	.366	13-32	.406	18-21	.857	12	16	28	5.6	14	0	4	11	1	3	83	16.6
14	YESPES, Mireia	14-14	343:28	24.5	45-97	.464	3-15	.200	28-36	.778	29	75	104	7.4	27	0	20	37	0	17	121	8.6
22	ELLIS, Kiayra	12-11	258:03	21.5	41-98	.418	9-19	.474	11-18	.611	14	19	33	2.8	35	2	13	20	13	8	102	8.5
13	KAHRIMANOVIC, Lyla	11-3	209:19	19.0	40-80	.500	4-21	.190	6-10	.600	16	25	41	3.7	23	0	23	16	6	24	90	8.2
41	DAVIS, Kyla	13-6	224:53	17.3	31-103	.301	18-61	.295	8-14	.571	7	26	33	2.5	23	0	13	17	2	11	88	6.8
1	REEVES, Azjah	13-2	291:19	22.4	29-101	.287	8-29	.276	17-28	.607	6	20	26	2.0	20	0	21	34	1	19	83	6.4
2	PUENTE VALVERDE, Julia	10-1	126:55	12.7	22-43	.512	1-5	.200	17-25	.680	11	23	34	3.4	23	2	0	17	3	9	62	6.2
7	WILLIAMS, Tyrielle	14-14	357:50	25.6	30-86	.349	8-41	.195	9-12	.750	7	40	47	3.4	23	0	44	45	2	12	77	5.5
21	BERRY, Boston	14-3	213:37	15.3	23-58	.397	10-25	.400	17-27	.630	10	12	22	1.6	6	0	20	20	1	10	73	5.2
12	MOFALK, Alva	6-0	55:47	9.3	8-19	.421	3-10	.300	0-2	.000	3	6	9	1.5	4	0	2	2	3	3	19	3.2
35	JOSEPH, Wilnie	14-13	232:49	16.6	19-46	.413	0-0	.000	1-5	.200	30	28	58	4.1	40	0	5	19	5	9	39	2.8
6	YOUNG, Avery	12-0	110:22	9.2	7-23	.304	0-4	.000	18-21	.857	3	12	15	1.3	4	0	7	3	1	9	32	2.7
44	VALLECILLA, Daniela	10-0	64:00	6.4	10-19	.526	0-0	.000	4-8	.500	5	13	18	1.8	1	0	2	3	7	2	24	2.4
20	MCQUIETOR, Sydney	14-0	176:53	12.6	12-37	.324	0-0	.000	8-13	.615	12	22	34	2.4	19	1	6	14	3	8	32	2.3
Team											32	44	76				9					
Total		14	2800		343-881	.389	77-262	.294	162-240	.675	197	381	578	41.3	262	5	180	267	48	144	925	66.1
Opponents		14	2800		316-821	.385	84-303	.277	190-272	.699	160	378	538	38.4	244	6	191	272	36	122	906	64.7

Team Statistics

	MCN	OPP
Scoring	925	906
Points per game	66.1	64.7
Scoring margin	+1.4	-
Field goals-att	343-881	316-821
Field goal pct	.389	.385
3 point fg-att	77-262	84-303
3-point FG pct	.294	.277
3-pt FG made per game	5.5	6.0
Free throws-att	162-240	190-272
Free throw pct	.675	.699
F-Throws made per game	11.6	13.6
Rebounds	578	538
Rebounds per game	41.3	38.4
Rebounding margin	+2.9	-
Assists	180	191
Assists per game	12.9	13.6
Turnovers	267	272
Turnovers per game	19.1	19.4
Turnover margin	+0.4	-
Assist/turnover ratio	0.7	0.7
Steals	144	122
Steals per game	10.3	8.7
Blocks	48	36
Blocks per game	3.4	2.6
Winning streak	1	-
Home win streak	0	-
Attendance	14361	9296
Home games-Avg/Game	6-2394	6-1549
Neutral site-Avg/Game	-	2-1480

Team Results

Date	Opponent		Score	Att.
11/04/2024	Southeastern Bapt.	W	99-19	2220
11/07/2024	Biblical Stud. (TX)	W	105-35	2589
11/10/2024	North American	W	77-52	2303
11/18/2024	at Utah	L	50-118	3129
11/19/2024	at BYU	L	64-85	1488
11/23/2024	Utah Tech	L	69-79	2430
11/27/2024	St. Thomas (TX)	W	81-43	2382
12/06/2024	vs William & Mary	L	48-57	1837
12/07/2024	vs South Carolina St.	W	62-38	1123
12/08/2024	at Longwood	L	54-81	1941
12/16/2024	at Oklahoma St.	L	41-92	2020
12/21/2024	Southeastern La.	L	56-82	2437
01/02/2025	at Northwestern St.	L	55-70	351
01/04/2025	at East Texas A&M	W	64-55	367