

**LOYOLA UNIVERSITY
MARYLAND
DEPARTMENT OF ATHLETICS**



**VISITING TEAM GUIDE
2025-2026**



Dear Visitor,

On behalf of Loyola University Maryland and the Department of Athletics, welcome to our campus! We hope this guide will assist you with all your needs during your stay in Baltimore.

Loyola was founded in 1852 as a private, Catholic-affiliated school. The campus is in an attractive residential area of suburban Baltimore and supports over 3,900 full-time students.

The Loyola athletic teams compete at the NCAA Division I level and in the Patriot League.

Please enjoy your visit to Loyola, and if we can be of assistance or answer any questions, please do not hesitate to call.

Sincerely,
Donna Woodruff
Assistant Vice President/Director of Athletics

Athletic Department Directory

Administrative Staff

Director of Athletics/Assistant Vice President

Donna Woodruff 410-617-2284

Associate Athletic Director for Facilities & Operations/Senior Woman Administrator
(*Sport supervision: WBB, WLAX*)

Teddi Burns 410-617-2643 tburns@loyola.edu

Associate Athletic Director

(*Sport supervision: GOLF, MSOC, M/W SWIM, M/W TEN*)

David Gerrity 410-617-2547 dgerrity@loyola.edu

Associate Athletic Director

(*Sport Supervision: WSOC*)

Bill Wnek 410-617-2172 bwnek@loyola.edu

Associate Athletic Director for Business Operations

(*Sport Supervision: M/W ROW, M/W XC/TRACK*)

Christopher Archacki 410-617-2718 carchacki@loyola.edu

Associate Athletic Director for Communications & Strategic Marketing

(*Sport Supervision: MBB, MLAX*)

Ryan Eigenbrode 410-617-2337 reigenbrode@loyola.edu

Assistant Athletic Director/Director of Sports Performance

John Hoffman 410-617-5372 jahoffman@loyola.edu

Key Staff Contacts

Sports Medicine

Assistant Athletic Director/Director of Sports Performance John Hoffman <i>Men's Basketball, Rowing</i>	410-617-5372	jahoffman@loyola.edu
Associate Athletic Trainer Kathleen Tamberrino <i>Men's Lacrosse, Men's Cross Country, Golf</i>	410-617-5365	ktamberrino@loyola.edu
Assistant Athletic Trainers Maddie Cavanaugh <i>Men's Soccer, Women's Track & Field and Cross Country</i>	410-617-2376	mlcavanaugh@loyola.edu
Alyssa Miller <i>Women's Soccer, Men's & Women's Tennis</i>	410-617-5276	ahammock@loyola.edu
Reann Young <i>Women's Basketball, Volleyball</i>	410-617-2413	ryoung9@loyola.edu
Kate Allen <i>Women's Lacrosse, Men's & Women's Swimming & Diving</i>	410-617-1424	azajac@loyola.edu

Athletic Communications

Associate Athletic Director Ryan Eigenbrode	410-617-2337	rceigenbrode@loyola.edu
Assistant Director Jonathan Yanko	410-617-2777	jyanko@loyola.edu

Facilities & Operations

Assistant Director Operations & Facilities TBD	410-617-2037	
Facilities & Equipment Room Staff Tanner Singleton	410-617-1455	twsingleton@loyola.edu
Corey Hudson	410-617-5002	chudson@loyola.edu
Scheduling Coordinator (Practice Times) Mikaela Fallon	410-617-1485	mcfallon1@loyola.edu

Marketing & Tickets

Associate Director Game Day Marketing Phil Wrye	410-617-5963	pwrye@loyola.edu
Assistant Director Strategic Marketing & Tickets Christina George	410-617-2773	cmgeorge1@loyola.edu

Administrative

Administrative Assistant Ellie Kenny	410-617-5013	enkenny@loyola.edu
---	--------------	--

Important Athletic Phone Numbers

Practice Time Reservation	410-617-1485 (Mikaela Fallon) mcfallon@loyola.edu
Equipment Room – Main Campus	410-617-5002
Equipment Room – Ridley Athletic Complex	410-617-1455
Athletic Training Room	410-617-2438/1426
Athletics Office – Main Campus	410-617-5013
Athletics Office – Ridley Athletic Complex	410-617-1485
Campus Police	410-617-5010
Ticketing	410-617-2773
Lost and Found	410-617-1455
Loyola Bookstore	410-617-2291

Facilities and Services

Athletic Training Rooms

There is an onsite trainer available two hours prior to any athletic event. Doctors are onsite for all in-season basketball, lacrosse and soccer games. Doctors are not onsite for scrimmages or other sports matches but can be contacted during any home event if needed. An ambulance service will be available for basketball, soccer, and lacrosse games.

Locker Rooms

Your team will be assigned a locker area. Upon arrival for the athletic contest, a team host will escort the team/coaches to the visiting team lock room. Loyola will supply towels, water, and ice to all visiting teams.

Practice Times

Practice times may be arranged prior to the athletic contest. Please call 410-617-2037.

Athletic Communications

The Athletic Communications office directs the public relations and media services for the Loyola University Department of Athletics. The office maintains and produces game programs, statistics, and photographic help for all 18 of Loyola's varsity athletic programs. Any questions about Loyola's media policies during, before or after athletic contests can be directed to the Loyola Communications staff.

Postgame Team Tailgates

Please contact Events Services at events@loyola.edu or 410-617-5077 for tailgating information. Tailgating must be approved before you are able to use any of the school's facilities. At the Ridley Athletic Complex there are no indoor tailgating areas. Please see the Athletic Tailgating Contract on the last page.

Basketball and Volleyball Team Bus/Van Parking

All buses will park behind the Student Center in the notch. The notch is located on Ennis Parallel.

Lacrosse and Soccer Team Bus Parking

All buses will park at Ridley Athletic Complex behind the stadium. Bus can drop off at team entrance and will park in the circle behind the stadium.

Reitz Arena

Basketball and Volleyball Venue

Reitz Arena, home of Loyola's basketball and volleyball teams, holds 2,100 spectators. Reitz Arena is housed in the Andrew White Student Center.

ADA Accommodations

- Animals: Only certified service animals for guests with disabilities are welcome at Reitz Arena. All service animals must always remain on a leash or in a harness. No other animals are allowed in the facility.
- Parking: Disabled parking is available on Jenkins parking lot
- Restrooms: Restrooms are located adjacent to Reitz Arena.
- Seating: Disabled guests gain entry near the ticket office. Seating is on the floor. For any questions concerning availability, call Loyola Box Office at 410-617-1420.

Concessions

There are concessions located in Reitz Arena. Food and drink items range from \$2-\$5. Cash and credit cards are accepted.

Evacuation

In the event of an emergency, staff will utilize the public address system to inform patrons of the situation and any instructions as applicable. All exits and emergency exits in the facility are clearly marked.

First Aid/EMS

If you need medical attention, please notify the nearest S.A.F.E Management representative or campus police officer.

Doors Open

Doors open 1 hour prior to the scheduled start time for Women's Basketball and Volleyball, and 1.5 hours prior to the scheduled start time for Men's Basketball.

Team Filming

Basketball filming is through Keemotion/Synergy; contact a member of the basketball staff for more details. Volleyball teams can position cameras in the alcove behind the court on the north end.

Events

For information about the availability of event space at Reitz Arena, please contact Events Services at 410-617-5077.

Ridley Athletic Complex

Lacrosse and Soccer Venue

Named for former Loyola College president Harold Ridley, S.J. (1939-2005), the Ridley Athletic Complex opened in March 2010 and is the home to Loyola's men's and women's soccer and men's and women's lacrosse programs. It is considered one of the finest college soccer/lacrosse facilities in the country. Locker rooms, training facilities and offices are currently in use by each program's coaches and student-athletes. The Class of 1968 Greyhound Suite also serves as host to various functions within the University community. The state-of-the-art video board enhances the game day experience for spectators and participants.

ADA Accommodations

- Animals: Certified service animals for guests with disabilities are welcome at Ridley Athletic Complex. All service animals must always remain on a leash or in a harness. No other animals are allowed in the facility.
- Parking: Disabled parking is available on the main parking lot
- Restrooms: Restrooms are located on the main concourse.
- Seating: Disabled guests gain entry near the ticket office, access to handicap accessible seating at Ridley is accessed via a ramp at the main gates. Seating is on the concourse level. For any questions concerning availability, call Loyola Box Office at 410-617-1420.

Concessions

There are concessions in the stadium located on the main concourse. Food and drink items range from \$2-\$5. No outside food or drink is allowed in the stadium. Cash and credit cards are accepted.

Evacuation

In the event of an emergency, staff will utilize the public address system to inform patrons of the situation and any instructions as applicable. All exits and emergency exits in the facility are clearly marked.

First Aid/EMS

If you need medical attention, please notify the nearest S.A.F.E Management representative or campus police officer.

Gates Open

Gates open 1 hour prior to the scheduled start time.

Suites

For information about the availability of suites in Ridley Athletic Complex, please contact Events Services at 410-617-5077.

Tailgating

Spectator Tailgating is not permitted in any of the parking areas surrounding Ridley Athletic Complex. Team Tailgating only will be coordinated by Events Services at 410-617-5077.

Team Filming

A dedicated platform for filming is located at the top of the grandstands with multiple power ports available. Access the platform via the upper stands from the concourse level.

Tickets

Online: www.LoyolaGreyhounds.com/tickets

Phone: Loyola Athletics Ticket Office 410-617-1420

Groups: Please email HoundTickets@loyola.edu for information.

(prices are subject to change)

Soccer

	General Admission	Student/Youth	Group (20+)
Men's Soccer	\$7	\$5	\$3
Women's Soccer	\$7	\$5	\$3

Men's Basketball

	Reserved	General Admission		Group (20+)
		Adult	Youth	
Single Game	For ticket prices please visit our website or call the ticket office for information.			

Women's Basketball

	General Admission	Courtside Seats	Group (20+)
Single Game	For ticket prices please visit our website or call the ticket office for information.		

Lacrosse

	General Admission	Student/Youth	Group (20+)
Men's Lacrosse	\$15	\$10	\$5
Women's Lacrosse	\$7	\$5	\$3

Will Call

Tickets purchased through the Loyola Box Office charge-by-phone line (410-617-1420) or online at LoyolaGreyhounds.com/tickets and designated for Will Call may be picked up at the Ridley Athletics Complex Box Office beginning one-hour prior to the event. **To pick up tickets in Will Call, the person picking up the tickets must bring their driver's license.** In addition, the name on the tickets must be the same as the person picking up the tickets.

Complimentary Tickets

Please check your respective contract regarding complimentary tickets for your team. If you have any questions regarding complimentary tickets, please call 410-617-2037.

Directions

From BWI Airport

Take I-195 to I-95 north. Follow to the Baltimore Beltway (I-695 West). Continue on the Beltway to exit 25 (Charles Street). Go South on Charles Street approximately seven miles to Cold Spring Lane. The college is located on the corner of Cold Spring Lane and Charles Street.

To Loyola's Main Campus & Reitz Arena

(GPS Address: 4501 N. Charles Street; Baltimore, MD 21210)

Coming from the North

Take 95 South to the Baltimore Beltway (I-695) towards Towson, take exit 25 South (Charles Street). Proceed south on Charles Street approximately seven miles to Cold Spring Lane intersection. The campus is also accessible from entrances on Cold Spring Lane.

Coming from the South

Take 95 North to the Baltimore Beltway (I-695) towards Towson, take exit 25 South (Charles Street). Proceed south on Charles Street approximately seven miles to Cold Spring Lane intersection. The campus is also accessible from entrances on Cold Spring Lane.

Team Bus/Van Parking

All buses will park behind the Andrew White Student Center in the notch. The notch is located on Ennis Parallel.

To Loyola's Ridley Athletic Complex

(GPS Address: 2221 W. Cold Spring Lane; Baltimore, MD 21211)

Coming from the North

Take 95 South to the Baltimore Beltway (I-695) towards Towson. Take Interstate I-83 South. Proceed south to Cold Spring Lane west exit 9B. Proceed to the next light. Take a Left at the light. There is a police station on the corner.

Coming from the South

Take 95 North to the Baltimore Beltway (I-695) towards Towson. Take Interstate I-83 South. Proceed south to Cold Spring Lane west exit 9B. Proceed to the next light. Take a Left at the light. There is a police station on the corner.

To Loyola's Fitness & Aquatic Center (FAC)

(GPS Address: 4900 N. Charles Street; Baltimore, MD 21210)

Coming from the North

Take 95 South to the Baltimore Beltway (I-695) towards Towson, take exit 25 South (Charles Street). Proceed south on Charles Street approximately six miles to Fitness and Aquatic Center intersection. Take a right at the light and proceed up the driveway to the FAC. Parking lots are available.

Coming from the South

Take 95 North to the Baltimore Beltway (I-695) towards Towson, take exit 25 South (Charles Street). Proceed south on Charles Street approximately six miles to Fitness and Aquatic Center intersection. Take a right at the light and proceed up the driveway to the FAC. Parking lots are available.

To Loyola/John Hopkins Track & Field Complex

(GPS Address: 1101 East 33rd Street, Baltimore, MD 21218)

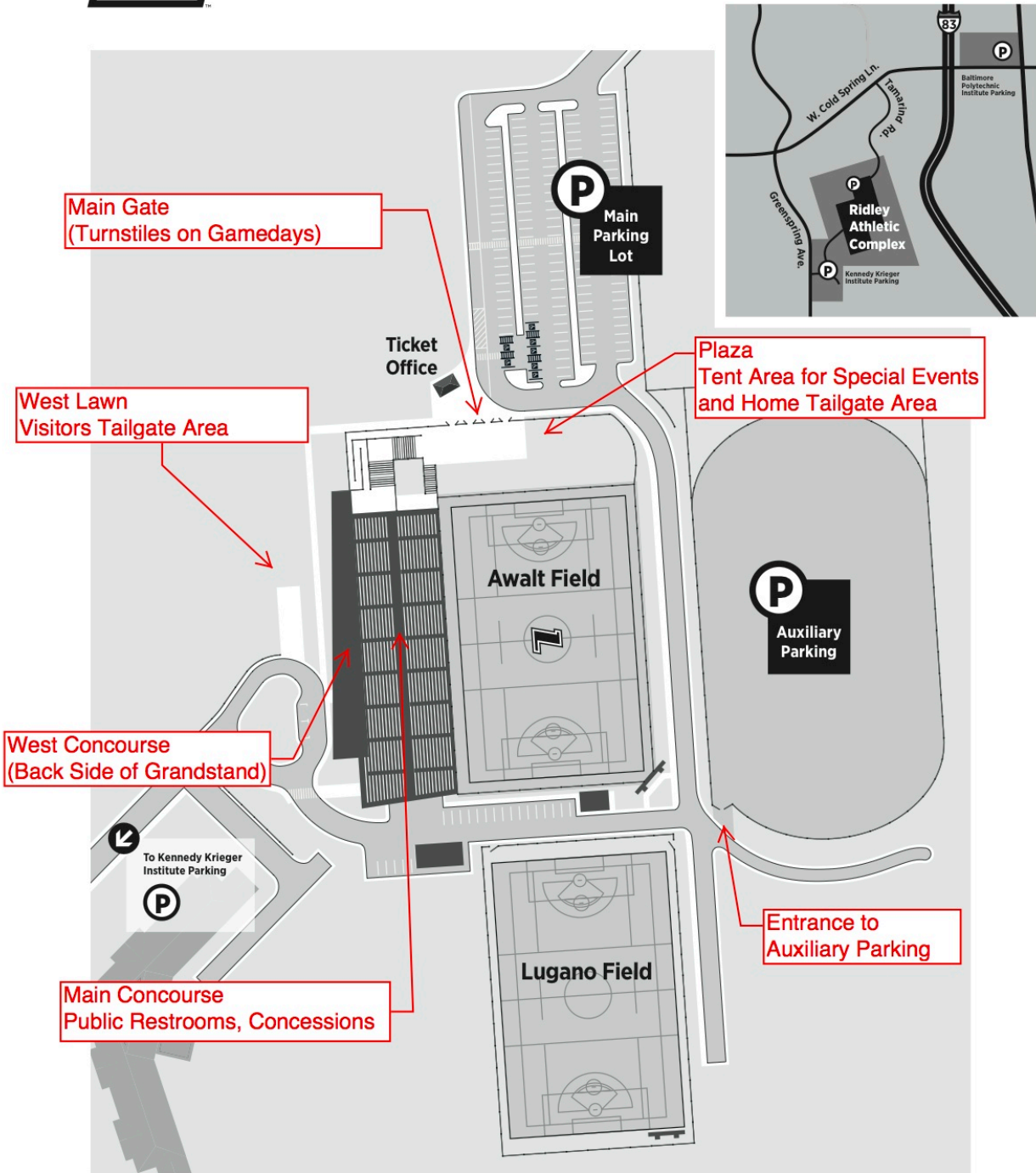
From I-695 (the Baltimore Beltway) – Take the beltway toward Towson to exit 25. Take Charles Street south for about 7 miles. Make a left onto University Parkway, which crosses Charles at an angle. Stay on University Parkway until it meets 33rd Street. Turn left at 33rd. Pass the Giant Grocery Store and Johns Hopkins University at Eastern will be on your right directly across from the YMCA (former site of Memorial Stadium). The parking lot is on the right just past Eilerslie Ave (between 2 small yellow pillars).

From the Jones Falls Expressway (I-83) southbound – Take the Cold Spring Lane exit. Turn left off the exit ramp onto Cold Spring Lane. Make a right at the third light onto Roland Avenue. Be sure to stay in the left two lanes - disregard the fork to the right. Roland Avenue will turn into University Parkway. Follow University Parkway to 33rd Street. Turn left at 33rd. Johns Hopkins at Eastern will be on your right directly across from the YMCA (former site of Memorial Stadium). The parking lot is on the right just past Eilerslie Ave (between 2 small yellow pillars).



LOYOLA UNIVERSITY MARYLAND

RIDLEY ATHLETIC COMPLEX





**RIDLEY
ATHLETIC
COMPLEX**

LEVEL 1

- Locker Rooms
- Officials Grey Locker Room
- Officials Green Locker Room
- Visitors Grey Locker Room
- Visitors Green Locker Room
- Equipment Room
- Campus Police
- Men's Soccer Locker Room
- Women's Soccer Locker Room
- Women's Lacrosse Locker Room
- Men's Lacrosse Locker Room
- Sports Medicine
- Visitors Treatment Area

LEVEL 2

- Athletics Offices
- Conference Room
- Men's Coaches Locker Rooms
- Women's Coaches Locker Rooms
- Media/Film Room
- Weight Room

LEVEL 3

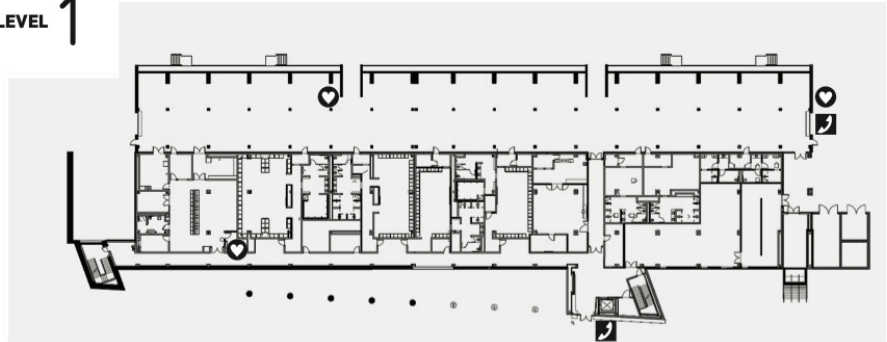
- Spectator Concourse
- Third Floor Lobby
- Concessions
- Merchandise Booth
- Guest Relations

LEVEL 4

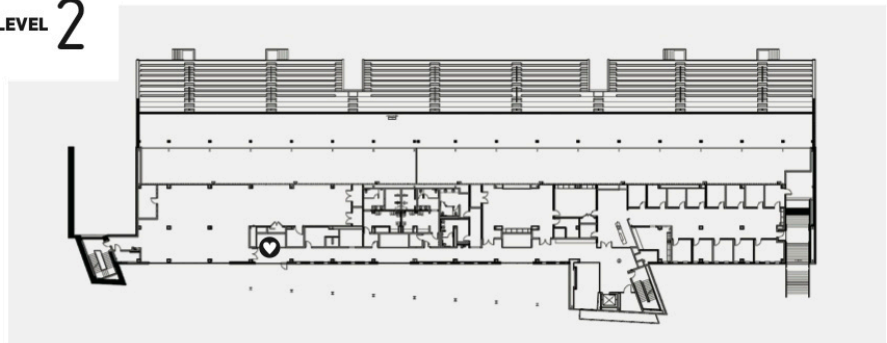
- Donor Suite
- Broadcast Booth
- Press Box
- Event Management Media Booth
- Broadcast Booth Green
- Broadcast Booth White
- President's Suite
- The Greyhound Suite

- Automated External Defibrillator
- Call Box

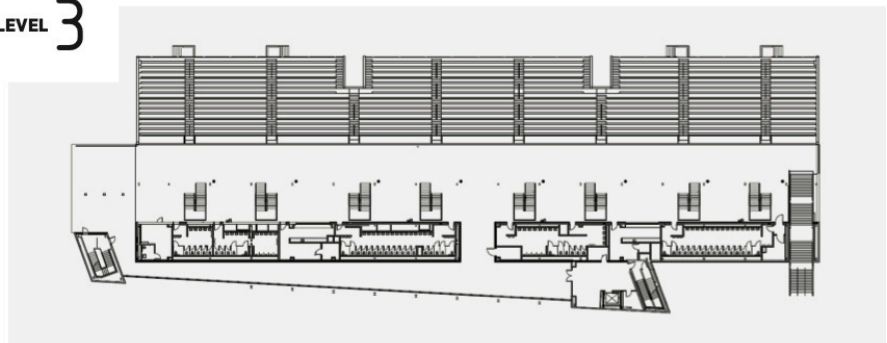
LEVEL 1



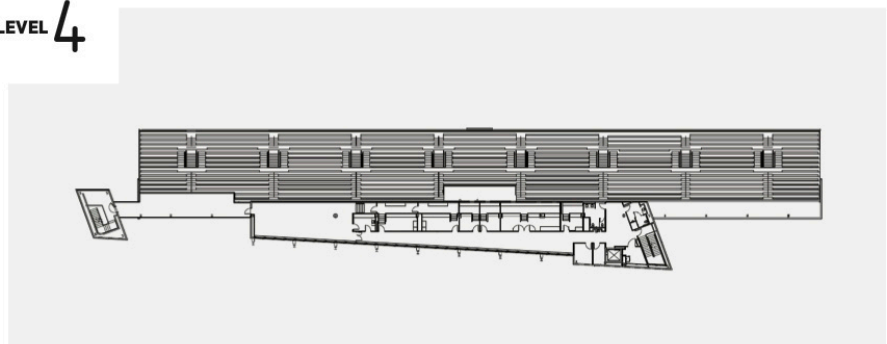
LEVEL 2



LEVEL 3



LEVEL 4



WELCOME TO THE EVERGREEN CAMPUS



- 1 Newman Towers
- 2 Ayla Hall
- 3 Belarmine Hall
- 4 Claver Hall
- 5 Dorothy Day Hall
- 6 Campion Tower
- 7 Seaton Court
- 8 Southwell Hall
- 9 Hopkins Court
- 10 Lange Court
- 11 Fresses & Aquatic Center
- 12 USF&S Pedestrian Bridge
- 13 Koett Hall
- 14 Donnelly Science Center
- 15 Cohn Hall
- 16 Alumni Memorial Chapel
- 17 Beatty Hall
- 18 The Miguel B. Fernandez Family Center for Innovation and Collaborative Learning
- 19 Jenkins Hall
- 20 Rev. Francis X. Koett, S.J., Humanities Center
- 21 Sullinger School of Business and Management
- 22 Maryland Hall
- 23 DeChiara College Center
- 24 Emil G. "Lefly" Reitz Arena/Forbis Court
- 25 Andrew White Student Center
- 26 Diane Geppi-Aikens Field
- 27 Bookstore
- 28 Stamp It! Student Mail Room
- 29 Arringer House
- 30 Rev. Brian F. Limano, S.J., Alumni Houses
- 31 Ignatius House
- 32 Hammernan House
- 33 Marjorie Art Studio
- 34 Butler Hall
- 35 Maryland Hall
- 36 Facilities Building
- 37 300 Radnor Road
- 38 302 Radnor Road
- 39 304 Radnor Road
- 40 306 Rosseter Avenue
- 41 McChrissy Cottage
- 42 301 Rosseter Avenue
- 43 Justin Osher House
- 44 Early House
- 45 304 Rosseter Avenue
- 46 St. Alphonsus Rodriguez House
- 47 302 Rosseter Avenue
- 48 300 Rosseter Avenue
- 49 303 Winston Avenue
- 50 301 Winston Avenue
- 51 Tennis Courts
- 52 The Bowman Hall
- 53 Loyola/Notre Dame Library
- 54 Atern Hall
- 55 McAuley Hall
- 56 Aquinas Hall
- 57 Rehner Village
- 58 5104 York Road Annex
- 59 5104 York Road
- 60 5000 York Road
- 61 4806 York Road
- 62 The Loyola Clinical Centers at Belvedere Square
- 63 Loyola Athletic Complex, McClure Tennis Center, and Air Dome (seasonal)
- 64 Center for Innovation and Entrepreneurship Annex
- 65 Academic Advising and Support Center
- 66 Accounting Department
- 67 American Studies Department
- 68 Anthropology Department
- 69 Art Department
- 70 Biology Department
- 71 Business Administration Department
- 72 Business Law Department
- 73 Business Management Department
- 74 Business Studies Department
- 75 Center for Community Service and Leadership
- 76 Center for Environmental Engagement
- 77 Center for Global Studies
- 78 Center for Health and Wellness
- 79 Center for Leadership and Management
- 80 Center for Learning and Innovation
- 81 Center for the Study of the Americas
- 82 Center for the Study of the Americas
- 83 Center for the Study of the Americas
- 84 Center for the Study of the Americas
- 85 Center for the Study of the Americas
- 86 Center for the Study of the Americas
- 87 Center for the Study of the Americas
- 88 Center for the Study of the Americas
- 89 Center for the Study of the Americas
- 90 Center for the Study of the Americas
- 91 Center for the Study of the Americas
- 92 Center for the Study of the Americas
- 93 Center for the Study of the Americas
- 94 Center for the Study of the Americas
- 95 Center for the Study of the Americas
- 96 Center for the Study of the Americas
- 97 Center for the Study of the Americas
- 98 Center for the Study of the Americas
- 99 Center for the Study of the Americas
- 100 Center for the Study of the Americas

TAKE A SELF-GUIDED TOUR AROUND CAMPUS

Download the Loyola Mobile Tour app

Or download the app for iPhone or Android from the App Store or Google Play.

- 1 Shuttle Stop
- 2 Visitor Parking
- 3 Dining Services
- 4 ATM
- 5 Post Office
- 6 Emergency Phone
- 7 Accessible
- 8 Taxi Area