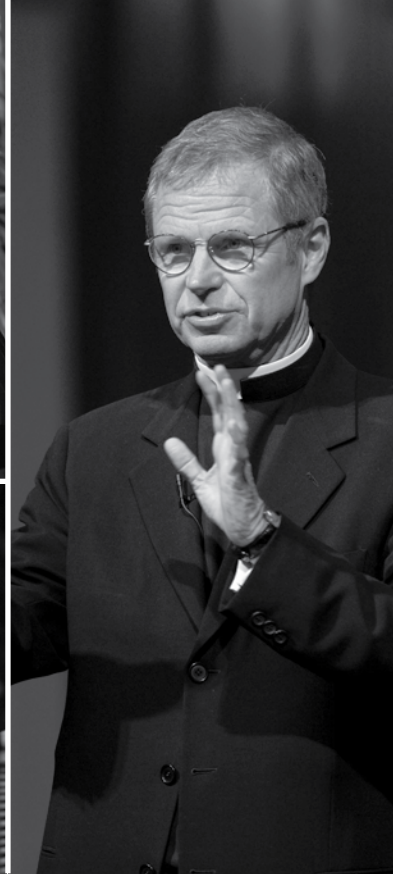
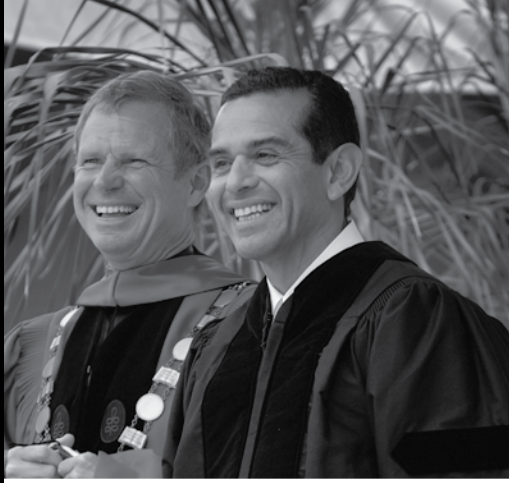


# ***INSIDE THE LIONS***

<i>LMU President - Fr. Robert B. Lawton S.J.</i> .....	186
<i>Athletics Director - Dr. William Husak</i> .....	187
<i>LMU Athletics Staff</i> .....	188
<i>NCAA Compliance</i> .....	191
<i>The West Coast Conference</i> .....	193
<i>Media Information</i> .....	195
<i>LMU Media Services Staff</i> .....	195
<i>Following LMU</i> .....	196
<i>Driving Directions, Game Day Information</i> .....	196
<i>Campus Map</i> .....	197
<i>2009-10 Opponent Information</i> .....	198
<i>2009-10 WCC Composite Schedule</i> .....	200





## *PRESIDENT*

# Rev. Robert B. Lawton, S.J.



**R**ev. Robert B. Lawton, S.J., was named the 14th president of Loyola Marymount University on June 1, 1999. Father Lawton leads LMU into the next millennium after serving as the dean of Georgetown College at Georgetown University since 1989.

Lawton, a classicist, scripture scholar, administrator, and priest, was born in Cumberland, Maryland, and entered the Society of Jesus in July 1965.

Possessing a wealth of experience in both university teaching and administration, Fr. Lawton comes to LMU after giving 20 years of service to Georgetown University. Serving as the assistant Dean from 1984-89, Fr. Lawton also taught in the Theology department as an adjunct assistant professor during that period. He started at the University in 1977 as an assistant professor of Theology and worked in that capacity until 1979.

He earned his bachelor of arts degree in classics from Fordham University in 1971, graduating Phi Beta Kappa (summa cum laude). Fr. Lawton went on to attend Harvard University where he completed his doctorate in Near Eastern Languages and Civilizations in

1977. Fr. Lawton was a Danforth and Woodrow Wilson Fellow at Harvard. He was ordained in 1981.

Following his preparation for ordination from 1979-81, Fr. Lawton traveled to Germany to conduct independent study in both German and theology. In 1982, he accepted an assistant professorship teaching Hebrew and Aramaic at the Pontifical Biblical Institute in Rome, Italy, a post he held until 1984.

In addition to his teaching and administrative duties at Georgetown, Fr. Lawton served on numerous campus committees examining such areas as campus planning, student life, freshman and transfer student admissions, and community relations. Outside of the University he has served as a member of the Board of Trustees of the University of Scranton and Fairfield University.

Father Lawton holds the rank of professor in LMU's Departments of Theological Studies and Classics.





## DIRECTOR OF ATHLETICS

# Dr. William S. Husak

**F**or Dr. William S. Husak life is all about family and his 12 years as the Athletics Director at Loyola Marymount University reflects his family-first approach to life. And that approach has brought success never before seen at LMU. Since taking over the program in 1998, the Lions' success has been some of the best in program history, Husak firmly believes the program has "just scratched the surface."

His administrative efforts have focused on developing a family of coaches, support staff and administrators who believe that LMU's athletics program can be among the elite in the nation. This period of time has been marked by enhancing the support of the athletic teams through the new and updated facilities, increased scholarship and operational support and enhancing the coaching and support staff.

The past 12 years have been some of the most successful seasons in school history as the Lions won over 54 percent of its dual competitions in that span and claimed the school's first ever Commissioner's Cup in 2006. Since 1998, LMU has claimed 26 conference championships and 32 NCAA postseason appearances. Off the field, the Lions have had a 65 percent increase in national scholar-athletes as 208 claimed the honor in the 2008-09 academic year.

Husak attributes the current success and the future growth of the program to the staff that is in place. Since he took over the program, the coaching and administrative staffs that lend support to the more than 450 student-athletes has more than doubled in size. A full-time head coach will lead 19 of the varsity sports sponsored at LMU. When Husak took over, only nine of the programs were led by full-time coaches.

In addition, support for the student-athletes was enhanced with the addition of 10 brand new staff positions, which included an athletic academic coordinator, marketing/promotions manager, ticket manager, corporate relations manager, two assistant athletic trainers, a two strength and conditioning assistant coaches, a assistant compliance director and an assistant media relations director.

The final major piece to LMU Athletics' growth and success has been Husak's commitment to facilities. Since he has taken over, \$30 million has been

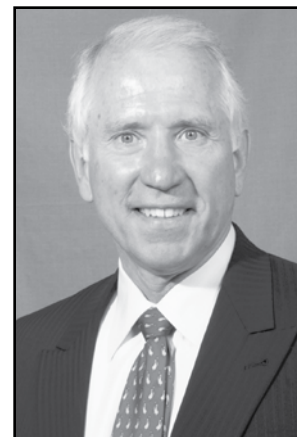
put into athletic facilities. That list includes the Burns Aquatics Center, which was used as host to the 2002 and 2006 NCAA Men's Water Polo Championships. It has been the only time LMU has hosted an NCAA championship.

Facility enhancements have also included the brand new Smith Field (softball), Thomas Higgins Short Game Center (golf), the Morris A. Pivaroff and George P. Kading Tournament Court (tennis), and the Jane Browne Bove Boathouse. LMU's existing facilities have also seen their share of growth, including new bleachers and scoreboard to Sullivan Field (soccer), Mikos Blue Monster and Pride Park to Page Stadium (baseball), and a new sound system, floor and bleachers in Gersten Pavilion.

More is on its way as the University committed more than 7,000 square feet for coaches office at the Leavey Center. In addition, plans for the next 18 months include a new weight training facility with locker room and storage space and new locker room suites in Gersten Pavilion, including new state-of-the-art areas for men's and women's basketball.

Husak comes from a long and accomplished background as an administrator, fundraiser and professor during a 19-year career at California State University, Long Beach. Between 1993-1998, he served as the Senior Associate Athletics Director and was mainly responsible for Athletics fundraising. While at CSULB between 1983 and 1997, Husak served as an assistant commissioner for the California Collegiate Athletic Association (CCAA). Between 1986 and 1993 he served as chairman of CSULB's physical education department. As an associate professor of physical education at CSULB between 1979 and 1986, he established the university's Motor Behavior Laboratory.

A 1972 graduate of State University of New York (SUNY) at Cortland, Husak holds a master's degree and Ph.D. in Physical Education from Texas A&M University. He and his wife of 38 years, Tish, live in Long Beach and have three sons, Greg, Todd and Jon.



# ATHLETICS DEPARTMENT STAFF

INSIDE THE LIONS

2009-10 LIONS' MEDIA GUIDE

## OFFICE OF THE ATHLETICS DIRECTOR



**Dr. William Husak**  
Athletics Director



**Dan Smith**  
Assoc. Athletics  
Director - Internal Ops.



**Addie Casey**  
Office Supervisor  
Camps/Clinics Coordinator



**Faith Sauerwald**  
Senior Secretary  
Camps Director



**June D'Amour**  
Senior Secretary

## BUSINESS/FINANCE



**Maria Behm**  
Assoc. Athletics  
Director/SWA



**Robyn Millen**  
Business Affairs  
Assistant

## NCAA COMPLIANCE



**Sara Webster**  
Asst. Athletics Director  
Compliance



**John Infante**  
Assistant Compliance  
Director

## DEVELOPMENT/FUNDRAISING



**Brian Luft**  
Asst. Athletics Director  
Development



**Rob Anderson**  
Deputy Dir. of  
Annual Giving

## MEDIA SERVICES



**John Shaffer**  
Asst. Athletics Director  
Media Services



**Mark Dodson**  
Assistant Director  
Media Services



**Tyler Geviert**  
Assistant Director  
Media Services



**Ahnie Draper**  
Media Services  
Assistant

## TICKETS



**Lisa Binetti**  
Ticket Office  
Manager



**Heather Herkenhoff**  
Assistant Ticket Office  
Manager

## MARKETING/CORPORATE RELATIONS



**Karina Handeland**  
Asst. Athletics Director  
Marketing



**Jason Hanchar**  
Corporate Relations  
Manager



**Danny Cup Choy**  
Marketing  
Assistant

## CHEER



**Travis Neese**  
Cheer  
Head Coach

## FACILITIES



**Shane Howell**  
Director of  
Athletics' Facilities



**Angelo Rawles**  
Athletics' Facilities  
Multi-craftsman

## ATHLETIC MEDICINE



**Keith Ellison**  
Asst. Athletics Director  
Sports Medicine



**Joe Gonzalez**  
Assistant Athletics  
Trainer



**Beth Drayer**  
Assistant Athletics  
Trainer



**Steven Cortez**  
Assistant Athletics  
Trainer



**Augie Dominguez**  
Athletics' Facilities  
Multi-Craftsman



**Shelton Lorick**  
Athletics' Facilities  
Multi-craftsman

**LMU STRENGTH**


**Bobby Harmston**  
Head Strength & Conditioning Coach



**Geno del Rosario**  
Assistant Strength & Conditioning Coach



**Ciara Carl**  
Assistant Strength & Conditioning Coach

**ACADEMIC SERVICES**


**Matt Casana**  
Director of Academic Services



**Sherilyn Frazier**  
Assistant Academic Advisor



**Eric Wiener**  
Academics Assistant

**MEN'S BASKETBALL**


**Max Good**  
Men's Basketball Assistant Coach



**Myke Scholl**  
Men's Basketball Assoc. Head Coach



**Jason Levy**  
Men's Basketball Assistant Coach



**Chris Farr**  
Men's Basketball Assistant Coach



**Gabe Carter**  
Men's Basketball Dir. of Operations

**BASEBALL**


**Jason Gill**  
Baseball Head Coach

**Women's Basketball**


**Julie Wilhoit**  
Women's Basketball Head Coach



**Lynn Flanagan**  
Women's Basketball Assoc. Head Coach



**Brian Rosario**  
Women's Basketball Assistant Coach



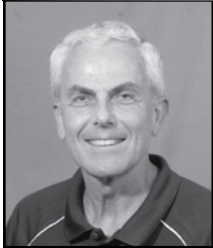
**Michele Zylstra**  
Women's Basketball Assistant Coach



**Michele Zylstra**  
Women's Basketball Assistant Coach



**Drew Keehn**  
Baseball Assistant Coach

**WOMEN'S VOLLEYBALL**


**Steve Stratos**  
Women's Volleyball Head Coach



**Larry Smoot**  
Women's Volleyball Assistant Coach



**Heather Collins**  
Women's Volleyball Assistant Coach



**David Cuthbert**  
Women's Volleyball Volunteer Assistant



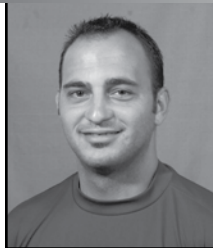
**Scott Walter**  
Baseball Assistant Coach

**MEN'S SOCCER**


**Paul Krumpke**  
Men's Soccer Head Coach



**Mathes Mennell**  
Men's Soccer Assoc. Head Coach



**Michael Erush**  
Men's Soccer Assistant Coach



**Matt Tutton**  
Men's Soccer Volunteer Assistant



**Brett Sarsfield**  
Men's Soccer Soccer Operations



**Jeff Walker**  
Baseball Volunteer Assistant



**WOMEN'S SOCCER**



**Joe Mallia**  
Women's Soccer  
Head Coach



**Michelle Myers**  
Women's Soccer  
Assistant Coach



**Joslyn Slovek**  
Women's Soccer  
Assistant Coach



**Katie Huchting**  
Women's Soccer  
Volunteer Assistant

**MEN'S GOLF**



**Alex Galvan**  
Men's Golf  
Head Coach



**Michael Gaines**  
Men's Golf  
Assistant Coach

**WATER POLO**



**John Loughran**  
Men's Water Polo  
Head Coach



**Kyle Witt**  
Women's Water Polo  
Head Coach



**Cara Colton**  
Water Polo  
Assistant Coach

**SOFTBALL**



**Gary Ferrin**  
Softball  
Head Coach



**Danielle Kaminaka**  
Softball  
Assistant Coach



**Josh Musselman**  
Softball  
Volunteer Assistant

**WOMEN'S SWIMMING**



**Bonnie Adair**  
Women's Swimming  
Head Coach



**Clay Evans**  
Women's Swimming  
Assistant Coach



**Joanne Reierson**  
Women's Swimming  
Assistant Coach

**WOMEN'S TENNIS**



**Jamie Sanchez**  
Women's Tennis  
Head Coach



**Amanda Ammerman**  
Women's Tennis  
Assistant Coach



**Tami Adkins**  
Women's Tennis  
Volunteer Assistant

**MEN'S TENNIS**



**Brad Sceney**  
Men's Tennis  
Head Coach



**Zeke Hindle**  
Men's Tennis  
Assistant Coach

**CROSS COUNTRY/TRACK**



**Scott Guerrero**  
Cross Country/Track  
Head Coach



**Drew Roberts**  
Cross Country/Track  
Assistant Coach



**Rick Weis**  
Cross Country/Track  
Volunteer Assistant



**Ali Mann**  
Cross Country/Track  
Volunteer Assistant

**MEN'S TENNIS CONT.**



**Aaron Paajanen**  
Men's Tennis  
Volunteer Assistant

**WOMEN'S ROWING/MEN'S CREW**



**Dawn Regan**  
Rowing/Crew  
Head Coach



**Ilia Ash**  
Women's Rowing  
Assistant Coach



**Scott Charette**  
Men's Crew  
Assistant Coach



**John Kolenda**  
Men's Crew  
Volunteer Assistant



# I Want to Play at LMU...

## What do I need to do in order to play at LMU as a freshman?

If you intend to participate in Division I or II athletics as a freshman, you must register and be certified by the NCAA Eligibility Center. To register, you must go on-line to [www.ncaaclearinghouse.net](http://www.ncaaclearinghouse.net). You will need a major credit card to complete the registration. The fee is \$60 for domestic prospects (\$85 for foreign prospects). The Eligibility Center evaluates your academic records as well as your amateurism status to determine whether or not you are eligible to play Division I or II sports. You will be required to designate all high schools you have attended and answer a series of questions relating to your status as an amateur. Once you've completed the registration and answered the amateurism questions, you will need to have each of the high schools you have attended supply an official copy of your transcripts directly to the Eligibility Center. You will also need to arrange to have your standardized test scores sent directly from the testing agency to the NCAA Eligibility Center. This

must be done directly from the testing agency's website. The NCAA Eligibility Center routing code is 9999. If you have questions, you or your high school counselor can obtain assistance by calling the NCAA Eligibility Center at (317) 223-0700. After you graduate and before school closes for the summer, your counselor must send a copy of your final transcript to the Eligibility Center that includes your confirmation of graduation from high school.

two (2) times per week on or after August 1 prior to your senior year in high school. For junior college and four-year transfer prospects, you may only receive one phone call per week, regardless of the time period.

### Exception for Women's Basketball ONLY

Only in the sport of women's basketball, a college coach (but not a booster) is permitted to call you

## How do I know if I'm being recruited?

You become a "prospective student-athlete" when you start ninth-grade classes. Before the ninth grade, you become a prospective student-athlete if a college gives you (or your relatives or friends) any financial aid or other benefits that the college does not provide to prospective students generally. You become a "recruited prospective student-athlete" at a particular college if any coach approaches you (or any member of your family) about enrolling and participating in athletics at that college. Activities by coaches that cause you to become a recruited prospective student-athlete are: (1) providing you with an official visit; (2) placing more than one telephone call to you or any other member of your family; or (3) visiting you or any other member of your family anywhere other than the college campus; or (4) issuing to you a National Letter of Intent or written offer of athletically related financial aid.



(or your parents or legal guardians) one time during each of the months of April (on or after the Thursday after the conclusion of the Women's Final Four) and May of your junior year in high school. You can receive one call on or after June 1 through June 20, and one call you can receive one call on or after June 21 through June 30 of your junior year in high school. In addition, you can receive three phone calls during the month of July following your junior year in high school, with no more than one call per week. On or after August 1 prior to your senior year in high school, you can receive no more than one phone call per week.

### Unlimited Phone Calls - All Sports

Unlimited phone calls can be made to you (or your parents or legal guardians) by a college coach ONLY under the following circumstances: (1) during the five days immediately before your official visit by the college you will be visiting; (2) on the day of a coach's off-campus contact with you by that coach; (3) on the initial date for signing the National Letter of Intent in your sport through two days after the initial signing date; and (4) you (or your parents or legal guardians) may telephone a coach at your expense as often as you wish. At the completion of your junior year (after July 1), coaches may also accept collect calls from you, using our toll-free number (1-800-LIONS-R-1). In men's basketball ONLY, coaches may accept a toll-free call from you no earlier than the conclusion of your sophomore year in high school.

### RECRUITING CALENDARS

Keep in mind that every sport has a different recruiting calendar. A coach in a particular sport may or may not be permitted to call you during certain times of the year. When you do speak to a college coach, be sure to ask about the recruiting calendar so you understand when you can accept phone calls from college coaches. You can also find the recruiting calendars for all sports on-line at [www.ncaa.org](http://www.ncaa.org).

### OFF-CAMPUS CONTACTS

In all Sports Other Than Football and Basketball

## BASIC INFORMATION QUESTIONS?

Should you have any questions regarding any NCAA rules, please contact our Compliance Office at (310) 338-7789 or you can contact the NCAA at (317) 917-6222.

## GO ONLINE

NCAA: [www.ncaa.org](http://www.ncaa.org)  
Loyola Marymount University: [www.LMU.edu](http://www.LMU.edu)  
LMU Athletics: [www.LMULions.com](http://www.LMULions.com)

## LMU CONTACTS

TBA - Assistant Athletic Director-Compliance  
(310) 338-7789 | (800) LIONS-R-1  
John Infante - Assistant Director - Compliance  
(310) 338-3706 | (800) LIONS-R-1

## MAILING ADDRESSES

Loyola Marymount University  
Gersten Pavilion  
Department of Athletics - Compliance  
1 LMU Drive - MS 8505; Los Angeles, CA 90045

NCAA Clearinghouse  
301 ACT Drive - Box 4043; Iowa City, IA 52243-4043  
Toll Free - Domestic Callers: (877) 262-1492  
Foreign Calls: (319) 337-1492  
[www.ncaaclearinghouse.net](http://www.ncaaclearinghouse.net)

After November 1, 2007  
NCAA Eligibility Center  
P.O. Box 7110  
Indianapolis, IN 46206

## WHAT CAN I RECEIVE FROM LMU

You (or your family) may not receive any benefit, inducement or arrangement such as cash, clothing, cars, improper expenses, transportation, gifts or loans to encourage you to sign a National Letter of Intent or attend an NCAA college. Loyola Marymount University may offer you a one-year scholarship that covers room and board, tuition and fees, and required course-related books, or any part of these. The institution can recommend that this aid be renewed each year, as is the general practice at LMU.

**Boosters:** In addition to general recruiting regulations, no alumni, boosters or representatives of a college's athletics interests can be involved in your recruitment. There can be no phone calls or letters from boosters. If an LMU booster is contacting you, please call the LMU Compliance Office as soon as possible at (310) 338-7789. Don't risk your NCAA eligibility!

## When can I talk to the coach and have him/her see me play?

## TELEPHONE CALLS In all Sports Other Than Football and Basketball

A college coach (but not a booster) is permitted to call you (or your parents or legal guardians) on or after July 1 following the completion of your junior year in high school. On or after July 1 after the completion of your junior year in high school, a college coach is permitted to call you only one time per week.

### Exception for Men's Basketball ONLY

Only in the sport of men's basketball, a college coach (but not a booster) is permitted to call you (or your parents or legal guardians) one time per month on or after June 15 of your sophomore year in high school through July 31 of your junior year in high school. Coaches are permitted to call you



A college coach is permitted to contact you in person off the college campus only on or after July 1 after the completion of your junior year in high school. A contact is any face-to-face meeting between a college coach or athletics staff member and you or your parents, during which any of you say more than "hello." Also, any such face-to-face meeting that is prearranged or that takes place on your campus, at an organized competition or practice involving you or your high school, preparatory school, two-year college or all-star team shall be considered a contact, regardless of the conversation. Currently in all sports other than football, college coaches may contact you off the college campus no more than three times. However, a college coach may visit your high school (with the approval of your high school principal) only once a week during a contact period. Junior college prospects who are non-qualifiers as determined by the NCAA Eligibility Center may not be recruited until they have completed one academic year at the junior college.

### In Men's Basketball

A college coach is not permitted to contact you prior to the opening day of classes of your senior year in high school. During the academic year, a college coach is limited to seven recruiting opportunities with you (contacts and evaluations combined) with no more than three in-person, off-campus contacts at any site during your senior year in high school.

### In Women's Basketball

A college coach is not permitted to contact you prior to the opening day of classes of your senior year in high school. During the academic year, a college coach is limited to five recruiting opportunities with you (contacts and evaluations combined) with no more than three in-person, off-campus contacts at any site during your senior year in high school. This restriction includes your relatives or legal guardians, but does not include any contact made during your official visit to campus. Further, all communication between you, your relatives, legal guardians, your coach, or anyone else involved with your participation in basketball, directly or indirectly, and a college coach during the month of July is prohibited.

### EVALUATIONS

An evaluation is any off-campus activity used to assess your academic qualifications or athletics ability, including a visit to your high school (during which no contact occurs) or watching you practice or compete at any site. Currently in all sports other than football and women's basketball, a college coach is limited to seven opportunities (contacts and evaluations combined) to recruit you and not more than three of the seven opportunities may be contacts. In women's basketball, coaches have a limit of five opportunities with which to recruit you (contact and evaluations combined) off the college campus. Not more than three of those five opportunities may be contacts. Once you sign a National Letter of Intent, you may be evaluated an unlimited number of times by a college coach from the college with which you have signed.

### LETTERS AND RECRUITING MATERIALS

In all sports other than men's basketball, letters (including emails) and printed recruiting information may be sent to you starting September 1st at the beginning of your junior year in high school. In men's basketball, you may receive these materials after June 15 at the completion of your sophomore year in high school. This information can only be sent to you through regular mail services. College coaches are not permitted to send anything to you (expect a National Letter of Intent offer) through any express mail service (e.g. Federal Express, UPS, DHL, etc.).

For more information, please visit our website at [www.LMULions.com](http://www.LMULions.com).

**Good Luck and GO LIONS!!!**

## STAFF DIRECTORY

**GENERAL PHONE:** ..... (310) 338-2765  
**TICKETS:** ..... (310) 338-LION  
**BY MAIL:** ..... Administration: ..... Loyola Marymount University  
 ..... Gersten Pavilion; 1 LMU Drive - MS 8505; Los Angeles, CA 90045  
 ..... Coaching Staff: ..... Loyola Marymount University  
 ..... Leavey Center; 1 LMU Drive - MS 8235; Los Angeles, CA 90045

### BY FAX:

Leavey Center: ..... (310) 338-5915      Men's Basketball: ..... (310) 338-7644  
 Aquatics: ..... (310) 338-3796      Media Services: ..... (310) 338-2703  
 Training Room: ..... (310) 338-5191      Administration: ..... (310) 338-4577  
 Compliance: ..... (310) 258-4628

### ADMINISTRATION (Area Code - 310)

#### Athletic Director

Dr. William Husak ..... Director of Athletics ..... 338-5940  
 Dan Smith ..... Associate Athletic Director - Internal Ops ..... 338-7483  
 Addie Casey ..... Office Supervisor/Co-Camp Director ..... 338-3047  
 Faith Sauerwald ..... Senior Secretary/Co-Camp Director ..... 338-4504  
 June D'Amour ..... Senior Secretary ..... 338-1743

#### Compliance

Sara Webster ..... Assistant Athletic Director - Compliance ..... 338-7789  
 John Infante ..... Assistant Director of Compliance ..... 338-3706

#### Business & Finance

Maria Behm ..... Associate Athletic Director - Business/SWA ..... 338-7645  
 Robyn Millen ..... Business Affairs Assistant ..... 338-2953

#### Media Services/Sports Information

John Shaffer ..... Assistant Athletics Director - Media Services ..... 338-7643  
Sports: Men's basketball, Men's & Women's Water Polo, Men's Golf  
 Mark Dodson ..... Assistant Director of Athletic Media Relations ..... 338-5798  
Sports: Men's & Women's Soccer, Women's Basketball, Softball  
 Tyler Geivett ..... Assistant Director of Athletic Media Relations ..... 338-7638  
Sports: Baseball, Volleyball, Swimming  
 Ahnie Draper ..... Athletic Media Relations Graduate Assistant ..... 338-7768  
Sports: M/W Tennis, Rowing/Crew, Cross Country/Track, Cheer

#### Academics

Matt Casana ..... Director of Academic Services ..... 338-1736  
 Sherilyn Frazier ..... Assistant Academic Advisor ..... 338-6594  
 Eric Wiener ..... Academics Assistant ..... 258-8872

#### Development

Brian Luft ..... Assistant Athletic Director - Development ..... 338-7853  
 Rob Anderson ..... Dir. of Annual Support for Athletic Giving ..... 338-2908  
 Jason Hanchar ..... Corporate Relations Manager ..... 338-5201

#### Tickets/Marketing/Promotions

Karina Handeland ..... Assistant Athletics Director - Marketing ..... 258-8608  
 Alisa Binetti ..... Ticket Manager ..... 338-4537  
 Danny Cup Choy ..... Marketing Assistant ..... 338-5466  
 Heather Herkenhoff ..... Central Ticket Agency ..... 338-4537

#### Strength Room

Bobby Harmstom ..... Strength and Conditioning Coach ..... 338-7690  
Sports: Men's basketball, Women's Basketball, Baseball, Women's Volleyball  
 Ciara Carl ..... Asst. Strength & Conditioning Coach ..... 338-5796  
Sports: M/W Tennis, Women's Water Polo, Men's Soccer, Golf, Softball, Cheer  
 Geno del Rosario ..... Asst. Strength & Conditioning Coach ..... 338-5796  
Sports: Women's Soccer, Swimming, Men's Water Polo, Cross Country/Track, Rowing

#### Training Room

Keith Ellison ..... Coordinator of Athletics Medicine ..... 338-2874  
Sports: Men's basketball, M/W Water Polo, Cross Country/Track, Cheer  
 Joe Gonzalez ..... Assistant Athletics Trainer ..... 338-2764  
Sports: Women's Basketball, Men's Soccer, Women's Tennis, Golf  
 Beth Drayer ..... Assistant Athletics Trainer ..... 338-2340  
Sports: Women's Soccer, Men's Tennis, Softball, Swimming  
 Steven Cortez ..... Assistant Athletics Trainer ..... 338-5220  
Sports: Women's Volleyball, Baseball, Men's Crew, Women's Rowing

#### Facilities

Shane Howell ..... Athletic Facilities Manager ..... 338-7641  
 Shelton Lorick ..... Athletic Facilities Assistant ..... 338-7642  
 Angelo Rawles ..... Athletic Facilities Assistant ..... 338-7642

#### SPORTS

Jason Gill ..... Baseball Head Coach ..... 338-2949  
 Max Good ..... Men's Basketball Head Coach ..... 338-7623  
 Julie Wilhoit ..... Women's Basketball Head Coach ..... 338-7699  
 John Loughran ..... Men's Water Polo Head Coach ..... 338-1844  
 Kyle Witt ..... Women's Water Polo Head Coach ..... 258-8646  
 Bonnie Adair ..... Women's Swimming Head Coach ..... 258-4685  
 Dawn Regan ..... Rowing/Crew Head Coach ..... 338-7624  
 Scott Guerrero ..... Cross Country/Track Head Coach ..... 338-7630  
 Alex Galvan ..... Men's Golf Head Coach ..... 258-8619  
 Paul Krumpe ..... Men's Soccer Head Coach ..... 338-7640  
 Joe Mallia ..... Women's Soccer Head Coach ..... 338-2795  
 Gary Ferrin ..... Softball Head Coach ..... 338-7651  
 Brad Sceney ..... Men's Tennis Head Coach ..... 338-7589  
 Jamie Sanchez ..... Women's Tennis Head Coach ..... 338-7506  
 Steve Stratos ..... Volleyball Head Coach ..... 338-4528

## THE WEST COAST CONFERENCE

The West Coast Conference was formed in 1952 to provide a convenient venue for five San Francisco Bay Area schools to compete in basketball. Since that modest beginning, the Conference has evolved and grown to become a nationally recognized and competitive force in intercollegiate athletics, with 13 league-sponsored sports: baseball; both men's and women's basketball, cross country, golf, soccer, and tennis; and women's volleyball and crew.

The eight WCC members span the western coast of the United States from Canada to Mexico, from the pine forests of Eastern Washington, to the Columbia River Basin, to the dynamic San Francisco Bay Area, to the sunny beaches of Southern California, the Conference is characterized by the stability of its membership - only two conferences have been together longer - and its unique emphasis on combining excellence in athletics with excellence in academics.

The Conference recognizes championships in each of its sports, has hosted NCAA championship events, and produced 26 NCAA Division I individual or team champions. And, many outstanding WCC student-athletes have gone on to excel in professional sports.

The long and rich history of the WCC demonstrates that success in intercollegiate athletics can be built on the foundation of values, character, and academics.

In March of 2007, the WCC and ESPN reached a multi-year agreement that would give the conference an unprecedented platform to showcase the numerous talented student-athletes within the league. In particular, the agreement gives the WCC a national vehicle to display the high level of men's basketball played within the conference. Starting in 2008-09, ESPN is the exclusive national broadcast provider of WCC men's basketball.

**West Coast Conference**  
1250 Bayhill Drive, Suite 101  
San Bruno, CA 94066  
Phone: (650) 873-8622  
Fax: (650) 873-7846

### SENIOR STAFF

Jamie Zaninovich	Commissioner
Colleen Lim	Associate Commissioner for Governance/Administration
Scott Leykam	Associate Commissioner for External Relations
Carolyn Jenkins	Associate Commissioner for Business and Operations

### GOVERNANCE AND ADMINISTRATION

Colleen Lim	Associate Commissioner for Governance/Administration
Ellen Moore	Director of Championships
Sarah Wilhelm	Director of Compliance/Student Services
Amanda Wood	Championships Assistant

### EXTERNAL RELATIONS

Scott Leykam	Associate Commissioner/External Relations
Jae Wilson	Director of Communications
Anish Patel	Associate Director of Communications
Stefanie Ordoveza	Communications & New Media Assistant

### OPERATIONS

Carolyn Jenkins	Associate Commissioner for Business and Operations
Korene Mangelsen	Office Coordinator
David Libbey	Coordinator of Men's Basketball Officiating
Violet Palmer	Coordinator of Women's Basketball Officiating
Karen Gee	Director of Women's Volleyball Officiating
Tom Hiller	Coordinator of Baseball Umpires

### CORPORATE PARTNERSHIPS-IMG

Dan Shell	General Manager
Katie Stockberger	Sponsorship Services Executive

## A GLANCE AT THE WCC

### All-Time Membership:

Saint Mary's	56 years	1952-Present
Santa Clara	56 years	1952-Present
San Francisco	56 years	1952-Present
Loyola Marymount	55 years	1955-Present
Pepperdine	55 years	1955-Present
Portland	33 years	1976-Present
Gonzaga	29 years	1979-Present
San Diego	29 years	1979-Present
Pacific	19 years	1952-71
San Jose State	17 years	1952-69
Nevada-Reno	10 years	1969-79
Seattle	9 years	1971-80
UNLV	6 years	1969-75
UC Santa Barbara	5 years	1964-69
Fresno State	2 years	1955-57

**The WCC Overall Student Population:** 54,668

WCC Institutions:	Location	Enroll
-------------------	----------	--------

Gonzaga University	Spokane, WA	6,375
Loyola Marymount University	Los Angeles, CA	8,300
Pepperdine University	Malibu, CA	8,000
University of Portland	Portland, OR	3,300
Saint Mary's College	Moraga, CA	4,768
University of San Diego	San Diego, CA	7,548
University of San Francisco	San Francisco, CA	8,000
Santa Clara University	Santa Clara, CA	8,377

\* Based on information provided by institutional alumni offices in 2007

### Sponsored Sports:

Men's Sports	Women's Sports
Baseball	
Basketball	Basketball
Cross Country	Cross Country
Golf	Golf
	Rowing
Soccer	Soccer
Tennis	Tennis
	Volleyball



jzaninovich@westcoast.org  
clim@westcoast.org  
sleykam@westcoast.org  
cjenkins@westcoast.org

clim@westcoast.org  
emoore@westcoast.org  
sarens@westcoast.org  
awood@westcoast.org

sleykam@westcoast.org  
jwilson@westcoast.org  
apatel@westcoast.org  
sordoveza@westcoast.org

cjenkins@westcoast.org  
kmangelsen@westcoast.org

dshell@westcoast.org  
kstockberger@westcoast.org



ZAPPOS.COM

WEST COAST CONFERENCE

# BASKETBALL CHAMPIONSHIPS

MARCH 5-8, 2010 • ORLEANS ARENA • LAS VEGAS, NV



Zappos.com

## WEST COAST

CONFERENCE CHAMPIONSHIPS

*Las Vegas 2010*

## MEDIA CREDENTIALS

Press credentials and access to restricted media areas of Gersten Pavilion will be limited to working media only. Requests for press credentials should be made in writing on the media institution's letterhead or through institution's email address. Credentials are not guaranteed. Two types of credentials will be granted:

### • Season Credentials

Season credentials will be granted only to media agencies that cover LMU basketball games on a regular basis. Season credential requests should be made prior to Nov. 12.

### • Single-Game Credentials:

Credentials will also be granted on a game-by-game basis. Requests for single game credentials must be made 48 hours prior to the start of the desired game. Seating on courtside (press row) of Gersten Pavilion will be given on a first-come, first-served basis, with priority given to Season Credential holders. All requests for credentials should be emailed to John Shaffer, Asst. Athletics Director - Media Services.

## MEDIA WILL CALL

Press credentials will be left at Media Will Call, which will open two hours prior to tip-off. Media Will Call is inside the administration office entrance of Gersten Pavilion (across from Ticket Office and next to elevator).

## INTERVIEW SESSIONS

### • Non-game

All interviews must be arranged through the Athletic Media Services Office. To arrange an interview with a coach or player during the week or non-game days, please contact John Shaffer, Assistant AD-Media Services at (310) 338-7643 at least 24 hours prior to the desired interview time. Interviews will not be permitted during practice or the day of a game.

### • Postgame Interviews:

**Home Games** - Following a 10-minute "cooling off" period, requested players and Coach Good will be available outside the LMU locker room. The LMU locker room is CLOSED. To request player(s) for postgame, please see John Shaffer with list of players prior to the final media time-out. Opponent Interviews - Contact the visiting SID to arrange interviews. **Road Games** - The LMU locker room is CLOSED. Coach Good will meet with the media following the 10-minute cool off period. Requested players will be brought outside the locker room to answer any questions.

## NBA SCOUTS

Scouting passes for the NBA teams and scouting services may be obtained via fax or email through the Athletic Media Relations Office at least one week prior to the game. Requests can be faxed to (310) 338- 2703 or emailed to jshaffer@lmu.edu. Press row seats are not guaranteed and are on a first-come, first-served basis. Parking pass will not be issued, however, parking is free during LMU games.

## RADIO

The Lions' Network and KXLU 88.9 FM is the official broadcaster of LMU basketball. Space will be provided for the official radio station of the visiting team and will be limited to three press row spaces. Lions' All-Access/KXLU and the visiting team's official radio station are the only institutions who are permitted to broadcast live while game is in progress. Phone lines and an ISDN line are provided to the official radio station of the visiting institution at no cost. However, ONLY LOCAL CALLS CAN BE MADE FROM THESE LINES. To access long distance, a calling card or collect call must be used.

## WEB POLICY

Other than the official website of each participating institution, the West Coast Conference (WCC) and contractual rights-free paying media, representatives credentialed to an LMU athletics event shall not post any game footage, statistics, game updates, or game information on any website (other than that of Associated Press, institutional websites, WCC website or contractual rights-free paying media website) for 30 minutes following the conclusion of the contest.

## TELEVISION

The West Coast Conference and LMU have an exclusive national rights contract with the ESPN family of networks. Games may be carried in the West Coast region and all requests for broadcast rights must be approved three weeks in advance and requested six weeks prior to the desired game. For visiting teams wishing to broadcast a game not-contracted by LMU to the visiting team's market and not in the Los Angeles area, there is a \$2,500 location fee and request must be made six weeks prior to the contest. Contact John Shaffer for more information.

## MEDIA ROOM

A working media room is available for all members of the media at Gersten Pavilion, and will include media guides and stats. The room is located down the stairs from the Media Will Call Entrance. A number of phone lines are also contained within the room for use by the media. However, if a dedicated phone line is requested, please phone John Shaffer, Director of Athletic Media Services at (310) 338-7643 to order a dedicated phone line.

## PRACTICES

With few exceptions, all LMU practices are open to the media. All inquiries regarding the practice schedule and status of availability should be made through the Athletic Media Relations Office. Please notify the Media Services Office at least 24 hours in advance if you plan to attend a practice.

## LMU MEDIA SERVICES STAFF

1 LMU Drive • Los Angeles, CA 90045

Fax: (310) 338-2703



### JOHN SHAFFER

**Assistant AD - Media Services**

**Sports:** Men's Basketball, Men's Golf  
Men's & Women's Water Polo

**Office:** (310) 338-7643

**Cell:** (310) 864-2626

**Email:** jshaffer@lmu.edu



### MARK DODSON

**Asst. Media Services Director**

**Sports:** Women's Basketball  
Men's & Women's Soccer  
Softball

**Office:** (310) 338-5798

**Cell:** (310) 261-8470

**Email:** mdodson2@lmu.edu



### TYLER GEIVETT

**Asst. Media Services Director**

**Sports:** Baseball  
Women's Volleyball  
Women's Swimming

**Office:** (310) 338-7638

**Cell:** (310) 345-6997

**Email:** tgeivett@lmu.edu



### AHNIE DRAPER

**Media Services Graduate Assistant**

**Sports:** Men's Crew  
Women's Rowing  
Cross Country/Track  
Men's & Women's Tennis

**Office:** (310) 338-7768

**Cell:** (937) 321-1795

**Email:** kdraper@lion.lmu.edu

## PARKING

The Loyola Marymount University campus is located in Westchester at 1 LMU Drive, approximately four miles north of the Los Angeles International Airport. All media must use the main entrance off of Lincoln Blvd. on LMU Drive. Media members may request a parking pass when requesting a credential, but space is limited and not guaranteed. Parking is issued on a first-come, first-serve basis. You can get directions from the guard at the front gate.

## CREDENTIAL POLICIES

A working credential ("Credential") is issued as a courtesy to an accredited agency for the sole purpose of providing stadium or venue access to an individual representative of the Agency (the "Bearer") who has a legitimate working function in connection with the event for which this credential is issued. Any unauthorized use of this Credential or violation of its terms subjects the Bearer to ejection from the Event stadium or venue(s) and revocation of the Credential. This Credential is non-transferable and may be revoked at any time without cause. The Credential authorizes the use by the Agency, solely for news and editorial coverage of the Event, of any descriptions, accounts, photographs, films, audio or video recordings, or drawings of the Event. Any other use or attempted use by the Bearer or the Agency is expressly prohibited, unless the Agency has obtained the advance written permission of Loyola Marymount University Athletics for such other use. The Bearer shall not use more than three (3) minutes of video highlights from the Event, and such usage shall be limited to a regularly scheduled television newscast aired by the Agency within a seven (7) day period following the Event. Bearer assumes all risk of harm while covering this Event. The Agency and the Bearer agree to indemnify and hold harmless Loyola Marymount University from and against any and all claims arising out of any acts or omissions of the Bearer. Acceptance of the credential constitutes agreement by the Bearer and the Agency to abide by the foregoing conditions. For complete credential and access policies and procedures, visit the game day central section on the LMU Athletics website.

# FOLLOWING LMU

## TICKETS

Seating capacity at Albert Gersten Pavilion is 4,156. Tickets to all home games are available online at [www.LMULions.com](http://www.LMULions.com) or through the LMU ticket office at (310) 338-LION. The ticket office is open Monday through Friday, 12:00 - 6:00 p.m. and one hour prior to tip-off of all men's basketball home games. Tickets can be purchased by using MasterCard or Visa charge cards. Please contact the ticket office for information on group discounts or any other questions you may have.

## TAILGATES

Tailgating is now permitted for LMU men's basketball games when school is in session. Those games include Nov. 18 vs. UC Irvine, Nov. 28 vs. UCSB, Dec. 2 vs. Academy of Art, Dec. 10 vs. Montana, Jan. 28 vs. USD, Jan. 30 vs. SMC, Feb. 6 vs. Pepperdine, Feb. 18 vs. Gonzaga and Feb. 20 vs. Portland. Here are the general guidelines for Tailgating during LMU men's basketball home games:

1. Location is Hannon Field.
2. Time is 2 hours prior until tip-off.
3. Space is first come first serve.
4. Alcohol consumption is allowed on the field ONLY, ONLY 2 hours before until game time, by 21 + ONLY.
5. Vendor(s) will be selling food and beverages.
6. Groups may provide their own food and beverages but must dispose of all trash at the end of the event.
7. Public Safety and University staff will be present to ensure that individuals behave in an appropriate manner.
8. All University rules and regulations are in effect for campus at all times.

## PREGAME AT THE LOFT

In addition, fans can go to The Loft Sports Lounge prior to LMU men's basketball home games. The Loft Sports Lounge is a casual stand alone student-run facility with two levels. The first floor features a living room type setting with fireplace and pool table. The large open area upstairs contains big, flat screen TVs allowing all to be able to enjoy a beverage and snack before the Lions take the floor. The Loft will be open for the same games as the tailgate parties.

1. Doors open at 5 pm.
2. 21 + only with two forms of ID required
3. Faculty/Staff Lion Pride Members get in free if wearing their t-shirt or throw back jersey
4. Alumni donors (at a certain level) get in 2 for 1, cover is \$5

## ADDITIONAL DINING ON CAMPUS:

There are plenty of places to get a bite to eat before, during and after any LMU athletics' event. There is always the concession stands during the game. Ranging from sit down dinners at the Crimson Lion to a burger and fries at Iggy's Diner to a quick Jamba Juice on the go, there is something for everyone when dining at LMU. Dining options include: The Lair Marketplace - Malone Center (H-4 on map), Jamba Juice - SE Corner Malone Center (H-4), The Roski Dining - University Hall (A-9), The Lion's Corner Cafe - University Hall (A-9), Pete's Arena - Founder's Pavilion (I-2), Iggy's Diner- McKay Hall (F-7), Crimson Lion - University Hall (A-9) and the Hannon Loft (F-8). For detailed information and operating hours, visit online at <http://dining.lmu.edu/locations.html>.



## DIRECTIONS

The Loyola Marymount University campus is located in Westchester at 1 LMU Drive, approximately four miles north of the Los Angeles International Airport. For game day entrance on to campus, please use the main entrance off of Lincoln Blvd. on LMU Drive.

### From the Los Angeles International Airport:

Travel north on Sepulveda Blvd. Remain in either of the left two lanes and merge onto Lincoln Blvd. Follow Lincoln Blvd north past Manchester Blvd. Turn right onto LMU Drive.

### From the South:

Travel on 405 North, exit on Jefferson Blvd., and turn left. Head west and make a left onto Lincoln Blvd. Head south and turn left into the campus on LMU Drive.

### From the North:

Travel on 405 South, exit on Jefferson Blvd., and turn right. Head west and make a left onto Lincoln Blvd. Head south and turn left into the campus on LMU Drive.

### From the East (using the 105 Freeway):

Travel on 105 West, exit on Sepulveda Blvd., and go north. Remain in either of the left two lanes and merge onto Lincoln Blvd. Follow Lincoln Blvd north past Manchester Blvd. Turn right onto LMU Drive.

### From the East (using the 10 Freeway):

Travel on 10 West to 405 South, exit on Jefferson Blvd., and turn right. Head west and make a left onto Lincoln Blvd. Head south and turn left into the campus on LMU Drive.



The purpose of TEAM LMU is to bring Lion fans together as one, creating an atmosphere that helps build the Lions into champions, while allowing them to enjoy the benefits of our corporate partners. Each week, a contest at LMU will be the TeamLMU Event of the Week. Look for special promotions, giveaways and opportunities to be part of the team. For more information on TEAM LMU, go online at [LMULions.com/teamlmu](http://LMULions.com/teamlmu).

[www.LMULIONS.com](http://www.LMULIONS.com)

## INFORMATION ON ATTENDING GAMES AT LMU



Annual gifts to LionsFund provide the flexibility to meet the annual budgetary needs of Loyola Marymount University's 21 intercollegiate athletics programs through scholarships and team support. Gifts to LionsFund can have a direct and immediate impact on the success of our teams each year and can provide the extra "margin of excellence" to enable teams to rise above the competition. LionsFund gifts assist to provide the resources needed for LMU Athletics to achieve the highest level of success both athletically and academically, and are critical in the LMU Athletics Department goal of Building Champions. For more information about LionsFund email to [golions@lmu.edu](mailto:golions@lmu.edu)

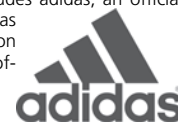
## LIONPRIDE

The official fan club for LMU Athletics! Seen throughout the athletic season, LionPride has been a major reason for record student attendance the last several years. With more than 1500 members this year, LionPride will be a factor at LMU events. Open to all students, faculty and staff enrolled/employed at LMU, LionPride offers an opportunity to participate in ingame promotions, drawings for valuable prizes and much, much more, including the LionPride T-Shirt. Go online for more info.



## GET IN GEAR

The LMULions.com Store is the official online store of LMU Athletics. This store was assembled so fans across the country could show their allegiance to their favorite school while at the same time contributing to the success of the athletics department. Proceeds from every purchase made in this store go directly to the athletics department, so you can be secure in knowing that every time you buy something from the store, you're doing more than wearing the colors. You're contributing to the success of the teams on the field. Merchandise for the LMULions.com Official Store includes adidas, an official sponsor and partner of LMU Athletics. The athletics department has teamed with adidas to provide the best for its teams in competition and it is available to you with the most extensive selection of officially licensed LMU products on the internet.



## LIONS' ONLINE

This 2009-10 season, check out the LMU men's basketball team online through LMU-Lions.com and the Multimedia Page. Log on today for all the latest info on the Lions, including updated schedules, rosters, player bios, and more. Here is how LMU Multimedia brings the Lions right to you:

### • KXLU 88.9 FM/Lions Audio Network

The broadcast home of LMU Men's Basketball is KXLU 88.9 FM. KXLU has been broadcasting LMU basketball for more than 48 years. In his ninth season as the play-by-play announcer for the Lions will be LMU alum Jeff Lampe. In addition, LMU, in conjunction with Stretch Internet, is proud to present, FREE, live audio broadcasts over the World Wide Web on [www.LMULions.com](http://www.LMULions.com). More than 150 events will be broadcast live and archived events can be heard via Apple's free QuickTime Player. All broadcasts will be archived within 72 hours of their original airing. All broadcasts will include both the pre-game and post-game shows. LMU is also proud to introduce a new weekly podcast show, LMU Sports Weekly, hosted by Jesse Kass. The show will feature radio highlights and recaps from recent games, interviews with student-athletes and coaches, and previews of upcoming events.

### • Lions' All-Access

LMU, in conjunction with CBS College Sports, presents Lions' All-Access, the official home to video broadcasts of LMU Athletics. Lions' All-Access will bring all non-televvised home games for men's basketball, women's basketball and women's volleyball. In addition, Lions' All-Access is home to feature interviews, highlights and more through "Inside the Lions." The "ITL" is a special look into LMU Athletics and its student-athletes in a 10 to 15 minute show hosted by a student-athlete, sophomore men's basketball guard Jarred DuBois. Airing roughly twice a month, the show will highlight a student-athlete and give an inside look to why LMU is such a special place. In addition, highlights from top games and other game day features will be within the show. Take a look at the newest show or past shows. Its all here thanks to Lions' All-Access.

### • Official LMU Athletics Podcast

Also online is the Official LMU Podcast Center through iTunes and Stretch Internet. This special section brings free content to your iPod and your computer. Catch postgame quotes, special interviews, "Inside the Lions", "LMU Sports Weekly", and more through this special podcast center. Just go to iTunes and search for LMU Athletics.

### • LMULions on Facebook/Twitter

Follow the Lions where ever you might be through:

- Facebook: [www.Facebook.com/LMULions](http://www.Facebook.com/LMULions)
- Twitter: [www.Twitter.com/LMULions](http://www.Twitter.com/LMULions)

The official fan pages of the LMULions will contain not only the latest news, notes, and results for LMU Athletics, it will have special inside information. Not a member, join today.

### • Live Updates to Your Wireless

Get the latest information sent straight to your wireless device with LMU Mobile. Sign-up for this free service today to have scores, headlines and the latest in LMU Athletics at your finger tips whenever you want it.

### • Interactive Media Guides

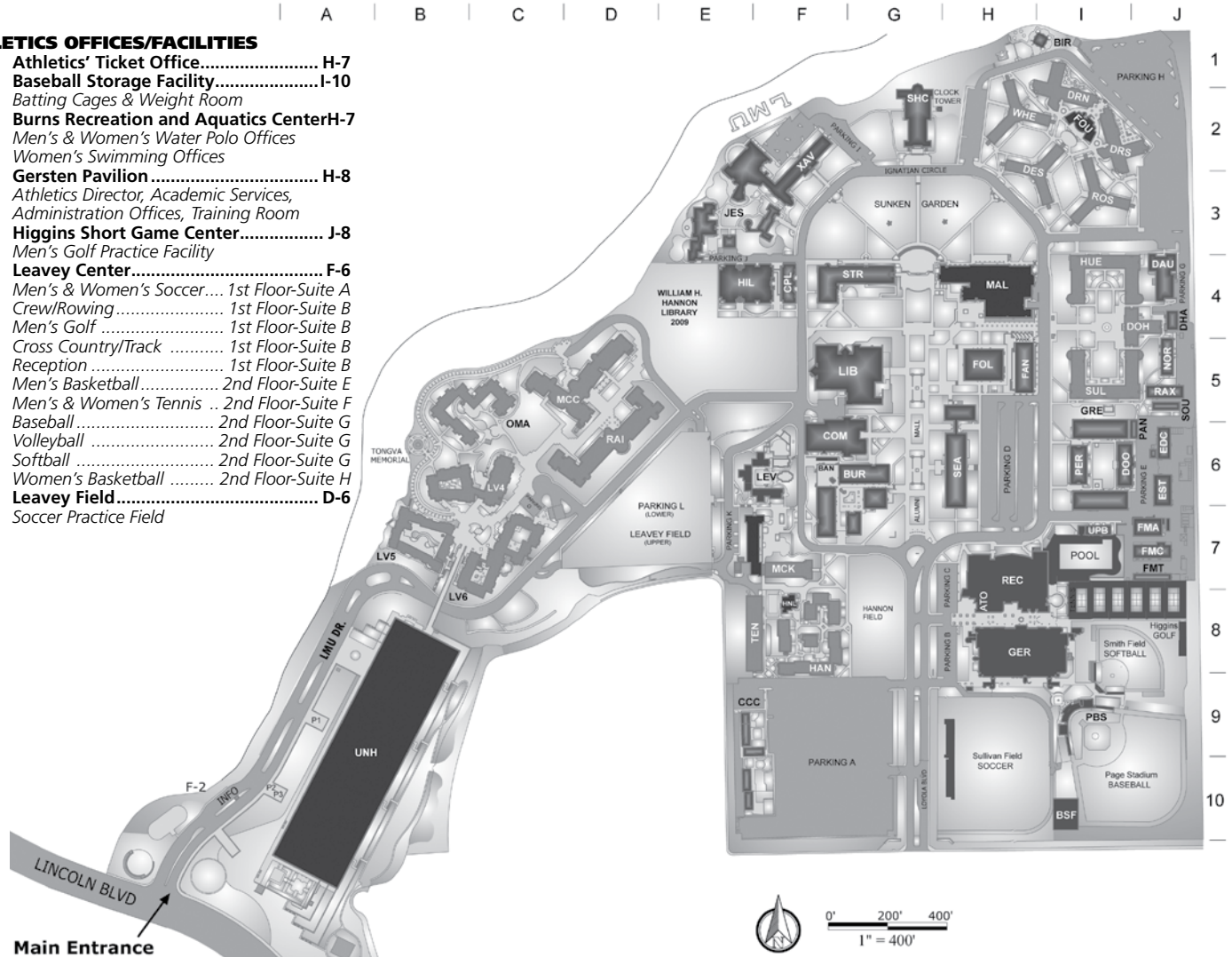
LMU Athletics now features all of the media guide online, and it isn't just in PDF. Through ISSUU.com, the LMU Athletic Media Guides and Yearbooks make reading about the Lions even easier. From bios to every student-athlete to put on a Lion uniform, it can be found through LMU Media Guides online. Check it out today.





### ATHLETICS OFFICES/FACILITIES

<b>ATO</b>	<b>Athletics' Ticket Office</b> .....	<b>H-7</b>
<b>BSF</b>	<b>Baseball Storage Facility</b> .....	<b>I-10</b>
	<i>Batting Cages &amp; Weight Room</i>	
<b>REC</b>	<b>Burns Recreation and Aquatics Center</b> .....	<b>H-7</b>
	<i>Men's &amp; Women's Water Polo Offices</i>	
	<i>Women's Swimming Offices</i>	
<b>GER</b>	<b>Gersten Pavilion</b> .....	<b>H-8</b>
	<i>Athletics Director, Academic Services,</i>	
	<i>Administration Offices, Training Room</i>	
<b>HGC</b>	<b>Higgins Short Game Center</b> .....	<b>J-8</b>
	<i>Men's Golf Practice Facility</i>	
<b>LEV</b>	<b>Leavey Center</b> .....	<b>F-6</b>
	<i>Men's &amp; Women's Soccer</i> ..... 1st Floor-Suite A	
	<i>Crew/Rowing</i> ..... 1st Floor-Suite B	
	<i>Men's Golf</i> ..... 1st Floor-Suite B	
	<i>Cross Country/Track</i> ..... 1st Floor-Suite B	
	<i>Reception</i> ..... 1st Floor-Suite B	
	<i>Men's Basketball</i> ..... 2nd Floor-Suite E	
	<i>Men's &amp; Women's Tennis</i> .. 2nd Floor-Suite F	
	<i>Baseball</i> ..... 2nd Floor-Suite G	
	<i>Volleyball</i> ..... 2nd Floor-Suite G	
	<i>Softball</i> ..... 2nd Floor-Suite G	
	<i>Women's Basketball</i> ..... 2nd Floor-Suite H	
<b>LVF</b>	<b>Leavey Field</b> .....	<b>D-6</b>
	<i>Soccer Practice Field</i>	



### ATHLETICS COMPETITION VENUES

<b>GER</b>	<b>Gersten Pavilion</b> .....	<b>H-8</b>
	<i>Men's &amp; Women's Basketball</i>	
	<i>Women's Volleyball</i>	
<b>LTC</b>	<b>LMU Tennis Center</b> .....	<b>I-8</b>
	<i>Men's &amp; Women's Tennis</i>	
<b>PBS</b>	<b>Page Stadium</b> .....	<b>I-9</b>
	<i>Baseball</i>	
<b>POOL</b>	<b>Burns Aquatics Center</b> .....	<b>H-7</b>
	<i>Men's &amp; Women's Water Polo</i>	
	<i>Women's Swimming</i>	
<b>SUF</b>	<b>Sullivan Field</b> .....	<b>H-10</b>
	<i>Men's &amp; Women's Soccer</i>	
<b>SMF</b>	<b>Smith Field</b> .....	<b>I-8</b>
	<i>Softball</i>	

### GAME DAY/VISITOR PARKING

<b>A</b>	<b>General Parking</b> .....	<b>F-9</b>
<b>B</b>	<b>Media/Handicap Parking</b> .....	<b>H-8</b>
	<i>Must have pass/credential</i>	
<b>C</b>	<b>Handicap Parking</b> .....	<b>H-8</b>
	<i>Must have pass</i>	
<b>D</b>	<b>General Parking</b> .....	<b>H-6</b>
	<i>After 5 p.m. when gate is up</i>	
<b>L</b>	<b>Drolinger Parking Plaza</b> .....	<b>D-7</b>
<b>P2-3</b>	<b>U-Hall Visitor Parking</b> .....	<b>A-10</b>

### ONCAMPUS DINING

<b>FOU</b>	<b>Founders Pavilion</b> .....	<b>I-2</b>
	<i>Pete's Arena</i>	
<b>HNL</b>	<b>Hannon Loft</b> .....	<b>F-8</b>
	<i>Sports Pub</i>	

<b>MAL</b>	<b>Malone Student Center</b> .....	<b>H-4</b>
	<i>Bookstore, The Lair Marketplace</i>	
	<i>Jamba Juice</i>	
<b>UNH</b>	<b>University Hall</b> .....	<b>A-9</b>
	<i>Bookstore, Lions Corner Café,</i>	
	<i>Roski Dining, Crimson Lion</i>	
<b>MCK</b>	<b>McKay Hall</b> .....	<b>F-7</b>
	<i>Iggy's Diner</i>	

### CAMPUS FACILITIES

<b>BIR</b>	<b>Birds Nest</b> .....	<b>I-1</b>
<b>BUR</b>	<b>Burns Fine Art Center</b> .....	<b>G-6</b>
	<i>Murphy Recital Hall &amp; Laband Gallery</i>	
<b>BAN</b>	<b>Burns Fine Art Annex</b> .....	<b>F-6</b>
<b>CPL</b>	<b>Central Plant</b> .....	<b>F-4</b>
<b>CCC</b>	<b>Child Care Center</b> .....	<b>E-9</b>
<b>COM</b>	<b>Communication Arts</b> .....	<b>F-6</b>
<b>DAU</b>	<b>Daum Hall</b> .....	<b>J-4</b>
<b>DHA</b>	<b>Daum Hall Annex</b> .....	<b>J-4</b>
<b>DOO</b>	<b>Doolan Hall</b> .....	<b>I-6</b>
<b>EST</b>	<b>East Hall</b> .....	<b>J-6</b>
<b>EDC</b>	<b>Engineering Design Center</b> .....	<b>J-6</b>
<b>FAN</b>	<b>Foley Annex (Public Safety)</b> .....	<b>H-5</b>
<b>FMA</b>	<b>Facilities Management</b> .....	<b>J-7</b>
<b>FMC</b>	<b>F.M. Craft Shops</b> .....	<b>J-7</b>
<b>FMT</b>	<b>F.M. Transportation</b> .....	<b>J-7</b>
<b>FOL</b>	<b>Foley Building (Shrub Theatre)</b> .....	<b>H-5</b>
<b>GRE</b>	<b>Greenhouse</b> .....	<b>I-5</b>
<b>HIL</b>	<b>Hilton Center for Business</b> .....	<b>E-4</b>
<b>JES</b>	<b>Jesuit Community</b> .....	<b>E-3</b>
<b>MAL</b>	<b>Malone Student Center</b> .....	<b>H-4</b>
<b>NOR</b>	<b>North Hall (Del Rey Theatre)</b> .....	<b>J-5</b>

<b>PER</b>	<b>Pereira Hall of Engineering</b> .....	<b>I-6</b>
<b>PAN</b>	<b>Pereira Annex</b> .....	<b>J-6</b>
<b>RAX</b>	<b>Research Annex</b> .....	<b>J-5</b>
<b>SHC</b>	<b>Sacred Heart Chapel</b> .....	<b>F-2</b>
<b>SEA</b>	<b>Seaver Science Hall</b> .....	<b>H-6</b>
<b>SOU</b>	<b>South Hall</b> .....	<b>J-5</b>
<b>STR</b>	<b>St. Roberts Hall</b> .....	<b>F-4</b>
<b>UNH</b>	<b>University Hall</b> .....	<b>A-9</b>
	<i>Ahmanson Auditorium</i>	
<b>UPB</b>	<b>University Pool &amp; Building</b> .....	<b>G-5</b>
<b>LIB</b>	<b>Von der Ahe Library</b> .....	<b>G-5</b>
<b>XAV</b>	<b>Havier Hall (Admissions/Financial Aid)</b> .....	<b>F-2</b>

### CAMPUS HOUSING

<b>DES</b>	<b>Desmond Hall</b> .....	<b>I-3</b>
<b>DOH</b>	<b>Doherty Hall</b> .....	<b>J-4</b>
<b>DRN</b>	<b>Del Rey North</b> .....	<b>I-2</b>
<b>DRS</b>	<b>Del Rey South</b> .....	<b>I-2</b>
<b>HAN</b>	<b>Hannon Apts.</b> .....	<b>F-8</b>
<b>HUE</b>	<b>Huesman Hall</b> .....	<b>I-4</b>
<b>LV4</b>	<b>Leavey 4 Apts.</b> .....	<b>C-6</b>
<b>LV5</b>	<b>Leavey 5 Apts.</b> .....	<b>B-7</b>
<b>LV6</b>	<b>Leavey 6 Apts.</b> .....	<b>C-7</b>
<b>MCC</b>	<b>McCarthy Hall</b> .....	<b>D-5</b>
<b>MCK</b>	<b>McKay Hall</b> .....	<b>F-7</b>
<b>OMA</b>	<b>O'Malley Apts.</b> .....	<b>C-5</b>
<b>RAI</b>	<b>Rains Hall</b> .....	<b>D-6</b>
<b>ROS</b>	<b>Rosecrans Hall</b> .....	<b>I-3</b>
<b>SUL</b>	<b>Sullivan Hall</b> .....	<b>I-5</b>
<b>TEN</b>	<b>Tendrigh Hall</b> .....	<b>F-8</b>
<b>WHE</b>	<b>Whelan Hall</b> .....	<b>H-2</b>



# 2009-10 OPPONENTS

## **BOISE STATE • Nov. 13, 2009 at Dahlberg Arena (7,500) - Missoula, MT (Montana Tournament)**

Location:	Boise, ID	Head Coach:	Greg Graham	Conference Record:	9-7/t-3rd	Office Phone:	(208) 426-3868	Streak:	LMU won 2
Enrollment:	19,667	Alma Mater:	Oregon, '78	Postseason:	CBI First Round	E-Mail:	beccafulds@boisestate.edu	At LMU:	1-1
Conference:	Western Athletic	Record at School:	127-95 (8th)	Starters Return/Lost:	3/2	Website:	brancosports.com	At Opp.:	1-1
Colors:	Blue and Orange	Career Record:	145-100 (9th)	Letterwinners R/L:	8/3	Fax:	(208) 426-1778	Last Mtg:	12/8/07 at Boise St
Nickname:	Broncos	2008-09 Record:	19-13	MBB SID:	Becca Faulds	Series:	Series tied at 2-2		W, 76-74

## **NORTH DAKOTA • Nov. 14, 2009 at Dahlberg Arena (7,500) - Missoula, MT (Montana Tournament)**

Location:	Grand Forks, ND	Head Coach:	Brian Jones	Conference Record:	n/a	E-Mail:		Streak:	n/a
Enrollment:	12,748	Alma Mater:	Northern Iowa, '94	Postseason:	1/4	E-Mail:	ryanpowell@mail.und.nodak.edu	At LMU:	n/a
Conference:	N/A	Record at School:	42-44 (4th)	Letterwinners R/L:	6/4	Website:	fightingsioux.com	At Opp.:	n/a
Colors:	Kelly Green & White	Career Record:	Same	MBB SID:	Ryan Powell	Fax:	(701) 4352	Neutral:	n/a
Nickname:	Fighting Sioux	2008-09 Record:	16-12	Office Phone:	(701) 777-2986	Series:	First Meeting	Last Mtg:	n/a

## **MONTANA • Nov. 15, 2009 at Dahlberg Arena (7,500) - Missoula, MT (Montana Tournament)**

Location:	Missoula, MT	Head Coach:	Wayne Tinkle	Conference Record:	11-5/t2nd	Office Phone:	(406) 243-5402	Streak:	Montana won 3
Enrollment:	14,207	Alma Mater:	Montana ('05)	Postseason:	None	E-Mail:	guffeydb@mso.umt.edu	At LMU:	0-3
Conference:	Big Sky	Record at School:	48-43 (4th)	Starters Return/Lost:	3/2	Website:	montanagrizzlies.com	At Opp.:	0-3
Colors:	Maroon & Silver	Career Record:	Same	Letterwinners R/L:	8/4	Fax:	(406) 243-6859	Neutral:	1-0
Nickname:	Grizzlies	2008-09 Record:	17-12	MBB SID:	Dave Guffey	Series:	Montana leads 6-1	Last Mtg:	12/6/05 at Montana L, 69-61

## **UC IRVINE • Nov. 18, 2009 at Gersten Pavilion (4,156) - Los Angeles, CA**

Location:	Irvine, CA	Head Coach:	Pat Douglass	Conference Record:	8-8 (t-4th)	Office Phone:	(949) 824-5814	Streak:	UCI 1 win
Enrollment:	27,000	Alma Mater:	Pacific, '72	Postseason:	None	E-Mail:	rkolson@uci.edu	At LMU:	5-4
Conference:	Big West	Record at School:	183-173 (13th)	Starters Return/Lost:	3/2	Website:	ucirvinesports.com	At Opp.:	3-4
Colors:	Blue & Gold	Career Record:	559-292 (29th)	Letterwinners R/L:	6/3	Fax:	(949) 824-5260	Neutral:	2-1
Nickname:	Anteaters	2008-09 Record:	122-19	MBB SID:	Bob Olson	Series:	Series tied at 10-10	Last Mtg:	11/9/07 at UCI L, 74-61

## **USC • Nov. 21, 2009 at Galen Center (10,258) - Los Angeles, CA**

Location:	Los Angeles, CA	Head Coach:	Kevin O'Neill	Conference Record:	9-9/t-5th	Office Phone:	(213) 740-8480	Streak:	USC 8 wins
Enrollment:	33,500	Alma Mater:	McGill, '79	Postseason:	NCAA 2nd Round	E-Mail:	davidtut@usc.edu	At LMU:	2-12
Conference:	Pacific-10	Record at School:	First Season	Starters Return/Lost:	2/3	Website:	usctrojans.com	At Opp.:	2-27
Colors:	Cardinal & Gold	Career Record:	171-180 (13th)	Letterwinners R/L:	10/3	Fax:	(213) 740-7584	Neutral:	1-0
Nickname:	Trojans	2008-09 Record:	22-13	MBB SID:	David Tuttle	Series:	USC leads 47-7	Last Mtg:	12/2/06 at USC L, 67-50

## **TULSA • Nov. 24, 2009 at Donald W. Reynolds Center (8,355) - Tulsa, OK**

Location:	Tulsa, OK	Head Coach:	Doug Wojcik	Conference Record:	12-4/2nd	Office Phone:	(918) 631-3200	Streak:	Tulsa 3 Wins
Enrollment:	4,100	Alma Mater:	Navy ('87)	Postseason:	NIT 2nd Round	E-Mail:	Donald-tomkalski@utulsa.edu	At LMU:	0-1
Conference:	Conference USA	Record at School:	81-53 (5th)	Starters Return/Lost:	3/2	Website:	tulashurricane.com	At Opp.:	0-2
Colors:	Old Gold, Royal Blue, Crimson	Career Record:	Same	Letterwinners R/L:	7/3	Fax:	(918) 631-3913	Neutral:	0-0
Nickname:	Golden Hurricane	2008-09 Record:	25-11	MBB SID:	Don Tomkalski	Series:	Tulsa leads 3-0	Last Mtg:	12/20/08 at LMU L, 79-45

## **UC SANTA BARBARA • Nov. 28, 2009 at Gersten Pavilion (4,156) - Los Angeles, CA**

Location:	Santa Barbara, CA	Head Coach:	Bob Williams	Conference Record:	8-8	Office Phone:	(805) 893-3428	Streak:	UCSB 2 wins
Enrollment:	20,847	Alma Mater:	San Jose St., '76	Postseason:	N/A	E-Mail:	Bill.Mahoney@athletics.ucsb.edu	At LMU:	21-9
Conference:	Big West	Record at School:	179-146 (12th)	Starters Return/Lost:	3/2	Website:	ucsbgauchos.com	At Opp.:	16-23
Colors:	Blue & Gold	Career Record:	368-246 (22nd)	Letterwinners R/L:	10/3	Fax:	(805) 893-4537	Neutral:	3-1
Nickname:	Gauchos	2008-09 Record:	16-15	MBB SID:	Bill Mahoney	Series:	LMU leads 48-37	Last Mtg:	12/13/08 at UCSB L, 81-61

## **ACADEMY OF ART • Dec. 2, 2009 at Gersten Pavilion (4,156) - Los Angeles, CA**

Location:	San Francisco, CA	Head Coach:	Mark Sembrowich	Conference Record:	n/a	Office Phone:	(415) 618-6495	Series:	first meeting
Enrollment:	14,000	Alma Mater:	n/a	Postseason:	n/a	E-Mail:		At LMU:	n/a
Conference:	Pacific West (D-II)	Record at School:	First Season	Starters Return/Lost:	2/3		Mdelahoya@academyart.edu	At Opp.:	n/a
Colors:	Red & Black	Career Record:	First Season	Letterwinners R/L:	4/4	Website:		Neutral:	n/a
Nickname:	Urban Knights	2008-09 Record:	4-22	MBB SID:	Megan De La Hoya		academyofartathletics.com	Last Mtg:	n/a

## **WYOMING • Dec. 10, 2009 at Arena-Auditorium (15,000) - Laramie, WY**

Location:	Laramie, Wyoming	Head Coach:	Heath Schroyer	Conference Record:	7-9	Office Phone:	(307) 766-2290	Streak:	Wyoming 2 wins
Enrollment:	13,207	Alma Mater:	Armstrong Atl. St. ('95)	Postseason:	n/a	E-Mail:	JP12@uwyo.edu	At LMU:	0-1
Conference:	Mountain West	Record at School:	31-32 (3rd)	Starters Return/Lost:	2/3	Website:	wyomingathletics.com	At Opp.:	0-3
Colors:	Gold & Brown	Career Record:	66-79 (6th)	Letterwinners R/L:	5/6	Fax:	(307) 766-2346	Neutral:	1-1
Nickname:	Cowboys	2008-09 Record:	19-14	MBB SID:	John Paradis	Series:	Wyoming leads 5-1	Last Mtg:	12/6/08 at LMU L, 62-55

## **NOTRE DAME • Dec. 12, 2009 at Purcell Pavilion at the Joyce Center (TBA) - Notre Dame, IN**

Location:	Notre Dame, Indiana	Head Coach:	Mike Brey	Conference Record:	8-10/t9th	Office Phone:	(574) 273-2390	Streak:	ND 4 wins
Enrollment:	11,733	Alma Mater:	George Washington, '82	Postseason:	NIT Semifinals	E-Mail:	cafarelli.1@nd.edu	At LMU:	0-2
Conference:	Big East	Record at School:	188-101 (10th)	Starters Return/Lost:	2/3	Website:	und.com	At Opp.:	1-2
Colors:	Gold & Blue	Career Record:	287-153 (15th)	Letterwinners R/L:	8/4	Fax:	(574) 631-7941	Neutral:	0-0
Nickname:	Fighting Irish	2008-09 Record:	21-15	MBB SID:	Bernadette Cafarelli	Series:	Notre Dame leads 4-1	Last Mtg:	11/21/08 at ND L, 65-54



**CS BAKERSFIELD • Dec. 19, 2009 at Gersten Pavilion (4,156) | Jan. 3, 2010 at Rabobank Arena (10,000)**

Location:	Bakersfield, CA	Head Coach:	Keith Brown	Conference Record:	0-0	Office Phone:	(661) 654-6071	Streak:	LMU 1 Win
Enrollment:	8,000	Alma Mater:	Pacific, '78	Postseason:	N/A	E-Mail:	kgilmore@csub.edu	At LMU:	4-0
Conference:	Independent	Record at School:	52-64 (5th)	Starters Return/Lost:	5/0	Website:	www.gorunners.com	At Opp.:	1-1
Colors:	Blue & Gold	Career Record:	93-172 (10th)	Letterwinners R/L:	8/4	Fax:	(661) 654-6978	Neutral:	0-0
Nickname:	Runners	2008-09 Record:	8-21	MBB SID:	Kevin Gilmore	Series:	LMU leads 5-1	Last Mtg:	1/4/09 at LMU W, 72-69

**LONG BEACH STATE • Dec. 21, 2009 at Gersten Pavilion (4,156) - Los Angeles, CA**

Location:	Long Beach, CA	Head Coach:	Dan Monson	Conference Record:	10-6 (t2nd)	Office Phone:	(562) 985-7797	Streak:	LBSU 3 Wins
Enrollment:	37,891	Alma Mater:	Idaho, '85	Postseason:	N/A	E-Mail:	tmiles@csulb.edu	At LMU:	4-4
Conference:	Big West	Record at School:	21-40 (3rd)	Starters Return/Lost:	4/2	Website:	longbeachstate.com	At Opp.:	1-13
Colors:	Black & Gold	Career Record:	191-163 (13th)	Letterwinners R/L:	8/4	Fax:	n/a	Neutral:	0-1
Nickname:	49ers	2008-09 Record:	15-15	MBB SID:	Todd Miles	Series:	LBSU leads 18-5	Last Mtg:	12/5/07 at LBSU L, 77-52

**SACRAMENTO STATE • Dec. 27, 2009 at Hornets Nest (1,200) - Sacramento, CA**

Location:	Sacramento, CA	Head Coach:	Brian Katz	Conference Record:	1-15 (9th)	Office Phone:	(916) 278-6896	Streak:	LMU 5 Wins
Enrollment:	29,011	Alma Mater:	Sac. St., '80	Postseason:	N/A	E-Mail:	rbork@csus.edu	At LMU:	3-0
Conference:	Big Sky	Record at School:	2-27 (2nd)	Starters Return/Lost:	3/2	Website:	hornetsports.com	At Opp.:	2-0
Colors:	Green & Gold	Career Record:	Same	Letterwinners R/L:	6/8	Fax:	(916) 278-5429	Neutral:	0-0
Nickname:	Hornets	2008-09 Record:	2-27	MBB SID:	Ryan Bjork	Series:	LMU leads 5-0	Last Mtg:	2002 at LMU W, 88-55

**SEATTLE • Dec. 30, 2009 at Gersten Pavilion (4,156) - Los Angeles, CA**

Location:	Seattle, WA	Head Coach:	Cameron Dollar	Conference Record:	0-0	Office Phone:	(206) 296-5915	Streak:	SU 1 win
Enrollment:	7,556	Alma Mater:	UCLA, '97	Postseason:	N/A	E-Mail:	behannaj@seattleu.edu	At LMU:	5-6
Conference:	Independent	Record at School:	First Season	Starters Return/Lost:	n/a	Website:	www.goseattleu.com	At Opp.:	1-16
Colors:	Red & White	Career Record:	Same	Letterwinners R/L:	n/a	Fax:	(206) 296-2154	Neutral:	0-1
Nickname:	Redhawks	2008-09 Record:	21-8	MBB SID:	Jason Behenna	Series:	Seattle leads 23-6	Last Mtg:	1/1/09 at Seattle L, 49-39

**PEPPERDINE • Jan. 9, 2010 at Firestone Fieldhouse (3,104) | Feb. 6, 2010 at Gersten Pavilion (4,156)**

Location:	Malibu, CA	Head Coach:	Tom Asbury	Conference Record:	5-9	Office Phone:	(310) 506-4455	Streak:	Pepperdine 6 wins
Enrollment:	8,000	Alma Mater:	Wyoming '68	Postseason:	n/a	E-Mail:	roger.horne@pepperdine.edu	At LMU:	35-32
Conference:	WCC	Record at School:	134-82 (8th)	Starters Return/Lost:	4/1	Website:	pepperdinesports.com	At Opp.:	16-45
Colors:	Blue, Orange, White	Career Record:	219-170 (14th)	Letterwinners R/L:	12/2	Fax:	(310) 506-4322	Neutral:	5-6
Nickname:	Waves	2008-09 Record:	9-23	MBB SID:	Roger Horne	Series:	Pepperdine leads 89-60	Last Mtg:	2/7/09 at PEP L, 58-43

**SAN FRANCISCO • Jan. 14, 2010 at Gersten Pavilion (4,156) | Feb. 13, 2010 at War Memorial Gym (5,300)**

Location:	San Francisco, CA	Head Coach:	Rex Walters	Conference Record:	3-11/7th	Office Phone:	(415) 422-6162	Streak:	LMU 1 win
Enrollment:	8,000	Alma Mater:	Kansas ('93)	Postseason:	N/A	E-Mail:	mccrary@usfa.edu	At LMU:	20-43
Conference:	WCC	Record at School:	11-19 (2nd)	Starters Return/Lost:	4/1	Website:	usfdons.cstv.com	At Opp.:	15-47
Colors:	Green & Gold	Career Record:	42-52 (4th)	Letterwinners R/L:	6/5	Fax:	(415) 422-2929	Neutral:	0-5
Nickname:	Dons	2008-09 Record:	11-19	MBB SID:	Ryan McCrary	Series:	USF leads 100-35	Last Mtg:	2/26/09 at LMU W, 61-57

**SANTA CLARA • Jan. 16, 2010 at Gersten Pavilion (4,156) | Feb. 11, 2010 at Leavey Center (4,500)**

Location:	Santa Clara, CA	Head Coach:	Kerry Keating	Conference Record:	7-7/4th	Office Phone:	(408) 554-2114	Streak:	Santa Clara 4 wins
Enrollment:	8,685	Alma Mater:	Seton Hall ('93)	Postseason:	N/A	E-Mail:	mschmitt@scu.edu	At LMU:	23-38
Conference:	WCC	Record at School:	31-33 (3rd)	Starters Return/Lost:	2/3	Website:	santaclarabroncos.com	At Opp.:	24-37
Colors:	Red & White	Career Record:	Same	Letterwinners R/L:	8/6	Fax:	(408) 554-6942	Neutral:	2-3
Nickname:	Broncos	2008-09 Record:	16-17	MBB SID:	Michelle Schmitt	Series:	SCU leads 80-50	Last Mtg:	2/14/09 at LMU L, 69-64

**PORTLAND • Jan. 22, 2009 at Gersten Pavilion (4,156) | Feb. 21, 2009 at Chiles Center (4,852)**

Location:	Portland, OR	Head Coach:	Eric Reveno	Conference Record:	9-5/3rd	Office Phone:	(503) 943-8439	Streak:	Portland 3 wins
Enrollment:	3,300	Alma Mater:	Stanford ('89)	Postseason:	N/A	E-Mail:	brough@up.edu	At LMU:	23-12
Conference:	WCC	Record at School:	37-58 (4th)	Starters Return/Lost:	5/0	Website:	portlandpilots.com	At Opp.:	15-24
Colors:	Purple, White	Career Record:	Same	Letterwinners R/L:	12/0	Fax:	(503) 943- 7242	Neutral:	3-2
Nickname:	Pilots	2008-09 Record:	19-13	MBB SID:	Jason Brough	Series:	LMU leads 41-38	Last Mtg:	2/21/09 at POR L, 73-65

**GONZAGA • Jan. 24, 2009 at Gersten Pavilion (4,156) | Feb. 19, 2009 at McCarthy Center (6,000)**

Location:	Spokane, WA	Head Coach:	Mark Few	Conference Record:	14-0/1st	Office Phone:	(509) 313-6373	Streak:	Gonzaga 4 wins
Enrollment:	7,500	Alma Mater:	U. of Oregon ('87)	Postseason:	NCAA Sweet 16	E-Mail:	pierce@athletics.gonzaga.edu	At LMU:	12-20
Conference:	WCC	Record at School:	264-66 (11th)	Starters Return/Lost:	2/3	Website:	gozags.com	At Opp.:	6-30
Colors:	Red & Blue	Career Record:	Same	Letterwinners R/L:	8/3	Fax:	(509) 313-5730	Neutral:	2-2
Nickname:	Bulldogs	2008-09 Record:	28-6	MBB SID:	Oliver Pierce	Series:	Gonzaga leads 52-20	Last Mtg:	2/19/09 at GON L, 91-54

**SAN DIEGO • Jan. 28, 2010 at Gersten Pavilion (4,156) | Feb. 25, 2010 at Jenny Craig Pavilion (5,100)**

Location:	San Diego, CA	Head Coach:	Bill Grier	Conference Record:	6-8/5th	Office Phone:	(619) 260-4745	Streak:	USD 1 Win
Enrollment:	7,800	Alma Mater:	Oregon ('90)	Postseason:	n/a	E-Mail:	tgosen@sandiego.edu	At LMU:	20-19
Conference:	WCC	Record at School:	38-30 (3rd)	Starters Return/Lost:	2/3	Website:	usdtoreros.cstv.com	At Opp.:	17-18
Colors:	Torero Blue, Navy, White	Career Record:	Same	Letterwinners R/L:	8/4	Fax:	(619) 260-2990	Neutral:	0-2
Nickname:	Toreros	2008-09 Record:	16-16	MBB SID:	Ted Gosen	Series:	Series tied 39-39	Last Mtg:	3/6/09 at Las Vegas L, 62-56

**SAINT MARY'S • Jan. 30, 2010 at Gersten Pavilion (4,156) | Feb. 27, 2010 at McKeon Pavilion (3,500)**

Location:	Moraga, CA	Head Coach:	Randy Bennett	Conference Record:	10-4/2nd	Office Phone:	(925) 631-4402	Streak:	St. Mary's 6 wins
Enrollment:	3,840	Alma Mater:	UC San Diego ('86)	Postseason:	NIT Quarters	E-Mail:	rdavi@stmarys-ca.edu	At LMU:	32-26
Conference:	WCC	Record at School:	155-97 (9th)	Starters Return/Lost:	2/4	Website:	smcgael.com	At Opp.:	18-41
Colors:	Red, Navy, Silver	Career Record:	Same	Letterwinners R/L:	6/5	Fax:	(925) 631-4405	Neutral:	2-2
Nickname:	Gaels	2008-09 Record:	28-7	MBB SID:	Rich Davi	Series:	SMC leads 72-53	Last Mtg:	2/28/09 at LMU L, 70-57



# 2009-10 COMPOSITE SCHEDULE

## 2009-10 WEST COAST CONFERENCE COMPOSITE MBB SCHEDULE (All times Pacific and subject to change; As of 11/10/09)

**Nov. 13**  
<sup>2</sup> LMU vs. Boise St. - 5:05 PM  
Stanford at SAN DIEGO - 7 PM  
Cal Poly at SAN FRANCISCO - 7 PM  
SANTA CLARA at CS Bakersfield - 7 PM  
Pacific at PEPPERDINE - 7:30 PM  
New Mexico St. at SMC - 8:30 PM

**Nov. 14**  
PORTLAND at East. Washington - 1 PM  
<sup>2</sup> LMU vs. North Dakota - 5:05 PM  
Mississippi Valley St. at GONZAGA - 5 PM

**Nov. 15**  
<sup>2</sup> LMU at Montana - 2:05 PM

**Nov. 16**  
SAN DIEGO at Pacific - 7 PM  
Dominican (Calif.) at USF - 7 PM  
Menlo at SANTA CLARA - 7 PM  
San Diego St. at SAINT MARY'S - 11 PM

**Nov. 17**  
GONZAGA at Michigan St. - 5 PM  
Long Beach St. at PEPPERDINE - 7 PM  
Seattle University at PORTLAND - 7 PM

**Nov. 18**  
Point Loma Nazarene at USD - 7 PM  
UC Irvine at LMU - 8 PM

**Nov. 19**  
<sup>3</sup> SANTA CLARA at San Diego St. - 7 PM

**Nov. 20**  
SAN FRANCISCO at Arizona St. - 4 PM  
IPFW at GONZAGA - 6 PM  
CS San Bernardino at PEPPERDINE - 7 PM  
Vanderbilt at SAINT MARY'S - 8:30 PM

**Nov. 21**  
LMU at USC - 5 PM  
Oregon at PORTLAND - 7 PM

**Nov. 22**  
<sup>3</sup> SANTA CLARA at Pacific - 5 PM

**Nov. 23**  
<sup>4</sup> GONZAGA vs. Colorado - 12 PM  
SAN FRANCISCO at UCSB - 7 PM  
Cal Poly at SAINT MARY'S - 7:05 PM  
PEPPERDINE at UCLA - 8 PM

**Nov. 24**  
LMU at Tulsa - 5 PM  
<sup>4</sup> GONZAGA vs. Arizona/Wisconsin - TBA

**Nov. 25**  
Montana St. at SAN FRANCISCO - 7 PM  
<sup>3</sup> No. Arizona at SANTA CLARA - 7 PM  
Cal-Maritime at SAINT MARY'S - 7:05 PM  
<sup>4</sup> GONZAGA vs. TBA - TBA  
<sup>5</sup> SAN DIEGO vs. Oklahoma - 10:45 PM

**Nov. 26**  
<sup>6</sup> PORTLAND vs. UCLA - 7:30 PM

**Nov. 27**  
<sup>7</sup> PEPPERDINE vs. Hampton - 3:30 PM  
<sup>5</sup> SAN DIEGO vs. Houston - 8:30 PM  
<sup>6</sup> PORTLAND vs. Butler/Minnesota - TBA

**Nov. 28**  
<sup>3</sup> Fresno St. at SANTA CLARA - 2 PM  
<sup>7</sup> PEPPERDINE vs. Monmouth - 3:30 PM  
UC Santa Barbara at LMU - 7:30 PM  
<sup>5</sup> SAN DIEGO vs. TBD - TBA

**Nov. 29**  
USF at Colorado St. - 1:00 PM  
<sup>7</sup> PEPPERDINE vs. Wyoming - 2 PM  
<sup>6</sup> PORTLAND vs. TBA - TBA

**Nov. 30**  
SAINT MARY'S at San Jose St. - 7 PM

**Dec. 1**  
SAN FRANCISCO at Colorado - 6 PM  
SANTA CLARA at UCSB - 7 PM

**Dec. 2**  
Washington St. at GONZAGA - 6 PM  
Portland St. at PORTLAND - 7 PM  
San Diego St. at SAN DIEGO - 7 PM  
Academy of Art at LMU - 7:05 PM

**Dec. 4**  
SAN DIEGO at UC Riverside - 8 PM

**Dec. 5**  
Wake Forest at GONZAGA - 2:30 PM  
SAN FRANCISCO at BYU - 3 PM  
LMU at Wyoming - 6 PM  
SAINT MARY'S at Utah St. - 6 PM  
PEPPERDINE at Cal Poly - 7 PM  
UNLV at SANTA CLARA - 7 PM

**Dec. 6**  
SAN DIEGO at Fresno St. - 4 PM  
PORTLAND at Idaho - 5 PM

**Dec. 8**  
Fresno St. at PEPPERDINE - 7 PM  
San Jose St. at SAN FRANCISCO - 7 PM

**Dec. 9**  
Augustana College at GONZAGA - 6 PM  
New Mexico at SAN DIEGO - 7 PM

**Dec. 10**  
California Baptist at PEPPERDINE - 7 PM  
Montana at LMU - 7:05 PM

**Dec. 11**  
Dominican (Calif.) at SCU - 8:15 PM

**Dec. 12**  
Denver at PORTLAND - 1:00 PM  
SAINT MARY'S at Oregon - 1:00 PM  
USF at Loyola-Chicago - 1:00 PM  
<sup>8</sup> GONZAGA vs. Davidson - 4 PM  
LMU at Notre Dame - 5 PM  
SAN DIEGO at Boise St. - 7 PM

**Dec. 13**  
Portland St. at PEPPERDINE - 2 PM

**Dec. 14**  
SCU at Houston Baptist - 5:30 PM

**Dec. 15**  
Portland St. at SAINT MARY'S - 7:05 PM

**Dec. 16**  
SANTA CLARA at Rice - 5 PM

**Dec. 18**  
Pacific at SAINT MARY'S - 7:05 PM  
New Mexico St. at PEPPERDINE - 7:30 PM

**Dec. 19**  
<sup>9</sup> GONZAGA vs. Duke - 1:00 PM  
<sup>10</sup> USF vs. South Florida - 1:00 PM  
CS Bakersfield at LMU - 3:30 PM  
<sup>10</sup> USD vs. Southern Illinois - 4:15 PM  
PORTLAND at Washington - 7 PM

**Dec. 20**  
<sup>10</sup> SAN DIEGO vs. South Florida - 2 PM  
<sup>10</sup> USF vs. Southern Illinois - 3:15 PM

**Dec. 21**  
PEPPERDINE at UC Irvine - 7 PM  
Pacific at SANTA CLARA - 7 PM  
Long Beach St. at LMU - 8:05 PM

**Dec. 22**  
<sup>11</sup> SMC vs. Northeastern - 12 PM  
Idaho at PORTLAND - 7 PM

**Dec. 23**  
CS Bakersfield at SAN FRANCISCO - 5 PM  
Utah at PEPPERDINE - 7 PM  
San Jose St. at SANTA CLARA - 7 PM  
<sup>11</sup> SAINT MARY'S vs. W. Mich./USC - TBA

**Dec. 25**  
<sup>11</sup> SAINT MARY'S vs. TBD - TBA

**Dec. 27**  
LMU at Sacramento St. - 1:00 PM  
SAN FRANCISCO at Washington - 12 PM

**Dec. 28**  
Eastern Washington at GONZAGA - 6 PM  
PORTLAND at Nevada - 7:05 PM

**Dec. 29**  
<sup>12</sup> Northeastern vs. SANTA CLARA - 6 PM  
Savannah St. at SAN DIEGO - 7 PM  
<sup>13</sup> Binghamton at SMC - 7:35 PM

**Dec. 30**  
PEPPERDINE at Georgia - 4 PM  
Seattle University at LMU - 7:30 PM  
<sup>13</sup> Howard at SAINT MARY'S - 7:35 PM  
<sup>12</sup> Kent St./Wofford vs. SCU - TBA

**Dec. 31**  
Ever. St. College at PORTLAND - 3 PM  
Mississippi St. at SAN DIEGO - 4 PM  
<sup>14</sup> Oklahoma vs. GONZAGA - 7 PM

**Jan. 2**  
<sup>15</sup> GONZAGA at Illinois - 11 AM  
New Hampshire at SCU - 1:00 PM  
Army at PORTLAND - 2 PM  
Holy Names at SAN FRANCISCO - 2 PM

**Jan. 3**  
LMU at CS Bakersfield - 3 PM  
Miami at PEPPERDINE - 4 PM  
Florida A&M at SAN DIEGO - 6 PM

**Jan. 4**  
Harvard at SANTA CLARA - 7 PM

**Jan. 8**  
SAINT MARY'S at USF - 6:30 PM  
SAN DIEGO at SANTA CLARA - 8:30 PM

**Jan. 9**  
GONZAGA at PORTLAND - 7 PM  
LMU at PEPPERDINE - 7 PM

**Jan. 10**  
SAN DIEGO at SAN FRANCISCO - 5 PM  
SAINT MARY'S at SANTA CLARA - 7 PM

**Jan. 14**  
SAN FRANCISCO at LMU - 7:05 PM  
PORTLAND at SAN DIEGO - 7:30 PM  
GONZAGA at SAINT MARY'S - 8 PM  
SANTA CLARA at PEPPERDINE - 8 PM

**Jan. 16**  
GONZAGA at SAN DIEGO - 6 PM  
SAN FRANCISCO at PEPPERDINE - 7 PM  
PORTLAND at SAINT MARY'S - 7 PM  
SANTA CLARA at LMU - 8 PM

**Jan. 21**  
PEPPERDINE at GONZAGA - 6 PM  
LMU at PORTLAND - 7 PM  
SAN DIEGO at SAINT MARY'S - 8 PM

**Jan. 23**  
LMU at GONZAGA - 5 PM  
SANTA CLARA at SAN FRANCISCO - 5 PM  
PEPPERDINE at PORTLAND - 7 PM

**Jan. 28**  
SAINT MARY'S at PEPPERDINE - 7 PM  
SAN DIEGO at LMU - 7:05 PM  
GONZAGA at SANTA CLARA - 8 PM  
PORTLAND at SAN FRANCISCO - 8 PM

**Jan. 30**  
GONZAGA at SAN FRANCISCO - 6:30 PM  
PORTLAND at SANTA CLARA - 7 PM  
SAINT MARY'S at LMU - 7 PM  
SAN DIEGO at PEPPERDINE - 7 PM

**Feb. 4**  
SAN FRANCISCO at SAN DIEGO - 7 PM  
PORTLAND at GONZAGA - 8 PM  
SANTA CLARA at SAINT MARY'S - 8:30 PM

**Feb. 6**  
GONZAGA at Memphis - 1:00 PM  
SANTA CLARA at SAN DIEGO - 5:30 PM  
PEPPERDINE at LMU - 7:30 PM  
SAN FRANCISCO at SMC - 8 PM

**Feb. 11**  
LMU at SANTA CLARA - 7 PM  
PEPPERDINE at SAN FRANCISCO - 7 PM  
SAINT MARY'S at GONZAGA - 8 PM  
SAN DIEGO at PORTLAND - 8 PM

**Feb. 13**  
SAINT MARY'S at PORTLAND - 6 PM  
LMU at SAN FRANCISCO - 7 PM  
PEPPERDINE at SANTA CLARA - 7 PM  
SAN DIEGO at GONZAGA - 7 PM

**Feb. 18**  
PORTLAND at PEPPERDINE - 5 PM  
GONZAGA at LMU - 6 PM  
SAINT MARY'S at SAN DIEGO - 8 PM

**Feb. 20**  
GONZAGA at PEPPERDINE - 6 PM  
PORTLAND at LMU - 7:05 PM  
SAN FRANCISCO at SANTA CLARA - 7 PM

**Feb. 25**  
SAN FRANCISCO at PORTLAND - 7 PM  
PEPPERDINE at SAINT MARY'S - 7:05 PM  
LMU at SAN DIEGO - 8 PM  
SANTA CLARA at GONZAGA - 8 PM

**Feb. 27**  
SAN FRANCISCO at GONZAGA - 5 PM  
LMU at SAINT MARY'S - 6 PM  
PEPPERDINE at SAN DIEGO - 6 PM  
SANTA CLARA at PORTLAND - 7 PM

**Mar. 2**  
CS Bakersfield at GONZAGA - 6 PM  
Lewis/Clark College at PORTLAND - 7 PM

## 2010 ZAPPOS.COM WCC BASKETBALL CHAMPIONSHIP SCHEDULE

**Mar. 5**  
First Round - Game #1 - 6 PM  
First Round - Game #2 - 8 PM

**Mar. 6**  
Quarterfinal Round - Game #3 - 6 PM  
Quarterfinal Round - Game #4 - 8 PM

**Mar. 7**  
Semifinal Round - Game #5 - 5:30 PM  
Semifinal Round - Game #6 - 7:30 PM

**Mar. 8**  
Championship - Game #7 - 6 PM

- TOURNAMENT KEY**  
2 - University of Montana Tournament (Missoula, Mont.)  
3 - West Coast Classic  
4 - EA Sports Maui Invitational (Lahaina, Maui)  
5 - Great Alaska Shootout (Anchorage, Alak.)  
6 - 76 Classic (Anaheim, Calif.)  
7 - Wyoming World Vision Challenge (Laramie, Wyo.)  
8 - Battle in Seattle (Key Arena, Seattle)  
9 - Aeropostle Classic (Madison Square Gardens, NY)  
10 - Las Vegas Holiday Hoops Classic (Las Vegas, Nev.)  
11 - Diamond Head Classic (Honolulu, Hawaii)  
12 - Cable Car Classic (Santa Clara, Calif.)  
13 - Shamrock Office Solutions Classic (Moraga, Calif.)  
14 - Ronald McDonald House Charities Classic (Spokane Arena)  
15 - Game played at the United Center

