



WOMEN'S BASKETBALL

2019-20 LA SALLE EXPLORERS GAME NOTES

Ed LeFurge III

Assistant Director of Athletic Communications

Phone: 732-600-6552 | lefurge@lasalle.edu | @LeFurgeIII

2019-20 SCHEDULE

RECORD: 6-7, 0-0 A-10, 0-3 BIG 5

HOME: 2-4 | AWAY: 3-3 | NEUTRAL: 1-0

Tue., Nov. 5	Howard	W, 78-62
SAT., NOV. 9	ROBERT MORRIS#	L, 68-71 OT
FRI., NOV. 15	HARVARD	W, 75-69
Sun., Nov. 17	Penn State	W, 69-67
Fri., Nov. 22	Norfolk State	W, 55-52
TUE., NOV. 26	COPPIN STATE	W, 79-46
Sat., Nov. 30	UMBC%	W, 74-58
Sun., Dec. 1	Navy%	L, 46-61
WED., DEC. 4	PENN^	L, 49-65
Sat., Dec. 7	Rider	L, 43-70
Tue., Dec. 17	Drexel	L, 31-69
SAT., DEC. 21	VILLANOVA^	L, 69-77
MON., DEC. 30	TEMPLE^	L, 69-72
SAT., JAN. 4	DAYTON*	2 P.M.
WED., JAN. 8	SAINT LOUIS*	7 P.M.
Sat., Jan. 11	Duquesne*	2 p.m.
Wed., Jan. 15	UMass*	7 p.m.
SUN., JAN. 19	ST. BONAVENTURE*	3 P.M.
Thu., Jan. 23	Richmond*	11 a.m.
SUN., JAN. 26	SAINT JOSEPH'S^*	2 P.M.
WED., JAN. 29	GEORGE MASON*	5 P.M.
Sat., Feb. 1	Fordham*	2 p.m.
SUN., FEB. 9	RICHMOND*	2 P.M.
Wed., Feb. 12	George Washington*	7 p.m.
Sat., Feb. 15	Saint Joseph's*	2 p.m.
WED., FEB. 19	VCU*	5 P.M.
Sat., Feb. 22	Rhode Island	1 p.m.
WED., FEB. 26	DAVIDSON*	11 A.M.
Sat., Feb. 29	George Mason*	2 p.m.

Homecoming | % Navy Classic

^ Philadelphia Big 5 game | * Atlantic 10 game

Home games in **BOLD** | All times EST

FOLLOW ALONG



ESPN+ **PBP:** COREY COHEN
ANALYST: MAREN WALSETH



WWW.SIDEARMSTATS.COM/LASALLE/WBBALL

FOLLOW US!



@LaSalle_WBB

#Limitless | #LaSalleWBB



LA SALLE EXPLORERS

Head Coach: Mountain MacGillivray

Career Record: 12-32 (2nd year)

Record at School: same



DAYTON FLYERS

Head Coach: Shauna Green

Career Record: 98-63 (6th year)

Record at School: 69-38 (4th year)

NEWS & NOTES

- La Salle opens Atlantic 10 play with the Dayton Flyers on Sat., Jan. 4 inside Tom Gola Arena. Tipoff is scheduled for 2 p.m. with the game streaming on ESPN+.
- The Explorers come into Saturday's game fresh off a nail-biting loss to Big 5 rival Temple, 72-69. In the game, four players registered double-digit point totals. Collectively, the team recorded a season high 20 assists and shot 44.6% from the floor.
- La Salle started the season with its best start in 13 years at 6-1, before it lost its last six games. The Explorers fell to Navy, Penn, Rider, Drexel, Villanova, and Temple. Its six wins match the Blue & Golds win total from a season ago.
- Rookie **Claire Jacobs** is leading La Salle with 11.6 points per outing this season. She is shooting 36.5% from the floor, including 37.7% from long range. The Aussie has recorded 12+ points in seven games this season, including 19 and 25 in her last two.
- Sophomore **Kayla Spruill** is second on the team in scoring. The Baltimore, Md. native is averaging 8.6 ppg. Spruill and rookie **Jordon Lewis** are tied for second on the team with 4.8 rpg.
- Senior **Shalina Miller** is corralling a team best 8.0 rebounds per game and deflecting 2.5 blocks per contest. Miller is one deflection short of tying **Linda French** '87 for second all-time and five shy of tying **Amy Griffin** '18 for first. She is second in the league in both blocks and blocks per game, ranking 16th and 19th in the nation, respectively.
- Junior **Kate Hill** sits atop the Atlantic 10 in assist to turnover ratio at 2.21. The transfer leads the Explorers with 42 helpers and 3.2 apg.
- La Salle is averaging 61.9 points per game and allowing 64.5.

PROJECTED STARTERS

#4 KATE HILL	#10 CLAIRE JACOBS	#22 JORDON LEWIS	#2 CARLEY LYTTON	#25 SHALINA MILLER
PPG: 3.5	PPG: 11.6	PPG: 7.6	PPG: 2.8	PPG: 5.7
RPG: 1.5	RPG: 2.2	RPG: 4.8	RPG: 1.9	RPG: 8.0
APG: 3.2	FG%: 36.5	APG: 1.7	FG%: 22.4	BPG: 2.5
FG%: 30.4	3FG%: 37.7	FG%: 40.2	3FG%: 24.4	FG%: 40.3

SERIES HISTORY: LA SALLE VS. DAYTON

Overall: Dayton, 22-16

At Home: 9-9

On the Road: 7-12

Neutral Sites: 0-1

Current Streak: Lost 3

Last Meeting: L, 38-65 - 3/5/19

Largest Victory:

Largest Defeat:



#	Name	Cl.	Pos.	Ht.	Hometown / High School (Previous School)
2	Carley Lytton	Gr.	F	5-10	Floyd, Va. / Floyd County (East Tennessee State)
3	Kayla Braxton-Young	Fr.	G	5-7	Newark, Del. / Paul M. Hodgson Vocational Technical
4	Kate Hill	Jr.	G	5-7	Toronto, Ontario, Canada / The Peddie School (Rutgers)
5	Christina Kline	Fr.	G	5-10	Winter Garden, Fla. / West Orange
10	Claire Jacobs	Fr.	G	6-0	Perth, Australia / Kennedy Baptist College
11	Deja King	Jr.	G	5-7	Trenton, N.J. / Life Center Academy
12	Molly Masciantonio	So.	G	5-10	Morton, Pa. / Archbishop Carroll (Holy Family)
14	Haleigh Hill	Jr.	F	6-0	Allen, Texas / Allen (Dodge City CC/South Plains)
15	Kayla Spruill	So.	G/F	6-0	Baltimore, Md. / Western School of Technology and Environmental Science
22	Jordon Lewis	Fr.	F	5-10	Houston, Texas / Westside
24	Amy Jacobs	Fr.	G	6-0	Perth, Australia / Kennedy Baptist College
25	Shalina Miller	Sr.	F/C	6-2	Philadelphia, Pa. / Archbishop Prendergast
33	Erin Morgan	So.	G	5-8	Willow Grove, Pa. / Archbishop Wood
35	Sofilia Ngwafang	Sr.	C	6-4	Silver Spring, Md. / Paint Branch

Head Coach: Mountain MacGillivray - Second Season (Temple '96)

Associate Head Coach: Chris Day - Second Season (West Chester '97)

Assistant Coach/Recruiting Coordinator: Boo Abshire - Second Season (Quinnipiac '15)

Assistant Coach: Sam Guastella - Second Season (Quinnipiac '15)

Director of Operations: Kim Brady - First Season (UMass '10)

PRO-NUN-SEE-AY-SHUNS:

2 - Lit-in
11 - Day-juh
12 - Mass-in-tone-ee-oh
15 - Sprool
25 - Shuh-lee-nuh
35 - so-feel-ee-uh GWAH-fong

HC - Muh-gill-vree

AC - Gwuh-stell-uh

ALPHABETICAL ROSTER

Kayla Braxton-Young	Fr.	G	5-7
Haleigh Hill	Jr.	F	6-0
Kate Hill	Jr.	G	5-7
Amy Jacobs	Fr.	G	6-0
Claire Jacobs	Fr.	G	6-0
Deja King	Jr.	G	5-7
Christina Kline	Fr.	G	5-10
Jordon Lewis	Fr.	F	5-10
Carley Lytton	Gr.	F	5-10
Molly Masciantonio	So.	G	5-10
Shalina Miller	Sr.	F/C	6-2
Erin Morgan	So.	G	5-8
Sofilia Ngwafang	Sr.	C	6-4
Kayla Spruill	So.	G/F	6-0

ROSTER BY CLASS

Graduate (1): Carley Lytton

Senior (2): Shalina Miller, Sofilia Ngwafang

Junior (3): Haleigh Hill, Kate Hill, Deja King,

Sophomore (3): Molly Masciantonio, Erin Morgan, Kayla Spruill

Freshman (5): Kayla Braxton-Young, Amy Jacobs, Claire Jacobs, Christina Kline, Jordon Lewis

QUICK FACTS

ALL-TIME

First Year of Competition.....	1972-73
Record	702-620 (.531)
Atlantic 10 Record.....	131-223 (.370)
A-10 Championship Record (app.)...	13-19 (19)
NCAA Tournament Record	1-4
NCAA Appearances	'83, '86, '88, '89
WNIT Record	0-3
WNIT Appearances	'92

TEAM INFORMATION

Head Coach	Mountain MacGillivray
Alma Mater (Year).....	Temple ('96)
Career Record	12-32
Atlantic 10 Record.....	3-13
Record at La Salle/Years
.....	Same/Second Season
E-Mail	macgillivray@lasalle.edu
Associate Head Coach	Chris Day
E-Mail	dayc@lasalle.edu
Assistant Coach	Boo Abshire
E-Mail	abshire@lasalle.edu
Assistant Coach	Sam Guastella
E-Mail	guastellas1@lasalle.edu
Director of Operations	Kim Brady
Email.....	bradyk@lasalle.edu

THE EXPLORERS

Letterwinners Returning/Lost.....	6/7
Starters Returning/Lost.....	1/4
Newcomers.....	8
2018-19 Overall Record.....	6-25
2018-19 A-10 Record	3-13
2018-19 A-10 Finish.....	13th
2018-19 Postseason	n/a

LA SALLE UNIVERSITY

Location.....	Philadelphia, Pa.
Founded.....	1863
Enrollment.....	3,200 (5,200)
President	Dr. Colleen M. Hanycz
Nickname.....	Explorers
Colors	Blue (540) and Gold (7406)
Website.....	www.lasalle.edu
Director of Athletics.....	Brian Baptiste
Athletic Website ..	www.goexplorers.com
Athletic Phone.....	215-951-1425
Home Court (Cap.) ..	Tom Gola Arena (3,400)

MEDIA RELATIONS

WBB Contact.....	Ed LeFurge III
Office Phone.....	215-991-2882
Cell Phone.....	732-600-6552
Email Address.....	lefurge@lasalle.edu
Twitter:.....	@LeFurgeIII

GIVE US SOME SPACE!

The correct spelling of our University is "La Salle", with a space in the middle. Please do not use "LaSalle."

ONE OF A KIND

With over 1,100 schools across three divisions in the NCAA, the La Salle Explorers are the only institution with the nickname 'Explorers.'

FAKE NEWS?

La Salle University's nickname - the Explorers - was announced by The Collegian in March 1932 as the winning entry to a student contest. However, in the fall of 1931, a Baltimore sportswriter covering the La Salle/St. John's (Md.) football game erroneously alluded to La Salle as being named for the French explorer La Salle, not St. John Baptist de La Salle. Were the two events related? We'll never know for sure.

SERIES HISTORY - DAYTON

Dayton holds the all-time record, 22-16, including the last three and 14 of the last 15. The Explorers last victory came on the road during the 2016-17 season, while La Salle's last home victory was back in 2006.

VAST IMPROVEMENTS AGAINST TEMPLE

La Salle saw four players score in double figures against the Owls for the first time this season. Freshman **Claire Jacobs** led the way with 19 points, followed by rookie **Amy Jacobs** (15), sophomore **Kayla Spruill** (12), and senior **Shalina Miller** (10). The squad outshot Temple from the field (44.6%) and three-point range (39.3%). Collectively, the team dished out 20 assists, which is the most in almost three years when the Explorers had 22 assists against Rhode Island on Jan. 9, 2017. Last season, Temple stumped La Salle, 75-47.

C. JACOBS, K. HILL RECORD CAREER HIGHS VS. NOVA

Rookie **Claire Jacobs** and junior **Kate Hill** had career performances in the Explorers' narrow loss to Villanova. Jacobs scored a career high 25 points and became the first Explorer to hit the mark since **Amy Griffin** '18 did to conclude the regular season in 2017-18. Hill dished out a career best 11 assists. She's the first to do so in a La Salle uniform since **Shaquanna Edwards** handed out 10 assists against UMass on Feb. 4, 2018.



500-500-100 CLUB

Senior **Shalina Miller** recorded her 500th rebound against Villanova earlier this season. She became the third player in program history to register 500 points, 500 rebounds, and 100 blocks. Miller joined **Amy Griffin** '18 and **Suzi McCaffrey** '86.

FOUNTAIN OF YOUTH

This season, La Salle's freshmen and sophomores are accounting for 65.0% of the Explorers' points. Of the 65.0%, 56.9% come from the team's top four scorers - freshman **Claire Jacobs**, sophomore **Kayla Spruill**, freshman **Jordon Lewis**, and freshman **Amy Jacobs**.

TALE OF THE TAPE

	61.9	PPG	67.4	
	64.5	Opp. PPG	64.0	
	-2.6	Scoring Margin	+3.4	
	35.9	FG%	37.8	
	32.4	3FG%	33.6	
	67.9	FT%	71.0	
	40.7	RPG	39.7	
	-1.8	Reb. Margin	+3.8	
	13.2	APG	12.9	
	7.5	SPG	5.9	
	4.8	BPG	2.2	
	19.8	TO/G	14.8	
	-3.9	TO Margin	+1.3	

WHERE THEY RANK...

Through games played on Sunday, the following Explorers rank toward the top of the conference and the nation.

NAME	CATEGORY	TOTAL	A-10 RANK	NATIONAL RANK
Shalina Miller	Blocks	33	2nd	16th
	Blocks/GM	2.5	2nd	19th
	Rebounds	105	3rd	105th
	Rebounds/GM	8.0	6th	127th
Kate Hill	Assist/TO Ratio	2.21	1st	41st

La Salle ranks toward the top of the A-10 and nation in the following categories:

CATEGORY	TOTAL	A-10 RANK	NATIONAL RANK
3FG Attempted	321	2nd	30th*
3FG Made	104	2nd	39th
3FG/GM	8.0	2nd	40th
Rebounds/GM	40.7	2nd	89th
3FG Defense	28.4	2nd	90th
Blocks	63	3rd	31st*
Blocks/GM	4.8	3rd	31st*
FG% Defense	35.7	3rd	50th
Rebounds	529	3rd	76th

*Ranks in the top 10% of DI schools

LA SALLE LOVES KIDS GAMES

This season, the Explorers are set to play in two more Kids/School games - at Richmond (1/23) and vs. Davidson (2/26). Since the 2011-12 season, La Salle is 9-2 in such games, including 7-1 at home, 2-1 on the road, and 7-1 in its last eight.

BLOCK MONSTER

Senior **Shalina Miller** leads the Explorers with 33 blocks and 2.5 bpg. In both categories she's second in the Atlantic 10 and ranks 16th (blocks) and 19th (bpg) nationally. Miller has at least two blocks in all but two games this season, including 3+ in seven outings. Miller is one behind **Linda French** '87 and five behind **Amy Griffin** '18.

PARTY LIKE IT'S 2006!

Through its first seven games, La Salle sat 6-1 on the year which marked the program's best start since the 2006-07 season when the Explorers started 7-0.

LEWIS, MILLER HAVE CAREER DAYS IN MILESTONE WIN

In La Salle's win at Norfolk State, freshman **Jordon Lewis** and senior **Shalina Miller** led La Salle with career days. The rookie registered a career high 18 points on 50% (4-of-8) shooting, including 2-of-3 from long range and a perfect 8-of-8 from the line. Miller grabbed a career best 16 rebounds. The victory was the program's 700th.


OUR RECORD WHEN...

La Salle scores first.....4-1
Opponent scores first2-6

Leading at halftime.....3-0
Trailing at halftime2-7
Tied at halftime1-1

In November.....6-1
In December.....0-6
In January0-0
In February.....0-0
In March0-0

On Sunday.....1-1
On Monday.....0-1
On Tuesday.....2-1
On Wednesday.....0-1
On Thursday.....0-0
On Friday.....2-0
On Saturday.....1-3

Shoots below 35%.....1-4
Shoots between 35-40%.....3-2
Shoots between 40-45%.....1-1
Shoots over 45%.....1-0

Opponent shoots below 35%.....4-1
Opponent shoots between 35-40%..1-3
Opponent shoots between 40-45%..1-3
Opponent shoots over 45%.....0-0

Scores fewer than 50 points.....0-4
Scores 50-59 points.....1-0
Scores 60-69 points1-3
Scores 70-79 points.....4-0
Scores 80+ points.....0-0

Holds opponent under 50 points1-0
Allows 50-59 points.....2-0
Allows 60-69 points3-3
Allows 70+ points.....0-4

Outrebounding an opponent3-3
Outrebounded by an opponent2-4
Rebounds are even.....1-0

Games decided by five points or less..2-2
In overtime.....0-1

Largest lead.....34, Coppin State
Largest deficit.....39 points at Drexel
Largest deficit overcome.....21 points at Penn St.
Largest halftime lead.....17, Coppin State



WEEKLY AWARDS

HONOR ROLL

Kayla Spruill	11/11/19
Claire Jacobs	11/11/19
Claire Jacobs	11/18/19
Jordon Lewis	11/25/19
Claire Jacobs	12/23/19



WEEKLY AWARDS

HONOR ROLL

Kayla Spruill	11/11/19
Claire Jacobs	11/11/19
Claire Jacobs	11/18/19
Jordon Lewis	11/25/19
Kayla Spruill	12/2/19
Claire Jacobs	12/23/19

 PHILLYCOLLEGESPORTS.COM
WEEKLY AWARDS*

PLAYER OF THE WEEK

Claire Jacobs	11/22/19
Amy Jacobs	11/22/19

HONOR ROLL

Jordon Lewis	11/22/19
Jordon Lewis	11/25/19
Shalina Miller	11/25/19
Claire Jacobs	12/3/19
Kayla Spruill	12/3/19
Shalina Miller	12/10/19
Claire Jacobs	12/23/19

*Selected by Glenn Papazian - PhillyCollegeSports.com, Mel Greenberg - WBB Hall of Famer, Matt Leon - KYW Newsradio



COMEBACK KIDS

In back-to-back upset wins, the Explorers have registered 16+ point comebacks over Harvard and Penn State. La Salle claimed a win over the Crimson with a 16-point comeback and overcame a 21-point deficit in Happy Valley. In the following game against Norfolk State the Explorers also overcame an 8-point deficit.

HISTORY MAKERS

La Salle's come-from-behind win over Penn St. was the first ever victory over the Lady Lions in program history. The win also signified the first over a Power 5 team since Nov. 29, 2015 when the Explorers topped Miami, 71-68, and the first over a Big Ten team since Dec. 22, 1988 when the Blue & Gold downed Northwestern, 69-67. In the win, La Salle outscored the Lady Lions, 33-11, in the final 8:23 led by the freshman trio of **Amy Jacobs, Claire Jacobs**, and **Jordon Lewis** who combined for 39 points, including 21 of the team's 33 in the final frame.

NEW YEAR, NEW TEAM?

During head coach **Mountain MacGillivray's** first season, the Blue & Gold opened play with the same three opponents it did this season - Howard, Robert Morris, and Harvard. In 2018-19, the Explorers were 0-3, shot 22.9% (42-of-183) from the floor, and lost by a combined 74 points. It has been the opposite in 2019-20 with La Salle holding a 2-1 record, shooting 39.6% (72-of-182) from the floor, and outscoring opponents by 19 points.

REVENGE AGAINST HARVARD

After falling to Harvard by 45 points in 2018-19, La Salle was out for revenge as the teams faced off this season. The Explorers cameback from a 16-point deficit to claim the victory, 75-69. Australian twins, **Amy Jacobs** and **Claire Jacobs**, combined for 32 points.

SIGNIFICANT IMPROVEMENTS AGAINST RMU

After losing to Robert Morris last year by 28 points, the Explorers nearly topped the Colonials at Tom Gola Arena on Saturday. RMU took the overtime-thriller, 71-68. Sophomore **Kayla Spruill** led La Salle with a career high 19 points, while senior **Sofilia Ngwafang** registered a double-double with 14 points and a career best 12 boards.

AUSSIE GOES OFF IN WIN OVER HOWARD

Freshman **Claire Jacobs** certainly made her presence felt on the floor in the Explorers opening win over Howard, 78-62. The Perth, Australia native tallied 20 points in her first career game on 7-of-9 shooting and 4-of-5 from the free throw line.

TOTAL TEAM EFFORT

In La Salle's win over Howard, all 10 Explorers who played in the game registered a point. Collectively, the Blue & Gold shot 45.6% from the field on 26-of-57 and out-rebounded Howard, 52-40.

STARTERS BY GAME

Howard	King	C. Jacobs	Spruill	Lewis	Miller
Robert Morris	King	C. Jacobs	Spruill	Lewis	Miller
Harvard	King	Kline	Spruill	Lewis	Miller
Penn State	King	C. Jacobs	Spruill	Lewis	Miller
Norfolk State	King	C. Jacobs	Spruill	Lewis	Miller
Coppin State	King	A. Jacobs	Spruill	Lewis	Miller
UMBC	King	A. Jacobs	Spruill	Lewis	Miller
Navy	King	A. Jacobs	Spruill	Lewis	Miller
Penn	King	A. Jacobs	Spruill	Lewis	Miller
Rider	K. Hill	Kline	C. Jacobs	Lytton	Ngwafang
Drexel	King	C. Jacobs	Spruill	Lewis	Miller
Villanova	K. Hill	C. Jacobs	Lewis	Spruill	Miller
Temple	K. Hill	C. Jacobs	Lewis	Lytton	Miller

GUASTELLA PROMOTED TO ASSISTANT COACH

After serving the 2018-19 season as a graduate assistant, **Sam Guastella** was promoted to a full-time assistant coach.

WELCOME ABOARD!

Kim Brady was hired as the team's director of basketball operations in August of 2019. Brady, who spent three seasons at Lafayette as an assistant coach, played college ball at UMass.

SNEAKER HEAD READY TO GO

Junior **Kate Hill** spent the 2018-19 sidelined due to NCAA transfer rules. The transfer from Rutgers is finally eligible and ready to take the court. The self-proclaimed 'sneaker head' was featured in the Philadelphia Inquirer prior to the season. Read the full story on pages 32-33.

SEEING DOUBLE?

Nah, that's just freshmen twins, **Amy Jacobs** and **Claire Jacobs**. The Perth, Australia natives make up 2/5 of the La Salle freshman class. The duo become the third set of sisters to don the Blue & Gold at the same time.

FRESH FACES

Outside of the Jacobs twins, rookies **Kayla Braxton-Young**, **Christina Kline**, and **Jordon Lewis** complete the Explorers 2019 signing class.

IT'S LIT...IN

The Explorers welcome graduate transfer **Carley Lytton** from East Tennessee State. Lytton could bring added depth and experience to the La Salle roster, especially from long range.

MOVING ON UP

Joining Lytton as a transfer this season are junior **Haleigh Hill** and sophomore **Molly Masciantonio**. Hill jumps to the Division I ranks from Dodge City Community College, while Masciantonio makes the jump from DII Holy Family.

LINE CHANGE

Head coach **Mountain MacGillivray** utilizes a unique approach in terms of substitutions. Much like La Salle's NHL neighbor to the south, MacGillivray could run five on, five off...as the Flyers do in a line change. Utilizing this strategy allows for the entire floor to be fresher than its opponents.

SEASON HIGHS AND LOWS

	High	Low
Points	79	31
Field Goal Percent	.456	.160
3-Point Field Goal Percent	.444	.100
Free Throw Percent	.842	.556

Points Scored in 1st	29	7
Points Scored in 2nd	24	7
Points Scored in 3rd	24	3
Points Scored in 4th	33	7
Points Scored in OT	7	7

Points Scored in a 1st Half	39	20
Points Scored in a 2nd Half	48	22

Points Allowed in 1st	26	11
Points Allowed in 2nd	25	6
Points Allowed in 3rd	19	10
Points Allowed in 4th	25	12
Points Allowed in OT	10	10

Points Allowed in a 1st Half	42	22
Points Allowed in a 2nd Half	41	24

Points Allowed in a game	77	46
--------------------------	----	----

Field Goals	29	8
Field Goals Att.	70	39
3-Point Field Goals	13	2
3-Point Field Goal Att.	35	17
Free Throws	24	5
Free Throw Att.	33	9

Points in the Paint	36	10
Points Off Turnovers	25	5
2nd Chance Points	16	6
Fast Break Points	26	0
Bench Points	49	12

Rebounds	55	28
Offensive Rebounds	21	6
Defensive Rebounds	36	20
Rebound Margin	+12	-21

Assists	20	3
Steals	13	4
Turnovers	33	10
Turnover Margin	+14	-18
Blocks	9	1

Fouls	30	12
-------	----	----



#LIMITLESS





STANDINGS

TEAM	A-10 REC.	OVERALL
Duquesne	0-0	10-3
UMass	0-0	10-3
Fordham	0-0	8-5
Saint Louis	0-0	8-5
Rhode Island	0-0	7-5
Davidson	0-0	7-6
Saint Joseph's	0-0	6-6
Dayton	0-0	7-7
Richmond	0-0	7-7
George Mason	0-0	6-7
George Washington	0-0	6-7
La Salle	0-0	6-7
VCU	0-0	5-8
St. Bonaventure	0-0	3-10

PRE SEASON COACHES POLL

RANK	SCHOOL	POINTS
1	VCU (11)	189
2	Dayton (1)	177
3	Fordham (1)	174
4	Saint Louis (1)	138
5	Davidson	135
6	George Mason	116
7	George Washington	114
8	Massachusetts	107
9	Duquesne	98
10	Saint Joseph's	67
11	Richmond	52
12	Rhode Island	47
13	St. Bonaventure	34
14	La Salle	22

Number in parenthesis indicates first place votes.

RECORD WATCH

CAREER BLOCKS

1.	151	Amy Griffin	2014-18
2.	147	Linda French	1982-87
3.	146	Shalina Miller	2016-Pres.
4.	136	Suzi McCaffrey	1982-86

O CAPTAIN, MY CAPTAIN!

The team held a vote amongst coaches, staff, and players to name captains for the 2019-20 season. After tallying votes, senior **Shalina Miller** and juniors **Kate Hill** and **Deja King** were named the team's captains for the season.

SMARTY PANTS

In the most recent NCAA GSR report, the La Salle women's basketball team posted a perfect 100 - one of eight teams to do so. Overall, La Salle had a score of 95, which ranks it in the 90th percentile among NCAA Division I schools nationally.

GREAT EIGHT

On Thursday, October 24, head coach **Mountain MacGillivray** and his wife, Grace, welcomed the birth of their eighth child, Emily Elizabeth.

TWO BEST FRIENDS THAT ANYONE COULD HAVE

It all started in the late 1980s at Archbishop Carroll High School. Then student managers, **Mountain MacGillivray** and **Chris Day** worked with the girls team at Carroll. Since then, the two have been waiting to coach together at the collegiate level and finally they are. More on pages 30-31.

TV TIME

For the second season in a row, all Atlantic 10 conference and non-conference games will be streamed on ESPN+. ESPN+ can be accessed on all mobile devices and online. The Explorers' home contest against St. Bonaventure will air on NBC Sports Network.

INTERNATIONAL AIR TIME

All Explorers' home games and select away games will also be available via an international stream through the Atlantic 10 and ESPN+.

PHILADELPHIA BIG 5

Created during the 1979-80 season, the Philadelphia Big 5 women's basketball City Series will celebrate its 40th season in 2019-20. This partnership has remained intact and defines Philadelphia's collegiate sports tradition, with heated rivalries and fierce competition on the court, partnership and camaraderie off the court. The Philadelphia Big 5 even beat out Rocky Balboa to be named the City's "Best Sports Tradition" in the Philadelphia Daily News! Overall, the Explorers are 62-99 in the Big 5 and have claimed five Big 5 titles, adding 16 Big 5 women's basketball hall of famers, which is second behind Saint Joseph's 21.



LAST TIME WHEN...

AN INDIVIDUAL...

Scored 20 Points	12/21/19 vs. Villanova - Claire Jacobs (25)
Scored 30 Points.....	11/10/17 at Lafayette - Amy Griffin (30)
Two Players Scored 20 Points.....	3/6/14 vs. Saint Louis - Micahya Owens (23) and Alicia Cropper (20)
Three Players Scored 10 Points	11/17/19 at Penn St. - Claire Jacobs (17), Jordon Lewis (12), Amy Jacobs (10)
Four Players Scored 10 Points	12/30/19 vs. Temple - Claire Jacobs (19), Amy Jacobs (15)
.....	Kayla Spruill (12), Shalina Miller (10)
Five Players Scored 10 Points.....	2/17/19 - Shayla Sweeney (13), Shalina Miller (12)
.....	Jeryn Reese (10), Michelle Nicholls (10), Janay Sanders (10)
Six Players Scored 10 Points.....	11/22/10 vs. Oral Roberts - Ashley Gale (22), Alexis Scott (19)
.....	Nadia Duncan (13), Ebonee Jones (12), Chelsea Conner (11), Jess Koci (10)
Had 15 Rebounds	11/22/19 at Norfolk State - Shalina Miller (16)
Had 10 Offensive Rebounds.....	2/1/17 at Rhode Island - Jasmine Alston (11)
Had 10 Defensive Rebounds	11/22/19 at Norfolk State - Shalina Miller (12)
Two Players Had 10 Rebounds.....	1/23/19 vs. Duquesne - Jeryn Reese (11) and Shalina Miller (10)
Had a Double-Double in Points and Rebounds	12/30/19 vs. Temple - Shalina Miller (10 pts, 10 rbs)
Had a Double-Double in Points and Assists.....	2/4/18 at Massachusetts - Shaquana Edwards (11 pts, 10 ast)
Two Players Had Double-Doubles.....	2/4/18 at Massachusetts - Shaquana Edwards (11 pts, 10 ast)
.....	Amy Griffin (14 pts, 10 rbs)
Made 10 Field Goals.....	2/24/18 at George Mason - Amy Griffin (11)
Made 15 Field Goals.....	2/22/17 vs. Fordham - Amy Griffin (18)
Attempted 20 Field Goals	12/21/19 vs. Villanova - Claire Jacobs (20)
Shot 75% from the Field (min 10 attempts).....	1/10/18 at Harvard - Sofilia Ngwafang (9-12, 75%)
Made 10 Free Throws.....	12/19/18 vs. Pepperdine - Deja King (12-14)
Shot 100% from the Line (min. 5 attempts)	12/21/19 vs. Villanova - Claire Jacobs (7-of-7)
Made 5 Three-Pointers.....	12/9/18 vs. Norfolk State - Michelle Nicholls (5)
Attempted 10 Three Pointers	11/9/19 vs. Robert Morris - Kayla Spruill (12)
Shot 75% from 3-Point Range (min. 5 att.)	2/7/18 vs. Saint Louis - Adreanna Miller (6-8, 75%)
Had 10 Assists	12/21/19 vs. Villanova - Kate Hill (11)
Had 5 Blocks	12/30/19 vs. Temple - Shalina Miller (5)
Had 5 Steals	11/26/19 vs. Coppin State - Amy Jacobs (5)
Led the Team in Points, Rebounds, Assists	2/21/18 vs. Davidson - Amy Griffin (18 pts, 10 rbs, 5 ast.)
Played Every Minute of a Game.....	12/15/18 vs. St. John's - Deja King (40)

THE TEAM...

Won by 30 Points	11/26/19 vs. Coppin State - 33 pts.	Made 20 free throws	12/7/19 at Rider - 24 FTs
Won by 40 Points	12/21/16 vs. Delaware State - 40 pts.	Made less than 5 free throws	2/14/19 at George Mason - 4 FTs
Scored 100 Points.....	2/20/91 vs. Iona - 100 pts.	Shot 90% from the line	1/31/19 vs. Fordham - 4-4, 100%
Scored Under 50 Points	12/7/19 at Rider - 43 pts.	Made 10 three pointers	12/30/19 - vs. Temple - 11 3FG
Scored Under 40 Points	12/17/19 at Drexel - 31 pts.	Made no three pointers.....	12/9/17 at North Texas
Scored 50 Points in a Half 2/7/18 vs. Saint Louis - 50 pts. (2nd Half)		Shot At Least 40% from three point range	
Scored Under 20 Points in a Half	11/30/19 - vs. UMBC - 41.9%
.....	12/17/19 at Drexel - 10 pts. (2nd Half)	Attempted at least 20 threes	12/30/19 vs. Temple - 28 3FG
Had 50 Rebounds	11/9/19 vs. Robert Morris - 55 rbs.	Attempted Less than 5 threes.....	1/28/18 vs. Saint Joseph's - 4 3FG
Had Less than 25 Rebounds.....	1/31/19 vs. Fordham - 24 rbs.	Had 20 assists	12/30/19 vs. Temple - 20 ast.
Had 20 Offensive Rebounds	11/5/19 at Howard - 21 rbs.	Had less than 5 assists.....	12/7/19 at Rider - 3 ast.
Had 25 Offensive Rebounds	2/1/17 at Rhode Island - 35 rbs.	Had 25 turnovers	12/17/19 at Drexel - 28 TO
Had 30 Defensive Rebounds	12/21/19 vs. Villanova - 32 rbs.	Had 10 blocks	2/4/18 at Massachusetts - 10
Made 30 Field Goals.....	2/7/15 vs. Massachusetts - 30 FG	Had no blocks	2/6/19 vs. Rhode Island
Made Less Than 15 Field Goals	12/17/19 at Drexel - 11 FG	Had 10 steals	11/30/19 - vs. UMBC - 13 stls.
Attempted 75 Field Goals.....	11/26/16 vs. Miami (OH) - 76 FG	Had less than 5 steals.....	1/20/19 at St. Joe's - 4 stls.
Attempted Less Than 40 Field Goals	12/17/19 at Drexel - 38 FG	Last overtime game	11/9/19 vs. Robert Morris - L, 71-68 OT
Shot At Least 50% from the field ...	11/29/17 vs. Penn - 25-45, 55.6%	Last overtime victory at home	3/2/19 vs. George Mason - W, 77-71 OT
Shot At Least 60% from the field	12/29/09 vs. Holy Cross - 27-45, 60%	Last overtime victory on the road.....	12/7/16 at Penn - W, 58-56 OT



Mountain MacGILLIVRAY

HEAD COACH | SECOND SEASON | TEMPLE '96

Mountain MacGillivray, a Philadelphia native who helped lead Quinnipiac to seven straight 20-win seasons and a trip to the Sweet 16 in 2017, was appointed the ninth head coach in La Salle University women's basketball history, in April of 2018. He begins his second year at the helm of the program in 2019-20.

MacGillivray spent the previous nine seasons at Quinnipiac, including the last three as the associate head coach. The Bobcats had tremendous success during MacGillivray's tenure, qualifying for the NCAA Tournament in four of his last five seasons, including three wins in NCAA play over the final two.

MacGillivray's role with the Bobcats evolved through the years and one of his greatest responsibilities is within the recruiting of prospective student-athletes. His success in the recruiting landscape has only improved through the years as his last two incoming classes featured the four highest-ranked recruits in program history. In his eight years with the Bobcats, MacGillivray helped guide 18 All-Conference players, including 10 in his final three seasons, as well as three Defensive Player of the Year award winners and three Tournament MVPs.

Quinnipiac went undefeated in the MAAC in 2017-18 for the third time in six years, winning the conference regular season title

for the fifth time in six seasons. After earning the league's automatic bid into the NCAA Tournament with a victory over Marist in the MAAC title game, the Bobcats earned a No. 9 seed and defeated Miami (Fla.) in the opening round.

In 2016-17, MacGillivray helped Quinnipiac to a pair of upset wins in NCAA Tournament action, defeating Marquette and Miami (Fla.) en route to the Sweet 16. The Bobcats won four conference championships and averaged 26 wins over that seven year span, and head coach Tricia Fabbri won MAAC Coach of the Year four times with the contributions of MacGillivray.

Prior to Quinnipiac, MacGillivray served as assistant coach and recruiting coordinator at the University of New Hampshire for two seasons from 2007-09, helping the Wildcats improve their finish in the conference in both seasons.

He got his start in collegiate coaching as an assistant at the University of Vermont in 1999-00, guiding the Catamounts to the NCAA Tournament that year after winning the America East regular season and tournament championships.

MacGillivray has 13 years of experience coaching at the high



school and AAU levels, helping turn Archbishop Carroll High School in Radnor, Pennsylvania into one of the most successful prep programs in the country. He also guided the Philadelphia AAU Lady Running Rebels from 2000-02 and Delaware Valley Comets AAU team in 2006.

A 1996 graduate of Temple with a degree in Journalism, MacGillivray and his wife Grace have eight children: Chiara, Mary, Brigid, Sean, Catherine, Joseph, Theresa, and Emily.

WHAT THEY'RE SAYING...

"It is rare in this business to get a coach on staff who cares about the program with the same attention to detail that you do. For the past nine years, Mountain has been that coach. We've experienced unprecedented success here during his tenure and he bears a great deal of responsibility for that from the recruitment of next level student-athletes that we've had to their remarkable development as both people and players. I can't overstate what he's meant to the improvement of this program and the impact he's had on my life. I'm proud to have had him as a colleague and privileged to call him a friend."

-Tricia Fabbri

Head WBB Coach, Quinnipiac



MacGILLIVRAY FILE

PERSONAL

Year Coaching24th season
 College Temple '96
 B.A. in Journalism
 Hometown..... Philadelphia, Pa.
 High School..... Archbishop Carroll
 Birthday January 7
 Spouse Grace
 Children..... Chiara, Mary, Brigid, Sean
 Catherine, Joseph, Theresa, Emily

COACHING EXPERIENCE

La Salle University

Head Coach, 1 season

Season	Overall	Conf.	Post.
2018-19	6-25	3-13	-
2019-20	6-7	-	-
Totals	12-32	3-13	

Quinnipiac University

Associate Head Coach, 3 seasons

Assistant Coach, 6 seasons

Season	Overall	Conf.	Post.
2017-18	28-6	18-0	NCAA 2nd Rd.
2016-17	29-7	17-3	NCAA Sweet 16
2015-16	25-9	17-3	WNIT 2nd Rd.
2014-15	31-4	20-0	NCAA 1st Rd.
2013-14	21-13	14-6	WNIT 1st Rd.
2012-13	30-3	18-0	NCAA 1st Rd.
2011-12	22-10	13-5	WNIT 1st Rd.
2010-11	14-16	11-7	-
2009-10	12-18	7-11	-
Totals	212-86	135-35	

2018 MAAC Champion

2017 MAAC Champion

2015 MAAC Champion

2013 NEC Champion

University of New Hampshire

Assistant Coach, 2 seasons

Season	Overall	Conf.	Post.
2008-09	8-23	6-10	-
2007-08	7-21	4-11	-
Totals	15-44	10-21	

Archbishop Carroll High School

Assistant Coach, 11 years

1995-99, 2000-07

2007 Philadelphia Catholic League Champ.

2004 Philadelphia Catholic League Champ.

2003 Philadelphia Catholic League Champ.

Vermont University

Assistant Coach, 1 season

Season	Overall	Conf.	Post.
1999-00	25-6	15-3	NCAA 1st Rd.
Totals	25-6	15-3	

2000 America East Champion



Carley LYTTON

2

GRADUATE | FORWARD | 5-10 | FLOYD, VA. | FLOYD COUNTY | EAST TENNESSEE STATE

MAJOR

MBA

CAREER HIGHS**Points**

19, NC A&T 12/14/18

Rebounds

9, Brevard 11/21/15

Assists

4, NC A&T 12/14/18

Blocks

2, Coppin St. 11/26/19

Steals

3, Chattanooga 2/9/19

Field Goals

6, NC A&T 12/14/18

Field Goal Att.

17, Brevard 11/21/15

3-Points Field Goals

6, NC A&T 12/14/18

3-Point Field Goal Att.

11, Brevard 11/21/15

Free Throws

3, three times

Free Throw Att.

4, four times

Minutes Played

40, UNC Asheville 12/11/18

2019-20: Joined the La Salle roster as a graduate transfer.**2018-19 (East Tennessee State):** Saw action in 30 games with 10 starts... Scored 4.9 points and corralled 1.2 rebounds per game... Shot 35.2% from the field, including 34.6% from long range.**2017-18 (East Tennessee State):** Missed the season due to injury.**2016-2017 (East Tennessee State):** Played in 28 games... Averaged 3.8 points and 1.0 rebounds per outing.**2015-2016 (East Tennessee State):** Appeared in 28 games, making six starts... Averaged 4.1 points and 1.9 rebounds per game.**Background:** Graduated from Floyd County High School in 2015... Led team to 2013 Group A Div. II Virginia State Championship... Garnered First Team All-State and First Team All-State Tournament team honors... Earned 2014 First Team Virginia High School Coaches Association All-State... Named to the 13th annual "Doc" Maples Holiday Hoops All-Tournament team.**Personal:** Daughter of Michael and Michele Lytton... Played AAU for Carolina All-Stars.

YEAR	GP-GS	MIN-AVG.	FG-FGA	PCT	3P-3PA	PCT	FT-FTA	PCT	OFF	DEF	TOT	AVG	PF-FO	A	TO	BLK	ST	PTS	AVG
15-16	28-6	428/15.3	39-141	.277	28-102	.275	10-20	.500	10	42	52	1.9	30-0	16	38	5	11	116	4.1
16-17	28-0	396/14.1	36-122	.295	28-99	.283	6-11	.546	6	22	28	1.0	28-0	11	19	2	8	106	3.8
17-18	1-0	0/0.0	0-1	.000	0-0	.000	0-0	.000	0	0	0	0.0	0-0	0	0	0	0	0	0.0
18-19	30-10	444/14.8	45-128	.352	37-107	.346	20-26	.769	4	31	35	1.2	21-0	16	31	4	11	147	4.9
19-20	13-2	186/14.3	11-49	.224	11-45	.244	4-5	.800	0	25	25	1.9	13-0	10	17	3	2	37	2.8
CAR.	100-18	1454/14.5	131-441	.297	104-354	.294	40-62	.645	20	120	140	1.4	92-0	53	105	14	32	406	4.1



Kayla BRAXTON-YOUNG

3

FRESHMAN | GUARD | 5-7 | NEWARK, DEL. | PAUL M. HODGSON VOC. TECH.

MAJOR

Education

CAREER HIGHS**Points**

9, Coppin St. 11/26/19

Rebounds

4, at Howard 11/5/19

Assists

7, Temple 12/30/19

Blocks

n/a

Steals

2, twice

Field Goals

3, Coppin St. 11/26/19

Field Goal Att.

6, twice

3-Points Field Goals

1, five times

3-Point Field Goal Att.

2, five times

Free Throws

4, at Rider 12/7/19

Free Throw Att.

4, at Rider 12/7/19

Minutes Played

16, Villanova 12/21/19

Background: Graduated from Paul M. Hodgson Vocational Technical in 2019... Played four different sports... Four-year letterwinner in basketball and volleyball... Two-year letterwinner in lacrosse and softball... Top point scorer in school history for basketball with 1,786... Four-time First Team All-Conference... Three-time All-State... Member of the National Honor Society and National Society of High School Scholars... Played AAU for PF Stars Elite.

Personal: Daughter of Jacqueline Braxton... Has three sisters... Twin sister attends Johnson and Wales... Lived in Mt. Airy section of Philadelphia until third grade.

YEAR	GP-GS	MIN-AVG.	FG-FGA	PCT	3P-3PA	PCT	FT-FTA	PCT	OFF	DEF	TOT	AVG	PF-FO	A	TO	BLK	ST	PTS	AVG
19-20	12-0	118/9.8	10-34	.294	5-15	.333	12-15	.800	5	15	20	1.7	12-0	18	17	0	9	37	3.1
CAR.	12-0	118/9.8	10-34	.294	5-15	.333	12-15	.800	5	15	20	1.7	12-0	18	17	0	9	37	3.1



Kate HILL

4

JUNIOR | GUARD | 5-7 | TORONTO, ONTARIO | THE PEDDIE SCHOOL | RUTGERS

MAJOR

Communications

CAREER HIGHS**Points**

8, twice

Rebounds

4, at Elon 11/14/16

Assists

11, Villanova 12/21/19

Blocks

1, twice

Steals

2, at Charlotte 11/16/17

Field Goals

3, three times

Field Goal Att.

10, at Princeton 11/25/16

3-Points Field Goals

2, twice

3-Point Field Goal Att.

8, at Princeton 11/25/16

Free Throws

2, Harvard 11/15/19

Free Throw Att.

2, five times

Minutes Played

30, twice

2018-19: Named to Atlantic 10 Commissioner's Honor Roll... Sat out due to NCAA transfer rules.

2017-2018 (at Rutgers): Earned Academic All-Big Ten Honors... Appeared in 22 contests with four starts ... Averaged 1.4 points, 1.0 assists and 0.6 rebounds per game ... Scored a career-high eight points vs. Fairleigh Dickinson (Dec. 10), going 3-for-6 from the floor and 2-of-3 from behind the arc ... Logged a season-high 16 minutes vs. Illinois (Jan. 3) ... Handed out an assist three times vs. Charlotte (Nov. 16) ...

2016-17 (at Rutgers): Made eight appearances, including three starts, before being sidelined with a stress fracture ... Missed the final 21 games of the year ... Scored a season-high five points in the win over Bryant (Nov. 27) ... Played a season-high 20 minutes in the double overtime contest with James Madison (Dec. 5) ... Grabbed a season-high four rebounds at Elon (Nov. 14) ... Dished the ball out three times in her Scarlet Knight debut in the season opener with Chattanooga (Nov. 11).

Background: A 2016 graduate of The Peddie School... Played four years of basketball... Named Team MVP in her senior season, averaging 12 points per game... Named to the Times of Trenton All-Area team as a junior, with 13 points and three assists per game... Also participated in soccer and track.

Personal: Daughter of Pam Prophet and Sam Hill... Father played basketball at University of Toronto... Mother was a triple and long jumper at University of Toronto... Sister, Sami, played four years of basketball at Virginia Tech... Brothers, Alex and Jake, played four years of collegiate baseball.

YEAR	GP-GS	MIN-AVG.	FG-FGA	PCT	3P-3PA	PCT	FT-FTA	PCT	OFF	DEF	TOT	AVG	PF-FO	A	TO	BLK	ST	PTS	AVG
16-17	8-3	148/18.5	6-28	.214	4-20	.200	0-0	.000	3	9	12	1.5	11-1	9	6	0	3	16	2.0
17-18	22-4	202/9.2	11-43	.256	6-23	.261	3-6	.500	3	10	13	0.6	11-0	21	18	0	6	31	1.4
19-20	13-3	259/19.9	17-56	.304	9-29	.310	3-4	.750	6	13	19	1.5	22-0	42	19	2	3	46	3.5
CAR.	43-10	609/14.2	34-127	.268	19-72	.264	6-10	.600	12	32	44	1.0	44-1	72	43	2	12	93	2.2



Christina KLINE

5

FRESHMAN | GUARD | 5-10 | WINTER GARDENS, FLA. | WEST ORANGE

MAJOR

Criminal Justice

CAREER HIGHS**Points**

11, at Navy 12/1/19

Rebounds

4, twice

Assists

1, twice

Blocks

n/a

Steals

2, at Drexel 12/17/19

Field Goals

4, at Navy 12/1/19

Field Goal Att.

4, twice

3-Points Field Goals

3, at Navy 12/1/19

3-Point Field Goal Att.

3, four times

Free Throws

n/a

Free Throw Att.

n/a

Minutes Played

20, at Navy 12/1/19

Background: Graduated from West Orange High School in 2019... Finished high school career as back-to-back District Champions... Scored over 1,000 career points... Played AAU for SMAC Florida.

Personal: Daughter of Johnny and Kelly Kline.

YEAR	GP-GS	MIN-AVG.	FG-FGA	PCT	3P-3PA	PCT	FT-FTA	PCT	OFF	DEF	TOT	AVG	PF-FO	A	TO	BLK	ST	PTS	AVG
19-20	10-2	113/11.3	9-25	.360	7-20	.350	0-0	.000	3	10	13	1.3	9-0	2	7	0	5	25	2.5
CAR.	10-2	113/11.3	9-25	.360	7-20	.350	0-0	.000	3	10	13	1.3	9-0	2	7	0	5	25	2.5



Claire JACOBS

10

FRESHMAN | GUARD | 6-0 | PERTH, AUSTRALIA | KENNEDY BAPTIST COLLEGE

MAJOR

Undecided Liberal Arts

CAREER HIGHS**Points**

25, Villanova 12/21/19

Rebounds

3, twice

Assists

3, three times

Blocks

1, Robert Morris 11/9/19

Steals

1, Harvard 11/15/19

Field Goals

8, Villanova 12/21/19

Field Goal Att.

20, Villanova 12/21/19

3-Points Field Goals

4, at Penn State 11/17/19

3-Point Field Goal Att.

9, Temple 12/30/19

Free Throws

7, Villanova 12/21/19

Free Throw Att.

7, Villanova 12/21/19

Minutes Played

34, Villanova 12/21/19

Background: Graduated from Kennedy Baptist College in 2018... 2018 Australian School D1 Finals MVP... Member of the Australian School D1 Championship team.

Personal: Daughter of Samantha and Adam Jacobs... Twin sister is Amy Jacobs... Led the Australian U18 State Team in scoring and ranked 14th in the country during the Australian National Championships... Played with the Lakeside Lightning in the WABL, earning all-star honors from 2014 through 2018.

YEAR	GP-GS	MIN-AVG.	FG-FGA	PCT	3P-3PA	PCT	FT-FTA	PCT	OFF	DEF	TOT	AVG	PF-FO	A	TO	BLK	ST	PTS	AVG
19-20	13-8	312/24.0	54-148	.365	20-53	.377	23-30	.767	9	19	28	2.2	30-1	13	38	1	1	151	11.6
CAR.	13-8	312/24.0	54-148	.365	20-53	.377	23-30	.767	9	19	28	2.2	30-1	13	38	1	1	151	11.6



Deja KING

11

JUNIOR | GUARD | 5-7 | TRENTON, N.J. | LIFE CENTER ACADEMY

MAJOR

Criminal Justice

CAREER HIGHS

Points

16, vs. NKU 12/19/18

Rebounds

7, vs. Pepperdine 12/20/18

Assists

7, twice

Blocks

1, 12 times

Steals

4, twice

Field Goals

5, twice

Field Goal Att.

12, Howard 11/6/18

3-Points Field Goals

3, at Penn 12/6/18

3-Point Field Goal Att.

6, twice

Free Throws

12, vs. NKU 12/20/18

Free Throw Att.

14, vs. NKU 12/20/18

Minutes Played

40, St. John's 12/15/18

2018-19: Started 12 of 14 games played before missing the rest of the season due to a broken ankle... Led the team in scoring (9.0), assists (2.4), and steals (1.9) per game prior to injury... Dropped 10+ points in seven of 14 games, including six of her last seven... Scored a career high 15 points at Towson.

2017-18: Appeared in all 30 games as a freshman, making six starts... Averaged 2.1 points, 2.0 rebounds and 2.0 assists per game... Scored season-high 11 points against Delaware State (12/17)... Dished season-high seven assists at George Mason (2/24) in regular season finale... Pulled down season-high five rebounds twice, against Davidson (2/21) and at George Washington (2/27) in the A-10 Championship opening round... Averaged 20.5 minutes per game... Shot 30.8 percent (20-65) from the floor and 58.8 percent (20-34) from the foul line.

YEAR	GP-GS	MIN-AVG.	FG-FGA	PCT	3P-3PA	PCT	FT-FTA	PCT	OFF	DEF	TOT	AVG	PF-FO	A	TO	BLK	ST	PTS	AVG
17-18	30-6	616-20.5	20-65	.308	2-10	.200	20-34	.588	8	52	60	2.0	54-1	59	64	4	14	62	2.1
18-19	14-12	437-31.2	34-105	.324	10-35	.286	48-64	.750	7	34	41	2.9	37-0	34	49	5	27	126	9.0
19-20	11-10	232-21.1	14-39	.359	6-16	.375	29-38	.763	1	18	19	1.7	19-1	32	37	3	12	63	5.7
CAR.	55-28	1285/23.4	68-209	.325	18-61	.295	97-136	.713	16	104	120	2.2	110-2	125	150	12	53	251	4.6



Molly

12

MASCIANTONIO

SOPHOMORE | GUARD | 5-10 | MORTON, PA. | ARCHBISHOP CARROLL

MAJOR

Undecided Liberal Arts

CAREER HIGHS

Points

25, Bloomsburg 11/20/18

Rebounds

10, at DC 11/17/18

Assists

10, Uni. Sciences 2/13/19

Blocks

2, twice

Steals

4, four times

Field Goals

10, Bloomsburg 11/20/18

Field Goal Att.

18, Millersville 12/30/18

3-Points Field Goals

5, DC 11/9/28

3-Point Field Goal Att.

9, Wilmington 2/27/19

Free Throws

6, Dominican 1/27/19

Free Throw Att.

6, Dominican 1/27/19

Minutes Played

42, Dominican 1/27/19

2019-20: Transferred to La Salle following one year at Holy Family ... will sit out due to NCAA transfer rules.

2018-19 (Holy Family): Led her team in points, rebounds, steals, and blocks... Averaged 13.3 ppg and 5.6 rpg... Named CACC Rookie of the Week twice.

Background: Four-year letterwinner at Archbishop Carroll... Three-time All-Catholic... Two-time All-Delco... Two-time All-Mainline... One-time All-State... Lettered three years in volleyball... Won Catholic League Volleyball Title.

Personal: Daughter of James and Susanne Masciantonio... Played for Comets AAU.

YEAR	GP-GS	MIN-AVG.	FG-FGA	PCT	3P-3PA	PCT	FT-FTA	PCT	OFF	DEF	TOT	AVG	PF-FO	A	TO	BLK	ST	PTS	AVG
18-19	27-27	955/354	133-333	.399	40-121	.331	54-74	.730	20	132	152	5.6	39-0	101	87	10	50	360	13.3
CAR.	27-27	955/354	133-333	.399	40-121	.331	54-74	.730	20	132	152	5.6	39-0	101	87	10	50	360	13.3



Haleigh HILL

14

JUNIOR | FORWARD | 6-0 | ALLEN, TEXAS | ALLEN | DODGE CITY CC

MAJOR

Marketing

CAREER HIGHS

Points

5, Coppin St. 11/26/19

Rebounds

13, Coppin St. 11/26/19

Assists

n/a

Blocks

1, vs. UMBC 11/30/19

Steals

2, vs. UMBC 11/30/19

Field Goals

2, Coppin St. 11/26/19

Field Goal Att.

3, Coppin St. 11/26/19

3-Points Field Goals

1, Coppin St. 11/26/19

3-Point Field Goal Att.

1, Coppin St. 11/26/19

Free Throws

2, at Rider 12/7/19

Free Throw Att.

4, at Rider 12/7/19

Minutes Played

16, Coppin St. 11/26/19

2019-20: Transferred to La Salle.

2018-19 (Dodge City CC): Played in 30 games, starting 14... Led her team with 7.8 pints and 5.7 rebounds per contest... Shot 40.5% from the field.

2017-18 (South Plains): Appeared in 29 games, making two starts... Averaged 3.3 points and 4.2 rebounds per game... Shot 41.5% from the floor.

Background: Graduated from Allen in 2017... Four-year lettwinner in basketball... One-year letter-winner in track and field.

Personal: Daughter of Linda Sue Hill... Mother played basketball at Henderson State... Played AAU for Texas Elite.

YEAR	GP-GS	MIN-AVG.	FG-FGA	PCT	3P-3PA	PCT	FT-FTA	PCT	OFF	DEF	TOT	AVG	PF-FO	A	TO	BLK	ST	PTS	AVG
19-20	9-0	66/73	3-9	.333	1-1	1.000	2-4	.500	4	13	17	1.9	6-0	1	2	1	5	9	1.0
CAR.	9-0	66/73	3-9	.333	1-1	1.000	2-4	.500	4	13	17	1.9	6-0	1	2	1	5	9	1.0



Kayla SPRUILL

15

SOPHOMORE | FORWARD | 6-0 | BALTIMORE, MD

MAJOR

Marketing

CAREER HIGHS**Points**

19, Robert Morris 11/9/19

Rebounds

10, Howard 11/6/18

Assists

4, Norfolk State 12/9/18

Blocks

2, three times

Steals

5, at Norfolk St. 11/22/19

Field Goals

6, at Providence 12/21/18

Field Goal Att.

17, Robert Morris 11/9/19

3-Points Field Goals

3, four times

3-Point Field Goal Att.

12, Robert Morris 11/9/19

Free Throws

6, three times

Free Throw Att.

10, at Howard 11/5/19

Minutes Played

32, George Mason 3/2/19

2018-19: Named to Atlantic 10 Commissioner's Honor Roll... Played in all 31 games as a true freshman... Made nine starts on the season... Averaged 5.2 points per contest... Neared a double-double in first career game with 10 boards and nine points... Scored a career high 16 points in the upset over George Mason to end the regular season.

Background: A 2018 graduate of Western School of Technology and Environmental Science... Missed senior and sophomore years due to injury... Played two years of basketball... Named First Team All-County in freshman and junior seasons... Also played volleyball.

Personal: Daughter of Janee and Gene Spruill... Father played basketball at Pittsburgh University... Mother ran track at Collin University.

YEAR	GP-GS	MIN-AVG.	FG-FGA	PCT	3P-3PA	PCT	FT-FTA	PCT	OFF	DEF	TOT	AVG	PF-FO	A	TO	BLK	ST	PTS	AVG
18-19	31-9	529/17.1	51-153	.333	22-81	.272	36-55	.655	32	42	74	2.4	40-0	16	32	10	19	160	5.2
19-20	13-11	297/22.8	35-102	.343	15-49	.306	27-39	.692	12	51	63	4.8	21-0	8	18	4	14	112	8.6
CAR.	44-20	826/18.8	86-255	.337	37-130	.285	63-94	.670	44	93	137	3.1	61-0	24	50	14	33	272	6.2



Jordon
LEWIS

22

FRESHMAN | FORWARD | 5-10 | HOUSTON, TEXAS | WESTSIDE

MAJOR

Biology

CAREER HIGHS

Points

18, at Norfolk St. 11/22/19

Rebounds

11, at Rider 12/7/19

Assists

5, at Howard 11/5/19

Blocks

1, twice

Steals

2, three times

Field Goals

5, twice

Field Goal Att.

11, twice

3-Points Field Goals

2, twice

3-Point Field Goal Att.

5, vs. UMBC 11/30/19

Free Throws

8, at Norfolk St. 11/22/19

Free Throw Att.

8, at Norfolk St. 11/22/19

Minutes Played

33, Villanova 12/21/19

Background: Graduated from Westside in 2019... Three-time All-District.

Personal: Daughter of Tammeka Watts and Aric Lewis.

YEAR	GP-GS	MIN	AVG.	FG-FGA	PCT	3P-3PA	PCT	FT-FTA	PCT	OFF	DEF	TOT	AVG	PF-FO	A	TO	BLK	ST	PTS	AVG
19-20	13-12	31	5/24.3	35-87	.402	6-20	.300	23-35	.657	33	29	62	4.8	19-0	22	31	2	10	99	7.6
CAR.	13-12	315	24.3	35-87	.402	6-20	.300	23-35	.657	33	29	62	4.8	19-0	22	31	2	10	99	7.6



Amy JACOBS

24

FRESHMAN | GUARD | 5-10 | PERTH, AUSTRALIA | KENNEDY BAPTIST COLLEGE

MAJOR

Undecided Liberal Arts

CAREER HIGHS

Points

17, Harvard 11/15/19

Rebounds

4, twice

Assists

3, Temple 12/30/19

Blocks

1, twice

Steals

5, Coppin St. 11/26/19

Field Goals

6, Harvard 11/15/19

Field Goal Att.

12, at Penn State 11/17/19

3-Points Field Goals

4, Harvard 11/15/19

3-Point Field Goal Att.

8, twice

Free Throws

2, four times

Free Throw Att.

2, five times

Minutes Played

25, Temple 12/30/19

Background: Graduated from Kennedy Baptist College in 2018... Member of the Australian School D1 Championship team.

Personal: Daughter of Samantha and Adam Jacobs... Twin sister is Claire Jacobs... WABL MVP runner up in 2016, 2017, and 2018... Won the SBL and the D League titles in 2018.

YEAR	GP-GS	MIN-AVG.	FG-FGA	PCT	3P-3PA	PCT	FT-FTA	PCT	OFF	DEF	TOT	AVG	PF-FO	A	TO	BLK	ST	PTS	AVG
19-20	13-4	244/18.8	33-92	.359	21-64	.328	9-10	.900	7	18	25	1.9	28-1	13	23	2	16	96	7.4
CAR.	13-4	244/18.8	33-92	.359	21-64	.328	9-10	.900	7	18	25	1.9	28-1	13	23	2	16	96	7.4



Shalina MILLER

25

SENIOR | CENTER | 6-2 | PHILADELPHIA, PA. | ARCHBISHOP PRENDERGAST

MAJOR

Communications

CAREER HIGHS**Points**

17, George Mason 3/2/19

Rebounds

16, at Norfolk St. 11/22/19

Assists

4, St. Joe's 2/17/19

Blocks

6, George Mason 3/2/19

Steals

4, UMass 1/13/19

Field Goals

7, five times

Field Goal Att.

13, three times

3-Points Field Goals

2, George Mason 3/2/19

3-Point Field Goal Att.

3, three times

Free Throws

7, George Mason 3/2/19

Free Throw Att.

8, twice

Minutes Played

35, three times

2018-19: Played in all 31 games, making 28 starts... Set the program single season block record with 64 deflections... Finished third on the team with 8.1 points per game and 6.8 rebounds per outing... Scored 10 or more points in 11 games... Notched 10 or more rebounds in six games... Set a career high in points (17) and rebounds (15) in the upset of George Mason to end the regular season... Recorded three double-doubles on the year.

2017-18: Started all 30 games as a sophomore in 2017-18... Averaged 8.2 points, 4.9 rebounds and 1.0 blocks per game... Shot 51.4 percent (107-for-208) from the field, which ranked fourth in the Atlantic 10 last season... Finished second on the team with 29 blocks... Scored career-high 16 points in the season-opener at Lafayette (11/10)... Scored in double figures in 13 games... Grabbed career-high 12 rebounds against Saint Louis (2/7)... Grabbed 10 rebounds against Rider (12/6) and Richmond (1/6)... Had a season-high four blocks against Delaware State (12/17)... Averaged 23.2 minutes per game.

2016-17: Appeared in all 30 games as a freshman, making four starts... Made first collegiate start in the season opener against Lafayette (11/11)... Averaged 2.4 points and 1.7 rebounds per game... Played a season-high 21 minutes against American (11/20)... Scored a career-high 14 points against Delaware State (12/21)... Snatched a career-high six rebounds twice, at Dayton (12/6) and Delaware State... Also blocked a season-high four shots against DSU.

Background: Graduated from Archbishop Prendergast in 2015... First Team All-Catholic as a senior, averaging over 18 points, six rebounds and four blocks per game... Second Team All-Catholic as a junior after averaging 14 points, four rebounds and three blocks... Played AAU for Fencor.

Personal: Daughter of Linda and Shawn Miller.

YEAR	GP-GS	MIN-AVG.	FG-FGA	PCT	3P-3PA	PCT	FT-FTA	PCT	OFF	DEF	TOT	AVG	PF-FO	A	TO	BLK	ST	PTS	AVG
16-17	30-4	280/9.3	35-81	.432	0-0	.000	2-8	.250	16	36	52	1.7	28-0	4	22	20	6	72	2.4
17-18	30-30	696/23.2	107-208	.514	0-0	.000	31-49	.633	53	94	147	4.9	67-0	9	62	29	8	245	8.2
18-19	31-28	783-25.3	101-245	.412	4-26	.154	45-72	.625	71	139	210	6.8	75-3	28	75	64	45	251	8.1
19-20	13-12	296/22.8	29-72	.403	2-4	.500	14-25	.560	33	71	104	8.0	24-1	9	27	33	19	74	5.7
CAR.	104-74	2055/19.8	272-606	.449	6-30	.200	92-154	.597	173	340	513	4.9	194-4	50	186	146	78	642	6.2



Erin MORGAN

33

SOPHOMORE | GUARD | 5-8 | WILLOW GROVE, PA. | ARCHBISHOP WOOD

MAJOR

Accounting

CAREER HIGHS

Points

6, George Mason 3/2/19

Rebounds

3, three times

Assists

1, four times

Blocks

n/a

Steals

2, at George Mason 2/14/19

Field Goals

2, George Mason 3/2/19

Field Goal Att.

4, at Oregon St. 12/1/18

3-Points Field Goals

2, George Mason 3/2/19

3-Point Field Goal Att.

3, three times

Free Throws

2, at Towson 11/18/18

Free Throw Att.

2, twice

Minutes Played

18, George Mason 3/2/19

2018-19: Named to Atlantic 10 Commissioner's Honor Roll... Joined the team as a walk-on, playing in 28 games as a true freshman... Made seven starts... Scored first collegiate points in first career start at Towson... Played a season high 20 minutes in the Atlantic 10 First Round game at #4 Dayton.

Background: A 2018 graduate of Archbishop Wood...Earned Second Team All-Catholic honors as a senior...Aided team to 2016 and 2017 State Championship Title...Helped team to a 2016 Philadelphia Catholic League Championship.

YEAR	GP-GS	MIN-AVG.	FG-FGA	PCT	3P-3PA	PCT	FT-FTA	PCT	OFF	DEF	TOT	AVG	PF-FO	A	TO	BLK	ST	PTS	AVG
18-19	28-7	260/9.3	3-24	.125	2-19	.105	3-4	.750	7	15	22	0.8	24-0	4	9	0	7	11	0.4
19-20	6-0	30/5.1	1-5	.200	1-5	.200	0-0	.000	0	0	0	0.0	2-0	0	1	0	0	3	0.5
CAR.	34-7	290/8.5	4-29	.138	3-24	.125	3-4	.750	7	15	22	0.6	26-0	4	10	0	7	14	0.4



Sofilia

35

NGWAFANG

SENIOR | CENTER | 6-4 | SILVER SPRINGS, MD. | PAINT BRANCH

MAJOR

Psychology

CAREER HIGHS

Points

18, Rhode Island 2/6/19

Rebounds

12, Robert Morris 11/9/19

Assists

1, 11 times

Blocks

2, twice

Steals

2, Rhode Island 2/6/19

Field Goals

9, at Harvard 1/10/18

Field Goal Att.

13, Rhode Island 2/6/19

3-Points Field Goals

n/a

3-Point Field Goal Att.

n/a

Free Throws

7, Rhode Island 2/1/17

Free Throw Att.

10, Rhode Island 2/6/19

Minutes Played

32, at Penn 12/7/16

2018-19: Played in nine games making one start... Averaged 7.0 points per contest... Dropped a career high 18 points in the win over Rhode Island.

2017-18: Appeared in all 30 games as a sophomore, making six starts...Averaged 5.4 points and 4.0 rebounds in 14.0 minutes per game...Shot 54.5 percent from the floor (66-for-121)...Matched career-high of 18 points against Harvard (1/10)...Dropped 13 points in win over Lehigh in Christmas City Classic title game (11/26)...Scored in double figures in seven games...Grabbed season-high eight rebounds at Wisconsin (12/2)...Added 10 points in 16 minutes off the bench in win over VCU (1/25).

2016-17: Named A-10 Rookie of the Week on Feb. 6...Appeared in all 30 games as a true freshman, including 10 starts...Averaged 4.5 points and 3.3 rebounds per game...Made first career start against American (11/20)...Scored a season-high 18 points against George Washington (2/4)...Registered first career double-double with 17 points and 11 rebounds in a win at Massachusetts (2/19) to help Explorers clinch home-court advantage in the first round of the A-10 Championship...Reached double figures for the first time with 11 points in a win at Rhode Island (2/1)...Hit a season-high seven free throws at Rhody.

Background: Graduated from Paint Branch High School in 2016... Averaged 12.8 points and six rebounds per game as a senior... Won a pair of Regional Championships and three straight Division Championships for the Panthers... Named Freshman Female Athlete of the Year at Blake High School... Played AAU for Team Takeover.

YEAR	GP-GS	MIN-AVG.	FG-FGA	PCT	3P-3PA	PCT	FT-FTA	PCT	OFF	DEF	TOT	AVG	PF-FD	A	TO	BLK	ST	PTS	AVG
16-17	30-10	423/14.1	48-113	.425	0-0	.000	40-70	.571	50	49	99	3.3	46-0	3	34	9	3	136	4.5
17-18	30-6	420/14.0	66-121	.546	0-0	.000	31-68	.456	64	56	130	4.0	58-2	3	45	13	3	163	5.4
18-19	9-1	124/13.8	25-46	.544	0-0	.000	13-29	.448	17	18	35	3.9	16-0	3	12	2	4	63	7.0
19-20	13-1	158/12.2	20-36	.556	0-0	.000	13-29	.448	24	35	59	4.5	26-1	2	15	12	2	53	4.1
CAR.	82-18	1125/13.7	159-316	.503	0-0	.000	97-196	.495	155	158	313	3.8	146-3	11	106	36	12	415	5.1

2019-20 OVERALL STATISTICS

Game Records

Record	Overall	Home	Away	Neutral
ALL GAMES	6-7	2-4	3-3	1-0
CONFERENCE	0-0	0-0	0-0	0-0
NON-CONFERENCE	6-7	2-4	3-3	1-0

Score by Periods

Team	1st	2nd	3rd	4th	OT	TOT
La Salle	236	213	131	163	7	805
Opponents	257	236	122	162	10	839

Team Box Score

No.	Player				Total		3-Point		F-Throw		Rebounds												
		GP-GS	MIN	AVG	FG-FGA	FG%	3FG-FGA	3FG%	FT-FTA	FT%	OFF	DEF	TOT	AVG	PF	DQ	A	TO	BLK	STL	PTS	AVG	
10	JACOBS, Claire	13-8	311:52	24.0	54-148	.365	20-53	.377	23-30	.767	9	19	28	2.2	30	1	13	38	1	1	151	11.6	
15	SPRUILL, Kayla	13-11	296:53	22.8	35-102	.343	15-49	.306	27-39	.692	12	51	63	4.8	21	0	8	18	4	14	112	8.6	
22	LEWIS, Jordon	13-12	315:23	24.3	35-87	.402	6-20	.300	23-35	.657	33	29	62	4.8	19	0	22	31	2	10	99	7.6	
24	JACOBS, Amy	13-4	244:17	18.8	33-92	.359	21-64	.328	9-10	.900	7	18	25	1.9	28	1	13	23	2	16	96	7.4	
11	KING, Deja	11-10	231:42	21.1	14-39	.359	6-16	.375	29-38	.763	1	18	19	1.7	19	1	32	37	3	12	63	5.7	
25	MILLER, Shalina	13-12	295:50	22.8	29-72	.403	2-4	.500	14-25	.560	33	71	104	8.0	24	1	9	27	33	19	74	5.7	
35	NGWAFANG, Sofilia	13-1	158:13	12.2	20-36	.556	0-0	.000	13-29	.448	24	35	59	4.5	26	1	2	15	12	2	53	4.1	
4	HILL, Kate	13-3	258:40	19.9	17-56	.304	9-29	.310	3-4	.750	6	13	19	1.5	22	0	42	19	2	3	46	3.5	
3	BRAXTON-YOUNG, Kayla	12-0	117:32	9.8	10-34	.294	5-15	.333	12-15	.800	5	15	20	1.7	12	0	18	17	0	9	37	3.1	
2	LYTTON, Carley	13-2	185:57	14.3	11-49	.224	11-45	.244	4-5	.800	0	25	25	1.9	13	0	10	17	3	2	37	2.8	
5	KLINE, Christina	10-2	112:36	11.3	9-25	.360	7-20	.350	0-0	.000	3	10	13	1.3	9	0	2	7	0	5	25	2.5	
14	HILL, Haleigh	9-0	65:45	7.3	3-9	.333	1-1	1.000	2-4	.500	4	13	17	1.9	6	0	1	2	1	5	9	1.0	
33	MORGAN, Erin	6-0	30:19	5.1	1-5	.200	1-5	.200	0-0	.000	0	0	0	0.0	2	0	0	1	0	0	3	0.5	
Team											33	42	75					5					
Total		13	2625		271-754	.359	104-321	.324	159-234	.679	170	359	529	40.7	231	5	172	257	63	98	805	61.9	
Opponents		13	2625		304-851	.357	75-264	.284	156-211	.739	204	348	552	42.5	222	3	186	206	44	114	839	64.5	

Team Statistics

	LAS	OPP
Scoring	805	839
Points per game	61.9	64.5
Scoring margin	-2.6	-
Field goals-att	271-754	304-851
Field goal pct	.359	.357
3 point fg-att	104-321	75-264
3-point FG pct	.324	.284
3-pt FG made per game	8.0	5.8
Free throws-att	159-234	156-211
Free throw pct	.679	.739
F-Throws made per game	12.2	12.0
Rebounds	529	552
Rebounds per game	40.7	42.5
Rebounding margin	-1.8	-
Assists	172	186
Assists per game	13.2	14.3
Turnovers	257	206
Turnovers per game	19.8	15.8
Turnover margin	-3.9	-
Assist/turnover ratio	0.7	0.9
Steals	98	114
Steals per game	7.5	8.8
Blocks	63	44
Blocks per game	4.8	3.4
Winning streak	0	-
Home win streak	0	-
Attendance	2465	5271
Home games-Avg/Game	6-411	6-879
Neutral site-Avg/Game	-	1-463

Team Results

Date	Opponent		Score	Att.
11/05/2019	at Howard	W	78-62	975
11/09/2019	Robert Morris	L	68-71	607
11/15/2019	Harvard	W	75-69	347
11/17/2019	at Penn St.	W	69-67	1949
11/22/2019	at Norfolk St.	W	55-52	342
11/26/2019	Coppin St.	W	79-46	322
11/30/2019	vs UMBC	W	74-58	463
12/01/2019	at Navy	L	46-61	659
12/04/2019	Penn	L	49-65	331
12/07/2019	at Rider	L	43-70	712
12/17/2019	at Drexel	L	31-69	634
12/21/2019	Villanova	L	69-77	475
12/30/2019	Temple	L	69-72	383

2019-20 BOX SCORES

GAME 1 - LA SALLE 78, HOWARD 62

La Salle 78 • 1-0

#	Player		Total		3-Ptr		Rebounds		PF	TP	A	TO	Blk	Stl	Min
			FG-FGA	FG-FGA	FT-FTA	Off	Def	Tot							
10	JACOBS, Claire	*	7-9	2-3	4-5	1	0	1	4	20	0	3	0	0	28
11	KING, Deja		3-6	2-4	4-6	1	2	3	0	12	6	5	0	1	29
15	SPRULL, Kayla	*	3-8	1-3	5-10	0	8	8	1	12	0	1	0	0	30
22	LEWIS, Jordon	*	2-7	0-1	0-0	4	2	6	0	4	5	6	1	2	29
25	MILLER, Shalina	*	3-4	0-0	3-5	4	7	11	3	9	1	4	2	0	29
02	LYTTON, Carley		1-3	1-3	0-0	0	2	2	0	3	0	1	0	0	11
03	BRAXTON-YOUNG, Kayl		1-6	0-1	0-2	2	2	4	0	2	1	0	0	1	11
04	HILL, Kate		1-3	0-1	0-0	1	1	2	2	2	2	3	0	0	12
24	JACOBS, Amy		3-7	0-2	2-2	1	1	2	3	8	0	0	0	2	10
35	NGWAFANG, Sofilia		2-4	0-0	2-2	2	3	5	2	6	0	2	0	0	11
Team							5 3 8								
Totals			26-57		6-18		20-32		21 31 52		15 78		15 25 3 6		200
1st - FG %: 3-14 21.4% 2nd: 8-19 42.1% 3rd: 7-11 63.6% 4th: 8-13 61.5% Game: 26-57 45.6% Deadball Rebounds 6															
3FG %: 1-7 14.3% 1-6 16.7% 1-2 50.0% 3-3 100.0% 6-18 33.3% 20-32 62.5%															
FT %: 7-11 63.6% 7-9 77.8% 5-8 62.5% 1-4 25.0%															

Howard University 62 • 0-1

#	Player		Total		3-Ptr		Rebounds				PF	TP	A	TO	Blk	Stl	Min				
			FG-FA	FG-FGA	FT-FTA	Off	Def	Tot													
14	Bryant,Imani	f	0-2	0-0	0-0	3	1	4	4	0	2	0	2	0	0	10					
20	Myles,Jayla	c	2-8	0-0	0-0	4	1	5	2	4	0	0	3	1	3	29					
04	Williams,Ayonna		7-16	4-5	0-0	2	4	6	2	18	3	4	0	3	35						
05	Edmond,Sarah	g	2-16	0-8	6-6	0	2	2	1	10	4	5	0	3	38						
23	Thornton,Jayla	g	4-14	2-8	1-2	0	3	3	2	11	0	3	0	1	32						
02	Warren,Iyanna		1-5	0-0	0-1	1	0	1	3	2	1	0	0	1	10						
12	Mccants,Asia		0-2	0-0	0-0	0	2	2	1	0	1	0	0	0	9						
03	Moore,Curstyn		0-0	0-0	0-0	0	0	0	0	0	0	0	0	0	1						
24	Fort-davis,Brooklyn		0-1	0-0	0-0	2	1	3	1	0	0	0	0	2	10						
32	Marsh,Krislyn		7-12	0-0	3-5	5	1	6	3	17	1	2	0	2	26						
Team							6 2 8														
Totals			23-76		6-21		10-14		23 17 40		19 62		12 14 5 13		200						
1st - FG %:			6-20	30.0%	2nd: 5-17			29.4%	3rd: 7-22			31.8%	4th: 5-17			29.4%	Game: 23-76			30.3%	Deadball
3FG %:			2-8	25.0%	0-5			0.0%	1-3			33.3%	3-5			60.0%	6-21			28.6%	Rebound
FT %:			3-6	50.0%	3-3			100.0%	4-5			80.0%	0-0			0.0%	10-14			71.4%	2

Officials:
Technical fouls: La Salle-None. Howard University-None.
Attendance: 975

Score by periods	1st	2nd	3rd	4th	Total
La Salle	14	24	20	20	78
Howard University	17	13	19	13	62

GAME 2 - ROBERT MORRIS 71, LA SALLE 68 OT

Robert Morris - 71

Robert Morris - 71		Record: 1-1																										
NO.	NAME	Min	FG		3P		FT		Rebounds		Fouls		TP	AS	TO	ST	Blocks		+/-	Shooting By Period								
			M-A	M-A	M-A	M-A	O	D	O	D	PF	FD					BS	BA		1st	FG%	2nd	FG%	3rd	FG%			
34	Holly Forbes	F	27:57	3-5	1-1	5-5	1	4	5	4	3	12	0	3	2	0	1	6	1	1st	FG%	7-24	29.2%					
33	Nneka Ezeigbo	C	34:01	7-24	0-0	7-11	6	6	12	3	9	21	1	0	4	2	4	14	1	3PT%	1-7	14.3%						
4	Isabella Posset	G	32:34	4-8	1-2	1-2	0	4	4	4	5	10	2	4	1	0	0	17	1	FT%	1-1	100%						
12	Nina Augustin	G	36:29	2-5	1-2	9-10	1	1	2	2	6	14	8	3	3	0	0	15	1	2nd	FG%	2-14	14.3%					
22	Esther Castedo	G	13:28	0-6	0-4	0-0	0	1	1	0	0	0	1	0	2	0	0	-8	1	3PT%	1-5	20.0%						
10	Laura Carrasco		28:26	5-8	1-3	1-2	1	2	3	2	2	12	1	2	2	0	0	10	1	FT%	7-8	87.5%						
11	Natalie Villator		19:22	0-3	0-0	0	1	1	2	2	1	0	0	1	1	0	0	0	3rd	FG%	4-13	30.8%						
13	Megan Callahan		10:56	1-5	0-1	0-0	1	1	2	3	1	2	0	1	0	1	1	-12	3	3PT%	2-2	100.0%						
14	Irishpitan Ozyi-Momodu		08:30	0-2	0-0	0-0	2	3	5	4	1	0	0	2	0	1	1	-12	4th	FG%	7-15	46.7%						
20	Honoka Ikematsu		08:31	0-4	0-3	0-0	0	0	0	0	1	0	0	0	0	0	1	-12	3	3PT%	0-3	0.0%						
00	Dahoméa Forgues		04:36	0-2	0-1	0-0	0	0	0	0	3	1	0	0	0	0	0	-1	OT	FG%	2-6	33.3%						
25	Trinity Papamandjaris		00:10	0-0	0-0	0-0	0	0	0	0	0	0	0	0	0	0	0	-2	3PT%	0-0	0.0%							
Team																												
Totals				22-72		4-17		23-30		16 27 43		27 30		71 13		18 15 3		8 3										
																						Technical Fouls: NONE						
																						GM FG%			22-72		30.6%	
																						3PT%			4-17		23.5%	
																						FT%			23-30		76.7%	
																						Dead Ball Rebounds:			5, 0			

La Salle - 68

La Salle - 68			Record: 1-1																				
NO.	Name	Min	FG	3P	FT	Rebounds	Fouls	TP	AS	TO	ST	Blocks	+/	Shooting By Period									
			M-A	M-A	M-A	OR	DR	PF	FD			BS	BA	1st	FG%	4-13	30.8%						
15	Kayla Sprull	F 31:26	5-17	3-12	6-8	0	7	2	5	19	1	2	1	0	-4	3PT%	1-6	16.7%					
22	Jordan Lewis	F 32:44	4-10	0-0	2-4	4	2	6	2	4	10	4	1	0	1	1	FT%	2	20.0%				
25	Shalina Miller	F 15:37	2-4	0-0	2-2	3	4	7	5	1	6	0	3	0	3	-1	2nd FG%	4-12	33.3%				
10	Claire Jacobs	G 22:38	3-7	1-4	0-0	1	1	5	4	7	2	6	0	1	0	17	3PT%	1-5	20.0%				
11	Deja King	G 23:10	0-1	0-0	3-6	0	3	3	5	3	2	4	2	1	0	2	FT%	6-13	46.2%				
2	Carley Lytton	16:08	2-6	2-5	0-0	0	0	0	2	0	6	1	2	1	0	-2	3rd FG%	5-12	41.7%				
3	Kayla Braxton-Young	10:27	0-1	0-1	0-0	0	3	3	2	1	0	0	3	1	0	-7	3PT%	3-5	60.0%				
4	Kate Hill	26:09	1-5	1-4	0-0	2	1	3	3	1	3	1	3	0	0	-6	FT%	0	0%				
24	Amy Jacobs	16:46	0-3	0-1	0-0	1	1	2	1	1	0	1	7	0	0	-9	4th FG%	7-19	36.8%				
35	Sofia Ngwafang	26:43	5-8	0-0	4-9	6	6	12	3	7	14	0	1	0	2	4	3PT%	2-9	22.2%				
14	Haleigh Hill	02:03	0-0	0-0	0-0	0	0	0	0	0	0	0	1	0	0	-6	FT%	6-10	60%				
5	Christina Kline	01:09	0-0	0-0	0-0	0	0	0	0	0	0	0	0	0	0	-4	OT FG%	2-6	33.3%				
Team																	3PT%	0-2	0.0%				
																	FT%	3-4	75%				
Totals			22-62	7-27	17-29	19	36	55	30	27	68	12	33	6	8	3	-3	GM FG%	22-62	35.5%			
																		Technical Fouls: NONE					
																		3PT%			7-27	25.9%	
																		FT%			17-29	58.6%	

2019-20 BOX SCORES

GAME 5 - LA SALLE 55, NORFOLK STATE 52

La Salle 55 • 4-1

#	Player		Total		3-Ptr	Rebounds			PF	TP	A	TO	Blk	Stl	Min
			FG	FGA		FT	FTA	Off Def Tot							
15	SPRUIELL, Kayla	f	3-9	1-5	3-4	2	5	7	0	10	2	4	1	5	28
22	LEWIS, Jordon	f	4-8	2-3	8-8	2	2	4	1	18	0	2	1	1	28
25	MILLER, Shalina	c	2-6	0-1	1-2	4	12	16	2	5	2	1	2	3	28
10	JACOBS, Claire	g	1-6	0-0	1-2	1	1	2	3	3	0	5	0	0	26
11	KING, Deja	g	1-4	0-2	3-3	0	1	1	3	5	2	5	1	0	25
02	LYTTON, Carley		1-3	1-3	2-3	0	1	1	0	5	0	3	0	0	12
03	BRAXTON-YOUNG, Kayl		1-2	1-2	0-0	0	0	0	1	3	0	4	0	0	3
04	HILL, Kate		1-1	1-1	0-0	0	1	1	1	3	2	2	0	0	12
05	KLINE, Christina		0-3	0-2	0-0	0	0	0	2	0	0	0	0	0	12
14	HILL, Haleigh		0-2	0-0	0-0	1	1	2	1	0	0	0	0	0	5
24	JACOBS, Amy		1-3	1-2	0-0	1	3	4	1	3	1	4	0	1	14
35	NGWAFANG, Sofilia		0-0	0-0	0-0	0	1	1	2	0	0	2	1	1	7
Team						2	5	7							
Totals			15-47	7-21	18-22	13	33	46	17	55	9	32	6	11	200

FG % 1st Half: 7-22 31.8% 2nd half: 8-25 32.0% Game: 15-47 31.9%
3FG % 1st Half: 3-10 30.0% 2nd half: 4-11 36.4% Game: 7-21 33.3%
FT % 1st Half: 7-8 87.5% 2nd half: 11-14 78.6% Game: 18-22 81.8%

Norfolk State 52 • 2-3

#	Player		Total		3-Ptr	Rebounds			PF	TP	A	TO	Blk	Stl	Min
			FG	FGA		FT	FTA	Off Def Tot							
42	THOMAS,Blair	f	1-7	0-3	4-4	1	1	2	4	6	0	3	0	0	28
25	JONES,Mikaela	c	2-7	0-0	0-1	3	4	7	5	4	0	5	2	3	23
10	JAMES,LaDeja	g	2-9	1-6	3-4	3	3	6	2	8	1	0	0	1	31
12	HICKS,Chanette	g	8-24	1-3	5-8	1	3	4	2	22	3	6	1	6	38
15	ECHOLS,Dana	g	0-5	0-3	0-0	2	3	5	2	0	3	1	0	2	29
00	PLATT-MORRIS,Cam		0-0	0-0	0-0	1	0	1	0	0	0	0	0	0	2
11	FRANKLIN,Armani		1-4	0-1	0-0	1	0	1	1	2	0	2	0	2	12
22	HOWARD,Shekinah		1-6	1-4	0-0	1	0	1	3	0	0	0	0	2	16
30	DEAS,DeJanaire		3-4	1-1	0-0	1	4	5	3	7	0	2	1	0	21
Team						2	2	4							
Totals			18-66	4-21	12-17	16	20	36	22	52	7	19	4	16	200

FG % 1st Half: 9-34 26.5% 2nd half: 9-32 28.1% Game: 18-66 27.3%
3FG % 1st Half: 1-8 12.5% 2nd half: 3-13 23.1% Game: 4-21 19.0%
FT % 1st Half: 8-13 61.5% 2nd half: 4-4 100.0% Game: 12-17 70.6%

Officials: Angel Stanton, Natoshia Haris, Ronnie Stephenson
Technical fouls: La Salle-TEAM. Norfolk State-None.
Attendance: 342

Score by periods					Points	In Paint	Off T/O	2nd Chance	Fast Break	Bench
1st	2nd	3rd	4th	Total						
La Salle	14	10	15	16	55	12	16	7	4	14
Norfolk State	13	14	11	14	52	20	27	5	10	12

Last FG - LAS 4th-01:00, NSUW 4th-04:35.
Largest lead - LAS by 6 3rd-05:12, NSUW by 8 4th-04:35.

GAME 6 - LA SALLE 79, COPPIN STATE 46

Coppin St. - 46			Record: 0-6																					
NO.	Name	Min	FG		3P	FT	Rebounds			Fouls	TP	AS	TO	ST	Blocks		+/-	Shooting By Period						
			M-A	P-A			OR	DR	TOT						PF	FD		BS	BA	1st FG%	1st FT%	2nd FG%	2nd FT%	3rd FG%
12	Oluwadamilola Oloyede	F	40:00	6-11	0-0	2-4	2	6	8	3	2	14	1	4	1	0	3	-33	1st FG%	7-15	46.7%	3rd FT%	1-1	100.0%
23	Chance Graham	F	38:55	4-16	1-3	1-2	3	13	16	3	7	10	2	7	1	1	2	-34	1st FT%	1-2	50.0%	2nd FG%	3-12	25.0%
45	Jaynda Salley	C	10:17	1-1	0-0	0-0	0	3	3	2	0	2	2	1	0	0	0	-14	2nd FT%	3-4	75.0%	3rd FG%	0-1	0.0%
00	Tyrese Allen	G	38:44	3-10	0-0	3-4	0	2	2	4	3	8	2	8	1	1	2	-31	3rd FT%	0-0	0.0%	4th FG%	1-2	50.0%
4	Marley Granway	G	30:56	1-4	1-2	2-2	1	1	2	0	2	5	0	1	0	1	0	-34	4th FT%	1-1	100.0%	GM FG%	17-55	30.9%
15	Unique Meyers		12:30	1-3	0-0	1-2	0	1	1	2	1	3	0	0	0	0	1	-7	3rd FG%	3-12	25.0%	3rd FT%	2-5	40.0%
1	Diamond Adams		28:38	1-10	0-0	1-2	1	3	4	0	2	3	3	2	1	0	0	-12	4th FT%	4-6	66.7%	GM FT%	17-55	30.9%
Team							3	2	5		0		1						1st FG%	12-16	75.0%	2nd FT%	5-8	62.5%
Totals			17:55	2-5	10-16	10	31	41	14	17	48	10	24	4	2	9	-33		2nd FG%	12	50.0%	3rd FT%	1-1	100.0%
																			Technical Fouls: NONE					
																			Dead Ball Rebounds: 4					

La Salle - 79		Record: 5-1																
NO.	NAME	Min	FG		3P	FT	Rebounds		Fouls	PF	FD	TP	AS	TO	ST	Blocks		+/-
			M-A	M-A			OR	DR								BS	BA	
15	Kayla Spruill	F	18:25	2-8	1-4	2-2	0	3	3	2	1	7	3	0	2	0	20	1st FG% 11-22 50.0%
22	Jordon Lewis	F	18:25	4-7	0-2	1-3	2	2	4	0	3	9	0	1	1	0	18	3PT% 4-13 30.8%
25	Shalina Miller	F	18:25	2-6	0-0	2-3	4	6	10	0	3	6	0	0	1	4	18	FT% 3-4 75.0%
11	Deja King	G	11:53	1-2	0-0	0-0	0	0	0	1	0	2	2	3	1	0	16	2nd FG% 3-16 18.8%
24	Amy Jacobs	G	18:25	3-6	2-4	0-0	0	3	3	0	0	8	2	0	5	1	18	3PT% 2-9 22.2%
2	Carley Lytton		21:35	3-7	3-6	0-0	0	4	4	1	0	9	1	0	0	2	15	FT% 2-4 50%
4	Kate Hill		21:35	3-4	0-0	0-0	2	2	3	0	6	7	3	0	1	0	15	3rd FG% 6-17 35.3%
5	Christina Kline		12:36	1-4	1-3	0-0	0	0	0	3	1	3	0	0	1	0	4	3PT% 2-4 50.0%
10	Claire Jacobs		18:33	4-13	2-8	2-4	1	2	3	3	12	0	1	0	0	0	10	FT% 4-6 66.7%
35	Sofilia Ngwafang		05:45	0-1	0-0	0-0	1	3	4	0	1	0	0	0	0	1	-2	4th FG% 9-15 60.0%
14	Haleigh Hill		15:50	2-3	1-1	0-0	1	4	5	1	0	5	0	0	0	0	17	3PT% 4-7 57.1%
3	Kayla Braxton-Young		09:34	3-6	1-2	2-2	1	1	2	2	1	9	1	5	2	0	5	GM FG% 25-70 41.4%
33	Erin Morgan		08:59	1-3	1-3	0-0	0	0	0	1	1	3	0	0	0	0	11	3PT% 1-3 33.3%
Team							1	0	1		0		0					FT% 9-14 64.3%
Totals			29:70	12-33	9-14	11	30	41	17	14	79	16	13	13	9	2	33	Dead Ball Fouls: 4, 0
Technical Fouls: NONE																		

	CSU	LAS		CSU	LAS	Period by Period Scoring					
Biggest lead	0 (1 st 10:00)	34 (4 th 5:20)		Turnovers	8 25		1st	2nd	3rd	4th	TOT
Best Scoring Run	6 (4 th 2:54)	9 (1 st 1:20)		Paint	24 30	CSU	16	6	10	14	46
Lead Changes	0			Second Chance	6 12	LAS	29	10	18	22	79
Times Tied	0			Fast Breaks	1 26						
Time with Lead	00:00	39:55		Bench	6 47						

GAME 7 - LA SALLE 74, UMBC 58

UMBC 58 • 2-5

#	Player		Total		3-Ptr	Rebounds			PF	TP	A	TO	Blk	Stl	Min
			FG	FGA		FT	FTA	Off Def Tot							
11	Summers,Janeae'a	f	1-9	0-0	0-0	2	4	6	3	2	1	3	0	1	35
13	Gast,Jen	f	5-9	0-0	5-7	6	12	18	3	15	0	2	1	1	27
03	Oliver,Te'yJah	g	5-24	1-6	5-6	1	8	9	2	16	3	3	0	3	38
12	Rubio,Paula	g	5-8	1-2	0-0	2	2	4	1	11	2	3	1	0	38
10	Swann,Lyric	g	1-8	0-2	0-0	0	2	2	3	2	1	1	0	1	29
02	Fisher,Eryn		0-2	0-0	0-0	1	1	2	1	0	0	1	0	0	6
11	Penese,Sariah		2-2	0-0	1-2	0	0	0	1	5	1	2	0	0	14
24	Costa,Lucrezia		2-3	0-0	3-4	1	2	3	3	7	0	3	0	1	13
Team						2	3	5							
Totals			21-65	2-10	14-19	15	34	49	17	58	8	18	2	7	200

1st - FG %:	6-17	35.3%	2nd:	3-12	25.0%	3rd:	5-18	27.8%	4th:	7-18	38.9%	Game:	21-65	32.3%	Deadball	
3FG %:	0-2	0.0%		0-1	0.0%		1-4	25.0%		1-3	33.3%		2-10	20.0%	Rebounds	
FT %:	5-6	83.3%		4-6	66.7%		3-4	75.0%		2-3	66.7%		14-19	73.7%		2

La Salle 74 • 6-1

11	KING, Deja	g	1-5	0-1	3-4	0	4	4	0	5	5	0	0	1	21	
15	SPRUIELL, Kayla	g	4-11	0-2	0-0	3	3	6	3	8	1	2	0	2	15	
24	JACOBS, Amy	g	5-8	3-6	0-0	0	0	0	3	13	0	1	1	1	20	
02	LYXTON, Carley	g	2-5	2-4	0-0	0	2	2	2	6	1	2	1	0	18	
03	BRAYTON-YOUNG, Kayl		1-2	0-0	2-2	0	1	1	0	4	0	0	0	0	3	
04	HILL, Kate		2-5	2-4	0-0	1	1	2	1	6	7	0	1	0	20	
05	KLINE, Christina		1-3	1-3	0-0	0	4	4	1	3	0	0	0	1	13	
10	JACOBS, Claire		5-11	3-6	1-1	0	2	2	0	14	3	1	0	0	22	
14	HILL, Haleigh		0-1	0-0	0-0	0	2	2	2	0	0	0	1	2	13	
33	MORGAN, Erin		0-0	0-0	0-0	0	0	0	0	0	0	1	0	0	3	
35	NGWAFANG, Sofilia Team		1-3	0-0	1-2	1	4	5	5	3	1	1	1	0	16	
						2	3	5								
Totals			27-70	13-31	7-9	10	32	42	22	74	19	13	8	10	200	
1st	FG %:	5-14	35.7%	2nd:	6-18	33.3%	3rd:	7-20	35.0%	4th:	9-18	50.0%	Game:	27-70	38.6%	Deads
	FT %:	0-0	0.0%		1-2	50.0%		3-4	75.0%		4-5	80.0%		13-24	54.2%	Rebounds
											3-3	100.0%		7-9	77.8%	

2019-20 BOX SCORES

GAME 9 - PENN 65, LA SALLE 49

Penn - 65

NO. Name	Min	FG M-A	3P M-A	FT M-A	Rebounds OR DR TOT	Fouls PF FD	TP	AS	TO	ST	Blocks BS BA	+/
4 Kennedy Suttle	F 29:14	0-2	0-0	0-0	4 7 11	4 2 0	2	3	1	0	0	13
31 Eleah Parker	C 15:03	4-8	0-0	0-0	0 2 2	0 0 0	8	0	0	0	1	11
11 Kendall Grasela	G 35:11	0-4	0-1	3-4	3 1 9	2 2 3	5	0	1	1	0	15
33 Phoenix Starba	G 37:09	8-15	5-10	1-2	2 3 5	3 2 22	4	1	2	0	0	17
45 Kayla Padilla	G 37:19	9-24	3-7	3-5	0 2 2	0 5 24	4	3	3	0	2	15
40 Emily Anderson	11:20	0-3	0-0	0-0	0 2 2	2 3 0	0	0	1	0	0	6
24 Toni Crawford	23:47	3-9	1-3	1-2	4 5 9	2 3 8	0	0	0	0	1	2
3 Michae Jones	09:09	0-0	0-0	0-0	0 0 0	0 1 0	2	0	0	0	0	1
2 Katie Kinum	00:36	0-0	0-0	0-0	0 0 0	0 0 0	0	0	0	0	0	0
21 Mia Lakstigala	00:36	0-0	0-0	0-0	0 0 0	0 0 0	0	0	0	0	0	0
34 Chrissy DiCindio	00:36	0-0	0-0	0-0	0 0 0	0 0 0	0	0	0	0	0	0
Team					2 2 4		0	1				
Totals		24-65	9-21	8-13	15 29 44	13 18 65	17	8	8	2	4	16

Technical Fouls: NONE

Dead Ball Rebounds: 3 0

Shooting By Period

1st FG%	5-22	36.4%
3PT%	0-7	0.0%
FT%	0-1	0%
2nd FG%	7-18	38.9%
3PT%	4-4	100.0%
FT%	0-0	0%
3rd FG%	6-12	50.0%
3PT%	3-4	75.0%
FT%	4-6	66.7%
4th FG%	3-13	23.1%
3PT%	2-6	33.3%
FT%	4-6	66.7%
GM FG%	24-65	36.9%
3PT%	9-21	42.9%
FT%	8-13	61.5%

La Salle - 49

NO. Name	Min	FG M-A	3P M-A	FT M-A	Rebounds OR DR TOT	Fouls PF FD	TP	AS	TO	ST	Blocks BS BA	+/
15 Kayla Sprull	F 27:43	2-5	0-1	1-2	1 2 3	3 1 5	0	0	0	0	0	-6
22 Jordan Lewis	F 14:57	0-3	0-0	0-0	1 1 2	2 0 0	1	3	0	0	0	-8
25 Shalina Miller	F 25:29	4-7	1-1	2-2	3 9 12	2 2 11	2	3	3	2	0	-4
11 Deja King	G 27:31	3-7	2-3	0-0	0 2 2	2 5 8	3	4	1	0	0	-6
24 Amy Jacobs	G 24:00	2-8	0-0	0 2 2	0 6 2	0 0 0	1	1	1	1	0	-11
2 Carley Lytton	11:28	0-4	0-0	0-0	0 1 1	1 0 0	1	1	1	0	0	-10
4 Kate Hill	20:56	2-6	2-5	1-2	0 1 1	2 1 7	3	0	0	0	0	-7
5 Christina Kline	12:29	0-1	0-1	0-0	0 0 0	0 0 0	0	1	0	0	0	-10
10 Claire Jacobs	19:05	1-10	0-2	2-2	1 3 4	2 3 4	0	1	0	0	1	-12
35 Sofilia Ngwafang	12:42	4-6	0-0	0-1	4 5 9	2 1 8	1	1	0	2	0	-9
33 Erin Morgan	03:40	0-0	0-0	0-0	0 0 0	0 0 0	0	0	0	0	0	3
Team					2 2 4		0	0				
Totals		18-57	7-25	6-9	12 28 40	18 13 49	13	14	4	2	1	-16

Technical Fouls: NONE

Dead Ball Rebounds: 1 0

Shooting By Period

1st FG%	7-18	38.9%
3PT%	1-5	20.0%
FT%	0-0	0%
2nd FG%	3-13	23.1%
3PT%	2-6	33.3%
FT%	1-2	50%
3rd FG%	5-14	35.7%
3PT%	2-6	33.3%
FT%	3-5	60%
4th FG%	3-12	25.0%
3PT%	2-8	25.0%
FT%	2-2	100%
GM FG%	18-57	31.6%
3PT%	7-25	28.0%
FT%	6-9	66.7%

PENN LAS

Biggest lead	18 (3rd 1:38)	7 (1st 8:02)
Best Scoring Run	10 (2nd 4:42)	7 (1st 8:02)
Lead Changes	5	
Times Tied	1	
Time with Lead	31:45	06:55

Points from

Turnovers	PENN	20	5
Paint	22	22	
Second Chance	10	14	
Fast Breaks	17	6	
Bench	8	19	

Period by Period Scoring

	1st	2nd	3rd	4th	TOT
PENN	16	18	19	12	65
LAS	15	9	15	10	49

GAME 10 - RIDER 70, LA SALLE 43

Official Basketball Box Score - Final															Game Time: 2:30 PM					
La Salle vs Rider															Game Duration: 1:52					
12/07/19 Alumni Gymnasium, Lawrence Township																				
La Salle - 43 • 6-4																				
##	Player		Total FG-FGA	3-Ptr FG-FGA	FT-FTA	Rebounds			PF	TP	A	TO	Blk	Stl	Min					
						Off	Def	Tot												
2	Carley Lytton	F	0-4	0-4	2-2	0	2	2	0	2	0	0	0	0	14:57					
35	Sofilia Ngwafang	C	0-1	0-0	2-2	1	0	1	3	2	0	3	1	0	08:56					
4	Kate Hill	C	0-2	0-0	0-0	1	1	2	0	0	2	0	2	0	15:57					
5	Christina Kline	G	0-2	0-2	0-0	1	1	2	0	0	0	1	0	0	09:30					
10	Claire Jacobs	G	2-11	0-0	2-2	1	0	1	3	6	0	0	0	0	22:26					
11	Deja King		3-5	1-2	5-7	0	1	1	2	12	1	2	0	0	18:23					
15	Kayla Sprull		1-5	1-2	1-2	0	3	3	0	4	0	1	0	0	21:23					
22	Jordan Lewis		1-8	0-1	3-6	7	4	11	1	5	0	3	0	0	25:03					
24	Amy Jacobs		1-5	1-4	2-2	0	1	1	3	5	0	1	0	0	19:59					
25	Shalina Miller		0-3	0-0	1-2	0	5	5	1	1	0	3	0	0	20:46					
33	Kayla Braxton-Young		0-2	0-1	4-4	1	2	3	0	4	0	0	0	0	11:40					
14	Haleigh Hill		0-1	0-0	2-4	1	3	4	1	2	0	1	0	2	07:20					
33	Erin Morgan		0-1	0-1	0-0	0	0	0	0	0	0	0	0	0	03:40					
Team						4	2	6				1								
Totals			8-50	3-17	24-33	17	25	42	14	43	3	18	1	5	200:00					
FG % 1st: 1-15 6.7% 2nd: 2-11 18.2% 3rd: 2-9 22.2% 4th: 3-15 20.0% Game: 8-50 16.0%															DeadBall Rebounds 4 0					
3PT % 1st: 1-5 20.0% 2nd: 1-6 16.7% 3rd: 0-2 0.0% 4th: 1-4 25.0% Game: 3-17 17.6%																				
FT % 1st: 4-6 66.7% 2nd: 8-10 80.0% 3rd: 8-11 72.7% 4th: 4-6 66.7% Game: 24-33 72.7%																				
Rider - 70 • 4-2																				
##	Player		Total FG-FGA	3-Ptr FG-FGA	FT-FTA	Rebounds			PF	TP	A	TO	Blk	Stl	Min					
						Off	Def	Tot												
13	Lea Favre	F	6-7	0-0	0-0	0	1	1	4	12	3	0	0	0	21:45					
32	Aubre Johnson	F	0-0	0-0	0-0	0	1	1	3	0	0	0	0	0	18:05					
3	Amanda Mobley	C	1-5	0-3	2-2	0	1	1	3	4	0	0	0	0	26:59					
4	Stella Johnson	G	8-18	1-6	5-6	1	8	9	3	22	9	1	2	5	40:00					
31	Amari Johnson	G	6-16	1-6	1-2	3	8	11	1	14	1	2	4	0	33:30					
22	Lexi Stover		3-5	3-5	0-0	3	2	5	1	9	1	0	0	0	19:53					
42	Tracey Goodman		2-7	2-3	1-2	1	4	5	2	7	1	2	0	0	16:35					
11	Daija Moses		0-2	0-0	0-0	0	2	2	3	0	2	0	1	1	16:29					
44	Victoria Toomey		1-1	0-0	0-0	0	0	0	0	2	0	1	0	0	03:02					
5	Maya Hyacinth		0-0	0-0	0-0	0	0	0	1	0	1	0	0	0	02:48					
33	Sophia DeMauro		0-0	0-0	0-0	0	0	0	0	0	0	0	0	0	00:54					
Team						2	3	5				0								
Totals			27-61	7-23	9-12	10	30	40	22	70	20	11	7	6	200:00					
FG % 1st: 8-19 42.1% 2nd: 4-13 30.8% 3rd: 6-15 40.0% 4th: 9-14 64.3% Game: 27-61 44.3%															DeadBall Rebounds 2 0					
3PT % 1st: 3-7 42.9% 2nd: 0-5 0.0% 3rd: 1-6 16.7% 4th: 3-5 60.0% Game: 7-23 30.4%																				
FT % 1st: 0-0 0.0% 2nd: 2-4 50.0% 3rd: 3-4 75.0% 4th: 4-4 100.0% Game: 9-12 75.0%																				
Officials: Technical fouls: La Salle - Team, Rider - NONE																				
Attendance: 712																				
Score by periods					1st	2nd	3rd	4th	Total											
La Salle					7	13	12	11	43	Points	In Paint	Off T/O	2nd Chance	Fast Break	Bench					
Rider					19	10	16	25	70	LAS	10	8	7	5	33					
										RID	30	19	11	6	18					
Last FG - LAS 4th 3:36, RID 4th 0-10																				
Largest lead - LAS by 0 1st - 10:00, RID by 27 4th - 0:10																				
Score tied - 0 times																				
Lead changed - 0 times																				

2019-20 BOX SCORES

GAME 13 - TEMPLE 72, LA SALLE 69

Temple - 72														
NO.	Name	Min	FG M-A	3P M-A	FT M-A	Rebounds OR DR TOT	Fouls PF FD	TP	AS	TO	ST	Blocks BS BA	+	-
11	Shannen Atkinson	C 21:00	2-8	0-0	2-2	4 3 7	3 3	6	0	0	0	1 3	15	
0	Ashley Jones	G 38:12	7-15	2-5	7-7	0 9 9	1 6	23	1	5	0	0 0	-2	
1	Lena Niang	G 35:08	2-8	1-6	2-2	2 7 9	3 2	7	2	1	0	2 0	4	
2	Asonah Alexander	G 26:20	0-2	0-1	0-0	3 2 5	3 0	0	5	1	1	0 0	-1	
5	Marissa Mackins	G 37:24	10-22	7-18	1-2	1 4 5	2 5	28	3	4	1	0 1	6	
20	Alexa Williamson		15:22	2-3	0-0	2 2 4	5 1	6	0	3	1	0 0	-9	
12	Emani Mayo		26:18	1-7	0-0	1 0 1	0 0	2	1	0	0	0 1	-2	
3	Rayniyah Walker		00:08	0-0	0-0	0 0 0	0 0	0	0	0	0	0 0	2	
10	Nicolette Mayo		00:08	0-0	0-0	0 0 0	0 0	0	0	0	0	0 0	2	
Team						6 3 9		0		1				
Totals			24-65	10-30	14-15	19 30 49	17 17	72	12	15	3	3 5	3	
Technical Fouls: NONE														
<div>Shooting By Period</div> <div>1st FG% 3-22 13.6%</div> <div>3PT% 2-11 18.2%</div> <div>FT% 5-5 100%</div> <div>2nd FG% 9-15 60.0%</div> <div>3PT% 3-7 42.9%</div> <div>FT% 4-4 100%</div> <div>3rd FG% 5-16 31.3%</div> <div>3PT% 1-7 14.3%</div> <div>FT% 2-2 100%</div> <div>4th FG% 7-12 58.3%</div> <div>3PT% 4-5 80.0%</div> <div>FT% 3-4 75%</div> <div>GM FG% 24-65 36.9%</div> <div>3PT% 10-30 33.3%</div> <div>FT% 14-15 93.3%</div> <div>Dead Ball Rebounds: 1, 0</div>														

La Salle - 69														
NO.	Name	Min	FG M-A	3P M-A	FT M-A	Rebounds OR DR TOT	Fouls PF FD	TP	AS	TO	ST	Blocks BS BA	+	-
2	Carley Lytton	F 21:43	1-4	1-4	0-0	0 4 4	0 0	3	2	1	1	0 1	-15	
22	Jordon Lewis	F 23:56	2-2	0-0	0-2	0 1 1	3 2	4	2	0	1	0 0	0	
25	Shalina Miller	F 26:50	4-10	1-2	1-4	3 7 10	1 4	10	0	0	2	5 1	-9	
4	Kate Hill	G 30:14	1-5	1-3	0-0	0 0 0	3 2	3	2	2	1	0 0	-16	
10	Claire Jacobs	G 32:33	7-16	3-9	2-2	0 1 1	2 3	19	3	2	0	0 0	2	
15	Kayla Spruill		15:42	4-5	1-1	3-3	2 1 3	1 2	12	1	0	0 0	6	
24	Amy Jacobs		25:11	5-10	3-7	2-2	0 0 0	2 1	15	3	4	1 0	1	2
3	Kayla Braxton-Young		14:20	1-3	1-2	0-0	0 2 2	1 1	3	7	1	1 0	0	6
35	Sofia Ngwafang		09:31	0-1	0-0	0 3 3	4 2	0	0	0	0	0 0	9	
Team						1 3 4		0		0				
Totals			25-56	11-28	8-17	6 22 28	17 17	69	20	10	7	5 3	-3	
Technical Fouls: NONE														
<div>Shooting By Period</div> <div>1st FG% 9-14 64.3%</div> <div>3PT% 5-5 100.0%</div> <div>FT% 2-4 50%</div> <div>2nd FG% 3-17 17.6%</div> <div>3PT% 1-10 10.0%</div> <div>FT% 3-5 60%</div> <div>3rd FG% 5-9 55.6%</div> <div>3PT% 1-4 25.0%</div> <div>FT% 3-8 37.5%</div> <div>4th FG% 8-16 50.0%</div> <div>3PT% 4-9 44.4%</div> <div>FT% 0-0 0%</div> <div>GM FG% 25-56 44.6%</div> <div>3PT% 11-28 39.3%</div> <div>FT% 8-17 47.1%</div> <div>Dead Ball Rebounds: 4, 0</div>														

	TEM	LAS
Biggest lead	9 (3rd 6:19)	15 (1st 0:36)
Best Scoring Run	10 (2nd 4:15)	10 (1st 5:10)
Lead Changes	8	
Times Tied	1	
Time with Lead	21:38	15:07

Points from	TEM	LAS
Turnovers	11	20
Paint	28	26
Second Chance	11	6
Fast Breaks	5	2
Bench	8	30

Period by Period Scoring				
	1st	2nd	3rd	4th
TEM	13	25	13	21
LAS	25	10	14	20

DAY, MACGILLIVRAY REUNITE, TRY TO TURN AROUND LA SALLE

Terry Toohey

The Delaware County Daily Times

PHILADELPHIA — La Salle head women's basketball coach Mountain MacGillivray and his associate head coach, Chris Day, laughed and joked like the old friends they are as they spoke Monday about the paths that led them both to 20th & Olney.

This pairing did not happen by chance.

The seeds were sown 30 years ago when they served as managers in the girls basketball program at Archbishop Carroll High School. MacGillivray, a 1991 grad, was a sophomore at the time. Day, who graduated a year later, was a freshman.

Day would videotape the games and MacGillivray did the play-by-play, among many other tasks. Those humble beginnings grew into separate coaching careers. Day quickly became one of the best high school athletes in Delaware County of the early 1990s, and went on to become the head women's basketball coach at Widener and the University of Vermont, along with assistant coaching gigs for the girls team at Carroll and the women's programs for Widener, Duquesne, La Salle, Saint Joseph's, Indiana and Penn.

He also spent time as an assistant football coach at Widener and was the track coach for a year at West Chester East. MacGillivray served as an assistant at Carroll for 13 seasons before moving to assistant women's coaching positions at Vermont, New Hampshire and Quinnipiac universities.

Regardless of where they were, however, MacGillivray and Day always stayed close.

"We prepared for a lot of teams over the phone together," said MacGillivray, who played baseball for the Patriots.

"Yes we did," added Day, an All-Delco standout in football and track during his scholastic career at Carroll. "We shared tons of ideas, how to guard people, what they had, recruiting, all that."

Now they're sharing those ideas together as part of the same staff. Although La Salle is off to a rocky start (0-5), it was a pairing that was meant to be.

It was Day who heard through the coaching grapevine that there was going to be an opening at La Salle last spring and the man who encouraged his best friend to go for the job. MacGillivray had just completed his ninth season as an assistant at Quinnipiac University in Hamden, Conn. and his third as the associate head coach.

The Bobcats were coming off their third MAAC title in four years and fourth trip to the NCAA Division I women's tournament in six seasons, including a Sweet 16 run in 2017. MacGillivray had a great situation. He was comfortable, happy, coaching at a winning program and able to provide for his large family, which includes his wife Grace and their seven children.

"I had no interest in leaving a great program as an assistant just to be the head coach, so my name was on the marquee," MacGillivray said.

He threw his hat into the ring, anyway.

"Coaching in the Big 5, bringing my family back to Philadelphia

and being at a Catholic university, that was too much to pass up," MacGillivray said. "It takes a lot just to put yourself out there to do it, just to go for the job. You have to stress out your head coach. You have to stress out your family and then you don't get it, so I didn't even know if I wanted to get involved. But the more I thought about those three things: Being in the Big 5, being back home and being at a Catholic university, I was like, 'I have to do it.'"

MacGillivray applied for the job, with one condition.

"I said if I get it I want you," MacGillivray said of Day. "Would you do it? How much would it take? We were negotiating the whole time."

The offer came at an interesting time for Day. He had just finished his second season as the head coach at Vermont, albeit under a cloud.

In early April, Vermont athletic director Jeff Schulman confirmed television and published reports that the university was "Investigating certain aspects of the women's basketball program." Specifically the school was looking into Day's 'verbal interaction' with the players, according to an unnamed source in the television report.

The investigation caught Day by surprise, but came to an end without a report when he tendered his resignation on April 26. Less than two weeks later Day joined MacGillivray as his associate head coach.

Day said the investigation was not the reason for his resignation. It was the opportunity to bring his family home and coach

with his best friend.

"I can't speak on everything," said Day, who went 17-42 in his two seasons in Burlington. "The best way to phrase it is that there were a couple of curveballs that were thrown at me that were unexpected. It made me think, when Mountain got the job, is this meant to be? Is this going to be our final chance to ever come back home?"

Day had left Philly twice before only to return to his roots. He left Duquesne after a year to take an assistant coaching job at La Salle, which led to a seven-year stint at Saint Joseph's. He then went to Indiana only to return for a post at Penn, which led to the job at Vermont.

No matter where he was, though, his hometown area was always on his mind.

"I told many people that the only reason I would leave Vermont was to come back to Philly," Day said.

And so, when the opportunity presented itself to return home for a third time, Day jumped at it.

"The biggest thing for me, at this point in my career, if I'm going to make a move to be a head coach or go somewhere else, coming home and working with someone who understands family is important," Day said. "I have five kids. I have one in college and four younger. As you get older, it's important to work with someone you know understands about family and (MacGillivray), with seven (children), understands that."

MacGillivray and Day understand one another other and work well together. It dates to their days at Carroll when they served as managers, first under Linus McGinty and later Barry Kirsch.

"The behind-the-scenes meetings with Linus and Barry, oh my goodness," Day said. "We learned so much from them ... A lot of our base is what we learned at Carroll, running the Loyola Marymount transition, that type of stuff."

"They treated us more like assistant coaches than managers," MacGillivray said. "We talked about basketball nonstop. They taught us the way they did things. They encouraged us to get in there and work with the players and help them out, so I can't say enough about the opportunity that Linus gave us and that Barry gave me, specifically. That was huge."

Now MacGillivray and Day are trying to use those lessons learned at Carroll, and many other stops along the way, to turn around an Explorers program that has had just one winning season (17-13 in 2016-17) in the last 11 years.

They know what it's going to take to achieve that goal.

"Patience," they responded in unison.

Three decades ago they talked about coaching together on the collegiate level and now it's a reality. It's only fitting that it comes at La Salle, where both

reached the pinnacle of their high school athletic careers.

As a senior, MacGillivray helped Carroll win the Catholic League baseball title at La Salle's DeVincent Field. A year later, Day won the 100- and 200-meter dashes at the Catholic League championships at McCarthy Stadium.

Talk about karma.

"It was just a sign," Day said. "Whatever was going on up there at Vermont and Mountain getting the job here, it was just crazy. The Lord spoke again. He keeps calling me home and we listened again. It was nothing that went down. It was just me saying, 'OK, what's happening is unfortunate. I could easily fight it and be fine.' Nothing happened. There was no report. But it was like, 'Why do all this and have this hanging over me? Are people going to be side-eyeing me? It was like I was being told to go home and coach with my best friend. The Lord spoke. I listened and here we are.'"



75 PAIRS OF SNEAKERS? LA SALLE'S KATE HILL HEADS INTO JUNIOR SEASON ON SOLID FOOTING

Mike Jensen
The Philadelphia Inquirer

PHILADELPHIA - In Kate Hill's own words, sitting out, not being able to play college basketball games last season, was the worst thing ever. Hill had transferred from Rutgers to La Salle in search of playing time. By all accounts, she'll find it this season.

Hill just had to survive the year sitting out.

Passing the time, favorite thing to do?

"Go to the mall," Hill said. "King of Prussia."

Favorite store?

"House of Hoops."

Favorite thing to buy?

"I'm a sneaker head."

How many sneakers are we talking about here?

"Over 75 sets of shoes," Hill said. "I've got all the boxes, a shoe rack on display."

La Salle teammate Deja King suggests 75 could be a conservative estimate.

"Between 75 and 100," King said of Hill's collection. (King is the other acknowledged sneaker head on the team, figuring she has between 30 and 45.)

Hill's favorite? She'll go with the Georgetown Air Jordan 11.

"Honestly, they just look the best – go with most of my outfits," Hill said. "White and blue ... I feel bad when I don't wear them, so I try to keep them in rotation."

Teammates will walk in her room, she said, and the response is typically the same.

"Dang, girl – why do you have so many?"

A lot of Jordans, Vans, Air Max.

"I try to stick to those four," Hill said. "I have a couple of random ones."

Most random?

"A couple of KDs I liked," Hill said, referring to shoes endorsed by Kevin Durant.

"Any shoe you can think of, and she has it in multiple colors," King said of the Hill collection.

For the record, Hill isn't going to be wearing any of those during a La Salle game. The Explorers are an Under Armour program. Hill said she is more than all right with that.

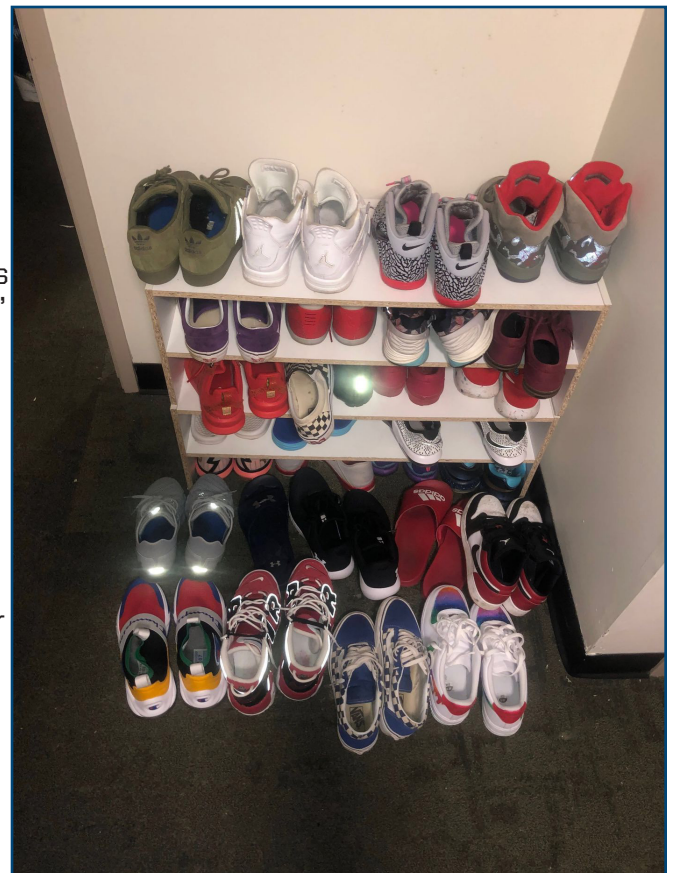
"Yeah, I like my Currys," Hill said.

Sitting out last season, she became close friends with King, although maybe at first King didn't know all that such a friendship would entail.

"Deja definitely has a lot," Hill said, talking sneakers. "We're the same size. I have a couple of her shoes in my room."

"Whenever she tries to put an outfit together and tries to get the right shoe, I say, 'I think I have the right one for you,' " King said.

For example ... black shirt, some writing on it. Light blue jeans. King's thought: Space Jams 11, from her own Jordan collection.



King's personal favorite?

"Just any pair of Jordan 11," King said.

La Salle coach Mountain MacGillivray said that when Hill first got to La Salle, she asked if she could store some stuff in the locker room.

"That does not constitute some stuff," MacGillivray remembers telling Hill.

What does the coach make of it all?

"I have no comment," MacGillivray said. "Kate has lots of style, and she needs lots of sneakers to go with all of them. As long as she plays hard on the court, I don't care what she does with her sneakers."

From Toronto, Hill first got into sneakers when she moved to New Jersey, boarding at the Peddie School, after her family decided this was the best path to college basketball. Her older sister Sami had done a year at Blair Academy before playing at Virginia Tech.

The family has mixed up its sports. Her father played basketball at the University of Toronto, while mom was a long and triple jumper at the same school. Two brothers played college baseball.

"Two things she's brought to our program – a work ethic, and she's in great shape," MacGillivray said. "She has a competitiveness to her. She's not losing sprints. She's going to win every conditioning drill. She's in the gym extra without being asked and people are following that lead. Every dog track needs a

rabbit. She's been the rabbit for us."

As it happens, Hill and King will split time at point guard, and no doubt share time on the court as well. Their coach thinks that is kind of special, seeing them compete for time while forging a close friendship.

Sharing playing time, sharing sneakers? What's the difference?

"My parents tell me I need to stop buying shoes," Hill said, adding, "I haven't."

She collects other kinds of shoes, too?

"No, just sneakers," Hill said. "I think I own one pair of heels that I'm required to wear when we dress up."

Her teammate King said newcomers to La Salle's team don't "know the full extent" of Hill's collection.

When will she stop?

"Never," Hill said. "I don't think I

will ever grow out of it."





**CARLEY
LYTTON**
Gr. | F | 5-10
Floyd, Va.



**KAYLA
BRAXTON-YOUNG**
Fr. | G | 5-7
Newark, Del.



**KATE
HILL**
Jr. | G | 5-7
Toronto, Ontario



**CHRISTINA
KLINE**
Fr. | G | 5-10
Winter Garden, Fla.



**CLAIRE
JACOBS**
Fr. | G | 6-0
Perth, Australia



**DEJA
KING**
Jr. | G | 5-7
Trenton, N.J.



**MOLLY
MASCANTONIO**
So. | G | 5-10
Morton, Pa.



**HALEIGH
HILL**
Jr. | F | 6-0
Allen, Texas



**KAYLA
SPRUILL**
So. | F | 6-0
Baltimore, Md.



**JORDON
LEWIS**
Fr. | F | 5-10
Houston, Texas



**AMY
JACOBS**
Fr. | G | 6-0
Perth, Australia



**SHALINA
MILLER**
Sr. | F | 6-2
Philadelphia, Pa.



**ERIN
MORGAN**
So. | G | 5-8
Willow Grove, Pa.



**SOFILIA
NGWAFANG**
Sr. | C | 6-4
Silver Springs, Md.



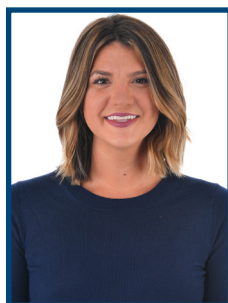
**MOUNTAIN
MacGILLIVRAY**
Head Coach
2nd Year
Temple '96



**CHRIS
DAY**
Assoc. Head Coach
2nd Year
West Chester '97



**BOO
ABSHIRE**
Assistant Coach
2nd Year
Quinnipiac '15



**SAM
GUASTELLA**
Assistant Coach
1st Year
Quinnipiac '15



**KIM
BRADY**
Dir. of Operations
1st Year
UMass '10