



WOMEN'S BASKETBALL

2019-20 LA SALLE EXPLORERS GAME NOTES

Ed LeFurge III

Assistant Director of Athletic Communications

Phone: 732-600-6552 | lefurge@lasalle.edu | @LeFurgeIII

2019-20 SCHEDULE

RECORD: 1-1, 0-0 A-10

HOME: 0-1 | AWAY: 1-0 | NEUTRAL: 0-0

Tue., Nov. 5	Howard	W, 78-62
SAT., NOV. 9	ROBERT MORRIS*L, 68-71 OT	
FRI., NOV. 15	HARVARD	7 P.M.
Sun., Nov. 17	Penn State	2 p.m.
Fri., Nov. 22	Norfolk State	6 p.m.
TUE., NOV. 26	COPPIN STATE	7 P.M.
Sat., Nov. 30	UMBC%	1 p.m.
Sun., Dec. 1	Navy/Kennesaw State%	TBD
WED., DEC. 4	PENN^	7 P.M.
Sat., Dec. 7	Rider	2 p.m.
Tue., Dec. 17	Drexel	11:30 a.m.
SAT., DEC. 21	VILLANOVA^	2:30 P.M.
MON., DEC. 30	TEMPLE^	7 P.M.
SAT., JAN. 4	DAYTON*	2 P.M.
WED., JAN. 8	SAINT LOUIS*	7 P.M.
Sat., Jan. 11	Duquesne*	2 p.m.
Wed., Jan. 15	UMass*	7 p.m.
SUN., JAN. 19	ST. BONAVENTURE*	3 P.M.
Thu., Jan. 23	Richmond*	11 a.m.
SUN., JAN. 26	SAINT JOSEPH'S*	2 P.M.
WED., JAN. 29	GEORGE MASON*	5 P.M.
Sat., Feb. 1	Fordham*	2 p.m.
SUN., FEB. 9	RICHMOND*	2 P.M.
Wed., Feb. 12	George Washington*	7 p.m.
Sat., Feb. 15	Saint Joseph's*	2 p.m.
WED., FEB. 19	VCU*	5 P.M.
Sat., Feb. 22	Rhode Island	1 p.m.
WED., FEB. 26	DAVIDSON*	11 A.M.
Sat., Feb. 29	George Mason*	2 p.m.

Homecoming | % Navy Classic

^ Philadelphia Big 5 game | * Atlantic 10 game
Home games in **BOLD** | All times EST

FOLLOW ALONG



ESPN + **PBP: COREY COHEN**
ANALYST: MAREN WALSETH



WWW.SIDEARMSTATS.COM/LASALLE/WBBALL

FOLLOW US!



@LaSalle_WBB

#Limitless | #LaSalleWBB



LA SALLE EXPLORERS

Head Coach: Mountain MacGillivray

Career Record: 7-26 (2nd year)

Record at School: same



HARVARD CRIMSON

Head Coach: Kathy Delaney-Smith




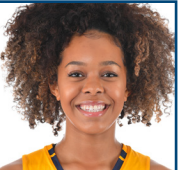

Career Record: 605-408 (37th year)

Record at School: same

NEWS & NOTES

- La Salle hosts Harvard at Tom Gola Arena on Friday, November 15 at 7 p.m. The game will stream on ESPN+ with Corey Cohen and Maren Walseth on the call.
- After starting the season with a convincing win at Howard, 78-62, the Blue & Gold fell to Robert Morris in its home opener, 71-68, in overtime. In the game, sophomore **Kayla Spruill** paced the Explorers with a career high 19 points. Senior **Sofilia Ngwafang** added a double-double with 14 points and 12 rebounds. During the 2018-19 season, the Colonials defeated La Salle by 28 points in Moon Township.
- Sophomore **Kayla Spruill** is leading the Explorers with 15.5 ppg this season. The Baltimore, Md. native dropped 12 against Howard and 19 versus Robert Morris. Spruill is also averaging 7.5 rpg, which is third best on the team.
- Freshman **Claire Jacobs** is the team's second leading scorer at 13.5 ppg. The rookie dropped 20 points in the season opener at Howard and seven points against Robert Morris. Jacobs is shooting 62.5% (10-of-16) from the floor.
- Senior **Sofilia Ngwafang** rounds out La Salle's double-figure scorers, dropping 10.0 ppg. Ngwafang nears a double-double on average with 8.5 rpg. The Silver Spring, Md. native is hitting 58.3% (7-of-12) of her shots.
- Senior **Shalina Miller** is the leading rebounder for the Explorers. Miller corrals 9.0 rpg, adding 7.0 ppg, and 2.5 bpg. After a three block performance over Robert Morris, Miller is 33 shy of tying the all-time record set by **Amy Griffin '18**.
- Like the first two games of the season, Friday's matchup against Harvard is a rematch from a season ago. Last year, the Crimson topped the Blue & Gold 88-43, in Cambridge, Mass. La Salle is looking to continue its improvements against last year's opponents.

PROJECTED STARTERS

				
#11	#10	#15	#22	#25
DEJA KING	CLAIRE JACOBS	KAYLA SPRUILL	JORDAN LEWIS	SHALINA MILLER
PPG: 7.5	PPG: 13.5	PPG: 15.5	PPG: 7.0	PPG: 7.5
RPG: 3.0	RPG: 1.0	RPG: 7.5	RPG: 6.0	RPG: 9.0
FG%: 42.9	FG%: 62.5	FG%: 32.0	FG%: 35.3	FG%: 62.5
3FG%: 50.0	3FG%: 42.9	3FG%: 26.7	3FG%: 0.0	3FG%: n/a

SERIES HISTORY: LA SALLE VS. HARVARD

Overall: Harvard leads, 4-1
In Phila: 0-1
In Cambridge: 1-2
Neutral Sites: 0-1

Current Streak: Harvard, Won 4
Last Meeting: L, 43-88 - 11/14/18
Largest Victory: 7 points - 86-79m- 12/4/94
Largest Defeat: 45 points - 11/14/18



#	Name	Cl.	Pos.	Ht.	Hometown / High School (Previous School)
2	Carley Lytton	Gr.	F	5-10	Floyd, Va. / Floyd County (East Tennessee State)
3	Kayla Braxton-Young	Fr.	G	5-7	Newark, Del. / Paul M. Hodgson Vocational Technical
4	Kate Hill	Jr.	G	5-7	Toronto, Ontario, Canada / The Peddie School (Rutgers)
5	Christina Kline	Fr.	G	5-10	Winter Garden, Fla. / West Orange
10	Claire Jacobs	Fr.	G	6-0	Perth, Australia / Kennedy Baptist College
11	Deja King	Jr.	G	5-7	Trenton, N.J. / Life Center Academy
12	Molly Masciantonio	So.	G	5-10	Morton, Pa. / Archbishop Carroll (Holy Family)
14	Haleigh Hill	Jr.	F	6-0	Allen, Texas / Allen (Dodge City CC/South Plains)
15	Kayla Spruill	So.	G/F	6-0	Baltimore, Md. / Western School of Technology and Environmental Science
22	Jordon Lewis	Fr.	F	5-10	Houston, Texas / Westside
24	Amy Jacobs	Fr.	G	6-0	Perth, Australia / Kennedy Baptist College
25	Shalina Miller	Sr.	F/C	6-2	Philadelphia, Pa. / Archbishop Prendergast
33	Erin Morgan	So.	G	5-8	Willow Grove, Pa. / Archbishop Wood
35	Sofilia Ngwafang	Sr.	C	6-4	Silver Spring, Md. / Paint Branch

Head Coach: Mountain MacGillivray - Second Season (Temple '96)

Associate Head Coach: Chris Day - Second Season (West Chester '97)

Assistant Coach/Recruiting Coordinator: Boo Abshire - Second Season (Quinnipiac '15)

Assistant Coach: Sam Guastella - Second Season (Quinnipiac '15)

Director of Operations: Kim Brady - First Season (UMass '10)

PRO-NUN-SEE-AY-SHUNS:

2 - Lit-in
11 - Day-juh
12 - Mas-in-tone-ee-oh
15 - Sprool
25 - Shuh-lee-nuh
35 - so-feel-ee-uh GWAH-fong

HC - Muh-gill-vree

AC - Gill-ee-in

AC - Gwuh-stell-uh

ALPHABETICAL ROSTER

Kayla Braxton-Young	Fr.	G	5-7
Haleigh Hill	Jr.	F	6-0
Kate Hill	Jr.	G	5-7
Amy Jacobs	Fr.	G	6-0
Claire Jacobs	Fr.	G	6-0
Deja King	Jr.	G	5-7
Christina Kline	Fr.	G	5-10
Jordon Lewis	Fr.	F	5-10
Carley Lytton	Gr.	F	5-10
Molly Masciantonio	So.	G	5-10
Shalina Miller	Sr.	F/C	6-2
Erin Morgan	So.	G	5-8
Sofilia Ngwafang	Sr.	C	6-4
Kayla Spruill	So.	G/F	6-0

ROSTER BY CLASS

Graduate (1): Carley Lytton

Senior (2): Shalina Miller, Sofilia Ngwafang

Junior (3): Haleigh Hill, Kate Hill, Deja King,

Sophomore (3): Molly Masciantonio, Erin Morgan, Kayla Spruill

Freshman (5): Kayla Braxton-Young, Amy Jacobs, Claire Jacobs, Christina Kline, Jordon Lewis

QUICK FACTS

ALL-TIME

First Year of Competition.....	1972-73
Record	697-614 (.532)
Atlantic 10 Record.....	131-223 (.370)
A-10 Championship Record (app.)...	13-19 (19)
NCAA Tournament Record	1-4
NCAA Appearances	'83, '86, '88, '89
WNIT Record	0-3
WNIT Appearances	'92

TEAM INFORMATION

Head Coach	Mountain MacGillivray
Alma Mater (Year).....	Temple ('96)
Career Record	7-26
Atlantic 10 Record.....	3-13
Record at La Salle/Years
.....	Same/Second Season
E-Mail	macgillivray@lasalle.edu
Associate Head Coach	Chris Day
E-Mail	dayc@lasalle.edu
Assistant Coach	Boo Abshire
E-Mail	abshire@lasalle.edu
Assistant Coach	Sam Guastella
E-Mail	guastellas1@lasalle.edu
Director of Operations	Kim Brady
Email.....	bradyk@lasalle.edu

THE EXPLORERS

Letterwinners Returning/Lost.....	6/7
Starters Returning/Lost.....	1/4
Newcomers.....	8
2018-19 Overall Record.....	6-25
2018-19 A-10 Record	3-13
2018-19 A-10 Finish.....	13th
2018-19 Postseason	n/a

LA SALLE UNIVERSITY

Location.....	Philadelphia, Pa.
Founded.....	1863
Enrollment.....	3,200 (5,200)
President	Dr. Colleen M. Hanycz
Nickname.....	Explorers
Colors	Blue (540) and Gold (7406)
Website.....	www.lasalle.edu
Director of Athletics.....	Brian Baptiste
Athletic Website ..	www.goexplorers.com
Athletic Phone.....	215-951-1425
Home Court (Cap.) ..	Tom Gola Arena (3,400)

MEDIA RELATIONS

WBB Contact.....	Ed LeFurge III
Office Phone.....	215-991-2882
Cell Phone.....	732-600-6552
Email Address.....	lefurge@lasalle.edu
Twitter:.....	@LeFurgeIII

GIVE US SOME SPACE!

The correct spelling of our University is "La Salle", with a space in the middle. Please do not use "LaSalle."

ONE OF A KIND

With over 1,100 schools across three divisions in the NCAA, the La Salle Explorers are the only institution with the nickname 'Explorers.'

FAKE NEWS?

La Salle University's nickname - the Explorers - was announced by The Collegian in March 1932 as the winning entry to a student contest. However, in the fall of 1931, a Baltimore sportswriter covering the La Salle/St. John's (Md.) football game erroneously alluded to La Salle as being named for the French explorer La Salle, not St. John Baptist de La Salle. Were the two events related? We'll never know for sure.

SERIES HISTORY - HARVARD

Harvard holds the all-time series record, 4-1, as it claimed the last four contests. La Salle's only win came 25 years ago on the road, 86-79. The Crimson took last year's game, 88-43.

SIGNIFICANT IMPROVEMENTS AGAINST RMU

After losing to Robert Morris last year by 28 points, the Explorers nearly topped the Colonials at Tom Gola Arena on Saturday. RMU took the overtime-thriller, 71-68. Sophomore **Kayla Spruill** led La Salle with a career high 19 points, while senior **Sofilia Ngwafang** registered a double-double with 14 points and a career best 12 boards.

AUSSIE GOES OFF IN WIN OVER HOWARD

Freshman **Claire Jacobs** certainly made her presence felt on the floor in the Explorers opening win over Howard, 78-62. The Perth, Australia native tallied 20 points in her first career game on 7-of-9 shooting and 4-of-5 from the free throw line.

TOTAL TEAM EFFORT

In La Salle's win over Howard, all 10 Explorers who played in the game registered a point. Collectively, the Blue & Gold shot 45.6% from the field on 26-of-57 and out-rebounded Howard, 52-40.

GUASTELLA PROMOTED TO ASSISTANT COACH

After serving the 2018-19 season as a graduate assistant, **Sam Guastella** was promoted to a full-time assistant coach.

WELCOME ABOARD!

Kim Brady was hired as the team's director of basketball operations in August of 2019. Brady, who spent three seasons at Lafayette as an assistant coach, played college ball at UMass.

SNEAKER HEAD READY TO GO

Junior **Kate Hill** spent the 2018-19 sidelined due to NCAA transfer rules. The transfer from Rutgers is finally eligible and ready to take the court. The self-proclaimed 'sneaker head' was featured in the Philadelphia Inquirer prior to the season. Read the full story on 25-26.

BLOCK MONSTER

Senior **Shalina Miller** set the single season block record last year with 64 deflections. After the record-setting season, Miller is just 36 blocks shy of tying the all-time program record set by **Amy Griffin '18**.

SEEING DOUBLE?

Nah, that's just freshmen twins, **Amy Jacobs** and **Claire Jacobs**. The Perth, Australia natives make up 2/5 of the La Salle freshman class. The duo become the third set of sisters to don the Blue & Gold at the same time.

FRESH FACES

Outside of the Jacobs twins, rookies **Kayla Braxton-Young, Christina Kline,** and **Jordon Lewis** complete the Explorers 2019 signing class.

IT'S LIT...IN

The Explorers welcome graduate transfer **Carley Lytton** from East Tennessee State. Lytton could bring added depth and experience to the La Salle roster, especially from long range.

MOVING ON UP

Joining Lytton as a transfer this season are **junior** Haleigh Hill and sophomore **Molly Masciantonio**. Hill jumps to the Division I ranks from Dodge City Community College, while Masciantonio makes the jump from DII Holy Family.

LINE CHANGE

Head coach **Mountain MacGillivray** utilizes a unique approach in terms of substitutions.. Much like La Salle's NHL neighbor to the south, MacGillivray could run five on, five off...as the Flyers do in a line change. Utilizing this strategy allows for the entire floor be fresher than its opponents.

SMARTY PANTS

In the most recent NCAA GSR report, the La Salle women's basketball team posted a perfect 100 - one of eight teams to do so. Overall, La Salle had a score of 95, which ranks it in the 90th percentile among NCAA Division I schools nationally.

GREAT EIGHT

On Thursday, October 24, head coach **Mountain MacGillivray** and his wife, Grace, welcomed the birth of their eighth child, Emily Elizabeth.

TWO BEST FRIENDS THAT ANYONE COULD HAVE

It all started in the late 1980s at Archbishop Carroll High School. Then student managers, Mountain MacGillivray and Chris Day worked with the girls team at Carroll. Since then, the two have been waiting to coach together at the collegiate level and finally they are. More on pages 23-24.

TV TIME

For the second season in a row, all Atlantic 10 conference and non-conference games will be streamed on ESPN+. ESPN+ can be accessed on all mobile devices and online. The Explorers' home contest against St. Bonaventure will air on NBC Sports Network.

INTERNATIONAL AIR TIME

All Explorers' home games and select away games will also be available via an international stream through the Atlantic 10 and ESPN+.

O CAPTAIN, MY CAPTAIN!

The team held a vote amongst coaches, staff, and players to name captains for the 2019-20 season. After tallying votes, senior **Shalina Miller** and juniors **Kate Hill** and **Deja King** were named the team's captains for the season.

PHILADELPHIA BIG 5

Created during the 1979-80 season, the Philadelphia Big 5 women's basketball City Series will celebrate its 40th season in 2019-20. This partnership has remained intact and defines Philadelphia's collegiate sports tradition, with heated rivalries and fierce competition on the court, partnership and camaraderie off the court. The Philadelphia Big 5 even beat out Rocky Balboa to be named the City's "Best Sports Tradition" in the Philadelphia Daily News! Overall, the Explorers are 62-99 in the Big 5 and have claimed five Big 5 titles, adding 16 Big 5 women's basketball hall of famers, which is second behind Saint Joseph's 21.

OUR RECORD WHEN...

La Salle scores first.....1-0
Opponent scores first0-1

Leading at halftime.....1-0
Trailing at halftime0-1
Tied at halftime0-0

In November.....1-1
In December.....0-0
In January0-0
In February.....0-0
In March0-0

On Sunday.....0-0
On Monday.....0-0
On Tuesday.....1-0
On Wednesday.....0-0
On Thursday.....0-0
On Friday.....0-0
On Saturday.....0-1

Shoots below 35%.....0-0
Shoots between 35-40%.....0-1
Shoots between 40-45%.....0-0
Shoots over 45%.....1-0

Opponent shoots below 35%.....1-1
Opponent shoots between 35-40%.....0-0
Opponent shoots between 40-45%.....0-0
Opponent shoots over 45%.....0-0

Scores fewer than 50 points.....0-0
Scores 50-59 points.....0-0
Scores 60-69 points0-1
Scores 70-79 points.....1-0
Scores 80+ points.....0-0

Holds opponent under 50 points0-0
Allows 50-59 points.....0-0
Allows 60-69 points1-0
Allows 70+ points.....0-1

Outrebounding an opponent1-1
Outrebounded by an opponent0-0
Rebounds are even.....0-0

Games decided by five points or less...0-1
In overtime.....0-1

Largest lead.....19 points vs. Howard
Largest deficit9 points vs. Robert Morris
Largest deficit overcome.....9 points vs. Robert Morris
Largest halftime lead.....8 points vs. Howard

LAST TIME WHEN...

AN INDIVIDUAL...

Scored 20 Points.....	11/5/19 at Howard - Claire Jacobs (20)
Scored 30 Points.....	11/10/17 at Lafayette - Amy Griffin (30)
Two Players Scored 20 Points.....	3/6/14 vs. Saint Louis - Micahya Owens (23) and Alicia Cropper (20)
Three Players Scored 10 Points.....	11/9/19 vs. Robert Morris - Kayla Spruill (19), Sofilia Ngwafang (14), and Jordon Lewis (10)
Four Players Scored 10 Points.....	1/26/19 vs. Richmond - Shayla Sweeney (11), Jeryn Reese (10)Shalina Miller (10), Rayshel Brown (10)
Five Players Scored 10 Points.....	2/17/19 - Shayla Sweeney (13), Shalina Miller (12)Jeryn Reese (10), Michelle Nicholls (10), Janay Sanders (10)
Six Players Scored 10 Points.....	11/22/10 vs. Oral Roberts - Ashley Gale (22), Alexis Scott (19)Nadia Duncan (13), Ebonee Jones (12), Chelsea Conner (11), Jess Koci (10)
Had 15 Rebounds.....	3/2/19 vs. George Mason - Shalina Miller (15)
Had 10 Offensive Rebounds.....	2/1/17 at Rhode Island - Jasmine Alston (11)
Had 10 Defensive Rebounds.....	2/27/19 at St. Bonaventure - Jeryn Reese (16)
Two Players Had 10 Rebounds.....	1/23/19 vs. Duquesne - Jeryn Reese (11) and Shalina Miller (10)
Had a Double-Double in Points and Rebounds.....	11/9/19 vs. Robert Morris - Sofilia Ngwafang (14 pts, 12 rbs)
Had a Double-Double in Points and Assists.....	2/4/18 at Massachusetts - Shaquana Edwards (11 pts, 10 ast)
Two Players Had Double-Doubles.....	2/4/18 at Massachusetts - Shaquana Edwards (11 pts, 10 ast)Amy Griffin (14 pts, 10 rbs)
Made 10 Field Goals.....	2/24/18 at George Mason - Amy Griffin (11)
Made 15 Field Goals.....	2/22/17 vs. Fordham - Amy Griffin (18)
Attempted 20 Field Goals.....	2/24/18 at George Mason - Amy Griffin (20)
Shot 75% from the Field (min 10 attempts).....	1/10/18 at Harvard - Sofilia Ngwafang (9-12, 75%)
Made 10 Free Throws.....	12/19/18 vs. Pepperdine - Deja King (12-14)
Shot 100% from the Line (min. 5 attempts).....	2/7/18 vs. Saint Louis - Shaquana Edwards (10-10)
Made 5 Three-Pointers.....	12/9/18 vs. Norfolk State - Michelle Nicholls (5)
Attempted 10 Three Pointers.....	11/9/19 vs. Robert Morris - Kayla Spruill (12)
Shot 75% from 3-Point Range (min. 5 att.).....	2/7/18 vs. Saint Louis - Adreanna Miller (6-8, 75%)
Had 10 Assists.....	2/4/18 at Massachusetts - Shaquana Edwards (10)
Had 5 Blocks.....	3/2/19 vs. George Mason - Shalina Miller (6)
Had 5 Steals.....	1/8/19 at VCU - Janay Sanders (5)
Led the Team in Points, Rebounds, Assists.....	2/21/18 vs. Davidson - Amy Griffin (18 pts, 10 rbs, 5 ast.)
Played Every Minute of a Game.....	12/15/18 vs. St. John's - Deja King (40)

THE TEAM...

Won by 30 Points.....	12/21/16 vs. Delaware State - 40 pts.	Made 20 free throws.....	11/5/19 at Howard - 20 FT
Won by 40 Points.....	12/21/16 vs. Delaware State - 40 pts.	Made less than 5 free throws.....	2/14/19 at George Mason - 4 FTs
Scored 100 Points.....	2/20/91 vs. Iona - 100 pts.	Shot 90% from the line.....	1/31/19 vs. Fordham - 4-4, 100%
Scored Under 50 Points.....	2/14/19 at George Mason - 42 pts.	Made 10 three pointers.....	3/2/19 vs. George Mason - 10 3PT
Scored Under 40 Points.....	1/8/19 at VCU - 38 pts.	Made no three pointers.....	12/9/17 at North Texas
Scored 50 Points in a Half.....	2/7/18 vs. Saint Louis - 50 pts. (2nd Half)	Shot At Least 40% from three point range.....3/2/19 vs. George Mason - 47.6%
Scored Under 20 Points in a Half.....	2/27/19 at St. Bonaventure - 18 pts. (1st Half)	Attempted at least 20 threes.....	11/9/19 vs. Robert Morris - 27 3FG
Had 50 Rebounds.....	11/9/19 vs. Robert Morris - 55 rbs.	Attempted Less than 5 threes.....	1/28/18 vs. Saint Joseph's - 4 3FG
Had Less than 25 Rebounds.....	1/31/19 vs. Fordham - 24 rbs.	Had 20 assists.....	1/9/17 vs. Rhode Island - 22 ast.
Had 20 Offensive Rebounds.....	11/5/19 at Howard - 21 rbs.	Had less than 5 assists.....	11/11/18 at Robert Morris - 4 ast.
Had 25 Offensive Rebounds.....	2/1/17 at Rhode Island - 35 rbs.	Had 25 turnovers.....	11/9/19 vs. Robert Morris - 33 TO
Had 30 Defensive Rebounds.....	11/9/19 vs. Robert Morris - 36 rbs.	Had 10 blocks.....	2/4/18 at Massachusetts - 10
Made 30 Field Goals.....	2/7/15 vs. Massachusetts - 30 FG	Had no blocks.....	2/6/19 vs. Rhode Island
Made Less Than 15 Field Goals.....	1/8/19 at VCU - 14 FG	Had 10 steals.....	2/27/19 at St. Bonaventure - 10 stls.
Attempted 75 Field Goals.....	11/26/16 vs. Miami (OH) - 76 FG	Had less than 5 steals.....	1/20/19 at St. Joe's - 4 stls.
Attempted Less Than 40 Field Goals.....	2/1/18 at George Wash. - 39 FG	Last overtime game.....	11/9/19 vs. Robert Morris - L, 71-68 OT
Shot At Least 50% from the field.....	11/29/17 vs. Penn - 25-45, 55.6%	Last overtime victory at home.....	3/2/19 vs. George Mason - W, 77-71 OT
Shot At Least 60% from the field.....	12/29/09 vs. Holy Cross - 27-45, 60%	Last overtime victory on the road.....	12/7/16 at Penn - W, 58-56 OT



Mountain MacGILLIVRAY

HEAD COACH | SECOND SEASON | TEMPLE '96

Mountain MacGillivray, a Philadelphia native who helped lead Quinnipiac to seven straight 20-win seasons and a trip to the Sweet 16 in 2017, was appointed the ninth head coach in La Salle University women's basketball history, in April of 2018. He begins his second year at the helm of the program in 2019-20.

MacGillivray spent the previous nine seasons at Quinnipiac, including the last three as the associate head coach. The Bobcats had tremendous success during MacGillivray's tenure, qualifying for the NCAA Tournament in four of his last five seasons, including three wins in NCAA play over the final two.

MacGillivray's role with the Bobcats evolved through the years and one of his greatest responsibilities is within the recruiting of prospective student-athletes. His success in the recruiting landscape has only improved through the years as his last two incoming classes featured the four highest-ranked recruits in program history. In his eight years with the Bobcats, MacGillivray helped guide 18 All-Conference players, including 10 in his final three seasons, as well as three Defensive Player of the Year award winners and three Tournament MVPs.

Quinnipiac went undefeated in the MAAC in 2017-18 for the third time in six years, winning the conference regular season title

for the fifth time in six seasons. After earning the league's automatic bid into the NCAA Tournament with a victory over Marist in the MAAC title game, the Bobcats earned a No. 9 seed and defeated Miami (Fla.) in the opening round.

In 2016-17, MacGillivray helped Quinnipiac to a pair of upset wins in NCAA Tournament action, defeating Marquette and Miami (Fla.) en route to the Sweet 16. The Bobcats won four conference championships and averaged 26 wins over that seven year span, and head coach Tricia Fabbri won MAAC Coach of the Year four times with the contributions of MacGillivray.

Prior to Quinnipiac, MacGillivray served as assistant coach and recruiting coordinator at the University of New Hampshire for two seasons from 2007-09, helping the Wildcats improve their finish in the conference in both seasons.

He got his start in collegiate coaching as an assistant at the University of Vermont in 1999-00, guiding the Catamounts to the NCAA Tournament that year after winning the America East regular season and tournament championships.

MacGillivray has 13 years of experience coaching at the high



school and AAU levels, helping turn Archbishop Carroll High School in Radnor, Pennsylvania into one of the most successful prep programs in the country. He also guided the Philadelphia AAU Lady Running Rebels from 2000-02 and Delaware Valley Comets AAU team in 2006.

A 1996 graduate of Temple with a degree in Journalism, MacGillivray and his wife Grace have eight children: Chiara, Mary, Brigid, Sean, Catherine, Joseph, Theresa, and Emily.

WHAT THEY'RE SAYING...

"It is rare in this business to get a coach on staff who cares about the program with the same attention to detail that you do. For the past nine years, Mountain has been that coach. We've experienced unprecedented success here during his tenure and he bears a great deal of responsibility for that from the recruitment of next level student-athletes that we've had to their remarkable development as both people and players. I can't overstate what he's meant to the improvement of this program and the impact he's had on my life. I'm proud to have had him as a colleague and privileged to call him a friend."

-Tricia Fabbri

Head WBB Coach, Quinnipiac



MacGILLIVRAY FILE

PERSONAL

Year Coaching24th season
 College Temple '96
 B.A. in Journalism
 Hometown..... Philadelphia, Pa.
 High School..... Archbishop Carroll
 Birthday January 7
 Spouse Grace
 Children..... Chiara, Mary, Brigid, Sean
 Catherine, Joseph, Theresa, Emily

COACHING EXPERIENCE

La Salle University

Head Coach, 1 season

Season	Overall	Conf.	Post.
2018-19	6-25	3-13	-
2019-20	1-1	-	-
Totals	7-26	3-13	

Quinnipiac University

Associate Head Coach, 3 seasons

Assistant Coach, 6 seasons

Season	Overall	Conf.	Post.
2017-18	28-6	18-0	NCAA 2nd Rd.
2016-17	29-7	17-3	NCAA Sweet 16
2015-16	25-9	17-3	WNIT 2nd Rd.
2014-15	31-4	20-0	NCAA 1st Rd.
2013-14	21-13	14-6	WNIT 1st Rd.
2012-13	30-3	18-0	NCAA 1st Rd.
2011-12	22-10	13-5	WNIT 1st Rd.
2010-11	14-16	11-7	-
2009-10	12-18	7-11	-
Totals	212-86	135-35	

2018 MAAC Champion

2017 MAAC Champion

2015 MAAC Champion

2013 NEC Champion

University of New Hampshire

Assistant Coach, 2 seasons

Season	Overall	Conf.	Post.
2008-09	8-23	6-10	-
2007-08	7-21	4-11	-
Totals	15-44	10-21	

Archbishop Carroll High School

Assistant Coach, 11 years

1995-99, 2000-07

2007 Philadelphia Catholic League Champ.

2004 Philadelphia Catholic League Champ.

2003 Philadelphia Catholic League Champ.

Vermont University

Assistant Coach, 1 season

Season	Overall	Conf.	Post.
1999-00	25-6	15-3	NCAA 1st Rd.
Totals	25-6	15-3	

2000 America East Champion



Carley LYTTON

2

GRADUATE | FORWARD | 5-10 | FLOYD, VA. | FLOYD COUNTY | EAST TENNESSEE STATE

MAJOR

MBA

CAREER HIGHS**Points**

19, NC A&T 12/14/18

Rebounds

9, Brevard 11/21/15

Assists

4, NC A&T 12/14/18

Blocks

1, 11 times

Steals

3, Chattanooga 2/9/19

Field Goals

6, NC A&T 12/14/18

Field Goal Att.

17, Brevard 11/21/15

3-Points Field Goals

6, NC A&T 12/14/18

3-Point Field Goal Att.

11, Brevard 11/21/15

Free Throws

3, three times

Free Throw Att.

4, four times

Minutes Played

40, UNC Asheville 12/11/18

2019-20: Joined the La Salle roster as a graduate transfer.**2018-19 (East Tennessee State):** Saw action in 30 games with 10 starts... Scored 4.9 points and corralled 1.2 rebounds per game... Shot 35.2% from the field, including 34.6% from long range.**2017-18 (East Tennessee State):** Missed the season due to injury.**2016-2017 (East Tennessee State):** Played in 28 games... Averaged 3.8 points and 1.0 rebounds per outing.**2015-2016 (East Tennessee State):** Appeared in 28 games, making six starts... Averaged 4.1 points and 1.9 rebounds per game.**Background:** Graduated from Floyd County High School in 2015... Led team to 2013 Group A Div. II Virginia State Championship... Garnered First Team All-State and First Team All-State Tournament team honors... Earned 2014 First Team Virginia High School Coaches Association All-State... Named to the 13th annual "Doc" Maples Holiday Hoops All-Tournament team.**Personal:** Daughter of Michael and Michele Lytton... Played AAU for Carolina All-Stars.

YEAR	GP-GS	MIN-AVG.	FG-FGA	PCT	3P-3PA	PCT	FT-FTA	PCT	OFF	DEF	TOT	AVG	PF-FD	A	TO	BLK	ST	PTS	AVG
15-16	28-6	428/15.3	39-141	.277	28-102	.275	10-20	.500	10	42	52	1.9	30-0	16	38	5	11	116	4.1
16-17	28-0	396/14.1	36-122	.295	28-99	.283	6-11	.546	6	22	28	1.0	28-0	11	19	2	8	106	3.8
17-18	1-0	0/0.0	0-1	.000	0-0	.000	0-0	.000	0	0	0	0.0	0-0	0	0	0	0	0	0.0
18-19	30-10	444/14.8	45-128	.352	37-107	.346	20-26	.769	4	31	35	1.2	21-0	16	31	4	11	147	4.9
19-20	2-0	27/13.6	3-9	.333	3-8	.375	0-0	.000	0	2	2	1.0	2-0	1	4	0	1	9	4.5
CAR.	89-16	1296/14.6	123-401	.307	96-317	.303	36-57	.632	20	97	117	1.3	81-0	44	92	11	31	378	4.2



Kayla ³BRAXTON-YOUNG

FRESHMAN | GUARD | 5-7 | NEWARK, DEL. | PAUL M. HODGSON VOC. TECH.

MAJOR

Education

CAREER HIGHS

Points

2, at Howard 11/5/19

Rebounds

4, at Howard 11/5/19

Assists

1, at Howard 11/5/19

Blocks

n/a

Steals

1, twice

Field Goals

1, at Howard 11/5/19

Field Goal Att.

6, at Howard 11/5/19

3-Points Field Goals

n/a

3-Point Field Goal Att.

1, twice

Free Throws

n/a

Free Throw Att.

2, at Howard 11/5/19

Minutes Played

11, at Howard 11/5/19

Background: Graduated from Paul M. Hodgson Vocational Technical in 2019... Played four different sports... Four-year letterwinner in basketball and volleyball... Two-year letterwinner in lacrosse and softball... Top point scorer in school history for basketball with 1,786... Four-time First Team All-Conference... Three-time All-State... Member of the National Honor Society and National Society of High School Scholars... Played AAU for PF Stars Elite.

Personal: Daughter of Jacqueline Braxton... Has three sisters... Twin sister attends Johnson and Wales... Lived in Mt. Airy section of Philadelphia until third grade.

YEAR	GP-GS	MIN-AVG.	FG-FGA	PCT	3P-3PA	PCT	FT-FTA	PCT	OFF	DEF	TOT	AVG	PF-FO	A	TO	BLK	ST	PTS	AVG
19-20	2-0	21/10.7	1-7	.143	0-2	.000	0-2	.000	2	5	7	3.5	2-0	1	3	0	2	2	1.0
CAR.	2-0	21/10.7	1-7	.143	0-2	.000	0-2	.000	2	5	7	3.5	2-0	1	3	0	2	2	1.0



Kate HILL

4

JUNIOR | GUARD | 5-7 | TORONTO, ONTARIO | THE PEDDIE SCHOOL | RUTGERS

MAJOR

Communications

CAREER HIGHS**Points**

8, twice

Rebounds

4, at Elon 11/14/16

Assists

3, twice

Blocks

n/a

Steals

2, at Charlotte 11/16/17

Field Goals

3, twice

Field Goal Att.

10, at Princeton 11/25/16

3-Points Field Goals

2, FDU 12/10/17

3-Point Field Goal Att.

8, at Princeton 11/25/16

Free Throws

1, three times

Free Throw Att.

2, three times

Minutes Played

30, Chattanooga 11/11/16

2018-19: Named to Atlantic 10 Commissioner's Honor Roll... Sat out due to NCAA transfer rules.

2017-2018 (at Rutgers): Earned Academic All-Big Ten Honors... Appeared in 22 contests with four starts ... Averaged 1.4 points, 1.0 assists and 0.6 rebounds per game ... Scored a career-high eight points vs. Fairleigh Dickinson (Dec. 10), going 3-for-6 from the floor and 2-of-3 from behind the arc ... Logged a season-high 16 minutes vs. Illinois (Jan. 3) ... Handed out an assist three times vs. Charlotte (Nov. 16) ...

2016-17 (at Rutgers): Made eight appearances, including three starts, before being sidelined with a stress fracture ... Missed the final 21 games of the year ... Scored a season-high five points in the win over Bryant (Nov. 27) ... Played a season-high 20 minutes in the double overtime contest with James Madison (Dec. 5) ... Grabbed a season-high four rebounds at Elon (Nov. 14) ... Dished the ball out three times in her Scarlet Knight debut in the season opener with Chattanooga (Nov. 11).

Background: A 2016 graduate of The Peddie School... Played four years of basketball... Named Team MVP in her senior season, averaging 12 points per game... Named to the Times of Trenton All-Area team as a junior, with 13 points and three assists per game... Also participated in soccer and track.

Personal: Daughter of Pam Prophet and Sam Hill... Father played basketball at University of Toronto... Mother was a triple and long jumper at University of Toronto... Sister, Sami, played four years of basketball at Virginia Tech... Brothers, Alex and Jake, played four years of collegiate baseball.

YEAR	GP-GS	MIN-AVG.	FG-FGA	PCT	3P-3PA	PCT	FT-FTA	PCT	OFF	DEF	TOT	AVG	PF-FO	A	TO	BLK	ST	PTS	AVG
16-17	8-3	148/18.5	6-28	.214	4-20	.200	0-0	.000	3	9	12	1.5	11-1	9	6	0	3	16	2.0
17-18	22-4	202-9.2	11-43	.256	6-23	.261	3-6	.500	3	10	13	0.6	11-0	21	18	0	6	31	1.4
19-20	2-0	38/19.1	2-8	.250	1-5	.200	0-0	.000	3	2	5	2.5	5-0	3	5	0	0	5	2.5
CAR.	32-7	388/12.1	19-79	.241	11-48	.229	3-6	.500	9	21	30	0.9	27-1	33	29	0	9	52	1.6



Christina KLINE

5

FRESHMAN | GUARD | 5-10 | WINTER GARDENS, FLA. | WEST ORANGE

MAJOR

Criminal Justice

CAREER HIGHS**Points**

n/a

Rebounds

n/a

Assists

n/a

Blocks

n/a

Steals

n/a

Field Goals

n/a

Field Goal Att.

n/a

3-Points Field Goals

n/a

3-Point Field Goal Att.

n/a

Free Throws

n/a

Free Throw Att.

n/a

Minutes Played

1, Robert Morris 11/9/19

Background: Graduated from West Orange High School in 2019... Finished high school career as back-to-back District Champions... Scored over 1,000 career points... Played AAU for SMAC Florida.

Personal: Daughter of Johnny and Kelly Kline.

YEAR	GP-GS	MIN-AVG.	FG-FGA	PCT	3P-3PA	PCT	FT-FTA	PCT	OFF	DEF	TOT	AVG	PF-FO	A	TO	BLK	ST	PTS	AVG
19-20	1-0	1/1.2	0-0	.000	0-0	.000	0-0	.000	0	0	0	0.0	0-0	0	0	0	0	0	0.0
CAR.	1-0	1/1.2	0-0	.000	0-0	.000	0-0	.000	0	0	0	0.0	0-0	0	0	0	0	0	0.0



Claire JACOBS

10

FRESHMAN | GUARD | 6-0 | PERTH, AUSTRALIA | KENNEDY BAPTIST COLLEGE

MAJOR

Undecided Liberal Arts

CAREER HIGHS**Points**

20, at Howard 11/5/19

Rebounds

1, twice

Assists

2, Robert Morris 11/9/19

Blocks

1, Robert Morris 11/9/19

Steals

n/a

Field Goals

7, at Howard 11/5/19

Field Goal Att.

9, at Howard 11/5/19

3-Points Field Goals

2, at Howard 11/5/19

3-Point Field Goal Att.

4, Robert Morris 11/9/19

Free Throws

4, at Howard 11/5/19

Free Throw Att.

5, at Howard 11/5/19

Minutes Played

28, at Howard 11/5/19

Background: Graduated from Kennedy Baptist College in 2018... 2018 Australian School D1 Finals MVP... Member of the Australian School D1 Championship team.

Personal: Daughter of Samantha and Adam Jacobs... Twin sister is Amy Jacobs... Led the Australian U18 State Team in scoring and ranked 14th in the country during the Australian National Championships... Played with the Lakeside Lightning in the WABL, earning all-star honors from 2014 through 2018.

YEAR	GP-GS	MIN-AVG.	FG-FGA	PCT	3P-3PA	PCT	FT-FTA	PCT	OFF	DEF	TOT	AVG	PF-FO	A	TO	BLK	ST	PTS	AVG
19-20	2-2	51/25.3	10-16	.625	3-7	.429	4-5	.800	1	1	2	1.0	9-1	2	9	1	0	27	13.5
CAR.	2-2	51/25.3	10-16	.625	3-7	.429	4-5	.800	1	1	2	1.0	9-1	2	9	1	0	27	13.5



Deja KING

11

JUNIOR | GUARD | 5-7 | TRENTON, N.J. | LIFE CENTER ACADEMY

MAJOR

Criminal Justice

CAREER HIGHS

Points

16, vs. NKU 12/19/18

Rebounds

7, vs. Pepperdine 12/20/18

Assists

7, at George Mason 2/24/18

Blocks

1, nine times

Steals

4, twice

Field Goals

5, twice

Field Goal Att.

12, Howard 11/6/18

3-Points Field Goals

3, at Penn 12/6/18

3-Point Field Goal Att.

6, twice

Free Throws

12, vs. NKU 12/20/18

Free Throw Att.

14, vs. NKU 12/20/18

Minutes Played

40, St. John's 12/15/18

2018-19: Started 12 of 14 games played before missing the rest of the season due to a broken ankle... Led the team in scoring (9.0), assists (2.4), and steals (1.9) per game prior to injury... Dropped 10+ points in seven of 14 games, including six of her last seven... Scored a career high 15 points at Towson.

2017-18: Appeared in all 30 games as a freshman, making six starts... Averaged 2.1 points, 2.0 rebounds and 2.0 assists per game... Scored season-high 11 points against Delaware State (12/17)... Dished season-high seven assists at George Mason (2/24) in regular season finale... Pulled down season-high five rebounds twice, against Davidson (2/21) and at George Washington (2/27) in the A-10 Championship opening round... Averaged 20.5 minutes per game... Shot 30.8 percent (20-65) from the floor and 58.8 percent (20-34) from the foul line.

YEAR	GP-GS	MIN-AVG.	FG-FGA	PCT	3P-3PA	PCT	FT-FTA	PCT	OFF	DEF	TOT	AVG	PF-FO	A	TO	BLK	ST	PTS	AVG
17-18	30-6	616-20.5	20-65	.308	2-10	.200	20-34	.588	8	52	60	2.0	54-1	59	64	4	14	62	2.1
18-19	14-12	437-31.2	34-105	.324	10-35	.286	48-64	.750	7	34	41	2.9	37-0	34	49	5	27	126	9.0
19-20	2-2	52-26.1	3-7	.429	2-4	.500	7-12	.583	1	5	6	3.0	5-1	8	9	1	3	15	7.5
CAR.	46-20	1105/24.0	57-177	.322	14-49	.286	75-110	.682	16	91	107	2.3	96-2	101	122	10	44	203	4.4



Molly MASCIAANTONIO

12

SOPHOMORE | GUARD | 5-10 | MORTON, PA. | ARCHBISHOP CARROLL

MAJOR

Undecided Liberal Arts

CAREER HIGHS**Points**

25, Bloomsburg 11/20/18

Rebounds

10, at DC 11/17/18

Assists

10, Uni. Sciences 2/13/19

Blocks

2, twice

Steals

4, four times

Field Goals

10, Bloomsburg 11/20/18

Field Goal Att.

18, Millersville 12/30/18

3-Points Field Goals

5, DC 11/9/28

3-Point Field Goal Att.

9, Wilmington 2/27/19

Free Throws

6, Dominican 1/27/19

Free Throw Att.

6, Dominican 1/27/19

Minutes Played

42, Dominican 1/27/19

2019-20: Transferred to La Salle following one year at Holy Family ... will sit out due to NCAA transfer rules.

2018-19 (Holy Family): Led her team in points, rebounds, steals, and blocks... Averaged 13.3 ppg and 5.6 rpg... Named CACC Rookie of the Week twice.

Background: Four-year letterwinner at Archbishop Carroll... Three-time All-Catholic... Two-time All-Delco... Two-time All-Mainline... One-time All-State... Lettered three years in volleyball... Won Catholic League Volleyball Title.

Personal: Daughter of James and Susanne Masciantonio... Played for Comets AAU.

YEAR	GP-GS	MIN-AVG.	FG-FGA	PCT	3P-3PA	PCT	FT-FTA	PCT	OFF	DEF	TOT	AVG	PF-FO	A	TO	BLK	ST	PTS	AVG
18-19	27-27	955/35.4	133-333	.399	40-121	.331	54-74	.730	20	132	152	5.6	39-0	101	87	10	50	360	13.3
CAR.	27-27	955/35.4	133-333	.399	40-121	.331	54-74	.730	20	132	152	5.6	39-0	101	87	10	50	360	13.3



Haleigh HILL

14

JUNIOR | FORWARD | 6-0 | ALLEN, TEXAS | ALLEN | DODGE CITY CC

MAJOR

Marketing

CAREER HIGHS

Points

n/a

Rebounds

n/a

Assists

n/a

Blocks

n/a

Steals

1, Robert Morris 11/9/19

Field Goals

n/a

Field Goal Att.

n/a

3-Points Field Goals

n/a

3-Point Field Goal Att.

n/a

Free Throws

n/a

Free Throw Att.

n/a

Minutes Played

2, Robert Morris 11/9/19

2019-20: Transferred to La Salle.

2018-19 (Dodge City CC): Played in 30 games, starting 14... Led her team with 7.8 pints and 5.7 rebounds per contest... Shot 40.5% from the field.

2017-18 (South Plains): Appeared in 29 games, making two starts... Averaged 3.3 points and 4.2 rebounds per game... Shot 41.5% from the floor.

Background: Graduated from Allen in 2017... Four-year lettwinner in basketball... One-year letter-winner in track and field.

Personal: Daughter of Linda Sue Hill... Mother played basketball at Henderson State... Played AAU fir Texas Elite.

YEAR	GP-GS	MIN-AVG.	FG-FGA	PCT	3P-3PA	PCT	FT-FTA	PCT	OFF	DEF	TOT	AVG	PF-FO	A	TO	BLK	ST	PTS	AVG
19-20	1-0	2/2.0	0-0	.000	0-0	.000	0-0	.000	0	0	0	0.0	0-0	0	0	0	1	0	0.0
CAR.	1-0	2/2.0	0-0	.000	0-0	.000	0-0	.000	0	0	0	0.0	0-0	0	0	0	1	0	0.0



Kayla SPRUILL

15

SOPHOMORE | FORWARD | 6-0 | BALTIMORE, MD

MAJOR

Marketing

CAREER HIGHS**Points**

19, Robert Morris 11/9/19

Rebounds

10, Howard 11/6/18

Assists

4, Norfolk State 12/9/18

Blocks

2, three times

Steals

3, Drexel 11/28/18

Field Goals

6, at Providence 12/21/18

Field Goal Att.

17, Robert Morris 11/9/19

3-Points Field Goals

3, three times

3-Point Field Goal Att.

12, Robert Morris 11/9/19

Free Throws

6, three times

Free Throw Att.

10, at Howard 11/5/19

Minutes Played

32, George Mason 3/2/19

2018-19: Named to Atlantic 10 Commissioner's Honor Roll... Played in all 31 games as a true freshman... Made nine starts on the season... Averaged 5.2 points per contest... Neared a double-double in first career game with 10 boards and nine points... Scored a career high 16 points in the upset over George Mason to end the regular season.

Background: A 2018 graduate of Western School of Technology and Environmental Science... Missed senior and sophomore years due to injury... Played two years of basketball... Named First Team All-County in freshman and junior seasons... Also played volleyball.

Personal: Daughter of Janee and Gene Spruill... Father played basketball at Pittsburgh University... Mother ran track at Collin University.

YEAR	GP-GS	MIN-AVG.	FG-FGA	PCT	3P-3PA	PCT	FT-FTA	PCT	OFF	DEF	TOT	AVG	PF-FO	A	TO	BLK	ST	PTS	AVG
18-19	31-9	529/17.1	51-153	.333	22-81	.272	36-55	.655	32	42	74	2.4	40-0	16	32	10	19	160	5.2
19-20	2-2	61/30.7	8-25	.320	4-15	.267	11-18	.611	0	15	15	7.5	3-0	1	3	1	1	31	15.5
CAR.	33-11	590/17.9	59-178	.331	26-96	.271	47-73	.644	32	57	89	2.7	43-0	17	35	11	20	191	5.8



Jordon
LEWIS

22

FRESHMAN | FORWARD | 5-10 | HOUSTON, TEXAS | WESTSIDE

MAJOR

Biology

CAREER HIGHS

Points

10, Robert Morris 11/9/19

Rebounds

6, twice

Assists

5, at Howard 11/5/19

Blocks

1, at Howard 11/5/19

Steals

2, at Howard 11/5/19

Field Goals

4, Robert Morris 11/9/19

Field Goal Att.

7, at Howard 11/5/19

3-Points Field Goals

n/a

3-Point Field Goal Att.

1, at Howard 11/5/19

Free Throws

2, Robert Morris 11/9/19

Free Throw Att.

4, Robert Morris 11/9/19

Minutes Played

32, Robert Morris 11/9/19

Background: Graduated from Westside in 2019... Three-time All-District.

Personal: Daughter of Tammeka Watts and Aric Lewis.

YEAR	GP-GS	MIN-AVG.	FG-FGA	PCT	3P-3PA	PCT	FT-FTA	PCT	OFF	DEF	TOT	AVG	PF-FO	A	TO	BLK	ST	PTS	AVG
19-20	2-2	62/30.9	6-17	.353	0-1	.000	2-4	.500	8	4	12	6.0	2-0	9	7	1	2	14	7.0
CAR.	2-2	62/30.9	6-17	.353	0-1	.000	2-4	.500	8	4	12	6.0	2-0	9	7	1	2	14	7.0



Amy
JACOBS

24

FRESHMAN | GUARD | 5-10 | PERTH, AUSTRALIA | KENNEDY BAPTIST COLLEGE

MAJOR

Undecided Liberal Arts

CAREER HIGHS

Points

8, at Howard 11/5/19

Rebounds

2, twice

Assists

1, Robert Morris 11/9/19

Blocks

n/a

Steals

2, at Howard 11/5/19

Field Goals

3, at Howard 11/5/19

Field Goal Att.

7, at Howard 11/5/19

3-Points Field Goals

n/a

3-Point Field Goal Att.

2, at Howard 11/5/19

Free Throws

2, at Howard 11/5/19

Free Throw Att.

2, at Howard 11/5/19

Minutes Played

17, Robert Morris 11/9/19

Background: Graduated from Kennedy Baptist College in 2018... Member of the Australian School D1 Championship team.

Personal: Daughter of Samantha and Adam Jacobs... Twin sister is Claire Jacobs... WABL MVP runner up in 2016, 2017, and 2018... Won the SBL and the D League titles in 2018.

YEAR	GP-GS	MIN-AVG.	FG-FGA	PCT	3P-3PA	PCT	FT-FTA	PCT	OFF	DEF	TOT	AVG	PF-FO	A	TO	BLK	ST	PTS	AVG
19-20	2-0	27/13.4	3-10	.300	0-3	.000	2-2	1.000	2	2	4	2.0	4-0	1	7	0	2	8	4.0
CAR.	2-0	27/13.4	3-10	.300	0-3	.000	2-2	1.000	2	2	4	2.0	4-0	1	7	0	2	8	4.0



Shalina MILLER

25

SENIOR | CENTER | 6-2 | PHILADELPHIA, PA. | ARCHBISHOP PRENDERGAST

MAJOR

Communications

CAREER HIGHS**Points**

17, George Mason 3/2/19

Rebounds

15, George Mason 3/2/19

Assists

4, St. Joe's 2/17/19

Blocks

6, George Mason 3/2/19

Steals

4, UMass 1/13/19

Field Goals

7, five times

Field Goal Att.

13, three times

3-Points Field Goals

2, George Mason 3/2/19

3-Point Field Goal Att.

3, three times

Free Throws

7, George Mason 3/2/19

Free Throw Att.

8, twice

Minutes Played

35, three times

2018-19: Played in all 31 games, making 28 starts... Set the program single season block record with 64 deflections... Finished third on the team with 8.1 points per game and 6.8 rebounds per outing... Scored 10 or more points in 11 games... Notched 10 or more rebounds in six games... Set a career high in points (17) and rebounds (15) in the upset of George Mason to end the regular season... Recorded three double-doubles on the year.

2017-18: Started all 30 games as a sophomore in 2017-18... Averaged 8.2 points, 4.9 rebounds and 1.0 blocks per game... Shot 51.4 percent (107-for-208) from the field, which ranked fourth in the Atlantic 10 last season... Finished second on the team with 29 blocks... Scored career-high 16 points in the season-opener at Lafayette (11/10)... Scored in double figures in 13 games... Grabbed career-high 12 rebounds against Saint Louis (2/7)... Grabbed 10 rebounds against Rider (12/6) and Richmond (1/6)... Had a season-high four blocks against Delaware State (12/17)... Averaged 23.2 minutes per game.

2016-17: Appeared in all 30 games as a freshman, making four starts... Made first collegiate start in the season opener against Lafayette (11/11)... Averaged 2.4 points and 1.7 rebounds per game... Played a season-high 21 minutes against American (11/20)... Scored a career-high 14 points against Delaware State (12/21)... Snatched a career-high six rebounds twice, at Dayton (12/6) and Delaware State... Also blocked a season-high four shots against DSU.

Background: Graduated from Archbishop Prendergast in 2015... First Team All-Catholic as a senior, averaging over 18 points, six rebounds and four blocks per game... Second Team All-Catholic as a junior after averaging 14 points, four rebounds and three blocks... Played AAU for Fencor.

Personal: Daughter of Linda and Shawn Miller.

YEAR	GP-GS	MIN-AVG.	FG-FGA	PCT	3P-3PA	PCT	FT-FTA	PCT	OFF	DEF	TOT	AVG	PF-FO	A	TO	BLK	ST	PTS	AVG
16-17	30-4	280/9.3	35-81	.432	0-0	.000	2-8	.250	16	36	52	1.7	28-0	4	22	20	6	72	2.4
17-18	30-30	696/23.2	107-208	.514	0-0	.000	31-49	.633	53	94	147	4.9	67-0	9	62	29	8	245	8.2
18-19	31-28	783-25.3	101-245	.412	4-26	.154	45-72	.625	71	139	210	6.8	75-3	28	75	64	45	251	8.1
19-20	2-2	45/22.3	5-8	.625	0-0	.000	5-7	.714	7	11	18	9.0	8-1	1	7	5	0	15	7.5
CAR.	93-64	1803/19.4	248-542	.458	4-26	.154	83-136	.610	147	280	427	4.6	178-4	42	166	118	59	583	6.3



Erin

MORGAN

33

SOPHOMORE | GUARD | 5-8 | WILLOW GROVE, PA. | ARCHBISHOP WOOD

MAJOR

Accounting

CAREER HIGHS**Points**

6, George Mason 3/2/19

Rebounds

3, three times

Assists

1, four times

Blocks

n/a

Steals

2, at George Mason 2/14/19

Field Goals

2, George Mason 3/2/19

Field Goal Att.

4, at Oregon St. 12/1/18

3-Points Field Goals

2, George Mason 3/2/19

3-Point Field Goal Att.

3, twice

Free Throws

2, at Towson 11/18/18

Free Throw Att.

2, twice

Minutes Played

18, George Mason 3/2/19

2018-19: Named to Atlantic 10 Commissioner's Honor Roll... Joined the team as a walk-on, playing in 28 games as a true freshman... Made seven starts... Scored first collegiate points in first career start at Towson... Played a season high 20 minutes in the Atlantic 10 First Round game at #4 Dayton.

Background: A 2018 graduate of Archbishop Wood...Earned Second Team All-Catholic honors as a senior...Aided team to 2016 and 2017 State Championship Title...Helped team to a 2016 Philadelphia Catholic League Championship.

YEAR	GP-GS	MIN-AVG.	FG-FGA	PCT	3P-3PA	PCT	FT-FTA	PCT	OFF	DEF	TOT	AVG	PF-FO	A	TO	BLK	ST	PTS	AVG
18-19	28-7	260/9.3	3-24	.125	2-19	.105	3-4	.750	7	15	22	0.8	24-0	4	9	0	7	11	0.4
19-20																			
CAR.	28-7	260/9.3	3-24	.125	2-19	.105	3-4	.750	7	15	22	0.8	24-0	4	9	0	7	11	0.4



Sofilia NGWAFANG

35

SENIOR | CENTER | 6-4 | SILVER SPRINGS, MD. | PAINT BRANCH
MAJOR

Psychology

CAREER HIGHS
Points

18, Rhode Island 2/6/19

Rebounds

12, Robert Morris 11/9/19

Assists

1, nine times

Blocks

2, Robert Morris 11/9/19

Steals

2, Rhode Island 2/6/19

Field Goals

9, at Harvard 1/10/18

Field Goal Att.

13, Rhode Island 2/6/19

3-Points Field Goals

n/a

3-Point Field Goal Att.

n/a

Free Throws

7, Rhode Island 2/1/17

Free Throw Att.

10, Rhode Island 2/6/19

Minutes Played

32, at Penn 12/7/16

2018-19: Played in nine games making one start... Averaged 7.0 points per contest... Dropped a career high 18 points in the win over Rhode Island.

2017-18: Appeared in all 30 games as a sophomore, making six starts...Averaged 5.4 points and 4.0 rebounds in 14.0 minutes per game...Shot 54.5 percent from the floor (66-for-121)...Matched career-high of 18 points against Harvard (1/10)...Dropped 13 points in win over Lehigh in Christmas City Classic title game (11/26)...Scored in double figures in seven games...Grabbed season-high eight rebounds at Wisconsin (12/2)...Added 10 points in 16 minutes off the bench in win over VCU (1/25).

2016-17: Named A-10 Rookie of the Week on Feb. 6...Appeared in all 30 games as a true freshman, including 10 starts...Averaged 4.5 points and 3.3 rebounds per game...Made first career start against American (11/20)...Scored a season-high 18 points against George Washington (2/4)...Registered first career double-double with 17 points and 11 rebounds in a win at Massachusetts (2/19) to help Explorers clinch home-court advantage in the first round of the A-10 Championship...Reached double figures for the first time with 11 points in a win at Rhode Island (2/1)...Hit a season-high seven free throws at Rhody.

Background: Graduated from Paint Branch High School in 2016... Averaged 12.8 points and six rebounds per game as a senior... Won a pair of Regional Championships and three straight Division Championships for the Panthers... Named Freshman Female Athlete of the Year at Blake High School... Played AAU for Team Takeover.

YEAR	GP-GS	MIN-AVG.	FG-FGA	PCT	3P-3PA	PCT	FT-FTA	PCT	OFF	DEF	TOT	AVG	PF-FD	A	TO	BLK	ST	PTS	AVG
16-17	30-10	423/14.1	48-113	.425	0-0	.000	40-70	.571	50	49	99	3.3	46-0	3	34	9	3	136	4.5
17-18	30-6	420/14.0	66-121	.546	0-0	.000	31-68	.456	64	56	130	4.0	58-2	3	45	13	3	163	5.4
18-19	9-1	124/13.8	25-46	.544	0-0	.000	13-29	.448	17	18	35	3.9	16-0	3	12	2	4	63	7.0
19-20	2-0	38/18.9	7-12	.583	0-0	.000	6-11	.545	8	9	17	8.5	5-0	0	3	2	0	20	10.0
CAR.	71-17	1005/14.1	146-292	.500	0-0	.000	90-178	.506	139	132	271	3.8	125-2	9	94	26	10	382	5.4

2018-19 OVERALL STATISTICS

Game Records

Record	Overall	Home	Away	Neutral
ALL GAMES	1-1	0-1	1-0	0-0
CONFERENCE	0-0	0-0	0-0	0-0
NON-CONFERENCE	1-1	0-1	1-0	0-0

Score by Periods

Team	1st	2nd	OT	TOT
La Salle	64	75	7	146
Opponents	58	65	10	133

Team Box Score

No.	Player				Total		3-Point		F-Throw		Rebounds													
		GP-GS	MIN	AVG	FG-FGA	FG%	3FG-FGA	3FG%	FT-FTA	FT%	OFF	DEF	TOT	AVG	PF	DQ	A	TO	BLK	STL	PTS	AVG		
15	SPRUILL, Kayla	2-2	61:25	30.7	8-25	.320	4-15	.267	11-18	.611	0	15	15	7.5	3	0	1	3	1	1	31	15.5		
10	JACOBS, Claire	2-2	50:38	25.3	10-16	.625	3-7	.429	4-5	.800	1	1	2	1.0	9	1	2	9	1	0	27	13.5		
35	NGWAFANG, Sofilia	2-0	37:44	18.9	7-12	.583	0-0	.000	6-11	.545	8	9	17	8.5	5	0	0	3	2	0	20	10.0		
25	MILLER, Shalina	2-2	44:37	22.3	5-8	.625	0-0	.000	5-7	.714	7	11	18	9.0	8	1	1	7	5	0	15	7.5		
11	KING, Deja	2-2	52:10	26.1	3-7	.429	2-4	.500	7-12	.583	1	5	6	3.0	5	1	8	9	1	3	15	7.5		
22	LEWIS, Jordon	2-2	61:43	30.9	6-17	.353	0-1	.000	2-4	.500	8	4	12	6.0	2	0	9	7	1	2	14	7.0		
2	LYTTON, Carley	2-0	27:08	13.6	3-9	.333	3-8	.375	0-0	.000	0	2	2	1.0	2	0	1	4	0	1	9	4.5		
24	JACOBS, Amy	2-0	26:46	13.4	3-10	.300	0-3	.000	2-2	1.000	2	2	4	2.0	4	0	1	7	0	2	8	4.0		
4	HILL, Kate	2-0	38:09	19.1	2-8	.250	1-5	.200	0-0	.000	3	2	5	2.5	5	0	3	5	0	0	5	2.5		
3	BRAXTON-YOUNG, Kayla	2-0	21:27	10.7	1-7	.143	0-2	.000	0-2	.000	2	5	7	3.5	2	0	1	3	0	2	2	1.0		
5	KLINE, Christina	1-0	01:09	1.2	0-0	.000	0-0	.000	0-0	.000	0	0	0	0.0	0	0	0	0	0	0	0	0.0		
14	HILL, Haleigh	1-0	02:03	2.0	0-0	.000	0-0	.000	0-0	.000	0	0	0	0.0	0	0	0	0	0	1	0	0.0		
Team											8	11	19					1						
Total		2			48-119	.403	13-45	.289	37-61	.607	40	67	107	53.5	45	3	27	58	11	12	146	73.0		
Opponents		2			45-148	.304	10-38	.263	33-44	.750	39	44	83	41.5	46	-	25	32	8	28	133	66.5		

Team Statistics

	LaS	OPP
Scoring	146	133
Points per game	73	66.5
Scoring margin	+6.5	-
Field goals-att	48-119	45-148
Field goal pct	.403	.304
3 point fg-att	13-45	10-38
3-point FG pct	.289	.263
3-pt FG made per game	6.5	5.0
Free throws-att	37-61	33-44
Free throw pct	.607	.750
F-Throws made per game	18.5	16.5
Rebounds	107	83
Rebounds per game	53.5	41.5
Rebounding margin	+12.0	-
Assists	27	25
Assists per game	13.5	12.5
Turnovers	58	32
Turnovers per game	29.0	16.0
Turnover margin	-13.0	-
Assist/turnover ratio	0.5	0.8
Steals	12	28
Steals per game	6.0	14.0
Blocks	11	8
Blocks per game	5.5	4.0
Winning streak	0	-
Home win streak	0	-
Attendance	607	975
Home games-Avg/Game	1-607	1-975
Neutral site-Avg/Game	-	0-0

Team Results

Date	Opponent		Score	Att.
11/05/19	at Howard	W	78-62	975
11/09/19	Robert Morris	L	68-71	607

DAY, MACGILLIVRAY REUNITE, TRY TO TURN AROUND LA SALLE

Terry Toohey

The Delaware County Daily Times

PHILADELPHIA — La Salle head women's basketball coach Mountain MacGillivray and his associate head coach, Chris Day, laughed and joked like the old friends they are as they spoke Monday about the paths that led them both to 20th & Olney.

This pairing did not happen by chance.

The seeds were sown 30 years ago when they served as managers in the girls basketball program at Archbishop Carroll High School. MacGillivray, a 1991 grad, was a sophomore at the time. Day, who graduated a year later, was a freshman.

Day would videotape the games and MacGillivray did the play-by-play, among many other tasks. Those humble beginnings grew into separate coaching careers. Day quickly became one of the best high school athletes in Delaware County of the early 1990s, and went on to become the head women's basketball coach at Widener and the University of Vermont, along with assistant coaching gigs for the girls team at Carroll and the women's programs for Widener, Duquesne, La Salle, Saint Joseph's, Indiana and Penn.

He also spent time as an assistant football coach at Widener and was the track coach for a year at West Chester East. MacGillivray served as an assistant at Carroll for 13 seasons before moving to assistant women's coaching positions at Vermont, New Hampshire and Quinnipiac universities.

Regardless of where they were, however, MacGillivray and Day always stayed close.

"We prepared for a lot of teams over the phone together," said MacGillivray, who played baseball for the Patriots.

"Yes we did," added Day, an All-Delco standout in football and track during his scholastic career at Carroll. "We shared tons of ideas, how to guard people, what they had, recruiting, all that."

Now they're sharing those ideas together as part of the same staff. Although La Salle is off to a rocky start (0-5), it was a pairing that was meant to be.

It was Day who heard through the coaching grapevine that there was going to be an opening at La Salle last spring and the man who encouraged his best friend to go for the job. MacGillivray had just completed his ninth season as an assistant at Quinnipiac University in Hamden, Conn. and his third as the associate head coach.

The Bobcats were coming off their third MAAC title in four years and fourth trip to the NCAA Division I women's tournament in six seasons, including a Sweet 16 run in 2017. MacGillivray had a great situation. He was comfortable, happy, coaching at a winning program and able to provide for his large family, which includes his wife Grace and their seven children.

"I had no interest in leaving a great program as an assistant just to be the head coach, so my name was on the marquee," MacGillivray said.

He threw his hat into the ring, anyway.

"Coaching in the Big 5, bringing my family back to Philadelphia

and being at a Catholic university, that was too much to pass up," MacGillivray said. "It takes a lot just to put yourself out there to do it, just to go for the job. You have to stress out your head coach. You have to stress out your family and then you don't get it, so I didn't even know if I wanted to get involved. But the more I thought about those three things: Being in the Big 5, being back home and being at a Catholic university, I was like, 'I have to do it.'"

MacGillivray applied for the job, with one condition.

"I said if I get it I want you," MacGillivray said of Day. "Would you do it? How much would it take? We were negotiating the whole time."

The offer came at an interesting time for Day. He had just finished his second season as the head coach at Vermont, albeit under a cloud.

In early April, Vermont athletic director Jeff Schulman confirmed television and published reports that the university was "Investigating certain aspects of the women's basketball program." Specifically the school was looking into Day's 'verbal interaction' with the players, according to an unnamed source in the television report.

The investigation caught Day by surprise, but came to an end without a report when he tendered his resignation on April 26. Less than two weeks later Day joined MacGillivray as his associate head coach.

Day said the investigation was not the reason for his resignation. It was the opportunity to bring his family home and coach

with his best friend.

"I can't speak on everything," said Day, who went 17-42 in his two seasons in Burlington. "The best way to phrase it is that there were a couple of curveballs that were thrown at me that were unexpected. It made me think, when Mountain got the job, is this meant to be? Is this going to be our final chance to ever come back home?"

Day had left Philly twice before only to return to his roots. He left Duquesne after a year to take an assistant coaching job at La Salle, which led to a seven-year stint at Saint Joseph's. He then went to Indiana only to return for a post at Penn, which led to the job at Vermont.

No matter where he was, though, his hometown area was always on his mind.

"I told many people that the only reason I would leave Vermont was to come back to Philly," Day said.

And so, when the opportunity presented itself to return home for a third time, Day jumped at it.

"The biggest thing for me, at this point in my career, if I'm going to make a move to be a head coach or go somewhere else, coming home and working with someone who understands family is important," Day said. "I have five kids. I have one in college and four younger. As you get older, it's important to work with someone you know understands about family and (MacGillivray), with seven (children), understands that."

MacGillivray and Day understand one another other and work well together. It dates to their days at Carroll when they served as managers, first under Linus McGinty and later Barry Kirsch.

"The behind-the-scenes meetings with Linus and Barry, oh my goodness," Day said. "We learned so much from them ... A lot of our base is what we learned at Carroll, running the Loyola Marymount transition, that type of stuff."

"They treated us more like assistant coaches than managers," MacGillivray said. "We talked about basketball nonstop. They taught us the way they did things. They encouraged us to get in there and work with the players and help them out, so I can't say enough about the opportunity that Linus gave us and that Barry gave me, specifically. That was huge."

Now MacGillivray and Day are trying to use those lessons learned at Carroll, and many other stops along the way, to turn around an Explorers program that has had just one winning season (17-13 in 2016-17) in the last 11 years.

They know what it's going to take to achieve that goal.

"Patience," they responded in unison.

Three decades ago they talked about coaching together on the collegiate level and now it's a reality. It's only fitting that it comes at La Salle, where both

reached the pinnacle of their high school athletic careers.

As a senior, MacGillivray helped Carroll win the Catholic League baseball title at La Salle's DeVincent Field. A year later, Day won the 100- and 200-meter dashes at the Catholic League championships at McCarthy Stadium.

Talk about karma.

"It was just a sign," Day said. "Whatever was going on up there at Vermont and Mountain getting the job here, it was just crazy. The Lord spoke again. He keeps calling me home and we listened again. It was nothing that went down. It was just me saying, 'OK, what's happening is unfortunate. I could easily fight it and be fine.' Nothing happened. There was no report. But it was like, 'Why do all this and have this hanging over me? Are people going to be side-eyeing me? It was like I was being told to go home and coach with my best friend. The Lord spoke. I listened and here we are.'"



75 PAIRS OF SNEAKERS? LA SALLE'S KATE HILL HEADS INTO JUNIOR SEASON ON SOLID FOOTING

Mike Jensen
The Philadelphia Inquirer

PHILADELPHIA - In Kate Hill's own words, sitting out, not being able to play college basketball games last season, was the worst thing ever. Hill had transferred from Rutgers to La Salle in search of playing time. By all accounts, she'll find it this season.

Hill just had to survive the year sitting out.

Passing the time, favorite thing to do?

"Go to the mall," Hill said. "King of Prussia."

Favorite store?

"House of Hoops."

Favorite thing to buy?

"I'm a sneaker head."

How many sneakers are we talking about here?

"Over 75 sets of shoes," Hill said. "I've got all the boxes, a shoe rack on display."

La Salle teammate Deja King suggests 75 could be a conservative estimate.

"Between 75 and 100," King said of Hill's collection. (King is the other acknowledged sneaker head on the team, figuring she has between 30 and 45.)

Hill's favorite? She'll go with the Georgetown Air Jordan 11.

"Honestly, they just look the best – go with most of my outfits," Hill said. "White and blue ... I feel bad when I don't wear them, so I try to keep them in rotation."

Teammates will walk in her room, she said, and the response is typically the same.

"Dang, girl – why do you have so many?"

A lot of Jordans, Vans, Air Max.

"I try to stick to those four," Hill said. "I have a couple of random ones."

Most random?

"A couple of KDs I liked," Hill said, referring to shoes endorsed by Kevin Durant.

"Any shoe you can think of, and she has it in multiple colors," King said of the Hill collection.

For the record, Hill isn't going to be wearing any of those during a La Salle game. The Explorers are an Under Armour program. Hill said she is more than all right with that.

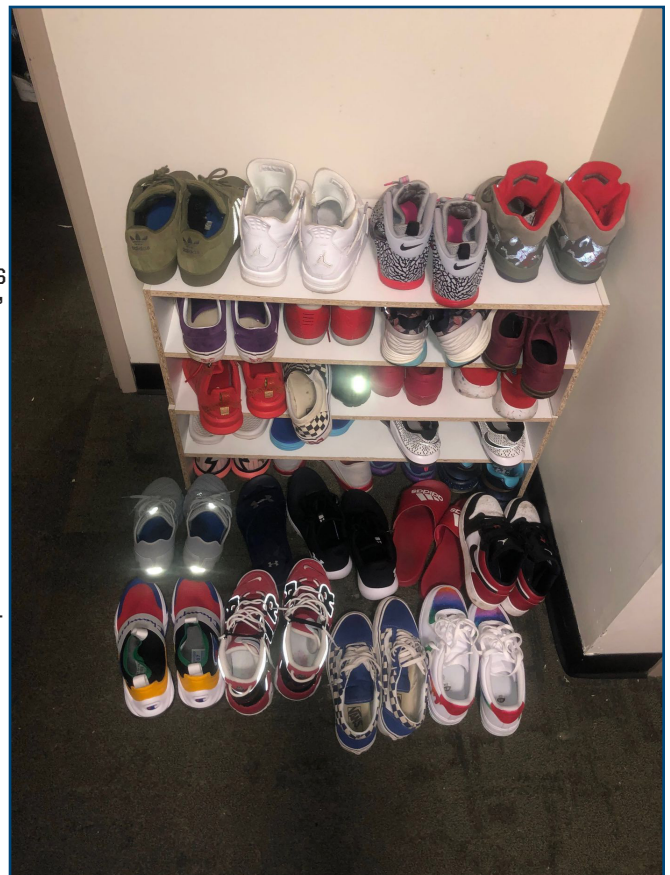
"Yeah, I like my Currys," Hill said.

Sitting out last season, she became close friends with King, although maybe at first King didn't know all that such a friendship would entail.

"Deja definitely has a lot," Hill said, talking sneakers. "We're the same size. I have a couple of her shoes in my room."

"Whenever she tries to put an outfit together and tries to get the right shoe, I say, 'I think I have the right one for you,' " King said.

For example ... black shirt, some writing on it. Light blue jeans. King's thought: Space Jams 11, from her own Jordan collection.



King's personal favorite?

"Just any pair of Jordan 11," King said.

La Salle coach Mountain MacGillivray said that when Hill first got to La Salle, she asked if she could store some stuff in the locker room.

"That does not constitute some stuff," MacGillivray remembers telling Hill.

What does the coach make of it all?

"I have no comment," MacGillivray said. "Kate has lots of style, and she needs lots of sneakers to go with all of them. As long as she plays hard on the court, I don't care what she does with her sneakers."

From Toronto, Hill first got into sneakers when she moved to New Jersey, boarding at the Peddie School, after her family decided this was the best path to college basketball. Her older sister Sami had done a year at Blair Academy before playing at Virginia Tech.

The family has mixed up its sports. Her father played basketball at the University of Toronto, while mom was a long and triple jumper at the same school. Two brothers played college baseball.

"Two things she's brought to our program – a work ethic, and she's in great shape," MacGillivray said. "She has a competitiveness to her. She's not losing sprints. She's going to win every conditioning drill. She's in the gym extra without being asked and people are following that lead. Every dog track needs a

rabbit. She's been the rabbit for us."

As it happens, Hill and King will split time at point guard, and no doubt share time on the court as well. Their coach thinks that is kind of special, seeing them compete for time while forging a close friendship.

Sharing playing time, sharing sneakers? What's the difference?

"My parents tell me I need to stop buying shoes," Hill said, adding, "I haven't."

She collects other kinds of shoes, too?

"No, just sneakers," Hill said. "I think I own one pair of heels that I'm required to wear when we dress up."

Her teammate King said newcomers to La Salle's team don't "know the full extent" of Hill's collection.

When will she stop?

"Never," Hill said. "I don't think I

will ever grow out of it."





**CARLEY
LYTTON**
Gr. | F | 5-10
Floyd, Va.



**KAYLA
BRAXTON-YOUNG**
Fr. | G | 5-7
Newark, Del.



**KATE
HILL**
Jr. | G | 5-7
Toronto, Ontario



**CHRISTINA
KLINE**
Fr. | G | 5-10
Winter Garden, Fla.



**CLAIRE
JACOBS**
Fr. | G | 6-0
Perth, Australia



**DEJA
KING**
Jr. | G | 5-7
Trenton, N.J.



**MOLLY
MASCANTONIO**
So. | G | 5-10
Morton, Pa.



**HALEIGH
HILL**
Jr. | F | 6-0
Allen, Texas



**KAYLA
SPRUILL**
So. | F | 6-0
Baltimore, Md.



**JORDON
LEWIS**
Fr. | F | 5-10
Houston, Texas



**AMY
JACOBS**
Fr. | G | 6-0
Perth, Australia



**SHALINA
MILLER**
Sr. | F | 6-2
Philadelphia, Pa.



**ERIN
MORGAN**
So. | G | 5-8
Willow Grove, Pa.



**SOFILIA
NGWAFANG**
Sr. | C | 6-4
Silver Springs, Md.



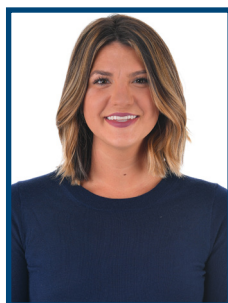
**MOUNTAIN
MacGILLIVRAY**
Head Coach
2nd Year
Temple '96



**CHRIS
DAY**
Assoc. Head Coach
2nd Year
West Chester '97



**BOO
ABSHIRE**
Assistant Coach
2nd Year
Quinnipiac '15



**SAM
GUASTELLA**
Assistant Coach
1st Year
Quinnipiac '15



**KIM
BRADY**
Dir. of Operations
1st Year
UMass '10