



**Kansas St. at California**

11/11/22 Haas Pavilion, Berkeley  
California vs. Kansas State

Game Time: 4:00 PM  
Game Duration: 2:08  
Attendance: 3,607

Officials: Tony Padilla, Amy Bonner, Rodrick Dixon

Kansas St. - 63

Record: 2-0

NO.	Name	F	Min	FG	3P	FT	Rebounds			Fouls		TP	AS	TO	ST	Blocks		+/-
				M-A	M-A	M-A	OR	DR	TOT	PF	FD					BS	BA	
3	David N'Guessan	F	13:40	1-2	0-0	0-0	1	2	3	3	0	2	0	3	0	0	0	12
11	Keyontae Johnson	F	33:26	6-13	1-2	3-4	3	6	9	2	7	16	1	2	2	1	1	12
35	Nae'Qwan Tomlin	F	25:59	4-9	1-4	2-2	0	2	2	2	1	11	0	1	1	2	0	14
1	Markquis Nowell	G	33:16	3-11	1-4	6-7	0	3	3	1	4	13	7	2	3	0	1	10
5	Cam Carter	G	19:25	1-3	0-1	2-2	0	3	3	4	2	4	0	0	2	1	0	15
13	Desi Sills		29:05	1-4	0-1	2-2	1	5	6	2	2	4	0	0	1	1	1	-7
23	Abayomi Iyiola		15:21	1-4	0-0	0-0	2	0	2	2	2	2	1	2	0	0	2	-6
25	Ismael Massoud		09:32	1-5	1-3	0-0	2	0	2	0	0	3	0	3	1	0	1	-8
4	Tykei Greene		20:16	3-6	1-4	1-1	2	1	3	2	1	8	0	1	0	0	0	3
Team							1	1	2			0		1				
<b>Totals</b>				21-57	5-19	16-18	12	23	35	18	19	63	9	15	10	5	6	9

Shooting By Period		
1 <sup>st</sup> FG%	12-30	40.0%
3PT%	4-11	36.4%
FT%	8-9	88.9%
2 <sup>nd</sup> FG%	9-27	33.3%
3PT%	1-8	12.5%
FT%	8-9	88.9%
GM FG%	21-57	36.8%
3PT%	5-19	26.3%
FT%	16-18	88.9%

Dead Ball Rebounds: 0, 0

Technical Fouls: Johnson 2<sup>nd</sup> 18:10 Johnson 2<sup>nd</sup> 10:57

California - 54

Record: 0-2

NO.	Name	F	Min	FG	3P	FT	Rebounds			Fouls		TP	AS	TO	ST	Blocks		+/-
				M-A	M-A	M-A	OR	DR	TOT	PF	FD					BS	BA	
13	Kuany Kuany	F	21:10	4-8	2-5	3-3	1	2	3	4	1	13	0	3	1	0	0	-10
14	Grant Newell	F	26:02	1-4	0-1	2-5	2	2	4	2	5	4	0	3	0	2	1	-10
21	Lars Thiemann	C	21:51	2-5	0-0	0-0	3	2	5	3	2	4	2	2	0	0	0	-19
1	Joel Brown	G	35:36	2-4	1-1	1-2	0	4	4	2	2	6	5	1	3	1	1	-13
55	Devin Askew	G	31:49	6-12	2-5	3-5	1	4	5	4	4	17	1	6	0	1	1	-3
0	Marsalis Roberson		19:08	1-4	0-2	0-0	0	1	1	1	0	2	1	2	0	0	0	4
24	Sam Alajiki		20:59	1-7	0-4	1-2	0	3	3	1	2	3	0	0	0	0	1	-6
2	Monty Bowser		08:51	0-1	0-0	0-0	0	1	1	0	0	0	0	0	0	0	1	-1
22	ND Okafor		14:34	2-2	0-0	1-2	0	2	2	2	1	5	0	3	2	2	0	13
Team							2	5	7			0		2				
<b>Totals</b>				19-47	5-18	11-19	9	26	35	20	17	54	9	22	6	6	5	-9

Shooting By Period		
1 <sup>st</sup> FG%	7-19	36.8%
3PT%	2-8	25.0%
FT%	5-7	71.4%
2 <sup>nd</sup> FG%	12-28	42.9%
3PT%	3-10	30.0%
FT%	6-12	50%
GM FG%	19-47	40.4%
3PT%	5-18	27.8%
FT%	11-19	57.9%

Dead Ball Rebounds: 4, 0

Technical Fouls: Coach 1<sup>st</sup> 11:20

	KSU	Cal
Biggest lead	20 (2 <sup>nd</sup> 17:11)	3 (1 <sup>st</sup> 15:06)
Best Scoring Run	12 (1 <sup>st</sup> 3:44)	13 (2 <sup>nd</sup> 11:40)
Lead Changes	4	
Times Tied	6	
Time with Lead	34:43	00:48

	KSU	Cal
Points from		
Turnovers	19	15
Paint	32	24
Second Chance	9	6
Fast Breaks	5	10
Bench	17	10

	Period by Period Scoring		
	1st	2nd	TOT
KSU	36	27	63
Cal	21	33	54



**Period 1**

**Quarter Starters:**

<b>Cal</b>	1 Brown J	13 Kuany K	14 Newell G	21 Thiemann L	55 Askew D
<b>KSU</b>	1 Nowell M	3 N'Guessan D	5 Carter C	11 Johnson K	35 Tomlin N

Game Time	Cal	Score	Diff	KSU
20:00	21 THIEMANN L jumpball lost			3 N'GUESSAN D jumpball won
19:29				3 N'GUESSAN D 2pt FG in the paint, layup missed
19:25	13 KUANY K defensive rebound (1)			
19:10	55 ASKEW D 2pt FG outside the paint, jump shot missed			
19:06				3 N'GUESSAN D defensive rebound (1)
19:01				11 JOHNSON K 2pt FG in the paint, layup blocked
19:01	14 NEWELL G block (1)			
19:01				offensive rebound (2)
18:48		<b>0-2</b>	<b>-2</b>	35 TOMLIN N 2pt FG second chance in the paint, jump shot made (2)
18:28	21 THIEMANN L 2pt FG outside the paint, jump shot missed			
18:24				11 JOHNSON K defensive rebound (1)
18:10				35 TOMLIN N 3pt FG , jump shot missed
18:07	1 BROWN J defensive rebound (1)			
17:46	14 NEWELL G 3pt FG , jump shot missed			
17:43	21 THIEMANN L offensive rebound (1)			
17:42	21 THIEMANN L 2pt FG second chance in the paint, layup made (2)	<b>2-2</b>	<b>0</b>	
17:35	1 BROWN J steal (1)			1 NOWELL M turnover lost ball (1)
17:29	14 NEWELL G foul drawn (1)			5 CARTER C foul personal (1 - 1)
17:29	13 KUANY K substitution out			
17:29	0 ROBERSON M substitution in			
17:29				3 N'GUESSAN D substitution out
17:29				5 CARTER C substitution out
17:29				35 TOMLIN N substitution out
17:29				13 SILLS D substitution in
17:29				23 IYIOLA A substitution in
17:29				25 MASSOUD I substitution in
17:15	55 ASKEW D 3pt FG from turnover, jump shot missed			
17:11				13 SILLS D defensive rebound (1)
17:02		<b>2-4</b>	<b>-2</b>	11 JOHNSON K 2pt FG in the paint, layup made (2)
16:35	55 ASKEW D foul drawn (1)			13 SILLS D foul shooting (1 - 2)
16:35	55 ASKEW D free throw 1 - 2 missed			
16:35	offensive dead ball rebound (1)			
16:35	14 NEWELL G substitution out			
16:35	24 ALAJIKI S substitution in			
16:35	55 ASKEW D free throw 2 - 2 made (1)	<b>3-4</b>	<b>-1</b>	
16:35	55 ASKEW D substitution out			
16:35	13 KUANY K substitution in			
16:24		<b>3-6</b>	<b>-3</b>	23 IYIOLA A 2pt FG in the paint, layup made (2)
16:24				1 NOWELL M assist (1)
16:08	13 KUANY K 3pt FG , jump shot made (3)	<b>6-6</b>	<b>0</b>	
16:08	1 BROWN J assist (1)			
15:47	1 BROWN J steal (2)			25 MASSOUD I turnover bad pass (1)



**Kansas St. at California**

11/11/22 Haas Pavilion, Berkeley  
California vs. Kansas State

**Game Time:** 4:00 PM  
**Game Duration:** 2:08  
**Attendance:** 3,607

**Officials:** Tony Padilla, Amy Bonner, Rodrick Dixon

Game Time	Cal	Score	Diff	KSU
15:33	24 ALAJIKI S 3pt FG from turnover, jump shot missed			
15:29	13 KUANY K offensive rebound (2)			
15:27	13 KUANY K turnover lost ball (1)			11 JOHNSON K steal (1)
15:22				11 JOHNSON K 2pt FG from turnover in the paint, layup missed
15:18	24 ALAJIKI S defensive rebound (1)			
15:06	1 BROWN J 3pt FG, jump shot made (3)	<b>9-6</b>	<b>3</b>	
15:06	21 THIEMANN L assist (1)			
14:42		<b>9-9</b>	<b>0</b>	25 MASSOUD I 3pt FG, jump shot made (3)
14:42				23 IYIOLA A assist (1)
14:23	13 KUANY K foul offensive (1 - 1)			11 JOHNSON K foul drawn (1)
14:23	13 KUANY K turnover offensive (2)			
14:23	Timeout media			
14:23	1 BROWN J substitution out			
14:23	13 KUANY K substitution out			
14:23	21 THIEMANN L substitution out			
14:23	2 BOWSER M substitution in			
14:23	22 OKAFOR N substitution in			
14:23	55 ASKEW D substitution in			
14:23				11 JOHNSON K substitution out
14:23				35 TOMLIN N substitution in
14:06		<b>9-11</b>	<b>-2</b>	1 NOWELL M 2pt FG from turnover in the paint, driving layup made (2)
13:52	55 ASKEW D turnover lost ball (1)			25 MASSOUD I steal (1)
13:46				23 IYIOLA A 2pt FG from turnover in the paint, layup blocked
13:46	22 OKAFOR N block (1)			
13:46	2 BOWSER M defensive rebound (1)			
13:29	22 OKAFOR N foul offensive (1 - 2)			23 IYIOLA A foul drawn (1)
13:29	22 OKAFOR N turnover offensive (1)			
13:20				1 NOWELL M 3pt FG from turnover, jump shot missed
13:16				25 MASSOUD I offensive rebound (1)
13:16	22 OKAFOR N steal (1)			25 MASSOUD I turnover lost ball (2)
13:12	55 ASKEW D 2pt FG fast break from turnover in the paint, layup made (3)	<b>11-11</b>	<b>0</b>	
13:12	55 ASKEW D foul drawn (2)			1 NOWELL M foul shooting (1 - 3)
13:12	55 ASKEW D free throw fast break 1 - 1 made (4)	<b>12-11</b>	<b>1</b>	
13:12	0 ROBERSON M substitution out			
13:12	2 BOWSER M substitution out			
13:12	55 ASKEW D substitution out			
13:12	1 BROWN J substitution in			
13:12	13 KUANY K substitution in			
13:12	14 NEWELL G substitution in			
13:12				1 NOWELL M substitution out
13:12				25 MASSOUD I substitution out
13:12				5 CARTER C substitution in
13:12				11 JOHNSON K substitution in
13:00				11 JOHNSON K 2pt FG in the paint, layup missed
12:57				11 JOHNSON K offensive rebound (2)
12:48	13 KUANY K foul shooting (2 - 3)			11 JOHNSON K foul drawn (2)
12:48		<b>12-12</b>	<b>0</b>	11 JOHNSON K free throw 1 - 2 made (3)
12:48		<b>12-13</b>	<b>-1</b>	11 JOHNSON K free throw 2 - 2 made (4)



**Kansas St. at California**

11/11/22 Haas Pavilion, Berkeley  
California vs. Kansas State

**Game Time:** 4:00 PM  
**Game Duration:** 2:08  
**Attendance:** 3,607

**Officials:** Tony Padilla, Amy Bonner, Rodrick Dixon

Game Time	Cal	Score	Diff	KSU
12:48	13 KUANY K substitution out			
12:48	55 ASKEW D substitution in			
12:24	22 OKAFOR N foul drawn (1)			11 JOHNSON K foul shooting (1 - 4)
12:24	22 OKAFOR N free throw 1 - 2 missed			
12:24	offensive dead ball rebound (2)			
12:24	22 OKAFOR N free throw 2 - 2 made (1)	<b>13-13</b>	<b>0</b>	
12:24	22 OKAFOR N substitution out			
12:24	21 THIEMANN L substitution in			
12:07				13 SILLS D 3pt FG , jump shot missed
12:05	defensive rebound (7)			
11:47	jump ball situation			
11:47	Timeout media			
11:47				13 SILLS D substitution out
11:47				23 IYIOLA A substitution out
11:47				1 NOWELL M substitution in
11:47				4 GREENE T substitution in
11:36	14 NEWELL G turnover travel (1)			
11:25		<b>13-16</b>	<b>-3</b>	35 TOMLIN N 3pt FG from turnover, jump shot made (5)
11:25				1 NOWELL M assist (2)
11:20	foul coach class A technical (4)			
11:20	turnover offensive (6)			
11:20		<b>13-17</b>	<b>-4</b>	1 NOWELL M free throw 1 - 2 made (3)
11:20		<b>13-18</b>	<b>-5</b>	1 NOWELL M free throw 2 - 2 made (4)
10:51	24 ALAJIKI S 3pt FG , jump shot missed			
10:44	14 NEWELL G offensive rebound (1)			
10:44	14 NEWELL G 2pt FG second chance in the paint, layup missed			
10:44				defensive rebound (7)
10:30	14 NEWELL G foul drawn (2)			4 GREENE T foul offensive (1 - 5)
10:30				4 GREENE T turnover offensive (1)
10:01	55 ASKEW D turnover travel (2)			
10:01	24 ALAJIKI S substitution out			
10:01	0 ROBERSON M substitution in			
09:46				1 NOWELL M 2pt FG from turnover in the paint, layup blocked
09:46	1 BROWN J block (1)			
09:37	21 THIEMANN L defensive rebound (2)			
09:35	1 BROWN J 2pt FG in the paint, layup missed			
09:34	21 THIEMANN L offensive rebound (3)			
09:34	21 THIEMANN L foul drawn (1)			5 CARTER C foul personal (2 - 6)
09:32				4 GREENE T substitution out
09:32				5 CARTER C substitution out
09:32				13 SILLS D substitution in
09:32				23 IYIOLA A substitution in
09:15	14 NEWELL G foul drawn (3)			23 IYIOLA A foul shooting (1 - 7)
09:12	14 NEWELL G free throw 1 - 2 made (1)	<b>14-18</b>	<b>-4</b>	
09:12	21 THIEMANN L substitution out			
09:12	22 OKAFOR N substitution in			
09:12	14 NEWELL G free throw 2 - 2 made (2)	<b>15-18</b>	<b>-3</b>	
09:00				1 NOWELL M 3pt FG , jump shot missed
08:56				11 JOHNSON K offensive rebound (3)



**Kansas St. at California**

11/11/22 Haas Pavilion, Berkeley  
California vs. Kansas State

**Game Time:** 4:00 PM  
**Game Duration:** 2:08  
**Attendance:** 3,607

**Officials:** Tony Padilla, Amy Bonner, Rodrick Dixon

Game Time	Cal	Score	Diff	KSU
08:56				11 JOHNSON K turnover travel (1)
08:29	55 ASKEW D turnover lost ball (3)			1 NOWELL M steal (1)
08:29	55 ASKEW D substitution out			
08:29	2 BOWSER M substitution in			
08:18	1 BROWN J foul drawn (1)			23 IYIOLA A foul offensive (2 - 8)
08:18				23 IYIOLA A turnover offensive (1)
08:18				23 IYIOLA A substitution out
08:18				3 N'GUESSAN D substitution in
07:58	22 OKAFOR N foul offensive (2 - 5)			11 JOHNSON K foul drawn (3)
07:58	22 OKAFOR N turnover offensive (2)			
07:58	Timeout media			
07:58	22 OKAFOR N substitution out			
07:58	21 THIEMANN L substitution in			
07:58				35 TOMLIN N substitution out
07:58				4 GREENE T substitution in
07:50		<b>15-21</b>	<b>-6</b>	11 JOHNSON K 3pt FG from turnover, jump shot made (7)
07:50				1 NOWELL M assist (3)
07:18	0 ROBERSON M 3pt FG , jump shot missed			
07:14				1 NOWELL M defensive rebound (1)
07:10				11 JOHNSON K 2pt FG in the paint, layup missed
07:06				3 N'GUESSAN D offensive rebound (2)
07:06	2 BOWSER M substitution out			
07:06	14 NEWELL G substitution out			
07:06	24 ALAJIKI S substitution in			
07:06	55 ASKEW D substitution in			
06:50				11 JOHNSON K 2pt FG second chance in the paint, layup missed
06:47	21 THIEMANN L defensive rebound (4)			
06:27	55 ASKEW D 3pt FG , jump shot missed			
06:23				13 SILLS D defensive rebound (2)
06:15		<b>15-23</b>	<b>-8</b>	13 SILLS D 2pt FG in the paint, driving layup made (2)
05:46	24 ALAJIKI S 2pt FG in the paint, layup missed			
05:42				11 JOHNSON K defensive rebound (4)
05:14		<b>15-25</b>	<b>-10</b>	11 JOHNSON K 2pt FG in the paint, jump shot made (9)
05:10	Timeout 30 Sec			
05:10				11 JOHNSON K substitution out
05:10				13 SILLS D substitution out
05:10				5 CARTER C substitution in
05:10				35 TOMLIN N substitution in
04:39	turnover shot clock (10)			
04:39	0 ROBERSON M substitution out			
04:39	13 KUANY K substitution in			
04:29	21 THIEMANN L foul drawn (2)			3 N'GUESSAN D foul offensive (1 - 9)
04:29				3 N'GUESSAN D turnover offensive (1)
04:22	1 BROWN J 2pt FG from turnover in the paint, layup blocked			
04:22				5 CARTER C block (1)
04:16				5 CARTER C defensive rebound (1)
04:14				35 TOMLIN N 2pt FG in the paint, layup missed
04:10				4 GREENE T offensive rebound (1)



**Kansas St. at California**

11/11/22 Haas Pavilion, Berkeley  
California vs. Kansas State

**Game Time:** 4:00 PM  
**Game Duration:** 2:08  
**Attendance:** 3,607

**Officials:** Tony Padilla, Amy Bonner, Rodrick Dixon

Game Time	Cal	Score	Diff	KSU
04:04		<b>15-28</b>	<b>-13</b>	4 GREENE T 3pt FG second chance, jump shot made (3)
04:04				1 NOWELL M assist (4)
03:49	21 THIEMANN L turnover lost ball (1)			35 TOMLIN N steal (1)
03:44		<b>15-30</b>	<b>-15</b>	35 TOMLIN N 2pt FG fast break from turnover in the paint, dunk, made (7)
03:44				1 NOWELL M assist (5)
03:40	Timeout 30 Sec			
03:40	24 ALAJIKI S substitution out			
03:40	14 NEWELL G substitution in			
03:22	14 NEWELL G foul offensive (1 - 6)			5 CARTER C foul drawn (1)
03:22	14 NEWELL G turnover offensive (2)			
03:07	1 BROWN J foul drawn (2)			3 N'GUESSAN D foul offensive (2 - 10)
03:07				3 N'GUESSAN D turnover offensive (2)
03:07	21 THIEMANN L substitution out			
03:07	22 OKAFOR N substitution in			
03:07				3 N'GUESSAN D substitution out
03:07				25 MASSOUD I substitution in
03:07	13 KUANY K substitution out			
03:07	0 ROBERSON M substitution in			
02:45	22 OKAFOR N 2pt FG from turnover in the paint, layup made (3)	<b>17-30</b>	<b>-13</b>	
02:45	0 ROBERSON M assist (1)			
02:23		<b>17-32</b>	<b>-15</b>	4 GREENE T 2pt FG in the paint, layup made (5)
02:23				1 NOWELL M assist (6)
02:22	55 ASKEW D foul shooting (1 - 7)			4 GREENE T foul drawn (1)
02:22		<b>17-33</b>	<b>-16</b>	4 GREENE T free throw 1 - 1 made (6)
02:22	1 BROWN J substitution out			
02:22	2 BOWSER M substitution in			
02:22				1 NOWELL M substitution out
02:22				13 SILLS D substitution in
02:21	2 BOWSER M substitution out			
02:21	1 BROWN J substitution in			
01:57	55 ASKEW D 2pt FG in the paint, driving layup made (6)	<b>19-33</b>	<b>-14</b>	
01:35				25 MASSOUD I 3pt FG , jump shot missed
01:31				13 SILLS D offensive rebound (3)
01:30				13 SILLS D 2pt FG second chance outside the paint, jump shot missed
01:28	defensive rebound (12)			
01:28				5 CARTER C substitution out
01:28				35 TOMLIN N substitution out
01:28				1 NOWELL M substitution in
01:28				11 JOHNSON K substitution in
01:28	1 BROWN J substitution out			
01:28	2 BOWSER M substitution in			
01:18	0 ROBERSON M foul offensive (1 - 8)			13 SILLS D foul drawn (1)
01:18	0 ROBERSON M turnover offensive (1)			
00:58				11 JOHNSON K 3pt FG from turnover, jump shot missed
00:57				25 MASSOUD I offensive rebound (2)
00:52				25 MASSOUD I 2pt FG from turnover in the paint, layup blocked
00:52	22 OKAFOR N block (2)			
00:51	22 OKAFOR N defensive rebound (1)			



Official Basketball Play by Play - First Half

**Kansas St. at California**

11/11/22 Haas Pavilion, Berkeley  
California vs. Kansas State

**Game Time:** 4:00 PM  
**Game Duration:** 2:08  
**Attendance:** 3,607

**Officials:** Tony Padilla, Amy Bonner, Rodrick Dixon

Game Time	Cal	Score	Diff	KSU
00:50	22 OKAFOR N turnover lost ball (3)			
00:50				Timeout 30 Sec
00:50	2 BOWSER M substitution out			
00:50	22 OKAFOR N substitution out			
00:50	1 BROWN J substitution in			
00:50	21 THIEMANN L substitution in			
00:38				25 MASSOUD I 3pt FG from turnover, jump shot missed
00:33				4 GREENE T offensive rebound (2)
00:20	55 ASKEW D foul personal (2 - 9)			1 NOWELL M foul drawn (1)
00:20		<b>19-34</b>	<b>-15</b>	1 NOWELL M free throw 1 - 2 made (5)
00:20		<b>19-35</b>	<b>-16</b>	1 NOWELL M free throw 2 - 2 made (6)
00:17	55 ASKEW D turnover lost ball (4)			1 NOWELL M steal (2)
00:15	55 ASKEW D foul shooting (3 - 10)			1 NOWELL M foul drawn (2)
00:15		<b>19-36</b>	<b>-17</b>	1 NOWELL M free throw fast break 1 - 2 made (7)
00:15	0 ROBERSON M substitution out			
00:15	55 ASKEW D substitution out			
00:15	2 BOWSER M substitution in			
00:15	24 ALAJIKI S substitution in			
00:15				1 NOWELL M free throw fast break 2 - 2 missed
00:15	24 ALAJIKI S defensive rebound (2)			
00:05	21 THIEMANN L 2pt FG in the paint, layup made (4)	<b>21-36</b>	<b>-15</b>	
00:05	1 BROWN J assist (2)			
<b>END OF PERIOD</b>				
<b>Cal 21-36 KSU</b>				



**Kansas St. at California**

11/11/22 Haas Pavilion, Berkeley  
California vs. Kansas State

Game Time: 4:00 PM  
Game Duration: 2:08  
Attendance: 3,607

Officials: Tony Padilla, Amy Bonner, Rodrick Dixon

**Kansas St. - 36**

NO.	Name	F	Min	FG	3P	FT	Rebounds			Fouls		TP	AS	TO	ST	Blocks		+/-
				M-A	M-A	M-A	OR	DR	TOT	PF	FD					BS	BA	
3	David N'Guessan	F	07:42	0-1	0-0	0-0	1	1	2	2	0	0	0	2	0	0	0	12
11	Keyontae Johnson	F	15:07	3-9	1-2	2-2	2	2	4	1	3	9	0	1	1	0	1	12
35	Nae'Qwan Tomlin	F	12:38	3-5	1-2	0-0	0	0	0	0	0	7	0	0	1	0	0	7
1	Markquis Nowell	G	17:41	1-4	0-2	5-6	0	1	1	1	2	7	6	1	2	0	1	16
5	Cam Carter	G	09:53	0-0	0-0	0-0	0	1	1	2	1	0	0	0	0	1	0	10
13	Desi Sills		12:26	1-3	0-1	0-0	1	2	3	1	1	2	0	0	0	0	0	4
23	Abayomi Iyiola		06:56	1-2	0-0	0-0	0	0	0	2	1	2	1	1	0	0	1	-2
25	Ismael Massoud		07:24	1-4	1-3	0-0	2	0	2	0	0	3	0	2	1	0	1	-1
4	Tykei Greene		10:13	2-2	1-1	1-1	2	0	2	1	1	6	0	1	0	0	0	17
Team							1	1	2			0		0				
<b>Totals</b>				12-30	4-11	8-9	9	8	17	10	9	36	7	8	5	1	4	15

Shooting By Period		
1st FG%	12-30	40.0%
3PT%	4-11	36.4%
FT%	8-9	88.9%
GM FG%	12-30	40.0%
3PT%	4-11	36.4%
FT%	8-9	88.9%

Dead Ball Rebounds: 0, 0

Technical Fouls::NONE

**California - 21**

NO.	Name	F	Min	FG	3P	FT	Rebounds			Fouls		TP	AS	TO	ST	Blocks		+/-
				M-A	M-A	M-A	OR	DR	TOT	PF	FD					BS	BA	
13	Kuany Kuany	F	06:39	1-1	1-1	0-0	1	1	2	2	0	3	0	2	0	0	0	-6
14	Grant Newell	F	13:11	0-2	0-1	2-2	1	0	1	1	3	2	0	2	0	1	0	-9
21	Lars Thiemann	C	14:30	2-3	0-0	0-0	2	2	4	0	2	4	1	1	0	0	0	-17
1	Joel Brown	G	18:10	1-3	1-1	0-0	0	1	1	0	2	3	2	0	2	1	1	-16
55	Devin Askew	G	15:46	2-5	0-2	2-3	0	0	0	3	2	6	0	4	0	0	0	-13
0	Marsalis Roberson		12:31	0-1	0-1	0-0	0	0	0	1	0	0	1	1	0	0	0	-6
24	Sam Alajiki		10:15	0-3	0-2	0-0	0	2	2	0	0	0	0	0	0	0	0	-10
2	Monty Bowser		03:28	0-0	0-0	0-0	0	1	1	0	0	0	0	0	0	0	0	0
22	ND Okafor		05:30	1-1	0-0	1-2	0	1	1	2	1	3	0	3	1	2	0	2
Team							0	2	2			0		2				
<b>Totals</b>				7-19	2-8	5-7	4	10	14	10	10	21	4	15	3	4	1	-15

Shooting By Period		
1st FG%	7-19	36.8%
3PT%	2-8	25.0%
FT%	5-7	71.4%
GM FG%	7-19	36.8%
3PT%	2-8	25.0%
FT%	5-7	71.4%

Dead Ball Rebounds: 2, 0

Technical Fouls:Coach 1<sup>st</sup>11:20

	KSU	Cal
Biggest lead	17 (1 <sup>st</sup> 0:15)	3 (1 <sup>st</sup> 15:06)
Best Scoring Run	12(1 <sup>st</sup> 3:44)	6(1 <sup>st</sup> 15:06)
Lead Changes	4	
Times Tied	6	
Time with Lead	14:43	00:48

	KSU	Cal
Points from		
Turnovers	15	5
Paint	16	10
Second Chance	9	4
Fast Breaks	3	3
Bench	13	3

	Period by Period Scoring		
	1st	2nd	TOT
KSU	36	27	63
Cal	21	33	54



**Kansas St. at California**

11/11/22 Haas Pavilion, Berkeley  
California vs. Kansas State

**Game Time:** 4:00 PM  
**Game Duration:** 2:08  
**Attendance:** 3,607

**Officials:** Tony Padilla, Amy Bonner, Rodrick Dixon

**Period 2**

**Quarter Starters:**

<b>Cal</b>	1 Brown J	2 Bowser M	13 Kuany K	14 Newell G	21 Thiemann L
<b>KSU</b>	1 Nowell M	3 N'Guessan D	5 Carter C	11 Johnson K	35 Tomlin N

Game Time	Cal	Score	Diff	KSU
20:00	24 ALAJIKI S substitution out			
20:00	13 KUANY K substitution in			
20:00				4 GREENE T substitution out
20:00				13 SILLS D substitution out
20:00				25 MASSOUD I substitution out
20:00				3 N'GUESSAN D substitution in
20:00				5 CARTER C substitution in
20:00				35 TOMLIN N substitution in
19:43				5 CARTER C 2pt FG in the paint, layup missed
19:39	defensive rebound (15)			
19:22	21 THIEMANN L 2pt FG in the paint, layup missed			
19:19				3 N'GUESSAN D defensive rebound (3)
19:03		<b>21-38</b>	<b>-17</b>	3 N'GUESSAN D 2pt FG in the paint, driving layup made (2)
18:48	13 KUANY K 2pt FG outside the paint, jump shot missed			
18:43				5 CARTER C defensive rebound (2)
18:39		<b>21-40</b>	<b>-19</b>	5 CARTER C 2pt FG in the paint, driving layup made (2)
18:11	21 THIEMANN L 2pt FG in the paint, layup missed			
18:11				35 TOMLIN N defensive rebound (1)
18:10				11 JOHNSON K foul class B technical (1 - 0)
18:10				11 JOHNSON K turnover offensive (2)
18:10	13 KUANY K free throw 1 - 1 made (4)	<b>22-40</b>	<b>-18</b>	
17:54	21 THIEMANN L foul personal (1 - 1)			11 JOHNSON K foul drawn (4)
17:52				1 NOWELL M 2pt FG in the paint, jump shot missed
17:50				11 JOHNSON K offensive rebound (5)
17:50	14 NEWELL G foul personal (2 - 2)			11 JOHNSON K foul drawn (5)
17:46				35 TOMLIN N 2pt FG second chance in the paint, jump shot missed
17:43	14 NEWELL G defensive rebound (2)			
17:36	13 KUANY K foul drawn (1)			3 N'GUESSAN D foul personal (3 - 1)
17:36				3 N'GUESSAN D substitution out
17:36				23 IYIOLA A substitution in
17:27	13 KUANY K 3pt FG , jump shot missed			
17:21				35 TOMLIN N defensive rebound (2)
17:11	21 THIEMANN L foul shooting (2 - 3)			35 TOMLIN N foul drawn (1)
17:11		<b>22-41</b>	<b>-19</b>	35 TOMLIN N free throw 1 - 2 made (8)
17:11	2 BOWSER M substitution out			
17:11	13 KUANY K substitution out			
17:11	0 ROBERSON M substitution in			
17:11	55 ASKEW D substitution in			
17:11		<b>22-42</b>	<b>-20</b>	35 TOMLIN N free throw 2 - 2 made (9)
16:59	0 ROBERSON M turnover bad pass (2)			5 CARTER C steal (1)
16:53				23 IYIOLA A 2pt FG from turnover in the paint, layup blocked
16:53	14 NEWELL G block (2)			



**Kansas St. at California**

11/11/22 Haas Pavilion, Berkeley  
California vs. Kansas State

**Game Time:** 4:00 PM  
**Game Duration:** 2:08  
**Attendance:** 3,607

**Officials:** Tony Padilla, Amy Bonner, Rodrick Dixon

Game Time	Cal	Score	Diff	KSU
16:47	55 ASKEW D defensive rebound (1)			
16:39	14 NEWELL G foul drawn (4)			5 CARTER C foul shooting (3 - 2)
16:39	14 NEWELL G free throw 1 - 2 missed			
16:39	offensive dead ball rebound (3)			
16:39				5 CARTER C substitution out
16:39				13 SILLS D substitution in
16:39	14 NEWELL G free throw 2 - 2 missed			
16:39				13 SILLS D defensive rebound (4)
16:11				35 TOMLIN N 3pt FG , jump shot missed
16:08	55 ASKEW D defensive rebound (2)			
15:57	0 ROBERSON M 3pt FG , jump shot missed			
15:53	21 THIEMANN L offensive rebound (5)			
15:52	21 THIEMANN L foul offensive (3 - 4)			23 IYIOLA A foul drawn (2)
15:52	21 THIEMANN L turnover offensive (2)			
15:52	Timeout media			
15:52	14 NEWELL G substitution out			
15:52	21 THIEMANN L substitution out			
15:52	22 OKAFOR N substitution in			
15:52	24 ALAJIKI S substitution in			
15:52				11 JOHNSON K substitution out
15:52				35 TOMLIN N substitution out
15:52				4 GREENE T substitution in
15:52				25 MASSOUD I substitution in
15:36				23 IYIOLA A 2pt FG from turnover in the paint, jump shot missed
15:31	1 BROWN J defensive rebound (2)			
15:11	22 OKAFOR N 2pt FG in the paint, layup made (5)	<b>24-42</b>	<b>-18</b>	
15:11	1 BROWN J assist (3)			
14:58				25 MASSOUD I turnover out of bounds (3)
14:46	55 ASKEW D 3pt FG from turnover, jump shot made (9)	<b>27-42</b>	<b>-15</b>	
14:30				Timeout 30 Sec
14:30				23 IYIOLA A substitution out
14:30				11 JOHNSON K substitution in
14:20				25 MASSOUD I 2pt FG outside the paint, jump shot missed
14:15	22 OKAFOR N defensive rebound (2)			
14:02	0 ROBERSON M 2pt FG outside the paint, jump shot made (2)	<b>29-42</b>	<b>-13</b>	
13:44				1 NOWELL M turnover bad pass (2)
13:44				25 MASSOUD I substitution out
13:44				35 TOMLIN N substitution in
13:31	24 ALAJIKI S foul drawn (1)			35 TOMLIN N foul shooting (1 - 3)
13:31	24 ALAJIKI S free throw 1 - 2 missed			
13:31	offensive dead ball rebound (4)			
13:31	1 BROWN J substitution out			
13:31	2 BOWSER M substitution in			
13:31	24 ALAJIKI S free throw 2 - 2 made (1)	<b>30-42</b>	<b>-12</b>	
13:31	0 ROBERSON M substitution out			
13:31	13 KUANY K substitution in			
13:15				35 TOMLIN N 3pt FG , jump shot missed
13:11	defensive rebound (22)			
12:55	55 ASKEW D 2pt FG outside the paint, jump shot missed			



**Kansas St. at California**

11/11/22 Haas Pavilion, Berkeley  
California vs. Kansas State

**Game Time:** 4:00 PM  
**Game Duration:** 2:08  
**Attendance:** 3,607

**Officials:** Tony Padilla, Amy Bonner, Rodrick Dixon

Game Time	Cal	Score	Diff	KSU
12:51				1 NOWELL M defensive rebound (2)
12:46				4 GREENE T 3pt FG , jump shot missed
12:42	55 ASKEW D defensive rebound (3)			
12:37	13 KUANY K 3pt FG , jump shot made (7)	<b>33-42</b>	<b>-9</b>	
12:37	55 ASKEW D assist (1)			
12:16				1 NOWELL M 2pt FG outside the paint, jump shot missed
12:14	13 KUANY K defensive rebound (3)			
12:11	13 KUANY K turnover lost ball (3)			13 SILLS D steal (1)
12:05	22 OKAFOR N steal (2)			35 TOMLIN N turnover lost ball (1)
11:59	2 BOWSER M 2pt FG from turnover in the paint, layup blocked			
11:59				13 SILLS D block (1)
11:59	offensive rebound (25)			
11:59	Timeout media			
11:59	22 OKAFOR N substitution out			
11:59	21 THIEMANN L substitution in			
11:59				1 NOWELL M substitution out
11:59				35 TOMLIN N substitution out
11:59				5 CARTER C substitution in
11:59				23 IYIOLA A substitution in
11:40	13 KUANY K 2pt FG from turnover second chance in the paint, layup made (9)	<b>35-42</b>	<b>-7</b>	
11:40	21 THIEMANN L assist (2)			
11:26		<b>35-44</b>	<b>-9</b>	11 JOHNSON K 2pt FG in the paint, layup made (11)
11:26	24 ALAJIKI S foul shooting (1 - 5)			11 JOHNSON K foul drawn (6)
11:26		<b>35-45</b>	<b>-10</b>	11 JOHNSON K free throw 1 - 1 made (12)
11:11	55 ASKEW D turnover bad pass (5)			
11:00		<b>35-47</b>	<b>-12</b>	11 JOHNSON K 2pt FG from turnover in the paint, layup made (14)
10:57				11 JOHNSON K foul class A technical (2 - 4)
10:57	13 KUANY K free throw fast break 1 - 2 made (10)	<b>36-47</b>	<b>-11</b>	
10:57	13 KUANY K free throw fast break 2 - 2 made (11)	<b>37-47</b>	<b>-10</b>	
10:57	2 BOWSER M substitution out			
10:57	24 ALAJIKI S substitution out			
10:57	1 BROWN J substitution in			
10:57	14 NEWELL G substitution in			
10:38	13 KUANY K 2pt FG outside the paint, jump shot made (13)	<b>39-47</b>	<b>-8</b>	
10:07				4 GREENE T 3pt FG , jump shot missed
10:04				23 IYIOLA A offensive rebound (1)
10:03	1 BROWN J steal (3)			23 IYIOLA A turnover bad pass (2)
09:58	1 BROWN J 2pt FG fast break from turnover in the paint, layup made (5)	<b>41-47</b>	<b>-6</b>	
09:25				turnover shot clock (14)
09:23				5 CARTER C substitution out
09:23				23 IYIOLA A substitution out
09:23				1 NOWELL M substitution in
09:23				3 N'GUESSAN D substitution in
09:14	13 KUANY K 3pt FG from turnover, jump shot missed			
09:09				4 GREENE T defensive rebound (3)
08:46	13 KUANY K foul personal (3 - 6)			1 NOWELL M foul drawn (3)
08:46	13 KUANY K substitution out			



**Kansas St. at California**

11/11/22 Haas Pavilion, Berkeley  
California vs. Kansas State

**Game Time:** 4:00 PM  
**Game Duration:** 2:08  
**Attendance:** 3,607

**Officials:** Tony Padilla, Amy Bonner, Rodrick Dixon

Game Time	Cal	Score	Diff	KSU
08:46	21 THIEMANN L substitution out			
08:46	0 ROBERSON M substitution in			
08:46	22 OKAFOR N substitution in			
08:39				13 SILLS D 2pt FG in the paint, layup blocked
08:39	55 ASKEW D block (1)			
08:39	defensive rebound (26)			
08:16	0 ROBERSON M 2pt FG outside the paint, jump shot missed			
08:13				11 JOHNSON K defensive rebound (6)
08:06				4 GREENE T 3pt FG , jump shot missed
08:02	55 ASKEW D defensive rebound (4)			
07:57	55 ASKEW D 2pt FG in the paint, driving layup made (11)	<b>43-47</b>	<b>-4</b>	
07:57	55 ASKEW D foul drawn (3)			4 GREENE T foul shooting (2 - 5)
07:57	Timeout media			
07:57				4 GREENE T substitution out
07:57				35 TOMLIN N substitution in
07:57	55 ASKEW D free throw 1 - 1 made (12)	<b>44-47</b>	<b>-3</b>	
07:36				1 NOWELL M 2pt FG in the paint, layup missed
07:32	0 ROBERSON M defensive rebound (1)			
07:16	55 ASKEW D 3pt FG , jump shot missed			
07:12				11 JOHNSON K defensive rebound (7)
06:57	55 ASKEW D substitution out			
06:57	13 KUANY K substitution in			
06:41				11 JOHNSON K 2pt FG outside the paint, jump shot missed
06:37	1 BROWN J defensive rebound (3)			
06:14	1 BROWN J turnover bad pass (1)			11 JOHNSON K steal (2)
05:57	13 KUANY K steal (1)			3 N'GUESSAN D turnover lost ball (3)
05:49	Timeout 60 Sec			
05:49	0 ROBERSON M substitution out			
05:49	14 NEWELL G substitution out			
05:49	24 ALAJIKI S substitution in			
05:49	55 ASKEW D substitution in			
05:49				3 N'GUESSAN D substitution out
05:49				23 IYOLA A substitution in
05:37	24 ALAJIKI S 2pt FG from turnover in the paint, layup made (3)	<b>46-47</b>	<b>-1</b>	
05:08		<b>46-50</b>	<b>-4</b>	1 NOWELL M 3pt FG , jump shot made (10)
05:07	1 BROWN J foul shooting (1 - 7)			1 NOWELL M foul drawn (4)
05:07		<b>46-51</b>	<b>-5</b>	1 NOWELL M free throw 1 - 1 made (11)
04:51	24 ALAJIKI S 3pt FG , jump shot missed			
04:48				13 SILLS D defensive rebound (5)
04:29		<b>46-53</b>	<b>-7</b>	1 NOWELL M 2pt FG in the paint, layup made (13)
04:09	55 ASKEW D turnover lost ball (6)			1 NOWELL M steal (3)
04:02		<b>46-55</b>	<b>-9</b>	35 TOMLIN N 2pt FG fast break from turnover in the paint, dunk, made (11)
04:02				1 NOWELL M assist (7)
03:40	55 ASKEW D 3pt FG , jump shot made (15)	<b>49-55</b>	<b>-6</b>	
03:40	1 BROWN J assist (4)			
03:35	Timeout 30 Sec			
03:35	22 OKAFOR N substitution out			
03:35	14 NEWELL G substitution in			



**Kansas St. at California**

11/11/22 Haas Pavilion, Berkeley  
California vs. Kansas State

**Game Time:** 4:00 PM  
**Game Duration:** 2:08  
**Attendance:** 3,607

**Officials:** Tony Padilla, Amy Bonner, Rodrick Dixon

Game Time	Cal	Score	Diff	KSU
03:35				35 TOMLIN N substitution out
03:35				5 CARTER C substitution in
03:23				1 NOWELL M 3pt FG , jump shot missed
03:16				23 IYIOLA A offensive rebound (2)
03:13				5 CARTER C 3pt FG second chance, jump shot missed
03:10	1 BROWN J defensive rebound (4)			
03:06	24 ALAJIKI S foul drawn (2)			13 SILLS D foul shooting (2 - 6)
03:06	1 BROWN J free throw fast break 1 - 2 made (6)	<b>50-55</b>	<b>-5</b>	
03:06				23 IYIOLA A substitution out
03:06				35 TOMLIN N substitution in
03:06	1 BROWN J free throw fast break 2 - 2 missed			
03:06				13 SILLS D defensive rebound (6)
02:42	55 ASKEW D foul personal (4 - 8)			5 CARTER C foul drawn (2)
02:42		<b>50-56</b>	<b>-6</b>	5 CARTER C 1&1 free throw 1 made (3)
02:42		<b>50-57</b>	<b>-7</b>	5 CARTER C 1&1 free throw 2 made (4)
02:26	24 ALAJIKI S 2pt FG in the paint, layup blocked			
02:26				35 TOMLIN N block (1)
02:21	55 ASKEW D offensive rebound (5)			
02:20	55 ASKEW D 2pt FG second chance in the paint, layup blocked			
02:20				35 TOMLIN N block (2)
02:15				1 NOWELL M defensive rebound (3)
02:10				1 NOWELL M 2pt FG in the paint, layup missed
02:08	14 NEWELL G defensive rebound (3)			
02:08	14 NEWELL G foul drawn (5)			35 TOMLIN N foul personal (2 - 7)
02:08	14 NEWELL G 1&1 free throw 1 missed			
02:08				11 JOHNSON K defensive rebound (8)
02:08				1 NOWELL M substitution out
02:08				4 GREENE T substitution in
02:05		<b>50-59</b>	<b>-9</b>	11 JOHNSON K 2pt FG in the paint, layup made (16)
01:27	14 NEWELL G 2pt FG in the paint, layup blocked			
01:27				11 JOHNSON K block (1)
01:22				11 JOHNSON K defensive rebound (9)
01:10		<b>50-61</b>	<b>-11</b>	4 GREENE T 2pt FG in the paint, dunk, made (8)
01:10				11 JOHNSON K assist (1)
00:57	13 KUANY K 3pt FG , jump shot missed			
00:52	offensive rebound (33)			
00:48	24 ALAJIKI S 3pt FG second chance, jump shot missed			
00:44				5 CARTER C defensive rebound (3)
00:31	13 KUANY K foul personal (4 - 9)			11 JOHNSON K foul drawn (7)
00:31				11 JOHNSON K 1&1 free throw 1 missed
00:31	24 ALAJIKI S defensive rebound (3)			
00:27	14 NEWELL G 2pt FG in the paint, dunk, made (4)	<b>52-61</b>	<b>-9</b>	
00:27	1 BROWN J assist (5)			
00:18	1 BROWN J foul personal (2 - 10)			13 SILLS D foul drawn (2)
00:18		<b>52-62</b>	<b>-10</b>	13 SILLS D free throw 1 - 2 made (3)
00:18				11 JOHNSON K substitution out
00:18				1 NOWELL M substitution in
00:18		<b>52-63</b>	<b>-11</b>	13 SILLS D free throw 2 - 2 made (4)



Official Basketball Play by Play - Second Half

### Kansas St. at California

11/11/22 Haas Pavilion, Berkeley  
California vs. Kansas State

Game Time: 4:00 PM

Game Duration: 2:08

Attendance: 3,607

Officials: Tony Padilla, Amy Bonner, Rodrick Dixon

Game Time	Cal	Score	Diff	KSU
00:13	55 ASKEW D 2pt FG fast break in the paint, driving layup made (17)	54-63	-9	
00:13	55 ASKEW D foul drawn (4)			5 CARTER C foul shooting (4 - 8)
00:13	55 ASKEW D free throw fast break 1 - 1 missed			
00:12	14 NEWELL G offensive rebound (4)			
00:09	14 NEWELL G turnover lost ball (3)			5 CARTER C steal (2)
<b>END OF GAME</b>				
<b>Cal 54-63 KSU</b>				



**Kansas St. at California**

11/11/22 Haas Pavilion, Berkeley  
California vs. Kansas State

Game Time: 4:00 PM  
Game Duration: 2:08  
Attendance: 3,607

Officials: Tony Padilla, Amy Bonner, Rodrick Dixon

**Kansas St. - 27**

NO.	Name	F	Min	FG	3P	FT	Rebounds			Fouls		TP	AS	TO	ST	Blocks		+/-
				M-A	M-A	M-A	OR	DR	TOT	PF	FD					BS	BA	
3	David N'Guessan	F	05:58	1-1	0-0	0-0	0	1	1	1	0	2	0	1	0	0	0	0
11	Keyontae Johnson	F	18:19	3-4	0-0	1-2	1	4	5	1	4	7	1	1	1	1	0	0
35	Nae'Qwan Tomlin	F	13:21	1-4	0-2	2-2	0	2	2	2	1	4	0	1	0	2	0	7
1	Markquis Nowell	G	15:35	2-7	1-2	1-1	0	2	2	0	2	6	1	1	1	0	0	-6
5	Cam Carter	G	09:32	1-3	0-1	2-2	0	2	2	2	1	4	0	0	2	0	0	5
23	Abayomi Iyiola		08:25	0-2	0-0	0-0	2	0	2	0	1	0	0	1	0	0	1	-4
13	Desi Sills		16:39	0-1	0-0	2-2	0	3	3	1	1	2	0	0	1	1	1	-11
4	Tykei Greene		10:03	1-4	0-3	0-0	0	1	1	1	0	2	0	0	0	0	0	-14
25	Ismael Massoud		02:08	0-1	0-0	0-0	0	0	0	0	0	0	0	1	0	0	0	-7
Team							0	0	0			0		1				
<b>Totals</b>				9-27	1-8	8-9	3	15	18	8	10	27	2	7	5	4	2	-6

Shooting By Period		
2 <sup>nd</sup> FG%	9-27	33.3%
3PT%	1-8	12.5%
FT%	8-9	88.9%
GM FG%	9-27	33.3%
3PT%	1-8	12.5%
FT%	8-9	88.9%

Dead Ball Rebounds: 0, 0

Technical Fouls: Johnson 2<sup>nd</sup>18:10 Johnson 2<sup>nd</sup>10:57

**California - 33**

NO.	Name	F	Min	FG	3P	FT	Rebounds			Fouls		TP	AS	TO	ST	Blocks		+/-
				M-A	M-A	M-A	OR	DR	TOT	PF	FD					BS	BA	
13	Kuany Kuany	F	14:31	3-7	1-4	3-3	0	1	1	2	1	10	0	1	1	0	0	-4
14	Grant Newell	F	12:51	1-2	0-0	0-3	1	2	3	1	2	2	0	1	0	1	1	-1
21	Lars Thiemann	C	07:21	0-2	0-0	0-0	1	0	1	3	0	0	1	1	0	0	0	-2
1	Joel Brown	G	17:26	1-1	0-0	1-2	0	3	3	2	0	3	3	1	1	0	0	3
55	Devin Askew	G	16:03	4-7	2-3	1-2	1	4	5	1	2	11	1	2	0	1	1	10
0	Marsalis Roberson		06:37	1-3	0-1	0-0	0	1	1	0	0	2	0	1	0	0	0	10
22	ND Okafor		09:04	1-1	0-0	0-0	0	1	1	0	0	2	0	0	1	0	0	11
24	Sam Alajiki		10:44	1-4	0-2	1-2	0	1	1	1	2	3	0	0	0	0	1	4
2	Monty Bowser		05:23	0-1	0-0	0-0	0	0	0	0	0	0	0	0	0	0	1	-1
Team							2	3	5			0		0				
<b>Totals</b>				12-28	3-10	6-12	5	16	21	10	7	33	5	7	3	2	4	6

Shooting By Period		
2 <sup>nd</sup> FG%	12-28	42.9%
3PT%	3-10	30.0%
FT%	6-12	50%
GM FG%	12-28	42.9%
3PT%	3-10	30.0%
FT%	6-12	50.0%

Dead Ball Rebounds: 2, 0

Technical Fouls::NONE

	KSU	Cal
Biggest lead	20 (2 <sup>nd</sup> 17:11)	0 (1 <sup>st</sup> 20:00)
Best Scoring Run	8 (2 <sup>nd</sup> 4:02)	13 (2 <sup>nd</sup> 11:40)
Lead Changes	0	
Times Tied	0	
Time with Lead	19:43	00:00

Points from	KSU	Cal
Turnovers	4	10
Paint	16	14
Second Chance	0	2
Fast Breaks	2	7
Bench	4	7

	Period by Period Scoring		
	1st	2nd	TOT
KSU	36	27	63
Cal	21	33	54



**Kansas St. at California**

11/11/22 Haas Pavilion, Berkeley  
California vs. Kansas State

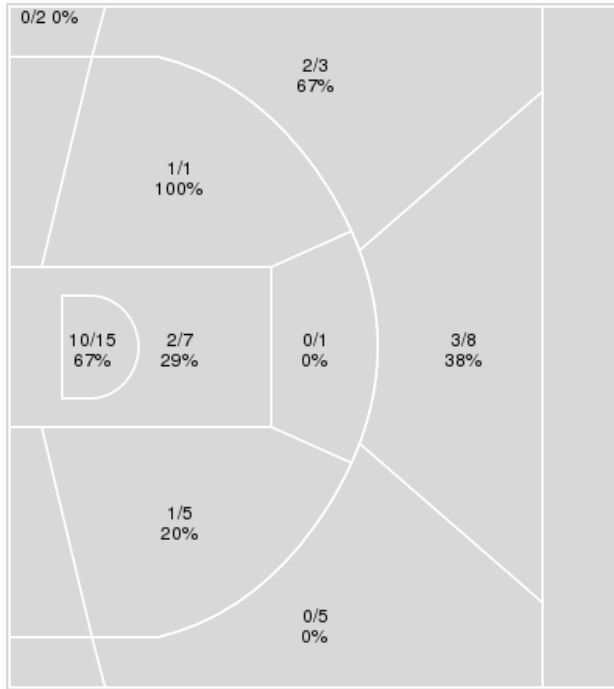
**Game Time:** 4:00 PM  
**Game Duration:** 2:08  
**Attendance:** 3,607

**Officials:** Tony Padilla, Amy Bonner, Rodrick Dixon

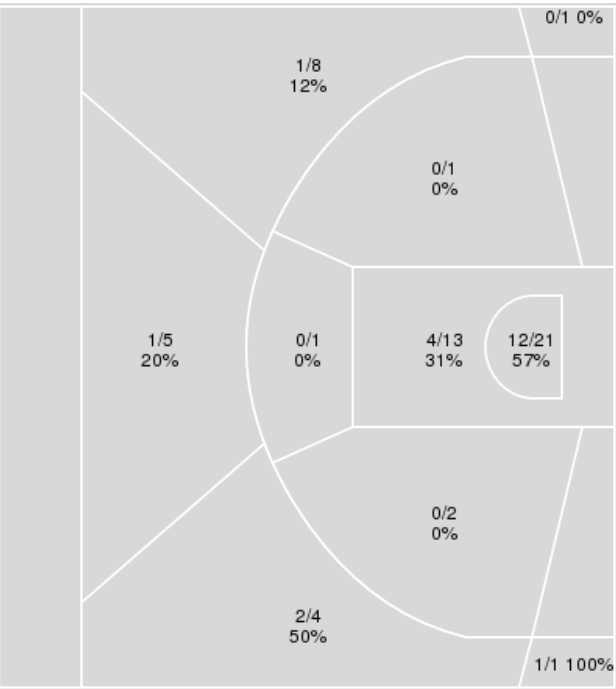
{ Players => 0, 1, 2, 3, 10, 12, 13, 14, 21, 22, 23, 24, 32, 33, 55; } FG  
Types => All; Results => All;

{ Players => All; } FG Types => All; Results => All;

**California**



**Kansas St.**



California	M/A	%
Field Goals	19/47	40
2 Points	14/29	48
3 Points	5/18	28
Free Throws	11/19	58

Kansas St.	M/A	%
Field Goals	21/57	37
2 Points	16/38	42
3 Points	5/19	26
Free Throws	16/18	89



**Kansas St. at California**

11/11/22 Haas Pavilion, Berkeley  
California vs. Kansas State

Game Time: 4:00 PM  
Game Duration: 2:08  
Attendance: 3,607

Officials: Tony Padilla, Amy Bonner, Rodrick Dixon

**Kansas St.**

No	Name	Mins		Score		Points Diff		Points per Min		Assists		Rebounds		Steals		Turnovers	
		On	Off	On	Off	On	Off	On	Off	On	Off	On	Off	On	Off	On	Off
1	Markquis Nowell	33:16	06:44	51 - 41	12 - 13	10	-1	1.53	1.78	8	1	30	5	10	0	13	2
3	David N'Guessan	13:40	26:20	18 - 6	45 - 48	12	-3	1.32	1.71	3	6	16	19	2	8	5	10
4	Tykei Greene	20:16	19:44	34 - 31	29 - 23	3	6	1.68	1.47	6	3	16	19	4	6	8	7
5	Cam Carter	19:25	20:35	36 - 21	27 - 33	15	-6	1.85	1.31	5	4	20	15	3	7	7	8
11	Keyontae Johnson	33:26	06:34	52 - 40	11 - 14	12	-3	1.56	1.68	6	3	31	4	7	3	11	4
13	Desi Sills	29:05	10:55	42 - 49	21 - 5	-7	16	1.44	1.92	5	4	24	11	8	2	10	5
23	Abayomi Iyiola	15:21	24:39	26 - 32	37 - 22	-6	15	1.69	1.50	3	6	9	26	5	5	7	8
25	Ismael Massoud	09:32	30:28	15 - 23	48 - 31	-8	17	1.57	1.58	3	6	5	30	3	7	4	11
35	Nae'Qwan Tomlin	25:59	14:01	41 - 27	22 - 27	14	-5	1.58	1.57	6	3	24	11	8	2	10	5

**California**

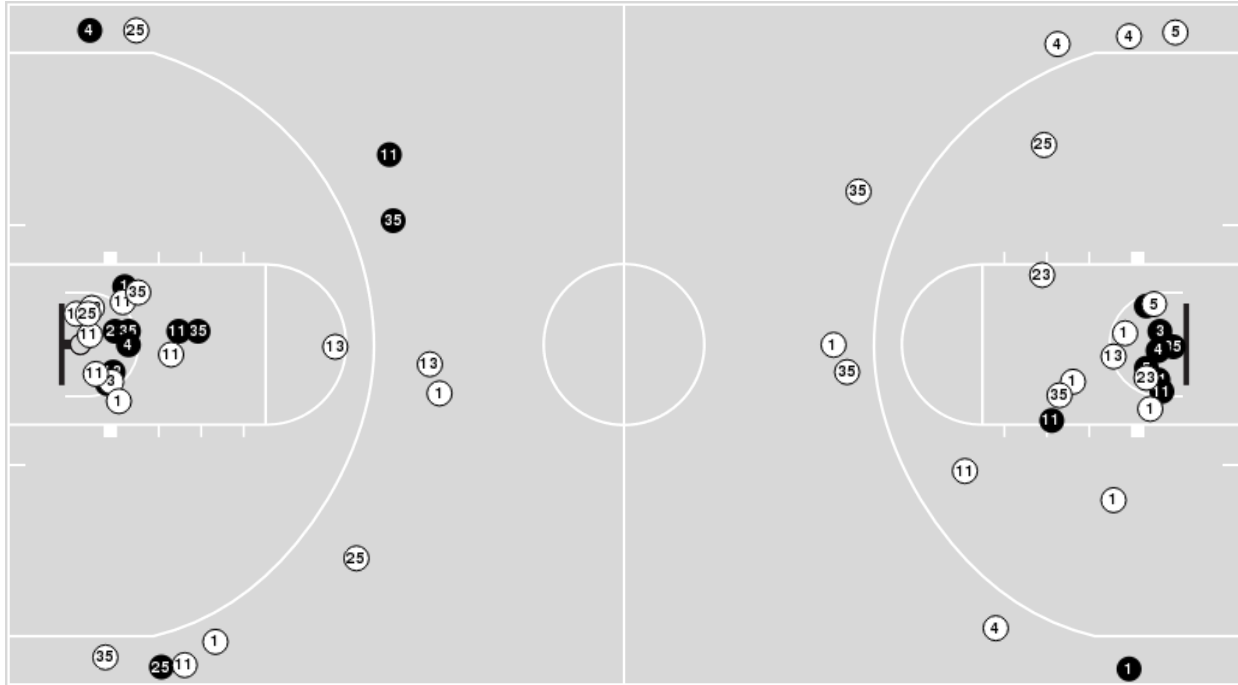
No	Name	Mins		Score		Points Diff		Points per Min		Assists		Rebounds		Steals		Turnovers	
		On	Off	On	Off	On	Off	On	Off	On	Off	On	Off	On	Off	On	Off
0	Marsalis Roberson	19:08	20:52	27 - 23	27 - 40	4	-13	1.41	1.29	4	5	17	18	3	3	13	9
1	Joel Brown	35:36	04:24	43 - 56	11 - 7	-13	4	1.21	2.50	7	2	29	6	4	2	16	6
2	Monty Bowser	08:51	31:09	14 - 15	40 - 48	-1	-8	1.58	1.28	3	6	9	26	2	4	7	15
13	Kuany Kuany	21:10	18:50	30 - 40	24 - 23	-10	1	1.42	1.27	6	3	18	17	5	1	9	13
14	Grant Newell	26:02	13:58	24 - 34	30 - 29	-10	1	0.92	2.15	3	6	25	10	3	3	13	9
21	Lars Thiemann	21:51	18:09	21 - 40	33 - 23	-19	10	0.96	1.82	4	5	16	19	3	3	12	10
22	ND Okafor	14:34	25:26	28 - 15	26 - 48	13	-22	1.92	1.02	4	5	13	22	3	3	9	13
24	Sam Alajiki	20:59	19:01	38 - 44	16 - 19	-6	-3	1.81	0.84	8	1	19	16	3	3	13	9
55	Devin Askew	31:49	08:11	45 - 48	9 - 15	-3	-6	1.41	1.10	6	3	29	6	4	2	18	4



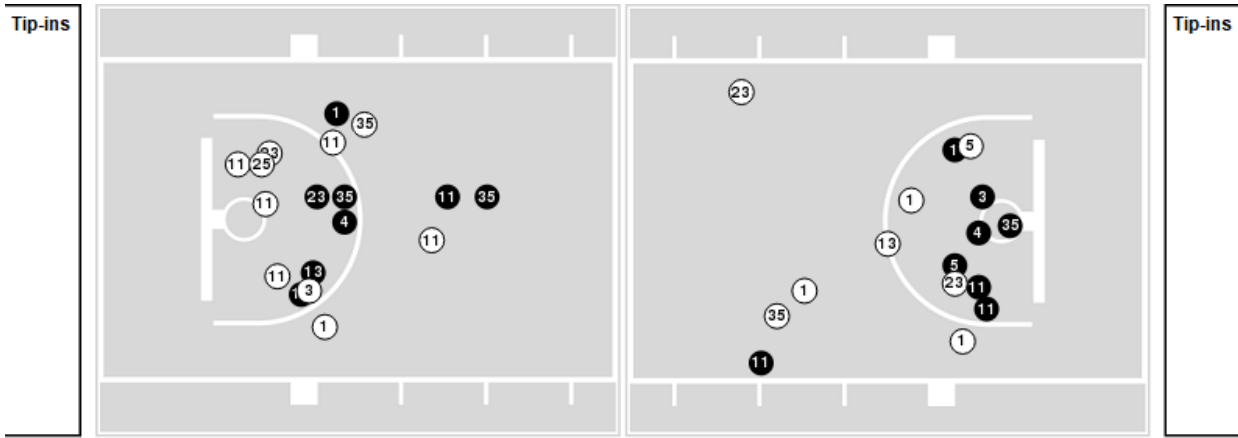
Players => AllFG Types=>AllResults=>All

**Kansas St.**

**All Field Goals**



**Blow Up Chart**



● Made    ○ Missed    N - Player Number

Kansas St.	M/A	%
Field Goals	21/57	37
2 Points	16/38	42
3 Points	5/19	26
Free Throws	16/18	89

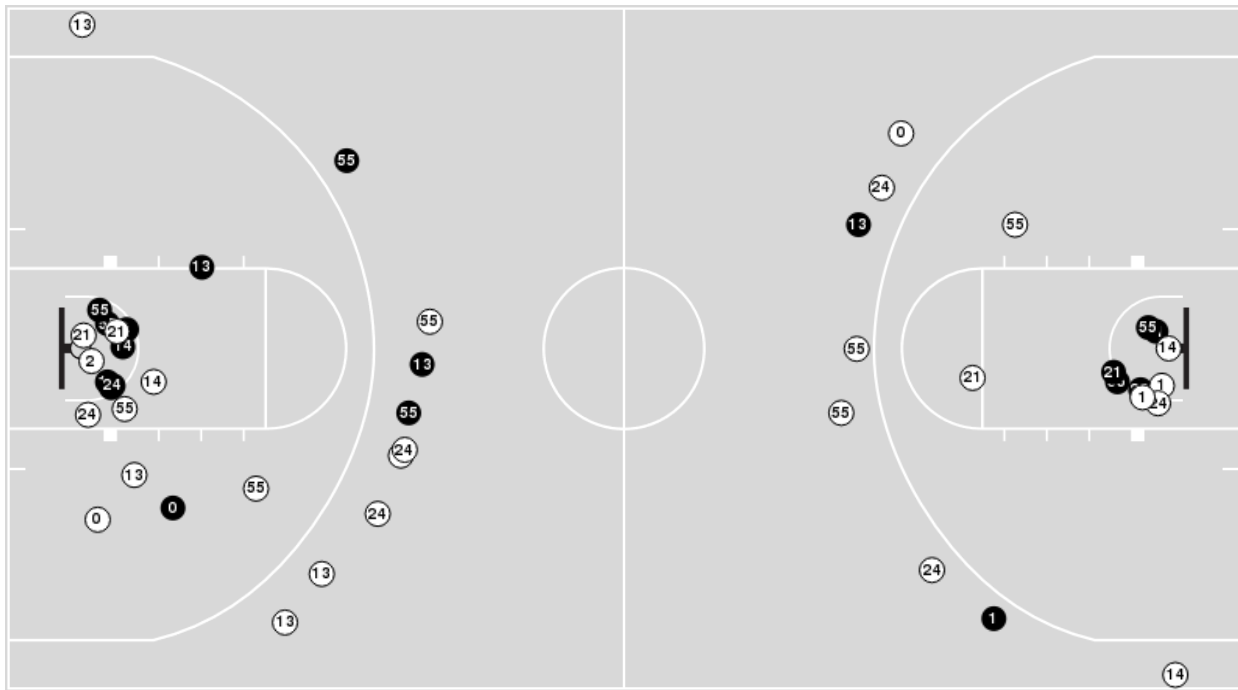
Kansas St.	M/A	%
Points in the Paint	32 (16 / 34)	47
Fast Break Points	5 (3/4)	75
Second Chance Points	9 (6/10)	60
Effective FG%	41	



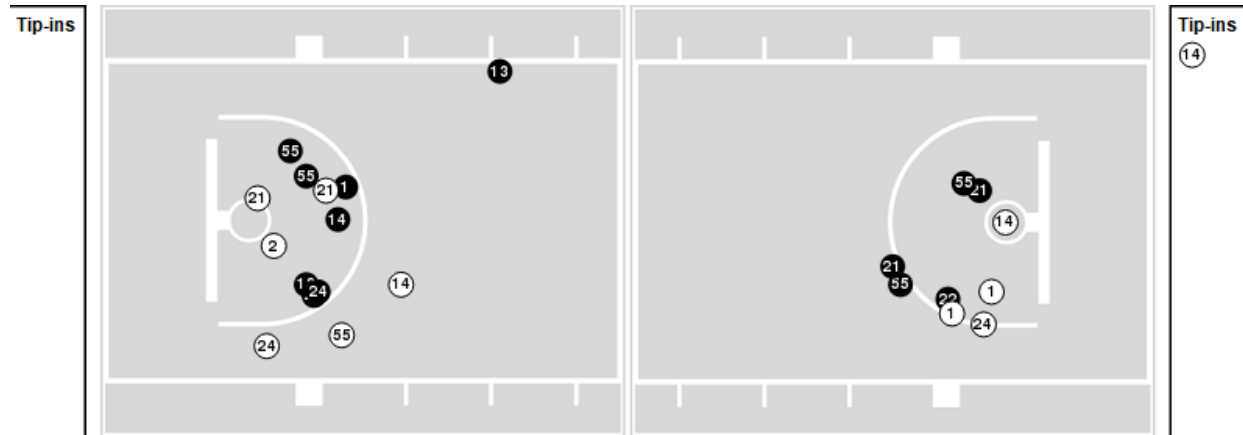
Players => 0, 1, 2, 3, 10, 12, 13, 14, 21, 22, 23, 24, 32, 33, 55FG Types=>AllResults=>All

**California**

**All Field Goals**



**Blow Up Chart**



● Made ○ Missed N - Player Number

California	M/A	%
Field Goals	19/47	40
2 Points	14/29	48
3 Points	5/18	28
Free Throws	11/19	58

California	M/A	%
Points in the Paint	24 (12 / 22)	55
Fast Break Points	10 (7/10)	70
Second Chance Points	6 (4/7)	57
Effective FG%	46	



**Kansas St. at California**

11/11/22 Haas Pavilion, Berkeley  
California vs. Kansas State

**Game Time:** 4:00 PM  
**Game Duration:** 2:08  
**Attendance:** 3,607

**Officials:** Tony Padilla, Amy Bonner, Rodrick Dixon

**Kansas St.**

Lineup	Quarter On	Time On	Quarter Off	Time Off	Time on Court	Score	Score Diff	Reb	Stl	Tov	Ass	PPP
1- Nowell M/ 3- N'Guessan D/ 5- Carter C/ 11- Johnson K/ 35- Tomlin N/	1	20:00	1	17:29	02:31	2-2	0	3	0	1	0	0.5000
1- Nowell M/ 11- Johnson K/ 13- Sills D/ 23- Iyiola A/ 25- Massoud I/	1	17:29	1	14:23	03:06	7-7	0	1	1	1	2	1.4000
1- Nowell M/ 13- Sills D/ 23- Iyiola A/ 25- Massoud I/ 35- Tomlin N/	1	14:23	1	13:12	01:11	2-3	-1	1	1	1	0	0.6667
5- Carter C/ 11- Johnson K/ 13- Sills D/ 23- Iyiola A/ 35- Tomlin N/	1	13:12	1	11:47	01:25	2-1	1	1	0	0	0	1.0638
1- Nowell M/ 4- Greene T/ 5- Carter C/ 11- Johnson K/ 35- Tomlin N/	1	11:47	1	09:32	02:15	5-0	5	1	0	1	1	1.2887
1- Nowell M/ 11- Johnson K/ 13- Sills D/ 23- Iyiola A/ 35- Tomlin N/	1	09:32	1	08:18	01:14	0-2	-2	1	1	2	0	0.0000
1- Nowell M/ 3- N'Guessan D/ 11- Johnson K/ 13- Sills D/ 35- Tomlin N/	1	08:18	1	07:58	00:20	0-0	0	0	0	0	0	0.0000
1- Nowell M/ 3- N'Guessan D/ 4- Greene T/ 11- Johnson K/ 13- Sills D/	1	07:58	1	05:10	02:48	7-0	7	4	0	0	1	1.7500
1- Nowell M/ 3- N'Guessan D/ 4- Greene T/ 5- Carter C/ 35- Tomlin N/	1	05:10	1	03:07	02:03	5-0	5	2	1	2	2	1.2500
1- Nowell M/ 4- Greene T/ 5- Carter C/ 25- Massoud I/ 35- Tomlin N/	1	03:07	1	02:22	00:45	3-2	1	0	0	0	1	2.0833
4- Greene T/ 5- Carter C/ 13- Sills D/ 25- Massoud I/ 35- Tomlin N/	1	02:22	1	01:28	00:54	0-2	-2	1	0	0	0	0.0000
1- Nowell M/ 4- Greene T/ 11- Johnson K/ 13- Sills D/ 25- Massoud I/	1	01:28	2	20:00	01:28	3-2	1	2	1	0	0	1.0870
1- Nowell M/ 3- N'Guessan D/ 5- Carter C/ 11- Johnson K/ 35- Tomlin N/	2	20:00	2	17:36	02:24	4-1	3	4	0	1	0	0.8000
1- Nowell M/ 5- Carter C/ 11- Johnson K/ 23- Iyiola A/ 35- Tomlin N/	2	17:36	2	16:39	00:57	2-0	2	1	1	0	0	1.0638
1- Nowell M/ 11- Johnson K/ 13- Sills D/ 23- Iyiola A/ 35- Tomlin N/	2	16:39	2	15:52	00:47	0-0	0	1	0	0	0	0.0000
1- Nowell M/ 4- Greene T/ 13- Sills D/ 23- Iyiola A/ 25- Massoud I/	2	15:52	2	14:30	01:22	0-5	-5	0	0	1	0	0.0000
1- Nowell M/ 4- Greene T/ 11- Johnson K/ 13- Sills D/ 25- Massoud I/	2	14:30	2	13:44	00:46	0-2	-2	0	0	1	0	0.0000
1- Nowell M/ 4- Greene T/ 11- Johnson K/ 13- Sills D/ 35- Tomlin N/	2	13:44	2	11:59	01:45	0-4	-4	1	1	1	0	0.0000
4- Greene T/ 5- Carter C/ 11- Johnson K/ 13- Sills D/ 23- Iyiola A/	2	11:59	2	09:23	02:36	5-8	-3	1	0	2	0	1.1261
1- Nowell M/ 3- N'Guessan D/ 4- Greene T/ 11- Johnson K/ 13- Sills D/	2	09:23	2	07:57	01:26	0-2	-2	2	0	0	0	0.0000
1- Nowell M/ 3- N'Guessan D/ 11- Johnson K/ 13- Sills D/ 35- Tomlin N/	2	07:57	2	05:49	02:08	0-1	-1	1	1	1	0	0.0000
1- Nowell M/ 11- Johnson K/ 13- Sills D/ 23- Iyiola A/ 35- Tomlin N/	2	05:49	2	03:35	02:14	8-5	3	1	1	0	1	2.3256
1- Nowell M/ 5- Carter C/ 11- Johnson K/ 13- Sills D/ 23- Iyiola A/	2	03:35	2	03:06	00:29	0-1	-1	1	0	0	0	0.0000
1- Nowell M/ 5- Carter C/ 11- Johnson K/ 13- Sills D/ 35- Tomlin N/	2	03:06	2	02:08	00:58	2-0	2	3	0	0	0	1.0638
4- Greene T/ 5- Carter C/ 11- Johnson K/ 13- Sills D/ 35- Tomlin N/	2	02:08	2	00:18	01:49	5-2	3	2	0	0	1	1.7361
1- Nowell M/ 4- Greene T/ 5- Carter C/ 13- Sills D/ 35- Tomlin N/	2	00:18	2	00:00	00:19	1-2	-1	0	1	0	0	2.2727



**Kansas St. at California**

11/11/22 Haas Pavilion, Berkeley  
California vs. Kansas State

**Game Time:** 4:00 PM  
**Game Duration:** 2:08  
**Attendance:** 3,607

**Officials:** Tony Padilla, Amy Bonner, Rodrick Dixon

**California**

Lineup	Quarter On	Time On	Quarter Off	Time Off	Time on Court	Score	Score Diff	Reb	Stl	Tov	Ass	PPP
1- Brown J/ 13- Kuany K/ 14- Newell G/ 21- Thiemann L/ 55- Askew D/	1	20:00	1	17:29	02:31	2-2	0	3	1	0	0	0.6667
0- Roberson M/ 1- Brown J/ 14- Newell G/ 21- Thiemann L/ 55- Askew D/	1	17:29	1	16:35	00:54	0-2	-2	0	0	0	0	0.0000
0- Roberson M/ 1- Brown J/ 21- Thiemann L/ 24- Alajiki S/ 55- Askew D/	1	16:35	1	16:35	00:00	1-0	1	0	0	0	0	2.2727
0- Roberson M/ 1- Brown J/ 13- Kuany K/ 21- Thiemann L/ 24- Alajiki S/	1	16:35	1	14:23	02:12	6-5	1	2	1	2	2	1.5000
0- Roberson M/ 2- Bowser M/ 22- Okafor N/ 24- Alajiki S/ 55- Askew D/	1	14:23	1	13:12	01:11	3-2	1	1	1	2	0	0.8721
1- Brown J/ 13- Kuany K/ 14- Newell G/ 22- Okafor N/ 24- Alajiki S/	1	13:12	1	12:48	00:24	0-2	-2	0	0	0	0	0.0000
1- Brown J/ 14- Newell G/ 22- Okafor N/ 24- Alajiki S/ 55- Askew D/	1	12:48	1	12:24	00:24	1-0	1	0	0	0	0	1.1364
1- Brown J/ 14- Newell G/ 21- Thiemann L/ 24- Alajiki S/ 55- Askew D/	1	12:24	1	10:01	02:23	0-5	-5	2	0	3	0	0.0000
0- Roberson M/ 1- Brown J/ 14- Newell G/ 21- Thiemann L/ 55- Askew D/	1	10:01	1	09:12	00:49	1-0	1	2	0	0	0	2.2727
0- Roberson M/ 1- Brown J/ 14- Newell G/ 22- Okafor N/ 55- Askew D/	1	09:12	1	08:29	00:43	1-0	1	0	0	1	0	0.6944
0- Roberson M/ 1- Brown J/ 2- Bowser M/ 14- Newell G/ 22- Okafor N/	1	08:29	1	07:58	00:31	0-0	0	0	0	1	0	0.0000
0- Roberson M/ 1- Brown J/ 2- Bowser M/ 14- Newell G/ 21- Thiemann L/	1	07:58	1	07:06	00:52	0-3	-3	0	0	0	0	0.0000
0- Roberson M/ 1- Brown J/ 21- Thiemann L/ 24- Alajiki S/ 55- Askew D/	1	07:06	1	04:39	02:27	0-4	-4	1	0	1	0	0.0000
1- Brown J/ 13- Kuany K/ 21- Thiemann L/ 24- Alajiki S/ 55- Askew D/	1	04:39	1	03:40	00:59	0-5	-5	0	0	1	0	0.0000
1- Brown J/ 13- Kuany K/ 14- Newell G/ 21- Thiemann L/ 55- Askew D/	1	03:40	1	03:07	00:33	0-0	0	0	0	1	0	0.0000
1- Brown J/ 13- Kuany K/ 14- Newell G/ 22- Okafor N/ 55- Askew D/	1	03:07	1	03:07	00:00	0-0	0	0	0	0	0	0.0000
0- Roberson M/ 1- Brown J/ 14- Newell G/ 22- Okafor N/ 55- Askew D/	1	03:07	1	02:22	00:45	2-3	-1	0	0	0	1	2.0000
0- Roberson M/ 2- Bowser M/ 14- Newell G/ 22- Okafor N/ 55- Askew D/	1	02:22	1	02:21	00:01	0-0	0	0	0	0	0	0.0000
0- Roberson M/ 1- Brown J/ 14- Newell G/ 22- Okafor N/ 55- Askew D/	1	02:21	1	01:28	00:53	2-0	2	1	0	0	0	2.0000
0- Roberson M/ 2- Bowser M/ 14- Newell G/ 22- Okafor N/ 55- Askew D/	1	01:28	1	00:50	00:38	0-0	0	1	0	2	0	0.0000
0- Roberson M/ 1- Brown J/ 14- Newell G/ 21- Thiemann L/ 55- Askew D/	1	00:50	1	00:15	00:35	0-3	-3	0	0	1	0	0.0000
1- Brown J/ 2- Bowser M/ 14- Newell G/ 21- Thiemann L/ 24- Alajiki S/	1	00:15	2	20:00	00:15	2-0	2	1	0	0	1	2.0000
1- Brown J/ 2- Bowser M/ 13- Kuany K/ 14- Newell G/ 21- Thiemann L/	2	20:00	2	17:11	02:49	1-5	-4	2	0	0	0	0.2252
0- Roberson M/ 1- Brown J/ 14- Newell G/ 21- Thiemann L/ 55- Askew D/	2	17:11	2	15:52	01:19	0-1	-1	3	0	2	0	0.0000
0- Roberson M/ 1- Brown J/ 22- Okafor N/ 24- Alajiki S/ 55- Askew D/	2	15:52	2	13:31	02:21	7-0	7	2	0	0	1	2.0349
0- Roberson M/ 2- Bowser M/ 22- Okafor N/ 24- Alajiki S/ 55- Askew D/	2	13:31	2	13:31	00:00	1-0	1	0	0	0	0	2.2727
2- Bowser M/ 13- Kuany K/ 22- Okafor N/ 24- Alajiki S/ 55- Askew D/	2	13:31	2	11:59	01:32	3-0	3	4	1	1	1	1.0000
2- Bowser M/ 13- Kuany K/ 21- Thiemann L/ 24- Alajiki S/ 55- Askew D/	2	11:59	2	10:57	01:02	4-5	-1	0	0	1	1	1.3889
1- Brown J/ 13- Kuany K/ 14- Newell G/ 21- Thiemann L/ 55- Askew D/	2	10:57	2	08:46	02:11	4-0	4	0	1	0	0	1.3333
0- Roberson M/ 1- Brown J/ 14- Newell G/ 22- Okafor N/ 55- Askew D/	2	08:46	2	06:57	01:49	3-0	3	3	0	0	0	0.8721
0- Roberson M/ 1- Brown J/ 13- Kuany K/ 14- Newell G/ 22- Okafor N/	2	06:57	2	05:49	01:08	0-0	0	1	1	1	0	0.0000
1- Brown J/ 13- Kuany K/ 22- Okafor N/ 24- Alajiki S/ 55- Askew D/	2	05:49	2	03:35	02:14	5-8	-3	0	0	1	1	1.2500
1- Brown J/ 13- Kuany K/ 14- Newell G/ 24- Alajiki S/ 55- Askew D/	2	03:35	2	00:00	03:35	5-8	-3	6	0	1	1	0.7396



**Kansas St. at California**

11/11/22 Haas Pavilion, Berkeley  
California vs. Kansas State

**Game Time:** 4:00 PM  
**Game Duration:** 2:08  
**Attendance:** 3,607

**Officials:** Tony Padilla, Amy Bonner, Rodrick Dixon

**Kansas St.**

Lineup	Time	Score	Score Diff	Pts/Min	Reb	Stl	Tov	Ass	PPP
1- Nowell M/ 3- N'Guessan D/ 5- Carter C/ 11- Johnson K/ 35- Tomlin N/	04:55	6-3	3	1.2203	7	0	2	0	0.6667
1- Nowell M/ 11- Johnson K/ 13- Sills D/ 23- Iyiola A/ 35- Tomlin N/	04:15	8-7	1	1.8824	3	2	2	1	1.2422
1- Nowell M/ 3- N'Guessan D/ 4- Greene T/ 11- Johnson K/ 13- Sills D/	04:14	7-2	5	1.6535	6	0	0	1	1.1667
1- Nowell M/ 11- Johnson K/ 13- Sills D/ 23- Iyiola A/ 25- Massoud I/	03:06	7-7	0	2.2581	1	1	1	2	1.4000
4- Greene T/ 5- Carter C/ 11- Johnson K/ 13- Sills D/ 23- Iyiola A/	02:36	5-8	-3	1.9231	1	0	2	0	1.1261
1- Nowell M/ 3- N'Guessan D/ 11- Johnson K/ 13- Sills D/ 35- Tomlin N/	02:28	0-1	-1	0.0000	1	1	1	0	0.0000
1- Nowell M/ 4- Greene T/ 5- Carter C/ 11- Johnson K/ 35- Tomlin N/	02:15	5-0	5	2.2222	1	0	1	1	1.2887
1- Nowell M/ 4- Greene T/ 11- Johnson K/ 13- Sills D/ 25- Massoud I/	02:14	3-4	-1	1.3433	2	1	1	0	0.6303
1- Nowell M/ 3- N'Guessan D/ 4- Greene T/ 5- Carter C/ 35- Tomlin N/	02:03	5-0	5	2.4390	2	1	2	2	1.2500
4- Greene T/ 5- Carter C/ 11- Johnson K/ 13- Sills D/ 35- Tomlin N/	01:49	5-2	3	2.7523	2	0	0	1	1.7361
1- Nowell M/ 4- Greene T/ 11- Johnson K/ 13- Sills D/ 35- Tomlin N/	01:45	0-4	-4	0.0000	1	1	1	0	0.0000
5- Carter C/ 11- Johnson K/ 13- Sills D/ 23- Iyiola A/ 35- Tomlin N/	01:25	2-1	1	1.4118	1	0	0	0	1.0638
1- Nowell M/ 4- Greene T/ 13- Sills D/ 23- Iyiola A/ 25- Massoud I/	01:22	0-5	-5	0.0000	0	0	1	0	0.0000
1- Nowell M/ 13- Sills D/ 23- Iyiola A/ 25- Massoud I/ 35- Tomlin N/	01:11	2-3	-1	1.6901	1	1	1	0	0.6667
1- Nowell M/ 5- Carter C/ 11- Johnson K/ 13- Sills D/ 35- Tomlin N/	00:58	2-0	2	2.0690	3	0	0	0	1.0638
1- Nowell M/ 5- Carter C/ 11- Johnson K/ 23- Iyiola A/ 35- Tomlin N/	00:57	2-0	2	2.1053	1	1	0	0	1.0638
4- Greene T/ 5- Carter C/ 13- Sills D/ 25- Massoud I/ 35- Tomlin N/	00:54	0-2	-2	0.0000	1	0	0	0	0.0000
1- Nowell M/ 4- Greene T/ 5- Carter C/ 25- Massoud I/ 35- Tomlin N/	00:45	3-2	1	4.0000	0	0	0	1	2.0833
1- Nowell M/ 5- Carter C/ 11- Johnson K/ 13- Sills D/ 23- Iyiola A/	00:29	0-1	-1	0.0000	1	0	0	0	0.0000
1- Nowell M/ 4- Greene T/ 5- Carter C/ 13- Sills D/ 35- Tomlin N/	00:19	1-2	-1	3.1579	0	1	0	0	2.2727



**Kansas St. at California**

11/11/22 Haas Pavilion, Berkeley  
California vs. Kansas State

**Game Time:** 4:00 PM  
**Game Duration:** 2:08  
**Attendance:** 3,607

**Officials:** Tony Padilla, Amy Bonner, Rodrick Dixon

**California**

Lineup	Time	Score	Score Diff	Pts/Min	Reb	Stl	Tov	Ass	PPP
1- Brown J/ 13- Kuany K/ 14- Newell G/ 21- Thiemann L/ 55- Askew D/	05:15	6-2	4	1.1429	3	2	1	0	0.8571
0- Roberson M/ 1- Brown J/ 14- Newell G/ 22- Okafor N/ 55- Askew D/	04:10	8-3	5	1.9200	4	0	1	1	1.1628
0- Roberson M/ 1- Brown J/ 14- Newell G/ 21- Thiemann L/ 55- Askew D/	03:37	1-6	-5	0.2765	5	0	3	0	0.1736
1- Brown J/ 13- Kuany K/ 14- Newell G/ 24- Alajiki S/ 55- Askew D/	03:35	5-8	-3	1.3953	6	0	1	1	0.7396
1- Brown J/ 2- Bowser M/ 13- Kuany K/ 14- Newell G/ 21- Thiemann L/	02:49	1-5	-4	0.3550	2	0	0	0	0.2252
0- Roberson M/ 1- Brown J/ 21- Thiemann L/ 24- Alajiki S/ 55- Askew D/	02:27	1-4	-3	0.4082	1	0	1	0	0.2907
1- Brown J/ 14- Newell G/ 21- Thiemann L/ 24- Alajiki S/ 55- Askew D/	02:23	0-5	-5	0.0000	2	0	3	0	0.0000
0- Roberson M/ 1- Brown J/ 22- Okafor N/ 24- Alajiki S/ 55- Askew D/	02:21	7-0	7	2.9787	2	0	0	1	2.0349
1- Brown J/ 13- Kuany K/ 22- Okafor N/ 24- Alajiki S/ 55- Askew D/	02:14	5-8	-3	2.2388	0	0	1	1	1.2500
0- Roberson M/ 1- Brown J/ 13- Kuany K/ 21- Thiemann L/ 24- Alajiki S/	02:12	6-5	1	2.7273	2	1	2	2	1.5000
2- Bowser M/ 13- Kuany K/ 22- Okafor N/ 24- Alajiki S/ 55- Askew D/	01:32	3-0	3	1.9565	4	1	1	1	1.0000
0- Roberson M/ 2- Bowser M/ 22- Okafor N/ 24- Alajiki S/ 55- Askew D/	01:11	4-2	2	3.3803	1	1	2	0	1.0309
0- Roberson M/ 1- Brown J/ 13- Kuany K/ 14- Newell G/ 22- Okafor N/	01:08	0-0	0	0.0000	1	1	1	0	0.0000
2- Bowser M/ 13- Kuany K/ 21- Thiemann L/ 24- Alajiki S/ 55- Askew D/	01:02	4-5	-1	3.8710	0	0	1	1	1.3889
1- Brown J/ 13- Kuany K/ 21- Thiemann L/ 24- Alajiki S/ 55- Askew D/	00:59	0-5	-5	0.0000	0	0	1	0	0.0000
0- Roberson M/ 1- Brown J/ 2- Bowser M/ 14- Newell G/ 21- Thiemann L/	00:52	0-3	-3	0.0000	0	0	0	0	0.0000
0- Roberson M/ 2- Bowser M/ 14- Newell G/ 22- Okafor N/ 55- Askew D/	00:39	0-0	0	0.0000	1	0	2	0	0.0000
0- Roberson M/ 1- Brown J/ 2- Bowser M/ 14- Newell G/ 22- Okafor N/	00:31	0-0	0	0.0000	0	0	1	0	0.0000
1- Brown J/ 13- Kuany K/ 14- Newell G/ 22- Okafor N/ 24- Alajiki S/	00:24	0-2	-2	0.0000	0	0	0	0	0.0000
1- Brown J/ 14- Newell G/ 22- Okafor N/ 24- Alajiki S/ 55- Askew D/	00:24	1-0	1	2.5000	0	0	0	0	1.1364
1- Brown J/ 2- Bowser M/ 14- Newell G/ 21- Thiemann L/ 24- Alajiki S/	00:15	2-0	2	8.0000	1	0	0	1	2.0000
1- Brown J/ 13- Kuany K/ 14- Newell G/ 22- Okafor N/ 55- Askew D/	00:00	0-0	0	NaN	0	0	0	0	0.0000