

**KENT STATE MEDIA RELATIONS**

Women's Basketball Contact: Jay Fiorello  
jfiorel2@kent.edu  
Office: 330-672-8420 • Cell: 330-209-9333

**2025-26 SCHEDULE****NOVEMBER (4-5)**

3-Mon	@ James Madison#	L, 48-80
7-Fri	@ West Virginia	L, 47-88
<b>10-Mon</b>	<b>WALSH</b>	<b>W, 79-55</b>
14-Fri	@ Xavier	W, 68-60
<b>16-Sun</b>	<b>NIAGARA</b>	<b>W, 92-45</b>
19-Wed	@ Ohio State	L, 68-88
24-Mon	@ Duquesne	L, 53-58
28-Fri	vs. Tulsa%	W, 75-69
30-Sun	vs. Arkansas State%	L, 54-74

**DECEMBER (1-3)**

6-Sat	@ Marshall	L, 62-70
<b>15-Mon</b>	<b>DAVIS &amp; ELKINS</b>	<b>W, 117-37</b>
20-Sat	@ Bowling Green*	L, 69-73
<b>31-Wed</b>	<b>MIAMI*</b>	<b>L, 63-67</b>

**JANUARY (1-2)**

<b>3-Sat</b>	<b>UMASS*</b>	<b>L, 70-75</b>
7-Wed	@ Central Michigan*	L, 57-66
10-Sat	@ Eastern Michigan*	W, 78-65

<b>14-Wed</b>	<b>OHIO*</b>	<b>7 p.m.</b>
---------------	--------------	---------------

<b>17-Sat</b>	<b>AKRON*</b>	<b>1 p.m.</b>
---------------	---------------	---------------

24-Sat	@ Buffalo*	2 p.m.
--------	------------	--------

28-Wed	@ Toledo*	7 p.m.
--------	-----------	--------

<b>31-Sat</b>	<b>BALL STATE*</b>	<b>1 p.m.</b>
---------------	--------------------	---------------

**FEBRUARY (0-0)**

<b>4-Wed</b>	<b>BOWLING GREEN*</b>	<b>7 p.m.</b>
--------------	-----------------------	---------------

<b>7-Sat</b>	<b>APP STATE#</b>	<b>1 p.m.</b>
--------------	-------------------	---------------

14-Sat	@ Ohio*	1 p.m.
--------	---------	--------

<b>18-Wed</b>	<b>NORTHERN ILLINOIS*</b>	<b>7 p.m.</b>
---------------	---------------------------	---------------

21-Sat	@ Akron*	12 p.m.
--------	----------	---------

25-Wed	@ UMass*	6 p.m.
--------	----------	--------

<b>28-Sat</b>	<b>CENTRAL MICHIGAN*</b>	<b>1 p.m.</b>
---------------	--------------------------	---------------

**MARCH (0-0)**

4-Wed	@ Miami*	7 p.m.
-------	----------	--------

<b>7-Sat</b>	<b>WESTERN MICHIGAN*</b>	<b>1 p.m.</b>
--------------	--------------------------	---------------

11-Wed	Quarterfinals®	TBA
--------	----------------	-----

13-Fri	Semifinals®	TBA
--------	-------------	-----

14-Sat	Championship®	11 a.m.
--------	---------------	---------

Home Games in **BOLD CAPS**

\* Mid-American Conference game

# MAC-Sun Belt Challenge

% Baha Mar Hoops Nassau Championship (Nassau, Bahamas)

@ MAC Tournament (Cleveland, Ohio)

**2025-26 KENT STATE WOMEN'S BASKETBALL****GAME #17****M.A.C. CENTER****JAN. 14, 2026****KENT, OHIO**

KENT STATE  
(6-10, 1-4 MAC)  
VS  
OHIO  
(10-4, 4-0 MAC)

**HOME: 3-2****AWAY: 2-7****NEUT: 1-1****STREAK: W1****THE GAME**

Kent State will host Ohio on Wednesday in the first of two home contests this week at the M.A.C. Center.

The Golden Flashes are coming off their first MAC victory and led by as many as 16 points during a 78-65 win at Eastern Michigan on Saturday. **Mya Babbitt** led all players with 17 points and **Dionna Gray** posted an impressive stat line with 15 points, nine rebounds, six assists and career-high five steals. Led by **Bianca Juzzo**'s 11 points and **Caitlyn Holmes**' career-high 10 points, Kent State totaled 38 bench points, the most in a non-Senior Day game against a Division I opponent since Jan. 9, 2021.

**Mya Babbitt** is the fourth leading scorer in the MAC at 15.7 ppg and has two of the top four single-game scoring performances in the league. Babbitt is third in the conference with 34 three-point field goals. **Riley Rismiller** (7.6 ppg) and **Tatiana Thomas** (7.6 ppg) provide low post options. Rismiller has three double-doubles and ranks ninth in the MAC in rebounding with 6.8 per game, while Thomas is grabbing 7.4 boards per conference contest. **Dionna Gray** (5.3 ppg) is sixth in the MAC in assists with 4.6 per game.

Ohio has won five straight, tied for the longest current streak in the MAC, and has started 4-0 in conference play for the first time since 2015-16. The Bobcats rank in the top 20 nationally in three-point field goals per game (9.3) and steals per game (12.6).

Bailey Tabeing leads the team with averages of 13.7 points, 3.1 assists and 2.1 steals per contest. Tabeing ranks second in the conference with 35 three-pointers and has shot 13-of-24 from behind the arc during league play. Bella Ranallo (11.4 ppg) and Aliah McWhorter (9.6 ppg) also provide scoring options on the perimeter.

**BROADCAST INFO**

ESPN+ (Dane Richardson, Jacki Windon) / Kent State Radio Network (Cam Manna)

**NEXT UP FOR KENT STATE**

The Golden Flashes will be back at the M.A.C. Center on Saturday, Jan. 17 to battle rival Akron.

**PROBABALE STARTERS** (Based on most recent game)

G #12	Dionna Gray	Sr.	5-4	Huntington, W.Va. / Huntington	5.3 ppg	4.6 apg	Season-high 15 pts, career-high 5 stl @ EMU on Saturday
G #9	Rylee Kalocay	Fr.	5-9	Pittsburgh, Pa. / Upper St. Clair	6.2 ppg	2.2 rpg	Career-high 16 pts, 6 reb, 4 stl vs. Davis & Elkins (12/15)
G #23	Mya Babbitt	Jr.	5-8	Papillion, Neb. / Millard South	15.7 ppg	4.4 rpg	Averaging 20.3 ppg over KSU's last 3 games
F #1	Tatiana Thomas	Sr.	5-10	Bolingbrook, Ill. / Bolingbrook	7.6 ppg	5.3 rpg	Averaging 4.4 off. rebounds/game in MAC play
C #30	Riley Rismiller	Jr.	6-4	Coldwater, Ohio / Dayton	7.6 ppg	6.8 rpg	Ranks 9th in MAC in rebounding (6.8 rpg)

**RESERVES**

F #34	Janae Tyler	Jr.	6-1	Lansing, Mich. / Holt	10.5 ppg	4.7 rpg	Last played on Dec. 6 at Marshall
G #3	Corynne Hauser	R-Jr.	5-7	Rochester, Pa. / Rochester	9.5 ppg	2.3 apg	Last played on Jan. 3 vs. UMass
F #35	Emory Klatt	So.	5-10	Kildeer, Ill. / DePaul	4.2 ppg	3.4 rpg	Averaging 8.6 ppg, 6.2 rpg over last 6 games
G #4	Journey Hildebrand	So.	5-11	Brunswick, Ohio / Brunswick	4.0 ppg	1.8 rpg	15 pts, career-high 5 3-pointers @ Ohio last season
G #0	Caitlyn Holmes	Fr.	5-8	Akron, Ohio / Ellet	3.1 ppg	1.1 rpg	Career-high 10 points @ E. Michigan on Saturday
G #11	Anna Campanelli	Fr.	5-8	Huntley, Ill. / Huntley	2.1 ppg	0.9 rpg	Career-high 11 pts, 3 reb vs. Davis & Elkins (12/15)
G #2	Meghan Murray	So.	5-5	Hampton, Pa. / Hampton	2.0 ppg	1.4 rpg	Tied career-high w/ 16 pts vs. Davis & Elkins (12/15)
F #5	Bianca Juzzo	Gr.	5-11	Ribeirão Preto, Brazil / New Mexico J.C.	1.9 ppg	1.5 rpg	Season-high 11 points @ E. Michigan on Saturday
G #22	Joy Bergstrom	R-Jr.	5-9	Mount Prospect, Ill. / South Dakota	--	--	Sidelined due to injury for 4th season in a row

**Head Coach:** Todd Starkey (10th season) **Associate Head Coach:** Fran Recchia (10th season) **Assistant Coaches:** Alexa Golden (sixth season);

Paige Salisbury (third season); Mary Dunn (first season); **Graduate Assistant:** Ondreya Brown (first season)

## SOCIAL MEDIA

### FOLLOW KENT STATE ON TWITTER

Kent State Athletics  
@KentStAthletics  
Kent State Women's Basketball  
@KentStateWBB  
Mid-American Conference  
@MACSports



## QUICK FACTS

### SCHOOL INFORMATION

Location ..... Kent, Ohio 44242-0001  
Founded ..... 1910  
Enrollment ..... 37,994 (all campuses)  
Nickname ..... Golden Flashes  
School Colors ..... Navy Blue and Gold  
Affiliation ..... NCAA Division I  
Conference ..... Mid-American (East Div.)  
Home venue ..... M.A.C. Center  
Year Built/Capacity ..... 1950/6,327  
Press Row Phone ..... 330-672-9411  
President ..... Todd Diacon  
Director of Athletics .... Randal L. Richmond  
Faculty Representative .... Dr. Theresa Walton-Fisette  
Ticket Office Phone ..... 330-672-4455

### COACHING STAFF

Head Coach ..... Todd Starkey  
Alma Mater ..... Montreat '93  
Years at Kent State/Record ..... 10/170-121  
Overall Head Coaching Record ..... 336-216  
Associate Head Coach ..... Fran Recchia  
Alma Mater ..... Virginia Tech '04  
Assistant Coach ..... Alexa Golden  
Alma Mater ..... Kent State '17  
Assistant Coach ..... Paige Salisbury  
Alma Mater ..... Ursuline '19  
Assistant Coach ..... Mary Dunn  
Alma Mater ..... Youngstown State '20  
Graduate Assistant ..... Ondreya Brown  
Athletic Trainer ..... Sarah Jane Novak

### TEAM INFORMATION

2024-25 Overall Record ..... 21-12  
2024-25 MAC Record/Finish ..... 12-6/4th  
Letterwinners Returning/Lost ..... 8/3  
Starters Returning/Lost ..... 3/2

### PROGRAM HISTORY

First Year of Basketball ..... 1975-76  
All-Time Record ..... 791-658 (.546)  
All-Time MAC Record ..... 414-334 (.554)  
MAC Regular Season Championships... 8 (2003)  
All-Time MAC Tournament Record ..... 41-32  
MAC Tournament Championships ..... 4/2024  
MAC Winning Seasons ..... 24  
NCAA Tournament Appearances ..... 6 (2024)  
NCAA Tournament Record ..... 1-6  
WNIT Appearances ..... 7 (2023)  
WNIT Record ..... 2-7  
All-time Post Season Appearances ..... 10  
Consecutive 20+ Win Seasons . 7 (1995-2002)

### KENT STATE, PLEASE...

Kent State University respectfully requests that the institution and its intercollegiate athletics teams be referred to as "Kent State" or "KSU" in shortened reference, as opposed to "Kent." Thank you.

## COLLEGEINSIDER.COM MID-MAJOR POLL (JAN. 6)

	Record	Pts	Prev.
1. Princeton (30)	13-1	774	1
2. South Dakota State (1)	11-4	734	2
3. Fairfield	11-3	676	6
4. Murray State	12-2	667	5
5. James Madison	11-5	663	3
6. Arkansas State	14-3	651	7
7. Green Bay	11-5	567	8
8. Troy	11-3	538	4
9. High Point	13-2	497	10
10. Ball State	11-4	454	11
11. North Dakota State	13-2	445	15
12. UC Santa Barbara	11-2	365	9
13. College of Charleston	12-3	351	14
14. UC Irvine	13-2	322	21
15. Columbia	9-5	308	12
16. UMass	10-2	277	17
17. Santa Clara	13-4	269	16
18. Marshall	13-3	249	20
19. Montana State	9-4	247	22
20. Gonzaga	10-6	207	19
21. Howard	10-6	168	13
22. South Dakota	11-4	135	23
23. Belmont	8-7	112	NR
24. Harvard	8-6	104	NR
25. Army	10-3	54	25

**OTHERS RECEIVING VOTES:** Liberty 53, Vermont 38, Miami 24, Abilene Christian 23, McNeese State 18, Cleveland State 16, Pepperdine 15, Navy 14, Quinnipiac 12, FDU 11, Northern Iowa 11, Missouri State 10, Youngstown State 9, Georgia Southern 8, Monmouth 8, Stephen F. Austin 7, Bryant 6, Southern Miss 6, UC Davis 6, Illinois State 5, Cal Baptist 5, Lindenwood 5, Western Illinois 5, Idaho 4, Southern 4, Purdue Fort Wayne 2, Idaho State 1, Southern Indiana 1.

*\*Italics represent opponent on Kent State's schedule*

## THE GOLDEN FLASHES NICKNAME

The origin of the nickname "Golden Flashes" has been a topic of debate. According to documentation in Phillip Shiver's book, *The Years of Youth*, widely regarded as historically correct, the reason for Kent State's nickname is noted in a letter to Linda Baughman, dated Aug. 6, 1959. Merle Wagoner recalled that the change in the name of Kent State athletics teams from "Silver Foxes" to "Golden Flashes" occurred in 1926 after the dismissal of President John E. McGilvrey (Kent State's first nickname originated from McGilvrey, who had a silver fox farm east of campus).

With Acting President T. Howard Winters providing the impetus, a contest was held (with a \$25 first prize) to select the new name. No special significance was attached to the winning suggestion, which was used first in 1927 by the basketball team after it had been approved by the student body and the faculty athletic committee. Also laying claim to the origin was Oliver Wolcott, one-time Kent State grid great who played center on the 1921 and 1922 teams. As former sports editor of the Kent Courier Tribune, the local newspaper, the name "Silver Foxes" seemed pretty frail to him. So, during the 1927 football season, he began referring to the team as "Golden Flashes."

## STARKEY RECORDS 300TH CAREER VICTORY

- Head coach **Todd Starkey** earned his 300th career win on Jan. 27 as Kent State defeated Bowling Green, 82-74.
- Now in his 10th season guiding the Golden Flashes' program, Starkey surpassed **Laurel Wartluft** (1977-86) for second on the all-time wins list with 143.
- Varsity K Hall of Fame member **Bob Lindsay** owns the program standard and is the winningest coach in Mid-American Conference history.

## COACHES RANKED BY:

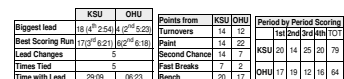
### WINS

1.	Bob Lindsay	418
2.	<b>Todd Starkey</b>	<b>170</b>
3.	Laurel Wartluft	135
4.	Richard Keast	33
5.	Danielle O'Banion	21

- Kent State is 60-36 all-time vs. Ohio.
- The Golden Flashes have won four of the last five matchups and are 9-8 vs. Ohio under head coach **Todd Starkey**.
- Kent State is 34-11 in series games played at the M.A.C. Center.
- The Flashes have won five straight home contests against the Bobcats and were last beaten on their home floor on Feb. 23, 2019.

**KENT STATE 79, OHIO 64**

- Kent State matched the program record with 16 three-point field goals en route to its first road win during MAC play.
- The Golden Flashes shot 3-of-10 from long range of each of the first two quarters and trailed 36-34 at halftime after a buzzer-beater by Ohio's Bailey Tabeling
- Kent State took control with a dominant 17-0 run, which included a stretch of five consecutive makes from three-point range, to open the third quarter.
- The Flashes shot 7-of-9 overall on three-pointers in the quarter.
- Four players contributed to the record-tying performance.
- **Mya Babbitt** (18 points) and **Journey Hildebrand** (15 points) led the way with five triples each, while **Jenna Batsch** (19 points) and **Bridget Dunn** (15 points) sank three apiece.
- Kennadi Watkins scored a game-high 21 points and grabbed 8 rebounds to lead the Bobcats.



Team Statistics	KSU (6-10)	Ohio (10-4)
SCORING	Conference ranking in ()	
Points per game	68.8 (8th)	75.2 (2nd)
Opp. points per game	66.9 (7th)	70.6 (12th)
FIELD GOALS-ATT		
Field goal pct.	.404 (8th)	.403 (9th)
Opp. Field goal pct.	.384 (4th)	.399 (5th)
3 POINT FG-ATT		
3-point FG pct	.280 (8th)	.311 (4th)
3-pt FG made PG	5.2 (10th)	9.3 (1st)
Opp. 3-pt FG pct	.304 (8th)	.319 (10th)
FREE THROWS-ATT		
Free throw pct	.773 (2nd)	.650 (12th)
F-Throws made PG	14.9 (3rd)	15.9 (2nd)
REBOUNDS		
Rebounds per game	40.9 (3rd)	38.0 (7th)
Opp. Rebounds PG	36.1 (7th)	42.3 (13th)
Rebounding margin	+4.8 (4th)	-4.3 (12th)
ASSISTS per game	14.1 (5th)	13.8 (8th)
TURNOVERS per game	19.3 (11th)	16.4 (4th)
Turnover margin	-1.6 (6th)	+4.9 (2nd)
Assist/Turnover	0.73 (8th)	0.84 (5th)
STEALS per game	8.6 (6th)	12.6 (1st)
BLOCKS per game	2.6 (8th)	3.0 (5th)

	MAC	Overall
Ball State	4-0	12-4
Miami	4-0	12-4
Ohio	4-0	10-4
UMass	3-1	11-3
Central Michigan	3-2	9-6
Bowling Green	2-2	9-6
Toledo	2-2	7-7
Western Michigan	2-2	5-9
Eastern Michigan	1-3	7-7
Northern Illinois	1-3	3-12
Kent State	1-4	56-10
Akron	0-4	3-13
Buffalo	0-4	2-13

## Mya Babbitt

- Kent State was voted as the favorite in the Mid-American Conference Women's Basketball Preseason Poll for the first time since the conference eliminated divisions.
- The Golden Flashes totaled 133 points in the poll, which was 15 more than any other team.
- In addition to receiving the most points, Kent State also had the most first place votes (5) and MAC Tournament champion votes (5).
- Juniors **Janae Tyler** (first team) and **Mya Babbitt** (second team) were among the 10 student-athletes named to Preseason All-MAC teams.

Amber Tretter, Miami  
Ayanna-Sarai Darrington, Central Michigan  
Megan Olbrys, UMass  
**Mya Babbitt, Kent State**  
Yahmani McKayle, UMass

DOUBLE-DOUBLES			
Points	2025-26	2024-25	KSU Career
Riley Rismiller	3	1	4
Dionna Gray	1	1	2
Tatiana Thomas	1	0	1
Emory Klatt	1	--	1
Corynne Hauser	0	--	1
Meghan Murray	0	1	1
Janae Tyler	0	1	1

30-POINT GAMES			
Points	2025-26	2024-25	KSU Career
Mya Babbitt	1	0	1

20+-POINT GAMES			
Points	2025-26	2024-25	KSU Career
Mya Babbitt	5	3	8
Janae Tyler	1	2	3
Corynne Hauser	1	-	2
Dionna Gray	0	1	1
Riley Rismiller	0	1	1

DOUBLE-DIGIT GAMES			
Points	2025-26	2024-25	KSU Career
Mya Babbitt	12	21	36
Janae Tyler	6	16	35
Rylee Kalocay	6	-	6
Corynne Hauser	5	-	32
Tatiana Thomas	4	5	9
Riley Rismiller	3	10	13
Dionna Gray	2	13	23
Emory Klatt	2	--	2
Journey Hildebrand	1	3	4
Bianca Juzzo	1	2	3
Meghan Murray	1	1	2
Anna Campanelli	1	--	1
Caitlyn Holmes	1	--	1

Rebounds	2025-26	2024-25	KSU Career
Riley Rismiller	5	2	7
Tatiana Thomas	1	0	1
Emory Klatt	1	--	1
Janae Tyler	0	3	3
Dionna Gray	0	1	1
Corynne Hauser	0	-	1
Assists	2025-26	2024-25	KSU Career
Dionna Gray	1	0	1
Corynne Hauser	0	-	1
Meghan Murray	0	1	1

2025-26 TEAM TRENDS			
LED THE TEAM IN POINTS (INCLUDES TIES)			
Player	2025-26	Record	Career Record
Mya Babbitt	9	5-4	18 11-7
Janae Tyler	2	1-1	10 7-3
Corynne Hauser	2	0-2	8 3-5
Riley Rismiller	2	0-2	3 0-3
Tatiana Thomas	2	0-2	2 0-2

LED THE TEAM IN REBOUNDS (INCLUDES TIES)			
Player	2025-26	Record	Career Record
Riley Rismiller	8	3-5	11 5-6
Tatiana Thomas	4	1-3	7 3-4
Emory Klatt	2	0-2	2 0-2
Janae Tyler	1	0-1	5 3-2
Mya Babbitt	1	1-0	4 3-1
Dionna Gray	2	1-1	5 3-2

LED THE TEAM IN ASSISTS (INCLUDES TIES)			
Player	2025-26	Record	Career Record
Dionna Gray	12	3-9	39 23-16
Mya Babbitt	2	1-1	4 2-2
Rylee Kalocay	2	1-1	2 1-1
Corynne Hauser	1	0-1	31 20-11
Bianca Juzzo	1	1-0	1 1-0
Tatiana Thomas	1	0-1	1 0-1

## KENT STATE TRENDS

SCORING		
	2025-26	Starkey Era
Kent State scores 70+	5-1	105-25
Opponent scores <60	3-1	73-6
FIELD GOAL PERCENTAGE		
	2025-26	Starkey Era
Kent State shoots ≥ 45%	3-1	78-7
Kent State shoots < 45%	3-9	93-112
Opponent shoots ≥ 42%	2-2	38-76
Opponent shoots < 42%	4-8	131-41
FREE THROWS		
	2025-26	Starkey Era
Kent State shoots more	5-1	135-39
Opponents shoot more	0-8	36-65
Attempts are equal	1-1	8-10
KSU FTM > opp. FTA	4-0	85-17
KSU FTM < opp. FTA	2-9	78-98
KSU FTM = opp. FTA	0-1	7-4
POINTS IN THE PAINT		
	2025-26	Starkey Era
Kent State scores 30+	5-5	107-35
Kent State scores <30	1-5	75-76
Kent State scores more	5-5	95-24
AT THE HALF		
	2025-26	Starkey Era
Leading at the half	5-1	131-30
Trailing at the half	1-9	32-85
Tied at the half	0-0	5-3
OVERTIME		
	2025-26	Starkey Era
Overtime games	0-0	8-6
Kent State scores first	0-0	6-0
Opponent scores first	0-0	2-6

2025-26 KENT STATE STATISTICAL LEADERS		
MYA BABBITT		MAC RANK
Points/Game	15.7	4th
3-Pt FG/Game	2.1	4th
Free Throw Percentage	.915	1st
Def. Rebounds/Game	3.6	16th
Minutes/Game	34.8	3rd
DIONNA GRAY		MAC RANK
Assists/Game	4.7	6th
Assist-to-Turnover Ratio	1.43	9th
Steals/Game	1.4	22nd
Double-Doubles	1	t-11th
Minutes/Game	30.6	15th
EMORY KLATT		MAC RANK
Double-Doubles	1	t-11th
RILEY RISMILLER		MAC RANK
Field Goal Percentage	.480	16th
Rebounds/Game	6.8	9th
Off. Rebounds/Game	2.2	10th
Def. Rebounds/Game	4.6	9th
Blocks/Game	0.8	13th
Double-Doubles	3	t-7th
TATIANA THOMAS		MAC RANK
Free Throw Percentage	.692	t-23rd
Rebounds/Game	5.3	18th
Off. Rebounds/Game	2.9	6th
Steals/Game	1.6	13th
Blocks/Game	0.6	21st
Double-Doubles	1	t-11th

## CHARITABLE FLASHES

Getting to the free throw line has been a focus of Kent State's offensive game plan during the Todd Starkey era. The Golden Flashes led the country in free throws made (594) and ranked seventh in free throws attempted (794) during the 2016-17 season. That same season, MAC Player of the Year **Larissa Lurken** made a NCAA Division I record 280 free throws, which included a MAC record 22 against WKU on Nov. 26, 2016.

Since the start of the 2016-17 season, Kent State is 15th in the nation in free throws per game (14.08), 26th in free throws made (4,069).

(SINCE START OF 2016-17)	
FREE THROWS MADE PER GAME	
1. Troy	15.33
2. Jackson State	15.03
3. Western Illinois	14.93
4. Murray State	14.91
5. Sam Houston	14.87
6. Maryland	14.79
7. LSU	14.77
8. North Dakota	14.60
9. Cleveland State	14.49
10. Howard	14.45
11. South Carolina	14.42
12. Stephen F. Austin	14.36
13. Iowa	14.13
14. Oklahoma	14.10
15. Kent State	14.08

FREE THROWS MADE	
1. South Carolina	4,860
2. Maryland	4,628
3. Troy	4,598
4. Iowa	4,508
5. LSU	4,432
6. Texas	4,361
7. Stephen F. Austin	4,351
8. Cleveland State	4,332
9. Baylor	4,305
10. Arkansas	4,294
11. Murray State	4,294
12. Western Illinois	4,256
13. Oklahoma	4,202
14. Jackson State	4,193
15. South Dakota State	4,179
16. Mississippi State	4,176
17. Notre Dame	4,154
18. Alabama	4,148
19. Indiana	4,135
20. Florida State	4,109
21. North Dakota	4,102
22. Ohio State	4,098
23. Howard	4,089
24. Missouri State	4,080
25. Drake	4,071
26. Kent State	4,069

\* Through games on Jan. 4, 2026

### The Largest ..... for Kent State

(Division I opponents only)

Lead.....	49, Niagara (4th quarter)
Deficit.....	44, at West Virginia (4th quarter)
Margin of Victory.....	47, Niagara
Margin of Defeat.....	41, at West Virginia
Halftime lead.....	33, Niagara
Halftime deficit.....	27, at James Madison
Deficit in win.....	8, at Xavier (3rd quarter)
Halftime deficit in win.....	1, at Xavier
Deficit in final 5 min of win.....	N/A
Lead in loss.....	15, UMass (2nd quarter)
Halftime lead in a loss.....	11, UMass



# THE LAST TIME KENT STATE...

## BUZZER BEATERS (0:00 ON THE CLOCK)

Won on a buzzer beater	Melanee Stubbs, mid-air catch & shoot	Feb. 14, 2015 vs. Northern Illinois (54-52)
Extended game on a buzzer beater	Nila Blackford, layup	Feb. 29, 2020 at Bowling Green (96-86)
Lost on a buzzer beater	Peyton Scott, three-pointer from top of arc	Feb. 27, 2021 at Miami (58-61)

## OVERTIME

Won in overtime	Dec. 31, 2022 vs. Coppin State (72-69)
Won in double overtime	Feb. 29, 2020 at Bowling Green (96-86)
Lost in overtime	Dec. 19, 2024 at Coppin State (61-67)
Lost in double overtime	Dec. 10, 2023 at Duquesne (82-89)

## SCORING

Scored 100 points	(W, 117-37)	Dec. 15, 2054 vs. Davis & Elkins
Scored 90-99 points	(W, 92-47)	Nov. 16, 2025 vs. Niagara
Scored less than 50 points	(L, 47-88)	Nov. 7, 2025 at West Virginia
Scored less than 50 points and won	(W, 46-31)	Dec. 19, 2017 at Robert Morris
Allowed 100 points	(L, 47-103)	Dec. 2, 2020 at #19 Ohio State
Allowed 90-99 points	(L, 72-93)	Jan. 25, 2017 at Northern Illinois
Allowed 40-49 points	(W, 64-44)	March 1, 2025 at Akron
Allowed less than 40 points	(W, 117-37)	Dec. 15, 2025 vs. Davis & Elkins
Won by 50+ points	80 (117-37)	Dec. 15, 2054 vs. Davis & Elkins
Won by 40-49 points	41 (87-46)	Nov. 16, 2025 vs. Niagara
Won by 30-39 points	30 (80-50)	Jan. 18, 2025 vs. Western Michigan
Won by 25-29 points	25 (73-48)	Jan. 14, 2024 vs. Northern Illinois

## TEAM STATS

Made 10-plus 3-point field goals	11	Dec. 15, 2025 vs. Davis & Elkins
Shot 50 percent or better from the field	59.7 (46/77)	Dec. 15, 2025 vs. Davis & Elkins
Shot 50 percent or better from the 3-point line (min. 10 3FGM)	52.0 (13/25)	Nov. 23, 2024 vs. Xavier
Shot 90 percent or better from the foul line (min. 10 FT)	92.9 (26/28)	Nov. 28, 2025 vs. Tulsa
Had 60 or more rebounds	60	Dec. 15, 2025 vs. Davis & Elkins
Had 50-59 more rebounds	53	Dec. 169 2024 at Coppin State
Had 30 or more assists	33	Dec. 15, 2025 vs. Davis & Elkins
Had 20-29 assists	25	Nov. 16, 2025 vs. Niagara
Had 8 or more blocked shots	8	Jan. 1, 2025 vs. Bowling Green
Had 20 or more steals	20	Jan. 10, 2024 at Miami
Had 5 or fewer turnovers	4	Feb. 15, 2023 at Buffalo

## A KENT STATE PLAYER(S)

Scored 25-29 points	Mya Babbitt (28) vs. Tulsa, 11/28/25
Scored 30-39 points	Mya Babbitt (30) at Ohio State, 11/19/25
Scored 40-plus points	Lindsay Shearer (44) vs. Bowling Green, 3/12/05
Two players score 20-plus points	Mya Babbitt (23), Corynne Hauser (21) vs. Walsh, 11/10/25
Three players score 20-plus points	at Toledo, 3/5/18
Two players with a double-double	Megan Carter (24) Jordan Korinek (21), Naddiyah Cross (20)
	vs. Miami, 3/12/25
	Bridget Dunn (13 points, 16 rebounds)
	Dionna Gray (12 points, 10 rebounds)
	at Eastern Michigan, 1/7/1
	Larissa Lurken (28 points, 10 rebounds)
	Jordan Korinek (21 points, 13 rebounds)
	McKenna Stephens (15 points, 11 rebounds)
Bench player with a double-double	Emory Klatt (12 points, 11 rebounds) vs. UMass, 1/3/26
Had a triple-double	Casey Santoro (16 points, 10 rebounds, 10 assists) vs. Clarion, 12/21/21
Four players in double-figures	at Eastern Michigan, 1/10/26
	Babbitt (17), Gray (15), Juzzo (11), Holmes (10)
Five players in double-figures	vs. Miami, 3/12/25
	Babbitt (19), Dunn (13), Gray (12), Tyler (12), Batsch (10)
Six-plus players in double-figures	vs. Davis & Elkins, 12/15/25 (8 players)
	Babbitt (19), Kalocay (17), Rismiller (13), Klatt (13), Thomas (13), Campanelli (11), Murray (11), Hildebrand (10)
Made 5-plus 3-point field goals	Mya Babbitt (6), at Ohio State, 11/19/25
Perfect at FT line (min. 10 att.)	Dionna Gray (11/11) vs. Duquesne, 11/20/24
Had 15-19 rebounds	Bridget Dunn (16) vs. Miami, 3/12/25
Had 20-plus rebounds	Merissa Barber-Smith (20) vs. Bowling Green, 3/11/19
Had 10-plus assists	Dionna Gray (10) vs. Niagara, 11/16/25
Had 6-plus steals	Abby Ogle (6) at Miami, 1/10/24
Had 5-plus blocked shots	Bridget Dunn (5) vs. James Madison, 11/4/24

\*Bold indicates 2025-26 season

## KENT STATE BY THE NUMBERS

2,816	Career points scored by Kent State assistant coaches <b>Fran Recchia, Alexa Golden, Paige Salisbury</b> and <b>Mary Dunn</b> during their collegiate playing careers
1950	Year the M.A.C. Center was built, making it the 20th-oldest arena in the country
791	Wins in Kent State history
594	Free throws made in 2016-17, which led the nation
266	School record three-point field goals made during the 2022-23 season
222	RPI jump from 2016 to 2017, the largest improvement in the country
51	Number of varsity seasons of competition for Kent State Women's Basketball
36	Points scored in the 4th quarter against La Roche on Dec. 30, 2023, which is the program record for points in a quarter
33	Points scored in the 4th quarter at Miami on January 25, 2025, tying the program record against a Division I opponent that was previously set during the 1st quarter of a contest at Northern Illinois on Feb. 21, 2021
12	Postseason appearances all-time
9	Starting lineup combinations this season
8	Mid-American Conference regular season titles in program history
6	NCAA Tournament appearances
4	Wins against Power Five opponents since the start of the 2021-22 season
2	MAC East Division titles won under guidance of head coach <b>Todd Starkey</b>

## KSU CAREER RECORDS

### KSU SINGLE-SEASON RECORDS

THREE-POINT FIELD GOALS MADE (TEAM)		
1.	266	2022-23
2.	<b>256</b>	<b>2024-25</b>
3.	251	2021-22
4.	241	2018-19
5.	234	1993-94

### THREE-POINT FIELD GOALS MADE (INDIVIDUAL)

1.	<b>83</b>	<b>Mya Babbitt</b>	<b>2024-25</b>
2.	71	Melissa DeGrate	2004-05
3.	68	Jena Stutzman	2008-09
4.	66	Lindsey Thall	2018-19
5.	64	Lindsey Thall	2019-20
	64	Larissa Lurken	2016-17

## KENT STATE SPECIALITY STATS

Opponent	Result	Listed as KSU/Opp.			
		In Paint	Off T/O	2nd Chance	Bench
at James Madison	L, 48-80	24/40	13/35	13/13	16/18
at West Virginia	L, 47-88	20/44	11/45	7/11	15/21
Walsh	W, 79-55	30/26	30/12	10/4	22/12
at Xavier	W, 68-60	22/34	17/26	12/9	20/6
Niagara	W, 92-45	44/16	28/8	10/7	32/9
at Ohio State	L, 68-88	22/36	9/34	12/19	13/18
at Duquesne	L, 53-58	24/16	19/13	13/13	12/19
vs. Tulsa	W, 75-69	38/16	21/10	13/13	9/21
vs. Arkansas State	L, 54-74	36/22	16/23	12/12	26/30
at Marshall	L, 62-70	30/32	8/17	21/11	15/22
Davis & Elkins	W, 117-36	<b>66/14</b>	<b>31/8</b>	22/8	<b>54/9</b>
at Bowling Green	L, 69-73	34/30	12/6	13/12	20/8
Miami	L, 63-67	<b>24/14</b>	14/18	11/20	13/12
UMass	L, 70-75	44/30	20/23	<b>24/19</b>	<b>33/6</b>
at Central Michigan	L, 57-66	32/40	16/15	6/16	10/13
at Eastern Michigan	W, 78-65	40/20	25/22	13/12	38/15
<b>Season Average</b>		<b>33.1/26.9 (+6.3)</b>	<b>18.1/19.7 (-1.6)</b>	<b>13.3/12.4 (+0.8)</b>	<b>21.8/14.9 (+6.8)</b>

**Bold** indicates season KSU high/opponent low

## 2025-26 STARTING LINEUPS

Opponent	Result	Guard	Guard	Guard	Forward	Center
at James Madison	L, 48-80	Gray	Hauser	Babbitt	Tyler	Rismiller
at West Virginia	L, 47-88	Gray	Hauser	Babbitt	Tyler	Rismiller
Walsh	W, 79-55	Gray	Hauser	Babbitt	Tyler	Rismiller
at Xavier	W, 68-60	Gray	Hauser	Babbitt	Tyler	Rismiller
Niagara	W, 92-45	Gray	Hauser	Babbitt	Tyler	Rismiller
at Ohio State	L, 68-88	Gray	Hauser	Babbitt	Tyler	Rismiller
at Duquesne	L, 53-58	Gray	Kalocay	Babbitt	Tyler	Rismiller
vs. Tulsa	W, 75-69	Gray	Kalocay	Babbitt	Tyler	Rismiller
vs. Arkansas State	L, 54-74	Gray	Kalocay	Babbitt	Tyler	Rismiller
at Marshall	L, 62-70	Gray	Hauser	Babbitt	Tyler	Rismiller
Davis & Elkins	W, 117-37	Gray	Kalocay	Babbitt	Thomas	Rismiller
at Bowling Green	L, 69-73	Gray	Hauser	Babbitt	Thomas	Rismiller
Miami	L, 63-67	Gray	Hauser	Babbitt	Thomas	Rismiller
UMass	L, 70-75	Gray	Hauser	Babbitt	Thomas	Rismiller
at Central Michigan	L, 57-66	Gray	Kalocay	Babbitt	Thomas	Rismiller
at Eastern Michigan	W, 78-65	Gray	Kalocay	Babbitt	Thomas	Rismiller
<b>Record as starters:</b>		3-4	Gray	Hauser	Babbitt	Tyler
	1-2	Gray	Kalocay	Babbitt	Tyler	Rismiller
	2-1	Gray	Kalocay	Babbitt	Thomas	Rismiller
	0-3	Gray	Hauser	Babbitt	Thomas	Rismiller

## JUNIORS NAMED TO PRESEASON ALL-MAC TEAMS

- Forward **Janae Tyler** and guard **Mya Babbitt** were selected to the 10-member Preseason All-MAC teams, as voted on by the conference's 13 head coaches.
- Despite being sidelined for 10 games last season, Tyler was an All-MAC honorable mention selection with averages of 11.6 points and 5.0 rebounds per game.
- Over her last 10 games played (missed final two games of regular season), Tyler's production rose to 14.3 points and 6.3 rebounds per contest.
- Babbitt had a breakout sophomore season, boosting her scoring output from 2.4 points per game as a freshman to 11.8.
- She made a program record 83 three-point field goals and led the MAC with 41.3% accuracy from behind the arc.

## PASSING ON THE PORTAL

- For the second year in a row, Kent State did not have a player enter the transfer portal.
- The Golden Flashes are 1 of only 4 Division I programs who not lost a player to the portal each of the past two offseasons.
- Stability has also been a cornerstone under head coach **Todd Starkey**, as associate head coach **Fran Recchia** and assistant coach **Alexa Golden** have been part of the program for all 10 seasons of the Starkey era.
- Recchia was an assistant coach on Starkey's inaugural staff before being promoted in July 2018.
- Golden was a starter on Starkey's first three squads and has been a member of the staff in various roles since graduation.

## 2025-26 KENT STATE GOLDEN FLASHES ROSTER

NO.	NAME	POS.	HT.	YR.	HOMETOWN / HIGH SCHOOL (LAST SCHOOL)
0	Caitlyn Holmes	G	Fr.	5-8	Akron, Ohio / Ellet
1	Tatiana Thomas	F	Sr.	5-10	Bolingbrook, Ill. / Bolingbrook
2	Meghan Murray	G	So.	5-5	Hampton, Pa. / Hampton
3	Corynne Hauser	G	R-Jr.	5-7	Rochester, Pa. / Rochester
4	Journey Hildebrand	G	So.	5-11	Brunswick, Ohio / Brunswick
5	Bianca Juzzo	F	Gr.	5-11	Ribeirão Preto, Brazil / SEBCOC (New Mexico J.C.)
9	Rylee Kalocay	G	Fr.	5-9	Pittsburgh, Pa. / Upper St. Clair
11	Anna Campanelli	G	Fr.	5-10	Huntley, Ill. / Huntley
12	Dionna Gray	G	Sr.	5-4	Huntington, W.Va. / Huntington
22	Joy Bergstrom	G	R-Jr.	5-9	Mount Prospect, Ill. / Saint Viator (South Dakota)
23	Mya Babbitt	G	Jr.	5-8	Papillion, Neb. / Millard South
30	Riley Rismiller	C	Jr.	6-4	Coldwater, Ohio / Coldwater (Dayton)
34	Janae Tyler	F	Jr.	6-1	Lansing, Mich. / Holt
35	Emory Klatt	F	So.	6-1	Kildeer, Ill. / Stevenson (DePaul)

### COACHING STAFF

Head Coach: Todd Starkey (Montreat '93), 10th season

Associate Head Coach: Fran Recchia (Virginia Tech '04), 10th season

Assistant Coach: Alexa Golden (Kent State, '17), sixth season

Assistant Coach: Paige Salisbury (Ursuline, '19), third season

Assistant Coach: Mary Dunn (Youngstown State, '20), first season

Graduate Assistant: Ondreya Brown (Kent State, '25), first season

### PRONUNCIATION GUIDE

#3 **Corynne** Hauser: kuh-RINN

#5 Bianca **Juzzo**: JEW-zo

#12 **Dionna** Gray: Dee-ONN-ah

#23 **Mya** Babbitt: MY-ah

Fran **Recchia**: RAY-key-uh







## HEAD COACH TODD STARKEY

**T**odd Starkey was hired as the sixth head coach of the Kent State Women's Basketball team in April 2016.

Already the second-winningest coach in school history with 164 victories, Starkey has led the Golden Flashes to one NCAA Tournament appearance, four Postseason WNITs and two Mid-American Conference East Division titles. His teams have recorded four 20-win seasons,

including 21 victories each of the past three years.

Starkey has found much success in recruiting talented student-athletes, landing two of the highest-touted signing classes in school history back-to-back in 2018 and 2019. Both classes had two student-athletes earn spots on the MAC All-Freshman Team, while only one other school had multiple honorees over the two seasons. Nila Blackford led all conference freshmen in rebounding during the 2019-20 season. Led by Asiah Dingle and Lindsey Thall, the 2018 class ranked second nationally with 964 points. Overall, these two classes have combined for four All-MAC honors and a pair of MAC All-Defensive Team nods.

The 2021-22 season ended with a berth in the WNIT for the Golden Flashes and a final record of 19-12. The season was highlighted by wins over two Power 5 programs at the Gulf Coast Showcase in Estero, Florida and a win in the WNIT. First, the Flashes took down #19 UCLA, 75-69 at the showcase. Two days later, Penn State was the victim as the Flashes won 81-74. Later in the year, Youngstown State couldn't handle the Golden Flashes in the WNIT, as Kent came out on top, 68-59. That win was the second postseason WNIT win in program history. The Flashes boasted the second best defense by points per game allowed in the MAC and were second in the MAC for three-point percentage. The 21-22 season also saw Starkey become the third coach to reach 100 wins at Kent State.

The Flashes advanced to the MAC Tournament quarterfinals for the fifth year in a row in the unique 2020-21 season. Kent State's three all-conference selections were tied for the most of any team in the league. In the MAC opener against Ohio, the Flashes set a new program record with 16 three-point field goals. Lindsey Thall was the conference's top shot blocker for the third straight season.

Kent State was playing its best ball of the year, having won seven of its last nine games, when a potential 2019-20 season-to-remember was unexpectedly cut short with the cancelation of the MAC Tournament. The East Division champions knocked off defending tournament champion Buffalo in a quarterfinal matchup and was the highest-remaining seed in the field. For the third time in the first four seasons under Starkey's guidance, Kent State finished in the top-100 of the RPI. Five players averaged more than 11 points per game with guards Megan Carter and Katie Shumate earning All-MAC honorable mention selections.

The 2018-19 season saw Kent State post its first 20-win campaign in eight years while breaking a 25-year-old school record with 241 three-point field goals made. The Flashes finished with the highest RPI ranking (81) in program history and boasted four wins against RPI Top 100 teams, including a victory at Green Bay in the first round of the Postseason WNIT. Guards Megan Carter and Alexa Golden thrived in their third season under Starkey's tutelage, earning All-MAC Third Team and Defensive Team honors, respectively. All-Freshman Team selections Asiah Dingle and Lindsey Thall highlighted the second highest-scoring freshman class (964 points) in the country.

Starkey was named 2017 MAC Coach of the Year for his efforts in guiding Kent State to one of biggest turnarounds in NCAA Division I women's basketball during his first season on the sidelines. The Golden Flashes finished the season with a 19-13 overall record and had the nation's largest RPI improvement, jumping 222 spots from the previous season, and the fifth most-improved record in the country. Despite being picked to finish last in the preseason, Kent State put together a 13-5 conference mark to win the program's first MAC East Division title since 2004-05. The regular season ended with a seven-game winning streak, which surpassed the number of conference games the team had won over the previous two seasons combined.

Behind the strength of five wins against RPI Top 100 teams, the Flashes received an at-large bid to the 2017 Postseason WNIT for the first time since the 2010-11 season. An angry Michigan squad that felt it deserved to play in the NCAA Tournament awaited

Career Record (18th season):	335-216
Kent State Record (10th season):	169-121
Conference Record:	97-69
At the M.A.C. Center:	89-32
On the road:	64-73
Neutral Site:	18-17
In overtime:	8-5
Vs. Ohio:	9-8

Kent State in the opening round. Down by 21 points at halftime, the Flashes fought back to within five with just over two minutes to play before falling, 67-60. The Wolverines went on to claim the WNIT championship.

The 26-year coaching veteran came to Kent State after spending two seasons as an assistant coach at Indiana, where he was responsible for assisting with the program's recruiting, practice and game preparation, scouting reports, scheduling and player development.

During his second season in Bloomington in 2015-16, he helped lead the Hoosiers to a historic year as the team made its fifth NCAA Tournament appearance and grabbed its first win in the NCAA Tournament since 1983. Indiana finished the season with a 21-12 record, tying the school wins record, and was a perfect 14-0 at home. The Hoosiers finished fourth in the Big Ten, the school's highest conference finish in 18 years, and defeated three ranked opponents.

Starkey's time at IU began with a record-setting offensive performance, as the Hoosiers set single-game records for scoring (115) and 3-pointers made (16) in the season-opening win over Gardner-Webb on Nov. 15, 2014. The team would go on to post the program's best scoring average (71.9 ppg) since 1995-96 and make the second-most three-pointers (236) in a season.

His first head coaching job came at NCAA Division II Lenoir-Rhyne University in Hickory, North Carolina. Starkey concluded his nine-year tenure as the winningest coach in program history with a 165-95 record. Over his final six years, he led the Bears to four NCAA Tournament appearances and three Southern Atlantic Conference (SAC) regular season championships while averaging more than 20 wins per season. He received SAC Coach of the Year honors on four occasions, including a conference record three straight from 2009-11.

Starkey was named the 2009 Russell Athletic/WBCA NCAA Division II National Coach of the Year after leading Lenoir-Rhyne to one of the greatest seasons in program history. The Bears posted a 27-5 record and won both the conference regular season and tournament titles for the first time ever to earn the No. 1 seed in the NCAA Division II Southeast Regional Tournament. Lenoir-Rhyne won the first NCAA Tournament game in program history, 69-58, over Anderson before falling in the second round.

Academics are important to the Youngstown-area native. Kent State was the only Division I women's basketball program in the country during the 2016-17 season with two CoSIDA Academic All-America® selections, as Jordan Korinek and Larissa Lurken both earned second team honors. Korinek was then named to the first team in 2018. In his time at Lenoir-Rhyne, Starkey had 100-percent of the players who remained past their sophomore year graduate, while the team maintained a grade point average of 3.0 or higher every year.

Prior to his head coaching stint, Starkey served as an assistant coach for Lenoir-Rhyne's men's team for two seasons (2003-05). The team won the 2004 SAC regular season championship and made an NCAA postseason appearance.

Starkey got his coaching career started at his alma mater, Montreat College, in North Carolina. He was an assistant men's basketball coach for five seasons (1998-03), helping the team to an NAIA National Tournament appearance in 2000.

Starkey grew up in nearby Canfield, Ohio, and graduated with a bachelor's degree in outdoor education from Montreat College. His playing career began in basketball and tennis at Mars Hill College.



# TV / RADIO CHART



**CAITLYN HOLMES**  
G • Fr. • 5-8  
Akron, Ohio / Ellet



**TATIANA THOMAS**  
F • Sr. • 5-10  
Bolingbrook, Ill. / Bolingbrook



**MEGHAN MURRAY**  
G • So. • 5-5  
Hampton, Pa. / Hampton



**CORYNNE HAUSER**  
G • R-Jr. • 5-7  
Rochester, Pa. / Rochester



**JOURNEY HILDEBRAND**  
G • So. • 5-11  
Brunswick, Ohio / Brunswick



**BIANCA JUZZO**  
F • Gr. • 5-11  
Ribeirão Preto, Brazil / SEBIOC  
/ New Mexico J.C.



**RYLEE KALOCAY**  
G • Fr. • 5-9  
Pittsburgh, Pa. / Upper St. Clair



**ANNA CAMPANELLI**  
G • Fr. • 5-10  
Huntley, Ill. / Huntley



**DIONNA GRAY**  
G • Sr. • 5-4  
Huntington, W.Va. / Huntington



**JOY BERGSTROM**  
G • R-Jr. • 5-9  
Mount Prospect, Ill. /  
Saint Viator / South Dakota



**MYA BABBITT**  
G • Jr. • 5-8  
Papillion, Neb. / Millard South



**RILEY RISMILLER**  
C • Jr. • 6-4  
Coldwater, Ohio / Coldwater /  
Dayton



**JANAE TYLER**  
F • Jr. • 6-1  
Lansing, Mich. / Holt



**EMORY KLATT**  
F • So. • 6-1  
Kildeer, Ill. / Stevenson /  
DePaul



# 2025-26 SEASON STATISTICS

## Game Records

Record	Overall	Home	Away	Neutral
ALL GAMES	6-10	3-2	2-7	1-1
CONFERENCE	1-4	0-2	1-2	0-0
NON-CONFERENCE	5-6	3-0	1-5	1-1

## Score by Periods

Team	1st	2nd	3rd	4th	OT	TOT
Kent St.	266	273	285	276	0	1100
Opponents	286	253	254	277	0	1070

## Team Box Score

No.	Player				Total		3-Point		F-Throw		Rebounds											
		GP-GS	MIN	AVG	FG-FGA	FG%	3FG-3FGA	3FG%	FT-FTA	FT%	OFF	DEF	TOT	AVG	PF	DQ	A	TO	BLK	STL	PTS	AVG
23	BABBITT, Mya	16-16	554:04	34.6	87-247	.352	34-130	.262	43-47	.915	13	58	71	4.4	36	0	32	47	3	20	251	15.7
34	TYLER, Janae	10-10	224:46	22.5	40-87	.460	0-0	.000	25-38	.658	26	21	47	4.7	25	0	6	9	5	5	105	10.5
3	HAUSER, Corynne	10-10	220:00	22.0	33-88	.375	12-33	.364	17-18	.944	6	22	28	2.8	16	0	23	29	2	10	95	9.5
1	THOMAS, Tatiana	16-6	318:11	19.9	42-87	.483	1-1	1.000	36-52	.692	47	38	85	5.3	44	1	22	30	10	26	121	7.6
30	RISMILLER, Riley	16-16	383:26	24.0	49-102	.480	2-8	.250	21-29	.724	35	74	109	6.8	28	0	8	30	12	5	121	7.6
9	KALOCAY, Rylee	16-6	273:11	17.1	28-67	.418	13-38	.342	30-37	.811	8	27	35	2.2	33	2	22	16	0	20	99	6.2
12	GRAY, Dionna	16-16	489:04	30.6	25-88	.284	6-26	.231	29-32	.906	17	53	70	4.4	40	1	73	51	3	23	85	5.3
35	KLATT, Emory	16-0	173:06	10.8	26-42	.619	2-3	.667	13-16	.813	22	33	55	3.4	12	1	5	6	3	6	67	4.2
4	HILDEBRAND, Journey	6-0	95:29	15.9	10-33	.303	2-19	.105	2-3	.667	2	9	11	1.8	6	0	6	9	0	4	24	4.0
0	HOLMES, Caitlyn	16-0	147:13	9.2	21-43	.488	0-0	.000	8-17	.471	5	12	17	1.1	18	0	9	30	2	7	50	3.1
11	CAMPANELLI, Anna	15-0	96:54	6.5	9-26	.346	2-12	.167	11-14	.786	5	8	13	0.9	13	0	3	9	0	3	31	2.1
2	MURRAY, Meghan	13-0	110:49	8.5	9-30	.300	7-20	.350	1-2	.500	5	13	18	1.4	18	1	8	13	0	8	26	2.0
5	JUZZO, Bianca	13-0	113:47	8.8	10-24	.417	2-6	.333	3-4	.750	9	10	19	1.5	15	0	9	10	2	0	25	1.9
Team											41	36	77					20				
Total		16	3200		389-964	.404	83-296	.280	239-309	.773	241	414	655	40.9	304	6	226	309	42	137	1100	68.8
Opponents		16	3200		371-966	.384	120-395	.304	208-306	.680	212	366	578	36.1	342	14	208	283	74	146	1070	66.9

## Team Statistics

	KENTST	OPP
<b>Scoring</b>	<b>1100</b>	<b>1070</b>
Points per game	68.8	66.9
Scoring margin	+1.9	-
<b>Field goals-att</b>	<b>389-964</b>	<b>371-966</b>
Field goal pct	.404	.384
<b>3 point fg-att</b>	<b>83-296</b>	<b>120-395</b>
3-point FG pct	.280	.304
3-pt FG made per game	5.2	7.5
<b>Free throws-att</b>	<b>239-309</b>	<b>208-306</b>
Free throw pct	.773	.680
F-Throws made per game	14.9	13.0
<b>Rebounds</b>	<b>655</b>	<b>578</b>
Rebounds per game	40.9	36.1
Rebounding margin	+4.8	-
<b>Assists</b>	<b>226</b>	<b>208</b>
Assists per game	14.1	13.0
<b>Turnovers</b>	<b>309</b>	<b>283</b>
Turnovers per game	19.3	17.7
Turnover margin	-1.6	-
Assist/turnover ratio	0.7	0.7
<b>Steals</b>	<b>137</b>	<b>146</b>
Steals per game	8.6	9.1
<b>Blocks</b>	<b>42</b>	<b>74</b>
Blocks per game	2.6	4.6
<b>Winning streak</b>	<b>1</b>	<b>-</b>
Home win streak	0	-
<b>Attendance</b>	<b>8001</b>	<b>17964</b>
Home games-Avg/Game	5-1600	9-1996
Neutral site-Avg/Game	-	2-227

## Team Results

Date	Opponent		Score	Att.
11/03/2025	at James Madison	L	48-80	2036
11/07/2025	at West Virginia	L	47-88	2954
11/10/2025	Walsh	W	79-55	1185
11/14/2025	at Xavier	W	68-60	910
11/16/2025	Niagara	W	92-45	1176
11/19/2025	at Ohio St.	L	68-88	4617
11/24/2025	at Duquesne	L	53-58	984
11/28/2025	vs Tulsa	W	75-69	217
11/30/2025	vs Arkansas St.	L	54-74	237
12/06/2025	at Marshall	L	62-70	1067
12/15/2025	Davis & Elkins	W	117-37	2067
12/20/2025	at Bowling Green	L	69-73	1919
12/31/2025	Miami (OH)	L	63-67	1124
01/03/2026	Massachusetts	L	70-75	2449
01/07/2026	at Central Mich.	L	57-66	2312
01/10/2026	at Eastern Mich.	W	78-65	1165

# 2025-26 MAC-ONLY STATISTICS

## Game Records

Record	Overall	Home	Away	Neutral
ALL GAMES	1-4	0-2	1-2	0-0
CONFERENCE	1-4	0-2	1-2	0-0
NON-CONFERENCE	0-0	0-0	0-0	0-0

## Score by Periods

Team	1st	2nd	3rd	4th	OT	TOT
Kent St.	81	83	79	94	0	337
Opponents	85	85	76	100	0	346

## Team Box Score

No.	Player				Total		3-Point		F-Throw		Rebounds													
		GP-GS	MIN	AVG	FG-FGA	FG%	3FG-3FGA	3FG%	FT-FTA	FT%	OFF	DEF	TOT	AVG	PF	DQ	A	TO	BLK	STL	PTS	AVG		
23	BABBITT, Mya	5-5	190:54	38.2	31-89	.348	9-42	.214	7-9	.778	5	12	17	3.4	14	0	9	15	1	8	78	15.6		
3	HAUSER, Corynne	3-3	62:43	20.9	11-26	.423	4-9	.444	9-9	1.000	4	5	9	3.0	6	0	7	7	1	4	35	11.7		
1	THOMAS, Tatiana	5-5	120:07	24.0	14-37	.378	0-0	.000	12-21	.571	22	15	37	7.4	18	1	12	13	8	7	40	8.0		
12	GRAY, Dionna	5-5	162:26	32.5	13-29	.448	2-7	.286	9-10	.900	5	20	25	5.0	16	1	16	12	0	10	37	7.4		
35	KLATT, Emory	5-0	82:13	16.4	12-19	.632	1-1	1.000	11-13	.846	9	19	28	5.6	8	1	1	2	1	5	36	7.2		
30	RISMILLER, Riley	5-5	110:24	22.1	12-30	.400	1-2	.500	4-10	.400	11	18	29	5.8	9	0	2	10	5	2	29	5.8		
9	KALOCAY, Rylee	5-2	71:25	14.3	8-17	.471	2-7	.286	5-5	1.000	2	6	8	1.6	13	1	5	4	0	4	23	4.6		
0	HOLMES, Caitlyn	5-0	44:57	9.0	8-20	.400	0-0	.000	5-9	.556	2	2	4	0.8	9	0	2	7	0	0	21	4.2		
4	HILDEBRAND, Journey	5-0	80:53	16.2	6-25	.240	1-14	.071	1-1	1.000	1	6	7	1.4	5	0	3	9	0	2	14	2.8		
5	JUZZO, Bianca	5-0	37:42	7.5	5-12	.417	1-4	.250	2-2	1.000	2	0	2	0.4	4	0	0	1	1	0	13	2.6		
11	CAMPANELLI, Anna	5-0	29:28	5.9	3-7	.429	1-2	.500	4-4	1.000	0	0	0	0.0	7	0	0	4	0	2	11	2.2		
2	MURRAY, Meghan	3-0	06:48	2.3	0-1	.000	0-1	.000	0-0	.000	0	1	1	0.3	0	0	0	0	0	0	0	0.0		
Team											15	10	25					4						
Total		5	1000		123-312	.394	22-89	.247	69-93	.742	78	114	192	38.4	109	4	57	88	17	44	337	67.4		
Opponents		5	1000		115-290	.397	32-108	.296	84-123	.683	77	124	201	40.2	102	5	64	84	23	38	346	69.2		

## Team Statistics

	KENTST	OPP
<b>Scoring</b>	<b>337</b>	<b>346</b>
Points per game	67.4	69.2
Scoring margin	-1.8	-
<b>Field goals-att</b>	<b>123-312</b>	<b>115-290</b>
Field goal pct	.394	.397
<b>3 point fg-att</b>	<b>22-89</b>	<b>32-108</b>
3-point FG pct	.247	.296
3-pt FG made per game	4.4	6.4
<b>Free throws-att</b>	<b>69-93</b>	<b>84-123</b>
Free throw pct	.742	.683
F-Throws made per game	13.8	16.8
<b>Rebounds</b>	<b>192</b>	<b>201</b>
Rebounds per game	38.4	40.2
Rebounding margin	-1.8	-
<b>Assists</b>	<b>57</b>	<b>64</b>
Assists per game	11.4	12.8
<b>Turnovers</b>	<b>88</b>	<b>84</b>
Turnovers per game	17.6	16.8
Turnover margin	-0.8	-
Assist/turnover ratio	0.6	0.8
<b>Steals</b>	<b>44</b>	<b>38</b>
Steals per game	8.8	7.6
<b>Blocks</b>	<b>17</b>	<b>23</b>
Blocks per game	3.4	4.6
<b>Winning streak</b>	<b>1</b>	<b>-</b>
Home win streak	0	-
<b>Attendance</b>	<b>3573</b>	<b>5396</b>
Home games-Avg/Game	2-1787	3-1799
Neutral site-Avg/Game	-	0-0

## Team Results

Date	Opponent		Score	Att.
12/20/2025	at Bowling Green	L	69-73	1919
12/31/2025	Miami (OH)	L	63-67	1124
01/03/2026	Massachusetts	L	70-75	2449
01/07/2026	at Central Mich.	L	57-66	2312
01/10/2026	at Eastern Mich.	W	78-65	1165



# CAREER STATISTICS

## BABBITT, Mya

				Field Goals		3-Point		F-Throws		Rebounds										Scoring	
SEASON	TEAM	GP-GS	MIN/AVG	FG-FGA	FG%	3FG-3FGA	3FG%	FT-FTA	FT%	OFF	DEF	TOT	AVG	PF-FO	A	TO	BLK	STL	PTS	AVG	
2023-24	KentSt	21-0	159/7.6	17-54	.315	13-47	.277	3-4	.750	5	20	25	1.2	5-0	7	5	2	4	50	2.4	
2024-25	KentSt	33-30	1099/33.3	132-298	.443	83-200	.415	42-53	.792	21	118	139	4.2	50-1	59	52	4	35	389	11.8	
2025-26	KentSt	16-16	554/34.6	87-247	.352	34-130	.262	43-47	.915	13	58	71	4.4	36-0	32	47	3	20	251	15.7	
TOTAL		70-46	1812/25.9	236-599	.394	130-377	.345	88-104	.846	39	196	235	3.4	91-1	98	104	9	59	690	9.9	

## Single Game Highs

Statistic	Value	
Points	30	at Ohio St. 11/19/25
Rebounds	8	vs Walsh 11/07/24, vs Tulsa 11/28/25
Assists	6	at Toledo 01/08/25
Steals	5	at Central Mich. 01/07/26
Blocks	2	vs Bowling Green 01/01/25
FG Made	9	5 times
FG Attempts	26	vs Massachusetts 01/03/26
3FG Made	6	at Ohio St. 11/19/25
3FG Attempts	12	at Marshall 12/06/25, vs Massachusetts 01/03/26
FT Made	11	vs Tulsa 11/28/25
FT Attempts	12	vs Tulsa 11/28/25

## CAMPANELLI, Anna

				Field Goals		3-Point		F-Throws		Rebounds									Scoring	
SEASON	TEAM	GP-GS	MIN/AVG	FG-FGA	FG%	3FG-3FGA	3FG%	FT-FTA	FT%	OFF	DEF	TOT	AVG	PF-FO	A	TO	BLK	STL	PTS	AVG
2025-26	KentSt	15-0	97/6.5	9-26	.346	2-12	.167	11-14	.786	5	8	13	0.9	13-0	3	9	0	3	31	2.1
TOTAL		15-0	97/6.5	9-26	.346	2-12	.167	11-14	.786	5	8	13	0.9	13-0	3	9	0	3	31	2.1

## Single Game Highs

Statistic	Value	
Points	11	vs Davis & Elkins 12/15/25
Rebounds	3	at James Madison 11/03/25, at West Virginia 11/07/25, vs Davis & Elkins 12/15/25
Assists	2	vs Davis & Elkins 12/15/25
Steals	2	at Eastern Mich. 01/10/26
FG Made	4	vs Davis & Elkins 12/15/25
FG Attempts	8	vs Davis & Elkins 12/15/25
3FG Made	1	at Bowling Green 12/20/25, at West Virginia 11/07/25
3FG Attempts	4	vs Davis & Elkins 12/15/25
FT Made	4	at Eastern Mich. 01/10/26
FT Attempts	4	at Eastern Mich. 01/10/26, vs Davis & Elkins 12/15/25

# CAREER STATISTICS

## GRAY, Dionna

				Field Goals		3-Point		F-Throws		Rebounds									Scoring	
SEASON	TEAM	GP-GS	MIN/AVG	FG-FGA	FG%	3FG-3FGA	3FG%	FT-FTA	FT%	OFF	DEF	TOT	AVG	PF-FO	A	TO	BLK	STL	PTS	AVG
2022-23	KentSt	25-0	230/9.2	24-72	.333	11-36	.306	10-14	.714	7	27	34	1.4	28-1	18	25	0	13	69	2.8
2023-24	KentSt	31-12	676/21.8	46-135	.341	19-64	.297	42-49	.857	20	54	74	2.4	61-2	86	50	1	27	153	4.9
2024-25	KentSt	28-28	906/32.4	72-226	.319	19-84	.226	74-87	.851	23	84	107	3.8	72-3	138	93	1	29	237	8.5
2025-26	KentSt	16-16	489/30.6	25-88	.284	6-26	.231	29-32	.906	17	53	70	4.4	40-1	73	51	3	23	85	5.3
TOTAL		100-56	2301/23.0	167-521	.321	55-210	.262	155-182	.852	67	218	285	2.9	201-7	315	219	5	92	544	5.4

## Single Game Highs

Statistic	Value	
Points	20	vs Duquesne 11/20/24
Rebounds	10	vs Miami (OH) 03/12/25
Assists	10	vs Niagara 11/16/25
Steals	5	at Eastern Mich. 01/10/26
Blocks	2	at Ohio St. 11/19/25
FG Made	6	at Coppin St. 12/19/24
FG Attempts	21	vs Colorado St. 11/29/24
3FG Made	4	vs Buffalo 03/16/24
3FG Attempts	10	vs Colorado St. 11/29/24
FT Made	11	vs Duquesne 11/20/24
FT Attempts	12	vs Miami (OH) 03/12/25

# CAREER STATISTICS

## HAUSER, Corynne

				Field Goals		3-Point		F-Throws		Rebounds										Scoring	
SEASON	TEAM	GP-GS	MIN/AVG	FG-FGA	FG%	3FG-3FGA	3FG%	FT-FTA	FT%	OFF	DEF	TOT	AVG	PF-FO	A	TO	BLK	STL		PTS	AVG
2022-23	KentSt	32-25	740/23.1	102-245	.416	20-64	.313	62-79	.785	10	75	85	2.7	59-1	95	58	7	22		286	8.9
2023-24	KentSt	20-20	563/28.1	69-173	.399	26-71	.366	32-40	.800	8	63	71	3.6	26-0	84	49	5	18		196	9.8
2025-26	KentSt	10-10	220/22.0	33-88	.375	12-33	.364	17-18	.944	6	22	28	2.8	16-0	23	29	2	10		95	9.5
TOTAL		62-55	1523/24.6	204-506	.403	58-168	.345	111-137	.810	24	160	184	3.0	101-1	202	136	14	50		577	9.3

## Single Game Highs

Statistic	Value	
Points	23	at Miami (OH) 01/11/23
Rebounds	11	at Duquesne 12/10/23
Assists	10	vs Ohio 01/06/24
Steals	4	vs Walsh 11/10/25
Blocks	2	at Miami (OH) 01/10/24
FG Made	7	at Duquesne 12/10/23, vs Walsh 11/10/25
FG Attempts	21	at Duquesne 12/10/23
3FG Made	3	6 times
3FG Attempts	9	vs Walsh 11/10/25
FT Made	8	at Miami (OH) 01/11/23, at Bowling Green 12/20/25
FT Attempts	10	at Miami (OH) 01/11/23

## HILDEBRAND, Journey

				Field Goals		3-Point		F-Throws		Rebounds										Scoring	
SEASON	TEAM	GP-GS	MIN/AVG	FG-FGA	FG%	3FG-3FGA	3FG%	FT-FTA	FT%	OFF	DEF	TOT	AVG	PF-FO	A	TO	BLK	STL		PTS	AVG
2024-25	KentSt	31-1	486/15.7	49-120	.408	24-65	.369	16-20	.800	10	40	50	1.6	27-0	14	28	5	9		138	4.5
2025-26	KentSt	6-0	95/15.9	10-33	.303	2-19	.105	2-3	.667	2	9	11	1.8	6-0	6	9	0	4		24	4.0
TOTAL		37-1	581/15.7	59-153	.386	26-84	.310	18-23	.783	12	49	61	1.6	33-0	20	37	5	13		162	4.4

## Single Game Highs

Statistic	Value	
Points	19	vs Walsh 11/07/24
Rebounds	6	vs Walsh 11/07/24
Assists	3	vs Davis & Elkins 12/15/25
Steals	2	4 times
Blocks	1	5 times
FG Made	6	vs Walsh 11/07/24
FG Attempts	11	vs Walsh 11/07/24, at Ohio 01/11/25
3FG Made	5	vs Virginia-Lynchburg 12/16/24, at Ohio 01/11/25
3FG Attempts	10	at Ohio 01/11/25
FT Made	5	vs Walsh 11/07/24
FT Attempts	5	vs Walsh 11/07/24



# CAREER STATISTICS

## HOLMES, Caitlyn

				Field Goals		3-Point		F-Throws		Rebounds										Scoring	
SEASON	TEAM	GP-GS	MIN/AVG	FG-FGA	FG%	3FG-3FGA	3FG%	FT-FTA	FT%	OFF	DEF	TOT	AVG	PF-FO	A	TO	BLK	STL		PTS	AVG
2025-26	KentSt	16-0	147/9.2	21-43	.488	0-0	.000	8-17	.471	5	12	17	1.1	18-0	9	30	2	7		50	3.1
TOTAL		16-0	147/9.2	21-43	.488	0-0	.000	8-17	.471	5	12	17	1.1	18-0	9	30	2	7		50	3.1

## Single Game Highs

Statistic	Value	
Points	10	at Eastern Mich. 01/10/26
Rebounds	3	vs Tulsa 11/28/25, vs Davis & Elkins 12/15/25
Assists	2	at Ohio St. 11/19/25, vs Niagara 11/16/25
Steals	4	vs Niagara 11/16/25
Blocks	1	at Ohio St. 11/19/25, at West Virginia 11/07/25
FG Made	4	at Eastern Mich. 01/10/26
FG Attempts	7	at Eastern Mich. 01/10/26
FT Made	2	at Eastern Mich. 01/10/26, vs Walsh 11/10/25
FT Attempts	4	at Eastern Mich. 01/10/26

## JUZZO, Bianca

				Field Goals		3-Point		F-Throws		Rebounds										Scoring	
SEASON	TEAM	GP-GS	MIN/AVG	FG-FGA	FG%	3FG-3FGA	3FG%	FT-FTA	FT%	OFF	DEF	TOT	AVG	PF-FO	A	TO	BLK	STL		PTS	AVG
2023-24	KentSt	11-0	53/4.9	4-14	.286	0-6	.000	0-0	.000	3	6	9	0.8	7-0	4	5	0	1		8	0.7
2024-25	KentSt	23-1	125/5.4	10-19	.526	2-6	.333	11-12	.917	11	7	18	0.8	21-0	8	8	3	6		33	1.4
2025-26	KentSt	13-0	114/8.8	10-24	.417	2-6	.333	3-4	.750	9	10	19	1.5	15-0	9	10	2	0		25	1.9
TOTAL		47-1	292/6.2	24-57	.421	4-18	.222	14-16	.875	23	23	46	1.0	43-0	21	23	5	7		66	1.4

## Single Game Highs

Statistic	Value	
Points	12	vs Walsh 11/07/24
Rebounds	8	vs Davis & Elkins 12/15/25
Assists	4	vs Walsh 11/10/25
Steals	3	at NIU 02/05/25
Blocks	1	5 times
FG Made	5	vs Walsh 11/07/24
FG Attempts	9	at Eastern Mich. 01/10/26
3FG Made	2	vs NIU 02/26/25
3FG Attempts	3	at Eastern Mich. 01/10/26
FT Made	2	6 times
FT Attempts	2	8 times

# CAREER STATISTICS

## KALOCAY, Rylee

				Field Goals		3-Point		F-Throws		Rebounds										Scoring	
SEASON	TEAM	GP-GS	MIN/AVG	FG-FGA	FG%	3FG-3FGA	3FG%	FT-FTA	FT%	OFF	DEF	TOT	AVG	PF-FO	A	TO	BLK	STL		PTS	AVG
2025-26	KentSt	16-6	273/17.1	28-67	.418	13-38	.342	30-37	.811	8	27	35	2.2	33-2	22	16	0	20		99	6.2
<b>TOTAL</b>		<b>16-6</b>	<b>273/17.1</b>	<b>28-67</b>	<b>.418</b>	<b>13-38</b>	<b>.342</b>	<b>30-37</b>	<b>.811</b>	<b>8</b>	<b>27</b>	<b>35</b>	<b>2.2</b>	<b>33-2</b>	<b>22</b>	<b>16</b>	<b>0</b>	<b>20</b>		<b>99</b>	<b>6.2</b>

## Single Game Highs

Statistic	Value	
Points	16	vs Davis & Elkins 12/15/25
Rebounds	6	at Bowling Green 12/20/25, vs Davis & Elkins 12/15/25, vs Arkansas St. 11/30/25
Assists	6	vs Davis & Elkins 12/15/25
Steals	4	vs Davis & Elkins 12/15/25
FG Made	6	vs Davis & Elkins 12/15/25
FG Attempts	10	vs Davis & Elkins 12/15/25
3FG Made	3	at Duquesne 11/24/25
3FG Attempts	8	at Duquesne 11/24/25
FT Made	5	vs Tulsa 11/28/25, at Xavier 11/14/25
FT Attempts	8	at Xavier 11/14/25

## KLATT, Emory

				Field Goals		3-Point		F-Throws		Rebounds										Scoring	
SEASON	TEAM	GP-GS	MIN/AVG	FG-FGA	FG%	3FG-3FGA	3FG%	FT-FTA	FT%	OFF	DEF	TOT	AVG	PF-FO	A	TO	BLK	STL		PTS	AVG
2024-25	DePaul	17-0	111/6.5	2-15	.133	0-0	.000	6-10	.600	17	13	30	1.8	16-0	2	1	3	8		10	0.6
2025-26	KentSt	16-0	173/10.8	26-42	.619	2-3	.667	13-16	.813	22	33	55	3.4	12-1	5	6	3	6		67	4.2
<b>TOTAL FOR KentSt</b>		<b>16-0</b>	<b>173/10.8</b>	<b>26-42</b>	<b>.619</b>	<b>2-3</b>	<b>.667</b>	<b>13-16</b>	<b>.813</b>	<b>22</b>	<b>33</b>	<b>55</b>	<b>3.4</b>	<b>12-1</b>	<b>5</b>	<b>6</b>	<b>3</b>	<b>6</b>		<b>67</b>	<b>4.2</b>
<b>TOTAL</b>		<b>33-0</b>	<b>284/8.6</b>	<b>28-57</b>	<b>.491</b>	<b>2-3</b>	<b>.667</b>	<b>19-26</b>	<b>.731</b>	<b>39</b>	<b>46</b>	<b>85</b>	<b>2.6</b>	<b>28-1</b>	<b>7</b>	<b>7</b>	<b>6</b>	<b>14</b>		<b>77</b>	<b>2.3</b>

## Single Game Highs

Statistic	Value	
Points	13	vs Davis & Elkins 12/15/25
Rebounds	11	vs Massachusetts 01/03/26
Assists	4	vs Davis & Elkins 12/15/25
Steals	4	at Central Mich. 01/07/26
Blocks	1	6 times
FG Made	6	vs Davis & Elkins 12/15/25
FG Attempts	8	vs Davis & Elkins 12/15/25
3FG Made	1	at Central Mich. 01/07/26, vs Davis & Elkins 12/15/25
3FG Attempts	1	at James Madison 11/03/25, at Central Mich. 01/07/26, vs Davis & Elkins 12/15/25
FT Made	6	vs Massachusetts 01/03/26
FT Attempts	7	vs Massachusetts 01/03/26

# CAREER STATISTICS

## MURRAY, Meghan

				Field Goals		3-Point		F-Throws		Rebounds									Scoring	
SEASON	TEAM	GP-GS	MIN/AVG	FG-FGA	FG%	3FG-3FGA	3FG%	FT-FTA	FT%	OFF	DEF	TOT	AVG	PF-FO	A	TO	BLK	STL	PTS	AVG
2024-25	KentSt	33-2	346/10.5	30-81	.370	13-35	.371	22-28	.786	8	26	34	1.0	29-0	56	36	2	9	95	2.9
2025-26	KentSt	13-0	111/8.5	9-30	.300	7-20	.350	1-2	.500	5	13	18	1.4	18-1	8	13	0	8	26	2.0
TOTAL		46-2	456/9.9	39-111	.351	20-55	.364	23-30	.767	13	39	52	1.1	47-1	64	49	2	17	121	2.6

## Single Game Highs

Statistic	Value	
Points	11	vs Virginia-Lynchburg 12/16/24, vs Davis & Elkins 12/15/25
Rebounds	7	vs Virginia-Lynchburg 12/16/24
Assists	13	vs Virginia-Lynchburg 12/16/24
Steals	4	at Elon 11/16/24
Blocks	1	vs Walsh 11/07/24, vs Virginia-Lynchburg 12/16/24
FG Made	4	at Niagara 12/05/24, vs Virginia-Lynchburg 12/16/24, vs Davis & Elkins 12/15/25
FG Attempts	12	vs Virginia-Lynchburg 12/16/24
3FG Made	3	vs Davis & Elkins 12/15/25
3FG Attempts	5	vs Virginia-Lynchburg 12/16/24, vs Davis & Elkins 12/15/25
FT Made	6	vs Bowling Green 01/01/25
FT Attempts	6	vs Bowling Green 01/01/25

## RISMILLER, Riley

				Field Goals		3-Point		F-Throws		Rebounds									Scoring	
SEASON	TEAM	GP-GS	MIN/AVG	FG-FGA	FG%	3FG-3FGA	3FG%	FT-FTA	FT%	OFF	DEF	TOT	AVG	PF-FO	A	TO	BLK	STL	PTS	AVG
2023-24	UD	23-1	293/12.7	35-90	.389	9-27	.333	25-33	.758	23	48	71	3.1	24-0	10	26	4	2	104	4.5
2024-25	KentSt	28-11	491/17.5	82-154	.532	2-14	.143	47-53	.887	35	106	141	5.0	35-1	10	45	9	7	213	7.6
2025-26	KentSt	16-16	383/24.0	49-102	.480	2-8	.250	21-29	.724	35	74	109	6.8	28-0	8	30	12	5	121	7.6
TOTAL FOR KentSt		44-27	875/19.9	131-256	.512	4-22	.182	68-82	.829	70	180	250	5.7	63-1	18	75	21	12	334	7.6
TOTAL		67-28	1168/17.4	166-346	.480	13-49	.265	93-115	.809	93	228	321	4.8	87-1	28	101	25	14	438	6.5

## Single Game Highs

Statistic	Value	
Points	20	vs James Madison 11/04/24
Rebounds	13	vs Akron 02/01/25
Assists	3	at Marshall 12/06/25
Steals	2	at NC State 11/14/24, at Xavier 11/14/25
Blocks	3	at Bowling Green 12/20/25, vs Tulsa 11/28/25
FG Made	7	vs Walsh 11/07/24
FG Attempts	15	at Duquesne 11/24/25
3FG Made	2	vs Purdue 12/01/23, at Miami (OH) 12/09/23
3FG Attempts	4	at Saint Joseph's 02/14/24
FT Made	14	vs James Madison 11/04/24
FT Attempts	15	vs James Madison 11/04/24



# CAREER STATISTICS

## THOMAS, Tatiana

				Field Goals		3-Point		F-Throws		Rebounds										Scoring	
SEASON	TEAM	GP-GS	MIN/AVG	FG-FGA	FG%	3FG-3FGA	3FG%	FT-FTA	FT%	OFF	DEF	TOT	AVG	PF-FO	A	TO	BLK	STL		PTS	AVG
2022-23	KentSt	20-0	211/10.6	31-62	.500	0-0	.000	16-26	.615	18	39	57	2.9	44-2	13	24	5	7		78	3.9
2023-24	KentSt	23-0	184/8.0	27-53	.509	0-0	.000	15-46	.326	28	33	61	2.7	37-0	7	24	9	6		69	3.0
2024-25	KentSt	31-3	403/13.0	64-134	.478	0-1	.000	43-60	.717	53	64	117	3.8	63-0	30	33	7	25		171	5.5
2025-26	KentSt	16-6	318/19.9	42-87	.483	1-1	1.000	36-52	.692	47	38	85	5.3	44-1	22	30	10	26		121	7.6
TOTAL		90-9	1117/12.4	164-336	.488	1-2	.500	110-184	.598	146	174	320	3.6	188-3	72	111	31	64		439	4.9

## Single Game Highs

Statistic	Value	
Points	18	vs Miami (OH) 12/31/25
Rebounds	13	vs Miami (OH) 12/31/25
Assists	6	vs Massachusetts 01/03/26
Steals	4	vs Arkansas St. 11/30/25, vs Niagara 11/16/25
Blocks	4	vs Miami (OH) 12/31/25
FG Made	7	vs Arkansas St. 11/30/25
FG Attempts	14	vs Miami (OH) 12/31/25
3FG Made	1	vs Davis & Elkins 12/15/25
3FG Attempts	1	vs Davis & Elkins 12/15/25, vs Akron 02/01/25
FT Made	8	vs Miami (OH) 12/31/25
FT Attempts	12	vs Miami (OH) 12/31/25

## TYLER, Janae

				Field Goals		3-Point		F-Throws		Rebounds										Scoring	
SEASON	TEAM	GP-GS	MIN/AVG	FG-FGA	FG%	3FG-3FGA	3FG%	FT-FTA	FT%	OFF	DEF	TOT	AVG	PF-FO	A	TO	BLK	STL		PTS	AVG
2023-24	KentSt	30-2	487/16.2	116-195	.595	0-0	.000	58-90	.644	54	58	112	3.7	59-0	17	31	19	17		290	9.7
2024-25	KentSt	23-20	483/21.0	102-196	.520	0-3	.000	63-113	.558	58	58	116	5.0	49-1	21	46	10	12		267	11.6
2025-26	KentSt	10-10	225/22.5	40-87	.460	0-0	.000	25-38	.658	26	21	47	4.7	25-0	6	9	5	5		105	10.5
TOTAL		63-32	1194/19.0	258-478	.540	0-3	.000	146-241	.606	138	137	275	4.4	133-1	44	86	34	34		662	10.5

## Single Game Highs

Statistic	Value	
Points	26	at Troy 02/08/25
Rebounds	12	at Akron 03/01/25
Assists	3	4 times
Steals	3	at Troy 02/08/25, vs Lake Erie 12/19/23
Blocks	3	vs Coppin St. 11/29/23, vs NIU 03/13/24
FG Made	12	at Troy 02/08/25
FG Attempts	20	at Troy 02/08/25
3FG Attempts	2	at Toledo 01/08/25
FT Made	8	at Miami (OH) 01/10/24, vs Niagara 11/16/25
FT Attempts	11	vs Niagara 11/16/25

# 2025-26 BOX SCORES



Official Basketball Box Score - Final  
**Kent St. at James Madison**  
11/03/25 Atlantic Union Bank Center, Harrisonburg  
2025-26 Women's Basketball

Game Time: 6:00 PM  
Game Duration: 1:59  
Attendance: 2,036

Officials: Britton Sherry, Ray Bullock Jr., Kelly Mitchell

Kent St. - 48

Record: 0-1

NO.	Name	Min	FG	3P	FT	Reb		Fouls		TP	AS	TO	ST	Blocks		+/-																
			M-A	M-A	M-A	OR	DR	TOT	PF					BS	BA																	
30	Riley Rismiller	F 26:26	4-7	0-0	2-2	1	1	1	12	2	10	1	2	0	0	1	-30															
34	Janae Tyler	F 22:24	2-7	0-0	1-4	4	1	5	3	5	5	0	1	1	0	0	-35															
3	Corynne Hauser	G 23:49	4-11	0-2	2-3	0	1	1	2	2	10	0	3	0	0	0	-17															
12	Dionna Gray	G 18:43	0-3	0-1	0-0	0	1	1	4	1	0	2	3	0	1	0	-15															
23	Mya Babbitt	G 33:14	1-15	1-9	4-4	2	5	7	2	4	7	2	3	0	1	1	-30															
35	Emory Klatt	17:56	1-3	0-1	2-2	4	2	6	1	2	4	0	1	1	0	0	3															
11	Anna Campanelli	17:13	0-3	0-1	2-2	1	2	3	1	1	2	0	3	1	0	0	-17															
0	Caitlyn Holmes	08:13	1-2	0-0	1-1	1	2	0	1	3	0	2	0	0	0	0	-10															
1	Tatiana Thomas	09:06	1-4	0-0	1-2	1	3	3	3	3	3	0	1	0	0	0	-1															
2	Meghan Murray	13:32	0-2	0-1	0-0	0	1	1	1	0	0	1	1	1	0	0	-3															
9	Rylee Kalocay	05:16	1-2	0-1	2-2	0	0	0	1	1	4	0	1	0	1	0	-4															
5	Bianca Juzzo	04:09	0-0	0-0	0-0	0	0	0	1	0	0	1	0	0	0	0	-1															
Team							2		6		8		2		0		4															
Totals			15-59		1-16		17-23		17		32		49		22		22		48		7		25		5		2		4		-32	

Major Fouls: Coach (TF) 1 1st 7:43 Coach (TF) 1 1st 7:43

Dead Ball Rebounds: 2.0

James Madison - 80

Record: 1-0

NO.	Name	Min	FG	3P	FT	Rebounds	OR	DR	TO	Fouls	TP	AS	TO	ST	Blocks	BS	+/-
5	Ashanti Barnes	F 26:37	4-11	0-3	0-0	1	4	5	1	0	8	1	2	0	0	0	22
22	Grace McDonough	F 12:26	1-1	0-0	0-0	1	2	3	5	0	2	0	0	2	0	0	22
00	Peyton McDaniel	G 26:25	10-16	2-6	7-9	2	6	9	2	6	29	2	2	2	0	0	29
11	Bree Robinson	G 23:09	3-8	0-4	4-5	0	0	0	3	3	10	1	2	4	0	0	15
21	Zakiya Stephenson	G 25:27	4-14	3-5	2-3	0	2	2	1	5	13	5	1	1	0	0	27
25	Brianna McLeod	28:20	1-3	0-0	0-0	4	7	11	3	1	2	2	2	4	1	1	12
10	Angela Williams	14:18	3-10	1-6	3-4	1	5	6	4	3	10	0	3	1	1	0	16
4	Delilah Soltyz	19:55	2-5	1-3	1-2	1	1	2	1	1	6	0	1	1	0	0	16
14	Ragina Walton	19:14	0-1	0-0	0-0	1	1	2	1	1	0	1	0	1	0	0	0
13	Maddie Oliver	04:09	0-0	0-0	0-0	0	1	1	1	0	0	0	0	0	0	0	1
Team						1	2	3	0	0	0	1					
Totals			28-69	7-28	17-23	12	31	43	22	20	80	12	14	16	4	2	32

Major Fouls: NONE

Dead Ball Rebounds: 3.0

		KSU	JMU
Biggest lead	0 (1 1st 10:00)	36 (4 1st 0:40)	
Best Scoring Run	6 (3 1st 7:37)	12 (1 1st 7:38)	
Lead Changes	0		
Times Tied	0		
Time with Lead	00:00	39:45	

Points from	KSU	JMU
Turnovers	13	35
Paint	24	40
Second Chance	13	13
Fast Breaks	7	26
Bench	16	18

Period by Period Scoring					
	1st	2nd	3rd	4th	TOT
KSU	8	10	18	12	48
JMU	22	23	16	19	80



Official Basketball Box Score - Final  
**Kent State at West Virginia**  
11/07/25 Hoge Coliseum, Morgantown, W.Va.  
2025-26 Women's Basketball

Game Time: 7:00 PM  
Game Duration: 1:59  
Attendance: 2,954

Officials: Eric Brewton, Josh Howell, Angel Kent

Kent State - 47

Record: 0-1

NO.	Name	Min	FG	3P	FT	Rebounds	Fouls	TP	AS	TO	ST	Blocks	+/-				
			M-A	M-A	M-A	OR	DR	TOT	PF			BS					
30	Riley Rismiller	F 28:17	3-6	0-0	2-2	1	5	6	2	3	8	0	2	0	0	-28	
34	Janae Tyler	F 24:36	1-8	0-0	2-2	4	2	6	2	1	4	1	1	0	0	-39	
3	Corynne Hauser	G 21:43	1-7	0-1	0-0	2	2	4	2	2	3	7	0	0	0	-22	
12	Dionna Gray	G 32:23	1-4	0-0	3-4	0	1	1	0	5	5	5	7	2	0	-39	
23	Mya Babbitt	G 31:05	4-12	3-8	2-2	2	3	5	4	3	13	1	2	1	0	-29	
11	Anna Campanelli	08:07	1-2	1-2	0-0	1	2	3	0	1	3	0	0	0	0	-18	
35	Emory Klatt	09:54	2-3	0-0	0-0	0	2	2	2	0	4	0	0	0	0	-10	
2	Meghan Murray	15:39	1-5	1-3	0-0	1	1	2	5	0	3	1	2	1	0	-10	
0	Caitlyn Holmes	06:01	1-1	0-0	0-0	0	0	0	0	0	0	2	0	1	0	-7	
1	Tatiana Thomas	05:28	1-1	0-0	1-2	0	0	0	0	4	1	3	0	4	0	-12	
5	Bianca Juzzo	11:45	0-0	0-0	0-0	0	0	0	2	1	0	1	2	0	0	-2	
9	Rylee Kalocay	05:02	0-0	0-0	0-0	0	0	0	0	0	0	0	0	1	0	2	
Team									0	3	3	0	0	4			
Totals			16-49	5-14	10-12	11	21	32	24	17	47	12	32	5	1	4	-41

Major Fouls: NONE

Dead Ball Rebounds: 1.0

West Virginia - 88

Record: 1-0

NO.	Name	Min	FG		3P		FT		Rebounds		Fouls		TP	AS	TO	ST	Blocks		+/-
			M-A	M-A	M-A	M-A	M-A	M-A	OR	DR	TOT	PF					BS	BA	
22	Kierra Wheeler	F 22:19	8-14	0-1	1-3	2	2	4	3	2	17	1	2	4	1	0	0	0	27
23	Jordan Thomas	F 18:15	0-0	0-0	2-4	0	4	4	1	3	2	1	2	1	2	0	0	0	14
3	Gia Cooke	G 29:48	3-10	1-5	5-6	0	2	4	5	12	1	3	0	0	0	0	0	0	14
5	Sydney Shaw	G 26:34	7-10	5-6	4-4	1	5	6	1	4	23	2	1	2	1	0	0	0	14
10	Jordan Harrison	G 26:12	5-12	0-6	3-5	1	1	2	3	3	13	5	0	2	0	0	0	0	35
2	Sydney Woodley	18:58	1-2	0-0	0-0	4	3	7	0	2	2	0	2	0	0	0	0	0	35
21	Riley Makaluskusky	22:17	4-10	2-7	2-2	1	1	2	1	3	12	0	2	2	0	0	0	0	31
1	Carlier McCray	11:53	1-2	0-0	0-2	1	1	2	1	1	2	0	3	0	0	0	0	0	1
25	Laghan Johnson	13:26	1-1	1-1	0-0	1	1	2	1	0	3	2	0	2	0	0	0	0	2
37	Celia Riviere	10:19	1-3	0-1	0-0	1	0	1	3	1	2	3	3	1	0	0	0	0	15
Team									2	3	5	0	0	0					
Totals			31-64	9-27	17-26	14	23	37	17	24	88	15	16	16	4	1	41		

Major Fouls: NONE

Dead Ball Rebounds: 6.0

		KSU	WVU
Biggest lead	1 (1 1st 9:25)	44 (4 1st 4:31)	
Best Scoring Run	6 (4 1st 0:42)	15 (3 1st 8:38)	
Lead Changes	2		
Times Tied	0		
Time with Lead	00:47	38:51	

Points from	KSU	WVU
Turnovers	11	45
Paint	20	44
Second Chance	7	11
Fast Breaks	6	21
Bench	15	21

Period by Period Scoring					
	1st	2nd	3rd	4th	TOT
KSU	10	12	10	15	47
WVU	22	20	22	24	88



Official Basketball Box Score - Final  
**Walsh at Kent St.**  
11/10/25 Memorial Athletic and Convocation Center, Kent, Ohio  
2025-26 Women's Basketball

Game Time: 5:00 PM  
Game Duration: 1:54  
Attendance: 1,185

Officials: Mark Resch, Ryan Daman, Laura Lewis

Walsh - 55

Record: 0-0

NO.	Name	Min	FG		3P		FT		Rebounds		Fouls		TP	AS	TO	ST	Blocks		+/-	
			M-A	M-A	M-A	M-A	OR	DR	TOT	PF	BS	BA								
2	Malory Oddo	G 25:26	3-7	0-2	0-0	1	3	4	5	2	6	0	1	0	1	0	0	0		
7	Carlota Lopez	G 26:39	2-8	1-2	0-2	0	2	2	4	2	5	4	5	2	0	1	0	0	-22	
22	Sydney Ludvigsen	G 30:11	3-8	1-5	0-0	0	4	4	5	1	7	0	5	3	0	1	0	0	-13	
23	Sami Kim	G 3:58	4-8	2-6	0-0	0	6	6	1	0	10	3	6	1	0	0	0	0	-24	
24	Kelly Dryndk	G 25:23	6-11	0-0	0-0	3	6	1	4	5	4	15	2	0	2	0	2	0	-14	
4	Emma Dyrud	22:07	0-3	0-0	0-0	0	0	0	0	0	0	1	1	1	0	0	0	0	-11	
20	Rory O'Hara	18:17	3-5	3-5	0-0	2	1	3	4	0	0	0	1	3	0	0	0	0	-11	
5	Kenzie Kramer	12:42	1-3	0-2	1-2	0	1	1	0	0	1	3	0	4	0	0	0	0	-12	
11	Jennica Berens	03:34	0-0	0-0	0-0	0	1	0	1	0	0	0	1	0	0	0	0	0	-2	
0	Leah Major	01:52	0-0	0-0	0-0	0	0	0	0	0	0	0	0	0	0	0	0	0	0	
25	Maddie Cerovac	01:52	0-1	0-0	0-0	0	0	0	0	0	0	0	1	0	0	0	0	0	0	
									2		2		0		0					
Totals			22:54	7:25	4:10	8	26	34	26	13	55	12	30	9	1	4	0	0	-24	

# 2025-26 BOX SCORES

	Official Basketball Box Score - Final										Game Time: 3:30 PM										Game Time: 6:30 PM									
	Niagara at Kent St.										Kent St. at Ohio St.										Kent St. at Ohio St.									
	11/16/25 Memorial Athletic and Convocation Center, Kent, Ohio										11/16/25 Value City Arena, Columbus										11/16/25 Value City Arena, Columbus									
	2025-26 Women's Basketball										2025-26 Women's Basketball										2025-26 Women's Basketball									

Niagara - 45										Record: 0-1										Officials: Aaron Brooks, Colleen Thompson, Dara Lofton																																													
NO. Name		Min	FG	3P	FT	Rebounds		Fouls		TP	AS	TO	ST	Blocks	+/-	Shooting By Period																																																	
			M-A	M-A	M-A	OR	DR	TOY	PF							FF	TS	TS	TS	TS	TS	TS																																											
2 Jordyn Williams	F	05:04	0-2	0-0	1-2	0	0	0	2	1	1	0	0	0	0	-12	1st	FG%	5-16	31.3%	3PT%	3-5	60.0%	FT%	1-2	50%	2nd	FG%	3-15	20.0%	3PT%	0-5	0.0%	FT%	3-4	75%	3rd	FG%	5-16	31.3%	3PT%	1-5	20.0%	FT%	1-4	25%	4th	FG%	4-12	33.3%	3PT%	0-4	0.0%	FT%	2	100%	GM FG%	17-59	28.8%	3PT%	4-19	21.1%	FT%	7-12	58.3%
13 Talia Dial	F	31:44	3-14	2-9	2-2	0	1	1	4	3	10	0	1	1	0	-32	1st	FG%	1-15	6.7%	3PT%	0-3	0.0%	FT%	1-1	100%	2nd	FG%	1-15	6.7%	3PT%	0-3	0.0%	FT%	1-1	100%	3rd	FG%	1-15	6.7%	3PT%	0-3	0.0%	FT%	1-1	100%	4th	FG%	1-15	6.7%	3PT%	0-3	0.0%	FT%	1-1	100%									
23 Jade Rutledge	F	19:18	0-2	0-0	0-0	0	1	1	4	1	0	1	0	1	3	0	-21	1st	FG%	1-15	6.7%	3PT%	0-3	0.0%	FT%	1-1	100%	2nd	FG%	1-15	6.7%	3PT%	0-3	0.0%	FT%	1-1	100%	3rd	FG%	1-15	6.7%	3PT%	0-3	0.0%	FT%	1-1	100%	4th	FG%	1-15	6.7%	3PT%	0-3	0.0%	FT%	1-1	100%								
1 Chastity Wilson	G	23:19	5-10	0-0	3-4	2	2	4	4	13	2	3	1	0	0	-20	1st	FG%	1-15	6.7%	3PT%	0-3	0.0%	FT%	1-1	100%	2nd	FG%	1-15	6.7%	3PT%	0-3	0.0%	FT%	1-1	100%	3rd	FG%	1-15	6.7%	3PT%	0-3	0.0%	FT%	1-1	100%	4th	FG%	1-15	6.7%	3PT%	0-3	0.0%	FT%	1-1	100%									
12 Calliana Fenceroy	G	30:41	5-13	2-6	0-0	1	1	2	4	0	12	0	2	1	0	0	-40	1st	FG%	1-15	6.7%	3PT%	0-3	0.0%	FT%	1-1	100%	2nd	FG%	1-15	6.7%	3PT%	0-3	0.0%	FT%	1-1	100%	3rd	FG%	1-15	6.7%	3PT%	0-3	0.0%	FT%	1-1	100%	4th	FG%	1-15	6.7%	3PT%	0-3	0.0%	FT%	1-1	100%								
21 Jisca Bila		28:38	0-8	0-4	0-0	1	2	3	1	1	0	1	9	0	0	-34	1st	FG%	1-15	6.7%	3PT%	0-3	0.0%	FT%	1-1	100%	2nd	FG%	1-15	6.7%	3PT%	0-3	0.0%	FT%	1-1	100%	3rd	FG%	1-15	6.7%	3PT%	0-3	0.0%	FT%	1-1	100%	4th	FG%	1-15	6.7%	3PT%	0-3	0.0%	FT%	1-1	100%									
4 Tyasia Freeman		25:44	0-1	0-0	0-0	2	3	5	0	0	0	0	2	1	1	0	-28	1st	FG%	1-15	6.7%	3PT%	0-3	0.0%	FT%	1-1	100%	2nd	FG%	1-15	6.7%	3PT%	0-3	0.0%	FT%	1-1	100%	3rd	FG%	1-15	6.7%	3PT%	0-3	0.0%	FT%	1-1	100%	4th	FG%	1-15	6.7%	3PT%	0-3	0.0%	FT%	1-1	100%								
15 Kenedie Haruna		14:38	2-5	0-0	0-0	3	1	4	5	0	4	0	2	0	1	1	-17	1st	FG%	1-15	6.7%	3PT%	0-3	0.0%	FT%	1-1	100%	2nd	FG%	1-15	6.7%	3PT%	0-3	0.0%	FT%	1-1	100%	3rd	FG%	1-15	6.7%	3PT%	0-3	0.0%	FT%	1-1	100%	4th	FG%	1-15	6.7%	3PT%	0-3	0.0%	FT%	1-1	100%								
3 Jade Campbell		20:54	2-4	0-0	1-4	0	4	4	3	6	5	1	2	0	1	0	-31	1st	FG%	1-15	6.7%	3PT%	0-3	0.0%	FT%	1-1	100%	2nd	FG%	1-15	6.7%	3PT%	0-3	0.0%	FT%	1-1	100%	3rd	FG%	1-15	6.7%	3PT%	0-3	0.0%	FT%	1-1	100%	4th	FG%	1-15	6.7%	3PT%	0-3	0.0%	FT%	1-1	100%								
Team						1	4	5	0	0	0	0	0	0	0		1st	FG%	1-15	6.7%	3PT%	0-3	0.0%	FT%	1-1	100%	2nd	FG%	1-15	6.7%	3PT%	0-3	0.0%	FT%	1-1	100%	3rd	FG%	1-15	6.7%	3PT%	0-3	0.0%	FT%	1-1	100%	4th	FG%	1-15	6.7%	3PT%	0-3	0.0%	FT%	1-1	100%									
Totals			17-59	4-19	7-12	10	19	29	26	16	45	8	20	7	7	2	-47	1st	FG%	1-15	6.7%	3PT%	0-3	0.0%	FT%	1-1	100%	2nd	FG%	1-15	6.7%	3PT%	0-3	0.0%	FT%	1-1	100%	3rd	FG%	1-15	6.7%	3PT%	0-3	0.0%	FT%	1-1	100%	4th	FG%	1-15	6.7%	3PT%	0-3	0.0%	FT%	1-1	100%								
Major Fouls: NONE										Dead Ball Rebounds: 1 0												Dead Ball Rebounds: 1 0																																											

Kent St. - 92				Record: 1-0																																																																																																																																																																																																																																																																																																																																																																																																																																																																																																																																																																						
NO. Name	Min	FG M-A	3P M-A	FT M-A	Rebounds OR DR TOT	Fouls PF FT	TP	AS	TO	ST	Blocks BS BA	+/-	Shooting By Period																																																																																																																																																																																																																																																																																																																																																																																																																																																																																																																																																													
30 Riley Rismiller	F 16:46	3-4	0-0	2-2	1 5 6	0 2	8	1	0	0	1	0	34	1st	FG%	7-18	38.9%	3PT%	2-3	66.7%	FT%	0-0	0%	2nd	FG%	3-15	20.0%	3PT%	0-5	0.0%	FT%	4-19	21.1%	3rd	FG%	3-15	20.0%	3PT%	0-5	0.0%	FT%	4-19	21.1%	4th	FG%	3-15	20.0%	3PT%	0-5	0.0%	FT%	4-19	21.1%																																																																																																																																																																																																																																																																																																																																																																																																																																																																																																																					
34 Janae Tyler	F 24:21	8-13	0-0	8-11	2 3 5	1 6	24	0	1	0	1	0	29	1st	FG%	7-18	38.9%	3PT%	2-3	66.7%	FT%	0-0	0%	2nd	FG%	3-15	20.0%	3PT%	0-5	0.0%	FT%	4-19	21.1%	3rd	FG%	3-15	20.0%	3PT%	0-5	0.0%	FT%	4-19	21.1%	4th	FG%	3-15	20.0%	3PT%	0-5	0.0%	FT%	4-19	21.1%																																																																																																																																																																																																																																																																																																																																																																																																																																																																																																																					
3 Corynne Hauser	G 17:51	3-8	2-4	0-0	0 4 4	2 2	8	5	1	0	0	1	25	1st	FG%	7-18	38.9%	3PT%	2-3	66.7%	FT%	0-0	0%	2nd	FG%	3-15	20.0%	3PT%	0-5	0.0%	FT%	4-19	21.1%	3rd	FG%	3-15	20.0%	3PT%	0-5	0.0%	FT%	4-19	21.1%	4th	FG%	3-15	20.0%	3PT%	0-5	0.0%	FT%	4-19	21.1%																																																																																																																																																																																																																																																																																																																																																																																																																																																																																																																					
12 Dionna Gray	G 25:37	2-7	2-2	4-4	2 2 4	2 7	10	10	0	1	0	3	51	1st	FG%	7-18	38.9%	3PT%	2-3	66.7%	FT%	0-0	0%	2nd	FG%	3-15	20.0%	3PT%	0-5	0.0%	FT%	4-19	21.1%	3rd	FG%	3-15	20.0%	3PT%	0-5	0.0%	FT%	4-19	21.1%	4th	FG%	3-15	20.0%	3PT%	0-5	0.0%	FT%	4-19	21.1%																																																																																																																																																																																																																																																																																																																																																																																																																																																																																																																					
23 Mya Babbitt	G 22:25	4-5	2-2	0-0	0 5 5	1 0	10	0	3	1	0	0	26	1st	FG%	7-18	38.9%	3PT%	2-3	66.7%	FT%	0-0	0%	2nd	FG%	3-15	20.0%	3PT%	0-5	0.0%	FT%	4-19	21.1%	3rd	FG%	3-15	20.0%	3PT%	0-5	0.0%	FT%	4-19	21.1%	4th	FG%	3-15	20.0%	3PT%	0-5	0.0%	FT%	4-19	21.1%																																																																																																																																																																																																																																																																																																																																																																																																																																																																																																																					
9 Rylee Kalocay	15:44	2-4	2-2	4-4	0 3 3	1 2	10	3	1	2	0	1	27	1st	FG%	7-18	38.9%	3PT%	2-3	66.7%	FT%	0-0	0%	2nd	FG%	3-15	20.0%	3PT%	0-5	0.0%	FT%	4-19	21.1%	3rd	FG%	3-15	20.0%	3PT%	0-5	0.0%	FT%	4-19	21.1%	4th	FG%	3-15	20.0%	3PT%	0-5	0.0%	FT%	4-19	21.1%																																																																																																																																																																																																																																																																																																																																																																																																																																																																																																																					
1 Tatiana Thomas	13:06	3-3	0-0	2-2	0 1 1	2 2	8	1	1	4	0	0	24	1st	FG%	7-18	38.9%	3PT%	2-3	66.7%	FT%	0-0	0%	2nd	FG%	3-15	20.0%	3PT%	0-5	0.0%	FT%	4-19	21.1%	3rd	FG%	3-15	20.0%	3PT%	0-5	0.0%	FT%	4-19	21.1%	4th	FG%	3-15	20.0%	3PT%	0-5	0.0%	FT%	4-19	21.1%																																																																																																																																																																																																																																																																																																																																																																																																																																																																																																																					
0 Caitlyn Holmes	17:18	3-5	0-0	0-2	0 1 1	1 2	6	2	4	4	0	1	11	1st	FG%	7-18	38.9%	3PT%	2-3	66.7%	FT%	0-0	0%	2nd	FG%	3-15	20.0%	3PT%	0-5	0.0%	FT%	4-19	21.1%	3rd	FG%	3-15	20.0%	3PT%	0-5	0.0%	FT%	4-19	21.1%	4th	FG%	3-15	20.0%	3PT%	0-5	0.0%	FT%	4-19	21.1%																																																																																																																																																																																																																																																																																																																																																																																																																																																																																																																					
25 Emory Klatt	11:22	1-4	0-0	0-0	1 2 3	0 0	0	0	1	0	1	0	14	1st	FG%	7-18	38.9%	3PT%	2-3	66.7%	FT%	0-0	0%	2nd	FG%	3-15	20.0%	3PT%	0-5	0.0%	FT%	4-19	21.1%	3rd	FG%	3-15	20.0%	3PT%	0-5	0.0%	FT%	4-19	21.1%	4th	FG%	3-15	20.0%	3PT%	0-5	0.0%	FT%	4-19	21.1%																																																																																																																																																																																																																																																																																																																																																																																																																																																																																																																					
2 Meghan Murray	11:05	1-3	0-2	0-0	2 1 3	1 3	1	2	2	1	1	0	-1	1st	FG%	7-18	38.9%	3PT%	2-3	66.7%	FT%	0-0	0%	2nd	FG%	3-15	20.0%	3PT%	0-5	0.0%	FT%	4-19	21.1%	3rd	FG%	3-15	20.0%	3PT%	0-5	0.0%	FT%	4-19	21.1%	4th	FG%	3-15	20.0%	3PT%	0-5	0.0%	FT%	4-19	21.1%																																																																																																																																																																																																																																																																																																																																																																																																																																																																																																																					
5 Bianca Juzzo	12:25	1-2	0-0	0-0	1 1 4	5 2	2	2	1	1	0	0	3	1st	FG%	7-18	38.9%	3PT%	2-3	66.7%	FT%	0-0	0%	2nd	FG%	3-15	20.0%	3PT%	0-5	0.0%	FT%	4-19	21.1%	3rd	FG%	3-15	20.0%	3PT%	0-5	0.0%	FT%	4-19	21.1%	4th	FG%	3-15	20.0%	3PT%	0-5	0.0%	FT%	4-19	21.1%																																																																																																																																																																																																																																																																																																																																																																																																																																																																																																																					
11 Anna Campanelli	10:00	1-4	0-2	0-0	1 1 2	1 0	2	0	1	0	0	0	2	1st	FG%	7-18	38.9%	3PT%	2-3	66.7%	FT%	0-0	0%	2nd	FG%	3-15	20.0%	3PT%	0-5	0.0%	FT%	4-19	21.1%	3rd	FG%	3-15	20.0%	3PT%	0-5	0.0%	FT%	4-19	21.1%	4th	FG%	3-15	20.0%	3PT%	0-5	0.0%	FT%	4-19	21.1%																																																																																																																																																																																																																																																																																																																																																																																																																																																																																																																					
Team					3 4 7	0 0	0	0	0	0	0	0		1st	FG%	7-18	38.9%	3PT%	2-3	66.7%	FT%	0-0	0%	2nd	FG%	3-15	20.0%	3PT%	0-5	0.0%	FT%	4-19	21.1%	3rd	FG%	3-15	20.0%	3PT%	0-5	0.0%	FT%	4-19	21.1%	4th	FG%	3-15	20.0%	3PT%	0-5	0.0%	FT%	4-19	21.1%																																																																																																																																																																																																																																																																																																																																																																																																																																																																																																																					
Totals		32-62	8-14	20-25	13 36 49	16 26	92	25	15	13	2	7	47																																																																																																																																																																																																																																																																																																																																																																																																																																																																																																																																																													

# 2025-26 BOX SCORES



Official Basketball Box Score - Final  
**Arkansas St. at Kent St.**  
11/30/25 Baha Mar Convention Center, Nassau  
2025-26 Women's Basketball

Game Time: 1:30 PM  
Game Duration: 1:45  
Attendance: 237

Officials: Josh Howell, Stacie Bow, Josh Hall

Arkansas St. - 74

Record: 1-0

NO. Name	Min	FG M-A	3P M-A	FT M-A	Rebounds OR DR TOT	Fouls PF FO	TP	AS	TO	ST	Blocks BS BA	+/-
1 Crislyn Rose	G 25:24	1-5	0-1	2-2	0 2 2	1 1	4	6	4	0	0 0	14
2 Wynter Rogers	G 23:16	1-4	0-0	0-0	4 6 10	4 1	2	2	2	0	2 0	3
3 Mia Tarver	G 20:32	4-7	2-5	0-0	0 0 0	2 0 0	1	1	1	0	0 0	6
5 Marlie Dickerson	G 24:56	4-9	4-5	0-0	1 4 5	0 0	2	12	2	0	0 0	16
21 Zion Shannon	G 24:56	5-13	3-10	3-4	0 4 4	0 2	16	0	4	1	0 0	16
0 D'Arrah Allen	G 19:59	6-10	3-7	2-2	1 0 1	1 3	17	1	1	2	0 0	11
6 Yves Cox	G 12:49	0-0	0-0	0-0	1 1 2	3 1	0	0	0	0	1 0	16
11 Aniyah Ruddock	G 15:04	0-2	0-2	0-0	0 1 1	1 0	0	2	1	2	0 0	6
12 Mimi McCollister	G 14:05	3-7	2-4	1-2	1 1 2	4 1	9	1	1	1	0 0	7
23 Bella Weary	G 15:04	2-5	0-2	0-0	0 1 1	0 1	4	2	1	0	0 0	6
24 Allyson Ferguson	G 03:55	0-0	0-0	0-0	1 0 1	2 0	0	0	0	0	0 0	1
Team					1 2 3	0 0	0	0	0	0	0 0	
Totals		26-62	14-36	8-10	12 19 31	20 10	74	16	15	9	3 0	20

Major Fouls: NONE

Dead Ball Rebounds: 1.0

Kent St. - 54

Record: 0-1

NO. Name	Min	FG M-A	3P M-A	FT M-A	Rebounds OR DR TOT	Fouls PF FO	TP	AS	TO	ST	Blocks BS BA	+/-
30 Riley Rismiller	F 19:36	4-7	0-0	0-0	2 4 6	0 3	8	1	0	0	0 0	10
34 Janise Tyler	F 21:25	4-9	0-0	2-2	2 4 2	2 3	10	1	1	0	1 0	5
9 Rylee Kalocay	G 24:50	0-3	0-2	1-2	0 6 6	3 4	1	1	2	0	0 0	23
12 Dionna Gray	G 34:12	1-5	0-3	2-2	1 4 5	2 5	4	6	7	0	0 0	22
23 Mya Babbitt	G 36:20	2-14	1-6	0-0	1 1 2	1 1	5	1	1	0	0 2	22
0 Caitlyn Holmes	G 24:22	0-0	0-0	0-0	0 0 0	0 0	4	1	2	1	0 0	8
1 Tatiana Thomas	G 26:33	7-9	0-0	3-3	4 1 5	1 2	17	0	4	4	0 0	16
2 Meghan Murray	G 15:39	1-4	1-2	1-2	1 3 4	1 1	4	0	3	2	0 0	0
5 Bianca Juzzo	G 03:58	0-1	0-0	0-0	0 0 0	0 0	0	1	0	0	0 0	1
35 Emory Klatt	G 03:02	0-0	0-0	0-0	0 0 0	0 0	0	0	0	0	0 0	3
11 Anna Campanelli	G 02:05	0-0	0-0	1-2	0 0 0	0 1	1	0	0	0	0 0	3
Team					4 3 7	0 0	0	4				
Totals		21-54	2-13	10-13	14 24 38	10 20	54	13	25	7	0 3	20

Major Fouls: Gray (F1) 4th 4:48

Dead Ball Rebounds: 3.1

	ASU	KSU
Biggest lead	23 (4 <sup>th</sup> 4:48)	0 (1 <sup>st</sup> 10:00)
Best Scoring Run	14 (1 <sup>st</sup> 3:05)	6 (2 <sup>nd</sup> 5:41)
Lead Changes	0	
Times Tied	0	
Time with Lead	39:37	00:00

Points from	ASU	KSU
Turnovers	23	16
Paint	22	36
Second Chance	12	12
Fast Breaks	7	8
Bench	30	26

Period by Period Scoring	1st	2nd	3rd	4th	TOT
ASU	33	17	14	10	74
KSU	16	19	16	3	54



Official Basketball Box Score - Final  
**Davis & Elkins at Kent St.**  
12/15/25 Memorial Athletic and Convention Center, Kent  
2025-26 Women's Basketball

Game Time: 11:00 AM  
Game Duration: 1:45  
Attendance: 2,067

Officials: Michael McConnell, Mark Majewski, Bridget Borelli

Davis & Elkins - 37

Record: 1-10

NO. Name	Min	FG M-A	3P M-A	FT M-A	Rebounds OR DR TOT	Fouls PF FO	TP	AS	TO	ST	Blocks BS BA	+/-
4 Kylie Morris	F 16:01	1-6	0-1	0-0	0 0 0	5 2	2	0	5	0	1 0	-34
21 Sydney Prince	F 24:28	0-1	0-1	0-0	0 0 0	2 0	0	0	0	1	0 0	-52
2 Jahnyia Marion	G 24:45	6-15	2-4	2-4	0 2 2	1 3	16	1	2	2	0 0	-45
3 Madison Mims	G 18:03	3-9	2-4	0-0	0 2 2	1 0	8	0	1	0	0 0	-33
20 Bryanna Sapp	G 29:50	1-7	0-0	0-0	0 0 0	1 1	2	0	4	0	0 0	-60
24 Koi Shabazz	G 22:06	0-5	0-2	2-2	3 0 3	3 2	2	1	1	1	0 0	-42
10 Addison Boram	G 11:18	0-1	0-1	2-4	0 1 1	1 3	2	0	2	0	0 0	-33
1 Jallia Markes	G 09:28	0-6	0-3	1-2	0 1 1	2 2	1	0	2	2	0 1	-8
5 Daylana Forrest	G 13:26	1-4	0-1	0-0	0 2 2	0 2	2	1	0	0	0 0	-24
13 Jallia Garner	G 13:09	1-4	0-3	0-0	0 1 1	1 1	0	2	0	1	0 0	-24
30 Ruby Smith	G 04:56	0-0	0-0	0-0	0 1 1	1 0	0	0	0	2	0 0	-11
41 Tanisha Seymour	G 02:29	0-0	0-0	0-0	0 0 0	0 0	0	0	0	0	0 0	-7
11 Nadia President	G 05:07	0-2	0-0	0-0	0 0 0	0 0	0	0	0	0	0 0	-13
33 Sophia Yancy	G 04:54	0-0	0-0	0-0	0 1 1	3 0	0	0	1	0	0 0	-14
Team					3 1 4	0 0	0	1				
Totals		13-60	4-20	7-12	6 12 18	21 15	57	3	22	6	1 1	80

Major Fouls: NONE

Dead Ball Rebounds: 4.1

Kent St. - 117

Record: 5-6

NO. Name	Min	FG M-A	3P M-A	FT M-A	Rebounds OR DR TOT	Fouls PF FO	TP	AS	TO	ST	Blocks BS BA	+/-
1 Tatiana Thomas	F 14:41	5-5	1-1	2-2	1 2 3	1 2	13	3	0	3	0 0	35
30 Riley Rismiller	F 17:58	5-9	0-1	3-4	3 7 10	2 5	13	0	1	1	0 0	28
9 Rylee Kalocay	G 21:02	6-10	1-4	3-4	1 5 6	1 2	16	6	0	4	0 0	51
12 Dionna Gray	G 22:59	0-1	0-1	2-2	1 3 3	2 1	2	7	1	0	0 0	39
23 Mya Babbitt	G 24:50	8-12	3-7	0-0	1 6 7	0 0	19	5	3	0	0 0	62
2 Meghan Murray	G 17:01	4-7	3-5	0-0	4 4 4	3 1	11	1	1	1	0 0	41
35 Emory Klatt	G 21:22	6-8	1-1	0-1	4 4 8	1 2	13	4	1	0	0 0	54
4 Journey Hildebrand	G 14:36	4-8	1-5	1-2	1 3 4	1 2	10	3	0	2	0 0	28
0 Caitlyn Holmes	G 14:47	0-2	0-0	0-0	1 2 3	1 2	0	1	4	0	0 0	18
5 Bianca Juzzo	G 15:51	4-7	1-1	0-0	4 4 8	1 0	9	1	3	0	0 0	26
11 Anna Campanelli	G 14:53	4-8	0-4	3-4	1 2 3	2 4	11	2	0	0	0 0	18
Team					1 0 1	0 0	0	0				
Totals		46-77	11-30	14-19	20 40 60	15 21	117	33	14	12	1 1	80

Major Fouls: NONE

Dead Ball Rebounds: 3.2

	DAE	KSU
Biggest lead	0 (1 <sup>st</sup> 10:00)	80 (4 <sup>th</sup> 1:24)
Best Scoring Run	4 (2 <sup>nd</sup> 9:40)	18 (3 <sup>rd</sup> 3:10)
Lead Changes	0	
Times Tied	0	
Time with Lead	00:00	39:45

Points from	DAE	KSU
Turnovers	8	31
Paint	14	66
Second Chance	8	22
Fast Breaks	0	24
Bench	9	54

Period by Period Scoring	1st	2nd	3rd	4th	TOT
DAE	10	11	11	5	37
KSU	30	27	31	29	117



Official Basketball Box Score - Final  
**Kent St. at Marshall**  
12/06/25 Cam Henderson Center, Huntington  
2025-26 Women's Basketball

Game Time: 1:00 PM  
Game Duration: 2:02  
Attendance: 1,067

Officials: Lesh Lanie, Natasha Harris, Eric Koch

Kent St. - 62

Record: 4-6

NO. Name	Min	FG M-A	3P M-A	FT M-A	Rebounds OR DR TOT	Fouls PF FO	TP	AS	TO	ST	Blocks BS BA	+/-
1 TreShondra Williams	F 23:07	3-7	0-1	0-0	4 3 7	1 1	6	3	1	0	1 3	-13
30 Riley Rismiller	F 27:02	8-13	0-0	0-0	3 5 8	3 1	16	1	0	1	1 1	
3 Corynne Hauser	G 53:26	2-11	1-4	0-0	0 5 5	2 3	5	4	3	1	1 2	-15
12 Dionna Gray	G 37:36	3-14	2-5	0-0	4 5 9	0 2	8	8	3	1	1 2	-1
23 Mya Babbitt	G 36:21	4-17	2-12	2-2	0 5 5	1 2	12	1	3	1	0 1	-12
1 Tatiana Thomas	G 23:53	3-10	0-0	1-2	8 1 9	2 2	7	0	0	3	1 3	-4
9 Rylee Kalocay	G 10:53	1-2	0-0	0-0	0 0 0	0 2	1	2	0	0	1 0	-2
35 Emory Klatt	G 05:52	2-2	0-0	0-0	1 0 1	0 0	4	0	1	0	1 0	0
0 Caitlyn Holmes	G 01:48	1-1	0-0	0-1	0 0 0	0 1	2	0	0	0	0 0	6
Team					2 2 4	0 0	0	1				
Totals		27-77	5-22	3-7	22 26 48	11 13	62	17	13	7	6 12	-8

Major Fouls: NONE

Dead Ball Rebounds: 1.0

Marshall - 70

Record: 3-3

NO. Name	Min	FG M-A	3P M-A	FT M-A	Rebounds OR DR TOT	Fouls PF FO	TP	AS	TO	ST	Blocks BS BA	+/-
1 TreShondra Williams	F 08:35	0-1	0-1	0-0	0 2 2	2 0	0	0	1	0	0 0	-1
23 Meredith Maier	F 31:25	4-14	3-10	3-3	1 4 5	0 2	14	0	0	2	0 0	7
3 Timaya Lewis-Eutsey	G 25:52	5-10	0-0	6-6	2 3 5	2 3	16	2	3	6	3 0	3
5 Olivia Olson	G 26:58	4-15	2-8	0-0	2 7 9	2 0	10	2	0	2	2 2	1
20 Peyton Ikerton	G 32:09	3-7	2-6	0-0	1 5 6	1 1	8	3	2	0	0 0	9
15 N'Kiah Chesterfield	G 08:55	1-2	0-1	0-0	0 2 2	0 1	2	0	0	0	1 0	1
24 Kessie Ingram	G 13:25	1-3	0-1	0-0	0 0 0	0 1	2	2	1	1	1 1	-5
0 Timberlynn Yeast	G 22:10	2-4	1-1	2-2	1 3 4	2 2	7	3	1	0	1 1	14
30 Aarionna Redman	G 10:58	1-2	0-1	0-0	1 1 2	0 0	2	1	1	1	0 0	-2
13 Leyocha Marigney	G 19:33	4-6	0-0	1-1	2 2 4	3 1	9	0	1	0	4 2	13
Team					3 2 5	0 0	0	0				
Totals		25-64	8-29	12-12	13 31 44	13 11	70	13	13	10	12 6	8

Major Fouls: NONE

Dead Ball Rebounds: 0.0

	KSU	MAR
Biggest lead	2 (3 <sup>rd</sup> 1:56)	14 (2 <sup>nd</sup> 7:28)
Best Scoring Run	10 (3 <sup>rd</sup> 3:39)	13 (2 <sup>nd</sup> 8:29)
Lead Changes	8	
Times Tied	4	
Time with Lead	03:55	33:28

Points from	KSU	MAR
Turnovers	8	17
Paint	30	32
Second Chance	21	11
Fast Breaks	8	14
Bench	15	22

Period by Period Scoring					
	1st	2nd	3rd	4th	TOT
KSU	10	15	19	18	62
MAR	16	15	15	24	70

# 2025-26 BOX SCORES



Official Basketball Box Score - Final  
**Miami (OH) at Kent St.**  
12/31/25 Memorial Athletic and Convocation Center, Kent, Ohio  
2025-26 Women's Basketball

Game Time: 12:00 PM  
Game Duration: 2:16  
Attendance: 1,124

Officials: Kale Entlerne, Robert McDow, Coleen Thompson

Miami (OH) - 67

Record: 9-4 (1-0)

NO.	Name	Min	FG		3P		FT	Rebounds		Fouls		TP	AS	TO	ST	Blocks		+/-
			M-A	M-A	M-A	M-A		OR	DR	TOT	PF					BS	BA	
15	Amber Trotter	F 37:19	3-12	1-4	7-8	2	5	7	3	8	14	2	2	1	3	2	2	
21	Ilsa de Vries	F 27:09	5-11	3-5	2-2	2	2	4	3	1	15	0	2	1	1	0	4	
1	Amber Scalia	G 37:04	2-13	1-8	2-4	0	2	1	4	7	0	4	1	0	2	4		
13	Tamara Slinger	G 37:48	3-9	1-5	8-10	4	5	9	4	5	16	8	2	3	0	1	14	
17	Nuria Jurjo	G 24:41	1-6	1-3	0-0	1	6	7	3	1	3	3	2	2	1	0	4	
30	Mio Sakano	G 22:15	0-1	0-1	0-0	0	0	0	0	0	0	0	0	0	0	0	-5	
7	Clara Gonzalez Planella	09:19	0-2	0-2	0-0	2	1	3	2	0	0	0	0	1	1	0	-2	
10	Macie Taylor	08:34	2-5	0-1	2-2	1	1	2	0	1	6	0	3	1	0	1	-1	
22	Ashton Elley	15:51	2-2	2-2	0-0	1	1	2	0	0	6	0	0	2	0	0	-2	
11	Anna Hurst	00:01	0-0	0-0	0-0	0	0	0	0	0	0	0	0	0	0	0	2	
Team																		
Totals			18-61	9-31	22-26	15	26	41	20	22	67	13	17	12	5	6	4	

Major Fouls: NONE

Shooting By Period	
1 <sup>st</sup> FG%	6-19 31.6%
3PT%	3-11 27.3%
FT%	4-6 66.7%
2 <sup>nd</sup> FG%	4-13 30.8%
3PT%	2-6 33.3%
FT%	9-10 90%
3 <sup>rd</sup> FG%	4-14 28.6%
3PT%	2-8 25.0%
FT%	0-0 0%
4 <sup>th</sup> FG%	4-15 26.7%
3PT%	2-6 33.3%
FT%	9-10 90%
GM FG%	28-61 46%
3PT%	9-31 29.0%
FT%	22-26 84.6%

Dead Ball Rebounds: 3.0

Kent St. - 63

Record: 5-8 (0-2)

NO.	Name	Min	FG		3P		FT	Rebounds		Fouls		TP	AS	TO	ST	Blocks		+/-
			M-A	M-A	M-A	M-A		OR	DR	TOT	PF					BS	BA	
1	Tatiana Thomas	F 32:36	5-14	0-0	6-12	9	4	13	5	9	18	1	5	3	4	3	10	
30	Riley Rismiller	F 33:11	2-7	1-2	0-0	1	6	7	2	0	5	0	4	1	0	0	-13	
3	Corynne Hauser	G 21:35	6-12	3-6	1-1	0	4	4	3	16	2	2	1	0	0	2		
12	Dionna Gray	G 32:50	2-4	0-1	0-0	3	3	3	3	4	2	4	0	0	0	0	-3	
23	Mya Babbitt	G 37:34	3-11	1-6	0-1	0	5	5	3	1	7	1	4	1	0	1	-1	
4	Journey Hildebrand	23:56	3-8	1-3	1-1	0	0	0	1	1	8	1	2	2	0	1	-2	
9	Rylee Kalocay	03:37	0-1	0-0	0-0	0	0	0	1	0	0	0	0	0	0	0	-4	
11	Anna Campanelli	02:14	0-0	0-0	0-0	0	0	0	0	1	0	0	0	0	0	0	-1	
35	Emory Klatt	05:11	0-0	0-0	0-0	2	2	1	0	0	0	0	0	0	0	0	5	
0	Caitlyn Holmes	05:19	2-3	0-0	1-1	0	0	0	1	2	5	1	2	0	0	0	-3	
5	Bianca Juzzo	01:56	0-1	0-0	0-0	0	0	0	1	0	0	0	0	0	1	0	-8	
Team																		
Totals			23-61	6-18	11-16	13	29	42	22	20	63	8	25	8	6	5	-4	

Major Fouls: NONE

Shooting By Period	
1 <sup>st</sup> FG%	7-14 50.0%
3PT%	1-2 50.0%
FT%	3-6 50.0%
2 <sup>nd</sup> FG%	6-15 40.0%
3PT%	1-3 33.3%
FT%	2-2 100%
3 <sup>rd</sup> FG%	4-15 26.7%
3PT%	2-6 33.3%
FT%	4-5 80%
4 <sup>th</sup> FG%	6-17 35.3%
3PT%	2-7 28.6%
FT%	2-3 66.7%
GM FG%	23-61 37.7%
3PT%	6-18 33.3%
FT%	11-16 68.8%

Dead Ball Rebounds: 4.0

	MIA	KSU
Biggest lead	10 (3 <sup>rd</sup> 4:56)	3 (2 <sup>nd</sup> 2:09)
Best Scoring Run	9 (2 <sup>nd</sup> 0:00)	12 (4 <sup>th</sup> 8:28)
Lead Changes	6	
Times Tied	6	
Time with Lead	30:52	03:37

Points from	MIA	KSU
Turnovers	18	14
Paint	14	24
Second Chance	20	11
Fast Breaks	10	7
Bench	12	13

Period by Period Scoring					
	1st	2nd	3rd	4th	TOT
MIA	19	19	10	19	67
KSU	18	15	14	16	63



Official Basketball Box Score - Final  
**Kent State at Central Michigan**  
01/01/26 McGuffey Arena, Mount Pleasant, MI  
2025-26 Chippewa Basketball

Game Time: 11:00 AM  
Game Duration: 1:58  
Attendance: 2,312

Officials: Josh Howell, Michelle DeDuco, Kayla Maxey

Kent State - 57

Record: 5-10 (0-4)

NO.	Name	Min	FG		3P		FT	Rebounds		Fouls		TP	AS	TO	ST	Blocks		+/-
			M-A	M-A	M-A	M-A		OR	DR	TOT	PF					BS	BA	
1	Tatiana Thomas	F 28:23	4-8	0-0	0-1	1	4	5	3	2	8	2	3	1	3	0	4	
30	Riley Rismiller	F 16:15	2-4	0-0	2-2	0	3	3	1	1	6	0	2	0	0	0	-5	
9	Rylee Kalocay	G 18:57	0-1	0-1	0-0	0	0	0	5	1	2	3	1	1	0	0	1	
12	Dionna Gray	G 37:52	3-7	0-1	1-1	1	3	4	3	3	7	3	4	4	0	0	-11	
23	Mya Babbitt	G 37:42	9-20	3-8	3-4	1	0	1	3	3	24	0	3	5	1	1	-4	
4	Journey Hildebrand	17:53	1-7	0-5	0-0	0	3	3	1	0	2	1	2	0	0	0	-11	
35	Emory Klatt	23:45	3-4	1-1	0-0	1	6	7	0	0	7	0	0	4	1	0	-4	
0	Caitlyn Holmes	10:07	0-4	0-0	1-2	0	0	0	3	2	1	0	0	0	0	2	-3	
5	Bianca Juzzo	06:05	0-0	0-0	0-0	0	0	0	0	1	0	0	1	0	0	0	-9	
11	Anna Campanelli	01:53	0-0	0-0	0-0	0	0	0	0	0	0	1	0	0	0	0	-5	
2	Meghan Murray	01:28	0-0	0-0	0-0	0	1	1	0	0	0	0	0	0	0	0	-2	
Team																		
Totals			22-55	4-16	9-12	6	21	27	19	13	57	9	17	15	5	3	-9	

Major Fouls: NONE

Shooting By Period	
1 <sup>st</sup> FG%	2-13 15.4%
3PT%	0-3 0.0%
FT%	0-0 0%
2 <sup>nd</sup> FG%	8-14 57.1%
3PT%	3-6 50.0%
FT%	0-1 0%
3 <sup>rd</sup> FG%	4-12 33.3%
3PT%	0-5 0.0%
FT%	7-8 87.5%
4 <sup>th</sup> FG%	9-16 56.3%
3PT%	1-2 50.0%
FT%	2-3 66.7%
GM FG%	22-55 40.0%
3PT%	4-16 25.0%
FT%	9-12 75.0%

Dead Ball Rebounds: 0.0

Central Michigan - 66

Record: 9-5 (3-1)

NO.	Name	Min	FG		3P		FT	Rebounds		Fouls		TP	AS	TO	ST	Blocks		+/-
			M-A	M-A	M-A	M-A		OR	DR	TOT	PF					BS	BA	
21	Zairea Chevre	F 32:54	2-4	0-0	0-0	1	3	4	1	0	4	2	4	0	1	1	0	
25	Ayanna-Sarai Darrington	F 27:49	7-10	0-0	4-5	6	4	10	3	4	18	1	2	0	0	1	0	
0	Madi Morson	G 33:46	7-14	1-4	3-3	2	2	4	2	4	18	0	5	0	0	0	1	
2	Liah Turnbull	G 25:01	2-9	1-2	0-0	1	2	3	2	3	5	1	3	0	0	1	17	
24	Taylor Anderson	G 28:10	3-7	0-2	2-7	4	8	12	2	4	8	5	2	2	0	0	12	
11	Nekhu Mitchell	30:49	2-6	0-2	2-4	0	5	5	2	3	6	3	2	2	1	0	-2	
23	Demetria Prewitt	16:48	3-10	0-0	1-2	3	2	5	1	7	3	1	0	1	1	2	13	
40	Taylor Johnson	04:43	0-0	0-0	0-0	0	0	0	0	0	0	0	1	0	0	0	-1	
Team																		
Totals			26-60	2-10	12-21	17	30	47	13	19	66	15	20	4	3	5	9	

Major Fouls: NONE

Shooting By Period	
1 <sup>st</sup> FG%	7-16 43.8%
3PT%	1-4 25.0%
FT%	2-4 50%
2 <sup>nd</sup> FG%	4-13 30.8%
3PT%	0-3 0.0%
FT%	0-2 0%
3 <sup>rd</sup> FG%	8-20 40.0%
3PT%	0-2 0%
FT%	3-5 60%
4 <sup>th</sup> FG%	7-11 63.6%
3PT%	1-1 100.0%
FT%	7-10 70%
GM FG%	26-60 43.3%
3PT%	2-10 20.0%
FT%	12-21 57.1%

Dead Ball Rebounds: 5.0

	KSU	CMU
Biggest lead	0 (1 <sup>st</sup> 10:00)	15 (2 <sup>nd</sup> 9:31)
Best Scoring Run	9 (4 <sup>th</sup> 2:31)	9 (1 <sup>st</sup> 5:01)
Lead Changes	0	
Times Tied	0	
Time with Lead	00:00	39:47

Points from	KSU	CMU
Turnovers	16	15
Paint	32	40
Second Chance	6	16
Fast Breaks	9	7
Bench	10	13

Period by Period Scoring						
	1st	2nd	3rd	4th	TOT	
KSU	4	19	15	19	57	
CMU	17	8	19	22	66	



Official Basketball Box Score - Final  
**Massachusetts at Kent St.**  
01/03/26 Memorial Athletic and Convocation Center, Kent, Ohio  
2025-26 Women's Basketball

Game Time: 3:30 PM  
Game Duration: 2:06  
Attendance: 2,449

Officials: Angie Enlund, Keley Reynolds, Corey Malone

Massachusetts - 75