



2024 OREGON VOLLEYBALL

THE SCHEDULE

OVERALL: 8-1 | BIG TEN: 0-0
H: 1-1 | A: 3-0 | N: 3-0

AUGUST

30 #4 Pittsburgh% [BTN] L, 0-3

SEPTEMBER

| | | |
|----|---------------------------------|-----------|
| 1 | Long Beach State% [BIG+] | W, 3-0 |
| 6 | at Colorado State& [MW Network] | W, 3-1 |
| 7 | vs Grand Canyon& | W, 3-2 |
| 8 | vs Central Arkansas& | W, 3-0 |
| 13 | vs #17 BYU@ | W, 3-2 |
| 14 | at San Diego@ [ESPN+] | W, 3-0 |
| 18 | at Portland State [ESPN+] | W, 3-0 |
| 22 | Oregon State [BIG+] | W, 3-0 |
| 27 | Illinois* [FS1] | 7:30 p.m. |
| 28 | Indiana* [BTN] | 5:30 p.m. |

OCTOBER

| | | |
|----|----------------------|-----------|
| 3 | at Ohio State* [BTN] | 5 p.m. |
| 4 | at Penn State* [BTN] | 4 p.m. |
| 9 | USC* [BTN] | 6 p.m. |
| 13 | Washington* [BIG+] | 1 p.m. |
| 18 | at Wisconsin* [BIG+] | 5 p.m. |
| 20 | at Iowa* [BIG+] | 10 a.m. |
| 25 | Maryland* [BIG+] | 6 p.m. |
| 27 | Rutgers* [BIG+] | 1 p.m. |
| 30 | at Washington* [BTN] | 6:30 p.m. |

NOVEMBER

| | | |
|----|----------------------|-----------|
| 2 | UCLA* [BTN] | 8 p.m. |
| 7 | Nebraska* [BTN] | 7 p.m. |
| 9 | at Minnesota* [BTN] | TBD |
| 15 | Northwestern* [BIG+] | 6 p.m. |
| 17 | at USC* [BIG+] | 1 p.m. |
| 21 | at Michigan State* | 3 p.m. |
| 23 | at Michigan* [BIG+] | 4 p.m. |
| 27 | Purdue* [BTN] | 7:30 p.m. |
| 29 | at UCLA* [Peacock] | 1:30 p.m. |

% - Oregon Invitational (Eugene, OR)
& - Ram Volleyball Classic (Fort Collins, CO)
@ - USD Invitational (San Diego, CA)
* - Big Ten Conference match

All times PT, subject to change



WELCOME TO BIG VOLLEYBALL



OREGON DUCKS (8-1/0-0 BIG TEN)

National Ranking (AVCA Poll): 11
Head Coach: Matt Ulmer (Carthage College, 2006)
Record at Oregon: 150-70 (.682, 8th Season)
Hitting Pct: .291 | Kills/Set: 13.16 | Digs/Set: 13.47 | Blocks/Set: 3.11

vs



ILLINOIS FIGHTING ILLINI (8-2/0-0 BIG TEN)

National Ranking (AVCA Poll): NR
Head Coach: Chris Tamas (Pacific, 2003)
Record at Illinois: 139-83 (.626, 8th Season)
Hitting Pct: .256 | Kills/Set: 12.51 | Digs/Set: 12.32 | Blocks/Set: 2.24

vs



INDIANA HOOSIERS (7-3/0-0 BIG TEN)

National Ranking (AVCA Poll): NR
Head Coach: Steve Aird (Penn State, 2001)
Record at Indiana: 89-102 (.466, 7th Season)
Hitting Pct: .247 | Kills/Set: 12.53 | Digs/Set: 11.03 | Blocks/Set: 2.29

NEWS & NOTES

FIRST SERVE

The No. 11 Oregon volleyball team starts Big Ten play with two home matches this weekend. The Ducks will host Illinois and Indiana at Matthew Knight Arena. The Oregon-Illinois opener is scheduled for 7:30 p.m. and will air on FS1.

SERIES HISTORY VS ILLINOIS

Friday will be just the fifth meeting between Oregon and Illinois, and first since the 2016 season. In that match, the Ducks swept then-No. 21 Illinois at Matthew Knight Arena. The teams have met once in Eugene, twice in Champaign and once on a neutral court. The all-time series is tied at 2-2.

SERIES HISTORY VS INDIANA

Oregon and Indiana will be meeting for the first time; one of the Ducks' three first-time opponents this season along with Grand Canyon (def. 3-2, Sept. 7) and Maryland.

FIRST BIG HONOR

Senior MB Onye Ofoegbu earned Big Ten Defensive Player of the Week honor on the heels of averaging 2.17 blocks per set during the final week of non-conference play. With her fourth of eight blocks against Oregon State (Sept. 22), she reached 400 career blocks. Ofoegbu accounted for 3.92 points per set over the two-match week, and enters conference play ranked fifth in the Big Ten with 1.38 blocks per set.

ACCESS DENIED

The Ducks' 15.0 total team blocks against Oregon State (Sept. 22) are the fifth most by a team in a three-set match this season. Individually, sophomore OPP Noemie Glover posted a match-high 10.0 blocks, also a career-high number. With their effort, the Ducks currently rank third in the Big Ten and fifth nationally with 3.11 blocks per set.

LAST TIME OUT

Oregon closed out its non-conference schedule with sweep of rival Oregon State (Sept. 22) in front of 3,200-plus at Matthew Knight Arena. The win extended the Ducks' winning streak to eight and was career win no. 150 for head coach Matt Ulmer. In victory, the Ducks hit .351 and tallied 15.0 total team blocks.

HOW THEY RANK

Entering conference play, Oregon ranks among the top 10 in the NCAA in both blocks per set (5th/3.11) and opponent hit-

DID YOU KNOW?



With 15.0 total team blocks in a straight-set win over Oregon State, No. 11 Oregon is now averaging 3.11 blocks per set this season which ranks third in the Big Ten and fifth in the NCAA.

ROSTER QUICK LOOK

STARTERS

| Pos. | Player | Notes |
|------|-------------------|---|
| S | Cristin Cline | 14th in NCAA with 10.67 assists per set |
| OH | Mimi Colyer | Ninth in Big Ten with 4.38 points per set |
| OPP | Noemie Glover | Career-high 10 blocks vs Oregon State |
| MB | Colby Neal | Second on team with 1.32 blocks per set |
| MB | Onye Ofoegbu | Sixth in NCAA with .490 hitting pct. |
| OH | Michelle Ohwobete | Season-high 16 digs against #17 BYU |
| L/DS | Daley McClellan | Has an ace in eight of nine matches |

KEY RESERVES

| Pos. | Player | Notes |
|------|-------------------|---|
| L/DS | Maya De Los Reyes | Three digs, an assist vs Oregon State |
| OH | Bella Gamache | Made first appearance at Portland State |
| OH | Sophie Gregoire | Career-high 12 kills vs Grand Canyon |
| L/DS | Mackenzie Morris | Second on the team with nine aces |
| OH | Isabel Patterson | Played in three matches this season |
| S | Roberta Purashaj | Started opener (29a, 3d, 2b) vs #4 Pitt |
| MB | Mia Tvrdy | First-career kill at Portland State |

OFF THE BENCH

| Pos. | Player | Notes |
|------|--------------------|---------------------------------------|
| S | Evelina Gerogianni | Third at 2021 U18 Greek Championships |
| OPP | Bridget Gould | 2023 Oregon Class 4A State Co-POY |

2024 QUICK FACTS

University Information

Location _____ Eugene, Ore.
 Founded _____ 1876
 Enrollment _____ 23,834
 Nickname _____ Ducks
 School Colors _____ Green and Yellow
 Affiliation _____ NCAA Division I
 Conference _____ Big Ten
 President _____ John Karl Scholz
 Director of Athletics _____ Rob Mullens
 Senior Women's Administrator _____ Valerie Johnson
 Faculty Athletics Representative _____ Joshua Gordon
 University Website _____ uoregon.edu
 Athletics Website _____ GoDucks.com

Coaching Staff

Head Coach _____ Matt Ulmer
 Record at Oregon _____ 150-70 (.682)
 Career Record _____ same as above
 Associate Head Coach _____ Erika Dillard
 Assistant Coach _____ Arica Nassar
 Assistant Coach/Technical Assistant _____ Jerry Quan
 Director of Operations _____ Nellie Schafer
 Volleyball Office Phone _____ 541-346-5879

2023 Review

Overall Record _____ 29-6
 Conference Record _____ 16-4
 Pac-12 Finish _____ Second
 Postseason _____ NCAA Regional Final/Elite 8
 Home Record _____ 9-3
 Away Record _____ 13-2
 Neutral Record _____ 7-1

Postseason History

NCAA Tournament Appearances _____ 20th appearance
 NCAA Tournament Record _____ 26-20 (.565)
 National Finals _____ 1 (2012)
 Record _____ 0-1
 National Semifinals _____ 1 (2012)
 Record _____ 1-0
 Regional Finals _____ 4 (2012, '18, '22, '23)
 Record _____ 1-3
 Regional Semifinals _____ 9 (1984, '07, '08, '12, '14, '18, '20, '22, '23)
 Record _____ 4-5
 Second-Round Record _____ 8-4
 First-Round Record _____ *12-7
 AIAW Appearances/Record _____ 8/42-29 (.600)
 * - first-round bye in 2020-21

Athletics Communications

Senior Associate AD - Communications _____ Jimmy Stanton
 Assistant AD - Communications (FB, WGolf) _____ Nate Krueger
 Director, Communications (MBB, MTennis) _____ Will Patterson
 Associate Director (BSB, FB) _____ Todd Miles
 Associate Director (SB, SOC) _____ Greg Walker
 Assistant Director (WBB, WTennis) _____ Chris Brown
 Assistant Director (XC/TF, VB, BVB) _____ Zach Lawson
 Email _____ zlawson@uoregon.edu
 Office # _____ 541-346-5469
 Cell # _____ 214-504-5463
 Editor-in-Chief, GoDucks.com (O Heroes) _____ Rob Moseley
 Comms Assistant (A&T, LAX, MGolf) _____ Joey Mancini

Mailing Address

University of Oregon Athletic Department
 2727 Leo Harris Parkway
 Eugene, OR 97401



2024 OREGON VOLLEYBALL | Front Row (L-R): Maya De Los Reyes, Cristin Cline, Isabel Patterson, Bridget Gould, Michelle Ohwobete, Mackenzie Morris; Back Row (L-R): Noemie Glover, Anaya Thrower, Colby Neal, Sophie Gregoire, Onye Ofoegbu, Mimi Colyer, Bella Gamache, Mia Tvrdy, Roberta Purashaj, Evelina Georgianni, Daley McClellan.

2024 OREGON VOLLEYBALL ROSTER

| # | Name | Pos | Ht. | Cl. | Hometown (High School/Previous School) |
|----|--------------------|-------|------|------|--|
| 1 | Mia Tvrdy | MB | 6-1 | Fr. | La Vista, Neb. (Papillion-La Vista HS) |
| 3 | Noemie Glover | OPP | 6-2 | So. | Rancho Santa Fe, Calif. (Cathedral Catholic HS) |
| 4 | Daley McClellan | OH/DS | 5-11 | Sr. | Canby, Ore. (Canby HS) |
| 5 | Bella Gamache | OH | 5-11 | Fr. | Monroe, Ore. (Monroe HS) |
| 6 | Sophie Gregoire | OH | 6-1 | RFr. | Dundee, Ore. (Newberg HS) |
| 7 | Colby Neal | MB | 6-3 | Jr. | Poway, Calif. (Poway HS) |
| 8 | Cristin Cline | S | 5-11 | RFr. | Stanfield, N.C. (Hickory Grove Christian School) |
| 10 | Bridget Gould | OPP | 5-11 | Fr. | North Bend, Ore. (Marshfield HS) |
| 13 | Onye Ofoegbu | MB | 6-3 | RSr. | Cerritos, Calif. (Long Beach Poly HS/UC Irvine) |
| 15 | Mimi Colyer | OH | 6-3 | Jr. | Lincoln, Calif. (Lincoln HS) |
| 16 | Evelina Gerogianni | S | 5-11 | Fr. | Athens, Greece (Moraitis School) |
| 19 | Michelle Ohwobete | OH | 5-10 | Sr. | Oakland, Calif. (Bishop O'Dowd HS/UCSB) |
| 20 | Mackenzie Morris | L | 5-7 | Sr. | Frisco, Texas (Ursuline Academy/Kansas State) |
| 21 | Roberta Purashaj | S | 5-11 | Jr. | Milan, Italy (ITCG Carlo Matteucci HS/FSW) |
| 22 | Maya De Los Reyes | L/DS | 5-2 | Jr. | Long Beach, Calif. (Long Beach Poly HS) |
| 23 | Isabel Patterson | OH | 5-10 | RFr. | Portland, Ore. (Jesuit HS) |

COACHING STAFF

Head Coach: Matt Ulmer (8th season; Carthage College, 2006)
 Associate Head Coach: Erika Dillard (7th season; Long Beach State, 2006)
 Assistant Coach: Arica Nassar (2nd season; Oregon State, 2015)
 Assistant Coach/Technical Assistant: Jerry Quan (1st season; Oregon, 2024)

SUPPORT STAFF

Director of Operations: Nellie Schafer
 Athletic Trainer: Mary-Grace Testa
 Strength & Conditioning: Jim Radcliffe
 Student Managers: Kendall Helton, Will Lockwood, Kerra Pierce

PRONUNCIATION GUIDE

Mimi Colyer _____ Call-yur
 Bella Gamache _____ guh-Mash
 Evelina Gerogianni _____ joor-Gee-on-ee
 Noemie Glover _____ no-Emmy
 Bridget Gould _____ ghould
 Sophie Gregoire _____ greg-Wah
 Daley McClellan _____ daily
 Onye Ofoegbu _____ Oh-knee oh-Fay-boo
 Michelle Ohwobete _____ oh-whoa-beh-tay
 Roberta Purashaj _____ Pur-uh-shy
 Mia Tvrdy _____ tuh-Vur-dee
 Arica Nassar _____ nuh-Sar



▶ MILESTONE WATCH

Mimi Colyer | OH

| | | |
|--|----------------------|----------------------------------|
| Milestone: 1,353 career kills (UO #10) | Current Total: 1,113 | Needs: 240 |
| Milestone: 1,000 career kills | Current Total: 1,113 | Reached: 12/9/23 at #3 Wisconsin |
| Milestone: 500 career digs | Current Total: 627 | Reached: 11/19/23 at Arizona |
| Milestone: 100 career aces | Current Total: 94 | Needs: 6 |

Daley McClellan | L/DS

| | | |
|----------------------------|--------------------|-----------|
| Milestone: 500 career digs | Current Total: 432 | Needs: 68 |
|----------------------------|--------------------|-----------|

Mackenzie Morris | L/DS

| | | |
|---|----------------------|------------|
| Milestone: 2,000 career digs (combined) | Current Total: 1,802 | Needs: 198 |
|---|----------------------|------------|

Onye Ofoegbu | MB

| | | |
|--|----------------------|-----------------------------|
| Milestone: 1,000 career kills (combined) | Current Total: 1,030 | Reached: 9/13/24 vs #17 BYU |
| Milestone: 500 career blocks (combined) | Current Total: 404 | Needs: 96 |

Michelle Ohwobete | OH

| | | |
|--|----------------------|-----------------------------|
| Milestone: 1,500 career kills (combined) | Current Total: 1,221 | Needs: 279 |
| Milestone: 1,000 career digs (combined) | Current Total: 819 | Needs: 181 |
| Milestone: 100 career aces (combined) | Current Total: 102 | Reached: 9/13/24 vs #17 BYU |

Roberta Purashaj | S

| | | |
|--|----------------------|-----------|
| Milestone: 2,000 career assists (combined) | Current Total: 1,940 | Needs: 60 |
| Milestone: 500 career digs (combined) | Current Total: 433 | Needs: 67 |
| Milestone: 100 career aces (combined) | Current Total: 72 | Needs: 28 |

ting percentage (9th/.134). The UO offense is currently hitting .291 as a unit, a figure that is 12th in the nation. Individually, senior MB Onye Ofoegbu is sixth in hitting percentage (.490) and 32nd in blocks per set (1.38) and redshirt freshman Cristin Cline is 14th among NCAA setters at 10.76 assists per set.

FAMILIAR FACE IN BLOOMINGTON

Indiana associate head coach Rachel Morris is a 2010 Oregon graduate (sociology) and was a setter for the Ducks during the 2007 and 2008 seasons. Morris is in her third season with the Hoosiers where she also serves as recruiting coordinator. Morris is one of six former UO players (*list below*) currently coaching in the NCAA...

Sonja (Newcombe) Anderson - Colorado State, Assoc. HC
Abby Hansen - Syracuse, Volunteer Assistant
Rachel Morris - Indiana, Associate Head Coach
Georgia Murphy - Rice, Assistant Coach
Kacey Nady - Southern Utah, Head Coach
Lauren Plum - Vanderbilt, Assistant Coach

THEY'RE WATCHING

Junior OH Mimi Colyer has earned a spot on the AVCA Player of the Year Watch List. Colyer is averaging 4.38 points per set through nine matches and is one of 13 names from the Big Ten to appear on the early season list. The 36-player list will be narrowed in November; players not part of the initial list can work their way into consideration.



Mimi Colyer

NONE SHALL PASS

In its five-set win over No. 17 BYU, Oregon had a season-high 20.0 total team blocks. That figure is the most by the pro-

gram since the 2006 season and is the third most by any team in a five-set match this season. The Ducks held BYU to a .174 hitting percentage; the Cougars were hitting .357 heading into the match.

AT YOUR SERVICE

Oregon served up a season-high 13 aces in its five-set victory over No. 17 BYU. Mimi Colyer had five aces, one off her career high, and was one of six UO players with an ace. Maya De Los Reyes, Mackenzie Morris and Michelle Ohwobete each had two aces against the Cougars. Cristin Cline and Daley McClellan both tallied one, as well.

SO NICE, DID IT TWICE

Sophomore opposite Noemie Glover registered a career-high 12 kills in the Ducks' five-set win over #17 BYU. She hit .450 (12-3-20) in the match and added four blocks. She followed up the next day with another 12-kill performance (.321) in a road sweep of San Diego.

MILESTONE WATCHED

With her fifth kill against #17 BYU, senior middle Onye Ofoegbu recorded the 1,000th kill of her career. She ended the night with 13 kills and a .545 hitting percentage. In the same match, senior outside Michelle Ohwobete served up the 100th ace of her career. Ofoegbu and Ohwobete began their respective careers at UC Irvine and UCSB.

OH MY, ONYE

Senior middle Onye Ofoegbu turned in a standout weekend at the Ram Volleyball Classic, posting 3.17 kills per set coupled with a .500 hitting percentage. Among the highlights, she had 19 kills while hitting .621 against Grand Canyon. She had just one attack error in 29 swings against the Lopes. Ofoegbu also finished the weekend with 13 total blocks.

OFFENSIVE OPTIONS

Mimi Colyer had a season-high 19 kills in the Ducks' four-set win at Colorado State, one of four UO players to reach double digits in the match. Noemie Glover and Sophie Gregoire each recorded 11 kills while Onye Ofoegbu tallied 10 kills of her own. Redshirt freshman Cristin Cline dished out 45 assists to lead the offense to a .323 hitting percentage.

STEPPING IN

Senior co-captain Daley McClellan picked up a career-high 20

▶ WHAT HAPPENS WHEN

| | |
|---------------------|------------|
| OVERALL | 8-1 |
| Big Ten | 0-0 |
| Home | 2-1 |
| Away | 3-0 |
| Neutral | 3-0 |
| vs Ranked Opponents | 1-1 |

STATISTICAL

| | |
|----------------------------|-----|
| More Kills Than Opponent | 6-0 |
| Fewer Kills Than Opponent | 2-1 |
| Kills Are Tied | 0-0 |
| More Digs Than Opponent | 7-0 |
| Fewer Digs Than Opponent | 1-1 |
| Digs Are Tied | 0-0 |
| More Blocks Than Opponent | 8-1 |
| Fewer Blocks Than Opponent | 0-0 |
| Blocks Are Tied | 0-0 |
| More Aces Than Opponent | 5-0 |
| Fewer Aces Than Opponent | 3-1 |
| Aces Are Tied | 0-0 |
| Higher Hitting Percentage | 8-0 |
| Lower Hitting Percentage | 0-1 |
| Hitting Percentage Tied | 0-0 |

HITTING PERCENTAGE

| | |
|----------------|-----|
| .400 or Higher | 0-0 |
| .300-.399 | 5-0 |
| .200-.299 | 3-0 |
| .100-.199 | 0-1 |
| .000-.099 | 0-0 |
| Negative | 0-0 |

OPPONENT HITTING PERCENTAGE

| | |
|----------------|-----|
| .400 or Higher | 0-0 |
| .300-.399 | 0-0 |
| .200-.299 | 1-1 |
| .100-.199 | 2-0 |
| .000-.099 | 4-0 |
| Negative | 1-0 |

BY SETS

| | |
|----------------------|-----|
| Three Sets | 5-1 |
| Four Sets | 1-0 |
| Five Sets | 2-0 |
| Win First Set | 7-0 |
| Lose First Set | 1-1 |
| Win First Two Sets | 5-0 |
| Lose First Two Sets | 0-1 |
| Split First Two Sets | 3-0 |

BY DAY

| | |
|-----------|-----|
| Tuesday | 0-0 |
| Wednesday | 1-0 |
| Thursday | 0-0 |
| Friday | 2-1 |
| Saturday | 2-0 |
| Sunday | 3-0 |

BY MONTH

| | |
|-----------|-----|
| August | 0-1 |
| September | 8-0 |
| October | 0-0 |
| November | 0-0 |
| December | 0-0 |

2024 AWARDS & HONORS

Mimi Colyer

Big Ten Preseason All-Conference Team
AVCA Player of the Year Watch List

Onye Ofoegbu

Big Ten Defensive Player of the Week (Sept. 23)
NCAA.com Starting Rotation, Week 4 (Sept. 24)

2024 DOUBLE-DOUBLES

#8 Cristin Cline | S

9/14 at San Diego - 32 assists, 15 digs

#15 Mimi Colyer | OH

9/7 vs Grand Canyon (N) - 17 kills, 12 digs
9/13 vs #17 BYU (N) - 10 kills, 12 digs
9/22 vs Oregon State - 10 kills, 11 digs

#19 Michelle Ohwobete | OH

9/8 vs Central Arkansas (N) - 12 kills, 12 digs
9/13 vs #17 BYU (N) - 12 kills, 16 digs

Career Totals

Michelle Ohwobete - 29 (at UCSB)
Mimi Colyer - 28
Onye Ofoegbu - 2 (2 at UC Irvine)
Cristin Cline - 1

MKA TOP-10 ATTENDANCE

| | | |
|----|-----------------------|------------|
| 1 | 7,334 vs Oregon State | 9/22/2023 |
| 2 | 6,210 vs California | 10/7/2011 |
| 3 | 5,872 vs Stanford | 10/6/2017 |
| 4 | 5,007 vs Stanford | 11/4/2012 |
| 5 | 4,779 vs Colorado | 9/27/2014 |
| 6 | 4,668 vs Washington | 9/27/2013 |
| 7 | 4,589 vs Oregon State | 9/20/2018 |
| 8 | 4,458 vs Stanford | 9/25/2022 |
| 9 | 4,363 vs Stanford | 10/22/2023 |
| 10 | 3,978 vs Washington | 10/13/2012 |



MATCH-BY-MATCH STARTERS

| | | |
|----------|----------------------|---|
| Aug. 30 | #4 Pittsburgh% | Glover, Neal, Ofoegbu, Colyer, Ohwobete, Purashaj, Morris (L) |
| Sept. 1 | Long Beach State% | Glover, Neal, Cline, Ofoegbu, Colyer, Ohwobete, Morris (L) |
| Sept. 6 | at Colorado State& | Glover, Neal, Cline, Ofoegbu, Colyer, Ohwobete, Morris (L) |
| Sept. 7 | vs Grand Canyon& | Glover, Gregoire, Neal, Cline, Ofoegbu, Colyer, McClellan (L) |
| Sept. 8 | vs Central Arkansas& | Glover, Neal, Cline, Ofoegbu, Colyer, Ohwobete, McClellan (L) |
| Sept. 13 | vs #17 BYU@ | Glover, Neal, Cline, Ofoegbu, Colyer, Ohwobete, McClellan (L) |
| Sept. 14 | at San Diego@ | Glover, Neal, Cline, Ofoegbu, Colyer, Ohwobete, McClellan (L) |
| Sept. 18 | at Portland State | Glover, Neal, Cline, Ofoegbu, Colyer, Ohwobete, McClellan (L) |
| Sept. 22 | Oregon State | Glover, Neal, Cline, Ofoegbu, Colyer, Ohwobete, McClellan (L) |
| Sept. 27 | Illinois* | |
| Sept. 28 | Indiana* | |
| Oct. 3 | at Ohio State* | |
| Oct. 4 | at Penn State* | |
| Oct. 9 | USC* | |
| Oct. 13 | Washington* | |
| Oct. 18 | at Wisconsin* | |
| Oct. 20 | at Iowa* | |
| Oct. 25 | Maryland* | |
| Oct. 27 | Rutgers* | |
| Oct. 30 | at Washington* | |
| Nov. 2 | UCLA* | |
| Nov. 7 | Nebraska* | |
| Nov. 9 | at Minnesota* | |
| Nov. 15 | Northwestern* | |
| Nov. 17 | at USC* | |
| Nov. 21 | at Michigan State* | |
| Nov. 23 | at Michigan* | |
| Nov. 27 | Purdue* | |
| Nov. 29 | at UCLA* | |

% - Oregon Invitational (Eugene, OR) | & - Ram Volleyball Classic (Fort Collins, CO) | @ - USD Invitational (San Diego, CA)

* - Pac-12 Conference match

digs in the Ducks' four-set win at Colorado State. She entered the match with a previous best of 14 digs from the 2022 season. McClellan also posted a career-high eight assists. After beginning the match as a defensive specialist, she changed into the libero jersey to start the second set.

NEAL SETS A NEW STANDARD

Junior middle blocker Colby Neal established an Oregon single-match record with a .929 hitting percentage against Long Beach State (Sept. 1). The previous record of .917 was shared by Serena Warner (2014) and Karson Bacon (2023). Neal had a career-high 13 kills on 14 errorless swings.

**STARTING POINT**

Oregon began the season as the No. 10 team in the AVCA preseason poll, marking the second-consecutive year and third time in program history for the Ducks to start the year in the top 10. The team is set to play eight teams in the preseason top 25 and six others receiving votes.

PRESEASON ATTENTION

Mimi Colyer (Jr./OH) was voted to the 2024 Big Ten Volleyball Preseason All-Conference Team. She was an AVCA All-America Honorable Mention performer a season ago with 471 kills and 4.43 points per set. Collectively, the Ducks were picked sixth in the 18-team Big Ten preseason poll.

DUCKS ADD 2023 NJCAA PLAYER OF THE YEAR

Roberta Purshaj (Jr./S) joins the UO roster after being named the 2023 AVCA Two-Year College Player of the Year. She broke a Florida SouthWestern single-season record with 1,035 assists and finished third nationally with 11.01 assists per set. In directing the FSW offense, Purashaj and the Bucs recorded an NJCAA-leading .316 hitting percentage.

ULMER ADDS DEFENSIVE BOOST WITH MORRIS

Mackenzie Morris (Sr./L) led the Big 12 with 468 digs and 4.82 digs per set for Kansas State a season ago and will spend her fifth year in Eugene. The Dallas, Texas, native amassed 1,734 digs and 103 aces in her K-State career. Morris was the 2022 Big 12 Volleyball Scholar-Athlete of the Year.

DUCKS ADD BIG WEST PLAYER OF THE YEAR

Michelle Ohwobete (Sr./OH) spent the first three years of her collegiate career at UCSB and was the 2023 Big West Player of the Year. She joined the UO roster during the spring term. Ohwobete put down a career-high 434 kills while hitting .254 last season and helped UCSB to an NCAA appearance, its first since 2019.

THE SCHEDULE

As part of its 2024 slate, Oregon will have 13 home matches and face nine teams that played in last year's NCAA Tournament. The Ducks' season--their first as a member of the Big Ten--begins Aug. 30 when they host Pittsburgh in Eugene. In its conference opener, Oregon faces Illinois (Sept. 27) inside Matthew Knight Arena.

#BIGWELCOME

Oregon officially joined the Big Ten Conference on Friday, August 2, 2024. The Ducks are one of four new teams in the league, alongside former Pac-12 mates UCLA, USC and Washington. The Oregon Volleyball program is set to begin its 57th season, and eighth under head coach Matt Ulmer.

PLUM INTO THE UO HALL OF FAME

Lauren Plum, the program's all-time leader in career assists, is a member of the six-person 2024 Oregon Athletics Hall of Fame induction class. Plum was the 2012 Pac-12 Setter of the Year, an AVCA All-America First Team selection that same sea-

son and helped the Ducks to a 2012 national runner-up finish. The 2024 honorees will officially be inducted in late October. Plum currently serves as an assistant coach at Vanderbilt.

SEASON REVIEW: 2023

Oregon finished the 2023 campaign with a 29-6 record, good for a program high for wins under head coach Matt Ulmer. The Ducks made a second-consecutive trip to the NCAA Elite Eight, falling to No. 3 Wisconsin in the Madison regional final. Oregon spent the entirety of the season inside the AVCA top 10 and checked in at No. 7 in the year-end poll.

TAKING FLIGHT IN THE PVF

There were 11 former Ducks on Pro Volleyball Federation (PVF) opening-day rosters including six--Hannah Pukis, Georgia Murphy, Gabby Gonzales, Morgan Lewis, Kara McGhee and Karson Bacon--that played on last year's team. In her rookie season, Murphy led the PVF with 379 digs. Brooke Nuneviller, top 10 in both kills per set and total digs, helped lead Omaha to the inaugural league title. Ronika Stone led the league with a .336 hitting percentage and was sixth in blocks per set. Former UO assistant Tayyiba Haneef-Park led the San Diego Mojo to the PVF finals and was named the league's Coach of the Year.



Brooke Nuneviller

AVCA TOP 25 • Week 4

| Rank | Team | Record | LW |
|------|------------------|--------|----|
| 1 | Pittsburgh# (60) | 9-0 | 1 |
| 2 | Nebraska# (1) | 10-1 | 5 |
| 3 | Stanford | 8-1 | 2 |
| 4 | Penn State# | 10-1 | 3 |
| 5 | Louisville | 8-2 | 4 |
| 6 | Creighton | 9-2 | 9 |
| 7 | Wisconsin# | 6-3 | 7 |
| 8 | Texas | 5-3 | 8 |
| 9 | Kansas | 9-1 | 10 |
| 10 | Purdue# | 9-2 | 6 |
| 11 | OREGON | 8-1 | 12 |
| 12 | Kentucky | 6-5 | 11 |
| 13 | Georgia Tech | 8-1 | 13 |
| 14 | Arizona State | 11-1 | 14 |
| 15 | Florida | 9-2 | 16 |
| 16 | Minnesota# | 7-3 | 17 |
| 17 | BYU# | 7-3 | 19 |
| 18 | Florida State | 8-2 | 18 |
| 19 | Baylor | 8-3 | 20 |
| 20T | USC# | 8-2 | 21 |
| 20T | Tennessee | 7-3 | 15 |
| 22 | TCU | 8-2 | 23 |
| 23 | SMU | 8-3 | 22 |
| 24 | Dayton | 10-1 | 24 |
| 25 | Miami (FL) | 9-2 | RV |

Receiving Votes | Washington#, Auburn, Arkansas, Marquette, Utah, San Diego#

- 2024 Opponent | () - First-Place Votes

BIG TEN STANDINGS

| Team | BIG | Overall | Streak |
|----------------|-----|---------|--------|
| Washington | 0-0 | 10-0 | W10 |
| Michigan | 0-0 | 10-1 | W1 |
| #2 Nebraska | 0-0 | 10-1 | W7 |
| #4 Penn State | 0-0 | 10-1 | W2 |
| #11 OREGON | 0-0 | 8-1 | W8 |
| Maryland | 0-0 | 9-2 | W8 |
| #10 Purdue | 0-0 | 9-2 | W1 |
| Illinois | 0-0 | 8-2 | W1 |
| #20 USC | 0-0 | 8-2 | W5 |
| Indiana | 0-0 | 7-3 | W1 |
| #16 Minnesota | 0-0 | 7-3 | W6 |
| Ohio State | 0-0 | 7-3 | W2 |
| UCLA | 0-0 | 6-3 | W1 |
| #7 Wisconsin | 0-0 | 6-3 | W6 |
| Michigan State | 0-0 | 7-4 | L1 |
| Iowa | 0-0 | 6-6 | L2 |
| Rutgers | 0-0 | 5-6 | W1 |
| Northwestern | 0-0 | 2-6 | W2 |

(as of Sept. 23)

2024 BIG TEN PRESEASON COACHES POLL

- 1 - Nebraska
- 2 - Wisconsin
- 3 - Penn State
- 4 - Purdue
- 5 - Minnesota
- 6 - OREGON
- 7 - USC
- 8 - UCLA
- 9 - Ohio State
- 10 - Indiana
- 11 - Illinois
- 12 - Michigan State
- 13 - Washington
- 14 - Maryland
- 15 - Michigan
- 16 - Northwestern
- 17 - Rutgers
- 18 - Iowa

HEAD COACH MATT ULMER



Through seven seasons as head coach of the Oregon volleyball program, Matt Ulmer has led the Ducks to six NCAA Tournament appearances including runs to the Elite 8 in 2018, 2022 and 2023, and an additional trip to the Sweet 16 during the 2021 spring season. Ulmer is 142-69 overall (.673 winning percentage) with an 88-50 record in Pac-12 play.

Oregon finished the 2023 campaign with a 29-6 record which represents a program high for wins under Ulmer. The Ducks made a second-consecutive trip to the Elite Eight, and after spending the entire season ranked among the top 10 in the country, Oregon checked in at No. 7 in the final poll. The team also earned NCAA first- and second-round hosting duties, marking the first time the Ducks hosted in back-to-back seasons.

At season's end, the Ducks collected a program-high six AVCA All-America honors including three team selections. Setter Hannah Pukis earned a spot on the First Team while middle blocker Kara McGhee and opposite Morgan Lewis landed on the second and third teams, respectively. Honorable mention performers included outside hitters Mimi Colyer and Gabby Gonzales, and libero Georgia Murphy.

Pukis became the fifth UO player named to the AVCA First Team and the second setter, joining Lauren Plum from 2012.

It marked the fourth time in Oregon history, and third time under Ulmer, that the program earned three AVCA All-America (team) honors in the same season.

AVCA All-America Trios

2023: Hannah Pukis (1), Kara McGhee (2), Morgan Lewis (3)
2022: Brooke Nuneviller (1), Hannah Pukis (2), Mimi Colyer (3)
2018: Ronika Stone (2), August Raskie (3), Lindsey Vander Weide (3)

Six Ducks—Pukis, Murphy, Gonzales, Lewis, McGhee and Karson Bacon—were all selected in the 2023 Pro Volleyball Federation (PVF) Player Draft. On opening day of the new professional league in the United States, 11 #Pro-Ducks were on a team roster.

Sixteen players during Ulmer's tenure are currently playing professionally. Ulmer was named head coach in April 2017 after three years on the Oregon staff, first as an assistant coach (2014-15) before being promoted to associate head coach in 2016. On the heels of the Ducks' stellar 2022 season, Ulmer received an extension through 2027.

Oregon finished the 2022 season with a 26-6 record including a 17-3 mark in Pac-12 play. The Ducks' 17 conference wins set a program record, surpassing the 2012 national runner-up team that went 16-4 in league play.

The Ducks finished second in the Pac-12 four times (2018, '20, '22, '23) in Ulmer's tenure.

During their 2022 postseason run, the Ducks were chosen to host the opening rounds of the NCAA Tournament for the sixth time in program history and responded with wins over Loyola Marymount and Arkansas to cap an undefeated (14-0) home record at Matthew Knight Arena. Oregon went on to defeat Nebraska in five sets to advance to the program's third regional final.

Ulmer reached a career milestone during the 2022 season, picking up his 100th victory as UO head coach in the team's straight-set win over Colorado (Oct. 23).

Individually, the Ducks collected three AVCA All-Americans in 2022 with the standout efforts of Brooke Nuneviller (first team), Pukis (second team) and Colyer (third team). Colyer, along with Pac-12 and regional honors, was named the 2022 AVCA National Freshman of the Year, a first for the Oregon program. With her selection, Nuneviller became the first three-time All-American in Oregon history, and fourth to earn First-Team accolades.

The Ducks capped an unprecedented 2021 calendar year with a 22-9 record in the fall campaign. The season featured the program's fourth trip to the NCAA Tournament under Ulmer and five wins over ranked opponents, including Oregon's first-ever season sweep of Stanford and a straight-set victory over Penn State in Eugene during the Pac-12/Big Ten Challenge.

Individually, Nuneviller earned a spot on the AVCA All-America Second Team for a second-consecutive season, and became the first UO player to win AVCA Pacific North Region Player of the Year.

Additional All-America selections went to Murphy (AVCA, VBMag) and Bacon (VBMag) who were both honorable mention picks. The trio collected all-region nods and was joined by Gloria Mutiri for All-Pac-12 accolades.

Ulmer led the Ducks to 15-5 record and an NCAA Sweet Sixteen appearance in the 2021 spring season, the third time in four seasons that he's led Oregon to the postseason. He guided the Ducks to a runner-up finish at 14-4 during the conference-only regular season - matching the best conference finish in the history of the program. The 14 conference wins were also tied for the second most in a season in school history, matching the total from the 2011 season and trailing only the league win total from the 2012 campaign.

Under Ulmer's tutelage, Nuneviller was named a second-team AVCA All-American and turned in one of the best all-around seasons in conference history, becoming the first Pac-12 player in the rally scoring era to average at least 3.0 kills and 4.0 digs per set in a season.

Ulmer guided Oregon to a historic season in 2018, his second as head coach. The Ducks went 23-11 overall and 13-7 in Pac-12 play to tie for second, matching the program's best-ever conference finish, and made a thrilling postseason run to reach UO's second NCAA Elite Eight. After beating New Mexico State and Baylor at home to reach the Sweet Sixteen, the Ducks pulled off a huge upset of No. 2 Minnesota on its home floor, using an epic 41-39 set two win to fuel a four-set win.

Ulmer coached a UO single-season record five AVCA all-America selections, including second-team pick Ronika Stone and third-teamers August Raskie and Lindsey Vander Weide. That season also saw Nuneviller (then a freshman libero) and Willow Johnson collect AVCA honorable mention honors.

In his first match as the Ducks' head coach, Ulmer led Oregon to a four-set upset of No. 5 ranked and eventual national champion Nebraska at the VERT Challenge, securing the program's first win over a top-five team since 2012. Ulmer guided the 2017 Ducks to an 18-12 overall record, 10-10 in the Pac-12, and a trip to the second round of the NCAA Tournament.

Ulmer came to Eugene after spending seven seasons at Long Beach State, five of which were served as a full-time assistant. He was also the sand volleyball program's head coach at Long Beach, where he led the 49ers to a national championship during the 2013 season to become the youngest head coach to win a Division I volleyball championship (indoor included, men and women).

The Ducks have made the NCAA Tournament in six of Ulmer's seven seasons on staff, including a run to the Sweet Sixteen during his first season in 2014. In 2016, with Ulmer in an elevated role as associate head coach, the Ducks finished fourth in the Pac-12 and reached the second round of the NCAA Tournament. Ulmer was in charge of the Oregon defense, which held opponents to a .194 hitting percentage overall, the best since 2005, and a .198 hitting percentage in Pac-12 play, the best mark in conference play since 2006.

Ulmer has helped mentor nine AVCA all-American selections since arriving at Oregon, including six since taking over as head coach, with Willow Johnson and Brooke Nuneviller earning honorable mention honors in 2018 to join Stone, Raskie and Vander Weide. Nuneviller added second-team honors in the spring of 2021 while Vander Weide was also a third-team selection as a sophomore in 2016, the same year libero Amanda Benson garnered honorable mention recognition, and Taylor Agost was an honorable mention pick in 2017. Ulmer has also coached 12 All-Pac-12 selections and four Pac-12 all-freshman picks at Oregon, with Nuneviller and Mutiri becoming the latest to earn all-league honors following the 2021 spring season.

As the recruiting coordinator for the Ducks in 2016, Ulmer brought in a class that garnered the No. 2 national ranking and proved vital to yet another tournament run for Oregon. Ulmer followed that by adding the No. 4 ranked class in 2018 and No. 7 ranked class in 2019, and also helped put together two more top 10 classes in 2014 and 2015. While at Long Beach, each of Ulmer's six recruiting classes garnered rankings, including three in the top 20 and a No. 10 ranking in 2014 that made LBSU the highest-ranked mid major program.

As a beach coach, in addition to guiding Long Beach to the title in 2013, Ulmer has coached five athletes who have won FIVB medals and four that have made main draws in AVP events. He has coached four beach all-Americans, and was the only coach to appear in every national championship match, pairs and teams, in 2012 and 2013.

In addition to molding success on the court, Ulmer has been instrumental in academic excellence for his players. Ulmer's student-athletes have garnered 12 Pac-12 all-academic honors in his time at Oregon, and 28 Big West all-academic awards during his time at Long Beach.

Away from the collegiate game, Ulmer worked with USA Volleyball Select A1 for three years. In 2014, he was honored with the Long Beach Century Club Ernie Pollman Award, which recognizes an individual who impacts the community's youth through sports.

In 2012, Ulmer was honored by the American Volleyball Coaches Association (AVCA) as a recipient of the "Thirty Under 30" award, recognizing outstanding up-and-coming coaches in the profession throughout all levels under the age of 30. Ulmer was one of 10 coaches recognized from Division I.

Ulmer spent his playing days at Carthage College, where he was a setter under head coach LJ Marx. While at Carthage, he led the team to two National Championship appearances, and was named a first-team D-III All-American as a senior. He finished his college career as the Carthage career leader in both assists and service aces, and in 2015 he was inducted into the Carthage Hall of Fame.

While at Carthage, Ulmer also worked as an assistant coach for the women's team, serving for five years from 2002-2006. He also worked as the club coach for TNT Volleyball Club from 2003-07, and has served with the Cal Juniors club team while in Southern California, helping the team earn two All-America selections on the way to a bronze medal in the Junior Olympics.

Ulmer completed his Master's degree in education in 2008 at Carthage. He graduated from Carthage in May 2006.

He and wife, Kara, have two sons, Camden and Easton, and two daughters, Harper and Harlow.



HEAD COACH RECORD

| Year | Overall | Conf. | Postseason |
|---------------|---------------|--------------|---------------------------|
| 2017 | 18-12 | 10-10 | NCAA 2nd Round |
| 2018 | 23-11 | 13-7 | NCAA Elite Eight |
| 2019 | 9-20 | 5-15 | -- |
| 2020-21 | 15-5 | 14-4 | NCAA Sweet 16 |
| 2021 | 22-9 | 13-7 | NCAA 1st Round |
| 2022 | 26-6 | 17-3 | NCAA Elite Eight |
| 2023 | 29-6 | 16-4 | NCAA Elite Eight |
| 2024 | 8-1 | 0-0 | TBD |
| Totals | 150-70 | 88-50 | 6 NCAA Appearances |

COACHING HISTORY

| Year(s) | Position | School |
|--------------|----------------------|------------------|
| 2017-present | Head Coach | Oregon |
| 2016 | Associate Head Coach | Oregon |
| 2014-15 | Assistant Coach | Oregon |
| 2009-13 | Assistant Coach | Long Beach State |
| 2013 | Beach Head Coach | Long Beach State |
| 2007-08 | Volunteer Assistant | Long Beach State |
| 2002-06 | Assistant Coach | Carthage College |



#1 MIA TVRDY | MB

Season Highs
 Hitting % _____ --
 Kills _____ 1 (2x); vs Oregon State | 9-22-24
 Attempts _____ 3 vs Central Arkansas | 9-8-24
 Assists _____ 1 vs Grand Canyon | 9-7-24
 Digs _____ --
 Blocks _____ 2.0 vs Central Arkansas | 9-8-24
 Aces _____ --

Career Highs
 Hitting % _____ --
 Kills _____ 1 at Portland State | 9-18-24
 Attempts _____ 3 vs Central Arkansas | 9-8-24
 Assists _____ 1 vs Grand Canyon | 9-7-24
 Digs _____ --
 Blocks _____ 2.0 vs Central Arkansas | 9-8-24
 Aces _____ --

#3 NOEMIE GLOVER | OPP

Season Highs
 Hitting % _____ .583 (7-0-12) vs Oregon State | 9-22-24
 Kills _____ 12 (2x); at San Diego | 9-14-24
 Attempts _____ 28 at San Diego | 9-14-24
 Assists _____ --
 Digs _____ 5 at San Diego | 9-14-24
 Blocks _____ 10.0 vs Oregon State | 9-22-24
 Aces _____ --

Career Highs
 Hitting % _____ .583 (7-0-12) vs Oregon State | 9-22-24
 Kills _____ 12 (2x); at San Diego | 9-14-24
 Attempts _____ 28 at San Diego | 9-14-24
 Assists _____ --
 Digs _____ 5 at San Diego | 9-14-24
 Blocks _____ 10.0 vs Oregon State | 9-22-24
 Aces _____ --

#4 DALEY MCCLELLAN | OH

Season Highs
 Hitting % _____ --
 Kills _____ 1 at San Diego | 9-14-24
 Attempts _____ 1 (2x); at Portland State | 9-18-24
 Assists _____ 8 at Colorado State | 9-6-24
 Digs _____ 20 at Colorado State | 9-6-24
 Blocks _____ --
 Aces _____ 2 vs Oregon State | 9-22-24

Career Highs
 Hitting % _____ --
 Kills _____ 1 (5x); at San Diego | 9-14-24
 Attempts _____ 5 vs Utah | 10-29-21
 Assists _____ 8 at Colorado State | 9-6-24
 Digs _____ 20 at Colorado State | 9-6-24
 Blocks _____ --
 Aces _____ 3 at San Diego State | 8-31-23

#5 BELLA GAMACHE | OH

Season Highs
 Hitting % _____
 Kills _____
 Attempts _____
 Assists _____
 Digs _____ 1 vs Oregon State | 9-22-24
 Blocks _____
 Aces _____

Career Highs
 Hitting % _____
 Kills _____
 Attempts _____
 Assists _____
 Digs _____ 1 vs Oregon State | 9-22-24
 Blocks _____
 Aces _____

#6 SOPHIE GREGOIRE | OH

Season Highs
 Hitting % _____ .250 (11-5-24) at Colorado State | 9-6-24
 Kills _____ 12 vs Grand Canyon | 9-7-24
 Attempts _____ 33 vs Grand Canyon | 9-7-24
 Assists _____ 1 at Colorado State | 9-6-24
 Digs _____ 8 (2x); vs Grand Canyon | 9-7-24
 Blocks _____ 3.0 vs #4 Pittsburgh | 8-30-24
 Aces _____ 1 (2x); at Portland State | 9-18-24

Career Highs
 Hitting % _____ .250 (11-5-24) at Colorado State | 9-6-24
 Kills _____ 12 vs Grand Canyon | 9-7-24
 Attempts _____ 33 vs Grand Canyon | 9-7-24
 Assists _____ 1 at Colorado State | 9-6-24
 Digs _____ 8 (2x); vs Grand Canyon | 9-7-24
 Blocks _____ 3.0 vs #4 Pittsburgh | 8-30-24
 Aces _____ 1 (2x); at Portland State | 9-18-24

#7 COLBY NEAL | MB

Season Highs
 Hitting % _____ .929 (13-0-14) vs Long Beach State | 9-1-24
 Kills _____ 13 vs Long Beach State | 9-1-24
 Attempts _____ 14 vs Long Beach State | 9-1-24
 Assists _____ 1 at San Diego | 9-14-24
 Digs _____ 3 at Portland State | 9-18-24
 Blocks _____ 8.0 vs #17 BYU | 9-13-24
 Aces _____ --

Career Highs
 Hitting % _____ .929 (13-0-14) vs Long Beach State | 9-1-24
 Kills _____ 13 vs Long Beach State | 9-1-24
 Attempts _____ 19 vs Rice | 9-3-22
 Assists _____ 1 (4x); at San Diego | 9-14-24
 Digs _____ 6 vs Long Beach State | 8-27-22
 Blocks _____ 9.0 at California | 11-11-23
 Aces _____ --

#8 CRISTIN CLINE | S

Season Highs
 Hitting % _____ --
 Kills _____ 3 (3x); vs Oregon State | 9-22-24
 Attempts _____ 8 (2x); vs Oregon State | 9-22-24
 Assists _____ 57 vs Grand Canyon | 9-7-24
 Digs _____ 15 at San Diego | 9-14-24
 Blocks _____ 6.0 vs #17 BYU | 9-13-24
 Aces _____ 3 vs Central Arkansas | 9-8-24

Career Highs
 Hitting % _____ --
 Kills _____ 3 (2x); at Portland State | 9-18-24
 Attempts _____ 8 at Colorado State | 9-6-24
 Assists _____ 57 vs Grand Canyon | 9-7-24
 Digs _____ 15 at San Diego | 9-14-24
 Blocks _____ 6.0 vs #17 BYU | 9-13-24
 Aces _____ 3 vs Central Arkansas | 9-8-24

#10 BRIDGET GOULD | OPP

Season Highs
 Hitting % _____
 Kills _____
 Attempts _____
 Assists _____
 Digs _____
 Blocks _____
 Aces _____

Career Highs
 Hitting % _____
 Kills _____
 Attempts _____
 Assists _____
 Digs _____
 Blocks _____
 Aces _____

#13 ONYE OFOEGBU | MB

Season Highs
 Hitting % _____ .727 (8-0-11) at Portland State | 9-18-24
 Kills _____ 19 vs Grand Canyon | 9-7-24
 Attempts _____ 29 vs Grand Canyon | 9-7-24
 Assists _____ 1 (2x); at Portland State | 9-18-24
 Digs _____ 2 (2x); at San Diego | 9-14-24
 Blocks _____ 8.0 (2x); vs Oregon State | 9-22-24
 Aces _____ --

Career Highs*
 Hitting % _____ .786 (12-1-14) at Sacred Heart | 9-11-21
 Kills _____ 23 vs Cal State Fullerton | 11-19-21
 Attempts _____ 43 at UC Riverside | 11-4-21
 Assists _____ 1 (13x); at Portland State | 9-18-24
 Digs _____ 5 (4x); at Cal Poly | 11-25-22
 Blocks _____ 10.0 (2x); vs UC San Diego | 11-9-21
 Aces _____ 3 (2x); vs CSU Bakersfield | 10-21-22

#15 MIMI COLYER | OH

Season Highs
 Hitting % _____ .425 (19-2-40) at Colorado State | 9-6-24
 Kills _____ 19 at Colorado State | 9-6-24
 Attempts _____ 57 vs Grand Canyon | 9-7-24
 Assists _____ 1 vs Central Arkansas | 9-8-24
 Digs _____ 12 (2x); vs #17 BYU | 9-13-24
 Blocks _____ 7.0 vs Grand Canyon | 9-7-24
 Aces _____ 5 vs #17 BYU | 9-13-24

Career Highs
 Hitting % _____ .667 (21-1-30) vs UC Davis | 9-1-22
 Kills _____ 29 vs USC | 11-20-22
 Attempts _____ 71 vs #7 Nebraska | 12-8-22
 Assists _____ 2 (6x); vs Colorado | 11-5-23
 Digs _____ 19 vs UCLA | 11-18-22
 Blocks _____ 7.0 vs Grand Canyon | 9-7-24
 Aces _____ 6 at #8 Pittsburgh | 9-14-23

#16 EVELINA GEORGIANNI | S

Season Highs
 Hitting % _____
 Kills _____
 Attempts _____
 Assists _____
 Digs _____
 Blocks _____
 Aces _____

Career Highs
 Hitting % _____
 Kills _____
 Attempts _____
 Assists _____
 Digs _____
 Blocks _____
 Aces _____

#19 MICHELLE OHWOBETE | OH

Season Highs
 Hitting % _____ .435 (12-2-23) vs Central Arkansas | 9-8-24
 Kills _____ 12 (2x); vs #17 BYU | 9-13-24
 Attempts _____ 33 at San Diego | 9-14-24
 Assists _____ 2 at Portland State | 9-18-24
 Digs _____ 16 vs #17 BYU | 9-13-24
 Blocks _____ 9.0 vs #17 BYU | 9-14-24
 Aces _____ 2 (3x); at San Diego | 9-14-24

Career Highs*
 Hitting % _____ .478 (12-1-23) vs UC Irvine | 9-30-23
 Kills _____ 23 at UC Irvine | 10-29-21
 Attempts _____ 62 at UC Davis | 11-17-22
 Assists _____ 2 (4x); at Portland State | 9-18-24
 Digs _____ 18 at UC Davis | 11-17-22
 Blocks _____ 9.0 vs #17 BYU | 9-14-24
 Aces _____ 5 at Cal Poly | 10-31-23

* at previous school if not this season | when multiple, most recent listed

#20 MACKENZIE MORRIS | L/DS

| | |
|---------------|-------------------------------------|
| Season Highs | |
| Hitting % | -- |
| Kills | 1 vs #17 BYU 9-13-24 |
| Attempts | 1 (3x); at Portland State 9-18-24 |
| Assists | 4 vs #4 Pittsburgh 8-30-24 |
| Digs | 12 (2x); vs #17 BYU 9-13-24 |
| Blocks | -- |
| Aces | 2 (3x); vs Oregon State 9-22-24 |
| Career Highs* | |
| Hitting % | -- |
| Kills | 1 (2x); vs #17 BYU 9-13-24 |
| Attempts | 2 (6x); at #14 Kansas 11-3-23 |
| Assists | 9 vs #8 BYU 10-26-23 |
| Digs | 36 vs Texas Tech 11-23-22 |
| Blocks | -- |
| Aces | 4 (5x); vs Kansas 11-26-21 |

#21 ROBERTA PURASHAJ | S

| | |
|---------------|--|
| Season Highs | |
| Hitting % | -- |
| Kills | -- |
| Attempts | -- |
| Assists | 29 vs #4 Pittsburgh 8-30-24 |
| Digs | 3 vs #4 Pittsburgh 8-30-24 |
| Blocks | 2.0 vs #4 Pittsburgh 8-30-24 |
| Aces | -- |
| Career Highs* | |
| Hitting % | -- |
| Kills | 3 (5x); vs #10 Southern Idaho 11-16-23 |
| Attempts | 9 at #14 Polk State 10-11-23 |
| Assists | 60 vs Trinity Valley 8-26-22 |
| Digs | 19 at #6 Miami Dade 10-25-22 |
| Blocks | 5.0 (3x); vs #16 Polk State 11-3-23 |
| Aces | 7 vs Indian River State 10-4-23 |

#22 MAYA DE LOS REYES | L/DS

| | |
|--------------|--------------------------------|
| Season Highs | |
| Hitting % | -- |
| Kills | -- |
| Attempts | -- |
| Assists | 1 vs Oregon State 9-22-24 |
| Digs | 4 vs Long Beach State 9-1-24 |
| Blocks | -- |
| Aces | 2 (2x); vs #17 BYU 9-13-24 |
| Career Highs | |
| Hitting % | -- |
| Kills | -- |
| Attempts | -- |
| Assists | 1 vs Oregon State 9-22-24 |
| Digs | 4 vs Long Beach State 9-1-24 |
| Blocks | -- |
| Aces | 2 (2x); vs #17 BYU 9-13-24 |

#23 ISABEL PATTERSON | OH

| | |
|--------------|----|
| Season Highs | |
| Hitting % | -- |
| Kills | -- |
| Attempts | -- |
| Assists | -- |
| Digs | -- |
| Blocks | -- |
| Aces | -- |
| Career Highs | |
| Hitting % | -- |
| Kills | -- |
| Attempts | -- |
| Assists | -- |
| Digs | -- |
| Blocks | -- |
| Aces | -- |

* at previous school | when multiple, most recent listed

OVERALL STATISTICS

| Overall | Conference | Home | Away | Neutral |
|---------|------------|-------|-------|---------|
| 8 - 1 | 0 - 0 | 2 - 1 | 3 - 0 | 3 - 0 |

Team Box Score

| | | Attack | | | | | | Set | | Serve | | | RE | Dig | | Blocking | | | | | | PTS |
|-----------|--------------------|--------|-----|-------|-----|------|------|-----|-------|-------|----|------|----|-----|-------|----------|-----|-------|-------|----|-----|-------|
| ## | Player | SP | K | K/S | E | TA | PCT | A | A/S | SA | SE | SA/S | | DIG | DIG/S | BS | BA | TOT/S | BLK/S | BE | BHE | |
| 1 | Tvrdy, Mia | 7 | 2 | 0.29 | 2 | 8 | .000 | 1 | 0.14 | 0 | 0 | 0.00 | 0 | 1 | 0.14 | 1 | 2 | 3 | 0.43 | 0 | 0 | 4.0 |
| 3 | Glover, Noemie | 32 | 75 | 2.34 | 27 | 168 | .286 | 0 | 0.00 | 0 | 0 | 0.00 | 0 | 16 | 0.50 | 1 | 33 | 34 | 1.06 | 0 | 0 | 92.5 |
| 4 | McClellan, Daley | 32 | 1 | 0.03 | 0 | 2 | .500 | 29 | 0.91 | 9 | 11 | 0.28 | 8 | 103 | 3.22 | 0 | 0 | 0 | 0.00 | 0 | 0 | 10.0 |
| 5 | Gamache, Bella | 2 | 0 | 0.00 | 0 | 0 | .000 | 0 | 0.00 | 0 | 1 | 0.00 | 0 | 1 | 0.50 | 0 | 0 | 0 | 0.00 | 0 | 0 | 0.0 |
| 6 | Gregoire, Sophie | 14 | 34 | 2.43 | 19 | 89 | .169 | 1 | 0.07 | 2 | 6 | 0.14 | 4 | 20 | 1.43 | 1 | 5 | 6 | 0.43 | 2 | 0 | 39.5 |
| 7 | Neal, Colby | 31 | 42 | 1.35 | 8 | 80 | .425 | 1 | 0.03 | 0 | 0 | 0.00 | 0 | 8 | 0.26 | 3 | 38 | 41 | 1.32 | 0 | 0 | 64.0 |
| 8 | Cline, Cristin | 29 | 12 | 0.41 | 2 | 42 | .238 | 312 | 10.76 | 6 | 12 | 0.21 | 0 | 50 | 1.72 | 2 | 17 | 19 | 0.66 | 0 | 0 | 28.5 |
| 13 | Ofoegbu, Onye | 32 | 83 | 2.59 | 12 | 145 | .490 | 2 | 0.06 | 0 | 0 | 0.00 | 0 | 6 | 0.19 | 3 | 41 | 44 | 1.38 | 4 | 1 | 106.5 |
| 15 | Colyer, Mimi | 30 | 109 | 3.63 | 43 | 289 | .228 | 1 | 0.03 | 10 | 23 | 0.33 | 11 | 70 | 2.33 | 3 | 19 | 22 | 0.73 | 2 | 0 | 131.5 |
| 19 | Ohwobete, Michelle | 26 | 62 | 2.38 | 19 | 166 | .259 | 4 | 0.15 | 7 | 9 | 0.27 | 13 | 73 | 2.81 | 0 | 14 | 14 | 0.54 | 3 | 0 | 76.0 |
| 20 | Morris, Mackenzie | 32 | 1 | 0.03 | 0 | 3 | .333 | 13 | 0.41 | 9 | 9 | 0.28 | 6 | 68 | 2.13 | 0 | 0 | 0 | 0.00 | 0 | 0 | 10.0 |
| 21 | Purashaj, Roberta | 4 | 0 | 0.00 | 0 | 0 | .000 | 31 | 7.75 | 0 | 0 | 0.00 | 0 | 3 | 0.75 | 0 | 2 | 2 | 0.50 | 0 | 0 | 1.0 |
| 22 | De Los Reyes, Maya | 30 | 0 | 0.00 | 0 | 0 | .000 | 1 | 0.03 | 6 | 8 | 0.20 | 0 | 11 | 0.37 | 0 | 0 | 0 | 0.00 | 0 | 0 | 6.0 |
| 23 | Patterson, Isabel | 4 | 0 | 0.00 | 0 | 0 | .000 | 0 | 0.00 | 0 | 0 | 0.00 | 0 | 1 | 0.25 | 0 | 0 | 0 | 0.00 | 0 | 0 | 0.0 |
| OREGON | | 32 | 421 | 13.16 | 132 | 992 | .291 | 396 | 12.38 | 49 | 79 | 1.53 | 50 | 431 | 13.47 | 14 | 171 | 99.5 | 3.11 | 11 | 1 | 569.5 |
| Opponents | | 32 | 348 | 10.88 | 203 | 1082 | .134 | 326 | 10.19 | 50 | 65 | 1.56 | 49 | 394 | 12.31 | 6 | 71 | 41.5 | 1.30 | 8 | 4 | 439.5 |

Team statistics

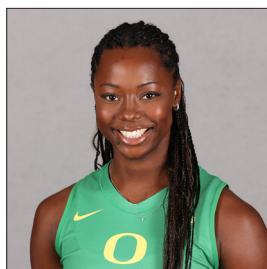
| | OREGON | OPP |
|----------------------|--------|--------|
| ATTACK | | |
| Kills | 421 | 348 |
| Errors | 132 | 203 |
| Total Attacks | 992 | 1082 |
| Attack Pct | .291 | .134 |
| Kills/Set | 13.16 | 10.88 |
| SET | | |
| Assists | 396 | 326 |
| Attempts | 977 | 1099 |
| Assist Pct | .405 | .297 |
| Assists/Set | 12.38 | 10.19 |
| SERVE | | |
| Aces | 49 | 50 |
| Errors | 79 | 65 |
| Attempts | 745 | 622 |
| Serve Pct | .894 | .895 |
| Aces/Set | 1.53 | 1.56 |
| SERVE RECEPTIONS | | |
| Errors | 50 | 49 |
| Errors/Set | 1.56 | 1.53 |
| Attempts | 557 | 666 |
| Reception Pct | .910 | .998 |
| DEFENSE | | |
| Digs | 431 | 394 |
| Digs/Set | 13.47 | 12.31 |
| BLOCKING | | |
| Block solo | 14 | 6 |
| Block Assist | 171 | 71 |
| Total Blocks | 99.5 | 41.5 |
| Blocks/Set | 3.11 | 1.30 |
| Block Errors | 11 | 8 |
| Ball handling errors | 1 | 4 |
| ATTENDANCE | | |
| Total | 7187 | 6597 |
| Dates/Avg Per Date | 3/2396 | 3/2199 |
| Neutral Site #/Avg | 3/169 | - |
| Current win streak | 0 | - |
| Home win streak | 0 | - |

Team Results

| Date | Opponent | | Score | Score-by-set | Att. |
|------------|-----------------|---|-------|-------------------------------|------|
| 08/30/2024 | Pittsburgh | L | 0-3 | 12-25,25-27,23-25 | 2319 |
| 09/01/2024 | Long Beach St. | W | 3-0 | 25-18,25-17,25-16 | 1661 |
| 09/06/2024 | at Colorado St. | W | 3-1 | 20-25,25-21,25-23,25-23 | 4428 |
| 09/07/2024 | vs Grand Canyon | W | 3-2 | 25-13,20-25,22-25,25-16,16-14 | 79 |
| 09/08/2024 | vs Central Ark. | W | 3-0 | 25-12,25-11,25-17 | 75 |
| 09/13/2024 | vs BYU | W | 3-2 | 25-14,23-25,25-13,22-25,17-15 | 353 |
| 09/14/2024 | at San Diego | W | 3-0 | 25-23,25-19,25-23 | 829 |
| 09/18/2024 | at Portland St. | W | 3-0 | 25-21,25-22,25-19 | 1340 |
| 09/22/2024 | Oregon St. | W | 3-0 | 25-17,25-15,25-13 | 3207 |



1 Mia Tvrđy
MB | 6-1 | Fr.
La Vista, Neb.



3 Noemie Glover
OPP | 6-2 | Soph.
Rancho Santa Fe, Calif.



4 Daley McClellan
OH/DS | 5-11 | Sr.
Canby, Ore.



5 Bella Gamache
OH | 5-11 | Fr.
Monroe, Ore.



6 Sophie Gregoire
OH | 6-1 | RFr.
Dundee, Ore.



7 Colby Neal
MB | 6-3 | Jr.
Poway, Calif.



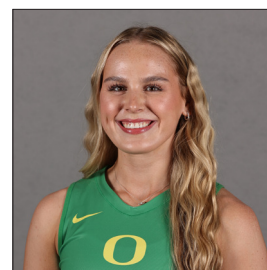
8 Cristin Cline
S | 5-11 | RFr.
Stanfield, N.C.



10 Bridget Gould
OPP | 5-11 | Fr.
North Bend, Ore.



13 Onye Ofoegbu
MB | 6-3 | RSr.
Cerritos, Calif.



15 Mimi Colyer
OH | 6-3 | Jr.
Lincoln, Calif.



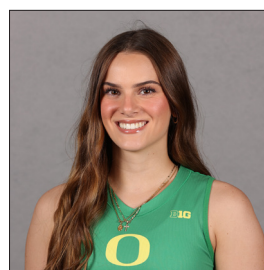
16 Evelina Gerogianni
S | 5-11 | Fr.
Athens, Greece



19 Michelle Ohwobete
OH | 5-10 | Sr.
Oakland, Calif.



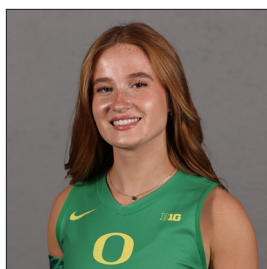
20 Mackenzie Morris
L | 5-7 | Sr.
Frisco, Texas



21 Roberta Purashaj
S | 5-11 | Jr.
Milan, Italy



22 Maya De Los Reyes
L/DS | 5-2 | Jr.
Long Beach, Calif.



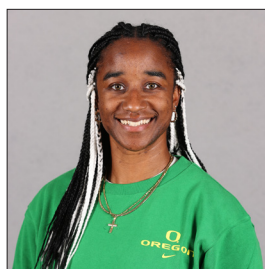
23 Isabel Patterson
OH | 5-10 | RFr.
Portland, Ore.



Matt Ulmer
Head Coach
8th Season



Erika Dillard
Associate Head Coach
7th Season



Arica Nassar
Assistant Coach
2nd Season



Jerry Quan
Assistant Coach/Technical Asst.
1st Season



Nellie Schafer
Director of Operations
4th Season