



BALL STATE VOLLEYBALL

11 NCAA TOURNAMENT APPEARANCES • 10 MAC REGULAR SEASON CHAMPIONSHIPS • 8 MAC TOURNAMENT CHAMPIONSHIPS

WVB Contact: Brad Caudill, Associate Director • Office: 765.285.8928 • Cell: 765.730.5036 • bcaudill2@bsu.edu

2024 SCHEDULE / RESULTS

Overall: 3-3 • MAC: 0-0

AUGUST

	TIME (ET)
30 vs. Seton Hall (!)	W, 3-0
vs. Bryant (!)	W, 3-0

31 at Florida Atlantic (!)	L, 0-3
----------------------------	--------

SEPTEMBER

6 vs. James Madison (@)	W, 3-1
-------------------------	--------

7 vs. #7 Penn State (@)	L, 0-3
-------------------------	--------

8 at #9 Kentucky (@)	L, 0-3
----------------------	--------

13 vs. Chicago State (#)	3 p.m.
--------------------------	--------

14 vs. Southern Indiana (#)	11 a.m.
-----------------------------	---------

at Indiana (#)	4 p.m.
----------------	--------

19 at Butler	7 p.m.
--------------	--------

20 WRIGHT STATE	6 p.m.
------------------------	--------

27 BOWLING GREEN (*)	6 p.m.
-----------------------------	--------

28 BOWLING GREEN (*)	4 p.m.
-----------------------------	--------

OCTOBER

4 at Central Michigan (*)	6 p.m.
---------------------------	--------

5 at Central Michigan (*)	4 p.m.
---------------------------	--------

8 at Miami (*)	6:30 p.m.
----------------	-----------

11 AKRON (*)	6 p.m.
---------------------	--------

12 BUFFALO (*)	4 p.m.
-----------------------	--------

18 at Ohio (*)	6 p.m.
----------------	--------

19 at Kent State (*)	4 p.m.
----------------------	--------

25 at Northern Illinois (*)	7 p.m.
-----------------------------	--------

26 at Northern Illinois (*)	5 p.m.
-----------------------------	--------

NOVEMBER

1 EASTERN MICHIGAN (*)	6 p.m.
-------------------------------	--------

2 EASTERN MICHIGAN (*)	4 p.m.
-------------------------------	--------

8 at Toledo (*)	6 p.m.
-----------------	--------

9 at Toledo (*)	4 p.m.
-----------------	--------

12 MIAMI (*)	6 p.m.
---------------------	--------

15 WESTERN MICHIGAN (*)	6 p.m.
--------------------------------	--------

16 WESTERN MICHIGAN (*)	5 p.m.
--------------------------------	--------

23 MAC Championship Quarterfinals (%)	TBA
---------------------------------------	-----

24 MAC Championship Semifinals (%)	TBA
------------------------------------	-----

25 MAC Championship Match (%)	TBA
-------------------------------	-----

DECEMBER

5-7 NCAA First / Second Rounds	TBA
--------------------------------	-----

12-14 NCAA Third Round / Quarterfinals	TBA
--	-----

19 NCAA Semifinals (^)	TBA
------------------------	-----

22 NCAA Championship (^)	TBA
--------------------------	-----

Home matches in **BOLD CAPS**

All times listed as Eastern / Local and subject to change

(!) denotes Florida Atlantic Invitational (hosted by FAU in Boca Raton, FL)

(@) denotes Kentucky Invitational (hosted by Kentucky in Lexington, KY)

(#) denotes Indiana Invitational (hosted by Indiana in Bloomington, IN)

(*) denotes Mid-American Conference Match

(^) denotes NCAA Semifinals / Championship
(in Louisville, KY in KFC Yum! Center)

Follow Ball State Women's Volleyball

BallStateSports.com

@BallStateWVB

Facebook.com/BallStateWVB

BALL STATE (3-3; 0-0 MAC) vs. CHICAGO STATE (2-3; 0-0 NEC)

FRIDAY, SEPT. 13 • 3 P.M. • WILKINSON HALL • BLOOMINGTON, IN

B1G+: <https://tinyurl.com/5cfkbzse>

Live Stats: <https://tinyurl.com/2ct8f3ns>

All-Time vs. Chicago State: 2-0 (W2)

Last Meeting: Sept. 11, 2009 in Terre Haute, IN
W, 3-0 (25-8, 25-10, 25-12)



BALL STATE CARDINALS

Rankings: AVCA - NR | RPI - N/A

Head Coach: Kelli Miller Phillips (9th Season at BSU)

Career Record: 152-91 (9th Season)



CHICAGO STATE COUGARS

Rankings: AVCA - NR | RPI - N/A

Head Coach: Tony Trifonov (5th Season at CSU)

Career Record: 367-266 (26th Season)

BALL STATE (3-3; 0-0 MAC) vs. SOUTHERN INDIANA (2-4; 0-0 OVC)

SATURDAY, SEPT. 14 • 11 A.M. • WILKINSON HALL • BLOOMINGTON, IN

B1G+: <https://tinyurl.com/2j9wb3x2>

Live Stats: <https://tinyurl.com/ywd4ts4s>

All-Time vs. Southern Indiana: First Meeting



BALL STATE CARDINALS

Rankings: AVCA - NR | RPI - N/A

Head Coach: Kelli Miller Phillips (9th Season at BSU)

Career Record: 152-91 (9th Season)



SOUTHERN INDIANA SCREAMING EAGLES

Rankings: AVCA - NR | RPI - N/A

Head Coach: Jeffrey Aucoin (2nd Season at USI)

Career Record: 17-20 (2nd Season)

BALL STATE (3-3; 0-0 MAC) vs. INDIANA (3-2; 0-0 BIG TEN)

SATURDAY, SEPT. 14 • 4 P.M. • WILKINSON HALL • BLOOMINGTON, IN

B1G+: <https://tinyurl.com/mr4xbjy>

Live Stats: <https://tinyurl.com/mrxh44as>

All-Time vs. Indiana: 20-26 (L3)

Last Meeting: Sept. 8, 2018 in Muncie, IN
L, 2-3 (16-25, 25-23, 26-24, 21-25, 13-15)



BALL STATE CARDINALS

Rankings: AVCA - NR | RPI - N/A

Head Coach: Kelli Miller Phillips (9th Season at BSU)

Career Record: 152-91 (9th Season)



INDIANA HOOSIERS

Rankings: AVCA - 9th | RPI - N/A

Head Coach: Steve Aird (7th Season at IU)

Career Record: 138-175 (11th Season)

WHAT TO WATCH FOR THIS WEEK

THE WEEK AHEAD: The Ball State women's volleyball program returns to the road for the third straight weekend for the Indiana Invitational ... The Cardinals open the two-day event Friday with a 3 p.m. match versus Chicago State ... Ball State battle Southern Indiana (11 a.m.) and host Indiana (4 p.m.) Saturday.

FOLLOW THE ACTION: Fans unable to make their way to Wilkinson Hall this weekend will have several ways to follow the action from home ... All three matches are slated to be streamed on B1G+ (\$12.99 for a monthly pass) ... In addition, live stats will be available for the entire tournament courtesy of host Indiana ... Live updates from the matches will also be provided on the team's X feed and Instagram story: @BallStateWVB.

MAC PRESEASON PROGNOSTICATION: With no divisions for the first time since the 1996 season, the Ball State women's volleyball team received 98 points in the league's annual coaches poll, trailing only Western Michigan (121) and Bowling Green (102) ... With coaches unable to vote for their own teams, WMU earned 11 of the 12 votes to win the MAC regular season title, with BGSU claiming the other ... The Broncos, who also received votes in the 2024 AVCA Preseason Coaches Poll, was also selected as the favorite to win the MAC Volleyball Championship with nine votes, followed by the Falcons (2) and the Cardinals (1).

PRESEASON HONORS: In addition to the team rankings, the MAC announced its annual Preseason All-MAC Team ... Representing Ball State are senior setter **Megan Wielonski** and redshirt sophomore outside **Aniya Kennedy** ... Wielonski earns Preseason All-MAC honors for the third consecutive season after claiming All-MAC First Team accolades for the third straight year ... Kennedy earns a nod on the Preseason All-MAC team for the first time in her career after a stellar 2023 campaign which saw her claim both First Team All-MAC and MAC Freshman of the Year honors.

2024 MAC PRESEASON POLL

1. Western Michigan (11) - 121 pts.
2. Bowling Green (1) - 102 pts.
3. Ball State - 98 pts.
4. Buffalo - 92 pts.
5. Ohio - 84 pts.
6. Toledo - 79 pts.
7. Central Michigan - 50 pts.
8. Northern Illinois - 49 pts.
9. Akron - 48 pts.
10. Miami - 32 pts.
11. Eastern Michigan - 22 pts.
12. Kent State - 15 pts.

Predicted Tournament Champion:

Western Michigan (9), Bowling Green (2) and Ball State (1)

2024 Preseason All-MAC Team

Aniya Kennedy - Ball State
Megan Wielonski - Ball State
Lauryn Hovey - Bowling Green
Abby Leigh - Buffalo
Mandy Leigh - Buffalo
Katrin Trebichavska - Buffalo
Anna Kharchynska - Ohio
Taylor Alt - Toledo
Logan Case - Western Michigan
Anna Calcagno - Western Michigan
Keona Salesman - Western Michigan
Andelyn Simkins - Western Michigan



2024 BALL STATE ROSTER



No.	Name	Pos.	Ht.	Cl./El.	Hometown (High School/Previous School)
2	Aayinde Smith	MH	6-0	Gr./Sr.	Garland, Texas (Cherry Hill East / Towson)
3	Elizabeth Tabeling	DS/L	5-6	Fr./Fr.	Edgewood, Ky. (St. Henry)
4	Paige Busick	DS/L	5-3	Jr./Jr.	Decatur, Ind. (Bellmont)
5	Niyah Lester	MH	6-2	Fr./Fr.	South Eculid, Ohio (Charles F. Brush)
6	Reese Baker	DS/L	5-5	So./So.	Selma, Ind. (Wapahani)
7	Josie Bloom	DS/L	5-6	Jr./Jr.	Clarkston, Mich. (Notre Dame Prep / Virginia Tech)
8	Lindsey Green	S	5-10	So./So.	Loveland, Ohio (Ursuline Academy)
9	Katie Egenolf	OH	6-1	Jr./Jr.	Greenwood, Ind. (Center Grove)
10	Kendall Barnes	OH	6-1	So./So.	Bartlett, Tenn. (Briarcrest Christian School)
12	Sophie Ledbetter	DS/L	5-8	Fr./Fr.	Fishers, Ind. (Hamilton Southeastern)
13	Gwen Crull	MH	6-2	So./So.	Madison, Wis. (McFarland / Bowling Green)
14	Aniya Kennedy	MH	6-0	Jr./So.	La Porte, Ind. (La Porte)
15	Megan Wielonski	S	5-10	Sr./Sr.	Mason, Ohio (Mount Notre Dame)
16	Kendall Seimet	DS/L	5-6	Sr./Sr.	Oregon, Ohio (Clay)
17	Camryn Wise	MH	5-11	So./So.	Parker City, Ind. (Wapahani)
18	Riley Whitlock	OPP/OH	6-0	Fr./Fr.	Lafayette, Ind. (William Henry Harrison)
20	Carson Tyler	OH	5-10	Fr./Fr.	Pavilion, N.Y. (St. Mary's)
21	Madison Buckley	OPP	6-2	Jr./Jr.	Montgomery, Ill. (Kaneland)

COACHING STAFF

Head Coach: Kelli Miller Phillips (Purdue, 2009) – 9th Season as HC / 15th Overall

Assistant Coach: Darcy Dorton (College of Charleston, 2014) – 2nd Season

Assistant Coach: Tucker Bitting (Ball State, 2011) – 3rd Season

Assistant Coach: Brad Kline (Purdue Fort Wayne, 2006) – 13th Season

Director of Operations: Camryn Johnston (Wisconsin-Platteville, 2023) – 1st Season

PRONUNCIATION GUIDE

#1 – AAYINDE (EYE-in-DAY) Smith

#4 - Paige BUSICK (BOO-SICK)

#5 - NIYAH (NIGH-UH) Lester

#9 - Katie EGENOLF (EE-guh-NOFF)

#14 - ANIYA (UH-nigh-UH) Kennedy

#15 - Megan WIELONSKI (WAH-LON-ski)

#16 - Kendall SEIMET (SIGH-met)



THE ALL-TIME SERIES: Ball State is 22-26 all-time versus teams in the Indiana Invitational field ... The Cardinals are 2-0 all-time versus Chicago State, including a 3-0 (25-8, 25-10, 25-12) win in the latest meeting Sept. 11, 2009 ... Indiana holds a 26-22 lead in the all-time series versus Ball State, including a 3-2 (25-16, 23-25, 24-26, 25-21, 15-13) win in the last meeting Sept. 8, 2018 ... The Cardinals will be facing Southern Indiana for the first time in women's volleyball.

SCOUTING BALL STATE:

• Ball State enters the Indiana Invitational with a 3-3 overall record after going 1-2 last weekend at the Kentucky Invitational ... After earning a 3-1 win over James Madison, which finished ranked 25th in the RPI last season, the Cardinals were swept by both then-No. 7 Penn State and then-No. 9 Kentucky.

• The Cardinals continue to be one of the nation's most dangerous offenses, ranking first in the Mid-American Conference and 49th nationally with a .257 attack percentage ... The mark includes a .271 rate of success against then-No. 7 Penn State, which is the best hitting mark against the Nittany Lions so far this season.

• Ball State has also made some major strides at the net this season, ranking third in the league and 68th nationally with a 2.42 team blocks-per-set average ... Sophomore middle **Gwen Crull** is currently third in the MAC with a 1.40 blocks-per-set average, while graduate middle **Aayinde Smith** is 10th at 1.00.

SCOUTING CHICAGO STATE:

• The Cougars enter the Indiana Invitational with a 2-3 record and will battle the host Hoosiers before taking on the Cardinals Friday ... Last weekend, Chicago State went 2-1 at the Dunn Hospitality Tournament hosted by Evansville, starting with a 3-1 win over the Aces ... CSU also topped MAC member Miami by a 3-2 margin, before suffering a 3-2 setback to Samford.

• An NIVC participant a season ago, the Cougars enter the week hitting just .138 as a team ... Patrycja Lagida leads the squad with a 3.75 kill-per-set average, while connecting for a .164 hitting mark.

SCOUTING SOUTHERN INDIANA:

• In its third year of transition to NCAA Division I, the Screaming Eagles own a 2-4 overall record ... Last weekend, USI went 0-3 at the Florida Invitational, starting with a 3-1 setback to Ohio State ... The 25-23 second-set victory over the Buckeyes marked the first set victory over a Power Four school in program history ... Southern Indiana also suffered 3-0 setbacks to No. 10 Florida and South Florida in the event.

• USI is led by former Ball State men's volleyball letterwinner **Jeffrey Aucoin** who played for the Cardinals during the 2012 seasons ... Prior to attending Ball State, Aucoin helped guide the University of New Hampshire men's volleyball club team to a NCVF Division 1AA National Championships.

• Another familiar face on the Southern Indiana staff is assistant coach **Julianna Cramer** who played her final season of collegiate volleyball at Ball State in 2022 and was the program's Director of Operations last season.

SCOUTING INDIANA:

• The Hoosiers enter the week with a 3-2 overall record after a tough week of their own last week ... After earning a 3-1 win over UC Davis, IU suffered a 3-0 setback at then-No. 1 Texas and fell to a receiving votes Miami (Fla.) squad by a score of 3-1.

• Indiana enters the weekend as one of the nation's top serving teams, ranking 24th nationally at 2.16 aces per set ... Candela Alonso-Corcelles, Camryn Haworth and Avry Tatum lead the squad with nine aces apiece.

• Offensively, Tatum and Alonso-Corcelles lead the squad at 3.32 and 3.16 kills per set, respectively ... Mady Saris is right behind at 2.63.

2024 QUICK FACTS

BALL STATE UNIVERSITY:

Location Muncie, IN 47306
Founded 1918
Enrollment 20,444
Nickname Cardinals
Colors Cardinal and White
Facility John E. Worthen Arena
Opening Date Of Facility Jan. 15, 1992
Capacity 11,500
Affiliation NCAA Division I
Conference Mid-American Conference
(West Division)
President Geoffrey S. Mearns
Athletics Director Jeff Mitchell

COACHING STAFF:

Head Coach (Yrs) Kelli Miller Phillips
(9th as Head Coach / 15th at Ball State)
Alma Mater Purdue, 2009 (Bachelor's)
Ball State, 2012 (Master's)
Career Record 152-91
Ball State / MAC Record 152-91 / 92-39
Assistant Coach (Yrs) Darcy Dorton (2nd)
Alma Mater College of Charleston, 2014
Assistant Coach (Yrs) Tucker Bitting (3rd)
Alma Mater Ball State, 2011
Assistant Coach (Yrs) Brad Kline (13th)
Alma Mater Purdue Fort Wayne, 2006
Director of Ops (Yrs) Camryn Johnston (1st)
Alma Mater Wisconsin-Platteville, 2023
Volleyball Secretary Sandy Wilburn
Volleyball Office Phone 765.285.8151

PROGRAM HISTORY:

First Year of Program 1972
All-Time Record 1015-651-2 (.609)
NCAA Appearances 11 (1992, 1993, 1994, 1995,
1999, 2000, 2002, 2011, 2019, 2021, 2022)
NCAA Tournament Record 3-11
MAC Championships 10 (1993, 1994, 1996, 1997,
1998, 1999, 2002, 2010, 2021, 2022)
MAC Tournament Championships 8 (1992,
1993, 1994, 1995, 1999, 2002, 2019, 2021)
MAC West Division Championships ... 12 (1997, 1998,
1999, 2002, 2004, 2010, 2013,
2017, 2018, 2019, 2021, 2022)

TEAM INFO:

2023 Record 17-15
2023 MAC Record / Finish 13-5 / T-2nd Overall
Starters Returning / Lost 5 / 1 + Libero
Players Returning / Lost 11 / 6
Newcomers 7

ATHLETIC COMMUNICATIONS:

Associate Director (WVB) Brad Caudill
Caudill's Email bcaudill2@bsu.edu
Caudill's Cell Phone 765.730.5036
Office Phone 765.285.8928
Website www.ballstatesports.com
Twitter @BallStateWVB
Instagram @BallStateWVB
TikTok @BallStateWVB
Facebook Facebook.com/BallStateWVB

2024 AVCA TOP 25 - SEPT. 9

Rank	School	Total	2024	Prior
	(1st-Place Votes)	Points	Record	Poll
1	Pitt (29)	1471	3-0	3
2	Stanford (23)	1462	4-0	5
3	Penn State (6)	1389	5-0	7
4	Louisville (1)	1284	5-1	4
5	Nebraska (2)	1277	5-1	2
6	Texas	1168	2-2	1
7	Purdue	1118	6-0	8
8	Wisconsin	1087	2-3	6
9	Creighton	1042	5-0	11
10	Kentucky	945	5-2	9
11	Kansas	898	6-0	13
12	Oregon	836	4-1	12
13	Florida	632	5-1	10
14	Arizona State	603	6-0	16
15	Georgia Tech	575	4-1	19
16	Tennessee	500	2-2	17
17	BYU	488	4-1	14
18	Baylor	465	5-1	23
19	Minnesota	433	1-3	18
20	Miami (FL)	393	5-0	NR
21	Florida State	344	4-1	15
22	Arkansas	303	7-0	21
23	Southern California	295	3-1	20
24	Dayton	221	5-0	22
25	TCU	165	2-2	NR

Others receiving votes and listed on two or more ballots: SMU 132; Auburn 85; UCLA 74; Marquette 39; Washington 22; Georgia 20; South Florida 18; Western Kentucky 3

BALL STATE IN THE POLLS:

Ball State put together a string of three straight polls receiving votes, including the final poll of 2021 and the first two of 2022 ... Ball State received three votes in the 2021 final poll, 18 in the 2022 preseason poll and seven in the Aug. 29, 2022, poll ... Prior to the 2021 AVCA Final Poll, the Cardinals had not received votes in an AVCA Top 25 Coaches Poll since earning eight votes on Oct. 31, 2011 ... Ball State has never been ranked in the top 25.



BALL STATE QUICK HITS:

• With her 50th of 57 assists in last Friday's win over James Madison, **Megan Wielonski** climbed to fifth on Ball State's career assists list ... She enters the Indiana Invitational with 4,227 career assists which is currently third among active NCAA Division I players ... Western Michigan's Logan Case is first at 5,313 (with the benefit of an extra COVID season), while Colorado State's Emery Herman is second at 4,406 ... Wielonski has ranked in the top 15 nationally in assists in each of her first three seasons: second (1,394) in 2021, fourth (1,359) in 2022 and 13th (1,269) in 2023.

• In addition to being one of the nation's top setters, **Megan Wielonski** is one of the country's top servers with 152 career aces ... The total, which includes eight aces so far this season, currently ranks 10th among active NCAA Division I players and is the most for any active student-athlete from the Mid-American Conference ... As a freshman, she ranked eighth among all NCAA Division I players with 58 aces, including a career-high seven vs. Ohio (Sept. 30, 2021) ... Her 58 aces in 2021 also tied as the sixth most in a single season in Ball State history and were a single season record for a BSU setter, topping **Amber Seaman's** total of 51 in 2018 ... In 2022, she ranked 55th nationally with 46 service aces, while she had a team-leading 40 aces last season.

• **Megan Wielonski** has also shined in the backcourt over her Ball State career, becoming just the 21st player in program history to register over 1,000 career digs in BSU's NIVC victory at Middle Tennessee (Nov. 30, 2023) ... She has 42 total digs so far this season, raising her career total to 1,063 which is 20th in program history ... Overall, she has accumulated double-digit digs in 55 career matches which is tied for 12th in program history and gives her 55 career assist/dig double-doubles.



HITTING .300-OR-BETTER

Including the Aug. 30 sweep of Bryant, **Megan Wielonski** has helped the Cardinals hit .300-or-better in 28 of her 105 matches as the program's starting setter, included three of the top six single-match performances in program history.

• **Aniya Kennedy** has picked up right where she left off last season, leading the Ball State offense with 70 kills and a 3.68 kills-per-set average ... Last season, she finished the year ranked 32nd nationally with a 4.12 kills-per-set average ... Over her career, including three times so far this season, Kennedy has smashed double-digit kills in 29 matches and led the team in kills in 26 outings.

• Including her season-high 20 kills at Florida Atlantic (Aug. 31), **Aniya Kennedy** has smashed 20-or-more kills in nine career matches ... The total ranks eighth in program history ... Last season, she registered a career-high 25 kills in two matches - versus Akron (Oct. 13, 2023) and at WMU (Nov. 3, 2023) - which were the most kills for a BSU player in a match since Kia Holder (2017-20) logged 27 at Eastern Michigan on March 27, 2021 ... In addition, Kennedy was the first Cardinal to register multiple 20+ kill matches in the same season since Natalie Risi (2019-22) had two as a freshman in 2019.

• Freshman outside **Carson Tyler** added her name to the 20+ kill list last Friday, smashing a career-high 21 kills in the four-set win over James Madison ... It was her first of back-to-back matches in double figures, as she added 12 more versus then-No. 7 Penn State ... Tyler currently ranks second on the squad with 47 kills and a 2.47 kills-per-set average.

• Freshman libero **Sophie Ledbetter** has shined in her first two weeks of collegiate action, leading the squad and ranking fourth in the MAC with a with a 4.67 digs-per-set average ... The effort includes a career-high 27 digs in the win over James Madison (Sept. 6) and 20 in the sweep of Bryant (Aug. 30) ... Ledbetter also boasts a .913 reception percentage, including perfect marks in four of BSU's six matches.

• Freshman defensive specialist **Elizabeth Tabeling** has also made a big impact in the back row for the Cardinals, ranking third on the squad with 37 digs for a 2.47 digs-per-set average ... The effort included a career-high 11 digs in the win over James Madison (Sept. 6).

ALL-REGION HONORS

For her play last season, **Aniya Kennedy** was named to the AVCA All-Midwest Region Honorable Mention team ... Converted from the middle to outside due to injuries last season, Kennedy ranked third among all MAC players with 470 total kills, which is 26th nationally.



• Graduate middle **Aayinde Smith** has been a big addition for the Ball State front line, ranking third on the squad with 2.05 kills per set, while ranking second on the team with 1.00 blocks per set ... A two-time All-CAA Second Team selection in her four years at Towson, Smith also owns a .368 attack percentage which ranks fourth among MAC players.

• Another big addition in the middle is sophomore **Gwen Crull** who leads the team and ranks third in the MAC with a 1.40 blocks-per-set average ... Crull has recorded at least two blocks in five of the six matches she has played, including season-highs of 4.0 versus both James Madison (Sept. 6) and then-No. 7 Penn State (Sept. 7) ... In fact, she led the Ball State defense with 10 total blocks at the Kentucky Invitational.

• Looking at the entire Ball State defense, the Cardinals limited Bryant (Aug. 30) to a -.020 (24-26-99) attack percentage ... It was the lowest attacking mark for a Ball State opponent since the 2018 campaign when the Cardinals held Grambling to a -.061 (18-23-82) rate of success on Aug. 31 ... That same season, the Ball State defense limited North Dakota State to a -.018 (23-25-114) hitting mark on Sept. 7.

• For the team's solid work in the classroom, Ball State was one of a record number of more than 1,400 collegiate and high school volleyball teams to earn the 2023-24 AVCA Team Academic Award sponsored by INTENT ... The Cardinals, who claimed the honor for the eighth straight season and the 14th time overall, finished the 2023-24 academic year with a 3.63 team GPA ... Of Ball State's 18 countable student-athletes, 17 maintained at least a 3.07 GPA during the academic year.

**SUPERLATIVES****BALL STATE IN THE RANKINGS:**

Was ranked:Has Not Happened
Defeated a ranked opponent:11/29/2003 at No. 17 Louisville: BSU won 3-2
Lost to a ranked opponent:9/8/2024 at No. 9 Kentucky, BSU lost 0-3
Faced a No. 1 ranked team:12/4/2021 at No. 1 Louisville, BSU lost 0-3
Defeated a No. 1 ranked team:Has Not Happened
Received Votes In AVCA Top 25 Poll:Aug. 29, 2022 (7 Votes)

DOUBLE-DOUBLES | TRIPLE-DOUBLES | 20-20 MATCHES:

Player had a double-double (kill-dig):10/22/2022 vs. Western Michigan: Natalie Risi (10 K / 22 D)
Player had a double-double (kill-assist):10/3/2015 vs. Western Michigan: Jenna Spadafora (10 K / 41 A)
Player had a double-double (assist-dig):9/6/2024 vs. James Madison: Megan Wielonski (57 A / 12 D)
Player had a double-double (kills-block):11/13/2004 vs. Toledo: Rachel Refenes (16 K / 10 B)
Player had a triple-double (kill-digs-assists):10/3/2015 vs. WMU: Jenna Spadafora (10 K / 13 D / 41 A)
Player had a triple-double (kills-digs-blocks):9/18/1998 at Iowa: Becky Inman (12 K / 21 D / 10 B)
Player had 20-or-more kills & 20-or more digs:11/14/2015 vs. CMU: Alex Fuelling (20 K / 21 D)

TEAM OFFENSE:

Ball State recorded 80-or-more kills:11/9/2013 vs. Toledo (80): BSU lost 2-3
Ball State recorded 70-to-79 kills:11/18/2023 vs. Bowling Green (70): BSU lost 2-3
Ball State recorded 60-to-69 kills:9/6/2024 vs. James Madison (64): BSU won 3-1
Opponent recorded 80-or-more kills:10/21/2023 at Buffalo (86): BSU lost 2-3

INDIVIDUAL OFFENSE:

Player had 30-or-more kills:9/25/2004 at Toledo: Sarah Obras (30)
Player had 25-to-29 kills:11/3/2023 at Western Michigan: Aniya Kennedy (25)
Player had 20-to-24 kills:9/6/2024 vs. James Madison: Carson Tyler (21)
Opponent had 25-or-more kills:11/30/2023 at Middle Tennessee: Adri Rhoda (25)

MULTIPLE DOUBLE-DIGIT KILLS:

Five players:10/21/2023 at Buffalo: Kennedy (23), Plitt (17), Wise (11), Buckley (10), Snyder (10)
Four players:9/6/2024 vs. James Madison: Tyler (21), Kennedy (14), Smith (13), Buckley (10)
Two players with 20-or-more kills:10/5/2007 vs. WMU: May (21), Breivogel (20)

TEAM DIGS:

Ball State recorded 100-or-more digs:11/24/2021 vs. Bowling Green (102): BSU won 3-2
Ball State recorded 90-to-99 digs:11/22/2022 vs. Bowling Green (93): BSU lost 2-3
Ball State recorded 80-to-89 digs:10/21/2023 at Buffalo (80): BSU lost 2-3
Opponent recorded 100-or-more digs:3/11/2021 vs. Kent State (100): BSU lost 2-3

INDIVIDUAL DIGS:

Player had 50-or-more digs:9/28/2006 vs. Toledo: Amanda McCormick (50)
Player had 40-to-49 digs:10/29/2010 vs. Western Michigan: Alyssa Rio (44)
Player had 30-to-39 digs:11/22/2022 vs. Bowling Green: Maggie Huber (35)
Opponent had 30-or-more digs:11/11/2023 vs. Northern Illinois: Crew Hoffmeier (34)

MULTIPLE DOUBLE-DIGIT DIGS:

Five players:10/21/2022 vs. Western Michigan: Huber (21), Risi (19), Wielonski (14), Busick (11), Gates (11)
Four players:11/10/2023 vs. Northern Illinois: Gates (21), Seimet (13), Vinson (11), Wielonski (10)
Two players with 20-or-more digs:10/22/2022 vs. Western Michigan: Huber (29), Risi (22)

TEAM BLOCKING (BS=1, BA=5):

Recorded 15-or-more blocks:3/20/2021 vs. Central Michigan (18.0): BSU lost 1-3
Recorded 10-to-14 blocks:9/6/2024 vs. James Madison (11.0): BSU won 3-1
Opponent had 15-or-more blocks:11/22/2022 vs. Bowling Green (15.0): BSU lost 2-3

INDIVIDUAL BLOCKING:

Player had 14-or-more blocks:9/21/2013 vs. SMU: Hayley Benson (14)
Player had 10-to-13 blocks:3/20/2021 vs. Central Michigan: Marie Plitt (11)
Opponent had 10-or-more blocks:9/13/2022 vs. Alabama: Alyiah Wells (10)

INDIVIDUAL ASSISTS:

Player had 90-or-more assists:11/28/1992 vs. Bowling Green: Lorie Vandenberg (90)
Player had 80-to-89 assists:9/22/2000 at Bowling Green: Emily Sallee (84)
Player had 70-to-79 assists:10/19/2002 vs. Eastern Michigan: Stacie Baldwin (70)
Opponent had 70-or-more assists:10/21/2023 at Buffalo: Mandy Leigh (74)

INDIVIDUAL SERVICE ACES:

Player had 8-or-more aces:9/15/1991 vs. Houston: Stefanie Decker (8)
Player had 7 aces:9/20/2021 vs. Ohio: Megan Wielonski (7)
Player had 6 aces:9/21/2019 vs. Missouri State: Chloe Rickenbach (6)
Opponent had 6-or-more aces:9/8/2024 at No. 9 Kentucky: Erin Lamb (6)

2024 RECORD WHEN**CATEGORY.....RECORD**

Overall 3-3
Mid-American Conference 0-0
Non-Conference 3-3
Home 0-0
Away 0-2
Neutral 3-1

Three Sets 2-3
Four Sets 1-0
Five Sets 0-0
Win First Set 3-0
Lost First Set 0-3
Win Second Set 2-0
Lost Second Set 1-3
Won First Two Sets 2-0
Split First Two Sets 1-0
Lost First Two Sets 0-3
Against Top-25 Teams 0-2
Against Unranked Teams 3-1
Leading in Kills 3-0
Trailing in Kills 0-3
Tied in Kills 0-0
Leading in Blocks 2-2
Trailing in Blocks 1-0
Tied in Blocks 0-1
Leading in Digs 3-0
Trailing in Digs 0-3
Tied in Digs 0-0
Leading in Service Aces 3-0
Trailing in Service Aces 0-3
Tied in Service Aces 0-0
Leading in Attack Percentage 3-0
Trailing in Attack Percentage 0-3
Tied in Attack Percentage 0-0

ATTACK PERCENTAGE

.350 or Above 0-0
.250 to .349 3-1
.150 to .249 0-1
.149 or Lower 0-1

OPPONENTS ATTACK PERCENTAGE

.350 or Above 0-3
.250 to .349 0-0
.150 to .249 1-0
.149 or Lower 2-0

DAY OF THE WEEK

Monday 0-0
Tuesday 0-0
Wednesday 0-0
Thursday 0-0
Friday 3-0
Saturday 0-2
Sunday 0-1

MONTH

August 2-1
September 1-2
October 0-0
November 0-0
December 0-0

**IN THE MAC** (as of Sept. 11)

TEAM	MAC	OVERALL
1. Central Mich.	0-0 (.000)	6-0 (1.000)
2. Miami	0-0 (.000)	4-2 (.667)
Western Mich.	0-0 (.000)	4-2 (.667)
4. Ohio	0-0 (.000)	3-2 (.600)
5. Ball State	0-0 (.000)	3-3 (.500)
Bowling Green	0-0 (.000)	3-3 (.500)
Toledo	0-0 (.000)	3-3 (.500)
8. Buffalo	0-0 (.000)	3-4 (.429)
9. Akron	0-0 (.000)	2-4 (.333)
10. Eastern Mich.	0-0 (.000)	2-5 (.286)
11. Kent State	0-0 (.000)	1-4 (.200)
Northern Ill.	0-0 (.000)	1-4 (.200)

IN THE MAC (as of Sept. 11)

ALL MATCHES - INDIVIDUAL RANKINGS

Hitting Percentage:

Aayinde Smith368 (4th)
Kendall Barnes286 (10th)

Kills Per Set:

Aniya Kennedy	3.68 (3rd)
---------------------	------------

Assists Per Set:

Megan Wielonski	10.79 (2nd)
-----------------------	-------------

Aces Per Set:

No One in Top 10

Blocks Per Set:

Gwen Crull	1.40 (3rd)
Aayinde Smith	1.00 (10th)

Digs Per Set:

Sophie Ledbetter	4.67 (4th)
------------------------	------------

ALL-MATCHES - TEAM RANKINGS

Hitting Percentage:257 (1st)
Opp. Hitting Percentage225 (12th)
Assists Per Set:	12.47 (3rd)
Kills Per Set:	13.37 (3rd)
Blocks Per Set:	2.42 (3rd)
Service Aces:	1.05 (11th)
Digs Per Set:	13.11 (9th)

MAC ONLY - INDIVIDUAL RANKINGS

Hitting Percentage:

.....N/A

Kills Per Set:

.....N/A

Assists Per Set:

.....N/A

Aces Per Set:

.....N/A

Blocks Per Set:

.....N/A

Digs Per Set:

.....N/A

MAC ONLY - TEAM RANKINGS

Hitting Percentage:	N/A
Opp. Hitting Percentage	N/A
Assists Per Set:	N/A
Kills Per Set:	N/A
Blocks Per Set:	N/A
Service Aces:	N/A
Digs Per Set:	N/A

BALL STATE VOLLEYBALL BY THE NUMBERS

6,408	Number of assists handed out by Emily Sallee (1997-2000) over her career, which ranks first in MAC history
2,273	Number of digs collected by Stephanie Keller over her career (2001-2004), which ranks fourth in MAC history
1,975	Number of kills smashed by Sarah Obras over her career (2002-2005), which ranks second in MAC history
1015	Number of wins in the 52-year history of the program
.802	Winning percentage (235-58) versus MAC opponents in Worthen Arena
.768	Winning percentage (318-96) versus all opponents in Worthen Arena
635	Number of total blocks by Liz Cothren over her career (1994-97), which ranks second in MAC history
446	Number of wins in MAC play, with the Cardinals ranking first in league history
279	Number of all-time letterwinners in program history
113	Number of All-MAC selections in program history, which ranks second in MAC history
61	Number of First Team All-MAC selections in program history, which ranks second in MAC history
29	Number of 20-win seasons in program history
12	Number of MAC West Division championships for Ball State
11	Number of NCAA Tournament appearances for Ball State
10	Number of MAC Regular Season championships for Ball State
8	Number of MAC Tournament championships for Ball State
7.68	Dig-per-set average for Amanda McCormick in 2006, which stands as the NCAA Record for digs per set with 30-point scoring format (2004-07)

2024 AWARD WINNERSANIYA KENNEDY

Preseason All-MAC

MEGAN WIELONSKI

Preseason All-MAC

**2024 MATCH-BY-MATCH LEADERS**

Date/Opponent	Kills	Assists	Aces	Digs	Total Blocks	Points
8/30 vs. Seton Hall	Wise (9)	Wielonski (31)	Wielonski (4)	Ledbetter (13)	2 Players (3)	Wise (11.5)
8/30 vs. Bryant	Smith (9)	Wielonski (29)	Wielonski (3)	Ledbetter (20)	Smith (6)	Smith (12.0)
8/31 at Florida Atlantic	Kennedy (20)	Wielonski (31)	Seimet (1)	Wielonski (9)	Smith (4)	Kennedy (21.0)
9/6 vs. James Madison	Tyler (21)	Wielonski (57)	Busick (2)	Ledbetter (27)	2 Players (4)	Tyler (22.0)
9/7 vs. #7 Penn State	Kennedy (14)	Wielonski (35)	Tabeling (1)	Ledbetter (13)	Crull (4)	Kennedy (14.5)
9/8 at #9 Kentucky	Kennedy (9)	Wielonski (22)	2 Players (1)	Ledbetter (7)	3 Players (2)	Kennedy (10.0)
9/13 vs. Chicago State						
9/14 vs. Southern Indiana						
9/15 at Indiana						
9/19 at Butler						
9/20 vs. Wright State						
9/27 vs. Bowling Green						
9/28 vs. Bowling Green						
10/4 at Central Michigan						
10/5 at Central Michigan						
10/8 at Miami						
10/11 vs. Akron						
10/12 vs. Buffalo						
10/18 at Ohio						
10/19 at Kent State						
10/25 at Northern Illinois						
10/26 at Northern Illinois						
11/1 vs. Eastern Michigan						
11/2 vs. Eastern Michigan						
11/8 at Toledo						
11/9 at Toledo						
11/12 at Miami						
11/15 vs. Western Michigan						
11/16 vs. Western Michigan						

2024 BREAKDOWN**Matches w/ Double-Figure Kills**

Name	24	Career
Aniya Kennedy	3	29
Carson Tyler	2	2
Madison Buckley	1	14
Aayinde Smith	1	7*
Kendall Barnes	-	5
Katie Egenolf	-	2
Camryn Wise	-	1

Matches w/ 20-or-More Kills

Name	24	Career
Aniya Kennedy	1	9
Carson Tyler	1	1

Matches w/ Double-Figure Digs

Name	24	Career
Sophie Ledbetter	4	4
Elizabeth Tabeling	2	2
Megan Wielonski	1	55
Kendall Seimet	-	7
Josie Bloom	-	5
Paige Busick	-	7
Katie Egenolf	-	1

Matches w/ 20-or-More Digs

Name	24	Career
Sophie Ledbetter	2	2
Megan Wielonski	-	5
Paige Busick	-	1

Matches w/ Double-Figure Blocks

Name	24	Career
Aayinde Smith	-	1*

Matches w/ Double-Doubles

Name	24	Career
Megan Wielonski	1	55

Matches w/ Triple-Doubles

Name	24	Career
N/A	-	-

Ball State's 2024 Double-Doubles

Megan Wielonski..... 1 (55 Career)
.....9/6 vs. James Madison (57A / 12 D)

* = denotes includes career totals from previous school

2024 TIMES LEADING TEAM (including ties)

KILLS	24	C	ASSISTS	24	C	ACES	24	C	DIGS	24	C	BLOCKS	24	C	POINTS	24	C
Kennedy	3	26	Wielonski	6	105	Wielonski	3	50	Ledbetter	5	5	Smith	4	4	Kennedy	3	26
Smith	1	1				Busick	1	12	Wielonski	1	11	Crull	3	3	Smith	1	1
Tyler	1	1				Seimet	1	7	Bloom	-	2	Buckley	1	11	Tyler	1	1
Wise	1	1				Tabeling	1	1	Busick	-	2	Kennedy	1	5	Wise	1	1
Buckley	-	3				Wise	1	1	Seimet	-	2	Tyler	1	1	Buckley	-	3
Barnes	-	1				Bloom	-	2				Wise	-	14	Barnes	-	1
Egenolf	-	1				Baker	-	1				Wielonski	-	7	Egenolf	-	1
						Barnes	-	1				Egenolf	-	1			



Kelli Miller Phillips earned her 100th career coaching victory with a 3-0 sweep of Miami on Oct. 30, 2021.



HEAD COACH KELLI MILLER PHILLIPS

The two-time Mid-American Conference (2021 & 2022) and 2021 American Volleyball Coaches Association (AVCA) Midwest Region Coach of the Year, Muncie native Kelli Miller Phillips has shown why she is considered one of the top up-and-coming coaches in the sport over her eight seasons at the helm of the Ball State women's volleyball program. She enters her ninth season at the program's mentor in 2024.

Recognized as an AVCA Thirty Under 30 Award winner just prior to accepting the head coaching position at Ball State in 2016, Phillips has led the Cardinals to the NCAA Division I Women's Volleyball Championship in three of the past five seasons, including an at-large berth in 2022.

Even more impressive, she became just the second coach in the first 50 years of Ball State women's volleyball history to lead the Cardinals to an NCAA Division I Women's Volleyball Championship first-round victory when BSU topped Big Ten foe Michigan in 2021.

In addition to the program's third-ever NCAA win in 2021, Phillips has guided BSU to two MAC Volleyball Championship crowns (2019 & 2021), two MAC regular season titles (2021 & 2022), and five MAC West Division championships (2017, 2018, 2019, 2021 & 2022). She also helped the program earn trips to the National Invitational Volleyball Championship (NIVC) in 2018 and 2023.

Phillips owns a 152-91 (92-39 MAC) record as Ball State's head coach, with her 2021 squad becoming just the fourth to reach the 30-win plateau at BSU with its 30-4 ledger. In fact, the team establishing program records for winning percentage (.882), fewest losses in a season (4) and hitting percentage in a season (.265), while tying the program record for most consecutive matches won (20).

For their play on the court, Phillips' student-athletes have claimed 17 All-MAC First Team honors, five All-MAC Second Team/Honorable Mention accolades, eight MAC All-Freshman awards, the 2019, 2021 & 2023 MAC Freshman of the Year honors and the 2018 & 2022 MAC Setter of the Year awards.

In addition, two members of the 2021 squad were named AVCA All-Midwest Region, with freshman setter Megan Wielonski becoming just the fifth player in program history to earn all-region first team honors. Senior middle Marie Plitt would go on to earn AVCA All-Midwest Region honors in 2022.

As strong as her teams have been on the court, they have been just as impressive in the classroom. In each of Phillips' first eight seasons, the Cardinals earned the prestigious American Volleyball Coaches Association (AVCA) Team Academic Award. In addition, the program led the Ball State athletics department with a 3.707 team grade-point average and a 3.671 cumulative GPA in the spring of 2019.

Phillips helped mentor libero Kate Avila to College Sports Information Directors of America (CoSIDA) Academic All-District Second Team in both 2017 and 2018, while middle Lauren Gilliland was named to the All-District First Team in 2021. Ball State players have earned 64 Academic All-MAC selections and 11 MAC Women's Volleyball Distinguished Scholar Athletes awards during her tenure.

Prior to being named the head coach at Ball State, Phillips spent the previous six seasons as an assistant coach for the Cardinals, helping guide the program to a 119-68 (64-32 Mid-American Conference) record under retired head coach Steve Shondell. During that time, Ball State won the 2010 MAC regular season championship, earned an at-large berth into the 2011 NCAA Division I Women's Volleyball Championship and captured the 2013 MAC West Division crown.

Phillips also helped Ball State student-athletes earn 15 All-MAC First Team honors, five All-MAC Second Team accolades and three MAC All-Freshman Team awards as an assistant. A former collegiate libero herself, Phillips mentored then-senior libero Alyssa Rio to the 2010 Collegiate Volleyball Update (CVU.com) National Libero of the Year award. Rio finished her senior season ranked second nationally with a 5.86 digs-per-set average and was a four-time MAC West Division Defensive Player of the Week and a CVU.com National Player of the Week.

Phillips served as Ball State's defensive coordinator for her first three seasons, with the team ranking in the top three in the league in digs-per-set average all three years. She assumed the duties of both offensive and recruiting coordinator in 2013. Ball State's offense shined under her guidance, finishing first in the MAC and seventh nationally with a 14.84 kills-per-set average in 2013. In 2014, middle attacker Hayley Benson led the MAC in hitting percentage (.433) and was named an AVCA All-Midwest Region honorable mention. In 2015, Ball State's recruiting class was recognized as the top class in the MAC and one of the top 55 nationally by PrepVolleyball.com.

Prior to coming to Ball State, Phillips was a student/volunteer coach under Purdue head coach Dave Shondell during the 2009 season. While working with the Boilermakers, she was responsible for scouting opponent hitters, reception rotations, and servers. In addition, she developed and implemented serve receive and defensive drills. Phillips has also coached for the Munciana Volleyball Club as both an assistant and head coach.

Phillips graduated from Purdue in December of 2009 with a bachelor's degree in health and kinesiology. She earned her master's degree in sport administration from Ball State in 2012.

She married Justin Phillips in the spring of 2019, and the couple have two daughters, Marlee and Palmer.



THE MILLER PHILLIPS FILE

HOMETOWN:

- Muncie, Ind.

EDUCATION:

- Bachelor's - Purdue, 2009
- Master's - Ball State, 2012

COACHING EXPERIENCE:

- **Ball State: Head Coach, 2016-Present**
 - Overall Record: 152-91
 - MAC Record: 92-39
 - 2021 & 2022 MAC Coach of the Year
 - 2021 AVCA Midwest Region Coach of the Year
 - 2019, 2021 & 2022 NCAA Division I Women's Volleyball Championship Participant
 - 2018 & 2023 NIVC Participant
 - 2019 & 2021 MAC Tournament Champions
 - 2021 & 2022 MAC Regular Season Champions
 - 2017, 2018, 2019, 2021 & 2022 MAC West Division Champions
 - 2019, 2021 & 2023 MAC Freshman of the Year
 - 2018 & 2022 MAC Setter of the Year
 - 17 All-MAC First Team Honorees
 - Five All-MAC Second Team/Honorable Mention Honorees
 - Eight MAC All-Freshman Team Honorees
 - Eight-Time AVCA Team Academic Award
 - 64 Academic All-MAC selections
 - 11 MAC Women's Volleyball Distinguished Scholar Athletes
- **Ball State: Assistant Coach, 2010-2015**
 - 2015 AVCA Thirty Under 30 Award
 - Helped her student-athletes earn 20 All-MAC honors and three MAC All-Freshman Team awards
 - Mentored Alyssa Rio to 2010 CVU.com National Libero of the Year honors
 - Helped Ball State win the 2010 MAC regular season title
 - Helped Ball State earn an at-large bid into the 2011 NCAA Tournament
 - Helped Ball State capture the 2013 MAC West Division championship
- **Purdue: Student/Volunteer Coach, 2009**



PLAYER CAREER STATS / CAREER HIGHS

Ball St. Women's Volleyball
Individual Career Summaries
All gamesPage 1/7
as of Sep 12, 2024

BAKER, Reese

SEASON	TEAM	SM-MP	K	K/S	E	TA	PCT	A	A/S	SA	SA/S	SE	DIG	D/S	RE	BS	BA	TB	B/S	BE	BHE	PTS	PTS/S
2023-24	BSU	21-14	0	0.00	0	0	.000	1	0.05	3	0.14	0	19	0.90	7	0	0	0	0.00	0	0	3.0	0.14
2024-25	BSU	2-2	0	0.00	0	0	.000	0	0.00	0	0.00	0	0	0.00	0	0	0	0	0.00	0	0	0.0	0.00
TOTAL		23 - 16	0	0.00	0	0	.000	1	0.04	3	0.13	0	19	0.83	7	0	0	0	0.00	0	0	3.0	0.13

Single Game Highs

Statistic	Value	
Assists	1	vs UNI 09/02/23
Serve Aces	2	vs LSU 09/03/23
Digs	5	vs LSU 09/03/23

BARNES, Kendall

SEASON	TEAM	SM-MP	K	K/S	E	TA	PCT	A	A/S	SA	SA/S	SE	DIG	D/S	RE	BS	BA	TB	B/S	BE	BHE	PTS	PTS/S
2023-24	BSU	56-24	113	2.02	55	323	.180	1	0.02	3	0.05	3	20	0.36	1	3	10	13	0.23	4	0	124.0	2.21
2024-25	BSU	10-4	12	1.20	2	35	.286	0	0.00	1	0.10	1	2	0.20	2	0	3	3	0.30	0	0	14.5	1.45
TOTAL		66 - 28	125	1.89	57	358	.190	1	0.02	4	0.06	4	22	0.33	3	3	13	16	0.24	4	0	138.5	2.10

Single Game Highs

Statistic	Value	
Kills	17	at Middle Tenn. 11/30/23
Attacks	40	vs Clemson 12/01/23
Assists	1	at Western Mich. 11/04/23
Serve Aces	2	at Western Mich. 11/04/23
Digs	7	at Western Mich. 11/04/23
Blocks	3	vs Bowling Green 11/18/23
Block solos	1	vs Central Mich. 09/21/23, vs Toledo 10/17/23, at Middle Tenn. 11/30/23
Block assists	3	vs Bowling Green 11/18/23

BLOOM, Josie

SEASON	TEAM	SM-MP	K	K/S	E	TA	PCT	A	A/S	SA	SA/S	SE	DIG	D/S	RE	BS	BA	TB	B/S	BE	BHE	PTS	PTS/S
2022-23	VT	16-8	0	0.00	0	0	.000	1	0.06	0	0.00	0	14	0.88	1	0	0	0	0.00	0	0	0.0	0.00
2023-24	BSU	77-25	1	0.01	1	3	.000	15	0.19	7	0.09	14	144	1.87	24	0	0	0	0.00	0	0	8.0	0.10
2024-25	BSU	1-1	0	0.00	0	0	.000	0	0.00	0	0.00	0	1	1.00	1	0	0	0	0.00	0	0	0.0	0.00
TOTAL FOR BSU		78 - 26	1	0.01	1	3	.000	15	0.19	7	0.09	14	145	1.86	25	0	0	0	0.00	0	0	8.0	0.10
TOTAL		94 - 34	1	0.01	1	3	.000	16	0.17	7	0.07	14	159	1.69	26	0	0	0	0.00	0	0	8.0	0.09

Single Game Highs

Statistic	Value	
Kills	1	vs ETSU 09/16/23
Attacks	1	vs ETSU 09/16/23, vs Central Mich. 09/22/23, vs Ohio 10/28/23
Assists	2	vs UIC 09/09/23, vs ETSU 09/16/23, at Eastern Mich. 09/29/23
Serve Aces	2	at Eastern Mich. 09/29/23, vs Central Mich. 09/21/23
Digs	13	at Creighton 09/01/23



PLAYER CAREER STATS / CAREER HIGHS

Ball St. Women's Volleyball
Individual Career Summaries
All gamesPage 2/7
as of Sep 12, 2024

BUCKLEY, Madison

SEASON	TEAM	SM-MP	K	K/S	E	TA	PCT	A	A/S	SA	SA/S	SE	DIG	D/S	RE	BS	BA	TB	B/S	BE	BHE	PTS	PTS/S
2022-23	BSU	23-12	33	1.43	16	84	.202	1	0.04	0	0.00	0	1	0.04	0	1	9	10	0.43	2	0	38.5	1.67
2023-24	BSU	120-32	290	2.42	109	798	.227	2	0.02	0	0.00	4	46	0.38	5	5	91	96	0.80	7	0	340.5	2.84
2024-25	BSU	19-6	36	1.89	13	98	.235	2	0.11	0	0.00	0	8	0.42	0	0	13	13	0.68	2	0	42.5	2.24
TOTAL		162 - 50	359	2.22	138	980	.226	5	0.03	0	0.00	4	55	0.34	5	6	113	119	0.73	11	0	421.5	2.60

Single Game Highs

Statistic	Value	
Kills	16	vs NIU 11/11/23
Attacks	43	at Creighton 09/01/23
Assists	1	5 times
Digs	5	at Buffalo 10/21/23
Blocks	7	vs LSU 09/03/23, vs Central Mich. 09/22/23
Block solos	1	6 times
Block assists	7	vs LSU 09/03/23, vs Central Mich. 09/22/23

BUSICK, Paige

SEASON	TEAM	SM-MP	K	K/S	E	TA	PCT	A	A/S	SA	SA/S	SE	DIG	D/S	RE	BS	BA	TB	B/S	BE	BHE	PTS	PTS/S
2022-23	BSU	37-13	0	0.00	0	0	.000	6	0.16	10	0.27	12	75	2.03	9	0	0	0	0.00	0	0	10.0	0.27
2023-24	BSU	105-31	0	0.00	0	4	.000	20	0.19	21	0.20	20	193	1.84	36	0	0	0	0.00	0	0	21.0	0.20
2024-25	BSU	10-4	0	0.00	0	0	.000	1	0.10	2	0.20	3	11	1.10	3	0	0	0	0.00	0	0	2.0	0.20
TOTAL		152 - 48	0	0.00	0	4	.000	27	0.18	33	0.22	35	279	1.84	48	0	0	0	0.00	0	0	33.0	0.22

Single Game Highs

Statistic	Value	
Attacks	2	at Eastern Mich. 09/29/23
Assists	4	vs Akron 10/13/23
Serve Aces	3	vs Bowling Green 11/22/22, vs UIC 09/09/23
Digs	21	vs Akron 10/13/23



PLAYER CAREER STATS / CAREER HIGHS



Ball St. Women's Volleyball Individual Career Summaries All games

Page 3/7
as of Sep 12, 2024

CRULL, Gwen

SEASON	TEAM	SM-MP	K	K/S	E	TA	PCT	A	A/S	SA	SA/S	SE	DIG	D/S	RE	BS	BA	TB	B/S	BE	BHE	PTS	PTS/S
2023-24	BGSU	30-12	23	0.77	4	61	.311	1	0.03	0	0.00	0	4	0.13	0	1	24	25	0.83	5	0	36.0	1.20
2024-25	BSU	10-6	14	1.40	4	29	.345	2	0.20	0	0.00	3	2	0.20	0	2	12	14	1.40	1	0	22.0	2.20
TOTAL FOR BSU		10 - 6	14	1.40	4	29	.345	2	0.20	0	0.00	3	2	0.20	0	2	12	14	1.40	1	0	22.0	2.20
TOTAL		40 - 18	37	0.93	8	90	.322	3	0.08	0	0.00	3	6	0.15	0	3	36	39	0.98	6	0	58.0	1.45

Single Game Highs

Statistic	Value	
Kills	5	at Western Mich. 09/29/23
Attacks	13	vs Ohio St. 08/26/23
Assists	1	vs Loyola Chicago 08/31/23, at Kentucky 09/08/24, vs Penn St. 09/07/24
Digs	2	vs Loyola Chicago 08/31/23
Blocks	5	vs NIU 09/22/23
Block solos	1	vs NIU 09/21/23, at Fla. Atlantic 08/31/24, vs James Madison 09/06/24
Block assists	5	vs NIU 09/22/23
PCT	1.000	vs Bryant 08/30/24, at Fla. Atlantic 08/31/24

EGENOLF, Katie

SEASON	TEAM	SM-MP	K	K/S	E	TA	PCT	A	A/S	SA	SA/S	SE	DIG	D/S	RE	BS	BA	TB	B/S	BE	BHE	PTS	PTS/S
2022-23	BSU	42-20	70	1.67	36	206	.165	0	0.00	0	0.00	0	13	0.31	1	3	5	8	0.19	1	0	75.5	1.80
2023-24	BSU	32-10	46	1.44	35	187	.059	1	0.03	2	0.06	7	41	1.28	8	0	8	8	0.25	1	0	52.0	1.63
2024-25	BSU	9-5	5	0.56	4	17	.059	0	0.00	0	0.00	1	6	0.67	4	0	1	1	0.11	0	0	5.5	0.61
TOTAL			83 - 35	121	1.46	75	.112	1	0.01	2	0.02	8	60	0.72	13	3	14	17	0.20	2	0	133.0	1.60

Single Game Highs

Statistic	Value	
Kills	15	at Central Mich. 09/23/22
Attacks	33	at Central Mich. 09/23/22
Assists	1	vs Gonzaga 08/25/23
Serve Aces	2	vs Gonzaga 08/25/23
Digs	10	vs UIC 09/09/23
Blocks	3	at Western Ky. 09/15/23
Block solos	1	vs Eastern Mich. 09/30/22, at Central Mich. 09/23/22, vs Northern Ky. 09/16/22
Block assists	3	at Western Ky. 09/15/23
PCT	1.000	at Kentucky 09/08/24

**PLAYER CAREER STATS / CAREER HIGHS****Ball St. Women's Volleyball
Individual Career Summaries
All games**Page 4/7
as of Sep 12, 2024**GREEN, Lindsey**

SEASON	TEAM	SM-MP	K	K/S	E	TA	PCT	A	A/S	SA	SA/S	SE	DIG	D/S	RE	BS	BA	TB	B/S	BE	BHE	PTS	PTS/S
2023-24	BSU	10-8	0	0.00	0	0	.000	10	1.00	0	0.00	1	3	0.30	0	0	1	1	0.10	2	1	0.5	0.05
2024-25	BSU	4-2	0	0.00	0	0	.000	6	1.50	0	0.00	0	1	0.25	0	0	0	0	0.00	0	0	0.0	0.00
TOTAL		14 - 10	0	0.00	0	0	.000	16	1.14	0	0.00	1	4	0.29	0	0	1	1	0.07	2	1	0.5	0.04

Single Game Highs

Statistic	Value	
Assists	4	vs Bryant 08/30/24
Digs	2	vs ETSU 09/16/23
Blocks	1	at Eastern Mich. 09/29/23
Block assists	1	at Eastern Mich. 09/29/23

KENNEDY, Aniya

SEASON	TEAM	SM-MP	K	K/S	E	TA	PCT	A	A/S	SA	SA/S	SE	DIG	D/S	RE	BS	BA	TB	B/S	BE	BHE	PTS	PTS/S
2023-24	BSU	114-31	470	4.12	169	1160	.259	1	0.01	0	0.00	1	45	0.39	7	18	39	57	0.50	8	0	507.5	4.45
2024-25	BSU	19-6	70	3.68	35	176	.199	1	0.05	1	0.05	1	8	0.42	3	2	6	8	0.42	1	0	76.0	4.00
TOTAL		133 - 37	540	4.06	204	1336	.251	2	0.02	1	0.01	2	53	0.40	10	20	45	65	0.49	9	0	583.5	4.39

Single Game Highs

Statistic	Value	
Kills	25	vs Akron 10/13/23, at Western Mich. 11/03/23
Attacks	65	at Western Mich. 11/03/23
Assists	1	at Toledo 11/15/23, vs Seton Hall 08/30/24
Serve Aces	1	vs Bryant 08/30/24
Digs	4	at Miami (OH) 10/06/23, vs NIU 11/10/23, at Buffalo 10/20/23, vs Wright St. 09/08/23
Blocks	4	at Western Mich. 11/03/23, at Miami (OH) 10/06/23, at Western Ky. 09/15/23, vs UIC 09/09/23
Block solos	3	at Buffalo 10/21/23, at Western Mich. 11/03/23
Block assists	4	at Western Ky. 09/15/23

LEDBETTER, Sophie

SEASON	TEAM	SM-MP	K	K/S	E	TA	PCT	A	A/S	SA	SA/S	SE	DIG	D/S	RE	BS	BA	TB	B/S	BE	BHE	PTS	PTS/S
2024-25	BSU	18-6	0	0.00	0	0	.000	12	0.67	0	0.00	6	84	4.67	8	0	0	0	0.00	0	0	0.0	0.00
TOTAL		18 - 6	0	0.00	0	0	.000	12	0.67	0	0.00	6	84	4.67	8	0	0	0	0.00	0	0	0.0	0.00

Single Game Highs

Statistic	Value	
Assists	2	6 times
Digs	27	vs James Madison 09/06/24



PLAYER CAREER STATS / CAREER HIGHS

Ball St. Women's Volleyball
Individual Career Summaries
All gamesPage 5/7
as of Sep 12, 2024

SEIMET, Kendall

SEASON	TEAM	SM-MP	K	K/S	E	TA	PCT	A	A/S	SA	SA/S	SE	DIG	D/S	RE	BS	BA	TB	B/S	BE	BHE	PTS	PTS/S
2021-22	BSU	2-2	0	0.00	0	0	.000	0	0.00	0	0.00	0	1	0.50	1	0	0	0	0.00	0	0	0.0	0.00
2022-23	BSU	12-7	0	0.00	0	0	.000	2	0.17	1	0.08	2	16	1.33	2	0	0	0	0.00	0	0	1.0	0.08
2023-24	BSU	94-31	1	0.01	0	2	.500	11	0.12	17	0.18	9	187	1.99	16	0	0	0	0.00	0	0	18.0	0.19
2024-25	BSU	8-4	0	0.00	0	0	.000	2	0.25	1	0.13	0	4	0.50	3	0	0	0	0.00	0	0	1.0	0.13
TOTAL		116 - 44	1	0.01	0	2	.500	15	0.13	19	0.16	11	208	1.79	22	0	0	0	0.00	0	0	20.0	0.17

Single Game Highs

Statistic	Value	
Kills	1	vs Wright St. 09/08/23
Attacks	1	vs Wright St. 09/08/23, at Western Mich. 11/04/23
Assists	4	at Buffalo 10/21/23
Serve Aces	4	vs NIU 11/10/23
Digs	17	vs Ohio 10/28/23

SMITH, Aayinde

SEASON	TEAM	SM-MP	K	K/S	E	TA	PCT	A	A/S	SA	SA/S	SE	DIG	D/S	RE	BS	BA	TB	B/S	BE	BHE	PTS	PTS/S
2020-21	Towson	20-7	16	0.80	12	56	.071	0	0.00	0	0.00	0	2	0.10	1	2	20	22	1.10	2	0	28.0	1.40
2021-22	Towson	12-7	9	0.75	6	35	.086	0	0.00	0	0.00	0	2	0.17	0	1	10	11	0.92	1	0	15.0	1.25
2022-23	Towson	109-31	164	1.50	50	315	.362	3	0.03	0	0.00	0	20	0.18	1	7	122	129	1.18	12	2	232.0	2.13
2023-24	Towson	105-30	162	1.54	50	348	.322	5	0.05	8	0.08	21	33	0.31	0	12	112	124	1.18	14	1	238.0	2.27
2024-25	BSU	19-6	39	2.05	11	76	.368	0	0.00	1	0.05	1	7	0.37	0	1	18	19	1.00	3	0	50.0	2.63
TOTAL FOR BSU		19 - 6	39	2.05	11	76	.368	0	0.00	1	0.05	1	7	0.37	0	1	18	19	1.00	3	0	50.0	2.63
TOTAL		265 - 81	390	1.47	129	830	.314	8	0.03	9	0.03	22	64	0.24	2	23	282	305	1.15	32	3	563.0	2.12

Single Game Highs

Statistic	Value	
Kills	15	vs Chicago St. 10/23/22
Attacks	24	vs Delaware 09/24/23
Assists	1	8 times
Serve Aces	1	9 times
Digs	3	5 times
Blocks	10	vs Chicago St. 10/23/22
Block solos	3	vs UC Irvine 09/08/23
Block assists	9	vs Chicago St. 10/23/22, vs Northeastern 11/18/22

**PLAYER CAREER STATS / CAREER HIGHS****Ball St. Women's Volleyball
Individual Career Summaries
All games**Page 6/7
as of Sep 12, 2024**TABELING, Elizabeth**

SEASON	TEAM	SM-MP	K	K/S	E	TA	PCT	A	A/S	SA	SA/S	SE	DIG	D/S	RE	BS	BA	TB	B/S	BE	BHE	PTS	PTS/S
2024-25	BSU	15-5	0	0.00	0	0	.000	4	0.27	3	0.20	5	37	2.47	5	0	0	0	0.00	0	0	3.0	0.20
TOTAL		15 - 5	0	0.00	0	0	.000	4	0.27	3	0.20	5	37	2.47	5	0	0	0	0.00	0	0	3.0	0.20

Single Game Highs

Statistic	Value	
Assists	2	vs Seton Hall 08/30/24
Serve Aces	1	vs Seton Hall 08/30/24, vs Bryant 08/30/24, vs Penn St. 09/07/24
Digs	11	vs James Madison 09/06/24

TYLER, Carson

SEASON	TEAM	SM-MP	K	K/S	E	TA	PCT	A	A/S	SA	SA/S	SE	DIG	D/S	RE	BS	BA	TB	B/S	BE	BHE	PTS	PTS/S
2024-25	BSU	19-6	47	2.47	22	131	.191	2	0.11	0	0.00	7	29	1.53	4	4	2	6	0.32	0	0	52.0	2.74
TOTAL		19 - 6	47	2.47	22	131	.191	2	0.11	0	0.00	7	29	1.53	4	4	2	6	0.32	0	0	52.0	2.74

Single Game Highs

Statistic	Value	
Kills	21	vs James Madison 09/06/24
Attacks	49	vs James Madison 09/06/24
Assists	1	vs Seton Hall 08/30/24, vs James Madison 09/06/24
Digs	8	vs James Madison 09/06/24
Blocks	2	vs James Madison 09/06/24, at Kentucky 09/08/24, vs Penn St. 09/07/24
Block solos	2	at Kentucky 09/08/24, vs Penn St. 09/07/24
Block assists	2	vs James Madison 09/06/24
PCT	.347	vs James Madison 09/06/24



PLAYER CAREER STATS / CAREER HIGHS



Ball St. Women's Volleyball Individual Career Summaries All games

Page 7/7
as of Sep 12, 2024

WIELONSKI, Megan

SEASON	TEAM	SM-MP	K	K/S	E	TA	PCT	A	A/S	SA	SA/S	SE	DIG	D/S	RE	BS	BA	TB	B/S	BE	BHE	PTS	PTS/S
2021-22	BSU	129-34	102	0.79	27	276	.272	1394	10.81	58	0.45	62	334	2.59	1	3	46	49	0.38	9	9	186.0	1.44
2022-23	BSU	126-33	81	0.64	23	254	.228	1359	10.79	46	0.37	44	391	3.10	0	3	35	38	0.30	7	7	147.5	1.17
2023-24	BSU	120-32	87	0.73	25	236	.263	1269	10.58	40	0.33	48	296	2.47	0	3	34	37	0.31	5	5	147.0	1.23
2024-25	BSU	19-6	12	0.63	0	27	.444	205	10.79	8	0.42	12	42	2.21	0	0	10	10	0.53	0	1	25.0	1.32
TOTAL		394 - 105	282	0.72	75	793	.261	4227	10.73	152	0.39	166	1063	2.70	1	9	125	134	0.34	21	22	505.5	1.28

Single Game Highs

Statistic	Value	
Kills	8	vs Akron 10/13/23
Attacks	16	vs Western Mich. 10/22/22
Assists	64	vs Bowling Green 11/24/21
Serve Aces	7	vs Ohio 09/30/21
Digs	22	at South Fla. 08/26/22
Blocks	4	5 times
Block solos	1	9 times
Block assists	4	at Green Bay 08/27/21, at Iowa 09/10/21

WISE, Camryn

SEASON	TEAM	SM-MP	K	K/S	E	TA	PCT	A	A/S	SA	SA/S	SE	DIG	D/S	RE	BS	BA	TB	B/S	BE	BHE	PTS	PTS/S
2023-24	BSU	85-23	95	1.12	26	198	.348	1	0.01	0	0.00	0	28	0.33	2	10	83	93	1.09	15	1	146.5	1.72
2024-25	BSU	12-5	19	1.58	3	34	.471	0	0.00	3	0.25	3	7	0.58	0	2	5	7	0.58	4	0	26.5	2.21
TOTAL		97 - 28	114	1.18	29	232	.366	1	0.01	3	0.03	3	35	0.36	2	12	88	100	1.03	19	1	173.0	1.78

Single Game Highs

Statistic	Value	
Kills	11	at Buffalo 10/21/23
Attacks	18	at Buffalo 10/21/23
Assists	1	vs Clemson 12/01/23
Serve Aces	1	vs Seton Hall 08/30/24, vs James Madison 09/06/24, at Kentucky 09/08/24
Digs	5	at Western Mich. 11/03/23
Blocks	9	vs Akron 10/13/23, vs Ohio 10/28/23
Block solos	2	at Eastern Mich. 09/30/23, vs Akron 10/13/23, at Buffalo 10/21/23, vs Ohio 10/28/23
Block assists	8	vs Central Mich. 09/22/23
PCT	.818	vs Seton Hall 08/30/24



2024 OVERALL STATS

2024-25 Ball St. Women's Volleyball
Combined Team Statistics
All gamesPage 1/1
as of Sep 08, 2024

Game Records

Overall	Conference	Home	Away	Neutral
3 - 3	0 - 0	0 - 0	0 - 2	3 - 1

Team Box Score

		Attack						Set		Serve			Dig			Blocking						
##	Player	SP	K	K/S	E	TA	PCT	A	A/S	SA	SE	SA/S	RE	DIG	DIG/S	BS	BA	TOT/S	BLK/S	BE	BHE	PTS
2	Smith, Aayinde	19	39	2.05	11	76	.368	0	0.00	1	1	0.05	0	7	0.37	1	18	19	1.00	3	0	50.0
3	Tabeling, Elizabeth	15	0	0.00	0	0	.000	4	0.27	3	5	0.20	5	37	2.47	0	0	0	0.00	0	0	3.0
4	Busick, Paige	10	0	0.00	0	0	.000	1	0.10	2	3	0.20	3	11	1.10	0	0	0	0.00	0	0	2.0
6	Baker, Reese	2	0	0.00	0	0	.000	0	0.00	0	0	0.00	0	0	0.00	0	0	0	0.00	0	0	0.0
7	Bloom, Josie	1	0	0.00	0	0	.000	0	0.00	0	0	0.00	1	1	1.00	0	0	0	0.00	0	0	0.0
8	Green, Lindsey	4	0	0.00	0	0	.000	6	1.50	0	0	0.00	0	1	0.25	0	0	0	0.00	0	0	0.0
9	Egenolf, Katie	9	5	0.56	4	17	.059	0	0.00	0	1	0.00	4	6	0.67	0	1	1	0.11	0	0	5.5
10	Barnes, Kendall	10	12	1.20	2	35	.286	0	0.00	1	1	0.10	2	2	0.20	0	3	3	0.30	0	0	14.5
12	Ledbetter, Sophie	18	0	0.00	0	0	.000	12	0.67	0	6	0.00	8	84	4.67	0	0	0	0.00	0	0	0.0
13	Crull, Gwen	10	14	1.40	4	29	.345	2	0.20	0	3	0.00	0	2	0.20	2	12	14	1.40	1	0	22.0
14	Kennedy, Aniya	19	70	3.68	35	176	.199	1	0.05	1	1	0.05	3	8	0.42	2	6	8	0.42	1	0	76.0
15	Wielonski, Megan	19	12	0.63	0	27	.444	205	10.79	8	12	0.42	0	42	2.21	0	10	10	0.53	0	1	25.0
16	Seimet, Kendall	8	0	0.00	0	0	.000	2	0.25	1	0	0.13	3	4	0.50	0	0	0	0.00	0	0	1.0
17	Wise, Camryn	12	19	1.58	3	34	.471	0	0.00	3	3	0.25	0	7	0.58	2	5	7	0.58	4	0	26.5
20	Tyler, Carson	19	47	2.47	22	131	.191	2	0.11	0	7	0.00	4	29	1.53	4	2	6	0.32	0	0	52.0
21	Buckley, Madison	19	36	1.89	13	98	.235	2	0.11	0	0	0.00	0	8	0.42	0	13	13	0.68	2	0	42.5
BALL ST.		19	254	13.37	94	623	.257	237	12.47	20	43	1.05	34	249	13.11	11	70	46	2.42	11	1	320.0
Opponents		19	236	12.42	96	622	.225	220	11.58	34	43	1.79	20	226	11.89	6	58	35	1.84	6	1	305.0

Team statistics

	BSU	OPP
ATTACK		
Kills	254	236
Errors	94	96
Total Attacks	623	622
Attack Pct	.257	.225
Kills/Set	13.37	12.42
SET		
Assists	237	220
Attempts	602	619
Assist Pct	.394	.355
Assists/Set	12.47	11.58
SERVE		
Aces	20	34
Errors	43	43
Attempts	423	413
Serve Pct	.898	.896
Aces/Set	1.05	1.79
SERVE RECEPTIONS		
Errors	34	20
Errors/Set	1.79	1.05
Attempts	370	380
Reception Pct	.908	.997
DEFENSE		
Digs	249	226
Digs/Set	13.11	11.89
BLOCKING		
Block solo	11	6
Block Assist	70	58
Total Blocks	46	35
Blocks/Set	2.42	1.84
Block Errors	11	6
Ball handling errors	1	1
ATTENDANCE		
Total	0	2391
Dates/Avg Per Date	0/0	2/1196
Neutral Site #/Avg	4/129	-
Current win streak	0	-
Home win streak	0	-

Team Results

Date	Opponent	Score	Score-by-set	Att.
08/30/2024	vs Seton Hall	W 3-0	25-19,25-16,25-19	89
08/30/2024	vs Bryant	W 3-0	25-15,25-17,25-12	154
08/31/2024	at Fla. Atlantic	L 0-3	12-25,24-26,20-25	448
09/06/2024	vs James Madison	W 3-1	27-25,25-27,25-20,25-17	127
09/07/2024	vs Penn St.	L 0-3	22-25,21-25,21-25	145
09/08/2024	at Kentucky	L 0-3	17-25,21-25,13-25	1943



2024 NCAA STATISTICAL RANKINGS

NCAA Statistics

Ball St. - 2024-25 Women's Volleyball Ranking Summary thru games 09/11/2024

Statistic	National Rank	Conference Rank	Value	National Leader	Value	Conference Leader	Value
Aces Per Set (334 ranked)	306	11	1.05	Saint Francis	2.95	Miami (OH)	2.88
Assists Per Set (334 ranked)	61	3	12.47	Texas A&M	15.08	Western Mich.	13.59
Blocks Per Set (334 ranked)	68	3	2.42	Idaho St.	3.76	Eastern Mich.	2.57
Digs Per Set (334 ranked)	225	9	13.11	Western Ill.	20.71	Western Mich.	18.77
Hitting Percentage (334 ranked)	49	1	0.257	BYU	0.357	Ball St.	0.257
Kills Per Set (334 ranked)	65	3	13.37	Texas A&M	16.15	Western Mich.	14.23
Match W-L Pctg. (318 ranked)	148	5	0.500	28 teams tied	1.000	Central Mich.	1.000
Opp Hitting Percentage (334 ranked)	235	12	0.225	East Carolina	0.088	Central Mich.	0.115
Team Assists (334 ranked)	204	8	237	American	404	Akron	308
Team Attacks Per Set (334 ranked)	227	7	32.79	Western Ill.	43.38	NIU	41.00
Team Digs (334 ranked)	273	12	249	Chattanooga	578	Central Mich.	416
Team Kills (334 ranked)	209	8	254	American	433	Akron	321
Team Service Aces (332 ranked)	308	11	20	Mercer	73	Miami (OH)	69
Team Total Attacks (334 ranked)	277	11	623	Chattanooga	1,193	NIU	943
Team Total Blocks (334 ranked)	145	4	46.0	Idaho St.	94.0	Eastern Mich.	72.0

Statistic	Player	National Rank	Conference Rank	Value	National Leader	Value	Conference Leader	Value
Aces Per Set (143 ranked)					Leah Linares Castro, Nicholls	0.95	Lauryn Hovey, Bowling Green	0.79
Assists Per Set (149 ranked)	Megan Wielonski	17	2	10.79	Maddie Waak, Texas A&M	12.31	Logan Case, Western Mich.	11.91
Attacks Per Set (150 ranked)					Keyana Cruse, Western Ill.	14.14	Ava Grevengoed, NIU	11.70
Blocks Per Set (299 ranked)	Aayinde Smith	221	9	1.00	Julia Haggerty, Boston College	2.44	Karleighana Jones, Akron	1.50
Digs Per Set (150 ranked)	Sophie Ledbetter	46	4	4.67	Laney Klika, Wofford	6.06	Crew Hoffmeier, NIU	5.91
Hitting Percentage (150 ranked)	Aayinde Smith	89	3	0.368	Claire Jeter, Arizona St.	0.625	Abby Leigh, Buffalo	0.462
Kills Per Set (1474 ranked)	Aniya Kennedy	98	3	3.68	Alexis Shelton, Oklahoma	5.53	Keona Salesman, Western Mich.	4.14
	Carson Tyler	576	19	2.47				
	Aayinde Smith	844	31	2.05				
	Madison Buckley	963	34	1.89				
Kills SG Highs (0 ranked)								
Points (146 ranked)					Jurnee Robinson, LSU	155.0	Katrin Trebichavska, Buffalo	119.0
Points Per Set (150 ranked)					Alexis Shelton, Oklahoma	6.33	Katrin Trebichavska, Buffalo	4.58
Service Aces (145 ranked)					Brooke Phillips, Mercer	24	Katrin Trebichavska, Buffalo	19
Total Assists (147 ranked)	Megan Wielonski	71	3	205	Elaine Redman, Chattanooga	331	Logan Case, Western Mich.	262
Total Attacks (150 ranked)					Sydney Jackwin, Chattanooga	336	Katrin Trebichavska, Buffalo	273
Total Blocks (171 ranked)					Misa Dlouha, Binghamton	49	Hatteras Welker, Eastern Mich.	36
Total Digs (294 ranked)	Sophie Ledbetter	165	9	84	Paige Gallentine, Chattanooga	165	Crew Hoffmeier, NIU	136
Total Kills (142 ranked)					Jurnee Robinson, LSU	138	Katrin Trebichavska, Buffalo	96
Triple Doubles (5 ranked)					Jalyn Stout, Coastal Carolina	3		



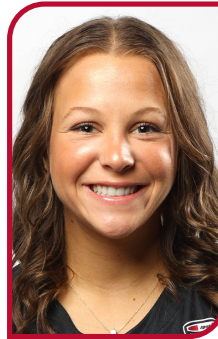
2024 TELEVISION / RADIO ROSTER



2 **AAYINDE SMITH**
6-0 • 5th • MH
Garland, Texas



3 **ELIZABETH TABELING**
5-6 • Fr. • DS/L
Edgewood, Ky.



4 **PAIGE BUSICK**
5-3 • Jr. • DS/L
Decatur, Ind.



5 **NIYAH LESTER**
6-2 • Fr. • MH
South Euclid, Ohio



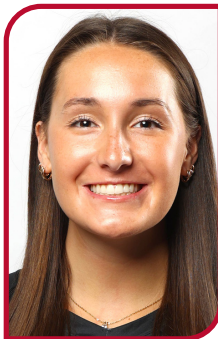
6 **REESE BAKER**
5-5 • So. • DS/L
Selma, Ind.



7 **JOSIE BLOOM**
5-6 • Jr. • DS/L
Clarkston, Mich.



8 **LINDSEY GREEN**
5-10 • So. • S
Loveland, Ohio



9 **KAITE EGENOLF**
6-1 • Jr. • OH
Greenwood, Ind.



10 **KENDALL BARNES**
6-1 • So. • OH
Bartlett, Tenn.



12 **SOPHIE LEDBETTER**
5-8 • Fr. • DS/L
Fishers, Ind.



13 **GWEN CRULL**
6-2 • So. • MH
Madison, Wis.



14 **ANIYA KENNEDY**
6-0 • R-So. • MB
La Porte, Ind.



15 **MEGAN WIELONSKI**
5-10 • Sr. • S
Mason, Ohio



16 **KENDALL SEIMET**
5-6 • Sr. • DS/L
Oregon, Ohio



17 **CAMRYN WISE**
5-11 • So. • MB
Parker City, Ind.



18 **RILEY WHITLOCK**
5-11 • Fr. • OPP/OH
Lafayette, Ind.



20 **CARSON TYLER**
5-10 • Fr. • OH
Pavilion, N.Y.



21 **MADISON BUCKLEY**
6-2 • Jr. • OPP
Montgomery, Ill.



HC **KELLI MILLER PHILLIPS**
Head Coach



AC **DARCY DORTON**
Assistant Coach



AC **TUCKER BITTING**
Assistant Coach



AC **BRAD KLINE**
Assistant Coach



DO **CAMRYN JOHNSTON**
Director of Operations