

# WICHITA STATE

Denning Gerig, Assistant Director of Communications | e: dgerig@goshockers.com | w: 316-978-5461 | c: 316-300-6540



**Kennesaw State Owls** | 0-0 (0-0 CUSA) | RPI: --  
 11:00 a.m./2:30 p.m. CT Kennesaw, Ga. (KSU Convocation Center)  
 Fri., Aug. 30/Sat., Aug. 31 ESPN+  
**[RV] Indiana Hoosiers** | 0-0 (0-0 Big 10) | RPI: --  
 10:00 a.m. CT Kennesaw, Ga. (KSU Convocation Center)  
 Saturday, Aug. 31

VS

**Wichita State Shockers**  
 0-0 **Record**  
 0-0 **American**  
 0-0 / 0-0 / 0-0 **H / A / N**  
 Won 6 **Streak**  
 -- **RPI**



**Live Stats:** ShockerStats.com // **Social:** Follow @GoShockersVB & @GoShockers on Facebook, Twitter, Instagram.

**Series w/ Kennesaw State:** First Meeting

**Series w/ Indiana:** WSU leads, 1-0

**Chris Lamb:** 25th season at Wichita State (508-236), same overall

**Keith Schunzel:** 12th season at Kennesaw State (194-110), same overall

**Steve Aird:** 7th season at Indiana (80-99), 11th season overall (135-173)

- » Wichita State begins the 2024 regular season at the Kennesaw State Invitational, taking on host Kennesaw State in a Friday matinee before squaring off with Indiana ahead of a second match with the Owls on Saturday.
- » The matches against KSU will be streamed on ESPN+, but the Indiana match will have live stats only.

## SCENE SETTERS

- » Wichita State opens their 49th season as an NCAA volleyball program with a trip to Kennesaw, Georgia for the Kennesaw State Invitational. The Shockers will sandwich a pair of matches against Kennesaw State around a single showdown with Indiana, a team receiving votes in the initial AVCA top 25 poll.
- » The Shockers are coming off a 26-8 season in 2023 that culminated in a dominant run to the NIVC championship, the program's first national postseason championship. Wichita State dropped just one set over the course of five NIVC victories, winning four straight at home before sweeping UTEP in El Paso to claim the title.
- » The 26 victories were the most in a season for Wichita State since the 2017 club finished 29-4. 2017 was also the last NCAA tournament appearance for the Shockers, who earned a top-16 seed that season and advanced to the second round.
- » Wichita State dropped a home exhibition match against [RV] Kansas State on Saturday, falling 29-27, 25-20 and 25-17 against the Wildcats at Charles Koch Arena. The match drew 2,902 fans.
- » The Shockers were picked second in the American Athletic Conference preseason poll announced on Monday. Rice was tabbed as the conference's preseason favorite, garnering eight first place votes to Wichita State's four. South Florida was picked third and received the final first place vote. Middle blocker Morgan Stout and setter Izzi Strand were both named preseason all-conference.
- » Head coach Chris Lamb enters his 25th season at the helm of the Shockers. Known affectionately as "Lambo," the veteran head coach owns a career record of 508-236, good for a .683 winning percentage and the most wins in the American Athletic Conference.

## LOOKING BACK

- » Wichita State dropped the 2024 exhibition opener against (RV) Kansas State 29-27, 25-20, 25-17 on Saturday evening at Charles Koch Arena.
- » The Shockers took a 19-14 lead in the opening set, but Kansas State rallied with an 8-2 run to claim a slim 22-21 advantage. The two teams then traded the next 12 points as Wichita State fought off four set point opportunities, but eventually the Wildcats put the set away via a kill from Meg Brown and a Shocker attack error.
- » K-State pulled away in the middle stages of the second set, turning an 8-7 edge into a 16-10 lead thanks in large part to a spurt from outside hitter Aliyah Carter, who racked up seven kills in the set. The lead swelled to 20-12 before the Shockers responded with a 5-0 run of their own, forcing a K-State timeout. Stout was at the center of the action, notching two kills and two blocks around a Katie Galligan service ace to trim the deficit to 20-17. The Wildcats regrouped out of the timeout, lengthening the lead out to five and eventually clinching the set with another termination from Carter.
- » Both teams went deep into the bench for the third set, which saw Kansas State sprint out to a 17-6 lead. Brown poured in six kills on eight swings for the Wildcats, who hit .324 as a team in the third set. WSU got as close as 21-14 following a mini run of three consecutive points, but the Shockers committed a trio of errors to help Kansas State close out the victory.
- » Carter led all scorers with 16 kills for KSU, followed by Brown with 12. Leggett paced the Shockers with 10 terminations, while Wilford produced nine and Stout seven. Annalie Heliste, who got the start at libero for WSU, piled up 14 digs, joined in double digits by Wilford (10) and Izzi Strand (10). Strand contributed 26 assists.

## WICHITA STATE

Individual Leaders	Category	D1 Rank*	Total
N. Foster	.413 Hitting %	40	.255
S. Rohling	2.98 Kills / Set	47	13.46
I. Strand	10.47 Assists / Set	72	12.25
G. Maas	3.88 Digs / Set	68	15.63
G. Maas	0.18 Aces / Set	t-325	1.00
N. Foster	0.98 Blocks / Set	97	2.26
B. Kelly	7.69 Attacks / Set	145	34.58
	Opponent Hitting %	28	.168

\*Out of 332 Division I teams; final 2023 rankings

## KENNESAW STATE

## INDIANA

D1 Rank*	Total	Category	D1 Rank*	Total
72	.241	Hitting %	80	.237
56	13.39	Kills / Set	64	13.30
49	12.45	Assists / Set	93	12.11
199	13.89	Digs / Set	232	13.50
t-170	1.97	Aces / Set	45	1.76
152	2.07	Blocks / Set	40	2.48
192	33.82	Attacks / Set	140	34.62
196	.213	Opponent Hitting %	82	.187

## SCHEDULE/RESULTS (Central Time Zone)

### Kennesaw State Invitational (Kennesaw, Ga.)

Aug. 30	at Kennesaw State	11:00 a.m.
Aug. 31	[RV] Indiana	10:00 a.m.
Aug. 31	at Kennesaw State	2:30 p.m.
Sep. 4	at Kansas	6:30 p.m.

### Woo Pig Invitational (Fayetteville, Ark.)

Sep. 6	at Arkansas	7:00 p.m.
Sep. 7	Little Rock	4:00 p.m.

### Nebraska Classic (Lincoln, Neb.)

Sep. 12	Arizona State	6:00 p.m.
Sep. 13	Long Beach State	3:30 p.m.
Sep. 14	Nebraska	2:00 p.m.

### Shocker Volleyball Classic (Wichita, Kan.)

Sep. 19	vs CAL POLY	7:00 p.m.
Sep. 20	vs NORTHERN COLORADO	7:00 p.m.
Sep. 21	vs OMAHA	4:00 p.m.

Sep. 25	at Memphis*	6:00 p.m.
Sep. 27	vs TEMPLE*	7:00 p.m.
Oct. 4	at UAB*	7:00 p.m.
Oct. 6	vs RICE*	1:00 p.m.
Oct. 6	vs SOUTH FLORIDA*	7:00 p.m.
Oct. 8	vs FLORIDA ATLANTIC*	1:00 p.m.
Oct. 18	at Charlotte*	5:00 p.m.
Oct. 20	at East Carolina*	11:00 a.m.
Oct. 25	vs MEMPHIS*	7:00 p.m.
Oct. 27	vs UAB*	1:00 p.m.
Nov. 1	at Tulsa*	6:00 p.m.
Nov. 3	vs TULSA*	1:00 p.m.
Nov. 8	at Rice*	6:00 p.m.
Nov. 10	at Tulane*	1:00 p.m.
Nov. 15	at North Texas*	6:00 p.m.
Nov. 17	vs UTSA*	1:00 p.m.
Nov. 22-24	AAC CHAMPIONSHIP	

\* = American Athletic Conference match

[ ] = AVCA ranking



## FACT BOOK

For bios, records, and more program history. Visit [goshockers.com/VB](http://goshockers.com/VB) or scan the QR code to access the 2024 Wichita State Volleyball Fact Book.

# 35

## BY THE NUMBERS

Percentage of kills that Wichita State returns in 2024. The departed trio of Sophia Rohling, Natalie Foster and Brylee Kelly each racked up more than 1,000 career kills at WSU.

# WICHITA STATE

## VOLLEYBALL

## QUICK FACTS

<b>Name</b>	Wichita State University
<b>Location</b>	Wichita, Kan.
<b>Enrollment</b> (Fall 2024)	17,548
<b>Founded</b>	1895
<b>Arena</b>	Charles Koch Arena
<b>Capacity</b>	10,506
<b>Colors</b>	Yellow (Pantone 116) & Black
<b>Nickname</b>	Shockers
<b>Mascot</b>	WuShock
<b>Affiliation</b>	NCAA Division I
<b>League</b>	American Athletic Conference
<b>Joined</b>	July 1, 2017
<b>President</b>	Richard D. Muma, PhD, MPH, PA-C
<b>Athletic Director</b>	Kevin Saal
<b>SWA</b>	Madison Stein-Mason
<b>Twitter</b>	@goshockersvb, @goshockers
<b>Facebook</b>	goshockersvb
<b>Instagram</b>	@goshockersvb, @goshockers

## WICHITA STATE COMMUNICATIONS

<b>VB Contact</b>	Denning Gerig
	Assoc. Director, Communications
<b>Office</b>	316-978-5461
<b>Cell</b>	316-300-6540
<b>Email</b>	dgerig@goshockers.com
<b>Dir. of Communications</b>	Weston Pletcher
<b>Office</b>	316-978-5447
<b>Email</b>	wpletcher@goshockers.com
<b>Athletics Mailing Address</b>	1845 Fairmount Street, Box 18 Wichita, KS 67260-0018

## ALL-TIME RECORDS

<b>First Year</b>	1974
<b>Total Seasons</b>	49 <sup>th</sup>
<b>Overall Record</b>	<b>850-685-14</b>
<b>AAC Record</b> (2017-Present)	<b>79-42</b>
<b>AAC Reg. Season Titles</b>	1 (2017)
<b>MVC Record</b> (1992-2016)	228-78
<b>MVC Reg. Season Titles</b>	6 (2004, '05, '07, '08, '13, '15) 2006, '12, '14, '15, '16, '17)
<b>MVC Tournament Titles</b>	4 (2004, '13, '15, '16)

## POSTSEASON

<b>NCAA Appearances</b>	11x 2004, '07, '08, '09, '10, '11, '12, '13, '15, '16, '17
<b>NIVC Appearances</b>	3x 2018, 2022, 2023
<b>NCAA Record</b>	8-11
<b>Round of 32</b>	7x, Last: 2017
<b>Sweet 16</b>	1x (2012)
<b>NIVC Championship</b>	1x (2023)

VOLLEYBALL  
ROSTER

Access detailed player and coaches bios and statistics at goshockers.com

## WICHITA STATE NUMERICAL ROSTER

#	Name	Po.	Ht.	Cl.	Exp	Hometown / Previous School
1	Olivia Brown	DS/L	5-2	Fr.	HS	Flower Mound, Texas / Flower Mound HS
2	Gracie Morrow	OH	6-0	Fr.	HS	Wichita, Kan. / Maize South HS
4	Brooklyn Leggett	OH	6-0	R-Jr.	2L	Draper, Utah / Colorado Mesa
5	Reagan Anderson	L/DS	5-3	So.	1L	Overland Park, Kan. / Saint Thomas Aquinas HS
6	Katie Galligan	L/DS	5-9	Jr.	2L	Omaha, Neb. / Elkhorn South HS
7	Haley Wolfe	MB	6-3	R-Fr.	1L	Elkhorn, Neb. / Elkhorn HS
8	Abby Whatton	OH	5-10	Jr.	2L	Tucson, Ariz. / Pima CC
9	Sarah Barham	MB	6-1	5th*	4L	Summerfield, N.C. / Wofford
10	Annalie Heliste	L/DS	5-2	Sr.	3L	Cypress, Texas / Cy-Fair HS
11	Sarah Musial	S	6-1	Fr.	HS	St. Charles, Ill. / St. Charles East HS
12	Grace Hett	DS/L	5-5	Fr.	HS	Marion, Kan. / Marion HS
13	Emerson Wilford	OH	6-2	Jr.	2L	Laguna Hills, Calif. / Arnold O. Beckman HS
14	Maddie Wilson	MB	6-1	R-So.	2L	Colorado Springs, Colo. / Idaho
15	Morgan Stout	MB	6-1	R-Sr.*	4L	Fowler, Kan. / Nickerson HS
16	Izzi Strand	S	6-1	5th*	4L	Carlsbad, Calif. / UC San Diego
18	Simone Grieser	S	6-0	Fr.	HS	Woodinville, Wash. / North Creek HS
21	Sydney Lafferty	MB	6-1	Fr.	HS	Rockwall, Texas / Rockwall HS
22	Nadia Wasilewski	OH	6-1	Fr.	HS	Jackson, Mo. / Jackson HS
23	Gabi Maas	L/DS	5-9	Jr.	2L	Aurora, Colo. / TCU
24	Alyssa Gonzales	OH	6-1	R-Fr.	1L	Aledo, Texas / TCU
26	Allie Paulsen	MB	6-2	R-Fr.	1L	Wichita, Kan. / Andover Central HS

**Head Coach:** Chris Lamb (25<sup>th</sup> season)

**Assistant Coach:** Brian Hosfeld

**Assistant Coach/Recruiting Coordinator:** Katie Zimmerman

**Assistant Coach/Director of Operations:** Ashleigh Houlton

**Athletic Trainer:** Kat Hollowell

Gracie Morrow (MAR oh) • Brooklyn Leggett (LEG it) • Katie Galligan (GAL uh gun) • Haley Wolfe (like wolf) • Abby Whatton (WATT un) • Sarah Barham (BAR um) • Annalie Heliste (ANN uh lee HELL ess tee) • Izzi Strand (rhymes with stand) • Simone Grieser (like greaser) • Nadia Wasilewski (wazz uh LESS key) • Gabi Maas (like moss) • Brian Hosfeld (HOSS feld) •

## ROSTER BREAKDOWN \* = Included extra year of eligibility for COVID-19

## CLASS

**Seniors (4):** Barham\*, Stout\*, Strand\*, Heliste

**Juniors (5):** Leggett, Galligan, Whatton, Wilford, Maas

**Sophomores (2):** Anderson, Wilson

**Freshmen (10):** Brown, Morrow, Wolfe, Musial, Hett, Grieser, Lafferty, Wasilewski, Gonzales, Paulsen

## HEIGHT

**6-3:** Wolfe • **6-2 (x2):** Paulsen, Wilford • **6-1 (x8):** Barham, Musial, Wilson, Stout, Strand, Lafferty, Wasilewski, Gonzales •

**6-0 (x3):** Morrow, Leggett, Grieser • **5-10:** Whatton • **5-9 (x2):** Galligan, Maas • **5-5:** Hett • **5-3:** Anderson • **5-2:** Heliste, Brown

## SEASONS IN WSU PROGRAM

**5<sup>th</sup> Year (1):** Stout (R-Sr.\*)

**4<sup>th</sup> Year (1):** Heliste (Sr.)

**3<sup>rd</sup> Year (2):** Galligan (Jr.), Wilford (Jr.)

**2<sup>nd</sup> Year (7):** Anderson (So.), Leggett (R-Jr.), Maas (Jr.), Paulsen (R-Fr.), Strand (5th\*), Wilson (R-So.), Wolfe (R-Fr.)

**1<sup>st</sup> Year (10):** Brown (Fr.), Morrow (Fr.), Whatton (Jr.), Barham (5th), Musial (Fr.), Hett (Fr.), Grieser (Fr.), Lafferty (Fr.), Wasilewski (Fr.), Gonzales (R-Fr.)

## HOME STATE / COUNTRY

**Kansas (5):** Morrow, Anderson, Hett, Stout, Paulsen

**Texas (4):** Heliste, Brown, Lafferty, Gonzales

**California (2):** Strand, Wilford

**Colorado (2):** Maas, Wilson

**Nebraska (2):** Galligan, Wolfe

**Arizona (1):** Whatton

**North Carolina (1):** Barham

**Illinois (1):** Musial • **Utah (1):** Leggett • **Washington (1):** Grieser • **Missouri (1):** Wasilewski

**WSU-KENNESAW STATE SERIES:**

- » The Shockers and Owls have no previous meetings.

**SCOUTING THE OWLS:**

- » Kennesaw State is in their first season as a member of Conference USA after making the move from the Atlantic Sun. The Owls finished 18-11 (10-6) in 2023, good for fourth place in the ASUN standings; Kennesaw State was bounced in the second round of the conference tournament to bring their season to a close.
- » The Owls are led by prolific outside hitter Manu Johnsen, a native of Denmark who set the program's single-season kills record in 2023. Johnsen was named the ASUN Freshman of the Year in 2022 and was a First Team All-Conference honoree a year ago.
- » Kennesaw State is picked seventh in the 10-team CUSA preseason poll. Reigning regular season and conference champion Western Kentucky topped the poll.
- » Veteran head coach Keith Schunzel is in his 12th season at the helm of the Owls, boasting a 194-110 overall record. Schunzel led Kennesaw State to the program's first NCAA tournament appearance in 2017 and back to the Big Dance in 2019, both times as ASUN champions.

**WSU-INDIANA SERIES:**

- » The Shockers and Hoosiers have just one previous meeting, a 3-1 Wichita State victory at the SMS Classic in Springfield, Missouri during the 1992 season. Wichita State started 1992 with an 18-2 record before finishing the year 24-8.

**► WSU-INDIANA GAME-BY-GAME**

Date	Location	Results	Set Scores
9/12/1992	* Springfield, Mo.	W, 3-1	13-15, 15-9, 15-6, 15-8
* neutral site			

**SCOUTING THE HOOSIERS:**

- » Indiana is receiving votes in the AVCA preseason top 25 poll after a breakout 2023 season that ended with a 21-12 record and 11-9 mark in Big Ten play. The Hoosiers finished sixth in the conference, their best finish since 1999.
- » Indiana is picked 10th in the expanded Big Ten preseason poll that now features 18 teams following the additions of USC, UCLA, Washington and Oregon.
- » Star setter Camryn Haworth earned a spot on the pre-season All-Big Ten team. The rising senior was named an AVCA Honorable Mention All-American last season after leading the nation in service aces (73) and pacing the conference in assists (1,247).
- » Libero Ramsey Gary was an all-conference and all-region selection after leading the Big Ten in digs as a freshman with 530 ups.
- » Head coach Steve Aird enters his seventh season with the Hoosiers in 2024. Aird previously spent four years leading Maryland and was an assistant coach for a pair of national championships while at Penn State. He owns a career record of 135-173 over 10 total seasons as head coach.

**SHOCKERS AT A GLANCE:**

- » The Shockers are tasked with replacing a significant amount of scoring in 2024. Reliable mainstays Sophia Rohling, Brylee Kelly and Natalie Foster have all departed, each with more than 1,000 career kills to their name. Returning outside hitters Emerson Wilford and Brooklyn Leggett are joined by a host of freshmen and TCU transfer Alyssa Gonzales, while Wofford transfer Sarah Barham joins Morgan Stout, Allie Paulsen, Maddie Wilson and Haley Wolfe in the middle.
- » Barham brings an accomplished resume to Wichita for her final season of collegiate volleyball. A four-time All-SoCon selection at Wofford, she led the Terriers to the SoCon championship and their first NCAA tournament appearance in 2023 and departed second in program history in both total blocks and hitting percentage.
- » What the Shockers lack in returning scoring they make up for on the defensive side of the ball. Wichita State returns nearly the entire group of defensive specialists and liberos from a year ago, though libero Gabi Maas is sidelined due to injury. Annalie Heliste, Katie Galligan and Reagan Anderson all saw meaningful playing time in 2023.
- » Setter Izzi Strand starred in her first season with the Shockers after transferring from UC San Diego. Now a 5th year senior, Strand was named Second Team All-AAC and Honorable Mention All-Region after ranking fifth nationally with 1,340 assists. Strand was named NIVC Most Valuable Player after averaging 11.2 assists per set over the course of WSU's run to the championship.
- » Redshirt senior middle Morgan Stout emerged as a star last season, earning Second Team All-Conference honors and ranking third in the conference with a .347 hitting percentage. Stout raised her hitting percentage 169 points from her 2022 mark and established a new career high with 120 blocks.

**UP NEXT:**

- » The Shockers play a single match on the road at top-25 Kansas before heading down to Arkansas for the Woo Pig Invitational, where Wichita State will battle the host Razorbacks and Little Rock.

**THE COACH:**

- » **Chris Lamb**, WSU's all-time wins leader (508-236, .683), is in his 25<sup>th</sup> season on the sideline.
- » The 2017 national coach of the year has guided the Shockers to 11 NCAA tournaments, highlighted by a run to the 2012 Sweet 16.
- » WSU has captured seven conference titles under Lamb's watch, most recently in 2017 when the Shockers finished conference play with a perfect 20-0 mark.

**► AMERICAN ATHLETIC CONFERENCE COACHES // CAREER WINS**

1. Chris Lamb	Wichita St.	508-236	25 <sup>th</sup> Season
2. Genny Volpe	Rice	394-209	21 <sup>st</sup> Season
3. Karen Weatherington	Charlotte	216-216	16 <sup>th</sup> Season
4. Fernanda Nelson	Florida Atlantic	172-152	13 <sup>th</sup> Season
5. Sean Burdette	Memphis	158-222	14 <sup>th</sup> Season

**SHOCKER VOLLEYBALL FOR DUMMIES:**

- » Wichita State is in its eighth season as a member of the American Athletic Conference following a lengthy run in the Missouri Valley Conference. The Shockers won six MVC titles (all between 2004 and 2016) and continued that success into The American. In their inaugural season (2017) they logged a 20-0 conference record
- » The 2017 Shockers accomplished another program milestone when they hosted NCAA tournament matches for the first time in school history. WSU dispatched Radford to reach the Round of 32 for the seventh time in 11 appearances under Chris Lamb but dropped a heartbreaker to Mizzou in front of a school-record 7,258 fans.
- » Shocker volleyball enjoys a passionate local following. The program has ranked among the nation's top-50 in attendance in each of the last 20 seasons, including nine times inside the top-10. The 2017 Shockers averaged a school-record 3,401 fans.
- » Among the former Shockers who have gone on to professional careers is 2009 graduate Emily Stockman, a two-time All-American, who transitioned to beach volleyball in 2014 and went on to big success with Team USA and on the AVP circuit before announcing her retirement in September of 2023.
- » What's a Shocker? Legend has it, the name first appeared in 1904 on a poster advertising a football game between Wichita State (then known as Fairmount College) and the Chillico Indians. The team's manager chose the name because many of the players earned money during the off-season harvesting (or "shocking") wheat in the surrounding fields. When it came time to bring the name to life, students created WuShock, a big, bad, muscle-bound bundle of wheat whose name is derived from a period of time when the school was simply Wichita University or "WU."

# AMERICAN

ATHLETIC CONFERENCE

Overall	Conf.	Overall	Home	Away	Neutral
Rice	-	-	-	-	-
Wichita State	-	-	-	-	-
South Florida	-	-	-	-	-
East Carolina	-	-	-	-	-
Florida Atlantic	-	-	-	-	-
North Texas	-	-	-	-	-
UTSA	-	-	-	-	-
Temple	-	-	-	-	-
Memphis	-	-	-	-	-
Tulsa	-	-	-	-	-
Charlotte	-	-	-	-	-
Tulane	-	-	-	-	-
UAB	-	-	-	-	-

Through Thursday, Aug. 29

## UPCOMING SCHEDULE:

### Friday, Aug. 30

9:00 a.m.	Charlotte vs. UTRGV
10:00 a.m.	East Carolina vs. Queens
10:30 a.m.	Tulane vs. New Mexico
11:00 a.m.	Bryant vs. Florida Atlantic
11:00 a.m.	Rider vs. Temple
11:00 a.m.	Wichita State vs. Kennesaw State
12:30 p.m.	UTSA vs. William & Mary
1:00 p.m.	Tulsa vs. Campbell
1:00 p.m.	Mississippi Valley State vs. Memphis
3:30 p.m.	Charlotte vs. Charleston Southern
5:00 p.m.	Tulane vs. UC Irvine
5:00 p.m.	East Carolina vs. UNCW
5:00 p.m.	South Florida vs. Florida State
6:00 p.m.	UTSA vs. Old Dominion
6:00 p.m.	Seton Hall vs. Florida Atlantic
7:00 p.m.	Houston Christian vs. Rice
7:00 p.m.	Tennessee Tech vs. Memphis
7:00 p.m.	Colorado vs. North Texas
7:00 p.m.	Alcorn State vs. UAB
7:00 p.m.	Tulsa vs. Baylor

### Saturday, Aug. 31

9:00 a.m.	UTSA vs. Marist
10:00 a.m.	Wichita State vs. Indiana
11:30 a.m.	Tulane vs. North Dakota
12:00 p.m.	Ball State vs. Florida Atlantic
12:00 p.m.	Charlotte vs. Furman
12:00 p.m.	Fairleigh Dickinson vs. Temple
12:00 p.m.	South Florida vs. Georgia
12:30 p.m.	East Carolina vs. Loyola (Md.)
1:00 p.m.	Austin Peay vs. Memphis
2:30 p.m.	Radford vs. Temple
2:30 p.m.	Wichita State vs. Kennesaw State
3:00 p.m.	Texas State vs. Rice
5:00 p.m.	Mississippi State vs. UAB
6:00 p.m.	Rutgers vs. North Texas

### Sunday, Sep. 1

10:00 a.m.	South Florida vs. UC Santa Barbara
11:00 a.m.	Tulsa vs. Abilene Christian
12:30 p.m.	Penn State vs. Temple
2:00 p.m.	UCF vs. Charlotte
3:00 p.m.	Miami vs. North Texas

## WSU ON THE LEADERBOARDS -- Final 2023 Rankings

Category	Nat'l	AAC	Value	National Leader	AAC Leader
Aces Per Set (332 ranked)	325	13	1.00	Dayton 2.26	South Florida 1.76
Assists Per Set (332 ranked)	72	4	12.25	UNI 13.91	SMU 12.86
Blocks Per Set (332 ranked)	97	9	2.26	Wisconsin 3.07	East Carolina 2.51
Digs Per Set (332 ranked)	68	6	15.63	Rice 18.56	Rice 18.56
Hitting Percentage (331 ranked)	40	2	.255	Stanford .316	SMU .257
Kills Per Set (332 ranked)	48	3	13.46	UNI 14.94	SMU 13.89
Match W-L Percentage (328 ranked)	32	2	.765	Nebraska .943	SMU .788
Opponent Hitting Percentage (332 ranked)	28	3	.168	Nebraska .134	Rice .159
Team Assists (332 ranked)	13	2	1,568	Drake 1,666	South Florida 1,582
Team Attacks Per Set (332 ranked)	146	11	34.58	Tulsa 39.57	Tulsa 39.57
Team Digs (332 ranked)	15	3	2,001	SE Missouri St. 2,235	Tulsa 2,132
Team Kills (332 ranked)	7	1	1,723	Oregon 1,769	Wichita State 1,723
Team Service Aces (332 ranked)	295	13	128	Dayton 278	South Florida 222
Team Total Attacks (332 ranked)	20	2	4,426	Tulsa 4,867	Tulsa 4,867
Team Total Blocks (332 ranked)	38	3	289.0	Wisconsin 365.5	North Texas 298.5

## WSU ON THE LEADERBOARDS -- Final 2023 Rankings

Category	Player	Nat'l	AAC	Value	AAC Leader
Aces Per Set (150 ranked)	-	-	-	-	Rylee Busse, Memphis 0.42
Assists Per Set (150 ranked)	Izzi Strand	30	2	10.47	Celia Cullen, SMU 10.59
Attacks Per Set (150 ranked)	-	-	-	-	Kayley Cassaday, Tulsa 14.28
Blocks Per Set (300 ranked)	Natalie Foster	218	12	0.98	Lara Kretschmer, Charlotte 1.21
Digs Per Set (150 ranked)	-	-	-	-	Nia McCardell, Rice 4.96
Hitting Percentage (149 ranked)	Natalie Foster	12	1	.413	Natalie Foster, Wichita State .413
Kills Per Set (1500 ranked)	Sophia Rohling	299	11	2.98	Kayley Cassaday, Tulsa 5.14
Points (150 ranked)	Natalie Foster	142	6	436.0	Kayley Cassaday, Tulsa 681.5
Points Per Set (150 ranked)	-	-	-	-	Kayley Cassaday, Tulsa 5.54
Service Aces (147 ranked)	-	-	-	-	Kelsey Smith, UAB 47
Total Assists (150 ranked)	Izzi Strand	5	1	1,340	Izzi Strand 1,340
Total Attacks (147 ranked)	-	-	-	-	Kayley Cassaday, Tulsa 1,757
Total Blocks (197 ranked)	Natalie Foster	75	5	126	Lara Kretschmer, Charlotte 143
Total Digs (300 ranked)	Gabi Maas	65	5	496	Nia McCardell, Rice 560
Total Kills (150 ranked)	-	-	-	-	Kayley Cassaday, Tulsa 632
Triple Doubles (13 ranked)	-	-	-	-	Kelsey Smith, UAB 6

## AVCA POLL -- Aug. 19

Rk	School	Pts	W-L	LW
1	Texas (53)	1503	0-0	-
2	Nebraska (10)	1474	0-0	-
3	Wisconsin (1)	1391	0-0	-
4	Pittsburgh	1338	0-0	-
5	Stanford	1228	0-0	-
6	Louisville	1221	0-0	-
7	Penn State	1005	0-0	-
8	Purdue	986	0-0	-
9	Kentucky	963	0-0	-
10	Oregon	943	0-0	-
11	Florida	870	0-0	-
12	Creighton	811	0-0	-
13	Kansas	691	0-0	-
14	Georgia Tech	665	0-0	-
15	Tennessee	650	0-0	-
16	BYU	547	0-0	-
17	Arizona State	430	0-0	-
18	Minnesota	358	0-0	-
19	Arkansas	334	0-0	-
20	Florida State	309	0-0	-
21	USC	300	0-0	-
22	Dayton	269	0-0	-
23	Baylor	244	0-0	-
24	Marquette	233	0-0	-
25	Georgia	187	0-0	-

## WSU All-Time in the Polls:

No. of Weeks in Top-25: 48 (Last: 2017)

No. of Weeks in Top-10: 2 (Last: 2008)

Highest Ranking: 9 (2008)


## 2024 INDIVIDUAL HONORS

### AAC PRESEASON ALL-CONFERENCE

Angeles Alderete (POTY)	Jr.	OH	East Carolina
Lara Kretschmer	Gr.	MB	Charlotte
Valeria Rosado	Sr.	OH	Florida Atlantic
Aryn Johnson	Sr.	OH	North Texas
Nia McCardell	5th	L	Rice
Maria Clara Andrade	Jr.	OH	South Florida
Caroline Dykes	Sr.	S	South Florida
Taylor Davenport	Gr.	OH	Temple
Mia Soerensen	Jr.	OPP	UTSA
Avery Burks	So.	OH	Tulane
Morgan Stout	R-Sr.	MB	Wichita State
Izzi Strand	5th	S	Wichita State

### SHOCKER AAC WEEKLY HONORS



I		<b>OLIVIA BROWN</b>		
FR		<b>S-2</b>	<b>DS/L</b>	<b>FLOWER MOUND, TEXAS</b>

**OVERVIEW****High School**

Helped Flower Mound High School to three district championships in four years, including a 34-8 mark and a regional finals appearance as a senior in 2023...team finished the season ranked #58 nationally according to MaxPreps...named Academic All-District in 2023...named to the 2022 JVA Phenom Watch List...earned the 2022 Lady Jags "Jag Award" for outstanding leadership and performance.

**Personal**

Daughter of Scott and Julie Brown...born October 4...majoring in Criminal Justice and Psychology at Wichita State.

**CAREER STATISTICS****2024 INDIVIDUAL MATCH-BY-MATCH**

2



GRACIE MORROW

FR

6-0

OH

WICHITA, KAN.

## OVERVIEW

## High School

Four-year letterwinner and four-year starter for head coach Alexis Head at Maize South High School...finished her career with 1,141 kills and 703 digs...a three-time All-State selection, First Team as a senior in 2023, Second Team as a junior in 2022 and honorable mention as a sophomore in 2021...a four-time All-Conference selection, including First Team honors in her sophomore, junior and senior seasons...twice named Class 5A State First Team All-Tournament...a two-time All-Metro selection by the Wichita Eagle as a junior and senior... participated in the 2023 Midwest Battle for Team Kansas...named to the AVCA All-American Watch List...helped Maize South to four consecutive league and regional titles... hit .294 with 344 kills as a senior, adding 220 digs and 31 aces for a Mavericks team that went 38-5 and finished third in Class 5A...also a member of the track & field team at Maize South, set the school record in the high jump.

## Personal

Daughter of Matt and Tobie Morrow...has a sister, Norah...father, Matt, played football collegiately at Bethany...mother, Tobie, played soccer collegiately at Friends...born January 7...majoring in elementary education at Wichita State.

## CAREER STATISTICS

## 2024 INDIVIDUAL MATCH-BY-MATCH

4

R-JR



BROOKLYN LEGGETT

6-0

OH

DRAPER, UTAH

## OVERVIEW

## 2023 Redshirt Sophomore

Appeared in four matches totaling eight sets...notched four kills on the season, highlighted by three on the road at Rice on November 18...had three blocks over two sets of action against Colorado on September 9...recorded her first kill as a Shocker against Texas Tech on August 25...named to AD Honor Roll in both the spring and fall semesters...named to AAC All-Academic Team...named to AAC All-Academic Team.

## Colorado Mesa (2021-22)

Appeared in 47 sets for Colorado Mesa in 2022 after redshirting in 2021...racked up 42 kills, highlighted by a season-best 11 in the opening round of the NCAA Division II Tournament... followed up with six more against #1 ranked Metropolitan State...voted Most Improved Player during her redshirt season.

## High School

Two-year team captain and four-year letterwinner for head coach Mindy Ricks at Corner Canyon High School... was named to the 2020 AVCA All-America Watch List prior to her senior season...an AVCA Phenom List pick in 2019... was an All-State selection at the 6A level as a junior in 2019 after earning the same honors at the 5A level as a sophomore in 2018...also earned all-region and UCVA honors in 2018.

## Personal

Daughter of Tyler and Sunny Leggett... has a brother, AJ... born 2/23/2003...Majoring in Graphic Design at Wichita State.

## CAREER STATISTICS

SEASON	TEAM	SM-MP	K	K/S	E	TA	PCT	A	A/S	SA	SA/S	SE	DIG	D/S	RE	BS	BA	TB	B/S	BE	BHE	PTS	PTS/S
2022-23	CMU	47-24	42	0.89	33	146	.062	0	0.00	1	0.02	0	12	0.26	0	3	11	14	0.30	6	0	51.5	1.10
2023-24	WSU	8-4	4	0.50	3	24	.042	0	0.00	0	0.00	1	0	0.00	0	0	6	6	0.75	0	0	7.0	0.88
<b>TOTAL FOR WSU</b>		<b>8 - 4</b>	<b>4</b>	<b>0.50</b>	<b>3</b>	<b>24</b>	<b>.042</b>	<b>0</b>	<b>0.00</b>	<b>0</b>	<b>0.00</b>	<b>1</b>	<b>0</b>	<b>0.00</b>	<b>0</b>	<b>0</b>	<b>6</b>	<b>6</b>	<b>0.75</b>	<b>0</b>	<b>0</b>	<b>7.0</b>	<b>0.88</b>
<b>TOTAL</b>		<b>55 - 28</b>	<b>46</b>	<b>0.84</b>	<b>36</b>	<b>170</b>	<b>.059</b>	<b>0</b>	<b>0.00</b>	<b>1</b>	<b>0.02</b>	<b>1</b>	<b>12</b>	<b>0.22</b>	<b>0</b>	<b>3</b>	<b>17</b>	<b>20</b>	<b>0.36</b>	<b>6</b>	<b>0</b>	<b>58.5</b>	<b>1.06</b>

## Single Game Highs

Statistic	Value
Kills	11 vs DBU 11/17/22
Attacks	32 vs DBU 11/17/22
Serve Aces	1 at MSU Denver 11/18/22
Digs	3 vs DBU 11/17/22
Blocks	3 vs Westminster (UT) 09/09/22, vs Regis (CO) 11/11/22, vs DBU 11/17/22, vs Colorado 09/09/23
Block solos	2 at MSU Denver 11/18/22
Block assists	3 vs Westminster (UT) 09/09/22, vs Regis (CO) 11/11/22, vs Colorado 09/09/23

## 2024 INDIVIDUAL MATCH-BY-MATCH

<b>S</b>		<b>REAGAN ANDERSON</b>	
<b>SO</b>		<b>S-3</b>	<b>DS/L</b>
		<b>OVERLAND PARK, KAN.</b>	

**OVERVIEW****2023 Freshman**

Appeared in 13 matches and 32 sets as a defensive specialist...logged 42 digs, including a season-high eight on three different occasions (September 1 at Illinois, September 2 vs. Illinois State, September 20 at East Carolina)...the only Shocker to record a trio of aces in a single set, firing three straight against SMU on September 29...notched an ace and four digs in a win over UTSA on November 10...had a pair of assists against Houston Christian on August 26...named to AD Honor Roll in Fall 2023...named to AAC All-Academic Team.

**High School**

Four-year letterwinner and three-year starter for head coach Sarah Ikenberry at Saint Thomas Aquinas High School...2022: Named Second Team All-State at libero, helping Saints to Class 5A state title...posted 340 digs, 469 serve receptions, and 20 aces...named First Team All-Eastern Kansas League...2021: First Team All-EKL...2020: Honorable Mention All-EKL...helped St. Thomas Aquinas to state title...Career: Notched 953 digs, 1305 serve receptions, and 53 aces...Saint Thomas Aquinas went 141-16 over her four years, claiming three state championships

**Personal**

Daughter of Rex and Diane Anderson...Has a sisters, Mackenzie, and three brothers, Taylor, Brady, and Blake... born 4/17/2005...Plans to major in Business at Wichita State.

**CAREER STATISTICS**

SEASON	TEAM	SM-MP	K	K/S	E	TA	PCT	A	A/S	SA	SA/S	SE	DIG	D/S	RE	BS	BA	TB	B/S	BE	BHE	PTS	PTS/S
2023-24	WSU	32-13	0	0.00	0	2	.000	3	0.09	4	0.13	2	42	1.31	7	0	0	0	0.00	0	0	4.0	0.13
<b>TOTAL</b>		<b>32 - 13</b>	<b>0</b>	<b>0.00</b>	<b>0</b>	<b>2</b>	<b>.000</b>	<b>3</b>	<b>0.09</b>	<b>4</b>	<b>0.13</b>	<b>2</b>	<b>42</b>	<b>1.31</b>	<b>7</b>	<b>0</b>	<b>0</b>	<b>0</b>	<b>0.00</b>	<b>0</b>	<b>0</b>	<b>4.0</b>	<b>0.13</b>

**Single Game Highs**

Statistic	Value
Attacks	1 at Illinois 09/01/23, vs Omaha 09/15/23
Assists	2 vs Houston Christian 08/26/23
Serve Aces	3 at SMU 09/29/23
Digs	8 at Illinois 09/01/23, vs Illinois St. 09/02/23, at East Carolina 09/20/23
PCT	.000 at Illinois 09/01/23, vs Omaha 09/15/23

**2024 INDIVIDUAL MATCH-BY-MATCH**



6		<h1>KATIE GALLIGAN</h1>		
JR		S-9	L/DS	OMAHA, NEB.

## OVERVIEW

## 2023 Sophomore

Played 32 matches and 101 sets, including a pair of late-season starts at libero...piled up 172 digs, ranking sixth on the team with an average of 1.70 per set...led the Shockers in reception percentage for a second consecutive season at .962, including a reception error percentage of just 1.0% in American Athletic Conference play...shined in Wichita State's run to the NIVC championship, notching a career-high 20 digs against Tulsa on December 1 and a career-best four assists against Arkansas State on November 30...reached double-digit digs six times over a nine-match stretch from November 3-December 1...recorded seven service aces on the season, including two in a straight sets win over South Florida on October 8...named to AD Honor Roll in the spring and fall, finishing with a 4.0 GPA in the spring semester...named to AAC All-Academic Team.

## 2022 Freshman

Played in 28 matches and 88 sets, earning three starts as a true freshman...finished sixth on the team with 118 digs, averaging 1.34 sets...led all qualified Shockers with a .967 reception percentage...contributed 14 assists and eight service aces...dropped in a season-best three aces in a road win at Cincinnati on Oct. 14...sparked third set comeback at Tulane with 7-0 run at the service line, picking up two aces...dished out three assists on the road at nationally ranked Houston on Oct. 21...notched first career double-digit dig performance with 11 in road victory at Tulsa on Nov. 16...named to AD Honor Roll in Fall 2022 and Spring 2023, finishing with a 4.0 GPA in both semesters.

## High School

Three-year letterwinner and three-year starter at Elkhorn South High School in Omaha, Neb...a 2021 Under Armour All-American and two-time Honorable Mention All-Conference selection...helped Elkhorn South to the program's first-ever state championship in 2020, claiming the Class A crown after a 30-1 season...totaled 946 digs in her career, averaging 3.3 per set while also recording 56 aces...averaged 4.1 digs per set as a senior...excelled in the classroom; named to the Honor Roll all four years as well as winning the Elkhorn Excellence Award...named to 2021 AVCA Best and Brightest First Team.

## Personal

Daughter of Tim and Mary Galligan...has two sisters, Sarah and Izzie, and a twin brother, Andrew...born 3/30/2004...Majoring in Health Sciences at WSU.


## CAREER STATISTICS

SEASON	TEAM	SM-MP	K	K/S	E	TA	PCT	A	A/S	SA	SA/S	SE	DIG	D/S	RE	BS	BA	TB	B/S	BE	BHE	PTS	PTS/S
2022-23	WSU	88-28	0	0.00	0	1	.000	14	0.16	8	0.09	10	118	1.34	8	0	0	0	0.00	0	0	8.0	0.09
2023-24	WSU	101-32	0	0.00	0	1	.000	13	0.13	7	0.07	9	172	1.70	7	0	0	0	0.00	0	0	7.0	0.07
TOTAL		189 - 60	0	0.00	0	2	.000	27	0.14	15	0.08	19	290	1.53	15	0	0	0	0.00	0	0	15.0	0.08

## Single Game Highs

Statistic	Value
Attacks	1 vs UNLV 09/08/22, at Northern Colo. 09/16/23
Assists	4 vs Arkansas St. 11/30/23
Serve Aces	3 at Cincinnati 10/14/22
Digs	20 vs Tulsa 12/01/23
PCT	.000 at Northern Colo. 09/16/23

## 2024 INDIVIDUAL MATCH-BY-MATCH

7		<b>HALEY WOLFE</b>		
R-FR		<b>6-3</b>	<b>MB</b>	<b>ELKHORN, NEB.</b>

**OVERVIEW****2023 Freshman**

Redshirted...named to the AD Honor Roll in the fall, finishing the semester with a 4.0 GPA...named to AAC All-Academic Team.

**High School**

Four-year letterwinner and three-year starter for head coach Morgan Johnson at Elkhorn High School...2022: Named First Team All-Eastern Midlands Conference and chosen to play in Nebraska's All-State game...fired 394 kills, hitting .320 while averaging 4.5 kills per set...added 47 blocks and 46 aces...2021: Named Honorable Mention All-EMC...led Class B in total blocks...2020: Honorable Mention All-EMC...Career: 691 kills, 192 blocks, hit .302

**Personal**

Daughter of Brett and Nicole Wolfe...Has a sister, Abby, and a brother, Zach...father Brett played baseball at Omaha...born 6/15/2005...Plans to major in Health Care Science at Wichita State.

**CAREER STATISTICS****2024 INDIVIDUAL MATCH-BY-MATCH**

8



ABBY WHATTON

JR

S-10

OH

TUCSON, ARIZ.

## OVERVIEW

**Pima Community College (2023)**

Named Honorable Mention All-ACCAC after leading the Aztecs in kills (304), kills per set (3.10), points (333.0) and points per set (3.40)...played in 29 of 30 matches and 98 total sets...had nine or more kills in 19 of 30 matches...recorded eight double-doubles...poured in a season-high 25 kills while hitting .302 in a five-set win over Glendale CC on Oct. 27...had 18 kills and a season-high 21 digs in a win over Yavapai College on September 6...fired three aces in a win over Mesa CC on Oct. 18.

**Yavapai College (2022)**

Named NJCAA All-Region I First Team and ACCAC Honorable Mention, pacing the Roughriders in kills (226) and kills per set (3.01) to go along with 171 digs and 32 blocks...finished sixth in the conference in kills per set and eighth in total kills...racked up a season-best 18 kills and 13 digs against Arizona Western on Oct. 26...had three solo blocks in a sweep of South Mountain on Sept. 7...delivered a career-high six aces at Eastern Arizona on Sept. 28.

**High School**

A four-time First Team All-Region selection at Canyon del Oro High School under head coach Michael Owens...earned Freshman of the Year, First Team All-Southern Arizona, First-Team All-Conference, First-Team All-Region and Offensive Player of the Year honors...powered Dorados to a runner-up finish in Class 4A as a senior in 2021.

**Personal**

Daughter of David and Erin Whatton...has a sister, Macy...born June 9...majoring in business administration at Wichita State.

## CAREER STATISTICS

## 2024 INDIVIDUAL MATCH-BY-MATCH

9

STH\*



# SARAH BARHAM

6-1
MB
SUMMERFIELD, NC

## OVERVIEW

## Wofford (2020-23)

Finished career at Wofford as one of the most decorated players in program history...named All-Southern Conference all four years to go along with an All-Freshman Team selection...named the Most Outstanding Player of the 2023 SoCon Tournament after notching 24 kills and 20 blocks in three matches to lead the Terriers to the SoCon championship and their first NCAA tournament appearance...twice set the program's single-season record for blocks, piling up 138 in 2021 and then breaking her own mark in 2023 with 146...averaged 1.16 blocks per set over the four years, the best career mark in Wofford history...ranks second in program history with 470 total blocks and third with 161 solo blocks...offensively, owns a career hitting percentage of .316 that is good for second all time at Wofford...delivered 937 kills on her way to 1,283 total points...only volleyball player in Southern Conference history to earn SoCon Player of the Month honors four times...fired a career-high 20 kills and 11 blocks for her first career double-double on Senior Night against East Tennessee State.

## High School

Starred at Northwest Guilford High School for head coach Nancy Everett, leading the Vikings to four regular-season conference championships...a three-time All-Area and All-Conference honoree...twice tabbed conference Player of the Year...named to the 2019 AVCA All-Region Team.

## Personal

Son of Ben and Jackie Barham...parents both competed collegiately at Western Carolina, Jackie on the volleyball team and Ben on the basketball team...has a brother, Wesley...born April 23...majoring in counseling with a sports emphasis at Wichita State.

## CAREER STATISTICS

SEASON	TEAM	SM-MP	K	K/S	E	TA	PCT	A	A/S	SA	SA/S	SE	DIG	D/S	RE	BS	BA	TB	B/S	BE	BHE	PTS	PTS/S	
2020-21	WOF	65-17	162	2.49	40	342	.357	1	0.02	5	0.08	13	27	0.42	0	21	42	63	0.97	3	2	209.0	3.22	
2021-22	WOF	115-31	260	2.26	95	587	.281	13	0.11	15	0.13	26	35	0.30	1	48	90	138	1.20	6	3	368.0	3.20	
2022-23	WOF	111-29	251	2.26	72	537	.333	8	0.07	10	0.09	20	55	0.50	0	37	86	123	1.11	11	1	341.0	3.07	
2023-24	WOF	114-31	264	2.32	81	587	.312	6	0.05	0	0.00	0	23	0.20	0	55	91	146	1.28	11	1	364.5	3.20	
TOTAL FOR WSU			-	0.00			.000		0.00		0.00			0.00					0.00			0.0	0.00	
TOTAL			405 - 108	937	2.31	288	2053	.316	28	0.07	30	0.07	59	140	0.35	1	161	309	470	1.16	31	7	1283	3.17

## Single Game Highs

Statistic	Value	
Kills	20	vs ETSU 11/11/23
Attacks	38	at Western Caro. 03/25/21
Assists	2	vs Chattanooga 10/15/21, at UNC Greensboro 11/06/21, vs Furman 09/28/22
Serve Aces	5	vs North Ala. 09/12/21
Digs	8	at Col. of Charleston 09/10/22
Blocks	13	at Mercer 03/07/21
Block solos	6	vs ETSU 11/11/23
Block assists	11	at Mercer 03/07/21

## 2024 INDIVIDUAL MATCH-BY-MATCH

10		<b>ANNALIE HELISTE</b>		
		<b>S-S</b>	<b>L/DS</b>	<b>CYPRESS, TEXAS</b>

**OVERVIEW****2023 Junior**

Played in 33 matches and 118 sets, logging eight starts... established new career highs across the board as a key cog in Wichita State's stellar defensive unit...finished fifth on the squad with 202 digs and 1.71 digs per set, both career bests... developed into one of the best out-of-system setters in the American Athletic Conference, ending conference play with a 32.4% assist percentage that ranked second in the league... matched a career high with three assists in the Shockers NIVC win over Drake on December 6...more than doubled her aces from a season ago, piling up 17 from the service line...had a pair of aces on two occasions, against Temple on October 6 and at Rice on November 17...recorded a kill for the third consecutive season by scoring against UTSA on November 10...named to AD Honor Roll in the spring and fall, finishing with a 4.0 GPA both semesters...named to AAC All-Academic Team.

**2022 Sophomore**

Played in 22 matches and 64 sets, making three starts...notched 78 digs, good for 1.22 per set...added eight service aces and five assists...led the Shockers with a .966 serve percentage, committing just five errors in 147 attempts...established new digs career high in back-to-back matches, recording 12 against Tulsa on Oct. 12 and 13 at Cincinnati on Oct. 14...also set new career highs with three assists and two aces in the Cincinnati match...fired two more aces in the following match at nationally ranked Houston on Oct. 21...delivered her lone kill of the season to clinch the fourth set in the Shockers come-from-behind win at SMU on Nov. 23...named to AD Honor Roll in Fall 2022 and Spring 2023, finishing with a 4.0 GPA in both semesters.

**2021 Freshman**

Played in 21 matches and 58 sets as a defensive specialist...picked up 51 digs, two assists and two service aces...had a season-best 10 digs at Houston on Sept. 26...notched five digs in three other matches, including final appearance of the season vs. SMU on Nov. 24...named to the AD Honor Roll in both Fall 2021 and Spring 2022, earning a 4.0 GPA each semester...named to AAC All-Academic Team.

**High School**

Three-year letterwinner and two-year starter for head coach Donna Benotti at Cy-Fair Senior High School...2019: Was the district leader in service aces, Named first team all-district, GVCVA Team of the Year, GVCVA All-Academic Team, GVCVA Postseason Team for Class 6A, TAVC Class 6A All-Texas Team, Prep Volleyball Defensive Dandies Honorable Mention...2020: GVCVA Preseason Team selection, Prep Volleyball Recruit of the Week... Helped her team to a Class 6A regional runner-up finish in 2019.

**Personal**

Daughter of Kyle and Stephanie Heliste...Has a sister, Madeleine Heliste...Her great uncle, Berl Simmons, played football at TCU...Majoring in Communication Science and Disorders at Wichita State.

**CAREER STATISTICS**

SEASON	TEAM	SM-MP	K	K/S	E	TA	PCT	A	A/S	SA	SA/S	SE	DIG	D/S	RE	BS	BA	TB	B/S	BE	BHE	PTS	PTS/S
2021-22	WSU	58-21	1	0.02	0	4	.250	2	0.03	2	0.03	11	51	0.88	10	0	0	0	0.00	0	0	3.0	0.05
2022-23	WSU	64-22	1	0.02	0	3	.333	5	0.08	8	0.13	5	78	1.22	10	0	0	0	0.00	0	0	9.0	0.14
2023-24	WSU	118-33	1	0.01	1	3	.000	23	0.19	17	0.14	33	202	1.71	23	0	0	0	0.00	0	0	18.0	0.15
<b>TOTAL</b>		<b>240 - 76</b>	<b>3</b>	<b>0.01</b>	<b>1</b>	<b>10</b>	<b>.200</b>	<b>30</b>	<b>0.13</b>	<b>27</b>	<b>0.11</b>	<b>49</b>	<b>331</b>	<b>1.38</b>	<b>43</b>	<b>0</b>	<b>0</b>	<b>0</b>	<b>0.00</b>	<b>0</b>	<b>0</b>	<b>30.0</b>	<b>0.13</b>

**Single Game Highs**

Statistic	Value
Kills	1 vs Delaware 09/11/21, at SMU 11/23/22, vs UTSA 11/10/23
Attacks	2 at Kansas 09/10/21, at SMU 11/23/22
Assists	3 at Cincinnati 10/14/22, vs Drake 12/06/23
Serve Aces	2 vs Temple 10/06/23, at Rice 11/17/23, at Cincinnati 10/14/22, at Houston 10/21/22
Digs	13 at Cincinnati 10/14/22
PCT	1.000 vs UTSA 11/10/23

**2024 INDIVIDUAL MATCH-BY-MATCH**



II		<b>SARAH MUSIAL</b>		
FR		<b>6-I</b>	<b>S</b>	<b>ST. CHARLES, ILL.</b>

**OVERVIEW****High School**

Three-year letterwinner and starter for head coaches Jennifer Kull and Kathleen McCullagh at St. Charles East High School in St. Charles, Illinois. . . named All-State as a junior in 2022. . . earned All-Conference and All-Area honors in both 2022 and 2023. . . powered St. Charles East to the Class 4A state tournament as a junior. . . tabbed to the AVCA Phenom List in 2022. . . a four-time Academic All-Conference honoree. . . selected for National Honor Society as a junior and senior.

**Personal**

Daughter of Mike and JoEllyn Musial. . . has a twin sister, Meredith. . . has two brothers, Joseph and Mark. . . grandfather, George Donnelly, played football collegiately at the University of Illinois and three seasons with the San Francisco 49ers. . . born March 16. . . undecided on a major at Wichita State.

**CAREER STATISTICS****2024 INDIVIDUAL MATCH-BY-MATCH**

12



GRACE HETT

FR

S-S

DS/L

MARION, KAN.

## OVERVIEW

## High School

Four-year letterwinner and starter for head coaches Kris Burkholder and Keri Collett at Marion High School in Marion, Kansas...played libero each of the first three seasons before moving to outside hitter as a senior...a three-time KVA All-State selection, earning Second Team honors in 2023, First Team in 2022 and Honorable Mention in 2021...a four-time Heart of America League selection, including First Team accolades in 2021, 2022 and 2023...averaged 5.8 digs per set to go along with 285 kills and 65 aces as a senior...committed just nine reception errors in more than 300 chances...finished her career with 2,017 digs, 404 kills, 211 aces and 167 assists...also participated in softball, track and basketball at Marion...an All-State basketball player who tied the school record with six three pointers in a game and broke the school record with a 38% three-point field goal percentage...named High Honor Roll all four years at Marion.

## Personal

Daughter of David and Diane Hett...has a brother, Ethan, and a sister, Emily Overton...cousins Jason, Jared and Jordan Hett all played basketball collegiately at Tabor...cousin, Kayley Davis, played basketball collegiately at Kansas Wesleyan...aunt, Lori Heerey, played volleyball collegiately at Friends...uncle, Jerry Hett, played basketball and ran track at McPherson College...born May 10...undecided on a major at Wichita State.

## CAREER STATISTICS

## 2024 INDIVIDUAL MATCH-BY-MATCH

13

JR



# EMERSON WILFORD

6-2

OH

LAGUNA HILLS, CALIF.

## OVERVIEW

### 2023 Sophomore

Emerged as a dependable scoring option on the left for the Shockers...played in 29 matches and 89 sets, earning 17 starts...nearly doubled her hitting percentage from her freshman season, hitting .180 on 193 total kills...averaged 2.17 kills per set and 2.61 points per set...recorded the first three double-doubles of her career, going off for 13 kills and 11 digs against Houston Christian on August 26, 15 and 10 at Florida Atlantic on October 27, and 13 and 14 one day later at Memphis on October 29...established a new career best with the 15 kills against FAU...averaged 1.18 digs per set...twice racked up 14 digs to establish a new personal best (vs. Tulsa on October 10, at Memphis on October 29)...finished second on the team with 11 solo blocks, notching a pair of solo rejections four times...had a career-best six total blocks at Northern Colorado on September 16...added four service aces, including two in a win over Tulsa on October 20...fired 11 kills in the NIVC championship win over UTEP, piling up nine terminations on 17 attempts without an error in the first two sets...named to the AD Honor Roll in both the spring and fall semesters...named to AAC All-Academic Team.

### 2022 Freshman

Played in 13 matches and 35 sets, making one start...recorded 46 kills (1.31 per set) on a .095 hitting percentage...contributed 14 digs and 12 blocks...helped Shockers to a five-set win vs. Memphis on Oct. 7 with eight kills and three blocks, including four terminations and two blocks in the deciding fifth set...delivered the best match of her season on the road at nationally ranked Houston on Oct. 21, pouring in 12 kills on a .281 hitting percentage...set a season high with four digs plus three block assists against Tulane on Oct. 23...named to AD Honor Roll in the fall semester...named to AAC All-Academic Team.

### High School

Three-year starter for head coach Darin McBain at Arnold O. Beckman High School in Irvine, California...Named captain for 2021 Beckman team that went 12-0 in league play to clinch a third consecutive Pacific Coast League title, selected as PCL MVP and First-Team All-League...Named First-Team All-League in 2019 as Patriots went undefeated in PCL play, finishing 22-12.

### Personal

Daughter of Marty and Shelly Wilford...father was drafted by the Chicago Blackhawks and played professionally in the IHL and AHL, as well as in Germany and Italy...Has a sister, Graycen, and a brother, Nash...born May 2...Majoring in Business at Wichita State.

## CAREER STATISTICS

SEASON	TEAM	SM-MP	K	K/S	E	TA	PCT	A	A/S	SA	SA/S	SE	DIG	D/S	RE	BS	BA	TB	B/S	BE	BHE	PTS	PTS/S
2022-23	WSU	35-13	46	1.31	28	189	.095	0	0.00	0	0.00	1	14	0.40	3	1	11	12	0.34	2	0	52.5	1.50
2023-24	WSU	89-29	193	2.17	82	618	.180	8	0.09	4	0.04	7	105	1.18	12	11	48	59	0.66	2	0	232.0	2.61
TOTAL		124 - 42	239	1.93	110	807	.160	8	0.06	4	0.03	8	119	0.96	15	12	59	71	0.57	4	0	284.5	2.29

### Single Game Highs

Statistic	Value
Kills	15 at Fla. Atlantic 10/27/23
Attacks	42 at Illinois 09/01/23, at Fla. Atlantic 10/27/23
Assists	2 vs Tulsa 10/20/23, vs UTSA 11/11/23
Serve Aces	2 vs Tulsa 10/20/23
Digs	14 vs Tulsa 10/20/23, at Memphis 10/29/23
Blocks	6 at Northern Colo. 09/16/23
Block solos	2 at East Carolina 09/20/23, vs Tulsa 12/01/23, vs Tulsa 10/21/23, vs Notre Dame 08/25/23
Block assists	5 at Northern Colo. 09/16/23, at Rice 11/17/23
PCT	1.000 vs North Texas 11/04/23

## 2024 INDIVIDUAL MATCH-BY-MATCH

14

R-SO



# MADDIE WILSON

6-1

MB

COLORADO SPRINGS, COLO.

## OVERVIEW

## 2023 Sophomore

Redshirted...named to AD Honor Roll in Spring 2023...  
named to AAC All-Academic Team.

## Idaho (2022)

Piled up 140 kills as a true freshman at Idaho in addition to 68 blocks, including a team-best 16 solo rejections...reached double-digit kills three times, highlighted by a season-best 17 terminations against Delaware State...notched five or more blocks four times, including 10 blocks in just three sets against Tarleton State....finished the year with a hitting percentage of .235 and added six aces from the service line.

## High School

Led Palmer Ridge High School to four state championship appearances and the 2021 state championship...named First Team All-Conference as both a junior and senior...tabbed conference player of the year as a senior...finished her career with 692 kills on a .356 hitting percentage with 271 blocks...twice named to the All-State games.

## Personal

Daughter of Daniel and Missy Wilson...has two sisters, Abigail and Noelle, and a brother, Ethan...born 1/22/2004...given name is Madison Wilson, goes by Maddie...majoring in Biology at Wichita State.

## CAREER STATISTICS

SEASON	TEAM	SM-MP	K	K/S	E	TA	PCT	A	A/S	SA	SA/S	SE	DIG	D/S	RE	BS	BA	TB	B/S	BE	BHE	PTS	PTS/S
2022-23	UI	79-23	140	1.77	63	328	.235	4	0.05	6	0.08	17	30	0.38	3	16	52	68	0.86	8	1	188.0	2.38
TOTAL FOR WSU		-		0.00			.000	0.00		0.00				0.00					0.00			0.0	0.00
TOTAL		79 - 23	140	1.77	63	328	.235	4	0.05	6	0.08	17	30	0.38	3	16	52	68	0.86	8	1	188.0	2.38

## Single Game Highs

Statistic	Value	
Kills	17	vs Delaware St. 08/27/22
Attacks	24	vs Delaware St. 08/27/22
Assists	2	vs Santa Clara 09/03/22
Serve Aces	2	vs Delaware St. 08/27/22
Digs	5	vs Valparaiso 08/26/22
Blocks	10	vs Tarleton St. 09/10/22
Block solos	3	vs Tarleton St. 09/10/22
Block assists	7	vs Tarleton St. 09/10/22

## 2024 INDIVIDUAL MATCH-BY-MATCH

IS



R-SR\*

MORGAN STOUT

6-I

MB

FOWLER, KAN.

## OVERVIEW

## 2023 Redshirt Junior

Developed into one of the conference's premier middles with a breakout season...named Second Team All-American Athletic Conference...started all 34 matches and played in 126 sets...raised her hitting percentage 169 points as compared to her 2022 mark (.178-.347), the third-best percentage in the American Athletic Conference...averaged 2.42 kills per set, ranking third among middles in the AAC...had 14 matches with double-digit kills...established a new career high with 17 kills in a dominant performance against Memphis on October 29, scoring 20.0 total points in a five-set win...poured in 15 kills on the road at Texas Tech on August 25...was nearly unstoppable in the NWC tournament, earning a spot on the All-Tournament team with 47 kills at a .438 hitting percentage...earned Wichita State's only AAC Offensive Player of the Week award after hitting .524 with 13 kills in a win over UAB on November 22...established a new career high with 120.0 total blocks, averaging 0.95 per set...provided a season-high eight blocks twice (vs. Omaha on September 15 and at SMU on October 1)...became a weapon from the service line late in the season, racking up 10 aces despite only serving in the final 13 matches of the season...set a new career high with nine digs in WSU's five-set win over Rice on November 17...named to the AD Honor Roll in both the spring and fall semesters, finishing the spring with a 4.0 GPA...named to AAC All-Academic Team.

## 2022 Redshirt Sophomore

Played in 29 matches and 90 sets, making 22 starts...led the Shockers and finished third in the conference with 1.10 blocks per set (99.0 total)...had six matches with six or more blocks, including three in a row to end the season...produced her second career double-digit block outing with 10 rejections (one solo, nine assists) in road win at SMU on Nov. 23...established a new career high with three solo blocks at Kansas City on Sept. 10...had a season-high 10 kills against future NCAA tournament participant Wright State on Sept. 17...hit .500 with seven kills and no attack errors at Tulane on Oct. 23...had eight or more kills in three of her last four matches, highlighted by an excellent outing at SMU on Nov. 23, when she had three kills on three swings plus two blocks in the fifth set to spark a Shocker win...racked up four service aces, including two on the road at Temple on Nov. 6...named to AD Honor Roll in Spring 2023, finishing with a 4.0 GPA.

## 2021 Redshirt Freshman

Battled through leg injuries that hampered her throughout the season to play in 25 matches and 98 sets...emotional spark plug led WSU and finished eighth in the conference with 0.91 blocks per set, second-most among AAC freshmen...named AAC Defensive Player of the Week on September 15 after recording 11 blocks in win over Tulsa, the second-most in a five-set match in the rally scoring era of Shocker volleyball...finished with 89.0 total blocks, including nine solo rejections...chipped in 141 kills, highlighted by a season-high 13 vs. Tulsa on Sept. 10...also reached double-figures with 10 kills vs. Cincinnati on Oct. 17...hit .202 for the season...had three matches with five or more digs...named to the AD Honor Roll in Spring 2022.

## 2021 Freshman (Spring Season)\*

Redshirted.

## High School

Four-year letterwinner and starter, and team captain as a senior at Nickerson High School...First team all-state honoree as a senior...Three-time all-league selection...Second team all-state as a junior...Second team all-league accolades as a freshman...Helped her team to a runner-up finish at the state tournament as a sophomore, and was a member of three teams that qualified for state volleyball...Also was honorable mention all-state in basketball as a junior.

## Personal

Daughter of Mickey and Amanda Stout...Has a brother, Logan...Her father, Mickey, competed in track and field at Northwestern Oklahoma State...Majoring in physical therapy at Wichita State.

## CAREER STATISTICS

SEASON	TEAM	SM-MP	K	K/S	E	TA	PCT	A	A/S	SA	SA/S	SE	DIG	D/S	RE	BS	BA	TB	B/S	BE	BHE	PTS	PTS/S
2021-22	WSU	98-25	141	1.44	63	387	.202	9	0.09	0	0.00	4	59	0.60	1	9	80	89	0.91	15	2	190.0	1.94
2022-23	WSU	90-29	115	1.28	59	315	.178	8	0.09	4	0.04	9	47	0.52	1	14	85	99	1.10	5	2	175.5	1.95
2023-24	WSU	126-34	305	2.42	73	668	.347	11	0.09	10	0.08	16	75	0.60	3	13	107	120	0.95	14	1	381.5	3.03
TOTAL		314 - 88	561	1.79	195	1370	.267	28	0.09	14	0.04	29	181	0.58	5	36	272	308	0.98	34	5	747.0	2.38

## Single Game Highs

Statistic	Value	
Kills	17	at Memphis 10/29/23
Attacks	35	at Rice 11/17/23
Assists	3	vs East Carolina 10/15/21
Serve Aces	2	vs Arkansas St. 11/30/23, vs UTSA 11/10/23, at Temple 11/06/22, vs North Texas 11/04/23
Digs	9	at Rice 11/17/23
Blocks	11	vs Tulsa 11/10/21
Block solos	3	at Kansas City 09/10/22
Block assists	9	vs Tulsa 11/10/21, at SMU 11/23/22
PCT	.750	vs Arkansas St. 11/30/23

## 2024 INDIVIDUAL MATCH-BY-MATCH



16		<b>IZZI STRAND</b>		
		<b>6-1</b>	<b>S</b>	<b>CARLSBAD, CALIF.</b>

**OVERVIEW****2023 Senior**

Orchestrated Wichita State's powerful offensive attack as the lone setter in the 5-1...named Second Team All-American Athletic Conference and Honorable Mention All-Region North, the first Wichita State setter to earn All-Region honors since Emily Hiebert in 2017...was named the NIVC Most Valuable Player after averaging 11.2 assists per set over the course of WSU's run to the championship...started all 34 matches and played in all 128 sets...led the conference and ranked fifth nationally with 1,340 assists, the sixth-most in a single season in program history and third-most in the rally scoring era...averaged 10.47 assists per set, second in the conference and 31st nationally...had a career-best 60 assists in a win over Tulane on October 13...earned a spot on the AAC Weekly Honor Roll on October 23 after averaging nearly 12 assists per set in two wins over Tulsa...finished the season with 107 kills, the first WSU setter to reach triple-digit kills since Hiebert in 2017...matched a career-high with eight kills twice (vs. Notre Dame on August 25, vs. Drake on December 6)...aided the Shockers defensive unit with 321 digs, second-most on the team...had a season-high 17 digs against Tulsa on December 1...chipped in with 44.0 total blocks, highlighted by a career-high six in a road win over Illinois on September 1...had more aces (19) than service errors (17)...named to the AD Honor Roll in both the spring and fall semesters...named to AAC All-Academic Team.

**UC San Diego (2020-22)**

Started all 30 matches at setter last season for UC San Diego, averaging 9.4 assists per set while also contributing 106 kills...averaged 2.32 digs per set and chipped in 44 blocks...dished out a season-high 59 assists against Long Beach State, one of 12 matches on the season with at least 40 helpers...had a season-best 18 digs against Cal, and nearly recorded a triple-double against Cal State Northridge with eight kills, 44 assists and 10 digs...appeared in 13 matches as a sophomore in 2021, but freshman season was canceled due to the COVID-19 pandemic.

**High School**

A four-year varsity letterwinner at Monte Vista High School and winner of two East League Division I championships and CIF North Coast Section championships...Named Third Team All-State as a senior...All-East Bay League First Team...was the team's starting setter as a freshman.

**Personal**

Daughter of Timm and Karly Strand...has a sister, Lucy...born 4/18/2002...given name is Isabel Strand, goes by Izzi...majoring in International Business at Wichita State.

**CAREER STATISTICS**

SEASON	TEAM	SM-MP	K	K/S	E	TA	PCT	A	A/S	SA	SA/S	SE	DIG	D/S	RE	BS	BA	TB	B/S	BE	BHE	PTS	PTS/S
2021-22	UCSD	24-13	3	0.13	5	19	-.105	68	2.83	1	0.04	2	25	1.04	0	1	3	4	0.17	0	5	6.5	0.27
2022-23	UCSD	114-30	106	0.93	21	260	.327	1074	9.42	19	0.17	13	265	2.32	0	7	37	44	0.39	2	23	150.5	1.32
2023-24	WSU	128-34	107	0.84	39	302	.225	1340	10.47	19	0.15	17	321	2.51	0	4	41	45	0.35	7	14	150.5	1.18
<b>TOTAL FOR WSU</b>		<b>128 - 34</b>	<b>107</b>	<b>0.84</b>	<b>39</b>	<b>302</b>	<b>.225</b>	<b>1340</b>	<b>10.47</b>	<b>19</b>	<b>0.15</b>	<b>17</b>	<b>321</b>	<b>2.51</b>	<b>0</b>	<b>4</b>	<b>41</b>	<b>45</b>	<b>0.35</b>	<b>7</b>	<b>14</b>	<b>150.5</b>	<b>1.18</b>
<b>TOTAL</b>		<b>266 - 77</b>	<b>216</b>	<b>0.81</b>	<b>65</b>	<b>581</b>	<b>.260</b>	<b>2482</b>	<b>9.33</b>	<b>39</b>	<b>0.15</b>	<b>32</b>	<b>611</b>	<b>2.30</b>	<b>0</b>	<b>12</b>	<b>81</b>	<b>93</b>	<b>0.35</b>	<b>9</b>	<b>42</b>	<b>307.5</b>	<b>1.16</b>

**Single Game Highs**

Statistic	Value
Kills	8 vs CSUN 09/24/22, vs Notre Dame 08/25/23, vs Drake 12/06/23
Attacks	18 at UC Irvine 10/04/22
Assists	60 at Tulane 10/13/23
Serve Aces	2 8 times
Digs	18 vs California 08/27/22
Blocks	6 at Illinois 09/01/23
Block solos	1 12 times
Block assists	6 at Illinois 09/01/23
PCT	.750 at Northern Colo. 09/16/23

**2024 INDIVIDUAL MATCH-BY-MATCH**

18



SIMONE GRIESER

FR

6-0

S

WOODINVILLE, WASH.

## OVERVIEW

## High School

Four-year letterwinner and starter for head coach Octavio Medina at North Creek High School in Bothell, Washington...as a senior in 2023 racked up 500 assists, 155 digs, 55 blocks and 41 aces...named Second Team All-Conference...helped North Creek to a runner-up finish in Class 4A as a senior...named to High Performance All-Region Team in 2018, 2019, and 2022...also played softball.

## Personal

Daughter of Jim and Karen Grieser...has two brothers, Jacob and Nathan, and two sisters, Jocelyn and Miranda...sister, Miranda, played volleyball collegiately at Alaska Fairbanks...cousins Kendra and Sonya Sandhu each played field hockey collegiately for Lehigh and York, respectively...born April 18...undecided on a major at Wichita State.

## CAREER STATISTICS

## 2024 INDIVIDUAL MATCH-BY-MATCH

21



SYDNEY LAFFERTY

FR

6-1

MB

ROCKWALL, TEXAS

## OVERVIEW

**High School**

Four-year letterwinner and three-year starter for head coach Travis Ferguson at Rockwall High School in Rockwall, Texas. . .named First Team All-District as a sophomore, junior and senior...hit .369 with 233 kills and 113 blocks as a senior, earning team Offensive MVP honors...finished her career with 336 blocks and a .320 hitting percentage... helped Rockwall to four consecutive undefeated district championships.

**Personal**

Daughter of Christina and Steve Lafferty...has two brothers, Jacob and Josh...born December 28... majoring in Pre-Physician Assistant at Wichita State.

## CAREER STATISTICS

## 2024 INDIVIDUAL MATCH-BY-MATCH

22



# NADIA WASILEWSKI

FR

6-1

OH

JACKSON, MO.

## OVERVIEW

## High School

Four-year letterwinner and four-year starter for head coach Dave Mirley at Jackson High School...finished her career with 1,031 kills, 119 aces and 180 blocks...set the school single-season record for kills as a senior with 333 terminations, hitting .290 in the process...a four-time All-District selection, including First Team honors in 2023, 2021 and 2020 and a Second Team nod in 2022...a four-time First Team All-Conference selection...a four-time Academic All-State selection...led Jackson to four consecutive conference and district championships, finishing her high school career with an overall record of 121-11-23...also a member of the basketball team at Jackson.

## Personal

Daughter of Todd and Cheryl Wasilewski...has a brother, Nicholas...mother, Cheryl, played basketball collegiately at Belmont...brother, Nicholas, plays basketball collegiately at Missouri Baptist...born October 26...majoring in business at Wichita State.

## CAREER STATISTICS

## 2024 INDIVIDUAL MATCH-BY-MATCH

23



GABI MAAS

JR

S-9

DS/L

AURORA, COLO.

## OVERVIEW

## 2023 Sophomore

Put together a strong first season as the Shockers libero...played in all 34 matches and all 128 sets...led the Shockers and ranked 65th nationally with 496 digs, averaging a team-best 3.88 digs per set...had six matches with 20 or more digs, paced by a career-high 27 ups in a road win at Illinois on September 1...led the Shockers to a season-best 117 team digs against Rice on November 17, contributing 25 of her own...established herself as one of the conference's most accurate servers, leading the league with a 3.1% service error percentage in AAC matches...led the Shockers with 23 aces at 0.18 per set...had a career-high three aces in a win over Illinois State on September 2...helped aid Wichita State's high-powered attack with 118 assists, reaching seven assists in a match four times (Houston Christian on August 26, Illinois on September 1, Kansas on September 7, Florida Atlantic on October 27)...named to AD Honor Roll in both the spring and fall semesters, earning a 4.0 GPA in the spring...named to AAC All-Academic Team...named to AAC All-Academic Team.

## TCU (2022)

Overcame an early season injury to appear in 15 of TCU's final 17 matches, helping the Horned Frogs to a third place Big 12 finish and an NCAA tournament berth...finished her true freshman season with 29 digs and a pair of service aces, picking up one apiece against Iowa State and Texas Tech....set a season high with seven digs on the road at Kansas.

## High School

Named First Team All-Conference as both a junior and senior at Cherokee Trail High School in Aurora, Colorado...averaged 5.7 digs per set as a senior to earn Honorable Mention All-State and a place in the 5A Colorado Coaches' All-Star Game...twice led the conference in digs...helped Cherokee Trail to two state tournament appearances, including a third place finish in her freshman season...elected to Cherokee Trail Hall of Fame.

## Personal

Daughter of Dustin and Jana Maas...has a brother, Jack...father, Dustin, played baseball collegiately at Gustavus Adolphus College...born 10/6/2003...majoring in Psychology at Wichita State.

## CAREER STATISTICS

SEASON	TEAM	SM-MP	K	K/S	E	TA	PCT	A	A/S	SA	SA/S	SE	DIG	D/S	RE	BS	BA	TB	B/S	BE	BHE	PTS	PTS/S
2022-23	TCU	46-16	0	0.00	0	1	.000	4	0.09	2	0.04	12	29	0.63	5	0	0	0	0.00	0	0	2.0	0.04
2023-24	WSU	128-34	2	0.02	0	28	.071	122	0.95	23	0.18	24	496	3.88	23	0	0	0	0.00	0	3	25.0	0.20
TOTAL FOR WSU		128 - 34	2	0.02	0	28	.071	122	0.95	23	0.18	24	496	3.88	23	0	0	0	0.00	0	3	25.0	0.20
TOTAL		174 - 50	2	0.01	0	29	.069	126	0.72	25	0.14	36	525	3.02	28	0	0	0	0.00	0	3	27.0	0.16

## Single Game Highs

Statistic	Value	
Kills	1	at Texas Tech 08/25/23, vs Colorado 09/09/23
Attacks	5	vs Colorado 09/09/23
Assists	7	at Illinois 09/01/23, vs Houston Christian 08/26/23, vs Kansas 09/07/23, at Fla. Atlantic 10/27/23
Serve Aces	3	vs Illinois St. 09/02/23
Digs	27	at Illinois 09/01/23
PCT	.500	at Texas Tech 08/25/23

## 2024 INDIVIDUAL MATCH-BY-MATCH



24



# ALYSSA GONZALES

R-FR

6-1

OH

ALEDO, TEXAS

## OVERVIEW

## TCU (2023)

Redshirted.

## High School

A four-year letterwinner and three-year starter who finished her high school career at Aledo High School... named a 2022 AVCA Honorable Mention All-American after tallying a team-leading 370 kills on .249 hitting to propel Aledo to a 31-16 record and a 10-2 district mark... named District Offensive Player of the Year and selected to the AVCA All-Region team.

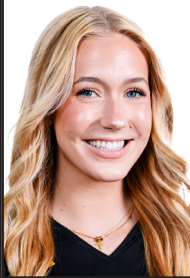
## Personal

Daughter of Chris and Rachelle Gonzales...has two brothers, Ryan and Jett...father, Chris, played basketball collegiately at Westmont and professionally overseas... mother, Rachelle, played basketball collegiately at UC Santa Barbara...born March 31...plans to major in communication at Wichita State.

## CAREER STATISTICS

## 2024 INDIVIDUAL MATCH-BY-MATCH

26



ALLIE PAULSEN

R-FR

6-2

MB

WICHITA, KAN.

## OVERVIEW

**2023 Freshman**

Redshirted...named to the AD Honor Roll in the fall semester...named to AAC All-Academic Team.

**High School**

Three-year letterwinner and three-year starter for head coach Kayla Weidert at Andover Central High School...2022: Named Second Team Class 5A All-State, First Team All-League, AVCTL-II MVP, All-Metro by The Wichita Eagle, and was selected to the Class 5A State All-Tournament Team...helped Jaguars go 34-9 and undefeated in AVCTL-II to reach the 5A State Tournament...piled up 47 aces, 285 kills, 74 total blocks, 239 digs, and 2.9 kills per set...2021: First Team All-League selection... Career: 530 kills, 167 blocks, and 67 aces...finished career as the Andover Central career record-holder for blocks.

**Personal**

Daughter of Gene and Kim Paulsen...Has a sister, Kate, and a brother, Nick...father Gene and grandfather Wesley both ran track at Nebraska...born 11/13/2004...Plans to major in Marketing at Wichita State.

## CAREER STATISTICS

## 2024 INDIVIDUAL MATCH-BY-MATCH

## RECORD BREAKDOWN

OVERALL	American	HOME	AWAY	NEUTRAL	3-SET	4-SET	5-SET
0-0	0-0	0-0	0-0	0-0	0-0	0-0	0-0

## SCHEDULE &amp; RESULTS

DATE	OPPONENT	RESULT	SET SCORES	STRK	RECORD	CONF	HI KILLS	HI ASSISTS	HI DIGS	TIME	ATT.
Aug. 30	at Kennesaw State <sup>1</sup>										
Aug. 31	Indiana <sup>1</sup>										
Aug. 31	at Kennesaw State <sup>1</sup>										
Sep. 4	at Kansas										
Sep. 6	at Arkansas <sup>2</sup>										
Sep. 7	Little Rock <sup>2</sup>										
Sep. 12	Arizona State <sup>3</sup>										
Sep. 13	Long Beach State <sup>3</sup>										
Sep. 14	at Nebraska <sup>3</sup>										
Sep. 19	vs CAL POLY <sup>4</sup>										
Sep. 20	vs NORTHERN COLORADO <sup>4</sup>										
Sep. 21	vs OMAHA <sup>4</sup>										
Sep. 25	at Memphis*										
Sep. 27	vs TEMPLE*										
Oct. 4	at UAB*										
Oct. 6	vs RICE*										
Oct. 11	vs SOUTH FLORIDA*										
Oct. 13	vs FLORIDA ATLANTIC*										
Oct. 18	at Charlotte*										
Oct. 20	at East Carolina*										
Oct. 25	vs MEMPHIS*										
Oct. 27	vs UAB*										
Nov. 1	at Tulsa*										
Nov. 3	vs TULSA*										
Nov. 8	at Rice*										
Nov. 10	at Tulane*										
Nov. 15	at North Texas*										
Nov. 17	vs UTSA*										

1 = Kennesaw State Invitational (Kennesaw, Ga.) • 2 = Wooo Pig Invitational (Fayetteville, Ark.) • 3 = Nebraska Classic (Lincoln, Kan.) • 4 = Shocker Volleyball Classic (Wichita, Kan.)

\* = American Athletic Conference match

## GAME-BY-GAME COMPARISON (WSU listed first in bold, then opponent)

	1st	2nd	3rd	4th	5th	Tot			Attack				Set				Serve				Reception				Block					
								K	E	TA	Pct.	Ast	Err	TA	Pct.	SA	SE	TA	Pct.	O	RE	Pct.	Dig	BS	BA	BE	BHE	Pts		
Notre Dame <sup>1</sup>																														
at Texas Tech <sup>1</sup>																														
Houston Christian <sup>1</sup>																														
at Illinois <sup>2</sup>																														
Illinois State <sup>2</sup>																														
vs. KANSAS <sup>3</sup>																														
vs. COLORADO <sup>3</sup>																														
Bradley <sup>4</sup>																														
Omaha <sup>4</sup>																														
at Northern Colorado <sup>4</sup>																														
at East Carolina *																														
vs. CHARLOTTE *																														
at SMU *																														
at SMU *																														
vs. TEMPLE *																														
vs. SOUTH FLORIDA *																														
at Tulane *																														
at Tulane *																														
vs. TULSA *																														
vs. TULSA *																														
at Florida Atlantic *																														
at Memphis *																														
vs. NORTH TEXAS *																														
vs. NORTH TEXAS *																														
vs. UTSA *																														
vs. UTSA *																														
at Rice *																														
at Rice *																														
vs. UAB *																														
vs. ARKANSAS STATE ^																														
vs. TULSA ^																														
vs. DRAKE ^																														
vs. MONTANA STATE ^																														
at UTEP ^																														

1 = Under Armour Challenge (Lubbock, Texas) • 2 = Illinois Tournament (Champaign, Ill.) • 3 = Shocker Volleyball Classic (Wichita, Kan.) • 4 = Northern Colorado Classic (Greeley, Colo.)

\* = American Athletic Conference match • ^ = NIVC match

## MISCELLANEOUS STATS

## DOUBLE-DOUBLES

Stats

Date

Opponent

CAREER DOUBLE-DOUBLES

3 Emerson Wilford

## 20+ DIGS

Stats

Date

Opponent

CAREER w/ 20+ DIGS

6 Maas

1 Galligan

## RECORD BREAKDOWN

Category	2023	Streak
Overall Record	26-8	Won 6
Home	13-3	Won 7
Road	9-4	Won 1
Neutral	4-1	Won 4
August	1-2	Won 1
September	7-3	Lost 1
October	8-1	Won 1
November	6-2	Won 2
December	4-0	Won 4
Set 1	26-8	Won 7
Set 2	20-14	Won 3
Set 3	26-8	Won 6
Set 4	10-8	Won 1
Set 5	5-3	Won 1
Total	87-41	Won 11
3-Set Matches	14-2	Won 9
4-Set Matches	7-3	Won 1
5-Set Matches	5-3	Won 1
Monday	-	-
Tuesday	1-0	Won 1
Wednesday	3-0	Won 6
Thursday	2-1	Won 2
Friday	9-4	Won 4
Saturday	8-3	Won 1
Sunday	3-0	Won 3

## MISCELLANEOUS STATS

## 2024 TEAM HIGHS / LOWS

\* = Rally Scoring Era High/Low \*\* = WSU record

		WICHITA STATE	OPPONENT
<b>Attack Percentage (K-E-TA)</b>	High Low		
<b>Kills</b>	High Low		
<b>Kills 3-Sets</b>	High Low		
<b>Kills 4-Sets</b>	High Low		
<b>Kills 5-Sets</b>	High Low		
<b>Total Attempts</b>	High Low		
<b>Total Attempts 3-Sets</b>	High Low		
<b>Total Attempts 4-Sets</b>	High Low		
<b>Total Attempts 5-Sets</b>	High Low		
<b>Assists</b>	High Low		
<b>Assists 3-Sets</b>	High Low		
<b>Assists 4-Sets</b>	High Low		
<b>Assists 5-Sets</b>	High Low		
<b>Digs</b>	High Low		
<b>Digs 3-Sets</b>	High Low		
<b>Digs 4-Sets</b>	High Low		
<b>Digs 5-Sets</b>	High Low		
<b>Aces</b>	High Low		
<b>Blocks (BS-BA)</b>	High Low		
<b>Sideout Percentage</b>	High Low		

## HIGHS &amp; LOWS -- SINGLE SET

		WICHITA STATE	OPPONENT
<b>Attack Percentage</b>	High Low		
<b>Kills</b> (excluding 5th set)	High Low		
<b>Attempts</b> (excluding 5th set)	High Low		
<b>Assists</b> (excluding 5th set)	High Low		
<b>Digs</b> (excluding 5th set)	High Low		
<b>Aces</b> (excluding 5th set)	High Low		
<b>Blocks</b> (excluding 5th set)	High Low		
<b>Sideout Percentage</b>	High Low		



## 2024 INDIVIDUAL BESTS

\* = Rally Scoring Era High/Low \*\* = WSU record

WICHITA STATE

OPPONENT

Attack Percentage (K-E-TA)

min. 12 kills

Kills

3 Sets

4 Sets

5 Sets

Total Attempts

3 Sets

4 Sets

5 Sets

Points

3 Sets

4 Sets

5 Sets

Assists

3 Sets

4 Sets

5 Sets

Digs

3 Sets

4 Sets

5 Sets

Aces

Blocks

## HIGHS &amp; LOWS -- SINGLE SET

WICHITA STATE

OPPONENT

Attack Percentage (K-E-TA)

Min. 5 Kills

Kills

Total Attempts

Points

Assists

Digs

Aces



**2023-24 Wichita St. Women's Volleyball**  
**Overall Individual Statistics**  
**All games**

Page 1/1  
as of Dec 14, 2023

**Game Records**

Overall	Conference	Home	Away	Neutral
26 - 8	15 - 4	13 - 3	9 - 4	4 - 1

**Team Box Score**

##	Player	SP	MP-MS	Attack					Set				Serve				
				K	K/S	E	TA	PCT	A	A/S	TA	PCT	SA	SA/S	SE	TA	PCT
1	Koehler, Barbara	75	27-13	156	2.08	71	477	.178	9	0.12	30	.300	7	0.09	11	108	.898
2	Wheeler, Lauren	3	2-0	0	0.00	0	0	.000	7	2.33	26	.269	0	0.00	1	5	.800
3	Kelly, Brylee	73	24-13	171	2.34	81	561	.160	3	0.04	15	.200	3	0.04	0	16	1.000
4	Leggett, Brooklyn	8	4-0	4	0.50	3	24	.042	0	0.00	1	.000	0	0.00	1	1	.000
5	Anderson, Reagan	32	13-0	0	0.00	0	2	.000	3	0.09	18	.167	4	0.13	2	56	.964
6	Galligan, Katie	101	32-2	0	0.00	0	1	.000	13	0.13	55	.236	7	0.07	9	256	.965
10	Heliste, Annalie	118	33-8	1	0.01	1	3	.000	23	0.19	75	.307	17	0.14	33	429	.923
11	Foster, Natalie	128	34-34	356	2.78	78	673	.413	4	0.03	22	.182	13	0.10	35	163	.785
12	McMahon, Lauren	6	3-0	3	0.50	1	9	.222	0	0.00	0	.000	0	0.00	0	0	.000
13	Wilford, Emerson	89	29-17	193	2.17	82	618	.180	8	0.09	37	.216	4	0.04	7	123	.943
15	Stout, Morgan	126	34-34	305	2.42	73	668	.347	11	0.09	49	.224	10	0.08	16	153	.895
16	Strand, Izzi	128	34-34	107	0.84	39	302	.225	1340	10.47	3396	.395	19	0.15	17	462	.963
17	Marnieris, Kylie	1	1-0	0	0.00	0	0	.000	1	1.00	1	1.000	0	0.00	0	5	1.000
20	Rohling, Sophia	119	33-31	355	2.98	127	828	.275	7	0.06	36	.194	5	0.04	19	179	.894
22	Weber, Morgan	120	33-18	70	0.58	40	232	.129	17	0.14	77	.221	16	0.13	22	434	.949
23	Maas, Gabi	128	34-0	2	0.02	0	28	.071	122	0.95	416	.293	23	0.18	24	514	.953
<b>WICHITA ST.</b>		<b>128</b>	<b>34-34</b>	<b>1723</b>	<b>13.46</b>	<b>596</b>	<b>4426</b>	<b>.255</b>	<b>1568</b>	<b>12.25</b>	<b>4254</b>	<b>.369</b>	<b>128</b>	<b>1.00</b>	<b>197</b>	<b>2904</b>	<b>.932</b>
<b>Opponents</b>		<b>128</b>	<b>34-34</b>	<b>1543</b>	<b>12.05</b>	<b>765</b>	<b>4642</b>	<b>.168</b>	<b>1438</b>	<b>11.23</b>	<b>4568</b>	<b>.315</b>	<b>163</b>	<b>1.27</b>	<b>265</b>	<b>2580</b>	<b>.897</b>

			Receptions			Dig		Blocking						Points	
##	Player	SP	RE	TA	PCT	DIG	DIG/S	BS	BA	TOTAL	BLK/S	BE	BHE	PTS	PTS/S
1	Koehler, Barbara	75	16	222	.928	106	1.41	6	28	34	0.45	3	0	183.0	2.44
2	Wheeler, Lauren	3	0	0	.000	1	0.33	0	0	0	0.00	0	1	0.0	0.00
3	Kelly, Brylee	73	2	70	.971	47	0.64	2	38	40	0.55	2	0	195.0	2.67
4	Leggett, Brooklyn	8	0	0	.000	0	0.00	0	6	6	0.75	0	0	7.0	0.88
5	Anderson, Reagan	32	7	67	.896	42	1.31	0	0	0	0.00	0	0	4.0	0.13
6	Galligan, Katie	101	7	183	.962	172	1.70	0	0	0	0.00	0	0	7.0	0.07
10	Heliste, Annalie	118	23	358	.936	202	1.71	0	0	0	0.00	0	0	18.0	0.15
11	Foster, Natalie	128	1	15	.933	38	0.30	8	118	126	0.98	3	0	436.0	3.41
12	McMahon, Lauren	6	0	0	.000	0	0.00	0	5	5	0.83	0	0	5.5	0.92
13	Wilford, Emerson	89	12	248	.952	105	1.18	11	48	59	0.66	2	0	232.0	2.61
15	Stout, Morgan	126	3	29	.897	75	0.60	13	107	120	0.95	14	1	381.5	3.03
16	Strand, Izzi	128	0	10	1.000	321	2.51	4	41	45	0.35	7	14	150.5	1.18
17	Marnieris, Kylie	1	0	0	.000	0	0.00	0	0	0	0.00	0	0	0.0	0.00
20	Rohling, Sophia	119	1	5	.800	102	0.86	9	61	70	0.59	11	0	399.5	3.36
22	Weber, Morgan	120	22	530	.958	294	2.45	5	10	15	0.13	1	0	96.0	0.80
23	Maas, Gabi	128	23	532	.957	496	3.88	0	0	0	0.00	0	3	25.0	0.20
-	TEAM	-	46	-	-	-	-	-	-	-	-	-	-	-	-
WICHITA ST.		128	163	2315	.930	2001	15.63	58	462	289.0	2.26	43	19	2140.0	16.72
Opponents		128	128	2707	.953	1819	14.21	54	413	260.5	2.04	54	25	1966.5	15.36



**2023-24 Wichita St. Women's Volleyball**  
**Overall Individual Statistics**  
**In Conference games**

Page 1/1  
as of Nov 23, 2023

**Game Records**

Overall	Conference	Home	Away	Neutral
15 - 4	15 - 4	9 - 1	6 - 3	0 - 0

**Team Box Score**

##	Player	SP	MP-MS	Attack					Set				Serve			
				K	K/S	E	TA	PCT	A	A/S	TA	PCT	SA	SA/S	SE	TA
1	Koehler, Barbara	49	15-9	96	1.96	43	305	.174	3	0.06	20	.150	5	0.10	7	70
2	Wheeler, Lauren	1	1-0	0	0.00	0	0	.000	2	2.00	16	.125	0	0.00	0	0
3	Kelly, Brylee	49	15-9	127	2.59	63	388	.165	1	0.02	7	.143	1	0.02	0	4
4	Leggett, Brooklyn	4	2-0	3	0.75	1	16	.125	0	0.00	1	.000	0	0.00	1	1
5	Anderson, Reagan	17	7-0	0	0.00	0	0	.000	1	0.06	5	.200	4	0.24	1	47
6	Galligan, Katie	66	19-1	0	0.00	0	0	.000	5	0.08	19	.263	7	0.11	8	190
10	Heliste, Annalie	69	19-4	1	0.01	1	2	.000	12	0.17	37	.324	13	0.19	20	269
11	Foster, Natalie	72	19-19	212	2.94	51	407	.396	2	0.03	8	.250	7	0.10	11	45
12	McMahon, Lauren	2	1-0	0	0.00	0	1	.000	0	0.00	0	.000	0	0.00	0	0
13	Wilford, Emerson	40	15-8	85	2.13	35	287	.174	7	0.18	19	.368	3	0.08	5	80
15	Stout, Morgan	72	19-19	172	2.39	39	380	.350	2	0.03	20	.100	7	0.10	9	91
16	Strand, Izzi	72	19-19	54	0.75	21	161	.205	781	10.85	1958	.399	8	0.11	8	238
17	Marneris, Kylie	1	1-0	0	0.00	0	0	.000	1	1.00	1	1.000	0	0.00	0	5
20	Rohling, Sophia	70	19-19	217	3.10	68	493	.302	3	0.04	15	.200	1	0.01	7	60
22	Weber, Morgan	65	18-7	21	0.32	13	80	.100	10	0.15	33	.303	8	0.12	8	244
23	Maas, Gabi	72	19-0	0	0.00	0	12	.000	70	0.97	247	.283	11	0.15	9	292
<b>WICHITA ST.</b>		<b>72</b>	<b>19-19</b>	<b>988</b>	<b>13.72</b>	<b>335</b>	<b>2532</b>	<b>.258</b>	<b>900</b>	<b>12.50</b>	<b>2406</b>	<b>.374</b>	<b>75</b>	<b>1.04</b>	<b>94</b>	<b>1636</b>
<b>Opponents</b>		<b>72</b>	<b>19-19</b>	<b>872</b>	<b>12.11</b>	<b>413</b>	<b>2612</b>	<b>.176</b>	<b>826</b>	<b>11.47</b>	<b>2552</b>	<b>.324</b>	<b>86</b>	<b>1.19</b>	<b>146</b>	<b>1432</b>

			Receptions			Dig		Blocking					Points		
##	Player	SP	RE	TA	PCT	DIG	DIG/S	BS	BA	TOTAL	BLK/S	BE	BHE	PTS	PTS/S
1	Koehler, Barbara	49	8	150	.947	75	1.53	3	22	25	0.51	3	0	115.0	2.35
2	Wheeler, Lauren	1	0	0	.000	0	0.00	0	0	0	0.00	0	1	0.0	0.00
3	Kelly, Brylee	49	2	52	.962	28	0.57	1	33	34	0.69	2	0	145.5	2.97
4	Leggett, Brooklyn	4	0	0	.000	0	0.00	0	2	2	0.50	0	0	4.0	1.00
5	Anderson, Reagan	17	3	36	.917	20	1.18	0	0	0	0.00	0	0	4.0	0.24
6	Galligan, Katie	66	1	98	.990	106	1.61	0	0	0	0.00	0	0	7.0	0.11
10	Heliste, Annalie	69	16	226	.929	131	1.90	0	0	0	0.00	0	0	14.0	0.20
11	Foster, Natalie	72	1	10	.900	17	0.24	2	55	57	0.79	3	0	248.5	3.45
12	McMahon, Lauren	2	0	0	.000	0	0.00	0	1	1	0.50	0	0	0.5	0.25
13	Wilford, Emerson	40	7	130	.946	68	1.70	5	20	25	0.63	1	0	103.0	2.58
15	Stout, Morgan	72	2	9	.778	39	0.54	8	69	77	1.07	10	1	221.5	3.08
16	Strand, Izzi	72	0	4	1.000	175	2.43	2	17	19	0.26	6	9	72.5	1.01
17	Marneris, Kylie	1	0	0	.000	0	0.00	0	0	0	0.00	0	0	0.0	0.00
20	Rohling, Sophia	70	0	2	1.000	53	0.76	7	30	37	0.53	10	0	240.0	3.43
22	Weber, Morgan	65	10	243	.959	162	2.49	1	3	4	0.06	1	0	31.5	0.48
23	Maas, Gabi	72	15	305	.951	283	3.93	0	0	0	0.00	0	1	11.0	0.15
-	TEAM	-	21	-	-	-	-	-	-	-	-	-	-	-	-
WICHITA ST.		72	86	1286	.933	1157	16.07	29	252	155.0	2.15	36	12	1218.0	16.92
Opponents		72	75	1542	.951	1047	14.54	34	234	151.0	2.10	36	14	1109.0	15.40



1

**OLIVIA BROWN**  
Fr. | DS/L | 5-2  
Flower Mound, Texas



2

**GRACIE MORROW**  
Fr. | OH | 6-0  
Wichita, Kan.



4

**BROOKLYN LEGGETT**  
R-Jr. | RS/OH | 6-0  
Draper, Utah



5

**REAGAN ANDERSON**  
So. | DS/L | 5-3  
Overland Park, Kan.



6

**KATIE GALLIGAN**  
Jr. | DS/L | 5-9  
Omaha, Neb.



7

**HALEY WOLFE**  
R-Fr. | MB | 6-3  
Elkhorn, Neb.



8

**ABBY WHATTON**  
Jr. | OH | 5-10  
Tucson, Ariz.



9

**SARAH BARHAM**  
5th Year\* | MB | 6-1  
Summerfield, N.C.



10

**ANNALIE HELISTE**  
Sr. | DS/L | 5-5  
Cypress, Texas



11

**SARAH MUSIAL**  
Fr. | S | 6-1  
St. Charles, Ill.



12

**GRACE HETT**  
Fr. | DS/L | 5-5  
Marion, Kan.



13

**EMERSON WILFORD**  
Jr. | OH | 6-2  
Laguna Hills, Calif.



14

**MADDIE WILSON**  
R-So. | MB | 6-1  
Colorado Springs, Colo.



15

**MORGAN STOUT**  
\*R-Sr. | MB | 6-1  
Fowler, Kan.



16

**IZZI STRAND**  
\*5th Year | S | 6-1  
Carlsbad, Calif.



18

**SIMONE GRIESER**  
Fr. | S | 6-0  
Woodinville, Wash.



21

**SYDNEY LAFFERTY**  
Fr. | MB | 6-1  
Rockwall, Texas



22

**NADIA WASILEWSKI**  
Fr. | OH | 6-1  
Jackson, Mo.



23

**GABI MAAS**  
Jr. | DS/L | 5-9  
Aurora, Colo.



24

**ALYSSA GONZALES**  
R-Fr. | OH | 6-1  
Aledo, Texas



26

**ALLIE PAULSEN**  
R-Fr. | MB | 6-2  
Wichita, Kan.



hc

**CHRIS LAMB**  
25th Season



ac

**BRIAN HOSFELD**  
3rd Season



ac

**KATIE ZIMMERMAN**  
3rd Season



ac

**ASHLEIGH HOULTON**  
3rd Season