



# PURDUE BOILERMAKERS

## 2024 VOLLEYBALL GAME NOTES

# BIG

SID: Rachel Coe | coer@purdue.edu | Office: 765-496-7842 | Cell: 518-729-9960  
900 John R. Wooden Drive, West Lafayette, IN 47907

### 2024 PURDUE VOLLEYBALL SCHEDULE

Overall Record: 18-5 (9-3 Big Ten)

Home: 7-2

Away: 7-2

Neutral: 4-1

#### AUGUST

30 #RV K-State (BIG+)\* W, 3-1  
31 UMBC (BIG+)\* W, 3-0

#### SEPTEMBER

1 UC Davis (BIG+)\* W, 3-0  
5 vs. California W, 3-1  
6 at Utah W, 3-0  
7 at Utah State (MWN) W, 3-0  
13 vs. Houston\* W, 3-0  
14 vs. #10 Kentucky\* W, 3-1  
19 at #10 Kansas# L, 1-3  
20 vs. #9 Creighton# L, 1-3  
21 vs. Tulsa# W, 3-0  
25 #4 PENN STATE (BTN)\* L, 0-3  
28 at #16 Minnesota (BTN)\* W, 3-2

#### OCTOBER

4 at Northwestern (BIG+)\* W, 3-1  
6 MICHIGAN STATE (BTN)\* W, 3-0  
11 at #2 Nebraska (BTN)\* L, 2-3  
12 at Iowa (BIG+)\* W, 3-1  
17 #RV UCLA (BIG+)\* W, 3-2  
19 INDIANA (Mackey Arena | BTN)\* W, 3-0  
23 OHIO STATE (BTN)\* W, 3-0  
26 #8 WISCONSIN (Mackey Arena | NBC)\* L, 0-3

#### NOVEMBER

1 at Maryland (BTN)\* W, 3-0  
2 at Rutgers (BIG+)\* W, 3-0  
8 at Indiana (BIG+)\* 7 p.m.  
10 MICHIGAN (BIG+)\* 1 p.m.  
14 RUTGERS (BIG+)\* 6 p.m.  
17 ILLINOIS (BTN)\* 5 p.m.  
21 at #3 Penn State (BTN)\* 6 p.m.  
23 #20 USC (BIG+)\* 7 p.m.  
27 at #12 Oregon (BTN)\* 10:30 p.m.  
29 at #RV Washington (BIG+)\* 10 p.m.

All Times Eastern

\* Big Ten match

^ Stacey Clark Classic

+ SMU Doubletree Invitational

# Jayhawk Classic

### #9 PURDUE BOILERMAKERS

18-5 | 9-3 Big Ten

Coach: Dave Shondell (22nd season)

Record at Purdue: 476-231

AT

### INDIANA HOOSIERS

12-10 | 5-7 Big Ten

Coach: Steve Aird (7th season)

Record at Indiana: 94-108

FRI. 11/8 - 7 PM ET - BLOOMINGTON, IND. - WILKINSON HALL - BIG+

SERIES HISTORY: 78-35 | LAST MEETING: W, 3-0 AT PURDUE (10/19/24)

### #9 PURDUE BOILERMAKERS

18-5 | 9-3 Big Ten

Coach: Dave Shondell (22nd season)

Record at Purdue: 476-231

VS

### MICHIGAN WOLVERINES

16-7 | 6-6 Big Ten

Coach: Erin Virtue (2nd season)

Record at Michigan: 23-29

SUN. 11/10 - 1 PM ET - WEST LAFAYETTE, IND. - HOLLOWAY GYMNASIUM - BIG+

SERIES HISTORY: 56-27 | LAST MEETING: W, 3-0 AT MICHIGAN

#### SCHEDULE BREAKDOWN

- Only eight matches remain in the regular-season, including four home matches.
- Purdue's already played eight teams ranked or receiving votes and have an additional four matches to come.
- The regular season will close with **four straight matches vs. teams ranked or receiving votes, with three on the road**: at #3 Penn State (11/21), vs. #20 USC (11/23), at #12 Oregon (11/27) and at receiving votes (RV) Washington (11/29).
- Purdue had a stretch of five top-16 foes in six matches, which included three straight top-10 showdowns.
- Not only are 100% of Purdue's losses to current top-8 teams, 60% (3 of 5) are to top-5 teams.
- The schedule features **six non-conference matchups vs. 2023 NCAA Tournament teams**.
- A total of 12 matches were against teams ranked or receiving votes in the 2023 final poll.
- Purdue played two matches in its historic **Mackey Arena**: vs. Indiana (10/19) and vs. #8 Wisconsin (10/26).
- The year marked the **most road matches** in non-conference action since 2008, with Purdue at home for two matches in the month of September.

#### PURDUE'S 9-3 BIG TEN RECORD

- The team entered November with just three Big Ten losses, marking the second straight year and seventh time Purdue has had such few losses under Shondell this far into league play.

#### SCOUTING THE INDIANA HOOSIERS

- Indiana currently sits at 11th in the Big Ten standings and are 5-5 over its last 10 matches.
- Since playing Purdue in Mackey, the Hoosiers have gone 3-1, with a loss to #8 Wisconsin and wins vs. Northwestern, at Maryland and at Rutgers.
- One of the best liberos in the Big Ten, sophomore Ramsey Gary is averaging 4.35 digs per set, #3 in the league.
- Candela Alonso-Corcelles leads the team with 4.11 points per set, followed by Mady Saris' 2.61.
- Cam Haworth leads the team behind the service line, ranking #5 in the conference with 37 aces this season.

#### SCOUTING THE MICHIGAN WOLVERINES

- Michigan sits at 10th in the Big Ten standings and have a 4-6 record over its last 10 matches.
- Five of Michigan's seven losses this season have come to top-15 programs during Big Ten action.
- Rutgers has pushed two Big Ten teams to five sets: vs. Iowa and at Michigan, both of which came in the opening weekend.
- The Wolverine generates a strong offense, seeing the second-most assists and attacks among Big Ten Teams. Meanwhile, they are ranked third in kills and fourth in aces per set and digs.
- Valentina Vaulet's serve produces .64 aces per set, 5th in the nation and will mark the second straight week Purdue has faced the toughest servers in not just the Big Ten, but nation (last week faced the national leader at Maryland).
- Allison Jacobs and Valentina Vaulet lead the team's offense with Nyambio owning a .376 hitting % and Jacobs kills per set and 4.40 points per set.

50 SEASONS

25 NCAA  
TOURNAMENT  
APPEARANCES

23 AVCA  
ALL-AMERICANS

## AVCA/Taraflex Top-25 Coaches Poll (11/4)

Rank	School	Record	Previous Rank
1	Pittsburgh (49)	21-1	1
2	Nebraska (11)	22-1	2
3	Penn State (1)	22-1	3
4	Louisville	19-3	4
5	Creighton	21-2	6
6	Stanford	17-4	5
7	Wisconsin	16-5	7
8	Kansas	20-1	8
9	Purdue	18-5	11
10	SMU	17-6	12
11	Arizona State	22-2	13
12	Oregon	17-4	10
13	Kentucky	14-7	14
14	Minnesota	16-6	15
15	Texas	12-6	9
16	Georgia Tech	17-4	16
17	Baylor	15-6	17
18	TCU	16-5	18
19	Dayton	24-1	19
20	USC	16-6	21
21	BYU	14-7	20
22	Florida	16-5	24
23	Utah	17-5	22
24	Florida State	16-6	23
25	North Carolina	18-3	25

**Receiving votes:** Missouri; Washington; Texas A&M; Arkansas; Marquette; Miami (FL); South Dakota State

### Purdue In The AVCA/Taraflex Poll

Date	Rank	Date	Rank
2023 Final	#13	W7 (10/14)	#10
2024 Preseason	#8	W8 (10/21)	#10
W1 (9/2)	#8	W9 (10/28)	#11
W2 (9)	#7	W10 (11/4)	#9
W3 (9/16)	#6	W11 (11/11)	
W4 (9/23)	#10	W12 (11/18)	
W5 (9/30)	#10	W13 (11/25)	
W6 (10/7)	#10	W14 (12/2)	
		Final	

### Big Ten of the Week Awards

<b>Player 9/2:</b>	Eva Hudson
<b>Setter 9/9:</b>	Taylor Anderson
<b>Defensive 9/16:</b>	Raven Colvin
<b>Defensive 10/7:</b>	Ali Hornung
<b>Defensive 11/4:</b>	Ali Hornung

### AVCA National Player of the Week

Player 9/2:	Eva Hudson
-------------	------------

#### RETURNING 2023 ALL-AMERICANS

- Purdue returns all three AVCA All-America honorees: junior Eva Hudson (second team), sophomore Chloe Chicoine (third team) and senior Raven Colvin (honorable mention).
- Hudson is the youngest Boilermaker to receive Second Team All-America honors since 1986.
- Chicoine's third team accolade was the highest-ever AVCA All-America honor by a Purdue newcomer.

#### PURDUE VOLLEYBALL'S ALL-TIME WINNINGEST HEAD COACH

- With the sweep vs. Michigan State on 10/6, HC Dave Shondell became the all-time winningest head coach in Purdue volleyball history, surpassing AVCA Hall of Famer Carol Dewey, with his 470th win.
- Shondell is one of two active head coaches in the Big Ten with as many wins at their institution (joined by John Cook) and is one of seven among Power 4 programs.

#### PROGRAM RECORDS FALLING

- Since Big Ten play has started, nine program records have been set or tied: two Big Ten regular-season match and Purdue home attendance record (14,876 fans vs. Indiana, 10/19 and again vs. #8 Wisconsin, 10/26); Longest match (2:53 at #2 Nebraska); Most team aces in a 5-set match during the rally-scoring era (17 at then-#16 Minnesota); Most aces by an individual in a 5-set match during the rally-scoring era (7 by Raven Colvin at then-#16 Minnesota); Most aces by a freshman (6 by Ryan McAleer); Most team digs in a 3-set match in the current 25-point rally scoring (71 vs. Michigan State); Most wins in program history (Dave Shondell, 470).

#### PURDUE VS. INDIANA: HISTORY AT A GLANCE

- Purdue is 30-19 all-time in away matches at Indiana.
- The Boilermakers won 10 consecutive matches in Bloomington until last year's loss (2013-22).
- Purdue is 23-1 in the last 24 matches vs. Indiana (home and away).
- The Boilermakers have lost at home just one time under Dave Shondell and are 39-4 all-time vs. Indiana since Shondell took the reigns in 2003.
- The Boilermakers have won 20 of the last 22 Monon Spike matches.

#### PURDUE: QUICK HITS

- Purdue has won 9 of its last 12 matches. Its only losses come to top-10 programs.
- The team is #13 in the nation in kills per set and #17 in hitting %.
- In four of the last five matches, Purdue has held opponents of under .190 attack %.
- Eva Hudson and Chloe Chicoine were named to the **AVCA Player of the Year Watch List in September**.
- Three Boilers are averaging **2.5 kills per set** or higher: Hudson (4.48), Chicoine (3.27) and Colvin (2.54).
- Purdue is 58-24 in sets won this season.
- Purdue's hitting % (.277) would rank as #3 in Purdue single-season history if things were to end today. It would be **just the second time this century the Boilers have hit so efficiently**.
- Since Big Ten play started, Purdue is averaging two more digs per set compared to their non-con action.
- Freshman DS Ryan McAleer has recorded a perfect reception % in 16 matches. Moreover, she recorded six aces at then-#16 Minnesota, tying as the most-ever by a Purdue freshman. She set a new career-high 15 digs vs. Indiana (10/19).
- Eva Hudson has stepped up in the biggest matches of the season. She set a season-high 26 kills on a .349% at #2 Nebraska, 17 kills vs. now-#7 Wisconsin and nearly had an errorless match at now-#8 Kansas, committing just one attack error in the final points of the match. This season, she is averaging 4.40 kills per set and 4.82 points per set this season.

#### LAST TIME OUT: PURDUE 3, INDIANA 0

- In one of the team's best performances of the season, Purdue swept Indiana (25-18, 25-14, 25-9) in front of a record-setting crowd of 12,876. It was the largest attendance for a Big Ten regular-season match, the second-largest attendance for any women's volleyball match this season.
- Set 3 Breakdown: The nine points allowed in Set 3 were the fewest ever in the rivalry's history since 2000 (prior to then, points were scored to 15 instead of the modern era's 25). Additionally, Purdue went errorless in the third set, hitting .500% (13-0-26).
- Purdue out-hit Indiana .333 to .061%. Not only did the Boilermakers hold the Hoosiers to a Purdue-opponent season-low, but the mark was the lowest Big Ten opponent hitting % in two years, which last also came at Indiana (.057%).
- Chloe Chicoine went errorless for the entire match vs. Indiana, recording 12 kills, 0 errors on 30 attacks for a Big Ten season-high .400 hitting % in addition to recording her 11th double-double of the season (12 digs).
- Freshman defensive specialist Ryan McAleer produced a career-high 15 digs, leading the team with 17 receptions. As a team, Purdue posted a perfect reception % and registered nine service aces, third-most in a match this season.

#### PURDUE'S NON CON VS. BIG TEN PLAY IMPROVEMENTS

- Despite playing six more sets in non-con, the Boilermakers have scored more points offensively (778 points in Big Ten vs. 711 in non-con, including 611 kills in Big Ten play vs. 536 in non-con).
- Serving has also improved, now averaging 1.50 aces per set in Big Ten action vs. 1.34 in non-con.
- Although Purdue's block has not been as efficient in Big Ten play (averaging one less block per set), the team has made fewer blocking errors in league action.

#### HUDSON: IMPROVING AS THE SEASON GOES

- Like last year, Hudson is improving during Big Ten action. She has increased her kills per set (4.34 in non-con vs. 4.59 in Big Ten play), hitting % (.279 in non-con vs. .285 in Big Ten), digs per set (2.21 in non-con vs. 2.57 in Big Ten).

#### PURDUE VS TOP-25 TEAMS

- The Boilermakers had a stretch of playing six ranked opponents in a 10 match span, all of which are currently ranked in the top-15.
- Purdue Match Highs: .311% at #2 Nebraska | 15 blocks at #2 Nebraska
- The Boilers totaled 79 digs at then-#16 Minnesota, a season-high, along with 17 aces, a program record-tying number in a Big Ten match.

#### CHICOINE'S ERRORLESS PERFORMANCE VS. INDIANA

- Chloe Chicoine went errorless on the attack vs. Indiana (10/19), recording 12 kills on 30 attacks for a .400 clip.
- The last time a Purdue outside hitter went errorless with a 30 attack minimum was All-American Grace Cleveland vs. Indiana in 2021.
- In fact, Chicoine is just the third Boilermaker in the last 10 years to go errorless on the attack with a 30-attempt minimum. In addition to Cleveland's match, she is joined by Sherridan Atkinson's.
- She is the only outside hitter in the Big Ten to go errorless on the attack in league action this year, and is just the second overall this season, joined by Oregon's Mimi Colyer's 12-0-33 (.364%) show vs. San Diego on Sept. 14.
- Meanwhile, she went errorless in seven of eight sets last week (vs. UCLA and vs. Indiana).

#### HUDSON: STRONG STARTS IN SET 1

- She's gone errorless in the opening game in 11 of 23 matches, including four of six top-25 matchups.

Big Ten Individual Rankings

<b>Blocks Per Set</b> No. 5 Raven Colvin (1.52)
<b>Total Assists</b> No. 2 Taylor Anderson (818)
<b>Total Kills</b> No. 2 Eva Hudson (367) No. 15 Chloe Chicoine (268)
<b>Total Blocks</b> No. 1 Raven Colvin (125)
<b>Digs Per Set</b> No. 6 Ali Hornung (3.99)
<b>Kills Per Set</b> No. 3 Eva Hudson (4.48)
<b>Total Attacks</b> No. 2 Eva Hudson (974) No. 9 Chloe Chicoine (801)
<b>Total Points</b> No. 3 Eva Hudson (399.0)

Big Ten Team Rankings

<b>No. 1   Attacks Per Set (35.22)</b>
<b>No. 1   Digs Per Set (15.48)</b>
<b>No. 3   Assists Per Set (12.95)</b>
<b>No. 3   Kills Per Set (13.99)</b>
<b>No. 4   Points Per Set (18.16)</b>
<b>No. 4   Hitting % (.277)</b>
<b>No. 4   Receive % (94.8)</b>
<b>No. 4   Total Blocks (225)</b>
<b>No. 4   Total Kills (1147)</b>

NCAA 2024 Attendance Rankings

Attendance	Match, Date
1. 15,084	Marquette at Wisconsin, 9/17
2. 14,876	Indiana at #10 Purdue, 10/19
14,876	#8 Wisconsin at #10 Purdue, 10/26
3. 14,126	Nebraska at Louisville, 9/22
4. 14,035	Texas vs. Wisconsin, 9/1
14,035	Stanford vs. Minnesota, 9/1

2024 Indiv. National Rankings

<b>Blocks Per Set</b> No. 5 Raven Colvin (1.52)
<b>Total Blocks</b> No. 10 Raven Colvin (125)
<b>Total Assists</b> No. 29 Taylor Anderson (890)
<b>Assists Per Set</b> No. 9 Taylor Anderson (10.85)
<b>Attacks Per Set</b> No. 14 Eva Hudson (11.88)
<b>Total Kills</b> No. 27 Eva Hudson (367)
<b>Kills Per Set</b> No. 15 Eva Hudson (4.48)
<b>Career Blocks Per Set</b> No. 4 Raven Colvin (1.37)
<b>Career Total Blocks</b> No. 5 Raven Colvin (583)
<b>Career Kills Per Set</b> No. 9 Eva Hudson (4.38)
<b>Career Attacks Per Set</b> No. 9 Eva Hudson (11.86)

PURDUE IN 5-SET MATCHES

- Purdue is 11-6 in five-set matches over the last three seasons, including 2-1 in 2024.
- The Boilermakers have gone errorless in the last two fifth sets: 13-0-27 at #2 Nebraska and 9-0-20 vs. #RV UCLA).
- The Boilers have hit over .400 in every 5th set this season (.429 at #16 Minnesota, .481% at #2 Nebraska, .450 vs. #RV UCLA).

BIG TEN DEFENSIVE PLAYER OF THE WEEK (11/4): ALI HORNING

- Libero Ali Hornung received her second Defensive Player of the Week award after guiding the team to a Big Ten-leading 17.67. Meanwhile her passing set Purdue up for a Big Ten-leading .364 hitting % and 15.83 kills per set.
- She registered a perfect reception % at Maryland and at Rutgers.
- Began the week with 17 digs at Maryland, followed by 14 at Rutgers.
- It was Hornung's second career DPOW, earning one as well a month ago (10/7) after totaling 64 digs (5.33 per set) over three matches, including 22 digs in three sets vs. Michigan State and a near-double-double vs. #10 Kentucky.
- Hornung is averaging more digs per set during conference-play vs. non-con: 4.18 vs. 3.76.

PURDUE AT #2 NEBRASKA

- Purdue's 2-hour 53-minute five-setter at #2 Nebraska was the longest match in known-program history (research available through 1999). The second-longest match in program history was also last year's five-setter vs. #2 Nebraska, which clocked in at 2 hours and 51 minutes.
- The Boilermakers held match point, 14-13 and went errorless in Set 5 (13-0-27) for a .481 set clip.
- In addition to Purdue edging Nebraska in efficiency, .311% vs. .242%, Purdue blew Nebraska's previous opponents away as the most efficient team the Huskers have faced (previous opponent-high: SMU's .242% on 9/3/24).
- Purdue out-blocked Nebraska, 15-5, holding the Huskers to a season-low. Raven Colvin was on 11 of those 15 blocks.
- Eva Hudson and Chloe Chicoine went off, combining for 48 kills and each hitting over .300% in the match.
- The Achilles heel for Purdue was service errors, tallying 19 errors in the match, including four in Set 5.

NCAA SELECTION COMMITTEE TOP-16 REVEAL

- Purdue was slotted at #12 in the NCAA Selection Committee's Top-16 reveal, which means if the season were to end today, the Boilermakers would host NCAA First and Second Rounds.

14,870 STRONG: SETTING A BIG TEN-MATCH ATTENDANCE RECORD

- Purdue set the Big Ten regular-season match attendance record, the state of Indiana attendance record for volleyball, and the Purdue volleyball home attendance record vs. Indiana (10/19) and then tied it a week later vs. #8 Wisconsin (10/26).
- Purdue eclipsed the old attendance record for a regular-season match between two Big Ten opponents, which stood at 10,927 (#23 Illinois at #2 Minnesota, 10/16/04).
- The matches sold out a month in advance (sold out on Friday, September 20).
- The last time Purdue volleyball played in Mackey Arena was in 2016 vs. Indiana, which also happened to be the Monon Spike match in front of a crowd of 8,240 fans.
- Last week's match was the second-largest crowd in women's volleyball this year.
- The last and only time Purdue and Wisconsin met in Mackey Arena was in 2008, which the attendance of 10,570 fans was second-largest crowd to witness a Big Ten regular-season match in conference history.

**SHONDELL QUOTE:** "It's time to take our Boilermakers back into Mackey Arena. The opportunity to grow our program, as well as our sport, is essential right now. Holloway is a special home, but for a few matches this fall, our team and Boilermaker Nation, must make Mackey Arena the best home-court environment in the land."

HISTORY OF ATTENDANCE SUCCESS

- Purdue set a previous NCAA women's volleyball attendance record in Mackey Arena on Oct. 29, 1985 with 10,645 fans watching Purdue defeating Western Michigan 3-1 (11-15, 15-6, 15-5, 15-2). The event was dubbed "Pac Mac" with promotions that allowed patrons to attend for just \$1.

2024 Team National Rankings

<b>No. 13   Kills Per Set (13.99)</b>
<b>No. 15   Blocks Per Set (2.74)</b>
<b>No. 17   Hitting % (.277)</b>
<b>No. 21   Assists Per Set (12.95)</b>
<b>No. 33   Total Blocks (225.0)</b>



School	Big Ten Record	Overall Record	Overall Pct.
Nebraska	12-0	22-1	.957
Penn State	12-0	22-1	.957
Wisconsin	10-2	16-5	.762
Oregon	9-3	17-4	.810
Purdue	9-3	18-5	.783
Minnesota	9-3	16-6	.727
USC	8-4	16-6	.727
Washington	7-5	17-5	.773
Illinois	7-5	15-7	.682
Michigan	6-6	16-7	.696
Indiana	5-7	12-10	.545
UCLA	4-8	10-11	.476
Ohio State	3-9	10-12	.455
Iowa	3-9	9-15	.375
Northwestern	2-10	4-16	.200
Maryland	1-11	10-13	.435
Michigan State	1-11	8-15	.348
Rutgers	0-12	5-18	.217

## Wins vs. Top-10 Opponents

### Last 8 Years (2017-present)

Opponent	Score	Date
vs. #10 Kentucky	3-1	9/14/24
vs. #3 Wisconsin	3-2	11/17/23
vs. #8 Minnesota	3-0	9/23/22
vs. #3 Ohio State	3-2	9/24/21
vs. #3 Wisconsin	3-1	10/31/21
at #4 Wisconsin	3-1	11/12/21
at #8 Minnesota	3-1	11/14/21
vs. #5 BYU	3-2	12/9/21
at #10 Penn State	3-1	3/5/21
at #9 Ohio State	3-1	3/26/21
at #9 Ohio State	3-1	3/27/21
vs. #5 Nebraska	3-2	10/26/19
at #4 Penn State	3-2	10/27/18
vs. #9 Creighton	3-1	9/8/17
vs. #5 Minnesota	3-1	11/10/17
vs. #10 Wisconsin	3-0	11/11/17
vs. #10 Michigan State	3-1	11/24/17
vs. #9 Stanford	3-2	9/9/16
vs. #4 Kansas	3-1	9/16/16
vs. #3 Minnesota	3-2	11/21/15

## Top-25 Wins in Holloway

### By Most Recent (Since 2011)

Opponent	Score	Date
vs. #3 Wisconsin	3-2	11/17/2023
vs. #16 Penn State	3-2	11/5/2023
vs. #19 Kentucky	3-2	9/9/2023
vs. #8 Minnesota	3-0	9/23/2022
vs. #3 Wisconsin	3-1	10/31/2021
vs. #15 Penn State	3-2	10/17/2021
vs. #3 Ohio State	3-2	9/24/2021
vs. #22 Tennessee	3-0	9/18/2021
vs. #16 Marquette*	3-1	12/7/2019
vs. #23 Michigan	3-0	11/23/2019
vs. #5 Nebraska	3-2	10/26/2019
vs. #10 Michigan State	3-1	11/24/2017
vs. #10 Wisconsin	3-0	11/11/2017
vs. #13 Michigan	3-1	10/28/2016
vs. #4 Kansas	3-1	9/16/2016
vs. #3 Minnesota	3-2	11/21/2015
vs. #18 Illinois	3-2	10/25/2015
vs. #22 Ohio State	3-2	10/18/2014
vs. #19 Michigan State	3-2	11/30/2013
vs. #6 Nebraska	3-0	11/22/2013
vs. #15 Wisconsin	3-2	11/2/2013
vs. #12 Ohio State	3-0	10/4/2013
vs. #21 Illinois	3-2	9/29/2012
vs. #21 Northern Iowa	3-0	8/24/2012

\*NCAA Tournament match

## The Snapshot: Last Week in Review

### NATIONAL RANKINGS

#### Team Stats

No. 4 | Team Hitting % (.364%)

No. 25 | Team Assists Per Set (14.17)

#### Individual

No. 12 | Assists Per Set (Taylor Anderson, 12.00)

### AMONG THE BIG TEN

No. 1 | Taylor Anderson (Assists Per Set, 12.00)

No. 2 | Ali Hornung (Digs Per Set, 5.17)

No. 3 | Chloe Chicoine (Digs Per Set, 4.50)

No. 3 | Eva Hudson (Kills Per Set, 4.83)

No. 5 | Chloe Chicoine (.431 Hitting %)

No. 7 | Eva Hudson (Points Per Set, 4.92)

No. 1 | Team Digs Per Set (17.67)

No. 1 | Team Hitting % (.364)

No. 1 | Team Kills Per Set (15.83)

No. 2 | Team Assists Per Set (14.17)

No. 3 | Team Opponent Hitting % (.159)

### LAST WEEK'S NEED-TO-KNOW

- Purdue pulled out a pair of sweeps in its trip to the east coast, rolling past Maryland (25-23,25-20,25-20) and Rutgers (25-14,25-12,25-16).
- Purdue led all Big Ten, ACC and Big 12 schools in kills per set (15.83) on its way to ranking #2 among all Power 4 programs. LSU (16.00) was the only team to post more kills per set than Purdue.
- Ali Hornung was named Big Ten Defensive Player of the Week following a 5.17 digs per set average performance (17 digs at Maryland, 14 at Rutgers).
- Purdue's back row led all Big Ten, SEC and Big 12 programs with 17.67 digs per set. In fact, Purdue's back row was #3 among all Power 4 programs.
- Chloe Chicoine and Eva Hudson each had just one attack error in each match last week.
- Purdue hit a season-high .538% in Set 2 at Rutgers.
- The team's .424% at Rutgers as the best efficiency in a Big Ten match since 2017. They committed just eight attack errors in the match, with four coming over the final two sets.

### TOP-10 TAKEDOWNS

- In every season for the last 10 years, Purdue has picked up at least one top-10 victory. In fact, Purdue's won 20 top-10 showdowns since 2015 (last: vs. #10 Kentucky, 3-1 on 9/14/24).

### PURDUE IN THE NATIONAL RANKINGS: 120 CONSECUTIVE WEEKS

- The program has been ranked for 120 consecutive weeks (since preseason 2017), the longest active streak in Purdue Athletics.
- Purdue's up two spots this week to #9 in the AVCA poll, tied for the largest jump in the top-25.
- It marks the highest ranking for Purdue since Week 3 (9/16).
- Since the 2021 spring season, Purdue has been ranked among the top-10 for 36 weeks.
- The Boilermakers' history of excellence includes 55 of the last 70 weeks ranked among the top-15 (77%).
- Purdue has spent the entirety of the 2024 season in the top-11 (includes preseason poll).

### PURDUE ATHLETICS INVESTING IN THE PROGRAM

- New this season, Purdue will play two matches in the history Mackey Arena.
- Holloway Gymnasium is home to a **brand-new Taraflex court**.
- The team received new **updates to their locker room, player lounge and film room**.
- A new \$11 million Purdue **Student-Athlete Dining Facility** opened on July 31.
- The **weight room** used by volleyball, men's and women's basketball has undergone construction and entirely new equipment has been purchased.

### ACED IT: 17 ACES AT #16 MINNESOTA

- The team's 17 service aces included five in the fifth set. Three came during libero Julia Kane's serving tear, which was a career-high.
- Raven Colvin tied a program record in five-set matches with her seven service aces.
- Freshman Ryan McAleer generated six aces, the third freshman in Purdue history, including the only one this century to do so (joining Lauri Grimes and Brooke White, both accomplished in 1993).
- The Boilermakers' 17 aces were the most by any team in the nation last week and are the most by a Big Ten team this season.

### SMOOTH & STEADY: SETTER TAYLOR ANDERSON

- She leads not only all Big Ten setters with 76 blocks this season (second-most is 60 by USC's Mia Tuaniga), but **all setters at Power 4 programs. In perspective, Anderson led many of the top middles in the league through the first half of the season, including Big Ten middles like Andi Jackson (Nebraska) and Taylor Trammell (Penn State).**
- Anderson has set Purdue to nine matches over .300%, including the highest mark by Purdue in a Big Ten match since 2017 with a .424% at Rutgers, a .311% at #2 Nebraska, .310 vs. #10 Kentucky and .450 vs. UC Davis.
- Anderson has gotten more aggressive on the attack compared to her freshman season, averaging .61 kills per set compared to .31 from last season (35 kills in 2023 vs. 50 in 2024). In fact, her numbers are up in virtually every category including digs per set (1.97 vs. 2.23), assists per set (9.88 vs. 10.85) and blocks (.85 vs. .93).
- She set a season-high 13 digs alongside 47 assists in the four-set victory at Northwestern (10/4).
- Has posted 7 or more blocks four times this season (last: 7 at #2 Nebraska)
- 40 or more assist in a match this season: 10
- 45 or more assists in a match this season: 7
- 50 or more assists in a match this season: 4
- Double-doubles this season: 8 (including five of the last nine matches)

### ON A MISSION: RAVEN COLVIN

- No player in DI** is taking care of business like Colvin for blocks, ranking #5 in blocks per set (1.52). She led the nation in blocks for the first 4 straight weeks and ranked among the top-12 in hitting % until Week 7.
- For 13 of the last 18 matches, Colvin has hit .308% or higher.
- She set a **career-high 19 kills** at #16 Minnesota (9/28) alongside a Purdue 5-set record-tying 7 aces in a five-set match.
- She is hitting, blocking and serving more efficiently than ever before and leads the team in aces.
- Colvin has **increased her hitting efficiency** compared to 2023: .360% this season vs. .280% last year.
- Already owning three top-10 marks in Purdue single-season history entering the year, the senior is on track to enter the Purdue record books in season blocks per set, career total blocks, career blocks per set, career block solos. She is



- joined by First Team All-American Stephanie Lynch as the best blockers in Purdue history during the 21st century.
- She's hit **.440% or higher in eight of 10 consecutive matches (9/7-10/6)**.
- Colvin ranks #2 in Purdue history in both career total blocks and block assists. She is one of just two blockers in program history to post as many this century (last: record-holder Stephanie Lynch, 2005-08).
- She also ranks #2 in Purdue history and the only Boilermaker this century to record 1.37 career blocks per set (record holder: Donna Gill, 1.49 blocks/set, 1991-92). The Big Ten season record in blocks/set is record: 1.85 set in 1996.
- Named **Big Ten Defensive Player of the Week (9/16)** after back-to-back .571% performances, 7 blocks vs. #10 Kentucky and four vs. Houston.
- The Boiler has recorded three 10-block performances: 11 at #2 Nebraska, 10 vs. K-State and 10 at Utah State (9/7).
- Number of matches with one or fewer attack errors: 10
- Number of matches hitting .300 or above: 20
- Number of matches hitting .400 or above: 15
- Number of matches hitting .500 or above: 7
- Number of matches hitting .700 or above: 3
- Number of matches with six or more blocks: 12

**THE BOILERMAKER FAITHFUL**

- Purdue has reached its second straight complete season-sell-out after the two Mackey matches officially sold out on Friday (9/20).
- The first match sold out within 20 minutes of the general public on-sale (vs. USC, 11/23).
- The lower bowl for each of the Mackey Arena matches filled up with just John Purdue Club member purchases before it opened up to the general public on-sale.
- Within the first hour, there were three sellouts: USC, Michigan and Penn State. Within an hour and 20 minutes, there were four sellouts.
- Within two hours of on-sale, over 9,800 tickets were sold for the Wisconsin match. That is the equivalent of filling Holloway four times over.
- Only five matches had tickets left just two hours into on-sale.
- Every ticket for every match was sold last year, making 2023 a complete-season sell-out.
- The student section: The Block Party sold out its season tickets in 20 minutes. That is up from the 40 minutes it took in 2022 and just under two-hour mark in 2022.
- Fans looking for season tickets have had to join a waiting list for at least the last three years. Due to the high renewal rate, only two people were able to move off the wait list in 2023 to buy season tickets.

**EVA HUDSON: A FORCE**

- Hudson is averaging 4.48 kills per set, 2.40 digs per set and 4.87 points per set as a junior.
- Set a Big Ten season-high hitting % in three times in the span of five matches, beginning with a .349 clip at #2 Nebraska (26-4-63), and most recently with a .417 clip, the second-highest overall this season, vs. Indiana (17-2-36).
- She has posted a double-double in all but one week of Big Ten play.
- At #2 Nebraska, went errorless and hit .500 (5-0-10) in Set 2, hit .500% in Set 3 (7-1-12) and errorless in Set 5 (7-0-18).
- Hudson went errorless in Set 2 vs. #10 Kentucky to help turn the tides, posting an 8-0-11 (.727) performance on the way to Purdue's 3-1 victory.
- Has posted at least one errorless set in every match but two this season (vs. Ohio State, 10/23 and #8 Wisconsin 10/26).
- Went errorless for nearly the entire match at #10 Kansas until the very end, forfeiting one attack error with the score 20-20 in Set 4. She finished the match 17-1-53.
- Posted 15 kills over just two sets of action vs. #10 Kentucky and seven of Purdue's 15 points in Set 5 at #2 Nebraska.
- She is averaging a .282 clip, but hit over .400 in back-to-back matches over opening weekend.
- She's hit over .300 in 3 of 6 matches vs. top-10 foes, including just one error at Kansas.
- Hudson is on track to become Purdue's all-time leader in career kills/set (4.38 currently; record is 3.96).
- Last year, the 2023 AVCA Second Team All-America honoree ranked #1 in the Big Ten and #5 in the nation in kills (560) and #2 in the Big Ten, #12 in the nation in total points (605.5).
- She is the fastest Boilermaker to reach 1,000 career kills in the rally-scoring era and recorded more kills over her first two years than any Boilermaker to come through the program (1,075).
- Number of season / career double-doubles: 7 / 24
- Number of matches in season / career with 15+ kills: 16 / 62
- Number of matches in season / career with 20+ kills: 2 / 15
- Number of matches in season / career hitting .300% or above: 11 / 33
- Number of matches in season / career hitting .350% or above: 6 / 19
- Number of matches in season / career hitting .400% or above: 4 / 12
- Number of errorless sets in season: 30

**CHLOE CHICOINE: YEAR 2**

- Went errorless for the entire match vs. Indiana, recording 12 kills, 0 errors on 30 attacks for a Big Ten season-high .400 hitting % in addition to recording her 11th double-double of the season (12 digs).
- Has reached double-digit kills in 19 of 23 matches this season.
- She is averaging 3.27 kills per set, 2.82 digs per set and 3.62 points per set as a sophomore.
- Set a season-high 22 kills (22-4-55) on a then-Big Ten-season-high .327 clip at #2 Nebraska.
- Led the team in the season-opener vs. K-State with 17 kills.
- Led the team in both kills (11) and digs (10) vs. Houston (9/13).
- Posted a season-high 15 digs vs. Cal (9/5).
- Recorded a career-high four blocks (2 solo, 2 assisted) alongside 14 kills at a .310 clip at Utah State (9/7).
- Was named Player of the Week once and Big Ten Freshman of the Week five times last season, including a Week 7 perfor-

**The Last Time....**

**A Match Went to 5 Sets**

Oct. 17, 2024 vs. UCLA  
W, 3-2 (23-25, 27-25, 25-20, 19-25, 15-11)

**Last Victory over a Top-5 Team**

Nov. 17, 2023 vs. #3 Wisconsin  
W, 3-2 (22-25, 25-19, 25-20, 12-25, 16-14)

**Team Hitting % of .400 or Better**

.424 | Nov. 2, 2024 at Rutgers | W, 3-0

**60 or More Team Kills**

69 | Oct. 17, 2024 vs. UCLA | W, 3-2

**15 or More Total Team Blocks**

16 | Oct. 17, 2024 | W, 3-2

**80 or More Team Digs**

83 | Dec. 2, 2023 vs. Marquette | W, 3-1

**10 or More Team Aces**

10 | Oct. 12, 2024 at Iowa | W, 3-1

**Team Season-Highs**

**Total Kills**

69 | Oct. 17 vs. UCLA

**Hitting % in a Match**

.450 | Sept. 1 vs. UC Davis

**Hitting % in a Set**

.538 (Set 2) | Last: Nov. 2 at Rutgers

**Total Digs**

79 | Sept. 28 at #16 Minnesota

**Total Blocks**

17 | Sept. 7 vs. Utah State

**Fewest Attack Errors**

7 | Aug. 31 vs. UMBC

**Lowest Opponent Hitting %**

.065 | Sept. 7 vs. Utah St.

**Total Attacks**

169 | Oct. 17 vs. UCLA

**Service Aces**

17 | Sept. 28 at #16 Minnesota

**Top Individual Performances: 2024 Season**

Category	Purdue	Opponent
Points	29 (Colvin at #16 Minnesota, 9/28)	29 (Cheridyn Leverette, UCLA)
Kills	26 (Hudson at #2 Nebraska, 10/11)	22 (Cheridyn Leverette, UCLA)
Attacks	63 (Hudson at #2 Nebraska, 10/11)	54 (Merritt Beason, Nebraska)
Service Aces	7 (Colvin at #16 Minnesota, 9/28)	4 (Kamryn Gibadlo, Utah)
Total Blocks	11 (Colvin at #2 Nebraska, 10/11)	9 (Carter Booth, Wisconsin)
Block Solos	3 (Colvin vs. Utah State, 9/7)	3 (Jess Mruzik, Penn State)
Block Assists	9 (twice by Colvin; last: at #2 Nebraska, 10/11)	7 (twice, last: Carter Booth, Wisconsin)
Digs	24 (Hornung at #16 Minnesota, 9/28)	20 (last: Nalani Iosia, Michigan State)
Assists	54 (Anderson at #16 Minnesota, 9/28)	60 (Bergen Reilly, Nebraska)
Attack % (10 attempt, min.)	.733% (Colvin, 12-1-15 vs. UC Davis, 9/1)	.545% (Caroline Jurevicius, Penn State, 6-0-11)

## Purdue's Record When....

**3-Set Matches:** 11-2

**4-Set Matches:** 5-2

**5-Set Matches:** 2-1

**Team attack % is .200 or better:** 17-2

**Team attack % is .250 or better:** 13-1

**Team attack % is .300 or better:** 8-1

**10 or more team blocks:** 10-1

**After dropping Set 1:** 3-5

**After winning Set 1:** 14-0

**Trailing after Set 3:** 0-2

**Leading after Set 3:** 7-1

## Record By Class

**Seniors:** 88-32 (win %: 73%)

**Juniors:** 62-25 (win %: 72%)

**Sophomores:** 41-14 (win %: 75%)

**Freshmen:** 18-5 (win %: 78%)

## NCAA D1 Single-Match Attendance

Attendance	Match, Date
1. 15,084	Marquette at Wisconsin, 9/17
2. 14,876	Indiana at #10 Purdue, 10/19
14,876	#8 Wisconsin at #10 Purdue, 10/26
3. 14,126	Nebraska at Louisville, 9/22
4. 14,035	Texas vs. Wisconsin, 9/1

## Undefeated Starts Under Shondell

- 2011 (14-0)
- 2018 (11-0)
- 2005 (11-0)
- 2024 (8-0)**
- 2017 (7-0)
- 2014 (7-0)
- 2008 (7-0)

## Purdue Career Total Blocks

Name	TB	Years
1. Stephanie Lynch	660	2005-08
<b>2. Raven Colvin</b>	<b>583</b>	<b>2021-</b>
3. Marianne Smith	567	1982-85
4. Kate Crandell	563	1981-84
5. KiKi Jones	510	2011-14

## Purdue Career Block Assists

Name	TB	Years
1. Stephanie Lynch	550	2005-08
<b>2. Raven Colvin</b>	<b>510</b>	<b>2021-</b>
3. KiKi Jones	454	2011-14
4. Grace Cleveland	423	201-21
5. Kristen Arthurs	403	2007-10

- mance in which she earned Freshman of the Week after leading the entire Big Ten, Pac-12 and ACC in points per set (5.63). Chicoine produced in the biggest matches last season, hitting .359% vs. #2 Nebraska with 18 kills and just four errors on 39 swings. At #11 Penn State, the freshman recorded a Big Ten season-high 20 kills with her second-highest hitting % of the year with a .405 clip in the match, including an errorless six kills on nine attacks (.667%) to seal the win in Set 4. She went on to best her kills at home vs. Penn State, totaling a career-high 27 kills. Moreover, vs. Minnesota, she recorded just one error in the match with a .333 hitting % with 11 kills and six digs. Against #3 Wisconsin, she obliterated her previous career-high of 14 digs, totaling 23 in the win.
- Number of season / career double-doubles: 12 / 22
- Number of matches in season / career with 15+ kills: 4 / 20
- Number of matches in season / career with 20+ kills: 1 / 6
- Number of matches in season / career with 10+ digs: 13 / 22
- Number of errorless sets in season / career: 23 / 63

### MOST IMPROVED PLAYER: RIGHT SIDE KENNA WOLLARD

- The sophomore has set career-highs in nearly every statistical category this season including kills (18 at Northwestern, 10/4/24), blocks (5 vs. Houston, 9/13/24) and hitting %.
- She led the team in Week 6 (at Northwestern and vs. Michigan State) in kills per set (3.71) and led outside hitters in efficiency (.385%).
- Already, she has nearly tripled her kills output compared to last season: 57 in 2023 vs. 130 in 2024.
- Number of matches hitting .300 or better this season: 10
- Number of matches hitting .400 or better this season: 3
- Number of matches hitting .450 or better this season: 2

### HUDSON NAMED AVCA NATIONAL PLAYER OF THE WEEK: W1

- The Stacey Clark Classic MVP led the league with 46 kills and 50.5 points.
- Averaged 4.60 kills per set
- Hit over .430 in back-to-back matches (.467% vs. UMBC and .433 vs. UC Davis)
- Recorded just one attack error vs. UMBC (8/31)
- Posted a double-double in the season-opener vs. K-State, recording 16 kills, 12 digs and a career-high-tying 5 blocks, which were the most since her freshman season.
- Was one dig shy of her second double-double of the season with her 15-kill, 9 dig performance vs. UC Davis.

### HC DAVE SHONDELL & COACHING STAFF

- In the 2024 calendar year, Dave Shondell began it with a four-year contract extension running through the 2027 season and has now reached GOAT status as the all-time winningest head coach in program history (470 wins).
- Under Shondell's guidance, Purdue has won 12 matches vs. top-5 opponents in the last 13 years.
- Led Purdue to a 128-47 record over the last five years alone.
- On the national stage, he is one of seven active coaches to lead a program for at least 21 years and one of seven with as many wins in the Power 4 (470 wins)
- In the last 21 seasons, Shondell has led the team to 18 NCAA tournament appearances and a perfect 18-0 record in first round matches.
- Last season, Shondell coached one of the youngest squads in program history, leading them to a third-place Big Ten finish and an NCAA Regional Semifinal berth. Three Boilermakers received All-America nods while tying a Purdue record of six Big Ten postseason honors, including two unanimous selections.
- He owns a .670 winning % at Purdue and is one of three active Big Ten coaches to be at their institution for 10 years.
- He is one of eight head coaches in Big Ten history to produce as many wins and one of two active coaches, joined by John Cook. Moreover, Shondell is the only one of the two to produce those wins at the same institution (Cook: Wisconsin & Nebraska).
- Coaching Staff Updates For 2024:** Kathy Jewell (22nd season) was promoted to associate head coach - recruiting coordinator; John Klanac was hired as assistant coach in January; Ben Cutrone (previously the GA) was hired as volleyball analyst in May.
- John Klanac was previously at Rice and graduated from Ohio State, where he was a 2011 national champion.

### RECORD BOOK WATCH: CAREER RECORDS

- Colvin is 40 block assists away from tying the Purdue career record, 77 total blocks away from setting a new Purdue career record and 85 kills away from reaching 1,000.
- Colvin is averaging a .310 career hitting %, good for #8 in Purdue's annals.
- Colvin entered the career block solos category with her 73rd block solo on the Maryland/Rutgers trip. She ranks #10 in Purdue history as the second Boilermaker this century to post as many block solos. She will tie Jan Hoosline (1980-83) with her 75th block.

### RECORD BOOK WATCH: SINGLE-SEASON RECORDS

- Purdue's .277 team hitting % checks in at #3 all-time and is just the second time this century the Boilermakers have hit as efficiently in a season.
- Eva Hudson's 4.48 kills per set this season currently ranks T-5 in Purdue single-season history, tying her 2023 average and Ariel Turner's (2012).
- Colvin's 1.52 blocks per set currently rank #4 in single-season history. It would be the second time this century a Boilermaker has posted as many blocks/set in a season.
- Colvin is 23 block assists away from entering Purdue's top-10.
- Colvin's .360 hitting % ties for #8 in Purdue single-season history, matching Kierra "Kiki" Jones in 2012.
- Ali Horning is .06 digs/set away from entering the top-10.

### ANNIE DREWS INDUCTED TO THE PURDUE HALL OF FAME

- Two-time Olympian Annie Drews (2012-15) will be inducted to the Leroy Keyes Purdue Athletics Hall of Fame on Friday.
- A four-year letterwinner as an outside hitter, she was a gold medalist at the 2020 Tokyo Olympics, playing a key role in Team USA's historic run on the world stage and a silver medalist at the 2024 Paris Olympics as well as a regular with the U.S. Senior National Team.
- Before her international glory, she led the Boilermakers to three NCAA Tournament trips, including two Sweet 16s and one Elite Eight. Drews closed out her Purdue career with Second Team All-America honors in 2015 along with back-to-back First Team All-Big Ten accolades.
- She is the seventh volleyball player to be inducted to elite group, joining Ariel (Turner) Gebhardt (Class of 2020), Stephanie (Lynch) Harpenau (Class of 2018), Carol Dewey and Debbie (McDonald) West (Class of 2003), Marianne (Smith) Orr (Class of 1999) and Jane Neff (inaugural Class of 1994).

# PURDUE VOLLEYBALL

## 2024 ROSTER

No.	Name	Ht.	Pos.	Yr.	Hometown / High School / Last School
1	Rachel Williams	5-7	DS	RS-Fr.	West Lafayette, Ind. / West Lafayette
2	Chloe Chicoine	5-10	OH	So.	Lafayette, Ind. / McCutcheon
3	Ryan McAleer	5-6	DS	Fr.	Overland Park, Kan. / Blue Valley
4	Kenna Wollard	6-1	OH	So.	Dunlap, Ill. / Illinois Valley Central
5	Taylor Anderson	6-1	S	So.	San Antonio, Texas / Cornerstone Christian
6	Sienna Foster	5-9	DS	Fr.	Lafayette, Ind. / Benton Central
7	Raven Colvin	6-1	MB	Sr.	Indianapolis, Ind. / Heritage Christian
8	Raven Gray	6-1	OH/RS	Sr.	Charlotte, N.C. / Cox Mill / Winston-Salem State
9	Lourdès Myers	6-3	MB	RS-Sr.	Alliance, Ohio / St. Thomas Aquinas
10	Ali Hornung	5-10	DS/OH	Sr.	New Albany, Ind. / Providence
11	Allie Shondell	5-10	S	Fr.	Lafayette, Ind. / McCutcheon
14	Grace Heaney	6-2	OPP/RS	So.	Omaha, Neb. / Elkhorn North
15	Lizzie Carr	6-6	MB	RS-So.	West Chester, Pa. / West Chester East
17	Eva Hudson	6-1	OH	Jr.	Fort Wayne, Ind. / Bishop Dwenger
19	Sydney Yim	6-1	S	Sr.	Newburyport, Mass. / Newburyport
21	Julia Kane	5-11	DS	So.	Windermere, Fla. / Windermere Prep
22	Emily Rastovski	6-2	OH	Sr.	Valparaiso, Ind. / Morgan Township

**Head Coach:** Dave Shondell, 22nd season

**Associate Head Coach - Recruiting Coordinator:** Kathy Jewell, 22nd season

**Assistant Coach:** John Klanac, 1st season

**Assistant Coach:** Michael Bouril, 2nd season | 5th overall at Purdue

**Supervisor of Volleyball Operations:** Carrie Gurnell, 4th season

**Volleyball Analyst:** Ben Cutrone, 1st season | 3rd overall at Purdue

**Graduate Assistant:** Owen Mahin, 1st season

### Pronunciation Guide

Chloe Chicoine: SHIH-coin (starts like Chicago)

Lourdès Myers: LORD-is

Ali Hornung: HORN-nung

Ryan McAleer: MAC-uh-leer

Eva Hudson: EE-va (think eve)

Emily Rastovski: RAZ-taw-v-skee

John Klanac: Klan-ICK

Michael Bouril: BURR-ill

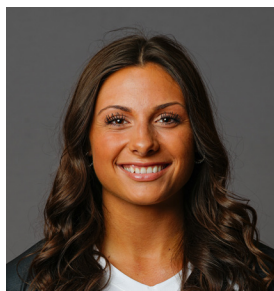




# 2024 PURDUE VOLLEYBALL ROSTER



**#1 Rachel Williams**  
R-Fr. | DS | 5-7 | West Lafayette, Ind.



**#2 Chloe Chicoine**  
So. | OH | 5-10 | Lafayette, Ind.



**#3 Ryan McAleer**  
Fr. | DS | 5-6 | Overland Park, Kan.



**#4 Kenna Wollard**  
So. | OH | 6-1 | Dunlap, Ill.



**#5 Taylor Anderson**  
So. | S | 6-1 | San Antonio, Texas



**#6 Sienna Foster**  
Fr. | DS | 5-9 | West Lafayette, Ind



**#7 Raven Colvin**  
Sr. | MB | 6-1 | Indianapolis, Ind.



**#8 Raven Gray**  
Sr. | OH/RS | 6-1 | Charlotte, N.C.



**#9 Lourdès Myers**  
RS-Sr. | MB | 6-3 | Alliance, Ohio



**#10 Ali Hornung**  
Sr. | DS/OH | 5-10 | New Albany, Ind.



**#11 Allie Shondell**  
Fr. | S | 5-10 | Lafayette, Ind.



**#14 Grace Heaney**  
So. | OPP/RS | 6-2 | Omaha, Neb.



**#15 Lizzie Carr**  
RS-So. | MB | 6-6 | West Chester, Pa.



**#17 Eva Hudson**  
Jr. | OH | 6-1 | Fort Wayne, Ind.



**#19 Sydney Yim**  
Sr. | S | 6-1 | Newburyport, Mass.



**#21 Julia Kane**  
So. | DS | 5-11 | Windermere, Fla.



**#22 Emily Rastovski**  
RS-Jr. | OH | 6-2 | Valparaiso, Ind.



**Graduate Assistant**  
Owen Mahin | 1st Season



**Volleyball Analyst**  
Ben Cutrone | 1st Season



**Head Coach**  
**Dave Shondell**  
22nd Season



**Assoc. Head Coach**  
**& Recruiting Coordinator**  
**Kathy Jewell**  
22nd Season



**Assistant Coach**  
**Michael Bouril**  
5th Season



**Assistant Coach**  
**John Klanac**  
1st Season



**Director of Operations**  
**Carrie Gurnell**  
4th Season





# 2024-25 Purdue Women's Volleyball Combined Team Statistics All games

Page 1/1  
as of Nov 03, 2024

## Game Records

Overall	Conference	Home	Away	Neutral
18 - 5	9 - 3	7 - 2	7 - 2	4 - 1

## Team Box Score

			Attack					Set		Serve					Dig		Blocking							PTS
##	Player	SP	K	K/S	E	TA	PCT	A	A/S	SA	SE	SA/S	RE	DIG	DIG/S	BS	BA	TOT/S	BLK/S	BE	BHE			
1	Williams, Rachel	42	1	0.02	0	3	.333	1	0.02	7	12	0.17	0	11	0.26	0	0	0	0.00	0	0	0	0	8.0
2	Chicoine, Chloe	82	268	3.27	93	801	.218	30	0.37	16	26	0.20	8	231	2.82	2	21	23	0.28	3	0	0	0	296.5
3	McAleer, Ryan	81	2	0.02	1	4	.250	24	0.30	14	30	0.17	13	192	2.37	0	0	0	0.00	0	0	0	0	16.0
4	Wollard, Kenna	75	130	1.73	54	318	.239	2	0.03	0	0	0.00	0	35	0.47	1	45	46	0.61	8	0	0	0	153.5
5	Anderson, Taylor	82	50	0.61	12	123	.309	890	10.85	22	32	0.27	1	183	2.23	6	70	76	0.93	2	3	0	0	113.0
7	Colvin, Raven	82	208	2.54	66	394	.360	6	0.07	31	47	0.38	1	43	0.52	19	106	125	1.52	14	0	0	0	311.0
8	Gray, Raven	3	1	0.33	0	1	1.000	0	0.00	0	1	0.00	0	0	0.00	0	0	0	0.00	0	0	0	0	1.0
9	Myers, Lourdes	78	90	1.15	23	193	.347	2	0.03	0	0	0.00	1	22	0.28	9	75	84	1.08	22	0	0	0	136.5
10	Hornung, Ali	82	0	0.00	0	6	.000	71	0.87	6	9	0.07	24	327	3.99	0	1	1	0.01	0	0	0	0	6.5
11	Shondell, Allie	5	0	0.00	1	1	-1.000	18	3.60	0	1	0.00	0	2	0.40	0	3	3	0.60	0	0	0	0	1.5
15	Carr, Lizzie	21	29	1.38	5	69	.348	1	0.05	0	0	0.00	0	3	0.14	1	9	10	0.48	1	0	0	0	34.5
17	Hudson, Eva	82	367	4.48	92	974	.282	8	0.10	10	20	0.12	16	197	2.40	2	40	42	0.51	3	0	0	0	399.0
19	Yim, Sydney	2	1	0.50	0	1	1.000	1	0.50	0	0	0.00	0	0	0.00	0	0	0	0.00	0	0	0	0	1.0
21	Kane, Julia	58	0	0.00	0	0	.000	8	0.14	11	26	0.19	1	23	0.40	0	0	0	0.00	0	0	0	0	11.0
<b>PURDUE</b>		<b>82</b>	<b>1147</b>	<b>13.99</b>	<b>347</b>	<b>2888</b>	<b>.277</b>	<b>1062</b>	<b>12.95</b>	<b>117</b>	<b>204</b>	<b>1.43</b>	<b>80</b>	<b>1269</b>	<b>15.48</b>	<b>40</b>	<b>370</b>	<b>225</b>	<b>2.74</b>	<b>53</b>	<b>3</b>	<b>1,489.0</b>		
<b>Opponents</b>		<b>82</b>	<b>1049</b>	<b>12.79</b>	<b>475</b>	<b>3034</b>	<b>.189</b>	<b>970</b>	<b>11.83</b>	<b>80</b>	<b>180</b>	<b>0.98</b>	<b>117</b>	<b>1196</b>	<b>14.59</b>	<b>26</b>	<b>257</b>	<b>154.5</b>	<b>1.88</b>	<b>33</b>	<b>5</b>	<b>1,283.5</b>		

## Team statistics

	PURDUE	OPP
ATTACK		
Kills	1147	1049
Errors	347	475
Total Attacks	2888	3034
Attack Pct	.277	.189
Kills/Set	13.99	12.79
SET		
Assists	1062	970
Attempts	2805	2951
Assist Pct	.379	.329
Assists/Set	12.95	11.83
SERVE		
Aces	117	80
Errors	204	180
Attempts	1933	1706
Serve Pct	.894	.894
Aces/Set	1.43	0.98
SERVE RECEPTIONS		
Errors	80	117
Errors/Set	0.98	1.43
Attempts	1526	1729
Reception Pct	.948	.999
DEFENSE		
Digs	1269	1196
Digs/Set	15.48	14.59
BLOCKING		
Block solo	40	26
Block Assist	370	257
Total Blocks	225	154.5
Blocks/Set	2.74	1.88
Block Errors	53	33
Ball handling errors	3	5
ATTENDANCE		
Total	46657	24312
Dates/Avg Per Date	9/5184	9/2701
Neutral Site #/Avg	5/904	-
Current win streak	0	-
Home win streak	0	-

## Team Results

Date	Opponent		Score	Score-by-set	Att.
08/30/2024	Kansas St.	W	3-1	25-21,18-25,25-22,25-23	2415
08/31/2024	UMBC	W	3-0	25-20,25-20,25-17	2415
09/01/2024	UC Davis	W	3-0	25-18,25-19,25-18	2415
09/05/2024	vs California	W	3-1	29-27,25-12,18-25,25-23	52
09/06/2024	at Utah	W	3-0	29-27,25-20,25-13	3766
09/07/2024	at Utah St.	W	3-0	25-18,25-16,25-22	1029
09/13/2024	vs Houston	W	3-0	25-12,25-21,25-20	891
09/14/2024	vs Kentucky	W	3-1	21-25,25-13,25-23,25-16	1883
09/19/2024	at Kansas	L	1-3	29-31,25-21,22-25,23-25	1640
09/20/2024	vs Creighton	L	1-3	21-25,25-17,16-25,25-27	1696
09/21/2024	vs Tulsa	W	3-0	25-21,25-17,25-10	0
* 09/25/2024	Penn St.	L	0-3	14-25,21-25,20-25	2415
* 09/28/2024	at Minnesota	W	3-2	26-24,23-25,25-20,23-25,15-10	4866
* 10/04/2024	at Northwestern	W	3-1	23-25,25-20,25-16,29-27	1618
* 10/06/2024	Michigan St.	W	3-0	25-19,25-22,25-18	2415
* 10/11/2024	at Nebraska	L	2-3	22-25,25-22,25-23,22-25,15-17	8715
* 10/12/2024	at Iowa	W	3-1	25-17,19-25,25-18,25-21	1036
* 10/17/2024	UCLA	W	3-2	23-25,27-25,25-20,19-25,15-11	2415
* 10/19/2024	Indiana	W	3-0	25-18,25-14,25-9	14876
* 10/23/2024	Ohio St.	W	3-0	28-26,25-19,27-25	2415
* 10/26/2024	Wisconsin	L	0-3	20-25,23-25,13-25	14876
* 11/01/2024	at Maryland	W	3-0	25-23,25-20,25-20	570
* 11/02/2024	at Rutgers	W	3-0	25-14,25-12,25-16	1072



2024-25 Purdue Women's Volleyball  
Individual Match-by-Match  
All games

Page 1/14  
as of Nov 03, 2024

#1 WILLIAMS, Rachel

			Attack				Set			Serve				Recept				Blocking				Team			
Date	Opponent	SP	K	E	TA	PCT	A	TA	PCT	SA	SE	TA	PCT	RE	TA	PCT	DIG	BS	BA	BE	TOTAL	BHE	POINTS	HIT%	SCORE
08/31/2024	UMBC	2	0	0	0	.000	0	0	.000	1	0	10	1.000	0	0	.000	4	0	0	0	0.0	0	1.0	.371	3-0
09/01/2024	UC Davis	3	0	0	0	.000	0	0	.000	0	1	11	.909	0	0	.000	0	0	0	0	0.0	0	0.0	.450	3-0
09/05/2024	vs California	3	1	0	1	1.000	0	0	.000	0	1	10	.900	0	0	.000	1	0	0	0	0.0	0	1.0	.235	3-1
09/06/2024	at Utah	2	0	0	0	.000	0	0	.000	1	1	3	.667	0	0	.000	1	0	0	0	0.0	0	1.0	.246	3-0
09/07/2024	at Utah St.	1	0	0	0	.000	0	0	.000	0	0	1	1.000	0	0	.000	0	0	0	0	0.0	0	0.0	.290	3-0
09/13/2024	vs Houston	1	0	0	0	.000	0	0	.000	1	0	2	1.000	0	0	.000	0	0	0	0	0.0	0	1.0	.292	3-0
09/14/2024	vs Kentucky	4	0	0	0	.000	0	0	.000	0	1	4	.750	0	0	.000	0	0	0	0	0.0	0	0.0	.310	3-1
09/19/2024	at Kansas	3	0	0	0	.000	0	0	.000	0	0	4	1.000	0	0	.000	0	0	0	0	0.0	0	0.0	.278	1-3
09/20/2024	vs Creighton	3	0	0	1	.000	1	2	.500	1	2	15	.867	0	0	.000	2	0	0	0	0.0	0	1.0	.209	1-3
09/21/2024	vs Tulsa	2	0	0	0	.000	0	0	.000	1	0	6	1.000	0	0	.000	1	0	0	0	0.0	0	1.0	.365	3-0
09/25/2024	Penn St.	1	0	0	1	.000	0	0	.000	0	0	1	1.000	0	0	.000	0	0	0	0	0.0	0	0.0	.176	0-3
09/28/2024	at Minnesota	3	0	0	0	.000	0	0	.000	0	0	3	1.000	0	0	.000	0	0	0	0	0.0	0	0.0	.252	3-2
10/04/2024	at Northwestern	1	0	0	0	.000	0	0	.000	0	1	1	.000	0	0	.000	0	0	0	0	0.0	0	0.0	.287	3-1
10/06/2024	Michigan St.	2	0	0	0	.000	0	0	.000	0	0	4	1.000	0	0	.000	0	0	0	0	0.0	0	0.0	.252	3-0
10/11/2024	at Nebraska	5	0	0	0	.000	0	0	.000	0	4	12	.667	0	0	.000	0	0	0	0	0.0	0	0.0	.311	2-3
10/19/2024	Indiana	3	0	0	0	.000	0	0	.000	2	0	5	1.000	0	0	.000	0	0	0	0	0.0	0	2.0	.333	3-0
11/01/2024	at Maryland	1	0	0	0	.000	0	0	.000	0	0	3	1.000	0	0	.000	2	0	0	0	0.0	0	0.0	.313	3-0
11/02/2024	at Rutgers	2	0	0	0	.000	0	0	.000	0	1	2	.500	0	0	.000	0	0	0	0	0.0	0	0.0	.424	3-0
Totals		42	1	0	3	.333	1	2	.500	7	12	97	.876	0	0	.000	11	0	0	0	0.0	0	8.0		

Player Averages

Sets Played	Kills per set	Assists per set	Service aces per set	Digs per set	Blocks per set	Points per set
42	0.02	0.02	0.17	0.26	0.00	0.19



2024-25 Purdue Women's Volleyball  
Individual Match-by-Match  
All games

Page 2/14  
as of Nov 03, 2024

#2 CHICOINE, Chloe

Date	Opponent	SP	Attack				Set			Serve				Recept			Blocking					Team			
			K	E	TA	PCT	A	TA	PCT	SA	SE	TA	PCT	RE	TA	PCT	DIG	BS	BA	BE	TOTAL	BHE	POINTS	HIT%	SCORE
08/30/2024	Kansas St.	*4	17	6	52	.212	0	4	.000	0	1	17	.941	2	12	.833	6	0	1	0	1.0	0	17.5	.234	3-1
08/31/2024	UMBC	*3	11	2	33	.273	2	5	.400	1	3	9	.667	0	14	1.000	11	0	1	0	1.0	0	12.5	.371	3-0
09/01/2024	UC Davis	*3	9	2	26	.269	4	5	.800	1	2	16	.875	0	12	1.000	5	0	0	1	0.0	0	10.0	.450	3-0
09/05/2024	vs California	*4	10	6	36	.111	0	3	.000	1	1	21	.952	0	10	1.000	15	0	1	0	1.0	0	11.5	.235	3-1
09/06/2024	at Utah	*3	8	4	31	.129	1	3	.333	1	0	23	1.000	0	2	1.000	13	0	0	0	0.0	0	9.0	.246	3-0
09/07/2024	at Utah St.	*3	14	5	29	.310	0	2	.000	0	0	10	1.000	0	19	1.000	8	2	2	0	4.0	0	17.0	.290	3-0
09/13/2024	vs Houston	*3	11	4	27	.259	0	3	.000	2	1	21	.952	0	13	1.000	10	0	3	0	3.0	0	14.5	.292	3-0
09/14/2024	vs Kentucky	*4	10	3	32	.219	0	5	.000	1	0	22	1.000	0	4	1.000	9	0	2	0	2.0	0	12.0	.310	3-1
09/19/2024	at Kansas	*4	16	3	39	.333	2	5	.400	1	2	24	.917	1	15	.933	12	0	0	0	0.0	0	17.0	.278	1-3
09/20/2024	vs Creighton	*4	14	8	44	.136	1	8	.125	0	0	15	1.000	1	18	.944	6	0	0	1	0.0	0	14.0	.209	1-3
09/21/2024	vs Tulsa	*3	10	2	23	.348	2	6	.333	0	1	17	.941	1	4	.750	6	0	2	0	2.0	0	11.0	.365	3-0
09/25/2024	Penn St.	*3	10	5	29	.172	1	4	.250	0	2	11	.818	1	12	.917	11	0	0	0	0.0	0	10.0	.176	0-3
09/28/2024	at Minnesota	*5	14	8	48	.125	1	7	.143	0	2	19	.895	0	8	1.000	11	0	0	0	0.0	0	14.0	.252	3-2
10/04/2024	at Northwestern	*4	10	3	33	.212	1	9	.111	1	2	19	.895	0	26	1.000	3	0	2	0	2.0	0	12.0	.287	3-1
10/06/2024	Michigan St.	*3	10	6	41	.098	0	1	.000	3	2	17	.882	0	9	1.000	13	0	1	0	1.0	0	13.5	.252	3-0
10/11/2024	at Nebraska	*5	22	4	55	.327	5	9	.556	0	1	26	.962	0	5	1.000	13	0	1	0	1.0	0	22.5	.311	2-3
10/12/2024	at Iowa	*4	7	7	36	.000	1	1	1.000	1	1	20	.950	1	20	.950	6	0	1	0	1.0	0	8.5	.213	3-1
10/17/2024	UCLA	*5	15	3	52	.231	4	8	.500	0	1	14	.929	0	10	1.000	13	0	2	1	2.0	0	16.0	.325	3-2
10/19/2024	Indiana	*3	12	0	30	.400	1	4	.250	0	1	10	.900	0	0	.000	10	0	1	0	1.0	0	12.5	.333	3-0
10/23/2024	Ohio St.	*3	11	5	33	.182	1	4	.250	1	2	18	.889	1	2	.500	9	0	0	0	0.0	0	12.0	.215	3-0
10/26/2024	Wisconsin	*3	3	5	21	.095	1	3	.333	0	0	13	1.000	0	6	1.000	14	0	0	0	0.0	0	3.0	.089	0-3
11/01/2024	at Maryland	*3	10	1	28	.321	2	5	.400	0	1	13	.923	0	4	1.000	14	0	0	0	0.0	0	10.0	.313	3-0
11/02/2024	at Rutgers	*3	14	1	23	.565	0	0	.000	2	0	14	1.000	0	6	1.000	13	0	1	0	1.0	0	16.5	.424	3-0
Totals		82	268	93	801	.218	30	104	.288	16	26	389	.933	8	231	.965	231	2	21	3	23.0	0	296.5		

Player Averages

Sets Played	Kills per set	Assists per set	Service aces per set	Digs per set	Blocks per set	Points per set
82	3.27	0.37	0.20	2.82	0.28	3.62





2024-25 Purdue Women's Volleyball  
Individual Match-by-Match  
All games

Page 3/14  
as of Nov 03, 2024

#3 MCALEER, Ryan

Date	Opponent	SP	Attack				Set			Serve				Recept			Blocking					Team			
			K	E	TA	PCT	A	TA	PCT	SA	SE	TA	PCT	RE	TA	PCT	DIG	BS	BA	BE	TOTAL	BHE	POINTS	HIT%	SCORE
08/30/2024	Kansas St.	*4	0	0	0	.000	0	2	.000	0	4	18	.778	0	19	1.000	11	0	0	0	0.0	0	0.0	.234	3-1
08/31/2024	UMBC	*2	0	0	0	.000	1	2	.500	0	0	10	1.000	2	12	.833	3	0	0	0	0.0	0	0.0	.371	3-0
09/01/2024	UC Davis	*3	0	0	0	.000	0	0	.000	0	0	8	1.000	0	16	1.000	5	0	0	0	0.0	0	0.0	.450	3-0
09/05/2024	vs California	*4	0	0	0	.000	0	1	.000	0	1	14	.929	3	32	.906	7	0	0	0	0.0	0	0.0	.235	3-1
09/06/2024	at Utah	*3	0	0	0	.000	1	3	.333	0	2	9	.778	0	4	1.000	7	0	0	0	0.0	0	0.0	.246	3-0
09/07/2024	at Utah St.	*3	0	0	0	.000	0	1	.000	1	1	16	.938	0	5	1.000	5	0	0	0	0.0	0	1.0	.290	3-0
09/13/2024	vs Houston	*3	0	0	0	.000	3	5	.600	1	0	8	1.000	0	15	1.000	6	0	0	0	0.0	0	1.0	.292	3-0
09/14/2024	vs Kentucky	*4	1	0	1	1.000	1	1	1.000	0	2	15	.867	0	18	1.000	11	0	0	0	0.0	0	1.0	.310	3-1
09/19/2024	at Kansas	*4	0	1	1	-1.000	1	2	.500	0	1	12	.917	0	5	1.000	10	0	0	0	0.0	0	0.0	.278	1-3
09/20/2024	vs Creighton	4	0	0	0	.000	1	2	.500	0	1	13	.923	1	18	.944	7	0	0	0	0.0	0	0.0	.209	1-3
09/21/2024	vs Tulsa	3	1	0	1	1.000	3	4	.750	0	2	12	.833	0	10	1.000	6	0	0	0	0.0	0	1.0	.365	3-0
09/25/2024	Penn St.	3	0	0	0	.000	0	0	.000	0	1	8	.875	0	3	1.000	5	0	0	0	0.0	0	0.0	.176	0-3
09/28/2024	at Minnesota	*5	0	0	0	.000	2	7	.286	6	3	30	.900	4	31	.871	10	0	0	0	0.0	0	6.0	.252	3-2
10/04/2024	at Northwestern	4	0	0	1	.000	1	4	.250	1	2	17	.882	1	11	.909	11	0	0	0	0.0	0	1.0	.287	3-1
10/06/2024	Michigan St.	3	0	0	0	.000	0	2	.000	0	2	13	.846	0	9	1.000	11	0	0	0	0.0	0	0.0	.252	3-0
10/11/2024	at Nebraska	*5	0	0	0	.000	2	4	.500	0	3	14	.786	0	14	1.000	13	0	0	0	0.0	0	0.0	.311	2-3
10/12/2024	at Iowa	*4	0	0	0	.000	2	2	1.000	1	0	13	1.000	1	11	.909	7	0	0	0	0.0	0	1.0	.213	3-1
10/17/2024	UCLA	*5	0	0	0	.000	3	6	.500	3	0	26	1.000	1	27	.963	7	0	0	0	0.0	0	3.0	.325	3-2
10/19/2024	Indiana	*3	0	0	0	.000	0	1	.000	1	0	8	1.000	0	17	1.000	15	0	0	0	0.0	0	1.0	.333	3-0
10/23/2024	Ohio St.	*3	0	0	0	.000	1	7	.143	0	2	13	.846	0	3	1.000	11	0	0	0	0.0	0	0.0	.215	3-0
10/26/2024	Wisconsin	*3	0	0	0	.000	1	2	.500	0	2	7	.714	0	11	1.000	6	0	0	0	0.0	0	0.0	.089	0-3
11/01/2024	at Maryland	*3	0	0	0	.000	0	3	.000	0	1	8	.875	0	12	1.000	8	0	0	0	0.0	0	0.0	.313	3-0
11/02/2024	at Rutgers	*3	0	0	0	.000	1	1	1.000	0	0	11	1.000	0	6	1.000	10	0	0	0	0.0	0	0.0	.424	3-0
Totals		81	2	1	4	.250	24	62	.387	14	30	303	.901	13	309	.958	192	0	0	0	0.0	0	16.0		

Player Averages

Sets Played	Kills per set	Assists per set	Service aces per set	Digs per set	Blocks per set	Points per set
81	0.02	0.30	0.17	2.37	0.00	0.20



2024-25 Purdue Women's Volleyball  
Individual Match-by-Match  
All games

Page 4/14  
as of Nov 03, 2024

#4 WOLLARD, Kenna

Date	Opponent	SP	Attack				Set			Serve				Recept			Blocking					Team			
			K	E	TA	PCT	A	TA	PCT	SA	SE	TA	PCT	RE	TA	PCT	DIG	BS	BA	BE	TOTAL	BHE	POINTS	HIT%	SCORE
08/30/2024	Kansas St.	4	8	2	20	.300	0	0	.000	0	0	0	.000	0	0	.000	1	0	2	1	2.0	0	9.0	.234	3-1
09/01/2024	UC Davis	3	10	2	17	.471	0	0	.000	0	0	0	.000	0	1	1.000	1	0	2	1	2.0	0	11.0	.450	3-0
09/05/2024	vs California	4	11	2	24	.375	0	1	.000	0	0	0	.000	0	0	.000	3	0	3	2	3.0	0	12.5	.235	3-1
09/06/2024	at Utah	3	7	2	15	.333	0	0	.000	0	0	0	.000	0	0	.000	3	0	1	0	1.0	0	7.5	.246	3-0
09/07/2024	at Utah St.	3	5	2	10	.300	0	1	.000	0	0	0	.000	0	0	.000	0	0	2	0	2.0	0	6.0	.290	3-0
09/13/2024	vs Houston	2	3	3	13	.000	0	0	.000	0	0	0	.000	0	0	.000	3	0	5	0	5.0	0	5.5	.292	3-0
09/14/2024	vs Kentucky	4	6	2	13	.308	0	0	.000	0	0	0	.000	0	0	.000	2	0	1	0	1.0	0	6.5	.310	3-1
09/19/2024	at Kansas	4	9	7	22	.091	0	0	.000	0	0	0	.000	0	0	.000	0	0	2	0	2.0	0	10.0	.278	1-3
09/20/2024	vs Creighton	*4	3	3	13	.000	0	0	.000	0	0	0	.000	0	0	.000	1	1	1	1	2.0	0	4.5	.209	1-3
09/21/2024	vs Tulsa	*2	2	0	7	.286	0	1	.000	0	0	1	1.000	0	1	1.000	0	0	0	0	0.0	0	2.0	.365	3-0
09/25/2024	Penn St.	*3	4	3	17	.059	0	1	.000	0	0	0	.000	0	0	.000	2	0	1	0	1.0	0	4.5	.176	0-3
09/28/2024	at Minnesota	5	7	0	15	.467	0	6	.000	0	0	0	.000	0	0	.000	3	0	2	1	2.0	0	8.0	.252	3-2
10/04/2024	at Northwestern	*4	18	4	32	.438	0	2	.000	0	0	0	.000	0	0	.000	2	0	1	0	1.0	0	18.5	.287	3-1
10/06/2024	Michigan St.	*3	8	2	20	.300	0	2	.000	0	0	0	.000	0	0	.000	3	0	3	0	3.0	0	9.5	.252	3-0
10/11/2024	at Nebraska	5	7	2	17	.294	0	2	.000	0	0	0	.000	0	0	.000	1	0	4	1	4.0	0	9.0	.311	2-3
10/12/2024	at Iowa	4	8	5	20	.150	0	2	.000	0	0	0	.000	0	0	.000	1	0	4	0	4.0	0	10.0	.213	3-1
10/17/2024	UCLA	5	1	3	8	-.250	0	1	.000	0	0	0	.000	0	0	.000	1	0	2	0	2.0	0	2.0	.325	3-2
10/19/2024	Indiana	3	1	2	5	-.200	1	1	1.000	0	0	0	.000	0	1	1.000	2	0	1	0	1.0	0	1.5	.333	3-0
10/23/2024	Ohio St.	3	5	3	12	.167	0	1	.000	0	0	0	.000	0	0	.000	0	0	3	1	3.0	0	6.5	.215	3-0
10/26/2024	Wisconsin	2	1	1	5	.000	0	0	.000	0	0	0	.000	0	0	.000	3	0	2	0	2.0	0	2.0	.089	0-3
11/01/2024	at Maryland	2	1	2	4	-.250	0	1	.000	0	0	0	.000	0	0	.000	1	0	0	0	0.0	0	1.0	.313	3-0
11/02/2024	at Rutgers	3	5	2	9	.333	1	3	.333	0	0	0	.000	0	0	.000	2	0	3	0	3.0	0	6.5	.424	3-0
Totals		75	130	54	318	.239	2	25	.080	0	0	1	1.000	0	3	1.000	35	1	45	8	46.0	0	153.5		

Player Averages

Sets Played	Kills per set	Assists per set	Service aces per set	Digs per set	Blocks per set	Points per set
75	1.73	0.03	0.00	0.47	0.61	2.05



2024-25 Purdue Women's Volleyball  
Individual Match-by-Match  
All games

Page 5/14  
as of Nov 03, 2024

#5 ANDERSON, Taylor

Date	Opponent	SP	Attack				Set			Serve				Recept			Blocking					Team			
			K	E	TA	PCT	A	TA	PCT	SA	SE	TA	PCT	RE	TA	PCT	DIG	BS	BA	BE	TOTAL	BHE	POINTS	HIT%	SCORE
08/30/2024	Kansas St.	*4	0	1	2	.500	43	109	.394	1	1	13	.923	0	0	.000	7	0	8	0	8.0	0	5.0	.234	3-1
08/31/2024	UMBC	*3	3	0	4	.750	34	76	.447	0	2	8	.750	0	0	.000	5	0	3	0	3.0	0	4.5	.371	3-0
09/01/2024	UC Davis	*3	1	0	3	.333	45	78	.577	2	2	11	.818	0	0	.000	9	1	1	0	2.0	0	4.5	.450	3-0
09/05/2024	vs California	*4	1	1	3	.000	52	118	.441	3	2	20	.900	0	1	1.000	11	0	2	0	2.0	0	5.0	.235	3-1
09/06/2024	at Utah	*3	3	0	5	.600	34	85	.400	0	1	14	.929	0	0	.000	10	0	7	0	7.0	0	6.5	.246	3-0
09/07/2024	at Utah St.	*3	0	0	1	.000	29	69	.420	0	2	10	.800	0	0	.000	3	0	2	1	2.0	0	1.0	.290	3-0
09/13/2024	vs Houston	*3	4	0	7	.571	31	70	.443	0	1	10	.900	0	2	1.000	7	1	1	0	2.0	0	5.5	.292	3-0
09/14/2024	vs Kentucky	*4	2	0	6	.333	28	86	.326	2	1	15	.933	0	0	.000	8	0	4	0	4.0	0	6.0	.310	3-1
09/19/2024	at Kansas	*4	2	0	7	.286	49	128	.383	1	2	17	.882	0	0	.000	11	0	7	0	7.0	2	6.5	.278	1-3
09/20/2024	vs Creighton	*4	2	0	7	.286	44	124	.355	1	2	13	.846	0	0	.000	9	0	5	0	5.0	0	5.5	.209	1-3
09/21/2024	vs Tulsa	*3	2	2	10	.000	27	57	.474	0	1	7	.857	0	0	.000	5	0	3	0	3.0	0	3.5	.365	3-0
09/25/2024	Penn St.	*3	0	1	5	-.200	29	84	.345	0	0	11	1.000	0	0	.000	2	0	1	0	1.0	0	0.5	.176	0-3
09/28/2024	at Minnesota	*5	3	3	9	.000	54	130	.415	1	0	14	1.000	0	0	.000	12	0	4	0	4.0	0	6.0	.252	3-2
10/04/2024	at Northwestern	*4	2	1	8	.125	47	111	.423	1	4	15	.733	0	0	.000	13	1	0	0	1.0	1	4.0	.287	3-1
10/06/2024	Michigan St.	*3	0	0	3	.000	37	101	.366	0	0	14	1.000	0	0	.000	8	0	2	0	2.0	0	1.0	.252	3-0
10/11/2024	at Nebraska	*5	3	0	4	.750	52	140	.371	1	3	18	.833	0	0	.000	10	1	6	1	7.0	0	8.0	.311	2-3
10/12/2024	at Iowa	*4	6	1	8	.625	42	110	.382	1	0	11	1.000	1	1	.000	7	0	0	0	0.0	0	7.0	.213	3-1
10/17/2024	UCLA	*5	7	1	12	.500	51	127	.402	1	0	18	1.000	0	0	.000	12	1	4	0	5.0	0	11.0	.325	3-2
10/19/2024	Indiana	*3	1	0	2	.500	28	68	.412	3	2	15	.867	0	0	.000	10	0	2	0	2.0	0	5.0	.333	3-0
10/23/2024	Ohio St.	*3	2	0	6	.333	38	94	.404	2	1	14	.929	0	0	.000	7	0	4	0	4.0	0	6.0	.215	3-0
10/26/2024	Wisconsin	*3	2	1	4	.250	24	80	.300	0	1	10	.900	0	0	.000	8	1	1	0	2.0	0	3.5	.089	0-3
11/01/2024	at Maryland	*3	3	0	4	.750	39	101	.386	1	1	16	.938	0	0	.000	6	0	1	0	1.0	0	4.5	.313	3-0
11/02/2024	at Rutgers	*3	1	0	3	.333	33	68	.485	1	3	19	.842	0	0	.000	3	0	2	0	2.0	0	3.0	.424	3-0
Totals		82	50	12	123	.309	890	2214	.402	22	32	313	.898	1	4	.750	183	6	70	2	76.0	3	113.0		

Player Averages

Sets Played	Kills per set	Assists per set	Service aces per set	Digs per set	Blocks per set	Points per set
82	0.61	10.85	0.27	2.23	0.93	1.38





2024-25 Purdue Women's Volleyball  
Individual Match-by-Match  
All games

Page 6/14  
as of Nov 03, 2024

#7 COLVIN, Raven

			Attack				Set			Serve				Recept				Blocking					Team			
Date	Opponent	SP	K	E	TA	PCT	A	TA	PCT	SA	SE	TA	PCT	RE	TA	PCT	DIG	BS	BA	BE	TOTAL	BHE	POINTS	HIT%	SCORE	
08/30/2024	Kansas St.	*4	7	3	14	.286	0	4	.000	3	4	18	.778	0	2	1.000	1	1	9	0	10.0	0	15.5	.234	3-1	
08/31/2024	UMBC	*3	7	3	13	.308	0	1	.000	0	2	9	.778	0	0	.000	1	0	5	2	5.0	0	9.5	.371	3-0	
09/01/2024	UC Davis	*3	12	1	15	.733	0	0	.000	0	2	2	.000	1	1	.000	0	1	3	2	4.0	0	14.5	.450	3-0	
09/05/2024	vs California	*4	16	5	26	.423	0	0	.000	2	4	12	.667	0	0	.000	4	1	5	0	6.0	0	21.5	.235	3-1	
09/06/2024	at Utah	*3	3	2	11	.091	0	1	.000	1	1	9	.889	0	0	.000	2	0	9	0	9.0	0	8.5	.246	3-0	
09/07/2024	at Utah St.	*3	7	0	10	.700	1	2	.500	1	1	10	.900	0	0	.000	1	3	7	0	10.0	0	14.5	.290	3-0	
09/13/2024	vs Houston	*3	5	1	7	.571	0	1	.000	1	2	10	.800	0	0	.000	2	1	3	1	4.0	0	8.5	.292	3-0	
09/14/2024	vs Kentucky	*4	9	1	14	.571	1	2	.500	2	2	10	.800	0	0	.000	5	1	6	0	7.0	0	15.0	.310	3-1	
09/19/2024	at Kansas	*4	14	3	25	.440	0	1	.000	2	2	13	.846	0	0	.000	3	0	7	1	7.0	0	19.5	.278	1-3	
09/20/2024	vs Creighton	*4	8	1	15	.467	0	1	.000	0	1	7	.857	0	0	.000	1	1	5	0	6.0	0	11.5	.209	1-3	
09/21/2024	vs Tulsa	*3	7	1	13	.462	0	3	.000	2	1	7	.857	0	0	.000	1	2	7	1	9.0	0	14.5	.365	3-0	
09/25/2024	Penn St.	*3	6	2	13	.308	0	1	.000	1	2	13	.846	0	0	.000	3	0	1	1	1.0	0	7.5	.176	0-3	
09/28/2024	at Minnesota	*5	19	7	31	.387	0	2	.000	7	3	23	.870	0	0	.000	5	1	4	0	5.0	0	29.0	.252	3-2	
10/04/2024	at Northwestern	*4	14	3	24	.458	0	0	.000	0	1	12	.917	0	0	.000	1	1	2	1	3.0	0	16.0	.287	3-1	
10/06/2024	Michigan St.	*3	8	1	15	.467	0	2	.000	0	1	3	.667	0	0	.000	0	2	4	2	6.0	0	12.0	.252	3-0	
10/11/2024	at Nebraska	*5	5	5	20	.000	1	2	.500	0	3	3	.000	0	0	.000	0	2	9	0	11.0	0	11.5	.311	2-3	
10/12/2024	at Iowa	*4	12	4	23	.348	0	1	.000	4	2	16	.875	0	1	1.000	4	0	3	0	3.0	0	17.5	.213	3-1	
10/17/2024	UCLA	*5	17	2	27	.556	0	3	.000	1	4	11	.636	0	2	1.000	3	1	5	0	6.0	0	21.5	.325	3-2	
10/19/2024	Indiana	*3	7	4	16	.188	1	2	.500	0	1	1	.000	0	0	.000	0	0	2	0	2.0	0	8.0	.333	3-0	
10/23/2024	Ohio St.	*3	5	7	14	.143	1	2	.500	1	4	11	.636	0	0	.000	2	0	6	0	6.0	0	9.0	.215	3-0	
10/26/2024	Wisconsin	*3	4	4	13	.000	0	2	.000	0	3	12	.750	0	0	.000	2	0	1	1	1.0	0	4.5	.089	0-3	
11/01/2024	at Maryland	*3	7	4	18	.167	0	3	.000	2	1	6	.833	0	0	.000	2	0	0	2	0.0	0	9.0	.313	3-0	
11/02/2024	at Rutgers	*3	9	2	17	.412	1	2	.500	1	0	4	1.000	0	0	.000	0	1	3	0	4.0	0	12.5	.424	3-0	
Totals		82	208	66	394	.360	6	38	.158	31	47	222	.788	1	6	.833	43	19	106	14	125.0	0	311.0			

Player Averages

Sets Played	Kills per set	Assists per set	Service aces per set	Digs per set	Blocks per set	Points per set
82	2.54	0.07	0.38	0.52	1.52	3.79



2024-25 Purdue Women's Volleyball  
Individual Match-by-Match  
All games

Page 7/14  
as of Nov 03, 2024

#8 GRAY, Raven

			Attack				Set			Serve				Recept				Blocking					Team			
Date	Opponent	SP	K	E	TA	PCT	A	TA	PCT	SA	SE	TA	PCT	RE	TA	PCT	DIG	BS	BA	BE	TOTAL	BHE	POINTS	HIT%	SCORE	
08/31/2024	UMBC	1	1	0	1	1.000	0	1	.000	0	0	0	.000	0	0	.000	0	0	0	0	0.0	0	1.0	.371	3-0	
11/02/2024	at Rutgers	2	0	0	0	.000	0	0	.000	0	1	1	.000	0	0	.000	0	0	0	0	0.0	0	0.0	.424	3-0	
Totals		3	1	0	1	1.000	0	1	.000	0	1	1	.000	0	0	.000	0	0	0	0	0.0	0	1.0			

Player Averages

Sets Played	Kills per set	Assists per set	Service aces per set	Digs per set	Blocks per set	Points per set
3	0.33	0.00	0.00	0.00	0.00	0.33



2024-25 Purdue Women's Volleyball  
Individual Match-by-Match  
All games

Page 8/14  
as of Nov 03, 2024

#9 MYERS, Lourdes

Date	Opponent	SP	Attack				Set			Serve				Recept			Blocking					Team			
			K	E	TA	PCT	A	TA	PCT	SA	SE	TA	PCT	RE	TA	PCT	DIG	BS	BA	BE	TOTAL	BHE	POINTS	HIT%	SCORE
08/30/2024	Kansas St.	*4	4	1	9	.333	0	1	.000	0	0	0	.000	0	2	1.000	0	0	6	4	6.0	0	7.0	.234	3-1
08/31/2024	UMBC	*3	3	1	9	.222	0	0	.000	0	0	0	.000	0	0	.000	1	0	5	1	5.0	0	5.5	.371	3-0
09/01/2024	UC Davis	*3	6	1	9	.556	0	0	.000	0	0	0	.000	0	0	.000	2	1	1	0	2.0	0	7.5	.450	3-0
09/05/2024	vs California	*4	6	2	13	.308	0	1	.000	0	0	0	.000	0	2	1.000	0	0	4	1	4.0	0	8.0	.235	3-1
09/06/2024	at Utah	*3	2	1	7	.143	0	0	.000	0	0	0	.000	0	0	.000	1	0	2	2	2.0	0	3.0	.246	3-0
09/07/2024	at Utah St.	*2	2	1	3	.333	0	1	.000	0	0	0	.000	0	0	.000	1	1	0	0	1.0	0	3.0	.290	3-0
09/13/2024	vs Houston	*3	1	0	6	.167	0	1	.000	0	0	0	.000	0	3	1.000	1	1	7	1	8.0	0	5.5	.292	3-0
09/14/2024	vs Kentucky	*4	1	1	3	.000	0	1	.000	0	0	0	.000	0	0	.000	2	0	2	0	2.0	0	2.0	.310	3-1
09/19/2024	at Kansas	*1	1	1	4	.000	0	0	.000	0	0	0	.000	0	0	.000	0	0	1	3	1.0	0	1.5	.278	1-3
09/20/2024	vs Creighton	*4	5	1	12	.333	0	1	.000	0	0	0	.000	0	0	.000	2	0	2	2	2.0	0	6.0	.209	1-3
09/21/2024	vs Tulsa	*3	6	1	8	.625	0	0	.000	0	0	0	.000	0	1	1.000	0	0	2	0	2.0	0	7.0	.365	3-0
09/25/2024	Penn St.	*3	3	0	7	.429	0	0	.000	0	0	0	.000	0	0	.000	2	0	1	0	1.0	0	3.5	.176	0-3
09/28/2024	at Minnesota	*5	4	1	9	.333	0	1	.000	0	0	0	.000	0	1	1.000	1	0	4	2	4.0	0	6.0	.252	3-2
10/04/2024	at Northwestern	*4	4	1	9	.333	0	1	.000	0	0	0	.000	0	0	.000	2	0	3	3	3.0	0	5.5	.287	3-1
10/06/2024	Michigan St.	*3	5	0	9	.556	0	0	.000	0	0	0	.000	1	2	.500	1	0	5	0	5.0	0	7.5	.252	3-0
10/11/2024	at Nebraska	*5	5	1	8	.500	0	0	.000	0	0	0	.000	0	1	1.000	0	0	3	0	3.0	0	6.5	.311	2-3
10/12/2024	at Iowa	*4	5	1	8	.500	0	1	.000	0	0	0	.000	0	2	1.000	0	1	4	0	5.0	0	8.0	.213	3-1
10/17/2024	UCLA	*5	4	2	10	.200	1	1	1.000	0	0	0	.000	0	1	1.000	2	3	6	1	9.0	0	10.0	.325	3-2
10/19/2024	Indiana	*3	1	0	3	.333	1	1	1.000	0	0	0	.000	0	0	.000	0	0	2	0	2.0	0	2.0	.333	3-0
10/23/2024	Ohio St.	*3	7	0	13	.538	0	1	.000	0	0	0	.000	0	0	.000	1	1	5	1	6.0	0	10.5	.215	3-0
10/26/2024	Wisconsin	*3	5	3	13	.154	0	1	.000	0	0	0	.000	0	0	.000	2	0	5	0	5.0	0	7.5	.089	0-3
11/01/2024	at Maryland	*3	4	1	10	.300	0	0	.000	0	0	0	.000	0	0	.000	0	0	2	1	2.0	0	5.0	.313	3-0
11/02/2024	at Rutgers	*3	6	2	11	.364	0	0	.000	0	0	0	.000	0	0	.000	1	1	3	0	4.0	0	8.5	.424	3-0
Totals		78	90	23	193	.347	2	13	.154	0	0	0	.000	1	15	.933	22	9	75	22	84.0	0	136.5		

Player Averages

Sets Played	Kills per set	Assists per set	Service aces per set	Digs per set	Blocks per set	Points per set
78	1.15	0.03	0.00	0.28	1.08	1.75





2024-25 Purdue Women's Volleyball  
Individual Match-by-Match  
All games

Page 9/14  
as of Nov 03, 2024

#10 HORNING, Ali

Date	Opponent	SP	Attack				Set			Serve				Recept			Blocking					Team			
			K	E	T	PCT	A	TA	PCT	SA	SE	TA	PCT	RE	TA	PCT	DIG	BS	BA	BE	TOTAL	BHE	POINTS	HIT%	SCORE
08/30/2024	Kansas St.	4	0	0	0	.000	6	17	.353	1	0	14	1.000	4	36	.889	17	0	0	0	0.0	0	1.0	.234	3-1
08/31/2024	UMBC	3	0	0	0	.000	1	7	.143	0	0	15	1.000	2	10	.800	14	0	0	0	0.0	0	0.0	.371	3-0
09/01/2024	UC Davis	3	0	0	0	.000	3	11	.273	1	1	15	.933	0	9	1.000	18	0	0	0	0.0	0	1.0	.450	3-0
09/05/2024	vs California	4	0	0	0	.000	3	18	.167	0	0	3	1.000	1	16	.938	18	0	1	0	1.0	0	0.5	.235	3-1
09/06/2024	at Utah	3	0	0	0	.000	1	14	.071	1	0	9	1.000	1	36	.972	14	0	0	0	0.0	0	1.0	.246	3-0
09/07/2024	at Utah St.	3	0	0	0	.000	3	6	.500	0	0	6	1.000	0	18	1.000	8	0	0	0	0.0	0	0.0	.290	3-0
09/13/2024	vs Houston	3	0	0	0	.000	1	8	.125	0	0	0	.000	0	7	1.000	9	0	0	0	0.0	0	0.0	.292	3-0
09/14/2024	vs Kentucky	4	0	0	1	.000	7	14	.500	0	0	1	1.000	1	24	.958	10	0	0	0	0.0	0	0.0	.310	3-1
09/19/2024	at Kansas	4	0	0	0	.000	5	13	.385	0	0	1	1.000	0	42	1.000	14	0	0	0	0.0	0	0.0	.278	1-3
09/20/2024	vs Creighton	4	0	0	1	.000	3	9	.333	0	0	0	.000	0	20	1.000	15	0	0	0	0.0	0	0.0	.209	1-3
09/21/2024	vs Tulsa	3	0	0	0	.000	0	7	.000	0	0	2	1.000	1	21	.952	6	0	0	0	0.0	0	0.0	.365	3-0
09/25/2024	Penn St.	3	0	0	0	.000	1	3	.333	0	1	4	.750	0	18	1.000	11	0	0	0	0.0	0	0.0	.176	0-3
09/28/2024	at Minnesota	5	0	0	0	.000	3	14	.214	0	0	0	.000	1	38	.974	24	0	0	0	0.0	0	0.0	.252	3-2
10/04/2024	at Northwestern	4	0	0	1	.000	2	10	.200	0	0	0	.000	0	27	1.000	18	0	0	0	0.0	0	0.0	.287	3-1
10/06/2024	Michigan St.	3	0	0	0	.000	4	8	.500	0	0	0	.000	2	10	.800	22	0	0	0	0.0	0	0.0	.252	3-0
10/11/2024	at Nebraska	5	0	0	0	.000	6	12	.500	0	1	9	.889	2	51	.961	12	0	0	0	0.0	0	0.0	.311	2-3
10/12/2024	at Iowa	4	0	0	0	.000	2	12	.167	0	1	13	.923	0	21	1.000	17	0	0	0	0.0	0	0.0	.213	3-1
10/17/2024	UCLA	5	0	0	1	.000	7	17	.412	0	1	14	.929	3	43	.930	19	0	0	0	0.0	0	0.0	.325	3-2
10/19/2024	Indiana	3	0	0	0	.000	5	12	.417	1	0	14	1.000	0	16	1.000	6	0	0	0	0.0	0	1.0	.333	3-0
10/23/2024	Ohio St.	3	0	0	1	.000	3	12	.250	0	0	9	1.000	1	58	.983	15	0	0	0	0.0	0	0.0	.215	3-0
10/26/2024	Wisconsin	3	0	0	1	.000	2	10	.200	0	1	6	.833	5	37	.865	9	0	0	0	0.0	0	0.0	.089	0-3
11/01/2024	at Maryland	3	0	0	0	.000	1	3	.333	1	3	16	.813	0	21	1.000	17	0	0	0	0.0	0	1.0	.313	3-0
11/02/2024	at Rutgers	3	0	0	0	.000	2	3	.667	1	0	12	1.000	0	20	1.000	14	0	0	0	0.0	0	1.0	.424	3-0
Totals		82	0	0	6	.000	71	240	.296	6	9	163	.945	24	599	.960	327	0	1	0	1.0	0	6.5		

Player Averages

Sets Played	Kills per set	Assists per set	Service aces per set	Digs per set	Blocks per set	Points per set
82	0.00	0.87	0.07	3.99	0.01	0.08



2024-25 Purdue Women's Volleyball  
Individual Match-by-Match  
All games

#11 SHONDELL, Allie

			Attack				Set			Serve				Recept				Blocking				Team			
Date	Opponent	SP	K	E	TA	PCT	A	TA	PCT	SA	SE	TA	PCT	RE	TA	PCT	DIG	BS	BA	BE	TOTAL	BHE	POINTS	HIT%	SCORE
08/31/2024	UMBC	1	0	0	0	.000	3	6	.500	0	1	2	.500	0	0	.000	0	0	0	0	0.0	0	0.0	.371	3-0
09/07/2024	at Utah St.	1	0	1	1	-1.000	3	8	.375	0	0	0	.000	0	0	.000	1	0	1	0	1.0	0	0.5	.290	3-0
09/21/2024	vs Tulsa	1	0	0	0	.000	5	8	.625	0	0	0	.000	0	0	.000	0	0	2	0	2.0	0	1.0	.365	3-0
10/26/2024	Wisconsin	1	0	0	0	.000	2	7	.286	0	0	0	.000	0	0	.000	1	0	0	0	0.0	0	0.0	.089	0-3
11/02/2024	at Rutgers	1	0	0	0	.000	5	10	.500	0	0	1	1.000	0	0	.000	0	0	0	0	0.0	0	0.0	.424	3-0
Totals		5	0	1	1	-1.000	18	39	.462	0	1	3	.667	0	0	.000	2	0	3	0	3.0	0	1.5		

Player Averages

Sets Played	Kills per set	Assists per set	Service aces per set	Digs per set	Blocks per set	Points per set
5	0.00	3.60	0.00	0.40	0.60	0.30



2024-25 Purdue Women's Volleyball  
Individual Match-by-Match  
All games

Page 11/14  
as of Nov 03, 2024

#15 CARR, Lizzie

Date	Opponent	SP	Attack				Set			Serve				Recept			Blocking					Team			
			K	E	TA	PCT	A	TA	PCT	SA	SE	TA	PCT	RE	TA	PCT	DIG	BS	BA	BE	TOTAL	BHE	POINTS	HIT%	SCORE
08/31/2024	UMBC	3	6	0	15	.400	0	0	.000	0	0	0	.000	0	0	.000	0	0	4	0	4.0	0	8.0	.371	3-0
09/06/2024	at Utah	1	0	0	0	.000	0	0	.000	0	0	0	.000	0	0	.000	0	0	0	0	0.0	0	0.0	.246	3-0
09/07/2024	at Utah St.	2	2	0	5	.400	0	0	.000	0	0	0	.000	0	0	.000	0	1	2	0	3.0	0	4.0	.290	3-0
09/13/2024	vs Houston	1	3	0	3	1.000	0	1	.000	0	0	0	.000	0	0	.000	0	0	0	0	0.0	0	3.0	.292	3-0
09/19/2024	at Kansas	3	5	3	11	.182	0	2	.000	0	0	0	.000	0	1	1.000	0	0	1	1	1.0	0	5.5	.278	1-3
09/21/2024	vs Tulsa	2	5	1	10	.400	0	1	.000	0	0	0	.000	0	0	.000	1	0	1	0	1.0	0	5.5	.365	3-0
10/17/2024	UCLA	2	1	1	3	.000	0	0	.000	0	0	0	.000	0	0	.000	0	0	0	0	0.0	0	1.0	.325	3-2
10/19/2024	Indiana	1	1	0	4	.250	0	0	.000	0	0	0	.000	0	0	.000	0	0	0	0	0.0	0	1.0	.333	3-0
10/26/2024	Wisconsin	2	1	0	5	.200	1	1	1.000	0	0	0	.000	0	0	.000	2	0	1	0	1.0	0	1.5	.089	0-3
11/01/2024	at Maryland	2	5	0	10	.500	0	0	.000	0	0	0	.000	0	0	.000	0	0	0	0	0.0	0	5.0	.313	3-0
11/02/2024	at Rutgers	2	0	0	3	.000	0	0	.000	0	0	0	.000	0	0	.000	0	0	0	0	0.0	0	0.0	.424	3-0
Totals		21	29	5	69	.348	1	5	.200	0	0	0	.000	0	1	1.000	3	1	9	1	10.0	0	34.5		

Player Averages

Sets Played	Kills per set	Assists per set	Service aces per set	Digs per set	Blocks per set	Points per set
21	1.38	0.05	0.00	0.14	0.48	1.64





2024-25 Purdue Women's Volleyball  
Individual Match-by-Match  
All games

Page 12/14  
as of Nov 03, 2024

#17 HUDSON, Eva

Date	Opponent	SP	Attack				Set			Serve				Recept			Blocking					Team			
			K	E	TA	PCT	A	TA	PCT	SA	SE	TA	PCT	RE	TA	PCT	DIG	BS	BA	BE	TOTAL	BHE	POINTS	HIT%	SCORE
08/30/2024	Kansas St.	*4	16	5	48	.229	0	0	.000	0	1	12	.917	0	12	1.000	12	1	4	1	5.0	0	19.0	.234	3-1
08/31/2024	UMBC	*3	15	1	30	.467	0	4	.000	0	1	4	.750	1	8	.875	8	0	2	0	2.0	0	16.0	.371	3-0
09/01/2024	UC Davis	*3	15	2	30	.433	0	1	.000	0	1	11	.909	0	13	1.000	9	0	1	1	1.0	0	15.5	.450	3-0
09/05/2024	vs California	*4	14	7	50	.140	0	6	.000	0	1	16	.938	1	22	.955	8	0	4	0	4.0	0	16.0	.235	3-1
09/06/2024	at Utah	*3	18	4	45	.311	0	1	.000	3	0	11	1.000	3	10	.700	6	0	3	0	3.0	0	22.5	.246	3-0
09/07/2024	at Utah St.	*3	10	4	34	.176	0	0	.000	0	1	13	.923	1	7	.857	8	1	2	0	3.0	0	12.0	.290	3-0
09/13/2024	vs Houston	*3	10	3	26	.269	1	1	1.000	0	1	11	.909	0	7	1.000	6	0	1	0	1.0	0	10.5	.292	3-0
09/14/2024	vs Kentucky	*4	20	6	46	.304	1	3	.333	1	2	12	.833	1	11	.909	3	0	1	0	1.0	0	21.5	.310	3-1
09/19/2024	at Kansas	*4	17	1	53	.302	1	3	.333	0	0	14	1.000	1	25	.960	11	0	0	0	0.0	0	17.0	.278	1-3
09/20/2024	vs Creighton	*4	19	7	55	.218	0	3	.000	0	0	11	1.000	0	25	1.000	9	0	1	0	1.0	0	19.5	.209	1-3
09/21/2024	vs Tulsa	*3	11	2	24	.375	1	1	1.000	0	1	6	.833	0	5	1.000	4	0	1	1	1.0	0	11.5	.365	3-0
09/25/2024	Penn St.	*3	10	4	30	.200	0	1	.000	0	1	5	.800	1	31	.968	5	0	0	0	0.0	0	10.0	.176	0-3
09/28/2024	at Minnesota	*5	18	5	51	.255	1	4	.250	0	1	7	.857	2	17	.882	11	0	2	0	2.0	0	19.0	.252	3-2
10/04/2024	at Northwestern	*4	13	6	42	.167	0	5	.000	3	0	17	1.000	1	13	.923	16	0	2	0	2.0	0	17.0	.287	3-1
10/06/2024	Michigan St.	*3	11	2	35	.257	0	0	.000	0	1	11	.909	1	22	.955	9	0	3	0	3.0	0	12.5	.252	3-0
10/11/2024	at Nebraska	*5	26	4	63	.349	0	1	.000	0	2	19	.895	1	33	.970	15	0	1	0	1.0	0	26.5	.311	2-3
10/12/2024	at Iowa	*4	18	8	46	.217	2	3	.667	3	0	18	1.000	0	20	1.000	8	0	2	0	2.0	0	22.0	.213	3-1
10/17/2024	UCLA	*5	24	2	56	.393	0	2	.000	0	1	17	.941	2	15	.867	17	0	3	0	3.0	0	25.5	.325	3-2
10/19/2024	Indiana	*3	17	2	36	.417	1	1	1.000	0	1	3	.667	0	4	1.000	6	0	0	0	0.0	0	17.0	.333	3-0
10/23/2024	Ohio St.	*3	19	6	51	.255	0	1	.000	0	1	11	.909	0	4	1.000	8	0	4	0	4.0	0	21.0	.215	3-0
10/26/2024	Wisconsin	*3	17	9	50	.160	0	2	.000	0	0	4	1.000	0	13	1.000	5	0	2	0	2.0	0	18.0	.089	0-3
11/01/2024	at Maryland	*3	15	1	41	.341	0	0	.000	0	2	9	.778	0	13	1.000	7	0	1	0	1.0	0	15.5	.313	3-0
11/02/2024	at Rutgers	*3	14	1	32	.406	0	1	.000	0	1	6	.833	0	7	1.000	6	0	0	0	0.0	0	14.0	.424	3-0
Totals		82	367	92	974	.282	8	44	.182	10	20	248	.919	16	337	.953	197	2	40	3	42.0	0	399.0		

Player Averages

Sets Played	Kills per set	Assists per set	Service aces per set	Digs per set	Blocks per set	Points per set
82	4.48	0.10	0.12	2.40	0.51	4.87



2024-25 Purdue Women's Volleyball  
Individual Match-by-Match  
All games

Page 13/14  
as of Nov 03, 2024

#19 YIM, Sydney

			Attack				Set			Serve				Recept				Blocking					Team			
Date	Opponent	SP	K	E	TA	PCT	A	TA	PCT	SA	SE	TA	PCT	RE	TA	PCT	DIG	BS	BA	BE	TOTAL	BHE	POINTS	HIT%	SCORE	
10/19/2024	Indiana	1	0	0	0	.000	1	2	.500	0	0	0	.000	0	0	.000	0	0	0	0	0.0	0	0.0	.333	3-0	
11/02/2024	at Rutgers	1	1	0	1	1.000	0	1	.000	0	0	0	.000	0	0	.000	0	0	0	0	0.0	0	1.0	.424	3-0	
Totals		2	1	0	1	1.000	1	3	.333	0	0	0	.000	0	0	.000	0	0	0	0	0.0	0	1.0			

Player Averages

Sets Played	Kills per set	Assists per set	Service aces per set	Digs per set	Blocks per set	Points per set
2	0.50	0.50	0.00	0.00	0.00	0.50



2024-25 Purdue Women's Volleyball  
Individual Match-by-Match  
All games

Page 14/14  
as of Nov 03, 2024

#21 KANE, Julia

		Attack					Set			Serve				Recept			Blocking					Team			
Date	Opponent	SP	K	E	TA	PCT	A	TA	PCT	SA	SE	TA	PCT	RE	TA	PCT	DIG	BS	BA	BE	TOTAL	BHE	POINTS	HIT%	SCORE
08/31/2024	UMBC	2	0	0	0	.000	1	1	1.000	1	0	7	1.000	1	6	.833	1	0	0	0	0.0	0	1.0	.371	3-0
09/07/2024	at Utah St.	2	0	0	0	.000	0	0	.000	1	1	8	.875	0	0	.000	0	0	0	0	0.0	0	1.0	.290	3-0
09/13/2024	vs Houston	3	0	0	0	.000	0	0	.000	0	1	12	.917	0	0	.000	1	0	0	0	0.0	0	0.0	.292	3-0
09/14/2024	vs Kentucky	4	0	0	0	.000	1	1	1.000	1	2	17	.882	0	0	.000	3	0	0	0	0.0	0	1.0	.310	3-1
09/19/2024	at Kansas	4	0	0	0	.000	2	2	1.000	1	3	15	.800	0	0	.000	0	0	0	0	0.0	0	1.0	.278	1-3
09/20/2024	vs Creighton	4	0	0	0	.000	0	2	.000	0	1	14	.929	0	0	.000	3	0	0	0	0.0	0	0.0	.209	1-3
09/21/2024	vs Tulsa	3	0	0	0	.000	1	1	1.000	1	2	16	.875	0	0	.000	6	0	0	0	0.0	0	1.0	.365	3-0
09/25/2024	Penn St.	2	0	0	0	.000	0	1	.000	0	1	4	.750	0	0	.000	0	0	0	0	0.0	0	0.0	.176	0-3
09/28/2024	at Minnesota	5	0	0	0	.000	0	1	.000	3	2	15	.867	0	0	.000	2	0	0	0	0.0	0	3.0	.252	3-2
10/04/2024	at Northwestern	4	0	0	0	.000	2	2	1.000	1	4	20	.800	0	0	.000	0	0	0	0	0.0	0	1.0	.287	3-1
10/06/2024	Michigan St.	3	0	0	0	.000	0	2	.000	0	1	12	.917	0	0	.000	4	0	0	0	0.0	0	0.0	.252	3-0
10/11/2024	at Nebraska	5	0	0	0	.000	1	2	.500	0	2	9	.778	0	0	.000	0	0	0	0	0.0	0	0.0	.311	2-3
10/12/2024	at Iowa	1	0	0	0	.000	0	0	.000	0	0	2	1.000	0	0	.000	0	0	0	0	0.0	0	0.0	.213	3-1
10/17/2024	UCLA	4	0	0	0	.000	0	0	.000	0	2	8	.750	0	0	.000	1	0	0	0	0.0	0	0.0	.325	3-2
10/19/2024	Indiana	3	0	0	0	.000	0	0	.000	2	1	18	.944	0	0	.000	2	0	0	0	0.0	0	2.0	.333	3-0
10/23/2024	Ohio St.	2	0	0	0	.000	0	0	.000	0	1	3	.667	0	0	.000	0	0	0	0	0.0	0	0.0	.215	3-0
10/26/2024	Wisconsin	3	0	0	0	.000	0	0	.000	0	1	6	.833	0	0	.000	0	0	0	0	0.0	0	0.0	.089	0-3
11/01/2024	at Maryland	2	0	0	0	.000	0	0	.000	0	0	3	1.000	0	0	.000	0	0	0	0	0.0	0	0.0	.313	3-0
11/02/2024	at Rutgers	2	0	0	0	.000	0	0	.000	0	1	4	.750	0	0	.000	0	0	0	0	0.0	0	0.0	.424	3-0
Totals		58	0	0	0	.000	8	15	.533	11	26	193	.865	1	6	.833	23	0	0	0	0.0	0	11.0		

Player Averages

Sets Played	Kills per set	Assists per set	Service aces per set	Digs per set	Blocks per set	Points per set
58	0.00	0.14	0.19	0.40	0.00	0.19



Purdue Women's Volleyball  
Individual Career Summaries  
All games

Page 1/7  
as of Nov 03, 2024

**ANDERSON, Taylor**

SEASON	TEAM	SM-MP	K	K/S	E	TA	PCT	A	A/S	SA	SA/S	SE	DIG	D/S	RE	BS	BA	TB	B/S	BE	BHE	PTS	PTS/S
2023-24	Purdue	112-31	35	0.31	13	101	.218	1107	9.88	17	0.15	30	221	1.97	2	7	88	95	0.85	6	7	103.0	0.92
2024-25	Purdue	82-23	50	0.61	12	123	.309	890	10.85	22	0.27	32	183	2.23	1	6	70	76	0.93	2	3	113.0	1.38
TOTAL		194 - 54	85	0.44	25	224	.268	1997	10.29	39	0.20	62	404	2.08	3	13	158	171	0.88	8	10	216.0	1.11

**Single Game Highs**

Statistic	Value	
Kills	7	vs UCLA 10/17/24
Attacks	12	vs UCLA 10/17/24
Assists	60	vs Marquette 12/01/23
Serve Aces	3	vs Illinois 10/04/23, vs Indiana 10/19/24, vs California 09/05/24
Digs	16	vs Marquette 12/01/23
Blocks	8	vs Kansas St. 08/30/24
Block solos	1	13 times
Block assists	8	vs Kansas St. 08/30/24

**CARR, Lizzie**

SEASON	TEAM	SM-MP	K	K/S	E	TA	PCT	A	A/S	SA	SA/S	SE	DIG	D/S	RE	BS	BA	TB	B/S	BE	BHE	PTS	PTS/S
2023-24	Purdue	30-18	14	0.47	6	34	.235	0	0.00	0	0.00	0	2	0.07	1	0	8	8	0.27	1	0	18.0	0.60
2024-25	Purdue	21-11	29	1.38	5	69	.348	1	0.05	0	0.00	0	3	0.14	0	1	9	10	0.48	1	0	34.5	1.64
TOTAL		51 - 29	43	0.84	11	103	.311	1	0.02	0	0.00	0	5	0.10	1	1	17	18	0.35	2	0	52.5	1.03

**Single Game Highs**

Statistic	Value	
Kills	6	vs UMBC 08/31/24
Attacks	15	vs UMBC 08/31/24
Assists	1	vs Wisconsin 10/26/24
Digs	2	vs Wisconsin 10/26/24
Blocks	4	vs UMBC 08/31/24
Block solos	1	at Utah St. 09/07/24
Block assists	4	vs UMBC 08/31/24
PCT	1.000	vs Houston 09/13/24





Purdue Women's Volleyball  
Individual Career Summaries  
All games

Page 2/7  
as of Nov 03, 2024

CHICOINE, Chloe

SEASON	TEAM	SM-MP	K	K/S	E	TA	PCT	A	A/S	SA	SA/S	SE	DIG	D/S	RE	BS	BA	TB	B/S	BE	BHE	PTS	PTS/S
2023-24	Purdue	125-32	478	3.82	142	1315	.256	27	0.22	39	0.31	53	283	2.26	30	5	24	29	0.23	7	1	534.0	4.27
2024-25	Purdue	82-23	268	3.27	93	801	.218	30	0.37	16	0.20	26	231	2.82	8	2	21	23	0.28	3	0	296.5	3.62
TOTAL		207 - 55	746	3.60	235	2116	.241	57	0.28	55	0.27	79	514	2.48	38	7	45	52	0.25	10	1	830.5	4.01

Single Game Highs

Statistic	Value	
Kills	27	vs Penn St. 11/05/23
Attacks	61	vs Penn St. 11/05/23
Assists	5	at Nebraska 10/11/24
Serve Aces	4	vs Illinois 10/04/23, vs Michigan St. 11/12/23
Digs	23	vs Wisconsin 11/17/23
Blocks	4	at Utah St. 09/07/24
Block solos	2	at Utah St. 09/07/24
Block assists	3	vs Indiana 10/18/23, at Wisconsin 11/01/23, vs Michigan St. 11/12/23, vs Houston 09/13/24
PCT	.565	at Rutgers 11/02/24

COLVIN, Raven

SEASON	TEAM	SM-MP	K	K/S	E	TA	PCT	A	A/S	SA	SA/S	SE	DIG	D/S	RE	BS	BA	TB	B/S	BE	BHE	PTS	PTS/S
2021-22	Purdue	96-30	169	1.76	54	330	.348	4	0.04	2	0.02	4	12	0.13	0	13	105	118	1.23	20	1	236.5	2.46
2022-23	Purdue	122-32	269	2.20	98	599	.285	6	0.05	43	0.35	59	74	0.61	1	22	151	173	1.42	19	1	409.5	3.36
2023-24	Purdue	125-32	269	2.15	105	586	.280	11	0.09	26	0.21	40	61	0.49	3	19	148	167	1.34	16	0	388.0	3.10
2024-25	Purdue	82-23	208	2.54	66	394	.360	6	0.07	31	0.38	47	43	0.52	1	19	106	125	1.52	14	0	311.0	3.79
TOTAL		425 - 117	915	2.15	323	1909	.310	27	0.06	102	0.24	150	190	0.45	5	73	510	583	1.37	69	2	1345	3.16

Single Game Highs

Statistic	Value	
Kills	19	at Minnesota 09/28/24
Attacks	32	vs Utah 09/02/22, vs Marquette 12/01/23
Assists	2	vs Illinois 10/04/23, vs Marquette 12/01/23
Serve Aces	7	at Minnesota 09/28/24
Digs	8	vs Marquette 09/01/23
Blocks	16	at Maryland 11/23/22
Block solos	5	at Maryland 11/23/22
Block assists	11	at Maryland 11/23/22



Purdue Women's Volleyball  
Individual Career Summaries  
All games

Page 3/7  
as of Nov 03, 2024

GRAY, Raven

SEASON	TEAM	SM-MP	K	K/S	E	TA	PCT	A	A/S	SA	SA/S	SE	DIG	D/S	RE	BS	BA	TB	B/S	BE	BHE	PTS	PTS/S
2024-25	Purdue	3-2	1	0.33	0	1	1.000	0	0.00	0	0.00	1	0	0.00	0	0	0	0	0.00	0	0	1.0	0.33
TOTAL		3 - 2	1	0.33	0	1	1.000	0	0.00	0	0.00	1	0	0.00	0	0	0	0	0.00	0	0	1.0	0.33

Single Game Highs

Statistic	Value	
Kills	1	vs UMBC 08/31/24
Attacks	1	vs UMBC 08/31/24
PCT	1.000	vs UMBC 08/31/24

HEANEY, Grace

SEASON	TEAM	SM-MP	K	K/S	E	TA	PCT	A	A/S	SA	SA/S	SE	DIG	D/S	RE	BS	BA	TB	B/S	BE	BHE	PTS	PTS/S
2023-24	Purdue	69-22	92	1.33	44	249	.193	3	0.04	0	0.00	0	23	0.33	0	4	46	50	0.72	5	0	119.0	1.72
TOTAL		69 - 22	92	1.33	44	249	.193	3	0.04	0	0.00	0	23	0.33	0	4	46	50	0.72	5	0	119.0	1.72

Single Game Highs

Statistic	Value	
Kills	13	at Ohio St. 10/15/23
Attacks	24	at Ohio St. 10/15/23
Assists	1	at Wisconsin 11/01/23, vs Northwestern 10/01/23, at Ohio St. 10/15/23
Digs	3	at Ohio St. 10/15/23, at Penn St. 10/22/23
Blocks	6	vs Indiana 10/18/23
Block solos	1	vs SMU 09/08/23, at Penn St. 10/22/23, vs Kentucky 09/09/23, vs Oregon 12/07/23
Block assists	6	vs Indiana 10/18/23



Purdue Women's Volleyball  
Individual Career Summaries  
All games

Page 4/7  
as of Nov 03, 2024

**HORNUNG, Ali**

SEASON	TEAM	SM-MP	K	K/S	E	TA	PCT	A	A/S	SA	SA/S	SE	DIG	D/S	RE	BS	BA	TB	B/S	BE	BHE	PTS	PTS/S
2021-22	Purdue	63-22	0	0.00	1	1	-1.000	3	0.05	7	0.11	11	32	0.51	3	0	2	2	0.03	0	0	8.0	0.13
2022-23	Purdue	122-32	2	0.02	4	17	-.118	29	0.24	28	0.23	26	303	2.48	15	0	0	0	0.00	1	0	30.0	0.25
2023-24	Purdue	114-31	0	0.00	0	3	.000	15	0.13	15	0.13	18	277	2.43	25	1	0	1	0.01	0	0	16.0	0.14
2024-25	Purdue	82-23	0	0.00	0	6	.000	71	0.87	6	0.07	9	327	3.99	24	0	1	1	0.01	0	0	6.5	0.08
<b>TOTAL</b>		<b>381 - 108</b>	<b>2</b>	<b>0.01</b>	<b>5</b>	<b>27</b>	<b>-.111</b>	<b>118</b>	<b>0.31</b>	<b>56</b>	<b>0.15</b>	<b>64</b>	<b>939</b>	<b>2.46</b>	<b>67</b>	<b>1</b>	<b>3</b>	<b>4</b>	<b>0.01</b>	<b>1</b>	<b>0</b>	<b>60.5</b>	<b>0.16</b>

**Single Game Highs**

Statistic	Value	
Kills	1	at Penn St. 11/25/22, vs Penn St. 11/12/22
Attacks	3	at Minnesota 10/22/22
Assists	7	vs Kentucky 09/14/24, vs UCLA 10/17/24
Serve Aces	4	vs Bradley 09/02/22
Digs	24	at Minnesota 09/28/24
Blocks	2	vs Rutgers 10/02/21
Block solos	1	at Kansas 08/31/23
Block assists	2	vs Rutgers 10/02/21

**HUDSON, Eva**

SEASON	TEAM	SM-MP	K	K/S	E	TA	PCT	A	A/S	SA	SA/S	SE	DIG	D/S	RE	BS	BA	TB	B/S	BE	BHE	PTS	PTS/S
2022-23	Purdue	122-32	515	4.22	176	1420	.239	10	0.08	34	0.28	15	249	2.04	21	7	54	61	0.50	5	0	583.0	4.78
2023-24	Purdue	125-32	560	4.48	167	1509	.260	8	0.06	14	0.11	17	255	2.04	29	8	47	55	0.44	3	0	605.5	4.84
2024-25	Purdue	82-23	367	4.48	92	974	.282	8	0.10	10	0.12	20	197	2.40	16	2	40	42	0.51	3	0	399.0	4.87
<b>TOTAL</b>		<b>329 - 87</b>	<b>1442</b>	<b>4.38</b>	<b>435</b>	<b>3903</b>	<b>.258</b>	<b>26</b>	<b>0.08</b>	<b>58</b>	<b>0.18</b>	<b>52</b>	<b>701</b>	<b>2.13</b>	<b>66</b>	<b>17</b>	<b>141</b>	<b>158</b>	<b>0.48</b>	<b>11</b>	<b>0</b>	<b>1588</b>	<b>4.83</b>

**Single Game Highs**

Statistic	Value	
Kills	30	vs Wisconsin 11/17/23
Attacks	73	vs Marquette 12/01/23
Assists	2	5 times
Serve Aces	4	at Michigan St. 11/04/22
Digs	17	at Illinois 09/30/22, vs UCLA 10/17/24
Blocks	5	at Northwestern 10/28/22, vs Utah 09/02/22, at Iowa 09/25/22, vs Kansas St. 08/30/24
Block solos	2	vs Wisconsin 11/17/23
Block assists	5	at Northwestern 10/28/22, vs Utah 09/02/22



Purdue Women's Volleyball  
Individual Career Summaries  
All games

Page 5/7  
as of Nov 03, 2024

KANE, Julia

SEASON	TEAM	SM-MP	K	K/S	E	TA	PCT	A	A/S	SA	SA/S	SE	DIG	D/S	RE	BS	BA	TB	B/S	BE	BHE	PTS	PTS/S
2023-24	Purdue	1-1	0	0.00	0	0	.000	0	0.00	0	0.00	0	0	0.00	0	0	0	0	0.00	0	0	0.0	0.00
2024-25	Purdue	58-19	0	0.00	0	0	.000	8	0.14	11	0.19	26	23	0.40	1	0	0	0	0.00	0	0	11.0	0.19
TOTAL		59 - 20	0	0.00	0	0	.000	8	0.14	11	0.19	26	23	0.39	1	0	0	0	0.00	0	0	11.0	0.19

Single Game Highs

Statistic	Value	
Assists	2	at Northwestern 10/04/24, at Kansas 09/19/24
Serve Aces	3	at Minnesota 09/28/24
Digs	6	vs Tulsa 09/21/24

MCALCER, Ryan

SEASON	TEAM	SM-MP	K	K/S	E	TA	PCT	A	A/S	SA	SA/S	SE	DIG	D/S	RE	BS	BA	TB	B/S	BE	BHE	PTS	PTS/S
2024-25	Purdue	81-23	2	0.02	1	4	.250	24	0.30	14	0.17	30	192	2.37	13	0	0	0	0.00	0	0	16.0	0.20
TOTAL		81 - 23	2	0.02	1	4	.250	24	0.30	14	0.17	30	192	2.37	13	0	0	0	0.00	0	0	16.0	0.20

Single Game Highs

Statistic	Value	
Kills	1	vs Kentucky 09/14/24, vs Tulsa 09/21/24
Attacks	1	at Northwestern 10/04/24, vs Kentucky 09/14/24, at Kansas 09/19/24, vs Tulsa 09/21/24
Assists	3	vs Houston 09/13/24, vs Tulsa 09/21/24, vs UCLA 10/17/24
Serve Aces	6	at Minnesota 09/28/24
Digs	15	vs Indiana 10/19/24
PCT	1.000	vs Kentucky 09/14/24, vs Tulsa 09/21/24

MYERS, Lourdes

SEASON	TEAM	SM-MP	K	K/S	E	TA	PCT	A	A/S	SA	SA/S	SE	DIG	D/S	RE	BS	BA	TB	B/S	BE	BHE	PTS	PTS/S
2022-23	Purdue	29-16	25	0.86	8	54	.315	0	0.00	0	0.00	0	3	0.10	0	0	16	16	0.55	3	0	33.0	1.14
2023-24	Purdue	112-32	164	1.46	53	333	.333	4	0.04	0	0.00	0	28	0.25	1	11	99	110	0.98	33	1	224.5	2.00
2024-25	Purdue	78-23	90	1.15	23	193	.347	2	0.03	0	0.00	0	22	0.28	1	9	75	84	1.08	22	0	136.5	1.75
TOTAL		219 - 71	279	1.27	84	580	.336	6	0.03	0	0.00	0	53	0.24	2	20	190	210	0.96	58	1	394.0	1.80

Single Game Highs

Statistic	Value	
Kills	11	vs Indiana 10/18/23
Attacks	24	vs Indiana 10/18/23
Assists	1	6 times
Digs	3	vs Southern California 09/15/23
Blocks	9	vs Michigan St. 11/12/23, vs UCLA 10/17/24
Block solos	3	vs UCLA 10/17/24
Block assists	9	vs Michigan St. 11/12/23



Purdue Women's Volleyball  
Individual Career Summaries  
All games

Page 6/7  
as of Nov 03, 2024

**RASTOVSKI, Emily**

SEASON	TEAM	SM-MP	K	K/S	E	TA	PCT	A	A/S	SA	SA/S	SE	DIG	D/S	RE	BS	BA	TB	B/S	BE	BHE	PTS	PTS/S
2022-23	Purdue	10-8	8	0.80	4	20	.200	0	0.00	0	0.00	0	0	0.00	0	0	2	2	0.20	0	0	9.0	0.90
2023-24	Purdue	15-7	10	0.67	5	25	.200	1	0.07	0	0.00	0	4	0.27	0	0	7	7	0.47	0	0	13.5	0.90
<b>TOTAL</b>		<b>25 - 15</b>	<b>18</b>	<b>0.72</b>	<b>9</b>	<b>45</b>	<b>.200</b>	<b>1</b>	<b>0.04</b>	<b>0</b>	<b>0.00</b>	<b>0</b>	<b>4</b>	<b>0.16</b>	<b>0</b>	<b>0</b>	<b>9</b>	<b>9</b>	<b>0.36</b>	<b>0</b>	<b>0</b>	<b>22.5</b>	<b>0.90</b>

**Single Game Highs**

Statistic	Value	
Kills	4	vs Xavier 09/10/22
Attacks	10	vs Penn St. 11/05/23
Assists	1	vs Penn St. 11/05/23
Digs	4	vs Penn St. 11/05/23
Blocks	3	vs Penn St. 11/05/23
Block assists	3	vs Penn St. 11/05/23

**SHONDELL, Allie**

SEASON	TEAM	SM-MP	K	K/S	E	TA	PCT	A	A/S	SA	SA/S	SE	DIG	D/S	RE	BS	BA	TB	B/S	BE	BHE	PTS	PTS/S
2024-25	Purdue	5-5	0	0.00	1	1	-1.000	18	3.60	0	0.00	1	2	0.40	0	0	3	3	0.60	0	0	1.5	0.30
<b>TOTAL</b>		<b>5 - 5</b>	<b>0</b>	<b>0.00</b>	<b>1</b>	<b>1</b>	<b>-1.000</b>	<b>18</b>	<b>3.60</b>	<b>0</b>	<b>0.00</b>	<b>1</b>	<b>2</b>	<b>0.40</b>	<b>0</b>	<b>0</b>	<b>3</b>	<b>3</b>	<b>0.60</b>	<b>0</b>	<b>0</b>	<b>1.5</b>	<b>0.30</b>

**Single Game Highs**

Statistic	Value	
Attacks	1	at Utah St. 09/07/24
Assists	5	vs Tulsa 09/21/24, at Rutgers 11/02/24
Digs	1	at Utah St. 09/07/24, vs Wisconsin 10/26/24
Blocks	2	vs Tulsa 09/21/24
Block assists	2	vs Tulsa 09/21/24
PCT	-1.000	at Utah St. 09/07/24

**WILLIAMS, Rachel**

SEASON	TEAM	SM-MP	K	K/S	E	TA	PCT	A	A/S	SA	SA/S	SE	DIG	D/S	RE	BS	BA	TB	B/S	BE	BHE	PTS	PTS/S
2024-25	Purdue	42-18	1	0.02	0	3	.333	1	0.02	7	0.17	12	11	0.26	0	0	0	0	0.00	0	0	8.0	0.19
<b>TOTAL</b>		<b>42 - 18</b>	<b>1</b>	<b>0.02</b>	<b>0</b>	<b>3</b>	<b>.333</b>	<b>1</b>	<b>0.02</b>	<b>7</b>	<b>0.17</b>	<b>12</b>	<b>11</b>	<b>0.26</b>	<b>0</b>	<b>0</b>	<b>0</b>	<b>0</b>	<b>0.00</b>	<b>0</b>	<b>0</b>	<b>8.0</b>	<b>0.19</b>

**Single Game Highs**

Statistic	Value	
Kills	1	vs California 09/05/24
Attacks	1	vs Penn St. 09/25/24, vs Creighton 09/20/24, vs California 09/05/24
Assists	1	vs Creighton 09/20/24
Serve Aces	2	vs Indiana 10/19/24
Digs	4	vs UMBC 08/31/24
PCT	1.000	vs California 09/05/24





Purdue Women's Volleyball  
Individual Career Summaries  
All games

Page 7/7  
as of Nov 03, 2024

WOLLARD, Kenna

SEASON	TEAM	SM-MP	K	K/S	E	TA	PCT	A	A/S	SA	SA/S	SE	DIG	D/S	RE	BS	BA	TB	B/S	BE	BHE	PTS	PTS/S
2023-24	Purdue	60-21	57	0.95	36	184	.114	0	0.00	0	0.00	0	22	0.37	0	3	35	38	0.63	9	0	77.5	1.29
2024-25	Purdue	75-22	130	1.73	54	318	.239	2	0.03	0	0.00	0	35	0.47	0	1	45	46	0.61	8	0	153.5	2.05
TOTAL		135 - 43	187	1.39	90	502	.193	2	0.01	0	0.00	0	57	0.42	0	4	80	84	0.62	17	0	231.0	1.71

Single Game Highs

Statistic	Value	
Kills	18	at Northwestern 10/04/24
Attacks	32	at Northwestern 10/04/24
Assists	1	vs Indiana 10/19/24, at Rutgers 11/02/24
Digs	5	vs Illinois 10/04/23
Blocks	5	vs Houston 09/13/24
Block solos	1	at Michigan St. 11/25/23, vs Creighton 09/20/24, at Rutgers 09/24/23, at Michigan 11/24/23
Block assists	5	vs Houston 09/13/24

YIM, Sydney

SEASON	TEAM	SM-MP	K	K/S	E	TA	PCT	A	A/S	SA	SA/S	SE	DIG	D/S	RE	BS	BA	TB	B/S	BE	BHE	PTS	PTS/S
2022-23	Purdue	4-4	0	0.00	0	0	.000	2	0.50	0	0.00	0	2	0.50	0	0	1	1	0.25	0	0	0.5	0.13
2023-24	Purdue	1-1	0	0.00	0	0	.000	1	1.00	0	0.00	0	0	0.00	0	0	0	0	0.00	0	0	0.0	0.00
2024-25	Purdue	2-2	1	0.50	0	1	1.000	1	0.50	0	0.00	0	0	0.00	0	0	0	0	0.00	0	0	1.0	0.50
TOTAL		7 - 7	1	0.14	0	1	1.000	4	0.57	0	0.00	0	2	0.29	0	0	1	1	0.14	0	0	1.5	0.21

Single Game Highs

Statistic	Value	
Kills	1	at Rutgers 11/02/24
Attacks	1	at Rutgers 11/02/24
Assists	1	vs Bradley 09/02/22, vs Rutgers 10/02/22, vs Fairfield 11/30/23, vs Indiana 10/19/24
Digs	2	vs Bradley 09/02/22
Blocks	1	vs Rutgers 10/02/22
Block assists	1	vs Rutgers 10/02/22
PCT	1.000	at Rutgers 11/02/24