



INDIANA HOOSIERS

No. 7/6 Indiana (17-3, 9-1 B1G) vs. Michigan State (13-10, 7-5 B1G)

Game 21

Saturday, February 12, 2022 • Simon Skjodt Assembly Hall • Bloomington, Ind. • 3 p.m. ET
TV: B1G+ • Radio: WHCC 105.1 FM (Austin Render) • Live Stats: HoosierStats.com

2021-22 SCHEDULE

Date	Opponent	Time/Result	TV
11/5	UIndy (exh.)	W, 97-43	
11/10	at Butler	W, 86-63	
11/14	^{13/13} Kentucky	W, 88-67	
11/16	Norfolk State	W, 72-42	
11/20	at Quinnipiac	W, 69-57	
<i>Baha Mar Pink Flamingo Classic</i>			
11/25	vs. ^{7/4} Stanford	L, 66-69	
11/26	vs. Miami (FL)	W, 53-51	
<i>Big Ten/ACC Challenge</i>			
12/2	^{2/3} NC State	L, 58-66	
12/6	Penn State*	W, 70-40	
12/9	Fairfield	W, 91-58	
12/12	at ^{20/21} Ohio State*	W, 86-66	
12/19	Western Michigan	W, 67-57	
12/21	Wright State	Canceled	
12/23	SIU	W, 70-37	
12/30	at Rutgers*	Postponed	
1/2	^{6/8} Maryland*	W, 70-63 (OT)	
1/5	at Wisconsin*	W, 76-53	
1/13	^{RV/RV} Nebraska*	W, 72-65	
1/16	at Purdue*	W, 73-68 (OT)	
1/19	Michigan State*	Postponed	
1/23	at Iowa*	Postponed	
1/27	Illinois*	Postponed	
1/31	at Michigan*	L, 50-65	
2/3	Minnesota*	W, 80-70	
2/6	Purdue*	W, 64-57	
2/9	at Illinois*	W, 91-63	
2/12	Michigan State*	3 p.m.	B1G+
2/14	at Nebraska*	7 p.m.	BTN
2/17	Northwestern*	6 p.m.	BTN
2/19	Iowa*	4 p.m.	B1G+
2/21	at Iowa*	8 p.m.	BTN
2/25	at Maryland*	7 or 8 p.m.	BTN

Big Ten Tournament (Gainbridge Fieldhouse, Indianapolis)

3/2-3/6 TBD

All home games in **BOLD CAPS**

* Big Ten Conference game

BTN - Big Ten Network televised game

B1G+ - Big Ten Network+ streamed game

All Times Eastern

THE OPENING TIP

No. 7/6 Indiana will host its annual Head to the Hall game on Saturday afternoon when it hosts Michigan State. Tipoff is set for 3 p.m. ET inside Simon Skjodt Assembly Hall.

PROJECTED STARTERS

Indiana Hoosiers					Michigan State Spartans				
Head Coach: Teri Moren					Head Coach: Suzy Merchant				
Career Record: 363-213 (19th Season)					Career Record: 510-287 (27th Season)				
Indiana Record: 164-83 (8th Season)					MSU Record: 309-167 (15th Season)				
NO. PLAYER		HT. POS. YR.			NO. PLAYER		HT. POS. YR.		
4	Nicole Cardaño-Hillary	5-6	G	Gr.	0	DeeDee Hagemann	5-7	G	Fr.
10	Aleksa Gulbe	6-3	F	Sr.	2	Tamar Farquhar	6-0	F	Gr.
14	Ali Patberg	5-11	G	Gr.	4	Alisia Smith	6-3	F	Gr.
23	Kiandra Browne	6-3	F	So.	11	Matilda Ekh	6-0	G/F	Fr.
34	Grace Berger	6-0	G	Sr.	24	Nia Clouden	5-8	G	Jr.

2021-22 ROSTER

#	Name	Ht.	Pos.	Yr.	Hometown/High School/Previous College
1	Kaitlin Peterson	5-9	G	Fr.	Eufaula, Ala./Eufaula
3	Grace Waggoner	6-0	G	Jr.	Vincennes, Ind./Vincennes Rivet
4	Nicole Cardaño-Hillary	5-6	G	Gr.	Madrid, Spain/Vista Ridge/George Mason
10	Aleksa Gulbe	6-3	F	Sr.	Riga, Latvia/TTT Riga
14	Ali Patberg	5-11	G	Sr.	Columbus, Ind./Columbus North/Notre Dame
22	Chloe Moore-McNeil	5-11	G	So.	Sharon, Tenn./Greenfield
23	Kiandra Browne	6-2	F	So.	Montreal, Quebec, Canada/St-Laurent
24	Mona Zaric	6-2	F	Fr.	Novi Sad, Serbia
25	Arielle Wisne	6-5	C	R-So.	Thornton, Colo./Horizon
34	Grace Berger	6-0	G	Sr.	Louisville, Ky./Sacred Heart
54	Mackenzie Holmes	6-3	F	Jr.	Gorham, Maine/Gorham

Head Coach: Teri Moren

Associate Head Coach: Rhet Wierzba

Associate Head Coach: Glenn Box

Assistant Coach: Ashley Williams

Director of Operations: Liz Honegger

Director of Player Development: Briana Schomaeker

Athletic Trainer: Ben Tate

Team and Recruitment Analyst: McIntyre Webb

Graduate Managers: Shayna Gore, Brittney Patrick, Liam Shanahan

Pronunciation Guide

Keyanna: Key-aun-ah

Cardaño: Car-DAWN-yoh

Aleksa Gulbe: Alexa Ghoul-bay

Arielle Wisne: Air-e-l Wiss-nee

Moren: MORE-in

Wierzba: Weerz-buh

2021-22 RADIO/TV ROSTER



1 • Kaitlin Peterson
Freshman



3 • Grace Waggoner
Junior



4 • Nicole Cardaño-Hillary
Graduate Student



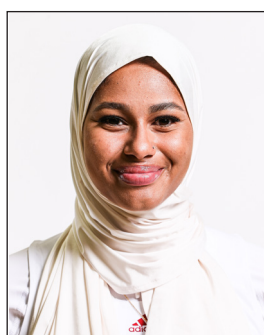
10 • Aleksa Gulbe
Senior



14 • Ali Patberg
Graduate Student



22 • Chloe Moore-McNeil
Sophomore



23 • Kiandra Browne
Sophomore



24 • Mona Zaric
Freshman



25 • Arielle Wisne
Redshirt Sophomore



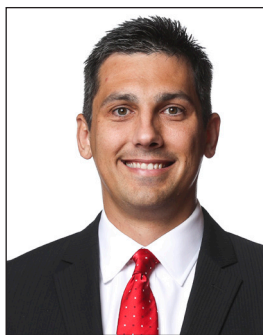
34 • Grace Berger
Senior



54 • Mackenzie Holmes
Junior



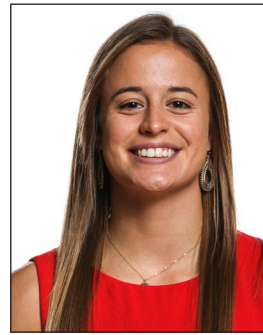
Teri Moren
Head Coach



Rhett Wierzbowski
Associate Head Coach



Glenn Box
Associate Head Coach



Ashley Williams
Assistant Coach

LAST TIME OUT

Indiana shot 57.6 percent from the floor behind 26 points from graduate student guard Ali Patberg in a 93-61 win at Illinois on Wednesday. Senior forward Aleksa Gulbe added 18 points while freshman guard Kaitlin Peterson added a career-high 11 points on three 3-pointers to extend its win streak over the Illini to 13 games.

AGAINST THE SPARTANS

Indiana trails in the all-time series with the Spartans but have won four of the last six games in the series. Saturday's game is a rescheduled game from Jan. 19 when the Hoosiers were in health and safety protocols.

ALL THE AWARDS

As national awards begin narrowing down its watch lists, Indiana's Grace Berger and Mackenzie Holmes each made appearances on respective national positional award list this week. Berger is on the top 10 watch list for the 2022 Cheryl Miller Award for nation's top small forward and Holmes earned a spot on the 2022 Lisa Leslie Award top 10 for nation's top center. She was also one of seven nationally added to the 2022 Wade Trophy watch list and to the 2022 Naismith Trophy midseason watch list. Both awards recognize the nation's best player.

LEMME HAVE THAT

Cardaño-Hillary continues to be a pest on the Indiana defense and continues to frustrate opponents this season. She currently leads the Hoosiers with 2.2 steals per game (42 total). Her eight steals against Michigan tied her for fourth place in a single game in school history. She has recorded multiple steals in 13 games, including the last five games, this season and is second in the conference in steals.

DEFENSE, DEFENSE

A staple of any Teri Moren program year after year is defense. The Hoosiers are second in the Big Ten in points allowed per game, giving up just 58.9 points per game, which ranks second in the Big Ten behind Rutgers (58.7). Opponents shoot 38.3 percent from the floor through 20 games, which ranks also second in the Big Ten. Only one opponent has scored 70 points this season (Minnesota, 70) and eight foes have been held to 60 points or less.

ALL THE LITTLE THINGS

In addition to scoring in double figures in

17 of 20 games this season, senior guard Grace Berger is filling up the stat sheet. The Louisville, Ky. native has dished out three assists in 19 of 20 games, averaging a team-high 5.2 assists per contest as she tied a season-high 11 dimes at Wisconsin. She's pulled down three or more rebounds in 18 games this season with 6.4 boards per game. In addition, she's had a steal in 18 games (1.5 per game) and nine games with multiple swipes.

BEST BIG START

With a 6-0 start to Big Ten play, Indiana recorded best ever start to conference play this season. It bested a previous best start of 4-0 which it notched in 2019-20.

IN THE POLLS

Indiana remained in the top 10 in both national polls in Week 14. They came in at 7 in the Associated Press Top 25 and stayed at No. 6 in the USA Today/WBCA coaches top 25. Their streak in the AP Top 25 stretches to 51 consecutive weeks and 39 consecutive weeks in the coaches poll.

TOP 16 REVEAL

IU came in at No. 8 in the NCAA Tournament committee's second of three top 16 reveals on Feb. 10. If the season ended today, the Hoosiers would be eyeing a No. 2 seed in the NCAA Tournament according to the national selection committee.

PAIR AGAINST IOWA RESCHEDULED

The Big Ten announced a pair of rescheduled games against Iowa next week. The Hoosiers will now host the Hawkeyes on Saturday, Feb. 19 at 4 p.m. ET and turn around on Monday, Feb. 21.

THREE AT 1,000

With Holmes reaching her 1,000th point on Dec. 12 at Ohio State, three active players on the IU roster have now scored 1,000 points or more. She joins Grace Berger and Ali Patberg who both put their names on IU's scoring list. This is the second time in program history IU has had a roster to feature three active 1,000 point scorers. The last time was in 2016 when Tyra Buss, Amanda Cahill and Alexis Gassion all reached the career mark. Senior forward Aleksa Gulbe has potential to be the fourth active player this season, as she currently sits with 932 career points.

IN THE RECORD BOOKS

Four Hoosiers currently have their name in the IU record book.

QUICK FACTS

School.....	Indiana University
Location.....	Bloomington, Ind.
Enrollment.....	48,514
Founded.....	1820
Nickname.....	Hoosiers
Colors.....	Cream and Crimson
Conference.....	Big Ten
Arena (Capacity).....	Simon Skjodt Assembly Hall (17,222)
Assembly Hall Press Row.....	812-855-2754
University President.....	Pamela Whitten
Athletics Director.....	Scott Dolson

COACHING STAFF

Head Coach.....	Teri Moren
Alma Mater, Year.....	Purdue, 1992
Record at Indiana (Years).....	164-83 (8th year)
Career Record (Years).....	363-213 (19th year)
Associate Head Coaches.....	Rhet Wierzb Glenn Box
Assistant Coach.....	Ashley Williams
Director of Operations.....	Liz Honegger
Director of Player Development	Briana Schomaeker
Team & Recruitment Analyst.....	McIntyre Webb
Basketball Office Phone.....	(812) 855-3013

TEAM INFORMATION

Starters Returning/Lost.....	5/0
Letterwinners Returning/Lost.....	9/4

2020-21 IN REVIEW

Overall Record.....	21-6
Big Ten Record (Regular Season Finish) ..	16-2 (2nd)
Postseason Finish.....	NCAA Elite Eight

TEAM HISTORY

First Year of Women's Basketball.....	1971-72
Record (Years).....	828-654 (50th year)
Big Ten Record (Years).....	306-368 (36th year)
Big Ten Regular-Season Titles.....	1 (1983)
Big Ten Tournament Titles.....	1 (2002)
NCAA Tournament Appearances (Record).....	6 (6-7)
Last NCAA Tournament Appearance.....	2016
WNIT Championships.....	1 (2018)

ATHLETICS STRATEGIC COMMUNICATIONS

Women's Basketball SID.....	Megan Kramper
Office Phone.....	812-856-4053
Cell Phone.....	618-334-5321
E-mail.....	mkramper@indiana.edu
Fax.....	812-855-9401
Press Row Phone.....	812-855-2754
Mailing Address.....	Athletics Media Relations Assembly Hall, 1001 East 17th St. Bloomington, IN 47408
Athletics Web Site.....	IUHoosiers.com Women's
Basketball on Twitter.....	@IndianaWBB
Teri Moren on Twitter.....	@TeriMoren
Basketball on Facebook.....	/IndianaWBB
Basketball on Snapchat.....	IndianaWBB

CAREER BY THE NUMBERS

CAREER DOUBLE-FIGURE SCORING GAMES

Ali Patberg.....	85
Grace Berger.....	67
Mackenzie Holmes.....	55
Aleksa Gulbe.....	32
Nicole Cardaño-Hillary*.....	20
Kiandra Browne.....	2
Chloe Moore-McNeil.....	2
Kaitlin Peterson.....	1

CAREER 20-PLUS POINT SCORING GAMES

Ali Patberg.....	24
Mackenzie Holmes.....	17
Grace Berger.....	14
Aleksa Gulbe.....	4
Nicole Cardaño-Hillary.....	1

CAREER DOUBLE-DOUBLES

Mackenzie Holmes.....	11
Aleksa Gulbe.....	4
Grace Berger.....	4
Ali Patberg.....	3
Kiandra Browne.....	1
Nicole Cardaño-Hillary*.....	1

CAREER TRIPLE-DOUBLES

Grace Berger.....	3
-------------------	---

CAREER DOUBLE-FIGURE REBOUNDING GAMES

Mackenzie Holmes.....	13
Grace Berger.....	8
Aleksa Gulbe.....	6
Kiandra Browne.....	2
Nicole Cardaño-Hillary*.....	1
Ali Patberg.....	1

CAREER FIVE-PLUS ASSIST GAMES

Ali Patberg.....	47
Grace Berger.....	31
Nicole Cardaño-Hillary*.....	7

CAREER THREE-PLUS STEALS GAMES

Ali Patberg.....	14
Grace Berger.....	11
Nicole Cardaño-Hillary*.....	11
Aleksa Gulbe.....	5
Mackenzie Holmes.....	3

CAREER 3-PLUS 3-POINT FG MADE GAMES

Ali Patberg.....	16
Nicole Cardaño-Hillary*.....	8
Aleksa Gulbe.....	7
Grace Berger.....	1
Kaitlin Peterson.....	1

CAREER STARTS

Ali Patberg.....	109
Grace Berger.....	80
Aleksa Gulbe.....	76
Mackenzie Holmes.....	44
Nicole Cardaño-Hillary*.....	35
Kiandra Browne.....	5
Chloe Moore-McNeil.....	1

*-at IU

VERSUS THE OPPONENT

2021-22 STATS (ALL GAMES)

MSU	Category	IU
73.0	Points Per Game	72.6
66.3	Points Allowed Per Game	58.9
+6.6	Scoring Margin	+13.8
.446	Field Goal Percentage	.465
.405	Opponent FG Percentage	.383
.369	3-Pt. Field Goal Percentage	.354
.321	Opp. 3-Pt. FG Percentage	.298
.745	Free Throw Percentage	.732
37.3	Rebounds Per Game	37.3
+3.5	Rebounding Margin	+4.0
17.7	Assists Per Game	14.6
15.7	Turnovers Per Game	13.6
8.1	Steals Per Game	6.7
3.8	Blocks Per Game	3.4

ABOUT THE SPARTANS

Michigan State is coming off a 63-57 win at home over their rival No. 4 Michigan on Thursday night. The win snapped a two-game skid for the Spartans, who are led by senior guard Nia Clouden who averages 21.3 points per game. Freshman forward Matilda Ekh adds 12.2 points per game as MSU averages 73.0 points per game.

SERIES HISTORY

MSU leads 48-31

LAST MEETING

3/11/21 - L, 61-69 (Indianapolis)

Grace Berger

1,299 career points (19th all-time)
384 career assists (6th all-time)

Ali Patberg

1,613 points (9th all-time)
486 assists (3rd all-time)

Mackenzie Holmes

1,075 points (27th all-time)
134 blocks (6th all-time)

Aleksa Gulbe

98 blocks (8th all-time)

THREE NAMED TO WATCH LISTS

Three Hoosiers earned spots on preseason award watch lists for the 2021-22 season.

Ali Patberg

2022 Nancy Lieberman Award (nation's top point guard)
2022 Wade Watch preseason watchlist

Grace Berger

2022 Cheryl Miller Award preseason watch list (nation's top small forward) and Top 10 watch list
2022 Wooden Award preseason Top 50 watch list
2022 Wade Watch preseason watch list

Mackenzie Holmes

2022 Naismith Trophy Midseason Team Top 20
2022 Wade Trophy midseason watch list
2022 Wooden Award midseason Top 25 watch list and Late Season Top 20
2022 Lisa Leslie Award preseason watch list and Top 10 watch list (nation's top center).

SEVENTH-YEAR SENIOR

Graduate student Ali Patberg returns for her seventh and final season of eligibility in 2021-22 as she is believed to be the

second-ever NCAA Division I women's basketball player to play a seventh collegiate season. After earning her sixth year waiver in July 2019, the Columbus, Ind. native is taking advantage of the extra year of eligibility granted by the NCAA as a result of the COVID-19 pandemic. Patberg joins Isis Young, who played seven collegiate seasons, graduating from Siena in 2019-20.

VETERAN LED GROUP

Returning all five starters from last season, the Hoosiers boast a wealth of experience in their core group. Among its five returning starters - Ali Patberg, Mackenzie Holmes, Grace Berger, Aleksa Gulbe and Nicole Cardaño-Hillary - the group holds 261 combined career starts at Indiana, 257 career games played, 4,076 career points and 10,743 minutes played heading in to the 2021-22 season.

FOUR SIGN WITH INDIANA

Indiana added four to its class of 2026 during the November signing period. Lilly Meister (Rochester, Minn.), Lexus Bargesser (Grass Lake, Mich.), Henna Sandvik (Helsinki, Finland) and Yarden Garzon (Ra'anana, Israel) have all signed their letters of intent to join the program next season.

TOP 25 POLLS

ASSOCIATED PRESS WEEK 14 FEBRUARY 7, 2022

Rank	School	Record	Points	Prev.
1	South Carolina (30)	21-1	750	1
2	Stanford	18-3	719	2
3	Louisville	21-2	679	4
4	Michigan	20-2	656	6
5	NC State	20-3	639	3
6	Arizona	17-3	583	8
7	Indiana	16-3	566	5
8	UConn	15-4	534	10
9	Iowa State	20-3	465	11
10	Baylor	17-5	462	9
11	Georgia Tech	18-4	445	12
12	Oklahoma	20-3	404	18
13	Tennessee	19-4	398	7
14	LSU	18-4	342	15
15	Maryland	17-6	337	17
16	Texas	15-6	269	13
17	Georgia	17-5	255	14
18	Notre Dame	18-5	240	20
19	Florida	17-6	166	NR
20	BYU	19-2	161	16
21	Ohio State	16-4	147	23
22	Florida Gulf Coast	21-1	140	22
23	North Carolina	18-4	136	24
24	Oregon	14-7	99	19
25	Iowa	15-6	61	21

Others receiving votes: Kansas State 44, Ole Miss 24, Duke 14, Princeton 5, Dayton 3, Liberty 2, DePaul 2, Drexel 1, Virginia Tech 1, **Nebraska 1**

Dropped from rankings: Kansas State 25

USA TODAY/WBCA COACHES WEEK 14 FEBRUARY 8, 2022

Rank	School	Record	Points	Prev.
1	South Carolina (31)	21-1	799	1
2	Stanford (1)	18-3	763	2
3	Louisville	21-2	733	4
4	Michigan	20-2	693	5
5	NC State	21-3	675	7
6	Indiana	16-3	638	6
7	Arizona	17-3	600	8
8	UConn	15-4	574	9
9	Iowa State	20-3	538	10
10	Tennessee	19-4	447	7
11	Baylor	17-5	445	12
12	Maryland	17-6	416	14
13	LSU	19-4	395	15
14	Georgia	17-5	373	11
15	Oklahoma	20-3	349	18
16	Georgia Tech	18-5	318	17
17	Texas	15-6	284	13
18	BYU	19-2	235	16
19	Notre Dame	18-5	228	19
20	Florida Gulf Coast	21-1	209	20
21	Ohio State	17-4	200	21
22	North Carolina	18-4	148	23
23	Florida	17-6	80	NR
24	Iowa	15-6	74	24
25	Oregon	15-7	41	22
	Ole Miss	18-5	41	NR

Others receiving votes: Kansas State 21, Liberty 20, UCF 19, South Florida 10, Rhode Island 7, Stony Brook 6, Virginia Tech 6, Drexel 4, **Nebraska 4**, Dayton 3, Duke 2, Gonzaga 1, Utah 1

2021-22 opponents in **bold**

STREAKS

TEAM

Current Streak	Won 3
Current Home Streak	Won 9
Current Road Streak	Won 1
Current Conference Streak	Won 3

INDIVIDUAL

Consecutive Games With a Point	
103	Berger
Consecutive Games With a Rebound	
72	Gulbe
Consecutive Games With Double Digit Scoring	
6	Berger
Consecutive Games With an Assist	
52	Berger
Consecutive Games With a Steal	
7	Cardaño-Hillary
Consecutive Games With a Block	
2	Gulbe

SEASON

Wins	9, (12/6/21-1/31/22)
Home Wins	9, (12/6/21-present)
Road Wins	5, (11/10/21-1/31/22)
Conference Wins	6, (12/6/21-1/31/22)

SEASON DOUBLE-DOUBLES

Grace Berger

19 points, 10 rebounds
vs. Minnesota

Aleksa Gulbe

22 points, 12 rebounds
vs. Norfolk State
17 points, 10 rebounds
vs. Maryland

Mackenzie Holmes

14 points, 11 rebounds
vs. Miami (FL)
17 points, 19 rebounds
vs. Western Michigan
15 points, 14 rebounds
vs. Maryland

Chloe Moore McNeil

11 points, 10 rebounds
vs. Purdue

SEASON TRIPLE-DOUBLES

THE HOOSIERS WHEN...

Home	10-1
Away	6-1
Neutral	1-1
Playing in overtime	2-0
Leading at half	15-1
Trailing at half	2-2
Tied at half	0-0
IU outrebounds an opponent	15-0
IU gets outrebounded	2-3
Ties in rebounds	0-0
IU shoots 50 percent or better	9-0
IU shoots less than 50 percent	8-3
Opponent shoots 50 percent or better	1-0
Opponent shoots less than 50 percent	16-3
IU shoots 70 percent or better from FT line	13-2
IU shoots less than 70 percent from FT line	4-1
Opponent shoots 70 percent or better from FT line	12-2
Opponent shoots less than 70 percent from FT line	5-1
IU makes more free throws than opponent	14-1
IU makes less free throws than opponent	1-2
IU is equal in free throws as opponent	2-0
IU hits 5 or less 3-pointers	9-1
IU hits 6-9 3-pointers	7-2
IU hits 10+ 3-pointers	1-0
IU scores 59 points or fewer	1-2
IU scores between 60-69 points	3-1
IU scores between 70-79 points	7-0
IU scores between 80-89 points	4-0
IU scores 90+ points	2-0
Holding opponent to 59 points or fewer	9-0
Holding opponent to between 60-69 points	7-3
Opponent scores 70 or more points	1-0
IU wins offensive glass	9-1
IU loses offensive glass	6-2
Ties offensive glass	2-0
IU wins defensive glass	14-0
IU loses defensive glass	2-3
Ties defensive glass	1-0
IU has 12 or fewer turnovers	8-2
IU has more than 12 turnovers	9-1
Leading with five minutes left in regulation	15-0
Trailing with five minutes left in regulation	1-3
Tied with five minutes left in regulation	1-0
Three IU players score in double figures	8-3
Four IU players score in double figures	10-0
Five IU players score in double figures	1-0
Six IU players score in double figures	0-0
Margin is 5 points or fewer	2-0
Margin is 6-10 points	6-2
Margin is 11-20 points	1-1
Margin is 21 or more points	8-0
Playing on Monday	1-1
Playing on Tuesday	1-0
Playing on Wednesday	3-0
Playing on Thursday	4-2
Playing on Friday	0-0
Playing on Saturday	2-0
Playing on Sunday	6-0
Playing in November	4-1
Playing in December	5-1
Playing in January	3-1
Playing in February	3-0
Playing in March	0-0
Night Games	10-2
Day Games	7-1

THE LAST TIME AN INDIANA TEAM

Scored 100 Points 100, vs. Eastern Kentucky (11/25/20)
Scored 90 Points 93, at Illinois (2/9/22)
Scored Fewer than 60 Points 50, at Michigan (1/31/22)
Scored Fewer than 50 Points 46, at Michigan State (12/28/17)
Won by 100 Points Never
Won by 30 Points or More 32, at Illinois (2/9/22)
Shot 65 pct from the floor 676, vs. Michigan State (1998)
Shot 60 pct from the floor 616, vs. Fairfield (12/9/21)
Shot 50 pct from the floor 576, at Illinois (2/9/22)
Shot less than 35 pct from the floor 33.3, at Michigan (1/31/22)
Shot 50 pct from 3-point range 50.0, vs. Minnesota (2/3/22)
Shot less than 35 pct from 3-point range 21.4, at Michigan (1/31/22)
Made 10 3-point field goals 11, vs. Michigan State (3/1/18)
Shot 75 pct from the FT line (min. 5 made) 75.0, at Illinois (2/9/22)
Shot less than 50 pct from the FT line 37.5, vs. Minnesota (1/4/17)
Had 70 or more Rebounds Never
Had 60-70 Rebounds 61, vs. Nebraska (12/20/20)
Had 50-60 Rebounds 50, at Wisconsin (12/24/21)
Had 30 Offensive Rebounds Never
Had 20 Offensive Rebounds 23, vs. Nebraska (12/20/20)
Had 40 or more Assists Never
Had 30-40 Assists Never
Had 20-39 Assists 20, at Illinois (2/9/22)
Had 20 Turnovers 24, vs. Miami (11/27/21)
Had less than 10 Turnovers 8, vs. SIU (12/23/21)
Had 5 or less Turnovers 2, at Penn State (1/7/21)
Had 10-20 Steals 14, at Michigan (1/31/22)
Had 20 or More Steals 24, vs. Ball State (1991)
Had 15 Blocked Shots Never
Had 10 Blocked Shots 11, vs. Eastern Kentucky (11/25/20)
Had two 30-point scorers Never
Had three 20-point scorers Never
Had two 20-point scorers Aleksa Gulbe (21), Grace Berger (24) vs. Purdue (1/16/22)
Had seven double-figure scorers Never
Had six double-figure scorers vs. Northern Kentucky (12/8/16)
Had five double-figure scorers vs. Penn St (12/6/21)
Had four double-figure scorers at Illinois (2/9/22)
Had no players score in double figures at Michigan (2/18/15)
Had two double-figure rebounders Mackenzie Holmes (14), Aleksa Gulbe (10) vs. Maryland (1/2/22)
Had three double-figure rebounders Never
Had three with double-doubles Never
Had two with double-doubles Mackenzie Holmes, Aleksa Gulbe vs. Maryland 1/2/22
Had two with double figure assists Never
Scored 70 points or more in the first half Never
Scored 60 points or more in first half 62, vs. Nicholls State (11/10/19)
Scored 50 points or more in first half 54, at Illinois (2/9/22)
Scored 60 pts or more in second half Never
Scored 50 points or more in the second half 50, vs. Kentucky (11/14/21)
Scored 20 points or less in first half Never
Scored 20 points or less in second half Never
Failed to make a 3-point field goal at Penn State (2/2/12)
Defeated a ranked team vs. 6/8 Maryland (1/2/22)
Defeated a top 10 team vs. 6/8 Maryland (1/2/22)
Lost to a ranked team at No. 6/7 Michigan (1/31/22)
Lost to an unranked team vs. Michigan State (3/11/21)
Lost to an unranked team at home vs. Tennessee (12/17/20)
Lost a regular season, non-conference game vs. NC State (12/2/21)
Lost a regular season, non-conference home game vs. NC State (12/2/21)
Won an overtime game at Purdue (1/16/22)
Lost an overtime game vs. Northwestern (69-71, 1/16/20)
Won a double-overtime game vs. Minnesota (80-77, 1/17/08)
Lost a double-overtime game at Iowa (85-91, 1/12/20)
Won a triple-overtime game Never
Lost a triple-overtime game Never
Won a quadruple-overtime game vs. Michigan State (3/1/18)
Lost a quadruple-overtime game Never

THE LAST TIME AN INDIANA INDIVIDUAL

Recorded a Triple-Double (Pts/Reb/Ast) .. Grace Berger (17, 11, 10) vs. Penn St. (2/10/21)
Recorded a Triple-Double (Pts/Reb/Blk) Never
Recorded a Double-Double (Pts/Reb) .. Chloe Moore-McNeil (11, 10) vs. Purdue (2/6/22)
Recorded a Double-Double (Pts/Ast) Tyra Buss (17, 10 vs. Chattanooga, 11/20/17)
Recorded a Double-Double (Reb/Ast) Never
Recorded a Double-Double (Pts/Blk) Never
Had a 20/10 Performance (Pts/Ast) Tyra Buss (28, 11 vs. Arkansas State, 11/11/17)
Had a 20/10 Performance (Pts/Reb) Aleksa Gulbe (22, 12 vs. Norfolk St., 11/16/21)
Had a 20/20 Performance (Pts/Reb) Never
Had a 30/20 Performance (Pts/Reb) Jill Chapman (35, 21 vs. Ball State 12/4/99)
Had a 40/20 Performance (Pts/Reb) Never
Scored 50 Points Never
Scored 40 Points 40, Karna Abram, vs. Michigan State (1987)
Scored 30 Points 30, Mackenzie Holmes, at Ohio State (12/12/21)
Had 20 Rebounds 20, Alexis Gassion, vs. Oakland (12/17/16)
Had 15 Rebounds 15, Kym Royster, vs. Southern (11/14/17)
Had 10 Assists 11, Grace Berger, vs. Wisconsin (1/5/22)
Had 5 Steals 8, Nicole Cardaño-Hillary, at Michigan (1/31/22)
Had 5 Blocked Shots 5, Mackenzie Holmes, at Ohio State (12/12/21)
Had 10 Blocked Shots 10, Quacy Barnes, vs. Youngstown State, (1997)

THE LAST TIME AN INDIANA OPPONENT

Scored 100 Points Michigan State (109, 3/1/18)
Scored 90 Points Missouri State (98, 12/9/18)
Scored Fewer than 60 Points Purdue (57, 2/6/22)
Scored Fewer than 50 Points Norfolk St. (42, 11/16/21)
Scored Fewer than 40 Points SIU (37, 12/23/21)
Scored Fewer than 30 Points Samford, 26 (12/3/20)
Won by 30 Points Maryland (36, 2/5/17)
Shot 65 pct from the floor Never
Shot 60 pct from the floor Ohio State (63.1%, 1/8/15)
Shot 50 pct from the floor NC State (50.0%, 3/27/21)
Shot less than 35 pct from the floor SIU (27.3%, 12/23/21)
Shot 50 pct from 3-point range Minnesota (52.4%, 2/3/22)
Shot less than 35 pct from 3-point range Illinois (22.2%, 2/9/22)
Made 10 3-point field goals Minnesota (11, 2/3/22)
Shot 75 pct from FT line (min. 5 made) Illinois (75%, 2/9/22)
Shot less than 50 pct from the FT line Penn St. (0%, 12/6/21)
Had 50 Rebounds Michigan (52, 1/31/22)
Had 20 Offensive Rebounds South Carolina (20, 11/28/2019)
Had 20 Assists Iowa (21, 1/12/20)
Had 20 Turnovers Michigan (1/31/22)
Had less than 10 Turnovers Purdue (9, 1/16/22)
Had 10 Steals Maryland (13, 1/2/22)
Had 10 Blocked Shots Nebraska (11, 2/9/20)
Had two 20-point scorers UCLA (25, 24 12/22/19)
Had two double-figure rebounders Never
Had no players in double figures VCU (3/22/21)
Scored 50 points or more in first half Never
Scored 50 points or more in the second half Penn State (50, 12/31/18)
Scored 20 points or less in first half Belmont (18, 3/24/21)
Scored 20 points or less in second half Penn St. (19, 12/6/21)
Failed to make a 3-point field goal Purdue (3/6/21)

THE LAST TIME AN OPPONENT INDIVIDUAL

Had a 30/10 Performance (Pts/Reb) . Aari McDonald, Arizona (33, 11 3/29/21)
Had a 20/10 Performance (Pts/Reb) Cameron Brink, Stanford (21, 22 11/25/21)
Scored 20 Points Sara Scalia (26, 2/3/22)
Scored 30 Points Aari McDonald, Arizona (3/29/21)
Scored 40 Points N/A*
Had 20 Rebounds Cameron Brink, Stanford (22, 11/25/21)
Had 15 Rebounds Emily Kiser, Michigan (16, 1/31/22)
Had 10 Assists Kathleen Doyle, Iowa (1/12/20)
Had 5 Steals Braxtin Miller, Ohio State (1/28/21)
Had 5 Blocked Shots Cameron Brink, Stanford (11/25/21)

2021-22 OVERALL STATISTICS

Game Records

Record	Overall	Home	Away	Neutral
ALL GAMES	17-3	10-1	6-1	1-1
CONFERENCE	9-1	5-0	4-1	0-0
NON-CONFERENCE	8-2	5-1	2-0	1-1

Score by Periods

Team	1st	2nd	3rd	4th	OT	TOT
Indiana	342	390	349	349	22	1452
Opponents	272	272	292	331	10	1177

Team Box Score

No.	Player				Total		3-Point		F-Throw		Rebounds													
		GP-GS	MIN	AVG	FG-FGA	FG%	3FG-3FGA	3FG%	FT-FTA	FT%	OFF	DEF	TOT	AVG	PF	DQ	A	TO	BLK	STL	PTS	AVG		
54	HOLMES, Mackenzie	14-14	402:57	28.8	104-169	.615	5-11	.455	38-49	.776	40	75	115	8.2	27	0	5	25	26	8	251	17.9		
34	BERGER, Grace	20-20	713:40	35.7	116-260	.446	3-11	.273	68-84	.810	12	113	125	6.3	44	0	103	48	4	30	303	15.2		
10	GULBE, Aleksa	20-20	693:27	34.7	90-197	.457	27-65	.415	42-48	.875	28	98	126	6.3	57	2	25	36	19	23	249	12.5		
14	PATBERG, Ali	20-20	687:32	34.4	88-204	.431	23-68	.338	46-61	.754	5	57	62	3.1	36	0	70	35	4	14	245	12.3		
4	CARDANO-HILLARY, Nicole	19-19	637:46	33.6	79-184	.429	31-74	.419	30-49	.612	20	77	97	5.1	38	0	65	61	1	42	219	11.5		
22	MOORE-MCNEIL, Chloe	18-1	342:11	19.0	28-72	.389	9-38	.237	12-19	.632	9	48	57	3.2	25	0	10	17	4	7	77	4.3		
23	BROWNE, Kiandra	20-6	307:19	15.4	26-44	.591	0-4	.000	18-26	.692	30	44	74	3.7	45	1	6	26	4	5	70	3.5		
1	PETERSON, Kaitlin	13-0	101:07	7.8	10-30	.333	4-15	.267	4-12	.333	2	6	8	0.6	13	0	3	6	1	2	28	2.2		
3	WAGGONER, Grace	18-0	99:19	5.5	3-8	.375	0-1	.000	4-10	.400	1	13	14	0.8	13	0	2	5	5	3	10	0.6		
24	ZARIC, Mona	6-0	16:34	2.8	0-0	.000	0-0	.000	0-0	.000	1	0	1	0.2	2	0	2	4	0	0	0	0.0		
25	WISNE, Arielle	9-0	22:34	2.5	0-1	.000	0-0	.000	0-0	.000	2	1	3	0.3	3	0	0	2	0	0	0	0.0		
21	BERRY, Keyarah	3-0	05:36	1.9	0-0	.000	0-0	.000	0-0	.000	0	0	0	0.0	2	0	0	1	0	0	0	0.0		
5	HOSE, Caitlin	4-0	19:59	5.0	0-1	.000	0-1	.000	0-0	.000	0	0	0	0.0	1	0	0	0	0	0	0	0.0		
Team											38	26	64					5						
Total		20	4050		544-1170	.465	102-288	.354	262-358	.732	188	558	746	37.3	306	3	291	271	68	134	1452	72.6		
Opponents		20	4050		450-1176	.383	95-319	.298	182-254	.717	187	479	666	33.3	386	11	189	315	66	144	1177	58.9		

Team Statistics

	IND	OPP
Scoring	1452	1177
Points per game	72.6	58.9
Scoring margin	+13.8	-
Field goals-att	544-1170	450-1176
Field goal pct	.465	.383
3 point fg-att	102-288	95-319
3-point FG pct	.354	.298
3-pt FG made per game	5.1	4.8
Free throws-att	262-358	182-254
Free throw pct	.732	.717
F-Throws made per game	13.1	9.1
Rebounds	746	666
Rebounds per game	37.3	33.3
Rebounding margin	+4.0	-
Assists	291	189
Assists per game	14.6	9.5
Turnovers	271	315
Turnovers per game	13.6	15.8
Turnover margin	+2.2	-
Assist/turnover ratio	1.1	0.6
Steals	134	144
Steals per game	6.7	7.2
Blocks	68	66
Blocks per game	3.4	3.3
Winning streak	3	-
Home win streak	8	-
Attendance	43351	23335
Home games-Avg/Game	11-3941	7-3334
Neutral site-Avg/Game	-	2-654

Team Results

Date	Opponent		Score	Att.
11/10/2021	at Butler	W	86-63	2360
11/14/2021	Kentucky	W	88-67	5394
11/16/2021	Norfolk St.	W	72-42	3398
11/20/2021	at Quinnipiac	W	67-59	1415
11/25/2021	vs Stanford	L	66-69	1307
11/27/2021	vs Miami (FL)	W	53-51	0
12/02/2021	NC State	L	58-66	5242
12/06/2021	Penn St.	W	70-40	3224
12/09/2021	Fairfield	W	91-58	3091
12/12/2021	at Ohio St.	W	86-66	3606
12/19/2021	Western Mich.	W	67-57	2327
12/23/2021	Southern Ill.	W	70-37	3735
01/02/2022	Maryland	Wot	70-63	5572
01/05/2022	at Wisconsin	W	76-53	2053
01/13/2022	Nebraska	W	72-65	3477
01/16/2022	at Purdue	Wot	73-68	8505
01/31/2022	at Michigan	L	50-65	4198
02/03/2022	Minnesota	W	80-70	0
02/06/2022	Purdue	W	64-57	7891
02/09/2022	at Illinois	W	93-61	1198

2021-22 BIG TEN STATISTICS

Game Records

Record	Overall	Home	Away	Neutral
ALL GAMES	9-1	5-0	4-1	0-0
CONFERENCE	9-1	5-0	4-1	0-0
NON-CONFERENCE	0-0	0-0	0-0	0-0

Score by Periods

Team	1st	2nd	3rd	4th	OT	TOT
Indiana	178	196	167	171	22	734
Opponents	150	130	149	169	10	608

Team Box Score

No. Player					Total		3-Point		F-Throw		Rebounds													
		GP-GS	MIN	AVG	FG-FGA	FG%	3FG-3FGA	3FG%	FT-FTA	FT%	OFF	DEF	TOT	AVG	PF	DQ	A	TO	BLK	STL	PTS	AVG		
54	HOLMES, Mackenzie	4-4	125:07	31.3	33-50	.660	1-3	.333	10-13	.769	13	22	35	8.8	6	0	1	10	9	2	77	19.3		
34	BERGER, Grace	10-10	378:28	37.8	57-122	.467	0-1	.000	43-53	.811	5	62	67	6.7	18	0	59	17	3	13	157	15.7		
10	GULBE, Aleksa	10-10	360:26	36.0	54-112	.482	16-33	.485	28-32	.875	13	50	63	6.3	28	2	11	16	11	11	152	15.2		
4	CARDANO-HILLARY, Nicole	9-9	314:48	35.0	43-102	.422	15-38	.395	19-28	.679	13	34	47	5.2	18	0	31	34	0	29	120	13.3		
14	PATBERG, Ali	10-10	360:45	36.1	48-112	.429	15-37	.405	17-24	.708	2	27	29	2.9	15	0	30	18	3	7	128	12.8		
22	MOORE-MCNEIL, Chloe	8-1	190:32	23.8	16-39	.410	6-22	.273	5-9	.556	4	24	28	3.5	17	0	3	5	2	5	43	5.4		
23	BROWNE, Kiandra	10-6	166:33	16.7	14-25	.560	0-1	.000	5-10	.500	13	20	33	3.3	22	1	4	17	3	4	33	3.3		
1	PETERSON, Kaitlin	7-0	72:20	10.3	7-19	.368	4-12	.333	1-5	.200	2	3	5	0.7	8	0	0	5	1	2	19	2.7		
3	WAGGONER, Grace	8-0	59:10	7.4	2-4	.500	0-1	.000	1-3	.333	0	7	7	0.9	8	0	2	3	4	2	5	0.6		
21	BERRY, Keyarah	1-0	01:24	1.4	0-0	.000	0-0	.000	0-0	.000	0	0	0	0.0	0	0	0	1	0	0	0	0.0		
24	ZARIC, Mona	3-0	08:30	2.8	0-0	.000	0-0	.000	0-0	.000	0	0	0	0.0	1	0	1	1	0	0	0	0.0		
25	WISNE, Arielle	5-0	11:57	2.4	0-1	.000	0-0	.000	0-0	.000	1	0	1	0.2	2	0	0	1	0	0	0	0.0		
Team											20	16	36					3						
Total		10	2050		274-586	.468	57-148	.385	129-177	.729	86	265	351	35.1	143	3	142	131	36	75	734	73.4		
Opponents		10	2050		231-591	.391	48-163	.294	98-129	.760	101	244	345	34.5	177	3	94	172	30	74	608	60.8		

Team Statistics

	IND	OPP
Scoring	734	608
Points per game	73.4	60.8
Scoring margin	+12.6	-
Field goals-att	274-586	231-591
Field goal pct	.468	.391
3 point fg-att	57-148	48-163
3-point FG pct	.385	.294
3-pt FG made per game	5.7	4.8
Free throws-att	129-177	98-129
Free throw pct	.729	.760
F-Throws made per game	12.9	9.8
Rebounds	351	345
Rebounds per game	35.1	34.5
Rebounding margin	+0.6	-
Assists	142	94
Assists per game	14.2	9.4
Turnovers	131	172
Turnovers per game	13.1	17.2
Turnover margin	+4.1	-
Assist/turnover ratio	1.1	0.5
Steals	75	74
Steals per game	7.5	7.4
Blocks	36	30
Blocks per game	3.6	3.0
Winning streak	3	-
Home win streak	5	-
Attendance	20164	19560
Home games-Avg/Game	5-4033	5-3912
Neutral site-Avg/Game	-	0-0

Team Results

Date	Opponent		Score	Att.
12/06/2021	Penn St.	W	70-40	3224
12/12/2021	at Ohio St.	W	86-66	3606
01/02/2022	Maryland	Wot	70-63	5572
01/05/2022	at Wisconsin	W	76-53	2053
01/13/2022	Nebraska	W	72-65	3477
01/16/2022	at Purdue	Wot	73-68	8505
01/31/2022	at Michigan	L	50-65	4198
02/03/2022	Minnesota	W	80-70	0
02/06/2022	Purdue	W	64-57	7891
02/09/2022	at Illinois	W	93-61	1198

BIG TEN STANDINGS (AS OF 2-7-22)

TEAM	BIG	PCT.	OVERALL	PCT.
Michigan	11-1	.917	20-2	.909
Indiana	8-1	.889	16-3	.842
Maryland	9-3	.750	17-6	.739
Iowa	9-3	.750	15-6	.714
Ohio St.	8-3	.727	16-4	.800
Nebraska	6-5	.545	17-5	.773
Michigan St.	6-5	.545	12-10	.545
Northwestern	5-5	.500	13-8	.619
Purdue	4-8	.333	13-10	.565
Minnesota	4-8	.333	11-13	.458
Penn State	3-9	.250	9-13	.409
Wisconsin	3-9	.250	6-16	.273
Illinois	1-6	.143	6-12	.333
Rutgers	0-11	.000	7-16	.304

BIG TEN STATS (AS OF 2-7-22)

TEAM		
Scoring Offense		71.5, 7th
Scoring Defense		58.7, 2nd
Scoring Margin		+12.8, 6th
Field Goal %		.459, 4th
Field Goal % Defense		.381, 2nd
3PT FG %		.346, 6th
3PT FG % Defense		.300, 3rd
Free Throw %		.731, 7th
Team Rebounds		37.4, 7th
Team Opponent Rebounds		33.7, 4th
Defensive Rebounds		28.1, 3rd
Rebounding Margin		+3.7, 7th
Turnover Margin		2.05, 4th
Assist/Turnover Ratio		1.04, 6th

INDIVIDUAL

Scoring	Mackenzie Holmes	179, 8th
Rebounding	Mackenzie Holmes	8.2, 8th
Field Goal	Mackenzie Holmes	61.5, 2nd
FT %	Grace Berger	81.7, 9th
Assists	Grace Berger	5.1, 6th
Assist/Turnover Ratio	Grace Berger	+2.1, 4th
	Ali Patberg	+2.0, 7th
Blocks	Mackenzie Holmes	1.9, 1st
Steals	Nicole Cardano-Hillary	2.2, 2nd
Minutes	Grace Berger	35.9, 3rd
	Aleksa Gulbe	35.9, 6th
	Ali Patberg	34.8, 8th

NCAA STATS (AS OF 2-7-22)

TEAM

Fewest Fouls	287, 37th
Fewest Turnovers Total	261, 30th
Field Goal %	45.9, 15th
Scoring Margin	12.8, 40th
3PT FG %	34.6, 44th
Fewest Turnovers PG	13.7, 48th

INDIVIDUAL

Assist/Turnover	Grace Berger	2.09, 39th
	Ali Patberg	2.00, 49th
Assists	Grace Berger	96, 53rd
Assist Per Game	Grace Berger	5.1, 37th
Blocked Shots PG	Mackenzie Holmes	1.86, 44th
FG %	Mackenzie Holmes	61.5, 7th
Minutes PPG	Grace Berger	35.99, 38th

2021-22 HOME GAME STATISTICS ONLY

No.	Player	Total			3-Point			F-Throw		Rebounds				PF		DQ	A	TO	BLK	STL	PTS	AVG
		GP-GS	MIN	AVG	FG-FGA	FG%	3FG-3FGA	3FG%	FT-FTA	FT%	OFF	DEF	TOT	AVG	PF							
54	HOLMES, Mackenzie	8-8	230:32	28.8	69-98	.704	3-6	.500	23-27	.852	21	44	65	8.1	15	0	3	13	15	4	164	20.5
34	BERGER, Grace	11-11	386:24	35.1	57-136	.419	2-7	.286	49-58	.845	8	63	71	6.5	21	0	52	27	3	18	165	15.0
10	GULBE, Aleksa	11-11	372:09	33.8	56-112	.500	19-39	.487	15-18	.833	14	58	72	6.5	32	1	16	20	14	12	146	13.3
14	PATBERG, Ali	11-11	375:30	34.1	43-105	.410	9-34	.265	28-39	.718	3	31	34	3.1	21	0	39	19	0	8	123	11.2
4	CARDANO-HILLARY, Nicole	11-11	367:52	33.4	40-103	.388	13-36	.361	16-27	.593	12	41	53	4.8	21	0	41	41	1	25	109	9.9
22	MOORE-MCNEIL, Chloe	10-0	184:24	18.4	14-35	.400	6-20	.300	10-14	.714	7	34	41	4.1	7	0	4	15	1	5	44	4.4
23	BROWNE, Kiandra	11-3	159:18	14.5	11-20	.550	0-3	.000	12-16	.750	20	28	48	4.4	17	0	2	12	2	4	34	3.1
1	PETERSON, Kaitlin	7-0	51:10	7.3	3-15	.200	0-6	.000	4-11	.364	0	3	3	0.4	10	0	3	3	0	1	10	1.4
3	WAGGONER, Grace	10-0	56:41	5.7	2-5	.400	0-0	.000	3-7	.429	1	8	9	0.9	7	0	0	1	4	2	7	0.7
25	WISNE, Arielle	5-0	13:19	2.7	0-0	.000	0-0	.000	0-0	.000	1	1	2	0.4	1	0	0	2	0	0	0	0.0
21	BERRY, Keyarah	3-0	05:36	1.9	0-0	.000	0-0	.000	0-0	.000	0	0	0	0.0	2	0	0	1	0	0	0	0.0
5	HOSE, Caitlin	2-0	11:06	5.6	0-0	.000	0-0	.000	0-0	.000	0	0	0	0.0	1	0	0	0	0	0	0	0.0
24	ZARIC, Mona	4-0	10:60	2.7	0-0	.000	0-0	.000	0-0	.000	1	0	1	0.3	1	0	1	3	0	0	0	0.0
Team											21	13	34					4				
Total		11	2225		295-629	.469	52-151	.344	160-217	.737	109	324	433	39.4	156	1	161	161	40	79	802	72.9
Opponents		11	2225		236-641	.368	55-184	.299	95-132	.720	97	249	346	31.5	228	7	96	178	38	91	622	56.5

2021-22 AWAY GAME STATISTICS ONLY

No.	Player	Total			3-Point			F-Throw		Rebounds				PF		DQ	A	TO	BLK	STL	PTS	AVG
		GP-GS	MIN	AVG	FG-FGA	FG%	3FG-3FGA	3FG%	FT-FTA	FT%	OFF	DEF	TOT	AVG	PF							
54	HOLMES, Mackenzie	4-4	109:31	27.4	28-51	.549	2-5	.400	9-11	.818	11	18	29	7.3	6	0	1	10	8	3	67	16.8
34	BERGER, Grace	7-7	254:09	36.3	50-94	.532	1-2	.500	14-19	.737	3	38	41	5.9	19	0	41	11	1	7	115	16.4
4	CARDANO-HILLARY, Nicole	6-6	198:20	33.1	33-65	.508	15-31	.484	9-12	.750	7	24	31	5.2	11	0	21	12	0	14	90	15.0
14	PATBERG, Ali	7-7	240:26	34.3	34-76	.447	12-28	.429	10-12	.833	1	22	23	3.3	10	0	28	11	4	4	90	12.9
10	GULBE, Aleksa	7-7	250:50	35.8	26-64	.406	6-19	.316	26-28	.929	11	30	41	5.9	17	1	9	12	5	6	84	12.0
23	BROWNE, Kiandra	7-3	125:56	18.0	15-22	.682	0-1	.000	6-10	.600	10	10	20	2.9	21	1	3	12	2	1	36	5.1
22	MOORE-MCNEIL, Chloe	6-1	138:59	23.2	12-34	.353	2-17	.118	2-4	.500	2	11	13	2.2	16	0	4	2	3	2	28	4.7
1	PETERSON, Kaitlin	5-0	49:18	9.9	7-15	.467	4-9	.444	0-1	.000	2	3	5	1.0	3	0	0	3	1	1	18	3.6
3	WAGGONER, Grace	6-0	37:41	6.3	1-3	.333	0-1	.000	1-3	.333	0	4	4	0.7	6	0	2	4	1	1	3	0.5
24	ZARIC, Mona	2-0	05:34	2.8	0-0	.000	0-0	.000	0-0	.000	0	0	0	0.0	1	0	1	1	0	0	0	0.0
25	WISNE, Arielle	4-0	09:15	2.3	0-1	.000	0-0	.000	0-0	.000	1	0	1	0.3	2	0	0	0	0	0	0	0.0
5	HOSE, Caitlin	1-0	05:01	5.0	0-1	.000	0-1	.000	0-0	.000	0	0	0	0.0	0	0	0	0	0	0	0	0.0
Team											13	11	24					1				
Total		7	1425		206-426	.484	42-114	.368	77-100	.770	61	171	232	33.1	112	2	110	79	25	39	531	75.9
Opponents		7	1425		165-406	.406	32-105	.305	73-92	.793	66	167	233	33.3	116	2	66	109	20	34	435	62.1

2021-22 NEUTRAL SITE STATISTICS ONLY

No.	Player	Total			3-Point			F-Throw		Rebounds				PF		DQ	A	TO	BLK	STL	PTS	AVG
		GP-GS	MIN	AVG	FG-FGA	FG%	3FG-3FGA	3FG%	FT-FTA	FT%	OFF	DEF	TOT	AVG	PF							
14	PATBERG, Ali	2-2	71:37	35.8	11-23	.478	2-6	.333	8-10	.800	1	4	5	2.5	5	0	3	5	0	2	32	16.0
34	BERGER, Grace	2-2	73:07	36.6	9-30	.300	0-2	.000	5-7	.714	1	12	13	6.5	4	0	10	10	0	5	23	11.5
54	HOLMES, Mackenzie	2-2	62:55	31.5	7-20	.350	0-0	.000	6-11	.545	8	13	21	10.5	6	0	4	2	3	1	20	10.0
4	CARDANO-HILLARY, Nicole	2-2	71:34	35.8	6-16	.375	3-7	.429	5-10	.500	1	12	13	6.5	6	0	3	8	0	3	20	10.0
10	GULBE, Aleksa	2-2	70:28	35.2	8-21	.381	2-7	.286	1-2	.500	3	10	13	6.5	8	0	4	0	0	5	19	9.5
22	MOORE-MCNEIL, Chloe	2-0	18:48	9.4	2-3	.667	1-1	1.000	0-1	.000	0	3	3	1.5	2	0	2	0	0	0	5	2.5
23	BROWNE, Kiandra	2-0	22:04	11.0	0-2	.000	0-0	.000	0-0	.000	0	6	6	3.0	7	0	1	2	0	0	0	0.0
5	HOSE, Caitlin	1-0	03:52	3.9	0-0	.000	0-0	.000	0-0	.000	0	0	0	0.0	0	0	0	0	0	0	0	0.0
3	WAGGONER, Grace	2-0	04:57	2.5	0-0	.000	0-0	.000	0-0	.000	0	1	1	0.5	0	0	0	0	0	0	0	0.0
1	PETERSON, Kaitlin	1-0	00:39	0.7	0-0	.000	0-0	.000	0-0	.000	0	0	0	0.0	0	0	0	0	0	0	0	0.0
Team											4	2	6									
Total		2	400		43-115	.374	8-23	.348	25-41	.610	18	63	81	40.5	38	0	20	31	3	16	119	59.5
Opponents		2	400		49-129	.380	8-30	.267	14-30	.467	24	63	87	43.5	42	2	27	28	8	19	120	60.0

2021-22 NON-CONFERENCE ONLY

No.	Player	Total			3-Point			F-Throw		Rebounds				PF		DQ	A	TO	BLK	STL
-----	--------	-------	--	--	---------	--	--	---------	--	----------	--	--	--	----	--	----	---	----	-----	-----

2021-22 GAME-BY-GAME

				Total		3-Pointers		Free throws		Rebounds											
Opponent	Date	Score		FG-FGA	PCT	3FG-3FGA	PCT	FT-FTA	PCT	OFF	DEF	TOT	AVG	PF	A	TO	BLK	STL	PTS	AVG	
at Butler	11/10/2021	86-63	W	35-67	.522	8-26	.308	8-8	1.000	11	21	32	32.0	13	24	9	3	3	86	86.0	
Kentucky	11/14/2021	88-67	W	32-59	.542	6-11	.545	18-21	.857	11	29	40	36.0	18	18	14	3	5	88	87.0	
Norfolk St.	11/16/2021	72-42	W	27-53	.509	5-12	.417	13-16	.813	13	34	47	39.7	9	22	22	4	5	72	82.0	
at Quinnipiac	11/20/2021	67-59	W	26-57	.456	3-8	.375	12-13	.923	6	26	32	37.8	17	10	13	2	3	67	78.3	
vs Stanford	11/25/2021	66-69	L	23-71	.324	6-14	.429	14-20	.700	11	27	38	37.8	20	10	7	2	12	66	75.8	
vs Miami (FL)	11/27/2021	53-51	W	20-44	.455	2-9	.222	11-21	.524	7	36	43	38.7	18	10	24	1	4	53	72.0	
NC State	12/02/2021	58-66	L	22-65	.338	7-24	.292	7-10	.700	11	24	35	38.1	17	12	13	3	7	58	70.0	
Penn St.	12/06/2021	70-40	W	26-51	.510	6-14	.429	12-16	.750	7	30	37	38.0	9	13	18	6	9	70	70.0	
Fairfield	12/09/2021	91-58	W	33-54	.611	4-12	.333	21-27	.778	9	35	44	38.7	23	11	19	7	6	91	72.3	
at Ohio St.	12/12/2021	86-66	W	36-62	.581	4-9	.444	10-14	.714	8	27	35	38.3	17	17	12	5	4	86	73.7	
Western Mich.	12/19/2021	67-57	W	23-59	.390	2-16	.125	19-29	.655	18	29	47	39.1	13	14	11	5	11	67	73.1	
Southern Ill.	12/23/2021	70-37	W	29-55	.527	2-8	.250	10-16	.625	5	32	37	38.9	15	18	8	2	3	70	72.8	
Maryland	01/02/2022	70-63	Wot	26-57	.456	3-11	.273	15-21	.714	9	28	37	38.8	18	14	19	1	7	70	72.6	
at Wisconsin	01/05/2022	76-53	W	28-58	.483	8-19	.421	12-14	.857	10	26	36	38.6	14	18	13	2	4	76	72.9	
Nebraska	01/13/2022	72-65	W	25-59	.424	6-18	.333	16-25	.640	7	28	35	38.3	14	12	13	3	13	72	72.8	
at Purdue	01/16/2022	73-68	Wot	27-63	.429	6-16	.375	13-18	.722	10	32	42	38.6	14	13	11	6	4	73	72.8	
at Michigan	01/31/2022	50-65	L	20-60	.333	3-14	.214	7-13	.538	5	15	20	37.5	18	8	11	4	14	50	71.5	
Minnesota	02/03/2022	80-70	W	28-55	.509	7-14	.500	17-20	.850	8	26	34	37.3	13	18	12	4	5	80	71.9	
Purdue	02/06/2022	64-57	W	24-62	.387	4-11	.364	12-16	.750	11	29	40	37.4	7	9	12	2	8	64	71.5	
at Illinois	02/09/2022	93-61	W	34-59	.576	10-22	.455	15-20	.750	11	24	35	37.3	19	20	10	3	7	93	72.6	
Total		1452		544-1170	.465	102-288	.354	262-358	.732	188	558	746	37.3	306	291	271	68	134	1452	72.6	
Opponents		1177		450-1176	.383	95-319	.298	182-254	.717	187	479	666	33.3	386	189	315	66	144	1177	58.9	

Indiana Averages

Games Played	Points/game	FG Pct	3FG Pct	FT Pct	Rebounds/game	Assists/game	Turnovers/game	Assist/Turnover ratio	Steals/game	Blocks/game
20	72.6	46.5	35.4	73.2	37.3	14.6	13.6	1.1	6.7	3.4

2021-22 COMPARISON STATS

Opponent	1st	2nd	Score	Mar	Total FG	FG Pct	3-Pointers	3FG Pct	Free Throws	FT Pct	Rebounds	Assist	T/Over	Block	Steal	Fouls	
Butler	43/32	43/31	86-63	+23	35-67/25-50	.522/.500	8-26/4-11	.308/.364	8-8/9-11	1000/.818	32/24	+8	24/8	9/18	3/3	3/2	13/16
KENTUCKY	38/32	50/35	88-67	+21	32-59/27-65	.542/.415	6-11/4-13	.545/.308	18-21/9-15	.857/.600	40/30	+10	18/7	14/12	3/4	5/7	18/24
NORFOLK ST.	39/21	33/21	72-42	+30	27-53/15-60	.509/.250	5-12/6-22	.417/.273	13-16/6-8	.813/.750	47/27	+20	22/8	22/15	4/5	5/13	9/22
Quinnipiac	27/33	40/26	67-59	+8	26-57/22-57	.456/.386	3-8/6-16	.375/.375	12-13/9-10	.923/.900	32/29	+3	10/8	13/11	2/4	3/4	17/19
Stanford	34/37	32/32	66-69	(3)	23-71/29-70	.324/.414	6-14/3-12	.429/.250	14-20/8-18	.700/.444	38/59	(21)	10/16	7/16	2/7	12/4	20/17
Miami (FL)	32/26	21/25	53-51	+2	20-44/20-59	.455/.339	2-9/5-18	.222/.278	11-21/6-12	.524/.500	43/28	+15	10/11	24/12	1/1	4/15	18/25
NC STATE	23/21	35/45	58-66	(8)	22-65/23-55	.338/.418	7-24/6-17	.292/.353	7-10/14-17	.700/.824	35/43	(8)	12/11	13/16	3/4	7/5	17/18
PENN ST.	37/21	33/19	70-40	+30	26-51/19-56	.510/.339	6-14/2-16	.429/.125	12-16/0-0	.750/.000	37/24	+13	13/10	18/22	6/3	9/8	9/17
FAIRFIELD	51/27	40/31	91-58	+33	33-54/21-56	.611/.375	4-12/2-9	.333/.222	21-27/14-20	.778/.700	44/19	+25	11/8	19/12	7/2	6/8	23/27
Ohio St.	43/29	43/37	86-66	+20	36-62/24-66	.581/.364	4-9/10-19	.444/.526	10-14/8-11	.714/.727	35/38	(3)	17/14	12/17	5/3	4/7	17/17
WESTERN MICH.	33/27	34/30	67-57	+10	23-59/22-58	.390/.379	2-16/8-25	.125/.320	19-29/5-7	.655/.714	47/29	+18	14/11	11/15	5/3	11/8	13/20
SOUTHERN ILL.	38/8	32/29	70-37	+33	29-55/15-55	.527/.273	2-8/3-13	.250/.231	10-16/4-7	.625/.571	37/33	+4	18/7	8/16	2/3	3/4	15/21
MARYLAND	33/29	28/32	70-63	+7	26-57/21-58	.456/.362	3-11/3-13	.273/.231	15-21/18-23	.714/.783	37/35	+2	14/6	19/19	1/3	7/13	18/22
Wisconsin	36/21	40/32	76-53	+23	28-58/20-56	.483/.357	8-19/6-21	.421/.286	12-14/7-9	.857/.778	36/25	+11	18/12	13/14	2/1	4/8	14/14
NEBRASKA	44/31	28/34	72-65	+7	25-59/24-60	.424/.400	6-18/6-21	.333/.286	16-25/11-18	.640/.611	35/41	(6)	12/9	13/19	3/2	13/9	14/19
Purdue	27/32	33/28	73-68	+5	27-63/26-68	.429/.382	6-16/3-18	.375/.167	13-18/13-16	.722/.813	42/40	+2	13/7	11/9	6/5	4/4	14/18
Michigan	30/32	20/33	50-65	(15)	20-60/26-55	.333/.473	3-14/1-11	.214/.091	7-13/12-15	.538/.800	20/52	(32)	8/10	11/25	4/2	14/3	18/15
MINNESOTA	36/37	44/33	80-70	+10	28-55/26-58	.509/.448	7-14/11-21	.500/.524	17-20/7-10	.850/.700	34/27	+7	18/12	12/14	4/0	5/8	13/18
PURDUE	34/24	30/33	64-57	+7	24-62/23-60	.387/.383	4-11/4-14	.364/.286	12-16/7-7	.750/1000	40/38	+2	9/7	12/18	2/9	8/8	7/20
Illinois	54/24	39/37	93-61	+32	34-59/22-54	.576/.407	10-22/2-9	.455/.222	15-20/15-20	.750/.750	35/25	+10	20/7	10/15	3/2	7/6	19/17

2021-22 GAME LEADERS

Date	Opponent		Score	Att.	High Points	High Rebounds
11/10/2021	at Butler	W	86-63	2360	(29) CARDANO-HILLARY, Nicole	(8) HOLMES, Mackenzie
11/14/2021	Kentucky	W	88-67	5394	(29) HOLMES, Mackenzie	(9) BERGER, Grace
						(9) GULBE, Aleksa
11/16/2021	Norfolk St.	W	72-42	3398	(22) GULBE, Aleksa	(12) GULBE, Aleksa
					(22) HOLMES, Mackenzie	
11/20/2021	at Quinnipiac	W	67-59	1415	(17) BERGER, Grace	(8) CARDANO-HILLARY, Nicole
11/25/2021	vs Stanford	L	66-69	1307	(19) PATBERG, Ali	(10) HOLMES, Mackenzie
11/27/2021	vs Miami (FL)	W	53-51	0	(14) HOLMES, Mackenzie	(11) HOLMES, Mackenzie
12/02/2021	NC State	L	58-66	5242	(24) HOLMES, Mackenzie	(9) BERGER, Grace
12/06/2021	Penn St.	W	70-40	3224	(16) HOLMES, Mackenzie	(7) CARDANO-HILLARY, Nicole
12/09/2021	Fairfield	W	91-58	3091	(23) HOLMES, Mackenzie	(9) GULBE, Aleksa
12/12/2021	at Ohio St.	W	86-66	3606	(30) HOLMES, Mackenzie	(7) CARDANO-HILLARY, Nicole
						(7) BERGER, Grace
						(7) HOLMES, Mackenzie
12/19/2021	Western Mich.	W	67-57	2327	(17) HOLMES, Mackenzie	(19) HOLMES, Mackenzie
12/23/2021	Southern Ill.	W	70-37	3735	(18) BERGER, Grace	(7) HOLMES, Mackenzie
					(18) HOLMES, Mackenzie	
01/02/2022	Maryland	Wot	70-63	5572	(18) PATBERG, Ali	(14) HOLMES, Mackenzie
01/05/2022	at Wisconsin	W	76-53	2053	(18) PATBERG, Ali	(8) BERGER, Grace
						(8) HOLMES, Mackenzie
01/13/2022	Nebraska	W	72-65	3477	(22) BERGER, Grace	(7) BERGER, Grace
01/16/2022	at Purdue	Wot	73-68	8505	(24) BERGER, Grace	(9) GULBE, Aleksa
01/31/2022	at Michigan	L	50-65	4198	(16) CARDANO-HILLARY, Nicole	(6) BERGER, Grace
02/03/2022	Minnesota	W	80-70	0	(28) GULBE, Aleksa	(10) BERGER, Grace
02/06/2022	Purdue	W	64-57	7891	(19) CARDANO-HILLARY, Nicole	(10) MOORE-MCNEIL, Chloe
02/09/2022	at Illinois	W	93-61	1198	(26) PATBERG, Ali	(8) BERGER, Grace

Attendance Summary

	Games	Attend	Avg/Game
Home	11	43351	3941
Away	7	23335	3334
Neutral	2	1307	654
Total	20	67993	3400

STARTING LINEUPS

11-10-21 at Butler

Cardaño-Hillary Patberg Berger Gulbe Holmes

11-14-21 vs. No. 13 Kentucky

Cardaño-Hillary Patberg Berger Gulbe Holmes

11-16-21 vs. Norfolk St.

Cardaño-Hillary Patberg Berger Gulbe Holmes

11-20-21 at Quinnipiac

Cardaño-Hillary Patberg Berger Gulbe Holmes

11-25-21 vs. No. 7/5 Stanford

Cardaño-Hillary Patberg Berger Gulbe Holmes

11-27-21 vs. Miami (FL)

Cardaño-Hillary Patberg Berger Gulbe Holmes

12-2-21 vs. No. 2/3 NC State

Cardaño-Hillary Patberg Berger Gulbe Holmes

12-6-21 vs. Penn State

Cardaño-Hillary Patberg Berger Gulbe Holmes

12-9-21 vs. Fairfield

Cardaño-Hillary Patberg Berger Gulbe Holmes

12-12-21 at No. 20/21 Ohio State

Cardaño-Hillary Patberg Berger Gulbe Holmes

12-19-21 vs. Western Michigan

Cardaño-Hillary Patberg Berger Gulbe Holmes

12-23-21 vs. SIU

Cardaño-Hillary Patberg Berger Gulbe Holmes

1-2-22 vs. No. 6/8 Maryland

Cardaño-Hillary Patberg Berger Gulbe Holmes

1-5-22 at Wisconsin

Cardaño-Hillary Patberg Berger Gulbe Holmes

1-13-22 vs. Nebraska

Cardaño-Hillary Patberg Berger Gulbe Browne

1-16-22 at Purdue

Patberg Moore-McNeil Berger Gulbe Browne

1-31-22 at Michigan

Cardaño-Hillary Patberg Berger Gulbe Browne

2-3-22 vs. Minnesota

Cardaño-Hillary Patberg Berger Gulbe Browne

2-6-22 vs. Purdue

Cardaño-Hillary Patberg Berger Gulbe Browne

2-9-22 at Illinois

Cardaño-Hillary Patberg Berger Gulbe Browne

2021-22 PRA

Opponent	Date	Score		1	3	4	5	10	14	21	22	23	24	25
				PETERSON,K	WAGGONER,G	CARDANO-HI	HOSE,CAITL	GULBE,ALEK	PATBERG,AL	BERRY,KEYA	MOORE-MCNE	BROWNE,KIA	ZARIC,MONA	WISNE,ARIE
at Butler	11/10/2021	86-63	W	2-1-0	0-0-0	29-6-5	0-0-0	8-6-3	6-3-10	DNP	2-0-2	10-3-0	DNP	0-0-0
Kentucky	11/14/2021	88-67	W	0-0-0	0-1-0	12-6-7	0-0-0	8-9-1	16-2-5	DNP	2-2-0	2-2-0	DNP	DNP
Norfolk St.	11/16/2021	72-42	W	2-0-0	0-2-0	1-5-4	0-0-0	22-12-1	17-3-6	0-0-0	0-5-0	2-3-0	0-0-0	0-0-0
at Quinnipiac	11/20/2021	67-59	W	DNP	0-1-0	10-8-3	DNP	8-2-2	12-6-2	DNP	4-3-0	6-1-0	DNP	DNP
vs Stanford	11/25/2021	66-69	L	DNP	0-0-0	18-8-1	0-0-0	8-5-0	19-1-1	DNP	3-2-0	0-2-0	DNP	DNP
vs Miami (FL)	11/27/2021	53-51	W	0-0-0	0-1-0	2-5-2	DNP	11-8-0	13-4-2	DNP	2-1-2	0-4-1	DNP	DNP
NC State	12/02/2021	58-66	L	DNP	0-1-0	0-4-3	DNP	6-3-1	10-5-3	DNP	6-3-0	2-6-0	DNP	DNP
Penn St.	12/06/2021	70-40	W	0-1-0	0-2-0	14-7-5	DNP	11-4-2	15-3-2	0-0-0	2-3-0	2-3-0	0-0-0	0-0-0
Fairfield	12/09/2021	91-58	W	5-1-3	4-1-0	8-4-2	DNP	21-9-3	5-2-0	0-0-0	4-7-0	2-6-0	0-1-0	0-0-0
at Ohio St.	12/12/2021	86-66	W	DNP	0-0-0	17-7-4	DNP	8-5-0	8-3-7	DNP	0-1-1	2-2-0	DNP	DNP
Western Mich.	12/19/2021	67-57	W	DNP	0-0-0	8-0-3	DNP	2-4-2	13-4-6	DNP	2-1-0	9-10-0	DNP	DNP
Southern Ill.	12/23/2021	70-37	W	0-1-0	1-0-0	11-4-4	DNP	3-5-1	6-3-5	DNP	9-5-3	4-4-1	0-0-1	0-2-0
Maryland	01/02/2022	70-63	Wot	DNP	0-0-0	9-4-5	DNP	17-10-1	18-2-3	DNP	DNP	2-0-0	DNP	DNP
at Wisconsin	01/05/2022	76-53	W	5-2-0	DNP	11-1-3	DNP	13-7-1	18-4-3	DNP	DNP	4-4-0	0-0-0	0-0-0
Nebraska	01/13/2022	72-65	W	DNP	DNP	13-6-2	DNP	17-5-1	10-3-4	DNP	8-4-1	2-5-1	DNP	DNP
at Purdue	01/16/2022	73-68	Wot	0-1-0	0-2-0	DNP	DNP	21-9-2	10-4-4	DNP	10-6-1	8-4-0	DNP	DNP
at Michigan	01/31/2022	50-65	L	0-0-0	0-0-0	16-5-2	DNP	8-5-0	10-2-0	DNP	3-1-0	0-0-0	DNP	0-0-0
Minnesota	02/03/2022	80-70	W	3-0-0	2-1-0	14-6-5	DNP	28-5-1	11-2-4	DNP	0-1-0	3-5-0	DNP	0-0-0
Purdue	02/06/2022	64-57	W	0-0-0	0-1-0	19-7-1	DNP	11-6-2	2-5-1	DNP	11-10-0	4-4-0	DNP	DNP
at Illinois	02/09/2022	93-61	W	11-1-0	3-1-2	7-4-4	DNP	18-7-1	26-1-2	DNP	9-2-0	6-6-3	0-0-1	0-1-0

Opponent	Date	Score		34	54
				BERGER,GRA	HOLMES,MAC
at Butler	11/10/2021	86-63	W	18-1-3	11-8-1
Kentucky	11/14/2021	88-67	W	19-9-4	29-7-1
Norfolk St.	11/16/2021	72-42	W	6-7-11	22-3-0
at Quinnipiac	11/20/2021	67-59	W	17-5-3	10-6-0
vs Stanford	11/25/2021	66-69	L	12-6-7	6-10-1
vs Miami (FL)	11/27/2021	53-51	W	11-7-3	14-11-0
NC State	12/02/2021	58-66	L	10-9-5	24-4-0
Penn St.	12/06/2021	70-40	W	10-6-4	16-6-0
Fairfield	12/09/2021	91-58	W	19-7-2	23-5-1
at Ohio St.	12/12/2021	86-66	W	21-7-5	30-7-0
Western Mich.	12/19/2021	67-57	W	16-6-3	17-19-0
Southern Ill.	12/23/2021	70-37	W	18-1-3	18-7-0
Maryland	01/02/2022	70-63	Wot	9-3-4	15-14-1
at Wisconsin	01/05/2022	76-53	W	9-8-11	16-8-0
Nebraska	01/13/2022	72-65	W	22-7-3	DNP
at Purdue	01/16/2022	73-68	Wot	24-6-6	DNP
at Michigan	01/31/2022	50-65	L	13-6-6	DNP
Minnesota	02/03/2022	80-70	W	19-10-8	DNP
Purdue	02/06/2022	64-57	W	17-6-5	DNP
at Illinois	02/09/2022	93-61	W	13-8-7	DNP

QUARTER AND HALF BREAKDOWNS

2021-22 QUARTER HIGHS AND LOWS

Indiana			Opponent		
	High	Low		High	Low
1st Q	28, at Illinois	9, vs. NC State	1st Q	21, vs. Minnesota	4, vs. SIU
2nd Q	26, 2x, last at Illinois	14, vs. NC State	2nd Q	20, vs. Stanford	4, vs. SIU
3rd Q	27, vs. Kentucky	6, at Michigan	3rd Q	21, vs. Kentucky	9, at Purdue
4th Q	27, vs. Minnesota	12, vs. Miami	4th Q	28, vs. NC State	6, vs. Norfolk St.
OT	13, at Purdue	9, vs. Maryland	OT	8, at Purdue	2, vs. Maryland

0-9	10-19	20-29	30-39
4	45	24	N/A

0-9	10-19	20-29	30-39
10	55	8	N/A

2021-22 HALF HIGHS AND LOWS

Indiana			Opponent		
	High	Low		High	Low
1st Half	54, at Illinois	17, at Quinnipiac	1st Half	37, vs. Stanford	8, vs. SIU
2nd Half	50, vs. Kentucky	21, vs. Miami	2nd Half	45, vs. NC State	19, vs. Penn State

ALL-TIME QUARTER SUPERLATIVES

	Indiana	Opponent
Most 1st Q Points	37, at Wisconsin (1/13/19)	32, at Ohio State (12/31/17)
Most 2nd Q Points	29, at North Texas (12/6/16)	28, 2x, last vs. Iowa (3/3/21)
Most 3rd Q Points	34, vs. Austin Peay (11/28/15)	32, at Maryland (1/30/16)
Most 4th Q Points	36, at Ohio State (2/27/21)	32, at Auburn (11/27/16)
Fewest 1st Q Points	4, 3x, last vs. UCLA (12/22/19)	3, at Oakland (11/11/18)
Fewest 2nd Q Points	2, vs. Butler (12/12/19)	4, vs. SIU (12/23/21)
Fewest 3rd Q Points	9, 3x, last vs. Miami (FL) (11/27/21)	6, vs. Chattanooga (11/17/15)
Fewest 4th Q Points	6, vs. Samford (12/11/15)	3, 2x, last vs. VCU (3/22/21)

ACTIVE PLAYERS CAREER VS. MICHIGAN STATE

#3 • GRACE WAGGONER

Opponent	Date	gs	min	Total		3-Pointers		Free throws		Rebounds				pf	a	t/o	blk	stl	pts	avg
				fg-fga	pct	3fg-fga	pct	ft-fta	pct	off	def	tot	avg							
MICHIGAN ST.	01/31/21		2	0-0	.000	0-0	.000	0-0	.000	0	0	0	0.0	0	0	0	0	0	0	0.0
vs Michigan St.	03/11/21		4	0-0	.000	0-0	.000	0-0	.000	0	0	0	0.0	1	0	0	0	0	0	0.0
Totals		0	6	0-0	.000	0-0	.000	0-0	.000	0	0	0	0.0	1	0	0	0	0	0	0.0

Games played: 2
Minutes/game: 3.0

#4 • NICOLE CARDANO-HILLARY

Opponent	Date	gs	min	Total		3-Pointers		Free throws		Rebounds				pf	a	t/o	blk	stl	pts	avg
				fg-fga	pct	3fg-fga	pct	ft-fta	pct	off	def	tot	avg							
MICHIGAN ST.	01/31/21		11	2-3	.667	1-1	1.000	2-2	1.000	0	1	1	1.0	0	1	1	0	1	7	7.0
vs Michigan St.	03/11/21	*	30	2-6	.333	1-3	.333	3-6	.500	2	2	4	2.5	4	1	1	1	2	8	7.5
Totals		1	41	4-9	.444	2-4	.500	5-8	.625	2	3	5	2.5	4	2	2	1	3	15	7.5

Games played: 2
Minutes/game: 20.5
Points/game: 7.5
FG Pct: 44.4
3FG Pct: 50.0
FT Pct: 62.5

Rebounds/game: 2.5
Assists/game: 1.0
Turnovers/game: 1.0
Assist/turnover ratio: 1.0
Steals/game: 1.5
Blocks/game: 0.5

#10 • ALEKSA GULBE

Opponent	Date	gs	min	Total		3-Pointers		Free throws		Rebounds				pf	a	t/o	blk	stl	pts	avg
				fg-fga	pct	3fg-fga	pct	ft-fta	pct	off	def	tot	avg							
MICHIGAN ST.	01/31/21	*	35	4-7	.571	2-3	.667	4-6	.667	1	3	4	4.0	3	0	2	0	0	14	14.0
vs Michigan St.	03/11/21	*	36	2-7	.286	1-2	.500	0-0	.000	1	2	3	3.5	4	1	4	1	2	5	9.5
MICHIGAN ST.	12/28/19	*	22	5-7	.714	0-0	.000	1-1	1.000	0	4	4	3.7	1	1	3	1	1	11	10.0
MICHIGAN ST.	01/06/19		23	4-8	.500	0-0	.000	1-2	.500	2	1	3	3.5	2	0	1	3	0	9	9.8
at Michigan St.	02/11/19		16	1-5	.200	0-0	.000	0-0	.000	1	3	4	3.6	1	0	1	1	0	2	8.2
Totals		3	132	16-34	.471	3-5	.600	6-9	.667	5	13	18	3.6	11	2	11	6	3	41	8.2

Games played: 5
Minutes/game: 26.4
Points/game: 8.2
FG Pct: 47.1
3FG Pct: 60.0
FT Pct: 66.7

Rebounds/game: 3.6
Assists/game: 0.4
Turnovers/game: 2.2
Assist/turnover ratio: 0.2
Steals/game: 0.6
Blocks/game: 1.2

ACTIVE PLAYERS CAREER VS. MICHIGAN STATE

#14 • ALI PATBERG

Opponent	Date	gs	min	Total		3-Pointers		Free throws		Rebounds				pf	a	t/o	blk	stl	pts	avg	
				fg-fga	pct	3fg-fga	pct	ft-fta	pct	off	def	tot	avg								
MICHIGAN ST.	01/31/21	*	35	4-8	.500	1-3	.333	6-6	1.000	0	6	6	6.0	3	5	4	0	0	15	15.0	
vs Michigan St.	03/11/21	*	38	5-15	.333	0-5	.000	2-3	.667	0	1	1	3.5	4	6	5	0	2	12	13.5	
MICHIGAN ST.	12/28/19	*	38	7-9	.778	1-1	1.000	8-11	.727	0	7	7	4.7	2	4	2	0	0	23	16.7	
MICHIGAN ST.	01/06/19	*	39	4-14	.286	1-2	.500	3-4	.750	1	3	4	4.5	2	5	2	0	0	12	15.5	
Totals			4	150	20-46	.435	3-11	.273	19-24	.792	1	17	18	4.5	11	20	13	0	2	62	15.5

Games played: 4
 Minutes/game: 37.5
 Points/game: 15.5
 FG Pct: 43.5
 3FG Pct: 27.3
 FT Pct: 79.2

Rebounds/game: 4.5
 Assists/game: 5.0
 Turnovers/game: 3.3
 Assist/turnover ratio: 1.5
 Steals/game: 0.5

#22 • CHLOE MOORE-MCNEIL

Opponent	Date	gs	min	Total		3-Pointers		Free throws		Rebounds				pf	a	t/o	blk	stl	pts	avg
				fg-fga	pct	3fg-fga	pct	ft-fta	pct	off	def	tot	avg							
vs Michigan St.	03/11/21		6	0-0	.000	0-0	.000	0-0	.000	0	2	2	2.0	1	0	0	0	1	0	0.0
Totals		0	6	0-0	.000	0-0	.000	0-0	.000	0	2	2	2.0	1	0	0	0	1	0	0.0

Games played: 1
 Minutes/game: 6.0

Rebounds/game: 2.0
 Steals/game: 1.0

#23 • KIANDRA BROWNE

Opponent	Date	gs	min	Total		3-Pointers		Free throws		Rebounds				pf	a	t/o	blk	stl	pts	avg
				fg-fga	pct	3fg-fga	pct	ft-fta	pct	off	def	tot	avg							
MICHIGAN ST.	01/31/21		10	1-1	1.000	0-0	.000	0-0	.000	0	0	0	0.0	3	0	1	0	0	2	2.0
vs Michigan St.	03/11/21		4	0-0	.000	0-0	.000	0-0	.000	0	0	0	0.0	0	0	0	0	0	0	1.0
Totals		0	14	1-1	1.000	0-0	.000	0-0	.000	0	0	0	0.0	3	0	1	0	0	2	1.0

Games played: 2
 Minutes/game: 7.0
 Points/game: 1.0
 FG Pct: 100.0

Turnovers/game: 0.5

ACTIVE PLAYERS CAREER VS. MICHIGAN STATE

#34 • GRACE BERGER

Opponent	Date	gs	min	Total		3-Pointers		Free throws		Rebounds				pf	a	t/o	blk	stl	pts	avg	
				fg-fga	pct	3fg-fga	pct	ft-fga	pct	off	def	tot	avg								
MICHIGAN ST.	01/31/21	*	35	2-10	.200	0-0	.000	5-6	.833	2	7	9	9.0	2	7	2	0	2	9	9.0	
vs Michigan St.	03/11/21	*	38	7-15	.467	0-0	.000	5-7	.714	1	6	7	8.0	5	1	3	0	0	19	14.0	
MICHIGAN ST.	12/28/19	*	37	6-10	.600	0-2	.000	4-4	1.000	0	4	4	6.7	1	2	6	0	2	16	14.7	
MICHIGAN ST.	01/06/19		22	5-7	.714	0-1	.000	0-0	.000	1	2	3	5.8	1	2	2	0	1	10	13.5	
at Michigan St.	02/11/19	*	36	3-8	.375	1-1	1.000	3-4	.750	0	4	4	5.4	0	4	5	0	0	10	12.8	
Totals			4	168	23-50	.460	1-4	.250	17-21	.810	4	23	27	5.4	9	16	18	0	5	64	12.8

Games played: 5
 Minutes/game: 33.6
 Points/game: 12.8
 FG Pct: 46.0
 3FG Pct: 25.0
 FT Pct: 81.0

Rebounds/game: 5.4
 Assists/game: 3.2
 Turnovers/game: 3.6
 Assist/turnover ratio: 0.9
 Steals/game: 1.0

#54 • MACKENZIE HOLMES

Opponent	Date	gs	min	Total		3-Pointers		Free throws		Rebounds				pf	a	t/o	blk	stl	pts	avg
				fg-fga	pct	3fg-fga	pct	ft-fga	pct	off	def	tot	avg							
MICHIGAN ST.	01/31/21	*	29	8-10	.800	0-0	.000	1-1	1.000	0	3	3	3.0	2	0	1	2	1	17	17.0
vs Michigan St.	03/11/21	*	36	8-12	.667	0-0	.000	1-2	.500	0	10	10	6.5	1	0	3	2	1	17	17.0
MICHIGAN ST.	12/28/19		21	7-8	.875	0-0	.000	4-5	.800	1	5	6	6.3	3	0	0	1	0	18	17.3
Totals			2	86	23-30	.767	0-0	.000	6-8	.750	1	18	19	6.3	6	0	4	5	52	17.3

Games played: 3
 Minutes/game: 28.7
 Points/game: 17.3
 FG Pct: 76.7

Rebounds/game: 6.3
 Turnovers/game: 1.3
 Steals/game: 0.7
 Blocks/game: 1.7

THE SERIES

LAST 10 GAMES

Location	Result	Date
N	L, 61-69	3/11/21
H	W, 79-67	1/31/21
H	W, 79-67	12/28/19
A	L, 61-77	2/11/19
H	W, 68-64	1/6/19
N	W, 111-109 ^(40T)	3/1/18
A	W, 69-65	1/20/18
H	L, 46-68	12/28/17
A	L, 60-69	2/2/17

LAST MEETING



Official Basketball Box Score - Final
Michigan St. at Indiana
03/11/21 Bankers Life Fieldhouse, Indianapolis, IN
2021 Big Ten Women's Basketball Tournament

Game Time: 6:30 PM
Game Duration: 1:54

Officials: Gina Cross, Tim Daley, Cameron Bouye

Michigan St. - 69

Record: 15-7

NO.	Name	Min	FG	3P	FT	Rebounds	Fouls	TP	AS	TO	ST	Blocks	BB	BA	+
4	Alisia Smith	18:38	3-7	0-0	0-0	0 8 8	2 0	6	0	1	0	0	1	8	
1	Tory Ozment	30:11	1-4	1-2	0-0	0 2 2	1 1	3	0	3	1	0	0	6	
3	Alyza Winston	29:09	5-9	1-2	2-2	0 1 1	5 2	13	1	3	1	0	0	13	
23	Janaia Crooks	23:28	2-4	0-2	0-0	0 1 1	2 1	4	1	2	1	0	0	6	
24	Nia Clouten	38:09	8-17	1-4	13-16	2 4 6	2 10	30	2	2	3	0	1	6	
14	Taiyler Parks	13:34	1-3	0-0	2-4	1 4 5	3 2	4	0	1	4	1	1	5	
22	Maira Joiner	26:16	0-1	0-0	4-6	1 1 2	3 3	4	1	3	1	0	0	11	
2	Mardrekia Cook	12:47	2-4	1-2	0-0	1 3 4	1 2	5	0	0	0	0	1	2	
44	Kendall Bostic	07:48	0-1	0-0	0-0	0 2 2	1 0	0	0	2	0	0	0	5	
Team			1	1	2			0							
Totals			22-50	4-12	21-28	6 27 33	20 21	69	5	18	11	1	4	8	

Technical Fouls: NONE

Shooting By Period		
1 st	FG%	5-11 45.5%
	3PT%	0-1 0.0%
	FT%	1-2 50%
2 nd	FG%	5-13 38.5%
	3PT%	1-3 33.3%
	FT%	4-6 66.7%
3 rd	FG%	7-13 53.8%
	3PT%	0-4 0.0%
	FT%	7-8 87.5%
4 th	FG%	5-13 38.5%
	3PT%	3-4 75.0%
	FT%	9-12 75%
GM	FG%	22-50 44.0%
	3PT%	4-12 33.3%
	FT%	21-28 75.0%

Dead Ball Rebounds: 5, 0

Indiana - 61

Record: 18-5

NO.	Name	Min	FG	3P	FT	Rebounds	Fouls	TP	AS	TO	ST	Blocks	BB	BA	+
10	Aleksa Gulbe	36:01	2-7	1-2	0-0	1 2 3	4 1	5	1	4	2	1	0	-12	
54	Mackenzie Holmes	35:56	8-12	0-0	1-2	0 10 10	1 2	17	0	3	1	2	0	-5	
4	Nicole Cardano-Hillary	29:43	2-6	1-3	3-6	2 2 4	4 4	8	1	1	2	1	0	1	
14	Ali Palberg	38:14	5-15	0-5	2-3	0 1 1	4 5	12	6	5	2	0	1	-8	
34	Grace Berger	37:25	7-15	0-0	5-7	1 6 7	5 7	19	1	3	0	0	0	-4	
2	Keyanna Warthen	08:47	0-1	0-1	0-0	1 0 1	1 1	0	0	0	0	0	0	-6	
23	Kiandra Browne	04:04	0-0	0-0	0-0	0 0 0	0 0	0	0	0	0	0	0	-3	
22	Chloe Moore-McNeil	05:51	0-0	0-0	0-0	0 2 2	1 0	0	0	0	1	0	0	-7	
3	Grace Waggoner	03:59	0-0	0-0	0-0	0 0 0	1 0	0	0	0	0	0	0	4	
Team			2	0	2			0		1					
Totals			24-56	2-11	11-18	7 23 30	21 20	61	9	17	8	4	1	-8	

Technical Fouls: NONE

Shooting By Period		
1 st	FG%	7-17 41.2%
	3PT%	1-3 33.3%
	FT%	1-4 25%
2 nd	FG%	8-10 80.0%
	3PT%	1-2 50.0%
	FT%	5-8 62.5%
3 rd	FG%	5-14 35.7%
	3PT%	0-2 0.0%
	FT%	1-1 100%
4 th	FG%	6-15 40.0%
	3PT%	0-4 0.0%
	FT%	4-5 80%
GM	FG%	24-56 42.9%
	3PT%	2-11 18.2%
	FT%	11-18 61.1%

Dead Ball Rebounds: 5, 1

	MSU	IU
Biggest lead	9 (4 th 6:13)	11 (2 nd 0:58)
Best Scoring Run	12 (3 rd 7:46)	6 (4 th 3:46)
Lead Changes	10	
Times Tied	5	
Time with Lead	13:05	24:04

Points from	MSU	IU
Turnovers	18	7
Paint	24	40
Second Chance	3	3
Fast Breaks	4	8
Bench	13	0

Period by Period Scoring				
	1st	2nd	3rd	4th TOT
MSU	11	15	21	22 69
IU	16	18	11	16 61



TERI MOREN

HEAD COACH

EIGHTH YEAR AT INDIANA • 19TH YEAR OVERALL AS COLLEGE HEAD COACH

Teri Moren enters her seventh season with Indiana Women's Basketball in the 2020-21 season.

The Indiana native has taken the program to new levels in her six seasons at the helm, coming off the program's fourth-straight 20-win season in 2019-20, when it set a new program mark for wins with a 24-8 overall record. In this historic season, IU was ranked in both national polls for much of the season including all 20 weeks of the Associated Press top 25 where it topped out at a program-record ranking of No. 12. They made history in the 2019 Paradise Jam where the Hoosiers upset then No. 5/6 South Carolina in the program's first top five non-conference victory in school history. In Big Ten play, Indiana finished fourth for the third time under Moren and went 13-5, setting a new school mark for wins in a conference season.

Moren, a Seymour, Indiana native, has coached 17 All-Big Ten honorees including 2019-20 first team honorees Ali Patberg and Grace Berger – the first time since 1986 that the program featured a pair of first team selections and just third time overall. In addition, junior guard Jaelynn Penn earned her third-straight All-Big Ten accolades on the honorable mention team and freshman forward Mackenzie Holmes was a Big Ten All-Freshman honoree.

Placing a priority on academics through her mantra "Graduate. Win. Serve" the Hoosiers have received 28 Academic All-Big Ten selections. In 2017-18, Amanda Cahill became the program's second back-to-back CoSIDA Academic All-American with a 3.92 GPA in Elementary education. In all, IU has had seven CoSIDA Academic All-District honors

It was another historic year for the Hoosiers in 2018-19, as Moren guided her team to its fourth-straight postseason appearance with an at-large bid in to the NCAA Tournament. IU won its first-round game over Texas and made its second appearance in four seasons in the Big Dance. They won 23 games, its fourth-straight 20-win season where three players earned All-Big Ten honors in Ali Patberg, Jaelynn Penn and Brenna Wise. The Hoosiers got off to a hot start, opening up the 2018-19 season 10-0 overall and had five Top 50 RPI wins and two AP Top 15 victories for the first time since 2001-02. In the classroom, seven players earned All-Big Ten honors, the most in a single season in program history while Patberg and Wise were honored as CoSIDA Academic All-District honorees.

The Hoosiers made history in 2017-18, claiming the WNIT Championship and guiding the program to a 23-14 overall record. IU won 15 of its final 17 games en route to hanging a banner inside Simon Skjodt Assembly Hall. Tyra Buss repeated for the third-straight time as a All-Big Ten First Team selection and second-straight WBCA All-American honorable mention while Amanda Cahill was a All-Big Ten Second Team honoree and CoSIDA Academic All-American for the second-consecutive season. The program's 23 wins marked the eighth time in program history the Hoosiers have reached 20 wins or more, including in three-straight seasons for the first time ever.

A record number of fans came out in Moren's fourth year in 2017-18, with four of the top 10 attended games in school history coming during the historic WNIT run. The Hoosiers averaged over 4,000 fans per game and set a new program attendance record during the WNIT Championship game where 13,007 fans saw IU defeat Virginia Tech, 65-57.

In 2016-17, Moren guided IU to 23 wins and an appearance in the WNIT Quarterfinals. The program also featured its first All-American in 31 years, as Tyra Buss was named a WBCA All-American Honorable Mention. For the first time since 2008-09, Indiana featured three players on All-Big Ten teams highlighted by a repeat All-Big Ten First Team selection Tyra Buss. Junior forward Amanda Cahill (second team) and senior guard Alexis Gassion (honorable mention) were also honored, as Gassion was selected to the league's All-Defensive team, also the first selection since 2008-09. In addition, Cahill earned CoSIDA Academic All-American honors, the first for the program since 1989 and the fifth player ever in school history.

In her second season 2015-16, Moren was named the Big Ten Coach of the Year after leading Indiana to a 21-12 overall record and the program's to its first NCAA Tournament berth in 14 years. Moren led the Hoosiers to the most regular season wins (20) in program history while also tying for overall wins (21) in a single season. Indiana had the school's second-most Big Ten victories (12) ever on her way to being named Big Ten Coach of the Year. She became just the second IU coach to earn the award (Maryalyce Jeremiah, 1983) while leading the The Hoosiers won their first NCAA Tournament game since 1983 with a 62-58 triumph over eighth-seeded Georgia in the first round at Notre Dame as the No. 9 seed in the Lexington Region.

IU's 12 Big Ten victories were the school's most since 1982-83. Moren's 2015-16 Hoosiers finished fourth in the Big Ten, the school's highest conference finish in 18 years, and earned a No. 4 seed in the Big Ten Tournament, tying for the program's highest seed ever in conference tournament play. That season, Buss was named First Team All-Big Ten, becoming the first IU player to earn first team honors since 2006. Cahill earned Second Team All-Big Ten accolades. Buss and Cahill become the first IU duo to earn all-conference recognition in the same season since 2010.

During her first year in Bloomington in 2014-15, Moren led the Hoosiers to the program's best scoring average (71.9 ppg) since 1995-96, the best team free throw percentage (74.3 percent) since 2003-04 and the most steals (284) since 2010-11. IU nailed 236 3-point field goals, the second best total in school history, and also cracked the top five in program history in free throw percentage (4th), points scored (5th, 2,229), points per game (5th) and 3-point field goal percentage (5th, 33.1 percent)

Indiana University Vice President and Director of Athletics Fred Glass announced the hiring of Seymour, Ind., native as head coach of the IU women's basketball program on August 9, 2014. Prior to Indiana, Moren won a Missouri Valley Conference championship during her four seasons with Indiana State. She led the Sycamores to two WNIT appearances and had six players named All-MVC. ISU finished with a 20-12 record in 2013-14, the program's first 20-win season in eight years and just the fifth 20-win campaign in school history. With a 14-4 record in conference games, Moren's Sycamores won a share of the regular season MVC title and earned the No. 1 overall seed in the MVC Tournament.

Prior to ISU, Moren was associate head coach at Georgia Tech. In each of her three years there, the Yellow Jackets made an NCAA Tournament appearance and won 22 or more games each season.

Moren began her head coaching career at the University of Indianapolis (2000-07). The 2003 WBCA Region 4 Coach of the Year in NCAA Division II, her teams went to three consecutive NCAA Division II Tournaments and earned Great Lakes Valley Conference regular season and tournament titles in 2003.

Moren began her coaching career in 1992-93 at Butler (1992-1998), leading the Bulldogs to three 20-win seasons. Moren then spent two years as an assistant at Northwestern (1998-2000).

A 1992 graduate of Purdue University, Moren earned her bachelor's degree in therapeutic recreation. She was a four-year basketball letterwinner and two-year starter for the Boilermakers under Women's Basketball Hall of Fame Coach Lin Dunn. She was part of three NCAA Tournament teams and Purdue's first Big Ten championship.

Moren graduated from Seymour High School in 1987 and was named an Indiana All Star. She led the Owls to four sectional titles, two regional championships, a semi-state win and a 1987 state finals appearance. She was inducted into the Indiana Basketball Hall of Fame on April 26, 2014 and will be part of the inaugural class of the Seymour Athletics Hall of Fame in December 2017.

PERSONAL

DATE OF BIRTH: April 14, 1969
HOMETOWN: Seymour, Ind.
HIGH SCHOOL: Seymour High School
COLLEGE: Purdue (1992)

COACHING EXPERIENCE

BUTLER UNIVERSITY
1992-98: Assistant Coach

NORTHWESTERN UNIVERSITY
1998-00: Assistant Coach

UNIVERSITY OF INDIANAPOLIS
2000-07: Head Coach

GEORGIA TECH
2007-10: Associate Head Coach

INDIANA STATE UNIVERSITY
2010-14: Head Coach

INDIANA UNIVERSITY
2014-Present: Head Coach

YEAR-BY-YEAR HEAD COACHING RECORD

YEAR	SCHOOL	OVERALL	CONF.
2000-01	Indianapolis	14-13	10-10
2001-02	Indianapolis	15-11	11-9
2002-03*^	Indianapolis	29-3	18-2
NCAA Tournament • GLVC Regular Season Champions • GLVC Tournament Champions			
2003-04	Indianapolis	23-9	14-6
NCAA Tournament • GLVC Tournament Runner-up			
2004-05	Indianapolis	22-10	12-8
NCAA Tournament • GLVC Tournament Runner-up			
2005-06	Indianapolis	11-16	6-13
2006-07	Indianapolis	16-11	9-10
2010-11	Indiana State	16-16	8-10
2011-12	Indiana State	15-16	9-9
2012-13	Indiana State	18-13	10-8
WNIT			
2013-14	Indiana State	20-12	14-4
WNIT • MVC Regular Season Champions			
2014-15	Indiana	15-16	4-14
2015-16*	Indiana	21-12	12-6
NCAA Tournament			
2016-17	Indiana	23-11	10-6
WNIT			
2017-18	Indiana	23-14	9-7
WNIT Champions			
2018-19	Indiana	21-13	8-10
NCAA Tournament			
2019-20	Indiana	24-8	13-5
2020-21	Indiana	21-6	16-2
2021-22	Indiana	17-3	9-1
TOTALS		364-213	202-140

* = Conference COY ^ = WBCA Regional CO

TERI MOREN ERA TEAM RECORDS

ALL GAMES

	<u>High</u>	<u>Low</u>
Points	115, vs. Gardner-Webb, 11-15-14	46, vs. Michigan State 12/28/17
Points (1Q)	37, at Wisconsin, 1-13-19	4, vs. Auburn, 12-3-17
Points (2Q)	28, vs. Minnesota, 2-18-16	5, vs. Maryland, 1-27-19
Points (3Q)	34, at Austin Peay, 11-28-15	6, 2x, last vs. Purdue (BIG Tourn), 3-3-17
Points (4Q)	33, at Northwestern, 1-24-16	5, at Indiana State, 12-8-15
Points (1H)	67, vs. Gardner Webb, 11-15-14	17, 2x, last vs. Michigan St., 12-28-17
Points (2H)	56, at Austin Peay, 11-28-15	20, at Indiana State, 12-8-16
Margin	+64, vs. Nicholls St, 11-10-19	+2, 5x, last at Illinois, 12-28-18
FG	46, vs. Gardner Webb, 11-15-14	15, vs. Rutgers, 12-28-14
FGA	88, vs. Michigan St., 3-1-18	41, at Butler, 12-11-19
FG%	.640 at North Texas, 12-6-16	.281, vs. Ohio State, 1-8-15
3FG	16, vs. Gardner-Webb, 11-15-14	1, 4x, last vs. Maryland, 1-20-20
3FGA	36, vs. Ohio State, 1-8-15	6, vs. Missouri St. 12-9-18
3FG%	.700, vs. Yale, 12-28-15	.000 vs. Arizona, 3-29-21
FT	32, vs. Michigan, 1-3-16	0, at Minnesota, 1-18-15
FTA	42, 2x, last vs. Minnesota, 2-18-16	2, at Minnesota, 1-18-15
FT%	1.000, 4x, last vs. Texas, 3-22-19	.000, at Minnesota, 1-18-15
REB	61, vs. Nebraska 12-20-20	18, 2x, last at Michigan, 1-10-18
REB Margin	+30, at North Texas, 12-6-16	-23, at Michigan, 2-18-15
Assists	33, vs. Nicholls State, 11-10-19	4, 2x, last vs. Tennessee, 12-17-20
Turnovers	28, at North Texas, 12-6-16	2, at Penn State, 1-7-21
Blocks	9, 2x, last vs. Purdue, 3-22-18	0, 10x, last at Rutgers, 2-18-19
Steals	18, 3x, last vs. UMass Lowell, 11-23-16	0, vs. Baylor, 11-29-19
Fouls	28, vs. Minnesota, 2-18-16	8, 3x, last vs. ECU, 11-25-20

BIG TEN GAMES

	<u>High</u>	<u>Low</u>
Points	93, 2x, last at Illinois, 2-9-22	46, vs. Michigan State, 12-28-17
Points (1Q)	37, at Wisconsin, 1-13-19	8, at Nebraska, 2-19-17
Points (2Q)	28, vs. Minnesota, 2-18-16	5, vs. Maryland, 1-27-19
Points (3Q)	25, 2x, last at Iowa, 2-21-16	6, vs. Purdue (BIG Tourn), 3-3-17
Points (4Q)	33, at Northwestern, 1-24-16	9, at Illinois, 12-28-19
Points (1H)	44, 3x, last vs. PSU, 2-27-16	17, 2x, last vs. Michigan St., 12-28-17
Points (2H)	56, vs. Iowa, 2-4-16	24, at Rutgers, 3-1-15
Margin	+28, vs. Northwestern, 2/11/17	+2, 2x, last at Illinois (85-83), 12-28-18
FG	35, at Penn State, 12-28-16	15, vs. Rutgers, 12-28-14
FGA	78, at Illinois, 12-28-18	42, vs. Rutgers, 1-27-18
FG%	.617, vs. Michigan State, 12-28-19	.281, vs. Ohio State, 1-8-15
3FG	13, 2x, last at Iowa, 2-24-18	1, 4x, last at Maryland, 1-20-20
3FGA	36, vs. Ohio State 1-8-15	7, 2x, last vs. Michigan State, 12-28-19
3FG%	.611, at Michigan State, 1-20-18	.077, at Ohio State, 1-10-19
FT	32, vs. Michigan, 1-3-16	0, at Minnesota, 1-18-15
FTA	42, 2x, last vs. Minnesota, 2-18-16	2, at Minnesota, 1-18-15
FT%	1.000, 2x, last at Iowa, 2-14-16	.000, at Minnesota, 1-18-15
REB	61, vs. Nebraska 12-20-20	18, 2x, last at Michigan, 1-10-18
REB Margin	+15, at Purdue, 1-4-15	-23, at Michigan, 2-18-15
Assists	24, at Northwestern, 1-24-16	4, at Ohio State, 1-10-19
Turnovers	23, 2x, last at Minnesota, 2-20-18	2, at Penn State, 1-7-21
Blocks	9, vs. Michigan 1-3-16	0, 10x, last vs. Rutgers, 2-18-19
Steals	17, vs. Milwaukee, 3-18-18	1, 3x, last at Ohio State, 1-7-16
Fouls	28, vs. Minnesota, 2-18-16	9, last at Wisconsin, 1-29-17

VS. DI OPPONENTS

Arkansas St.	1-0	Jackson State	1-0	Purdue	12-4	West Virginia	0-1
Auburn	0-2	Kansas State	0-1	Quinnipiac	1-0	Wichita State	3-4
Austin Peay	1-0	Kentucky	1-1	Rutgers	5-5	Wisconsin	8-1
Ball State	1-0	Louisville	0-1	Saint Louis	2-0	Wright State	0-0
Baylor	0-1	Loyola (Chicago)	2-1	Saint Mary's	0-1	Yale	2-0
Belmont	2-1	Loyola Marymount	1-0	Samford	2-0	Youngstown St.	1-1
Boston College	1-0	LSU	0-1	Southern	1-0	Bold denotes 21-22 opponents	
Bradley	7-1	Marquette	0-1	SIU Edwardsville	1-0		
Butler	5-2	Marshall	2-0	Southern Illinois	9-0		
Chattanooga	2-2	Maryland	1-11	South Alabama	1-0		
Chicago State	2-0	Miami (Fla.)	2-1	South Carolina	1-0		
Creighton	1-3	Michigan	5-7	South Dakota	1-0		
DePaul	0-1	Michigan State	6-4	Stanford	0-1		
Detroit	1-0	Milwaukee	3-0	Stetson	0-1		
Drake	3-3	Minnesota	8-3	Stony Brook	1-0		
East Tenn. St	1-1	Missouri	0-1	TCU	1-0		
Eastern Ky.	1-0	Missouri State	5-3	Tennessee	0-1		
Eastern Illinois	3-1	Morehead State	1-0	Tennessee State	1-0		
Evansville	5-2	Mount St. Mary's	1-0	Texas	1-0		
Fairfield	1-0	Nebraska	8-2	Tulane	0-1		
FIU	0-1	Nicholls State	1-0	UAB	1-0		
Florida	3-0	Norfolk State	1-0	UCLA	1-1		
Furman	1-0	N. Kentucky	2-0	UC Davis	1-0		
Gardner-Webb	1-0	NC State	1-2	UMass Lowell	1-0		
Georgia	1-0	North Florida	2-0	USC Upstate	1-0		
Georgia Tech	1-0	North Texas	2-0	UT Martin	4-1		
Grambling State	0-1	Northern Illinois	2-1	Vanderbilt	1-0		
Illinois	10-0	Northern Iowa	4-5	Valparaiso	2-0		
Illinois (Chicago)	2-0	Northwestern	5-5	VCU	1-0		
Illinois State	4-2	Notre Dame	0-2	Villanova	0-1		
Incarinate Word	1-0	Oakland	3-0	Virginia	0-1		
Indiana	0-2	Ohio	0-1	Virginia Tech	1-0		
Indiana State	1-1	Ohio State	1-8	Wake Forest	1-0		
Iowa	5-5	Oregon	0-1	Washington State	0-0		
IPFW	2-0	Penn State	9-2	W. Kentucky	1-0		
IUPUI	2-2	Presbyterian	1-0	W. Michigan	2-0		

VS. CONFERENCE OPPONENTS

ASUN	3-0
AAC	1-1
ACC	5-8
A10	3-0
American East	2-0
Big Ten	84-55
Big 12	2-3
Big East	5-5
Big South	1-0
Big West	1-0
Conference USA	5-2
Horizon	12-1
Ivy League	2-0
MAAC	2-1
MAC	5-2
MEAC	1-0
MVC	43-31
NEC	1-0
OVC	14-3
Pac 12	1-3
SEC	7-6
SoCon	7-3
Southland	2-0
Summit League	5-2
Sun Belt	2-0
SWAC	2-1
WAC	2-0
WCC	1-1



#1 • KAITLIN PETERSON

Fr. • G • 5-9
Eufaula, Ala. • Eufaula

NOTES ON PETERSON

- Set a new season-high 11 points on three 3-pointers in the win at Illinois
- Scored 2,967 points, 591 rebounds, 588 steals and 492 assists at Eufaula High School
- Averaged 25.0 points, 5.7 steals, 4.9 assists and 3.9 rebounds per game
- 2021 Alabama All-Star
- Four-time Alabama Sports Writers Association all-state selection
- Rated No. 41 overall recruit by All Star Girls Report and No. 54 by Prospects Nation
- Major: human development family studies
- Birthday: June 12

2021-22 GAME-BY-GAME

GAME AND CAREER HIGHS

2021-22 Game Highs

Points 11, at Illinois (2/9/22)
Rebounds 2, at Wisconsin (1/5/22)
Assists 3, vs. Fairfield (12/9/21)
Steals 1, 2x, last at Michigan (1/31/22)
Blocks 1, at Illinois (2/9/22)
FG Made 4, at Illinois (2/9/22)
3FG Made 3, at Illinois (2/9/22)
FT Made 2, vs. Norfolk St. (11/16/21)
Minutes 18, at Illinois (2/9/22)

Career Highs

Points 11, at Illinois (2/9/22)
Rebounds 2, at Wisconsin (1/5/22)
Assists 3, vs. Fairfield (12/9/21)
Steals 1, 2x, last at Michigan (1/31/22)
Blocks 1, at Illinois (2/9/22)
FG Made 4, at Illinois (2/9/22)
3FG Made 3, at Illinois (2/9/22)
FT Made 2, vs. Norfolk St. (11/16/21)
Minutes 18, at Illinois (2/9/22)

Opponent	Date	GS	MIN	Total		3-Pointers		Free throws		Rebounds				PF	A	TO	BLK	STL	PTS	AVG
				FG-FGA	PCT	3FG-3FGA	PCT	FT-FTA	PCT	OFF	DEF	TOT	AVG							
at Butler	11/10/2021		02:16	1-2	.500	0-1	.000	0-0	.000	0	1	1	1.0	0	0	0	0	0	2	2.0
Kentucky	11/14/2021		01:02	0-1	.000	0-0	.000	0-0	.000	0	0	0	0.5	0	0	0	0	0	0	1.0
Norfolk St.	11/16/2021		05:34	0-2	.000	0-1	.000	2-2	1.000	0	0	0	0.3	0	0	1	0	0	2	1.3
vs Miami (FL)	11/27/2021		00:39	0-0	.000	0-0	.000	0-0	.000	0	0	0	0.3	0	0	0	0	0	0	1.0
Penn St.	12/06/2021		10:25	0-4	.000	0-3	.000	0-2	.000	0	1	1	0.4	3	0	1	0	1	0	0.8
Fairfield	12/09/2021		14:10	2-5	.400	0-1	.000	1-3	.333	0	1	1	0.5	4	3	0	0	0	5	1.5
Southern Ill.	12/23/2021		05:05	0-1	.000	0-0	.000	0-2	.000	0	1	1	0.6	1	0	0	0	0	0	1.3
at Wisconsin	01/05/2022		13:31	2-5	.400	1-3	.333	0-0	.000	1	1	2	0.8	1	0	2	0	0	5	1.8
at Purdue	01/16/2022		08:11	0-0	.000	0-0	.000	0-0	.000	0	1	1	0.8	0	0	0	0	0	0	1.6
at Michigan	01/31/2022		07:14	0-1	.000	0-1	.000	0-0	.000	0	0	0	0.7	0	0	1	0	1	0	1.4
Minnesota	02/03/2022		13:16	1-2	.500	0-1	.000	1-2	.500	0	0	0	0.6	1	0	1	0	0	3	1.5
Purdue	02/06/2022		01:38	0-0	.000	0-0	.000	0-0	.000	0	0	0	0.6	1	0	0	0	0	0	1.4
at Illinois	02/09/2022		18:06	4-7	.571	3-4	.750	0-1	.000	1	0	1	0.6	2	0	0	1	0	11	2.2
Totals		0	101:07	10-30	.333	4-15	.267	4-12	.333	2	6	8	0.6	13	3	6	1	2	28	2.2

Player Averages

Games Played	Minutes/game	Points/game	FG Pct	3FG Pct	FT Pct	Rebounds/game	Assists/game	Turnovers/game	Assist/Turnover ratio	Steals/game	Blocks/game
13	7.8	2.2	33.3	26.7	33.3	0.6	0.2	0.5	0.5	0.2	0.1

CAREER STATISTICS

				Field Goals		3-Point		F-Throws		Rebounds				Scoring						
SEASON	TEAM	GP-GS	MIN/AVG	FG-FGA	FG%	3FG-3FGA	3FG%	FT-FTA	FT%	OFF	DEF	TOT	AVG	PF-FO	A	TO	BLK	STL	PTS	AVG
2021-22	IND	12-0	83/6.9	6-23	.261	1-11	.091	4-11	.364	1	6	7	0.6	11-0	3	6	0	2	17	1.4
TOTAL		12-0	83/6.9	6-23	.261	1-11	.091	4-11	.364	1	6	7	0.6	11-0	3	6	0	2	17	1.4



#3 • GRACE WAGGONER

Jr. • G • 6-0

Vincennes, Ind • Vincennes Rivet

NOTES ON WAGGONER

- 2020-21 Academic All-Big Ten selection
- Set a new career-high three blocks against Minnesota
- Appeared in 26 games off the bench as a sophomore and plays a key defensive role for the Hoosiers
- Scored buckets in four games and set a new career-high 6 points against Illinois
- Awarded a basketball scholarship in Oct. 2021 - also receives a Lilly Endowment Community Scholarship
- This will be her final season at IU as she graduates in May to pursue her MBA at the Kelley School of Business
- Major: Finance
- Birthday: Sept. 2

2021-22 GAME-BY-GAME

GAME AND CAREER HIGHS

2021-22 Game Highs

Points 4, vs. Fairfield (12/9/21)
 Rebounds 2, 3x, last at Purdue (1/16/22)
 Assists 2, at Illinois (2/9/22)
 Steals 1, 3x, last vs. Purdue (2/9/22)
 Blocks 3, vs. Minnesota (2/3/22)
 FG Made 1, 3x, last at Illinois (2/9/22)
 3FG Made N/A
 FT Made 2, vs. Fairfield (12/9/21)
 Minutes 13, at Purdue (1/16/22)

Career Highs

Points 6, vs. Illinois (12/31/20)
 Rebounds 9, vs. Eastern Ky. (11/25/20)
 Assists 3, vs. YSU (12/15/19)
 Steals 2, 2x, last vs. Nebraska (2/27/20)
 Blocks 3, vs. Minnesota (2/3/22)
 FG Made 2, 2x, last vs. Illinois (12/31/20)
 3FG Made 1, vs. Illinois (1/6/20)
 FT Made 2, 2x, last vs. Fairfield (12/9/21)
 Minutes 13, at Purdue (1/16/22)

Opponent	Date	GS	MIN	Total		3-Pointers		Free throws		Rebounds				PF	A	TO	BLK	STL	PTS	
				FG-FGA	PCT	3FG-3FGA	PCT	FT-FTA	PCT	OFF	DEF	TOT	AVG							
at Butler	11/10/2021		02:16	0-0	.000	0-0	.000	0-0	.000	0	0	0	0.0	0	0	1	1	0	0	0.0
Kentucky	11/14/2021		03:50	0-0	.000	0-0	.000	0-0	.000	0	1	1	0.5	1	0	0	0	0	0	0.0
Norfolk St.	11/16/2021		02:31	0-0	.000	0-0	.000	0-0	.000	0	2	2	1.0	0	0	0	0	0	0	0.0
at Quinnipiac	11/20/2021		00:44	0-0	.000	0-0	.000	0-0	.000	0	1	1	1.0	0	0	0	0	0	0	0.0
vs Stanford	11/25/2021		01:14	0-0	.000	0-0	.000	0-0	.000	0	0	0	0.8	0	0	0	0	0	0	0.0
vs Miami (FL)	11/27/2021		03:42	0-0	.000	0-0	.000	0-0	.000	0	1	1	0.8	0	0	0	0	0	0	0.0
NC State	12/02/2021		03:17	0-0	.000	0-0	.000	0-0	.000	0	1	1	0.9	2	0	1	0	0	0	0.0
Penn St.	12/06/2021		06:33	0-0	.000	0-0	.000	0-0	.000	0	2	2	1.0	1	0	0	1	0	0	0.0
Fairfield	12/09/2021		10:08	1-2	.500	0-0	.000	2-3	.667	1	0	1	1.0	1	0	0	0	0	4	0.4
at Ohio St.	12/12/2021		06:47	0-0	.000	0-0	.000	0-0	.000	0	0	0	0.9	2	0	1	0	0	0	0.4
Western Mich.	12/19/2021		01:45	0-0	.000	0-0	.000	0-0	.000	0	0	0	0.8	1	0	0	0	1	0	0.4
Southern Ill.	12/23/2021		10:42	0-2	.000	0-0	.000	1-4	.250	0	0	0	0.8	0	0	0	0	0	1	0.4
Maryland	01/02/2022		01:32	0-0	.000	0-0	.000	0-0	.000	0	0	0	0.7	0	0	0	0	0	0	0.4
at Purdue	01/16/2022		13:14	0-2	.000	0-1	.000	0-1	.000	0	2	2	0.8	2	0	0	0	1	0	0.4
at Michigan	01/31/2022		01:50	0-0	.000	0-0	.000	0-0	.000	0	0	0	0.7	1	0	2	0	0	0	0.3
Minnesota	02/03/2022		09:32	1-1	1.000	0-0	.000	0-0	.000	0	1	1	0.8	1	0	0	3	0	2	0.4
Purdue	02/06/2022		06:51	0-0	.000	0-0	.000	0-0	.000	0	1	1	0.8	0	0	0	0	1	0	0.4
at Illinois	02/09/2022		12:50	1-1	1.000	0-0	.000	1-2	.500	0	1	1	0.8	1	2	0	0	0	3	0.6
Totals		0	99:19	3-8	.375	0-1	.000	4-10	.400	1	13	14	0.8	13	2	5	5	3	10	0.6

Player Averages

Games Played	Minutes/ game	Points/ game	FG Pct	3FG Pct	FT Pct	Rebounds/ game	Assists/ game	Turnovers/ game	Assist/Turnover ratio	Steals/ game	Blocks/ game
18	5.5	0.6	37.5	0.0	40.0	0.8	0.1	0.3	0.4	0.2	0.3

CAREER STATISTICS

				Field Goals		3-Point		F-Throws		Rebounds									Scoring	
SEASON	TEAM	GP-GS	MIN/AVG	FG-FGA	FG%	3FG-3FGA	3FG%	FT-FTA	FT%	OFF	DEF	TOT	AVG	PF-FO	A	TO	BLK	STL	PTS	AVG
2019-20	IND	15-0	82/5.5	3-9	.333	1-5	.200	2-5	.400	3	6	9	0.6	11-0	6	6	2	4	9	0.6
2020-21	IND	26-0	118/4.5	5-13	.385	0-2	.000	4-6	.667	7	20	27	1.0	14-0	8	2	4	2	14	0.5
2021-22	IND	18-0	99/5.5	3-8	.375	0-1	.000	4-10	.400	1	13	14	0.8	13-0	2	5	5	3	10	0.6
TOTAL		59-0	299/5.1	11-30	.367	1-8	.125	10-21	.476	11	39	50	0.8	38-0	16	13	11	9	33	0.6



#4 • NICOLE CARDAÑO-HILLARY

Gr. • G • 5-6

Madrid, Spain • Vista Ridge/George Mason

NOTES ON CARDAÑO-HILLARY

- Leading IU at the 3-point line, shooting 41.9 percent with a team-high 31 made triples
- Set a new career-high 8 steals at Michigan and leads the team with 35 steals (2.2 per game)
- Those 8 steals tied for fourth most in a single game in IU history
- Added 13 points, 6 rebounds, 3 steals and 2 assists in the win over Nebraska
- Scored an IU high 29 points on 11-for-12 shooting and 7-for-8 from the 3-point line at Butler in the season opener
- A transfer from George Mason where she was the Atlantic 10 Player of the Year (2018-19), Atlantic 10 Rookie of the Year (2017-18) and a two-time Atlantic 10 All-Conference selection and Mason's all-time leading scorer with 1,766 career points
- Major: sports media
- Birthday: Feb. 27

2021-22 GAME-BY-GAME

GAME AND CAREER HIGHS

2021-22 Game Highs

Points 29, at Butler (11/10/21)
Rebounds 8, 2x, last vs. Stanford (11/25/21)
Assists 7, vs. Kentucky (11/14/21)
Steals 8, at Michigan (1/31/22)
Blocks 1, vs. SIU (12/23/21)
FG Made 11, at Butler (11/10/21)
3FG Made 7, at Butler (11/10/21)
FT Made 5, vs. Stanford (11/25/21)
Minutes 43, vs. Maryland (1/2/22)

Career Highs

Points 41, at Penn State (11/24/19)*
Rebounds 11, at Ohio State (2/27/21)
Assists 8, at Navy (12/19/19)*
Steals 8, at Michigan (1/31/22)
Blocks .1, 8x, last vs. Michigan St. (3/11/21)
FG Made 14, vs. George Washington (2/6/19)*
3FG Made 7, at Butler (11/10/21)
FT Made 15, vs. Rhode Island (1/27/19)*
Minutes 43, vs. Maryland (1/2/22)

* - at George Mason

Opponent	Date	GS	MIN	Total		3-Pointers		Free throws		Rebounds				PF	A	TO	BLK	STL	PTS	AVG	
				FG-FGA	PCT	3FG-3FGA	PCT	FT-FTA	PCT	OFF	DEF	TOT	AVG								
at Butler	11/10/2021	*	32:43	11-12	.917	7-8	.875	0-0	.000	1	5	6	6.0	3	5	1	0	0	29	29.0	
Kentucky	11/14/2021	*	34:10	4-6	.667	3-5	.600	1-2	.500	0	6	6	6.0	1	7	4	0	2	12	20.5	
Norfolk St.	11/16/2021	*	29:43	0-5	.000	0-2	.000	1-2	.500	3	2	5	5.7	0	4	1	0	0	1	14.0	
at Quinnipiac	11/20/2021	*	37:23	4-9	.444	0-1	.000	2-3	.667	1	7	8	6.3	2	3	2	0	1	10	13.0	
vs Stanford	11/25/2021	*	37:37	5-10	.500	3-5	.600	5-8	.625	1	7	8	6.6	3	1	2	0	3	18	14.0	
vs Miami (FL)	11/27/2021	*	33:57	1-6	.167	0-2	.000	0-2	.000	0	5	5	6.3	3	2	6	0	0	2	12.0	
NC State	12/02/2021	*	33:54	0-10	.000	0-6	.000	0-0	.000	1	3	4	6.0	1	3	4	0	2	0	10.3	
Penn St.	12/06/2021	*	27:39	5-12	.417	3-6	.500	1-2	.500	2	5	7	6.1	0	5	4	0	5	14	10.8	
Fairfield	12/09/2021	*	24:32	3-5	.600	0-0	.000	2-2	1.000	0	4	4	5.9	4	2	1	0	2	8	10.4	
at Ohio St.	12/12/2021	*	37:12	6-11	.545	2-5	.400	3-4	.750	1	6	7	6.0	1	4	4	0	2	17	11.1	
Western Mich.	12/19/2021	*	28:26	3-9	.333	2-5	.400	0-2	.000	0	0	0	5.5	3	3	4	0	3	8	10.8	
Southern Ill.	12/23/2021	*	30:33	5-10	.500	1-2	.500	0-0	.000	0	4	4	5.3	0	4	2	1	0	11	10.8	
Maryland	01/02/2022	*	43:28	3-8	.375	0-2	.000	3-4	.750	0	4	4	5.2	4	5	8	0	3	9	10.7	
at Wisconsin	01/05/2022	*	35:02	4-12	.333	2-7	.286	1-1	1.000	0	1	1	4.9	2	3	2	0	1	11	10.7	
Nebraska	01/13/2022	*	36:29	5-13	.385	1-3	.333	2-4	.500	1	5	6	5.0	3	2	4	0	3	13	10.9	
at Michigan	01/31/2022	*	37:51	6-15	.400	3-7	.429	1-2	.500	2	3	5	5.0	2	2	2	0	8	16	11.2	
Minnesota	02/03/2022	*	39:09	4-9	.444	2-4	.500	4-4	1.000	2	4	6	5.1	3	5	2	0	3	14	11.4	
Purdue	02/06/2022	*	39:49	8-16	.500	1-1	1.000	2-5	.400	3	4	7	5.2	2	1	7	0	2	19	11.8	
at Illinois	02/09/2022	*	18:09	2-6	.333	1-3	.333	2-2	1.000	2	2	4	5.1	1	4	1	0	2	7	11.5	
Totals			19	637:46	79-184	.429	31-74	.419	30-49	.612	20	77	97	5.1	38	65	61	1	42	219	11.5

Player Averages

Games Played	Minutes/ game	Points/ game	FG Pct	3FG Pct	FT Pct	Rebounds/ game	Assists/ game	Turnovers/ game	Assist/Turnover ratio	Steals/ game	Blocks/ game
19	33.6	11.5	42.9	41.9	61.2	5.1	3.4	3.2	1.1	2.2	0.1

CAREER STATISTICS

SEASON	TEAM	GP-GS	MIN/AVG	Field Goals		3-Point		F-Throws		Rebounds				Scoring						
				FG-FGA	FG%	3FG-3FGA	3FG%	FT-FTA	FT%	OFF	DEF	TOT	AVG	PF-FO	A	TO	BLK	STL	PTS	AVG
2017-18	GMU	34-34	1111/32.7	200-576	.347	68-223	.305	137-183	.749	26	87	113	3.3	93-2	102	129	4	84	605	17.8
2018-19	GMU	30-30	1073/35.8	210-569	.369	43-155	.277	150-200	.750	27	105	132	4.4	66-1	95	133	1	65	613	20.4
2019-20	GMU	30-30	1029/34.3	190-534	.356	48-173	.277	120-155	.774	39	115	154	5.1	84-1	95	117	2	67	548	18.3
2020-21	IND	24-17	657/27.4	73-204	.358	27-99	.273	32-59	.542	15	73	88	3.7	45-1	47	35	1	31	205	8.5
2021-22	IND	19-19	638/33.6	79-184	.429	31-74	.419	30-49	.612	20	77	97	5.1	38-0	65	61	1	42	219	11.5
TOTAL FOR IND		43-36	1295/30.1	152-388	.392	58-173	.335	62-108	.574	35	150	185	4.3	83-1	112	96	2	73	424	9.9
TOTAL		137-130	4509/32.9	752-2067	.364	217-724	.300	469-646	.726	127	457	584	4.3	326-5	404	475	9	289	2190	16.0



#10 • ALEKSA GULBE

Sr. • F • 6-3
Riga, Latvia • TTT Riga

NOTES ON GULBE

- Team's second leading rebounder with 6.3 rebounds per game
- Set a career-high 28 points in the win over Minnesota by going 11-for-15 from the floor and 4-for-4 from the 3-point line
- Has 2 double-doubles this season including a 17 point, 10 rebound effort against 6/8 Maryland
- Added 21 points and nine boards in the win over Fairfield
- All-Big Ten Honorable Mention (media)
- Ranks 10th in school history in career blocks with 94
- Third IU player from Latvia - Kristiana Stauere (2011-12) and Linda Rubene (2011-13)
- Major: Public Financial Management
- Birthdate: February 5

2021-22 GAME-BY-GAME

GAME AND CAREER HIGHS

2021-22 Game Highs

Points.....28, vs. Minnesota (2/3/22)
Rebounds12, vs. Norfolk St. (11/16/21)
Assists 3, 2x, last vs. Fairfield (12/9/21)
Steals 4, vs. Nebraska (1/13/22)
Blocks2, 6x, last vs. Purdue (2/6/22)
FG Made11, vs. Minnesota (2/3/22)
3FG Made 4, vs. Minnesota (2/3/22)
FT Made.....7, at Illinois (2/9/22)
Minutes 44, at Purdue (1/16/22)

Career Highs

Points.....28, vs. Minnesota (2/3/22)
Rebounds12, 2x, last vs. Norfolk St. (11/16/21)
Assists3, 3x, last at Butler (11/10/21)
Steals4, 2x, last vs. Nebraska (1/13/22)
Blocks 4, at UCLA (12/2/18)
FG Made11, vs. Minnesota (2/3/22)
3FG Made 4, vs. Minnesota (2/3/22)
FT Made9, 3x, last at Minnesota (12/23/20)
Minutes 44, at Purdue (1/16/22)

Opponent	Date	GS	MIN	Total		3-Pointers		Free throws		Rebounds				PF	A	TO	BLK	STL	PTS	AVG	
				FG-FGA	PCT	3FG-3FGA	PCT	FT-FTA	PCT	OFF	DEF	TOT	AVG								
at Butler	11/10/2021	*	33:48	2-7	.286	0-3	.000	4-4	1.000	2	4	6	6.0	1	3	2	0	8	8.0		
Kentucky	11/14/2021	*	36:10	4-7	.571	0-0	.000	0-0	.000	2	7	9	7.5	3	1	2	2	1	8	8.0	
Norfolk St.	11/16/2021	*	30:21	9-13	.692	3-4	.750	1-1	1.000	3	9	12	9.0	2	1	6	2	0	22	12.7	
at Quinnipiac	11/20/2021	*	39:16	1-7	.143	0-3	.000	6-6	1.000	1	1	2	7.3	2	2	3	0	1	8	11.5	
vs Stanford	11/25/2021	*	34:10	3-13	.231	1-4	.250	1-2	.500	2	3	5	6.8	4	0	0	0	3	8	10.8	
vs Miami (FL)	11/27/2021	*	36:18	5-8	.625	1-3	.333	0-0	.000	1	7	8	7.0	4	0	4	0	2	11	10.8	
NC State	12/02/2021	*	35:54	2-7	.286	2-5	.400	0-0	.000	1	2	3	6.4	4	1	0	1	1	6	10.1	
Penn St.	12/06/2021	*	30:44	3-6	.500	1-2	.500	4-4	1.000	2	2	4	6.1	1	2	3	2	1	11	10.3	
Fairfield	12/09/2021	*	30:29	8-12	.667	3-4	.750	2-3	.667	3	6	9	6.4	3	3	2	1	1	21	11.4	
at Ohio St.	12/12/2021	*	29:53	3-9	.333	1-1	1.000	1-1	1.000	2	3	5	6.3	5	0	1	0	0	8	11.1	
Western Mich.	12/19/2021	*	35:18	1-8	.125	0-4	.000	0-0	.000	0	4	4	6.1	3	2	1	1	2	2	10.3	
Southern Ill.	12/23/2021	*	21:18	1-3	.333	1-2	.500	0-0	.000	0	5	5	6.0	3	1	0	1	1	3	9.7	
Maryland	01/02/2022	*	42:00	6-14	.429	1-6	.167	4-6	.667	1	9	10	6.3	4	1	2	0	1	17	10.2	
at Wisconsin	01/05/2022	*	37:28	4-10	.400	1-3	.333	4-5	.800	3	4	7	6.4	3	1	1	1	2	13	10.4	
Nebraska	01/13/2022	*	33:12	7-14	.500	3-6	.500	0-0	.000	0	5	5	6.3	5	1	2	2	4	17	10.9	
at Purdue	01/16/2022	*	44:02	8-11	.727	3-4	.750	2-2	1.000	0	9	9	6.4	2	2	3	1	1	21	11.5	
at Michigan	01/31/2022	*	37:24	3-10	.300	0-2	.000	2-2	1.000	1	4	5	6.4	3	0	0	2	2	8	11.3	
Minnesota	02/03/2022	*	38:41	11-15	.733	4-4	1.000	2-2	1.000	1	4	5	6.3	1	1	1	0	0	28	12.2	
Purdue	02/06/2022	*	38:02	4-13	.308	1-2	.500	2-2	1.000	1	5	6	6.3	3	2	1	2	0	11	12.2	
at Illinois	02/09/2022	*	28:60	5-10	.500	1-3	.333	7-8	.875	2	5	7	6.3	1	1	2	1	0	18	12.5	
Totals			20	693:27	90-197	.457	27-65	.415	42-48	.875	28	98	126	6.3	57	25	36	19	23	249	12.5

Player Averages

Games Played	Minutes/ game	Points/ game	FG Pct	3FG Pct	FT Pct	Rebounds/ game	Assists/ game	Turnovers/ game	Assist/Turnover ratio	Steals/ game	Blocks/ game
20	34.7	12.5	45.7	41.5	87.5	6.3	1.3	1.8	0.7	1.2	1.0

CAREER STATISTICS

				Field Goals		3-Point		F-Throws		Rebounds									Scoring	
SEASON	TEAM	GP-GS	MIN/AVG	FG-FGA	FG%	3FG-3FGA	3FG%	FT-FTA	FT%	OFF	DEF	TOT	AVG	PF-FO	A	TO	BLK	STL	PTS	AVG
2018-19	IND	32-0	545/17.0	55-146	.377	12-33	.364	41-48	.854	48	66	114	3.6	90-0	11	33	23	8	163	5.1
2019-20	IND	31-30	728/23.5	90-203	.443	9-38	.237	89-122	.730	50	121	171	5.5	89-2	18	50	37	22	278	9.0
2020-21	IND	27-27	865/32.0	86-192	.448	18-56	.321	52-66	.788	65	122	187	6.9	70-3	29	37	20	31	242	9.0
2021-22	IND	20-20	693/34.7	90-197	.457	27-65	.415	42-48	.875	28	98	126	6.3	57-2	25	36	19	23	249	12.5
TOTAL		110-77	2831/25.7	321-738	.435	66-192	.344	224-284	.789	191	407	598	5.4	306-7	83	156	99	84	932	8.5



#14 • ALI PATBERG

Gr. • G • 5-11

Columbus, Ind. • Columbus North/Notre Dame

NOTES ON PATBERG

- 2022 Nancy Lieberman Award preseason watch list
- 2022 Wade Trophy watchlist
- 2021-22 Senior CLASS Award Finalist
- Big Ten Player of the Week Honor Roll (11/22/21)
- Entering her 7th college basketball season - 2nd player in NCAA Division I WBB history to play a 7th season (Isis Young, Siena)
- Ranks 3rd in IU history with 486 career assists
- Ranks ninth in IU history with 1,613 career points
- 2020-21 All-Big Ten Second Team (coaches and media) - a 3x All-Big Ten honoree
- Major: Graduated in May 2020 with a bachelor's degree in finance from the Kelley School of Business; pursuing a master's degree in recreational administration
- Birthdate: Sept. 11

2021-22 GAME-BY-GAME

GAME AND CAREER HIGHS

2021-22 Game Highs

Points 26, at Illinois (2/9/22)
 Rebounds 6, at Quinnipiac (11/20/21)
 Assists 10, at Butler (11/10/21)
 Steals 2, 2x, last at Purdue (1/16/22)
 Blocks 2, at Purdue (1/16/22)
 FG Made 9, at Illinois (2/9/22)
 3FG Made 4, 2x, last at Illinois (2/9/22)
 FT Made 5, vs. Norfolk St. (11/16/21)
 Minutes 45, vs. Maryland (1/2/22)

Career Highs

Points 30, at Wake Forest (11/28/18)
 Rebounds 13, vs. North Florida (11/18/18)
 Assists 13, vs. Missouri State (12/9/18)
 Steals 5, vs. Samford (12/3/20)
 Blocks 2, 4x, last at Purdue (1/16/22)
 FG Made 12, at Minnesota (2/22/20)
 3FG Made 6, vs. Iowa (2/21/19)
 FT Made 12, vs. Rutgers (3/6/20)
 Minutes 47, at Iowa (1/12/20)

Opponent	Date	GS	MIN	Total		3-Pointers		Free throws		Rebounds				PF	A	TO	BLK	STL	PTS	AVG	
				FG-FGA	PCT	3FG-3FGA	PCT	FT-FTA	PCT	OFF	DEF	TOT	AVG								
at Butler	11/10/2021	*	30:57	2-10	.200	0-6	.000	2-2	1.000	0	3	3	3.0	1	10	1	1	0	6	6.0	
Kentucky	11/14/2021	*	33:25	6-10	.600	1-1	1.000	3-3	1.000	0	2	2	2.5	4	5	1	0	0	16	11.0	
Norfolk St.	11/16/2021	*	34:14	5-9	.556	2-5	.400	5-6	.833	1	2	3	2.7	1	6	1	0	2	17	13.0	
at Quinnipiac	11/20/2021	*	31:26	5-7	.714	2-2	1.000	0-0	.000	0	6	6	3.5	4	2	2	0	0	12	12.8	
vs Stanford	11/25/2021	*	34:39	7-14	.500	1-3	.333	4-4	1.000	0	1	1	3.0	3	1	2	0	1	19	14.0	
vs Miami (FL)	11/27/2021	*	36:58	4-9	.444	1-3	.333	4-6	.667	1	3	4	3.2	2	2	3	0	1	13	13.8	
NC State	12/02/2021	*	35:23	3-12	.250	1-4	.250	3-4	.750	1	4	5	3.4	2	3	2	0	1	10	13.3	
Penn St.	12/06/2021	*	30:38	6-9	.667	2-3	.667	1-2	.500	0	3	3	3.4	3	2	3	0	0	15	13.5	
Fairfield	12/09/2021	*	24:32	2-5	.400	0-2	.000	1-2	.500	0	2	2	3.2	0	0	2	0	1	5	12.6	
at Ohio St.	12/12/2021	*	36:26	4-7	.571	0-0	.000	0-0	.000	0	3	3	3.2	0	7	1	0	1	8	12.1	
Western Mich.	12/19/2021	*	37:26	3-9	.333	0-4	.000	7-10	.700	0	4	4	3.3	1	6	2	0	1	13	12.2	
Southern Ill.	12/23/2021	*	27:48	3-7	.429	0-1	.000	0-0	.000	0	3	3	3.3	3	5	1	0	0	6	11.7	
Maryland	01/02/2022	*	45:00	6-11	.545	2-3	.667	4-5	.800	0	2	2	3.2	3	3	0	0	1	18	12.2	
at Wisconsin	01/05/2022	*	35:24	6-8	.750	4-5	.800	2-2	1.000	0	4	4	3.2	0	3	1	0	0	18	12.6	
Nebraska	01/13/2022	*	38:19	3-12	.250	0-4	.000	4-7	.571	0	3	3	3.2	0	4	2	0	0	10	12.4	
at Purdue	01/16/2022	*	42:10	4-16	.250	2-4	.500	0-0	.000	0	4	4	3.3	2	4	3	2	2	10	12.3	
at Michigan	01/31/2022	*	34:03	4-13	.308	0-2	.000	2-3	.667	0	2	2	3.2	2	0	2	1	0	10	12.1	
Minnesota	02/03/2022	*	32:40	5-13	.385	1-4	.250	0-0	.000	1	1	2	3.1	4	4	4	0	1	11	12.1	
Purdue	02/06/2022	*	36:05	1-8	.125	0-3	.000	0-0	.000	0	5	5	3.2	0	1	1	0	1	2	11.5	
at Illinois	02/09/2022	*	29:60	9-15	.600	4-9	.444	4-5	.800	1	0	1	3.1	1	2	1	0	1	26	12.3	
Totals			20	687:32	88-204	.431	23-68	.338	46-61	.754	5	57	62	3.1	36	70	35	4	14	245	12.3

Player Averages

Games Played	Minutes/game	Points/game	FG Pct	3FG Pct	FT Pct	Rebounds/game	Assists/game	Turnovers/game	Assist/Turnover ratio	Steals/game	Blocks/game
20	34.4	12.3	43.1	33.8	75.4	3.1	3.5	1.8	2.0	0.7	0.2

CAREER STATISTICS

				Field Goals		3-Point		F-Throws		Rebounds									Scoring	
SEASON	TEAM	GP-GS	MIN/AVG	FG-FGA	FG%	3FG-3FGA	3FG%	FT-FTA	FT%	OFF	DEF	TOT	AVG	PF-FO	A	TO	BLK	STL	PTS	AVG
2016-17	ND	22-0	169/7.7	6-11	.545	0-1	.000	6-8	.750	4	20	24	1.1	17-0	11	8	0	3	18	0.8
2018-19	IND	31-31	1102/35.5	169-386	.438	41-104	.394	111-138	.804	22	132	154	5.0	72-0	149	99	10	37	490	15.8
2019-20	IND	32-32	1143/35.7	179-365	.490	34-88	.386	107-136	.787	27	120	147	4.6	59-0	168	75	17	39	499	15.6
2020-21	IND	27-27	924/34.2	137-324	.423	30-104	.288	75-102	.735	14	90	104	3.9	47-0	99	49	4	24	379	14.0
2021-22	IND	20-20	688/34.4	88-204	.431	23-68	.338	46-61	.754	5	57	62	3.1	36-0	70	35	4	14	245	12.3
TOTAL FOR IND		110-110	3856/35.1	573-1279	.448	128-364	.352	339-437	.776	68	399	467	4.2	214-0	486	258	35	114	1613	14.7
TOTAL		132-110	4025/30.5	579-1290	.449	128-365	.351	345-445	.775	72	419	491	3.7	231-0	497	266	35	117	1631	12.4



#22 • CHLOE MOORE-MCNEIL

So. • G • 5-11
Sharon, Tenn. • Greenfield

NOTES ON MOORE-MCNEIL

- Started her first career game at Purdue on Jan. 16 where she scored a career-high 10 points
- Came in clutch against Nebraska where she had 2 3-pointers and a pair of free throws in the fourth quarter to help Indiana to the win
- Played a new career-high 28 points against the Huskers
- Set a new career-high seven rebounds against Fairfield
- Played in 25 games off the bench for IU as a true freshman
- A two-time Tennessee Class A Miss Basketball out of Greenfield High School who scored 2,598 points in her high school career and finished with more than 500 rebounds, 500 assists and 400 steals
- Major: exercise science
- Birthday: June 5

2021-22 GAME-BY-GAME

GAME AND CAREER HIGHS

2021-22 Game Highs

Points..... 11, vs. Purdue (2/6/22)
Rebounds10, vs. Purdue (2/6/22)
Assists3, vs. SIU (12/23/21)
Steals 2, vs. Nebraska (1/13/22)
Blocks1, 4x, last at Illinois (2/9/22)
FG Made 4, at Illinois (2/9/22)
3FG Made2, 3x, last vs. Purdue (2/6/22)
FT Made3, vs. SIU (12/23/21)
Minutes 42, at Purdue (1/16/22)

Opponent	Date	GS	MIN	Total		3-Pointers		Free throws		Rebounds				PF	A	TO	BLK	STL	PTS	AVG
				FG-FGA	PCT	3FG-3FGA	PCT	FT-FTA	PCT	OFF	DEF	TOT	AVG							
at Butler	11/10/2021		15:14	1-5	.200	0-3	.000	0-0	.000	0	0	0	0.0	1	2	0	0	0	2	2.0
Kentucky	11/14/2021		11:36	0-2	.000	0-1	.000	2-2	1.000	0	2	2	1.0	1	0	1	0	0	2	2.0
Norfolk St.	11/16/2021		09:14	0-0	.000	0-0	.000	0-0	.000	1	4	5	2.3	0	0	3	0	1	0	1.3
at Quinnipiac	11/20/2021		16:06	2-3	.667	0-1	.000	0-0	.000	0	3	3	2.5	1	0	0	1	0	4	2.0
vs Stanford	11/25/2021		06:49	1-1	1.000	1-1	1.000	0-0	.000	0	2	2	2.4	0	0	0	0	0	3	2.2
vs Miami (FL)	11/27/2021		11:59	1-2	.500	0-0	.000	0-1	.000	0	1	1	2.2	2	2	0	0	0	2	2.2
NC State	12/02/2021		16:31	2-4	.500	2-4	.500	0-0	.000	1	2	3	2.3	0	0	0	0	0	6	2.7
Penn St.	12/06/2021		18:07	1-1	1.000	0-0	.000	0-0	.000	0	3	3	2.4	0	0	1	0	0	2	2.6
Fairfield	12/09/2021		24:00	1-4	.250	0-2	.000	2-3	.667	1	6	7	2.9	2	0	3	1	0	4	2.8
at Ohio St.	12/12/2021		15:21	0-1	.000	0-1	.000	0-0	.000	0	1	1	2.7	4	1	1	0	0	0	2.5
Western Mich.	12/19/2021		16:19	1-6	.167	0-2	.000	0-0	.000	1	0	1	2.5	0	0	2	0	0	2	2.5
Southern Ill.	12/23/2021		23:51	3-6	.500	0-2	.000	3-4	.750	1	4	5	2.8	1	3	3	0	1	9	3.0
Nebraska	01/13/2022		28:57	2-4	.500	2-4	.500	2-4	.500	0	4	4	2.8	2	1	1	0	2	8	3.4
at Purdue	01/16/2022	*	42:47	4-13	.308	1-7	.143	1-2	.500	0	6	6	3.1	3	1	0	1	0	10	3.9
at Michigan	01/31/2022		21:24	1-5	.200	0-2	.000	1-2	.500	1	0	1	2.9	3	0	0	0	1	3	3.8
Minnesota	02/03/2022		07:04	0-1	.000	0-1	.000	0-0	.000	0	1	1	2.8	1	0	1	0	0	0	3.6
Purdue	02/06/2022		28:45	4-7	.571	2-4	.500	1-1	1.000	2	8	10	3.2	0	0	0	0	1	11	4.0
at Illinois	02/09/2022		28:07	4-7	.571	1-3	.333	0-0	.000	1	1	2	3.2	4	0	1	1	1	9	4.3
Totals			1 342:11	28-72	.389	9-38	.237	12-19	.632	9	48	57	3.2	25	10	17	4	7	77	4.3

Career Highs

Points..... 11, vs. Purdue (2/6/22)
Rebounds10, vs. Purdue (2/6/22)
Assists3, 2x, last vs. SIU (12/23/21)
Steals 2, vs. Nebraska (1/13/22)
Blocks1, 4x, last at Illinois (2/9/22)
FG Made 4, at Illinois (2/9/22)
3FG Made2, 4x, last vs. Purdue (2/6/22)
FT Made3, 2x, last vs. SIU (12/23/21)
Minutes 42, at Purdue (1/16/22)

Player Averages

Games Played	Minutes/game	Points/game	FG Pct	3FG Pct	FT Pct	Rebounds/game	Assists/game	Turnovers/game	Assist/Turnover ratio	Steals/game	Blocks/game
18	19.0	4.3	38.9	23.7	63.2	3.2	0.6	0.9	0.6	0.4	0.2

CAREER STATISTICS

SEASON	TEAM	GP-GS	MIN/AVG	Field Goals		3-Point		F-Throws		Rebounds				Scoring						
				FG-FGA	FG%	3FG-3FGA	3FG%	FT-FTA	FT%	OFF	DEF	TOT	AVG	PF-FO	A	TO	BLK	STL	PTS	AVG
2020-21	IND	25-0	184/7.3	10-38	.263	4-27	.148	8-17	.471	1	23	24	1.0	17-0	17	8	0	7	32	1.3
2021-22	IND	18-1	342/19.0	28-72	.389	9-38	.237	12-19	.632	9	48	57	3.2	25-0	10	17	4	7	77	4.3
TOTAL		43-1	526/12.2	38-110	.345	13-65	.200	20-36	.556	10	71	81	1.9	42-0	27	25	4	14	109	2.5



#23 • KIANNDRA BROWNE

So. • F • 6-2

Montreal, Quebec, Canada • St-Laurent

NOTES ON BROWNE

- Has made six consecutive starts
- Set a new season-high 10 rebounds against Western Michigan
- One of two active NCAA women's basketball players to wear a hijab, a traditional Muslim head covering
- Saw action in 21 games as a freshman in 2020-21
- A member of Canada's U18 National Team where she participated in the 2018 FIBA U18 Championships in Mexico City where the team won the silver medal
- A member of the gold medal winning team at the 2017 Canada Summer Games where she averaged 23.0 minutes per game, 9.6 points per game and 5.2 rebounds per game
- Major: criminal justice
- Birthday: Feb. 6

GAME AND CAREER HIGHS

2021-22 Game Highs

Points 10, at Butler (11/10/21)
 Rebounds 10, vs. W. Michigan (12/19/21)
 Assists 3, at Illinois (2/9/22)
 Steals 2, vs. Nebraska (1/13/22)
 Blocks 1, 4x, last at Michigan (1/31/22)
 FG Made 4, at Butler (11/10/21)
 3FG Made N/A
 FT Made 7, vs. W. Michigan (12/19/21)
 Minutes 29, at Purdue (1/16/22)

Career Highs

Points 12, vs. Nebraska (12/20/20)
 Rebounds 10, 2x, last vs. W. Michigan (12/19/21)
 Assists 3, at Illinois (2/9/22)
 Steals 2, vs. Nebraska (1/13/22)
 Blocks 1, 4x, last at Purdue (1/16/22)
 FG Made 4, at Butler (11/10/21)
 3FG Made N/A
 FT Made 7, vs. W. Michigan (12/19/21)
 Minutes 29, at Purdue (1/16/22)

2021-22 GAME-BY-GAME

Opponent	Date	GS	MIN	Total		3-Pointers		Free throws		Rebounds				PF	A	TO	BLK	STL	PTS	AVG
				FG-FGA	PCT	3FG-3FGA	PCT	FT-FTA	PCT	OFF	DEF	TOT	AVG							
at Butler	11/10/2021		17:24	4-5	.800	0-1	.000	2-2	1.000	2	1	3	3.0	4	0	0	0	0	10	10.0
Kentucky	11/14/2021		11:47	1-2	.500	0-1	.000	0-0	.000	1	1	2	2.5	2	0	0	0	0	2	6.0
Norfolk St.	11/16/2021		17:33	0-0	.000	0-0	.000	2-2	1.000	0	3	3	2.7	3	0	2	1	0	2	4.7
at Quinnipiac	11/20/2021		14:36	3-3	1.000	0-0	.000	0-0	.000	1	0	1	2.3	0	0	1	0	0	6	5.0
vs Stanford	11/25/2021		12:01	0-2	.000	0-0	.000	0-0	.000	0	2	2	2.2	4	0	0	0	0	0	4.0
vs Miami (FL)	11/27/2021		10:03	0-0	.000	0-0	.000	0-0	.000	0	4	4	2.5	3	1	2	0	0	0	3.3
NC State	12/02/2021		08:29	1-3	.333	0-0	.000	0-0	.000	3	3	6	3.0	2	0	0	0	1	2	3.1
Penn St.	12/06/2021		12:13	1-1	1.000	0-0	.000	0-0	.000	0	3	3	3.0	0	0	1	1	0	2	3.0
Fairfield	12/09/2021		14:56	0-1	.000	0-1	.000	2-2	1.000	2	4	6	3.3	3	0	4	0	0	2	2.9
at Ohio St.	12/12/2021		06:02	1-2	.500	0-0	.000	0-1	.000	0	2	2	3.2	1	0	1	0	0	2	2.8
Western Mich.	12/19/2021		14:58	1-1	1.000	0-0	.000	7-10	.700	7	3	10	3.8	1	0	0	0	0	9	3.4
Southern Ill.	12/23/2021		18:58	2-2	1.000	0-0	.000	0-0	.000	1	3	4	3.8	1	1	0	0	0	4	3.4
Maryland	01/02/2022		06:51	1-1	1.000	0-0	.000	0-0	.000	0	0	0	3.5	1	0	0	0	0	2	3.3
at Wisconsin	01/05/2022		13:54	2-3	.667	0-0	.000	0-0	.000	3	1	4	3.6	4	0	4	0	0	4	3.4
Nebraska	01/13/2022	*	24:56	1-4	.250	0-1	.000	0-0	.000	1	4	5	3.7	3	1	2	0	2	2	3.3
at Purdue	01/16/2022	*	29:37	2-4	.500	0-0	.000	4-5	.800	3	1	4	3.7	3	0	3	1	0	8	3.6
at Michigan	01/31/2022	*	20:07	0-1	.000	0-0	.000	0-2	.000	0	0	0	3.5	4	0	2	1	0	0	3.4
Minnesota	02/03/2022	*	18:19	1-1	1.000	0-0	.000	1-2	.500	3	2	5	3.6	1	0	2	0	0	3	3.3
Purdue	02/06/2022	*	10:18	2-4	.500	0-0	.000	0-0	.000	2	2	4	3.6	0	0	1	0	1	4	3.4
at Illinois	02/09/2022	*	24:16	3-4	.750	0-0	.000	0-0	.000	1	5	6	3.7	5	3	1	0	1	6	3.5
Totals		6	307:19	26-44	.591	0-4	.000	18-26	.692	30	44	74	3.7	45	6	26	4	5	70	3.5

Player Averages

Games Played	Minutes/ game	Points/ game	FG Pct	3FG Pct	FT Pct	Rebounds/ game	Assists/ game	Turnovers/ game	Assist/Turnover ratio	Steals/ game	Blocks/ game
20	15.4	3.5	59.1	0.0	69.2	3.7	0.3	1.3	0.2	0.3	0.2

CAREER STATISTICS

SEASON	TEAM	GP-GS	MIN/AVG	Field Goals		3-Point		F-Throws		Rebounds				Scoring						
				FG-FGA	FG%	3FG-3FGA	3FG%	FT-FTA	FT%	OFF	DEF	TOT	AVG	PF-FO	A	TO	BLK	STL	PTS	AVG
2020-21	IND	21-0	174/8.3	15-26	.577	0-1	.000	14-20	.700	14	19	33	1.6	35-1	4	12	1	2	44	2.1
2021-22	IND	20-6	307/15.4	26-44	.591	0-4	.000	18-26	.692	30	44	74	3.7	45-1	6	26	4	5	70	3.5
TOTAL		41-6	482/11.7	41-70	.586	0-5	.000	32-46	.696	44	63	107	2.6	80-2	10	38	5	7	114	2.8



#24 • MONA ZARIC

Fr. • F • 6-1
Novi Sad, Serbia

NOTES ON ZARIC

- Played for Keravnos B.C. for 10 years and Sistema Rosa Pordenone for 2 years
- A two-time U16 Cypriot Championship and U18 Cypriot Championship winner
- Named to the league's senior team three times and senior super cup team three times
- Named U16 and U18 Cypriot League MVP a total of four times
- Averaged 4.4 points, 2.8 rebounds and shot 36 percent from 3-point range in the U20 Challengers in July 2021
- Major: exercise science
- Birthday: November 29

2021-22 GAME-BY-GAME

GAME AND CAREER HIGHS

2021-22 Game Highs

Points..... N/A
Rebounds1, vs. Fairfield (12/9/21)
Assists1, 2x, last at Illinois (2/9/22)
Steals..... N/A
Blocks..... N/A
FG Made N/A
3FG Made N/A
FT Made..... N/A
Minutes..... 3, 2x, last at Illinois (2/9/22)

Opponent	Date	GS	MIN	Total		3-Pointers		Free throws		Rebounds				PF		A		TO		BLK		STL		PTS		AVG
				FG-FGA	PCT	3FG-3FGA	PCT	FT-FTA	PCT	OFF	DEF	TOT	AVG													
Norfolk St.	11/16/2021		01:57	0-0	.000	0-0	.000	0-0	.000	0	0	0	0.0	0	0	1	0	0	0	0	0	0	0	0.0		
Penn St.	12/06/2021		02:56	0-0	.000	0-0	.000	0-0	.000	0	0	0	0.0	0	0	0	0	0	0	0	0	0	0	0.0		
Fairfield	12/09/2021		02:53	0-0	.000	0-0	.000	0-0	.000	1	0	1	0.3	1	0	2	0	0	0	0	0	0	0	0.0		
Southern Ill.	12/23/2021		03:14	0-0	.000	0-0	.000	0-0	.000	0	0	0	0.3	0	1	0	0	0	0	0	0	0	0	0.0		
at Wisconsin	01/05/2022		01:36	0-0	.000	0-0	.000	0-0	.000	0	0	0	0.2	0	0	0	0	0	0	0	0	0	0	0.0		
at Illinois	02/09/2022		03:58	0-0	.000	0-0	.000	0-0	.000	0	0	0	0.2	1	1	1	0	0	0	0	0	0	0	0.0		
Totals			0 16:34	0-0	.000	0-0	.000	0-0	.000	1	0	1	0.2	2	2	4	0	0	0	0	0	0	0	0.0		

Player Averages

Games Played	Minutes/game	Points/game	FG Pct	3FG Pct	FT Pct	Rebounds/game	Assists/game	Turnovers/game	Assist/Turnover ratio	Steals/game	Blocks/game
6	2.8	0.0	0.0	0.0	0.0	0.2	0.3	0.7	0.5	0.0	0.0

Career Highs

Points..... N/A
Rebounds1, vs. Fairfield (12/9/21)
Assists1, 2x, last at Illinois (2/9/22)
Steals..... N/A
Blocks..... N/A
FG Made N/A
3FG Made N/A
FT Made..... N/A
Minutes..... 3, 2x, last at Illinois (2/9/22)

CAREER STATISTICS

				Field Goals		3-Point		F-Throws		Rebounds									Scoring	
SEASON	TEAM	GP-GS	MIN/AVG	FG-FGA	FG%	3FG-3FGA	3FG%	FT-FTA	FT%	OFF	DEF	TOT	AVG	PF-FO	A	TO	BLK	STL	PTS	AVG
2021-22	IND	6-0	17/2.8	0-0	.000	0-0	.000	0-0	.000	1	0	1	0.2	2-0	2	4	0	0	0	0.0
TOTAL		6-0	17/2.8	0-0	.000	0-0	.000	0-0	.000	1	0	1	0.2	2-0	2	4	0	0	0	0.0



#25 • ARIELLE WISNE

R-So. • C • 6-5
Thornton, Colo. • Horizon

NOTES ON WISNE

- Played in 13 games as a redshirt freshman
- Scored her first career baskets against Eastern Kentucky in the season opener where she scored 4 points and went 2-for-4 from the field and grabbed three rebounds
- Redshirted her true freshman season to develop her game
- Major: media
- Birthday: May 12

2021-22 GAME-BY-GAME

Opponent	Date	GS	MIN	Total		3-Pointers		Free throws		Rebounds				PF	A	TO	BLK	STL	PTS	AVG
				FG-FGA	PCT	3FG-3FGA	PCT	FT-FTA	PCT	OFF	DEF	TOT	AVG							
at Butler	11/10/2021		01:15	0-0	.000	0-0	.000	0-0	.000	0	0	0	0.0	0	0	0	0	0	0	0.0
Norfolk St.	11/16/2021		01:57	0-0	.000	0-0	.000	0-0	.000	0	0	0	0.0	0	0	1	0	0	0	0.0
Penn St.	12/06/2021		02:38	0-0	.000	0-0	.000	0-0	.000	0	0	0	0.0	0	0	1	0	0	0	0.0
Fairfield	12/09/2021		02:53	0-0	.000	0-0	.000	0-0	.000	0	0	0	0.0	0	0	0	0	0	0	0.0
Southern Ill.	12/23/2021		04:32	0-0	.000	0-0	.000	0-0	.000	1	1	2	0.4	1	0	0	0	0	0	0.0
at Wisconsin	01/05/2022		01:36	0-0	.000	0-0	.000	0-0	.000	0	0	0	0.3	0	0	0	0	0	0	0.0
at Michigan	01/31/2022		00:39	0-0	.000	0-0	.000	0-0	.000	0	0	0	0.3	0	0	0	0	0	0	0.0
Minnesota	02/03/2022		01:19	0-0	.000	0-0	.000	0-0	.000	0	0	0	0.3	0	0	0	0	0	0	0.0
at Illinois	02/09/2022		05:45	0-1	.000	0-0	.000	0-0	.000	1	0	1	0.3	2	0	0	0	0	0	0.0
Totals		0	22:34	0-1	.000	0-0	.000	0-0	.000	2	1	3	0.3	3	0	2	0	0	0	0.0

Player Averages

Games Played	Minutes/ game	Points/ game	FG Pct	3FG Pct	FT Pct	Rebounds/ game	Assists/ game	Turnovers/ game	Assist/Turnover ratio	Steals/ game	Blocks/ game
9	2.5	0.0	0.0	0.0	0.0	0.3	0.0	0.2	0.0	0.0	0.0

GAME AND CAREER HIGHS

2020-21 Game Highs

Points..... N/A
Rebounds 2, vs. SIU (12/23/21)
Assists N/A
Steals..... N/A
Blocks N/A
FG Made N/A
3FG Made N/A
FT Made..... N/A
Minutes..... 5, at Illinois (2/9/22)

Career Highs

Points..... 4, vs. Eastern Ky. (11/25/20)
Rebounds 3, vs. Eastern Ky. (11/25/20)
Assists N/A
Steals..... N/A
Blocks 1, 2x, last at Illinois (2/14/21)
FG Made 2, vs. Eastern Ky. (11/25/20)
3FG Made N/A
FT Made..... N/A
Minutes..... 8, vs. Samford (12/3/20)

CAREER STATISTICS

				Field Goals		3-Point		F-Throws		Rebounds				Scoring						
SEASON	TEAM	GP-GS	MIN/AVG	FG-FGA	FG%	3FG-3FGA	3FG%	FT-FTA	FT%	OFF	DEF	TOT	AVG	PF-FO	A	TO	BLK	STL	PTS	AVG
2020-21	IND	13-0	39/3.0	2-6	.333	0-0	.000	0-0	.000	4	5	9	0.7	9-0	0	3	3	0	4	0.3
2021-22	IND	9-0	23/2.5	0-1	.000	0-0	.000	0-0	.000	2	1	3	0.3	3-0	0	2	0	0	0	0.0
TOTAL		22-0	62/2.8	2-7	.286	0-0	.000	0-0	.000	6	6	12	0.5	12-0	0	5	3	0	4	0.2



#34 • GRACE BERGER

Sr. • G • 6-0
Louisville, Ky. • Sacred Heart

NOTES ON BERGER

- 2022 Cheryl Miller watchlist Top 10
- 2022 Wooden Award Preseason Top 50
- 2022 Wade Trophy watchlist
- 2021-22 Senior CLASS Award Top 30 candidate
- 2021-22 preseason All-Big Ten
- Team's second leading scorer (15.2 ppg) and 30th member of IU 1,000 point club (1,269 - 19th)
- Set a season-high 10 rebounds in her first double-double of the season (19 points) vs. Minnesota
- Won a gold medal with USA Basketball in June at the 2021 AmeriCup in San Juan, Puerto Rico
- 2021 WBCA and USWBA All-American honorable mention
- 2020-21 All-Big Ten First Team (coaches and media)
- Graduated from IU with undergraduate degree in sports marketing and management in May 2021
- Major: recreational administration (master's degree)
- Birthdate: June 3

2021-22 GAME-BY-GAME

Opponent	Date	GS	MIN	Total		3-Pointers		Free throws		Rebounds				PF	A	TO	BLK	STL	PTS	AVG	
				FG-FGA	PCT	3FG-3FGA	PCT	FT-FTA	PCT	OFF	DEF	TOT	AVG								
at Butler	11/10/2021	*	33:49	9-15	.600	0-1	.000	0-0	.000	0	1	1	1.0	3	3	2	0	1	18	18.0	
Kentucky	11/14/2021	*	36:38	6-16	.375	1-2	.500	6-8	.750	3	6	9	5.0	4	4	3	0	0	19	18.5	
Norfolk St.	11/16/2021	*	31:59	2-9	.222	0-0	.000	2-3	.667	0	7	7	5.7	1	11	4	0	1	6	14.3	
at Quinnipiac	11/20/2021	*	35:05	7-17	.412	1-1	1.000	2-2	1.000	1	4	5	5.5	4	3	2	0	1	17	15.0	
vs Stanford	11/25/2021	*	37:03	4-19	.211	0-1	.000	4-6	.667	1	5	6	5.6	2	7	2	0	4	12	14.4	
vs Miami (FL)	11/27/2021	*	36:04	5-11	.455	0-1	.000	1-1	1.000	0	7	7	5.8	2	3	8	0	1	11	13.8	
NC State	12/02/2021	*	34:12	5-15	.333	0-1	.000	0-0	.000	1	8	9	6.3	3	5	3	1	2	10	13.3	
Penn St.	12/06/2021	*	31:34	3-8	.375	0-0	.000	4-4	1.000	0	6	6	6.3	1	4	2	0	1	10	12.9	
Fairfield	12/09/2021	*	24:06	7-10	.700	1-2	.500	4-4	1.000	0	7	7	6.3	3	2	4	0	2	19	13.6	
at Ohio St.	12/12/2021	*	34:55	9-13	.692	0-0	.000	3-3	1.000	0	7	7	6.4	3	5	0	0	0	21	14.3	
Western Mich.	12/19/2021	*	37:49	7-14	.500	0-1	.000	2-3	.667	1	5	6	6.4	1	3	2	0	4	16	14.5	
Southern Ill.	12/23/2021	*	28:27	7-12	.583	0-0	.000	4-4	1.000	0	1	1	5.9	3	3	1	0	1	18	14.8	
Maryland	01/02/2022	*	45:00	3-13	.231	0-0	.000	3-4	.750	0	3	3	5.7	2	4	4	0	2	9	14.3	
at Wisconsin	01/05/2022	*	36:03	4-9	.444	0-0	.000	1-2	.500	0	8	8	5.9	3	11	1	0	1	9	13.9	
Nebraska	01/13/2022	*	38:07	7-12	.583	0-0	.000	8-10	.800	1	6	7	5.9	1	3	1	1	2	22	14.5	
at Purdue	01/16/2022	*	45:00	9-17	.529	0-0	.000	6-8	.750	0	6	6	5.9	2	6	2	1	0	24	15.1	
at Michigan	01/31/2022	*	39:28	6-15	.400	0-0	.000	1-2	.500	1	5	6	5.9	3	6	2	0	2	13	14.9	
Minnesota	02/03/2022	*	40:00	5-13	.385	0-0	.000	9-10	.900	0	10	10	6.2	1	8	1	1	1	19	15.2	
Purdue	02/06/2022	*	38:31	5-14	.357	0-1	.000	7-8	.875	2	4	6	6.2	1	5	2	0	2	17	15.3	
at Illinois	02/09/2022	*	29:49	6-8	.750	0-0	.000	1-2	.500	1	7	8	6.3	1	7	2	0	2	13	15.2	
Totals			20	713:40	116-260	.446	3-11	.273	68-84	.810	12	113	125	6.3	44	103	48	4	30	303	15.2

Player Averages

Games Played	Minutes/game	Points/game	FG Pct	3FG Pct	FT Pct	Rebounds/game	Assists/game	Turnovers/game	Assist/Turnover ratio	Steals/game	Blocks/game
20	35.7	15.2	44.6	27.3	81.0	6.3	5.2	2.4	2.1	1.5	0.2

Career Highs

Points 26, at Maryland (1/4/21)
Rebounds 15, at Nebraska (2/9/20)
Assists 12, at Penn St. (1/7/21)
Steals 5, at Florida (11/22/19)
Blocks 1, 15x, last vs. Nebraska (1/13/22)
FG Made 13, at Maryland (1/4/21)
3FG Made 3, vs. Mount St. Mary's (11/7/19)
FT Made 10, vs. Ohio St. (1/28/21)
Minutes 45, 2x, last at Purdue (1/16/22)

CAREER STATISTICS

				Field Goals		3-Point		F-Throws		Rebounds										Scoring	
SEASON	TEAM	GP-GS	MIN/AVG	FG-FGA	FG%	3FG-3FGA	3FG%	FT-FTA	FT%	OFF	DEF	TOT	AVG	PF-FO	A	TO	BLK	STL	PTS	AVG	
2018-19	IND	34-4	691/20.3	79-187	.422	5-23	.217	25-48	.521	5	89	94	2.8	50-0	53	53	3	24	188	5.5	
2019-20	IND	30-30	1032/34.4	154-338	.456	15-50	.300	70-91	.769	12	144	156	5.2	58-1	104	76	5	43	393	13.1	
2020-21	IND	27-27	922/34.1	154-349	.441	11-34	.324	96-129	.744	23	160	183	6.8	61-3	124	55	5	31	415	15.4	
2021-22	IND	20-20	714/35.7	116-260	.446	3-11	.273	68-84	.810	12	113	125	6.3	44-0	103	48	4	30	303	15.2	
TOTAL		111-81	3358/30.3	503-1134	.444	34-118	.288	259-352	.736	52	506	558	5.0	213-4	384	232	17	128	1299	11.7	



#54 • MACKENZIE HOLMES

Jr. • F • 6-3
Gorham, Maine • Gorham

NOTES ON HOLMES

- Had knee procedure on 1/20
- Big Ten Player of the Week (11/15/21, 12/13/21)
- 2022 Wade Trophy midseason watch list
- 2022 Naismith Trophy midseason watch list
- 2022 Wooden Award midseason Top 25
- 2021-22 preseason All-Big Ten
- 2022 Lisa Leslie Award preseason watch list
- 2022 The Athletic Preseason All-American honorable mention
- 2021 Associated Press All-American Honorable Mention
- 2020-21 All-Big Ten First Team (coaches and media)
- 2020-21 All-Big Ten Defensive Team (media)
- Ranks 6th all-time in school history with 134 career blocks
- Major: human development & family studies
- Birthday: November 1

GAME AND CAREER HIGHS

2021-22 Game Highs

Points 30, at Ohio State (12/12/21)
Rebounds 19, vs. W. Michigan (12/19/21)
Assists 1, 5x, last vs. Maryland (1/2/22)
Steals 2, 2x, last vs. Kentucky (11/14/21)
Blocks ... 5, 2x, last at Ohio State (12/12/21)
FG Made 13, at Ohio State (12/12/21)
3FG Made 2, vs. NC State (12/2/21)
FT Made 6, 2x, last vs. Miami (FL) (11/27/21)
Minutes 41, vs. Maryland (1/2/22)

Career Highs

Points 30, at Ohio State (12/12/21)
Rebounds 19, vs. W. Michigan (12/19/21)
Assists 2, at Minnesota (2/22/20)
Steals 3, 2x, last vs. Michigan (2/18/21)
Blocks 7, vs. Eastern Ky. (11/25/20)
FG Made 13, 2x, last at Ohio State (12/12/21)
3FG Made 1, at Butler (11/10/21)
FT Made 11, vs. Wisconsin (1/30/20)
Minutes 41, vs. Maryland (1/2/22)

2021-22 GAME-BY-GAME

Opponent	Date	GS	MIN	Total		3-Pointers		Free throws		Rebounds				PF	A	TO	BLK	STL	PTS	AVG	
				FG-FGA	PCT	3FG-3FGA	PCT	FT-FTA	PCT	OFF	DEF	TOT	AVG								
at Butler	11/10/2021	*	25:17	5-10	.500	1-2	.500	0-0	.000	4	4	8	8.0	0	1	2	1	2	11	11.0	
Kentucky	11/14/2021	*	28:13	11-15	.733	1-1	1.000	6-6	1.000	3	4	7	7.5	2	1	2	1	29	20.0		
Norfolk St.	11/16/2021	*	25:41	11-15	.733	0-0	.000	0-0	.000	0	3	3	6.0	0	0	2	1	1	22	20.7	
at Quinnipiac	11/20/2021	*	25:24	4-11	.364	0-0	.000	2-2	1.000	2	4	6	6.0	4	0	3	1	0	10	18.0	
vs Stanford	11/25/2021	*	32:35	3-12	.250	0-0	.000	0-0	.000	4	6	10	6.8	4	1	1	2	1	6	15.6	
vs Miami (FL)	11/27/2021	*	30:20	4-8	.500	0-0	.000	6-11	.545	4	7	11	7.5	2	0	1	1	0	14	15.3	
NC State	12/02/2021	*	32:21	9-14	.643	2-4	.500	4-6	.667	3	1	4	7.0	3	0	2	1	0	24	16.6	
Penn St.	12/06/2021	*	25:09	7-10	.700	0-0	.000	2-2	1.000	3	3	6	6.9	0	0	1	2	1	16	16.5	
Fairfield	12/09/2021	*	24:28	9-10	.900	0-0	.000	5-5	1.000	1	4	5	6.7	1	1	1	5	0	23	17.2	
at Ohio St.	12/12/2021	*	33:24	13-19	.684	1-2	.500	3-5	.600	2	5	7	6.7	1	0	3	5	1	30	18.5	
Western Mich.	12/19/2021	*	27:59	7-12	.583	0-0	.000	3-4	.750	6	13	19	7.8	3	0	0	4	0	17	18.4	
Southern Ill.	12/23/2021	*	25:33	8-12	.667	0-1	.000	2-2	1.000	0	7	7	7.8	2	0	1	0	0	18	18.3	
Maryland	01/02/2022	*	41:08	7-10	.700	0-0	.000	1-2	.500	5	9	14	8.2	4	1	4	1	0	15	18.1	
at Wisconsin	01/05/2022	*	25:26	6-11	.545	0-1	.000	4-4	1.000	3	5	8	8.2	1	0	2	1	0	16	17.9	
Totals			14	402:57	104-169	.615	5-11	.455	38-49	.776	40	75	115	8.2	27	5	25	26	8	251	17.9


Player Averages


Games Played	Minutes/game	Points/game	FG Pct	3FG Pct	FT Pct	Rebounds/game	Assists/game	Turnovers/game	Assist/Turnover ratio	Steals/game	Blocks/game
14	28.8	17.9	61.5	45.5	77.6	8.2	0.4	1.8	0.2	0.6	1.9

CAREER STATISTICS

				Field Goals		3-Point		F-Throws		Rebounds				Scoring						
SEASON	TEAM	GP-GS	MIN/AVG	FG-FGA	FG%	3FG-3FGA	3FG%	FT-FTA	FT%	OFF	DEF	TOT	AVG	PF-FO	A	TO	BLK	STL	PTS	AVG
2019-20	IND	32-2	609/19.0	144-227	.634	0-0	.000	56-86	.651	64	102	166	5.2	75-1	10	41	27	23	344	10.8
2020-21	IND	27-27	821/30.4	202-333	.607	0-6	.000	76-97	.784	69	137	206	7.6	65-1	11	42	81	25	480	17.8
2021-22	IND	14-14	403/28.8	104-169	.615	5-11	.455	38-49	.776	40	75	115	8.2	27-0	5	25	26	8	251	17.9
TOTAL		73-43	1833/25.1	450-729	.617	5-17	.294	170-232	.733	173	314	487	6.7	167-2	26	108	134	56	1075	14.7

BOX SCORES

<div>  <div> Official Basketball Box Score - Final Indiana at Butler 11/10/21 Hinkle Fieldhouse, Indianapolis 2021-22 Women's Basketball </div> <div> Game Time: 7:00 PM Game Duration: 1:43 Attendance: 2,360 </div> </div>																			
<div> <div>Indiana - 86</div> <div>Record: 1-0</div> </div>																			
NO.	Name	Min	FG	3P	FT	Rebounds	Fouls	TP	AS	TO	ST	Blocks	BS	BA	+	Shooting By Period			
			M-A	M-A	M-A	OR DR TOT	PF									1st	2nd	3rd	4th
10	Aleksa Gulbe	33:48	2-7	0-3	4-4	2 4 6	1 5	8	3	2	0	0	1	25		1st FG% 8-18	44.4%		
54	Mackenzie Holmes	25:17	5-10	1-2	0-0	4 4 8	0 0	11	1	2	2	1	1	14		3PT% 1-4	25.0%		
4	Nicole Cardano-Hillary	32:43	11-12	7-8	0-0	1 5 6	3 4	29	5	1	0	0	0	20		FT% 0-0	0%		
14	Ali Patberg	30:57	2-10	0-6	2-2	0 3 3	1 1	6	10	1	0	1	0	22		2nd FG% 10-14	71.4%		
34	Grace Berger	33:49	9-15	0-1	0-0	0 1 1	3 2	18	3	2	1	0	0	21		3PT% 2-3	66.7%		
22	Chloe Moore-McNeil	15:14	1-5	0-3	0-0	0 0 0	1 0	2	2	0	0	0	1	5		FT% 4-4	100%		
23	Kiandra Browne	17:24	4-5	0-1	2-2	2 1 3	4 3	10	0	0	0	0	0	7		3rd FG% 6-19	31.6%		
5	Caillin Hose	05:01	0-1	0-0	0-0	0 0 0	0 0	0	0	0	0	0	0	1		FT% 2-2	100%		
1	Kaitlin Peterson	02:16	1-2	0-1	0-0	0 1 1	0 0	2	0	0	0	0	0	0		4th FG% 11-16	68.8%		
3	Grace Waggoner	02:16	0-0	0-0	0-0	0 0 0	0 1	0	0	1	0	1	0	0		3PT% 2-7	28.6%		
25	Arielle Wisne	01:15	0-0	0-0	0-0	0 0 0	0 0	0	0	0	0	0	0	0		FT% 2-2	100%		
Team						2 2 4		0		0						GM FG% 35-67	52.2%		
Totals		35:47	8-26	8-8	11	21	32	13	16	86	24	9	3	3	23	3PT% 8-8	100.0%		
Technical Fouls: NONE																			
Dead Ball Rebounds: 0, 2																			
<div> <div>Butler - 63</div> <div>Record: 9-1</div> </div>																			
NO.	Name	Min	FG	3P	FT	Rebounds	Fouls	TP	AS	TO	ST	Blocks	BS	BA	+	Shooting By Period			
			M-A	M-A	M-A	OR DR TOT	PF									1st	2nd	3rd	4th
20	Alex Richard	25:17	10-13	0-0	0-0	0 4 4	1 0	20	1	3	1	0	0	-16		1st FG% 6-13	46.2%		
2	Genesis Saxon	14:26	0-4	0-1	0-0	0 2 2	1 3	0	1	3	0	0	0	-13		3PT% 0-3	0.0%		
5	Emilia Parker	26:46	1-1	1-1	0-0	1 1 2	0 0	3	0	0	0	0	0	-12		FT% 1-1	100%		
10	Trinity White	25:28	3-11	1-2	2-2	0 4 4	4 3	9	1	2	0	0	2	-16		2nd FG% 9-15	60.0%		
11	Tenley Dowell	25:15	1-3	1-3	2-2	1 4 4	4 2	5	1	2	1	0	0	-11		3PT% 1-4	25.0%		
32	Sydney Jaynes	12:27	1-4	0-0	1-2	1 0 1	5 2	3	0	0	0	2	1	-7		FT% 0-0	0%		
55	Kendall Winger	25:14	1-1	1-1	0-0	0 3 3	1 1	3	2	1	0	0	0	-11		3PT% 0-0	0.0%		
13	Zoe Jackson	29:21	7-10	0-2	4-5	0 0 0	0 0	2	18	2	0	0	0	-17		FT% 8-10	80%		
25	Ellen Ross	15:46	1-3	0-1	0-0	0 0 0	0 0	2	0	0	0	1	0	-12		4th FG% 7-13	53.8%		
Team						0 3 3		0		0		1				3PT% 3-4	75.0%		
Totals		25:50	4-11	9-11	3	21	24	16	13	63	8	18	2	3	23	GM FG% 25-50	50.0%		
Technical Fouls: NONE																			
Dead Ball Rebounds: 1, 0																			
<div> <div>Biggest lead</div> <div>25 (4th 3:17) 1 (2nd 9:25)</div> </div>																			
<div> <div>Best Scoring Run</div> <div>10 (2nd 2:48) 6 (4th 6:45)</div> </div>																			
<div> <div>Lead Changes</div> <div>2</div> </div>																			
<div> <div>Times Tied</div> <div>0</div> </div>																			
<div> <div>Time with Lead</div> <div>39:04 00:22</div> </div>																			
<div> <div>Points from Turnovers</div> <div>21 7</div> </div>																			
<div> <div>Paint</div> <div>44 34</div> </div>																			
<div> <div>Second Chance</div> <div>11 2</div> </div>																			
<div> <div>Fast Breaks</div> <div>12 0</div> </div>																			
<div> <div>Bench</div> <div>14 26</div> </div>																			



Official Basketball Box Score - Final

Kentucky at Indiana

11/14/21 Simon Skjott Assembly Hall, Bloomington

2021-22 Women's Basketball

Game Time: 5:00 PM

Game Duration: 1:52

Attendance: 5,334

Kentucky - 67

Record: 2-1

NO.	Name	Min	FG	3P	FT	Rebounds	Fouls	TP	AS	TO	ST	Blocks	BS	BA	+	Shooting By Period			
			M-A	M-A	M-A	OR DR TOT	PF									1st	2nd	3rd	4th
44	Dre'una Edwards	F 22:37	3-10	1-3	0-0	0 5 5	4 0	7	0	3	1	0	0	0	-16		1st FG%	6-16	37.5%
1	Robyn Benton	G 33:29	4-10	1-2	2-4	2 2 4	3 2	11	1	0	1	1	1	1	-19		3PT%	0-1	0.0%
3	Jasmine Massengill	G 33:42	2-5	0-0	0-0	1 1 2	4 2	4	2	1	0	0	0	0	-17		FT%	2-4	50%
10	Rhyné Howard	G 39:39	9-18	2-6	3-4	3 6 9	4 6	23	2	3	2	1	1	1	-22		2nd FG%	7-15	46.7%
12	Treasure Hunt	G 27:10	1-6	0-2	2-4	3 2 5	2 2	4	1	2	1	0	0	0	-7		3PT%	0-2	0.0%
00	Olivia Owens	F 12:40	1-3	0-0	0-0	0 0 0	4 1	2	0	2	0	1	1	1	-6		FT%	4-5	80%
11	Jada Walker	F 26:49	7-13	0-0	2-3	1 0 1	2 5	16	1	1	2	1	0	0	-18		3rd FG%	9-19	47.4%
34	Emma King	G 03:54	0-0	0-0	0-0	0 0 0	1 0	0	0	0	0	0	0	0	0		3PT%	2-3	66.7%
Team						2 2 4		0		0		0					FT%	1-2	50%
Totals			27:65	4-13	9-15	12 18 30	24 18	67	7	12	7	4	3	21			4th FG%	5-15	33.3%
																	3PT%	2-7	28.6%
																	FT%	2-4	50%
																	GM FG%	27-65	41.5%
																	3PT%	4-13	30.8%
																	FT%	9-15	60.0%

Technical Fouls: NONE

Dead Ball Rebounds: 3, 0

Indiana - 88

Record: 2-0

NO.	Name	Min	FG	3P	FT	Rebounds	Fouls	TP	AS	TO	ST	Blocks	BS	BA	+	Shooting By Period			
			M-A	M-A	M-A	OR DR TOT	PF									1st	2nd	3rd	4th
10	Aleksa Gulbe	F 36:10	4-7	0-0	0-0	2 7 9	3 0	8	1	2	1	2	0	12		1st FG%	9-16	56.3%	
54	Mackenzie Holmes	F 28:12	11-15	1-1	6-6	3 4 7	2 3	29	1	2	2	1	1	22		3PT%	2-3	66.7%	
4	Nicole Cardano-Hillary	G 34:10	4-6	3-5	1-2	0 6 6	1 5	12	7	4	2	0	0	19		FT%	0-0	0%	
14	Ali Patberg	G 33:25	6-10	1-1	3-3	0 2 2	4 4	16	5	1	0	0	0	17		2nd FG%	7-15	46.7%	
34	Grace Berger	G 36:38	6-16	1-2	6-8	3 6 9	4 9	19	4	3	0	0	0	1	22		3PT%	1-3	33.3%
22	Chloe Moore-McNeil	F 11:36	0-2	0-1	2-2	0 2 2	1 1	2	0	1	0	0	0	1	5		FT%	3-3	100%
23	Kiandra Browne	F 11:48	1-2	0-1	0-0	1 1 2	2 2	2	0	0	0	0	0	0	-1		3rd FG%	8-15	53.3%
5	Caillin Hose	G 03:09	0-0	0-0	0-0	0 0 0	0 0	0	0	0	0	0	0	0	1		3PT%	2-3	66.7%
3	Grace Waggoner	G 03:50	0-0	0-0	0-0	0 1 1	1 0	0	0	0	0	0	0	0	-1		FT%	9-12	75%
1	Kaitlin Peterson	F 01:02	0-1	0-0	0-0	0 0 0	0 0	0	0	0	0	0	0	0	0		4th FG%	8-13	61.5%
Team						2 0 2		0		1							3PT%	1-2	50.0%
Totals			32:59	6-11	19-21	11 29 40	18 24	88	18	14	5	3	4	21			GM FG%	32-59	54.2%
																	3PT%	6-11	54.5%
																	FT%	18-21	85.7%

Technical Fouls: NONE

Dead Ball Rebounds: 1, 0

	UKY	IND	Points from		UKY	IND	Period by Period Scoring				
Biggest lead	4 (1st 8:24)	22 (4th 1:38)	Turnovers	12	13	1st 2nd 3rd 4th TOT					
Best Scoring Run	6 (2nd 5:51)	11 (1st 3:00)	Point	34	44						
Lead Changes	1		Second Chance	13	20	UKY	14	18	21	14	67
Times Tied	3		Fast Breaks	8	14	IND	20	18	27	23	88
Time with Lead	02:54	34:45	Bench	18	4						

BOX SCORES

NCAA

Official Basketball Box Score - Final

Stanford at Indiana

11/25/21 Baha Mar Convention Center, Nassau

2021-22 Women's Basketball

Game Time: 1:30 PM

Game Duration: 1:47

Stanford - 69

Record: 4-1

Officials: Julie Kromenhoek, Kelsey Reynolds, Kelly Broomfield

NO.	Name	Min	FG	3P	FT	Rebounds	Fouls	TP	AS	TO	ST	Blocks	x/-		
			M/A	M/A	M/A	OR	OR					BS			
11	Ashten Precthel	F 15:50	3-7	0-3	0-0	3	3	6	1	6	1	0	0	4	
22	Cameron Brink	F 32:14	10-24	0-1	1-6	7	15	22	9	21	5	0	5	1	
3	Anna Wilson	G 16:35	1-3	0-1	0-0	1	2	3	1	0	2	0	0	0	
12	Lexie Hull	G 23:30	1-6	0-1	1-2	1	1	2	5	1	3	3	2	0	
24	Lexie Hull	G 24:41	2-4	0-0	1-2	1	7	8	3	1	7	1	1	0	
33	Hannah Jump	G 27:59	2-4	1-2	0-0	1	2	1	1	5	2	0	0	1	
5	Francesca Belbiti	G 17:40	6-11	0-0	2-4	2	3	5	1	4	14	2	1	1	
30	Haley Jones	G 21:48	3-8	0-1	0-2	5	5	5	2	8	2	1	1	0	
44	Kiki Iriafen	G 00:47	0-1	0-0	0-2	2	1	3	0	1	0	0	0	0	
2	Agnes Emma-Nnoku	G 01:54	0-0	0-0	0-0	0	0	0	0	0	0	0	0	0	
14	Jordan Hamilton	G 09:26	1-1	1-1	0-0	0	2	2	1	0	3	0	2	0	
21	Brogan Demetree	G 00:28	0-0	0-0	0-0	0	0	0	1	0	0	0	0	0	
10	Alyssa Jerome	G 05:56	0-1	0-0	0-0	0	0	0	0	0	1	1	0	0	
Team						1	0	1	0	0	0	0	0	0	
Totals			29-70	3-12	8-18	19	40	59	17	20	69	16	4	7	3

Shooting By Period	
1 st FG%	8-21 38.1%
3PT%	0-2 0.0%
FT%	1-4 25%
2 nd FG%	9-20 45.0%
3PT%	2-4 50.0%
FT%	0-0 0%
3 rd FG%	8-15 53.3%
3PT%	1-4 25.0%
FT%	1-2 50%
4 th FG%	4-14 28.6%
3PT%	0-2 0.0%
FT%	6-12 50%
GM FG%	29-70 41.4%
3PT%	3-12 25.0%
FT%	8-18 44.4%

Dead Ball Rebounds: 5

Technical Fouls: NONE

Indiana - 66

Record: 4-1

Officials: Julie Kromenhoek, Kelsey Reynolds, Kelly Broomfield

NO.	Name	Min	FG	3P	FT	Rebounds	Fouls	TP	AS	TO	ST	Blocks	x/-		
			M/A	M/A	M/A	OR	OR					BS			
10	Aleksa Gulbe	F 34:10	3-13	1-4	1-2	2	3	5	4	1	8	0	3	0	4
54	MacKenzie Holmes	F 32:35	3-12	0-0	0-0	4	6	10	4	6	1	1	2	3	
4	Nicole Cardano-Hillary	G 37:37	5-10	3-5	5-9	1	7	8	3	6	18	1	2	0	
14	Ali Platberg	G 34:39	7-14	1-3	4-4	0	1	1	3	5	19	1	2	1	
34	Grace Berger	G 37:02	4-19	0-1	4-6	1	5	6	2	3	12	7	2	4	
22	Chloe Moore-McNeil	G 06:50	1-1	1-1	0-0	0	2	2	0	0	3	0	0	0	
23	Kiandra Browne	G 12:00	0-2	0-0	0-0	0	2	2	4	0	0	0	0	0	
5	Gastlin Hose	G 03:52	0-0	0-0	0-0	0	0	0	0	0	0	0	0	0	
3	Grace Waggoner	G 01:15	0-0	0-0	0-0	0	0	0	0	1	0	0	0	0	
Team						3	1	4	0	0	0	0	0	0	
Totals			23-71	6-14	14-20	11	27	38	20	17	68	10	7	12	7

Shooting By Period	
1 st FG%	7-18 38.9%
3PT%	1-4 25.0%
FT%	0-2 0%
2 nd FG%	6-19 31.6%
3PT%	3-4 75.0%
FT%	5-6 83.3%
3 rd FG%	6-18 33.3%
3PT%	2-4 50.0%
FT%	4-4 100%
4 th FG%	4-16 25.0%
3PT%	1-5 20.0%
FT%	5-8 62.5%
GM FG%	23-71 32.4%
3PT%	6-14 42.9%
FT%	14-20 70.0%

Dead Ball Rebounds: 3

Technical Fouls: NONE

SFD

IND

Biggest lead

10 (2nd 6:10) / 4 (1st 5:47)

Best Scoring Run

8 (1st 3:40) / 7 (2nd 1:14)

Lead Changes

1

Times Tied

3

Time with Lead

34:12 / 04:22

Points from

SFD

IND

Turnovers

4

17

Paint

46

24

Second Chance

13

10

Fast Breaks

4

15

Bench

30

3

Period by Period Scoring

1st 2nd 3rd 4th TOT

SFD

17

20

18

14

69

IND

14

20

18

14

66

Official: Basketball Box Score - Final
Indiana at Miami (FL)
11/27/21 Baha Mar Convention Center, Nassau
2021-22 Women's Basketball

Game Time: 8:30 PM
Game Duration: 1:49

Indiana - 53

Record: 5-1

Officials: Jule Krommenhoek, Natasha Camy, Neonta Williams

NO. Name	Min	FG		3P		FT		Rebounds		Fouls		TP	AS	TO	Blocks		+/-
		M-A	M-A	M-A	M-A	M-A	M-A	OR	DR	TOT	PF				DD	SB	
10 Aleksa Gulbe	F 36:18	5-8	1-3	0-0		1	7	8				0	4	2	0	0	-2
54 Mackenzie Holmes	F 30:20	4-8	0-0	6-11		4	7	11		2	7	14	0	1	0	1	7
4 Nicole Cardano-Hillary	G 33:57	1-6	0-2	0-2		0	5	5		3	7	2	6	0	0	0	2
14 Ali Patberg	G 36:58	4-9	1-3	4-6		1	3	4		2	5	13	2	3	1	0	-7
34 Grace Berger	G 36:04	5-11	0-1	1-1		0	7	7		2	4	11	3	8	1	0	2
23 Kiandra Browne	G 10:03	0-0	0-0	0-0		0	4	4		3	0	0	1	2	0	0	-5
22 Chloe Moore-McNeil	11:59	1-2	0-0	0-1		0	1	1		2	2	2	2	0	0	0	5
1 Kaitlin Peters	00:39	0-0	0-0	0-0		0	0	0		0	0	0	0	0	0	0	4
3 Grace Waggoner	03:42	0-0	0-0	0-0		0	1	1		0	0	0	0	0	0	0	4
Team								1	1	2							
Totals		20-44	2-9	11-21		7	36	43	18	25	53	10	24	4	1	1	2

Technical Fouls: NONE

Shooting By Period		
1 st FG%	5-15	33.3%
3PT%	1-5	20.0%
FT%	6-8	75.0%
2 nd FG%	6-11	54.5%
3PT%	0-1	0.0%
FT%	3-4	75.0%
3 rd FG%	4-6	66.7%
3PT%	0-1	0.0%
FT%	1-6	16.7%
4 th FG%	5-12	41.7%
3PT%	1-2	50.0%
FT%	1-3	33.3%
GM FG%	20-44	45.5%
3PT%	2-9	22.2%
FT%	11-21	52.4%

Dead Ball Rebounds: 4, 2

Miami (FL) - 51


Record: 4-2

NO. Name	Min	FG		3P		FT		Rebounds		Fouls		TP	AS	TO	Blocks		+/-
		M-A	M-A	M-A	M-A	M-A	M-A	OR	DR	TOT	PF				DD	SB	
21 Leta Pendande	F 18:16	4-5	0-0	0-0		0	5	5		5	1	8	1	3	1	0	6
35 Naomi Mbando	F 27:25	2-6	1-2	2-2		0	2	2		3	3	7	2	2	0	0	-4
12 Ja'Leah Williams	G 35:09	2-8	0-3	1-3		1	2	3		2	3	5	1	1	4	0	0
20 Kelsey Marshall	G 32:39	8-19	3-9	1-1		1	3	4		3	3	20	1	2	4	0	4
25 Karla Enjavac	G 32:04	2-7	1-2	0-0		0	3	3		1	5	3	0	1	0	0	-4
33 Maeva Djadi-Tabdi	09:10	1-4	0-0	1-2		1	3	4		4	3	3	0	1	1	1	-8
34 Mounayna Johnson Sidi Baba	13:04	0-1	0-0	0-0		0	1	1		1	1	0	1	1	0	0	-10
5 Mykela Gray	11:16	0-4	0-2	0-0		0	1	1		1	0	0	1	1	0	0	-6
13 Lashae Dwyer	08:21	0-2	0-0	0-0		0	1	1		4	0	0	0	1	1	0	-3
4 Jasmine Roberts	06:04	1-1	0-0	0-0		0	1	1		0	1	2	1	0	0	0	11
22 Chiso Okafor	06:32	0-2	0-0	1-4		2	0	2		1	2	1	0	0	0	0	4
Team								0	1	1		0					
Totals		20-59	5-18	6-12		5	23	28	25	18	51	11	12	15	1	1	2

Technical Fouls: NONE

Dead Ball Rebounds: 2, 0

	IND	MIA	Points from Turnovers	IND	MIA	Period by Period Scoring					
Biggest lead	15 (2 nd 5:33)	4 (1 st 8:42)				4	21	1st	2nd	3rd	4th
Best Scoring Run	9 (1 st 0:19)	11 (4 th 0:43)	Paint	32	30	IND	17	15	9	12	53
Lead Changes	5		Second Chance	4	3						
Times Tied	2		Fast Breaks	4	8						
Time with Lead	35:14	02:41	Bench	2	6	MIA	11	15	12	13	51



Official Basketball Box Score - Final

NC State at Indiana

12/02/21 Simon Skjott Assembly Hall, Bloomington

2021-22 Women's Basketball

Game Time: 72:00 PM

Game Duration: 1:56

Attendance: 5,342

Officials: Gina Cross, Michael McConnell, Roy Rubyguyan

NC State - 66

Record: 7-1

NO. Name	Min	FG M-A	3P M-A	FT M-A	Rebounds OR DR TOT	Fouls PF FD	TP	AS	TO	ST	Blocks BS BA	+/-	Shooting By Period					
25 Kayla Jones	F 30:24	6-14	2-7	3-3	4 7 11	0 6	17	0	0	0	1 0 14		1 st FG%	5-13	38.5%			
33 Elissa Cunane	C 24:51	5-9	0-0	1-2	2 5 7 5	4 11	1 2	0	0	0	1 16		3PT%	1-3	33.3%			
2 Raina Perez	G 33:57	3-6	1-2	6-6	1 4 5 2	3 13	3 3	1	0	1 0 8		FT%	0-0	0%				
31 Kat Crutchfield	G 35:08	1-3	1-1	0-0	1 3 4 2	0 3	1 3	0	0	0 0 12		2 nd FG%	4-12	33.3%				
11 Jakia Brown-Turner	G 22:15	0-3	0-2	1-2	0 5 5 1	1 11	3 2	1	1 1 2			3PT%	2-5	40.0%				
41 Camille Hobby	08:02	0-1	0-0	0-0	0 0 0 0	3 0	0 0	1 0	0 0 0	-7		FT%	0-0	0%				
0 Diamond Johnson	28:39	7-16	2-5	3-4	0 6 6 4	2 19	3 3	3 3	0 1 2			3 rd FG%	7-17	41.2%				
5 Jadia Boyd	10:57	1-2	0-0	0-0	1 3 4 0	0 2	0 0	1 1	0 0 -1			3PT%	2-6	33.3%				
21 Madison Hayes	03:07	0-1	0-0	0-0	0 0 0 0	1 1	0 0	1 0	0 0 -5			FT%	1-2	50%				
32 Sophie Hart	01:39	0-0	0-0	0-0	0 0 0 0	0 0	0 0	0 0	0 0 -1			4 th FG%	7-13	53.8%				
Team					1 0 1		0	2					3PT%	1-3	33.3%			
Totals		23-55	6-17	14-17	10 33 43	18 17	66	11	16	5 4 3 8			GM FG%	23-55	41.8%			
														Technical Fouls: NONE				
														Dead Ball Rebounds: 1,0				

Indiana - 58

Record: 5-2

NO. Name	Min	FG M-A	3P M-A	FT M-A	Rebounds OR DR TOT	Fouls PF FD	TP	AS	TO	ST	Blocks BS BA	+/-	Shooting By Period					
10 Aleksa Gulbe	F 35:54	2-7	2-5	0-0	1 2 3 4	0 6	1 0	1 0	1 1 -9			1 st FG%	3-15	16.7%				
54 Mackenzie Holmes	F 32:21	9-14	2-4	4-6	3 1 4 0	3 24	6 2	0 2	0 1 0	-5		3PT%	1-7	14.3%				
4 Nicole Cardano-Hillary	G 33:54	0-10	0-6	0-0	1 3 4 1	1 4	0 3	4 2	0 1 -4			2 nd FG%	5-14	35.7%				
14 Ali Patberg	G 35:23	3-12	1-4	3-4	1 4 5 2	4 10	3 2	1 0	1 1 -14			3PT%	2-6	33.3%				
34 Grace Berger	G 34:13	5-15	0-1	0-0	1 8 9 3	2 10	5 3	2 2	1 0 0			FT%	2-2	100%				
22 Chloe Moore-McNeil	16:30	2-4	2-4	0-0	1 2 3 0	1 6	0 0	0 0	0 0 -6			3 rd FG%	5-15	33.3%				
23 Kiandra Browne	08:29	1-3	0-0	0-0	3 3 6 2	2 0	2 0	0 1	0 1 -1			3PT%	1-3	33.3%				
3 Grace Waggoner	03:16	0-0	0-0	0-0	0 1 1 2	1 1	0 0	1 0	0 0 -1			FT%	0-0	0%				
Team					0 0 0		0	1					4 th FG%	9-18	50.0%			
Totals		22-65	7-24	7-10	11 24 35	17 18	58	12	13	7 3 4 8			3PT%	3-8	37.5%			
														Technical Fouls: NONE				

		NCST	IND			Period by Period Scoring				
Biggest lead	11 (4 th 0:29)	5 (2 nd 0:50)	Points From Turnovers	12	11	1st	2nd	3rd	4th	TOT
Best Scoring Run	6 (3 rd 3:18)	5 (2 nd 6:27)	Paint	30	22					
Lead Changes	6		Second Chance	11	10					
Times Tied	2		Fast Breaks	9	6					
Time with Lead	26:25	12:52	Bench	21	8	IND	9	14	11	27 58

Dead Ball Rebounds: 2,0

Official Basketball Box Score - Final
Penn St. at Indiana
12/06/21 *Smen Sport Assembly Hall, Bloomington*
2021-22 Women's Basketball

Game Time: 6:00 PM
Game Date: 12/06/21
Attendance: 3,220

Penn St. - 40

Record: 4-5 (0-1)

Officials: Dee Kantner, Cameron Inouye, Tim Dwyer

NO. Name	Min	FG M-A	3P M-A	FT M-A	Rebounds OR DR TOT	Fouls PF FO	TP	AS	TO	ST	Blocks BS BA	+/-
11 Anna Camden	F 20:20	1-3	1-3	0-0	2 2 4	1 0 3	3	0	1	0	1 0	-22
1 Ali Brigham	C 26:05	4-10	0-0	0-0	1 2 3	4 1 8	1	1	1	2	0 3	-10
4 Nyia Beverly	G 35:59	0-3	0-2	0-0	2 2 3	2 0 0	1	2	2	0	0 0	-16
5 Lellani Kapiun	G 27:53	2-8	0-0	0-0	0 4 4	3 2 4	3	2	2	1 1	8	-9
20 Makenna Marisa	G 37:15	10-22	1-7	0-0	2 3 5	1 3 21	3	0	3	1 0	1 0	-31
22 Kelly Jekot	14:15	0-0	0-0	0-0	0 0 0	1 0 0	0	2	3	1 0	0 0	-16
15 Maddie Burke	21:31	1-5	0-3	0-0	0 3 3	1 0 2	0	3	1	0 0	0 0	-25
23 Shay Hagans	09:32	0-2	0-1	0-0	0 0 0	1 0 0	0	1	0	0 0	1 0	-9
0 Nyam Thornton	11:01	1-2	0-0	0-0	0 1 1	1 1 2	0	0	2	0 0	0 0	-12
12 Kayla Thomas	02:12	0-0	0-0	0-0	0 0 0	0 0 0	0	0	1	0 0	0 0	-7
10 Tova Sabel	03:57	0-1	0-0	0-0	0 0 0	1 0 0	0	0	0	0 0	1 0	-6
Team					0 2 2	0 0 0	0	0	3			
Totals		19-56	2-16	0-0	5 19 24	17 9 40	10	22	8	3 6	3 0	-30

Shooting By Period			
1 st FG	6-14	42.9%	
3PT%	1-3	33.3%	
FT%	0-0	0.0%	
2 nd FG	4-15	26.7%	
3PT%	0-5	0.0%	
FT%	0-0	0.0%	
3 rd FG	4-12	33.3%	
3PT%	1-4	25.0%	
FT%	0-0	0.0%	
4 th FG	5-15	33.3%	
3PT%	0-4	0.0%	
FT%	0-0	0.0%	
GM FG	19-56	33.9%	
3PT%	2-16	12.5%	
FT%	0-0	0.0%	

Technical Fouls: NONE

Dead Ball Rebounds: 2-0

Indiana - 70

Record: 6-2 (1-0)

NO. Name	Min	FG M-A	3P M-A	FT M-A	Rebounds OR DR TOT	Fouls PF FO	TP	AS	TO	ST	Blocks BS BA	+/-
10 Aleksa Gulbe	F 30:44	3-6	1-2	4-4	2 2 4	1 4 11	2	3	1	2 0	2 0	39
54 Mackenzie Holmes	F 25:09	7-10	0-0	2-2	3 3 6	0 1 16	0	1	1	2 0	0 24	
4 Nicole Cardano-Hillary	G 27:39	5-12	3-6	1-2	5 5 7	0 6 14	5	4	5	0 2	31	
14 Ali Patheng	G 30:38	6-23	3-12	0-3	3 3 3	1 15 23	0	3	0	0 0	33	
34 Grace Berger	G 31:34	3-8	0-0	4-4	0 6 6	1 2 10	4	2	1 0	1 1	33	
23 Kiandra Browne	12:13	1-1	0-0	0-0	3 3 0	1 2 0	1	0	1 0	1 0	12	
22 Chloe Moore-McNeil	18:07	1-1	0-0	0-0	3 3 0	1 2 0	1	0	1 0	0 0	5	
1 Kaitlin Peterson	10:25	0-4	0-3	0-2	0 1 1	3 1 0	0	1	1 0	0 0	-7	
3 Grace Waggoner	06:33	0-0	0-0	0-0	2 2 1	0 0 0	0	0	0 0	1 0	-6	
24 Mona Zaric	02:56	0-0	0-0	0-0	0 0 0	0 0 0	0	0	0 0	0 0	-6	
25 Anelle Wene	02:38	0-0	0-0	0-0	0 0 0	0 0 0	0	0	1 0	0 0	-6	
21 Keyarah Berry	01:24	0-0	0-0	0-0	0 0 0	0 0 0	0	0	1 0	0 0	-2	
Team					0 2 2	0 0 0	0	0	3			
Totals		26-51	6-14	12-16	7 30 37	9 17 70	13	18	9	6 3	3 30	

Shooting By Period			
1 st FG	7-11	63.6%	
3PT%	2-3	66.7%	
FT%	2-4	50.0%	
2 nd FG	7-17	41.2%	
3PT%	3-5	60.0%	
FT%	2-2	100%	
3 rd FG	7-14	50.0%	
3PT%	1-5	20.0%	
FT%	8-10	100%	
4 th FG	5-9	55.6%	
3PT%	0-1	0.0%	
FT%	0-2	0.0%	
GM FG	26-51	51.0%	
3PT%	6-14	42.9%	
FT%	12-16	75.0%	

Technical Fouls: NONE

Dead Ball Rebounds: 3-0

	PASU	IND
Biggest lead	4 (1 st 8:29)	3 (4 th 5:28)
Best Scoring Run	6 (1 st 8:29)	21 (3 rd 2:04)
Lead Changes	6	
Times Tied	1	
Time with Lead	03:32	35:58

Points from	PASU	IND
Turnovers	12	24
Paint	26	34
Second Chance	4	8
Fast Breaks	2	5
Bench	4	4

Period by Period Scoring					
	1st	2nd	3rd	4th	TOT
PASU	13	8	9	10	40
IND	18	19	23	10	70

34

BOX SCORES

Official Basketball Box Score - Final														
Indiana at Purdue														
01/16/22 Mackey Arena, West Lafayette														
2021-22 Women's Basketball														
Game Time: 2:00 PM														
Game Duration: 2:16														
Attendance: 8,505														
Officials: Tim Detry, Tara Cruss, Maggie Tieman														
Record: 14-2 (6-0)														
Indiana - 73														
NO. Name	Min	FG	3P	FT	Rebounds	Fouls	TP	AS	TO	ST	Blocks	BS	BA	+/-
10 Aleksa Gulbe	44:02	8-11	3-4	2-2	0 9 9	2 2	21	2	3	1	1	0	5	
23 Kiandra Browne	29:35	2-4	0-0	4-5	3 1 4	3 4	8	0	3	0	1	0	18	
14 Ali Patberg	42:10	4-16	2-4	0-0	0 4 4	2 4	10	4	3	2	2	0	6	
22 Chloe Moore-McNeil	42:47	4-13	1-7	1-2	0 6 6	3 4	10	1	0	0	1	1	9	
34 Grace Berger	45:00	9-17	0-0	6-8	0 6 6	2 4	24	6	2	0	1	3	5	
3 Grace Waggoner	13:15	0-2	0-1	0-1	0 2 2	2 0	0	0	0	1	0	1	-13	
1 Kaitlin Peterson	08:11	0-0	0-0	0-0	0 1 1	0 0	0	0	0	0	0	0	-5	
Team					7 3 10	0	0	0	0	0	0	0	0	
Totals	27:63	6-16	13-16	10-32	42 14 18	73	13	11	4	6	5	5		
Technical Fouls: NONE														
Shooting By Period														
1st FG%	5-14	35.7%												
3PT%	1-3	33.3%												
FT%	1-1	100%												
2nd FG%	7-14	50.0%												
3PT%	1-2	50.0%												
FT%	0-0	0%												
3rd FG%	6-16	37.5%												
3PT%	1-5	20.0%												
FT%	1-2	50%												
4th FG%	5-13	38.5%												
3PT%	1-2	50.0%												
FT%	8-8	100%												
OTFG%	4-6	66.7%												
3PT%	2-4	50.0%												
GM FG%	27-63	42.9%												
3PT%	6-16	37.5%												
FT%	13-18	72.2%												
Dead Ball Rebounds: 2, 0														
Purdue - 68														
Record: 11-6 (2-4)														
NO. Name	Min	FG	3P	FT	Rebounds	Fouls	TP	AS	TO	ST	Blocks	BS	BA	+/-
35 Rickie Wolman	18:31	2-3	0-0	0-0	0 3 3	1 0	4	0	0	0	1	0	-11	
5 Cassidy Hardin	42:58	2-6	1-4	0-0	0 3 3	2 1	5	1	1	0	1	0	-5	
10 Jeanne Terry	17:41	0-5	0-2	0-0	1 2 3	2 0	0	1	2	0	1	1	-4	
23 Abbey Ellis	43:50	8-17	1-2	2-4	4 4 8	4 3	19	4	0	0	0	1	-9	
33 Madison Layden	43:56	5-15	1-5	4-4	1 7 8	1 4	15	1	0	2	2	2	-2	
0 Brooke Moore	35:12	6-18	0-4	6-6	0 6 6	3 4	18	0	3	1	0	1	-1	
14 Ava Learn	22:52	3-4	0-1	1-2	0 5 5	5 2	7	0	0	0	1	0	5	
Team					4 0 4	0	0	0	0	0	0	0	0	
Totals	26:58	3-18	13-16	11-29	40 18 14	68	7	9	4	5	6	5		
Technical Fouls: NONE														
Shooting By Period														
1st FG%	6-16	37.5%												
3PT%	1-5	20.0%												
FT%	2-2	100%												
2nd FG%	7-14	50.0%												
3PT%	0-1	0.0%												
FT%	3-4	75%												
3rd FG%	4-12	33.3%												
3PT%	1-3	33.3%												
FT%	0-0	0%												
4th FG%	6-15	40.0%												
3PT%	1-5	20.0%												
FT%	8-8	100%												
OTFG%	3-11	27.3%												
3PT%	0-6	0.0%												
FT%	2-2	100%												
GM FG%	26-68	38.2%												
3PT%	3-18	16.7%												
FT%	13-16	81.2%												
Dead Ball Rebounds: 2, 0														
IND PUR														
Biggest lead	7 (1st OT: 36)	8 (4th 3:21)												
Best Scoring Run	9 (3rd 5:44)	7 (1st 5:51)												
Lead Changes	11													
Times Tied	9													
Time with Lead	10:33	26:37												
Points from Turnovers														
IND	9	12												
PUR	20	38												
Period by Period Scoring														
1st	2nd	3rd	4th	OT1	TOT									
IND	12	15	14	19	13	73								
PUR	15	17	9	19	8	68								

Official Basketball Box Score - Final

Indiana at Michigan

01/31/22 Crisler Center, Ann Arbor

2021-22 Women's Basketball

Game Time: 7:00 PM

Game Duration: 1:49

Attendance: 4,198

Officials: Tim Duley, Julie Kromenhoek, Mark Resch

Indiana - 50

Record: 14-3 (6-1)

NO. Name	Min	FG MA	3P MA	FT MA	Rebounds OR DR TOT	Fouls PF FD	TP	AS	TO	ST	Blocks BS BA	+/-
10 Alecia Gulbe	F 37:24	3-10	0-2	2-2	1 4 5	3 1	8	0	0	2	2 0 0	-14
23 Kiandra Browne	F 20:07	0-1	0-0	0-0	0 0 0	4 3	0	0	2	0	1 0 0	-16
4 Nicole Cardano-Hillary	G 37:51	6-15	3-7	1-2	2 3 5	2 3	16	2	2	8	0 1	-15
14 Ali Patberg	G 34:03	4-13	0-2	2-3	0 2 2	2 4	10	0	2	0	1 1 1	-8
34 Grace Berger	G 39:28	6-15	0-1	1-2	1 5 6	3 3	13	6	2	2	0 0	-15
3 Grace Waggoner	01:50	0-0	0-0	0-0	0 0 0	1 0	0	0	2	0	0 0	-3
22 Chloe Moore-McNeil	21:24	1-5	0-2	1-2	1 0 1	3 1	3	0	0	1	0 0	-12
1 Kaitlin Peterson	07:14	0-1	0-1	0-0	0 0 0	0 0	0	0	1	1	0 0	8
25 Arielle Wisne	00:39	0-0	0-0	0-0	0 0 0	0 0	0	0	0	0	0 0	0
Team					0 1 1	0	0	0	0	0	0	0
Totals		20-60	3-14	7-13	5 15 20	18 15	50	8	11	14	4 2	-15

Technical Fouls: NONE

Michigan - 65

Record: 19-2 (10-1)

NO. Name	Min	FG MA	3P MA	FT MA	Rebounds OR DR TOT	Fouls PF FD	TP	AS	TO	ST	Blocks BS BA	+/-
00 Naz Hillmon	F 37:15	8-14	0-0	5-7	2 3 5	2 5	21	1	4	0	0 2	16
33 Emily Kiser	F 31:59	2-5	0-1	0-0	4 12 16	2 2	4	1	4	2	1 1	11
3 Maddie Nolan	G 29:59	1-8	0-5	4-4	4 3 7	1 2	6	2	0	0	0 0	5
23 Danielle Rauch	G 34:42	3-9	0-4	0-0	0 7 7	0 3	6	1	5	0	0 0	16
32 Leigha Brown	G 19:44	4-5	1-1	2-2	0 4 4	4 2	11	3	4	0	0 0	8
11 Amy Dik	13:41	2-3	0-0	0-0	1 3 4	2 1	4	1	3	0	1 0	9
5 Laila Phella	24:13	5-10	0-0	1-2	2 2 4	2 1	11	0	3	1	0 1	13
44 Cameron Williams	02:57	0-0	0-0	0-0	0 1 1	1 1	0	0	1	0	0 0	0
30 Elise Stuck	05:30	1-1	0-0	0-0	1 0 1	1 1	2	1	1	0	0 0	-3
Team					0 3 3	0	0	0	0	0	0	0
Totals		26-55	1-11	12-15	14 38 52	15 18	65	10	25	3	2 4	15

Technical Fouls: NONE

	Ind	Mich	Points from Turnovers	Ind	Mich	Period by Period Scoring
Biggest lead	0 (1 st 10:00)	16 (4 th 8:47)	Paint	28	46	1st 2nd 3rd 4th TOT
Best Scoring Run	11 (2 nd 8:58)	10 (4 th 8:47)	Second Chance	0	14	Ind 14 16 6 14 50
Lead Changes	0	0	Fast Breaks	4	4	Mich 19 13 16 17 65
Times Tied	1	0	Bench	3	17	
Time with Lead	00:00	38:54				

BOX SCORES

Official Basketball Box Score - Final
Indiana at Illinois
02/09/22 State Farm Center, Champaign
2021-22 Women's Basketball

Game Time: 7:00 PM
Game Duration: 1:48
Attendance: 1,188

Officials: Doug Knight, Bryan Enterline, Jamie Broderick

Indiana - 93

Record: 17-3 (9-1)

NO.	Name	Min	FG M-A	3P M-A	FT M-A	Rebounds OR DR TOT	Fouls PF FD	TP	AS	TO	ST	Blocks BS BA	+/-
10	Aleksa Gulbe	F 29:00	5-10	1-3	7-8	2 5 7	1 5	18	1	2	0	1 0	40
23	Kiandra Browne	F 24:16	3-4	0-0	0-0	1 5 6	5 4	6	3	1	1	0 0	26
4	Nicole Cardano-Hillary	G 18:09	2-6	1-3	2-2	2 2 4	1 1	7	4	1	2	0 0	17
14	Ali Peilberg	G 30:00	9-15	4-9	4-5	1 0 1	1 3	26	2	1	1	0 0	23
34	Grace Berger	G 29:50	6-8	0-0	1-2	1 7 8	1 1	13	7	2	2	0 1	33
22	Chloe Moore-McNeil	28:07	4-7	1-3	0-0	1 1 2	4 1	9	0	1	1	1 1	24
3	Grace Waggoner	12:50	1-1	0-0	1-2	0 1 1	1 1	3	2	0	0	0 0	0
1	Kaitlin Peterson	18:05	4-7	3-4	0-1	1 0 1	2 1	11	0	0	0	1 1	1
25	Arielle Wisne	05:45	0-1	0-0	0-0	1 0 1	2 0	0	0	0	0	0 0	-1
24	Mona Zaric	03:58	0-0	0-0	0-0	0 0 0	1 0	0	1	1	0	0 0	-3
Team						1 3 4	0	1					
Totals			34-59	10-22	15-20	11 24 35	19 17	93	20	10	7	3 2	32

Technical Fouls: NONE

Illinois - 61

Record: 6-13 (1-7)

NO.	Name	Min	FG M-A	3P M-A	FT M-A	Rebounds OR DR TOT	Fouls PF FD	TP	AS	TO	ST	Blocks BS BA	+/-
44	Kendall Bostic	F 28:21	3-4	0-0	0-0	4 3 7	2 0	6	1	2	0	1 0	-23
0	Sara Anastasijska	G 12:46	1-3	1-2	0-0	0 0 0	1 1	3	0	4	0	0 0	-16
11	Jada Peewbles	G 25:41	0-6	0-2	0-0	0 0 0	2 0	0	0	0	0	1	-29
12	Jayla Oden	G 20:46	4-6	0-0	5-5	0 0 0	2 3	13	2	2	1	0 0	-15
32	Aaliyah Nye	G 27:38	3-6	1-3	2-5	1 2 3	1 1	3	9	1	0	1 0	-11
22	Eva Rubin	04:27	0-1	0-0	0-0	0 1 1	0 1	0	0	1	0	0 1	-9
5	De'Myla Brown	24:22	2-9	0-1	4-4	0 2 2	3 4	8	1	2	0	0 1	-22
24	Adalia McKenzie	25:49	6-12	0-0	2-2	1 3 4	3 2	14	0	1	1	0 0	-20
14	Geovana Lopes	12:15	3-6	0-0	1-2	0 1 1	2 1	7	2	1	3	1 0	-7
20	Erika Porter	05:41	0-0	0-0	1-2	0 1 1	1 2	1	0	1	0	0 0	-9
3	Sotape Amusan	12:14	0-1	0-1	0-0	2 0 2	0 2	0	0	0	0	0 0	1
Team						1 3 4	0	1					
Totals			22-54	2-9	15-20	9 16 25	17 19	61	7	15	6	2 3	32

Technical Fouls: NONE

	IND	ILL
Biggest lead	36 (4 th 3:21)	0 (1 st 10:00)
Best Scoring Run	14 (1 st 1:50)	6 (2 nd 4:20)
Lead Changes	0	
Times Tied	0	
Time with Lead	39:39	00:00

Points from	IND	ILL
Turnovers	21	9
Paint	42	28
Second Chance	17	8
Fast Breaks	4	12
Bench	23	30

Period by Period Scoring	1st	2nd	3rd	4th	TOT
IND	28	26	19	20	93
ILL	8	16	15	22	61

Dead Ball Rebounds: 3, 1