



INDIANA HOOSIERS

Indiana (7-3) vs. Oakland (5-4)

Saturday, December 17, 2016 • 5 p.m. ET • Simon Skjodt Assembly Hall • Bloomington, Ind.
Television: BTN Plus | Radio: WHCC105.com (Greg Murray) | Live Stats: IUHoosiers.com

2016-17 SCHEDULE

Date	Opponent	Time	TV/Result
11/11	PRESBYTERIAN		W, 71-37
11/13	VANDERBILT		W, 94-61
11/17	at Chattanooga		W, 79-76
11/19	at Western Kentucky		L, 85-74
11/23	UMASS LOWELL		W, 79-45
11/27	at Auburn		L, 71-67
ACC/BIG TEN CHALLENGE			
12/1	at NC State		L, 84-70
12/6	at North Texas		W, 94-64
12/8	NORTHERN KENTUCKY		W, 100-49
12/11	VALPARAISO		W, 87-58
12/17	OAKLAND	5 p.m.	BTN+
FLORIDA SUNSHINE CLASSIC			
12/20	Florida	7:45 p.m.	
12/21	Stony Brook	7:45 p.m.	
12/28	at Penn State*	7 p.m.	BTN+
12/31	OHIO STATE*	3 p.m.	CBS
1/4	MINNESOTA*	7 p.m.	BTN+
1/10	at Michigan*	6 p.m.	BTN
1/14	at Northwestern*	3 p.m.	BTN+
1/19	PURDUE*	8 p.m.	BTN
1/23	PENN STATE*	7 p.m.	BTN
1/29	at Wisconsin*	3 p.m.	BTN+
2/2	at Michigan State*	6 p.m.	BTN
2/5	MARYLAND*	12 p.m.	ESPN2
2/8	at Rutgers*	7 p.m.	BTN+
2/11	NORTHWESTERN*	12 p.m.	BTN
2/16	MICHIGAN*	6 p.m.	BTN
2/19	at Nebraska*	3 p.m.	BTN+
2/22	IOWA*	7 p.m.	BTN+
2/25	at Illinois	TBA	BTN
3/1-3/5	Big Ten Tournament	TBA	TBA

All homes games in **BOLD CAPS**

* Big Ten Conference game
BTN - Big Ten Network televised game
ESPN/ESPN2/ESPNU - ESPN family televised game
CBS - CBS Sports televised game
All Times Eastern

THE OPENING TIP

Non-conference play inside Simon Skjodt Assembly Hall wraps up on Saturday afternoon when Indiana Women's Basketball hosts Oakland. Tipoff is set for 5 p.m. ET and will be live on BTN Plus and WHCC105.com with Greg Murray.

PROJECTED STARTERS (based on last game)

Indiana Hoosiers					Oakland Golden Grizzlies				
Head Coach: Teri Moren					Head Coach: Jeff Tungeat				
Career Record: 241-161 (14th Season)					Career Record: 45-54 (4th Season)				
Indiana Record: 42-31 (3rd Season)					Oakland Record: Same				
NO.	PLAYER	HT	POS.	YR.	NO.	PLAYER	HT	POS.	YR.
3	Tyra Buss	5-8	G	Jr.	5	Sha'Keya Graves	5-9	G	R-Jr.
21	Karlee McBride	5-10	G	Sr.	11	Hannah Little	6-1	F	R-Sr.
23	Alexis Gassion	5-11	G	Sr.	21	Nola Anderson	5-9	G	Sr.
33	Amanda Cahill	6-2	F	Jr.	22	Taylor Gleason	5-8	G	R-Jr.
43	Jenn Anderson	6-3	C	Sr.	23	Leah Somerfield	6-1	F	Jr.

2016-17 ROSTER

#	Name	Ht.	Pos.	Yr.	Hometown/High School/Previous College
2	Amber Deane	5-10	G	Sr.	Lathrup Village, Mich./Detroit County Day/Dayton
3	Tyra Buss	5-8	G	Jr.	Mt. Carmel, Ill./Mt. Carmel
5	Ria Gulley	5-9	G	Fr.	San Antonio, Texas/Tom C. Clark
11	Kym Royster	6-2	F	So.	Newark, Ohio/Newark
13	Darby Foresman	6-3	F	Fr.	Indianapolis, Ind./Heritage Christian
14	Laken Wairau	5-10	G	So.	Christchurch, New Zealand/Christchurch Girls'
21	Karlee McBride	5-10	G	Sr.	Erie, Pa./Villa Maria
22	Tia Elbert	5-7	G	R-So.	Oakdale, Minn./Tartan/Marquette
23	Alexis Gassion	5-11	G	Sr.	Fairborn, Ohio/Fairborn
24	Tyshee Towner	5-9	G	Sr.	Aurora, Ill./East Aurora/Wabash Valley College
31	Bre Wickware	6-1	F	Fr.	Denton, Texas/Guyer
33	Amanda Cahill	6-2	F	Jr.	Clyde, Ohio/Clyde
43	Jenn Anderson	6-3	C	Sr.	Sheridan, Ind./Westfield
44	Danielle Williams	6-4	C	So.	Fort Worth, Texas/North Crowley

Head Coach: Teri Moren
Assistant Coach: Rhet Wierzba
Assistant Coach: Janese Banks
Assistant Coach: Glenn Box

Director of Operations: Liz Honegger
Director of Player Development: Briana Bass
Athletic Trainer: Robert Black
Video Coordinator: Erin McKinney
Graduate Managers: Mistie Bass, Eddie Praley

Pronunciation Guide

Cahill: CAY-hill
Gassion: GASS-ee-un
Moren: MORE-in
Ria: Ree-uh
Tyshee: TIE-shee
Wairau: WHY-doe

2016-17 RADIO/TV ROSTER



2 • Amber Deane
Sr. • G • 5-10
Lathrup Village, Mich./
Dayton



3 • Tyra Buss
Jr. • G • 5-8
Mt. Carmel, Ill./Mt. Carmel



5 • Ria Gulley
Fr. • G • 5-9
San Antonio, Texas /Tom C.
Clark



11 • Kym Royster
So. • F • 6-2
Newark, Ohio/Newark



13 • Darby Foresman
Fr. • F • 6-3
Indianapolis, Ind./Heritage
Christian



14 • Laken Wairau
So. • G • 5-10
Christchurch, New Zealand/
Christchurch Girls'



21 • Karlee McBride
Sr. • G • 5-10
Erie, Pa./Villa Maria



22 • Tia Elbert
R-So. • G • 5-7
Oakdale, Minn./Tartan



23 • Alexis Gassion
Sr. • G • 5-11
Fairborn, Ohio/Fairborn



24 • Tyshee Towner
Sr. • G • 5-9
Aurora, Ill./East Aurora



31 • Bre Wickware
Fr. • F • 6-1
Denton, Texas/Guyer



33 • Amanda Cahill
Jr. • F • 6-2
Clyde, Ohio/Clyde



43 • Jenn Anderson
Sr. • F • 6-3
Sheridan, Ind./Westfield



44 • Danielle Williams
So. • F • 6-4
Fort Worth, Texas/North
Crowley



Teri Moren
Head Coach • Third Year



Rhet Wierzba
Assistant Coach • Third Year



Janese Banks
Assistant Coach • First Year



Glenn Box
Assistant Coach • First Year

VERSUS THE OPPONENT

2016-17 STATS (ALL GAMES)

OU	Category	IU
82.8	Points Per Game	81.5
63.1	Points Allowed Per Game	63.0
+19.7	Scoring Margin	+18.5
.433	Field Goal Percentage	.506
.390	Opponent Field Goal Percentage	.406
.306	3-Pt. Field Goal Percentage	.359
.329	Opp. 3-Pt. Field Goal Percentage	.279
.641	Free Throw Percentage	.684
44.0	Rebounds Per Game	38.3
5.3	Rebounding Margin	+10.1
15.2	Assists Per Game	17.2
14.6	Turnovers Per Game	14.2
13.2	Steals Per Game	9.2
2.3	Blocks Per Game	3.0

ABOUT THE GRIZZLIES

Oakland comes to Bloomington after dropping a home contest to Ball State (66-59) on Sunday, Dec. 11. The Hoosiers are one of three teams from the Big Ten that the Golden Grizzlies have visited this season as they also have losses at Michigan (101-63) and Michigan State (81-74). They are led by five players who average double figures including sophomore guard Taylor Jones who comes off the bench for 16.1 points per game. Redshirt junior guards Taylor Gleason (13.3 ppg.) and Sha'Keya Graves (10.7 ppg.) round out the top three scorers while redshirt senior forward Hannah Little adds 10.4 points and a team-high 11.7 rebounds per game. Oakland averages 82.2 points per game this season on a 43.3 field goal percentage.

Series History vs. Oakland

Indiana leads, 2-0
Last Meeting: 12/20/14 - W, 88-61 (Rochester, Mich.)

19 IN A ROW

Indiana continued the program's longest win streak on its home court on Sunday with the 87-58 victory over Valparaiso. The 19-straight wins are also the sixth longest active streak in the NCAA as IU has put together a 5-0 records inside Simon Skjodt Assembly Hall this season.

HORIZON LEAGUE SWING

The Hoosiers will continue to entertain Horizon League opponents on Sunday when it welcomes Valparaiso. IU is fresh off a win over another league foe Northern Kentucky and will host Oakland on Sunday. All-time, IU is 29-12 against current members of the Horizon League.

GOOD FROM THE FIELD

Posting a 58.9 field goal percentage in the last three games combined, Indiana currently ranks third in the nation with an overall shooting percentage of 50.6 percent. It ranks behind the national leader Maryland (51.9) and California (51.0). IU shot above 53 percent in all three wins last week including the fourth-best single game mark of 64.0 percent at North Texas on Dec. 6.

REACHING THE CENTURY MARK

IU scored 100 points for the first time since the 2014-15 season in the 100-49 win over Northern Kentucky. It was just the second time under third year head coach Teri Moren, whose team scored 115 points in her IU debut against Gardner Webb in 2014-15. Six players also scored in double figures led by 16 points from senior guard Karlee McBride. Junior forward Amanda Cahill (14), junior guard Tyra Buss (14), sophomore forward Kym Royster (13) and senior forward Jenn Anderson (12) all recorded double-digits, also the first time since 2014-15 that IU has had six players score in double figures.

CLEAN THE GLASS

The Hoosiers have dominated on the glass. Against the Mean Green on Dec. 6, Indiana posted a +31 margin (44-14) which is the largest since the record has been kept track of beginning in 2008-09. It bested a previous high of 28 against St. Louis in the 2008-09 season. IU was also able to easily outrebound

Northern Kentucky on Thursday night, recording a 49-22 mark on the glass. In three games last week, IU outrebounded its opponents 132-65 overall.

GASSION'S CONTRIBUTIONS

Senior guard Alexis Gassion continues to provide a steady offensive threat for Indiana as she has scored in double-figures in eight games this season and is the team's second leading scorer averaging 13.9 points and 6.2 rebounds per game. The Fairborn, Ohio native is coming off her fifth career double-double (10 points, 15 rebounds) against Northern Kentucky. Her team-high 43 assists (4.3 per game) ranks eighth in the Big Ten while her assist-to-turnover ratio (2.5) ranks 37th in the nation and fifth in the Big Ten. In addition, she has played the most minutes of any Hoosier this season, averaging 31.4 minutes per game and has committed a combined eight fouls through ten games.

POINTS IN THE PAINT

Indiana continues to produce a majority of its points inside the paint this season as it scored a season-high 64 points against Northern Kentucky. It marked the sixth time this season IU has scored at least 44 points in the lane and reached 50 or more for the second time (50, vs. Presbyterian).

BUSS CAN CLIMB THE BOOKS

Buss can continue to put her mark on the IU record books as she sits in reaching distance of a few categories. She moved her way into No. 16 all-time on the list on Sunday as she finished with 12 points and now has 1,177 points. She is also three assists and seven steals away from reaching the top 10 on both respective career lists.

47 AND COUNTING

Buss continues to reach new scoring heights as she extended her double-figure scoring streak to 47 games, with 12 points in Sunday's win over Valparaiso. She extended her streak - which dates back to her freshman season - and marks the 65th overall game she's reached double figures - out of the 74 games played in her career. The current IU record stands at 49 consecutive double figure scoring games

2016-17 QUICK FACTS

School	Indiana University
Location	Bloomington, Ind.
Enrollment	48,514
Founded	1820
Nickname	Hoosiers
Colors	Cream and Crimson
Conference	Big Ten
Arena (Capacity)	Simon Skjodt Assembly Hall (17,472)
Assembly Hall Press Row	812-855-2754
University President	Michael A. McRobbie
Athletics Director	Fred Glass

COACHING STAFF

Head Coach	Teri Moren
Alma Mater, Year	Purdue, 1992
Record at Indiana (Years)	42-31 (3rd year)
Career Record (Years)	241-161 (14th year)
Assistant Coaches	Rhet Wierzba Janese Banks Glenn Box
Director of Operations	Liz Honegger
Director of Player Development	Briana Bass
Video Coordinator	Erin McKinney
Basketball Office Phone	(812) 855-3013

TEAM INFORMATION

Starters Returning/Lost	5/0
Letterwinners Returning/Lost	10/2

2015-16 IN REVIEW

Overall Record	21-12
Big Ten Record (Regular Season Finish)	12-6 (4th)

TEAM HISTORY

First Year of Women's Basketball	1971-72
Record (Years)	703-602 (46th year)
Big Ten Record (Years)	251-337 (35th year)
Big Ten Regular-Season Titles	1 (1983)
Big Ten Tournament Titles	1 (2002)
NCAA Tournament Appearances (Record)	5 (2-5)
Last NCAA Tournament Appearance	2016

ATHLETICS MEDIA RELATIONS

Women's Basketball SID	Megan Kramper
Office Phone	812-856-4053
Cell Phone	618-334-5321
E-mail	mkramper@indiana.edu
Fax	812-855-9401
Press Row Phone	812-855-2754
Mailing Address	Athletics Media Relations Assembly Hall, 1001 East 17th St. Bloomington, IN 47408
Athletics Web Site	IUHoosiers.com Women's Basketball
Basketball on Twitter	@IndianaWBB
Teri Moren on Twitter	@TeriMoren
Basketball on Facebook	/IndianaWBB
Basketball on Snapchat	IndianaWBB



CAREER BY THE NUMBERS

CAREER DOUBLE-FIGURE SCORING GAMES

Tyra Buss.....	65
Amanda Cahill.....	58
Alexis Gassion.....	55
Karlee McBride.....	26
Jenn Anderson.....	22
Kym Royster.....	8
Tyshee Towner.....	1
Amber Deane.....	1
Tia Elbert.....	1

CAREER 20-PLUS POINT SCORING GAMES

Tyra Buss.....	22
Amanda Cahill.....	5
Alexis Gassion.....	5
Jenn Anderson.....	1

CAREER DOUBLE-DOUBLES

Amanda Cahill.....	20
Alexis Gassion.....	5
Tyra Buss.....	5
Kym Royster.....	1
Jenn Anderson.....	1

CAREER DOUBLE-FIGURE REBOUNDING GAMES

Amanda Cahill.....	24
Alexis Gassion.....	11
Tyra Buss.....	4
Jenn Anderson.....	4
Lyndsay Leikem.....	1
Kym Royster.....	1

CAREER FIVE-PLUS ASSIST GAMES

Tyra Buss.....	29
Alexis Gassion.....	17
Amanda Cahill.....	3

CAREER THREE-PLUS STEALS GAMES

Tyra Buss.....	27
Alexis Gassion.....	12
Amanda Cahill.....	12
Karlee McBride.....	6
Tyshee Towner.....	1

CAREER THREE-PLUS 3-POINT FG MADE GAMES

Karlee McBride.....	15
Tyra Buss.....	10
Alexis Gassion.....	7
Amanda Cahill.....	2

CAREER STARTS

Alexis Gassion.....	91
Tyra Buss.....	74
Amanda Cahill.....	74
Jenn Anderson.....	61
Karlee McBride.....	20
Tyshee Towner.....	11
Kym Royster.....	6
Ria Gulley.....	4
Amber Deane.....	2

and is held by Karna Abram who did it between 1985-86 and 1986-87.

BUSS NAMED TO NAISMITH PRESEASON WATCH LIST

Junior guard Tyra Buss has been named to the Naismith Trophy Women's Preseason Watch List, announced by the Atlanta Tipoff Club on Nov. 30. Buss is one of 50 players from around the country and one of nine players from the Big Ten on the list for women's college basketball's player of the year honor. Each year the club's board publishes the "Naismith Watch" list that is made up of the top 50 players to watch in men's and women's college basketball. The organization also releases a list of 30 mid-season Naismith candidates.

KYM'S BIG WEEK

Sophomore forward Kym Royster put together a nice week for herself coming off the bench for the Hoosiers. The Newark, Ohio native went 16-for-20 from the field (80 percent) to average 11.7 points and grabbed 3.3 rebounds per game. She posted back-to-back double figure games with 13 points each at North Texas and Northern Kentucky and went a perfect 6-for-6 against the Mean Green. She also combined for 10 rebounds in the three games last week.

CAHILL'S CONSISTENCY

Junior forward Amanda Cahill has been a constant presence for the Hoosiers not only this season but in her career. Through nine games this season, the Clyde, Ohio native has grabbed at least six rebounds in every game and scored in double figures in eight of those contests. She recorded her 19th career double-double in Tuesday's win at North Texas (15 points, 10 rebounds) and is shooting 50 percent from the field on the season. In addition, Cahill is the team's leading rebounder (8.2) and the third-leading scorer (12.9). In addition, Cahill recorded her 600th rebound in Sunday's win over Valpo.

JENN FROM ANYWHERE

Senior forward Jenn Anderson continues to provide productive minutes for Indiana this season either in the starting lineup or off the bench. The Sheridan, Ind. native tied her season-high 12 points in Thursday's win over Northern Kentucky and tied a career-high 11 rebounds against Western Kentucky.

She made her way into the starting lineup for the first time against North Carolina State and started the last three games. Anderson is also shooting a team-high 61.1 percent from the floor, which is the third-best average in the Big Ten. In addition, she averages 7.7 points and 4.9 rebounds per outing and saw a season-high 27 minutes of play against the Hilltoppers.

CHANGES IN THE STARTING FIVE

Indiana continues to move around its starting lineup which featured a new look against North Carolina State. Seniors Karlee McBride and Jenn Anderson made their first starts of the season at North Carolina State as IU used its third different variation of the starting five this season.

WICKWARE'S HOMECOMING

IU's game at North Texas was extra special for freshman forward Bre Wickware who played in front of a hometown crowd on Dec. 6. The Denton, Texas native scored a season-high five points and tied her season-high five rebounds in the victory over the Mean Green.

ANOTHER CAREER-NIGHT FOR BUSS

Junior guard Tyra Buss continues to shine for the Hoosiers as she poured in a new career-high 38 points in Thursday's ACC/Big Ten Challenge loss to North Carolina State. She finished the game just two points shy of the all-time single game scoring record (40, Karna Abram) and in a tie for the fourth-best performance in school history. She is also the first player to score more than 30 points in a game since the 2013-14 season and bested her previous career-high by nine points (29, vs. IPFW).

CAHILL NAMED NOMINEE FOR ALLSTATE WBCA GOOD WORKS TEAM

Junior forward Amanda Cahill was selected as a nominee for the Allstate WBCA Good Works Team, announced on Wednesday morning. The Allstate WBCA Good Works Team® recognizes players at all levels of college basketball whose charitable involvement and altruistic acts stand out amongst all other student-athletes participating in the sport. Cahill, an elementary education major, is one of 64 Division I nominees for the Allstate WBCA Good Works team. The Clyde, Ohio native volunteers time with Hoosier HEROES, Indiana's Student-Athlete Advisory Committee (SAAC), IU Best Buddies, Camp Riley, Andrew Luck Change the Play camp, Hoosier Outrun Cancer and the Candy Stripe Crew event

IUWBB Team Schedule and Media Availability - Dec. 18-24 (subject to change)

Sunday Dec. 18	Monday Dec. 19	Tuesday Dec. 20	Wednesday Dec. 21	Thursday Dec. 22	Friday Dec. 23	Saturday Dec. 24
TBD	TRAVEL TO FLORIDA	GAME vs. Florida (at Sunshine Classic)	GAME vs. Stony Brook	TRAVEL BACK TO BLOOMINGTON	OFF	OFF
	NO RADIO SHOW					

among others. This past summer, Cahill spent three weeks teaching English, coaching basketball and life skills to disadvantaged children in rural Vietnam.

GASSION HITS 1,000

Senior guard Alexis Gassion became the 25th player to score 1,000 points in the Nov. 23 win over UMass Lowell. Gassion's team-high 18 points was enough to push her over the career mark and puts two 1,000 point active scorers on Indiana's roster. Junior guard Tyra Buss scored her 1,000th career point earlier this season and the duo becomes the first 1,000 point scorers in program history since 2008-09. With her 1,062 career points, the Fairborn, Ohio native ranks 21st in all-time scoring.

700 WINS

On Nov. 23, Indiana recorded the program's 700th win with a victory over UMass Lowell. IU now holds an all-time program record of 703-602 in its 46 year history.

PICK YOUR POCKET

IU's 18 steals not only helped elevate it to a win over UMass Lowell on Thanksgiving eve, it tied for the most under the Teri Moren era and most in two seasons. It tied the highest output by the Hoosiers since it posted back-to-back 18 steal games to open the 2014-15 season.

IT'S BEEN A WHILE

Indiana's 94-61 victory over Vanderbilt on Nov. 13 marked the first time it has defeated an SEC foe in the regular season for the first time since 2006. The Hoosiers previously defeated SEC member Georgia in the first round of the NCAA tournament last season and will meet three schools from the league this season in non-conference play (Vanderbilt, Auburn and Florida).

FASTEST TO 1,000

Junior guard Tyra Buss made history on Nov. 13 when she became the fastest player in school history to 1,000 points. Buss's transition layup in the second quarter pushed her over the 1,000 point threshold and the 24th player in school history to do so. The Mt. Carmel, Ill. native has now scored 1,177 points, which moves her into 16th on the all-time scoring list.

GULLEY GETS THE NOD

Freshman guard Ria Gulley picked up her first career start in her first career game in cream and crimson on Friday night. She becomes the first freshman to start since teammates Amanda Cahill and Tyra Buss each started their freshmen campaigns. The San Antonio, Texas native scored six points in her debut and has started four games for IU this season.

INDIANA ADDS FIVE FOR 2017

On Nov. 10, IU announced it has signed five players to national letters of intent for the 2017-18 season. A trio of guards (Jaelynn Penn, Keyanna Warthen, Bendu Yeane) and duo of forwards (Linsey Marchese, Alexis Johnson) will all have four years

of eligibility when they arrive in Bloomington next season. ProspectsNation.com ranks the Class of 2021 as the No. 13 class in the country. It was also heralded as one of the best classes in the Big Ten by ESPN, ProspectsNation, Dan Olson and others.

ITS (ALMOST) ALL COMING BACK

With the return of 10 letterwinners from a season ago, Indiana returns 93 percent of its scoring and 91 percent of its rebounding in 2016-17. All five top scorers also return including all three -- Tyra Buss, Amanda Cahill and Alexis Gassion -- who averaged double figures last season. Buss and Cahill return off All-Big Ten campaigns a season ago and join starters seniors Karlee McBride, Alexis Gassion and Jenn Anderson who all return this season.

HOOSIERS PICKED TO FINISH THIRD; BUSS NAMED PRESEASON ALL-BIG TEN

For the first time in program history, Indiana has been selected to finish third in the Big Ten by a vote of the league's coaches and media, released on Monday, Oct. 24. IU was selected to finish third outright by the media while the coaches elected a tie between Michigan State and Indiana. Junior guard Tyra Buss was selected as a preseason All-Big Ten pick as she earned a unanimous selection by the coaches and a spot on the media team as well.

FRESH FACES

While the Hoosiers return their top five starters from the 2015-16 NCAA Tournament campaign, they welcome some fresh faces to the bench for the 2016-17 season. Redshirt sophomore Tia Elbert will finally make her cream and crimson debut after transferring from Marquette a season ago while also welcoming fifth-year graduate senior Amber Deane (Dayton) to the mix. Three new freshmen also work into the fold with Texas natives Ria Gulley and Bre Wickware along with Indianapolis native Darby Foresman joining the squad. On the coaching side, third year and Big Ten Coach of the Year Teri Moren added Janese Banks and Glenn Box to her staff in the offseason. Banks arrives in Bloomington after spending the last two seasons at nearby IUPUI while Box joins the Hoosiers after two seasons at Saint Louis.

MAJOR TV TIME

IU will be featured a total of nine times on national television broadcasts including games on CBS and ESPN2. The Hoosiers will meet Ohio State on New Year's Eve on CBS Sports while ESPN2 will be inside Simon Skjodt Assembly Hall when reigning Big Ten champ Maryland visits on February 5.

HOME COURT ADVANTAGE GETS BETTER

Fans will notice a new look - and a new name - to Simon Skjodt Assembly Hall this season. It's in thanks to a \$40-million-dollar gift from IU alumna Cindy Simon Skjodt, which updates the historic venue with new fan amenities and modern technology. Just a few of the most notable changes are the South Lobby entrance, Ken Nunn Champions Plaza, new scoreboard with HD quality video screens, updated and improved rest rooms.

HOOSIERS ON NATIONAL TELEVISION

Indiana will be on national television nine times guaranteed during the 2016-17 regular season. The Hoosiers can also be seen throughout the season on BTN Plus, which is a web streamed broadcast through BTN2Go.com (all times Eastern). All 14 home games of the season will be aired on some platform.

CBS Sports Television Broadcast

vs. Ohio State.....Dec. 31, 3 p.m.

ESPN2 Television Broadcast

vs. Maryland.....Feb. 5, 12 p.m.

BTN Television Broadcasts

at MichiganJan. 10, 6 p.m.
vs. Purdue.....Jan. 19, 8 p.m.
vs. Penn StateJan. 23, 7 p.m.
vs. Michigan StateFeb. 2, 6 p.m.
vs. Northwestern.....Feb. 11, 12 p.m.
vs. Michigan.....Feb. 16, 6 p.m.
vs. IllinoisFeb. 25, TBA

BTN Plus

vs. Oakland.....Dec. 17, 5 p.m.
at Penn State.....Dec. 28, 7 p.m.
vs. Minnesota.....Jan. 4, 7 p.m.
at Northwestern.....Jan. 14, 3 p.m.
at WisconsinJan. 29, 3 p.m.
at Rutgers.....Feb. 8, 7 p.m.
at Nebraska.....Feb. 19, 3 p.m.
vs. IowaFeb. 22, 7 p.m.

INDIANA ON THE RADIO

The Hoosiers can be heard all season long on the flagship station for IU women's basketball, Hoosier Country WHCC 105.1 FM. Selected games can also be heard throughout the year on the state-wide IU Radio Network. Greg Murray is in his third season as the voice of Indiana Women's basketball.

IU RADIO NETWORK GAMES

vs. Minnesota.....Jan. 4, 7 p.m.
at Northwestern.....Jan. 14, 3 p.m.
vs. Purdue.....Jan. 19, 8 p.m.
vs. Penn StateJan. 23, 7 p.m.
at Michigan StateFeb. 2, 6 p.m.
at Rutgers.....Feb. 8, 7 p.m.
vs. Northwestern.....Feb. 11, 12 p.m.
vs. Michigan.....Feb. 16, 6 p.m.
at Nebraska.....Feb. 19, 3 p.m.
vs. IowaFeb. 22, 7 p.m.

BIG TEN STANDINGS (AS OF 12/15/16)

Team	B1G	Pct.	Overall	Pct.
Maryland	0-0	.000	11-0	1.000
Northwestern	0-0	.000	9-1	.900
Michigan St.	0-0	.000	9-2	.818
Penn State	0-0	.000	8-2	.778
Michigan	0-0	.000	9-3	.750
Iowa	0-0	.000	8-3	.727
Ohio State	0-0	.000	8-3	.727
Indiana	0-0	.000	7-3	.700
Minnesota	0-0	.000	8-4	.667
Purdue	0-0	.000	8-4	.667
Illinois	0-0	.000	4-6	.400
Nebraska	0-0	.000	4-6	.400
Wisconsin	0-0	.000	4-8	.333
Rutgers	0-0	.000	3-9	.250

NCAA STAT RANKINGS (AS OF 12/15/16)

TEAM

Assist/Turnover Ratio	1.2, 32nd
Assists	172, 30th
Assists Per Game	17.2, 36th
Field-Goal Percentage	.506, 3rd
Free Throw Attempts	212, 27th
Rebounding Margin	+10.1, 28th
Scoring Offense	81.5, 21st
Scoring Margin	18.5, 27th
Free Throws Made	145, 32nd

INDIVIDUAL

Assist/Turnover Ratio	Alexis Gassion	2.5, 35th
Field Goal %	Alexis Gassion	56.0, 45th
Points	Tyra Buss	195, 23rd
Free Throws Attempts	Tyra Buss	63, 21st
Free Throws Made	Tyra Buss	50, 15th
Points Per Game	Tyra Buss	19.5, 21st
Steals	Tyra Buss	30, 17th
Steals Per Game	Tyra Buss	3.0, 26th
Three Point FG %	Tyra Buss	.447, 47th

BIG TEN STAT RANKINGS (AS OF 12/15/16)

TEAM

Scoring Offense	81.5, 3rd
Scoring Margin	+18.5, 3rd
Field Goal %	.506, 2nd
3PT Field Goal %	.359, 3rd
3PT Field Goal % Defense	.279, 5th
Rebounding Defense	28.2, 1st
Rebounding Margin	+10.1, 3rd
Assists	17.2, 5th
Steals	9.2, 3rd
Turnover Margin	+2.7, T4th
Assist/Turnover Ratio	1.2, 3rd
Defensive Rebounding Pct.	.732, 2nd
Offensive Rebounding Pct.	.411, 2nd

INDIVIDUAL

Scoring	Tyra Buss	19.5, T6th
Rebounding	Amanda Cahill	8.2, 7th
FG Percentage	Jenn Anderson	.611, 5th
3PT FG Percentage	Tyra Buss	.447, 3rd
Assists	Alexis Gassion	4.3, 8th
Steals	Tyra Buss	3.0, 2nd
	Amanda Cahill	2.2, 5th
3PT FG Made Per Game	Tyra Buss	2.1, T6th
Ast/TO Ratio	Amber Deane	2.8, T3rd
	Alexis Gassion	2.5, T3rd
Offensive Rebounds	Amanda Cahill	3.6, 3rd

A GLANCE AT THE SCHEDULE

The Hoosiers will yet again face another challenging schedule in the 2016-17 season, including nine teams that made postseason appearances last year. NCAA Tournament foes include Chattanooga (Nov. 17), at Auburn (Nov. 27), Florida (Dec. 20) and Big Ten rivals Ohio State (Dec. 31), Purdue (Jan. 19), Michigan State (Feb. 2), and Maryland (Feb. 5). IU will hit the road for the Big Ten/ACC Challenge this season, heading to North Carolina State on Dec. 1 while also facing the likes of Vanderbilt (Nov. 13) and travel to Western Kentucky (Nov. 19) before league play begins.

CAHILL VISITS VIETNAM

During the offseason, junior forward Amanda Cahill spent three weeks abroad in Vietnam with Coach for College program through the IU Excellence Academy. Coach for College is a service learning program founded in 2007 by former Duke women's tennis player Parker Goyer. It pairs student-athletes from the US with Vietnamese university students to teach academics, sports and life skills at summer camps to disadvantaged children in rural Vietnam.

INDIANA MAKES THE NCAA TOURNAMENT

Indiana made its fifth appearance in the NCAA Tournament in the 2015-16 season with an at-large bid into the 64-field tournament. It was the first tournament appearance for the Hoosiers since 2002 and first at-large bid into the Big Dance since 1995. IU again made history when it won its first tournament game since 1983 in a 62-58 defeat of Georgia in the first round. The Hoosiers went dancing previously in 1983, 1994, 1995 and 2002. IU's last at-large bid prior was in 1995. The 2002 Hoosiers earned their way into the Big Dance by winning the Big Ten Tournament title. The 1983 tournament featured 36 teams and the field has been 64 teams in all of IU's NCAA Tournament appearances since then.

HOOSIERS WITH BEST BIG TEN FINISH IN 18 YEARS

Indiana finished in fourth place in the Big Ten standings in 2015-16 regular season, the program's best conference finish since tying for third in 1997-98. IU's No. 4 seed in this year's Big Ten Tournament tied for the program's best conference tourney seed with that 1997-98 team. Indiana's top four Big Ten finish this year marked the eighth time in school history that IU had finished in fourth place or better in the final standings.

TERI MOREN NAMED BIG TEN COACH OF THE YEAR

Indiana head coach Teri Moren was named 2015-16 Big Ten Coach of the Year in a vote by the conference coaches and media. Moren became the second Indiana head coach to be named Big Ten Coach of the Year, the first being Maryalyce Jeremiah in 1983. Moren led the 2015-16 Hoosiers to 20 wins, the most regular season victories in program history, and a fourth place finish in the Big Ten standings with a 12-6 record in conference play. IU's fourth place finish was the school's best since tying for third overall in 1997-

98, which was also the only other time in program history that the Hoosiers earned a No. 4 seed in the Big Ten Tournament. The Seymour, Ind., native earns her first career conference Coach of the Year award at the Division I level. Moren was named Great Lakes Valley Conference Coach of the Year in 2003. Moren has won 20 games in a season in two of the last three years (20 wins at Indiana State in 2013-14).

BUSS, CAHILL GET ALL-BIG TEN NODS

Tyra Buss and Amanda Cahill earned All-Big Ten accolades as announced by the conference office on Feb. 29. Buss was named First Team All-Big Ten by the conference coaches and the media. Cahill earned Second Team All-Big Ten honors as voted on by the media and was an honorable mention in the coaches ballot. Buss became the first Indiana player to earn First Team recognition since 2006 (Cyndi Valentin) as it is the first time a pair of Indiana players earned All-Big Ten recognition in the same season since 2010.

WHAT A DIFFERENCE A YEAR MAKES

From 2014-15 to 2015-16, Indiana improved its overall win total by six games, its Big Ten win total by eight games and improved on a 12th-place finish in the conference standings last year to fourth place this season. The improvement of eight wins in conference play and the jump from 12th to fourth place are the biggest leaps between two seasons in program history in each of those categories.

INDIANA SETS SCHOOL MARK FOR MOST REGULAR SEASON WINS

With the win over Penn State on Feb. 27, the Hoosiers ended the regular season with 20 wins, the most regular season victories in school history. The program record for most overall victories (including Big Ten Tournament and postseason games) is 21 (5 times).

SECOND MOST BIG TEN VICTORIES AT IU

The PSU win allowed the Hoosiers to finish the Big Ten schedule with a 12-6 record in conference play. The 12 wins are the second most Big Ten victories in a single year in school history and the first time IU has won 12 conference games since 1982-83 when the Hoosiers won a share of the Big Ten title with a 15-3 record.

MOST ROAD BIG TEN WINS SINCE 2008-09

Indiana picked up its third Big Ten road victory on Feb. 24 at Nebraska, marking the program's most conference regular season road wins in a single year since 2008-09. IU won five Big Ten contests on the road that season.

TOP 25 POLLS

**ASSOCIATED PRESS WEEK 6 POLL
DECEMBER 12, 2016**

Rank	School	Record	Points
1	Connecticut (33)	9-0	825
2	Notre Dame	9-1	764
3	Baylor	10-1	761
4	Maryland	10-0	742
5	Mississippi State	9-0	676
6	South Carolina	7-1	657
7	Florida State	10-1	625
8	Louisville	8-2	574
9	UCLA	7-1	565
10	Stanford	8-1	520
11	Washington	10-1	490
12	Ohio State	8-3	424
13	Miami	8-1	415
14	West Virginia	10-0	406
15	Colorado	9-0	286
16	Texas	3-4	268
17	DePaul	6-3	225
18	Duke	10-1	217
19	Kentucky	7-3	189
20	Oklahoma	7-2	187
21	Syracuse	8-3	162
22	South Florida	7-0	153
23	Arizona State	6-2	137
24	Virginia Tech	10-0	112
25	Oregon	7-1	75

Others receiving votes: Oregon State 68, Green Bay 49, Kansas State 44, California 29, **Florida 23**, Oklahoma State 15, **Northwestern 10**, USC 9, Texas A&M 9, **Auburn 7**, Gonzaga 4, UNLV 1, **Vanderbilt 1**, **Michigan State 1**

**USA TODAY COACHES WEEK 6 POLL
DECEMBER 13, 2016**

Rank	School	Record	Points
1	Connecticut (32)	9-0	800
2	Notre Dame	9-1	753
3	Maryland	11-0	725
4	Baylor	10-1	723
5	Mississippi State	9-0	656
6	South Carolina	7-1	644
7	Florida State	10-1	606
8	Louisville	8-2	554
9	UCLA	7-1	553
10	Stanford	8-1	511
11	Washington	10-1	474
12	Miami	8-1	416
13	Ohio State	8-3	409
14	West Virginia	10-0	376
15	Oregon State	6-1	283
16	DePaul	6-3	269
17	Texas	3-4	230
18	Syracuse	8-3	215
19	South Florida	7-0	185
20	Duke	10-1	175
21	Arizona State	6-2	154
22	Oklahoma	7-2	137
23	Kentucky	7-3	124
24	California	9-0	110
25	Virginia Tech	10-0	75

Others receiving votes: Colorado 54, Green Bay 51, Oregon 27, **Michigan State 26**, Oklahoma State 26, Texas A&M 15, **Florida 11**, **Northwestern 9**, **Michigan 7**, Kansas State 6, Gonzaga 4, **Auburn 3**, Georgia Tech 2, **Penn State 1**, Tennessee 1

Bold indicates Indiana opponent in 2016-17

STREAKS

TEAM

Current Streak.....	Won 3
Current Home Streak.....	Won 19
Current Road Streak.....	Won 1
Current Conference Streak.....	Won 2

INDIVIDUAL

Consecutive Games With a Point	
74.....	Gassion, Cahill, Buss
Consecutive Games With a Rebound	
74.....	Amanda Cahill
Consecutive Games With Double Digit Scoring	
47.....	Tyra Buss
Consecutive Games With an Assist	
65.....	Tyra Buss
Consecutive Games With a Steal	
37.....	Tyra Buss
Consecutive Games With a Block	
1.....	Buss

SEASON

Wins.....	3 (2x, last 12/6/16-present)
Home Wins.....	5 (11/11/16-present)
Road Wins.....	1 (12/6/16-present)
Conference Wins.....	N/A

STARTERS

11-11-16 vs. Presbyterian	Buss	Gulley	Gassion	Cahill	Royster
11-13-16 vs. Vanderbilt	Buss	Gulley	Gassion	Cahill	Royster
11-17-16 at Chattanooga	Buss	Gulley	Gassion	Cahill	Royster
11-19-16 at Western Kentucky	Buss	Gulley	Gassion	Cahill	Royster
11-23-16 vs. UMass Lowell	Buss	Deane	Gassion	Cahill	Royster
11-27-16 at Auburn	Buss	Dean	Gassion	Cahill	Royster
12-1-16 at North Carolina State	Buss	McBride	Gassion	Cahill	Anderson
12-6-16 at North Texas	Buss	McBride	Gassion	Cahill	Anderson
12-8-16 vs. Northern Kentucky	Buss	McBride	Gassion	Cahill	Anderson
12-11-16 vs. Valparaiso	Buss	McBride	Gassion	Cahill	Anderson

DOUBLE-DOUBLES

Amanda Cahill
12 points, 11 rebounds (vs. Presbyterian)
15 points, 10 rebounds (at North Texas)
Alexis Gassion
10 points, 15 rebounds (vs. Northern Kentucky)
Tyra Buss
14 points, 10 assists (vs. Northern Kentucky)

THE HOOSIERS WHEN...

Home.....	5-0
Away.....	2-3
Neutral.....	0-0
Playing in overtime.....	0-0
Leading at half.....	7-1
Trailing at half.....	0-2
Tied at half.....	0-0
IU outrebounds an opponent.....	6-2
IU gets outrebounded.....	1-1
Ties in rebounds.....	0-0
IU shoots 50 percent or better.....	6-0
IU shoots less than 50 percent.....	1-3
Opponent shoots 50 percent or better.....	0-0
Opponent shoots less than 50 percent.....	7-3
IU shoots 70 percent or better from FT line.....	2-2
IU shoots less than 70 percent from FT line.....	5-1
Opponent shoots 70 percent or better from FT line.....	2-3
Opponent shoots less than 70 percent from FT line.....	5-0
IU makes more free throws than opponent.....	6-0
IU makes less free throws than opponent.....	1-3
IU is equal in free throws as opponent.....	0-0
IU hits 5 or less 3-pointers.....	4-1
IU hits 6-9 3-pointers.....	3-2
IU hits 10+ 3-pointers.....	0-0
IU scores 59 points or fewer.....	0-0
IU scores between 60-69 points.....	0-1
IU scores between 70-79 points.....	3-2
IU scores between 80-89 points.....	1-0
IU scores 90+ points.....	3-0
Holding opponent to 59 points or fewer.....	4-0
Holding opponent to between 60-69 points.....	2-0
Opponent scores more than 70 points.....	1-3
IU wins offensive glass.....	5-2
IU loses offensive glass.....	2-1
Ties offensive glass.....	0-0
IU wins defensive glass.....	5-1
IU loses defensive glass.....	1-2
Ties defensive glass.....	1-0
IU has 10 or fewer turnovers.....	1-0
IU has more than 10 turnovers.....	6-3
Leading with five minutes left in regulation.....	7-1
Trailing with five minutes left in regulation.....	0-2
Tied with five minutes left in regulation.....	0-0
Three IU players score in double figures.....	1-2
Four IU players score in double figures.....	4-0
Five IU players score in double figures.....	0-0
Six IU players score in double figures.....	1-0
Margin is 5 points or fewer.....	1-1
Margin is 6-10 points.....	0-0
Margin is 11-20 points.....	0-2
Margin is 20 or more points.....	6-0
Playing on Monday.....	0-0
Playing on Tuesday.....	1-0
Playing on Wednesday.....	1-0
Playing on Thursday.....	2-1
Playing on Friday.....	1-0
Playing on Saturday.....	0-1
Playing on Sunday.....	2-1
Playing in November.....	4-2
Playing in December.....	3-1
Playing in January.....	0-0
Playing in February.....	0-0
Playing in March.....	0-0
Night Games.....	3-1
Day Games.....	4-2



TERI MOREN

HEAD COACH

THIRD YEAR AT INDIANA • 14TH YEAR OVERALL AS COLLEGE HEAD COACH

PERSONAL

DATE OF BIRTH: April 14, 1969

HOMETOWN: Seymour, Ind.

HIGH SCHOOL: Seymour High School

COLLEGE: Purdue (1992)

COACHING EXPERIENCE

BUTLER UNIVERSITY

1992-98: Assistant Coach

NORTHWESTERN UNIVERSITY

1998-00: Assistant Coach

UNIVERSITY OF INDIANAPOLIS

2000-07: Head Coach

GEORGIA TECH

2007-10: Associate Head Coach

INDIANA STATE UNIVERSITY

2010-14: Head Coach

INDIANA UNIVERSITY

2014-Present: Head Coach

- Indiana University Vice President and Director of Athletics Fred Glass announced the hiring of Seymour, Ind., native Teri Moren as head coach of the IU women's basketball program on August 9, 2014.

- In just her second season at the helm of the IU program in 2015-16, Moren led the Hoosiers to the most regular season wins (20) in program history while also tying for overall wins (21) in a single season. Indiana had the school's second-most Big Ten victories (12) ever on her way to being named Big Ten Coach of the Year. She became just the second IU coach to earn the award (Maryalyce Jeremiah, 1983).

- Moren led IU to the program's first NCAA Tournament berth in 14 years as Indiana was the No. 9 seed in the Lexington Region. The Hoosiers won their first NCAA Tournament game since 1983 with a 62-58 triumph over eighth-seeded Georgia in the first round at Notre Dame.

- Indiana's 21 wins marked the sixth time in program history that IU had won at least 21 games in a season as its 12 Big Ten victories were the school's most since 1982-83.

- Moren's 2015-16 Hoosiers finished fourth in the Big Ten, the school's highest conference finish in 18 years, and earned a No. 4 seed in the Big Ten Tournament, tying for the program's highest seed ever in conference tournament play.

- IU went a perfect 14-0 at home in Assembly Hall, marking the most home wins ever without a defeat and tying for the most overall home victories in a single year in program history. The women's team combined with the IU men's basketball program to go a perfect 31-0 inside of Assembly Hall in 2015-16 for the first unblemished home season in school history between both men's and women's basketball teams.

- Indiana defeated three ranked opponents during the season, tying for the program's most wins over ranked foes in regular season play. The Hoosiers also won their most road Big Ten games in seven years.

- During her first year in Bloomington in 2014-15, Moren led the Hoosiers to the program's best scoring average (71.9 ppg) since 1995-96, the best team free throw percentage (74.3 percent) since 2003-04 and the most steals (284) since 2010-11. IU nailed 236 3-point field goals, the second best total in school history, and also cracked the top five in program history in free throw percentage (4th), points scored (5th, 2,229), points per game (5th) and 3-point field goal percentage (5th, 33.1 percent).

- The 2014-15 Hoosiers became the first team ever in program history to achieve back-to-back games

of 18 steals as IU tallied that total against Gardner-Webb and Valparaiso in consecutive games to begin the year.

- Indiana also set single game records for scoring (115) and 3-pointers made (16) in the season opening win over Gardner-Webb on Nov. 15, 2014. IU also tied the school mark for field goals made in that game (46).
- Off the court, Moren's team achieved a team grade point average of 3.23 in 2014-15.

- Before arriving in Bloomington, Moren spent four seasons as head coach at Indiana State University where she led the Sycamores to their first 20-win season in eight years in 2013-14 before taking the job at Indiana.

- In her four years at Indiana State, Moren guided the Sycamores from a middle of the pack Missouri Valley Conference (MVC) team in her first year to a conference championship program in 2013-14, including a postseason tournament appearance in the WNIT. Twice in her four years, Moren led the Sycamores to a WNIT berth while six players earned All-MVC honors.

- In 2013-14, point guard Bilqis Abdul-Qaadir earned MVC Newcomer of the Year recognition as senior Anna Munn was named MVC Scholar-Athlete of the Year.

- ISU finished with a 20-12 record in 2013-14, the program's first 20-win season in eight years and just the fifth 20-win campaign in school history. With a 14-4 record in conference games, Moren's Sycamores won a share of the regular season MVC title and earned the No. 1 overall seed in the MVC Tournament. Moren led Indiana State to six-straight victories and seven wins in eight games to end the regular season last year to secure a share of the MVC crown. It was only the third time in program history that ISU won a regular season conference championship and the first since 2006.

- In 2012-13, Moren's Sycamores finished with an 18-13 record, the program's most wins in six years at the time. ISU went 10-8 in conference play, its most MVC victories in four seasons, to finish fourth in the MVC standings.

- The Sycamores would go on to play in the WNIT for the first time since 2006. Moren's 2012-13 team set a program record for fewest points allowed per game (55.5 ppg) while holding 10 opponents to less than 50 points.

- In her second year at ISU in 2011-12, Moren led the Sycamores to a fifth place finish in the MVC.

- During her first year at the helm in 2010-11, Moren

won the most games by a first year coach in ISU history as the Sycamores played into the semifinals of the 2011 MVC Tournament.

- Prior to ISU, Moren was associate head coach at Georgia Tech. In each of her three years there, the Yellow Jackets made an NCAA Tournament appearance and won 22 or more games each season.

- Moren began her head coaching career just up the road at the University of Indianapolis. She spent seven seasons at UlIndy beginning in 2000-01.

- The 2003 WBCA Region 4 Coach of the Year in NCAA Division II, her teams went to three consecutive NCAA Division II Tournaments and earned Great Lakes Valley Conference regular season and tournament titles in 2003. That squad finished with a 29-3 record overall and an 18-2 mark in conference play.

- Moren began her coaching career in 1992-93 at Butler as an assistant coach for six years, leading the Bulldogs to three 20-win seasons. Moren then

spent two years as an assistant at Northwestern.

- A 1992 graduate of Purdue University, Moren earned her bachelor's degree in therapeutic recreation. She was a four-year basketball letterwinner and two-year starter for the Boilermakers under Women's Basketball Hall of Fame Coach Lin Dunn. She was part of three NCAA Tournament teams and Purdue's first Big Ten championship.

- Moren graduated from Seymour High School in 1987 and was named an Indiana All Star that year. She led the Owls to four sectional titles, two regional championships, a semi-state win and a 1987 state finals appearance. She was inducted into the Indiana Basketball Hall of Fame on April 26, 2014

MOREN VS. OPPONENTS

Auburn	0-1
Austin Peay	1-0
Belmont	1-1
Boston College	1-0
Bradley	7-1
Butler	2-2
Chattanooga	2-1
Chicago State	2-0
Creighton	1-3
DePaul	0-1
Detroit	1-0
Drake	3-3
East Tennessee State	1-1
Eastern Illinois	3-1
Evansville	5-2
FIU	0-1
Furman	1-0
Gardner-Webb	1-0
Georgia	1-0
Georgia Tech	1-0
Illinois	3-0
Illinois (Chicago)	2-0
Illinois State	4-2
Incarnate Word	1-0
Indiana	0-2
Indiana State	1-1
Iowa	1-2
IPFW	2-0
IUPUI	2-2
Kansas State	0-1
Loyola	2-1
LSU	0-1
Marquette	0-1
Marshall	2-0
Maryland	0-3
Miami (Fla.)	0-1
Michigan	1-3
Michigan State	2-1
Milwaukee	1-0
Minnesota	1-2
Missouri State	4-3
Morehead State	1-0
Nebraska	2-1
Northern Kentucky	1-0
NC State	0-1
North Texas	1-0
Northern Illinois	1-1
Northern Iowa	4-5
Northwestern	2-2
Notre Dame	0-2
Oakland	1-0
Ohio	0-1
Ohio State	0-3
Penn State	2-1
Presbyterian	1-0
Purdue	1-2
Rutgers	1-3
Saint Louis	1-0
Samford	1-0
SIU Edwardsville	1-0
Southern Illinois	8-0
South Alabama	1-0
Stetson	0-1
Tennessee State	1-0
Tulane	0-1
UMass Lowell	1-0
USC Upstate	1-0
UT Martin	3-1
Vanderbilt	1-0
Valparaiso	2-0
Western Kentucky	1-0
Western Michigan	1-0
West Virginia	0-1
Wichita State	3-4
Wisconsin	1-1
Yale	1-0
Youngstown State	0-1

YEAR-BY-YEAR HEAD COACHING RECORD

YEAR	SCHOOL	OVERALL	CONF.	NOTES
2000-01	Indianapolis	14-13	10-10	
2001-02	Indianapolis	15-11	11-9	
2002-03*^	Indianapolis	29-3	18-2	NCAA Tournament GLVC Regular Season Champions GLVC Tournament Champions
2003-04	Indianapolis	23-9	14-6	NCAA Tournament GLVC Tournament Runner-up
2004-05	Indianapolis	22-10	12-8	NCAA Tournament GLVC Tournament Runner-up
2005-06	Indianapolis	11-16	6-13	
2006-07	Indianapolis	16-11	9-10	
2010-11	Indiana State	16-16	8-10	
2011-12	Indiana State	15-16	9-9	
2012-13	Indiana State	18-13	10-8	WNIT
2013-14	Indiana State	20-12	14-4	WNIT MVC Regular Season Champions
2014-15	Indiana	15-16	4-14	
2015-16*	Indiana	21-12	12-6	NCAA Tournament
2016-17	Indiana	7-3	0-0	
TOTALS		242-161	137-109	

* = Conference Coach of the Year ^ = WBCA Regional Coach of the Year

MOREN VS. CONFERENCE RECORDS

Big Ten	17-24	Horizon	6-1
SEC	2-2	Ivy League	1-0
ASUN	1-0	MAAC	0-1
AAC	0-1	MAC	2-2
ACC	1-4	MVC	41-31
A10	1-0	OVC	11-3
American East	1-0	SoCon	6-2
Big 12	0-2	Southland	1-0
Big East	2-4	Summit League	4-2
Big South	1-0	Sun Belt	1-0
Conference USA	3-2	WAC	2-0

2016-17 STATISTICS (ALL GAMES)

THE STAT CREW SYSTEM
Indiana Combined Team Statistics (as of Dec 11, 2016)
All games

RECORD:	OVERALL	HOME	AWAY	NEUTRAL
ALL GAMES	7-3	5-0	2-3	0-0
CONFERENCE	0-0	0-0	0-0	0-0
NON-CONFERENCE	7-3	5-0	2-3	0-0

##	Player	gp-gs	min	Total		3-Point		F-Throw		Rebounds				pf	dq	a	to	blk	stl	pts	avg	
				fg-fga	fg%	3fg-fga	3fg%	ft-fa	ft%	off	def	tot	avg									
03	Tyra Buss	10-10	313	31.3	62-129	.481	21-47	.447	50-63	.794	4	23	27	2.7	29	1	42	21	2	30	195	19.5
23	Alexis Gassion	10-10	314	31.4	56-100	.560	3-12	.250	24-34	.706	14	48	62	6.2	8	0	43	17	4	9	139	13.9
33	Amanda Cahill	10-10	310	31.0	46-92	.500	11-31	.355	26-35	.743	36	46	82	8.2	28	3	29	24	6	22	129	12.9
43	Jenn Anderson	10-4	203	20.3	33-54	.611	0-0	.000	11-16	.688	21	28	49	4.9	23	0	4	9	8	1	77	7.7
11	Kym Royster	10-6	159	15.9	30-49	.612	0-0	.000	6-13	.462	15	23	38	3.8	26	1	2	11	4	4	66	6.6
21	Karlee McBride	10-4	151	15.1	17-58	.293	13-38	.342	5-7	.714	2	12	14	1.4	14	0	13	8	0	9	52	5.2
22	Tia Elbert	10-0	125	12.5	16-32	.500	1-6	.167	4-10	.400	1	12	13	1.3	17	0	17	14	0	5	37	3.7
02	Amber Deane	10-2	105	10.5	11-26	.423	1-7	.143	11-14	.786	4	3	7	0.7	15	0	14	5	1	4	34	3.4
13	Darby Foresman	8-0	69	8.6	12-16	.750	0-0	.000	0-1	.000	8	12	20	2.5	7	0	2	4	2	2	24	3.0
05	Ria Gulley	9-4	115	12.8	8-21	.381	6-14	.429	1-3	.333	0	3	3	0.3	3	0	2	10	1	2	23	2.6
24	Tyshee Towner	9-0	69	7.7	9-14	.643	0-0	.000	3-4	.750	2	6	8	0.9	8	0	2	3	0	0	21	2.3
31	Bre Wickware	9-0	62	6.9	7-15	.467	0-1	.000	3-10	.300	6	16	22	2.4	15	0	2	9	2	4	17	1.9
44	Danielle Williams	2-0	4	2.0	0-0	.000	0-0	.000	1-2	.500	0	0	0	0.0	1	0	0	2	0	0	1	0.5
14	Laken Wairau	2-0	1	0.5	0-1	.000	0-0	.000	0-0	.000	0	0	0	0.0	0	0	0	0	0	0	0	0.0
Team											21	17	38				5					
Total.....		10	2000		307-607	.506	56-156	.359	145-212	.684	134	249	383	38.3	194	5	172	142	30	92	815	81.5
Opponents.....		10	2000		222-547	.406	51-183	.279	135-186	.726	91	191	282	28.2	197	-	104	169	30	66	630	63.0

TEAM STATISTICS	IND	OPP	Date	Opponent	Score	Att.
SCORING	815	630	11/11/16	PRESBYTERIAN COLLEGE	w 71-37	2422
Points per game	81.5	63.0	11/13/16	VANDERBILT	w 94-61	3029
Scoring margin	+18.5	-	11/17/16	at Chattanooga	w 79-76	1709
FIELD GOALS-ATT	307-607	222-547	11/19/16	at WKU	L 74-85	1832
Field goal pct	.506	.406	11/23/16	UMASS LOWELL	w 79-45	2670
3 POINT FG-ATT	56-156	51-183	11/27/16	at Auburn	L 67-71	1752
3-point FG pct	.359	.279	12/01/16	at NC State	L 70-84	2203
3-pt FG made per game	5.6	5.1	12/6/16	at North Texas	w 94-64	2164
FREE THROWS-ATT	145-212	135-186	12/8/16	NORTHERN KENTUCKY	w 100-49	2207
Free throw pct	.684	.726	12/11/16	VALPARAISO	w 87-58	2611
F-Throws made per game	14.5	13.5				
REBOUNDS	383	282				
Rebounds per game	38.3	28.2				
Rebounding margin	+10.1	-				
ASSISTS	172	104				
Assists per game	17.2	10.4				
TURNOVERS	142	169				
Turnovers per game	14.2	16.9				
Turnover margin	+2.7	-				
Assist/turnover ratio	1.2	0.6				
STEALS	92	66				
Steals per game	9.2	6.6				
BLOCKS	30	30				
Blocks per game	3.0	3.0				
ATTENDANCE	12939	9660				
Home games-Avg/Game	5-2588	5-1932				
Neutral site-Avg/Game	-	0-0				

* - Conference game

Score by Periods	1st	2nd	3rd	4th	Totals
Indiana	213	190	228	184	815
Opponents	128	157	160	185	630

2015-16 STATISTICS (BIG TEN GAMES)

RECORD:	OVERALL	HOME	AWAY	NEUTRAL
ALL GAMES	12-6	9-0	3-6	0-0
CONFERENCE	12-6	9-0	3-6	0-0
NON-CONFERENCE	0-0	0-0	0-0	0-0

#	Player	gp-gs	min	avg	Total		3-Point		F-Throw		Rebounds					pts	avg					
					fg-fga	fg%	3fg-fga	3fg%	ft-fa	ft%	off	def	tot	avg	pf			dq	a	to	blk	stl
03	Tyra Buss	18-18	687	38.2	104-242	.430	25-74	.338	103-137	.752	11	90	101	5.6	42	0	84	63	4	42	336	18.7
33	Amanda Cahill	18-18	563	31.3	102-210	.486	21-58	.362	54-70	.771	55	114	169	9.4	54	4	49	47	17	21	279	15.5
23	Alexis Gassion	18-18	624	34.7	71-178	.399	10-31	.323	38-54	.704	13	59	72	4.0	25	0	71	22	15	24	190	10.6
43	Jenn Anderson	18-17	468	26.0	64-118	.542	0-0	.000	36-50	.720	54	63	117	6.5	54	1	12	20	12	9	164	9.1
21	Karlee McBride	18-14	414	23.0	47-136	.346	31-92	.337	24-34	.706	1	31	32	1.8	42	1	29	27	0	18	149	8.3
11	Kym Royster	18-0	208	11.6	34-58	.586	0-0	.000	24-31	.774	26	37	63	3.5	33	1	5	24	15	1	92	5.1
02	Jess Walter	18-4	324	18.0	22-72	.306	10-42	.238	7-12	.583	0	17	17	0.9	24	0	18	17	1	0	61	3.4
24	Tyshee Towner	15-0	129	8.6	5-23	.217	0-4	.000	9-12	.750	0	9	9	0.6	16	0	6	7	0	5	19	1.3
40	Lyndsay Leikem	18-1	194	10.8	11-32	.344	0-15	.000	0-0	.000	6	19	25	1.4	7	0	9	9	1	2	22	1.2
44	Danielle Williams	4-0	9	2.3	2-4	.500	0-0	.000	0-0	.000	1	3	4	1.0	3	0	0	1	0	0	4	1.0
32	Laken Wairau	4-0	5	1.3	1-4	.250	0-1	.000	0-0	.000	1	0	1	0.3	0	0	0	0	0	0	2	0.5
Team											36	30	66		1		11					
Total.....		18	3625		463-1077	.430	97-317	.306	295-400	.738	204	472	676	37.6	301	7	283	248	65	122	1318	73.2
Opponents.....		18	3625		487-1120	.435	84-261	.322	195-290	.672	200	455	655	36.4	356	-	227	261	83	102	1253	69.6

TEAM STATISTICS	IND	OPP	Date	Opponent	Score	Att.
SCORING	1318	1253	* 12/31/15	at Wisconsin	L 69-73	4410
Points per game	73.2	69.6	* 1/3/16	MICHIGAN	Wot 77-69	3602
Scoring margin	+3.6	-	* 1/7/16	at Ohio State	L 70-97	4420
FIELD GOALS-ATT	463-1077	487-1120	* 1/10/16	at Purdue	L 53-63	8519
Field goal pct	.430	.435	* 1/13/16	MICHIGAN STATE	w 81-65	2507
3 POINT FG-ATT	97-317	84-261	* 1/17/16	at Minnesota	L 76-78	4337
3-point FG pct	.306	.322	* 1/20/16	ILLINOIS	w 68-66	2202
3-pt FG made per game	5.4	4.7	* 1/24/16	at Northwestern	w 91-84	1642
FREE THROWS-ATT	295-400	195-290	* 1/27/16	RUTGERS	w 64-48	2496
Free throw pct	.738	.672	* 1/30/16	at Maryland	L 63-86	6230
F-Throws made per game	16.4	10.8	* 2/4/16	IOWA	w 79-74	2421
REBOUNDS	676	655	* 2/7/16	NEBRASKA	w 59-47	3370
Rebounds per game	37.6	36.4	* 2/10/16	at Illinois	w 80-68	1622
Rebounding margin	+1.2	-	* 2/14/16	WISCONSIN	w 67-57	3362
ASSISTS	283	227	* 2/18/16	MINNESOTA	w 93-79	2530
Assists per game	15.7	12.6	* 2/21/16	at Iowa	L 73-76	9838
TURNOVERS	248	261	* 2/24/16	at Nebraska	w 79-68	5376
Turnovers per game	13.8	14.5	* 2/27/16	PENN STATE	w 76-55	5246
Turnover margin	+0.7	-				
Assist/turnover ratio	1.1	0.9				
STEALS	122	102				
Steals per game	6.8	5.7				
BLOCKS	65	83				
Blocks per game	3.6	4.6				
ATTENDANCE	27736	46394				
Home games-Avg/Game	9-3082	9-5155				
Neutral site-Avg/Game	-	0-0				

* - Conference game

Score by Periods	1st	2nd	3rd	4th	OT	Totals
Indiana	316	280	331	375	16	1318
Opponents	295	304	338	308	8	1253

TEAM GAME-BY-GAME

Opponent	Date	Score	W/L	Total		3-Pointers		Free throws		Rebounds				pf	a	t/o	blk	stl	pts	avg
				fg-fga	pct	3fg-fga	pct	ft-fa	pct	off	def	tot	avg							
PRESBYTERIAN COLLEGE	11/11/16	71-37	W	30-56	.536	3-10	.300	8-16	.500	20	20	40	40.0	13	14	12	6	11	71	71.0
VANDERBILT	11/13/16	94-61	W	33-63	.524	6-18	.333	22-29	.759	8	28	36	38.0	21	19	12	3	12	94	82.5
at Chattanooga	11/17/16	79-76	W	31-60	.517	8-17	.471	9-15	.600	9	22	31	35.7	15	18	6	6	6	79	81.3
at WKU	11/19/16	74-85	L	28-68	.412	5-20	.250	13-20	.650	21	21	42	37.2	24	16	12	1	3	74	79.5
UMASS LOWELL	11/23/16	79-45	W	33-69	.478	2-10	.200	11-23	.478	14	24	38	37.4	18	21	12	3	18	79	79.4
at Auburn	11/27/16	67-71	L	21-52	.404	8-25	.320	17-22	.773	13	21	34	36.8	23	15	20	2	7	67	77.3
at NC State	12/01/16	70-84	L	22-54	.407	7-19	.368	19-21	.905	6	24	30	35.9	25	11	17	4	5	70	76.3
at North Texas	12/6/16	94-64	W	32-50	.640	6-14	.429	24-35	.686	12	32	44	36.9	21	15	28	1	10	94	78.5
NORTHERN KENTUCKY	12/8/16	100-49	W	43-71	.606	7-12	.583	7-13	.538	18	31	49	38.2	14	21	10	3	7	100	80.9
VALPARAISO	12/11/16	87-58	W	34-64	.531	4-11	.364	15-18	.833	13	26	39	38.3	20	22	13	1	13	87	81.5
Indiana		815		307-607	.506	56-156	.359	145-212	.684	134	249	383	38.3	194	172	142	30	92	815	81.5
Opponents		630		222-547	.406	51-183	.279	135-186	.726	91	191	282	28.2	197	104	169	30	66	630	63.0

TEAM COMPARISON

Opponent	Date	Score	W/L	Total		3-Pointers		Free throws		Rebounds				pf	a	t/o	blk	stl	pts	avg
				fg-fga	pct	3fg-fga	pct	ft-fa	pct	off	def	tot	avg							
PRESBYTERIAN COLLEGE	11/11/16	71-37	W	30-56	.536	3-10	.300	8-16	.500	20	20	40	40.0	13	14	12	6	11	71	71.0
VANDERBILT	11/13/16	94-61	W	33-63	.524	6-18	.333	22-29	.759	8	28	36	38.0	21	19	12	3	12	94	82.5
at Chattanooga	11/17/16	79-76	W	31-60	.517	8-17	.471	9-15	.600	9	22	31	35.7	15	18	6	6	6	79	81.3
at WKU	11/19/16	74-85	L	28-68	.412	5-20	.250	13-20	.650	21	21	42	37.2	24	16	12	1	3	74	79.5
UMASS LOWELL	11/23/16	79-45	W	33-69	.478	2-10	.200	11-23	.478	14	24	38	37.4	18	21	12	3	18	79	79.4
at Auburn	11/27/16	67-71	L	21-52	.404	8-25	.320	17-22	.773	13	21	34	36.8	23	15	20	2	7	67	77.3
at NC State	12/01/16	70-84	L	22-54	.407	7-19	.368	19-21	.905	6	24	30	35.9	25	11	17	4	5	70	76.3
at North Texas	12/6/16	94-64	W	32-50	.640	6-14	.429	24-35	.686	12	32	44	36.9	21	15	28	1	10	94	78.5
NORTHERN KENTUCKY	12/8/16	100-49	W	43-71	.606	7-12	.583	7-13	.538	18	31	49	38.2	14	21	10	3	7	100	80.9
VALPARAISO	12/11/16	87-58	W	34-64	.531	4-11	.364	15-18	.833	13	26	39	38.3	20	22	13	1	13	87	81.5
Indiana		815		307-607	.506	56-156	.359	145-212	.684	134	249	383	38.3	194	172	142	30	92	815	81.5
Opponents		630		222-547	.406	51-183	.279	135-186	.726	91	191	282	28.2	197	104	169	30	66	630	63.0

GAME-BY-GAME HIGHS

Opponent	Date	Score	Points	Rebounds	Assists	Steals	Blocked shots
PRESBYTERIAN COLLEGE	11/11/16	71-37	15-Tyra Buss	11-Amanda Cahill	3-Karlee McBride	3-Tyra Buss	3-Kym Royster
VANDERBILT	11/13/16	94-61	22-Alexis Gassion	7-Jenn Anderson	5-Tyra Buss Tia Elbert	5-Amanda Cahill	1-Ria Gulley Jenn Anderson Alexis Gassion
at Chattanooga	11/17/16	79-76	23-Tyra Buss	8-Alexis Gassion	8-Alexis Gassion	3-Tyra Buss	2-Amanda Cahill Jenn Anderson
at WKU	11/19/16	74-85	24-Tyra Buss	11-Jenn Anderson	6-Amanda Cahill	2-Alexis Gassion	1-Alexis Gassion
UMASS LOWELL	11/23/16	79-45	18-Alexis Gassion	6-Amanda Cahill Jenn Anderson	6-Alexis Gassion	8-Tyra Buss	3-Jenn Anderson
at Auburn	11/27/16	67-71	23-Tyra Buss	7-Amanda Cahill	5-Amanda Cahill Alexis Gassion	3-Amanda Cahill	1-Tyra Buss Kym Royster
at NC State	12/01/16	70-84	38-Tyra Buss	8-Amanda Cahill	4-Alexis Gassion	2-Alexis Gassion Tyra Buss	2-Amanda Cahill
at North Texas	12/6/16	94-64	21-Tyra Buss	10-Amanda Cahill	5-Alexis Gassion Tyra Buss	4-Tyra Buss	1-Jenn Anderson
NORTHERN KENTUCKY	12/8/16	100-49	16-Karlee McBride	15-Alexis Gassion	10-Tyra Buss	4-Amanda Cahill	2-Bre Wickware
VALPARAISO	12/11/16	87-58	19-Alexis Gassion	11-Amanda Cahill	6-Tyra Buss	3-Tyra Buss Karlee McBride Amanda Cahill	1-Tyra Buss

POINTS-REBOUNDS-ASSISTS

Opponent	Date	Score		02	03	05	11	13	14	21
				DEANE,AMBE	BUSS,TYRA	GULLEY,RIA	ROYSTER,KY	FOESMAN,D	WAIKAU,LAK	MCBRIDE,KA
PRESBYTERIAN COLLEGE	11/11/16	71-37	w	4-1-2	15-2-2	6-1-1	9-9-0	4-2-0	DNP	0-0-3
VANDERBILT	11/13/16	94-61	w	10-0-2	11-2-5	1-1-0	5-4-1	2-0-0	DNP	8-3-0
at Chattanooga	11/17/16	79-76	w	5-0-4	23-4-2	3-0-0	4-1-0	DNP	DNP	3-1-2
at WKU	11/19/16	74-85	L	8-1-1	24-2-3	0-0-0	2-4-0	DNP	DNP	4-1-2
UMASS LOWELL	11/23/16	79-45	w	2-2-2	14-5-4	DNP	4-3-0	6-2-0	0-0-0	0-2-2
at Auburn	11/27/16	67-71	L	0-3-1	23-3-2	2-0-0	5-4-0	0-0-0	DNP	11-1-2
at NC State	12/01/16	70-84	L	2-0-0	38-5-3	0-0-0	2-3-0	0-0-0	DNP	3-2-1
at North Texas	12/6/16	94-64	w	0-0-0	21-1-5	8-0-0	13-5-0	0-4-0	0-0-0	3-2-1
NORTHERN KENTUCKY	12/8/16	100-49	w	0-0-1	14-2-10	3-1-1	13-1-0	8-6-0	DNP	16-1-0
VALPARAISO	12/11/16	87-58	w	3-0-1	12-1-6	0-0-0	9-4-1	4-6-2	DNP	4-1-0

Opponent	Date	Score		22	23	24	31	33	43	44
				ELBERT,TIA	GASSION,AL	TOWNER,TYS	WICKWARE,B	CAHILL,AMA	ANDERSON,J	WILLIAMS,D
PRESBYTERIAN COLLEGE	11/11/16	71-37	w	2-2-2	9-4-1	4-0-0	2-5-1	12-11-2	4-2-0	DNP
VANDERBILT	11/13/16	94-61	w	8-4-5	22-5-3	2-0-0	2-3-0	17-6-3	6-7-0	DNP
at Chattanooga	11/17/16	79-76	w	2-0-1	15-8-8	0-0-0	DNP	12-7-1	12-3-0	DNP
at WKU	11/19/16	74-85	L	2-0-0	13-7-4	0-0-0	0-0-0	12-8-6	9-11-0	DNP
UMASS LOWELL	11/23/16	79-45	w	2-0-1	18-5-6	5-2-2	4-1-0	15-6-3	8-6-1	1-0-0
at Auburn	11/27/16	67-71	L	0-0-0	7-6-5	0-0-0	0-0-0	10-7-5	9-6-0	DNP
at NC State	12/01/16	70-84	L	2-1-1	11-3-4	DNP	2-2-0	6-8-2	4-2-0	DNP
at North Texas	12/6/16	94-64	w	3-2-2	15-4-5	2-1-0	5-5-0	15-10-2	9-4-0	0-0-0
NORTHERN KENTUCKY	12/8/16	100-49	w	6-3-1	10-15-2	4-2-0	0-4-1	14-8-4	12-3-1	DNP
VALPARAISO	12/11/16	87-58	w	10-1-4	19-5-5	4-3-0	2-2-0	16-11-1	4-5-2	DNP



#2 • AMBER DEANE

Sr. • G • 5-10

Lathrup Village, Mich. • Detroit County Day • Dayton

NOTES ON DEANE

- Has started two games for IU (versus UMass Lowell and at Auburn)
- One of four players in double figures in 94-61 win over Vanderbilt on Nov. 13 (10 points)
- Fifth-year graduate transfer from Dayton
- Scored 1,194 points during her four year career with the Flyers despite missing most of her senior season due to injury
- Led the Flyers to three NCAA Tournament appearances
- Major: Master's degree in media-journalism (holds bachelor's degree in psychology from Dayton)
- Birthdate: Feb. 22

2016-17 GAME-BY-GAME

Opponent	Date	gs	min	Total		3-Pointers		Free throws		Rebounds					pts	avg					
				fg-fga	pct	3fg-fga	pct	ft-fa	pct	off	def	tot	avg	pf			a	t/o	blk	stl	
PRESBYTERIAN COLLEGE	11/11/16		13	2-4	.500	0-0	.000	0-0	.000	0	1	1	1.0	0	2	0	0	1	4	4.0	
VANDERBILT	11/13/16		11	4-6	.667	0-1	.000	2-2	1.000	0	0	0	0.5	4	2	0	0	1	10	7.0	
at Chattanooga	11/17/16		16	2-3	.667	1-1	1.000	0-0	.000	0	0	0	0.3	2	4	1	1	0	5	6.3	
at WKU	11/19/16		17	2-4	.500	0-1	.000	4-4	1.000	0	1	1	0.5	3	1	1	0	0	8	6.8	
UMASS LOWELL	11/23/16	*	22	1-4	.250	0-1	.000	0-0	.000	1	1	2	0.8	2	2	1	0	2	2	5.8	
at Auburn	11/27/16	*	6	0-5	.000	0-3	.000	0-0	.000	3	0	3	1.2	4	1	1	0	0	0	4.8	
at NC State	12/01/16		2	0-0	.000	0-0	.000	2-2	1.000	0	0	0	1.0	0	0	1	0	0	2	4.4	
at North Texas	12/06/16		3	0-0	.000	0-0	.000	0-2	.000	0	0	0	0.9	0	0	0	0	0	0	3.9	
NORTHERN KENTUCKY	12/08/16		6	0-0	.000	0-0	.000	0-0	.000	0	0	0	0.8	0	1	0	0	0	0	3.4	
VALPARAISO	12/11/16		9	0-0	.000	0-0	.000	3-4	.750	0	0	0	0.7	0	1	0	0	0	3	3.4	
Totals			2	105	11-26	.423	1-7	.143	11-14	.786	4	3	7	0.7	15	14	5	1	4	34	3.4

GAME AND CAREER HIGHS

2016-17 Game Highs

Points..... 10, vs. Vanderbilt (11/13/16)
 Rebounds..... 3, at Auburn (11/27/16)
 Assists..... 4, at Chattanooga (11/17/16)
 Steals 2, vs. UMass Lowell (11/23/16)
 Blocks 1, at Chattanooga (11/17/16)
 FG Made..... 4, vs. Vanderbilt (11/13/16)
 3FG Made..... 1, at Chattanooga (11/17/16)
 Minutes 22, vs. UMass Lowell (11/23/16)

Career Highs (from Dayton)

Points..... 29, vs. Louisville (11/29/15)
 Rebounds..... 11, 2x, last vs. Louisville (11/29/15)
 Assists..... 10, at Michigan State (11/17/13)
 Steals 5, at Michigan State (11/17/13)
 Blocks 1, 11x, last vs. Louisville (11/29/15)
 FG Made..... 10, at DePaul (11/10/12)
 3FG Made..... 5, vs. George Washington (1/16/14)
 Minutes N/A

CAREER STATISTICS

Season	gp-gs	min/avg	Total		3-Point		F-Throws		Rebounds				Scoring							
			fg-fga	pct	fg-fga	pct	ft-fa	pct	off	def	tot	avg	pf	fo	ast	to	blk	stl	pts	avg
2012-13*	31-31	777/25.1	124-223	.556	17-52	.327	42-57	.737	52	95	147	4.7	64	2	76	72	1	37	307	9.9
2013-14*	29-27	903/31.1	132-292	.452	21-73	.288	98-122	.803	46	102	148	5.1	82	3	105	87	5	40	383	13.2
2014-15*	35-3	761/21.7	121-256	.473	24-62	.387	100-124	.806	42	84	126	3.6	74	1	69	66	8	18	366	10.5
2015-16*	9-9	256/28.4	46-100	.460	8-26	.308	38-47	.809	13	24	37	4.1	25	0	29	25	1	11	138	15.3
2016-17	10-2	105/10.5	11-26	.423	1-7	.143	11-14	.786	4	3	7	0.7	15	0	14	5	1	4	34	3.4
TOTAL	10-2	105/10.5	11-26	.423	1-7	.143	11-14	.786	4	3	7	0.7	15	0	14	5	1	4	34	3.4
All*	114-72	2802/24.6	434-897	.484	71-220	.323	289-364	.794	157	308	465	4.1	260	6	293	255	16	110	1228	10.8

* Statistics from prior team/school



#3 • TYRA BUSS

Jr. • G • 5-8
Mt. Carmel, Ill. • Mt. Carmel

NOTES ON BUSS

- Naismith Trophy Preseason Watch List Top 50
- Has scored in double figures in 65 of 74 career games playing including every game of 2016-17. She also has a streak of 47 consecutive games scored in double figures - two shy of tying the school record (49, Karna Abram).
- Posted her 5th career double-double against Northern Kentucky with a new career-high 10 assists and 14 points
- Scored a new career-high 38 points against North Carolina State which ties the fourth-best performance in a single game in school history
- Became the fastest player and 24th overall in school history to reach 1,000 career points on Nov. 13 vs. Vanderbilt. Moved up on the all-time scoring list on Tuesday at North Texas and now stands at No. 18 with 1,177 points scored in her career.
- All-Big Ten First Team selection in 2015-16
- Scored the third most points in a single season with 620 as a sophomore in 2015-16 where she averaged 18.8 points per game and set a program record of 982 points scored in her freshman and sophomore season. Also set the school record for most free throws made in a season in 2015-16 (203)
- Major: Physical Education
- Birthdate: April 25

2016-17 GAME-BY-GAME

Opponent	Date	gs	min	Total		3-Pointers		Free throws		Rebounds				Other							
				fg-fga	pct	3fg-fga	pct	ft-fa	pct	off	def	tot	avg	pf	a	t/o	blk	stl	pts	avg	
PRESBYTERIAN COLLEGE	11/11/16	*	26	4-8	.500	1-4	.250	6-10	.600	1	1	2	2.0	3	2	0	0	3	15	15.0	
VANDERBILT	11/13/16	*	26	3-9	.333	1-2	.500	4-6	.667	0	2	2	2.0	3	5	2	0	4	11	13.0	
at Chattanooga	11/17/16	*	38	8-16	.500	4-7	.571	3-3	1.000	1	3	4	2.7	3	2	0	0	3	23	16.3	
at WKU	11/19/16	*	38	9-19	.474	2-6	.333	4-5	.800	0	2	2	2.5	2	3	3	0	1	24	18.3	
UMASS LOWELL	11/23/16	*	25	5-14	.357	1-3	.333	3-5	.600	2	3	5	3.0	3	4	4	0	8	14	17.4	
at Auburn	11/27/16	*	39	7-14	.500	4-8	.500	5-5	1.000	0	3	3	3.0	3	2	5	1	1	23	18.3	
at NC State	12/01/16	*	39	10-14	.714	4-6	.667	14-15	.933	0	5	5	3.3	5	3	4	0	2	38	21.1	
at North Texas	12/6/16	*	33	6-10	.600	2-5	.400	7-8	.875	0	1	1	3.0	3	5	2	0	4	21	21.1	
NORTHERN KENTUCKY	12/8/16	*	27	6-14	.429	1-3	.333	1-2	.500	0	2	2	2.9	1	10	1	0	1	14	20.3	
VALPARAISO	12/11/16	*	22	4-11	.364	1-3	.333	3-4	.750	0	1	1	2.7	3	6	0	1	3	12	19.5	
Totals			10	313	62-129	.481	21-47	.447	50-63	.794	4	23	27	2.7	29	42	21	2	30	195	19.5

GAME AND CAREER HIGHS

2016-17 Game Highs

Points..... 38, at NC State (12/1/16)
 Rebounds..... 5, 2x, last at NC State (12/1/16)
 Assists..... 10, vs. Northern Kentucky (12/8/16)
 Steals 8, vs. UMass Lowell (11/23/16)
 Blocks 1, at Auburn (11/27/16)
 FG Made..... 10, at NC State (12/1/16)
 3FG Made..... 4, 3x, last at NC State (12/1/16)
 Minutes 39, 2x, last at NC State (12/1/16)

Career Highs

Points..... 38, at NC State (12/1/16)
 Rebounds..... 15, at Michigan State (12/31/14)
 Assists..... 10, vs. Northern Kentucky (12/8/16)
 Steals8, 2x, last vs. UMass Lowell (11/23/16)
 Blocks 2, at Northwestern (1/24/16)
 FG Made..... 10, 3x, last at NC State (12/1/16)
 3FG Made..... 4, 6x, last at NC State (12/1/16)
 Minutes 41, vs. Samford (12/11/15)

CAREER STATISTICS

Season	gp-gs	min/avg	Total		3-Point		F-Throws		Rebounds				Scoring							
			fg-fga	pct	fg-fga	pct	ft-fa	pct	off	def	tot	avg	pf	fo	ast	to	blk	stl	pts	avg
2014-15	31-31	904/29.2	121-310	.390	25-104	.240	95-140	.679	21	91	112	3.6	71	1	98	75	4	65	362	11.7
2015-16	33-33	1243/37.7	187-452	.414	43-140	.307	203-263	.772	20	146	166	5.0	73	0	144	121	4	70	620	18.8
2016-17	10-10	313/31.3	62-129	.481	21-47	.447	50-63	.794	4	23	27	2.7	29	1	42	21	2	30	195	19.5
TOTAL	74-74	2460/33.2	370-891	.415	89-291	.306	348-466	.747	45	260	305	4.1	173	2	284	217	10	165	1177	15.9



#5 • RIA GULLEY

Fr. • G • 5-8

San Antonio, Texas • Tom C. Clark

NOTES ON GULLEY

- Became the first freshman to start since Tyra Buss and Amanda Cahill (2014) as she has started in the first four games of the season
- Scored a season-high eight points as she went 2-for-3 from the 3-point line in the win at North Texas
- Earned District 27-6A All-District MVP and Texas Association of Basketball Coaches District 6A IV all-region first team
- Averaged 11.5 points and 3.4 assists while shooting 49 percent from the floor as a junior
- McDonald's All-American nominee as a senior
- Major: Neuroscience
- Birthdate: January 12

2016-17 GAME-BY-GAME

Opponent	Date	gs	min	Total		3-Pointers		Free throws		Rebounds				pf	a	t/o	blk	stl	pts	avg	
				fg-fga	pct	3fg-fga	pct	ft-fga	pct	off	def	tot	avg								
PRESBYTERIAN COLLEGE	11/11/16	*	19	2-4	.500	2-3	.667	0-0	.000	0	1	1	1.0	0	1	2	0	0	6	6.0	
VANDERBILT	11/13/16	*	18	0-2	.000	0-2	.000	1-2	.500	0	1	1	1.0	1	0	0	1	0	1	3.5	
at Chattanooga	11/17/16	*	12	1-3	.333	1-1	1.000	0-0	.000	0	0	0	0.7	0	0	0	0	0	3	3.3	
at WKU	11/19/16	*	6	0-0	.000	0-0	.000	0-0	.000	0	0	0	0.5	0	0	1	0	0	0	2.5	
at Auburn	11/27/16		5	1-2	.500	0-1	.000	0-1	.000	0	0	0	0.4	0	0	0	0	0	2	2.4	
at NC State	12/01/16		6	0-2	.000	0-1	.000	0-0	.000	0	0	0	0.3	0	0	0	0	0	0	2.0	
at North Texas	12/6/16		19	3-4	.750	2-3	.667	0-0	.000	0	0	0	0.3	1	0	4	0	0	8	2.9	
NORTHERN KENTUCKY	12/8/16		18	1-3	.333	1-2	.500	0-0	.000	0	1	1	0.4	0	1	2	0	1	3	2.9	
VALPARAISO	12/11/16		12	0-1	.000	0-1	.000	0-0	.000	0	0	0	0.3	1	0	1	0	1	0	2.6	
Totals			4	115	8-21	.381	6-14	.429	1-3	.333	0	3	3	0.3	3	2	10	1	2	23	2.6

GAME AND CAREER HIGHS

2016-17 Game Highs

Points.....8, at North Texas (12/6/16)
 Rebounds..... 1, 3x, last vs. NKU (12/8/16)
 Assists..... 1, 2x, last vs. NKU (12/8/16)
 Steals 1, vs. NKU (12/8/16)
 Blocks 1, vs. Vanderbilt (11/13/16)
 FG Made.....3, at North Texas (12/6/16)
 3FG Made.....2, 2x, last at North Texas (12/6/16)
 Minutes19, 2x, last at North Texas (12/6/16)

Career Highs

Points.....8, at North Texas (12/6/16)
 Rebounds..... 1, 3x, last vs. NKU (12/8/16)
 Assists..... 1, 2x, last vs. NKU (12/8/16)
 Steals 1, vs. NKU (12/8/16)
 Blocks 1, vs. Vanderbilt (11/13/16)
 FG Made.....3, at North Texas (12/6/16)
 3FG Made.....2, 2x, last at North Texas (12/6/16)
 Minutes19, 2x, last at North Texas (12/6/16)

CAREER STATISTICS

Season	gp-gs	min/avg	Total		3-Point		F-Throws		Rebounds				Scoring							
			fg-fga	pct	fg-fga	pct	ft-fga	pct	off	def	tot	avg	pf	fo	ast	to	blk	stl	pts	avg
2016-17	9-4	115/12.8	8-21	.381	6-14	.429	1-3	.333	0	3	3	0.3	3	0	2	10	1	2	23	2.6
TOTAL	9-4	115/12.8	8-21	.381	6-14	.429	1-3	.333	0	3	3	0.3	3	0	2	10	1	2	23	2.6



#11 • KYM ROYSTER

So. • F • 6-2

Newark, Ohio • Newark

NOTES ON ROYSTER

- Has started in six games for Indiana in 2016-17
- Posted back-to-back double figure games for the first time in her career with 13 points at North Texas and against Northern Kentucky
- Was just shy of a double-double against Presbyterian (nine points, nine rebounds)
- Appeared in all 33 games in her freshman season
- Averaged 4.5 points and 3.5 rebounds per game while shooting 55.6 percent from the field
- Major: Youth Development
- Birthdate: March 7

2016-17 GAME-BY-GAME

Opponent	Date	gs	min	Total		3-Pointers		Free throws		Rebounds				Other							
				fg-fga	pct	3fg-fga	pct	ft-fga	pct	off	def	tot	avg	pf	a	t/o	blk	stl	pts	avg	
PRESBYTERIAN COLLEGE	11/11/16	*	23	4-8	.500	0-0	.000	1-2	.500	7	2	9	9.0	1	0	2	3	2	9	9.0	
VANDERBILT	11/13/16	*	12	2-4	.500	0-0	.000	1-2	.500	1	3	4	6.5	3	1	0	0	1	5	7.0	
at Chattanooga	11/17/16	*	16	2-4	.500	0-0	.000	0-0	.000	1	0	1	4.7	5	0	0	0	0	4	6.0	
at WKU	11/19/16	*	12	1-1	1.000	0-0	.000	0-2	.000	2	2	4	4.5	4	0	2	0	0	2	5.0	
UMASS LOWELL	11/23/16	*	17	2-6	.333	0-0	.000	0-2	.000	1	2	3	4.2	4	0	1	0	1	4	4.8	
at Auburn	11/27/16	*	24	2-4	.500	0-0	.000	1-1	1.000	1	3	4	4.2	1	0	2	1	0	5	4.8	
at NC State	12/01/16		11	1-2	.500	0-0	.000	0-0	.000	0	3	3	4.0	2	0	1	0	0	2	4.4	
at North Texas	12/6/16		13	6-6	1.000	0-0	.000	1-1	1.000	1	4	5	4.1	1	0	1	0	0	13	5.5	
NORTHERN KENTUCKY	12/8/16		17	6-8	.750	0-0	.000	1-2	.500	0	1	1	3.8	1	0	0	0	0	13	6.3	
VALPARAISO	12/11/16		14	4-6	.667	0-0	.000	1-1	1.000	1	3	4	3.8	4	1	2	0	0	9	6.6	
Totals			6	159	30-49	.612	0-0	.000	6-13	.462	15	23	38	3.8	26	2	11	4	4	66	6.6

GAME AND CAREER HIGHS

2016-17 Game Highs

Points..... 13, 2x, last vs. NKU (12/8/16)
 Rebounds..... 9, vs. Presbyterian (11/11/16)
 Assists..... 1, 2x, last vs. Valparaiso (12/11/16)
 Steals 2, vs. Presbyterian (11/11/16)
 Blocks 3, vs. Presbyterian (11/11/16)
 FG Made..... 6, 2x, last vs. NKU (12/8/16)
 3FG Made..... N/A
 Minutes 23, vs. Presbyterian (11/11/16)

Career Highs

Points.....21, vs. Incarnate Word (11/23/14)
 Rebounds.... 10, 2x, last at Notre Dame (3/21/16)
 Assists..... 2, 4x, last vs. Penn State (2/27/16)
 Steals2, 7x, last vs. Presbyterian (11/11/16)
 Blocks3, 2x, last vs. Presbyterian (11/11/16)
 FG Made..... 8, 2x, last vs. ETSU (11/26/14)
 3FG Made.. 1, 2x, last at Michigan State (3/2/14)
 Minutes 34, vs. Indiana State (11/30/14)

CAREER STATISTICS

Season	gp-gs	min/avg	Total		3-Point		F-Throws		Rebounds				Scoring							
			fg-fga	pct	fg-fga	pct	ft-fga	pct	off	def	tot	avg	pf	fo	ast	to	blk	stl	pts	avg
2015-16	33-0	392/11.9	55-99	.556	0-0	.000	38-47	.809	48	68	116	3.5	66	2	8	37	25	8	148	4.5
2016-17	10-6	159/15.9	30-49	.612	0-0	.000	6-13	.462	15	23	38	3.8	26	1	2	11	4	4	66	6.6
TOTAL	43-6	551/12.8	85-148	.574	0-0	.000	44-60	.733	63	91	154	3.6	92	3	10	48	29	12	214	5.0



#13 • DARBY FORESMAN

Fr. • F • 6-3

Indianapolis, Ind. • Heritage Christian

NOTES ON FORESMAN

- Scored a new season-high eight points and six rebounds in the win over Northern Kentucky
- Tied her season-high six rebounds in win over Valparaiso on Dec. 11
- Grabbed four rebounds in just three minutes of work at North Texas on Dec. 6
- Saw action in both games to open the season at home including four points again Presbyterian on Friday
- Guided Heritage Christian to three-straight 3A IHSAA state titles
- Averaged 9.1 points and 6.9 rebounds as a senior in 2015-16
- Named an IndyStar Indiana Girls All-Star and IBCA All-State honoree
- Major: Elementary Education
- Birthdate: December 2

2016-17 GAME-BY-GAME

Opponent	Date	gs	min	Total		3-Pointers		Free throws		Rebounds				pf	a	t/o	blk	stl	pts	avg
				fg-fga	pct	3fg-fga	pct	ft-fa	pct	off	def	tot	avg							
PRESBYTERIAN COLLEG	11/11/16	5		2-3	.667	0-0	.000	0-0	.000	1	1	2	2.0	1	0	0	1	0	4	4.0
VANDERBILT	11/13/16	4		1-1	1.000	0-0	.000	0-0	.000	0	0	0	1.0	0	0	0	0	0	2	3.0
UMASS LOWELL	11/23/16	12		3-3	1.000	0-0	.000	0-0	.000	1	1	2	1.3	1	0	0	0	1	6	4.0
at Auburn	11/27/16	12		0-0	.000	0-0	.000	0-0	.000	0	0	0	1.0	0	0	0	0	0	0	3.0
at NC State	12/01/16	9		0-0	.000	0-0	.000	0-0	.000	0	0	0	0.8	1	0	0	0	0	0	2.4
at North Texas	12/6/16	3		0-0	.000	0-0	.000	0-0	.000	0	4	4	1.3	1	0	1	0	0	0	2.0
NORTHERN KENTUCKY	12/8/16	9		4-7	.571	0-0	.000	0-1	.000	4	2	6	2.0	0	0	1	1	0	8	2.9
VALPARAISO	12/11/16	15		2-2	1.000	0-0	.000	0-0	.000	2	4	6	2.5	3	2	2	0	1	4	3.0
Totals		0	69	12-16	.750	0-0	.000	0-1	.000	8	12	20	2.5	7	2	4	2	2	24	3.0

GAME AND CAREER HIGHS

2016-17 Game Highs

Points..... 8, vs. NKU (12/8/16)
 Rebounds..... 6, 2x, last vs. Valparaiso (12/11/16)
 Assists..... 2, vs. Valparaiso (12/11/16)
 Steals 1, vs. UMass Lowell (11/23/16)
 Blocks 1, 2x, last vs. NKU (12/8/16)
 FG Made..... 4, vs. NKU (12/8/16)
 3FG Made..... N/A
 Minutes 15, vs. Valparaiso (12/11/16)

Career Highs

Points..... 8, vs. NKU (12/8/16)
 Rebounds..... 6, 2x, last vs. Valparaiso (12/11/16)
 Assists..... 2, vs. Valparaiso (12/11/16)
 Steals 1, vs. UMass Lowell (11/23/16)
 Blocks 1, 2x, last vs. NKU (12/8/16)
 FG Made..... 4, vs. NKU (12/8/16)
 3FG Made..... N/A
 Minutes 15, vs. Valparaiso (12/11/16)

CAREER STATISTICS

Season	gp-gs	min/avg	Total		3-Point		F-Throws		Rebounds				Scoring							
			fg-fga	pct	fg-fga	pct	ft-fa	pct	off	def	tot	avg	pf	fo	ast	to	blk	stl	pts	avg
2016-17	8-0	69/8.6	12-16	.750	0-0	.000	0-1	.000	8	12	20	2.5	7	0	2	4	2	2	24	3.0
TOTAL	8-0	69/8.6	12-16	.750	0-0	.000	0-1	.000	8	12	20	2.5	7	0	2	4	2	2	24	3.0



#14 • LAKEN WAIRAU

So. • G • 5-10

Christchurch, New Zealand • Christchurch Girls'

NOTES ON WAIRAU

- Has seen action in two games for Indiana this season
- Appeared in a limited role for the Hoosiers as a midseason addition in 2015-16
- Saw action in four contests and scored her first career points at Maryland (Jan. 30)
- Major: Exercise Science
- Birthdate: May 20

2016-17 GAME-BY-GAME

Opponent	Date	gs	min	Total		3-Pointers		Free throws		Rebounds				pf	a	t/o	blk	stl	pts	avg
				fg-fga	pct	3fg-fga	pct	ft-fta	pct	off	def	tot	avg							
UMASS LOWELL	11/23/16	0		0-0	.000	0-0	.000	0-0	.000	0	0	0	0.0	0	0	0	0	0	0	0.0
at North Texas	12/6/16	1		0-1	.000	0-0	.000	0-0	.000	0	0	0	0.0	0	0	0	0	0	0.0	
Totals		0	1	0-1	.000	0-0	.000	0-0	.000	0	0	0	0.0	0	0	0	0	0	0.0	

GAME AND CAREER HIGHS

2016-17 Game Highs

Points.....
 Rebounds.....
 Assists.....
 Steals.....
 Blocks.....
 FG Made.....
 3FG Made.....
 Minutes.....1, at North Texas (12/6/16)

Career Highs

Points..... 2, at Maryland (1/30/16)
 Rebounds..... 1, at Maryland (1/30/16)
 Assists.....
 Steals.....
 Blocks.....
 FG Made..... 1, at Maryland (1/30/16)
 3FG Made.....
 Minutes..... 2, at Maryland (1/30/16)

CAREER STATISTICS

Season	gp-gs	min/avg	Total		3-Point		F-Throws		Rebounds				Scoring							
			fg-fga	pct	fg-fga	pct	ft-fta	pct	off	def	tot	avg	pf	fo	ast	to	blk	stl	pts	avg
2015-16	4-0	5/1.3	1-4	.250	0-1	.000	0-0	.000	1	0	1	0.3	0	0	0	0	0	0	2	0.5
2016-17	2-0	1/0.5	0-1	.000	0-0	.000	0-0	.000	0	0	0	0.0	0	0	0	0	0	0	0	0.0
TOTAL	6-0	6/1.0	1-5	.200	0-1	.000	0-0	.000	1	0	1	0.2	0	0	0	0	0	0	2	0.3



#21 • KARLEE MCBRIDE

Sr. • G • 5-10
Erie, Pa. • Villa Marie

NOTES ON MCBRIDE

- Has started in the last four games
- Posted a season-high 16 points by going 6-for-8 from the floor and 3-for-4 from 3-point range in the win over Northern Kentucky
- Scored 11 points against Auburn where she hit three 3-pointers and played a season-high 24 minutes
- Appeared in all 33 games last season, starting the final 17 contests of the season
- Led IU with 48 made 3-point field goals
- Scored in double figures in 11 contests and connected on multiple 3-pointers in 14 games
- Major: Sport Communication-Broadcast
- Birthdate: March 17

2016-17 GAME-BY-GAME

Opponent	Date	gs	min	Total		3-Pointers		Free throws		Rebounds				pf	a	t/o	blk	stl	pts	avg
				fg-fga	pct	3fg-fga	pct	ft-fa	pct	off	def	tot	avg							
PRESBYTERIAN COLLEGE	11/11/16	15	0-3	.000	0-1	.000	0-0	.000	0	0	0	0.0	0	3	1	0	1	0	0.0	
VANDERBILT	11/13/16	11	2-6	.333	2-4	.500	2-2	1.000	0	3	3	1.5	2	0	1	0	0	8	4.0	
at Chattanooga	11/17/16	11	1-3	.333	1-2	.500	0-0	.000	0	1	1	1.3	0	2	2	0	1	3	3.7	
at WKU	11/19/16	12	1-9	.111	1-7	.143	1-2	.500	0	1	1	1.3	2	2	0	0	0	4	3.8	
UMASS LOWELL	11/23/16	15	0-3	.000	0-2	.000	0-0	.000	0	2	2	1.4	0	2	0	0	0	0	3.0	
at Auburn	11/27/16	24	4-11	.364	3-9	.333	0-0	.000	1	0	1	1.3	2	2	2	0	1	11	4.3	
at NC State	12/01/16	*	26	1-8	.125	1-4	.250	0-0	.000	1	1	2	1.4	4	1	1	0	1	3	4.1
at North Texas	12/6/16	*	13	1-3	.333	1-3	.333	0-0	.000	0	2	2	1.5	0	1	1	0	1	3	4.0
NORTHERN KENTUCKY	12/8/16	*	12	6-8	.750	3-4	.750	1-1	1.000	0	1	1	1.4	4	0	0	0	1	16	5.3
VALPARAISO	12/11/16	*	12	1-4	.250	1-2	.500	1-2	.500	0	1	1	1.4	0	0	0	0	3	4	5.2
Totals		4	151	17-58	.293	13-38	.342	5-7	.714	2	12	14	1.4	14	13	8	0	9	52	5.2

GAME AND CAREER HIGHS

2016-17 Game Highs

Points..... 16, vs. NKU (12/8/16)
Rebounds..... 3, vs. Vanderbilt (11/13/16)
Assists..... 3, vs. Presbyterian (11/11/16)
Steals 1, 6x, last vs. NKU (12/8/16)
Blocks N/A
FG Made..... 6, vs. NKU (12/8/16)
3FG Made..... 3, 2x, last vs. NKU (12/8/16)
Minutes 24, at Auburn (11/27/16)

Career Highs

Points..... 18, at Maryland (2/26/15)
Rebounds..... 7, vs. IPFW (12/10/14)
Assists..... 4, 3x, last at Iowa (2/21/16)
Steals 4, at Iowa (2/21/16)
Blocks 1, 5x, last vs. Georgia (3/19/16)
FG Made..... 7, 2x, last at Maryland (2/26/15)
3FG Made..... 4, 6x, last at Notre Dame (3/21/16)
Minutes 30, 2x, last vs. Penn State (2/27/16)

CAREER STATISTICS

Season	gp-gs	min/avg	Total		3-Point		F-Throws		Rebounds				Scoring							
			fg-fga	pct	fg-fga	pct	ft-fa	pct	off	def	tot	avg	pf	fo	ast	to	blk	stl	pts	avg
2013-14	32-0	306/9.6	45-143	.315	30-88	.341	19-32	.594	15	27	42	1.3	43	1	15	26	0	13	139	4.3
2014-15	31-0	459/14.8	92-222	.414	40-120	.333	37-53	.698	14	56	70	2.3	44	1	33	47	4	20	261	8.4
2015-16	33-17	668/20.2	83-217	.382	48-131	.366	39-62	.629	4	51	55	1.7	65	2	40	45	1	29	253	7.7
2016-17	10-4	151/15.1	17-58	.293	13-38	.342	5-7	.714	2	12	14	1.4	14	0	13	8	0	9	52	5.2
TOTAL	106-21	1584/14.9	237-640	.370	131-377	.347	100-154	.649	35	146	181	1.7	166	4	101	126	5	71	705	6.7



#22 • TIA ELBERT

R-So. • G • 5-7

Oakdale, Minn. • Tartan/Marquette

NOTES ON ELBERT

- Scored a season-high eight points and grabbed four rebounds in Indiana's rout of Vanderbilt on Nov. 13
- Came off the bench in IU's win over NKU for six points on 3-for-5 shooting, three rebounds and an assist and also played a season-high 22 minutes
- Transferred to Indiana after one season at Marquette (2014-15); did not play last season due to NCAA rules
- Averaged 8.6 points, 3.0 assists and 1.0 steals per game as a freshman
- Saw action in the Hoosiers' exhibition game on Nov. 6 vs. Ulndy as she scored four points in 11 minutes of work
- Major: Business
- Birthdate: Oct. 21

2016-17 GAME-BY-GAME

Opponent	Date	gs	min	Total		3-Pointers		Free throws		Rebounds				Other			pts	avg		
				fg-fga	pct	3fg-fga	pct	ft-fa	pct	off	def	tot	avg	pf	a	t/o			blk	stl
PRESBYTERIAN COLLEGE	11/11/16	15	1-2	.500	0-0	.000	0-0	.000	0	2	2	2.0	3	2	1	0	1	2	2.0	
VANDERBILT	11/13/16	19	3-5	.600	1-2	.500	1-2	.500	1	3	4	3.0	3	5	2	0	1	8	5.0	
at Chattanooga	11/17/16	7	1-3	.333	0-0	.000	0-0	.000	0	0	0	2.0	0	1	1	0	0	2	4.0	
at WKU	11/19/16	6	1-2	.500	0-0	.000	0-0	.000	0	0	0	1.5	2	0	0	0	0	2	3.5	
UMASS LOWELL	11/23/16	15	1-4	.250	0-0	.000	0-0	.000	0	0	0	1.2	2	1	2	0	0	2	3.2	
at Auburn	11/27/16	1	0-0	.000	0-0	.000	0-0	.000	0	0	0	1.0	1	0	0	0	0	0	2.7	
at NC State	12/01/16	7	1-4	.250	0-2	.000	0-0	.000	0	1	1	1.0	1	1	0	0	0	2	2.6	
at North Texas	12/6/16	11	0-2	.000	0-1	.000	3-8	.375	0	2	2	1.1	3	2	3	0	2	3	2.6	
NORTHERN KENTUCKY	12/8/16	22	3-5	.600	0-1	.000	0-0	.000	0	3	3	1.3	2	1	2	0	0	6	3.0	
VALPARAISO	12/11/16	22	5-5	1.000	0-0	.000	0-0	.000	0	1	1	1.3	0	4	3	0	1	10	3.7	
Totals		0	125	16-32	.500	1-6	.167	4-10	.400	1	12	13	1.3	17	17	14	0	5	37	3.7

GAME AND CAREER HIGHS

2016-17 Game Highs

Points.....10, vs. Valparaiso (12/11/16)
 Rebounds.....4, vs. Vanderbilt (11/13/16)
 Assists.....5, vs. Vanderbilt (11/13/16)
 Steals2, at North Texas (12/6/16)
 Blocks N/A
 FG Made.....5, vs. Valparaiso (12/11/16)
 3FG Made.....1, vs. Vanderbilt (11/13/16)
 Minutes22, 2x, last vs. Valparaiso (12/11/16)

Career Highs (at Marquette)

Points.....21, vs. Wake Forest (11/21/14)
 Rebounds.....6, vs. South Dakota (11/30/14)
 Assists.....9, 2x, last vs. Vanderbilt (12/18/14)
 Steals3, 3x, last vs. Providence (1/23/15)
 Blocks N/A
 FG Made.....9, vs. Wake Forest (11/21/14)
 3FG Made.....3, vs. Wake Forest (11/21/14)
 Minutes35, vs. Wake Forest (11/21/14)

CAREER STATISTICS

Season	gp-gs	min/avg	Total		3-Point		F-Throws		Rebounds				Other			Scoring				
			fg-fga	pct	fg-fga	pct	ft-fa	pct	off	def	tot	avg	pf	fo	ast	to	blk	stl	pts	avg
2014-15*	30-22	800/26.7	99-266	.372	18-65	.277	47-80	.588	11	64	75	2.5	76	3	92	78	1	32	263	8.8
2016-17	10-0	125/12.5	16-32	.500	1-6	.167	4-10	.400	1	12	13	1.3	17	0	17	14	0	5	37	3.7
TOTAL	10-0	125/12.5	16-32	.500	1-6	.167	4-10	.400	1	12	13	1.3	17	0	17	14	0	5	37	3.7
All*	40-22	925/23.1	115-298	.386	19-71	.268	51-90	.567	12	76	88	2.2	93	3	109	92	1	37	300	7.5

* Statistics from prior team/school



#23 • ALEXIS GASSION

Sr. • G • 5-11

Fairborn, Ohio • Fairborn

NOTES ON GASSION

- Recorded her fifth career double-double (10 points, 15 rebounds) on a perfect 4-for-4 performance from the field in the win over Northern Kentucky
- Leads Indiana in assists with 43 and has a tied for team-high +2.5 assist to turnover ratio on the season and has dished out multiple assists in nine of ten games
- Scored her 1,000th career point in the Nov. 23 win over UMass Lowell and became the 25th player in school history to reach 1,000 points and ranks 21st all-time with 1,062 career points
- Scored in double figures in six of eight games
- Tied a career-high 22 points in Nov. 13 rout of Vanderbilt while adding five rebounds and three assists
- Has started in the last 71 consecutive games
- Major: Human Development and Family Studies
- Birthdate: June 24

2016-17 GAME-BY-GAME

Opponent	Date	gs	min	Total		3-Pointers		Free throws		Rebounds				pf	a	t/o	blk	stl	pts	avg	
				fg-fga	pct	3fg-fga	pct	ft-fa	pct	off	def	tot	avg								
PRESBYTERIAN COLLEGE	11/11/16	*	21	4-5	.800	0-0	.000	1-3	.333	1	3	4	4.0	1	1	1	0	1	9	9.0	
VANDERBILT	11/13/16	*	29	8-14	.571	1-4	.250	5-6	.833	0	5	5	4.5	0	3	2	1	0	22	15.5	
at Chattanooga	11/17/16	*	37	7-12	.583	0-3	.000	1-4	.250	1	7	8	5.7	0	8	0	1	1	15	15.3	
at WKU	11/19/16	*	37	5-14	.357	0-1	.000	3-4	.750	2	5	7	6.0	2	4	1	1	2	13	14.8	
UMASS LOWELL	11/23/16	*	30	8-14	.571	0-0	.000	2-2	1.000	2	3	5	5.8	0	6	1	0	0	18	15.4	
at Auburn	11/27/16	*	34	2-5	.400	0-1	.000	3-5	.600	0	6	6	5.8	1	5	5	0	2	7	14.0	
at NC State	12/01/16	*	38	5-12	.417	1-2	.500	0-0	.000	2	1	3	5.4	2	4	3	1	2	11	13.6	
at North Texas	12/6/16	*	33	6-8	.750	0-0	.000	3-4	.750	2	2	4	5.3	2	5	4	0	0	15	13.8	
NORTHERN KENTUCKY	12/8/16	*	23	4-4	1.000	0-0	.000	2-2	1.000	3	12	15	6.3	0	2	0	0	0	10	13.3	
VALPARAISO	12/11/16	*	32	7-12	.583	1-1	1.000	4-4	1.000	1	4	5	6.2	0	5	0	0	1	19	13.9	
Totals			10	314	56-100	.560	3-12	.250	24-34	.706	14	48	62	6.2	8	43	17	4	9	139	13.9

GAME AND CAREER HIGHS

2016-17 Game Highs

Points..... 22, vs. Vanderbilt (11/13/16)
 Rebounds..... 15, vs. NKU (12/8/16)
 Assists..... 8, at Chattanooga (11/16/16)
 Steals 2, 3x, last at NC State (12/1/16)
 Blocks 1, 4x, last at NC State (12/1/16)
 FG Made..... 8, 2x, last vs. UMass Lowell (11/23/16)
 3FG Made..... 1, 2x, last at NC State (12/1/16)
 Minutes..... 38, at NC State (12/1/16)

Career Highs

Points..... 22, 4x, last vs. Vanderbilt (11/13/16)
 Rebounds..... 16, vs. Wisconsin (1/11/15)
 Assists..... 9, at Northwestern (1/24/16)
 Steals 4, 2x, last vs. Illinois (2/22/14)
 Blocks 4, 3x, last at Ohio State (1/7/16)
 FG Made..... 9, at Yale (12/28/15)
 3FG Made..... 4, at Illinois (2/2/14)
 Minutes..... 40, 7x, last at Notre Dame (3/21/16)

CAREER STATISTICS

Season	gp-gs	min/avg	Total		3-Point		F-Throws		Rebounds				Scoring							
			fg-fga	pct	fg-fga	pct	ft-fa	pct	off	def	tot	avg	pf	fo	ast	to	blk	stl	pts	avg
2013-14	34-32	967/28.4	108-297	.364	36-119	.303	48-76	.632	65	123	188	5.5	53	0	56	32	21	33	300	8.8
2014-15	31-16	832/26.8	93-207	.449	16-46	.348	47-61	.770	47	142	189	6.1	65	1	48	38	20	28	249	8.0
2015-16	33-33	1151/34.9	144-353	.408	17-53	.321	69-99	.697	29	127	156	4.7	43	0	109	50	24	38	374	11.3
2016-17	10-10	314/31.4	56-100	.560	3-12	.250	24-34	.706	14	48	62	6.2	8	0	43	17	4	9	139	13.9
TOTAL	108-91	3264/30.2	401-957	.419	72-230	.313	188-270	.696	155	440	595	5.5	169	1	256	137	69	108	1062	9.8



#24 • TYSHEE TOWNER

Sr. • G • 5-9

Aurora, Ill. • East Aurora/Wabash Valley College

NOTES ON TOWNER

- Has scored in the last four of five games for Indiana and recorded a season-high three rebounds against Valparaiso
- Scored a season-high five points and played 15 minutes in the win over UMass Lowell
- Has come off the bench in eight of nine games including Thursday night when she scored four points and added two rebounds against Northern Kentucky
- Scored a career-high 18 points to go with six rebounds, two steals and two assists in the 2015-16 season opener vs. Tennessee State
- Played first two seasons at Wabash Valley College in Mt. Carmel, Ill.
- Major: Liberal Studies
- Birthdate: Feb. 1

2016-17 GAME-BY-GAME

Opponent	Date	gs	min	Total		3-Pointers		Free throws		Rebounds				pf	a	t/o	blk	stl	pts	avg
				fg-fga	pct	3fg-fga	pct	ft-fa	pct	off	def	tot	avg							
PRESBYTERIAN COLLEG	11/11/16	11	2-4	.500	0-0	.000	0-0	.000	0	0	0	0.0	1	0	1	0	0	4	4.0	
VANDERBILT	11/13/16	6	1-1	1.000	0-0	.000	0-0	.000	0	0	0	0.0	0	0	0	0	0	2	3.0	
at Chattanooga	11/17/16	0	0-0	.000	0-0	.000	0-0	.000	0	0	0	0.0	0	0	0	0	0	0	2.0	
at WKU	11/19/16	6	0-0	.000	0-0	.000	0-0	.000	0	0	0	0.0	2	0	1	0	0	0	1.5	
UMASS LOWELL	11/23/16	15	1-2	.500	0-0	.000	3-4	.750	1	1	2	0.4	0	2	0	0	0	5	2.2	
at Auburn	11/27/16	2	0-0	.000	0-0	.000	0-0	.000	0	0	0	0.3	2	0	0	0	0	0	1.8	
at North Texas	12/6/16	7	1-1	1.000	0-0	.000	0-0	.000	0	1	1	0.4	2	0	0	0	0	2	1.9	
NORTHERN KENTUCKY	12/8/16	12	2-4	.500	0-0	.000	0-0	.000	1	1	2	0.6	0	0	1	0	0	4	2.1	
VALPARAISO	12/11/16	10	2-2	1.000	0-0	.000	0-0	.000	0	3	3	0.9	1	0	0	0	0	4	2.3	
Totals		0	69	9-14	.643	0-0	.000	3-4	.750	2	6	8	0.9	8	2	3	0	0	21	2.3

GAME AND CAREER HIGHS

2016-17 Game Highs

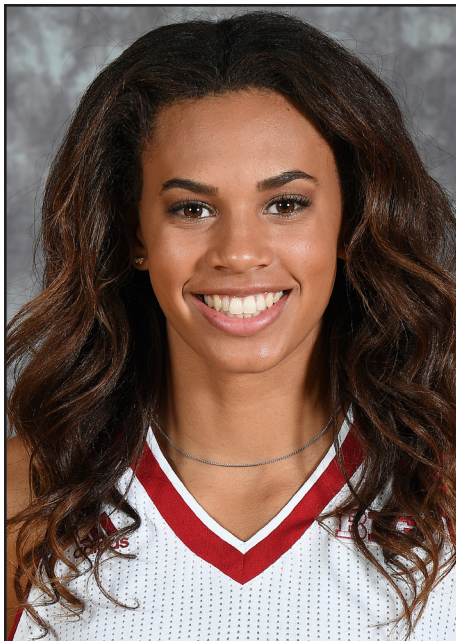
Points..... 5, vs. UMass Lowell (11/23/16)
 Rebounds.....3, vs. Valparaiso (12/11/16)
 Assists..... 2, vs. Presbyterian (11/11/16)
 Steals N/A
 Blocks N/A
 FG Made..... 2, 3x, last vs. Valparaiso (12/11/16)
 3FG Made..... N/A
 Minutes 15, vs. UMass Lowell (11/23/16)

Career Highs

Points..... 18, vs. Tennessee State (11/13/15)
 Rebounds.....6, vs. Tennessee State (11/13/15)
 Assists..... 3, at DePaul (11/19/15)
 Steals 3, at Indiana State (12/8/15)
 Blocks 1, 2x, last vs. West Virginia (12/21/15)
 FG Made.....6, vs. Tennessee State (11/13/15)
 3FG Made.....2, vs. Tennessee State (11/13/15)
 Minutes.. 32, 2x, last vs. Chattanooga (11/17/15)

CAREER STATISTICS

Season	gp-gs	min/avg	Total		3-Point		F-Throws		Rebounds				Scoring							
			fg-fga	pct	fg-fga	pct	ft-fa	pct	off	def	tot	avg	pf	fo	ast	to	blk	stl	pts	avg
2015-16	30-11	407/13.6	19-71	.268	4-19	.211	20-30	.667	5	37	42	1.4	29	0	16	25	2	16	62	2.1
2016-17	9-0	69/7.7	9-14	.643	0-0	.000	3-4	.750	2	6	8	0.9	8	0	2	3	0	0	21	2.3
TOTAL	39-11	476/12.2	28-85	.329	4-19	.211	23-34	.676	7	43	50	1.3	37	0	18	28	2	16	83	2.1



#31 • BRE WICKWARE

Fr. • F • 6-1
Denton, Texas • Guyer

NOTES ON WICKWARE

- Has come off the bench in nine of ten games in her freshman season
- Scored a career-high five points and tied a season-high five points playing in front of a hometown crowd at North Texas
- Grabbed a season-high five rebounds in the season opener against Presbyterian
- Scored four points, grabbed a rebound and picked up three steals in the win over UMass Lowell
- Named a First Team All-District 6-5A selection as she led Guyer to a district championship
- As a junior averaged 15.7 points, 10.2 rebounds and 1.5 steals
- Major: Biology
- Birthdate: May 12

2016-17 GAME-BY-GAME

Opponent	Date	gs	min	Total		3-Pointers		Free throws		Rebounds				pf	a	t/o	blk	stl	pts	avg
				fg-fga	pct	3fg-fga	pct	ft-fa	pct	off	def	tot	avg							
PRESBYTERIAN COLLEG	11/11/16	8		1-2	.500	0-0	.000	0-0	.000	3	2	5	5.0	2	1	1	0	0	2	2.0
VANDERBILT	11/13/16	6		1-2	.500	0-1	.000	0-0	.000	0	3	3	4.0	1	0	1	0	0	2	2.0
at WKU	11/19/16	2		0-1	.000	0-0	.000	0-0	.000	0	0	0	2.7	0	0	0	0	0	1.3	
UMASS LOWELL	11/23/16	6		2-2	1.000	0-0	.000	0-4	.000	0	1	1	2.3	1	0	1	0	3	4	2.0
at Auburn	11/27/16	0		0-0	.000	0-0	.000	0-0	.000	0	0	0	1.8	0	0	0	0	0	1.6	
at NC State	12/01/16	8		1-2	.500	0-0	.000	0-0	.000	0	2	2	1.8	1	0	1	0	0	2	1.7
at North Texas	12/6/16	13		1-2	.500	0-0	.000	3-4	.750	1	4	5	2.3	4	0	3	0	1	5	2.1
NORTHERN KENTUCKY	12/8/16	11		0-2	.000	0-0	.000	0-2	.000	2	2	4	2.5	3	1	0	2	0	1.9	
VALPARAISO	12/11/16	8		1-2	.500	0-0	.000	0-0	.000	0	2	2	2.4	3	0	2	0	0	2	1.9
Totals		0	62	7-15	.467	0-1	.000	3-10	.300	6	16	22	2.4	15	2	9	2	4	17	1.9

GAME AND CAREER HIGHS

2016-17 Game Highs

Points.....5, at North Texas (12/6/16)
Rebounds.....5, 2x, last at North Texas (12/6/16)
Assists.....1, 2x, last vs. NKU (12/8/16)
Steals3, vs. UMass Lowell (11/23/16)
Blocks2, vs. NKU (12/8/16)
FG Made.....2, vs. UMass Lowell (11/23/16)
3FG Made.....N/A
Minutes13, at North Texas (12/6/16)

Career Highs

Points.....5, at North Texas (12/6/16)
Rebounds.....5, 2x, last at North Texas (12/6/16)
Assists.....1, 2x, last vs. NKU (12/8/16)
Steals3, vs. UMass Lowell (11/23/16)
Blocks2, vs. NKU (12/8/16)
FG Made.....2, vs. UMass Lowell (11/23/16)
3FG Made.....N/A
Minutes13, at North Texas (12/6/16)

CAREER STATISTICS

Season	gp-gs	min/avg	Total		3-Point		F-Throws		Rebounds				Scoring							
			fg-fga	pct	fg-fga	pct	ft-fa	pct	off	def	tot	avg	pf	fo	ast	to	blk	stl	pts	avg
2016-17	9-0	62/6.9	7-15	.467	0-1	.000	3-10	.300	6	16	22	2.4	15	0	2	9	2	4	17	1.9
TOTAL	9-0	62/6.9	7-15	.467	0-1	.000	3-10	.300	6	16	22	2.4	15	0	2	9	2	4	17	1.9



#33 • AMANDA CAHILL

Jr. • F • 6-2
Clyde, Ohio • Clyde

NOTES ON CAHILL

- Allstate WBCA Good Works Team nominee
- Has scored in double figures in nine of ten games for IU this season and the team's third leading scorer with 12.9 points per game
- Has three of IU's five double-doubles this season including two last week when she scored 15 points and 10 rebounds at North Texas and 16 points and 11 rebounds against Valparaiso
- IU's leading rebounder averaging 8.2 boards per game and second in assists with 29 (2.9 per game)
- Could be come IU's third active player this season to score 1,000 career points as she has scored 948 career points through 74 games of her career.
- All-Big Ten Second Team (media) and Honorable Mention (coaches) in 2015-16
- Major: Elementary Education
- Birthdate: June 8

2016-17 GAME-BY-GAME

Opponent	Date	gs	min	Total		3-Pointers		Free throws		Rebounds				pf	a	t/o	blk	stl	pts	avg	
				fg-fga	pct	3fg-fga	pct	ft-fa	pct	off	def	tot	avg								
PRESBYTERIAN COLLEGE	11/11/16	*	32	6-11	.545	0-2	.000	0-1	.000	6	5	11	11.0	1	2	2	2	2	12	12.0	
VANDERBILT	11/13/16	*	34	6-9	.667	1-2	.500	4-5	.800	2	4	6	8.5	3	3	3	0	5	17	14.5	
at Chattanooga	11/17/16	*	39	4-9	.444	1-3	.333	3-4	.750	2	5	7	8.0	1	1	0	2	0	12	13.7	
at WKU	11/19/16	*	37	5-10	.500	2-5	.400	0-1	.000	4	4	8	8.0	5	6	3	0	0	12	13.3	
UMASS LOWELL	11/23/16	*	23	6-11	.545	1-4	.250	2-4	.500	3	3	6	7.6	1	3	1	0	3	15	13.6	
at Auburn	11/27/16	*	34	1-6	.167	1-3	.333	7-8	.875	4	3	7	7.5	5	5	4	0	3	10	13.0	
at NC State	12/01/16	*	29	2-6	.333	1-4	.250	1-2	.500	1	7	8	7.6	5	2	4	2	0	6	12.0	
at North Texas	12/6/16	*	29	5-9	.556	1-2	.500	4-4	1.000	5	5	10	7.9	1	2	4	0	2	15	12.4	
NORTHERN KENTUCKY	12/8/16	*	25	5-7	.714	2-2	1.000	2-3	.667	3	5	8	7.9	2	4	1	0	4	14	12.6	
VALPARAISO	12/11/16	*	28	6-14	.429	1-4	.250	3-3	1.000	6	5	11	8.2	4	1	2	0	3	16	12.9	
Totals			10	310	46-92	.500	11-31	.355	26-35	.743	36	46	82	8.2	28	29	24	6	22	129	12.9

GAME AND CAREER HIGHS

2016-17 Game Highs

Points..... 17, vs. Vanderbilt (11/13/16)
Rebounds.... 11, 2x, last vs. Valparaiso (12/11/16)
Assists..... 6, at WKU (11/19/16)
Steals 5, vs. Vanderbilt (11/13/16)
Blocks 2, 3x, last at NC State (12/1/16)
FG Made..... 6, 3x, vs. UMass Lowell (11/23/16)
3FG Made..... 2, 2x, last vs. NKU (12/8/16)
Minutes 39, at Chattanooga (11/17/16)

Career Highs

Points..... 24, vs. Iowa (2/4/16)
Rebounds..... 18, vs. Indiana State (11/30/14)
Assists..... 6, 2x, last at WKU (11/19/16)
Steals 5, vs. Vanderbilt (11/13/16)
Blocks 5, vs. Illinois (2/11/15)
FG Made... 10, 2x, last vs. Northwestern (3/4/16)
3FG Made..... 3, 3x, last at Nebraska (3/4/16)
Minutes 41, at Indiana State (11/30/14)

CAREER STATISTICS

Season	gp-gs	min/avg	Total		3-Point		F-Throws		Rebounds				Scoring							
			fg-fga	pct	fg-fga	pct	ft-fa	pct	off	def	tot	avg	pf	fo	ast	to	blk	stl	pts	avg
2014-15	31-31	862/27.8	125-249	.502	23-75	.307	62-80	.775	79	160	239	7.7	97	5	47	38	30	40	335	10.8
2015-16	33-33	1024/31.0	181-364	.497	42-103	.408	80-107	.748	86	193	279	8.5	91	5	81	91	31	42	484	14.7
2016-17	10-10	310/31.0	46-92	.500	11-31	.355	26-35	.743	36	46	82	8.2	28	3	29	24	6	22	129	12.9
TOTAL	74-74	2196/29.7	352-705	.499	76-209	.364	168-222	.757	201	399	600	8.1	216	13	157	153	67	104	948	12.8



#43 • JENN ANDERSON

Sr. • F • 6-3
Sheridan, Ind. • Westfield

NOTES ON ANDERSON

- Leading Indiana in field goal percentage (.611) and fifth in the Big Ten
- Has started the last three games and tied a season-high 12 points in the win over Northern Kentucky
- Shot a season-best 80 percent (4-for-5) with nine points at Chattanooga
- A major part of IU's win over Chattanooga where she added 12 points, three rebounds and two rebounds
- Came off the bench against Vanderbilt for six points and team-high seven rebounds in 24 minutes of work
- Tied a career-high three blocks against UMass Lowell - needs three more blocks to move into a tie for 11th place all-time (45)
- Major: Non-profit communication recreation
- Birthdate: June 8

2016-17 GAME-BY-GAME

Opponent	Date	gs	min	Total		3-Pointers		Free throws		Rebounds				pf	a	t/o	blk	stl	pts	avg
				fg-fga	pct	3fg-fga	pct	ft-fa	pct	off	def	tot	avg							
PRESBYTERIAN COLLEGE	11/11/16	12		2-2	1.000	0-0	.000	0-0	.000	1	1	2	2.0	0	0	0	0	0	4	4.0
VANDERBILT	11/13/16	24		2-4	.500	0-0	.000	2-2	1.000	3	4	7	4.5	1	0	1	1	0	6	5.0
at Chattanooga	11/17/16	24		5-7	.714	0-0	.000	2-4	.500	1	2	3	4.0	4	0	2	2	1	12	7.3
at WKU	11/19/16	27		4-8	.500	0-0	.000	1-2	.500	6	5	11	5.8	2	0	0	0	0	9	7.8
UMASS LOWELL	11/23/16	18		4-6	.667	0-0	.000	0-0	.000	2	4	6	5.8	3	1	0	3	0	8	7.8
at Auburn	11/27/16	19		4-5	.800	0-0	.000	1-2	.500	1	5	6	5.8	4	0	1	0	0	9	8.0
at NC State	12/01/16	*	25	1-4	.250	0-0	.000	2-2	1.000	0	2	2	5.3	4	0	2	1	0	4	7.4
at North Texas	12/6/16	*	20	3-4	.750	0-0	.000	3-4	.750	1	3	4	5.1	3	0	1	1	0	9	7.6
NORTHERN KENTUCKY	12/8/16	*	18	6-9	.667	0-0	.000	0-0	.000	3	0	3	4.9	1	1	1	0	0	12	8.1
VALPARAISO	12/11/16	*	16	2-5	.400	0-0	.000	0-0	.000	3	2	5	4.9	1	2	1	0	0	4	7.7
Totals		4	203	33-54	.611	0-0	.000	11-16	.688	21	28	49	4.9	23	4	9	8	1	77	7.7

GAME AND CAREER HIGHS

2016-17 Game Highs

Points..... 12, last vs. NKU (12/8/16)
 Rebounds..... 11, at WKU (11/19/16)
 Assists..... 2, vs. Valparaiso (12/11/16)
 Steals 1, at Chattanooga (11/17/16)
 Blocks 3, vs. UMass Lowell (11/23/16)
 FG Made..... 6, vs. NKU (12/8/16)
 3FG Made..... N/A
 Minutes 27, at WKU (11/19/16)

Career Highs

Points..... 21, vs. Incarnate Word (11/23/14)
 Rebounds..... 11, 2x, last at WKU (11/19/16)
 Assists..... 2, 7x, last at Nebraska (2/24/16)
 Steals 2, 5x, last vs. Northwestern (3/4/16)
 Blocks 3, 2x, last vs. UMass Lowell (11/23/16)
 FG Made..... 8, 2x, last vs. ETSU (11/26/14)
 3FG Made... 1, 2x, last at Michigan State (3/2/14)
 Minutes 36, at Nebraska (2/24/16)

CAREER STATISTICS

Season	gp-gs	min/avg	Total		3-Point		F-Throws		Rebounds				Scoring							
			fg-fga	pct	fg-fga	pct	ft-fa	pct	off	def	tot	avg	pf	fo	ast	to	blk	stl	pts	avg
2013-14	16-3	104/6.5	22-48	.458	2-9	.222	8-17	.471	13	14	27	1.7	12	0	3	12	1	1	54	3.4
2014-15	30-28	584/19.5	94-168	.560	0-5	.000	49-68	.721	41	64	105	3.5	80	1	11	50	16	12	237	7.9
2015-16	33-26	748/22.7	101-175	.577	0-0	.000	56-82	.683	76	92	168	5.1	87	2	20	36	20	14	258	7.8
2016-17	10-4	203/20.3	33-54	.611	0-0	.000	11-16	.688	21	28	49	4.9	23	0	4	9	8	1	77	7.7
TOTAL	89-61	1639/18.4	250-445	.562	2-14	.143	124-183	.678	151	198	349	3.9	202	3	38	107	45	28	626	7.0



#44 • DANIELLE WILLIAMS

So. • F • 6-4

Fort Worth, Texas • North Crowley

NOTES ON WILLIAMS

- Has seen action in two games in 2016-17
- Appeared in six games for the Hoosiers in her freshman season (2015-16)
- Scored a season-high four points in a win over Penn State
- Played at North Crowley High School in Fort Worth, Texas where she averaged 10 points, eight rebounds and six blocks per game
- Major: Sport Communication-Broadcast
- Birthdate: Aug. 24

2016-17 GAME-BY-GAME

Opponent	Date	gs	min	Total		3-Pointers		Free throws		Rebounds				pf	a	t/o	blk	stl	pts	avg
				fg-fga	pct	3fg-fga	pct	ft-fa	pct	off	def	tot	avg							
UMASS LOWELL	11/23/16	2		0-0	.000	0-0	.000	1-2	.500	0	0	0	0.0	1	0	1	0	0	1	1.0
at North Texas	12/6/16	2		0-0	.000	0-0	.000	0-0	.000	0	0	0	0.0	0	0	1	0	0	0	0.5
Totals		0	4	0-0	.000	0-0	.000	1-2	.500	0	0	0	0.0	1	0	2	0	0	1	0.5

GAME AND CAREER HIGHS

2016-17 Game Highs

Points..... 1, vs. UMass Lowell (11/23/16)
 Rebounds..... N/A
 Assists..... N/A
 Steals N/A
 Blocks N/A
 FG Made..... N/A
 3FG Made..... N/A
 Minutes 2, vs. UMass Lowell (11/23/16)

Career Highs

Points..... 4, vs. Penn State (2/27/16)
 Rebounds..... 2, vs. Penn State (2/27/16)
 Assists..... N/A
 Steals N/A
 Blocks 1, vs. Austin Peay (11/28/15)
 FG Made..... 2, vs. Penn State (2/27/16)
 3FG Made..... N/A
 Minutes 5, vs. Penn State (2/27/16)

CAREER STATISTICS

Season	gp-gs	min/avg	Total		3-Point		F-Throws		Rebounds				Scoring							
			fg-fga	pct	fg-fga	pct	ft-fa	pct	off	def	tot	avg	pf	fo	ast	to	blk	stl	pts	avg
2015-16	6-0	15/2.5	3-7	.429	0-0	.000	0-0	.000	1	5	6	1.0	5	0	0	3	1	0	6	1.0
2016-17	2-0	4/2.0	0-0	.000	0-0	.000	1-2	.500	0	0	0	0.0	1	0	0	2	0	0	1	0.5
TOTAL	8-0	19/2.4	3-7	.429	0-0	.000	1-2	.500	1	5	6	0.8	6	0	0	5	1	0	7	0.9

Official Basketball Box Score -- Game Totals -- Final Statistics
Presbyterian College vs Indiana
11/11/16 7 p.m. at Simon Skjodt Assembly Hall

Presbyterian College 37 • 0-1

#	Player	Total		3-Ptr		Rebounds			PF	TP	A	TO	Blk	Stl	Min
		FG-FGA	FT-FTA	FG-FGA	FT-FTA	Off	Def	Tot							
05	WALKER, Rebecca	f	4-14	1-6	0-0	0	3	3	4	9	1	1	0	0	39
10	STOREY, Courtney	g	2-7	1-3	0-0	0	2	2	5	2	3	1	1	40	
14	MILES, Janie	g	5-8	2-4	0-0	0	1	1	12	2	4	0	1	38	
21	PETTY, Taylor	g	4-7	0-1	0-0	2	1	3	5	8	1	4	1	22	
30	REFFNER, Kaycie	g	1-2	1-1	0-4	3	1	4	4	3	1	4	0	29	
11	HALL, Kacie	g	0-6	0-4	0-0	0	0	0	2	0	0	1	0	26	
32	VIROLA, Salina	g	0-1	0-0	0-0	0	0	0	0	0	0	0	0	6	
Team						4	1	5			2				
Totals			16-45	5-19	0-4	9	9	18	18	37	7	19	2	3	200

1st - FG %: 4-12 33.3% 2nd: 5-11 45.5% 3rd: 5-15 33.3% 4th: 2-7 28.6% Game: 16-45 35.6% Deadball Rebounds 3,1
 3FG %: 1-4 25.0% 2-5 40.0% 1-6 16.7% 1-4 25.0% 5-19 26.3%
 FT %: 0-0 0.0% 0-0 0.0% 0-0 0.0% 0-4 0.0%

Indiana 71 • 1-0

#	Player	Total		3-Ptr		Rebounds			PF	TP	A	TO	Blk	Stl	Min
		FG-FGA	FT-FTA	FG-FGA	FT-FTA	Off	Def	Tot							
11	Kym Royster	f	4-8	0-0	1-2	7	2	9	1	9	0	2	3	23	
23	Amanda Cahill	f	6-11	0-2	0-1	6	5	11	1	12	2	2	2	32	
03	Tyra Buss	g	4-8	1-4	6-10	1	1	2	3	15	2	0	0	26	
05	Ria Gulley	g	2-4	2-3	0-0	0	1	1	0	6	1	2	0	19	
23	Alexis Gassion	g	4-5	0-0	1-3	1	3	4	1	9	1	1	0	21	
02	Amber Deane	g	2-4	0-0	0-0	0	1	1	0	4	2	0	0	13	
13	Darby Foresman	g	2-3	0-0	0-0	1	1	2	1	4	0	0	1	5	
21	Karlee McBride	g	0-3	0-1	0-0	0	0	0	0	3	1	0	1	15	
22	Tia Elbert	g	1-2	0-0	0-0	0	2	2	3	2	2	1	0	15	
24	Tyshee Towner	g	2-4	0-0	0-0	0	0	0	1	4	0	1	0	11	
31	Bre Wickware	g	1-2	0-0	0-0	3	2	5	2	2	1	1	0	8	
43	Jenn Anderson	g	2-2	0-0	0-0	1	1	2	0	4	0	0	0	12	
Team						0	1	1			1				
Totals			30-56	3-10	8-16	20	20	40	13	71	14	12	6	11	200

1st - FG %: 8-14 57.1% 2nd: 9-17 52.9% 3rd: 4-11 36.4% 4th: 9-14 64.3% Game: 30-56 53.6% Deadball Rebounds 4,1
 3FG %: 2-3 66.7% 1-4 25.0% 0-3 0.0% 0-0 0.0% 3-10 30.0%
 FT %: 1-5 20.0% 0-0 0.0% 7-11 63.6% 0-0 0.0%

Officials: Camreon Inouye, Talisa Green, Ann Schroeder
 Technical fouls: Presbyterian College-None. Indiana-None.
 Attendance: 2422

Score by periods	1st	2nd	3rd	4th	Total
Presbyterian College	9	12	11	5	37
Indiana	19	19	15	18	71

	In	Off	2nd	Fast	Bench
PC	20	5	6	0	0
IND	50	26	24	12	20

Score tied - 2 times.
 Lead changed - 4 times.

Official Basketball Box Score -- Game Totals -- Final Statistics
Vanderbilt vs Indiana
11/13/16 2 p.m. at Simon Skjodt Assembly Hall

Vanderbilt 61 • 1-1

#	Player	Total		3-Ptr		Rebounds			PF	TP	A	TO	Blk	Stl	Min
		FG-FGA	FT-FTA	FG-FGA	FT-FTA	Off	Def	Tot							
22	Webb, Marqu'es	f	3-4	0-0	2-2	1	8	9	5	8	0	2	1	1	25
01	Dahlman, Rebekah	g	0-1	0-0	4-4	0	4	4	1	4	2	2	0	11	
03	Beel, Rachel	g	4-14	0-1	3-3	1	0	1	0	11	0	1	1	17	
33	Rend, Christa	g	3-10	1-4	1-2	0	5	5	4	8	0	3	0	29	
35	Clemons-Green, Kalei	g	2-3	1-1	0-0	0	2	2	4	5	1	3	0	17	
00	Overbeck, Kayla	g	3-3	0-0	2-2	2	2	4	5	8	0	3	0	14	
10	Walker, Cierra	g	3-7	2-5	0-0	1	0	1	3	8	1	1	0	32	
21	Whalen, Erin	g	1-6	0-2	0-0	2	1	3	3	2	1	2	0	18	
23	Spears, Minta	g	0-0	0-0	0-0	0	0	0	0	0	0	0	0	6	
30	Carter, Lealea	g	1-7	0-2	2-2	1	0	1	0	4	1	2	0	15	
41	Seawright, Miaya	g	1-3	0-0	1-2	1	1	2	4	3	0	2	0	16	
Team						0	2	2							
Totals			21-58	4-15	15-17	9	25	34	29	61	6	22	2	5	200

1st - FG %: 6-15 40.0% 2nd: 7-14 50.0% 3rd: 4-15 26.7% 4th: 4-14 28.6% Game: 21-58 36.2% Deadball Rebounds 2
 3FG %: 1-4 25.0% 1-3 33.3% 1-6 16.7% 1-2 50.0% 4-15 26.7%
 FT %: 2-2 100.0% 1-3 33.3% 2-2 100.0% 3-4 75.0%

Indiana 94 • 2-0

#	Player	Total		3-Ptr		Rebounds			PF	TP	A	TO	Blk	Stl	Min
		FG-FGA	FT-FTA	FG-FGA	FT-FTA	Off	Def	Tot							
11	Kym Royster	f	2-4	0-0	1-2	1	3	4	3	5	1	0	0	1	12
33	Amanda Cahill	f	6-9	1-2	4-5	2	4	6	3	17	3	3	0	5	34
03	Tyra Buss	g	3-9	1-2	4-6	0	2	2	3	11	5	2	0	4	26
05	Ria Gulley	g	0-2	0-2	1-2	0	1	1	1	1	0	0	1	18	
23	Alexis Gassion	g	8-14	1-4	5-6	0	5	5	0	22	3	2	1	0	29
02	Amber Deane	g	4-6	0-1	2-2	0	0	0	4	10	2	0	0	11	
13	Darby Foresman	g	1-1	0-0	0-0	0	0	0	0	2	0	0	0	4	
21	Karlee McBride	g	2-6	2-4	2-2	0	3	2	8	0	1	0	0	11	
22	Tia Elbert	g	3-5	1-2	1-2	1	3	4	3	8	5	2	0	19	
24	Tyshee Towner	g	1-1	0-0	0-0	0	0	0	0	2	0	0	0	6	
31	Bre Wickware	g	1-2	0-1	0-0	0	3	3	1	2	0	1	0	6	
43	Jenn Anderson	g	2-4	0-0	2-2	3	4	7	1	6	0	1	1	24	
Team						1	0	1							
Totals			33-63	6-18	22-29	8	28	36	21	94	19	12	3	12	200

1st - FG %: 5-16 31.3% 2nd: 10-20 50.0% 3rd: 8-13 61.5% 4th: 10-14 71.4% Game: 33-63 52.4% Deadball Rebounds 4
 3FG %: 2-5 40.0% 3-9 33.3% 1-2 50.0% 0-2 0.0% 6-18 33.3%
 FT %: 11-13 84.6% 4-6 66.7% 5-6 83.3% 2-4 50.0%

Officials: Laura Morris, Amy Bonner, Kevin Pethel
 Technical fouls: Vanderbilt-None. Indiana-None.
 Attendance: 3029

Score by periods	1st	2nd	3rd	4th	Total
Vanderbilt	15	23	11	12	61
Indiana	23	27	22	22	94

	In	Off	2nd	Fast	Bench
VANDY	22	17	15	4	25
IND	48	30	10	13	38

Score tied - 1 time.
 Lead changed - 0 times.

Official Basketball Box Score -- Game Totals -- Final Statistics
#23 Indiana vs Chattanooga
11/17/16 6:30 p.m. at McKenzie Arena - Chattanooga, Tenn.

#23 Indiana 79 • 3-0

#	Player	Total		3-Ptr		Rebounds			PF	TP	A	TO	Blk	Stl	Min
		FG-FGA	FT-FTA	FG-FGA	FT-FTA	Off	Def	Tot							
11	Kym Royster	f	2-4	0-0	0-0	1	0	1	5	4	0	0	0	0	16
33	Amanda Cahill	f	4-9	1-3	3-4	2	5	7	1	12	1	0	2	39	
03	Tyra Buss	g	8-16	4-7	3-3	1	3	4	3	23	2	0	0	38	
05	Ria Gulley	g	1-3	1-1	0-0	0	0	0	0	3	0	0	0	6	
23	Alexis Gassion	g	7-12	0-3	1-4	1	7	8	0	15	8	0	1	37	
02	Amber Deane	g	2-3	1-1	0-0	0	0	0	2	5	4	1	1	16	
21	Karlee McBride	g	1-3	1-2	0-0	0	1	1	0	3	2	2	0	11	
22	Tia Elbert	g	1-3	0-0	0-0	0	0	0	0	2	1	1	0	7	
24	Tyshee Towner	g	0-0	0-0	0-0	0	0	0	0	0	0	0	0	0	
43	Jenn Anderson	g	5-7	0-0	2-4	1	2	3	4	12	0	2	2	24	
Team						3	4	7							
Totals			31-60	8-17	9-15	9	22	31	15	79	18	6	6	200	

1st - FG %: 8-16 50.0% 2nd: 7-15 46.7% 3rd: 8-17 47.1% 4th: 8-12 66.7% Game: 31-60 51.7% Deadball Rebounds 4
 3FG %: 3-6 50.0% 0-3 0.0% 3-6 50.0% 2-2 100.0% 8-17 47.1%
 FT %: 0-0 0.0% 4-5 80.0% 1-2 50.0% 4-8 50.0%

Chattanooga 76 • 1-2

#	Player	Total		3-Ptr		Rebounds			PF	TP	A	TO	Blk	Stl	Min
		FG-FGA	FT-FTA	FG-FGA	FT-FTA	Off	Def	Tot							
03	Jasmine Joyner	f	5-9	2-2	3-4	2	7	9	3	15	2	2	4	1	37
10	Queen Alford	g	7-19	1-6	2-2	3	3	6	0	17	2	1	0	30	
20	Keiana Gilbert	g	8-13	2-4	1-2	2	4	6	0	19	5	2	1	36	
25	Chelsey Shumpert	g	3-8	1-3	1-1	0	2	2	2	8	0	1	0	28	
35	Aryanna Gilbert	g	1-3	0-1	0-0	1	3	4	1	2	0	2	0	1	28
21	Sydney Vanlandingham	g	0-0	0-0	0-0	0	1	1	0	0	0	0	0	3	
22	Shelbie Davenport	g	0-1	0-1	0-0	0	0	0	1	0	1	0	0	5	
23	Moses Johnson	g	0-0	0-0	0-0	0	0	0	3	0	0	0	0	3	
24	Lakelyn Bouldin	g	2-4	2-3	4-4	0	1	1	2	10	0	0	0	19	
41	Ashlyn Wert	g	1-1	0-0	3-4	2	1	3	0	5	0	1	0		

Official Basketball Box Score -- Game Totals -- Final Statistics
Umass Lowell vs Indiana
11/23/16 2 p.m. at Simon Skjott Assembly Hall

Umass Lowell 45 • 0-5

#	Player	Total			3-Ptr			Rebounds			PF	TP	A	TO	Blk	Stl	Min
		FG	FGA	FT	FTA	FG	FGA	FT	FTA	Off							
01	GIBBS, Kayla	6	7	0	0	2	2	0	4	4	2	14	2	5	2	1	23
05	SMITH, Katherine	4	5	0	0	1	2	1	5	6	3	9	1	5	0	1	34
12	MITCHELL-OWENS, Asi	1	5	0	0	0	2	2	1	2	1	2	1	2	0	1	21
22	BUTLER, Nazarae	0	3	0	0	2	2	0	0	0	4	2	2	2	0	0	22
04	HAYNER, Nicole	1	3	0	0	0	1	1	1	1	2	2	1	0	1	0	20
02	ORTIZ, Amanda	0	0	0	0	0	1	1	0	0	0	0	2	0	0	0	3
03	HENDRICK, Megan	3	8	1	6	1	4	4	4	8	0	4	0	0	0	0	30
11	BRITTEN, Tyshay	0	4	0	0	2	1	2	3	1	0	0	2	1	0	9	
13	SHERMAN, Markayla	0	2	0	0	0	1	1	2	0	0	5	0	0	0	10	
21	SHACKELFORD, Oda	2	6	0	0	0	2	1	3	3	4	0	3	0	1	14	
23	McCALLUM, Shawnkia	1	1	0	0	2	2	0	1	1	1	4	0	3	0	0	14
	Team								1	6	7						
	Totals	18	44	1	0	8	14	5	28	33	22	45	8	34	3	5	200

1st - FG %: 4-9 44.4% 2nd: 4-12 33.3% 3rd: 5-11 45.5% 4th: 5-12 41.7% Game: 18-44 40.9% Deadball Rebounds 3
 3FG %: 0-2 0.0% 0-2 0.0% 0-1 0.0% 1-5 20.0% 1-10 10.0%
 FT %: 0-2 0.0% 2-4 50.0% 2-2 100.0% 4-6 66.7% 8-14 57.1%

Indiana 79 • 4-1

#	Player	Total			3-Ptr			Rebounds			PF	TP	A	TO	Blk	Stl	Min
		FG	FGA	FT	FTA	FG	FGA	FT	FTA	Off							
11	Kym Royster	2	6	0	0	2	2	3	4	4	0	1	0	1	0	17	
33	Amanda Cahill	6	11	1	4	2	4	3	6	1	15	3	1	0	3	23	
02	Amber Deane	1	4	0	1	0	0	1	2	2	2	2	1	0	0	22	
03	Tyra Buss	5	14	1	3	5	2	3	5	3	14	4	4	0	0	25	
23	Alexis Gassion	8	14	0	2	2	3	5	0	18	6	1	0	0	0	30	
13	Darby Foresman	3	3	0	0	0	1	2	1	6	0	0	0	0	0	12	
14	Laken Wairau	0	0	0	0	0	0	0	0	0	0	0	0	0	0	0+	
21	Karlee McBride	0	3	0	2	0	0	2	2	0	2	0	0	0	0	15	
22	Tia Elbert	1	4	0	0	0	0	0	2	2	1	2	0	0	0	15	
24	Tyshee Towner	1	2	0	0	3	4	1	2	0	5	2	0	0	0	15	
31	Bre Wickware	2	2	0	0	4	0	1	1	1	4	0	1	0	3	6	
43	Jenn Anderson	4	6	0	0	0	2	4	6	3	8	1	0	3	0	18	
44	Danielle Williams	0	0	0	1	2	0	0	0	1	1	0	1	0	0	2	
	Team							1	3	4							
	Totals	33	69	2	10	11	23	14	24	38	18	79	21	12	3	18	200

1st - FG %: 12-22 54.5% 2nd: 6-15 40.0% 3rd: 7-17 41.2% 4th: 8-15 53.3% Game: 33-69 47.8% Deadball Rebounds 6
 3FG %: 1-4 25.0% 1-2 50.0% 0-1 0.0% 2-10 20.0% 2-12 16.7%
 FT %: 2-2 100.0% 4-12 33.3% 5-9 55.6% 0-0 0.0% 1-23 4.3%

Officials: Beverly Roberts, Tim Daley, John Whitson
 Technical fouls: UMass Lowell-None, Indiana-None.
 Attendance: 2670

Score by periods	1st	2nd	3rd	4th	Total
UMass Lowell	8	10	12	15	45
Indiana	27	17	19	16	79

Last FG - UMLW 4th-00:14, IND 4th-01:47.
 Largest lead - UMLW by 2 1st-09:33, IND by 37 4th-08:34.
 UMLW led for 01:08, IND led for 37:29. Game was tied for 01:12.
 Score tied - 2 times.
 Lead changed - 1 time.

Official Basketball Box Score -- Game Totals -- Final Statistics
Indiana vs Auburn
11/27/16 1:00 pm at Auburn Arena -- Auburn, Ala.

Indiana 67 • 4-2

#	Player	Total			3-Ptr			Rebounds			PF	TP	A	TO	Blk	Stl	Min
		FG	FGA	FT	FTA	FG	FGA	FT	FTA	Off							
11	Kym Royster	2	4	0	0	1	3	4	1	5	0	2	1	0	0	24	
33	Amanda Cahill	1	6	1	3	7	1	5	0	1	5	4	3	0	3	34	
02	Amber Deane	0	5	0	0	3	0	3	0	4	0	1	1	0	0	6	
03	Tyra Buss	7	14	4	8	5	0	3	3	23	2	5	1	1	1	39	
23	Alexis Gassion	2	5	0	1	3	5	0	6	1	7	5	5	0	2	34	
05	Ria Gulley	1	2	0	1	0	0	0	0	0	2	0	0	0	0	5	
13	Darby Foresman	0	0	0	0	0	0	0	0	0	0	0	0	0	0	12	
21	Karlee McBride	4	11	3	9	0	1	2	11	2	11	2	2	0	1	24	
22	Tia Elbert	0	0	0	0	0	0	0	0	0	0	0	0	0	0	1	
24	Tyshee Towner	0	0	0	0	0	0	0	0	0	2	0	0	0	0	2	
31	Bre Wickware	0	0	0	0	0	0	0	0	0	0	0	0	0	0	0+	
43	Jenn Anderson	4	5	0	0	1	5	6	4	9	0	1	0	0	0	19	
	Team							3	1	4							
	Totals	21	52	8	25	17	22	13	21	34	23	67	15	20	2	7	200

1st - FG %: 4-15 26.7% 2nd: 5-8 62.5% 3rd: 7-18 38.9% 4th: 5-11 45.5% Game: 21-52 40.4% Deadball Rebounds 5
 3FG %: 2-3 66.7% 0-4 0.0% 3-7 42.9% 2-6 33.3% 8-25 32.0%
 FT %: 7-9 77.8% 3-5 60.0% 5-6 83.3% 2-2 100.0% 17-22 77.3%

Auburn 71 • 6-1

#	Player	Total			3-Ptr			Rebounds			PF	TP	A	TO	Blk	Stl	Min
		FG	FGA	FT	FTA	FG	FGA	FT	FTA	Off							
15	Jazmine Jones	0	1	0	0	0	1	1	3	0	0	1	0	0	0	18	
23	Jessica Jones	1	1	0	0	1	2	2	1	3	3	0	1	0	1	25	
10	Brandy Montgomery	9	20	4	9	6	8	1	4	5	28	0	2	0	2	35	
13	Katie Frerking	8	13	0	4	5	6	1	6	7	2	21	3	2	1	37	
33	Janiah McKay	3	8	0	1	6	0	0	0	2	12	3	1	0	1	21	
01	Tyra Johnson	2	5	1	4	0	0	0	0	1	5	0	3	0	0	8	
03	Erica Sanders	1	1	0	0	0	3	1	4	5	2	1	1	0	1	16	
05	Emari Jones	0	0	0	0	0	0	0	0	0	0	0	0	0	0	4	
14	Tiffany Lewis	0	1	0	1	0	1	0	1	2	0	0	1	1	0	12	
22	Ekiya Gray	0	0	0	0	3	2	0	0	3	2	0	1	0	0	12	
40	Khady Dieng	0	5	0	0	0	1	1	2	0	4	1	1	0	0	12	
	Team							1	2								
	Totals	24	55	5	21	18	22	9	18	27	23	71	11	13	4	11	200

1st - FG %: 6-13 46.2% 2nd: 6-14 42.9% 3rd: 9-13 69.2% 4th: 9-15 60.0% Game: 24-55 43.6% Deadball Rebounds 5
 3FG %: 1-4 25.0% 0-4 0.0% 0-7 0.0% 3-7 42.9% 5-21 23.8%
 FT %: 1-2 50.0% 3-4 75.0% 3-4 75.0% 11-12 91.7% 18-22 81.8%

Officials: Felicia Grinter, Douglas Knight, Frank Steratore
 Technical fouls: Indiana-None, Auburn-None.
 Attendance: 1752

Score by periods	1st	2nd	3rd	4th	Total
Indiana	17	14	22	14	67
Auburn	15	15	9	32	71

Last FG - IND 4th-00:17, AU 4th-00:50.
 Largest lead - IND by 17 4th-09:49, AU by 4 4th-00:27.
 IND led for 32:36, AU led for 01:55. Game was tied for 05:29.
 Score tied - 5 times.
 Lead changed - 3 times.

Official Basketball Box Score -- Game Totals -- Final Statistics
Indiana vs NC State
12/01/16 7:02 pm at Reynolds Coliseum (Raleigh, N.C.)

#STATEMENT

Indiana 70 • 4-3

#	Player	Total			3-Ptr			Rebounds			PF	TP	A	TO	Blk	Stl	Min
		FG	FGA	FT	FTA	FG	FGA	FT	FTA	Off							
03	Tyra Buss	10	14	4	6	14	15	0	5	5	5	38	3	4	0	2	39
21	Karlee McBride	1	8	1	4	0	0	1	1	2	4	3	1	1	0	1	26
23	Alexis Gassion	5	12	1	2	0	0	2	1	3	2	11	4	3	1	2	38
33	Amanda Cahill	2	6	1	4	1	7	8	5	6	2	4	2	2	0	29	
43	Jenn Anderson	1	4	0	0	2	2	4	4	0	2	1	0	1	0	25	
02	Amber Deane	0	0	0	0	2	0	0	0	0	2	0	1	0	0	2	
05	Ria Gulley	0	2	0	1	0	0	0	0	0	0	0	0	0	0	6	
11	Kym Royster	1	2	0	0	0	0	3	3	2	2	0	1	0	0	11	
13	Darby Foresman	0	0	0	0	0	0	1	1	0	0	0	0	0	0	9	
22	Tia Elbert	1	4	0	2	0	0	1	1	1	2	1	0	0	0	7	
31	Bre Wickware	1	2	0	0	0	2	2	1	2	0	1	0	0	0	8	
	Team							2	2	4							
	Totals	22	54	7	19	19	21	6	24	30	25	70	11	17	4	5	200

1st - FG %: 4-13 30.8% 2nd: 4-12 33.3% 3rd: 9-15 60.0% 4th: 5-14 35.7% Game: 22-54 40.7% Deadball Rebounds 1
 3FG %: 1-4 25.0% 1-2 50.0% 2-5 40.0% 3-5 60.0% 7-19 36.8%
 FT %: 5-6 83.3% 2-2 100.0% 7-7 100.0% 19-21 90.5%

NC State 84 • 6-2

#	Player	Total			3-Ptr			Rebounds			PF	TP	A	TO	Blk	Stl	Min
		FG	FGA	FT	FTA	FG	FGA	FT	FTA	Off							
03	Miah Spencer	3	10	1	1	10	12	2	1	3	3	17	5	3	0	1	33
04	Ashley Williams	1	4	0	2	1	3	4	1	3	4	3	2	0	0	1	22
05	Chelsea Nelson	7	12	0	0	5	8	4	8	12	1	19	0	3	1	1	35
11	Jennifer Mathurin	2	12	2	8	3	4	1									

Official Basketball Box Score -- Game Totals -- Final Statistics
Northern Kentucky vs Indiana
12/8/16 7 p.m. at Simon Skjodt Assembly Hall

Northern Kentucky 49 • 2-6

##	Player	Total		3-Ptr		Rebounds			PF	TP	A	TO	Blk	Stl	Min
		FG-FGA	FT-FTA	FG-FGA	FT-FTA	Off	Def	Tot							
03	LYTTLE, Rebecca	f	5-8	1-2	1-2	1	2	3	1	12	1	1	0	2	30
23	UETRECHT, Kasey	f	3-11	1-6	1-2	1	1	2	1	8	0	0	1	1	29
04	TERRY, Mikayla	g	3-11	0-2	1-2	3	2	5	2	7	4	2	1	1	35
12	THOMAS, Laura	g	0-4	0-2	0-0	0	1	1	2	0	1	2	0	0	16
22	WIEGMAN, Kelley	g	1-5	1-3	0-0	0	1	1	3	3	0	1	0	0	29
00	DAVIS, Shar'Rae	g	2-5	1-2	0-2	1	0	1	0	5	2	1	0	1	12
11	TAUGHER, Taryn	g	1-6	0-4	0-0	0	2	2	2	2	3	1	0	0	18
21	CLARK, Hannah	g	1-3	0-2	0-0	2	1	3	2	2	0	0	0	0	13
34	COMBS, Hayley	g	4-6	1-2	1-1	1	2	3	2	10	1	2	0	1	18
	Team					0	1	1							
Totals			20-59	5-25	4-9	9	13	22	15	49	12	12	2	6	200
1st - FG %:		2-15	13.3%	2nd: 8-16	50.0%	3rd: 5-14	35.7%	4th: 5-14	35.7%	Game: 20-59	33.9%	Deadball			
3FG %:		0-5	0.0%	1-6	16.7%	2-8	25.0%	2-6	33.3%	5-25	20.0%	Rebounds			
FT %:		1-2	50.0%	0-0	0.0%	3-5	60.0%	0-2	0.0%	4-9	44.4%	1,1			

Indiana 100 • 6-3

##	Player	Total		3-Ptr		Rebounds			PF	TP	A	TO	Blk	Stl	Min
		FG-FGA	FT-FTA	FG-FGA	FT-FTA	Off	Def	Tot							
33	Amanda Cahill	f	5-7	2-2	2-3	3	5	8	2	14	4	1	0	4	25
43	Jenn Anderson	c	6-9	0-0	0-0	3	0	3	1	12	1	1	0	0	18
03	Tyra Buss	g	6-14	1-3	1-2	0	2	2	1	14	10	1	0	1	27
21	Karlee McBride	g	6-8	3-4	1-1	0	1	1	4	16	0	0	0	1	12
23	Alexis Gassion	g	4-4	0-0	2-2	3	12	15	0	10	2	0	0	0	23
02	Amber Deane	g	0-0	0-0	0-0	0	0	0	0	0	1	0	0	0	6
05	Ria Gulley	g	1-3	1-2	0-0	0	1	1	0	3	1	2	0	1	18
11	Kym Royster	g	6-8	0-0	1-2	0	1	1	1	13	0	0	0	0	17
13	Darby Foresman	g	4-7	0-0	0-1	4	2	6	0	8	0	1	1	0	9
22	Tia Elbert	g	3-5	0-1	0-0	0	3	3	2	6	1	2	0	0	22
24	Tyshee Towner	g	2-4	0-0	0-0	1	1	2	0	4	0	1	0	0	12
31	Bre Wickware	g	0-2	0-0	0-2	2	2	4	3	0	1	0	2	0	11
	Team					2	1	3							
Totals			43-71	7-12	7-13	18	31	49	14	100	21	10	3	7	200
1st - FG %:		15-22	68.2%	2nd: 9-14	64.3%	3rd: 12-16	75.0%	4th: 7-19	36.8%	Game: 43-71	60.6%	Deadball			
3FG %:		3-4	75.0%	1-1	100.0%	2-4	50.0%	1-3	33.3%	7-12	58.3%	Rebounds			
FT %:		2-2	100.0%	0-1	0.0%	4-6	66.7%	1-4	25.0%	7-13	53.8%	2,3			

Officials: Lisa Mattingly, Felicia Grinter, Bruce Morris
 Technical fouls: Northern Kentucky-None. Indiana-None.
 Attendance: 2207

Score by periods	1st	2nd	3rd	4th	Total
Northern Kentucky	5	17	15	12	49
Indiana	35	19	30	16	100

Last FG - NKU 4th-00:23, IND 4th-00:50.
 Largest lead - NKU None, IND by 55 4th-05:59.
 NKU led for 00:00, IND led for 39:55. Game was tied for 00:05.

Points	In	Off	2nd	Fast	Bench
	Paint	T/O	Chance	Break	
NKU	22	14	5	0	19
IND	64	19	21	12	34

Score tied - 0 times.
 Lead changed - 0 times.

Official Basketball Box Score -- Game Totals -- Final Statistics
Valparaiso vs Indiana
12/11/16 2 p.m. at Simon Skjodt Assembly Hall

Valparaiso 58 • 5-5

##	Player	Total		3-Ptr		Rebounds			PF	TP	A	TO	Blk	Stl	Min
		FG-FGA	FT-FTA	FG-FGA	FT-FTA	Off	Def	Tot							
32	Dani Franklin	f	5-16	2-6	6-6	1	2	3	3	18	1	3	0	1	34
40	Caitlin Morrison	f	2-7	1-4	3-4	1	4	5	4	8	0	3	1	0	23
24	Amber Lindfors	c	3-6	0-0	0-2	1	0	1	2	6	0	0	4	0	22
02	Meredith Hamlet	g	0-3	0-1	0-0	0	4	4	1	0	1	1	0	0	28
03	Hannah Schaub	g	2-4	0-1	0-0	2	2	4	1	4	7	5	0	3	28
00	Maya Meredith	g	0-1	0-0	0-0	0	0	0	0	0	1	1	0	1	3
11	Georgi Donchetz	g	4-5	0-0	2-2	1	2	3	3	10	2	2	0	0	22
13	Imani Scott-Thompson	g	0-1	0-1	0-0	0	0	0	0	0	0	1	0	0	3
25	Grace Hales	g	2-6	1-4	0-3	1	2	3	0	5	1	2	0	1	22
33	Allison Schofield	g	0-0	0-0	0-0	0	0	0	0	0	0	0	0	0	3
42	Haylee Thompson	g	3-6	1-1	0-0	3	0	3	1	7	0	1	0	0	12
	Team					1	2	3							
Totals			21-55	5-18	11-17	11	18	29	15	58	13	19	5	6	200
1st - FG %:		4-14	28.6%	2nd: 5-8	62.5%	3rd: 5-17	29.4%	4th: 7-16	43.8%	Game: 21-55	38.2%	Deadball			
3FG %:		1-4	25.0%	1-3	33.3%	0-7	0.0%	3-4	75.0%	5-18	27.8%	Rebounds			
FT %:		0-2	0.0%	2-2	100.0%	0-1	0.0%	9-12	75.0%	11-17	64.7%	3			

Indiana 87 • 7-3

##	Player	Total		3-Ptr		Rebounds			PF	TP	A	TO	Blk	Stl	Min
		FG-FGA	FT-FTA	FG-FGA	FT-FTA	Off	Def	Tot							
33	Amanda Cahill	f	6-14	1-4	3-3	6	5	11	4	16	1	2	0	3	28
43	Jenn Anderson	c	2-5	0-0	0-0	3	2	5	1	4	2	1	0	0	16
03	Tyra Buss	g	4-11	1-3	3-4	0	1	1	3	12	6	0	1	3	22
21	Karlee McBride	g	1-4	1-2	1-2	0	1	1	0	4	0	0	0	3	12
23	Alexis Gassion	g	7-12	1-1	4-4	1	4	5	0	19	5	0	0	1	32
02	Amber Deane	g	0-0	0-0	3-4	0	0	0	0	3	1	0	0	0	9
05	Ria Gulley	g	0-1	0-1	0-0	0	0	0	0	1	0	1	0	0	12
11	Kym Royster	g	4-6	0-0	1-1	1	3	4	4	9	1	2	0	0	14
13	Darby Foresman	g	2-2	0-0	0-0	2	4	6	3	4	2	2	0	1	15
22	Tia Elbert	g	5-5	0-0	0-0	0	1	1	0	10	4	3	0	1	22
24	Tyshee Towner	g	2-2	0-0	0-0	0	3	3	1	4	0	0	0	0	10
31	Bre Wickware	g	1-2	0-0	0-0	0	2	2	3	2	0	2	0	0	8
	Team					0	0	0							
Totals			34-64	4-11	15-18	13	26	39	20	87	22	13	1	13	200
1st - FG %:		8-15	53.3%	2nd: 10-19	52.6%	3rd: 9-19	47.4%	4th: 7-11	63.6%	Game: 34-64	53.1%	Deadball			
3FG %:		2-4	50.0%	0-3	0.0%	2-4	50.0%	0-0	0.0%	4-11	36.4%	Rebounds			
FT %:		4-4	100.0%	0-0	0.0%	10-13	76.9%	1-1	100.0%	15-18	83.3%	2			

Officials: Kevin Pethel, Missy Brooks, Erika Herriman-Camarota
 Technical fouls: Valparaiso-None. Indiana-None.
 Attendance: 2611

Score by periods	1st	2nd	3rd	4th	Total
Valparaiso	9	13	10	26	58
Indiana	22	20	30	15	87

Last FG - VALPO 4th-00:01, IND 4th-00:45.
 Largest lead - VALPO None, IND by 40 3rd-00:01.
 VALPO led for 00:00, IND led for 37:46. Game was tied for 02:13.

Points	In	Off	2nd	Fast	Bench
	Paint	T/O	Chance	Break	
VALPO	28	20	12	2	22
IND	34	25	11	14	32

Score tied - 2 times.
 Lead changed - 0 times.