

2016-17 WOMEN'S BASKETBALL —
INDIANA STATE
 SYCAMORES

GAME NOTES



ISU Media Relations | Tim McCaughan - Assistant Director of Media Relations
 p: 812.237.4159 | e: timothy.mccaughan@indstate.edu | GoSycamores.com

>> SCHEDULE & RECORD

THE RECORD

OVERALL:	6-5
Missouri Valley:	0-0
Home:	2-1
Away:	4-4
Neutral:	0-0

THE SCHEDULE

Date	Opponent	Location	Time
Nov. 4	Quincy (Exh.)	Hulman Center	W, 69-55
Nov. 11	Northern Kentucky	Hulman Center	W, 58-38
Nov. 14	at FAU	Boca Raton, Fla.	L, 70-67
Nov. 19	at Cincinnati	Cincinnati, Ohio	W, 63-55
Nov. 22	at Missouri	Columbia, Mo.	L, 77-48
Nov. 25	at Omaha	Omaha, Neb.	L, 72-45
Nov. 28	at Eastern Illinois	Charleston, Ill.	W, 88-61
Nov. 30	IUPUI	Hulman Center	L, 45-35
Dec. 3	at Miami (OH)	Oxford, Ohio	W, 62-54
Dec. 6	at Saint Louis	St. Louis, Mo.	W, 70-67
Dec. 11	at Butler	Indianapolis, Ind.	L, 66-48
Dec. 21	Tulsa	Hulman Center	W, 72-68
Dec. 30	at Evansville*	Evansville, Ind.	8 p.m.
Jan. 1	at Southern Illinois*	Carbondale, Ill.	2 p.m.
Jan. 6	Bradley*	Hulman Center	7 p.m.
Jan. 8	Illinois State*	Hulman Center	7 p.m.
Jan. 14	at Loyola*	Chicago, Ill.	8:30 p.m.
Jan. 20	at Northern Iowa*	Cedar Falls, Iowa	8 p.m.
Jan. 22	at Drake*	Des Moines, Iowa	3 p.m.
Jan. 27	Wichita State*	Hulman Center	7 p.m.
Jan. 29	Missouri State*	Hulman Center	2 p.m.
Feb. 3	at Illinois State*	Normal, Ill.	8 p.m.
Feb. 5	at Bradley*	Peoria, Ill.	3 p.m.
Feb. 12	Loyola*	Hulman Center	2 p.m.
Feb. 17	Drake*	Hulman Center	7 p.m.
Feb. 19	Northern Iowa*	Hulman Center	12 p.m.
Feb. 24	at Missouri State*	Springfield, Mo.	8 p.m.
Feb. 26	at Wichita State*	Wichita, Kan.	3 p.m.
Mar. 2	Southern Illinois*	Hulman Center	7 p.m.
Mar. 4	Evansville*	Hulman Center	2 p.m.
Mar. 10	MVC Tournament	Quad Cities	TBA
Mar. 11	MVC Tournament	Quad Cities	TBA
Mar. 12	MVC Tournament	Quad Cities	TBA
Mar. 13	MVC Tournament	Quad Cities	TBA

* Denotes Missouri Valley Conference Contest
 Home Games in Bold | Neutral Games in Italics | All Times ET

GAMEDAY CENTRAL

Indiana State

Evansville



DECEMBER 30 • 8 PM ET • FORD CENTER • EVANSVILLE, IND.

Record - 6-5

Record - 5-6

Current Rank: NR

Current Rank: NR

Points Per Game: 12.2 - Ashley Taia

Points Per Game: 16.5 - Sara Dickey

Assists Per Game: 1.9 - Ashley Taia

Assists Per Game: 3.2 - Brooke Dossett

Rebounds Per Game: 8.4 - Wendi Bibbins

Rebounds Per Game: 8.5 - Saha Robinson

Steals Per Game: 1.5 - Tierra Webb

Steals Per Game: 4.8 - Camary Williams

MEDIA INFORMATION

Radio: WIBQ 1230 AM - Luke Martin (Play-by-Play)

TV/Video: The Valley On ESPN3

Live Audio Link: GoSycamores.com

Live Video Link: GoSycamores.com

Live Stats Link: GoSycamores.com

NOTES

SETTING THE STAGE

The Indiana State women's basketball team will open Missouri Valley Conference play Friday night at Evansville. The Purple Aces and Sycamores are scheduled to tip at 8 p.m. ET inside the Ford Center. The game can be seen live world-wide on The Valley On ESPN3 while Luke Martin will have the radio play-by-play on WIBQ 1230 AM in the Wabash Valley.

SERIES HISTORY

The Sycamores lead the all-time series against Evansville by a wide margin at 35-15. Indiana State has won four-straight in the series and 14 of the last 17 contests between the two programs.

LOOKING AT EVANSVILLE

Tulsa comes into the game with a 5-6 record, including a 3-3 record inside the Ford Center this season. UE is led by Sara Dickey with 16.5 points per game, while Camary Williams adds 15.2 points per game and 7.5 rebounds per game. In total, the Purple Aces have three players scoring in double-figures and four players with two or more assists per contest.

PUTTING ON THE CLAMPS

The Sycamores currently rank first in the Missouri Valley Conference, holding opponents just 61.2 points per game through 11 games this season. The Sycamores are also leading the conference field goal percent defense, allowing the opposition to shoot just 36.4 percent from the floor.

SWAT TEAM

Indiana State as a whole has recorded 48 blocks as a team this year to lead the Missouri Valley. Their 4.4 blocks per game are the most by any team in the league and 71st-best in the country. The Sycamores top paint protector is Rhagen Smith who has recorded 11 blocks while her counterpart Wendi Bibbins has swatted away 10 shots. A total of 10 players have recorded blocks this year for the Sycamores

FOLLOW SYCAMORE WOMEN'S BASKETBALL



GoSycamores.com



/SycamoreWBB



@IndStWBB



SITUATIONAL RECORDS

Table with 2 columns: Sycamores When... and Record. Rows include at home, on the road, at a neutral site, by month, by conference, and shooting percentages.

NOTES (CONTINUED)

REBOUND AND WIN: The Sycamores are a perfect 4-0 when cleaning up on the glass... CONSISTENCY: Ashley Taia, the Sycamores' leading scorer has been the most consistent offense for ISU this season... PULLIN THEM DOWN: From day one junior Wendi Bibbins has made her presence known in the paint on the boards... MAGIC NUMBER THREE: Sophomore guard Tierra Webb has started every game this season for the Sycamores... ROAD WARRIORS: When the nonconference schedule comes to a close, Indiana State will have played eight of their 11 games on the road... SYCAMORES SELECTED SEVENTH: The Indiana State women's basketball team has been picked to finish sixth in the Missouri Valley Conference's annual preseason poll... HALF OLD, HALF NEW: Indiana State adds five new players to their roster, including three freshmen... HOME SWEET HOME: Thanks to the home-court advantage of Hulman Center, the Sycamores have been dominant in Terre Haute over the past 13 seasons.

nonconference slate. SEASON OPENERS: Head coach Joey Wells is 2-1 in season openers at Indiana State during his three seasons at the helm. The Sycamores bested Saint Louis two season ago to open their season before falling to Central Michigan a year ago. ISU defeated Northern Kentucky 58-38 to kick off the 2016-17 campaign. The Sycamores are 7-3 in season openers over the last 10 season, including wins over Kansas State, Furman, Detroit and Eastern Illinois. RADIO SHOW: Head coach Joey Wells will join play-by-play voice Brian Fritz every Monday at 6:30 p.m. live from 7th & Elm Bar & Grill in Terre Haute. The show will air live on WIBQ 1230 in the Wabash Valley. HOOPS IN THE HEARTLAND: The 2017 Missouri Valley Conference Women's Basketball Tournament will return to the iWireless Center in Moline, Ill., for the second of a three-year contract with the Quad Cities Convention and Visitors Bureau. Affectionately coined "Hoops in the Heartland," the four-day event (Mar. 9-12) will showcase all 10 Missouri Valley Conference schools as they compete for the Valley's automatic berth into the NCAA Tournament.

THE VALLEY ON ESPN3: Last year, ESPN and the Missouri Valley Conference announced a 10-year extension to their current media rights agreement that will provide increased coverage of conference events across ESPN platforms through the 2023-24 academic year. The co-branded The Valley on ESPN3 network will allow for all home women's basketball contests to be available for viewing on ESPN3.

SYCAMORES ON SOCIAL MEDIA: Follow the Sycamores all season long on Indiana State's official athletics website, GoSycamores.com, and get a behind-the-scenes look at the program on the team's Facebook (/SycamoreWBB) as well as Instagram and Twitter (@IndStWBB).





Indiana State Basketball 2016-17 Roster Breakdown

No.	Name	Pos.	Ht.	Yr.	Hometown (Previous School)
1	Ashley Taia	F	6-0	Jr.	Brisbane, Australia (Odessa CC/St. John Paul)
2	Freja Christensen	G	5-10	Jr.	Copenhagen, Denmark (Falkonergardens Gymnasium)
3	Ashli O'Neal	G	5-5	Fr.	Cincinnati, Ohio (Wyoming)
4	Maryam Wilcher	G	6-0	Fr.	Berywn, Ill. (Morton West)
5	Gabi Baldrige	F	6-3	Fr.	Willard, Ohio (Willard)
14	Tierra Webb	G	5-7	Fr.	Richton Park, Ill. (Rich South)
20	McKenzy Telfair	G	5-11	RFr.	Indianapolis, Ind. (Cardinal Ritter)
21	Brooklyn Artis	G	5-8	Jr.	Amarillo, Texas (Seward County CC/Caprock)
23	Wendi Bibbins	F	6-2	Jr.	Harvey, La. (Jones County CC)
30	Regan Wentland	G	6-1	So.	Greenwood, Ind. (Center Grove)
45	Rhagen Smith	F	6-2	Sr.	Sullivan, Ind. (Sullivan)

Team Information (2015-16 Statistics)

Starters Returning (R) / Lost (L)	Ht.	Yr.	Pos.	GP/GS	PPG	RPG	Other
(L) Cierra Ceazar	5-10	--	G	30/30	13.8	6.1	47 Steals
(L) Joyea Marshall	6-0	Jr.	G/F	29/29	8.2	7.9	42 Assists
(L) Alexis Newbolt	5-6	--	G	25/24	5.8	2.2	27 3-Pt FG
(R) Rhagen Smith	6-2	Sr.	F	30/13	6.5	5.1	18 Blocks
(R) Ashley Taia	6-0	Jr.	F	26/22	9.0	3.7	29 3-PT FG

Other Players Returning	Ht.	Yr.	Pos.	GP/GS	PPG	RPG	Other
Brooklyn Artis	5-8	RJr.	G	18/0	2.5	1.0	3 3-PT FG
Freja Christensen	5-10	Jr.	G	4/0	0.5	0.5	1 Steal
Tierra Webb	5-7	So.	G	30/3	4.4	2.0	27 Assists
Regan Wentland	6-1	So.	F	28/0	1.1	1.5	8 Blocks

Other Players Lost	Ht.	Yr.	Pos.	GP/GS	PPG	RPG	Other
Kelsey Dirks	6-3	--	C	30/17	4.0	4.1	19 Assists
Kalliste Haskin	5-7	--	G	16/1	1.1	0.6	5 3-PT FG
Jennifer Mackowiak	5-8	--	G	28/11	6.1	2.3	58 Assists
Jessica Mackowiak	5-8	--	G	4/0	0.5	0.0	2-2 FT

Returning Redshirts	Ht.	Yr.	Pos.	Hometown / Previous School
McKenzy Telfair	5-11	RFr.	G	Indianapolis, Ind. / Cardinal Ritter HS

Newcomers	Ht.	Yr.	Pos.	Hometown / Previous School
Gabi Baldrige	6-3	Fr.	F	Willard, Ohio / Willard HS
Wendi Bibbins	6-2	Jr.	F	Harvey, La. / Jones County JC
Ashli O'Neal	5-5	Fr.	G	Wyoming, Ohio / Wyoming HS
Maryam Wilcher	6-0	Fr.	G	Berwyn, Ill. / Morton West HS

Pronunciations

1	Ashley Taia	Tie-ya
2	Freja Christensen	Fray-juh
21	Brooklyn Artis	Artus





MVC STANDINGS (AS OF 12/19/16)

Table with 5 columns: Team, Conf., Pct., Ovr., Pct. Lists MVC standings for teams like Drake, Northern Iowa, Southern Illinois, etc.

QUICK FACTS

General Information

School: Indiana State University
Location: Terre Haute, Ind., 47809
Founded: 1865
Enrollment: 13,584
Mascot: Sycamores
Colors: Royal Blue & White
Arena/Capacity: Hulman Center/10,200

Team Information

2015-16 Overall Record: 13-17
2015-16 Home/Away/Neutral: 8-6/5-9/0-2
2015-16 MVC Record/Finish: 9-9/6th
Letterwinners Returning/Lost: 67
Starters Returning/Lost: 2/3
Newcomers: 5

Coaching Staff

Head Coach: Joey Wells (Fresno Pacific '96)
Career Record: 36-35 (Third Season)
Record at ISU: Same
Assistant Coach: Josh Keister (Mount Mercy '96)
Assistant Coach: Janet Eaton (Dillard '94)
Assistant Coach: Jenna Smith (Illinois '10)
Video Coordinator: Evan Dodd (Indiana State '15)
Graduate Mgr.: Lashonda Littleton (Indiana State '15)

Media Relations

Associate Director: Ace Hunt
Assistant Director: Tyler Wooten
Graduate Assistant: Kate Johnson
Director of New Media: Alex Kight
Assistant Director/WBB Contact: Tim McCaughan
Email: timothy.mccaughan@indstate.edu
Office Phone: (812) 237-4159

AROUND THE MVC

2016-17 Preseason Coaches PoLL

Table with 2 columns: Rank, Name. Lists top coaches like Drake, Northern Iowa, Missouri State, etc.

2016-17 MVC Preseason All-Conference

Rangie Bessard, Wichita State F Jr.
Caitlin Ingle, Drake G Sr.
Rishonda Napier, Southern Illinois G Sr.
Madison Weekly, UNI G Sr.
*Lizzy Wendell, Drake F Sr.
*Preseason Player of the Year

Sycamore MVC Players of the Week

Newcomer (12/5): Wendi Bibbins, Jr., F, Indiana State

MEDIA RELATIONS INFORMATION



ACE HUNT
ASSISTANT AD/MEDIA RELATIONS
16th Season • South Carolina '99

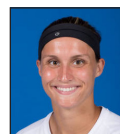


TIM MCCAUGHAN
ASST. DIR. OF MEDIA RELATIONS
1st Season • Southern Illinois '14

Office Phone: (812) 237-4159
Cell Phone: (618) 841-2139
E-mail: timothy.mccaughan@indstate.edu
Twitter: @timmccaughan



TYLER WOOTEN
ASST. DIR. OF MEDIA RELATIONS
2nd Season • Southern Illinois '13, '15



KATE JOHNSON
GRADUATE ASSISTANT
1st Season • Indiana State '16

PLAYER AVAILABILITY

Players will be available for interviews before practice ONLY with advance notification through the Media Relations Office. Requests for player interviews MUST be made at least one day in advance through Tim McCaughan, Assistant Director of Media Relations.

COACH WELLS' AVAILABILITY

Head Coach Joey Wells is available for interviews before practice and at select times throughout the day. Please contact Tim McCaughan, Assistant Director of Media Relations, for Coach Wells' availability and to schedule an interview.

FOLLOW THE SYCAMORES ONLINE

Fans of the Sycamores can follow the team through a variety of sources that provide daily coverage of the team throughout the season. GoSycamores.com, the official online home of Indiana State University, is the place to go for game previews and recaps, video interviews, rosters, schedules, player bios, action pictures and more.





MID-MAJOR TOP 25

Mid-Major Top 25
Dec. 27

Rank	Team	Record	Points
1.	Green Bay (27)	9-2	771
2.	Gonzaga (3)	9-2	739
3.	Buffalo (1)	9-0	702
4.	Ohio	9-1	671
5.	Drake	7-4	628
6.	Quinnipiac	9-3	605
7.	South Dakota State	9-3	598
8.	South Dakota	11-2	545
9.	James Madison	6-4	516
10.	BYU	11-2	468
11.	Drexel	8-2	445
12.	Bucknell	8-3	403
13.	San Diego	6-4	358
14.	Mercer	9-3	330
15.	Troy	6-4	305
16.	Northern Iowa	7-4	287
17.	Stetson	11-3	263
18.	Northern Colorado	8-3	206
19.	IUPUI	9-3	196
20.	Toledo	9-2	166
21.	New Mexico State	7-6	154
22.	UT Arlington	7-3	131
23.	Central Michigan	8-3	97
24.	Milwaukee	8-3	87
25.	Army	9-2	55

OTHERS RECEIVING VOTES: Florida Gulf Coast 50, Jacksonville 47, Harvard 39, Rider 38, Elon 29, Chattanooga 26, St Mary's 23, William & Mary 18, Hofstra 16, Western Illinois 12, Belmont 8, Stephen F Austin 7, Western Michigan 7, Morehead St 6, Oral Roberts 6, Albany 5, Yale 5, Columbia 4, Penn 2, Northern Illinois 1.

AP TOP 25/USA TODAY COACHES

AP Top 25
Dec. 26

Rank	Team	Record	Points
1	Connecticut (33)	11-0	825
2	Notre Dame	11-1	767
3	Baylor	11-1	759
4	Maryland	12-0	740
5	Mississippi State	13-0	679
6	South Carolina	10-1	664
7	Florida State	12-1	629
8	Louisville	12-2	593
9	Washington	12-1	539
10	UCLA	9-2	517
11	Miami	11-1	473
12	West Virginia	12-0	451
13	Stanford	9-2	408
14	Ohio State	10-4	400
15	Duke	11-1	310
16	Texas	6-4	272
17	Kentucky	9-3	251
18	Arizona State	9-2	247
19	Virginia Tech	12-0	227
20	Colorado	10-1	188
21	California	12-0	159
22	Oregon State	10-1	147
23	South Florida	10-1	117
24	Oklahoma	9-3	112
25	Syracuse	9-4	76

USA Today Coaches Poll

Dec. 26

Rank	School (Votes)	Record	Points
1	Connecticut (32)	11-0	800
2	Notre Dame	11-1	757
3	Maryland	12-0	730
4	Baylor	11-1	709
5	Mississippi State	13-0	663
6	South Carolina	10-1	650
7	Florida State	12-1	610
8	Louisville	12-2	575
9	Washington	12-1	534
10	UCLA	9-2	495
11	Miami	11-1	468
12	West Virginia	12-0	441
13	Ohio State	10-4	396
14	Stanford	9-2	383
15	Oregon State	10-1	328
16	Texas	6-4	267
17	Duke	11-1	259
18	California	12-0	240
19	Arizona State	9-2	235
20	Virginia Tech	12-0	172
21	Syracuse	9-4	154
22	DePaul	8-4	137
23	Kentucky	9-3	107
24	Oklahoma	9-3	80
25	South Florida	10-1	76

SYCAMORES YEAR-BY-YEAR

1971-72	4-9
1972-73	16-7
1973-74	15-5
1974-75	18-6
1975-76	19-9
1976-77	19-9
1977-78	12-8
1978-79	14-10
1979-80	19-13
1980-81	11-21
1981-82	9-18
1982-83	13-15
1983-84	5-23 (2-16)
1984-85	10-18 (7-11)
1985-86	5-23 (4-14)
1986-87	12-15 (8-10)
1987-88	22-6 (14-5)
1988-89	18-9 (10-8)
1989-90	8-19 (5-13)
1990-91	13-14 (8-10)
1991-92	10-17 (7-11)
1992-93	8-18 (4-12)
1993-94	14-14 (6-10)
1994-95	13-14 (10-8)
1995-96	7-19 (3-15)
1996-97	14-13 (9-9)
1997-98	17-11 (10-8)
1998-99	18-11 (10-8)
1999-00	9-18 (5-13)
2000-01	10-18 (7-11)
2001-02	11-17 (7-11)
2002-03	22-9 (13-5)
2003-04	16-12 (10-8)
2004-05	23-9 (13-5)
2005-06	27-6 (16-2)
2006-07	19-11 (12-6)
2007-08	14-15 (8-10)
2008-09	14-16 (10-8)
2009-10	17-14 (7-11)
2010-11	16-16 (8-10)
2011-12	15-16 (9-9)
2012-13	18-13 (10-8)
2013-14	20-12 (14-4)
2014-15	17-13 (7-11)
2015-16	13-17 (9-9)
2016-17	6-5 (0-0)
Overall (Missouri Valley)	650-611 (218-201)





THE LAST TIME

A PLAYER SCORED 25-29 POINTS

28, Cierra Ceazer
at Loyola -- Feb. 28, 2016

A PLAYER SCORED 40+ POINTS

46, Melanie Boeglin
at Drake -- Jan. 25, 2006

A PLAYER RECORDED 20+ REBOUNDS

21, Shannon Thomas
at UT Martin -- Dec. 19, 2010

A PLAYER HIT FIVE OR MORE 3-POINTERS

5, Ashley Taia
vs Butler -- Dec. 21, 2015

A PLAYER RECORDED FIVE OR MORE BLOCKS

5, Joyea Marshall
at Northern Kentucky -- Nov. 15, 2015

A PLAYER RECORDED A 20-20 DOUBLE-DOUBLE

28 points, 21 rebounds
Shannon Thomas
at UT Martin -- Dec. 19, 2010

A PLAYER HIT 10 OR MORE FREE THROWS

10, Bilqis Abdul-Qaadir
vs Drake -- Jan. 5, 2014

A TEAM SCORED 50 POINTS IN A HALF

53, second half
vs Drake -- Jan. 5, 2014

A TEAM ALLOWED 10 POINT OR LESS IN A HALF

9, first half
vs Eastern Illinois -- Nov. 9, 2012

A TEAM ALLOWED 31-40 POINTS

59-37 win
vs Bradley -- Jan. 24, 2016

A TEAM ALLOWED 100 POINTS

116-26 loss
at Old Dominion -- Nov. 23, 1996

A TEAM SHOT OVER 50% FROM THE FIELD

.60.3, 35-for-58
at Eastern Illinois -- Nov. 28, 2016

A TEAM SHOT OVER 50% FROM 3PT RANGE

.57.9, 11-for-19
at Eastern Illinois -- Nov. 28, 2016

A PLAYER SCORED 30-39 POINTS

32, Bilqis Abdul-Qaadir
at Loyola-- Feb. 2, 2014

A PLAYER RECORDED 10-19 REBOUNDS

11, Wendi Bibbins
at Cincinnati -- Nov. 19, 2016

A PLAYER RECORDED 10 OR MORE ASSISTS

11, Melanie Boeglin
vs Evansville -- Mar. 4, 2006

A PLAYER RECORDED FIVE OR MORE STEALS

6, Natasha Zurek
vs ETSU -- Nov. 24, 2014

A PLAYER RECORDED A DOUBLE-DOUBLE

14 points, 11 rebounds
Wendi Bibbins
at Cincinnati -- Nov. 19, 2016

A PLAYER RECORDED A TRIPLE DOUBLE

13 points, 10 rebounds, 10 assists
Amy Walker
at Illinois State -- Feb. 18, 1995

A PLAYER MADE 15 OR MORE FREE THROWS

15, Julie Lein
vs Illinois State -- Mar. 1, 1991

A PLAYER LOGGED MORE THAN 40 MINUTES

42, Ashley Taia
vs Butler -- Dec. 21, 2015

A TEAM SCORED 100 POINTS

101-71 win
vs Loyola Chicago -- Nov. 28, 2006

A TEAM ALLOWED 30 POINTS OR LESS

72-28 win
vs SEMO -- Nov. 24, 2009

A TEAM ALLOWED 41-50 POINTS

62-48 win
vs Loyola -- Jan. 22, 2016

A TEAM WON IN OVERTIME

70-63, one overtime
vs Butler -- Dec. 21, 2015

A TEAM SHOT OVER 90% FROM FT LINE

1.000, 8-for-8
at UMKC -- Nov. 27, 2015

A TEAM HAD UNDER 10 TURNOVERS

6
vs Evansville -- Feb. 1, 2015





Joey Wells

Indiana State Head Basketball Coach Third Season

Joey Wells enters his third season as head coach of Indiana State women's basketball in 2016-17.

Named the seventh head coach in Indiana State history on August 15, 2014, Wells marks his sixth overall season in Terre Haute after serving as an assistant coach (2012-13) and associate head coach (2013-14) for the Sycamores prior to his promotion.

A defensive minded coach, Wells has guided ISU to top two finishes in team defense under his guidance including a second place finish in scoring defense in the Missouri Valley Conference in 2015-16. The Sycamores allowed opponents to score just 59.6 points per game which also ranked 77th in the nation. Their 36.8 field goal percentage defense – which came in 41st in the nation - also finished second among the league competition and held teams to a 30.2 percent mark from 3-point range, which ranked third. In the past four seasons, ISU has held 23 opponents to 50 points or less under Wells' direction.

In 2015-16, Wells helped guide redshirt senior Cierra Ceazer to All-MVC Honorable Mention honors and placed two (Kelsey Dirks and Rhagen Smith) on the MVC Scholar Athlete team. The duos selection is the first multiple selection under his two-year direction and the 14th in the last 15 years for ISU.

Redshirt junior forward Joyea Marshall was a force on the boards for the Sycamores, as she pulled down the MVC's second-best average of 7.9 per game. Newcomers also filled the roster as redshirt sophomore Ashley Taia finished second in points per game (9.0) as she picked up three MVC Newcomer of the Week awards while freshman guard Tierra Webb appeared in all 30 games in a reserve role for the Sycamores.

He led the Sycamores to a 17-13 overall record the 2014-15 season. He helped guide the Sycamores to tie its best non-conference record in program history, going 10-1 overall. The non-conference slate included wins over in-state Big 10 foe Indiana and a win over No. 25 St. John's for the program's first win since 2007.

With his 17 wins, Wells moved into sixth place all-time amongst rookie head coaches in the Missouri Valley Conference. A defensive minded coach, Wells has made it his trademark during his time with the Sycamores. Under his direction as head coach, the Sycamores once again posted positive marks, finishing 77th in the nation in points allowed per game (59.9) and 30th in turnover margin (+4.37). They also held the MVC's top mark in steals (9.8 per game) and second ranked scoring defense to go along with the third best team performance in blocked shots (3.8 per game).

He has also made community services efforts a priority for the Lady Sycamores, as the team is committed to over 150 hours of volunteer work each year. Wells was the spearhead for instituting community outreach like the Sycamore Mile and weekly hours for the team at the 14th and Chestnut Community Center.

As the team's defensive coordinator, Wells has improved the Sycamores in a variety of categories in just three seasons. Since his arrival, Wells has helped ISU post positive turnover margins in three straight seasons. He has also elevated the Sycamores in the MVC standings in points allowed per game, field goal percentage defense and defensive rebound percentage. In 2014, ISU led the league in opponent field goal percentage (.380), ranked second in opponent points per game (60.0) and second in turnover margin (+2.0).

Prior to his promotion, Wells spent two years on staff at Indiana State – one as an assistant (2012-13) and one as associate head coach (2013-14). He helped guide the Sycamores to a 2014 Missouri Valley Conference regular season finish and 20-12 record overall. ISU finished 14-4 in conference action en route to earning the No. 1 seed in the MVC Tournament. ISU also made its second-straight appearance in the WNIT in 2013-14.

In his first season in 2012-13, Wells helped guide the Sycamores to an 18-win season and a spot in the postseason for the first time since 2005-06. Indiana State posted an 18-13 record in 2012-13, advancing to the Postseason WNT. ISU's 18 wins were their most since 2006-07 and the team's 10-8 record within the Missouri Valley Conference was ISU's best since 2008-09.

Defense was key to Indiana State's success in 2012-13, as the Sycamores set a program record for the fewest points allowed per game for a single season. Indiana State held 10 opponents to less than 50 points in a game while their opponents averaged 55.5 points per game for the season.

Wells came to Indiana State after spending five seasons on the coaching staff at Lamar University. He helped the Cardinals to a Southland Conference championship in 2010 while the team averaged 21 wins per season in his time on the staff. In 2011, Wells was named a Top 25 Mid-Major Women's Basketball Assistant Coach by CollegelInsider.com.

Prior to coming to Lamar, Wells served as an assistant coach for Division II Missouri Western from 2004-07. The team averaged 23 wins over his final two seasons there, including a 30-4 mark in 2006-2007.

Getting his start at the junior college level, Wells spent time as the head coach of Howard (TX) Junior College (2000-02) and Ranger (TX) Junior College (2002-04). He took Howard to the NJCAA regionals during his time and was also named the WACJAC Coach of the Year.

Wells is a 1996 graduate of Fresno Pacific University, having earned a bachelor's degree in physical education. He and his wife, Tina, reside in Terre Haute and have three grown children – Tanner (wife Jennifer), Alex and Carlie. The couple also has a three-year-old granddaughter, Brylee.





THE STAT CREW SYSTEM
Indiana State Combined Team Statistics (as of Dec 21, 2016)
All games



RECORD: OVERALL HOME AWAY NEUTRAL
ALL GAMES 6-5 2-1 4-4 0-0
CONFERENCE 0-0 0-0 0-0 0-0
NON-CONFERENCE 6-5 2-1 4-4 0-0

Table with columns: #, Player, gp-gs, min, avg, Total (fg-fga, fg%), 3-Point (3fg-fga, 3fg%), F-Throw (ft-fa, ft%), Rebounds (off, def, tot, avg), pf, dg, a, to, blk, stl, pts, avg. Includes rows for individual players and Team/Opponents totals.

TEAM STATISTICS table with columns: INS, OPP, Date, Opponent, Score, Att. Lists various statistics like SCORING, FIELD GOALS-ATT, FREE THROWS-ATT, REBOUNDS, ASSISTS, TURNOVERS, STEALS, BLOCKS, and ATTENDANCE.

Score by Periods table with columns: 1st, 2nd, 3rd, 4th, Totals. Shows scores for Indiana State and Opponents.





THE STAT CREW SYSTEM
Indiana State Team Game-by-Game (as of Dec 21, 2016)
All games



TEAM STATISTICS

Opponent	Date	Score		Total		3-Pointers		Free throws		Rebounds				pf	a	t/o	blk	stl	pts	avg
				fg-fga	pct	3fg-fga	pct	ft-fta	pct	off	def	tot	avg							
NORTHERN KENTUCKY	11/11/16	58-38	W	22-64	.344	4-20	.200	10-15	.667	15	33	48	48.0	14	11	17	8	18	58	58.0
at Florida Atlantic	11/14/16	67-70	L	27-63	.429	4-22	.182	9-12	.750	10	28	38	43.0	22	1	16	2	6	67	62.5
at Cincinnati	11/19/16	63-55	W	21-52	.404	8-18	.444	13-20	.650	12	37	49	45.0	20	11	25	6	6	63	62.7
at Mizzou	11/22/16	48-77	L	17-60	.283	5-18	.278	9-15	.600	14	25	39	43.5	21	6	18	3	7	48	59.0
at Omaha	11/25/16	45-72	L	17-64	.266	4-25	.160	7-11	.636	12	27	39	42.6	14	11	9	3	6	45	56.2
at Eastern Illinois	11/28/16	88-61	W	35-58	.603	11-19	.579	7-8	.875	8	25	33	41.0	16	22	12	3	7	88	61.5
IUPUI	11-30-16	35-45	L	14-45	.311	3-13	.231	4-15	.267	9	25	34	40.0	20	2	20	2	6	35	57.7
at Miami	12/3/16	62-54	W	22-48	.458	6-19	.316	12-15	.800	11	26	37	39.6	18	8	19	6	7	62	58.2
at Saint Louis	12/06/16	70-67	W	24-49	.490	8-16	.500	14-20	.700	4	32	36	39.2	20	17	18	7	5	70	59.6
at Butler	12/11/16	48-66	L	16-64	.250	5-22	.227	11-16	.688	15	21	36	38.9	15	4	11	4	8	48	58.4
TULSA	12/21/16	72-68	W	23-57	.404	6-16	.375	20-29	.690	13	25	38	38.8	17	13	9	4	4	72	59.6
Indiana State		656		238-624	.381	64-208	.308	116-176	.659	123	304	427	38.8	197	106	174	48	80	656	59.6
Opponents		673		243-668	.364	64-218	.294	123-175	.703	145	286	431	39.2	166	137	154	38	80	673	61.2

Games played: 11

Points/game: 59.6

FG Pct: 38.1

3FG Pct: 30.8

FT Pct: 65.9

Rebounds/game: 38.8

Assists/game: 9.6

Turnovers/game: 15.8

Assist/turnover ratio: 0.6

Steals/game: 7.3

Blocks/game: 4.4





THE STAT CREW SYSTEM
Indiana State Season Schedule/Results & Leaders (as of Dec 21, 2016)
All games



RECORD: OVERALL HOME AWAY NEUTRAL
ALL GAMES 6-5 2-1 4-4 0-0
CONFERENCE 0-0 0-0 0-0 0-0
NON-CONFERENCE 6-5 2-1 4-4 0-0

Table with columns: Date, Opponent, Score, Att. High Points, High Rebounds. Rows include games against Northern Kentucky, Florida Atlantic, Cincinnati, Mizzou, Omaha, Eastern Illinois, IUPUI, Miami, Saint Louis, Butler, and Tulsa.

* - Conference game

Attendance Summary table with columns: Games, Attend, Avg/Game. Rows: Home, Away, Neutral, Total.





Indiana State - TEAM GAME HIGHS

POINTS	88	at Eastern Illinois (11/28/16)
	72	TULSA (12/21/16)
	70	at Saint Louis (12/06/16)
	67	at Florida Atlantic (11/14/16)
	63	at Cincinnati (11/19/16)
FIELD GOALS MADE	35	at Eastern Illinois (11/28/16)
	27	at Florida Atlantic (11/14/16)
FIELD GOAL ATTEMPTS	64	at Butler (12/11/16)
	64	at Omaha (11/25/16)
	64	NORTHERN KENTUCKY (11/11/16)
FIELD GOAL PERCENTAGE	.603 (35-58)	at Eastern Illinois (11/28/16)
	.490 (24-49)	at Saint Louis (12/06/16)
3 PT FIELD GOALS MADE	11	at Eastern Illinois (11/28/16)
	8	at Saint Louis (12/06/16)
	8	at Cincinnati (11/19/16)
3 PT FG ATTEMPTS	25	at Omaha (11/25/16)
	22	at Butler (12/11/16)
	22	at Florida Atlantic (11/14/16)
3 PT FG PERCENTAGE	.579 (11-19)	at Eastern Illinois (11/28/16)
	.500 (8-16)	at Saint Louis (12/06/16)
FREE THROWS MADE	20	TULSA (12/21/16)
	14	at Saint Louis (12/06/16)
FREE THROW ATTEMPTS	29	TULSA (12/21/16)
	20	at Saint Louis (12/06/16)
	20	at Cincinnati (11/19/16)
FREE THROW PERCENTAGE	.875 (7-8)	at Eastern Illinois (11/28/16)
	.800 (12-15)	at Miami (12/3/16)
REBOUNDS	49	at Cincinnati (11/19/16)
	48	NORTHERN KENTUCKY (11/11/16)
ASSISTS	22	at Eastern Illinois (11/28/16)
	17	at Saint Louis (12/06/16)
STEALS	18	NORTHERN KENTUCKY (11/11/16)
	8	at Butler (12/11/16)
BLOCKED SHOTS	8	NORTHERN KENTUCKY (11/11/16)
	7	at Saint Louis (12/06/16)
TURNOVERS	25	at Cincinnati (11/19/16)
	20	IUPUI (11-30-16)
FOULS	22	at Florida Atlantic (11/14/16)
	21	at Mizzou (11/22/16)

Indiana State - GAME LOWS

POINTS	35	IUPUI (11-30-16)
	45	at Omaha (11/25/16)
	48	at Mizzou (11/22/16)
	48	at Butler (12/11/16)
	58	NORTHERN KENTUCKY (11/11/16)
FIELD GOALS MADE	14	IUPUI (11-30-16)
	16	at Butler (12/11/16)
FIELD GOAL ATTEMPTS	45	IUPUI (11-30-16)
	48	at Miami (12/3/16)
FIELD GOAL PERCENTAGE	.250 (16-64)	at Butler (12/11/16)
	.266 (17-64)	at Omaha (11/25/16)
3 PT FIELD GOALS MADE	3	IUPUI (11-30-16)
	4	NORTHERN KENTUCKY (11/11/16)
	4	at Florida Atlantic (11/14/16)
	4	at Omaha (11/25/16)
3 PT FG ATTEMPTS	13	IUPUI (11-30-16)
	16	at Saint Louis (12/06/16)
	16	TULSA (12/21/16)
3 PT FG PERCENTAGE	.160 (4-25)	at Omaha (11/25/16)
	.182 (4-22)	at Florida Atlantic (11/14/16)
FREE THROWS MADE	4	IUPUI (11-30-16)
	7	at Omaha (11/25/16)
	7	at Eastern Illinois (11/28/16)
FREE THROW ATTEMPTS	8	at Eastern Illinois (11/28/16)
	11	at Omaha (11/25/16)
FREE THROW PERCENTAGE	.267 (4-15)	IUPUI (11-30-16)
	.600 (9-15)	at Mizzou (11/22/16)
REBOUNDS	33	at Eastern Illinois (11/28/16)
	34	IUPUI (11-30-16)
ASSISTS	1	at Florida Atlantic (11/14/16)
	2	IUPUI (11-30-16)
STEALS	4	TULSA (12/21/16)
	5	at Saint Louis (12/06/16)
BLOCKED SHOTS	2	at Florida Atlantic (11/14/16)
	2	IUPUI (11-30-16)
TURNOVERS	9	at Omaha (11/25/16)
	9	TULSA (12/21/16)
FOULS	14	NORTHERN KENTUCKY (11/11/16)
	14	at Omaha (11/25/16)





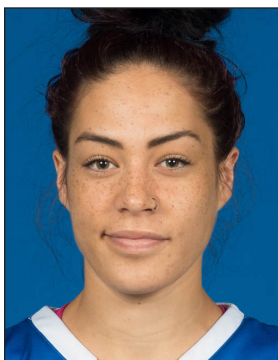
THE STAT CREW SYSTEM Indiana State Team Game-by-Game Comparison (as of Dec 21, 2016) All games



Opponent	1st	2nd	Score	Mar	Total FG	FG Pct	3-Pointers	3FG Pct	Free Throws	FT Pct	Rebounds	Assist	T/Over	Block	Steal	Fouls
NORTHERN KENTUCKY	17/17	41/21	58-38	+20	22-64/15-59	.344/.254	4-20/2-16	.200/.125	10-15/6-9	.667/.667	48/43 +5	11/7	17/27	8/1	18/5	14/14
Florida Atlantic	30/34	37/36	67-70	(3)	27-63/26-59	.429/.441	4-22/10-21	.182/.476	9-12/8-19	.750/.421	38/41 (3)	1/15	16/18	2/1	6/6	22/15
Cincinnati	35/35	28/20	63-55	+8	21-52/25-69	.404/.362	8-18/2-16	.444/.125	13-20/3-11	.650/.273	49/31 +18	11/10	25/13	6/5	6/11	20/18
Mizzou	19/34	29/43	48-77	(29)	17-60/22-63	.283/.349	5-18/6-21	.278/.286	9-15/27-28	.600/.964	39/49 (10)	6/15	18/13	3/6	7/13	21/16
Omaha	21/43	24/29	45-72	(27)	17-64/28-65	.266/.431	4-25/11-26	.160/.423	7-11/5-8	.636/.625	39/45 (6)	11/19	9/10	3/4	6/5	14/13
Eastern Illinois	43/33	45/28	88-61	+27	35-58/22-54	.603/.407	11-19/3-17	.579/.176	7-8/14-21	.875/.667	33/26 +7	22/11	12/11	3/1	7/6	16/9
IUPUI	16/17	19/28	35-45	(10)	14-45/14-49	.311/.286	3-13/3-16	.231/.188	4-15/14-20	.267/.700	34/38 (4)	2/8	20/16	2/6	6/7	20/12
Miami	32/37	30/17	62-54	+8	22-48/21-59	.458/.356	6-19/7-25	.316/.280	12-15/5-6	.800/.833	37/30 +7	8/9	19/12	6/3	7/10	18/17
Saint Louis	30/28	40/39	70-67	+3	24-49/20-66	.490/.303	8-16/5-20	.500/.250	14-20/22-27	.700/.815	36/39 (3)	17/15	18/11	7/3	5/6	20/13
Butler	17/40	31/26	48-66	(18)	16-64/24-51	.250/.471	5-22/7-14	.227/.500	11-16/11-17	.688/.647	36/42 (6)	4/17	11/14	4/7	8/6	15/18
TULSA	26/35	46/33	72-68	+4	23-57/26-74	.404/.351	6-16/8-26	.375/.308	20-29/8-9	.690/.889	38/47 (9)	13/11	9/9	4/1	4/5	17/21

Note: Game totals are displayed in the format TEAM/OPPONENT for each category





#1 ASHLEY TAIA

FORWARD • JUNIOR • 6-0
BRISBANE, AUSTRALIA • ODESSA CC

CAREER HONORS

MVC Newcomer of the Week (2/22/16)
MVC Newcomer of the Week (12/28/15)
MVC Newcomer of the Week (12/14/15)

NOTES

As a Redshirt Sophomore (2015-16) – Played in 26 games, making 22 starts ... earned three MVC Newcomer of the Week accolades ... was the team's second leading scorer with 9.0 points per game ... shot 38.9 percent from the floor on the season and a team-high 33.3 percent from 3-point range (41-123) ... scored 20-plus points three times including back-to-back games versus Indiana (21) and a career-high against Butler (25) ... was a double-figure scorer in six games including 24 in a win at Loyola ... hit a season-high five 3-pointers three times including going 5-for-7 against Butler (71.4 percent) ... pulled down an average of 3.7 rebounds per game ... posted a career-high seven twice versus Stephen F. Austin in the Plaza Lights Classic and at Wichita State ... had a rebound in 25 of 26 games played ... dished out 47 total assists (1.8 per game) including a career-high eight at Loyola ... also collected 23 steals including a season-high three against Butler and Loyola ... averaged 26.2 minutes per game and hit a season-high 42 minutes in the overtime win over Butler.

Prior to Indiana State - Played at Odessa Community College in 2014-15 where she played in 26 games ... averaged 6.2 points, 2.5 rebounds and 1.2 assists per game helping Odessa to a 24-7 overall record and 10-4 mark in Region V play scored a season-high 22 points in a win over Southwest Texas which marked one of five games in double figures ... also had four assists and four steals against Southwest Texas ... also helped the Wranglers to a 13-1 home mark in 2014-15 ... spent her freshman season at Division II Saint Leo.

2016-17 GAME-BY-GAME STATISTICS

	MIN	FG	3FG	FT	O-D-R	PF	A	TO	B	S	PTS	
N11	Northern Kentucky	29	5-18	3-10	0-1	1-1-2	3	1	2	2	4	13
N14	at Florida Atlantic	12	4-8	1-5	0-0	2-2-4	5	1	1	0	0	9
N19	at Cincinnati	20	1-9	0-4	0-0	1-2-3	2	1	2	0	1	2
N22	at Missouri	24	4-9	2-5	1-1	0-1-1	2	1	1	0	1	11
N25	at Omaha	26	4-11	3-8	0-0	1-3-4	0	1	3	0	1	11
N28	at Eastern Illinois	28	8-10	3-5	0-0	1-2-3	0	2	4	1	1	19
N30	IUPUI	35	3-9	2-6	0-0	0-6-6	3	0	3	0	3	8
D3	at Miami (OH)	38	9-14	3-6	2-2	0-7-7	1	4	2	0	2	23
D6	at Saint Louis	36	5-10	1-4	2-2	0-6-6	2	5	5	1	0	13
D11	at Butler	33	5-18	3-7	1-2	1-5-6	1	2	1	0	2	14
D21	Tulsa	22	2-9	2-5	5-6	3-3-6	3	3	1	1	0	11
D30	at Evansville											
J1	at Southern Illinois											
J6	Bradley											
J8	Illinois State											
J14	at Loyola											
J20	at Northern Iowa											
J22	at Drake											
J27	Wichita State											
J29	Missouri State											
F3	at Illinois State											
F5	at Bradley											
F12	Loyola											
F17	Drake											
F19	Northern Iowa											
F24	at Missouri State											
F26	at Wichita State											
M2	Southern Illinois											
M4	Evansville											
M9	MVC Tournament											

CAREER HIGHS

POINTS	25, BUTLER - 12-21-15
FG MADE	9, AT MIAMI (OH) - 12/3/16
3FG MADE	5, DRAKE - 02-14-16
FT MADE	5, TULSA - 12/21/16
REBOUNDS	8, ILLINOIS STATE - 01-10-16
ASSISTS	8, AT LOYOLA - 02-21-16
BLOCKS	2, NORTHERN KENTUCKY - 11/11/16
STEALS	4, NORTHERN KENTUCKY - 11/11/16

CAREER STATS

Season	gp-gs	min/avg	Total		3-Point		F-Throws		Rebounds				Scoring							
			fg-fga	pct	fg-fga	pct	ft-fta	pct	off	def	tot	avg	pf	fo	ast	to	blk	stl	pts	avg
2015-16	26-22	680/26.2	81-208	.389	41-123	.333	30-46	.652	25	71	96	3.7	59	1	47	68	7	23	233	9.0
2016-17	11-11	303/27.5	50-125	.400	23-65	.354	11-14	.786	10	38	48	4.4	22	1	21	25	5	15	134	12.2
TOTAL	37-33	983/26.6	131-333	.393	64-188	.340	41-60	.683	35	109	144	3.9	81	2	68	93	12	38	367	9.9





#2 FREJA CHRISTENSEN

GUARD • JUNIOR • 5-10
COPENHAGEN, DENMARK • FALKONERGARDENS

2016-17 GAME-BY-GAME STATISTICS

	MIN	FG	3FG	FT	O-D-R	PF	A	TO	B	S	PTS	
N11	Northern Kentucky	7	1-2	0-1	0-0	0-0-0	1	0	0	1	0	2
N14	at Florida Atlantic	1	0-1	0-1	0-0	0-0-0	0	0	0	0	0	0
N19	at Cincinnati	-	-	-	-	-	-	-	-	-	-	-
N22	at Missouri	7	0-0	0-0	0-0	0-0-0	0	2	1	0	0	7
N25	at Omaha	9	0-3	0-2	0-0	0-0-0	0	0	0	0	0	0
N28	at Eastern Illinois	7	3-3	3-3	0-0	0-0-0	0	0	0	0	0	9
N30	IUPUI	-	-	-	-	-	-	-	-	-	-	-
D3	at Miami (OH)	-	-	-	-	-	-	-	-	-	-	-
D6	at Saint Louis	-	-	-	-	-	-	-	-	-	-	-
D11	at Butler	7	0-1	0-1	0-0	2-0-2	0	0	0	0	0	0
D21	Tulsa	-	-	-	-	-	-	-	-	-	-	-
D30	at Evansville	-	-	-	-	-	-	-	-	-	-	-
J1	at Southern Illinois	-	-	-	-	-	-	-	-	-	-	-
J6	Bradley	-	-	-	-	-	-	-	-	-	-	-
J8	Illinois State	-	-	-	-	-	-	-	-	-	-	-
J14	at Loyola	-	-	-	-	-	-	-	-	-	-	-
J20	at Northern Iowa	-	-	-	-	-	-	-	-	-	-	-
J22	at Drake	-	-	-	-	-	-	-	-	-	-	-
J27	Wichita State	-	-	-	-	-	-	-	-	-	-	-
J29	Missouri State	-	-	-	-	-	-	-	-	-	-	-
F3	at Illinois State	-	-	-	-	-	-	-	-	-	-	-
F5	at Bradley	-	-	-	-	-	-	-	-	-	-	-
F12	Loyola	-	-	-	-	-	-	-	-	-	-	-
F17	Drake	-	-	-	-	-	-	-	-	-	-	-
F19	Northern Iowa	-	-	-	-	-	-	-	-	-	-	-
F24	at Missouri State	-	-	-	-	-	-	-	-	-	-	-
F26	at Wichita State	-	-	-	-	-	-	-	-	-	-	-
M2	Southern Illinois	-	-	-	-	-	-	-	-	-	-	-
M4	Evansville	-	-	-	-	-	-	-	-	-	-	-
M9	MVC Tournament	-	-	-	-	-	-	-	-	-	-	-

CAREER HONORS

NOTES

As a Sophomore (2015-16) – Saw action in four games ... scored her lone points in a win over host UMKC at the Plaza Lights Classic ... played in a total of 14 minutes.

As a Freshman (2014-15) - Made five appearances off the bench in her rookie season ... made her first career appearance at South Alabama ... also saw action in games against Ulndy, at home and on the road against Evansville and against Missouri State ... scored her lone bucket at South Alabama ... saw a season-high four minutes of playing time at home against Ulndy ... also picked up a rebound against Missouri State.

High School – Graduated from Falkonergardens Gymnasium...Helped lead her club team the Falcons to four consecutive high school championships...was awarded player of the game at European Championship while playing for the National Team against Switzerland. Falcon won silver in the Danish Women's League championships.

CAREER HIGHS

POINTS	9, AT EASTERN ILLINOIS - 11/28/16
FG MADE	3, AT EASTERN ILLINOIS - 11/28/16
3FG MADE	3, AT EASTERN ILLINOIS - 11/28/16
FT MADE	
REBOUNDS	2, AT BUTLER - 12/11/16
ASSISTS	2, AT MIZZOU - 11/22/16
BLOCKS	1, NORTHERN KENTUCKY - 11/11/16
STEALS	1, AT DRAKE - 01-15-16

CAREER STATS

Season	gp-gs		Total		3-Point		F-Throws		Rebounds				Scoring							
	gp	gs	fg-fga	pct	fg-fga	pct	ft-fga	pct	off	def	tot	avg	pf	fo	ast	to	blk	stl	pts	avg
2014-15	5	0	1-3	.333	0-1	.000	0-0	.000	0	1	1	0.2	1	0	0	1	0	0	2	0.4
2015-16	4	0	1-7	.143	0-5	.000	0-0	.000	1	1	2	0.5	0	0	0	0	0	1	2	0.5
2016-17	6	0	4-10	.400	3-8	.375	0-0	.000	2	0	2	0.3	1	0	2	1	1	0	11	1.8
TOTAL	15	0	6-20	.300	3-14	.214	0-0	.000	3	2	5	0.3	2	0	2	2	1	1	15	1.0





#3 ASHLI O'NEAL

GUARD • FRESHMAN • 5-5
WYOMING, OHIO • WYOMING

2016-17 GAME-BY-GAME STATISTICS

	MIN	FG	3FG	FT	O-D-R	PF	A	TO	B	S	PTS	
N11	Northern Kentucky	12	3-4	0-0	1-2	0-3-3	1	0	1	0	3	7
N14	at Florida Atlantic	-	-	-	-	-	-	-	-	-	-	-
N19	at Cincinnati	-	-	-	-	-	-	-	-	-	-	-
N22	at Missouri	-	-	-	-	-	-	-	-	-	-	-
N25	at Omaha	-	-	-	-	-	-	-	-	-	-	-
N28	at Eastern Illinois	-	-	-	-	-	-	-	-	-	-	-
N30	IUPUI	11	0-1	0-0	0-0	0-1-1	4	0	0	0	0	0
D3	at Miami (OH)	20	1-2	1-2	2-2	1-2-3	2	0	5	0	3	5
D6	at Saint Louis	18	4-6	3-5	2-4	0-3-3	2	3	2	0	0	13
D11	at Butler	17	1-5	1-2	2-2	0-1-1	1	0	0	0	4	5
D21	Tulsa	20	2-4	1-1	0-0	0-3-3	1	2	1	0	0	5
D30	at Evansville											
J1	at Southern Illinois											
J6	Bradley											
J8	Illinois State											
J14	at Loyola											
J20	at Northern Iowa											
J22	at Drake											
J27	Wichita State											
J29	Missouri State											
F3	at Illinois State											
F5	at Bradley											
F12	Loyola											
F17	Drake											
F19	Northern Iowa											
F24	at Missouri State											
F26	at Wichita State											
M2	Southern Illinois											
M4	Evansville											
M9	MVC Tournament											

CAREER HONORS

NOTES

A two-time Cincinnati Hills League Athlete of the Year and three-time conference first-team selection ... scored her 1,000th career point as a senior as she averaged a league-high 23.2 points and 5.2 steals per game ... Wyoming to a 21-5 overall record and 12-4 mark in league play earning AP Southwest District second team honors and an All-Ohio District II honorable mention selection ... selected to play in the North-South All-Star game where she earned Most Valuable Player honors scored in double figures in 23 of 24 games played in her final high school season and hit a career-high 37 points in a win over Indiana Hill ... tallied four 30-plus point scoring performances in 2015-16 and had a double-double (20 points, 10 steals) in a win over Maderia ... shot 41.7 percent from the floor on the season, 39.9 percent from 3-point range and also added 3.3 rebounds and 1.7 assists ... a sophomore she averaged a league-high 17.0 points and 5.5 steals per game leading Wyoming to a Cincinnati Hills League championship with an overall record of 22-2 overall record and 13-1 mark in the league ... started in all 24 games and scored in double figures in 21 of those 24 games ... as a freshman, O'Neal averaged 9.1 points, 3.0 steals, 2.3 rebounds and 1.4 assists per ballgame.

CAREER HIGHS

POINTS	13, AT SAINT LOUIS - 12/06/16
FG MADE	4, AT SAINT LOUIS - 12/06/16
3FG MADE	3, AT SAINT LOUIS - 12/06/16
FT MADE	2, AT BUTLER - 12/11/16
REBOUNDS	3, AT SAINT LOUIS - 12/06/16
ASSISTS	3, AT SAINT LOUIS - 12/06/16
BLOCKS	
STEALS	4, AT BUTLER - 12/11/16

CAREER STATS

Season	gp-gs	min/avg	Total		3-Point		F-Throws		Rebounds				Scoring							
			fg-fga	pct	fg-fga	pct	ft-fta	pct	off	def	tot	avg	pf	fo	ast	to	blk	stl	pts	avg
2016-17	6-0	98/16.3	11-22	.500	6-10	.600	7-10	.700	1	13	14	2.3	11	0	5	9	0	10	35	5.8
TOTAL	6-0	98/16.3	11-22	.500	6-10	.600	7-10	.700	1	13	14	2.3	11	0	5	9	0	10	35	5.8





#4 MARYAM WILCHER

GUARD • FRESHMAN • 6-0
BERWYN, ILLINOIS • MORTON WEST

CAREER HONORS

NOTES

A three-year varsity starter at Morton West High School ... scored over 1,000 points in her high school career ... a 2014-15 Chicago Tribune All-State selection who averaged 22.6 points, eight rebounds, five assists and two steals per game and shot 46.6 percent from the floor as a junior ... named the Most Valuable Player and all-tournament team at the Riverside-Brookfield Thanksgiving tournament ... was the Mustangs' MVP both as a sophomore and junior ... an all-conference selection and helped lead her team to a 13-9 overall record as a junior ... as a sophomore, averaged 15.3 points per game ... played club basketball with Chi Hoops Express under head coach Jerald Davis.

2016-17 GAME-BY-GAME STATISTICS

		MIN	FG	3FG	FT	O-D-R	PF	A	TO	B	S	PTS
N11	Northern Kentucky	8	0-2	0-0	3-4	3-3-6	0	1	2	0	0	3
N14	at Florida Atlantic	14	1-5	0-0	0-0	0-2-2	0	0	2	0	1	2
N19	at Cincinnati	5	0-1	0-0	0-0	0-1-1	0	0	0	0	0	0
N22	at Missouri	8	1-2	0-1	0-2	0-2-2	0	0	0	0	0	2
N25	at Omaha	11	1-5	0-3	0-0	1-0-1	1	1	0	1	0	2
N28	at Eastern Illinois	13	2-3	0-0	0-0	1-0-1	0	3	1	1	1	4
N30	IUPUI	-	-	-	-	-	-	-	-	-	-	-
D3	at Miami (OH)	6	1-2	0-0	0-0	0-1-1	1	0	1	0	0	2
D6	at Saint Louis	14	3-5	0-1	2-2	0-1-1	1	1	2	0	2	8
D11	at Butler	12	1-3	0-0	0-0	1-2-3	0	0	0	0	0	2
D21	Tulsa	5	1-2	0-1	2-2	0-0-0	0	0	0	0	0	4
D30	at Evansville											
J1	at Southern Illinois											
J6	Bradley											
J8	Illinois State											
J14	at Loyola											
J20	at Northern Iowa											
J22	at Drake											
J27	Wichita State											
J29	Missouri State											
F3	at Illinois State											
F5	at Bradley											
F12	Loyola											
F17	Drake											
F19	Northern Iowa											
F24	at Missouri State											
F26	at Wichita State											
M2	Southern Illinois											
M4	Evansville											
M9	MVC Tournament											

CAREER HIGHS

POINTS	8, AT SAINT LOUIS - 12/06/16
FG MADE	3, AT SAINT LOUIS - 12/06/16
3FG MADE	
FT MADE	3, NORTHERN KENTUCKY - 11/11/16
REBOUNDS	6, NORTHERN KENTUCKY - 11/11/16
ASSISTS	3, AT EASTERN ILLINOIS - 11/28/16
BLOCKS	1, AT EASTERN ILLINOIS - 11/28/16
STEALS	2, AT SAINT LOUIS - 12/06/16

CAREER STATS

Season	gp-gs	min/avg	Total		3-Point		F-Throws		Rebounds				Scoring							
			fg-fga	pct	fg-fga	pct	ft-fta	pct	off	def	tot	avg	pf	fo	ast	to	blk	stl	pts	avg
2016-17	10-0	96/9.6	11-30	.367	0-6	.000	7-10	.700	6	12	18	1.8	3	0	6	8	2	4	29	2.9
TOTAL	10-0	96/9.6	11-30	.367	0-6	.000	7-10	.700	6	12	18	1.8	3	0	6	8	2	4	29	2.9





#5 GABI BALDRIDGE

FORWARD • FRESHMAN • 6-3
WILLARD, OHIO • WILLARD

2016-17 GAME-BY-GAME STATISTICS

	MIN	FG	3FG	FT	O-D-R	PF	A	TO	B	S	PTS	
N11	Northern Kentucky	9	0-3	0-0	1-2	1-2-3	1	1	0	1	0	1
N14	at Florida Atlantic	4	1-1	0-0	0-0	0-0-0	0	0	0	0	0	2
N19	at Cincinnati	8	0-0	0-0	2-4	2-3-5	2	0	2	1	0	2
N22	at Missouri	21	1-11	0-0	2-2	3-2-5	3	0	0	0	0	4
N25	at Omaha	10	0-1	0-0	0-0	0-3-3	1	1	0	1	0	0
N28	at Eastern Illinois	-	-	-	-	-	-	-	-	-	-	-
N30	IUPUI	3	0-0	0-0	0-0	0-0-0	2	0	0	0	0	0
D3	at Miami (OH)	3	0-0	0-0	0-0	1-1-2	1	0	1	0	0	0
D6	at Saint Louis	2	0-0	0-0	1-2	0-0-0	2	0	0	0	0	0
D11	at Butler	12	2-4	0-0	0-0	1-1-2	1	0	0	1	0	4
D21	Tulsa	-	-	-	-	-	-	-	-	-	-	-
D30	at Evansville	-	-	-	-	-	-	-	-	-	-	-
J1	at Southern Illinois	-	-	-	-	-	-	-	-	-	-	-
J6	Bradley	-	-	-	-	-	-	-	-	-	-	-
J8	Illinois State	-	-	-	-	-	-	-	-	-	-	-
J14	at Loyola	-	-	-	-	-	-	-	-	-	-	-
J20	at Northern Iowa	-	-	-	-	-	-	-	-	-	-	-
J22	at Drake	-	-	-	-	-	-	-	-	-	-	-
J27	Wichita State	-	-	-	-	-	-	-	-	-	-	-
J29	Missouri State	-	-	-	-	-	-	-	-	-	-	-
F3	at Illinois State	-	-	-	-	-	-	-	-	-	-	-
F5	at Bradley	-	-	-	-	-	-	-	-	-	-	-
F12	Loyola	-	-	-	-	-	-	-	-	-	-	-
F17	Drake	-	-	-	-	-	-	-	-	-	-	-
F19	Northern Iowa	-	-	-	-	-	-	-	-	-	-	-
F24	at Missouri State	-	-	-	-	-	-	-	-	-	-	-
F26	at Wichita State	-	-	-	-	-	-	-	-	-	-	-
M2	Southern Illinois	-	-	-	-	-	-	-	-	-	-	-
M4	Evansville	-	-	-	-	-	-	-	-	-	-	-
M9	MVC Tournament	-	-	-	-	-	-	-	-	-	-	-

CAREER HONORS

NOTES

A three year varsity player for Willard High School ... scored over 1,000 points in her high school career where she was named an All-District 6 Coaches Association team and first team all-conference selection as a junior, averaging 7.7 points and 9.0 rebounds per contest as she helped Willard to a Division II district runners-up finish and a No. 6 ranking in the Ohio AP poll ... in her three-year high school career, Baldridge tallied up 606 points, grabbed 561 rebounds, posted 98 blocks and shot 52 percent from the floor ... earned a spot in the Shelby Rotary NCO Girls All-Star game as a junior where she scored 13 points ... played her sophomore season at Strongsville where she averaged 10 points and eight rebounds per contest.

CAREER HIGHS

POINTS	4, AT BUTLER - 12/11/16
FG MADE	2, AT BUTLER - 12/11/16
3FG MADE	
FT MADE	2, AT MIZZOU - 11/22/16
REBOUNDS	5, AT MIZZOU - 11/22/16
ASSISTS	1, NORTHERN KENTUCKY - 11/11/16
BLOCKS	1, NORTHERN KENTUCKY - 11/11/16
STEALS	

CAREER STATS

Season	gp-gs	min/avg	Total		3-Point		F-Throws		Rebounds				Scoring							
			fg-fga	pct	fg-fga	pct	ft-fta	pct	off	def	tot	avg	pf	fo	ast	to	blk	stl	pts	avg
2016-17	9-0	72/8.0	4-20	.200	0-0	.000	6-10	.600	8	12	20	2.2	10	0	2	3	4	0	14	1.6
TOTAL	9-0	72/8.0	4-20	.200	0-0	.000	6-10	.600	8	12	20	2.2	10	0	2	3	4	0	14	1.6





#14 TIERRA WEBB

GUARD • SOPHOMORE • 5-7
RICHTON PARK, ILLINOIS • RICH SOUTH

CAREER HONORS

NOTES

Saw action in all 30 games, the only freshman to do so ... earned three starts in conference play ... averaged 4.4 points per game with four double-digit performances (all in conference play) with a career-high 19 coming against Loyola ... shot 31.7 percent from the field and went a season-high .833 at Southern Illinois (5-for-6) ... pulled down an average of 2.0 rebounds per game ... grabbed a career-high nine at Wichita State in the regular season finale ... combined for 27 assists in her rookie season, dishing out a season-high three at UMKC in the Plaza Lights Classic ... picked off a season-high four steals at Illinois State ... one of the team leaders at the line with a 72.1 clip (44-for-61) and went 1.000 percent from the charity stripe eight times ... averaged 16.0 minutes per appearance with a season-high 26 minutes at Illinois State.

2016-17 GAME-BY-GAME STATISTICS

	MIN	FG	3FG	FT	O-D-R	PF	A	TO	B	S	PTS	
N11	Northern Kentucky	31	2-6	0-3	0-0	2-4-6	1	3	2	1	2	4
N14	at Florida Atlantic	27	6-10	2-3	3-4	1-2-3	5	0	3	0	2	17
N19	at Cincinnati	25	3-7	2-3	2-2	1-2-3	5	1	3	0	2	10
N22	at Missouri	23	1-6	1-2	3-4	1-3-4	2	0	3	0	1	6
N25	at Omaha	28	0-11	0-4	2-2	0-5-5	2	0	0	0	0	2
N28	at Eastern Illinois	25	3-9	2-4	0-0	0-3-3	2	6	1	0	2	8
N30	IUPUI	30	3-10	0-2	0-1	0-4-4	2	1	2	1	1	6
D3	at Miami (OH)	26	2-9	1-6	1-2	1-0-1	4	1	5	0	1	6
D6	at Saint Louis	26	0-4	0-1	2-2	1-0-1	1	3	3	0	2	2
D11	at Butler	28	1-7	0-4	5-6	1-2-3	2	1	3	0	1	7
D21	Tulsa	28	4-8	1-1	3-4	1-7-8	3	1	2	0	2	12
D30	at Evansville											
J1	at Southern Illinois											
J6	Bradley											
J8	Illinois State											
J14	at Loyola											
J20	at Northern Iowa											
J22	at Drake											
J27	Wichita State											
J29	Missouri State											
F3	at Illinois State											
F5	at Bradley											
F12	Loyola											
F17	Drake											
F19	Northern Iowa											
F24	at Missouri State											
F26	at Wichita State											
M2	Southern Illinois											
M4	Evansville											
M9	MVC Tournament											

CAREER HIGHS

POINTS	19, LOYOLA - 01-22-16
FG MADE	6, AT FLORIDA ATLANTIC - 11-14-16
3FG MADE	2, AT CINCINNATI - 11/19/16
FT MADE	7, LOYOLA - 01-22-16
REBOUNDS	9, AT WICHITA STATE - 03-05-16
ASSISTS	6, AT EASTERN ILLINOIS - 11/28/16
BLOCKS	1, NORTHERN KENTUCKY - 11/11/16
STEALS	4, AT ILLINOIS STATE - 02-05-16

CAREER STATS

Season	gp-gs	min/avg	Total		3-Point		F-Throws			Rebounds					Scoring					
			fg-fga	pct	fg-fga	pct	ft-fa	pct	off	def	tot	avg	pf	fo	ast	to	blk	stl	pts	avg
2015-16	30-3	480/16.0	40-126	.317	8-39	.205	44-61	.721	17	42	59	2.0	60	1	27	45	3	25	132	4.4
2016-17	11-11	297/27.0	25-87	.287	9-33	.273	21-27	.778	9	32	41	3.7	29	2	17	27	2	16	80	7.3
TOTAL	41-14	777/19.0	65-213	.305	17-72	.236	65-88	.739	26	74	100	2.4	89	3	44	72	5	41	212	5.2





#20 McKENZY TELFAIR

GUARD • R-FRESHMAN • 5-11
INDIANAPOLIS, INDIANA • CARDINAL RITTER

2016-17 GAME-BY-GAME STATISTICS

	MIN	FG	3FG	FT	O-D-R	PF	A	TO	B	S	PTS	
N11	Northern Kentucky	10	0-1	0-0	0-0	0-1-1	2	0	1	1	0	0
N14	at Florida Atlantic	16	3-8	0-4	2-2	1-1-2	4	0	1	0	0	8
N19	at Cincinnati	24	3-5	2-3	4-7	0-4-4	3	0	4	2	1	12
N22	at Missouri	16	2-8	1-4	1-2	2-1-3	4	1	3	1	2	6
N25	at Omaha	5	0-0	0-0	0-0	0-0-0	1	0	0	0	0	0
N28	at Eastern Illinois	12	0-2	0-0	0-0	0-3-3	5	1	1	0	0	0
N30	IUPUI	15	2-4	1-3	1-4	0-0-0	1	0	1	0	-	6
D3	at Miami (OH)	4	0-0	0-0	0-0	0-0-0	2	0	0	0	0	0
D6	at Saint Louis	2	1-1	1-1	0-0	0-0-0	1	0	0	0	0	3
D11	at Butler	8	0-2	0-0	1-2	2-1-3	0	0	1	0	0	1
D21	Tulsa	22	1-4	1-2	2-4	2-1-3	3	2	2	1	0	5
D30	at Evansville											
J1	at Southern Illinois											
J6	Bradley											
J8	Illinois State											
J14	at Loyola											
J20	at Northern Iowa											
J22	at Drake											
J27	Wichita State											
J29	Missouri State											
F3	at Illinois State											
F5	at Bradley											
F12	Loyola											
F17	Drake											
F19	Northern Iowa											
F24	at Missouri State											
F26	at Wichita State											
M2	Southern Illinois											
M4	Evansville											
M9	MVC Tournament											

CAREER HONORS

NOTES

Redshirted her first season with Indiana State. Helped Cardinal Ritter High School to a sectional championship and 20-4 overall record as a junior and reach the regional championship ... as a junior, averaged 11.1 points, 6.2 rebounds, 2.5 assists, 2.9 steals and 2.9 blocks, setting a single-season for Ritter in blocked shots (79) as she earned all-city and all-conference honors ... was named Ritter's Most Valuable Player as she posted a season-high 24 points and 15 points against Bishop Chatarde ... a member of the UnderArmour National All-Star team.

CAREER HIGHS

POINTS	12, AT CINCINNATI - 11/19/16
FG MADE	3, AT FLORIDA ATLANTIC - 11-14-16
3FG MADE	
FT MADE	4, AT CINCINNATI - 11/19/16
REBOUNDS	4, AT CINCINNATI - 11/19/16
ASSISTS	2, TULSA - 12/21/16
BLOCKS	2, AT CINCINNATI - 11/19/16
STEALS	2, AT MIZZOU - 11/22/16

CAREER STATS

Season	gp-gs	min/avg	Total		3-Point		F-Throws		Rebounds				Scoring							
			fg-fga	pct	fg-fga	pct	ft-fa	pct	off	def	tot	avg	pf	fo	ast	to	blk	stl	pts	avg
2016-17	11-0	134/12.2	12-35	.343	6-17	.353	11-21	.524	7	12	19	1.7	26	1	4	14	5	3	41	3.7
TOTAL	11-0	134/12.2	12-35	.343	6-17	.353	11-21	.524	7	12	19	1.7	26	1	4	14	5	3	41	3.7





#21 BROOKLYN ARTIS

GUARD • JUNIOR • 5-8
AMARILLO, TEXAS • SEWARD COUNTY

2016-17 GAME-BY-GAME STATISTICS

	MIN	FG	3FG	FT	O-D-R	PF	A	TO	B	S	PTS
N11	Northern Kentucky	5	1-2	0-1	0-0	0-1-1	0	0	1	0	2
N14	at Florida Atlantic	12	0-1	0-1	0-0	0-0-0	0	0	3	0	0
N19	at Cincinnati	8	1-3	0-2	0-0	0-0-0	0	1	1	0	2
N22	at Missouri	9	1-3	0-0	0-0	0-0-0	0	0	0	0	2
N25	at Omaha	12	0-2	0-1	2-2	0-3-3	1	1	3	0	1
N28	at Eastern Illinois	18	4-7	0-1	0-0	0-1-1	3	3	2	0	8
N30	IUPUI	16	2-6	0-0	0-0	1-0-1	2	0	2	0	4
D3	at Miami (OH)	24	0-4	0-2	0-0	0-2-2	1	1	0	0	0
D6	at Saint Louis	24	1-2	1-1	0-0	0-2-2	2	1	2	0	3
D11	at Butler	23	1-6	0-2	0-0	1-0-1	1	0	0	0	1
D21	Tulsa	23	2-4	1-3	0-0	0-0-0	1	1	2	0	5
D30	at Evansville										
J1	at Southern Illinois										
J6	Bradley										
J8	Illinois State										
J14	at Loyola										
J20	at Northern Iowa										
J22	at Drake										
J27	Wichita State										
J29	Missouri State										
F3	at Illinois State										
F5	at Bradley										
F12	Loyola										
F17	Drake										
F19	Northern Iowa										
F24	at Missouri State										
F26	at Wichita State										
M2	Southern Illinois										
M4	Evansville										
M9	MVC Tournament										

CAREER HONORS

NOTES

Played in 18 games in her first season with the Sycamores ... averaged 2.5 points and 1.0 rebound per appearance ... scored a career-high 10 points versus Stephen F. Austin in the Plaza Lights Classic ... also dropped nine against UMKC and eight at Missouri State. Was a key piece to the Lady Saints puzzle as Seward County, finishing third on the team in scoring at 13.3 points per game ... led in assists with 3.1 per night ... After playing as a reserve for the first 11 games of the season, started the final 23 games of the year ... posted 20-plus scoring efforts on eight occasions including a career-high 34 in a road overtime win over Weatherford and 23 in the NJCAA National Tournament against Lake Region ... was a 2nd Team All-Jayhawk West selection and was an Honorable Mention All-Region VI performer.

CAREER HIGHS

POINTS	10, VS STEPHEN F. AUSTIN - 11/28/15
FG MADE	4, AT EASTERN ILLINOIS - 11/28/16
3FG MADE	1, 3X, LAST AT CENTRAL MICHIGAN - 11/13/15
FT MADE	5, VS STEPHEN F. AUSTIN - 11/28/15
REBOUNDS	4, AT EASTERN ILLINOIS - 11/28/16
ASSISTS	3, AT EASTERN ILLINOIS - 11/28/16
BLOCKS	
STEALS	2, AT EASTERN ILLINOIS - 11/28/16;

CAREER STATS

Season	gp-gs		Total		3-Point		F-Throws		Rebounds				Scoring												
	gp	gs	fg-fga	pct	fg-fga	pct	ft-fa	pct	off	def	tot	avg	pf	fo	ast	to	blk	stl	pts	avg					
2015-16	18	0	184	10.2	11	42	.262	3	10	.300	20	27	.741	3	15	18	1.0	11	0	8	21	0	3	45	2.5
2016-17	11	4	174	15.8	13	40	.325	2	14	.143	2	2	1.000	2	9	11	1.0	11	0	7	16	0	5	30	2.7
TOTAL	29	4	358	12.3	24	82	.293	5	24	.208	22	29	.759	5	24	29	1.0	22	0	15	37	0	8	75	2.6





#23 WENDI BIBBINS

FORWARD • JUNIOR • 6-2
HARVEY, LOUISIANA • JONES COUNTY

CAREER HONORS

MVC Newcomer of the Week (12/5/16)

NOTES

Ranked the third best junior college prospect and nation's top small forward by Dan Olson of GirlsBasketballReport.com ... played for Jones County Community College where she was a second-team All-MACJC selection leading the Lady Bobcats to a 19-7 overall record and 10-3 mark in the MACJC with an appearance in the Region 23 Tournament ... averaged a double-double (12.8 points, 10.7 rebounds) to go along with 2.0 assists, 1.3 blocks and 1.2 steals per game ... played in the MACJC All-Star game.

2016-17 GAME-BY-GAME STATISTICS

	MIN	FG	3FG	FT	O-D-R	PF	A	TO	B	S	PTS	
N11	Northern Kentucky	18	3-8	0-0	0-0	0-6-6	3	0	1	0	3	6
N14	at Florida Atlantic	33	6-9	0-0	0-1	2-12-14	3	0	2	1	1	10
N19	at Cincinnati	28	5-7	0-0	4-5	3-8-11	2	0	3	1	0	14
N22	at Missouri	23	3-9	0-0	0-0	1-4-5	2	1	3	0	0	6
N25	at Omaha	25	2-6	0-0	1-3	3-2-5	1	2	1	1	1	5
N28	at Eastern Illinois	27	6-7	0-0	4-5	2-7-9	1	1	2	0	0	16
N30	IUPUI	33	3-7	0-0	2-4	2-5-7	4	1	3	1	1	8
D3	at Miami (OH)	34	6-10	0-0	4-5	3-4-7	3	1	2	1	1	16
D6	at Saint Louis	30	3-9	909	3-6	1-12-13	2	3	3	3	0	9
D11	at Butler	23	2-7	0-0	0-0	1-6-7	3	0	3	1	0	4
D21	Tulsa	33	8-16	0-0	3-4	3-5-8	4	2	0	1	0	19
D30	at Evansville											
J1	at Southern Illinois											
J6	Bradley											
J8	Illinois State											
J14	at Loyola											
J20	at Northern Iowa											
J22	at Drake											
J27	Wichita State											
J29	Missouri State											
F3	at Illinois State											
F5	at Bradley											
F12	Loyola											
F17	Drake											
F19	Northern Iowa											
F24	at Missouri State											
F26	at Wichita State											
M2	Southern Illinois											
M4	Evansville											
M9	MVC Tournament											

CAREER HIGHS at ISU

POINTS	19, TULSA - 12/21/16
FG MADE	8, TULSA - 12/21/16
3FG MADE	
FT MADE	4, AT MIAMI (OH) - 12/3/16
REBOUNDS	14, AT FLORIDA ATLANTIC - 11-14-16
ASSISTS	3, AT SAINT LOUIS - 12/06/16
BLOCKS	3, AT SAINT LOUIS - 12/06/16
STEALS	3, NORTHERN KENTUCKY - 11/11/16

CAREER STATS

Season	gp-gs	min/avg	Total		3-Point		F-Throws		Rebounds				Scoring							
			fq-fga	pct	fq-fga	pct	ft-fta	pct	off	def	tot	avg	pf	fo	ast	to	blk	stl	pts	avg
2016-17	11-11	307/27.9	47-95	.495	0-0	.000	21-33	.636	21	71	92	8.4	28	0	11	23	10	7	115	10.5
TOTAL	11-11	307/27.9	47-95	.495	0-0	.000	21-33	.636	21	71	92	8.4	28	0	11	23	10	7	115	10.5





#30 REGAN WENTLAND

FORWARD • SOPHOMORE • 6-1
GREENWOOD, INDIANA • CENTER GROVE

2016-17 GAME-BY-GAME STATISTICS

	MIN	FG	3FG	FT	O-D-R	PF	A	TO	B	S	PTS	
N11	Northern Kentucky	19	1-2	1-1	0-0	1-6-7	2	1	1	0	2	2
N14	at Florida Atlantic	18	1-4	0-2	0-0	1-4-5	0	0	1	0	1	2
N19	at Cincinnati	21	2-3	1-1	0-0	0-4-4	0	2	0	0	0	5
N22	at Missouri	26	1-3	0-1	1-2	2-3-5	2	0	2	2	1	3
N25	at Omaha	19	3-6	0-1	1-2	2-3-5	2	0	0	0	0	7
N28	at Eastern Illinois	25	2-4	1-1	0-0	1-2-3	3	2	0	1	1	5
N30	IUPUI	14	0-1	0-0	1-4	0-3-3	2	0	2	0	0	1
D3	at Miami (OH)	15	1-2	1-2	0-0	1-2-3	0	1	2	1	0	3
D6	at Saint Louis	22	3-3	1-1	0-0	0-6-6	2	1	0	0	1	7
D11	at Butler	18	1-3	0-1	0-2	1-0-1	1	0	2	2	0	2
D21	Tulsa	17	1-4	0-2	0-0	0-3-3	1	1	0	0	0	2
D30	at Evansville											
J1	at Southern Illinois											
J6	Bradley											
J8	Illinois State											
J14	at Loyola											
J20	at Northern Iowa											
J22	at Drake											
J27	Wichita State											
J29	Missouri State											
F3	at Illinois State											
F5	at Bradley											
F12	Loyola											
F17	Drake											
F19	Northern Iowa											
F24	at Missouri State											
F26	at Wichita State											
M2	Southern Illinois											
M4	Evansville											
M9	MVC Tournament											

CAREER HONORS

NOTES

Played in 28 games as a freshman ... scored a career-high nine points in the season opener against Central Michigan where she shot 80 percent from the floor (4-for-5) ... pulled down 42 rebounds (1.5 per game) including a season-high four times ... dished out a career-high two assists against Saint Louis and Bradley ... added eight total blocks including two against Southern Illinois ... picked up 15 steals including five at Missouri State ... averaged 9.5 minutes per game and saw a career-high 27 minutes at IUPUI.

CAREER HIGHS

POINTS	9, AT CENTRAL MICHIGAN - 11/13/15
FG MADE	4, AT CENTRAL MICHIGAN - 11/13/15
3FG MADE	1, 6 TIMES
FT MADE	1, NORTHERN IOWA - 02-12-16
REBOUNDS	7, NORTHERN KENTUCKY - 11/11/16
ASSISTS	2, AT CINCINNATI - 11/19/16
BLOCKS	2, AT BUTLER - 12/11/16
STEALS	5, AT MISSOURI STATE - 03-03-16

CAREER STATS

Season	gp-gs	min/avg	Total		3-Point		F-Throws			Rebounds				Scoring						
			fg-fga	pct	fg-fga	pct	ft-fa	pct	off	def	tot	avg	pf	fo	ast	to	blk	stl	pts	avg
2015-16	28-0	265/9.5	12-47	.255	6-22	.273	2-4	.500	12	30	42	1.5	25	0	9	15	8	14	32	1.1
2016-17	11-0	214/19.5	16-35	.457	5-13	.385	3-10	.300	9	36	45	4.1	15	0	8	10	6	6	40	3.6
TOTAL	39-0	479/12.3	28-82	.341	11-35	.314	5-14	.357	21	66	87	2.2	40	0	17	25	14	20	72	1.8





#45 RHAGEN SMITH

FORWARD • SENIOR • 6-2
SULLIVAN, INDIANA • SULLIVAN

2016-17 GAME-BY-GAME STATISTICS

	MIN	FG	3FG	FT	O-D-R	PF	A	TO	B	S	PTS	
N11	Northern Kentucky	29	5-9	0-1	5-6	0-6-6	0	1	3	1	3	15
N14	at Florida Atlantic	31	2-6	0-1	3-3	2-2-4	3	0	2	1	1	7
N19	at Cincinnati	30	3-9	0-1	1-2	2-6-8	4	1	4	1	1	7
N22	at Missouri	12	0-0	0-0	1-2	0-0-0	4	0	2	1	0	0
N25	at Omaha	27	5-10	0-1	1-2	4-5-9	3	0	1	0	0	11
N28	at Eastern Illinois	23	6-8	1-2	3-3	2-4-6	1	1	0	0	0	16
N30	IUPUI	30	0-5	0-2	0-2	2-4-6	2	0	5	0	0	0
D3	at Miami (OH)	30	2-5	0-1	3-4	1-4-5	3	0	1	4	0	7
D6	at Saint Louis	26	4-9	1-2	2-2	2-1-3	5	0	1	3	0	11
D11	at Butler	19	2-8	1-5	2-2	0-3-3	5	1	0	0	0	7
D21	Tulsa	30	2-6	0-1	5-9	4-0-4	1	2	1	1	2	9
D30	at Evansville											
J1	at Southern Illinois											
J6	Bradley											
J8	Illinois State											
J14	at Loyola											
J20	at Northern Iowa											
J22	at Drake											
J27	Wichita State											
J29	Missouri State											
F3	at Illinois State											
F5	at Bradley											
F12	Loyola											
F17	Drake											
F19	Northern Iowa											
F24	at Missouri State											
F26	at Wichita State											
M2	Southern Illinois											
M4	Evansville											
M9	MVC Tournament											

CAREER HONORS

2015 MVC Scholar-Athlete Team Honorable Mention
2015 Plaza Lights Classic All-Tournament Team

NOTES

As a Junior (2015-16) – Played in all 30 games, making 13 starts ... scored 6.4 points and 5.1 rebounds per game ... her 5.1 rebounds were third-best for the Sycamores ... scored in double figures eight times including a career-high 14 points at Illinois State ... grabbed a career-high 11 rebounds in the MVC Tournament quarterfinals against Missouri State ... was second on the team in offensive rebounds (56) as she pulled down a career-high seven versus SIU ... had at least one rebound in every game this season and holds a streak of 31 straight games with a rebound.

As a Sophomore (2014-15) - Appeared in all 30 games and made three starts ... averaged 3.6 points and 2.6 rebounds per contest ... went 41.4 percent from the floor and 37.5 percent from 3-point range ... scored a career-high nine points on two separate occasions including at Butler and at Evansville ... she went a season-high 3-for-3 from the floor versus the Purple Aces.

As a Freshman (2013-14) – Played in 27 games off the bench as in her freshman season ... went 15-for-35 from the floor (.429) ... grabbed 28 rebounds on the season ... scored a season-high eight points twice (vs. Southern Illinois, at Missouri State) ... played a season-high 19 minutes against SIU where she also hit a season-high three field goals ... grabbed a season-high five rebounds in back-to-back games against Loyola and Bradley.

High School – Listed as one of the Top 25 prospects out of the state of Indiana by ESPN HoopGurlz ... named an Indiana High School All-Star following both her junior and senior seasons ... participated in the IBCA/IHSAA Girls Top 100 Underclass Showcase in Indianapolis in 2012 ... IBCA First Team All-State selection as a junior and as a senior ... led the Western Indiana Conference in scoring and rebounding as a junior, averaging 15.8 points and 7.0 rebounds per game while also totaling 54 assists, 32 blocks and shooting over 50% from the field ... led the Golden Arrows to back-to-back sectional championships in 2012 and 2013, the school's first titles since 2003.

Personal – Born October 18, 1994 in Terre Haute, Ind. ... Daughter of Thad and Maria Smith ... mom Maria played basketball at Indiana State ... has one sibling, Rhett, a junior, who plays basketball at Hillsdale College ... Majoring in nursing.

CAREER HIGHS

POINTS	16, AT EASTERN ILLINOIS - 11/28/16
FG MADE	6, AT EASTERN ILLINOIS - 11/28/16
3FG MADE	2, AT ILLINOIS STATE - 02-05-16
FT MADE	7, EVANSVILLE - 2-26-16
REBOUNDS	11, VS MISSOURI STATE UNIVER - 03/11/16
ASSISTS	3, AT TULSA - 12/06/15
BLOCKS	4, AT MIAMI (OH) - 12/3/16
STEALS	NORTHERN KENTUCKY - 11/11/16

CAREER STATS

Season	gp-gs	min/avg	Total		3-Point		F-Throws		Rebounds				Scoring							
			fg-fga	pct	fg-fga	pct	ft-fta	pct	off	def	tot	avg	pf	fo	ast	to	blk	stl	pts	avg
2013-14	27-0	180/6.7	15-35	.429	1-2	.500	19-31	.613	12	16	28	1.0	27	0	2	16	6	1	50	1.9
2014-15	30-3	382/12.7	41-99	.414	6-16	.375	19-36	.528	33	45	78	2.6	42	0	7	21	8	2	107	3.6
2015-16	30-13	629/21.0	71-177	.401	12-37	.324	41-58	.707	66	88	154	5.1	51	0	15	30	18	9	195	6.5
2016-17	11-11	287/26.1	31-75	.413	3-17	.176	26-37	.703	23	32	55	5.0	31	2	6	16	11	6	91	8.3
TOTAL	98-27	1478/15.1	158-386	.409	22-72	.306	105-162	.648	134	181	315	3.2	151	2	30	83	43	18	443	4.5





2016-17 Indiana State Women's Basketball Game Notes



Official Basketball Box Score -- Game Totals -- Final Statistics Northern Kentucky vs Indiana State 11/11/16 7:00 PM at Terre Haute, IN



Official Basketball Box Score -- Game Totals -- Final Statistics Indiana State vs Florida Atlantic 11/14/16 7:05 PM at FAU Arena, Boca Raton, Fla.



Northern Kentucky 38 • 0-1

#	Player	Total			3-Ptr			Rebounds			PF	TP	A	TO	Blk	Stl	Min
		FG	FGA	FT	FTA	Off	Def	Tot									
03	Lyttle, Rebecca	f	2-11	0-2	1-2	2	6	8	0	5	1	1	0	1	23		
04	Terry, Mikayla	f	1-5	0-1	0-0	3	1	4	4	2	2	3	0	1	24		
23	Utrecht, Kasey	f	4-7	1-1	1-2	4	2	6	3	10	2	7	1	1	31		
22	Glickman, Kelley	g	3-7	0-2	2-3	0	1	1	1	8	1	2	0	1	34		
24	Wick, Molly	g	0-6	0-2	0-0	1	3	4	3	0	0	3	0	0	26		
00	Davis, Shar'rae	g	2-6	0-2	0-0	0	2	2	1	4	0	3	0	0	13		
11	Taugher, Taryn	g	0-2	0-1	0-0	0	2	2	1	0	0	0	0	1	6		
12	Thomas, Laura	g	1-6	0-1	0-0	0	4	4	0	2	0	6	0	0	14		
21	Clark, Hannah	g	1-4	1-1	0-0	0	3	3	1	3	1	1	0	0	15		
34	Combs, Hayley	g	1-5	0-3	2-2	0	4	4	0	4	0	0	0	0	14		
Team						2	3	5				1					
Totals			15-59	2-16	6-9	12	31	43	14	38	7	27	1	5	200		

FG % 1st Half: 7-22 31.8% 2nd half: 8-37 21.6% Game: 15-59 25.4%
 3FG % 1st Half: 0-5 0.0% 2nd half: 2-11 18.2% Game: 2-16 12.5%
 FT % 1st Half: 3-5 60.0% 2nd half: 3-4 75.0% Game: 6-9 66.7%

Indiana State 58 • 1-0

#	Player	Total			3-Ptr			Rebounds			PF	TP	A	TO	Blk	Stl	Min
		FG	FGA	FT	FTA	Off	Def	Tot									
01	Taia, Ashley	f	5-18	3-10	0-1	1	1	2	3	13	1	2	2	4	29		
23	Bibbins, Wendi	f	3-8	0-0	0-0	0	6	6	3	6	0	1	0	3	18		
45	Smith, Rhagen	f	5-9	0-1	5-6	4	3	7	0	15	1	3	1	3	29		
11	Sophus, Diamonisha	g	1-7	0-3	0-0	1	1	2	1	2	3	2	1	1	23		
14	Webb, Tierra	g	2-6	0-3	0-0	2	4	6	1	4	3	2	1	2	31		
02	Christensen, Freja	g	1-2	0-1	0-0	0	0	0	1	2	0	0	1	0	7		
03	O'Neal, Ashli	g	3-4	0-0	1-2	0	3	3	1	7	0	1	0	3	12		
04	Wilcher, Maryam	g	0-2	0-0	3-4	3	3	6	0	3	1	2	0	0	8		
05	Baldrige, Gabi	g	0-3	0-0	1-2	1	2	3	0	1	1	0	1	0	9		
20	Telfair, McKenzie	g	0-1	0-0	0-0	0	1	1	2	0	0	1	1	0	5		
21	Artis, Brooklyn	g	1-2	0-1	0-0	0	1	1	0	2	0	1	0	0	10		
30	Wentland, Regan	g	1-2	1-1	0-0	1	6	7	2	3	1	1	0	2	19		
Team						2	2	4				1					
Totals			22-64	4-20	10-15	15	33	48	14	58	11	17	8	18	200		

FG % 1st Half: 6-28 21.4% 2nd half: 16-36 44.4% Game: 22-64 34.4%
 3FG % 1st Half: 2-11 18.2% 2nd half: 2-9 22.2% Game: 4-20 20.0%
 FT % 1st Half: 3-4 75.0% 2nd half: 7-11 63.6% Game: 10-15 66.7%

Officials: David Stewart, Todd Moistener, Molly Caldwell
 Technical fouls: Northern Kentucky-None. Indiana State-None.
 Attendance: 1381

Score by periods	1st	2nd	3rd	4th	Total
Northern Kentucky	11	6	9	12	38
Indiana State	14	3	26	15	58

Indiana State 67 • 1-1

#	Player	Total			3-Ptr			Rebounds			PF	TP	A	TO	Blk	Stl	Min
		FG	FGA	FT	FTA	Off	Def	Tot									
01	Taia, Ashley	f	4-8	1-5	0-0	2	2	4	5	9	1	1	0	0	12		
23	Bibbins, Wendi	f	6-9	0-0	0-1	2	12	14	3	12	0	2	1	1	33		
45	Smith, Rhagen	f	2-6	0-1	3-3	2	2	4	3	7	0	0	1	0	31		
11	Sophus, Diamonisha	g	3-10	1-5	1-2	0	3	3	2	8	0	3	0	0	32		
14	Webb, Tierra	g	6-10	2-3	3-4	1	2	3	5	17	0	3	0	2	27		
02	Christensen, Freja	g	0-1	0-1	0-0	0	0	0	0	0	0	0	0	0	1		
04	Wilcher, Maryam	g	1-5	0-0	0-0	0	2	2	0	2	0	2	0	1	14		
05	Baldrige, Gabi	g	1-1	0-0	0-0	0	0	0	0	0	0	0	0	0	4		
20	Telfair, McKenzie	g	3-8	0-4	2-2	1	1	2	4	8	0	0	0	0	16		
21	Artis, Brooklyn	g	0-1	0-1	0-0	0	0	0	0	0	0	3	0	1	12		
30	Wentland, Regan	g	1-4	0-2	0-0	1	4	5	0	2	0	1	0	1	18		
Team						1	0	1									
Totals			27-63	4-22	9-12	10	28	38	22	67	1	16	2	6	200		

FG % 1st Half: 12-31 38.7% 2nd half: 15-32 46.9% Game: 27-63 42.9%
 3FG % 1st Half: 1-9 11.1% 2nd half: 3-13 23.1% Game: 4-22 18.2%
 FT % 1st Half: 5-6 83.3% 2nd half: 4-6 66.7% Game: 9-12 75.0%

Florida Atlantic 70 • 2-0

#	Player	Total			3-Ptr			Rebounds			PF	TP	A	TO	Blk	Stl	Min
		FG	FGA	FT	FTA	Off	Def	Tot									
05	DOYLE, Raven	f	2-9	0-1	3-4	2	8	10	2	7	0	4	0	1	30		
50	MYERS, Melinda	f	0-1	0-1	0-0	0	2	2	4	0	0	0	0	0	16		
11	BAILEY, Jacey	g	1-2	0-1	1-4	2	1	3	2	3	1	0	0	0	10		
32	KENCY, Malia	g	3-9	1-2	1-4	0	1	1	3	8	6	2	0	1	31		
33	ZYRYANOVA, Nika	g	8-14	4-6	0-0	1	1	2	20	2	3	0	1	33			
10	PERRY, Vashnie	g	0-1	0-1	0-0	0	0	0	0	0	0	1	0	0	3		
15	CEDENO, Sasha	g	6-9	5-8	0-1	0	6	6	1	17	3	0	1	0	26		
21	JENIKE, Julia	g	1-2	0-0	2-4	1	1	2	0	4	1	1	0	0	11		
23	SHANNON, Alexis	g	1-2	0-0	0-0	1	0	1	0	2	0	2	0	0	7		
31	GABRIEL, Ra'kyra	g	1-4	0-1	1-2	0	0	0	0	3	0	0	0	0	7		
34	O'REILLY, Katelyn	g	3-6	0-0	0-0	1	3	4	1	6	2	5	0	3	26		
Team						5	5	10									
Totals			26-59	10-21	8-19	13	28	41	15	70	15	18	1	6	200		

FG % 1st Half: 15-28 53.6% 2nd half: 11-31 35.5% Game: 26-59 44.1%
 3FG % 1st Half: 3-6 50.0% 2nd half: 7-15 46.7% Game: 10-21 47.6%
 FT % 1st Half: 1-4 25.0% 2nd half: 7-15 46.7% Game: 8-19 42.1%

Officials: Sue Blanch, Brian Hall, Marc Merritt
 Technical fouls: Indiana State-None. Florida Atlantic-None.
 Attendance: 535

Score by periods	1st	2nd	3rd	4th	Total
Indiana State	16	14	22	15	67
Florida Atlantic	22	12	22	14	70



Official Basketball Box Score -- Game Totals -- Final Statistics Indiana State vs Cincinnati 11/19/16 6pm at Fifth Third Arena (Cincinnati, Ohio)



Official Basketball Box Score -- Game Totals -- Final Statistics Indiana State vs Mizzou 11/22/16 7 p.m. at Mizzou Arena



Indiana State 63 • 2-1

#	Player	Total			3-Ptr			Rebounds			PF	TP	A	TO	Blk	Stl	Min
		FG	FGA	FT	FTA	Off	Def	Tot									
01	Taia, Ashley	f	1-9	0-4	0-0	1	2	3	2	2	1	2	0	1	20		
23	Bibbins, Wendi	f	5-7	0-0	4-5	3	8	11	2	14	0	3	1	0	38		
45	Smith, Rhagen	f	3-9	0-1	1-2	2	6	8	4	7	1	4	1	1	20		
11	Sophus, Diamonisha	g	3-8	3-4	0-0	0	5	5	2	9	5	6	1	1	31		
14	Webb, Tierra	g	3-7	2-3	2-2	1	2	3	5	10	1	3	0	2	25		
04	Wilcher, Maryam	g	0-1	0-0	0-0	0	1	1	0	0	0	0	0	0	5		
05	Baldrige, Gabi	g	0-0	0-0	2-4	2	3	5	2	2	0	2	1	0	8		
20	Telfair, McKenzie	g	3-5	2-3	4-7	0	4	4	3	12	0	4	2	1	24		
21	Artis, Brooklyn	g	1-3	0-2	0-0	0	0	0	0	2	1	1	0	0	8		
30	Wentland, Regan	g	2-3	1-1	0-0	0	4	4	0	5	2	0	0	0	21		
Team						3	2	5									
Totals			21-52	8-18	13-20	12	37	49	20	63	11	25	6	6	200		

FG % 1st Half: 13-28 46.4% 2nd half: 8-24 33.3% Game: 21-52 40.4%
 3FG % 1st Half: 5-8 62.5% 2nd half: 3-10 30.0% Game: 8-18 44.4%
 FT % 1st Half: 4-6 66.7% 2nd half: 9-14 64.3% Game: 13-20 65.0%

Cincinnati 55 • 2-1

#	Player	Total			3-Ptr			Rebounds			PF	TP	A	TO	Blk	Stl	Min
		FG	FGA	FT	FTA	Off	Def	Tot									
21	JOHNSON, Shanice	f	5-10	0-0	0-1	4	7	11	4	10	0	2	1	3	30		
25	WARREN, Chelsea	f	3-5	0-0	0-1	2	2	4	4	6	0	1	1	3			



Official Basketball Box Score -- Game Totals -- Final Statistics

Indiana State vs Omaha

11/25/16 7:00pm at Omaha, Nebraska (Baxter Arena)



Official Basketball Box Score -- Game Totals -- Final Statistics

Indiana State vs Eastern Illinois

11/28/16 6:00 pm at Lantz Arena



Indiana State 45 • 2-3

#	Player	Total			3-Ptr			Rebounds			PF	TP	A	TO	Blk	Stl	Min
		FG	FGA	FT	FTA	FG	FGA	FT	FTA	Off							
01	Ashley Taia	4	11	3	8	0	0	1	3	4	0	11	1	3	0	1	26
23	Wendi Bibbins	2	6	0	0	1	3	2	5	1	5	2	1	1	1	0	25
45	Rhagen Smith	5	10	1	2	4	5	9	3	11	0	1	0	1	0	0	27
11	Diamonisha Sophus	2	9	1	5	0	0	1	2	5	5	1	0	0	3	28	
14	Tierra Webb	0	11	0	4	2	2	0	5	2	2	0	0	0	0	28	
02	Freja Christensen	0	3	0	2	0	0	0	0	0	0	0	0	0	0	9	
04	Maryam Wilcher	1	5	0	3	0	0	1	0	1	2	1	0	1	0	11	
05	Gabi Baldrige	0	1	0	0	0	0	3	3	1	0	1	0	1	0	10	
20	McKenzy Telfair	0	0	0	0	0	0	0	0	0	1	0	0	0	0	5	
21	Brooklyn Artis	0	2	0	1	2	2	3	3	1	2	1	3	0	1	12	
30	Regan Wentland	3	6	0	1	2	2	3	5	2	7	0	0	0	0	19	
	Team																
	Totals	17	64	4	25	7	11	12	27	39	14	45	11	9	3	6	200

FG % 1st Half: 8-33 24.2% 2nd half: 9-31 29.0% Game: 17-64 26.6% Deadball Rebounds: 3.1
 3FG % 1st Half: 3-16 18.8% 2nd half: 1-9 11.1% Game: 4-25 16.0%
 FT % 1st Half: 2-2 100.0% 2nd half: 5-9 55.6% Game: 7-11 63.6%

Omaha 72 • 2-3

#	Player	Total			3-Ptr			Rebounds			PF	TP	A	TO	Blk	Stl	Min
		FG	FGA	FT	FTA	FG	FGA	FT	FTA	Off							
22	Mikaela Shaw	4	8	0	1	2	3	9	14	0	10	6	4	2	0	25	
44	Michaela Dapprich	3	11	0	3	1	1	3	4	1	7	3	1	1	0	21	
10	Courtney Vaccher	3	7	0	0	1	2	4	2	6	1	7	0	1	1	21	
05	Amber Vidal	2	5	2	2	0	0	4	4	0	4	1	2	0	0	29	
23	Remy Davenport	3	8	2	6	0	0	0	1	1	0	8	4	0	0	24	
01	Kalen Phillips	0	1	0	0	0	0	0	0	2	0	1	0	0	0	6	
14	Marissa Preston	3	6	1	2	0	0	3	3	7	1	0	0	0	2	20	
20	Alexa Fisher	0	1	0	1	0	0	0	0	0	0	2	0	0	0	5	
21	Abi Lujan	2	2	2	2	0	0	5	5	1	6	0	0	0	0	11	
34	Ellie Brecht	2	8	2	6	0	0	1	1	2	1	6	0	2	0	13	
40	Jay Bridgeman	3	3	0	0	1	2	1	1	4	7	0	0	0	0	8	
43	Moriah Dapprich	3	5	2	3	0	0	0	1	1	0	8	1	0	0	17	
	Team																
	Totals	28	65	11	26	5	8	11	34	45	13	72	19	10	4	5	200

FG % 1st Half: 18-35 51.4% 2nd half: 10-30 33.3% Game: 28-65 43.1% Deadball Rebounds: 1.2
 3FG % 1st Half: 6-12 50.0% 2nd half: 5-14 35.7% Game: 11-26 42.3%
 FT % 1st Half: 1-2 50.0% 2nd half: 4-6 66.7% Game: 5-8 62.5%

Officials: Zac Brost, Tim Greenwood, Darla Brendemeuhl
 Technical fouls: Indiana State-None, Omaha-None.
 Attendance: 208

Score by periods	1st	2nd	3rd	4th	Total
Indiana State	9	12	12	12	45
Omaha	25	18	13	16	72

	In	Off	2nd	Fast	Bench
Points	Paint	T/O	Chance	Break	
IND	22	5	8	4	11
OMAHA	30	9	12	5	34

Last FG - IND 4th-00:20, OMAHA 4th-00:40.
 Largest lead - IND by 1 1st-07:16, OMAHA by 29 4th-00:40.
 IND led for 00:13. OMAHA led for 38:52. Game was tied for 00:44.

Score tied - 1 time.
 Lead changed - 2 times.

Indiana State 88 • 3-3

#	Player	Total			3-Ptr			Rebounds			PF	TP	A	TO	Blk	Stl	Min
		FG	FGA	FT	FTA	FG	FGA	FT	FTA	Off							
01	Taia, Ashley	8	10	3	5	0	0	1	2	3	0	19	2	4	1	28	
23	Bibbins, Wendi	6	7	0	0	4	5	2	7	9	1	16	1	2	0	27	
45	Smith, Rhagen	6	8	1	2	3	4	6	1	6	1	16	1	0	0	23	
11	Sophus, Diamonisha	1	5	1	3	0	0	2	2	1	3	3	1	0	0	22	
14	Webb, Tierra	3	9	2	4	0	0	3	3	2	8	6	1	0	2	25	
02	Christensen, Freja	3	3	3	3	0	0	0	0	0	0	9	0	0	0	7	
04	Wilcher, Maryam	2	3	0	0	0	1	0	1	0	4	3	1	1	1	13	
20	Telfair, McKenzy	0	2	0	0	0	0	3	3	5	0	1	1	0	0	12	
21	Artis, Brooklyn	4	7	0	1	0	0	1	1	3	8	3	2	0	2	18	
30	Wentland, Regan	2	4	1	1	0	0	1	2	3	5	2	0	1	1	25	
	Team																
	Totals	35	58	11	19	7	8	25	33	16	88	22	12	3	7	200	

FG % 1st Half: 17-29 58.6% 2nd half: 18-29 62.1% Game: 35-58 60.3% Deadball Rebounds: 1
 3FG % 1st Half: 6-10 60.0% 2nd half: 5-9 55.6% Game: 11-19 57.9%
 FT % 1st Half: 3-4 75.0% 2nd half: 4-4 100.0% Game: 7-8 87.5%

Eastern Illinois 61 • 4-3

#	Player	Total			3-Ptr			Rebounds			PF	TP	A	TO	Blk	Stl	Min
		FG	FGA	FT	FTA	FG	FGA	FT	FTA	Off							
11	BROWN, Erica	4	7	0	0	6	7	5	1	6	0	14	0	1	0	2	34
31	SMITH, Jalisha	1	1	0	0	0	0	0	1	1	2	2	0	0	0	12	
32	NEHLS, Jennifer	2	3	1	1	0	0	1	0	1	1	5	1	1	1	13	
05	LENNOX, Grace	6	12	0	3	4	8	0	1	1	3	16	4	1	0	32	
30	VAN DYKE, Allison	3	9	0	2	1	2	2	2	4	0	7	1	1	0	27	
01	LENOIR, Zharina	1	4	1	3	0	0	0	0	0	0	3	1	2	0	11	
10	CHANDRA, Karina	0	3	0	1	2	2	0	1	1	0	2	0	0	0	6	
12	TELLEZ, Carmen	1	4	1	4	0	0	0	0	0	0	3	1	0	0	7	
20	BERRY, Danielle	2	3	0	1	2	2	4	1	5	2	4	1	3	0	24	
21	STULL, Halle	2	5	0	2	0	0	2	2	1	4	2	1	0	0	24	
22	BOYER, Brittin	0	3	0	0	1	2	2	3	5	0	1	0	1	0	10	
	Team																
	Totals	22	54	3	17	14	21	11	15	26	9	61	11	11	1	6	200

FG % 1st Half: 13-25 52.0% 2nd half: 9-29 31.0% Game: 22-54 40.7% Deadball Rebounds: 3
 3FG % 1st Half: 2-7 28.6% 2nd half: 1-10 10.0% Game: 3-17 17.6%
 FT % 1st Half: 5-8 62.5% 2nd half: 9-13 69.2% Game: 14-21 66.7%

Officials: Jamie Broderick, Jeff Cross, Troy Winders
 Technical fouls: Indiana State-None, Eastern Illinois-None.
 Attendance: 262

Score by periods	1st	2nd	3rd	4th	Total
Indiana State	29	14	24	21	88
Eastern Illinois	19	14	14	14	61

	In	Off	2nd	Fast	Bench
Points	Paint	T/O	Chance	Break	
INS	36	14	14	2	26
EIU	24	10	5	4	17

Last FG - INS 4th-00:04, EIU 4th-01:26.
 Largest lead - INS by 27 4th-00:04, EIU None.
 INS led for 39:21. EIU led for 00:00. Game was tied for 00:39.

Score tied - 1 time.
 Lead changed - 0 times.



Official Basketball Box Score -- Game Totals -- Final Statistics

IUPUI vs Indiana State

11-30-16 5:30 PM at Terre Haute, Ind. (Hulman Center)



Official Basketball Box Score -- Game Totals -- Final Statistics

Indiana State 62 • 4-4

12/3/16 2:00 PM ET at Millett Hall, Oxford, Ohio



IUPUI 45 • 5-1

#	Player	Total			3-Ptr			Rebounds			PF	TP	A	TO	Blk	Stl	Min
		FG	FGA	FT	FTA	FG	FGA	FT	FTA	Off							
12	Tolen, Caitlyn	0	3	0	3	2	4	0	1	1	1	2	2	0	0	0	26
14	Lawrence, Danielle	1	14	1	5	0	0	1	6	7	1	3	2	5	0	1	35
32	Gunn, Jenna	1	4	0	2	1	4	2	6	2	3	1	1	0	0	0	30
33	Rogers, Mikale	6	17	0	0	3	3	0	4	4	3	15	0	4	6	2	34
42	Hall, Sydney	3	4	2	3	2	4	0	6	6	3	10	1	1	0	0	23
03	Byrd, Kelsi	0	2	0	1	4	5	0	2								



2016-17 Indiana State Women's Basketball Game Notes



Official Basketball Box Score -- Game Totals -- Final Statistics

Indiana State vs Saint Louis 12/06/16 7 p.m. at St. Louis, Mo. (Chaifetz Arena)



Official Basketball Box Score -- Game Totals -- Final Statistics

Indiana State vs Butler 12/11/16 2:00 PM at Indianapolis, Ind. - Hinkle Fieldhouse



Indiana State 70 • 5-4

##	Player	Total			Rebounds			PF	TP	A	TO	Blk	Stl	Min	
		FG-FGA	3-Ptr FG-FGA	FT-FTA	Off	Def	Tot								
01	Taia, Ashley	f	5-10	1-4	2-2	0	6	2	13	5	5	1	0	36	
23	Bibbins, Wendi	f	3-9	0-0	3-6	1	12	13	2	9	3	3	3	0	30
45	Smith, Rhagen	f	4-9	1-2	2-2	2	1	3	5	11	0	1	3	0	26
14	Webb, Tierra	g	0-4	0-1	2-2	1	0	1	1	2	3	3	0	2	26
21	Artis, Brooklyn	g	1-2	1-1	0-0	0	2	2	2	3	1	2	0	0	24
03	O'Neal, Ashli	g	4-6	3-5	2-4	0	3	3	2	13	3	2	0	0	18
04	Wilcher, Maryam	g	3-5	0-1	2-2	0	1	1	1	8	1	2	0	2	14
05	Baldrige, Gabi	g	0-0	0-0	1-2	0	0	0	2	1	0	0	0	0	2
20	Telfair, McKenzie	g	1-1	1-1	0-0	0	0	0	1	3	0	0	0	0	2
30	Wentland, Regan	g	3-3	1-1	0-0	0	6	6	2	7	1	0	0	1	22
Team						0	1	1							
Totals			24-49	8-16	14-20	4	32	36	20	70	17	18	7	5	200

FG % 1st Half: 12-26 46.2% 2nd half: 12-23 52.2% Game: 24-49 49.0% Deadball Rebounds 4
 3FG % 1st Half: 3-7 42.9% 2nd half: 5-9 55.6% Game: 8-16 50.0%
 FT % 1st Half: 3-4 75.0% 2nd half: 11-16 68.8% Game: 14-20 70.0%

Saint Louis 67 • 7-2

##	Player	Total			Rebounds			PF	TP	A	TO	Blk	Stl	Min	
		FG-FGA	3-Ptr FG-FGA	FT-FTA	Off	Def	Tot								
42	JAKUBICEK, Olivia	f	4-7	0-0	2-2	6	7	13	3	10	0	3	0	0	39
10	STIPANOVICH, Sadie	c	6-13	0-0	8-11	2	7	9	1	20	0	1	1	0	31
03	KEMPH, Jackie	g	2-13	0-4	0-0	0	2	2	1	4	11	4	0	2	39
10	VLJET, Jenny	g	3-11	2-7	8-10	3	0	3	4	16	2	1	1	1	39
20	FRANTZ, Jordyn	g	2-15	1-7	0-0	2	2	4	4	5	1	1	1	2	33
40	MCMAHAN, Kerri	g	1-5	1-1	0-0	0	0	0	0	3	1	0	0	1	7
33	NELSON, Erin	g	1-1	1-1	0-0	0	0	0	0	3	0	0	0	0	3
42	GITS, Maddison	g	1-1	0-0	4-4	0	3	3	0	6	0	1	0	0	9
Team						3	2	5							
Totals			20-66	5-20	22-27	16	23	39	13	67	15	11	3	6	200

FG % 1st Half: 11-36 30.6% 2nd half: 9-30 30.0% Game: 20-66 30.3% Deadball Rebounds 3
 3FG % 1st Half: 3-12 25.0% 2nd half: 2-8 25.0% Game: 5-20 25.0%
 FT % 1st Half: 3-5 60.0% 2nd half: 19-22 86.4% Game: 22-27 81.5%

Officials: Wesley Dean, Amy Imming, Scott Osbourne
 Technical fouls: Indiana State-None. Saint Louis-None.
 Attendance: 314

Score by periods	1st	2nd	3rd	4th	Total
Indiana State	7	23	23	17	70
Saint Louis	15	13	17	22	67

	In	Off	2nd	Fast	Bench
Points	Paint	T/O	Chance	Break	
INS	24	7	2	0	32
SLU	24	22	10	4	12

Last FG - INS 4th-02:08, SLU 4th-00:02.
 Largest lead - INS by 13 4th-09:12, SLU by 11 1st-01:31.
 INS led for 23:12. SLU led for 15:32. Game was tied for 00:45.

Score tied - 0 times.
 Lead changed - 1 time.

Indiana State 48 • 5-5

##	Player	Total			Rebounds			PF	TP	A	TO	Blk	Stl	Min	
		FG-FGA	3-Ptr FG-FGA	FT-FTA	Off	Def	Tot								
01	Taia, Ashley	*	5-18	3-7	1-2	1	5	6	1	14	2	1	0	2	33
14	Webb, Tierra	*	1-7	0-4	5-6	1	2	3	2	7	1	3	0	1	28
21	Artis, Brooklyn	*	1-6	0-2	0-0	1	0	1	1	2	0	0	0	1	23
23	Bibbins, Wendi	*	2-7	0-0	0-0	1	6	7	3	4	0	3	1	0	23
45	Smith, Rhagen	*	2-8	1-5	2-2	0	3	3	5	7	1	0	0	0	19
02	Christensen, Freja	*	0-1	0-1	0-0	2	0	2	0	0	0	0	0	0	7
03	O'Neal, Ashli	*	1-5	1-2	2-2	0	1	1	1	5	0	0	0	4	17
04	Wilcher, Maryam	*	1-3	0-0	0-0	1	2	3	0	2	0	0	0	0	12
05	Baldrige, Gabi	*	2-4	0-0	0-0	1	1	2	1	4	0	0	0	1	12
20	Telfair, McKenzie	*	0-2	0-0	1-2	1	3	0	1	0	1	0	0	0	8
30	Wentland, Regan	*	1-3	0-1	0-2	1	0	1	1	2	0	2	2	0	18
Team						4	0	4							
Totals			16-64	5-22	11-16	15	21	36	15	48	4	11	4	8	200

FG % 1st Half: 6-30 20.0% 2nd half: 10-34 29.4% Game: 16-64 25.0% Deadball Rebounds 3
 3FG % 1st Half: 3-10 30.0% 2nd half: 2-12 16.7% Game: 5-22 22.7%
 FT % 1st Half: 3-5 60.0% 2nd half: 9-11 81.8% Game: 11-16 68.8%

Butler 66 • 3-7

##	Player	Total			Rebounds			PF	TP	A	TO	Blk	Stl	Min	
		FG-FGA	3-Ptr FG-FGA	FT-FTA	Off	Def	Tot								
03	WARD, Brittany	*	1-2	0-0	0-0	0	1	1	1	2	2	0	0	2	7
11	WEAVER, Michelle	*	0-2	0-1	0-0	0	5	5	0	2	2	0	1	21	
22	BAILLEY, Alexa	*	1-2	0-0	2-2	0	6	6	3	4	5	0	1	1	37
24	SPLYAR, Kristen	*	6-14	2-5	0-0	0	1	1	3	14	2	3	0	0	25
34	SCHICKEL, Tori	*	6-11	0-0	4-7	5	3	8	1	16	2	2	2	2	32
02	HODGES, Kaela	*	0-3	0-0	1-2	2	0	2	0	1	1	1	0	0	11
04	BUTFORD, Taylor	*	5-6	2-2	0-0	0	4	2	2	12	0	1	1	0	21
14	HUMPHREY, Sarah	*	1-2	0-0	2-2	0	0	0	1	4	0	0	0	0	7
23	BREY, Shae	*	1-2	1-1	0-2	0	8	1	3	1	3	3	0	0	16
30	SHELTON, Sydney	*	3-7	2-5	2-2	0	4	4	1	10	2	2	0	0	23
Team						0	3	3							
Totals			24-51	7-14	11-17	7	35	42	18	66	17	14	7	6	200

FG % 1st Half: 15-30 50.0% 2nd half: 9-21 42.9% Game: 24-51 47.1% Deadball Rebounds 5
 3FG % 1st Half: 4-10 40.0% 2nd half: 3-4 75.0% Game: 7-14 50.0%
 FT % 1st Half: 6-7 85.7% 2nd half: 5-10 50.0% Game: 11-17 64.7%

Officials: Albert Titus, Kevin Dillard, Jenna Schroeder
 Technical fouls: Indiana State-None. Butler-None.
 Attendance: 466

Butler #11 fouled out with 5:27 left in the 4th quarter.
 ISU #45 fouled out with 3:51 left in the 4th quarter.

Score by periods	1st	2nd	3rd	4th	Total
Indiana State	7	10	17	14	48
Butler	23	17	14	12	66

	In	Off	2nd	Fast	Bench
Points	Paint	T/O	Chance	Break	
INS	16	10	10	2	14
BU	26	17	9	6	30

Last FG - INS 4th-01:10, BU 4th-04:45.
 Largest lead - INS None, BU by 28 3rd-08:59.
 INS led for 00:00. BU led for 39:43. Game was tied for 00:17.

Score tied - 0 times.
 Lead changed - 0 times.



Official Basketball Box Score -- Game Totals -- Final Statistics

Tulsa vs Indiana State 12/21/16 12:00 PM at Terre Haute, IN



Indiana State 72 • 6-5

##	Player	Total			Rebounds			PF	TP	A	TO	Blk	Stl	Min	
		FG-FGA	3-Ptr FG-FGA	FT-FTA	Off	Def	Tot								
00	Elliott, Kendrian	f	3-6	0-0	0-0	5	5	10	3	6	1	3	0	0	24
22	Pongonis, Jessica	f	1-5	0-1	1-2	3	1	4	5	3	0	0	0	0	25
02	Perez, Tatyana	g	1-7	0-2	0-0	0	3	3	0	2	0	0	0	0	21
03	Wakefield, Erika	g	7-14	0-1	3-3	2	2	4	4	17	6	0	0	4	36
10	Gaulden, Alexis	g	4-15	3-9	2-2	0	5	5	2	13	2	2	0	0	26
04	Richards, Addison	g	2-3	1-1	0-0	0	0	0	3	5	0	1	0	0	14
11	Parker, Ebony	g	4-9	3-8	2-2	1	2	3	0	13	1	0	0	0	20
12	Dickson, Shug	g	3-9	1-2	0-0	5	3	8	1	7	1	2	0	1	14
13	Hughes, Ashley	g	1-3	0-1	0-0	2	0	2	1	2	0	1	0	0	3
25	Scales, Tyjae	g	0-1	0-0	0-0	1	2	3	1	0	0	0	0	0	8
33	Polk, Crystal	g	0-1	0-0	0-0	0	0	0	0	0	0	0	1	0	5
35	Spoerl, Liesl	g	0-1	0-1	0-0	1	0	1	1	0	0	0	0	0	4
Team						3	1	4							
Totals			26-74	8-26	8-9	23	24	47	21	68	11	9	1	5	200

FG % 1st Half: 15-40 37.5% 2nd half: 11-34 32.4% Game: 26-74 35.1% Deadball Rebounds 1,1
 3FG % 1st Half: 5-15 33.3% 2nd half: 3-11 27.3% Game: 8-26 30.8%
 FT % 1st Half: 0-0 0.0% 2nd half: 8-9 88.9% Game: 8-9 88.9%

Indiana State 72 • 6-5

##	Player	Total			Rebounds			PF	TP	A	TO	Blk	Stl	Min	
		FG-FGA	3-Ptr FG-FGA	FT-FTA	Off	Def	Tot								
01	Taia, Ashley	f	2-9	2-5	5-6	3	3	6	3	11	3	1	1	0	22
23	Bibbins, Wendi	f	8-16	0-0	3-4	3	5	8	4	19	2	0	1	0	33
45	Smith, Rhagen	f	2-6	0-1	5-9	4	0	4	1	9	2	1	1	2	30
14	Webb, Tierra	g	4-8	1-1	3-4	1	7	8	3	12	1	2	0	2	28
21	Artis, Brooklyn	g	2-4	1-3	0-0	0	0	0	1	5	0	2	0	0	23
03	O'Neal, Ashli	g	2-4	1-1	0-0	0	3	3	1	5	2	1	0	0	20
04	Wilcher, Maryam	g	1-2	0-1	2-2	0	0	0	0	4	0	0	0	0	5
20	Telfair, McKenzie	g	1-4	1-2	2-4	2	1	3	3	5	2	2	1	0	22
30	Wentland, Regan	g	1												



2016-17 TV/Radio Roster



1 • Ashley Taia
Jr. • F • 6-0
Brisbane, Australia



2 • Freja Christensen
Jr. • G • 5-11
Copenhagen, Denmark



3 • Ashli O'Neal
Fr. • G • 5-5
Wyoming, Ohio



4 • Maryam Wilcher
Fr. • G • 6-0
Berwyn, Ill.



5 • Gabi Baldrige
Fr. • F • 6-3
Willard, Ohio



14 • Tierra Webb
So. • G • 5-7
Richton Park, Ill.



20 • McKenzy Telfair
RFr. • G • 5-11
Indianapolis, Ind.



21 • Brooklyn Artis
Jr. • G • 5-8
Amarillo, Texas



23 • Wendi Bibbins
Jr. • F • 6-2
Amarillo, Texas



30 • Regan Wentland
So. • G • 6-1
Greenwood, Ind.



45 • Rhagen Smith
Sr. • F • 6-2
Sullivan, Ind.



Joey Wells
Head Coach



Janet Eaton
Assistant Coach



Josh Keister
Assistant Coach



Jenna Smith
Assistant Coach