



Compliance Office

Indiana State University

Sycamore Sentinel

October 2009 Newsletter

Contact & Evaluation Periods

Basketball (M):

Oct 1-5 Contact
Oct 6-31: Evaluation

Basketball (W):

Oct 1-6: Contact
Oct 2-: Evaluations Permitted at Non-Scholastic Women's Basketball Events Only
Oct 7-31: Evaluation

Football:

Oct 1-31: Evaluation

All Other Sports:

October 1-31: Contact
Baseball
Volleyball
Soccer
Softball
Golf
Track/Cross Country



Upcoming Compliance Education Meetings

October 13
November 9
December 14

Reminders: National Letter of Intent

CONTACTS:

- ALL SPORTS EXCEPT FOOTBALL AND WOMEN'S BASKETBALL:
 - Unlimited contacts after NLI is signed. HOWEVER,
 - In Men's Basketball, contact at the PSA's school shall be limited to the permissible contact period and shall not exceed one visit per week.
 - No in-person off-campus contact may be made during a "dead" period.
 - No off-campus contact (including correspondence and phone calls) may be made by athletic staff except when involved with pre-enrollment activities (e.g. discussion of summer employment).

DELIVERY OF NLI:

- No in-person off-campus deliver of an NLI is allowed.
- No in-person off-campus signing of an NLI. Coach can't be present!
- May be delivered via regular mail, express mail, courier, email or fax!
- If sent by express mail or courier, other items can't be included.
- A third party may not deliver the NLI to the PSA.

NLI RECRUITING RULES:

- Coaches may NOT comment on a prospect's ability or likelihood to attend Indiana State University.
- Coaches and institutional staff may not "rate" a PSA's ability for a recruiting service or the media (newspapers, TV, radio, etc.).
- PSA's may NOT appear on TV or radio shows run by ISU or shows conducted in conjunction with an athletic contest.

Volunteer Coaches

- A volunteer coach is prohibited from contacting and evaluating prospective student-athletes off campus or from scouting opponents off campus.
- A volunteer coach may receive a maximum of two complimentary tickets to home athletics contests in the coach's sport.
- A volunteer coach may receive compensation for employment at an institution's sports camp or clinic.
- A volunteer coach may receive transportation to and from, and room and board, at away games; and parking expenses associated with practice and competition.
- A volunteer coach may not receive a meal, free of charge, in conjunction with a prospective student-athlete's official visit.
- All volunteer coaches must complete and submit to the Compliance Office the "[Volunteer Coach Agreement](#)" form.

What's Going On In The News ?

[Words from coaches can set a tone fro their student-athletes' behavior! YouTube Video](#)

[Twittering Coaches Article](#)

[University of Michigan Investigation](#)

GAMBLING

The NCAA FORBIDS all forms of legal and illegal sports wagering. Including:

1. Use of a bookmaker or parlay card;
2. Internet sports wagering;
3. Pools or fantasy leagues in which an entry fee is required and there is an opportunity to win a prize.

"DON'T BET ON IT!!"

PRACTICE

Think you practice too much?

▶ Countable Activities include any required activity with an athletics purpose involving student-athletes and occur at the direction of, or supervised by, one or more of an institution's coaching staff, including strength and conditioning coaches.

▶ Participation is limited to a maximum of 4 hrs per day, 20 hours per week in season, and 2 hrs skill instruction per day, 8 hrs per week off season.

▶ Daily and weekly hour limitations do not apply, (1) prior to the first day of class and (2) during vacation periods.

▶ Student-athletes must receive one-day off per week from all countable activities.

A travel day may be considered as a day off.
(Basketball Exception: If a team participates in 3 contests in a week, the team is not subject to the one-day-off-per-week requirement. However, student-athletes must receive 2 days off from all countable activities during either the preceding or following week..

From Steve Duzan's Desk

Oct 7: Dr. Will Keim - "Will Keim Speaks!" - DEDE I @ 7:30pm

Oct 9: Fall Break - No Classes

Oct. 11: Study Hall Closed - Fall Break

Oct. 17: Cross Country Blue/White Game

Oct. 23: Soccer Blue/White Game

Oct. 24: Homecoming

Nov 3: Last Day to Drop Classes: No Petition for Exception

Nov. 14: Football Blue/White Game

Nov. 21: Volleyball Blue/White Game

Nov 2-24: Priority Scheduling for Spring 2009

Nov. 27: Study Hall Closed Sunday -Thanksgiving Break

Nov. 25-27: Thanksgiving Break

Nov 30 Study hall closed Sunday, for Thanksgiving Break

Dec. 7-11: Study Week - Last week of Mentoring/Study Hall

Dec. 14-18: Final Exams

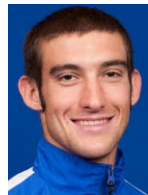


Katlin Owens

Casey Allbright



CONGRATULATIONS!
MVC PLAYERS OF THE WEEK



Michael Disher



Craig Padgett



SAAC UPDATE

Canned Food Drive in November.
Date, Time, and Location (s) TBA.

ISU Compliance Contacts

Joel McMullen
Assistant AD - Compliance
812-237-4086
joel.mcmullen@indstate.edu

Tonya Gimbert
Compliance Coordinator
812-237-4160
tgimbert@indstate.edu

Katie Gaal
Compliance Assistant
812-237-4040
katie.gaal@indstate.edu

Joe Sanders
Faculty Athletic Representative
812-237-2015
joe.sanders@indstate.edu

Steve Duzan
Athletic Academics Coordinator
812-237-7601
sduzan@indstate.edu

** HOST INSTRUCTIONS**

Have you been asked to be a student-host for a prospective student-athlete? If so, please keep the following in mind!

- Host money cannot be given directly to the PSA.
- Host money can only be used for entertainment and snacks. A maximum of \$30 per day will be provided for entertainment. (Does not include meals)
- Host money cannot be used to buy t-shirts, hats, sweatshirts or other souvenirs.
- Entertainment for the prospect is limited to a 30-mile radius of campus.
- You cannot borrow your coach's car or any vehicle owned by the University or a booster.
- A visiting recruit may engage in recreational activities, so long as the activity does not include the sport in which the individual is being recruited.
- You are not allowed to have any contact with the media or a booster.
- **Underage drinking is illegal. It is the student host's responsibility to discourage this type of activity. Do not break the law!**



OCTOBER IS BREAST CANCER AWARENESS MONTH

Thank You Soccer for raising money at their PACK IT PINK Night!
Look for other sports teams upcoming pink games soon!

For More Information on Breast Cancer Awareness and Health Information,
visit <http://www.nbcam.org/>

