



2021-22 MARSHALL WOMEN'S BASKETBALL

THE HERD

GAME NOTES

Jason Corriher, Marshall Sports Information | Email: corriher@marshall.edu
O: 304-696-4660 | C: 740-331-1497 | Twitter: @HerdWBB | Website: www.HerdZone.com

GAME INFORMATION

Date/Time: March 2, 2022
Site: Bowling Green, Ky. (E.A. Diddle Arena)
Live Stats: Sidearm (WKUSports.com)
Live Video: ESPN+
Marshall Radio: www.marshall.edu/wmul (Stream 2)
Twitter Updates: @HerdWBB
Series History vs. WKU: 17 all-time meetings
WKU leads 15-2
Last Meeting vs. MT: Jan. 17, 2021 in Bowling Green - L, 69-60

SCHEDULE

2021-22 Record: 13-12, 8-8 C-USA

DATE	OPPONENT	TIME
Nov. 9	BLUEFIELD STATE	W, 108-45
14	at Radford	W, 68-64
19	MOREHEAD STATE	W, 65-58
22	at Purdue	L, 70-60
28	at (RV) Michigan State	L, 85-75
30	WRIGHT STATE	Canceled
Dec. 4	COPPIN STATE	L, 77-69
12	at St. Bonaventure	L, 50-47
15	ALDERSON BROADDUS	W, 88-56
20	vs. Oakland!	W, 79-58
21	vs. Akron!	Canceled
30	LOUISIANA TECH*	W, 62-44
Jan. 1	SOUTHERN MISS *	W, 72-55
8	at Florida Atlantic *	W, 66-51
13	at North Texas *	L, 64-54
15	at Rice *	W, 66-53
20	FIU*	W, 62-59
22	FLORIDA ATLANTIC *(OT)	W, 57-44
27	at Middle Tennessee *	L, 80-41
29	at UAB *	L, 77-65
Feb. 3	OLD DOMINION *	L, 62-47
5	CHARLOTTE *	(OT) L, 39-37
10	at FIU *	L, 70-66
13	UTEP *	W, 60-48
17	at Old Dominion*	W, 64-48
19	at Charlotte*	L, 65-47
24	MIDDLE TENNESSEE *	L, 65-57
Mar. 2	at WKU *	7:30 p.m.
5	WKU*	1 P.M.

Conference USA Tournament March 8-12
Ford Center at the Star - Frisco, Texas

All times Eastern. Game times & dates are subject to change. Home games in **CAPS & BOLD**

* - Conference game

! - Las Vegas Holiday Hoops Classic

CONFERENCE USA PLAY



Marshall
Thundering Herd
13-12, 8-8 C-USA

CATEGORY LEADERS

Scoring/Game
Savannah Wheeler, 20.0
Rebounds/Game
Lorelei Roper, 6.5
Assists/Game
Aaliyah Dunham, 3.9

HEAD COACH
Tony Kemper (5th season)
Overall: 60-75
at School: Same



WKU
Lady Toppers
18-9, 11-5 C-USA

CATEGORY LEADERS

Scoring/Game
Meral Abdelgawad, 20.0
Rebounds/Game
Meral Abdelgawad, 7.2
Assists/Game
Alexis Mead, 3.5

HEAD COACH
Greg Collins (4th season)
Overall: 67-47
at School: same



PROBABLE STARTERS (BASED ON PREVIOUS GAME)



#4 Savannah Wheeler
5'6" - SO - Guard

2021-22
25 GP, 25 GS, 34.2 mpg
20.0 ppg, 4.6 rpg
2.2 apg, 1.4 spg



#10 Aaliyah Dunham
5'4" - SR - Guard

2021-22
25 GP, 25 GS, 34.5 mpg
8.9 ppg, 3.1 rpg
3.9 apg, 2.0 spg



#24 Kennedi Colclough
6'0" - GR - Forward

2021-22
23 GP, 23 GS, 29.9 mpg
11.9 ppg, 3.5 rpg
1.0 apg, 0.8 spg



#33 Briana Ferby
5'6" - SR - Guard

2021-22
23 GP, 17 GS, 25.2 mpg
7.4 ppg, 3.2 rpg
0.9 apg, 1.2 spg



#34 Lorelei Roper
6'1" - JR - F/C

2021-22
25 GP, 25 GS, 25.8 mpg
3.5 ppg, 6.5 rpg
1.0 bpg

MARSHALL WOMEN'S BASKETBALL

2021-22 ROSTER

NUMERICAL

NO.	NAME	HT.	POS.	YR.	HOMETOWN (LAST SCHOOL)
0	Kia Sivils	5-7	G	JR	Louisville, Ky. (Sacred Heart HS)
1	Christiana McLean	5-6	G	RS FR	Wake Forest, N.C. (Heritage HS)
2	Sofia Llanos	5-10	G	FR	Tarragona, Catalonia, Spain (Femeni Maresme - Uemataro)
3	CC Mays	5-8	G	FR	Tampa, Fla. (Seffner Christian Academy)
4	Savannah Wheeler	5-6	G	SO	Catlettsburg, Ky. (Boyd County HS)
5	Samantha LaFon	6-0	F	FR	Chesapeake, Ohio (Ironton HS)
10	Aaliyah Dunham	5-4	G	SR	South Charleston, W.Va. (Xavier)
11	Ksenija Mitric	5-8	G	FR	Banja Luka, Bosnia & Herzegovina (Celje BC)
21	Sarah Liberatore	5-10	G	FR	Greensburg, Pa. (Hempfield Area HS)
23	Alexis Johnson	5-10	F	SO	Southfield, Mich. (Southfield HS for Arts & Tech.)
24	Kennedi Colclough	6-0	F	GRAD	Crofton, Md. (Stetson University)
25	Mahogany Matthews*	6-1	F	RS SO	York, Pa. (Ole Miss)
30	Aarionna Redman	5-10	F/G	FR	Pickerington, Ohio (Pickerington Central)
33	Brianah Ferby	5-6	G	SR	Smyrna, Tn. (Austin Peay)
34	Lorelei Roper	6-1	F/C	JR	Charlotte, N.C. (Carmel Christian HS)

* Mahogany Matthews will miss the 2021-22 season due to achilles injury

Coaching Staff

Head Coach: Tony Kemper – 5th season
 Assistant Coach: Jenna Burdette – 1st season
 Assistant Coach: Janko Popovic – 2nd season
 Assistant Coach: Lexie Barrier – 1st season
 Director of Operations: Rudy Evans – 1st season
 Graduate Assistant: Maggie Stanley – 4th season

PROUNUNCIATION GUIDE

Kia Sivils	Key-uh Sivils (sounds like civils)
Christiana McLean	Chris-che-ahn-uh Muh-Clain
Sofia Llanos	YAWN-ohs
Ksenija Mitric	Ksen-ee-uh Me-trich (say K in first name quickly & softly)
hometown	Bahn-ya Luke-ah
basketball club	Cell-yee
Sarah Liberatore	Lib-er-tore
Kennedi Colclough	Cole-Claw
Aarionna Redman	Air-EE-ahn-uh
Brianah Ferby	Bree-AHN-uh
Lorelei Roper	Lore-UH-lie
Staff	
Janko Popovic	Yawnko Pop-oh-vitch



GENERAL INFORMATION

Name	Marshall University
Founded	1837
Location	Huntington, W.Va.
Enrollment	13,324
Nickname	Thundering Herd
Colors	Kelly Green & White
Conference	Conference USA
Home	Cam Henderson Center/9,048
President	Brad D. Smith (Marshall)
Interim AD	Jeff O'Malley (Miami (Ohio))

COACHING STAFF

Head Coach	Tony Kemper (Fort Hays '01)
Career record (seasons)	60-75 (5th)
Record at Marshall (seasons)	60-75 (5th)
Conference USA record	35-47
Assistant Coach	Jenna Burdette
Assistant Coach	Janko Popovic
Assistant Coach	Lexie Barrier
Director of Operations	Rudy Evans
Graduate Assistant	Maggie Stanley

TEAM INFORMATION

2020-21 Record	8-11
2020-21 Conference USA Record/Finish	7-9/4th (East)
Starters Returning/Lost	3/2
Letterwinners Returning/Lost	10/3
Newcomers	3

PROGRAM HISTORY

First Year of Basketball	1969
Overall Record	712-741
Conference Championships	1 ('97/SoCon)
Regular Season Championships	5 ('85, '86, '87, '88, '89/SoCon)
NCAA Tournament Appearances	1 ('97, L, 69-49 vs. Colorado)
Women's Basketball Invitational - 2	
2015, 1-1, W, 81-79 vs. NKU & L, 73-71 vs. Mercer	
2019, 1-1, W, 67-64 at Davidson & L, 83-71 at App. St.	
Women's NIT Appearances	1 ('16, L, 76-68 at Ohio)

SPORTS INFORMATION

Asst. AD/Media Relations	Jason Corriher (NC State '00)
Office	(304) 696-4660
E-Mail	corriher@marshall.edu
Associate SID/2nd WBB	Scott Hall (Marshall '08)
Office	(304) 696-4662
Cell	(540) 539-2032
E-Mail	hall133@marshall.edu
Sports Information Fax	(304) 696-2325
Press Row Phone	(304) 696-3303 or 7061
Mailing Address	Marshall University Sports Information
	P.O. Box 1360
	Huntington, WV 25715
Overnight Address	
	Cam Henderson Center, Room 2036
	1801 3rd Avenue
	Huntington, WV 25703
Official Athletics Website	www.Herdzone.com
Twitter	@HerdZone, @HerdWBB
Instagram	@HerdWBB
Facebook	Marshall Athletics,
	Marshall University Basketball

CONFERENCE USA

Phone	214-774-1300
Website	ConferenceUSA.com
Mailing Address	5201 N. O'Connor Blvd.
	Suite 300
	Irving, TX 75039
Director, Media Relations	Ashley Walker
E-mail	awalker@c-usa.org

MARSHALL WOMEN'S BASKETBALL BROADCAST TALKING POINTS



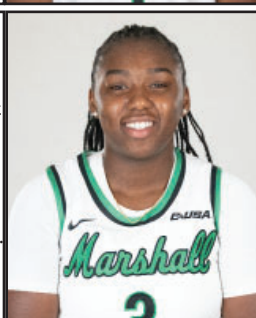
#0 Kia Sivils, Jr., G, Louisville, Ky.
 - 23 GP & 6 GS - Avg. 12.3 mpg, solid defender; heady player.
 - Season-high 6 rebs at Middle Tennessee (1/27).
 - DNP vs Alderson Broadbudds & Oakland with injury, hurt at St. Bona.
 - Returned to lineup vs. LA Tech (12/30) 4 rebs, 1 blk & 1 stl.
 - Tied career-high with 2 blocks, both in 4th Q at FAU (1/8).
 - Scored season-high 5 pts vs. Morehead State (11/19).
 - 13-of-19 games in 2020-21, 5 starts, avg. 22.6 mpg, 2.8 rpg & 10 steals.
 - 1st career start in 2019-20 opener vs. KCU, 7 pts & 4 rebs.
 - Scored a career-high 16 points on 7-of-7 shooting, including 2-of-2 from 3, at North Texas (1/4/20).
 - Tied career-best 16 points vs. Old Dominion (2/22/20) with career-high 3-for-3 from beyond the arc.
 - Career-high 5 assists at Evansville & again at Southern Miss.
 - Career-best 8 boards twice, 1st vs. Charlotte (1/5/19) freshman year, 2nd at MTSU (3/5/21).



#1 Christiana McLean, R-Fr., G, Wake Forest, N.C.
 - 5 GP off the bench. Played 6 min. at MTSU (1/27).
 - Made 1st collegiate appearance in 2021-22 opener vs. Bluefield State, 11 min. 6 pts on 3-of-5 shooting, 2 rebs, 2 asts., 2 stls.
 - Scored 2 pts & had 1 assist vs. Alderson Broadbudds.
 - 2-for-2 at the line vs. Oakland.
 - Medical redshirt in 2020-21, dealing with injury.
 - Redshirted her freshman season 2019-20.
 - Graduated from Heritage High School.
 - Avg. 14 pts, 5 rebs. & 3 assists per game senior year.
 - Attended Northside Christian Academy as a freshman & was named a Select 60 Best Offensive Player.
 - Attended Carmel Christian HS as a sophomore & was named a South Carolina Season's Finest Basketball Player and a Big5 Top Performer.
 - Queen City All-Tournament team selection. Won the John Wall Championship. Honored as All-Conference & All-District.



#2 Sofia Llanos, Fr., G, Tarragona, Catalonia, Spain
 - 3 GP off the bench.
 - Made collegiate debut with just over 1 min. of action in season-opener vs. Bluefield State (11/9). Attempted 1 shot.
 - Played season-high 4 min. vs. Alderson Broadbudds, recorded 1st career rebound and steal.
 - In Spain, debuted in the 3rd league at 15 yrs old, then to 2nd league at 17.
 - Was leading scorer with club team in Tarragona every since 2015-16.
 - Named MVP of tournament in Logrono scoring 22 pts in final.
 - Averaged 17.2 ppg (309 pts) over 18 games in 2019-20, scoring 20+ in 7 games.
 - Scored season-high 26 pts in 25 min. against C.B. Gava.



#3 CC Mays, Fr., G, Tampa, Fla.
 - 23 GP, 4 GS, avg. 19.6 mpg. Missed 2 games injury (St. Bona. & AB).
 - 13 pts, 4 rebs, 2 steals in start at UAB.
 - Career-high three three-pointers at FIU (2/10).
 - Season-high 11 rebs (4 offensive) & 6 pts vs. ODU (2/3).
 - 6 rebs vs. FIU (1/20) including key off. reb with :16 left & MU up 3.
 - 1st start of year at FAU (1/8), 7 pts, 3 rebs, 1 steal.
 - Scored 15 pts & had clutch steal late vs. Morehead St. (11/19).
 - Scored 10+ in 1st 3 games of season, career-high 17 vs. Bluefield St.
 - Saw significant playing time in COVID 2020-21 season, all 19 games, 4 starts, avg. 17.8 mpg, 3.6 ppg, 3.6 rpg, 28 asts., 20 stls.
 - 1st career start vs. Radford (12/6/20), 26 min., 5 rebs. & 4 pts.
 - Started at #9 UK, 6 pts, 3-of-4 from the line (12/9).
 - First double-double came at Charlotte (11p, 13r) (1/9/21).
 - Tallied Carrollwood HS 1st ever quadruple-double with 10 pts, 11 rebs., 14 ast., & 12 steals in win vs. Middleton.



#4 Savannah Wheeler, So., G, Catlettsburg, Ky.
 - 25 GP, 25 GS, 34.2 mpg, 1st MU & C-USA 20.0 ppg - 20th NCAA
 - 23rd member of MU 1,000-Pt Club, reached milestone at Rice (1/15).
 - Led MU 31 pts & 8 rebs at UAB (1/29). Career-high 25 FG attempts.
 - 10-straight games with 4+ rebs. (12/20-1/29) Streak broken vs. ODU.
 - 40 pts vs. Oakland, 14-of-18 FG, 2-of-4 3PT, 10-of-12 FT, 5 asts & 4 stls.
 - 1st Herd player with 40 pt-game since Kristina Behnfeldt in Feb. of 1999.
 - Scored 30 pts at Michigan State (11/28), tallied 800th career point on a 3 in the 2nd quarter that gave MU the lead.
 - 1st all-time at MU (since 1979-80) in career FT% (83.9).
 - 63-of-74 career games with 10+ points. 19 games with 20+ and 6 with 30+.
 - Has 1,226 career pts.
 - Career-best 11 boards, 9 def. rebs., vs. LA Tech (11/21).
 - In 2019-20, highest ppg avg by MU freshman (13.4) since Sikeetha Shepard-Hall's 15.0 ppg in 2002-03 (361 pts) & highest pts total (403) by freshman since Kristina Behnfeldt (438) in 1995-96. Both in MU HOF.



#5 Samantha LaFon, Fr., F, Chesapeake, Ohio
 - 8 GP off the bench, 5.6 mpg - 6 points - Has played 5 C-USA games.
 - Career-highs 4 pts & 2 rebs. in 15 min. vs. Bluefield State (11/9).
 - Missed games after Radford (11/14), dealing with injury. Returned to active lineup vs. FIU (1/20) but did not play.
 - 1st game back on the floor at MTSU (1/27), played 5 minutes.
 - Career-high 17 min. off the bench at UAB (1/29). Scored 2 pts.
 - Saw action in five games in 2020-21. Collegiate debut vs. FIU (1/22/21), 1 pt, 1 reb. in 1 min. Scored 2 pts. next day vs. FIU.
 - Early enrollee for Herd, signing National Letter of Intent Nov. 13, 2020.
 - Successful prep career at Ironton High School.
 - Averaged 14 points and nearly 11 rebounds per game this past season.
 - Ranked 12th in the state of Ohio in 2019-20 in field goal percentage hitting on 57 percent of shots.
 - Over last two years honored as First Team All-District, two-time First Team All-Conference, All-State Special Mention and was the league's leading rebounder.



#10 Aaliyah Dunham, Sr., G, South Charleston, W.Va.
 - 25 GP, 25 GS, leads MU w/ 50 steals & 3.9 apg, 9 games w/ 5+ assists.
 - 24th in the NCAA in Ast/TO Ratio, 98 asts-42 TO (2.33) - 1st C-USA 4 ast., 0 TO vs. ODU (2/3). 3rd game of year with 0 TOS. Added 4 stls.
 - 13 pts at UAB (1/29), 4-of-8 from 3PT, season-best & tied career-high.
 - Tied season-high 6 rebs & added 6 asts with just 1 TO vs. FAU (1/22).
 - Led MU with 17 pts & 7 asts at Rice (1/15). 38th career game 5+ asts.
 - Opened MU career with 17 pts, 7 asts. & 6 stls vs. Bluefield St. (11/9).
 - 3 of 1st 4 games had 5+ steals.
 - Back in home state. Transferred to MU after 4 yrs at Xavier.
 - 105 games, 83 starts at Xavier, 736 pts, 148 stls, 260 rebs. 8th all-time in career assists (371) & 10th in apg (3.5). Tied for 8th in steals avg. (1.4).
 - 2-time Big East All-Academic Team 2017-18 & 2018-19.
 - Big East All-Freshman Team 2017-18, had 4th-most assists by a freshman in Xavier history (74).
 - Career-high 20 pts, 7 FGM, & 4-of-4 3PT at Georgetown (1/20/20).
 - Career-high 9 assists vs. Colorado (12/6/19), St. John's (12/29/19) & Valpo (12/16/20).



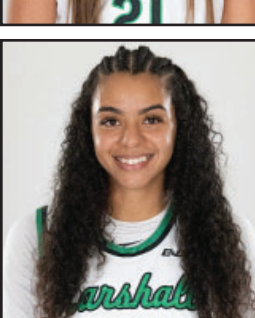
#11 Ksenija Mitric, Fr, G, Banja Luka, Bosnia & Herzegovina
 - 5 GP off bench. Avg. 5.8 min per game.
 - 3 pts, 2 rebs. & 2 asts. vs. Alderson Broadbudds
 - Played 2 games in 2020-21 COVID year, opted to return home and sit out remainder of season. Played vs. Radford & at #9 UK.
 - Played 22 min. vs. Radford (12/6) scored 8 pts & had 3 assists.
 - Led Celje Basketball Club to the Slovenian championship in the U17 & U19 divisions in 2018 & runner-up finish in 2019.
 - Avg. 15+ points per game during those 2 seasons.
 - Helped lead team to the Women's Adriatic Basketball Association (WABA) title in 2017.
 - Played for Bosnia and Herzegovina national team leading in scoring (10.3) and assists (3.1) at the FIBA U16 Women's European Championship in 2016.
 - Led team in scoring in U18 division in 2017 (11.1) & in 2018 (10.1).



#21 Sarah Liberatore, Fr., G, Greensburg, Pa.
 - 8 GP off bench, 4.8 mpg.
 - Career-day vs. Alderson Broadbudds with 15 pts, 3 rebs, 2 asts. & 1 stl in 21 minutes. Shot 5-of-9 FG & 4-of-6 3 PT.
 - Played in 10 games in 2020-21. Scored 11 pts, 3-of-8 3PT FGs.
 - Scored 3 pts vs. LA Tech (1/1/21), at Charlotte (1/8/21) & vs. WKU (1/14/21).
 - Finished prep career with 1,125 points.
 - Senior year averaged 19.7 ppg, 7.2 rpg, 5.3 assists & 2.1 steals.
 - 2x Big 56 First Team selection, 4x Big 56 All-Section, 2x Tribune Review Terrific 10 All-Star, Post Gazette Top 5 in class 6A.
 - 2x US Jr. National Champion & was ranked #25 in Pennsylvania. 2x Team MVP and Captain.
 - Very athletic family. Dad played baseball at Bowling Green & mom swam at John Carroll U., older brother Jack current pitcher at Ohio U. among many others.



#23 Alexis Johnson, So., F, Southfield, Mich.
 - 25 games off bench, avg. 13.2 mpg, 3.8 ppg & 3.7 rpg.
 - Took over in 4th Q at Rice with 7 pts & 5 of her 6 rebs in helping MU to outscore Owls 21-3 on the way to comeback win.
 - 4 rebs & tied career-high with 3 steals vs. LA Tech.
 - Tied career-high with 18 pts on 7-of-10 FG & 2-of-3 3PT vs. AB added 7 rebs., 2 asts & 2 stls off the bench.
 - Saw increase in minutes from freshman year (5.9 mpg) to sophomore year (19.3 mpg). 2020-21 avg. 7.4 ppg and 5.9 rpg.
 - Opened sophomore year with 10+ pts in 1st 4 games. Led MU with 16 pts on 6-of-9 shooting at #9 UK (12/9/20).
 - 1st career dble-dble (16p & 11r) vs. LA Tech (1/1/21).
 - 2nd career dble-dble (11p, 14r) at Charlotte on 1/9.
 - Career-high 18 pts. vs. ODU (2/5).
 - Big day in sophomore opener vs. Radford (12/6/20) with 21 min. 12 pts, on 6-of-11 shooting & 9 rebs.
 - Had 2019-20 best game vs. Alderson Broadbudds 15 min., 9 pts & 6 rebs.



#24 Kennedi Colclough, Gr., F, Crofton, Md.
 - 23 GP, 23 GS, avg. 29.9 mpg, 11.9 ppg & 3.5 rpg - 933 career points.
 - Leads MU .454 FG%
 - DNP at FAU (1/08). 1st missed game of the season.
 - Season-high 8 rebs vs. FAU at home (1/22), had 15 pts.
 - 10+ pts in 14-of-23 games. Season & MU career-high 23 pts vs. Coppin State. Scored 19 pts at Purdue & at Michigan State.
 - Played & started 17 games in 2020-21, avg. 8.2 ppg & 4.6 rpg.
 - Double-double (13p, 10r) in win over MT (3/4/21).
 - Transfer from Stetson, who hit game-winner at NT (2/27/21).
 - Played very well in sophomore season (2017-18) with 13.0 ppg through 17 games before season-ending injury. Played 2018-19 opener before another injury ended season. Played in 23 games in 2019-20 with 6.7 ppg. Scored career-high 25 pts vs. Trinity Baptist (11/23/19).
 - 7 dble-dbles at Stetson, 23 pts & 13 rebs in win at Florida (11/22/17).
 - Father LaVorn played WVR for Marshall (1995-98).



#25 Mahogany Matthews, R-So., F, York, Pa.
 - Will miss 2021-22 due to achilles injury.
 - Second in the league in blocks in 2020-21 (2.0 per game).
 - Averaged 6 blocks in Louisiana Tech series split (1/1-2).
 - Played 14 min. off bench vs. Radford (12/6/20) blocked 2 shots, scored 2 pts. & had 2 rebs.
 - 15 min at #9 UK & career-high 5 pts. 3-of-4 FT.
 - Sat out 2019-20 due to NCAA transfer rules after spending 2018-19 at Ole Miss.
 - 22 games, 6 starts with Rebels, Avg. 9.2 min per game.
 - Career-high 6 boards vs. Florida (3/6/19).
 - 3-star recruit by ESPN coming out of Hoke Country HS with a grade of 88 & 45th best forward nationally.



#30 Aarionna Redman, Fr., F/G, Pickerington, Ohio
 - 23 GP off bench, 9.6 mpg, 1.7 ppg, 2.0 rpg, 9 steals.
 - 2 steals at MTSU (1/27).
 - 6 pts & 6 rebs vs. Alderson Broaddus.
 - Career-day at St. Bonaventure with career-highs of minutes (21), rebs (9) and points (8). Added 1 block. Hit 2 3PTs.
 - Made collegiate debut in opener vs. Bluefield State (11/9), scored 6 pts, 2-of-3 from 3PT, 3 rebs, 2 asts, 1 block & 3 stls.
 - Missed the 2020-21 season with a knee injury.
 - Helped lead Pickerington Central to a state title as a sophomore & runner-up finishes junior & senior years.
 - Helped lead team to three Ohio Capital Conference and district titles as well as 2 regional appearances.
 - As a senior was named honorable mention Division I All-Central District and to the OCC's District II second team.
 - Competed in shot put as well.



#33 Brianah Ferby, Sr., G, Smyrna, Tenn.
 - 23 GP, 17 GS 25.2 mpg, 7.4 ppg, 3.2 rpg, - 990 career pts.
 - DNP at MTSU & UAB. 1st missed games of the season.
 - 10+ pts 9 times this season.
 - Season-high 20 pts at FAU, scored 15 in 4th Q to help lead to win.
 - Drained 3 late vs. Morehead State to halt Eagle rally (11/19).
 - 12 pts & career-high 9 rebs vs. Coppin State (12/4)
 - 10 pts, 3 rebs & 2 assists at Michigan State (11/28).
 - Transfer from Austin Peay, played with twin sister Brandi.
 - At AP, 107 games, 58 starts, 819 pts, 123 3PT FGM, 138 asts, 129 stls & 265 rebs. Led team in scoring (9.1 ppg) in 2020-21.
 - 8th all-time at AP with 437 3PT FG attempted.
 - Lit up Belmont (1/20/18) as freshman 28 pts, 8 rebs, & 1 away from tying program record for made 3PTs with 7 (7-of-13).
 - Consistently on Austin Peay Athletic Dir. Honor Roll, 2x Deans' list & 2x OVC Commissioner's Honor Roll (3.25+ GPA)



#34 Lorelei Roper, Jr., F/C, Charlotte, N.C.
 - 25 GP 25 GS, 25.8 mpg, 3.5 ppg, 6.5 rpg, 25 blocks. - 402 career rebs.
 - Season-high 12 rebounds vs. UTEP (2/13)
 - 10-game block streak ended at FAU. Did set career-high 3 steals.
 - At least 5 rebs in 15-straight games (11/14-1/22) & 6+ in 11-straight.
 - Streak ended at MTSU (1/27).
 - Tied career-high with 4 blocks at UAB (1/29).
 - Tied career-high 4 blocks vs. Southern Miss. Added 6 rebs, all offensive.
 - 11 boards & 8 pts on 4-of-6 shooting vs. Oakland.
 - 10 rebs. at St. Bonaventure, 5 offensive.
 - Played & started 15 games in shortened 2020-21, 5.9 ppg & 5.4 rpg.
 - Had started just 4 games combined previous 2 yrs.
 - Great 2 games vs FIU in Jan. 2021 with 24 total pts, 14 rbs & 7 blocks.
 - Career-high 13 rebounds against ODU (2/6/21).
 - Tallied 59 career blocks. Needs 3 to crack top 15 all-time at MU.
 - Made 2019-20 debut vs. Alderson Broaddus (11/27) 10 pts & 5 rebs after working way back from knee injury at end of freshman season.



Head Coach Tony Kemper - 5th Season/10th overall
 - Became HC in March of 2017. Current record of 60-75. Was an assistant coach for 5 years under previous HC Matt Daniel.
 - Led MU to 1st rd win in 2019-20 C-USA Tourn. before rest of tourney was canceled due to COVID-19.
 - 2019 recruiting class ranked in the top 60 nationally.
 - Herd had 8-win improvement in 2018-19 and 7-win improvement in C-USA action last season.
 - Picked to finish 13th in 2018-19, finished 6th, led MU to WBI.
 - Helped mentor Shayna Gore who became 3rd played in program history with over 2,000 career points.
 - Spent 3 years as assistant at Central Arkansas under Matt Daniel as well.
 - Attended Fort Hays State.



Assistant Coach Janko Popovic - 2nd season
 - Hired September of 2020.
 - Promoted to Assistant Coach, Jan. 18, 2022.
 - Was video coordinator at Texas Tech 2019-20. While there Tech finished 18-11 & Brittany Brewer was #17 WNBA Draft Pick in 2020.
 - 2018-19 worked for Serbian National Team as coach during training camp in preparation for EuroBasketball 2019 in Serbia & Latvia.
 - In 2017-18 was Dir. of Ops & Video Coordinator at Robert Morris. Team went 25-8 won NEC regular season title, NEC Tourn. runner-up and made WNIT appearance.
 - Graduated bachelor from LeMoyné-Owen College in 2014 & master's from Winthrop in 2017.



Assistant Coach Lexie Barrier - 1st Season
 - Hired April of 2021. Was graduate manager at NC State in 2020-21. Wolfpack ranked 7th in final USA Today/Coaches Poll, spent every week in the top 10, 3-straight weeks at No. 2.
 - Played for James Madison 2016-20. Member of 1,000 Point Club (1,216), added 497 rebs., 236 asts, 126 steals, 129 3PTM.
 - Named to Colonial Athletic Association All-Rookie Team, 2016-17, 2x CAA Rookie of the Week.
 - 2017-18 named All-CAA Second Team, made last 17 shots of season from the free throw line.
 - 2018-19 named All-CAA Second Team, career-high 24 pts vs. Northwestern.
 - From Ironton, Ohio 20 miles from Huntington. Starred for Ironton HS. Named Southeast Ohio AP District Player of Year.



Assistant Coach Jenna Burdette - 1st Season
 - Hired May of 2021. Spent 2020-21 as Dir. of Ops at NKU
 - Assistant coach at Glenville State for 2 years, 2018-20. Helped lead Pioneers to 56-8 record winning back-to-back Mountain East Conference titles with combined 40-4 league record.
 - Outstanding player for Dayton 2014-18. Tops all-time in career 3PT FG% with .392
 - 13th all-time in scoring with 1,344 pts. Avg. 16.2 ppg, 487 total pts, shot 44.5% from 3PT, & 81.1% FT senior year. Named A-10 First Team selection, team's MVP, Dayton Female RUDY Award.
 - 4th all-time in career assists (481), tied team record with 14 in a game vs. Duquesne (2016).
 - Also ranks in top 20 in FGM, FGA, FTM, FTA, 3PTM, 3PTA, minutes played in career, single season & game marks.



Director of Operations Rudy Evans - 1st season
 - Hired July 2021. Worked as Notre Dame College men's bball Asst. Coach/Dir. of Player Development in 2020.
 - Assistant coach at Urbana University (DII) 2019-20.
 - Assistant coach at NAIA Lourdes University for 3 yrs.
 - Assistant coach at alma mater Berea College (NAIA). In 2014-15 Berea ranked as high as No. 2 leading nation in scoring assists & 3PTM, 3PT%. Finished 20-6 with trip to USCAA Final Four.
 - Also coaches AAU teams and helped with women's team at Berea.
 - Played at Berea & Cuyahoga CC. Scored over 1,000 pts at Cuyahoga & NJCAA All-American, 2x All-Conference at Berea in 2010 & 2011.

AWARDS LIST

#00 Kia Sivils

2020-21 Conference USA Commissioner's Honor Roll: GPA 3.0 or better
 2019-20 Conference USA Commissioner's Honor Roll: GPA 3.0 or better
 2018-19 Conference USA Academic Medalist: GPA 3.75 or better
 2018-19 Conference USA Commissioner's Honor Roll: GPA 3.0 or better

#1 Christiana McLean

2020-21 Conference USA Commissioner's Honor Roll: GPA 3.0 or better

#4 Savannah Wheeler

2021-22 Conference USA Player of the Week: Dec. 27
 2020-21 Second Team All-Conference USA
 2020-21 Conference USA Commissioner's Honor Roll: GPA 3.0 or better
 2019-20 Conference USA All-Freshman Team
 2019-20 Conference USA Freshman of the Week: Nov. 11
 2019-20 Conference USA Freshman of the Week: Feb. 17
 2019-20 Conference USA Academic Medalist: GPA 3.75 or better
 2019-20 Conference USA Commissioner's Honor Roll: GPA 3.0 or better

#10 Aaliyah Dunham

2017-18 Big East All-Freshman Team

#11 Ksenija Mitric

2020-21 Conference USA Academic Medalist: GPA 3.75 or better
 2020-21 Conference USA Commissioner's Honor Roll: GPA 3.0 or better

#21 Sarah Liberatore

2020-21 Conference USA Academic Medalist: GPA 3.75 or better
 2020-21 Conference USA Commissioner's Honor Roll: GPA 3.0 or better

#23 Alexis Johnson

2020-21 Conference USA Academic Medalist: GPA 3.75 or better
 2020-21 Conference USA Commissioner's Honor Roll: GPA 3.0 or better
 2019-20 Conference USA Academic Medalist: GPA 3.75 or better

2019-20 Conference USA Commissioner's Honor Roll: GPA 3.0 or better

#24 Kennedy Colclough

2020-21 Conference USA Commissioner's Honor Roll: GPA 3.0 or better
 2017-18 FAU Holiday Classic All-Tournament Team
 2016-17 Atlantic Sun Newcomer of the Week: Dec. 5

#30 Aarionna Redman

2020-21 Conference USA Commissioner's Honor Roll: GPA 3.0 or better

#33 Brianah Ferby

2020-21 OVC Commissioner's Honor Roll: GPA 3.25 or better
 2019-20 OVC Commissioner's Honor Roll: GPA 3.25 or better
 2017-18 OVC Freshman of the Week: Jan. 23
 2017-18 OVC Freshman of the Week: Dec. 5
 Austin Peay Dean's List: Spring 2020
 Austin Peay Dean's List: Fall 2019
 Austin Peay Athletics Director's Honor Roll: Spring 2021
 Austin Peay Athletics Director's Honor Roll: Fall 2020
 Austin Peay Athletics Director's Honor Roll: Spring 2020
 Austin Peay Athletics Director's Honor Roll: Spring 2019
 Austin Peay Athletics Director's Honor Roll: Fall 2018
 Austin Peay Athletics Director's Honor Roll: Spring 2018
 Austin Peay Athletics Director's Honor Roll: Fall 2017

#34 Lorelei Roper

2020-21 Conference USA Commissioner's Honor Roll: GPA 3.0 or better
 2019-20 Conference USA Commissioner's Honor Roll: GPA 3.0 or better
 2018-19 Conference USA Commissioner's Honor Roll: GPA 3.0 or better

HERD NOTES

Wheeler Climbs the Three-Point List

With four more three-pointers, Marshall's Savannah Wheeler will jump from a tie for sixth to third on the Thundering Herd's all-time three-point list. She currently has 135. Shayna Gore (2015-19) holds the career mark at 303.

Johnson Lets it Fly vs. Middle

Alexis Johnson set career-highs in three-pointers made (three) and three-pointers attempted (11) in the 65-57 home loss to Middle Tennessee on February 24.

Good with Five

Marshall is 13-2 when it holds the lead with five minutes remaining this season (and 0-10 when it does not).

Welcome to the 1,000-Point Club

On Jan. 15, 2022, in the second quarter at Rice, Savannah Wheeler reached the 1,000-point milestone with a layup. She also drew the foul and then converted the free throw with one second remaining in the quarter. Wheeler is the 23rd member of the Marshall University 1,000-Point Club. She achieved the milestone in the 63rd game of her career.

Wheeler has 1,226 points in her career and is averaging 20.0 per game. That figure leads Conference USA and is 20th nationally. The Catlettsburg, Ky., native began her time with the Green & White scoring 403 points, 13.4 per game in 2019-20. She followed up with 323 points, 17.0 per contest, in the 19 games of the shortened COVID season of 2020-21. In 2021-22, Wheeler has reached double-figures in all but one game and has 500 points. She has scored 10 or more points in 63-of-74 career games.

With 22 points vs. Middle Tennessee (2/24), Wheeler moved into ninth all-time at Marshall on the career scoring list.

Countdown to 1,000 Points

Senior Brianah Ferby has 990 total points in her career and came to Marshall in the summer of 2021 after playing four seasons at Austin Peay. She was able to use her COVID year of 2020-21 to gain a fifth year of eligibility and decided to get a change of scenery. Ferby left Austin Peay with 819 points in 107 games. She scored 225 as a freshman in 2017-18, then 249 in 2018-19, 136 points in 2019-20 and finally 209 in the shortened 2020-21 season with a career-best 9.1 points per game. Ferby began her Marshall career as an igniter off the bench but has started 17 games. She is scoring 7.4 points per game and has 171 so far in her Herd career. Ferby has reached double-digits in nine games this season with a high of 20 at Florida Atlantic, including 15 points in the fourth quarter.

Taking Care of the Basketball

In 2021-22, Marshall has been taking care of the basketball, and leading the way has been senior point guard, Aaliyah Dunham. The Herd is second in Conference USA in Assist-to-Turnover Ratio at 0.88. Dunham is 24th in the nation and leads the league at 2.33.

Individually, Dunham is the first Herd player ranked in the top 100 in Assist-to-Turnover ratio since Norrishia Victrum in the 2015-16 season. Victrum finished the season 43rd in the NCAA, and tops in C-USA, at 2.11.

Marshall also leads C-USA and ranks 38th in the NCAA in fewest turnovers per game (13.2). The last time Marshall finished a season in the top 50 in fewest turnovers per game was the 2014-15 season when the team ranked 44th with 14.0 per game.

Herd Shuts Down Owls in Overtime

Marshall and Florida Atlantic struggled offensively through four quarters in the Cam Henderson Center (1/22) and ended regulation tied at 44-44. The teams traded the lead three times in the final minutes. Aaliyah Dunham hit the game-tying free throw with seven seconds to go.

The game headed to overtime, and Marshall shutout the Owls, 13-0, in the extra five minutes for a 57-44 victory. Going back through the 2002-03 season (overtime scores incomplete prior to then), it was the first time that the Herd had blanked an opponent in OT. Marshall shot 75-percent (3-of-4) from the floor, 1-for-1 from three and sank six free throws. Florida Atlantic was 0-for-8 from the floor including 0-for-6 from three-point range and did not get to the free throw line. The Herd outrebounded FAU 8-3 in OT with seven defensive boards to take away second chances from the Owls. FAU committed three turnovers and Marshall had zero.

It was the Herd's first overtime game since a 73-68 win over Old Dominion on Feb. 6, 2021.

Defense Stays Tough

Since giving up 77 points in a loss to Coppin State on Dec. 4, Marshall's defense has been tough to score against. The Herd held six-straight opponents, and nine of ten from Dec. 12 through Jan. 22, under 60 points giving up an average of 53.4 points per game, with an 8-2 record over that span.

Dec. 12 at St. Bonaventure L, 50-47
Dec. 15 vs. Alderson Broaddus W, 88-56

Dec. 20 vs. Oakland W, 79-58
Dec. 30 vs. Louisiana Tech W, 62-44
Jan. 1 vs. Southern Miss W, 72-55
Jan. 8 at Florida Atlantic W, 66-51
Jan. 13 at North Texas L, 64-54 (only 60+)
Jan. 15 at Rice W, 66-53
Jan. 20 vs. FIU W, 62-59
Jan. 22 vs. Florida Atlantic W, 57-44 (OT)

The 6-straight to begin the recent stretch is the longest streak of holding opponents under 60 since Jan. 17-Feb. 5, 1976, also six games. Marshall's tough defense helped the Herd begin Conference USA play 6-1, its best start in C-USA play in team history (joined league prior to 2005-06 season). Marshall's best start in conference play was an 8-0 run in 1988-89, when the Herd was in the Southern Conference. Marshall finished 9-1. MU also finished 9-1 in 1984-85 and 1986-87, while in the SoCon. Marshall's best record in C-USA play was 10-6 in 2018-19.

Wheeler and Ferby Carry Herd Passed Owls

Savannah Wheeler (24) and Brianah Ferby (20) combined for 44 of Marshall's 66 points (66.7%) in a comeback win at Florida Atlantic. The Herd trailed the Owls by three going into the fourth, 38-35. Wheeler and Ferby then caught fire in the final period as Wheeler put up 11 points and Ferby exploded for 15. Marshall outscored FAU 31-13 in the fourth. Wheeler scored the first four points of the quarter to give the Herd a 1-point lead, 39-38. After the Owls hit a three to go back up by two, Ferby scored the next eight points over the next 1:26, putting Marshall up by six, 47-41. The two stars also took advantage of the free throw opportunities late, combining to go 9-of-10 at the line in the period. They shot 7-of-8 (87.5%) from the field and 3-of-4 from three as well in the quarter. It was the first time the Herd had two players with 20 in a game since Feb. 1, 2020, against FAU. Wheeler had 25 and Kristen Mayo scored 20 in the 85-75 win.

Herd Defense Clips Golden Eagles

Marshall began C-USA play 2-0 for the first time since the 2018-19 season after taking down Southern Miss, 72-55. It was the fifth-straight game that the Herd held an opponent to under 60 points, its longest streak since five-in-a-row in the 2011-12 season. Marshall outrebounded the top rebounding team in the league (43.8 per game) grabbing 44 and allowing the Golden Eagles just 33. It was also the third-consecutive game that Marshall's defense held its opponent to 20 or fewer points in a half as Southern Miss managed just 17 points in the first half.

Wheeler Goes For 30...Again

Savannah Wheeler is off to a great start this season, averaging 20.6 points per game through the first 11 games. Against Southern Miss, Wheeler scored 30 points after being shut out in the first quarter. The sophomore guard was 0-for-7 from the floor and 0-for-5 from three in the first. Wheeler found her rhythm in the second scoring 12 points on 4-of-5 shooting and 2-for-2 from three. By the end of the day, she recorded her third game of the season with 30 or more and the fourth of her career. After beginning 0-for-5 from beyond the arc, Wheeler hit 5-of-7 to cap her turnaround. Her 12 three-pointers attempted is a career-high. Over the last three games (Oakland, LA Tech and Southern Miss) Wheeler scored 86 points (28.7 ppg), grabbed 19 boards (6.3 rpg), dished out 13 assists and grabbed eight steals. She shot 27-of-51 (52.9%) from the field, 10-of-25 (40.0%) from three and 22-of-26 (84.6%) from the free throw line after drawing 22 fouls.

Herd Stifles LA Tech

Marshall got off to a slow start against the Lady Techsters to begin Conference USA play, but then the defense took over in the second quarter. The Herd allowed LA Tech to score 16 points in the first quarter, but then only another 28 points over the next three periods as Marshall won 62-44. The Herd's defense held the Lady Techsters to just eight points in the second and seven points in the third. Marshall also outrebounded the visitors from Ruston, La., 37-25, allowing Louisiana Tech to grab just 11 boards in the second half. It was the first time that Marshall allowed 25 or fewer rebounds since Dec. 18, 2017 against Kentucky Christian (17 rebs.).

The Herd won the turnover battle as well as outscoring LA Tech 20-12 in points off turnovers. The point total for the Lady Techsters tied for the lowest output of the season, also a 62-44 loss at Ole Miss back on Nov. 19. It was Marshall's best defensive performance of the season so far, and was the lowest points given up by the Herd since an 89-40 victory over Kentucky Christian on Nov. 7, 2019.

Family Connection

Graduate student Kennedy Colclough may have grown up in Crofton, Md., and originally played at Stetson down in Florida, but she has a connection to Marshall and Huntington. Colclough was born in Huntington in 1998 and got to spend some time in the stands as a child and listen to stories of playing for the Herd from her father LaVorn Colclough who was a wide receiver for Marshall from 1995-98. He was a member of the 1996 I-AA National Championship squad and won two Mid-American Championships in 1997 and 1998.

LaVorn finished his playing career with 144 receptions (15th

all-time) for 1,737 yards (17th) and 18 touchdowns (12th). He was named All-MAC twice in 1997 and 1998. LaVorn caught a career-high 74 passes in 1997. Against Kent State in 1997, on the first play from scrimmage, he caught a 92-yard touchdown pass from future first-round draft pick and two-time NFL Comeback Player of the Year Chad Pennington, which is tied for the fourth longest pass play in MU History.

Wheeler Lights up Las Vegas Night

Savannah Wheeler had a career night against Oakland at the Las Vegas Holiday Hoops Classic. Wheeler scored 40 points, becoming the first Herd player with 40 in a game since Kristina Behnfeldt back in February of 1999. Wheeler did most of her damage inside of the three-point arc shooting 14-of-18 from the floor and was just 2-of-4 from three. She drew seven fouls and was 10-of-12 from the line. Wheeler put Marshall on her back as the offense started slow. She scored 12 points in the second quarter, including nine of the Herd's 11 points over the final three minutes of the second, cutting the deficit to one, 38-37.

Wheeler put up 12 more in the third quarter as the Herd outscored Oakland 21-6 in the period to take a commanding lead. She surpassed 900 career points, and her old career-high of 35 points, in the fourth quarter. She reached 39 points getting a layup to drop while also getting fouled for the third time in the period. Wheeler sank the free throw to complete the three-point play, and was then subbed out with 1:22 to go. She received a standing ovation and was mobbed by her teammates on the bench.

The sophomore guard was named Conference USA Player of the Week for her efforts as she also led the Herd with five assists and four steals. Wheeler's 40 is tied for the fourth-most in a game this season in the NCAA and she is one of just six players to score at least 40. At 5'6", she is also the shortest player this season in Division I to score 40.

Johnson & Liberatore Ignite Herd

Against Alderson Broaddus, head coach Tony Kemper was looking for someone to get the team going as the Herd came out flat against the Battlers. He subbed in sophomore Alexis Johnson and then freshman Sarah Liberatore in the latter half of the first quarter and told each one to make something happen and be the spark. Johnson and Liberatore responded throughout the rest of the night.

The two combined for 33 points on 12-of-19 shooting (63.1%), 6-of-9 from three (66.7%), 10 rebounds, four assists and three steals.

Johnson tied her career-high with 18 points while shooting 7-of-10 from the field and hit two big three-pointers. Her first three came in the second quarter to cut the deficit to three and then two minutes later hit another three to pull the Herd within one sparking a 15-0 run to take the lead. Johnson pulled down seven boards with six coming on the defensive glass.

Liberatore had a career-night across the board in minutes played (21), points (15), rebounds (three) and tied career-bests with two assists and one steal. She had only hit three three-pointers in her career, but on this night Liberatore was 4-of-6 from outside with her first trey coming on her first offensive possession in the first quarter. Her three rebounds were all offensive in the fourth quarter to help shut down the Battlers.

Dishing Out Assists

In the win over Alderson Broaddus, Savannah Wheeler finished with seven assists and Aaliyah Dunham had six. It was the first time the Herd had two players with at least five helpers in the same game since Feb. 6, 2020 at Southern Miss when Kia Siwils and Wheeler both had five. It was the only time in the 2019-20 season that the Herd accomplished the feat. Marshall did it in five games in 2018-19, including having three players dish out at least five assists (Kristen Mayo-8, Shayna Gore-6, Taylor Porter-5) in an 86-64 win over Cleveland State on Dec. 8, 2018.

Colclough Finds Her Rhythm

Graduate student Kennedy Colclough has been finding her rhythm on offense and has come through big on the scoreboard. Prior to the St. Bonaventure game, she was averaging 16.5 points per game, and scored at least 19 points in the three previous contests. Averaging 20.3 during the stretch. After scoring a season-low six points against Morehead State, Colclough scored 19 at Purdue, 19 at Michigan State and a season-high 23 versus Coppin State. Over the three games, she shot 54.1-percent from the floor (20-of-37) and an astounding 19-of-20 (95.0%) from the line including going 10-for-10 against Coppin State. Her ability to finish at the rim has helped her pile up the points and get those free throw chances.

Points in the Paint

Despite consistently going against lineups that have a little more size, Marshall has won the points in the paint category in each of its first five games.

vs. Bluefield State 58-8
at Radford 28-22

HERD NOTES

vs. Morehead State 38-28
at Purdue 32-20
at Michigan State 34-30

Much of the success around the basket has come from the play of Kennedy Colclough, who averaged 15.2 points per game, and Lorelei Roper who had some key put-backs. However, the Herd's guards are not afraid to drive to rim either with Savannah Wheeler, Aaliyah Dunham, CC Mays and Brianah Ferby making a lot of plays inside and also drawing contact. The four guards combined to draw 63 fouls over the first five games with Wheeler leading the way with 27.

Wheeler Goes Off at Michigan State

Savannah Wheeler broke out of her shooting slump in a big way scoring 30 points in the Breslin Center. She came through with four three-pointers in the game, and usually coming at key moments. Wheeler tallied her 800th career point with a three in the second quarter that gave Marshall its first lead of the day. Prior to the game in East Lansing Wheeler was just 3-of-16 from distance. Against the Spartans, she hit on 50 percent (4-of-8). Wheeler moved into 15th place all-time at Marshall, surpassing her old teammate Khadajia Brooks, with now 90 made three's. It was her second career game with at least 30 points and was also the first 30-point game of the season from a player in Conference USA. Wheeler drew eight fouls in the game and was 8-of-9 from the line, as she was able to get her shot attempt to drop and then earn the and-one opportunity.

Ferby Comes Up Clutch

Marshall senior, and transfer from Austin Peay, Brianah Ferby hit the big shot with 1:19 remaining to help the Herd get the win over Morehead State. The Eagles were coming back and only trailed Marshall by one, when Savannah Wheeler broke through the full-court press and found Ferby wide open in the near corner. Ferby fired the three and stopped Morehead's momentum. Marshall struggled from distance throughout the contest against the Eagles. Prior to hitting the three, Ferby was 0-3 from three and 0-4 from the field in the contest. Despite the struggles, Ferby had no hesitation on launching the three.

Dunham Steals the Show

Marshall senior, and transfer from Xavier, Aaliyah Dunham made a tremendous return to her home state. In her first two games with Marshall, the South Charleston, W.Va., native put up 30 total points, 12 assists and 12 steals. Dunham opened the year with 17 points, seven assists and six steals against Bluefield State in front of the home crowd. She followed that up with 13 points, five assists and six more steals at Radford. Dunham is an aggressive defender with quick hands and showcased her ability to pick the pockets of her opponents. Her career-high for steals is seven against St. John's in 2021 while playing for Xavier. She also had 40 games with the Musketeers with two or more thefts. Dunham is off to a quick start for Marshall and said that she plans to be that "pesky gnat" getting after the opponent.

Marshall Lights up the Stat Sheet vs. Big Blue

Marshall piled up the numbers in the season-opener against Bluefield State. The game included many marks that the program had not hit in a while. Below are the numbers and the last time it happened.

100+ points (108)	Dec. 18, 2017
	vs. Kentucky Christian, W 111-38
Held Opp. to <20 pts in half (18)	Jan. 1, 2021
	vs. LA Tech (18), L 61-51 OT
Held Opp. to <50 points (45)	March 4, 2021
	at MTSU, W 72-49
Scored 50+ pts in a half (59)	Jan. 19, 2019
	at FIU (53), W 86-58
Scored 30+ pts in quarter (36)	Jan. 19, 2019
	at FIU (31), W 86-58
Made 40+ FG (42)	Dec. 18, 2017
	vs. Kentucky Christian (46), W 111-38
Shot 50%+ from Three (52.9%)	Feb. 21, 2021
	vs. Rice (50.0%), W 68-56
Had 20+ Assists (20)	Jan. 24, 2019
	vs. LA Tech (21), W 90-88 3OT
Had 20+ Steals (21)	Nov. 5, 2019
	vs. Kentucky Christian (24), W 89-40
6+ Players with 10+ pts	Dec. 20, 2016
	vs. Maine Fort Kent, W 136-62
Forced 30+ TO (30)	Nov. 5, 2019
	vs. Kentucky Christian (30), W 86-58

Marshall Women's Basketball Signs Two

Marshall head coach Tony Kemper announced a pair of signees on Wednesday as Meredith Maier and Sydni Scott are headed to Huntington.

As a junior, the 6'0" Maier averaged 18.5 points, 12.9 rebounds, 4.9 assists and 4.7 steals for Fairmont Senior High School. A native of Grafton, West Virginia, she secured first team all-state and all-conference honor. She was also named to the all-tourney team at the state tournament, where she led the Polar Bears to a runner-up finish.

The 5'8" Scott, rated a four-star prospect by ESPN.com, hails from Prospect Park, Pennsylvania. She was named first team all-Philadelphia Catholic League and Daily Times All-Delco three times and was a 2021 PIAA 5A first team all-state pick. She led Cardinal O'Hara High School to the state title last season, averaging 14 points, five rebounds and five assists per contest.

"Both of these signees have the ability to instantly impact us at the collegiate level," said Kemper. "Sydni is a hard-nosed shooter with a basketball IQ that will help her acclimate quickly to Division I basketball. I like her upbringing as one of the best guards in what is always one of the toughest high school basketball leagues in the country ... the Philly Catholic League.

"Meredith adds outside scoring ability to our interior group. She is active and physical in the paint but is also a tremendous perimeter shooter. It is exciting to add such a talented West Virginia player to our program."

The Thundering Herd got off to a flying start in 2021-22 with a 108-45 victory over Bluefield State Tuesday evening. Marshall is back in action Sunday at Radford for a 2 p.m. ET tip.

WHERE THE HERD RANKS

Herd NCAA Rankings Top 100 (C-USA rank)

As of 2/28/22

Fewest Turnovers	17th (1st) 329
3PT FG Defense	33rd (4th) 27.3
Turnovers/Game	38th (1st) 13.2
Turnover Margin	40th (4th) 3.8
Scoring Defense	83rd (5th) 59.5

Player NCAA Rankings (Top 50)

FT Made	Savannah Wheeler 14th (2nd) 130
Points/Game	Savannah Wheeler 20th (1st) 20.0
Assist/TO Ratio	Aaliyah Dunham 24th (1st) 2.3
Total Points	Savannah Wheeler 39th (3rd) 500

WHEELER IN THE RECORD BOOK



Savannah Wheeler is finding a permanent home in the Marshall record books as she continues to climb in several categories.

Points	
8. Sheila Johnson (1987-91)	1,326
9. Wheeler	1,226
3-Point FG Made	
2. Sikeetha Shepard-Hall (2002-06)	146
3. Kristen Mayo (2017-21)	138
4. Natal Rosko (1994-98)	136
4. Taylor Porter (2015-19)	136
6. McKenzie Akers (2013-17)	135
6. Wheeler	135
3-Point FG Percentage	
10. Jill McElhinny (1988-93)	34.6
11. Shay Weaver (2011-13)	34.0
12. Mary Pat Statler (2003-06)	33.8
13. Wheeler	33.7
14. Tracy Krueger (1989-93)	33.6
Free Throws Made	
4. Tynikki Crook (2007-11)	380
5. Wheeler	359
Free Throw Percentage	
1. Wheeler	83.9
2. Taylor Porter (2015-19)	83.7
3. Kristina Behnfeldt (1995-99)	82.0
4. Shayna Gore (2015-19)	81.2

THE OPPONENT - WKU

Scouting the Lady Toppers

The Lady Tops come into Wednesday's contest at 18-9 overall and 11-5 in Conference USA.

The team went 7-4 in non-conference play.

Meral Abdelgawad leads WKU in scoring (20.0), rebounding (7.2), steals (2.3-third in C-USA) and field goal percentage (54.7-second in C-USA). Alexis Mead's 3.5 assists and 38.6 percent three-point mark lead the team, as well. Jenna Walker is the team's best free throw shooter at 79.2 percent. Abdelgawad, who is also fourth in the league in minutes per game (34.6), and Marshall's Savannah Wheeler are tied for the league lead in scoring.

WKU leads the league in scoring (71.9) and steals (10.8), but are last in scoring defense (69.2) and defensive rebounding percentage (62.7).

The head coach is Greg Collins, who is in his fourth year at the helm of the Lady Toppers.

In the all-time series between the two schools, WKU has won 15 of 17 meetings, including all 10 in E.A. Diddle Arena.

THE SERIES

17 All-Time Meetings WKU leads 15-2

Year	Date	Winner	Score
75-76	(J7)	WKU	61-59 OT
76-77	(J5)	WKU	92-56
14-15	(J4)	WKU	67-53*
	(F14)	WKU	74-60
15-16	(J2)	WKU	81-52
	(F14)	WKU	80-76
	(M10)	MAR	66-63\$
16-17	(J21)	WKU	73-57
	(F11)	WKU	78-64*
17-18	(J21)	WKU	86-66*
	(F17)	WKU	77-50
18-19	(J12)	WKU	85-55
	(F23)	WKU	69-66* OT
19-20	(J25)	WKU	74-65*
	(F20)	WKU	79-65
20-21	(J14)	MAR	81-54*
	(J17)	WKU	69-60

2021-2022 Western Kentucky University Women's Basketball Overall Statistics (as of Feb 26, 2022)

Overall Record: 18-9 Conf: 11-5 Home: 10-3 Away: 7-5 Neutral: 1-1

#	Player	GP-GS	MIN	AVG	FG		3PT		FT		Rebounds				PF	DQ	A	TO	BLK	STL	PTS	AVG
					FG-FGA	FG%	3FG-FGA	3FG%	FT-FTA	FT%	OFF	DEF	TOT	AVG								
04	Abdelgawad, Meral	27-27	931	34.5	188-344	.547	36-104	.346	128-186	.688	61	133	194	7.2	51	0	71	77	4	63	540	20.0
05	Meredith, Mya	22-18	608	27.6	103-235	.438	32-94	.340	42-68	.618	39	74	113	5.1	45	1	27	49	12	42	280	12.7
03	Mead, Alexis	27-27	773	28.6	91-229	.397	32-83	.386	83-108	.769	47	69	116	4.3	63	1	94	82	2	45	297	11.0
20	Blevins, Macey	27-23	721	26.7	71-225	.316	45-147	.306	27-42	.643	20	66	86	3.2	63	1	46	71	7	20	214	7.9
01	Sivori, Hope	26-8	521	20.0	64-171	.374	36-101	.356	20-30	.667	12	31	43	1.7	55	0	46	59	0	34	184	7.1
11	Foster, Jaylin	27-15	558	20.7	71-152	.467	8-36	.222	23-42	.548	44	79	123	4.6	80	4	37	39	11	28	173	6.4
14	Faustino, Teresa	26-4	307	11.8	30-84	.357	9-33	.273	13-23	.565	14	23	37	1.4	19	0	17	31	1	30	82	3.2
24	Walker, Jenna	26-0	373	14.3	17-61	.279	10-41	.244	19-24	.792	7	16	23	0.9	21	0	18	32	2	13	63	2.4
30	Kulo, Selma	24-8	260	10.8	26-58	.448	0-1	.000	3-10	.300	20	31	51	2.1	34	0	10	20	21	6	55	2.3
21	Hunter, Tori	25-1	132	5.3	11-28	.393	0-0	.000	7-15	.467	15	16	31	1.2	16	0	6	7	4	1	29	1.2
25	Smith, Jordan	15-0	74	4.9	5-15	.333	0-5	.000	1-6	.167	7	10	17	1.1	5	0	2	13	1	3	11	0.7
42	McBride, Gabby	27-4	267	9.9	6-20	.300	0-0	.000	1-2	.500	25	40	65	2.4	52	1	11	21	12	7	13	0.5
Total		27	5525	204.6	683-1622	.421	208-645	.322	367-556	.660	366	647	1013	37.5	504	8	385	528	77	292	1941	71.89
Opponents			5525	204.6	671-1638	.410	160-549	.291	366-514	.712	385	655	1040	38.5	499	9	388	541	70	271	1868	69.19

Team Statistics	WestKy	OPP	Conf	Date	Opponent	W/L	Score	Att.
SCORING	1941	1868		11/10/21	PURDUE	L	69-79	1,214
Points Per Game	71.9	69.2		11/12/21	vs N.C. A&T	W	86-76	0
Scoring Margin	2.7	-		11/14/21	at Kansas St.	L	44-76	2,212
FIELD GOALS-ATT	683-1622	671-1638		11/15/21	vs UT Martin	L	47-63	0
Field Goal Pct	.421	.410		11/21/21	KENTUCKY ST.	W	96-59	796
3 POINT FG-ATT	208-645	160-549		11/24/21	INDIANA ST.	W	83-65	501
3PT FG Pct	.322	.291		11/28/21	TENNESSEE ST.	W	77-65	584
3PT Made Per Game	7.7	5.9		12/02/21	at Bellarmine	W	64-55	407
FREE THROWS-ATT	367-556	366-514		12/05/21	TENNESSEE TECH	L	72-76	881
FT Pct	.660	.712		12/15/21	at Miami (OH)	W	60-58	163
FT Made Per Game	13.6	13.6		12/17/21	at Fairleigh Dickinson	W	92-88	153
REBOUNDS	1013	1040	*	12/30/21	SOUTHERN MISS.	W	98-88	1,222
Rebounds Per Game	37.5	38.5	*	01/01/22	LOUISIANA TECH	W	64-50	526
Rebounds Margin	-1.0	-	*	01/08/22	at FIU	W	63-51	87
ASSISTS	385	388	*	01/13/22	at Rice	W	78-61	241
Assists Per Game	14.3	14.4	*	01/15/22	at North Texas	W	61-54	1,005
TURNOVERS	528	541	*	01/20/22	FLA. ATLANTIC	W	73-49	709
Turnovers Per Game	19.6	20.0	*	01/22/22	FIU	W	87-66	821
Turnovers Margin	0.4	-	*	01/27/22	at UAB	L	70-86	412
Assist/Turnover Ratio	0.7	0.7	*	01/29/22	at Middle Tenn.	L	64-71	3,806
STEALS	292	271	*	02/03/22	CHARLOTTE	L	74-79	386
Steals Per Game	10.8	10.0	*	02/05/22	OLD DOMINION	W	71-57	1,156
BLOCKS	77	70	*	02/10/22	at Fla. Atlantic	W	72-69	465
Blocks Per Game	2.9	2.6	*	02/13/22	UTSA	W	81-70	589
ATTENDANCE	10,694	11,781	*	02/17/22	at Charlotte	L	43-89	745
Dates/Avg Per Date	13-823	12-982	*	02/19/22	at Old Dominion	L	55-75	2,085
Neutral Site #/Avg	-	2-0	*	02/26/22	MIDDLE TENN.	W	97-93	1,309

* = Conference game

Score by Periods	1st	2nd	3rd	4th	OT	OT2	Total
Western Ky.	438	438	452	563	7	11	1941
Opponents	428	455	469	472	7	7	1868

2021-22 TRENDS

Home	8-4
Away	4-8
Neutral	1-0
Leading at half	10-5
Trailing at half	4-7
Tied at half	0-0
Overtime game	1-1
C-USA Home Game	5-3
C-USA Road Game	3-5
C-USA Tournament	0-0
Non- C-USA Home Game	3-1
Non- C-USA Road Game	1-3
Non- C-USA Neutral Game	1-0
vs. Ranked Opponents	0-0
vs. Unranked Opponents	13-12
Leading-5 min. left	13-2
Trailing-5 min. left	0-8
Score tied-5 min. left	0-2
Herd outrebounds opp.	10-4
Herd outrebounded by opp.	3-8
Team rebounds are even	0-0
Herd scores more points in paint	8-4
Opp. scores more points in paint	5-8
Points in paint is even	0-0
Herd shoots 50% from floor	1-0
Herd shoots <50% from floor	12-12
Opp. shoots 50% from floor	0-0
Opp. shoots <50% from floor	13-12
Herd makes more FTs	11-2
Opp. makes more FTs	2-9
FTs are even	0-1
Herd has more TOs	3-3
Opp. has more TOs	10-8
TOs are even	0-1
Herd scores 60 points or less	2-8
Herd scores 61-69 points	7-3
Herd scores 70-79 points	2-1
Herd scores 80-89 points	1-0
Herd scores 90 points or more	1-0
Opp. scores 60 points or less	12-2
Opp. scores 61-69 points	1-4
Opp. scores 70-79 points	0-4
Opp. scores 80-89 points	1-1
Opp. scores 90 points or more	0-0
Two or less score 10+	5-7
Three or more score 10+	8-5
On Monday	1-1
On Tuesday	1-0
On Wednesday	1-0
On Thursday	4-4
On Friday	1-0
On Saturday	3-5
On Sunday	2-2
In November	3-2
In December	3-2
In January	5-3
In February	2-5
In March	0-0
Game decided by 5 pts or less	2-3
Game decided by 6-10 pts	1-5
Game decided by 11-20 pts	7-3
Game decided by 21 pts or more	3-1

THE LAST TIME...

Scored 100 Points	vs. Bluefield State, 11/9/21 (W, 108-45)
Allowed 100 Points	Morehead State, 11/13/15 (W, 104-101)
Scored 41-50 Points	(3x in 2021-22) 47 vs. Old Dominion, 2/3/22 (L, 62-47)
Allowed 41-50 Points	(5x in 2021-22) 48 vs. UTEP, 2/13/22 (W, 60-48)
Scored 40 or Fewer Points	37 vs. Charlotte, 2/5/22 (L, 39-37 OT)
Allowed 40 or Fewer Points	39 vs. Charlotte, 2/5/22 (L, 39-37 OT)
Scored 50 Points in a Half	59, 2nd Half vs. Bluefield State, 11/9/21 (W, 108-45)
Allowed 50 Points in a Half	56, 1st Half Bowling Green, 11/13/18 (L, 99-76)
Scored 20 or Fewer Points in a Half	(6x in 2021-22) 17, 2nd Half vs. Charlotte, 2/5/22 (L, 39-37 OT)
Allowed 16-20 Points in a Half	(6x in 2021-22) 17, 1st Half vs. UTEP, 2/13/22 (W, 60-48)
Allowed 15 or Fewer Points in a Half	(3x in 2021-22) 12, 1st Half vs. Charlotte, 2/5/22 (L, 39-37 OT)
Scored 30+ Points in Quarter	(3x in 2021-22) 31, 4th Q at Florida Atlantic, 1/8/22 (W, 66-51)
Allowed 30+ Points in Quarter	30, 4th Q Appalachian State, 3/25/19 (L, 83-71)
Scored 10 or Fewer Points in Quarter	(14x in 2021-22) 10, 3rd Q at Charlotte, 2/19/22 (L, 65-47)
Allowed 10 or Fewer Points in Quarter	(20x in 2021-22) 9, 2nd Q vs. MT, 2/24/22 (L, 65-57)
Shut out Opponent in OT Period	(13-0) vs. Florida Atlantic, 1/22/22 (W, 57-44)
Made 40+ Field Goals	42 vs. Bluefield State, 11/9/21 (W, 108-45)
Allowed 40+ Field Goals	41, Charlotte, 1/7/17 (L, 93-77)
Shot 60% From the Field	62.5% (55-88) vs. Maine Fort Kent, 12/20/16 (W, 136-62)
Allowed 60% From the Field	68.7% (32-of-47) Rice, 2/9/19 (L, 79-67)
Shot 85-89% From the Foul Line*	85.7% (12-of-14) vs. NT, 2/27/21 (W, 56-55)
Shot 90-99% From the Foul Line*	(3x in 2021-22) 92.9% (13-of-14) at MTSU, 1/27/22 (L, 80-41)
Shot 100% From the Foul Line *	17-of-17 vs. UTSA, 2/13/20 (W, 66-53)
Opponent Shot <20% From Field	18.6% vs. Charlotte, 2/5/22 (L, 39-37 OT)
Made 10-14 3-Pointers	(2x in 2021-22) 12, at FIU 2/10/22 (L, 70-66)
Made 15+ 3-Pointers	\$18 vs. FIU, 3/7/19 (W, 87-42)
Shot 50% From Three	9-of-17 (52.9%) vs. Bluefield State, 11/9/21 (W, 108-45)
Allowed 10+ 3-Pointers	11, vs. Middle Tennessee, 2/24/22 (L, 65-57)
Did Not Make a 3-Point FG	vs. George Washington, 12/2/10 (W, 64-61 2OT)
	345-straight games with a made three-pointer
Did Not Attempt a 3-Point FG	vs. Wright State, 12/19/06 (W, 62-54)
Played an Overtime Game	vs. Charlotte, 2/5/22 (L, 39-37 OT)
Won an Overtime Game	vs. Florida Atlantic, 1/22/22 (W, 57-44)
Played a Ranked Team	at #9 Kentucky, 12/9/20 (L, 79-45)
Had 40-49 Rebounds	(7x in 2021-22) 49 vs. Florida Atlantic, 1/22/22 (W, 57-44)
Had 50-59 Rebounds	(2x in 2021-22) 56 vs. Charlotte, 2/5/22 (L, 39-37 OT)
Had 60+ Rebounds	63 vs. Evansville, 11/29/18 (W, 72-65 OT)
Had Fewer than 30 Rebounds	(2x in 2021-22) 27 vs. MT, 2/14/22 (L, 65-57)
Allowed 50 Rebounds	51 vs. Charlotte, 2/5/22 (L, 39-37 OT)
Allowed 25 or fewer Rebounds	24 at FIU, 2/10/22 (L, 70-66)
Had 20 Assists	(2x in 2021-22) 22 vs. Alderson Broaddus, 12/15/21 (W, 88-56)
Had 10 or Fewer Turnovers	(7x in 2021-22) 7 at Charlotte, 2/19/22 (L, 65-47)
Had 25 or More Turnovers	27 at Clemson, 12/18/18 (L, 68-54)
Forced 25-29 Turnovers	(2x in 2021-22) 29 vs. Alderson Broaddus, 12/15/21 (W, 88-56)
Forced 30 or more Turnovers	30 vs. Bluefield State, 11/9/21 (W, 108-45)
Had 5-9 Blocks	(2x in 2021-22) 6 at UAB, 1/29/22 (L, 77-65)
Had 10+ Blocks	14 vs. Louisiana Tech, 1/1/21 (L, 61-51 OT)
Had 0 Blocks	vs. FIU (broke string of 31-straight games), 1-20-22 (W, 62-59)
Had 15-20 Steals	15 vs. Southern Miss (C-USA Tourn.), 3/11/20 (W, 71-67 OT)
Had 20 or more Steals	21 vs. Bluefield State, 11/9/21 (W, 108-45)
Had Six or More Players in Double Figures	vs. Bluefield State, 11/9/21 (W, 108-45)
	Aaliyah Dunham - 17, CC Mays - 17, Kennedi Colclough - 15
	Savannah Wheeler - 14, Brianah Ferby - 13, Alexis Johnson - 10
Had Five Players in Double Figures	at Appalachian State, 3/25/19 (L, 83-71)
	Shayna Gore - 17, Khadaija Brooks - 15, Taylor Porter - 13, Taylor Pearson - 11, Kristen Mayo - 10
Had Four Players in Double Figures	at Radford, 11/14/21 (W, 68-64)
	Kennedi Colclough - 17, Aaliyah Dunham - 13, Savannah Wheeler - 13, CC Mays - 10
Had Two Score 20+ Points	at Florida Atlantic, 1/8/22 (W, 66-51)
	Savannah Wheeler - 24, Brianah Ferby - 20
Had No Players in Double Figures	at Middle Tennessee, 2/19/14 (L, 75-36)
Had Two or More Players with a Double-Double	at Charlotte, 1/9/21 (L, 65-56 OT)
	Alexis Johnson (11 pts. & 14 rbs.) & CC Mays (11 pts. & 13 rbs.)
Had Two Players with 10+ Rebs	vs. Louisiana Tech, 1/1/21 (L, 61-51 OT)
	Savannah Wheeler-11, Alexis Johnson-11
Had Three or More Players with 10+ Rebs	vs. Evansville, 11/29/18 (W, 72-65 OT)
	Khadaija Brooks - 13, Taylor Pearson - 12, Ashley Saintigene - 11
No opposing players scored in double figures	vs. Bluefield State, 11/20/18 (W, 82-29)
Opposing starting five all in double figures	vs. Bowling Green, 12/7/19 (L, 82-69)
Scored 40+ Bench Points	44 vs. Alderson Broaddus, 12/15/21 (W, 88-56)
Allowed 40+ Bench Points	40, Florida Atlantic, 1/5/18 (L, 79-59)

* Minimum of 5 free throws for free throw percentages

THE LAST TIME CONTINUED...

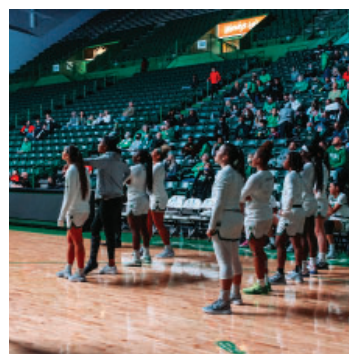
A MARSHALL PLAYER...

Scored 20-29 Points	Savannah Wheeler (22) vs. MT, 2/24/22 (L, 65-57)
Scored 30-39 Points	Savannah Wheeler (30) at ODU, 2/17/22 (W, 64-48)
Scored 40+ Points	Savannah Wheeler (40) vs. Oakland, 12/20/21 (W, 79-58)
	Last time - Kristina Behnfeldt (40) vs. Ohio, 2/10/99 (L, 74-72)
Had 10-14 Rebounds	Lorelei Roper (12) vs. UTEP, 2/13/22 (W, 60-48)
Had 15-19 Rebounds	Ashley Saintigene (16) vs. Longwood, 11/10/17 (W, 90-45)
Had 20+ Rebounds	Catie Knable (21) vs. Bowling Green, 2/16/02 (W, 56-43)
Had 10 Assists	Norrisha Victrum (11) at Morehead State, 11/13/15 (W, 104-101)
Had Two Players with 5+ Assists	vs. Alderson Broaddus, 12/15/21 (W, 88-56)
	Savannah Wheeler (7) & Aaliyah Dunham (6)
Had Three or More Players with 5+ Assists	vs. Cleveland State, 12/8/18 (86-64)
	Kristen Mayo (8), Shayna Gore (6) & Taylor Porter (5)
Had 5-9 Blocks	Mahogany Matthews (5) vs. Louisiana Tech, 1/2/21 (W, 61-57)
Had 10 Blocks	\$^Sharon Deal (12) vs. Youngstown St. 3/4/89 (W, 63-59)
Had 5-9 Steals	Aaliyah Dunham (5) at Purdue, 11/22/21 (L, 70-60)
Two or More Players with 5+ Steals	vs. Kentucky Christian, 11/5/19 (W, 89-40)
	Kristen Mayo (5) & Dazha Congleton (5)
Had 10 Steals	\$^Stephanie Wine (14) vs. Western Carolina, 1/23/95 (W, 72-69)
Had a Double-Double	Kennedi Colclough (13p, 11r) vs. LA Tech, 3/10/21 (L, 50-48)
Made 6-7 3-pointers	Taylor Pearson (6-of-9) at Southern Miss, 2/6/20 (W, 80-65)
Made 8+ 3-pointers	\$Taylor Porter (10-of-12) vs. FIU, 3/7/19 (W, 87-42)

\$ School record, + NCAA Record, ^ SoCon Record

AN OPPOSING PLAYER...

Scored 20-29 Points	Ajah Wayne (23) of ODU, 2/17/22 (W, 64-48)
Two or More Players with 20+ Points	Coppin State, 12/4/21 (L, 77-69)
	Jaia Alexander (24) & Alexandria Hamilton (22)
	2nd time in 2021-22 - Nia Clouden (24) & Alisia Smith (20) of Michigan State the other
Scored 30-39 Points	Octavia Jett-Wilson (34) of Charlotte, 2/19/22 (L, 65-47)
Scored 40+ Points	Jennie Simms (43) of ODU, 1/1/17 (L, 73-69)
Had 10-14 Rebounds	Zakyia Weathersby (10) of UAB, 1/29/22 (L, 77-65)
Had 15-19 Rebounds	Keke McKinney (16) of Charlotte, 2/5/22 (L, 39-37 OT)
Had 20+ Rebounds	Bayley Plummer (21) of Appalachian State, 3/25/19 (L, 83-71)
Two or More Players with 10+ Rebounds	Florida Atlantic, 1/22/22 (W, 57-44)
	Sofia Galerón (12) & Janeta Rozentale (10)
Had 10 Assists	Jada McMillian (10) of Charlotte, 1/8/21 (L, 75-54)
Had 5 Blocks	Maria Torres (5) of FIU, 1/20/22 (W, 62-59)
Had 5 Steals	N'Yah Boyd (5) of North Texas, 2/26/21 (L, 52-51)
Had a Double-Double	Zakyia Weathersby (10p, 10r) of UAB, 1/29/22 (L, 77-65)
Had Two Players with a Double-Double	WKU, 1/14/21 (W, 81-54)
	Raneem Elgedawy (17 pts & 10 rbs) & Fatou Pouye (14 pts & 10 rbs)
Had a Triple-Double	Anastasia Hayes (17pts-11rebs-10ast.) of MTSU, 1/9/20 (L, 75-55)
Made 6-7 3-pointers	Ieva Spigule (6-of-10) of FIU, 1/30/20 (L, 68-65)
Made 8+ 3-pointers	Morgan McMillen (8-of-11) Bowling Green, 11/13/18 (L, 99-76)



MARSHALL STARTING FIVE

Opponents						Score
BLUEFIELD STATE	Dunham	Wheeler	Sivils	Colclough	Roper	W, 108-45
at Radford	Dunham	Wheeler	Sivils	Colclough	Roper	W, 68-64
MOREHEAD STATE	Dunham	Wheeler	Sivils	Colclough	Roper	W, 65-58
at Purdue	Dunham	Wheeler	Sivils	Colclough	Roper	L, 70-60
at (RV) Michigan State	Dunham	Wheeler	Sivils	Colclough	Roper	L, 85-75
vs. Coppin State	Dunham	Wheeler	Sivils	Colclough	Roper	L, 77-69
at St. Bonaventure	Dunham	Wheeler	Ferby	Colclough	Roper	L, 50-47
vs. Alderson Broaddus	Dunham	Wheeler	Ferby	Colclough	Roper	W, 88-56
vs. Oakland	Dunham	Wheeler	Ferby	Colclough	Roper	W, 79-58
vs. LA Tech*	Dunham	Wheeler	Ferby	Colclough	Roper	W, 62-44
vs. Southern Miss*	Dunham	Wheeler	Ferby	Colclough	Roper	W, 72-55
at Florida Atlantic*	Dunham	Wheeler	Ferby	Mays	Roper	W, 66-51
at North Texas*	Dunham	Wheeler	Ferby	Colclough	Roper	L, 64-54
at Rice*	Dunham	Wheeler	Ferby	Colclough	Roper	W, 66-53
vs. FIU*	Dunham	Wheeler	Ferby	Colclough	Roper	W, 62-59
vs Florida Atlantic*	Dunham	Wheeler	Ferby	Colclough	Roper	(OT) W, 57-44
at Middle Tennessee*	Dunham	Wheeler	Mays	Colclough	Roper	L, 80-41
at UAB*	Dunham	Wheeler	Mays	Colclough	Roper	L, 77-65
vs. Old Dominion*	Dunham	Wheeler	Ferby	Colclough	Roper	L, 62-47
vs. Charlotte*	Dunham	Wheeler	Ferby	Colclough	Roper	(OT) L, 39-37
at FIU*	Dunham	Wheeler	Ferby	Mays	Roper	L, 70-66
vs. UTEP*	Dunham	Wheeler	Ferby	Colclough	Roper	W, 60-48
at ODU*	Dunham	Wheeler	Ferby	Colclough	Roper	W, 64-48
at Charlotte*	Dunham	Wheeler	Ferby	Colclough	Roper	L, 65-47
vs. MT*	Dunham	Wheeler	Ferby	Colclough	Roper	L, 65-47

* Conference USA game

Record with starting groups:

Dunham, Wheeler, Sivils, Colclough, Roper: 3-3

Dunham, Wheeler, Ferby, Colclough, Roper: 9-5

Dunham, Wheeler, Ferby, Mays, Roper: 1-1

Dunham, Wheeler, Mays, Colclough, Roper: 0-2

MARSHALL'S LARGEST IN 2021-22

Lead	72 vs. Bluefield State
Deficit	39 at Middle Tennessee
Margin of Victory	63 vs. Bluefield State
Margin of Defeat	39 at Middle Tennessee
Halftime Lead	22 vs. Bluefield State
Halftime Deficit	14 at Middle Tennessee
Deficit in Win	13 at Rice
Lead in Loss	14 at St. Bonaventure
Halftime Deficit in Win	4 at Rice
Halftime Lead in Loss	13 at St. Bonaventure
Scoring Run	29-0 vs. Bluefield State
Opponent Scoring Run	19-0 at Middle Tennessee
Lead Changes in a Game	11 (3x) last vs. Florida Atlantic
Times Tied in a Game	10 vs. Florida Atlantic

LED (TIED) THE TEAM IN...

	Pts.	Rebs.	Asts.	Blks.	Stls.
0 Sivils	-	2	-	2	2
1 McLean	-	-	-	-	-
2 Llanos	-	-	-	-	-
3 Mays	1	7	2	3	2
4 Wheeler	18	4	5	4	8
5 LaFon	-	-	-	-	-
10 Dunham	4	-	19	-	10
11 Mitric	-	-	-	-	-
21 Liberatore	-	-	-	-	-
23 Johnson	1	2	-	2	3
24 Colclough	3	1	3	9	1
30 Redman	-	-	-	2	-
33 Ferby	-	2	1	-	6
34 Roper	-	16	1	14	1



2021-22 Marshall Women's Basketball Combined Team Statistics All games

Page 1/1
as of Mar 01, 2022

Game Records

Record	Overall	Home	Away	Neutral
ALL GAMES	13-12	8-4	4-8	1-0
CONFERENCE	8-8	5-3	3-5	0-0
NON-CONFERENCE	5-4	3-1	1-3	1-0

Score by Periods

Team	1st	2nd	3rd	4th	OT	TOT
Marshall	360	412	404	389	17	1582
Opponents	363	355	382	381	6	1487

Team Box Score

No.	Player				Total		3-Point		F-Throw		Rebounds											
		GP-GS	MIN	AVG	FG-FGA	FG%	3FG-3FGA	3FG%	FT-FTA	FT%	OFF	DEF	TOT	AVG	PF	DQ	A	TO	BLK	STL	PTS	AVG
4	WHEELER, Savannah	25-25	854:03	34.2	159-377	.422	52-150	.347	130-155	.839	16	99	115	4.6	62	2	55	77	5	34	500	20.0
24	COLCLOUGH, Kennedi	23-23	684:41	29.8	103-227	.454	13-43	.302	54-76	.711	27	53	80	3.5	74	2	24	46	12	18	273	11.9
10	DUNHAM, Aaliyah	25-25	861:30	34.5	73-225	.324	36-106	.340	40-54	.741	10	68	78	3.1	39	0	98	42	0	50	222	8.9
33	FERBY, Brianah	23-17	579:52	25.2	56-197	.284	27-113	.239	32-48	.667	20	53	73	3.2	43	0	21	25	0	27	171	7.4
3	MAYS, CC	23-4	449:37	19.5	48-137	.350	11-41	.268	36-51	.706	50	67	117	5.1	62	2	29	36	3	19	143	6.2
23	JOHNSON, Alexis	25-0	330:55	13.2	39-112	.348	12-48	.250	6-13	.462	19	73	92	3.7	45	0	17	19	2	14	96	3.8
34	ROPER, Lorelei	25-25	641:37	25.7	41-96	.427	0-0	.000	6-17	.353	75	87	162	6.5	65	2	17	29	25	8	88	3.5
21	LIBERATORE, Sarah	8-0	38:52	4.9	5-14	.357	4-11	.364	3-4	.750	4	1	5	0.6	1	0	4	3	0	2	17	2.1
1	MCLEAN, Christiana	5-0	29:22	5.9	4-10	.400	0-0	.000	2-3	.667	0	2	2	0.4	4	0	3	4	0	1	10	2.0
30	REDMAN, Aarionna	22-0	212:21	9.7	15-51	.294	6-20	.300	2-5	.400	10	33	43	2.0	30	0	9	13	2	9	38	1.7
5	LAFON, Samantha	8-0	46:05	5.8	2-5	.400	0-0	.000	2-2	1.000	2	2	4	0.5	9	0	0	3	0	0	6	0.8
0	SIVILS, Kia	23-6	285:25	12.4	6-25	.240	0-2	.000	3-7	.429	29	19	48	2.1	34	0	11	16	6	13	15	0.7
11	MITRIC, Ksenija	5-0	29:03	5.8	1-9	.111	1-6	.167	0-0	.000	1	2	3	0.6	1	0	2	2	0	1	3	0.6
2	LLANOS, Sofia	3-0	06:38	2.2	0-2	.000	0-0	.000	0-0	.000	0	1	1	0.3	0	0	0	0	0	1	0	0.0
Team											63	58	121					14				
Total		25	5050		552-1487	.371	162-540	.300	316-435	.726	326	618	944	37.8	469	8	290	329	55	197	1582	63.3
Opponents		25	5050		514-1341	.383	140-513	.273	319-458	.697	268	666	934	37.4	450	11	264	424	69	131	1487	59.5

Team Statistics

	MARSH	OPP
Scoring	1582	1487
Points per game	63.3	59.5
Scoring margin	+3.8	-
Field goals-att	552-1487	514-1341
Field goal pct	.371	.383
3 point fg-att	162-540	140-513
3-point FG pct	.300	.273
3-pt FG made per game	6.5	5.6
Free throws-att	316-435	319-458
Free throw pct	.726	.697
F-Throws made per game	12.6	12.8
Rebounds	944	934
Rebounds per game	37.8	37.4
Rebounding margin	+0.4	-
Assists	290	264
Assists per game	11.6	10.6
Turnovers	329	424
Turnovers per game	13.2	17.0
Turnover margin	+3.8	-
Assist/turnover ratio	0.9	0.6
Steals	197	131
Steals per game	7.9	5.2
Blocks	55	69
Blocks per game	2.2	2.8
Winning streak	0	-
Home win streak	0	-
Attendance	6150	14856
Home games-Avg/Game	12-513	12-1238
Neutral site-Avg/Game	-	1-0

Team Results

Date	Opponent		Score	Att.
11/09/2021	Bluefield St.	W	108-45	467
11/14/2021	at Radford	W	68-64	745
11/19/2021	Morehead St.	W	65-58	737
11/22/2021	at Purdue	L	60-70	1526
11/28/2021	at Michigan St.	L	75-85	3938
12/04/2021	Coppin St.	L	69-77	431
12/12/2021	at St. Bonaventure	L	47-50	339
12/15/2021	Alderson Broaddus	W	88-56	209
12/20/2021	vs Oakland	W	79-58	0
12/30/2021	Louisiana Tech	W	62-44	437
01/01/2022	Southern Miss.	W	72-55	461
01/08/2022	at Fla. Atlantic	W	66-51	351
01/13/2022	at North Texas	L	54-64	1052
01/15/2022	at Rice	W	66-53	464
01/20/2022	FIU	W	62-59	610
01/22/2022	Fla. Atlantic	Wot	57-44	651
01/27/2022	at Middle Tenn.	L	41-80	3025
01/29/2022	at UAB	L	65-77	324
02/03/2022	Old Dominion	L	47-62	412
02/05/2022	Charlotte	Lot	37-39	613
02/10/2022	at FIU	L	66-70	312
02/13/2022	UTEP	W	60-48	549
02/17/2022	at Old Dominion	W	64-48	1765
02/19/2022	at Charlotte	L	47-65	1015
02/24/2022	Middle Tenn.	L	57-65	573



2021-22 Marshall Women's Basketball Combined Team Statistics In Conference games

Page 1/1
as of Mar 01, 2022

Game Records

Record	Overall	Home	Away	Neutral
ALL GAMES	8-8	5-3	3-5	0-0
CONFERENCE	8-8	5-3	3-5	0-0
NON-CONFERENCE	0-0	0-0	0-0	0-0

Score by Periods

Team	1st	2nd	3rd	4th	OT	TOT
Marshall	204	243	220	239	17	923
Opponents	230	211	249	228	6	924

Team Box Score

No.	Player				Total		3-Point		F-Throw		Rebounds													
		GP-GS	MIN	AVG	FG-FGA	FG%	3FG-3FGA	3FG%	FT-FTA	FT%	OFF	DEF	TOT	AVG	PF	DQ	A	TO	BLK	STL	PTS	AVG		
4	WHEELER, Savannah	16-16	588:38	36.8	101-253	.399	37-107	.346	80-97	.825	11	76	87	5.4	39	0	32	54	4	19	319	19.9		
10	DUNHAM, Aaliyah	16-16	582:10	36.4	51-150	.340	31-78	.397	33-45	.733	6	48	54	3.4	23	0	58	26	0	26	166	10.4		
24	COLCLOUGH, Kennedy	14-14	428:23	30.6	55-125	.440	10-28	.357	22-37	.595	13	33	46	3.3	48	2	13	30	5	12	142	10.1		
33	FERBY, Brianah	14-14	367:45	26.3	32-121	.264	15-71	.211	20-29	.690	10	30	40	2.9	30	0	12	17	0	15	99	7.1		
3	MAYS, CC	16-4	319:43	20.0	26-90	.289	10-36	.278	25-34	.735	32	48	80	5.0	41	1	25	25	3	12	87	5.4		
34	ROPER, Lorelei	16-16	421:45	26.4	22-51	.431	0-0	.000	2-8	.250	42	57	99	6.2	45	1	9	19	14	5	46	2.9		
23	JOHNSON, Alexis	16-0	210:40	13.2	18-63	.286	9-34	.265	1-5	.200	13	42	55	3.4	30	0	11	11	1	11	46	2.9		
30	REDMAN, Aarionna	13-0	110:60	8.5	4-26	.154	1-11	.091	1-2	.500	5	10	15	1.2	15	0	4	9	0	5	10	0.8		
0	SIVILS, Kia	16-0	175:02	10.9	2-14	.143	0-1	.000	2-4	.500	21	15	36	2.3	20	0	5	9	4	8	6	0.4		
5	LAFON, Samantha	6-0	29:21	4.9	0-2	.000	0-0	.000	2-2	1.000	2	0	2	0.3	5	0	0	3	0	0	2	0.3		
21	LIBERATORE, Sarah	3-0	05:04	1.7	0-2	.000	0-2	.000	0-0	.000	0	0	0	0.0	0	0	0	0	0	0	0	0.0		
1	MCLEAN, Christiana	2-0	09:22	4.7	0-3	.000	0-0	.000	0-0	.000	0	0	0	0.0	1	0	0	0	0	0	0	0.0		
11	MITRIC, Ksenija	1-0	01:10	1.2	0-0	.000	0-0	.000	0-0	.000	0	0	0	0.0	0	0	0	0	0	0	0	0.0		
Team											46	33	79					12						
Total		16	3250		311-900	.346	113-368	.307	188-263	.715	201	392	593	37.1	297	4	169	215	31	113	923	57.7		
Opponents		16	3250		322-856	.376	86-341	.252	194-278	.698	176	423	599	37.4	289	8	159	246	45	89	924	57.8		

Team Statistics

	MARSH	OPP
Scoring	923	924
Points per game	57.7	57.8
Scoring margin	-0.1	-
Field goals-att	311-900	322-856
Field goal pct	.346	.376
3 point fg-att	113-368	86-341
3-point FG pct	.307	.252
3-pt FG made per game	7.1	5.4
Free throws-att	188-263	194-278
Free throw pct	.715	.698
F-Throws made per game	11.8	12.1
Rebounds	593	599
Rebounds per game	37.1	37.4
Rebounding margin	-0.4	-
Assists	169	159
Assists per game	10.6	9.9
Turnovers	215	246
Turnovers per game	13.4	15.4
Turnover margin	+1.9	-
Assist/turnover ratio	0.8	0.6
Steals	113	89
Steals per game	7.1	5.6
Blocks	31	45
Blocks per game	1.9	2.8
Winning streak	0	-
Home win streak	0	-
Attendance	4306	8308
Home games-Avg/Game	8-538	8-1039
Neutral site-Avg/Game	-	0-0

Team Results

Date	Opponent		Score	Att.
12/30/2021	Louisiana Tech	W	62-44	437
01/01/2022	Southern Miss.	W	72-55	461
01/08/2022	at Fla. Atlantic	W	66-51	351
01/13/2022	at North Texas	L	54-64	1052
01/15/2022	at Rice	W	66-53	464
01/20/2022	FIU	W	62-59	610
01/22/2022	Fla. Atlantic	Wot	57-44	651
01/27/2022	at Middle Tenn.	L	41-80	3025
01/29/2022	at UAB	L	65-77	324
02/03/2022	Old Dominion	L	47-62	412
02/05/2022	Charlotte	Lot	37-39	613
02/10/2022	at FIU	L	66-70	312
02/13/2022	UTEP	W	60-48	549
02/17/2022	at Old Dominion	W	64-48	1765
02/19/2022	at Charlotte	L	47-65	1015
02/24/2022	Middle Tenn.	L	57-65	573



2021-22 Marshall Women's Basketball
Season/Career Statistics
All games

Page 1/1
as of Mar 01, 2022

Summary

Player	Season Statistics										Career Statistics									
	GP-GS	MIN/G	FG%	3FG%	FT%	R/G	A/G	STL	BLK	PTS/G	GP-GS	MIN/G	FG%	3FG%	FT%	R/G	A/G	STL	BLK	PTS/G
COLCLOUGH, Kennedy	23-23	29.8	.454	.302	.711	3.5	1.0	18	12	11.9	40-40	27.6	.457	.288	.691	4.0	1.0	25	25	10.3
DUNHAM, Aaliyah	25-25	34.5	.324	.340	.741	3.1	3.9	50	0	8.9	25-25	34.5	.324	.340	.741	3.1	3.9	50	0	8.9
FERBY, Brianah	23-17	25.2	.284	.239	.667	3.2	0.9	27	0	7.4	23-17	25.2	.284	.239	.667	3.2	0.9	27	0	7.4
JOHNSON, Alexis	25-0	13.2	.348	.250	.462	3.7	0.7	14	2	3.8	57-4	13.1	.436	.267	.405	3.8	0.5	35	4	4.4
LAFON, Samantha	8-0	5.8	.400	.000	1.000	0.5	0.0	0	0	0.8	13-0	4.7	.333	.000	.750	0.6	0.0	0	0	0.7
LIBERATORE, Sarah	8-0	4.9	.357	.364	.750	0.6	0.5	2	0	2.1	18-0	4.8	.375	.368	.600	0.3	0.2	3	0	1.6
LLANOS, Sofia	3-0	2.2	.000	.000	.000	0.3	0.0	1	0	0.0	3-0	2.2	.000	.000	.000	0.3	0.0	1	0	0.0
MAYS, CC	23-4	19.5	.350	.268	.706	5.1	1.3	19	3	6.2	42-8	18.7	.320	.214	.646	4.4	1.4	39	4	5.0
MCLEAN, Christiana	5-0	5.9	.400	.000	.667	0.4	0.6	1	0	2.0	5-0	5.9	.400	.000	.667	0.4	0.6	1	0	2.0
MITRIC, Ksenija	5-0	5.8	.111	.167	.000	0.6	0.4	1	0	0.6	7-0	9.7	.174	.188	.000	1.0	1.1	1	0	1.6
REDMAN, Aarionna	22-0	9.7	.294	.300	.400	2.0	0.4	9	2	1.7	22-0	9.7	.294	.300	.400	2.0	0.4	9	2	1.7
ROPER, Lorelei	25-25	25.7	.427	.000	.353	6.5	0.7	8	25	3.5	90-44	18.0	.434	.000	.393	4.5	0.7	25	62	3.5
SIVILS, Kia	23-6	12.4	.240	.000	.429	2.1	0.5	13	6	0.7	96-17	19.4	.379	.228	.451	2.6	1.0	80	25	2.6
WHEELER, Savannah	25-25	34.2	.422	.347	.839	4.6	2.2	34	5	20.0	74-61	32.2	.401	.337	.843	3.9	2.5	94	11	16.6

Scoring

Player	Season Statistics								Career Statistics							
	FG-FGA	FG%	3FG-3FGA	3FG%	FT-FTA	FT%	PTS	PTS/G	FG-FGA	FG%	3FG-3FGA	3FG%	FT-FTA	FT%	PTS	PTS/G
COLCLOUGH, Kennedy	103-227	.454	13-43	.302	54-76	.711	273	11.9	163-357	.457	21-73	.288	65-94	.691	412	10.3
DUNHAM, Aaliyah	73-225	.324	36-106	.340	40-54	.741	222	8.9	73-225	.324	36-106	.340	40-54	.741	222	8.9
FERBY, Brianah	56-197	.284	27-113	.239	32-48	.667	171	7.4	56-197	.284	27-113	.239	32-48	.667	171	7.4
JOHNSON, Alexis	39-112	.348	12-48	.250	6-13	.462	96	3.8	106-243	.436	20-75	.267	17-42	.405	249	4.4
LAFON, Samantha	2-5	.400	0-0	.000	2-2	1.000	6	0.8	3-9	.333	0-0	.000	3-4	.750	9	0.7
LIBERATORE, Sarah	5-14	.357	4-11	.364	3-4	.750	17	2.1	9-24	.375	7-19	.368	3-5	.600	28	1.6
LLANOS, Sofia	0-2	.000	0-0	.000	0-0	.000	0	0.0	0-2	.000	0-0	.000	0-0	.000	0	0.0
MAYS, CC	48-137	.350	11-41	.268	36-51	.706	143	6.2	73-228	.320	12-56	.214	53-82	.646	211	5.0
MCLEAN, Christiana	4-10	.400	0-0	.000	2-3	.667	10	2.0	4-10	.400	0-0	.000	2-3	.667	10	2.0
MITRIC, Ksenija	1-9	.111	1-6	.167	0-0	.000	3	0.6	4-23	.174	3-16	.188	0-0	.000	11	1.6
REDMAN, Aarionna	15-51	.294	6-20	.300	2-5	.400	38	1.7	15-51	.294	6-20	.300	2-5	.400	38	1.7
ROPER, Lorelei	41-96	.427	0-0	.000	6-17	.353	88	3.5	142-327	.434	0-1	.000	35-89	.393	319	3.5
SIVILS, Kia	6-25	.240	0-2	.000	3-7	.429	15	0.7	99-261	.379	13-57	.228	37-82	.451	248	2.6
WHEELER, Savannah	159-377	.422	52-150	.347	130-155	.839	500	20.0	366-912	.401	135-401	.337	359-426	.843	1226	16.6

Totals

Player	Season Statistics										Career Statistics									
	O-REB	D-REB	TOTAL	PF	FO	A	TO	A/TO			O-REB	D-REB	TOTAL	PF	FO	A	TO	A/TO		
COLCLOUGH, Kennedy	27	53	80	74	2	24	46	0.5			50	109	159	114	5	41	70	0.6		
DUNHAM, Aaliyah	10	68	78	39	0	98	42	2.3			10	68	78	39	0	98	42	2.3		
FERBY, Brianah	20	53	73	43	0	21	25	0.8			20	53	73	43	0	21	25	0.8		
JOHNSON, Alexis	19	73	92	45	0	17	19	0.9			54	162	216	100	0	29	50	0.6		
LAFON, Samantha	2	2	4	9	0	0	3	0.0			4	4	8	16	0	0	3	0.0		
LIBERATORE, Sarah	4	1	5	1	0	4	3	1.3			4	2	6	3	0	4	7	0.6		
LLANOS, Sofia	0	1	1	0	0	0	0	0.0			0	1	1	0	0	0	0	0.0		
MAYS, CC	50	67	117	62	2	29	36	0.8			76	110	186	112	5	57	67	0.9		
MCLEAN, Christiana	0	2	2	4	0	3	4	0.8			0	2	2	4	0	3	4	0.8		
MITRIC, Ksenija	1	2	3	1	0	2	2	1.0			1	6	7	2	0	8	5	1.6		
REDMAN, Aarionna	10	33	43	30	0	9	13	0.7			10	33	43	30	0	9	13	0.7		
ROPER, Lorelei	75	87	162	65	2	17	29	0.6			162	240	402	190	3	59	87	0.7		
SIVILS, Kia	29	19	48	34	0	11	16	0.7			133	117	250	171	0	98	81	1.2		
WHEELER, Savannah	16	99	115	62	2	55	77	0.7			47	239	286	187	6	188	204	0.9		



**2021-22 Marshall Women's Basketball
Team Game-by-Game
All games**

Page 1/1
as of Mar 01, 2022

				Total		3-Pointers		Free throws		Rebounds											
Opponent	Date	Score		FG-FGA	PCT	3FG-3FGA	PCT	FT-FTA	PCT	OFF	DEF	TOT	AVG	PF	A	TO	BLK	STL	PTS	AVG	
Bluefield St.	11/09/2021	108-45	W	42-74	.568	9-17	.529	15-21	.714	16	28	44	44.0	21	20	11	1	21	108	108.0	
at Radford	11/14/2021	68-64	W	22-63	.349	4-18	.222	20-24	.833	16	20	36	40.0	23	10	16	4	12	68	88.0	
Morehead St.	11/19/2021	65-58	W	23-65	.354	2-21	.095	17-21	.810	12	35	47	42.3	16	12	11	3	7	65	80.3	
at Purdue	11/22/2021	60-70	L	22-58	.379	1-17	.059	15-18	.833	14	18	32	39.8	23	6	19	3	9	60	75.3	
at Michigan St.	11/28/2021	75-85	L	27-62	.435	9-23	.391	12-18	.667	11	18	29	37.6	29	17	16	1	8	75	75.2	
Coppin St.	12/04/2021	69-77	L	24-69	.348	7-25	.280	14-19	.737	15	28	43	38.5	20	14	6	3	2	69	74.2	
at St. Bonaventure	12/12/2021	47-50	L	17-59	.288	7-19	.368	6-9	.667	13	30	43	39.1	14	9	18	3	5	47	70.3	
Alderson Broaddus	12/15/2021	88-56	W	34-72	.472	8-22	.364	12-21	.571	14	23	37	38.9	12	22	9	4	11	88	72.5	
vs Oakland	12/20/2021	79-58	W	30-65	.462	2-10	.200	17-21	.810	14	26	40	39.0	14	11	8	2	9	79	73.2	
Louisiana Tech	12/30/2021	62-44	W	19-51	.373	9-24	.375	15-22	.682	15	22	37	38.8	17	12	13	3	12	62	72.1	
Southern Miss.	01/01/2022	72-55	W	21-59	.356	12-33	.364	18-20	.900	19	25	44	39.3	18	17	19	6	4	72	72.1	
at Fla. Atlantic	01/08/2022	66-51	W	22-62	.355	6-19	.316	16-20	.800	16	21	37	39.1	15	8	8	2	10	66	71.6	
at North Texas	01/13/2022	54-64	L	17-59	.288	5-23	.217	15-16	.938	11	26	37	38.9	21	12	10	1	7	54	70.2	
at Rice	01/15/2022	66-53	W	25-61	.410	5-18	.278	11-17	.647	13	21	34	38.6	18	15	11	1	11	66	69.9	
FIU	01/20/2022	62-59	W	17-45	.378	7-19	.368	21-32	.656	14	25	39	38.6	21	9	19	0	7	62	69.4	
Fla. Atlantic	01/22/2022	57-44	Wot	16-53	.302	7-23	.304	18-30	.600	14	35	49	39.3	12	12	13	1	6	57	68.6	
at Middle Tenn.	01/27/2022	41-80	L	12-47	.255	4-19	.211	13-14	.929	12	21	33	38.9	20	5	19	1	8	41	67.0	
at UAB	01/29/2022	65-77	L	23-58	.397	8-21	.381	11-15	.733	10	18	28	38.3	21	4	9	6	6	65	66.9	
Old Dominion	02/03/2022	47-62	L	17-62	.274	6-21	.286	7-11	.636	15	21	36	38.2	20	9	12	1	5	47	65.8	
Charlotte	02/05/2022	37-39	Lot	14-67	.209	2-29	.069	7-14	.500	19	37	56	39.1	20	9	10	3	5	37	64.4	
at FIU	02/10/2022	66-70	L	24-57	.421	12-27	.444	6-7	.857	12	15	27	38.5	24	9	16	1	7	66	64.5	
UTEP	02/13/2022	60-48	W	23-58	.397	9-23	.391	5-11	.455	7	29	36	38.4	15	10	15	2	11	60	64.3	
at Old Dominion	02/17/2022	64-48	W	22-50	.440	9-19	.474	11-14	.786	7	32	39	38.4	19	14	18	1	7	64	64.3	
at Charlotte	02/19/2022	47-65	L	19-61	.311	5-24	.208	4-8	.500	12	22	34	38.2	20	11	7	0	4	47	63.5	
Middle Tenn.	02/24/2022	57-65	L	20-50	.400	7-26	.269	10-12	.833	5	22	27	37.8	16	13	16	2	3	57	63.3	
Total		1582		552-1487	.371	162-540	.300	316-435	.726	326	618	944	37.8	469	290	329	55	197	1582	63.3	
Opponents		1487		514-1341	.383	140-513	.273	319-458	.697	268	666	934	37.4	450	264	424	69	131	1487	59.5	



**2021-22 Marshall Women's Basketball
Opponents Game-by-Game
All games**

Page 1/1
as of Mar 01, 2022

				Total		3-Pointers		Free throws		Rebounds											
Opponent	Date	Score		FG-FGA	PCT	3FG-3FGA	PCT	FT-FTA	PCT	OFF	DEF	TOT	AVG	PF	A	TO	BLK	STL	PTS	AVG	
Bluefield St.	11/09/2021	108-45	W	14-46	.304	8-27	.296	9-18	.500	7	20	27	27.0	19	11	30	2	5	45	45.0	
at Radford	11/14/2021	68-64	W	21-45	.467	6-12	.500	16-22	.727	5	27	32	29.5	22	9	26	0	3	64	54.5	
Morehead St.	11/19/2021	65-58	W	23-60	.383	7-21	.333	5-13	.385	7	32	39	32.7	18	12	15	3	7	58	55.7	
at Purdue	11/22/2021	60-70	L	21-54	.389	7-21	.333	21-26	.808	16	22	38	34.0	15	13	21	3	6	70	59.3	
at Michigan St.	11/28/2021	75-85	L	25-51	.490	3-9	.333	32-35	.914	10	27	37	34.6	21	18	18	3	4	85	64.4	
Coppin St.	12/04/2021	69-77	L	28-57	.491	7-19	.368	14-23	.609	8	33	41	35.7	13	12	9	5	4	77	66.5	
at St. Bonaventure	12/12/2021	47-50	L	18-57	.316	2-14	.143	12-14	.857	10	28	38	36.0	12	5	13	6	3	50	64.1	
Alderson Broaddus	12/15/2021	88-56	W	21-55	.382	9-25	.360	5-12	.417	14	30	44	37.0	24	13	29	2	5	56	63.1	
vs Oakland	12/20/2021	79-58	W	21-60	.350	5-24	.208	11-17	.647	15	24	39	37.2	17	12	17	0	5	58	62.6	
Louisiana Tech	12/30/2021	62-44	W	18-44	.409	2-15	.133	6-8	.750	5	20	25	36.0	17	6	18	1	5	44	60.7	
Southern Miss.	01/01/2022	72-55	W	19-58	.328	3-15	.200	14-16	.875	14	19	33	35.7	26	10	18	2	7	55	60.2	
at Fla. Atlantic	01/08/2022	66-51	W	18-48	.375	8-29	.276	7-9	.778	9	27	36	35.8	22	13	22	1	5	51	59.4	
at North Texas	01/13/2022	54-64	L	23-61	.377	4-23	.174	14-20	.700	15	31	46	36.5	16	12	12	2	4	64	59.8	
at Rice	01/15/2022	66-53	W	20-45	.444	5-18	.278	8-18	.444	10	28	38	36.6	19	13	23	3	4	53	59.3	
FIU	01/20/2022	62-59	W	22-56	.393	7-24	.292	8-14	.571	13	20	33	36.4	27	9	16	6	10	59	59.3	
Fla. Atlantic	01/22/2022	57-44	Wot	16-60	.267	6-35	.171	6-7	.857	9	30	39	36.6	21	4	15	2	2	44	58.3	
at Middle Tenn.	01/27/2022	41-80	L	28-60	.467	12-28	.429	12-17	.706	13	24	37	36.6	17	13	8	2	9	80	59.6	
at UAB	01/29/2022	65-77	L	24-53	.453	7-18	.389	22-26	.846	10	27	37	36.6	13	13	14	1	2	77	60.6	
Old Dominion	02/03/2022	47-62	L	21-52	.404	3-16	.188	17-24	.708	14	32	46	37.1	14	8	16	6	9	62	60.6	
Charlotte	02/05/2022	37-39	Lot	11-59	.186	4-26	.154	13-18	.722	13	38	51	37.8	17	6	10	3	1	39	59.6	
at FIU	02/10/2022	66-70	L	23-47	.489	6-20	.300	18-27	.667	9	15	24	37.1	17	9	17	3	8	70	60.0	
UTEP	02/13/2022	60-48	W	19-58	.328	2-14	.143	8-13	.615	13	31	44	37.5	17	9	19	1	7	48	59.5	
at Old Dominion	02/17/2022	64-48	W	17-59	.288	2-16	.125	12-19	.632	15	22	37	37.4	15	8	14	3	7	48	59.0	
at Charlotte	02/19/2022	47-65	L	24-51	.471	4-16	.250	13-21	.619	9	32	41	37.6	16	13	9	6	2	65	59.3	
Middle Tenn.	02/24/2022	57-65	L	19-45	.422	11-28	.393	16-21	.762	5	27	32	37.4	15	13	15	3	7	65	59.5	
Total		1487		514-1341	.383	140-513	.273	319-458	.697	268	666	934	37.4	450	264	424	69	131	1487	59.5	
Marshall		1582		552-1487	.371	162-540	.300	316-435	.726	326	618	944	37.8	469	290	329	55	197	1582	63.3	

Official Basketball Box Score - Final

Bluefield St. at Marshall

11/09/21 Cam Henderson Center, Huntington

2021-22 Women's Basketball

Game Time: 0:00:00

Game Duration: 1:42

Attendance: 407

Officials: Maria Gearhart, Linda Miles, Clark Strickland

Bluefield St. - 45

Record: 0-0

NO. Name	Min	FG	3P	FT	Rebounds	Fouls	TP	AS	TO	ST	Blocks	BS	BA	+/-
0 Darnisha Farris	07:28	0-3	0-0	0-0	0 0 0	0 0	0	1	0	0	0	0	0	-15
5 London Coleman	32:02	3-9	0-1	4-6	1 5 6	2 5	10	0	10	1	0	1	0	-58
2 Alexis Tucker	21:44	3-7	2-5	0-0	1 1 2	3 1	8	2	5	1	1	0	0	-40
4 Katrina Davis	29:45	0-4	0-4	1-2	1 2 3	2 2	1	1	2	1	0	0	0	-54
32 Dani Janutolo	18:12	0-4	0-3	1-2	0 2 2	4 2	1	0	4	0	0	0	0	-26
1 Azariah Binford	24:26	3-9	1-5	1-2	1 0 1	3 4	8	3	4	2	0	0	0	-39
12 Jade Goodloe	09:25	0-0	0-0	0-0	0 1 1	2 1	0	0	1	0	0	0	0	-18
22 Gabrielle Thomas	14:37	2-2	2-2	0-0	1 2 3	0 2	6	1	2	0	1	0	0	-16
3 Ashlie Loudon	24:30	3-5	3-5	1-2	0 1 1	1 2	10	3	2	0	0	0	0	-37
24 Zayniah Robinson	08:31	0-2	0-2	0-0	0 2 2	0 0	0	0	0	0	0	0	0	-11
40 Sydney Billington	06:24	0-1	0-0	1-2	0 1 1	2 1	1	0	0	0	0	0	0	-9
20 Trinity Amick	01:28	0-0	0-0	0-0	0 0 0	0 0	0	0	0	0	0	0	0	4
44 Derricka Bramwell	01:28	0-0	0-0	0-2	0 0 0	0 1	0	0	0	0	0	0	0	4
Team					2 3 5		0		0					
Totals		14-46	8-27	9-18	7 20 27	19 21	45	11	30	5	2	1	63	

Shooting By Period

1st	FG%	3-12	25.0%
2nd	FG%	2-7	28.6%
3rd	FG%	0-0	0.0%
4th	FG%	6-14	42.9%
5th	FG%	4-9	44.4%
6th	FG%	3-6	50.0%
7th	FG%	1-7	14.3%
8th	FG%	0-4	0.0%
9th	FG%	2-2	100.0%
10th	FG%	4-13	30.8%
11th	FG%	2-7	28.6%
12th	FG%	4-10	40.0%
GM FG%	14-46	30.4%	
3PT%	8-27	29.6%	
FT%	9-18	50.0%	

Dead Ball Rebounds: 6.0

Marshall - 68

Record: 2-0

NO. Name	Min	FG	3P	FT	Rebounds	Fouls	TP	AS	TO	ST	Blocks	BS	BA	+/-
24 Kennedi Colclough	34:06	7-13	1-2	2-2	2 4 6	3 1	17	0	0	0	2	0	4	1
34 Lorelei Roper	23:44	2-7	0-0	1-2	5 2 7	1 1	5	0	3	0	2	0	4	1
0 Kia Sivils	16:52	0-0	0-0	0-0	1 0 1	2 1	0	1	1	0	0	0	-3	2
4 Savannah Wheeler	22:34	3-7	1-3	6-8	0 0 0	4 5	13	3	1	2	0	0	6	1
10 Aaliyah Dunham	35:43	4-14	1-5	4-4	0 4 4	2 5	13	5	4	6	0	0	7	7
33 Brianah Ferby	23:54	1-7	1-4	1-2	2 2 4	3 2	4	1	2	3	0	0	-6	3
3 CC Mays	21:16	3-7	0-1	4-4	5 2 7	5 6	10	0	4	1	0	0	8	3
23 Alexis Johnson	18:31	2-7	0-3	2-2	0 3 3	3 1	6	0	1	0	0	0	3	3
5 Samantha Lafon	01:36	0-0	0-0	0-0	0 0 0	0 0	0	0	0	0	0	0	-3	4
30 Aarionna Redman	01:44	0-1	0-0	0-0	0 1 1	0 0	0	0	0	0	0	0	0	0
Team					1 2 3		0							
Totals		22-63	4-18	20-24	16 20 36	23 22	68	10	16	12	4	0	4	4

Shooting By Period

1st	FG%	8-14	57.1%
2nd	FG%	3-11	33.3%
3rd	FG%	5-18	27.8%
4th	FG%	3-7	28.6%
5th	FG%	4-6	66.7%
6th	FG%	3-18	16.7%
7th	FG%	1-6	16.7%
8th	FG%	4-4	100.0%
9th	FG%	6-13	46.2%
10th	FG%	0-2	0.0%
11th	FG%	3-6	50.0%
GM FG%	22-63	34.9%	
3PT%	4-18	22.2%	
FT%	20-24	83.3%	

Dead Ball Rebounds: 2.0

Technical Fouls: NONE

Marshall at Radford

11/14/21 Dedmon Center, Radford

2021-22 Women's Basketball

Game Time: 2:00:00

Game Duration: 2:00


Attendance: 745

Officials: Michael Johnson, Katie Wade, Brian Walters

Marshall - 108															Marshall - 68															
Record: 1-0															Record: 2-0															
NO. Name	Min	FG	3P	FT	Rebounds	Fouls	TP	AS	TO	ST	Blocks	BS	BA	+/-	NO. Name	Min	FG	3P	FT	Rebounds	Fouls	TP	AS	TO	ST	Blocks	BS	BA	+/-	
24 Kennedi Colclough	16:30	6-9	0-1	3-5	1 2 3	1 4	15	0	0	2	0	0	0	40	00 Rachel LaLonde	17:35	0-3	0-0	1-2	1 2 3	5 1	1	2	3	0	0	0	1	4	1
0 Lorelei Roper	F 14:01	2-3	0-0	0-0	1 2 3	2 1	4	1	1	1	0	0	0	26	3 Bridget Birkhead	G 28:10	1-3	1-1	4-4	0 2 2	4 2	7	2	4	0	0	0	0	2	1
0 Kia Sivils	F 14:11	0-1	0-0	0-0	1 1 2	2 1	0	1	1	1	0	0	0	20	12 Bryonna McClean	G 30:37	2-4	0-0	4-6	0 6 6	5 5	8	2	1	1	0	0	0	2	1
4 Savannah Wheeler	G 21:26	5-11	1-2	3-3	0 4 4	0 2 14	2	0	3	0	1	0	1	45	22 Ashley Tudor	G 35:25	3-8	1-2	7-8	1 5 6	1 9	14	0	4	1	0	0	1	-1	1
10 Aaliyah Dunham	G 20:41	6-9	3-4	2-2	2 0 2	2 1 17	7	0	6	0	0	0	0	46	24 Kyanna Morgan	G 25:51	6-10	1-4	0-2	0 7 7	2 13	2	7	1	0	0	0	-3	1	
3 CC Mays	G 15:15	7-9	1-1	2-2	4 2 6	2 2 17	0	2	2	0	1	0	1	21	10 Jackie Christ	G 16:17	2-4	0-0	0-0	0 0 0	0 2 0	4	0	3	0	0	0	1	-14	4
23 Alexis Johnson	G 16:39	5-10	0-1	0-2	3 3 6	3 1 10	0	0	0	0	0	0	0	28	1 Destinee Marshall	G 17:34	3-7	2-3	0-0	0 0 0	0 1 0	8	1	2	0	0	0	1	-8	3
33 Brianah Ferby	G 15:35	4-7	2-4	3-4	1 3 4	0 2 13	2	3	1	0	0	0	0	35	23 Carmen Williams	G 08:54	0-1	0-1	0-0	0 2 2	0 1 0	0	0	1	0	0	0	0	-2	1
5 Samantha Lafon	G 15:08	2-3	0-0	0-0	2 2 4	1 4	0	0	0	0	0	0	0	13	10 Makaila Brown	G 04:37	0-0	0-0	0-0	0 1 1	0 1 0	0	0	1	0	0	0	0	-2	4
30 Aarionna Redman	G 17:42	2-3	2-3	0-0	1 2 3	2 0 6	2	2	3	1	0	0	0	19	21 Madison Roshelle	G 03:14	1-1	1-1	0-0	0 0 0	0 1 0	3	0	0	0	0	0	0	-3	1
11 Ksenija Mitric	G 12:41	0-2	0-0	0-0	0 1 1	1 0	0	0	1	1	0	0	0	10	30 Taiye Johnson	G 06:06	2-2	0-0	0-0	1 0 1	1 1 4	0	0	0	0	0	0	0	5	1
21 Sarah Liberatore	G 07:13	0-1	0-1	0-2	1 0 1	0 1 2	2	2	1	1	0	0	0	4	5 Danielle Montebano	G 05:40	1-2	0-0	0-0	0 0 0	0 1 2	0	0	0	0	0	0	0	-1	1
1 Christiana McLean	G 11:30	3-5	0-0	0-1	0 2 3	3 2 6	2	2	1	0	0	0	0	12	Team					2 2 4		0								
2 Sofia Llanos	G 01:28	0-1	0-0	0-0	0 0 0	0 0 0	0	0	0	0	0	0	0	-4	Totals		21-45	6-12	16-22	5 27 32	22 23	64	9	26	3	0	4	4	4	
Team					1 4 5		0		0						Technical Fouls: NONE															
Totals		42-74	9-17	15-21	16 28 44	21 19	108	20	11	21	1	2	63	Dead Ball Rebounds: 5.0																

Totals															42-74 9-17 15-21 16 28 44 21 19 108 20 11 21 1 2 63															Technical Fouls: NONE															Biggest lead 12 (2 nd 8:53) 6 (3 rd 0:42) Points from Turnovers 28 16 MARW RADW 1st 2nd 3rd 4th TOT																																												
Biggest lead 0 (1 st 10:00) 72 (4 th 2:54) Points from Turnovers 7 42															Best Scoring Run 8 (4 th 1:23) 29 (3 rd 2:36) Paint 8 58															Lead Changes 6 (2 nd 8:53) 2 (3 rd 6:52) Second Chance 7 18 MARW RADW 21 16 11 20 68															Times Tied 0 Fast Breaks 11 7															Time with Lead 00:00 39:29 Bench 25 58															MAR 23 26 36 23 108														

Official Basketball Box Score - Final															Game Time: 5:00 PM	
Marshall at Oakland															Game Duration: 1:43	
12/20/21 South Point Arena, Las Vegas																
2021-22 Women's Basketball																
Officials: Lisa Jons, Julie Kromenhoek, Bryan Entolise																
Marshall - 79																
Record: 5-4																
NO. Name	Min	FG	3P	FT	Rebounds	Fouls	TP	AS	TO	ST	Blocks	BS	BA	+/-	Shooting By Period	
		M-A	M-A	M-A	OR DR TOT	PF FD									1 st FG%	1 st FT%
24 Kennedy Colclough	F 31:15	6-16	0-2	2-2	2 2 4	3 1	14	1	2	2	1	0	1	15	3PT%	7-16 43.8%
34 Lorelei Roper	F 30:17	4-6	0-0	0-0	6 5 11	1 0	8	0	2	0	1	0	1	19	FT%	2-2 100%
4 Savannah Wheeler	G 35:13	14-18	2-4	10-12	1 3 4	1 7	40	5	1	4	0	0	0	25	2 nd FG%	7-17 41.2%
10 Aaliyah Dunham	G 31:36	1-6	0-0	0-1	1 5 6	0 5	2	3	1	1	0	0	0	21	3PT%	1-3 33.3%
33 Brianah Ferby	G 24:59	2-8	0-2	0-0	0 4 5	1 1	4	1	0	1	0	0	0	10	FT%	5-6 83.3%
3 CC Mays	F 18:42	2-8	0-0	2-2	2 1 3	4 1	6	0	1	0	0	0	0	9	3 rd FG%	9-17 52.9%
20 Aarionna Redman	12:00	0-1	0-1	1-2	0 1 1	2 1	1	1	0	0	0	0	0	5	3PT%	0-2 0.0%
21 Sarah Liberatore	07:23	0-1	0-0	0-0	0 1 1	1 0	0	0	0	0	0	0	0	2	FT%	3-4 75%
23 Alexis Johnson	05:32	1-1	0-0	0-0	0 1 1	1 0	2	0	0	0	0	0	0	5	4 th FG%	7-15 46.7%
1 Christiana McLean	01:11	0-0	0-0	2-2	0 0 0	0 0	0	0	0	0	0	0	0	-2	3PT%	0-2 0.0%
2 Sofia Llanos	00:56	0-0	0-0	0-0	0 0 0	0 0	0	0	0	0	0	0	0	-2	FT%	7-9 77.8%
11 Ksenija Mitric	00:56	0-0	0-0	0-0	0 0 0	0 0	0	0	0	0	0	0	0	-2	GM FG%	30-65 46.2%
Team					1 3 4		0	1							3PT%	2-10 20.0%
Totals		30-65	2-10	17-21	14 26 40	14 17	79	11	8	9	2	0	21		FT%	17-21 81.0%
Technical Fouls: NONE															Dead Ball Rebounds: 1.0	



Official Basketball Box Score - Final

Louisiana Tech at Marshall

12/20/21 Cam Henderson Center, Huntington

2021-22 Women's Basketball

Game Time: 6:00 PM

Game Duration: 1:48

Attendance: 107

Officials: Neonta Williams, Molly Catwell, Kaz Beveley

Louisiana Tech - 44

Record: 8-4 (0-1)

NO. Name	Min	FG M-A	3P M-A	FT M-A	Rebounds OR DR TOT	Fouls PF FD	TP	AS	TO	ST	Blocks BS BA	+/	
44 Anna Larr Roberson	F 33:17	5-9	0-0	2-2	2 5 7	3 2	12	3	3	0	0	0	-12
2 Keianna Walker	G 36:33	8-15	1-4	4-6	0 0 0	2 8	21	1	4	1	0	0	-17
10 Salma Bates	G 37:44	2-7	1-4	0-0	0 5 5	3 2	5	0	1	1	1	1	-17
23 Silvia Nativi	G 21:44	1-5	0-2	0-0	2 2 4	2 1	2	0	4	0	0	0	-5
24 Amaya Brannon	G 31:37	0-3	0-3	0-0	0 4 4	0 1	0	1	2	1	0	0	-2
3 Robyn Lee	12:04	1-2	0-0	0-0	0 2 2	4 1	2	1	3	0	0	0	-13
32 Kate Thompson	08:46	1-1	0-0	0-0	1 0 1	2 1	2	0	1	0	0	0	-7
4 Lotte Sant	15:00	0-2	0-2	0-0	0 1 1	1 1	0	0	0	1	0	0	-21
33 Mackenzie Wurm	02:11	0-0	0-0	0-0	0 0 0	0 0	0	0	0	0	0	0	0
1 Autumn Smith	01:04	0-0	0-0	0-0	0 0 0	0 0	0	0	0	1	0	0	4
Team					0 1 1		0	0					
Totals		18-44	2-15	6-8	5 20 25	17 17	44	6	18	5	1	3	-18


Technical Fouls: NONE

Shooting By Period

1 st FG%	6-12	50.0%
3PT%	1-4	25.0%
FT%	3-3	100%
2 nd FG%	4-10	40.0%
3PT%	0-4	0.0%
FT%	0-0	0%
3 rd FG%	3-12	25.0%
3PT%	1-4	25.0%
FT%	0-0	0%
4 th FG%	5-10	50.0%
3PT%	0-3	0.0%
FT%	3-5	60%
GM FG%	18-44	40.9%
3PT%	2-15	13.3%
FT%	6-8	75.0%

Dead Ball Rebounds: 1.0

Oakland - 58															Technical Fouls: NONE										Dead Ball Rebounds: 10		
Record: 4-7																											
NO. Name	Min	FG	3P	FT	Rebounds	Fouls	TP	AS	TO	ST	Blocks	BS	BA	+/-	Shooting By Period												
		M-A	M-A	M-A	OR DR TOT	PF FD									1 st FG%	2 nd FG%	3 rd FG%										
0 Breanna Perry	12:58	2-5	0-1	0-2	6 3 9	0 2	4	0	1	0	0	0	0	-17	1 st FG%	9-14	64.3%										
10 Breanne Beatty	G 35:44	2-7	1-2	0-2	1 7 8	1 3	5	3	0	0	0	0	2	-22	3 rd TS%	3-5	60.0%										
21 Kahlajah Dean	G 12:36	1-7	0-5	2-2	2 2 4	3 2	4	0	2	1	0	0	0	-14	FT%	1-1	100%										
24 Brianna Bready	G 30:47	2-6	0-1	0-0	0 0 0	2 0	4	3	6	0	0	0	0	-16	2 nd FG%	5-17	29.4%										
30 Alona Blackwell	G 18:31	1-7	1-6	0-0	0 3 3	0 0	3	1	0	0	0	0	0	-6	3 rd TS%	2-6	33.3%										
2 Lamariyah Williams	17:37	1-3	1-2	6-8	2 3 5	2 5	9	1	2	0	0	0	0	-7	FT%	4-4	100%										
3 Kayla Luchenbach	24:59	5-12	0-1	3-3	1 0 1	1 2	13	0	1	0	0	0	0	-13	1 st FG%	1-10	10.0%										
12 Kendall Folley	06:41	1-1	0-0	0-0	1 0 1	0 0	2	3	1	2	0	0	0	-7	3 rd TS%	0-7	0.0%										
33 Olivia Sims	14:21	0-2	0-2	0-0	0 1 1	4 0	0	0	1	1	0	0	0	-10	FT%	4-8	50.0%										
1 Aaliyah McQueen	17:20	5-8	2-4	0-0	0 3 3	3 0	12	1	2	1	0	0	0	-14	4 th FG%	6-19	31.6%										
3 Sydney Gouard	02:43	0-0	0-0	0-0	0 0 0	0 0	0	0	0	0	0	0	0	-6	3 rd TS%	0-6	0.0%										
22 Brunelle Mungo	03:36	0-1	0-0	0-0	2 0 2	1 0	0	0	0	0	0	0	0	-4	FT%	2-4	50.0%										
15 C'Enna Mahomes	01:11	0-0	0-0	0-0	0 0 0	0 0	0	0	0	0	0	0	0	-2	GM FG%	21-60	35.0%										
35 Kennedy Montue	00:56	0-0	0-0	0-0	0 0 0	0 0	0	0	0	0	0	0	0	-2	3 rd TS%	5-24	20.8%										
															FT%	11-17	64.7%										
Team					0 2 2		0		1																		
Totals		21-60	5-24	11-17	15 24 39	17 14	58	12	17	5	0	2	-21				Dead Ball Rebounds: 4, 0										
Technical Fouls: NONE																											
MAR		OAK		Points from Turnovers		MAR		OAK		Period by Period Scoring																	
Biggest lead		25 (4 th 0:55)		8 (2 nd 3:25)		Turnovers		22		6		1st		2nd		3rd		4th		TOT							
Best Scoring Run		13 (3 rd 1:34)		10 (2 nd 4:34)		Paint		48		22		MAR		17		20		3rd		4th							
Lead Changes		11				Second Chance		16		10																	
Times Tied		8				Fast Breaks		11		4		OAK		22		6		14		58							
Time with Lead		23:44		14:36		Bench		11		38																	



Official Basketball Box Score - Final

UTEP at Marshall

02/13/22 Cam Henderson Center, Huntington

2021-22 Women's Basketball

Game Time: 1:00 PM

Game Duration: 1:49

Attendance: 549

Officials: Meadow Overstreet, Royce Bevis, Mike Caldwell

UTEP - 48

Record: 13-10 (5-5)

NO. NAME	Min	FG M-A	3P M-A	FT M-A	Rebounds F/TOT	Fouls F/TOT	TP	AS	TST	Blocks BS/BA	+/-	Shooting By Period				
21 Elina Anike	16:16	3/7	0/0	2/4	4	2	6	3	3	8	0	3	1st FG%	5-17	29.4%	
3 Katia Gallegos	G 35:46	2/9	0/3	1-2	3	1	3	1	5	4	7	1	3PT%	0/4	0.0%	
5 Destiny Thurman	G 07:19	0/3	0/2	0/1	1	2	0	0	0	1	0	0	FT%	1/2	50.0%	
15 Avery Crouse	G 00:40	6/9	0/3	0/2	0	6	6	2	22	2	2	1	2nd FG%	3-11	27.3%	
22 Erin Wilson	G 26:41	0/5	0/0	0/0	1	4	5	2	5	0	1	1	3PT%	0/3	0.0%	
2 Teal Battle	21:39	1/7	0-2	3/3	2	2	4	3	2	5	0	1	FT%	0/0	0.0%	
23 Eliana Cabral	15:48	1/4	1-2	2/2	1	4	5	2	1	5	0	1	3rd FG%	8-14	57.1%	
55 Brenda Fontana	15:11	3/7	0/0	0/0	2	3	5	0	0	6	0	0	3PT%	1/1	100.0%	
12 Grace Alvarez	04:14	0-1	0-1	0/0	0	0	0	0	1	0	1	0	FT%	2/3	66.7%	
24 Adhel Tac	03:13	1-1	0/0	0/0	1	1	0	0	2	0	1	0	4th FG%	3-16	18.8%	
0 Mahri Petree	13:53	2-5	1-1	0/0	0	1	1	2	0	5	1	2	3PT%	1/4	25.0%	
Team					1	4	5	0	0	0	0	0	FT%	5/8	62.5%	
Totals		19-58	2-14	8-13	13	31	44	17	15	48	9	7	1	2	-12	GM FG% 19-58 32.8%
													3PT%	2-14	14.3%	

Marshall - 60																	DeLoe Ball Rebounds: 2-0			
		FG				3P		FT		Rebounds		Fouls		TP		Blocks				
NO. Name		Min	Ma	FG	3P	FT	OR	DR	TR	PF	FF	FD	AS	TO	ST	BS	BA	+	-	
24	Kennedi Colclough	F	30:03	3-8	1-2	1-4	0	3	3	2	8	0	2	2	2	0	0	10	0	
34	Lorelei Roper	F	29:26	3-3	0-0	1-2	3	9	12	5	6	0	1	1	1	0	0	10	0	
4	Savannah Wheeler	G	37:57	6-15	1-5	3-5	4	3	4	2	6	16	2	7	3	0	0	17	0	
10	Aaliyah Dunham	G	36:27	6-13	4-6	0-0	1	3	4	1	3	16	4	1	2	0	0	14	0	
33	Briannah Ferby	G	26:34	2-8	1-5	0-0	1	2	2	0	5	2	2	2	0	0	0	14	0	
3	CC Mays		08:52	0-3	0-1	0-0	0	1	1	1	0	0	1	1	0	1	0	-10	0	
23	Alexis Johnson		17:04	2-6	2-3	0-0	0	5	5	2	6	1	1	1	0	0	0	0	0	
5	Samantha Lafon		01:06	0-0	0-0	0-0	0	0	0	0	0	0	0	0	0	0	0	-1	0	
0	Kia Svils		10:10	1-1	0-0	0-0	0	1	1	2	1	2	0	0	0	0	0	0	0	
30	Aarionna Redman		02:21	0-1	0-1	0-0	0	0	0	0	0	0	0	0	0	0	0	0	0	
Team							2	2	4		0	0								
Totals			23:58	9-23	5-11		7	29	36	15	17	60	10	15	11	2	1	12	0	
																			Technical Fouls: NONE	
																			Shooting By Period	
																			1 st FG% 3-12 25.0%	
																			3 rd FT% 2-7 28.6%	
																			FT% 2-2 100%	
																			2 nd FG% 7-17 41.2%	
																			3 rd FT% 2-6 33.3%	
																			FT% 0-1 0%	
																			3 rd FG% 7-16 43.8%	
																			3 rd FT% 2-5 40.0%	
																			FT% 0-0 0%	
																			4 th FG% 6-13 46.2%	
																			3 rd FT% 3-5 60.0%	
																			FT% 3-8 37.5%	
																			GM FG% 23.58 39.7%	
																			3PT% 9-23 39.1%	
																			FT% 5-11 45.5%	
																			Dead Ball Rebounds: 3-0	

	UTP	MAR	Points from	UTP	MAR	Period by Period Scoring					
Biggest lead	1 (1 st 0:10)	17 (4 th 1:39)	Turnovers	6	19		1st	2nd	3rd	4th	TOT
Best Scoring Run	6 (1 st 0:10)	9 (3 rd 9:46)	Paint	28	24	UTP	11	6	19	12	48
Lead Changes		4	Second Chance	9	10						
Times Tied		1	Fast Breaks	4	2	MAR	10	16	16	18	60
Time with Lead	02:22	36:00	Bench	23	8						

[illegible]

Charlotte - 65		Record: 15-8 (11-2)										Deja Ball Rebounds: 2, 0			
No. Name	Min	FG P	3P M/A	FT M/A	Rebounds OR	Fouls PF	TS	AS	TO	ST	Blocks B	B/B	A/-	Shooting By Period	
20 Molina Williams	F 23:18	0-3	0-2	1-2	1 3	2	1	1	0	0	1	0	0	1st FG% 6-14 42.9%	
40 KeKe McKinney	F 32:48	2-5	0-1	0-2	3 4	7	4	3	4	1	2	0	0	3PT% 1-6 16.7%	
12 Mikayla Boykin	G 35:05	5-13	2-6	2-2	7 9	1	14	6	2	0	2	0	13	FT% 1-1 100%	
13 Octavia Jet-Wilson	G 28:33	12-19	2-3	8-9	1 4	5	27	34	1	0	0	0	21	2nd FG% 5-11 45.5%	
15 Jada McMillian	G 31:19	2-3	0-0	0-0	0 0	3	1	4	5	1	0	0	0	3PT% 1-5 20.0%	
23 Kameron Roach	02:47	0-0	0-0	0-0	0 0	0	0	0	0	0	0	0	-2	FT% 4-6 66.7%	
20 Jaccee Busick	24:01	0-4	0-4	0-0	1 6	7	3	1	0	1	0	0	-1	3rd FG% 6-14 42.9%	
10 Dazia Lawrence	19:41	2-3	0-0	2-6	1 6	7	1	3	6	2	1	0	2	3PT% 0-2 0.0%	
0 Aylesha Wade	00:37	1-1	0-0	0-0	1 1	0	0	2	0	0	0	0	2	FT% 4-7 57.1%	
2 Cali Konek	00:37	0-0	0-0	0-0	0 0	0	0	0	0	0	0	0	2	4th FG% 7-12 58.3%	
3 Tarnia Davis	00:37	0-0	0-0	0-0	0 0	0	0	0	0	0	0	0	2	3PT% 2-3 66.7%	
44 Angel Middleton	00:37	0-0	0-0	0-0	0 0	0	0	0	0	0	0	0	2	FT% 4-7 57.1%	
Team						0 1	1	0	0	0					
Totals		24-51	4-16	13-21	9 32	41	16	20	65	13	9	2	6	0	18
Technical Fouls: NONE															
														Deja Ball Rebounds: 4	

	MAR	CLT	Points from	MAR	CLT	Period by Period Scoring					
Biggest lead	0 (1 st 10:00)	18 (3 rd 4:18)	Turnovers	9	8	MAR	1 st	2 nd	3 rd	4 th	TOT
Best Scoring Run	5(1 st 5:01)	9(3 rd 4:18)	Paint	18	24		9	14	10	14	47
Lead Changes			Second Chance	5	9						
Times Tied		1	Fast Breaks	4	7	CLT	14	15	16	20	65
Time with 1 lead	00:00	38:12	Rench	4	8						



HEAD COACH TONY KEMPER

Fifth season • @CoachTonyKemper
Career Record: 60-75 (Overall)
35-47 (C-USA)



Fort Hays State '01

Tony Kemper enters his fifth season as the head coach of the Marshall women's basketball team after being elevated to the position in March of 2017. Kemper had previously been an assistant coach with the women's program for five seasons before taking over.

Kemper helped the Thundering Herd navigate the COVID-19-riddled 2020-21 campaign, which yielded second-team All-Conference USA acclaim for Savannah Wheeler and a signature home win over perennial league stalwart Rice in late February.

Kemper led the Herd through a great improvement in his second season. He has brought some added excitement to the program as the attendance average for Marshall rose from 641 in 2016-17 to 1,153 in 2018-19. Kemper's 2019 recruiting class also ranked in the top 60 nationally.

After going 9-20 overall and 3-13 in C-USA in 2017-18, Marshall was predicted to finish 13th in the Conference USA 2018-19 preseason polls. Instead, the Herd rolled out an 8-win improvement overall and 7-wins better in conference play finishing 17-15 and 10-6 in C-USA, securing the No. 6 seed in the tournament. The 10 conference victories were the most C-USA wins for Marshall in program history. Following the conference tournament, the Herd earned a berth in the WBI, just the fourth postseason trip in program history. Marshall won its first round game 67-64 at Davidson before falling in the second round.

Following the 2020-21 season, Kemper increased his overall record to 47-63.

During the 2018-19 season, Marshall was fifth in the conference in points per game (67.3) and led the league in 3-point field goals made per game in conference action (8.9). The Herd also saw an increase in defensive production as Marshall was ranked 13th in C-USA in field goal percentage allowed in 2017-18 but jumped up to fifth in 2018-19. The Herd saw senior Taylor Porter honored twice as a Conference USA Player of the Week including once after breaking the Marshall single-game record draining 10 3-pointers in the senior day win over FIU.

Senior Shayna Gore was named First Team All-Conference USA. Gore was previously honored as Second Team All-Conference USA in 2017-18. The senior guard capped off her prestigious career under the guide of Kemper as just the third player in program history to score over 2,000 points (2,081). Her name can be found all throughout the record book including the program's all-time leader in 3-point field goals made with 303, more than twice the previous record of 146.

The Herd reached some other milestones in 2018-19 including earning a three-overtime victory at home against Louisiana Tech (Jan. 24). It was one of three overtime victories in 2018-19 after going 131 games – second-longest active streak in the NCAA at the time – without even playing an overtime contest. Marshall also earned its first win over Charlotte in the last 10 meetings (Jan. 5) and the team's first ever win over Middle Tennessee (Feb. 16) as Marshall was previously 0-8 against the Blue Raiders.

Kemper's teams have had major success in the classroom as well with seven college graduates over the last two years. The team's overall grade point average in 2017-18 was 3.23 and climbed up to 3.28 in 2108-19. His players have been honored 18 times on the Conference USA Commissioner's Honor Roll (cumulative GPA of 3.0 or better) and 11-time recipients of the C-USA Academic Medal for maintaining a GPA of 3.75 or higher.

During his first five seasons at Marshall as an assistant coach, Kemper has assisted in rebuilding a program that progressively increased its win total over the first four seasons - from 9 to 11 to 17 to 21 wins in the 2015-16 season. That 2015-16 win total was the most

for Thundering Herd Women's Basketball in 29 seasons and, for the first time in school history, yielded a first-team All-Conference USA student-athlete for Marshall in Leah Scott.

He helped lead Marshall to two of only three postseason berths in the program's NCAA history, including its first postseason win in 2014-15 (WBI) and WNIT berth in 2015-16.

Kemper has also been heavily involved in the Thundering Herd's recruiting and academic success, helping sign the 34th-ranked class in 2017 and its group in 2015, which came in 52nd.

In the classroom, the program has placed 28 members on the Conference USA Commissioner's Honor Roll (3.0 cumulative GPA or better) and three more were given the Commissioner's Academic Medal (3.75).

Kemper came to Marshall from Central Arkansas, where he coached with now-former Marshall head coach Matt Daniel for three seasons. At UCA, Kemper helped the Sugar Bears to their first Division I conference title and three seasons of at least 21 wins. His tutelage of inside players helped gain two Southland Player of the Year honors and a Defensive Player of the Year.

Before joining the women's staff, Kemper served as an assistant coach for the Central Arkansas men's basketball program for four years.

Two professional players emerged from UCA during those seasons – the leading scorer in Portugal's Proliga pro league in 2011, Nate Bowie, and professional center Durrell Nevels.

Prior to UCA, Kemper was an assistant coach at Hutchinson (Kansas) Community College - one of the nation's most successful junior college programs.

At Hutchinson, he oversaw day-to-day operations and directed the Blue Dragons' strength and conditioning efforts while also serving as a mathematics and physical education instructor.

The Logan, Kansas, native also held the head coaching spot at Quivira Heights High School in Bushton in 2003-04, guiding QHHS to a No. 1 seed to the regional tournament.

His coaching career began in 2002-03 as an assistant at Hill City (Kansas) High School. Kemper received a bachelor's degree in finance from Fort Hays State University in 2001 and a BBA in Business Education in 2003. He also earned a master's degree in organizational leadership from Fort Hays in 2008.

Kemper and his wife Sandra, a professor at Marshall in the Communications Disorders Department, live in Huntington with sons Brayden and Landry and daughter Jolie.





0 Kia Sivils

5-7 | G | Louisville, Ky.
Sacred Heart HS

CAREER HIGHS

POINTS

S:.....5 vs. Morehead St., 11/19/21
C: 16 (2x) last vs. ODU, 2/22/20

FIELD GOALS

S:.....2 vs. Morehead St., 11/19/21
C:7 at North Texas, 1/4/20

FGA

S:..... 3 (3x) last at MTSU, 1/27/22
C: 8 at Bowling Green, 11/13/18

3-POINTERS

S:..... N/A
C:3 vs. ODU, 2/22/20

3PTA

S:..... 1 (2x) last at MTSU, 1/27/22
C: 3 (2x) last vs. ODU, 2/22/20

FREE THROWS

S:..... 2 at FAU, 1/8/22
C: 3 at Wisconsin, 12/4/18

FTA

S:..... 2 (3x) last vs. Charlotte, 2/5/22
C:4 (4x) last at Rutgers, 12/15/19

REBOUNDS

S:..... 6 at MTSU, 1/27/22
C: 8 (2x) last at MTSU, 3/5/21

ASSISTS

S:..... 2 vs. Bluefield St., 11/9/21
C: 5 (2x) last at USM, 2/6/20

BLOCKS

S:..... 2 at FAU, 1/8/22
C:2 (4x) last at FAU, 1/8/22

STEALS

S:.....3 (2x) last at FIU, 2/10/22
C:5 (2x) last vs. UTEP, 2/15/20

MINUTES

S:..24 at St. Bonaventure, 12/12/21
C:32 vs. Evansville, 11/29/18

Opponent	Date	GS	MIN	Total		3-Pointers		Free throws		Rebounds											
				FG-FGA	PCT	3FG-3FGA	PCT	FT-FTA	PCT	OFF	DEF	TOT	AVG	PF	A	TO	BLK	STL	PTS	AVG	
Bluefield St.	11/09/2021	*	14:11	0-1	.000	0-0	.000	0-0	.000	1	1	2	2.0	2	2	1	0	1	0	0.0	
at Radford	11/14/2021	*	16:52	0-0	.000	0-0	.000	0-0	.000	1	0	1	1.5	2	1	1	0	0	0	0.0	
Morehead St.	11/19/2021	*	11:21	2-3	.667	0-1	.000	1-1	1.000	0	0	0	1.0	0	0	1	0	0	5	1.7	
at Purdue	11/22/2021	*	13:46	0-1	.000	0-0	.000	0-0	.000	1	0	1	1.0	2	1	0	1	0	0	1.3	
at Michigan St.	11/28/2021	*	14:25	0-1	.000	0-0	.000	0-2	.000	2	0	2	1.2	3	1	0	0	3	0	1.0	
Coppin St.	12/04/2021	*	15:12	1-2	.500	0-0	.000	0-0	.000	0	2	2	1.3	1	0	0	1	0	2	1.2	
at St. Bonaventure	12/12/2021		24:37	1-3	.333	0-0	.000	0-0	.000	3	1	4	1.7	4	1	4	0	1	2	1.3	
Louisiana Tech	12/30/2021		12:02	0-2	.000	0-0	.000	0-0	.000	3	1	4	2.0	1	0	1	1	1	0	1.1	
Southern Miss.	01/01/2022		10:30	0-0	.000	0-0	.000	0-0	.000	0	3	3	2.1	0	1	2	1	0	0	1.0	
at Fla. Atlantic	01/08/2022		12:52	1-2	.500	0-0	.000	2-2	1.000	1	0	1	2.0	0	0	1	2	1	4	1.3	
at North Texas	01/13/2022		15:05	0-1	.000	0-0	.000	0-0	.000	4	0	4	2.2	2	0	0	0	1	0	1.2	
at Rice	01/15/2022		06:04	0-0	.000	0-0	.000	0-0	.000	1	0	1	2.1	1	1	0	0	1	0	1.1	
FIU	01/20/2022		13:10	0-1	.000	0-0	.000	0-0	.000	1	1	2	2.1	3	1	1	0	0	0	1.0	
Fla. Atlantic	01/22/2022		03:59	0-1	.000	0-0	.000	0-0	.000	0	0	0	1.9	0	0	0	0	0	0	0.9	
at Middle Tenn.	01/27/2022		20:05	0-3	.000	0-1	.000	0-0	.000	2	4	6	2.2	2	1	3	0	0	0	0.9	
at UAB	01/29/2022		14:47	0-1	.000	0-0	.000	0-0	.000	1	1	2	2.2	1	0	0	0	1	0	0.8	
Old Dominion	02/03/2022		06:10	0-0	.000	0-0	.000	0-0	.000	1	0	1	2.1	1	0	0	0	0	0	0.8	
Charlotte	02/05/2022		08:26	0-0	.000	0-0	.000	0-2	.000	2	2	4	2.2	1	0	0	0	0	0	0.7	
at FIU	02/10/2022		19:60	0-1	.000	0-0	.000	0-0	.000	2	2	4	2.3	2	1	0	0	3	0	0.7	
UTEP	02/13/2022		10:10	1-1	1.000	0-0	.000	0-0	.000	0	1	1	2.3	2	0	0	0	0	2	0.8	
at Old Dominion	02/17/2022		07:07	0-0	.000	0-0	.000	0-0	.000	1	0	1	2.2	2	0	1	0	0	0	0.7	
at Charlotte	02/19/2022		09:13	0-0	.000	0-0	.000	0-0	.000	1	0	1	2.1	2	0	0	0	0	0	0.7	
Middle Tenn.	02/24/2022		05:22	0-1	.000	0-0	.000	0-0	.000	1	0	1	2.1	0	0	0	0	0	0	0.7	
Totals		6	285:25	6-25	.240	0-2	.000	3-7	.429	29	19	48	2.1	34	11	16	6	13	15	0.7	

Player Averages

Games Played	Minutes/game	Points/game	FG Pct	3FG Pct	FT Pct	Rebounds/game	Assists/game	Turnovers/game	Assist/Turnover ratio	Steals/game	Blocks/game
23	12.4	0.7	24.0	0.0	42.9	2.1	0.5	0.7	0.7	0.6	0.3

Career Superlatives

	Sea.	Car.
10+ Pts:	0	3
20+ Pts:	0	0
5+ Rebs:	1	10
10+ Rebs:	0	0
5+ Asts:	0	2
2+ Blks:	1	4
2+ Stls:	2	21
Double-Double:	0	0



CAREER STATISTICS

				Field Goals		3-Point		F-Throws		Rebounds									Scoring	
SEASON	TEAM	GP-GS	MIN/AVG	FG-FGA	FG%	3FG-3FGA	3FG%	FT-FTA	FT%	OFF	DEF	TOT	AVG	PF-FO	A	TO	BLK	STL	PTS	AVG
2018-19	Marsh	32-0	653/20.4	43-111	.387	6-23	.261	15-31	.484	54	45	99	3.1	54-0	37	33	7	28	107	3.3
2019-20	Marsh	28-6	633/22.6	41-94	.436	6-20	.300	15-33	.455	32	34	66	2.4	61-0	34	19	9	29	103	3.7
2020-21	Marsh	13-5	294/22.6	9-31	.290	1-12	.083	4-11	.364	18	19	37	2.8	22-0	16	13	3	10	23	1.8
2021-22	Marsh	23-6	285/12.4	6-25	.240	0-2	.000	3-7	.429	29	19	48	2.1	34-0	11	16	6	13	15	0.7
TOTAL		96-17	1865/19.4	99-261	.379	13-57	.228	37-82	.451	133	117	250	2.6	171-0	98	81	25	80	248	2.6



1 Christiana McLean

5-6 | G | Wake Forest, N.C
Heritage HS

Opponent	Date	GS	MIN	Total		3-Pointers		Free throws		Rebounds				PF A TO BLK STL PTS AVG						
				FG-FGA	PCT	3FG-3FGA	PCT	FT-FTA	PCT	OFF	DEF	TOT	AVG	PF	A	TO	BLK	STL	PTS	AVG
Bluefield St.	11/09/2021		11:30	3-5	.600	0-0	.000	0-1	.000	0	2	2	2.0	3	2	2	0	1	6	6.0
Alderson Broadus	12/15/2021		07:19	1-2	.500	0-0	.000	0-0	.000	0	0	0	1.0	0	1	2	0	0	2	4.0
vs Oakland	12/20/2021		01:11	0-0	.000	0-0	.000	2-2	1.000	0	0	0	0.7	0	0	0	0	0	2	3.3
at Middle Tenn.	01/27/2022		06:14	0-1	.000	0-0	.000	0-0	.000	0	0	0	0.5	1	0	0	0	0	0	2.5
at UAB	01/29/2022		03:08	0-2	.000	0-0	.000	0-0	.000	0	0	0	0.4	0	0	0	0	0	0	2.0
Totals		0	29:22	4-10	.400	0-0	.000	2-3	.667	0	2	2	0.4	4	3	4	0	1	10	2.0

Player Averages

Games Played	Minutes/ game	Points/ game	FG Pct	3FG Pct	FT Pct	Rebounds/ game	Assists/ game	Turnovers/ game	Assist/Turnover ratio	Steals/ game	Blocks/ game
5	5.9	2.0	40.0	0.0	66.7	0.4	0.6	0.8	0.8	0.2	0.0

CAREER HIGHS

POINTS

S:..... 6 vs. Bluefield St., 11/9/21

C: 6 vs. Bluefield St., 11/9/21

FIELD GOALS

S:..... 3 vs. Bluefield St., 11/9/21

C: 3 vs. Bluefield St., 11/9/21

FGA

S:..... 5 vs. Bluefield St., 11/9/21

C: 5 vs. Bluefield St., 11/9/21

3-POINTERS

S:..... N/A

C: N/A

3PTA

S:..... N/A

C: N/A

FREE THROWS

S:..... 2 vs. Oakland, 12/20/21

C: 2 vs. Oakland, 12/20/21

FTA

S:..... 2 vs. Oakland, 12/20/21

C: 2 vs. Oakland, 12/20/21

REBOUNDS

S:..... 2 vs. Bluefield St., 11/9/21

C: 2 vs. Bluefield St., 11/9/21

ASSISTS

S:..... 2 vs. Bluefield St., 11/9/21

C: 2 vs. Bluefield St., 11/9/21

BLOCKS

S:..... N/A

C: N/A

STEALS

S:..... 1 vs. Bluefield St., 11/9/21

C: 1 vs. Bluefield St., 11/9/21

MINUTES

S:..... 11 vs. Bluefield St., 11/9/21

C: 11 vs. Bluefield St., 11/9/21

Career Superlatives

	Sea.	Car.
10+ Pts:	0	0
20+ Pts:	0	0
5+ Rebs:	0	0
10+ Rebs:	0	0
5+ Asts:	0	0
2+ Blks:	0	0
2+ Stls:	0	0
Double-Double:	0	0



CAREER STATISTICS

				Field Goals		3-Point		F-Throws		Rebounds				Scoring						
SEASON	TEAM	GP-GS	MIN/AVG	FG-FGA	FG%	3FG-3FGA	3FG%	FT-FTA	FT%	OFF	DEF	TOT	AVG	PF-FO	A	TO	BLK	STL	PTS	AVG
2021-22	Marsh	5-0	29/5.9	4-10	.400	0-0	.000	2-3	.667	0	2	2	0.4	4-0	3	4	0	1	10	2.0
TOTAL		5-0	29/5.9	4-10	.400	0-0	.000	2-3	.667	0	2	2	0.4	4-0	3	4	0	1	10	2.0



2 Sofia Llanos

5-10 | G | Tarragona, Catalonia, Spain
Femeni Maresme - Uemataro

Opponent	Date	GS	MIN	Total		3-Pointers		Free throws		Rebounds				PF A TO BLK STL PTS AVG							
				FG-FGA	PCT	3FG-3FGA	PCT	FT-FTA	PCT	OFF	DEF	TOT	AVG	PF	A	TO	BLK	STL	PTS	AVG	
Bluefield St.	11/09/2021		01:28	0-1	.000	0-0	.000	0-0	.000	0	0	0	0.0	0	0	0	0	0	0	0.0	
Alderson Broadus	12/15/2021		04:14	0-1	.000	0-0	.000	0-0	.000	0	1	1	0.5	0	0	0	0	1	0	0.0	
vs Oakland	12/20/2021		00:56	0-0	.000	0-0	.000	0-0	.000	0	0	0	0.3	0	0	0	0	0	0	0.0	
Totals		0	06:38	0-2	.000	0-0	.000	0-0	.000	0	1	1	0.3	0	0	0	0	1	0	0.0	

Player Averages

Games Played	Minutes/game	Points/game	FG Pct	3FG Pct	FT Pct	Rebounds/game	Assists/game	Turnovers/game	Assist/Turnover ratio	Steals/game	Blocks/game
3	2.2	0.0	0.0	0.0	0.0	0.3	0.0	0.0	0.0	0.3	0.0

CAREER HIGHS

POINTS

S:..... N/A

C:..... N/A

FIELD GOALS

S:..... N/A

C:..... N/A

FGA

S:..... 1 (2x) last vs. AB, 12/15/21

C:..... 1 (2x) last vs. AB, 12/15/21

3-POINTERS

S:..... N/A

C:..... N/A

3PTA

S:..... N/A

C:..... N/A

FREE THROWS

S:..... N/A

C:..... N/A

FTA

S:..... N/A

C:..... N/A

REBOUNDS

S:..... 1 vs. AB, 12/15/21

C:..... 1 vs. AB, 12/15/21

ASSISTS

S:..... N/A

C:..... N/A

BLOCKS

S:..... N/A

C:..... N/A

STEALS

S:..... 1 vs. AB, 12/15/21

C:..... 1 vs. AB, 12/15/21

MINUTES

S:..... 4 vs. AB, 12/15/21

C:..... 4 vs. AB, 12/15/21

Career Superlatives

	Sea.	Car.
10+ Pts:	0	0
20+ Pts:	0	0
5+ Rebs:	0	0
10+ Rebs:	0	0
5+ Asts:	0	0
2+ Blks:	0	0
2+ Stls:	0	0
Double-Double:	0	0



CAREER STATISTICS

				Field Goals		3-Point		F-Throws		Rebounds				Scoring						
SEASON	TEAM	GP-GS	MIN/AVG	FG-FGA	FG%	3FG-3FGA	3FG%	FT-FTA	FT%	OFF	DEF	TOT	AVG	PF-FO	A	TO	BLK	STL	PTS	AVG
2021-22	Marsh	3-0	7/2.2	0-2	.000	0-0	.000	0-0	.000	0	1	1	0.3	0-0	0	0	0	1	0	0.0
TOTAL		3-0	7/2.2	0-2	.000	0-0	.000	0-0	.000	0	1	1	0.3	0-0	0	0	0	1	0	0.0



3 CC Mays

5-8 | G | Tampa, Fla.
Seffner Christian Academy

CAREER HIGHS

POINTS

S:..... 17 vs. Bluefield St., 11/9/21
C: 17 vs. Bluefield St., 11/9/21

FIELD GOALS

S:..... 7 vs. Bluefield St., 11/9/21
C: 7 vs. Bluefield St., 11/9/21

FGA

S:.....12 vs. ODU, 2/3/22
C:14 at Charlotte, 1/9/21

3-POINTERS

S:..... 3 at FIU, 2/10/22
C: 3 at FIU, 2/10/22

3PTA

S:.. 5 (3x) last at Charlotte, 2/23/22
C: .. 5 (3x) last at Charlotte, 2/23/22

FREE THROWS

S:.....4 (3x) last vs. FAU, 1/22/22
C:4 (3x) last vs. FAU, 1/22/22

FTA

S:..... 6 vs. FAU, 1/22/22
C: 6 vs. FAU, 1/22/22

REBOUNDS

S:.....11 vs. ODU, 2/3/22
C:13 at Charlotte, 1/9/21

ASSISTS

S:..... 4 (2x), last at ODU, 2/17/22
C: 4 (2x), last at ODU, 2/17/22

BLOCKS

S:..... 1 (3x) last vs. UTEP, 2/13/22
C: 1 (4x) last vs. UTEP, 2/13/22

STEALS

S:..... 2 (6x) last at ODU, 2/11/22
C: 4 vs. ODU, 2/6/21

MINUTES

S:.....31 (2x) last at FIU, 2/10/22
C:39 vs. ODU, 2/6/21

Opponent	Date	GS	MIN	Total		3-Pointers		Free throws		Rebounds															
				FG-FGA	PCT	3FG-3FGA	PCT	FT-FTA	PCT	OFF	DEF	TOT	AVG	PF	A	TO	BLK	STL	PTS	AVG					
Bluefield St.	11/09/2021		15:15	7-9	.778	1-1	1.000	2-2	1.000	4	2	6	6.0	2	0	2	0	2	17	17.0					
at Radford	11/14/2021		21:16	3-7	.429	0-1	.000	4-4	1.000	5	2	7	6.5	5	0	4	0	1	10	13.5					
Morehead St.	11/19/2021		25:25	6-10	.600	0-1	.000	3-4	.750	2	5	7	6.7	2	2	1	0	2	15	14.0					
at Purdue	11/22/2021		20:27	3-5	.600	0-0	.000	0-2	.000	2	2	4	6.0	4	1	2	0	1	6	12.0					
at Michigan St.	11/28/2021		17:57	1-4	.250	0-1	.000	0-3	.000	1	4	5	5.8	3	1	1	0	0	2	10.0					
Coppin St.	12/04/2021		10:53	0-4	.000	0-1	.000	0-0	.000	2	3	5	5.7	1	0	1	0	0	0	8.3					
vs Oakland	12/20/2021		18:42	2-8	.250	0-0	.000	2-2	1.000	2	1	3	5.3	4	0	0	0	1	6	8.0					
Louisiana Tech	12/30/2021		18:28	2-5	.400	1-1	1.000	2-4	.500	2	3	5	5.3	2	1	3	0	1	7	7.9					
Southern Miss.	01/01/2022		16:31	1-5	.200	1-3	.333	4-4	1.000	2	1	3	5.0	3	4	3	0	0	7	7.8					
at Fla. Atlantic	01/08/2022	*	16:18	3-6	.500	1-1	1.000	0-0	.000	1	2	3	4.8	3	0	0	0	1	7	7.7					
at North Texas	01/13/2022		11:31	2-7	.286	1-2	.500	2-2	1.000	1	3	4	4.7	5	3	0	0	1	7	7.6					
at Rice	01/15/2022		14:06	1-4	.250	0-0	.000	3-4	.750	3	1	4	4.7	3	1	2	0	2	5	7.4					
FIU	01/20/2022		12:28	1-2	.500	0-1	.000	2-4	.500	2	4	6	4.8	2	0	3	0	0	4	7.2					
Fla. Atlantic	01/22/2022		22:36	1-6	.167	1-4	.250	4-6	.667	2	6	8	5.0	0	0	1	0	1	7	7.1					
at Middle Tenn.	01/27/2022	*	22:60	2-5	.400	0-1	.000	2-2	1.000	3	1	4	4.9	2	1	0	0	0	6	7.1					
at UAB	01/29/2022	*	31:10	5-11	.455	1-5	.200	2-2	1.000	2	2	4	4.9	3	1	0	0	2	13	7.4					
Old Dominion	02/03/2022		24:37	3-12	.250	0-2	.000	0-0	.000	4	7	11	5.2	2	2	2	1	0	6	7.4					
Charlotte	02/05/2022		26:25	0-7	.000	0-5	.000	2-2	1.000	3	5	8	5.4	4	2	1	1	0	2	7.1					
at FIU	02/10/2022	*	30:57	3-5	.600	3-3	1.000	2-2	1.000	2	2	4	5.3	4	1	4	0	2	11	7.3					
UTEP	02/13/2022		08:52	0-3	.000	0-1	.000	0-0	.000	0	1	1	5.1	1	1	1	1	0	0	6.9					
at Old Dominion	02/17/2022		24:27	1-3	.333	1-2	.500	0-2	.000	1	3	4	5.0	2	4	2	0	2	3	6.7					
at Charlotte	02/19/2022		27:06	1-8	.125	0-5	.000	0-0	.000	3	4	7	5.1	4	2	1	0	0	2	6.5					
Middle Tenn.	02/24/2022		11:11	0-1	.000	0-0	.000	0-0	.000	1	3	4	5.1	1	2	2	0	0	0	6.2					
Totals		4	449:37	48-137	.350	11-41	.268	36-51	.706	50	67	117	5.1	62	29	36	3	19	143	6.2					

Player Averages

Games Played	Minutes/game	Points/game	FG Pct	3FG Pct	FT Pct	Rebounds/game	Assists/game	Turnovers/game	Assist/Turnover ratio	Steals/game	Blocks/game
23	19.5	6.2	35.0	26.8	70.6	5.1	1.3	1.6	0.8	0.8	0.1

Career Superlatives

	Sea.	Car.
10+ Pts:	5	6
20+ Pts:	0	0
5+ Rebs:	11	16
10+ Rebs:	1	2
5+ Asts:	0	0
2+ Blks:	0	0
2+ Stls:	6	12
Double-Double:	0	1



CAREER STATISTICS

				Field Goals		3-Point		F-Throws		Rebounds								Scoring		
SEASON	TEAM	GP-GS	MIN/AVG	FG-FGA	FG%	3FG-3FGA	3FG%	FT-FTA	FT%	OFF	DEF	TOT	AVG	PF-FO	A	TO	BLK	STL	PTS	AVG
2020-21	Marsh	19-4	337/17.8	25-91	.275	1-15	.067	17-31	.548	26	43	69	3.6	50-3	28	31	1	20	68	3.6
2021-22	Marsh	23-4	450/19.5	48-137	.350	11-41	.268	36-51	.706	50	67	117	5.1	62-2	29	36	3	19	143	6.2
TOTAL		42-8	787/18.7	73-228	.320	12-56	.214	53-82	.646	76	110	186	4.4	112-5	57	67	4	39	211	5.0



4 Savannah Wheeler

5-6 | G | Catlettsburg, Ky.
Boyd County HS

CAREER HIGHS

POINTS

S:..... 40 vs. Oakland, 12/20/21
C: 40 vs. Oakland, 12/20/21

FIELD GOALS

S:..... 14 vs. Oakland, 12/20/21
C: 14 vs. Oakland, 12/20/21

FGA

S:.....25 at UAB, 1/29/22
C:25 at UAB, 1/29/22

3-POINTERS

S:..... 5 vs. S. Miss, 1/1/22
C:5 (2x) last vs. S. Miss, 1/1/22

3PTA

S:..... 12 vs. S. Miss, 1/1/22
C: 12 vs. S. Miss, 1/1/22

FREE THROWS

S:.....11 vs. Morehead St., 11/19/21
C:15 vs. ODU, 2/6/21

FTA

S:12 (2x) last vs. Oakland, 12/20/21
C:18 vs. ODU, 2/6/21

REBOUNDS

S:..... 9 vs. S. Miss, 1/1/22
C: 11 vs. Louisiana Tech, 1/1/21

ASSISTS

S:..... 7 vs. AB, 12/15/21
C: 7 (2x) last vs. AB, 12/15/21

BLOCKS

S:.....2 at UAB, 1/29/22
C:2 at UAB, 1/29/22

STEALS

S:...4 (2x) last vs. LA Tech, 12/30/21
C: 5 at Evansville, 11/24/19

MINUTES

S:..... 43 vs. FAU, 1/22/22
C:43 (2x) last vs. FAU, 1/22/22

Opponent	Date	GS	MIN	Total FG-FGA	PCT	3-Pointers 3FG-3FGA	PCT	Free throws FT-FTA	PCT	Rebounds OFF DEF TOT	AVG	PF	A	TO	BLK	STL	PTS	AVG
Bluefield St.	11/09/2021	*	21:26	5-11	.455	1-2	.500	3-3	1.000	0 4 4	4.0	0	2	0	0	3	14	14.0
at Radford	11/14/2021	*	22:34	3-7	.429	1-3	.333	6-8	.750	0 0 0	2.0	4	3	1	0	2	13	13.5
Morehead St.	11/19/2021	*	35:24	5-13	.385	1-6	.167	11-12	.917	1 7 8	4.0	2	1	2	0	2	22	16.3
at Purdue	11/22/2021	*	27:54	2-9	.222	0-5	.000	6-6	1.000	1 3 4	4.0	2	0	7	0	0	10	14.8
at Michigan St.	11/28/2021	*	29:01	9-18	.500	4-8	.500	8-9	.889	2 0 2	3.6	5	2	6	0	0	30	17.8
Coppin St.	12/04/2021	*	31:39	7-17	.412	2-7	.286	2-2	1.000	0 1 1	3.2	5	1	3	0	0	18	17.8
at St. Bonaventure	12/12/2021	*	38:36	6-18	.333	3-5	.600	3-4	.750	0 3 3	3.1	2	2	3	1	2	18	17.9
Alderson Broadus	12/15/2021	*	23:37	7-13	.538	1-3	.333	1-2	.500	0 2 2	3.0	2	7	0	0	2	16	17.6
vs Oakland	12/20/2021	*	35:13	14-18	.778	2-4	.500	10-12	.833	1 3 4	3.1	1	5	1	0	4	40	20.1
Louisiana Tech	12/30/2021	*	38:00	5-15	.333	3-9	.333	3-4	.750	1 5 6	3.4	2	3	2	0	4	16	19.7
Southern Miss.	01/01/2022	*	35:00	8-18	.444	5-12	.417	9-10	.900	2 7 9	3.9	2	5	2	0	0	30	20.6
at Fla. Atlantic	01/08/2022	*	36:16	8-19	.421	2-4	.500	6-8	.750	1 6 7	4.2	3	1	2	0	1	24	20.9
at North Texas	01/13/2022	*	38:05	4-16	.250	2-8	.250	5-6	.833	0 5 5	4.2	3	3	6	0	0	15	20.5
at Rice	01/15/2022	*	36:41	5-18	.278	0-6	.000	3-5	.600	1 3 4	4.2	3	4	5	0	2	13	19.9
FIU	01/20/2022	*	36:20	6-13	.462	4-5	.800	7-8	.875	1 4 5	4.3	3	2	3	0	3	23	20.1
Fla. Atlantic	01/22/2022	*	43:17	6-14	.429	2-5	.400	4-5	.800	0 6 6	4.4	1	2	2	1	0	18	20.0
at Middle Tenn.	01/27/2022	*	33:33	4-9	.444	2-4	.500	5-5	1.000	1 4 5	4.4	1	1	4	0	1	15	19.7
at UAB	01/29/2022	*	34:40	12-25	.480	3-6	.500	4-5	.800	2 6 8	4.6	3	0	1	2	2	31	20.3
Old Dominion	02/03/2022	*	31:38	4-10	.400	2-6	.333	5-7	.714	0 3 3	4.5	4	1	5	0	1	15	20.1
Charlotte	02/05/2022	*	40:43	4-23	.174	1-10	.100	5-7	.714	1 7 8	4.7	2	1	4	0	0	14	19.8
at FIU	02/10/2022	*	36:23	11-21	.524	4-10	.400	2-3	.667	0 2 2	4.6	1	2	4	1	1	28	20.1
UTEP	02/13/2022	*	37:57	6-15	.400	1-5	.200	3-5	.600	0 4 4	4.5	2	2	7	0	3	16	20.0
at Old Dominion	02/17/2022	*	35:24	9-16	.563	3-7	.429	9-9	1.000	1 5 6	4.6	2	3	3	0	0	30	20.4
at Charlotte	02/19/2022	*	36:00	4-13	.308	1-7	.143	0-0	.000	0 2 2	4.5	4	1	1	0	0	9	19.9
Middle Tenn.	02/24/2022	*	38:40	5-8	.625	2-3	.667	10-10	1.000	0 7 7	4.6	3	1	3	0	1	22	20.0
Totals			25	854:03	.422	52-150	.347	130-155	.839	16 99 115	4.6	62	55	77	5	34	500	20.0

Player Averages

Games Played	Minutes/game	Points/game	FG Pct	3FG Pct	FT Pct	Rebounds/game	Assists/game	Turnovers/game	Assist/Turnover ratio	Steals/game	Blocks/game
25	34.2	20.0	42.2	34.7	83.9	4.6	2.2	3.1	0.7	1.4	0.2

Career Superlatives

	Sea.	Car.
10+ Pts:	24	63
20+ Pts:	10	19
30+ Pts:	5	6
40+ Pts:	1	1
5+ Rebs:	12	24
10+ Rebs:	0	1
5+ Asts:	3	9
2+ Stls:	11	29
Double-Double:	0	0



CAREER STATISTICS

SEASON	TEAM	GP-GS	MIN/AVG	Field Goals FG-FGA FG%	3-Point 3FG-3FGA 3FG%	F-Throws FT-FTA FT%	Rebounds OFF DEF TOT AVG	PF-FO	A	TO	BLK	STL	PTS	AVG
2019-20	Marsh	30-17	872/29.1	113-290 .390	47-140 .336	130-155 .839	19 77 96 3.2	89-3	83	74	4	41	403	13.4
2020-21	Marsh	19-19	657/34.6	94-245 .384	36-111 .324	99-116 .853	12 63 75 3.9	36-1	50	53	2	19	323	17.0
2021-22	Marsh	25-25	854/34.2	159-377 .422	52-150 .347	130-155 .839	16 99 115 4.6	62-2	55	77	5	34	500	20.0
TOTAL		74-61	2382/32.2	366-912 .401	135-401 .337	359-426 .843	47 239 286 3.9	187-6	188	204	11	94	1226	16.6



5 Samantha LaFon

6-0 | F | Chesapeake, Ohio
Ironton HS

Opponent	Date	GS	MIN	Total		3-Pointers		Free throws		Rebounds				PF		A		BLK		STL		PTS		AVG
				FG-FGA	PCT	3FG-3FGA	PCT	FT-FTA	PCT	OFF	DEF	TOT	AVG											
Bluefield St.	11/09/2021		15:08	2-3	.667	0-0	.000	0-0	.000	0	2	2	2.0	4	0	0	0	0	0	4	4.0			
at Radford	11/14/2021		01:36	0-0	.000	0-0	.000	0-0	.000	0	0	0	1.0	0	0	0	0	0	0	0	2.0			
at Middle Tenn.	01/27/2022		05:31	0-0	.000	0-0	.000	0-0	.000	0	0	0	0.7	0	0	0	0	0	0	0	1.3			
at UAB	01/29/2022		17:48	0-0	.000	0-0	.000	2-2	1.000	0	0	0	0.5	3	0	3	0	0	2	1.5				
Old Dominion	02/03/2022		00:60	0-1	.000	0-0	.000	0-0	.000	2	0	2	0.8	0	0	0	0	0	0	0	1.2			
at FIU	02/10/2022		03:19	0-0	.000	0-0	.000	0-0	.000	0	0	0	0.7	2	0	0	0	0	0	0	1.0			
UTEP	02/13/2022		01:06	0-0	.000	0-0	.000	0-0	.000	0	0	0	0.6	0	0	0	0	0	0	0	0.9			
at Charlotte	02/19/2022		00:37	0-1	.000	0-0	.000	0-0	.000	0	0	0	0.5	0	0	0	0	0	0	0	0.8			
Totals		0	46:05	2-5	.400	0-0	.000	2-2	1.000	2	2	4	0.5	9	0	3	0	0	6	0.8				

Player Averages

Games Played	Minutes/ game	Points/ game	FG Pct	3FG Pct	FT Pct	Rebounds/ game	Assists/ game	Turnovers/ game	Assist/Turnover ratio	Steals/ game	Blocks/ game
8	5.8	0.8	40.0	0.0	100.0	0.5	0.0	0.4	0.0	0.0	0.0

CAREER HIGHS

POINTS

S:..... 4 vs. Bluefield St., 11/9/21
C:..... 4 vs. Bluefield St., 11/9/21

FIELD GOALS

S:..... 2 vs. Bluefield St., 11/9/21
C:..... 2 vs. Bluefield St., 11/9/21

FGA

S:..... 3 vs. Bluefield St., 11/9/21
C:3 (2x) last vs. Bluefield St., 11/9/21

3-POINTERS

S:..... N/A
C:..... N/A

3PTA

S:..... N/A
C:..... N/A

FREE THROWS

S:..... 2 at UAB, 1/29/22
C:..... 2 at UAB, 1/29/22

FTA

S:..... 2 at UAB, 1/29/22
C:..... 2 (2x) last at UAB, 1/29/22

REBOUNDS

S:..... 2 (2x) last vs. ODU, 2/3/22
C:..... 2 (3x) last vs. ODU, 2/3/22

ASSISTS

S:..... N/A
C:..... N/A

BLOCKS

S:..... N/A
C:..... N/A

STEALS

S:..... N/A
C:..... N/A

MINUTES

S:..... 17 at UAB, 1/29/22
C:..... 17 at UAB, 1/29/22

Career Superlatives

	Sea.	Car.
10+ Pts:	0	0
20+ Pts:	0	0
5+ Rebs:	0	0
10+ Rebs:	0	0
5+ Asts:	0	0
2+ Blks:	0	0
2+ Stls:	0	0
Double-Double:	0	0



CAREER STATISTICS

				Field Goals		3-Point		F-Throws		Rebounds										Scoring	
SEASON	TEAM	GP-GS	MIN/AVG	FG-FGA	FG%	3FG-3FGA	3FG%	FT-FTA	FT%	OFF	DEF	TOT	AVG	PF-FO	A	TO	BLK	STL	PTS	AVG	
2020-21	Marsh	5-0	16/3.1	1-4	.250	0-0	.000	1-2	.500	2	2	4	0.8	7-0	0	0	0	0	3	0.6	
2021-22	Marsh	8-0	46/5.8	2-5	.400	0-0	.000	2-2	1.000	2	2	4	0.5	9-0	0	3	0	0	6	0.8	
TOTAL		13-0	62/4.7	3-9	.333	0-0	.000	3-4	.750	4	4	8	0.6	16-0	0	3	0	0	9	0.7	



CAREER HIGHS

POINTS

S:.....23 at Charlotte, 2/19/22
C:23 at Charlotte, 2/19/22

FIELD GOALS

S:.....8 at Charlotte, 2/19/22
C:8 at Charlotte, 2/19/22

FGA

S:.....17 at FIU, 2/10/22
C:17 at FIU, 2/10/22

3-POINTERS

S:.....4 (3x), last at UTEP, 2/13/22
C:4 (5x) last at UTEP, 2/13/22

3PTA

S:.....8 (2x) last at FIU, 2/10/22
C:8 (5x) last at FIU, 2/10/22

FREE THROWS

S:.....6 vs. LA Tech, 12/30/21
C:7 (2x) last vs. Utah, 11/7/19*

FTA

S:.....8 vs. LA Tech, 12/30/21
C: 11 (2x) last at Ball St., 11/20/19*

REBOUNDS

S:.....8 at ODU, 2/17/22
C:8 (2x) last at ODU, 2/17/22

ASSISTS

S:.....7 (2x) last at Rice, 1/15/22
C:9 (3x) last at Valpo, 12/16/20*

BLOCKS

S:.....N/A
C: 2 (2x) last at Creighton, 1/24/20*

STEALS

S:...6 (2x) last at Radford, 11/14/21
C:7 at St. John's, 3/5/21

MINUTES

S:.....40 (2x) last vs. ODU, 2/3/22
C:45 at Butler, 1/31/20*
* accomplished at Xavier

10Aaliyah Dunham

5-4 | G | South Charleston, W.Va.
South Charleston HS | Xavier U.

Opponent	Date	GS	MIN	Total		3-Pointers		Free throws		Rebounds											
				FG-FGA	PCT	3FG-3FGA	PCT	FT-FTA	PCT	OFF	DEF	TOT	AVG	PF	A	TO	BLK	STL	PTS	AVG	
Bluefield St.	11/09/2021	*	20:41	6-9	.667	3-4	.750	2-2	1.000	2	0	2	2.0	1	7	0	0	6	17	17.0	
at Radford	11/14/2021	*	35:43	4-14	.286	1-5	.200	4-4	1.000	0	4	4	3.0	2	5	4	0	6	13	15.0	
Morehead St.	11/19/2021	*	28:18	0-5	.000	0-3	.000	0-0	.000	0	2	2	2.7	2	4	2	0	1	0	10.0	
at Purdue	11/22/2021	*	35:34	2-7	.286	0-3	.000	0-0	.000	0	0	0	2.0	2	2	4	0	5	4	8.5	
at Michigan St.	11/28/2021	*	34:18	3-11	.273	1-6	.167	0-0	.000	0	4	4	2.4	2	6	1	0	3	7	8.2	
Coppin St.	12/04/2021	*	36:54	2-10	.200	0-4	.000	1-2	.500	0	1	1	2.2	1	6	1	0	0	5	7.7	
at St. Bonaventure	12/12/2021	*	27:00	0-4	.000	0-2	.000	0-0	.000	1	3	4	2.4	3	1	2	0	0	0	6.6	
Alderson Broadbudds	12/15/2021	*	29:17	4-9	.444	0-1	.000	0-0	.000	0	1	1	2.3	3	6	1	0	2	8	6.8	
vs Oakland	12/20/2021	*	31:36	1-6	.167	0-0	.000	0-1	.000	1	5	6	2.7	0	3	1	0	1	2	6.2	
Louisiana Tech	12/30/2021	*	36:26	1-3	.333	1-3	.333	6-8	.750	1	1	2	2.6	0	4	1	0	2	9	6.5	
Southern Miss.	01/01/2022	*	28:27	3-10	.300	3-7	.429	0-0	.000	0	1	1	2.5	2	2	2	0	1	9	6.7	
at Fla. Atlantic	01/08/2022	*	33:26	0-9	.000	0-3	.000	2-2	1.000	1	4	5	2.7	0	5	1	0	1	2	6.3	
at North Texas	01/13/2022	*	34:36	1-6	.167	0-2	.000	4-4	1.000	0	1	1	2.5	1	2	0	0	0	6	6.3	
at Rice	01/15/2022	*	40:00	5-8	.625	3-4	.750	4-5	.800	1	2	3	2.6	1	7	2	0	2	17	7.1	
FIU	01/20/2022	*	35:24	1-5	.200	1-4	.250	4-6	.667	0	1	1	2.5	3	3	2	0	2	7	7.1	
Fla. Atlantic	01/22/2022	*	36:08	1-7	.143	1-5	.200	3-6	.500	0	6	6	2.7	0	6	1	0	1	6	7.0	
at Middle Tenn.	01/27/2022	*	33:18	3-9	.333	1-5	.200	1-1	1.000	0	2	2	2.6	3	2	4	0	3	8	7.1	
at UAB	01/29/2022	*	39:05	4-11	.364	4-8	.500	1-2	.500	0	2	2	2.6	1	3	1	0	1	13	7.4	
Old Dominion	02/03/2022	*	40:00	3-10	.300	2-4	.500	0-0	.000	0	3	3	2.6	3	4	0	0	4	8	7.4	
Charlotte	02/05/2022	*	38:04	1-8	.125	0-4	.000	0-0	.000	0	6	6	2.8	2	2	0	0	2	2	7.2	
at FIU	02/10/2022	*	37:44	6-17	.353	4-8	.500	2-2	1.000	1	1	2	2.8	2	3	4	0	0	18	7.7	
UTEP	02/13/2022	*	36:27	6-13	.462	4-6	.667	0-0	.000	1	3	4	2.8	1	4	1	0	2	16	8.0	
at Old Dominion	02/17/2022	*	38:15	5-11	.455	3-6	.500	2-3	.667	1	7	8	3.0	1	3	1	0	0	15	8.3	
at Charlotte	02/19/2022	*	35:54	8-14	.571	3-3	1.000	4-6	.667	0	6	6	3.2	1	3	3	0	3	23	9.0	
Middle Tenn.	02/24/2022	*	38:55	3-9	.333	1-6	.167	0-0	.000	0	2	2	3.1	2	5	3	0	2	7	8.9	
Totals		25	861:30	73-225	.324	36-106	.340	40-54	.741	10	68	78	3.1	39	98	42	0	50	222	8.9	

Player Averages

Games Played	Minutes/game	Points/game	FG Pct	3FG Pct	FT Pct	Rebounds/game	Assists/game	Turnovers/game	Assist/Turnover ratio	Steals/game	Blocks/game
25	34.5	8.9	32.4	34.0	74.1	3.1	3.9	1.7	2.3	2.0	0.0

Career Superlatives

	Sea.	Car.
10+ Pts:	8	37
20+ Pts:	1	2
5+ Rebs:	6	15
10+ Rebs:	0	0
5+ Asts:	9	40
2+ Blks:	0	2
2+ Stls:	14	54
Double-Double:	0	0



CAREER STATISTICS

				Field Goals		3-Point		F-Throws		Rebounds				Scoring						
SEASON	TEAM	GP-GS	MIN/AVG	FG-FGA	FG%	3FG-3FGA	3FG%	FT-FTA	FT%	OFF	DEF	TOT	AVG	PF-FO	A	TO	BLK	STL	PTS	AVG
2017-18	XU	30-8	636/21.2	55-133	.414	32-82	.390	40-55	.727	8	45	53	1.8	33-0	74	35	1	18	182	6.1
2018-19	XU	30-30	944/31.5	83-227	.366	33-112	.295	48-75	.640	9	59	68	2.3	40-0	105	53	4	37	247	8.2
2019-20	XU	30-30	1057/35.2	81-229	.354	33-85	.388	30-51	.588	15	73	88	2.9	60-2	135	59	4	56	225	7.5
2020-21	XU	15-15	461/30.7	28-73	.384	10-33	.303	16-25	.640	13	38	51	3.4	28-0	57	18	0	37	82	5.5
2021-22	Marsh	25-25	862/34.5	73-225	.324	36-106	.340	40-54	.741	10	68	78	3.1	39-0	98	42	0	50	222	8.9
TOTAL FOR Marsh		25-25	862/34.5	73-225	.324	36-106	.340	40-54	.741	10	68	78	3.1	39-0	98	42	0	50	222	8.9
TOTAL		130-108	3960/30.5	320-887	.361	144-418	.344	174-260	.669	55	283	338	2.6	200-2	469	207	9	198	958	7.4



11 Ksenija Mitric

5-8 | G | Banja Luka, Bosnia & Herzegovina | Celje Basketball Club

Opponent	Date	GS	MIN	Total		3-Pointers		Free throws		Rebounds				PF		A		BLK		STL		PTS		AVG
				FG-FGA	PCT	3FG-3FGA	PCT	FT-FTA	PCT	OFF	DEF	TOT	AVG	PF	A	TO	BLK	STL	PTS					
Bluefield St.	11/09/2021		12:41	0-2	.000	0-0	.000	0-0	.000	0	1	1	1.0	1	0	1	0	1	0	1	0	0	0	0.0
Morehead St.	11/19/2021		02:23	0-2	.000	0-2	.000	0-0	.000	0	0	0	0.5	0	0	0	0	0	0	0	0	0	0	0.0
Alderson Broaddus	12/15/2021		11:54	1-5	.200	1-4	.250	0-0	.000	1	1	2	1.0	0	2	0	0	0	0	3	1.0			
vs Oakland	12/20/2021		00:56	0-0	.000	0-0	.000	0-0	.000	0	0	0	0.8	0	0	1	0	0	0	0	0	0	0	0.8
at Middle Tenn.	01/27/2022		01:10	0-0	.000	0-0	.000	0-0	.000	0	0	0	0.6	0	0	0	0	0	0	0	0	0	0	0.6
Totals		0	29:03	1-9	.111	1-6	.167	0-0	.000	1	2	3	0.6	1	2	2	0	1	3	0.6				

Player Averages

Games Played	Minutes/ game	Points/ game	FG Pct	3FG Pct	FT Pct	Rebounds/ game	Assists/ game	Turnovers/ game	Assist/Turnover ratio	Steals/ game	Blocks/ game
5	5.8	0.6	11.1	16.7	0.0	0.6	0.4	0.4	1.0	0.2	0.0

CAREER HIGHS

POINTS

S:..... 3 vs. AB, 12/15/21

C: 8 vs. Radford, 12/6/20

FIELD GOALS

S:..... 1 vs. AB, 12/15/21

C: 3 vs. Radford, 12/6/20

FGA

S:..... 5 vs. AB, 12/15/21

C: 10 vs. Radford, 12/6/20

3-POINTERS

S:..... 1 vs. AB, 12/15/21

C: 2 vs. Radford, 12/6/20

3PTA

S:..... 4 vs. AB, 12/15/21

C: 6 vs. Radford, 12/6/20

FREE THROWS

S:..... N/A

C: N/A

FTA

S:..... N/A

C: N/A

REBOUNDS

S:..... 2 vs. AB, 12/15/21

C: 2 (3x) last vs. AB, 12/15/21

ASSISTS

S:..... 2 vs. AB, 12/15/21

C: 3 (2x) last at #9 UK, 12/9/20

BLOCKS

S:..... N/A

C: N/A

STEALS

S:..... 1 vs. Bluefield St., 11/9/21

C: 1 vs. Bluefield St., 11/9/21

MINUTES

S:..... 13 vs. Bluefield St., 11/9/21

C: 22 vs. Radford, 12/6/20

Career Superlatives

	Sea.	Car.
10+ Pts:	0	0
20+ Pts:	0	0
5+ Rebs:	0	0
10+ Rebs:	0	0
5+ Asts:	0	0
2+ Blks:	0	0
2+ Stls:	0	0
Double-Double:	0	0



CAREER STATISTICS

				Field Goals		3-Point		F-Throws		Rebounds									Scoring	
SEASON	TEAM	GP-GS	MIN/AVG	FG-FGA	FG%	3FG-3FGA	3FG%	FT-FTA	FT%	OFF	DEF	TOT	AVG	PF-FO	A	TO	BLK	STL	PTS	AVG
2020-21	Marsh	2-0	39/19.3	3-14	.214	2-10	.200	0-0	.000	0	4	4	2.0	1-0	6	3	0	0	8	4.0
2021-22	Marsh	5-0	29/5.8	1-9	.111	1-6	.167	0-0	.000	1	2	3	0.6	1-0	2	2	0	1	3	0.6
TOTAL		7-0	68/9.7	4-23	.174	3-16	.188	0-0	.000	1	6	7	1.0	2-0	8	5	0	1	11	1.6



21 Sarah Liberatore

5-10 | G | Greensburg, Pa.
Hempfield Area HS

Opponent	Date	GS	MIN	Total		3-Pointers		Free throws		Rebounds				PF		A		BLK		STL		PTS	
				FG-FGA	PCT	3FG-3FGA	PCT	FT-FTA	PCT	OFF	DEF	TOT	AVG	PF	A	TO	BLK	STL	PTS	AVG			
Bluefield St.	11/09/2021		07:13	0-1	.000	0-1	.000	2-2	1.000	1	0	1	1.0	0	2	1	0	1	2	2.0			
at Purdue	11/22/2021		00:29	0-1	.000	0-1	.000	0-0	.000	0	0	0	0.5	0	0	0	0	0	0	1.0			
at Michigan St.	11/28/2021		00:05	0-0	.000	0-0	.000	0-0	.000	0	0	0	0.3	0	0	0	0	0	0	0.7			
Alderson Broadbus	12/15/2021		18:38	5-9	.556	4-6	.667	1-2	.500	3	0	3	1.0	0	2	2	0	1	15	4.3			
vs Oakland	12/20/2021		07:23	0-1	.000	0-1	.000	0-0	.000	0	1	1	1.0	1	0	0	0	0	0	3.4			
at Fla. Atlantic	01/08/2022		01:15	0-0	.000	0-0	.000	0-0	.000	0	0	0	0.8	0	0	0	0	0	0	2.8			
at Middle Tenn.	01/27/2022		02:40	0-1	.000	0-1	.000	0-0	.000	0	0	0	0.7	0	0	0	0	0	0	2.4			
at FIU	02/10/2022		01:09	0-1	.000	0-1	.000	0-0	.000	0	0	0	0.6	0	0	0	0	0	0	2.1			
Totals		0	38:52	5-14	.357	4-11	.364	3-4	.750	4	1	5	0.6	1	4	3	0	2	17	2.1			

Player Averages

Games Played	Minutes/ game	Points/ game	FG Pct	3FG Pct	FT Pct	Rebounds/ game	Assists/ game	Turnovers/ game	Assist/Turnover ratio	Steals/ game	Blocks/ game
8	4.9	2.1	35.7	36.4	75.0	0.6	0.5	0.4	1.3	0.3	0.0

CAREER HIGHS

POINTS

S:..... 15 vs. AB, 12/15/21
C:..... 15 vs. AB, 12/15/21

FIELD GOALS

S:..... 5 vs. AB, 12/15/21
C:..... 5 vs. AB, 12/15/21

FGA

S:..... 9 vs. AB, 12/15/21
C:..... 9 vs. AB, 12/15/21

3-POINTERS

S:..... 4 vs. AB, 12/15/21
C:..... 4 vs. AB, 12/15/21

3PTA

S:..... 6 vs. AB, 12/15/21
C:..... 6 vs. AB, 12/15/21

FREE THROWS

S:..... 2 vs. Bluefield St., 11/9/21
C:..... 2 vs. Bluefield St., 11/9/21

FTA

S:..... 2 (2x) last vs. AB, 12/15/21
C:..... 2 (2x) last vs. AB, 12/15/21

REBOUNDS

S:..... 3 vs. AB, 12/15/21
C:..... 3 vs. AB, 12/15/21

ASSISTS

S:..... 2 (2x) last vs. AB, 12/15/21
C:..... 2 (2x) last vs. AB, 12/15/21

BLOCKS

S:..... N/A
C:..... N/A

STEALS

S:..... 1 (2x) last vs. AB, 12/15/21
C:..... 1 (3x) last vs. AB, 12/15/21

MINUTES

S:..... 19 vs. AB, 12/15/21
C:..... 19 vs. AB, 12/15/21

Career Superlatives

	Sea.	Car.
10+ Pts:	1	1
20+ Pts:	0	0
5+ Rebs:	0	0
10+ Rebs:	0	0
5+ Asts:	0	0
2+ Blks:	0	0
2+ Stls:	0	0
Double-Double:	0	0



CAREER STATISTICS

				Field Goals		3-Point		F-Throws		Rebounds									Scoring	
SEASON	TEAM	GP-GS	MIN/AVG	FG-FGA	FG%	3FG-3FGA	3FG%	FT-FTA	FT%	OFF	DEF	TOT	AVG	PF-FO	A	TO	BLK	STL	PTS	AVG
2020-21	Marsh	10-0	48/4.8	4-10	.400	3-8	.375	0-1	.000	0	1	1	0.1	2-0	0	4	0	1	11	1.1
2021-22	Marsh	8-0	39/4.9	5-14	.357	4-11	.364	3-4	.750	4	1	5	0.6	1-0	4	3	0	2	17	2.1
TOTAL		18-0	87/4.8	9-24	.375	7-19	.368	3-5	.600	4	2	6	0.3	3-0	4	7	0	3	28	1.6



23 Alexis Johnson

5-10 | F | Southfield, Mich.
Southfield HS for the Arts & Tech.

CAREER HIGHS

POINTS

S:..... 18 vs. AB, 12/15/21
S:..... 18 (2x) last vs. AB, 12/15/21

FIELD GOALS

S:..... 7 vs. AB, 12/15/21
C: 9 vs. ODU, 2/5/21

FGA

S:..... 13 vs. MT, 2/24/22
C: 16 at Charlotte, 1/9/21

3-POINTERS

S:..... 3 vs. MT, 2/24/22
C: 3 vs. MT, 2/24/22

3PTA

S:..... 11 vs. MT, 2/24/22
C: 11 vs. MT, 2/24/22

FREE THROWS

S:..... 2 (2x) last vs. AB, 12/15/21
C: 2 (6x) last vs. AB, 12/15/21

FTA

S:..... 3 vs. Charlotte, 2/5/22
C: 4 (3x) last vs. ODU, 2/6/21

REBOUNDS

S:..... 7 (2x) last vs. AB, 12/15/21
C: 14 at Charlotte, 1/9/21

ASSISTS

S:..... 2 (3x) last vs. AB, 12/15/21
C: 2 (5x) last vs. AB, 12/15/21

BLOCKS

S:..... 1 (2x) vs. Charlotte, 2/5/22
C: ... 1 (4x) last vs. Charlotte, 2/5/22

STEALS

S:..... 3 vs. LA Tech, 12/30/21
C: .. 3 (3x) last vs. LA Tech, 12/30/21

MINUTES

S:..... 26 vs. Charlotte, 2/5/22
C: 34 vs. LA Tech, 1/1/21

Opponent	Date	GS	MIN	Total		3-Pointers		Free throws		Rebounds				PF		A	TO	BLK	STL	PTS	AVG
				FG-FGA	PCT	3FG-3FGA	PCT	FT-FTA	PCT	OFF	DEF	TOT	AVG								
Bluefield St.	11/09/2021		16:39	5-10	.500	0-1	.000	0-2	.000	3	3	6	6.0	3	0	0	0	0	10	10.0	
at Radford	11/14/2021		18:31	2-7	.286	0-3	.000	2-2	1.000	0	3	3	4.5	3	0	1	0	0	6	8.0	
Morehead St.	11/19/2021		15:38	2-9	.222	0-2	.000	1-2	.500	1	6	7	5.3	2	2	0	1	0	5	7.0	
at Purdue	11/22/2021		12:31	1-1	1.000	0-0	.000	0-0	.000	0	4	4	5.0	1	0	3	0	0	2	5.8	
at Michigan St.	11/28/2021		11:07	1-2	.500	1-1	1.000	0-0	.000	1	3	4	4.8	3	2	0	0	0	3	5.2	
Coppin St.	12/04/2021		11:19	2-7	.286	0-3	.000	0-0	.000	0	3	3	4.5	2	0	1	0	1	4	5.0	
at St. Bonaventure	12/12/2021		03:51	0-2	.000	0-1	.000	0-0	.000	0	2	2	4.1	0	0	1	0	0	0	4.3	
Alderson Broaddus	12/15/2021		25:07	7-10	.700	2-3	.667	2-2	1.000	1	6	7	4.5	0	2	2	0	2	18	6.0	
vs Oakland	12/20/2021		05:32	1-1	1.000	0-0	.000	0-0	.000	0	1	1	4.1	1	0	0	0	0	2	5.6	
Louisiana Tech	12/30/2021		07:58	0-3	.000	0-2	.000	0-0	.000	1	3	4	4.1	2	1	0	0	3	0	5.0	
Southern Miss.	01/01/2022		09:57	2-3	.667	0-0	.000	0-0	.000	2	3	5	4.2	0	1	1	0	0	4	4.9	
at Fla. Atlantic	01/08/2022		09:08	1-5	.200	0-1	.000	0-0	.000	1	0	1	3.9	1	1	0	0	1	2	4.7	
at North Texas	01/13/2022		07:46	0-1	.000	0-0	.000	0-0	.000	0	1	1	3.7	1	1	0	0	0	0	4.3	
at Rice	01/15/2022		12:43	3-4	.750	1-2	.500	0-0	.000	2	4	6	3.9	4	1	0	0	1	7	4.5	
FIU	01/20/2022		09:36	1-1	1.000	1-1	1.000	0-0	.000	0	2	2	3.7	2	0	1	0	0	3	4.4	
Fla. Atlantic	01/22/2022		09:22	0-1	.000	0-1	.000	0-0	.000	1	2	3	3.7	2	0	1	0	1	0	4.1	
at Middle Tenn.	01/27/2022		09:36	0-3	.000	0-3	.000	0-0	.000	1	0	1	3.5	3	0	1	0	0	0	3.9	
at UAB	01/29/2022		05:05	0-0	.000	0-0	.000	1-2	.500	0	2	2	3.4	1	0	0	0	0	1	3.7	
Old Dominion	02/03/2022		14:52	1-4	.250	0-2	.000	0-0	.000	2	0	2	3.4	3	1	2	0	0	2	3.6	
Charlotte	02/05/2022		25:46	2-8	.250	1-4	.250	0-3	.000	2	4	6	3.5	4	1	0	1	2	5	3.7	
at FIU	02/10/2022		13:04	1-4	.250	0-1	.000	0-0	.000	0	3	3	3.5	3	0	1	0	0	2	3.6	
UTEP	02/13/2022		17:04	2-6	.333	2-3	.667	0-0	.000	0	5	5	3.5	2	1	1	0	1	6	3.7	
at Old Dominion	02/17/2022		19:05	1-4	.250	1-1	1.000	0-0	.000	0	4	4	3.6	2	0	2	0	2	3	3.7	
at Charlotte	02/19/2022		13:08	1-3	.333	0-2	.000	0-0	.000	1	5	6	3.7	0	1	0	0	0	2	3.6	
Middle Tenn.	02/24/2022		26:30	3-13	.231	3-11	.273	0-0	.000	0	4	4	3.7	0	2	1	0	0	9	3.8	
Totals		0	330:55	39-112	.348	12-48	.250	6-13	.462	19	73	92	3.7	45	17	19	2	14	96	3.8	

Player Averages

Games Played	Minutes/ game	Points/ game	FG Pct	3FG Pct	FT Pct	Rebounds/ game	Assists/ game	Turnovers/ game	Assist/Turnover ratio	Steals/ game	Blocks/ game
25	13.2	3.8	34.8	25.0	46.2	3.7	0.7	0.8	0.9	0.6	0.1

Career Superlatives

	Sea.	Car.
10+ Pts:	2	8
20+ Pts:	0	0
5+ Rebs:	8	19
10+ Rebs:	0	2
5+ Asts:	0	0
2+ Blks:	0	0
2+ Stls:	4	8
Double-Double:	0	2



CAREER STATISTICS

				Field Goals		3-Point		F-Throws		Rebounds				Scoring						
SEASON	TEAM	GP-GS	MIN/AVG	FG-FGA	FG%	3FG-3FGA	3FG%	FT-FTA	FT%	OFF	DEF	TOT	AVG	PF-FO	A	TO	BLK	STL	PTS	AVG
2019-20	Marsh	15-0	88/5.9	11-23	.478	1-4	.250	4-10	.400	6	18	24	1.6	18-0	2	7	0	6	27	1.8
2020-21	Marsh	17-4	327/19.3	56-108	.519	7-23	.304	7-19	.368	29	71	100	5.9	37-0	10	24	2	15	126	7.4
2021-22	Marsh	25-0	331/13.2	39-112	.348	12-48	.250	6-13	.462	19	73	92	3.7	45-0	17	19	2	14	96	3.8
TOTAL		57-4	747/13.1	106-243	.436	20-75	.267	17-42	.405	54	162	216	3.8	100-0	29	50	4	35	249	4.4



24 Kennedi Colclough

6-0 | F | Crofton, Md.
Stetson University

CAREER HIGHS

POINTS

S:.....23 vs. Coppin St., 12/4/21
C: .25 vs. Trinity Baptist, 11/23/19*

FIELD GOALS

S:.....8 at Michigan State, 11/28/21
C: .10 vs. Trinity Baptist, 11/23/19*

FGA

S:.....16 vs. Oakland, 12/20/21
C:17 vs. Florida, 11/22/17*

3-POINTERS

S:.....1 (12x) last at ODU, 2/17/22
C:2 (4x) last LA Tech, 3/10/21

3PTA

S:..4 (2x), last at Charlotte, 2/19/22
C:5 vs. LA Tech, 3/10/21

FREE THROWS

S:.....10 vs. Coppin St., 12/4/21
C:10 vs. Coppin St., 12/4/21

FTA

S:.....10 vs. Coppin St., 12/4/21
C:12 vs. Webber Int., 11/11/16*

REBOUNDS

S:.....8 vs. FAU, 1/22/22
C:13 (2x) last at J'ville, 1/18/20*

ASSISTS

S:..3 (3x) last at Charlotte, 2/19/22
C:4 (2x) last vs. Del. State, 12/30/17*

BLOCKS

S:.....2 (2x) last vs. AB, 12/15/21
C:4 vs. Louisiana Tech, 1/1/21

STEALS

S:.....3 at Rice, 1/15/22
C:3 (2x) last at Rice, 1/15/22

MINUTES

S:.....40 vs. FAU, 1/22/22
C:40 (3x) last vs. FAU, 1/22/22

* accomplished at Stetson

Opponent	Date	GS	MIN	Total		3-Pointers		Free throws		Rebounds											
				FG-FGA	PCT	3FG-3FGA	PCT	FT-FTA	PCT	OFF	DEF	TOT	AVG	PF	A	TO	BLK	STL	PTS	AVG	
Bluefield St.	11/09/2021	*	16:30	6-9	.667	0-1	.000	3-5	.600	1	2	3	3.0	1	0	0	0	2	15	15.0	
at Radford	11/14/2021	*	34:06	7-13	.538	1-2	.500	2-2	1.000	2	4	6	4.5	3	0	0	2	0	17	16.0	
Morehead St.	11/19/2021	*	25:41	3-8	.375	0-2	.000	0-0	.000	1	2	3	4.0	4	3	3	1	1	6	12.7	
at Purdue	11/22/2021	*	32:28	6-13	.462	0-0	.000	7-8	.875	2	2	4	4.0	4	1	1	0	0	19	14.3	
at Michigan St.	11/28/2021	*	33:19	8-12	.667	1-2	.500	2-2	1.000	0	1	1	3.4	4	0	3	0	1	19	15.2	
Coppin St.	12/04/2021	*	31:57	6-12	.500	1-3	.333	10-10	1.000	5	1	6	3.8	2	3	0	1	0	23	16.5	
at St. Bonaventure	12/12/2021	*	29:09	4-13	.308	0-1	.000	3-4	.750	0	4	4	3.9	3	2	5	0	0	11	15.7	
Alderson Broaddus	12/15/2021	*	21:53	2-6	.333	0-2	.000	3-6	.500	1	2	3	3.8	2	1	2	2	0	7	14.6	
vs Oakland	12/20/2021	*	31:15	6-16	.375	0-2	.000	2-2	1.000	2	2	4	3.8	3	1	2	1	2	14	14.6	
Louisiana Tech	12/30/2021	*	37:22	5-8	.625	1-2	.500	2-2	1.000	2	4	6	4.0	2	1	2	0	1	13	14.4	
Southern Miss.	01/01/2022	*	29:36	5-8	.625	1-1	1.000	1-2	.500	2	1	3	3.9	4	2	4	1	0	12	14.2	
at North Texas	01/13/2022	*	22:10	5-9	.556	1-2	.500	2-2	1.000	1	0	1	3.7	4	1	0	1	1	13	14.1	
at Rice	01/15/2022	*	30:33	7-14	.500	1-1	1.000	1-3	.333	0	3	3	3.6	4	0	1	1	3	16	14.2	
FIU	01/20/2022	*	31:15	4-8	.500	0-1	.000	4-6	.667	1	2	3	3.6	3	1	2	0	1	12	14.1	
Fla. Atlantic	01/22/2022	*	40:38	5-12	.417	1-4	.250	4-6	.667	3	5	8	3.9	3	0	3	0	1	15	14.1	
at Middle Tenn.	01/27/2022	*	28:49	1-8	.125	1-3	.333	4-4	1.000	1	1	2	3.8	2	0	3	0	2	7	13.7	
at UAB	01/29/2022	*	23:40	2-7	.286	0-1	.000	1-2	.500	0	1	1	3.6	4	0	2	0	0	5	13.2	
Old Dominion	02/03/2022	*	36:07	3-12	.250	1-3	.333	2-4	.500	0	3	3	3.6	3	0	1	0	0	9	12.9	
Charlotte	02/05/2022	*	23:58	6-9	.667	0-2	.000	0-0	.000	0	0	0	3.4	5	2	3	1	1	12	12.9	
UTEP	02/13/2022	*	30:03	3-8	.375	1-2	.500	1-4	.250	0	3	3	3.4	3	0	2	0	2	8	12.7	
at Old Dominion	02/17/2022	*	29:37	4-10	.400	1-1	1.000	0-0	.000	0	6	6	3.5	3	1	5	0	0	9	12.5	
at Charlotte	02/19/2022	*	35:34	2-7	.286	1-4	.250	0-2	.000	2	3	5	3.5	3	3	0	0	0	5	12.1	
Middle Tenn.	02/24/2022	*	29:00	3-5	.600	0-1	.000	0-0	.000	1	1	2	3.5	5	2	2	1	0	6	11.9	
Totals			23 684:41	103-227	.454	13-43	.302	54-76	.711	27	53	80	3.5	74	24	46	12	18	273	11.9	

Player Averages

Games Played	Minutes/ game	Points/ game	FG Pct	3FG Pct	FT Pct	Rebounds/ game	Assists/ game	Turnovers/ game	Assist/Turnover ratio	Steals/ game	Blocks/ game
23	29.8	11.9	45.4	30.2	71.1	3.5	1.0	2.0	0.5	0.8	0.5

Career Superlatives

	Sea.	Car.
10+ Pts:	14	48
20+ Pts:	1	4
5+ Rebs:	6	42
10+ Rebs:	0	8
5+ Asts:	0	0
2+ Blks:	2	9
2+ Stls:	5	16
Double-Double:	0	8



CAREER STATISTICS

SEASON	TEAM	GP-GS	MIN/AVG	Field Goals FG-FGA FG%	3-Point 3FG-3FGA 3FG%	F-Throws FT-FTA FT%	Rebounds OFF DEF TOT AVG	PF-FO	A	TO	BLK	STL	Scoring PTS AVG
2016-17	Stet	30-4	401/13.4	59-109 .541	2-4 .500	24-39 .615	43 51 94 3.1	58-0	15	24	8	14	144 4.8
2017-18	Stet	17-17	564/33.2	87-185 .470	3-16 .188	44-54 .815	36 79 115 6.8	42-2	29	50	2	14	221 13.0
2018-19	Stet	1-0	7/7.0	1-2 .500	0-0 .000	1-2 .500	1 1 2 2.0	1-0	0	1	0	0	3 3.0
2019-20	Stet	23-6	413/18.0	62-133 .466	0-6 .000	29-50 .580	31 69 100 4.3	44-2	18	41	8	12	153 6.7
2020-21	Marsh	17-17	419/24.6	60-130 .462	8-30 .267	11-18 .611	23 56 79 4.6	40-3	17	24	13	7	139 8.2
2021-22	Marsh	23-23	685/29.8	103-227 .454	13-43 .302	54-76 .711	27 53 80 3.5	74-2	24	46	12	18	273 11.9
TOTAL FOR Marsh		40-40	1104/27.6	163-357 .457	21-73 .288	65-94 .691	50 109 159 4.0	114-5	41	70	25	25	412 10.3
TOTAL		111-67	2489/22.4	372-786 .473	26-99 .263	163-239 .682	161 309 470 4.2	259-9	103	186	43	65	933 8.4



30 Aarionna Redman

5-10 | F | Pickerington, Oh
Pickerington Central HS

CAREER HIGHS

POINTS

S:....8 at St. Bonaventure, 12/12/21

C: ...8 at St. Bonaventure, 12/12/21

FIELD GOALS

S:..... 3 (2x) last vs. AB, 12/15/21

C: 3 (2x) last vs. AB, 12/15/21

FGA

S:..... 6 (2x) last vs. AB, 12/15/21

C: 6 (2x) last vs. AB, 12/15/21

3-POINTERS

S:... 2 (2x) last at St. Bona, 12/12/21

S:... 2 (2x) last at St. Bona, 12/12/21

3PTA

S:...3 (3x) last at St. Bona, 12/12/21

C: ..3 (3x) last at St. Bona, 12/12/21

FREE THROWS

S:..... 1 (2x) last at MTSU, 1/27/22

C: 1 (2x) last at MTSU, 1/27/22

FTA

S:..... 2 (2x) last at MTSU, 1/27/22

C: 2 (2x) last at MTSU, 1/27/22

REBOUNDS

S:....9 at St. Bonaventure, 12/12/21

C: ...9 at St. Bonaventure, 12/12/21

ASSISTS

S:.....2 (2x) last vs. FAU, 1/22/22

C:2 (2x) last vs. FAU, 1/22/22

BLOCKS

S:...1 (2x) last at St. Bona, 12/12/21

C: ..1 (2x) last at St. Bona, 12/12/21

STEALS

S:..... 3 vs. Bluefield St., 11/9/21

C: 3 vs. Bluefield St., 11/9/21

MINUTES

S:...21 at St. Bonaventure, 12/12/21

C: .21 at St. Bonaventure, 12/12/21

Opponent	Date	GS	MIN	Total		3-Pointers		Free throws		Rebounds											
				FG-FGA	PCT	3FG-3FGA	PCT	FT-FTA	PCT	OFF	DEF	TOT	AVG	PF	A	TO	BLK	STL	PTS	AVG	
Bluefield St.	11/09/2021		17:42	2-3	.667	2-3	.667	0-0	.000	1	2	3	3.0	2	2	2	1	3	6	6.0	
at Radford	11/14/2021		01:44	0-1	.000	0-0	.000	0-0	.000	0	1	1	2.0	0	0	0	0	0	0	3.0	
Morehead St.	11/19/2021		07:22	1-4	.250	0-0	.000	0-0	.000	1	0	1	1.7	1	0	1	0	0	2	2.7	
at Purdue	11/22/2021		04:42	1-2	.500	0-0	.000	0-0	.000	1	1	2	1.8	0	0	1	0	0	2	2.5	
at Michigan St.	11/28/2021		05:57	0-0	.000	0-0	.000	0-0	.000	0	2	2	1.8	2	1	0	0	0	0	2.0	
Coppin St.	12/04/2021		09:44	1-2	.500	1-1	1.000	0-0	.000	0	3	3	2.0	3	1	0	0	0	3	2.2	
at St. Bonaventure	12/12/2021		21:26	3-6	.500	2-3	.667	0-1	.000	2	7	9	3.0	1	0	0	1	0	8	3.0	
Alderson Broaddus	12/15/2021		20:45	3-6	.500	0-1	.000	0-0	.000	0	6	6	3.4	4	0	0	0	1	6	3.4	
vs Oakland	12/20/2021		12:00	0-1	.000	0-1	.000	1-2	.500	0	1	1	3.1	2	1	0	0	0	1	3.1	
Louisiana Tech	12/30/2021		11:24	1-2	.500	1-2	.500	0-0	.000	0	0	0	2.8	1	1	2	0	0	3	3.1	
Southern Miss.	01/01/2022		09:13	0-3	.000	0-1	.000	0-0	.000	0	1	1	2.6	0	1	2	0	1	0	2.8	
at Fla. Atlantic	01/08/2022		19:34	1-3	.333	0-1	.000	0-0	.000	1	0	1	2.5	3	0	1	0	0	2	2.8	
at North Texas	01/13/2022		11:09	1-3	.333	0-1	.000	0-0	.000	0	1	1	2.4	0	0	1	0	1	2	2.7	
FIU	01/20/2022		03:06	0-1	.000	0-0	.000	0-0	.000	0	0	0	2.2	0	0	0	0	0	0	2.5	
Fla. Atlantic	01/22/2022		07:44	0-2	.000	0-0	.000	0-0	.000	1	1	2	2.2	1	2	0	0	0	0	2.3	
at Middle Tenn.	01/27/2022		16:10	1-5	.200	0-1	.000	1-2	.500	1	3	4	2.3	3	0	1	0	2	3	2.4	
at UAB	01/29/2022		12:05	0-1	.000	0-1	.000	0-0	.000	1	0	1	2.2	2	0	1	0	0	0	2.2	
Old Dominion	02/03/2022		02:08	0-2	.000	0-1	.000	0-0	.000	0	0	0	2.1	1	0	0	0	0	0	2.1	
at FIU	02/10/2022		07:27	0-1	.000	0-0	.000	0-0	.000	1	2	3	2.2	2	0	0	0	0	0	2.0	
UTEP	02/13/2022		02:21	0-1	.000	0-1	.000	0-0	.000	0	0	0	2.1	0	0	0	0	0	0	1.9	
at Charlotte	02/19/2022		06:01	0-1	.000	0-1	.000	0-0	.000	0	1	1	2.0	2	0	1	0	1	0	1.8	
Middle Tenn.	02/24/2022		02:37	0-1	.000	0-1	.000	0-0	.000	0	1	1	2.0	0	0	0	0	0	0	1.7	
Totals		0	212:21	15-51	.294	6-20	.300	2-5	.400	10	33	43	2.0	30	9	13	2	9	38	1.7	

Player Averages

Games Played	Minutes/game	Points/game	FG Pct	3FG Pct	FT Pct	Rebounds/game	Assists/game	Turnovers/game	Assist/Turnover ratio	Steals/game	Blocks/game
22	9.7	1.7	29.4	30.0	40.0	2.0	0.4	0.6	0.7	0.4	0.1

Career Superlatives

	Sea.	Car.
10+ Pts:	0	0
20+ Pts:	0	0
5+ Rebs:	2	2
10+ Rebs:	0	0
5+ Asts:	0	0
2+ Blks:	0	0
2+ Stls:	2	2
Double-Double:	0	0



CAREER STATISTICS

				Field Goals		3-Point		F-Throws		Rebounds				Scoring						
SEASON	TEAM	GP-GS	MIN/AVG	FG-FGA	FG%	3FG-3FGA	3FG%	FT-FTA	FT%	OFF	DEF	TOT	AVG	PF-FO	A	TO	BLK	STL	PTS	AVG
2021-22	Marsh	22-0	212/9.7	15-51	.294	6-20	.300	2-5	.400	10	33	43	2.0	30-0	9	13	2	9	38	1.7
TOTAL		22-0	212/9.7	15-51	.294	6-20	.300	2-5	.400	10	33	43	2.0	30-0	9	13	2	9	38	1.7



33 Brianah Ferby

5-6 | G | Smyrna, Tenn.
Stewarts Creek HS | Austin Peay

CAREER HIGHS

POINTS

S:..... 20 at FAU, 1/8/22
C:..... 28 at Belmont, 1/20/18*

FIELD GOALS

S:..... 6 at FAU, 1/8/22
C: 10 at North Alabama, 11/25/20*

FGA

S:..... 14 at FAU, 1/8/22
C:..... 18 at Belmont, 1/20/18*

3-POINTERS

S:..... 3 (2x) last at FAU, 1/8/22
C:..... 7 at Belmont, 1/20/18*

3PTA

S:..... 9 (2x) last at FAU, 1/8/22
C:..... 13 at Belmont, 1/20/18*

FREE THROWS

S:..... 5 (2x) at FAU, 1/8/22
C:..... 8 vs. Eastern Ill., 2/20/21*

FTA

S:..... 9 vs. AB, 12/15/21
C:..... 10 vs. ECU, 1/2/21*

REBOUNDS

S:..... 9 vs. Coppin St., 12/4/21
C:..... 9 vs. Coppin St., 12/4/21

ASSISTS

S:..... 2 (3x) last vs. UTEP, 2/13/22
C: 7 vs. Trevecca Nazarene, 11/28/20*

BLOCKS

S:..... N/A
C:..... 2 at Tennessee Tech, 2/25/21*

STEALS

S:..... 3 (2x), last at ODU, 2/17/22
C: 6 (2x) last vs. T. Nazarene, 11/28/20*

MINUTES

S:..... 35 at FAU, 1/8/22
C:..... 37 at Belmont, 1/20/18*
* accomplished at Austin Peay

Opponent	Date	GS	MIN	Total		3-Pointers		Free throws		Rebounds				PF	A	TO	BLK	STL	PTS	AVG
				FG-FGA	PCT	3FG-3FGA	PCT	FT-FTA	PCT	OFF	DEF	TOT	AVG							
Bluefield St.	11/09/2021		15:35	4-7	.571	2-4	.500	3-4	.750	1	3	4	4.0	0	2	1	0	0	13	13.0
at Radford	11/14/2021		23:54	1-7	.143	1-4	.250	1-2	.500	2	2	4	4.0	3	1	2	0	3	4	8.5
Morehead St.	11/19/2021		17:23	1-5	.200	1-4	.250	0-0	.000	1	0	1	3.0	0	0	0	0	1	3	6.7
at Purdue	11/22/2021		24:38	5-13	.385	1-8	.125	0-0	.000	0	2	2	2.8	3	1	0	0	2	11	7.8
at Michigan St.	11/28/2021		24:38	3-7	.429	2-5	.400	2-2	1.000	1	2	3	2.8	3	2	3	0	1	10	8.2
Coppin St.	12/04/2021		26:11	4-10	.400	3-6	.500	1-2	.500	2	7	9	3.8	3	1	0	0	1	12	8.8
at St. Bonaventure	12/12/2021	*	29:47	2-11	.182	2-7	.286	0-0	.000	0	2	2	3.6	0	1	2	0	2	6	8.4
Alderson Broaddus	12/15/2021	*	25:01	2-8	.250	0-2	.000	5-9	.556	2	1	3	3.5	0	0	0	0	1	9	8.5
vs Oakland	12/20/2021	*	24:59	2-8	.250	0-2	.000	0-0	.000	1	4	5	3.7	1	1	0	0	1	4	8.0
Louisiana Tech	12/30/2021	*	16:26	4-8	.500	2-5	.400	2-4	.500	0	1	1	3.4	4	0	0	0	0	12	8.4
Southern Miss.	01/01/2022	*	29:31	2-9	.222	2-9	.222	4-4	1.000	1	3	4	3.5	2	1	0	0	2	10	8.5
at Fla. Atlantic	01/08/2022	*	35:00	6-14	.429	3-9	.333	5-6	.833	1	3	4	3.5	3	1	2	0	2	20	9.5
at North Texas	01/13/2022	*	27:07	1-12	.083	1-8	.125	2-2	1.000	0	2	2	3.4	3	1	2	0	2	5	9.2
at Rice	01/15/2022	*	30:02	1-8	.125	0-5	.000	0-0	.000	0	2	2	3.3	2	1	0	0	0	2	8.6
FIU	01/20/2022	*	33:15	3-12	.250	1-7	.143	4-6	.667	2	2	4	3.3	2	0	4	0	1	11	8.8
Fla. Atlantic	01/22/2022	*	32:34	3-7	.429	2-4	.500	3-5	.600	0	2	2	3.3	1	0	2	0	2	11	8.9
Old Dominion	02/03/2022	*	17:35	2-8	.250	1-3	.333	0-0	.000	0	1	1	3.1	0	1	1	0	0	5	8.7
Charlotte	02/05/2022	*	33:15	1-9	.111	0-4	.000	0-0	.000	1	7	8	3.4	1	1	0	0	0	2	8.3
at FIU	02/10/2022	*	28:09	3-7	.429	1-4	.250	0-0	.000	3	1	4	3.4	4	2	3	0	1	7	8.3
UTEP	02/13/2022	*	26:34	2-8	.250	1-5	.200	0-0	.000	1	1	2	3.4	2	2	2	0	2	5	8.1
at Old Dominion	02/17/2022	*	17:31	0-4	.000	0-2	.000	0-0	.000	0	1	1	3.2	3	1	0	0	3	0	7.7
at Charlotte	02/19/2022	*	11:47	0-6	.000	0-2	.000	0-0	.000	0	0	0	3.1	1	0	0	0	0	0	7.4
Middle Tenn.	02/24/2022	*	28:59	4-9	.444	1-4	.250	0-2	.000	1	4	5	3.2	2	1	1	0	0	9	7.4
Totals		17	579:52	56-197	.284	27-113	.239	32-48	.667	20	53	73	3.2	43	21	25	0	27	171	7.4

Player Averages

Games Played	Minutes/ game	Points/ game	FG Pct	3FG Pct	FT Pct	Rebounds/ game	Assists/ game	Turnovers/ game	Assist/Turnover ratio	Steals/ game	Blocks/ game
23	25.2	7.4	28.4	23.9	66.7	3.2	0.9	1.1	0.8	1.2	0.0

Career Superlatives

	Sea.	Car.
10+ Pts:	9	46
20+ Pts:	1	7
5+ Rebs:	4	20
10+ Rebs:	0	0
5+ Asts:	0	4
2+ Blks:	0	1
2+ Stls:	7	46
Double-D:	0	0



CAREER STATISTICS

				Field Goals		3-Point		F-Throws		Rebounds				Scoring						
SEASON	TEAM	GP-GS	MIN/AVG	FG-FGA	FG%	3FG-3FGA	3FG%	FT-FTA	FT%	OFF	DEF	TOT	AVG	PF-FO	A	TO	BLK	STL	PTS	AVG
2017-18	APSU	27-11	567/21.0	78-210	.371	34-109	.312	35-57	.614	31	37	68	2.5	46-0	20	25	2	31	225	8.3
2018-19	APSU	30-22	767/25.6	81-269	.301	41-144	.285	46-61	.754	16	45	61	2.0	58-1	41	27	4	32	249	8.3
2019-20	APSU	27-3	417/15.4	51-159	.321	20-89	.225	14-33	.424	27	22	49	1.8	41-0	23	14	1	19	136	5.0
2020-21	APSU	23-22	564/24.5	68-198	.343	28-95	.295	45-68	.662	35	52	87	3.8	49-0	54	27	4	47	209	9.1
2021-22	Marsh	23-17	580/25.2	56-197	.284	27-113	.239	32-48	.667	20	53	73	3.2	43-0	21	25	0	27	171	7.4
TOTAL FOR Marsh		23-17	580/25.2	56-197	.284	27-113	.239	32-48	.667	20	53	73	3.2	43-0	21	25	0	27	171	7.4
TOTAL		130-75	2895/22.3	334-1033	.323	150-550	.273	172-267	.644	129	209	338	2.6	237-1	159	118	11	156	990	7.6



34 Lorelei Roper

6-1 | F/C | Charlotte, N.C.
Carmel Christian HS

CAREER HIGHS

POINTS

S:..... 8 vs. Oakland, 12/20/21
C: 12 (2x) last vs. ODU, 2/5/21

FIELD GOALS

S:..... 4 vs. Oakland, 12/20/21
C: 6 (2x) last vs. ODU, 2/5/21

FGA

S:7 (2x) last at Michigan St, 11/28/21
C: 10 vs. FIU, 1/23/21

3-POINTERS

S:..... N/A
C: N/A

3PTA

S:..... N/A
C: 1 at Rice, 1/2/20

FREE THROWS

S:..... 2 at Purdue, 11/22/21
C: 3 at App. State, 11/25/18

FTA

S:..... 3 vs. Coppin State, 12/4/21
C: 6 vs. FIU, 1/23/21

REBOUNDS

S:..... 12 vs. UTEP, 2/13/22
C: 13 vs. ODU, 2/6/21

ASSISTS

S:..... 2 (6x) last at ODU, 2/17/22
C: 4 at MTSU, 3/4/21

BLOCKS

S:..... 4 (2x) last at UAB, 1/29/22
C: 4 (4x) last at UAB, 1/29/22

STEALS

S:..... 3 at FAU, 1/8/22
C: 3 at FAU, 1/8/22

MINUTES

S:..... 36 at FAU, 1/8/22
C: 36 at FAU, 1/8/22

Opponent	Date	GS	MIN	Total		3-Pointers		Free throws		Rebounds				PF	A	TO	BLK	STL	PTS		AVG
				FG-FGA	PCT	3FG-3FGA	PCT	FT-FTA	PCT	OFF	DEF	TOT	AVG								
Bluefield St.	11/09/2021	*	14:01	2-3	.667	0-0	.000	0-0	.000	1	2	3	3.0	2	1	1	0	1	4	4.0	
at Radford	11/14/2021	*	23:44	2-7	.286	0-0	.000	1-2	.500	5	2	7	5.0	1	0	3	2	0	5	4.5	
Morehead St.	11/19/2021	*	31:06	3-6	.500	0-0	.000	1-2	.500	1	6	7	5.7	3	0	1	1	0	7	5.3	
at Purdue	11/22/2021	*	27:31	2-6	.333	0-0	.000	2-2	1.000	4	1	5	5.5	5	0	1	2	1	6	5.5	
at Michigan St.	11/28/2021	*	29:13	2-7	.286	0-0	.000	0-0	.000	3	2	5	5.4	4	2	1	1	0	4	5.2	
Coppin St.	12/04/2021	*	26:11	1-5	.200	0-0	.000	0-3	.000	3	5	8	5.8	2	2	0	1	0	2	4.7	
at St. Bonaventure	12/12/2021	*	25:34	1-2	.500	0-0	.000	0-0	.000	5	5	10	6.4	1	2	1	1	0	2	4.3	
Alderson Broaddus	12/15/2021	*	12:15	2-3	.667	0-0	.000	0-0	.000	5	2	7	6.5	1	1	0	2	1	4	4.3	
vs Oakland	12/20/2021	*	30:17	4-6	.667	0-0	.000	0-0	.000	6	5	11	7.0	1	0	2	1	0	8	4.7	
Louisiana Tech	12/30/2021	*	21:55	1-5	.200	0-0	.000	0-0	.000	5	4	9	7.2	3	1	2	2	0	2	4.4	
Southern Miss.	01/01/2022	*	31:14	0-3	.000	0-0	.000	0-0	.000	6	0	6	7.1	5	0	3	4	0	0	4.0	
at Fla. Atlantic	01/08/2022	*	36:11	2-4	.500	0-0	.000	1-2	.500	4	4	8	7.2	2	0	0	0	3	5	4.1	
at North Texas	01/13/2022	*	32:31	3-4	.750	0-0	.000	0-0	.000	3	6	9	7.3	2	1	0	0	1	6	4.2	
at Rice	01/15/2022	*	29:51	3-5	.600	0-0	.000	0-0	.000	2	5	7	7.3	0	0	1	0	0	6	4.4	
FIU	01/20/2022	*	25:26	1-2	.500	0-0	.000	0-2	.000	1	7	8	7.3	3	2	1	0	0	2	4.2	
Fla. Atlantic	01/22/2022	*	28:42	0-3	.000	0-0	.000	0-2	.000	4	4	8	7.4	4	2	0	0	0	0	3.9	
at Middle Tenn.	01/27/2022	*	19:54	1-3	.333	0-0	.000	0-0	.000	1	1	2	7.1	3	0	2	1	0	2	3.8	
at UAB	01/29/2022	*	18:32	0-0	.000	0-0	.000	0-0	.000	2	3	5	6.9	3	0	1	4	0	0	3.6	
Old Dominion	02/03/2022	*	25:53	1-3	.333	0-0	.000	0-0	.000	2	3	5	6.8	3	0	1	0	0	2	3.5	
Charlotte	02/05/2022	*	28:22	0-3	.000	0-0	.000	0-0	.000	5	4	9	7.0	1	0	0	0	0	0	3.4	
at FIU	02/10/2022	*	21:48	0-0	.000	0-0	.000	0-0	.000	2	2	4	6.8	4	0	0	0	0	0	3.2	
UTEP	02/13/2022	*	29:26	3-3	1.000	0-0	.000	1-2	.500	3	9	12	7.0	2	0	1	1	1	7	3.4	
at Old Dominion	02/17/2022	*	28:34	2-2	1.000	0-0	.000	0-0	.000	0	4	4	6.9	4	2	2	1	0	4	3.4	
at Charlotte	02/19/2022	*	24:40	3-8	.375	0-0	.000	0-0	.000	2	1	3	6.8	3	1	1	0	0	6	3.5	
Middle Tenn.	02/24/2022	*	18:46	2-3	.667	0-0	.000	0-0	.000	0	0	0	6.5	3	0	4	1	0	4	3.5	
Totals			25	641:37	41-96	.427	0-0	.000	6-17	.353	75	87	162	6.5	65	17	29	25	8	88	3.5

Player Averages

Games Played	Minutes/ game	Points/ game	FG Pct	3FG Pct	FT Pct	Rebounds/ game	Assists/ game	Turnovers/ game	Assist/Turnover ratio	Steals/ game	Blocks/ game
25	25.7	3.5	42.7	0.0	35.3	6.5	0.7	1.2	0.6	0.3	1.0

Career Superlatives

	Sea.	Car.
10+ Pts:	0	3
20+ Pts:	0	0
5+ Rebs:	15	37
10+ Rebs:	3	5
5+ Asts:	0	0
2+ Blks:	6	12
2+ Stls:	1	4
Double-Double:	0	0



CAREER STATISTICS

				Field Goals		3-Point		F-Throws		Rebounds										Scoring	
SEASON	TEAM	GP-GS	MIN/AVG	FG-FGA	FG%	3FG-3FGA	3FG%	FT-FTA	FT%	OFF	DEF	TOT	AVG	PF-FO	A	TO	BLK	STL	PTS	AVG	
2018-19	Marsh	28-1	385/13.7	36-89	.404	0-0	.000	19-41	.463	31	59	90	3.2	63-1	13	25	17	4	91	3.3	
2019-20	Marsh	22-3	270/12.3	24-59	.407	0-1	.000	3-13	.231	24	45	69	3.1	28-0	10	16	9	6	51	2.3	
2020-21	Marsh	15-15	326/21.7	41-83	.494	0-0	.000	7-18	.389	32	49	81	5.4	34-0	19	17	11	7	89	5.9	
2021-22	Marsh	25-25	642/25.7	41-96	.427	0-0	.000	6-17	.353	75	87	162	6.5	65-2	17	29	25	8	88	3.5	
TOTAL		90-44	1622/18.0	142-327	.434	0-1	.000	35-89	.393	162	240	402	4.5	190-3	59	87	62	25	319	3.5	

TV/RADIO ROSTER



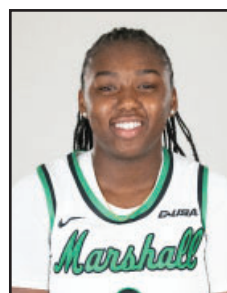
0 KIA SIVILS
G - 5-7 - JR
LOUISVILLE, KY.



1 CHRISTIANA MCLEAN
G - 5-6 - RS-FR
WAKE FOREST, N.C.



2 SOFIA LLANOS
G - 5-10 - FR
TARRAGONA, CATALONIA, SPAIN



3 CC MAYS
G - 5-8 - FR
TAMPA, FLA.



4 SAVANNAH WHEELER
G - 5-6 - SO
CATLETTSBURG, KY.



5 SAMANTHA LAFON
F - 6-0 - FR
CHESAPEAKE, OHIO



10 AALIYAH DUNHAM
G - 5-4 - SR
S. CHARLESTON, WV



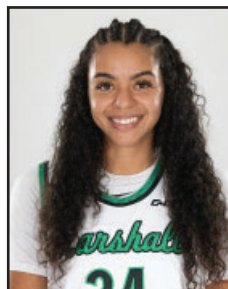
11 KSENIJA MITRIC
G - 5-8 - FR
BANJA LUKA, BOSNIA
& HERZEGOVINA



21 SARAH LIBERATORE
G - 5-10 - FR
GREENSBURG, PA.



23 ALEXIS JOHNSON
F - 5-10 - SO
SOUTHFIELD, MICH.



24 KENNEDI COLCLOUGH
F - 6-0 - GRAD
CROFTON, MD.



25 MAHOGANY MATTHEWS
F - 6-1 - RS-SO
YORK, PA.



30 AARIONNA REDMAN
F/G - 5-10 - FR
PICKERINGTON, OHIO



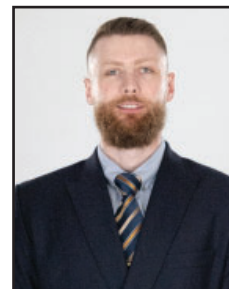
33 BRIANAH FERBY
G - 5-6 - SR
SMYRNA, TENN.



34 LORELEI ROPER
F/C - 6-1 - JR
CHARLOTTE, N.C.



TONY KEMPER
HEAD COACH
FIFTH SEASON



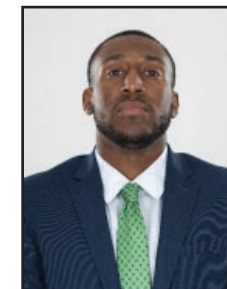
JANKO POPOVIC
ASSISTANT COACH
SECOND SEASON



LEXI BARRIER
ASSISTANT COACH
FIRST SEASON



JENNA BURDETTE
ASSISTANT COACH
FIRST SEASON



RUDY EVANS
DIRECTOR OF OPS
FIRST SEASON



MAGGIE STANLEY
GRADUATE ASSISTANT
FOURTH SEASON



BRANDI ANDERS
ATHLETIC TRAINER
EIGHTH SEASON