



# 2021-22 MARSHALL WOMEN'S BASKETBALL

## THE HERD

### GAME NOTES

Scott Hall, Marshall Sports Information | Email: hall133@marshall.edu

O: 304-696-4662 | C: 540-539-2032 | Twitter: @HerdWBB | Website: www.HerdZone.com

#### GAME INFORMATION

**Date/Time:** December 20-21, 2021

**Site:** Las Vegas, NV (South Point Arena)

**Live Stats:** Statbroadcast

**Live Video:** FloSports

**Marshall Radio:** 88.1 WMUL-FM with Scott Hall  
www.marshall.edu/wmul

**Twitter Updates:** @HerdWBB

**Last Meeting vs. Akron:** March 1, 2005 - Marshall won 65-49 in Huntington.

#### SCHEDULE

##### 2021-22 Record: 4-4, 0-0 C-USA

DATE	OPPONENT	TIME
Nov. 9	<b>BLUEFIELD STATE</b>	<b>W, 108-45</b>
14	at Radford	W, 68-64
19	<b>MOREHEAD STATE</b>	<b>W, 65-58</b>
22	at Purdue	L, 70-60
28	at (RV) Michigan State	L, 85-75
30	<b>WRIGHT STATE</b>	Canceled
Dec. 4	<b>COPPIN STATE</b>	<b>L, 77-69</b>
12	at St. Bonaventure	L, 50-47
15	<b>ALDERSON BROADDUS</b>	<b>W, 88-56</b>
20	vs. Oakland!	8 p.m.
21	vs. Akron!	5:30 p.m.
30	<b>LOUISIANA TECH*</b>	<b>6 P.M.</b>
Jan. 1	<b>SOUTHERN MISS *</b>	<b>1 P.M.</b>
8	at Florida Atlantic *	2 p.m.
13	at North Texas *	7:30 p.m.
15	at Rice *	3 p.m.
20	<b>FIU*</b>	<b>6 P.M.</b>
22	<b>FLORIDA ATLANTIC *</b>	<b>1 P.M.</b>
27	at Middle Tennessee *	7 p.m.
29	at UAB *	3 p.m.
Feb. 3	<b>OLD DOMINION *</b>	<b>6 P.M.</b>
5	<b>CHARLOTTE *</b>	<b>1 P.M.</b>
10	at FIU *	7 p.m.
13	<b>UTEP *</b>	<b>1 P.M.</b>
17	at Old Dominion*	6:30 p.m.
19	at Charlotte*	4 p.m.
24	<b>MIDDLE TENNESSEE *</b>	<b>6 P.M.</b>
Mar. 2	at WKU *	7:30 p.m.
5	<b>WKU*</b>	<b>1 P.M.</b>

Conference USA Tournament March 9-12  
Ford Center at the Star - Frisco, Texas

All times Eastern. Game times & dates are subject to change. Home games in **CAPS & BOLD**

\* - Conference game

! - Las Vegas Holiday Hoops Classic

#### THE TEAMS

##### 2021-22 Las Vegas South Point Holiday Hoops Classic



**Marshall**  
Thundering Herd  
3-4



**Oakland**  
Golden Grizzlies  
4-5



**Akron**  
Zips  
3-3

#### CATEGORY LEADERS

##### Scoring/Game

Savannah Wheeler, 17.6

##### Rebounds/Game

Lorelei Roper, 6.5

##### Assists/Game

Aaliyah Dunham, 4.6

##### HEAD COACH

Tony Kemper (5th season)

**Overall:** 51-67

**at School:** Same

#### CATEGORY LEADERS

##### Scoring/Game

Kahlajiah Dean, 18.6

##### Rebounds/Game

Breanna Perry, 4.9

##### Assists/Game

Kahlajiah Dean, 2.7

##### HEAD COACH

Jeff Tungate (9th season)

**Overall:** 106-138

**at School:** Same

##### Series History:

First ever meeting

#### CATEGORY LEADERS

##### Scoring/Game

Jordyn Dawson, 15.6

##### Rebounds/Game

Jordyn Dawson, 6.2

##### Assists/Game

Jordyn Dawson, 3.2

##### HEAD COACH

Melissa Jackson

(4th season)

**Overall:** 41-47

**at School:** Same

**Series History:**

14 all-time meetings  
Tied 7-7

#### Statistical Comparison

	Marshall	Oakland	Akron
Points Per Game	72.5	67.3	63.3
Scoring Margin	+9.4	-2.8	+1.3
FG Percentage	.404	.406	.408
FG Percentage Def.	.402	.443	.381
FG Made/Game	26.4	24.3	23.3
3PT FG Percentage	.290	.333	.299
3PT FG Percentage Def.	.331	.302	.309
3PT FG Made/Game	5.9	7.4	6.8
FT Made-Attempted	111-151	101-151	59-94
FT Percentage	.735	.669	.628
FT Made/Game	13.9	11.2	9.8
Rebounds/Game	38.9	34.0	35.3
Rebounding Margin	+1.9	-4.7	-3.4
Assists/Game	13.8	12.9	13.8
TO/Game	13.3	16.9	15.8
TO Forced/Game	20.1	17.8	16.2
Assist/TO Ratio	1.0	0.8	0.9
PTS off TO/Game	22.0	17.9	14.5
Steals/Game	9.4	9.4	7.8
Blocks/Game	2.8	2.1	4.0

#### PROBABLE STARTERS (BASED ON PREVIOUS GAME)



#4 Savannah Wheeler  
5'6" - SO - Guard

2021-22  
8 GP, 8 GS, 28.8 mpg  
17.6 ppg, 3.0 rpg  
2.3 apg, 1.4 spg



#10 Aaliyah Dunham  
5'4" - SR - Guard

2021-22  
8 GP, 8 GS, 31.0 mpg  
6.8 ppg, 2.3 rpg  
4.6 apg, 2.9 spg



#24 Kennedi Colclough  
6'0" - GR - Forward

2021-22  
8 GP, 8 GS, 28.4 mpg  
14.6 ppg, 3.8 rpg  
0.5 spg, 0.8 bpg



#33 Briana Ferby  
5'6" - SR - Guard

2021-22  
8 GP, 2 GS, 23.5 mpg  
8.5 ppg, 3.5 rpg  
1.0 apg, 1.4 spg



#34 Lorelei Roper  
6'1" - JR - F/C

2021-22  
8 GP, 8 GS, 23.6 mpg  
4.3 ppg, 6.5 rpg  
1.3 bpg

# MARSHALL WOMEN'S BASKETBALL

## 2021-22 ROSTER

### NUMERICAL

NO.	NAME	HT.	POS.	YR.	HOMETOWN (LAST SCHOOL)
0	Kia Sivils	5-7	G	JR	Louisville, Ky. (Sacred Heart HS)
1	Christiana McLean	5-6	G	RS FR	Wake Forest, N.C. (Heritage HS)
2	Sofia Llanos	5-10	G	FR	Tarragona, Catalonia, Spain (Femeni Maresme - Uemataro)
3	CC Mays	5-8	G	FR	Tampa, Fla. (Seffner Christian Academy)
4	Savannah Wheeler	5-6	G	SO	Catlettsburg, Ky. (Boyd County HS)
5	Samantha LaFon	6-0	F	FR	Chesapeake, Ohio (Ironton HS)
10	Aaliyah Dunham	5-4	G	SR	South Charleston, W.Va. (Xavier)
11	Ksenija Mitric	5-8	G	FR	Banja Luka, Bosnia & Herzegovina (Celje BC)
21	Sarah Liberatore	5-10	G	FR	Greensburg, Pa. (Hempfield Area HS)
23	Alexis Johnson	5-10	F	SO	Southfield, Mich. (Southfield HS for Arts & Tech.)
24	Kennedi Colclough	6-0	F	GRAD	Crofton, Md. (Stetson University)
25	Mahogany Matthews*	6-1	F	RS SO	York, Pa. (Ole Miss)
30	Aarionna Redman	5-10	F/G	FR	Pickerington, Ohio (Pickerington Central)
33	Brianah Ferby	5-6	G	SR	Smyrna, Tn. (Austin Peay)
34	Lorelei Roper	6-1	F/C	JR	Charlotte, N.C. (Carmel Christian HS)

\* Mahogany Matthews will miss the 2021-22 season due to achilles injury

### Coaching Staff

Head Coach: Tony Kemper – 5th season  
 Assistant Coach: Lexie Barrier – 1st season  
 Assistant Coach: Jenna Burdette – 1st season  
 Video Coordinator - Janko Popovic - 2nd season  
 Director of Operations: Rudy Evans – 1st season  
 Graduate Assistant - Maggie Stanley - 4th season

### PROUNUNCIATION GUIDE

Kia Sivils	Key-uh Sivils (sounds like civils)
Christiana McLean	Chris-che-ahn-uh Muh-Clain
Sofia Llanos	YAWN-ohs
Ksenija Mitric	Ksen-ee-uh Me-trich (say K in first name quickly & softly)
hometown	Bahn-ya Luke-ah
basketball club	Cell-yee
Sarah Liberatore	Lib-er-tore
Kennedi Colclough	Cole-Claw
Aarionna Redman	Air-EE-ahn-uh
Brianah Ferby	Bree-AHN-uh
Lorelei Roper	Lore-UH-lie
Staff	
Janko Popovic	Yawnko Pop-oh-vitch



### GENERAL INFORMATION

Name	Marshall University
Founded	1837
Location	Huntington, W.Va.
Enrollment	13,324
Nickname	Thundering Herd
Colors	Kelly Green & White
Conference	Conference USA
Home	Cam Henderson Center/9,048
President	Dr. Jerry A. Gilbert (Duke)
Director of Athletics	Mike Hamrick (Marshall '80)

### COACHING STAFF

Head Coach	Tony Kemper (Fort Hays '01)
Career record (seasons)	51-67 (5th)
Record at Marshall (seasons)	51-67 (5th)
Conference USA record	27-39
Assistant Coach	Jenna Burdette
Assistant Coach	Lexie Barrier
Director of Operations	Rudy Evans
Video Coordinator	Janko Popovic
Graduate Assistant	Maggie Stanley

### TEAM INFORMATION

2020-21 Record	8-11
2020-21 Conference USA Record/Finish	7-9/4th (East)
Starters Returning/Lost	3/2
Letterwinners Returning/Lost	10/3
Newcomers	3

### PROGRAM HISTORY

First Year of Basketball	1969
Overall Record	703-733
Conference Championships	1 ('97/SoCon)
Regular Season Championships	5 ('85, '86, '87, '88, '89/SoCon)
NCAA Tournament Appearances	1 ('97, L, 69-49 vs. Colorado College)
Women's Basketball Invitational - 2	
2015, 1-1, W, 81-79 vs. NKU & L, 71-73 vs. Mercer	
2019, 1-1, W, 67-64 at Davidson & L, 83-71 at App. St.	
Women's NIT Appearances	1 ('16, L, 76-68 at Ohio)

### SPORTS INFORMATION

Asst. AD/Media Relations	Jason Corriher (NC State '00)
Office	(304) 696-4660
E-Mail	corriher@marshall.edu
Associate SID/WBB	Scott Hall (Marshall '08)
Office	(304) 696-4662
Cell	(540) 539-2032
E-Mail	hall133@marshall.edu
Sports Information Fax	(304) 696-2325
Press Row Phone	(304) 696-3303 or 7061
Mailing Address	Marshall University Sports Information
	P.O. Box 1360
	Huntington, WV 25715
Overnight Address	
	Cam Henderson Center, Room 2036
	1801 3rd Avenue
	Huntington, WV 25703
Official Athletics Website	www.Herdzone.com
Twitter	@HerdZone, @HerdWBB
Instagram	@HerdWBB
Facebook	Marshall Athletics,
	Marshall University Basketball

### CONFERENCE USA

Phone	214-774-1300
Website	ConferenceUSA.com
Mailing Address	5201 N. O'Connor Blvd.
	Suite 300
	Irving, TX 75039
Director, Media Relations	Ashley Walker
E-mail	awalker@c-usa.org



# MARSHALL WOMEN'S BASKETBALL BROADCAST TALKING POINTS



**#0 Kia Sivils, Jr., G, Louisville, Ky.**  
 - 7 games & 6 starts. Avg. 15.4 mpg, solid defender, heady player.  
 - 80 career games with 17 starts, 240 career pts.  
 - Scored season-high 5 pts vs. Morehead State (11/19).  
 - Played in 13-of-19 games in 2020-21 with 5 starts, avg. 22.6 mpg, 2.8 rpg and had 10 steals.  
 - Earned 1st career start in 2019-20 season-opener vs. Kentucky Christian, scored seven pts & had four rebs.  
 - Scored a career-high 16 points on 7-of-7 shooting, including 2-of-2 from 3, at North Texas (1/4/20).  
 - Tied career-best 16 points vs. Old Dominion (2/22/20) with career-high 3-for-3 from beyond the arc.  
 - Set career-high of 5 assists at Evansville (11/24/19) & again at Southern Miss (2/6/20).  
 - Career-best 8 boards twice, 1st vs. Charlotte (1/5/19) freshman year, 2nd at MTSU (3/5/21).



**#1 Christiana McLean, R-Fr., G, Wake Forest, N.C.**  
 - Made 1st collegiate appearance in 2021-22 opener vs. Bluefield State, 11 min. 6 pts on 3-of-5 shooting, 2 rebs, 2 asts., 2 stls.  
 - Scored 2 pts & had 1 assist vs. Alderson Broaddus.  
 - Medical redshirt in 2020-21, dealing with injury.  
 - Redshirted her freshman season 2019-20.  
 - Graduated from Heritage High School.  
 - Avg. 14 pts, 5 rebs. & 3 assists per game senior year.  
 - Attended Northside Christian Academy as a freshman & was named a Select 60 Best Offensive Player.  
 - Attended Carmel Christian HS as a sophomore & was named at South Carolina Season's Finest Basketball Player and a Big5 Top Performer.  
 - Queen City All-Tournament team selection. Won the John Wall Championship. Honored as All-Conference & All-District.  
 - Also lettered in soccer.



**#2 Sofia Llanos, Fr., G, Tarragona, Catalonia, Spain**  
 - Made collegiate debut with just over 1 min. of action in season-opener vs. Bluefield State (11/9). Attempted 1 shot.  
 - Played season-high 4 min. vs. Alderson Broaddus, recorded 1st career rebound and steal.  
 - In Spain, debuted in the 3rd league at 15 yrs old, then to 2nd league at 17.  
 - Was leading scorer with club team in Tarragona every since 2015-16.  
 - Named MVP of tournament in Logrono scoring 22 pts in final.  
 - Averaged 17.2 ppg (309 pts) over 18 games in 2019-20, scoring 20+ in 7 games.  
 - Scored season-high 26 pts in 25 min. against C.B. Gava.



**#3 CC Mays, Fr., G, Tampa, Fla.**  
 - Appeared in 6 games, avg. 18.7 mpg off the bench.  
 - Scored 15 pts & had clutch steal late vs. Morehead St. (11/19).  
 - Scored 10+ in 1st 3 games of season, including career-high 17 vs. Bluefield State in opener.  
 - Saw significant playing time in COVID 2020-21 season, all 19 games, 4 starts, avg. 17.8 mpg, 3.6 ppg, 3.6 rpg, 28 asts., 20 stls.  
 - Started 1st career game vs. Radford (12/6), played 26 min., had 5 rebs. & scored 4 pts.  
 - Started at #9 UK and had career-high 6 points, was 3-of-4 from the line (12/9).  
 - First double-double came at Charlotte (11p, 13r) (1/9/21).  
 - As a HS freshman was named All-County First Team & nominated for Tampa Bay Times HomeTeam Hot Shot.  
 - Tallied Carrollwood's 1st ever quadruple-double with 10 pts, 11 rebs., 14 ast., & 12 steals in win vs. Middleton.



**#4 Savannah Wheeler, So., G, Catlettsburg, Ky.**  
 - 8 games, 8 starts, 29.6 mpg, leads MU 17.6 ppg.  
 - Scored 30 pts at Michigan State (11/28), tallied 800th career point on 3 in the 2nd quarter that gave MU the lead.  
 - Reached 750 career points at Radford (11/14).  
 - 1st all-time at MU (since 1979-80) in career FT% (84.9).  
 - 15th all-time at MU with 96 career 3PT FGM.  
 - 47-of-57 career games with 10+ points, currently 11-straight in double-figures. 11 games with 20+ and 2 with 30+. Has 867 career pts.  
 - Avg. 17 ppg during shortened 2020-21 season.  
 - Set new career-high with 35 pts. vs. ODU (2/6).  
 - Career-best 11 boards, 9 def. rebs., vs. LA Tech (11/21).  
 - In 2019-20, highest ppg avg by MU freshman (13.4) since Sikeetha Shepard-Hall's 15.0 ppg in 2002-03 (361 pts) & highest pts total (403) by freshman since Kristina Behnfeldt (438) in 1995-96. Both in MU HOF.  
 - Only freshman nationally ranked in 2019-20 in top 40 for FTM (737th-130) & FT% (40th-83.9).



**#5 Samantha LaFon, Fr., F, Chesapeake, Ohio**  
 - 2 games, career-highs 4 pts & 2 rebs. in 15 min. in opener vs. Bluefield State (11/9).  
 - Saw action in five games in 2020-21.  
 - Made collegiate debut vs. FIU (1/22/21), 1 pt, 1 reb. in 1 min. Scored 2 pts. next day vs. FIU.  
 - Early enrollee for the Herd after signing National Letter of Intent on Nov. 13, 2020.  
 - Successful prep career at Ironton High School.  
 - Averaged 14 points and nearly 11 rebounds per game this past season.  
 - Ranked 12th in the state of Ohio in 2019-20 in field goal percentage hitting on 57 percent of shots.  
 - Over last two years honored as First Team All-District, two-time First Team All-Conference, All-State Special Mention and was the league's leading rebounder.



**#10 Aaliyah Dunham, Sr., G, South Charleston, W.Va.**  
 - 8 games, 8 starts, leads MU with 23 steals. 7-of-8 FT.  
 - Leads with 4.6 assists per game, five games with 5+ assists.  
 - Had 6 asts. & 3 steals at Michigan State. Also 5 steals at Purdue.  
 - Opened MU career with 17 pts, 7 asts. & 6 stls vs. Bluefield St. (11/9).  
 - 3 of 1st 4 games with 5+ steals.  
 - 13 pts, 4-of-4 FT & 6 stls at Radford (11/14).  
 - Back in home state. Transferred to MU after 4 yrs at Xavier.  
 - 105 games 83 starts at Xavier, 736 pts, 148 stls, 260 rebs.  
 - 8th all-time in career assists with 371 & 10th in assists per game 3.5 at Xavier. Tied for 8th in steals avg. 1.4  
 - 2-time Big East All-Academic Team 2017-18 & 2018-19.  
 - Big East All-Freshman Team 2017-18, had 4th-most assists by a freshman in Xavier history (74).  
 - Career-high 20 pts, 7 FGM, & 4 3PTM at Georgetown (1/20/20) was 4-for-4 from three.  
 - Career-high 9 assists vs. Colorado (12/6/19), St. John's (12/29/19) & Valpo (12/16/20).



**#11 Ksenija Mitric, Fr, G, Banja Luka, Bosnia & Herzegovina**  
 - 3 games off bench. Avg. 9.0 min per game.  
 - 3 pts, 2 rebs. & 2 asts. vs. Alderson Broaddus  
 - Played 2 games in 2020-21 COVID year, opted to return home and sit out remainder of season. Played vs. Radford & at #9 UK.  
 - Played 22 min. vs. Radford (12/6) scored 8 pts & had 3 assists.  
 - Led Celje Basketball Club to the Slovenian championship in the U17 & U19 divisions in 2018 & runner-up finish in 2019.  
 - Avg. 15+ points per game during those 2 seasons.  
 - Helped lead team to the Women's Adriatic Basketball Association (WABA) title in 2017.  
 - Played for Bosnia and Herzegovina national team leading in scoring (10.3) and assists (3.1) at the FIBA U16 Women's European Championship in 2016.  
 - Led team in scoring in U18 division in 2017 (11.1) & in 2018 (10.1).



**#21 Sarah Liberatore, Fr., G, Greensburg, Pa.**  
 - 4 games off bench. 2-of-2 FT vs. Bluefield State (11/9).  
 - Career-day vs. Alderson Broaddus with 15 pts, 3 rebs, 2 asts. & 1 stl in 21 minutes. Shot 5-of-9 FG & 4-of-6 3 PT.  
 - Played in 10 games in 2020-21. Scored 11 pts, 3-of-8 3PT FGs.  
 - Scored 3 pts vs. LA Tech (1/1/21), at Charlotte (1/8/21) & vs. WKU (1/14/21).  
 - Finished prep career with 1,125 points.  
 - Senior year averaged 19.7 ppg, 7.2 rpg, 5.3 assists & 2.1 steals.  
 - 2x Big 56 First Team selection, 4x Big 56 All-Section, 2x Tribune Review Terrific 10 All-Star, Post Gazette Top 5 in class 6A.  
 - 2x US Jr. National Champion & was ranked #25 in Pennsylvania. 2x Team MVP and Captain.  
 - Very athletic family. Dad played baseball at Bowling Green & mom swam at John Carroll U., older brother Jack current pitcher at Ohio U. among many others.



**#23 Alexis Johnson, So., F, Southfield, Mich.**  
 - 8 games off bench, avg. 14.4 mpg, 6.0 ppg & 4.5 rpg.  
 - Tied career-high with 18 pts on 7-of-10 FG & 2-of-3 3PT vs. AB added 7 rebs., 2 asts & 2 stls off the bench.  
 - 10 pts on 5-of-10 shooting vs. Bluefield State (11/9).  
 - Saw increase in minutes from freshman year (5.9 mpg) to sophomore year (19.3 mpg). 2020-21 avg. 7.4 ppg and 5.9 rpg.  
 - Opened sophomore year with 10+ pts in 1st 4 games. Led MU with 16 pts on 6-of-9 shooting at #9 UK (12/9/20).  
 - 1st career dble-dble (16p & 11r) vs. LA Tech (1/1/21).  
 - 2nd career dble-dble (11p, 14r) at Charlotte on 1/9.  
 - Career-high 18 pts. vs. ODU (2/5).  
 - Big day in sophomore opener vs. Radford (12/6/20) with 21 min. 12 pts, on 6-of-11 shooting & 9 rebs.  
 - Had 2019-20 best game vs. Alderson Broaddus with 15 min., 9 pts and 6 boards.



**#24 Kennedi Colclough, Gr., F, Crofton, Md.**  
 - 8 games, 8 starts, avg. 28.4 mpg, 14.6 ppg & 3.8 rpg.  
 - 10+ pts in 6-of-8 games. Season & MU career-high 23 pts vs. Coppin State. Scored 19 pts at Purdue & at Michigan State.  
 - Helped lead MU to win at Radford with 17 pts & 2 blocks.  
 - Played & started 17 games in 2020-21, avg. 8.2 ppg & 4.6 rpg.  
 - Double-double (13p, 10r) in win over MT (3/4/21).  
 - Transfer from Stetson, who hit game-winner at NT (2/27/21).  
 - Played very well in sophomore season (2017-18) with 13.0 ppg through 17 games before season-ending injury.  
 - Played 2018-19 opener before another injury ended season.  
 - Played in 23 games in 2019-20 with 6.7 ppg.  
 - Scored career-high 25 pts vs. Trinity Baptist (11/23/19).  
 - Has 7 career double-doubles including 23 pts & 13 boards in win over Florida (11/22/17).  
 - Father LaVorn played VWR for Marshall (1995-98).



**#25 Mahogany Matthews, R-So., F, York, Pa.**  
 - Will miss 2021-22 due to achilles injury.  
 - Second in the league in blocks in 2020-21 (2.0 per game).  
 - Averaged 6 blocks in Louisiana Tech series split (1/1-2).  
 - Played 14 min. off bench vs. Radford (12/6/20) blocked 2 shots, scored 2 pts. & had 2 rebs.  
 - 15 min at #9 UK & career-high 5 pts. 3-of-4 FT.  
 - Sat out 2019-20 due to NCAA transfer rules after spending 2018-19 at Ole Miss.  
 - 22 games, 6 starts with Rebels, Avg. 9.2 min per game.  
 - Career-high 6 boards vs. Florida (3/6/19).  
 - 3-star recruit by ESPN coming out of Hoke Country HS with a grade of 88 & 45th best forward nationally.





**#30 Aarionna Redman, Fr., F/G, Pickerington, Ohio**

- 8 games off bench, 11.3 mpg, 3.4 ppg, 3.4 rpg, 4 steals.
- 6 pts & 6 rebs vs. Alderson Broaddus.
- Career-day at St. Bonaventure with career-highs of minutes (21), rebs (9) and points (8). Added 1 block. Hit 2 3PTs.
- Made collegiate debut in opener vs. Bluefield State (11/9), scored 6 pts, 2-of-3 from 3PT, 3 rebs, 2 asts, 1 block & 3 stls.
- 2 pts & 2 rebs at Purdue
- Missed the 2020-21 season with a knee injury.
- Helped lead Pickerington Central to a state title as a sophomore & runner-up finishes junior & senior years.
- Helped lead team to three Ohio Capital Conference and district titles as well as 2 regional appearances.
- As a senior was named honorable mention Division I All-Central District and to the OCC's District II second team.
- Competed in shot put as well.



**#33 Brianah Ferby, Sr., G, Smyrna, Tenn.**

- 8 games, 2 starts 23.5 mpg, 8.5 ppg, 3.5 rpg.
- 13 pts in MU opener vs. Bluefield State (11/9).
- Drained 3 late vs. Morehead State to halt Eagle rally (11/19).
- 12 pts & career-high 9 rebs. vs. Coppin State (12/4).
- 10 pts, 3 rebs & 2 assists at Michigan State (11/28).
- Transfer from Austin Peay, played with twin sister Brandi.
- At AP, 107 games, 58 starts, 819 pts, 123 3PT FGM, 138 asts, 129 stls & 265 rebs. Led team in scoring (9.1 ppg) in 2020-21.
- 8th all-time at AP with 437 3PT FG attempted.
- Lit up Belmont (1/20/18) as freshman 28 pts, 8 rebs, & 1 away from tying program record for made 3PTs with 7 (7-of-13).
- Consistently on Austin Peay Athletic Dir. Honor Roll, 2x Deans' list & 2x OVC Commissioner's Honor Roll (3.25+ GPA)
- 2x time OVC Freshman of the Week (2018).



**#34 Lorelei Roper, Jr., F/C, Charlotte, N.C.**

- 8 games, 8 starts, 23.6 mpg, 4.3 ppg, 6.5 rpg, 10 blocks.
- Has a block in each of last 7 games.
- Has 7+ rebounds in last 3 games.
- Season-high 10 rebs. at St. Bonaventure, 5 offensive.
- 5 boards, 4 pts, 2 assists & 1 block at Michigan State (11/28).
- 7 rebs at Radford (11/14) & vs. Morehead St. (11/19).
- Played & started 15 games in shortened 2020-21, 5.9 ppg & 5.4 rpg.
- Had started just 4 games combined previous 2 yrs.
- Great 2 games vs. FIU in Jan. 2021 with 24 total pts, 14 rbs & 7 blocks.
- 12 pts in each game.
- Career-high 13 rebounds against ODU (2/6/21).
- Has 24 career games with 5+ rebounds. 3 with 10+.
- Tallied 45 career blocks.
- Made 2019-20 debut vs. Alderson Broaddus (11/27) 10 pts & 5 rebs after working way back from knee injury at end of freshman season.



**Head Coach Tony Kemper - 5th Season/10th overall**

- Became HC in March of 2017. Current record of 51-67. Was an assistant coach for 5 years under previous HC Matt Daniel.
- Led MU to 1st rd win in 2019-20 C-USA Tourn. before rest of tourney was canceled due to COVID-19.
- 2019 recruiting class ranked in the top 60 nationally.
- Herd had 8-win improvement in 2018-19 and 7-win improvement in C-USA action last season.
- Picked to finish 13th in 2018-19, finished 6th, led MU to WBI.
- Helped mentor Shayna Gore who became 3rd played in program history with over 2,000 career points.
- Spent 3 years as assistant at Central Arkansas under Matt Daniel as well.
- Attended Fort Hays State.



**Assistant Coach Lexie Barrier - 1st Season**

- Hired April of 2021. Was graduate manager at NC State in 2020-21. Wolfpack ranked 7th in final USA Today/Coaches Poll, spent every week in the top 10, 3-straight weeks at No. 2.
- Played for James Madison 2016-20. Member of 1,000 Point Club (1,216), added 497 rebs., 236 asts, 126 steals, 129 3PTM.
- Named to Colonial Athletic Association All-Rookie Team, 2016-17, 2x CAA Rookie of the Week.
- 2017-18 named All-CAA Second Team, made last 17 shots of season from the free throw line.
- 2018-19 named All-CAA Second Team, career-high 24 pts vs. Northwestern.
- From Ironton, Ohio 20 miles from Huntington. Starred for Ironton HS. Named Southeast Ohio AP District Player of Year.



**Assistant Coach Jenna Burdette - 1st Season**

- Hired May of 2021. Spent 2020-21 as Dir. of Ops at NKU
- Assistant coach at Glenville State for 2 years, 2018-20. Helped lead Pioneers to 56-8 record winning back-to-back Mountain East Conference titles with combined 40-4 league record.
- Outstanding player for Dayton 2014-18. Tops all-time in career 3PT FG% with .392
- 13th all-time in scoring with 1,344 pts. Avg. 16.2 ppg, 487 total pts, shot 44.5% from 3PT, & 81.1% FT senior year. Named A-10 First Team selection, team's MVP, Dayton Female RUDY Award.
- 4th all-time in career assists (481), tied team record with 14 in a game vs. Duquesne (2016).
- Also ranks in top 20 in FGM, FGA, FTM, FTA, 3PTM, 3PTA, minutes played in career, single season & game marks.



**Video Coordinator Janko Popovic - 2nd season**

- Hired September of 2020.
- Was video coordinator at Texas Tech 2019-20. While there Tech finished 18-11 & Brittany Brewer was #17 WNBA Draft Pick in 2020.
- 2018-19 worked for Serbian National Team as coach during training camp in preparation for EuroBasketball 2019 in Serbia & Latvia.
- In 2017-18 was Dir. of Ops & Video Coordinator at Robert Morris. Team went 25-8 won NEC regular season title, NEC Tourn. runner-up and made WNIT appearance.
- Graduated bachelor from LeMoyne-Owen College in 2014 & master's from Winthrop in 2017.



**Director of Operations Rudy Evans - 1st season**

- Hired July 2021. Worked as Notre Dame College men's bball Asst. Coach/Dir. of Player Development in 2020.
- Assistant coach at Urbana University (DII) 2019-20.
- Assistant coach at NAIA Lourdes University for 3 yrs.
- Assistant coach at alma mater Berea College (NAIA). In 2014-15 Berea ranked as high as No. 2 leading nation in scoring, assists & 3PTM, 3PT%. Finished 20-6 with trip to USCAA Final Four.
- Also coaches AAU teams and helped with women's team at Berea.
- Played at Berea & Cuyahoga CC. Scored over 1,000 pts at Cuyahoga & NJCAA All-American, 2x All-Conference at Berea in 2010 & 2011.

## Awards List

### #00 Kia Sivils

2020-21 Conference USA Commissioner's Honor Roll: GPA 3.0 or better  
2019-20 Conference USA Commissioner's Honor Roll: GPA 3.0 or better  
2018-19 Conference USA Academic Medalist: GPA 3.75 or better  
2018-19 Conference USA Commissioner's Honor Roll: GPA 3.0 or better

### #1 Christiana McLean

2020-21 Conference USA Commissioner's Honor Roll: GPA 3.0 or better

### #4 Savannah Wheeler

2020-21 Second Team All-Conference USA  
2020-21 Conference USA Commissioner's Honor Roll: GPA 3.0 or better  
2019-20 Conference USA All-Freshman Team  
2019-20 Conference USA Freshman of the Week: Nov. 11  
2019-20 Conference USA Freshman of the Week: Feb. 17  
2019-20 Conference USA Academic Medalist: GPA 3.75 or better  
2019-20 Conference USA Commissioner's Honor Roll: GPA 3.0 or better

### #10 Aaliyah Dunham

2017-18 Big East All-Freshman Team

### #11 Ksenija Mitric

2020-21 Conference USA Academic Medalist: GPA 3.75 or better  
2020-21 Conference USA Commissioner's Honor Roll: GPA 3.0 or better

### #21 Sarah Liberatore

2020-21 Conference USA Academic Medalist: GPA 3.75 or better  
2020-21 Conference USA Commissioner's Honor Roll: GPA 3.0 or better

### #23 Alexis Johnson

2020-21 Conference USA Academic Medalist: GPA 3.75 or better  
2020-21 Conference USA Commissioner's Honor Roll: GPA 3.0 or better  
2019-20 Conference USA Academic Medalist: GPA 3.75 or better  
2019-20 Conference USA Commissioner's Honor Roll: GPA 3.0 or better

### #24 Kennedi Colclough

2020-21 Conference USA Commissioner's Honor Roll: GPA 3.0 or better  
2017-18 FAU Holiday Classic All-Tournament Team  
2016-17 Atlantic Sun Newcomer of the Week: Dec. 5

### #30 Aarionna Redman

2020-21 Conference USA Commissioner's Honor Roll: GPA 3.0 or better

### #33 Brianah Ferby

2020-21 OVC Commissioner's Honor Roll: GPA 3.25 or better  
2019-20 OVC Commissioner's Honor Roll: GPA 3.25 or better  
2017-18 OVC Freshman of the Week: Jan. 23  
2017-18 OVC Freshman of the Week: Dec. 5  
Austin Peay Dean's List: Spring 2020  
Austin Peay Dean's List: Fall 2019  
Austin Peay Athletics Director's Honor Roll: Spring 2021  
Austin Peay Athletics Director's Honor Roll: Fall 2020  
Austin Peay Athletics Director's Honor Roll: Spring 2020  
Austin Peay Athletics Director's Honor Roll: Spring 2019  
Austin Peay Athletics Director's Honor Roll: Fall 2018  
Austin Peay Athletics Director's Honor Roll: Spring 2018  
Austin Peay Athletics Director's Honor Roll: Fall 2017

### #34 Lorelei Roper

2020-21 Conference USA Commissioner's Honor Roll: GPA 3.0 or better  
2019-20 Conference USA Commissioner's Honor Roll: GPA 3.0 or better  
2018-19 Conference USA Commissioner's Honor Roll: GPA 3.0 or better

## HERD NOTES

### Countdown to 1,000 Points

Marshall has two players closing in on reaching the 1,000-point plateau in their careers. Sophomore Savannah Wheeler and senior transfer Brianah Ferby. The two have combined for over 200 points this season.

Wheeler has 867 points, all with the Herd, and is averaging 15.2 points per game throughout her career. The Catlettsburg, Ky., native began her time with the Green & White scoring 403 points, 13.4 per game in 2019-20. She followed up with 323 points, 17.0 per contest, in the just 19 games of the shortened COVID season of 2020-21. In 2021-22, Wheeler has reached double-figures in all eight games with 141 points and is averaging 17.6 per game. She has played just 57 games in her career and has scored 10+ in 47. Wheeler would be the 23rd player in team history to reach 1,000 points.

Ferby, with 887 total points in her career, came to Marshall in the summer of 2021 after playing four seasons at Austin Peay. She was able to use her COVID year of 2020-21 to gain a fifth year of eligibility and decided to get a change of scenery. Ferby left Austin Peay with 819 points in 107 games. She scored 225 as a freshman in 2017-18, then 249 in 2018-19, 136 points in 2019-20 and finally 209 in the shortened 2020-21 season with a career-best 9.1 points per game. This year, Ferby has been an igniter off the bench, or most recently in the starting lineup, scoring 8.5 points per game and 68 so far in her Herd career.

### Johnson & Liberatore Ignite Herd

Against Alderson Broaddus, head coach Tony Kemper was looking for someone to get the team going as the Herd came out flat against the Battlers. He subbed in sophomore Alexis Johnson and then freshman Sarah Liberatore in the latter half of the first quarter and told each one to make something happen and be the spark. Johnson and Liberatore responded throughout the rest of the night.

The two combined for 33 points on 12-of-19 shooting (63.1%), 6-of-9 from three (66.7%), 10 rebounds, four assists and three steals.

Johnson tied her career-high with 18 points while shooting 7-of-10 from the field and hit two big three-pointers. Her first three came in the second quarter to cut the deficit to three and then two minutes later hit another three to pull the Herd within one sparking a 15-0 run to take the lead. Johnson pulled down seven boards with six coming on the defensive glass.

Liberatore had a career-night across the board in minutes played (21), points (15), rebounds (three) and tied career-bests with two assists and one steal. She had only hit three three-pointers in her career, but on this night Liberatore was 4-of-6 from outside with her first trey coming on her first offensive possession in the first quarter. Her three rebounds were all offensive in the fourth quarter to help shut down the Battlers.

### Dishing Out Assists

In the win over Alderson Broaddus, Savannah Wheeler finished with seven assists and Aaliyah Dunham had six. It was the first time the Herd had two players with at least five helpers in the same game since Feb. 6, 2020 at Southern Miss when Kia Sivils and Wheeler both had five. It was the only time in the 2019-20 season that the Herd accomplished the feat. Marshall did it in five games in 2018-19, including having three players dish out at least five assists (Kristen Mayo-8, Shayna Gore-6, Taylor Porter-5) in an 86-64 win over Cleveland State on Dec. 8, 2018.

### Colclough Finds Her Rhythm

Graduate student Kennedy Colclough has been finding her rhythm on offense and has come through big on the scoreboard. Prior to the St. Bonaventure game, she was averaging 16.5 points per game, and scored at least 19 points in the three previous contests. Averaging 20.3 during the stretch. After scoring a season-low six points against Morehead State, Colclough scored 19 at Purdue, 19 at Michigan State and a season-high 23 versus Coppin State. Over the three games, she shot 54.1-percent from the floor (20-of-37) and an

astounding 19-of-20 (95.0%) from the line including going 10-for-10 against Coppin State. Her ability to finish at the rim has helped her pile up the points and get those free throw chances.

### Points in the Paint

Despite consistently going against lineups that have a little more size, Marshall has won the points in the paint category in each of its first five games.

vs. Bluefield State	58-8
at Radford	28-22
vs. Morehead State	38-28
at Purdue	32-20
at Michigan State	34-30

Much of the success around the basket has come from the play of Kennedy Colclough, who is averaging 15.2 points per game, and Lorelei Roper who has had some key put-backs. However, the Herd's guards are not afraid to drive to rim either with Savannah Wheeler, Aaliyah Dunham, CC Mays and Brianah Ferby making a lot of plays inside and also drawing contact. The four guards have combined to draw 63 fouls over the first five games with Wheeler leading the way with 27.

### Wheeler Goes Off at Michigan State

Savannah Wheeler broke out of her shooting slump in a big way scoring 30 points in the Breslin Center. She came through with four three-pointers in the game, and usually coming at key moments. Wheeler tallied her 800th career point with a three in the second quarter that gave Marshall its first lead of the day. Prior to the game in East Lansing, Wheeler was just 3-of-16 from distance. Against the Spartans, she hit on 50 percent (4-of-8). Wheeler moved into 15th place all-time at Marshall, surpassing her old teammate Khadaiji Brooks, with now 90 made three's. It was her second career game with at least 30 points and was also the first 30-point game of the season from a player in Conference USA. Wheeler drew eight fouls in the game and was 8-of-9 from the line, as she was able to get her shot attempt to drop and then earn the and-one opportunity.

### Ferby Comes Up Clutch

Marshall senior, and transfer from Austin Peay, Brianah Ferby hit the big shot with 1:19 remaining to help the Herd get the win over Morehead State. The Eagles were coming back and only trailed Marshall by one, when Savannah Wheeler broke through the full-court press and found Ferby wide open in the near corner. Ferby fired the three and stopped Morehead's momentum. Marshall struggled from distance throughout the contest against the Eagles. Prior to hitting the three, Ferby was 0-3 from three and 0-4 from the field in the contest. Despite the struggles, Ferby had no hesitation on launching the three.

### Dunham Steals the Show

Marshall senior, and transfer from Xavier, Aaliyah Dunham made a tremendous return to her home state. In her first two games with Marshall, the South Charleston, W.Va., native put up 30 total points, 12 assists and 12 steals. Dunham opened the year with 17 points, seven assists and six steals against Bluefield State in front of the home crowd. She followed that up with 13 points, five assists and six more steals at Radford. Dunham is an aggressive defender with quick hands and showcased her ability to pick the pockets of her opponents. Her career-high for steals is seven against St. John's in 2021 while playing for Xavier. She also had 40 games with the Musketeers with two or more thefts. Dunham is off to a quick start for Marshall and said that she plans to be that "pesky gnat" getting after the opponent.

### Marshall Lights up the Stat Sheet vs. Big Blue

Marshall piled up the numbers in the season-opener against Bluefield State. The game included many marks that the program had not hit in a while. Below are the numbers and the last time it happened.

<b>100+ points (108)</b>	Dec. 18, 2017
	vs. Kentucky Christian, W 111-38
<b>Held Opp. to &lt;20 pts in half (18)</b>	Jan. 1, 2021
	vs. LA Tech (18), L 61-51 OT
<b>Held Opp. to &lt;50 points (45)</b>	March 4, 2021
	at MTSU, W 72-49
<b>Scored 50+ pts in a half (59)</b>	Jan. 19, 2019

	at FIU (53), W 86-58
<b>Scored 30+ pts in quarter (36)</b>	Jan. 19, 2019
	at FIU (31), W 86-58
<b>Made 40+ FG (42)</b>	Dec. 18, 2017
	vs. Kentucky Christian (46), W 111-38
<b>Shot 50%+ from Three (52.9%)</b>	Feb. 21, 2021
	vs. Rice (50.0%), W 68-56
<b>Had 20+ Assists (20)</b>	Jan. 24, 2019
	vs. LA Tech (21), W 90-88 3OT
<b>Had 20+ Steals (21)</b>	Nov. 5, 2019
	vs. Kentucky Christian (24), W 89-40
<b>6+ Players with 10+ pts</b>	Dec. 20, 2016
	vs. Maine Fort Kent, W 136-62
<b>Forced 30+ TO (30)</b>	Nov. 5, 2019
	vs. Kentucky Christian (30), W 86-58

### Marshall Women's Basketball Signs Two

Marshall head coach Tony Kemper announced a pair of signees on Wednesday as Meredith Maier and Sydney Scott are headed to Huntington.

As a junior, the 6'0" Maier averaged 18.5 points, 12.9 rebounds, 4.9 assists and 4.7 steals for Fairmont Senior High School. A native of Grafton, West Virginia, she secured first team all-state and all-conference honor. She was also named to the all-tourney team at the state tournament, where she led the Polar Bears to a runner-up finish.

The 5'8" Scott, rated a four-star prospect by ESPN.com, hails from Prospect Park, Pennsylvania. She was named first team all-Philadelphia Catholic League and Daily Times All-Delco three times and was a 2021 PIAA 5A first team all-state pick. She led Cardinal O'Hara High School to the state title last season, averaging 14 points, five rebounds and five assists per contest.

"Both of these signees have the ability to instantly impact us at the collegiate level," said Kemper. "Sydney is a hard-nosed shooter with a basketball IQ that will help her acclimate quickly to Division I basketball. I like her upbringing as one of the best guards in what is always one of the toughest high school basketball leagues in the country ... the Philly Catholic League."

"Meredith adds outside scoring ability to our interior group. She is active and physical in the paint but is also a tremendous perimeter shooter. It is exciting to add such a talented West Virginia player to our program."

The Thundering Herd got off to a flying start in 2021-22 with a 108-45 victory over Bluefield State Tuesday evening. Marshall is back in action Sunday at Radford for a 2 p.m. ET tip.



## MILESTONE WATCH

### 900 Points

Brianah Ferby.....	887 (819 at Austin Peay & 68 at MU)
Savannah Wheeler.....	867

..... Reached 750 vs. Morehead State Nov. 19, 2021  
..... Reached 800 at (RV) Michigan State Nov. 28, 2021

### 800 Points

Aaliyah Dunham.....	790 (736 at Xavier & 54 at MU)
Kennedi Colclough.....	777 (521 at Stetson & 256 at MU)

..... Reached 700 at Purdue Nov. 22, 2021

### 300 Points

Lorelei Roper.....	265
Kia Sivils.....	242

### 200 Points

Alexis Johnson.....	201
..... Reached 200 vs. Alderson Broaddus Dec. 15, 2021	

CC Mays..... 118

..... Reached 100 vs. Morehead State Nov. 19, 2021

### 500 Rebounds

Kennedi Colclough.....	420 (311 at Stetson & 109 at MU)
..... Reached 400 vs. Morehead State Nov. 19, 2021	

..... Reached 100th at MU vs. Coppin St., Dec. 4, 2021

### 300 Rebounds

Brianah Ferby.....	293 (265 at Austin Peay & 28 at MU)
Lorelei Roper.....	292

Aaliyah Dunham..... 278 (260 at Xavier & 18 at MU)

Kia Sivils..... 214

### 200 Rebounds

Savannah Wheeler.....	195
Alexis Johnson.....	160

### 100 Rebounds

CC Mays.....	103
..... Reached 100 vs. Coppin State Dec. 4, 2021	

### 400 Assists

Aaliyah Dunham.....	408 (371 at Xavier & 37 at MU)
..... Reached 400 vs. Coppin State Dec. 4, 2021	

### 200 Assists

Savannah Wheeler.....	151
Brianah Ferby.....	146 (138 at Austin Peay & 8 at MU)

### 100 Assists

Kia Sivils.....	93
Kennedi Colclough.....	89 (62 at Stetson & 27 at MU)

### 200 Steals

Aaliyah Dunham.....	171 (148 at Xavier & 23 at MU)
Brianah Ferby.....	140 (129 at Austin Peay & 11 at MU)

### 100 Steals

Kia Sivils.....	72
Savannah Wheeler.....	71

Kennedi Colclough..... 51 (40 at Stetson & 11 at MU)

### 50 Blocks

Lorelei Roper.....	47
Kennedi Colclough.....	37 (18 at Stetson & 19 at MU)

### 300 Field Goals Made

Kennedi Colclough.....	311 (209 at Stetson & 102 at MU)
..... Reached 300 vs. Coppin State Dec. 4, 2021	

Brianah Ferby..... 300 (278 at Austin Peay & 22 at MU)

..... Reached 300 vs. Alderson Broaddus Dec. 15, 2021

Aaliyah Dunham..... 268 (247 at Xavier & 21 at MU)

Savannah Wheeler..... 251

### 100 Field Goals Made

Lorelei Roper.....	116
..... Reached 100 at MTSU March 4, 2021	

Kia Sivils..... 97

Alexis Johnson..... 87

### 150 3-PT Field Goals Made

Brianah Ferby.....	135 (123 at Austin Peay & 12 at MU)
Aaliyah Dunham.....	113 (108 at Xavier & 5 at MU)

### 100 3-PT Field Goals Made

Savannah Wheeler..... 96 (15th all-time at MU)

### 300 Free Throws Made

Savannah Wheeler..... 269 (9th all-time at MU)

### 200 Free Throws Made

Brianah Ferby.....	152 (140 at Austin Peay & 12 at MU)
Aaliyah Dunham.....	141 (134 at Xavier & 7 at MU)

Kennedi Colclough..... 139 (98 at Stetson & 42 at MU)

## WHEELER IN THE RECORD BOOK



Savannah Wheeler is finding a permanent home in the Marshall record books as she continues to climb in several categories.

### 3-Point FG Made

12. Kristi Huff (1988-92)	106
13. Stephanie Wine (1992-96)	97

Taylor Pearson (2017-21) 97

15. Wheeler 96

16. Amanda Eddinger 91

### 3-Point FG Attempted

13. Shay Weaver (2011-13) 318

14. Taylor Pearson (2017-21) 317

15. Wheeler 290

16. Khadajia Brooks (2015-20) 274

### Free Throws Made

7. Sheila Johnson (1987-91) 302

8. Tammy Wiggins (1983-87) 270

9. Wheeler 269

10. Deanna Carter (1978-82) 265

11. Lee Ann Parsley (1986-90) 263

### Free Throws Attempted

14. Alyssa Hammond (2006-09) 339

15. Tracy Krueger (1989-93) 322

16. Wheeler 317

### Free Throw Percentage

1. Wheeler 84.9

2. Taylor Porter (2015-19) 83.7

3. Kristina Behnfeldt (1995-99) 82.0

4. Shayna Gore (2015-19) 81.2

5. Jenny Leavitt (1985-89) 80.7

## SEASON SUPERLATIVES

2021-22 Season games achieving numbers with career in ()

Points	10+	20+	30+
Savannah Wheeler	8 (47)	2 (11)	1 (2)
Kennedi Colclough	6 (40)	1 (4)	-
Brianah Ferby	4 (41)	- (6)	-
CC Mays	3 (4)	-	-
Aaliyah Dunham	2 (31)	- (1)	-
Alexis Johnson	2 (8)	-	-
Sarah Liberatore	1 (1)	-	-

Rebounds	5+	10+
Lorelei Roper	7 (25)	1 (3)
CC Mays	5 (10)	- (1)
Alexis Johnson	3 (14)	- (2)
Kennedi Colclough	2 (38)	- (8)
Aarionna Redman	2 (2)	-
Savannah Wheeler	1 (13)	- (1)
Brianah Ferby	1 (17)	-


Assists	2+	5+
Aaliyah Dunham	7 (89)	5 (36)
Savannah Wheeler	5 (42)	1 (7)
Kennedi Colclough	3 (25)	-
Alexis Johnson	3 (5)	-
Lorelei Roper	3 (12)	-
Brianah Ferby	2 (38)	- (4)
Sarah Liberatore	2 (2)	-
Kia Sivils	1 (24)	- (2)
Aarionna Redman	1 (1)	-
Christiana McLean	1 (1)	-
CC Mays	1 (10)	-
Ksenija Mitric	1 (3)	-

Steals	2+	5+
Aaliyah Dunham	5 (45)	3 (9)
Savannah Wheeler	5 (23)	- (1)
Brianah Ferby	3 (40)	- (3)
CC Mays	2 (8)	-
Aarionna Redman	1 (1)	-
Kennedi Colclough	1 (11)	-
Kia Sivils	1 (20)	- (2)
Alexis Johnson	1 (5)	-

Blocks	2+	5+
Lorelei Roper	3 (9)	-
Kennedi Colclough	2 (9)	-

Double-Doubles Numbers, Opp., Date

# Last Time on the Court - Dec. 15 vs. Alderson Broaddus



Official Basketball Box Score - Final

Alderson Broaddus at Marshall

12/15/21 Cam Henderson Center, Huntington

2021-22 Women's Basketball

Game Duration: 1:42

Attendance: 208

Officials: Michael McConnell, Angie Enlund, Jamie Broderick

Alderson Broaddus - 56

Record: 5-4

NO.	Name	Min	FG M-A	3P M-A	FT M-A	Rebounds OR DR TOT	Fouls PF FD	TP	AS	TO	ST	Blocks BS BA	+/-
5	Iyahna Williams	F 16:09	2-5	0-0	0-0	3 2 5	5 0	4	2	4	0	1 0	-11
21	Nyshae Weaver	F 23:49	5-11	0-0	1-4	2 6 8	2 5	11	0	1	0	0 2	-18
4	Saharra Murphy	G 15:48	0-1	0-0	0-0	0 0 0	3 0	0	2	0	1	0 1	-22
12	Jaya Nelson	G 28:03	1-6	1-4	0-0	1 4 5	1 1	3	1	4	0	0 0	-14
34	Ariyah Douglas	G 24:00	4-8	4-7	0-0	0 3 3	3 1	12	2	2	1	1 0	-16
13	Hannah Taylor	17:00	1-3	0-1	4-6	1 1 2	2 4	6	0	3	2	0 0	-12
24	Cassandra Smith	24:14	2-3	0-0	0-0	2 3 5	2 0	4	2	2	0	0 1	-12
20	Londaisa Smith	12:55	1-2	0-0	0-2	2 1 3	4 1	2	0	4	0	0 0	-23
2	Alexis Kuhlman	17:47	1-2	1-2	0-0	0 2 2	0 0	3	3	3	1	0 0	-11
11	Taylor Isaac	20:15	4-14	3-11	0-0	0 4 4	2 0	11	1	2	0	0 0	-21
Team						3 4 7		0	4				
Totals			21-55	9-25	5-12	14 30 44	24 12	56	13	29	5	2 4	-32

Technical Fouls: NONE

Marshall - 88

Record: 4-4

NO.	Name	Min	FG M-A	3P M-A	FT M-A	Rebounds OR DR TOT	Fouls PF FD	TP	AS	TO	ST	Blocks BS BA	+/-
24	Kennedi Colclough	F 21:53	2-6	0-2	3-6	1 2 3	2 4	7	1	2	0	2 0	25
34	Lorelei Roper	F 12:15	2-3	0-0	0-0	5 2 7	1 0	4	1	0	1	2 0	11
4	Savannah Wheeler	G 23:37	7-13	1-3	1-2	0 2 2	2 5	16	7	2	0	1 3	33
10	Aaliyah Dunham	G 29:17	4-9	0-1	0-0	0 1 1	3 3	8	6	1	2	0 0	23
33	Briannah Ferby	G 25:01	2-8	0-2	5-9	2 1 3	0 6	9	0	0	1	0 0	28
30	Aarionna Redman	20:45	3-6	0-1	0-0	0 6 6	4 1	6	0	0	1	0 0	6
23	Alexis Johnson	25:07	7-10	2-3	2-2	1 6 7	0 1	18	2	2	2	0 0	22
21	Sarah Liberatore	18:38	5-9	4-6	1-2	3 0 3	0 3	15	2	2	1	0 0	10
11	Ksenija Mitric	11:54	1-5	1-4	0-0	1 1 2	0 1	3	2	0	0	0 1	12
1	Christiana McLean	07:19	1-2	0-0	0-0	0 0 0	0 0	2	1	2	0	0 0	-2
2	Sofia Lianos	04:14	0-1	0-0	0-0	0 1 1	0 0	0	0	0	1	0 0	-8
Team						1 1 2		0	0				
Totals			34-72	8-22	12-21	14 23 37	12 24	88	22	9	11	4 2	32

Technical Fouls: NONE

	AB	MAR
Biggest lead	7 (1 <sup>st</sup> 1:40)	40 (4 <sup>th</sup> 5:31)
Best Scoring Run	7 (4 <sup>th</sup> 1:10)	21 (3 <sup>rd</sup> 1:49)
Lead Changes	6	
Times Tied	4	
Time with Lead	09:39	26:06


Points from	AB	MAR
Turnovers	8	33
Paint	18	46
Second Chance	14	30
Fast Breaks	4	10
Bench	26	44

Period by Period Scoring						
	1st	2nd	3rd	4th	TOT	
AB	23	9	12	12	56	
MAR	18	22	33	15	88	

Dead Ball Rebounds: 4; 0

Shooting By Period		
1 <sup>st</sup> FG%	7-18	38.9%
3PT%	1-3	33.3%
FT%	3-7	42.9%
2 <sup>nd</sup> FG%	8-17	47.1%
3PT%	3-7	42.9%
FT%	3-5	60%
3 <sup>rd</sup> FG%	13-20	65.0%
3PT%	2-5	40.0%
FT%	5-7	71.4%
4 <sup>th</sup> FG%	6-17	35.3%
3PT%	2-7	28.6%
FT%	1-2	50%
GM FG%	34-72	47.2%
3PT%	8-22	36.4%
FT%	12-21	57.1%

Dead Ball Rebounds: 3; 0





#23 Alexis Johnson (18) and #21 Sarah Liberatore (15) combined for 33 points to ignite the Herd win.

HUNTINGTON, W.Va. – The Marshall women's basketball team received great performances off the bench from sophomore Alexis Johnson and freshman Sarah Liberatore, as the Herd defeated the Alderson Broaddus Battlers 88-56, Wednesday night in the Cam Henderson Center.

Johnson (18) and Liberatore (15) combined for 33 points and provided a tremendous spark of energy on the floor for Marshall as the Herd improved to 4-4.

"Obviously it was good to come out with a win," head coach Tony Kemper said. "I think we started flat. That was evident. Some credit goes to (Alderson Broaddus). Their shooters were ready to come in here and make shots and we kind of dared them to do it and they did. I thought Sarah (Liberatore) came in and hit a really big shot for us when we were just out of sorts. We kind of looked like we weren't sure how we were going to make it happen."

"We did eventually make it happen. But we have to grow. We have to improve, and we have to get our chemistry back together. Afterward, I talked to the team about how we haven't been the same since some final sequences at Michigan State."

"The change and trying to get there with them, it starts from my point of view. I have to better about messaging and what is important. And they have to respond a little bit too. I'm glad we flipped the switch and got it done. We have got to get steady and get in a better headspace for Las Vegas and for conference play which is right around the corner."

Coach Kemper told both Johnson and Liberatore when he sent them in to make something happen and to be the spark. And both players responded throughout the game.

Johnson tied her career-high in points, originally set against Old Dominion in February, and tied her season-high with seven boards for her 14th career game with five or more off the glass. Johnson added two assists and two steals. The sophomore was able to find her spot from in and around the paint, shooting 7-of-10 from the floor. She was also 2-of-3 from beyond the arc and 2-for-2 from the line. It was Johnson's eighth career game scoring in double-figures, and her second this season.

Liberatore had a career-night in points, minutes (18), rebounds (three), field goals made (five) and three-pointers made (four). She had only hit just three from beyond the arc in her career before Wednesday. Liberatore finished the game 4-of-6 from distance, hitting some key shots throughout the night. She tied career-highs with two assists and one steal.

"I think for me personally, any time I am given an opportunity I want to impact this team

## THE OPPONENT - OAKLAND

### Scouting the Golden Grizzlies

Oakland heads to Las Vegas with a 4-5 record and winning two of its last three. The Golden Grizzlies defeated Illinois-Chicago 67-59 on Dec. 2, lost to IUPUI 74-49 on Dec. 4 and then took down Central Michigan 79-58 in its last outing on Dec. 7. Oakland and Marshall share one familiar opponent in Michigan State, as the Golden Grizzlies fell 84-71 on Nov. 26.

Against the Chippewas, Oakland began the game with an 8-point lead (18-10) at the end of the first quarter. The Golden Grizzlies kept the offense rolling in the second quarter, outscoring Central Michigan 24-10 in the period, and taking a 42-20 lead at the half. The Chippewas were 0-of-13 from beyond the arc in the first half and finished the game 3-of-25.

Kahlaijah Dean, who leads the team in every category except for rebounds and blocked shots, scored a season-high 34 points against Central Michigan. She shot 11-of-16 from the field, 4-of-7 from three and was 8-for-8 from the line. The senior guard added seven boards. Breanna Perry, who leads in rebounds and blocks, tallied 13 points, eight boards and three blocks in the win.

Dean leads Oakland in points per game (18.6), minutes per game (31.9), assists (24), steals (22), made field goals (55), field goal attempts (138), three-pointers made (24), three-pointers attempted (70), free throws made (33) and free throws attempted (44). She is also second on the team in rebounds per game with 4.6 as Perry leads with 4.9 per contest. Dean ranks in the top 100 in the NCAA in eight statistical categories and the top 50 in three.

As a team, Oakland is shooting 40.6-percent from the field and 33.3-percent from beyond the arc.

Oakland will take on Campbell on Dec. 21 for its second game of the Las Vegas Holiday Classic.

Head coach Jeff Tungate is in his ninth season at the helm and has an overall record of 106-138. He will not be with the team in Las Vegas, taking a medical leave of absence.

## THE SERIES

### First All-Time Meeting



## 2021-22 Oakland Women's Basketball Combined Team Statistics All games

Page 1/1  
as of Dec 07, 2021

### Game Records

Record	Overall	Home	Away	Neutral
ALL GAMES	4-5	3-4	1-1	0-0
CONFERENCE	2-2	2-2	0-0	0-0
NON-CONFERENCE	2-3	1-2	1-1	0-0

### Score by Periods

Team	1st	2nd	3rd	4th	OT	TOT
Oakland	146	148	148	164	0	606
Opponents	152	130	187	162	0	631

### Team Box Score

No.	Player	GP-GS			Total			3-Point			F-Throw		Rebounds				PER 36 MIN											
		GP-GS	MIN	AVG	FG-FGA	FG%	3FG-3FGA	3FG%	FT-FTA	FT%	OFF	DEF	TOT	AVG	PF	DQ	A	TO	BLK	STL	PTS	AVG						
21	DEAN, Kahlaijah	9-9	287:30	31.9	55-138	.399	24-70	.343	33-44	.750	8	33	41	4.6	24	1	24	29	2	22	167	18.6						
33	SIMS, Olivia	8-3	134:01	16.8	22-48	.458	15-27	.556	5-10	.500	5	10	15	1.9	13	0	5	10	0	3	64	8.0						
2	WILLIAMS, Lamariyee	9-4	209:08	23.2	22-56	.393	4-11	.364	21-29	.724	8	30	38	4.2	14	0	19	22	2	16	69	7.7						
32	LUCHENBACH, Kayla	9-3	171:51	19.1	26-53	.491	2-8	.250	11-15	.733	12	13	25	2.8	18	1	3	10	2	4	65	7.2						
24	BREEDY, Brianna	8-8	205:41	25.7	21-46	.457	5-14	.357	8-8	1.000	2	12	14	1.8	11	0	19	10	0	6	55	6.9						
10	BEATTY, Breanne	9-9	265:01	29.4	24-63	.381	7-27	.259	4-9	.444	19	16	35	3.9	24	0	20	20	0	8	59	6.6						
0	PERRY, Breanna	9-6	168:49	18.8	20-45	.444	1-7	.143	12-23	.522	21	23	44	4.9	27	3	7	13	8	10	53	5.9						
30	BLACKWELL, Alona	9-3	140:41	15.6	15-46	.326	6-26	.231	2-4	.500	7	15	22	2.4	9	0	4	13	1	6	38	4.2						
1	MCQUEEN, Aaliyah	6-0	46:20	7.7	6-18	.333	3-7	.429	2-4	.500	4	6	10	1.7	8	0	5	5	0	2	17	2.8						
3	GOUARD, Sydney	8-0	62:30	7.8	3-11	.273	0-1	.000	0-0	.000	7	10	17	2.1	6	0	3	5	1	3	6	0.8						
15	MAHOLMES, C'Erra	4-0	06:33	1.6	1-4	.250	0-0	.000	1-1	1.000	0	1	1	0.3	2	0	0	0	0	0	3	0.8						
12	FOLLEY, Kendall	7-0	40:21	5.8	2-5	.400	0-1	.000	1-2	.500	0	2	2	0.3	4	0	3	7	0	3	5	0.7						
13	STALEY, Helen	9-0	36:42	4.1	2-5	.400	0-2	.000	1-2	.500	1	4	5	0.6	4	0	3	1	1	2	5	0.6						
22	MUNGO, Prunelle	4-0	17:21	4.3	0-2	.000	0-0	.000	0-0	.000	2	3	5	1.3	5	0	1	4	2	0	0	0.0						
25	MONTUE, Kennedie	3-0	04:26	1.5	0-0	.000	0-0	.000	0-0	.000	0	0	0	0.0	1	0	0	0	0	0	0	0.0						
23	IBEZIM, Miriam	2-0	03:05	1.5	0-0	.000	0-0	.000	0-0	.000	0	1	1	0.5	0	0	0	1	0	0	0	0.0						
Team											15	16	31				2											
Total		9	1800		219-540	.406	67-201	.333	101-151	.669	111	195	306	34.0	170	5	116	152	19	85	606	67.3						
Opponents		9	1800		236-533	.443	51-169	.302	108-161	.671	122	226	348	38.7	161	1	142	160	15	67	631	70.1						

### Team Statistics

	OAK	OPP
<b>Scoring</b>	<b>606</b>	<b>631</b>
Points per game	67.3	70.1
Scoring margin	-2.8	-
<b>Field goals-att</b>	<b>219-540</b>	<b>236-533</b>
Field goal pct	.406	.443
<b>3 point fg-att</b>	<b>67-201</b>	<b>51-169</b>
3-point FG pct	.333	.302
3-pt FG made per game	7.4	5.7
<b>Free throws-att</b>	<b>101-151</b>	<b>108-161</b>
Free throw pct	.669	.671
F-Throws made per game	11.2	12.0
<b>Rebounds</b>	<b>306</b>	<b>348</b>
Rebounds per game	34.0	38.7
Rebounding margin	-4.7	-
<b>Assists</b>	<b>116</b>	<b>142</b>
Assists per game	12.9	15.8
<b>Turnovers</b>	<b>152</b>	<b>160</b>
Turnovers per game	16.9	17.8
Turnover margin	+0.9	-
Assist/turnover ratio	0.8	0.9
<b>Steals</b>	<b>85</b>	<b>67</b>
Steals per game	9.4	7.4
<b>Blocks</b>	<b>19</b>	<b>15</b>
Blocks per game	2.1	1.7
<b>Winning streak</b>	<b>1</b>	<b>-</b>
Home win streak	0	-
<b>Attendance</b>	<b>3479</b>	<b>1967</b>
Home games-Avg/Game	7-497	2-984
Neutral site-Avg/Game	-	0-0

### Team Results

Date	Opponent		Score	Att.
11/09/2021	Toledo	L	72-84	644
11/12/2021	Niagara	W	77-64	261
11/18/2021	Youngstown St.	L	68-79	244
11/20/2021	Robert Morris	W	65-60	405
11/22/2021	at Michigan	L	58-69	1967
11/26/2021	Michigan St.	L	71-84	1219
12/02/2021	UIC	W	67-59	295
12/04/2021	IUPUI	L	49-74	411
12/07/2021	at Central Mich.	W	79-58	0

### Oakland NCAA Rankings top 100 (Horizon rank)

As of 12/16/21

3PT FG Made/Game	68th (4th) 7.4
3PT FG Made	79th (2nd) 67
3PT FG Percentage	94th (4th) 33.3
Steals Per Game	96th (3rd) 9.4
<b>Player NCAA Rankings</b>	
3PT FG Att.	Kahlaijah Dean 32nd (1st) 70
Points/Game	Kahlaijah Dean 41st (4th) 18.6
3PT FG/Game	Kahlaijah Dean 46th (2nd) 2.67
FG Att.	Kahlaijah Dean 53rd (2nd) 138
3PT FG Made	Kahlaijah Dean 55th (1st) 24
Points	Kahlaijah Dean 59th (2nd) 167
Steals/Game	Kahlaijah Dean 66th (2nd) 2.44
Steals	Kahlaijah Dean 73rd (1st) 22



## THE OPPONENT - AKRON

### Scouting the Zips

Akron enters the Las Vegas Holiday Hoops Classic with a 3-3 record, and has not taken on an opponent since Dec. 5, a 93-54 loss at No. 12 Michigan. The Zips game against Cleveland State on Dec. 12 was postponed due to COVID-19 protocols in the Vikings program. Akron began the season with back-to-back wins over Slippery Rock (97-54) and then at Robert Morris (60-50). The Zips then lost to Youngstown State and Duquesne before getting a 7-point win versus Detroit Mercy on Nov. 29.

Layne Ferrell led the team with 13 points against Michigan, her first game of the season in double-figures. The Wolverines shot over 64-percent from the floor, held Akron to just 17 rebounds and forced 21 turnovers.

Jordyn Dawson, who is from Huntington and went to Huntington High School, is the lone player averaging double-digits in points this season with 15.6 a game. Dawson also leads the Zips in rebounds with 6.2 per game, assists with 16 and steals with 15. She ranks 21st in the NCAA in steals per game (3.0). Dawson missed the game against Detroit Mercy and has struggled scoring since. She opened the year with 31 points against Slippery Rock, 22 at Robert Morris and 19 against Youngstown State. Dawson has combined for just six points over her next two games.

Reagan Bass is second on the team in scoring (8.3 ppg) and rebounds (5.5 rpg). The freshman's best game came against Youngstown State with 10 points, nine boards and two blocks. Bass leads the Zips in rejections with seven.

Akron begins its trip to Las Vegas with a game against UT-Martin on Dec. 20.

Head coach Melissa Jackson is in her fourth season at the helm and has a 41-47 record. Jackson led the Zips to a berth in the Women's Basketball Invitational in her first season in 2018-19.

## THE SERIES

### 14 All-Time Meetings

#### Series Tied 7-7

Year	Date	Winner	Location	Score
1997-98	Nov. 22	Akron	Home	72-57
1997-98	Feb. 25	Akron	Away	89-70
1998-99	Feb. 3	Akron	Away	78-64
1999-00	Jan. 29	Akron	Home	60-53
1999-00	Feb. 17	Akron	Away	69-57
2000-01	Jan. 27	Akron	Away	59-58
2000-01	Feb. 14	Marshall	Home	70-60
2001-02	Jan. 30	Marshall	Away	71-68 (OT)
2001-02	Feb. 26	Marshall	Home	63-37
2002-03	Jan. 15	Akron	Away	59-49
2002-03	March 1	Marshall	Home	72-52
2003-04	Feb. 4	Marshall	Away	70-55
2003-04	March 2	Marshall	Home	67-52
2004-05	March 1	Marshall	Home	65-49



## 2021-22 Akron Women's Basketball Combined Team Statistics All games

Page 1/1  
as of Dec 05, 2021

### Game Records

Record	Overall	Home	Away	Neutral
ALL GAMES	3-3	2-0	1-3	0-0
CONFERENCE	0-0	0-0	0-0	0-0
NON-CONFERENCE	3-3	2-0	1-3	0-0

### Score by Periods

Team	1st	2nd	3rd	4th	OT	TOT
Akron	80	91	96	113	0	380
Opponents	97	92	92	91	0	372

### Team Box Score

No.	Player				Total		3-Point		F-Throw		Rebounds													
		GP-GS	MIN	AVG	FG-FGA	FG%	3FG-3FGA	3FG%	FT-FTA	FT%	OFF	DEF	TOT	AVG	PF	DQ	A	TO	BLK	STL	PTS	AVG		
25	DAWSON, Jordyn	5-5	125:09	25.0	29-70	.414	7-20	.350	13-15	.867	4	27	31	6.2	15	1	16	14	3	15	78	15.6		
34	BASS, Reagan	6-6	149:30	24.9	20-44	.455	0-3	.000	10-13	.769	12	21	33	5.5	17	0	5	5	7	4	50	8.3		
13	BREWER, Lonasia	6-5	125:19	20.9	16-35	.457	1-5	.200	9-15	.600	6	23	29	4.8	6	0	7	11	3	2	42	7.0		
30	FERRELL, Layne	6-6	138:14	23.0	15-35	.429	4-16	.250	5-9	.556	5	12	17	2.8	9	0	9	8	5	5	39	6.5		
14	MARTINDALE, Rachel	6-2	148:57	24.8	11-40	.275	11-39	.282	4-6	.667	0	4	4	0.7	5	0	8	5	1	6	37	6.2		
1	MILLER, Kendall	6-0	130:38	21.8	12-28	.429	2-4	.500	7-13	.538	3	16	19	3.2	8	0	10	12	0	5	33	5.5		
2	CARTER, Alanna	2-0	17:26	8.7	4-7	.571	0-1	.000	2-5	.400	1	1	2	1.0	4	0	1	1	0	1	10	5.0		
10	STEWART, Alexis	3-0	15:22	5.1	4-10	.400	4-8	.500	2-2	1.000	0	0	0	0.0	1	0	0	0	1	1	14	4.7		
0	CORCORAN, Annika	6-6	120:34	20.1	9-22	.409	7-16	.438	2-4	.500	2	3	5	0.8	13	0	6	9	0	0	27	4.5		
21	NEITZEL, Molly	6-0	57:09	9.5	10-21	.476	0-2	.000	1-3	.333	6	7	13	2.2	11	0	3	7	2	2	21	3.5		
23	RASHEED, Zakia	5-0	43:46	8.8	3-9	.333	2-8	.250	1-2	.500	1	7	8	1.6	2	0	8	5	0	3	9	1.8		
33	NEITZEL, Colleen	5-0	33:53	6.8	3-9	.333	1-4	.250	2-5	.400	4	11	15	3.0	9	0	5	1	2	0	9	1.8		
20	BROWN-MITCHELL, Gabrielle	6-0	75:39	12.6	3-9	.333	1-7	.143	1-2	.500	1	11	12	2.0	5	0	4	8	0	2	8	1.3		
3	TECCA, Emma	3-0	18:23	6.1	1-4	.250	1-4	.250	0-0	.000	0	0	0	0.0	4	0	1	1	0	1	3	1.0		
Team											9	15	24					8						
Total		6	1200		140-343	.408	41-137	.299	59-94	.628	54	158	212	35.3	109	1	83	95	24	47	380	63.3		
Opponents		6	1200		134-352	.381	34-110	.309	70-106	.660	72	160	232	38.7	105	2	78	97	17	50	372	62.0		

### Team Statistics

	UA	OPP
<b>Scoring</b>	<b>380</b>	<b>372</b>
Points per game	63.3	62.0
Scoring margin	+1.3	-
<b>Field goals-att</b>	<b>140-343</b>	<b>134-352</b>
Field goal pct	.408	.381
<b>3 point fg-att</b>	<b>41-137</b>	<b>34-110</b>
3-point FG pct	.299	.309
3-pt FG made per game	6.8	5.7
<b>Free throws-att</b>	<b>59-94</b>	<b>70-106</b>
Free throw pct	.628	.660
F-Throws made per game	9.8	11.7
<b>Rebounds</b>	<b>212</b>	<b>232</b>
Rebounds per game	35.3	38.7
Rebounding margin	-3.3	-
<b>Assists</b>	<b>83</b>	<b>78</b>
Assists per game	13.8	13.0
<b>Turnovers</b>	<b>95</b>	<b>97</b>
Turnovers per game	15.8	16.2
Turnover margin	+0.3	-
Assist/turnover ratio	0.9	0.8
<b>Steals</b>	<b>47</b>	<b>50</b>
Steals per game	7.8	8.3
<b>Blocks</b>	<b>24</b>	<b>17</b>
Blocks per game	4.0	2.8
<b>Winning streak</b>	<b>0</b>	<b>-</b>
Home win streak	2	-
<b>Attendance</b>	<b>882</b>	<b>4901</b>
Home games-Avg/Game	2-441	4-1225
Neutral site-Avg/Game	-	0-0

### Team Results

Date	Opponent		Score	Att.
11/09/2021	Slippery Rock	W	97-54	476
11/13/2021	at Robert Morris	W	60-50	782
11/15/2021	at Youngstown St.	L	55-57	1329
11/23/2021	at Duquesne	L	47-58	516
11/29/2021	Detroit Mercy	W	67-60	406
12/05/2021	at Michigan	L	54-93	2274

### Akron NCAA Rankings top 100 (MAC rank)

#### As of 12/13/21

Fewest Turnovers	12th (2nd) 95
Fewest Fouls	13th (1st) 109
Blocks/Game	88th (2nd) 4.0
Player NCAA Rankings	
Steals/Game	Jordyn Dawson 21st (4th) 3.00
FT Percentage	Jordyn Dawson 46th (3rd) 86.7

## 2021-22 TRENDS

Home	3-1
Away	1-3
Neutral	0-0
Leading at half	3-3
Trailing at half	1-1
Tied at half	0-0
Overtime game	0-0
C-USA Home Game	0-0
C-USA Road Game	0-0
C-USA Tournament	0-0
Non- C-USA Home Game	3-1
Non- C-USA Road Game	1-3
Non- C-USA Neutral Game	0-0
vs. Ranked Opponents	0-0
vs. Unranked Opponents	4-4
Leading-5 min. left	4-2
Trailing-5 min. left	0-1
Score tied-5 min. left	0-1
Herd outrebounds opp.	3-2
Herd outrebounded by opp.	1-2
Team rebounds are even	0-0
Herd scores more points in paint	4-2
Opp. scores more points in paint	0-2
Points in paint is even	0-0
Herd shoots 50% from floor	1-0
Herd shoots <50% from floor	3-4
Opp. shoots 50% from floor	0-0
Opp. shoots <50% from floor	4-4
Herd makes more FTs	4-0
Opp. makes more FTs	0-3
FTs are even	0-1
Herd has more TOs	0-1
Opp. has more TOs	4-3
TOs are even	0-0
Herd scores 60 points or less	0-2
Herd scores 61-69 points	2-1
Herd scores 70-79 points	0-1
Herd scores 80-89 points	1-0
Herd scores 90 points or more	1-0
Opp. scores 60 points or less	3-1
Opp. scores 61-69 points	1-0
Opp. scores 70-79 points	0-2
Opp. scores 80-89 points	0-1
Opp. scores 90 points or more	0-0
Two or less score 10+	1-1
Three or more score 10+	3-3
On Monday	0-1
On Tuesday	1-0
On Wednesday	1-0
On Thursday	0-0
On Friday	1-0
On Saturday	0-1
On Sunday	1-2
In November	3-2
In December	1-2
In January	0-0
In February	0-0
In March	0-0
Game decided by 5 pts or less	1-1
Game decided by 6-10 pts	1-3
Game decided by 11-20 pts	0-0
Game decided by 21 pts or more	2-0

## THE LAST TIME...

Scored 100 Points	vs. Bluefield State, 11/9/21 (W, 108-45)
Allowed 100 Points	Morehead State, 11/13/15 (W, 104-101)
Scored 41-50 Points	47 at St. Bonaventure, 12/12/21 (L, 50-47)
Allowed 41-50 Points	50 at St. Bonaventure, 12/12/21 (L, 50-47)
Scored 40 or Fewer Points	39 at No. 22 Kentucky, 11/26/17 (L, 69-39)
Allowed 40 or Fewer Points	40, Kentucky Christian, 11/5/19 (W, 89-40)
Scored 50 Points in a Half	59, 2nd Half vs. Bluefield State, 11/9/21 (W, 108-45)
Allowed 50 Points in a Half	56, 1st Half Bowling Green, 11/13/18 (L, 99-76)
Scored 20 or Fewer Points in a Half	20, 2nd Half St. Bonaventure, 12/12/21 (L, 50-47)
Allowed 16-20 Points in a Half	18, 2nd Half vs. Bluefield State, 11/9/21 (W, 108-45)
Allowed 15 or Fewer Points in a Half	14, 1st Half at St. Bonaventure, 12/12/21 (L, 50-47)
Scored 30+ Points in Quarter	(2x in 2021-22) 33, 3rd Q vs. Alderson Broaddus, 12/15/21 (W, 88-56)
Allowed 30+ Points in Quarter	30, 4th Q Appalachian State, 3/25/19 (L, 83-71)
Scored 10 or Fewer Points in Quarter	(3x in 2021-22) 9, 3rd Q at St. Bonaventure, 12/12/21 (L, 50-47)
Allowed 10 or Fewer Points in Quarter	(6x in 2021-22) 9, 2nd Q vs. Al. Broaddus, 12/15/21 (W, 88-56)
Made 40+ Field Goals	42 vs. Bluefield State, 11/9/21 (W, 108-45)
Allowed 40+ Field Goals	41, Charlotte, 1/7/17 (L, 93-77)
Shot 60% From the Field	62.5% (55-88) vs. Maine Fort Kent, 12/20/16 (W, 136-62)
Allowed 60% From the Field	68.7% (32-of-47) Rice, 2/9/19 (L, 79-67)
Shot 85-89% From the Foul Line*	85.7% (12-of-14) vs. NT, 2/27/21 (W, 56-55)
Shot 90-99% From the Foul Line*	90% (9-of-10) vs. ODU, 2/5/21 (L, 80-70)
Shot 100% From the Foul Line *	17-of-17 vs. UTSA, 2/13/20 (W, 66-53)
Opponent Shot <20% From Field	19.3%, vs. Bluefield College, 12/11/16 (W, 77-35)
Made 10-14 3-Pointers	10, vs. Rice, 2/21/21 (W, 68-56)
Made 15+ 3-Pointers	\$18 vs. FIU, 3/7/19 (W, 87-42)
Shot 50% From Three	9-of-17 (52.9%) vs. Bluefield State, 11/9/21 (W, 108-45)
Allowed 10+ 3-Pointers	14, vs. FIU, 1/22/21 (L, 75-60)
Did Not Make a 3-Point FG	vs. George Washington, 12/2/10 (W, 64-61 2OT)
Did Not Attempt a 3-Point FG	**328-straight games with a made three-pointer
Played an Overtime Game	vs. Wright State, 12/19/06 (W, 62-54)
Won an Overtime Game	vs. ODU, 2/6/21 (W, 73-68)
Played a Ranked Team	at #9 Kentucky, 12/9/20 (L, 79-45)
Had 40-49 Rebounds	(4x in 2021-22) 43 at St. Bonaventure, 12/12/21 (L, 50-47)
Had 50-59 Rebounds	56 vs. Alderson Broaddus, 11/27/19 (W, 85-41)
Had 60+ Rebounds	63 vs. Evansville, 11/29/18 (W, 72-65 OT)
Had Fewer than 30 Rebounds	29 at (RV) Michigan State, 11/28/21 (L, 85-75)
Allowed 50 Rebounds	50 at Charlotte, 1/9/21 (L, 65-56 OT)
Allowed Fewer Than 25 Rebounds	17, Kentucky Christian, 12/18/17 (W, 111-38)
Had 20 Assists	(2x in 2021-22) 22 vs. Alderson Broaddus, 12/15/21 (W, 88-56)
Had 10 or Fewer Turnovers	(2x in 2021-22) 9 vs. Alderson Broaddus, 12/15/21 (W, 88-56)
Had 25 or More Turnovers	27 at Clemson, 12/18/18 (L, 68-54)
Forced 25-29 Turnovers	(2x in 2021-22) 29 vs. Alderson Broaddus, 12/15/21 (W, 88-56)
Forced 30 or more Turnovers	30 vs. Bluefield State, 11/9/21 (W, 108-45)
Had 5-9 Blocks	5 vs. LATech, 3/10/21 (L, 50-48)
Had 10+ Blocks	14 vs. Louisiana Tech, 1/1/21 (L, 61-51 OT)
Had 0 Blocks	at #9 Kentucky (broke string of 37-straight games), 12/9/20 (L, 75-49)
Had 15-20 Steals	15 vs. Southern Miss (C-USA Tourn.), 3/11/20 (W, 71-67 OT)
Had 20 or more Steals	21 vs. Bluefield State, 11/9/21 (W, 108-45)
Had Six or More Players in Double Figures	vs. Bluefield State, 11/9/21 (W, 108-45)
Had Five Players in Double Figures	Aaliyah Dunham - 17, CC Mays - 17, Kennedi Colclough - 15
Had Four Players in Double Figures	Savannah Wheeler - 14, Brianah Ferby - 13, Alexis Johnson - 10
Had Three Players in Double Figures	at Appalachian State, 3/25/19 (L, 83-71)
Had Two Players in Double Figures	Shayna Gore - 17, Khadaija Brooks - 15, Taylor Porter - 13, Taylor Pearson - 11, Kristen Mayo - 10
Had Two Score 20+ Points	at Radford, 11/14/21 (W, 68-64)
Had No Players in Double Figures	Kennedi Colclough - 17, Aaliyah Dunham - 13, Savannah Wheeler - 13, CC Mays - 10
Had Two or More Players with a Double-Double	vs. Florida Atlantic, 2/1/20 (W, 85-75)
Had Two Players with 10+ Rebs	Savannah Wheeler - 25, Kristen Mayo - 20
Had Three or More Players with 10+ Rebs	at Middle Tennessee, 2/19/14 (L, 75-36)
No opposing players scored in double figures	at Charlotte, 1/9/21 (L, 65-56 OT)
Opposing starting five all in double figures	Alexis Johnson (11 pts. & 14 rbs.) & CC Mays (11 pts. & 13 rbs.)
Scored 40+ Bench Points	vs. Louisiana Tech, 1/1/21 (L, 61-51 OT)
Allowed 40+ Bench Points	Savannah Wheeler-11, Alexis Johnson-11
	vs. Evansville, 11/29/18 (W, 72-65 OT)
	Khadaija Brooks - 13, Taylor Pearson - 12, Ashley Saintigene - 11
	vs. Bluefield State, 11/20/18 (W, 82-29)
	vs. Bowling Green, 12/7/19 (L, 82-69)
	44 vs. Alderson Broaddus, 12/15/21 (W, 88-56)
	40, Florida Atlantic, 1/5/18 (L, 79-59)

\* Minimum of 5 free throws for free throw percentages



## THE LAST TIME CONTINUED...

### A MARSHALL PLAYER...

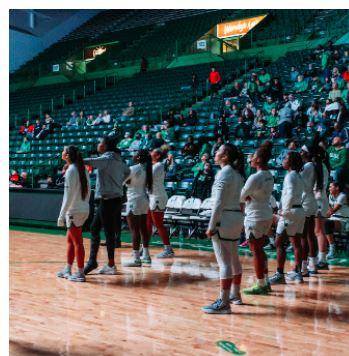
Scored 20-29 Points	Kennedi Colclough (23) vs. Coppin State, 12/4/21 (L, 77-69)
Scored 30-39 Points	Savannah Wheeler (30) at (RV) Michigan State, 11/28/21 (L, 85-75)
Scored 40+ Points	Kristina Behnfeldt (40) vs. Ohio, 2/10/99 (L, 74-72)
Had 10-14 Rebounds	Lorelei Roper (10) at St. Bonaventure, 12/12/21 (L, 50-47)
Had 15-19 Rebounds	Ashley Saintigene (16) vs. Longwood, 11/10/17 (W, 90-45)
Had 20+ Rebounds	Catie Knable (21) vs. Bowling Green, 2/16/02 (W, 56-43)
Had 10 Assists	Norrishia Victrum (11) at Morehead State, 11/13/15 (W, 104-101)
Had Two Players with 5+ Assists	vs. Alderson Broaddus, 12/15/21 (W, 88-56)
	Savannah Wheeler (7) & Aaliyah Dunham (6)
Had Three or More Players with 5+ Assists	vs. Cleveland State, 12/8/18 (86-64)
	Kristen Mayo (8), Shayna Gore (6) & Taylor Porter (5)
Had 5-9 Blocks	Mahogany Matthews (5) vs. Louisiana Tech, 1/2/21 (W, 61-57)
Had 10 Blocks	<b>\$^A Sharon Deal (12) vs. Youngstown St. 3/4/89 (W, 63-59)</b>
Had 5-9 Steals	Aaliyah Dunham (5) at Purdue, 11/22/21 (L, 70-60)
Two or More Players with 5+ Steals	vs. Kentucky Christian, 11/5/19 (W, 89-40)
	Kristen Mayo (5) & Dazha Congleton (5)
Had 10 Steals	<b>\$^A Stephanie Wine (14) vs. Western Carolina, 1/23/95 (W, 72-69)</b>
Had a Double-Double	Kennedi Colclough (13p, 11r) vs. LA Tech, 3/10/21 (L, 50-48)
Made 6-7 3-pointers	Taylor Pearson (6-of-9) at Southern Miss, 2/6/20 (W, 80-65)
Made 8+ 3-pointers	<b>\$Taylor Porter (10) vs. FIU, 3/7/19 (W, 87-42)</b>
<b>\$ School record, + NCAA Record, ^ SoCon Record</b>	

### AN OPPOSING PLAYER...

Scored 20-29 Points	Jaia Alexander (24) & Alexandria Hamilton (22) of Coppin St., 12/4/21
Two or More Players with 20+ Points	Coppin State, 12/4/21 (L, 77-69)
	Jaia Alexander (24) & Alexandria Hamilton (22)
	2nd time in 2021-22 - Nia Clouden (24) & Alisia Smith (20) of Michigan State the other
Scored 30-39 Points	Kierra Anthony (34) of LA Tech, 1/24/19 (W, 90-88 3OT)
Scored 40+ Points	Jennie Simms (43) of ODU, 1/1/17 (L, 73-69)
Had 10-14 Rebounds	Colleen Bucknor (10) of Coppin State, 12/4/21 (L, 77-69)
Had 15-19 Rebounds	Crystal Primm (18) of Florida Atlantic, 3/7/20 (L, 68-50)
Had 20+ Rebounds	Bayley Plummer (21) of Appalachian State, 3/25/19 (L, 83-71)
Two or More Players with 10+ Rebounds	Morehead State, 11/19/21 (W, 65-58)
	Lauren Carter (11) & Jada Claude (11)
Had 10 Assists	Jada McMillian (10) of Charlotte, 1/8/21 (L, 75-54)
Had 5 Blocks	Ryan Holder (5) of Towson, 12/21/19 (L, 59-56)
Had 5 Steals	N'Yah Boyd (5) of North Texas, 2/26/21 (L, 52-51)
Had a Double-Double	Ra Shaya Kyle (15p, 10r) of Purdue, 11/22/21 (L, 70-60)
Had Two Players with a Double-Double	WKU, 1/14/21 (W, 81-54 OT)
	Raneem Elgedawy (17 pts & 10 rbs) & Fatou Pouye (14 pts & 10 rbs)
Had a Triple-Double	Anastasia Hayes (17pts-11rebs-10ast.) of MTSU, 1/9/20 (L, 75-55)
Made 6-7 3-pointers	Ieva Spigule (6-of-10) of FIU, 1/30/20 (L, 68-65)
Made 8+ 3-pointers	Morgan McMillen (8-of-11) Bowling Green, 11/13/18 (L, 99-76)

#### Herd NCAA Rankings top 100 (C-USA rank) As of 12/16/21

Turnover Margin	17th (1st) 6.88
Fewest Turnovers	23rd (1st) 106
Fewest Turnovers/Game	31st (1st) 13.2
Turnovers Forced/Game	62nd (5th) 20.12
Assist/TO Ratio	71st (1st) 1.04
Scoring Offense	81st (3rd) 72.5
FT Percentage	88th (5th) 73.5
<b>Player NCAA Rankings</b>	
Steals/Game	Aaliyah Dunham 30th (1st) 2.88
FT Made	Savannah Wheeler 42nd (3rd) 40
FT Percentage	Savannah Wheeler 43rd (1st) 87.0
Assist/TO Ratio	Aaliyah Dunham 48th (1st) 2.47
Steals	Aaliyah Dunham 60th (3rd) 23
Points/Game	Savannah Wheeler 64th (2nd) 17.6
Assists/Game	Aaliyah Dunham 73rd (2nd) 4.6
FT Attempts	Savannah Wheeler (84th (6th) 46



## MARSHALL STARTING FIVE

<b>Opponents</b>						<b>Score</b>
BLUEFIELD STATE	Dunham	Wheeler	Sivils	Colclough	Roper	W, 108-45
at Radford	Dunham	Wheeler	Sivils	Colclough	Roper	W, 68-64
MOREHEAD STATE	Dunham	Wheeler	Sivils	Colclough	Roper	W, 65-58
at Purdue	Dunham	Wheeler	Sivils	Colclough	Roper	L, 70-60
at (RV) Michigan State	Dunham	Wheeler	Sivils	Colclough	Roper	L, 85-75
vs. Coppin State	Dunham	Wheeler	Sivils	Colclough	Roper	L, 77-69
at St. Bonaventure	Dunham	Wheeler	Ferby	Colclough	Roper	L, 50-47
vs. Alderson Broaddus	Dunham	Wheeler	Ferby	Colclough	Roper	W, 88-56

### Record with starting groups:

Dunham, Wheeler, Sivils, Colclough, Roper: 3-3

Dunham, Wheeler, Ferby, Colclough, Roper: 1-1

### MARSHALL'S LARGEST IN 2021-22

Lead	72 vs. Bluefield State
Deficit	10 (2x) last at (RV) Michigan State
Margin of Victory	63 vs. Bluefield State
Margin of Defeat	10 (2x) last at (RV) Michigan State
Halftime Lead	22 vs. Bluefield State
Halftime Deficit	6 at Purdue
Deficit in Win	7 vs. Alderson Broaddus
Lead in Loss	14 at St. Bonaventure
Halftime Deficit in Win	None
Halftime Lead in Loss	13 at St. Bonaventure
Scoring Run	29-0 vs. Bluefield State
Opponent Scoring Run	12-0 Morehead State
Lead Changes in a Game	9 vs. Morehead State
Times Tied in a Game	6 (2x) last at Michigan State

### LED (TIED) THE TEAM IN...

	Pts.	Rebs.	Asts.	Blks.	Stls.
0 Sivils	-	-	-	1	1
1 McLean	-	-	-	-	-
2 Llanos	-	-	-	-	-
3 Mays	1	3	-	-	1
4 Wheeler	3	1	2	4	3
5 LaFon	-	-	-	-	-
10 Dunham	1	-	6	-	5
11 Mitric	-	-	-	-	-
21 Liberatore	-	-	-	-	-
23 Johnson	1	2	-	1	2
24 Colclough	3	-	1	4	-
30 Redman	-	-	-	2	-
33 Ferby	-	1	-	-	2
34 Roper	-	5	1	7	-





# 2021-22 Marshall Women's Basketball Combined Team Statistics All games

Page 1/1  
as of Dec 16, 2021

## Game Records

Record	Overall	Home	Away	Neutral
ALL GAMES	4-4	3-1	1-3	0-0
CONFERENCE	0-0	0-0	0-0	0-0
NON-CONFERENCE	4-4	3-1	1-3	0-0

## Score by Periods

Team	1st	2nd	3rd	4th	OT	TOT
Marshall	139	149	163	129	0	580
Opponents	111	128	127	139	0	505

## Team Box Score

No.	Player				Total		3-Point		F-Throw		Rebounds											
		GP-GS	MIN	AVG	FG-FGA	FG%	3FG-3FGA	3FG%	FT-FTA	FT%	OFF	DEF	TOT	AVG	PF	DQ	A	TO	BLK	STL	PTS	AVG
4	WHEELER, Savannah	8-8	230:12	28.8	44-106	.415	13-39	.333	40-46	.870	4	20	24	3.0	22	2	18	22	1	11	141	17.6
24	COLCLOUGH, Kennedi	8-8	225:03	28.1	42-86	.488	3-13	.231	30-37	.811	12	18	30	3.8	23	0	10	14	6	4	117	14.6
33	FERBY, Brianah	8-2	187:07	23.4	22-68	.324	12-40	.300	12-19	.632	9	19	28	3.5	12	0	8	8	0	11	68	8.5
3	MAYS, CC	6-0	111:12	18.5	20-39	.513	1-5	.200	9-15	.600	16	18	34	5.7	17	1	4	11	0	6	50	8.3
10	DUNHAM, Aaliyah	8-8	247:45	31.0	21-69	.304	5-28	.179	7-8	.875	3	15	18	2.3	16	0	37	15	0	23	54	6.8
23	JOHNSON, Alexis	8-0	114:43	14.3	20-48	.417	3-14	.214	5-8	.625	6	30	36	4.5	14	0	6	8	1	3	48	6.0
34	ROPER, Lorelei	8-8	189:35	23.7	15-39	.385	0-0	.000	4-9	.444	27	25	52	6.5	19	1	8	8	10	3	34	4.3
21	LIBERATORE, Sarah	4-0	26:25	6.6	5-11	.455	4-8	.500	3-4	.750	4	0	4	1.0	0	0	4	3	0	2	17	4.3
1	MCLEAN, Christiana	2-0	18:49	9.4	4-7	.571	0-0	.000	0-1	.000	0	2	2	1.0	3	0	3	4	0	1	8	4.0
30	REDMAN, Aarionna	8-0	89:22	11.2	11-24	.458	5-8	.625	0-1	.000	5	22	27	3.4	13	0	4	4	2	4	27	3.4
5	LAFON, Samantha	2-0	16:44	8.4	2-3	.667	0-0	.000	0-0	.000	0	2	2	1.0	4	0	0	0	0	0	4	2.0
0	SIVILS, Kia	7-6	110:24	15.8	4-11	.364	0-1	.000	1-3	.333	8	4	12	1.7	14	0	6	7	2	5	9	1.3
11	MITRIC, Ksenija	3-0	26:58	9.0	1-9	.111	1-6	.167	0-0	.000	1	2	3	1.0	1	0	2	1	0	1	3	1.0
2	LLANOS, Sofia	2-0	05:42	2.9	0-2	.000	0-0	.000	0-0	.000	0	1	1	0.5	0	0	0	0	0	1	0	0.0
Team											16	22	38					1				
Total		8	1600		211-522	.404	47-162	.290	111-151	.735	111	200	311	38.9	158	4	110	106	22	75	580	72.5
Opponents		8	1600		171-425	.402	49-148	.331	114-163	.699	77	219	296	37.0	144	3	93	161	24	37	505	63.1

## Team Statistics

	MARSH	OPP
<b>Scoring</b>	<b>580</b>	<b>505</b>
Points per game	72.5	63.1
Scoring margin	+9.4	-
<b>Field goals-att</b>	<b>211-522</b>	<b>171-425</b>
Field goal pct	.404	.402
<b>3 point fg-att</b>	<b>47-162</b>	<b>49-148</b>
3-point FG pct	.290	.331
3-pt FG made per game	5.9	6.1
<b>Free throws-att</b>	<b>111-151</b>	<b>114-163</b>
Free throw pct	.735	.699
F-Throws made per game	13.9	14.3
<b>Rebounds</b>	<b>311</b>	<b>296</b>
Rebounds per game	38.9	37.0
Rebounding margin	+1.9	-
<b>Assists</b>	<b>110</b>	<b>93</b>
Assists per game	13.8	11.6
<b>Turnovers</b>	<b>106</b>	<b>161</b>
Turnovers per game	13.3	20.1
Turnover margin	+6.9	-
Assist/turnover ratio	1.0	0.6
<b>Steals</b>	<b>75</b>	<b>37</b>
Steals per game	9.4	4.6
<b>Blocks</b>	<b>22</b>	<b>24</b>
Blocks per game	2.8	3.0
<b>Winning streak</b>	<b>1</b>	<b>-</b>
Home win streak	1	-
<b>Attendance</b>	<b>1844</b>	<b>6548</b>
Home games-Avg/Game	4-461	4-1637
Neutral site-Avg/Game	-	0-0

## Team Results

Date	Opponent		Score	Att.
11/09/2021	Bluefield St.	W	108-45	467
11/14/2021	at Radford	W	68-64	745
11/19/2021	Morehead St.	W	65-58	737
11/22/2021	at Purdue	L	60-70	1526
11/28/2021	at Michigan St.	L	75-85	3938
12/04/2021	Coppin St.	L	69-77	431
12/12/2021	at St. Bonaventure	L	47-50	339
12/15/2021	Alderson Broaddus	W	88-56	209



**2021-22 Marshall Women's Basketball**  
**Season/Career Statistics**  
**All games**

Page 1/1  
as of Dec 16, 2021

**Summary**

Player	Season Statistics										Career Statistics									
	GP-GS	MIN/G	FG%	3FG%	FT%	R/G	A/G	STL	BLK	PTS/G	GP-GS	MIN/G	FG%	3FG%	FT%	R/G	A/G	STL	BLK	PTS/G
COLCLOUGH, Kennedy	8-8	28.1	.488	.231	.811	3.8	1.3	4	6	14.6	25-25	25.8	.472	.256	.745	4.4	1.1	11	19	10.2
DUNHAM, Aaliyah	8-8	31.0	.304	.179	.875	2.3	4.6	23	0	6.8	8-8	31.0	.304	.179	.875	2.3	4.6	23	0	6.8
FERBY, Brianah	8-2	23.4	.324	.300	.632	3.5	1.0	11	0	8.5	8-2	23.4	.324	.300	.632	3.5	1.0	11	0	8.5
JOHNSON, Alexis	8-0	14.3	.417	.214	.625	4.5	0.8	3	1	6.0	40-4	13.3	.486	.268	.432	4.0	0.5	24	3	5.0
LAFON, Samantha	2-0	8.4	.667	.000	.000	1.0	0.0	0	0	2.0	7-0	4.6	.429	.000	.500	0.9	0.0	0	0	1.0
LIBERATORE, Sarah	4-0	6.6	.455	.500	.750	1.0	1.0	2	0	4.3	14-0	5.3	.429	.438	.600	0.4	0.3	3	0	2.0
LLANOS, Sofia	2-0	2.9	.000	.000	.000	0.5	0.0	1	0	0.0	2-0	2.9	.000	.000	.000	0.5	0.0	1	0	0.0
MAYS, CC	6-0	18.5	.513	.200	.600	5.7	0.7	6	0	8.3	25-4	17.9	.346	.100	.565	4.1	1.3	26	1	4.7
MCLEAN, Christiana	2-0	9.4	.571	.000	.000	1.0	1.5	1	0	4.0	2-0	9.4	.571	.000	.000	1.0	1.5	1	0	4.0
MITRIC, Ksenija	3-0	9.0	.111	.167	.000	1.0	0.7	1	0	1.0	5-0	13.1	.174	.188	.000	1.4	1.6	1	0	2.2
REDMAN, Aarionna	8-0	11.2	.458	.625	.000	3.4	0.5	4	2	3.4	8-0	11.2	.458	.625	.000	3.4	0.5	4	2	3.4
ROPER, Lorelei	8-8	23.7	.385	.000	.444	6.5	1.0	3	10	4.3	73-27	16.0	.430	.000	.407	4.0	0.7	20	47	3.6
SIVILS, Kia	7-6	15.8	.364	.000	.333	1.7	0.9	5	2	1.3	80-17	21.1	.393	.232	.449	2.7	1.2	72	21	3.0
WHEELER, Savannah	8-8	28.8	.415	.333	.870	3.0	2.3	11	1	17.6	57-44	30.8	.392	.331	.849	3.4	2.6	71	7	15.2

**Scoring**

Player	Season Statistics								Career Statistics							
	FG-FGA	FG%	3FG-3FGA	3FG%	FT-FTA	FT%	PTS	PTS/G	FG-FGA	FG%	3FG-3FGA	3FG%	FT-FTA	FT%	PTS	PTS/G
COLCLOUGH, Kennedy	42-86	.488	3-13	.231	30-37	.811	117	14.6	102-216	.472	11-43	.256	41-55	.745	256	10.2
DUNHAM, Aaliyah	21-69	.304	5-28	.179	7-8	.875	54	6.8	21-69	.304	5-28	.179	7-8	.875	54	6.8
FERBY, Brianah	22-68	.324	12-40	.300	12-19	.632	68	8.5	22-68	.324	12-40	.300	12-19	.632	68	8.5
JOHNSON, Alexis	20-48	.417	3-14	.214	5-8	.625	48	6.0	87-179	.486	11-41	.268	16-37	.432	201	5.0
LAFON, Samantha	2-3	.667	0-0	.000	0-0	.000	4	2.0	3-7	.429	0-0	.000	1-2	.500	7	1.0
LIBERATORE, Sarah	5-11	.455	4-8	.500	3-4	.750	17	4.3	9-21	.429	7-16	.438	3-5	.600	28	2.0
LLANOS, Sofia	0-2	.000	0-0	.000	0-0	.000	0	0.0	0-2	.000	0-0	.000	0-0	.000	0	0.0
MAYS, CC	20-39	.513	1-5	.200	9-15	.600	50	8.3	45-130	.346	2-20	.100	26-46	.565	118	4.7
MCLEAN, Christiana	4-7	.571	0-0	.000	0-1	.000	8	4.0	4-7	.571	0-0	.000	0-1	.000	8	4.0
MITRIC, Ksenija	1-9	.111	1-6	.167	0-0	.000	3	1.0	4-23	.174	3-16	.188	0-0	.000	11	2.2
REDMAN, Aarionna	11-24	.458	5-8	.625	0-1	.000	27	3.4	11-24	.458	5-8	.625	0-1	.000	27	3.4
ROPER, Lorelei	15-39	.385	0-0	.000	4-9	.444	34	4.3	116-270	.430	0-1	.000	33-81	.407	265	3.6
SIVILS, Kia	4-11	.364	0-1	.000	1-3	.333	9	1.3	97-247	.393	13-56	.232	35-78	.449	242	3.0
WHEELER, Savannah	44-106	.415	13-39	.333	40-46	.870	141	17.6	251-641	.392	96-290	.331	269-317	.849	867	15.2

**Totals**

Player	Season Statistics									Career Statistics								
	O-REB	D-REB	TOTAL	PF	FO	A	TO	A/TO		O-REB	D-REB	TOTAL	PF	FO	A	TO	A/TO	
COLCLOUGH, Kennedy	12	18	30	23	0	10	14	0.7		35	74	109	63	3	27	38	0.7	
DUNHAM, Aaliyah	3	15	18	16	0	37	15	2.5		3	15	18	16	0	37	15	2.5	
FERBY, Brianah	9	19	28	12	0	8	8	1.0		9	19	28	12	0	8	8	1.0	
JOHNSON, Alexis	6	30	36	14	0	6	8	0.8		41	119	160	69	0	18	39	0.5	
LAFON, Samantha	0	2	2	4	0	0	0	0.0		2	4	6	11	0	0	0	0.0	
LIBERATORE, Sarah	4	0	4	0	0	4	3	1.3		4	1	5	2	0	4	7	0.6	
LLANOS, Sofia	0	1	1	0	0	0	0	0.0		0	1	1	0	0	0	0	0.0	
MAYS, CC	16	18	34	17	1	4	11	0.4		42	61	103	67	4	32	42	0.8	
MCLEAN, Christiana	0	2	2	3	0	3	4	0.8		0	2	2	3	0	3	4	0.8	
MITRIC, Ksenija	1	2	3	1	0	2	1	2.0		1	6	7	2	0	8	4	2.0	
REDMAN, Aarionna	5	22	27	13	0	4	4	1.0		5	22	27	13	0	4	4	1.0	
ROPER, Lorelei	27	25	52	19	1	8	8	1.0		114	178	292	144	2	50	66	0.8	
SIVILS, Kia	8	4	12	14	0	6	7	0.9		112	102	214	151	0	93	72	1.3	
WHEELER, Savannah	4	20	24	22	2	18	22	0.8		35	160	195	147	6	151	149	1.0	





2021-22 Marshall Women's Basketball  
Season Schedule/Results & Leaders  
All games

Page 1/1  
as of Dec 16, 2021

### Game Records

Record	Overall	Home	Away	Neutral
ALL GAMES	4-4	3-1	1-3	0-0
CONFERENCE	0-0	0-0	0-0	0-0
NON-CONFERENCE	4-4	3-1	1-3	0-0

### Team Results

Date	Opponent		Score	Att.	High Points	High Rebounds
11/09/2021	Bluefield St.	W	108-45	467	(17) DUNHAM, Aaliyah	(6) JOHNSON, Alexis
					(17) MAYS, CC	(6) MAYS, CC
11/14/2021	at Radford	W	68-64	745	(17) COLCLOUGH, Kennedi	(7) ROPER, Lorelei
						(7) MAYS, CC
11/19/2021	Morehead St.	W	65-58	737	(22) WHEELER, Savannah	(8) WHEELER, Savannah
11/22/2021	at Purdue	L	60-70	1526	(19) COLCLOUGH, Kennedi	(5) ROPER, Lorelei
11/28/2021	at Michigan St.	L	75-85	3938	(30) WHEELER, Savannah	(5) ROPER, Lorelei
						(5) MAYS, CC
12/04/2021	Coppin St.	L	69-77	431	(23) COLCLOUGH, Kennedi	(9) FERBY, Brianah
12/12/2021	at St. Bonaventure	L	47-50	339	(18) WHEELER, Savannah	(10) ROPER, Lorelei
12/15/2021	Alderson Broaddus	W	88-56	209	(18) JOHNSON, Alexis	(7) ROPER, Lorelei
						(7) JOHNSON, Alexis

### Attendance Summary

	Games	Attend	Avg/Game
Home	4	1844	461
Away	4	6548	1637
Neutral	0	0	0
<b>Total</b>	<b>8</b>	<b>8392</b>	<b>1049</b>



2021-22 Marshall Women's Basketball  
Overall Team Statistics  
All games

Page 1/1  
as of Dec 16, 2021

Team Statistics

	MARSH	OPP
<b>Scoring</b>	<b>580</b>	<b>505</b>
Points per game	72.5	63.1
Scoring margin	+9.4	-
<b>Field goals-att</b>	<b>211-522</b>	<b>171-425</b>
Field goal pct	.404	.402
<b>3 point fg-att</b>	<b>47-162</b>	<b>49-148</b>
3-point FG pct	.290	.331
3-pt FG made per game	5.9	6.1
<b>Free throws-att</b>	<b>111-151</b>	<b>114-163</b>
Free throw pct	.735	.699
F-Throws made per game	13.9	14.3
<b>Rebounds</b>	<b>311</b>	<b>296</b>
Rebounds per game	38.9	37.0
Rebounding margin	+1.9	-
<b>Assists</b>	<b>110</b>	<b>93</b>
Assists per game	13.8	11.6
<b>Turnovers</b>	<b>106</b>	<b>161</b>
Turnovers per game	13.3	20.1
Turnover margin	+6.9	-
Assist/turnover ratio	1.0	0.6
<b>Steals</b>	<b>75</b>	<b>37</b>
Steals per game	9.4	4.6
<b>Blocks</b>	<b>22</b>	<b>24</b>
Blocks per game	2.8	3.0
<b>Winning streak</b>	<b>1</b>	<b>-</b>
Home win streak	1	-
<b>Attendance</b>	<b>1844</b>	<b>6548</b>
Home games-Avg/Game	4-461	4-1637
Neutral site-Avg/Game	-	0-0

Score by Periods

Team	1st	2nd	3rd	4th	OT	TOT
Marshall	139	149	163	129	0	580
Opponents	111	128	127	139	0	505



**2021-22 Marshall Women's Basketball  
Team Game-by-Game  
All games**

Page 1/1  
as of Dec 16, 2021

				Total		3-Pointers		Free throws		Rebounds											
Opponent	Date	Score		FG-FGA	PCT	3FG-3FGA	PCT	FT-FTA	PCT	OFF	DEF	TOT	AVG	PF	A	TO	BLK	STL	PTS	AVG	
Bluefield St.	11/09/2021	108-45	W	42-74	.568	9-17	.529	15-21	.714	16	28	44	44.0	21	20	11	1	21	108	108.0	
at Radford	11/14/2021	68-64	W	22-63	.349	4-18	.222	20-24	.833	16	20	36	40.0	23	10	16	4	12	68	88.0	
Morehead St.	11/19/2021	65-58	W	23-65	.354	2-21	.095	17-21	.810	12	35	47	42.3	16	12	11	3	7	65	80.3	
at Purdue	11/22/2021	60-70	L	22-58	.379	1-17	.059	15-18	.833	14	18	32	39.8	23	6	19	3	9	60	75.3	
at Michigan St.	11/28/2021	75-85	L	27-62	.435	9-23	.391	12-18	.667	11	18	29	37.6	29	17	16	1	8	75	75.2	
Coppin St.	12/04/2021	69-77	L	24-69	.348	7-25	.280	14-19	.737	15	28	43	38.5	20	14	6	3	2	69	74.2	
at St. Bonaventure	12/12/2021	47-50	L	17-59	.288	7-19	.368	6-9	.667	13	30	43	39.1	14	9	18	3	5	47	70.3	
Alderson Broadbus	12/15/2021	88-56	W	34-72	.472	8-22	.364	12-21	.571	14	23	37	38.9	12	22	9	4	11	88	72.5	
Total		580		211-522	.404	47-162	.290	111-151	.735	111	200	311	38.9	158	110	106	22	75	580	72.5	
Opponents		505		171-425	.402	49-148	.331	114-163	.699	77	219	296	37.0	144	93	161	24	37	505	63.1	

**Marshall Averages**

Games Played	Points/game	FG Pct	3FG Pct	FT Pct	Rebounds/game	Assists/game	Turnovers/game	Assist/Turnover ratio	Steals/game	Blocks/game
8	72.5	40.4	29.0	73.5	38.9	13.8	13.3	1.0	9.4	2.8



**2021-22 Marshall Women's Basketball  
Opponents Game-by-Game  
All games**

Page 1/1  
as of Dec 16, 2021

				Total		3-Pointers		Free throws		Rebounds											
Opponent	Date	Score		FG-FGA	PCT	3FG-3FGA	PCT	FT-FTA	PCT	OFF	DEF	TOT	AVG	PF	A	TO	BLK	STL	PTS	AVG	
Bluefield St.	11/09/2021	108-45	W	14-46	.304	8-27	.296	9-18	.500	7	20	27	27.0	19	11	30	2	5	45	45.0	
at Radford	11/14/2021	68-64	W	21-45	.467	6-12	.500	16-22	.727	5	27	32	29.5	22	9	26	0	3	64	54.5	
Morehead St.	11/19/2021	65-58	W	23-60	.383	7-21	.333	5-13	.385	7	32	39	32.7	18	12	15	3	7	58	55.7	
at Purdue	11/22/2021	60-70	L	21-54	.389	7-21	.333	21-26	.808	16	22	38	34.0	15	13	21	3	6	70	59.3	
at Michigan St.	11/28/2021	75-85	L	25-51	.490	3-9	.333	32-35	.914	10	27	37	34.6	21	18	18	3	4	85	64.4	
Coppin St.	12/04/2021	69-77	L	28-57	.491	7-19	.368	14-23	.609	8	33	41	35.7	13	12	9	5	4	77	66.5	
at St. Bonaventure	12/12/2021	47-50	L	18-57	.316	2-14	.143	12-14	.857	10	28	38	36.0	12	5	13	6	3	50	64.1	
Alderson Broadbuss	12/15/2021	88-56	W	21-55	.382	9-25	.360	5-12	.417	14	30	44	37.0	24	13	29	2	5	56	63.1	
Total		505		171-425	.402	49-148	.331	114-163	.699	77	219	296	37.0	144	93	161	24	37	505	63.1	
Marshall		580		211-522	.404	47-162	.290	111-151	.735	111	200	311	38.9	158	110	106	22	75	580	72.5	

**Opponents Averages**

Games Played	Points/game	FG Pct	3FG Pct	FT Pct	Rebounds/game	Assists/game	Turnovers/game	Assist/Turnover ratio	Steals/game	Blocks/game
8	63.1	40.2	33.1	69.9	37.0	11.6	20.1	0.6	4.6	3.0





**2021-22 Marshall Women's Basketball**  
**Player Highs Analysis**  
**All games**

Page 1/2  
as of Dec 16, 2021

**Marshall - Individual Game Highs**

<b>POINTS</b>	30		Savannah Wheeler at Michigan St. (11/28/2021)
	23		Kennedi Colclough vs Coppin St. (12/04/2021)
	22		Savannah Wheeler vs Morehead St. (11/19/2021)
	19		Kennedi Colclough at Michigan St. (11/28/2021)
	19		Kennedi Colclough at Purdue (11/22/2021)
<b>FIELD GOALS MADE</b>	9		Savannah Wheeler at Michigan St. (11/28/2021)
	8		Kennedi Colclough at Michigan St. (11/28/2021)
<b>FIELD GOAL ATTEMPTS</b>	18		Savannah Wheeler at St. Bonaventure (12/12/2021)
	18		Savannah Wheeler at Michigan St. (11/28/2021)
<b>FIELD GOAL PERCENTAGE (min 5 made)</b>	.778	(7-9)	CC Mays vs Bluefield St. (11/09/2021)
	.700	(7-10)	Alexis Johnson vs Alderson Broaddus (12/15/2021)
<b>3 PT FG MADE</b>	4		Sarah Liberatore vs Alderson Broaddus (12/15/2021)
	4		Savannah Wheeler at Michigan St. (11/28/2021)
<b>3 PT FG ATTEMPTS</b>	8		Savannah Wheeler at Michigan St. (11/28/2021)
	8		Brianah Ferby at Purdue (11/22/2021)
<b>3 PT FG PERCENTAGE (min 2 made)</b>	.750	(3-4)	Aaliyah Dunham vs Bluefield St. (11/09/2021)
	.667	(4-6)	Sarah Liberatore vs Alderson Broaddus (12/15/2021)
	.667	(2-3)	Alexis Johnson vs Alderson Broaddus (12/15/2021)
	.667	(2-3)	Aarionna Redman at St. Bonaventure (12/12/2021)
	.667	(2-3)	Aarionna Redman vs Bluefield St. (11/09/2021)
<b>FREE THROWS MADE</b>	11		Savannah Wheeler vs Morehead St. (11/19/2021)
	10		Kennedi Colclough vs Coppin St. (12/04/2021)
<b>FREE THROW ATTEMPTS</b>	12		Savannah Wheeler vs Morehead St. (11/19/2021)
	10		Kennedi Colclough vs Coppin St. (12/04/2021)
<b>FREE THROW PERCENTAGE (min 3 made)</b>	1.000	(10-10)	Kennedi Colclough vs Coppin St. (12/04/2021)
	1.000	(6-6)	Savannah Wheeler at Purdue (11/22/2021)
	1.000	(4-4)	Aaliyah Dunham at Radford (11/14/2021)
	1.000	(4-4)	CC Mays at Radford (11/14/2021)
	1.000	(3-3)	Savannah Wheeler vs Bluefield St. (11/09/2021)
<b>REBOUNDS</b>	10		Lorelei Roper at St. Bonaventure (12/12/2021)
	9		Aarionna Redman at St. Bonaventure (12/12/2021)
	9		Brianah Ferby vs Coppin St. (12/04/2021)
<b>ASSISTS</b>	7		Savannah Wheeler vs Alderson Broaddus (12/15/2021)
	7		Aaliyah Dunham vs Bluefield St. (11/09/2021)
<b>STEALS</b>	6		Aaliyah Dunham at Radford (11/14/2021)
	6		Aaliyah Dunham vs Bluefield St. (11/09/2021)
<b>BLOCKED SHOTS</b>	2		Kennedi Colclough vs Alderson Broaddus (12/15/2021)
	2		Lorelei Roper vs Alderson Broaddus (12/15/2021)
	2		Lorelei Roper at Purdue (11/22/2021)
	2		Kennedi Colclough at Radford (11/14/2021)
	2		Lorelei Roper at Radford (11/14/2021)
<b>TURNOVERS</b>	7		Savannah Wheeler at Purdue (11/22/2021)
	6		Savannah Wheeler at Michigan St. (11/28/2021)
<b>FOULS</b>	5		Savannah Wheeler vs Coppin St. (12/04/2021)
	5		Savannah Wheeler at Michigan St. (11/28/2021)
	5		Lorelei Roper at Purdue (11/22/2021)
	5		CC Mays at Radford (11/14/2021)



**2021-22 Marshall Women's Basketball**  
**Player Highs Analysis**  
**All games**

Page 2/2  
as of Dec 16, 2021

**Opponent - Individual Game Highs**

<b>POINTS</b>	24		Jaia Alexander vs Coppin St. (12/04/2021)
	24		Nia Clouden at Michigan St. (11/28/2021)
	22		Aliyah Lawson vs Coppin St. (12/04/2021)
	21		Lauren Carter vs Morehead St. (11/19/2021)
	20		Alisia Smith at Michigan St. (11/28/2021)
<b>FIELD GOALS MADE</b>	10		Jaia Alexander vs Coppin St. (12/04/2021)
	10		Lauren Carter vs Morehead St. (11/19/2021)
<b>FIELD GOAL ATTEMPTS</b>	19		Asiana Johnson at St. Bonaventure (12/12/2021)
	17		Jaia Alexander vs Coppin St. (12/04/2021)
	17		Lauren Carter vs Morehead St. (11/19/2021)
<b>FIELD GOAL PERCENTAGE (min 5 made)</b>	.636	(7-11)	Alisia Smith at Michigan St. (11/28/2021)
	.625	(5-8)	Ra Shaya Kyle at Purdue (11/22/2021)
<b>3 PT FG MADE</b>	4		Ariyah Douglas vs Alderson Broaddus (12/15/2021)
	3		Taylor Isaac vs Alderson Broaddus (12/15/2021)
	3		Aliyah Lawson vs Coppin St. (12/04/2021)
	3		Cassidy Hardin at Purdue (11/22/2021)
	3		Tyler Moore vs Morehead St. (11/19/2021)
	3		Terri Smith vs Morehead St. (11/19/2021)
	3		Ashlie Loudon vs Bluefield St. (11/09/2021)
<b>3 PT FG ATTEMPTS</b>	11		Taylor Isaac vs Alderson Broaddus (12/15/2021)
	8		Aliyah Lawson vs Coppin St. (12/04/2021)
	8		Tyler Moore vs Morehead St. (11/19/2021)
<b>3 PT FG PERCENTAGE (min 2 made)</b>	1.000	(2-2)	DeeDee Hagemann at Michigan St. (11/28/2021)
	1.000	(2-2)	Gabrielle Thomas vs Bluefield St. (11/09/2021)
<b>FREE THROWS MADE</b>	10		Nia Clouden at Michigan St. (11/28/2021)
	7		Aliyah Lawson vs Coppin St. (12/04/2021)
	7		Ashley Tudor at Radford (11/14/2021)
<b>FREE THROW ATTEMPTS</b>	11		Nia Clouden at Michigan St. (11/28/2021)
	10		Aliyah Lawson vs Coppin St. (12/04/2021)
<b>FREE THROW PERCENTAGE (min 3 made)</b>	1.000	(6-6)	Alisia Smith at Michigan St. (11/28/2021)
	1.000	(6-6)	Abbey Ellis at Purdue (11/22/2021)
	1.000	(4-4)	Bridget Birkhead at Radford (11/14/2021)
<b>REBOUNDS</b>	11		Jada Claude vs Morehead St. (11/19/2021)
	11		Lauren Carter vs Morehead St. (11/19/2021)
<b>ASSISTS</b>	8		Nia Clouden at Michigan St. (11/28/2021)
	5		Mossi Staples vs Coppin St. (12/04/2021)
<b>STEALS</b>	4		Madison Layden at Purdue (11/22/2021)
	3		Lauren Carter vs Morehead St. (11/19/2021)
<b>BLOCKED SHOTS</b>	3		I'yanna Lops at St. Bonaventure (12/12/2021)
	3		Jalynda Salley vs Coppin St. (12/04/2021)
<b>TURNOVERS</b>	10		Londen Coleman vs Bluefield St. (11/09/2021)
	7		Kyanna Morgan at Radford (11/14/2021)
<b>FOULS</b>	5		Iyahna Williams vs Alderson Broaddus (12/15/2021)
	5		Bryonna McClean at Radford (11/14/2021)
	5		Rachel LaLonde at Radford (11/14/2021)



**2021-22 Marshall Women's Basketball  
Team High/Low Analysis  
All games**

Page 1/4  
as of Dec 16, 2021

**Marshall - Game Highs**

<b>POINTS</b>	108		Bluefield St. (11/09/2021)
	88		Alderson Broaddus (12/15/2021)
	75		at Michigan St. (11/28/2021)
	69		Coppin St. (12/04/2021)
	68		at Radford (11/14/2021)
<b>FIELD GOALS MADE</b>	42		Bluefield St. (11/09/2021)
	34		Alderson Broaddus (12/15/2021)
<b>FIELD GOAL ATTEMPTS</b>	74		Bluefield St. (11/09/2021)
	72		Alderson Broaddus (12/15/2021)
<b>FIELD GOAL PERCENTAGE</b>	.568	(42-74)	Bluefield St. (11/09/2021)
	.472	(34-72)	Alderson Broaddus (12/15/2021)
<b>3 PT FG MADE</b>	9		at Michigan St. (11/28/2021)
	9		Bluefield St. (11/09/2021)
<b>3 PT FG ATTEMPTS</b>	25		Coppin St. (12/04/2021)
	23		at Michigan St. (11/28/2021)
<b>3 PT FG PERCENTAGE</b>	.529	(9-17)	Bluefield St. (11/09/2021)
	.391	(9-23)	at Michigan St. (11/28/2021)
<b>FREE THROWS MADE</b>	20		at Radford (11/14/2021)
	17		Morehead St. (11/19/2021)
<b>FREE THROW ATTEMPTS</b>	24		at Radford (11/14/2021)
	21		Alderson Broaddus (12/15/2021)
	21		Morehead St. (11/19/2021)
	21		Bluefield St. (11/09/2021)
<b>FREE THROW PERCENTAGE</b>	.833	(20-24)	at Radford (11/14/2021)
	.833	(15-18)	at Purdue (11/22/2021)
<b>REBOUNDS</b>	47		Morehead St. (11/19/2021)
	44		Bluefield St. (11/09/2021)
<b>ASSISTS</b>	22		Alderson Broaddus (12/15/2021)
	20		Bluefield St. (11/09/2021)
<b>STEALS</b>	21		Bluefield St. (11/09/2021)
	12		at Radford (11/14/2021)
<b>BLOCKED SHOTS</b>	4		Alderson Broaddus (12/15/2021)
	4		at Radford (11/14/2021)
<b>TURNOVERS</b>	19		at Purdue (11/22/2021)
	18		at St. Bonaventure (12/12/2021)
<b>FOULS</b>	29		at Michigan St. (11/28/2021)
	23		at Purdue (11/22/2021)
	23		at Radford (11/14/2021)





**2021-22 Marshall Women's Basketball  
Team High/Low Analysis  
All games**

Page 2/4  
as of Dec 16, 2021

**Opponent - Game Highs**

<b>POINTS</b>	85		at Michigan St. (11/28/2021)
	77		Coppin St. (12/04/2021)
	70		at Purdue (11/22/2021)
	64		at Radford (11/14/2021)
	58		Morehead St. (11/19/2021)
<b>FIELD GOALS MADE</b>	28		Coppin St. (12/04/2021)
	25		at Michigan St. (11/28/2021)
<b>FIELD GOAL ATTEMPTS</b>	60		Morehead St. (11/19/2021)
	57		at St. Bonaventure (12/12/2021)
	57		Coppin St. (12/04/2021)
<b>FIELD GOAL PERCENTAGE</b>	.491	(28-57)	Coppin St. (12/04/2021)
	.490	(25-51)	at Michigan St. (11/28/2021)
<b>3 PT FG MADE</b>	9		Alderson Broaddus (12/15/2021)
	8		Bluefield St. (11/09/2021)
<b>3 PT FG ATTEMPTS</b>	27		Bluefield St. (11/09/2021)
	25		Alderson Broaddus (12/15/2021)
<b>3 PT FG PERCENTAGE</b>	.500	(6-12)	at Radford (11/14/2021)
	.368	(7-19)	Coppin St. (12/04/2021)
<b>FREE THROWS MADE</b>	32		at Michigan St. (11/28/2021)
	21		at Purdue (11/22/2021)
<b>FREE THROW ATTEMPTS</b>	35		at Michigan St. (11/28/2021)
	26		at Purdue (11/22/2021)
<b>FREE THROW PERCENTAGE</b>	.914	(32-35)	at Michigan St. (11/28/2021)
	.857	(12-14)	at St. Bonaventure (12/12/2021)
<b>REBOUNDS</b>	44		Alderson Broaddus (12/15/2021)
	41		Coppin St. (12/04/2021)
<b>ASSISTS</b>	18		at Michigan St. (11/28/2021)
	13		Alderson Broaddus (12/15/2021)
	13		at Purdue (11/22/2021)
<b>STEALS</b>	7		Morehead St. (11/19/2021)
	6		at Purdue (11/22/2021)
<b>BLOCKED SHOTS</b>	6		at St. Bonaventure (12/12/2021)
	5		Coppin St. (12/04/2021)
<b>TURNOVERS</b>	30		Bluefield St. (11/09/2021)
	29		Alderson Broaddus (12/15/2021)
<b>FOULS</b>	24		Alderson Broaddus (12/15/2021)
	22		at Radford (11/14/2021)



**2021-22 Marshall Women's Basketball**  
**Team High/Low Analysis**  
**All games**

Page 3/4  
as of Dec 16, 2021

**Marshall - Game Lows**

<b>POINTS</b>	47 60 65 68 69		at St. Bonaventure (12/12/2021) at Purdue (11/22/2021) Morehead St. (11/19/2021) at Radford (11/14/2021) Coppin St. (12/04/2021)
<b>FIELD GOALS MADE</b>	17 22 22		at St. Bonaventure (12/12/2021) at Purdue (11/22/2021) at Radford (11/14/2021)
<b>FIELD GOAL ATTEMPTS</b>	58 59		at Purdue (11/22/2021) at St. Bonaventure (12/12/2021)
<b>FIELD GOAL PERCENTAGE</b>	.288 (17-59) .348 (24-69)		at St. Bonaventure (12/12/2021) Coppin St. (12/04/2021)
<b>3 PT FG MADE</b>	1 2		at Purdue (11/22/2021) Morehead St. (11/19/2021)
<b>3 PT FG ATTEMPTS</b>	17 17		at Purdue (11/22/2021) Bluefield St. (11/09/2021)
<b>3 PT FG PERCENTAGE</b>	.059 (1-17) .095 (2-21)		at Purdue (11/22/2021) Morehead St. (11/19/2021)
<b>FREE THROWS MADE</b>	6 12 12		at St. Bonaventure (12/12/2021) Alderson Broaddus (12/15/2021) at Michigan St. (11/28/2021)
<b>FREE THROW ATTEMPTS</b>	9 18 18		at St. Bonaventure (12/12/2021) at Michigan St. (11/28/2021) at Purdue (11/22/2021)
<b>FREE THROW PERCENTAGE</b>	.571 (12-21) .667 (12-18) .667 (6-9)		Alderson Broaddus (12/15/2021) at Michigan St. (11/28/2021) at St. Bonaventure (12/12/2021)
<b>REBOUNDS</b>	29 32		at Michigan St. (11/28/2021) at Purdue (11/22/2021)
<b>ASSISTS</b>	6 9		at Purdue (11/22/2021) at St. Bonaventure (12/12/2021)
<b>STEALS</b>	2 5		Coppin St. (12/04/2021) at St. Bonaventure (12/12/2021)
<b>BLOCKED SHOTS</b>	1 1		at Michigan St. (11/28/2021) Bluefield St. (11/09/2021)
<b>TURNOVERS</b>	6 9		Coppin St. (12/04/2021) Alderson Broaddus (12/15/2021)
<b>FOULS</b>	12 14		Alderson Broaddus (12/15/2021) at St. Bonaventure (12/12/2021)



**2021-22 Marshall Women's Basketball  
Team High/Low Analysis  
All games**

Page 4/4  
as of Dec 16, 2021

**Opponent - Game Lows**

<b>POINTS</b>	45		Bluefield St. (11/09/2021)
	50		at St. Bonaventure (12/12/2021)
	56		Alderson Broaddus (12/15/2021)
	58		Morehead St. (11/19/2021)
	64		at Radford (11/14/2021)
<b>FIELD GOALS MADE</b>	14		Bluefield St. (11/09/2021)
	18		at St. Bonaventure (12/12/2021)
<b>FIELD GOAL ATTEMPTS</b>	45		at Radford (11/14/2021)
	46		Bluefield St. (11/09/2021)
<b>FIELD GOAL PERCENTAGE</b>	.304	(14-46)	Bluefield St. (11/09/2021)
	.316	(18-57)	at St. Bonaventure (12/12/2021)
<b>3 PT FG MADE</b>	2		at St. Bonaventure (12/12/2021)
	3		at Michigan St. (11/28/2021)
<b>3 PT FG ATTEMPTS</b>	9		at Michigan St. (11/28/2021)
	12		at Radford (11/14/2021)
<b>3 PT FG PERCENTAGE</b>	.143	(2-14)	at St. Bonaventure (12/12/2021)
	.296	(8-27)	Bluefield St. (11/09/2021)
<b>FREE THROWS MADE</b>	5		Alderson Broaddus (12/15/2021)
	5		Morehead St. (11/19/2021)
<b>FREE THROW ATTEMPTS</b>	12		Alderson Broaddus (12/15/2021)
	13		Morehead St. (11/19/2021)
<b>FREE THROW PERCENTAGE</b>	.385	(5-13)	Morehead St. (11/19/2021)
	.417	(5-12)	Alderson Broaddus (12/15/2021)
<b>REBOUNDS</b>	27		Bluefield St. (11/09/2021)
	32		at Radford (11/14/2021)
<b>ASSISTS</b>	5		at St. Bonaventure (12/12/2021)
	9		at Radford (11/14/2021)
<b>STEALS</b>	3		at St. Bonaventure (12/12/2021)
	3		at Radford (11/14/2021)
<b>BLOCKED SHOTS</b>	0		at Radford (11/14/2021)
	2		Alderson Broaddus (12/15/2021)
	2		Bluefield St. (11/09/2021)
<b>TURNOVERS</b>	9		Coppin St. (12/04/2021)
	13		at St. Bonaventure (12/12/2021)
<b>FOULS</b>	12		at St. Bonaventure (12/12/2021)
	13		Coppin St. (12/04/2021)



[illegible]

Radford - 64		Record: 0-2																					
NO.	NAME	Min	FG		3P		FT	Rebounds		Fouls		TP	AS	TO	ST	Blocks		4+1	Shooting By Period				
			M-A	M-A	M-A	OR		DR	TOT	FF	FD					BS	BA						
00	Rachel LaLonde	F 17:35	0-3	0-0	1-2	1	2	3	5	1	2	3	0	0	1	4			1st FG%	4-8	50.0%		
03	Bridget Birkhead	G 28:10	1-3	1-1	4-4	0	2	2	4	5	7	2	4	0	0	2			3PT%	1-2	50.0%		
12	Byronna McClean	G 30:37	2-4	0-0	4-6	0	6	6	5	5	8	2	1	1	0	0	3		FT%	5-6	83.3%		
22	Ashley Tudor	G 35:25	2-8	1-4	7-8	1	5	6	1	9	10	4	1	0	1	1			2nd FG%	7-14	50.0%		
34	Kyanna Morgan	G 25:51	6-10	1-2	0-2	0	7	7	2	2	13	2	7	1	0	0	-3		3PT%	2-4	50.0%		
50	Jackie Christ	16:17	2-4	0-0	0	0	0	0	2	0	4	0	3	0	0	1	-14		FT%	2-2	100%		
	Destinee Marshall	17:34	3-7	2-3	0-4	0	0	0	0	8	1	2	0	0	0	1	-8		3rd FG%	6-10	60.0%		
	Carmen Williams	06:54	0-1	0-0	0-0	0	0	0	2	0	0	1	0	0	0	0			3PT%	2-2	100%		
	Makaila Brown	04:37	0-0	0-0	0	0	1	1	0	0	0	1	0	0	0	0	-2		FT%	6-10	60.0%		
21	Madison Roselle	03:14	1-1	1-1	0-0	0	0	0	1	1	3	0	0	0	0	0	-3		4th FG%	4-13	30.8%		
30	Talys Johnson	06:06	2-2	0-0	0	0	1	0	1	1	4	0	0	0	0	0	5		3PT%	1-4	25.0%		
5	Danielle Montelbano	05:40	1-2	0-0	0-0	0	0	0	0	1	2	0	0	0	0	0	-1		FT%	3-4	75%		
Team							2	2	4		0								GM FG%	21-45	46.7%		
Totals			21-45	6-12	16-22	5	27	32	22	23	64	9	26	3	0	4	-4			3PT%	6-12	50.0%	
																			FT%	17-22	72.7%		

Technical Fouls: NONE

Dead Ball Rebounds: 5-6

MARW		RADW		Points from Turnovers		MARW/RADW		Period by Period Scoring					
Biggest lead	12 (2 <sup>nd</sup> 8:53)	6 (3 <sup>rd</sup> 0:42)		Turnovers	28	16		1st	2nd	3rd	4th	TOT	
Best Scoring Run	8 (4 <sup>th</sup> 4:56)	8 (2 <sup>nd</sup> 6:52)		Paint	28	22		MARW	21	16	11	20	68
Lead Changes	6			Second Chance	18	2							
Times Tied	2			Fast Breaks	11	17		RADW	14	18	20	12	64
Time with Lead	27:44	10:47		Bench	20	21							

Marshall - 60

Record: 3-1

Official Basketball Box Score - Final

Marshall at Purdue

11/22/21 Mackey Arena, West Lafayette

2021-22 Women's Basketball

Game Time: 7:30 PM

Game Duration: 1:54

Attendance: 1,526

Officials: Gina Cross, Maggie Toman, Katie Entenhe

NO.	Name	Min	FG	3P	FT	Rebounds	Fouls	TP	AS	TO	ST	Blocks	+/-
			M/A	M/A	M/A	OR DR TOT	PF FO					BS BA	
24	Kennedi Colclough	F 32:27	6-13	0-0	7-8	2 2 4	4 5	19	1	1	0	1	4
34	Lorelei Roper	F 27:31	2-6	0-0	2-2	4 5 5	5 1	6	0	1	2	0	7
0	Kia Svils	G 13:47	0-1	0-0	0-0	1 0 1	2 0	0	1	0	0	1	0
4	Savannah Wheeler	G 27:54	2-9	0-5	6-6	1 3 4	2 3	10	0	7	0	0	-4
10	Aaliyah Dunham	G 35:34	2-7	0-3	0-0	0 0 0	2 3	4	2	4	5	0	-15
3	CC Mays	20:27	3-5	0-0	0-2	2 2 4	4 1	6	1	2	1	0	0
23	Alexis Johnson	12:31	1-1	0-0	0-0	0 4 4	1 0	2	0	3	0	0	0
3	Brianah Ferby	24:38	5-13	1-8	0-0	2 2 3	2 11	1	0	2	0	0	-3
21	Sarah Liberatore	00:29	0-1	0-0	0-0	0 0 0	0 0	0	0	0	0	1	0
20	Asirionna Redman	04:42	1-2	0-0	0-0	1 1 2	0 0	2	0	1	0	0	-3
Team						3 3 6	0 0	0	0	0	0	0	
Totals			22-58	1-17	15-18	14 18 32	23 15	60	6	19	9	3 3	-10

Shooting By Period

1 <sup>st</sup> FG%	5-12	41.7%
3PT%	0-5	0.0%
FT%	2-2	100%
2 <sup>nd</sup> FG%	5-15	33.3%
3PT%	0-5	0.0%
FT%	4-4	100%
3 <sup>rd</sup> FG%	7-18	38.9%
3PT%	1-3	33.3%
FT%	2-2	100%
4 <sup>th</sup> FG%	13-35	38.5%
3PT%	0-4	0.0%
FT%	7-10	70%
GM FG%	22-58	37.9%
3PT%	1-17	5.9%
FT%	15-18	83.3%

Technical Fouls: NONE

Dead Ball Rebounds: 3-0

Purdue - 70		Record: 4-1																		
NO. Name		FG	3P	FT	Rebounds	Fouls	TP	AS	ST	Blocks	+/-	Shooting By Period								
	W/L	M/A	M/A		O R TOT	P F				BS BA		1st	2nd							
24 Ra Shaya Kyle	C	27:36	5-8	0-1	5-6	4	6	10	4	15	1	3	0	1	0	6	1st	3PT%	1-5	20.0%
5 Cassidy Hardin	G	29:01	3-5	3-5	1-2	1	1	3	2	10	2	4	1	0	0	13	FT%	2-2	100%	
10 Jeansee Terry	G	25:23	3-11	0-2	3-4	3	3	6	0	3	0	0	0	0	0	3	2nd	FG%	5-16	31.3%
23 Abby Ellis	B	26:55	3-5	2-4	6-6	1	1	2	2	14	3	2	0	0	0	-1	3PT%	4-8	50.0%	
3 Madison Layden	G	32:24	2-10	0-4	3-4	1	5	6	2	6	7	1	5	4	1	12	FT%	1-2	50%	
3 Jaylia Smith	T	23:35	2-7	0-2	3-4	3	7	1	3	7	1	1	1	0	0	6	3rd	FG%	3-9	33.3%
0 Brooke Moore		12:42	1-3	1-1	0-0	0	0	0	0	3	0	0	0	1	0	0	3PT%	2-5	40.0%	
14 Ava Learn		03:52	0-0	0-0	0-0	0	0	0	1	0	0	0	0	0	0	4	FT%	7-8	87.5%	
3 Rickie Woltman		04:23	1-1	0-0	0-0	1	0	1	1	2	0	1	0	0	0	1	4th	FG%	6-12	50.0%
4 Mide Onyimo		10:34	1-2	1-2	0-0	1	1	1	0	3	1	2	0	0	0	9	3PT%	0-3	0.0%	
20 Nyagosa Gory		03:35	0-2	0-0	0-0	0	0	0	0	0	0	0	0	1	-3	1	FT%	11-14	78.6%	
Team					1	2	3	0	0	1	0	1	0	0	0	1	GM	FG%	21-54	38.9%
Totals			21-54	7-21	21-26	16	22	38	10	23	70	13	21	6	3	10	3PT%	7-21	33.3%	
													Technical Fouls: NONE		FT%		21-26	80.8%		
																	Dead Ball Boundaries: 4-0			
		MAR	PUR	Points from Turnovers		MAR	PUR	Points by Period Scoring												
		0 (1st 10:00)	10 (3rd 6:46)	1st	2nd	14	14	1st	2nd	3rd	4th	TOT								
Best Scoring Run	6 (3rd 4:35)	6 (2nd 8:12)	2	Paint	32	20	MAR	12	14	17	17	60								
Lead Changes	0	2	2	Second Chance	13	21	PUR	17	15	15	23	70								
Times Tied	2	0	0	Fast Breaks	10	0														
Time with Lead	00:00	36:47	0	Bench	21	15														





# HEAD COACH TONY KEMPER

Fifth season • @CoachTonyKemper  
Career Record: 51-67, 27-39 (C-USA)



## Fort Hays State '01

Tony Kemper enters his fifth season as the head coach of the Marshall women's basketball team after being elevated to the position in March of 2017. Kemper had previously been an assistant coach with the women's program for five seasons before taking over.

Kemper helped the Thundering Herd navigate the COVID-19-riddled 2020-21 campaign, which yielded second-team All-Conference USA acclaim for Savannah Wheeler and a signature home win over perennial league stalwart Rice in late February.

Kemper led the Herd through a great improvement in his second season. He has brought some added excitement to the program as the attendance average for Marshall rose from 641 in 2016-17 to 1,153 in 2018-19. Kemper's 2019 recruiting class also ranked in the top 60 nationally.

After going 9-20 overall and 3-13 in C-USA in 2017-18, Marshall was predicted to finish 13th in the Conference USA 2018-19 preseason polls. Instead, the Herd rolled out an 8-win improvement overall and 7-wins better in conference play finishing 17-15 and 10-6 in C-USA, securing the No. 6 seed in the tournament. The 10 conference victories were the most C-USA wins for Marshall in program history. Following the conference tournament, the Herd earned a berth in the WBI, just the fourth postseason trip in program history. Marshall won its first round game 67-64 at Davidson before falling in the second round.

Following the 2020-21 season, Kemper increased his overall record to 47-63.

During the 2018-19 season, Marshall was fifth in the conference in points per game (67.3) and led the league in 3-point field goals made per game in conference action (8.9). The Herd also saw an increase in defensive production as Marshall was ranked 13th in C-USA in field goal percentage allowed in 2017-18 but jumped up to fifth in 2018-19. The Herd saw senior Taylor Porter honored twice as a Conference USA Player of the Week including once after breaking the Marshall single-game record draining 10 3-pointers in the senior day win over FIU.

Senior Shayna Gore was named First Team All-Conference USA. Gore was previously honored as Second Team All-Conference USA in 2017-18. The senior guard capped off her prestigious career under the guide of Kemper as just the third player in program history to score over 2,000 points (2,081). Her name can be found all throughout the record book including the program's all-time leader in 3-point field goals made with 303, more than twice the previous record of 146.

The Herd reached some other milestones in 2018-19 including earning a three-overtime victory at home against Louisiana Tech (Jan. 24). It was one of three overtime victories in 2018-19 after going 131 games – second-longest active streak in the NCAA at the time – without even playing an overtime contest. Marshall also earned its first win over Charlotte in the last 10 meetings (Jan. 5) and the team's first ever win over Middle Tennessee (Feb. 16) as Marshall was previously 0-8 against the Blue Raiders.

Kemper's teams have had major success in the classroom as well with seven college graduates over the last two years. The team's overall grade point average in 2017-18 was 3.23 and climbed up to 3.28 in 2108-19. His players have been honored 18 times on the Conference USA Commissioner's Honor Roll (cumulative GPA of 3.0 or better) and 11-time recipients of the C-USA Academic Medal for maintaining a GPA of 3.75 or higher.

During his first five seasons at Marshall as an assistant coach, Kemper has assisted in rebuilding a program that progressively increased its win total over the first four seasons - from 9 to 11 to 17 to 21 wins in the 2015-16 season. That 2015-16 win total was the most

for Thundering Herd Women's Basketball in 29 seasons and, for the first time in school history, yielded a first-team All-Conference USA student-athlete for Marshall in Leah Scott.

He helped lead Marshall to two of only three postseason berths in the program's NCAA history, including its first postseason win in 2014-15 (WBI) and WNIT berth in 2015-16.

Kemper has also been heavily involved in the Thundering Herd's recruiting and academic success, helping sign the 34th-ranked class in 2017 and its group in 2015, which came in 52nd.

In the classroom, the program has placed 28 members on the Conference USA Commissioner's Honor Roll (3.0 cumulative GPA or better) and three more were given the Commissioner's Academic Medal (3.75).

Kemper came to Marshall from Central Arkansas, where he coached with now-former Marshall head coach Matt Daniel for three seasons. At UCA, Kemper helped the Sugar Bears to their first Division I conference title and three seasons of at least 21 wins. His tutelage of inside players helped gain two Southland Player of the Year honors and a Defensive Player of the Year.

Before joining the women's staff, Kemper served as an assistant coach for the Central Arkansas men's basketball program for four years.

Two professional players emerged from UCA during those seasons – the leading scorer in Portugal's Proliga pro league in 2011, Nate Bowie, and professional center Durrell Nevels.

Prior to UCA, Kemper was an assistant coach at Hutchinson (Kansas) Community College - one of the nation's most successful junior college programs.

At Hutchinson, he oversaw day-to-day operations and directed the Blue Dragons' strength and conditioning efforts while also serving as a mathematics and physical education instructor.

The Logan, Kansas, native also held the head coaching spot at Quivira Heights High School in Bushton in 2003-04, guiding QHHS to a No. 1 seed to the regional tournament.

His coaching career began in 2002-03 as an assistant at Hill City (Kansas) High School. Kemper received a bachelor's degree in finance from Fort Hays State University in 2001 and a BBA in Business Education in 2003. He also earned a master's degree in organizational leadership from Fort Hays in 2008.

Kemper and his wife Sandra, a professor at Marshall in the Communications Disorders Department, live in Huntington with sons Brayden and Landry and daughter Jolie.







# 0 Kia Sivils

5-7 | G | Louisville, Ky.  
Sacred Heart HS

Opponent	Date	GS	MIN	Total		3-Pointers		Free throws		Rebounds										
				FG-FGA	PCT	3FG-3FGA	PCT	FT-FTA	PCT	OFF	DEF	TOT	AVG	PF	A	TO	BLK	STL	PTS	AVG
Bluefield St.	11/09/2021	*	14:11	0-1	.000	0-0	.000	0-0	.000	1	1	2	2.0	2	2	1	0	1	0	0.0
at Radford	11/14/2021	*	16:52	0-0	.000	0-0	.000	0-0	.000	1	0	1	1.5	2	1	1	0	0	0	0.0
Morehead St.	11/19/2021	*	11:21	2-3	.667	0-1	.000	1-1	1.000	0	0	0	1.0	0	0	1	0	0	5	1.7
at Purdue	11/22/2021	*	13:46	0-1	.000	0-0	.000	0-0	.000	1	0	1	1.0	2	1	0	1	0	0	1.3
at Michigan St.	11/28/2021	*	14:25	0-1	.000	0-0	.000	0-2	.000	2	0	2	1.2	3	1	0	0	3	0	1.0
Coppin St.	12/04/2021	*	15:12	1-2	.500	0-0	.000	0-0	.000	0	2	2	1.3	1	0	0	1	0	2	1.2
at St. Bonaventure	12/12/2021		24:37	1-3	.333	0-0	.000	0-0	.000	3	1	4	1.7	4	1	4	0	1	2	1.3
Totals		6	110:24	4-11	.364	0-1	.000	1-3	.333	8	4	12	1.7	14	6	7	2	5	9	1.3

## CAREER HIGHS

### POINTS

S:.....5 vs. Morehead St., 11/19/21  
C: ..... 16 (2x) last vs. ODU, 2/22/20

### FIELD GOALS

S:.....2 vs. Morehead St., 11/19/21  
C: .....7 at North Texas, 1/4/20

### FGA

S:....3 (2x) last at St. Bona, 12/12/21  
C: ..... 8 at Bowling Green, 11/13/18

### 3-POINTERS

S:..... N/A  
C: ..... 3 vs. ODU, 2/22/20

### 3PTA

S:.....1 vs. Morehead St., 11/19/21  
C: ..... 3 (2x) last vs. ODU, 2/22/20

### FREE THROWS

S:.....1 vs. Morehead St., 11/19/21  
C: ..... 3 at Wisconsin, 12/4/18

### FTA

S:.....2 at Michigan State, 11/28/21  
C: ....4 (4x) last at Rutgers, 12/15/19

### REBOUNDS

S:.....4 at St. Bonaventure, 12/12/21  
C: ..... 8 twice, last at MT, 3/5/21

### ASSISTS

S:..... 2 vs. Bluefield St., 11/9/21  
C: ..... 5 (2x) last at USM, 2/6/20

### BLOCKS

S: 1 (2x) last vs. Coppin St., 12/4/21  
C: .....2 (3x) last vs. WKU, 1/14/21

### STEALS

S:.....3 at Michigan State, 11/28/21  
C: .....5 (2x) last vs. UTEP, 2/15/20

### MINUTES

S:....24 at St. Bonaventure, 12/12/21  
C: ..... 32 vs. Evansville, 11/29/18

## Player Averages

Games Played	Minutes/ game	Points/ game	FG Pct	3FG Pct	FT Pct	Rebounds/ game	Assists/ game	Turnovers/ game	Assist/Turnover ratio	Steals/ game	Blocks/ game
7	15.8	1.3	36.4	0.0	33.3	1.7	0.9	1.0	0.9	0.7	0.3

## Career Superlatives

	Sea.	Car.
10+ Pts:	0	3
20+ Pts:	0	0
5+ Rebs:	0	9
10+ Rebs:	0	0
5+ Asts:	0	2
2+ Blks:	0	3
2+ Stls:	1	20
Double-Double:	0	0



## CAREER STATISTICS

SEASON	TEAM	GP-GS	MIN/AVG	Field Goals		3-Point		F-Throws		Rebounds				Scoring						
				FG-FGA	FG%	3FG-3FGA	3FG%	FT-FTA	FT%	OFF	DEF	TOT	AVG	PF-FO	A	TO	BLK	STL	PTS	AVG
2018-19	Marsh	32-0	653/20.4	43-111	.387	6-23	.261	15-31	.484	54	45	99	3.1	54-0	37	33	7	28	107	3.3
2019-20	Marsh	28-6	633/22.6	41-94	.436	6-20	.300	15-33	.455	32	34	66	2.4	61-0	34	19	9	29	103	3.7
2020-21	Marsh	13-5	294/22.6	9-31	.290	1-12	.083	4-11	.364	18	19	37	2.8	22-0	16	13	3	10	23	1.8
2021-22	Marsh	7-6	110/15.8	4-11	.364	0-1	.000	1-3	.333	8	4	12	1.7	14-0	6	7	2	5	9	1.3
<b>TOTAL</b>		<b>80-17</b>	<b>1690/21.1</b>	<b>97-247</b>	<b>.393</b>	<b>13-56</b>	<b>.232</b>	<b>35-78</b>	<b>.449</b>	<b>112</b>	<b>102</b>	<b>214</b>	<b>2.7</b>	<b>151-0</b>	<b>93</b>	<b>72</b>	<b>21</b>	<b>72</b>	<b>242</b>	<b>3.0</b>



# 1 Christiana McLean

5-6 | G | Wake Forest, N.C  
Heritage HS

Opponent	Date	GS	MIN	Total		3-Pointers		Free throws		Rebounds								PTS	AVG
				FG-FGA	PCT	3FG-3FGA	PCT	FT-FTA	PCT	OFF	DEF	TOT	AVG	PF	A	TO	BLK	STL	
Bluefield St.	11/09/2021		11:30	3-5	.600	0-0	.000	0-1	.000	0	2	2	2.0	3	2	2	0	1	6
Alderson Broadus	12/15/2021		07:19	1-2	.500	0-0	.000	0-0	.000	0	0	0	1.0	0	1	2	0	0	2
Totals		0	18:49	4-7	.571	0-0	.000	0-1	.000	0	2	2	1.0	3	3	4	0	1	8

## Player Averages

Games Played	Minutes/ game	Points/ game	FG Pct	3FG Pct	FT Pct	Rebounds/ game	Assists/ game	Turnovers/ game	Assist/Turnover ratio	Steals/ game	Blocks/ game
2	9.4	4.0	57.1	0.0	0.0	1.0	1.5	2.0	0.8	0.5	0.0

## CAREER HIGHS

### POINTS

S:..... 6 vs. Bluefield St., 11/9/21

C: ..... 6 vs. Bluefield St., 11/9/21

### FIELD GOALS

S:..... 3 vs. Bluefield St., 11/9/21

C: ..... 3 vs. Bluefield St., 11/9/21

### FGA

S:..... 5 vs. Bluefield St., 11/9/21

C: ..... 5 vs. Bluefield St., 11/9/21

### 3-POINTERS

S:..... N/A

C: ..... N/A

### 3PTA

S:..... N/A

C: ..... N/A

### FREE THROWS

S:..... N/A

C: ..... N/A

### FTA

S:..... 1 vs. Bluefield St., 11/9/21

C: ..... 1 vs. Bluefield St., 11/9/21

### REBOUNDS

S:..... 2 vs. Bluefield St., 11/9/21

C: ..... 2 vs. Bluefield St., 11/9/21

### ASSISTS

S:..... 2 vs. Bluefield St., 11/9/21

C: ..... 2 vs. Bluefield St., 11/9/21

### BLOCKS

S:..... N/A

C: ..... N/A

### STEALS

S:..... 1 vs. Bluefield St., 11/9/21

C: ..... 1 vs. Bluefield St., 11/9/21

### MINUTES

S:..... 11 vs. Bluefield St., 11/9/21

C: ..... 11 vs. Bluefield St., 11/9/21

## Career Superlatives

	Sea.	Car.
10+ Pts:	0	0
20+ Pts:	0	0
5+ Rebs:	0	0
10+ Rebs:	0	0
5+ Asts:	0	0
2+ Blks:	0	0
2+ Stls:	0	0
Double-Double:	0	0



## CAREER STATISTICS

				Field Goals		3-Point		F-Throws		Rebounds								Scoring	
SEASON	TEAM	GP-GS	MIN/AVG	FG-FGA	FG%	3FG-3FGA	3FG%	FT-FTA	FT%	OFF	DEF	TOT	AVG	PF-FO	A	TO	BLK	STL	PTS
2021-22	Marsh	2-0	19/9.4	4-7	.571	0-0	.000	0-1	.000	0	2	2	1.0	3-0	3	4	0	1	8
TOTAL		2-0	19/9.4	4-7	.571	0-0	.000	0-1	.000	0	2	2	1.0	3-0	3	4	0	1	8



# 2 Sofia Llanos

5-10 | G | Tarragona, Catalonia, Spain  
Femeni Maresme - Uemataro

Opponent	Date	GS	MIN	Total		3-Pointers		Free throws		Rebounds				PF		A		BLK	STL	PTS	AVG
				FG-FGA	PCT	3FG-3FGA	PCT	FT-FTA	PCT	OFF	DEF	TOT	AVG								
Bluefield St.	11/09/2021		01:28	0-1	.000	0-0	.000	0-0	.000	0	0	0	0.0	0	0	0	0	0	0	0	0.0
Alderson Broadus	12/15/2021		04:14	0-1	.000	0-0	.000	0-0	.000	0	1	1	0.5	0	0	0	0	1	0	0.0	0.0
Totals		0	05:42	0-2	.000	0-0	.000	0-0	.000	0	1	1	0.5	0	0	0	0	1	0	0.0	0.0

## Player Averages

Games Played	Minutes/ game	Points/ game	FG Pct	3FG Pct	FT Pct	Rebounds/ game	Assists/ game	Turnovers/ game	Assist/Turnover ratio	Steals/ game	Blocks/ game
2	2.9	0.0	0.0	0.0	0.0	0.5	0.0	0.0	0.0	0.5	0.0

### CAREER HIGHS

#### POINTS

S:..... N/A

C:..... N/A

#### FIELD GOALS

S:..... N/A

C:..... N/A

#### FGA

S:..... 1 (2x) last vs. AB, 12/15/21

C:..... 1 (2x) last vs. AB, 12/15/21

#### 3-POINTERS

S:..... N/A

C:..... N/A

#### 3PTA

S:..... N/A

C:..... N/A

#### FREE THROWS

S:..... N/A

C:..... N/A

#### FTA

S:..... N/A

C:..... N/A

#### REBOUNDS

S:..... 1 vs. AB, 12/15/21

C:..... 1 vs. AB, 12/15/21

#### ASSISTS

S:..... N/A

C:..... N/A

#### BLOCKS

S:..... N/A

C:..... N/A

#### STEALS

S:..... 1 vs. AB, 12/15/21

C:..... 1 vs. AB, 12/15/21

#### MINUTES

S:..... 4 vs. AB, 12/15/21

C:..... 4 vs. AB, 12/15/21

### Career Superlatives

	Sea.	Car.
10+ Pts:	0	0
20+ Pts:	0	0
5+ Rebs:	0	0
10+ Rebs:	0	0
5+ Asts:	0	0
2+ Blks:	0	0
2+ Stls:	0	0
Double-Double:	0	0



### CAREER STATISTICS

				Field Goals		3-Point		F-Throws		Rebounds									Scoring	
SEASON	TEAM	GP-GS	MIN/AVG	FG-FGA	FG%	3FG-3FGA	3FG%	FT-FTA	FT%	OFF	DEF	TOT	AVG	PF-FO	A	TO	BLK	STL	PTS	AVG
2021-22	Marsh	2-0	6/2.9	0-2	.000	0-0	.000	0-0	.000	0	1	1	0.5	0-0	0	0	0	1	0	0.0
TOTAL		2-0	6/2.9	0-2	.000	0-0	.000	0-0	.000	0	1	1	0.5	0-0	0	0	0	1	0	0.0





# 3 CC Mays

5-8 | G | Tampa, Fla.  
Seffner Christian Academy

Opponent	Date	GS	MIN	Total		3-Pointers		Free throws		Rebounds											
				FG-FGA	PCT	3FG-3FGA	PCT	FT-FTA	PCT	OFF	DEF	TOT	AVG	PF	A	TO	BLK	STL	PTS	AVG	
Bluefield St.	11/09/2021		15:15	7-9	.778	1-1	1.000	2-2	1.000	4	2	6	6.0	2	0	2	0	2	17	17.0	
at Radford	11/14/2021		21:16	3-7	.429	0-1	.000	4-4	1.000	5	2	7	6.5	5	0	4	0	1	10	13.5	
Morehead St.	11/19/2021		25:25	6-10	.600	0-1	.000	3-4	.750	2	5	7	6.7	2	2	1	0	2	15	14.0	
at Purdue	11/22/2021		20:27	3-5	.600	0-0	.000	0-2	.000	2	2	4	6.0	4	1	2	0	1	6	12.0	
at Michigan St.	11/28/2021		17:57	1-4	.250	0-1	.000	0-3	.000	1	4	5	5.8	3	1	1	0	0	2	10.0	
Coppin St.	12/04/2021		10:53	0-4	.000	0-1	.000	0-0	.000	2	3	5	5.7	1	0	1	0	0	0	8.3	
Totals		0	111:12	20-39	.513	1-5	.200	9-15	.600	16	18	34	5.7	17	4	11	0	6	50	8.3	

## Player Averages

Games Played	Minutes/ game	Points/ game	FG Pct	3FG Pct	FT Pct	Rebounds/ game	Assists/ game	Turnovers/ game	Assist/Turnover ratio	Steals/ game	Blocks/ game
6	18.5	8.3	51.3	20.0	60.0	5.7	0.7	1.8	0.4	1.0	0.0

## CAREER HIGHS

### POINTS

S:..... 17 vs. Bluefield St., 11/9/21  
C: ..... 17 vs. Bluefield St., 11/9/21

### FIELD GOALS

S:..... 7 vs. Bluefield St., 11/9/21  
C: ..... 7 vs. Bluefield St., 11/9/21

### FGA

S:.....10 vs. Morehead St., 11/19/21  
C: .....14 at Charlotte, 1/9/21

### 3-POINTERS

S:..... 1 vs. Bluefield St., 11/9/21  
C:1 (2x) last vs. Bluefield St, 11/9/21

### 3PTA

S: 1 (5x) last vs. Coppin St., 12/4/21  
C: ..... 3 at #9 Kentucky, 12/9/20

### FREE THROWS

S:.....4 at Radford, 11/14/21  
C: .....4 at Radford, 11/14/21

### FTA

S:.....4 at Radford, 11/14/21  
C: .....5 vs. ODU, 2/6/21

### REBOUNDS

S: 7 (2x) last vs. More. St., 11/19/21  
C: .....13 at Charlotte, 1/9/21

### ASSISTS

S:.....2 vs. Morehead St., 11/19/21  
C: ..... 3 (5x) last at MT, 3/5/21

### BLOCKS

S:..... N/A  
C: ..... 1 vs. LA Tech, 3/10/21

### STEALS

S: 2 (2x) last vs. More. St., 11/19/21  
C: .....4 vs. ODU, 2/6/21

### MINUTES

S:.....25 vs. Morehead St., 11/19/21  
C: .....39 vs. ODU, 2/6/21

## Career Superlatives

	Sea.	Car.
10+ Pts:	3	4
20+ Pts:	0	0
5+ Rebs:	5	10
10+ Rebs:	0	1
5+ Asts:	0	0
2+ Blks:	0	0
2+ Stls:	2	8
Double-Double:	0	1



## CAREER STATISTICS

				Field Goals		3-Point		F-Throws		Rebounds										Scoring	
SEASON	TEAM	GP-GS	MIN/AVG	FG-FGA	FG%	3FG-3FGA	3FG%	FT-FTA	FT%	OFF	DEF	TOT	AVG	PF-FO	A	TO	BLK	STL	PTS	AVG	
2020-21	Marsh	19-4	337/17.8	25-91	.275	1-15	.067	17-31	.548	26	43	69	3.6	50-3	28	31	1	20	68	3.6	
2021-22	Marsh	6-0	111/18.5	20-39	.513	1-5	.200	9-15	.600	16	18	34	5.7	17-1	4	11	0	6	50	8.3	
TOTAL		25-4	448/17.9	45-130	.346	2-20	.100	26-46	.565	42	61	103	4.1	67-4	32	42	1	26	118	4.7	



# 4 Savannah Wheeler

5-6 | G | Catlettsburg, Ky.  
Boyd County HS

Opponent	Date	GS	MIN	Total		3-Pointers		Free throws		Rebounds				PF	A	TO	BLK	STL	PTS	AVG
				FG-FGA	PCT	3FG-3FGA	PCT	FT-FTA	PCT	OFF	DEF	TOT	AVG							
Bluefield St.	11/09/2021	*	21:26	5-11	.455	1-2	.500	3-3	1.000	0	4	4	4.0	0	2	0	0	3	14	14.0
at Radford	11/14/2021	*	22:34	3-7	.429	1-3	.333	6-8	.750	0	0	0	2.0	4	3	1	0	2	13	13.5
Morehead St.	11/19/2021	*	35:24	5-13	.385	1-6	.167	11-12	.917	1	7	8	4.0	2	1	2	0	2	22	16.3
at Purdue	11/22/2021	*	27:54	2-9	.222	0-5	.000	6-6	1.000	1	3	4	4.0	2	0	7	0	0	10	14.8
at Michigan St.	11/28/2021	*	29:01	9-18	.500	4-8	.500	8-9	.889	2	0	2	3.6	5	2	6	0	0	30	17.8
Coppin St.	12/04/2021	*	31:39	7-17	.412	2-7	.286	2-2	1.000	0	1	1	3.2	5	1	3	0	0	18	17.8
at St. Bonaventure	12/12/2021	*	38:36	6-18	.333	3-5	.600	3-4	.750	0	3	3	3.1	2	2	3	1	2	18	17.9
Alderson Broaddus	12/15/2021	*	23:37	7-13	.538	1-3	.333	1-2	.500	0	2	2	3.0	2	7	0	0	2	16	17.6
<b>Totals</b>		<b>8</b>	<b>230:12</b>	<b>44-106</b>	<b>.415</b>	<b>13-39</b>	<b>.333</b>	<b>40-46</b>	<b>.870</b>	<b>4</b>	<b>20</b>	<b>24</b>	<b>3.0</b>	<b>22</b>	<b>18</b>	<b>22</b>	<b>1</b>	<b>11</b>	<b>141</b>	<b>17.6</b>

## Player Averages

Games Played	Minutes/ game	Points/ game	FG Pct	3FG Pct	FT Pct	Rebounds/ game	Assists/ game	Turnovers/ game	Assist/Turnover ratio	Steals/ game	Blocks/ game
8	28.8	17.6	41.5	33.3	87.0	3.0	2.3	2.8	0.8	1.4	0.1

## CAREER HIGHS

### POINTS

S:.....30 at Michigan State, 11/28/21  
C: .....35 vs. ODU, 2/6/21

### FIELD GOALS

S:.....9 at Michigan State, 11/28/21  
C:9 (2x) last at Michigan St, 11/28/21

### FGA

S:18 (2x) last at St. Bona, 12/12/21  
C: 18 (3x) last at St. Bona, 12/12/21

### 3-POINTERS

S:.....4 at Michigan State, 11/28/21  
C: .....5 vs. Norfolk State, 11/9/19

### 3PTA

S:.....8 at Michigan State, 11/28/21  
C: .....10 vs. LA Tech, 1/2/21

### FREE THROWS

S:.....11 vs. Morehead St., 11/19/21  
C: .....15 vs. ODU, 2/6/21

### FTA

S:.....12 vs. Morehead St., 11/19/21  
C: .....18 vs. ODU, 2/6/21

### REBOUNDS

S:.....8 vs. Morehead St., 11/19/21  
C: .....11 vs. Louisiana Tech, 1/1/21

### ASSISTS

S:.....7 vs. AB, 12/15/21  
C: .....7 (2x) last vs. AB, 12/15/21

### BLOCKS

S:.....1 at St. Bonaventure, 12/12/21  
C: ..1 (7x) last at St. Bona, 12/12/21

### STEALS

S:.....3 vs. Morehead St., 11/19/21  
C: .....5 at Evansville, 11/24/19

### MINUTES

S:..38 at St. Bonaventure, 12/12/21  
C: .....43 vs. ODU, 2/6/21

## Career Superlatives

	Sea.	Car.
10+ Pts:	8	47
20+ Pts:	2	11
30+ Pts:	1	2
5+ Rebs:	1	13
10+ Rebs:	0	1
5+ Asts:	1	7
2+ Stls:	5	23
Double-Double:	0	0



## CAREER STATISTICS

SEASON	TEAM	GP-GS	MIN/AVG	Field Goals		3-Point		F-Throws		Rebounds				Scoring						
				FG-FGA	FG%	3FG-3FGA	3FG%	FT-FTA	FT%	OFF	DEF	TOT	AVG	PF-FO	A	TO	BLK	STL	PTS	AVG
2019-20	Marsh	30-17	872/29.1	113-290	.390	47-140	.336	130-155	.839	19	77	96	3.2	89-3	83	74	4	41	403	13.4
2020-21	Marsh	19-19	657/34.6	94-245	.384	36-111	.324	99-116	.853	12	63	75	3.9	36-1	50	53	2	19	323	17.0
2021-22	Marsh	8-8	230/28.8	44-106	.415	13-39	.333	40-46	.870	4	20	24	3.0	22-2	18	22	1	11	141	17.6
<b>TOTAL</b>		<b>57-44</b>	<b>1758/30.8</b>	<b>251-641</b>	<b>.392</b>	<b>96-290</b>	<b>.331</b>	<b>269-317</b>	<b>.849</b>	<b>35</b>	<b>160</b>	<b>195</b>	<b>3.4</b>	<b>147-6</b>	<b>151</b>	<b>149</b>	<b>7</b>	<b>71</b>	<b>867</b>	<b>15.2</b>



# 5 Samantha LaFon

6-0 | F | Chesapeake, Ohio  
Ironton HS

Opponent	Date	GS	MIN	Total		3-Pointers		Free throws		Rebounds											
				FG-FGA	PCT	3FG-3FGA	PCT	FT-FTA	PCT	OFF	DEF	TOT	AVG	PF	A	TO	BLK	STL	PTS	AVG	
Bluefield St.	11/09/2021		15:08	2-3	.667	0-0	.000	0-0	.000	0	2	2	2.0	4	0	0	0	0	4	4.0	
at Radford	11/14/2021		01:36	0-0	.000	0-0	.000	0-0	.000	0	0	0	1.0	0	0	0	0	0	0	2.0	
Totals		0	16:44	2-3	.667	0-0	.000	0-0	.000	0	2	2	1.0	4	0	0	0	0	4	2.0	

## Player Averages

Games Played	Minutes/game	Points/game	FG Pct	3FG Pct	FT Pct	Rebounds/game	Assists/game	Turnovers/game	Assist/Turnover ratio	Steals/game	Blocks/game
2	8.4	2.0	66.7	0.0	0.0	1.0	0.0	0.0	0.0	0.0	0.0

## CAREER HIGHS

### POINTS

S:..... 4 vs. Bluefield St., 11/9/21  
C: ..... 4 vs. Bluefield St., 11/9/21

### FIELD GOALS

S:..... 2 vs. Bluefield St., 11/9/21  
C: ..... 2 vs. Bluefield St., 11/9/21

### FGA

S:..... 3 vs. Bluefield St., 11/9/21  
C: 3 (2x) last vs. Bluefield St., 11/9/21

### 3-POINTERS

S:..... N/A  
C: ..... N/A

### 3PTA

S:..... N/A  
C: ..... N/A

### FREE THROWS

S:..... N/A  
C: ..... 1 vs. FIU, 1/22/21

### FTA

S:..... N/A  
C: ..... 2 vs. FIU, 1/22/21

### REBOUNDS

S:..... 2 vs. Bluefield St., 11/9/21  
C: 2 (2x) last vs. Bluefield St., 11/9/21

### ASSISTS

S:..... N/A  
C: ..... N/A

### BLOCKS

S:..... N/A  
C: ..... N/A

### STEALS

S:..... N/A  
C: ..... N/A

### MINUTES

S:..... 15 vs. Bluefield St., 11/9/21  
C: ..... 15 vs. Bluefield St., 11/9/21

## Career Superlatives

	Sea.	Car.
10+ Pts:	0	0
20+ Pts:	0	0
5+ Rebs:	0	0
10+ Rebs:	0	0
5+ Asts:	0	0
2+ Blks:	0	0
2+ Stls:	0	0
Double-Double:	0	0



## CAREER STATISTICS

				Field Goals		3-Point		F-Throws		Rebounds										Scoring	
SEASON	TEAM	GP-GS	MIN/AVG	FG-FGA	FG%	3FG-3FGA	3FG%	FT-FTA	FT%	OFF	DEF	TOT	AVG	PF-FO	A	TO	BLK	STL	PTS	AVG	
2020-21	Marsh	5-0	16/3.1	1-4	.250	0-0	.000	1-2	.500	2	2	4	0.8	7-0	0	0	0	0	3	0.6	
2021-22	Marsh	2-0	17/8.4	2-3	.667	0-0	.000	0-0	.000	0	2	2	1.0	4-0	0	0	0	0	4	2.0	
TOTAL		7-0	32/4.6	3-7	.429	0-0	.000	1-2	.500	2	4	6	0.9	11-0	0	0	0	0	7	1.0	





# 10Aaliyah Dunham

5-4 | G | South Charleston, W.Va.  
South Charleston HS | Xavier U.

## CAREER HIGHS

### POINTS

S:..... 17 vs. Bluefield St., 11/9/21  
C: .....20 at Georgetown, 1/10/20\*

### FIELD GOALS

S:..... 6 vs. Bluefield St., 11/9/21  
C: .....7 at Georgetown, 1/20/20\*

### FGA

S:..... 14 at Radford, 11/14/21  
C: ..... 15 vs. Marquette, 1/25/19\*

### 3-POINTERS

S:..... 3 vs. Bluefield St., 11/9/21  
C: 4 (2x) last Georgetown, 1/10/20\*

### 3PTA

S:..... 6 at Michigan State, 11/28/21  
C: .....8 (3x) last at Butler, 2/22/21\*

### FREE THROWS

S:..... 4 at Radford, 11/14/21  
C: ..... 7 (2x) last vs. Utah, 11/7/19\*

### FTA

S:..... 4 at Radford, 11/14/21  
C: 11 (2x) last at Ball St., 11/20/19\*

### REBOUNDS

S:.... 4 (3x) last at St. Bona, 12/12/21  
C: ..... 8 at Butler, 2/22/21\*

### ASSISTS

S:..... 7 vs. Bluefield St., 11/9/21  
C: .... 9 (3x) last at Valpo, 12/16/20\*

### BLOCKS

S:..... N/A  
C: 2 (2x) last at Creighton, 1/24/20\*

### STEALS

S:.... 6 (2x) last at Radford, 11/14/21  
C: ..... 7 at St. John's, 3/5/21

### MINUTES

S:..... 36 vs. Coppin St., 12/4/21  
C: ..... 45 at Butler, 1/31/20\*  
\* accomplished at Xavier

Opponent	Date	GS	MIN	Total		3-Pointers		Free throws		Rebounds				PF	A	TO	BLK	STL	PTS	AVG
				FG-FGA	PCT	3FG-3FGA	PCT	FT-FTA	PCT	OFF	DEF	TOT	AVG							
Bluefield St.	11/09/2021	*	20:41	6-9	.667	3-4	.750	2-2	1.000	2	0	2	2.0	1	7	0	0	6	17	17.0
at Radford	11/14/2021	*	35:43	4-14	.286	1-5	.200	4-4	1.000	0	4	4	3.0	2	5	4	0	6	13	15.0
Morehead St.	11/19/2021	*	28:18	0-5	.000	0-3	.000	0-0	.000	0	2	2	2.7	2	4	2	0	1	0	10.0
at Purdue	11/22/2021	*	35:34	2-7	.286	0-3	.000	0-0	.000	0	0	0	2.0	2	2	4	0	5	4	8.5
at Michigan St.	11/28/2021	*	34:18	3-11	.273	1-6	.167	0-0	.000	0	4	4	2.4	2	6	1	0	3	7	8.2
Coppin St.	12/04/2021	*	36:54	2-10	.200	0-4	.000	1-2	.500	0	1	1	2.2	1	6	1	0	0	5	7.7
at St. Bonaventure	12/12/2021	*	27:00	0-4	.000	0-2	.000	0-0	.000	1	3	4	2.4	3	1	2	0	0	0	6.6
Alderson Broaddus	12/15/2021	*	29:17	4-9	.444	0-1	.000	0-0	.000	0	1	1	2.3	3	6	1	0	2	8	6.8
Totals			8 247:45	21-69	.304	5-28	.179	7-8	.875	3	15	18	2.3	16	37	15	0	23	54	6.8

## Player Averages

Games Played	Minutes/ game	Points/ game	FG Pct	3FG Pct	FT Pct	Rebounds/ game	Assists/ game	Turnovers/ game	Assist/Turnover ratio	Steals/ game	Blocks/ game
8	31.0	6.8	30.4	17.9	87.5	2.3	4.6	1.9	2.5	2.9	0.0

## Career Superlatives

	Sea.	Car.
10+ Pts:	2	31
20+ Pts:	0	1
5+ Rebs:	0	9
10+ Rebs:	0	0
5+ Asts:	5	36
2+ Blks:	0	2
2+ Stls:	5	45
Double-Double:	0	0



## CAREER STATISTICS

				Field Goals		3-Point		F-Throws		Rebounds				Scoring						
SEASON	TEAM	GP-GS	MIN/AVG	FG-FGA	FG%	3FG-3FGA	3FG%	FT-FTA	FT%	OFF	DEF	TOT	AVG	PF-FO	A	TO	BLK	STL	PTS	AVG
2017-18	XU	30-8	636/21.2	55-133	.414	32-82	.390	40-55	.727	8	45	53	1.8	33-0	74	35	1	18	182	6.1
2018-19	XU	30-30	944/31.5	83-227	.366	33-112	.295	48-75	.640	9	59	68	2.3	40-0	105	53	4	37	247	8.2
2019-20	XU	30-30	1057/35.2	81-229	.354	33-85	.388	30-51	.588	15	73	88	2.9	60-2	135	59	4	56	225	7.5
2020-21	XU	15-15	461/30.7	28-73	.384	10-33	.303	16-25	.640	13	38	51	3.4	28-0	57	18	0	37	82	5.5
2021-22	Marsh	8-8	248/31.0	21-69	.304	5-28	.179	7-8	.875	3	15	18	2.3	16-0	37	15	0	23	54	6.8
TOTAL FOR Marsh		8-8	248/31.0	21-69	.304	5-28	.179	7-8	.875	3	15	18	2.3	16-0	37	15	0	23	54	6.8
TOTAL		113-91	3346/29.6	268-731	.367	113-340	.332	141-214	.659	48	230	278	2.5	177-2	408	180	9	171	790	7.0



# 11 Ksenija Mitric

5-8 | G | Banja Luka, Bosnia & Herzegovina | Celje Basketball Club

Opponent	Date	GS	MIN	Total		3-Pointers		Free throws		Rebounds				PF	A	TO	BLK	STL	PTS	AVG
				FG-FGA	PCT	3FG-3FGA	PCT	FT-FTA	PCT	OFF	DEF	TOT	AVG							
Bluefield St.	11/09/2021		12:41	0-2	.000	0-0	.000	0-0	.000	0	1	1	1.0	1	0	1	0	1	0	0.0
Morehead St.	11/19/2021		02:23	0-2	.000	0-2	.000	0-0	.000	0	0	0	0.5	0	0	0	0	0	0	0.0
Alderson Broadus	12/15/2021		11:54	1-5	.200	1-4	.250	0-0	.000	1	1	2	1.0	0	2	0	0	0	3	1.0
Totals		0	26:58	1-9	.111	1-6	.167	0-0	.000	1	2	3	1.0	1	2	1	0	1	3	1.0

## Player Averages

Games Played	Minutes/game	Points/game	FG Pct	3FG Pct	FT Pct	Rebounds/game	Assists/game	Turnovers/game	Assist/Turnover ratio	Steals/game	Blocks/game
3	9.0	1.0	11.1	16.7	0.0	1.0	0.7	0.3	2.0	0.3	0.0

## CAREER HIGHS

### POINTS

S:..... 3 vs. AB, 12/15/21

C: ..... 8 vs. Radford, 12/6/20

### FIELD GOALS

S:..... 1 vs. AB, 12/15/21

C: ..... 3 vs. Radford, 12/6/20

### FGA

S:..... 5 vs. AB, 12/15/21

C: ..... 10 vs. Radford, 12/6/20

### 3-POINTERS

S:..... 1 vs. AB, 12/15/21

C: ..... 2 vs. Radford, 12/6/20

### 3PTA

S:..... 4 vs. AB, 12/15/21

C: ..... 6 vs. Radford, 12/6/20

### FREE THROWS

S:..... N/A

C: ..... N/A

### FTA

S:..... N/A

C: ..... N/A

### REBOUNDS

S:..... 2 vs. AB, 12/15/21

C: ..... 2 (3x) last vs. AB, 12/15/21

### ASSISTS

S:..... 2 vs. AB, 12/15/21

C: ..... 3 (2x) last at #9 UK, 12/9/20

### BLOCKS

S:..... N/A

C: ..... N/A

### STEALS

S:..... 1 vs. Bluefield St., 11/9/21

C: ..... 1 vs. Bluefield St., 11/9/21

### MINUTES

S:..... 13 vs. Bluefield St., 11/9/21

C: ..... 22 vs. Radford, 12/6/20

## Career Superlatives

	Sea.	Car.
10+ Pts:	0	0
20+ Pts:	0	0
5+ Rebs:	0	0
10+ Rebs:	0	0
5+ Asts:	0	0
2+ Blks:	0	0
2+ Stls:	0	0
Double-Double:	0	0



## CAREER STATISTICS

SEASON	TEAM	GP-GS	MIN/AVG	Field Goals		3-Point		F-Throws		Rebounds				Scoring						
				FG-FGA	FG%	3FG-3FGA	3FG%	FT-FTA	FT%	OFF	DEF	TOT	AVG	PF-FO	A	TO	BLK	STL	PTS	AVG
2020-21	Marsh	2-0	39/19.3	3-14	.214	2-10	.200	0-0	.000	0	4	4	2.0	1-0	6	3	0	0	8	4.0
2021-22	Marsh	3-0	27/9.0	1-9	.111	1-6	.167	0-0	.000	1	2	3	1.0	1-0	2	1	0	1	3	1.0
TOTAL		5-0	66/13.1	4-23	.174	3-16	.188	0-0	.000	1	6	7	1.4	2-0	8	4	0	1	11	2.2



# 21 Sarah Liberatore

5-10 | G | Greensburg, Pa.  
Hempfield Area HS

Opponent	Date	GS	MIN	Total		3-Pointers		Free throws		Rebounds				PF		A		BLK		STL		PTS		AVG
				FG	FGA	PCT	3FG	3FGA	PCT	FT	FTA	PCT	OFF	DEF	TOT	AVG	PF	A	TO	BLK	STL	PTS	AVG	
Bluefield St.	11/09/2021		07:13	0-1	.000		0-1	.000		2-2	1.000		1	0	1	1.0	0	2	1	0	1	2	2.0	
at Purdue	11/22/2021		00:29	0-1	.000		0-1	.000		0-0	.000		0	0	0	0.5	0	0	0	0	0	0	1.0	
at Michigan St.	11/28/2021		00:05	0-0	.000		0-0	.000		0-0	.000		0	0	0	0.3	0	0	0	0	0	0	0.7	
Alderson Broadus	12/15/2021		18:38	5-9	.556		4-6	.667		1-2	.500		3	0	3	1.0	0	2	2	0	1	15	4.3	
Totals			0 26:25	5-11	.455		4-8	.500		3-4	.750		4	0	4	1.0	0	4	3	0	2	17	4.3	

## Player Averages

Games Played	Minutes/ game	Points/ game	FG Pct	3FG Pct	FT Pct	Rebounds/ game	Assists/ game	Turnovers/ game	Assist/Turnover ratio	Steals/ game	Blocks/ game
4	6.6	4.3	45.5	50.0	75.0	1.0	1.0	0.8	1.3	0.5	0.0

## CAREER HIGHS

### POINTS

S:..... 15 vs. AB, 12/15/21

C:..... 15 vs. AB, 12/15/21

### FIELD GOALS

S:..... 5 vs. AB, 12/15/21

C:..... 5 vs. AB, 12/15/21

### FGA

S:..... 9 vs. AB, 12/15/21

C:..... 9 vs. AB, 12/15/21

### 3-POINTERS

S:..... 4 vs. AB, 12/15/21

C:..... 4 vs. AB, 12/15/21

### 3PTA

S:..... 6 vs. AB, 12/15/21

C:..... 6 vs. AB, 12/15/21

### FREE THROWS

S:..... 2 vs. Bluefield St., 11/9/21

C:..... 2 vs. Bluefield St., 11/9/21

### FTA

S:..... 2 (2x) last vs. AB, 12/15/21

C:..... 2 (2x) last vs. AB, 12/15/21

### REBOUNDS

S:..... 3 vs. AB, 12/15/21

C:..... 3 vs. AB, 12/15/21

### ASSISTS

S:..... 2 (2x) last vs. AB, 12/15/21

C:..... 2 (2x) last vs. AB, 12/15/21

### BLOCKS

S:..... N/A

C:..... N/A

### STEALS

S:..... 1 (2x) last vs. AB, 12/15/21

C:..... 1 (3x) last vs. AB, 12/15/21

### MINUTES

S:..... 19 vs. AB, 12/15/21

C:..... 19 vs. AB, 12/15/21

## Career Superlatives

	Sea.	Car.
10+ Pts:	1	1
20+ Pts:	0	0
5+ Rebs:	0	0
10+ Rebs:	0	0
5+ Asts:	0	0
2+ Blks:	0	0
2+ Stls:	0	0
Double-Double:	0	0



## CAREER STATISTICS

				Field Goals		3-Point		F-Throws		Rebounds									Scoring	
SEASON	TEAM	GP-GS	MIN/AVG	FG-FGA	FG%	3FG-3FGA	3FG%	FT-FTA	FT%	OFF	DEF	TOT	AVG	PF-FO	A	TO	BLK	STL	PTS	AVG
2020-21	Marsh	10-0	48/4.8	4-10	.400	3-8	.375	0-1	.000	0	1	1	0.1	2-0	0	4	0	1	11	1.1
2021-22	Marsh	4-0	26/6.6	5-11	.455	4-8	.500	3-4	.750	4	0	4	1.0	0-0	4	3	0	2	17	4.3
TOTAL		14-0	74/5.3	9-21	.429	7-16	.438	3-5	.600	4	1	5	0.4	2-0	4	7	0	3	28	2.0





# 23 Alexis Johnson

5-10 | F | Southfield, Mich.  
Southfield HS for the Arts & Tech.

Opponent	Date	GS	MIN	Total		3-Pointers		Free throws		Rebounds								PTS	AVG
				FG-FGA	PCT	3FG-3FGA	PCT	FT-FTA	PCT	OFF	DEF	TOT	AVG	PF	A	TO	BLK	STL	
Bluefield St.	11/09/2021		16:39	5-10	.500	0-1	.000	0-2	.000	3	3	6	6.0	3	0	0	0	0	10
at Radford	11/14/2021		18:31	2-7	.286	0-3	.000	2-2	1.000	0	3	3	4.5	3	0	1	0	0	6
Morehead St.	11/19/2021		15:38	2-9	.222	0-2	.000	1-2	.500	1	6	7	5.3	2	2	0	1	0	5
at Purdue	11/22/2021		12:31	1-1	1.000	0-0	.000	0-0	.000	0	4	4	5.0	1	0	3	0	0	2
at Michigan St.	11/28/2021		11:07	1-2	.500	1-1	1.000	0-0	.000	1	3	4	4.8	3	2	0	0	0	3
Coppin St.	12/04/2021		11:19	2-7	.286	0-3	.000	0-0	.000	0	3	3	4.5	2	0	1	0	1	4
at St. Bonaventure	12/12/2021		03:51	0-2	.000	0-1	.000	0-0	.000	0	2	2	4.1	0	0	1	0	0	4
Alderson Broaddus	12/15/2021		25:07	7-10	.700	2-3	.667	2-2	1.000	1	6	7	4.5	0	2	2	0	2	18
Totals		0	114:43	20-48	.417	3-14	.214	5-8	.625	6	30	36	4.5	14	6	8	1	3	48

## CAREER HIGHS

### POINTS

S:..... 18 vs. AB, 12/15/21  
S:..... 18 (2x) last vs. AB, 12/15/21

### FIELD GOALS

S:..... 7 vs. AB, 12/15/21  
C: ..... 9 vs. ODU, 2/5/21

### FGA

S:..... 10 (2x) last vs. AB, 12/15/21  
C: ..... 16 at Charlotte, 1/9/21

### 3-POINTERS

S:..... 2 vs. AB, 12/15/21  
C: ..... 2 (2x) last vs. AB, 12/15/21

### 3PTA

S:..... 3 (3x) last vs. AB, 12/15/21  
C: .... 4 (2x) last at Charlotte, 1/9/21

### FREE THROWS

S:..... 2 (2x) last vs. AB, 12/15/21  
C: ..... 2 (6x) last vs. AB, 12/15/21

### FTA

S:..... 2 (2x) last vs. AB, 12/15/21  
C: ..... 4 (3x) last vs. ODU, 2/6/21

### REBOUNDS

S:..... 7 (2x) last vs. AB, 12/15/21  
C: ..... 14 at Charlotte, 1/9/21

### ASSISTS

S:..... 2 (3x) last vs. AB, 12/15/21  
C: ..... 2 (5x) last vs. AB, 12/15/21

### BLOCKS

S:..... 1 vs. Morehead St., 11/19/21  
C: .... 1 (3x) last More. St., 11/19/21

### STEALS

S:..... 2 vs. AB, 12/15/21  
C: ..... 3 (2x) last at #9 UK, 12/9/20

### MINUTES

S:..... 25 vs. AB, 12/15/21  
C: ..... 34 vs. LA Tech, 1/1/21

## Player Averages

Games Played	Minutes/ game	Points/ game	FG Pct	3FG Pct	FT Pct	Rebounds/ game	Assists/ game	Turnovers/ game	Assist/Turnover ratio	Steals/ game	Blocks/ game
8	14.3	6.0	41.7	21.4	62.5	4.5	0.8	1.0	0.8	0.4	0.1

## Career Superlatives

	Sea.	Car.
10+ Pts:	2	8
20+ Pts:	0	0
5+ Rebs:	3	14
10+ Rebs:	0	2
5+ Asts:	0	0
2+ Blks:	0	0
2+ Stls:	1	5
Double-Double:	0	2



## CAREER STATISTICS

SEASON	TEAM	GP-GS	MIN/AVG	Field Goals		3-Point		F-Throws		Rebounds								Scoring	
				FG-FGA	FG%	3FG-3FGA	3FG%	FT-FTA	FT%	OFF	DEF	TOT	AVG	PF-FO	A	TO	BLK	STL	PTS
2019-20	Marsh	15-0	88/5.9	11-23	.478	1-4	.250	4-10	.400	6	18	24	1.6	18-0	2	7	0	6	27
2020-21	Marsh	17-4	327/19.3	56-108	.519	7-23	.304	7-19	.368	29	71	100	5.9	37-0	10	24	2	15	126
2021-22	Marsh	8-0	115/14.3	20-48	.417	3-14	.214	5-8	.625	6	30	36	4.5	14-0	6	8	1	3	48
TOTAL		40-4	530/13.3	87-179	.486	11-41	.268	16-37	.432	41	119	160	4.0	69-0	18	39	3	24	201





# 24 Kennedi Colclough

6-0 | F | Crofton, Md.  
Stetson University

## CAREER HIGHS

### POINTS

S:..... 23 vs. Coppin St., 12/4/21  
C: . 25 vs. Trinity Baptist, 11/23/19\*

### FIELD GOALS

S:..... 8 at Michigan State, 11/28/21  
C: . 10 vs. Trinity Baptist, 11/23/19\*

### FGA

S: 13 (3x) last at St. Bona, 12/12/21  
C: ..... 17 vs. Florida, 11/22/17\*

### 3-POINTERS

S: 1 (3x) last vs. Coppin St., 12/4/21  
C: ..... 2 (4x) last LA Tech, 3/10/21

### 3PTA

S:..... 3 vs. Coppin St., 12/4/21  
C: ..... 5 vs. LA Tech, 3/10/21

### FREE THROWS

S:..... 10 vs. Coppin St., 12/4/21  
C: ..... 10 vs. Coppin St., 12/4/21

### FTA

S:..... 10 vs. Coppin St., 12/4/21  
C: .... 12 vs. Webber Int., 11/11/16\*

### REBOUNDS

S: 6 (2x) last vs. Coppin St., 12/4/21  
C: .... 13 (2x) last at J'ville, 1/18/20\*

### ASSISTS

S: 3 (2x) last vs. Coppin St., 12/4/21  
C: 4 (2x) last vs. Del. State, 12/30/17\*

### BLOCKS

S:..... 2 (2x) last vs. AB, 12/15/21  
C: ..... 4 vs. Louisiana Tech, 1/1/21

### STEALS

S:..... 2 vs. Bluefield St., 11/9/21  
C: ..... 3 vs. Chattanooga, 11/15/17\*

### MINUTES

S:..... 34 at Radford, 11/14/21  
C: ..40 (2x) last vs. WKU, 12/16/17\*

\* accomplished at Stetson

Opponent	Date	GS	MIN	Total		3-Pointers		Free throws		Rebounds											
				FG-FGA	PCT	3FG-3FGA	PCT	FT-FTA	PCT	OFF	DEF	TOT	AVG	PF	A	TO	BLK	STL	PTS	AVG	
Bluefield St.	11/09/2021	*	16:30	6-9	.667	0-1	.000	3-5	.600	1	2	3	3.0	1	0	0	0	2	15	15.0	
at Radford	11/14/2021	*	34:06	7-13	.538	1-2	.500	2-2	1.000	2	4	6	4.5	3	0	0	2	0	17	16.0	
Morehead St.	11/19/2021	*	25:41	3-8	.375	0-2	.000	0-0	.000	1	2	3	4.0	4	3	3	1	1	6	12.7	
at Purdue	11/22/2021	*	32:28	6-13	.462	0-0	.000	7-8	.875	2	2	4	4.0	4	1	1	0	0	19	14.3	
at Michigan St.	11/28/2021	*	33:19	8-12	.667	1-2	.500	2-2	1.000	0	1	1	3.4	4	0	3	0	1	19	15.2	
Coppin St.	12/04/2021	*	31:57	6-12	.500	1-3	.333	10-10	1.000	5	1	6	3.8	2	3	0	1	0	23	16.5	
at St. Bonaventure	12/12/2021	*	29:09	4-13	.308	0-1	.000	3-4	.750	0	4	4	3.9	3	2	5	0	0	11	15.7	
Alderson Broaddus	12/15/2021	*	21:53	2-6	.333	0-2	.000	3-6	.500	1	2	3	3.8	2	1	2	2	0	7	14.6	
Totals		8	225:03	42-86	.488	3-13	.231	30-37	.811	12	18	30	3.8	23	10	14	6	4	117	14.6	

## Player Averages

Games Played	Minutes/ game	Points/ game	FG Pct	3FG Pct	FT Pct	Rebounds/ game	Assists/ game	Turnovers/ game	Assist/Turnover ratio	Steals/ game	Blocks/ game
8	28.1	14.6	48.8	23.1	81.1	3.8	1.3	1.8	0.7	0.5	0.8

## Career Superlatives

	Sea.	Car.
10+ Pts:	6	40
20+ Pts:	1	4
5+ Rebs:	2	38
10+ Rebs:	0	8
5+ Asts:	0	0
2+ Blks:	2	9
2+ Stls:	1	12
Double-Double:	0	8

## CAREER STATISTICS

SEASON	TEAM	GP-GS	MIN/AVG	Field Goals		3-Point		F-Throws		Rebounds				Scoring						
				FG-FGA	FG%	3FG-3FGA	3FG%	FT-FTA	FT%	OFF	DEF	TOT	AVG	PF-FO	A	TO	BLK	STL	PTS	AVG
2016-17	Stet	30-4	401/13.4	59-109	.541	2-4	.500	24-39	.615	43	51	94	3.1	58-0	15	24	8	14	144	4.8
2017-18	Stet	17-17	564/33.2	87-185	.470	3-16	.188	44-54	.815	36	79	115	6.8	42-2	29	50	2	14	221	13.0
2018-19	Stet	1-0	7/7.0	1-2	.500	0-0	.000	1-2	.500	1	1	2	2.0	1-0	0	1	0	0	3	3.0
2019-20	Stet	23-6	413/18.0	62-133	.466	0-6	.000	29-50	.580	31	69	100	4.3	44-2	18	41	8	12	153	6.7
2020-21	Marsh	17-17	419/24.6	60-130	.462	8-30	.267	11-18	.611	23	56	79	4.6	40-3	17	24	13	7	139	8.2
2021-22	Marsh	8-8	225/28.1	42-86	.488	3-13	.231	30-37	.811	12	18	30	3.8	23-0	10	14	6	4	117	14.6
<b>TOTAL FOR Marsh</b>		<b>25-25</b>	<b>644/25.8</b>	<b>102-216</b>	<b>.472</b>	<b>11-43</b>	<b>.256</b>	<b>41-55</b>	<b>.745</b>	<b>35</b>	<b>74</b>	<b>109</b>	<b>4.4</b>	<b>63-3</b>	<b>27</b>	<b>38</b>	<b>19</b>	<b>11</b>	<b>256</b>	<b>10.2</b>
<b>TOTAL</b>		<b>96-52</b>	<b>2029/21.1</b>	<b>311-645</b>	<b>.482</b>	<b>16-69</b>	<b>.232</b>	<b>139-200</b>	<b>.695</b>	<b>146</b>	<b>274</b>	<b>420</b>	<b>4.4</b>	<b>208-7</b>	<b>89</b>	<b>154</b>	<b>37</b>	<b>51</b>	<b>777</b>	<b>8.1</b>



# 30 Aarionna Redman

5-10 | F | Pickerington, Oh  
Pickerington Central HS

Opponent	Date	GS	MIN	Total		3-Pointers		Free throws		Rebounds										
				FG-FGA	PCT	3FG-3FGA	PCT	FT-FTA	PCT	OFF	DEF	TOT	AVG	PF	A	TO	BLK	STL	PTS	AVG
Bluefield St.	11/09/2021		17:42	2-3	.667	2-3	.667	0-0	.000	1	2	3	3.0	2	2	2	1	3	6	6.0
at Radford	11/14/2021		01:44	0-1	.000	0-0	.000	0-0	.000	0	1	1	2.0	0	0	0	0	0	0	3.0
Morehead St.	11/19/2021		07:22	1-4	.250	0-0	.000	0-0	.000	1	0	1	1.7	1	0	1	0	0	2	2.7
at Purdue	11/22/2021		04:42	1-2	.500	0-0	.000	0-0	.000	1	1	2	1.8	0	0	1	0	0	2	2.5
at Michigan St.	11/28/2021		05:57	0-0	.000	0-0	.000	0-0	.000	0	2	2	1.8	2	1	0	0	0	0	2.0
Coppin St.	12/04/2021		09:44	1-2	.500	1-1	1.000	0-0	.000	0	3	3	2.0	3	1	0	0	0	3	2.2
at St. Bonaventure	12/12/2021		21:26	3-6	.500	2-3	.667	0-1	.000	2	7	9	3.0	1	0	0	1	0	8	3.0
Alderson Broadus	12/15/2021		20:45	3-6	.500	0-1	.000	0-0	.000	0	6	6	3.4	4	0	0	0	1	6	3.4
<b>Totals</b>		<b>0</b>	<b>89:22</b>	<b>11-24</b>	<b>.458</b>	<b>5-8</b>	<b>.625</b>	<b>0-1</b>	<b>.000</b>	<b>5</b>	<b>22</b>	<b>27</b>	<b>3.4</b>	<b>13</b>	<b>4</b>	<b>4</b>	<b>2</b>	<b>4</b>	<b>27</b>	<b>3.4</b>

## Player Averages

Games Played	Minutes/game	Points/game	FG Pct	3FG Pct	FT Pct	Rebounds/game	Assists/game	Turnovers/game	Assist/Turnover ratio	Steals/game	Blocks/game
8	11.2	3.4	45.8	62.5	0.0	3.4	0.5	0.5	1.0	0.5	0.3

## CAREER HIGHS

### POINTS

S:....8 at St. Bonaventure, 12/12/21  
C: ...8 at St. Bonaventure, 12/12/21

### FIELD GOALS

S:..... 3 (2x) last vs. AB, 12/15/21  
C: ..... 3 (2x) last vs. AB, 12/15/21

### FGA

S:..... 6 (2x) last vs. AB, 12/15/21  
C: ..... 6 (2x) last vs. AB, 12/15/21

### 3-POINTERS

S:... 2 (2x) last at St. Bona, 12/12/21  
S:... 2 (2x) last at St. Bona, 12/12/21

### 3PTA

S:...3 (3x) last at St. Bona, 12/12/21  
C: ...3 (3x) last at St. Bona, 12/12/21

### FREE THROWS

S:..... N/A  
C: ..... N/A

### FTA

S:....1 at St. Bonaventure, 12/12/21  
C: ...1 at St. Bonaventure, 12/12/21

### REBOUNDS

S:....9 at St. Bonaventure, 12/12/21  
C: ...9 at St. Bonaventure, 12/12/21

### ASSISTS

S:..... 2 vs. Bluefield St., 11/9/21  
C: ..... 2 vs. Bluefield St., 11/9/21

### BLOCKS

S:...1 (2x) last at St. Bona, 12/12/21  
C: ...1 (2x) last at St. Bona, 12/12/21

### STEALS

S:..... 3 vs. Bluefield St., 11/9/21  
C: ..... 3 vs. Bluefield St., 11/9/21

### MINUTES

S:...21 at St. Bonaventure, 12/12/21  
C: .21 at St. Bonaventure, 12/12/21

## Career Superlatives

	Sea.	Car.
10+ Pts:	0	0
20+ Pts:	0	0
5+ Rebs:	2	2
10+ Rebs:	0	0
5+ Asts:	0	0
2+ Blks:	0	0
2+ Stls:	1	1
Double-Double:	0	0



## CAREER STATISTICS

				Field Goals		3-Point		F-Throws		Rebounds				Scoring						
SEASON	TEAM	GP-GS	MIN/AVG	FG-FGA	FG%	3FG-3FGA	3FG%	FT-FTA	FT%	OFF	DEF	TOT	AVG	PF-FO	A	TO	BLK	STL	PTS	AVG
2021-22	Marsh	8-0	89/11.2	11-24	.458	5-8	.625	0-1	.000	5	22	27	3.4	13-0	4	4	2	4	27	3.4
<b>TOTAL</b>		<b>8-0</b>	<b>89/11.2</b>	<b>11-24</b>	<b>.458</b>	<b>5-8</b>	<b>.625</b>	<b>0-1</b>	<b>.000</b>	<b>5</b>	<b>22</b>	<b>27</b>	<b>3.4</b>	<b>13-0</b>	<b>4</b>	<b>4</b>	<b>2</b>	<b>4</b>	<b>27</b>	<b>3.4</b>



# 33 Brianah Ferby

5-6 | G | Smyrna, Tenn.  
Stewarts Creek HS | Austin Peay

## CAREER HIGHS

### POINTS

S:..... 13 vs. Bluefield St., 11/9/21  
C: .....28 at Belmont, 1/20/18\*

### FIELD GOALS

S:..... 5 at Purdue, 11/22/21  
C: 10 at North Alabama, 11/25/20\*

### FGA

S:..... 13 at Purdue, 11/22/21  
C: .....18 at Belmont, 1/20/18\*

### 3-POINTERS

S:..... 3 vs. Coppin St., 12/4/21  
C: ..... 7 at Belmont, 1/20/18\*

### 3PTA

S:..... 8 at Purdue, 11/22/21  
C: .....13 at Belmont, 1/20/18\*

### FREE THROWS

S:..... 5 vs. AB, 12/15/21  
C: .....8 vs. Eastern Ill., 2/20/21\*

### FTA

S:..... 9 vs. AB, 12/15/21  
C: .....10 vs. ECU, 1/2/21\*

### REBOUNDS

S:..... 9 vs. Coppin St., 12/4/21  
C: ..... 9 vs. Coppin St., 12/4/21

### ASSISTS

S:2 (2x) last at Michigan St., 11/28/21  
C:7 vs. Trevecca Nazarene, 11/28/20\*

### BLOCKS

S:..... N/A  
C: .....2 at Tennessee Tech, 2/25/21\*

### STEALS

S:..... 3 at Radford, 11/14/21  
C:6 (2x) last vs. T. Nazarene, 11/28/20\*

### MINUTES

S:..29 at St. Bonaventure, 12/12/21  
C: .....37 at Belmont, 1/20/18\*  
\* accomplished at Austin Peay

Opponent	Date	GS	MIN	Total		3-Pointers		Free throws		Rebounds				PF	A	TO	BLK	STL	PTS	AVG
				FG-FGA	PCT	3FG-3FGA	PCT	FT-FTA	PCT	OFF	DEF	TOT	AVG							
Bluefield St.	11/09/2021		15:35	4-7	.571	2-4	.500	3-4	.750	1	3	4	4.0	0	2	1	0	0	13	13.0
at Radford	11/14/2021		23:54	1-7	.143	1-4	.250	1-2	.500	2	2	4	4.0	3	1	2	0	3	4	8.5
Morehead St.	11/19/2021		17:23	1-5	.200	1-4	.250	0-0	.000	1	0	1	3.0	0	0	0	0	1	3	6.7
at Purdue	11/22/2021		24:38	5-13	.385	1-8	.125	0-0	.000	0	2	2	2.8	3	1	0	0	2	11	7.8
at Michigan St.	11/28/2021		24:38	3-7	.429	2-5	.400	2-2	1.000	1	2	3	2.8	3	2	3	0	1	10	8.2
Coppin St.	12/04/2021		26:11	4-10	.400	3-6	.500	1-2	.500	2	7	9	3.8	3	1	0	0	1	12	8.8
at St. Bonaventure	12/12/2021	*	29:47	2-11	.182	2-7	.286	0-0	.000	0	2	2	3.6	0	1	2	0	2	6	8.4
Alderson Broaddus	12/15/2021	*	25:01	2-8	.250	0-2	.000	5-9	.556	2	1	3	3.5	0	0	0	0	1	9	8.5
<b>Totals</b>		<b>2</b>	<b>187:07</b>	<b>22-68</b>	<b>.324</b>	<b>12-40</b>	<b>.300</b>	<b>12-19</b>	<b>.632</b>	<b>9</b>	<b>19</b>	<b>28</b>	<b>3.5</b>	<b>12</b>	<b>8</b>	<b>8</b>	<b>0</b>	<b>11</b>	<b>68</b>	<b>8.5</b>

## Player Averages

Games Played	Minutes/ game	Points/ game	FG Pct	3FG Pct	FT Pct	Rebounds/ game	Assists/ game	Turnovers/ game	Assist/Turnover ratio	Steals/ game	Blocks/ game
8	23.4	8.5	32.4	30.0	63.2	3.5	1.0	1.0	1.0	1.4	0.0

## Career Superlatives

	Sea.	Car.
10+ Pts:	4	41
20+ Pts:	0	6
5+ Rebs:	1	17
10+ Rebs:	0	0
5+ Asts:	0	4
2+ Blks:	0	1
2+ Stls:	3	40
Double-D:	0	0



## CAREER STATISTICS

				Field Goals		3-Point		F-Throws		Rebounds				Scoring						
SEASON	TEAM	GP-GS	MIN/AVG	FG-FGA	FG%	3FG-3FGA	3FG%	FT-FTA	FT%	OFF	DEF	TOT	AVG	PF-FO	A	TO	BLK	STL	PTS	AVG
2017-18	APSU	27-11	567/21.0	78-210	.371	34-109	.312	35-57	.614	31	37	68	2.5	46-0	20	25	2	31	225	8.3
2018-19	APSU	30-22	767/25.6	81-269	.301	41-144	.285	46-61	.754	16	45	61	2.0	58-1	41	27	4	32	249	8.3
2019-20	APSU	27-3	417/15.4	51-159	.321	20-89	.225	14-33	.424	27	22	49	1.8	41-0	23	14	1	19	136	5.0
2020-21	APSU	23-22	564/24.5	68-198	.343	28-95	.295	45-68	.662	35	52	87	3.8	49-0	54	27	4	47	209	9.1
2021-22	Marsh	8-2	187/23.4	22-68	.324	12-40	.300	12-19	.632	9	19	28	3.5	12-0	8	8	0	11	68	8.5
<b>TOTAL FOR Marsh</b>		<b>8-2</b>	<b>187/23.4</b>	<b>22-68</b>	<b>.324</b>	<b>12-40</b>	<b>.300</b>	<b>12-19</b>	<b>.632</b>	<b>9</b>	<b>19</b>	<b>28</b>	<b>3.5</b>	<b>12-0</b>	<b>8</b>	<b>8</b>	<b>0</b>	<b>11</b>	<b>68</b>	<b>8.5</b>
<b>TOTAL</b>		<b>115-60</b>	<b>2502/21.8</b>	<b>300-904</b>	<b>.332</b>	<b>135-477</b>	<b>.283</b>	<b>152-238</b>	<b>.639</b>	<b>118</b>	<b>175</b>	<b>293</b>	<b>2.5</b>	<b>206-1</b>	<b>146</b>	<b>101</b>	<b>11</b>	<b>140</b>	<b>887</b>	<b>7.7</b>





# 34 Lorelei Roper

6-1 | F/C | Charlotte, N.C.  
Carmel Christian HS

Opponent	Date	GS	MIN	Total		3-Pointers		Free throws		Rebounds				PF				PTS			
				FG-FGA	PCT	3FG-3FGA	PCT	FT-FTA	PCT	OFF	DEF	TOT	AVG	A	TO	BLK	STL	PTS	AVG		
Bluefield St.	11/09/2021	*	14:01	2-3	.667	0-0	.000	0-0	.000	1	2	3	3.0	2	1	1	0	1	4	4.0	
at Radford	11/14/2021	*	23:44	2-7	.286	0-0	.000	1-2	.500	5	2	7	5.0	1	0	3	2	0	5	4.5	
Morehead St.	11/19/2021	*	31:06	3-6	.500	0-0	.000	1-2	.500	1	6	7	5.7	3	0	1	1	0	7	5.3	
at Purdue	11/22/2021	*	27:31	2-6	.333	0-0	.000	2-2	1.000	4	1	5	5.5	5	0	1	2	1	6	5.5	
at Michigan St.	11/28/2021	*	29:13	2-7	.286	0-0	.000	0-0	.000	3	2	5	5.4	4	2	1	1	0	4	5.2	
Coppin St.	12/04/2021	*	26:11	1-5	.200	0-0	.000	0-3	.000	3	5	8	5.8	2	2	0	1	0	2	4.7	
at St. Bonaventure	12/12/2021	*	25:34	1-2	.500	0-0	.000	0-0	.000	5	5	10	6.4	1	2	1	1	0	2	4.3	
Alderson Broaddus	12/15/2021	*	12:15	2-3	.667	0-0	.000	0-0	.000	5	2	7	6.5	1	1	0	2	1	4	4.3	
Totals		8	189:35	15-39	.385	0-0	.000	4-9	.444	27	25	52	6.5	19	8	8	10	3	34	4.3	

## CAREER HIGHS

### POINTS

S:.....7 vs. Morehead St., 11/19/21

C: ..... 12 (2x) last vs. ODU, 2/5/21

### FIELD GOALS

S:.....3 vs. Morehead St., 11/19/21

C: ..... 6 (2x) last vs. ODU, 2/5/21

### FGA

S:7 (2x) last at Michigan St, 11/28/21

C: ..... 10 vs. FIU, 1/23/21

### 3-POINTERS

S:..... N/A

C: ..... N/A

### 3PTA

S:..... N/A

C: ..... 1 at Rice, 1/2/20

### FREE THROWS

S:..... 2 at Purdue, 11/22/21

C: ..... 3 at App. State, 11/25/18

### FTA

S:..... 2 (3x) last at Purdue, 11/22/21

C: ..... 6 vs. FIU, 1/23/21

### REBOUNDS

S:.. 10 at St. Bonaventure, 12/12/21

C: ..... 13 vs. ODU, 2/6/21

### ASSISTS

S:.... 2 (3x) last at St. Bona, 12/12/21

C: ..... 4 at MTSU, 3/4/21

### BLOCKS

S:..... 2 (3x) last vs. AB, 12/15/21

C: ..... 4 (2x) last vs. ODU, 2/5/21

### STEALS

S:..... 1 (3x) last vs. AB, 12/15/21

C: ..... 2 (3x) last vs. Rice, 2/21/21

### MINUTES

S:..... 31 vs. Morehead St., 11/19/21

C: ..... 34 vs. ODU, 2/6/21

## Player Averages

Games Played	Minutes/game	Points/game	FG Pct	3FG Pct	FT Pct	Rebounds/game	Assists/game	Turnovers/game	Assist/Turnover ratio	Steals/game	Blocks/game
8	23.7	4.3	38.5	0.0	44.4	6.5	1.0	1.0	1.0	0.4	1.3

## Career Superlatives

	Sea.	Car.
10+ Pts:	0	3
20+ Pts:	0	0
5+ Rebs:	7	25
10+ Rebs:	1	3
5+ Asts:	0	0
2+ Blks:	3	9
2+ Stls:	0	3
Double-Double:	0	0



## CAREER STATISTICS

				Field Goals		3-Point		F-Throws		Rebounds										Scoring	
SEASON	TEAM	GP-GS	MIN/AVG	FG-FGA	FG%	3FG-3FGA	3FG%	FT-FTA	FT%	OFF	DEF	TOT	AVG	PF-FO	A	TO	BLK	STL	PTS	AVG	
2018-19	Marsh	28-1	385/13.7	36-89	.404	0-0	.000	19-41	.463	31	59	90	3.2	63-1	13	25	17	4	91	3.3	
2019-20	Marsh	22-3	270/12.3	24-59	.407	0-1	.000	3-13	.231	24	45	69	3.1	28-0	10	16	9	6	51	2.3	
2020-21	Marsh	15-15	326/21.7	41-83	.494	0-0	.000	7-18	.389	32	49	81	5.4	34-0	19	17	11	7	89	5.9	
2021-22	Marsh	8-8	190/23.7	15-39	.385	0-0	.000	4-9	.444	27	25	52	6.5	19-1	8	8	10	3	34	4.3	
TOTAL		73-27	1170/16.0	116-270	.430	0-1	.000	33-81	.407	114	178	292	4.0	144-2	50	66	47	20	265	3.6	



# TV/RADIO ROSTER



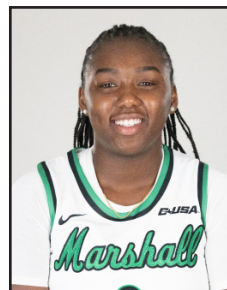
**0** KIA SIVILS  
G - 5-7 - JR  
LOUISVILLE, KY.



**1** CHRISTIANA MCLEAN  
G - 5-6 - RS-FR  
WAKE FOREST, N.C.



**2** SOFIA LLANOS  
G - 5-10 - FR  
TARRAGONA, CATALONIA, SPAIN



**3** CC MAYS  
G - 5-8 - FR  
TAMPA, FLA.



**4** SAVANNAH WHEELER  
G - 5-6 - SO  
CATLETTSBURG, KY.



**5** SAMANTHA LAFON  
F - 6-0 - FR  
CHESAPEAKE, OHIO



**10** AALIYAH DUNHAM  
G - 5-4 - SR  
S. CHARLESTON, WV



**11** KSENIJA MITRIC  
G - 5-8 - FR  
BANJA LUKA, BOSNIA & HERZEGOVINA



**21** SARAH LIBERATORE  
G - 5-10 - FR  
GREENSBURG, PA.



**23** ALEXIS JOHNSON  
F - 5-10 - SO  
SOUTHFIELD, MICH.



**24** KENNEDI COLCLOUGH  
F - 6-0 - GRAD  
CROFTON, MD.



**25** MAHOGANY MATTHEWS  
F - 6-1 - RS-SO  
YORK, PA.



**30** AARIONNA REDMAN  
F/G - 5-10 - FR  
PICKERINGTON, OHIO



**33** BRIANAH FERBY  
G - 5-6 - SR  
SMYRNA, TENN.



**34** LORELEI ROPER  
F/C - 6-1 - JR  
CHARLOTTE, N.C.



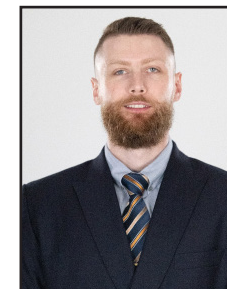
**TONY KEMPER**  
HEAD COACH  
FIFTH SEASON



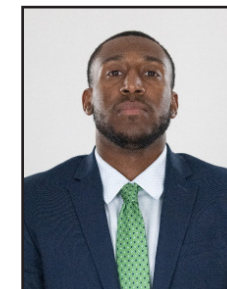
**LEXI BARRIER**  
ASSISTANT COACH  
FIRST SEASON



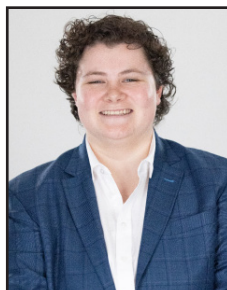
**JENNA BURDETTE**  
ASSISTANT COACH  
FIRST SEASON



**JANKO POPOVIC**  
VIDEO COORDINATOR  
SECOND SEASON



**RUDY EVANS**  
DIRECTOR OF OPS  
FIRST SEASON



**MAGGIE STANLEY**  
GRADUATE ASSISTANT  
FOURTH SEASON



**BRANDI ANDERS**  
ATHLETIC TRAINER  
FIFTH SEASON