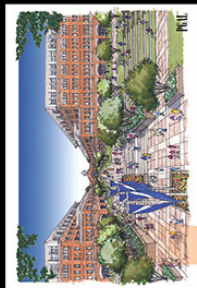


# 2015-16 HBU WOMEN'S BASKETBALL



# The Future of HBU

*The Path to 10,000 Enrollment*



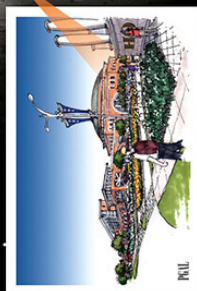
New Science and Student Affairs Building



Development Zone



Development Zone Retail



Belin Drive Entrance



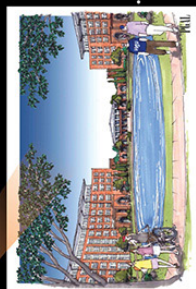
Belin Plaza



Dunham Field



Stadium Entrance



Husky Village



Holcombe Mall



**TABLE OF CONTENTS**

Quick Facts, Media Information & Credits ..... 1  
 2015-16 Schedule ..... 2  
 Meet the Coaches ..... 3-7  
 2015-16 Season Preview ..... 8  
 Meet the Huskies ..... 9  
 2015-16 Roster and Pronunciation Guide ..... 10  
 Player Profiles ..... 11-18  
 2015-16 Opponents ..... 19  
 Southland Conference ..... 20-21  
 Opponent Information ..... 22-24  
 Series Records ..... 24  
 History ..... 25  
 2014-15 Season in Review ..... 26  
 2014-15 Statistics ..... 27  
 2014-15 Game-by-Game ..... 28  
 Career Records ..... 29-30  
 Single-Season Records ..... 31-32  
 HBU Records ..... 32  
 All-Time Results ..... 33-36  
 Letterwinners ..... 37-38  
 HBU Honor Roll ..... 38  
 HBU ..... 39  
 Compliance ..... 40-41  
 Administration ..... 42-49  
 Media Relations ..... 50-51  
 Athletic Training ..... 52-54  
 Athletic Performance ..... 55  
 Athletics Staff Directory ..... 56-57  
 HBU Athletics Hall of Honor ..... 58-59  
 Colin Montgomerie ..... 60  
 Facilities ..... 61  
 Houston, Texas ..... 62

**MEDIA INFORMATION**

All home games will be played at HBU's Sharp Gym. Contact the HBU media relations office with any special requests prior to gameday.

**Game Services:** Programs, game notes, and statistics will be supplied to all working media.

**Coaches Interviews:** Coach Finnie will meet with the media after each game following a short post-game meeting with the team.

**Radio Broadcasts:** Application for broadcasting permission must be made in writing to the HBU sports information office at least one week prior to the game. Seating will be provided for no more than three persons. Any station other than the designated official station of each visiting school will be charged a \$100 rights fee.

**Player Interviews:** All requests for player interviews, either in person or by phone, must be arranged through the HBU media relations office. No player interviews will be granted on game day prior to the game. However, HBU players will be made available after the game following a brief cooling-off period.

**CREDITS**

The HBU women's basketball media guide is an official publication of the HBU athletic department.

**Written & Designed By:** Mary Ellen Leisering  
**Editor:** Russ Reneau  
**Photographers:** Wade Bagley and Roland Mercado, Wade's Photography, Houston; Erik Williams, Photography by Erik, Houston; Anthony Vasser, Anthony Vasser Photography, Houston; Virginia Brown; Richard Boling; Michael Tims, Michael Tims Photography; Thomas Shea, TBS Photography, Houston; Jeff Shaw, Jeff Shaw Photography, Houston; Alison Ashworth; Will Glasgow; W.G. Sports Photos, Florence, S.C.; Ruben Guadarama; Jacque Cottrell; Steven Key; Mary Ellen Leisering; Juliana Cox

**QUICK FACTS**

Location ..... Houston, Texas  
 Founded ..... 1960  
 Enrollment ..... 3,160  
 Nickname ..... Huskies  
 Colors ..... Royal Blue and Orange  
 Home Arena (capacity) ..... Sharp Gym (1,000)  
 Affiliation ..... NCAA Division I  
 Conference ..... Southland  
 2014-15 Record (Conference) ..... 15-18 (6-12)  
 Lettermen Returning/Lost ..... 6/8  
 Starters Returning/Lost ..... 3/2  
 Newcomers ..... 7

**HBU Administration**

President ..... Dr. Robert B. Sloan, Jr.  
 Director of Athletics ..... Steve Moniaci  
 Faculty Representative ..... Dr. Robert Towery

**HBU Women's Basketball Staff**

Head Coach (alma mater) ..... Donna Finnie (Heriot Watt '98)  
 Career Record ..... 27-35 (3rd season)  
 Record at HBU ..... Same  
 Assistant Coach ..... Ben Chase (Emerson '08)  
 Assistant Coach ..... Lauren Tippet (Sam Houston St. '11)  
 Assistant Coach ..... Becca Allison (Old Dominion '14)  
 Office Phone ..... (281) 649-3106

**HBU Athletic Media Relations**

Director ..... Russ Reneau  
 Office: (281) 649-3098  
 Email: rreneau@hbu.edu  
**Asst. Dir./WBB Contact.....Mary Ellen Leisering**  
**Office: (281) 649-3087**  
**Cell: (832) 623-8660**  
**Email: mleisering@hbu.edu**  
 Assistant Director ..... Kyle Rogers  
 Office: (281) 649-3208  
 Email: karogers@hbu.edu

**HBU Athletic Training**

Director ..... Richie Valdés  
 Phone: (281) 649-3157  
 Email: rvaldes@hbu.edu  
 Associate Director ..... Emily Kohut  
 Assistants ..... Dana Quintero, Hanna Stelzer,  
 Omni Ashford, Dan Meza, Chris Eaton  
 Graduate Assistants ..... Katie Becnel, Justin Henson  
 Team Physicians ..... Dr. Alysia Bedgood,  
 Dr. Michael Kent, Dr. Arun Rajaram, Dr. Randolph Taylor  
 Athletic Performance ..... Paul Constantine  
 Olympic Athletic Performance ..... René Peña  
 Graduate Assistant ..... Nick Gaujanian

**HBU Mission Statement**

The mission of Houston Baptist University is to provide a learning experience for students that instills them with a passion for academic, spiritual, and professional excellence as a result of our central confession, "Jesus Christ is Lord."

**HBU Athletic Department Mission Statement**

To be committed to Christ-centered development of people through intercollegiate athletics.

To aid the university in recruitment of the general student body and create school spirit and pride among students, faculty, staff, and alumni.

To help provide a positive identity for the university through our athletic endeavors.

To provide a competitive, diverse, and equitable athletic program in compliance with applicable rules and regulations that promotes good opportunities for student-athletes to earn a degree, to achieve individual athletic potential within team goals, and to emphasize spiritual and social growth.

## 2015-16 SCHEDULE

<u>Date</u>	<u>Day</u>	<u>Opponent</u>	<u>Location</u>	<u>Time</u>
<b>Nov. 6</b>	<b>Fri.</b>	<b>Southwestern</b> (Exhibition)	<b>Sharp Gym</b>	<b>7:00 p.m.</b>
Nov. 13	Fri.	at New Mexico <b>ROOT SPORTS</b>	Albuquerque, N.M.	9:00 p.m.
Nov. 15	Sun.	at UTEP	El Paso, Texas	3:00 p.m.
<b>Nov. 20</b>	<b>Fri.</b>	<b>Paul Quinn</b>	<b>Sharp Gym</b>	<b>7:00 p.m.</b>
Nov. 27	Fri.	vs. Nebraska Omaha (UTSA Thanksgiving Tournament)	San Antonio, Texas	2:00 p.m.
Nov. 29	Sun.	at UTSA (UTSA Thanksgiving Tournament)	San Antonio, Texas	2:00 p.m.
<b>Dec. 2</b>	<b>Wed.</b>	<b>Trinity</b>	<b>Sharp Gym</b>	<b>5:30 p.m.</b>
Dec. 5	Sat.	at Texas Southern	Houston (H&PE Arena)	2:00 p.m.
<b>Dec. 16</b>	<b>Wed.</b>	<b>Texas State</b>	<b>Sharp Gym</b>	<b>7:00 p.m.</b>
<b>Dec. 19</b>	<b>Sat.</b>	<b>UT Arlington</b>	<b>Sharp Gym</b>	<b>1:00 p.m.</b>
<b>Dec. 28</b>	<b>Mon.</b>	<b>Huston-Tillotson</b>	<b>Sharp Gym</b>	<b>2:00 p.m.</b>
Jan. 2	Sat.	*at Northwestern State	Natchitoches, La.	1:00 p.m.
<b>Jan. 4</b>	<b>Mon.</b>	<b>*McNeese State</b>	<b>Sharp Gym</b>	<b>7:00 p.m.</b>
<b>Jan. 7</b>	<b>Thu.</b>	<b>*Nicholls</b>	<b>Sharp Gym</b>	<b>7:00 p.m.</b>
<b>Jan. 9</b>	<b>Sat.</b>	<b>*Southeastern Louisiana</b>	<b>Sharp Gym</b>	<b>4:00 p.m.</b>
Jan. 13	Wed.	*at Central Arkansas	Conway, Ark.	7:00 p.m.
Jan. 16	Sat.	*at New Orleans <b>ESPN 3</b>	New Orleans, La.	4:00 p.m.
Jan. 23	Sat.	*at Lamar	Beaumont, Texas	4:00 p.m.
Jan. 27	Wed.	*at Abilene Christian	Abilene, Texas	4:00 p.m.
<b>Jan. 30</b>	<b>Sat.</b>	<b>*Sam Houston State</b>	<b>Sharp Gym</b>	<b>4:00 p.m.</b>
Feb. 3	Wed.	*at Texas A&M-Corpus Christi	Corpus Christi, Texas	7:00 p.m.
<b>Feb. 6</b>	<b>Sat.</b>	<b>*Stephen F. Austin</b>	<b>Sharp Gym</b>	<b>4:00 p.m.</b>
<b>Feb. 10</b>	<b>Wed.</b>	<b>*Lamar</b> (Play 4 Kay Game)	<b>Sharp Gym</b>	<b>7:00 p.m.</b>
Feb. 13	Sat.	*at Sam Houston State	Huntsville, Texas	2:00 p.m.
Feb. 18	Thu.	*at Incarnate Word	San Antonio, Texas	6:00 p.m.
<b>Feb. 24</b>	<b>Wed.</b>	<b>*Abilene Christian</b>	<b>Sharp Gym</b>	<b>7:00 p.m.</b>
Feb. 27	Sat.	*at Stephen F. Austin	Nacogdoches, Texas	4:00 p.m.
<b>March 3</b>	<b>Thu.</b>	<b>*Texas A&amp;M-Corpus Christi</b>	<b>Sharp Gym</b>	<b>5:00 p.m.</b>
<b>March 5</b>	<b>Sat.</b>	<b>*Incarnate Word</b> (Senior Day)	<b>Sharp Gym</b>	<b>12:00 p.m.</b>
March 9-13	Wed.-Sun.	at Southland Conference Tournament	Katy, Texas	TBA

\* Southland Conference opponent

All times central

## 2016 Southland Conference Tournament

March 9-13

Katy, Texas





# MEET THE COACHES





Donna Finnie begins her third year as head coach in 2015-16, fresh off the heels of HBU's most successful season in recent memory. The Huskies went 15-18 overall and 6-12 in Southland Conference play, earning a berth to their first SLC Tournament, despite being without the services of last year's First Team All-Conference selection, Shanice Steenholdt, and losing freshman Lisa Zderadicka after three games. As the eighth seed, HBU began a memorable Cinderella run as it knocked off the fifth seed, fourth seed, and top seed Stephen F. Austin on ESPN3, becoming the first eighth seed to reach the SLC championship game. Before a national crowd, HBU fell to reigning tournament champions, Northwestern State, 58-50, but had seniors Tayler Jefferson and Erin McGarrachan earn All-Tournament honors. Anna Strickland was named SLC All-Defensive. At season's end, HBU was ranked 26th nationally in field-goal percentage (44.0) and 39th in rebounding margin (+5.6), leading all SLC teams in both categories. For the second-straight year, the Huskies got it done in the classroom as well, as the team was honored by the WBCA for academics. Over the summer, two Huskies signed contracts to play basketball overseas: McGarrachan with Leicester Riders of the Women's British Basketball League and Shanice Steenholdt with Club Desportivo Torres Novas of Portugal's Liga Feminina League. In October, 2015, Tayler Jefferson became the third Husky to sign a contract as she joined Spain's CN Reus Ploms.

In Finnie's first year at the helm of the program in 2013-14, the team made huge strides both on and off the court. The Huskies won 12 games, the most since HBU began the transition to NCAA Division I in 2007. The Huskies also boasted the highest RPI in program history (251); a significant improvement from the 2012-13 campaign. Offensively the team exploded to produce one of the most efficient scoring attacks in the nation. The Huskies shot 44% from the field, which led the Southland Conference and ranked 39th nationally out of 344 eligible teams. The charge was led by Shanice Steenholdt, who finished in the top three in multiple statistical categories including points per game (18.1), field goal percentage (54.9%), rebounds per game (9.8) and blocks per game (1.8). Her exceptional effort earned her First Team All-Southland Conference honors.

Success continued in the classroom, where the Huskies had one of their most successful school years in program history. In the second semester, the

team posted a combined 3.6 GPA, which included five players earning a perfect 4.0. This was the strongest academic performance, top to bottom, since the founding of the program. All thirteen players on the Huskies' roster earned at least a 3.0 GPA, which netted them all spots on the Southland



Conference Commissioner's Honor Roll. This is the first time in the history of the program that the entire team has made the All-Conference Honor Roll.

Finnie was named the fifth head coach in program history on April 17, 2013, making history in the process. Finnie became the first international ever to land a head coaching position in NCAA Division I basketball.

Prior to becoming the head coach, Finnie served as an assistant coach at HBU for three seasons. During that time, Finnie was instrumental in recruiting all of the players who are currently on the Huskies' roster.

Finnie came to HBU after spending 10 seasons as a national team coach in Scotland. She started as an assistant coach for Arthur McGuire and then was promoted to head coach when McGuire retired. She was the head coach from 2003-2010 for the U18 national team and also had a stint coaching the U16 national team.

Finnie became the first head coach at any level to win two consecutive FIBA Tournaments in 2005



and 2006 and the first Scottish female to win any FIBA level tournament. Following those wins, she then led the national team into three FIBA European B Division Championships with former Huskies forward Erin McGarrachan, setting a then-record for single game rebounds with a haul of 27 in the 2010 Championships in Romania.

In her 10 years coaching national teams, Finnie coached in over 20 different countries including several trips to the US where she would bring her team to play in exposure events/ team camps.

Finnie also helped her players look at scholarship opportunities in the US and has helped 10 former players attain scholarships at the DI and DII level, meaning more Scottish players than ever are playing NCAA basketball.

She was also the Talent ID Manager for Basketballscotland for two years and worked on identifying talented youngsters across the country and worked with the Institute of Sport to develop annual plans for personal strength, conditioning, and skill development. One of her former players, Rose Anderson, who played for Finnie for four years, represented Great Britain in the basketball tournament at the London Olympics.

Finnie recruited all of the current women's basketball student-athletes in her former role as recruiting coordinator and has worked specifically with the Huskies forwards and posts over the last three years.

An Edinburgh, Scotland, native, Finnie graduated with a BSC in Applied Sports Sciences from Heriot Watt University.

## FINNIE AT A GLANCE

### Education

College: Heriot Watt Univ. - Edinburgh, Scotland

### Coaching Experience

Head Coach: Houston Baptist University  
2013-Present

- Record at HBU: 27-35 (3rd season)
- Southland Conference Tournament Runner-ups (2015)
- Became first international head coach in Division I basketball.

Assistant Coach: Houston Baptist University  
2010-13

- Recruiting Coordinator

Head Coach: U18 Scottish National Team  
2003-10

- Became first head coach in any level to win two consecutive FIBA Tournaments (2005 and 2006).
- First Scottish female to win any FIBA level tournament.

Talent ID Manager for Basketballscotland  
2008-10



Ben Chase enters his fifth year at HBU, and his third as assistant coach for the women's basketball program. Chase played a key role in the Huskies' success by organizing the defense and scouting opponent's offenses. In the Huskies' memorable 2014-15, they earned a berth to the Southland Conference Tournament in only their second season in the league, earning the eighth seed. From there, HBU defeated the fifth, fourth, and top seed to become the first eight seed to reach the SLC championship game in league history. In the record-setting season in 2013-14, HBU's first season in the Southland Conference, the Huskies' defense finished 4th in both blocked shots per game (3.41) and steals per game (8.69).

He spent his first two seasons at HBU as director of basketball operations for the HBU men's program, where he handled much of the Huskies' video duties, aided the staff in advance scouting, as well as coordinating team travel, academic monitoring and game and practice statistical analysis.

Chase, a Newburyport, Mass. native, played basketball at Division III Emerson College in Boston from 2004-08. He was captain of the team three times and led the squad to a 24-5 record as a senior while earning All-Great Northeast Athletic Conference honors. He was also outstanding in the classroom, earning CoSIDA/ESPN The Magazine Academic All-America honors as a senior and was a CoSIDA/ESPN The Magazine Academic All-District pick in 2007 and 2008. He earned his bachelor's degree in video production and marketing from Emerson in 2008.

Chase remained at Emerson, where he was an assistant coach for both the men's and women's basketball teams from 2008-10, then served as a graduate assistant in 2010-11 at Boston University, helping the Terriers win the America East Conference title and earning a game against Kansas in the first round of the NCAA Tournament. Chase earned his Master's of Education in Physical Education, Health and Coaching from Boston University in 2011.

Chase is married to the former Kim Fraser. They currently reside in Houston.

Lauren Tippet enters her third season at HBU. Tippet has a wealth of experience with training and individual skill development, particularly working with guards and perimeter players, which played an important role in the Huskies' Southland Conference Tournament run in 2014-15 and a five-win increase in 2013-14.

Tippet came to HBU from Sam Houston State. During her two years as a graduate assistant coach at Sam Houston, the Bearkats won the program's first Southland conference championship and received both pre-season and post-season WNIT invitations. Prior to being a graduate assistant, Tippet played two seasons for the Bearkats. During her career she received academic all-conference honors both seasons and graduated Magna Cum Laude with a bachelor's degree in Kinesiology. Following her undergraduate work, Tippet received a Master of Science Degree in Exercise Science that transitioned to her work with the Bearkats' off-season training programs. While in Huntsville Tippet also trained local high school athletes primarily in off-season strength and conditioning programs.

A Houston native, Tippet transferred to Sam Houston after playing two seasons at San Jacinto Junior College and graduating from Clear Creek High School.



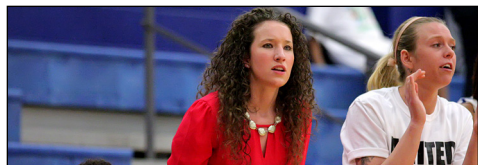


Becca Allison begins her second season as an assistant coach for the women's basketball team. Last season, she helped HBU reach the Southland Conference Tournament in program history and become the first eight seed to reach the SLC championship game, as the Huskies knocked off the fifth, fourth, and top seed.

Along with her coaching duties, Allison will be pursuing her Masters in Education at HBU.

Allison, an Edinburgh, Scotland, native, comes to Houston from Old Dominion University, where she was a four-year letterwinner for the Monarchs basketball team from 2010-14. She was Academic Athlete of the Year her sophomore year and finished her career at Old Dominion with a 4.0 GPA. Allison was team captain her senior year and was also named the Conference USA Spirit of Service Award recipient. She earned her degree in sport management with a minor in marketing.

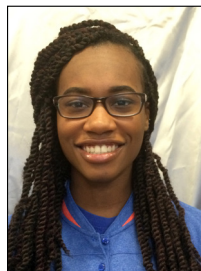
She has represented both Great Britain and Scotland in the European Championships. She averaged over 10 points a game in the European "B" Championships. She also represented Great Britain in the World University Games in China in 2011. Playing for the COE Kool Kats in Edinburgh prior to her US move, Allison and her team won the Scottish National League and the Scottish Cup. She was named MVP every year since 2006-07 and earned Women's Player of the Year accolades in 2008-09.



### STUDENT MANAGERS



*Ashlyn Blakely*



*Brion Brown*



*Alyssa Mahler*



*Alexis Torres*



## 2015-16 SEASON PREVIEW

Despite losing over half of their scoring from a season ago, head coach Donna Finnie and her staff are optimistic about what 2015-16 brings for their team.

The Huskies continue to make tremendous strides with each year under Finnie's leadership, evident with the team reaching the Southland Conference Tournament for the first time in program history and becoming the first No. 8 seed to reach the championship game, eventually falling to reigning champion, Northwestern State.

### Schedule

After a home exhibition against Southwestern Nov. 6, the Huskies open the regular season on the road against New Mexico and UTEP.

"We feel that this schedule will allow us to prepare our very young group for conference play," said Finnie. "It's a tough non-conference schedule for us, beginning with two perennial powerhouses in New Mexico and UTEP."

After a home tilt against Paul Quinn on Nov. 20, the Huskies head to San Antonio to compete in the UTSA Thanksgiving Tournament Nov. 27-29 against Nebraska Omaha and the host Roadrunners.

"We are delighted to have been invited to the UTSA Thanksgiving tournament," stated Finnie. "It will not only give us two quality games, but allow Monet Neal [William Howard Taft HS] to play in front of her family and friends for Thanksgiving in her senior year."

HBU remains in Houston the entire month of December - with the lone "away" game against Texas Southern - before commencing Southland Conference action with a rematch of the SLC championship game against Northwestern State Jan. 2 in Natchitoches, La.

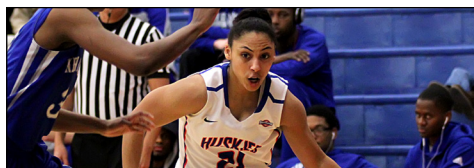
Key games on the conference slate include the annual "Play 4 Kay Game" against Lamar Feb. 10 and "Senior Day" March 5 versus Incarnate Word.

"This year, we have a lot to do prior to Southland play in getting our eight freshmen up to speed," said Finnie. "Our team will look very different, but we are excited about the challenges this schedule brings."

### Guards

HBU returns four letterwinners to this position, including seniors **Rachel Arthur**, **Ekemini Essien**, and **Meghan Shank**. Arthur finished second on the team with 11.0 points per game last season, dished out 73 assists, and was third on the team with 33 steals. Junior **Heidi Sihvola** averaged 4.7 points per contest and was second on the team with 79 assists.

Redshirt freshman **Lisa Zderadička** - who started the first three games and missed the rest of the season due to injury - returns. The coaching staff has brought in three newcomers in **Bria Johnson**, **Adriana Jackson**, and **Amanda Johnson**.



### Forwards

The Huskies have a nice mix of experience and youth, as seniors **Anna Strickland** and **Monet Neal** complement a pair of freshmen in **Charlotte Hodges** and **Brooklyn Moore**.

Strickland returns after being named to the SLC All-Defensive Team. She averaged 7.2 points and 8.6 rebounds per game last year and 8.2 points and 9.3 boards per contest in conference play. Her 63 blocks are a program Division I record. Neal posted 8.8 points and 5.5 rebounds per game during the season and 9.0 points and 6.3 boards per contest in conference play.



### Posts

HBU has the least amount of experience in this position, as the coaching staff brought in two newcomers in **Kennedy Collins** and **Veronika Kirienko**.

Collins was named Offensive and Defensive Player of the Year, as well as Queen of the Glass, while attending Cedar Creek High School.

Kirienko, the first Uzbekistani to suit up for the Huskies, has national team experience under her belt. She was named MVP in 2013-14 and competed in the 2014 Youth Olympic Games.

# MEET THE HUSKIES

nce Tournament





## 2015-16 ROSTER

No.	Name	Pos.	Ht.	Cl.-Exp.	Hometown (High School/Previous School)
3	Heidi Sihvola	G	5-8	Jr.-2L	Helsinki, Finland (Mäkelänninne)
5	Lisa Zderadická	G	5-6	Fr.-RS	Vienna, Austria (HAK Korneburg)
10	Bria Johnson	PG	5-6	Fr.-HS	Sunnyvale, Texas (Sunnyvale)
11	Adriana Jackson	PG	5-1	Fr.-HS	Houston, Texas (North Shore)
14	Amanda Johnson	G	6-1	Fr.-HS	Georgetown, Texas (Georgetown)
20	Charlotte Hodges	F	6-0	Fr.-HS	Kingwood, Texas (Kingwood)
21	Rachel Arthur	G	5-7	Sr.-3L	Humble, Texas (Atascocita)
23	Anna Strickland	F	6-1	Sr.-2L	The Woodlands, Texas (The Woodlands/Harding)
24	Meghan Shank	G	5-8	Sr.-3L	Ventura, Calif. (Ventura)
25	Monet Neal	F	5-10	Sr.-3L	San Antonio, Texas (William Howard Taft)
33	Brooklyn Moore	F	5-11	Fr.-HS	Murphy, Texas (Wylie)
35	Ekemini Essien	G	5-9	Sr.-3L	Carrollton, Texas (Dallas Lutheran)
45	Veronika Kirienko	C	6-4	Fr.-HS	Tashkent, Uzbekistan (School 168)
55	Kennedy Collins	C	6-1	Fr.-HS	Bastrop, Texas (Cedar Creek)

**Head Coach:** Donna Finnie (3rd season; Heriot Watt)

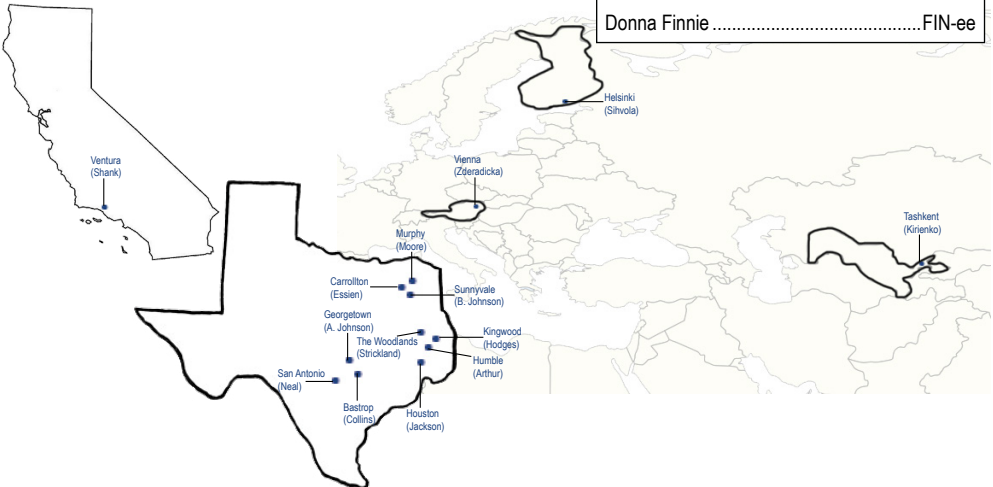
**Assistant Coaches:** Ben Chase (3rd season; Emerson),  
Lauren Tippet (3rd season; Sam Houston St.),  
Becca Allison (2nd season; Old Dominion)

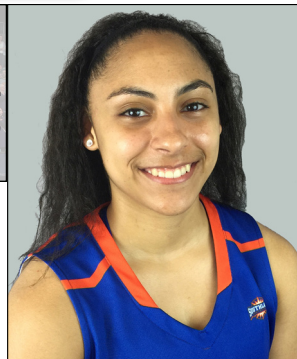
**Student Managers:** Ashlyn Blakley, Brion Brown, Alyssa Mahler,  
Alexis Torres

## PRONUNCIATION GUIDE

Ekemini Essien ..... uh-KEM-in-ee ESS-ee-in  
 Veronika Kirienko ..... kir-ee-ENK-oh  
 Adriana Jackson ..... ay-dree-AWN-uh  
 Monet Neal ..... mo-NAY  
 Heidi Sihvola ..... HAY-dee SEE-vole-uh  
 Lisa Zderadicka ..... dare-uh-DITCH-kah

Donna Finnie ..... FIN-ee





**2014-15 (Junior):** Played in all but one of the team's 33 contests...second on the team with 11.0 points per game, which ranked her 22nd in the Southland Conference...averaged 11.2 points per contest in conference play...her 73 assists were third-highest on the team and she also registered 22 steals and 13 blocked shots...set a new career high with 25 points against Sam Houston State (2/14), where she went 12-for-19 from the floor and 1-for-1 from beyond the arc...tied her career high of three 3-pointers made at UT Arlington (11/16) and seven assists against Arlington Baptist (12/13)...her three blocked shots against Stephen F. Austin (3/14) in the SLC semifinal game was a new personal best and she added 22 points on 8-of-13 shooting and 6-of-8 from the charity stripe...Arthur scored in double figures 17 times, including a stretch of six-consecutive contests from Feb. 5 through Feb. 25.

**Sophomore (2013-14):** One of only two Huskies to start all 29 games...second on the team with 11.9 points per game...scored a career-high 21 points three times: versus Huston-Tillotson (12/28), at McNeese State (1/18), and versus McNeese State (3/8)...averaged 2.2 rebounds per game...tied her career high of five rebounds twice: versus UT Arlington (11/8) and at Abilene Christian (2/6)...had a career high of seven steals against UT Arlington (11/8) and a new personal best of seven assists against Southeastern Louisiana (1/25)...Arthur scored in double figures 18 times and 20-plus points on three occasions...she finished the season scoring in double figures in seven of the last eight games...she and Taylor Jefferson averaged a team-best 32 minutes per game...averaged 12.4 points and 2.7 rebounds per game in conference play...averaged a team-best 35 minutes per game in conference play...named to Southland Conference Spring Honor Roll.

**Freshman (2012-13):** Appeared in 30 games with 29 starts...started the first 22 games of the season...averaged 7.0 points and 1.5 rebounds per game...her 46 assists were third-highest on the team and she was second with 46 assists...scored career-high 20 points against Bakersfield (1/15)...made a career-high three 3-pointers at NJIT (2/16)...grabbed career-high five rebounds in a win at New Orleans (1/12) and had six steals versus NJIT (3/9).

**High School:** A three-time All-District selection for head coach Valery Jackson...she was named First Team All-District as a sophomore and senior, and Second Team All-District as a junior...as a senior, she was named to the Greater Houston Area All-Star Team...she averaged 10 points per game as a freshman...as a sophomore, Arthur averaged 6.4 points, 2.3 rebounds, 2 assists, and 2.6 steals a game, while scoring 172 points on the season...as a junior, she averaged 8 points, 2.8 assists, 2.3 rebounds, and 2.7 steals per game, while scoring 207 points...Arthur erupted as a senior, averaging 14.4 points, 2.0 assists, 2.2 rebounds, and 3.0 steals per game while scoring 431 points...she hit a half-court shot just before halftime in a close game during her sophomore

season...in the classroom, Arthur was a four-year A/B Honor Roll recipient...she played club for Houston Elite and coach Howard.

**Personal:** Full name is Rachel Mamie Arthur...majoring in marketing...born on June 21, 1994, in Fort Hood, Texas...daughter of William and Kirsten Arthur...has two sisters, Iesha and Dominique...Dominique played basketball for one year at Texas Wesleyan University.



**ARTHUR'S HBU CAREER HIGHS**

- Points .....25 vs. Sam Houston State (2/14/15)
- Field Goals Made .....12 vs. Sam Houston State (2/14/15)
- 3-Point FG Made.....3, 4 times, last @ UT Arlington (11/16/14)
- Free Throws Made.....6, 3 times, last vs. Stephen F. Austin (3/14/15)
- Rebounds .....6 @ UT-Pan American (11/29/14)
- Assists .....7, twice, last vs. Arlington Baptist (12/13/14)
- Steals .....7 vs. UT Arlington (11/8/13)
- Blocks .....3 vs. Stephen F. Austin (3/14/15)
- Minutes .....45 @ UC Davis (12/21/13)

**ARTHUR'S HBU STATISTICS**

Yr	GP-GS	Min.-Avg.	FG-FGA	Pct.	3FG-FGA	Pct.	FT-FTA	Pct.	Off.-Def.-Tot.-Avg.	A	TO	Blk.	Stl.	Pts.	Avg.
2012-13	30-29	818-27.3	74-211	.351	29-112	.259	33-60	.550	21-25-46-1.5	46	61	2	46	210	7.0
2013-14	29-29	906-31.2	128-278	.460	19-68	.279	71-108	.657	29-34-63-2.2	57	64	5	39	346	11.9
2014-15	32-28	1011-31.6	145-298	.487	6-22	.273	56-98	.571	37-45-82-2.6	73	76	13	33	352	11.0
<b>Total</b>	<b>91-86</b>	<b>2735-30.1</b>	<b>347-787</b>	<b>.441</b>	<b>54-202</b>	<b>.267</b>	<b>160-266</b>	<b>.602</b>	<b>87-104-191-2.1</b>	<b>176</b>	<b>201</b>	<b>20</b>	<b>118</b>	<b>908</b>	<b>10.0</b>

35

EKEMINI ESSIEN

Guard • 5-9 • Sr.-3L  
Carrollton, Texas  
(Dallas Lutheran)



**2014-15 (Junior):** Saw action in 16 games with two starts...scored a season-high six points and set a new career mark of four assists against Huston-Tillotson (12/28)...her six rebounds at Sam Houston State (1/31) tied her career high...she had eight steals and tied her personal best with three against Abilene Christian (1/29).

**Sophomore (2013-14):** Appeared in 17 games...averaged 2.5 points and 2.2 rebounds per game...scored a career-high eight points against Texas A&M-Corpus Christi (2/22)...set a new personal best of six rebounds twice: against UT Arlington (11/8) and against Nicholls (3/6)...set new career highs with three steals against UT Arlington (11/8) and three assists against Nicholls (3/6)...averaged 2.1 points and 1.9 rebounds in conference play...named to Southland Conference Spring Honor Roll.

**Freshman (2012-13):** Played in 16 games with one start...averaged 1.4 points and 1.5 rebounds per game, while averaging just 5.1 minutes a contest...had three assists, three blocks, and four steals...scored a career-high five points against Lamar (12/21) and grabbed five rebounds against Chicago State (3/7).

**High School:** Competed in basketball and track at Dallas Lutheran...she was a four-year letterwinner and four-year starter in basketball for head coach Tyerone Washington...as a senior, she averaged 20 points, 11.5 rebounds, four assists, and two steals a game...while leading her team to a 26-5 record with a perfect TAPPS regular season mark, Essien had 16 double-doubles and four triple-doubles...she averaged 20 points a game as a junior, and 15 points a game as both a freshman and sophomore...she was a three-time Most Valuable Player (2010-12) and was a four-time First Team All-District selection (2009-12)...she earned All-State Honorable Mention honors in 2011 and was named Second Team All-District in 2008...in track, she earned MVP honors in 2011 and is the defending TAPPS Division III champion in the shot put and runner-up in the long jump...in the classroom, Essien was a member of the National Honor Society and the Spanish Honor Society...she was a three-time Student of the Month and was the student body president...she was named

Academic All-State as a junior and senior...played club for All Net Basketball for coach Carven.

**Personal:** Full name is Ekemini Liron Essien...majoring in marketing...born on Oct. 13, 13, 1993, in Dallas, Texas...daughter of Uko and Deborah Essien...has two brothers, Attah and Junior...enjoys playing sports, playing the drums, and working out...she plays the drums in her church's praise band.



ESSIEN'S HBU CAREER HIGHS

- Points .....8 vs. Texas A&M-Corpus Christi (2/22/14)
- Field Goals Made .3, twice, last vs. TXA&M-Corpus Christi (2/22/14)
- 3-Point FG Made .....1 @ Sam Houston State (1/31/15)
- Free Throws Made .....3 vs. UT Arlington (11/8/13)
- Rebounds .....6, 3 times, last @ Sam Houston State (1/31/15)
- Assists .....4 vs. Huston-Tillotson (12/28/14)
- Steals .....3, twice, last vs. Abilene Christian (1/29/15)
- Blocks .....1, 11 times, last vs. Huston-Tillotson (12/28/14)
- Minutes .....22 @ Sam Houston State (11/19/13)

ESSIEN'S HBU STATISTICS

Yr	GP-GS	Min.-Avg.	FG-FGA	Pct.	3FG-FGA	Pct.	FT-FTA	Pct.	Off.-Def.-Tot.-Avg.	A	TO	Blk.	Stl.	Pts.	Avg.
2012-13	16-1	82-5.1	10-26	.385	0-0	.000	3-7	.429	9-15-24-1.5	3	14	3	4	23	1.4
2013-14	17-0	135-7.9	14-46	.304	0-1	.000	14-30	.467	20-17-37-2.2	4	14	5	10	42	2.5
2014-15	16-2	120-7.5	10-35	.286	1-4	.250	6-14	.429	6-16-22-1.4	11	23	3	8	27	1.7
<b>Total</b>	<b>49-3</b>	<b>337-6.9</b>	<b>34-107</b>	<b>.318</b>	<b>1-5</b>	<b>.200</b>	<b>23-51</b>	<b>.451</b>	<b>35-48-83-1.7</b>	<b>18</b>	<b>51</b>	<b>11</b>	<b>22</b>	<b>92</b>	<b>1.9</b>



# MONET NEAL

Forward • 5-10 • Sr.-3L

San Antonio, Texas

(William Howard Taft)



**2014-15 (Junior):** One of three Huskies to play in all 33 games...started 17 contests...averaged 8.8 points and 5.5 rebounds per game on the season and 9.0 points and 6.3 boards per contest in conference play...took a team-high 69 free throws and 126 free-throw attempts...set a new career high with 11 free-throws made against Lamar (1/24)...third on the team with 20 blocked shots, where she tied her personal mark of three against Stephen F. Austin in the conference semifinal game (3/14)...registered 18 assists and 16 steals...scored a personal-best 28 points at Northwestern State (1/2)...scored in double figures 12 times and had two double-doubles: at Northwestern State (1/2) and against Lamar (1/24).

**Sophomore (2013-14):** Appeared in 27 games with 18 starts...averaged 6.0 points and 3.9 rebounds per game...set new personal bests of 19 points and 19 rebounds at Lamar (1/30)...she nearly recorded a triple-double at UC Davis (12/21), as she finished with 16 points, nine rebounds, and a personal best nine steals...tied for third on the team with 38 steals...averaged 6.8 points and 4.6 rebounds per game in conference play...named to Southland Conference Spring Honor Roll.

**Freshman (2012-13):** Played in 20 games with three starts, missing eight games due to injury...averaged 3.4 points and 3.1 rebounds per game...recorded nine assists, seven blocks, and 21 steals...scored career-high 10 points and grabbed career-high seven rebounds against Texas State (2/20)...recorded career-high four assists at UTEP (11/16).

**High School:** Three-year letterwinner and two-year starter at Taft High School and head coach Lynette Joiner...she was the second leading rebounder in the San Antonio area in 2010-11 and was touted to be the leading rebounder in 2011-12...as a senior, she averaged a double-double with 15 points and 10.8 rebounds per game, adding 3.4 blocks and 1.5 steals per game...she averaged 10.5 points and 8.5 rebounds per game as a junior and 5 points and 4 rebounds as a sophomore...she earned First Team All-District, TABC All-Region, BTL All-Star Team, and Lone Star All-Star Team honors as a senior...a team captain in 2010-11, Neal was ranked 12th in the area for the 2012 class

and played club for Sophia Young Elite AAU under head coach Mike Ekanem.

**Personal:** Full name is Monet Jonelle Neal...majoring in kinesiology/athletic training...born on June 19, 1995, in New Haven, Conn....daughter of Michael and Alicia Neal...has one brother, Aubrey, and two sisters, Brittany and Maya...she enjoys playing the guitar and cooking.



## NEAL'S HBU CAREER HIGHS

Points.....	28 vs. Northwestern State (1/2/15)
Field Goals Made.....	11 vs. Northwestern State (1/2/15)
3-Point FG Made.....	1 @ Baylor (12/15/13)
Free Throws Made.....	11 vs. Lamar (1/24/15)
Rebounds.....	19 @ Lamar (1/30/14)
Assists.....	4 @ UTEP (11/16/12)
Steals.....	9 @ UC Davis (12/21/13)
Blocks.....	3, 3 times, last vs. Stephen F. Austin (3/14/15)
Minutes.....	39 @ Lamar (1/30/14)

## NEAL'S HBU STATISTICS

Yr	GP-GS	Min.-Avg.	FG-FGA	Pct.	3FG-FGA	Pct.	FT-FTA	Pct.	Off.-Def.-Tot.-Avg.	A	TO	Blk.	Stl.	Pts.	Avg.
2012-13	20-3	255-12.8	26-69	.377	0-3	.000	16-30	.533	25-36-61-3.1	9	18	7	21	68	3.4
2013-14	27-18	522-19.3	61-132	.462	1-8	.125	39-70	.557	24-82-106-3.9	20	52	3	38	162	6.0
2014-15	33-17	744-22.5	111-248	.448	0-0	.000	69-126	.548	62-119-181-5.5	18	75	20	16	291	8.8
<b>Total</b>	<b>80-38</b>	<b>1521-19.0</b>	<b>198-449</b>	<b>.441</b>	<b>1-11</b>	<b>.091</b>	<b>124-226</b>	<b>.549</b>	<b>111-237-348-4.4</b>	<b>47</b>	<b>145</b>	<b>30</b>	<b>75</b>	<b>521</b>	<b>6.5</b>

24

MEGHAN SHANK

Guard • 5-8 • Sr.-3L

Ventura, Calif.

(Ventura)



**2014-15 (Junior):** Saw action in 23 games with 13 starts...scored a career-high 15 points on 6-of-13 shooting and 3-for-4 from the charity stripe against Texas Southern (12/17)...also registered a career-high seven steals...scored 12 points at Nicholls (1/8)...pulled down a personal-best five rebounds against New Orleans (1/17)...dished out 22 assists with a season-high five at Southeastern Louisiana (1/10).

**Sophomore (2013-14):** Played in 16 games...scored four points and pulled down two rebounds at Central Arkansas (1/4)...shot 50 percent from the floor...named to Southland Conference Spring Honor Roll.

**Freshman (2012-13):** Appeared in 16 games, while averaging just under a point and assist per game...had seven assists and nine steals, while averaging just 9.5 minutes per game...scored a career-high five points at Lamar (2/13)...grabbed a career-best four rebounds against Huston-Tillotson (12/29).

**High School:** Four-year letterwinner and four-year varsity starter in basketball at Ventura High School and head coach Ann Larson...she averaged 13.0 points, 3.0 assists, 3.0 rebounds, and 2.0 steals a game in 2010-11...she earned First Team All-Channel League honors as a freshman and junior...Shank was a Second Team All-Channel League honoree as a sophomore...as a junior, she was named First Team All-Ventura County and team captain...she earned Santa Barbara First Team All-Tournament honors as a freshman and First Team All-Tournament Optimist Invitational as a junior...earned the Coaches Award as a sophomore...named Team MVP and earned a spot on the Ventura Kowanis All-Tournament Team as a junior...as a senior, Shank was named Channel League MVP, Team MVP, MVP of the Ventura Kiwanis Tournament, MVP of the Santa Barbara Tournament of Champions, First Team All-CIF Southern Section Division 2AA, First Team All-Ventura County, Ventura County Player of the Year, and Ventura County Star Newspaper "Female Basketball Player of the Year"...she was inducted into the Ventura Sports Hall of Fame as Ventura High School's 2011-12 "Female Athlete of the Year"...she earned Honor Roll honors as

a freshman and junior...played club for Cal-Sparks "Black" team in 2011 for head coach Elbert Kinnebrew.

**Personal:** Full name is Meghan Nicolle Shank...majoring in kinesiology...born Dec. 31, 1993, in Ventura, Calif...daughter of Robert and Lori Shank...her father is a police officer and her mother is a police and fire dispatcher...enjoys reading, hiking, wakeboarding, and anything involving sports.



SHANK'S HBU CAREER HIGHS

Points..... 15 vs. Huston-Tillotson (12/28/14)  
Field Goals Made..... 6 vs. Huston-Tillotson (12/28/14)  
3-Point FG Made..... 1, twice, last @ McNeese State (1/5/15)  
Free Throws Made..... 3 vs. Huston-Tillotson (12/28/14)  
Rebounds..... 5, twice, last @ Sam Houston State (1/31/15)  
Assists..... 5 @ Nicholls (1/8/15)  
Steals..... 7 vs. Huston-Tillotson (12/28/14)  
Blocks..... 0  
Minutes..... 37 @ McNeese State (1/5/15)

SHANK'S HBU STATISTICS

Yr	GP-GS	Min.-Avg.	FG-FGA	Pct.	3FG-FGA	Pct.	FT-FTA	Pct.	Off.-Def.-Tot.-Avg.	A	TO	Blk.	Stl.	Pts.	Avg.
2012-13	16-0	152-9.5	7-25	.280	1-3	.333	0-0	.000	6-9-15-0.9	7	9	0	9	15	0.9
2013-14	16-0	81-5.1	3-6	.500	0-0	.000	2-2	1.000	2-2-4-0.3	8	8	0	2	8	0.5
2014-15	23-13	342-14.9	18-57	.316	1-6	.167	8-9	.889	8-13-21-0.9	22	22	0	14	45	2.0
<b>Total</b>	<b>55-13</b>	<b>575-10.5</b>	<b>28-88</b>	<b>.318</b>	<b>2-9</b>	<b>.222</b>	<b>10-11</b>	<b>.909</b>	<b>16-24-40-0.7</b>	<b>37</b>	<b>39</b>	<b>0</b>	<b>25</b>	<b>68</b>	<b>1.2</b>

23

## ANNA STRICKLAND

**Forward • 6-1 • Sr-2L**  
**The Woodlands, Texas**  
**(The Woodlands/Harding University)**



**2014-15 (Junior):** One of three Huskies to compete in all 33 contests, starting in 20...averaged 7.2 points and second on the team with 8.6 rebounds per game on the season...posted marks of 8.2 points and 9.3 boards per contest in conference action...her 63 blocked shots are the third-most all-time and set a new record in the DI era...her 1.91 blocked shots per game ranked her second in the Southland Conference and 66th nationally...set a new career high with six blocks at McNeese State (1/5), then did it again against Incarnate Word (2/19)...pulled down a personal-best 20 rebounds in the Huskies' quarterfinal win over McNeese State (3/12), the most in a single game in four seasons...Strickland scored in double figures 10 times and posted seven double-doubles...two of the double doubles came in the Southland Conference Tournament: against McNeese State (3/12) and in the championship game against Northwestern State (3/15)...earned spots on the SLC All-Defensive Team and Academic All-Conference.

the Year honoree...she was also a two-time Houston Athlete of the Week recipient...Strickland amassed 1,497 points and 1,265 rebounds in her high school career.

**Personal:** Full name is Anna Elizabeth Strickland...majoring in accounting...born Oct. 25, 1993 in Marion, N.C...daughter of Don and Gale Strickland...has one brother, Hayes...enjoys horseback riding.

**Sophomore (2013-14):** Played in all 29 games with two starts...averaged 5.7 points and 5.7 rebounds per game...the 5.7 rebounds per game were second-best on the team...scored a career-high 12 points twice: against UT Arlington (11/8) and versus Huston-Tillotson (12/28)...pulled down a career-high 11 rebounds twice: at McNeese State (1/18) and versus McNeese State (3/8)...second on the team with 14 blocks...had a career-high two blocks three times: at Baylor (12/15), against New Orleans (1/23), and at Abilene Christian (2/6)...averaged 5.2 points and 5.2 rebounds per game in conference play...named to Southland Conference Spring Honor Roll.



**Before HBU:** Played one season at Harding University in Searcy, Ark...played basketball for head coach Tim Kirby...averaged 2.1 points and 1.8 rebounds per game while playing in just nine games...she shot 46 percent from the floor and 50 percent from the free throw line... she set career highs of nine points and five rebounds against Southern Arkansas (1/17).

**High School:** Four-year letterwinner and starter for head coach Dana Bruton...named Most Valuable Player in her district as a senior...she averaged 6.2 points and 6.8 rebounds per game as a freshman, 11.4 points and 9.8 rebounds as a sophomore, 11.3 points and 9.8 rebounds as a junior, and 16.0 points and 10.8 rebounds as a senior...a three-time All-District and two-time Academic All-District recipient, she was also named All-County and was a two-time Team Offensive Player of

**STRICKLAND'S HBU CAREER HIGHS**

Points.....	20 @ Sam Houston State (1/31/15)
Field Goals Made.....	7 @ Lamar (2/12/15)
3-Point FG Made.....	0
Free Throws Made.....	8 vs. UT Arlington (11/8/13)
Rebounds .....	20 vs. McNeese State (3/12/15)
Assists.....	6, twice, last vs. Incarnate Word (2/19/15)
Steals.....	5 vs. Sam Houston State (2/14/15)
Blocks.....	6, twice, last vs. Incarnate Word (2/19/15)
Minutes.....	40, twice, last @ Incarnate Word (3/7/15)

**STRICKLAND'S HBU STATISTICS**

Yr	GP-GS	Min.-Avg.	FG-FGA	Pct.	3FG-FGA	Pct.	FT-FTA	Pct.	Off.-Def.-Tot.-Avg.	A	TO	Blk.	Stl.	Pts.	Avg.
2013-14	29-2	629-21.7	60-132	.455	0-1	.000	44-59	.746	45-121-166-5.7	27	58	14	24	164	5.7
2014-15	33-20	828-25.1	90-206	.437	0-1	.000	56-101	.554	96-188-284-8.6	67	74	63	39	236	7.2
<b>Total</b>	<b>62-22</b>	<b>1457-23.5</b>	<b>150-338</b>	<b>.444</b>	<b>0-2</b>	<b>.000</b>	<b>100-160</b>	<b>.625</b>	<b>141-309-450-7.3</b>	<b>94</b>	<b>132</b>	<b>77</b>	<b>63</b>	<b>400</b>	<b>6.5</b>



# HEIDI SIHVOLA

Guard • 5-8 • Jr.-21

Helsinki, Finland  
(Makelanrinne)



**2014-15 (Junior):** One of three Huskies to appear in all 33 games...started in 22...averaged 4.7 points and 2.4 rebounds on the season and 4.1 points and 1.8 boards per game in conference play...second on the team with 16 three-pointers made...set a new career high with 19 points against McMurry (12/19) where she tied her personal mark of three 3-pointers made...she would tie it again later in the season versus Incarnate Word (2/19)...second on the team with 79 assists with a career high of seven against Sam Houston State (2/14)...registered two blocked shots against Arlington Baptist (12/13)...set a new personal best with four steals against Stephen F. Austin (2/28).

**Freshman (2013-14):** Played in all 29 games with two starts...averaged 4.9 points and 2.0 rebounds per game...scored a career-high 12 points at Oral Roberts (1/2)...pulled down a personal-best seven rebounds against UT Arlington (11/8), where she also scored 11 points...dished out six assists against Southern Utah (11/16) and had three steals against Huston-Tillotson (12/28)...hit three 3-pointers twice: at Oral Roberts (1/2) and against Texas A&M-Corpus Christi (2/22)...averaged 5.2 points and 1.9 rebounds per game in conference play...named to Southland Conference Spring Honor Roll.

**High School:** Played for both the U-18 Team and the Senior Team in 2009-10 in Finland...she averaged 9.3 points and 6.0 rebounds per game for the U-18 Team...averaged 3.7 points and 4.1 rebounds per game for the Senior Team...both teams were coached by Danny Jansson...she was named Senior Team MVP...in 2010-11, she was an exchange student at Episcopal High School in Houston for head coach Lauren Mitchell, earning a letter in basketball...she averaged 15 points and 10 rebounds a game and was named Team MVP, while earning spots on the All-SPC Team and South Zone SPC Team...she went back to Finland in 2011-12, where she played for the U-18 and Senior Teams under head coach Timo Nieminen...as team captain for the U-18 Team, she averaged 10.9 points and 6.8 rebounds per game and was later named Female Player of the Year...

for the Senior Team, she averaged 5.9 points and 4.1 rebounds per game.

**Personal:** Full name is Heidi Katariina Sihvola...majoring in biology...born Oct. 16, 1993 in Helsinki, Finland...daughter of Juha and Riitta Sihvola...has one sister, Miia...enjoys downhill skiing.



## SIHVOLA'S HBU CAREER HIGHS

Points.....	19 vs. McMurry (12/19/14)
Field Goals Made.....	8 vs. McMurry (12/19/14)
3-Point FG Made.....	3, 5 times, last vs. Incarnate Word (2/19/15)
Free Throws Made.....	4, 4 times, last vs. Stephen F. Austin (3/14/15)
Rebounds.....	8 vs. Northwestern State (3/15/15)
Assists.....	7 vs. Sam Houston State (2/14/15)
Steals.....	4 vs. Stephen F. Austin (2/28/15)
Blocks.....	2 vs. Arlington Baptist (12/13/14)
Minutes.....	40 vs. Northwestern State (3/15/15)

## SIHVOLA'S HBU STATISTICS

Yr	GP-GS	Min.-Avg.	FG-FGA	Pct.	3FG-FGA	Pct.	FT-FTA	Pct.	Off.-Def.-Tot.-Avg.	A	TO	Blk.	Stl.	Pts.	Avg.
2013-14	29-2	515-17.8	54-133	.406	15-53	.283	20-26	.769	24-34-58-2.0	49	40	1	13	143	4.9
2014-15	33-22	726-22.0	57-167	.341	16-56	.286	24-30	.800	22-57-79-2.4	79	80	4	21	154	4.7
<b>Total</b>	<b>62-24</b>	<b>1241-20.0</b>	<b>111-300</b>	<b>.370</b>	<b>31-109</b>	<b>.284</b>	<b>44-56</b>	<b>.786</b>	<b>46-91-137-2.2</b>	<b>128</b>	<b>120</b>	<b>5</b>	<b>34</b>	<b>297</b>	<b>4.8</b>

55

**KENNEDY  
COLLINS**  
Center • 6-1 • Fr.-HS  
Bastrop, Texas  
(Cedar Creek)



**High School:** Was a four-year letterwinner and starter in basketball for head coach Cassandra Gabriel...as a freshman, she was named Second Team All-District 17-4A...earned First Team All-District honors as a sophomore and also had a great volleyball season, earning Honorable Mention All-District honors in that sport as well...as a junior, Collins was named Offensive and Defensive Player of the Year as well as Queen of the Glass at Cedar Creek in addition to earning a second-consecutive First Team All-District selection...during senior campaign, she was once again named the school's Offensive Player of the Year and Queen of the Glass as well as Most Valuable Player...also earned her third-straight First Team All-District accolade...four-time Academic All-District selection, maintaining a 90 or above average throughout each of her four basketball seasons.

**Personal:** Full name is Kennedy Rachele Collins...majoring in pre-med...born April 15, 1997 in Austin, Texas...daughter of Benita and Bernard Collins...her mother played basketball at University of Texas for head coach Jody Conradt...has one brother, Alfred Collins, Jr...two sisters, Mackenzie and Teri...cousin Trenton Brown was drafted by the NFL's San Francisco 49ers in 2015...enjoys reading.

11

**ADRIANA  
JACKSON**  
Point Guard • 5-1 • Fr.-HS  
Houston, Texas  
(North Shore)



**High School:** Four-sport student-athlete from Houston's North Shore High School...was a four-time team captain of the girls basketball team, and a three-time all-tournament selection of both the McDonald's Invitational and the Peggy Whitley Classic...named East Regional Female Athlete of the Year as a senior and ranked in the 3rd percentile of her senior class (30th of 975 students) with a 4.039 GPA...Jackson earned a First Team All-District selection in basketball as a freshman and continuing onto earn those honors in the subsequent three years as well...was named Most Valuable Player and Offensive Player of the Year honors in volleyball as a freshman...was also a key contributor to the track and field and softball teams as well...as a sophomore, she led the district in points with 438 and was named to the Premier Basketball Report "30 In 30 Players to Watch" in addition to earning a Player of the Week nod in the Houston Chronicle...was nominated as Greatest Basketball Player of 2013 in Vype Magazine...named First Team All-District and First Team All-Region...she earned North Shore MVP and TABC All-Region honors, and was also accepted into the National Honor Society...as a junior, Jackson was named District Defensive Player of the Year and TABC All-Region...as a senior, she earned another Houston Chronicle's Player of the Week nomination and was named MVP of the McDonald's Invitational Basketball Tournament Gold Division...named East Regional Female Athlete of the Year honors, another TABC All-Region selection, and a selection to the Vype Magazine Second Team Greater Houston squad...also participated in both the Houston All-Star Game and the state-wide All-Star Game.

**Personal:** Full name is Adriana Morgan Jackson...majoring in kinesiology: pre-physical therapy...born April 25, 1997 in Houston...daughter of Andrew Jackson and Jamey Clark...father, Andrew, played college baseball at Prairie View A&M and Texas Southern and was ranked second in the nation in doubles...has one brother, Phillip, and one sister, Jae'lee...enjoys dancing and music.

20

**CHARLOTTE  
HODGES**  
Forward • 6-0 • Fr.-HS  
Kingwood, Texas  
(Kingwood)



**High School:** Four-year varsity letterwinner and starter for head coach Tonia Thomas...has been a major contributor for the Mustangs throughout her career, averaging 7.9 points, 7.3 rebounds, and 1.3 steals per game as a sophomore in 2012-13 and strong 8.8 point, 7.9 rebound, and 2.0 steal per game averages during her junior season, which saw the team reach the second round of district playoffs...earned Second-Team All-District honors as a freshman and sophomore, as well as a First-Team All-District selection this past season...a three-time Academic All-American and has been a member of the National Honor Society since she started her junior year...Hodges played club basketball for the highly competitive Cy-Fair Shock organization under head coach Brian Jolivette...the team reached the Final Four in both the Battle for the Boro in Nashville, Tenn., as well as The Run for the Roses in Lexington, Ky., two of the largest and most competitive tournaments held each summer.

**Personal:** Full name is Charlotte Ann Hodges...majoring in biology...born Oct. 3, 1996 in Baton Rouge, La...daughter of Daryl and Ingrid Hodges...has two brothers, Austin and Andrew, and two sisters, Caroline and Claire...sister Claire runs cross country and competes in track and field at the University of Louisiana-Lafayette...enjoys watching Netflix and hanging out at youth group.

14

**AMANDA  
JOHNSON**  
Guard • 6-1 • Fr.-HS  
Georgetown, Texas  
(Georgetown)



**High School:** A three-year letterwinner for head coach Rhonda Farney...was a member of the 2012-13 Texas 4A State Championship team...she was also a key contributor on the 2013-14 team that made it all the way to the state semifinals...she ranked in the Top 5% of her senior class, scored in the top percentile on the SATs, and was commended in the National Merit Scholarship Program...she has earned Academic All-District honors in each of her first three years of high school...Johnson played club for the Fury organization for the better part of the last decade, most recently for coach Kris Haney...she led the team in scoring averaging 13 points per game and scored a season-high 33 points during the Texas End of Road Showcase.

**Personal:** Full name is Amanda Leigh Johnson...majoring in biology...born May 20, 1997 in Austin, Texas...daughter of David and Debbie Johnson...has one brother, Eric, and one sister, Emily...sister, Emily, played basketball at Colorado State University...enjoys drawing, reading, outdoor exploring, and playing with animals.

**10** **BRIA JOHNSON**  
Point Guard • 5-6 • Fr-HS  
Sunnyvale, Texas  
(Sunnyvale)



**High School:** A two-year letterwinner and starter for head coach Jill McDill...as a junior, Bria averaged 8.0 points and 5.0 rebounds per game and earned All-District, All-Region, and All-State honors. She is a three-time A/B Honor Roll recipient...played club for the Texas Fire and head coach Marty Murphy.

**Personal:** Full name is Bria Leigh-Ann Johnson...undecided on academic major...born May 9, 1997 in Dallas, Texas...daughter of Jamie and Brig Johnson...has one brother, Jared, and one sister, Brit...enjoys listening to music and reading.

**33** **BROOKLYN MOORE**  
Forward • 5-11 • Fr-HS  
Murphy, Texas  
(Wylie)



**High School:** A three-year letterwinner and two-year starter for head coach Matthew Butler...as a junior in 2013-14, Moore registered the most blocks in her district, averaging 1.1 blocks per game in 21 contests...played club for Dallas AllNet and coach Jon Sherrod.

**Personal:** Full name is Brooklyn Juanita Moore...majoring in marketing...born Aug. 20, 1997 in Dallas, Texas...daughter of Creed and Yolanda Moore...has one sister, Sarah...enjoys shopping and cooking.

**45** **VERONIKA KIRIENKO**  
Center • 6-4 • Fr-HS  
Tashkent, Uzbekistan  
(School 168)



**High School:** Played for the National Team of Uzbekistan under head coaches Stepan Stepanovich Lebedev and Vladimir Vasilevich Arefev... During the FIBA Asia Championships in 2013, Kirienko averaging 6.0 points and 4.2 rebounds per game, despite being one of the youngest competitors in the tournament at only 17 years old...was also a member of the senior national team in 2012, and the Under-16 national team in 2011, averaging 11 points and 12 rebounds per game during the Asian Championships...named MVP in 2013-14...competed in the 2014 Youth Olympic Games in Nanjing, China.

**Personal:** Majoring in international business...born Dec. 6, 1996 in Andijan, Uzbekistan...daughter of Natalya Baranova...has one brother, Aleksandr...enjoys playing ping-pong, traveling, and listening to music.

**5** **LISA ZDERADICKA**  
Guard • 5-6 • Fr-RS  
Vienna, Austria  
(HAK Korneuburg)



**2014-15 (Freshman):** Appeared in the first three games before missing the rest of the season due to injury...redshirt season...averaged 9.0 points and 2.3 rebounds per game...scored a career-high 16 points in her first collegiate game at TCU (11/14)...scored seven points with career highs of three rebounds, five assists, one steal, and 26 minutes played at Texas State (11/22).

**High School:** Attended HAK Korneuburg High School in Korneuburg, Austria...played club basketball for BC Vienna 87 and her father, Franz Zderadicka...she had been named MVP of the league six times and was a 12-time Austrian champion...she was a Vienna Champion eight times and her team finished in second place once and third three times in the Austrian Women's National Basketball League...in international play, she had competed in four European Championships: U16 in 2009 (held in Estonia), U20 in 2010 (in Macedonia), and Zderadicka played for both the U18 and U20 national teams who competed in Hungary and Macedonia, respectively, in 2011...also competed in the 3v3 U18 World Championship in Italy in 2011.

**Personal:** Full name is Lisa Marie Zderadicka...majoring in marketing... born Nov. 23, 1994 in Vienna, Austria...daughter of Franz and Birgit Zderadicka...has two sisters, Pia and Anja...enjoys hanging out with friends and playing other sports.

# 2015-16 OPPONENTS





## #SOUTHLANDSTRONG

Well into its sixth decade of service, the Southland Conference continues to be a model of innovation, stability and consistent achievement as it celebrates the academic and athletic accomplishments of its member institutions and approximately 4,200 student-athletes.

Having commemorated its 50th anniversary in 2013, the Southland Conference has transformed itself into a dynamic and respected consortium of 13 member universities in three states. Beginning with a historic meeting of five institutions in Dallas on March 15, 1963, the Southland Conference set on an extraordinary course that has proven successful well into the 21st Century.

The successful transformation continues, as the Southland Conference welcomed four additional members in 2013: Abilene Christian University, Houston Baptist University, the University of Incarnate Word in San Antonio, and the University of New Orleans.

In addition to its newest members, the Southland also consists of the University of Central Arkansas, Lamar University, McNeese State University, Nicholls State University, Northwestern State University, Sam Houston State University, Southeastern Louisiana University, Stephen F. Austin State University and Texas A&M University-Corpus Christi.

An original Southland member from 1963-73, Abilene Christian rejoined the league as one of the most decorated athletic programs in NCAA history, and the addition of Houston Baptist, UIW and New Orleans gives the Southland a regular competitive presence in the key metropolitan areas of Houston, San Antonio and New Orleans. Southland cities encompass approximately 14 million people, and six of its television markets rank among the top 100 in the U.S.

All told, the membership of the Southland encompasses nearly 140,000 current students and an alumni base of nearly 800,000. Famous alums from current Southland Conference schools include former CBS news anchor Dan Rather (Sam Houston State), NBA executive Joe Dumars (McNeese State), ABC news anchor Robin Roberts (Southeastern Louisiana), Major League Baseball star Wade Miley (Southeastern Louisiana), NBA legend Scottie Pippen (Central Arkansas), and track and field Olympians Kenta Bell (Northwestern

State), and Bobby Morrow and Billy Olson (both Abilene Christian).

Other notable alums from current members include Grammy Award-winning musicians Frank Ocean (New Orleans), Don Henley and Rodney Crowell (both Stephen F. Austin), and Ronnie Dunn (Abilene Christian), television personality and actress Ellen DeGeneres (New Orleans), current NFL standouts Lardarius Webb (Nicholls State), Terrence McGee (Northwestern State), and Daniel Manning (Abilene Christian), professional golfers Shawn Stefani and Chris Stroud (both Lamar) and Colin Montgomery (HBU), award-winning filmmaker Richard Linklater (Sam Houston State), American Idol winner Kris Allen (Central Arkansas), NFL Hall of Famer Jackie Harris (Northwestern State), former NFL standouts Bobby Hebert (Northwestern State), Gary Barbaro (Nicholls State), Wilbert Montgomery (Abilene Christian) and Gary Reasons (Northwestern State), former MLB stars Darryl Hamilton (Nicholls State) and Kevin Millar (Lamar), NCAA football coach Charlie Strong (Central Arkansas), actors John Larroquette (New Orleans), Ricardo Chavira (UIW) and Jesse Borrego (UIW), and the late NFL coaching legend O.A. "Bum" Phillips (Lamar and Stephen F. Austin).

The Southland sponsors 17 full championship sports, all at the NCAA Division I level. The eight men's sports include baseball, basketball, cross country, football, golf, tennis, and indoor and outdoor track and field. The women compete for nine championships in basketball, cross country, golf, soccer, softball, tennis, indoor and outdoor track and field, and volleyball. The conference earns automatic qualification to NCAA championships in baseball, men's and women's basketball, men's and women's cross country, football, men's and women's golf, women's soccer, softball, men's and women's tennis, and volleyball. The Southland Bowling League, an affiliated Conference sport, originated in 2015, and four of its members filled out half of the eight-team bracket, with Stephen F. Austin advancing to the national title match.

Continuing its tradition of innovation, the league launched the Southland Conference Television Network in the fall of 2008 and has broadcast more than 160 events. The network has expanded its reach to roughly 13 million households throughout Texas, Louisiana, Arkansas and Oklahoma in recent years, and has also gained national viewership through ESPN3 and Fox College Sports. In its first seven years, the network has received recognition for its work, earning numerous College Sports Media and Telly Awards.

The Southland Conference, in conjunction with the city of Frisco, Texas, and Hunt Sports Group, also serves as the host to the NCAA Division I Football Championship Game in Frisco, which has been home to the conference headquarters since 2006. The game is played at Frisco's Toyota Stadium, and after a successful three-year run, the partnership was rewarded with a three-year renewal to serve as the national championship host site through the 2015 season.

Southland Conference football ranks among the best Football Championship Subdivision leagues in the nation, and enjoys an annual expectation of competing for the national championship with multiple teams advancing to the NCAA playoffs each year. In 2014, three Southland teams – Southeastern Louisiana, Sam Houston State and Stephen F. Austin – all qualified for the NCAA Division I Football Championship, and in 2011 and 2012, Sam Houston advanced to the national championship game. Also, in 2002 and 2003, McNeese State finished the regular season ranked No. 1 in the nation, and advanced to the 2002 national championship contest. The conference has been represented in eight national championship games since the league joined the FCS (formerly I-AA) in 1982. All told, Southland teams have played in 115 Division I playoff games in 33 years, winning 56 of the contests.

The Conference can lay claim to five national championships, including College Division championships through former members Arkansas State (1970, UPI) and Louisiana Tech (1972, National Football Foundation). Louisiana Tech also won the first NCAA-sanctioned national title, winning the Division II playoffs in 1973. Tech followed that with the UPI's Division II national championship in 1974. Louisiana-Monroe won the 1987 Division I-AA national championship.

McNeese State, which has made 15 appearances in the NCAA Division I playoffs, played in the 1997 NCAA Championship game, while Sam Houston State has earned eight trips to the football playoffs, most recently advancing to the 2014 national semifinals. Stephen F. Austin played in the 1989 NCAA title contest and has seven total playoff appearances, including 2009, 2010 and 2014. Northwestern State has advanced to the NCAA playoffs six times, Nicholls State has participated three times in postseason, Southeastern Louisiana played in the 2013 and 2014 NCAA Championships, and Central Arkansas made consecutive playoff appearances in 2011 and 2012. On six occasions, the Southland has placed three teams in the NCAA playoffs.

The Southland has produced 177 first-team football All-Americans during its history and in 2010, Stephen F. Austin quarterback Jeremy Moses became the first player in Southland history to receive the Walter Payton Award, which is presented annually to the most outstanding football player at the FCS level.

The Southland is one of five FCS conferences with at least 200 selections (208) in the National Football League draft. There have been 28 Southland players taken in the draft since 2000, including Southeastern Louisiana defensive back Robert Alford, who was picked as the first FCS player in the second round of the 2013 draft. There are more than 15 former Southland players on NFL rosters heading into the 2015 season.

Southland Conference alumni in the NFL include Cleveland's Josh McCown (Sam Houston State), who has been in the league for the last 12 seasons, and Baltimore's Lardarius Webb, who is currently the second-longest tenured player with six seasons of experience. Other recent NFL additions from the Southland

include New England's Kevin Hughes (Southeastern Louisiana) and Dax Swanson (Sam Houston State), Seattle's Jeremy Lane (Northwestern State), Chicago's Malcolm Bronson (McNeese State), Atlanta's Robert Alford (Southeastern Louisiana) and Washington's Chase Dixon (Central Arkansas).

The Southland has seen former Nicholls State players win Super Bowl rings in recent seasons, as former Colonel Antonio Robinson was a member of the Green Bay Packers' Super Bowl XLV champions. And, Nicholls-ex Webb was a member of the Super Bowl XLVII champion Baltimore Ravens.

The conference has increased sponsorship and championship opportunities for female student-athletes in recent years, adding women's golf and soccer as league sports.

In women's basketball, the Southland also has its share of tradition with former member Louisiana-Monroe advancing to the 1985 NCAA Women's Final Four, and Stephen F. Austin sustaining itself as one of the most successful programs in the history of the sport. In 2014, the Ladyjacks became the fifth program in NCAA Division I history to record more than 950 wins.

In each of the last six seasons, at least three Southland teams reached the postseason, and in 2013, four women's squads earned postseason berths. A Southland team has played in the WNIT 15 times, including each of the last nine years. Women's basketball all-stars have included Eun Jung Lee, Lisa Ingram, Portia Hill, Deneen Parker, Katrina Price, and Joskean Garner, and coaches such as Gary Blair, Linda Sharp, James Smith and Linda Harper.

The Southland Conference has repeatedly demonstrated its commitment to the academic and athletic success of its student-athletes. With the F.L. McDonald Postgraduate Scholarship Award, the league annually honors male and female scholar-athletes with a stipend for postgraduate study. The Scholar-Athlete Award is given to each institution's male and female student-athlete with the highest grade-point average. The Steve McCarty Citizenship Award, initiated in 2005-06 and named after the former Stephen F. Austin athletic director, properly recognizes accomplishments off the court for a male and female student-athlete. Also, student-athletes with grade-point averages above 3.0 are honored on the Southland's annual All-Academic teams and Commissioner's Honor Roll. A total of 856 student-athletes appeared on the honor roll following the 2013 spring semester, and total of 1,553 student-athletes earned a spot on the honor roll at the end of the fall and spring semesters during the 2012-13 academic year.

While successful on the fields and courts, the Southland Conference has repeatedly demonstrated its commitment to the academic and athletic success of its student-athletes.

The conference continues to make great strides in the classroom. During the last decade, no other Division I conference has improved its Academic Progress Rate as well as the Southland Conference has. In fact, in 2009-10, the Southland ranked 10th among the 31 Division I leagues in men's basketball APR. The academic progress the league has shown ultimately leads to higher graduation rates for our student-athletes.

In addition to providing expanding opportunities for student-athletes, the Southland Conference and its member institutions are very involved in various community outreach programs. Many of these programs provide positive life skills training such as academics, citizenship and leadership to school-aged students in Southland communities.

## SOUTHLAND CONFERENCE MILEAGE CHART

SCHOOL	ACU	UCA	HBU	UIW	LU	MCN	UNO	NICH	NSU	SHSU	SLU	SFA	AMCC
Abilene Christian	—	523	409	624	461	526	702	670	436	341	669	364	390
Central Arkansas	523	—	464	624	430	464	473	589	310	415	500	321	754
HBU	409	464	—	198	88	144	348	316	229	70	314	142	219
Incarnate Word	245	624	198	—	284	340	544	512	424	226	510	324	143
Lamar	461	430	88	284	—	60	261	231	157	112	226	124	307
McNeese State	526	464	144	340	60	—	206	171	121	172	166	161	363
New Orleans	702	473	348	544	261	206	—	65	272	392	58	388	566
Nicholls	670	589	316	512	231	171	65	—	229	343	88	329	536
Northwestern State	436	310	229	424	157	121	272	229	—	180	208	109	488
Sam Houston State	341	415	70	226	112	172	392	343	180	—	338	94	290
Southeastern Louisiana	669	500	314	510	226	166	58	88	208	338	—	311	535
Stephen F. Austin	364	321	142	324	124	161	388	329	109	94	311	—	361
Texas A&M-Corpus Christi	390	754	219	143	307	363	566	536	488	209	535	361	—

2015-16 OPPONENTS

NEW MEXICO

Date ..... Nov. 13 at New Mexico  
Location ..... Albuquerque, N.M.  
President ..... Dr. Robert Frank  
Athletic Director ..... Paul Krebs  
Colors ..... Cherry & Silver  
Nickname ..... Lobos  
Enrollment ..... 28,500  
Affiliation ..... NCAA Division I  
Conference ..... Mountain West  
Head Coach ..... Yvonne Sanchez  
Phone ..... (505) 925-5770  
Assistant Coaches.. Anthony Turner, Joseph Anders,  
Amy Beggin  
Women's Basketball SID ..... Chelsey Chamberlain  
SID Phone ..... (505) 925-5520  
2014-15 Record (Conference) ..... 21-13 (14-4)  
Series Record ..... New Mexico Leads, 2-0

UTEP

Date ..... Nov. 15 at UTEP  
Location ..... El Paso, Texas  
President ..... Dr. Diana Natalicio  
Athletic Director ..... Bob Stull  
Colors ..... Dark Blue, Orange & Silver Accent  
Nickname ..... Miners  
Enrollment ..... 23,003  
Affiliation ..... NCAA Division I  
Conference ..... Conference USA  
Head Coach ..... Keitha Adams  
Phone ..... (915) 747-8609  
Associate Head Coach ..... Ewa Laskowska  
Assistant Coach ..... Bill Damuth  
Women's Basketball SID ..... Mark Brunner  
SID Phone ..... (915) 747-5722  
2014-15 Record (Conference) ..... 12-16 (7-11)  
Series Record ..... UTEP leads, 2-1

PAUL QUINN

Date ..... Nov. 20 at HBU  
Location ..... Dallas, Texas  
President ..... Dr. Michael J. Sorrell  
Athletic Director ..... Kelsel Thompson  
Colors ..... Purple & Gold  
Nickname ..... Tigers  
Enrollment ..... 700  
Affiliation ..... NAIA Division I  
Conference ..... Red River Athletic  
Head Coach ..... Chris Walker  
Assistant Coach ..... Latasha Roach  
Women's Basketball SID ..... Andrew Whigham  
2014-15 Record (Conference) ..... 0-24  
Series Record ..... HBU leads, 16-0

NEBRASKA OMAHA

Date ..... Nov. 27 at UTSA Thanksgiving Tournament  
Location ..... Omaha, Neb.  
Chancellor ..... Dr. John Christensen  
Athletic Director ..... Trev Alberts  
Colors ..... Crimson & Black  
Nickname ..... Mavericks  
Enrollment ..... 15,227  
Affiliation ..... NCAA Division I  
Conference ..... Summit League  
Head Coach ..... Brittany Lange  
Phone ..... (402) 554-3269  
Assistant Coaches..... Lee Aduddell, Rodney Rogan,  
Kirk Walker  
Women's Basketball SID ..... Shad Beam  
SID Phone ..... (402) 554-2140  
2014-15 Record (Conference) ..... 10-18 (5-11)  
Series Record ..... First Meeting

UTSA

Date ..... Nov. 29 at UTSA Thanksgiving Tournament  
Location ..... San Antonio, Texas  
President ..... Dr. Ricardo Romo  
Athletic Director ..... Lynn Hickey  
Colors ..... Navy Blue, Orange & White  
Nickname ..... Roadrunners  
Enrollment ..... 28,628  
Affiliation ..... NCAA Division I  
Conference ..... Conference USA  
Head Coach ..... Lubomyr Lichonczak  
Phone ..... (210) 458-4171  
Associate Head Coach ..... Kristen Holt  
Assistant Coaches..... Nicole Dunson, Ela Mukosiej  
Women's Basketball SID ..... Zena Rex  
SID Phone ..... (956) 739-4878  
2014-15 Record (Conference) ..... 16-15 (11-7)  
Series Record ..... UTSA leads, 1-0

TRINITY

Date ..... Dec. 2 at HBU  
Location ..... San Antonio, Texas  
President ..... Dr. Danny J. Anderson  
Athletic Director ..... Bob King  
Colors ..... Maroon & White  
Nickname ..... Tigers  
Enrollment ..... 2,700  
Affiliation ..... NCAA Division III  
Conference ..... Southern Collegiate Athletic  
Head Coach ..... Cameron Hill  
Phone ..... (210) 999-8276  
Assistant Coach ..... Joe Shotland  
Women's Basketball SID ..... Justin Parker  
SID Phone ..... (210) 999-8447  
2014-15 Record (Conference) ..... 22-6 (11-3)  
Series Record ..... First Meeting

TEXAS SOUTHERN

Date ..... Dec. 5 at TSU  
Location ..... Houston, Texas  
President ..... Dr. John M. Rudley  
Athletic Director ..... Dr. Charles McClelland  
Colors ..... Maroon & Grey  
Nickname ..... Lady Tigers  
Enrollment ..... 9,700  
Affiliation ..... NCAA Division I  
Conference ..... Southwestern Athletic  
Head Coach ..... Johnetta Hayes-Perry  
Phone ..... (713) 313-1958  
Assistant Coaches... Royce Samuels, Tamara Torru,  
Terrence Royals  
Women's Basketball SID ..... Andrew Roberts  
SID Phone ..... (713) 313-6829  
2014-15 Record (Conference) ..... 19-11 (16-2)  
Series Record ..... Texas Southern leads, 5-1

TEXAS STATE

Date ..... Dec. 16 at HBU  
Location ..... San Marcos, Texas  
President ..... Dr. Denise M. Trauth  
Athletic Director ..... Dr. Larry Teis  
Colors ..... Maroon & Gold  
Nickname ..... Bobcats  
Enrollment ..... 38,006  
Affiliation ..... NCAA Division I  
Conference ..... Sun Belt  
Head Coach ..... Zenarae Antoine  
Phone ..... (512) 245-3832  
Associate Head Coach ..... Chandra Dorsey  
Assistant Coaches ..... Addie Lees, Laura Terry  
Women's Basketball SID ..... Jen Lawson  
SID Phone ..... (512) 245-2988  
2014-15 Record (Conference) ..... 17-15 (10-5)  
Series Record ..... HBU leads, 2-1

UT ARLINGTON

Date ..... Dec. 19 at HBU  
Location ..... Arlington, Texas  
President ..... Dr. Vistasp Karbhari  
Athletic Director ..... Jim Baker  
Colors ..... Royal Blue, Orange & White  
Nickname ..... Mavericks  
Enrollment ..... 33,500  
Affiliation ..... NCAA Division I  
Conference ..... Sun Belt  
Head Coach ..... Krista Gerlich  
Phone ..... (817) 272-7165  
Associate Head Coach ..... Kristin Cole  
Assistant Coaches ..... Ashley Crawford, Talby Justus  
Women's Basketball SID ..... Michael Eldridge  
SID Phone ..... (817) 272-7168  
2014-15 Record (Conference) ..... 17-13 (11-9)  
Series Record ..... UT Arlington leads, 5-1



2015-16 OPPONENTS

**SAM HOUSTON STATE**

Date.....Jan. 30 at HBU; Feb. 13 at SHSU  
 Location.....Huntsville, Texas  
 President.....Dr. Dana G. Hoyt  
 Athletic Director.....Bobby Williams  
 Colors.....Orange & White  
 Nickname.....Bearkats  
 Enrollment.....19,719  
 Affiliation.....NCAA Division I  
 Conference.....Southland  
 Head Coach.....Brenda Welch-Nichols  
 Phone.....(936) 294-1994  
 Assistant Coaches...Jessica Salera, Stacy Stephens,  
 .....Rosalind Jennings  
 Women's Basketball SID.....Paul Ridings  
 SID Phone.....(936) 294-1764  
 2014-15 Record (Conference).....6-22 (5-13)  
 Series Record.....HBU leads, 6-3

**INCARNATE WORD**

Date.....Feb. 18 at UIW; March 5 at HBU  
 Location.....San Antonio, Texas  
 President.....Dr. Louis J. Agnese, Jr.  
 Athletic Director.....John Williams  
 Colors.....Red, Black & White  
 Nickname.....Cardinals  
 Enrollment.....9,597  
 Affiliation.....NCAA Division I  
 Conference.....Southland  
 Head Coach.....Kate Henderson  
 Phone.....(210) 283-5049  
 Assistant Coaches.....Eric Dumas, Natalie Marlowe,  
 .....Bryant Porter  
 Women's Basketball SID.....Daniel Yancelson  
 SID Phone.....(210) 535-4877  
 2014-15 Record (Conference).....5-24 (2-16)  
 Series Record.....HBU leads, 5-0

**TPKACM-CORPUS CHRISTI**

Date.....Feb. 3 at TAMUCC; March 3 at HBU  
 Location.....Corpus Christi, Texas  
 President.....Dr. Flavius Killebrew  
 Athletic Director.....Scott Lazenby  
 Colors.....Royal Blue, Green & White  
 Nickname.....Islanders  
 Enrollment.....11,362  
 Affiliation.....NCAA Division I  
 Conference.....Southland  
 Head Coach.....Royce Chadwick  
 Phone.....(361) 825-3145  
 Associate Head Coach.....Roxanne White  
 Assistant Coaches.....Darren Brunson, Geoff Grawn  
 Women's Basketball SID.....Ian MacDougall  
 SID Phone.....(361) 825-3411  
 2014-15 Record (Conference).....16-14 (12-6)  
 Series Record.....TAMUCC leads, 5-2

**STEPHEN F. AUSTIN**

Date.....Feb. 6 at HBU; Feb. 27 at SFA  
 Location.....Nacogdoches, Texas  
 President.....Dr. Baker Pattillo  
 Athletic Director.....Robert Hill  
 Colors.....Purple & White  
 Nickname.....Ladyjacks  
 Enrollment.....12,955  
 Affiliation.....NCAA Division I  
 Conference.....Southland  
 Head Coach.....Mark Kellogg  
 Phone.....(936) 468-3208  
 Assistant Coaches.....Jayci Stone, Jamila Ganter  
 .....Leonard Bishop  
 Women's Basketball SID.....Brian Newton  
 SID Phone.....(936) 468-5801  
 2014-15 Record (Conference).....23-8 (16-2)  
 Series Record.....Stephen F. Austin leads, 7-1

Opponent	W	L
McMurry	1	0
McNeese State	2	4
Montana-Western	2	0
Morehead State	0	2
Murray State	0	1
National Christian	1	0
Navy	0	1
New Mexico	0	2
New Orleans	3	1
Nicholls	1	2
NJIT	1	8
Norfolk State	0	1
North Carolina Central	0	1
North Dakota	0	10
Northwestern	0	1
Northwestern Oklahoma	3	0
Northwestern State	1	2
Nyack	1	0
Oklahoma Baptist	2	3
Oklahoma Christian	5	1
Oklahoma City	1	7
Oklahoma Science & Arts	1	0
Oral Roberts	1	3
Oregon State	0	1
Palm Beach Atlantic	1	0
Paul Quinn	16	0
Philander Smith	1	0
Pikeville	3	0
Point Loma Nazarene	0	1
Portland	0	1
Prairie View A&M	0	2
Rhema College	1	0
Rhode Island	0	1
Rice	0	2
Sam Houston State	6	3
St. Gregory's	1	0
St. Thomas	1	0
Schreiner	7	0
Seattle	0	2
South Alabama	1	2
South Dakota	3	5
Southeastern Louisiana	0	2
Southern-Baton Rouge	0	1
Southern Nazarene	2	2
Southern-New Orleans	2	2
Southern Illinois-Edwardsville	1	1
Southern Utah	1	1
Southwestern Adventist	6	0
Southwestern Assemblies	18	0
Stephen F. Austin	1	7
TCU	0	3
Texas A&M-Corpus Christi	2	5
Texas A&M International	9	0
Texas A&M-Kingsville	1	0
Texas College	17	0
Texas Lutheran	1	0
Texas Southern	1	5
Texas State	2	1
Texas Tech	0	2
Texas Wesleyan	11	0
Tougaloo	2	0
UC Davis	0	2
UMKC	0	2
Union-Tennessee	0	4
Utah	0	1
Utah Valley	0	9
UTEP	1	2
UT Arlington	1	5
UT-Martin	0	2
UT-Pan American	1	16
UT-Permian Basin	11	0
UTSA	0	1
Vermont	0	2
Wayland Baptist	4	2
Wiley	20	0
William Carey	1	0
Williams Baptist	1	0
Xavier-New Orleans	3	1
<b>Totals</b>	<b>310</b>	<b>211</b>

**SERIES RECORDS**

Opponent	W	L
Abilene Christian	0	3
Alcorn State	1	1
Arlington Baptist	1	0
Auburn-Montgomery	1	0
Austin College	2	0
Azusa Pacific	1	0
Bacone	17	0
Bakersfield	0	4
Baylor	0	1
Brescia	1	0
Campbellsville	0	1
Central Arkansas	2	4
Chicago State	2	7
Clafin	1	0
Columbia	1	0
Concordia-Austin	1	0
Cumberland-Kentucky	1	0
Cumberland-Tennessee	2	1
Dallas Christian	1	0
Delaware State	0	1
Dickinson State	0	1
Dillard	7	2
Duke	0	1
East Carolina	0	1
East Texas Baptist	0	2
Eastern Kentucky	1	0
Freed Hardeman	1	0
George Washington	0	1
Georgetown College	1	1
Harding	0	1
Hope International	1	0
Houston	0	2
Huston-Tillotson	26	1
Incarnate Word	5	0
Indiana-South Bend	1	0
Iowa State	0	1
Jackson State	0	2
Jarvis Christian	19	2
Lamar	1	6
Langston	14	5
Lee	1	0
Lewis-Clark State	0	1
Lindsey Wilson	2	0
Lipscomb	1	0
Louisiana	0	1
Louisiana College	0	2
Louisville	0	1
Loyola-Louisiana	0	1
LSU	0	1
Lubbock Christian	4	2
Marshall	0	1
Mary Hardin-Baylor	2	0



**Program's first win:**  
HBU - 94  
Rhema - 69  
Nov. 12, 1999



# HISTORY

**The Huskies made the first of their eight trips to the NAIA National Tournament in 2000**

**2014-15 SEASON IN REVIEW**

HBU had a memorable, Cinderella-like run in its first appearance in the Southland Conference Tournament, knocking off #5 seed McNeese State, #4 seed Texas A&M-Corpus Christi, and top seed Stephen F. Austin to become the first #8 seed to reach the conference title game. The win over regular season champions, SFA, was the first for the Huskies in series history (1-7). The clock struck midnight, however, as defending champions Northwestern State repeated in a 58-50 win over the Huskies.

The Huskies accomplished this without the services of leading scorer, and rebounder senior forward **Shanice Steenholdt** (17.8 points per game and 10.3 rebounds per game) and touted freshman guard **Lisa Zderadička** (9.0 points per game in just three contests). The Huskies were led by junior guard **Rachel Arthur**, who averaged 11.0 points per game and junior forward **Anna Strickland**, who posted 7.2 points per game, 8.6 boards per contest, and her 63 blocked shots are a single-season program record in the DI era. Her 20 rebounds in the Huskies' quarterfinal win over McNeese State were the most in a single game in four seasons. She was eventually named to the SLC All-Defensive Team.

Senior guard **Taylor Jefferson** and senior forward **Erin McGarrachan** had terrific seasons and strong tournaments, as evident by the All-Tournament Team accolades.

HBU had another strong year in the classroom, being honored for the second-straight year by the Women's Basketball Coaches' Association (WBCA) on its Academic Team Honor Roll, as the Huskies boasted a 3.445 team cumulative GPA. Senior guard **Maisie Elston** and junior guard **Ekemini Essien** had a perfect 4.0 GPA in the fall semester, while Strickland accomplished the feat in the spring. McGarrachan and Strickland earned a spot on the SLC All-Academic Team and HBU had 11 players named to the SLC Spring Commissioner's Honor Roll.



Rachel Arthur



Anna Strickland



Taylor Jefferson



2014-15 STATISTICS

Overall Record: 15-18

Conference: 6-12

Home: 9-5

Away: 3-12

Neutral: 3-1

##	Player	GP-GS	Min.	Avg.	FG	FGA	Pct.	3FG	3FGA	Pct.	Off.	Def.	Tot.	Avg.	PF	FO	A	TO	Blk	Stl	Pts.	Avg.
20	Shanice Steenholdt	16-16	462	28.9	118	222	.532	3	19	.158	70	95	165	10.3	28	0	20	35	25	26	284	17.8
	<i>conference</i>	6-6	165	27.5	38	80	.475	1	7	.143	23	31	54	9.0	9	0	3	10	11	11	87	14.5
21	Rachel Arthur	32-28	1011	31.6	145	298	.487	6	22	.273	37	45	82	2.6	111	6	73	76	13	33	352	11.0
	<i>conference</i>	18-15	559	31.1	83	182	.456	2	14	.143	25	20	45	2.5	62	2	37	42	6	21	201	11.2
11	Taylor Jefferson	32-16	1001	31.3	114	281	.406	55	135	.407	32	54	86	2.7	67	0	106	66	2	41	348	10.9
	<i>conference</i>	18-6	550	30.6	61	162	.377	30	77	.390	19	28	47	2.6	42	0	48	38	2	23	182	10.1
14	Erin McGarrachan	32-20	640	20.0	125	255	.490	10	33	.303	45	92	137	4.3	89	2	36	67	18	27	295	9.2
	<i>conference</i>	17-13	344	20.2	69	145	.476	8	22	.364	25	47	72	4.2	54	1	14	42	11	13	171	10.1
05	Lisa Zderadicka	3-0	61	20.3	11	22	.500	2	2	1.000	2	5	7	2.3	7	0	8	14	0	1	27	9.0
	<i>conference</i>	0-0	0	0.0	0	0	.000	0	0	0.000	0	0	0	0.0	0	0	0	0	0	0	0	0.0
25	Monet Neal	33-17	744	22.5	111	248	.448	0	0	.000	62	119	181	5.5	98	6	18	75	20	16	291	8.8
	<i>conference</i>	18-8	427	23.7	67	150	.447	0	0	.000	41	73	114	6.3	63	5	12	47	11	10	162	9.0
23	Anna Strickland	33-20	828	25.1	90	206	.437	0	1	.000	96	188	284	8.6	69	0	67	74	63	39	236	7.2
	<i>conference</i>	18-14	511	28.4	58	124	.468	0	1	.000	52	115	167	9.3	43	0	42	42	36	22	147	8.2
03	Heidi Sihvola	33-22	726	22.0	57	167	.341	16	56	.286	22	57	79	2.4	62	1	79	80	4	21	154	4.7
	<i>conference</i>	18-12	410	22.8	28	92	.304	7	28	.250	13	20	33	1.8	27	0	42	45	1	14	74	4.1
42	Ashleigh Nwanguma	28-7	293	10.5	33	76	.434	0	0	.000	35	63	98	3.5	46	0	14	41	16	13	89	3.2
	<i>conference</i>	14-2	133	9.5	9	30	.300	0	0	.000	17	21	38	2.7	20	0	8	18	6	3	26	1.9
24	Meghan Shank	23-13	342	14.9	18	57	.316	1	6	.167	8	13	21	0.9	25	0	22	22	0	14	45	2.0
	<i>conference</i>	16-11	266	16.6	12	39	.308	1	4	.250	7	9	16	1.0	18	0	18	20	0	7	28	1.8
35	Ekemini Essien	16-2	120	7.5	10	35	.286	1	4	.250	6	16	22	1.4	19	0	11	23	3	8	27	1.7
	<i>conference</i>	7-1	48	6.9	5	16	.313	1	3	.333	3	8	11	1.6	8	0	4	10	0	4	13	1.9
13	Emely Lopez	3-0	18	6.0	1	7	.143	1	11	1.000	1	0	1	0.3	5	1	0	1	0	3	3	1.0
	<i>conference</i>	0-0	0	0.0	0	0	.000	0	0	.000	0	0	0	0.0	0	0	0	0	0	0	0	0.0
33	Maisie Elston	25-4	260	10.4	10	42	.238	2	22	.091	3	13	16	0.6	25	0	21	33	1	8	22	0.9
	<i>conference</i>	14-2	154	11.0	5	24	.208	1	12	.083	2	7	9	0.6	12	0	18	21	0	7	11	0.8
30	Carissa Diaz	15-0	72	4.8	4	8	.500	0	0	.000	2	5	7	0.5	8	0	1	4	2	0	11	0.7
	<i>conference</i>	10-0	27	2.7	1	3	.333	0	0	.000	0	2	2	0.2	4	0	1	1	0	0	2	0.2
12	Caro Lloyd	7-0	23	3.3	2	5	.400	0	0	.000	3	4	7	1.0	3	0	1	0	0	2	5	0.7
	<i>conference</i>	2-0	6	3.0	0	0	.000	0	0	.000	1	1	2	1.0	0	0	0	0	0	2	0	0.0
	Team-Overall										65	70	135	4.1	0						10	
	Team-Conference										31	39	70	3.9	0						4	
	Total	33	6600	--	849	1929	.440	93	301	.322	489	839	1328	40.2	662	16	477	621	167	252	2189	66.2
	Opponents	33	6600	--	755	1902	.397	145	471	.308	442	702	1144	34.7	578	--	383	547	100	327	2164	65.6

Score by periods

HBU	1097	1092	2189
Opponents	1031	1133	2164



2014-15 HBU Women's Basketball

## 2014-15 GAME-BY-GAME

Overall Record: 15-18

Conference: 6-12

Home: 9-5

Away: 3-12

Neutral: 3-1

Date	Opponent	Score	Record (Conf.)	Attend.	High Points	High Rebounds
Nov. 14	at TCU	L 64-87	0-1 (0-0)	1344	(26) Shanice Steenholdt	(12) Shanice Steenholdt
Nov. 16	at UT Arlington	L 73-83	0-2 (0-0)	1263	(18) Rachel Arthur	(6) Anna Strickland
Nov. 22	at Texas State	W 61-56	1-2 (0-0)	1166	(19) Shanice Steenholdt	(16) Shanice Steenholdt
Nov. 25	SW Assemblies of God	W 85-57	2-2 (0-0)	620	(23) Rachel Arthur	(15) Shanice Steenholdt
Nov. 29	at UT-Pan American	L 72-75	2-3 (0-0)	342	(24) Shanice Steenholdt	(9) Shanice Steenholdt
Dec. 6	at UTEP	W 87-77	3-3 (0-0)	1309	(27) Shanice Steenholdt	(16) Shanice Steenholdt
Dec. 13	Arlington Baptist	W 92-62	4-3 (0-0)	407	(22) Shanice Steenholdt	(11) Shanice Steenholdt
Dec. 17	Texas Southern	L 80-92	4-4 (0-0)	483	(25) Tayler Jefferson	(10) Shanice Steenholdt
Dec. 19	McMurry	W 69-49	5-4 (0-0)	149	(24) Shanice Steenholdt	(10) Anna Strickland
Dec. 28	Huston-Tillotson	W 86-36	6-4 (0-0)	150	(17) Erin McGarrachan (17) Anna Strickland	(18) Anna Strickland
Dec. 30	at Texas Tech	L 59-60	6-5 (0-0)	2249	(16) Rachel Arthur	(7) Shanice Steenholdt
Jan. 2	*Northwestern State	L 68-78	6-6 (0-1)	305	(28) Monet Neal	(18) Monet Neal
Jan. 5	*at McNeese State	L 57-60	6-7 (0-2)	977	(19) Shanice Steenholdt	(15) Shanice Steenholdt
Jan. 8	*at Nicholls	L 58-70	6-8 (0-3)	334	(20) Shanice Steenholdt	(8) Shanice Steenholdt
Jan. 10	*at Southeastern La.	L 59-67	6-9 (0-4)	315	(18) Rachel Arthur	(13) Anna Strickland
Jan. 15	*Central Arkansas	W 58-37	7-9 (1-4)	670	(25) Shanice Steenholdt	(12) Shanice Steenholdt
Jan. 17	*New Orleans	W 63-45	8-9 (2-4)	768	(14) Erin McGarrachan	(14) Anna Strickland
Jan. 24	*Lamar	L 64-80	8-10 (2-5)	722	(21) Monet Neal	(14) Anna Strickland
Jan. 29	*Abilene Christian	L 50-53	8-11 (2-6)	489	(9) Monet Neal	(17) Anna Strickland
Jan. 31	*at Sam Houston State	L 67-74	8-12 (2-7)	807	(21) Tayler Jefferson	(9) Anna Strickland
Feb. 5	*A&M-Corpus Christi	W 59-54	9-12 (3-7)	590	(21) Rachel Arthur	(10) Anna Strickland
Feb. 7	*at Stephen F. Austin	L 67-72	9-13 (3-8)	1481	(18) Erin McGarrachan	(6) Monet Neal
Feb. 12	*at Lamar	L 62-79	9-14 (3-9)	765	(19) Erin McGarrachan	(8) Anna Strickland
Feb. 14	*Sam Houston State	W 66-61	10-14 (4-9)	680	(25) Rachel Arthur	(8) Anna Strickland
Feb. 19	*Incarnate Word	W 67-64	11-14 (5-9)	223	(15) Rachel Arthur (15) Erin McGarrachan	(12) Anna Strickland
Feb. 25	*at Abilene Christian	L 53-68	11-15 (5-10)	1125	(16) Rachel Arthur	(14) Anna Strickland
Feb. 28	*Stephen F. Austin	L 57-69	11-16 (5-11)	820	(18) Tayler Jefferson	(8) Erin McGarrachan
March 5	*at A&M-Corpus Christi	L 48-73	11-17 (5-12)	1115	(19) Tayler Jefferson	(7) Erin McGarrachan
March 7	*at Incarnate Word	W 81-71	12-17 (6-12)	216	(27) Erin McGarrachan	(11) Erin McGarrachan
March 12	*vs. McNeese State	W 70-68	13-17 (6-12)	862	(16) Anna Strickland (20) Anna Strickland	
March 13	*vs. A&M-Corpus Christi	W 49-48	14-17 (6-12)	860	(16) Erin McGarrachan	(10) Erin McGarrachan
March 14	*vs. Stephen F. Austin	W 88-81	15-17 (6-12)	1596	(29) Tayler Jefferson	(8) Anna Strickland
March 15	*vs. Northwestern State	L 50-58	15-18 (6-12)	968	(22) Erin McGarrachan	(13) Anna Strickland

\* Southland Conference

^ SLC Tournament (Katy, Texas)

## CAREER RECORDS



### SCORING

1.	Tiffany Andrews	2261	1999-03
2.	Jeré Adams	2205	2001-04, 05-06
3.	Elinor Smith	1771	2000-04
4.	Shanice Steenholdt	1686	2011-15
5.	Velencia Kuykendall	1606	2003-07
6.	Sherill Hadrick	1315	2002-06
7.	Cari Scaff	1381	2000-05
8.	Dominique Thomas	1202	2004-07
9.	Taylor Jefferson	1020	2011-15
10.	<b>Rachel Arthur</b>	<b>908</b>	<b>2012-15</b>
11.	Natasha Avey	864	2000-05
12.	Kanika Harvey	858	1999-03
13.	Erin McGarrachan	811	2012-15
14.	Deborah Mize	771	1999-02
15.	Griffin Colvert	730	2000-04

### SCORING (NCAA Division I-Era Only; 2007-Present)

1.	Shanice Steenholdt	1686	2011-15
2.	Taylor Jefferson	1020	2011-15
3.	<b>Rachel Arthur</b>	<b>908</b>	<b>2012-15</b>
4.	Erin McGarrachan	811	2012-15
5.	Jamie Spriggs	646	2008-11

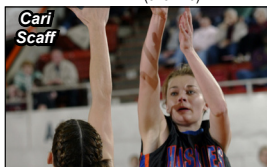
### FIELD GOAL PCT. (Min. 5 Att./Gm.)

1.	Elinor Smith	.642	2000-04
		(723-1127)	
2.	Arie Wilson	.639	2004-05
		(248-388)	
3.	Jasmine Irving	.552	2006-07
		(179-324)	
4.	Stephanie Stoglin	.533	2004-05
		(216-405)	
5.	Shanice Steenholdt	.512	2011-15
		(690-1347)	
6.	Tiffany Andrews	.5020	1999-03
		(845-1683)	
7.	Jeré Adams	.5017	2001-04, 05-06
		(861-1716)	
8.	Shawnaka Holland	.4977	1999-00, 01-02
		(110-221)	
9.	Megan Morris	.4976	2007-08
		(107-215)	
10.	Sherill Hadrick	.494	2002-06
		(547-1107)	
11.	Fallon Thomas	.479	2007-09
		(159-332)	
12.	Carey Owens	.476	1999-00
		(171-359)	
13.	Velencia Kuykendall	.475	2003-07
		(651-1371)	
14.	Jamie Spriggs	.472	2008-11
		(254-538)	
15.	Nola Wainohu	.468	1999-00
		(181-387)	

### FG PCT. (Min. 5 Att./Gm.) (D1-Era Only; 2007-Present)

1.	Shanice Steenholdt	.512	2011-15
		(690-1347)	
2.	Megan Morris	.4976	2007-08
		(107-215)	

3.	Fallon Thomas	.479	2007-09
		(159-332)	
4.	Jamie Spriggs	.472	2008-11
		(254-538)	
5.	Erin McGarrachan	.450	2012-15
		(348-773)	



### 3-POINT FG MADE

1.	Cari Scaff	275	2000-05
2.	Taylor Jefferson	154	2011-15
3.	Deborah Mize	146	1999-2002
4.	Griffin Colvert	143	2000-04
5.	Jacqueline Overby	139	2005-07
6.	Megan Green	122	2008-11
7.	Ashley Davis	121	2004-08
8.	Jeré Adams	118	2001-04, 05-06
9.	Dominique Thomas	109	2004-07
10.	Natasha Avey	108	2000-05
11.	Raquel Jones	107	2008-11
12.	Carey Owens	106	1999-00
13.	Shellie Winzer	103	2001-03
14.	Angelica DeVries	64	2004-07
	Kathy Hill	64	2006-08

### 3-POINT FG MADE (D1-Era Only; 2007-Present)

1.	Taylor Jefferson	154	2011-15
2.	Megan Green	122	2008-11
3.	Raquel Jones	107	2008-11
4.	Brittany Barton	55	2009-13
5.	<b>Rachel Arthur</b>	<b>54</b>	<b>2012-15</b>

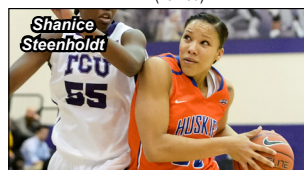
### 3-POINT FG PCT. (Min. 2 Att./Gm.)

1.	Carey Owens	.457	1999-00
		(106-232)	
2.	Griffin Colvert	.373	2000-04
		(143-383)	
3.	Deborah Mize	.372	1999-02
		(146-393)	
4.	Jasmin Moore	.359	2007-08
		(66-184)	
5.	Jeré Adams	.346	2001-04, 05-06
		(118-341)	
6.	Cari Scaff	.341	2000-05
		(275-794)	
7.	Jessica Brantley	.339	2005-07
		(39-115)	
8.	Taylor Jefferson	.330	2011-15
		(154-466)	
9.	Raquel Jones	.320	2008-11
		(107-334)	
10.	Megan Green	.314	2008-11
		(122-389)	
11.	Natasha Avey	.309	2000-05
		(108-349)	
12.	Sherill Hadrick	.306	2002-06
		(38-124)	
13.	Fallon Thomas	.270	2007-09
		(43-159)	

14.	Dominique Thomas	.268	2004-07
		(109-406)	
15.	<b>Rachel Arthur</b>	<b>.267</b>	<b>2012-15</b>
		<b>(54-202)</b>	

### 3-PT FG PCT. (Min. 2 Att./Gm.) (D1-Era Only; 2007-Present)

1.	Jasmin Moore	.359	2007-08
		(66-184)	
2.	Taylor Jefferson	.330	2011-15
		(154-466)	
3.	Raquel Jones	.320	2008-11
		(107-334)	
4.	Megan Green	.314	2008-11
		(122-389)	
5.	Fallon Thomas	.270	2007-09
		(43-159)	



### SCORING AVERAGE

1.	Shanice Steenholdt	18.3	2011-15
2.	Jasmin Moore	16.6	2007-08
3.	Arie Wilson	16.3	2004-05
4.	Tiffany Andrews	15.8	1999-03
5.	Carey Owens	15.0	1999-00
6.	Jeré Adams	14.8	2001-04, 05-06
7.	Stephanie Stoglin	14.1	2004-05
8.	Jasmine Irving	14.0	2006-07
9.	Elinor Smith	13.8	2000-04
10.	Nola Wainohu	12.6	1999-00
11.	Megan Morris	12.0	2007-08
12.	Dominique Thomas	11.4	2004-07
13.	Velencia Kuykendall	11.0	2003-07
	Jelela Simpson	11.0	2007-08
15.	Destini Texada	10.4	2009-11

### SCORING AVERAGE (D1-Era Only; 2007-Present)

1.	Shanice Steenholdt	18.3	2011-15
2.	Jasmin Moore	16.6	2007-08
3.	Megan Morris	12.0	2007-08
4.	Jelela Simpson	11.0	2007-08
5.	Destini Texada	10.4	2009-11

### FREE THROW PCT. (Min. 2 Att./Gm.)

1.	Carey Owens	.824	1999-00
		(61-74)	
2.	Taylor Jefferson	.806	2011-15
		(204-253)	
3.	Jasmin Moore	.779	2007-08
		(53-68)	
4.	Tiffany Andrews	.776	1999-03
		(559-720)	
5.	Deborah Mize	.771	1999-02
		(81-105)	
6.	Griffin Colvert	.761	2000-04
		(89-117)	
7.	Jessica Brantley	.758	2005-07
		(91-120)	
8.	Danica King	.746	2005-07
		(53-71)	
9.	Dominique Thomas	.732	2004-07
		(249-340)	

## CAREER RECORDS

10.	Jasmine Irving	.7239	2006-07
		(118-163)	
11.	Arie Wilson	.7237	2004-05
		(131-181)	
12.	Megan Morris	.723	2007-09
		(146-202)	
13.	Natasha Avey	.715	2000-05
		(108-151)	
14.	Joselyn Pugh	.713	2009-13
		(102-143)	
15.	Devyn Weymouth	.692	2011-13
		(135-195)	

### FT PCT. (Min. 2 Att./Gm.) (D1-Era Only; 2007-Present)

1.	Taylor Jefferson	.806	2011-15
		(204-253)	
2.	Jasmin Moore	.779	2007-08
		(53-68)	
3.	Megan Morris	.723	2007-09
		(146-202)	
4.	Joselyn Pugh	.713	2009-13
		(102-143)	
5.	Devyn Weymouth	.692	2011-13
		(135-195)	

### REBOUNDS

1.	Tiffany Andrews	1131	1999-03
2.	Elinor Smith	1088	2000-04
3.	Valencia Kuykendall	1021	2003-07
4.	Sherill Hadrick	974	2002-06
5.	Shanice Steenholdt	931	2011-15
6.	Jeré Adams	572	2001-04, 05-06
7.	Tonie Noise	507	1999-02
8.	Erin McGarrachan	437	2012-15
9.	<b>Anna Strickland</b>	<b>405</b>	<b>2013-15</b>
10.	Griffin Colvert	395	2000-04
11.	Destini Texada	380	2009-11
12.	Shonté Witherspoon	358	1999-01
13.	Ryylon Brailsford	357	1999-01, 02-03
14.	Jelela Simpson	353	2006-09
15.	Dominique Thomas	347	2004-07

### REBOUNDS (D1-Era Only; 2007-Present)

1.	Shanice Steenholdt	931	2011-15
2.	Erin McGarrachan	437	2012-15
3.	<b>Anna Strickland</b>	<b>405</b>	<b>2013-15</b>
4.	Destini Texada	380	2009-11
5.	Jelela Simpson	323	2006-09

### REBOUND AVERAGE

1.	Shanice Steenholdt	10.2	2011-15
2.	Elinor Smith	8.5	2000-04
3.	Tiffany Andrews	7.9	1999-03
4.	Arie Wilson	7.9	2004-05
5.	Stephanie Stoglin	7.3	2004-05
	<b>Anna Strickland</b>	<b>7.3</b>	<b>2013-15</b>
7.	Sherill Hadrick	7.2	2002-06
	Valencia Kuykendall	7.2	2003-07
9.	Destini Texada	6.9	2009-11
10.	Jelela Simpson	6.8	2006-09
11.	Megan Morris	6.1	2007-09
12.	Nola Wainohu	6.0	1999-00
13.	Jasmine Irving	5.9	2006-07
14.	Tonie Noise	5.5	1999-02
15.	Shonté Witherspoon	5.1	1999-01
	Fallon Thomas	5.1	2007-09

### REBOUND AVE. (D1-Era Only; 2007-Present)

1.	Shanice Steenholdt	10.2	2011-15
2.	<b>Anna Strickland</b>	<b>7.3</b>	<b>2013-15</b>
3.	Destini Texada	6.9	2009-11
4.	Jelela Simpson	6.6	2006-09
5.	Fallon Thomas	5.1	2007-09

### ASSISTS

1.	Dominique Thomas	645	2004-07
2.	Jeré Adams	581	2001-04, 05-06
3.	Griffin Colvert	394	2000-04
4.	Kanika Harvey	341	1999-03
5.	Natasha Avey	339	2000-05
6.	Taylor Jefferson	331	2011-15
7.	Deborah Mize	316	1999-01
8.	Cari Scaff	275	2000-05
9.	Sherill Hadrick	189	2002-06
10.	<b>Rachel Arthur</b>	<b>176</b>	<b>2012-15</b>
11.	Shonté Witherspoon	173	1999-01
12.	Fallon Thomas	170	2007-09
13.	Wiebke Bruns	149	2012-14
14.	<b>Heidi Sihvola</b>	<b>128</b>	<b>2013-15</b>
15.	Tiffany Andrews	125	1999-03

### ASSISTS (D1-Era Only; 2007-Present)

1.	Taylor Jefferson	331	2011-15
2.	<b>Rachel Arthur</b>	<b>176</b>	<b>2012-15</b>
3.	Fallon Thomas	170	2007-09
4.	Wiebke Bruns	149	2012-14
5.	<b>Heidi Sihvola</b>	<b>128</b>	<b>2013-15</b>

### STEALS

1.	Jeré Adams	389	2001-04, 05-06
2.	Dominique Thomas	373	2004-07
3.	Tiffany Andrews	288	1999-03
4.	Cari Scaff	251	2000-05
5.	Griffin Colvert	248	2000-04
6.	Sherill Hadrick	242	2002-06
7.	Valencia Kuykendall	219	2003-07
8.	Natasha Avey	216	2000-05
9.	Kanika Harvey	209	1999-03
10.	Fallon Thomas	204	2007-09
11.	Elinor Smith	184	2000-04
12.	Shanice Steenholdt	181	2011-15
13.	Taylor Jefferson	158	2011-15
14.	Shonté Witherspoon	135	1999-01
15.	Jelela Simpson	132	2006-09

### STEALS (D1-Era Only; 2007-Present)

1.	Fallon Thomas	204	2007-09
2.	Shanice Steenholdt	181	2011-15
3.	Taylor Jefferson	158	2011-15
4.	Jelela Simpson	122	2006-09
5.	<b>Rachel Arthur</b>	<b>118</b>	<b>2012-15</b>

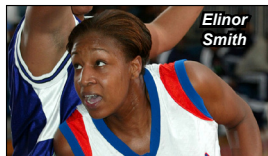
### BLOCKED SHOTS

1.	Sherill Hadrick	195	2002-06
2.	Shanice Steenholdt	158	2011-15
3.	Valencia Kuykendall	117	2003-07
4.	Tonie Noise	81	1999-02
5.	Arie Wilson	77	2004-05
	<b>Anna Strickland</b>	<b>77</b>	<b>2013-15</b>
7.	Elinor Smith	68	2000-04
8.	Jamie Spriggs	63	2008-11
9.	Whitney Pederson	62	2005-07
	Fallon Thomas	62	2007-09

11.	Ryylon Brailsford	58	1999-01, 02-03
12.	Erica Smith	52	2000-03
	Ernesta Gricunaite	52	2009-11
14.	Tiffany Andrews	43	1999-03
	Rachel Rost	43	2002-04

### BLOCKED SHOTS (D1-Era Only; 2007-Present)

1.	Shanice Steenholdt	158	2011-15
2.	<b>Anna Strickland</b>	<b>77</b>	<b>2013-15</b>
3.	Jamie Spriggs	63	2008-11
4.	Fallon Thomas	62	2007-09
5.	Ernesta Gricunaite	52	2009-11



# SINGLE-SEASON RECORDS



### SCORING

1.	Arie Wilson	634	2004-05
2.	Tiffany Andrews	632	2001-02
3.	Tiffany Andrews	594	2000-01
4.	Jeré Adams	581	2003-04
5.	Shanice Steenholdt	576	2012-13
6.	Jeré Adams	549	2002-03
7.	Tiffany Andrews	547	2002-03
8.	Stephanie Stoglin	535	2004-05
9.	Jeré Adams	533	2005-06
10.	Velencia Kuykendall	513	2006-07
11.	Shanice Steenholdt	510	2013-14
12.	Carey Owens	509	1999-00
13.	Sherill Hadrick	508	2003-04
14.	Cari Scaff	496	2003-04
15.	Elinor Smith	489	2003-04

### FIELD GOAL PCT. (Min. 5 Att./Gm.)

1.	Elinor Smith	.681	2002-03
		(173-254)	
2.	Elinor Smith	.657	2003-04
		(205-312)	
3.	Arie Wilson	.639	2004-05
		(248-388)	
4.	Elinor Smith	.618	2001-02
		(175-283)	
5.	Elinor Smith	.612	2000-01
		(170-278)	
6.	Whitney Pederson	.578	2006-07
		(108-187)	
7.	Jasmine Irving	.552	2006-07
		(179-324)	
8.	Sherill Hadrick	.550	2005-06
		(175-318)	
9.	Shanice Steenholdt	.549	2013-14
		(213-388)	
10.	Tiffany Andrews	.541	2001-02
		(250-462)	
11.	Jeré Adams	.534	2001-02
		(203-380)	
12.	Stephanie Stoglin	.533	2004-05
		(216-405)	
13.	Shanice Steenholdt	.532	2014-15
		(118-222)	
14.	Tiffany Andrews	.526	2000-01
		(222-422)	
15.	Velencia Kuykendall	.514	2005-06
		(164-319)	

### 3-POINT FIELD GOALS MADE

1.	Cari Scaff	117	2003-04
2.	Carey Owens	106	1999-2000
3.	Shellie Winzer	94	2002-03
4.	Jacqueline Overby	83	2006-07
5.	Deborah Mize	71	1999-2000
	Cari Scaff	71	2004-05
7.	Jeré Adams	68	2005-06
8.	Jasmin Moore	66	2007-08
9.	Taylor Jefferson	55	2014-15
10.	Cari Scaff	54	2001-02
	Megan Green	54	2010-11

12.	Jacqueline Overby	53	2005-06
13.	Angelica DeVries	50	2004-05
	Raquel Jones	50	2008-09
15.	Taylor Jefferson	46	2012-13



### 3-POINT FG PCT. (Min. 2 Att./Gm.)

1.	Griffin Colvert	.486	2001-02
		(34-70)	
2.	Carey Owens	.457	1999-00
		(106-232)	
3.	Deborah Mize	.436	1999-00
		(71-163)	
4.	Taylor Jefferson	.407	2014-15
		(55-135)	
5.	Jacqueline Overby	.405	2006-07
		(83-205)	
6.	Jeré Adams	.393	2005-06
		(68-173)	
	Jacqueline Overby	.393	2005-06
		(53-135)	
8.	Deborah Mize	.371	2001-02
		(33-89)	
9.	Cari Scaff	.364	2003-04
		(117-321)	
10.	Shellie Winzer	.363	2002-03
		(94-259)	
11.	Jasmin Moore	.359	2007-08
		(66-184)	
12.	Griffin Colvert	.356	2002-03
		(42-118)	
13.	Cari Scaff	.355	2004-05
		(71-200)	
14.	Kathy Hill	.354	2006-07
		(34-96)	
15.	Ashley Davis	.350	2006-07
		(41-117)	

### SCORING AVERAGE

1.	Shanice Steenholdt	18.7	2011-12
2.	Shanice Steenholdt	18.6	2012-13
3.	Shanice Steenholdt	18.2	2013-14
4.	Shanice Steenholdt	17.8	2014-15
5.	Tiffany Andrews	17.1	2001-02
6.	Elinor Smith	16.9	2003-04
7.	Jeré Adams	16.7	2005-06
8.	Jasmin Moore	16.6	2007-08
9.	Arie Wilson	16.3	2004-05
10.	Tiffany Andrews	16.1	2002-03
11.	Elinor Smith	16.1	2002-03
12.	Jeré Adams	15.7	2003-04
13.	Tiffany Andrews	15.6	2000-01
14.	Velencia Kuykendall	15.1	2006-07
15.	Carey Owens	15.0	1999-00

### FREE THROW PCT. (Min. 2 Att./Gm.)

1.	Taylor Jefferson	.857	2012-13
		(60-70)	
2.	Tiffany Andrews	.840	2002-03
		(147-175)	
3.	Taylor Jefferson	.833	2014-15
		(65-78)	

4.	Carey Owens	.824	1999-00
		(61-74)	
5.	Tiffany Andrews	.787	1999-00
		(137-174)	
6.	Jasmin Moore	.779	2007-08
		(53-68)	
7.	Elinor Smith	.772	2003-04
		(78-101)	
8.	Tiffany Andrews	.763	2000-01
		(148-194)	
9.	Megan Morris	.761	2008-09
		(86-113)	
10.	Taniqua Hollis	.7605	2009-10
		(54-71)	
11.	Jeré Adams	.759	2005-06
		(85-112)	
12.	Taylor Jefferson	.747	2013-14
		(56-75)	
13.	Velencia Kuykendall	.7460	2006-07
		(94-126)	
14.	Dominique Thomas	.7459	2006-07
		(91-122)	
15.	Kanika Harvey	.7452	2002-03
		(79-106)	

### REBOUNDS

1.	Sherill Hadrick	364	2003-04
2.	Tiffany Andrews	319	2000-01
3.	Elinor Smith	308	2000-01
4.	Arie Wilson	307	2004-05
	Shanice Steenholdt	307	2012-13
6.	Elinor Smith	294	2001-02
7.	Velencia Kuykendall	292	2006-07
8.	Sherill Hadrick	285	2005-06
9.	<b>Anna Strickland</b>	<b>284</b>	<b>2014-15</b>
10.	Tiffany Andrews	282	1999-00
11.	Stephanie Stoglin	277	2004-05
12.	Shanice Steenholdt	273	2013-14
13.	Tiffany Andrews	266	2002-03
14.	Tiffany Andrews	264	2001-02
15.	Elinor Smith	261	2003-04

### REBOUND AVERAGE

1.	Shanice Steenholdt	10.9	2011-12
2.	Shanice Steenholdt	10.3	2014-15
3.	Shanice Steenholdt	9.9	2012-13
4.	Shanice Steenholdt	9.8	2013-14
5.	Sherill Hadrick	9.6	2003-04
6.	Elinor Smith	9.1	2000-01
7.	Elinor Smith	9.0	2003-04
8.	Sherill Hadrick	8.9	2005-06
9.	Velencia Kuykendall	8.6	2006-07
	Anna Strickland	8.6	2014-15
11.	Tiffany Andrews	8.4	2000-01
12.	Tiffany Andrews	8.3	1999-00
	Elinor Smith	8.3	2002-03
14.	Arie Wilson	7.9	2004-05
	Velencia Kuykendall	7.9	2005-06

### ASSISTS

1.	Dominique Thomas	276	2006-07
2.	Dominique Thomas	215	2005-06
3.	Jeré Adams	165	2003-04
4.	Jeré Adams	164	2002-03
5.	Dominique Thomas	154	2004-05
6.	Natasha Avey	146	2004-05

**SINGLE-SEASON RECORDS**

7.	Jeré Adams	132	2001-02
8.	Deborah Mize	129	1999-00
9.	Griffin Colvert	116	2002-03
10.	Natasha Avey	114	2003-04
11.	Shonté Witherspoon	112	1999-00
	Tia Jackson	112	2010-11
13.	Deborah Mize	109	2000-01
14.	Kanika Harvey	107	2002-03
	Jeré Adams	107	2005-06
	Taylor Jefferson	107	2013-14

**STEALS**

1.	Dominique Thomas	138	2004-05
2.	Dominique Thomas	120	2006-07
3.	Dominique Thomas	115	2005-06
4.	Jeré Adams	114	2003-04
5.	Fallon Thomas	113	2008-09
6.	Nola Wainohu	98	1999-00
7.	Sherill Hadrick	96	2003-04
	Arie Wilson	96	2004-05
9.	Jeré Adams	92	2002-03
10.	Fallon Thomas	91	2007-08
11.	Jeré Adams	90	2001-02
12.	Cari Scaff	82	2003-04
13.	Jeré Adams	81	2005-06
14.	Tiffany Andrews	80	2000-01
15.	Tiffany Andrews	79	2001-02

**BLOCKED SHOTS**

1.	Sherill Hadrick	79	2003-04
2.	Arie Wilson	77	2004-05
3.	<b>Anna Strickland</b>	<b>63</b>	<b>2014-15</b>
	Sherill Hadrick	60	2005-06
5.	Shanice Steenholdt	51	2012-13
	Shanice Steenholdt	51	2013-14
7.	Whitney Pederson	38	2006-07
8.	Tonie Noise	35	2001-02
	Jasmine Irving	35	2006-07
	Fallon Thomas	35	2007-08
11.	Sherill Hadrick	32	2002-03
	Velencia Kuykendall	32	2003-04
	Velencia Kuykendall	32	2006-07
14.	Shanice Steenholdt	31	2011-12
15.	Jamie Spriggs	30	2009-10



Fallon Thomas



Ernesta Gričuniņa

**HBU RECORDS**

SINGLE GAME INDIVIDUAL RECORDS

**Most Points:**  
40, Shanice Steenholdt vs. Huston-Tillotson (1/10/12)

**Most FGs Attempted:**  
23, Dominique Thomas at Oklahoma City (12/5/05)  
23, Shanice Steenholdt vs. Huston-Tillotson (12/28/13)

**Most FGs Made:**  
17, Shanice Steenholdt vs. Huston-Tillotson (12/28/13)

**Most 3-Pt. FGs Attempted:**  
17, Shellie Winzer vs. Texas Wesleyan (1/20/02)

**Most 3-Pt. FGs Made:**  
8, Cari Scaff vs. Langston (1/10/03)  
8, Raquel Jones vs. Huston-Tillotson (11/18/09)

**Most FTs Attempted:**  
17, Cindee Wright at SIU-Edwardsville (1/29/09)

**Most FTs Made:**  
12, Cindee Wright at SIU-Edwardsville (1/29/09)

**Most Rebounds:**  
22, Shanice Steenholdt vs. Huston-Tillotson (1/10/12)

**Most Assists:**  
17, Dominique Thomas at Texas College (2/13/06)

**Most Steals:**  
11, Griffin Colvert vs. SW Adventist (1/21/02)

**Most Blocked Shots:**  
10, Sherill Hadrick vs. Texas College (3/4/06)

**Triple Doubles:**  
Sherill Hadrick (12pts, 16rebs, 10blks)  
vs. Texas College (3/4/06)

SINGLE GAME TEAM RECORDS

**Most Points:** 129 vs. Paul Quinn (2/2/02)

**Fewest Pts Allowed:** 20 vs. Nat'l Christian (12/4/02)

**Most FGs Made:** 56 vs. Paul Quinn (2/2/02)

**Most 3-Pt. FGs Made:** 15 vs. Texas-Permian Basin (11/29/03)

**Most FTs Made:** 30 at Jarvis Christian (2/10/01)  
30 vs. Wiley (2/7/04)

**Most Rebounds:** 76 vs. Texas A&M Int. (1/28/06)

**Most Assists:** 37 vs. Wiley (1/10/99)  
37 at Texas College (2/13/06)

**Victory Margin:** 78 vs. National Christian (12/4/01)

**Defeat Margin:** 79 at TCU (11/15/09)

SINGLE SEASON TEAM RECORDS

**Most Victories:** 36 (2004-05)

**Longest Winning Streak:** 32 (2004-05)

**Longest Home Winning Streak:** 32 (1999-00, '00-01, '01-02, '02-03, '03-04)

**Most Points Scored:** 3,293 (2004-05)

**Highest Scoring Ave.:** 86.5 (2005-06)

**Highest FG%:** .483 (2001-02)

**Highest 3-Pt. %:** .410 (1999-00)

**Best FG% Defense:** .356 (2000-01)

**Highest FT%:** .716 (2002-03)

**Most 3-Pt. Made:** 254 (2004-05)

**Most Rebounds:** 1,816 (2000-01)

**Most Assists:** 681 (2003-04)

**Most Steals:** 577 (2004-05)

**Most Blocked Shots:** 182 (2003-04)

40-POINT CLUB

40 Shanice Steenholdt  
vs. Huston-Tillotson (1/10/12)

30-POINT CLUB

36 Jeré Adams  
at TX A&M International (12/17/05)

36 Shanice Steenholdt  
vs. Huston-Tillotson (12/28/13)

35 Carey Owens  
vs. Concordia-Austin (12/11/99)

33 Shanice Steenholdt  
vs. Chicago State (3/7/13)

32 Tiffany Andrews  
at SW Assemblies (11/19/02)

32 Shanice Steenholdt  
vs. Texas State (2/20/13)

32 Shanice Steenholdt  
at Oral Roberts (1/12/14)

32 Shanice Steenholdt  
vs. Southeastern Louisiana (1/25/14)

30 Tiffany Andrews  
at Dallas Christian (11/8/02)

30 Elinor Smith  
vs. SW Assemblies (11/19/02)

30 Tiffany Andrews  
at Hope International (11/8/02)

30 Jeré Adams  
vs. SW Assemblies (3/3/03)

30 Sherill Hadrick  
at Texas College (1/5/04)

30 Jasmine Moore  
vs. Bacone (2/9/08)

30 Shanice Steenholdt  
at Houston (12/10/11)

2,000 Point Club

Tiffany Andrews 2,261 1999-03  
Jeré Adams 2,205 2001-04, '05-06

1,000 Point Club

Elinor Smith 1,771 2000-04  
Shanice Steenholdt 1,686 2011-15  
Velencia Kuykendall 1,606 2003-07  
Shanice Steenholdt 1,402 2011-14  
Sherill Hadrick 1,315 2002-06  
Cari Scaff 1,381 2000-05  
Dominique Thomas 1,202 2004-07

1,000 Rebound Club

Tiffany Andrews 1,131 1999-03  
Elinor Smith 1,088 2000-04  
Velencia Kuykendall 1,021 2003-07

ALL-TIME RESULTS



**Chris Harris**  
1999-2000

**NAIA Division I  
1999-00 (25-9)**

**Coach:** Chris Harris

11/6	Southern	L	69-91
11/9	Louisiana College	L	55-59
11/12	at Rhema	W	94-69
11/13	at Dallas Christian	W	121-61
11/20	at Austin College	W	89-71
11/23	Dillard	W	91-59
11/30	at UT-San Antonio	L	56-66
12/4	at Louisiana College	L	62-72
12/11	Concordia-Austin	W	105-73
12/14	Austin College	W	109-65
12/18	at Mary Hardin-Baylor	W	80-63
1/3	Mary Hardin-Baylor	W	72-61
1/4	Texas Lutheran	W	85-76
1/8	*Huston-Tillotson	W	88-57
1/10	*Wiley	W	106-50
1/13	Texas-Pan American	L	55-61
1/15	*at Jarvis Christian	L	60-65
1/17	*at SW Assemblies	W	94-44
1/22	Texas College	W	105-42
1/24	*Paul Quinn	W	81-61
1/31	*at Schreiner	W	99-58
2/5	*Langston	W	90-82
2/7	*SW Adventist	W	96-29
2/10	*Jarvis Christian	W	73-53
2/12	East Texas Baptist	L	85-101
2/14	*at Huston-Tillotson	W	85-65
2/16	at Texas-Pan American	L	59-72
2/19	*at Wiley	W	75-46
2/26	*SW Assemblies	W	80-42
2/28	at Texas College	W	79-44
3/3	+Huston-Tillotson	W	78-70
3/7	+at Jarvis Christian	W	77-52
3/15	*vs. Campbellsville	L	55-64

\*RRAC (Champions)  
\*RRAC Tournament (campus sites; Champions)  
\*NAIA National Tournament (Jackson, Tenn.)



**Shane Brown**  
2000-05

**2000-01 (31-7)**

**Coach:** Shane Brown

11/7	Xavier-New Orleans	W	84-71
11/11	at Dillard	L	72-74 <sup>(OT)</sup>

11/18	at Southern	L	82-89
11/21	at Texas Southern	L	51-54
11/28	at East Texas Baptist	L	61-64
12/1	at Philander Smith	W	72-62
12/2	at Williams Baptist	W	71-55
12/9	*at SW Assemblies	W	99-67
12/11	*at SW Adventist	W	90-64
12/14	Schreiner	W	103-45
12/16	at Paul Quinn	W	77-52
12/18	at Texas College	W	78-46
12/29	Lee	W	70-49
1/3	at Incarnate Word	W	72-49
1/6	*Jarvis Christian	W	65-49
1/8	*Wiley	W	108-52
1/10	at UT-Pan American	L	64-76
1/13	*at NW Oklahoma St.	W	70-61
1/15	*at Langston	W	71-66
1/20	*at Huston-Tillotson	W	77-63
1/22	at Schreiner	W	83-68
1/27	*SW Assemblies	W	82-59
1/29	*SW Adventist	W	102-27
2/1	Lipscomb	W	59-57
2/3	Texas College	W	77-54
2/5	*Paul Quinn	W	93-51
2/10	*at Jarvis Christian	L	65-78
2/12	*at Wiley	W	93-64
2/15	Texas-Pan American	W	64-52
2/17	*NW Oklahoma State	W	51-37
2/19	Langston	W	71-57
2/24	*Huston-Tillotson	W	75-51
3/1	+vs. Paul Quinn	W	97-38
3/2	+vs. Huston-Tillotson	W	86-67
3/3	+vs. Jarvis Christian	W	69-61
3/15	*vs. Okla. Christian	W	70-68 <sup>(OT)</sup>
3/16	*vs. Dillard	W	72-66
3/17	*vs. Lewis-Clark State	L	82-84

\*RRAC (Champions)  
+RRAC Tournament (Waxahachie; Champions)  
\*NAIA National Tournament (Jackson, Tenn.)

**Final National Ranking: 21st**

**2001-02 (33-5)**

**Coach:** Shane Brown

11/8	at Oklahoma City	L	37-89
11/10	at Okla. Christian	W	70-65
11/17	at Schreiner	W	110-42
11/20	Pikeville	W	99-54
11/23	*vs. Nyack	W	78-55
11/24	*at Palm Beach Atlantic	W	92-76
11/30	at Dillard	L	69-77
12/1	at Xavier (N.O.)	W	63-58
12/4	National Christian	W	98-20
12/8	*Huston-Tillotson	W	84-40
12/10	Southern	W	92-63
12/13	Schreiner	W	94-38
12/15	*at Paul Quinn	W	107-61
12/17	at Texas College	W	84-56
12/28	*vs. Okla. Baptist	W	83-66
12/29	*vs. S. Nazarene	W	78-63
1/5	Jarvis Christian	W	85-62
1/7	*Wiley	W	99-29
1/12	*at Bacone	W	66-51



**Coach Shane Brown led the Huskies to five National Tournament appearances, including two NAIA Final Fours.**

1/14	*at Langston	W	69-59
1/19	*SW Assemblies	W	106-44
1/21	*SW Adventist	W	96-31
1/26	*at Huston-Tillotson	W	69-43
1/29	Incarnate Word	W	75-68
2/2	*Paul Quinn	W	129-66
2/4	Texas College	W	84-58
2/9	*at Jarvis Christian	W	81-50
2/11	*at Wiley	W	102-68
2/16	*Bacone	W	66-38
2/18	*Langston	W	67-48
2/23	*at SW Assemblies	W	100-75
2/25	*at SW Adventist	W	87-45
2/28	+vs. SW Adventist	W	74-54
3/1	+at SW Assemblies	W	92-50
3/2	+vs. Jarvis Christian	W	80-64
3/13	*vs. Auburn-Montgomery	W	67-59
3/15	*vs. Oklahoma Baptist	W	83-80
3/16	*vs. Union (Tenn.)	L	50-71

\*RRAC (Champions)  
\*Palm Beach Atlantic (Fla.) Thanksgiving Tour.  
\*Second Baptist Eagle Holiday Classic (Houston)  
\*RRAC Tournament (Waxahachie; Champions)  
\*NAIA National Tournament (Jackson, Tenn.)

**Final National Ranking: 6th**

**2002-03 (33-4)**

**Coach:** Shane Brown

11/8	at Hope International	W	64-59
11/9	at Azusa Pacific	W	84-71
11/12	William Carey	W	65-38
11/22	*Oklahoma Christian	W	76-61
11/23	*Oklahoma City	L	77-95
11/28	*vs. Lubbock Christian	W	80-75
11/29	*at Wayland Baptist	L	65-78
11/30	*vs. Oklahoma Baptist	W	72-64
12/7	*at Texas-Permian Basin	W	95-54
12/11	at Southern	L	57-65
12/14	*at Langston*	W	69-64
12/16	*at Bacone*	W	62-57
12/18	*at Texas College*	W	94-68
12/30	Wayland Baptist	W	54-50
1/4	Brescia	W	74-67
1/6	Dillard	W	65-64
1/11	*Jarvis Christian	W	74-59
1/13	*Wiley	W	78-26
1/16	*at Huston-Tillotson	W	81-41
1/20	*Texas Wesleyan	W	82-50
1/25	*at Paul Quinn	W	105-80
1/27	*at SW Assemblies	W	96-61
2/1	*Texas-Permian Basin	W	95-56

**ALL-TIME RESULTS**

2/3	*Texas College	W	82-78
2/8	*Langston	W	75-44
2/10	*Bacone	W	72-61
2/15	*at Jarvis Christian	W	83-53
2/17	*at Wiley	W	87-44
2/20	*Huston-Tillotson	W	94-65
2/24	*at Texas Wesleyan	W	104-63
3/1	*Paul Quinn	W	107-54
3/3	*SW Assemblies	W	99-29
3/6	+Texas-Permian Basin	W	96-49
3/8	+Bacone	W	78-47
3/10	+Langston	W	65-47
3/19	vs. Claflin	W	83-63
3/21	vs. Pt. Loma Nazarene	L	68-75
*RRAC (Champions)			
*HBU Fall Classic (Houston)			
*Queens Classic (Plainsview)			
+RRAC Tournament (Waxahachie; Champions)			
*NAIA National Tournament (Jackson, Tenn.)			
<b>Final National Ranking: 2nd</b>			
<b>2003-04 (33-5)</b>			
<b>Coach:</b> Shane Brown			
11/7	at TAMU-Corpus Christi	L	59-90
11/13	Southern	W	77-56
11/15	*at TAMU International	W	103-67
11/21	*at Oklahoma Baptist	L	73-85
11/22	vs. NW Okla. State	W	60-58
11/29	*Texas-Permian Basin	W	70-52
12/1	*Texas Wesleyan	W	74-52
12/7	Science & Arts of Okla.	W	65-58
12/11	*at Jarvis Christian	W	77-62
12/13	*at Wiley	W	87-60
12/18	at Sam Houston State	W	56-44
12/29	at Wayland Baptist	L	61-71
12/30	at Lubbock Christian	W	69-55
1/5	*Texas College	W	102-52
1/10	*Langston	W	65-44
1/12	*Bacone	W	86-46
1/17	*at Huston-Tillotson	W	89-54
1/19	*at SW Assemblies	W	97-49
1/24	at Texas-Permian Basin	W	114-67
1/26	at Texas Wesleyan	W	76-58
1/31	*TAMU International	W	113-59
2/2	*Paul Quinn	W	88-51
2/4	at Alcorn State	L	60-70
2/7	*Wiley	W	100-54
2/9	*Jarvis Christian	W	76-59
2/14	*at Paul Quinn	W	100-54
2/16	*at Texas College	W	92-69
2/21	*at Langston	W	82-63
2/23	*at Bacone	W	73-37
2/28	*Huston-Tillotson	W	95-53
3/1	*SW Assemblies	W	105-34
3/4	+Jarvis Christian	W	79-62
3/6	+TAMU International	W	102-38
3/8	+Langston	W	89-52
3/18	vs. Montana-Western	W	89-79
3/19	vs. Columbia	W	79-66
3/20	vs. Freed-Hardeman	W	74-61
3/21	vs. Oklahoma City	L	69-81
*RRAC (Champions)			
*Red River/Sooner Shootout (Shawnee, Okla.)			

+RRAC Tournament (Houston, Champions)  
\*NAIA National Tournament (Jackson, Tenn.)  
**Final National Ranking: 5th**

**2004-05 (36-3)**

**Coach:** Shane Brown

11/8	Xavier-New Orleans	W	84-68
11/13	Lubbock Christian	W	97-33
11/19	*vs. Cumberland	W	64-54
11/20	*at Pikeville	W	78-54
11/30	Union (Tenn.)	L	61-73
12/4	at Southern Nazarene	L	62-76
12/7	*Paul Quinn	W	88-48
12/9	Alcorn State	W	78-65
12/11	*at Texas-Permian Basin	W	67-54
12/13	*at TAMU International	W	104-67
12/16	*SW Assemblies	W	89-37
12/20	at Sam Houston State	W	75-58
12/30	Oklahoma Christian	W	64-55
1/3	Dillard	W	68-52
1/8	*at Langston	W	60-52
1/10	*at Bacone	W	98-41
1/13	*Huston-Tillotson	W	89-64
1/15	*at Jarvis Christian	W	85-51
1/17	*at Wiley	W	113-77
1/22	*Texas Wesleyan	W	88-61
1/24	*Texas College	W	97-46
1/29	*at SW Assemblies	W	85-47
1/31	*at Paul Quinn	W	86-35
2/5	*Texas-Permian Basin	W	110-53
2/7	*TAMU International	W	118-79
2/12	*Langston	W	98-65
2/14	*Bacone	W	95-45
2/17	*at Huston-Tillotson	W	86-61
2/19	*Jarvis Christian	W	82-55
2/21	*Wiley	W	101-75
2/26	*at Texas Wesleyan	W	71-52
2/28	*at Texas College	W	97-52
3/3	+vs. Bacone	W	81-33
3/4	+vs. Texas-Permian Basin	W	93-46
3/5	+vs. Texas Wesleyan	W	88-62
3/16	vs. Indiana-South Bend	W	64-49
3/18	vs. Cumberland	W	86-59
3/19	vs. Georgetown (Ky.)	W	68-66
3/21	vs. Oklahoma City	L	74-81 <sup>(OT)</sup>
*RRAC (Champions)			
*Mr. Gatti's Classic (Pikesville, Ky.)			
+RRAC Tournament (Waxahachie; Champions)			
*NAIA National Tournament (Jackson, Tenn.)			
<b>Final National Ranking: 1st</b>			



**Coach Todd Buchanan led the Huskies to two NAIA National Tournaments and led the program back into NCAA Division I**



**Todd Buchanan**  
2005-10

**2005-06 (28-4)**

**Coach:** Todd Buchanan

11/7	St. Gregory's	W	80-58
11/19	*at Texas-Permian Basin	W	75-61
11/29	Wayland Baptist	W	69-59
12/2	*at Southern Nazarene	W	79-62
12/3	*vs. Oklahoma Christian	L	74-76
12/5	at Oklahoma City	L	69-78
12/10	*at Jarvis Christian	W	93-59
12/12	*at Wiley	W	94-64
12/17	*at TAMU International	W	98-94
1/5	*Huston-Tillotson	W	84-62
1/7	*Texas Wesleyan	W	85-39
1/14	*Paul Quinn	W	81-48
1/16	*SW Assemblies	W	101-47
1/21	*at Langston	L	77-85
1/23	*at Bacone	W	87-52
1/28	*TAMU International	W	108-77
1/30	*Texas-Permian Basin	W	91-56
2/2	*at Huston-Tillotson	W	100-68
2/4	*Jarvis Christian	W	86-52
2/6	*Wiley	W	86-61
2/11	*at Texas Wesleyan	W	72-59
2/13	*at Texas College	W	114-69
2/18	*at Paul Quinn	W	109-55
2/20	*at SW Assemblies	W	78-56
2/25	*Langston	W	88-61
2/27	*Bacone	W	88-52
3/2	+vs. Huston-Tillotson	W	95-48
3/3	+vs. Bacone	W	88-52
3/4	+vs. Texas College	W	107-67
3/16	vs. Lindsey Wilson	W	60-57
3/17	vs. Lubbock Christian	L	56-62

\*RRAC (Champions)  
\*S. Nazarene Classic (Bethany, Okla.)  
+RRAC Tournament (Waxahachie; Champions)  
\*NAIA National Tournament (Jackson, Tenn.)  
**Final National Ranking: 6th**

**2006-07 (27-7)**

**Coach:** Todd Buchanan

11/2	at Sam Houston State	W	90-84
11/7	at Union (Tenn.)	L	64-81
11/10	Wayland Baptist	W	73-62
11/18	at Dillard	W	78-49

**All-Time Results**

11/24	vs. Lindsey Wilson	W	86-61
11/25	at Cumberland (Tenn.)	L	75-87
12/4	Southern Nazarene	W	83-75
12/7	Oklahoma City	L	52-65
12/9	*at SW Assemblies	W	74-49
12/11	*at Paul Quinn	W	75-54
12/14	Dillard	W	87-57
12/16	*at TAMU International	W	73-70
1/6	*Bacone	W	80-42
1/8	*Langston	L	77-80
1/13	*at Texas Wesleyan	W	96-65
1/15	*at Texas College	W	89-58
1/20	*Wiley	W	87-57
1/22	*Jarvis Christian	W	75-59
1/27	*Huston-Tillotson	W	76-64
1/29	*at Huston-Tillotson	L	67-70
2/3	*SW Assemblies	W	74-63
2/5	*Paul Quinn	W	67-50
2/10	*at Bacone	W	89-45
2/12	*at Langston	L	62-65
2/17	*Texas Wesleyan	W	70-63
2/19	*Texas College	W	76-70
2/24	*at Wiley	W	86-76
2/26	*at Jarvis Christian	W	85-70
3/1	+vs. Bacone	W	95-75
3/2	+vs. Wiley	W	88-56
3/3	+vs. Jarvis Christian	W	94-68
3/14	^vs. Montana-Western	W	64-63
3/16	^vs. Lubbock Christian	W	82-73
3/17	^vs. Union (Tenn.)	L	58-83

\*Red River Athletic Conference

^Cumberland Tournament (Lebanon, Tenn.)

+RRAC Tournament (Waxahachie, Champions)

^NAIA National Tournament (Jackson, Tenn.)

**Final National Ranking: 22nd**

**NCAA Division I  
2007-08 (14-11)**

**Coach:** Todd Buchanan

11/7	TAMU-Kingsville	W	76-65
11/10	Oklahoma City	W	60-53
11/16	^vs. Oklahoma Christian	W	74-62
11/17	^at Oklahoma Baptist	L	62-65
11/19	at Texas-Permian Basin	W	97-61
12/1	at Loyola (La.)	L	66-78
12/2	at Xavier (La.)	L	72-81
12/4	TAMU International	W	60-58
12/8	at Wayland Baptist	W	70-60
12/10	at Lubbock Christian	L	72-75
12/13	at Prairie View A&M	L	65-81
12/18	Cumberland	W	72-60
12/29	^vs. Georgetown (Ky.)	W	83-81 <sup>(OT)</sup>
12/30	^vs. Dickinson State	L	75-81
1/2	Dillard	W	82-46
1/7	at Langston	L	74-82
1/8	at Oklahoma City	L	48-68
1/13	Tougaloo	W	79-49
1/14	Tougaloo	W	65-48
1/16	Huston-Tillotson	W	69-47
2/9	Bacone	W	97-53

2/11	Langston	L	65-89
2/16	at Huston-Tillotson	W	74-59
3/1	at Texas-Pan American	L	56-63
^Oklahoma Baptist Classic (Shawnee, Okla.)			
*Las Vegas Classic (Las Vegas, Nev.)			

**2008-09 (8-21)**

**Coach:** Todd Buchanan

11/15	Huston-Tillotson	W	84-65
11/17	at Stephen F. Austin	L	72-82
11/20	at Northwestern	L	60-68
11/22	Wiley	W	71-59
11/25	at McNeese State	L	63-71
11/29	at Oral Roberts	L	59-101
12/2	at South Alabama	L	48-83
12/6	Prairie View A&M	L	57-69
12/13	at Eastern Kentucky	W	81-69
12/14	at Morehead State	L	62-70
12/16	at Marshall	L	50-91
12/19	at Murray State	L	60-80
12/29	Central Arkansas	W	66-61
1/3	at Texas-Arlington	L	57-66
1/6	North Dakota	L	54-67
1/11	Seattle	L	56-62
1/13	Texas Southern	W	74-51
1/16	South Dakota	W	65-55
1/18	^vs. CSU-Bakersfield	L	73-82
1/19	at Texas-Pan American	L	56-67
1/27	at Tennessee-Martin	W	63-52
1/29	at SIU-Edwardsville	L	64-78
2/7	at CSU-Bakersfield	L	59-66
2/9	at Seattle	L	65-74
2/14	at North Dakota	L	67-95
2/16	at South Dakota	L	46-62
2/27	SIU-Edwardsville	W	73-59
3/7	*at North Dakota	L	68-93
3/8	^vs. South Dakota	L	50-63

^Edinburg, Texas

\*Spring Thaw Tournament (Grand Forks, N.D.)

**2009-10 (3-25)**

**Coach:** Todd Buchanan

11/13	No. 6 Duke	L	35-104
11/15	at TCU	L	30-109
11/18	Huston-Tillotson	W	101-99 <sup>(2OT)</sup>
11/22	Oregon State	L	42-70
11/24	McNeese State	L	41-63
11/25	UT-Martin	L	53-66
11/28	Oral Roberts	L	67-107
12/6	Wiley	W	71-47
12/12	Stephen F. Austin	L	46-92
12/15	*at LSU	L	31-93
12/16	^vs. Louisiana	L	76-86
12/19	^vs. East Carolina	L	59-103
12/20	^vs. N.C. Central	L	60-75
12/30	Texas-Arlington	L	65-77
1/5	at Central Arkansas	L	66-106
1/14	*Chicago State	L	51-71
1/16	*NJIT	L	70-83
1/28	*South Dakota	W	74-70 <sup>(OT)</sup>
1/30	*North Dakota	L	53-75
2/4	*at Chicago State	L	49-71

2/6	*at NJIT	L	46-72
2/10	*at UT-Pan American	L	66-79
2/18	*at NJIT	L	46-72
2/25	*Utah Valley	L	59-70
2/27	*UT-Pan American	L	76-77
3/4	*at North Dakota	L	66-80
3/6	*at South Dakota	L	45-76
3/11	+vs. UT-Pan American	L	61-69

\*Great West Conference

^Sue Gunter Classic (Baton Rouge, La.)

\*USF Shootout (Tampa, Fla.)

+GWC Tournament (Orem, Utah)



**Mary Gleason**  
2010-13

**2010-11 (4-25)**

**Coach:** Mary Gleason

11/12	at TCU	L	38-96
11/17	at Louisville	L	34-100
11/19	^vs. Norfolk State	L	50-60
11/20	^at Morehead State	L	50-71
11/21	^vs. Central Arkansas	L	50-82
11/26	*UMKC	L	50-59
11/27	*Portland	L	59-80
11/30	Wiley	W	77-48
12/11	at Sam Houston State	W	51-48
12/12	at Texas Southern	L	62-71
12/19	at Lamar	L	52-88
12/21	Rice	L	46-82
12/28	at Stephen F. Austin	L	53-95
12/30	Houston	L	63-93
1/3	at Texas Tech	L	36-73
1/13	*at Chicago State	L	64-92
1/15	*at NJIT	L	55-82
1/22	*Texas-Pan American	L	61-76
1/27	*at South Dakota	L	33-62
1/29	*at North Dakota	L	54-104
2/3	*Chicago State	L	50-79
2/5	*Utah Valley	L	75-79
2/9	*at UT-Pan American	L	67-80
2/17	*NJIT	W	71-66
2/26	*at Utah Valley	L	58-82
3/3	*North Dakota	L	61-73
3/5	*South Dakota	L	48-66
3/9	+vs. South Dakota	W	73-64
3/11	+vs. North Dakota	L	41-82

\*Great West Conference

^Comfort Inn & Suites Invit. (Morehead, Ky.)

\*Husky Classic (Houston, Texas)

+GWC Tournament (Orem, Utah)

**2011-12 (1-27)**

**Coach:** Mary Gleason

11/11	at Iowa State	L	33-73
11/13	at UMKC	L	45-92
11/16	at Rice	L	42-75

ALL-TIME RESULTS

11/19	at UTEP	L	53-82
11/25	^Vermont	L	47-60
11/26	^TAMU-Corpus Christi	L	45-65
11/29	Stephen F. Austin	L	39-53
12/2	*at Navy	L	31-67
12/3	*vs. George Washington	L	44-80
12/10	at Houston	L	60-83
12/18	New Mexico	L	38-65
12/20	Lamar	L	40-73
12/28	at Texas State	L	61-86
12/31	at UT Arlington	L	61-78
1/3	Sam Houston State	L	51-69
1/10	Huston-Tillotson	W	87-70
1/19	*NJIT	L	52-69
1/21	*Chicago State	L	66-79
1/28	*UT-Pan American	L	41-55
2/2	*at North Dakota	L	34-93
2/7	Texas Southern	L	44-54
2/16	*at Chicago State	L	41-63
2/18	*at NJIT	L	28-88
2/23	*Utah Valley	L	41-62
2/25	*North Dakota	L	36-57
2/28	*at Utah Valley	L	36-71
3/3	*at UT-Pan American	L	14-43
3/8	+vs. NJIT	L	42-61

\*Great West Conference  
^ Husky Classic (Houston, Texas)  
\*Navy Classic (Annapolis, Md.)  
+GWC Tournament (Chicago, Ill.)

2012-13 (7-24)

Coach: Mary Gleason

11/9	South Alabama	L	53-83
11/12	Schreiner	W	73-46
11/16	at UTEP	L	58-67
11/18	at New Mexico	L	46-63
11/21	St. Thomas	W	63-60
11/23	^Jackson State	L	57-65
11/24	^UC Davis	L	66-75
11/27	UT Arlington	L	71-77
11/30	*at Vermont	L	48-59
12/1	*vs. Rhode Island	L	36-59
12/15	at Utah	L	33-71
12/17	at Southern Utah	L	58-79
12/21	Lamar	L	52-68
12/29	Huston-Tillotson	W	88-51
1/2	Sam Houston State	L	58-75
1/5	Delaware State	L	83-84 <sup>(a)</sup>
1/12	at New Orleans	W	60-45
1/15	Bakersfield	L	75-88
1/19	*at UT-Pan American	L	45-71
1/26	*at Chicago State	L	62-73
2/2	*Utah Valley	L	71-75
2/9	New Orleans	L	58-65
2/13	at Lamar	L	55-76
2/16	*at NJIT	L	48-77
2/20	Texas State	W	78-76 <sup>(a)</sup>
2/23	*UT-Pan American	L	59-67
3/2	*at Utah Valley	L	46-59
3/7	*Chicago State	W	92-57

3/9	*NJIT	L	49-65
3/14	+at Chicago State	W	77-66
3/15	+vs. Utah Valley	L	53-67

\*Great West Conference  
^ Husky Classic (Houston, Texas)  
\*TD Bank Classic (Burlington, Vt.)  
+GWC Tournament (Chicago, Ill.)



Donna Finnie  
2013-present

2013-14 (12-17)

Coach: Donna Finnie

11/8	UT Arlington	W	72-60
11/14	at Texas Southern	L	70-82
11/16	Southern Utah	W	88-77
11/19	at Sam Houston State	L	68-85
11/22	at Jackson State	L	50-74
11/25	at South Alabama	W	54-51
12/3	UT-Pan American	L	74-76
12/15	at No. 9 Baylor	L	57-100
12/19	at Bakersfield	L	61-81
12/21	at UC Davis	L	58-63 <sup>(a)</sup>
12/28	Huston-Tillotson	W	99-48
1/2	*at Oral Roberts	L	73-85
1/4	*at Central Arkansas	L	54-67
1/9	*Stephen F. Austin	L	60-71
1/11	*Northwestern State	W	67-56
1/16	*at Nicholls	W	66-61
1/18	*at McNeese State	L	62-66
1/23	*New Orleans	W	66-54
1/25	*Southeastern Louisiana	L	84-85 <sup>(2a)</sup>
1/30	*at Lamar	W	76-66
2/1	*at Sam Houston State	W	63-62
2/6	*at Abilene Christian	L	70-82
2/8	*at Incarnate Word	W	70-65
2/13	*Oral Roberts	W	84-75
2/15	*Central Arkansas	L	55-57
2/22	*A&M-Corpus Christi	L	62-74
3/1	*at A&M-Corpus Christi	L	65-90
3/6	*Nicholls	L	69-73
3/8	*McNeese State	W	77-67

\*Southland Conference

2014-15 (15-18)

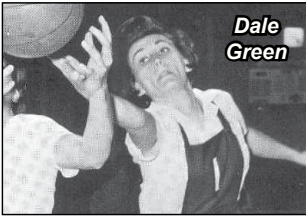
Coach: Donna Finnie

11/14	at TCU	L	64-87
11/16	at UT Arlington	L	73-83
11/22	at Texas State	W	61-56
11/25	Southwestern Assemblies	W	85-57
11/29	at UT-Pan American	L	72-75
12/6	at UTEP	W	87-77
12/13	Arlington Baptist	W	92-62
12/17	Texas Southern	L	80-92
12/19	McMurry	W	69-49
12/28	Huston-Tillotson	W	86-36
12/30	at Texas Tech	L	59-60
1/2	*Northwestern State	L	68-78
1/5	*at McNeese State	L	57-60
1/8	*at Nicholls	L	58-70
1/10	*at Southeastern Louisiana	L	59-67
1/15	*Central Arkansas	W	58-37
1/17	*New Orleans	W	63-45
1/24	*Lamar	W	64-80
1/29	*Abilene Christian	L	50-53
1/31	*at Sam Houston State	L	67-74
2/5	*TX A&M-Corpus Christi	W	59-54
2/7	*at Stephen F. Austin	L	67-72
2/12	*at Lamar	L	62-79
2/14	*Sam Houston State	W	66-61
2/19	*Incarnate Word	W	67-64
2/25	*at Abilene Christian	L	53-68
2/28	*Stephen F. Austin	L	57-69
3/5	*at TX A&M-Corpus Christi	L	48-73
3/7	*at Incarnate Word	W	81-71
3/12	+vs. McNeese State	W	70-68
3/13	+vs. TX A&M-Corpus Christi	W	49-48
3/14	+vs. Stephen F. Austin	W	88-81
3/15	+vs. Northwestern State	L	50-58

\*Southland Conference  
+SLC Tournament (Katy, Texas)



## LETTERWINNERS

Dale  
Green

## ♦ A ♦

Jeré Adams	2002, 03, 04, 06
Mary Ames	2003, 04
Tiffany Andrews	2000, 01, 02, 03
<b>Rachel Arthur</b>	<b>2013, 14, 15</b>
Mary Askew	1966
Natasha Avey	2001, 02, 04, 05

## ♦ B ♦

Carole Bapoo	2008, 09
Brittany Barton	2010, 11, 12, 13
Sue Bierman	1966, 67, 68, 69
Ellen Bollinger	1966
Lauren Bozeman	2012
Ryalon Brailsford	2000, 01, 03
Jessica Brantley	2006, 07
Wiebke Bruns	2013, 14
Danika Burwell	2005, 06

## ♦ C ♦

Kaylin Caulkins	2006
Griffin Colvert	2001, 02, 03, 04

## ♦ D ♦

Ashley Davis	2005, 06, 07, 08
Angelica DeVries	2005, 06
Carissa Diaz	2015

## ♦ E ♦

Ashley Elliott	2008
Maisie Elston	2012, 13, 14, 15
<b>Ekemini Essien</b>	<b>2013, 14, 15</b>

Ryalon  
Brailsford

## ♦ F ♦

Marsha Forbes	2004, 05
---------------	----------

## ♦ G ♦

Lee Ann Gee	1969
Misty Gordon	2008
Dale Green	1966, 67, 68
Megan Green	2009, 10, 11
Simone Greenleaf	2009, 10
Ernesta Griciunaite	2010, 11

## ♦ H ♦

Sherill Hadrick	2003, 04, 06
Kanika Harvey	2000, 01, 02, 03
Kathy Hill	2007, 08
Shawnaka Holland	2000
Taniqua Hollis	2010
Shirolacille Holloway	2010
Leota Hutchinson	1969

Kanika  
Harvey

## ♦ I ♦

Jasmine Irving	2007
----------------	------

## ♦ J ♦

Pat James	1967, 68, 69
Princess Jeanmard	2010
Taylor Jefferson	2012, 13, 14, 15
Emily Jenkins	2012
Raquel Jones	2009, 10, 11

## ♦ K ♦

Danika King	2006, 07
Laura Kitzmiller	1966, 67, 68
Gay Klentzman	1966, 67, 68
Kay Klentzman	1966, 67, 68
Valencia Kuykendall	2004, 05, 06, 07

## ♦ L ♦

Mele Leasau	2010, 11
Jimmie Ruth Levingston	1967, 68
Nadine Lissouck	2008, 09
Shardé Little	2008, 09
Caro Lloyd	2015
Emely Lopez	2014, 15

## ♦ M ♦

Olivia Madison	2012
Brittany Maxey	2010, 11
Dominique Mayberry	2009, 10
Erin McGarrachan	2013, 14, 15
Deborah Mize	2000, 01, 02
Mollye Mlcak	2012
Jasmin Moore	2008
Rebecca Morales	2006
Megan Morris	2008, 09
Veronica Mueller	2012

## ♦ N ♦

<b>Monet Neal</b>	<b>2013, 14, 15</b>
Tonie Noise	2000, 01, 02
Ashleigh Nwanguma	2013, 14, 15

## ♦ O ♦

Jacqueline Overby	2006, 07
Carey Owens	2000

## ♦ P ♦

Soraya Page	2014
Amisha Payne	2000, 01
Whitney Pederson	2006, 07, 08
Joselyn Pugh	2010, 11, 12, 13

## ♦ R ♦

Rachel Rost	2003, 04
-------------	----------

## ♦ S ♦

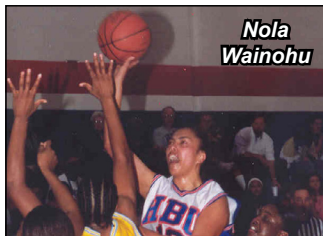
Cari Scaff	2001, 02, 04, 05
Donna Schamber	1966
<b>Meghan Shank</b>	<b>2013, 14, 15</b>
<b>Heidi Sihvola</b>	<b>2014, 15</b>
Jejela Simpson	2007, 08, 09
Ruth Skelton	1966
Elinor Smith	2001, 02, 03, 04
Erica Smith	2001, 02, 03
Margaret Smith	1967, 68, 69

LETTERWINNERS

Jamie Spriggs 2009, 10, 11  
Mary Squires 1969  
Shanice Steenholdt 2012, 13, 14, 15  
Stephanie Stoglin 2005  
**Anna Strickland 2014, 15**

◆ T ◆

Destini Texada 2010, 11  
Dominique Thomas 2005, 06, 07  
Fallon Thomas 2008, 09



**Nola Wainohu**

◆ W ◆

Nola Wainohu 2000  
Devyn Weymouth 2012, 13  
Creshun White 2008  
Arie Wilson 2005  
Courtney Wilson 2008  
Shellie Winzer 2001, 02, 03  
Shonté Witherspoon 2000, 01

◆ Z ◆

Shannon Zoet 2001



**Velencia Kuykendall**



**Jessica Brantley**

HBU HONOR ROLL

**All-America**  
Tiffany Andrews 2000-01, '01-02, '02-03  
Elinor Smith 2002-03, '03-04  
Jeré Adams 2003-04, '05-06  
Sherill Hadrick 2003-04, '05-06  
Stephanie Stoglin 2004-05  
Arie Wilson 2004-05  
Dominique Thomas 2004-05, '05-06, '06-07  
Velencia Kuykendall 2005-06, '06-07

**Academic All-America Scholar-Athlete**  
Carey Owens 1999-00  
Tiffany Andrews 2001-02, '02-03  
Ryylon Brailsford 2002-03  
Griffin Colvert 2003-04  
Arie Wilson 2004-05  
Ashley Davis 2006-07

**F.L. McDonald Post-Graduate Scholarship**  
Devyn Weymouth 2014-15

**Academic All-Conference**  
Tiffany Andrews 1999-00, '00-01, '01-02, '02-03  
Ryylon Brailsford 1999-00, 2000-01, 2002-03  
Tonia Noise 1999-00, '01-02  
Shawnaka Holland 1999-2000, '01-02  
Carey Owens 1999-00  
Deborah Mize 2000-01, '01-02  
Natasha Avey 2000-01, '01-02, '03-04, '04-05  
Griffin Colvert 2000-01, '01-02, '02-03, '03-04  
Cari Scaff 2000-01, '03-04, '04-05  
Elinor Smith 2000-01, '01-02, '02-03, '03-04  
Shannon Zoet 2000-01  
Kanika Harvey 2001-02, '02-03  
Erica Smith 2001-02, '02-03  
Shellie Winzer 2002-03  
Mary Ames 2002-03, '03-04, '03-04  
Marsha Forbes 2003-04, '04-05  
Ashley Davis 2004-05, '05-06, '06-07  
Velencia Kuykendall 2004-05, '05-06, '06-07  
Arie Wilson 2004-05  
Jacqueline Overby 2005-06, '06-07  
Jessica Brantley 2005-06, '06-07  
Sherill Hadrick 2005-06

**Red River Athletic Conference Champions**  
1999-2000, '00-01, '01-02, '02-03, '03-04, '04-05, '05-06

**All-Red River Athletic Conference**  
Carey Owens 1999-00  
Nola Wainohu 1999-00  
Tiffany Andrews 1999-00, '00-01, '01-02, '02-03  
Shonté Witherspoon 2000-01  
Elinor Smith 2000-01, '01-02, '02-03  
Jeré Adams 2001-02, '02-03, '05-06  
Griffin Colvert 2001-02  
Shellie Winzer 2002-03  
Stephanie Stoglin 2004-05  
Dominique Thomas 2004-05, '05-06, '06-07  
Arie Wilson 2004-05  
Cari Scaff 2004-05  
Natasha Avey 2004-05  
Sherill Hadrick 2003-04, '05-06  
Velencia Kuykendall 2005-06, '06-07  
Jessica Brantley 2005-06, '06-07  
Jacqueline Overby 2006-07  
Jasmine Irving 2006-07

**RRAC Coach of the Year**  
Shane Brown 2002-03, '03-04, '04-05

**RRAC Player of the Year**  
Tiffany Andrews 2001-02, '02-03  
Elinor Smith 2003-04  
Stephanie Stoglin 2004-05  
Jeré Adams 2005-06

**RRAC Defensive Player of the Year**  
Shonté Witherspoon 2000-01  
Jeré Adams 2002-03, '03-04  
Dominique Thomas 2004-05, '05-06

**RRAC Newcomer of the Year**  
Stephanie Stoglin 2004-05

**Great West All-Conference**  
Raquel Jones (HM) 2009-10  
Destini Texada (2nd) 2009-10  
Destini Texada (2nd) 2010-11  
Devyn Weymouth (2nd) 2011-12  
Joselyn Pugh (HM) 2011-12  
Shanice Steenholdt (HM) 2011-12

Wiebke Bruns (HM) 2012-13  
Tayler Jefferson (HM) 2012-13  
Erin McGarrachan (HM) 2012-13  
Shanice Steenholdt (1st) 2012-13

**Great West All-Newcomer Team**  
Taniqua Hollis 2009-10  
Destini Texada 2009-10  
Devyn Weymouth 2011-12  
Erin McGarrachan 2012-13

**Great West Academic All-Conference**  
Ernesta Gricunaite 2010-11  
Tia Jackson 2010-11  
Wiebke Bruns 2012-13  
Erin McGarrachan 2012-13  
Devyn Weymouth 2012-13

**Southland All-Conference**  
Shanice Steenholdt (1st) 2013-14

**Southland All-Defensive Team**  
**Anna Strickland 2014-15**

**Southland All-Tournament Team**  
Tayler Jefferson 2014-15  
Erin McGarrachan 2014-15

**Southland Conference Spring Honor Roll**  
**Rachel Arthur 2013-14**  
Wiebke Bruns 2013-14  
Maisie Elston 2013-14  
**Ekemini Essien 2013-14**  
Tayler Jefferson 2013-14  
Erin McGarrachan 2013-14  
Soraya Page 2013-14  
**Monet Neal 2013-14**  
Ashleigh Nwanguma 2013-14  
**Megan Shank 2013-14**  
**Heidi Sihvola 2013-14**  
Shanice Steenholdt 2013-14  
**Anna Strickland 2013-14**

**Most Valuable Player**  
Carey Owens 1999-00  
Shonté Witherspoon 2000-01  
Tiffany Andrews 2001-02, '02-03  
Elinor Smith 2003-04  
Stephanie Stoglin 2004-05  
Arie Wilson 2004-05

**Defensive Award**  
Shonté Witherspoon 1999-00, '00-01  
Jeré Adams 2001-02, '02-03, '03-04  
Dominique Thomas 2004-05

**Teammate of the Year**  
Carey Owens 1999-00

**Orange and Blue Award**  
Carey Owens 1999-00  
Shannon Zoet 2000-01  
Shawnaka Holland 2001-02  
Shellie Winzer 2002-03  
Griffin Colvert 2003-04  
Cari Scaff 2004-05

**Offensive Player of the Year**  
Tiffany Andrews 2000-01  
Elinor Smith 2000-01, '02-03, '03-04  
Arie Wilson 2004

**Independent Defensive Player of the Year**  
Fallon Thomas 2008-09

**Mildred Boone/Francis Curtis Spirit Award**  
**Monet Neal 2013-14**

**HBU Sports Hall of Honor**  
Tiffany Andrews 2005  
Carey Owens 2006  
Elinor Smith 2007  
Griffin Colvert 2008  
Jeré Adams 2010  
Cari Scaff 2014



FBI

# COMPLIANCE

The goal of the Athletics Compliance Office is to educate, monitor, and verify NCAA rules compliance with regard to each sport and component within the Athletics Department. The compliance office strives to be proactive with education along with having monitoring systems in place that are effective and user friendly. HBU compliance embraces open communication with faculty, staff, student-athletes and the community at large. It is compliance office's position that all questions and requests for rules interpretations shall be answered in a friendly and timely manner. In addition, it should be known that no rules violation is too minor to be reported. In responding to rule violations, the compliance office will determine whether the violation was incidental or intentional and to what effect the violation will have on the involved coach, student-athlete or administrator.

The compliance office maintains an open-door policy and is designed to be student-athlete friendly. The compliance office functions as an office within the Department of Intercollegiate Athletics at Houston Baptist University. It is the mission of the compliance office to provide a service to HBU which is in alignment with the overall mission of the University.

## Mission Statement

The HBU Athletics Compliance Office is committed to creating and fostering an atmosphere of compliance throughout the HBU community. Operating with integrity and accountability, the Athletics Compliance Office will educate, monitor and promote all aspects of rules compliance in accordance with NCAA, Great West Conference, and HBU rules and regulations.

## Rules & Regulations

Effective institutional management and integrity in intercollegiate athletics through compliance with, and enforcement of, the rules and regulations of Houston Baptist University the NCAA, the Great West Conference, and the standards of fair play and appropriate conduct for student-athletes and institutional representatives.

## Amateur Sportsmanship

The call to honesty, integrity, commitment, hard work and social responsibility resounds from the Department's administrators, coaches and student-athletes. Through participation in athletics, student-athletes are provided opportunities to develop essential life skills in leadership, teamwork, discipline, goal setting, respect for self and respect for others, as demonstrated both on and off the field of play.

## HBU's Commitment to Rules Compliance

Houston Baptist University has made the commitment to operate and support a Division I athletics program. Along with this commitment is the pledge that the program is administered and operated with the highest level of integrity, respect and regard for all rules and regulations that govern its operation. It is every coach and staff member's responsibility to operate his/her program in full compliance with all NCAA, Great West Conference and Institutional rules and regulations. Ignorance of these regulations cannot be used as an excuse for failure to comply.

Coaches and staff members have an affirmative duty to the following: Knowledge of all NCAA and Great West Conference regulations and policies including but not limited to, recruiting, eligibility, amateur status and sporting behavior, as well as all rules interpretations, observance of all NCAA and Conference regulations and HBU policies. Self-reporting of all known or potential violations to the Assistant Athletic Director Compliance or the Athletic Director. Full cooperation with NCAA, Confer-

ence and HBU in all investigations and provision of any of these entities with truthful and complete information concerning involvement in or knowledge of any violation of NCAA, Conference and regulations.

As a member of the NCAA, Houston Baptist University is accountable for the actions of its boosters and fans. Even the best-intentioned action on a fan's part may be a violation of NCAA rules. Please contact the HBU Athletics Compliance Office if you have any questions concerning what is permissible.

If you have any questions or concerns please feel free to contact the compliance office at 281-649-3342.

## PROSPECTIVE STUDENT-ATHLETES

### Who is a prospective student-athlete?

A "prospective student-athlete," better known as a "recruit" or "prospect", is a student who has started classes for the ninth grade, with the exception of men's basketball which is a student who has started classes for the seventh grade. In addition, any younger student-athlete who receives any benefits from the institution would be considered a recruit.

## Recruiting

Only coaches and athletic department staff may be involved in the recruiting process. Athletics representatives are prohibited from contacting a prospective student-athlete or members of his/her family by telephone, letter, e-mail, or in person for the purpose of encouraging participation in athletics at Houston Baptist University. This prohibition remains in effect even after the prospect signs a National Letter of Intent (scholarship offer).

NCAA Recruiting Definitions  
NCAA Recruiting Calendars

## Visiting HBU

An "official visit" is a visit paid in whole or in part by the university and cannot exceed 48 hours in length. A prospect can make a total of five official visits, with a limit of only one per university.

Official Visit Checklist (link to .pdf file)

An "unofficial visit" is a visit made at the prospect's own expense. The university may provide (a) three complimentary tickets to an on-campus athletics event in which the university's team is competing and (b) transportation to view off-campus practice and competition sites within a 30-mile radius. Prospects can make as many unofficial visits as they want.

## National Letter of Intent

The National Letter of Intent (NLI) is a binding agreement between a prospective student-athlete and an institution in which the institution agrees to provide a prospective student-athlete who is admitted to the institution and is eligible for financial aid under NCAA rules athletics aid for one academic year in exchange for the prospect's agreement to attend the institution for one academic year. All colleges and universities that participate in the NLI program agree to not recruit a prospective student-athlete once he/she signs an NLI with another college or university. Therefore, a prospective student-athlete who signs an NLI should no longer receive recruiting contacts and calls and is ensured an athletics scholarship for one academic year. The NLI must be accompanied by an institutional financial aid agreement. If the student-athlete does not enroll at that institution for a full academic year, he/she may be subject to specific penalties, including loss of a season of eligibility and a mandatory residence requirement.

## Who is a "Representative of Athletic Interests?"

A "representative of the institution's athletics interests" or Booster can be an individual, independent agency, corporate entity or other organization

### BOOSTERS

- ◆ Have ever made financial contributions to the athletic department, or a specific team.
- Have contacted, in any manner, students in grades 9-12 regarding Husky athletic programs.
- ◆ Be assisting or to have assisted in providing benefits to enrolled student-athletes or their families.
- ◆ Have provided or arranged summer employment for student-athletes.
- ◆ Have provided benefits to a student-athlete and or their parents
- ◆ Are or ever have been a Husky season ticket holder (NCAA bylaw 13.02.13)
- ◆ According to NCAA rules, once an individual has been identified as an institutional "representative of athletic interests" the individual IS A BOOSTER FOR LIFE!
- ◆ Houston Baptist University is ultimately responsible for the acts of all "representatives of athletic interests" in relation to NCAA rules and regulations.

### Important Reminders

- ◆ Boosters cannot be involved in the recruiting process.
- ◆ Only HBU staff members may be involved in the recruiting process. Boosters who are not employed by HBU may not contact a prospect in any way.
- ◆ Boosters may not have any involvement with a prospect during an official or unofficial visit to the HBU campus.
- ◆ Boosters may continue to maintain pre-existing relationships with neighbors and friends who have prospect age children as long as you do not encourage participation in HBU athletics.
- ◆ You may not contact an enrolled student-athlete at another institution for the purpose of encouraging transfer to HBU and participation in our athletic program.
- ◆ Boosters may not provide benefits of any kind to prospects or their families.

### Boosters CANNOT:

- ◆ Provide cash or loans in any amount.
- ◆ Sign off or co-sign a note with an outside agency to arrange a loan.
- ◆ Employ relatives or friends of a prospect as an inducement for the enrollment of the prospect at HBU.
- ◆ Provide gifts of any kind (e.g. birthday) or free services (airline tickets, laundry, meals in restaurants).
- ◆ Provide discounts for goods or services.
- ◆ Provide use of an automobile.
- ◆ Provide hospitality or lodging in your home.
- ◆ Provide them transportation within or outside of the campus area. (e.g. from campus to your home, from the airport to campus, to summer job, etc.)
- ◆ Entertain or contact a prospect or prospect's parents on or off campus.

### Boosters CAN:

- ◆ Attend high school and junior college athletic events assuming no attempt is made to contact the prospect or his/her coaches.
- ◆ You May attend a public event (high school awards banquet) at which prospects are in attendance. No attempt should be made to recruit the prospect.
- ◆ You May discuss summer employment arrangements with a prospect AFTER he/she has signed a National Letter of Intent.

- ◆ You are permitted to play "pick up" basketball or softball games, continue neighborhood picnics or backyard barbecues and engage in your normal activities with the prospect and their family and friends. Again, you simply are not permitted to discuss the athletic program.
- ◆ Reminders regarding relationships with currently enrolled HBU student-athletes:

DO NOT employ or arrange employment for a prospective or enrolled student-athlete without checking first with the HBU Athletic Department. The department is permitted to make arrangements for summer employment for prospects prior to enrollment as freshmen and to enrolled student-athletes during the summer and semester breaks. Stringent rules apply in these instances and written records must be kept regarding employment.

DO NOT provide transportation for prospects or student-athletes in your employ unless transportation is provided for all employees.

DO NOT provide employment for student-athletes during the academic year without contacting the HBU Athletic Department first. The NCAA has strict rules about the amount and source of outside funds during the academic year.

DO NOT provide a student-athlete or friend discounted clothing, reduced rent, or any other benefits. The NCAA considers these extra benefits and they are specifically prohibited.

DO NOT provide room and/or board or any type of transportation during the summers for a student-athlete with eligibility remaining.

DO NOT provide any payment, expense or loan of an automobile for student-athlete to return home or to any location for ANY reason.

DO NOT provide lodging or transportation costs incurred by friends or family of an enrolled student-athlete to visit campus or attend an away athletic contest.

DO NOT expend funds to entertain student-athletes, their friends or relatives. You are not even permitted to buy soda or a cup of coffee for them.

DO NOT use the name or picture of an enrolled student-athlete to directly advertise, recommend or promote sales or use of a commercial product or service of any kind. Even the sale of a picture of an enrolled student-athlete would jeopardize his/her eligibility.

DO NOT provide awards or gifts to a student-athlete for his or her athletic performance. All awards must conform to NCAA regulations and must be approved by HBU.

DO NOT allow a student-athlete, his/her friends or relatives to use your telephone to make long distance calls even if it is a free call. THIS INCLUDES CELL PHONES!

DO feel free to invite an HBU team for dinner or to meet with a group of alumni in a city where they are competing. The NCAA permits student-athletes, AS A TEAM, to receive special benefits not permitted as individuals. Arrangements for such events can be made in advance with the head coach or Athletic Department.

### DR. ROBERT B. SLOAN JR.



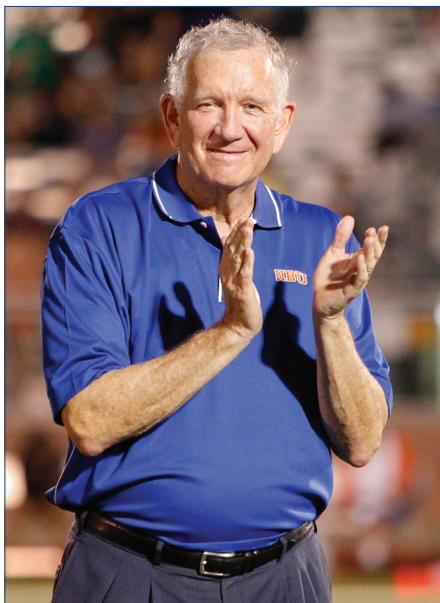
#### University President

Dr. Robert B. Sloan Jr. is in his 10th year as President of Houston Baptist University, the third president in the school's history. He came to HBU from Baylor University, where he served as both Chancellor and President.

HBU has seen tremendous growth in Sloan's first nine years as President. Enrollment has increased, building is happening all over campus and the Huskies have moved back to NCAA Division I. This is all part of Sloan's vision to make HBU one of the premier Christian institutions in the country.

Born in Coleman, Sloan grew up in Abilene before attending Baylor and earning a bachelor of arts degree cum laude, graduating "With Distinction." In his freshman year, Sloan was a member of Baylor's baseball team. He then earned a master of divinity degree magna cum laude from Princeton Theological Seminary before conducting postbaccalaureate research in church history at the University of Bristol, England, and earned the Doktor der Theologie degree insigni cum laude from the University of Basel, Switzerland.

Before returning to Baylor to join the faculty of the Department of Religion, he taught at Southwestern Baptist Theological Seminary and adjunctively at Hardin-Simmons University. He was the first to hold the position of chair of the George



W. Truett School of Evangelism at Baylor and became founding Dean of Truett Seminary in 1993. Two years later, Sloan was named President of Baylor University. Ten years later, in 2005, Sloan was named Chancellor.

While holding a full-time academic position, Sloan served as interim pastor of more than 20 churches throughout Texas and Oklahoma. He has also authored two books, edited several and published more than 50 articles during his career.

Sloan has held memberships in many professional societies and learned organizations. He has held numerous civic positions in the Waco area and has served on the board of Independent Colleges and Universities of Texas, the American Association of Presidents of Independent Colleges and Universities, the Big 12 Athletic Conference Board of Directors, and the Group of 6 (six major athletic conferences). He was inducted into the Little League Hall of Excellence in 1996.

Married to the former Sue Collier, the Sloans have seven children, Chrissa, Bryan, Charissa, Eraina, Michael, Alatheia, Sophia and Paul, along with their three daughters-in-law and four sons-in-law.

They are also the proud grandparents of 20 grandchildren.

**STEVE MONIACI**



**Director of Athletics**

Steve Moniaci was named the Director of Athletics at HBU on Feb. 1, 2010 after serving as interim director since May 2009. In his role, he oversees the day-to-day operations of the athletic department and its 17 NCAA Division I sport programs. He came to HBU in January of 2007 as the associate director of athletics, after 26 years across town at Rice University.

During his five-plus years as director of athletics, HBU has successfully transitioned back to NCAA Division I membership status, joined the Southland Conference, and started a football program, which competes in the Football Championship Subdivision (FCS). Moniaci was pivotal in the construction of HBU's new 5,000-seat on-campus football venue, Husky Stadium, which debuted on Sept. 6, 2014, as HBU hosted McMurry in the season opener.

As members of the Great West Conference, HBU won four-straight women's golf titles and also won championships in volleyball, women's soccer, indoor track and field, softball and baseball. The men's golf team, competing in the America Sky Conference, won a pair of league titles and advanced to the 2013 NCAA Championships.

He began his tenure at Rice as the executive director for the Owl Club and director of athletic promotions. He was elevated to assistant athletic director in charge of operations in 1985, associate athletic director in 1997 and rose to the position of senior associate athletic director in 2001, a position he held until 2006.

Moniaci was the administrator at Rice directly responsible for volleyball, baseball, tennis, golf and women's soccer. During his tenure with the Owls, he played an integral role in the success of the baseball team's 11 conference champion-

ships and five College World Series appearances, including the 2003 NCAA National Championship.

He was also responsible for academic advising, sports information, marketing and athletic fund-raising, concessions and facilities maintenance. Moniaci has extensive experience in overseeing facilities renovations and construction. He oversaw renovations to historic Rice Stadium and to Rice Track to accommodate the addition of women's soccer. He also played an important role in the expansion of Rice's Reckling Park, which is consistently rated as one of the country's top collegiate baseball venues.

Moniaci graduated summa cum laude with a bachelor's degree in physical education and a minor in mathematics from Ball State University. He went on to attain his master's degree in education with an emphasis in athletic administration from Ohio University.

He and his wife, Cathy, have two daughters, Alyssa and Andrea.

**RON COTTRELL**



**Associate Director of Athletics/  
Head Men's Basketball Coach**

Ron Cottrell is in his seventh year as associate director of athletics after serving 16 years as director of athletics for the Huskies. Cottrell worked very closely with HBU President Robert Sloan in leading HBU's transition back to NCAA Division I.

Under Cottrell's leadership, HBU athletics became one of the premier NAIA programs in the country, winning 42 conference championships and competing in national tournaments 32 times.

Cottrell then led the Huskies back into NCAA Division I as a member of the Great West Conference, building on the successes of the past.

Under his guidance, HBU produced 96 All-America and 62 Academic All-America honorees while maintaining a graduation rate above 90

## ADMINISTRATION

percent. Cottrell was honored by his peers as the 2001 NAIA Region Athletics Director of the Year.

Cottrell also has served HBU as head men's basketball coach for 26 years and led his last 10 NAIA teams to national championship appearances. He recorded his 400th career victory in 2011-12 and has been named Conference Coach of the Year five times. In 2002-03, Cottrell was chosen Basketball Times National Coach of the Year after leading the Huskies to a 31-3 record and the nation's top ranking. He also was chosen as a coach for USA Basketball in 2006, helping select the U18 team that won the gold medal at the FIBA Americas Championship.

A native of Arkansas, Cottrell attended Houston's Westbury High School. After graduating from Westbury, Cottrell attended the University of Arkansas, where he served as a volunteer coach for Nolan Richardson, his mentor, while earning his degree in industrial engineering. He also served as sports director for Fayetteville, Ark., ABC affiliate KTVP-TV. Cottrell then spent a year as an assistant coach at North Dakota State College of Science before returning to Arkansas and joining Richardson's staff as an assistant coach. During Cottrell's years as an assistant at Arkansas, the Razorbacks won two Southwest Conference championships and went to the NCAA tournament three times, culminating with the Hogs' appearance at the 1990 NCAA Final Four.

Cottrell is married to the former Jacque George, who served as director of media relations at HBU and also worked in the media relations office at the Great West Conference, Southwest Conference and the sports information office at the University of Arkansas. They have two daughters, Scottlyn Rose and Sydney-Anne. Scottlyn is a junior at HBU and is a manager for the men's basketball team. He also serves as a deacon at Sugar Land Baptist Church.

## TOM PAYNE



### Associate Director of Athletics/ Business & Operations

Tom Payne enters his fifth year at HBU and his second as associate athletic director for business and operations. He has worked in a variety of capacities over the course of his 14-year career and has had the luxury of gaining valuable experience in fiscal management and planning, facility management, internal operations, project management, strategic planning, student development, fundraising, marketing and promotions, sports camps, human resource management, and coaching.

As the associate athletic director for business and operations, Payne will be responsible for oversight of all intercollegiate athletic department fiscal operations. He will ensure that all fiscal operations are in full compliance with university, federal, state, Southland Conference, WAC and NCAA guidelines. Payne will work closely with all department staff, financial affairs, accounts payable, human resources, and other service departments on campus. He will also oversee all event operations for the 16-NCAA Division I sports. In addition, Marketing, Promotions, Ticket Operations and Broadcasting fall under Payne's umbrella of responsibilities. He also serves as the sport administrator for Baseball, Men's and Women's Cross Country, and Men's and Women's Indoor/Outdoor Track & Field programs.

Payne arrived at HBU after a short stint at the University of Houston. Prior to Houston, he served as the assistant athletic director of facilities at Johns Hopkins University, where he made a tremendous impact on the overall department. At Hopkins, the facility area saw a major change with many upgrades and improvements on how operations were conducted. Payne was also part of the first-ever department strategic plan for in-

tercollegiate athletics, serving as the chair of the image committee, and sitting on the facility committee. The image committee reviewed and recommended a variety of changes and upgrades for marketing and branding of all sports. During his time, he was part of the completion of a multi-million dollar track and field complex. Payne oversaw major internal facility upgrades, including women's lacrosse, wrestling, and men's lacrosse locker room upgrades. He also oversaw improvement for external facilities including the baseball field, Homewood Field Stadium, and the Lacrosse Practice Field. He worked closely with the University police department and University facilities to improve safety and security plans around all athletic and recreation facilities.

Payne has had stops at Cornell University, Binghamton University, and Purdue University, serving in a multitude of positions. He brings a wealth of Championship experience to the department after serving in a variety of roles working with the Texas Bowl, USA Track & Field National Championships, National Senior Games, Empire State Games, and the NCAA Division III Stagg Bowl. He has also served as the Box Office Manager for the Men's & Women's Southland Conference Basketball Tournament the past three years.

He is a member of NACDA, CABMA, NACMA, NAADD, IAVM, NASPA, and a variety of other professional organizations. Thomas currently serves on the membership committee for CABMA.

Payne received his Bachelor of Science degree in Health and Physical Education from Ithaca College and continued on at Ithaca to work on his graduate studies in Exercise Science.

Payne and his wife, Amanda, are proud parents of two pups: Bear, a maltipoo, and Chloe, a chocolate lab mix.

## MARY-ELLEN HALL



### Senior Woman Administrator/ Head Softball Coach

Mary-ellen Hall is in her seventh year as Senior Woman Administrator at HBU. Hall's duties at SWA is to coordinate and/or provide support of all woman's sports teams at HBU, attend home and away games and conference championships as appropriate to represent the department, participate in the hiring and evaluation of sports coaches, disseminate pertinent information to coaches, provide insight and information regarding women's issues and programming at all levels, as well as support for all woman's programs. She also represents HBU at Great West Conference and NCAA meetings and conventions.

Hall is also the head softball coach at HBU and the 2014 season was her 23rd at the helm of the program. With a career record of 728-408, she has the most victories by any head coach in HBU history. She led the Huskies to the Great West Conference championship in 2011, nine NAIA national championship tournament appearances and was the Red River Athletic Conference Coach of the Year every year HBU was a member of the league. In 2005, the Huskies posted the record for number of wins in a season (51) and concluded the season ranked the highest in program history (2nd). She and assistant coach Roger Willhite were honored as NAIA Southwest Region Coaching Staff of the Year in 1999 and 2005. She has coached 31 All-Americans and 44 Academic All-Americans.

Hall is a 1988 graduate of HBU and was inducted into the HBU Sports Hall of Honor in 2012.

## ADMINISTRATION

### DR. ROBERT TOWERY



#### NCAA Faculty Representative

Dr. Robert “Bobby” Towery is in his third year as the Faculty Athletic Representative at HBU, after serving five years as the chairman of HBU’s Athletic Affairs Committee and liaison to the NCAA.

Towery has been a professor of chemistry at HBU since 1999 and has directed Welch undergraduate research scholars on several projects. He is a member of the American Chemical Society and International Union of Pure and Applied Chemistry, was a COSM Nominee for the Minnie Stevens Piper Award in 2008 and earned the Opal Goolsby Excellence in Teaching Award in 2004.

Prior to working at HBU, Towery worked in private business from 1992-1999 with the Drew Industrial Division of Ashland Chemical Company and Larry S. Minter, Inc.

He was a research and teaching assistant at the University of Southern Mississippi from 1985-1992 and also taught at Hinds Junior College, Belhaven University, and First Presbyterian Christian Day School.

Towery earned a bachelor of science in chemistry from Belhaven in 1978, while playing both baseball and basketball for the Blazers. He earned his Ph.D. in Analytical Chemistry from Southern Miss in 1999.

He and his wife, Lisa, reside in The Woodlands.

### TED SEILHEIMER



#### Asst. AD/ Compliance & Academics

Ted Seilheimer is in his third year as assistant director of athletics for compliance and academics at HBU, after serving for two years as director of compliance. He handles the day-to-day administration and investigation of NCAA compliance issues. Seilheimer returned to athletics after practicing law for two years, focusing primarily on real estate, corporate, and civil litigation matters. He most recently worked with the United States Soccer Federation and the Houston Dynamo in various operational and coordinator capacities, and has assisted the Huskies in developing marketing initiatives and managing gameday operations.

A Houston native, Seilheimer worked for the University of Texas at Austin athletics department for four years while earning his bachelors degree in Plan II Honors and Government, and graduated from the University of Notre Dame Law School where he interned with the Notre Dame Student Activities Office, the Immigration Legal Aid Clinic, and the St. Joseph County Public Defender Office.

He and his wife, Sarah, have a son, Owen.

**JAKE WONDERS**



**Director of  
Academics**

Jake Wonders begins his second year as Athletic Academic Director at HBU. This is his second stint at HBU, as Wonders was an assistant coach for the men's basketball team from 2003-06, helping the Huskies to three NAIA National Tournament appearances. Wonders was the recruiting coordinator and responsible for all team travel.

Wonders comes back to HBU after a two-year stint as the head men's basketball coach at San Jacinto College in Pasadena, Texas, from 2011-13. He had a career record of 47-13 at San Jac, helping five student-athletes earn scholarships at NCAA Division I institutions. Wonders first came to San Jac as an assistant men's basketball coach for the 2010-11 season before earning the head position in May, 2011.

Prior to his time at San Jac, Wonders was the head men's basketball coach at Panola College in Carthage, Texas, from 2006-10, where he led the Ponies to three appearances in the NJCAA Region XIV Tournament (2008-10).

Wonders worked with the Lamar men's basketball team in different capacities from 1997-00 and returned to assist the team in 2002-03. Wonders was part of a Cardinal team that reached the NCAA Division I National Tournament (2000) - the only appearance in a 27-year span - and coached the NCAA Division I Men's Basketball Scholar-Athlete of the Year in 1998-99.

Wonders has also been a kinesiology professor at the schools while also assisting the men's basketball programs. He taught either kinesiology or physical education at HBU, Lamar, San Jac, Panola, and Lewis-Clark State College, where he was also an assistant coach for the men's basketball program from 2000-01.

Wonders earned his undergraduate degree at Central Michigan in 1997 with a degree in sport studies and a minor in management and psychology. He graduated cum laude and was nominated for the Jane McNamara Outstanding Physical Education Major Award. Wonders earned his master's degree in kinesiology from Lamar in 2000.

A member of the National Association of Basketball Coaches (NABC) and the Texas Association of Basketball Coaches (TABC), he served as College Men's Director for the TABC Board from 2010-13.

Wonders and his wife, Caren, have two sons.

**BARBARA TOLAR**



**Assistant Director of  
Compliance/  
Scholarships**

Barbara Tolar is in her eighth year as assistant director of compliance/scholarships coordinator for the Huskies. Tolar came to HBU after 35 years with the Rice University athletic department.

A Shreveport native, she moved to Houston when her husband, the late Charles Tolar, played football for the Houston Oilers. He played fullback for the Oilers for seven years until his retirement and then served the organization as a scout for three years. They met at Northwestern State University where Barbara and her family represented Charles at the century celebration of NSU football after he was chosen one of the Demons' Top 100 players.

While at Rice, Tolar served as a coaches' secretary, then executive assistant to the athletic director. She took over compliance and the duties of assistant to the athletic director on scholarships.

Tolar has three children: Debbie, Sharon and Brenda. She enjoys four grandchildren: Alicia, Nick, Shelby and Brandon, two great-grandchildren: Aisha and Braydon, and her Yorkshire terrier, Annie.

## ADMINISTRATION

### RACHEL STROMAN



#### Assistant Director of Compliance/ Eligibility

Rachel Stroman is entering her first year as assistant director of compliance/eligibility at HBU. She will also oversee the Student-Athlete Advisory Committee (SAAC).

She joins HBU after spending one year as athletics marketing assistant at Rice University, where she oversaw the marketing and promotion plans of the Owls' women's baseball and volleyball programs, as well as assisting with football, men's basketball and baseball.

Stroman has also served as a marketing associate for the Houston Rockets, where she was the lead for the 2014-15 Rockets Power Dancer and Entertainer auditions and assisted with Rockets corporate, community, ticket sales, marketing events and promotions and game operations.

A Houston native, Stroman earned her bachelor's degree from Texas Tech.

### DR. BRAD HOVIOUS



#### Executive Director of the Husky Club

Dr. Brad Hovious is in his fourth year as executive director of the Husky Club at HBU.

Hovious helps in the efforts to secure funds for HBU Athletics, including annual giving, endowed giving, and major gifts directly related to university projects.

Hovious served as Assistant Athletic Director for Development at Rice University from 1999-2010 and saw contributions to the Owl Club rise significantly under his guidance.

Prior to his tenure at Rice, Hovious was the Athletic Director at Arkansas State, where he had a major role in increasing booster club donations on an average of seven percent each year. He then left ASU to serve as a consultant to the Northwest Sun Bowl, then became the assistant golf

pro in Charlottesville, Va.

Hovious also served as the Director of Athletics at the University of Texas-El Paso from 1987 to 1993 and saw the Miners track and field, golf, tennis and football teams experience their best seasons under his watch. UTEP's football team was extended an invitation to the Independence Bowl and the basketball team qualified for five NCAA tournaments.

The Oxford, Miss., native was a two-sport letterman in basketball and tennis at Mississippi and received his bachelor's degree in physical education from Ole Miss in 1969, adding a master's in physical education in 1970. After two years as an officer in the army, he coached at the high school level for four years before he enrolled in Ohio University's sports administration program. He graduated with a master's degree from Ohio in 1975 and two years later earned a doctorate in education administration from Louisiana State.

After earning his doctorate, Hovious was Athletic Director at Delta State for 10 years and was also an assistant professor in the education department.

Hovious and his wife, Marcia, have four children: Mary Katherine Stout, Taylor Wilkinson, Greg Cohen, and Hally Cohen.

### SCOTT TARRANT



#### Director of Ticketing & Promotions

Scott Tarrant is in his eighth year at HBU, but is in his third year as director of ticketing and promotions. He is responsible for the ticketing of all Huskies athletic events, in-game entertainment, as well as Husky Sports Network broadcasts.

Tarrant came to HBU after more than 10 years with the McLane Group, serving as sales manager for Astrodome USA, special assistant to the chairman of the Houston Astros and director of sales for Classic Foods.

Along with current HBU director of athletics Steve Moniaci, Tarrant helped implement and develop the Minute Maid College Baseball Classic, which has matched the nation's top programs in a professional environment since 2001.

Tarrant was also instrumental in bringing the first NCAA Super Regional to a professional facility when Rice hosted Southwestern Louisiana at the Astrodome in 1999.

**OLGA CARVALLO**



**Promotions &  
Game Day Experience**

Olga Carvalho is in her first year as a graduate assistant for promotions and game day experience, after serving as a promotions and ticketing intern last year, at HBU.

She was a promotions assistant for the Cox Media Group from 2012-14, managing events for popular Houston radio stations.

A native of Sugar Land, Texas, Carvalho is a former captain of the HBU Cheerleading squad and graduated from HBU in May 2015 with a bachelor's degree in marketing. She is now working toward a master's in business administration.

**LACIE HINKLE**



**General Manager/  
HBU Sports  
Properties**

Lacie Hinkle has served as the General Manager of HBU Sports Properties since October 2014.

Hinkle came to HBU from the University of North Carolina at Greensboro where she was a Ticket Sales Assistant, focusing primarily on selling group tickets for UNCG men's and women's basketball games.

Prior to UNCG, Hinkle served as the Corporate Sales and Partnerships Assistant at Coastal Carolina University from 2013-14. While there, she assisted in the sale, renewal and fulfillment of corporate sponsorships, implemented sport specific marketing plans, oversaw the athletic department's external events, and produced social media content.

Hinkle is a 2013 graduate of Coastal Carolina and holds a bachelor of science degree in recreation and sport management. Prior to graduation, she interned in Coastal's athletic marketing office.

**SPIRIT COORDINATORS**



**Mon'sher Spencer**  
Cheerleading Coach



**Patrick Moore**  
Director of Bands



**Kiza**  
Mascot

**HBU ATHLETIC  
AFFAIRS COMMITTEE**

Theresa Fuqua

Mary-Ellen Hall

Paul Lewis

Phillip Marshall

Anthony Martin

Steve Moniaci

Jared Moon

Megan Mueller

Kylee Short

Hannah Wingate

Jake Wonders

Allan Yan



**John Yarrington - Chair**

### RUSS RENEAU



**Director of  
Media Relations**

Russ Reneau is in his sixth year as director of athletic media relations and seventh overall at HBU. He oversees the media relations efforts for the department's 17 NCAA Division I sports and is the primary contact for football and baseball.

He has seen the Huskies' official athletics website, HBUHuskies.com, through two redesigns, and he designs the department's printed marketing and promotional materials. Reneau also serves as the play-by-play voice for baseball road games and provided the color commentary for football road games in 2014. He began working at HBU as a statistician in 2007 and began helping with the coverage of the baseball and volleyball programs in 2009, before moving into a full-time role.

Reneau was the assistant director of athletic media relations and internet coordinator at Baylor from 2003-2006. He served as the primary contact for volleyball, track & field/cross country, men's and women's golf, and worked extensively with the men's and women's basketball and baseball programs as the secondary contact. Reneau oversaw two redesigns of BaylorBears.com and served as the play-by-play voice for Baylor Volleyball. He was also the assistant director at Jacksonville University from 2001-03, where he was the contact for the women's basketball, baseball and volleyball teams. Reneau began his career in collegiate athletics as the soccer, swimming and cross country contact at Rice in 2000.

During the 2005-06 academic year, Reneau's design of the Baylor Men's Golf Media Guide was ranked second nationally and the Baylor Women's Golf Media Guide was ranked fourth nationally by the College Sports Information Directors of America (CoSIDA). He was an official scorer at the 2003 NCAA Volleyball Championship in Dallas, assisted in hosting the 2010 NCAA Men's Basketball South Regional at Reliant Stadium in Houston and served on the local media committee for the 2011 NCAA Men's Basketball Final Four.

A Houston native, Reneau graduated with a bachelor of arts in journalism and corporate communication from Baylor in 1998, and earned a Master of Science in sports leadership from Duquesne in 2014. He is a member of CoSIDA.

### MARY ELLEN LEISERING



**Assistant Director of  
Media Relations**

Mary Ellen Leisering is in her eighth year as assistant director of athletic media relations at HBU and is the primary contact for the women's basketball, soccer, cross country and track and field programs.

She came to Houston after a 10-month internship at Wayne State University in Detroit where she was responsible for the Division I women's ice hockey program, as well as Division II men's and women's cross country and men's and women's tennis.

Leisering also served as the public relations intern for College Hockey America (CHA), where she was responsible for the weekly press releases and conference players of the week. She designed the WSU women's hockey and the CHA men's and women's media guides and was also the acting commissioner at the 2007 CHA Women's Hockey Tournament in Pittsburgh.

Leisering is a 2006 graduate of Mercyhurst College in Erie, Pa., where she earned her bachelor of arts degree in sport media. While at Mercyhurst, she was a four-year student assistant in the sports information office, assisting in all aspects of the Lakers' 25 varsity sports. She has sports information in her blood as her father, John, is the former SID at Mercyhurst College, and her brother, David, is the former SID at the University of Findlay. Leisering earned a Master of Liberal Arts at HBU in 2014.

She is a member of College Sports Information Directors of America and the Eastern College Athletic Conference Sports Information Directors Association.

**KYLE ROGERS****Assistant Director of  
Media Relations**

Kyle Rogers joined HBU as an assistant director of athletic media relations in Feb. 2015 and is the primary contact for men's basketball, volleyball, golf and softball.

A 2013 graduate of Stephen F. Austin, Rogers joined the SFA athletics department in July of 2013 after serving an internship within the media relations office. He served as the primary contact for men's basketball, soccer, baseball and women's tennis. During his time in the department, Rogers covered the men's basketball team during their 2014 Cinderella run to the third round of the NCAA Tournament. Along the way, Rogers helped maximize media coverage for the 'Jacks and head coach Brad Underwood, eventual winner of the 2014 Joe. B. Hall Award, given annually to the top first-year head coach. During the 2013-14 season, Rogers coordinated media coverage of SFA basketball with USA Today, Sports Illustrated, Yahoo Sports, LA Times, Newsweek and other major media outlets during the team's nation-leading home win streak and first-ever NCAA Tournament win.

In 2014-15, Rogers helped coordinate with ESPN2 and TV talent Jeff Van Gundy and Adam Amin for ESPN's College Hoops Tip-Off Marathon on November 18. He also coordinated media coverage for the Ladyjack soccer team as the program claimed their fourth consecutive Southland Conference regular season title and closed the regular season with the nation's longest active overall win streak.

Rogers also revamped the media guides for men's basketball and soccer. For basketball, he also compiled an all-time series history for the 'Jacks dating back to the program's first season in 1925 and added dates to the all-time year-by-year history.

As an intern, Rogers assisted with all 17 varsity sports, as well as updating the policy and procedures manual for the athletic department. Rogers' work as an intern included writing releases and recaps for all sports, updating bios, in-game statistical inputting and updating social media. Rogers also served as the public address announcer for Ladyjack softball and play-by-play announcer for the live streaming of Lumberjack

home baseball games.

A graduate of Elkins High School in Missouri City, Texas, Rogers originally attended SFA as a student-athlete. Rogers was a pitcher on the 2010 Lumberjack baseball team, but his time on the field was cut short due to consecutive shoulder injuries.

Rogers graduated cum laude from SFA with a degree in Radio/TV and minor in journalism. He broke into sports media, co-hosting an award-winning sports talk show on KSAU 90.1 FM, the university's student-run station, while serving as the station's news and sports director. Rogers also served as a contributing writer to the sports section of the university newspaper, The Pine Log. During his senior year Rogers' sports show was recognized by the Texas Intercollegiate Press Association for excellence in collegiate journalism and he was named outstanding student broadcaster for SFA.

Rogers and his wife, Lauren, were married in June 2015, and he is a member of the College Sports Information Directors of America.

**LINDSAY MATLOCK****Media Relations  
Student Assistant**

Lindsay Matlock is entering her first year as student assistant for HBU Athletic Media Relations and will assist primarily with men's and women's soccer.

Matlock had an outstanding four-year career for the HBU women's soccer team, ranking seventh all-time with 65 games and 5,653 minutes played, while tallying one goal and six assists. She is tied for the single-season record with 22 matches played and 22 matches started in 2014.

A native of Sacramento, California, Matlock helped lead the Huskies to the 2014 Southland Conference Tournament title and their first-ever appearance in the NCAA Tournament. Last season, she was named to the Southland All-Conference Second Team, SLC All-Tournament Team and was voted the team's defensive MVP. Matlock was also a Great West All-Conference selection in 2011 and earned HBU's Frances Curtis/Mildred Boone Spirit Award in 2013.

Matlock will graduate from HBU in December 2015 with a bachelor of science degree in psychology and aspires to be a sports psychologist.

## RICHIE VALDÉS



**Director of  
Athletic Training**

Richie Valdés is in his fourth year as director of athletic training at HBU and works primarily with the Huskies' football program.

Valdés came to HBU after serving as head football athletic trainer and assistant athletic trainer at Rice since 2006. He coordinated and supervised the healthcare needs for all football student-athlete, the Rice Stadium Athletic Training Room and provided on-site coverage for all practices, workouts, conditioning sessions and games in prevention, recognition, evaluation, rehabilitation and care of all athletic injuries.

While at Rice, he also served as sub-committee chair for medical services at the 2011 NCAA Men's Basketball Final Four, served as tournament medical director at the 2010 NCAA Men's Basketball South Regional, 2009 Conference USA Women's Tennis Championship, 2007 and 2008 NCAA Baseball Super Regional and 2007, 2008 and 2009 NCAA Baseball Regional. He was also tournament host for the 2008 NCAA Men's Basketball South Regional and 2007 Conference USA Men's Tennis Championship and assisted at two bowl appearances - the 2006 New Orleans Bowl and the 2008 Texas Bowl.

Prior to Rice, Valdés was a graduate assistant trainer at Southern Mississippi, where he worked with the softball and football programs. During his undergraduate work at Georgia, he was a student athletic trainer, assisting with women's soccer, football, softball and track and field.

Valdés earned his bachelor's degree in science education in exercise and sports science in athletic training from Georgia in 2004, then earned a master of science degree in sports administration from Southern Miss in 2006.

He is a certified member of the National Athletic Trainers Association, a licensed member of the Texas State Athletic Trainers Association, a member of the Southwestern Athletic Trainers Association and a member of the Greater Houston Athletic Trainers Association.

Valdés married the former Sarah Beth Hendley of Melbourne, Fla., in Dec. 2011, and they have two daughters, Caroline and Norah.

## EMILY KOHUT



**Associate Director of  
Athletic Training**

Emily Kohut is in her sixth year as associate director of athletic training at HBU, and will mainly be responsible for the care of the Huskies' football program.

She came to HBU after two years as assistant athletic trainer for the football program at Rice University. While at Rice, she also covered several football and basketball camps and NCAA postseason events.

A native of Osceola, Pennsylvania, Kohut attended California University of Pennsylvania, earning a bachelor of science degree in athletic training in 2008. She also served as an athletic training student.

She earned a master of education degree in allied health education and administration from the University of Houston in 2010.

Kohut is a certified and licensed athletic trainer and is a member of the National Athletic Trainers' Association. She is also a member of the Southwestern Athletic Trainers' Association and has obtained National Academy of Sports Medicine Performance Enhancement Specialist Certification.

## DANA QUINTERRO



**Assistant Athletic  
Trainer**

Dana Quinterro is in her seventh year as assistant athletic trainer at HBU, working primarily with the women's basketball program. Quinterro spent two years working for Austin Sports Medicine, assisting four orthopedic surgeons, four physical therapists and a physiatrist in daily clinical functions.

Quinterro earned a bachelor's degree in athletic training at the University of Texas in 2006. While at UT, she worked as the head athletic

training student with the Longhorn football team, as well as volleyball and women's track and field. Her duties at Texas also included assisting with the athletic training coverage at the Clyde Littlefield Texas Relays and numerous Big 12 championships. She was also a member of the Longhorn Athletic Training Student Association.

## OMNI ASHFORD



**Assistant Athletic  
Trainer**

Omni Ashford is in her third year as an assistant athletic trainer and will work primarily with the HBU cross country and track and field teams.

A 2011 graduate of HBU, Ashford was a four-year letterwinner for the track team, where she participated in the triple jump and sprints. She was the women's team captain in 2007. Ashford was also an athletic training student assistant at HBU. She made the Dean's List all four years and graduated with a bachelor of science degree in kinesiology: athletic training.

Ashford is a certified athletic trainer, a certified personal fitness trainer, and a healthcare provider with the American Red Cross.

## HANNA STELZER



**Assistant Athletic  
Trainer**

Hanna Stelzer enters her third year as an assistant athletic trainer and will work primarily with the volleyball and softball programs.

Stelzer came to Houston from Lubbock, where she was a student athletic trainer for the Texas Tech women's basketball team. Prior to that, she was a student athletic trainer at Shallowater High School, in Shallowater, Texas, where she assisted with the men's and women's basketball, softball, and baseball programs. She was also a student athletic trainer for Lubbock Sports Medicine, where she evaluated orthopedic injuries and fitted orthopedic devices and casts.

A Long Island, N.Y., native, Stelzer earned her bachelor's degree in exercise science from Concordia University of Chicago, and her master's degree in athletic training from Texas Tech. She was on the Dean's List at Concordia and she also played volleyball. She is a licensed athletic trainer in the state of Texas and has volunteered at the Special Olympics and Buffalo Springs Ironman.

## CHRIS EATON



**Assistant Athletic  
Trainer**

Chris Eaton is in his second year as an assistant athletic trainer. He came to HBU from Southeastern Louisiana University in Hammond, La., where he was a graduate assistant athletic trainer from 2012-14. While at Southeastern, he worked with the football and baseball teams, both of which were 2013-14 Southland Conference champions.

Eaton received his bachelor's degree in athletic training from Purdue University in West Lafayette, Ind. At Purdue, he spent time working with the swimming and diving, football, and cheerleading programs.

The native of Spiceland, Indiana, also spent a month in China, where he studied alternative practices in sports medicine.

## DANIEL MEZA



**Assistant Athletic  
Trainer**

Daniel Meza begins his second year as assistant athletic trainer, after spending the previous five years as a student assistant and intern. While a student assistant, Meza worked with several sports in his four years: women's soccer (2011-12), softball (2011-12), football (2012), men's basketball (2012) and baseball (2012-present).

He assisted with four conference tournaments (women's soccer, 2010; softball, 2010 and 2012; outdoor track and field, 2012) and the

## ATHLETIC TRAINING

HBU Cross Country Open in 2012. Meza is currently working a summer internship with the NFL's Houston Texans, where he covers all practices, workouts, conditioning sessions, and games. He also assists with prevention and care of on-field injuries, along with on-site rehabilitation. Meza also worked an internship with the Rice University football team from Aug.-Nov. 2010.

Meza graduated from HBU in May 2013, with a bachelor of science degree in kinesiology with an emphasis in athletic training.

### KATIE BECNEL



#### Graduate Assistant Athletic Trainer

Katie Becnel enters her second year as a graduate assistant athletic trainer at HBU. She works primarily with the women's soccer program.

Becnel received her bachelor's degree in athletic training from Southeastern Louisiana in Hammond, La. While at SLU, Becnel worked with the 2013 Southland Conference champion football program. She served as a state senator for the SLU Athletic Trainers' Association and also acted as the Student Representative for the Louisiana Athletic Trainers' Association Executive Committee.

A Belle Chasse, La., native, Becnel is working towards a master's degree in theological studies at HBU.

### JUSTIN HENSON



#### Graduate Assistant Athletic Trainer

Justin Henson begins his first season as a graduate assistant athletic trainer at HBU. He will help cover the football and men's and women's golf programs.

A native of Boling, Texas, Henson earned his bachelor of science degree in athletic training from Texas State University in San Marcos, Texas. During his time there, he served as the Southwest Athletic Trainers' Association Education Committee Chair for the states of Texas and Arkansas. While in school at Texas State, he was also attending the Lauterstein-Conway Massage School, where he received his License in Massage Therapy in 2012.

Henson did internships with an Arena Football Team and with professional soccer team, the San Antonio Scorpions.

He is working towards his master's in education at HBU.

## TEAM PHYSICIANS



**Alysia Bedgood**



**Michael Kent**



**Arun Rajaram**



**Randolph Taylor**

**PAUL CONSTANTINE****Director of Athletic Performance**

Paul Constantine enters his third year at HBU. After spending one season as director of football athletic performance, he now oversees all 17 of the Huskies' NCAA Division I programs as director of athletic performance.

Constantine spent the 2012-13 academic year at Baylor University as athletic performance coach and intern strength and conditioning coach, working with the Bears acrobatics and tumbling team, men's tennis, as well as assisting with football and volleyball. He was also a strength and conditioning assistant and intern strength and conditioning coach at Campbell University from 2011-12, working with the Camels' football, men's and women's basketball, volleyball and wrestling programs.

Constantine graduated from Campbell with an Bachelor of Science degree in exercise science in 2012. He was a four-year letterwinner as a wide receiver on the Camels' football team from 2008-2011 and was a member of the Unity Council (team captain). In 2011, he earned Pioneer League All-Conference honorable mention and Pioneer League Academic All-Conference honors.

Originally born in Miami, Constantine was a standout wide receiver at Enloe High School in Raleigh, N.C.

**RENÉ PEÑA****Director of Olympic Athletic Performance**

René Peña is in his second year as the Director of Olympic Athletic Performance at HBU and his 19th as a strength coach.

Peña comes to HBU after spending the past four years being the strength and conditioning coordinator for the St. Louis Cardinals. While with the Cardinals, Peña was a member of the exciting 2011 World Series champions and also the 2013 National League champions. Peña's talent helped develop many Major League athletes while with the Cardinals and many Minor League championship titles as well.

As a strength coach, Peña has worked with many athletes in the high school, collegiate, and professional level in both men's and women's sports.

**NICK GAUJANIAN****Athletic Performance Graduate Assistant**

Nick Gaujanian enters his first season as an athletic performance graduate assistant. He comes to Houston from Eastern Michigan University in Ypsilanti, where he was the Strength and Conditioning Intern. He earned his Bachelor of Science degree from EMU in Exercise Science in August, 2015.

From September, 2012 to September, 2014, Gaujanian was a Sport Performance Coach for Dynamic Athlete Performance.

He is CPR/AED certified and earned his Certified Strength and Conditioning Specialist (CSCS) from the National Strength and Conditioning Association in August, 2015.

# ATHLETICS STAFF DIRECTORY

Name	Title	Office Phone	E-mail
Steve Moniaci	Director of Athletics	3096	smoniaci@hbu.edu
Dr. Bobby Towery	Faculty Athletics Representative	3459	rtowery@hbu.edu
Tom Payne	Associate AD/Business & Operations	3743	tpayne@hbu.edu
Dr. Brad Hovious	Executive Director - Husky Club	3252	bhovious@hbu.edu
<b>COMPLIANCE &amp; ACADEMICS</b>			
Ted Seilheimer	Assistant AD/Compliance & Academics	3046	tseilheimer@hbu.edu
Jake Wonders	Director of Academics	3028	jwonders@hbu.edu
Barbara Tolar	Assistant Director of Compliance/Scholarships	3052	btolar@hbu.edu
Rachel Stroman	Assistant Director of Compliance/Eligibility	3342	rstroman@hbu.edu
<b>MEDIA RELATIONS</b>			
Russ Reneau	Director of Athletic Media Relations	3098	rreneau@hbu.edu
Mary Ellen Leisering	Asst. Director of Athletic Media Relations	3087	mleisering@hbu.edu
Kyle Rogers	Asst. Director of Athletic Media Relations	3208	karogers@hbu.edu
Lindsay Matlock	Student Assistant	3098	matlockla@hbu.edu
<b>TICKETING &amp; PROMOTIONS</b>			
Scott Tarrant	Director of Tickets & Promotions	3143	starrant@hbu.edu
Olga Carvallo	Promotions & Gameday Experience	3143	carvallooh@hbu.edu
<b>MARKETING - ROCKBRIDGE SPORTS</b>			
Lacie Hinkle	General Manager, HBU Sports Properties	3039	lhinkle@hbu.edu
<b>ATHLETIC TRAINING</b>			
Richie Valdés	Director of Athletic Training	3157	rvaldes@hbu.edu
Emily Kohut	Associate Director of Athletic Training	3285	ekohut@hbu.edu
Dana Quintero	Assistant Athletic Trainer	3115	dquintero@hbu.edu
Hanna Stelzer	Assistant Athletic Trainer	3328	hstelzer@hbu.edu
Omni Ashford	Assistant Athletic Trainer	3328	oashford@hbu.edu
Chris Eaton	Assistant Athletic Trainer	3328	ceaton@hbu.edu
Dan Meza	Athletic Training Intern	3328	dmeza@hbu.edu
Katie Becnel	Athletic Training Graduate Assistant	3328	becnelkr@hbu.edu
<b>ATHLETIC PERFORMANCE</b>			
Paul Constantine	Director of Athletic Performance	3114	pconstantine@hbu.edu
René Pena	Director of Olympic Sports Athletic Performance	3791	rpena@hbu.edu
Jennifer Cadwell	Graduate Assistant	3791	cadwelljr@hbu.edu
<b>BASEBALL</b>			
Jared Moon	Head Coach	3332	jmoon@hbu.edu
Xavier Hernandez	Assistant Coach	3262	xhernandez@hbu.edu
Russell Stockton	Assistant Coach	3264	rstockton@hbu.edu
Brent Schmidt	Volunteer Assistant Coach	3264	bschmidt@hbu.edu
<b>BASKETBALL - MEN'S</b>			
Ron Cottrell	Head Coach/Associate AD	3250	rcottrell@hbu.edu
Steven Key	Assistant Coach	3271	skey@hbu.edu
Jud Kinne	Assistant Coach	3409	jkinne@hbu.edu
Jeremy Case	Assistant Coach	3057	jcase@hbu.edu
Timir Patel	Director of Operations	3082	tpatel@hbu.edu
<b>BASKETBALL - WOMEN'S</b>			
Donna Finnie	Head Coach	3149	dfinnie@hbu.edu
Ben Chase	Assistant Coach	3105	bchase@hbu.edu
Lauren Tippet	Assistant Coach	3106	ltippet@hbu.edu
Becca Allison	Assitant Coach	3790	allisonra@hbu.edu
<b>FOOTBALL</b>			
Vic Shealy	Head Coach	3870	vshealy@hbu.edu
Scott Smith	Associate Head Coach - Offensive Coordinator	3876	ssmith@hbu.edu
Shannon Kelley	Assistant Head Coach - Running Backs	3872	skelley@hbu.edu
Roger Hinshaw	Assistant Coach - Co-Defensive Coordinator/DEs	3871	rhinshaw@hbu.edu
Charlie Camp	Assistant Coach - Co-Defensive Coordinator/LBs	3873	ccamp@hbu.edu
Drew O'Daniel	Assistant Coach - Co-Offensive Coordinator/OL	3875	aodaniel@hbu.edu
Burl Jordan	Assistant Coach - Defensive Line	3877	bjordan@hbu.edu
Jeff Love	Assistant Coach - Receivers	3874	jlove@hbu.edu
Brandon North	Assistant Coach - Secondary	3878	bnorth@hbu.edu
Johnathan Ramey	Director of Football Operations	3879	jramey@hbu.edu

# ATHLETICS STAFF DIRECTORY

## GOLF - MEN'S & WOMEN'S

David Shuster	Head Coach	3092	dshuster@hbu.edu
Jordan Jeffers	Assistant Coach	3085	jjeffers@hbu.edu

## SOCCER - MEN'S

Steve Jones	Head Coach	3480	sjones@hbu.edu
Ryan Pratt	Assistant Coach	3091	rpratt@hbu.edu

## SOCCER - WOMEN'S

Misty Jones	Head Coach	3490	mjones@hbu.edu
Chris Dodd	Assistant Coach	3079	cdodd@hbu.edu

## SOFTBALL

Mary-Ellen Hall	Head Coach/Senior Woman Administrator	3248	mhall@hbu.edu
Roger Willhite	Assistant Coach	3254	rwillhite@hbu.edu

## TRACK & FIELD/CROSS COUNTRY - MEN'S & WOMEN'S

Theresa Fuqua	Head Coach	3093	tfuqua@hbu.edu
Sesar Figueroa	Assistant Coach	3147	sfigueroa@hbu.edu

## VOLLEYBALL - INDOOR & BEACH

Trent Herman	Head Coach	3316	therman@hbu.edu
Cameron Sitler	Assistant Coach	3273	csitler@hbu.edu
Brandy Huskey	Assistant Coach	3144	bhuskey@hbu.edu

All phone numbers begin with 281.649.

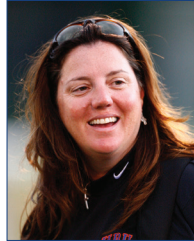
## HBU HEAD COACHES



**Ron Cottrell**  
Men's Basketball



**Donna Finnie**  
Women's Basketball



**Theresa Fuqua**  
Cross Country/  
Track & Field



**Mary-Ellen Hall**  
Softball



**Trent Herman**  
Volleyball  
Indoor & Beach



**Misty Jones**  
Women's Soccer



**Steve Jones**  
Men's Soccer



**Jared Moon**  
Baseball



**Vic Shealy**  
Football



**David Shuster**  
Men's & Women's Golf

# HBU ATHLETICS HALL OF HONOR

## 1997

Name	Sport, Years Active
Wally Abukishk	Soccer, 1984-88
E.C. Coleman	Basketball, 1969-73
Stephanie Farwig	Golf, 1977-81
Lorraine Fennell	Tennis, 1981-84
Ricky Gras	Soccer, 1979-82
Dale Green	Women's Basketball, Volleyball, 1965-68
Anicet Lavodrama	Basketball, 1981-85
Kenny McCormick	Baseball, 1965-69
Colin Montgomerie	Golf, 1983-87
Ronnie Moore	Baseball, 1965-69
Paul O'Neill	Men's Gymnastics, 1985-87
Robert Paige	Basketball, 1973-76
Caroline Pierce	Golf, 1982-86
David Preston	Basketball, 1993-95
Miguel Rubio	Men's Gymnastics, 1986-89
Alfonso Rodriguez Sadia	Men's Gymnastics, 1986-89
Bobby Sanders	Basketball, 1991-95
Wendy Thomas	Softball, 1990-93
Ricky Thompson	Track and Field, 1986-90
Nicole Williams	Women's Gymnastics, 1986-90
Chris Wiloth	Men's Gymnastics, 1977-81
1990 Women's Gymnastics Team	Michelle Baker, Gina Csengery, Tonya Fluty, Barbara Hamby, Renee Melancon, Dawn Mulholland, Niecy Stringer, Nicole Williams, Dawn Zugay

## 1998

Boone Almanza	Basketball, 1981-85
Trevor Enders	Baseball, 1994-96
Shannon Holmes	Basketball, 1991-95
Kim Lowe	Volleyball, 1992-94, 96
Dana Lyons	Softball, 1992-95
Ryan Thomas	Baseball, 1993-96

## 1999

Reagan Buckley	Baseball, 1996-97
Jennifer Carruth	Softball, 1994-97
Tony DiCamillo	Basketball, 1991-95
Jennifer Elias	Softball, 1994-97
Holly Moore	Volleyball, 1993-96
Walter Reese	Baseball, 1990-93

## 2000

Eddie Brown	Basketball, 1968-72
Cindy Connell	Softball, 1995-98
Brandon Curtis	Baseball, 1994-97
Matt England	Basketball, 1983-85
Kaddie Mahoney	Volleyball, 1988-91
Kevin Scott	Baseball, 1996-97
Greg Wise	Basketball, 1977-81

## 2001

Terry Hairston	Basketball, 1982-84
Chad Hartley	Basketball, 1995-99
Chris Hill	Baseball, 1998-99
Randy Martell	Basketball, 1977-81
Ty Schmaltz	Baseball, 1966-69
Kara Williams	Volleyball, 1996-98

## 2002

Rick Bailey	Basketball, 1964-67
Ryan Bailey	Basketball, 1993-97
Ty Bailey	Basketball, 1991-93
Becky Dudley	Softball, 1996-98
Chris Fadal	Baseball, 1997-00

## 2003

A.J. Bass	Baseball, 1991-93
Loralyn Hinze	Softball, 1997-00
Jamie Kemper	Softball, 1998-00
Sean Salinas	Baseball, 1997-00
Jim Skaggs	Basketball, 1969-74
Kathy Spies	Softball, 1997-00

## 2004

Amy Boiteaux	Volleyball, 1998-01
Shawn Brown	Baseball, 1990-93
Fred Goporo	Basketball, 1983-87
Lori Jordan	Volleyball, 1998-01
Angie Perry	Volleyball, 1998-01
Christine Phillips	Softball, 1999-01
Justin Syfert	Baseball, 2000-01

## 2005

Tiffany Andrews	Women's Basketball, 1999-03
Erin Bolton	Softball, 2001-02
Danny Cataline	Baseball, 1998-01
Mack Coleman	Basketball, 1972-75
Rachel Dinkins	Volleyball, 1999-01
Charity Rychlik	Softball, 2001-02

## 2006

Sherry Blakely	Softball, 1992-95
Elele Ekadeli	Volleyball, 2001-02
Charles Fordjour	Basketball, 1999-02
Michael Hanks	Baseball, 1999-02
Carey Owens	Women's Basketball, 1999-00
Mike Sissel	Basketball, 1995-96
Rachelle Willhite	Softball, 1991-94

# HBU ATHLETICS HALL OF HONOR

## 2007

Tommy Crosby ..... Baseball, 2001-03  
Sarah Emmer ..... Volleyball, 2002-03  
Carlos Gil..... Soccer, 1982-85  
Rod Nealy..... Basketball, 2002-03  
Elinor Smith..... Women's Basketball 2000-04;  
Volleyball, 2002-04  
Rachel Werner..... Softball, 2002-05

## 2008

Morgan Anderson..... Softball, 2003-05  
Dr. Ed Billings ..... Athletic Director, 1966-90  
Griffin Colvert..... Women's Basketball, 2000-04  
Katelyn Griffin..... Softball, 2002-05  
Darryl Henning ..... Golf, 1983-85  
Michael LeBlanc..... Basketball, 1999-2000, 01-02  
Jared Moon..... Baseball, 1993-95  
Tim Thelen ..... Golf, 1983-84  
Sergio Uribe ..... Soccer, 1982-85  
Nancy Wataka ..... Volleyball, 2005-06  
Nicole Westerterp..... Volleyball, 2003-06

## 2009

Dave Mannen ..... Golf Coach, 1975-91  
Larry Hollins..... Basketball, 1981-84  
Steve Kinnett..... Men's Gymnastics, 1974-78  
Laura Hess..... Softball, 2003-05  
1985 Men's Track & Field 4x800 Relay Team.....  
Charlie Foreman, Lowell Jones,  
Alfredo Lahuerta, Nureldin Ramirez

## 2010

Jere' Adams ..... Women's Basketball, 2002-04, 06  
Bryce Burch ..... Basketball, 1999, 2001-02  
Jorge Cruz ..... Men's Soccer, 1985-87  
Joey Gregory ..... Baseball, 2002-03  
Mary Beth Morgan ..... Women's Golf, 1975-77  
John Sweeney..... Men's Gymnastics, 1983-85

## 2011

Hutch Dvorak..... Gymnastics coach, 1973-89  
Charlie Foreman..... Men's Cross Country, 1982-85  
Michael Holmquist ..... Basketball, 2001-04  
Mike Kyei ..... Men's Soccer, 1981-84  
Archie Panfilli ..... Baseball, 2004-05  
Debbie Skelly..... Women's Golf, 1975-78

## 2012

Ron Cottrell..... Basketball Coach, 1990-present;  
Athletic Director, 1994-2009  
Mary-Ellen Hall ..... Softball coach, 1992-present  
Ken Kelley ..... Men's Golf, 1978-82  
Cheri Wood ..... Softball, 2004-07  
Magnus Fyhr..... Men's Cross Country, 1984-85  
Joey Serralta ..... Men's Soccer, 1981

## 2013

Stephanie Lust ..... Volleyball, 2004-07  
Bob Marley..... Athletic Trainer  
Ashkan Nowamooz..... Men's Soccer, 1983-85  
Jamie Sebesta ..... Volleyball, 2004-07

## 2014

Michael Crabtree..... Baseball, 2006-07  
Cari Scaff ..... Women's Basketball, 2001-05  
Jeff Wagner..... Men's Golf, 1987-88  
1983-84 Men's Basketball Team .....  
Gene Iba (Head Coach),  
Tommy Jones and Bob Marlin (Assistant Coaches),  
Boone Almanza, Scott Bigott, Matt England,  
Fred Goporo, Terry Hairston, Larry Hollins,  
Daryl Jones, Bruno Kongawoin, Anicet Lavodrama,  
Hamilton Lewis, Reggie Martin, Arthur Walton,  
Ellington Wilkins

## 2015

Isla Cameron ..... Women's Soccer, 2007-10  
Sara Faulkner..... Women's Soccer, 2006-08  
Valencia Kuykendall..... Women's Basketball, 2004-07  
John Lewis ..... Men's Golf, 1971-74  
Robert Seligman ..... Men's Golf, 1971-74  
Andrew Taccolini..... Baseball, 2006-09

# "MONTY": HBU LEGEND

Colin Montgomerie solidified himself as the most recognizable figure in HBU athletics as he was inducted into the World Golf Hall of Fame in 2013.

He played golf for the Huskies from 1983-87, earning All-America honors in 1986 and 1987, Trans America Athletic All-Conference honors in 1985, 1986 and 1987, and TAAC Player of the Year in 1985. He led the Huskies to the TAAC team championship in 1984, 1985 and 1986, and won the 1985 TAAC individual title with a tournament-record score of 11-under par 205. HBU made three-straight NCAA Championship appearances with Montgomerie from 1985-87.

After his collegiate career at HBU, Montgomerie became a professional on the European Tour in 1987 and was named the 1988 Sir Henry Cotton Rookie of the Year. He then went on to win a record eight European Tour Order of Merit titles from, seven-straight from 1993-99, then again in 2005. Montgomerie earned European Tour Player of the Year honors in 1995, 1996, 1997 and 1999. He was named Order of the British Empire officer in 2005.

The Glasgow, Scotland, native had a distinguished career as a member of eight European Ryder Cup teams, compiling a 20-9-7 record and never losing a singles a match. His 23.5 points in Ryder Cup play rank third, only 1.5 points behind the all-time leader. Montgomerie was named captain of the European squad for 2010 and led them to a 14.5-13.5 victory at Celtic Manor in Newport, South Wales.

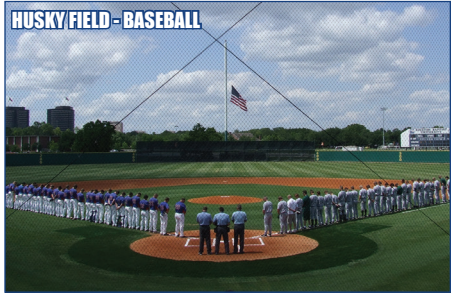
After recording 45 total victories on tour, which included 31 wins on the European Tour, Montgomerie has posted six victories on the Champions Tour and European Seniors Tour. In 2014, he captured a pair of major titles, winning the Senior PGA Championship by four strokes over Tom Watson and the U.S. Senior Open in a playoff. In his victory at the Travis Perkins Masters in August 2014, former HBU teammate Tim Thelen finished as the runner-up. Already in 2015, he has added another Senior PGA Championship to his resume.



## SORRELS FIELD - SOCCER



## HUSKY FIELD - BASEBALL



## HUSKY STADIUM - FOOTBALL



## HUSKY FIELD - SOFTBALL



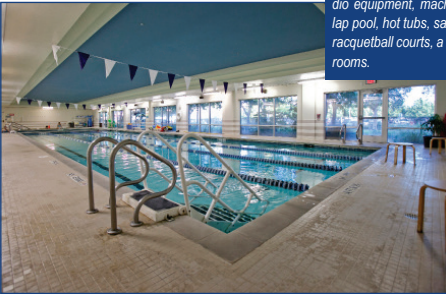
## HBU FOOTBALL COMPLEX WEIGHT ROOM



## BRADSHAW FITNESS CENTER



In Feb. 2012, HBU acquired the Bradshaw Fitness Center (BFC), which has been an instant boost to student life on campus. The fitness center is available for use at no extra cost to HBU students. The facility offers cardio equipment, machine and free weights, a lap pool, hot tubs, saunas, a basketball court, racquetball courts, a running track, and locker rooms.



# Houston, Texas...

## “Bayou City” ... “Space City” ... “Energy Capital”

- Houston is the fourth most populous city in the nation, trailing only New York, Los Angeles and Chicago, and is the largest of the southern U.S. and Texas
- Houston metro area's population of 4.8 million is the 10th largest among U.S. metropolitan statistical areas
- More than 38 million people each year fly in and out of Houston's two major airports: Bush Intercontinental and William P. Hobby
- Houstonians eat out more than residents of any other city. Houston has more than 11,000 restaurants
- Houston has a unique museum district offering a range of museums, galleries, art and cultural institutions
- Houston is home to the Houston Livestock Show and Rodeo. The largest rodeo in the world, it attracts more than 1.8 million visitors each year
- Houston is home to the Texas Medical Center, the largest concentration of medical facilities in the world, with a local economic impact of \$10 billion
- Houston has the second lowest cost of living among major American cities
- Home to 18 Fortune 500 companies, second only to New York City, and more than 5,000 energy-related firms, Houston is considered by many as the Energy Capital of the World

### FAMOUS HOUSTONIANS

Lance Berkman - MLB (HOU, STL)  
Beyoncé - Singer/Actress  
Clint Black - Country Singer  
Alexis Bledel - Actress, *Gilmore Girls*  
Danielle Bradbery - Winner, Season 4 of *The Voice*  
George H.W. & Barbara Bush - 41st U.S. President  
Mark Calaway - WWE's "The Undertaker"  
Chamillionaire - Rapper  
Roger Clemens - MLB (BOS, TOR, NYY, HOU)  
Carl Crawford - MLB (TB, BOS, LAD)  
Walter Cronkite - Broadcast Journalist  
Michael Dell - Founder of Dell Computers  
Eric Dickerson - NFL Hall of Famer  
Clyde Drexler - NBA Hall of Famer  
Hilary & Haylie Duff - Actresses  
Adam Dunn - MLB (CIN, WAS, CWS, ARZ)  
Shannon Elizabeth - Actress, *American Pie*  
Steve Elkington - Golfer, 1995 PGA Champion  
George Foreman - Hall of Fame Boxer  
A.J. Foyt - Auto Racing (4-time Indy 500 winner)  
Billy Gibbons - Musician (ZZ Top)  
Howard Hughes - Film director/producer, aviator  
Scott Kazmir - MLB (TB, OAK)  
Tara Lapinski - Figure skater (Olympic gold medalist)  
Lecrae - Rapper  
Rashard Lewis - NBA (SEA, ORL, MIA)  
Andrew Luck - NFL (IND)  
Emeka Okafor - NBA (CHA, NO, WAS)  
Jim Parsons - Actor, *The Big Bang Theory*  
Dennis & Randy Quaid - Actors  
Andy Pettitte - MLB (NYY, HOU)  
Phylicia Rashad - Actress, *The Cosby Show*  
Dan Rather - Journalist, *CBS Evening News* Anchor  
Kenny Rogers - Country Singer  
Nolan Ryan - MLB Hall of Famer  
Michael Strahan - NFL (NYG)/TV Host  
Patrick Swayze - Actor  
Thurman Thomas - NFL Hall of Famer  
Laura Wilkinson - Diver, Olympic gold medalist  
Vince Young - NFL (TEN, PHI)  
Renée Zellweger - Actress



**DANIELLE BRADBERRY**  
Winner on Season 4 of NBC's "The Voice"

# HOUSTON SPORTS



# 2015-16 SCHEDULE

Nov. 13	at New Mexico	9:00 p.m.
Nov. 15	at UTEP	3:00 p.m.
<b>Nov. 20</b>	<b>Paul Quinn</b>	<b>7:00 p.m.</b>
Nov. 27	vs. Nebraska Omaha (UTSA Thanksgiving Tournament)	2:00 p.m.
Nov. 29	at UTSA (UTSA Thanksgiving Tournament)	2:00 p.m.
<b>Dec. 2</b>	<b>Trinity</b>	<b>5:30 p.m.</b>
Dec. 5	at Texas Southern (H&PE Arena)	2:00 p.m.
<b>Dec. 16</b>	<b>Texas State</b>	<b>7:00 p.m.</b>
<b>Dec. 19</b>	<b>UT Arlington</b>	<b>1:00 p.m.</b>
<b>Dec. 28</b>	<b>Huston-Tillotson</b>	<b>2:00 p.m.</b>
Jan. 2	*at Northwestern State	1:00 p.m.
<b>Jan. 4</b>	<b>McNeese State</b>	<b>7:00 p.m.</b>
<b>Jan. 7</b>	<b>Nicholls</b>	<b>7:00 p.m.</b>
<b>Jan. 9</b>	<b>Southeastern Louisiana</b>	<b>4:00 p.m.</b>
Jan. 13	*at Central Arkansas	7:00 p.m.
Jan. 16	*at New Orleans	4:00 p.m.
Jan. 23	*at Lamar	4:00 p.m.
Jan. 27	*at Abilene Christian	4:00 p.m.
<b>Jan. 30</b>	<b>Sam Houston State</b>	<b>4:00 p.m.</b>
Feb. 3	*at Texas A&M-Corpus Christi	7:00 p.m.
<b>Feb. 6</b>	<b>Stephen F. Austin</b>	<b>4:00 p.m.</b>
<b>Feb. 10</b>	<b>Lamar</b> (Play 4 Kay Breast Cancer Awareness Game)	<b>7:00 p.m.</b>
Feb. 13	*at Sam Houston State	2:00 p.m.
Feb. 18	*at Incarnate Word	6:00 p.m.
<b>Feb. 24</b>	<b>Abilene Christian</b>	<b>7:00 p.m.</b>
Feb. 27	*at Stephen F. Austin	4:00 p.m.
<b>March 3</b>	<b>Texas A&amp;M-Corpus Christi</b>	<b>5:00 p.m.</b>
<b>March 5</b>	<b>Incarnate Word</b> (Senior Day)	<b>12:00 p.m.</b>
March 9-13	at Southland Conference Tournament (Katy, Texas.)	TBA

Home games in **Blue** played at Sharp Gym

All times central

\* Southland Conference

