



# **University of Hawai'i Women's Volleyball History & Records**

**updated August 2021**

# H ALL-TIME RESULTS

- ^ Match played on Kauai
- % Match played at Neal S. Blaisdell Arena on O'ahu
- \$ Match played on Maui
- & Match played in Hilo, Hawai'i
- \* Match played at McKinley High School, Honolulu
- + Big Ten Experimental Rule match — scores:  
UH won 5-0 (20-4, 26-6, 29-7)

NOTE: All home matches were played at Otto Klum Gym unless otherwise noted. Beginning Oct. 22, 1994, all home matches were moved to the Stan Sheriff Center (formerly the Special Events Arena) on the UH-Manoa campus.

Dave Shoji has been the head coach for all but the 1974 season



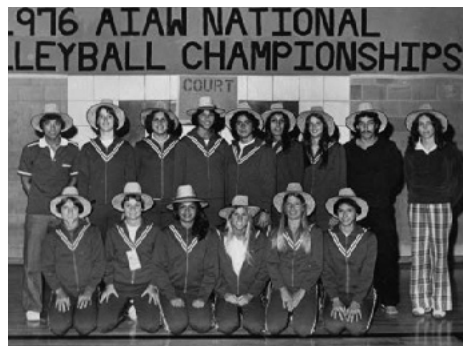
## 1974 (9-1)

Date	Opponent	Result/Score
n/a	UH-Hilo <sup>^</sup>	W 15-2, 15-0
n/a	BYU-Hawai'i <sup>^</sup>	W 15-2, 15-0
<i>at AIAW Nationals (Portland, Ore., Dec. 12-14)</i>		
12/12	SW Missouri State	W 15-4, 15-8
12/12	UC Riverside	W 15-5, 15-8
12/12	Maryland	W 15-3, 15-4
12/13	Cleveland State	W 15-0, 4-12 (time)
12/13	Houston	W 15-13, 8-15, 5-13
12/13	Texas-Arlington	W 15-9, 15-4
12/14	UC Santa Barbara	W 15-11, 15-8
<i>National Final</i>		
12/14	UCLA	L 7-15, 8-15



## 1975 (16-2)

10/29	at UC Riverside	W 15-17, 15-6, 15-13, 15-11
10/30	at Santa Clara	W scores unavailable
<i>at UCLA/NIVT (Los Angeles, Calif., Oct. 31-Nov. 1)</i>		
10/31	San Diego State	W 11-6, 11-4
10/31	San Francisco	W 11-6, 11-2
10/31	Cal State LA	W 11-0, 11-5
10/31	Southern Cal	W 12-10, 11-4
10/31	UC Irvine	W 11-5, 11-1
11/1	Portland State	W 15-5, 15-4
11/1	UCLA	L 9-15, 5-15
11/1	San Jose State	W 15-5
<i>at AIAW Nationals (Princeton, N.J., Dec. 11-13)</i>		
12/11	Maryland	W 15-7, 15-6
12/11	Illinois-Chicago Circle	W 15-4, 15-12
12/11	CSUN	W 15-4, 15-7
12/12	Florida State	W 15-7, 17-15
12/12	Nebraska	W 15-6, 15-6
12/12	Illinois-Chicago Circle	W 5-4, 17-15
12/13	Houston	W 15-9, 15-7
<i>National Final</i>		
12/13	UCLA	L 2-15, 11-15



## 1976 (14-5)

9/23	UCLA%	L 15-13, 10-15, 11-15, 8-10 (time)
9/24	UCLA\$	L 15-7, 10-15, 9-15, 15-13, 13-15
9/25	UCLA	W 8-15, 15-10, 9-15, 15-12, 15-3
10/14	Portland State	W 15-3, 15-1, 15-6
10/15	Portland State	W 15-3, 10-15, 15-13, 15-8
10/21	Southern Cal	L 6-15, 8-15, 8-15
10/22	Southern Cal	L 1-15, 15-9, 7-15, 13-15
11/8	Houston	W 15-13, 11-15, 15-8, 15-8
11/9	Texas	W 13-15, 15-5, 15-2, 16-14
12/2	UC Riverside	W 18-16, 15-11, 15-2
12/3	UC Riverside	W 15-2, 15-5, 15-6
<i>at AIAW Nationals (Austin, Tex., Dec. 8-11)</i>		
12/9	SUNY-Cortland	W 15-3, 15-6
12/9	SW Missouri State	W 15-2, 15-0
12/9	Portland State	W 15-10, 15-8
12/10	Texas-Arlington	W 15-2, 15-7
12/10	UC Santa Barbara	W 15-13, 15-5
12/11	SW Missouri State	W 15-13, 15-2
12/11	UCLA	L 11-15, 15-10, 9-15
12/11	Pepperdine	W 12-15, 15-12, 15-12



## 1977 (22-5)

9/28	San Diego State	W 15-2, 11-15, 15-0, 15-9
9/29	San Diego State	W 15-12, 15-6, 15-1
9/30	San Diego State	W 15-11, 15-7, 15-7
10/6	UCLA	L 5-15, 8-15, 5-15
10/7	UCLA	W 15-13, 7-15, 15-12, 15-1
10/8	UCLA	W 15-8, 15-7, 16-18, 13-15, 16-14
10/20	Long Beach State	W 15-2, 15-11, 15-7
10/21	Long Beach State	W 15-11, 15-7, 15-5
10/22	Long Beach State	W 15-11, 15-9, 15-6
11/1	Texas Lutheran	W 9-15, 4-15, 15-12, 15-5, 15-8
11/2	Texas Lutheran	W 15-6, 15-8
11/3	Texas Lutheran	W 15-2, 16-14
11/9	Southern Cal	L 6-15, 10-15, 11-15
11/11	Southern Cal\$	L 15-10, 5-15, 14-16, 5-15
11/12	Southern Cal&	L 10-15, 2-15, 15-11, 13-15
11/16	Pepperdine	W 15-11, 15-3, 15-12
11/17	Pepperdine	W 15-8, 15-4, 15-9
11/18	Pepperdine %	W 13-15, 15-7, 15-6
<i>at AIAW Nationals (Provo, Utah, Dec. 8-10)</i>		
12/8	Ball State	W 15-3, 15-4
12/8	Washington State	W 15-5, 15-7
12/8	Alabama	W 15-6, 15-11
12/9	Rhode Island	W 15-0, 15-4
12/9	SW Missouri State	W 15-4, 15-3
12/9	Pepperdine	W 3-15, 15-11, 15-4, 15-7
12/10	UCLA	W 15-10, 4-15, 15-13, 16-14
<i>National Final</i>		
12/10	Southern Cal	L 5-12, 6-15, 7-15, 6-15
12/11	at Pacific	W 15-10, 15-10, 15-3



**1978 (28-10-1)**

Women's Collegiate Classic (Malibu, Calif., Sept. 22-23)

9/22	Utah State	L 8-15, 15-8, 10-15, 22-20, 4-15
9/23	Pepperdine	W 12-15, 11-15, 15-8, 15-13, 15-4
9/28	UCLA%	L 11-15, 10-15, 15-7, 7-15
9/29	UCLA%	L 16-14, 15-12, 13-15, 9-15, 14-16
10/3	San Diego State	W 15-6, 11-15, 15-9, 15-8
10/5	San Diego State	W 15-9, 15-3, 4-15, 15-7
10/11	Pepperdine%	L 14-16, 13-15, 15-10, 15-11, 14-16
10/13	Pepperdine&	L 9-15, 15-8, 15-12, 4-15, 9-15
10/18	San Jose State	W 11-15, 15-8, 15-0, 15-12
10/20	San Jose State	W 13-15, 15-7, 14-16, 15-9, 15-10
10/26	Pacific	W 15-3, 15-1, 3-15, 15-5
10/27	Pacific	W 15-10, 15-10, 12-15, 15-5
10/28	Pacific	W 15-10, 15-13, 11-15, 15-1
10/31	at UC Santa Barbara	W 15-13, 17-15, 15-13
11/1	at UCLA	L 13-15, 9-15, 15-13, 10-15
at UCLA/NIVT (Los Angeles, Calif., Nov. 3-5)		
11/3	Stanford	W 15-8, 17-15
11/3	Illinois-Chicago Circle	W 15-4, 15-5
11/4	UC Riverside	W 15-2, 15-1
11/4	Arizona State	W 15-6, 15-12
11/4	Long Beach State	T 12-15, 15-6
11/5	San Jose State	W 15-6, 15-3
11/5	Brigham Young	W 15-4, 15-6
11/5	Pepperdine	W 15-10, 10-15, 15-5
11/8	Utah State%	L 10-15, 5-15, 16-14, 4-15
11/9	Utah State%	W 15-13, 15-9, 15-12
11/24	Brigham Young%	W 15-5, 15-4, 15-11
11/25	Brigham Young&	W 15-6, 9-15, 15-10, 15-8
11/29	Southern Cal%	W 15-6, 15-10, 15-12
11/30	Southern Cal%	W 16-14, 15-10, 15-11
at AIAW Nationals (Tuscaloosa, Ala., Dec. 7-9)		
12/7	Alabama	W 15-2, 15-11
12/7	Texas-Arlington	W 15-5, 15-6
12/7	San Jose State	L 8-15, 15-10, 12-15
12/8	Oregon	W 15-0, 15-8
12/8	Pittsburgh	W 15-0, 15-9
12/8	San Jose State	L 13-15
12/8	Texas-Arlington	W 15-9
12/8	Southern Cal	W 9-15, 15-5, 15-11, 15-5
12/9	UCLA	L 15-7, 16-14, 8-15, 5-15, 10-15
12/9	Pepperdine	W 15-4, 12-15, 15-5, 15-6



**1979 (36-5)**

AIAW NATIONAL CHAMPIONS

9/18	Pittsburgh*	W 15-5, 15-5, 15-8
9/19	Pittsburgh*	W 5-7, 15-4, 15-8
9/26	San Diego State%	W 9-15, 15-4, 15-12, 15-1
9/27	San Diego State%	W 16-14, 15-11, 15-12
10/3	UC Riverside%	W 15-2, 15-1, 15-4
10/4	UC Riverside%	W 15-2, 15-4, 15-5
at Nissin Food Collegiate Classic (Los Angeles, Calif., Oct. 12-13)		
10/12	UCLA	W 15-12, 10-15, 15-7, 15-5
10/13	Utah State	W 15-6, 12-15, 15-13, 15-13
10/17	San Jose State%	W 15-6, 15-9, 15-6
10/18	San Jose State%	W 15-12, 15-9, 11-15, 15-7
10/23	BYU-Hawai'i*	W 15-4, 15-0, 12-15, 15-9
10/27	at San Jose State	W 8-15, 15-6, 15-9, 16-14
10/28	at Pacific	L 10-15, 11-15, 15-8, 15-12, 14-16
10/30	at Utah State	L 9-15, 15-6, 15-7, 6-15, 14-16
10/31	at Utah State	L 14-16, 11-15, 7-15
at UCLA/NIVT (Los Angeles, Calif., Nov. 2-3)		
11/2	Stanford	W 15-4, 17-15
11/2	Southern Cal	W 15-7, 15-2
11/3	UC Santa Barbara	W 15-3, 15-12
11/3	Arizona State	W 17-15, 15-5
11/3	CSUN	W 15-4, 15-11
11/3	UC Irvine	W 15-2, 15-13
11/3	Pepperdine	W 4-15, 15-7, 15-9
11/3	Southern Cal	W 15-4, 15-11
11/7	Utah State	W 13-15, 6-15, 15-7, 15-10, 15-7
11/8	Utah State	W 7-15, 15-6, 16-14, 15-13
11/14	Hawai'i-Hilo	W 15-6, 15-13, 15-12
11/15	Hawai'i-Hilo	W 15-5, 15-10, 15-10
at AIAW West Regionals (San Diego, Calif., Nov. 23-24)		
11/23	Long Beach State	W 15-2, 15-11, 15-9
11/23	Pepperdine	W 16-14, 15-9, 7-15, 15-5
11/24	UCLA	L 12-15, 15-7, 8-15, 10-15
11/24	Pacific	W 15-7, 15-8
11/24	UCLA	L 8-15, 13-15, 16-14, 9-15
11/28	Texas-Arlington	W 15-11, 15-5, 17-15
11/29	Texas-Arlington	W 15-7, 15-8, 15-5
at AIAW Nationals (Carbondale, Ill., Dec. 6-8)		
12/6	SW Missouri State	W 15-2, 15-8
12/6	New Mexico State	W 16-14, 15-9
12/6	San Diego State	W 15-7, 16-14
12/7	Washington	W 15-0, 15-6
12/7	Texas-Arlington	W 15-12, 15-13, 13-15, 15-2
12/8	Pacific	W 15-5, 15-4, 5-15, 15-6
National Final		
12/8	Utah State	W 8-15, 7-15, 15-9, 16-14, 15-12



**1980 (34-10)**

Women's Games Invitational (Salt Lake City, Utah, Sept. 11-13)

9/11	Pacific	L 9-15, 11-15, 12-15
9/11	UCLA	L 15-11, 7-15, 9-15, 7-15
9/12	San Diego State	L 15-8, 10-15, 15-9, 7-15, 12-15
9/13	Utah	W 15-2, 15-5, 15-13
9/13	San Diego State	W 15-6, 10-15, 15-8, 15-5
9/16	Arizona State	W 10-15, 15-11, 15-2, 15-11
9/17	Arizona State	W 15-7, 15-12, 15-7
9/25	UCLA%	W 15-12, 15-13, 15-5
10/2	Pacific	W 9-15, 15-10, 15-3, 16-14
10/3	Pacific	W 15-12, 4-15, 15-9, 15-7
10/7	San Diego State	W 6-15, 15-11, 15-10, 8-15, 15-6
10/8	San Diego State	L 10-15, 15-8, 8-15, 9-15
10/15	BYU-Hawai'i	W 15-5, 15-5, 15-12
10/16	at BYU-Hawai'i	W 15-7, 15-12, 11-15, 15-10
10/28	at Utah State	W 15-12, 8-15, 16-14, 11-15, 15-13
10/29	at Utah State	L 8-15, 15-13, 8-15, 15-13, 9-15
at UCLA/NIVT (Los Angeles, Calif., Oct. 31-Nov. 1)		
10/31	Brigham Young	W 15-5, 9-15, 15-0
10/31	Texas	W 15-9, 15-3
10/31	UCLA	W 15-11, 15-12
11/1	San Jose State	W 15-4, 15-6
11/1	Pepperdine	W 15-9, 15-9
11/1	UC Santa Barbara	W 6-15, 15-7, 15-4
11/1	Pacific	W 15-9, 15-7
11/1	UCLA	L 15-17, 13-15
11/5	Utah State\$	W 15-10, 15-6, 15-10
11/6	Utah State%	L 13-15, 15-11, 12-15, 3-15
11/11	Cal Poly	W 11-15, 15-13, 15-10, 15-6
11/12	Cal Poly	W 15-7, 15-10, 6-15, 12-15, 15-2
11/17	at Hawai'i-Hilo	W 15-11, 15-7, 10-15, 15-13
11/18	at Hawai'i-Hilo	W 15-5, 15-13, 15-11
at AIAW West Regionals (Santa Clara, Calif., Nov. 28-29)		
11/28	San Diego St.	W 11-15, 15-11, 6-15, 15-10, 15-12
11/28	Pacific	L 16-18, 15-9, 3-15, 12-15
11/28	UC Santa Barbara	W 15-7, 15-11
11/29	UCLA	W 15-7, 17-15
11/29	Pacific	L 15-8, 11-15, 3-15
12/2	Hawai'i-Hilo	W 6-15, 15-8, 15-9, 15-7
12/3	Hawai'i-Hilo	W 16-14, 13-15, 15-12, 15-8
at AIAW Nationals (Santa Barbara, Calif., Dec. 11-13)		
12/11	Miami (Fla.)	W 15-12, 17-15
12/11	Texas-Arlington	W 16-14, 16-14
12/11	Portland State	W 15-9, 15-8
12/12	Utah State	W 4-15, 15-6, 15-3
12/12	UC Santa Barbara	W 8-15, 15-5, 15-10, 15-10
12/13	Southern Cal	L 15-10, 13-15, 12-15, 7-15
12/13	UCLA	W 15-7, 15-7, 15-10



# ALL-TIME RESULTS



## 1981 (37-2)

*Sneak Preview Classic (Honolulu, O'ahu, Sept. 15-16)*

9/15	BYU-Hawai'i	W 15-0, 15-2, 15-1
9/16	Brigham Young	W 15-4, 15-10, 13-15, 15-4
9/18	at Hawai'i-Hilo	W 15-6, 15-0, 15-13
9/19	at Hawai'i-Hilo	W 15-9, 15-2, 15-13
9/23	Washington	W 15-2, 15-4, 11-15, 15-1
9/24	Washington	W 15-7, 15-7, 9-15, 15-6
9/30	UC Riverside	W 15-3, 15-10, 15-6
10/1	UC Riverside	W 15-1, 15-11, 15-13
10/9	UCLA%	W 15-8, 15-12, 15-9
10/10	UCLA	W 9-15, 16-14, 5-15, 15-13, 15-11
10/15	UC Santa Barbara	W 15-10, 6-15, 15-13, 15-12
10/16	UC Santa Barbara	W 15-8, 12-15, 14-16, 15-3, 16-14
10/21	CSUN	W 15-9, 15-7, 14-16, 15-3
10/22	CSUN	W 15-1, 15-5, 15-5
10/27	at BYU-Hawai'i	W 15-6, 11-15, 15-5, 15-7
10/30	Utah State	W 15-7, 15-4, 15-12
11/1	Utah State	W 15-5, 15-6, 15-8
11/2	Utah State	W 15-1, 15-1, 15-13
11/5	at Pepperdine	W 15-6, 15-11, 15-11
<i>at UCLA/NIVT (Los Angeles, Calif., Nov. 6-7)</i>		
11/6	Texas-Arlington	W 15-6, 15-7
11/6	Pacific	W 15-12, 15-8
11/6	Nebraska	W 15-9, 15-13
11/7	Utah State	W 15-8, 15-9
11/7	Pepperdine	W 15-8, 15-9
11/7	UCLA	W 9-15, 17-15, 15-3
11/7	Arizona	W 15-4, 15-12
11/7	San Diego State	W 13-15, 15-5, 15-12
11/9	at Northwestern	W 15-4, 15-11, 15-10
11/10	at Illinois	W 15-3, 15-3, 15-2
11/11	at Purdue	W 15-7, 10-15, 15-7, 15-6
11/12	at Utah State	L 13-15, 15-7, 15-10, 12-15, 10-15
<i>at Wendy's Classic (Stockton, Calif., Nov. 14-15)</i>		
11/14	Southern Cal	W 15-11, 7-15, 15-13, 15-12
11/15	Pacific	W 15-2, 15-12, 2-15, 5-15, 15-9
11/24	San Diego State	W 15-8, 15-4, 7-15, 15-6
11/25	San Diego State%	W 8-15, 15-3, 8-15, 15-9, 15-9
11/29	Hawai'i-Hilo	W 15-5, 15-2, 14-16, 15-11
11/30	Hawai'i-Hilo	W 15-13, 15-12, 15-8
<i>NCAA Regionals (Seattle, Wash., Dec. 11-12)</i>		
12/11	Texas A&M	W 15-13, 15-12, 9-15, 15-9
12/12	Southern Cal	L 6-15, 10-15, 7-15



## 1982 (33-1)

### NCAA NATIONAL CHAMPIONS

*Sneak Preview Classic (Honolulu, O'ahu, Sept. 16-17)*

9/16	Chico State	W 15-5, 15-9, 15-10
9/17	Hawai'i-Hilo	W 15-3, 15-7, 15-12
9/22	Hawai'i Pacific	W 15-2, 15-2, 15-3
9/27	Hawai'i-Hilo	W 15-13, 12-15, 15-9, 15-5
9/28	Hawai'i-Hilo	W 15-4, 15-7, 10-15, 15-9
9/30	UCLA%	W 15-11, 7-15, 15-9, 8-15, 15-13
10/1	UCLA	W 15-12, 15-4, 15-11
10/4	at New Mexico	W 15-10, 15-5, 13-15, 15-12
10/5	at New Mexico State	W 15-7, 15-9, 15-5
10/6	at Arizona State	W 15-5, 15-5, 15-7
10/8	at UC San Diego	W 15-2, 15-7, 15-13
10/12	at BYU-Hawai'i	W 15-8, 15-9, 12-15, 15-13
<i>at Wendy's Classic (Stockton, Calif., Oct. 29-30)</i>		
10/29	UCLA	W 15-17, 15-9, 15-13, 17-15
10/30	Pacific	W 15-7, 15-11, 12-15, 11-15, 15-4
11/1	at Stanford	W 13-15, 15-11, 15-13, 16-14
11/3	at Cal Poly	W 15-1, 15-12, 15-8
<i>at UCLA/NIVT (Los Angeles, Calif., Nov. 5-6)</i>		
11/5	California	W 15-9, 15-13
11/5	Cal State Fullerton	W 15-5, 15-7
11/5	Texas	W 15-5, 15-10
11/6	Tennessee	W 15-7, 15-17, 15-5
11/6	Arizona	W 15-7, 4-15, 15-11
11/6	Pepperdine	W 15-3, 15-11
11/6	Pacific	L 4-15, 14-16
11/6	**Stanford	W 15-8
11/10	at Hawai'i-Hilo	W 15-10, 15-13, 15-3
11/11	at Hawai'i-Hilo	W 12-15, 15-9, 15-5, 15-11
11/17	Portland State	W 7-15, 15-6, 15-4, 15-13
11/19	Portland State	W 15-12, 15-4, 15-12
11/27	Pacific	W 15-11, 15-1, 15-9
11/28	Stanford	W 15-12, 15-9, 16-14
11/29	Stanford	W 15-9, 9-15, 11-15, 15-5, 15-10
<i>NCAA Regionals (San Luis Obispo, Calif.)</i>		
12/10	San Jose State	W 15-10, 15-8, 15-2
12/11	Cal Poly	W 5-15, 15-8, 15-12, 15-6
<i>NCAA Championships (Stockton, Calif.)</i>		
12/17	Stanford	W 12-15, 15-9, 12-15, 15-11, 15-6
12/19	Southern Cal	W 14-16, 9-15, 15-13, 15-10, 15-12

\*\*Does not count toward overall record



## 1983 (34-2)

### NCAA NATIONAL CHAMPIONS

9/8	at Hawai'i-Hilo	W 15-5, 15-4, 15-7
9/9	at Hawai'i-Hilo	W 15-13, 15-13, 15-13
9/15	Stanford%	W 15-5, 15-9, 15-8
9/16	Stanford	W 15-6, 15-10, 10-15, 12-15, 17-15
9/17	Long Beach State	W 15-2, 15-6, 15-5
9/22	Fresno State	W 15-2, 15-0, 15-0
9/23	Fresno State	W 15-10, 15-1, 15-12
9/29	UCLA	W 8-15, 9-15, 15-6, 15-9, 15-13
9/30	UCLA	W 8-15, 15-8, 3-15, 15-8, 15-6
10/6	Hawai'i-Hilo	W 15-1, 15-6, 15-2
10/7	Hawai'i-Hilo	W 15-10, 15-6, 15-13
10/9	at Illinois State	W 16-14, 15-7, 15-8
10/10	at Illinois	W 15-1, 15-3, 15-8
10/11	at Northwestern	W 15-8, 15-6, 15-0
10/12	at Purdue	W 15-6, 15-5, 15-6
10/14	at Kentucky	W 13-15, 15-10, 15-7, 15-2
10/15	at Kentucky	W 16-14, 15-17, 8-15, 15-6, 15-2
10/21	Weber State	W 15-5, 15-6, 15-7
<i>at UCLA/NIVT (Los Angeles, Calif., Nov. 4-5)</i>		
11/4	Washington	W 15-8, 15-3
11/4	Arizona State	L 9-15, 9-15
11/4	Cal State Fullerton	W 15-1, 15-3
11/5	UC Santa Barbara	W 15-6, 15-7
11/5	Brigham Young	W 16-14, 15-0
11/5	Southern Cal	L 15-9, 9-15, 11-15
11/7	at Santa Clara	W 15-6, 15-7, 15-3
11/8	at California	W 15-3, 15-10, 15-9
11/9	at San Jose State	W 15-12, 15-12, 15-4
<i>at Wendy's Classic (Stockton, Calif., Nov. 12-13)</i>		
11/12	Stanford	W 13-15, 15-5, 15-7, 15-11
11/13	Pacific	W 14-16, 16-14, 15-7, 13-15, 15-7
11/16	Hawai'i Pacific	W 15-3, 15-2, 15-1
11/23	Arizona%	W 15-7, 15-2, 15-3
11/25	Arizona	W 15-13, 15-13, 15-9
<i>NCAA Regionals (Austin, Tex., Dec 10-11)</i>		
12/10	Tennessee	W 15-6, 15-7, 15-4
12/11	Kentucky	W 10-15, 18-16, 15-9, 15-10
<i>NCAA Championships (Lexington, Ky., Dec. 17-19)</i>		
12/17	Stanford	W 15-9, 15-7, 15-7
12/19	UCLA	W 15-13, 15-4, 15-10



**1984 (33-11)**

9/6	Brigham Young	W 13-15, 15-3, 15-12, 15-10
9/7	Brigham Young	W 11-15, 15-11, 9-15, 15-13, 15-3
9/10	Utah State	W 15-5, 15-13, 8-15, 15-8
9/11	Ohio State	W 15-11, 15-10, 15-12
9/12	Ohio State	W 15-7, 15-8, 15-7
<i>at Titan Collegiate (Fullerton, Calif., Sept. 14-15)</i>		
9/14	Indiana	W 15-7, 16-14
9/14	UC Riverside	W 3-15, 15-0, 15-3
9/14	Cal State Fullerton	W 15-7, 4-15, 15-7
9/15	Cal State Fullerton	W 15-4, 15-3
9/15	Southern Cal	L 14-16, 9-15
9/15	**Pepperdine	W 15-2
9/18	at Western Michigan	W 15-6, 13-15, 8-15, 15-3, 15-6
9/20	Oregon State	W 9-15, 15-9, 15-5, 15-6
9/21	Oregon State	W 15-6, 15-5, 15-2
9/27	UCLA%	L 13-15, 15-6, 14-16, 8-15
9/28	UCLA	L 16-14, 10-15, 15-11, 15-17, 10-15
10/2	Illinois State	L 8-15, 15-4, 15-8, 14-16, 8-15
10/3	Illinois State	W 15-9, 12-15, 15-5, 13-15, 15-11
10/6	at New Orleans	W 12-15, 15-5, 15-6, 15-5
10/7	at Louisiana State	W 15-4, 15-3, 16-14
10/8	at Louisiana State	W 15-4, 15-7, 8-15, 15-7
10/9	at South Carolina	W 15-2, 15-7, 15-2
10/10	at Tennessee	W 15-7, 15-9, 15-3
<i>at Texas Avia Classic (Austin, Tex., Oct. 12-13)</i>		
10/12	Oklahoma	W 15-7, 11-15, 15-3, 15-6
10/13	Texas	W 12-15, 15-10, 15-10, 12-15, 15-3
10/17	at BYU-Hawaii	W 15-8, 15-9, 16-14
10/19	at Hawaii-Hilo	W 15-10, 15-2, 17-15
10/20	at Hawaii-Hilo	W 15-9, 15-9, 15-5
10/23	at Hawaii Pacific	W 15-6, 15-4, 15-8
10/25	Pacific	L 6-15, 13-15, 9-15
10/26	Pacific	W 16-14, 15-9, 11-15, 15-5
<i>at UCLA/NIVT (Los Angeles, Calif., Nov. 2-3)</i>		
11/2	UC Santa Barbara	W 17-15, 6-15, 15-12
11/2	San Diego State	W 15-14, 15-11
11/3	Wyoming	W 15-13, 15-7
11/3	Fresno State	W 12-15, 15-8, 15-9
11/3	Oregon	W 15-13, 15-6
11/3	Pacific	L 5-15, 15-10, 3-15
11/5	at Air Force	W 15-12, 15-5, 15-0
11/6	at Colorado St.	W 15-7, 15-7, 13-15, 5-15, 15-10
11/7	at Wyoming	W 15-7, 15-2, 9-15, 12-15, 15-10
<i>at Wendy's Classic (Stockton, Calif., Nov. 10-11)</i>		
11/10	Pacific	L 14-16, 10-15, 11-15
11/11	Stanford	L 15-17, 10-15, 15-17
11/21	Southern Cal%	L 15-3, 15-13, 4-15, 10-15, 13-15
11/23	Southern Cal	L 15-13, 13-15, 11-15, 15-12, 10-15
<i>NCAA First Round (Eugene, Ore.)</i>		
12/1	Oregon	L 9-15, 14-16, 16-14, 15-3, 9-15

\*\*Does not count toward overall record



**1985 (28-12, 10-6 PCAA, 8th)**

9/5	Oregon	W 15-7, 15-12, 15-9
9/6	Oregon	W 15-3, 15-13, 16-14
9/12	CSUN	W 15-8, 15-7, 15-11
9/13	CSUN	W 15-3, 15-4, 15-10
9/17	Tennessee	W 15-1, 15-1, 15-4
9/19	Long Beach State	W 15-7, 15-8, 15-10
9/20	Long Beach State	W 6-15, 15-6, 15-11, 15-4
9/26	UCLA	W 15-13, 15-9, 15-8
9/27	UCLA	L 15-11, 3-15, 15-7, 12-15, 12-15
10/2	Hawaii-Hilo	W 15-8, 15-6, 16-14
<i>at Husker Classic (Lincoln, Neb., Oct. 5-6)</i>		
10/5	SW Missouri State	W 15-10, 15-3, 15-4
10/6	Oklahoma	W 15-8, 15-4, 15-10
10/6	Nebraska	L 13-15, 10-15, 13-15
10/9	at Cal State Fullerton	W 15-4, 15-12, 15-12
<i>at UCLA/NIVT (Los Angeles, Calif., Oct. 10-12)</i>		
10/10	Pepperdine	W 15-13, 9-15, 15-12
10/11	Washington	W 15-9, 15-13
10/11	Wyoming	W 16-14, 6-15, 17-15
10/11	Pacific	L 8-15, 5-15, 9-15
10/12	CSUN	W 15-1, 15-9, 10-15, 15-3
10/12	Arizona State	W 15-7, 15-7, 15-12
10/17	Pacific	L 13-15, 6-15, 15-13, 5-15
10/18	Pacific	L 2-15, 15-10, 11-15, 11-15
10/24	UC Irvine	W 15-1, 15-11, 13-15, 15-0
10/25	UC Irvine	W 15-11, 15-11, 15-9
10/30	at Hawaii Pacific	W 15-5, 15-9, 16-14
11/1	at San Diego State	L 12-15, 15-17, 9-15
11/2	at San Diego State	W 15-10, 15-3, 15-9
11/4	at UNLV	W 15-7, 6-15, 15-4, 15-10
11/5	at UNLV	W 15-3, 17-15, 16-14
11/6	at Cal State Fullerton	W 15-7, 15-10, 15-6
11/8	at UC Santa Barbara	W 19-17, 15-4, 15-12
11/9	at UC Santa Barbara	L 5-15, 5-15, 14-16
11/14	Cal Poly	L 12-15, 15-6, 11-15, 15-13, 8-15
11/15	Cal Poly	L 15-7, 10-15, 5-15, 15-7, 7-15
11/26	Stanford%	L 6-15, 13-15, 16-14, 4-15
11/27	Stanford	L 15-10, 8-15, 16-14, 12-15, 5-15
<i>PCAA Tournament (Stockton, Calif., Nov. 29-Dec. 1)</i>		
11/29	San Diego State	W 15-7, 13-15, 9-15, 15-4, 15-3
11/30	Cal Poly	W 9-15, 15-12, 15-7, 15-11
12/1	Pacific	L 13-15, 15-9, 10-15, 12-15
<i>NCAA First Round (Honolulu, O'ahu)</i>		
12/6	San Diego State	W 15-12, 11-15, 15-8, 16-14
<i>NCAA Northwest Regional (Stockton, Calif.)</i>		
12/13	Pacific	L 7-15, 6-15, 4-15



**1986 (31-7, 15-3 PCAA, 2nd)**

9/4	New Mexico State	W 15-11, 15-7, 15-7
9/5	New Mexico State	W 20-22, 15-8, 15-0, 15-11
9/11	Minnesota	W 15-3, 15-11, 15-4
9/12	Minnesota	W 15-5, 15-4, 15-3
9/17	UCLA	L 15-9, 6-15, 5-15, 15-10, 9-15
9/18	UCLA	W 15-10, 15-8, 14-16, 16-14
9/25	UC Santa Barbara	W 15-6, 15-7, 11-15, 15-4
9/26	UC Santa Barbara	W 7-15, 15-8, 15-8, 15-13
10/3	at Long Beach State	W 9-15, 15-17, 15-6, 15-9, 15-10
10/4	at UC Irvine	W 15-8, 15-10, 15-10
10/7	at Long Beach State	W 15-6, 15-12, 15-6
10/8	at UC Irvine	W 15-8, 15-10, 15-10
<i>at UCLA/NIVT (Los Angeles, Calif., Oct. 9-11)</i>		
10/9	Wyoming	W 15-6, 15-4
10/9	Southern Cal	W 15-2, 15-6
10/10	Cal Poly	W 15-7, 9-15, 15-12
10/10	Pepperdine	W 16-14, 15-13, 15-2
10/11	UCLA	W 15-6, 15-13, 9-15, 13-15, 15-13
10/11	Brigham Young	L 15-12, 15-12, 9-15, 15-18, 10-15
10/16	San Jose State	W 15-11, 15-11, 15-7
10/17	San Jose State	L 15-12, 11-15, 5-15, 15-11, 2-15
10/23	Cal State Fullerton	W 15-3, 15-4, 15-5
10/24	Cal State Fullerton	W 15-3, 15-7, 15-4
10/28	at Pacific	L 12-15, 5-15, 14-16
10/30	at Pacific	L 3-15, 6-15, 7-15
10/31	at Fresno State	W 15-5, 15-7, 15-13
11/1	at Fresno State	W 15-4, 15-8, 15-11
11/3	at Cal Poly	W 15-2, 15-11, 5-15, 15-12
11/4	at Cal Poly	W 15-8, 15-10, 16-14
11/13	San Diego St.	W 15-12, 15-5, 11-15, 15-17, 15-8
11/14	San Diego St.	W 15-10, 15-4, 15-12
<i>PCAA Tournament (Long Beach, Calif., Nov. 20-22)</i>		
11/20	Long Beach State	W 13-15, 15-9, 17-15, 15-12
11/21	San Jose State	W 15-1, 17-15, 12-15, 16-14
11/22	Pacific	L 11-15, 14-16, 15-3, 9-15
11/26	Southern Cal	W 15-4, 15-6, 15-3
11/28	Southern Cal	W 15-4, 15-6, 15-7
<i>NCAA First Round (Honolulu, O'ahu)</i>		
12/5	U.S. International	W 15-5, 15-4, 15-8
<i>NCAA Northwest Regional (San Jose, Calif.)</i>		
12/12	San Jose State	W 8-15, 6-15, 16-14, 15-12, 15-11
12/13	Pacific	L 7-15, 15-6, 6-15, 12-15



# ALL-TIME RESULTS



## 1987 (37-2, 17-1 PCAA, 1st)

### NCAA NATIONAL CHAMPIONS

9/3	California	W 15-11, 15-2, 16-14
9/4	California	W 5-4, 15-7, 15-13
9/11	UCLA	W 15-9, 9-15, 15-13, 15-7
9/12	UCLA	W 15-10, 15-11, 15-10
9/15	UC Irvine	W 15-8, 15-2, 15-12
9/16	UC Irvine	W 15-1, 15-7, 15-13
9/18	at BYU-Hawai'i	W 15-4, 15-6, 15-10
9/24	Long Beach State	W 15-3, 15-11, 15-9
9/26	Long Beach State	W 15-9, 15-12, 15-8
10/2	at Cal State Fullerton	W 15-0, 15-3, 15-3
10/3	at San Diego State	W 15-3, 15-2, 8-15, 15-5 10-6
10/6	at San Diego State	W 15-8, 16-14, 12-15, 15-4
10/7	at Cal State Fullerton	W 15-10, 15-9, 15-6
<i>at Bronco Classic (Pomona, Calif., Oct. 8-10)</i>		
10/8	CSUN	W 15-11, 15-5, 12-15, 15-4
10/9	Nebraska-Omaha	W 15-7, 15-7, 15-9
10/9	Cal Poly-Pomona	W 15-9, 15-3, 15-7
10/10	Portland State	W 15-2, 15-10, 15-9
10/10	UC Riverside	W 15-4, 15-8, 15-3
10/15	Pacific	W 15-11, 15-8, 15-11
10/16	Pacific	W 13-15, 17-15, 15-7, 15-11
10/22	Western Kentucky	W 15-2, 15-1, 15-6
10/23	Western Kentucky	W 15-3, 15-8, 15-13
10/30	at San Jose St.	W 12-15, 15-13, 15-13, 8-15, 16-14
10/31	at San Jose St.	W 15-5, 15-7, 15-5
11/2	at UC Santa Barbara	W 15-5, 15-2, 15-10
11/3	at UC Santa Barbara	L 15-7, 15-10, 8-15, 10-15, 9-15
11/5	Cal Poly	W 15-5, 15-12, 15-10
11/6	Cal Poly	W 15-5, 15-10, 10-15, 15-3
11/12	Fresno State	W 15-10, 15-8, 15-11
11/13	Fresno State	W 15-6, 15-9, 15-10
<i>at Wendy's Classic (Stockton, Calif., Nov. 21-22)</i>		
11/21	Texas	W 15-10, 15-9, 15-2
11/22	Pacific	L 10-15, 14-16, 15-10, 10-15
11/25	Stanford	W 10-15, 15-7, 9-15, 15-7, 15-7
11/27	Stanford	W 15-13, 15-10, 12-15, 15-11
<i>NCAA First Round (Honolulu, O'ahu)</i>		
12/3	Arizona	W 15-4, 15-11, 15-10
<i>NCAA Northwest Regional (Honolulu, O'ahu)</i>		
12/10	Cal Poly	W 15-4, 15-10, 15-8
12/11	Pacific	W 15-11, 15-9, 15-12
<i>NCAA Championships (Indianapolis, Ind.)</i>		
12/17	Illinois	W 19-17, 15-13, 15-11
12/19	Stanford	W 15-10, 15-10, 9-15, 15-1



## 1988 (33-3, 18-0 Big West, 1st)

8/31	Brigham Young	W 15-10, 15-11, 15-1
9/2	Oregon	W 15-10, 15-3, 15-5
<i>Hawaiian Airlines Wahine Classic (Honolulu, O'ahu, Sept. 8-10)</i>		
9/8	Pepperdine\$	W 15-5, 15-2, 15-2
9/9	UCLA%	L 16-14, 11-15, 7-15, 0-15
9/10	Illinois%	W 15-11, 15-9, 15-8
9/15	San Francisco	W 15-2, 15-6, 15-8
9/16	San Francisco	W 15-1, 15-12, 15-9
9/23	Cal State Fullerton	W 15-5, 15-6, 15-13
9/24	Cal State Fullerton	W 15-0, 16-14, 15-3
9/30	at UC Irvine	W 15-3, 15-12, 15-10
10/1	at Long Beach State	W 5-15, 15-12, 15-10, 15-12
10/3	at UC Irvine	W 17-15, 15-8, 15-7
10/4	at Long Beach State	W 15-1, 15-11, 15-13
10/5	at Pacific	W 15-1, 15-9, 15-11
<i>Josten's Invitational (Palo Alto, Calif., Oct. 7-8)</i>		
10/7	Texas-Arlington	W 15-13, 15-3, 16-18, 18-16
10/8	Stanford	L 10-15, 16-14, 15-9, 8-15, 5-15
10/14	UC Santa Barbara	W 10-15, 15-10, 15-1, 15-5
10/15	UC Santa Barbara	W 15-9, 15-13, 15-13
10/21	at Wyoming	W 15-6, 15-9, 15-9
10/22	at Colorado State	W 16-14, 15-2, 15-10
10/27	San Diego State	W 15-4, 15-10, 15-9
10/28	San Diego State	W 15-5, 15-5, 13-15, 15-7
11/3	at Pacific	W 15-7, 15-6, 16-18, 15-11
11/4	at Fresno State	W 13-15, 15-0, 15-9, 15-9
11/5	at Fresno State	W 15-6, 15-5, 15-9
11/7	at Cal Poly	W 15-11, 13-15, 15-13, 11-15, 5-3
11/8	at Cal Poly	W 10-15, 15-3, 15-2, 15-11
11/11	San Jose State	W 15-10, 15-3, 15-11
11/12	San Jose State	W 15-3, 15-7, 15-8
11/23	Southern Cal	W 15-13, 15-12, 15-7
11/26	Southern Cal	W 15-5, 15-3, 13-15, 15-2
<i>NCAA First Round (Honolulu, O'ahu)</i>		
12/2	Cal Poly	W 15-12, 15-7, 15-11
<i>NCAA Northwest Regional (Honolulu, O'ahu)</i>		
12/9	San Diego State	W 15-4, 15-8, 15-13
12/10	Pacific	W 15-10, 15-7, 13-15, 15-8
<i>NCAA Championships (Minneapolis, Minn.)</i>		
12/15	Illinois	W 15-1, 15-12, 13-15, 15-13
12/17	Texas	L 4-15, 14-16, 13-15



## 1989 (29-3, 17-1 Big West, 1st)

8/31	Washington State	W 15-6, 15-6, 15-9
9/1	Washington State	W 15-4, 15-5, 15-1
<i>Hawaiian Airlines Wahine Classic (Honolulu, O'ahu, Sept. 7-9)</i>		
9/7	Texas%	W 15-3, 15-7, 15-8
9/8	UCLA%	W 17-15, 15-11, 9-15, 15-11
9/9	Colorado State\$	W 15-9, 15-4, 15-6
9/14	at Chaminade	W 15-3, 15-4, 15-7
9/22	at San Diego State	W 15-10, 15-5, 7-15, 12-15, 15-9
9/23	at Cal State Fullerton	W 15-8, 15-7, 15-1
9/25	at San Diego State	W 15-10, 15-12, 15-12
9/26	at Cal State Fullerton	W 15-4, 15-4, 15-9
9/28	Long Beach State	W 15-12, 15-7, 15-4
9/29	Long Beach State	W 15-13, 15-8, 15-10
10/5	Fresno State	W 15-6, 15-9, 15-7
10/6	Fresno State	W 15-9, 15-10, 15-12
10/12	Pacific	W 15-11, 16-14, 15-10
10/13	Pacific	W 5-15, 15-10, 12-15, 15-0, 15-4
10/20	at Nebraska	W 15-9, 15-9, 15-9
10/21	at Nebraska	L 7-15, 16-14, 14-16, 12-15
10/26	UC Irvine	W 17-15, 7-15, 15-3, 15-4
10/27	UC Irvine	W 15-6, 15-5, 15-4
11/5	at Texas	W 15-12, 15-11, 15-9
11/7	at UC Santa Barbara	W 15-13, 12-15, 15-7, 15-6
11/8	at UC Santa Barbara	W 16-14, 6-15, 15-11, 13-15, 15-2
11/10	at San Jose State	W 15-7, 15-3, 10-15, 15-13
11/11	at San Jose State	W 15-12, 15-12, 15-12
11/16	Cal Poly	L 15-11, 15-17, 15-13, 11-15, 7-15
11/17	Cal Poly	W 15-12, 10-15, 15-5, 10-15, 15-9
11/22	Stanford	W 15-13, 15-10, 7-15, 15-6
11/24	Stanford	W 15-6, 15-1, 15-13
<i>NCAA First Round (Honolulu, O'ahu)</i>		
12/1	Eastern Washington	W 15-2, 15-9, 15-7
<i>NCAA Northwest Regional (Stockton, Calif.)</i>		
12/8	Cal Poly	W 15-9, 15-17, 9-15, 15-12, 15-12
12/9	Long Beach St	L 15-11, 13-15, 15-10, 8-15, 10-15



**1990 (28-6, 16-2 Big West, 1st)**

8/31	Texas A&M	W 15-5, 15-9, 15-9
9/1	Texas A&M	W 15-5, 15-11, 15-8
<i>Hawaiian Airlines Wahine Classic (Honolulu, O'ahu, Sept. 6-8)</i>		
9/6	Ohio State\$	W 12-15, 15-7, 15-5, 15-7
9/7	Nebraska%	L 11-15, 14-16, 5-15
9/8	UCLA%	L 15-10, 5-15, 10-15, 9-15
9/14	Hawai'i-Hilo	W 15-1, 15-5, 15-10
9/21	New Mexico	W 15-10, 15-8, 15-12
9/22	New Mexico	W 8-15, 16-14, 15-11, 15-12
9/27	New Mexico State	W 15-6, 15-3, 15-4
9/28	New Mexico State	W 15-3, 15-2, 15-9
10/1	at Utah State	W 15-4, 15-1, 15-3
10/2	at Utah State	W 15-6, 15-6, 15-2
10/3	at Long Beach St.	W 11-15, 15-13, 15-12, 15-12
10/4	at UC Irvine	W 15-13, 15-8, 15-12
10/6	at UC Irvine	W 15-4, 15-9, 15-7
10/12	UC Santa Barbara	W 15-7, 15-9, 15-5
10/13	UC Santa Barbara	W 15-12, 16-18, 15-9, 15-12
10/18	CSUN	W 15-1, 15-4, 15-8
10/19	CSUN	W 15-9, 15-10, 16-14
10/25	San Jose State	W 15-7, 15-7, 15-13
10/26	San Jose State	W 15-12, 15-3, 15-10
11/1	at Long Beach St.	L 5-15, 15-10, 15-8, 7-15, 9-15
<i>at Big West/Pac-10 Challenge (Los Angeles, Calif., Nov. 2-3)</i>		
11/2	Southern Cal	W 15-9, 15-8, 15-13
11/3	UCLA	L 15-12, 15-13, 12-15, 7-15, 9-15
11/9	Cal State Fullerton	W 15-1, 15-6, 15-9
11/10	Cal State Fullerton	W 15-3, 15-1, 15-3
11/13	at Fresno State	W 15-5, 15-9, 15-3
11/14	at Fresno State	W 15-8, 15-10, 15-12
11/16	at Pacific	W 15-9, 15-12, 16-14
11/17	at Pacific	L 15-8, 5-15, 15-10, 11-15, 9-15
11/21	Southern Cal	W 15-8, 15-10, 15-13
11/23	Southern Cal	W 15-10, 15-12, 12-15, 15-10
<i>NCAA First Round (Honolulu, O'ahu)</i>		
11/30	SW Missouri State	W 15-4, 15-11, 15-4
<i>NCAA Northwest Regional (Honolulu, O'ahu)</i>		
12/7	Long Beach State%	L 11-15, 15-8, 13-15, 13-15



**1991 (26-5, 15-3 Big West, T2nd)**

8/30	Oregon State	W 15-5, 15-10, 15-9
8/31	Oregon State	W 15-12, 15-13, 10-15, 15-5
<i>Hawaiian Airlines Wahine Classic (Honolulu, O'ahu, Sept. 5-7)</i>		
9/5	Minnesota%	W 15-4, 13-15, 15-5, 15-1
9/6	Georgia%	W 15-13, 15-3, 15-12
9/7	UCLA%	W 16-14, 16-14, 13-15, 1-15, 15-12
9/13	St. Mary's (CA)	W 15-7, 15-6, 15-7
9/19	Long Beach State	L 10-15, 16-14, 6-15, 8-15
9/20	Long Beach State	L 5-15, 11-15, 14-16
10/3	at New Mexico State	W 15-9, 15-11, 15-13
10/5	at New Mexico State	W 15-10, 15-9, 15-6
10/7	at San Jose State	W 15-9, 15-7, 14-16, 15-10
10/8	at San Jose State	W 15-6, 15-4, 15-13
10/11	UC Irvine	W 15-7, 15-0, 15-4
10/12	UC Irvine\$	W 15-11, 15-10, 15-7
10/18	at Cal State Fullerton	W 15-3, 15-6, 10-15, 15-11
10/19	at Cal State Fullerton	W 15-13, 15-7, 15-8
10/21	at UC Santa Barbara	W 16-14, 15-10, 11-15, 15-13
10/22	at UC Santa Barbara	W 15-13, 15-4, 15-10
10/25	Utah State	W 15-3, 15-8, 15-5
10/26	Utah State	W 15-8, 15-5, 15-4
11/7	Cal Poly	W 15-7, 15-4, 15-9
11/8	Cal Poly	W 15-9, 15-8, 15-8
11/15	Pacific	W 16-14, 12-15, 6-15, 16-14, 15-4
11/16	Pacific	L 12-15, 12-15, 7-15
11/21	Fresno State	W 15-12, 15-7, 15-7
11/22	Fresno State	W 15-2, 15-4, 15-3
11/27	Stanford	W 15-8, 15-12, 15-11
11/28	Stanford	L 13-15, 16-14, 15-10, 8-15, 14-16
<i>NCAA First Round (Honolulu, O'ahu)</i>		
12/5	SW Texas State	W 17-15, 15-6, 15-7
<i>NCAA Northwest Regional (Stockton, Calif.)</i>		
12/13	Pacific	W 16-14, 15-13, 15-10
12/14	Long Beach State	L 6-15, 10-15, 15-8, 15-8, 11-15



**1992 (15-12, 11-7 Big West, 4th)**

<i>Hawaiian Airlines Wahine Classic (Honolulu, O'ahu, Sept. 3-5)</i>		
9/3	Houston%	W 15-6, 12-15, 15-10, 15-3
9/4	Illinois%	L 12-15, 9-15, 7-15
9/5	UCLA%	L 11-15, 13-15, 5-15
9/12	Washington	L 10-15, 15-9, 10-15, 15-7, 13-15
9/17	San Jose State	W 12-15, 15-7, 15-3, 15-7
9/19	San Jose State\$	W 15-8, 15-7, 15-11
9/22	at UC Irvine	W 11-15, 15-8, 14-16, 15-10, 15-5
9/23	at UC Irvine	W 15-13, 15-3, 15-11
9/25	at Long Beach State	L 11-15, 11-15, 5-15
9/26	at Long Beach State	L 4-15, 9-15, 6-15
10/2	Cal State Fullerton	W 15-8, 15-10, 15-6
10/3	Cal State Fullerton	W 15-1, 15-4, 15-5
10/9	BYU-Hawai'i	L 15-13, 10-15, 14-16, 12-15
10/16	at Utah State	W 15-5, 17-15, 15-6
10/17	at Utah State	W 15-3, 15-10, 15-10
10/22	Notre Dame	L 14-16, 11-15, 8-15
10/23	Notre Dame	W 15-10, 15-10, 18-16
10/30	UC Santa Barbara	L 2-15, 10-15, 6-15
10/31	UC Santa Barbara	L 12-15, 10-15, 5-15
11/3	at Nevada	L 10-15, 15-3, 15-4, 12-15, 10-15
11/4	at Nevada	W 15-5, 15-8, 15-8
11/6	at Pacific	L 9-15, 9-15, 9-15
11/7	at Pacific	L 10-15, 6-15, 15-6, 2-15
11/19	New Mexico State	W 15-2, 15-11, 15-2
11/20	New Mexico State	W 15-5, 15-3, 15-7
11/25	Wyoming	W 15-5, 15-11, 15-81
11/26	Wyoming	W 16-14, 15-9, 15-3



# ALL-TIME RESULTS



## 1993 (19-11, 13-5 Big West, 3rd)

9/2	Brigham Young	W 17-15, 15-4, 15-11
9/3	Brigham Young	L 12-15, 12-15, 9-15
<i>Hawaiian Airlines Wahine Classic (Honolulu, O'ahu, Sept. 9-11)</i>		
9/9	Georgia Tech%	W 15-2, 15-11, 15-13
9/10	Penn State%	L 12-15, 13-15, 8-15
9/11	UCLA%	L 3-15, 2-15, 11-15
9/14	at San Jose State	L 8-15, 14-16, 15-6, 15-10, 13-15
9/15	at San Jose State	W 8-15, 15-8, 15-4, 15-0
9/17	at New Mexico State	W 15-1, 15-13, 15-3
9/18	at New Mexico State	W 15-7, 15-4, 12-15, 15-1
9/24	UC Irvine	W 15-8, 15-6, 15-11
9/26	UC Irvine	W 15-8, 15-4, 15-1
9/28	at Cal State Fullerton	W 15-3, 15-2, 15-2
9/29	at Cal State Fullerton	W 15-0, 15-6, 15-7
10/1	at UC Santa Barbara	L 12-15, 13-15, 8-15
10/2	at UC Santa Barbara	L 8-15, 7-15, 15-13, 15-11, 9-15
10/7	Nevada	W 15-10, 15-3, 15-8
10/8	Nevada	W 15-1, 15-4, 15-9
10/15	Utah State	W 15-4, 15-1, 15-9
10/16	Utah State	W 15-6, 15-8, 15-12
10/22	Long Beach State	L 14-16, 15-6, 10-15, 7-15
10/23	Long Beach State	L 2-15, 6-15, 8-15
10/29	Pacific	W 15-7, 15-9, 15-1
10/30	Pacific	W 15-7, 15-13, 12-15, 15-13
11/12	Cal Poly	W 15-6, 15-5, 15-4
11/13	Cal Poly	W 15-5, 15-5, 15-12
11/24	Southern Cal	L 15-9, 8-15, 15-5, 11-15, 16-18
11/26	Southern Cal	L 12-15, 15-5, 12-15, 13-15
<i>NCAA Second Round (Honolulu, O'ahu)</i>		
12/5	Wisconsin	W 16-14, 15-10, 15-7
<i>NCAA Northwest Regional (Long Beach, Calif.)</i>		
12/10	Pacific	W 15-6, 15-13, 12-15, 15-10
12/11	Long Beach State	L 12-15, 7-15, 12-15



## 1994 (25-5, 15-3 Big West, 2nd)

<i>Hawaiian Airlines Wahine Classic (Honolulu, O'ahu, Sept. 1-2, 4)</i>		
9/1	Illinois%	W 15-3, 15-13, 15-10
9/2	Georgia%	W 15-10, 15-1, 15-11
9/4	UCLA%	L 15-7, 8-15, 10-15, 13-15
9/8	Texas-Arlington	W 13-15, 15-3, 15-2, 15-13
9/9	Texas-Arlington	W 15-4, 15-6, 15-2
9/16	UC Irvine	W 15-5, 15-6, 15-5
9/17	UC Irvine\$	W 15-7, 15-7, 15-13
9/22	at St. Mary's (CA)	W 15-3, 15-6, 15-9
9/23	at Pacific	L 12-15, 12-15, 15-12, 15-7, 8-15
9/24	at Pacific	W 15-7, 15-7, 15-7
9/30	Cal Poly	W 15-4, 15-2, 15-10
10/1	Cal Poly	W 15-3, 15-9, 15-9
10/6	New Mexico State	W 15-7, 15-11, 15-2
10/7	New Mexico State	W 15-10, 15-3, 15-6
10/11	at Nevada	W 15-3, 15-8, 12-15, 15-1
10/12	at Nevada	W 15-6, 15-4, 15-9
10/14	at Cal State Fullerton	W 15-5, 15-8, 15-5
10/15	at Cal State Fullerton	W 15-8, 15-10, 15-3
10/21	San Jose State	W 15-4, 12-15, 15-2, 15-6
10/22	San Jose State	W 15-5, 15-3, 15-7
10/28	at Utah State	W 15-2, 15-0, 15-3
10/29	at Utah State	W 15-1, 15-9, 15-5
11/1	at Long Beach St.	L 10-15, 7-15, 15-10, 15-7, 5-15
11/2	at Long Beach St.	W 15-10, 15-5, 16-14
11/10	UCSB	L 13-15, 15-8, 11-15, 9-15
11/11	UCSB	W 15-4, 14-16, 11-15, 15-7, 15-7
11/23	Baylor	W 16-14, 15-2, 14-16, 15-7
11/24	Baylor	W 15-11, 15-2, 15-4
<i>NCAA Second Round (Honolulu, O'ahu)</i>		
12/4	Idaho	W 17-15, 15-11, 15-7
<i>NCAA Northwest Regional (Long Beach, Calif.)</i>		
12/9	Long Beach St.	L 12-15, 15-12, 11-15, 15-11, 10-15



## 1995 (31-1, 18-0 Big West, 1st)

<i>Hawaiian Airlines Wahine Classic (Honolulu, O'ahu, Sept. 1-3)</i>		
9/1	Texas	W 13-15, 12-15, 15-9, 15-13, 15-6
9/2	Minnesota	W 15-8, 15-4, 15-9
9/3	UCLA	W 15-11, 15-1, 16-14
<i>Aston's Imua Wahine Challenge (Honolulu, O'ahu, Sept. 8-9)</i>		
9/8	Loyola Marymount	W 6-15, 18-16, 15-2, 15-5
9/9	Idaho State	W 15-10, 15-12, 15-5
9/9	Iowa	W 15-6, 15-7, 15-2
9/14	at San Jose State	W 8-15, 15-6, 15-6, 15-7
9/15	at UC Irvine	W 12-15, 15-7, 15-8, 15-6
9/16	at UC Irvine	W 15-8, 15-4, 15-12
9/21	Pacific	W 15-7, 15-6, 14-16, 15-2
9/22	Pacific	W 15-5, 11-15, 14-16, 15-7, 15-12
9/29	CSUN	W 15-2, 15-3, 15-5
10/4	at San Jose State	W 15-6, 15-9, 15-10
10/6	at New Mexico State	W 15-4, 15-4, 7-15, 15-7
10/7	at New Mexico State	W 15-8, 10-15, 15-8, 17-15
10/13	Cal State Fullerton	W 15-4, 15-6, 15-13
10/14	Cal State Fullerton	W 15-1, 15-5, 15-3
10/19	Texas A&M	W 15-13, 15-5, 15-10
10/20	Texas A&M	W 15-12, 9-15, 15-8, 15-12
10/27	Utah State	W 15-5, 15-4, 15-7
10/28	Utah State+	W 15-3, 15-5, 15-0
11/2	Nevada	W 15-6, 15-6, 15-4
11/3	Nevada	W 15-13, 15-6, 15-5
11/10	at UC Santa Barbara	W 15-7, 15-13, 15-5
11/11	at UC Santa Barbara	W 18-16, 15-5, 9-15, 15-10
11/16	Long Beach State	W 15-11, 15-3, 15-6
11/17	Long Beach State	W 15-2, 15-13, 15-12
11/22	Arizona	W 15-4, 15-8, 15-7
11/23	Arizona	W 15-5, 6-15, 15-11, 15-2
<i>NCAA Second Round (Honolulu, O'ahu)</i>		
12/3	Louisville	W 15-4, 15-7, 15-2
<i>NCAA Mountain Regional (Honolulu, O'ahu)</i>		
12/7	Arizona State	W 15-8, 15-5, 11-15, 15-13
12/8	Michigan State	L 15-6, 15-8, 10-15, 7-15, 12-15



**1996 (35-3, 16-0 WAC, 1st-Pacific)**

*State Farm's NACWAA Classic (Normal, Ill., Aug. 23-24)*

8/23	Florida	W 15-12, 15-11, 6-15, 6-15, 15-13
8/24	Nebraska	W 15-12, 16-14, 15-9

*Hawaiian Airlines Wahine Volleyball Classic (Honolulu, O'ahu, Aug. 30-Sept. 2)*

8/30	Michigan	W 15-11, 15-10, 15-9
9/1	Louisville	W 16-14, 15-2, 15-4
9/2	UCLA	W 15-5, 15-2, 15-9

*Aston's Imua Wahine Challenge (Honolulu, O'ahu, Sept. 5-8)*

9/5	Rhode Island	W 15-5, 15-4, 15-7
9/6	Sacramento State	W 15-9, 15-2, 13-15, 15-10
9/8	Santa Clara	W 15-4, 15-3, 19-17
9/13	California	W 15-1, 15-4, 15-5
9/14	California	W 15-11, 15-7, 15-7
9/20	Fresno State	W 16-14, 15-3, 15-9
9/21	San Jose State	W 15-6, 15-3, 15-11
9/26	at Southern Cal	W 15-11, 11-15, 15-11, 15-9
9/28	at Utah	W 15-2, 15-9, 15-8
10/4	San Diego State	W 15-12, 15-5, 15-9
10/11	Wyoming	W 15-2, 15-2, 15-5
10/13	Colorado State	W 15-5, 15-4, 15-3
10/16	at San Diego State	W 13-15, 15-5, 15-7, 15-11
10/18	at UNLV	W 15-2, 15-8, 15-0
10/19	at Air Force	W 15-1, 15-9, 15-9
10/24	Notre Dame	W 15-5, 15-8, 15-2
10/25	Notre Dame	W 15-1, 15-9, 15-13
11/1	Utah	W 15-7, 15-4, 13-15, 15-6
11/2	Stanford	L 15-5, 11-15, 6-15, 9-15
11/8	at Colo. St.	W 15-11, 14-16, 17-19, 15-10, 15-10
11/9	at Wyoming	W 15-10, 15-7, 15-3
11/15	Air Force	W 15-2, 15-2, 15-5
11/17	UNLV	W 15-2, 15-4, 15-2
11/22	at San Jose State	W 15-1, 15-7, 15-7
11/23	at Fresno State	W 15-9, 15-2, 15-7

*WAC Tournament (Las Vegas, Nev., Nov. 27-30)*

11/27	Rice	W 15-10, 15-6, 15-6
11/29	New Mexico	W 15-4, 15-8, 15-2
11/30	Brigham Young	L 15-6, 11-15, 13-15, 18-16, 8-15

*NCAA Second Round (Honolulu, O'ahu)*

12/8	Colorado	W 15-12, 15-11, 15-13
------	----------	-----------------------

*NCAA Mountain Regional (Honolulu, O'ahu)*

12/12	Texas	W 15-13, 13-15, 15-13, 15-2
12/13	Brigham Young	W 15-10, 15-6, 15-6

*NCAA Championships (Cleveland, Ohio)*

12/19	Florida	W 15-11, 15-8, 15-9
12/21	Stanford	L 7-15, 3-15, 5-15



**1997 (25-8, 14-0 WAC, 1st-Pacific)**

*Aston's Imua Wahine Challenge (Honolulu, O'ahu, Aug. 29-31)*

8/29	Illinois State	W 15-6, 15-1, 8-15, 11-15, 15-11
8/31	San Francisco	W 15-10, 15-9, 15-6
8/31	Kansas State	W 15-5, 15-3, 15-8

*Hawaiian Airlines Wahine Classic (Honolulu, O'ahu, Sept. 5-7)*

9/5	North Carolina	W 15-9, 15-7, 17-15
9/6	Houston	W 15-13, 15-12, 15-10
9/7	UCLA	L 6-15, 10-15, 9-15
9/12	Pepperdine	L 15-6, 9-15, 15-8, 7-15, 8-15
9/14	Pacific	L 16-14, 13-15, 8-15, 9-15
9/19	LMU	W 15-11, 9-15, 15-4, 15-6
9/20	LMU	L 11-15, 10-15, 15-13, 15-6, 17-19
9/26	San Jose State	W 15-8, 15-11, 15-5
9/27	Fresno State	W 15-8, 15-10, 15-5
10/3	UNLV	W 15-4, 15-6, 15-10
10/4	San Diego State	W 15-11, 15-13, 15-8
10/9	at Western Michigan	W 15-3, 17-15, 15-11
10/10	at Southern Methodist	W 15-10, 15-7, 15-3
10/11	at Texas Christian	W 15-11, 15-6, 15-1
10/16	Rice	W 15-8, 15-4, 15-5
10/18	Tulsa	W 13-15, 15-10, 15-3, 15-9
10/23	at Fresno State	W 15-3, 15-11, 13-15, 15-9
10/25	at San Jose State	W 15-5, 14-16, 15-4, 15-7
10/30	at San Diego State	W 15-1, 15-6, 4-15, 15-7
11/1	at Long Beach State	L 8-15, 5-15, 0-15
11/2	at UNLV	W 15-2, 8-15, 15-8, 15-9
11/6	Texas Christian	W 15-5, 15-0, 15-6
11/8	Southern Methodist	W 15-0, 15-5, 15-11
11/14	at Tulsa	W 15-6, 15-0, 15-8
11/15	at Rice	W 15-7, 15-10, 15-5
11/23	at Stanford	L 8-15, 15-10, 10-15, 3-15

*WAC Tournament (Las Vegas, Nev., Nov. 25-28)*

11/25	Utah	W 8-15, 15-10, 13-15, 15-12, 15-8
11/26	Colorado State	W 16-14, 7-15, 15-12, 15-8
11/28	Brigham Young	L 6-15, 6-15, 8-15

*NCAA First Round (Long Beach, Calif.)*

12/5	LMU	L 7-15, 7-15, 4-15
------	-----	--------------------



**1998 (32-3, 13-1 WAC, T1st-Pacific)**

*Hawaiian Airlines Wahine Classic (Honolulu, O'ahu, Sept. 4-6)*

9/4	UCLA	W 15-10, 15-9, 15-3
9/5	Ohio State	W 15-11, 15-8, 15-8
9/6	Florida	L 14-16, 7-15, 15-11, 10-15

*Aston's Imua Wahine Challenge (Honolulu, O'ahu, Sept. 10-12)*

9/10	Bradley	W 15-2, 15-5, 15-6
9/11	Baylor	W 15-5, 15-3, 15-12
9/12	Arizona State	W 15-5, 10-15, 15-7, 15-4
9/18	San Diego State	W 15-5, 15-3, 15-9
9/19	Pacific	W 13-15, 15-13, 15-13, 15-8
9/25	St. Mary's	W 15-4, 15-9, 15-8
9/26	St. Mary's	W 15-10, 15-8, 15-6
10/2	UTEP	W 15-8, 15-4, 15-5
10/4	New Mexico	W 15-7, 15-9, 15-7
10/9	at Utah	W 15-10, 15-11, 7-15, 15-4
10/10	at BYU	L 15-13, 4-15, 12-15, 8-15
10/17	at San Diego State	W 15-5, 15-8, 14-16, 12-15, 15-10
10/19	at San Diego	W 15-11, 8-15, 15-12, 15-3
10/22	San Jose State	W 15-8, 15-6, 15-2
10/23	Fresno State	W 15-4, 15-11, 15-4
10/28	at Pepperdine	W 15-13, 15-6, 15-10
10/30	at UTEP	W 15-5, 15-5, 15-10
10/31	at New Mexico	W 15-8, 16-14, 15-9
11/5	BYU	W 13-15, 13-15, 15-2, 15-5, 16-14
11/6	Utah	W 15-8, 8-15, 15-3, 15-9
11/10	BYU-Hawai'i	W 15-5, 10-15, 14-16, 15-5, 15-3
11/13	Central Florida	W 15-7, 15-6, 15-1
11/14	Central Florida	W 15-6, 15-9, 15-8
11/20	at San Jose State	W 15-11, 15-12, 15-9
11/21	at Fresno State	W 15-8, 5-15, 15-9, 15-5

*WAC Tournament (Las Vegas, Nev., Nov. 25-28)*

11/25	Rice	W 12-15, 15-1, 15-10, 15-6
11/27	San Jose State	W 15-4, 15-7, 15-12
11/28	BYU	W 15-12, 21-19, 13-15, 16-18, 24-22

*NCAA First and Second Rounds (Honolulu, O'ahu)*

12/5	Brown	W 15-3, 15-5, 15-6
12/6	Miami (OH)	W 15-4, 15-5, 15-12

*NCAA East Regional (Gainesville, Fla.)*

12/10	Arkansas	W 15-13, 15-9, 15-9
12/11	Florida	L 15-11, 15-4, 10-15, 4-15, 7-15



# ALL-TIME RESULTS



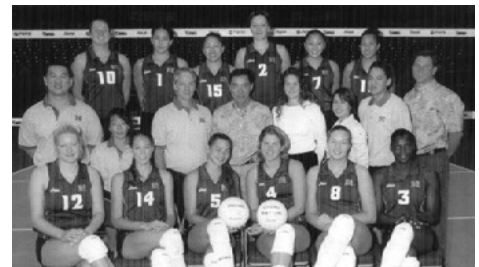
## 1999 (29-2, 14-0 WAC, 1st)

9/1	at California	W 15-8, 15-7, 15-5
<i>Hawaiian Airlines Wahine Classic (Honolulu, O'ahu, Sept. 3-6)</i>		
9/3	Minnesota	W 15-13, 15-4, 15-6
9/5	Pittsburgh	W 15-6, 15-1, 15-8
9/6	UCLA	W 7-15, 15-11, 15-10, 15-11
<i>Aston's Imua Wahine Challenge (Honolulu, O'ahu, Sept. 9-12)</i>		
9/9	Tennessee	W 19-17, 15-0, 15-1
9/11	Southern Cal	W 15-12, 13-15, 16-14, 15-10
9/12	Nevada	W 15-8, 15-6, 14-16, 15-2
9/16	Long Beach State	W 15-13, 15-10, 10-15, 15-10
9/17	Colorado	W 15-9, 15-0, 15-5
9/24	LMU	W 15-17, 15-11, 13-15, 15-5, 15-12
9/25	LMU	W 16-14, 15-4, 15-7
10/1	Texas Christian	W 15-5, 15-7, 15-13
10/3	Fresno State	W 15-3, 15-4, 15-5
10/8	at Tulsa	W 15-4, 15-5, 15-2
10/9	at Rice	W 15-8, 15-1, 15-7
10/16	Southern Methodist	W 15-12, 15-3, 15-5
10/21	UTEP	W 15-6, 15-2, 15-3
10/24	Stanford	L 9-15, 12-15, 10-15
10/29	at San Jose State	W 15-12, 15-9, 13-15, 15-7
10/30	at Fresno State	W 15-3, 15-5, 15-10
11/5	Tulsa	W 15-3, 15-1, 15-2
11/12	at SMU	W 15-4, 15-2, 12-15, 15-13
11/13	at Texas Christian	W 15-9, 15-4, 15-6
11/15	at UTEP	W 15-1, 15-7, 15-10
11/18	Rice	W 15-1, 15-0, 15-8
11/23	San Jose State	W 11-15, 15-5, 15-10, 15-6
<i>Starwoods Plaza Hotel Thanksgiving Invitational (Tucson, Ariz., Nov. 26-27)</i>		
11/26	at Arizona	W 4-15, 15-7, 15-13, 15-10
11/27	Cal Poly	W 15-3, 15-9, 15-1
<i>NCAA First and Second Rounds (Honolulu, O'ahu)</i>		
12/2	Prairie View A&M	W 15-3, 15-0, 15-3
12/3	Utah	W 15-11, 15-6, 15-4
<i>NCAA Mountain Regional (Honolulu, O'ahu)</i>		
12/9	Texas A&M	L 9-15, 15-12, 9-15, 12-15



## 2000 (31-2, 16-0 WAC, 1st)

<i>Hawaiian Airlines Wahine Classic (Honolulu, O'ahu, Sept. 1-4)</i>		
9/1	Texas A&M	W 15-11, 12-15, 15-6, 15-8
9/3	Iowa	W 15-3, 15-1, 15-7
9/4	UCLA	W 15-8, 16-14, 15-12
<i>Aston's Imua Wahine Challenge (Honolulu, O'ahu, Sept. 7-10)</i>		
9/7	Oregon	W 15-6, 15-4, 15-2
9/8	Creighton	W 15-1, 15-6, 15-3
9/10	Northwestern	W 15-7, 15-5, 15-0
9/15	UC Santa Barbara	W 5-15, 15-11, 15-6, 15-5
9/16	UNLV	W 15-0, 15-12, 15-3
9/22	Pepperdine	W 12-15, 15-5, 15-2, 4-15, 15-7
9/23	Pepperdine	W 14-16, 15-3, 15-5, 15-7
9/29	at Fresno State	W 15-5, 15-4, 15-10
9/30	at San Jose State	W 15-5, 15-6, 15-6
10/5	SMU	W 15-7, 15-6, 15-3
10/7	TCU	W 15-5, 15-8, 15-6
10/14	at Nevada	W 15-2, 10-15, 15-6, 15-5
10/16	Tulsa	W 15-6, 15-5, 15-5
10/20	at UTEP	W 15-8, 15-4, 15-12
10/21	at Rice	W 15-8, 15-12, 15-9
10/27	at TCU	W 17-15, 15-10, 15-8
10/28	at SMU	W 15-4, 15-9, 15-9
11/2	San Jose State	W 15-10, 15-7, 15-6
11/4	Fresno State	W 15-7, 15-9, 15-5
11/10	at Tulsa	W 15-5, 15-13, 15-8
11/16	Nevada	W 15-7, 15-4, 15-9
11/21	Rice	W 15-3, 15-6, 15-3
11/22	UTEP	W 15-1, 15-4, 15-12
<i>Long Beach State Thanksgiving Tournament (Long Beach, Calif., Nov. 24-25)</i>		
11/24	Cal Poly	W 15-9, 12-15, 15-2, 15-9
11/25	at Long Beach State	L 13-15, 8-15, 15-13, 10-15
<i>NCAA First and Second Rounds (Honolulu, O'ahu)</i>		
11/30	Davidson	W 15-5, 15-6, 15-8
12/1	Utah	W 15-12, 15-8, 15-8
<i>NCAA West Regional (Honolulu, O'ahu)</i>		
12/7	Long Beach St.	W 11-15, 15-13, 15-9, 12-15, 15-6
12/8	UC Santa Barbara	W 8-15, 15-1, 15-10, 15-3
<i>NCAA Championships (Richmond, Va.)</i>		
12/14	Nebraska	L 3-15, 12-15, 15-9, 10-15



## 2001 (29-6, 13-0 WAC, 1st)

<i>State Farm's NACWAA Classic (Stockton, Calif., Aug. 24-25)</i>		
8/24	Nebraska	L 17-30, 27-30, 24-30
8/25	Wisconsin	L 22-30, 29-31, 26-30
<i>Hawaiian Airlines Wahine Volleyball Classic (Honolulu, O'ahu, Aug. 31-Sept. 2)</i>		
8/31	Kansas State	W 19-30, 26-30, 30-24, 30-25, 15-8
9/1	Michigan	W 24-30, 30-24, 30-23, 30-14
9/2	UCLA	L 25-30, 25-30, 24-30
<i>Aston's Imua Wahine Challenge (Honolulu, O'ahu, Sept. 6-8)</i>		
9/6	Utah State	W 30-23, 30-12, 30-18
9/7	Southern Cal	L 17-30, 19-30, 31-33
9/8	Cincinnati	W 30-24, 30-22, 30-16
9/21	Santa Clara	W 30-25, 28-30, 30-19, 30-25
9/22	Santa Clara	W 30-20, 30-19, 30-16
9/29	at Louisiana Tech	W 30-18, 30-15, 30-20
10/3	at Houston	W 30-22, 30-18, 30-10
10/4	at Rice	W 30-10, 30-14, 30-21
10/6	at Tulsa	W 30-19, 30-9, 30-22
10/12	UTEP	W 30-23, 23-30, 30-22, 30-21
10/14	Southern Methodist	W 30-16, 30-21, 30-26
10/17	at San Diego State	W 30-18, 30-22, 23-30, 30-19
10/18	at San Jose St.	W 30-19, 26-30, 30-20, 27-30, 15-13
10/20	at Fresno State	W 30-24, 30-20, 30-15
10/27	Nevada	W 30-26, 26-30, 30-23, 30-16
10/28	Boise State	W 30-16, 30-22, 30-16
10/30	Hawai'i Pacific	W 30-14, 30-20, 30-14
11/2	at Nevada	W 30-18, 30-23, 30-20
11/3	at Boise State	W 30-13, 30-13, 30-17
11/5	UC Santa Barbara	W 30-26, 35-33, 30-27
11/8	San Jose State	W 30-13, 30-21, 30-11
11/9	Fresno State	W 30-23, 30-20, 30-27
<i>WAC Tournament (San Jose, Calif., Nov. 16-18)</i>		
11/16	Tulsa	W 30-18, 30-14, 30-17
11/17	Fresno State	W 30-18, 30-25, 30-18
11/18	San Jose State	W 30-22, 30-27, 30-22
<i>Banker's Classic (Stockton, Calif., Nov. 23-24)</i>		
11/23	Utah	W 24-30, 30-29, 27-30, 30-23, 15-7
11/24	Pacific	L 28-30, 30-19, 21-30, 30-20, 12-15
<i>NCAA First and Second Rounds (Pullman, Wash.)</i>		
11/30	Washington State	W 34-32, 30-26, 30-23
12/1	Eastern Wash.	W 30-22, 28-30, 30-20, 30-28
<i>NCAA West Regional (Long Beach, Calif.)</i>		
12/6	UCLA	L 25-30, 28-30, 30-22, 22-30



**2002 (34-2, 13-0 WAC, 1st)**

*Hawaiian Airlines Wahine Volleyball Classic (Honolulu, O'ahu, Aug. 30-Sept. 2)*

8/30	Ohio State	W 30-24, 30-24, 30-23
9/1	Colorado	W 30-18, 30-21, 30-22
9/2	UCLA	W 30-28, 30-25, 28-30, 30-13

*Aston's Imua Wahine Challenge (Honolulu, O'ahu, Sept. 5-7)*

9/5	San Francisco	W 30-15, 30-20, 30-16
9/6	San Diego State	W 30-10, 30-11, 30-23

*Washington* W 26-30, 30-22, 30-27, 30-28

9/13 Cal Poly W 30-28, 30-27, 30-26

9/14 Cal Poly W 30-16, 30-18, 30-20

9/20 Houston W 30-17, 30-17, 30-20

9/21 St. Mary's W 30-17, 30-24, 30-17

9/27 Rice W 30-19, 30-13, 30-20

10/5 Louisiana Tech W 30-15, 30-19, 30-16

10/13 Tulsa W 30-20, 30-15, 30-12

10/17 at UTEP W 30-13, 30-21, 30-20

10/19 at SMU W 30-24, 30-6, 30-17

10/21 Notre Dame W 30-26, 30-23, 30-17

10/22 Notre Dame W 34-32, 30-18, 30-25

10/24 San Jose State W 30-12, 30-22, 30-23

10/26 Fresno State W 30-28, 30-17, 30-26

11/1 at Nevada W 30-25, 30-21, 30-20

11/2 at Boise State W 30-15, 30-14, 30-18

11/8 Nevada W 30-17, 30-11, 30-17

11/9 Boise State W 30-6, 30-23, 30-23

11/10 Stanford L 29-31, 28-30, 24-30

11/15 at Fresno St .W 30-19, 30-24, 25-30, 22-30, 15-10

11/16 at San Jose State W 30-18, 30-19, 30-17

*WAC Tournament (Reno, Nev., Nov. 22-24)*

11/22 Louisiana Tech W 30-13, 30-19, 30-17

11/23 San Jose State W 30-24, 30-25, 30-24

11/24 at Nevada W 30-19, 30-32, 30-13, 30-23

11/26 at Brigham Young W 30-23, 30-19, 30-17

11/27 at Utah W 31-29, 30-16, 30-18

*NCAA First and Second Rounds (Honolulu, O'ahu)*

12/5 Western Kentucky W 30-18, 30-25, 30-21

12/6 Washington W 30-26, 39-37, 30-25

*NCAA Central Regional (Lincoln, Neb.)*

12/13 North Carolina W 30-21, 30-23, 30-22

12/14 at Nebraska W 30-25, 25-30, 30-27, 30-21

*NCAA Championships (New Orleans, La.)*

12/19 Stanford L 25-30, 27-30, 24-30



**2003 (36-2, 13-0 WAC, 1st)**

*State Farm NACWAA Classic (Honolulu, O'ahu, Aug. 22-23)*

8/22 Kansas State W 30-26, 30-23, 30-23

8/23 Southern California L 22-30, 26-30, 29-31

*Hawaiian Airlines Wahine Volleyball Classic (Honolulu, O'ahu, Aug. 29-Sept. 1)*

8/29 Minnesota W 30-20, 30-18, 30-18

8/31 Louisville W 30-17, 30-24, 30-18

9/1 UCLA W 25-30, 30-18, 30-24, 29-31, 15-13

*Aston's Imua Wahine Challenge (Honolulu, O'ahu, Sept. 4-6)*

9/4 Wichita State W 30-17, 30-20, 30-18

9/5 Baylor W 30-16, 30-20, 30-26

9/6 Pacific W 27-30, 30-24, 30-18, 30-21

*Sprint Hawai'i Invitational (Honolulu, O'ahu, Sept. 12-13)*

9/12 Utah State W 30-25, 30-25, 30-24

9/13 Stanford W 30-22, 29-31, 30-27, 25-30, 16-14

9/19 Loyola Marymount W 30-27, 30-11, 30-22

9/20 UNLV W 30-16, 30-9, 30-22

9/26 at San Jose State W 30-22, 30-19, 30-24

9/28 at Santa Clara W 30-25, 30-27, 30-22

10/2 Fresno State W 30-22, 30-19, 30-20

10/4 Nevada W 30-20, 30-18, 30-25

10/9 at Boise State W 30-17, 30-15, 30-24

10/11 at UTEP W 30-16, 30-19, 30-20

10/16 Louisiana Tech W 30-21, 30-21, 30-17

10/18 Southern Methodist W 30-25, 30-19, 30-18

10/19 Arizona W 30-24, 30-26, 22-30, 27-30, 15-13

10/23 at Rice W 30-19, 30-25, 30-22

10/24 at Louisiana State W 30-13, 30-23, 30-22

10/25 at Tulsa W 30-20, 30-22, 30-26

10/30 Boise State W 30-20, 30-20, 30-25

11/6 at Nevada W 28-30, 30-26, 30-22, 30-24

11/9 at Fresno State W 30-15, 30-26, 30-21

11/15 San Jose State W 30-25, 30-24, 30-27

*WAC Tournament (Reno, Nev., Nov. 21-23)*

11/21 Tulsa W 30-17, 30-12, 34-32

11/22 at Nevada W 30-16, 30-19, 30-17

11/23 San Jose State W 30-28, 30-26, 30-20

*UNLV Thanksgiving Tournament (Las Vegas, Nev., Nov. 27-28)*

11/27 Weber State W 30-15, 28-30, 30-17, 30-22

11/28 Kentucky W 30-26, 30-18, 30-27

*NCAA First and Second Rounds (Honolulu, O'ahu)*

12/4 Idaho W 30-24, 30-20, 30-21

12/5 Brigham Young W 30-19, 30-23, 30-22

*NCAA Honolulu Regional (Honolulu, O'ahu)*

12/12 Illinois W 30-21, 30-22, 33-31

12/13 Georgia Tech W 32-34, 33-31, 30-24, 30-25

*NCAA Championships (Dallas, Tex.)*

12/18 Florida L 28-30, 28-30, 30-23, 28-30



**2004 (30-1, 13-0 WAC, 1st)**

*Hawaiian Airlines Wahine Volleyball Classic (Honolulu, O'ahu, Sept. 2-5)*

9/2 Eastern Washington W 30-23, 30-15, 30-20

9/3 San Diego W 30-28, 24-30, 25-30, 30-28, 15-11

9/5 Arizona W 30-24, 33-31, 26-30, 26-30, 15-11

*Mauna Loa Macadamia Nut Challenge (Honolulu, O'ahu, Sept. 9-11)*

9/9 SW Missouri St. W 30-28, 29-31, 30-27, 30-17

9/10 Santa Clara W 30-27, 28-30, 30-27, 30-28

9/11 UCLA W 32-30, 20-30, 30-23, 27-30, 15-13

*Waikiki Beach Marriott Invitational (Honolulu, O'ahu, Sept. 17-19)*

9/17 California W 30-20, 34-32, 30-26

9/18 UC Irvine W 30-27, 28-30, 30-28, 30-17

9/24 Pepperdine W 30-28, 30-28, 30-27

9/25 Pepperdine W 30-17, 27-30, 30-25, 30-23

9/30 at Fresno State W 30-17, 26-30, 30-27, 30-23

10/2 at Nevada W 30-27, 28-30, 28-30, 32-30, 15-13

10/8 Boise State W 30-20, 30-25, 30-26

10/10 UTEP W 30-18, 30-14, 30-21

10/14 at Louisiana Tech W 30-15, 30-21, 30-23

10/16 at SMU W 27-30, 30-27, 30-20, 30-27

10/21 Rice W 35-37, 30-24, 30-28, 30-15

10/22 Tulsa W 30-16, 30-19, 30-19

10/27 at San Jose State W 33-31, 30-21, 26-30, 30-20

10/29 at Boise State W 26-30, 33-31, 30-18, 30-25

11/5 Fresno State W 30-24, 31-29, 30-17

11/12 San Jose State W 30-18, 30-27, 30-25

11/13 Nevada W 27-30, 33-35, 30-20, 30-26, 15-6

*WAC Tournament (Reno, Nev., Nov. 19-21)*

11/19 SMU W 30-15, 30-27, 30-20

11/20 Fresno State W 30-24, 25-30, 30-25, 30-21

11/21 at Nevada W 30-21, 28-30, 30-22, 30-27

11/23 at Utah St. W 16-30, 26-30, 30-20, 30-21, 15-12

11/24 at Utah W 30-28, 18-30, 30-16, 30-26

*NCAA First and Second Rounds (Ft. Collins, Colo.)*

12/2 Colorado W 24-30, 30-22, 30-20, 30-24

12/3 Purdue W 33-31, 30-27, 30-19

*NCAA Green Bay Regional (Green Bay, Wis.)*

12/10 Wisconsin L 29-31, 23-30, 30-22, 30-28, 19-21



# ALL-TIME RESULTS



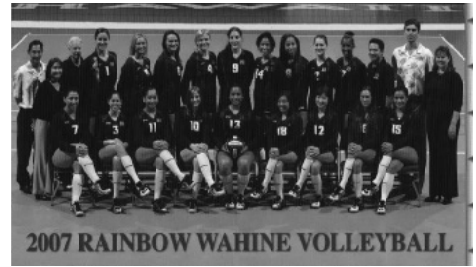
## 2005 (27-7, 16-0 WAC, 1st)

<i>AVCA/NACWAA Volleyball Showcase (Omaha, Neb., Aug. 26-27)</i>	
8/26	Nebraska L 23-30, 26-30, 21-30
8/27	Penn State L 27-30, 26-30, 18-30
<i>Hawaiian Airlines Wahine Volleyball Classic (Honolulu, O'ahu, Sept. 1-4)</i>	
9/1	Southern Cal W 30-23, 30-27, 33-31
9/2	Penn State L 30-22, 30-17, 27-30, 18-30, 11-15
9/4	Western Michigan W 30-27, 28-30, 30-18, 30-24
<i>Waikiki Beach Marriott Challenge (Honolulu, O'ahu, Sept. 8-10)</i>	
9/8	Cincinnati W 30-21, 30-17, 30-22
9/9	CSUN W 30-17, 30-22, 30-24
9/10	UCLA W 24-30, 30-25, 30-24, 30-26
9/16	Washington L 18-30, 24-30, 28-30
9/17	Washington L 28-30, 20-30, 28-30
9/22	Boise State W 30-17, 30-10, 30-21
9/23	LMU W 26-30, 30-26, 29-31, 30-23, 13-15
9/24	LMU W 30-17, 31-29, 30-25
9/29	at Louisiana Tech W 30-14, 30-18, 33-31
10/1	at NMSU W 28-30, 26-30, 30-21, 30-22, 15-10
10/7	Fresno State W 30-23, 30-17, 30-17
10/8	Nevada W 30-16, 30-7, 30-17
10/13	at Idaho W 30-24, 30-22, 30-18
10/15	at Boise State W 30-27, 30-21, 30-20
10/20	Utah State W 30-20, 30-28, 30-19
10/22	San Jose State W 30-27, 30-22, 30-24
10/27	at Nevada W 30-22, 30-22, 30-27
10/29	at Fresno State W 30-24, 30-17, 30-24
11/5	Idaho W 30-18, 30-23, 30-23
11/9	at Utah St. W 31-29, 32-34, 24-30, 30-24, 15-7
11/12	at San Jose State W 30-16, 30-18, 30-17
11/17	NMSU W 30-19, 30-26, 25-30, 24-30, 15-12
11/18	Louisiana Tech W 30-16, 30-11, 30-20
<i>WAC Tournament (Reno, Nev., Nov. 24-26)</i>	
11/24	Boise State W 30-21, 30-22, 30-26
11/25	at Nevada W 30-19, 22-30, 30-28, 33-31
11/26	Utah State W 30-25, 30-27, 30-25
<i>NCAA First and Second Rounds (Austin, Tex.)</i>	
12/2	Texas State W 30-25, 30-28, 30-23
12/3	at Texas W 19-30, 30-18, 30-21, 30-20
<i>NCAA State College Regional (State College, Pa.)</i>	
12/9	Missouri L 26-30, 30-26, 27-30, 22-30



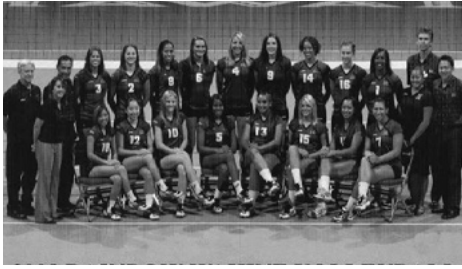
## 2006 (29-6, 15-1 WAC, 1st)

8/25	Pepperdine W 25-30, 26-30, 30-25, 33-31, 17-15
8/26	Pepperdine W 30-28, 30-26, 25-30, 23-30, 21-19
<i>Hawaiian Airlines Wahine Volleyball Classic (Honolulu, O'ahu, Sept. 1-3)</i>	
9/1	Florida L 20-30, 26-30, 23-30
9/2	Colorado W 32-30, 30-23, 30-20
9/3	UCLA L 19-30, 26-30, 24-30
<i>Waikiki Beach Marriott Challenge (Honolulu, O'ahu, Sept. 7-9)</i>	
9/7	Fairfield W 30-19, 33-31, 30-18
9/8	Northwestern W 29-31, 30-27, 32-30, 32-30
9/9	Stanford L 10-30, 22-30, 24-30
9/14	Cal Poly L 30-22, 21-30, 30-16, 24-30, 15-17
9/15	Cal Poly W 29-31, 27-30, 30-23, 30-28, 15-12
9/23	Fresno State W 30-21, 30-15, 30-18
9/29	at Fresno State W 30-23, 30-22, 30-23
9/30	at San Jose State W 30-20, 30-25, 31-29
10/6	Utah State W 30-14, 30-23, 30-18
10/8	Nevada W 30-23, 30-20, 30-25
10/9	Boise State W 30-22, 30-16, 30-25
10/11	at Louisiana Tech W 30-25, 30-20, 30-14
10/13	at NMSU L 30-22, 28-30, 30-27, 24-30, 13-15
10/16	Notre Dame W 30-27, 30-26, 30-27
10/17	Notre Dame W 30-28, 30-25, 22-30, 30-23
10/27	Idaho W 30-17, 25-30, 30-19, 30-22
10/29	San Jose State W 31-33, 30-27, 30-18, 30-24
11/2	at Nevada W 30-24, 30-24, 30-23
11/4	at Utah State W 30-17, 30-18, 30-24
11/10	Louisiana Tech W 30-16, 30-15, 30-21
11/12	New Mexico St. W 30-16, 30-18, 24-30, 30-23
11/15	at Boise State W 30-28, 30-32, 32-30, 30-22
11/17	at Idaho W 30-21, 26-30, 30-20, 30-25
<i>WAC Tournament (Reno, Nev., Nov. 22-24)</i>	
11/22	Fresno State W 30-16, 30-17, 30-25
11/23	San Jose State W 30-26, 30-27, 30-24
11/24	New Mexico St. W 30-27, 30-20, 29-31, 30-22
<i>NCAA First and Second Rounds (Long Beach, Calif.)</i>	
12/1	Oregon W 30-17, 30-17, 30-18
12/2	at Long Beach St. W 30-28, 30-25, 24-30, 30-17
<i>NCAA Honolulu Regional (Honolulu, O'ahu)</i>	
12/8	USC W 28-30, 30-21, 21-30, 30-27, 15-5
12/9	UCLA L 16-30, 23-30, 23-30



## 2007 (27-6, 15-1 WAC, 1st)

<i>Asics Rainbow Wahine Invitational (Honolulu, O'ahu, Aug. 24-26)</i>	
8/24	Michigan L 14-30, 28-30, 30-22, 30-27, 16-18
8/25	Colo. St. W 30-21, 22-30, 27-30, 30-25, 15-13
8/26	Oregon State L 31-33, 21-30, 26-30
<i>Hawaiian Airlines Wahine Volleyball Classic (Honolulu, O'ahu, Aug. 31-Sept. 3)</i>	
8/31	Kansas State W 34-32, 30-26, 25-30, 31-29
9/2	Louisville W 31-29, 30-28, 28-30, 30-24
9/3	UCLA L 29-31, 18-30, 16-30
<i>Waikiki Beach Marriott Challenge (Honolulu, O'ahu, Sept. 6-8)</i>	
9/6	Eastern Washington W 31-29, 30-15, 30-20
9/7	Wichita St. W 27-30, 28-30, 30-22, 30-19, 15-12
9/8	Santa Clara W 28-30, 30-20, 30-28, 30-27
9/14	Idaho W 30-18, 30-13, 30-27
9/15	Boise State W 30-28, 30-22, 30-24
9/20	at Louisiana Tech W 23-30, 30-12, 30-29, 30-25
9/22	at NMSU W 30-26, 28-30, 30-27, 28-30, 23-21
9/24	at San Jose State W 30-17, 30-25, 30-19
10/5	Nevada W 30-13, 30-25, 30-19
10/7	Fresno State W 30-17, 30-22, 13-30, 30-22
10/11	at Boise State W 30-17, 30-22, 30-16
10/13	at Idaho W 30-25, 30-26, 30-21
10/15	at Utah State W 30-27, 30-17, 30-22
10/21	at Nebraska L 22-30, 16-30, 24-30
10/26	New Mexico State W 30-26, 30-28, 30-22
10/28	Louisiana Tech W 30-20, 30-15, 30-16
11/1	at Nevada W 30-17, 30-20, 30-27
11/2	at Fresno State W 30-26, 30-25, 30-23
11/8	San Jose State W 30-25, 30-27, 30-14
11/11	Utah State L 28-30, 29-31, 27-30
<i>WAC Tournament (Las Cruces, N.M., Nov. 15-17)</i>	
11/15	Boise State W 30-13, 30-15, 30-22
11/16	Nevada W 30-27, 30-28, 30-21
11/17	NMSU W 28-30, 30-20, 24-30, 30-23, 15-11
11/20	LMU W 27-30, 30-28, 30-24, 30-17
11/21	LMU W 30-22, 30-24, 30-27
<i>NCAA First and Second Rounds (Louisville, Ky., Nov. 30-Dec. 1)</i>	
11/30	Tennessee State W 30-26, 30-14, 30-17
12/1	Middle Tennessee L 22-30, 18-30, 30-15, 31-33



**2008 (31-4, 15-1 WAC, T1st)**

*Hawaiian Airlines Wahine Volleyball Classic (Honolulu, O'ahu, Aug. 29-31)*

8/29	Penn State	L 21-25, 19-25, 19-25
8/30	Ohio	W 25-19, 25-12, 25-12
8/31	UCLA	L 25-23, 23-25, 24-26, 28-30

*The Honolulu Advertiser Challenge (Honolulu, O'ahu, Sept. 4-7)*

9/4	Minnesota	W 25-22, 21-25, 25-19, 23-25, 15-7
9/5	Wyoming	W 25-15, 25-10, 25-18
9/7	Cincinnati	W 25-11, 25-17, 25-23

*Chevron Rainbow Wahine Invitational (Honolulu, O'ahu, Sept. 11-13)*

9/11	St. Mary's (CA)	W 25-22, 25-16, 25-8
9/12	Pacific	W 25-21, 25-22, 25-23
9/13	Wash.	W 20-25, 27-29, 26-24, 25-14, 16-14
9/19	Idaho	W 27-29, 25-21, 25-16, 25-14
9/20	Boise State	W 25-11, 25-18, 29-27
9/25	at Louisiana Tech	W 25-11, 25-20, 25-16
9/27	at New Mexico State	W 26-24, 25-20, 25-23
9/29	at San Jose State	W 25-17, 25-20, 25-20
10/10	Louisiana Tech	W 25-15, 25-19, 25-9
10/12	New Mexico State	L 22-25, 24-26, 21-25
10/16	at Utah State	W 25-18, 25-18, 25-18
10/18	at Nevada	W 25-19, 25-20, 25-17
10/24	San Jose State	W 25-12, 25-22, 26-24
10/26	Fresno State	W 25-15, 19-25, 25-14, 25-12
10/31	Nevada	W 25-12, 25-23, 25-16
11/1	Utah State	W 25-19, 25-14, 25-13
11/6	at Boise State	W 25-15, 25-13, 25-21
11/8	at Idaho	W 25-17, 25-13, 25-21
11/10	at Fresno State	W 25-9, 25-16, 25-17
11/15	Utah Valley	W 25-19, 25-14, 25-10

*WAC Tournament (Honolulu, O'ahu, Nov. 20-23)*

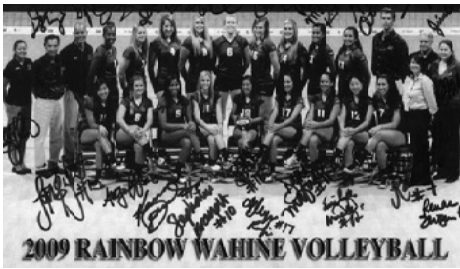
11/20	Boise State	W 25-15, 25-16, 25-17
11/21	Idaho	W 25-21, 26-24, 25-14
11/23	New Mexico State	W 25-19, 25-27, 25-18, 25-9
11/26	Cal Poly	W 25-23, 23-25, 25-20, 19-25, 15-13
11/28	Cal Poly	W 25-17, 25-19, 25-23

*NCAA First and Second Rounds (Los Angeles, Calif.)*

12/5	Belmont	W 25-19, 25-11, 25-16
12/6	Southern Cal	W 25-21, 25-18, 25-22

*NCAA Fort Collins Regional (Ft. Collins, Colo.)*

12/12	Purdue	W 18-25, 25-22, 25-23, 25-20
12/13	Stanford	L 19-25, 9-25, 25-28



**2009 (32-3, 16-0 WAC, 1st)**

*Chevron Rainbow Wahine Invitational (Honolulu, O'ahu, Aug. 28-30)*

8/28	Western Michigan	W 25-17, 25-16, 25-14
8/29	Santa Clara	W 25-19, 25-27, 30-28, 25-13
8/30	UCLA	W 25-23, 25-18, 25-22

*Hawaiian Airlines Wahine Volleyball Classic (Honolulu, O'ahu, Sept. 3-6)*

9/3	St. Louis	W 25-21, 25-23, 19-25, 25-15
9/5	Texas	L 11-25, 22-25, 25-22, 11-25
9/6	California	L 21-25, 16-25, 25-20, 25-17, 11-15

*Honolulu Advertiser Rainbow Wahine Challenge (Honolulu, O'ahu, Sept. 10-12)*

9/10	Weber State	W 25-13, 25-13, 25-17
9/11	UT-San Antonio	W 25-15, 25-9, 25-14
9/12	Stanford	W 27-25, 25-21, 25-22
9/18	Pepperdine	W 25-18, 25-20, 25-21
9/19	Pepperdine	W 25-17, 25-17, 25-17
9/24	Boise State	W 25-21, 25-14, 25-14
9/26	Idaho	W 25-13, 25-11, 25-19
10/1	at Louisiana Tech	W 25-11, 25-18, 25-12
10/2	at New Mexico St.	W 25-21, 15-25, 25-22, 25-11
10/8	Nevada	W 25-12, 25-17, 25-16
10/9	San Jose State	W 25-12, 25-11, 25-17
10/17	New Mexico State	W 25-13, 22-25, 25-21, 25-8
10/19	Louisiana Tech	W 25-12, 25-8, 25-17
10/23	BYU-Hawai'i	W 25-14, 25-11, 25-17
10/29	at Fresno State	W 25-19, 23-25, 25-15, 25-20
10/31	at Nevada	W 25-16, 25-20, 25-17
11/2	at San Jose State	W 25-12, 25-15, 25-15
11/6	Fresno State	W 25-19, 25-11, 25-13
11/8	Utah State	W 25-11, 25-12, 25-21
11/12	at Boise State	W 25-16, 25-14, 25-16
11/14	at Idaho	W 25-12, 25-15, 25-21
11/16	at Utah State	W 25-19, 22-25, 25-19, 25-13

*WAC Tournament (Las Vegas, Nev., Nov. 23-25)*

11/24	Fresno State	W 25-19, 25-11, 25-13
11/25	New Mexico State	W 25-12, 25-17, 25-23

*NCAA First and Second Rounds (Los Angeles, Calif.)*

12/4	New Mexico	W 25-22, 25-16, 25-21
12/5	USC	W 25-20, 25-18, 16-25, 27-25

*NCAA Stanford Regional (Stanford, Calif.)*

12/11	Illinois	W 21-25, 25-10, 27-25, 25-16
12/12	Michigan	W 25-23, 25-19, 25-18

*NCAA Championships (Tampa, Fla.)*

12/17	Penn State	L 25-23, 18-25, 15-25, 18-25
-------	------------	------------------------------



**2010 (29-3, 16-0 WAC, 1st)**

*Chevron Rainbow Wahine Invitational (Honolulu O'ahu, Aug. 27-29)*

8/27	San Diego	W 25-14, 22-25, 21-25, 25-16, 15-9
8/28	Kansas State	W 25-16, 25-23, 25-20
8/29	UCLA	W 25-22, 25-19, 18-25, 25-21

*Hawaiian Airlines Wahine Volleyball Classic (Honolulu, O'ahu, Sept. 3-5)*

9/3	MSU	W 25-18, 31-33, 24-26, 25-20, 15-11
9/4	New Mexico	W 25-15, 25-14, 25-21
9/5	USC	L 25-23, 22-25, 17-25, 25-18, 7-15

*Verizon Wireless Volleyball Challenge (Honolulu, O'ahu, Sept. 9-11)*

9/9	San Diego State	W 25-17, 25-18, 25-13
9/10	UC Irvine	W 25-17, 25-13, 25-17
9/11	Saint Mary's	W 25-22, 25-27, 25-23, 25-23
9/17	Brigham Young	W 25-23, 25-11, 25-10
9/18	Brigham Young	W 25-23, 25-13, 25-16
9/23	Utah State	W 26-24, 25-17, 25-17
9/24	Nevada	W 25-19, 25-18, 25-20
9/29	at New Mexico State	W 25-16, 25-14, 25-14
10/1	at Louisiana Tech	W 25-14, 25-17, 25-23
10/15	San Jose State	W 25-16, 25-12, 25-15
10/17	Fresno State	W 25-18, 25-18, 25-17
10/21	at Idaho	W 25-20, 25-7, 25-19 ]
10/23	at Boise State	W 25-13, 25-23, 25-20
10/25	at Utah State	W 25-18, 25-22, 25-16
10/29	Boise State	W 25-15, 25-13, 25-18
10/31	New Mexico State	W 25-18, 25-10, 25-23
11/1	Louisiana Tech	W 25-13, 25-11, 25-18
11/5	Hawai'i Pacific	W 25-14, 25-7, 25-22
11/11	at Fresno State	W 25-20, 25-18, 25-22
11/13	at San Jose State	W 25-17, 25-17, 25-21
11/14	at Nevada	W 25-13, 25-20, 25-22
11/18	Idaho	W 25-18, 25-17, 25-13

*WAC Tournament (Las Vegas, Nev., Nov. 23-24)*

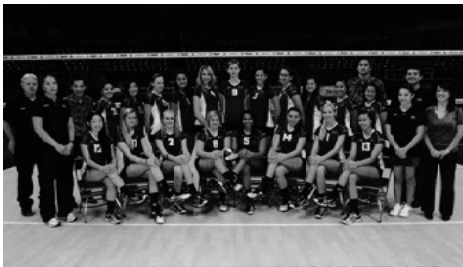
11/23	Idaho	W 25-11, 25-21, 25-16
11/24	Utah State	L 15-25, 25-27, 24-26

*NCAA First and Second Rounds (Seattle, Wash.)*

12/2	Portland State	W 25-23, 25-19, 25-8
12/3	Washington	L 17-25, 11-25, 23-25



# ALL-TIME RESULTS



## 2011 (31-2, 14-0 WAC, 1st)

*Chevron Rainbow Wahine Invitational (Honolulu, O'ahu, Aug. 27-29)*

8/26	San Francisco	W 25-22, 25-12, 25-23
8/27	Wichita State	W 21-25, 25-21, 25-19, 25-18
8/28	Arizona	W 25-12, 25-16, 25-20

*Hawaiian Airlines Wahine Volleyball Classic (Honolulu, O'ahu, Sept. 1, 2 & 4)*

9/1	Ohio State	W 25-18, 25-23, 25-14
9/2	LBSU	W 25-17, 21-25, 23-25, 25-19, 15-11
9/4	UCLA	L 25-20, 28-26, 20-25, 25-17

*Verizon Volleyball Challenge (Honolulu, O'ahu, Sept. 8-10)*

9/8	Rice	W 25-10, 25-18, 25-19
9/9	Pacific	W 25-17, 25-17, 20-25, 25-15
9/10	Cincinnati	W 25-18, 25-23, 25-21

9/16	Pepperdine	W 25-14, 25-23, 20-25, 25-17
9/17	Pepperdine	W 21-25, 25-9, 25-14, 25-14
9/22	at Idaho	W 25-21, 25-19, 17-25, 25-21

9/24	at Utah State	W 21-25, 25-16, 25-15, 25-20
9/29	Nevada	W 25-15, 25-15, 25-14
10/1	Fresno State	W 25-14, 25-16, 25-18

10/8	San Jose State	W 25-21, 25-8, 25-19
10/12	at NMSU	W 17-25, 25-21, 25-20, 25-27, 15-5
10/14	at Louisiana Tech	W 25-9, 25-9, 25-14

10/17	Notre Dame	W 25-18, 25-23, 25-17
10/18	Notre Dame	W 25-15, 25-18, 22-25, 25-21
10/21	Utah State	W 25-16, 25-21, 25-11

10/23	Idaho	W 25-23, 25-22, 25-23
10/25	at San Jose State	W 25-17, 25-20, 25-19
10/27	at Fresno State	W 25-20, 25-18, 23-25, 25-18

10/29	at Nevada	W 25-14, 25-21, 25-17
11/10	Louisiana Tech	W 25-11, 25-7, 25-15
11/12	NMSU	W 25-15, 25-11, 25-23

*WAC Tournament (Las Vegas, Nev., Nov. 22-23)*

11/22	Fresno St.	W 23-25, 19-25, 25-20, 25-11, 15-10
11/23	NMSU	W 25-22, 25-18, 25-20
11/25	at Cal St. Fullerton	W 14-25, 25-16, 25-17, 25-9

*NCAA First and Second Rounds (Honolulu, O'ahu)*

12/1	Northern Colo.	W 25-21, 25-15, 25-15
12/2	Colorado State	W 22-25, 25-22, 25-16, 25-18

*NCAA Honolulu Regional (Honolulu, O'ahu)*

12/9	USC	L 19-25, 29-27, 19-25, 25-23, 15-12
------	-----	-------------------------------------



## 2012 (27-3, 18-0 Big West, 1st)

*Chevron Rainbow Wahine Invitational (Honolulu, O'ahu, Aug. 24-26)*

8/24	Albany	W 25-17, 25-6, 25-17
8/25	Saint Mary's	W 25-20, 22-25, 25-19, 25-19
8/26	Stanford	W 17-25, 25-23, 25-15, 25-17

*Hawaiian Airlines Wahine Volleyball Classic (Honolulu, O'ahu, Aug. 31-Sept. 2)*

8/31	San Francisco	W 25-14, 27-25, 25-19
9/1	Baylor	W 25-17, 25-13, 25-19
9/2	California	L 25-23, 16-25, 20-25, 25-17, 15-12

*Outrigger Hotels and Resorts Volleyball Challenge (Honolulu, O'ahu, Sept. 7-9)*

9/7	San Diego State	W 22-25, 25-20, 25-19, 25-15
9/8	Idaho	W 25-11, 25-14, 25-16
9/9	UCLA	L 28-30, 25-16, 25-17, 25-21

9/19	at CSUN	W 22-25, 25-16, 17-25, 25-17, 19-17
9/21	at UC Riverside	W 25-17, 25-16, 25-19
9/22	at CSUF	W 3-2 25-12, 25-15, 26-28, 25-27, 15-12

9/27	UC Irvine	W 25-18, 25-11, 25-18
9/29	Long Beach State	W 25-17, 25-16, 25-19
10/5	at Cal Poly	W 25-15, 25-17, 17-25, 25-19

10/6	at UC Santa Barbara	W 25-13, 25-16, 25-21
10/12	CSUN	W 22-25, 25-18, 25-21, 25-20
10/18	UC Davis	W 23-25, 25-16, 25-21, 25-16

10/20	Pacific	W 14-25, 22-25, 25-16, 25-14, 15-11
10/26	at Long Beach State	W 24-26, 34-32, 26-24, 25-22
10/27	at UC Irvine	W 25-21, 22-25, 19-25, 25-22, 15-10

11/1	UC Santa Barbara	W 25-8, 25-19, 25-18
11/3	Cal Poly	W 25-19, 25-17, 25-19
11/8	BYU-Hawai'i	W 25-16, 25-15, 25-17

11/16	at Pacific	W 25-16, 25-27, 22-25, 25-16, 15-7
11/17	at UC Davis	W 25-17, 25-23, 25-17
11/21	Cal State Fullerton	W 23-25, 25-14, 25-20, 25-19

11/23	UC Riverside	W 25-17, 25-17, 25-23
-------	--------------	-----------------------

*NCAA First and Second Rounds (Seattle, Wash.)*

11/30	vs. Santa Clara	W 25-20, 25-13, 25-19
12/2	at Washington	L 20-25, 25-20, 19-25, 27-25, 15-11



## 2013 (25-5, 13-3 Big West, T-1st)

*Chevron Rainbow Wahine Invitational (Honolulu, O'ahu, Aug. 30-Sept. 1)*

8/30	Texas	W 25-19, 19-25, 27-25, 25-16
8/31	UTEP	W 25-20, 25-15, 25-10
9/1	San Diego	L 15-25, 26-24, 25-19, 23-25, 15-11

*Hawaiian Airlines Wahine Volleyball Classic (Honolulu, O'ahu, Sept. 5-7)*

9/5	New Mexico State	W 25-17, 25-23, 25-15
9/6	Santa Clara	W 25-23, 25-15, 23-25, 25-18
9/7	UCLA	W 25-18, 25-17, 25-18

*Outrigger Hotels and Resorts Volleyball Challenge (Honolulu, O'ahu, Sept. 12-14)*

9/12	Portland State	W 25-21, 25-20, 25-14
9/13	Northwestern	W 25-12, 24-13, 25-19
9/14	Arizona	W 25-20, 25-17, 22-25, 25-23

*Shocker Volleyball Classic (Wichita, Kan., Sept. 19-21)*

9/19	vs. South Dakota	W 25-19, 25-21, 25-21
9/20	vs. Creighton	W 25-17, 25-16, 19-25, 20-25, 15-9
9/21	at Wichita State	W 25-20, 25-20, 25-23

9/25	Toyota AutoBody (exhib)	L 25-18, 26-24, 25-22
9/27	Cal State Fullerton	W 25-22, 25-5, 25-20
9/29	UC Riverside	W 25-7, 25-13, 25-15

10/4	at Long Beach State	W 25-11, 25-21, 25-16
10/5	at UC Irvine	W 25-16, 25-17, 22-25, 25-15
10/11	UCSB	L 25-21, 25-20, 21-25, 22-25, 15-12

10/12	Cal Poly	W 25-17, 25-16, 25-13
10/18	Alumnae	W 25-19, 25-19, 28-26
10/24	at CSUN	L 30-32, 28-26, 20-25, 25-22, 15-10

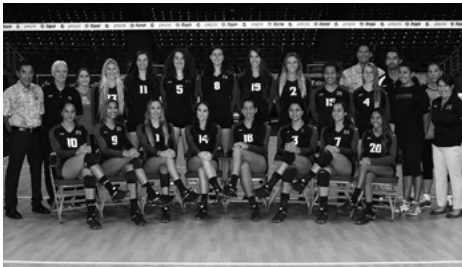
10/26	at UC Davis	L 25-21, 25-22, 19-25, 15-25, 15-9
11/1	at UC Irvine	W 25-22, 25-16, 25-23
11/2	Long Beach State	W 25-27, 25-19, 25-18, 25-22

11/8	at Cal Poly	W 25-16, 25-19, 25-19
11/9	at UCSB	W 22-25, 25-15, 23-25, 25-22, 15-12
11/22	UC Davis	W 25-19, 25-17, 25-19

11/23	CSUN	W 25-19, 25-20, 25-21
11/29	at UC Riverside	W 25-20, 25-15, 25-18
11/30	at Cal State Fullerton	W 25-19, 25-18, 27-25

*NCAA First and Second Rounds (Honolulu, O'ahu)*

12/6	Idaho State	W 25-16, 19-25, 25-12, 25-13
12/7	Brigham Young	L 25-21, 25-17, 25-13



**2014 (22-7, 13-3 Big West, 2nd)**

*Chevron Rainbow Wahine Invitational (Honolulu, O'ahu, Aug. 29-31)*

8/29	Ohio	W	25-22, 25-23, 25-20
8/30	Arizona State	L	25-21, 25-23, 25-23
8/31	San Diego State	W	25-16, 25-17, 23-25, 25-14

*Hawaiian Airlines Wahine Volleyball Classic (Honolulu, O'ahu, Sept. 4-6)*

9/4	New Mexico	W	24-26, 25-18, 25-11, 25-17
9/5	Oregon	L	25-18, 25-14, 19-25, 18-25, 15-8
9/6	St. John's	W	19-25, 25-15, 25-20, 25-22

*Outrigger Resorts Volleyball Challenge (Honolulu, O'ahu, Sept. 11-14)*

9/11	Utah State	W	25-16, 25-20, 25-22
9/12	UCLA	L	25-23, 25-23, 27-25
9/14	San Francisco	W	15-25, 25-22, 25-22, 25-20
9/17	Toyota AutoBody	L	27-25, 25-19, 21-25, 20-25, 15-10
9/19	Northern Arizona	W	25-18, 25-15, 25-18
9/20	Northern Arizona	W	25-20, 25-23, 25-18
9/26	at UC Davis	W	25-18, 25-18, 26-24
9/27	at UC Riverside	W	25-13, 29-27, 25-19
10/3	Cal State Fullerton	W	25-18, 25-19, 25-15
10/4	UC Irvine	W	25-17, 25-19, 26-24
10/10	at CSUN	L	25-17, 25-20, 25-21
10/11	at Long Beach St.	L	25-15, 22-25, 26-24, 21-25, 15-11
10/24	Cal Poly	W	25-17, 25-18, 25-22
10/26	UC Santa Barbara	W	25-22, 19-25, 25-15, 25-16
10/31	at UC Irvine	W	21-25, 22-25, 26-24, 25-18, 15-7
11/1	at Cal State Fullerton	W	25-22, 25-14, 25-18
11/7	Long Beach St.	L	27-25, 25-22, 18-25, 17-25, 15-10
11/8	CSUN	W	25-16, 22-25, 25-23, 25-18
11/21	at UCSB	W	25-23, 25-23, 27-29, 19-25, 15-12
11/22	at Cal Poly	W	21-25, 25-22, 25-12, 25-16
11/28	UC Riverside	W	19-25, 25-19, 25-14, 25-15
11/29	UC Davis	W	25-19, 25-16, 25-15

*NCAA First and Second Rounds (Seattle, Wash.)*

12/5	vs Duke	W	25-15, 25-19, 25-17
12/6	at Washington	L	25-20, 19-25, 25-16, 25-14



**2015 (29-2, 16-0 Big West, 1st)**

*Chevron Rainbow Wahine Invitational (Honolulu, O'ahu, Aug. 28-30)*

8/28	Idaho	W	25-18, 25-23, 25-19
8/29	Wichita State	W	24-26, 25-20, 25-20, 25-19
8/30	Oregon State	W	25-20, 25-19, 25-11

*Hawaiian Airlines Wahine Volleyball Classic (Honolulu, O'ahu, Sept. 4-6)*

9/4	Iowa	W	18-25, 25-20, 25-18, 25-21
9/5	American	W	25-22, 25-18, 25-20
9/6	UCLA	L	16-25, 27-25, 17-25, 26-28

*Outrigger Resorts Volleyball Challenge (Honolulu, O'ahu, Sept. 10-12)*

9/10	San Diego State	W	25-17, 25-11, 25-21
9/11	Florida	W	18-25, 25-22, 22-25, 25-17, 15-9
9/12	E. Washington	W	25-19, 25-19, 22-25, 25-20
9/18	CSU Bakersfield	W	25-11, 25-14, 24-26, 25-15
9/20	CSU Bakersfield	W	25-20, 25-12, 25-15
9/25	UC Santa Barbara	W	25-13, 25-14, 25-19
9/26	Cal Poly	W	25-20, 25-12, 25-19
10/2	at Cal St. Fullerton	W	25-11, 25-16, 25-13
10/3	at UC Riverside	W	25-17, 25-15, 25-5
10/9	CSUN	W	25-19, 25-16, 25-16
10/11	Long Beach St.	W	22-25, 25-12, 16-25, 25-21, 15-8
10/16	UC Davis	W	25-14, 25-12, 25-17
10/17	UC Irvine	W	25-17, 25-23, 21-25, 26-24
10/30	UC Riverside	W	25-15, 25-16, 18-25, 25-23
11/1	Cal State Fullerton	W	25-17, 25-18, 25-21
11/6	at Long Beach St.	W	26-28, 25-22, 25-13, 25-20
11/7	at CSUN	W	25-14, 25-17, 25-19
11/15	at UC Davis	W	23-25, 25-17, 25-22, 25-17
11/17	at UC Irvine	W	26-24, 25-21, 25-14
11/19	at Cal Poly	W	25-17, 25-19, 25-18
11/21	at UC Santa Barbara	W	25-16, 25-21, 25-19

*NCAA First and Second Rounds (Seattle, Wash.)*

12/4	vs TCU	W	17-25, 25-23, 24-26, 25-21, 15-13
12/5	at Texas A&M	W	25-22, 25-19, 25-20

*NCAA Regionals (Des Moines, Iowa)*

12/11	vs Penn State	W	25-22, 27-25, 25-16
12/12	vs Minnesota	L	18-25, 13-25, 26-24, 21-25



**2016 (23-6, 15-1 Big West, 1st)**

*Chevron Rainbow Wahine Invitational (Honolulu, O'ahu, Aug. 26-28)*

8/26	Wisconsin	L	16-25, 16-25, 26-24, 23-25
8/27	Kansas State	L	25-19, 28-30, 22-25, 20-25
8/28	Arizona	W	15-25, 23-25, 25-18, 25-19, 15-13

*Hawaiian Airlines Wahine Volleyball Classic (Honolulu, O'ahu, Sept. 1-3)*

9/1	Missouri State	W	25-16, 25-22, 25-22
9/2	Pacific	W	25-15, 25-18, 25-23
9/3	UCLA	L	23-25, 22-25, 22-25

*Rainbow Wahine Volleyball Challenge (Honolulu, O'ahu, Sept. 8-11)*

9/8	Utah Valley	W	25-18, 25-21, 25-8
9/9	Northern Illinois	W	26-24, 25-15, 25-15
9/11	Washington	L	23-25, 25-17, 26-28, 25-23, 13-15
9/16	Pepperdine	W	29-27, 25-6, 25-18
9/17	Pepperdine	W	25-14, 25-18, 22-25, 25-12
9/23	at UC Santa Barbara	W	25-20, 25-14, 25-19
9/24	at Cal Poly	W	34-32, 27-25, 25-17, 25-20
9/30	Cal St. Fullerton	W	25-13, 25-16, 25-18
10/2	UC Riverside	W	25-15, 25-6, 25-17
10/6	at CSUN	W	25-14, 25-15, 25-15
10/8	at Long Beach St.	L	17-25, 25-23, 16-25, 25-21, 13-15
10/14	UC Irvine	W	25-14, 25-21, 24-26, 25-18
10/16	UC Davis	W	26-16, 25-11, 25-15
10/28	at UC Riverside	W	25-10, 25-18, 25-22
10/29	at Cal St. Fullerton	W	25-19, 25-13, 25-19
11/4	Long Beach St.	W	25-13, 25-15, 25-16
11/5	CSUN	W	25-9, 25-14, 25-16
11/10	at UC Irvine	W	25-14, 25-13, 25-18
11/12	at UC Davis	W	25-19, 25-19, 25-16
11/17	Cal Poly	W	25-11, 26-24, 25-15
11/18	UC Santa Barbara	W	21-25, 25-14, 25-18, 25-10

*NCAA First & Second Round (Minneapolis, Minn., Dec. 2-3)*

12/2	USC	W	25-22, 25-20, 22-25, 16-25, 15-13
12/3	Minnesota	L	17-25, 17-25, 19-25



# ALL-TIME RESULTS



## 2017 (20-8, 14-2 Big West, 2nd)

Texaco Rainbow Wahine Invitational (Honolulu, O'ahu, Aug. 25-27)

8/25	Marquette	L, 26-24, 21-25, 18-25, 25-18, 12-15
8/26	San Diego	L, 23-25, 23-25, 21-25
8/27	UCLA	L, 25-23, 23-25, 22-25, 25-22, 10-15
Hawaiian Airlines Rainbow Wahine Invitational (Honolulu, O'ahu, Aug. 31-Sept. 3)		
8/31	Western Carolina	W, 25-15, 25-14, 25-13
9/1	South Dakota	W, 25-19, 25-15, 25-13
8/30	Utah	L, 25-20, 24-26, 15-25, 23-25
Outrigger Hotel & Resorts Volleyball Challenge (Honolulu, O'ahu, Sept. 7-9)		
9/7	BYU	L, 18-25, 12-25, 25-16, 25-15, 7-15
9/8	Baylor	W, 18-25, 25-14, 18-25, 25-17, 16-14
9/9	Nevada	W, 25-22, 25-23, 25-12
9/15	Northern Arizona	W, 25-12, 25-10, 25-12
9/16	Northern Arizona	W, 25-14, 25-12, 25-12
9/22	UC Irvine	W, 18-25, 25-22, 25-20, 25-21
9/23	UC Davis	W, 26-24, 25-17, 25-20
9/29	at Cal St. Fullerton	W, 25-8, 25-9, 25-16
9/30	at UC Riverside	W, 20-25, 19-25, 25-20, 25-19, 15-7
10/6	UC Santa Barbara	W, 25-20, 26-24, 25-11
10/7	Cal Poly	L, 25-16, 25-22, 15-25, 22-25, 9-15
10/13	at Long Beach St.	W, 16-25, 25-16, 25-20, 25-22
10/14	at CSUN	W, 25-23, 20-25, 27-25, 22-25, 15-8
10/20	UC Riverside	W, 25-22, 25-12, 25-18
10/21	Cal State Fullerton	W, 27-25, 25-11, 25-14
10/27	at Cal Poly	L, 25-23, 23-25, 25-23, 18-25, 15-17
10/28	at UC Santa Barbara	W, 25-20, 25-22, 19-25, 25-17
11/3	CSUN	W, 25-19, 25-21, 25-12
11/4	Long Beach State	W, 25-14, 25-11, 25-10
11/16	at UC Davis	W, 25-18, 25-11, 25-12
11/18	at UC Irvine	W, 25-20, 26-24, 25-16
NCAA First and Second Rounds (Seattle, Wash.)		
12/1	Illinois	L, 18-25, 17-25, 25-13, 26-24, 10-15



## 2018 (18-9, 14-2 Big West, 2nd)

Hawaiian Airlines Rainbow Wahine Invitational (Honolulu, O'ahu, Aug. 24-26)

8/25	Gonzaga	Canceled
8/25	Kansas State	L, 21-25, 27-29, 20-25
8/26	Kansas State	W, 21-25, 27-29, 19-25
8/26	UCLA	Canceled
8/30	Coastal Carolina	W, 25-17, 25-21, 25-17
8/31	Coastal Carolina	W, 25-14, 25-16, 25-22
Outrigger Hotels & Resorts Volleyball Challenge (Honolulu, O'ahu, Sept. 6-9)		
9/6	Idaho	W, 25-21, 23-25, 25-18, 25-22
9/7	Portland	L, 25-19, 11-25, 18-25, 25-20, 8-15
9/9	San Diego State	W, 25-21, 25-17, 19-25, 25-17
9/13	Oregon	L, 18-25, 23-25, 22-25
9/14	Oregon	L, 23-25, 10-25, 25-22, 25-23, 12-15
9/21	at UC Davis	W, 25-18, 25-21, 26-24
9/23	at UC Irvine	W, 23-25, 22-25, 25-23, 25-20, 15-11
9/28	Cal St. Fullerton	W, 25-15, 25-19, 25-21
9/29	UC Riverside	W, 25-15, 25-19, 25-17
10/5	at UCSB	W, 19-25, 25-14, 25-21, 19-25, 15-10
10/6	at Cal Poly	L, 19-25, 18-25, 25-21, 25-27
10/12	Long Beach St.	W, 25-22, 25-19, 23-25, 25-20
10/13	CSUN	W, 25-18, 17-25, 25-20, 25-20
10/19	at UC Riverside	W, 25-16, 25-17, 25-22
10/20	at Cal State Fullerton	W, 25-3, 25-14, 25-13
10/26	Cal Poly	W, 14-25, 25-19, 17-25, 25-18, 15-10
10/27	UC Santa Barbara	L, 26-28, 22-25, 21-25
11/2	at CSUN	W, 25-23, 25-19, 25-20
11/3	at Long Beach St.	W, 19-25, 25-21, 25-17, 25-19
11/6	at Pepperdine	L, 19-25, 25-20, 22-25, 25-18, 6-15
11/15	UC Irvine	W, 25-19, 27-25, 25-16
11/16	UC Davis	W, 25-19, 25-17, 23-25, 25-14
NCAA First and Second Rounds (Eugene, Ore.)		
11/29	Baylor	L, 25-23, 25-23, 14-25, 24-26, 14-16



## 2019 (26-4, 14-2 Big West, 1st)

Hawaiian Airlines Rainbow Wahine Classic (Honolulu, O'ahu, Aug. 30 - Sept. 1)

8/30	San Diego	W, 25-19, 20-25, 16-25, 25-19, 15-10
8/31	St. John's	W, 26-28, 25-20, 23-25, 25-22, 15-12
9/1	Washington	W, 25-20, 25-12, 20-25, 25-16
Heineken Rainbow Wahine Invitational (Honolulu, O'ahu, Sept. 5-8)		
9/5	Army	W, 22-25, 25-17, 25-20, 25-19
9/6	Sacramento State	W, 25-19, 25-17, 25-18
9/8	Denver	W, 25-16, 21-25, 25-15, 25-18
Outrigger Hotel & Resorts Volleyball Challenge (Honolulu, O'ahu, Sept. 12-14)		
9/12	West Virginia	W, 18-25, 25-17, 25-17, 25-12
9/13	Utah Valley	W, 25-20, 25-20, 20-25, 25-15
9/14	UCLA	W, 25-15, 25-22, 25-23
Baylor Tournament (Waco, Texas, Sept. 21-22)		
9/21	Missouri	W, 17-25, 28-26, 16-25, 25-16, 16-14
9/22	at Baylor	L, 19-25, 23-25, 22-25
9/27	at Long Beach St.	W, 25-16, 21-25, 25-21, 25-16
9/28	at CSUN	W, 25-17, 23-25, 25-23, 26-24
10/4	UC Irvine	L, 25-11, 25-21, 23-25, 16-25, 13-15
10/5	Cal St. Fullerton	W, 22-25, 20-25, 25-23, 25-15, 15-12
10/11	at Cal Poly	L, 22-25, 26-24, 25-15
10/12	at UC Santa Barbara	W, 25-20, 25-22, 25-19
10/18	UC Riverside	W, 25-17, 25-18, 25-12
10/20	UC Davis	W, 22-25, 21-25, 25-22, 25-17, 15-12
10/25	at Cal St. Fullerton	W, 25-12, 25-19, 25-18
10/26	at UC Irvine	W, 27-25, 25-17, 25-21
11/1	UC Santa Barbara	W, 25-19, 22-25, 21-25, 25-18, 17-15
11/3	Cal Poly	W, 25-15, 22-25, 25-20, 25-23
11/8	at UC Davis	W, 26-24, 22-25, 25-22, 25-15
11/10	at UC Riverside	W, 25-19, 25-11, 25-17
11/21	CSUN	W, 25-18, 25-12, 25-14
11/22	Long Beach St.	W, 25-18, 25-12, 25-20
NCAA 1st & 2nd Round (Honolulu, O'ahu, Dec. 6-7)		
12/6	Northern Colorado	W, 26-24, 24-26, 25-8, 25-15
12/7	San Diego	W, 25-23, 25-21, 25-21
NCAA Regional (Madison, Wisc.)		
12/13	Nebraska	L, 27-29, 22-25, 19-25

# ALL-TIME RECORD VS. OPPONENTS



Opponent	Overall				Postseason			Last Mtg.	Result
	W	L	T	Pct.	W	L	Pct.		
Air Force	3	0	0	1.000				11/5/96	W, 3-0
Alabama	2	0	0	1.000	2	0	1.000	12/8/78	W, 2-0
Albany	1	0	0	1.000				8/24/12	W, 3-0
American	1	0	0	1.000				9/5/15	W, 3-0
Arizona	13	0	0	1.000	1	0	1.000	8/28/16	W, 3-2
Arizona State	8	2	0	.800	1	0	1.000	8/30/14	L, 3-0
Arkansas	1	0	0	1.000	1	0	1.000	12/10/98	W, 3-0
Ball State	1	0	0	1.000	1	0	1.000	12/8/77	W, 2-0
Baylor	6	2	0	.750	0	1	.000	9/22/19	L, 3-0
Belmont	1	0	0	1.000	1	0	1.000	12/5/08	W, 3-0
Boise State	22	0	0	1.000	1	0	1.000	10/29/10	W, 3-0
Bradley	1	0	0	1.000				9/10/98	W, 3-0
BYU	17	7	0	.708	2	1	1.000	9/7/17	L, 3-2
BYU-Hawaii	12	1	0	.923				11/8/12	W, 3-0
Brown	1	0	0	1.000	1	0	1.000	12/5/98	W, 3-0
Cal	8	2	0	.800				9/2/12	L, 3-2
Cal Poly	41	8	0	.837	4	0		11/3/19	W, 3-1
Cal Poly Pomona	1	0	0	1.000				10/9/87	W, 3-0
CSU Bakersfield	2	0	0	1.000				9/20/15	W, 3-0
Cal State Fullerton	42	0	0	1.000				10/25/19	W, 3-0
CSU Los Angeles	1	0	0	1.000				10/31/75	W, 2-0
Central Florida	2	0	0	1.000				11/14/98	W, 3-0
Chaminade	1	0	0	1.000				9/14/89	W, 3-0
Chico State	1	0	0	1.000				9/16/82	W, 3-0
Cincinatti	5	0	0	1.000				9/10/11	W, 3-0
Cleveland State	1	0	0	1.000	1	0	1.000	12/13/74	W, 2-0
Coastal Carolina	2	0	0	1.000				8/31/18	W, 3-0
Colorado	5	0	0	1.000	2	0	1.000	9/2/06	W, 3-0
Colorado State	8	0	0	1.000	1	0	1.000	12/2/11	W, 3-1
Creighton	2	0	0	1.000				9/20/13	W, 3-2
CSUN	26	2	0	.929				11/21/19	W, 3-0
Davidson	1	0	0	1.000	1	0	1.000	11/30/00	W, 3-0
Denver	1	0	0	1.000				9/8/19	W, 3-1
Duke	1	0	0	1.000	1	0	1.000	12/5/14	W, 3-0
E. Washington	5	0	0	1.000	2	0	1.000	9/12/15	W, 3-1
Fairfield	1	0	0	1.000				9/7/06	W, 3-0
Florida	3	4	0	.429	1	2	.333	9/11/15	W, 3-2
Florida State	1	0	0	1.000	1	0	1.000	12/12/75	W, 2-0
Fresno State	51	0	0	1.000	1	0	1.000	11/22/11	W, 3-2
Georgia	2	0	0	1.000				9/14/90	W, 3-0
Georgia Tech	2	0	0	1.000				12/13/03	W, 3-1
Hawaii-Hilo	24	0	0	1.000				9/14/90	W, 3-0
Hawaii Pacific	6	0	0	1.000				11/5/10	W, 3-0
Houston	7	0	0	1.000	2	0	1.000	9/20/02	W, 3-0
Idaho	21	0	0	1.000	3	0	1.000	9/6/18	W, 3-1
Idaho State	2	0	0	1.000	1	0	1.000	12/6/13	W, 3-1
Illinois	3	2	0	.600	1	1	.500	12/1/17	L, 3-2
Indiana	1	0	0	1.000				9/14/84	W, 2-0
Iowa	3	0	0	1.000				9/4/15	W, 3-0
Kansas State	5	2	0	.714				8/26/18	L, 3-0
Kentucky	4	0	0	1.000	1	0	1.000	11/28/3	W, 3-0
Long Beach State	37	18	1	.670	2	5	.286	11/22/19	W, 3-0
LSU	3	0	0	1.000				10/24/03	W, 3-0
Louisiana Tech	21	0	0	1.000				11/10/10	W, 3-0
Louisville	4	0	0	1.000	1	0	1.000	9/2/07	W, 3-1
Loyola Marymount	8	3	0	.727	0	1	.000	11/21/07	W, 3-0
Marquette	0	1	0	.000				8/25/17	L, 3-2
Maryland	2	0	0	1.000	2	0	1.000	12/11/75	W, 2-0
Miami (Fla.)	1	0	0	1.000	1	0	1.000	12/11/80	W, 2-0
Miami (Ohio)	1	0	0	1.000	1	0	1.000	12/6/98	W, 3-0
Michigan	3	0	0	1.000	1	0	1.000	12/12/09	W, 3-0
Michigan State	1	1	0	.500	0	1	.000	9/3/10	W, 3-2
Middle Tennessee	0	1	0	.000	0	1	.000	12/1/07	L, 3-1
Minnesota	7	2	0	.778	0	2	.000	12/3/16	L, 3-0
Missouri	1	1	0	.500	0	1	.000	9/21/19	W, 3-2
Missouri State	1	0	0	1.000				9/1/16	W, 3-0
Nebraska	5	7	0	.417	2	1	.667	10/21/07	L, 3-0
Nebraska-Omaha	1	0	0	1.000				10/9/87	W, 3-0
Nevada	38	1	0	.974				9/9/17	W, 3-0
UNLV	8	0	0	1.000				9/20/03	W, 3-0
New Mexico	9	0	0	1.000	1	0	1.000	9/4/14	W, 3-1
New Mexico State	34	2	0	.944	2	0	1.000	9/5/13	W, 3-0
New Orleans	1	0	0	1.000				10/6/84	W, 3-1
North Carolina	2	0	0	1.000	1	0	1.000	12/13/02	W, 3-0

Opponent	Overall				Postseason			Last Mtg.	Result
	W	L	T	Pct.	W	L	Pct.		
Northern Arizona	4	0	0	1.000				9/16/17	W, 3-0
Northern Colorado	2	0	0	1.000	2	0	1.000	12/6/19	W, 3-1
Northern Illinois	1	0	0	1.000				9/9/16	W, 3-0
Northwestern	5	0	0	1.000				9/13/13	W, 3-0
Notre Dame	9	1	0	.900				19/18/11	W, 3-1
Ohio	2	0	0	1.000				8/29/14	W, 3-0
Ohio State	5	0	0	1.000				8/30/02	W, 3-0
Oklahoma	2	0	0	1.000				10/6/85	W, 3-0
Oregon	7	4	0	.636	2	1	.667	9/14/18	L, 3-2
Oregon State	5	1	0	.833				8/30/15	W, 3-0
Pacific	39	25	0	.609	5	2	.714	9/2/16	W, 3-0
Penn State	1	5	0	.167	1	1	.500	12/11/15	W, 3-0
Pepperdine	30	4	0	.882	3	0	1.000	11/6/18	L, 3-2
Pittsburgh	4	0	0	1.000	1	0	1.000	9/4/99	W, 3-0
Portland	0	1	0	.000				9/7/18	L, 3-2
Portland State	10	0	0	1.000	3	0	1.000	9/12/13	W, 3-0
Prairie View A&M	1	0	0	1.000	1	0	1.000	12/2/99	W, 3-0
Purdue	4	0	0	1.000	2	0	1.000	12/12/08	W, 3-1
Rhode Island	2	0	0	1.000	1	0	1.000	9/5/96	W, 3-0
Rice	13	0	0	1.000				9/8/11	W, 3-0
Sacramento State	2	0	0	1.000				9/6/19	W, 3-0
St. John's	2	0	0	1.000				8/31/19	W, 3-2
Saint Louis	1	0	0	1.000				9/3/09	W, 3-1
St. Mary's (Calif.)	8	0	0	1.000				8/25/12	W, 3-1
San Diego	5	2	0	.714	1	0	1.000	12/7/19	W, 3-0
San Diego State	41	3	0	.932	3	0	1.000	9/9/18	W, 3-1
San Francisco	8	0	0	1.000				9/12/14	W, 3-1
San Jose State	65	4	0	.942	2	2	.500	10/25/11	W, 3-0
Santa Clara	11	0	0	1.000	1	0	1.000	9/6/13	W, 3-1
SUNY Cortland	1	0	0	1.000	1	0	1.000	12/9/76	W, 2-0
Southern California	23	18	0	.561	6	4	.600	12/2/16	W, 3-2
South Carolina	1	0	0	1.000				10/9/84	W, 3-0
South Dakota	2	0	0	1.000				9/1/17	W, 3-0
SMU	11	0	0	1.000				11/19/04	W, 3-0
Southwest Missouri St.	8	0	0	1.000	6	0	1.000	9/9/04	W, 3-0
Southwest Texas State	1	0	0	1.000	1	0	1.000	12/5/91	W, 3-0
Stanford	19	13	0	.593	3	3	.500	8/26/12	W, 3-1
TCU	7	0	0	1.000	1	0	1.000	12/4/15	W, 3-2
Tennessee	5	0	0	1.000	1	0	1.000	9/9/99	W, 3-0
Tennessee State	1	0	0	1.000	1	0	1.000	11/30/07	W, 3-0
Texas	11	2	0	.846	2	1	.667	8/30/12	W, 3-0
Texas A&M	7	1	0	.875	2	1	.667	12/5/15	W, 3-0
Texas State	1	0	0	1.000	1	0	1.000	12/2/05	W, 3-0
UT Arlington	12	0	0	1.000	6	0	1.000	9/9/94	W, 3-0
UTEP	11	0	0	1.000				8/31/13	W, 3-0
Texas Lutheran	3	0	0	1.000				11/3/77	W, 2-0
UTSA	1	0	0	1.000				9/11/09	W, 3-0
Tulsa	12	0	0	1.000				10/22/04	W, 3-0
UC Davis	15	1	0	.938				11/8/19	W, 3-1
UC Irvine	41	1	0	.976				10/26/19	W, 3-0
UCLA	38	38	0	.500	3	6	.333	9/14/19	W, 3-0
UC Riverside	27	0	0	1.000	1	0	1.000	11/10/19	W, 3-0
UC San Diego	1	0	0	1.000				10/8/82	W, 3-0
UC Santa Barbara	43	9	0	.827	4	0	1.000	11/1/19	W, 3-2
US International	1	0	0	1.000	1	0	1.000	12/5/86	W, 3-0
Utah	11	1	0	.916	2	0	1.000	9/3/17	L, 3-1
Utah State	43	9	0	.827	2	1	.667	9/11/14	W, 3-0
Utah Valley	3	0	0	1.000				9/13/19	W, 3-1
Washington	10	6	0	.625	2	3	.400	9/1/19	W, 3-1
Washington State	4	0	0	1.000	2	0	1.000	11/30/01	W, 3-1
Weber State	3	0	0	1.000				9/10/09	W, 3-0
West Virginia	1	0	0	1.000				9/12/19	W, 3-1
Western Carolina	1	0	0	1.000				8/31/17	W, 3-0
Western Kentucky	3	0	0	1.000	1	0	1.000	12/05/02	W, 3-0
Western Michigan	4	0	0	1.000				8/28/09	W, 3-0
Wichita State	5	0	0	1.000				8/29/15	W, 3-1
Wisconsin	1	3	0	.250	1	1	.500	8/26/16	L, 3-1
Wyoming	10	0	0	1.000				9/5/08	W, 3-0



# ALL-TIME LETTERWINNERS

## A

Gunnvor Aase-1986  
 Kalei Adolpho-2011-14  
 Robyn Ah Mow-1993-96  
 Reydan Ahuna-1984-87  
 Braelyn Akana - 2019-present  
 Joey Akeo-1974-77  
 Reyn Akiu-2018  
 Clare-Marie Anderson-2014-17  
 Kari Anderson-1991-94  
 Angie Andrade-1979  
 Alicia Arnett-2003-05  
 Kristal Attwood-1990-93

## B

Melinda Beckenhauer-1985  
 Kyra Bjornson-1979-81  
 Debbi Black-1983-84, '86  
 Elizabeth Blake-2011  
 Caroline Blood-2004-07  
 Susie Boogaard-2002-05  
 Heather Bown-1998-99  
 Cheri Boyer-1988-91  
 Adrienne Bradley-1998  
 Stephanie Brandt-2007-09  
 Heather Brennan-1990-91  
 Brandi Brooks-1991-94  
 Nahaku Brown-1978-81  
 Natasha Burns-2016-18

## C

Jennifer Carey-1999-2002  
 Corinne Cascioppo-2009-10  
 Trinity Castenda-2018  
 Casey Castillo, 2015-18  
 Sarah Chase-1992-94  
 Bailey Choy - 2019  
 Martina Cincerova-1985-88  
 Laurel Clay-1977-78  
 Deitre Collins-1980-83  
 Kelli Cordray-1995-97  
 Darlene Costales-1975  
 Rebekah Cravens-2000  
 Therese Crawford-1994-97  
 Jane Croson-2011-12  
 Aneli Cubi-Otineru-2007-09

## D

Kanani Danielson-2008-11  
 Elise Duggins-2006-07  
 Lauren Duggins-2000-03  
 Deanna Dunstone-1986, '88

## E

Suzanne Eagye-1984-87  
 Melody Eckmier-2001-04  
 Mahina Eleneki-1984-87  
 Roxanne Elias-1976, '78-79  
 Kapu Elkington-1996-97

## F

Linda Fernandez-1972, '74  
 Stephanie Ferrell-2008-09  
 Nani Flores-1992  
 Alexis Forsythe-2009-10  
 Teisa Fotu-2004  
 Catherine Fowler-2008  
 Malin Fransson-1989-91

## G

Lori Garber-1995, '97  
 Angel Gaskin-2018  
 Maile Golden-1988-91  
 Ann Goldenson-1976-77  
 Andrea Gomez Tukuafu-2000  
 Janelle Gong-2018-present  
 Kaela Goodman-2010-13  
 Cecelia Goods-1993, '95-97  
 Bonnie Gouveia-1976-79  
 McKenna Granato, 2015-18  
 Kalei Greeley-2014-17  
 Kari Gregory-2004-07  
 Alex Griffiths-2010-11  
 Cheryl Grimm-1976-79  
 Gianna Guinasso-2014-17  
 Paula Gusman-1976-79  
 Maja Gustin-2000-03

## H

Sandy Hafner-1980  
 Stephanie Hagins-2012  
 Kyra Hanawahine - 2019 - present  
 Emily Hartong-2010-13  
 Lani Hayes-1978, '80  
 Nue Heffernan-1990  
 Hanna Hellvig - 2019  
 Sue Hemenway-1981  
 Heidi Hemmings-1974-75  
 Donna Hess-1975  
 Brittany Hewitt-2009-11  
 Naomi Higa-1983-86  
 Lori Higashida-1995-96  
 Tayler Higgins-2013-16  
 Tara Hittle-2004-05, '07-08  
 Sue Hlavenka-1982-85  
 Cathy Hollinger-1974-77  
 Jamie Houston-2005-08  
 Sophia Howling-2017  
 Nikki Hubbert-1996-98  
 Megan Huff-2014  
 Nicole Huihui-1998

## I

Amber Igiiede - 2019 - present  
 Hedder Ilustre-2001-02  
 Heidi Ilustre-1996-99  
 Norene Iosia - 2016-19

## J

Paula Jenkins-1975-77  
 Diana Jessie-1984-87

## K

Kawehi Ka'a'a-1980-81  
 Elizabeth Ka'aihue-2007-10  
 Joyce Ka'apuni-1974, '76, '82-83  
 Savannah Kahakai-2014-17  
 Lily Kahumoku-1999-2000, '02-03  
 Babes Kalulu-1989  
 Kristina Kam-2010-12  
 Kanoë Kamana'o-2003-06  
 Candy Kane-1979-82  
 Chastity Kanoa-1993-94  
 Leah Karratti-1997-98  
 Ashley Kastl-2012-13  
 Amber Kaufman-2006-09  
 Kayla Kawamura-2012-13  
 Jessica Keefe-2005-08  
 Shelly Kim-1998-99  
 Rayna Kitaguchi-2006-07  
 Kelly Knowles-1984  
 Joyce Koehn-1985

Kendra Koelsch-2014-17  
 Karolyn Kootnekoff-1984-85  
 Kamalei Krug-2018

## L

Zelda Lainaholo-1974-75  
 Pam Lawrence-1983-84  
 Aven Lee-1996-97, '99-2000  
 Jayme Lee-2006-09  
 Liz Lee-1975  
 Courtney Lelepali-2011-13  
 Veronica Lima-1998-2000  
 Sarah Liva-2018  
 Angelica Ljungquist-1993-96  
 Ginger Long-2012-14  
 Jami Long-1987, '89  
 Ali Longo-2012-13  
 Kenyatta Lovelace-1990-93  
 Joan Lui-1981  
 Karin Lundqvist-2002-03

## M

Faith Maafala-2017-18  
 Emily Maeda-2009-12  
 Dani Mafua-2007-10  
 Olivia Magill-2014-15  
 Emily Maglio-2014-17  
 SyRina Makainai-1999  
 Terry Malterre-1976-79  
 Tai Manu-Olevao-2012-15  
 Sarah Mason-2005-06  
 Mary McGrath-1975-76  
 Diana McInerney-1978-79  
 Beth McLachlin-1974-75, '77  
 Sarah Mendoza-2013-14  
 Leeana Merriweather-1987  
 Waynette Mitchell-1976-79  
 Annie Mitchem-2015-16  
 Tehani Miyashiro-1997-98  
 Marilyn Moniz-1972-75

## N

Keala Nihipali-1997  
 Tanja Nikolic-1999-2001  
 Toni Nishida-1988-91  
 Chastity Nobriga-1992, '94-96

## O

Megan O'Brian-2002  
 Rika Okino - 2017-19  
 Kelly Ong-2004-06

## P

Jaime Paet-1986-89  
 Sista Palakiko-1980-83  
 Wendi Park-1992, '94  
 Lee Ann Pestana-1981-84  
 Laura Phillips-1988-89  
 Katiana Ponce-2013-16  
 Victoria Prince-2004-05  
 Oveta Puaa-1974  
 Kori Pulaski-1980-83  
 Kris Pulaski-1980-83

## R

Jolie Rasmussen - 2019 - present  
 Makana Recca-2006  
 Nancy Renner-1976  
 Jennifer Roberts-1996-99  
 Alexis Robins-2009  
 Joselyn Robins-1993-96  
 Mary Robins-1986, '88-89  
 McKenna Ross - 2016-19

**S**

Joanna Sahm-1989-91  
Juliana Sanders-2004-07  
Chanteal Satele-2010-11  
Diane Sebastian-1978-81  
Stephanie Shota-1990-93  
Kirsten Sibley - 2016-19  
Amanda Simmons-2007-08  
Mary Kay Simpson-1976  
Mary Ann Singleton-1975-78  
Emma Smith - 2016  
Monica Stauber-2011-12  
Jameka Stevens-1997  
Lisa Strand-1981-84  
Jessica Sudduth-1997-2000  
Meg Sullivan-1977-78

**T**

Carolyn Taeatafa-1988  
Nohea Tano-2001-03  
Nikki Taylor-2013-16  
Nikkie Thomas-2005-08  
Cayley Thurlby-2003-06  
Karrie Trieschman-1987-90  
Kristiana Tuaniga-2010-13

**U**

Mita Uiato-2010-13

**V**

Margaret Vakasausau-1999-2002  
Brooke Van Sickle - 2019 - present  
Melissa Villaroman-2000-03  
Joyce Visser-1980  
Jade Vorster-2012-13  
Anna Vorwerk-1988

**W**

Michelle Waber-2010  
Riley Wagoner - 2019 - present  
Ashley Watanabe-2002-05  
Tiffany Westerberg - 2019 - present  
Kee Williams-1991, '93-94  
Skyler Williams-2017-present  
Tee Williams-1987-89  
Kim Willoughby-2000-03  
Jenny Wilton-1991-92, '94-95  
Raeceen Woolford-2004-07  
Marcie Wurts-1980-83

**Y**

Nalani Yamashita-1995-96  
Missy Yomes-1980-83

**NAHAKU BROWN (1981)****HONOLULU, O'AHU**

Played from 1978-81 for the Rainbow Wahine...1981 AVCA All-American...setter for 1981 team that won a program-record 37 matches before being upset by Southern California in the NCAA Regional final...a member of the 1979 AIAW national championship team for the Rainbow Wahine.

**DEITRE COLLINS (1981-83)****LANCASTER, CALIF.**

Played from 1980-83 for the Rainbow Wahine...a three-time AVCA All-American...1982 and '83 Honda Award Winner for volleyball...1983 Broderick Cup winner as top female collegiate athlete...1983 Volleyball Magazine Player of the Year...1982 USVBA All-American...ranks in the UH career top 10 lists in kills, kills per game, hitting percentage, block

solos, total blocks and blocks per game...member of the 1982 and '83 NCAA championship teams...member of the 1988 United States Olympic Team...inducted into the UH Sports Circle of Honor in 1989.

**KORI PULASKI (1982)****BALBOA, CALIF.**

Played from 1980-83 for the Rainbow Wahine...earned AVCA All-America honors in 1982...named the MVP of the 1982 USVBA All-America team...also a 1983 honorable mention USVBA All-American...amassed over 1,000 kills in her career at UH...a member of the 1982 and '83 NCAA championship teams.

**JOYCE KA'APUNI (1983)****HONOLULU, O'AHU**

Played in 1974, '76 and '82-83 for the Rainbow Wahine...left the team from 1977-81 to play for the U.S. National Team...earned AVCA All-America honors in 1983...also named an AIAW and USVBA All-American in 1974...still holds the record for aces-per-game average in the UH career record book...

member of the 1982 and '83 NCAA championship teams...also was on the 1974 AIAW second-place team and 1976 AIAW third-place team.

**REYDAN AHUNA (1985, '86)****HONOLULU, O'AHU**

Played from 1984-87 for the Rainbow Wahine...named AVCA second team All-American in 1985 and '86...also was the MVP of the 1986 and '87 USVBA All-America teams...first team all-PCAA in 1985 and second team all-PCAA in 1986 and '87...ranks in the UH career top 10 lists in kills,

attempts, aces, digs and digs per game...first player to post career marks of 1,000 kills and 1,000 digs...member of the 1987 NCAA championship team.

**SUZANNE EAGYE (1986, '87)****SAN DIEGO, CALIF.**

Played from 1984-87 for the Rainbow Wahine...earned AVCA first-team All-America honors in 1986 and '87...won the 1987 Honda Award for Volleyball...1987 PCAA Player of the Year...three-time all-PCAA honoree...only UH player to amass over 1,000 kills, 1,000 digs and 500 blocks in her career...career leader in blocks and block solos...also ranks in the top 10 in kills, attempts, digs, block assists and blocks per game...member of the 1987 NCAA championship team.

**TEE WILLIAMS (1987-89)****LONG BEACH, CALIF.**

Played from 1987-89 for the Rainbow Wahine...three-time AVCA first team All-American...named the 1987 AVCA and Volleyball Magazine Player of the Year...also named Co-Player of the Year by AVCA in 1989...co-Big West Player of the Year in 1988 and '89...ranks in the top five in kills, attempts, kills per

game, digs, digs per game and block solos, while ranking in the top 10 in hitting percentage in the UH career record book...member of the 1987 NCAA championship and the 1988 NCAA finalist teams...member of the 1992 United States Olympic team...inducted into the UH Sports Circle of Honor in 1998.

**DIANA JESSIE (1987)****ANCHORAGE, ALASKA**

Played from 1984-87 for the Rainbow Wahine...1987 AVCA second team All-America...also named honorable mention USVBA All-American in 1986 and second team USVBA All-American in 1987...ranks in the UH career top 10 list in kills and attempts...member of 1987 NCAA championship team.

**MARTINA CINCEROVA (1988)****TORRANCE, CALIF.**

Played from 1985-88 for the Rainbow Wahine...AVCA second team All-America in 1988...also earned USVBA second-team All-America honors in 1986 and '87...ranks second in career assists and aces while ranking in the top 10 in assists per game, aces per game, digs and digs per game in

the UH career record book...setter for the 1987 NCAA championship team and the 1988 NCAA finalist team.

**ANNA VORWERK (1988)****STOCKHOLM, SWEDEN**

Played for Hawai'i in 1988...earned AVCA second-team All-America honors in 1988...averaged 3.00 kills, 3.38 digs and 0.92 blocks per game while hitting .312 in 1988...led the team in blocks while ranking second on the team in kills and digs...was a member of the Swedish National Team

for three years before joining the Rainbow Wahine for one season...member of 1988 NCAA finalist team.



**KARRIE TRIESCHMAN (1989, '90)**  
**MANHATTAN BEACH, CALIF.**

Played from 1987-90 for the Rainbow Wahine... earned AVCA first-team All-America honors in 1989 and '90...first team all-Northwest Region and all-Big West in 1989 and '90, while garnering honorable mention all-Big West in 1988...named Big West Player of the Year in 1990...ranks in the

top 10 in the UH career record book in block solos, block assists and total blocks...a member of the 1987 NCAA championship team and the 1988 NCAA finalist team.



**CHERI BOYER (1990, '91)**  
**POWAY, CALIF.**

Played from 1988-91 for the Rainbow Wahine... earned AVCA first-team All-America honors in 1990, garnering second-team honors in 1991... earned all-region honors in 1989-91...named first team all-Big West in 1990 while being named to the second team in 1989 and '91...ranks in the

top 10 of the career list in assists, assists per game, service aces and service aces per game...member of the 1988 NCAA finalist team.



**KEE WILLIAMS (1991)**  
**COMPTON, CALIF.**

Played from 1991-94 for the Rainbow Wahine... earned AVCA first-team All-America honors in 1991...named first team all-Big West in 1991, '93 and '94...named all-region in 1991 and '94... hit .380 with 3.60 kills per game and 1.76 blocks per game in 1991, a bpg average that broke the

school record at the time.



**MALIN FRANSSON (1991)**  
**VALLENTUNA, SWEDEN**

Played from 1989-91 for the Rainbow Wahine... AVCA second team All-America in 1991...three-time all-Big West (1989-91)...led team with 2.76 digs per game in 1991 while adding 1.29 bpg and 3.18 kpg...ranks fourth in the UH career record book in digs per game...member of NCAA finalist team in 1989.



**ANGELICA LJUNGQUIST (1993-96)**  
**VALLENTUNA, SWEDEN**

Played for Hawai'i from 1993-96...one of UH's two four-time AVCA All-Americans...earned All-America honors in 1993 and '94...named first team All-America in 1995 and '96...1996 AVCA and *Volleyball Magazine* National Player of the Year... won 1996 Honda Award for volleyball...1996-97

Stan Bates Award winner as the WAC's top female student-athlete...1996 WAC Player of the Year...1995 Big West Player of the Year... ranks in the top 10 of the UH career record book in 10 categories, leading in block assists (623)...member of 1996 NCAA finalist team... inducted into UH Sports Circle of Honor in 2006.



**ROBYN AH MOW (1995, '96)**  
**HONOLULU, O'AHU**

Played from 1993-96 for the Rainbow Wahine... earned AVCA first-team All-America honors in 1995 and '96...three-time all-conference performer (1994, '95 in Big West and 1996 in WAC)... ranks third in the UH record book in career assists (4,313)...also averaged just below a block per

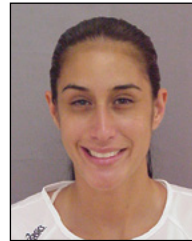
game in 1995 (0.96) and '96 (0.99) as a setter...member of 1996 NCAA finalist team...member of the 2000, '04 and '08 United States Olympic teams...inducted into UH Sports Circle of Honor in 2006.



**HEATHER BOWN (1998, '99)**  
**YORBA LINDA, CALIF.**

Played in 1998 and '99 for the Rainbow Wahine... named AVCA first team All-America in 1998 and '99...two-time WAC Player of the Year (1998 and '99)...ranks first in blocks per game, second in hitting and fifth in career kills per game in the UH career record books...posted a 2.25 blocks-per-

game average in 1999, leading the nation while breaking the UH single-season record...transferred to Hawai'i after playing two years at UC Santa Barbara...member of the United States Olympic teams in 2000, '04 and '08.



**LILY KAHUMOKU (2000, '02, '03)**  
**LUBBOCK, TEX.**

Played from 1999-2000 and 2002-03 for UH...an AVCA first team All-American three times (2000, '02 and '03)...named WAC Player of the Year in 2000...first four-time first-team all-WAC honoree in conference history...ranks fourth in career kills and kills per game in UH record book...led team

with 4.51 kills per game in 2000...member of three NCAA semifinalist teams (2000, '02 and '03).



**KIM WILLOUGHBY (2001-03)**  
**NAPOLEONVILLE, LA.**

Played from 2000-03 for the Rainbow Wahine... three-time AVCA first team All-American (2001-03)...named AVCA and *Volleyball Magazine* National Player of the Year in 2003...first woman to win back-to-back Joe Kearney Awards (2002-03, '03-04) as the WAC's top female athlete...WAC

Player of the Year three times (2001-03)...holds five UH career records and five single-season records...is the NCAA all-time single-season leader (30-point format) in kills (850) and kills per game (7.20)...member of three NCAA semifinalist teams (2000, '02 and '03)...member of the United States Olympic team in 2008.



**LAUREN DUGGINS (2002)**  
**FULLERTON, CALIF.**

Played from 2000-03 for the Rainbow Wahine... named AVCA third team All-American in 2002... three-time all-WAC honoree...led team with .396 hitting percentage and 1.33 blocks per game in 2002...ranks in the UH career top 10 in hitting, block assists and total blocks...part of the recruit-

ing class of 2000 that ended their careers with a record of 130-12 (.915)...member of three NCAA semifinalist teams (2000, '02 and '03).

**KANOË KAMANAO'Ō (2003-06)**  
**HONOLULU, O'AHU**

Played for UH from 2003-06...one of UH's two four-time All-Americans...earned AVCA Freshman of the Year and third team All-America honors in 2003... named AVCA first team All-America in 2004... garnered AVCA third team All-America honors in 2005...named AVCA first team All-America in 2006...three-time WAC Player of the Year (2004, '05, '06)...UH and WAC career assists and assists-per-set leader...ranks seventh in the NCAA in career assists and eighth in career assists per game...also in the top 10 of the UH career record book in digs, digs per game, total blocks and block assists...member of 2003 NCAA semifinalist team.

**VICTORIA PRINCE (2004, '05)**  
**KENNEWICK, WASH.**

Played for UH in 2004 and '05...earned AVCA second-team All-America honors both years...holds the school career hitting record (.407), posting two of the program's three single-season hitting percentages over .400...led team in all three scoring categories in 2005, notching 352 kills, 42 aces and 168 blocks...transferred to Hawai'i after playing two years at Washington State...member of two NCAA Regional teams (2004, '05).

**JAMIE HOUSTON (2006, '08)**  
**HUNTSVILLE, ALA.**

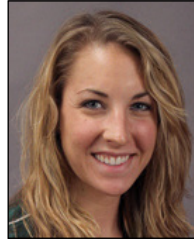
Played for UH from 2005-08...earned AVCA third-team All-America honors in 2006 and second-team honors in 2008...averaged 5.49 kills per game, ranking sixth in the NCAA statistics in 2006...named the WAC Player of the Year in 2007 and '08...also earned first-team all-region and first-team all-WAC honors in 2006-08...ranks second in career kills and third in kills per game in the UH record book...member of three NCAA Regional teams (2005, '06 and '08)...was also an honorable-mention pick in 2007.

**ANELI CUBI-OTINERU (2009)**  
**HALE'IWA, O'AHU**

Played from 2007-09 for the Rainbow Wahine... earned AVCA third-team All-America honors in 2009...earned first-team all-WAC honors from 2007-09...named AVCA all-West Region in 2008 and '09...ranks in the top five in aces and aces per game in the UH record book...member of the NCAA semifinalist team in 2009.

**KANANI DANIELSON (2008-11)**  
**EWA BEACH, O'AHU**

Played four seasons at UH from 2008-11...earned AVCA first-team All-America honors in 2009, '10 and '11, and third-team honors in 2008...named the WAC Player of the Year in 2009, '10 and '11... named the WAC Freshman of the Year in 2008... also was named the West Region Freshman of the Year...2011 Lowe's Senior CLASS Award winner.

**BRITTANY HEWITT (2010)**  
**EAGLE, IDAHO**

Named to the 2010 AVCA All-America second team and earned honorable-mention honors in 2011... was also named to the AVCA all-west region team and three times earned first-team all-WAC selections...named 2009 WAC Freshman of the Year and 2010 CVU.com Blocker of the Year.

**EMILY HARTONG (2011-13)**  
**LOS ALAMITOS, CALIF.**

Named first team AVCA All-American and Big West Player of the Year as a junior and senior...second team AVCA All-American in her sophomore season (2011) as well as AVCA all-region and first team all-WAC...was also the WAC Freshman of the Year and named second team all-WAC in 2010...earned a spot on the 2013 Senior CLASS List.

**OLIVIA MAGILL (2015)**  
**SHORELINE, WASH.**

Named third team AVCA All-American and first team all-Big West as a senior...named AVCA all-Region three years...led the Big West with a .412 hitting percentage and 1.44 blocks per set average. Also led the league in total blocks (153), solo blocks (18) and block assists (135).

**NIKKI TAYLOR (2015,16)**  
**HONOLULU, O'AHU**

Named second team AVCA All-American and Big West Player of the Year as a junior...led UH and the Big West with 4.46 kills per set, .41 service aces per set and 5.48 points per set. Was named AVCA and ESPNW National Player of the Week after leading UH to a five-set win over then-No. 2 Florida with 27 kills. Tied the UH record being named conference Player of the Week five times in one season.

**EMILY MAGLIO (2017)**  
**COQUITLAM, B.C., CANADA**

After earning AVCA honorable mention honors as a junior, Emily Maglio was named a third-team All-American as a senior in 2017. For the second-straight year, led the Big West in blocks [solo (25), assist (130) and total (155)] as well as blocks per set (1.46). Led UH with a .381 hitting percentage. Played at middle hitter four seasons at UH from 2014-17. Earned all-Big West First Team honors for third straight year. As a senior was named BWC Defensive Player of the Week twice (10/9, 10/16) and Player of the Week honors once (11/6)

**NORENE IOSIA (2019)****TORRANCE, CALIF.**

Named honorable mention AVCA All-American and Big West Player of the Year as a senior, the senior setter/outside hitter helped to lead Hawai'i to its first Big West title since 2016 and its first NCAA Regional appearance since 2015. In her final season as a Rainbow Wahine, Iosia led Hawai'i with 645 assists, 331 digs, and 48 service aces. She concluded her standout career at UH ranked No. 9 with 3,148 career assists, No. 8 in with 1,175 career digs, and tied for No. 2 with 139 career service aces with Martina Cincero who played from 1985-88. A four-time All-Big West first-team selection.



**PRE-RALLY SCORING SINGLE-MATCH RECORDS**

**INDIVIDUAL**

**KILL ATTEMPTS**

Sets	No.	Name	Opponent	Date
3 sets	54	Pam Lawrence	Pacific	11/10/84
4 sets	67	Tee Williams	San Jose State	11/10/89
5 sets	103	Tee Williams	Cal Poly	11/7/88

**KILLS**

Sets	No.	Name	Opponent	Date
3 sets	28	Tee Williams	Cal Poly	12/2/88
	28	Tee Williams	Texas	12/17/88
4 sets	30	Diana Jessie	UCLA	9/18/86
5 sets	44	Tee Williams	UC Santa Barbara	11/8/89

**HITTING PERCENTAGE (MIN. 10 ATT.)**

Pct. (K-E-TA)	Name	Opponent	Date
1.000 (12-0-12)	Kenyatta Lovelace	Cal State Fullerton	10/3/92

**ASSISTS**

Sets	No.	Name	Opponent	Date
3 sets	61	Cheri Boyer	Long Beach State	9/28/89
4 sets	78	Nikki Hubbert	Pacific	9/19/98
5 sets	95	Nikki Hubbert	Brigham Young	11/28/98

**DIGS**

Sets	No.	Name	Opponent	Date
3 sets	20	Suzanne Eagye	Cal Poly	11/4/85
	20	Sarah Chase	Penn State	9/10/93
	20	Joselyn Robins	Long Beach State	11/17/95
	20	Jessica Sudduth	Utah	12/1/00
4 sets	30	Tee Williams	Cal Poly	11/8/88
5 sets	45	Tee Williams	Cal Poly	11/7/88

**BLOCK SOLOS**

Sets	No.	Name	Opponent	Date
3 sets	5	Suzanne Eagye	Hawai'i-Hilo	10/24/84
4 sets	9	Suzanne Eagye	San Jose State	11/21/86
5 sets	8	Deitre Collins	Kentucky	10/15/83

**BLOCK ASSISTS**

Sets	No.	Name	Opponent	Date
3 sets	11	Suzanne Eagye	UCLA	9/26/85
4 sets	14	Cecelia Goods	Colorado State	11/26/97
	14	Heather Bown	San Jose State	10/29/99
5 sets	16	Suzanne Eagye	Long Beach State	10/3/86
	16	Cecelia Goods	Utah	11/25/97

**TOTAL BLOCKS**

Sets	No.	Name	Opponent	Date
3 sets	13	Suzanne Eagye	UCLA	9/26/85
4 sets	16	Heather Bown	San Jose State	10/29/99
5 sets	20	Suzanne Eagye	Long Beach State	10/3/86

**SERVICE ACES**

Sets	No.	Name	Opponent	Date
3 sets	6	Mahina Eleneki	UC Riverside	10/10/87
	6	Sarah Chase	Cal State Fullerton	10/3/92
4 sets	6	Diana Jessie	UC Irvine	10/24/85
	6	Toni Nishida	Ohio State	9/6/90
5 sets	6	Joyce Ka'apuni	UCLA	9/30/83
	6	Kelly Knowles	Illinois State	10/3/84

**TEAM**

**KILL ATTEMPTS**

Sets	No.	Opponent	Date
3 sets	204	Pacific	11/10/84
4 sets	235	San Jose State	11/21/86
5 sets	329	Cal Poly	11/7/88

**KILLS**

Sets	No.	Opponent	Date
3 sets	82	Long Beach State	9/26/87
4 sets	91	UCLA	9/18/86
5 sets	119	Cal Poly	11/7/88

**HITTING PERCENTAGE**

Sets	Pct. (K-E-TA)	Opponent	Date
3 sets	.657 (49-3-70)	Cal State Fullerton	10/2/87
4 sets	.438 (63-14-112)	San Diego State	10/3/87
5 sets	.411 (65-7-141)	Western Michigan	9/18/84

**ASSISTS**

Sets	No.	Opponent	Date
3 sets	69	Long Beach State	9/26/87
4 sets	86	Pacific	9/19/98
5 sets	107	Brigham Young	11/28/98

**DIGS**

Sets	No.	Opponent	Date
3 sets	97	Cal Poly	11/4/86
4 sets	137	Cal Poly	11/8/88
5 sets	223	Cal Poly	11/7/88

**BLOCK SOLOS**

Sets	No.	Opponent	Date
3 sets	12	Tennessee	10/10/84
4 sets	18	Pacific	10/2/80
5 sets	10	Cal Poly	12/8/89

**BLOCK ASSISTS**

Sets	No.	Opponent	Date
3 sets	36	Nebraska	8/24/96
4 sets	54	San Jose State	10/29/99
5 sets	46	Long Beach State	10/3/86

**TOTAL BLOCKS**

Sets	No. (BS-BA)	Opponent	Date
3 sets	37 (4-33)	Louisville	12/3/95
	37 (1-36)	Nebraska	8/24/96
4 sets	56 (2-54)	San Jose State	10/29/99
5 sets	51 (5-46)	Long Beach State	10/3/86

**SERVICE ACES**

Sets	No.	Opponent	Date
3 sets	13	Purdue	10/12/83
	13	Texas A&M	8/31/90
	13	USC	11/21/90
4 sets	14	Illinois	12/15/88
	14	Ohio State	9/6/90
	14	Minnesota	9/5/91
5 sets	16	Stanford	11/29/82

**RALLY SCORING SINGLE-MATCH RECORDS (SINCE 2001)**

**INDIVIDUAL**

**KILL ATTEMPTS**

Sets	No.	Name	Opponent	Date
3 sets	74	Kim Willoughby	UC Santa Barbara	11/5/01
4 sets	88	Kim Willoughby	UCLA	12/6/01
5 sets	105	Kim Willoughby	Pacific	11/24/01

**KILLS**

Sets	No.	Name	Opponent	Date
3 sets	34	Kim Willoughby	UC Santa Barbara	11/5/01
4 sets	38	Kim Willoughby	UCLA	12/6/01
5 sets	43	Kim Willoughby	Pacific	11/24/01

**HITTING PERCENTAGE (MIN 10 ATT.)**

Pct. (K-E-TA)	Name	Opponent	Date
.917 (11-0-12)	Brittany Hewitt	New Mexico State	9/29/10

**ASSISTS**

Sets	No.	Name	Opponent	Date
3 sets	54	Kanoe Kamana'o	California	9/17/04
	54	Stephanie Brandt	Fresno State	11/02/07
4 sets	71	Kanoe Kamana'o	Georgia Tech	12/13/03
5 sets	74	Kanoe Kamana'o	Stanford	9/13/03

**DIGS**

Sets	No.	Name	Opponent	Date
3 sets	24	Ashley Watanabe	San Jose State	10/22/05
4 sets	32	Sarah Mendoza	Washington	12/6/14
5 sets	33	Melissa Villaroman	Fresno State	11/15/02

**BLOCKS SOLO**

Sets	No.	Name	Opponent	Date
3 sets	4	Sarah Mason	San Jose State	11/23/06
4 sets	4	Sarah Mason	San Jose State	10/29/06
5 sets	4	Nohea Tano	Utah	11/23/01
	4	Lauren Duggins	Stanford	9/13/06

**BLOCK ASSISTS**

Sets	No.	Name	Opponent	Date
3 sets	13	Kari Gregory	Oregon	12/1/06
4 sets	12	Olivia Magill	St. John's	9/6/14
5 sets	15	Brittany Hewitt	San Diego	8/27/10

**TOTAL BLOCKS**

Sets	No.	Name	Opponent	Date
3 sets	14	Kari Gregory	Oregon	12/1/06
4 sets	12	Olivia Magill	St. John's	9/6/14
5 sets	16	Brittany Hewitt	San Diego	8/27/10

**ACES**

Sets	No.	Name	Opponent	Date
3 sets	9	Sarah Mason	Fairfield	9/7/06
4 sets	8	Taylor Higgins	New Mexico	9/4/14
5 sets	11	Amber Kaufman	Washington	9/13/08

**TEAM**

**KILL ATTEMPTS**

Sets	No.	Opponent	Date
3 sets	171	UC Santa Barbara	11/5/01
4 sets	226	Pepperdine	9/24/04
5 sets	230	New Mexico State	9/22/07

**KILLS**

Sets	No.	Opponent	Date
3 sets	67	UC Santa Barbara	11/5/01
4 sets	85	Georgia Tech	12/13/03
5 sets	94	San Jose State	10/18/01

**HITTING PERCENTAGE**

Sets	Pct. (K-E-TA)	Opponent	Date
3 sets	.573 (56-5-89)	CSUN	9/9/05
4 sets	.454 (57-8-108)	Fresno State	10/26/08
5 sets	.323 (82-22-186)	UCLA	9/1/03

**ASSISTS**

Sets	No.	Opponent	Date
3 sets	64	UC Santa Barbara	11/5/01
4 sets	80	Georgia Tech	12/13/03
5 sets	90	San Jose State	10/18/01

**DIGS**

Sets	No.	Opponent	Date
3 sets	77	North Carolina	12/13/02
4 sets	119	Pepperdine	9/25/04
5 sets	110	New Mexico State	9/22/07

**BLOCKS SOLO**

Sets	No.	Opponent	Date
3 sets	5	Louisiana Tech	10/5/02
4 sets	8	St. Mary's (Calif.)	10/29/06
5 sets	8	Utah	11/23/01

**BLOCK ASSISTS**

Sets	No.	Opponent	Date
3 sets	34	Oregon	12/1/06
4 sets	40	St. John's	9/6/14
5 sets	40	Utah State	11/23/04
	40	Utah State	11/9/05

**TOTAL TEAM BLOCKS**

Sets	No.	Opponent	Date
3 sets	21	Oregon	12/1/06
4 sets	21	New Mexico State	11/24/06
5 sets	24	Utah State	11/23/04

**ACES**

Sets	No.	Opponent	Date
3 sets	17	Cal State Fullerton	9/29/17
4 sets	13	New Mexico	9/4/14
	13	Wichita State	8/27/11
5 sets	16	CSUN	10/14/17



**COMBINED SINGLE-MATCH RECORDS**

**INDIVIDUAL**

**KILLS**

No.	Name	Opponent (sets)	Date
44	Tee Williams	at UC Santa Barbara (5)	11/8/89
43	Kim Willoughby	at San Jose State (5)	10/18/01*
41	Kim Willoughby	at Pacific (5)	11/24/01*
40	Tee Williams	at Cal Poly (5)	11/7/88
39	Tee Williams	vs Cal Poly (5)	12/8/89

**HITTING PERCENTAGE (MIN. 10 ATT.)**

No.	Name (K-E-TA)	Opponent (sets)	Date
1.000	Kenyata Lovelace (12-0-12)	vs Cal State Fullerton (3)	10/3/92
.917	Brittany Hewitt (11-0-12)	at New Mexico State (3)	9/29/10*
.900	Diana Jessie (9-0-10)	vs Western Kentucky	10/22/87
.889	Heather Brown (16-0-18)	vs Tulsa (3)	11/5/99
.867	Victoria Prince (13-0-15)	vs SMU (3)	11/19/04*
.857	Kee Williams (12-0-14)	at Cal State Fullerton (4)	10/18/91
.857	Heather Bown (18-0-21)	vs UCLA (3)	9/4/98

**ASSISTS**

No.	Name	Opponent (sets)	Date
95	Nikki Hubbert	vs BYU (5)	11/28/98
83	Cheri Boyer	vs Long Beach State (5)	12/14/91
83	Robyn Ah Mow	at Colorado State (5)	11/8/96
80	Cheri Boyer	vs Cal Poly (5)	12/8/89
78	Nikki Hubbert	vs Pacific (4)	9/19/98

**DIGS**

No.	Name	Opponent (sets)	Date
45	Tee Williams	at Cal Poly (5)	11/7/88
37	Anna Vorwerk	at Cal Poly (5)	11/7/88
36	Reydan Ahuna	at Long Beach State (5)	10/3/86
33	Melissa Villaroman	at Fresno State (5)	11/15/02*
32	Sarah Mendoza	at Washington (4)	12/6/14*
31	Mary Robins	at Cal Poly (5)	11/7/88
31	Ashley Watanabe	at LMU (5)	9/23/05*
31	Elizabeth Ka'iahue	vs Louisville (4)	9/2/07*

**TOTAL BLOCKS**

No.	Name (BS-BA)	Opponent (sets)	Date
20	Suzanne Eagye (4-16)	at Long Beach State (5)	10/3/86
17	Deitre Collins (8-9)	vs Pacific (4)	10/2/80
17	Ceclia Goods (1-16)	vs Utah (5)	11/25/97
16	Heather Bown (2-14)	at San Jose State (4)	10/29/99
16	Brittany Hewitt (1-15)	vs San Diego (5)	8/27/10*

**ACES**

No.	Name	Opponent (sets)	Date
11	Amber Kaufman	vs Washington (5)	9/13/08*
9	Sarah Mason	vs Fairfield (3)	9/7/06*
6	Joyce Kaapuni	vs UCLA (5)	9/30/83
6	Kelly Knowles	vs Illinois State (5)	10/3/84
6	Diana Jessie	vs UC Irvine (4)	10/24/85
6	Mahina Eleneki	vs UC Riverside (3)	10/10/87
6	Toni Nashida	vs Ohio State (4)	9/6/90
6	Sarah Chase	vs Cal State Fullerton (3)	10/3/92
6	Kim Willoughby	vs Cal Poly (3)	9/13/02*
6	Kim Willoughby	vs Baylor (3)	9/5/03*
6	Alicia Arnott	vs Tulsa (3)	10/22/04*
6	Emily Hartong	vs Wichita State (4)	8/27/11*
6	McKenna Grenato	at Cal State Fullerton (3)	9/29/17*

**TEAM**

**KILLS**

No.	Opponent (sets)	Date
119	at Cal Poly (5)	11/7/88
116	vs BYU (5)	11/28/98
104	vs Cal Poly (5)	11/16/89
103	vs Stanford (5)	9/16/83
101	vs UCLA (5)	10/10/81

**HITTING PERCENTAGE**

No. (K-E-TA)	Opponent (sets)	Date
.657 (49-3-70)	at Cal State Fullerton (3)	10/2/87
.630 (36-2-54)	vs Prairie View A&M (3)	12/2/99
.574 (39-4-61)	vs Fresno State (3)	9/22/83
.573 (56-5-89)	vs CSUN (3)	9/9/05*
.567 (41-3-67)	at Utah State (3)	10/28/94

**ASSISTS**

No.	Opponent (sets)	Date
107	vs BYU (5)	11/28/98
106	at Cal Poly (5)	11/7//88
102	vs Cal Poly (5)	11/16/89
90	at San Jose State (5)	10/18/01*
88	vs Cal Poly (5)	12/8/89
88	vs UCLA (5)	11/3/90

**DIGS**

No.	Opponent (sets)	Date
223	at Cal Poly (5)	11/7/88
156	at Long Beach State (5)	10/3/86
140	vs Cal Poly (5)	11/16/89
137	at Cal Poly (4)	11/8/88
135	vs Cal Poly (5)	12/8/89

**TOTAL TEAM BLOCKS**

No. (BS-BA)	Opponent (sets)	Date
29.5 (18-23)	vs Pacific (4)	10/2/80
29 (2-54)	at San Jose State (4)	10/29/99
28 (5-46)	at Long Beach State (5)	10/3/86
26 (13-26)	vs Cal Poly (4)	11/11/80
25.5 (7-37)	vs LMU (5)	9/24/99
25 (3-44)	at Colorado State (5)	11/8/86

**ACES**

No.	Opponent (sets)	Date
17	at Cal State Fullerton (3)	9/29/17*
16	at CSUN (5)	10/14/17*
16	vs Stanford (5)	11/29/82
15	vs Stanford (5)	12/17/82
14	vs Illinois (4)	12/15/88
14	vs Ohio State (4)	9/6/80
14	vs Minnesota (4)	9/5/91

\* denotes rally-scoring era

**INDIVIDUAL**

**KILLS**

No.	Name	Year	Sets Played	Total
1	Kim Willoughby	2001	118	850*
2	Kim Willoughby	2003	114	752*
3	Kim Willoughby	2002	109	688*
4	Tee Williams	1988	121	688
5	Jamie Hudson	2006	122	670*

**KILL ATTEMPTS**

No.	Name	Year	Sets Played	Total
1	Kim Willoughby	2001	118	1,782*
2	Jamie Houston	2006	122	1,560*
3	Kim Willoughby	2003	114	1,457*
4	Tee Williams	1988	121	1,430
5	Jamie Houston	2007	113	1,418*

**KILLS PER SET**

No.	Name	Year	Sets Played	Kills	Avg.
1	Kim Willoughby	2001	118	850*	7.20
2	Kim Willoughby	2003	114	752*	6.60
3	Kim Willoughby	2002	109	688*	6.31
4	Tee Williams	1989	101	625	6.18
5	Tee Williams	1988	121	688	5.68

**HITTING PERCENTAGE (MIN. 500 ATT.)**

No.	Name	Year	Sets	Kills	Errors	TA	Pct.
1	Angelica Ljungquist	1996	123	559	118	1,057	.417
2	Victoria Prince*	2004	119	403	71	807	.411
3	Victoria Prince*	2005	108	352	68	707	.402
4	Dietre Collins	1981	101	461	119	857	.399
5	Lauren Duggins*	2002	111	280	68	535	.396

**ASSISTS**

No.	Name	Year	Sets	Assists
1	Nikki Hubbert	1998	122	1,782
2	Kanoe Kamana'o*	2003	123	1,683
3	Kanoe Kamana'o*	2005	117	1,621
4	Kanoe Kamana'o*	2004	117	1,593
5	Martina Cincerova	1987	127	1,567

**ASSISTS PER SET**

No.	Name	Year	Sets	Assists	Avg.
1	Nikki Hubbert	1998	122	1,782	14.61
2	Kanoe Kamana'o*	2005	117	1,621	13.85
3	Cheri Boyer	1989	105	1,443	13.74
4	Kanoe Kamana'o*	2003	123	1,683	13.68
5	Kanoe Kamana'o*	2004	117	1,593	13.62

**DIGS**

No.	Name	Year	Sets	Digs
1	Elizabeth Ka'aihue*	2010	104	484
2	Ashley Watanabe*	2005	116	481
3	Jayme Lee*	2006	123	467
4	Elizabeth Ka'aihue*	2007	112	444
5	Tee Williams	1988	121	437

**DIGS PER SET**

No.	Name	Year	Sets	Digs	Avg.
1	Elizabeth Ka'aihue*	2010	104	484	4.65
2	Ashley Watanabe*	2004	102	430	4.22
3	Ashley Watanabe*	2005	116	481	4.15
4	Elizabeth Ka'aihue*	2007	112	444	3.96
5	Jayme Lee	2006	123	467	3.80

**INDIVIDUAL**

**ACES**

No.	Name	Year	Sets	Aces
1	Kim Willoughby*	2002	109	76
2	Kim Willoughby*	2003	114	71
3	Sarah Mason*	2006	114	64
4	Angelica Ljungquist	1996	123	58
5	Joyce Ka'apuni	1983	94	56
	Aneli Cubi-Otineru*	2009	112	56

**ACES PER SET**

No.	Name	Year	Sets	Aces	Avg.
1	Kim Willoughby*	2002	109	76	0.697
2	Joyce Ka'apuni	1983	94	56	0.596
3	Sarah Mason	2006	114	64	0.561
4	Kim Willoughby*	2003	114	71	0.523
5	Lisa Strand	1982	95	48	0.505

**SOLO BLOCKS**

No.	Name	Year	Sets	BS
1	Dietre Collins	1983	82	80
2	Suzanne Eagye	1986	124	72
3	Suzanne Eagye	1984	115	65
4	Suzanne Eagye	1987	128	60
5	Tee Williams	1987	128	48

**BLOCK ASSISTS**

No.	Name	Year	Sets	BA
1	Angelica Ljungquist	1996	123	201
2	Cecelia Goods	1997	116	199
3	Heather Bown	1999	102	198
4	Kari Gregory*	2006	123	184
5	Victoria Prince*	2004	119	182

**TOTAL BLOCKS**

No.	Name	Year	Sets	TB
1	Angelica Ljungquist	1996	123	236
2	Cecelia Goods	1997	116	230
	Heather Bown	1999	102	230
4	Suzanne Eagye	1986	124	209
5	Heather Bown	1998	122	206

**BLOCKS PER SET (SINCE 1985)**

No.	Name	Year	Sets	TB	Avg.
1	Heather Brown	1999	102	230	2.25
2	Cecelia Goods	1997	116	230	1.98
3	Angelica Ljungquist	1996	123	236	1.92
4	Kee Williams	1991	94	165	1.75
5	Angelica Ljungquist	1995	108	187	1.73

\* denotes rally-scoring era



# CAREER RECORDS

## KILLS

No.	Name	Years	Sets	Total
1	Kim Willoughby	2000-03	439	2,598
2	Jaime Houston	2005-08	435	2,061
3	Tee Williams	1987-89	350	1,873
4	Lily Kahumoku	1999-00, '02-03	411	1,822
5	Kanani Danielson	2008-11	442	1,760
6	Angelica Ljungquist	1993-96	437	1,570
7	Suzanne Eagye	1984-87	478	1,553
8	Emily Hartong	2010-13	436	1,494
9	Therese Crawford	1994-97	394	1,467
10	Reydan Ahuna	1984-87	475	1,411

## KILL ATTEMPTS

No.	Name	Years	Sets	Total
1	Kim Willoughby	2000-2003	439	5,327
2	Jamie Houston	2005-08	435	4,745
3	Lily Kahumoku	1999-00, '02-03	411	4,277
4	Kanani Danielson	2008-11	442	4,156
5	Tee Williams	1987-89	350	3,863
6	Reydan Ahuna	1984-87	475	3,792
7	Therese Crawford	1994-97	394	3,542
8	Emily Harton	2010-13	436	3,508
9	Suzanne Eagye	1984-87	478	3,434
10	Jessica Sudduth	1997-00	411	3,283

## KILLS PER SET

No.	Name	Years	Sets	Kills	Avg.
1	Kim Willoughby	2000-03	439	2,598	5.92
2	Tee Williams	1987-89	350	1,873	5.35
3	Jamie Houston	2005-08	435	2,061	4.74
4	Lily Kahumoku	1999-00, '02-03	411	1,822	4.43
5	Heather Bown	1998-99	224	989	4.42
6	Deitre Collins	1980-83	322	1,385	4.30
7	Kanani Danielson	2008-11	442	1,760	3.98
8	Sarah Mason	2005-06	188	734	3.90
9	Therese Crawford	1994-97	394	1,467	3.72
10	Nikki Taylor	2013-16	375	1,377	3.67

## HITTING PERCENTAGE (MIN. 500 ATT.)

No.	Name	Years	Sets	Kills	Errors	TA	Pct.
1	Olivia Magill	2014-15	208	554	88	1,141	.408
2	Victoria Prince	2004-05	227	755	139	1,514	.407
3	Emily Maglio	2014-17	321	787	151	1,644	.387
4	Heather Bown	1998-99	224	989	254	1,944	.378
5	Angelica Ljungquist	1993-96	437	1,570	407	3,098	.375
6	Deitre Collins	1980-83	322	1,385	397	2,652	.373
7	Nohea Tano	2001-03	267	433	97	908	.370
8	Lauren Duggins	2000-03	383	846	237	1,748	.348
9	Amber Kaufman	2006-09	402	802	244	1,622	.344
	Tee Williams	1987-89	350	1,873	545	3,863	.344

## ASSISTS

No.	Name	Years	Sets	Assists
1	Kanoe Kamana'o	2003-06	472	6,428
2	Martina Cincero	1985-88	423	4,637
3	Robyn Ah Mow	1993-96	384	4,313
4	Cheri Boyer	1988-91	351	4,304
5	Mita Uiato	2010-13	407	3,794
6	Dani Mafua	2007-10	368	3,745
7	Jennifer Carey	1999-02	410	3,540
8	Nikki Hubbert	1996-98	256	3,368
9	Norene Iosia	2016-19	394	3,077
10	Margaret Vakasausau	1999-02	364	2,661

## ASSISTS PER SET

No.	Name	Years	Sets	Assists	Avg.
1	Kanoe Kamana'o	2003-06	472	6,428	13.62
2	Nikki Hubbert	1996-98	256	3,368	13.16
3	Cheri Boyer	1988-91	351	4,304	12.26
4	Robyn Ah Mow	1993-96	384	4,313	11.23
5	Martina Cincero	1985-88	423	4,637	10.96
6	Kari Anderson	1991-94	227	2,385	10.51
7	Dani Mafua	2007-10	368	3,745	10.18
8	Mita Uiato	2010-13	407	3,794	9.32
9	Nahaku Brown	1980-81	113	1,001	8.86
10	Jennifer Carey	1999-02	410	3,540	8.63

## DIGS

No.	Name	Years	Sets	Digs
1	Kim Willoughby	2000-03	439	1,440
2	Savanah Kahakai	2014-17	393	1,417
3	Elizabeth Ka'aihue	2007-10	385	1,416
4	Reydan Ahuna	1984-87	475	1,384
5	Tara Hittle	2004-08	464	1,315
6	Kanani Danielson	2008-11	442	1,233
7	Kanoe Kamana'o	2003-06	472	1,220
8	Tee Williams	1987-89	350	1,143
9	Suzanne Eagye	1984-87	478	1,138
10	Norene Iosia	2016-19	394	1,128

## DIGS PER SET

No.	Name	Years	Sets	Digs	Avg.
1	Elizabeth Ka'aihue*	2007-10	385	1,416	3.68
2	Savanah Kahakai	2014-17	393	1,417	3.61
3	Kim Willoughby	2000-03	439	1,440	3.28
4	Tee Williams	1987-89	350	1,143	3.27
5	Ashley Watanabe	2002-05	299	973	3.25
6	Malin Fransson	1989-91	309	919	2.97
7	Reydan Ahuna	1984-87	475	1,384	2.91
8	Norene Iosia	2016-19	394	1,128	2.86
9	Tara Hittle	2004-08	464	1,315	2.83
10	Kanani Danielson	2008-11	442	1,233	2.79

## ACES

No.	Name	Years	Sets	Acers
1	Kim Willoughby	2000-03	439	194
2	Martina Cincero	1985-88	423	139
3	Norene Iosia	2016-19	394	135
4	Lisa Strand	1981-94	379	134
5	Angelica Ljungquist	1993-96	437	133
6	Aneli Cubi-Otineru	2007-09	335	121
7	Cheri Boyer	1988-91	351	120
8	Amber Kaufman	2006-09	402	120
9	Nikki Taylor	2013-16	375	117
10	Reydan Ahuna	1984-87	475	108

## ACES PER SET

No.	Name	Years	Sets	Acers	Avg.
1	Joyce Ka'apuni	1982-83	182	90	0.495
2	Kim Willoughby	2000-03	439	194	0.442
3	Sarah Mason	2005-06	188	76	0.404
4	Joanna Sahm	1989-90	121	48	0.397
5	Aneli Cubi-Otineru	2007-09	335	121	0.361
6	Lisa Strand	1981-84	379	134	0.354
7	Victoria Prince	2004-05	227	80	0.352
8	Norene Iosia	2016-19	394	135	0.343
9	Cheri Boyer	1988-91	351	120	0.342
10	Martina Cincero	1985-88	423	139	0.329

**SOLO BLOCKS**

No.	Name	Years	Sets	BS
1	Suzanne Eagye	1984-87	478	241
2	Deitre Collins	1980-83	322	209
3	Angelica Ljungquist	1993-96	437	110
4	Tee Williams	1987-89	350	82
	Cecilia Goods	1993, '95-97	389	82
6	Karrie Trieschman	1987-90	375	77
7	Heather Bown	1998-99	224	63
8	Lisa Strand	1981-84	379	61
9	Jamie Houston	2005-08	435	59
10	Diane Sebastian	1980-81	138	58
	Sarah Chase	1992-94	276	58

**BLOCK ASSISTS**

No.	Name	Years	Sets	BA
1	Angelica Ljungquist	1993-96	437	623
2	Suzanne Eagye	1984-87	478	502
3	Cecelia Goods	1993, '95-97	389	491
4	Juliana Sanders	2004-07	401	445
5	Lauren Duggins	2000-03	383	412
6	Brittany Hewitt	2009-11	309	406
7	Kanoe Kamana'o	2003-06	472	403
8	Kari Gregory	2004-07	321	389
9	Heather Bown	1998-99	224	373
10	Emily Maglio	2014-17	321	358

**TOTAL BLOCKS**

No.	Name	Years	Sets	TB
1	Suzanne Eagye	1984-87	478	743
2	Angelica Ljungquist	1993-96	437	733
3	Cecelia Goods	1993, '95-97	389	573
4	Deitre Collins	1980-83	322	500
5	Juliana Sanders	2004-07	401	495
6	Lauren Duggins	2000-03	383	453
7	Brittany Hewitt	2009-11	309	450
8	Heather Bown	1998-99	224	436
9	Kanoe Kamana'o	2003-06	472	428
10	Kari Gregory	2004-07	321	422

**BLOCKS PER SET**

No.	Name	Years	Sets	TB	Avg.
1	Heather Bown	1998-99	224	436	1.95
2	Angelica Ljungquist	1993-96	437	733	1.67
3	Victoria Prince	2004-05	227	336	1.59
4	Suzanne Eagye	1984-87	478	743	1.55
5	Deitre Collins	1980-83	322	500	1.55
6	Cecelia Goods	1993, '95-97	389	573	1.47
7	Brittany Hewitt	2009-11	309	450	1.46
8	Olivia Magill	2014-15	208	290	1.39
9	Sarah Chase	1992-94	276	373	1.35
10	Kari Gregory	2004-07	321	422	1.31

**INDIVIDUAL OFFENSE**

Had 25 kills..... 27, McKenna Grenato, Oct. 27, 2017 at Cal Poly  
 Had 25 kills in consecutive matches ..... 25 & 29, Emily Hartong, Oct. 23 & 26, 2013  
 Had 35 kills..... 35, Jamie Houston, Dec. 8, 2006 vs USC\*  
 Had 35 kills in consecutive matches ..... 35 (2x), Kim Willoughby, Dec. 1 & 6, 2001\*  
 Had 40 kills..... 41, Kim Willoughby, Nov. 24, 2001 vs Pacific  
 Had 20 kills in 3-straight matches ..... 24, 23, 22, McKenna Grenato, Sept. 3-8, 2017  
 Had 55 attempts..... 62, Hanna Hellvig, Oct. 5, 2019 vs Cal State Fullerton  
 Had 55 attempts in consecutive matches ..... 64 & 57, McKenna Grenato, Sept. 7-8, 2017  
 Had 70 attempts..... 79, Emily Hartong, Oct. 27, 2012 at UC Irvine  
 Had 70 attempts in consecutive matches ..... 79 (2x), Emily Hartong, Oct. 26-27, 2012  
 Had 1.000 hitting pct..... Kenyatta Lovelace (12-0-12), Oct. 3, 1992 at Cal St. Fullerton  
 Had 60 assists ..... 63, Norene Iosia, Oct. 27, 2017 at Cal Poly  
 Had 60 assists in consecutive matches ..... 63 & 61, Stephanie Brandt, Sept. 7-8, 2007  
 Had 80 assists ..... 95, Nikki Hubbert, Nov. 28, 1998, vs BYU+

**INDIVIDUAL DEFENSE**

Had 20 digs..... 25, Rika Okio, Nov. 1, 2019 vs UC Santa Barbara  
 Had 20 digs in consecutive matches ..... 26 & 22, Tita Akiu, Sept. 6-9, 2018  
 Had 30 digs..... 34, Tita Akiu, Nov. 29, 2018 vs Baylor  
 Had 30 digs in consecutive matches ..... 45 & 30, Tee Williams, Nov. 7-8, 1988  
 Had 40 digs..... 45, Tee Williams, Nov. 7, 1988 at Cal Poly  
 Had 4 solo blocks..... 4, Emily Maglio, Oct. 7, 2017 vs Cal Poly  
 Had 8 solo blocks..... 9, Suzanne Eagye, Nov. 21, 1986, vs San Jose St.  
 Had 10 block assists..... 10, Amber Igiende, Oct. 5, 2019 vs Cal State Fullerton  
 Had 15 block assists..... 15, Brittany Hewitt, Aug. 27, 2010 vs San Diego  
 Had 12 total blocks..... 12, Olivia Magill, Sept. 6, 2014 vs St. John's  
 Had 16 total blocks..... 16, Brittany Hewitt, Aug. 27, 2010 vs San Diego

**INDIVIDUAL SERVING**

Had 5 aces ..... 7, Norene Iosia, Nov. 25, 2019 vs Long Beach State  
 Had 3 aces in consecutive matches ..... 3 & 3, Norene Iosia, Aug. 31 & Spet. 6, 2018  
 Had 6 aces ..... 7, Norene Iosia, Nov. 25, 2019 vs Long Beach State

Had a triple-double ..... 12k, 26ast, 11d, Norene Iosia, Sept. 14, 2018 vs Oregon

**TEAM OFFENSE**

Had 80 kills..... 84, Dec. 4, 2015 vs TCU\*  
 Had 100 kills..... 116, Nov. 28, 1998 vs BYU  
 Had 200 attempts..... 221, Oct. 5, 2019 vs Cal State Fullerton  
 Had 275 attempts..... 316, Nov. 28, 1998 vs BYU  
 Hit .500..... 500, Sept. 11, 2009 vs UT San Antonio  
 Had 75 assists ..... 78, Dec. 5, 2015 vs TCU\*  
 Had 100 assists ..... 107, Nov. 28, 1998 vs BYU+

**TEAM DEFENSE**

Had 75 digs..... 106, Oct. 5, 2019 vs Cal State Fullerton  
 Had 125 digs..... 133, Nov. 17, 1990 at Pacific  
 Had 200 digs..... 223, Nov. 7, 1988 at Cal Poly  
 Had 8 solo blocks..... 8, Nov. 23, 2001 vs Utah  
 Had 30 block assists..... 46, Sept. 25, 2017 vs Marquette  
 Had 20 total blocks..... 20.0, Oct. 11, 2015 vs Long Beach State  
 Had 25 total blocks..... 29.0, Oct. 29, 1999 vs San Jose St.

**TEAM SERVING**

Had 10 aces ..... 12, Nov. 22, 2019 vs Long Beach State  
 Had 15 aces..... 17, Sept. 29, 2017 at Cal State Fullerton

**MISCELLANEOUS**

Lost consecutive home matches ..... Sept. 13-14, 2018 vs Oregon  
 Lost consecutive road matches..... Oct. 10-11, 2014 at CSUN and Long Beach St.  
 Lost consecutive conference matches ..... Oct. 10-11, 2014 at CSUN and Long Beach St.

+ denotes WAC Tournament match  
 \* denotes NCAA Tournament match

**MISCELLANEOUS RECORDS****BEST RECORD**

Record	Pct.	Year
33-1	.971	1982

**MOST MATCHES WON**

No.	Year
37	1981, 1987

**MOST MATCHES LOST**

No.	Year
13	1985

**LONGEST MATCH**

Time	Opponent	Date
3:38	BYU	11/28/1998

**MOST CONSECUTIVE MATCHES WON**

Matches	Date of Streak
35	8/29 - 12/13/2003

**MOST CONSECUTIVE SETS WON**

Matches	Date of Streak
62	9/11 - 11/23/2010

**MOST CONSECUTIVE HOME MATCHES WON**

Matches	Date of Streak
55	10/23/1986 - 11/11/1989

**MOST CONSECUTIVE HOME MATCHES WON (KLUM GYM)**

Matches	Date of Streak
55	10/23/1986 - 11/11/1989

**MOST CONSECUTIVE HOME MATCHES WON (SSC)**

Matches	Date of Streak
39	8/29/2003 - 9/1/2005

**MOST CONSECUTIVE ROAD MATCHES WON**

Matches	Date of Streak
39	11/15/1981 - 11/7/1984

**MOST CONSECUTIVE MATCHES LOST**

Matches	Date of Streak
5	11/10 - 12/1/1984
5	11/9 - 11/27/1985

**MOST CONSECUTIVE HOME MATCHES LOST**

Matches	Date of Streak
4	11/14 - 11/27/1985

**MOST CONSECUTIVE ROAD MATCHES LOST**

Matches	Date of Streak
3	10/1 - 12/11/1993
3	11/9 - 12/13/1985
3	10/28 - 10/31/1979

**MOST CONSECUTIVE CONFERENCE MATCHES WON**

Matches	Date of Streak
114	10/17/1998 - 10/13/2006

**ATTENDANCE RECORDS****LARGEST HOME ATTENDANCE**

Total	Opponent	Date	Site
10,300	Long Beach State	11/22/2019	Stan Sheriff Center
10,300	UCLA	12/3/2013	Stan Sheriff Center
10,300	USC	12/9/2011	Stan Sheriff Center
10,300	Stanford	11/10/2002	Stan Sheriff Center
10,300	San Jose State	10/21/1994	Stan Sheriff Center
8,835	UCLA	9/9/2012	Stan Sheriff Center
8,058	San Diego	12/7/2019	Stan Sheriff Center
7,533	UCLA	10/9/1981	Neal Blaisdell Center

**TOTAL HOME SEASON ATTENDANCE**

Total	Year	Site
184,314	1996	Stan Sheriff Center

**AVERAGE HOME SEASON ATTENDANCE**

Total	Year	Site
8,378	1996	Stan Sheriff Center

**MOST SELLOUTS IN A SEASON**

Total	Year	Site
9	1989	Klum Gym

**YEAR-BY-YEAR ATTENDANCE**

Total	Average
2019	6,684
2018	5,502
2017	6,396
2016	6,759
2015	6,905
2014	6,652
2013	5,285
2012	6,675*
2011	6,814*
2010	6,136*
2009	6,423*
2008	5,944*
2007	6,542*
2006	7,186*
2005	7,302*
2004	7,135*
2003	7,486*
2002	7,209*
2001	6,514*
2000	6,986*
1999	7,139*
1998	6,880*
1997	7,201*
1996	8,378*
1995	6,042*
1994	4,108*
1993	1,495
1992	1,356
1991	1,707
1990	1,900
1989	2,056
1988	1,841
1987	1,400
1986	958
1985	991
1984	1,066
1983	1,587