



## 2016 RAINBOW WAHINE VOLLEYBALL

WVB CONTACT: KARA NISHIMURA • karakn@hawaii.edu • Office: 808-956-5087 • Cell: 808-372-7506 • Fax: 808-956-4470

### 2016 SCHEDULE

Date Opponent Time

#### CHEVRON RAINBOW WAHINE INVITATIONAL

Aug. 26 WISCONSIN L, 16-25, 16-25, 26-24, 23-25  
Aug. 27 KANSAS STATE L, 25-19, 28-30, 22-25, 20-25  
Aug. 28 ARIZONA W, 15-25, 23-25, 25-18, 25-19, 15-13

#### HAWAIIAN AIRLINES WAHINE VOLLEYBALL CLASSIC

Sept. 1 MISSOURI ST. W, 25-16, 25-22, 25-22  
Sept. 2 PACIFIC W, 25-15, 25-18, 25-23  
Sept. 3 UCLA L, 23-25, 22-25, 22-25

#### OUTRIGGER RESORTS VOLLEYBALL CHALLENGE

Sept. 8 UTAH VALLEY 7:00 p.m.  
Sept. 9 Washington vs. Utah Valley 4:45 p.m.  
NORTHERN ILLINOIS 7:00 p.m.  
Sept. 10 Utah Valley vs. Northern Illinois 12:00 p.m.  
Washington vs. Northern Illinois 5:00 p.m.  
Sept. 11 Washington 4:00 p.m.

SEPT. 16 PEPPERDINE 7:00 p.m.

SEPT. 17 Alumnae Game 5:00 p.m.  
PEPPERDINE 7:00 p.m.

Sept. 23 at UC Santa Barbara\* 7:00 p.m. (PT)  
Sept. 24 at Cal Poly\* 7:00 p.m. (PT)

SEPT. 30 CAL ST. FULLERTON\* 7:00 P.M.

OCT. 2 UC RIVERSIDE\* 6:00 P.M.

OCT. 6 at CSUN\* 7:00 p.m. (PT)

OCT. 8 at Long Beach State\* 8:00 p.m. (PT)

OCT. 14 UC IRVINE\* 7:00 p.m.

OCT. 16 UC DAVIS\* 5:00 p.m.

Oct. 28 at UC Riverside\* 7:00 p.m. (PT)

Oct. 29 at Cal State Fullerton\* 7:00 p.m. (PT)

Nov. 4 LONG BEACH STATE\* 7:00 p.m. (PT)

Nov. 5 CSUN\* 7:00 p.m. (PT)

Nov. 10 at UC Irvine\* 7:00 p.m. (PT)

Nov. 12 at UC Davis\* 7:00 p.m. (PT)

Nov. 17 CAL POLY\* 7:00 p.m. (PT)

Nov. 19 UC SANTA BARBARA\* 7:00 p.m. (PT)

Dec. 1-3 NCAA Rounds 1 & 2 TBD

Dec. 9-10 NCAA Regional TBD

Dec. 15-17 NCAA Final Four TBD

\* Denotes Big West Conference match

All home games played at the Stan Sheriff Center in Honolulu, O'ahu

### No. 14 HAWAII HOSTS OUTRIGGER RESORTS VOLLEYBALL CHALLENGE



No. 14  
**HAWAII**  
Rainbow Wahine  
Head Coach: Dave Shoji  
3-3, 0-0 Big West



UTAH VALLEY  
Wolverines  
Head Coach: Sam Atoa  
3-4, 0-0 Western Athletic Conf.



NORTHERN ILLINOIS  
Huskies  
Head Coach: Ray Gooden  
5-1, 0-0 Mid-American Conference



No. 6  
**WASHINGTON**  
Huskies  
Head Coach: Keegan Cook  
5-0, 0-0 Pacific-12

**Series History:** UH has played Utah Valley just once in 2008 and has a 1-0 record against the Wolverines. UH defeated UVU 25-19, 25-14, 25-10 on Nov. 15, 2009.

**Series History:** First meeting

**Series History:** UH holds a 8-6 record against Washington. But the Huskies have won the last three-straight meetings in which they have knocked out the 'Bows of the NCAA tournament in the second round in Seattle.

#### Outrigger Resorts Volleyball Challenge Information

**When:** Thursday, September 8 – Sunday, Sept. 11, 2016

**Where:** Honolulu, O'ahu (Stan Sheriff Center)

**Promotions:** Tournament-sponsor Outrigger Hotels & Resorts will distribute 500 spirit flags one hour prior to each UH match. Also, Outrigger Hotels & Resorts will award up to \$2,000 in cash during the "Outrigger Hukilau" promotion during intermission of each UH match. Members of the Rainbow Warrior football team will distribute team posters to fans outside Gate A prior to Thursday's match and will be introduced to the crowd at intermission.

**Television:** OCSports (Oceanic Time Warner Cable Channels 16 (SD) and 1016 (HD) –or- Hawaiian Telcom Channel 89 (SD) and 1089 (HD) will be broadcasting all Hawaii matches of the tournament with Kanoa Leahey calling the play-by-play and Lisa Strand-Ma'a providing color commentary. Scott Robbs, Chelsea Hardin, and Ryan Kalei Tsuji will be the talent for the pre and post-match shows.

**Radio:** ESPN 1420AM will be on the airwaves for Thursday and Friday's UH matches. Sunday's match vs. Washington will be broadcast on NBC Sports Radio 1500 am. Tiff Wells will be handling the play-by-play for all three matches this week.

**Live-streaming Video:** A live video stream will be available at BigWest.tv.

**Audio Webcast:** Friday and Saturday's matches can be listened to online at [espn1420am.com](http://espn1420am.com). Sunday's match can be heard on [nbcsportsradiohawaii.com](http://nbcsportsradiohawaii.com).

**Live Stats:** Live in-game stats are available at [HawaiiAthletics.com](http://HawaiiAthletics.com) women's volleyball schedule page  
**Ticket Information:** Tickets can be purchased at Stan Sheriff Center Box Office, online at [HawaiiAthletics.com](http://HawaiiAthletics.com), or by phone at (808) 944-2697 (BOWS).

**Series History:** UH has played Utah Valley just once in 2008 and has a 1-0 record against the Wolverines. It is Hawaii's first meeting against Northern Illinois. UH holds a 8-6 record against Washington. UH won seven of their first eight meetings against UW, but have since lost five of the last six matches, including the last three-straight meetings in which they have knocked out the 'Bows of the NCAA tournament in the second round in Seattle.

HONOLULU—The No. 14 University of Hawaii women's volleyball team (3-3, 0-0 Big West) will host the Outrigger Resorts Volleyball Challenge, the team's final non-conference tournament this week. The Rainbow Wahine will take on Utah Valley (3-4, 0-0 WAC) first on Thursday, Sept. 8 followed by Northern Illinois (5-1, 0-0 MAC) on Friday, Sept. 9. On Saturday, there will be a pair of non-UH matches, then the 'Bows will play No. 6 Washington (5-0, PAC-12) on Sunday at 4:00 p.m. in the tournament finale.

The Rainbow Wahine rose one spot in the AVCA Coaches Poll after posting a 2-1 record this past week. UH came out strong, sweeping both Missouri State and Pacific before falling to No. 8 UCLA in the Hawaiian Airlines Wahine Volleyball Classic championship match.

#### Outrigger Resorts Volleyball Challenge Schedule

**Thursday, Sept. 8**  
7:00 p.m. – Hawaii vs. Utah Valley

**Friday, Sept. 9**  
4:45 p.m. – Washington vs. Utah Valley  
7:00 p.m. – Hawaii vs. Northern Illinois

**Saturday, Sept. 10**  
12:00 p.m. – UVU vs. NIU  
5:00 p.m. – UW vs. NIU

**Sunday, Sept. 11**  
4:00 p.m. – Hawaii vs. Washington

## UNIVERSITY FACTS

<b>Location</b>	Honolulu, HI
<b>Founded</b>	1907
<b>Enrollment</b>	18,865
<b>President</b>	David Lassner
<b>Chancellor</b>	Robert Bley-Vroman
<b>Athletics Director</b>	David A.K. Matlin
<b>SWA</b>	Marilyn Moniz-Kaho'ohanohano
<b>Faculty Athletics Rep.</b>	David Ericson, PhD
<b>Nickname</b>	Rainbow Wahine
<b>Colors</b>	Green, Black, Silver, White
<b>Conference</b>	Big West
<b>Arena</b>	Stan Sheriff Center (10,300)

## COACHING STAFF

<b>Head Coach</b>	Dave Shoji
<b>Alma Mater (Year)</b>	UC Santa Barbara (1969)
<b>Record at Hawai'i (Years)</b>	1,182-201-1 (42)
<b>Overall Record (Years)</b>	Same
<b>Associate Coach:</b>	Jeff Hall
<b>Assistant Coach:</b>	Lindsey Berg
<b>Volunteer Assistant:</b>	Tom Pestolesi
<b>Equipment Manager:</b>	James Buccella
<b>2015 Record:</b>	29-2
<b>2015 Conference Record (Finish):</b>	16-0 (1st)
<b>Letterwinners Ret./Lost:</b>	12 + 1 redshirt/2
<b>Starters Returning/Lost</b>	4 + libero/2
<b>Newcomers</b>	6

## PROGRAM HISTORY

<b>First Year:</b>	1974
<b>First Year as NCAA Division I:</b>	1981
<b>All-Time Collegiate Record:</b>	1,191-202-1(42)
<b>Big West Record:</b>	225-37 (15)
<b>Big West Titles:</b>	8
<b>WAC Record:</b>	232-4 (16)
<b>WAC Regular Season Titles:</b>	16
<b>NCAA Tournament Appearances:</b>	34 (75-30)
<b>NCAA Final Four Appearances:</b>	9 (8-6)
<b>National Championships:</b>	1-AIWA, 3-NCAA

## MEDIA RELATIONS

<b>Media Relations Director</b>	Derek Inouchi
<b>E-mail:</b>	inouchi@hawaii.edu
<b>Office:</b>	(808) 956-4478
<b>Cell:</b>	(808) 954-0234
<b>Ass't Director/WVB Contact:</b>	Kara Nishimura
<b>E-Mail:</b>	karakn@hawaii.edu
<b>Office:</b>	(808) 956-5087
<b>Cell:</b>	(808) 372-7506
<b>Assistant Directors:</b>	Nick Heidelberger, Neal Iwamoto, Michael Stambaugh
<b>Fax:</b>	(808) 956-4470
<b>Address:</b>	UH Sports Media Relations 1337 Lower Campus Rd., Honolulu, HI 96822
<b>Website:</b>	www.HawaiiAthletics.com

## ATTENDANCE

Last year, the Rainbow Wahine finished ranked No. 2 in the nation last year with 120,776 fans coming to 18 matches in the Stan Sheriff Center to average 6,709 per match. Since attendance records were compiled by the NCAA in 1998, Hawai'i was tops in the NCAA for the first 15 seasons. Nebraska has claimed the top spot the last two seasons averaging over 8,000 fans per match. UH had it's largest crowd of the season with 8,667 tickets issued in their match vs UCLA on Sunday, Sept. 6.

## WELCOME BACK TAYLOR!

Senior opposite Nikki Taylor (Honolulu, O'ahu/Kaiser HS) made her 2016 debut this week after suffering an injury that held her out of UH's first three matches last week. This week the 6-4 opposite earned her eighth career Big West Player of the Week award and claimed Hawaiian Airlines Wahine Volleyball Classic Most Valuable Player honors after averaging 6.67 kills, 3.78 digs and 1.00 service aces per set over three matches. It marked the first BWC Player of the Week of the year for UH and for Taylor.

Taylor's first match back on the Teraflex resulted in her first double-double of the season with 21 kills, 11 digs, two aces and four blocks in a straight-set win over Missouri State. She hit .529 with just three errors in 34 swings. In that contest, Taylor became just the 19th Rainbow Wahine to join the 1,000 career kill club.

The reigning Big West Player of the Year had another solid match against Pacific with 22 kills on .439 hitting, adding 14 digs for her second consecutive double-double. She also contributed another four blocks and dealt a career-high tying four aces. It marked Taylor's 13th career match in which she recorded at least 20 kills.

Taylor then recorded 17 kills against No. 8 UCLA, and nearly missed her third straight double-double as she finished with nine digs. She increased her streak of pounding double-digit kills to 11 matches dating back to last season. For the week, Taylor tallied a team-high 60 kills, nine service aces and 73.0 points. She also racked up 34 digs—passing the 500 career-dig mark and had eight blocks.

Last year, Taylor had a breakout season, earning second team AVCA All-America and Big West Player of the Year, Taylor, led the league in three statistical categories with career-highs in points (5.48 p/set), kills (4.46 p/set) and service aces (0.42 p/set). The junior from Honolulu, Hawai'i and Kaiser High School was ranked amongst the nation's elite all year and currently is ranked No. 5 in the NCAA in points per set; 16th in kills per set, 20th in points (575.5); 38th in service aces (44); and 45th in total kills (468). The 6-4 opposite tied the UH record earning conference Player of the Week five times this season—including three-straight to begin the year. Angelica Ljungquist (1996-WAC) and Kanani Danielson (2009-WAC) are the only other two Rainbow Wahine to ever accomplish that feat. Taylor also received AVCA/Sports Imports and ESPNW National Player of the Week awards the week of September 14 following an impressive performance at the Outrigger Resort Volleyball Challenge that included a career-best 27-kill performance against nationally-ranked Florida.

## MAGLIO NAMED BIG WEST DEFENSIVE PLAYER OF THE WEEK

Hawai'i junior middle hitter Emily Maglio (Coquitlam, B.C., Canada/Pinetree HS) was a blocking beast at the net in capturing her first ever Big West indoor volleyball weekly honor. Maglio, who also earned a spot on this past week's all-tournament team, led UH with 17 blocks—nine more than her closest teammate—over UH's three matches this week.

Maglio's best match came in a sweep over Pacific when she registered a career-high nine blocks (including one solo). That eclipsed her previous career high of seven which was set on two other occasions. Maglio had four block assists against both Missouri State and UCLA. She finished the week with 1.89 blocks per set. Maglio also totaled 22 kills, including 12 against No. 8 UCLA in which she also hit .333 (12-2-30) for the contest.

Overall, Maglio leads UH with 27 total blocks (2 solo/25 assist) to average 1.23 per set. On offense, she has 54 kills and a team-high (amongst the starters) .308 hitting percentage.

Maglio is looking to improve upon her sophomore indoor season where she blossomed into a first team all-Big West middle hitter and became a force to reckon with. Maglio, who is the top returning blocker from last year's squad which finished the season ranked No. 2 in the NCAA in blocks, was second on the team averaging 1.13 blocks per set. She was also second on the squad with a .384 hitting percentage behind fellow middle, Olivia Magill who has since graduated from last year.

Last season, Maglio also sparkled in her first season playing for UH's beach volleyball team. The 6-3 native of Coquitlam, British Columbia, Canada earned first team AVCA All-America honors as was one-half of the Big West's Pair of the Year with partner Katie Spieler. Maglio recorded a 22-6 overall record and a 21-5 mark when partnered with Spieler.

Maglio is also a Big West Scholar Athlete majoring in animal science with the goal of being a veterinarian in the future.

## GRANATO COMES OF AGE TO LEAD THE 'BOWS

Sophomore McKenna Granato continues to lead the 'Bows with 72 kills this season, averaging 3.27 kills per set. The Punahou School product has started the last five-straight matches as a pin hitter.

Last week you could see Granato improving with each match played. In UH's first match against No. 4 Wisconsin, she had four kills but five errors in 33 swings for a .030 hitting percentage. Against Kansas State, she recorded her first career double-double posting a career-high 19 kills and also helped on defense with a career-high 12 digs. Then, in UH's thrilling, five-set reverse-sweep win over Arizona, Granato cast all doubt aside to pummel a career-high 33 kills with a career-high .459 percentage with just five errors in 61 attacks. The 33 kills were the most since Emily Hartong buried 33 against Long Beach State in 2012. Her 33 kills tied her entire season total from a year ago as a freshman.

## KAHAKAI ANCHORING THE BACKLINE

Junior libero Savannah Kahakai has started 2016 off with a bang and needs just eight digs to hit the 700 dig milestone. She has been electrifying the crowd with her effort to keep balls from hitting the floor with three-straight 20+ dig matches in the first week of action. Kahakai, a Farrington High School product, has anchored the defense for the past two seasons.

This past week however was a little different with the return of Nikki Taylor to fortify the UH blocking schemes. As a result, Kahakai did not record as many blocks as she had early in the season, but she is still flying around the Teraflex trying to defy gravity and keep the ball from falling.

**AVCA DIVISION I COACHES POLL - WEEK 2****Sept. 5, 2016**

RANK	TEAM (1st place votes)	POINTS	RECORD	Prev. Wk.
1	Nebraska (64)	1600	4-0	1
2	Wisconsin	1518	5-0	2
3	Texas	1439	5-1	3
4	Kansas	1357	6-0	4
5	Minnesota	1279	3-1	6
6	Washington	1245	5-0	5
7	UCLA	1189	6-0	8
8	Florida	1174	4-1	7
9	Stanford	1128	3-1	9
10	BYU	1044	6-0	10
11	North Carolina	987	5-0	12
12	Ohio State	900	5-1	11
13	Florida State	756	3-1	16
14	<b>Hawai'i</b>	<b>684</b>	<b>3-3</b>	<b>15</b>
15	San Diego	585	2-2	18
16	Texas A&M	573	3-3	14
17	Penn State	478	2-3	13
18	Colorado	466	4-1	NR
19	Santa Clara	423	6-0	NR
20	Purdue	374	5-1	24
21	Illinois	322	2-3	17
22	Michigan	308	6-0	NR
23	Western Kentucky	205	6-1	19
24	Southern California	110	3-3	NR
25	Loyola Marymount	101	4-2	20

Others receiving votes and listed on two or more ballots: Michigan State 90; Kansas State 84; Dayton 76; Kentucky 52; Creighton 48; Oregon 45; TCU 39; Louisville 25; Missouri 14; Wichita State 13; Washington State 11; Arizona 8; Missouri State 8; Iowa State 7; Pittsburgh 6; UNLV 6; UC Santa Barbara 4; Oklahoma 3; Ole Miss 3

• Four teams mentioned on only one ballot for a total of 13 combined points.

• Dropped Out: Kentucky 23; Creighton 22; Louisville 21; Colorado State 25

**AVCA All-Time Poll Records - Hawai'i**

No. 3 - 486 times ranked in Top 25

No. 5 - 48 times ranked No. 1

No. 3 - 366 times ranked in Top 10

Last time UH was ranked No. 1 -

11/22/2004

**BIG WEST PRESEASON POLL**

RANK	TEAM	Points
1.	<b>Hawai'i (9)</b>	<b>81</b>
2.	Long Beach State	68
3.	Cal Poly	66
4.	UC Irvine	47
5.	UC Davis	44
6.	UC Santa Barbara	39
7.	CSUN	29
8.	UC Riverside	20
9.	Cal State Fullerton	11

( ) Denotes first place votes

Through six matches, Kahakai has a total of 107 digs, averaging 4.86 digs per set. She also has 21 assists and two service aces thus far.

**IOSIA CRACKS THE STARTING LINE-UP**

Rookie setter Norene Iosia has started the last four straight matches and has made an impact on the team. Currently, she is ranked No. 7 and No. 1 in the NCAA and Big West respectively in both aces per set and total service aces. She is averaging .67 services aces per set and has a total of 12 aces thus far. She has been a force with 192 assists (10.67 per set) with 50 digs. She has also added 10 blocks with the Manoa Roofing Company.

**GREELEY WORKING WAY BACK**

Although junior Kalei Greeley has seen significant playing time through the first six matches, one must still remember that the two-year starter on the outside is still working her way back from off-season shoulder surgery from last spring. Greeley, a 6-1 pin hitter from Riverside, Calif., is projected to play primarily in the back row for now, but she has made periodic appearances going all the way around the rotation.

Greeley is a steadying force for the Rainbow Wahine on the court and her presence and craftiness bodes well for her both in the back row and hopefully soon in the front as well. Currently, she has already had 42 digs-including a career-high of 18 set against Kansas State in the first week's tournament.

After earning all-league freshman honors to start her UH career, junior Kalei Greeley earned honorable mention honors last year as a sophomore. The outside hitter from Riverside, Calif. was steady all season, putting down 214 total kills with a career-high .260 hitting percentage overall. She also added 205 digs, 47 total blocks, 18 service aces and 11 assists overall. She helped lift UH to a five-set win against TCU (Dec. 4) in the first round of the NCAA tournament with a season-high 16 kills to go with a career-high 17 digs for her third double-double of the season and then against Penn State in the NCAA Regionals was one of the key elements in UH's sweep over the Nittany Lions. She was a warrior on the court, playing on a hurt ankle ending the match with eight kills, five digs, two blocks, two aces, and two assists.

**KEIKI TO THE RESCUE OVER ARIZONA**

With Hawai'i down two standout senior starters in Nikki Taylor and Annie Mitchem, it was the Rainbow Wahine rookies and sophomores that made the biggest impact this past weekend. During UH's win over Arizona, the 'Bows had six underclassmen on the floor-including four true freshman. It is the first time that has happened since the 1984 season that four true freshmen were on the floor at the same time. Tita Ahuna, Suzanne Eagye, Mahina Eleneki, and Diana Jesse were all true freshmen in Klum Gym in 1984.

On the opening night, outside hitter Kirsten Sibley earned her first collegiate start of her career and she did not disappoint, blasting 13 kills and seeing the most attacks on the team with 44. She also had two digs and three blocks to lead UH with 14.5 points. Redshirt freshman Natasha Burns came off the bench to spark things from the middle. She hit .333 with four kills on nine attacks with an error. She led UH with four blocks in just two sets played. Setter Norene Iosia also sparked the team. In her first play on the Teraflex, she boomed a service ace as the fans welcomed the freshman from Torrance Calif. She finished the match with 22 assists, three kills, three digs and two blocks.

Against Kansas State, Granato paced the 'Bows with her first career double-double with a career-high 19 kills and 12 digs. Burns and defensive specialist Emma Smith both got their first career collegiate start in the Green and White. Burns had another good appearance with six kills on 18 attacks with an error to go with two blocks while Smith popped up five digs with a service ace and an assist.

Then in the tourney finale vs. Arizona, Hawai'i was down 0-2 in sets and 2-8 in the fifth set before roaring back for the dramatic 15-13 win over the Wildcats to preserve UH's undefeated record against Arizona (13-0). Sophomore Casey Castillo and freshman McKenna Ross came off the bench and came through in the clutch for the 'Bows. Castillo, who slid over from her normal outside hitter position after Mitchem went down with her injury to middle hitter, took Burns' place in the lineup and made her presence immediately known. She finished the match with six kills and two blocks. Ross, who is actually a defensive specialist but was an outside in high school, entered in the third set and instantly brought energy and enthusiasm to help turn the tide for UH. With UH looking for another answer at pin-hitter, Ross blasted seven clutch kills with just one error in 14 swings for a .429 hitting percentage. She also had five digs to help the 'Bows avoid starting the season for just the second time in school history with three losses (1980).

**MITCHEM TO MISS AT LEAST SIX WEEKS**

Senior middle hitter Annie Mitchem is also out of commission for the time being after breaking the pinkie finger on her left hand while blocking in practice during fall camp. Last season, she missed the last 12 matches of the season after fracturing the pinkie finger on her right hand in the same way.

Last year, Mitchem recorded 51 kills, 33 blocks, 15 digs and two service aces as a junior transfer out of Irvine Valley College. While playing with Lasers, Mitchem was named the AVCA's Two-Year College National Player of the Year in both 2013 and '14 and also earned AVCA All-America, all-region, all-state, and all-league honors in both seasons. She was just the second player from the California Community College Athletics Association to be named the AVCA College Player of the Year. At IVC, she was coached by current Rainbow Wahine volunteer volleyball coach and former UH men's volleyball All-American, Tom Pestolesi.

**HAWAI'I IN THE 2016 AVCA POLL**

8/10	8/29	9/5	9/12	9/19	9/26	10/3	10/10	10/17	10/24	10/31	11/7	11/14	11/21	11/28	12/19
6	15	14													



## HAWAII VOLLEYBALL BY THE NUMBERS

NCAA Championships 1-AIAW/3-NCAA..6	
Final Four Appearances .....	9
NCAA Regional Appearances .....	28
NCAA Tournament Appearances.....	34
Conference Championships	
Big West Titles: .....	8
WAC Regular Season Titles: .....	16
Consecutive Winning Seasons.....	40
30-Plus Win Seasons .....	18
Distinguished National Awards	
Honda Award (Volleyball) .....	4
Broderick Cup.....	1
Collegiate Woman of the Year .....	1
Senior CLASS Award.....	2
All-American Selections.....	84
AIAW .....	14
USVBA .....	14
AVCA .....	57
National Players of the Year.....	89
AVCA .....	4
Volleyball Magazine.....	4
Freshmen of the Year .....	14
AVCA National.....	1
AVCA District .....	1
AVCA Region.....	2
Big West.....	2
Western Athletic Conference.....	8
All-Region .....	81
Conference Players of the Year.....	24
Pacific Coast Athletic Association ..	1
Big West.....	7
Western Athletic .....	16
Coach of the Year	
AVCA National.....	5
AVCA Regional .....	11
Conference Coach of the Year.....	12
Big West.....	5
Western Athletic Conference .....	8

## 2016 ALL-TOURNAMENT PLAYERS

### CHEVRON RAINBOW WAHINE INVITATIONAL

-Savanah Kahakai

### HAWAIIAN AIRLINES WAHINE VOLLEYBALL CLASSIC

-Emily Maglio

-Norene Iosia

**Most Outstanding Player** - Nikki Taylor

## SERIES HISTORY FOR THIS WEEK...

### Utah Valley (1-0)

Nov. 15, 2008 - W, 25-19, 25-14, 25-10

### Washington (8-6)

Dec. 7, 1979 - W, 15-0, 15-6

Sept. 23, 1981 - W, 15-2, 15-4, 11-15, 15-1

Sept. 24, 1981 - W, 15-7, 15-7, 9-15, 15-6

Nov. 4, 1983 - W, 15-8, 15-3

Oct. 11, 1985 - W, 15-9, 15-13

Sept. 12, 1992 - L, 15-0-15, 15-9, 10-15, 15-7, 13-15

Sept. 7, 2002 - W, 26-30, 30-22, 30-27, 30-28

Dec. 6, 2002 - W, 30-26, 39-37, 30-28

Sept. 16, 2005 - L, 18-30, 24-30, 28-30

Sept. 17, 2005 - L, 28-30, 20-30, 28-30

Sept. 13, 2008 - W, 20-25, 27-29, 26-24, 25-14, 16-14

Dec. 3, 2010 - L, 17-25, 11-25, 23-25

Dec. 2, 2012 - L, 20-25, 25-20, 19-25, 27-25, 15-11

Dec. 6, 2012 - L, 25-20, 19-25, 25-16, 25-14

## 2016 RAINBOW WAHINE TO FACE FIVE TEAMS RECEIVING VOTES IN AVCA PRESEASON TOP 25

Hawaii enters the 2016 ranked at No. 6 in the AVCA in the preseason coaches' poll. It is the 484th time that UH has been ranked in the Top 25 and the 366th time that the 'Bows were ranked in the Top 10. The 'Bows open the season against No. 4 Wisconsin who posted a 26-7 record and finished last season ranked at No. 10. The Badgers are led by the Big Ten's assists leader and first team All-American, Lauren Carlini who was Taylor's teammate on this past summer's Team USA at the Pan American Cup.

UCLA is ranked No. 12 in the pre-season poll and Washington was tied with USC in the preseason poll at No. 7 right behind UH. The Rainbow Wahine will also take on both Arizona and Long Beach who are receiving 68 and 25 points each.

## RAINBOW WAHINE UNANIMOUS CHOICE TO REPEAT AS BWC CHAMPIONS

Hawaii was unanimously selected to repeat as the Big West Conference women's volleyball champion, according to the Big West women's volleyball preseason coaches poll as voted on by the nine head coaches. The Rainbow Wahine, who reclaimed the title last season with a perfect 16-0 mark, captured all nine first-place votes en route to a perfect 81-point total.

Long Beach State secured the second slot after securing 68 points and earning the third spot with a point total of 66 was Cal Poly. The Anteaters of UC Irvine ranked fourth with 47 points and is followed by UC Davis after tallying 44 points. UC Santa Barbara, who welcomes the No. 24 recruiting class in the nation, according to PrepVolleyball.com, nabbed the sixth slot after registering 39 points. CSUN holds the seventh spot with 29 points and UC Riverside locked-in the eighth position after grabbing 20 points. Rounding out the nine-team field is Cal State Fullerton with 11 points.

## OCSports TO TELEVISION ALL HOME MATCHES; TWO BIG WEST MATCHES TO AIR IN NATIONAL SPOTLIGHT

Once again, OCSports—the flagship station of the University of Hawaii athletics—will broadcast all of UH's home matches in 2016. Kanoa Leahey will serve as the play-by-play announcer while Chris McLachlin will be the main play-by-play commentator. Unfortunately however, as of right now, none of the matches will be available online this season.

During the Big West season, Fox Sports Prime Time will be broadcasting UH's match at Long Beach State on Oct. 8 at 8:00 p.m. and later, ESPNU is set to televise the Hawaii at UC Riverside women's volleyball match Friday, October 28 at 8:00 p.m. (PT) inside the SRC Arena, which was updated with a newly designed floor over the summer.

## BERG, PESTOLESI JOIN COACHING STAFF

University of Hawaii women's volleyball head coach Dave Shoji finalized his 2016 coaching staff with the hiring of assistant coach Lindsey Napela Berg and volunteer coach Tom Pestolesi.

It will be a homecoming for Berg who was born and raised in Honolulu. She is a three-time U.S. Olympic team setter who helped lead the U.S. squad as the team captain to silver medals in 2008 and 2012. Berg was named the USA Volleyball Female Indoor Athlete of the Year in both 2008 and 2011 and was named the Best Setter at the North Central and Caribbean Volleyball (NORCECA) Championships (2005, '11); the Pan American Cup (2003, '04, '05) and earned the All-USPV Outstanding Server and Outstanding Setter award in 2002.

After graduating from Punahou School in 1998, Berg matriculated to Minnesota where she was a three-time All-Big Ten selection. She set a new Golden Gopher record for career assists and is ranked third in the Big Ten in all-time assists with 5,913. Berg earned her bachelor's degree in business marketing in 2001 from Minnesota's Carlson School of Management.

Berg played professionally both in the U.S. (Minnesota Chill of the USPV in 2002) and abroad. She played eight years in Italy for three teams: Scavolini Pesaro (2004-07); Asystel Novara (2007-08); and MC-Carnaghi Villa Cortese (2009-12) and also played for Fenerbache in Istanbul in 2013.

Berg will take the place of another three-time U.S. Olympic team setter from Hawaii, Robyn Ah Mow-Santos, who resigned after the 2015 season following her husband's military reassignment to Nevada.

Pestolesi also returns to Hawaii with a wealth of experience. He will be taking a five-month sabbatical as the head coach of the women's indoor volleyball team at Irvine Valley College this season for the opportunity to serve as a volunteer coach under his former coach and mentor, Shoji.

After playing two seasons at Long Beach State from 1979-80, Pestolesi transferred to Hawaii where he earned All-America honors in his junior and senior years under Shoji, who was the UH men's volleyball head coach from 1979-85. He earned his bachelor's degree in physical education from UH in 1983 and also earned his master's degree from Long Beach State in 1989. Pestolesi played for the U.S. team at the World University Games in Bucharest, Romania in 1981 before beginning his coaching career.

Pestolesi coached at a trio of high schools and then for the Professional Beach 4's Tour before starting the IVC men's volleyball program in 1991. Since that time, Pestolesi has served many roles at Irvine Valley College. He won three state championships as the head men's volleyball coach from 1991-94 and 1999-2009 with a career record of 163-95. Pestolesi has been the head women's volleyball coach since 1998 with a career record of 302-102. He has led the Lasers to 17 consecutive state playoffs and to a state championship title in 2014-led in part by current Rainbow Wahine middle hitter Annie Mitchem who was a two-time AVCA national two-year college Player of the Year at IVC.

Pestolesi then started the IVC women's beach volleyball program as the head coach in 2010 and at the same time introducing it as an intercollegiate sport to the California Community Colleges. His beach teams have earned a 20-1 record against community colleges and the Lasers were the ICCCAA state champions in 2015 and the state runners-up in 2016.

During his time at IVC, Pestolesi also spent time as a coach with several of the U.S. National teams. He was the USA Men's and Women's Training Coach from 2008-13 and was an assistant on the women's indoor team, winning

CAREER NUMBER WATCH		
STAT	NAME	#NEEDED
<b>KILLS</b>		
<b>1,100 Kills</b>	Nikki Taylor.....	49
<b>500 Kills</b>	Kalei Greeley .....	14
<b>300 Kills</b>	Emily Maglio .....	52
<b>200 Kills</b>	McKenna Granato .....	95
<b>100 Kills</b>	Tayler Higgins .....	14
<b>100 Kills</b>	Annie Mitchem .....	49
<b>100 Kills</b>	Casey Castillo .....	79
<b>TOTAL BLOCKS</b>		
<b>300 Blocks</b>	Nikki Taylor.....	16
<b>200 Blocks</b>	Emily Maglio .....	60
<b>200 Blocks</b>	Tayler Higgins .....	100
<b>100 Blocks</b>	McKenna Granato .....	86
<b>100 Blocks</b>	Casey Castillo .....	85
<b>100 Blocks</b>	Annie Mitchem .....	67
<b>100 Blocks</b>	Kendra Koelsch .....	36
<b>BLOCK ASSISTS</b>		
<b>100 Block Ass't</b>	Tayler Higgins .....	3
<b>100 Block Ass't</b>	Kalei Greeley .....	14
<b>100 Block Ass't</b>	Kendra Koelsch .....	41
<b>100 Block Ass't</b>	Casey Castillo .....	85
<b>100 Block Ass't</b>	McKenna Granato .....	86
<b>100 Block Ass't</b>	Norene losia .....	92
<b>ASSISTS</b>		
<b>3,000 Assists</b>	Tayler Higgins .....	809
<b>400 Assists</b>	Kendra Koelsch .....	25
<b>100 Assists</b>	Norene losia .....	8
<b>ACES</b>		
<b>100 Aces</b>	Tayler Higgins .....	26
<b>100 Aces</b>	Nikki Taylor.....	26
<b>100 Aces</b>	Norene losia .....	88
<b>DIGS</b>		
<b>700 Digs</b>	Savanah Kahakai .....	8
<b>600 Digs</b>	Tayler Higgins .....	91
<b>600 Digs</b>	Nikki Taylor.....	97
<b>500 Digs</b>	Kalei Greeley .....	20
<b>200 Digs</b>	McKenna Granato .....	96
<b>100 Digs</b>	Clare-Marie Anderson .....	91
<b>100 Digs</b>	Norene losia .....	20
<b>100 Digs</b>	Kendra Koelsch .....	28

1,000-CAREER KILL CLUB		
Rk.	Player	Kills
1.	Kim Willoughby (2000-03)	2,513
2.	Jamie Houston (2005-08)	2,061
3.	Tee Williams (1987-89)	1,873
4.	Lily Kahumoku (1999-00, 02-03)	1,762
5.	Kanani Danielson (2008-11)	1,760
6.	Angelica Ljungquist (1993-96)	1,570
7.	Suzanne Eagye (1984-87)	1,553
8.	Therese Crawford (1994-97)	1,467
9.	Reydan Ahuna (1984-87)	1,411
10.	Deitre Collins (1980-83)	1,385
11.	Emily Hartong (2010-13)	1,277
12.	Diana Jessie (1984-87)	1,266
13.	Karrie Trieschman (1987-90)	1,232
14.	Jessica Sudduth (1997-00)	1,220
15.	Kenyatta Lovelace (1990-93)	1,189
16.	Maja Gustin (2000-03)	1,111
17.	Kori Pulaski (1980-83)	1,082
<b>18.</b>	<b>Nikki Taylor (2013-present)</b>	<b>1,051</b>
19.	Aneli Cubi-Otineru (2007-09)	1,027

a gold medal at the 2012 Pan Am Cup (Juarez, Mexico); silver medal at the Final Four in 2009 in Lima, Peru; and a fourth place finish in the NORCECA Tournament in 2009 in Bayamon, Puerto Rico.

Pestolesi is married to Diane Sebastian Pestolesi, who is considered to be the first blue-chip mainland recruit for Shoji and his young program in 1978. Sebastian Pestolesi was the starting middle blocker for the 1979 AIAW national championship team and named to the all-tournament team. She was a three-time AIAW All-American (1978-80) and the 1980 Broderick Award winner as the nation's top collegiate volleyball player. A U.S. national team member, she was named the 1981 Hawai'i state female athlete of the year and in 2013 she was inducted into UH's Circle of Honor. The two have three children who reside in Huntington Beach, Calif.

#### RAINBOW WAHINE WELCOME FIVE NEWCOMERS

Hawai'i welcomes five incoming freshmen to the 2016 team. Norene losia, Rika Okino, McKenna Ross, Kirsten Sibley and Emma Smith are the newest players to don the Green and White.

losia, a 5-11 setter from Redondo Union HS, is an all-CIF selection in her first three years of high school. She was voted the 2012 National Freshman of the Year and 2014 National Junior of the Year by PrepVolleyball.com. losia was named the 2013 and '14 Daily Breeze Player of the Year and last season she helped lead the Sea Hawks to the D1AA CIF and State Championships. losia has earned a silver medal and two bronze medals in the Junior Olympics and was selected to the 2012 and the 2015 Junior Olympic All-Tournament Teams.

Okino is a 2016 graduate of Kalani High School in Honolulu where she earned four varsity letters in volleyball. Okino earned all-league honorable mention honors as a freshman and sophomore and first and second all-league honors as a junior and senior respectively. Academically, Okino was one of the Class of 2016's valedictorians. She was an Honor Graduate and on the Principal's List all four years and a member of the National Honor Society for three years.

Ross is a 2016 graduate of Aliso Niguel High School in Aliso Viejo, Calif. where she earned three varsity letters in indoor volleyball and helped to lead the Wolverines to a state championship in 2014. She was named second team all-league honors as a sophomore and junior and was named a first team all-league player as a senior. Ross' older sister Kyla won a gold medal at both the artistic gymnastics team competition at the 2012 Summer Olympics in London and the 2014 World Gymnastic Championships in Nanning, China. Her aunt, Nohea Tano Laboy played three seasons at middle blocker/outside hitter for the Rainbow Wahine volleyball team (2001-03). Her parents are Jason and Kiana Ross of Aliso Viejo, Calif. Her father Jason played both football (1993-94) and baseball (1994-96) at the University of Hawai'i, he was drafted by the Atlanta Braves in the 13th round of the 1996 MLB Draft and played in the Braves' farm system from 1996-2001 finishing his career with the Triple A Richmond Braves of the International League.

Sibley is a 6-2 outside hitter out of Campolindo High School in Moraga, Calif. She has many accomplishments and accolades, including being selected to the 2013 and '14 USA Women's Junior A1 National Training Team Program and playing in the HP Championships in Tulsa, Okla. Sibley, a four-year starter at Campolindo, was named one of the "Top 12 High School Volleyball Players of the Bay Area" by Sports Stars Magazine and she has been her team's captain the past two seasons. She earned all-area and all-league honors in both 2013 and '14. She has helped to lead Campolindo to three-straight DFAL titles. Sibley is also a highly accomplished beach volleyball player as she was selected to compete in the 2013 A-2 USA HP Select beach training championships in Hermosa Beach, Calif. Sibley was also invited to attend the HP Beach Holiday Camp and the HP Beach A-2 Select beach training and championships in Hermosa Calif. in 2011 and '12.

Smith is a 2016 graduate of Mira Costa High School in Manhattan Beach, Calif where she earned three varsity letters in indoor volleyball and four in beach volleyball. In indoor volleyball, helped to lead the Mustangs to co-league titles in 2015. Smith was named the team's Most Valuable Player in 2015 and she earned all-league libero honors as a junior and senior and was named the league's Libero of the Year in 2014 and '15. She was named the 2015-16 Mira Costa Athlete of the Year.

#### TEAM STATISTICS COMPARISON

STATISTIC	UH	UVU	NIU	UW
Record	3-3, 0-0 BWC	3-4, 0-0 WAC	5-1, 0-0 MAC	5-0, 0-0 PAC-12
Kills	288	277	274	256
Kills p/set	13.1	11.5	13.0	14.2
Hitting %	.206	.150	.251	.273
Assists	278	257	257	232
Assists p/set	12.6	10.7	12.2	12.9
Aces	30	21	31	27
Aces p/set	1.4	0.9	1.5	1.5
Digs	369	329	267	279
Digs p/set	16.8	13.7	12.7	15.5
Total Blocks	50.5	71.5	57.0	41.0
Blocks p/set	2.3	3.0	2.7	2.3
Opp. Hitting %	.244	.233	.149	.148

# 2016 UNIVERSITY OF HAWAI'I WOMEN'S VOLLEYBALL ROSTERS

## NUMERICAL ROSTER

No.	Name	Pos.	Ht.	Yr.	Ex.	Hometown/Last School
1	Katiana Ponce	L/DS	5-3	Sr.	3V	Honolulu, O'ahu / Moanalua HS
2	Kendra Koelsch	S	6-1	Jr.	2V	Huntington Beach, Calif. / Huntington Beach HS
3	McKenna Granato	OH	6-0	So.	1V	Kailua, O'ahu / Punahou School
4	Clare-Marie Anderson	L/DS	5-7	Jr.	2L	Honolulu, O'ahu/Punahou School
5	Emma Smith	DS	5-8	Fr.	HS	Manhattan Beach, Calif./Mira Costa HS
6	Natasha Burns	MH	6-5	R-Fr.	HS	Hamilton, ON, Canada / St. Mary's Catholic Secondary School
7	Taylor Higgins	S	5-9	Sr.	3V	Honolulu, O'ahu/Punahou School
8	Annie Mitchem	MH	6-2	Sr.	1V	Friendswood, Texas / Irvine Valley College
9	Kirsten Sibley	OH	6-2	Fr.	HS	Lafayette, Calif. / Campolindo HS
10	Norene Iosia	S	5-11	Fr.	HS	Torrance, Calif. / Redondo Union HS
11	Kalei Greeley	OH	6-2	Jr.	2V	Riverside, Calif./King HS
12	Gianna Guinasso	L/DS	5-9	Jr.	2V	Huntington Beach, Calif./Huntington Beach HS
14	Nikki Taylor	OPP	6-4	Sr.	3V	Honolulu, O'ahu/Kaiser HS
15	Savanah Kahakai	L/DS	5-8	Jr.	2V	Honolulu, O'ahu/Farrington HS
16	Rika Okino	DS	5-5	Fr.	HS	Honolulu, O'ahu / Kalani HS
17	Casey Castillo	OH	6-3	So.	1V	Oceanside, Calif. / Santa Fe Christian Schools
19	Emily Maglio	MH	6-3	Jr.	2V	Coquitlam, B.C., Canada /Pinetree HS
20	McKenna Ross	DS	5-10	Fr.	HS	Aliso Viejo, Calif. / Aliso Niguel HS
	Faith Ma'afala	DS/S	5-8	R-Jr.	TR	Kapolei, O'ahu / Southern Utah

**Head Coach:** Dave Shoji (42nd season)

**Associate Coach:** Jeff Hall

**Assistant Coach:** Lindsey Berg

**Volunteer Coach:** Tom Pestolesi

**Director of Operations:** Kaleo Baxter

**Equipment Manager:** James "Jimbo" Buccella

**Athletic Trainer:** Renae Shigemura

## ALPHABETICAL

4	Anderson, Clare-Marie
6	Burns, Natasha
17	Castillo, Casey
3	Granato, McKenna
11	Greeley, Kalei
12	Guinasso, Gianna
7	Higgins, Taylor
10	Iosia, Norene
15	Kahakai, Savanah
2	Koelsch, Kendra
	Ma'afala, Faith
9	Maglio, Emily
8	Mitchem, Annie
16	Okino, Rika
1	Ponce, Katiana
20	Ross, McKenna
9	Sibley, Kirsten
5	Smith, Emma
14	Taylor, Nikki

## BY HEIGHT

<b>5-3</b>	Katiana Ponce
<b>5-5</b>	Rika Okino
<b>5-7</b>	Clare-Marie Anderson
<b>5-8</b>	Savanah Kahakai
	Faith Ma'afala
	Emma Smith
<b>5-9</b>	Gianna Guinasso
	Taylor Higgins
<b>5-10</b>	McKenna Ross
<b>5-11</b>	Norene Iosia
<b>6-0</b>	McKenna Granato
<b>6-1</b>	Kendra Koelsch
<b>6-2</b>	Kalei Greeley
	Annie Mitchem
	Kirsten Sibley
<b>6-3</b>	Casey Castillo
	Emily Maglio
<b>6-4</b>	Nikki Taylor
<b>6-5</b>	Natasha Burns

## BY CLASS

<b>Freshmen</b>	Norene Iosia
	Rika Okino
	McKenna Ross
	Kirsten Sibley
	Emma Smith
	Natasha Burns (RS)
<b>Sophomores</b>	McKenna Granato
	Casey Castillo
<b>Juniors</b>	Clare-Marie Anderson
	Kalei Greeley
	Gianna Guinasso
	Savanah Kahakai
	Kendra Koelsch
	Faith Ma'afala
	Emily Maglio
<b>Seniors</b>	Taylor Higgins
	Katiana Ponce
	Annie Mitchem
	Nikki Taylor

## BY HOMETOWN

<b>Hawai'i</b>
Clare-Marie Anderson (Honolulu)
McKenna Granato (Kailua)
Taylor Higgins (Honolulu)
Savanah Kahakai (Honolulu)
Faith Ma'afala (Kapolei)
Rika Okino (Honolulu)
Katiana Ponce (Honolulu)
Nikki Taylor (Honolulu)
<b>California</b>
Casey Castillo (Oceanside)
Kalei Greeley (Riverside)
Gianna Guinasso (Huntington Beach)
Norene Iosia (Torrance)
Kendra Koelsch (Huntington Beach)
McKenna Ross (Aliso Viejo)
Kirsten Sibley (Lafayette)
Emma Smith (Manhattan Beach)

### Texas

Annie Mitchem (Friendswood)

### CANADA

Natasha Burns (Hamilton, Ontario)  
Emily Maglio (Coquitlam, British Columbia)

## BY POSITION (Players listed alphabetically)

DEFENSIVE SPECIALIS/LIBERO	SETTER	OUTSIDE HITTER	MIDDLE HITTER
Clare-Marie Anderson	Taylor Higgins	Casey Castillo	Natasha Burns
Gianna Guinasso	Norene Iosia	McKenna Granato	Emily Maglio
Savanah Kahakai	Kendra Koelsch	Kalei Greeley	Annie Mitchem
Faith Ma'afala		Kirsten Sibley	
Rika Okino		Nikki Taylor	
Katiana Ponce			
McKenna Ross			
Emma Smith			



# 2016 UNIVERSITY OF HAWAII WOMEN'S VOLLEYBALL TV/RADIO ROSTER



**KATIANA PONCE**

L/DS • 5-3 • Sr.  
Honolulu, O'ahu  
Moanalua HS



**KENDRA KOELSCH**

S • 6-1 • Jr.  
Huntington Beach,  
Calif.  
Huntington Beach HS



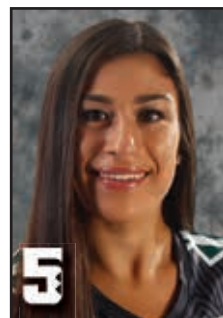
**McKENNA  
GRANATO**

OH • 6-0 • So.  
Kailua, O'ahu  
Punahou School



**CLARE-MARIE  
ANDERSON**

L/DS • 5-7 • Jr.  
Honolulu, O'ahu  
Punahou School



**EMMA SMITH**

DS • 5-8 • Fr.  
Manhattan Beach, Calif.  
Mira Costa HS



**NATASHA BURNS**

MH • 6-5 • R-Fr.  
Hamilton, Ontario,  
Canada  
St. Mary's Catholic  
Secondary School



**TAYLER HIGGINS**

S • 5-9 • Sr.  
Honolulu, O'ahu  
Punahou School



**ANNIE MITCHEM**

MH • 6-2 • Sr.  
Friendswood, Texas  
Irvine Valley College



**KIRSTEN SIBLEY**

OH • 6-2 • Fr.  
Lafayette, Calif.  
Campolindo HS



**NORENE IOSIA**

S • 5-11 • Fr.  
Torrance, Calif.  
Redondo Uni



**KALEI GREELEY**

OH • 6-2 • Jr.  
Riverside, Calif.  
King HS



**FAITH MA'AFALA**

S/DS • 5-8 • Jr-Fr.  
Kapolei, O'ahu  
Southern Utah  
Kamehameha-Kapalama



**GIANNA GUINASSO**

L/DS • 5-9 • Jr.  
Huntington Beach, Calif.  
Huntington Beach HS



**NIKKI TAYLOR**

OH • 6-4 • Sr.  
Honolulu, O'ahu  
Kaiser HS



**SAVANAH KAHAKAI**

L/DS • 5-8 • Jr.  
Honolulu, O'ahu  
Farrington HS



**RIKA OKINO**

DS • 5-5 • Fr.  
Honolulu, O'ahu  
Kalani HS



**CASEY CASTILLO**

OH • 6-3 • So.  
Oceanside, Calif.  
Santa Fe Christian Schools



**EMILY MAGLIO**

MH • 6-3 • Jr.  
Coquitlam, B.C., Canada  
Pinetree HS



**McKENNA ROSS**

DS • 5-10 • Fr.  
Aliso Viejo, Calif.  
Alisa Niguel HS



**DAVE SHOJI**

Head Coach  
42nd Season



**JEFF HALL**

Associate Coach  
Second Season



**LINDSEY BERG**

Assistant Coach  
First Season



**TOM PESTOLESI**

Volunteer Coach  
First Season



**KALEO BAXTER**

Director of Operations  
First Season



## DAVE SHOJI

**Head Coach**

**42nd Season**

**UC Santa Barbara (1969)**

**Overall Record: 1,182-201-1**

Dave Shoji enters his 42nd season as head coach of the Rainbow Wahine. In 2016, he led UH to a 29-2 overall record; a 16-0 mark to win its eighth Big West title thus advancing to its 34th trip to the NCAA Tournament. Shoji became the all-time winningest coach in NCAA Division I women's volleyball history with his 1,107th victory on Sept. 6, 2013 against Santa Clara. Currently he is ranked No. 2 in the NCAA behind Penn State's Russ Rose (1,189) with a career record of 1,182-201-1.

The honors have piled up for Shoji over the years. In addition to being a member of the AVCA Hall of Fame, he is an 13-time conference and nine-time region Coach of the Year, and was named the National Coach of the Year in 1982 and in 2009. Shoji was named to the list of all-time great coaches by USA Volleyball in 2002. He has also been inducted into the Hawai'i Sports Hall of Fame and was named coach of the NCAA 25th Anniversary team.

In 1975, a young Shoji took over the reins of the UH women's volleyball program. He was just 28 years old with no clue that he would turn a one-year-old program into a national powerhouse over the next four decades. The team was coming off a 9-1 campaign in 1974 that ended with the Rainbow Wahine falling to UCLA in the national title match at the AIAW (Association for Intercollegiate Athletics for Women) Championship.

In Shoji's first four years at the helm of the program, he took the team to two more national title matches before he finally broke through to take the title in 1979 with a five-game victory over Utah State in the AIAW finals. It was the school's first-ever team national championship and a sign of great things to come for the young program.

In 1981, Shoji became UH's first full-time coach for a women's program. He led the team to another national title, this time in the new NCAA Tournament in 1982, beating the USC Women of Troy in a come-from-behind five-game thriller. Shoji would lead the team to another title in 1983 with a straight-set win over UCLA, becoming the first school to win back-to-back NCAA championships.

The Rainbow Wahine again returned to the national championship match in 1987, capping a 37-2 season with a sweep of Stanford for the program's fourth national title and third NCAA title. The team lost to Texas in the 1988 national championship match, then went through a stretch of five frustrating losses in six years to rival Long Beach State in the NCAA Regionals, holding them out of the NCAA Championships.

UH looked primed to return to the Final Four in 1995, going through the season undefeated at 29-0. After winning their regional match over Arizona State, Hawai'i was set for a national championship run. But Michigan State dealt a heart-breaking blow to those plans, coming back from being down two games to none, to hold the Rainbow Wahine out of the NCAA Championships.

Hawai'i would finally make that return in 1996, dropping just one set in the first four matches of the NCAA Tournament. But another long-time nemesis of the Rainbow Wahine, Stanford, stopped UH's bid for a national title, sweeping Hawai'i in the championship match. The Rainbow Wahine experienced another great run of success that started with the 1998 season, as transfer Heather Bown led the team from a perennial Top 25 squad and NCAA Tournament team to again a national-title contender.

Hawai'i made its way to the NCAA Regional Final in 1998 and was one of the top seeds in the 1999 tournament before a scrappy Texas A&M team beat UH in the regionals.

Following that season, Kim Willoughby came to the program, joining Lily Kahumoku to form a dynamic duo that would lead the team to great success

- » .856 winning percentage is third all-time among active head coaches
- » Second winningest coach in NCAA Division I history with 1,182 wins
- » 37 20-plus-win seasons
- » 19 30-plus-win seasons
- » 41 consecutive winning seasons
- » Four national championships (1979, '82, '83, '87)
- » Nine NCAA Final Four appearances
- » 28 NCAA Regional appearances
- » 34 NCAA Tournament appearances
- » 85 All-America Selections (14-AIAW; 15 USVBA; 56 AVCA)
- » USA Volleyball All-Time Great Volleyball Coach
- » 13-time Conference Coach of the Year
- » 10-time Regional Coach of the Year
- » National Coach of the Year in 1982 and 2009

for another four years. From 2000-03, the Rainbow Wahine advanced to the NCAA Championship national semifinal match three times, while Shoji's 2003 senior class became the winningest class in school history.

The Rainbow Wahine returned to the NCAA Championships in 2009, reaching the national semifinal match in Shoji's 35th season, giving the legendary coach his second national coach of the year award and his 10th award for conference and region coach of the year.

Under Shoji, UH volleyball finished in the Top 10 in 23 of the 28 final AVCA polls, and ranked in the top five 15 times. They have made it to the postseason in all but one year, finishing with a winning record in all 39 seasons and missing the postseason just once.

The 69-year-old was also responsible for the start of the men's volleyball program in 1978. Shoji served as the men's coach at UH from 1978-85, compiling a record of 81-48 and leading the team to a Western Collegiate Volleyball Conference title in 1980.

Shoji was a three-sport athlete at Upland High School in California, playing football, basketball and baseball. He then moved on to UC Santa Barbara, where he played baseball for a year, along with three years of volleyball. He earned All-America honors as a volleyball player in 1968 and '69. He earned his bachelor's degree in physical education in 1969.

After spending two years in the U.S. Army, Shoji returned to Hawai'i to coach the Kalani High School girl's and boy's volleyball teams. He then took an assistant coaching job at Punahou School.

Shoji and his wife, the former Mary Tennefos, reside in Manoa. The Shoji's have three children, Cobey, Kawika and Erik. Daughter Cobey played volleyball at both UNLV and Michigan as a defensive specialist/setter. She graduated from Michigan with a bachelor's degree in sports management and communications and later received her master's in athletic administration from North Carolina. She is married to South Carolina assistant coach Coleman Hutzler who is in charge of special teams and linebackers. The Hutzlers have two children. Both sons Kawika and Erik helped lead the Stanford men's volleyball team to a national title in 2010, with Kawika earning National Player of the Year honors. Currently the Shoji brothers are on the US National men's volleyball team which will compete in the 2016 Olympics in Rio de Janeiro.







# KATIANA PONCE

## Libero/Defensive Specialist

5-3 • Senior

Honolulu, O'ahu • Moanalua HS



**2015 (Junior):** Played in 20 matches...had one ace and eight digs on the season... had one assist in UH's five-set win vs. Florida (9/11)...served a season-high seven times twice—against Iowa (Sept. 4) and CSU Bakersfield (Sept. 20)...recorded a season-high two digs against Oregon State (Aug. 30)

**2014 (Sophomore):** Played in 23 matches...had six aces and 14 digs on the season...set a career high of three digs vs. Cal Poly (10/24)...had one assist vs. UC Riverside (9/27)...posted two aces against eventual league champion Long Beach State (11/7)

**2013 (Freshman):** Saw action in three matches as a defensive specialist; UTEP (8/31), UC Riverside (9/29), and Cal Poly (10/12).

**2012:** Redshirted.

**Prep:** A 2012 graduate of Moanalua High School in Honolulu, O'ahu...earned three letters in volleyball... was named all-league and all-state as a sophomore in 2009...named to the 2011 Ann Kang Invitational all-tournament team.

**Personal:** Born in Honolulu, O'ahu...played four years in the Maunalani Volleyball Club and helped lead her team to the 2011 Las Vegas Invitational Under-17 champions...majoring in travel industry management...has two older sisters...her uncle Harold Cabbab played baseball for the UH baseball team from 1989-1992...cousin Haku Correa played for the Rainbow Warrior football team from 2009-12...parents are Warren and Lisa Ponce of Honolulu, O'ahu.

### 2016 MATCH HIGHS

**DIGS:** 1(Oct. 24, 2014)

### CAREER HIGHS

**ASSISTS:** 1 (2x) last at UC Irvine (Nov. 17, 2015)

**DIGS:** 3, Cal Poly (Oct. 24, 2014)

**SERVICE ACES:** 2, Long Beach State (Nov. 7, 2014)

### PONCE'S MATCH-BY-MATCH STATISTICS

Date	Opponent	sp	k	e	ta	pct	a	ta	pct	sa	se	ta	pct	re	ta	pct	dig	bs	ba	be	total	bhe	points	hit%	team score
Aug 26, 2016	WISCONSIN	1	0	0	0	.000	0	0	.000	0	0	0	.000	0	0	.000	0	0	0	0	0.0	0	0.0	.109	1-3
Aug 27, 2016	KANSAS STATE	1	0	0	0	.000	0	0	.000	0	0	2	1.000	0	0	.000	0	0	0	0	0.0	0	0.0	.174	1-3
Sep 02, 2016	PACIFIC	1	0	0	0	.000	0	0	.000	0	0	0	.000	0	0	.000	1	0	0	0	0.0	0	0.0	.241	3-0
Sep 03, 2016	UCLA	1	0	0	0	.000	0	1	.000	0	0	1	1.000	0	0	.000	0	0	0	0	0.0	0	0.0	.150	0-3
Totals		4	0	0	0	.000	0	1	.000	0	0	3	1.000	0	0	.000	1	0	0	0	0.0	0	0.0		

Sets played: 4

Digs per set: 0.25

Points per set: 0.00

### PONCE'S CAREER STATISTICS

Season	sp-mp	k	k/s	e	ta	pct	a	a/s	ta	ast%	sa	sa/s	se	ta	srv%
2013	3-3	0	0.00	0	0	.000	0	0.00	0	.000	0	0.00	1	6	.833
2014	59-23	0	0.00	0	0	.000	3	0.05	16	.188	6	0.10	15	169	.911
2015	24-20	0	0.00	0	0	.000	2	0.08	3	.667	1	0.04	3	57	.947
2016	4-4	0	0.00	0	0	.000	0	0.00	1	.000	0	0.00	0	3	1.000
TOTAL	90-50	0	0.00	0	0	.000	5	0.06	20	.250	7	0.08	19	235	.919

Season	dig	d/s	re	ta	rec%	bs	ba	tb	b/s	be	bhe	points	pts/s
2013	0	0.00	1	1	.000	0	0	0	0.00	0	0	0.0	0.00
2014	14	0.24	0	0	.000	0	0	0	0.00	0	0	6.0	0.10
2015	8	0.33	0	2	1.000	0	0	0	0.00	0	0	1.0	0.04
2016	1	0.25	0	0	.000	0	0	0	0.00	0	0	0.0	0.00
TOTAL	23	0.26	1	3	.667	0	0	0	0.00	0	0	7.0	0.08



# KENDRA KOELSCH

## Setter

6-1 • Junior

Huntington Beach, Calif.

Huntington Beach HS



### 2016 MATCH HIGHS

**ATTACK %:** .261 (8-2-23), Kansas State (8/27/16)

**KILLS:** 8, Kansas State (8/27/16)

**ATTEMPTS:** 23 (2X) last Kansas State (8/27/16)

**ASSISTS:** 2 (2X), Kansas St. (8/27/16)

**DIGS:** 2, Wisconsin (8/26/16)

**ACES:**

**BLOCKS:** 3, Kansas St. (8/27/16)

**BLOCK SOLO:**

**BLOCK ASSIST:** 3, Kansas St. (8/27/16)

**POINTS:** 9.5, Kansas St. (8/27/16)

### CAREER HIGHS

**KILLS:** 8, Kansas State (8/27/16)

**ATTEMPTS:** 23 (2X) last Kansas State (8/27/16)

**ASSISTS:** 41, Long Beach State (10/11/15)

**DIGS:** 13, Long Beach State (10/11/15)

**ACES:** 1 (2x), last UC Irvine (10/17/15)

**BLOCKS:** 9, LONG BEACH STATE (10/11/15)

**BLOCK SOLO:** 2, Long Beach State (10/11/15)

**BLOCK ASSIST:** 7, Long Beach State (10/11/15)

**POINTS:** 9.5, Kansas State (8/27/16)

**2015 (Sophomore):** Appeared in all 31 matches with five starts at setter...posted career-highs on the season with 315 assists, 23 kills, 54 digs and 51 blocks overall...for the season, she averaged 3.62 assists per set...was second on the team in assists and fourth on the team averaging 0.54 blocks per set...helped spark UH's five-set win against then-No. 2 Florida (Sept. 11), coming in relief with 27 assists, two kills, three digs and two blocks...had a career-match against Long Beach State (Oct. 11) in which she recorded several career-highs, including 41 assists, 13 digs, and nine blocks...the LBSU match also marked her first career double-double with 41 assists and 13 digs and was just one block short of a triple-double.

**2014 (Freshman):** Saw action in 28 matches at setter...had a total of seven kills in addition to 49 assists, 13 digs and eight blocks...had a career-high eight assists at UC Santa Barbara (11/21) and two blocks vs Northern Arizona (9/19)...also had a career-high two kills at CSUN (10/10) and two digs at Cal State Fullerton (11/1).

**Prep:** A 2014 graduate of Huntington Beach HS in California...lettered three seasons in indoor volleyball, two seasons in beach volleyball and one season in surfing...in indoor volleyball was a first team all-league selection her senior year...named team MVP and HBHS's Athlete of the Year as a senior...earned Orange County all-star honors...was a four-time academic all-league selection...academically, was named a Top 5 Most Distinguished Oiler Award at Huntington Beach High School; a 2014 Scholar with Honors; and was a the league's all-academic team scholar athlete from 2011-14...also earned a Star Specialized Training/Talent Achievement Survey Certificate in visual arts in 2014...was a leader in the Fellowship of Christian Athletes (FCA) in 2014.

**Personal:** Born in Newport Beach, Calif...played two seasons for the Laguna Beach Volleyball Club...majoring in elementary education...has one younger sister...parents are Michael and Liane Koelsch of Huntington Beach, Calif.

### KOELSCH'S MATCH-BY-MATCH STATISTICS

Date	Opponent	sp	attack				set			serve			recept			dig	blocking			bhe	points	team hit%	score	
			k	e	ta	pct	a	ta	pct	sa	se	ta	pct	re	ta		pct	bs	ba					be
Aug 26, 2016	WISCONSIN	4	4	5	23	.043	1	2	.500	0	1	10	0	0	.000	2	0	1	0	1.0	0	4.5	.109	1-3
Aug 27, 2016	KANSAS STATE	4	8	2	23	.261	2	4	.500	0	0	0	0	0	.000	1	0	3	0	3.0	0	9.5	.174	1-3
Aug 28, 2016	ARIZONA	2	0	2	7	-.286	0	1	.000	0	0	0	0	1	1.000	1	0	1	0	1.0	0	0.5	.292	3-2
Sep 02, 2016	PACIFIC	1	0	0	0	.000	0	1	.000	0	0	0	0	0	.000	0	0	0	0	0.0	0	0.0	.241	3-0
Sep 03, 2016	UCLA	2	0	0	0	.000	1	2	.500	0	0	0	0	0	.000	0	0	0	0	0.0	0	0.0	.150	0-3
		13	12	9	53	.057	4	10	.400	0	1	10	0	1	1.000	4	0	5	0	5.0	0	14.5		

Sets played: 13  
Kills per set: 0.92  
Assists per set: 0.31

Digs per set: 0.31  
Blocks per set: 0.38

Points per set: 1.12

### KOELSCH'S CAREER STATISTICS

Season	sp-mp	k	k/s	e	ta	pct	a	a/s	ta	ast%	sa	sa/s	se	ta	srv%
2014	60-28	7	0.12	1	13	.462	49	0.82	136	.360	1	0.02	2	23	.913
2015	94-31	24	0.26	10	52	.269	322	3.43	731	.440	2	0.02	2	98	.980
2016	13-5	12	0.92	9	53	.057	4	0.31	10	.400	0	0.00	1	10	.900
TOTAL	167-64	43	0.26	20	118	.195	375	2.25	877	.428	3	0.02	5	131	.962

Season	dig	d/s	re	ta	rec%	bs	ba	tb	b/s	be	bhe	points	pts/s
2014	13	0.22	0	0	.000	1	7	8	0.13	0	2	12.5	0.20
2015	55	0.59	0	1	1.000	4	47	51	0.54	2	4	53.5	0.56
2016	4	0.31	0	1	1.000	0	5	5	0.38	0	0	14.5	1.08
TOTAL	72	0.43	0	2	1.000	5	59	64	0.38	2	6	80.5	0.48



# McKENNA GRANATO

## Outside Hitter

5-10 • Sophomore

Honolulu, O'ahu • Punahou School



### 2016 MATCH HIGHS

**ATTACK %:** .459, 33-5-61, Arizona (8/28/16)

**KILLS:** 33, Arizona (8/28/16)

**ATTEMPTS:** 66, Kansas St. (8/27/16)

**ASSISTS:** 1 (3x), last UCLA (9-3/16)

**DIGS:** 12, Kansas State (8/27/16)

**ACES:** 1 (2x), last Pacific (9/2/16)

**BLOCKS:** 2 (2x), UCLA (9/3/16)

**BLOCK SOLO:** 1, Kansas St. (8/27/16)

**BLOCK ASSIST:** 2(2x), UCLA (9/3/16)

**POINTS:** 33, Arizona (8/28/16)

### CAREER HIGHS

**ATTACK %:** .459, 33-5-61, Arizona (8/28/16)

**KILLS:** 33, Arizona (8/28/16)

**ATTEMPTS:** 66, Kansas St. (8/27/16)

**ASSISTS:** 2 (3X), last Minnesota (12/12/15)

**DIGS:** 12, (2X), last Kansas State (8/27/16)

**ACES:** 3, Oregon State (8/30/15)

**BLOCKS:** 2 (5X), last UCLA (9/3/16)

**BLOCK ASSIST:** 2 (5x), last UCLA (9/3/16)

**POINTS:** 33, Arizona (8/28/16)

**2015 (Freshman):** Appeared in 25 matches with four starts at outside hitter...played in 54 sets overall...finished her rookie season with 33 kills, eight blocks, 15 service aces and nine assists overall...was second on the team averaging 0.30 service aces a set...hit a career-high .385 hitting percentage (6-1-13) against Minnesota in the NCAA Regional Final match in Des Moines, Iowa (Dec. 12)...had a career night against UC Irvine (Oct. 17) recording nine kills in 35 attempts with 12 digs, and 12.0 points...served a career-high three aces against Oregon State (Aug. 30)...rejected a career-high two blocks three times this season against Iowa (Sept. 4); UC Irvine (Oct. 17); and at UC Riverside (Oct. 3)...served 19 times in a match twice—against Iowa and UC Irvine.

**Prep:** A 2015 graduate of Punahou School in Honolulu, O'ahu...lettered three years in volleyball, one in basketball...volleyball team won league and state titles in 2012 and state again in 2014...named 2014 Under Armour All-American...voted the 2014 Gatorade State Player of the Year...named 2014 Star-Advertiser All-State Player of the Year honors...2014 Punahou Female Athlete of the Year...played for 'Imi 'Ike Volleyball Club.

**Personal:** Born in Honolulu, O'ahu...played for 'Imi 'Ike Volleyball Club...majoring in family resources...has one older brother and one younger sister...parents are Steven and Noelle Granato of Kailua, O'ahu.

### GRANATO'S MATCH-BY-MATCH STATISTICS

Date	Opponent	sp	k	e	ta	pct	a	ta	pct	sa	se	ta	pct	re	ta	pct	dig	bs	ba	be	total	bhe	points	team hit%	score
Aug 26, 2016	WISCONSIN	4	4	5	33	.030	1	3	.333	0	2	8	.750	0	7	1.000	4	0	2	0	2.0	0	5.0	.109	1-3
Aug 27, 2016	KANSAS STATE	*4	19	13	66	.091	0	3	.000	0	2	15	.867	0	13	1.000	12	1	0	0	1.0	0	20.0	.174	1-3
Aug 28, 2016	ARIZONA	*5	33	5	61	.459	1	1	1.000	0	3	15	.800	3	30	.900	8	0	0	0	0.0	0	33.0	.292	3-2
Sep 01, 2016	MISSOURI STATE	*3	6	2	24	.167	0	0	.000	1	2	14	.857	2	19	.895	7	0	1	0	1.0	0	7.5	.312	3-0
Sep 02, 2016	PACIFIC	*3	5	3	16	.125	0	1	.000	1	1	11	.909	0	12	1.000	4	0	1	0	1.0	0	6.5	.241	3-0
Sep 03, 2016	UCLA	*3	5	7	29	.069	1	3	.333	0	0	11	1.000	0	17	1.000	8	0	2	0	2.0	0	6.0	.150	0-3
Totals		22	72	35	229	.162	3	11	.273	2	10	74	.865	5	98	.949	43	1	6	0	7.0	0	78.0		

Sets played: 22  
Kills per set: 3.27  
Assists per set: 0.14

Service aces per set: 0.09  
Digs per set: 1.95  
Blocks per set: 0.32

Points per set: 3.55

### GRANATO'S CAREER STATISTICS

Season	sp-mp	k	k/s	e	ta	pct	a	a/s	ta	ast%	sa	sa/s	se	ta	srv%
2015	54-25	33	0.61	17	120	.133	9	0.17	31	.290	15	0.28	21	145	.855
2016	22-6	72	3.27	35	229	.162	3	0.14	11	.273	2	0.09	10	74	.865
TOTAL	76-31	105	1.38	52	349	.152	12	0.16	42	.286	17	0.22	31	219	.858

Season	dig	d/s	re	ta	rec%	bs	ba	tb	b/s	be	bhe	points	pts/s
2015	61	1.13	5	153	.967	0	8	8	0.15	1	0	52.0	0.96
2016	43	1.95	5	98	.949	1	6	7	0.32	0	0	78.0	3.55
TOTAL	104	1.37	10	251	.960	1	14	15	0.20	1	0	130.0	1.71





# CLARE-MARIE ANDERSON

**Libero/Defensive Specialist**

**5-7 • Junior**

**Honolulu, O'ahu • Punahou School**



## 2016 MATCH HIGHS

**ASSISTS:**

**DIGS:** 10, Wisconsin (8/26/16)

**ACES:**

**POINTS:**

## CAREER HIGHS

**ATTEMPTS:** 1, at Cal St. Fullerton (10/2/15)

**ASSISTS:** 2 (2x), last UC Irvine (10/17/15)

**DIGS:** 10, Wisconsin (8/26/16)

**ACES:** 2 (3x), last vs. TCU (12/4/15)

**POINTS:** 2.0 (3x), last vs. TCU (12/4/15)

**2015 (Sophomore):** Played in all 31 matches with 86 sets played...appeared as the libero against Eastern Washington (Sept. 12) and recorded a career-high nine digs against the Eagles...notched a career-high two service aces in three matches—EWU, CSU Bakersfield (Sept. 20) and TCU (Dec. 4) in first round of the NCAA Tournament in College Station, Texas...also against the Horned Frogs, she tallied a career-high 23 serves in a match...finished the season with 10 assists and 63 digs.

**2014 (Freshman):** Saw action in 22 matches as a libero and defensive specialist...logged one service ace against UC Riverside (11/28) and three digs at UC Santa Barbara (11/21)...posted 12 digs on the season...saw action in UH's first round NCAA Tournament win over Duke (12/5)

**Prep:** A 2014 graduate of Punahou School in Honolulu, O'ahu...lettered two seasons in volleyball...earned league honors in 2013...team won league and state title in 2012...earned all-league honorable mention honors in 2013...academically earned several recognition awards in chemistry honors, lifetime fitness, and French 4 honors...made the Dean's List and graduated with honors...was a student volunteer at the Hawai'i Nature Center.

**Personal:** Born in Honolulu, O'ahu...grew up on the island of Moloka'i until she was nine years old...played for 'Imi 'Ike Volleyball Club for four years...is a member of the UH Honors Program aiming towards a bachelor of science in biology...parents are Jay and Janet Anderson of Honolulu, O'ahu...father Jay played volleyball at Pepperdine from 1976-79 where helped the Waves to win the national championship in 1978...he went on to play on the U.S. national team and also professionally for eight years in Italy and Switzerland.

## ANDERSON'S MATCH-BY-MATCH STATISTICS

Date	Opponent	sp	k	e	ta	pct	a	ta	pct	sa	se	ta	pct	re	ta	pct	dig	bs	ba	be	total	bhe	points	team hit%	score
Aug 26, 2016	WISCONSIN	4	0	0	0	.000	0	3	.000	0	0	5	1.000	1	20	.950	10	0	0	0	0.0	0	0.0	.109	1-3
Aug 27, 2016	KANSAS STATE	2	0	0	0	.000	0	0	.000	0	0	4	1.000	0	0	.000	0	0	0	0	0.0	0	0.0	.174	1-3
Aug 28, 2016	ARIZONA	4	0	0	0	.000	0	0	.000	0	0	9	1.000	0	0	.000	0	0	0	0	0.0	0	0.0	.292	3-2
Sep 01, 2016	MISSOURI STATE	2	0	0	0	.000	0	0	.000	0	1	7	.857	0	0	.000	0	0	0	0	0.0	0	0.0	.312	3-0
Sep 02, 2016	PACIFIC	3	0	0	0	.000	0	0	.000	0	0	11	1.000	0	0	.000	1	0	0	0	0.0	0	0.0	.241	3-0
Sep 03, 2016	UCLA	3	0	0	0	.000	0	0	.000	0	0	18	1.000	0	0	.000	5	0	0	0	0.0	0	0.0	.150	0-3
Totals		18	0	0	0	.000	0	3	.000	0	1	54	.981	1	20	.950	16	0	0	0	0.0	0	0.0		

Sets played: 18

Digs per set: 0.89  
Blocks per set: 0.00

Points per set: 0.00

## ANDERSON'S CAREER STATS

Season	sp-mp	k	k/s	e	ta	pct	a	a/s	ta	ast%	sa	sa/s	se	ta	srv%
2014	43-22	0	0.00	0	0	.000	0	0.00	5	.000	1	0.02	9	92	.902
2015	86-31	0	0.00	0	1	.000	10	0.12	26	.385	12	0.14	3	319	.991
2016	18-6	0	0.00	0	0	.000	0	0.00	3	.000	0	0.00	1	54	.981
TOTAL	147-59	0	0.00	0	1	.000	10	0.07	34	.294	13	0.09	13	465	.972

Season	dig	d/s	re	ta	rec%	bs	ba	tb	b/s	be	bhe	points	pts/s
2014	12	0.28	0	3	1.000	0	0	0	0.00	0	0	1.0	0.02
2015	63	0.73	1	18	.944	0	0	0	0.00	0	0	12.0	0.14
2016	16	0.89	1	20	.950	0	0	0	0.00	0	0	0.0	0.00
TOTAL	91	0.62	2	41	.951	0	0	0	0.00	0	0	13.0	0.09



## 2016 MATCH HIGHS

**ASSISTS:** 1, Kansas St. (8/27/16)

**DIGS:** 10, Arizona (8/28/16)

**ACES:** 1, Kansas St. (8/27/16)

**POINTS:** 1.0 Kansas St. (8/27/16)

# EMMA SMITH

## Defensive Specialist

### 5-8 • Freshman

## Manhattan Beach, Calif. / Mira Costa HS

**Prep:** A 2016 graduate of Mira Costa High School in Manhattan Beach, Calif....earned three varsity letters in indoor volleyball and four in beach volleyball...in indoor volleyball, helped to lead the Mustangs to co-league titles in 2015...named the team's Most Valuable Player in 2015...earned all-league libero honors as a junior and senior and was named the league's Libero of the Year in 2014 and '15...was named the 2015-16 Mira Costa Athlete of the Year...in beach volleyball was named all-CIF all four years...was named a MCHS Scholar-Athlete in her senior year.

**Personal:** Plans to major in business...born in Manhattan Beach, Calif....played nine seasons with the Mizuno Long Beach volleyball club...has one older sister...parents are Cheri Kaplan and Jimmy Smith of Manhattan Beach, Calif.

## SMITH'S GAME-BY-GAME STATISTICS

Date	Opponent	sp	k	e	ta	pct	a	ta	pct	sa	se	ta	pct	re	ta	pct	dig	bs	ba	be	total	bhe	points	team hit%	score
Aug 26, 2016	WISCONSIN	2	0	0	0	.000	0	0	.000	0	0	6	1.000	0	2	1.000	0	0	0	0	0.0	0	0.0	.109	1-3
Aug 27, 2016	KANSAS STATE	*4	0	0	0	.000	1	2	.500	1	1	11	.909	0	9	1.000	5	0	0	0	0.0	0	1.0	.174	1-3
Aug 28, 2016	ARIZONA	4	0	0	0	.000	0	3	.000	0	1	11	.909	0	12	1.000	10	0	0	0	0.0	0	0.0	.292	3-2
Sep 03, 2016	UCLA	1	0	0	0	.000	0	0	.000	0	0	0	.000	0	1	1.000	1	0	0	0	0.0	0	0.0	.150	0-3
Totals		11	0	0	0	.000	1	5	.200	1	2	28	.929	0	24	1.000	16	0	0	0	0.0	0	1.0		

Sets played: 11  
Assists per set: 0.09

Service aces per set: 0.09  
Digs per set: 1.45  
Blocks per set: 0.00

Points per set: 0.09



## 2016 MATCH HIGHS

**ATTACK%:** .167 (6-3-18), Kansas St. (8/27/16)

**KILLS:** 6, Kansas State (8/27/16)

**ATTEMPTS:** 18, Kansas St. (8/27/16)

**ASSISTS:** 1, Kansas St. (8/27/16)

**DIGS:** 1 (2x), Kansas St. (8/27/16)

**BLOCKS:** 4, Wisconsin (8/26/16)

**BLOCK SOLO:** 1, Wisconsin (8/26/16)

**BLOCK ASST:** 3, Wisconsin (8/26/16)

**POINTS:** 7.0 Kansas St. (8/27/16)

# NATASHA BURNS

## Middle Hitter

### 6-5 • R-Freshman

## Hamilton, Ontario, Canada

## St. Mary's Catholic Secondary School

**2015:** Redshirted

**Prep:** A 2015 graduate of St. Mary's Catholic Secondary School in Hamilton, Ontario, Canada...helped U18 team to a fourth place finish at Canadian Nationals...a member of the St. Mary's basketball team, helping them to a 2012 championship title and 2013 AAA Ontario Federation of Schools Athletic Associations title...four year honor-roll student.

**Personal:** Born in Vancouver, B.C., Canada...majoring in biology...has one younger sister...parents are Greg and Gerri Burns of Hamilton, Ontario.

## BURNS' GAME-BY-GAME STATISTICS

Date	Opponent	sp	k	e	ta	pct	a	ta	pct	sa	se	ta	pct	re	ta	pct	dig	bs	ba	be	total	bhe	points	team hit%	score
Aug 26, 2016	WISCONSIN	2	4	1	9	.333	0	0	.000	0	0	0	.000	0	0	.000	1	1	3	0	4.0	0	6.5	.109	1-3
Aug 27, 2016	KANSAS STATE	*4	6	3	18	.167	1	1	1.000	0	0	0	.000	0	0	.000	1	0	2	0	2.0	0	7.0	.174	1-3
Aug 28, 2016	ARIZONA	*1	0	1	1	1.000	0	0	.000	0	0	0	.000	1	2	.500	0	0	0	0	0.0	0	0.0	.292	3-2
Totals		7	10	5	28	.179	1	1	1.000	0	0	0	.000	1	2	.500	2	1	5	0	6.0	0	13.5		

Sets played: 7  
Kills per set: 1.43  
Assists per set: 0.14

Digs per set: 0.29  
Blocks per set: 0.86

Points per set: 1.93



# TAYLER HIGGINS

## Setter

5-9 • Senior

Honolulu, O'ahu • Punahou School



## 2016 MATCH HIGHS

**KILLS:** 1 (2x), UCLA (9/3/16)  
**ATTEMPTS:** 3, Wisconsin (8/26/16)  
**ASSISTS:** 21, Kansas St. (8/27/16)  
**DIGS:** 6, Kansas St. (8/27/16)  
**ACES:** 2, Kansas St. (8/27/16)  
**BLOCKS:** 3, Wisconsin (8/26/16)  
**BLOCK SOLO:** 1, UCLA (9/3/16)  
**BLOCK ASST:** 3, Wisconsin (8/26/16)  
**POINTS:** 3.0, Kansas St. (8/27/16)

## CAREER HIGHS

**ATTACK %:** .500, Long Beach State (Nov. 7, 2014)  
**KILLS:** 5, Long Beach St. (Nov. 7, 2014)  
**TOTAL ATTEMPTS:** 10, Long Beach State (Nov. 7, 2014)  
**ASSISTS:** 65, vs. TCU (12/4/15)  
**DIGS:** 19, at UC Irvine (Oct. 31, 2014)  
**ACES:** 8, New Mexico (Sept. 4, 2014)  
**BLOCKS:** 7, UCSB (Oct. 26, 2014)  
**BLOCK SOLO:** 1 (6x) last UCLA (9/3/16)  
**BLOCK ASSIST:** 6, (3x), last Iowa (9/4/15)  
**POINTS:** 11.5, New Mexico (9/4/14)

**2015 (Junior):** Appeared in 27 matches with 26 starts at setter...voted to the Chevron Rainbow Wahine Invitational All-Tournament Team...was ranked No. 3 in the Big West and No. 68 in the NCAA averaging 10.73 assists per set and No. 3 with 0.30 service aces per set...missed four matches at the beginning of the Big West season due to an injury...recorded a career-high 65 assists in UH's NCAA first round, five-set win over TCU (Dec. 4)...tallied a season high 16 digs against Wichita State (Aug. 29); five aces against CSU Bakersfield (Sept. 18); and six blocks vs. Iowa (Sept. 4)...had five double-doubles for the season: Wichita St. 51A/16D, Oregon State (Aug. 30) 33A/11D; Iowa (Sept. 4) 44A/11D; UCSB (Sept. 25) 35A/12D; and Cal Poly (Sept. 26) 37A/10D...finished the season with a team-high 955 assists and was second on the team with 28 service aces.

**2014 (Sophomore):** Played and started in all 29 matches at setter...led team with 1,115 assists and 39 service aces...also logged 55 kills and hit .352 for the season...posted 61 blocks and was second on the team with 254 digs...had career highs of 53 assists against UC Irvine (10/31) and eight service aces vs. New Mexico (9/4)...also had a career-high seven blocks to go along with 10 kills vs UC Santa Barbara (10/26)...had a career-high 19 digs vs UC Irvine (10/31)...had double figures in kills in 12 matches including UH's two NCAA matches (Duke, 12/5; Washington, 12/6)...posted 12 digs and three blocks at eventual Big West champion Long Beach State (10/11).

**2013 (Freshman):** Played in all 30 matches as a backup setter...was third on the team with 72 assists while adding 40 digs and five service aces...had a season-high 11 assists to go along with seven digs at UC Santa Barbara (11/9)...posted nine assists and four digs vs. San Diego (9/1)...had six assists and three digs vs. UC Riverside (9/29)

**Prep:** A 2013 graduate of Punahou School in Honolulu, O'ahu...lettered four seasons in volleyball, two in track, and one in basketball...was named the ILH Player of the Year her junior year as well as Gatorade State Volleyball Player of the Year for Hawai'i...as a junior, helped to lead the Buffanblu to a perfect 18-0 record...selected to the Volleyball Magazine All-American Team her senior year...led Punahou to two state titles in 2011 and '12...was named the Punahou School 2011-12 Athlete of the Year...academically, earned the Hawaiian language award in 2013.

**Personal:** Born in Honolulu, O'ahu...played for Ku'i Kahi Volleyball Club...majoring in business marketing...has three older brother and one younger brother...older brothers Cameron and Jeremy played quarterback for Weber State and Hawai'i, respectively...parents are James and Anne Higgins of Honolulu, O'ahu...father James played offensive tackle, outside linebacker and on the defensive line for the UH football for UH from 1984-85.

## HIGGINS' MATCH-BY-MATCH STATISTICS

Date	Opponent	sp	k	e	ta	pct	a	sa	se	ta	pct	re	ta	pct	dig	bs	ba	be	total	bhe	points	team hit%	score
Aug 26, 2016	WISCONSIN	2	0	2	3	.667	13	0	0	4	1.000	0	0	.000	3	0	3	1	3.0	0	1.5	.109	1-3
Aug 27, 2016	KANSAS STATE	3	1	0	1	1.000	21	2	1	12	.917	0	1	1.000	6	0	0	0	0.0	0	3.0	.174	1-3
Aug 28, 2016	ARIZONA	1	0	0	0	.000	4	0	1	3	.667	0	0	.000	2	0	0	0	0.0	0	0.0	.292	3-2
Sep 01, 2016	MISSOURI STATE	2	0	0	0	.000	0	0	1	3	.667	0	0	.000	0	0	0	0	0.0	0	0.0	.312	3-0
Sep 03, 2016	UCLA	1	1	0	1	1.000	11	0	1	4	.750	0	1	1.000	3	1	1	0	2.0	0	2.5	.150	0-3
		9	2	2	5	.000	49	2	4	26	.846	0	2	1.000	14	1	4	1	5.0	0	7.0		

Sets played: 9  
 Kills per set: 0.22  
 Assists per set: 5.44

Service aces per set: 0.22  
 Digs per set: 1.56  
 Blocks per set: 0.56

Points per set: 0.78

## HIGGINS' CAREER STATS

Season	sp-mp	k	k/s	e	ta	pct	a	a/s	ta	ast%	sa	sa/s	se	ta	srv%
2013	70-30	1	0.01	0	2	.500	72	1.03	175	.411	5	0.07	5	31	.839
2014	106-29	55	0.52	12	122	.352	1115	10.52	2560	.436	39	0.37	66	479	.862
2015	92-27	28	0.30	12	67	.239	955	10.38	2192	.436	28	0.30	51	384	.867
2016	9-5	2	0.22	2	5	.000	49	5.44	177	.277	2	0.22	4	26	.846
TOTAL	277-91	86	0.31	26	196	.306	2191	7.91	5104	.429	74	0.27	126	920	.863

Season	dig	d/s	re	ta	rec%	bs	ba	tb	b/s	be	bhe	points	pts/s
2013	40	0.57	0	0	.000	0	1	1	0.01	1	0	6.5	0.09
2014	254	2.40	1	5	.800	2	59	61	0.58	16	11	125.5	1.18
2015	201	2.18	0	3	1.000	3	33	36	0.39	9	9	75.5	0.82
2016	14	1.56	0	2	1.000	1	4	5	0.56	1	0	7.0	0.78
TOTAL	509	1.84	1	10	.900	6	97	103	0.37	27	20	214.5	0.77





# ANNIE MITCHEM

**Middle Hitter**

**6-2 • Senior**

**Friendswood, Texas**

**Irvine Valley College**



## 2015 MATCH HIGHS

**ATTACK %:** 1.000, UC Davis (10/16/15)

**KILLS:** 7, UC Irvine (10/17/15)

**ATTEMPTS:** 29, UC Irvine (10/17/15)

**ASSISTS:** 1 (2x), last at UC Riverside (10/3/15)

**DIGS:** 13, UC Irvine (10/17/15)

**ACES:** 2, UC Irvine (10/17/15)

**BLOCKS:** 4 (3x), last at UC Riverside (10/3/70)

**BLOCK SOLO:** 1 (2x), last at Cal State Fullerton (10/2/15)

**BLOCK ASSIST:** 4 (3x), last at UC Riverside (10/3/15)

**POINTS:** 10.5, UC Irvine (10/17/15)

**2015 (Junior):** Appeared in 18 matches with three starts primarily at middle hitter...finished her first season at UH with 51 kills, 33.0 total blocks (two solo), 15 digs, and two service aces...notched her first kill and first two blocks as a Rainbow Wahine in UH's opener against Idaho (Aug. 28)...averaged 1.38 kills per set and 0.89 blocks per set for the season...missed the final 12 games after suffering a season-ending injury against UC Irvine (Oct. 17)...against the Anteaters, started at rightside hitter and recorded a career-match with seven kills, 13 digs, two service aces, and 10.5 points...hit 1.000 (5-0-5) against UC Davis (Oct. 16)...tallied a career-high four blocks in three matches—at UC Riverside (Oct. 3), and against San Diego State (Set. 10) and Iowa (Sept. 4)...recorded at least one kill in all but one match she appeared in this season.

**Prior to UH:** Redshirted her true freshman year before playing two stand-out seasons at Irvine Valley College in Irvine, Calif....was named the AVCA's Two-Year College National Player of the Year in both 2013 and '14...also earned AVCA All-America, all-region, all-state, and all-league honors in both seasons...in her freshman season, she helped lead the Lasers to a 24-2 overall record and their first State Championship since 2009 ...in the 2013 championship match, she recorded a team-high 20 kills with eight blocks and a .444 hitting percentage...was named conference Player of the Year in her first year ending the season ranked first in hitting percentage (.436) and blocks per set (1.61) while placing second in kills (309) and third in kills per set (3.64) as IVC went a perfect 14-0 in conference play...was just the second player from the California Community College Athletics Association to be named the AVCA College Player of the Year...as a sophomore, the six rotation middle hitter ended the season as the nation's leader with a .517 hitting percentage and was fourth in blocks per set (1.24)...was third on the team with 2.46 digs per set...the Lasers went a perfect 27-0...in the state championship game, she buried 24 kills, hit .488 while tallying six solo blocks and seven digs en route to being voted the state tournament MVP...named the Irvine Valley College Female Athlete of the Year...was coached by former Hawai'i men's volleyball All-American, Tom Pestolesi.

**Prep:** A 2012 graduate of Friendswood High School in Texas...earned all-state first team honors as a senior.

**Personal:** Born in Johnson City, Tennessee...majoring in sociology...has one older brother...parents are Kimberly Mitchem of Austin, Texas and Mark Mitchem of Friendswood, Texas.

## MITCHEM'S CAREER STATISTICS

Season	sp-mp	k	k/s	e	ta	pct	a	a/s	ta	ast%	sa	sa/s	se	ta	srv%
2015	37-18	51	1.38	14	118	.314	2	0.05	8	.250	2	0.05	4	11	.636
TOTAL	37-18	51	1.38	14	118	.314	2	0.05	8	.250	2	0.05	4	11	.636

Season	dig	d/s	re	ta	rec%	bs	ba	tb	b/s	be	bhe	points	pts/s
2015	15	0.41	0	1	1.000	2	31	33	0.89	3	0	70.5	1.89
TOTAL	15	0.41	0	1	1.000	2	31	33	0.89	3	0	70.5	1.89



## 2016 MATCH HIGHS

**ATTACK %:** .286 (13-5-28), Missouri State (9-1-16)

**KILLS:** 13 (2x), last Missouri St. (9/1/16)

**ATTEMPTS:** 44, Wisconsin (8/26/16)

**ASSISTS:**

**DIGS:** 5, Arizona (8/28/16)

**ACES:**

**BLOCKS:** 4, Pacific (9/2/16)

**BLOCK SOLO:**

**BLOCK ASSIST:** 4, Pacific (9/2/16)

**POINTS:** 14.5, Wisconsin (8/26/16)

# KIRSTEN SIBLEY

## Outside Hitter

## 6-2 • Freshman

## Lafayette, Calif./Campolindo HS

**Prep:** A 2016 graduate of Campolindo High School in Moraga, Calif....was a four-year varsity starter in indoor volleyball...was voted her league's Player of the Year in 2016...in her senior season, notched 325 kills, 241 digs and 73 blocks...among her many accomplishments and accolades are being selected to the 2013 and '14 USA Women's Junior A1 National Training Team Program and playing in the HP Championships in Tulsa, Okla. ...named one of the "Top 12 High School Volleyball Players of the Bay Area" by Sports Stars Magazine ...served as her team's captain the past two seasons...earned all-area and all-league honors in both 2013 and '14 and helped to lead Campolindo to three-straight league titles... a highly accomplished beach volleyball player, was selected to compete in the 2013 A-2 USA HP Select beach training championships in Hermosa Beach, Calif. and was invited to attend the HP Beach Holiday Camp and the HP Beach A-2 Select beach training and championships in Hermosa Calif. in 2011 and '12.

**Personal:** Plans to major in communications...has one older brother...parents are Marilyn and Tadd Sibley of Lafayette, Calif.

## SIBLEY'S GAME-BY-GAME STATISTICS

Date	Opponent	sp	attack			set			serve			recept			dig	blocking			bhe	points	team hit%	score
			k	e	ta	a	ta	pct	sa	se	ta	re	ta	pct		bs	ba	be				
Aug 26, 2016	WISCONSIN	4	13	8	44	0	0	.000	0	0	0	1	10	.900	2	0	3	0	3.0	14.5	.109	1-3
Aug 27, 2016	KANSAS STATE	3	4	2	15	0	0	.000	0	0	0	0	0	.000	0	0	1	0	1.0	4.5	.174	1-3
Aug 28, 2016	ARIZONA	5	7	5	24	0	0	.000	0	1	6	0	1	1.000	5	0	1	0	1.0	7.5	.292	3-2
Sep 01, 2016	MISSOURI STATE	3	13	5	28	0	0	.000	0	1	1	0	6	1.000	0	0	1	0	1.0	13.5	.312	3-0
Sep 02, 2016	PACIFIC	3	0	4	13	0	0	.000	0	0	0	1	6	.833	3	0	4	0	4.0	2.0	.241	3-0
Sep 03, 2016	UCLA	2	3	2	10	0	0	.000	0	0	0	0	8	1.000	4	0	0	0	0.0	3.0	.150	0-3
Totals		20	40	26	134	0	0	.000	0	2	7	2	31	.935	14	0	10	0	10.0	45.0		

Sets played: 20  
Kills per set: 2.00  
Digs per set: 0.70  
Blocks per set: 0.50  
Points per set: 2.25



## 2016 MATCH HIGHS

**ATTACK %:** .1000 (3-0-3), Wisconsin (8/26/16)

**KILLS:** 3, Wisconsin (8/26/16)

**ATTEMPTS:** 3, Wisconsin (8/26/16)

**ASSISTS:** 57, Arizona (8/28/16)

**DIGS:** 12, Pacific (9/2/16)

**ACES:** 4, Kansas State (8/27/16)

**BLOCKS:** 2, Missouri St. (9/1/16)

**BLOCK SOLO:** 1 (2x), last Missouri St. (9/1/16)

**BLOCK ASSIST:** 2 (3x), last Missouri State (9/1/16)

**POINTS:** 5.5, Wisconsin (8/26/16)

# NORENE IOSIA

## Setter

## 5-11 • Freshman

## Torrance, Calif./Redondo Union HS

**Prep:** A 2016 graduate of Redondo Union High School...earned four varsity letters in volleyball...helped to lead the Sea Hawks to four league titles and a pair of state championships in 2014 and 2015...earned national honors as a freshman and a junior...was named the Daily Breeze's Player of the year for 2013, '14, and '15...earned all-state DI Player of the Year honors in 2014 and '15...named the winner of the 2016 Andi Collins Award, which is given to the best senior setter in the nation...was named to the Junior Olympic All-America team for 15's, 17's, and 18's...named the Daily Breeze's girls volleyball Co-Athlete of the Year in 2015.

**Personal:** Plans to major in family resources...born in Torrance, Calif....played for the Mizuno Long Beach club volleyball team for 11 years...won a gold medal representing American Samoa at the 2015 Pacific Games in Papua New Guinea...has two sisters and three brothers...oldest sister Naomi played volleyball at Hope University for four seasons (2008-11)...parents are Marlene and Moe Iosia of Torrance, Calif.

## IOSIA'S GAME-BY-GAME STATISTICS

Date	Opponent	sp	attack			set			serve			recept			dig	blocking			bhe	points	team hit%	score
			k	e	ta	a	ta	pct	sa	se	ta	re	ta	pct		bs	ba	be				
Aug 26, 2016	WISCONSIN	2	3	0	3	22	68	.324	1	1	10	0	0	.000	3	1	1	0	2.0	5.5	.109	1-3
Aug 27, 2016	KANSAS STATE	3	0	0	0	21	76	.276	4	1	14	0	0	.000	7	0	0	0	0.0	4.0	.174	1-3
Aug 28, 2016	ARIZONA	5	0	0	2	57	127	.449	3	2	22	0	0	.000	9	0	2	0	2.0	4.0	.292	3-2
Sep 01, 2016	MISSOURI STATE	3	0	0	3	37	89	.416	2	1	18	0	1	1.000	11	1	2	0	3.0	4.0	.312	3-0
Sep 02, 2016	PACIFIC	3	1	0	2	29	68	.426	2	0	13	0	0	.000	12	0	1	0	1.0	3.5	.241	3-0
Sep 03, 2016	UCLA	2	2	0	2	26	77	.338	0	1	7	0	0	.000	8	0	2	1	2.0	3.0	.150	0-3
Totals		18	6	0	12	192	505	.380	12	6	84	0	1	1.000	60	2	8	1	10.0	24.0		

Sets played: 18  
Kills per set: 0.33  
Assists per set: 10.67  
Service aces per set: 0.67  
Digs per set: 2.76  
Blocks per set: 0.56  
Points per set: 1.33





# KALEI GREELEY

## Outside Hitter

6-2 • Junior

Riverside, Calif. • King HS



### 2016 MATCH HIGHS

**ATTACK %:** .278 (6-1-18), Kansas St.(8/27/16)

**KILLS:** 6, Kansas St.(8/27/16)

**ATTEMPTS:** 18, Kansas St.(8/27/16)

**ASSISTS:** 1 (2X), UCLA (9/3/16)

**DIGS:** 18, Kansas St. (8/27/16)

**ACES:** 1 (2X), last Kansas St. (8/27/16)

**BLOCKS:** 2, Kansas St. (8/27/16)

**BLOCK SOLO:** 1, Kansas St. (8/27/16)

**BLOCK ASSIST:** 1, Kansas St. (8/27/16)

**POINTS:** 8.5, Kansas St. (8/27/16)

### CAREER HIGHS

**ATTACK %:** .692, CSUN (10/9/15)

**KILLS:** 19, at UCSB (11/21/14)

**ATTEMPTS:** 49, UCLA (9/6/15)

**ASSISTS:** 2 (6x), last vs. Penn State (12/11/15)

**DIGS:** 18, Kansas St. (8/27/16)

**ACES:** 3, San Diego State (8/31/14)

**BLOCKS:** 5, UCLA (9/12/14)

**BLOCK SOLO:** 2, UCLA (9/12/14)

**BLOCK ASSIST:** 4 (4x), last at Long Beach State (11/6/15)

**POINTS:** 16.0, vs. TCU (10/4/15)

**2015 (Sophomore):** Started in 29 matches this season...earned all-Big West honorable mention honors...named to the Hawaiian Airlines Volleyball Classic all-tournament team...finished fourth on the team with 214 total kills with a career-high .260 hitting percentage for the year...tallied 205 digs, 47 total blocks, 18 service aces and 11 assists...helped lift UH to a five-set win against TCU (Dec. 4) with a season-high 16 kills to go with a career-high 17 digs for her third double-double of the season...also recorded double-doubles against Iowa (Sept. 4) 12K/11D and 11 kills 10 digs against then No.2 Florida (Sept. 11)...posted a career-high 29 hitting attempts vs. UCLA (Sept. 6)...recorded a career-high .692 hitting percentage against CSUN (Oct. 9)...notched double-digit kills in seven times and double-digit digs in eight matches this year.

**2014 (Freshman):** Saw action in all 29 games, with 26 starts...voted to the Big West Conference all-freshman team...named Big West Defensive Player of the Week (11/24)...had 10 kills and 13 digs in UH's NCAA second round match at Washington (12/6)...was third on the team with 264 kills to go along with 233 digs and 51 blocks...also tallied 17 assists and 19 service aces...had a career-high 19 kills against UC Santa Barbara (11/21) and a career-best hitting percentage of .433 vs San Diego State (8/31)...also had a career highs of five blocks vs UCLA and 16 digs against UC Irvine...posted 15 kills, three aces, and nine digs against San Diego State (8/31) in just her third career match.

**Prep:** A 2014 graduate of Martin Luther King HS in Riverside, Calif...lettered four seasons in volleyball...was named Press Enterprise HS Gametime Player of the Year in 2012 and first-team all-CIF in 2013...was a three-time first-team all-league selection...team won 2011 league title and was the state runner-up in 2012...academically earned a Presidential Award and was on the honor roll all four years.

**Personal:** Born in Riverside, Calif...played for Rancho Valley Volleyball Club for three years and three years at 951 Elite...majoring in psychology with a minor in English...her great-uncle, Jake Highland, was a member of the first U.S. Olympic men's volleyball team at the 1964 Tokyo Olympics...has five younger

### GREELEY'S GAME-BY-GAME STATISTICS

Date	Opponent	sp	k	e	ta	pct	a	ta	pct	sa	se	ta	pct	re	ta	pct	dig	bs	ba	be	total	bhe	points	hit%	score
Aug 26, 2016	WISCONSIN	4	0	0	0	.000	1	1	1.000	1	1	13	.923	0	11	1.000	7	0	0	0	0.0	0	1.0	.109	1-3
Aug 27, 2016	KANSAS STATE	4	6	1	18	.278	0	1	.000	1	1	13	.923	3	25	.880	18	1	1	0	2.0	0	8.5	.174	1-3
Aug 28, 2016	ARIZONA	5	2	3	8	-.125	0	2	.000	0	0	6	1.000	0	17	1.000	8	0	0	0	0.0	0	2.0	.292	3-2
Sep 01, 2016	MISSOURI STATE	3	0	0	0	.000	0	1	.000	0	0	3	1.000	0	6	1.000	6	0	0	0	0.0	0	0.0	.312	3-0
Sep 02, 2016	PACIFIC	3	0	0	0	.000	0	0	.000	0	0	0	.000	1	7	.857	0	0	0	0	0.0	0	0.0	.241	3-0
Sep 03, 2016	UCLA	3	0	0	3	.000	1	3	.333	0	0	0	.000	2	26	.923	3	0	0	0	0.0	0	0.0	.150	0-3
Totals		22	8	4	29	.138	2	8	.250	2	2	35	.943	6	92	.935	42	1	1	0	2.0	0	11.5		

Sets played: 22  
Kills per set: 0.36  
Assists per set: 0.09

Service aces per set: 0.09  
Digs per set: 1.91  
Blocks per set: 0.09

Points per set: 0.52

### GREELEY'S CAREER STATS

Season	sp-mp	k	k/s	e	ta	pct	a	a/s	ta	ast%	sa	sa/s	se	ta	srv%
2014	103-29	264	2.56	92	798	.216	17	0.17	135	.126	19	0.18	33	331	.900
2015	98-29	214	2.18	59	596	.260	11	0.11	63	.175	18	0.18	22	288	.924
2016	22-6	8	0.36	4	29	.138	2	0.09	8	.250	2	0.09	2	35	.943
TOTAL	223-64	486	2.18	155	1423	.233	30	0.13	206	.146	39	0.17	57	654	.913

Season	dig	d/s	re	ta	rec%	bs	ba	tb	b/s	be	bhe	points	pts/s
2014	233	2.26	22	548	.960	7	44	51	0.50	1	1	312.0	3.03
2015	205	2.09	16	473	.966	6	41	47	0.48	8	1	258.5	2.63
2016	42	1.91	6	92	.935	1	1	2	0.09	0	0	11.5	0.50
TOTAL	480	2.15	44	1113	.960	14	86	100	0.45	9	2	582.0	2.61





# GIANNA GUINASSO

## Libero/Defensive Specialist

5-9 • Junior

## Huntington Beach, Calif./Huntington Beach HS



**2015 (Sophomore):** Appeared in 23 matches...recorded 11 digs, four assists, and two aces on the season...tied her career-high of two digs three times, against Oregon State (Aug. 30), at Cal State Fullerton (Oct. 2) and at UC Riverside (Oct. 3).

**2014 (Freshman):** Played in 12 matches...posted three digs on the season in limited action had a season-high of two aces against San Diego State (9/31)...had an assist in UH's five-set win at UC Irvine (10/31).

**Prep:** A 2014 graduate of Huntington Beach High School in California...lettered in volleyball for four seasons and beach volleyball for two seasons...was a 2014 all-league selection and earned MVP honors in 2012...team advanced to three tournament finals her senior season and she was a two-time beach champion...played for TCA Volleyball Club for seven seasons.

**Personal:** Born in Newport Beach, Calif...in club volleyball, played three years for TStreet, two years for Surf City, and four years for TCA...is a pre-business major in marketing...has one younger brother...parents are Angelo and Cindy Guinasso of Huntington Beach, Calif.

### 2016 MATCH HIGHS

**ASSISTS:** 1, Pacific (9/2/16)

**DIGS:** 4, Wisconsin (8/26/16)

**SERVICE ACES:**

**POINTS:**

### CAREER HIGHS

**ATTACKS:** 1 (2x), last at UC Riverside (10/3/15)

**ASSISTS:** 1 (6x) last at Cal State Fullerton (10/2/15)

**DIGS:** 4, Wisconsin (8/26/16)

**SERVICE ACES:** 2, San Diego State (8/31/14)

**POINTS:** 1.0 (2x) last at CSUN (11/7/15)

### GUINASSO'S GAME-BY-GAME STATISTICS

Date	Opponent	sp	k	e	ta	pct	a	ta	pct	sa	se	ta	pct	re	ta	pct	dig	bs	ba	be	total	bhe	points	hit%	score
Aug 26, 2016	WISCONSIN	3	0	0	0	.000	0	1	.000	0	0	6	1.000	0	3	1.000	4	0	0	0	0.0	0	0.0	.109	1-3
Sep 01, 2016	MISSOURI STATE	2	0	0	0	.000	0	0	.000	0	0	4	1.000	0	0	.000	0	0	0	0	0.0	0	0.0	.312	3-0
Sep 02, 2016	PACIFIC	3	0	0	0	.000	1	1	1.000	0	0	10	1.000	0	0	.000	0	0	0	0	0.0	0	0.0	.241	3-0
Sep 03, 2016	UCLA	2	0	0	0	.000	0	0	.000	0	1	3	.667	0	0	.000	0	0	0	0	0.0	0	0.0	.150	0-3
Totals		10	0	0	0	.000	1	2	.500	0	1	23	.957	0	3	1.000	4	0	0	0	0.0	0	0.0		

Sets played: 10  
Assists per set: 0.10

Digs per set: 0.40

Points per set: 0.00

### GUINASSO'S CAREER STATS

Season	sp-mp	k	k/s	e	ta	pct	a	a/s	ta	ast%	sa	sa/s	se	ta	srv%
2014	25-12	0	0.00	0	0	.000	2	0.08	6	.333	3	0.12	4	70	.943
2015	22-19	0	0.00	1	2	-.500	4	0.18	8	.500	2	0.09	5	53	.906
2016	10-4	0	0.00	0	0	.000	1	0.10	2	.500	0	0.00	1	23	.957
TOTAL	57-35	0	0.00	1	2	-.500	7	0.12	16	.438	5	0.09	10	146	.932

Season	dig	d/s	re	ta	rec%	bs	ba	tb	b/s	be	bhe	points	pts/s
2014	3	0.12	0	2	1.000	0	0	0	0.00	0	0	3.0	0.12
2015	11	0.50	0	3	1.000	0	0	0	0.00	0	0	2.0	0.09
2016	4	0.40	0	3	1.000	0	0	0	0.00	0	0	0.0	0.00
TOTAL	18	0.32	0	8	1.000	0	0	0	0.00	0	0	5.0	0.09



# FAITH MA'AFALA

## Setter/Defensive Specialist

5-8 • RS Junior (Transfer)

## Honolulu, O'ahu / Southern Utah

**Prior to UH:** Played two seasons (2014-15) at Southern Utah...as a freshman in 2014, started all 29 matches for the Thunderbirds and led SUU with 1,147 assists while finishing third on the team with 275 digs (2.5 d/set)...set the Southern Utah all-time record with 63 assists against Idaho...recorded career highs of 21 digs against Idaho and four service aces vs. Grand Canyon...in her sophomore season, lead SUU with 756 assists and was third on the team with 213 digs...for her two year Thunderbird career, tallied 1,903 assists, 488 digs, 101 kills and 83 total blocks.

**Prep:** A 2014 graduate of Kamehameha Schools—Kapalama in Honolulu, O'ahu...bookended her prep career helping the Warriors win a state championship titles as a freshman in 2010 and a senior in '13...was a member of the National Honor Society and was on the school's honor roll.

**Personal:** Born in Denver, Colo....played for two seasons for the 'Imi 'Ike Volleyball Club...majoring in elementary education/behavioral assistance...has one older sister and two older brothers...older sister Jazmine also played for two seasons (2009-10) at Southern Utah...her uncle, Chris Fuamatu-Ma'afala played football at the University of Utah and later played in the NFL for the Pittsburgh Steelers (1998-2002) and Jacksonville Jaguars (2003-04)...parents are Benson and Caroline Ma'afala of Kapolei, O'ahu...father Benson played for the Rainbow Warrior football team in 1985.



## 2016 MATCH HIGHS

**ATTACK %:** .529 (21-3-34), Missouri St. (9/1/16)

**KILLS:** 22, Pacific (9/2/16)

**ATTEMPTS:** 56, UCLA (9/3/16)

**ASSISTS:** 1 (2x), last UCLA (9/3/16)

**DIGS:** 14, Pacific (9/2/16)

**ACES:** 4, Pacific (9/2/16)

**BLOCKS:** 4 (2x) last Pacific (9/2/16)

**BLOCK SOLO:**

**BLOCK ASSIST:** 4 (2x), last Pacific (9/2/16)

**POINTS:** 28.0, Pacific (9/3/16)

## CAREER HIGHS

**ATTACK %:** .857, UC Riverside 6-0-7 (Sept. 29, 2013)

**KILLS:** 27, Florida (9/11/15)

**ATTEMPTS:** 63, Florida (9/11/15)

**ASSISTS:** 3 (2x), UC Riverside (10/30/15)

**DIGS:** 21, at UC Santa Barbara (Nov. 21, 2014)

**ACES:** 4 (3x), last Pacific (9/2/16)

**BLOCKS:** 11, at Cal Poly (Nov. 22, 2014)

**BLOCK SOLO:** 1 (21x), last at UCSB (11/21/14)

**BLOCK ASSIST:** 10, at Cal Poly (Nov. 22, 2014)

**POINTS:** 31.5, Florida (9/11/16)

# NIKKI TAYLOR

## Opposite

6-4 • Senior

Honolulu, O'ahu • Kaiser HS



**2015 (U.S. National Team):** Was one of 12 athletes selected to represent the United States at the Pan American Games held in Santo Domingo, Dominican Republic...played in all seven matches played...led the U.S. team tallying a team-high 10 points with eight kills and two blocks to lead the team to a sweep over Cuba...also notched eight kills against Puerto Rico.

**2015 (Junior):** Started and played in 30 matches at opposite hitter...earned second team American Volleyball Coaches Association (AVCA) All-America Honors and AVCA Pacific North All-Region honors...selected Big West Player of the Year (the 24th overall Rainbow Wahine to earn conference Player of the Year honors)...earned third-straight all-Big West first team honors...received AVCA/Sports Imports and ESPNW National Player of the Week awards (Sept. 14) following an impressive performance at the Outrigger Resort Volleyball Challenge that included a career-best 27-kill performance against then-No. 2 Florida...became just the third player in UH history to be voted Big West Player of the Week five times in one season...named the Chevron Rainbow Wahine Invitational Most Outstanding Player; the Outrigger Resorts Volleyball Challenge's Most Outstanding Player; and to the Hawaiian Airlines Wahine Volleyball Classic All-Tournament team...finished the season ranked No. 5 in the NCAA and No. 1 in the league after averaging 5.48 points per set (kills + blocks + aces)...finished the season ranked in eight other NCAA categories: No. 16 with 4.46 kills per set (No. 1 in Big West); No. 20 with 575.5 total points (No. 1 in Big West); No. 27 with 0.42 aces per set (No. 1 in Big West); No. 38 with 44 service aces (No. 1 in Big West); No. 46 with 468 total kills (No. 1 in Big West); No. 104 with 1.10 blocks per set (No. 4 in Big West); No. 109 with 10.16 attacks per set; and No. 148 with 116 total blocks (No. 2 in Big West)...pounded a career-high 27 kills with a career-high 63 attacks against then-No. 2 Florida (Sept. 11)...also tallied a season-high 17 digs against the Gators in that match...led UH with six double-doubles for the season (Wichita State, Aug. 29 - 25K/11D; UCLA, Sept. 6 - 16K, 15D; Florida, Sept. 11 - 27K/17D; CSU Bakersfield, Sept. 20 - 20K/11D; at Long Beach State, Nov. 6 - 20K/14D; vs. TCU, Dec. 4 - 21K/12D...recorded double-digit kills in 26 matches—including 20 or more kills in nine matches...led UH in kills in 25 matches this season...had at least six kills and at least one block in every match she played this season...was second on the team with 220 digs, averaging 2.10 per set.

**2014 (Sophomore):** Saw action in 22 matches with 21 starts at outside hitter after missing the early part of the season with an elbow injury...earned first team all-Big West honors for the second time...named the Big West's Defensive Player of the Week (11/24)...against Cal Poly, became the first UH player in the rally scoring era to record a triple-double (10 kills, 10 digs, 11 blocks)...her 11 blocks was also a career high...had a total of 239 kills with a 2.99 k/s average...also added 12 assists and 13 service aces, in addition to 159 digs and 79 blocks...had a career-high 22 kills vs UC Santa Barbara (10/26) and a hitting percentage of .474 vs UC Davis (9/26)...had a career-high 21 digs at UC Santa Barbara (11/21)...posted double figures in kills in 13 matches with three double-doubles.

**2013 (Freshman):** Saw action in all 30 matches with 26 starts at outside hitter...named first team all-Big West and to the Big West all-freshman team...also earned honorable mention all-region honors...was second on the team with 284 kills for a .287 attack percentage...averaged 2.70 kills per set and recorded 81 total blocks...had 10 kills, six blocks, and two digs against No. 1 Texas, her first collegiate match...posted a season-high 20 kills vs. Cal State Fullerton (9/27)...had a season-high seven blocks vs. Long Beach State (11/2) to go along with 12 kills and eight digs...posted 15 kills, nine digs, and five blocks at UC Santa Barbara (11/9)...had 14 kills, six digs, and four blocks at Cal State Northridge (10/24)...belted 11 kills to along with eight digs and four blocks in UH's NCAA opening round match vs. Idaho State (12/6).

**Prep:** A 2013 graduate of Kaiser High School in Honolulu, O'ahu...lettered three seasons in volleyball...named to Volleyball Magazine's 2013 Girls' Fab 50...led Kaiser to a league title as a freshman.

**Personal:** Born in Honolulu, O'ahu...is majoring in communicology...played five seasons with 'Imi 'Ike Volleyball Club...has an older brother and a younger sister...brother Josh played volleyball at Pepperdine from 2012-15, earning AVCA second team All-America honors as a senior and all-conference honors in his final two seasons...parents are Graham and Kimberly Taylor of Honolulu, O'ahu...father Graham played basketball for the University of the Pacific from 1981-84.

## TAYLOR'S GAME-BY-GAME STATISTICS

Date	Opponent	sp	k	e	ta	pct	a	ta	pct	sa	se	ta	pct	re	ta	pct	dig	bs	ba	be	total	bhe	points	hit%	score
Sep 01, 2016	MISSOURI STATE	*3	21	3	34	.529	1	6	.167	2	2	12	.833	0	0	.000	11	0	4	0	4.0	0	25.0	.312	3-0
Sep 02, 2016	PACIFIC	*3	22	4	41	.439	0	3	.000	4	3	15	.800	1	1	.000	14	0	4	0	4.0	0	28.0	.241	3-0
Sep 03, 2016	UCLA	*3	17	14	56	.054	1	4	.250	3	1	14	.929	0	2	1.000	9	0	0	0	0.0	0	20.0	.150	0-3
		9	60	21	131	.298	2	13	.154	9	6	41	.854	1	3	.667	34	0	8	0	8.0	0	73.0		

Sets played: 9  
Kills per set: 6.67  
Assists per set: 0.22

Service aces per set: 1.00  
Digs per set: 3.78  
Blocks per set: 0.89

Points per set: 8.11

## TAYLOR'S CAREER STATS

Season	sp-mp	k	k/s	e	ta	pct	a	a/s	ta	ast%	sa	sa/s	se	ta	srv%
2013	105-30	284	2.70	104	627	.287	3	0.03	40	.075	8	0.08	11	120	.908
2014	80-22	239	2.99	98	657	.215	12	0.15	49	.245	13	0.16	27	252	.893
2015	105-30	468	4.46	179	1067	.271	20	0.19	75	.267	44	0.42	62	399	.845
2016	9-3	60	6.67	21	131	.298	2	0.22	13	.154	9	1.00	6	41	.854
TOTAL	299-85	1051	3.52	402	2482	.261	37	0.12	177	.209	74	0.25	106	812	.869

Season	dig	d/s	re	ta	rec%	bs	ba	tb	b/s	be	bhe	points	pts/s
2013	90	0.86	2	25	.920	3	78	81	0.77	3	0	334.0	3.18
2014	159	1.99	2	20	.900	7	72	79	0.99	8	0	295.0	3.69
2015	220	2.10	2	40	.950	11	105	116	1.10	9	0	575.5	5.48
2016	34	3.78	1	3	.667	0	8	8	0.89	0	0	73.0	8.11
TOTAL	503	1.68	7	88	.920	21	263	284	0.95	20	0	1277.5	4.27



# SAVANAH KAHAKAI

## Libero/Defensive Specialist

5-8 • Junior

Honolulu, O'ahu • Farrington HS



### 2016 MATCH HIGHS

**ASSISTS:** 5 (2x), last Missouri State (9/1/16)

**DIGS:** 23 (2x), last Arizona (8/28/16)

**SERVICE ACES:** 2, Arizona (8/28/16)

**POINTS:** 2.0 Arizona (8/28/16)

### CAREER HIGHS

**KILLS:** 2, San Diego St. (Aug. 31, 2014)

**TOTAL ATTEMPTS:** 5, San Diego State (Aug. 31, 2014)

**ASSISTS:** 8, Florida (9/11/15)

**DIGS:** 23 (4x), last vs. Arizona (8/28/16)

**SERVICE ACES:** 3, UC Riverside (10/30/15)

**BLOCKS:** 1, San Diego State (Aug. 31, 2014)

**POINTS:** 4.0, San Diego State (8/31/14)

**2015 (Sophomore):** Started as the libero in all 31 matches this season and played 107-of-109 sets this year...earned all-Big West honorable mention honors...named Big West Player of the Week on Sept. 14 after leading UH in digs in all three of Hawaii's victories the previous week racking up 42 including a career-high 19 digs in Hawaii's five-set takedown of the then-No. 2 Florida...raised her career-high to 23 digs which she recorded twice this season against CSU Bakersfield (Sept. 18) and against TCU (Dec. 4) in the first round of the NCAA Tournament...tallied a career-high 23 serves and posted a career-high three service aces against UC Riverside (Oct. 30)...led the team with 424 digs overall and averaged 3.96 digs per set...recorded a career-high 14 aces on the season...was third on the team with 92 assists...tallied double-digit digs in 25 matches.

**2014 (Freshman):** Played in 21 matches with three starts...posted 161 digs on the season for an average of 2.04 digs per set...tallied 13 service aces on the season...had a career-high 17 digs vs. Cal State Fullerton (11/1)...matched career-high of two aces vs. Cal Poly (11/22)...had a career-high of three assists vs. UC Irvine (10/31)...contributed five digs in UH's NCAA Tournament first round win vs. Duke (12/5)...recorded 15 digs against UC Santa Barbara (10/26)

**Prep:** A 2014 graduate of Farrington HS in Honolulu, O'ahu...named first-team all-state in 2013 and earned second-team honors in 2011 and '12...team won 2012 league title...played for 'Ime 'Ike Volleyball Club.

**Personal:** Born in Honolulu, O'ahu...played for 'Imi 'Ike Volleyball Club...is majoring in family resources...has four sisters and two brothers...parents are Talbot and Aleka Kahakai of Honolulu, O'ahu.

### KAHAKAI'S GAME-BY-GAME STATISTICS

Date	Opponent	sp	k	e	ta	pct	a	ta	pct	sa	se	ta	pct	re	ta	pct	dig	bs	ba	be	total	bhe	points	team	hit%	score
Aug 26, 2016	WISCONSIN	4	0	0	0	.000	1	7	.143	0	0	9	1.000	2	31	.935	23	0	0	0	0	0	0	0	0	1-3
Aug 27, 2016	KANSAS STATE	4	0	0	0	.000	5	15	.333	0	2	15	.867	2	38	.947	21	0	0	0	0	0	0	0	0	1-3
Aug 28, 2016	ARIZONA	5	0	0	0	.000	3	15	.200	2	1	22	.955	1	25	.960	23	0	0	0	0	0	0	2	0	3-2
Sep 01, 2016	MISSOURI STATE	3	0	0	0	.000	5	9	.556	0	2	12	.833	0	22	1.000	15	0	0	0	0	0	0	0	0	3-0
Sep 02, 2016	PACIFIC	3	0	0	0	.000	4	13	.308	0	1	13	.923	2	16	.875	6	0	0	0	0	0	0	0	0	3-0
Sep 03, 2016	UCLA	3	0	0	0	.000	3	12	.250	0	0	9	1.000	0	16	1.000	19	0	0	0	0	0	0	0	0	0-3
Totals		22	0	0	0	.000	21	71	.296	2	6	80	.925	7	148	.953	107	0	0	0	0	0	2	0	0	

Sets played: 22  
Assists per set: 0.95

Service aces per set: 0.09  
Digs per set: 4.86

Points per set: 0.09

### KAHAKAI'S CAREER STATS

Season	sp-mp	k	k/s	e	ta	pct	a	a/s	ta	ast%	sa	sa/s	se	ta	srv%
2014	79-21	2	0.03	0	10	.200	26	0.33	134	.194	13	0.16	14	269	.948
2015	107-31	2	0.02	1	7	.143	92	0.86	326	.282	14	0.13	24	421	.943
2016	22-6	0	0.00	0	0	.000	21	0.95	71	.296	2	0.09	6	80	.925
TOTAL	208-58	4	0.02	1	17	.176	139	0.67	531	.262	29	0.14	44	770	.943

Season	dig	d/s	re	ta	rec%	bs	ba	tb	b/s	be	bhe	points	pts/s
2014	161	2.04	7	258	.973	1	0	1	0.01	1	0	16.0	0.20
2015	424	3.96	13	529	.975	0	0	0	0.00	0	3	16.0	0.15
2016	107	4.86	7	148	.953	0	0	0	0.00	0	0	2.0	0.09
TOTAL	692	3.33	27	935	.971	1	0	1	0.00	1	3	34.0	0.16



# RIKA OKINO

## Defensive Specialist

5-5 • Freshman

Honolulu, O'ahu • Kalani HS



**Prep:** A 2016 graduate of Kalani High School in Honolulu, O'ahu...earned four varsity letters in volleyball...earned all-league honorable mention honors as a freshman and sophomore and first and second all-league honors as a junior and senior respectively...was a valedictorian for the Class of 2016 at Kalani High School and was an Honor Graduate...was on the Principal's List all four years and a member of the National Honor Society for three years.

**Personal:** Plans to major in civil engineering...born in Honolulu, O'ahu...played for five seasons for the Rainbow Volleyball Club Hawaii...has one older sister...parents are Junko and Landon Okino of Honolulu, O'ahu.





# CASEY CASTILLO

Outside Hitter

6-3 • Sophomore

Oceanside, Calif. • Santa Fe Christian Schools



**2015 (Freshman):** Appeared in 19 matches...finished her rookie campaign with four kills, four blocks, two digs and a service ace...recorded her first collegiate kill and block against CSU Bakersfield (Sept. 20)...notched a career-high two kills against UC Riverside (Oct. 3) and a career-high two blocks against UC Irvine (Oct. 17).

**Prep:** A 2015 graduate of Santa Fe Christian Schools in Solana Beach, California...lettered four seasons in indoor volleyball...a four-year member of Wave Volleyball Club...named to Prepvolleyball.com Top 50 Class of 2015 prospect list.

**Personal:** Born in Encinitas, Calif...played for Wave Volleyball Club for four years...is a pre-psychology major...has two older brothers...parents are Fransisco and Heather Castillo of Oceanside, Calif.

## 2016 MATCH HIGHS

**ATTACK %:** .667 (6-0-9), UCLA (9/3/16)

**KILLS:** 6 (2x), last UCLA (9/3/16)

**ATTEMPTS:** 18, Arizona (8/28/16)

**DIGS:** 1 (2x), last Arizona (8/28/16)

**BLOCKS:** 4, Missouri State (9/1/16)

**BLOCK ASSIST:** 4, Missouri State (9/1/16)

**BLOCK SOLO:** 1, Arizona (8/28/16)

**POINTS:** 7.5, Arizona (8/28/16)

## CAREER HIGHS

**ATTACK %:** .667 (6-0-9), UCLA (9/3/16)

**KILLS:** 6 (2x), last UCLA (9/3/16)

**ATTEMPTS:** 18, Arizona (8/28/16)

**DIGS:** 1 (4x), last Arizona (8/28/16)

**SERVICE ACES:** 1, at Cal St Fullerton (10/2/15)

**BLOCKS:** 4, Missouri State (9/1/16)

**BLOCK ASSIST:** 4, Missouri State (9/1/16)

**BLOCK SOLO:** 1, Arizona (8/28/16)

**POINTS:** 7.5, Arizona (8/28/16)

## CASTILLO'S GAME-BY-GAME STATISTICS

Date	Opponent	sp	k	e	ta	pct	a	ta	pct	sa	se	ta	pct	re	ta	pct	dig	bs	ba	be	total	bhe	points	team hit%	score
Aug 26, 2016	WISCONSIN	*3	2	1	7	.143	0	1	.000	0	1	2	.500	0	1	1.000	1	0	3	0	3.0	0	3.5	.109	1-3
Aug 27, 2016	KANSAS STATE	1	0	0	1	.000	0	0	.000	0	0	0	.000	0	0	.000	0	0	0	0	0.0	0	0.0	.174	1-3
Aug 28, 2016	ARIZONA	*5	6	2	18	.222	0	1	.000	0	0	0	.000	0	1	1.000	1	1	1	1	2.0	0	7.5	.292	3-2
Sep 01, 2016	MISSOURI STATE	*3	2	0	7	.286	1	1	1.000	0	0	0	.000	0	0	.000	0	0	4	1	4.0	0	4.0	.312	3-0
Sep 02, 2016	PACIFIC	*3	1	1	3	.000	0	0	.000	0	0	0	.000	0	1	1.000	0	0	2	0	2.0	0	2.0	.241	3-0
Sep 03, 2016	UCLA	*3	6	0	9	.667	0	1	.000	0	0	0	.000	0	1	1.000	0	0	1	0	1.0	0	6.5	.150	0-3
Totals		18	17	4	45	.289	1	4	.250	0	1	2	.500	0	4	1.000	2	1	11	2	12.0	0	23.5		

Sets played: 18  
Kills per set: 0.94  
Assists per set: 0.06

Digs per set: 0.11  
Blocks per set: 0.67

Points per set: 1.31

## CASTILLO'S CAREER STATISTICS

Season	sp-mp	k	k/s	e	ta	pct	a	a/s	ta	ast%	sa	sa/s	se	ta	srv%
2015	23-19	4	0.17	3	14	.071	0	0.00	2	.000	1	0.04	2	13	.846
2016	18-6	17	0.94	4	45	.289	1	0.06	4	.250	0	0.00	1	2	.500
TOTAL	41-25	21	0.51	7	59	.237	1	0.02	6	.167	1	0.02	3	15	.800

Season	dig	d/s	re	ta	rec%	bs	ba	tb	b/s	be	bhe	points	pts/s
2015	2	0.09	5	25	.800	0	4	4	0.17	0	0	7.0	0.30
2016	2	0.11	0	4	1.000	1	11	12	0.67	2	0	23.5	1.28
TOTAL	4	0.10	5	29	.828	1	15	16	0.39	2	0	30.5	0.73



# EMILY MAGLIO

## Middle Hitter

6-3 • Junior

Coquitlam, British Columbia, Canada

Pinetree Secondary School



### 2016 MATCH HIGHS

**ATTACK %:** .500 (6-1-10), Pacific (9/2/16)

**KILLS:** 12 (3x), last UCLA (9/3/16)

**ATTEMPTS:** 34, Wisconsin (8/26/16)

**ASSISTS:** 1, Kansas St. (8/27/16)

**DIGS:** 4, Kansas St. (8/27/16)

**BLOCKS:** 9, Pacific (9/2/16)

**BLOCK ASSIST:** 8, Pacific (9/2/16)

**BLOCK SOLO:** 1 (2x), Pacific (9/2/16)

**POINTS:** 14.0, UCLA (9/3/16)

### CAREER HIGHS

**ATTACK %:** 1.000, at CSUN 5-0-5, (Nov. 7, 2015)

**KILLS:** 13, vs. TCU (12/4/15)

**ATTEMPTS:** 34, Wisconsin (8/26/16)

**ASSISTS:** 1 (6x), last Kansas St. (8/27/16)

**DIGS:** 5, at UC Davis (11/15/15)

**BLOCKS:** 9, Pacific (9/2/16)

**BLOCK ASSIST:** 8, Pacific (9/2/16)

**BLOCK SOLO:** 1 (8x), Pacific (9/2/16)

**POINTS:** 15.0, vs. TCU (10/17/15)

**2015 (Sophomore):** Appeared in 30 matches with 29 starts at middle hitter...had a breakout sophomore season, earning first team all-Big West honors...finished the season ranked second on in the Big West and on the team and No. 34 in the NCAA with a .384 hitting percentage overall...she was also ranked No. 3 in the league with 1.13 blocks per set which was ranked at No. 93 in the NCAA...overall recorded 184 kills in 367 swings while averaging 1.98 kills per set...in conference matches only, led the Big West with a .438 hitting percentage (104-19-194)...recorded a career-high 13 kills in UH's NCAA first round, five set win over TCU (Dec. 4) in College Station, Texas...hit a perfect 1.000 hitting percentage (5-0-5) at CSUN (Nov. 7)...hit .769 at UC Santa Barbara in the season finale (Nov. 21) with 10 kills and no errors in 13 attempts...notched a career-high seven blocks three time this season—against UC Irwindale (Oct. 17) and in both matches against UC Riverside (Oct. 3 and Oct. 30)...tallied a career-high five digs against UC Davis (Nov. 15)...had eight matches with zero hitting errors...recorded at least one kill in every match she played this season...notched double-digit kills in five matches overall.

**2014 (Freshman):** Played in 14 matches...for the season, recorded 10 kills, eight blocks, two assists, and two digs...had a monster game at eventual league champion Long Beach State (10/11) posting a season-high five kills (.308) along with four blocks...saw action in UH's NCAA second round match at Washington (12/6)

**Prep:** A 2014 graduate of Pinetree Secondary School in Coquitlam, British Columbia...lettered three seasons in volleyball and two in basketball...was named her volleyball team's Most Valuable Player her senior season as well as Pinetree High School's Female Athlete of the Year for 2014.

**Personal:** Born in Cranbrook, British Columbia...majoring in animal sciences and aims to become a veterinarian...played for the Coquitlam Ducks volleyball club for four seasons and her team won the B.C. provincial championship in 2012, '13, and '14 and the Canadian Nationals in 2012...was a two-time Canadian Nationals All-Star selection...played hockey for eight years (grade 2-9)...has one older brother...parents are Tony and Roberta Maglio of Coquitlam, British Columbia.

### MAGLIO'S GAME-BY-GAME STATISTICS

Date	Opponent	sp	mp	a	e	ta	pct	a	a/s	ta	ast%	sa	sa/s	se	ta	srv%	pts	pts/s
Aug 26, 2016	WISCONSIN	4	12	3	34	.262	0	2	.000	0	1	9	.000	0	0	.000	4	13.5
Aug 27, 2016	KANSAS STATE	4	8	1	30	.233	1	4	.250	0	0	9	1.000	0	0	.000	4	10.5
Aug 28, 2016	ARIZONA	5	12	1	26	.423	0	2	.000	0	1	7	.000	0	0	.000	2	13.5
		13	32	5	90	.300	1	8	.125	0	2	25	.920	0	0	.000	10	37.5

Sets played: 13  
Kills per set: 2.46  
Assists per set: 0.08  
Digs per set: 0.77  
Blocks per set: 0.77  
Points per set: 2.88

### MAGLIO'S CAREER STATISTICS

Season	sp-mp	k	k/s	e	ta	pct	a	a/s	ta	ast%	sa	sa/s	se	ta	srv%
2014	22-14	10	0.45	2	25	.320	2	0.09	3	.667	0	0.00	0	0	.000
2015	93-30	184	1.98	43	367	.384	3	0.03	13	.231	0	0.00	0	1	1.000
2016	22-6	54	2.45	10	143	.308	1	0.05	11	.091	0	0.00	2	27	.926
TOTAL	137-50	248	1.81	55	535	.361	6	0.04	27	.222	0	0.00	2	28	.929

Season	dig	d/s	re	ta	rec%	bs	ba	tb	b/s	be	bhe	points	pts/s
2014	2	0.09	1	4	.750	0	8	8	0.36	0	0	14.0	0.64
2015	24	0.26	3	10	.700	6	99	105	1.13	7	1	239.5	2.57
2016	13	0.59	0	1	1.000	2	25	27	1.23	4	0	68.5	3.09
TOTAL	39	0.28	4	15	.733	8	132	140	1.02	11	1	322.0	2.35



## 2016 MATCH HIGHS

**ATTACK %:** .429 (7-1-14), Arizona (8/28/16)

**KILLS:** 7.0, vs. Arizona (8/28/16)

**ATTEMPTS:** 16, Arizona (8/28/16)

**DIGS:** 5, Arizona (8/28/16)

**BLOCKS:** 4, Kansas St. (8/27/16)

**POINTS:** 7.0, vs. Arizona (8/28/16)

# McKENNA ROSS

## Defensive Specialist

## 5-10 • Freshman

## Aliso Viejo, Calif./Aliso Niguel HS



**Prep:** A 2016 graduate of Aliso Niguel High School in Aliso Viejo, Calif....earned three varsity letters in indoor volleyball...helped to lead the Wolverines to a 2014 state championship...earned second team all-league honors as a sophomore and junior and was named a first team all-league player as a senior...earned all-state honorable mention honors.

**Personal:** Plans to major in public health...born in Aliso Viejo, Calif....played for Laguna Beach volleyball club for seven seasons...has one older sister and one younger sister...older sister Kyla won a gold medal at both the artistic gymnastics team competition at the 2012 Summer Olympics in London and the 2014 World Gymnastic Championships in Nanning, China...her aunt, Nohea Tano Laboy played three seasons at middle blocker/outside hitter for the Rainbow Wahine volleyball team (2001-03)...parents are Jason and Kiana Ross of Aliso Viejo, Calif.... father Jason played both football (1993-94) and baseball (1994-96) at the Univeristy of Hawai'i, he was drafted by the Atlanta Braves in the 13th round of the 1996 MLB Draft and played in the Braves' farm system from 1996-2001 finishing his career with the Triple A Richmond Braves of the International League.

## ROSS' GAME-BY-GAME STATISTICS

Date	Opponent	sp	attack				set			serve				recept			dig	blocking				team			
			k	e	ta	pct	a	ta	pct	sa	se	ta	pct	re	ta	pct		bs	ba	be	total	bhe	points	hit%	score
Aug 28, 2016	ARIZONA	3	7	1	14	.429	0	0	.000	0	0	1	1.000	0	0	.000	5	0	0	0	0.0	0	7.0	.292	3-2
Sep 02, 2016	PACIFIC	1	0	1	2	-.500	0	0	.000	0	0	0	.000	0	0	.000	0	0	0	0	0.0	0	0.0	.241	3-0
Sep 03, 2016	UCLA	1	0	0	0	.000	0	0	.000	0	0	0	.000	0	1	1.000	2	0	0	0	0.0	0	0.0	.150	0-3
		5	7	2	16	.312	0	0	.000	0	0	1	1.000	0	1	1.000	7	0	0	0	0.0	0	7.0		

Sets played: 5  
Kills per set: 1.40

Digs per set: 1.40

Points per set: 1.40



# 2016 OVERALL STATISTICS

Overall record: 3-2 Conf: 0-0 Home: 3-2 Away: 0-0 Neutral: 0-0

##	Player	sp	Attack					Set		Serve			Dig		Blocking							points
			k	k/s	e	ta	pct	a	a/s	sa	se	sa/s	re	dig	dig/s	bs	ba	total	blk/s	be	bhe	
3	Granato, McKenna	19	67	3.53	28	200	.195	2	0.11	2	10	0.11	5	35	1.84	1	4	5	0.26	0	0	72.0
14	Taylor, Nikki	6	43	7.17	7	75	.480	1	0.17	6	5	1.00	1	25	4.17	0	8	8	1.33	0	0	53.0
19	Maglio, Emily	19	42	2.21	8	113	.301	1	0.05	0	2	0.00	0	11	0.58	2	21	23	1.21	4	0	54.5
9	Sibley, Kirsten	18	37	2.06	24	124	.105	0	0.00	0	2	0.00	2	10	0.56	0	10	10	0.56	0	0	42.0
2	Koelsch, Kendra	11	12	1.09	9	53	.057	3	0.27	0	1	0.00	0	4	0.36	0	5	5	0.45	0	0	14.5
17	Castillo, Casey	15	11	0.73	4	36	.194	1	0.07	0	1	0.00	0	2	0.13	1	10	11	0.73	2	0	17.0
6	Burns, Natasha	7	10	1.43	5	28	.179	1	0.14	0	0	0.00	1	2	0.29	1	5	6	0.86	0	0	13.5
11	Greeley, Kalei	19	8	0.42	4	26	.154	1	0.05	2	2	0.11	4	39	2.05	1	1	2	0.11	0	0	11.5
20	Ross, McKenna	4	7	1.75	2	16	.312	0	0.00	0	0	0.00	0	5	1.25	0	0	0	0.00	0	0	7.0
10	Iosia, Norene	16	4	0.25	0	10	.400	166	10.38	12	5	0.75	0	42	2.62	2	6	8	0.50	0	1	21.0
7	Higgins, Tayler	8	1	0.12	2	4	-.250	38	4.75	2	3	0.25	0	11	1.38	0	3	3	0.38	1	0	4.5
15	Kahakai, Savanah	19	0	0.00	0	0	.000	18	0.95	2	6	0.11	7	88	4.63	0	0	0	0.00	0	0	2.0
5	Smith, Emma	10	0	0.00	0	0	.000	1	0.10	1	2	0.10	0	15	1.50	0	0	0	0.00	0	0	1.0
1	Ponce, Katiana	3	0	0.00	0	0	.000	0	0.00	0	0	0.00	0	1	0.33	0	0	0	0.00	0	0	0.0
4	Anderson, Clare	15	0	0.00	0	0	.000	0	0.00	0	1	0.00	1	11	0.73	0	0	0	0.00	0	0	0.0
12	Guinasso, Gianna	8	0	0.00	0	0	.000	1	0.12	0	0	0.00	0	4	0.50	0	0	0	0.00	0	0	0.0
HAWAII		19	242	12.74	93	685	.218	234	12.32	27	40	1.42	22	305	16.05	8	73	44.5	2.34	7	1	313.5
Opponents		19	256	13.47	96	700	.229	248	13.05	22	58	1.16	27	296	15.58	4	72	40.0	2.11	4	0	318.0

Team Statistics	UH	OPP
ATTACK		
Kills	242	256
Errors	93	96
Total Attacks	685	700
Attack Pct	.218	.229
Kills/Set	12.7	13.5
SET		
Assists	234	248
Attempts	680	695
Assist Pct	.344	.357
Assists/Set	12.3	13.1
SERVE		
Aces	27	22
Errors	40	58
Attempts	426	418
Serve Pct	.906	.861
Aces/Set	1.4	1.2
SERVE RECEPTIONS		
Errors	22	27
Errors/Set	1.2	1.4
Attempts	359	386
Reception Pct	.939	.930
DEFENSE		
Digs	305	296
Digs/Set	16.1	15.6
BLOCKING		
Block Solo	8	4
Block Assist	73	72
Total Blocks	44.5	40.0
Blocks/Set	2.3	2.1
Block Errors	7	4
Ball handling errors	1	0
ATTENDANCE		
Total	31428	0
Dates/Avg Per Date	5/6286	0/0
Neutral site #/Avg	0/0	
Current win streak	3	-
Home win streak	3	-

Date	Opponent	Score	Score by set	Att.
Aug 26	#4 WISCONSIN	L 1-3	16-25,16-25,26-24,23-25	7344
Aug 27	KANSAS STATE	L 1-3	25-19,28-30,22-25,20-25	6463
Aug 28	ARIZONA	W 3-2	15-25,23-25,25-18,25-19,15-13	5906
Sep 01	MISSOURI STATE	W 3-0	25-16,25-22,25-22	5604
Sep 02	PACIFIC	W 3-0	25-15,25-18,25-23	6111

Record in 3-set matches:2-0 • Record in 4-set matches:0-2 • Record in 5-set matches:1-0

## 2016 RESULTS

Date	Opponent		Score	Score-by-set	Overall	Conf	Time	Att.
Aug 26	#4 WISCONSIN	L	1-3	16-25,16-25,26-24,23-25	0-1	0-0	2:25	7344
Aug 27	KANSAS STATE	L	1-3	25-19,28-30,22-25,20-25	0-2	0-0	2:31	6463
Aug 28	ARIZONA	W	3-2	15-25,23-25,25-18,25-19,15-13	1-2	0-0	2:44	5906
Sep 01	MISSOURI STATE	W	3-0	25-16,25-22,25-22	2-2	0-0	1:41	5604
Sep 02	PACIFIC	W	3-0	25-15,25-18,25-23	3-2	0-0	1:26	6111
Sep 03	#8 UCLA	L	0-3	23-25,22-25,22-25	3-3	0-0	1:51	8503

Team Record	W-L-T	Attend	Dates	Total	Avg.
Overall:	3-3	Total:	6	39931	6655
Conference:	0-0	Home:	6	39931	6655
Home:	3-3	Away:	0	0	0
Away:	0-0	Neutral:	0	0	0
Neutral:	0-0				
3 sets:	2-1				
4 sets:	0-2				
5 sets:	1-0				

## 2016 COMPARISON

Date	Opponent	Score	Kills	Errors	TA	Hit%	Assists	SA	SE	RE	Digs	Blocks	BS	BA	BE	BHE
Aug 26, 2016	WISCONSIN	1-3	42 / 64	25 / 21	156 / 162	.109 / .265	39 / 62	2 / 4	7 / 14	4 / 2	64 / 72	11.5 / 8.0	2 / 0	19 / 16	3 / 0	0 / 0
Aug 27, 2016	KANSAS STATE	1-3	52 / 62	22 / 24	172 / 173	.174 / .220	52 / 60	8 / 6	8 / 11	6 / 8	75 / 83	8.0 / 12.0	3 / 3	10 / 18	0 / 0	0 / 0
Aug 28, 2016	ARIZONA	3-2	67 / 62	20 / 18	161 / 161	.292 / .273	65 / 61	5 / 5	10 / 12	5 / 5	74 / 63	5.0 / 9.0	1 / 0	8 / 18	2 / 3	1 / 0
Sep 01, 2016	MISSOURI STATE	3-0	46 / 36	12 / 17	109 / 111	.312 / .171	44 / 34	5 / 2	10 / 6	2 / 5	51 / 46	9.0 / 4.0	1 / 1	16 / 6	1 / 0	0 / 0
Sep 02, 2016	PACIFIC	3-0	35 / 32	14 / 16	87 / 93	.241 / .172	34 / 31	7 / 5	5 / 15	5 / 7	41 / 32	11.0 / 7.0	1 / 0	20 / 14	1 / 1	0 / 0
Sep 03, 2016	UCLA	0-3	46 / 43	25 / 17	140 / 132	.150 / .197	44 / 41	3 / 2	4 / 1	2 / 3	64 / 57	6.0 / 9.0	1 / 1	10 / 16	1 / 2	0 / 0

Note: Match totals are displayed in the format TEAM/OPPONENT for each category

## 2016 TEAM MATCH-BY-MATCH

Date	Opponent	sp	attack			set			serve				recept			dig	blocking				bhe	points	score	
			k	e	ta	pct	a	ta	pct	sa	se	ta	pct	re	ta		pct	bs	ba	be				total
Aug 26, 2016	WISCONSIN	4	42	25	156	.109	39	153	.255	2	7	82	.915	4	85	.953	64	2	19	3	11.5	0	55.5	1-3
Aug 27, 2016	KANSAS STATE	4	52	22	172	.174	52	170	.306	8	8	95	.916	6	87	.931	75	3	10	0	8.0	0	68.0	1-3
Aug 28, 2016	ARIZONA	5	67	20	161	.292	65	164	.396	5	10	102	.902	5	89	.944	74	1	8	2	5.0	1	77.0	3-2
Sep 01, 2016	MISSOURI STATE	3	46	12	109	.312	44	106	.415	5	10	74	.865	2	55	.964	51	1	16	1	9.0	0	60.0	3-0
Sep 02, 2016	PACIFIC	3	35	14	87	.241	34	87	.391	7	5	73	.932	5	43	.884	41	1	20	1	11.0	0	53.0	3-0
Sep 03, 2016	UCLA	3	46	25	140	.150	44	142	.310	3	4	69	.942	2	73	.973	64	1	10	1	6.0	0	55.0	0-3
Hawaii		22	288	118	825	.206	278	822	.338	30	44	495	.911	24	432	.944	369	9	83	8	50.5	1	368.5	
		22	299	113	832	.224	289	826	.350	24	59	492	.880	30	451	.933	353	5	88	6	49.0	0	372.0	

Sets played: 22  
Kills per set: 13.09  
Assists per set: 12.64

Service aces per set: 1.36  
Digs per set: 16.77  
Blocks per set: 2.30

Points per set: 16.75  
Ball handling errors per set: 0.05  
Reception errors per set: 1.09

NCAA RANKING SUMMARY / BIG WEST STANDINGS / BIG WEST PLAYERS OF THE WEEK

Statistic	National Rank	Conference Rank	Value	National Leader	Value	Conference Leader	Value
Aces Per Set (329 ranked)	138	5	1.36	Oral Roberts	2.74	Cal St. Fullerton	1.71
Assists Per Set (329 ranked)	75	3	12.64	St. Mary's (CA)	20.36	UC Riverside	13.55
Blocks Per Set (329 ranked)	84	3	2.30	St. Mary's (CA)	4.04	UC Santa Barbara	2.82
Digs Per Set (329 ranked)	37	3	16.77	St. Mary's (CA)	23.71	UC Riverside	18.05
Hitting Percentage (329 ranked)	157	5	0.206	Oklahoma	0.368	Long Beach St.	0.240
Kills Per Set (329 ranked)	112	5	13.09	St. Mary's (CA)	22.29	UC Riverside	14.45
Match W-L Pctg. (303 ranked)	150	3	0.500	26 teams tied	1.000	UC Santa Barbara	0.714
Opp Hitting Percentage (329 ranked)	234	6	0.224	Towson	0.019	UC Davis	0.160
Team Assists (329 ranked)	130	6	278	Butler	425	UC Santa Barbara	314
Team Attacks Per Set (329 ranked)	35	4	37.50	St. Mary's (CA)	58.50	UC Riverside	42.20
Team Digs (329 ranked)	108	4	369	Drake	575	UC Santa Barbara	416
Team Kills (329 ranked)	159	7	288	Butler	446	UC Santa Barbara	346
Team Service Aces (329 ranked)	145	5	30	Belmont	65	Cal St. Fullerton	41
Team Total Attacks (329 ranked)	142	5	825	Omaha	1,209	UC Santa Barbara	967
Team Total Blocks (328 ranked)	113	2	50.5	Western Caro.	81.0	UC Santa Barbara	70.5

Statistic	Player	National Rank	Conference Rank	Value	National Leader	Value	Conference Leader	Value
Aces Per Set (150 ranked)	Norene Iosia	7	1	0.67	Laura Milos, Oral Roberts	1.24	Norene Iosia, Hawaii	0.67
Assists Per Set (150 ranked)	Norene Iosia	49	2	10.67	Jessica Lucas, Western Ky.	12.71	Taylor Nelson, Cal Poly	11.00
Attacks Per Set (150 ranked)	Mckenna Granato	80	6	10.41	Katie Staiger, Baylor	13.87	Lindsey Ruddins, UC Santa Barbara	12.64
Blocks Per Set (150 ranked)	Emily Maglio	88	2	1.23	Sydnye Fields, North Carolina	2.63	Kelechi Ohiri, UC Davis	1.40
Digs Per Set (150 ranked)	Savanah Kahakai	53	2	4.86	Arden Fisher, Robert Morris	6.16	Heather Reed, UC Davis	5.05
Hitting Percentage (150 ranked)					Emma Hagedorn, UMKC	0.529	Yizhi Xue, Long Beach St.	0.468
Kills Per Set (149 ranked)					Laura Milos, Oral Roberts	6.00	Lindsey Ruddins, UC Santa Barbara	4.80
Kills SG Highs (28 ranked)					Anna Logan, Butler	162	Lindsey Ruddins, UC Santa Barbara	120
Points (150 ranked)					Anna Logan, Butler	183.0	Lindsey Ruddins, UC Santa Barbara	133.5
Points Per Set (150 ranked)					Laura Milos, Oral Roberts	7.38	Lindsey Ruddins, UC Santa Barbara	5.34
Service Aces (142 ranked)	Norene Iosia Nikki Taylor	33 142	1 3	12 9	Laura Milos, Oral Roberts	26	Norene Iosia, Hawaii	12
Total Assists (149 ranked)	Norene Iosia	138	5	192	Jessica Bartczyszyn, UL Lafayette	344	Lauren Conati, CSUN	254
Total Attacks (150 ranked)	Mckenna Granato	150	7	229	Moriah Smith, The Citadel	409	Lindsey Ruddins, UC Santa Barbara	316
Total Blocks (134 ranked)	Emily Maglio	95	2	27	Blair Gillard, Houston Baptist	44	Kelechi Ohiri, UC Davis	28
Total Digs (143 ranked)	Savanah Kahakai	85	3	107	Channing Burleson, Northwestern St.	169	Emilia Petrachi, UC Santa Barbara	119
Total Kills (140 ranked)					Anna Logan, Butler	162	Lindsey Ruddins, UC Santa Barbara	120
Triple Doubles (6 ranked)					Taylor Smith, Eastern Ill.	3	Harlee Kekauoha, UC Irvine	1

2016 BIG WEST STANDINGS

	BIG WEST GAMES			ALL GAMES		
	W	L	Pct.	W	L	Pct.
UC Santa Barbara	0	0	.000	5	2	.714
Cal Poly	0	0	.000	4	2	.667
CSUN	0	0	.000	3	3	.500
UC Davis	0	0	.000	3	3	.500
UC Riverside	0	0	.000	3	3	.500
Hawaii	0	0	.000	3	3	.500
Cal State Fullerton	0	0	.000	3	4	.429
UC Irvine	0	0	.000	3	4	.429
Long Beach State	0	0	.000	2	3	.400

PLAYER OF THE WEEK

Aug. 29	Fabiana Rosas, UCR, Sr
Sept. 5	Nikki Taylor, UH, Sr.
Sept. 12	
Sept. 19	
Sept. 26	
Oct. 3	
Oct. 10	
Oct. 17	
Oct. 24	
Oct. 31	
Nov. 7	
Nov. 14	
Nov. 21	
Nov. 28	

DEFENSIVE PLAYER OF THE WEEK

Aug. 29	Maddie Hubbell, UCR, Sr
Sept. 5	Emily Maglio, UH, Jr.
Sept. 12	
Sept. 19	
Sept. 26	
Oct. 3	
Oct. 10	
Oct. 17	
Oct. 24	
Oct. 31	
Nov. 7	
Nov. 14	
Nov. 21	
Nov. 28	

FRESHMAN OF THE WEEK

Aug. 29	Lindsey Ruddins, UCSB
Sept. 5	Lindsey Ruddins, UCSB
Sept. 12	
Sept. 19	
Sept. 26	
Oct. 3	
Oct. 10	
Oct. 17	
Oct. 24	
Oct. 31	
Nov. 7	
Nov. 14	
Nov. 21	
Nov. 28	



## 2016 BY THE NUMBERS

Overall.....	3-0
Conference.....	0-0
Non-Conference (Reg. season).....	1-2
Postseason.....	0-0
Home .....	3-0
Away.....	0-0
Neutral.....	0-0
vs. Ranked Teams (current).....	0-2
vs. Unranked Teams (current).....	3-1
Three-Set Matches .....	2-1
Four-Set Matches .....	0-2
Five-Set Matches .....	1-0
Winning Set One .....	2-1
Losing Set One.....	1-2
Winning Set Two .....	2-0
Losing Set Two.....	1-3
Winning Set Three .....	3-1
Losing Set Three.....	0-2
Winning Set Four .....	1-0
Losing Set Four.....	0-2
Higher Hitting % .....	3-0
Lower Hitting % .....	0-3
Same Hitting % .....	0-0
More Kills .....	3-1
Less Kills .....	0-2
Same Kills .....	0-0
More Blocks .....	2-1
Less Blocks .....	1-2
Same Blocks .....	0-0
More Digs .....	3-1
Less Digs .....	0-2
Same Digs.....	0-0
More Assists.....	3-1
Less Assists.....	0-2
Same Assists.....	0-0
More Aces .....	2-1
Less Aces .....	0-1
Same Aces .....	1-0
Longest Match .....	2:44 (Arizona)
Shortest Match .....	1:26 (Pacific)
Largest Home Crowd .....	8,503
Smallest Home Crowd.....	5,604
Largest Road Crowd .....	n/a
Smallest Road Crowd .....	n/a

## DOUBLE-DOUBLES

**McKenna Granato**

19K, 12D - Kansas State (8/27/16)

**Norene Iosia**

37A, 11D - Missouri St. (9/1/16)

29A, 12D - Pacific (9/2/16)

**Nikki Taylor**

21K, 11D - Missouri St. (9/1/16)

22K, 14D - Pacific (9/2/16)

## 2015 TEAM LEADERS

#	ATTACK (by K)	S	K	K/S	E	TA	Pct	#	KILL (by K)	S	K	K/S		
3	Granato, McKenna	22	72	3.27	35	229	.162	3	Granato, McKenna	22	72	3.27		
14	Taylor, Nikki	9	60	6.67	21	131	.298	14	Taylor, Nikki	9	60	6.67		
19	Maglio, Emily	22	54	2.45	10	143	.308	19	Maglio, Emily	22	54	2.45		
9	Sibley, Kirsten	20	40	2.00	26	134	.104	9	Sibley, Kirsten	20	40	2.00		
17	Castillo, Casey	18	17	0.94	4	45	.289	17	Castillo, Casey	18	17	0.94		
2	Koelsch, Kendra	13	12	0.92	9	53	.057	2	Koelsch, Kendra	13	12	0.92		
6	Burns, Natasha	7	10	1.43	5	28	.179	6	Burns, Natasha	7	10	1.43		
11	Greeley, Kalei	22	8	0.36	4	29	.138	11	Greeley, Kalei	22	8	0.36		
20	Ross, McKenna	5	7	1.40	2	16	.312	20	Ross, McKenna	5	7	1.40		
10	Iosia, Norene	18	6	0.33	0	12	.500	10	Iosia, Norene	18	6	0.33		
7	Higgins, Tayler	9	2	0.22	2	5	.000	7	Higgins, Tayler	9	2	0.22		
#	SET (by A)	S	A	A/S	TA	Pct	#	SERVE (by SA)	S	SA	SE	SA/S	TA	Pct
10	Iosia, Norene	18	192	10.67	505	.380	10	Iosia, Norene	18	12	6	0.67	84	.929
7	Higgins, Tayler	9	49	5.44	177	.277	14	Taylor, Nikki	9	9	6	1.00	41	.854
15	Kahakai, Savannah	22	21	0.95	71	.296	15	Kahakai, Savannah	22	2	6	0.09	80	.925
2	Koelsch, Kendra	13	4	0.31	10	.400	11	Greeley, Kalei	22	2	2	0.09	35	.943
3	Granato, McKenna	22	3	0.14	11	.273	7	Higgins, Tayler	9	2	4	0.22	26	.846
11	Greeley, Kalei	22	2	0.09	8	.250	3	Granato, McKenna	22	2	10	0.09	74	.865
14	Taylor, Nikki	9	2	0.22	13	.154	5	Smith, Emma	11	1	2	0.09	28	.929
6	Burns, Natasha	7	1	0.14	1	1.000	1	Ponce, Katiana	4	0	0	0.00	3	1.00
5	Smith, Emma	11	1	0.09	5	.200	12	Guinasso, Gianna	10	0	1	0.00	23	.957
19	Maglio, Emily	22	1	0.05	11	.091	4	Anderson, Clare	18	0	1	0.00	54	.981
12	Guinasso, Gianna	10	1	0.10	2	.500	2	Koelsch, Kendra	13	0	1	0.00	10	.900
17	Castillo, Casey	18	1	0.06	4	.250	17	Castillo, Casey	18	0	1	0.00	2	.500
4	Anderson, Clare	18	0	0.00	3	.000	9	Sibley, Kirsten	20	0	2	0.00	7	.714
1	Ponce, Katiana	4	0	0.00	1	.000	19	Maglio, Emily	22	0	2	0.00	27	.926
							20	Ross, McKenna	5	0	0	0.00	1	1.00
#	BLOCK (by Total)	S	BS	BA	Total	Blk/S	#	DEFENSE (by Dig)	S	Dig	Dig/S	BHE		
19	Maglio, Emily	22	2	25	27.0	1.23	15	Kahakai, Savannah	22	107	4.86	0		
17	Castillo, Casey	18	1	11	12.0	0.67	10	Iosia, Norene	18	50	2.78	1		
10	Iosia, Norene	18	2	8	10.0	0.56	3	Granato, McKenna	22	43	1.95	0		
9	Sibley, Kirsten	20	0	10	10.0	0.50	11	Greeley, Kalei	22	42	1.91	0		
14	Taylor, Nikki	9	0	8	8.0	0.89	14	Taylor, Nikki	9	34	3.78	0		
3	Granato, McKenna	22	1	6	7.0	0.32	5	Smith, Emma	11	16	1.45	0		
6	Burns, Natasha	7	1	5	6.0	0.86	4	Anderson, Clare	18	16	0.89	0		
2	Koelsch, Kendra	13	0	5	5.0	0.38	7	Higgins, Tayler	9	14	1.56	0		
7	Higgins, Tayler	9	1	4	5.0	0.56	9	Sibley, Kirsten	20	14	0.70	0		
11	Greeley, Kalei	22	1	1	2.0	0.09	19	Maglio, Emily	22	13	0.59	0		
4	Anderson, Clare	18	0	0	0.0	0.00	20	Ross, McKenna	5	7	1.40	0		
5	Smith, Emma	11	0	0	0.0	0.00	12	Guinasso, Gianna	10	4	0.40	0		
#	POINTS (by Points)	S	Points	Points/S	#	RECEIPT (by TA)	S	RE	RE/S	TA	Pct			
3	Granato, McKenna	22	78	3.55	15	Kahakai, Savannah	22	7	0.32	148	.953			
14	Taylor, Nikki	9	73	8.11	3	Granato, McKenna	22	5	0.23	98	.949			
19	Maglio, Emily	22	68	3.11	11	Greeley, Kalei	22	6	0.27	92	.935			
9	Sibley, Kirsten	20	45	2.25	9	Sibley, Kirsten	20	2	0.10	31	.935			
10	Iosia, Norene	18	24	1.33	5	Smith, Emma	11	0	0.00	24	1.000			
17	Castillo, Casey	18	23	1.31	4	Anderson, Clare	18	1	0.06	20	.950			
2	Koelsch, Kendra	13	14	1.12	17	Castillo, Casey	18	0	0.00	4	1.000			
6	Burns, Natasha	7	13	1.93	12	Guinasso, Gianna	10	0	0.00	3	1.000			
11	Greeley, Kalei	22	11	0.52	14	Taylor, Nikki	9	1	0.11	3	.667			
20	Ross, McKenna	5	7	1.40	6	Burns, Natasha	7	1	0.14	2	.500			
7	Higgins, Tayler	9	7	0.78	7	Higgins, Tayler	9	0	0.00	2	1.000			
						TM TEAM	-	1	0.05	-	-			
						2	Koelsch, Kendra	13	0	0.00	1	1.000		
						19	Maglio, Emily	22	0	0.00	1	1.000		
						10	Iosia, Norene	18	0	0.00	1	1.000		
						20	Ross, McKenna	5	0	0.00	1	1.000		

## 2015 RAINBOW WAHINE STARTING LINE-UPS

Opponent	MB	MB	S	OH	OH(OPP)	OH/DS	LIBERO
Wisconsin	Maglio	Castillo	Higgins	Sibley	Koelsch	Anderson	Kahakai
Kansas State	Maglio	Burns	Higgins	Granato	Greeley	Smith	Kahakai
Arizona	Maglio	Burns	Iosia	Sibley	Greeley	Granato	Kahakai
Missouri State	Maglio	Castillo	Iosia	Sibley	Taylor	Granato	Kahakai
Pacific	Maglio	Castillo	Iosia	Granato	Taylor	Greeley	Kahakai
UCLA	Maglio	Castillo	Iosia	Granato	Taylor	Greeley	Kahakai
Utah Valley							
Northern Illinois							
Washington							
Pepperdine							
Pepperdine							
at UC Santa Barbara							
at Cal Poly							
CSU Fullerton							
UC Riverside							
at CSUN							
at Long Beach State							
UC Davis							
UC Irvine							
at UC Riverside							
at Cal State Fullerton							
Long Beach State							
CSUN							
at UC Davis							
at UC Irvine							
Cal Poly							
UC Santa Barbara							

## BOX SCORES

MATCH  
1

### Volleyball Box Score

#### 2016 Hawai'i Women's Volleyball

#### #4 Wisconsin vs #6 Hawaii (Aug 26, 2016 at Honolulu, HI)

#	Wisconsin	ATTACK				SET			SERVE			RECEIVE			BLOCK				Points			
		S	K	E	TA	Pct	Asst	TA	Pct	SA	SE	TA	Pct	0	RE	Pct	Dig	BS		BA	BE	BH
1	Carlini, Lauren	4	2	2	8	.000	58	127	.457	2	2	19	.895	1	0	1000	7	0	3	0	0	-
2	Kriskova, Romana	4	6	3	18	.167	0	0	.000	0	0	0	.000	0	0	.000	0	0	3	0	0	-
3	Gillis, Lauryn	4	12	3	41	.220	0	3	.000	0	0	0	.000	22	0	1000	9	0	1	0	0	-
11	Williams, Tionna	4	11	3	19	.421	0	1	.000	0	0	0	.000	2	0	1000	3	0	6	0	0	-
13	Nelson, Haleigh	4	14	3	28	.393	0	2	.000	1	1	24	.958	0	0	.000	7	0	2	0	0	-
23	Hagerty, Molly	4	19	6	47	.277	1	4	.250	0	3	14	.786	19	1	.950	16	0	1	0	0	-
4	Bates, Kelli	4	0	0	0	.000	2	13	.154	0	3	11	.727	18	1	.947	22	0	0	0	0	-
7	MacDonald, Amber	4	0	0	0	.000	1	3	.333	1	0	14	1000	11	0	1000	5	0	0	0	0	-
8	Dodd, Sarah	4	0	0	0	.000	0	0	.000	0	5	18	.722	0	0	.000	3	0	0	0	0	-
10	Blake, Tori	1	0	1	1	-1.00	0	0	.000	0	0	0	.000	0	0	.000	0	0	0	0	0	-
Totals		4	64	21	162	.265	62	153	.405	4	14	100	.860	73	2	.973	72	0	16	0	0	-

## Team Attack By Set

Set	K	E	TA	Pct	Sideout	Pct
1	16	3	30	.433	15-16	93%
2	16	5	46	.239	13-17	76%
3	16	6	41	.244	16-25	63%
4	16	7	45	.200	17-24	70%
						61-82 74%

TOTAL TEAM BLOCKS: 8.0

## SET SCORES

1	2	3	4	Team Records:
Wisconsin (3)	25	25	24	1-0
Hawaii (1)	16	16	26	0-1

#	Hawaii	ATTACK				SET			SERVE			RECEIVE			BLOCK				Points		
		S	K	E	TA	Pct	Asst	TA	Pct	SA	SE	TA	Pct	0	RE	Pct	Dig	BS		BA	BHE
2	Koelsch, Kendra	4	4	5	23	-.043	1	2	.500	0	1	10	.900	0	0	.000	2	0	1	0	0
4	Anderson,Clare-Marie	4	0	0	0	.000	0	3	.000	0	0	5	1000	19	1	.950	10	0	0	0	-
7	Higgins, Tayler	2	0	2	3	-.667	13	65	.200	0	0	4	1000	0	0	.000	3	0	3	1	0
9	Sibley, Kirsten	4	13	8	44	.114	0	0	.000	0	0	0	.000	9	1	.900	2	0	3	0	0
17	Castillo, Casey	3	2	1	7	.143	0	1	.000	0	1	2	.500	1	0	1000	1	0	3	0	-
19	Maglio, Emily	4	12	3	34	.265	0	2	.000	0	1	9	.889	0	0	.000	4	0	3	2	0
1	Ponce, Katiana	1	0	0	0	.000	0	0	.000	0	0	0	.000	0	0	.000	0	0	0	0	-
3	Granato, McKenna	4	4	5	33	-.030	1	3	.333	0	2	8	.750	7	0	1000	4	0	2	0	0
5	Smith, Emma	2	0	0	0	.000	0	0	.000	0	0	0	.000	2	0	1000	0	0	0	0	-
6	Burns, Natasha	2	4	1	9	.333	0	0	.000	0	0	0	.000	0	0	.000	1	1	3	0	0
10	Iosia, Norene	2	3	0	3	1.000	22	68	.324	1	1	10	.900	0	0	.000	3	1	1	0	0
11	Greeley, Kalei	4	0	0	0	.000	1	1	1000	1	1	13	.923	11	0	1000	7	0	0	0	-
12	Guinasso, Gianna	3	0	0	0	.000	0	1	.000	0	0	0	.000	3	0	1000	4	0	0	0	-
15	Kahakai, Savanah	4	0	0	0	.000	1	7	.143	0	0	9	1000	29	2	.935	23	0	0	0	-
Totals		4	42	25	156	-.109	39	153	.255	2	7	82	.915	81	4	.953	64	2	19	3	0

## Team Attack By Set

Set	K	E	TA	Pct	Sideout	Pct
1	7	6	30	.033	15-25	60%
2	7	8	45	-.022	12-25	47%
3	14	4	42	.238	16-26	61%
4	14	7	39	.179	16-24	66%
						59-100 58%

TOTAL TEAM BLOCKS: 11.5

Site: Honolulu, HI (Stan Sheriff Center)

Date: Aug 26, 2016 Attend: 7344 Time: 2:25

Referees: Wayne Lee, Dickson Chun

1	2	3	4	Total
Tie scores	3	1	16	8 28
Lead change	1	0	6	2 9

MATCH  
2

### Volleyball Box Score

#### 2016 Hawai'i Women's Volleyball

#### Kansas State vs #6 Hawaii (Aug 27, 2016 at Honolulu, HI)

#	Kansas State	Attack				Pct	Asst	Serve			Block					Pts
		S	K	E	TA			SA	SE	RE	Dig	BS	BA	BE	BH	
6	Brand, Katie	4	4	1	9	.333	49	0	1	0	21	1	6	0	0	-
7	Zumach, Kylee	4	14	8	39	.154	1	3	4	1	11	1	1	0	0	-
9	Reininger, Katie	4	7	3	21	.190	1	0	0	0	0	7	0	0	0	-
12	Flowers, Macy	4	7	0	17	.412	1	1	2	0	8	0	2	0	0	-
17	Sassin, Brooke	4	18	9	58	.155	2	0	0	1	9	1	1	0	0	-
18	Vogel, Bryna	4	12	3	29	.310	0	0	2	3	7	0	1	0	0	-
1	Kober, Kersten	4	0	0	0	.000	6	2	2	3	19	0	0	0	0	-
21	Fairfield, Devan	4	0	0	0	.000	0	0	0	0	8	0	0	0	0	-
Totals		4	62	24	173	.220	60	6	11	8	83	3	18	0	0	-

## Team Attack By Set

Set	K	E	TA	Pct	Sideout	Pct
1	11	4	36	.194	13-23	56%
2	20	6	47	.298	16-29	55%
3	16	6	41	.195	14-22	63%
4	17	8	49	.184	13-21	61%
						56-95 58%

TOTAL TEAM BLOCKS: 12.0

## SET SCORES

1	2	3	4	Team Records:
Kansas State (3)	19	30	25	2-0
Hawaii (1)	25	28	22	0-2

#	Hawaii	S	Attack				Serve				Block				BH	Pts
			K	E	TA	Pct	Asst	SA	SE	RE	Dig	BS	BA	BE		
3	Granato, McKenna	4	19	13	66	.091	0	0	2	0	12	1	0	0	0	-
5	Smith, Emma	4	0	0	0	.000	1	1	1	0	5	0	0	0	0	-
6	Burns, Natasha	4	6	3	18	.167	1	0	0	0	1	0	2	0	0	-
7	Higgins, Tayler	3	1	0	1	1.000	21	2	1	0	6	0	0	0	0	-
11	Greeley, Kalei	4	6	1	18	.278	0	1	1	3	18	1	1	0	0	-
19	Maglio, Emily	4	8	1	30	.233	1	0	0	0	4	1	3	0	0	-
1	Ponce, Katiana	1	0	0	0	.000	0	0	0	0	0	0	0	0	0	-
2	Koelsch, Kendra	4	8	2	23	.261	2	0	0	0	1	0	3	0	0	-
4	Anderson,Clare-Marie	2	0	0	0	.000	0	0	0	0	0	0	0	0	0	-
9	Sibley, Kirsten	3	4	2	15	.133	0	0	0	0	0	1	0	0	0	-
10	Iosia, Norene	3	0	0	0	.000	21	4	1	0	7	0	0	0	0	-
15	Kahakai, Savanah	4	0	0	0	.000	5	0	2	2	21	0	0	0	0	-
17	Castillo, Casey	1	0	0	1	.000	0	0	0	0	0	0	0	0	0	-
	Team										1					-
Totals		4	52	22	172	.174	52	8	8	6	75	3	10	0	0	-

## Team Attack By Set

Set	K	E	TA	Pct	Sideout	Pct
1	15	6	38	.237	15-20	75%
2	14	6	42	.190	15-29	51%
3	13	4	43	.209	14-25	56%
4	10	6	49	.082	12-24	50%
						56-98 57%

TOTAL TEAM BLOCKS: 8.0

Site: Honolulu, HI (Stan Sheriff Center)

Date: Aug 27, 2016 Attend: 6463 Time: 2:31

Referees: Dickson Chun, Denise Hanson

1	2	3	4	Total
Tie scores	8	11	11	4 34
Lead change	2	7	5	0 14

MATCH  
3

### Volleyball Box Score

#### 2016 Hawai'i Women's Volleyball

#### Arizona vs #6 Hawaii (Aug 28, 2016 at Honolulu, HI)

#	Arizona	S	Attack				Serve			RE	Dig	Block				Pts
			K	E	TA	Pct	Asst	SA	SE			BS	BA	BE	BH	
6	Pilepic, Katarina	4	7	4	21	.143	1	0	0	1	2	0	3	0	0	-
8	Dahlke, Kendra	5	9	4	29	.172	1	1	3	0	6	0	2	0	0	-
10	Mau, Kalei	5	21	7	63	.222	2	0	1	1	19	0	1	0	0	-
13	Cross, Devyn	5	4	0	12	.333	0	0	0	1	1	0	4	0	0	-
18	Jacobson, McKenzie	5	12	1	21	.524	0	0	0	0	3	0	5	2	0	-
20	Snuka, Penina	5	5	0	6	.833	45	0	1	0	4	0	3	1	0	-
2	Painton, McKenna	5	0	0	0	.000	3	0	2	0	4	0	0	0	0	-
4	Patterson, Julia	4	0	0	0	.000	6	1	0	0	1	0	0	0	0	-
11	Larson, Laura	5	0	1	2	-.500	2	0	1	0	19	0	0	0	0	-
12	Killeen, Reilly	5	0	0	0	.000	1	2	2	0	2	0	0	0	0	-
22	Martin, Makenna	3	0	0	0	.000	0	1	1	0	2	0	0	0	0	-
33	Turner, Jade	1	0	0	0	.000	0	0	0	0	0	0	0	0	0	-
35	Spriggs, Tyler	5	4	1	7	.429	0	0	1	0	0	0	0	0	0	-
	Team									2						-
Totals		5	62	18	161	.273	61	5	12	5	63	0	18	3	0	-

# BOX SCORES

## MATCH

5

### Volleyball Box Score 2016 Hawai'i Women's Volleyball Pacific vs #15 Hawaii (Sep 02, 2016 at Honolulu, HI)

#	Pacific	Attack					Serve			Dig	Block				Pts
		S	K	E	TA	Pct	Ass	SA	SE	RE	BS	BA	BE	BH	
1	SHELTON, Andie	3	0	0	4	.000	27	0	1	1	3	0	3	0	0
4	ELMAN, Lexi	3	10	7	31	.097	1	2	4	2	7	0	1	1	0
6	BAPTISTA, Emily	3	8	2	19	.316	0	1	2	1	6	0	2	0	0
10	FLEMING, Ashlyn	3	6	3	12	.250	0	0	0	0	0	0	5	0	0
13	WILK, Alicia	2	1	3	5	-.400	0	0	3	0	0	0	0	0	0
16	LABASS, Maycie	3	0	0	2	.000	0	2	2	1	5	0	0	0	0
5	PETNICKI, Olivia	1	0	0	0	.000	0	0	0	0	2	0	0	0	0
8	GOTTERBA, Katrin	3	0	0	0	.000	3	0	0	2	7	0	0	0	0
9	WINE, Skylar	3	5	0	13	.385	0	0	1	0	1	0	1	0	0
15	HESS, Jess	1	0	0	0	.000	0	0	0	0	0	0	0	0	0
25	CLINE, Lauren	3	2	1	7	.143	0	0	2	0	1	0	2	0	0
Totals		3	32	16	93	.172	31	5	15	7	32	0	14	1	0

#### Team Attack By Set

Set	K	E	TA	Pct	Sideout	Pct
1	12	7	34	.147	11-24	45%
2	13	6	27	.259	14-25	56%
3	7	3	32	.125	12-24	50%
37-73						50%

#### SET SCORES

Pacific (0)  
Hawaii (3)

TOTAL TEAM BLOCKS: 7.0

#### Team Records:

Pacific (0) 15 18 23 2-3  
Hawaii (3) 25 25 25 3-2

#	Hawaii	Attack					Serve			Dig	Block				Pts
		S	K	E	TA	Pct	Ass	SA	SE	RE	BS	BA	BE	BH	
3	Granato, McKenna	3	5	3	16	.125	0	1	1	0	4	0	1	0	0
10	Iosia, Norene	3	1	0	2	.500	29	2	0	0	12	0	1	0	0
11	Greeley, Kalei	3	0	0	0	.000	0	0	0	1	0	0	0	0	0
14	Taylor, Nikki	3	22	4	41	.439	0	4	3	1	14	0	4	0	0
17	Castillo, Casey	3	1	1	3	.000	0	0	0	0	0	2	0	0	0
19	Maglio, Emily	3	6	1	10	.500	0	0	0	0	0	1	8	1	0
1	Ponce, Katiana	1	0	0	0	.000	0	0	0	0	1	0	0	0	0
2	Koelsch, Kendra	1	0	0	0	.000	0	0	0	0	0	0	0	0	0
4	Anderson,Clare-Marie	3	0	0	0	.000	0	0	0	0	1	0	0	0	0
9	Sibley, Kirsten	3	0	4	13	-.308	0	0	0	1	3	0	4	0	0
12	Guinasso, Gianna	3	0	0	0	.000	1	0	0	0	0	0	0	0	0
15	Kahakai, Savanah	3	0	0	0	.000	4	0	1	2	6	0	0	0	0
20	Ross, McKenna	1	0	1	2	-.500	0	0	0	0	0	0	0	0	0
Totals		3	35	14	87	.241	34	7	5	5	41	1	20	1	0

#### Team Attack By Set

Set	K	E	TA	Pct	Sideout	Pct
1	10	2	23	.348	12-16	75%
2	7	3	23	.174	14-18	77%
3	18	9	41	.220	13-24	54%
39-58						67%

Site: Honolulu, HI (Stan Sheriff Center)  
Date: Sep 02, 2016 Attend: 6111 Time: 1:26  
Referees: Ernest Ho, Wayne Lee

#### 1 2 3 Total

Tie scores 1 5 7 13  
Lead change 0 1 4 5

## MATCH

6

### Volleyball Box Score 2016 Hawai'i Women's Volleyball #8 UCLA vs #15 Hawaii (Sep 03, 2016 at Honolulu, HI)

#	UCLA	Attack					Serve			Dig	Block				Pts
		S	K	E	TA	Pct	Ass	SA	SE	RE	BS	BA	BE	BH	
3	Buechler, Reilly	3	14	8	42	.143	0	2	0	0	11	0	3	1	0
4	Lawless, Hailey	3	4	1	13	.231	0	0	0	0	1	0	2	0	0
8	Felix, Claire	3	6	0	14	.429	0	0	0	0	0	0	2	1	0
10	Fragar, Jennie	3	8	1	22	.318	0	0	0	0	3	0	6	0	0
12	Chandler, Ryann	3	0	0	2	.000	37	0	0	1	2	1	3	0	0
24	Simo, Savvy	3	0	1	1	-1.000	0	0	0	1	13	0	0	0	0
1	Anderson, Jordan	3	11	6	38	.132	0	0	0	0	2	0	0	0	0
7	Muno, Zana	3	0	0	0	.000	0	0	0	1	9	0	0	0	0
11	Formico, Taylor	3	0	0	0	.000	4	0	0	0	16	0	0	0	0
18	Schlener, Taylor	1	0	0	0	.000	0	0	1	0	0	0	0	0	0
Totals		3	43	17	132	.197	41	2	1	3	57	1	16	2	0

#### Team Attack By Set

Set	K	E	TA	Pct	Sideout	Pct
1	12	5	47	.149	12-24	50%
2	19	6	46	.283	14-22	63%
3	12	6	39	.154	13-23	56%
39-69						56%

#### SET SCORES

UCLA (3)  
Hawaii (0)

TOTAL TEAM BLOCKS: 9.0

#### Team Records:

UCLA (3) 25 25 25 6-0  
Hawaii (0) 23 22 22 3-3

#	Hawaii	Attack					Serve			Dig	Block				Pts
		S	K	E	TA	Pct	Ass	SA	SE	RE	BS	BA	BE	BH	
3	Granato, McKenna	3	5	7	29	-.069	1	0	0	0	8	0	2	0	0
10	Iosia, Norene	2	2	0	2	1.000	26	0	1	0	8	0	2	1	0
11	Greeley, Kalei	3	0	0	3	.000	1	0	0	2	3	0	0	0	0
14	Taylor, Nikki	3	17	14	56	.054	1	3	1	0	9	0	0	0	0
17	Castillo, Casey	3	6	0	9	.667	0	0	0	0	0	0	1	0	0
19	Maglio, Emily	3	12	2	30	.333	0	0	0	0	2	0	4	0	0
1	Ponce, Katiana	1	0	0	0	.000	0	0	0	0	0	0	0	0	0
2	Koelsch, Kendra	2	0	0	0	.000	1	0	0	0	0	0	0	0	0
4	Anderson,Clare-Marie	3	0	0	0	.000	0	0	0	0	5	0	0	0	0
5	Smith, Emma	1	0	0	0	.000	0	0	0	0	1	0	0	0	0
7	Higgins, Tayler	1	1	0	1	1.000	11	0	1	0	3	1	1	0	0
9	Sibley, Kirsten	2	3	2	10	.100	0	0	0	0	4	0	0	0	0
12	Guinasso, Gianna	2	0	0	0	.000	0	0	1	0	0	0	0	0	0
15	Kahakai, Savanah	3	0	0	0	.000	3	0	0	0	19	0	0	0	0
20	Ross, McKenna	1	0	0	0	.000	0	0	0	0	2	0	0	0	0
Totals		3	46	25	140	.150	44	3	4	2	64	1	10	1	0

#### Team Attack By Set

Set	K	E	TA	Pct	Sideout	Pct
1	18	12	59	.102	11-24	45%
2	14	5	39	.231	14-25	56%
3	14	8	42	.143	13-25	51%
38-74						51%

Site: Honolulu, HI (Stan Sheriff Center)  
Date: Sep 03, 2016 Attend: 8503 Time: 1:51  
Referees: Wayne Lee, Dickson Chun

#### 1 2 3 Total



## THE LAST TIME...

### INDIVIDUAL STATISTICS

#### KILLS

**A UH player had 25-plus kills in a match...**

McKenna Granato (33), Arizona (8/28/16)

**A UH player hit 25-plus kills in consecutive matches...**

Emily Hartong (29) at UC Davis (Oct. 26, 2013), (25) at CSUN (Oct. 23, 2013)

**A UH player hit 35-plus kills in a match...**

Jamie Houston (35) vs. Southern California (Dec. 8, 2006)\*

**A UH player hit 35-plus kills in consecutive matches...**

Kim Willoughby (35) vs. Eastern Washington (Dec. 1, 2001)\*, (35) vs. UCLA (Dec. 6, 2001)\*

**A UH player hit 40-plus kills in a match...**

Kim Willoughby (41) vs. Pacific (Nov. 24, 2001)

#### ATTEMPTS

**A UH player attempted 55-plus swings in a match...**

McKenna Granato, 61 (Arizona 8/28/16)  
Nikki Taylor, 56, UCLA (9/3/16)

**A UH player attempted 55-plus swings in consecutive matches...**

McKenna Granato, 66 (Kansas State 8/27/16); McKenna Granato, 61 (Arizona 8/28/16)

**A UH player attempted 70-plus swings in a match...**

Emily Hartong (79) at UC Irvine (Oct. 27, 2012)

**A UH player attempted 70-plus swings in consecutive matches...**

Emily Hartong (79) at Long Beach State (Oct. 26, 2012), (79) at UC Irvine (Oct. 27, 2012)

#### HITTING PERCENTAGE

**A UH player hit a perfect 1.000 in a match (min. 10)...**

Kenyatta Lovelace (12-0-12) vs. Cal State Fullerton (10/3/92)

#### ASSISTS

**A UH player had 60-plus assists in a match...**

Taylor Higgins (65) vs. 65 (Dec. 4, 2015)

**A UH player had 60-plus assists in consecutive matches...**

Stephanie Brandt (63) vs. Wichita State (Sept. 7, 2007), (61) vs. Santa Clara (Sept. 8, 2007)

**A UH player had 80-plus assists in a match...**

Nikki Hubbert (95) vs. Brigham Young (Nov. 28, 1998)+

#### DIGS

**A UH player had 20-plus digs in a match...**

Savanah Kahakai (23) Wisconsin 8/26/16), (21) Kansas State 8/27/16, (23) Arizona 8/28/16

**A UH player had 20-plus digs in consecutive matches...**

Savanah Kahakai (23) Wisconsin 8/26/16), (21) Kansas State 8/27/16, (23) Arizona 8/28/16

**A UH player had 30-plus digs in a match...**

Sarah Mendoza (32) at Washington (Dec. 6, 2014)

**A UH player had 30-plus digs in consecutive matches...**

Tee Williams (45) at Cal Poly (Nov. 7, 1988), (30) at Cal Poly (Nov. 8, 1988)

**A UH player had 40-plus digs in a match...**

Tee Williams (45) at Cal Poly (Nov. 7, 1988)

#### BLOCKING

**A UH player had 4-plus block solos in a match...**

Brittany Hewitt (4) vs. Long Beach State (Sept. 2, 2011)

**A UH player had 8-plus block solos in a match...**

Suzanne Eagye (9) vs. San Jose State (Nov. 21, 1986)

**A UH player had 10-plus block assists in a match...**

Olivia Magill (11) Iowa (Sept. 4, 2015)

**A UH player had 15-plus block assists in a match...**

Brittany Hewitt (15) vs. San Diego (Aug. 27, 2010)

**A UH player had 12-plus total blocks in a match...**

Olivia Magill (12) vs. St. John's (Sept. 6, 2014)

**A UH player had 16-plus total blocks in a match...**

Brittany Hewitt (16) vs. San Diego (Aug. 27, 2010)

#### SERVING

**A UH player had 3-plus aces in a match...**

Norene Iosia (3) Arizona (8/28/16)

**A UH player had 3-plus aces in consecutive matches...**

Norene Iosia (4) Kansas State (8/27/16); (3) Arizona (8/28/16)  
Nikki Taylor (4) Pacific (9/2/16) + (3) UCLA (9/3/16)

**A UH player had 6-plus aces in a match...**

Tai Manu-Olevao (6) at Long Beach State (Oct. 11, 2014)

#### TRIPLE-DOUBLE

**A UH player recorded a triple-double...**

Nikki Taylor (10K, 10D, 11B) vs. Cal Poly (Nov. 22, 2014)

### TEAM STATISTICS

#### KILLS

**Hawai'i had 80-plus kills in a match...**

84 vs. TCU\* (12/4/15)

**Hawai'i had 100-plus kills in a match...**

116 vs. Brigham Young (Nov. 28, 1998)+

#### ATTEMPTS

**Hawai'i attempted 200-plus swings in a match...**

202, vs. TCU\* (12/4/15)

**Hawai'i attempted 275-plus swings in a match...**

316 vs. Brigham Young (Nov. 28, 1998)+

#### HITTING PERCENTAGE

**Hawai'i hit .500 or more in a match...**

.500 vs. UT-San Antonio (Sept. 11, 2009)

#### SETTING

**Hawai'i had 75-plus assists in a match...**

78 vs. TCU\* (12/4/15)

**Hawai'i had 100-plus assists in a match...**

107 vs. Brigham Young (Nov. 28, 1998)+

#### DIGS

**Hawai'i had 75-plus digs in a match...**

75, Kansas State (8/27/16)

**Hawai'i had 125-plus digs in a match...**

133 at Pacific (Nov. 17, 1990)

**Hawai'i had 200-plus digs in a match...**

223 at Cal Poly (Nov. 7, 1988)

#### BLOCKING

**Hawai'i had 8-plus block solos in a match...**

8 vs. Utah (Nov. 23, 2001)

**Hawai'i had 30-plus block assists in a match...**

35, Iowa (9/4/15)

**Hawai'i had 20-plus total team blocks in a match...**

20.0 Long Beach State (10/11/15)

**Hawai'i had 25-plus total team blocks in a match...**

29 at San Jose State (Oct. 29, 1999)

#### SERVING

**Hawai'i had 10-plus aces in a match...**

13 vs. New Mexico (Sept. 4, 2014)

**Hawai'i had 15-plus aces in a match...**

16 vs. Stanford (Dec. 17, 1982)

**Hawai'i lost consecutive home matches...**

Wisconsin (8/26/16); Kansas State (8/27/16)

**Hawai'i lost consecutive road matches...**

at CSUN (Oct. 10, 2014), at Long Beach State (Oct. 11, 2014)

**Hawai'i lost consecutive conference matches...**

at CSUN (Oct. 10, 2014), at Long Beach State (Oct. 11, 2014)

+ Denotes WAC Tournament

\* Denotes NCAA Tournament