

OFFICIAL GAMEDAY PROGRAM

GRAMBLING STATE VS. TEXAS SOUTHERN / EDDIE G. ROBINSON MEMORIAL STADIUM / OCTOBER 16, 2021 / \$5.00

GAMEDAY

HOMECOMING

 Origin Bank.



COCA-COLA[®] NEVER MISSES A GAME



PROUD SUPPORTER
OF





OFFICIAL GAMEDAY PROGRAM

The Gameday program is an Official Publication of the GSU Department of Athletics GSU Quick Facts

Location	Grambling, Louisiana
Founded	1901
Enrollment	5,232
Affiliation	NCAA Division I FCS
Conference	SWAC
Nickname	Tigers
School Colors	Black and Gold
Band	The World Famed Tiger Marching Band
President	Richard J. Gallot, Jr., JD
VP of Intercollegiate Athletics	Dr. Trayvean Scott
Faculty Athletics Rep.	Dr. Bobby Burkes
All-Time Record	551-246-18 (91 seasons)
First Year of Football	1928

15 Black College National Championships

1955, 1967, 1972, 1974, 1975, 1977, 1980, 1983, 1992, 2000, 2001, 2002, 2005, 2008, 2016

27 SWAC Championships

1960*, 1965, 1966*, 1967, 1968, 1971, 1972*, 1973*, 1974*, 1975*, 1977, 1978, 1979*, 1980*, 1983, 1985*, 1989, 1994*, 2000, 2001, 2002, 2005, 2007, 2008, 2011, 2016, 2017

*Denotes Co-Champions

STADIUM INFORMATION

Name	Eddie G. Robinson Memorial Stadium
Capacity	19,600
Surface	Artificial Turf
Largest Crowd	26,000 (vs. Alcorn State, 1994)

GENERAL INFORMATION

Athletic Department	318.274.2374
Ticket Office	318.274.2625
Football Office	318.274.6539
Press Box Phone	318-274-2151
WEBSITE	gsutigers.com

ATHLETIC COMMUNICATIONS

Brian Howard, Curtis Ford, Taylor Jeanlewis

PHOTOGRAPHY

Carlton Hamlin

LAYOUT & DESIGN

Brian Howard

GRAMBLING STATE UNIVERSITY GAMEDAY 2021

GRAMBLING STATE TIGERS vs. TEXAS SOUTHERN TIGERS

INSIDE TODAY'S ISSUE

2	Message from the President
3	Biography of President Richard J. Gallot, Jr., JD
5-6	Grambling State University
8	Welcome from the Vice President of Intercollegiate Athletics
9	Biography of Vice President of Intercollegiate Athletics Dr. Trayvean Scott
11	Department of Athletics
13-14	Eddie G. Robinson Memorial Stadium Policies
20-22	Head Coach Broderick Fobbs
23	Grambling State Assistant Coaches
26-28	Meet The Grambling State Tigers
30-31	Grambling State Numerical Roster
32	Texas Southern Numerical Roster
33-34	Inside Today's Game - Depth Chart
35-36	2021 Football Season Ticket Holders

2021 SCHEDULE/OVERALL RESULTS

DATE	OPPONENT	RESULTS/TIME
9.5.21	vs. Tennessee State	W, 16-10
9.11.21	at Southern Miss	L, 0-37
9.18.21	at Houston	L, 0-45
9.25.21	vs. Prairie View A&M*	L, 10-24
10.2.21	ALABAMA A&M*	W, 37-28
10.9.21	at Alcorn State*	L, 20-24
10.16.21	TEXAS SOUTHERN* (HC)	2 p.m.
10.30.21	at Florida A&M*	3 p.m.
11.6.21	at Arkansas-Pine Bluff*	2 p.m.
11.13.21	BETHUNE-COOKMAN*	2 p.m.
11.27.21	vs. Southern*	4 p.m.

* Denotes SWAC game | All Times Listed as CENTRAL



FROM THE PRESIDENT

IT'S A GREAT TIME TO BE...

A GRAMBLING STATE UNIVERSITY TIGER



Dear Tiger Fans:

It is my pleasure to extend a hearty welcome to all alumni, friends and special guests who have joined us to share in the 2021 Homecoming festivities at Grambling State University (GSU). This annual celebration culminates in today's exciting football game between the Grambling State University Tigers and the Texas Southern University Tigers.

We are doing our very best to follow appropriate CDC and the Department of Health guidelines, so I thank you for your support and cooperation as we support Coach Broderick Fobbs, the coaching staff and, of course, our outstanding G-Men football team.

A special welcome is extended to President, Dr. Lesia L. Crumpton-Young and the Texas Southern University Tigers Football team, coaches and fans. Despite the outcome of the game, we hope you will enjoy your visit and our GSU hospitality.

Welcome home, GSU Alumni. I want to thank you, again, for your continued support as we continue to Build What's Next. We move forward knowing that many others will join us in making Grambling State University's future one of promise and security.

We have continued to make giant strides in academics, enrollment and student services. I encourage each of you to continue your support by assisting with student recruitment, contributing to our fund raising efforts and participating in campus activities. Your active involvement is essential to our continued growth and success.

Again, welcome home, and enjoy all the homecoming activities that have been planned just for you.

Sincerely,

Richard J. Gallot, Jr., JD
President

RICHARD JOSEPH GALLOT, JR.

PRESIDENT • FIFTH YEAR • GRAMBLING STATE UNIVERSITY, 1987



Richard “Rick” Joseph Gallot, Jr., JD assumed the role of the tenth of Grambling State University on August 1, 2016. The fourth alumnus to hold the prestigious position, he received a bachelor’s degree from Grambling State University in 1987. He continued his education at the Southern University Law Center in Baton Rouge where he earned a law degree.

President Gallot has a leadership style reminiscent of the university’s second president, Ralph Waldo Emerson Jones. His transformational vision, engaging personality, and student-oriented focus has garnered him the title of Prez to all that encounter him.

Over the past five years, President Gallot has overseen several initiatives that reinvigorated the academic enterprise at Grambling State University. Some of the most significant include: reaffirmation of accreditation by SACSCOC, an increase in the first-to-second year retention rate from 60 percent to 77 percent; 200% improvement in the fiscal health score, relaunch of the undergraduate nursing program, launch of Louisiana’s only bachelor’s degree programs in cloud computing and cybersecurity, and approval of the first PhD program in criminology and justice administration. Because he understands the importance of corporate relationships and institutional longevity, several national partnerships were formed including, Lumen - formerly CenturyLink, AT&T, Coca-Cola, and SodexoMAGIC, which included a \$5 million upgrade to McCall Dining Center.

President Gallot’s vision of what Grambling State can be extended beyond the classroom and materialized into several campus-wide construction and renovation projects that foster the environment scholars deserve. He is particularly proud of the nearly-completed digital library, the first of its kind in the state of Louisiana and among all HBCUs in the nation; expansion of the intramural center, completion of the C.D. Henry Natatorium, resurfacing of the football field at Eddie G. Robinson Memorial Stadium, razing of several

dilapidated buildings, upgrades to the drainage system, and much needed enhancements to campus-wide WIFI.

Prior to taking the helm at GSU, the Grambling native served the constituents of North Louisiana as a representative and senator in the Louisiana Legislature for 15 years and also enjoyed a thriving law practice in the neighboring city of Ruston as an attorney. When he is not serving as Tiger-In-Chief at “The Place Where Everybody is Somebody”, he enjoys spending time with his wife Christy and their four sons.

Armed with the resolve to continually raise the profile of the institution that prepared him to achieve, President Gallot is unwavering in his belief that there is no vision too big or too bold for Grambling State University.



THE RICK GALLOT FILE

EDUCATION

- Southern University Law Center, Baton Rouge, LA J.D. - 1990
- John F. Kennedy School of Government, Harvard University, Cambridge, MA - 2003
 - Honors: Senior Executives in State & Local Government Program
- Grambling State University, Grambling, LA
 - B.A. - 1987
 - Honors: National Dean’s List, Academic Merit Scholar With Honors,
 - Who’s Who in American Colleges and Universities, Presidential Merit Scholar
 - Major: History

PROFESSIONAL EXPERIENCE

- President, Grambling State University
 - August 1, 2016 - Present
- CLECO Corporation, 2016 - Present
 - Board of Directors Member, Audit Committee Leadership Development & Compensation Committee
 - Governance & Public Relations Committee
- Gallot Law Office, 1990-Present
- Louisiana State Senate, 2012-2016
 - State Senator, District 29
 - Vice Chairman, Commerce Committee
 - Member, Agriculture & Revenue & Fiscal Affairs
- Louisiana House of Representatives, 2000-2012
 - State Representative, District 11
 - Chairman, House & Governmental Affairs Committee
- Member, House Executive Committee, Judiciary and Civil Law
- City of Grambling - City Councilman, 1995-1999
- Louisiana Appellate Project, 1996-1998
- Grambling State University, 1990-1991
 - Adjunct Professor, Departments of History and Criminal Justice

HONORS AND AWARDS

- Outstanding Young Men of America, 1988
- Lincoln Parish Outstanding Young Person
 - Ruston Jaycees, 1998
- 10 Leaders of the New Century in N.W. Louisiana - Shreveport Times, 2001
- Legislator of the Month, Louisiana Municipal Association, June 2001
- Legislator of the Year, National Conference of Black Mayors, 2002
- Friend of the L.M.A. - Louisiana Mutual Association, 2002 and 2003
- National Conference of State Legislatures,
 - Co-Chair of Redistricting and Elections Committee, 2007-Present
- Grambling State University Alumni Hall of Fame 2007 - Present
- BV Peer Review Rated-Lexis/Nexis Martindale-Hubbell, 2009-Present
- Top 100 Trial Lawyers-The American Trial Lawyers Association, 2009-Present
- Southern University Law Center Alumni Hall of Fame, 2012-Present
- The Ohio State University Graduate School Leadership Award, 1979
- Competent Toastmaster Award (CTM), Toastmasters International, 1984
- Kellogg National Fellowship Program, participant, 1989-91

FRATERNITIES

- Kappa Alpha Psi
- Phi Alpha Delta



© 2021 Whatabrands LLC



Celebrate
YOUR "W" HERE.

WHATABURGER PROUDLY SUPPORTS GRAMBLING TIGERS FOOTBALL



THIS IS GRAMBLING STATE UNIVERSITY



Grambling State University combines all the strengths of a major university with the personality of a small college, thereby allowing students to grow and learn in a serene and positive environment. The campus houses students in its 19 residence halls, enhances and promotes student life through its impressive student union and bookstore, and appeals to other areas of life and improvement through buildings such as the assembly center, dining hall, library, intramural center, and health center. More than 800 courses and 68 degree programs are offered at Grambling. There are five colleges, including an honors college, two professional schools, a graduate school, and a Division of Continuing Education. National and local employers recruit graduates from Grambling's excellent nursing, computer science, teacher education, and other programs.

A wide variety of student clubs and organizations at Grambling ensure that every student will find an activity of interest. Honor societies, sports, art, religion, politics, and Greek organizations are just a few of the organizations that appeal to a diverse group of students. As a member of one of Grambling's student organizations, students learn to give of themselves while participating in worthwhile campus and community projects.

MISSION

Grambling State University is a comprehensive, historically black, public institution that offers a broad spectrum of undergraduate and graduate programs of study. Through its undergraduate major courses of study, which are undergirded by a traditional liberal arts program, and through its

graduate school, which has a professional focus, the University embraces its founding principle of educational opportunity. With a commitment to the education of minorities in American society, the University seeks to reflect in all of its programs the diversity in the world. The University advances the study and preservation of African American history, art, and culture.

Grambling State University is a community of learners who strive for excellence in their pursuit of knowledge and who seek to contribute to their respective major academic disciplines. The University prepares its graduates to compete and succeed in careers related to its programs of study, to contribute to the advancement of knowledge, and to lead productive lives as informed citizens in a democratic society. The University provides its students a living and learning environment which nurtures their development for leadership in academics, athletics, campus governance, and in their future pursuits. The University affords each student the opportunity to pursue any program of study provided that the student makes reasonable progress. Grambling fosters in its students a commitment to service and to the improvement in the quality of life for all persons.

The University expects that all persons who matriculate and who are employed at Grambling will reflect through their study and work that the University is indeed a place where all persons are valued, "where everybody is somebody."

HISTORY

Grambling State University opened on November 1, 1901 as the Colored Industri-

al and Agricultural School. It was founded by the North Louisiana Colored Agriculture Relief Association, organized in 1896 by a group of African-American farmers who wanted to organize and operate a school for African Americans in their region of the state.

In response to the Association's request for assistance, Tuskegee Institute's Booker T. Washington sent Charles P. Adams to help the group organize an industrial school. Adams became its founding president.

In 1905, the school moved to its present location and was renamed the North Louisiana Agricultural and Industrial School. By 1928, after becoming a state junior college and being renamed the Louisiana Negro Normal and Industrial Institute, the school began to award two-year professional certificates and diplomas. In 1936, the curriculum emphasis shifted to rural teacher education; students were able to receive professional teaching certificates after completing a third academic year. The first baccalaureate degree was awarded in 1944, in elementary education.

In 1946, the school became Grambling College, named after P.G. Grambling, the white sawmill owner who had donated the parcel of land where the school was constructed. In addition to elementary educators, Grambling prepared secondary teachers and added curricula in sciences, liberal arts and business, transforming the college from a single purpose institution of teacher education into a multipurpose college. In 1949, the college earned its first accreditation by the Southern Association of Colleges and Schools (SACS).

In 1974, the addition of graduate pro-

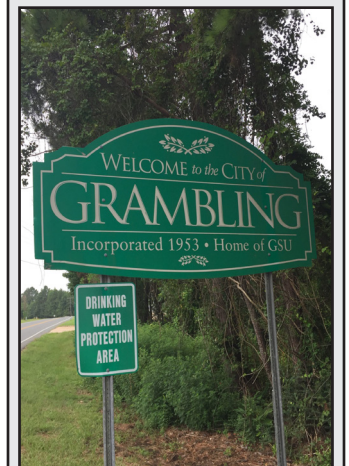
THE CITY OF GRAMBLING

The City of Grambling's history as a distinct African-American community began in 1875 when Alfred Richmond bought a 160-acre tract from Jim Gipson, a former slave owner. This tract, which is the site of the present-day city of Grambling, was later inherited by Richmond's son, Lafayette (Fate), who became one of the founding fathers of the village that would ultimately evolve into a city.

The name Grambling came from Judson Hartwell Grambling, a European-American who lived in Ruston. Grambling leased land from Fate Richmond in 1887 to build a sawmill that serviced a thriving lumber industry in the area. Grambling got its name because the Vicksburg, Shreveport and Pacific Railroad that stopped in the village to pick up lumber called it "the Grambling stop." The mill operated for about 10 years, during which time homes and businesses grew up near the sawmill in the area that would be later known as downtown Grambling, affectionately called "The Village" by local residents and students.

In September of 1953, Grambling became Louisiana's first incorporated African-American municipality. Today, it is the second fastest growing municipality in Lincoln Parish. Among its most noted sites are: Legends Plaza, which includes the a grocery store and a discount store, the City's Walk of Fame, The Eddie Robinson Museum, and City Park.

Mayor Edward R. Jones is currently serving his third term.



grams in early childhood and elementary education gave the school a new status and a new name — Grambling State University. The university expanded and prospered between 1977 and 2000. Several new academic programs were incorporated and new facilities were added to the 384-acre campus, including a business and computer science building, school of nursing, student services building, stadium, stadium support facility and an intramural sports center.

UNIVERSITY PRESIDENTS

Following Founding President Charles P. Adams, who served for 35 years, Ralph Waldo Emerson Jones became the second president in 1936. Five presidents served from 1977 to 2001: Dr. Joseph Benjamin Johnson, Dr. Harold W. Lundy, Dr. Raymond Hicks, Dr. Leonard Haynes III and Dr. Steve A. Favors. Grambling State University's first female president, Dr. Neari Francois Warner, served a three-year interim term until the selection of Dr. Horace Judson, who became the institution's seventh president in 2004. After leading an ambitious five-year campaign to rebuild the institution's facilities, Judson resigned in 2009. After Judson's resignation, Frank G. Pogue, Ph.D., a highly respected educator and administrator with a distinguished 47-year career in higher education was named GSU's president.

Prior to his selection as president, Dr. Pogue served as the president of Edinboro University of Pennsylvania, interim president at Chicago State University and State University of New York (SUNY)-Cobleskill. Dr. Pogue retired after serving a five-year term as president, and Dr. Cynthia Warrick, Ph.D., RPh. was named as interim president in 2014 during the presidential search.

Warrick ventured into higher education 16 years ago serving in multi-faceted leadership roles as an administrator, public servant, healthcare professional, environmental research scientist, faculty member, and accreditation reviewer.

Dr. Willie D. Larkin, Ph.D. was named ninth university president in 2015 (May) and serve a one-year term. Dr. Larkin had previously served as Chief of Staff to leaders of Morgan State University and the University of Wisconsin Colleges, where he worked directly with the chancellor, and the president at Morgan State University, to provide oversight of nearly 3,000 employees and an operating budget of more than \$300 million. At Auburn University, he was the faculty advisor to the university's Board of Trustees and the first African American to chair the university's 90-member Univer-

sity Senate.

Our current president is Richard J. Gallot, Jr. The University of Louisiana System (ULS) Board of Supervisors announced (07/26/2016) that the tenth President of Grambling State University (GSU) will be former Louisiana state senator, and state representative, Richard J. Gallot, Jr. Gallot is a 1987 GSU graduate where he received a bachelor of arts in Arts & History. He earned his Juris Doctorate from Southern University in 1990. From 2000 to 2012, Gallot held the District 11 seat in the Louisiana House of Representatives. He served three terms in the house before winning his first term in the senate in 2011. Gallot did not seek re-election in the October 24, 2015 election.

THE CAMPUS

Located in the small north central Louisiana town of Grambling, Grambling State University offers a personalized educational experience with a big city atmosphere. The campus houses students in its 19 residence halls, enhances and promotes student life through its impressive student union and bookstore, and appeals to other areas of life and improvement through buildings such as the dining hall, library, intramural center, and health center. More than 800 courses and 68 degree programs are offered at Grambling. There are five colleges, including an honors college, two professional schools, a graduate school, and a Division of Continuing Education. National and local employers recruit graduates from Grambling's excellent nursing, computer science, teacher education, and other programs. We encourage you to visit Grambling State University and discover why Grambling State University is Where Everybody is Somebody.

CAMPUS LIFE

Grambling State University recognizes that clubs and social organizations are an important part of college life. By joining one of these, students discover an avenue to meet new faces with similar interests and have the opportunity to learn about new subjects. As students' commitments to their clubs develop, leadership positions may be another step within the activity's hierarchy that a student can explore.

One of the most popular campus organizations is the Tiger Marching Band, touted as the number one collegiate show band in the world. Formed in 1926 by President R.W.E. Jones, the Mighty Tiger Marching Band has become a household name. The band has been featured in television ads, the

major motion picture Drumline, appeared as guest entertainment on television shows, and entertained Liberian President William R. Tolbert at his 1972 inauguration. In 1999, the band was selected to represent the Pageantry of Bands section of the NCAA Hall of Fame. Through an impressive list of accomplishments and honors, the Grambling Tiger Band has become known as "The Best In The Land."

Intercollegiate athletics has also made Grambling State University a household name among national universities. The football program has been successful in landing prominent coaching staffs over the years. Professional football player, Doug Williams, a Super Bowl Most Valuable Player, served as head football coach, succeeding Coach Eddie Robinson, the "winningest coach in the history of football." Known as the "Cradle of Pros," Grambling also produced the first black football player in the NFL and the first black quarterback to start in the NFL.

ACADEMIC SUPPORT

Under the watch of Provost and Vice President Dr. Robert M. Dixon, the Office of the Provost & Vice President for Academic Affairs is designed to provide leadership and supervision for all undergraduate and graduate degree programs. Continuing education initiatives, the military science program, and a variety of support and outreach units also fall under its auspices.

The office espouses a philosophy of excellence from which a rigorous plan for enhancing and strengthening the academic environment continuously evolves. The office is committed to realizing the overarching goals of preparing students for success in their chosen careers, motivating them to pursue graduate and advanced study, and equipping them with skills for effective interaction with diverse groups of people. To this end, the instructional program is delivered through four academic colleges and two professional schools. Within this structure, one certificate program and seventy-two degree programs, ranging from associates to the doctorate, are offered.

This office is committed to providing faculty with opportunities and activities for professional growth and development. Moreover, the office is responsible for monitoring and maintaining the integrity of the academic program.

GRAMBLING STATE UNIVERSITY FAMOUS ALUMS

NEWS, MEDIA and JOURNALISM

Name	Notable
Charles M. Blow	New York Times columnist

EDUCATION

Name	Notable
Ivory V. Nelson	President of Lincoln University (Pa.)

ENTERTAINMENT

Name	Notable
Erykah Badu	Grammy Award-winning artist
Natalie Desselle-Reid	Actress best known for roles in B*A*P*S, Def Jam's How to Be a Player, and Disney's Cinderella
Judi Ann Mason	Television writer, producer and playwright

CRIMINAL JUSTICE

Name	Notable
Burl Cain	Master's degree in criminal justice, now warden of the Louisiana State Penitentiary

POLITICS

Name	Notable
Robert Bobb	Politician and public administrator; Emergency Financial Director for Detroit Public Schools; City manager for thirty years in the cities of Kalamazoo, Michigan; Santa Ana, California; and Richmond, Virginia
Israel "Bo" Curtis	Member of the Louisiana House of Representatives from 1992 to 2008; Member of the Rapides Parish School Board from 1976 to 1992
Bettye Davis	Member of the Alaska Senate and former member of the Alaska House of Representatives from the 21st district
Rick Gallot	Democratic member of the Louisiana State Senate

Jeff Hall	for District 29 since 2012; Former state representative for the 11th district
E. Edward Jones	Member of the Louisiana House of Representatives (District 26), accountant in Alexandria
Edward Joseph Price	Educator, civil rights advocate, pastor, and former president of the National Baptist Convention of America, Inc., in Shreveport
Alicia Reece	Member of the Louisiana House of Representatives (District 58), businessman in Gonzales
Shannon F. Reeves	Politician, member of the Ohio House of Representatives (33rd district)
Gregory Tarver	National Director of State and Local Development for the Republican National Committee
Ollie Tyler	Former member of the Shreveport City Council and the Louisiana State Senate
Pinkie C. Wilkerson	Mayor of Shreveport; former interim state superintendent of education; former Caddo Parish school superintendent
	Former member of the Louisiana House of Representatives, District 11

SPORTS

Name	Notable
Tommie Agee	Former professional baseball player
Garland Boyette	Former professional football player
Willie Brown	Former professional football player; Member of the Pro Football Hall of Fame
Jophery Brown	Former Major League Baseball player;
Buck Buchanan	Stuntman in film and television for over 30 years
	Former professional football player; Member of the College Football Hall of Fame and the Pro Football Hall of Fame

Patricia Cage-Bibbs	Women's basketball head coach at North Carolina A&T State University, Hampton University and Grambling State University; Has over 400 wins in her coaching career
Ronnie Coleman	Professional bodybuilder and eight-time Mr. Olympia winner
Bruce Eugene Clemente Gordon	Former professional football player
Charles "Charlie Red" Hardnett	Former ABA basketball player
James "Shack" Harris	First black quarterback to start in the NFL
Jason Hatcher	Current NFL defensive end
Tyree Hollins	Professional football player
Charlie Joiner	Former professional football player and member of the Pro Football Hall of Fame
Johnny Jeter	Former Major League Baseball player
Trumaine Johnson	Former professional football player
Ernie Ladd	Former professional football player and Professional wrestler (nicknamed "The Big Cat")
Albert Lewis	Former professional football player
Guy Prather	Former professional football player
Willis Reed	Retired professional basketball player
Patrick Scott	Former professional football player
Goldie Sellers	Former professional football player
Winston Short	Former track athlete who competed for Trinidad in the Commonwealth and Pan American Games during the 1960s
Everson Walls	Former NFL All-Pro cornerback and Super Bowl champion (XXV)
Doug Williams	Former NFL quarterback; MVP of Super Bowl XXII
Gerald Williams	Former Major League Baseball player



We're on a mission to improve the health and lives of Louisianians.

We stay true to our mission by making sure our customers can see top doctors and specialists in all 50 states. By rewarding doctors and hospitals with proven track records. And by offering customers a wide range of health and wellness programs. Our mission is more than words. It's deeds.



Louisiana

www.bcbsla.com

01MK6020 R07/19 Blue Cross and Blue Shield of Louisiana is an independent licensee of the Blue Cross and Blue



FROM THE VICE PRESIDENT OF INTERCOLLEGIATE ATHLETICS

WELCOME #GRAMFAM



On behalf of the entire athletics department, I would like to welcome you to our 2021 Homecoming game against Texas Southern University. We are extremely excited for this season and we look forward to continuing to bring you the rich tradition and excellence of Tiger Football.

We want to thank each of you for your blood, sweat, hard work and sacrifices made during these challenging times.

The Department of Athletics recognizes and acknowledges all our alumni, fans and supporters today, however, we send out a special thanks to the family, friends and supporters of our senior class, we are truly grateful for ALL you do for Dear Old GSU!

To our World Famed Marching Band, Orchesis Dance Company, GSU NCAA Nationally Ranked Cheer Team and Miss Grambling State University & Royal Court, we thank you for all your support and all you do to enrich this experience with your distinct talents. Lastly, we thank our GramFam student body for being the best student body in the world.

Again, thanks for attending the game; and PLEASE mask up, social distance, wash hands frequently and stay safe! We pray safe travels for all back to your destinations!

With Tiger Pride,

Sincerely,

Dr. Trayvean Scott

Trayvean D. Scott, Ph.D

Vice President of Intercollegiate Athletics

DR. TRAYVEAN SCOTT

VICE PRESIDENT OF INTERCOLLEGIATE ATHLETICS • FIRST YEAR • SOUTHERN 2003



Trayvean D. Scott, Ph.D was hired as the Vice President of Intercollegiate Athletics at Grambling State University on July 1, 2021.

Scott came to Grambling State after spending 10 years at Southern University where he was the Deputy Athletic Director/Chief Operating Officer and was responsible for the daily operations of the SU athletic programs.

While at Southern, Scott, who served as the sport administrator for football, women's basketball, softball, and men & women's track & field (indoor & outdoor), and men & women's cross country, oversaw NCAA Compliance, Student-Athlete Support Services, Academics, Student-Athlete Development, as well as the Strength & Conditioning program.

Scott was also responsible for football game scheduling. He serves as a member of the athletics department's senior staff, and previously served as Southern's Executive Athletic Director.

Throughout his professional career, Scott has been active on the university, conference, and national levels. He graduated in 2016 from the prestigious NCAA Leadership Institute for Ethnic Minorities, 2018 of the Sports Management Institute (SMI) and has facilitated the NCAA's Career in Sports Forum in 2016 while also serving as a member of the selection committee.

Scott is currently a member of the National Association of Collegiate Directors of Athletics (NACDA), National Association of Academic & Student-Athlete Development



Professionals (N4A), the Minority Opportunities Athletic Association (MOAA), and the National Association of Athletic Development Professionals (NAADD) where he was the Diversity Initiative recipient in 2015 and 2016,

respectively.

During his time at Southern, Scott spearheaded an unprecedented academic recovery of Southern Athletics as it relates to the Academic Progress Rate, making a dramatic improvement from 3 to all 15 programs meeting the APR benchmarks earning post-season access after just two full years in charge.

Scott, who has written more than \$2 million in grants to support academic and student development initiatives, also guided the institution through the successful completion of the NCAA Data Review process and served as the author and principal investigator of the \$900,000 NCAA AASP Grant.

A former standout basketball student-athlete, four-year starter, and team captain at Southern, Scott remains atop the school's record books in assist, steals, and minutes played. After his collegiate playing career was over, Scott enjoyed a successful career in financial services until returning to his alma mater in 2011.

Outside of athletics administration, Scott was an adjunct faculty member in the College of Business at Southern where he taught courses in Business Administration, Management, and Sports Marketing. He holds bachelor's in marketing (2003) & Management (2005) and a Master's Degree in Communications (2005) from Southern University. In addition, he completed his Ph.D. in Education/Sport Management in 2018 from Northcentral University.

BE  THE MATCH[®]

JOIN HER RACE AGAINST TIME

We match blood cancer patients to their life-saving donor. But as patients urgently need blood stem cell donors who share their ethnic background, race is a crucially important factor. **Thank you Tigers for helping save lives!**

[Join.BeTheMatch.org/GRAMFAM](https://www.bethematch.org/GRAMFAM)
or text **GRAMFAM** to **61474**



Genesis,
searching patient

DEPARTMENT OF ATHLETICS

Developing Leaders, Winning Championships and Graduating Student-Athletes



ATHLETICS HISTORY

Athletics at Grambling State University was established in 1926 under the direction of the late President Ralph Waldo Emerson Jones. At the time, only football and baseball were offered with men's basketball beginning in 1929. As the university's enrollment grew, the Department of Athletics began to sponsor additional sports such as track and field (men and women), golf (men and women), tennis (men and women), and cross country (men and women) under the umbrella of the National Association of Intercollegiate Athletics (NAIA).

In the mid-1970s, Grambling State moved to the NCAA and participated on the Division II level before moving on to the Division I ranks while several sports, such as track and field, remained in the NAIA.

In the mid-1990s, Grambling State's entire athletic program participated in the NCAA and expanded its offering of women's sports with the addition of softball and bowling. With the addition of women's soccer in the fall of 2003, the University now sponsors 15 sports, which consists of six (6) men's and nine (9) women's teams (Men's Sports: Baseball, Basketball, Cross Country, Football, Indoor Track & Field, Outdoor Track & Field; Women's Sports: Basketball, Bowling, Cross Country, Indoor Track & Field, Outdoor Track & Field, Soccer, Softball, Tennis, Volleyball).

MISSION STATEMENT

The mission of the Grambling State University Department of Athletics is to graduate our student-athletes and



compete successfully at the highest level of NCAA Division I Intercollegiate Athletics while supporting the total development of our student-athletes and staff.

The Athletics Department holds the philosophy that the athlete's most important tasks are pursuit of personal growth through academic work, team experiences, and ethical responsibility. The department strives to maintain outstanding athletic programs conducted in a manner that sets an example for fair play and sportsmanship. The department recognizes that its primary commitment is education of the student-athlete and, to this end, extends academic assistance. Under the auspices of the University, the Athletics Department offers grants-in-aid to qualifying student athletes enabling them to pursue both academic and athletic goals.

The Athletics Department provides the guidance neces-

sary for an exemplary and competitive athletics program that is beneficial to students, faculty and staff, administration, alumni, and community. All activities, operations, and decisions of the Athletics Department are guided by principles of equal opportunity and nondiscrimination.

VISION STATEMENT

The vision of the Department of Athletics is to build on our national reputation of winning championships, graduating student-athletes, and developing leaders. The department is widely recognized for the delivery of educational and athletic-related experiences. The Department of Athletics expands its brand by forging strategic corporate partnerships, challenging top competition, engaging the alumni, and recruiting the best talent available. Further, the department is a source of pride for alumni and global supporters.



GreenClinic Health System

1200 S. Farmerville St
Ruston, LA 7127
(318) 255-3690

Jonesboro-Hodge
4707 Quitman Hwy
Hodge, LA 71247
(318) 395-1168

QuickCARE of Ruston
1809 Northpoint Ln, Ste. 102
Ruston, LA 71270
(318) 255-3762

Green Clinic Surgery Department
411 E. Vaughn St
Ruston, LA 71270
(318) 232-1570

Green Clinic TechCare
921 Tech Drive
Ruston, LA 71273
(318) 257-4866

Minden
3 Medical Plaza Place
Minden, LA 71055
(318) 639-4001

Northside
1402 Celebrity Dr
Ruston, LA 71270
(318) 255-1515

Ruston Women's © Specialty Center
411 E. Vaughn St
Ruston, LA 71270
(318) 255-9414

PHYSICIAN DIRECTORY

AUDIOLOGY

Kiley E. Stephenson, Au. D.

CARDIOLOGY

George B. Smith, M.D.
William C. Smith, M.D.

DERMATOLOGY

Joshua C. Mandrell, M.D.
Linzie Hebert, PA-C
Tiffany Guthrie, PA-C

EAR, NOSE, THROAT/HEAD & NECK SURGERY

John H. Broocks, IV, M.D.

FAMILY PRACTICE

Johnathan C. Baines, M.D.
Kenneth P. Metoyer, M.D.

FAMILY PRACTICE

- Jonesboro
Shane M. McVay, FNP-C

FAMILY PRACTICE

- Northside

M. Shane Phillips, M.D.
William P. Sanders, M.D.

INTERNAL MEDICINE

Mark A. Blackwelder, M.D.
Holly A. Kidd, D.O.
Thomas L. Morris, M.D.
E. Gregory Tubre, M.D.
Kadie Claborn, FNP-C

INTERNAL MEDICINE/ HEMATOLOGY/ONCOLOGY

David C. Osafo, M.D.
Stacey Spears, FNP-C

NEPHROLOGY

T. Michael Nammour, M.D.
Lisa Farris, FNP-C

NEUROLOGY

Michael E. Ehrlich, M.D.
Brian L. Stucki, M.D.
Elyse Mills, FNP-C

OBSTETRICS-GYNECOLOGY

J.R. McWhorter, M.D.
Landon C. Smith, M.D.
Michelle Waller, FNP-C

OPHTHALMOLOGY

Gary E. Luffey, M.D.

ORTHOPAEDICS & SPORTS MEDICINE

Richard I. Ballard, M.D.
Paul M. Novakovich, M.D.
Railey Garrett, FNP-C
Erin Lancaster, FNP-C

PEDIATRICS

Marlene F. Daher, M.D.
David W. McGehee, M.D.
Candace F. Moak, M.D.
Tonya K. Slusher, M.D.

PHYSIATRY (Physical Medicine & Rehabilitation)

Navneet Sharma, M.D.
Kristina Barber, FNP-C

PHYSICAL THERAPY/ OCCUPATIONAL THERAPY

Abigail Mandrell, PT
Jason Granger, PT
Gene Mariano, PT
Fred Poulin, PT
Jodi Serpas, PT
Nick Howard, PTA
Josh Stanley, OT
Abigail Johnson, PTA
Cynthia Jones, COTA

PODIATRY

Dionne R. Nolan, D.P.M.

PULMONARY MEDICINE

Thomas P. Smith, M.D.
Ashley Walpole, FNP-C

RADIOLOGY

Jeffrey S. Weeks, M.D.

RHEUMATOLOGY

Rochelle Robicheaux
Metoyer, M.D.
Melani Craig, FNP-C

SURGERY

Greene S. Butler, Jr., M.D.
Kerry Byrnes, M.D.
Derek R. McClusky, M.D.
Trey Deason, FNP-C

UROLOGY

Charles W. Tanner, Jr., M.D.
Raymond D. Germany, Jr., M.D.

QuickCARE of Ruston

Johnathan C. Baines, M.D.
Wesley Coleman, P.A.
Rachel Moore, FNP-C

Green Clinic TechCare

Christi Gallot, FNP-C
Jenny Sherrard, FNP-C



GO TIGERS!



STADIUM POLICIES

ADMISSION

All guests over the age of two years entering Eddie G. Robinson Memorial Stadium must have a valid ticket. Once guests enter the stadium, they may not exit and re-enter without a separate game ticket. All persons and their belongings are subject to be searched by security before entering.

Once a guest leaves the stadium, they will not be permitted back in. This is a Grambling State University policy and applies to every ticket holder. Guests should plan accordingly and bring everything they need to the stadium upon initial entry. This re-entry policy is waived in case the stadium has to be cleared for weather and/or emergencies on game day but later the game resumes.

ALCOHOL

Alcoholic beverages are not permitted to enter the facility. Persons identified with alcohol may be asked to leave the premises. Intoxicated guests will be subject to removal from the facility.

ANIMALS

Animals are not permitted in or around athletics facility grounds, with the exception of trained service animals for our guests with disabilities.

ANNOUNCEMENTS AND PAGING

The public address system is used for game related information and emergency announcements only. In the event of an emergency in which guests attending the game must be located, please contact a member of Grambling State University PD for clearance.

BANNERS, SIGNS, AND FLAGS

Banners, signs and flags are allowed in athletics facilities provided they do not impede another guest's view of the competition, cover any facility signage, and/or are not attached to the facility. Banners, signs, and flags on poles or sticks are prohibited. Athletics Event Management reserves the right to remove any banner, sign, or flag that is in violation of the policy.

BAG POLICY AND ENTRY PROCEDURES

Grambling State University has implemented the Clear Bag Policy for all home events. This policy will help provide a safer environment for the public while significantly expediting fan entry at the stadium.

This policy limits the size and types of bags permitted. Items must be carried or fit into a permissible clear plastic bag or a small clutch (no larger than 4.5" x 6.5"). All persons, approved bags and permitted items are subject to search upon entry and may be subject to additional search within Eddie G. Robinson Memorial Stadium. Anyone possessing prohibited items will be asked to return them to their vehicle or dispose of them at the entrance doors.

PROHIBITED ITEMS

- Alcoholic beverages
- Baby seats/baby strollers
- Backpacks
- Bags of all types, except when used for medical or childcare needs
- Beach Balls, inflatable toys or laser pointers
- Coolers, containers or ice chests
- Explosives, guns, knives or weapons
- Folding chairs or stools
- Food and beverages
- Noisemakers of any type (i.e. bells, horns, whistles, etc.)
- Personal heaters
- Tobacco of any kind including *e-cigarettes

- Umbrellas
- Video cameras

PERMITTED ITEMS

- Small clutch or wallet 6.5 x 4.5 or smaller
- Cameras with a 6" lens or less
- Service animals with identification
- Carried rain gear, blankets or coats
- Pre-approved signs of poster board size or less
- Wheelchairs for ADA ticket holders

CAMERA POLICY

Consumer level point-and-shoot cameras are permitted inside Eddie G. Robinson Memorial Stadium. However, professional camera equipment, camera bags or camera lenses exceeding 6" in length, monopods, tripods and video cameras are prohibited. Any capture of images, still or motion, for the purposes of advertising, promotions, trade or resale by patrons is prohibited. The recording of events and the public distribution without prior written permission is a violation of GSU Athletics, SWAC and NCAA policies.

CONCESSIONS

The concession stands located throughout Eddie G. Robinson Memorial Stadium, offer a great menu for fans. No outside food or beverages are permitted inside the stadium. Concessions offer a wide variety of delicious menu options featuring our classic hot dogs, nachos & cheese, snacks and Coca-Cola beverages. Credit card machines are available at some concessions.

EVACUATION

In case of evacuation, instructions will be given over the public address system. Gate personnel and ushers will assist directing fans to the appropriate exits. Do not try to re-enter Eddie G. Robinson Memorial Stadium after an evacuation until emergency personnel have instructed fans to do so.

FIELD ACCESS PROHIBITED

In accordance with the Southwestern Athletic Conference (SWAC) and Grambling State University policies, guests are prohibited from coming onto the field at any time. Only participants, coaches, officials, and authorized personnel shall be allowed in the competition area before, during, and at the conclusion of the competition. This policy is for the safety of our guests, the officials, student-athletes, and coaches.

GAME DAY POLICIES

Rowdy, threatening, unsafe or inappropriate conduct including profane, racial, sexist, abusive or intimidating comments or actions, fighting, smoking, drunkenness and throwing of any object in the stadium will not be tolerated and can result in ejection, arrest and/or loss of ticket privileges. Grambling State University, SWAC and NCAA policies strictly prohibit anyone from entering the sideline or field without proper credentials.

Violators may be arrested. Grambling State University reserves the right to remove the ticket holder from the premises if, in the sole discretion of security personnel, the ticket holder's conduct endangers or disrupts the environment. All bags will be searched at the gates upon entering the stadium. Public address announcements are restricted to emergency situations only and must be requested through GSU PD.

INCLEMENT WEATHER

In the event of inclement weather, (i.e. dangerous winds, tornado, electrical storm, etc.) all guests will be advised that it is in their best interest to seek shelter. Emergency instructions will be delivered via the public address system and the message boards when possible. The designated safety is the Fredrick C. Hobby Assembly Center.



STADIUM POLICIES

NCAA LIGHTNING POLICY

When lightning is detected within a minimum of 10 miles of the competition site, home team game management shall utilize the public address system to inform those in attendance that inclement weather, including lightning within 10 (or more) miles and that should patrons vacate the facility for safe shelter, they will be allowed to re-enter with a ticket stub. Grambling State University employs two lightening detection systems, which will aid in the determination of unsafe conditions. The contest will resume only after a 30 minute period of no lightening detections within the 10 mile radius.

LOST CHILDREN

Parents/guardians with a lost child should contact the nearest police officer or event staff member. That person will then contact the proper personnel to insure the quickest remedy to the situation. At the discretion of Grambling State University PD and game staff, public address announcements may be requested and executed.

SMOKING/TOBACCO FREE

Grambling State University is a smoke-free campus. This means no cigarettes, pipes, cigars, dip or chew anywhere on campus and includes Eddie G. Robinson Memorial Stadium.

THROWING ITEMS

The throwing of items is strictly prohibited and will not be tolerated. Anyone caught throwing items may be ejected from the stadium.

Grambling State University Athletics hopes to provide a safe and enjoyable experience to fans at each and every athletic contest on our campus. Your cooperation with a few simple rules can help to ensure that it is indeed a great game day experience. Tiger fans are loud, but they are always respectful and show good sportsmanship to the visiting fans.

The SWAC, NCAA and GSU take great effort insuring athletic events are conducted in a safe and enjoyable atmosphere which promotes good sportsmanship by spectators, student-athletes and coaches. We request your cooperation by supporting the participants, officials, those around you, and event management in a positive manner and treating others with courtesy and respect. Refrain from throwing objects onto the field for any reason. Do not enter the playing areas at any time, unless directed to do so in an emergency situation, including after game celebrations.

TAILGATING POLICY

As defined in this policy, tailgating may not involve the consumption of alcohol in any area. Grambling State University does not sanction the violation of federal, state, or local laws, including the consumption/possession of alcoholic beverages by underage persons. Individuals participating in tailgating activities at GSU are expected to conduct themselves in a manner respectful of the nature and character of the University; including, following the directives of event management staff and public safety officials.

Tailgating hosts may be held responsible for the behavior and actions of guests in the permitted area. Persons acting in a disruptive, disrespectful or disorderly manner may be asked to leave the premises or be subject to arrest or citation. Students may also be charged with a violation of the GSU Student Code of Conduct.

Drinking games (including but not limited to beer pong and other table games) and the use of devices intended to accelerate the consumption of alcohol (including but not limited to funnels or beer bong) are prohibited.

Propane and charcoal grills are allowed when used solely for food preparation purposes. Burned coals and/or residue from cooking are not permitted to make contact with the paved surface of the parking lot or grassy areas. Open flame fires, including fire pits, are prohibited.

All groups and individuals participating in tailgating are responsible for the proper collection and disposal of their trash, as well as, other debris such as charcoal. Trash

containers will be provided throughout tailgate areas.

TICKET INFORMATION

Ticket information is located on the Grambling State University athletics website at www.gsutigers.com. The GSU Ticket Office is located in the Fredrick C. Hobdy Assembly Center. The address is 100 North Stadium Drive, Grambling, LA 71245. The telephone number is (318) 274-2629. The email address is gsutickets@gram.edu. The preferred way to acquire genuine GSU athletic tickets is through the GSU Ticket Office, however they can also legitimately be purchased through any Ticketmaster outlet. On game days, tickets will be available for sale at the Fredrick C. Hobdy Assembly Center, located across from Eddie G. Robinson Memorial Stadium. GSU Athletics does not sell game tickets through third party vendors. Purchasing through such vendors is a risk, which could result in the purchase of counterfeit tickets. Counterfeit tickets will not be granted entry to the stadium.

Payment Options

The GSU Box Office accepts VISA/Mastercard/Discover, cashier's checks, money orders and cash. Personal checks are not accepted at the box office. Refunds are not available for tickets purchased to GSU football games.

Will Call:

Tickets purchased with credit cards in advance can be picked up at the GSU Ticket Office from 8:30 a.m. - 4 p.m. on Monday-Friday at the Fredrick C. Hobdy Assembly Center. Tickets left at the Will Call window will be available on game days two hours prior to the start of the game. All tickets left for other persons will be available at designated Will Call window at Eddie G. Robinson Memorial Stadium. A valid state-issued I.D. is required to retrieve tickets left at the Will Call window. There is a strict no re-entry policy at Eddie G. Robinson Memorial Stadium.

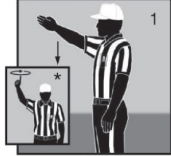
Please be aware of the following when attending a football game in Grambling at Eddie G. Robinson Memorial Stadium:

- All persons entering the Stadium are subject to reasonable search to protect the safety of the public and to ensure compliance with this Fan Code of Conduct.
- Do not enter the field of play at any time. This includes post game.
- Possession or use of illegal drugs is strictly prohibited.
- Be courteous to other fans, players, coaches and referees. Derogatory or threatening comments made by a patron could result in their ejection from the stadium or arrest by law enforcement.
- Smoking and tobacco products are prohibited in all areas of the stadium.
- No weapons are allowed on the premises of Grambling State University.
- No outside food is allowed in Eddie G. Robinson Memorial Stadium.
- Persons entering the stadium are expected to abide by local, state and federal laws.
- Alcoholic beverages may not be brought onto the campus of Grambling State University.
- Fans are expected to comply with requests from law enforcement, EMS and stadium public workers for the duration of the contest. Fans ejected will not be refunded admission.



Official Football Signals

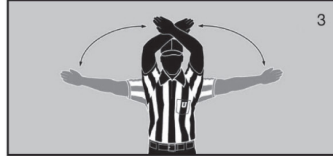
PlayPic®



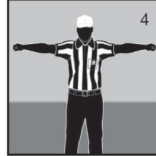
1 Ready for play
*Untimed down



2 Start the clock



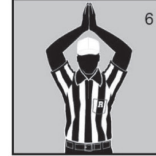
3 Stop the clock



4 TV/radio timeout



5 Touchdown
Field Goal



6 Safety



7 Dead-ball foul/
touchback
(move side to side)



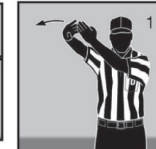
8 First down



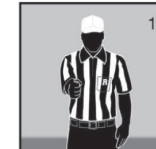
9 Loss of down



10 Incomplete pass/unsuccesful try or
field goal/penalty declined/
coin toss option deferred



11 Legal touching



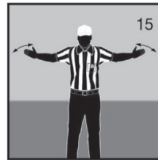
12 Inadvertent whistle



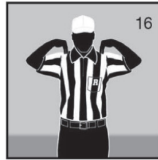
13 Disregard flag



14 End of period



15 Sideline warning



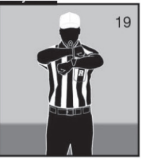
16 Illegal touching



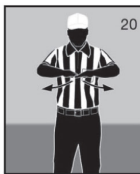
17 Uncatchable pass



18 Offside B/Offside A
or B on kickoff



19 False start/
Encroachment A
Illegal formation



20 Illegal motion (1 hand)
Illegal shift (2 hands)



21 Delay of game



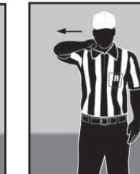
22 Substitution
infraction



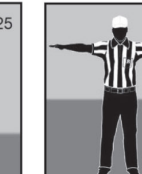
23 Equipment violation



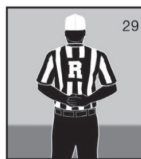
24 Targeting



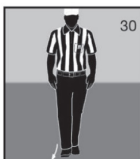
25 Horse-collar



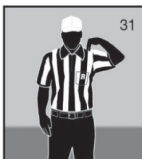
27 Unsportsmanlike
conduct



29 Sideline interference
Note: Face press box
when giving signal.



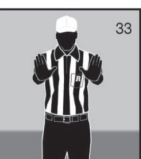
30 Running into or
roughing the kicker
or holder



31 Illegal batting/kicking
(for illegal kicking, follow
with a point toward foot)



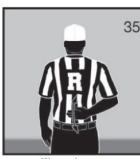
32 Illegal fair catch



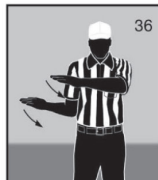
33 Pass interference
Kick-catching
interference



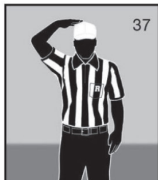
34 Roughing the passer



35 Illegal pass
Illegal forward handing
Note: Face press box
when giving signal.



36 Intentional grounding



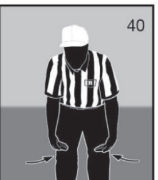
37 Ineligible downfield
on pass



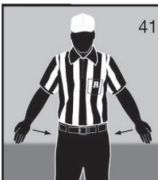
38 Personal foul



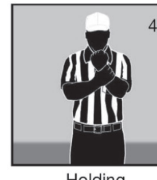
39 Clipping



40 Block below the waist
Illegal block



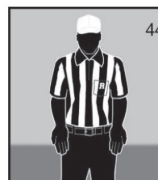
41 Chop block



42 Holding
Obstructing
Illegal use of the
hands or arms



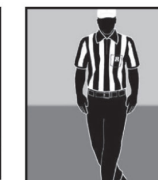
43 Illegal block
in the back



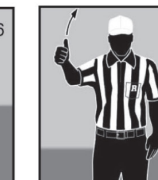
44 Helping the runner
Interlocked blocking



45 Grasping of
face mask or
helmet opening



46 Tripping



47 Disqualification

THE CLUB



HOW TO JOIN

MEMBERSHIP PACKAGE INCLUDES

\$300 ONE-TIME FEE

EXCLUSIVE T-SHIRT

LETTERMAN JACKET (WITH BLACK LEATHER SLEEVES)

LAPEL PIN

*EARLY ACCESS TO PURCHASING
SEASON TICKETS & OTHER EVENTS*



THE **CUB CLUB**

MEMBERSHIP PACKAGE INCLUDES

\$50 ONE-TIME FEE

TWO CUB CLUB T-SHIRTS

ID CARD W/LANYARD

WATER BOTTLE

FREE ENTRY INTO

HOME MEN'S/WOMEN'S BASKETBALL AND BASEBALL

**SPECIAL ON-FIELD/COURT ACCESS AS BALL BOY/GIRL
FOR MEN'S/WOMEN'S BASKETBALL, BASEBALL & SOFTBALL**

EXCLUSIVE CUB CLUB GIFTS



#THISISTHEG



*Sodexo Food Service
Director
Alan Johnson*

"Grambling State University's dining program is open 24 hours/ 7 days a week. Featuring a wide variety of fresh food designed to satisfy everyone's appetite. Menu selections include just about every item you can imagine. Just feast your eyes on what we have available!" We also provide Catering services like simple coffee break to the more elaborate dinner reception offering a variety of chef-inspired foods and flavours and also Catering boxed fresh for you! For casual gatherings of any size, offering simple, high quality meals handcrafted onsite daily.



**Dining
Services**

THE WORLD'S MOST REFRESHING BEER™

OFFICIAL PARTNER OF
GRAMBLING STATE UNIVERSITY





**MOBILE
ORDERING
IS HERE!**

FAST JUST GOT FASTER

- Order & pay right from your phone
- Use Favorites for one-click ordering
- We'll have your order hot & ready as soon as you get here



Download our App or order online to get your Cane's EVEN faster.

ORDER.RAISINGCANES.COM



Download on the
App Store



GET IT ON
Google Play





HEAD COACH - BRODERICK FOBBS



Broderick Fobbs enters his eighth season as head football coach at Grambling State University.

Last season, Fobbs and the Tigers faced adversity as the team went 0-4 during the COVID-19 shortened season.

In 2018 & 2019, Fobbs led the Tigers to 6-5 overall record and a 4-3 mark in the Southwestern Athletic Conference (SWAC). Grambling State had four players named to the All-SWAC teams, including De'Arius Christmas, who earned the SWAC's Defensive Player of the Year honor for the second consecutive season. Christmas also earned school and national recognition as he was one of 14 finalists for the William V. Campbell National Football Foundation Academic Award.

In addition, the Tigers defense ranked tops in the conference in six categories, including blocked kicks (which led the nation), defensive touchdowns, fumbles recovered, passes intercepted, turnovers gained and turnover margin.

In 2017, Fobbs led Grambling State to an overall record of 11-2, ending the season in the Celebration Bowl with a loss to North Carolina A&T State. The Tigers repeated as SWAC Champions, beating Alcorn State, 40-32, and enjoyed Classic wins over Clark Atlanta (31-20), Prairie View A&M (34-21) and rival Southern (30-21). The four-time SWAC Coach of the Year led the Tigers to a final ranking of 14th in the FCS Coaches Poll and 16th in the STATS FCS Top 25 Poll.

In 2016, Fobbs led the Tigers to an overall record of 11-1, ending the season as SWAC Champions, Air Force Reserve Celebration Bowl Champions and HBCU National Champions. After repeating as SWAC Western Division champions, win-



THE PATH TO GRAMBLING STATE



LOUISIANA
Fullbacks/Linebacks
2000-2002



NORTHWESTERN STATE
Assistant Head Coach/Co-Offensive Coordinator/Running Backs/Passing Game Coordinator/Wide Receivers/Tight Ends
2002-2007



BUFFALO BILLS
Summer Minority Fellowship/Wide Receivers Assistant
2000-2005



MCNEESE STATE
Co-Offensive Coordinator/Wide Receivers
2007-2011



SOUTHERN MISS
Wide Receivers
2012



MCNEESE STATE
Tight Ends
2013



GRAMBLING STATE
Head Coach
2014-Present



PERSONAL

Born: August 2, 1974
Hometown: West Monroe, La.
Family: Wife, Kimbia; Daughters Kyndal and Rylee

EDUCATION

Carroll High School | Monroe La.
 Grambling State University
 Grambling, La. (1997 - Bachelor's Degree)

PLAYING EXPERIENCE

Grambling State University (1992-1997)

POSTSEASON EXPERIENCE AS A PLAYER

1993 Grambling State vs. Florida A&M (W, 45-15)
 Heritage Bowl
 1994 Grambling State vs. South Carolina State (L, 27-30)
 Heritage Bowl

POSTSEASON EXPERIENCE AS A COACH

2004 Northwestern State vs. Montana (L, 7-56)
 FCS Playoffs First Round
 2007 Northwestern State vs. Eastern Washington (L, 15-44)
 FCS Playoffs First Round
 2009 McNeese State vs. New Hampshire (L, 13-49)
 FCS Playoffs First Round
 2015 Grambling State vs. Alcorn State (L, 21-49)
 SWAC Championship
 2016 Grambling State vs. Alcorn State (W, 27-20)
 SWAC Championship
 Grambling State vs. North Carolina Central (W, 10-9)
 Air Force Reserve Celebration Bowl
 2017 Grambling State vs. Alcorn State (W, 40-32)
 SWAC Championship
 Grambling State vs. North Carolina A&T State (L, 14-21)
 Celebration Bowl

ACCOLADES AS A PLAYER

1992 HBCU National Champion
 1993 Heritage Bowl Champion
 1994 SWAC Co-Champions

ACCOLADES AS A COACH

2004 Southland Conference Champions
 2007 Southland Conference Champions
 2009 Southland Conference Champions
 2014 SWAC Coach of the Year
 FCS Eddie Robinson Award Finalist
 SBN Eddie Robinson Coach of the Year
 Louisiana Sports Writers Coach of the Year
 Black College HOF Sports Writer Coach of the Year
 2015 SWAC Coach of the Year
 SWAC West Division Champions
 BOXTOROW Coach of the Year
 2016 SWAC Coach of the Year
 SWAC West Division Champions
 FCS Eddie Robinson Award Finalist
 SBN Eddie Robinson Coach of the Year
 BOXTOROW Co-Coach of the Year
 HERO Sports FCS Coach of the Year
 Air Force Reserve Celebration Bowl Champions
 SWAC & HBCU National Champions
 2017 SWAC Coach of the Year
 SWAC West Division Champions
 SWAC Champions



ning the 2016 SWAC championship game and defeating North Carolina Central University 10-9 in the Air Force Reserve Celebration Bowl, the Tigers are out to remain on top teams in all of FCS football.

Following a narrow 10-point loss (31-21) to FBS opponent Arizona, Grambling State finished the 2016 season on an 11-game winning streak, earning the program's 25th SWAC title (the first since 2011) and 15th HBCU Football National title - its first since 2008. The Tigers finished the 2016 season ranked 15th in the final FCS Coaches Poll and 16th in the final FCS STATS poll.

In his first three years as a head coach, Fobbs not only captured three SWAC Coach of the Year awards, but had led the Tigers to a 25-2 regular-season conference record — including back-to-back undefeated conference regular seasons (18-0). At the end of the season, 14 Tigers earned all-conference honors, including Devante Kincade being named Offensive Player of the Year and Donovan McCray being named Defensive Player of the Year.

In addition to being named SWAC Coach of the Year in 2016, Fobbs was also named the Sheridan Broadcasting Network Eddie Robinson Coach of the Year, HERO Sports FCS Football Coach of the Year, BOXTOROW Co-Coach of the Year, 3x Fitz Pollard Coach of the Year and was a finalist for the FCS Eddie Robinson Award. Fobbs has also overseen several off the field achievements within the development of his students. From the students Academic Progress Rate sky rocketing since his arrival in 2014 (975), to the over 125 student-athletes that

THE BRODERICK FOBBS WORKSHEET

Year	School	Overall Record	SWAC Record	Finish
2014	Grambling State	7-5	7-2	2nd (West)
2015	Grambling State	9-3	9-0	1st (West)
2016	Grambling State	11-1 ^A #	9-0*	1st (West)
2017	Grambling State	11-2 ^A	7-0*	1st (West)
2018	Grambling State	6-5	4-3	2nd (West)
2019	Grambling State	6-5	4-3	2nd (West)
2021 ^{**}	Grambling State	0-4	0-4	5th (West)
Total		51-25	40-12	

* - SWAC Champions | # - Celebration Bowl Champions | ^A - Celebration Bowl Appearance | ** - COVID Season

ALL-SWAC HONORS

Year	Name	Pos.	Team	
2014	Jahnaathan Williams	QB	2nd	
	Martez Carter	RS	2nd	
2015	Offensive Player of the Year - Jahnaathan Williams			
	Coach of the Year - Broderick Fobbs			
	Devante Kincade	QB	1st	
	Martez Carter	RB	1st	
	Trent Scott	OL	1st	
	William Waddell	OL	1st	
	La'Allan Clark	DL	1st	
	De'Arius Christmas	LB	1st	
	De'Aumante Johnson	DB	1st	
	Marc Orozco	K	1st	
	Darrell Clark	WR	2nd	
	Jordan Jones	TE	2nd	
	Linwood Banks	DL	2nd	
	2016	Offensive Player of the Year - Devante Kincade		
Defensive Player of the Year - Donovan McCray				
Coach of the Year - Broderick Fobbs				
Devante Kincade		QB	1st	
Martez Carter		RB	1st	
Justin Miller		OL	1st	
Chad Williams		WR	1st	
Donovan McCray		DL	1st	
Samuel Reese		DL	1st	
Arkeez Cooper		LB	1st	
2017	Offensive Player of the Year - Devante Kincade			
	Defensive Player of the Year - De'Arius Christmas			
	Coach of the Year - Broderick Fobbs			
	De'Arius Christmas	LB	1st	
	Joseph McWilliams	DB	1st	
	Anfernee Mullins	DE	2nd	
	Percy Cargo	DB	2nd	
	2018	Defensive Player of the Year - De'Arius Christmas		
		Joseph McWilliams	DB	1st
		Joseph McWilliams	DB	1st
2021 - Spring	Kenan Fontenot	DB	2nd	

have obtained their degrees during Fobbs' tenure. Fobbs has exposed his student-athletes to such experiences as etiquette training and other historical museums such as The Edmond Pettis Bridge, BB King Museum, Medgar Evers Museum, Little Rock Central High School, Arizona Science Biosphere, JFK Book Depository, Dallas Holocaust Museum and the Legacy Museum of Montgomery, Ala.

Fobbs was named head coach at Grambling on December 4, 2013. Being a first-time head coach of a historic football program presented monumental challenges, but Fobbs, his staff and the team embraced the challenges head on in the 2014 season.

After starting the season with three consecutive losses, Fobbs led the Tigers to seven consecutive conference wins before dropping the final two games of the season. Finishing with an overall record of 7-5 and 7-2 in the conference, Grambling was only one win away from clinching a western division title and a berth in the SWAC Championship game. The seven wins was a six-win improvement from the previous season for the Tigers. The drastic turnaround by the program created national headlines for Fobbs and the program earning him several Coach of the Year awards.

In 2014, Fobbs was named SWAC Coach of the Year, Louisiana Sports Writers Coach of the Year, Black College HOF Sports Writers Coach of the Year and Sheridan Broadcasting Network Eddie Robinson Coach of the Year and was named as a FCS Eddie Robinson Award Finalist.

The success continued into Fobbs' second year at Grambling. In only his second season, Fobbs guided the team to an undefeated regular season conference record (9-0) — the first undefeated regular-season record by a SWAC school since Grambling finished 7-0 in 2008 — and a western division championship. The Tigers' season ended in defeat in the Toyota SWAC Football Championship Game to Alcorn State.

Grambling finished the season ranked 24th in the final FCS STATS poll and quarterback Johnathan Williams was named SWAC Offensive Player of the Year — the first offensive player of the year award from a Grambling player since Frank Warren in 2010. That season Fobbs was named 2015 SWAC Coach of the Year and BOXTOROW Coach of the Year and was a finalist for the STATS FCS Coach of the Year.

After a one-year stint serving as the wide receivers coach with Southern Mississippi in 2012, Fobbs returned to McNeese State University for the 2013 for a sixth overall season as a member of the McNeese coaching staff as the tight ends

coach. That season, McNeese defeated FBS opponent University of South Florida 53-21. After a 10-2 regular season, McNeese made yet another FCS playoff appearance.

Prior to that, Fobbs served as co-offensive coordinator and wide receivers coach with McNeese from 2007-2011. During that time, he mentored players Quinten Lawrence, who was drafted and played for the Kansas City Chiefs and Miami Dolphins, and Steven Whitehead, an all-conference receiver. McNeese was a dominant Southland Conference opponent during these years as it boasted an undefeated regular season record of 11-0 in 2007 and FCS playoff appearances in 2007 and 2009. McNeese was also Southland Conference Champions in those two years.

Fobbs had a successful stay as an assistant coach at Northwestern State from 2002-2006, where he mentored and recruited two of the most productive receivers in Northwestern State history, Derrick Doyle and Toby Zeigler, who ranked first and second at the school in receptions, respectively. The Demons won a share of the 2004 Southland Conference Championship with an overall regular season record of 8-4 and a berth to the FCS Playoffs.

During his stay at NSU, Fobbs completed an NFL Minority Internship with the Buffalo Bills in 2005 and also coached the Arena League II Lafayette, La., franchise. He also worked as an offensive graduate assistant at the University of Louisiana-Lafayette during the 2000-01 season.

Under legendary Grambling head football coach Eddie Robinson, Fobbs was an honor roll student and served as a two-time team captain for the Tigers. Grambling won the 1992 HBCU National Championship defeating Florida A&M 45-15 in the Heritage Bowl. Grambling also were co-champions of the SWAC in 1994. He led the SWAC in yards per carry averaging 7.1 one season. He gained more than 1,000 yards during his college football career.

Fobbs was a standout multi-sport student-athlete at Carroll High School in Monroe, La. There, he was a team captain and earned all-state honors in football in 1990 and 1991 and all-region in baseball in 1990. Fobbs was also a state qualifier in the open 200m dash in 1991. He played in the state baseball and football all-star games before earning a scholarship to Grambling State University as a running back.

He earned his bachelor's degree from Grambling in 1997 and is married to the former Kimbia Jones. The couple has two children, Kyndal and Rylee.



FOBBS BY THE NUMBERS

FOBBS VS. ALL-TIME OPPONENTS

Alabama A&M University	6-0
Alabama State University	4-2
Alcorn State University	7-3
Arkansas-Pine Bluff, University of	6-1
Arizona, University of	0-1
Bethune-Cookman University	0-2
California, University of	0-1
Clark Atlanta University	1-0
Florida A&M University	0-0
Houston, University of	0-2
Jackson State University	5-1
University of Louisiana (Lafayette)	0-1
Lamar University	0-1
Louisiana-Monroe, University of	0-1
Louisiana Tech University	0-1
North Carolina Central University	1-0
North Carolina A&T State University	0-1
Mississippi Valley State University	6-0
Northwestern State University	1-1
Oklahoma Panhandle State University	1-0
Prairie View A&M University	4-4
Southern University	3-4
Southern Miss, University of	0-1
Tennessee State University	1-0
Texas Southern University	6-0
Tulane University	0-1
Virginia-Lynchburg, University of	1-0

CLASSIC/CHAMPIONSHIP/HOMECOMING GAMES

Celebration Bowl	1-1
Bayou Classic	3-4
Black College Hall of Fame Classic	1-0
Chicago Football Classic	1-0
SWAC Championship	2-1
Texas State Fair Classic	4-4
Homecoming	7-0

ALL-TIME RECORD VS. CONFERENCES

American Athletic Conference (AAC)	0-3
Conference USA	0-2
Mid-Eastern Athletic Conference (MEAC)	1-3
NCCAA	1-0
Ohio Valley Conference (OVC)	1-0
Pac-12	0-2
Southern Intercollegiate Athletic Conference (SIAC)	1-0
Sooner Athletic Conference (NAIA)	1-0
Southland Conference	1-1
Sun Belt Conference	0-2
Southwestern Athletic Conference (SWAC)	45-15
Western Athletic Conference (WAC)	0-1

BY DAY OF THE WEEK

Thursday	1-0
Saturday	51-29
Sunday	1-0

BY STATE

Alabama	5-1
Arkansas	3-0
Arizona	0-1
California	0-1
Florida	0-1
Georgia	1-1
Illinois	1-0
Louisiana	25-10
Mississippi	9-3
Ohio	1-0
Texas	9-7



ASSISTANT COACHES



ERIC MARTY

Offensive Coordinator/Quarterbacks Coach

- ◀ Enters his first year as the offensive coordinator/quarterbacks coach
- ◀ Spent the previous four seasons at Reedley Junior College
- ◀ Guided Reedley Junior College to back-to-back 10-1 seasons
- ◀ Played quarterback at Chapman University where he broke six school passing records

Gameday: Pressbox



EVERETT TODD

Defensive Coordinator / Defensive Line Coach

- ◀ Enters his eighth year as the defensive line coach and defensive coordinator
- ◀ In 2017, the Tigers defense led the SWAC in eight different categories
- ◀ Has been a part of three SWAC West Division titles, two SWAC crowns and one HBCU National Championship
- ◀ Was an assistant coach at New Mexico and coached in the New Mexico Bowl in 2007

Gameday: Field



BRYANT ROSS

Offensive Line Coach

- ◀ Enters his first season as the offensive line coach
- ◀ Coached at the University of Louisiana for two years as an assistant under head coach Billy Napier
- ◀ Also coached as an offensive line graduate assistant under Dan Mullen's staff at Mississippi State
- ◀ Played collegiately West Hills Community College before transferring to Alabama A&M University

Gameday: Field



TERRENCE GRAVES

Linebackers Coach / Special Teams Coordinator

- ◀ Enters his eighth year for the Black and Gold as the linebackers coach and special teams coordinator
- ◀ Has over 24 years of experience as a college football coach
- ◀ Coached the 2017 SWAC Defensive Player of the Year - De'Arius Christmas
- ◀ Had previous stops at Mississippi Valley State and Southern

Gameday: Field



QUENTIN BURRELL

Wide Receivers Coach

- ◀ Enters his sixth season and his first as the wide receivers coach
- ◀ Was a two-year starter, three-year letterman and a captain at the University of Notre Dame
- ◀ Played in the Gator Bowl and Insight.com Bowl
- ◀ Great-grandson of legendary Grambling State head coach Eddie Robinson

Gameday: Field



BRIAN WARE

Safeties Coach

- ◀ Begins his eighth season in the secondary
- ◀ Coached Montrel Meander (Cleveland Browns/Oakland Raiders/New York Jets)
- ◀ A native of Austin, Texas
- ◀ Previous stops include Kentucky Wesleyan and Texas Lutheran

Gameday: Field



DRE FUSILIER

Running Backs Coach

- ◀ Enters his fourth year on the Grambling State staff
- ◀ Played four years at Grambling State as a running back
- ◀ Spent the previous season as an offensive graduate assistant
- ◀ Worked over the summer at the Boys and Girls Club of Ruston (Louisiana)

Gameday: Field



ERIC RHODES

Cornerbacks Coach

- ◀ Begins his first season on the Grambling State staff
- ◀ Makes his return to Grambling State as he was a graduate assistant during the 2016 when the team won the Black College Football National Championship
- ◀ Previously served as the defensive backs coach at Chowan University
- ◀ Played collegiately at Kentucky Wesleyan as a defensive back

Gameday: Pressbox



RYAN WALKER

Tight Ends Coach

- ◀ Enters his second year as the tight ends coach
- ◀ Spent two seasons as the offensive coordinator at Atlantic Coast High School in Jacksonville, Florida
- ◀ Played professionally for the Jacksonville Sharks
- ◀ Has had the opportunity to support and train numerous quarterbacks on their path to success. Most notably, Mac Jones from the University of Alabama

Gameday: Field



Deveonte Mackey

*Graduate Assistant
Offense*



Hakim Gray

*Graduate Assistant
Defense*

LOCATIONS

Administration

2913 Betin Avenue
Monroe, LA 71201
(318) 388-1250
M-F: 8AM-5PM

Desiard Street Primary Care Clinic

2913 Desiard Street
Monroe, LA 71201
(318) 651-9914
M-W/F: 8AM-5PM; TH: 8AM-7PM

Behavioral Health Clinic

2913 Desiard Street
(318) 325-7740
Monroe, LA 71201
M-W/F: 8AM-5PM; TH: 8AM-7PM

Dental Clinic

2914 Betin Avenue
Monroe, LA 71201
(318) 323-4450
M-W/F: 8AM-5PM; TH: 8AM-7PM

Pediatric & Women's Health

2915 Betin Avenue
Monroe, LA 71201
(318) 651-9945
M-W/F: 8AM-5PM; TH: 8AM-7PM

S. D. Hill Clinic

850 S. 2nd Street
Monroe, LA 71202
(318) 651-0041
M-W-F: 8AM-5PM; TU: 8AM-7PM

Grambling Family Health Center

7604 Hwy. 80
Grambling, LA 71234
(318) 596-1700
M/W-F: 8AM-5PM
TU: 8AM-7PM

School-Based Health Center

Carroll Junior High School
2945 Renwick Street
Monroe, LA 71201
(318) 654-8760

West Monroe Family Health Center

301 McMillan Road
West Monroe, LA 71291
(318) 737-7616

School-Based Nurse

Lincoln Preparatory School
407 Central Avenue
Grambling, LA 71245

Pharmacy

2913 Desiard Street
Monroe, LA 71201
(318) 654-8756

Family Justice Center

620 Riverside Drive
Monroe, LA 71202

Mobile Health Clinics

(Serving Ouachita, Lincoln, and Morehouse Parishes)



7604 Hwy. 80
(corner of RWE Jones Drive & Hwy. 80 . . . down the street from GSU campus)

*Most insurances accepted including Medicare, Medicaid, Private insurance, Self-Pay and *Sliding Fee Discounts (*Proof of income is required)*

SERVICES

- ❖ Primary Care of all ages
- ❖ Dental
- ❖ Pediatrics
 - KidMed
 - Child immunizations
- ❖ Physicals
- ❖ Behavioral Health/Family Counseling
 - Telepsychiatry
- ❖ Women's Health
 - OBGYN
 - Family Planning
- ❖ Telehealth
- ❖ Case/Care Management Services
- ❖ Pharmacy
 - Prescription Services
- ❖ Laboratory Services
- ❖ Medicaid Enrollment
- ❖ Community Outreach
- ❖ Health Education
- ❖ Mobile Health Services



Catherine M. Tonore, CEO

Schedule an Appointment today!



(318) 596-1700

www.phsccenter.org





Bring the fun into OVERTIME



Keep your excitement going after the game by visiting Lincoln Parish's local attractions for excellent dining, shopping and entertainment. Scan the QR code to visit us online and start planning your post-game stops now!



318-255-2031 or 1-800-392-9032
www.ExperienceRuston.com

Play the Field

Every day is game day with the Louisiana Lottery with so many to choose from! So play the field and kick off some fun today!



louisianalottery.com



Play Responsibly Must Be 21 To Purchase. Gambling Problem? Call 877-770-7867.

Scan to Download Your FREE Lottery app.
Download on the App Store | Get it on Google play





MEET THE TIGERS



Donald JOHNSON III
WR • 5-9 • 180 • SO
Ruston, La. **1**



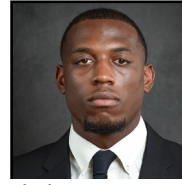
Myron STEWART
DB • 6-1 • 195 • JR
Port Gibson, Miss. **1**



Aldon CLARK
QB • 6-2 • 200 • JR
New Orleans, La. **2**



Xavier LODGE
DB • 5-11 • 205 • SO
Baton Rouge, La. **2**



Elijah WALKER
QB • 6-2 • 215 • JR
Amité, La. **3**



Marquis BRITTEN
DB • 5-11 • 185 • JR
Baton Rouge, La. **3**



Darquese BRUTTON
WR • 5-7 • 178 • SO
Tallahassee, Fla. **4**



Joshua REED
LB • 6-0 • 225 • JR
Houston, Texas **4**



Kash FOLEY
WR • 5-11 • 190 • FR
LaPlace, La. **5**



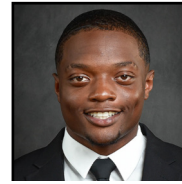
Quincy MITCHELL
DB • 6-1 • 190 • SO
Baton Rouge, La. **5**



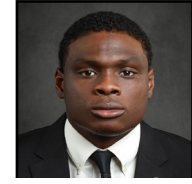
CJ RUSSELL
RB • 6-0 • 200 • R-FR
Arcadia, La. **6**



Hurshie WILLIAMS
DB • 6-0 • 200 • JR
Harker Heights, Texas **6**



Tyran CASSIE
RB • 6-0 • 210 • SR
Napoléville, La. **7**



Danquarian FIELDS
DB • 6-2 • 210 • GR
Arcadia, La. **7**



Antonio JONES
WR • 5-9 • 175 • FR
Atlanta, Ga. **8**



Lawrence ASIEDU
DB • 6-4 • 180 • JR
Austin, Texas **8**



Greg WHITE
WR • 6-3 • 205 • JR
Atlanta, Ga. **9**



Sundiata ANDERSON
DL • 6-5 • 240 • SO
College Park, Ga. **9**



Lyndon RASH
WR • 6-0 • 200 • JR
Baton Rouge, La. **10**



John-Paul PIERCE
QB • 6-1 • 195 • SO
New Orleans, La. **11**



Tyron HALL
DB • 6-2 • 200 • FR
Frisco, Texas **13**



Ken PIERRE-CHARLES
QB • 5-10 • 185 • FR
Middle Village, N.Y. **14**



Noah BODDEN
QB • 6-4 • 218 • FR
Valley Stream, N.Y. **15**



Gene WILSON III
WR • 5-11 • 190 • SO
Cedar Hill, Texas **15**



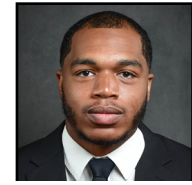
Wesley CALLOWAY
WR • 5-11 • 195 • FR
Shreveport, La. **16**



Darrell CLARK
WR • 5-11 • 185 • SR
New Orleans, La. **17**



Taylum DRUILHET
QB • 6-1 • 180 • FR
Baldwin, La. **18**



Jeff PERRY
WR • 6-5 • 200 • FR
Tallahassee, Fla. **19**



Tyce FUSILIER
RB • 5-10 • 195 • FR
New Iberia, La. **20**



Ryan FIELDS
DB • 6-2 • 190 • SO
Cypress, Texas **21**



Keilon ELDER
RB • 5-10 • 200 • SO
Dallas, Texas **23**



Kenan FONTENOT
DB • 6-0 • 185 • SR
Lake Charles, La. **23**



Rey ESTES
DB • 6-0 • 180 • JR
East Saint Louis, Ill. **24**



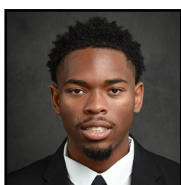
Devanir MARTIN
QB • 5-10 • 175 • JR
Dothan, Ala. **25**



August BERRY
RB • 5-10 • 185 • R-FR
Monroe, La. **26**



Mason McSPADDEN
LS • 6-2 • 185 • FR
Fort Worth, Texas **26**



Tyler STEIB
DB • 6-2 • 190 • FR
Vacherie, La. **27**



Dayron BUTLER III
DB • 5-10 • 165 • FR
Austin, Texas **28**



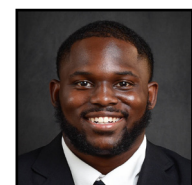
Terry WALKER
DB • 6-2 • 190 • SO
Homer, La. **29**



Garrett URBAN
K/P • 5-10 • 185 • JR
Houston, Texas **30**



Marquise MCKNIGHT
K/P • 5-10 • 195 • FR
Baton Rouge, La. **31**



Demario CLEAVES
LB • 6-1 • 195 • FR
Memphis, Tenn. **32**



MEET THE TIGERS



WalterFORTE
LB • 6-3 • 200 • FR
Jonesboro, Ga. **34**



DylanHARRIS
TE • 6-5 • 215 • FR
Farmerville, La. **35**



WilliamSAVALA
DB • 5-11 • 190 • R-FR
Dallas, Texas **36**



DonaldLEE
DB • 6-3 • 180 • FR
Houston, Texas **37**



CharlesSTRAUGHTER
DB • 5-10 • 175 • FR
Monroe, La. **38**



JaylenJOSEPH
RB • 5-7 • 175 • FR
Lake Charles, La. **39**



BrendanVAUGHN
LB • 6-1 • 235 • JR
Forney, Texas **40**



EnachicoNAH
LB • 6-1 • 220 • JR
Federal Way, Wash. **41**



FreddieMANGO
DB • 5-10 • 200 • R-FR
Vidalia, La. **42**



JoshDARLING
LB • 5-10 • 205 • FR
Gordo, Ala. **43**



BlakeTHOMAS
LB • 6-3 • 245 • JR
Dallas, Texas **44**



IsaiahCONNER
LB • 6-1 • 210 • FR
Memphis, Tenn. **45**



AnthonyBOSTON
DB • 5-10 • 190 • JR
Bienville, La. **46**



TyrinVESSELL
DB • 5-10 • 185 • FR
Baton Rouge, La. **47**



BryanPOWELL
LB • 6-2 • 230 • JR
Atlanta, Ga. **48**



EricOUTLEY
WR • 5-7 • 140 • FR
Ruston, La. **49**



ImhotepWILSON
DB • 5-10 • 190 • JR
Fort Worth, Texas **49**



JaylanTURNER
LB • 6-0 • 195 • FR
Alexandria, La. **50**



DalenSANDERS
OL • 6-1 • 300 • FR
Plaquemine, La. **51**



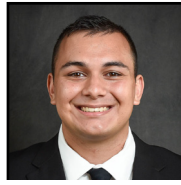
ZionLAWTON
LB • 6-0 • 215 • SO
Bastrop, La. **52**



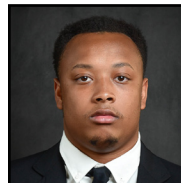
JalenTHOMAS
DL • 6-2 • 220 • FR
Slidell, La. **53**



RickyFRAZIER
LB • 5-11 • 205 • SO
Pineville, La. **54**



MicahTORES-WHITMER
LS • 5-11 • 220 • FR
Kyle, Texas **55**



ZachWILLIAMS
LB • 5-11 • 220 • R-FR
DeSoto, Texas **56**



LewisMATTHEWS
DL • 5-11 • 220 • SO
Ferriday, La. **57**



JalonSHEFFIELD
DL • 6-2 • 220 • SO
Tallahassee, Fla. **58**



JacobySCOTT
DL • 6-1 • 220 • FR
Boutte, La. **59**



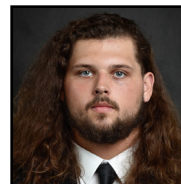
Shun'MarkusADAMS
DL • 6-3 • 300 • FR
Jasper, Texas **60**



ErrolWALKER
OL • 6-3 • 330 • SO
Bronx, N.Y. **61**



JaxsonSANDERS
OL • 6-2 • 300 • FR
White Hall, Ark. **62**



ZachBARNAO
OL • 6-4 • 300 • SO
Morgan Hill, Calif. **63**



JordanIGHOFOSE
OL • 6-2 • 335 • SR
Detroit, Mich. **65**



CameronDAVIS
OL • 6-1 • 305 • R-FR
Shreveport, La. **66**



ChrisCHERNAK Jr.
OL • 6-8 • 327 • FR
Brooklyn, N.Y. **67**



EganATKINS
OL • 6-4 • 310 • JR
Tampa, Fla. **68**



ColinGREEN
OL • 6-3 • 315 • SO
Jersey City, N.J. **69**



Geor TerroisSPIVEY
OL • 6-0 • 300 • SO
Monroe, La. **70**



RodGREEN
OL • 6-4 • 325 • FR
Dayton, Ohio **71**



Sean-CharlesNED
DL • 6-2 • 225 • FR
Maurice, La. **73**



KyleDAVIS
OL • 6-2 • 305 • SR
Monroe, La. **74**



StephenMYERS
OL • 6-2 • 305 • SO
New Rochelle, N.Y. **75**



DaltonHOUGE Jr.
OL • 6-1 • 300 • FR
Farmerville, La. **76**

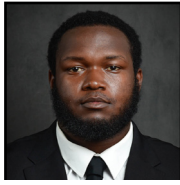


MEET THE TIGERS



Tyler THOMAS
OL • 6-5 • 320 • FR
Baltimore, Md.

77



Kyree WADE-McLeod
OL • 6-4 • 315 • SR
Philadelphia, Pa.

78



Terrence BELL Jr.
OL • 6-0 • 315 • SO
Kalamazoo, Mich.

79



Dorrell JAMES
TE • 6-2 • 230 • SR
Tallahassee, Fla.

80



Kobe ROSS
WR • 6-0 • 175 • SR
Decatur, Ga.

81



Trenton GROW
WR • 6-3 • 189 • FR
St. Rose, La.

82



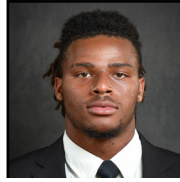
Trey TRUITT
WR • 6-3 • 195 • FR
Snellville, Ga.

83



Joshua QUIETT
TE • 6-5 • 218 • SO
Baton Rouge, La.

84



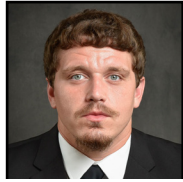
Tony FOREST Jr.
TE • 6-4 • 235 • R-FR
Jacksonville, Fla.

85



Jaye PATRICK
TE • 6-0 • 245 • SR
Detroit, Mich.

86



Casey WARMING
TE • 6-2 • 245 • SR
Tallahassee, Fla.

87



Claude COLEMAN
WR • 6-1 • 190 • JR
Baton Rouge, La.

88



Zavier COOPER
WR • 6-2 • 195 • SO
Ruston, La.

89



Zion CAGE
DL • 6-5 • 250 • SO
Pflugerville, Texas

90



Cameron RICHARDSON
DL • 6-2 • 300 • JR
Stone Mountain, Ga.

91



Wesley GREEN
DL • 6-0 • 326 • JR
DeSoto, Texas

92



Syemere ROBERTS
DL • 6-0 • 297 • SO
Ruston, La.

93



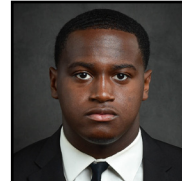
Koby FOSTER
DL • 6-1 • 325 • JR
Houston, Texas

94



Javon CARTER
DL • 6-4 • 258 • FR
Lemonsville, La.

95



Toddrick PAUL
DL • 6-2 • 230 • FR
Jeanerette, La.

96



Lane LEWIS
DL • 6-2 • 226 • FR
Allen, Texas

97



Jaden HARDY
DL • 6-3 • 285 • FR
Savannah, Ga.

98



Martavius DOTSON
DL • 6-2 • 240 • SR
Alexandria, La.

99

THIS STADIUM ISN'T BIG ENOUGH FOR TWO ANIMALS.

Other fans bought tickets to support our school, our team and our traditions. Acting crazy and taunting the other team is not one of our traditions. Please enjoy the game responsibly. Treat all the players, coaches and officials with respect.

RESPECT.

It's the name of the game.



NCAA and NCAA.org are trademarks of the National Collegiate Athletic Association.



GRAMBLING STATE ROSTER

NO.	NAME	POS.	HT.	WT.	CL.	HOMETOWN/PREVIOUS SCHOOL
1	Donald Johnson III	WR	5-9	180	So.	Ruston, La. / Ruston HS
1	Myron Stewart	DB	6-1	195	Jr.	Port Gibson, Miss. / Mississippi Gulf Coast CC
2	Aldon Clark	QB	6-2	200	Jr.	New Orleans, La. / Edna Karr HS
2	Xavier Lodge	DB	5-11	205	So.	Baton Rouge, La. / Louisiana Tech
3	Marquis Britten	DB	5-11	185	Jr.	Baton Rouge, La. / Incarnate Word
3	Elijah Walker	QB	6-2	215	Jr.	Amite, La. / Hinds CC
4	Darqueze Brutton	WR	5-7	178	So.	Tallahassee, Fla. / Leon HS
4	Joshua Reed	LB	6-0	225	Jr.	Houston, Texas / Blinn CC
5	Kash Foley	WR	5-11	190	Fr.	LaPlace, La. / Riverside HS
5	Quincy Mitchell	DB	6-1	190	So.	Baton Rouge, La. / Southern Lab HS
6	CJ Russell	RB	6-0	200	R-Fr.	Arcadia, La. / Arcadia HS
6	Hurshie Williams	DB	6-0	200	Jr.	Harker Heights, Texas / Cisco CC
7	Tyran Cassie	RB	6-0	210	Sr.	Napoleonville, La. / Assumption HS
7	Danquarian Fields	DB	6-3	210	Gr.	Arcadia, La. / Arcadia HS
8	Lawrence Asiedu	DB	6-0	195	Jr.	Austin, Texas / Fort Scott CC
8	Antonio Jones	WR	5-9	175	Fr.	Atlanta, Ga. / Lovejoy HS
9	Sundiata Anderson	DL	6-5	240	So.	College Park, Ga. / North Clayton HS
9	Greg White	WR	6-3	205	Jr.	Atlanta, Ga. / Riverdale HS
10	Lyndon Rash	WR	6-0	220	Jr.	Baton Rouge, La. / Madison Prep HS
11	John-Paul Pierce	QB	6-1	195	So.	New Orleans, La. / Brother Martin HS
13	Tyron Hall	DB	6-2	190	Fr.	Frisco, Texas / Lone Star HS
14	Ken Pierre-Charles	DB	5-10	185	Fr.	Middle Village, N.Y. / Christ the King HS
15	Noah Bodden	QB	6-4	218	Fr.	Valley Stream, N.Y. / Christ The King Regional
15	Gene Wilson III	WR	5-11	190	So.	Cedar Hill, Texas / Mary Hardin-Baylor
16	Wesley Calloway	WR	5-11	195	Fr.	Shreveport, La. / Southwood HS
17	Darrell Clark	WR	5-11	185	Sr.	New Orleans, La. / Warren Easton HS
18	Taylum Druilhet	QB	6-1	180	Fr.	Baldwin, La. / West St. Mary HS
19	Jeff Perry	WR	6-5	200	Fr.	Tallahassee, Fla. / Leon HS
20	Tyce Fusilier	RB	5-9	195	Fr.	New Iberia, La. / New Iberia HS
21	Ryan Fields	DB	6-2	190	So.	Cypress, Texas / Cypress Ranch HS
23	Keilon Elder	RB	5-10	200	So.	Dallas, Texas / Duncanville HS
23	Kenan Fontenot	DB	6-0	185	Sr.	Lake Charles, La. / Hamilton Christian HS
24	Rey Estes	DB	6-0	180	Jr.	East Saint Louis, Ill. / Riverside CC
25	Devanir Martin	DB	5-10	175	Jr.	Dothan, Ala. / Dothan HS
26	August Berry	RB	5-10	185	R-Fr.	Marrero, La. / John Curtis Christian HS
26	Mason McSpadden	LS	6-2	185	Fr.	Fort Worth, Texas / V.R. Eaton HS
27	Tyler Steib	DB	6-0	180	Fr.	Vacherie, La. / St. James HS
28	Dayron Butler III	DB	5-10	165	Fr.	Austin, Texas / Manor HS
29	Terry Walker	DB	6-2	190	So.	Homer, La / Homer HS
30	Garrett Urban	K/P	5-10	185	Jr.	Houston, Texas / Fort Bend Travis HS
31	Marquise McKnight	K/P	5-10	195	Fr.	Baton Rouge, La. / Madison Prep HS
32	Demario Cleaves	LB	6-1	195	Fr.	Memphis, Tenn. / Freedom Prep Academy HS
34	Walter Forte	LB	6-3	200	Fr.	Jonesboro, Ga. / Jonesboro HS
35	Dylan Harris	TE	6-5	215	Fr.	Farmerville, La. / Union Parish HS
36	William Savala	DB	5-11	190	R-Fr.	Dallas, Texas / Dallas Carter HS
37	Donald Lee	DB	6-3	180	Fr.	Houston, Texas/Klein Collins HS
38	Charles Straughter	DB	5-10	175	Fr.	Monroe, La. / Neville HS
39	Jaylen Joseph	RB	5-7	175	Fr.	Lake Charles, La. / Lake Charles College Prep
40	Brendan Vaughn	LB	6-1	235	Jr.	Forney, Texas / Cisco CC
41	Enach Tico Nah	LB	6-1	220	Jr.	Federal Way, Wash. / Reedley College
42	Freddie Mango	DB	5-10	200	R-Fr.	Vidalia, LA. / Delta Charter HS
43	Josh Darling	LB	5-10	205	Fr.	Gordo, Ala. / Gordo HS
44	Blake Thomas	LB	6-3	245	Jr.	Dallas, Texas / Cisco College
45	Isaiah Conner	LB	6-1	210	Fr.	Memphis, Tenn. / Freedom Prep Academy HS
46	Anthony Boston	DB	5-10	190	Jr.	Bienville, La. / Arcadia HS
47	Tyrin Vessel	DB	5-10	185	Fr.	Baton Rouge, La. / Madison Prep HS



GRAMBLING STATE ROSTER

No.	Name	Pos.	Ht.	Wt.	Cl.	Hometown/Previous School
48	Bryan Powell	LB	6-2	230	Jr.	Atlanta, Ga. / ASA College Miami Silver Storm
49	Imhotep Wilson	DB	5-10	190	Jr.	Fort Worth, Texas / Navarro College
49	Eric Outley	WR	5-7	140	Fr.	Ruston, La. / Ruston HS
50	Jaylon Turner	LB	6-0	195	Fr.	Alexandria, La. / Peabody HS
51	Dalen Sanders	OL	6-1	300	Fr.	Plaquemine, La. / Plaquemine HS
52	Zion Lawton	LB	6-0	215	So.	Bastrop, La. / Bastrop HS
53	Jalen Thomas	DL	6-2	220	Fr.	Slidell, La. / Pope John Paul II
54	Ricky Frazier	LB	5-11	205	So.	Pineville, La. / Pineville HS
55	Micah Torres-Whitmer	LS	5-11	220	Fr.	Kyle, Texas / Lehman HS
56	Zach Williams	LB	5-11	220	R-Fr.	DeSoto, Texas / DeSoto HS
57	Lewis Matthews	LB	5-11	220	So.	Ferriday, La. / Ferriday HS
58	Jalon Sheffield	DL	6-2	220	So.	Tallahassee, Fla. / South Alabama
59	Jacoby Scott	DL	6-1	220	Fr.	Boutte, La. / Hahnville HS
60	Shun'Markus Adams	OL	6-3	330	Fr.	Jasper, Texas / Jasper HS
61	Errol Walker	OL	6-3	330	So.	Bronx, N.Y. / Monroe CC
62	Jaxson Sanders	OL	6-2	300	Fr.	White Hall, Ark. / White Hall HS
63	Zach Barnao	OL	6-1	300	So.	Morgan Hill, Calif. / College of San Mateo
65	Jordan Ighofose	OL	6-3	335	Sr.	Detroit, Mich. / Northeast Oklahoma CC
66	Cameron Davis	OL	6-1	305	R-Fr.	Shreveport, La. / Captain Shreve HS
67	Chris Chernak Jr.	OL	6-8	327	Fr.	Brooklyn, N.Y. / Stony Brook
68	Egan Atkins	OL	6-4	310	Jr.	Tampa, Fla. / ASA College
69	Colin Green	OL	6-3	315	So.	Jersey City, N.J. / Monroe CC
70	Geor'Terrius Spivey	OL	6-0	300	So.	Monroe, La. / Richwood HS
71	Rod Green	OL	6-4	325	Fr.	Dayton, Ohio / Springfield HS
73	Sean-Charles Ned	DL	6-2	225	Fr.	Maurice, La. / Lafayette HS
74	Kyle Davis	OL	6-2	305	Sr.	Monroe, La. / Neville HS
75	Stephen Myers	OL	6-2	305	So.	New Rochelle, N.Y. / Monroe College
76	Dalton Hogue Jr.	OL	6-1	300	Fr.	Farmerville, La. / Union Parish HS
77	Tyler Thomas	OL	6-5	320	Fr.	Baltimore, Md. / Kent State
78	Kyree Wade-McLeod	OL	6-4	315	Sr.	Philadelphia, Pa. / ASA CC
79	Terrence Bell Jr.	OL	6-0	315	So.	Kalamazoo, Mich. / Northland CTC
80	Dorrell James	TE	6-2	230	Sr.	Tallahassee, Fla. / Leon HS
81	Kobe' Ross	WR	6-0	175	Sr.	Decatur, Ga. / Martin Luther King HS
82	Trenton Grow	WR	6-3	189	Fr.	St. Rose, La. / West St. John HS
83	Trey Truitt	WR	6-3	195	Fr.	Snellville, Ga. / South Gwinnett HS
84	Joshua Quiett	TE	6-4	218	So.	Baton Rouge, La. / McKinley HS
85	Tony Forrest Jr.	TE	6-4	235	R-Fr.	Jacksonville, Fla. / Central Florida
86	Jaye Patrick	TE	6-4	245	Sr.	Detroit, Mich. / College of the Desert
87	Casey Warming	TE	6-2	245	Sr.	Tallahassee, Fla. / Dodge City CC
88	Claude Coleman	WR	6-1	190	Jr.	Baton Rouge, La. / Baker HS
89	Zavier Cooper	WR	6-2	195	So.	Ruston, La. / Ruston HS
90	Zion Cage	DL	6-5	250	So.	Pflugerville, Texas / Navarro CC
91	Cameron Richardson	DL	6-2	300	Jr.	Stone Mountain, Ga. / Tucker HS
92	Wesley Green	DL	6-0	326	Jr.	DeSoto, Texas / Desoto HS
93	Syemere Roberts	DL	6-0	297	So.	Ruston, La. / Ruston HS
94	Koby Foster	DL	6-1	325	Jr.	Houston, Texas / Tyler JC
95	Javon Carter	DL	6-4	258	Fr.	Lemannville, La. / East Ascension HS
96	Toddrick Paul	DL	6-2	230	Fr.	Jeanerette, La. / Jeanerette HS
97	Lane Lewis	DL	6-2	226	Fr.	Allen, Texas / Allen HS
98	Jaden Hardy	DL	6-3	285	Fr.	Savannah, Ga. / Island HS
99	Martavius Dotson	DL	6-2	240	Sr.	Alexandria, La. / Peabody Magnet HS
	Joseph Evans	LB	6-0	210	Fr.	Frisco, Texas / Independence HS
	Ja'Cori Gilmore	OL	6-6	250	Fr.	Harvey, La. / Helen Cox HS
	Terry Mareus	DL	6-0	275	Fr.	Fort Lauderdale, Fla. / Mississippi State



TEXAS SOUTHERN ROSTER

NO.	NAME	POS.	HT.	WT.	CL.	HOMETOWN/PREVIOUS SCHOOL
0	Jonathon Giles	WR	6-0	201	Gr.	Missouri City, Texas/LSU
0	Viramontes Pippens	DT	6-1	300	So.	Desoto, Texas/Desoto
1	Michael Badejo	DE	6-3	260	Gr.	Arlington, Texas/SMU
1	Andrew Body	QB	6-2	195	Fr.	Corpus Christi, Texas/Miller
2	Demontario Anderson	DE	6-2	238	Jr.	Beeville, Texas/Jones
2	Savion Sims	WR	6-1	181	Fr.	Missouri City, Texas/Elkins
3	C'ing Blanton	WR	6-2	201	Fr.	Fort Worth, Texas/Southwest
4	A.J. McDuffy	WR	5-11	173	Fr.	Temple, Texas/Temple
4	Derrick Tucker	S	6-3	220	T-Jr.	Manvel, Texas/Texas A&M
5	Thomathon Good	DT	6-1	315	Fr.	Conroe, Texas/St. Pius
5	Kevin Harris	RB	5-10	178	Jr.	Chicago, Ill./Olivet Nazarene
6	Dylan Hamilton	WR	6-2	172	Fr.	Houston, Texas/Klein Forest
6	Matthew Williams	S	6-0	186	Sr.	Shreveport, La./Grambling State
7	Isaiah Hamilton	CB	6-1	167	Fr.	Houston, Texas/Channelview
7	Jyrin Johnson	WR	6-4	208	Fr.	Sorrento, La./East Ascension
8	Jacorey Benjamin	CB	5-11	172	So.	Houston, Texas/Hastings
8	Kelton Wright	WR	6-2	185	Fr.	Lufkin, Texas/Lufkin
9	Sol-dreveen Degrate	WR	6-2	168	Fr.	Waco, Texas/La Vega
10	Ke-Lenn Davis	WR	6-2	187	Sr.	Houston, Texas/Navarro
11	Jalen Brown	QB	6-2	248	Fr.	Round Rock, Texas/Cedar Ridge
12	Josh Murray	CB	5-11	171	Sr.	Houston, Texas/St. Pius
13	Brysen McKinney	WR	6-2	190	R-Fr.	Mansfield, Texas/Summit
14	Malachi Byrd	CB	6-1	190	Fr.	Cedar Park, Texas/Vista Ridge
15	Tim Walton, Jr.	DE	6-2	230	Gr.	Detroit, Mich./Syracuse
16	Aaron Tomasulo	QB	6-1	178	T-Jr.	Bronx, NY/Dakota College
17	Brandon Mallory	QB	6-3	205	Fr.	Frisco, Texas/Jackson State
18	Mannie Netherley	WR	6-3	190	Sr.	Crosby, Texas/LSU
19	Ijenea Wooley	QB	5-10	165	Fr.	Baytown, Texas/E. Central Oklahoma
20	Jaylin Nelson	RB	5-9	199	Sr.	Dallas, Texas/Texas State
21	Jeffrey Proctor	RB	5-8	185	Gr.	Munster, Ind./Southern Illinois
22	LaDarius Owens	RB	5-9	186	So.	Houston, Texas/Manvel
23	Jacorey Howard	RB	6-1	224	So.	Houston Texas/Aldine
24	Javius Williams	LB	6-0	186	Fr.	Dallas, Texas/Skyline
25	Cedrick Williams	CB	6-0	205	Jr.	College Station, Texas/Trinity Valley CC
26	Malachai Mitchell	S	6-0	189	Fr.	Mansfield, Texas/Kansas State
27	Mikevian Titus	RB	5-10	201	Fr.	Dallas, Texas/South Oak Cliff
28	Andre Gibbs	TI/LB	5-10	205	T-So.	Houston, Texas/College of San Mateo
29	Jaden Hannah	S	5-11	194	Fr.	Sugar Land, Texas/Kempner
30	Dominic Franklin	RB	6-0	226	Jr.	Houston, Texas/Chavez
31	Perry Wells	CB	5-7	156	R-Fr.	Houston, Texas/North Shore
32	Calvin Henderson	S	6-1	165	Fr.	Monroe, La./Richwood
33	Xavier Goynes	CB	6-1	151	Fr.	Fort Worth, Texas/Crowley
34	Sylvester LaBome, Jr.	WR	5-8	160	Fr.	Missouri City, Texas/Lane College
35	Nick Cole	TI/LB	6-0	167	Fr.	Fort Worth, Texas/All Saints
36	Kingston Griffin	RB	5-9	193	R-Fr.	League City, Texas/Clear Creek
37	Kenyota Smith	TI/LB	6-2	190	Fr.	Mansfield, Texas/Timberview
38	Marquis Walker	S	5-10	186	R-Sr.	Houston, Texas/Bellaire
39	Terry Keys	CB	6-2	200	So.	Dickinson, Texas/SMU
40	Brayden West	S	6-2	200	Fr.	Frisco, Texas/Independence
41	Xavier Kately	S	6-0	188	Fr.	St. Martinville, La./St. Martinville
42	Jadrian McGraw	LB	6-0	206	So.	Newton, Texas/Newton
43	Canary Simmons	S	5-10	172	Fr.	Houston, Texas/Bellaire
44	Cervantis Pounds	LB	5-10	203	R-Fr.	Pasadena, Texas/Dobie
45	Chrishon Frazier	DE	6-2	228	T-Sr.	Sun Valley, Calif./LA Valley College
46	Alex Bouldin	LB	6-1	235	Fr.	San Antonio, Texas/Wagner
47	Nehemiah Tarble	LB	5-11	195	Fr.	Stafford, Texas/Stafford
48	Cassel Truscott III	S	5-10	177	So.	Sugar Land, Texas/Dulles
49	Tavaris Achane	WR	6-3	201	R-Fr.	Jennings, La./Lake Arthur
50	Tate McConnell	LS	5-10	250	R-So.	La Porte, Texas/La Porte
51	Tarik Cooper	LB	6-0	253	T-Jr.	Texas City, Texas/Blinn College
52	Joseph Martin	LB	5-9	195	Fr.	Fort Worth, Texas/Paschal
52	Joseph McGowan	WR	5-10	175	Fr.	Rusk, Texas/Rusk
53	Jacob Williams	LB	6-0	209	Fr.	Fresno, Texas/Hightower

NO.	NAME	POS.	HT.	WT.	CL.	HOMETOWN/PREVIOUS SCHOOL
54	Julian Marcantel	LB	6-1	227	Sr.	Sulphur, La./Hamilton Christian
55	Tzion Dixon	LB	6-3	220	T-Jr.	Pasadena, Calif./East LA College
56	Curtis Falkenburg	PK	5-9	153	Fr.	Houston, Texas/Clear Brook
57	Drew Robinson	LB	6-0	217	R-Sr.	Arlington, Texas/MacArthur
58	Isaac Garcia	LS	6-2	214	Fr.	Benbrook, Texas/Paschal
59	Richard Garcia III	PK	5-11	150	So.	Forney, Texas/Mesquite Horn
61	Marcus Jackson	DT	6-3	272	Jr.	Honolulu, Hawaii/Independence CC
62	Jack Nance	OL	6-2	269	So.	Houston, Texas/Clear Lake
63	Kelton Davis	DT	5-7	228	Fr.	Fort Worth, Texas/North Crowley
64	Robert Allen	OL	6-3	326	Fr.	Waco, Texas/La Vega
65	Treyvon Robinson	OL	6-4	333	R-Fr.	Missouri City, Texas/Hightower
66	Nick Taylor	DT	6-4	240	R-Fr.	Washington, D.C./Morgan State
67	Drake Staten	OL	6-4	340	T-Jr.	Richmond, Texas/Fullerton College
68	Mehdi Torrence	OL	6-4	335	Fr.	Friendswood, Texas/Clear Brook
69	Bright Ofoh	OL	6-5	270	Fr.	Houston, Texas/Westbury
70	Skyron Littleton	OL	6-4	227	R-So.	Lafayette, La./Carenbro
72	Nathaniel Hines	OL	6-4	338	Sr.	San Diego Calif./Mesa College
73	Kedric Williams	OL	6-5	265	Fr.	Duncanville, Texas/Duncanville
74	Marque Johnson, Jr.	OL	6-3	316	So.	Missouri City, Texas/Hightower
76	Joe Heath	OL	6-3	340	Fr.	Fort Worth, Texas/North Crowley
77	Drake Centers	OL	6-4	250	Jr.	Tatum, Texas/Tatum
78	Aiden Hemphill	OL	6-6	265	R-So.	Houston, Texas/Klein Oak
79	Cameron Handy	OL	6-7	298	Fr.	Beaumont, Texas/West Brook
80	Edward King	WR	6-2	192	So.	Houston, Texas/Briar Cliff U.
81	Joseph Hayes	WR	5-10	192	Fr.	Beaumont, Texas/West Brook
82	Aiden Jones	WR	6-0	190	Fr.	Belleville, Ill./Mascoutah
82	Aaron Powell	WR	5-7	178	R-So.	Houston, Texas/Nimitz
84	Terrence Franklin	WR	5-7	162	R-SR	Houston, Texas/St. Pius
85	Osby Mitchell III	WR	5-11	198	T-Jr.	Pearland, Texas/Dawson
86	Derek Morton	WR	5-10	170	R-So.	Spring Branch, Texas/SA Johnson
87	Sawyer Evans	P	6-3	201	Fr.	Arlington, Texas/Martin
88	Roderick "RJ" Howard	WR	6-5	170	R-So.	Beaumont, Texas/Legacy Christian
89	Kaleb Arceneaux	LB	6-0	205	Fr.	Lafayette, La./Acadiana
89	Tyrence Augusta	WR	5-9	185	Fr.	Port Arthur, Texas/Memorial
90	Ja-Bronski Edwards	DE	6-3	260	Fr.	Lake Charles, La./Ville Platte
91	Isaiah Chance	DE	6-3	212	R-So.	Pearland, Texas/Dawson
92	Gabe Smith	DE	6-3	228	Fr.	Austin, Texas/LBJ
93	Tyler Martinez	DT	6-3	283	So.	Houston, Texas/Humble
94	Myles Pierre	LB	6-1	200	R-Fr.	Houston, Texas/Bush
96	Michael Akins	DE	6-2	255	Fr.	Dothan, Ala./New Iberia (La.)
97	Terrance Fuller	DE	6-2	225	Fr.	St. Louis, Mo./Lutheran North
98	Atravon Bossier	DT	6-3	296	Fr.	Lafayette, La./Acadiana
99	Rolland Trent	DT	6-3	265	Fr.	Beaumont Texas/United

COACHING STAFF

- Clarence McKinney: **Head Coach**
- David Marsh: **Offensive Coordinator/QB**
- Jeff Ceasar: **Defensive Coordinator/DL**
- Manny Ramirez: **Offensive Line**
- Justin Sanders: **Safeties**
- Derrick Matthews: **Linebackers**
- Jerwin Wilson: **Wide Receivers/Recruiting**
- Milo Austin: **Special Teams/Corners**
- Khenon Hall: **Running Backs**
- Charles Nichols: **Football Operations**
- Dr. David Phillips: **Strength & Conditioning**
- Nick Pearce: **Quality Control**
- Phillip Longino: **Defensive Analyst**
- Ed Paris: **Defensive Graduate Assistant**
- Isaac Williams: **Student Assistant**
- Jwaun Cook: **Student Assistant**



INSIDE TODAY'S MATCHUP - DEPTH CHARTS

WHEN GRAMBLING STATE IS ON DEFENSE

GRAMBLING STATE DEFENSE

TEXAS SOUTHERN OFFENSE

PROJECTED STARTERS

DE	98 99	JADEN HARDY Martavius Dotson	1 11	ANDREW BODY Jalen Brown	QB
NG	91 92	CAMERON RICHARDSON Wesley Green	21 22	JEFFREY PROCTOR LaDarius Owens	RB
DE	9 58	SUNDIATA ANDERSON Jalan Sheffield	10 8	KE'LENN DAVIS Kelton Wright	WR-X
LB	44 32	BLAKE THOMAS Damario Cleaves	0 86	JONATHAN GILES Derek Morton	WR-Y
LB	4 57	JOSHUA REED Lewis Matthews	2 85	SAVION SIMS Osby Mitchell III	WR-Z
LB	48 41	BRYAN POWELL Enach Tico Nah	7 84	JYRIN JOHNSON Terrence Franklin	WR-H
K	5 2	QUINCY MITCHELL Xavier Lodge	78 77	AIDEN HEMPHILL Drake Centers	LT
LCB	25 3	DEVANIR MARTIN Marquis Britten	77 74	DRAKE CENTERS Marque Johnson Jr.	LG
RS	23 8	KENAN FONTENOT Lawrence Asiedu	72 62	NATHANIEL HINES Jack Nance	C
LS	1 6	MYRON STEWART Hurshie Williams	68 74	MEHDI TORRENCE Marque Johnson Jr.	RG
RCB	21 24	RYAN FIELDS Rey Estes	77 70	DRAKE CENTERS Skyron Littleton	RT



INSIDE TODAY'S MATCHUP - DEPTH CHARTS

WHEN GRAMBLING STATE IS ON OFFENSE

GRAMBLING STATE OFFENSE

TEXAS SOUTHERN DEFENSE

PROJECTED STARTERS

QB	15 3	NOAH BODDEN Elijah Walker	1 45	MICHAEL BADEJO Chrishon Frazier	DE
RB	6 4	CJ RUSSELL Darquese Brutton	93 5	TYLER MARTINEZ Thomathon Good	NG
WR	17 1	DARRELL CLARK Donald Johnson III	98 61	ATRAVON BOSSIER Marcus Jackson	DT
WR	9 5	GREG WHITE Kash Foley	41 15	DEMONTARIO ANDERSON Tim Walton Jr.	B
WR	81 89	KOBE ROSS Zavier Cooper	51 57	TARIK COOPER Drew Robinson	MIKE
TE	80 86	DORRELL JAMES Jaye Patrick	54 42	JULIAN MARCANTEL Jadrian McGraw	WILL
LT	67 68	CHRIS CHERNAK Egan Atkins	28 24	ANDRE GIBBS Javius Williams	TIGER
LG	61 60	ERROL WALKER Shun'Markus Adams	8 26	JA'COREY BENJAMIN Isaiah Hamilton	CB
C	74 63	KYLE DAVIS Zach Barnao	38 32	MARQUIS WALKER Calvin Henderson	SS
RG	65 77	JORDAN IGHOFOSE Tyler Thomas	26 6	MALACHI MITCHELL Matthew Williams	FS
RT	77 78	TYLER THOMAS Kyree Wade-McLeod	12 25	JOSHUA MURRAY Cedrick Williams	CB



2021 FOOTBALL SEASON TICKET HOLDERS

James L. Adams
 Johnny Adams
 Nathaniel Adams
 Stella-Marie Akindayomi
 John Alexander
 Mary Yvette Allen
 Bettye Anders
 Andrea Anderson
 Henry Anderson
 Laquetta Anderson
 Larry Anderson
 Nicole Anderson
 Tyron Anderson
 Willie Anderson
 Kip Andrews
 Kimberly Angrum
 Neal Wade Angrum
 Andrea Anthony
 Teab Frank Applewhite
 Quanesha Armstrong
 Herman Arvie
 Karla Atwater
 Fannie Aubespin
 Erika Ayatey
 Kendrick Bailey
 Nelda Baisy
 Walter Baisy
 Alcide Baker
 Julie Barnett
 Craig Bass
 Calvin Bates
 Katherine Bates
 LeRoy Bates
 Sharon Beals-Fowler
 Dave Beasley
 Lynette Davis
 Jackie Beaver
 Ronald Bell
 Jackye Belton
 Leonard Benjamin
 Nathan Benjamin
 Sandra Bennett
 Lewis Belton, Jr.
 Ron Bernard
 Shelton A. Berry
 Cornell J. Beslin
 Faye T. Bess
 Michelle Bethea
 Kimberly Bibbins
 Natalie Blake
 Negatha Blake
 Nicole Blake
 Ronnie Blake
 William Eric Blake
 Daryl Bluford
 Sonja Boatner
 Kevin Bolds
 Barbara Bosman
 David C. Bowers
 Johnny Braden
 Betty Bradford
 Gracie Bradford
 James Bradford
 Terence Bradford
 Ronald Brantley
 Tamika C. Brantley
 Sonya Breland
 Donnie Bright
 Lee Britt
 Cynthia Brokenberry
 Stephanie Brooks
 Lynell Broussard
 Jerry Brown
 Jo Ann Brown
 Lee Arthur Brown
 Meg Brown

Nora Brown
 Trenell Brown
 Cynthia Brown-Manning
 Toby Bryan
 Henry Bryant
 Milton Bryant
 Rosia Bryant-Garrett
 Cedric Buckner
 Jenifer Buford
 Dr. Bobby Burkes
 Linda Burkes
 Traci & Benjamin Burkes
 Sheryl Burrell
 Deoborah Burton
 Ezzard Burton
 Greta Burton
 Phillis & Rickey Burton
 Debra Butler
 Casey Byrd
 Lester/Ludonlar Calahan
 Windy Calahan
 Donell Cann
 Kecha Canty
 Theatre Carter
 Cynthia Carter
 Dr. Joseph Carter
 Caleb Ceaser
 Century Next Bank
 Zimbalist Chalk
 Curt Chambers
 Fonda Chapan
 Terry Cheeks
 Rose Chew
 Mary Choyce
 Petchina Clark
 Robert Clark
 Jimmie L. Clay
 Monica Cloman
 Donald Cole
 Brenda Coleman
 Vera Coleman
 Michael Collazo
 Larry Combest
 Eldrige Conley
 Roy Conner
 Cathy Conwright
 Wanda J. Cook
 George Cooper
 Terry Cooper
 Harold Cornwell
 Tanisha Cousby
 Chenire Craig
 Eddie Crane Jr.
 Gary Cravens
 Beverly Crawford
 Dianne Crawford
 Joy Credit
 Joyce Crowe
 Katina Crowe-Scott
 Wanda Currie
 Tiffany Curry
 Pamela Dade
 James Daniel
 Media Daniels
 Marcia Darville
 Alicia Davis
 Donyetta Davis
 Mandell Davis
 Marcus Davis
 Sylvia Davis
 Tyronne Davis
 Lionel Dawson
 Shirley Daye
 Yanise Days
 Chiantie Deal
 Walter Dean

Sharron Delafosse-Scott
 Kadar Dennis
 Sarah Dennis
 Lashona Dickerson
 Mr. & Mrs. Bobby Dillard
 Charles Dorton
 Linda Dotson
 Cathy Douglas
 Gwendolyn Douglas
 K.C. Doyle
 Delissa Doyle
 Larry Drayton
 Cynthia & Michael Dunlap
 Alfred Dupree
 Brenda Dupree
 Sandra Dupree
 Sylvia Dupree
 Mattie Dupree-McMullen
 Jean & Sherman Dyer
 Donald R. Early
 Agnes Edgerson
 Remond Elder
 Bertha Ellis
 Norman Ellis
 Sharonda Ellis
 Deanna Ellsworth
 Cheryl Enslay
 Donald Enslay
 Beverly Epps
 Felton Evans
 Joyce Evans
 Juanita Denise Favorite
 Mildred Ferguson
 Becky Fields
 Doris Fields
 Karla Fields
 Rickey Fields
 Donald Flemon
 Ventric Fletcher
 Jimmy Flournoy
 Devin Flowers
 Gordan Ford
 Melody Ford
 Ingruil Foster
 Charles Foster
 Jerry Foster
 Tranell Foster
 Donald Francis
 Pamela Franklin
 Ruby Franklin
 Xavier Frazier
 John Lewis Fuller
 Ronald Gadsen
 Leon Gafford, Jr.
 Catherine Gage
 Wilson Gant
 Deidre Gardner
 Annetta Garner
 Dock Garner
 Lawrence Garner, Jr.
 Gorra Garrett
 Vickie Garrett
 Patricia George
 Wayne C. Gibson
 Rhoderick Giddens
 Sonja Giddings
 Arthur Gilmore Jr.
 Ramona Ginn
 Mary Gipson
 Donald Giron
 Vickie Gladney
 James Goldsberry
 Chasity Goree
 Nelda Graham
 Steven Grant
 Thomas Grant

Marjorie Granvle
 Terrence Graves
 Ethel L. Gray
 Janice Gray
 Travis Gray
 Tyrone Green
 Jackie Greer
 Johnetta Griffin
 Leonard Griffin
 Travis Griffin
 Stanley Guice
 Angela Gunn
 Hardy Gunn Jr.
 Dorothy Hall
 Jeff Hall
 Vernon Hall
 Willie Hamilton
 Chad Hamlin
 Jan M. Hamlin
 Mattie Hardy
 Edwina Harris
 Dana Harrison
 Mrs. Mahmoud Hassan
 Sarah Hassen
 Jon Hawkins
 Jerry Hayes
 Quantreus Hayes
 Curtis Heard
 Austrial Hearn
 Lynsi Henderson
 Glenn Henderson
 Roderick Henderson
 Scotty Hendricks
 Beverly Hill Hercules
 Leon Herring
 Andrew Hickerson Jr.
 Ray Higgins
 Ruby Higgins
 Wince Highshaw
 Erica Hill
 Gwendolyn Hill
 Jackye Hill
 Tanjalyn Hill
 David Hines
 Sammie & Josie Hives
 Shirley Hollinquest
 Ernest Holly
 Cathy Holmes
 Frederick L. Holts
 Marvin Hite
 Sharon Hite
 Rita Hood
 Jenifer Hooker
 Shamika Spikes Hooker
 Jacqueline Houston
 Valarie Houston
 Brian Howard
 Delles Howell
 Devaria & Edward Hudson
 Berdette Huey
 Kathy R. Hughes
 Ronald Hunt
 Jack Hunter, Jr.
 LaCondra Hunter
 Mark Hunter
 Patricia Hutcherson
 Betty Jackson
 Will McCarthy
 Thelma McCarthy
 Henry Moody
 Varolyn Jackson
 Clifton Jackson
 Donte Jackson
 Gary Jackson
 Jamie Jackson
 Judy Jackson

Lemer Jackson
 Marcus Jackson
 Milton Jackson
 Teresa Jackson
 Vernon & Ruby Jackson
 James Jackson, Jr.
 Theresa Jacobs
 Vincent James
 Breanna James
 Debra L. James
 Patricia Jefferson-Perry
 Gary Jiles Sr.
 Sinthy Joe
 Vickie Joe
 Alicia Johnson
 Andre Johnson
 Annie Johnson
 Edward Johnson
 Germaine Johnson
 Ingrid Johnson
 Jacinda Johnson
 Kevin Johnson
 Napoleon Johnson
 Nia Johnson
 Patricia P. Johnson
 Patrick Johnson
 Russell Johnson
 Veronica Johnson
 Chanita Johnson
 Bert Jones
 Craig Jones
 Jennifer Jones
 Leronious Jones
 LeRoy Jones
 Monica & E.M. Jones
 Natasha Jones
 Sandra Jones
 Thomas Jones
 Wyman Jones
 Kenyonn Jones
 Jake Jordan
 Terry Jordan
 Ada Joseph
 Dennis Joubert
 Frank Kelley
 Antoinette Kelly
 Henry Kelly
 Michael Kelly
 Roderick Kelly
 Francile Kenner
 Demetria Keys-Johnson
 Linda Kimble
 John King
 Karmen King
 Cherie Kirkland
 Lywanda & Broderick Knox
 Patricia Kyler
 Fredrick Landry
 Nikelyia Lard
 Carol Latham
 Nicole Lathan
 Anna Mason Lathan
 Eric Lawson
 James Lawson
 Roy Leake Jr.
 Russell LeDay
 Marlin Lee
 Tazinski Lee
 Denzel Lewis
 J.D. Lewis
 Kelvin Lewis
 Kelvin R. Lewis
 Stanley Lewis
 Reginald Loche
 Shanitra Loche
 Brandon Logan



2021 FOOTBALL SEASON TICKET HOLDERS

James Logan
Bertram Lovell
Edith Lowe-Douzat
Greg Ludley
Flynn Ludley
James Lyons
Jocelyn & Sebastian Lyons
Roderick Mahoney
John Malone
Katrina Malone
Angela Manning
Bobby Manning
May Mansfield
Valisa Mansfield
Yvett Mansfield
Karen Mansfield-Potts
Gregory Marish
Fred Marsh
Brandon Marshall
Earl Marshall Jr.
Doris Marzett
Edward Mason Jr.
Edwin Mason
Gussie Mason
Larry Mason
Stephanie Matthews
Sylvania Paul Matthews
Gregory May
Gussie May
Linda May
Billy Mayfield
Kenneth Mayfield
Louis T. Mayfield
Johnny E. MCCA
Donzella McCall
Elmira McCarty
David McCollough
Sharcenda McConnell
Ernest McCowan
Sherrri McCurry
Andre McDonald
Mack E. McClaurin
Marcia Menyweather
Latoya Merritt
Liesha Metz
Velda Metz
Benny Miles
John Miles
Rodney Millender
Gloria Miller
Andrea & John Miller
Roderick Milton
Gerry Mims
Rodrick Moncrief
Monroe Ouachita Chapter - GUNNA
Eric Montgomery
Joyce Montgomery
Clarence Moore
Dwight Moore
Gloria E. Moore
Johnny Moore
Karen Moore
Leonard Moore
Rena Moore
Alfredo Moreles Sr.
Amanda Morgan
Randall Morgan
Charlie Morris
Cheryl Morris
Latonia Morrison
Lionel Mosby
Douglas Mosley
Annie Moss
Jon Moss
Terrance D. Moss
Fred Murray

Charles L. Muse
Kim Myles
Lynetta C. Narcisse
Chris Ned
Jerry Nelson
Katrina Nichols
Holmer Norris
Verna Norris
DiAndra Bradford Odom
Thomas Odom
Lawdins Office
Chris Okafor
Robert Oliver
Laura Opelousas-Davis
Jorge Oubre
Patrice a& Eric Outley
Raven Owens
Erasmus Page
Isac Paggett
Maisha Paggett
Angela Parker
Lloyd J. Parker
Robin Parker
Alicia Patterson
Frank Patterson
Jerome Patterson
Johnny Patterson
Patrick Kimble Payne
Catherine Payne
LaTreshia Payne
Patrick Payne
Renwick Payne
Melodie Penn
Byron Penn
Tina Pennywell
Cassandra Peoples
Gaynell Perry
Rodrick Perry
David Peterson
LaTonya Phenix
Jimmy Phillips
Keifer Phillips
Audris Pickett
Drexel Pickles
Rodney J. Pierre
Joycelyn Pitts
Ora Pitts
Kindrell Plains
Clarence Powell
Tyler Price
Dwayne Priestly
Kimberly Proctor
LaShawn Prudhomme
Carolyn Pruitt
Leonard Pruitt
Wyvetta Pruitt
Mark Pursley
Billy Rabon
Bobby Rabon
Eugenia Rakestraw
Kenyatta Randall
Kenn Rashad
Reginald Ratcliff, Jr.
Reginald Ratcliff, Sr.
Jarrad Ratliff
Keith Reddix
Robert Reddix
Gloria Rhodes
Angelee Rhynes
Michael Richard
Janice Riggs
Cherrie Risen
Scott B. Roberson
Andre Robinson
Archie Robinson
Bobby Robinson

Eddie Robinson, Jr.
Jerry Robinson
Jesse Robinson, Jr.
Jessica Robinson
Sharron M. Robinson
Sherry Robinson
Christian Robinson
Miranda Robinson-Davis
Genevoly Rollins
Jerry Ross
Greg Route, Jr.
Belinda Ruben
Rosiland Russell
Jeffrey Sampson
Bryan Sanders
Ora C. Sanders
Paulette Sanders
Rudolph Sanders
Shawn Sanders
Velora Sanders-Duncan
Craig Satcher
Lawrence Saucer
Pamela Saulsberry
Willie Saulsberry
Crystal Sayles-Milliner
Christine Scarver
Allen Schonberg
Royce Scobey
Donald Scott
Sharon Scott
Dr. Trayvean Scott
Teresa Scott
Aviva Seabrook
Janice Sherfield
Moses Shillow
Harold Simmons Jr.
Eldridge M. Simon
Lester Sims
Ronnie Sims
Willie Mae Sims
Jackie S. Slack
Earnestine Smallwood
Blaines Smith
Brennan Smith
Cassandra D. Smith
Delores Smith
Jeffry Smith
Joan Smith
Lamar Smith
Lennie Smith
Leon Smith
Lonnie Smith
Michael Smith
Rhoda Smith
Steven Grant Smith
Susie Smith
Trenton Smith
April Sooknanan
Sandy Spann
Eric Stacy
Mary Stafford
Devona Steib
Robert E. Stevens
Taylor Stewart
James Stewart
Kenita Stokes
Ricky Stoner
Tommie Stout
Carl Street
Mrs. Katherine S. Story
Thomas Sutton
Katasha Sylvain
Joseph Sylvester
Melissa & Carlos Tate
Grace Tatem
Jerry Tatman

Isaac Tatum
Sharon & Charles Taylor
Henry Taylor & Estella Jeffer
Veronica Taylor-Henry
The McIntosh Family
Alisha Thomas
Donald Thomas
Vickie Thomas
LaTonya Thomas
Lucille Thomas
Lurie Thomason, Jr.
Sylvia Thompson
Kelly Threats
Leo Tillis
Randy Tims
Yolanda Tindall
Sylvia Tolbert-Ford
Ann Tolston
Lakeisha Towner
Oswald Townsend
Leslie Travis
Stephanie Travis
Williamson Turner
Ava Turner
Renee Turner
Becky Urban
Casey Valentine
Billy Varner
Melvyn Vaughn
LaShonda Victorian
Victoria & Ellis Wade
Carl Walk
Joan Walker
Lavanda Walker
Monica Walker
Alvin Wallace
Horace Wallace
Jonathan Wallace
Connie Walton
Jerry Ward
Allen Washington
Alvin Washington
Felton Washington
General Washington
Gwendolyn Washington
Debra & John Washington
Sonya Washington
Willie Washington
Angela Waters
Kalia Watkins
Sharon Watley
Darlene Williams Watson
Ebony Watson
Vialouphia Wattree
Rod Webb
Dewayne Wells
Freda Wells
Lewis Wells
Eugenia White
George White
Gregory White
Isaac White
Regina White
Derrick White
Alan Hale Wicker
John Wilborn
Susan Wiley
Ronald Willhite
Alicia Williams
Angelique Williams
Bentley Williams
Bobbie Williams
Charles Williams
Derek Williams
Erica Williams
Frank V. Williams

George H. Williams
Germarla Williams
Harry Williams
Hubert Williams
Jeannie Williams
Johnnie, Faye & Ben Williams
Jonathan Williams Jr.
Marvin Williams
McArthur Williams
Mike Williams
Namon Williams
Patsy Williams
Ryan Williams
Valencia Williams
Vincent Williams
Wilbert Williams
Hurshie Williams
Tony Williams
Quincy Williams
Jennifer Williams-Hauer
Jaimal Williamson
Jevella Williamson
Andrew Wilson
Cartelis Wilson
DiJuana Wilson
Emma Wilson
Marvins Wilson
Mary & Sherry Wilson
Warren Wiltz
John Winston
Nicole Wise
Joseph Wright
Louis Wright
Michael Wright
Daphne Wynn
Glenda Young
Reginald Young
Toriano Young
Vernita Young
Anthony Ziegler

2021 ROARING TIGER MEMBERS

Alvin Thomas
Estella Smith
Dr. Joseph Carter
Mr. & Mrs. Willis & Gale Reed
Angela G. Thomas
Ruby Franklin
Mr. & Mrs. Moses Shillow
Murphy Cheatham
E. Jean Cheatham
LT. COL. Ewing Collier
Frederick Carr
Kenneth Coutee
Shirley Lewis
Kwenita Lewis-Garner
Joyce Patton
Valencia Williams
James Bradford
Berkita Bradford
Mr. & Mrs. John Miller

Super 1 Foods®

SUPPORTS THE
GRAMBLING STATE TIGERS



THE HOME OF
LOW PRICES
IN LOUISIANA
SUPER1FOODS.COM

NOW AVAILABLE

**ONLINE
ORDERING
& PICKUP!**

VISIT SUPER1FOODS.COM
FOR AVAILABILITY AND
TO PLACE YOUR ORDER



Super 1 Foods

CURBSIDE

**\$10 OFF YOUR FIRST ORDER
OF \$50 OR MORE WITH CODE SAVE.**

LIMITED TIME OFFER. LIMIT ONE PER CUSTOMER.



Attorney
Ivan J. Daigs
is a proud supporter of
Grambling State University.

309 S Bonner Street | Ruston, LA 71270

Free Consultation
(318) 254-0400 | www.ijdlaw.com

IVAN J. DAIGS ATTORNEY AND COUNSELOR AT LAW is a full-service firm with a practice emphasis in the area of Personal Injury and Medical Malpractice, civil matters, real estate and loan closing.

Personal Attention for your Personal Injury Case!

LONG MAY THEE STAND



Origin Bank and Grambling State's relationship is built on a foundation of hard work and trust. By dedicating ourselves to a long-standing partnership, we're able to enrich lives and build futures in the community we call home.



Origin Bank[®]





cricket
CELEBRATION
BOWL
MEAC ★ SWAC



DECEMBER 18, 2021, NOON ET ON 

MERCEDES-BENZ STADIUM | ATLANTA, GA