



THE YOTE FUND

THE UNIVERSITY OF SOUTH DAKOTA'S ANNUAL FUND FOR STUDENT-ATHLETE EXCELLENCE



2025 MEMBERSHIP GUIDE



TABLE OF CONTENTS

- 3 ABOUT THE YOTE FUND
- 4 PEER REVENUE COMPARISON
- 5 WHAT IT COSTS TO FULLY FUND A STUDENT ATHLETE
- 6 CELEBRATING STUDENT-ATHLETE EXCELLENCE
- 7 FISCAL YEAR 2025 VICTORIES
- 8 WHAT IS HOLISTIC GIVING?
- 9 WAYS TO GIVE
- 10 THE YOTE FUND 2025-2026 BENEFITS CHART
- 12 YOTE LEADERSHIP SOCIETY
- 14 FOOTBALL SEASON TICKETS
- 15 FOOTBALL PARKING & TAILGATE
- 16 BASKETBALL SEASON TICKETS
- 17 BASKETBALL PARKING
- 18 VOLLEYBALL SEASON TICKETS
- 19 VOLLEYBALL PARKING
- 20 PREMIUM AREAS
- 22 USD STAFF
- 23 IMPORTANT DATES

MESSAGE FROM THE DIRECTOR OF ATHLETICS



COYOTE FANS,

Thank you for your unwavering support of Coyote Athletics and our 400+ student-athletes (insert actual number). Coyote Nation continues to be one of the most loyal and dedicated fan bases in the country, and nowhere is that passion more evident than in your investment in our new donor program, **The Yote Fund**.

For the first time, **The Yote Fund** will encompass season ticket purchases, event participation and donations to all athletic funds. Our goal is to strengthen our community by offering meaningful experiences while making a direct, positive impact on the holistic experience of our Coyote student-athletes. I encourage you to review the membership guide and consider purchasing season tickets, making an additional gift or both.

As we continue to evolve in the ever-changing world of Division I athletics, our core mission remains the same. We strive to elevate South Dakota to its highest potential by competing for national championships, while also fostering the growth and graduation of our student-athletes. Our commitment to these goals is unwavering.

As we reflect on our past successes and look toward the challenges and opportunities ahead, please know that your generosity directly enhances the experience of our student-athletes—and it never goes unnoticed. Whether you are a long-time supporter or are considering your first gift or ticket purchase, your participation at any level makes a meaningful difference.

On behalf of our student-athletes, coaches and staff, thank you for everything you do to support and advance Coyote Athletics.

Go Yotes!

Jon Schemmel
Athletic Director, USD

ABOUT THE YOTE FUND

The University of South Dakota's Official Fund for Student-Athlete Excellence

GIVE FOR YOUR "Y"

As college athletics continues to evolve, it's important for our athletics department to stay flexible and adaptable. The Yote Fund is our new approach to the USD Athletics annual fund, with a renewed focus on recognizing every generous dollar contributed to USD Athletics. Under this new format, all annual giving—covering endowments, capital projects, Howling Pack scholarship fund, excellence funds, premium seating, and season tickets, Calling all Coyotes and Golf tournaments—will count toward your membership levels. This exciting change will positively impact many current supporters and help attract the next generation of dedicated Coyotes. Go Yotes!

MISSION

The mission of The Yote Fund is to provide comprehensive financial support to the University of South Dakota Athletics, fostering a championship culture that drives student-athlete success, strengthens the campus community, and instills Coyote pride through resources for scholarships, facilities, and programs.

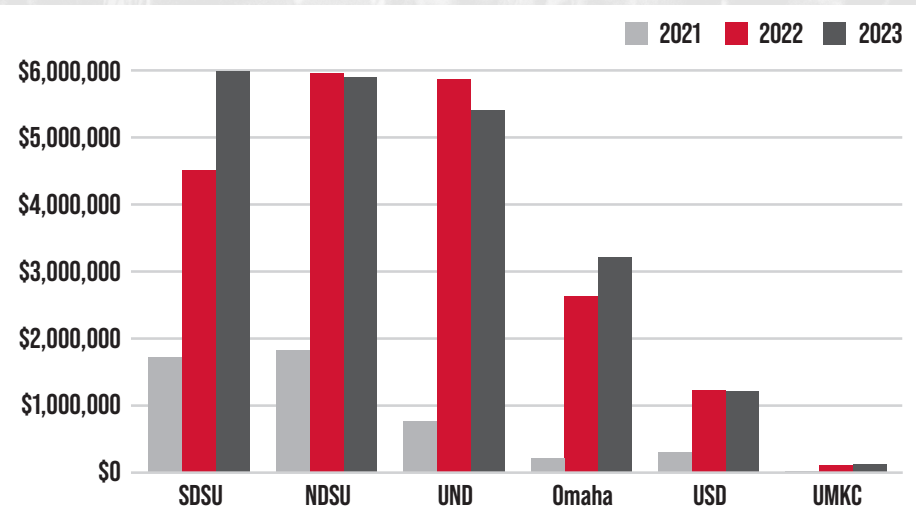
VISION

The vision of The Yote Fund is to unify alumni, friends, and supporters through a comprehensive giving platform that equips USD student-athletes and coaches with the resources to excel. By supporting athletic and personal development, The Yote Fund fosters a competitive athletics community and strengthens future generations of Coyotes. This support will be maintained following the University of South Dakota policies and NCAA rules and regulations.

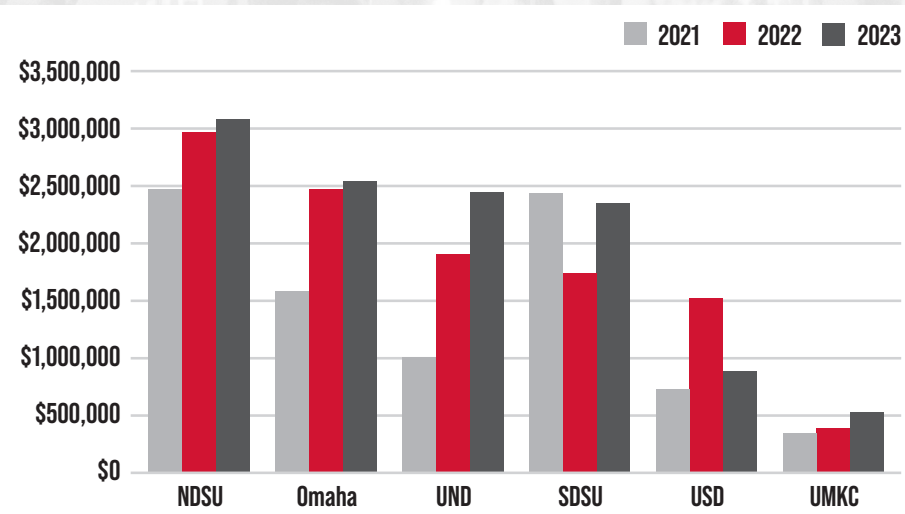


PEER REVENUE COMPARISON

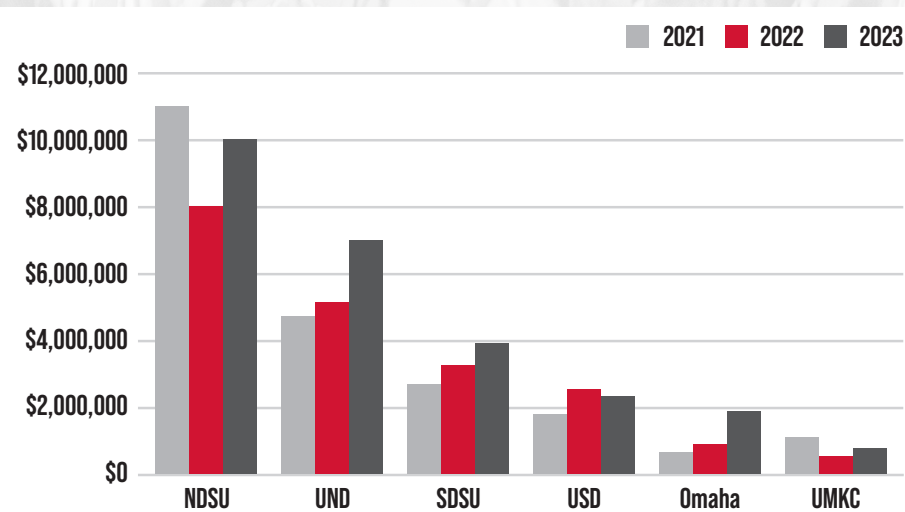
TICKET SALES REVENUE



SPONSORSHIP & MEDIA RIGHTS



CONTRIBUTIONS & ENDOWMENTS



Based on 2023-24 data

WHAT IT COSTS TO FULLY FUND A STUDENT-ATHLETE?

STUDENT-ATHLETE BENEFIT ANNUAL COST BREAKDOWN



OLIVIA KIEFFER

**RAPID CITY, SD
WOMEN'S BASKETBALL - GUARD**



SHAHID BARROS

**NEW BEDFORD, MA
FOOTBALL - DEFENSIVE BACK**

\$57,679

**IN-STATE
TOTAL ANNUAL COST**

**IN-STATE
SCHOLARSHIP**
(tuition fees, room,
board, books)

\$25,802

\$61,189

**OUT-OF-STATE
TOTAL ANNUAL COST**

**OUT-OF-STATE
SCHOLARSHIP**
(tuition fees, room,
board, books)

\$29,312

STRENGTH &
CONDITIONING

\$754

FOOD & NUTRITION

\$1,254

TRAVEL

\$7,786

GAME & PRACTICE
APPAREL

\$2,238

SPORTS MEDICINE

\$3,082

ACADEMIC AWARDS

\$904

COACHING & ADMIN
SUPPORT

\$15,859

CELEBRATING STUDENT-ATHLETE EXCELLENCE

FISCAL YEAR 2025 VICTORIES

JULY 1, 2024 - DECEMBER 31, 2024

FALL 2024 ACADEMIC ACHIEVEMENTS

ALL 16 PROGRAMS EARNED A

3.0+

TERM GPA

127 STUDENT-ATHLETES ACHIEVED A

4.0+

TERM GPA

304 STUDENT-ATHLETES EARNED A

3.25+

TERM GPA

80%

OF STUDENT-ATHLETES MAINTAIN
A 3.0+ CUMULATIVE GPA

211

STUDENT-ATHLETES ON THE 2023-2024
SUMMIT LEAGUE'S ACADEMIC HONOR ROLL

2023-2024 DAKTRONICS SUMMIT LEAGUE SCHOLAR ATHLETES OF THE YEAR

JACY PULSE

TRACK & FIELD

CALEB SWANSON

SWIMMING & DIVING

2024 RECORD AUCTION YEAR

3

GIFTS OF
\$1 MILLION+

3

GIFTS OF
\$500,000+

5

GIFTS OF
\$100,000+

6

GIFTS OF
\$50,000+

25%

YEAR-TO-DATE INCREASE IN
TOTAL CASH

78%

YEAR-TO-DATE GROWTH IN
EXCELLENCE FUND CASH

8

NEWLY ESTABLISHED ENDOWMENTS
& QUASI-ENDOWMENTS

\$10.25

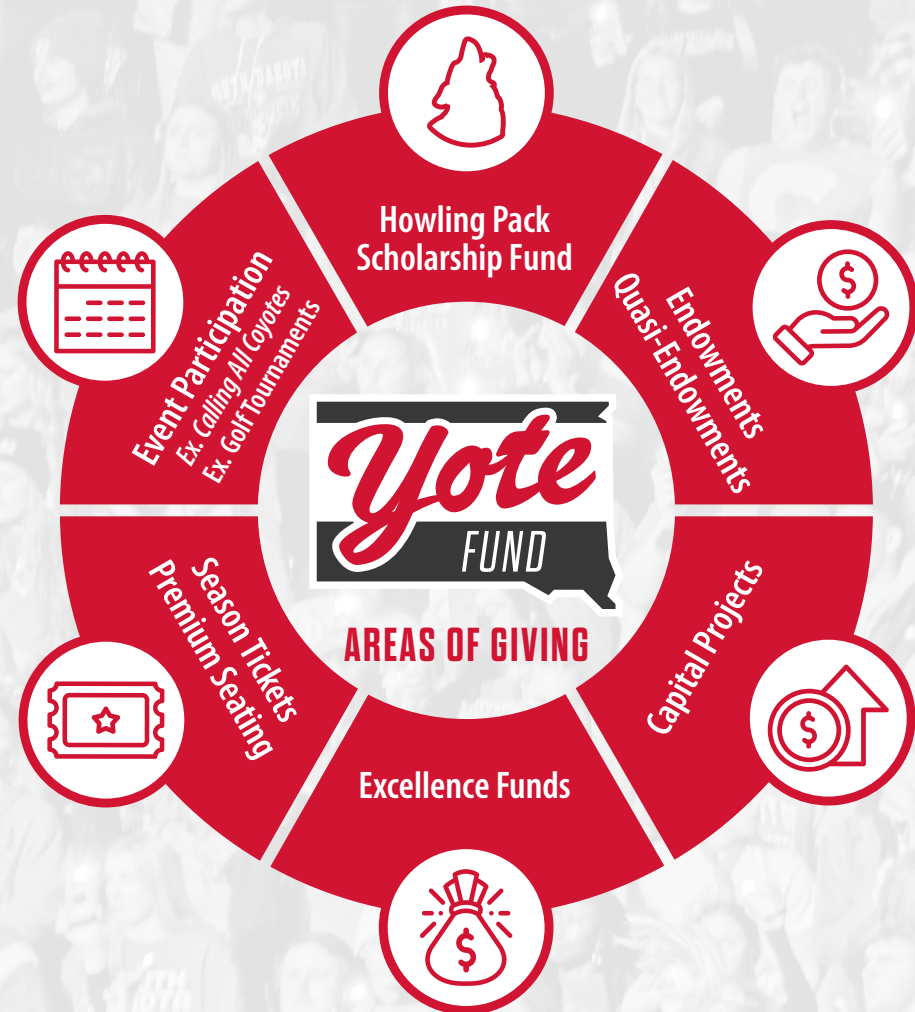
MILLION YEAR-TO-DATE
INCREASE IN PLEDGED DOLLARS

WHAT IS HOLISTIC GIVING?

EXCITING NEWS: THE YOTE FUND IS HERE!

The Yote Fund is our new approach to the USD Athletics Annual Fund, recognizing all contributions – Howling Pack, endowments, capital projects, excellence funds, premium seating, season tickets, Calling all Coyotes and Golf tournaments – will count toward your membership level.

YOTE FUND MEMBERSHIP - AREAS OF GIVING



WAYS TO GIVE



CASH

A gift of cash, via check or credit card, is the most common way for you to make an immediate charitable impact while also enjoying potential tax benefits.



MATCHING GIFTS

If your employer provides matching gifts, you can double the impact of your personal gift.



PLEDGE

You can make a pledge that is payable over time - typically annually over two to five years - so that you can tailor your donation to your interest and ability to pay.



STOCKS & SECURITIES

Gifts of publicly traded stocks and securities can make an immediate impact while providing you potential tax advantages through charitable deductions and avoidance of capital gains tax liability.



DONOR-ADVISED FUNDS (DAF)

A donor-advised fund (DAF) is a philanthropic giving vehicle that provides an immediate tax benefit to you and allows you to grant funds to charities of your choice. Contact your fund administrator to direct your gift to USD.



RETIREMENT ACCOUNTS

By designating USD as beneficiary of all or a percentage of your IRA or any other qualified retirement account, you can make a substantial gift while potentially avoiding estate and income taxes.



CHARITABLE BEQUESTS

A bequest via your will or revocable trust can allow you to leave a significant legacy while retaining control of your assets during your lifetime.



OTHER WAYS TO GIVE

Charitable lead trust, charitable gift annuity, charitable remainder trust, real estate, life insurance, artwork and other personal property can all be used to support USD and its mission.

EXAMPLE #1

- Howling Pack - \$1,200
- Season Tickets- \$750
- MBB/WBB Excellence- \$500
- CAC Table- \$1,500
- Charlie Coyote Birdie Sponsor - \$1,500
- **Total Yote Fund: \$5,450 Yote Fund - Legend Club**
(Prior Howling Pack recognition was \$1,200 Silver Club)

EXAMPLE #2

- Howling Pack- \$12,000
- Loge Box - \$13,000
- Season Tickets - \$2,250
- Volleyball Excellence- \$5,000
- Football Excellence- \$5,000
- Annual Endowment Payment- \$25,000
- CAC Table- \$1,500
- **Total Yote Fund: \$63,750 Yote Leadership Society - Gold Club**
(Prior Howling Pack recognition was \$12,000 Great Expectations)

THE YOTE FUND 2025-2026 BENEFITS CHART

	RED \$100-\$499	COYOTE \$500-\$1,499	DAKOTA \$1,500-\$2,499	VARSITY \$2,500-\$4,999	LEGEND \$5,000-\$7,499	VICTORY \$7,500-\$9,999	YOTE LEADERSHIP SOCIETY \$10,000+
Matched with a Student-Athlete (\$15K ANNUAL HOWLING PACK DONATION REQUIRED)							
Access to Dome Club & First Dakota Landing (PREGAME & HALFTIME)							
Access to CorTrust Club - Basketball (PREGAME & HALFTIME)							
Invite to Charlies Awards & Scholarship Dinner							
Pregame Sideline Access FOOTBALL							
Access to NW Landing FOOTBALL							
Access to CorTrust Club Volleyball (PREGAME & HALFTIME)							
Upgraded Priority Parking FOOTBALL*							
Upgraded Priority Parking BASKETBALL/VOLLEYBALL*							
Access to Purchase FOOTBALL TAILGATE SPOT*							
Priority Parking VOLLEYBALL*							
Access to Premium Seating**/Parking* FOOTBALL/BASKETBALL							
Ticket Purchase Priority							
15% off at Charlie's Bookstore & Fan Shop							

*Season Ticket Holders Only

**Season Ticket Holders Only & Based on Coyote Points

HOW TO CHECK YOUR COYOTE POINTS & YOTE FUND LEVEL

1. Visit GoYotes.com
2. Hover over "Tickets"
3. Select "Manage My Account"
4. Login to your South Dakota Athletics account
5. Hover over "My Account."
6. Select "View Coyote Points."



OR SCAN THE QR CODE AND FOLLOW THESE INSTRUCTIONS:

1. Login to your South Dakota Athletics (link.usd.edu/GoYotesAccount)
2. Hover over "My Account."
3. Select "View Coyote Points."

COYOTE POINT SYSTEM

The Coyote Points System is an internal ranking system that rewards loyal Coyote fans for their continued generosity and loyalty to USD Athletics. Coyote Points are used for seating priority, post season ticket access and purchase of single-game away tickets. To the right is a breakdown of how points are calculated.



per \$100 of annual giving to **ENDOWMENTS AND CAPITAL PROJECTS**



per \$100 of annual giving to the **HOWLING PACK OR EXCELLENCE FUNDS**



per \$100 give to other **YOTE FUND INITIATIVES**



per season ticket for **PREMIUM SEATING SEASON TICKET**



per non-premium **SEASON TICKET**



for **RENEWAL OF HOWLING PACK DONATION BY 6/30/25** or commit to a payment plan



BENEFITS

The Yote Leadership Society is USD Athletics' premier giving program, recognizing top donors whose support funds scholarships, academic resources, sports medicine, recruitment, and facility improvements. Members are honored with Bronze, Silver, Gold, or Diamond status and enjoy exclusive benefits for their impact on athletic and academic excellence.



BRONZE LEVEL \$10,000 - \$24,999

- All Yote Fund benefits
- Invitation to exclusive Yote Leadership Society events
- Invitation to VIP reception at Summit League Tournament
- Pregame Field Access for all Home USD Football Games
- Ball Boy or Ball Girl Opportunity for Basketball or Volleyball (one game per household - 12 years or younger)
- Attend a day of Fall Camp practice for MBB/WBB, Volleyball or Football
- Ability to purchase four additional premium area tickets*
- Early access to purchase four postseason tickets*
- Early access to tailgate lot



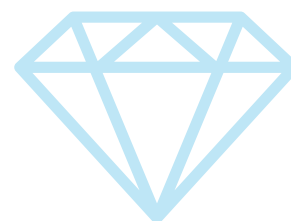
SILVER LEVEL \$25,000 - \$49,999

- All Yote Fund & Bronze level benefits
- Exclusive opportunity to travel with Men's Football Program
- Join MBB/WBB as honorary coaches for a game
- Ability to purchase six additional premium area tickets*
- Early access to purchase six postseason tickets*



GOLD LEVEL \$50,000 - \$99,999

- All Yote Fund and Bronze/Silver level benefits
- Access for you and a guest to post-game press conferences
- Access into all premium areas of the Dakota Dome and SCSC (Excluding individually owned suites, loges, and the SW Landing)
- Ability to purchase eight additional premium area tickets*
- Early access to purchase eight postseason tickets*



DIAMOND LEVEL \$100,000+

- All Yote Fund and Bronze/Silver/Gold level benefits
- Exclusive Adidas issued team gear*
- Invite to Dinner at 50-yard line at Dakota Dome

*Based on availability and assigned according to priority point ranking

Please recognize that all philanthropic gifts made to the Yote Fund, and other initiatives are fully tax deductible. (Season tickets, single game tickets, parking/tailgating passes and additional premium passes are not deemed philanthropic gifts.)

FOOTBALL SEASON TICKETS

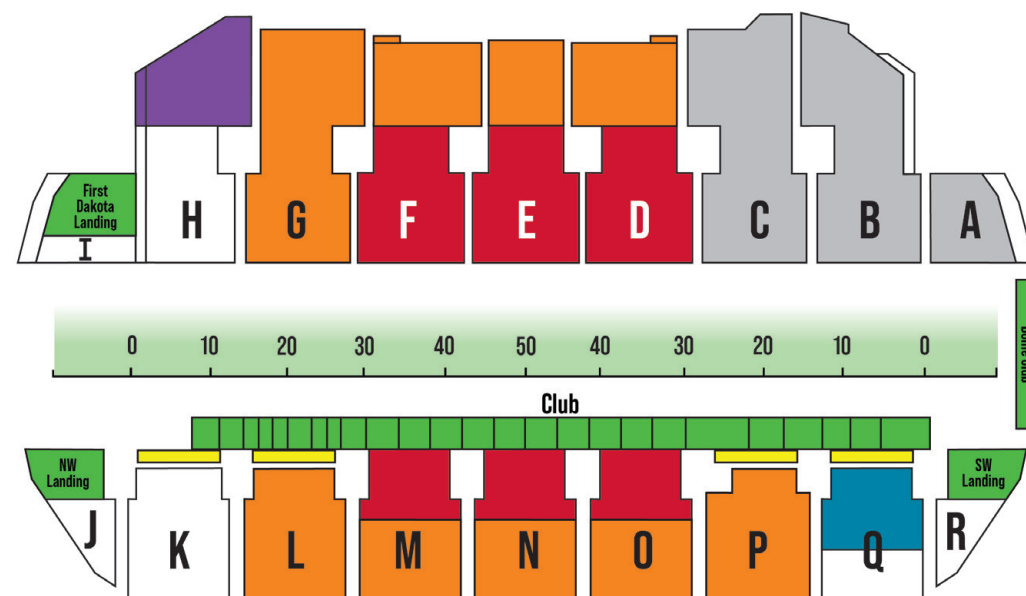
Yote Fund members have the first opportunity to purchase football season tickets in the Dakota Dome. Priority seating sections require a minimum per-seat contribution to the Howling Pack to purchase seats on a season ticket basis. Contributions made for priority seating count toward your total Yote Fund annual membership level and earn Coyote Points.

LOCATION	HOWLING PACK DONATION (PER SEAT LICENSE)	SEASON TICKET COST (PER SEAT)	TOTAL COST (PER SEAT)
Suites & Loges*	\$80	\$170	\$250
Dome Club*	\$80	\$185	\$265
First Dakota Landing* <i>(per four seat table)</i>	\$80	\$750	\$830
Inside the 30's lower	\$75	\$170	\$245
Inside the 30's upper	\$50	\$170	\$220
Outside the 30's	\$50	\$170	\$220

*Premium Seating

TAX INFORMATION STATEMENT:

Contributions to South Dakota Athletics are considered gifts to the University of South Dakota and are credited at full value by the USD Foundation. As of 2019, donations tied to minimum per-seat contributions and premium seating may not be tax-deductible. However, gifts to sport-specific funds, endowments, and capital projects etc. remain 100% deductible. Donors will receive acknowledgment letters with relevant tax details. Please consult your tax advisor for guidance.

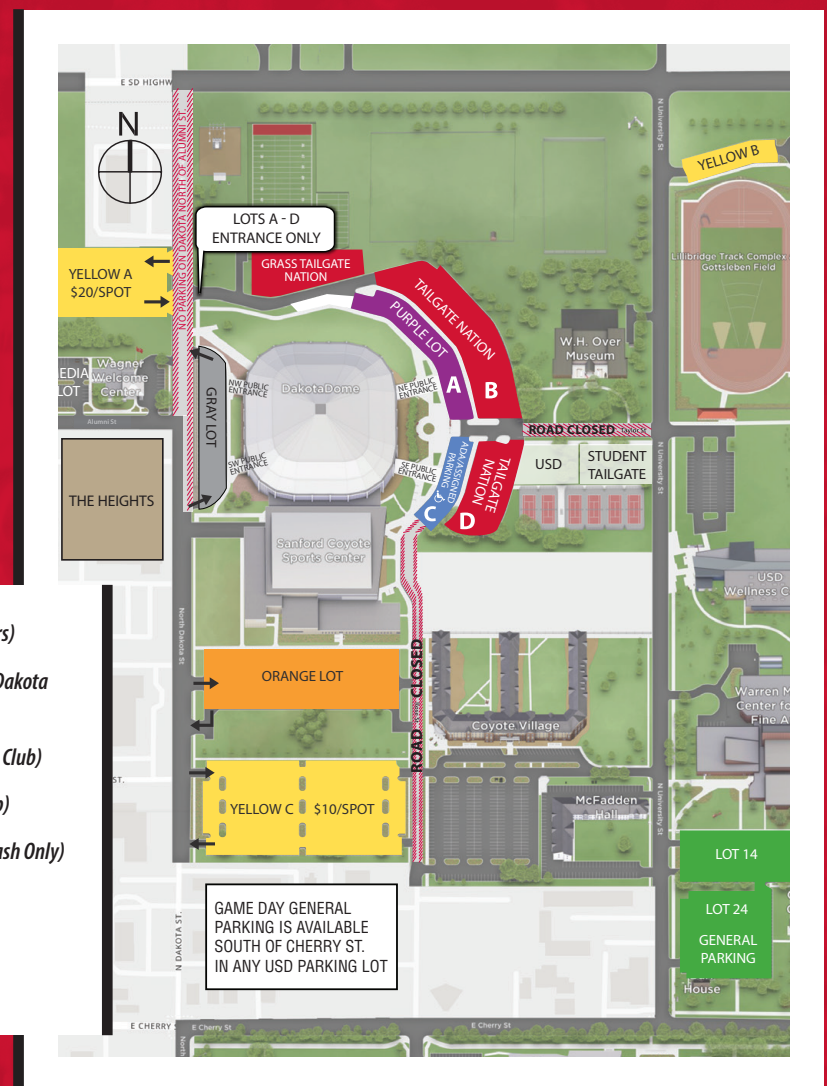


FOOTBALL PARKING

Enjoy convenient parking near the DakotaDome with three premium options for Yote Fund members.

- **Eligibility:** Football season ticket holders meeting the required Yote Fund level (one pass per household).
- **Priority:** Renew season tickets and Yote Fund memberships by **June 30** for priority access, allocated on a first-come, first-served basis.
- If the **Orange Lot** sells out, \$100-level members can buy a **Yellow Lot C** pass for \$60 through the Coyote Ticket Office.

- Gray Lot | Parking Pass Required (Suite & Loge Holders)
 - Tailgate Nation | Parking Pass Required (\$1,500+ Dakota Club | Access to Purchase a Tailgate Spot)
 - Purple Lot | Parking Pass Required (\$2,500+ Varsity Club)
 - Orange Lot | Parking Pass Required (\$100+ Red Club)
 - Yellow Lot (Yellow Lot A: Weather Permitting) (Cash Only)
 - General Parking (Cars Only)
 - ADA Parking
- All Priority Parking is accessible from Dakota Street



TAILGATING

Tailgate spots are available based on Coyote Points and availability. To qualify, you must be a Dakota Club member at the \$1,500+ Yote Fund membership level. Tailgate lots open at 9 a.m. for general access. Early access is available starting at 7 a.m. for an additional fee.

Want to reserve a spot or enjoy early access? Contact the Coyote Ticket Office for more details!

LOCATION	TOTAL COST
Tailgate Nation	\$600
Grass Tailgate (Season)*	\$400
Grass Tailgate (Per Game)*	\$200

*Do not have to be a Yote Fund member to purchase. Includes post season games. Includes parking pass.

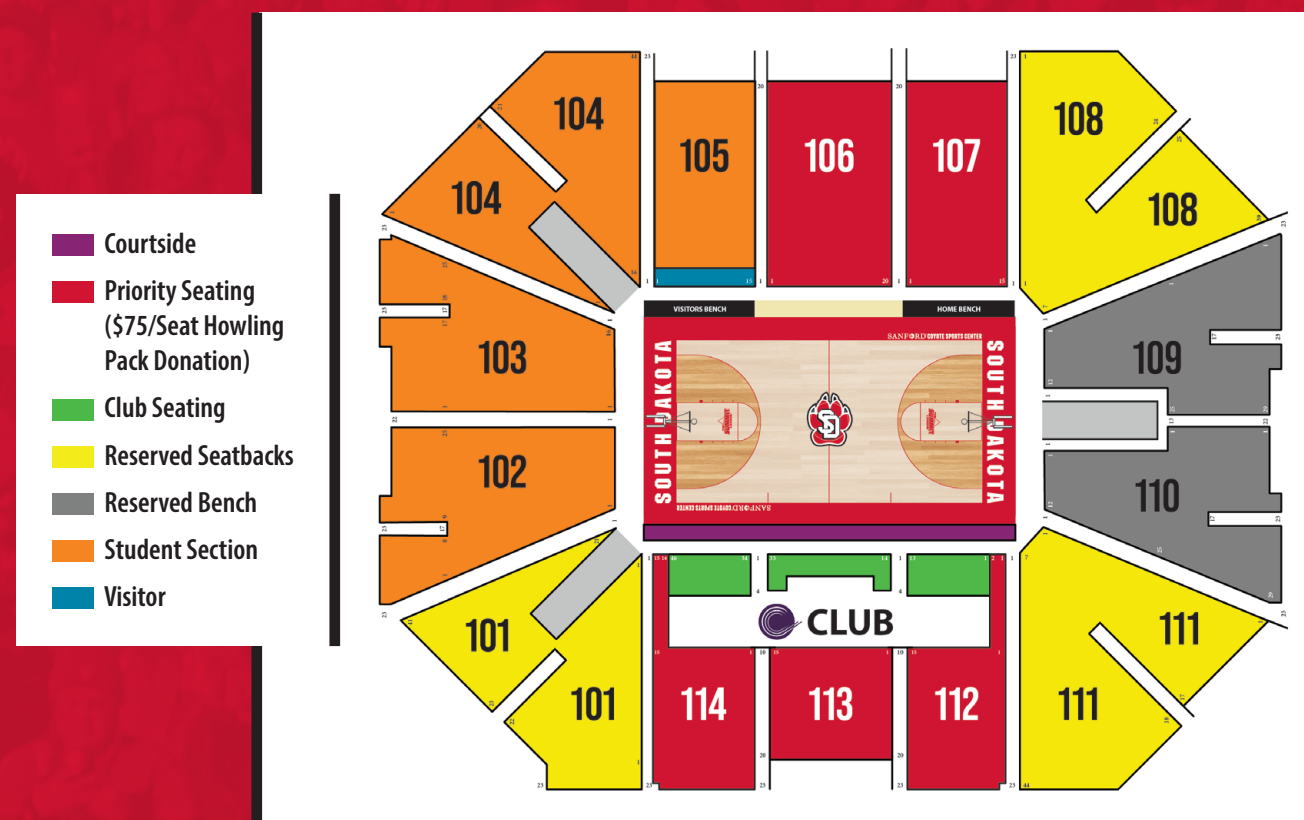
BASKETBALL SEASON TICKETS

Yote Fund members have the first opportunity to purchase basketball season tickets in the Sanford Coyote Sports Center. Priority seating sections require a minimum per-seat contribution to the Howling Pack to purchase seats on a season ticket basis. Contributions made for priority seating count toward your total Yote Fund annual membership level and earn Coyote Points.

LOCATION	HOWLING PACK DONATION (PER SEAT LICENSE)	SEASON TICKET COST (PER SEAT)	TOTAL COST (PER SEAT)
Courtside (1st Row)	\$1,500	\$500	\$2,000
Baseline Courtside (16 available)	\$1,250	\$500	\$1,750
General Club (Chairbacks & Tables)	\$1,000	\$500	\$1,500
Sections 106, 107, & 112-114	\$75	\$300	\$375

TAX INFORMATION STATEMENT:

Contributions to South Dakota Athletics are considered gifts to the University of South Dakota and are credited at full value by the USD Foundation. As of 2019, donations tied to minimum per-seat contributions and premium seating may not be tax-deductible. However, gifts to sport-specific funds, endowments, and capital projects etc. remain 100% deductible. Donors will receive acknowledgment letters with relevant tax details. Please consult your tax advisor for guidance.



BASKETBALL PARKING

Premium Parking Near the Sanford Coyote Sports Center for Basketball

Yote Fund members can enjoy convenient parking with three premium options.

Eligibility: Must be a basketball season ticket holder and meet the required Yote Fund level (one pass per household).



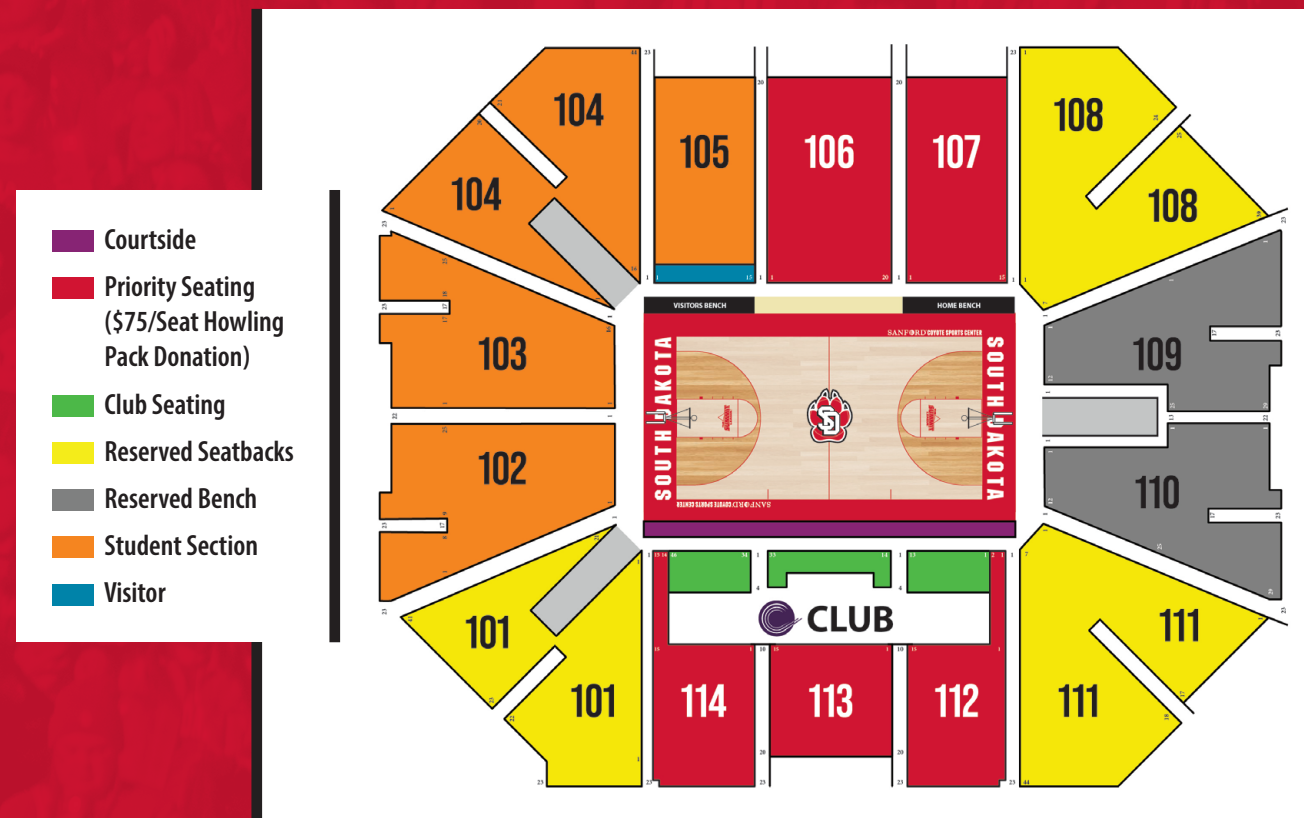
VOLLEYBALL SEASON TICKETS

Yote Fund members have the first opportunity to purchase volleyball season tickets in the Sanford Coyote Sports Center. Priority seating sections require a minimum per-seat contribution to the Howling Pack to purchase seats on a season ticket basis. Contributions made for priority seating count toward your total Yote Fund annual membership level and earn Coyote Points.

LOCATION	HOWLING PACK DONATION (PER SEAT LICENSE)	SEASON TICKET COST (PER SEAT)	TOTAL COST (PER SEAT)
Courtside (1st Row)	\$250	\$140	\$390
General Club (Chairbacks & Tables)	\$150	\$140	\$290
Sections 106, 107, & 112-114	\$75	\$110	\$185

TAX INFORMATION STATEMENT:

Contributions to South Dakota Athletics are considered gifts to the University of South Dakota and are credited at full value by the USD Foundation. As of 2019, donations tied to minimum per-seat contributions and premium seating may not be tax-deductible. However, gifts to sport-specific funds, endowments, and capital projects etc. remain 100% deductible. Donors will receive acknowledgment letters with relevant tax details. Please consult your tax advisor for guidance.



VOLLEYBALL PARKING

Premium Parking Near the Sanford Coyote Sports Center for Volleyball

Yote Fund members can enjoy convenient parking with two premium options.

Eligibility: Must be a volleyball season ticket holder and meet the required Yote Fund level (one pass per household).



PREMIUM AREAS

Premium areas open 90 minutes before football kickoff and 60 minutes before volleyball and basketball games.

Access With Membership: Membership includes access for two adults (member + spouse) and K-12 children. Single members may bring one guest. Members with access are eligible to purchase up to two additional passes on a game-by-game basis through the ticket office, subject to availability and Coyote Points.

Access With Tickets: If you have club seats or courtside tickets, you can access the premium areas by showing your ticket.

Please contact the ticket office for assistance for all premium seating areas, excluding Suites and Loges.

SANFORD COYOTE SPORTS CENTER



CORTRUST CLUB

Basketball: Accessible during pregame and halftime only.

- Yote Leadership Society Members (\$10,000+)
- CorTrust Club Ticket

Volleyball: Accessible throughout the entire game.

- Yote Fund Members (\$5,000+)
- CorTrust Club Ticket



COURTSIDE SEATING

Season Ticket Required

DAKOTADOME



DAKOTADOME CLUB

Accessible during pregame and halftime only.

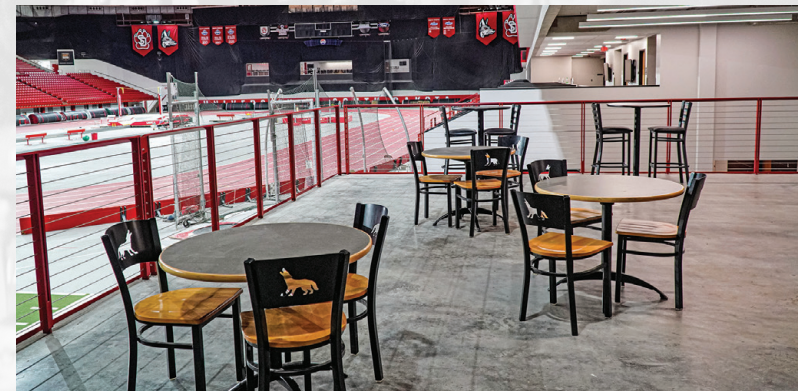
- Yote Leadership Society Members (\$10,000+)
- Dome Club Ticket



FIRST DAKOTA LANDING

Accessible during pregame and halftime only.

- Yote Leadership Society Members (\$10,000+)
- First Dakota Landing Ticket



NORTHWEST COYOTE LANDING

Accessible throughout the entire game.

- Yote Fund Members (\$5,000+)



SUITES & LOGES

Season Ticket Required

* Currently sold out. To be added to the waitlist, contact The Yote Fund.

USD STAFF



JON SCHEMSEL
Athletic Director
athleticdirector@usd.edu



COREY JENKINS
Deputy AD
Corey.Jenkins@usd.edu



BEN LECOMPTE
Senior Associate AD/CRO
Ben.LeCompte@usdfoundation.org



LOGAN BORNHOLDT
Assistant AD for Development
Logan.Bornholdt@usdfoundation.org



CARSON HRUBY
Associate Director of Development - Athletics
Carson.Hruby@usdfoundation.org



MICHAELA MOHR
Assistant Director of Athletics Annual Giving
Michaela.Mohr@usdfoundation.org



BRIANNA SCHULZ
Assistant Director of Athletic Development
Brianna.Schulz@usdfoundation.org



GINA MOCKLER
Senior Associate AD for Internal Operations/SWA
Gina.Mockler@usd.edu



SEAN BEAM
Associate AD for Events and Facilities
Sean.Beam@usd.edu



JARREN DUFFY
Associate AD for Fan Engagement
Jarren.Duffy@usd.edu



ALEXA RUDEEN
Assistant AD for Equipment and Operations
Alexa.Rudeen@usd.edu



MADISON MILLS
Assistant AD for Student-Athlete Excellence
Madison.Mills@usd.edu

IMPORTANT DATES 2025-2026



FEBRUARY 25-26

- UNITE FOR USD



MARCH 5-9

- SUMMIT LEAGUE BASKETBALL TOURNAMENT



APRIL 11

- CALLING ALL COYOTES



MAY 1

- CHARLIE'S AWARDS BANQUET



JUNE 30

- LAST DAY TO MAKE YOUR HOWLING PACK DONATION & EARN AN EXTRA 25 COYOTE POINTS



JULY 1

- YOTE FUND MEMBERSHIP YEAR BEGINS FOR 25-26



OCTOBER 4

- DAKOTA DAYS



2025

- SANFORD COYOTE GOLF TOUR**
- MAY 28: YANKTON COYOTE OPEN
 - JUNE 16: VERMILLION COYOTE OPEN
 - JUNE 30: COYOTE METRO OPEN
 - JULY 14: RAPID CITY COYOTE OPEN
 - AUGUST 4: BERESFORD COYOTE OPEN



QR CODE

- SCAN THE QR CODE TO VISIT THE ALUMNI EVENT PAGE AT USDALUMNI.COM/EVENTS



GoYotes.com

CONTACT THE YOTE FUND

1110 N. Dakota St. | Vermillion, SD 57069

Phone: (605) 677-5527 | **Email:** YoteFund@usdfoundation.org

CONTACT THE TICKET OFFICE

414 E. Clark St. | Vermillion, SD 57069

Phone: (605) 677-5959 | **Email:** Tickets@usd.edu