



IDAHO MEN'S BASKETBALL

vs.

MONTANA

January , 2016



2016-17 SCHEDULE

Date	Opponent	Time/Results
Oct. 25	Carroll (EXH)	W, 80-62
Nov. 4	Lewis-Clark State (EXH)	W, 80-66
Nov. 12	Corban University	W, 90-67
Nov. 16	at NIU	L, 49-63
Nov. 18	at Little Rock	W, 65-57
Nov. 21	South Dakota State	W, 96-89 (OT)
Nov. 25	at Sam Houston State	L, 62-69
Nov. 29	San Jose State	L, 49-58
Dec. 3	UC Davis	W, 68-66
Dec. 7	at Washington State	L, 48-61
Dec. 10	at South Dakota State	L, 77-80
Dec. 17	Northwest Nazarene	W, 87-61
Dec. 22	at Stanford	L, 80-86
Dec. 30	*EWU	L, 62-69
Jan. 5	*Montana	7 p.m.
Jan. 7	*Montana State	7 p.m.
Jan. 12	*at Weber State	6 p.m.
Jan. 14	*at Idaho State	6 p.m.
Jan. 19	*Southern Utah	7 p.m.
Jan. 21	*Northern Arizona	7 p.m.
Jan. 26	*at Montana State	6 p.m.
Jan. 28	*at Montana	6 p.m.
Feb. 2	*Portland State	7 p.m.
Feb. 4	*Sacramento State	7 p.m.
Feb. 9	*at Northern Colorado	6 p.m.
Feb. 11	*at North Dakota	2 p.m.
Feb. 17	*at EWU	6 p.m.
Feb. 23	*Idaho State	7 p.m.
Feb. 25	*Weber State	3 p.m.
Mar. 2	*at Northern Arizona	5:30 p.m.
Mar. 4	*at Southern Utah	3 p.m.
Mar. 7-11	Big Sky Tournament	TBA

All times Pacific

All dates/times subject to change

Home games in **Bold**

* - Denotes Big Sky Conference game

QUICK HITS

- Idaho returns to the court to take on long-time rival Montana on Thursday night in Cowan Spectrum.
- Idaho fell to Eastern Washington in the opener, 69-62, at home last weekend. The Vandals trailed by as many as 22 in the second half but fought their way back to get within five in the closing minutes.
- Victor Sanders led the way for Idaho with 32 points, including 27 in the second half. Sanders closed the game with 20 points in the final six minutes, including Idaho's final 18 points.
- The Vandal defense also picked things up in the final minutes, forcing seven turnovers and picking up six steals in the final six minutes of action.
- Montana defeated Idaho State in the opening game but fell to defending tournament champions Weber State in overtime on Saturday.
- Montana enters the matchup at 6-9 but played an incredibly difficult non-conference schedule.
- The Grizzlies and the Vandals have played two common opponents this year. Washington State got the better of both teams, while San Jose State managed to defeat the Vandals before falling to the Griz.
- Last year's regular season meeting in Missoula went Idaho's way, as Sanders went off for the second straight game and finished with 27 points. The Idaho defense was stellar, holding Montana without a field goal for the first seven minutes of the second half and came out with its first win in Missoula since December 11, 1999.
- The teams also met in the postseason, with Montana earning the 81-72 win in the Big Sky Tournament Semifinals. The Griz shot lights-out in the second half at better than 70 percent, keeping any hope at an Idaho comeback down.

Vandal Radio Network

KRPL 1400 AM.....	Moscow/Pullman
KFXD 630 AM	Boise
KVNI 1080 AM	Coeur d'Alene
KSPZ 980 AM	Idaho Falls
KLER 1300 AM	Orofino
KOVE 1240 AM.....	St. Maries
KLIX 1310 AM	Twin Falls/Sun Valley
Vandal Video	GoVandals.com

FOLLOW LIVE

TV/Stream	GoVandals.com/WBS
Radio	Vandal Radio Network
Twitter	@VandalHoops
Stats.....	Idaho.statbroadcast.com

GAMEDAY INFO



Record	5-7
Conference.....	0-1
Streak.....	L2
Last 5	1-4
Home Games	4-2
Last Game	L, 62-69

Head Coach	Don Verlin
Record	136-133
at Idaho	Same



Record	6-9
Conference.....	1-1
Streak.....	L1
Last 5	3-2
Road Games	1-5
Last Game	L, 81-84 (OT)

Head Coach ...	Travis DeCuire
----------------	----------------

2016-17 IDAHO MEN'S BASKETBALL

DON VERLIN

9th Season - 136-133



Pedigree

'89-'91.....	Columbia CC
.....	Assistant Coach
'91-'92.....	Colorado State
.....	Assistant Coach
'92-'94.....	CSU-Bakersfield
.....	Assistant Coach
'94-'98.....	Colorado State
.....	Assistant Coach
'98-'08.....	Utah State
.....	Assistant Coach
'08-present.....	Idaho
.....	Head Coach

Year-By-Year Results

'08-'09.....	17-16
'09-'10.....	15-16
'10-'11.....	18-14
'11-'12.....	19-14
'12-'13.....	12-18
'13-'14.....	16-18
'14-'15.....	13-17
'15-'16.....	21-13
'16-'17.....	5-7

ROSTER

##	Name	Pos.	Ht.	Wt.	Yr.	Hometown (Previous School)
0	Nick Blair	SF	6-5	205	So.	Las Vegas, Nev. (Bishop Gorman HS)
1	Perrion Callandret	G	6-2	180	Sr.	Bothell, Wash. (Bothell HS)
2	Myles Franklin	PG	6-0	171	Fr.	Castaic, Calif. (Hart HS)
4	Brayon Blake	F	6-7	220	Jr.	Seattle, Wash. (North Idaho College)
5	Jake Straughan	G	6-1	175	So.	Colton, Wash. (Colton HS)
11	Victor Sanders	G	6-5	195	Jr.	Portland, Ore. (Jefferson HS)
12	Chance Garvin	G/F	6-4	170	Fr.	Coulee Dam, Wash. (Lake Roosevelt HS)
13	Pat Ingram	PG	6-2	201	Sr.	Indianapolis, Ind. (Trinity Valley JC)
14	Chad Sherwood	G	6-2	180	Jr.	Albany, Ore. (West Albany HS)
21	Arkadiy Mkrtchyan	F	6-7	235	Jr.	Portland, Ore. (Columbia Christian HS)
23	Nate Sherwood	PF	6-8	215	So.	Albany, Ore. (West Albany, HS)
24	Tyler Brimhall	G	6-4	195	Fr.	Logan, Utah (Logan HS)
25	Trevon Allen	G	6-2	180	Fr.	Lapwai, Idaho (Clarkston HS)
41	Ty Egbert	F	6-9	225	Sr.	Coulee Dam, Wash. (Lake Roosevelt HS)
44	Jordan Scott	SF	6-6	200	Jr.	Colorado Springs, Colo. (Lewis-Palmer HS)

Coaching Staff

Don Verlin – Head Coach
 Tim Murphy – Assistant Coach
 Kirk Earlywine – Assistant Coach
 Zach Claus – Assistant Coach
 Brooks Malm – Director of Operations

Pronunciation Guide

Perrion Callandret PAIR-e-on KAL-an-dret
 Brayon Blake BRAY-on
 Jake Straughan STRAWN
 Arkadiy Mkrtchyan R-KAH-dee m-KURT-chin
 Trevon Allen TRAY-von

TEAM INFO

General Information

LocationMoscow, Idaho
 Founded1889
 Enrollment11,594
 President..... Dr. Chuck Staben
 Athletic Director.....Dr. Rob Spear
 Conference..... Big Sky
 Nickname Vandals
 Colors..... Silver, Vandal Gold
 Arena (capacity) .. Cowan Spectrum (5000)

2015-16 Review

Record 21-13
 Big Sky Record (Finish)12-6 (3)
 Big Sky Tournament.....W, 77-73, vs. EWU
L, 72-81, vs. Montana (semifinals)
 Postseason CBI
L, 63-68, at Seattle U

2016-17 Preview

Lettermen Returning/Lost10/4
 Newcomers..... 3
 Staters Returning/Lost..... 4/1
 Redshirts Returning..... 2
 Returning Scoring 2005/2372 (84.5%)
 Returning Rebounding..... 930/1257 (74.0%)

Men's Basketball History

First Season..... 1905-06
 All-Time Record 1322-1467
 NCAA Appearances/W-L..... 4/1-4
 Last NCAA Appearance1990
 NIT Appearances/W-L 1/0-1
 Last NIT Appearance1983
 CIT Appearances/W-L..... 3/2-3
 Last CIT Appearance.....2012
 CBI Appearances/W-L 1/0-1
 Last CBI Appearance2016

Idaho Athletics Media Relations

Mailing Address:

Kibbie-ASUI Activity Center
 875 Perimeter Drive MS 2302
 Moscow, ID 83844-2302

Fax: (208) 885-2862

Media Relations Contact

Joe St. Pierre
 Cell: 603.475.8548
 Email: jstpierre@uidaho.edu

Interview Requests

Head coach Don Verlin and Idaho players will be made available for interviews in person or by telephone by request to media relations contact Joe St. Pierre.

All interviews with Idaho student-athletes must be coordinated through the athletics media relations office and requested with 24 hours advance notice.

Idaho Athletics Website

Game notes, statistics and preview stories along with photos are all available on Idaho's athletics department website, GoVandals.com.

Social Media

In addition to the information found on Idaho's official athletics website, exclusive content and up-to-the-minute news on all Idaho athletics can be found by following @Idaho_Vandals and @VandalHoops on Twitter.

2016-17 IDAHO MEN'S BASKETBALL

STATISTICAL RANKINGS

TEAM STATS.....	##	BSC	BSC Leader	NCAA BSC Only	BSC Rank
Scoring Offense.....	69.4	9	88.2 (PSU)	268	62.0	12
Scoring Defense.....	68.8	1	--	114	69.0	4
Scoring Margin.....	+0.6	5	+9.8 (PSU)	206	-7.0	8
Free Throw %.....	68.5	6	77.0 (EWU)	207	73.3	3
Field Goal %.....	41.2	10	50.2 (PSU)	298	30.5	12
Field Goal % Defense.....	41.5	1	--	115	50.0	T9
3-pointers per Game.....	7.6	10	10.7 (MSU)	170	4.0	11
3-point %.....	34.0	9	40.8 (WSU)	220	28.6	10
3-point % Defense.....	35.2	4	32.4 (UNCO)	211	50.0	11
Rebounds per Game.....	36.5	6	38.0 (UNCO)	197	35.0	T7
Rebounds Allowed.....	33.6	1	--	--	35.0	T4
Rebound Margin.....	+2.9	1	--	123	+0.0	T6
Blocks.....	1.6	12	5.7 (EWU)	343	1.0	T11
Assists.....	13.8	5	18.3 (PSU)	180	13.0	T9
Steals.....	5.8	4	10.6 (PSU)	231	15.0	T1
Turnovers per Game.....	12.6	7	11.3 (WSU)	105	10.0	4
Turnover Margin.....	+0.9	5	+5.0 (PSU)	137	+11.0	1
Assist/Turnover Ratio.....	1.1	6	1.6 (PSU)	129	1.3	6
Offensive Rebounds.....	11.8	3	12.2 (NAU)	116	14.0	1
Defensive Rebounds.....	24.8	10	28.2 (UNCO)	247	21.0	12

INDIVIDUAL STATS..... ##... BSC..... BSC Leader..... NCAA ... | ... BSC Only BSC Rank

Points per Game

Victor Sanders..... 18.5 6 23.1 76 32.0 T2

Rebounds per Game

Brayon Blake..... 7.1 7 8.3 194 12.0 T1

Nate Sherwood..... 9.0 T5

Field Goal %

--

Assists per Game

Victor Sanders..... 3.7 8 5.8 219 4.0 T8

Free Throw %

--

Steals per Game

Victor Sanders..... 2.3 3 2.7 22 5.0 T1

3-point %

Victor Sanders..... 41.2 13 60.0 60

3-pointers per Game

Victor Sanders..... 2.9 5 4.3 58 2.0 T14

Blocks per Game

--

Assist/Turnover Ratio

Victor Sanders..... 1.6 7 3.0 248 4/0 T1

O. Rebounds per Game

Bryaon Blake..... 2.1 8 3.9

Jordan Scott..... 1.8 14 3.9

Nate Sherwood..... 4.0 T1

D. Rebounds per Game

Brayon Blake..... 5.0 T6 6.6 183 11.0 1

Minutes Played

Victor Sanders..... 37.0 T3

Big Sky Conference

Standings

R	Team	BSC Rec.	Rec.
1	Weber State	2-0	7-6
	Northern Colorado	2-0	6-7
3	EWU	1-0	9-5
	Southern Utah	1-0	3-11
5	Portland State	1-1	8-5
	North Dakota	1-1	6-6
	Montana	1-1	6-9
	Montana State	1-1	6-9
9	Idaho	0-1	5-7
	Northern Arizona	0-1	3-11
11	Sacramento State	0-2	3-10
	Idaho State	0-2	2-12

2016-17 By The Numbers

Offense - Scoring

<60.....0-3

60-69.....2-2

70-79.....0-1

80-89.....1-1

>89.....2-0

Offense - Shooting

<35%.....0-4

35%-40%.....0-1

40%-45%.....1-0

45%-50%.....3-2

>50%.....1-0

Defense - Scoring

<60.....1-1

60-69.....3-4

70-79.....--

80-89.....1-2

>89.....--

Defense - Shooting

<35%.....1-1

35%-40%.....2-2

40%-45%.....1-0

45%-50%.....1-3

>50%.....0-1

Rebounding

Outrebounded Opponent.....4-3

Outrebounded by Opponent.....1-3

Rebounds Even.....0-1

Turnovers

Fewer than Opponent3-4

More than Opponent2-2

Even0-1

2016-17 IDAHO MEN'S BASKETBALL

VIC TAKES OVER

- Victor Sanders took over in the final minutes against EWU, scoring Idaho's final 18 points.
- Sanders scored 20 points in the final six minutes, going 6-of-8 from the field and 7-of-8 from the line during that stretch. The only other Vandal to score during that time (a 22-9 run by Idaho), was Myles Franklin who went 2-of-2 at the free throw line.
- The Vandal defense was tremendous during the stretch as well, forcing seven turnovers and picking up six steals as Idaho attempted the comeback.
- However, the rest of the offense struggled in the closing minutes, going 0-of-4 from the floor.

LOCAL RIVALS

- Idaho and Eastern Washington have met seven times over the last two-plus seasons.
- The Eagles and the Vandals have met in the Big Sky Quarterfinals in each of the last two seasons, with EWU winning in 2015 and Idaho winning in 2016.

SOUTH DAKOTA STATE REMATCH

- Idaho made 13 3's in the rematch with South Dakota State, one fewer than the record-tying performance against the Jackrabbits in the first meeting.
- Idaho did need 35 attempts from range, the most ever against a Division I opponent for a Don Verlin-coached team.
- South Dakota State did most of its work from the line, connecting on 25-of-26 attempts (96.2%). That performance sets the new record for best free throw shooting performance against a Don Verlin-coached team (minimum 20 attempts).

BATTLE OF THE PALOUSE

- Last season, Idaho came out victorious for the second straight time in the Battle of the Palouse, the longest continuously running college basketball rivalry West of the Mississippi River.
- Idaho hadn't won at home in the rivalry since the 2002 season and hadn't won back-to-back games in the series since winning three straight from 1988-90.
- The Vandals fell on the road this season, 61-48.

HOW CAN I HELP?

- Idaho recorded 20 assists against UC Davis. All five starters recorded at least three helpers.
- It was the second time that Idaho recorded at least 20 assists in a game this season. Idaho also had 24 assists against South Dakota State, a record for Don Verlin's Vandals.
- The Vandals did not have a 20-assist game against a Division I opponent last season.
- Idaho hadn't had multiple 20 assist games against Division I opponents in a season since 2012-13.

BENCH PRODUCTION

- The Idaho bench was incredible against South Dakota State, scoring 47 points.
- Idaho's best bench game last year came against Idaho State, with the Vandals scoring 36 points off the bench.
- Pat Ingram led the way, scoring 23 points.

2016-17 Schedule

Opponent	Results	Idaho vs. Opp.	Opp. Rec. Time of Game	Opp. Record
Corban	W, 90-67	1-0	2-2	5-3
NIU	L, 49-63	0-3	2-0	8-6
Little Rock	W, 65-57	2-1	2-0	10-5
South Dakota State	W, 96-89 (OT)	4-3	1-3	8-9
Sam Houston State	L, 62-69	1-2	3-2	9-6
San Jose State	L, 49-58	14-13	2-3	5-4
UC Davis	W, 68-66	7-0	5-3	8-7
Washington State	L, 48-61	109-163	4-4	8-5
South Dakota State	L, 77-80	4-3	4-7	8-9
Northwest Nazarene	W, 87-61	---	4-4	4-5
Stanford	L, 80-86	3-7	7-4	8-6
EWU	L, 62-69	54-30	8-5	9-5
Montana		108-85	6-9	
Montana State		54-60		
Weber State		22-53		
Idaho State		58-45		
Southern Utah		7-9		
Northern Arizona		37-20		
Montana State		54-60		
Montana		108-85		
Portland State		12-11		
Sacramento State		15-4		
Northern Colorado		3-0		
North Dakota		3-1		
EWU		54-30		
Idaho State		58-45		
Weber State		22-53		
Northern Arizona		37-20		
Southern Utah		7-9		

At Time of Game:

Idaho vs. Teams with winning records:	2-4
Idaho vs. Teams with losing/even records:	3-3

Season total:

Idaho vs. Teams with winning records:	3-6
Idaho vs. Teams with losing/even records:	2-1

Specialty Stats

Opponent	Idaho/Opponent			FAST	BP
	PP	POT	2nd		
Corban	42/16	21/7	25/16	10/0	33/37
NIU	22/16	9/9	11/16	6/2	8/21
Little Rock	22/24	10/13	9/14	4/2	2/21
South Dakota State	36/18	21/16	13/16	8/0	47/15
Sam Houston State	14/20	14/18	6/7	0/2	20/18
San Jose State	30/24	9/10	3/13	0/0	17/28
UC Davis	38/20	5/11	5/9	4/0	22/25
Washington State	22/18	11/6	8/7	4/2	19/7
South Dakota State	20/26	3/10	7/8	0/0	23/12
Northwest Nazarene	34/22	17/4	19/5	2/4	36/21
Stanford	22/20	14/18	6/8	2/4	42/17
EWU	20/20	26/10	13/9	4/0	16/12
Montana					
Montana State					
Weber State					
Idaho State					
Southern Utah					
Northern Arizona					
Montana State					
Montana					
Portland State					
Sacramento State					
Northern Colorado					
North Dakota					
EWU					
Idaho State					
Weber State					
Northern Arizona					
Southern Utah					
Idaho Average	27.0	13.3	10.4	3.5	25.3
Opp. Average	20.3	11.0	10.7	1.5	17.9

2016-17 IDAHO MEN'S BASKETBALL

Last time a Vandal team...

Scored 110 points	Idaho 127, New Hope 54 (12/18/15)
Scored 100 points	Idaho 127, New Hope 54 (12/18/15)
Scored 90 points	Idaho 96, SDSU 89 (11/21/16)
Scored Fewer than 60 points.....	Idaho 48, WSU 61 (12/7/16)
Scored Fewer than 50 points.....	Idaho 48, WSU 61 (12/7/16)
Won by 30 points.....	Idaho 49, NIU 63 (11/16/16)
Shot 65% from the floor.....	68.4% (26-38) vs. Cal State Northridge (2/21/09)
Shot 60% from the floor.....	60.4% (29-48) vs. South Dakota State (12/13/14)
Shot <35% from the floor.....	30.5% (18-59), vs. EWU (12/30/16)
Shot 50% from 3FG.....	57.1 (8-14) vs. Corban (11/12/16)
Shot <30% from 3FG.....	28.6% (4-14), vs. EWU (12/30/16)
Made 10 3FGs	13, at Stanford (12/22/16)
Shot 75% from the FT line.....	92.6% (25-27) vs. NNU (12/17/16)
Shot <50% from the FT line.....	40.0% (8-20) vs. UC Davis (12/3/16)
Had 50 rebounds	50, vs. Weber State (3/3/16)
Had 20 offensive rebounds.....	20, at WSU (12/7/16)
Had 20 assists.....	20, vs. UC Davis (12/3/16)
Had 20 turnovers	20, at Montana (11/21/16)
Had fewer than 10 turnovers	9, at Stanford (12/22/16)
Had 10 steals	15, vs. EWU (12/30/16)
Had 10 blocks	10, vs. San Jose State (2/2/13)
Had two 20-point scorers.....	Sanders (29), Ingram (23) vs. SDSU (11/21/16)
Had four double-digit scorers.....	(4) vs. NNU (12/17/16)
Won an overtime game.....	vs. SDSU (11/21/16)
Lost an overtime game	vs. Southern Utah (1/16/16)
Won a double-overtime game.....	vs. Montana (2/26/15)

Last time a Vandal individual...

Had a double-double (pts/rebs)	Brayon Blake, 13/11 (11/12/16)
Had a double-double (pts/asts)	Mike Scott, 15/10 (1/17/15)
Had 10 assists.....	Mike Scott, 10 (1/17/15)
Had 20/10 (pts/rebs)	Kyle Barone, 20/11 (12/6/12)
Scored 30 points	Victor Sanders, 32 (12/30/16)
Scored 20 points	Victor Sanders, 29 (11/21/16)
Had 15 rebounds	Kyle Barone, 15 (2/28/13)
Had 5 steals.....	Victor Sanders, 5 (12/30/16)
Had 5 blocks.....	Ty Egbert, 5 (11/14/15)

Last time a Vandal opponent...

Scored 90 points	EWU, 91 (3/12/15)
Scored fewer than 60 points	San Jose State, 58 (11/29/16)
Scored fewer than 50 points	Southern Utah, 44 (2/4/16)
Shot 60% from the floor.....	Montana, 65.1% (3/11/16)
Shot <30% from the floor.....	New Hope, 29.0% (12/18/15)
Shot 50% from 3FG.....	EWU, 50.0% (12/30/16)
Shot <30% from 3FG.....	San Jose State, 16.7% (11/29/16)
Made 10 3FGs	EWU, 11 (12/30/16)
Shot 75% from the FT line.....	Stanford, 76.7% (12/22/16)
Shot <50% from the FT line.....	Northwest Nazarene, 33.3% (12/17/16)
Had fewer than 25 rebounds	Montana, 24 (3/11/16)
Had 20 offensive rebounds.....	San Jose State, 21 (2/2/13)
Had 20 assists.....	Denver, 21 (2/9/13)
Had fewer than 10 turnovers	SDSU, 9 (12/10/16)
Had 10 steals	Texas State, 12 (1/24/13)
Had no blocks.....	Stanford (12/22/16)

• As a whole, the Idaho bench was incredible. Four of the five guys off the bench finished at +10 or better, led by Ty Egbert at +19.

MAKE IT RAIN

- Idaho hit 14 3's in the first meeting with South Dakota State.
- The most 3's Idaho hit in a D1 game last year was 10, against Northern Colorado early in the Big Sky season.
- Under Don Verlin, Idaho had hit 14 3-pointers against a Division I opponent just once, against Hawaii on February 6, 2010.

FREE THROW STRUGGLES

- Idaho struggled at the free throw line at NIU, going 9-of-22 (40.9 %).
- It is the first time since December 11, 2013 that an Idaho team shot worse than 50% from the line. Idaho went 7-of-18 from the line against Montana on that night. On that day, Bira Seck went 3-of-5 from the line.
- No Vandal shot better than 50% from the line at NIU. That hasn't happened for an Idaho squad since March 13, 2008, when Idaho went 3-of-13 from the line as a team. Darin Nagle hit all three free throws, going 3-of-6, while the rest of the team went 0-of-7.
- Idaho also struggled mightily against UC Davis, going 8-of-20 (40%) from the line.

DOUBLE-DOUBLES

- Brayon Blake got his Idaho career off to a tremendous start, earning a double-double in his first game.
- The junior JUCO transfer finished with 13 points and 11 boards against Corban.
- Blake came within one rebound of duplicating the feat in his first game against a Division I opponent, scoring 17 points and grabbing nine rebounds at NIU.
- Last season, Idaho had just two double-doubles on the year. The first came for Skyler White against New Hope Christian College, while the second came for Nate Sherwood at NAU.

SANDERS AT THE LINE

- Victor Sanders made it a point to get to the line in 2015-16, taking more than five free throws per game.
- Sanders' free throw percentage of 84.8 was the seventh best single-season average in program history.
- Sanders was also incredible at getting to line on 3-point attempts.
- He was fouled on a 3-pointer 22 times in 2015-16, including twice in the College Basketball Invitational game at Seattle U.

IDAHO RECORD WHEN...

	Overall	BSC	Opp. shoot >35%	3-3	0-1	Outrebound opp.	4-3	--			
Leading at Halftime	3-1	--	Opp. shoot <35%	2-4	--	Fewer/equal rebounds	1-4	0-1	November	3-3	--
Trailing at Halftime	1-5	0-1				40-plus rebounds	2-2	--	December	2-4	0-1
Tied at Halftime	1-1	--	Score <70 points	2-5	0-1	<40 rebounds	3-5	0-1	January	--	--
			Score 70-plus points	3-2	--				February	--	--
Higher FG% than opp.	4-1	--	Score 80-plus points	3-1	--	Fewer turnovers	3-3	0-1	March	--	--
Lower/equal FG%	1-6	0-1	Score 90-plus points	2-0	--	More/equal turnovers	2-4	--			
Shoot >45%	4-2	--									
Shoot <45%	1-5	0-1	Allow <70 points	4-5	0-1	More pts. in paint	4-4	--	* - Games decided by five or fewer points		
Opp. shoot >45%	1-4	0-1	Allow 70-plus points	1-2	--	Fewer/equal pts. in paint	1-3	0-1			
Opp. shoot <45%	4-3	--	Allow 80-plus points	1-2	--						
			Allow 90-plus points	--	--	More 2nd chance pts.	2-2	0-1			
Higher 3FG% than opp.	3-3	--				Fewer/equal	3-5	--			
Lower/equal 3FG%	2-4	0-1	Close Games*	1-1	--						
Shoot >35%	3-2	--	Overtime games	1-0	--	More bench pts.	3-4	0-1			
Shoot <35%	2-5	0-1				Fewer/equal bench pts.	2-3	--			

2016-17 IDAHO MEN'S BASKETBALL

MATCHUP BY THE NUMBERS

Stats	Idaho	Montana
Head coach	Don Verlin	Travis DeCuire
Record at School	136-133	47-34
Career Record	Same	Same
Overall Record	5-7	6-9
Conference Record	0-1	1-1
Scoring	69.4	72.5
Scoring Defense	68.8	73.4
Scoring Margin	+0.6	-0.9
Field Goal Pct.	41.2	44.0
Field Goal Pct. Defense	41.5	44.9
3-Pt. FG per Game	7.6	8.1
3-Pt. FG Pct.	34.0	37.5
3-Pt. FG Pct. Defense	35.2	34.6
Free Throw Pct.	68.5	76.0
Rebounds Per Game	36.5	33.3
Opp. Rebounds Per Game	33.6	34.3
Rebounding Margin	+2.9	-1.1
Assists	166	205
Assists Per Game	13.8	13.7
Turnovers	151	179
Turnovers Per Game	12.6	11.9
Opp. Turnovers Per Game	13.5	13.0
Turnover Margin	+0.9	+1.1
Assist/Turnover Ratio	1.1	1.1
Steals	70	80
Steals Per Game	5.8	5.3
Blocks	19	43
Blocks Per Game	1.6	2.9

SEASON OPENER

- The Vandals have won 7-of-9 season openers under head coach Don Verlin.
- Last season, Idaho defeated San Jose State, 74-54, in the season-opener on the road. Perrion Callandret led the Vandals with 18 points and six assists on that night.
- This season, Idaho dominated Corban 90-67 to start the year.

LAST TIME OUT...

Official Basketball Box Score -- Game Totals -- Final Statistics EWU vs Idaho 12/30/16 7 p.m. at Cowan Spectrum (Memorial Gym)

EWU 69 • 9-5, 1-0

#	Player	Total	3-Ptr	Rebounds	PF	TP	A	TO	Blk	Stl	Min
		FG-FGA	FG-FGA	FT-FTA	Off Def Tot						
13	VULKIC, Luka	0-0	0-0	0-0	0 2 2	0	0	3	1	0	8
14	PEATLING, Mason	2-3	1-1	2-3	1 8 9	4	7	2	1	3	31
24	WILEY, Jacob	9-13	0-0	5-7	3 6 9	3	23	1	3	5	36
32	BLIZNYUK, Bogdan	2-9	1-5	0-0	0 3 3	5	5	4	5	0	35
44	VON HOF, Felix	6-12	6-11	4-5	0 2 2	2	22	0	5	1	36
02	GIBSON, Ty	2-2	2-2	1-1	0 0 0	1	7	0	0	0	14
04	WASHINGTON, Sir	0-3	0-2	2-4	1 5 6	4	2	8	4	0	31
20	BENZEL, Cody	1-2	1-1	0-0	0 2 2	0	3	0	0	0	8
34	HUNT, Jesse	0-0	0-0	0-0	0 0 0	0	0	0	0	0	1
	Team				0 2 2						
	Totals	22-44	11-22	14-20	5 30 35	19	69	15	21	10	5
	FG % 1st Half: 13-28	46.4%	2nd half: 9-16	56.3%	Game: 22-44	50.0%					
	3FG % 1st Half: 2-5	40.0%	2nd half: 2-9	22.2%	Game: 11-22	50.0%					
	FT % 1st Half: 6-6	100.0	2nd half: 8-14	57.1%	Game: 14-20	70.0%					

Idaho 62 • 5-7, 0-1

#	Player	Total	3-Ptr	Rebounds	PF	TP	A	TO	Blk	Stl	Min
		FG-FGA	FG-FGA	FT-FTA	Off Def Tot						
11	Sanders, Victor	10-22	2-6	10-11	1 1 2	1	32	4	0	0	37
14	Sherwood, Chad	1-2	1-2	0-0	0 0 0	0	3	0	1	0	23
23	Sherwood, Nate	1-7	0-1	2-4	4 5 9	2	4	1	0	0	26
25	Allen, Trevon	1-3	1-2	0-0	0 1 1	2	3	3	1	0	17
44	Scott, Jordan	1-1	0-0	2-2	0 0 0	4	4	1	1	0	19
	Blair, Nick	0-0	0-0	0-0	0 0 0	0	0	0	0	0	11
02	Franklin, Myles	1-3	0-1	2-2	0 0 0	0	4	1	1	0	18
04	Blake, Brayon	2-9	0-1	2-5	1 11 12	4	6	0	1	1	20
13	Ingram, Pat	0-2	0-1	0-0	0 1 1	0	0	1	1	0	2
21	Mkrtychyan, Arkadiy	1-6	0-0	2-4	3 1 4	1	4	0	0	0	12
24	Brimhall, Tyler	0-2	0-0	2-2	3 1 4	1	2	1	2	0	7
41	Egbert, Ty	0-2	0-0	0-0	0 0 0	1	0	1	2	0	1
	Team				2 0 2						
	Totals	18-59	4-14	22-30	14 21 35	16	62	13	10	1	15
	FG % 1st Half: 7-27	25.9%	2nd half: 11-32	34.4%	Game: 18-59	30.5%					
	3FG % 1st Half: 2-5	40.0%	2nd half: 2-9	22.2%	Game: 4-14	28.6%					
	FT % 1st Half: 9-9	100.0	2nd half: 13-21	61.9%	Game: 22-30	73.3%					

Officials: Chris Rastatter, Mike Reed, Rick Batsell
Technical fouls: EWU-None. Idaho-None.
Attendance: 1107

Score by periods	1st	2nd	Total
EWU	39	30	69
Idaho	25	37	62

Points	In	Off	2nd	Fast	Bench
EWU	20	20	13	0	4
IDAHO	20	26	13	4	16

Score tied - 3 times.
Lead changed - 2 times.

Last FG - EWU 2nd-00:59, IDAHO 2nd-00:08.
Largest lead - EWU by 22 2nd-06:50, IDAHO by 5 1st-17:24.
EWU led for 33:51. IDAHO led for 04:01. Game was tied for 02:08.

MOSCOW, Idaho – Down but never out, the Vandals mounted a furious second half comeback, but the clock got the better of them as Idaho (5-7, 0-1) fell to Eastern Washington (9-5, 1-0), 69-62, in Cowan Spectrum on Friday night.

“I thought Eastern came in here with a chip on their shoulder and I thought they played better than us,” said head coach Don Verlin. “The bottom line is they held us to 30 percent from the field and they shot 50 percent. They were the more aggressive team for 30 minutes in that basketball game.

“It’s a tough defeat for us, it’s a home conference game. What we have to do is stay the course, commit to the process, and that’s what we’re going to do.”

Victor Sanders went off in the second half. The junior from Portland scored 27 of his game-high 32 in the second, including Idaho’s final 18 points. He filled up the box score too, dishing out four assists and picking up five steals.

The Vandals found themselves down by 22 with just under seven minutes to play after a Jacob Wiley free throw made the score 60-38. Idaho would then score 13 straight of their own, with Sanders’ incredible streak beginning midway through the run. The Idaho defense picked things up in a major way, forcing a number of EWU turnovers to lead to easy, transition buckets.

In the end, Idaho would cut the deficit to five with just under two minutes to play, but a handful of missed opportunities and solid free throw shooting from Eastern Washington sank the comeback attempt. Brayon Blake grabbed 12 boards on the night and finished second on the squad with six points.

The Eagles were efficient, inside and out. Wiley led the team with 23 points on 9-of-13 shooting, while Felix Von Hofe went 6-of-11 from beyond the arc for 22 points. As a team, Idaho shot 30.5 percent (18-of-59) from the floor and 28.6 percent (4-of-14) from beyond the arc. Eastern Washington shot 22-of-44 from the floor and 11-of-22 from beyond the arc. Idaho forced 21 turnovers, picking up 15 steals. The teams were even on the glass, 35-35.

2016-17 IDAHO MEN'S BASKETBALL

RESULTS AND LEADERS

Record	Overall	Home	Away	Neutral
All Games	5-7	4-2	1-5	--
Big Sky	0-1	0-1	--	--
Non-Conference	5-6	4-1	1-5	--

Opponent	Result	High Points	High Rebounds	High Assists	1	2	3	4	5
Corban	W, 90-67	Sanders (19)	Blake (11)	Callandret/Sanders (5)	Callandret	Sanders	Scott	N. Sherwood	Blake
NIU	L, 49-63	Blake (17)	Blake/Scott (9)	Callandret/Chad (2)	Callandret	Sanders	Scott	N. Sherwood	Blake
Little Rock	W, 65-57	Sanders (20)	Blake (12)	Sanders/Nate (4)	Allen	Sanders	Scott	N. Sherwood	Blake
SDSU	W, 96-89 (OT)	Sanders (29)	Scott (7)	Franklin (7)	Allen	Sanders	Scott	N. Sherwood	Blake
SHSU	L, 62-69	Sanders (14)	Blake (8)	Mkrtychyan (3)	Allen	Sanders	Scott	Mkrtychyan	Blake
SJSU	L, 49-58	Sanders (15)	Scott (8)	Sanders (3)	C. Sherwood	Sanders	Scott	N. Sherwood	Blake
UC Davis	W, 68-66	Blake (17)	Allen/Sanders (6)	Allen (4)	Allen	Sanders	Scott	N. Sherwood	Blake
WSU	L, 48-61	Sanders (18)	Scott (8)	Sanders (3)	Allen	Sanders	Scott	N. Sherwood	Blake
SDSU	L, 77-80	Sanders (17)	Scott (6)	Sanders (9)	Allen	Sanders	Scott	N. Sherwood	Blake
NNU	W, 87-61	Sanders (18)	Nate/Blake (6)	Sanders (3)	Allen	Sanders	C. Sherwood	N. Sherwood	Scott
Stanford	L, 80-86	Sanders (17)	Blake (5)	Chad (5)	Allen	Sanders	C. Sherwood	N. Sherwood	Scott
EWU	L, 62-69	Sanders (32)	Blake (12)	Sanders (4)	Allen	Sanders	C. Sherwood	N. Sherwood	Scott
Montana									
Montana State									
Weber State									
Idaho State									
Southern Utah									
NAU									
Montana State									
Montana									
Portland State									
Sacramento State									
UNCO									
North Dakota									
EWU									
Idaho State									
Weber State									
NAU									
Southern Utah									

Attendance	Games	Totals	Avg/Game
Home	6	4941	824
BSC Home	6	12499	2083
Away	6	12499	2083
Neutral	6	12499	2083
Overall	12	17440	1453

Margin	1	2	3	4	5	6	7	8	9	10	11	12	13	14	15	16	17	18	19	20	21	22	23	24	25	26	27	28	29	30	30+
Victory		1					1	1															1			1					
Defeat			1			1	2		1				1	1																	

CAREER HIGHS

##	Name	Pts.	Rebs.	Asts.	FG	3FG	Mins.
0	Blair	16	7	2	6	4	27
1	Callandret	26	7	6	7	4	38
2	Franklin	6	4	7	2	--	20
4	Blake	17	12	3	8	1	32
5	Straughan	24	1	4	8	8	20
11	Sanders	33	8	9	10	6	38
12	Garvin	--	--	--	--	--	--
13	Ingram	23	7	9	8	4	28
14	C. Sherwood	22	6	6	8	6	39
21	Mkrtychyan	18	10	3	7	1	32
23	N. Sherwood	19	10	5	6	2	34
24	Brimhall	13	3	1	4	3	17
25	Allen	11	6	4	3	3	32
41	Egbert	18	9	2	6	--	31
44	Scott	13	13	3	6	1	34

SEASON HIGHS

##	Name	Pts.	Rebs.	Asts.	FG	3FG	Mins.
0	Blair	11	3	--	2	2	9
1	Callandret	14	5	5	4	3	25
2	Franklin	6	4	7	2	--	20
4	Blake	17	12	3	8	1	32
5	Straughan	6	1	1	2	2	7
11	Sanders	32	5	9	10	4	38
12	Garvin	--	--	--	--	--	--
13	Ingram	23	7	3	8	4	28
14	C. Sherwood	13	6	5	4	4	31
21	Mkrtychyan	12	7	3	6	--	20
23	N. Sherwood	14	9	4	6	1	27
24	Brimhall	13	4	1	4	3	17
25	Allen	11	6	4	3	3	32
41	Egbert	13	6	1	5	--	15
44	Scott	13	9	3	3	--	28

2016-17 IDAHO MEN'S BASKETBALL

DON VERLIN'S VANDALS - THE HIGHS

IDAHO		OPPONENT
##/Opponent (Date)	STAT	##/Opponent (Date)
127/New Hope (12/18/15) [101/UC Irvine (12/28/08)]	Points	100/Michigan State (11/16/08)
53/New Hope (12/18/15) [39/UC Irvine (11/28/08)]	FG	36/Cal State Northridge (2/18/14)
89/New Hope (12/18/15) [78/Southern Utah (2/21/15)]	FGA	76/EWU (12/6/12)
.684 (26-38)/Cal State Northridge (2/21/09)	FG% (min. 50 att.)	.651 (28-43)/Montana (3/11/16)
19/New Hope (12/18/15) [14/South Dakota State (11/21/16)]	3FG	17/EWU (1/31/15)
43/New Hope (12/18/15) [35/South Dakota State (12/10/16)]	3FGA	46/New Hope (12/18/15) [44/EWU (1/31/15)]
.667 (12-18)/South Dakota State (12/13/14)	3FG% (min. 10 att.)	.667 (8-12)/LaTech (3/12/09)
33/Southern Utah (1/16/16)	FT	35/Grand Canyon (1/23/14)
45/Southern Utah (1/16/16)	FTA	44/Texas Pan American (1/9/14)
.944 (17-18)/Idaho State (2/23/13)	FT% (min. 10 att.)	.962 (25-26)/South Dakota State (12/10/16)
57/New Hope (12/18/15) [55/EWU (12/6/12)]	Rebounds	51/South Carolina State (12/10/08)
39/New Hope (12/18/15) [24/South Dakota State (11/21/16)]	Assists	23/Michigan State (11/16/08)
15/EWU (12/30/16)	Steals	14/Denver (2/9/13)
10/San Jose State (2/2/13)	Blocks	11/Nevada (1/31/09)
24/New Mexico State (1/29/11)	Turnovers	24/San Francisco (3/16/11)
31/Northern Illinois (11/16/16)	Fouls	32/North Texas (11/23/15)

DON VERLIN'S VANDALS - THE LOWS

IDAHO		OPPONENT
##/Opponent (Date)	STAT	##/Opponent (Date)
33/Montana (11/22/10)	Points	39/Walla Walla (12/18/14) [42/North Dakota (12/3/10)]
6/Montana (11/22/10)	FG	14/UC Davis (12/22/15)
35/Denver (1/10/13)	FGA	39/LaTech (3/12/09)
.120 (6-50)/Montana (11/22/10)	FG% (min. 50 att.)	.262 (16-61)/Walla Walla (12/15/12) [.260 (15-57)/North Dakota (12/3/10)]
1/New Mexico State (2/29/12)	3FG	1/New Mexico State (2/9/12)
6/Seattle U (2/18/10)	3FGA	7/Boise State (11/27/13)
.077 (1-13)/Montana (11/22/10)	3FG% (min. 10 att.)	.105 (2-19)/CSU Bakersfield (12/17/11)
2/New Hope (12/18/15) [4/USC (12/7/15)]	FT	1/Washington State (12/21/08)
2/New Hope (12/18/15) [4/Washington State (12/21/08)]	FTA	2/Washington State (12/21/08)
.389 (7-18)/Montana (12/11/13)	FT% (min. 10 att.)	.333 (5-15)/Idaho State (3/7/15)
16/Utah State (1/31/13)	Rebounds	17/Denver (1/10/13)
3/CSU Bakersfield (11/17/15)	Assists	3/Seattle U (12/11/10)
0/Sacramento State (2/14/15)	Steals	1/Southern Utah (2/21/15)
0/Washington State (12/7/16)	Blocks	0/Sam Houston State (11/25/16)
2/New Hope (12/18/15) [4/Weber State (1/3/15)]	Turnovers	4/New Mexico State (1/12/13)
8/Washington State (12/21/08)	Fouls	7/Washington State (12/21/08)

DON VERLIN'S VANDALS - THE INDIVIDUALS

IDAHO		OPPONENT
##/Player/Opponent (Date)	STAT	##/Player/Opponent (Date)
42/Stephen Madison/Utah Valley (2/15/14)	Points	42/Tyler Harvey/EWU (3/12/15)
16/Stephen Madison/Utah Valley (2/15/14)	FG	13/Tyler Harvey/EWU (3/12/15)
23/Stephen Madison/EWU (12/6/12)	FGA	26/Roderick Flemings/Hawaii (3/6/10)
1.000 (10-10)/Kyle Barone/UTSA (1/26/13)	FG% (most makes)	1.000 (8-8)/Kevin Butler/UT Arlington (2/14/13)
8/Connor Hill/Portland State (2/12/15)	3FG	10/Jared Stohl/Portland (12/22/09)
15/Connor Hill/Idaho State (3/7/15)	3FGA	18/Isiah Umipig/Seattle U (3/1/14)
1.000 (5-5)/Stephen Madison/UT Arlington (2/14/13)	3FG% (min. 5 att.)	1.000 (7-7)/Kevin Butler/UT Arlington (2/14/13)
15/Kashif Watson/Cal State Northridge (12/3/09)	FT	21/Derrick Marks/Boise State (11/27/13)
20/Kashif Watson/Evergreen State (11/14/08)	FTA	23/Derrick Marks/Boise State (11/27/13)
[18/Stephen Madison/Montana (12/28/13)]		
1.000 (15-15)/Kashif Watson/Cal State Northridge (12/3/09)	FT% (min. 10 att.)	1.000 (13-13)/Mike Daum/South Dakota State (12/10/16)
18/Kyle Barone/UT Arlington (1/19/13)	Rebounds	20/Cameron Forte/Portland State (1/30/16)
11/Deremy Geiger/Hawaii (2/5/11)	Assists	11/Brockeith Pane/Utah State (3/17/12)
7/Victor Sanders (12/7/16)	Steals	7/Mark Hill/Cal State Northridge (2/21/09)
6/Djim Bandoumel/New Mexico State (2/9/12)	Blocks	7/Hamidu Rahman/New Mexico State (2/24/10)
8/Victor Sanders/San Jose State (11/29/16)	Turnovers	9/Ethan Telfair/Idaho State (3/5/16)
48/Stephen Madison/Texas Pan American (1/9/14)	Minutes	N/A

Highs are the most recent accomplishment, lows are the first occurrence

Division I records in []

In the case of a D1 record being tied by a non-D1 team, the D1 record remains

2016-17 IDAHO MEN'S BASKETBALL

University of Idaho season statistics Idaho Combined Team Statistics (as of Dec 30, 2016) All games

RECORD:	OVERALL	HOME	AWAY	NEUTRAL
ALL GAMES	5-7	4-2	1-5	0-0
CONFERENCE	0-1	0-1	0-0	0-0
NON-CONFERENCE	5-6	4-1	1-5	0-0

#	Player	gp-gs	min	avg	Total		3-Point		F-Throw		Rebounds				pf	dq	a	to	blk	stl	pts	avg
					fg-fga	fg%	3fg-fga	3fg%	ft-fa	ft%	off	def	tot	avg								
11	Sanders, Victor	12-12	379	31.6	71-159	.447	35-85	.412	45-62	.726	3	31	34	2.8	34	2	44	27	3	27	222	18.5
04	Blake, Brayon	12-9	276	23.0	48-114	.421	5-26	.192	22-36	.611	25	60	85	7.1	29	0	9	14	4	9	123	10.3
01	Callandret, Perrion	2-2	60	30.0	5-21	.238	3-11	.273	3-4	.750	0	9	9	4.5	3	0	7	1	0	0	16	8.0
23	Sherwood, Nate	12-11	250	20.8	24-58	.414	3-10	.300	20-31	.645	21	28	49	4.1	43	4	16	12	3	5	71	5.9
25	Allen, Trevon	12-9	249	20.8	18-56	.321	12-37	.324	17-17	1.000	3	21	24	2.0	15	0	21	20	1	3	65	5.4
14	Sherwood, Chad	12-4	235	19.6	16-49	.327	13-38	.342	12-16	.750	6	14	20	1.7	20	0	15	11	0	2	57	4.8
21	Mkrtychyan, Arkadiy	12-1	181	15.1	22-53	.415	1-3	.333	12-21	.571	13	25	38	3.2	28	0	7	12	1	2	57	4.8
41	Egbert, Ty	12-0	133	11.1	23-41	.561	0-0	.000	10-15	.667	12	12	24	2.0	19	0	6	12	4	1	56	4.7
44	Scott, Jordan	12-12	254	21.2	20-48	.417	1-9	.111	12-18	.667	22	36	58	4.8	30	1	10	13	0	5	53	4.4
13	Ingram, Pat	12-0	137	11.4	17-31	.548	6-12	.500	5-13	.385	7	18	25	2.1	13	0	9	9	2	8	45	3.8
24	Brimhall, Tyler	8-0	80	10.0	9-30	.300	8-24	.333	4-5	.800	7	8	15	1.9	8	0	4	5	0	2	30	3.8
05	Straughan, Jake	3-0	13	4.3	2-3	.667	2-3	.667	0-0	.000	0	2	2	0.7	1	0	2	1	0	2	6	2.0
02	Franklin, Myles	11-0	135	12.3	5-17	.294	0-7	.000	11-15	.733	0	14	14	1.3	5	0	16	10	0	3	21	1.9
00	Blair, Nick	8-0	43	5.4	3-7	.429	2-3	.667	3-4	.750	5	3	8	1.0	3	0	0	2	1	1	11	1.4
Team											17	16	33				2					
Total.....		12	2425		283-687	.412	91-268	.340	176-257	.685	141	297	438	36.5	251	7	166	151	19	70	833	69.4
Opponents.....		12	2425		261-629	.415	101-287	.352	203-277	.733	102	301	403	33.6	231	-	154	162	47	61	826	68.8

TEAM STATISTICS	IDAHO	OPP	Date	Opponent	Score	Att.
SCORING	833	826	11/12/16	CRB	W 90-67	628
Points per game	69.4	68.8	11/16/16	at Northern Illinois	L 49-63	1430
Scoring margin	+0.6	-	11/18/16	at Little Rock	W 65-57	2630
FIELD GOALS-ATT	283-687	261-629	11/21/16	SDSU	Wot 96-89	474
Field goal pct	.412	.415	11/25/16	at Sam Houston State	L 62-69	625
3 POINT FG-ATT	91-268	101-287	11/29/16	SAN JOSE STATE	L 49-58	674
3-point FG pct	.340	.352	12/3/16	UCD	W 68-66	1232
3-pt FG made per game	7.6	8.4	12/07/16	at Washington State	L 48-61	3178
FREE THROWS-ATT	176-257	203-277	12/10/16	at SDSU	L 77-80	1349
Free throw pct	.685	.733	12/17/16	NNU-M	W 87-61	826
F-Throws made per game	14.7	16.9	12/22/16	at STANFORD	L 80-86	3287
REBOUNDS	438	403	* 12/30/16	EWU	L 62-69	1107
Rebounds per game	36.5	33.6				
Rebounding margin	+2.9	-				
ASSISTS	166	154				
Assists per game	13.8	12.8				
TURNOVERS	151	162				
Turnovers per game	12.6	13.5				
Turnover margin	+0.9	-				
Assist/turnover ratio	1.1	1.0				
STEALS	70	61				
Steals per game	5.8	5.1				
BLOCKS	19	47				
Blocks per game	1.6	3.9				
ATTENDANCE	4941	12499				
Home games-Avg/Game	6-824	6-2083				
Neutral site-Avg/Game	-	0-0				

* - Conference game

Score by Periods	1st	2nd	OT	Totals
Idaho	385	430	18	833
Opponents	379	436	11	826

2016-17 IDAHO MEN'S BASKETBALL



#0 Nick Blair

Sophomore • SF
6-5 • 205
Las Vegas, Nev.
Bishop Gorman HS

Miscellaneous

Double-Figure Pts.	3 (2-1)
20+ points	0 (0-0)
Led team in pts.	0 (0-0)
5+ rebounds	5 (4-1)
10+ rebounds	0 (0-0)
Led team in rebs.	0 (0-0)
5+ assists	0 (0-0)
10+ assists	0 (0-0)
Fouled out	0 (0-0)

- Played a season-high 11 minutes against EWU
- Did not record a stat, but made a major impact in the Idaho press during the comeback attempt

SEASON HIGHS

Points	6, at SDSU (12/10/16)
Rebounds	3, at WSU (12/7/16)
Assists	-
Blocks	1, vs. SJSU (11/29/16)
Steals	1, vs. SJSU (11/29/16)
Field Goals	2, at SDSU (12/10/16)
Field Goal Attempts	3, at WSU (12/7/16)
3-point Field Goals	2, at SDSU (12/10/16)
3-point Field Goal Attempts	2, at SDSU (12/10/16)
Free Throws	2, vs. NNU (12/17/16)
Free Throw Attempts	2 (2x), last vs. NNU (12/17/16)
Minutes	11, vs. EWU (12/30/16)

CAREER HIGHS

Points	16, at Montana State (1/23/16)
Rebounds	7, vs. New Hope (12/18/15)
Assists	2 (3x), last at SUU (2/4/16)
Blocks	1 (7x), last vs. SJSU (11/29/16)
Steals	1 (6x), last vs. Montana (3/11/16)
Field Goals	6, at Montana State (1/23/16)
Field Goal Attempts	12, at Montana State (1/23/16)
3-point Field Goals	4, at Montana State (1/23/16)
3-point Field Goal Attempts	8, at Montana State (1/23/16)
Free Throws	2, vs. WSU (12/10/15)
Free Throw Attempts	3, vs. UND (2/13/16)
Minutes	27, at Montana State (1/23/16)

LAST 5

Opponent	*	Min.	FG-FGA	FG%	3FG-3FGA	3FG%	FT-FTA	FT%	Off-Def-Tot.-Avg.	PF	A	TO	Blk.	Stl.	Pts.
vs. SJSU		7	0-0	---	0-0	---	0-0	---	0-0-0	1	0	1	1	1	0
at WSU		4	1-3	.333	0-1	.000	0-0	---	2-1-3	0	0	0	0	0	2
at SDSU		9	2-2	1.000	2-2	1.000	0-0	---	2-0-2	0	0	1	0	0	6
vs. NNU		4	0-1	.000	0-0	---	2-2	1.000	1-0-1	1	0	0	0	0	2
vs. EWU		11	0-0	---	0-0	---	0-0	---	0-0-0	0	0	0	0	0	0
TOTAL		35-7.0	3-6	.500	2-3	.667	2-2	1.000	5-1-6-1.2	2	0	2	1	1	10-2.0

CAREER STATISTICS

Year	GP-GS	Min-Avg	Total FG-FGA	Pct	3-Point FG-FGA	Pct	F-Throw FT-FTA	Pct	Rebounds Off-Def-Tot	Avg	PF	FO	Ast	TO	Blk	Stl	Pts	Avg
2015-16	27-1	275-10.2	41-85	.482	6-20	.300	6-16	.375	20-43-63	2.3	28	0	13	17	6	6	94	3.5
2016-17	8-0	43-5.4	3-7	.429	2-3	.667	3-4	.750	5-3-8	1.0	3	0	0	2	1	1	11	1.4
TOTAL	35-1	318-9.1	44-92	.478	8-23	.348	9-20	.450	25-46-71	2.0	31	0	13	19	7	7	105	3.0



#1 Perrion Callandret

Senior • Guard
6-2 • 180
Bothel, Wash.
Bothel HS

Miscellaneous

Double-Figure Pts.	18 (11-7)
20+ points	4 (3-1)
Led team in pts.	11 (7-4)
5+ rebounds	12 (8-4)
10+ rebounds	0 (0-0)
Led team in rebs.	2 (1-1)
5+ assists	2 (2-0)
10+ assists	0 (0-0)
Fouled out	1 (1-0)

- Struggled against NIU, going 1-of-10 from the floor
- Grabbed four boards and had two assists
- Has not played since NIU
- Continues to recover from a bone bruise on his knee
- Will likely miss the remainder of the 2016-17 season

SEASON HIGHS

Points	14, vs. Corban (11/12/16)
Rebounds	5, vs. Corban (11/12/16)
Assists	5, vs. Corban (11/12/16)
Blocks	-
Steals	-
Field Goals	4, vs. Corban (11/12/16)
Field Goal Attempts	11, vs. Corban (11/12/16)
3-point Field Goals	3, vs. Corban (11/12/16)
3-point Field Goal Attempts	6, at NIU (11/16/16)
Free Throws	3, vs. Corban (11/12/16)
Free Throw Attempts	4, vs. Corban (11/12/16)
Minutes	35, at NIU (11/16/16)

CAREER HIGHS

Points	26, vs. CSUB (12/2/15)
Rebounds	7 (3x), last vs. UNCO (1/2/16)
Assists	6, at SJSU (11/14/15)
Blocks	2 (2x), last at UND (12/31/15)
Steals	3 (3x), last at PSU (2/18/16)
Field Goals	7 (4x), last vs. UM (3/11/16)
Field Goal Attempts	18, at UND (12/31/15)
3-point Field Goals	4 (2x), last vs. UM (3/11/16)
3-point Field Goal Attempts	9 (2x), last vs. LR (12/5/15)
Free Throws	12, vs. CSUB (12/2/15)
Free Throw Attempts	13, vs. WSU (12/10/15)
Minutes	38, at UND (12/31/15)

LAST 5

Opponent	*	Min.	FG-FGA	FG%	3FG-3FGA	3FG%	FT-FTA	FT%	Off-Def-Tot.-Avg.	PF	A	TO	Blk.	Stl.	Pts.
vs. EWU	*	34	3-12	.250	0-3	.000	2-4	.500	1-5-6	3	2	0	0	2	8
vs. Montana	*	36	7-12	.583	4-8	.500	7-8	.875	2-3-5	2	3	3	0	0	25
at Seattle U.	*	33	6-13	.462	4-9	.444	2-4	.500	1-0-1	3	1	1	0	0	18
vs. Corban	*	25	4-11	.364	3-5	.600	3-4	.750	0-5-5	0	5	0	0	0	14
at NIU	*	35	1-10	.100	0-6	.000	0-0	---	0-4-4	3	2	1	0	0	2
TOTAL		163-32.6	21-58	.362	11-31	.355	14-20	.700	4-17-21-4.2	11	13	5	0	2	67-13.4

CAREER STATISTICS

Year	GP-GS	Min-Avg	Total FG-FGA	Pct	3-Point FG-FGA	Pct	F-Throw FT-FTA	Pct	Rebounds Off-Def-Tot	Avg	PF	FO	Ast	TO	Blk	Stl	Pts	Avg
2013-14	29-0	363-12.5	25-79	.316	4-25	.160	18-29	.621	14-35-49	1.7	39	1	19	27	3	14	72	2.5
2014-15	30-1	629-21.3	67-152	.441	38-87	.437	30-42	.714	5-69-74	2.5	59	2	49	32	6	17	202	6.7
2015-16	25-23	789-31.6	102-260	.392	49-142	.345	98-120	.817	15-86-101	4.0	62	1	51	59	7	22	351	14.0
2016-17	2-2	60-30.0	5-21	.238	3-11	.273	3-4	.750	0-9-9	4.5	3	0	7	1	0	0	16	8.0
TOTAL	86-26	1841-21.4	199-512	.389	94-265	.355	149-195	.764	34-199-233	2.7	163	4	126	119	16	53	641	7.5

2016-17 IDAHO MEN'S BASKETBALL



#2 Myles Franklin

Sophomore • PG
6-0 • 171
Castaic, Calif.
Hart HS

Miscellaneous

Double-Figure Pts.	0 (0-0)
20+ points	0 (0-0)
Led team in pts.	0 (0-0)
5+ rebounds	0 (0-0)
10+ rebounds	0 (0-0)
Led team in rebs.	0 (0-0)
5+ assists	1 (1-0)
10+ assists	0 (0-0)
Fouled out	0 (0-0)

- Scored four points against EWU
- Serving as the backup point guard

SEASON HIGHS

Points
6, at Stanford (12/22/16)
Rebounds
4, at LR (11/18/16)
Assists
7, vs. SDSU (11/21/16)
Blocks
-
Steals
2, vs. EWU (12/30/16)
Field Goals
2, at Stanford (12/22/16)
Field Goal Attempts
3 (2x), last vs. EWU (12/30/16)
3-point Field Goals
-
3-point Field Goal Attempts
2, vs. SDSU (11/21/16)
Free Throws
3, at WSU (12/7/16)
Free Throw Attempts
4, at WSU (12/7/16)
Minutes
20, vs. LR (11/18/16)

Opponent	*	Min.	FG-FGA	FG%	3FG-3FGA	3FG%	LAST 5 FT-FTA	FT%	Off.-Def.-Tot.-Avg.	PF	A	TO	Blk.	Stl.	Pts.
at WSU		15	0-2	.000	0-2	.000	3-4	.750	0-1-1	0	0	2	0	1	3
at SDSU		5	0-0	---	0-0	---	0-0	---	0-0-0	1	0	1	0	0	0
vs. NNU		17	0-2	.000	0-0	---	1-2	.500	0-3-3	0	1	2	0	0	1
at Stanford		17	2-3	.667	0-0	---	2-2	1.000	0-3-3	0	3	0	0	0	6
vs. EWU		18	1-3	.333	0-1	.000	2-2	1.000	0-0-0	0	1	1	0	2	4
TOTAL		72-14.4	3-10	.300	0-3	.000	8-10	.800	0-7-7-1.4	1	5	6	0	3	14-2.8

CAREER STATISTICS

Year	GP-GS	Min-Avg	Total FG-FGA	Pct	3-Point FG-FGA	Pct	F-Throw FT-FTA	Pct	Rebounds Off-Def-Tot	Avg	PF	FO	Ast	TO	Blk	Stl	Pts	Avg
2016-17	11-0	135-12.3	5-17	.294	0-7	.000	11-15	.733	0-14-14	1.3	5	0	16	10	0	3	21	1.9



#4 Brayon Blake

Junior • Forward
6-7 • 220
Seattle, Wash.
Garfield H.S.

Miscellaneous

Double-Figure Pts.	7 (4-3)
20+ points	0 (0-0)
Led team in pts.	2 (1-1)
5+ rebounds	9 (4-5)
10+ rebounds	3 (2-1)
Led team in rebs.	7 (3-4)
5+ assists	0 (0-0)
10+ assists	0 (0-0)
Fouled out	0 (0-0)

- Tied a season-high with 12 rebounds against EWU
- Also had a season-high three steals

SEASON HIGHS

Points
17 (2x), last vs. UCD (12/3/16)
Rebounds
12 (2x), last vs. EWU (12/30/16)
Assists
3, vs. UCD (12/3/16)
Blocks
1 (3x), last vs. EWU (12/30/16)
Steals
3, vs. EWU (12/30/16)
Field Goals
8 (2x), last vs. UCD (12/3/16)
Field Goal Attempts
13, at SDSU (12/10/16)
3-point Field Goals
1 (5x), last at SDSU (12/10/16)
3-point Field Goal Attempts
6, at SDSU (12/10/16)
Free Throws
8, vs. NNU (12/17/16)
Free Throw Attempts
10, vs. Corban (11/12/16)
Minutes
32, at SHSU (11/25/16)

Opponent	*	Min.	FG-FGA	FG%	3FG-3FGA	3FG%	LAST 5 FT-FTA	FT%	Off.-Def.-Tot.-Avg.	PF	A	TO	Blk.	Stl.	Pts.
at WSU	*	14	1-9	.111	0-1	.000	0-0	---	3-4-7	4	1	0	0	0	2
at SDSU	*	23	4-13	.308	1-6	.167	0-0	---	3-1-4	3	0	0	0	1	9
vs. NNU		17	2-7	.286	0-1	.000	8-8	1.000	1-5-6	2	0	0	0	1	12
at Stanford		24	6-9	.667	0-2	.000	2-2	1.000	2-3-5	4	0	1	0	0	14
vs. EWU		20	2-9	.222	0-1	.000	2-5	.400	1-11-12	4	0	1	1	3	6
TOTAL		98-19.6	15-47	.319	1-11	.091	12-15	.800	10-24-34-6.8	17	1	2	1	5	43-8.6

CAREER STATISTICS

Year	GP-GS	Min-Avg	Total FG-FGA	Pct	3-Point FG-FGA	Pct	F-Throw FT-FTA	Pct	Rebounds Off-Def-Tot	Avg	PF	FO	Ast	TO	Blk	Stl	Pts	Avg
2016-17	12-9	276-23.0	48-114	.421	5-26	.192	22-36	.611	25-60-85	7.1	29	0	9	14	4	9	123	10.3

2016-17 IDAHO MEN'S BASKETBALL



#5 Jake Straughan

Sophomore • G
6-1 • 175
Colton, Wash.
Colton HS

Miscellaneous

Double-Figure Pts. 2 (2-0)
20+ points 2 (2-0)
Led team in pts. 2 (2-0)
5+ rebounds 0 (0-0)
10+ rebounds 0 (0-0)
Led team in rebs. 0 (0-0)
5+ assists 0 (0-0)
10+ assists 0 (0-0)
Fouled out 0 (0-0)

- Came off the bench to hit a pair of clutch 3's at South Dakota State
- Saw limited minutes against Northwest Nazarene

SEASON HIGHS

Points
6, at SDSU (12/10/16)
Rebounds
1 (2x), last vs. NNU (12/17/16)
Assists
1, at SDSU (12/10/16)
Blocks
--
Steals
1 (2x), last vs. NNU (12/17/16)
Field Goals
2, at SDSU (12/10/16)
Field Goal Attempts
3, at SDSU (12/10/16)
3-point Field Goals
2, at SDSU (12/10/16)
3-point Field Goal Attempts
3, at SDSU (12/10/16)
Free Throws
--
Free Throw Attempts
--
Minutes
7, at SDSU (12/10/16)

CAREER HIGHS

Points
24, vs. New Hope (12/18/15)
Rebounds
1 (7x), last vs. NNU (12/17/16)
Assists
4, vs. New Hope (12/18/15)
Blocks
--
Steals
1 (3x), last vs. NNU (12/17/16)
Field Goals
8, vs. New Hope (12/18/15)
Field Goal Attempts
14, vs. New Hope (12/18/15)
3-point Field Goals
8, vs. New Hope (12/18/15)
3-point Field Goal Attempts
14, vs. New Hope (12/18/15)
Free Throws
5, vs. UNCO (2/11/16)
Free Throw Attempts
6, vs. UNCO (2/11/16)
Minutes
20, vs. New Hope (12/18/15)

LAST 5

Opponent	*	Min.	FG-FGA	FG%	3FG-3FGA	3FG%	FT-FTA	FT%	Off.-Def.-Tot.-Avg.	PF	A	TO	Blk.	Stl.	Pts.
vs. UNCO		15	6-7	.857	6-7	.857	5-6	.833	0-0-0	1	0	0	0	0	23
vs. UND		4	0-1	.000	0-1	.000	0-0	---	0-0-0	2	0	0	0	0	0
vs. Corban		2	0-0	---	0-0	---	0-0	---	0-0-0	0	0	0	0	0	0
at SDSU		7	2-3	.667	2-3	.667	0-0	---	0-1-1	1	1	1	0	1	6
vs. NNU		4	0-0	---	0-0	---	0-0	---	0-1-1	0	1	0	0	1	0
TOTAL		32-6.4	8-11	.727	8-11	.727	5-6	.833	0-2-2-0.4	4	2	1	0	2	29-5.4

CAREER STATISTICS

Year	GP-GS	Min-Avg	Total FG-FGA	Pct	3-Point FG-FGA	Pct	F-Throw FT-FTA	Pct	Rebounds Off-Def-Tot	Avg	PF	FO	Ast	TO	Blk	Stl	Pts	Avg
2015-16	17-0	100-5.9	17-34	.500	16-33	.485	5-7	.714	0-5-5	0.3	10	0	6	3	0	1	55	3.2
2016-17	3-0	13-4.3	2-3	.667	2-3	.667	0-0	---	0-2-2	0.7	1	0	2	1	0	2	6	2.0
TOTAL	20-0	113-5.7	19-37	.514	18-36	.500	5-7	.714	0-7-7	0-4	11	0	8	4	0	3	61	3.1



#11 Victor Sanders

Junior • G
6-5 • 195
Portland, Ore.
Jefferson HS

Miscellaneous

Double-Fig. Pts. 35 (19-16)
20+ points 10 (7-3)
Led team in pts. 24 (12-12)
5+ rebounds 9 (8-1)
10+ rebounds 0 (0-0)
Led team in rebs. 4 (3-1)
5+ assists 3 (1-2)
10+ assists 0 (0-0)
Fouled out 4 (1-3)

*** Preseason All-Big Sky ***

- Scored a season-high 32 points against EWU to start Big Sky play
- Scored 20 points in the final six minutes of play, including Idaho's final 18 points
- Also had four steals

SEASON HIGHS

Points
32, vs. EWU (12/30/16)
Rebounds
5, vs. UCD (12/3/16)
Assists
9, at SDSU (12/10/16)
Blocks
1 (3x), last vs. SJSU (11/29/16)
Steals
7, at WSU (12/7/16)
Field Goals
10, vs. EWU (12/30/16)
Field Goal Attempts
22, vs. EWU (12/30/16)
3-point Field Goals
4, vs. SDSU (11/21/16)
3-point Field Goal Attempts
11 (2x), last at Stanford (12/22/16)
Free Throws
10, vs. EWU (12/30/16)
Free Throw Attempts
11, vs. EWU (12/30/16)
Minutes
38, at LR (11/18/16)

CAREER HIGHS

Points
33, vs. NAU (1/14/16)
Rebounds
8 (2x), last vs. Weber State (3/3/16)
Assists
9, at SDSU (12/10/16)
Blocks
3 (2x), last at SAC (2/20/16)
Steals
7, at WSU (12/7/16)
Field Goals
10, vs. EWU (12/30/16)
Field Goal Attempts
22, vs. EWU (12/30/16)
3-point Field Goals
6, vs. Linfield (11/21/15)
3-point Field Goal Attempts
12 (2x), last at USC (12/7/15)
Free Throws
13, at Montana (1/21/16)
Free Throw Attempts
14, at Montana (1/21/16)
Minutes
38, at LR (11/18/16)

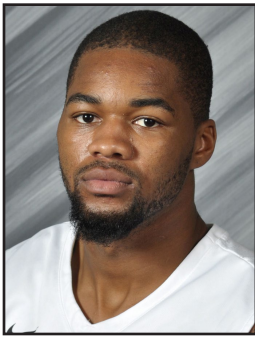
LAST 5

Opponent	*	Min.	FG-FGA	FG%	3FG-3FGA	3FG%	FT-FTA	FT%	Off.-Def.-Tot.-Avg.	PF	A	TO	Blk.	Stl.	Pts.
at WSU	*	37	7-15	.467	3-7	.429	1-1	1.000	0-3-3	4	3	1	0	7	18
at SDSU	*	37	6-14	.429	3-10	.300	2-4	.500	0-1-1	3	9	3	0	0	17
vs. NNU	*	28	5-10	.500	3-7	.429	5-5	1.000	0-4-4	3	3	1	0	2	18
at Stanford	*	31	5-16	.313	5-11	.456	2-3	.667	0-0-0	3	4	2	0	2	17
vs. EWU	*	37	10-22	.455	2-6	.333	10-11	.909	1-1-2	1	4	0	0	5	32
TOTAL		170-34.0	33-77	.429	16-41	.390	20-24	.833	1-9-10-2.0	14	23	7	0	16	102-20.4

CAREER STATISTICS

Year	GP-GS	Min-Avg	Total FG-FGA	Pct	3-Point FG-FGA	Pct	F-Throw FT-FTA	Pct	Rebounds Off-Def-Tot	Avg	PF	FO	Ast	TO	Blk	Stl	Pts	Avg
2014-15	30-1	379-12.6	36-91	.396	21-54	.389	22-35	.629	11-39-50	1.7	42	0	28	29	3	10	115	3.8
2015-16	27-25	772-28.6	122-295	.414	69-166	.416	117-138	.848	19-79-98	3.6	78	2	51	54	16	33	430	15.9
2016-17	12-12	379-31.6	71-159	.447	35-85	.412	45-62	.726	3-31-34	2.8	34	2	44	27	3	27	222	18.5
Total	69-38	1530-22.2	229-545	.420	125-305	.410	184-235	.783	33-149-182	2.6	154	4	123	110	22	70	767	11.1

2016-17 IDAHO MEN'S BASKETBALL



#13 Pat Ingram

Senior • PG
6-2 • 201
Indianapolis, Ind.
Trinity Valley JC

Miscellaneous

Double-Figure Pts.	3 (2-1)
20+ points	1 (1-0)
Led team in pts.	0 (0-0)
5+ rebounds	5 (3-2)
10+ rebounds	0 (0-0)
Led team in rebs.	1 (0-1)
5+ assists	1 (1-0)
10+ assists	0 (0-0)
Fouled out	0 (0-0)

• Did not score against EWU in four minutes of action

SEASON HIGHS

Points
23, vs. SDSU (11/21/16)
Rebounds
7, vs. Corban (11/12/16)
Assists
3, vs. SDSU (11/21/16)
Blocks
2, vs. SDSU (11/21/16)
Steals
2 (2x), last vs. EWU (12/30/16)
Field Goals
8, vs. SDSU (11/21/16)
Field Goal Attempts
9, vs. SDSU (11/21/16)
3-point Field Goals
5, vs. SDSU (11/21/16)
3-point Field Goal Attempts
6, vs. SDSU (11/21/16)
Free Throws
2 (2x), last at SHSU (11/25/16)
Free Throw Attempts
5, vs. SDSU (11/21/16)
Minutes
28, vs. SDSU (11/21/16)

CAREER HIGHS

Points
23, vs. SDSU (11/21/16)
Rebounds
7, vs. Corban (11/12/16)
Assists
9, vs. New Hope (12/18/15)
Blocks
2, vs. SDSU (11/21/16)
Steals
3, vs. New Hope (12/18/15)
Field Goals
8, vs. SDSU (11/21/16)
Field Goal Attempts
9, vs. SDSU (11/21/16)
3-point Field Goals
5, vs. SDSU (11/21/16)
3-point Field Goal Attempts
6, vs. SDSU (11/21/16)
Free Throws
5 (2x), last vs. SUU (1/16/16)
Free Throw Attempts
7, vs. SUU (1/16/16)
Minutes
28, vs. SDSU (11/21/16)

Opponent	*	Min.	FG-FGA	FG%	3FG-3FGA	3FG%	FT-FTA	FT%	Off.-Def.-Tot.-Avg.	PF	A	TO	Blk.	Stl.	Pts.
at WSU		11	2-5	.400	0-1	.000	0-2	.000	1-0-1	2	1	0	0	1	4
at SDSU		5	0-1	.000	0-1	.000	0-0	---	0-0-0	1	1	0	0	0	0
vs. NNU		3	0-0	---	0-0	---	0-0	---	0-0-0	0	0	0	0	0	0
at Stanford		3	0-0	---	0-0	---	0-0	---	0-1-1	0	1	0	0	0	0
vs. EWU		4	0-2	.000	0-1	.000	0-0	---	0-1-1	0	1	1	0	2	0
TOTAL		26-5.2	2-8	.250	0-3	.000	0-2	.000	1-2-3-0.6	3	4	1	0	3	4-0.8

LAST 5

CAREER STATISTICS

Year	GP-GS	Min-Avg	Total FG-FGA	Pct	3-Point FG-FGA	Pct	F-Throw FT-FTA	Pct	Rebounds Off-Def-Tot	Avg	PF	FO	Ast	TO	Blk	Stl	Pts	Avg
2012-13*	19-0	116-6.1	6-14	.429	0-2	.000	5-12	.417	2-10-12	0.6	10	0	9	9	0	3	17	0.9
2015-16	25-0	325-13.0	30-69	.435	0-1	.000	28-43	.651	5-32-37	1.5	40	0	36	42	3	12	88	3.5
2016-17	12-0	137-11.4	17-31	.548	6-12	.500	5-13	.385	7-18-25	2.1	13	0	9	9	2	8	45	3.8
TOTAL	56-0	578-10.3	53-114	.465	6-15	.400	38-68	.559	14-60-74	1.3	63	0	54	60	5	23	150	2.7



#14 Chad Sherwood

Junior • G
6-2 • 180
Albany, Ore.
West Albany HS

Miscellaneous

Double-Figure Pts.	12 (10-2)
20+ points	1 (0-1)
Led team in pts.	3 (2-1)
5+ rebounds	2 (2-0)
10+ rebounds	0 (0-0)
Led team in rebs.	0 (0-0)
5+ assists	3 (1-2)
10+ assists	0 (0-0)
Fouled out	1 (0-1)

• Scored three points against EWU

SEASON HIGHS

Points
13, vs. SDSU (11/21/16)
Rebounds
6, vs. SDSU (11/21/16)
Assists
5, at Stanford (12/22/16)
Blocks
1 (2x), last at SDSU (12/10/16)
Steals
4, vs. SDSU (11/21/16)
Field Goals
7, vs. SDSU (11/21/16)
Field Goal Attempts
13, vs. SAC (1/28/16)
3-point Field Goals
4, vs. SDSU (11/21/16)
3-point Field Goal Attempts
6, at WSU (12/7/16)
Free Throws
3 (2x), last at SDSU (12/10/16)
Free Throw Attempts
5, at WSU (12/7/16)
Minutes
31, vs. SJSU (11/29/16)

CAREER HIGHS

Points
22, vs. SAC (1/28/16)
Rebounds
6, vs. SDSU (11/21/16)
Assists
6 (2x), last vs. ISU (3/5/16)
Blocks
1 (2x), last vs. CSUB (12/2/15)
Steals
2, vs. ISU (3/5/16)
Field Goals
8, vs. SAC (1/28/16)
Field Goal Attempts
13, vs. SAC (1/28/16)
3-point Field Goals
6 (3x), last vs. SAC (1/28/16)
3-point Field Goal Attempts
11, vs. New Hope (12/18/15)
Free Throws
5, at UND (12/31/15)
Free Throw Attempts
5, at UND (12/31/15)
Minutes
39, vs. SAC (1/28/16)

Opponent	*	Min.	FG-FGA	FG%	3FG-3FGA	3FG%	FT-FTA	FT%	Off.-Def.-Tot.-Avg.	PF	A	TO	Blk.	Stl.	Pts.
at WSU		19	1-6	.167	1-6	.167	3-5	.600	0-1-1	1	0	1	0	0	6
at SDSU		8	0-1	.000	0-1	.000	3-3	1.000	0-0-0	1	0	0	0	1	3
vs. NNU	*	23	2-4	.500	2-4	.500	0-0	---	0-2-2	1	1	0	0	0	6
at Stanford	*	29	3-6	.500	2-5	.400	0-0	---	1-3-4	2	5	1	0	0	8
vs. EWU	*	23	1-2	.500	1-2	.500	0-0	---	0-0-0	0	0	1	0	0	3
TOTAL		102-20.4	7-19	.368	6-18	.333	6-8	.750	1-6-7-1.4	5	6	3	0	1	26-5.2

CAREER STATISTICS

Year	GP-GS	Min-Avg	Total FG-FGA	Pct	3-Point FG-FGA	Pct	F-Throw FT-FTA	Pct	Rebounds Off-Def-Tot	Avg	PF	FO	Ast	TO	Blk	Stl	Pts	Avg
2014-15	6-0	49-8.2	5-14	.357	5-11	.455	1-2	.500	0-4-4	0.7	9	1	2	2	1	1	16	2.7
2015-16	34-13	763-22.4	83-207	.401	68-161	.422	24-29	.828	10-44-54	1.6	62	1	59	48	1	14	258	7.6
2016-17	12-4	235-19.6	16-49	.327	13-38	.342	12-16	.750	6-14-20	1.7	20	0	15	11	0	2	57	4.8
TOTAL	52-17	1047-20.1	104-270	.385	86-210	.410	37-47	.787	16-62-78	1.5	91	2	76	61	2	17	331	6.4

2016-17 IDAHO MEN'S BASKETBALL



#21 Arkadiy Mkrtchyan

Junior • F
6-7 • 235
Portland, Ore.
Columbia Christian HS

Miscellaneous

Double-Figure Pts. 11 (6-5)
20+ points 0 (0-0)
Led team in pts. 1 (0-1)
5+ rebounds 16 (7-9)
10+ rebounds 0 (0-0)
Led team in rebs. 2 (1-1)
5+ assists 0 (0-0)
10+ assists 0 (0-0)
Fouled out 2 (2-0)

• Finished with four points and four boards against EWU

SEASON HIGHS

Points
12, vs. Corban (11/12/16)
Rebounds
7 (2x), last vs. SJSU (11/29/16)
Assists
3, at SHSU (11/25/16)
Blocks
1, at LR (11/18/16)
Steals
1 (2x), last vs. EWU (12/30/16)
Field Goals
6, vs. Corban (11/12/16)
Field Goal Attempts
12 (2x), last vs. SJSU (11/29/16)
3-point Field Goals
1, at Stanford (12/22/16)
3-point Field Goal Attempts
1 (3x), last at Stanford (12/22/16)
Free Throws
3 (2x), last at LR (11/18/16)
Free Throw Attempts
6, at NIU (11/16/16)
Minutes
20 (2x), last vs. SJSU (11/29/16)

CAREER HIGHS

Points
18, vs. E. Oregon (11/14/15)
Rebounds
10, at Sac. State (1/15/15)
Assists
3, at SHSU (11/25/16)
Blocks
1 (5x), last at LR (11/18/16)
Steals
3 (3x), last at Seattle U. (3/16/16)
Field Goals
7, vs. E. Oregon (11/14/15)
Field Goal Attempts
13, vs. E. Oregon (11/14/15)
3-point Field Goals
1 (3x), last at Stanford (12/22/16)
3-point Field Goal Attempts
2, at UC Davis (12/22/15)
Free Throws
10, vs. Samford (11/25/15)
Free Throw Attempts
15, vs. Samford (11/25/15)
Minutes
32, vs. S. Dakota St. (11/17/14)

LAST 5

Opponent	*	Min.	FG-FGA	FG%	3FG-3FGA	3FG%	FT-FTA	FT%	Off.-Def.-Tot.-Avg.	PF	A	TO	Blk.	Stl.	Pts.
at WSU		13	1-4	.250	0-0	---	0-0	---	2-3-5	3	1	2	0	0	2
at SDSU		4	0-0	---	0-0	---	0-0	---	0-0-0	2	0	1	0	0	0
vs. NNU		12	2-2	1.000	0-0	---	0-0	---	1-0-1	4	1	0	0	0	4
at Stanford		19	2-3	.667	1-1	1.000	1-3	.667	0-2-2	2	0	1	0	1	6
vs. EWU		12	1-6	.167	0-0	---	2-4	.500	3-1-4	1	0	0	0	1	4
TOTAL		60-12.0	6-15	.400	1-1	1.000	3-7	.429	6-6-12-2.4	12	2	4	0	2	16-3.2

CAREER STATISTICS

Year	GP-GS	Min-Avg	Total FG-FGA	Pct	3-Point FG-FGA	Pct	F-Throw FT-FTA	Pct	Rebounds Off-Def-Tot	Avg	PF	FO	Ast	TO	Blk	Stl	Pts	Avg
2014-15	30-5	633-21.1	86-150	.573	2-7	.286	90-131	.687	51-94-145	4.8	82	2	16	38	2	13	264	8.8
2015-16	31-22	576-18.6	83-172	.483	0-3	.000	61-103	.592	37-80-117	3.8	80	2	22	46	2	19	227	7.3
2016-17	12-1	181-15.1	22-53	.415	1-3	.333	12-21	.571	13-25-38	3.2	28	0	7	12	1	2	57	4.8
TOTAL	73-28	1390-19.0	191-375	.509	3-13	.231	163-255	.639	111-199-310	4.2	190	4	45	96	5	34	548	7.5



#23 Nate Sherwood

Sophomore • PF
6-8 • 215
Albany, Ore.
West Albany HS

Miscellaneous

Double-Figure Pts. 11 (8-3)
20+ points 0 (0-0)
Led team in pts. 2 (2-0)
5+ rebounds 16 (8-8)
10+ rebounds 1 (0-1)
Led team in rebs. 5 (2-3)
5+ assists 1 (1-0)
10+ assists 0 (0-0)
Fouled out 7 (2-5)

• Struggled from the floor against EWU, going 1-of-7 and finishing with four points

SEASON HIGHS

Points
14 (2x), last at SDSU (12/10/16)
Rebounds
9, vs. EWU (12/30/16)
Assists
4, at LR (11/18/16)
Blocks
2, vs. Corban (11/12/16)
Steals
1 (5x), last vs. NNU (12/17/16)
Field Goals
6, at SDSU (12/10/16)
Field Goal Attempts
8, at SDSU (12/10/16)
3-point Field Goals
1, vs. Corban (11/12/16)
3-point Field Goal Attempts
2 (2x), last vs. UCD (12/3/16)
Free Throws
5, at LR (11/18/16)
Free Throw Attempts
6, at LR (11/18/16)
Minutes
27 (2x), last vs. UCD (12/3/16)

CAREER HIGHS

Points
19, vs. EWU (3/10/16)
Rebounds
10, at NAU (2/6/16)
Assists
5, vs. Linfield (11/21/15)
Blocks
3, vs. ISU (3/5/16)
Steals
2, at PSU (2/18/16)
Field Goals
6 (4x), last at SDSU (12/10/16)
Field Goal Attempts
13 (2x), last at NAU (2/6/16)
3-point Field Goals
2, at SJSU (11/14/15)
3-point Field Goal Attempts
2 (3x), vs. Corban (11/12/16)
Free Throws
6, at EWU (1/9/16)
Free Throw Attempts
7, at EWU (1/9/16)
Minutes
34, vs. NAU (1/14/16)

LAST 5

Opponent	*	Min.	FG-FGA	FG%	3FG-3FGA	3FG%	FT-FTA	FT%	Off.-Def.-Tot.-Avg.	PF	A	TO	Blk.	Stl.	Pts.
at WSU	*	23	1-6	.167	0-1	.000	1-2	.500	3-4-7	2	0	0	0	1	3
at SDSU	*	26	6-8	.750	0-0	---	2-4	.500	2-3-5	3	3	1	0	1	14
vs. NNU	*	14	3-6	.500	0-0	---	3-3	1.000	3-3-6	3	2	0	0	1	9
at Stanford	*	13	0-1	.000	0-0	---	3-4	.750	0-2-2	4	0	1	0	0	3
vs. EWU	*	26	1-7	.143	0-1	.000	2-4	.500	4-5-9	2	1	0	0	0	4
TOTAL		102-20.4	11-28	.393	0-2	.000	11-17	.647	12-17-29-5.8	14	6	2	0	3	33-6.6

CAREER STATISTICS

Year	GP-GS	Min-Avg	Total FG-FGA	Pct	3-Point FG-FGA	Pct	F-Throw FT-FTA	Pct	Rebounds Off-Def-Tot	Avg	PF	FO	Ast	TO	Blk	Stl	Pts	Avg
2014-15	6-0	43-7.2	1-5	.200	0-1	.000	0-2	.000	3-7-10	1.7	10	0	0	5	1	1	2	0.3
2015-16	34-18	755-22.2	87-176	.494	8-27	.296	39-52	.750	52-76-128	3.8	87	3	20	34	8	8	221	6.5
2016-17	12-11	250-20.8	24-58	.414	3-10	.300	20-31	.645	21-28-49	4.1	43	4	16	12	3	5	71	5.9
TOTAL	52-29	1048-20.2	112-239	.469	11-38	.289	59-85	.694	76-111-187	3.6	140	7	36	51	12	14	294	5.7

2016-17 IDAHO MEN'S BASKETBALL



#24 Tyler Brimhall

Freshman • Guard
6-4 • 195
Logan, Utah
Logan HS

Miscellaneous

Double-Figure Pts.	1 (0-1)
20+ points	0 (0-0)
Led team in pts.	0 (0-0)
5+ rebounds	0 (0-0)
10+ rebounds	0 (0-0)
Led team in rebs.	0 (0-0)
5+ assists	0 (0-0)
10+ assists	0 (0-0)
Fouled out	0 (0-0)

- Saw seven minutes of action against EWU

SEASON HIGHS

Points
13, at Stanford (12/22/16)
Rebounds
4, vs. EWU (12/30/16)
Assists
1 (4x), last vs. EWU (12/30/16)
Blocks
-
Steals
1 (2x), last at Stanford (12/22/16)
Field Goals
4, at Stanford (12/22/16)
Field Goal Attempts
7, at Stanford (12/22/16)
3-point Field Goals
3, at Stanford (12/22/16)
3-point Field Goal Attempts
6, vs. NNU (12/17/16)
Free Throws
2 (2x), last vs. EWU (12/30/16)
Free Throw Attempts
2 (2x), last vs. EWU (12/30/16)
Minutes
17 (2x), last at Stanford (12/22/16)

LAST 5														
Opponent	*	Min.	FG-FGA	FG%	3FG-3FGA	3FG%	FT-FTA	FT%	Off.-Def.-Tot.-Avg.	PF	A	TO	Blk.Stl.	Pts.
at WSU		5	0-3	.000	0-2	.000	0-0	---	1-0-1	0	0	0	0 0	0
at SDSU		7	2-4	.500	2-4	.500	0-0	---	2-1-3	0	0	1	0 0	6
vs. NNU		17	2-6	.333	2-6	.333	0-0	---	0-1-1	1	1	1	0 0	6
at Stanford		17	4-7	.571	3-5	.600	2-2	1.000	0-2-2	3	1	1	0 1	13
vs. EWU		7	0-2	.000	0-0	---	2-2	1.000	3-1-4	1	1	2	0 0	2
TOTAL		53-10.6	8-22	.364	7-17	.412	4-4	1.000	6-5-11-2.2	5	3	5	0 1	27-5.4

CAREER STATISTICS

Year	GP-GS	Min-Avg	Total		3-Point		F-Throw		Rebounds		PF	FO	Ast	TO	Blk	Stl	Pts	Avg
			FG-FGA	Pct	FG-FGA	Pct	FT-FTA	Pct	Off-Def-Tot	Avg								
2016-17	8-0	80-10.0	9-30	.300	8-24	.333	4-5	.800	7-8-15	1.9	8	0	4	5	0	2	30	3.8



#25 Trevon Allen

Freshman • Guard
6-2 • 180
Lapwai, Idaho
Clarkston H.S.

Miscellaneous

Double-Figure Pts.	2 (0-2)
20+ points	0 (0-0)
Led team in pts.	0 (0-0)
5+ rebounds	2 (1-1)
10+ rebounds	0 (0-0)
Led team in rebs.	1 (1-0)
5+ assists	0 (0-0)
10+ assists	0 (0-0)
Fouled out	0 (0-0)

- Continues to serve as the starting point guard for the Vandals
- Scored three points against EWU

SEASON HIGHS

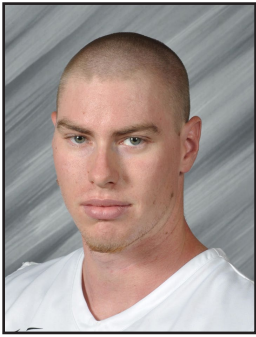
Points
11, at SDSU (12/10/16)
Rebounds
6, vs. UCD (12/3/16)
Assists
4 (2x), last at SDSU (12/10/16)
Blocks
1, vs. NNU (12/17/16)
Steals
1 (2x), last vs. SJSU (11/29/16)
Field Goals
3 (4x), last at Stanford (12/22/16)
Field Goal Attempts
9, at SDSU (12/10/16)
3-point Field Goals
3, vs. UCD (12/3/16)
3-point Field Goal Attempts
6, at SDSU (12/10/16)
Free Throws
4 (2x), last at SHSU (11/25/16)
Free Throw Attempts
4 (2x), last at SHSU (11/25/16)
Minutes
32, at SDSU (12/10/16)

LAST 5														
Opponent	*	Min.	FG-FGA	FG%	3FG-3FGA	3FG%	FT-FTA	FT%	Off.-Def.-Tot.-Avg.	PF	A	TO	Blk.Stl.	Pts.
at WSU	*	20	1-6	.167	0-4	.000	2-2	1.000	0-1-1	0	2	3	0 0	4
at SDSU	*	32	3-9	.333	2-6	.333	3-3	1.000	0-5-5	2	4	2	0 0	11
vs. NNU	*	23	1-5	.200	1-5	.200	2-2	1.000	1-1-2	1	2	2	1 0	5
at Stanford	*	23	3-6	.500	2-3	.667	0-0	---	1-0-1	2	3	0	0 0	8
vs. EWU	*	17	1-3	.333	1-2	.500	0-0	---	0-1-1	2	3	1	0 1	3
TOTAL		115-23.0	9-29	.310	6-20	.300	7-7	1.000	2-8-10-2.0	7	14	8	1 1	31-6.2

CAREER STATISTICS

Year	GP-GS	Min-Avg	Total		3-Point		F-Throw		Rebounds		PF	FO	Ast	TO	Blk	Stl	Pts	Avg
			FG-FGA	Pct	FG-FGA	Pct	FT-FTA	Pct	Off-Def-Tot	Avg								
2016-17	12-9	249-20.8	18-56	.321	12-37	.324	17-17	1.000	3-21-24	2.0	15	0	21	20	1	3	65	5.4

2016-17 IDAHO MEN'S BASKETBALL



#41 Ty Egbert

Senior • F
6-9 • 225
Coulee Dam, Wash.
Lake Roosevelt HS

Miscellaneous

Double-Figure Pts. 11 (7-4)
20+ points 0 (0-0)
Led team in pts. 3 (2-1)
5+ rebounds 11 (8-3)
10+ rebounds 0 (0-0)
Led team in rebs. 5 (2-3)
5+ assists 0 (0-0)
10+ assists 0 (0-0)
Fouled out 0 (0-0)

• Saw limited minutes against EWU

SEASON HIGHS

Points
13, vs. UCD (12/3/16)
Rebounds
6, vs. SDSU (11/21/16)
Assists
1 (6x), last vs. EWU (12/30/16)
Blocks
1 (4x), last at SDSU (12/10/16)
Steals
1, vs. EWU (12/30/16)
Field Goals
5 (2x), last vs. UCD (12/3/16)
Field Goal Attempts
8, vs. SDSU (11/21/16)
3-point Field Goals
--
3-point Field Goal Attempts
--
Free Throws
3 (2x), last vs. NNU (12/17/16)
Free Throw Attempts
4 (2x), last vs. NNU (12/17/16)
Minutes
15 (2x), last vs. NNU (12/17/16)

CAREER HIGHS

Points
18, at Montana State (1/23/16)
Rebounds
9 (3x), last vs. SAC (1/28/16)
Assists
2, vs. NNU (11/16/13)
Blocks
5, at SJSU (11/14/15)
Steals
2, vs. SAC (1/28/16)
Field Goals
6, at Montana State (1/23/16)
Field Goal Attempts
10, vs. SAC (1/28/16)
3-point Field Goals
--
3-point Field Goal Attempts
--
Free Throws
6 (2x), last at MSU (1/23/16)
Free Throw Attempts
12, at North Texas (11/23/15)
Minutes
31, at Montana (1/21/16)

Opponent	*	Min.	FG-FGA	FG%	3FG-3FGA	3FG%	FT-FTA	FT%	Off-Def-Tot.-Avg.	PF	A	TO	Blk.	Stl.	Pts.
at WSU		14	1-3	.333	0-0	---	0-0	---	2-0-2	3	1	3	0	0	2
at SDSU		15	1-2	.500	0-0	---	0-0	---	0-2-2	1	1	1	1	0	2
vs. NNU		15	4-6	.667	0-0	---	3-4	.750	1-1-2	1	1	1	0	0	11
at Stanford		8	1-1	1.000	0-0	---	1-2	.500	0-0-0	2	0	1	0	0	3
vs. EWU		6	0-2	.000	0-0	---	0-0	---	0-0-0	1	1	2	0	1	0
TOTAL		58-11.6	7-14	.500	0-0	---	4-6	.667	3-3-6-1.2	8	4	8	1	1	18-3.6

CAREER STATISTICS

Year	GP-GS	Min-Avg	Total FG-FGA	Pct	3-Point FG-FGA	Pct	F-Throw FT-FTA	Pct	Rebounds Off-Def-Tot	Avg	PF	FO	Ast	TO	Blk	Stl	Pts	Avg
2013-14	30-1	372-12.4	23-41	.561	0-0	---	13-32	.406	23-43-66	2.2	65	1	7	12	15	4	59	2.0
2014-15	27-0	289-10.7	26-53	.491	0-0	---	18-24	.750	18-44-62	2.3	41	1	5	12	8	1	70	2.6
2015-16	27-8	482-17.9	62-112	.554	0-0	---	54-80	.675	33-73-106	3.9	48	0	10	27	22	8	178	6.6
2016-17	12-0	133-11.1	23-41	.561	0-0	---	10-15	.667	12-12-24	2.0	19	0	6	12	4	1	56	4.7
TOTAL	96-9	1276-13.3	134-247	.543	0-0	---	95-151	.629	86-172-258	2.7	173	2	28	63	49	14	363	3.8



#44 Jordan Scott

Junior • SF
6-6 • 200
Colorado Springs, Colo.
Lewis-Palmer HS

Miscellaneous

Double-Figure Pts. 3 (3-0)
20+ points 0 (0-0)
Led team in pts. 0 (0-0)
5+ rebounds 15 (7-8)
10+ rebounds 0 (0-0)
Led team in rebs. 6 (1-5)
5+ assists 0 (0-0)
10+ assists 0 (0-0)
Fouled out 1 (0-1)

• Finished with four points against EWU
• Got in foul trouble, played just 19 minutes

SEASON HIGHS

Points
13, vs. NNU (12/17/16)
Rebounds
9, at NIU (11/16/16)
Assists
3 (2x), last vs. UCD (12/3/16)
Blocks
--
Steals
2, vs. NNU (12/17/16)
Field Goals
6, vs. NNU (12/17/16)
Field Goal Attempts
10, vs. NNU (12/17/16)
3-point Field Goals
1, at SDSU (12/10/16)
3-point Field Goal Attempts
2 (2x), last at SDSU (12/10/16)
Free Throws
4, at SHSU (11/25/16)
Free Throw Attempts
4, at SHSU (11/25/16)
Minutes
28, vs. SJSU (11/29/16)

CAREER HIGHS

Points
13 (3x), last vs. NNU (12/17/16)
Rebounds
13, at Idaho State (3/7/15)
Assists
3 (5x), last vs. UCD (12/3/16)
Blocks
2 (3x), at SAC (2/20/16)
Steals
2, vs. NNU (12/17/16)
Field Goals
6 (3x), last vs. NNU (12/17/16)
Field Goal Attempts
11, vs. New Hope (12/18/15)
3-point Field Goals
1 (6x), last at SDSU (12/10/16)
3-point Field Goal Attempts
3, vs. New Hope (12/18/15)
Free Throws
4, vs. EWU (2/27/16)
Free Throw Attempts
6, vs. EWU (2/27/16)
Minutes
34, vs. UNCO (2/11/16)

Opponent	*	Min.	FG-FGA	FG%	3FG-3FGA	3FG%	FT-FTA	FT%	Off-Def-Tot.-Avg.	PF	A	TO	Blk.	Stl.	Pts.
at WSU	*	25	1-4	.250	0-1	.000	0-2	.000	4-4-8	2	0	2	0	0	2
at SDSU	*	22	1-2	.500	1-2	.500	0-0	---	2-4-6	5	0	0	0	0	3
vs. NNU	*	23	6-10	.600	0-0	---	1-1	1.000	4-1-5	1	1	1	0	2	13
at Stanford	*	16	1-4	.250	0-0	---	0-0	---	1-1-2	2	0	1	0	1	2
vs. EWU	*	19	1-1	1.000	0-0	---	2-2	1.000	0-0-0	4	1	1	0	0	4
TOTAL		105-21.0	10-21	.476	1-3	.333	3-5	.600	11-10-21-4.2	14	2	5	0	3	24-4.8

CAREER STATISTICS

Year	GP-GS	Min-Avg	Total FG-FGA	Pct	3-Point FG-FGA	Pct	F-Throw FT-FTA	Pct	Rebounds Off-Def-Tot	Avg	PF	FO	Ast	TO	Blk	Stl	Pts	Avg
2014-15	21-0	203-9.7	18-30	.600	0-0	---	11-17	.647	13-19-32	1.5	25	0	5	10	2	3	47	2.2
2015-16	34-9	546-16.1	42-111	.378	5-23	.217	14-32	.438	39-70-109	3.2	61	0	30	29	11	6	103	3.0
2016-17	12-12	254-21.2	20-48	.417	1-9	.111	12-18	.667	22-36-58	4.8	30	1	10	13	0	5	53	4.4
TOTAL	67-21	1003-15.0	80-189	.423	6-32	.188	37-67	.552	74-125-199	3.0	116	1	45	52	13	14	203	3.0