



# IDAHO MEN'S BASKETBALL

vs.

## MONTANA

January 28, 2016



### 2016-17 SCHEDULE

Date	Opponent	Time/Results
<b>Oct. 25</b>	<b>Carroll (EXH)</b>	<b>W, 80-62</b>
<b>Nov. 4</b>	<b>Lewis-Clark State (EXH)</b>	<b>W, 80-66</b>
<b>Nov. 12</b>	<b>Corban University</b>	<b>W, 90-67</b>
Nov. 16	at NIU	L, 49-63
Nov. 18	at Little Rock	W, 65-57
<b>Nov. 21</b>	<b>South Dakota State</b>	<b>W, 96-89 (OT)</b>
Nov. 25	at Sam Houston State	L, 62-69
<b>Nov. 29</b>	<b>San Jose State</b>	<b>L, 49-58</b>
<b>Dec. 3</b>	<b>UC Davis</b>	<b>W, 68-66</b>
Dec. 7	at Washington State	L, 48-61
Dec. 10	at South Dakota State	L, 77-80
<b>Dec. 17</b>	<b>Northwest Nazarene</b>	<b>W, 87-61</b>
Dec. 22	at Stanford	L, 80-86
<b>Dec. 30</b>	<b>*EWU</b>	<b>L, 62-69</b>
<b>Jan. 5</b>	<b>*Montana</b>	<b>L, 57-70</b>
<b>Jan. 7</b>	<b>*Montana State</b>	<b>W, 83-81 (OT)</b>
Jan. 12	*at Weber State	L, 66-91
Jan. 14	*at Idaho State	W, 77-62
<b>Jan. 19</b>	<b>*Southern Utah</b>	<b>W, 79-67</b>
<b>Jan. 21</b>	<b>*Northern Arizona</b>	<b>W, 65-49</b>
Jan. 26	*at Montana State	L, 91-94 (2OT)
Jan. 28	*at Montana	6 p.m.
<b>Feb. 2</b>	<b>*Portland State</b>	<b>7 p.m.</b>
<b>Feb. 4</b>	<b>*Sacramento State</b>	<b>7 p.m.</b>
Feb. 9	*at Northern Colorado	6 p.m.
Feb. 11	*at North Dakota	2 p.m.
Feb. 17	*at EWU	6 p.m.
<b>Feb. 23</b>	<b>*Idaho State</b>	<b>7 p.m.</b>
<b>Feb. 25</b>	<b>*Weber State</b>	<b>3 p.m.</b>
Mar. 2	*at Northern Arizona	5:30 p.m.
Mar. 4	*at Southern Utah	3 p.m.
Mar. 7-11	Big Sky Tournament	TBA

All times Pacific

All dates/times subject to change

Home games in **Bold**

\* - Denotes Big Sky Conference game

### QUICK HITS

- Idaho looks to bounce back with the always difficult trip to Missoula to take on Montana
- Last time out, Idaho fell in a heartbreaker at Montana State, 94-91, in double overtime. The Vandals led for much of the game, but a cold stretch without a field goal over more than six minutes late in regulation allowed the Bobcats to chip away and tie things up to force the overtime frame. Neither team got much going in overtime, but Montana State took over in the second. The Bobcats would lead by as many as seven in the second OT, but Idaho kept fighting to make it a game in the closing seconds.
- Brayon Blake finished with a career-best 20 points to pace the squad. Nate Sherwood tied his career-high with 19 points, while Victor Sanders added 18 before fouling out late in regulation. Ty Egbert was tremendous off the bench as well, scoring 11 points and adding a team-high eight boards.
- Montana has dropped three straight games overall after falling to Eastern Washington, 72-60, on Thursday night. Montana has not dropped four straight Big Sky games since losing six straight during the 2003-04 season.
- Montana got the better of Idaho in the first meeting, winning 70-57 in Moscow in early January. Sanders was the lone Vandals to score in double-figures that night, finishing with 20 points before fouling out late.

#### Vandal Radio Network

KRPL 1400 AM	Moscow/Pullman
KFXD 630 AM	Boise
KVNI 1080 AM	Coeur d'Alene
KSPZ 980 AM	Idaho Falls
KLER 1300 AM	Orofino
KOVE 1240 AM	St. Maries
KLIX 1310 AM	Twin Falls/Sun Valley
Vandal Video	GoVandals.com

### FOLLOW LIVE

TV/Stream	GoVandals.com/WBS
Radio	Vandal Radio Network
Twitter	@VandalHoops
Stats	Idaho.statbroadcast.com

### GAMEDAY INFO



Record	9-10
Conference	4-4
Streak	L1
Last 5	3-2
Road Games	2-7
Last Game	L, 91-94 (2OT)

Head Coach	Don Verlin
Record	140-136
at Idaho	Same



Record	10-12
Conference	5-4
Streak	L3
Last 5	2-3
Home Games	6-3
Last Game	L, 60-72

Head Coach	Randy DeCuire
------------	---------------

# 2016-17 IDAHO MEN'S BASKETBALL

## DON VERLIN

9th Season - 140-136



### Pedigree

'89-'91.....	Columbia CC
.....	Assistant Coach
'91-'92.....	Colorado State
.....	Assistant Coach
'92-'94.....	CSU-Bakersfield
.....	Assistant Coach
'94-'98.....	Colorado State
.....	Assistant Coach
'98-'08.....	Utah State
.....	Assistant Coach
'08-present.....	Idaho
.....	Head Coach

### Year-By-Year Results

'08-'09.....	17-16
'09-'10.....	15-16
'10-'11.....	18-14
'11-'12.....	19-14
'12-'13.....	12-18
'13-'14.....	16-18
'14-'15.....	13-17
'15-'16.....	21-13
'16-'17.....	9-10

## ROSTER

##	Name	Pos.	Ht.	Wt.	Yr.	Hometown (Previous School)
0	Nick Blair	SF	6-5	205	So.	Las Vegas, Nev. (Bishop Gorman HS)
1	Perrion Callandret	G	6-2	180	Sr.	Bothell, Wash. (Bothell HS)
2	Myles Franklin	PG	6-0	171	Fr.	Castaic, Calif. (Hart HS)
4	Brayon Blake	F	6-7	220	Jr.	Seattle, Wash. (North Idaho College)
5	Jake Straughan	G	6-1	175	So.	Colton, Wash. (Colton HS)
11	Victor Sanders	G	6-5	195	Jr.	Portland, Ore. (Jefferson HS)
12	Chance Garvin	G/F	6-4	170	Fr.	Coulee Dam, Wash. (Lake Roosevelt HS)
13	Pat Ingram	PG	6-2	201	Sr.	Indianapolis, Ind. (Trinity Valley JC)
14	Chad Sherwood	G	6-2	180	Jr.	Albany, Ore. (West Albany HS)
21	Arkadiy Mkrtchyan	F	6-7	235	Jr.	Portland, Ore. (Columbia Christian HS)
23	Nate Sherwood	PF	6-8	215	So.	Albany, Ore. (West Albany, HS)
24	Tyler Brimhall	G	6-4	195	Fr.	Logan, Utah (Logan HS)
25	Trevon Allen	G	6-2	180	Fr.	Lapwai, Idaho (Clarkston HS)
41	Ty Egbert	F	6-9	225	Sr.	Coulee Dam, Wash. (Lake Roosevelt HS)
44	Jordan Scott	SF	6-6	200	Jr.	Colorado Springs, Colo. (Lewis-Palmer HS)

### Coaching Staff

Don Verlin – Head Coach  
 Tim Murphy – Assistant Coach  
 Kirk Earlywine – Assistant Coach  
 Zach Claus – Assistant Coach  
 Brooks Malm – Director of Operations

### Pronunciation Guide

Perrion Callandret PAIR-e-on KAL-an-dret  
 Brayon Blake BRAY-on  
 Jake Straughan STRAWN  
 Arkadiy Mkrtchyan R-KAH-dee m-KURT-chin  
 Trevon Allen TRAY-von

## TEAM INFO

### General Information

Location .....Moscow, Idaho  
 Founded .....1889  
 Enrollment .....11,594  
 President..... Dr. Chuck Staben  
 Athletic Director.....Dr. Rob Spear  
 Conference..... Big Sky  
 Nickname ..... Vandals  
 Colors..... Silver, Vandal Gold  
 Arena (capacity) .. Cowan Spectrum (5000)

### 2015-16 Review

Record ..... 21-13  
 Big Sky Record (Finish) .....12-6 (3)  
 Big Sky Tournament.....W, 77-73, vs. EWU  
 .....L, 72-81, vs. Montana (semifinals)  
 Postseason ..... CBI  
 .....L, 63-68, at Seattle U

### 2016-17 Preview

Lettermen Returning/Lost .....10/4  
 Newcomers..... 3  
 Staters Returning/Lost..... 4/1  
 Redshirts Returning..... 2  
 Returning Scoring ..... 2005/2372 (84.5%)  
 Returning Rebounding..... 930/1257 (74.0%)

### Men's Basketball History

First Season..... 1905-06  
 All-Time Record ..... 1326-1470  
 NCAA Appearances/W-L..... 4/1-4  
 Last NCAA Appearance ..... 1990  
 NIT Appearances/W-L ..... 1/0-1  
 Last NIT Appearance ..... 1983  
 CIT Appearances/W-L..... 3/2-3  
 Last CIT Appearance..... 2012  
 CBI Appearances/W-L ..... 1/0-1  
 Last CBI Appearance ..... 2016

## Idaho Athletics Media Relations

### Mailing Address:

Kibbie-ASUI Activity Center  
 875 Perimeter Drive MS 2302  
 Moscow, ID 83844-2302

Fax: (208) 885-2862

### Media Relations Contact

Joe St. Pierre  
 Cell: 603.475.8548  
 Email: jstpierre@uidaho.edu

### Interview Requests

Head coach Don Verlin and Idaho players will be made available for interviews in person or by telephone by request to media relations contact Joe St. Pierre.

All interviews with Idaho student-athletes must be coordinated through the athletics media relations office and requested with 24 hours advance notice.

### Idaho Athletics Website

Game notes, statistics and preview stories along with photos are all available on Idaho's athletics department website, GoVandals.com.

### Social Media

In addition to the information found on Idaho's official athletics website, exclusive content and up-to-the-minute news on all Idaho athletics can be found by following @Idaho\_Vandals and @VandalHoops on Twitter.

# 2016-17 IDAHO MEN'S BASKETBALL

## STATISTICAL RANKINGS

TEAM STATS.....	##	BSC	BSC Leader	NCAA ...	... BSC Only	BSC Rank
Scoring Offense.....	71.1	8	85.9 (PSU)	234	72.5	9
Scoring Defense.....	70.5	2	70.2 (WSU)	132	72.9	4
Scoring Margin.....	+0.6	6	+8.8 (WSU)	201	-0.4	7
Free Throw %.....	70.6	6	75.5 (EWU)	143	73.6	3
Field Goal %.....	42.3	10	49.3 (PSU)	275	42.3	9
Field Goal % Defense.....	40.7	1	--	53	40.5	1
3-pointers per Game.....	7.3	10	10.0 (MSU)	182	6.4	11
3-point %.....	34.3	10	41.6 (WSU)	210	34.5	10
3-point % Defense.....	36.0	5	32.9 (NAU)	249	38.6	9
Rebounds per Game.....	37.2	5	38.0 (SUU)	137	37.9	4
Rebounds Allowed.....	33.3	1	--	--	33.0	2
Rebound Margin.....	+3.9	1	--	77	+4.9	1
Blocks.....	2.4	8	5.3 (EWU)	298	3.4	5
Assists.....	12.6	10	17.2 (PSU)	250	10.8	11
Steals.....	5.4	7	10.2 (PSU)	270	5.9	5
Turnovers per Game.....	13.6	8	11.1 (UM)	191	14.6	8
Turnover Margin.....	-0.4	7	+4.9 (PSU)	207	-1.0	T7
Assist/Turnover Ratio.....	0.9	9	1.5 (PSU)	248	0.7	11
Offensive Rebounds.....	11.4	3	12.3 (SUU)	127	11.3	3
Defensive Rebounds.....	25.7	6	27.2 (UNCO)	161	26.6	4

### INDIVIDUAL STATS..... ##... BSC..... BSC Leader..... NCAA ... | ... BSC Only .... BSC Rank

<b>Points per Game</b>						
Victor Sanders.....	19.6	4	23.5	44	22.8	T3
Brayon Blake.....	11.1	25	23.5		11.9	27

<b>Rebounds per Game</b>						
Brayon Blake.....	6.8	7	84	217	7.1	10
Nate Sherwood.....					6.6	12

#### Field Goal %

#### Assists per Game

Victor Sanders.....	3.3	10	5.5		2.8	T14
---------------------	-----	----	-----	--	-----	-----

#### Free Throw %

Victor Sanders.....	78.6	13	89.1	227	86.4	T5
---------------------	------	----	------	-----	------	----

#### Steals per Game

Victor Sanders.....	1.8	4	2.6	85	1.5	7
---------------------	-----	---	-----	----	-----	---

#### 3-point %

Victor Sanders.....	41.9	11	59.3	33		
---------------------	------	----	------	----	--	--

#### 3-pointers per Game

Victor Sanders.....	2.7	T6	4.2	61	2.4	12
---------------------	-----	----	-----	----	-----	----

#### Blocks per Game

#### Assist/Turnover Ratio

Victor Sanders.....	1.2	12	2.4			
---------------------	-----	----	-----	--	--	--

#### O. Rebounds per Game

Brayon Blake.....	2.1	10	3.5			
-------------------	-----	----	-----	--	--	--

#### D. Rebounds per Game

Brayon Blake.....	4.8	10	6.1	235	5.3	9
Nate Sherwood.....					4.9	13

#### Minutes Played

Victor Sanders.....			207		35.2	7
---------------------	--	--	-----	--	------	---

### 2016-17 By The Numbers

#### Offense - Scoring

<60.....	0-4
60-69.....	3-3
70-79.....	2-1
80-89.....	2-1
>89.....	2-1

#### Offense - Shooting

<35%.....	0-4
35%-40%.....	1-1
40%-45%.....	4-0
45%-50%.....	3-5
>50%.....	1-0

#### Defense - Scoring

<60.....	2-1
60-69.....	5-4
70-79.....	0-1
80-89.....	2-2
>89.....	0-2

#### Defense - Shooting

<35%.....	4-2
35%-40%.....	2-2
40%-45%.....	2-1
45%-50%.....	1-3
>50%.....	0-2

#### Rebounding

Outrebounded Opponent.....	7-6
Outrebounded by Opponent.....	1-3
Rebounds Even.....	1-1

#### Turnovers

Fewer than Opponent.....	6-4
More than Opponent.....	3-5
Even.....	0-1

## Big Sky Conference

### Standings

R	Team	BSC Rec.	Rec.
1	Weber State	6-1	11-7
2	North Dakota	7-2	12-7
3	EWU	6-2	14-7
4	Portland State	4-3	11-7
5	Montana	5-4	10-12
	Montana State	5-4	10-12
7	Idaho	4-4	9-10
8	Sacramento State	3-4	6-12
9	Northern Colorado	3-6	7-13
10	Northern Arizona	2-6	5-16
	Southern Utah	2-6	4-17
12	Idaho State	1-6	3-16

# 2016-17 IDAHO MEN'S BASKETBALL

## STARTING LINEUP

- Eight of Idaho's nine wins this season have come when the Vandal starting five scores at least 40 points, combined.
- The Vandals are 1-5 when the starters fail to score 40.

## GIVE HIM SOME HELP

- Victor Sanders has been the leader of the Vandals all season, but he needs some help.
- Idaho is 7-4 in games this season that at least two players other than Sanders score in double figures (Sanders scored in double-figures in all but one of those games too).
- Idaho is 0-4 in games that Sanders is the only double-digit scorer and 2-2 when one other player scores in double-figures with Sanders.
- In his career, Idaho is 12-3 in games that Chad Sherwood scores in double-figures.
- Sanders has led the Vandals in scoring in 15-of-19 games this season.

## VIC TAKES OVER

- Victor Sanders took over in the final minutes against EWU, scoring Idaho's final 18 points.
- Sanders scored 20 points in the final six minutes, going 6-of-8 from the field and 7-of-8 from the line during that stretch. The only other Vandal to score during that time (a 22-9 run by Idaho), was Myles Franklin who went 2-of-2 at the free throw line.
- The Vandal defense was tremendous during the stretch as well, forcing seven turnovers and picking up six steals as Idaho attempted the comeback.
- However, the rest of the offense struggled in the closing minutes, going 0-of-4 from the floor.

## SOUTH DAKOTA STATE REMATCH

- Idaho made 13 3's in the rematch with South Dakota State, one fewer than the record-tying performance against the Jackrabbits in the first meeting.
- Idaho did need 35 attempts from range, the most ever against a Division I opponent for a Don Verlin-coached team.
- South Dakota State did most of its work from the line, connecting on 25-of-26 attempts (96.2%). That performance sets the new record for best free throw shooting performance against a Don Verlin-coached team (minimum 20 attempts).

## BATTLE OF THE PALOUSE

- Last season, Idaho came out victorious for the second straight time in the Battle of the Palouse, the longest continuously running college basketball rivalry West of the Mississippi River.
- Idaho hadn't won at home in the rivalry since the 2002 season and hadn't won back-to-back games in the series since winning three straight from 1988-90.
- The Vandals fell on the road this season, 61-48.

## HOW CAN I HELP?

- Idaho recorded 20 assists against UC Davis. All five starters recorded at least three helpers.
- It was the second time that Idaho recorded at least 20 assists in a game this season. Idaho also had 24 assists against South Dakota State, a record for Don Verlin's Vandals.
- The Vandals did not have a 20-assist game against a Division I opponent

## 2016-17 Schedule (season records as of 1/25)

Opponent	Results	Idaho vs. Opp.	Opp. Rec. Time of Game	Opp. Record
Corban	W, 90-67	1-0	2-2	12-8
NIU	L, 49-63	0-3	2-0	12-8
Little Rock	W, 65-57	2-1	2-0	12-8
South Dakota State	W, 96-89 (OT)	4-3	1-3	9-13
Sam Houston State	L, 62-69	1-2	3-2	15-6
San Jose State	L, 49-58	14-13	2-3	9-9
UC Davis	W, 68-66	7-0	5-3	12-8
Washington State	L, 48-61	109-163	4-4	10-9
South Dakota State	L, 77-80	4-3	4-7	9-13
Northwest Nazarene	W, 87-61	---	4-4	7-7
Stanford	L, 80-86	3-7	7-4	11-9
EWU	L, 62-69	54-30	8-5	13-7
Montana	L, 57-70	108-86	6-9	10-11
Montana State	W, 83-81 (OT)	55-61	6-10	9-12
Weber State	L, 66-91	22-54	7-6	10-7
Idaho State	W, 77-62	59-45	3-13	3-15
Southern Utah	W, 79-67	8-9	4-14	4-16
Northern Arizona	W, 65-49	38-20	4-15	4-16
Montana State	L, 91-94 (2OT)	55-61	9-12	10-12
Montana		108-86	10-12	
Portland State		12-11		
Sacramento State		15-4		
Northern Colorado		3-0		
North Dakota		3-1		
EWU		54-30		
Idaho State		59-45		
Weber State		22-54		
Northern Arizona		38-20		
Southern Utah		8-9		

### At Time of Game:

Idaho vs. Teams with winning records:	2-5
Idaho vs. Teams with losing/even records:	7-5

### Season total:

Idaho vs. Teams with winning records:	2-8
Idaho vs. Teams with losing/even records:	7-2

## Specialty Stats

Opponent	Idaho/Opponent			FAST	BP
	PP	POT	2nd		
Corban	42/16	21/7	25/16	10/0	33/37
NIU	22/16	9/9	11/16	6/2	8/21
Little Rock	22/24	10/13	9/14	4/2	21/2
South Dakota State	36/18	21/16	13/16	8/0	47/15
Sam Houston State	14/20	14/18	6/7	0/2	20/18
San Jose State	30/24	9/10	3/13	0/0	17/28
UC Davis	38/20	5/11	5/9	4/0	22/25
Washington State	22/18	11/6	8/7	4/2	19/7
South Dakota State	20/26	3/10	7/8	0/0	23/12
Northwest Nazarene	34/22	17/4	19/5	2/4	36/21
Stanford	22/20	14/18	6/8	2/4	42/17
EWU	20/20	26/10	13/9	4/0	16/12
Montana	30/16	6/21	11/11	4/2	20/16
Montana State	24/16	15/9	14/8	6/2	26/24
Weber State	32/24	10/25	8/5	0/2	37/25
Idaho State	22/10	20/20	8/16	0/0	19/15
Southern Utah	36/16	13/13	18/7	2/0	19/10
Northern Arizona	24/24	18/6	9/15	6/2	35/5
Montana State	18/24	13/34	11/10	4/0	42/21
Montana					
Portland State					
Sacramento State					
Northern Colorado					
North Dakota					
EWU					
Idaho State					
Weber State					
Northern Arizona					
Southern Utah					
<b>Idaho Average</b>	<b>26.8</b>	<b>13.4</b>	<b>10.7</b>	<b>3.4</b>	<b>27.9</b>
<b>Opp. Average</b>	<b>19.7</b>	<b>13.7</b>	<b>10.5</b>	<b>1.4</b>	<b>16.4</b>



# 2016-17 IDAHO MEN'S BASKETBALL

## Last time a Vandal team...

Scored 110 points .....	Idaho 127, New Hope 54 (12/18/15)
Scored 100 points .....	Idaho 127, New Hope 54 (12/18/15)
Scored 90 points .....	Idaho 96, SDSU 89 (11/21/16)
Scored Fewer than 60 points.....	Idaho 57, Montana 70 (1/5/17)
Scored Fewer than 50 points.....	Idaho 48, WSU 61 (12/7/16)
Won by 30 points.....	Idaho 49, NIU 63 (11/16/16)
Shot 65% from the floor.....	68.4% (26-38) vs. Cal State Northridge (2/21/09)
Shot 60% from the floor.....	60.4% (29-48) vs. South Dakota State (12/13/14)
Shot <35% from the floor.....	30.5% (18-59), vs. EWU (12/30/16)
Shot 50% from 3FG.....	57.1 (8-14) vs. Corban (11/12/16)
Shot <30% from 3FG.....	26.3% (5-19) vs. Southern Utah (1/19/17)
Made 10 3FGs.....	13, at Stanford (12/22/16)
Shot 75% from the FT line.....	91.7% (11-12) vs. NAU (1/21/17)
Shot <50% from the FT line.....	33.3 (3-9) at Weber State (1/12/17)
Had 50 rebounds.....	50, vs. Weber State (3/3/16)
Had 20 offensive rebounds.....	20, at WSU (12/7/16)
Had 20 assists.....	20, vs. UC Davis (12/3/16)
Had 20 turnovers.....	20, vs. Montana (1/5/17)
Had fewer than 10 turnovers.....	9, at Idaho State (1/14/17)
Had 10 steals.....	15, vs. EWU (12/30/16)
Had 10 blocks.....	10, vs. San Jose State (2/2/13)
Had two 20-point scorers.....	Sanders (29), Ingram (23) vs. SDSU (11/21/16)
Had four double-digit scorers.....	(4) vs. NNU (12/17/16)
Won an overtime game.....	vs. Montana State (1/7/17)
Lost an overtime game.....	vs. Southern Utah (1/16/16)
Won a double-overtime game.....	vs. Montana (2/26/15)

## Last time a Vandal individual...

Had a double-double (pts/rebs) .....	Brayon Blake, 13/11 (11/12/16)
Had a double-double (pts/asts) .....	Mike Scott, 15/10 (1/17/15)
Had 10 assists.....	Mike Scott, 10 (1/17/15)
Had 20/10 (pts/rebs) .....	Kyle Barone, 20/11 (12/6/12)
Scored 30 points.....	Victor Sanders, 33 (1/19/17)
Scored 20 points.....	Victor Sanders, 33 (1/19/17)
Had 15 rebounds.....	Kyle Barone, 15 (2/28/13)
Had 5 steals.....	Victor Sanders, 5 (12/30/16)
Had 5 blocks.....	Ty Egbert, 5 (11/14/15)

## Last time a Vandal opponent...

Scored 90 points .....	Weber State (1/12/17)
Scored fewer than 60 points .....	NAU, 49 (1/21/17)
Scored fewer than 50 points .....	NAU, 49 (1/21/17)
Shot 60% from the floor.....	Montana, 65.1% (3/11/16)
Shot <30% from the floor.....	New Hope, 29.0% (12/18/15)
Shot 50% from 3FG.....	Weber State, 58.3% (1/12/17)
Shot <30% from 3FG.....	NAU, 15.0% (1/21/17)
Made 10 3FGs.....	Idaho State, 11 (1/14/17)
Shot 75% from the FT line.....	Southern Utah, 88.0% (1/19/17)
Shot <50% from the FT line.....	Northwest Nazarene, 33.3% (12/17/16)
Had fewer than 25 rebounds.....	Montana, 24 (3/11/16)
Had 20 offensive rebounds.....	San Jose State, 21 (2/2/13)
Had 20 assists.....	Denver, 21 (2/9/13)
Had fewer than 10 turnovers.....	Montana, 6 (1/5/17)
Had 10 steals.....	Texas State, 12 (1/24/13)
Had no blocks.....	NAU (1/21/17)

last season.

- Idaho hadn't had multiple 20 assist games against Division I opponents in a season since 2012-13.

## BENCH PRODUCTION

- The Idaho bench was incredible against South Dakota State, scoring 47 points.
- Idaho's best bench game last year came against Idaho State, with the Vandals scoring 36 points off the bench.
- Pat Ingram led the way, scoring 23 points.
- As a whole, the Idaho bench was incredible. Four of the five guys off the bench finished at +10 or better, led by Ty Egbert at +19.

## MAKE IT RAIN

- Idaho hit 14 3's in the first meeting with South Dakota State.
- The most 3's Idaho hit in a D1 game last year was 10, against Northern Colorado early in the Big Sky season.
- Under Don Verlin, Idaho had hit 14 3-pointers against a Division I opponent just once, against Hawaii on February 6, 2010.

## FREE THROW STRUGGLES

- Idaho struggled at the free throw line at NIU, going 9-of-22 (40.9 %).
- It is the first time since December 11, 2013 that an Idaho team shot worse than 50% from the line. Idaho went 7-of-18 from the line against Montana on that night. On that day, Bira Seck went 3-of-5 from the line.
- No Vandal shot better than 50% from the line at NIU. That hasn't happened for an Idaho squad since March 13, 2008, when Idaho went 3-of-13 from the line as a team. Darin Nagle hit all three free throws, going 3-of-6, while the rest of the team went 0-of-7.
- Idaho also struggled mightily against UC Davis, going 8-of-20 (40%) from the line.

## DOUBLE-DOUBLES

- Brayon Blake got his Idaho career off to a tremendous start, earning a double-double in his first game.
- The junior JUCO transfer finished with 13 points and 11 boards against Corban.
- Blake came within one rebound of duplicating the feat in his first game against a Division I opponent, scoring 17 points and grabbing nine rebounds at NIU.
- Last season, Idaho had just two double-doubles on the year. The first came for Skyler White against New Hope Christian College, while the second came for Nate Sherwood at NAU.

## IDAHO RECORD WHEN...

	Overall	BSC	Opp. shoot >35%	4-6	1-4	Outrebound opp.	7-6	3-3			
Leading at Halftime	6-2	3-1	Opp. shoot <35%	5-4	3-0	Fewer/equal rebounds	2-4	1-1	November	3-3	--
Trailing at Halftime	2-6	1-3				40-plus rebounds	4-3	2-1	December	2-4	0-1
Tied at Halftime	1-1	--	Score <70 points	4-7	2-3	<40 rebounds	5-7	2-3	January	4-3	4-3
			Score 70-plus points	5-3	2-1				February	--	--
Higher FG% than opp.	7-3	3-2	Score 80-plus points	4-2	1-1	Fewer turnovers	6-3	3-1	March	--	--
Lower/equal FG%	2-7	1-2	Score 90-plus points	2-1	0-1	More/equal turnovers	3-7	1-3			
Shoot >45%	4-5	0-3									
Shoot <45%	5-5	4-1	Allow <70 points	6-5	2-1	More pts. in paint	7-6	3-2	* - Games decided by five or fewer points		
Opp. shoot >45%	1-5	0-2	Allow 70-plus points	3-5	2-3	Fewer/equal pts. in paint	2-4	1-2			
Opp. shoot <45%	8-5	4-2	Allow 80-plus points	2-4	1-2						
			Allow 90-plus points	0-2	0-2	More 2nd chance pts.	4-4	2-3			
Higher 3FG% than opp.	5-4	2-1				Fewer/equal	5-6	2-1			
Lower/equal 3FG%	4-6	2-3	Close Games*	2-2	1-1						
Shoot >35%	5-4	2-2	Overtime games	2-1	1-1	More bench pts.	7-7	4-4			
Shoot <35%	4-6	2-2				Fewer/equal bench pts.	2-3	--			

# 2016-17 IDAHO MEN'S BASKETBALL

## MATCHUP BY THE NUMBERS

Stats	Idaho	Montana
Head coach	Don Verlin	Randy DeCuire
Record at School	140-136	51-37
Career Record	Same	Same
Overall Record	9-10	10-12
Conference Record	4-4	5-4
Scoring	71.1	73.1
Scoring Defense	70.5	73.0
Scoring Margin	+0.6	+0.1
Field Goal Pct.	42.3	44.5
Field Goal Pct. Defense	40.7	45.9
3-Pt. FG per Game	7.3	7.8
3-Pt. FG Pct.	34.3	36.2
3-Pt. FG Pct. Defense	36.0	35.6
Free Throw Pct.	70.6	73.4
Rebounds Per Game	37.2	33.5
Opp. Rebounds Per Game	33.3	34.5
Rebounding Margin	+3.9	-1.0
Assists	239	297
Assists Per Game	12.6	13.5
Turnovers	258	244
Turnovers Per Game	13.6	11.1
Opp. Turnovers Per Game	13.2	13.2
Turnover Margin	-0.4	+2.1
Assist/Turnover Ratio	0.9	1.2
Steals	102	127
Steals Per Game	5.4	5.8
Blocks	45	61
Blocks Per Game	2.4	2.8

## SANDERS AT THE LINE

- Victor Sanders made it a point to get to the line in 2015-16, taking more than five free throws per game.
- Sanders' free throw percentage of 84.8 was the seventh best single-season average in program history.
- Sanders was also incredible at getting to line on 3-point attempts.
- He was fouled on a 3-pointer 22 times in 2015-16, including twice in the College Basketball Invitational game at Seattle U.

## SEASON OPENER

- The Vandals have won 7-of-9 season openers under head coach Don Verlin.
- Last season, Idaho defeated San Jose State, 74-54, in the season-opener on the road. Perrion Callandret led the Vandals with 18 points and six assists on that night.
- This season, Idaho dominated Corban 90-67 to start the year.

## LAST TIME OUT...

**Official Basketball Box Score -- Game Totals -- Final Statistics**  
**Idaho vs Montana State**  
**1/26/17 7:05 pm at Worthington Arena - Bozeman, MT**

**Idaho 91 • 9-10/4-4 Big Sig**

#	Player	Total			3-Ptr			Rebounds			PF	TP	A	TO	Blk	Stl	Min
		FG-FGA	FG-FGA	FT-FTA	FG-FGA	FG-FGA	FT-FTA	Off	Def	Tot							
21	MKRTYCHYAN, Arkadiy	f	3-3	0-0	3-6	1	2	3	4	9	2	2	0	0	14		
44	SCOTT, Jordan	f	0-1	0-0	1-2	1	1	2	4	1	3	3	2	0	33		
23	SHERWOOD, Nate	c	6-8	2-3	5-6	2	5	7	5	19	2	1	2	0	38		
11	SANDERS, Victor	g	5-10	4-6	4-7	1	5	6	5	18	0	4	1	2	34		
14	SHERWOOD, Chad	g	1-6	0-4	0-0	1	3	4	4	2	1	2	0	1	37		
04	BLAKE, Brayon		6-10	4-6	4-6	3	3	6	4	20	1	3	1	0	23		
05	STRAUGHAN, Jake		0-0	0-0	0-0	0	0	0	0	0	0	0	0	0	2		
13	INGRAM, Pat		3-9	1-3	1-3	1	1	2	5	8	1	2	0	2	19		
24	BRIMHALL, Tyler		0-0	0-0	0-0	0	0	0	0	0	0	0	0	0	0		
25	ALLEY, Trevon		1-7	0-2	1-2	0	3	3	1	3	3	2	0	1	27		
41	EGBERT, Ty		4-7	0-0	3-5	2	6	8	2	11	1	2	1	0	23		
	Team					0	2	2									
	Totals		29-61	11-24	22-37	12	31	43	34	91	14	21	7	6	250		

FG % 1st Half: 13-30 43.3% 2nd half: 10-13 76.9% OT: 6-18 33.3% Game: 29-61 47.5% Deadball Rebounds 10  
 3FG % 1st Half: 4-10 40.0% 2nd half: 4-6 66.7% OT: 3-8 37.5% Game: 11-24 45.8%  
 FT % 1st Half: 3-7 42.9% 2nd half: 14-22 63.6% OT: 5-8 62.5% Game: 22-37 59.5%

**Montana State 94 • 10-12/5-4 Big Sig**

#	Player	Total			3-Ptr			Rebounds			PF	TP	A	TO	Blk	Stl	Min
		FG-FGA	FG-FGA	FT-FTA	FG-FGA	FG-FGA	FT-FTA	Off	Def	Tot							
00	GREEN, Zach	f	2-2	0-0	1-2	1	1	2	5	5	1	1	0	0	3		
03	HALL, Tyler	f	7-19	5-12	12-16	0	3	3	2	31	2	2	0	3	47		
04	NEUMANN, Sam	c	1-2	0-0	2-4	6	6	12	4	4	1	2	0	2	38		
05	FREY, Harald	g	6-10	3-7	5-5	0	1	1	5	20	1	2	0	0	33		
10	KLINES, Devonte	g	4-8	1-2	4-5	0	2	2	4	13	4	0	0	0	42		
01	MVUEZOLLO JR., Joe		0-3	0-2	0-0	1	1	2	2	0	1	2	0	2	10		
21	OSAYANDE, Benson		4-9	0-0	5-7	0	1	1	4	13	0	4	0	1	32		
24	EVERETT, Quinton		2-9	1-3	1-2	1	5	6	2	6	1	1	0	1	30		
31	KIRBY, Devin		1-1	0-0	0-0	0	1	1	0	2	0	0	0	0	4		
	Team					2	4	6									
	Totals		27-63	10-26	30-41	11	25	36	28	94	11	15	0	9	250		

FG % 1st Half: 10-29 34.5% 2nd half: 11-25 44.0% OT: 6-9 66.7% Game: 27-63 42.9% Deadball Rebounds 5  
 3FG % 1st Half: 4-13 30.8% 2nd half: 5-12 41.7% OT: 1-1 100.0% Game: 10-26 38.5%  
 FT % 1st Half: 5-9 55.6% 2nd half: 15-17 88.2% OT: 10-15 66.7% Game: 30-41 73.2%

Officials: Jimmy Casas, Doug Sturdivan, Michael Cheatham  
 Technical fouls: Idaho-None. Montana State-None.  
 Attendance: 2620

Score by periods	1st	2nd	OT	OT2	Total
Idaho	33	38	7	13	91
Montana State	29	42	7	16	94

Last FG - IDAHO 012-00:03, MSU 012-01:04.  
 Largest lead - IDAHO by 9 2nd-13:09, MSU by 7 OT2-00:39.  
 IDAHO led for 30:46. MSU led for 12:18. Game was tied for 06:56.

Points	In	Off	2nd	Fast	Bench
IDAHO	18	13	11	4	42
MSU	24	34	10	0	21

Score tied - 10 times.  
 Lead changed - 7 times.

# 2016-17 IDAHO MEN'S BASKETBALL

## RESULTS AND LEADERS

Record	Overall	Home	Away	Neutral
<b>All Games</b>	<b>9-10</b>	<b>7-3</b>	<b>2-7</b>	<b>--</b>
<b>Big Sky</b>	<b>4-4</b>	<b>3-2</b>	<b>1-2</b>	<b>--</b>
<b>Non-Conference</b>	<b>5-6</b>	<b>4-1</b>	<b>1-5</b>	<b>--</b>

Opponent	Result	High Points	High Rebounds	High Assists	1	2	3	4	5
Corban	W, 90-67	Sanders (19)	Blake (11)	Callandret/Sanders (5)	Callandret	Sanders	Scott	N. Sherwood	Blake
NIU	L, 49-63	Blake (17)	Blake/Scott (9)	Callandret/Chad (2)	Callandret	Sanders	Scott	N. Sherwood	Blake
Little Rock	W, 65-57	Sanders (20)	Blake (12)	Sanders/Nate (4)	Allen	Sanders	Scott	N. Sherwood	Blake
SDSU	W, 96-89 (OT)	Sanders (29)	Scott (7)	Franklin (7)	Allen	Sanders	Scott	N. Sherwood	Blake
SHSU	L, 62-69	Sanders (14)	Blake (8)	Mkrtychyan (3)	Allen	Sanders	Scott	Mkrtychyan	Blake
SJSU	L, 49-58	Sanders (15)	Scott (8)	Sanders (3)	C. Sherwood	Sanders	Scott	N. Sherwood	Blake
UC Davis	W, 68-66	Blake (17)	Allen/Sanders (6)	Allen (4)	Allen	Sanders	Scott	N. Sherwood	Blake
WSU	L, 48-61	Sanders (18)	Scott (8)	Sanders (3)	Allen	Sanders	Scott	N. Sherwood	Blake
SDSU	L, 77-80	Sanders (17)	Scott (6)	Sanders (9)	Allen	Sanders	Scott	N. Sherwood	Blake
NNU	W, 87-61	Sanders (18)	Nate/Blake (6)	Sanders (3)	Allen	Sanders	C. Sherwood	N. Sherwood	Scott
Stanford	L, 80-86	Sanders (17)	Blake (5)	Chad (5)	Allen	Sanders	Scott	N. Sherwood	Scott
EWU	L, 62-69	Sanders (32)	Blake (12)	Sanders (4)	Allen	Sanders	C. Sherwood	N. Sherwood	Scott
Montana	L, 57-70	Sanders (20)	Ingram (9)	Sanders (3)	Allen	Sanders	C. Sherwood	N. Sherwood	Mkrtychyan
Montana State	W, 83-81 (OT)	Sanders (27)	Blake (7)	Sanders (6)	C. Sherwood	Sanders	Scott	N. Sherwood	Mkrtychyan
Weber State	L, 66-91	Sanders (13)	Blake (7)	Blair/Allen (2)	C. Sherwood	Sanders	Scott	N. Sherwood	Mkrtychyan
Idaho State	W, 77-62	Sanders (22)	Three Tied (5)	Sanders (4)	C. Sherwood	Sanders	Scott	N. Sherwood	Mkrtychyan
Southern Utah	W, 79-67	Sanders (33)	Nate/Blake (8)	Chad (3)	C. Sherwood	Sanders	Scott	N. Sherwood	Mkrtychyan
NAU	W, 65-49	Blake (18)	Nate (9)	Three Tied (3)	C. Sherwood	Sanders	Scott	N. Sherwood	Mkrtychyan
Montana State	L, 91-94 (2OT)	Blake (20)	Egbert (8)	Scott/Allen (3)	C. Sherwood	Sanders	Scott	N. Sherwood	Mkrtychyan
Montana									
Portland State									
Sacramento State									
UNCO									
North Dakota									
EWU									
Idaho State									
Weber State									
NAU									
Southern Utah									

Attendance	Games	Totals	Avg/Game
Home .....	10	9080	908
BSC Home .....			
Away .....	9	23380	2598
Neutral .....			
Overall .....	19	32460	1708

Margin	1	2	3	4	5	6	7	8	9	10	11	12	13	14	15	16	17	18	19	20	21	22	23	24	25	26	27	28	29	30	30+
Victory		2					1	1				1			1	1						1				1					
Defeat			2			1	2		1				2	1										1							

### CAREER HIGHS

##	Name	Pts.	Rebs.	Asts.	FG	3FG	Mins.
0	Blair	16	7	2	6	4	27
1	Callandret	26	7	6	7	4	38
2	Franklin	6	4	7	2	--	20
4	Blake	20	12	3	8	4	32
5	Straughan	24	2	4	8	8	20
11	Sanders	33	8	9	10	6	39
12	Garvin	--	--	--	--	--	--
13	Ingram	23	9	9	8	4	28
14	C. Sherwood	22	6	6	8	6	39
21	Mkrtychyan	18	10	3	7	1	32
23	N. Sherwood	19	10	5	6	2	38
24	Brimhall	13	3	1	4	3	17
25	Allen	11	6	4	3	3	32
41	Egbert	18	9	2	6	--	31
44	Scott	13	13	3	6	1	35

### SEASON HIGHS

##	Name	Pts.	Rebs.	Asts.	FG	3FG	Mins.
0	Blair	11	3	2	2	2	13
1	Callandret	14	5	5	4	3	25
2	Franklin	6	4	7	2	--	20
4	Blake	20	12	3	8	4	32
5	Straughan	9	2	1	3	3	15
11	Sanders	33	6	9	10	4	39
12	Garvin	--	--	--	--	--	--
13	Ingram	23	9	3	8	4	28
14	C. Sherwood	17	6	5	4	4	37
21	Mkrtychyan	12	7	3	6	--	20
23	N. Sherwood	19	9	4	6	1	38
24	Brimhall	13	4	1	4	3	17
25	Allen	11	6	4	3	3	32
41	Egbert	13	8	1	5	--	27
44	Scott	13	9	3	3	--	35

\*\* More season/career highs on individual player pages

# 2016-17 IDAHO MEN'S BASKETBALL

## DON VERLIN'S VANDALS - THE HIGHS

IDAHO		OPPONENT
##/Opponent (Date)	STAT	##/Opponent (Date)
127/New Hope (12/18/15) [101/UC Irvine (12/28/08)]	Points	100/Michigan State (11/16/08)
53/New Hope (12/18/15) [39/UC Irvine (11/28/08)]	FG	36/Cal State Northridge (2/18/14)
89/New Hope (12/18/15) [78/Southern Utah (2/21/15)]	FGA	76/EWU (12/6/12)
.684 (26-38)/Cal State Northridge (2/21/09)	FG% (min. 50 att.)	.651 (28-43)/Montana (3/11/16)
19/New Hope (12/18/15) [14/South Dakota State (11/21/16)]	3FG	17/EWU (1/31/15)
43/New Hope (12/18/15) [35/South Dakota State (12/10/16)]	3FGA	46/New Hope (12/18/15) [44/EWU (1/31/15)]
.667 (12-18)/South Dakota State (12/13/14)	3FG% (min. 10 att.)	.667 (8-12)/LaTech (3/12/09)
35/Montana State (1/7/17)	FT	35/Grand Canyon (1/23/14)
45/Southern Utah (1/16/16)	FTA	44/Texas Pan American (1/9/14)
.944 (17-18)/Idaho State (2/23/13)	FT% (min. 10 att.)	.962 (25-26)/South Dakota State (12/10/16)
57/New Hope (12/18/15) [55/EWU (12/6/12)]	Rebounds	51/South Carolina State (12/10/08)
39/New Hope (12/18/15) [24/South Dakota State (11/21/16)]	Assists	23/Michigan State (11/16/08)
15/EWU (12/30/16)	Steals	14/Denver (2/9/13)
10/San Jose State (2/2/13)	Blocks	11/Nevada (1/31/09)
24/New Mexico State (1/29/11)	Turnovers	24/San Francisco (3/16/11)
34/Montana State (1/26/17) (2OT)	Fouls	32/North Texas (11/23/15)

## DON VERLIN'S VANDALS - THE LOWS

IDAHO		OPPONENT
##/Opponent (Date)	STAT	##/Opponent (Date)
33/Montana (11/22/10)	Points	39/Walla Walla (12/18/14) [42/North Dakota (12/3/10)]
6/Montana (11/22/10)	FG	14/UC Davis (12/22/15)
35/Denver (1/10/13)	FGA	39/LaTech (3/12/09)
.120 (6-50)/Montana (11/22/10)	FG% (min. 50 att.)	.260 (15-57)/North Dakota (12/3/10)
1/New Mexico State (2/29/12)	3FG	1/New Mexico State (2/9/12)
6/Seattle U (2/18/10)	3FGA	7/Boise State (11/27/13)
.077 (1-13)/Montana (11/22/10)	3FG% (min. 10 att.)	.105 (2-19)/CSU Bakersfield (12/17/11)
2/New Hope (12/18/15) [4/USC (12/7/15)]	FT	1/Washington State (12/21/08)
2/New Hope (12/18/15) [4/Washington State (12/21/08)]	FTA	2/Washington State (12/21/08)
.333 (3-9)/Weber State (1/12/17)	FT% (min. 10 att.)	.333 (5-15)/Idaho State (3/7/15)
16/Utah State (1/31/13)	Rebounds	17/Denver (1/10/13)
3/CSU Bakersfield (11/17/15)	Assists	3/Seattle U (12/11/10)
0/Sacramento State (2/14/15)	Steals	1/Southern Utah (2/21/15)
0/Washington State (12/7/16)	Blocks	0/Sam Houston State (11/25/16)
2/New Hope (12/18/15) [4/Weber State (1/3/15)]	Turnovers	4/New Mexico State (1/12/13)
8/Washington State (12/21/08)	Fouls	7/Washington State (12/21/08)

## DON VERLIN'S VANDALS - THE INDIVIDUALS

IDAHO		OPPONENT
##/Player/Opponent (Date)	STAT	##/Player/Opponent (Date)
42/Stephen Madison/Utah Valley (2/15/14)	Points	42/Tyler Harvey/EWU (3/12/15)
16/Stephen Madison/Utah Valley (2/15/14)	FG	13/Tyler Harvey/EWU (3/12/15)
23/Stephen Madison/EWU (12/6/12)	FGA	26/Roderick Flemings/Hawaii (3/6/10)
1.000 (10-10)/Kyle Barone/UTSA (1/26/13)	FG% (most makes)	1.000 (8-8)/Kevin Butler/UT Arlington (2/14/13)
8/Connor Hill/Portland State (2/12/15)	3FG	10/Jared Stohl/Portland (12/22/09)
15/Connor Hill/Idaho State (3/7/15)	3FGA	18/Isiah Umipig/Seattle U (3/1/14)
1.000 (5-5)/Stephen Madison/UT Arlington (2/14/13)	3FG% (min. 5 att.)	1.000 (7-7)/Kevin Butler/UT Arlington (2/14/13)
15/Victor Sanders/Montana State (1/7/17)	FT	21/Derrick Marks/Boise State (11/27/13)
20/Kashif Watson/Evergreen State (11/14/08)	FTA	23/Derrick Marks/Boise State (11/27/13)
[18/Stephen Madison/Montana (12/28/13)]		
1.000 (15-15)/Kashif Watson/Cal State Northridge (12/3/09)	FT% (min. 10 att.)	1.000 (13-13)/Mike Daum/South Dakota State (12/10/16)
18/Kyle Barone/UT Arlington (1/19/13)	Rebounds	20/Cameron Forte/Portland State (1/30/16)
11/Deremy Geiger/Hawaii (2/5/11)	Assists	11/Brockeith Pane/Utah State (3/17/12)
7/Victor Sanders (12/7/16)	Steals	7/Mark Hill/Cal State Northridge (2/21/09)
6/Djim Bandoumel/New Mexico State (2/9/12)	Blocks	7/Hamidu Rahman/New Mexico State (2/24/10)
8/Victor Sanders/San Jose State (11/29/16)	Turnovers	9/Ethan Telfair/Idaho State (3/5/16)
48/Stephen Madison/Texas Pan American (1/9/14)	Minutes	N/A

Highs are the most recent accomplishment, lows are the first occurrence

Division I records in []

In the case of a D1 record being tied by a non-D1 team, the D1 record remains



# 2016-17 IDAHO MEN'S BASKETBALL

## University of Idaho season statistics Idaho Combined Team Statistics (as of Jan 26, 2017) All games

RECORD:	OVERALL	HOME	AWAY	NEUTRAL
ALL GAMES	9-10	7-3	2-7	0-0
CONFERENCE	4-4	3-2	1-2	0-0
NON-CONFERENCE	5-6	4-1	1-5	0-0

#	Player	gp-gs	min	avg	Total		3-Point		F-Throw		Rebounds				pf	dq	a	to	blk	stl	pts	avg
					fg-fga	fg%	3fg-fga	3fg%	ft-fa	ft%	off	def	tot	avg								
11	Sanders, Victor	19-19	624	32.8	114-252	.452	52-124	.419	92-117	.786	7	55	62	3.3	57	4	62	53	5	34	372	19.6
04	Blake, Brayon	18-9	405	22.5	73-162	.451	11-36	.306	43-63	.683	37	86	123	6.8	47	1	14	24	6	12	200	11.1
01	Callandret, Perrion	2-2	60	30.0	5-21	.238	3-11	.273	3-4	.750	0	9	9	4.5	3	0	7	1	0	0	16	8.0
23	Sherwood, Nate	19-18	452	23.8	41-97	.423	6-18	.333	27-42	.643	31	62	93	4.9	65	5	23	24	8	6	115	6.1
21	Mkrtychyan, Arkadiy	19-8	297	15.6	42-88	.477	2-5	.400	21-40	.525	24	45	69	3.6	46	1	12	20	3	5	107	5.6
14	Sherwood, Chad	19-11	406	21.4	28-90	.311	21-70	.300	25-29	.862	8	28	36	1.9	39	1	21	21	4	6	102	5.4
41	Egbert, Ty	19-0	242	12.7	36-64	.563	0-0	.000	17-25	.680	16	31	47	2.5	31	0	9	19	7	1	89	4.7
44	Scott, Jordan	19-18	434	22.8	33-75	.440	3-14	.214	19-31	.613	32	56	88	4.6	51	2	19	23	7	7	88	4.6
25	Allen, Trevon	19-10	352	18.5	23-77	.299	14-47	.298	25-27	.926	4	28	32	1.7	19	0	28	31	1	5	85	4.5
13	Ingram, Pat	19-0	248	13.1	30-61	.492	8-19	.421	11-24	.458	16	30	46	2.4	33	1	17	18	3	14	79	4.2
24	Brimhall, Tyler	14-0	123	8.8	11-42	.262	9-32	.281	6-8	.750	9	11	20	1.4	12	0	5	7	0	5	37	2.6
05	Straughan, Jake	8-0	46	5.8	7-15	.467	7-15	.467	0-0	.000	0	5	5	0.6	3	0	2	1	0	3	21	2.6
02	Franklin, Myles	14-0	154	11.0	5-17	.294	0-7	.000	14-20	.700	0	14	14	1.0	6	0	18	11	0	3	24	1.7
00	Blair, Nick	10-0	57	5.7	5-11	.455	2-4	.500	4-5	.800	5	4	9	0.9	5	0	2	2	1	1	16	1.6
Team											28	25	53					3				
Total.....		0	3900		453-1072	.423	138-402	.343	307-435	.706	217	489	706	0.0	417	15	239	258	45	102	1351	0.0
Opponents.....		0	3900		418-1027	.407	171-475	.360	333-450	.740	169	463	632	0.0	392	-	234	250	64	101	1340	0.0

TEAM STATISTICS	IDAHO	OPP	Date	Opponent	Score	Att.
SCORING	1351	1340	11/12/16	CRB	W 90-67	628
Points per game	71.1	70.5	11/16/16	at Northern Illinois	L 49-63	1430
Scoring margin	+0.6	-	11/18/16	at Little Rock	W 65-57	2630
FIELD GOALS-ATT	453-1072	418-1027	11/21/16	SDSU	Wot 96-89	474
Field goal pct	.423	.407	11/25/16	at Sam Houston State	L 62-69	625
3 POINT FG-ATT	138-402	171-475	11/29/16	SAN JOSE STATE	L 49-58	674
3-point FG pct	.343	.360	12/3/16	UCD	W 68-66	1232
3-pt FG made per game	7.3	9.0	12/07/16	at Washington State	L 48-61	3178
FREE THROWS-ATT	307-435	333-450	12/10/16	at SDSU	L 77-80	1349
Free throw pct	.706	.740	12/17/16	NNU-M	W 87-61	826
F-Throws made per game	16.2	17.5	12/22/16	at STANFORD	L 80-86	3287
REBOUNDS	706	632	* 12/30/16	EWU	L 62-69	1107
Rebounds per game	37.2	33.3	* 1/5/17	MONTANA	L 57-70	813
Rebounding margin	+3.9	-	* 1/7/17	MSU	Wot 83-81	1114
ASSISTS	239	234	* 01/12/17	at Weber State	L 66-91	6507
Assists per game	12.6	12.3	* 1/14/17	at Idaho State	W 77-62	1754
TURNOVERS	258	250	* 1/19/17	SUU	W 79-67	889
Turnovers per game	13.6	13.2	* 1/21/17	NAU	W 65-49	1323
Turnover margin	-0.4	-	* 1/26/17	at MSU	Lo2 91-94	2620
Assist/turnover ratio	0.9	0.9	* - Conference game			
STEALS	102	101				
Steals per game	5.4	5.3				
BLOCKS	45	64				
Blocks per game	2.4	3.4				
ATTENDANCE	9080	23380				
Home games-Avg/Game	10-908	9-2598				
Neutral site-Avg/Game	-	0-0				

Score by Periods	1st	2nd	OT	OT2	Totals
Idaho	590	710	38	13	1351
Opponents	597	698	29	16	1340

# 2016-17 IDAHO MEN'S BASKETBALL

## University of Idaho season statistics Idaho Combined Team Statistics (as of Jan 26, 2017) Conference games

RECORD:	OVERALL	HOME	AWAY	NEUTRAL
ALL GAMES	4-4	3-2	1-2	0-0
CONFERENCE	4-4	3-2	1-2	0-0
NON-CONFERENCE	0-0	0-0	0-0	0-0

#	Player	gp-gs	min	avg	Total		3-Point		F-Throw		Rebounds								a	to	blk	stl	pts	avg		
					fg-fga	fg%	3fg-fga	3fg%	ft-fa	ft%	off	def	tot	avg	pf	dq										
11	Sanders, Victor	8-8	282	35.2	53-115	.461	19-45	.422	57-66	.864	5	25	30	3.8	24	2	22	26	2	12	182	22.8				
04	Blake, Brayon	7-0	149	21.3	27-57	.474	6-11	.545	23-32	.719	13	37	50	7.1	22	1	5	11	3	6	83	11.9				
21	Mkrtychyan, Arkadiy	8-7	128	16.0	21-41	.512	1-2	.500	11-23	.478	14	21	35	4.4	19	1	5	8	2	4	54	6.8				
23	Sherwood, Nate	8-8	228	28.5	18-46	.391	3-9	.333	9-15	.600	14	39	53	6.6	24	1	8	12	5	1	48	6.0				
14	Sherwood, Chad	8-8	194	24.3	13-43	.302	9-34	.265	13-13	1.000	2	14	16	2.0	19	1	6	11	4	4	48	6.0				
44	Scott, Jordan	8-7	199	24.9	14-28	.500	2-5	.400	9-15	.600	10	20	30	3.8	25	1	10	11	7	2	39	4.9				
13	Ingram, Pat	8-0	115	14.4	13-32	.406	2-8	.250	6-11	.545	9	13	22	2.8	20	1	9	10	1	8	34	4.3				
41	Egbert, Ty	8-0	115	14.4	13-25	.520	0-0	.000	7-10	.700	4	19	23	2.9	13	0	4	9	3	1	33	4.1				
05	Straughan, Jake	5-0	33	6.6	5-12	.417	5-12	.417	0-0	.000	0	3	3	0.6	2	0	0	0	0	1	15	3.0				
25	Allen, Trevon	8-2	120	15.0	6-24	.250	3-12	.250	8-10	.800	1	8	9	1.1	6	0	10	12	0	3	23	2.9				
02	Franklin, Myles	4-0	37	9.3	1-3	.333	0-1	.000	5-7	.714	0	0	0	0.0	1	0	3	2	0	2	7	1.8				
00	Blair, Nick	3-0	25	8.3	2-4	.500	0-1	.000	1-1	1.000	0	1	1	0.3	2	0	2	0	0	0	5	1.7				
24	Brimhall, Tyler	7-0	50	7.1	2-14	.143	1-8	.125	4-5	.800	5	4	9	1.3	5	0	2	4	0	3	9	1.3				
Team											13	9	22											1		
Total.....		8	1675		188-444	.423	51-148	.345	153-208	.736	90	213	303	37.9	182	8	86	117	27	47	580	72.5				
Opponents.....		8	1675		179-442	.405	81-210	.386	144-193	.746	72	192	264	33.0	180	-	95	109	27	45	583	72.9				

TEAM STATISTICS	IDAHO	OPP	Date	Opponent	Score	Att.
SCORING	580	583	* 12/30/16	EWU	L 62-69	1107
Points per game	72.5	72.9	* 1/5/17	MONTANA	L 57-70	813
Scoring margin	-0.4	-	* 1/7/17	MSU	Wot 83-81	1114
FIELD GOALS-ATT	188-444	179-442	* 01/12/17	at Weber State	L 66-91	6507
Field goal pct	.423	.405	* 1/14/17	at Idaho State	W 77-62	1754
3 POINT FG-ATT	51-148	81-210	* 1/19/17	SUU	W 79-67	889
3-point FG pct	.345	.386	* 1/21/17	NAU	W 65-49	1323
3-pt FG made per game	6.4	10.1	* 1/26/17	at MSU	Lo2 91-94	2620
FREE THROWS-ATT	153-208	144-193	* - Conference game			
Free throw pct	.736	.746				
F-Throws made per game	19.1	18.0				
REBOUNDS	303	264				
Rebounds per game	37.9	33.0				
Rebounding margin	+4.9	-				
ASSISTS	86	95				
Assists per game	10.8	11.9				
TURNOVERS	117	109				
Turnovers per game	14.6	13.6				
Turnover margin	-1.0	-				
Assist/turnover ratio	0.7	0.9				
STEALS	47	45				
Steals per game	5.9	5.6				
BLOCKS	27	27				
Blocks per game	3.4	3.4				
ATTENDANCE	5246	10881				
Home games-Avg/Game	5-1049	3-3627				
Neutral site-Avg/Game	-	0-0				

Score by Periods	1st	2nd	OT	OT2	Totals
Idaho	230	317	20	13	580
Opponents	257	292	18	16	583

# 2016-17 IDAHO MEN'S BASKETBALL



**#0 Nick Blair**

Sophomore • SF  
6-5 • 205  
Las Vegas, Nev.  
Bishop Gorman HS

## Miscellaneous

Double-Figure Pts.	3 (2-1)
20+ points	0 (0-0)
Led team in pts.	0 (0-0)
5+ rebounds	5 (4-1)
10+ rebounds	0 (0-0)
Led team in rebs.	0 (0-0)
5+ assists	0 (0-0)
10+ assists	0 (0-0)
Fouled out	0 (0-0)

- Saw limited minutes against NAU

## SEASON HIGHS

**Points**  
6, at SDSU (12/10/16)  
**Rebounds**  
3, at WSU (12/7/16)  
**Assists**  
2, at WSU (1/12/17)  
**Blocks**  
1, vs. SJSU (11/29/16)  
**Steals**  
1, vs. SJSU (11/29/16)  
**Field Goals**  
2 (2x), last at WSU (1/12/17)  
**Field Goal Attempts**  
4, at WSU (1/12/17)  
**3-point Field Goals**  
2, at SDSU (12/10/16)  
**3-point Field Goal Attempts**  
2, at SDSU (12/10/16)  
**Free Throws**  
2, vs. NNU (12/17/16)  
**Free Throw Attempts**  
2 (2x), last vs. NNU (12/17/16)  
**Minutes**  
13, at WSU (1/12/17)

## CAREER HIGHS

**Points**  
16, at Montana State (1/23/16)  
**Rebounds**  
7, vs. New Hope (12/18/15)  
**Assists**  
2 (4x), last at WSU (1/12/17)  
**Blocks**  
1 (7x), last vs. SJSU (11/29/16)  
**Steals**  
1 (6x), last vs. Montana (3/11/16)  
**Field Goals**  
6, at Montana State (1/23/16)  
**Field Goal Attempts**  
12, at Montana State (1/23/16)  
**3-point Field Goals**  
4, at Montana State (1/23/16)  
**3-point Field Goal Attempts**  
8, at Montana State (1/23/16)  
**Free Throws**  
2, vs. WSU (12/10/15)  
**Free Throw Attempts**  
3, vs. UND (2/13/16)  
**Minutes**  
27, at Montana State (1/23/16)

## LAST 5

Opponent	*	Min.	FG-FGA	FG%	3FG-3FGA	3FG%	FT-FTA	FT%	Off-Def-Tot.-Avg.	PF	A	TO	Blk.	Stl.	Pts.
at SDSU		9	2-2	1.000	2-2	1.000	0-0	---	2-0-2	0	0	1	0	0	6
vs. NNU		4	0-1	.000	0-0	---	2-2	1.000	1-0-1	1	0	0	0	0	2
vs. EWU		11	0-0	---	0-0	---	0-0	---	0-0-0	0	0	0	0	0	0
at WSU		13	2-4	.500	0-1	.000	1-1	1.000	0-1-1	2	2	0	0	0	5
vs. NAU		1	0-0	---	0-0	---	0-0	---	0-0-0	0	0	0	0	0	0
<b>TOTAL</b>		<b>38-7.6</b>	<b>4-7</b>	<b>.571</b>	<b>2-3</b>	<b>.667</b>	<b>3-3</b>	<b>1.000</b>	<b>3-1-4-0.8</b>	<b>3</b>	<b>2</b>	<b>1</b>	<b>0</b>	<b>0</b>	<b>13-2.6</b>

## CAREER STATISTICS

Year	GP-GS	Min-Avg	Total FG-FGA	Pct	3-Point FG-FGA	Pct	F-Throw FT-FTA	Pct	Rebounds Off-Def-Tot	Avg	PF	FO	Ast	TO	Blk	Stl	Pts	Avg
2015-16	27-1	275-10.2	41-85	.482	6-20	.300	6-16	.375	20-43-63	2.3	28	0	13	17	6	6	94	3.5
2016-17	10-0	57-5.7	5-11	.455	2-4	.500	4-5	.800	5-4-9	0.9	5	0	2	2	1	1	16	1.6
<b>TOTAL</b>	<b>37-1</b>	<b>332-9.0</b>	<b>46-96</b>	<b>.479</b>	<b>8-24</b>	<b>.333</b>	<b>10-21</b>	<b>.476</b>	<b>25-47-72</b>	<b>1.9</b>	<b>33</b>	<b>0</b>	<b>15</b>	<b>19</b>	<b>7</b>	<b>7</b>	<b>110</b>	<b>3.0</b>



**#1 Perrion Callandret**

Senior • Guard  
6-2 • 180  
Bothel, Wash.  
Bothel HS

## Miscellaneous

Double-Figure Pts.	18 (11-7)
20+ points	4 (3-1)
Led team in pts.	11 (7-4)
5+ rebounds	12 (8-4)
10+ rebounds	0 (0-0)
Led team in rebs.	2 (1-1)
5+ assists	2 (2-0)
10+ assists	0 (0-0)
Fouled out	1 (1-0)

- Struggled against NIU, going 1-of-10 from the floor
- Grabbed four boards and had two assists
- Has not played since NIU
- Continues to recover from a bone bruise on his knee
- Will likely miss the remainder of the 2016-17 season

## SEASON HIGHS

**Points**  
14, vs. Corban (11/12/16)  
**Rebounds**  
5, vs. Corban (11/12/16)  
**Assists**  
5, vs. Corban (11/12/16)  
**Blocks**  
-  
**Steals**  
-  
**Field Goals**  
4, vs. Corban (11/12/16)  
**Field Goal Attempts**  
11, vs. Corban (11/12/16)  
**3-point Field Goals**  
3, vs. Corban (11/12/16)  
**3-point Field Goal Attempts**  
6, at NIU (11/16/16)  
**Free Throws**  
3, vs. Corban (11/12/16)  
**Free Throw Attempts**  
4, vs. Corban (11/12/16)  
**Minutes**  
35, at NIU (11/16/16)

## CAREER HIGHS

**Points**  
26, vs. CSUB (12/2/15)  
**Rebounds**  
7 (3x), vs. UNCO (1/2/16)  
**Assists**  
6, at SJSU (11/14/15)  
**Blocks**  
2 (2x), last at UND (12/31/15)  
**Steals**  
3 (3x), last at PSU (2/18/16)  
**Field Goals**  
7 (4x), last vs. UM (3/11/16)  
**Field Goal Attempts**  
18, at UND (12/31/15)  
**3-point Field Goals**  
4 (2x), last vs. UM (3/11/16)  
**3-point Field Goal Attempts**  
9 (2x), last vs. LR (12/5/15)  
**Free Throws**  
12, vs. CSUB (12/2/15)  
**Free Throw Attempts**  
13, vs. WSU (12/10/15)  
**Minutes**  
38, at UND (12/31/15)

## LAST 5

Opponent	*	Min.	FG-FGA	FG%	3FG-3FGA	3FG%	FT-FTA	FT%	Off-Def-Tot.-Avg.	PF	A	TO	Blk.	Stl.	Pts.
vs. EWU	*	34	3-12	.250	0-3	.000	2-4	.500	1-5-6	3	2	0	0	2	8
vs. Montana	*	36	7-12	.583	4-8	.500	7-8	.875	2-3-5	2	3	3	0	0	25
at Seattle U.	*	33	6-13	.462	4-9	.444	2-4	.500	1-0-1	3	1	1	0	0	18
vs. Corban	*	25	4-11	.364	3-5	.600	3-4	.750	0-5-5	0	5	0	0	0	14
at NIU	*	35	1-10	.100	0-6	.000	0-0	---	0-4-4	3	2	1	0	0	2
<b>TOTAL</b>		<b>163-32.6</b>	<b>21-58</b>	<b>.362</b>	<b>11-31</b>	<b>.355</b>	<b>14-20</b>	<b>.700</b>	<b>4-17-21-4.2</b>	<b>11</b>	<b>13</b>	<b>5</b>	<b>0</b>	<b>2</b>	<b>67-13.4</b>

## CAREER STATISTICS

Year	GP-GS	Min-Avg	Total FG-FGA	Pct	3-Point FG-FGA	Pct	F-Throw FT-FTA	Pct	Rebounds Off-Def-Tot	Avg	PF	FO	Ast	TO	Blk	Stl	Pts	Avg
2013-14	29-0	363-12.5	25-79	.316	4-25	.160	18-29	.621	14-35-49	1.7	39	1	19	27	3	14	72	2.5
2014-15	30-1	629-21.3	67-152	.441	38-87	.437	30-42	.714	5-69-74	2.5	59	2	49	32	6	17	202	6.7
2015-16	25-23	789-31.6	102-260	.392	49-142	.345	98-120	.817	15-86-101	4.0	62	1	51	59	7	22	351	14.0
2016-17	2-2	60-30.0	5-21	.238	3-11	.273	3-4	.750	0-9-9	4.5	3	0	7	1	0	0	16	8.0
<b>TOTAL</b>	<b>86-26</b>	<b>1841-21.4</b>	<b>199-512</b>	<b>.389</b>	<b>94-265</b>	<b>.355</b>	<b>149-195</b>	<b>.764</b>	<b>34-199-233</b>	<b>2.7</b>	<b>163</b>	<b>4</b>	<b>126</b>	<b>119</b>	<b>16</b>	<b>53</b>	<b>641</b>	<b>7.5</b>

# 2016-17 IDAHO MEN'S BASKETBALL



**#2 Myles Franklin**

Sophomore • PG  
6-0 • 171  
Castaic, Calif.  
Hart HS

### Miscellaneous

Double-Figure Pts.	0 (0-0)
20+ points	0 (0-0)
Led team in pts.	0 (0-0)
5+ rebounds	0 (0-0)
10+ rebounds	0 (0-0)
Led team in rebs.	0 (0-0)
5+ assists	1 (1-0)
10+ assists	0 (0-0)
Fouled out	0 (0-0)

- Saw limited action against NAU

### SEASON HIGHS

**Points**  
6, at Stanford (12/22/16)  
**Rebounds**  
4, at LR (11/18/16)  
**Assists**  
7, vs. SDSU (11/21/16)  
**Blocks**  
-  
**Steals**  
2, vs. EWU (12/30/16)  
**Field Goals**  
2, at Stanford (12/22/16)  
**Field Goal Attempts**  
3 (2x), last vs. EWU (12/30/16)  
**3-point Field Goals**  
-  
**3-point Field Goal Attempts**  
2, vs. SDSU (11/21/16)  
**Free Throws**  
3, at WSU (12/7/16)  
**Free Throw Attempts**  
4, at WSU (12/7/16)  
**Minutes**  
20, vs. LR (11/18/16)

Opponent	*	Min.	FG-FGA	FG%	3FG-3FGA	3FG%	LAST 5		Off.-Def.-Tot.-Avg.	PF	A	TO	Blk.	Stl.	Pts.
							FT-FTA	FT%							
at Stanford		17	2-3	.667	0-0	---	2-2	1.000	0-3-3	0	3	0	0	0	6
vs. EWU		18	1-3	.333	0-1	.000	2-2	1.000	0-0-0	0	1	1	0	2	4
vs. Montana		11	0-0	---	0-0	---	3-4	.750	0-0-0	1	1	1	0	0	3
at WSU		6	0-0	---	0-0	---	0-1	.000	0-0-0	0	1	0	0	0	0
vs. NAU		2	0-0	---	0-0	---	0-0	---	0-0-0	0	0	0	0	0	0
<b>TOTAL</b>		<b>54-10.8</b>	<b>3-6</b>	<b>.500</b>	<b>0-1</b>	<b>.000</b>	<b>7-9</b>	<b>.778</b>	<b>0-3-3-0.6</b>	<b>1</b>	<b>6</b>	<b>2</b>	<b>0</b>	<b>2</b>	<b>13-2.6</b>

### CAREER STATISTICS

Year	GP-GS	Min-Avg	Total FG-FGA	Pct	3-Point FG-FGA	Pct	F-Throw FT-FTA	Pct	Rebounds Off-Def-Tot	Avg	PF	FO	Ast	TO	Blk	Stl	Pts	Avg
2016-17	14-0	154-11.0	5-17	.294	0-7	.000	14-20	.700	0-14-14	1.0	6	0	18	11	0	3	24	1.7



**#4 Brayon Blake**

Junior • Forward  
6-7 • 220  
Seattle, Wash.  
Garfield H.S.

### Miscellaneous

Double-Figure Pts.	12 (7-5)
20+ points	1 (0-1)
Led team in pts.	4 (2-2)
5+ rebounds	14 (7-7)
10+ rebounds	3 (2-1)
Led team in rebs.	10 (5-5)
5+ assists	0 (0-0)
10+ assists	0 (0-0)
Fouled out	1 (1-0)

- Netted a career-high 20 points at Montana State
- Also grabbed six rebounds
- Made four 3-pointers, a new career-best

### SEASON HIGHS

**Points**  
20, at MSU (1/26/17)  
**Rebounds**  
12 (2x), last vs. EWU (12/30/16)  
**Assists**  
3, vs. UCD (12/3/16)  
**Blocks**  
1 (6x), last at MSU (1/26/17)  
**Steals**  
3, vs. EWU (12/30/16)  
**Field Goals**  
8 (2x), last vs. UCD (12/3/16)  
**Field Goal Attempts**  
13, at SDSU (12/10/16)  
**3-point Field Goals**  
4, at MSU (1/26/17)  
**3-point Field Goal Attempts**  
6 (2x), last at MSU (1/26/17)  
**Free Throws**  
8, vs. NNU (12/17/16)  
**Free Throw Attempts**  
10, vs. Corban (11/12/16)  
**Minutes**  
32, at SHSU (11/25/16)

Opponent	*	Min.	FG-FGA	FG%	3FG-3FGA	3FG%	LAST 5		Off.-Def.-Tot.-Avg.	PF	A	TO	Blk.	Stl.	Pts.
							FT-FTA	FT%							
at WSU		23	5-9	.556	0-1	.000	1-3	.333	2-5-7	3	1	1	1	1	11
at ISU		17	1-4	.250	0-0	---	2-2	1.000	0-3-3	5	1	0	0	1	4
vs. SUU		19	5-7	.714	0-1	.000	4-4	1.000	4-4-8	1	1	2	0	0	14
vs. NAU		21	6-11	.545	2-2	1.000	4-4	1.000	2-5-7	2	0	0	0	0	18
at MSU		23	6-10	.600	4-6	.667	4-6	.667	3-3-6	4	1	3	1	0	20
<b>TOTAL</b>		<b>103-20.6</b>	<b>23-41</b>	<b>.561</b>	<b>6-8</b>	<b>.750</b>	<b>15-19</b>	<b>.789</b>	<b>11-20-31-6.2</b>	<b>15</b>	<b>4</b>	<b>6</b>	<b>2</b>	<b>2</b>	<b>67-13.4</b>

### CAREER STATISTICS

Year	GP-GS	Min-Avg	Total FG-FGA	Pct	3-Point FG-FGA	Pct	F-Throw FT-FTA	Pct	Rebounds Off-Def-Tot	Avg	PF	FO	Ast	TO	Blk	Stl	Pts	Avg
2016-17	18-9	405-22.5	73-162	.451	11-36	.306	43-63	.683	37-86-123	6.8	47	1	14	24	6	12	200	11.1



# 2016-17 IDAHO MEN'S BASKETBALL



**#5 Jake Straughan**

Sophomore • G  
6-1 • 175  
Colton, Wash.  
Colton HS

## Miscellaneous

Double-Figure Pts.	2 (2-0)
20+ points	2 (2-0)
Led team in pts.	2 (2-0)
5+ rebounds	0 (0-0)
10+ rebounds	0 (0-0)
Led team in rebs.	0 (0-0)
5+ assists	0 (0-0)
10+ assists	0 (0-0)
Fouled out	0 (0-0)

- Saw four minutes of action against NAU
- Saw limited action at Montana State

## SEASON HIGHS

**Points**  
9, at WSU (1/12/17)  
**Rebounds**  
2, vs. SUU (1/19/17)  
**Assists**  
1, at SDSU (12/10/16)  
**Blocks**  
-  
**Steals**  
1 (3x), last at WSU (1/12/17)  
**Field Goals**  
3, at WSU (1/12/17)  
**Field Goal Attempts**  
5, at WSU (1/12/17)  
**3-point Field Goals**  
3, at WSU (1/12/17)  
**3-point Field Goal Attempts**  
5, at WSU (1/12/17)  
**Free Throws**  
-  
**Free Throw Attempts**  
-  
**Minutes**  
15, at WSU (1/12/17)

## CAREER HIGHS

**Points**  
24, vs. New Hope (12/18/15)  
**Rebounds**  
2, vs. SUU (1/19/17)  
**Assists**  
4, vs. New Hope (12/18/15)  
**Blocks**  
-  
**Steals**  
1 (4x), last at WSU (1/12/17)  
**Field Goals**  
8, vs. New Hope (12/18/15)  
**Field Goal Attempts**  
14, vs. New Hope (12/18/15)  
**3-point Field Goals**  
8, vs. New Hope (12/18/15)  
**3-point Field Goal Attempts**  
14, vs. New Hope (12/18/15)  
**Free Throws**  
5, vs. UNCO (2/11/16)  
**Free Throw Attempts**  
6, vs. UNCO (2/11/16)  
**Minutes**  
20, vs. New Hope (12/18/15)

## LAST 5

Opponent	*	Min.	FG-FGA	FG%	3FG-3FGA	3FG%	FT-FTA	FT%	Off.-Def.-Tot.-Avg.	PF	A	TO	Blk.	Stl.	Pts.
at WSU		15	3-5	.600	3-5	.600	0-0	---	0-1-1	0	0	0	0	1	9
at ISU		6	2-4	.500	2-4	.500	0-0	---	0-0-0	2	0	0	0	0	6
vs. SUU		6	0-1	.000	0-1	.000	0-0	---	0-2-2	0	0	0	0	0	0
vs. NAU		4	0-2	.000	0-2	.000	0-0	---	0-0-0	0	0	0	0	0	0
at MSU		2	0-0	---	0-0	---	0-0	---	0-0-0	0	0	0	0	0	0
<b>TOTAL</b>		<b>33-6.6</b>	<b>5-12</b>	<b>.417</b>	<b>5-12</b>	<b>.417</b>	<b>0-0</b>	<b>---</b>	<b>0-3-3-0.6</b>	<b>2</b>	<b>0</b>	<b>0</b>	<b>0</b>	<b>1</b>	<b>15-3.0</b>

## CAREER STATISTICS

Year	GP-GS	Min-Avg	Total FG-FGA	Pct	3-Point FG-FGA	Pct	F-Throw FT-FTA	Pct	Rebounds Off-Def-Tot	Avg	PF	FO	Ast	TO	Blk	Stl	Pts	Avg
2015-16	17-0	100-5.9	17-34	.500	16-33	.485	5-7	.714	0-5-5	0.3	10	0	6	3	0	1	55	3.2
2016-17	8-0	46-5.8	7-15	.467	7-15	.467	0-0	---	0-5-5	0.6	3	0	2	1	0	3	21	2.6
<b>TOTAL</b>	<b>25-0</b>	<b>146-5.8</b>	<b>24-49</b>	<b>.490</b>	<b>23-48</b>	<b>.479</b>	<b>5-7</b>	<b>.714</b>	<b>0-10-10</b>	<b>0.4</b>	<b>13</b>	<b>0</b>	<b>8</b>	<b>4</b>	<b>0</b>	<b>4</b>	<b>76</b>	<b>3.0</b>



**#11 Victor Sanders**

Junior • G  
6-5 • 195  
Portland, Ore.  
Jefferson HS

## Miscellaneous

Double-Fig. Pts.	42 (23-19)
20+ points	14 (10-4)
Led team in pts.	29 (15-14)
5+ rebounds	12 (10-2)
10+ rebounds	0 (0-0)
Led team in rebs.	4 (3-1)
5+ assists	4 (2-2)
10+ assists	0 (0-0)
Fouled out	6 (1-5)

\*\*\* Preseason All-Big Sky \*\*\*

- Scored 18 points at Montana State before fouling out late in regulation
- Tied a season-high with six rebounds. Also had six in the first meeting with Montana State

## SEASON HIGHS

**Points**  
33, vs. SUU (1/19/17)  
**Rebounds**  
6 (2x), last at MSU (1/26/17)  
**Assists**  
9, at SDSU (12/10/16)  
**Blocks**  
1 (5x), last at MSU (1/26/17)  
**Steals**  
7, at WSU (12/7/16)  
**Field Goals**  
10, vs. EWU (12/30/16)  
**Field Goal Attempts**  
22, vs. EWU (12/30/16)  
**3-point Field Goals**  
4 (3x), last at MSU (1/26/17)  
**3-point Field Goal Attempts**  
11 (2x), last at Stanford (12/22/16)  
**Free Throws**  
15, vs. MSU (1/7/17)  
**Free Throw Attempts**  
17, vs. MSU (1/7/17)  
**Minutes**  
39, at ISU (1/14/17)

## CAREER HIGHS

**Points**  
33 (2x), last vs. SUU (1/19/17)  
**Rebounds**  
8 (2x), last vs. Weber State (3/3/16)  
**Assists**  
9, at SDSU (12/10/16)  
**Blocks**  
3 (2x), last at SAC (2/20/16)  
**Steals**  
7, at WSU (12/7/16)  
**Field Goals**  
10, vs. EWU (12/30/16)  
**Field Goal Attempts**  
22, vs. EWU (12/30/16)  
**3-point Field Goals**  
6, vs. Linfield (11/21/15)  
**3-point Field Goal Attempts**  
12 (2x), last at USC (12/7/15)  
**Free Throws**  
15, vs. MSU (1/7/17)  
**Free Throw Attempts**  
17, vs. MSU (1/7/17)  
**Minutes**  
39, at ISU (1/14/17)

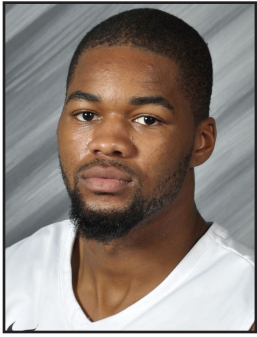
## LAST 5

Opponent	*	Min.	FG-FGA	FG%	3FG-3FGA	3FG%	FT-FTA	FT%	Off.-Def.-Tot.-Avg.	PF	A	TO	Blk.	Stl.	Pts.
at WSU	*	29	6-11	.545	1-3	.333	0-1	.000	2-1-3	1	1	2	0	1	13
at ISU	*	39	3-11	.273	2-5	.400	14-15	.933	1-1-2	3	4	4	0	1	22
vs. SUU	*	36	9-19	.474	4-9	.444	11-12	.917	0-5-5	1	1	2	0	1	33
vs. NAU	*	33	7-14	.500	3-5	.600	0-0	---	0-3-3	4	3	3	0	0	17
at MSU	*	34	5-10	.500	4-6	.667	4-7	.571	1-5-6	5	0	4	1	2	18
<b>TOTAL</b>		<b>171-34.2</b>	<b>30-65</b>	<b>.462</b>	<b>14-28</b>	<b>.500</b>	<b>29-35</b>	<b>.829</b>	<b>4-15-19-3.8</b>	<b>14</b>	<b>9</b>	<b>15</b>	<b>1</b>	<b>5</b>	<b>103-20.6</b>

## CAREER STATISTICS

Year	GP-GS	Min-Avg	Total FG-FGA	Pct	3-Point FG-FGA	Pct	F-Throw FT-FTA	Pct	Rebounds Off-Def-Tot	Avg	PF	FO	Ast	TO	Blk	Stl	Pts	Avg
2014-15	30-1	379-12.6	36-91	.396	21-54	.389	22-35	.629	11-39-50	1.7	42	0	28	29	3	10	115	3.8
2015-16	27-25	772-28.6	122-295	.414	69-166	.416	117-138	.848	19-79-98	3.6	78	2	51	54	16	33	430	15.9
2016-17	19-19	624-32.8	114-252	.452	52-124	.419	92-117	.786	7-55-62	3.3	57	4	62	53	5	34	372	19.6
<b>Total</b>	<b>76-45</b>	<b>1775-23.4</b>	<b>272-638</b>	<b>.426</b>	<b>142-344</b>	<b>.413</b>	<b>231-290</b>	<b>.797</b>	<b>37-173-210</b>	<b>2.8</b>	<b>177</b>	<b>6</b>	<b>141</b>	<b>136</b>	<b>24</b>	<b>77</b>	<b>917</b>	<b>12.1</b>

# 2016-17 IDAHO MEN'S BASKETBALL



**#13 Pat Ingram**

Senior • PG  
6-2 • 201  
Indianapolis, Ind.  
Trinity Valley JC

## Miscellaneous

Double-Figure Pts.	3 (2-1)
20+ points	1 (1-0)
Led team in pts.	0 (0-0)
5+ rebounds	6 (3-3)
10+ rebounds	0 (0-0)
Led team in rebs.	2 (0-2)
5+ assists	1 (1-0)
10+ assists	0 (0-0)
Fouled out	1 (0-1)

- Gave Idaho a tremendous spark off the bench at Montana State, scoring eight points in 19 minutes of action before fouling out
- One of Idaho's top defenders

## SEASON HIGHS

**Points**  
23, vs. SDSU (11/21/16)  
**Rebounds**  
9, vs. Montana (1/5/17)  
**Assists**  
3 (2x), last vs. NAU (1/21/17)  
**Blocks**  
2, vs. SDSU (11/21/16)  
**Steals**  
2 (3x), last at MSU (1/26/17)  
**Field Goals**  
8, vs. SDSU (11/21/16)  
**Field Goal Attempts**  
9 (2x), last at MSU (1/26/17)  
**3-point Field Goals**  
5, vs. SDSU (11/21/16)  
**3-point Field Goal Attempts**  
6, vs. SDSU (11/21/16)  
**Free Throws**  
2 (4x), last vs. NAU (1/21/17)  
**Free Throw Attempts**  
5, vs. SDSU (11/21/16)  
**Minutes**  
28, vs. SDSU (11/21/16)

## CAREER HIGHS

**Points**  
23, vs. SDSU (11/21/16)  
**Rebounds**  
9, vs. Montana (1/5/17)  
**Assists**  
9, vs. New Hope (12/18/15)  
**Blocks**  
2, vs. SDSU (11/21/16)  
**Steals**  
3, vs. New Hope (12/18/15)  
**Field Goals**  
8, vs. SDSU (11/21/16)  
**Field Goal Attempts**  
9 (2x), last at MSU (1/26/17)  
**3-point Field Goals**  
5, vs. SDSU (11/21/16)  
**3-point Field Goal Attempts**  
6, vs. SDSU (11/21/16)  
**Free Throws**  
5 (2x), last vs. SUU (1/16/16)  
**Free Throw Attempts**  
7, vs. SUU (1/16/16)  
**Minutes**  
28, vs. SDSU (11/21/16)

Opponent	*	Min.	FG-FGA	FG%	3FG-3FGA	3FG%	FT-FTA	FT%	Off-Def-Tot-Avg.	PF	A	TO	Blk.	Stl.	Pts.
at WSU		15	2-4	.500	0-0	---	0-0	---	1-0-1	2	1	2	0	1	4
at ISU		18	1-3	.333	0-0	---	0-0	---	2-2-4	1	1	0	0	1	2
vs. SUU		11	0-0	---	0-0	---	1-2	.500	1-1-2	3	1	0	0	0	1
vs. NAU		18	3-5	.600	1-3	.333	2-2	1.000	1-2-3	2	3	1	1	1	9
at MSU		19	3-9	.333	1-3	.333	1-3	.333	1-1-2	5	1	2	0	2	8
<b>TOTAL</b>		<b>81-16.2</b>	<b>9-21</b>	<b>.429</b>	<b>2-6</b>	<b>.333</b>	<b>4-7</b>	<b>.571</b>	<b>6-6-12-2.4</b>	<b>13</b>	<b>7</b>	<b>5</b>	<b>1</b>	<b>5</b>	<b>24-4.8</b>

## LAST 5

## CAREER STATISTICS

Year	GP-GS	Min-Avg	Total FG-FGA	Pct	3-Point FG-FGA	Pct	F-Throw FT-FTA	Pct	Rebounds Off-Def-Tot	Avg	PF	FO	Ast	TO	Blk	Stl	Pts	Avg
2012-13*	19-0	116-6.1	6-14	.429	0-2	.000	5-12	.417	2-10-12	0.6	10	0	9	9	0	3	17	0.9
2015-16	25-0	325-13.0	30-69	.435	0-1	.000	28-43	.651	5-32-37	1.5	40	0	36	42	3	12	88	3.5
2016-17	19-0	248-13.1	30-61	.492	8-19	.421	11-24	.458	16-30-46	2.4	33	1	17	18	3	14	79	4.2
<b>TOTAL</b>	<b>63-0</b>	<b>689-10.9</b>	<b>66-144</b>	<b>.458</b>	<b>8-22</b>	<b>.364</b>	<b>44-79</b>	<b>.557</b>	<b>23-72-95</b>	<b>1.5</b>	<b>83</b>	<b>1</b>	<b>62</b>	<b>69</b>	<b>6</b>	<b>29</b>	<b>184</b>	<b>2.9</b>



**#14 Chad Sherwood**

Junior • G  
6-2 • 180  
Albany, Ore.  
West Albany HS

## Miscellaneous

Double-Figure Pts.	15 (12-3)
20+ points	1 (0-1)
Led team in pts.	3 (2-1)
5+ rebounds	2 (2-0)
10+ rebounds	0 (0-0)
Led team in rebs.	0 (0-0)
5+ assists	3 (1-2)
10+ assists	0 (0-0)
Fouled out	3 (1-2)

- Played a season-high 37 minutes at Montana State

## SEASON HIGHS

**Points**  
17, vs. MSU (1/7/17)  
**Rebounds**  
6, vs. SDSU (11/21/16)  
**Assists**  
5, at Stanford (12/22/16)  
**Blocks**  
1 (4x), last vs. NAU (1/21/17)  
**Steals**  
1 (6x), last at MSU (1/26/17)  
**Field Goals**  
4 (2x), last at ISU (1/14/17)  
**Field Goal Attempts**  
8 (2x), last at ISU (1/14/17)  
**3-point Field Goals**  
4, vs. SDSU (11/21/16)  
**3-point Field Goal Attempts**  
7 (2x), last vs. SUU (1/19/17)  
**Free Throws**  
6, vs. MSU (1/7/17)  
**Free Throw Attempts**  
6, vs. MSU (1/7/17)  
**Minutes**  
37, at MSU (1/26/17)

## CAREER HIGHS

**Points**  
22, vs. SAC (1/28/16)  
**Rebounds**  
6, vs. SDSU (11/21/16)  
**Assists**  
6 (2x), last vs. ISU (3/5/16)  
**Blocks**  
1 (6x), last vs. NAU (1/21/17)  
**Steals**  
2, vs. ISU (3/5/16)  
**Field Goals**  
8, vs. SAC (1/28/16)  
**Field Goal Attempts**  
13, vs. SAC (1/28/16)  
**3-point Field Goals**  
6 (3x), last vs. SAC (1/28/16)  
**3-point Field Goal Attempts**  
11, vs. New Hope (12/18/15)  
**Free Throws**  
6, vs. MSU (1/7/17)  
**Free Throw Attempts**  
6, vs. MSU (1/7/17)  
**Minutes**  
39, vs. SAC (1/28/16)

Opponent	*	Min.	FG-FGA	FG%	3FG-3FGA	3FG%	FT-FTA	FT%	Off-Def-Tot-Avg.	PF	A	TO	Blk.	Stl.	Pts.
at WSU	*	15	1-5	.200	1-3	.333	0-0	---	1-1-2	0	1	2	0	0	3
at ISU	*	30	4-8	.500	3-7	.429	2-2	1.000	0-3-3	1	0	1	0	1	13
vs. SUU	*	33	0-7	.000	0-7	.000	2-2	1.000	0-2-2	2	3	1	1	1	2
vs. NAU	*	19	1-5	.200	1-4	.250	0-0	---	0-1-1	3	1	2	1	1	3
at MSU	*	37	1-6	.167	0-4	.000	0-0	---	1-3-4	4	1	2	0	1	2
<b>TOTAL</b>		<b>134-26.8</b>	<b>7-31</b>	<b>.226</b>	<b>5-25</b>	<b>.200</b>	<b>4-4</b>	<b>1.000</b>	<b>2-10-12-2.4</b>	<b>10</b>	<b>6</b>	<b>8</b>	<b>2</b>	<b>4</b>	<b>23-4.6</b>

## CAREER STATISTICS

Year	GP-GS	Min-Avg	Total FG-FGA	Pct	3-Point FG-FGA	Pct	F-Throw FT-FTA	Pct	Rebounds Off-Def-Tot	Avg	PF	FO	Ast	TO	Blk	Stl	Pts	Avg
2014-15	6-0	49-8.2	5-14	.357	5-11	.455	1-2	.500	0-4-4	0.7	9	1	2	2	1	1	16	2.7
2015-16	34-13	763-22.4	83-207	.401	68-161	.422	24-29	.828	10-44-54	1.6	62	1	59	48	1	14	258	7.6
2016-17	19-11	406-21.4	28-90	.311	21-70	.300	25-29	.862	8-28-36	1.9	39	1	21	21	4	6	102	5.4
<b>TOTAL</b>	<b>59-24</b>	<b>1218-20.6</b>	<b>116-311</b>	<b>.373</b>	<b>94-242</b>	<b>.388</b>	<b>50-60</b>	<b>.833</b>	<b>18-76-94</b>	<b>1.6</b>	<b>110</b>	<b>3</b>	<b>82</b>	<b>71</b>	<b>6</b>	<b>21</b>	<b>376</b>	<b>6.4</b>

# 2016-17 IDAHO MEN'S BASKETBALL



## #21 Arkadiy Mkrtchyan

Junior • F  
6-7 • 235  
Portland, Ore.  
Columbia Christian HS

### Miscellaneous

Double-Figure Pts. 11 (6-5)  
20+ points 0 (0-0)  
Led team in pts. 1 (0-1)  
5+ rebounds 20 (10-10)  
10+ rebounds 0 (0-0)  
Led team in rebs. 3 (2-1)  
5+ assists 0 (0-0)  
10+ assists 0 (0-0)  
Fouled out 5 (2-3)

- Finished with nine points in just 14 minutes of action at Montana State

### SEASON HIGHS

**Points**  
12, vs. Corban (11/12/16)  
**Rebounds**  
7 (2x), last vs. SJSU (11/29/16)  
**Assists**  
3, at SHSU (11/25/16)  
**Blocks**  
1 (3x), last vs. SUU (1/19/17)  
**Steals**  
1 (5x), last vs. NAU (1/21/17)  
**Field Goals**  
6, vs. Corban (11/12/16)  
**Field Goal Attempts**  
12 (2x), last vs. SJSU (11/29/16)  
**3-point Field Goals**  
1 (2x), last vs. SUU (1/19/17)  
**3-point Field Goal Attempts**  
1 (4x), last vs. SUU (1/19/17)  
**Free Throws**  
3 (4x), last at MSU (1/26/17)  
**Free Throw Attempts**  
6 (3x), last at MSU (1/26/17)  
**Minutes**  
20 (2x), last vs. SJSU (11/29/16)

### CAREER HIGHS

**Points**  
18, vs. E. Oregon (11/14/15)  
**Rebounds**  
10, at Sac. State (1/15/15)  
**Assists**  
3, at SHSU (11/25/16)  
**Blocks**  
1 (7x), last vs. SUU (1/19/17)  
**Steals**  
3 (3x), last at Seattle U. (3/16/16)  
**Field Goals**  
7, vs. E. Oregon (11/14/15)  
**Field Goal Attempts**  
13, vs. E. Oregon (11/14/15)  
**3-point Field Goals**  
1 (4x), last vs. SUU (1/19/17)  
**3-point Field Goal Attempts**  
2, at UC Davis (12/22/15)  
**Free Throws**  
10, vs. Samford (11/25/15)  
**Free Throw Attempts**  
15, vs. Samford (11/25/15)  
**Minutes**  
32, vs. S. Dakota St. (11/17/14)

### LAST 5

Opponent	*	Min.	FG-FGA	FG%	3FG-3FGA	3FG%	FT-FTA	FT%	Off-Def-Tot.-Avg.	PF	A	TO	Blk.	Stl.	Pts.
at WSU	*	14	3-3	1.000	0-0	---	1-2	.500	1-1-2	5	0	0	0	0	7
at ISU	*	16	4-4	1.000	0-0	---	0-0	---	2-3-5	2	0	1	0	0	8
vs. SUU	*	19	3-7	.429	1-1	1.000	0-1	.000	2-2-4	3	1	1	1	1	7
vs. NAU	*	22	3-8	.375	0-1	.000	0-0	---	3-3-6	1	2	0	0	1	6
at MSU	*	14	3-3	1.000	0-0	---	3-6	.500	1-2-3	4	2	2	0	0	9
<b>TOTAL</b>		<b>85-17.0</b>	<b>16-25</b>	<b>.640</b>	<b>1-2</b>	<b>.500</b>	<b>4-9</b>	<b>.444</b>	<b>9-11-20-4.0</b>	<b>15</b>	<b>5</b>	<b>4</b>	<b>1</b>	<b>2</b>	<b>37-7.4</b>

### CAREER STATISTICS

Year	GP-GS	Min-Avg	Total FG-FGA	Pct	3-Point FG-FGA	Pct	F-Throw FT-FTA	Pct	Rebounds Off-Def-Tot	Avg	PF	FO	Ast	TO	Blk	Stl	Pts	Avg
2014-15	30-5	633-21.1	86-150	.573	2-7	.286	90-131	.687	51-94-145	4.8	82	2	16	38	2	13	264	8.8
2015-16	31-22	576-18.6	83-172	.483	0-3	.000	61-103	.592	37-80-117	3.8	80	2	22	46	2	19	227	7.3
2016-17	19-8	297-15.6	42-88	.477	2-5	.400	21-40	.525	24-45-69	3.6	46	1	12	20	3	5	107	5.6
<b>TOTAL</b>	<b>80-35</b>	<b>1506-18.8</b>	<b>211-410</b>	<b>.515</b>	<b>4-15</b>	<b>.267</b>	<b>172-274</b>	<b>.628</b>	<b>112-219-331</b>	<b>4.1</b>	<b>208</b>	<b>5</b>	<b>50</b>	<b>104</b>	<b>7</b>	<b>37</b>	<b>598</b>	<b>7.5</b>



## #23 Nate Sherwood

Sophomore • PF  
6-8 • 215  
Albany, Ore.  
West Albany HS

### Miscellaneous

Double-Figure Pts. 12 (8-4)  
20+ points 0 (0-0)  
Led team in pts. 2 (2-0)  
5+ rebounds 22 (12-10)  
10+ rebounds 1 (0-1)  
Led team in rebs. 8 (5-3)  
5+ assists 1 (1-0)  
10+ assists 0 (0-0)  
Fouled out 8 (2-6)

- Tied his career-high with 19 points at Montana State
- Also grabbed seven rebounds before fouling out in the second overtime

### SEASON HIGHS

**Points**  
19, at MSU (1/26/17)  
**Rebounds**  
9 (2x), last vs. NAU (1/21/17)  
**Assists**  
4, at LR (11/18/16)  
**Blocks**  
2 (3x), last at MSU (1/26/17)  
**Steals**  
1 (6x), last at WSU (1/12/17)  
**Field Goals**  
6 (2x), last at MSU (1/26/17)  
**Field Goal Attempts**  
8 (3x), last at MSU (1/26/17)  
**3-point Field Goals**  
2, at MSU (1/26/17)  
**3-point Field Goal Attempts**  
3, at MSU (1/26/17)  
**Free Throws**  
5 (2x), last at MSU (1/26/17)  
**Free Throw Attempts**  
6 (2x), last at MSU (1/26/17)  
**Minutes**  
38, at MSU (1/26/17)

### CAREER HIGHS

**Points**  
19 (2x), last at MSU (1/26/17)  
**Rebounds**  
10, at NAU (2/6/16)  
**Assists**  
5, vs. Linfield (11/21/15)  
**Blocks**  
3, vs. ISU (3/5/16)  
**Steals**  
2, at PSU (2/18/16)  
**Field Goals**  
6 (5x), last at MSU (1/26/17)  
**Field Goal Attempts**  
13 (2x), last at NAU (2/6/16)  
**3-point Field Goals**  
2 (2x), last at MSU (1/26/17)  
**3-point Field Goal Attempts**  
3, at MSU (1/26/17)  
**Free Throws**  
6, at EWU (1/9/16)  
**Free Throw Attempts**  
7, at EWU (1/9/16)  
**Minutes**  
38, at MSU (1/26/17)

### LAST 5

Opponent	*	Min.	FG-FGA	FG%	3FG-3FGA	3FG%	FT-FTA	FT%	Off-Def-Tot.-Avg.	PF	A	TO	Blk.	Stl.	Pts.
at WSU	*	18	0-3	.000	0-0	---	0-0	---	1-2-3	1	0	3	0	1	0
at ISU	*	29	3-5	.600	0-0	---	1-3	.333	0-5-5	3	2	2	1	0	7
vs. SUU	*	31	4-8	.500	0-0	---	0-0	---	1-7-8	3	0	4	0	0	8
vs. NAU	*	28	1-5	.200	0-2	.000	0-0	---	3-6-9	4	3	1	0	0	2
at MSU	*	38	6-8	.750	2-3	.667	5-6	.833	2-5-7	5	2	1	2	0	19
<b>TOTAL</b>		<b>144-28.8</b>	<b>14-29</b>	<b>.483</b>	<b>2-5</b>	<b>.400</b>	<b>6-9</b>	<b>.667</b>	<b>7-25-32-6.4</b>	<b>16</b>	<b>7</b>	<b>11</b>	<b>3</b>	<b>1</b>	<b>36-7.2</b>

### CAREER STATISTICS

Year	GP-GS	Min-Avg	Total FG-FGA	Pct	3-Point FG-FGA	Pct	F-Throw FT-FTA	Pct	Rebounds Off-Def-Tot	Avg	PF	FO	Ast	TO	Blk	Stl	Pts	Avg
2014-15	6-0	43-7.2	1-5	.200	0-1	.000	0-2	.000	3-7-10	1.7	10	0	0	5	1	1	2	0.3
2015-16	34-18	755-22.2	87-176	.494	8-27	.296	39-52	.750	52-76-128	3.8	87	3	20	34	8	8	221	6.5
2016-17	19-18	452-23.8	41-97	.423	6-18	.333	27-42	.643	31-62-93	4.9	65	5	23	24	8	6	115	6.1
<b>TOTAL</b>	<b>59-36</b>	<b>1250-21.2</b>	<b>129-278</b>	<b>.464</b>	<b>14-46</b>	<b>.304</b>	<b>66-96</b>	<b>.688</b>	<b>86-145-231</b>	<b>3.9</b>	<b>162</b>	<b>8</b>	<b>43</b>	<b>63</b>	<b>17</b>	<b>15</b>	<b>338</b>	<b>5.7</b>

# 2016-17 IDAHO MEN'S BASKETBALL



**#24 Tyler Brimhall**

Freshman • Guard  
6-4 • 195  
Logan, Utah  
Logan HS

## Miscellaneous

Double-Figure Pts.	1 (0-1)
20+ points	0 (0-0)
Led team in pts.	0 (0-0)
5+ rebounds	0 (0-0)
10+ rebounds	0 (0-0)
Led team in rebs.	0 (0-0)
5+ assists	0 (0-0)
10+ assists	0 (0-0)
Fouled out	0 (0-0)

• Playing limited minutes of late

## SEASON HIGHS

**Points**  
13, at Stanford (12/22/16)  
**Rebounds**  
4 (2x), last vs. MSU (1/7/17)  
**Assists**  
1 (5x), last at ISU (1/14/17)  
**Blocks**  
-  
**Steals**  
3, vs. MSU (1/7/17)  
**Field Goals**  
4, at Stanford (12/22/16)  
**Field Goal Attempts**  
7, at Stanford (12/22/16)  
**3-point Field Goals**  
3, at Stanford (12/22/16)  
**3-point Field Goal Attempts**  
6, vs. NNU (12/17/16)  
**Free Throws**  
2 (3x), last vs. NAU (1/21/17)  
**Free Throw Attempts**  
2 (3x), last vs. NAU (1/21/17)  
**Minutes**  
17 (2x), last at Stanford (12/22/16)

Opponent	*	LAST 5								Off.-Def.-Tot.-Avg.	PF	A	TO	Blk.	Stl.	Pts.
		Min.	FG-FGA	FG%	3FG-3FGA	3FG%	FT-FTA	FT%								
vs. MSU		16	0-5	.000	0-3	.000	0-0	---	2-2-4	0	0	0	0	3	0	
at WSU		10	1-3	.333	0-1	.000	0-0	---	0-0-0	2	0	1	0	0	2	
at ISU		4	0-2	.000	0-2	.000	0-0	---	0-0-0	0	1	0	0	0	0	
vs. NAU		1	0-0	---	0-0	---	2-2	1.000	0-0-0	0	0	0	0	0	2	
at MSU		0+	0-0	---	0-0	---	0-0	---	0-0-0	0	0	0	0	0	0	
TOTAL		31-6.2	1-10	.100	0-6	.000	2-2	1.000	2-2-4-0.8	2	1	1	0	3	4-0.8	

## CAREER STATISTICS

Year	GP-GS	Min-Avg	Total		3-Point	F-Throw	Rebounds		Avg	PF	FO	Ast	TO	Blk	Stl	Pts	Avg
			FG-FGA	Pct	FG-FGA	Pct	FT-FTA	Pct	Off-Def-Tot								
2016-17	14-0	123-8.8	11-42	.262	9-32	.281	6-8	.750	9-11-20	1.4	12	0	5	7	0	37	2.6



**#25 Trevon Allen**

Freshman • Guard  
6-2 • 180  
Lapwai, Idaho  
Clarkston H.S.

## Miscellaneous

Double-Figure Pts.	2 (0-2)
20+ points	0 (0-0)
Led team in pts.	0 (0-0)
5+ rebounds	2 (1-1)
10+ rebounds	0 (0-0)
Led team in rebs.	1 (1-0)
5+ assists	0 (0-0)
10+ assists	0 (0-0)
Fouled out	0 (0-0)

• Struggling to find his shot of late, scored just three points in 27 minutes of action at Montana State

## SEASON HIGHS

**Points**  
11, at SDSU (12/10/16)  
**Rebounds**  
6, vs. UCD (12/3/16)  
**Assists**  
4 (2x), last at SDSU (12/10/16)  
**Blocks**  
1, vs. NNU (12/17/16)  
**Steals**  
1 (4x), last at MSU (1/26/17)  
**Field Goals**  
3 (4x), last at Stanford (12/22/16)  
**Field Goal Attempts**  
9, at SDSU (12/10/16)  
**3-point Field Goals**  
3, vs. UCD (12/3/16)  
**3-point Field Goal Attempts**  
6, at SDSU (12/10/16)  
**Free Throws**  
4 (2x), last at SHSU (11/25/16)  
**Free Throw Attempts**  
4 (2x), last at SHSU (11/25/16)  
**Minutes**  
32, at SDSU (12/10/16)

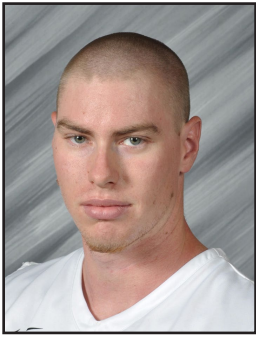
Opponent	*	LAST 5								Off.-Def.-Tot.-Avg.	PF	A	TO	Blk.	Stl.	Pts.
		Min.	FG-FGA	FG%	3FG-3FGA	3FG%	FT-FTA	FT%								
at WSU		5	0-0	---	0-0	---	0-0	---	0-3-3	0	2	1	0	0	0	
at ISU		4	1-3	.333	1-3	.333	2-2	1,000	0-0-0	0	1	0	0	0	5	
vs. SUU		12	1-3	.333	0-0	---	2-2	1,000	0-0-0	1	1	1	0	1	4	
vs. NAU		23	1-3	.333	1-2	.500	1-2	.500	0-0-0	1	0	4	0	0	4	
at MSU		27	1-7	.143	0-2	.000	1-2	.500	0-3-3	1	3	2	0	1	3	
TOTAL		67-13.4	4-16	.250	2-7	.286	6-8	.750	0-6-6-1.2	3	7	8	0	2	16-3.2	

## CAREER STATISTICS

Year	GP-GS	Min-Avg	Total		3-Point	F-Throw	Rebounds		Avg	PF	FO	Ast	TO	Blk	Stl	Pts	Avg
			FG-FGA	Pct	FG-FGA	Pct	FT-FTA	Pct	Off-Def-Tot								
2016-17	19-10	352-18.5	23-77	.299	14-47	.298	25-27	.926	4-28-32	1.7	19	0	28	31	1	5	85



# 2016-17 IDAHO MEN'S BASKETBALL



**#41 Ty Egbert**

Senior • F  
6-9 • 225  
Coulee Dam, Wash.  
Lake Roosevelt HS

## Miscellaneous

Double-Figure Pts. 12 (7-5)  
20+ points 0 (0-0)  
Led team in pts. 3 (2-1)  
5+ rebounds 14 (9-5)  
10+ rebounds 0 (0-0)  
Led team in rebs. 6 (2-4)  
5+ assists 0 (0-0)  
10+ assists 0 (0-0)  
Fouled out 0 (0-0)

- Played well at Montana State, finishing with 11 points and a season-high eight boards
- Did the majority of his work in the first half, scoring six points and grabbing eight rebounds in the opening frame

## SEASON HIGHS

**Points**  
13, vs. UCD (12/3/16)  
**Rebounds**  
8, at MSU (1/26/17)  
**Assists**  
1 (8x), last at MSU (1/26/17)  
**Blocks**  
2, vs. MSU (1/7/17)  
**Steals**  
1, vs. EWU (12/30/16)  
**Field Goals**  
5 (2x), last vs. UCD (12/3/16)  
**Field Goal Attempts**  
8, vs. SDSU (11/21/16)  
**3-point Field Goals**  
--  
**3-point Field Goal Attempts**  
--  
**Free Throws**  
3 (3x), last at MSU (1/26/17)  
**Free Throw Attempts**  
5, at MSU (1/26/17)  
**Minutes**  
27, vs. MSU (1/7/17)

## CAREER HIGHS

**Points**  
18, at Montana State (1/23/16)  
**Rebounds**  
9 (3x), last vs. SAC (1/28/16)  
**Assists**  
2, vs. NNU (11/16/13)  
**Blocks**  
5, at SJSU (11/14/15)  
**Steals**  
2, vs. SAC (1/28/16)  
**Field Goals**  
6, at Montana State (1/23/16)  
**Field Goal Attempts**  
10, vs. SAC (1/28/16)  
**3-point Field Goals**  
--  
**3-point Field Goal Attempts**  
--  
**Free Throws**  
6 (2x), last at MSU (1/23/16)  
**Free Throw Attempts**  
12, at North Texas (11/23/15)  
**Minutes**  
31, at Montana (1/21/16)

Opponent	*	Min.	FG-FGA	FG%	3FG-3FGA	3FG%	FT-FTA	FT%	Off-Def-Tot.-Avg.	PF	A	TO	Blk.	Stl.	Pts.
at WSU		22	3-6	.500	0-0	---	0-0	---	1-5-6	2	0	1	0	0	6
at ISU		10	1-1	1.000	0-0	---	0-0	---	0-1-1	2	0	1	0	0	2
vs. SUU		4	0-1	.000	0-0	---	0-0	---	0-0-0	1	0	2	0	0	0
vs. NAU		8	0-1	.000	0-0	---	2-2	1.000	0-0-0	2	0	0	0	0	2
at MSU		23	4-7	.571	0-0	---	3-5	.600	2-6-8	2	1	2	1	0	11
<b>TOTAL</b>		<b>67-13.4</b>	<b>8-16</b>	<b>.500</b>	<b>0-0</b>	<b>---</b>	<b>5-7</b>	<b>.714</b>	<b>3-12-15-3.0</b>	<b>9</b>	<b>1</b>	<b>6</b>	<b>1</b>	<b>0</b>	<b>21-4.2</b>

## CAREER STATISTICS

Year	GP-GS	Min-Avg	Total FG-FGA	Pct	3-Point FG-FGA	Pct	F-Throw FT-FTA	Pct	Rebounds Off-Def-Tot	Avg	PF	FO	Ast	TO	Blk	Stl	Pts	Avg
2013-14	30-1	372-12.4	23-41	.561	0-0	---	13-32	.406	23-43-66	2.2	65	1	7	12	15	4	59	2.0
2014-15	27-0	289-10.7	26-53	.491	0-0	---	18-24	.750	18-44-62	2.3	41	1	5	12	8	1	70	2.6
2015-16	27-8	482-17.9	62-112	.554	0-0	---	54-80	.675	33-73-106	3.9	48	0	10	27	22	8	178	6.6
2016-17	19-0	242-12.7	36-64	.563	0-0	---	17-25	.680	16-31-47	2.5	31	0	9	19	7	1	89	4.7
<b>TOTAL</b>	<b>103-9</b>	<b>1385-13.4</b>	<b>147-270</b>	<b>.544</b>	<b>0-0</b>	<b>---</b>	<b>102-161</b>	<b>.634</b>	<b>90-191-281</b>	<b>2.7</b>	<b>185</b>	<b>2</b>	<b>31</b>	<b>70</b>	<b>52</b>	<b>14</b>	<b>396</b>	<b>3.8</b>



**#44 Jordan Scott**

Junior • SF  
6-6 • 200  
Colorado Springs, Colo.  
Lewis-Palmer HS

## Miscellaneous

Double-Figure Pts. 4 (4-0)  
20+ points 0 (0-0)  
Led team in pts. 0 (0-0)  
5+ rebounds 19 (10-9)  
10+ rebounds 0 (0-0)  
Led team in rebs. 7 (2-5)  
5+ assists 0 (0-0)  
10+ assists 0 (0-0)  
Fouled out 2 (1-1)

- Primarily used for his defensive ability, often guarding the opponent's top scorer

## SEASON HIGHS

**Points**  
13, vs. NNU (12/17/16)  
**Rebounds**  
9, at NIU (11/16/16)  
**Assists**  
3 (3x), last at MSU (1/26/17)  
**Blocks**  
2 (2x), last at MSU (1/26/17)  
**Steals**  
2, vs. NNU (12/17/16)  
**Field Goals**  
6, vs. NNU (12/17/16)  
**Field Goal Attempts**  
10, vs. NNU (12/17/16)  
**3-point Field Goals**  
1 (3x), last at ISU (1/14/17)  
**3-point Field Goal Attempts**  
2 (3x), last at ISU (1/14/17)  
**Free Throws**  
4, at SHSU (11/25/16)  
**Free Throw Attempts**  
4 (2x), last at ISU (1/14/17)  
**Minutes**  
35, vs. MSU (1/7/17)

## CAREER HIGHS

**Points**  
13 (3x), last vs. NNU (12/17/16)  
**Rebounds**  
13, at Idaho State (3/7/15)  
**Assists**  
3 (6x), last at MSU (1/26/17)  
**Blocks**  
2 (5x), last at MSU (1/26/17)  
**Steals**  
2, vs. NNU (12/17/16)  
**Field Goals**  
6 (3x), last vs. NNU (12/17/16)  
**Field Goal Attempts**  
11, vs. New Hope (12/18/15)  
**3-point Field Goals**  
1 (8x), last at ISU (1/14/17)  
**3-point Field Goal Attempts**  
3, vs. New Hope (12/18/15)  
**Free Throws**  
4, vs. EWU (2/27/16)  
**Free Throw Attempts**  
6, vs. EWU (2/27/16)  
**Minutes**  
35, vs. MSU (1/7/17)

Opponent	*	Min.	FG-FGA	FG%	3FG-3FGA	3FG%	FT-FTA	FT%	Off-Def-Tot.-Avg.	PF	A	TO	Blk.	Stl.	Pts.
at WSU	*	15	3-5	.600	0-0	---	0-1	.000	1-2-3	4	0	3	0	0	6
at ISU	*	27	2-4	.500	1-2	.500	3-4	.750	1-4-5	2	2	0	1	1	8
vs. SUU	*	29	4-5	.800	0-0	---	2-3	.667	3-3-6	4	0	1	2	0	10
vs. NAU	*	20	1-3	.333	0-1	.000	0-0	---	0-5-5	0	2	0	0	0	2
at MSU	*	33	0-1	.000	0-0	---	1-2	.500	1-1-2	4	3	3	2	0	1
<b>TOTAL</b>		<b>124-24.8</b>	<b>10-18</b>	<b>.556</b>	<b>1-3</b>	<b>.333</b>	<b>6-10</b>	<b>.600</b>	<b>6-15-21-4.2</b>	<b>14</b>	<b>7</b>	<b>7</b>	<b>5</b>	<b>1</b>	<b>27-5.4</b>

## CAREER STATISTICS

Year	GP-GS	Min-Avg	Total FG-FGA	Pct	3-Point FG-FGA	Pct	F-Throw FT-FTA	Pct	Rebounds Off-Def-Tot	Avg	PF	FO	Ast	TO	Blk	Stl	Pts	Avg
2014-15	21-0	203-9.7	18-30	.600	0-0	---	11-17	.647	13-19-32	1.5	25	0	5	10	2	3	47	2.2
2015-16	34-9	546-16.1	42-111	.378	5-23	.217	14-32	.438	39-70-109	3.2	61	0	30	29	11	6	103	3.0
2016-17	19-18	434-22.8	33-75	.440	3-14	.214	19-31	.613	32-56-88	4.6	51	2	19	23	7	7	88	4.6
<b>TOTAL</b>	<b>74-27</b>	<b>1183-16.0</b>	<b>93-216</b>	<b>.431</b>	<b>8-37</b>	<b>.216</b>	<b>44-80</b>	<b>.550</b>	<b>84-145-229</b>	<b>3.1</b>	<b>137</b>	<b>2</b>	<b>54</b>	<b>62</b>	<b>20</b>	<b>16</b>	<b>238</b>	<b>3.2</b>