

BOSTON

2016-17 WOMEN'S BASKETBALL

MEDIA CONTACT: PATRICK LAWLOR | PLAWLOR@BU.EDU | OFFICE: (617) 358-0045 | CELL (857) 600-6809

BOSTON UNIVERSITY

Overall: 7-13 | PL: 5-4
Head Coach: Katy Steding
Website: GoTerriers.com



GAME 21: at NAVY

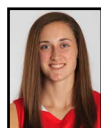
58.8	PPG	70.6
14.4	APG	17.1
35.2	RPG	36.2
40.3	FG%	41.4
31.2	3PT FG%	37.6



NAVY

Overall: 15-5 | PL: 8-1
Head Coach: Stefanie Pemper
Website: NavySports.com

PROBABLE STARTERS



#12 - HOPE
PPG: 11.9
RPG: 2.7
APG: 2.4
FG%: .382



#03 - THOMPSON
PPG: 5.6
RPG: 3.4
APG: 1.7
FG%: .489



#14 - LATHAM
PPG: 5.5
RPG: 5.0
APG: 3.7
FG%: .387



#20 - IRVING
PPG: 9.1
RPG: 5.7
FT%: .805
FG%: .446



#01 - BEAUDRY
PPG: 12.9
RPG: 6.4
BPG: 2.0
FG%: .507

TODAY'S GAME

WHERE: Alumni Hall - Annapolis, Md.
WHEN: Feb. 2, 2017 - 7 p.m. ET
NAVY SID: Justin Kischefsky, kischefs@usna.edu

STORYLINES

- BU will look to remain above .500 in the Patriot League when the Terriers travel to Annapolis, Maryland to face Navy on Thursday night at 7 p.m.
- The Terriers were edged at home by the Mids on Jan. 6, with Navy escaping Case Gym with a 62-59 victory.
- BU is 2-2 on the road this season against Patriot League foes, with one of those two blemishes coming in double overtime.

A TERRIER WIN WOULD...

- ...move them to 6-4 in the Patriot League.
- ...be their third road win of the season.

QUICK HITS

- BU enters its fourth season in the Patriot League and third under the command of head coach Katy Steding.
- The Terriers return 11 players from the 2015-16 season and added two during the off-season.
- This year's captains are Courtney Latham, Sarah Hope and Corrine Williams.
- Six players that started 10 or more games return for the 2016-17 season.
- BU's leading scorer and rebounder return for this season with Meghan Green (9.6 ppg) suiting up as a senior and Corrine Williams (4.9 rpg) returning for her junior season.
- The Terriers enter their 42nd season as a varsity program.

MEDIA COVERAGE

WATCH: Patriot League Network
• PatriotLeague.tv

FOLLOW: LIVE STATS
• Sidearmstats.com/bu/wbball

FOLLOW: @BUGameDay
• Twitter.com/BUGameDay
• #GoBU

FOLLOW: @BostonU_WBB
• Twitter.com/BostonU_WBB
• #EarnIt



CONFERENCE CHAMPIONS: 1988, 1989, 2003
REGULAR SEASON CHAMPIONS: 1988, 2009, 2012
NCAA: 2003 | WNIT: 2009, 2010, 2012, 2013

2016-17 SCHEDULE

NOVEMBER		DECEMBER		JANUARY		FEBRUARY		MARCH	
11	at Northeastern L, 59-78	3	at Arizona State L, 42-71	2	at Lehigh* W, 69-64	2	at Navy* 7 PM	1	at Army West Point* 7 PM
14	at Boston College L, 49-67	4	vs. Long Beach L, 48-61	6	NAVY* L, 59-62	4	at Lafayette* 2 PM	4	PL First Round TBA
19	at Albany L, 54-69	7	DARTMOUTH L, 49-61	8	LAFAYETTE* W, 68-50	8	AMERICAN* 7 PM		
22	HARVARD L, 52-65	10	at Marist L, 57-76	11	at American* L, 62-73	11	at Loyola Md.* 2 PM		
26	UMASS LOWELL W, 66-56	14	MASSACHUSETTS W, 64-60	14	LOYOLA MD.* W, 61-58	15	COLGATE* 7 PM		
28	NEW HAMPSHIRE L, 51-59	30	at Holy Cross* W, 66-49	18	at Colgate*L, 87-96 (2OT)	18	at Bucknell* 2 PM		
				21	BUCKNELL* L, 50-66	22	ARMY WEST POINT* 7 PM		
				28	LEHIGH* W, 64-50	25	HOLY CROSS* 2 PM		

*Patriot League Contest

QUICK FACTS

THE UNIVERSITY

Location.....	Boston, Mass.
Founded/Chartered.....	1839/1869
Enrollment.....	16,572
President.....	Robert A. Brown
Director of Athletics.....	Drew Marrochello
Affiliation.....	Division I
Conference.....	Patriot League
Nickname.....	Terriers
Colors.....	Scarlet and White

BASKETBALL STAFF

Head Coach.....	Katy Steding (Stanford '90)
Years at BU.....	3rd season
Record at BU.....	14-63
Career Record.....	14-63
Assistant Coach.....	Cindy Blodgett (Maine '98)
Assistant Coach.....	Jenny Thigpin (Fresno State '07)
Assistant Coach.....	Ben Chase (Emerson '08)
Dir. of Basketball Ops.....	Mike Karon (BC '06)
Office Phone.....	(617) 353-5864
Athletic Trainer.....	Stephanie Naylor
Strength & Conditioning.....	Jill Zeller
Academic Coordinator.....	Phil DeCarlo

ATHLETIC COMMUNICATIONS

Media Contact.....	Scott Ellis/Patrick Lawlor
Email.....	mellis@bu.edu/plawlor@bu.edu
Office Phone.....	(617) 353-2163
Website.....	GoTerriers.com
Press Row Phone.....	(617) 358-5685
Assistant AD/Communications.....	Brian Kelley
Email.....	bkelley@bu.edu

TEAM INFORMATION

Season.....	42nd
Overall Record.....	578-577 (.501)
Conference Record.....	257-249 (.508)
2015-16 Overall Record.....	3-27
2015-16 Patriot League Record.....	3-15
Postseason.....	Patriot League First Round
Letterwinners Returning/Lost.....	10/3
Starters Returning/Lost.....	3/2
Newcomers.....	2
Captains.....	Latham, Hope, Williams
NCAA Tournament Appearances.....	1 (2003)
WNIT Appearances.....	4 (last-'13)
Conference Tournament Titles.....	1988, '89, 2003
Conf. Regular Season Titles.....	1988, 2009, '12
All-Time Best Record.....	25-8 (2008-09)

TERRIER TIDBITS

2016-17 STARTING LINEUPS.....RECORD

Beaudry, Hauck, Hope, Sheftic, Williams.....	0-2
Beaudry, Hope, Latham, Sheftic, Williams.....	0-3
Hauck, Hope, Latham, Sheftic, Williams.....	1-2
Beaudry, Hope, Latham, Sheftic, Thompson.....	1-2
Beaudry, Hauck, Hope, Latham, Thompson.....	2-1
Beaudry, Hope, Latham, Thompson, Williams.....	1-1
Beaudry, Hope, Irving, Latham, Thompson.....	2-2

GAMES LED BU IN SCORING.....SEASON/TOTAL

Sophie Beaudry.....	10/10
Meghan Doogan.....	0/2
Meghan Green.....	3/24
Sarah Hope.....	7/27
Nia Irving.....	1/1
Courtney Latham.....	0/2
Kara Sheftic.....	1/7
Lauren Spearman.....	0/1
Naiyah Thompson.....	1/3
Corrine Williams.....	3/7

GAMES LED BU IN REBOUNDING.....SEASON/TOTAL

Sophie Beaudry.....	8/8
Meghan Green.....	3/26
Nia Irving.....	4/4
Courtney Latham.....	6/20
Kara Sheftic.....	2/12
Naiyah Thompson.....	1/2
Corrine Williams.....	4/10

GAMES LED BU IN ASSISTS.....SEASON/TOTAL

Sophie Beaudry.....	1/1
Meghan Doogan.....	1/1
Meghan Green.....	0/2
Payton Hauck.....	2/6
Sarah Hope.....	4/42
Courtney Latham.....	9/41
Kara Sheftic.....	1/2
Lauren Spearman.....	1/1
Naiyah Thompson.....	3/4
Corrine Williams.....	4/12

CAREER DOUBLE-DOUBLES.....SEASON/TOTAL

Sophie Beaudry.....	3/3
Meghan Green.....	0/7
Nia Irving.....	2/2
Courtney Latham.....	1/3
Kara Sheftic.....	0/2
Corrine Williams.....	0/1

BACK ON TRACK

- The Terriers snapped a two-game losing streak on Saturday with a 64-50 victory over Lehigh at Case Gym.
- Junior Sophie Beaudry led all scorers with 20 points while sophomore Payton Hauck matched a career high with 10 points.
- Senior Meghan Green grabbed a game-high nine boards and also added six points.
- Senior Courtney Latham dished out a game-high six assists.
- The Terriers led after each quarter and held Lehigh to just 30.8% shooting from the floor.

LAST TIME AGAINST NAVY

- BU led by one with less than a minute to play, but Navy hit a jumper with 27 seconds left and followed that with two stops on the defensive end to escape with a 62-59 win on Jan. 6 at Case Gym.
- Senior Sarah Hope hit seven 3-pointers to finish with a game-high 21 points, with junior Sophie Beaudry securing a double-double thanks to 11 points and 11 rebounds.
- Sophomore Naiyah Thompson also reached double figures with 10 points and was terrific on the glass, bringing down seven boards.
- The Terriers shot an impressive 61.5% from three-point range (8-of-13).

SCOUTING THE MIDS

- Navy extended its win streak to eight games thanks to a 73-71 win at Holy Cross on Saturday.
- The last three wins have been close calls, however, as all of those victories were by five points or fewer.
- Sarita Condie leads the Mids in scoring (12.4 ppg), followed by Taylor Dunham (10.9 ppg).
- Justice Swett is the team's top rebounder at 6.5 boards per game while Hannah Fenske has dished out a team-best 3.4 assists per game.

STEALING THE SHOW

- BU recorded 16 steals in its victory over Lehigh on Saturday.
- The last time the Terriers tallied 15 or more steals came on Feb. 16, 2013, when they had 15 in a 59-45 win over New Hampshire.
- Seniors Sarah Hope and Courtney Latham each led the Terriers on Saturday with four steals apiece.
- Eight different Terriers recorded a steal in the win.

HOPE MARCHES ON

- Senior Sarah Hope continues her march up the all-time list of 3-point shooters at BU.
- She now has 230 threes, good for second in program history behind Chantell Alford ('13) and her 244 treys.
- Over her career, 83.3% of Hope's made field goals have been from beyond the arc.

- Hope is shooting 38.2% for the season from 3-point land, seventh best in the Patriot League, and her average of 3.3 treys per game is first in the Patriot League and tied for 11th in the NCAA.
- Hope is also playing a conference-high 36.5 minutes per game, exactly two full minutes more than the player in second.

SOPHIE SO IMPORTANT

- Junior Sophie Beaudry has been crucial to the Terriers' success in her first season with the squad.
- She leads the team and is ninth in the Patriot League in scoring with 12.9 points per game.
- Beaudry is also first in blocks (2.0 bpg), fourth in field goal percentage (.507) and eighth in rebounding (6.4 rpg).
- A native of Chambly, Quebec, Beaudry has reached double figures in scoring in each of the last five games and in eight of the Terriers' last nine contests.

IF IT'S FREE IT'S FOR NIA

- Freshman Nia Irving has impressed in her rookie campaign, particularly at the charity stripe.
- She is shooting over 80 percent from the free throw line, which would be good for sixth in the Patriot League once she plays in 75 percent of the Terriers' games.
- In league games only, she is seventh.
- Within league play, Irving is third among rookies in scoring at 10.1 points per game. Overall, she averages 9.1 points per game and 5.7 rebounds per game.

DEFENSE DOING ITS JOB

- BU held Lehigh to just 30.8 percent shooting on Saturday in the Terriers' 64-50 win.
- In conference play, the Terriers have the top field goal percentage defense in the league, holding opponents to just 35.8% from the floor.
- BU ranks third in the Patriot League in overall field goal percentage defense, keeping teams to under 40 percent (.390) shooting.
- The Terriers also average 9.1 steals per game, good for third in the conference.

REMAINING ON THE ROAD

- The Terriers will be on a true road trip this week, as after their game with Navy on Thursday they will continue straight to Easton, Pennsylvania, to face Lafayette on Saturday.
- Three of their next four games are on the road, though the Terriers have already bested two of those opponents (Lafayette, Loyola Maryland) at home this season.

Boston University – 2016-17 TEAM GAME HIGHS

POINTS	87	at Colgate (1/18/17)
	69	at Lehigh (1/2/17)
	68	LAFAYETTE (1/8/17)
	66	at Holy Cross (12/30/16)
	66	UMASS LOWELL (11/26/16)
FIELD GOALS MADE	30	at Colgate (1/18/17)
	25	LEHIGH (1/28/17)
	25	at American (1/11/17)
	25	at Lehigh (1/2/17)
FIELD GOAL ATTEMPTS	70	at Colgate (1/18/17)
	66	at Lehigh (1/2/17)
FIELD GOAL PCT.	.500 (25-50)	at American (1/11/17)
	.490 (24-49)	LAFAYETTE (1/8/17)
3 PT FG MADE	8	NAVY (1/6/17)
	8	at Albany (11/19/16)
	6	UMASS (12/14/16)
	6	at Marist (12/10/16)
3 PT FG ATTEMPTS	21	at Marist (12/10/16)
	21	vs. Long Beach State (12/4/16)
3 PT FG PERCENTAGE	.615 (8-13)	NAVY (1/6/17)
	.500 (6-12)	LAFAYETTE (1/8/17)
FREE THROWS MADE	21	at Colgate (1/18/17)
	18	at Holy Cross (12/30/16)
FREE THROW ATTEMPTS	34	at Colgate (1/18/17)
	32	at Holy Cross (12/30/16)
FREE THROW PCT	1.000 (4-4)	DARTMOUTH (12/7/16)
	.773 (17-22)	at Lehigh (1/2/17)
REBOUNDS	46	at Lehigh (1/2/17)
	45	at Colgate (1/18/17)
	45	LOYOLA MARYLAND (1/14/17)
ASSISTS	21	at Colgate (1/18/17)
	19	at American (1/11/17)
	19	at Marist (12/10/16)
STEALS	16	LEHIGH (1/28/17)
	16	UMASS LOWELL (11/26/16)
BLOCKED SHOTS	10	at American (1/11/17)
	9	UMASS (12/14/16)
TURNOVERS	26	NAVY (1/6/17)
	24	vs. Long Beach State (12/4/16)
FOULS	26	at Colgate (1/18/17)
	26	UMASS (12/14/16)

Opponent – 2016-17 GAME HIGHS

POINTS	96	at Colgate (1/18/17)
	78	at Northeastern (11/11/16)
	76	at Marist (12/10/16)
	73	at American (1/11/17)
	71	at Arizona State (12/3/16)
FIELD GOALS MADE	31	at Colgate (1/18/17)
	28	at Arizona State (12/3/16)
FIELD GOAL ATTEMPTS	74	at Colgate (1/18/17)
	64	at American (1/11/17)
FIELD GOAL PCT.	.583 (28-48)	at Arizona State (12/3/16)
	.481 (26-54)	at Albany (11/19/16)
3 PT FG MADE	14	at Marist (12/10/16)
	13	at Colgate (1/18/17)
3 PT FG ATTEMPTS	35	at Holy Cross (12/30/16)
	31	NAVY (1/6/17)
	31	at Marist (12/10/16)
3 PT FG PERCENTAGE	.500 (12-24)	at Northeastern (11/11/16)
	.464 (13-28)	at Colgate (1/18/17)
FREE THROWS MADE	23	UMASS (12/14/16)
	21	at Colgate (1/18/17)
	21	at Boston College (11/14/16)
FREE THROW ATTEMPTS	29	UMASS (12/14/16)
	29	at Boston College (11/14/16)
FREE THROW PCT.	.941 (16-17)	at Northeastern (11/11/16)
	.933 (14-15)	BUCKNELL (1/21/17)
REBOUNDS	46	at Colgate (1/18/17)
	45	LEHIGH (1/28/17)
ASSISTS	22	at Colgate (1/18/17)
	18	at American (1/11/17)
	18	at Marist (12/10/16)
	18	at Northeastern (11/11/16)
STEALS	18	NAVY (1/6/17)
	16	vs. Long Beach State (12/4/16)
BLOCKED SHOTS	8	at Holy Cross (12/30/16)
	6	at Albany (11/19/16)
TURNOVERS	28	UMASS LOWELL (11/26/16)
	24	LEHIGH (1/28/17)
FOULS	28	at Holy Cross (12/30/16)
	25	at Colgate (1/18/17)

Boston University – 2016-17 GAME LOWS

POINTS	42	at Arizona State (12/3/16)
	48	vs. Long Beach State (12/4/16)
	49	at Boston College (11/14/16)
	49	DARTMOUTH (12/7/16)
	50	BUCKNELL (1/21/17)
FIELD GOALS MADE	17	at Albany (11/19/16)
	18	at Boston College (11/14/16)
	18	at Arizona State (12/3/16)
	18	vs. Long Beach State (12/4/16)
FIELD GOAL ATTEMPTS	42	at Arizona State (12/3/16)
	47	at Boston College (11/14/16)
FIELD GOAL PCT.	.347 (17-49)	at Albany (11/19/16)
	.350 (21-60)	at Marist (12/10/16)
	.350 (21-60)	BUCKNELL (1/21/17)
3 PT FG MADE	1	at Arizona State (12/3/16)
	2	HARVARD (11/22/16)
	2	at Lehigh (1/2/17)
	2	BUCKNELL (1/21/17)
3 PT FG ATTEMPTS	9	at Lehigh (1/2/17)
	9	LOYOLA MARYLAND (1/14/17)
3 PT FG PCT.	.100 (1-10)	at Arizona State (12/3/16)
	.167 (2-12)	HARVARD (11/22/16)
FREE THROWS MADE	2	NEW HAMPSHIRE (11/28/16)
	4	DARTMOUTH (12/7/16)
FREE THROW ATTEMPTS	4	DARTMOUTH (12/7/16)
	5	NEW HAMPSHIRE (11/28/16)
FREE THROW PCT.	.400 (2-5)	NEW HAMPSHIRE (11/28/16)
	.438 (7-16)	at American (1/11/17)
REBOUNDS	19	at Arizona State (12/3/16)
	25	UMASS LOWELL (11/26/16)
ASSISTS	9	LOYOLA MARYLAND (1/14/17)
	10	BUCKNELL (1/21/17)
STEALS	6	at Northeastern (11/11/16)
	6	at Boston College (11/14/16)
	6	DARTMOUTH (12/7/16)
	6	UMASS (12/14/16)
BLOCKED SHOTS	1	at Arizona State (12/3/16)
	1	NAVY (1/6/17)
TURNOVERS	11	BUCKNELL (1/21/17)
	14	UMASS LOWELL (11/26/16)
	14	at Marist (12/10/16)
FOULS	12	LOYOLA MARYLAND (1/14/17)
	13	at Holy Cross (12/30/16)

Opponent – 2016-17 GAME LOWS

POINTS	49	at Holy Cross (12/30/16)
	50	LAFAYETTE (1/8/17)
	50	LEHIGH (1/28/17)
	56	UMASS LOWELL (11/26/16)
	58	LOYOLA MARYLAND (1/14/17)
FIELD GOALS MADE	17	UMASS (12/14/16)
	17	LAFAYETTE (1/8/17)
FIELD GOAL ATTEMPTS	46	DARTMOUTH (12/7/16)
	48	at Arizona State (12/3/16)
FIELD GOAL PCT.	.293 (17-58)	LAFAYETTE (1/8/17)
	.300 (18-60)	at Holy Cross (12/30/16)
3 PT FG MADE	2	at Arizona State (12/3/16)
	3	UMASS (12/14/16)
3 PT FG ATTEMPTS	9	UMASS (12/14/16)
	11	at Boston College (11/14/16)
3 PT FG PCT.	.154 (2-13)	at Arizona State (12/3/16)
	.185 (5-27)	LAFAYETTE (1/8/17)
FREE THROWS MADE	3	LOYOLA MARYLAND (1/14/17)
	5	at Holy Cross (12/30/16)
FREE THROW ATTEMPTS	5	LOYOLA MARYLAND (1/14/17)
	9	at Holy Cross (12/30/16)
FREE THROW PCT.	.556 (5-9)	at Holy Cross (12/30/16)
	.565 (13-23)	at Arizona State (12/3/16)
REBOUNDS	31	DARTMOUTH (12/7/16)
	32	at Arizona State (12/3/16)
	32	NAVY (1/6/17)
	32	LAFAYETTE (1/8/17)
ASSISTS	5	HARVARD (11/22/16)
	6	UMASS LOWELL (11/26/16)
	6	UMASS (12/14/16)
STEALS	4	DARTMOUTH (12/7/16)
	5	BUCKNELL (1/21/17)
	6	LOYOLA MARYLAND (1/14/17)
BLOCKED SHOTS	0	at American (1/11/17)
	1	at Northeastern (11/11/16)
TURNOVERS	11	LOYOLA MARYLAND (1/14/17)
	12	at American (1/11/17)
FOULS	9	NEW HAMPSHIRE (11/28/16)
	9	DARTMOUTH (12/7/16)

AROUND THE
PATRIOT LEAGUE

This Week's Games

WEDNESDAY, FEB. 1

Army West Point at Lafayette - 7 p.m.
Loyola (Md.) at Lehigh - 7 p.m.
Bucknell at American - 7 p.m.
Holy Cross at Colgate - 7 p.m.

THURSDAY, FEB. 2

BU at Navy - 7 p.m.

2016-17 PATRIOT LEAGUE
STANDINGS (as of 2/1)

TEAM	PL	PCT	OVL	PCT
Bucknell	9-0	1.000	17-3	.850
Navy	8-1	.889	15-5	.750
American	6-3	.667	9-11	.450
Army	5-4	.556	14-6	.700
Loyola (Md.)	5-4	.556	9-11	.450
Boston Univ.	5-4	.556	7-13	.350
Colgate	3-6	.333	6-14	.300
Holy Cross	3-6	.333	5-15	.250
Lehigh	1-8	.111	6-14	.300
Lafayette	0-9	.000	1-20	.048

SERIES HISTORY

VS. NAVY

NAVY LEADS, 6-2

Dec. 30, 2011..... N..... W, 48-46
 Jan. 8, 2014 A..... L, 70-50
 Feb. 5, 2014..... H..... L, 68-57
 Jan. 7, 2015 H..... L, 61-55
 Feb. 4, 2015..... A..... L, 48-40
 Jan. 7, 2016 A..... L, 67-56
 Feb. 4, 2016..... H..... W, 51-49
 Jan. 6, 2017 H..... L, 62-59

Official Basketball Box Score -- Game Totals -- Final Statistics

Navy vs Boston University

01/06/17 7:05 p.m. at Case Gym "The Roof" - Boston, Mass.

Navy 62 • 9-5, 2-1 PL

#	Player		Total		3-Ptr		Rebounds			PF	TP	A	TO	Blk	Stl	Min
			FG-FTA	FG-FGA	FT-FTA	Off	Def	Tot								
10	Jaunich, Laurel	f	2-3	0-0	0-0	1	2	3	2	4	0	2	1	2	22	
01	Dunham, Taylor	g	0-8	0-7	1-2	1	1	2	1	1	2	1	0	0	15	
05	Condie, Sarita	g	3-14	2-8	6-8	2	2	4	2	14	2	0	0	0	29	
13	Fenske, Hannah	g	3-5	2-3	2-2	1	3	4	2	10	1	3	0	2	28	
21	Swett, Justice	g	4-8	1-2	1-5	3	4	7	3	10	3	2	0	3	32	
11	Clark, Kaila		2-2	0-0	0-0	1	4	5	2	4	1	1	1	5	19	
15	Roach, Bianca		0-2	0-1	0-0	0	0	0	1	0	0	1	0	1	10	
23	Sanders, Molly		0-6	0-6	0-0	0	4	4	2	0	2	2	0	1	17	
25	Kennedy, Ashanti		7-13	3-4	2-2	0	1	1	1	19	1	2	0	4	28	
Team						2	0	2								
Totals			21-61	8-31	12-19	11	21	32	16	62	12	14	2	18	200	
1st - FG %: 9-19 47.4% 2nd: 5-14 35.7% 3rd: 2-15 13.3% 4th: 5-13 38.5% Game: 21-61 34.4% Deadball																
3FG %: 4-11 36.4% 2-7 28.6% 0-6 0.0% 2-7 28.6% 8-11 72.7% 25.8%																
FT %: 1-1 100.0% 3-3 100.0% 4-6 66.7% 4-9 44.4% 12-19 63.2%																
Rebounds																

1st - FG %: 9-19 47.4% 2nd: 5-14 35.7% 3rd: 2-15 13.3% 4th: 5-13 38.5% Game: 21-61 34.4% Deadball
 3FG %: 4-11 36.4% 2-7 28.6% 0-6 0.0% 2-7 28.6% 8-31 25.8% Rebounds
 FT %: 1-1 100.0% 3-3 100.0% 4-6 66.7% 4-9 44.4% 12-19 63.2% 4,1

Boston University 59 • 4-10, 2-1 PL

#	Player		Total			3-Ptr	Rebounds					PF	TP	A	TO	Blk	Stl	Min
			FG-FGA	FG-FGA	FT-FTA	Off	Def	Tot										
03	Thompson, Naiyah	f	3-7	0-1	4-5	4	3	7	4	10	14	10	4	6	0	1	29	
01	Beaudry, Sophie	c	4-13	0-0	3-6	3	8	11	2	11	13	11	1	7	1	1	29	
04	Hauck, Payton	g	1-2	0-0	0-0	1	1	2	3	2	5	2	1	3	0	2	22	
12	Hope, Sarah	g	7-13	7-11	0-0	0	4	4	3	21	24	21	2	4	0	1	38	
14	Latham, Courtney	g	1-5	0-0	0-0	1	2	3	0	2	2	2	2	3	0	0	20	
20	Irving, Nia		2-8	0-0	2-2	0	6	6	3	6	9	6	0	2	0	2	21	
21	Spearman, Lauren		0-0	0-0	0-0	0	0	0	1	0	1	0	0	0	0	0	4	
22	Williams, Corrine		1-1	1-1	0-0	0	0	0	5	3	8	3	4	1	0	1	15	
33	Green, Meghan		0-0	0-0	0-0	0	0	0	0	0	0	0	0	0	0	0	4	
52	Sheftic, Kara		1-2	0-0	2-3	2	3	5	1	4	5	1	4	1	0	0	18	
	Team								1	5	6							
Totals			20-51	8-13	11-16	12	32	44	22	59	81	22	59	15	26	1	8	200
1st - FG %:			4-11	36.4%	2nd: 4-13	30.8%	3rd: 8-14	57.1%	4th: 4-13	30.8%	Game: 20-51	39.2%	Rebounds					
3Pt %:			1-6	16.7%	0-0	66.7%	2-5	40.0%	1-3	33.3%	8-11	61.5%						
FT %:			4-4	100.0%	2-3	66.7%	2-5	40.0%	3-4	75.0%	11-16	68.8%						

1st - FG %: 4-11 36.4% 2nd: 4-13 30.8% 3rd: 8-14 57.1% 4th: 4-13 30.8% Game: 20-51 39.2% Deadball
 3FG %: 3-6 50.0% 2-3 66.7% 2-3 66.7% 1-1 100.0% 8-13 61.5% Rebounds
 FT %: 4-4 100.0% 2-3 66.7% 2-5 40.0% 3-4 75.0% 11-16 68.8% 2

Officials: Margaret Tieman, Donald Cummsky, Natasha Camy
 Technical fouls: Navy-None. Boston University-None.
 Attendance: 172

Score by periods	1st	2nd	3rd	4th	Total
Navy	23	15	8	16	62
Boston University	15	12	20	12	59

Points	In	Off	2nd	Fast	Bench
Point	T/O	Chance	Break		
NAVY	20	16	11	0	23
BU	18	14	9	4	13

Last FG - NAVY 4th-00:29, BU 4th-02:52.
 Largest lead - NAVY by 14 2nd-01:52, BU by 4 1st-09:08.
 NAVY led for 27:43. BU led for 11:31. Game was tied for 00:46.

Score tied - 3 times.
 Lead changed - 5 times.

HEAD TO HEAD



OVERALL RECORD	7-13	15-5
CURRENT STREAK	W1	W1
LAST FIVE	2-3	5-0
LAST TEN	6-4	8-2
SCORING AVERAGE	58.8	70.6
SCORING DEFENSE	64.6	62.3
SCORING MARGIN	(5.7)	8.3
FG PERCENTAGE OFFENSE	40.3	41.4
FG PERCENTAGE DEFENSE	39.0	39.6
3FG PERCENTAGE OFFENSE	31.2	37.6
3FG PERCENTAGE DEFENSE	33.0	34.3
3FG MADE PER GAME	4.4	8.9
FT PERCENTAGE	60.9	62.8
FT ATTEMPTS PER GAME	17.25	14.1
FT ATTEMPTS PER GAME (OPPONENT)	17.85	13.9
REBOUNDING AVERAGE	35.2	36.2
REBOUNDING AGAINST AVERAGE	37.0	40.6
REBOUNDING MARGIN	(1.7)	(4.4)
ASSISTS PER GAME	14.4	17.1
TURNOVERS PER GAME	18.5	13.3
TURNOVERS FORCED PER GAME	17.4	18.6
TURNOVER MARGIN	(1.1)	5.3
STEALS PER GAME	9.1	11.3
BLOCKS PER GAME	3.7	3.3

THE LAST TIME IT HAPPENED...

BY A TEAM

Overtime Game	Dec. 10, 2012, vs. Harvard, W, 68-61
Two Overtimes	Jan. 18, 2017, at Colgate, L, 96-87
Won by 30+ points	31 Jan. 16, 2013, at Maine, W, 85-54
Lost by 30+ points	35 March 2, 2016, vs. Army West Point, L, 79-44
Scored 100 points.....	106 Feb. 13, 1987, vs. Brooklyn, W, 106-48
Allowed 100 points	110 Dec. 21, 2000, at Tulane, L, 66-110
Scored 90-99 points	95 March 8, 2009, vs. Albany, W, 95-72
Allowed 90-99 points	96 Jan. 18, 2017, at Colgate, L, 96-87 (20T)
Scored under 40 points.....	38 Feb. 24, 2016, at Army West Point, L, 72-38
Allowed under 40 points	35 March 4, 2014, vs. Loyola Maryland, W, 40-35
Shot 60% or better from the field.....	61.4 (35-of-57), March 14, 2008 vs. UMBC, W, 88-59
Shot 50% or better from the field	50.0 (25-of-50), Jan. 11, 2017 at American, L, 73-62
Shot less than 30%	27.3 (15-55), Feb. 24, 2016, at Army West Point, L, 72-38
Opponent shot less than 30%	29.3 (17-of-58), Jan. 8, 2017, vs. Lafayette, W, 68-50
Made 10+ 3-pointers	10 (10-for-28), Jan. 19, 2014, at Loyola, W, 70-60
Attempted 20+ 3-pointers	21 (6-for-21), Dec. 10, 2016, at Marist, L, 76-57
Shot 50% or better from 3-point range	50.0 (6-of-12), Jan. 8, 2017, vs. Lafayette, W, 68-50
Shot 60% or better from 3-point range	61.5 (8-of-13), Jan. 6, 2017, vs. Navy, L, 62-59
Attempted 40+ free throws.....	43 (23-of-43), Dec. 4, 2013, at UMass, W, 66-63
Made 30+ free throws	33 (24-of-33), Feb. 20, 2010 vs. SBU, W, 72-68
Had 60+ rebounds.....	61 Jan. 19, 2008 vs. Stony Brook, W, 89-40
50-59 rebounds	51 Dec. 9, 2014 at Rhode Island, L, 56-48
25+ assists.....	25 Jan. 25, 2014 vs. Bucknell, W, 86-58
15+ steals	16 Jan. 28, 2017 vs. Lehigh, W, 64-50
Blocked 10+ shots.....	10 Nov. 23, 2012, at Eastern Michigan, W, 66-55
Three or more players foul out	3 Dec. 9, 2009 at Yale, L, 61-57
Five or more players scoring in double-figures	Jan. 18, 2017 at Colgate, L, 96-87 (20T)
.....	Beaudry (20), Hope (20), Thompson (17), Irving (13), Latham (11)
Two players score 20 or more points	Jan. 18, 2017 at Colgate, L, 96-87 (20T); Beaudry (20), Hope (20)
Two or more players with double-figure rebs	Jan. 18, 2017 at Colgate, L, 96-87 (20T), Irving (12), Latham (10)
Two players record double-doubles	Jan. 18, 2017 at Colgate, W, 96-87
.....	Irving (13 pts, 12 reb), Latham (11 pts, 10 reb)
Everyone on the active roster scores	Nov. 28, 2006, at Connecticut, L, 84-51

BY A TERRIER

40 or more points	43 Katie Meinhardt vs. Stony Brook, March 9, 2005
30-39 points	30 Chantell Alford vs. No. 14 WVU, Nov. 12, 2012
Made 5 or more 3-pointers	6 Sarah Hope (6-for-15) at Colgate, Jan. 18, 2017
Attempted 10+ 3-pointers	15 Sarah Hope (6-for-15) at Colgate, Jan. 18, 2017
Attempted 10 or more free throws	10 Naiyah Thompson (5-for-10) at Colgate, Jan. 18, 2017
Made 10 or more free throws	12 Nia Irving (12-for-13) at Lehigh, Jan. 2, 2017
20 or more rebounds	20 Jesyka Burks-Wiley vs. UNH, March 10, 2006
15-19 rebounds	15 Meghan Green at BC, Nov. 20, 2014
10-14 rebounds	12 Nia Irving at Colgate, Jan. 18, 2017
.....	10 Courtney Latham at Colgate, Jan. 18, 2017
10 or more assists.....	11 Danielle Callahan vs. Bucknell, Jan. 25, 2014
5 or more steals	5 Corrine Williams vs. Lafayette, Jan. 8, 2017
5 or more blocks	5 Sophie Beaudry at American, Jan. 11, 2017
Recorded a triple-double	1 Mo Moran, vs. Yale, Nov. 12, 2010; 15 pts, 12 rebs, 11 assists

bold - occurred in 2016-17

BU'S RECORD WHEN...

Overall Record	7-13
Conference Record.....	5-4
Overtime	0-1
At home	5-5
On the road.....	2-7
Neutral site.....	0-1
Day games	6-4
Night games.....	1-9
Games dec. by 5 pts or less	3-1
Games dec. by 1 point
Outrebounded opponent.....	5-5
Outrebounded by opponent	2-8
Rebounds equal

Leading after first quarter	5-5
Trailing after first quarter.....	2-8
Tied after first quarter
Leading at the half	4-2
Trailing at the half.....	3-10
Tied at the half	0-1
Leading after third quarter.....	4-1
Trailing after third quarter.....	3-12
Tied after third quarter

Scoring first	4-7
Scoring second	3-6
Winning opening tip.....	6-7
Losing opening tip.....	1-6

OFFENSIVE OUTPUT

Scoring under 50 points	0-4
Scoring 50-59 points	0-7
Scoring 60-69 points	7-1
Scoring 70-79 points.....
Scoring 80+ points	0-1

STREAKS

Coming off a win	L2
Coming off a loss	W1
Longest winning streak.....	W3
Longest losing streak.....	L5

DAYS OF THE WEEK

Sunday	1-1
Monday	1-2
Tuesday.....	0-1
Wednesday.....	1-3
Thursday.....
Friday	1-2
Saturday.....	3-4

VS. CONFERENCES

ACC.....	0-1
America East	1-2
Atlantic 10.....	1-0
Big West.....	0-1
Colonial.....	0-1
Ivy League.....	0-2
Metro Atlantic	0-1
Pac-12	0-1
Patriot League.....	5-4

TERRIERS BREAKDOWN BY CLASS

The Terriers' 13-player roster includes:

SENIORS (3)

Meghan Green
Sarah Hope
Courtney Latham

JUNIORS (5)

Erin Bayram
Sophie Beaudry
Meghan Doogan
Kara Sheftic
Corrine Williams

SOPHOMORES (3)

Payton Hauck
Naiyah Thompson
Lauren Spearman

FRESHMEN (2)

Vanessa Edgehill
Nia Irving

TERRIERS BREAKDOWN BY REGION

The Terriers' 13-player roster includes:

CALIFORNIA (1)

Lauren Spearman

CONNECTICUT (2)

Courtney Latham
Corrinne Williams

DELAWARE (1)

Meghan Doogan

ILLINOIS (1)

Erin Bayram

MARYLAND (1)

Naiyah Thompson

MAINE (1)

Nia Irving

MASSACHUSETTS (2)

Vanessa Edgehill
Sarah Hope

NEW HAMPSHIRE (1)

Meghan Green

PENNSYLVANIA (1)

Payton Hauck

QUEBEC (1)

Sophie Beaudry

VERMONT (1)

Kara Sheftic

NUMERICAL ROSTER

No.	Name	Pos.	Ht.	Yr.	Hometown / High School
1	Sophie Beaudry	C	6-5	Jr.	Chambly, Quebec / Monmouth
3	Naiyah Thompson	F	5-11	So.	Waldorf, Md. / St. Mary's Ryken
4	Payton Hauck	G	5-9	So.	York, Pa. / Northeastern High School
11	Meghan Doogan	G	5-9	Jr.	Claymont, Del. / Concord
12	Sarah Hope	G	5-7	Sr.	Medway, Mass. / Medway
14	Courtney Latham	G	5-8	Sr.	Glastonbury, Conn. / Glastonbury
20	Nia Irving	F	6-1	Fr.	Fairfield, Maine / Lawrence
21	Lauren Spearman	G	5-7	So.	Los Angeles, Calif. / Marlborough School
22	Corrine Williams	G	6-1	Jr.	Bloomfield, Conn. / Bloomfield
30	Vanessa Edgehill	G	5-8	Fr.	Franklin, Mass. / The Rivers School
33	Meghan Green	F	6-0	Sr.	Bedford, N.H. / Bishop Guertin
34	Erin Bayram	F	6-2	Jr.	Batavia, Ill. / Batavia
52	Kara Sheftic	F	6-1	Jr.	Essex Junction, Vt. / Essex

ALPHABETICAL ROSTER

No.	Name	Pos.	Ht.	Yr.	Hometown / High School
34	Erin Bayram	F	6-2	Jr.	Batavia, Ill. / Batavia
1	Sophie Beaudry	C	6-5	Jr.	Chambly, Quebec / Monmouth
11	Meghan Doogan	G	5-9	Jr.	Claymont, Del. / Concord
30	Vanessa Edgehill	G	5-8	Fr.	Franklin, Mass. / The Rivers School
33	Meghan Green	F	6-0	Sr.	Bedford, N.H. / Bishop Guertin
4	Payton Hauck	G	5-9	So.	York, Pa. / Northeastern High School
12	Sarah Hope	G	5-7	Sr.	Medway, Mass. / Medway
20	Nia Irving	F	6-1	Fr.	Fairfield, Maine / Lawrence
14	Courtney Latham	G	5-8	Sr.	Glastonbury, Conn. / Glastonbury
52	Kara Sheftic	F	6-1	Jr.	Essex Junction, Vt. / Essex
3	Naiyah Thompson	F	5-11	So.	Waldorf, Md. / St. Mary's Ryken
21	Lauren Spearman	G	5-7	So.	Los Angeles, Calif. / Marlborough School
22	Corrine Williams	G	6-1	Jr.	Bloomfield, Conn. / Bloomfield

PRONUNCIATIONS

Erin Bayram:	Erin BAY-rum
Sophie Beaudry:	So-FEE BOW-dree
Meghan Doogan:	Meghan DOOG-in
Payton Hauck:	Payton HAWK
Nia Irving:	NYE-uh UR-ving
Courtney Latham:	Courtney LAY-thumb
Kara Sheftic:	Kara CHEF-tick
Corrine Williams:	Curr-INN Williams
Katy Steding:	KATIE Steding
Cindy Blogett:	Cindy BLAW-git
Jenny Thigpin:	Jenny THIG-pen

KATY STEDING

HEAD COACH
THIRD SEASON • STANFORD '90



Katy Steding enters her third year at the helm of the Terriers in 2016-17. The Olympic gold medalist and NCAA champion looks to improve upon the team's success with the return of 10 letterwinners and the addition of two new Terriers, including the Maine State Gatorate Player of the Year Nia Irving.

A 15-year coaching veteran, Steding came to BU after spending two seasons at California where she helped lead the Golden Bears to their first Pac-12 title and a pair of trips to the NCAA tournament. Under her guidance, the 2012-13 team posted a 32-4 overall record and earned the first Final Four berth in program history. Her main responsibilities at Cal included recruiting, working with the post players and overseeing the team's offense.

BU is Steding's second head-coaching position, as she spent seven seasons at the helm of the Warner Pacific College (NAIA) program in her native Oregon, helping it transition from a club-level program to a varsity team. During her time in Portland, Steding recorded a pair of 20-plus win seasons, leading the Knights to the NAIA Division II National Tournaments in 2004 and 2006. The 2004 selection to the national tournament marked the first postseason appearance in school history for men's or women's basketball.

Steding was named the Cascade Collegiate Conference (CCC) Coach of the Year at the conclusion of the 2005-06 season after leading the Knights to their first-ever CCC title with a 22-9 record. Throughout her seven-year stint, Steding recruited 11 All-Conference performers and 11 Academic All-Americans to Warner Pacific.

Before joining the coaching staff at Cal, Steding was an associate head coach at the University of San Francisco from 2010-12, overseeing recruiting and player and practice development in addition to opponent scouting. At USF, Steding teamed with Hall of Famer and Stanford and Olympic teammate Jennifer Azzi. The 2011-12 squad earned a win over a nationally ranked Brigham Young team.

Prior to her stint at USF, Steding served as an assistant at Columbia during the 2009-10 season. She helped the Lions achieve a top-three Ivy League finish and the highest RPI in school history while developing Columbia's first-ever Ivy

League Player of the Year, who went on to earn All-America Third Team honors.

Steding also served as an assistant coach for the WNBA's Atlanta Dream during the franchise's inaugural season in 2008.

A three-time Pac-10 All-Conference selection at Stanford, Steding was one of the most versatile players in Cardinal history. She finished her career ranked ninth in scoring with 1,586 points and fourth in rebounds with 864 boards. During her senior season she shot a conference-best 46.4 percent from beyond the arc and led Stanford to a pair of Pac-10 titles.

Steding and the Cardinal captured Stanford's first-ever NCAA championship in 1990. She was named the CBS/Chevrolet Player of the Game after scoring 18 points and grabbing seven rebounds in Stanford's 88-81 victory over Auburn in the title game.

Steding graduated from Stanford in 1990 with a degree in psychology and embarked on a professional playing career overseas with stops in Japan and Spain before returning to the states and earning a spot on U.S. National Team in 1995. Dubbed the "Women's Dream Team," Steding teamed with Teresa Edwards, Rebecca Lobo, Sheryl Swoopes and a myriad of other women's basketball superstars to compile a 60-0 record that culminated with a gold medal at the 1996 Atlanta Olympics.

After her time with Team USA, Steding became a founding player for the Portland Power of the American Basketball League before playing with Sacramento Monarchs and Seattle Storm of the WNBA. Steding retired from professional basketball in 2001.

During her time at Warner Pacific, Steding also served as Director of Marketing and College Relations from March 2006 to April 2008. Her marketing and advertising efforts resulted in a 30 percent increase in both applications and enrollment.

A native of Tualatin, Oregon, Steding was inducted into the Stanford Sports Hall of Fame in 2002 and the Oregon Sports Hall of Fame in 2004.

2016-17 TERRIER BASKETBALL

8

Official Basketball Box Score -- Game Totals -- Final Statistics Boston University vs Northeastern 11/11/16 3 p.m. at Boston, Mass. (Cabot Center)

Boston University 59 • 0-1

#	Player	Total		3-Ptr		Rebounds			PF	Tp	A	TO	Blk	Stl	Min
		FG-FTA	FG-FGA	FT-FTA	FT-FTA	Off	Def	Tot							
01	Beaudry, Sophie	* 2-12	0-0	2-4	4	2	6	1	6	1	0	3	0	23	
04	Hauck, Payton	* 1-2	0-1	0-0	1	0	1	1	2	0	4	0	1	17	
12	Hope, Sarah	* 4-11	4-11	1-2	0	2	2	0	13	4	2	0	0	34	
22	Williams, Corrine	* 5-6	1-1	2-3	1	3	4	3	13	3	4	0	0	29	
52	Sheftic, Kara	* 3-8	0-0	2-2	1	2	3	4	8	0	2	0	4	23	
03	Thompson, Naiyah	1-3	0-1	0-0	2	1	3	2	2	1	4	0	0	17	
11	Doogan, Meghan	0-0	0-0	0-0	1	0	1	0	0	0	0	0	0	2	
14	Latham, Courtney	6-8	0-0	0-0	4	5	9	2	12	5	2	0	1	31	
30	Edgehill, Vanessa	0-0	0-0	0-0	0	0	0	1	0	0	0	0	0	7	
33	Green, Meghan	1-8	0-3	1-2	2	3	5	1	3	1	2	0	0	15	
34	Bayram, Erin	0-0	0-0	0-0	0	0	0	1	0	0	1	0	0	2	
	Team				2	0	2								
Totals		23-58	5-17	8-13	18	18	36	16	59	15	21	3	6	200	

1st - FG %: 4-11 36.4% 2nd: 8-15 53.3% 3rd: 7-20 35.0% 4th: 4-12 33.3% Game: 23-58 39.7% Deadball Rebounds 3
3FG %: 1-3 33.3% 1-4 25.0% 1-4 25.0% 5-17 29.4% 8-13 61.5%
FT %: 1-1 100.0% 0-2 0.0% 3-4 75.0% 4-6 66.7% 2-2 100.0%

Northeastern 78 • 1-0

#	Player	Total		3-Ptr		Rebounds			PF	Tp	A		Blk	Stl	Min
		FG-FGA	FG-FGA	FT-FTA	Off	Def	Tot	To			Ass				
01	Zwerling, Zoe	* 2-11	1-6	2-2	0	2	2	0	7	4	1	0	1	27	
14	Todd, Shannon	* 0-4	0-2	0-0	2	0	2	1	0	1	1	0	1	18	
20	Genco, Jess	* 9-12	7-9	2-2	0	6	6	1	27	3	4	0	1	37	
24	Giacone, Gabby	* 2-4	0-1	2-2	2	3	5	5	6	1	2	0	1	21	
33	Sally, Francesca	* 5-17	2-3	5-6	2	4	6	1	17	1	4	0	0	28	
03	Lassiter, Loren	2-4	0-0	0-0	5	2	7	4	4	3	1	1	3	28	
04	Ortiz, Claudia	3-4	1-2	3-3	0	0	0	1	10	2	3	0	1	18	
04	Dublin, Ayanna	0-0	0-0	0-0	0	0	0	1	0	0	0	0	0	5	
22	Eason, Te'Erica	1-2	0-0	2-2	2	0	2	1	4	3	0	0	0	8	
23	Redcross, Courtney	0-0	0-0	0-0	0	0	0	0	0	0	0	0	0	2	
30	Schnare, Briana	0-0	0-0	0-0	0	0	0	0	0	0	0	0	0	0+	
32	Taggart, Maureen	1-1	1-1	0-0	0	0	0	0	3	0	1	0	0	8	
	Team				3	1	4								
Totals		25-59	12-24	16-17	16	18	34	15	78	18	18	1	8	200	

1st - FG %: 7-19 36.8% 2nd: 7-12 58.3% 3rd: 6-14 42.9% 4th: 5-14 35.7% Game: 25-59 42.4% Deadball Rebounds 1,1
3FG %: 4-6 66.7% 2-7 28.6% 3-6 50.0% 3-5 60.0% 12-24 50.0%
FT %: 6-6 100.0% 3-7 100.0% 7-8 87.5% 0-0 0.0% 9-13 69.2%

Officials: Duane Mack, Carlos Alvarez, Danielle Bittle
Technical fouls: Boston University-None. Northeastern-None.
Attendance: 412

Score by periods	1st	2nd	3rd	4th	Total
Boston University	10	17	19	13	59
Northeastern	24	19	22	13	78

	In	Off	2nd	Fast	Bench
Points	Paint	T/O	Chance	Break	
BU	30	19	11	2	17
NU	22	26	20	0	21

Last FG - BU 4th-03:56, NU 4th-00:46.
Largest lead - BU None, NU by 23 4th-06:02.
BU led for 00:00, NU led for 39:37. Game was tied for 00:23.

Score tied - 0 times.
Lead changed - 0 times.

Official Basketball Box Score -- Game Totals -- Final Statistics BU vs UAlbany 11/19/16 7:00 pm at Albany, N.Y.

BU 54 • 0-3

#	Player	Total		3-Ptr		Rebounds			PF	TP	A		To	Blk	Stl	Min
		FG-FGA	FG-FGA	FT-FTA	Off	Def	Tot									
52	Sheftic, Kara	f	0-5	0-0	8-12	1	4	5	2	8	3	2	1	0	28	
01	Beaudry, Sophie	c	2-6	0-0	2-2	1	2	3	5	6	0	2	1	1	21	
12	Hope, Sarah	g	7-12	6-11	0-0	0	2	2	3	20	1	4	0	1	35	
14	Latham, Courtney	g	0-4	0-0	0-1	2	4	6	1	0	2	2	0	4	29	
22	Williams, Corrine	g	0-1	0-0	0-0	0	1	1	4	0	1	3	0	0	16	
03	Thompson, Naiyah		0-0	0-0	0-0	0	0	0	1	0	0	3	0	0	5	
04	Hauck, Payton		3-4	1-2	2-2	1	1	2	4	9	3	2	0	1	23	
11	Doogan, Meghan		0-4	0-3	0-0	0	0	0	1	0	0	1	1	0	10	
21	Spearman, Lauren		0-1	0-0	0-2	1	0	1	0	0	3	1	0	0	13	
33	Green, Meghan		5-10	1-2	0-0	0	3	3	4	11	0	1	1	1	15	
34	Bayram, Erin		0-2	0-0	0-0	0	0	0	0	0	0	0	0	1	5	
Team						6	2	8								
Totals			17-49	8-18	12-19	12	19	31	25	54	13	22	4	9	200	

1st - FG %:	1-8	12.5%	2nd: 3-10	30.0%	3rd: 5-13	38.5%	4th: 8-14	44.4%	Game: 17-49	34.7%	Deadball
3FG %:	1-4	25.0%	2-4	50.0%	0-3	0.0%	0-7	71.4%	8-18	44.4%	Rebounds
	2-3	66.7%	4-5	80.0%	4-8	50.0%	5-10	50.0%	13-22	59.1%	

1st - FG %: 1-8 12.5% 2nd: 3-10 30.0% 3rd: 5-13 38.5% 4th: 8-18 44.4% Game: 17-49 34.7% Deadball Rebounds 5
3FG %: 1-4 25.0% 2-4 50.0% 0-3 0.0% 5-7 71.4% 8-18 44.4%
FT %: 2-3 66.7% 4-6 66.7% 4-8 50.0% 2-2 100.0% 12-19 63.2%

UAlbany 69 • 2-2

#	Player	Total		3-Ptr		Rebounds			PF	TP	A TO Blk Stl			Min	
		FG-FGA	FG-FGA	FT-FTA	Off	Def	Tot								
15	Fequiere, Jessica	f	3-9	0-4	0-0	3	4	7	1	6	1	2	0	1	23
22	Forster, Heather	f	0-1	0-0	1-2	0	2	2	3	1	1	2	0	2	19
00	Trpic, Mackenzie	g	0-2	0-2	1-2	0	1	1	2	1	2	1	0	1	16
12	Tate, Imani	g	11-16	1-4	1-1	1	3	4	0	24	3	2	1	0	25
13	Aiyalogbe, Bose	g	4-9	1-2	0-0	1	3	4	1	9	0	4	1	0	31
02	Hernandez, Aubrey		0-0	0-0	0-0	0	0	0	1	0	0	1	0	0	3
03	Stokes, Khepera		1-4	1-1	3-4	0	1	1	0	6	4	2	0	2	22
10	Hixson, Bailey		2-6	1-3	0-0	0	1	1	1	5	2	1	0	0	14
20	Aslan, Kumsal		0-0	0-0	0-0	0	1	1	1	0	1	1	0	0	3
24	Schecter, Alexi		1-1	0-0	0-0	1	0	1	2	2	0	2	2	0	10
33	Carter, Tiana-Jo		1-1	0-0	3-4	0	1	1	4	5	1	0	1	0	9
34	Edwards, Cassandra		3-5	0-0	4-4	3	3	6	1	10	0	0	1	3	25
	Team					3	2	5							
Totals			26-54	4-16	13-17	12	22	34	17	69	15	18	6	9	200

1st - FG %: 8-15 53.3% 2nd: 9-18 50.0% 3rd: 4-13 30.8% 4th: 5-8 62.5% Game: 26-54 48.1% Deadball Rebounds 2
3FG %: 2-5 40.0% 1-4 25.0% 0-4 0.0% 1-3 33.3% 4-16 25.0%
FT %: 7-9 77.8% 1-2 50.0% 2-2 100.0% 3-4 75.0% 13-17 76.5%

Officials: Fidel Gonzalez, Heather Browne, Debra Garcia
Technical fouls: BU-None. UAlbany-None.
Attendance: 1119

Score by periods	1st	2nd	3rd	4th	Total
BU	5	12	14	23	54
UAlbany	25	20	10	14	69

	In	Off	2nd	Fast	Bench
Points	Paint	T/O	Chance	Break	
BU	18	20	14	2	20
ALBANY	26	20	11	2	28

Last FG - BU 4th-01:06, ALBANY 4th-02:24.
Largest lead - BU by 1 1st-08:12, ALBANY by 34 2nd-01:11.
BU led for 00:13, ALBANY led for 38:07. Game was tied for 01:31.

Score tied - 0 times.
Lead changed - 2 times.

Official Basketball Box Score -- Game Totals -- Final Statistics Boston University vs Boston College 11-14-16 7:05 p.m. at Silvio O. Conte Forum, Chesnut Hill, MA

Boston University 49 • 0-2

Boston University 43-6-2																		
#	Player	Total		3-Ptr		Rebounds							PF	TP	A TO	Blk	Stl	Min
		FG-FGA	FG-FGA	FT-FTA	FT-FTA	Off	Def	Tot	PF	TP								
52	Sheftic, Kara	f	3-8	0-0	7-12	2	1	3	5	13	0	1	0	1	26			
01	Beaudry, Sophie	c	4-7	0-0	0-0	3	10	13	5	8	3	5	4	2	26			
04	Hauck, Payton		0-3	0-0	0-0	0	0	0	2	0	1	0	0	0	4			
12	Hope, Sarah	g	5-12	3-7	0-0	0	0	0	1	13	3	2	0	0	39			
22	Williams, Corrine	g	1-2	0-0	0-0	0	2	2	2	2	5	2	1	1	35			
03	Thompson, Naiyah		1-3	0-1	0-0	1	0	1	4	2	1	2	1	1	16			
11	Doogan, Meghan		1-4	0-2	0-0	0	0	0	0	2	0	0	0	0	12			
14	Latham, Courtney		1-3	0-0	0-0	0	3	3	3	2	1	3	0	1	23			
30	Edgehill, Vanessa		0-0	0-0	0-0	0	0	0	0	0	0	0	0	0	1			
33	Green, Meghan		2-5	1-4	2-2	2	2	4	1	7	0	3	0	0	18			
	Team					2	2	4										
Totals			18-47	4-14	9-14	10	20	30	23	49	14	19	6	6	200			

1st - FG %: 3-13 23.1% 2nd: 8-13 61.5% 3rd: 5-11 45.5% 4th: 2-10 20.0% Game: 18-47 38.3% Deadball Rebounds 2
3FG %: 0-0 0.0% 0-3 0.0% 2-5 40.0% 2-4 50.0%
FT %: 2-2 100.0% 0-0 0.0% 5-8 62.5% 2-4 50.0%

Boston College 67 • 1-1

Boston Celtics 0 1 1																		
#	Player	Total		3-Ptr		Rebounds						PF	TP	A	TO	Blk	Stl	Min
		FG-FGA	FG-FGA	FT-FTA	FT-FTA	Off	Def	Tot	4	4								
##	Pineau,Georgia	f	3-4	0-0	2-4	0	4	4	2	8	1	2	0	1	34			
10	Awobajo,Emma	f	1-4	0-1	5-7	2	4	6	4	7	1	2	0	1	33			
11	Guy,Emma	f	2-4	0-0	2-3	2	3	5	3	6	2	3	2	2	33			
34	Fasoula,Mariella	c	8-18	0-0	5-7	4	4	8	3	21	2	5	0	1	34			
23	Hughes,Kelly	g	6-16	4-10	5-6	1	3	4	1	21	2	2	1	1	37			
21	Mosetti,Martina		0-1	0-0	2-2	0	1	1	1	2	6	1	0	2	21			
42	Quandt,Katie		1-3	0-0	0-0	0	0	0	2	2	0	0	0	0	8			
Team						6	3	9										
Totals			21-50	4-11	21-29	15	22	37	16	67	14	15	3	8	200			
1st - FG %: 7-15 46.7% 35.7% 3rd: 3-10 30.0% 4th: 6-11 54.5% Game: 21-50 42.0% Deadball																		
3rd: 0-3 0.0% 100.0% 0-2 0.0% 4-11 36.4%																		
FT %: 6-8 75.0% 3-4 75.0% 3-4 75.0% 9-13 69.2% 21-29 72.4%																		

Official Basketball Box Score -- Game Totals -- Final Statistics
UMass Lowell vs Boston University
11/26/16 2 p.m. at Case Gym "The Roof" - Boston, Mass.

UMass Lowell 56 • 0-6

		Total	3-Ptr		Rebounds										
#	Player	FG-FGA	FG-FGA	FT-FTA	Off	Def	TP	PF	A	TO	Blk	Stl	Min		
01	GIBBS, Kayla	f	5-9	0-0	3-3	2	8	10	1	13	0	1	2	29	
50	SMITH, Katherine	f	0-2	0-0	0-0	1	4	5	0	0	2	0	0	24	
02	HENDRICK, Megan	g	6-11	3-6	0-0	0	5	4	15	0	2	0	0	24	
12	MITCHELL-OWENS, Asi	g	2-6	1-1	0-0	3	1	4	2	5	1	6	0	26	
22	BUTLER, Nazarae	g	0-1	0-0	0-0	0	0	0	1	0	0	2	0	1	9
02	ORTIZ, Amanda		1-3	0-0	1-1	0	2	2	5	3	0	4	0	1	18
11	BRITTEN, Tyshay		0-0	0-0	0-0	1	1	2	1	0	0	1	1	1	14
13	SHERMAN, Markayla		4-14	1-5	3-6	1	2	3	5	12	1	4	0	1	23
23	SHACKELFORD, Oda		3-4	0-0	2-2	4	3	7	1	8	1	0	0	0	13
23	McCALLUM, Shawnkia		0-0	0-0	0-0	0	1	1	1	0	1	4	0	2	13
34	HAYNER, Nicole		0-0	0-0	0-0	0	0	0	0	0	2	2	0	0	7
Team						1	1	2							
Totals			21-50	5-12	9-12	13	28	41	21	56	6	28	2	8	200
1st- 44%		4-9	44%	2nd- 3-9	33.3%	3rd- 5-13	38.5%	4th- 9-19	47.4%	Game: 21-50		42.0%	Deadball		
3FG %: 1-4		25.0%	0-1	0.0%	0-2	0.0%	4-5	80.0%	5-12	41.7%	Rebounds				
FT %: 6-8		75.0%	0-0	0.0%	6-8	75.0%	6-7	85.7%	12-15	80.0%					

1st FG %:	4-9	44.4%	2nd:	3-9	33.3%	3rd:	5-13	38.5%	4th:	9-19	47.4%	Game:	21-50	42.0%	Deadball	Rebounds
3FG %:	1-4	25.0%		0-1	0.0%		0-2	0.0%		5-12	41.7%		9-12	75.0%		1
FT %:	1-1	100.0%		0-0	0.0%		6-8	75.0%		2-3	66.7%					

Boston University 66 • 1-4

		Total	3-Ptr		Rebounds										
#	Player	FG-FGA	FG-FGA	FT-FTA	Off	Def	TP	PF	A	TO	Blk	Stl	Min		
52	Sheftic, Kara	f	4-9	0-0	2-3	0	0	2	10	0	1	0	1	29	
04	Hauck, Payton	g	0-3	0-1	0-0	0	1	1	3	0	2	0	0	2	14
12	Hope, Sarah	g	2-8	1-5	3-4	0	0	0	1	8	4	6	0	4	32
14	Latham, Courtney	g	5-7	0-0	7-9	1	2	3	3	17	4	3	0	4	34
22	Williams, Corrine	g	7-11	2-2	3-4	2	5	7	3	19	2	2	2	1	34
03	Thompson, Naiyah		2-3	0-0	0-2	1	2	3	4	1	0	2	1	1	18
11	Doogan, Meghan		0-2	0-1	0-0	0	0	0	0	0	0	0	0	0	3
21	Spearman, Lauren		2-5	0-2	0-0	1	1	2	1	4	0	0	0	2	18
33	Green, Meghan		2-5	0-0	0-2	0	3	3	2	4	2	2	0	1	18
Team						2	4	6							
Totals			24-53	3-11	15-24	7	18	25	18	66	15	14	4	16	200
1st - FG %		4-10	40.0%		40.0%	3rd: 8-16	50.0%		4th: 6-12	50.0%	Game: 24-53	45.3%			Deadball
3FG %		2-5	40.0%	0-4	0.0%	0-1	0.0%		1-2	50.0%	3-11	27.3%			Rebounds
FT %		0-0	0.0%		0.0%	0-0	0.0%								

1st FG %:	4-10	40.0%	2nd:	6-15	40.0%	3rd:	8-16	50.0%	4th:	6-12	50.0%	Game:	24-53	45.3%	Deadball	Rebounds
3FG %:	2-5	40.0%		0-4	0.0%		0-0	0.0%		1-2	50.0%		3-11	27.3%		3
FT %:	2-2	100.0%		1-5	20.0%		3-5	60.0%		9-12	75.0%		15-24	62.5%		

Officials: Margaret Tieman, Roger Saraiya, Eric Ferris

Technical fouls: UMass Lowell-None. Boston University-None.

Attendance: 166

Score by periods	1st	2nd	3rd	4th	Total
UMass Lowell	10	6	16	24	56
Boston University	12	13	19	22	66

Points	In	Off	2nd	Fast	Bench
UMass Lowell	24	10	16	4	23
BU	32	25	6	6	12

Last FG - UMLW 4th-00:06, BU 4th-00:17.

Largest lead - UMLW by 2 1st-01:03, BU by 19 3rd-03:39.

UMLW led for 00:24, BU led for 35:37. Game was tied for 03:57.

Score tied - 2 times.
Lead changed - 2 times.

Official Basketball Box Score -- Game Totals -- Final Statistics
New Hampshire vs Boston University
11/28/16 7 p.m. at Case Gym "The Roof" - Boston, Mass.

New Hampshire 59 • 3-2

		Total	3-Ptr		Rebounds									
#	Player	FG-FGA	FG-FGA	FT-FTA	Off	Def	TP	PF	A	TO	Blk	Stl	Min	
36	Kat Fogarty	4-12	1-4	6-6	1	0	1	3	15	0	1	3	0	29
32	Charlie Pogue	6-16	0-0	1-1	1	7	8	1	13	0	2	0	1	36
02	Brittni Lai	5-14	3-6	6-6	1	2	3	1	19	6	3	0	4	40
10	Aliza Simpson	3-7	1-3	0-2	2	4	6	0	7	4	5	0	1	35
14	Peyton Booth	2-3	1-1	0-0	0	4	4	2	5	3	0	0	0	26
04	Kristen Anderson	0-1	0-1	0-0	0	1	1	2	0	1	1	1	1	9
11	Ashley Storey	0-0	0-0	0-0	1	2	3	0	0	0	0	0	0	13
33	Caroline Soucy	0-3	0-2	0-0	0	2	2	0	0	0	0	0	0	10
50	Morgan Bassett-Smith	0-0	0-0	0-0	0	0	0	0	0	0	2	0	0	2
Team					4	3	7							
Totals		20-56	6-17	13-15	10	25	35	9	59	14	14	4	7	200
1st - FG %		3-14	21.4%	43.8%	3rd - 1-3	33.3%	4th - 2-4	50.0%	Games - 10-55		35.7%	Double Rebound		
2nd - FG %		1-4	18.7%	50.0%	1-3	33.3%	2-4	50.0%	6-17		35.3%			
3rd - FG %		1-6	16.7%	100.0%	1-2	50.0%	1-2	50.0%	4-17		23.5%			

1st FG %:	3-14	21.4%	2nd:	7-16	43.8%	3rd:	6-15	40.0%	4th:	4-13	30.8%	Game:	20-56	35.7%	Deadball	Rebounds
3FG %:	1-4	25.0%		2-4	50.0%		2-4	50.0%		6-17	35.3%		13-15	86.7%		1,1
FT %:	2-2	100.0%		1-1	100.0%		2-2	100.0%		8-10	80.0%					

Boston University 51 • 1-5

		Total	3-Ptr		Rebounds										
#	Player	FG-FGA	FG-FGA	FT-FTA	Off	Def	TP	PF	TP	A	TO	Blk	Stl	Min	
52	Sheftic, Kara	f	4-7	0-0	0-0	3	2	5	0	8	1	3	1	0	19
04	Hauck, Payton	g	2-5	0-0	0-0	0	2	2	1	4	0	3	0	0	18
12	Hope, Sarah	g	3-8	3-6	2-2	0	3	3	2	11	6	4	0	1	38
14	Latham, Courtney	g	2-6	0-0	0-0	0	5	5	4	4	4	2	0	1	35
22	Williams, Corinne	g	2-10	0-2	0-0	1	4	5	3	4	2	1	0	4	34
01	Beaudry, Sophie		6-10	0-0	0-2	2	3	5	4	12	1	3	1	1	18
03	Thompson, Naiyah		2-3	1-2	0-1	0	0	0	4	5	0	3	0	0	10
11	Doogan, Meghan		1-3	1-2	0-0	1	1	2	2	3	0	0	0	1	13
21	Spearman, Lauren		0-1	0-0	0-0	0	1	1	0	0	0	0	0	0	7
33	Green, Meghan		0-2	0-1	0-0	0	5	5	0	0	0	0	0	1	8
Team						2	1	3							
Totals			22-55	5-13	2-5	9	27	36	20	51	14	19	2	9	200

1st FG %:	6-15	40.0%	2nd:	2-14	14.3%	3rd:	5-13	38.5%	4th:	7-13	53.8%	Game:	22-55	40.0%	Deadball	Rebounds
3FG %:	0-1	0.0%		0-1	0.0%		2-4	50.0%		5-13	38.5%		9-24	37.5%		0
FT %:	0-3	0.0%		2-2	100.0%		0-4	0.0%		0-0	0.0%		2-5	40.0%		1

Officials: John Palermo, Elizabeth Kuzmeski, Katelyn Adams

Technical fouls: New Hampshire-None. Boston University-None.

Attendance: 151

Score by periods	1st	2nd	3rd	4th	Total
New Hampshire	9	17	15	18	59
Boston University	16	6	12	17	51

Points	In	Off	2nd	Fast	Bench
UMass Lowell	24	19	5	8	0
BU	22	16	10	4	20

Last FG - UMLW 4th-01:34, BU 4th-00:15.

Largest lead - UMLW by 11 3rd-04:19, BU by 10 1st-06:50.

UMLW led for 26:17, BU led for 30:40. Game was tied for 03:00.

Score tied - 2 times.
Lead changed - 1 time.

Official Basketball Box Score -- Game Totals -- Final Statistics
Boston University vs #24 Arizona State
12/3/16 12:05 pm MT at Wells Fargo Arena (Tempe,Ariz.)

Boston University 42 • 1-6

		Total	3-Ptr		Rebounds										
#	Player	FG-FGA	FG-FGA	FT-FTA	Off	Def	Tot	PF	TP	A	TO	Blk	Stl	Min	
52	Sheftic, Kara	f	2-4	0-0	0	1	1	2	4	0	0	0	0	14	
01	Beaudry, Sophie	c	4-8	0-0	0	3	3	2	8	3	1	0	0	33	
12	Hope, Sarah	g	1-7	1-6	2-2	0	0	0	3	5	1	5	0	24	
14	Latham, Courtney	g	2-3	0-0	0-0	0	0	0	0	4	4	4	0	1	
22	Williams, Corrine	g	3-5	0-1	0-0	1	0	1	3	6	0	2	0	3	
03	Thompson, Naiyah		0-1	0-0	2-2	2	1	3	4	2	1	4	0	3	
04	Hauck, Payton		0-0	0-0	0	0	1	2	0	1	0	1	0	2	
11	Doogan, Meghan		0-0	0-0	0-0	0	0	0	1	0	1	3	0	0	
21	Spearman, Lauren		2-5	0-2	0-0	0	0	0	4	4	0	1	0	1	
30	Edgehill, Vanessa		0-0	0-0	0-0	0	0	0	0	0	0	0	0	3	
33	Green, Meghan		2-6	0-1	1-2	0	3	3	1	5	2	0	1	1	
34	Bayram, Erin		1-1	0-0	0-0	0	1	1	0	2	1	0	0	4	
Team						3	3	6							
Totals			18-42	1-10	5-7	6	13	19	21	42	13	22	1	12	200
1st 3FG %: 6-10		60.0%	2nd: 2-12		16.7%	3rd: 4-12		33.3%	4th: 6-8		75.0%	Game: 18-42		42.9%	Deadball
FG %: 1-3		33.3%	1-5		20.0%	0-2		0.0%	0-1		0.0%	1-7		14.3%	Rebounds
FT %: 0-0		0.0%	2-2		100.0%	3-4		75.0%	0-0		0.0%	5-7		71.4%	1

#34 Arizona State 31 4 1 0

1st FG %:	6-10	60.0%	2
-----------	------	-------	---

2016-17 TERRIER BASKETBALL

10

Official Basketball Box Score -- Game Totals -- Final Statistics Dartmouth vs Boston University 12/07/16 5:35 p.m. at Case Gym "The Roof" - Boston, Mass.

Dartmouth 61 • 3-4

#	Player	Total		3-Ptr		Rebounds			PF	TP	A TO		Blk	Stl	Min
		FG-FGA	FT-FTA	FG-FGA	FT-FTA	Off	Def	Tot							
03	Smith, Olivia	* 1-5	0-0	4-6	1 2 3	3	6	0 1 2	1	38	0	1	2	1	38
04	Mixon, Amber	* 0-0	0-0	4-4	1 1 2	1	4	3 3 0	0	25	0	0	0	0	25
14	Lekewicz, Kate	* 6-12	3-5	2-2	0 12 12	2	17	0 4 0	0	36	0	4	0	0	36
25	Quinones, Isalys	* 6-10	0-1	2-3	0 5 5	1	14	1 2 1	0	36	0	1	2	1	36
32	Norman, Andi	* 3-9	2-6	0-0	0 2 2	1	8	1 1 0	1	22	0	1	0	1	22
02	McKenna, Annie	0-3	0-2	2-2	0 0 0	1	2	3 0 0	1	15	0	0	0	1	15
15	Szabo, Fanni	3-7	2-4	2-2	0 2 2	0	10	3 2 1	1	26	0	3	2	1	26
32	Slagle, Emily	0-0	0-0	0-0	0 0 0	0	0	0 0 0	0	2	0	0	0	0	2
Team					4 5			1							
Totals		19-46	7-18	16-19	3 28 31	9	61	11 14 4	4	200					

1st - FG %: 4-12 33.3% 2nd: 7-13 53.8% 3rd: 4-14 28.6% 4th: 4-7 57.1% Game: 19-46 41.3% Deadball Rebounds 0
3FG %: 2-6 33.3% 3-5 60.0% 1-5 20.0% 1-2 50.0% 7-18 38.9%
FT %: 0-0 0.0% 4-4 100.0% 2-2 100.0% 10-13 76.9% 16-19 84.2%

Boston University 49 • 1-8

#	Player	Total		3-Ptr		Rebounds			PF	TP	A TO		Blk	Stl	Min
		FG-FGA	FT-FTA	FG-FGA	FT-FTA	Off	Def	Tot							
01	Beaudry, Sophie	* 5-12	0-0	2-2	2 9 11	1	12	0 2 2	0	29	0	2	2	0	29
03	Thompson, Naiyah	* 6-8	0-1	0-0	3 5 8	1	12	1 5 1	3	30	0	0	1	0	30
12	Hope, Sarah	* 2-12	2-7	0-0	2 4 6	3	6	1 2 0	1	37	0	1	4	0	37
14	Latham, Courtney	* 2-7	0-0	2-2	0 2 2	2	6	4 1 1	1	26	0	3	2	0	26
52	Sheftic, Kara	* 1-1	0-0	0-0	0 2 2	2	2	1 2 0	0	15	0	1	0	0	15
04	Hauck, Payton	1-1	0-0	0-0	0 2 2	1	2	0 1 0	0	8	0	1	0	0	8
11	Doogan, Meghan	0-2	0-2	0-0	0 1 1	1	0	0 0 0	1	7	0	0	0	0	7
21	Spearman, Lauren	1-5	0-1	0-0	0 0 0	2	2	1 0 0	0	17	0	1	0	0	17
33	Green, Meghan	2-7	1-3	0-0	0 1 1	1	5	3 2 0	0	28	0	3	2	0	28
34	Bayram, Erin	1-2	0-0	0-0	0 0 0	1	2	0 0 0	0	3	0	0	0	0	3
Team					1 1 2										
Totals		21-57	3-14	4-4	8 27 35	15	49	11 15 4	6	200					

1st - FG %: 5-12 41.7% 2nd: 5-14 35.7% 3rd: 3-15 20.0% 4th: 8-16 50.0% Game: 21-57 36.8% Deadball Rebounds 0
3FG %: 1-2 50.0% 2-5 40.0% 0-0 0.0% 0-4 0.0% 3-14 21.4%
FT %: 2-2 100.0% 0-0 0.0% 0-0 0.0% 2-2 100.0% 4-4 100.0%

Officials: Pastor Torres, Ryan Nunes, Michael Motta
Technical fouls: Dartmouth-None. Boston University-None.
Attendance: 363

Score by periods		1st	2nd	3rd	4th	Total	Points DART	In Paint	Off T/O	2nd Chance	Fast Break	Bench
		10	21	11	19	61						
Dartmouth		13	12	6	18	49	28	14	14	6	0	12
Boston University		6	13	22	6	44	12	4	4	4	11	

Last FG - DART 4th-04:08, BU 4th-00:53.
Largest lead - DART by 18 4th-04:08, BU by 6 1st-01:42.
DART led for 27:19, BU led for 11:15. Game was tied for 01:22.
Score tied - 2 times.
Lead changed - 4 times.

Official Basketball Box Score -- Game Totals -- Final Statistics UMass vs Boston University 12/14/16 7:05 p.m. at Case Gym "The Roof" - Boston, Mass.

UMass 60 • 5-6

#	Player	Total		3-Ptr		Rebounds			PF	TP	A TO		Blk	Stl	Min
		FG-FGA	FT-FTA	FG-FGA	FT-FTA	Off	Def	Tot							
00	MULLIGAN, Maggie	c 2-9	0-0	4-6	7 8 15	4	8	0 0 0	1	39	0	0	0	1	39
02	HOLDER, Ryan	g 5-17	0-0	6-8	4 3 7	4	16	2 0 1	1	32	0	0	1	1	32
22	GEORGE, Jessica	g 0-0	0-0	2-2	0 0 0	0	0	0 0 0	2	27	0	2	3	0	27
24	LEIDEL, Hailey	g 3-9	2-4	1-2	2 0 2	2	9	0 3 1	0	28	0	3	1	0	28
26	McDERMONT, Leah	g 2-6	0-1	1-2	2 1 3	3	5	1 3 0	2	37	0	1	3	0	37
03	STIFF, Alyx	3-6	1-3	2-2	1 2 3	3	9	0 4 0	1	17	0	4	0	1	17
32	LAWRENCE, Alyssa	2-8	0-1	7-7	0 1 1	1	11	1 4 0	1	20	0	1	4	0	20
Team					5 2 7			1							
Totals		17-55	3-9	23-29	21 17 38	17	60	6 18 2	6	200					

1st - FG %: 4-10 40.0% 2nd: 5-13 38.5% 3rd: 3-18 16.7% 4th: 5-14 35.7% Game: 17-55 30.9% Deadball Rebounds 4,1
3FG %: 1-4 25.0% 1-2 50.0% 0-1 0.0% 1-2 50.0% 3-9 33.3%
FT %: 2-2 100.0% 1-2 50.0% 1-2 50.0% 1-2 50.0%

Boston University 64 • 2-9

#	Player	Total		3-Ptr		Rebounds			PF	TP	A TO		Blk	Stl	Min
		FG-FGA	FT-FTA	FG-FGA	FT-FTA	Off	Def	Tot							
03	Thompson, Naiyah	r 3-5	0-0	2-2	2 1 3	5	8	1 2 2	1	18	0	2	0	1	18
52	Sheftic, Kara	r 0-2	0-0	2-2	2 0 2	4	2	0 0 1	0	13	0	0	1	0	13
01	Beaudry, Sophie	c 2-5	0-0	1-2	2 5 7	4	5	3 5 6	0	27	0	3	5	0	27
12	Hope, Sarah	g 6-13	4-10	0-0	0 4 4	1	16	1 4 0	1	40	0	1	4	0	40
14	Latham, Courtney	g 1-5	0-0	1-2	1 3 4	3	3	2 3 0	2	21	0	3	2	0	21
04	Hauck, Payton	5-8	0-1	0-1	3 0 3	1	10	3 3 0	1	21	0	3	3	0	21
11	Doogan, Meghan	0-1	0-1	0-0	0 0 0	3	0	0 1 0	0	6	0	1	0	0	6
20	Irving, Nia	0-0	0-0	0-0	0 0 0	1	0	0 0 0	0	3	0	0	0	0	3
21	Spearman, Lauren	1-3	1-2	1-2	1 1 2	2	4	1 1 0	0	21	0	1	1	0	21
33	Green, Meghan	5-10	1-3	5-7	2 3 5	2	16	1 1 0	1	30	0	1	1	0	30
Team					1 1 2										
Totals		23-52	6-17	12-18	14 18 32	26	64	12 20 9	6	200					

1st - FG %: 2-8 25.0% 2nd: 6-14 42.9% 3rd: 7-17 41.2% 4th: 8-13 61.5% Game: 23-52 44.2% Deadball Rebounds 5,1
3FG %: 1-3 33.3% 1-4 25.0% 2-2 100.0% 2-4 50.0% 6-17 35.3%
FT %: 1-2 50.0% 0-0 0.0% 0-0 0.0% 0-0 0.0%

Officials: Michael De Couto, Randall Amrey, Rachel Kimball
Technical fouls: UMass-None. Boston University-None.
Attendance: 186

Score by periods		1st	2nd	3rd	4th	Total	Points	In Paint	Off T/O	2nd Chance	Fast Break	Bench
UMass		11	17	19	13	60	UMASS	26	16	19	0	20
Boston University		6	13	22	23	64	BU	22	15	18	0	30

Last FG - UMass 4th-02:23, BU 4th-02:06.
Largest lead - UMass by 11 2nd-03:52, BU by 4 4th-00:06.
UMass led for 30:47, BU led for 04:34. Game was tied for 04:39.
Score tied - 2 times.
Lead changed - 7 times.

Official Basketball Box Score -- Game Totals -- Final Statistics Boston U. vs Marist 12/10/16 7:05 pm at Poughkeepsie, N.Y. (McCann Arena)

Boston U. 57 • 1-8

#	Player	Total		3-Ptr		Rebounds			PF	TP	A TO		Blk	Stl	Min
		FG-FGA	FT-FTA	FG-FGA	FT-FTA	Off	Def	Tot							
03	Thompson, Naiyah	r 1-6	0-1	0-0	2 0 2	4	2	3 1 1	0	23	0	1	1	0	23
52	Sheftic, Kara	r 2-5	0-0	2-4	3 5 8	1	6	1 1 0	2	23	0	1	0	2	23
01	Beaudry, Sophie	c 7-13	0-0	6-10	2 1 3	2	20	0 2 1	2	31	0	1	2	1	31
12	Hope, Sarah	g 6-17	6-15	0-0	1 2 3	3	18	1 1 1	2	39	0	1	1	2	39
14	Latham, Courtney	g 1-5	0-0	1-2	1 4 5	4	3	9 2 0	0	27	0	3	2	0	27
04	Hauck, Payton	0-0	0-0	0-0	0 0 0	3	0	1 1 0	0	4	0	1	0	0	4
11	Doogan, Meghan	0-0	0-0	0-0	0 0 0	0	0	0 0 0	0	2	0	0	0	0	2
21	Spearman, Lauren	1-5	0-4	0-0	0 3 3	3	2	4 3 0	2	30	0	4	3	0	30
33	Green, Meghan	3-9	0-1	0-0	5 1 6	2	6	0 3 0	0	21	0	3	0	0	21
Team					3 3 6										
Totals		21-60	6-21	9-16	17 19 36	22	57	19 14 3	8	200					

1st - FG %: 3-15 20.0% 2nd: 7-11 63.6% 3rd: 6-18 33.3% 4th: 5-16 31.3% Game: 21-60 35.0% Deadball Rebounds 4,1
3FG %: 1-5 20.0% 1-2 50.0% 2-8 25.0% 2-6 33.3% 6-21 28.6%
FT %: 0-2 0.0% 2-2 100.0% 2-2 100.0% 5-10 50.0% 9-16 56.3%

Marist 76 • 3-7

#	Player	Total		3-Ptr		Rebounds			PF	TP					Min
		FG-FGA	FT-FTA	FG-FGA	FT-FTA	Off	Def	Tot			A	TO	Blk	Stl	
05	Henningsdottir, Lovi	f 5-9	3-6	0-0	0	5	5	3	13	1	2	0	1	35	
10	Fitzpatrick, Maura	f 3-7	1-3	5-5	1	3	4	3	12	8	2	0	1	29	
01	Oberdorf, Claire	g 2-6	2-5	5-6	4	6	10	2	11	1	1	0	0	38	
20	Hand, Hannah	g 3-9	3-4	2-2	4	0	4	2	11	3	0	0	2	34	
23	Hand, Rebekah	g 5-16	3-9	4-6	1	3	4	3	17	2	4	0	1	35	
14	Jossart, Jordyn	0-2	0-0	2-2	1	0	1	1	2	2	3	1	0	8	
15	Baab, Kendall	1-3	1-1	0-0	1	0	1	1	3	0	1	0	1	9	
22	Bartner, Morgan	2-4	1-3	2-2	0	5	5	4	7	1	1	0	0	12	
	Team				5	3	8				1				
		21-56	14-31	20-23	17	25	42	19	76	18	15	1	6	200	
1st	FG: 7-14	50.0%	2nd: 4-14	28.6%	3rd: 1-12	8.3%	4th: 9-16	56.3%	Game: 21-56	37.5%	DeadB				
	FT: 1-1	45.5%	2-6	33.3%	6-8	75.0%	1-1	100.0%	25-52	48.2%	Rebnds				
	FT %: 0-0	0.0%	8-10	80.0%	11-12	91.7%			40-23	87.0%					

Official Basketball Box Score -- Game Totals -- Final Statistics

Boston University vs Lehigh

1/2/17 2:05 p.m. at Stabler Arena - Bethlehem, Pa.

Boston University 69 • 4-9, 2-0 PL

#	Player	Total		3-Ptr		Rebounds			PF	TP	A TO Blk Stl				Min
		FG-FGA	FG-FGA	FT-FTA	Off Def Tot	PF	TP	A TO Blk Stl							
03	Thompson, Naiyah	f	3-8	1-1	1-2	1	8	9	4	8	3	4	1	3	28
01	Beaudry, Sophie	c	7-12	0-0	2-3	2	3	5	3	16	0	2	2	2	20
04	Hauck, Payton	g	2-5	0-1	0-0	0	0	0	0	4	0	1	0	0	17
12	Hope, Sarah	g	1-8	1-5	0-0	0	0	0	4	3	4	1	0	1	38
14	Latham, Courtney	g	4-12	0-0	2-2	3	6	9	3	10	2	2	0	0	36
20	Irving, Nia		7-12	0-0	12-13	3	7	10	1	26	1	1	0	3	28
21	Spearman, Lauren		0-1	0-0	0-0	0	0	0	1	0	0	0	0	0	5
22	Williams, Corrine		0-4	0-1	0-2	0	0	4	2	0	1	4	0	1	16
33	Green, Meghan		0-2	0-1	0-0	2	1	3	2	0	0	2	0	0	4
52	Sheftic, Kara		1-2	0-0	0-0	0	1	1	1	2	2	0	0	1	8
Team						3	2	5							
Totals			25-66	2-9	17-22	14	32	46	21	69	13	17	3	11	200

1st - FG %: 5-16 31.3% 2nd: 5-17 29.4% 3rd: 4-17 23.5% 4th: 11-16 68.8% Game: 25-66 37.9% Deadball Rebounds 4,1
 3FG %: 0-1 0.0% 1-6 16.7% 0-0 0.0% 1-2 50.0% 1-6 16.7% 1-9 11.1%
 FT %: 1-1 100.0% 0-2 0.0% 2-4 50.0% 14-15 93.3% 17-22 77.3%

Lehigh 64 • 5-8, 0-2 PL

#	Player	Total		3-Ptr		Rebounds			PF	TP	A TO Blk Stl				Min
		FG-FGA	FG-FGA	FT-FTA	Off Def Tot	PF	TP	A TO Blk Stl							
15	Buhr, Camryn	f	1-5	0-0	1-3	1	3	4	2	3	2	2	1	2	21
44	Williams, Mae	f	3-4	1-1	2-4	3	1	4	4	9	0	0	0	2	14
12	Grundhoffer, Gena	c	1-6	0-2	2-2	1	4	5	3	4	1	3	0	0	24
20	Mann, Quinci	g	7-19	3-9	3-4	0	3	3	1	20	0	3	0	1	30
22	Hedstrom, Hannah	g	0-2	0-0	0-0	1	1	2	4	0	6	4	0	1	26
05	Devaney, Bernadette		1-7	0-2	2-2	0	1	1	1	4	1	1	0	1	16
11	Campbell, Taylor		2-4	0-2	2-2	1	3	4	0	6	0	1	0	1	9
13	Eripret, Meagan		2-2	0-0	0-0	0	2	2	1	4	0	1	1	0	15
25	Burton, Kayla		2-3	2-3	2-2	0	3	3	2	8	2	2	0	2	14
30	Benz, Cameryn		0-2	0-2	0-0	2	3	5	1	0	1	0	0	0	11
33	Pascoe, Hailey		2-7	2-7	0-0	0	1	1	4	6	2	1	0	0	20
Team						1	3	4							
Totals			21-61	8-28	14-19	10	28	38	23	64	15	18	2	10	200

1st - FG %: 5-17 29.4% 2nd: 6-15 40.0% 3rd: 6-16 37.5% 4th: 4-13 30.8% Game: 21-61 34.4% Deadball Rebounds 2
 3FG %: 2-5 40.0% 3-8 37.5% 1-9 11.1% 2-6 33.3% 8-28 28.6%
 FT %: 0-1 0.0% 4-4 100.0% 1-4 25.0% 7-10 70.0% 14-19 73.7%

Officials: Bill Titus, Kenneth Kelly, Kevin Ruland
 Technical fouls: Boston University-None. Lehigh-None.
 Attendance: 566

Score by periods	1st	2nd	3rd	4th	Total
Boston University	11	11	10	37	69
Lehigh	12	19	16	17	64

Points	In Paint	Off T/O	2nd Chance	Fast Break	Bench
BU	38	16	11	6	28
LEHIGH	24	12	10	10	28

Last FG - BU 4th-00:28, LEHIGH 4th-05:33.

Largest lead - BU by 5 4th-00:02, LEHIGH by 17 3rd-01:37.

BU led for 05:43. LEHIGH led for 31:24. Game was tied for 02:53.

Score tied - 3 times.
Lead changed - 7 times.

Official Basketball Box Score -- Game Totals -- Final Statistics

Lafayette vs Boston University

01/08/17 2:05 p.m. at Case Gym "The Roof" - Boston, Mass.

Lafayette 50 • 1-15, 0-4 PL

#	Player	Total		3-Ptr		Rebounds			PF	TP	A TO Blk Stl				Min
		FG-FGA	FG-FGA	FT-FTA	Off Def Tot	PF	TP	A TO Blk Stl							
14	Ottewill-Soulsby, H	f	1-1	0-0	0-0	2	1	3	5	2	2	3	1	0	17
24	Santarelli, Alexis	f	2-10	0-2	4-4	4	2	6	4	8	3	5	0	3	27
11	Cantwell, Alex	g	0-4	0-2	0-0	1	2	3	0	0	2	0	0	1	22
13	Agnello, Sarah	g	0-4	0-2	0-0	1	1	2	3	0	3	3	0	2	29
22	Stipa, Sammy	g	5-14	3-9	2-2	4	1	5	2	15	3	2	0	3	38
00	Gumbs, Olivia		4-7	0-0	4-7	0	3	3	4	12	0	0	0	0	19
02	Holland, Nia		0-0	0-0	0-0	0	0	0	1	0	0	0	0	0	2
05	Ptasinski, Anna		2-12	1-9	1-2	0	0	0	1	6	0	3	0	2	18
15	Ribarich, Angela		1-2	0-0	0-0	0	1	1	1	2	0	2	0	0	6
23	Hood, Maia		1-1	0-0	0-0	0	1	1	1	2	0	1	0	0	11
34	Vipond, Tasha		1-3	1-3	0-0	1	2	3	0	3	0	0	1	0	11
Team						4	1	5							
Totals			17-58	5-27	11-15	17	15	32	22	50	13	20	2	11	200

1st - FG %: 4-11 36.4% 2nd: 4-12 33.3% 3rd: 6-17 35.3% 4th: 3-18 16.7% Game: 17-58 29.3% Deadball Rebounds 3
 3FG %: 1-5 20.0% 1-6 16.7% 2-7 28.6% 1-9 11.1% 5-27 18.5%
 FT %: 2-2 100.0% 1-2 50.0% 6-6 100.0% 2-5 40.0% 11-15 73.3%

Boston University 68 • 5-10, 3-1 PL

#	Player	Total		3-Ptr		Rebounds			PF	TP	A TO Blk Stl				Min
		FG-FGA	FG-FGA	FT-FTA	Off Def Tot	PF	TP	A TO Blk Stl							
01	Beaudry, Sophie	c	2-6	0-0	0-2	2	3	5	4	4	3	2	1	1	24
03	Thompson, Naiyah	g	2-6	0-2	3-4	3	4	7	4	7	5	3	1	1	28
12	Hope, Sarah	g	5-9	4-7	1-1	0	1	1	1	15	1	7	0	2	38
14	Latham, Courtney	g	1-3	0-0	0-0	0	4	4	2	2	3	1	1	1	23
22	Williams, Corrine	g	8-11	2-3	3-7	5	4	9	2	21	2	1	0	5	32
04	Hauck, Payton		1-2	0-0	0-0	0	0	0	0	2	1	0	0	0	13
20	Irving, Nia		3-8	0-0	7-8	2	7	9	4	13	2	3	0	0	23
33	Green, Meghan		0-1	0-0	0-0	0	0	0	0	0	0	0	0	0	6
52	Sheftic, Kara		2-3	0-0	0-2	1	0	1	4	4	0	1	0	0	13
Team						0	2	2							
Totals			24-49	6-12	14-24	13	25	38	21	68	16	20	3	10	200

1st - FG %: 6-11 54.5% 2nd: 7-16 43.8% 3rd: 5-10 50.0% 4th: 6-12 50.0% Game: 24-49 49.0% Deadball Rebounds 7
 3FG %: 1-2 50.0% 3-5 60.0% 1-2 50.0% 1-3 33.3% 6-12 50.0%
 FT %: 1-4 25.0% 1-4 25.0% 5-5 100.0% 7-11 63.6% 14-24 58.3%

Officials: Michael Henderson, Debra Garcia, Rachel Kimball
 Technical fouls: Lafayette-None. Boston University-None.
 Attendance: 137

Score by periods	1st	2nd	3rd	4th	Total
Lafayette	11	10	20	9	50
Boston University	14	18	16	20	68

Points	In Paint	Off T/O	2nd Chance	Fast Break	Bench
LAFAYETTE	14	14	12	5	25
BU	34	21	13	8	19

Last FG - LAFAYETTE 4th-00:30, BU 4th-02:27.

Largest lead - LAFAYETTE by 3 1st-08:48, BU by 21 4th-01:44.

LAFAYETTE led for 04:06. BU led for 34:14. Game was tied for 01:20.

Score tied - 2 times.
Lead changed - 4 times.

Official Basketball Box Score -- Game Totals -- Final Statistics

Navy vs Boston University

01/06/17 7:05 p.m. at Case Gym "The Roof" - Boston, Mass.

Navy 62 • 9-5, 2-1 PL

#	Player	Total		3-Ptr		Rebounds			PF	TP	A TO Blk Stl				Min
		FG-FGA	FG-FGA	FT-FTA	Off Def Tot	PF	TP	A TO Blk Stl							
10	Jaunich, Laurel	f	2-3	0-0	0-0	1	2	3	2	4	0	2	1	2	22
01	Dunham, Taylor		0-8	0-7	1-2	1	1	2	1	1	2	1	0	0	15
05	Condie, Sarita	g	3-14	2-8	6-8	2	2	4	2	14	2	0	0	0	29
13	Fenske, Hannah	g	3-5	2-3	2-2	1	3	4	2	10	1	3	0	2	28
21	Swett, Justice	g	4-8	1-2	1-5	3	4	7	3	10	3	2	0	3	32
11	Clark, Kaila		2-2	0-0	0-0	1	4	5	2	4	1	1	1	5	19
15	Roach, Bianca		0-2	0-1	0-0	0	0	0	1	0	0	1	0	1	10
23	Sanders, Molly		0-6	0-6	0-0	0	4	4	2	0	2	2	0	1	17
25	Kennedy, Ashanti		7-13	3-4	2-2	0	1	1	1	19	1	2	0	4	28
Team						2	0	2							
Totals			21-61	8-31	12-19	11	21	32	16	62	12	14	2	18	200

1st - FG %: 9-19 47.4% 2nd: 5-14 35.7% 3rd: 2-15 13.3% 4th: 5-13 38.5% Game: 21-61 34.4% Deadball Rebounds 4,1
 3FG %: 4-11 36.4% 2-7 28.6% 0-6 0.0% 2-7 28.6% 8-31 25.8%
 FT %: 1-1 100.0% 3-3 100.0% 4-6 66.7% 4-9 44.4% 12-19 63.2%

Boston University 59 • 4-10, 2-1 PL

#	Player		Total		3-Ptr		Rebounds			PF	TP	A				Min
			FG-FGA	FG-FGA	FT-FTA	Off	Def	Tot	To			Blk	Stl			
03	Thompson, Naiyah	f	3-7	0-1	4-5	4	3	7	4	10	4	6	0	1	29	
04	Baudry, Sophie	c	4-13	0-0	3-6	3	8	11	2	11	1	7	1	1	29	
04	Hauck, Payton	g	1-2	0-0	0-0	1	1	2	3	2	1	3	0	2	22	
12	Hope, Sarah	g	7-13	7-11	0-0	0	4	4	3	21	2	4	0	1	38	
14	Latham, Courtney	g	1-5	0-0	0-0	1	2	3	2	2	2	3	0	0	20	
20	Irving, Nia		2-8	0-0	2-2	0	6	6	3	6	0	2	0	2	21	
21	Spearmann, Lauren		0-0	0-0	0-0	0	0	0	1	0	0	0	0	0	4	
22	Williams, Corrine		1-1	1-1	0-0	0	0	0	5	3	4	1	0	1	15	
33	Green, Meghan		0-0	0-0	0-0	0	0	0	0	0	0	0	0	0	4	
52	Sheftic, Kara		1-2	0-0	2-3	2	3	5	1	4	1	0	0	0	18	
	Team					1	5	6								
	Totals		20-51	8-13	11-16	12	32	44	22	59	15	26	1	8	200	

2016-17 TERRIER BASKETBALL

12

Official Basketball Box Score -- Game Totals -- Final Statistics Loyola Maryland vs Boston University 01/14/17 2:05 p.m. at Case Gym "The Roof" - Boston, Mass.

Loyola Maryland 58 • 7-10, 3-3 PL

#	Player		Total		3-Ptr		Rebounds			PF	TP	A TO Blk Stl				Min
			FG-FGA	FG-FGA	FT-FTA	Off	Def	Tot	A			TO	Blk	Stl		
21	Daugherty, Lauren	f	5-15	2-7	0-1	2	6	8	5	12	4	2	1	1	36	
10	Karcz, Stephanie	g	5-10	1-3	3-4	1	6	7	3	14	0	2	1	2	37	
11	Betz-White, Bri	g	6-16	2-6	0-0	1	4	5	1	14	4	2	0	0	39	
23	Mirarchi, Lisa	g	1-5	0-1	0-0	1	2	3	2	2	6	2	0	2	33	
33	Monzo, Carly	g	3-10	1-3	0-0	1	1	2	3	7	0	2	1	1	30	
01	Taylor, Molly		2-3	2-3	0-0	0	1	1	1	6	0	0	0	0	10	
22	Barazotti, Alex		0-0	0-0	0-0	0	0	0	0	0	0	0	0	0	1	
55	Vannoy, Courtney		1-4	1-1	0-0	1	0	1	3	3	0	0	0	0	14	
Team						4	2	6				1				
Totals				23-63	9-24	3-5	11	22	33	18	58	14	11	3	6	200
1st FG %: 2-13 15.4%			2nd: 10-18 55.6%			3rd: 6-16 37.5%			4th: 5-16 31.3%			Game: 23-63 36.5%			Deadball Rebounds 2	
3FG %: 1-6 16.7%			6-11 54.5%			2-2 100.0%			0-1 0.0%			9-24 37.5%			3-5 60.0%	
FT %: 2-2 100.0%			0-0 0.0%			1-2 50.0%			0-1 0.0%							

Boston University 61 • 6-11, 4-2 PL

#	Player		Total		3-Ptr		Rebounds			PF	TP	A TO Blk Stl				Min
			FG-FGA	FG-FGA	FT-FTA	Off Def Tot										
03	Thompson, Naiyah	f	1-3	0-0	0-0	1	1	2	4	2	1	1	0	3	21	
20	Irving, Nia	f	2-6	0-0	1-2	1	3	4	2	5	0	2	0	0	18	
01	Beaudry, Sophie	c	10-16	0-0	4-8	5	5	10	0	24	1	5	0	0	29	
12	Hope, Sarah	g	3-8	3-4	3-4	0	6	6	0	12	2	3	0	1	35	
14	Latham, Courtney	g	0-3	0-0	0-0	0	4	4	4	0	1	1	1	0	34	
04	Hauck, Payton		0-1	0-1	0-0	0	1	1	1	0	1	0	1	0	9	
11	Doogan, Meghan		1-7	1-4	0-0	1	1	2	0	3	2	0	0	1	16	
21	Spearman, Lauren		0-1	0-0	0-0	0	1	1	1	0	0	1	0	0	5	
33	Green, Meghan		1-2	0-0	0-0	0	0	0	0	2	0	1	0	1	9	
52	Sheftic, Kara		4-8	0-0	5-9	1	5	6	0	13	1	2	0	1	24	
Team						7	2	9								
Totals				22-55	4-9	13-23	16	29	45	12	61	9	16	2	7	200
1st FG %: 4-11 36.4%			2nd: 6-17 35.3%			3rd: 4-13 30.8%			4th: 8-14 57.1%			Game: 22-55 40.0%			Deadball Rebounds 5	
3FG %: 0-1 0.0%			1-2 50.0%			1-2 50.0%			2-4 50.0%			13-23 56.5%				
FT %: 0-2 0.0%			1-3 33.3%			5-8 62.5%			7-10 70.0%							

Officials: Margaret Tieman, Ryan Nunes, William Dugan Jr.
Technical fouls: Loyola Maryland-None. Boston University-None.
Attendance: 231

Score by periods	1st	2nd	3rd	4th	Total
Loyola Maryland	7	26	15	10	58
Boston University	8	14	14	25	61

Last FG - LOYOLA 4th-00:15, BU 4th-00:34.

Largest lead - LOYOLA by 15 3rd-06:51, BU by 4 1st-01:59.

LOYOLA led for 26:46, BU led for 05:37. Game was tied for 07:12.

Points	In	Off	2nd	Fast	Bench
LOYOLA	28	12	15	4	9
BU	32	10	7	0	18

Score tied - 5 times.

Lead changed - 2 times.

Official Basketball Box Score -- Game Totals -- Final Statistics Bucknell vs Boston University 01/21/17 2:05 p.m. at Case Gym "The Roof" - Bosto, Mass.

Bucknell 66 • 16-3, 8-0 PL

#	Player		Total		3-Ptr		Rebounds			PF	TP	A TO Blk Stl				Min
			FG-FGA	FG-FGA	FT-FTA	FT-FTA	Off	Def	Tot			A	TO	Blk	Stl	
12	DeBoer, Claire	f	6-14	0-1	8-9	7	3	10	1	20	1	3	1	1	40-	
41	Swart, Sune	f	5-6	0-1	0-0	1	3	4	4	10	2	0	0	1	29	
50	Slagus, Kaitlyn	f	2-8	0-4	2-2	1	8	9	3	6	1	2	1	0	27	
02	English, Kyi	g	0-4	0-4	0-0	2	2	4	2	0	4	4	0	2	34	
11	McGurk, Megan	g	1-4	1-3	2-2	0	0	0	2	5	2	2	0	1	33	
04	Hayes, Gia		0-2	0-1	0-0	0	0	0	0	0	0	0	0	0	8	
13	Dumiak, Rachel		0-0	0-0	0-0	0	0	0	0	0	0	0	0	0	1	
20	Walker, Kate		8-18	4-10	2-2	1	1	2	3	22	3	1	0	0	22	
22	Mikkelsen, Maegan		1-2	1-2	0-0	0	1	1	1	3	0	0	0	0	3	
33	Richardson, Carly		0-0	0-0	0-0	1	0	1	0	0	0	0	0	0	2	
54	Moore, MK		0-0	0-0	0-0	0	2	2	0	0	0	0	0	0	1	
Team						3	4	7				1				
Totals			23-58	6-26	14-15	16	24	40	16	66	13	13	2	5	200	
1st - FG %: 6-19 31.6% 2nd: 3-13 23.1% 3rd: 7-12 58.3% 4th: 7-14 50.0% Game: 23-58 39.7% Deadball Rebounds 1																
3FG %: 2-9 22.2% 1-7 14.3% 1-5 20.0% 2-2 100.0% 6-26 23.1% 14-15 93.3%																
FT %: 1-1 100.0% 5-6 83.3% 1-6 100.0% 2-2 100.0%																

Boston University 50 • 6-13, 4-4 PL

#	Player		Total FG-FGA	3-Ptr FG-FGA	FT-FTA	Rebounds Off Def Tot	PF	TP	A	TO	Blk	Stl	Min
03	Thompson, Naiyah	f	4-7	0-0	0-0	1 2 3	3	8	2	0	0	3	38
20	Irving, Nia	f	4-8	0-0	2-2	4 2 6	3	10	1	3	0	0	29
01	Beaudry, Sophie	c	7-15	0-0	1-3	2 3 5	1	15	1	2	4	2	34
12	Hope, Sarah	g	2-9	1-6	0-0	1 4 5	4	5	1	2	0	0	32
14	Latham, Courtney	g	2-6	0-0	1-3	2 4 6	1	5	5	2	0	1	36
04	Hauck, Payton		0-1	0-0	0-0	0 0 0	0	0	0	1	0	0	2
11	Doogan, Meghan		1-4	1-3	0-0	0 0 0	0	3	0	0	0	1	6
21	Spearman, Lauren		0-1	0-1	0-0	0 0 0	1	0	0	0	0	0	5
33	Green, Meghan		0-1	0-1	0-0	1 0 1	1	0	0	0	0	0	5
52	Sheftic, Kara		1-8	0-0	2-4	4 1 5	5	4	0	0	0	0	13
Team						3 3 6				1			
Totals			21-60	2-11	6-12	18 19 37	19	50	10	11	4	7	200
1st - FG %: 6-13 46.2% 2nd: 4-12 33.3% 3rd: 6-15 40.0% 4th: 5-20 25.0% Game: 21-60 35.0% Deadball Rebounds 3													
3FG %: 0-1 0.0% 1-3 33.3% 0-3 0.0% 1-4 25.0% 2-11 18.2%													
FT %: 2-2 100.0% 2-4 50.0% 0-1 0.0% 2-5 40.0%													

Officials: Joanne Aldrich, Bill Titus, Fidel Gonzalez
Technical fouls: Bucknell-None. Boston University-None.
Attendance: 186

Score by periods	1st	2nd	3rd	4th	Total
Bucknell	15	12	21	18	66
Boston University	14	11	12	13	50

Last FG - BUCKNELL 4th-02:14, BU 4th-00:02.

Largest lead - BUCKNELL by 18 4th-01:23, BU by 3 1st-01:25.

BUCKNELL led for 30:38, BU led for 03:21. Game was tied for 06:01.

Score tied - 8 times.
Lead changed - 9 times.

Official Basketball Box Score -- Game Totals -- Final Statistics Boston University vs Colgate 01/18/17 7 p.m. at Hamilton, N.Y. (Cotterell Court)

Boston University 87 • 6-12 (4-3 PL)

#	Player		Total		3-Ptr		Rebounds			PF	TP	A	TO	Blk	Stl	Min
			FG-FGA	FG-FGA	FT-FTA	Off	Def	Tot								
03	Thompson, Naiyah	f	6-10	0-0	5-10	3	2	5	4	17	5	3	1	2	40	
20	Irving, Nia	f	4-7	0-0	5-7	3	9	12	3	13	4	7	0	1	39	
01	Beaudry, Sophie	c	8-18	0-0	4-7	4	4	8	4	20	4	4	0	1	42	
12	Hope, Sarah	g	6-19	6-15	2-2	0	3	3	1	20	3	4	0	1	47	
14	Latham, Courtney	g	5-7	0-0	1-2	3	7	10	5	11	4	4	0	2	42	
04	Hauck, Payton		0-1	0-0	1-2	0	1	1	3	1	0	0	0	0	4	
11	Doogan, Meghan		0-3	0-0	0-0	0	0	0	2	0	1	0	0	0	9	
21	Spearman, Lauren		0-1	0-0	0-0	0	0	0	0	0	0	0	0	0	8	
33	Green, Meghan		1-1	0-0	0-0	0	1	1	1	2	0	0	0	0	7	
52	Sheftic, Kara		0-3	0-0	3-4	1	2	3	3	3	0	0	0	0	12	
Team						1	1	2								
Totals				30-70	6-15	21-34	15	30	45	26	87	21	22	1	7	250
1st - FG %:			6-13	46.2%	2nd - FG %:	5-17	29.4%	3rd - 4-13	30.8%	4th: 11-14	78.6%	Game: 30-70			42.9%	Deadball Rebounds
3FG %:			0-1	0.0%	1-2	50.0%	1-2	50.0%	3-5	60.0%	6-15			40.0%		
FT %:			2-2	100%	1-1	100%	8-15	53.3%	10-15	66.7%	10-15			66.7%		

Boston University Women's Basketball
Boston University Combined Team Statistics (as of Jan 28, 2017)
All games

RECORD:	OVERALL	HOME	AWAY	NEUTRAL
ALL GAMES	7-13	5-5	2-7	0-1
CONFERENCE	5-4	3-2	2-2	0-0
NON-CONFERENCE	2-9	2-3	0-5	0-1

##	Player	gp-gs	min	avg	Total		3-Point		F-Throw		Rebounds				pf	dq	a	to	blk	stl	pts	avg
					fg-fga	fg%	3fg-fga	3fg%	ft-fga	ft%	off	def	tot	avg								
01	Beaudry, Sophie	19-18	520	27.4	102-201	.507	0-0	.000	41-79	.519	39	82	121	6.4	44	2	27	57	38	19	245	12.9
12	Hope, Sarah	20-20	730	36.5	77-222	.347	65-170	.382	18-23	.783	5	49	54	2.7	37	0	48	61	3	26	237	11.9
20	Irving, Nia	10-4	214	21.4	29-65	.446	0-0	.000	33-41	.805	16	41	57	5.7	28	0	9	24	1	8	91	9.1
22	Williams, Corrine	12-10	346	28.8	34-71	.479	8-21	.381	14-24	.583	17	31	48	4.0	38	1	36	31	5	21	90	7.5
03	Thompson, Naiyah	19-12	405	21.3	43-88	.489	3-12	.250	17-31	.548	30	35	65	3.4	64	2	34	49	12	25	106	5.6
52	Sheftic, Kara	20-11	349	17.5	34-91	.374	0-0	.000	42-72	.583	25	38	63	3.2	47	2	11	20	4	12	110	5.5
14	Latham, Courtney	20-18	603	30.2	43-111	.387	0-0	.000	23-39	.590	22	78	100	5.0	51	1	74	53	6	33	109	5.5
33	Green, Meghan	18-0	280	15.6	39-98	.398	4-25	.160	13-20	.650	20	37	57	3.2	22	0	9	23	2	9	95	5.3
04	Hauck, Payton	19-7	254	13.4	22-60	.367	1-9	.111	8-12	.667	9	15	24	1.3	32	1	19	27	1	15	53	2.8
11	Doogan, Meghan	15-0	120	8.0	7-37	.189	4-23	.174	0-0	.000	3	6	9	0.6	12	0	6	5	1	6	18	1.2
21	Spearman, Lauren	16-0	184	11.5	8-37	.216	2-18	.111	1-4	.250	5	9	14	0.9	19	0	13	9	0	6	19	1.2
34	Bayram, Erin	7-0	30	4.3	2-9	.222	0-0	.000	0-0	.000	1	2	3	0.4	3	0	2	4	1	2	4	0.6
30	Edgehill, Vanessa	5-0	14	2.8	0-1	.000	0-1	.000	0-0	.000	0	0	0	0.0	1	0	0	0	0	0	0	0.0
Team											50	39	89				7					
Total.....		20	4049		440-1091	.403	87-279	.312	210-345	.609	242	462	704	35.2	398	9	288	370	74	182	1177	58.8
Opponents.....		20	4050		439-1127	.390	144-437	.330	269-357	.754	265	474	739	37.0	350	10	269	347	62	173	1291	64.6

TEAM STATISTICS	BU	OPP	Date	Opponent	Score	Att.
SCORING	1177	1291	11/11/16	at Northeastern	L 59-78	412
Points per game	58.8	64.6	11/14/16	at Boston College	L 49-67	623
Scoring margin	-5.7	-	11/19/16	at UAlbany	L 54-69	1119
FIELD GOALS-ATT	440-1091	439-1127	11/22/16	HARVARD	L 52-65	262
Field goal pct	.403	.390	11/26/16	UMASS LOWELL	w 66-56	166
3 POINT FG-ATT	87-279	144-437	11/28/16	NEW HAMPSHIRE	L 51-59	151
3-point FG pct	.312	.330	12/03/16	at #24 Arizona State	L 42-71	1428
3-pt FG made per game	4.4	7.2	12/04/16	vs Long Beach State	L 48-61	1773
FREE THROWS-ATT	210-345	269-357	12/07/16	DARTMOUTH	L 49-61	363
Free throw pct	.609	.754	12/10/16	at Marist	L 57-76	1310
F-Throws made per game	10.5	13.5	12/14/16	UMASS	w 64-60	186
REBOUNDS	704	739	* 12/30/16	at Holy Cross	w 66-49	1147
Rebounds per game	35.2	37.0	* 01/02/17	at Lehigh	w 69-64	566
Rebounding margin	-1.7	-	* 01/06/17	NAVY	L 59-62	172
ASSISTS	288	269	* 01/08/17	LAFAYETTE	w 68-50	137
Assists per game	14.4	13.5	* 01/11/17	at American	L 62-73	303
TURNOVERS	370	347	* 01/14/17	LOYOLA MARYLAND	w 61-58	231
Turnovers per game	18.5	17.4	* 01/18/17	at Colgate	Lo2 87-96	573
Turnover margin	-1.1	-	* 01/21/17	BUCKNELL	L 50-66	186
Assist/turnover ratio	0.8	0.8	* 01/28/17	LEHIGH	w 64-50	383
STEALS	182	173				
Steals per game	9.1	8.7				
BLOCKS	74	62				
Blocks per game	3.7	3.1				
ATTENDANCE	2237	9254				
Home games-Avg/Game	10-224	9-831				
Neutral site-Avg/Game	-	1-1773				

* - Conference game

Score by Periods	1st	2nd	3rd	4th	OT	OT2	Totals
Boston University	254	264	295	350	13	1	1177
Opponents	290	313	323	342	13	10	1291



34 ERIN BAYRAM

JUNIOR | FORWARD | 6'2 | BATAVIA, ILL. | BATAVIA

AS A SOPHOMORE IN 2015-16: Played 16 minutes against Albany...Scored a career-high eight points and matched her personal best five rebounds against Boston College...Played at Harvard...Had two points in three minutes at Dartmouth...Played at UMass Lowell...Had one rebound in four minutes played at New Hampshire... Played against Rhode Island...Had two points and a block against Marist...Had two points at UMass...Played against Vermont...Went 3-for-3 from the floor in eight minutes played against Holy Cross...Had two points, a block and an assist against Lehigh...Had five points, four rebounds and her first career steal at Lafayette...Recorded two points and a rebound against American... Had four points, an assist and a block at Loyola Md...Played at Bucknell...Played at Lehigh...Had four points and rebounds against Navy...Totalled two points, a rebound and a block against Lafayette... Had three points and two rebounds at American...Played at Colgate... Played at Army West Point...Scored two points against Holy Cross... Scored six points against Army West Point.

PERSONAL: Born Sept. 26, 1995 ... Daughter of Mark and Katie Bayram ... Has two siblings, Kyle and Shea ... Enrolled in the School of Hospital Administration.

CAREER HIGHS

Points:..... 8, vs. Boston College, 11/21/15
Rebounds:..... 5, 2x, last vs. BC, 11/21/15
FGs Made: 3, 2x, last vs. HC, 12/30/15
FGs Att.: 4, vs. Boston College, 11/21/15
3-FGs Made:
3-FGs Att.:
FTs Made: 2, 3x, last vs. BC, 11/21/15
FTs Att.: 2, 3x, last vs. BC, 11/21/15
Assists:..... 1, 5x, last at ASU, 12/3/16
Blocks: .. 1, 7x, last vs Long Beach, 12/4/16
Steals:.... 1, 3x, last vs Long Beach 12/4/16
Minutes: 20, vs. Lafayette, 2/7/15

YEAR	GP-GS	MIN	AVG	TOTAL		3-PTRS		FT-FTA		REBOUNDS			PF-FO	A	TO	BLK	STL	PTS	AVG
				FG-FGA	Pct	FG-FGA	PCT	PCT	PCT	OFF-DEF	TOT	AVG							
2014-15	14-0	73	5.2	5-9	.556	0-0	.000	4-6	.667	4-9	13	0.9	7-0	2	3	1	0	14	1.0
2015-16	24-0	154	6.4	22-48	.458	0-0	.000	6-8	.750	7-16	23	1.0	16-0	2	11	5	1	50	2.1
2016-17	7-0	30	4.3	2-9	.222	0-0	.000	0-0	.000	1-2	3	0.4	3-0	2	4	1	2	4	0.6
TOTAL	45-0	257	5.7	29-66	.439	0-0	.000	10-14	.714	12-27	39	0.9	26-0	6	18	7	3	68	1.5

1 SOPHIE BEAUDRY

JUNIOR | CENTER | 6'5 | CHAMBLY, QUEBEC | MONMOUTH

AS A JUNIOR IN 2015-16: Redshirted the season due to NCAA transfer rules.

AS A SOPHOMORE IN 2014-15: Started 26 of 30 games played as the Hawks' center, averaging 2.8 ppg and 2.4 rpg ... Ranked 11th in the MAAC at 1.1 blocks per game... Scored a career-high 12 points twice, vs. Rider (Feb. 13) and at Niagara (Feb. 20)... Played a career-high 30 minutes in the 20T win at Niagara (Feb. 20)... Equaled her career-high with seven rebs. against the Purple Eagles (Jan. 18) ... Had six pts., six rebs. and a career-high six blocks against Siena (Jan. 22).

CAREER HIGHS

Points:..... 27, at American, 1/11/17
Rebounds:..13, at Boston College, 11/14/16
FGs Made: 11, at American, 1/11/17
FGs Att.: 18, at Colgate, 1/18/17
3-FGs Made: 0
3-FGs Att.: 0
FTs Made: 6, at Marist, 12/10/16
FTs Attempted:..... 10 at Marist, 12/10/16
Assists:..... 4, at Colgate, 1/18/17
Blocks: 6, 2x, last vs. UMass, 12/14/16
Steals:..... 3, vs. Long Beach State, 12/4/16
Minutes: 42, at Colgate, 1/18/16

AS A FRESHMAN IN 2013-14: Saw action in 26 games off the bench, averaging 1.9 points, 2.0 rebounds and 0.6 blocks per game... Shot 48.6 percent from the floor and 68.2 percent from the free-throw line... Posted season-highs in points (10) and rebounds (7) against Siena in the regular-season finale against Siena (Mar. 2)... Scored six points at No. 1 Connecticut (Nov. 23) and at Marist (Feb. 28).

BEFORE COLLEGE: Led College Dawson to a pair of second place finishes at Nationals, while finishing first at Provincial in 2011-12 ... Averaged 8.5 points and 5.0 rebounds per game while shooting 53.8 percent from the floor in 2011-12... Also played two years for Team Canada ... In 2011, her cadet team ranked 9th at the World Championships in France and in 2012, her junior team ranked 5th at the World Championships in Chili.



YEAR	GP-GS	MIN	AVG.	TOTAL		3-PTRS		FT-FTA		REBOUNDS			PF-FO	A	TO	BLK	STL	PTS	AVG
				FG-FGA	PCT	FG-FGA	PCT	PCT	PCT	OFF-DEF	TOT	AVG							
2013-14	26-0	218	8.4	17-35	.486	0-1	.000	15-22	.682	20-31	51	2.0	34-0	5	21	15	2	49	1.9
2014-15	30-26	409	13.6	36-75	.480	0-0	.000	13-19	.684	26-47	73	2.4	63-1	15	17	32	10	85	2.8
2015-16	-----TRANSFER REDSHIRT-----																		
2016-17	19-18	520	27.4	102-201	.507	0-0	.000	41-79	.519	39-82	121	6.4	44-2	27	57	38	19	245	12.9
TOTAL	75-44	1147	15.3	155-311	.498	0-1	.000	69-120	.575	85-160	245	3.3	141-3	47	95	85	31	379	5.1

11 MEGHAN DOOGAN

JUNIOR | GUARD | 5'9 | CLAYMONT, DEL. | CONCORD

AS A SOPHOMORE IN 2015-16: Played 12 minutes against Albany and tallied a steal and an assist...Played against Boston College...Tallied her first points of the season at New Hampshire, finishing with two...Played at UMass...Had one rebound against Vermont...Played against Holy Cross...Played at Navy...Had two points and three rebounds at Lafayette...Played against American...Scored a career-high 11 points against Colgate...Had three points at Bucknell...Played at Lehigh...Had five points, three rebounds and two steals at American...Played against Loyola

CAREER HIGHS

Points:..... 23, at Colgate, 2/17/16
Rebounds:..... 5, 2x, last at Colgate, 2/17/16
FGs Made:..... 8, at Colgate, 2/17/16
FGs Att.:..... 14, vs. Colgate, 1/20/16
3-FGs Made:..... 5, at Colgate, 2/17/16
3-FGs Att.:..... 8, at Colgate, 2/17/16
FTs Made:..... 2, 2x, last at Holy Cross, 2/27/16
FTs Attempted:..... 4, at American, 2/10/16
Assists:..... 2, 2x, last vs. Loyola, 1/14/17
Blocks:..... 1, 3x, last at Albany, 11/19/16
Steals:..... 2, 2x, at American, 2/10/16
Minutes:..... 36, at Colgate, 2/17/16

Maryland...Led the game with a career-high 23 points, going 5-of-8 at Colgate...Scored nine points and collected two rebounds and a steal against Bucknell... Had eight points and two rebounds at Army West Point...Led the team with 19 points, going 3-of-5 from beyond the arc...Started against Army West Point...Started against American in the PL First Round and totaled two points.

PERSONAL: Born Aug. 10, 1996 ... Daughter of Sean and Patty Doogan ...Has three siblings, Kelley, Siobhan and Sean ... Sister Kelley played basketball at Saint Francis University and is now on the women's basketball coaching staff at Providence ... Enrolled in the School of Management.



YEAR	GP-GS	MIN	AVG.	TOTAL		3-PTRS		FT-FTA	PCT.	REBOUNDS			PF-FO	A	TO	BLK	STL	PTS	AVG
				FG-FGA	PCT	FG-FGA	PCT			OFF-DEF	TOT	AVG							
2014-15	20-0	176	8.8	13-49	.265	8-31	.258	1-2	.500	6-14	20	1.0	19-1	3	15	1	9	35	1.8
2015-16	20-6	249	12.5	32-79	.405	14-45	.311	6-10	.600	4-22	26	1.3	19-0	3	15	2	7	84	4.2
2016-17	15-0	120	8.0	7-37	.189	4-23	.174	0-0	.000	3-6	9	0.6	12-0	6	5	1	6	18	1.2
TOTAL	55-6	545	9.9	52-165	.315	26-99	.263	7-12	.583	13-42	55	1.0	50-1	12	35	4	22	137	2.5



30 VANESSA EDGEHILL

FRESHMAN | GUARD | 5'8 | FRANKLIN, MASS. | THE RIVERS SCHOOL

Edgehill will be one of two Terriers playing in their home state next season as she joins now-junior Sarah Hope (Medway, Mass.). The Franklin, Mass. native earned All-Independent School League honors in each of her first three seasons and was named a Class A All-New England player during her junior campaign, during which she averaged 13 points per game, seven assists per game and 2.5 steals per game.

With her high school team, Edgehill made it to the Class A finals during her freshman year and Class A semifinals as a sophomore and junior. She is also a member of the Rhode Island Breakers AAU team, ranked in the top-50 nationally, which won two Massachusetts State Championships and a Deep South Championship during her tenure with the team.

Off the court, Edgehill has invested a lot of time serving her local community. She is a member of A Shot for Life, Inc., a cancer research nonprofit organization. Edgehill, along with other high school basketball players, spends her summers raising money for the organization. Additionally, she has served as a coach for the Special Olympics and volunteers for the RISE service program at Rivers that focuses on eliminating gun violence in Massachusetts.

STEDING ON EDGEHILL: "Vanessa is a sharp-shooting combo guard who can drill the three-pointer and has a high basketball-IQ. I get excited just thinking about her wearing the Scarlet and White because of the headiness she brings to the game—no matter what she always makes sure the ball gets to the right place."

CAREER HIGHS

Points:.....
Rebounds:.....
FGs Made:.....
FGs Att.:.....
3-FGs Made:.....
3-FGs Att.:.....
FTs Made:.....
FTs Attempted:.....
Assists:.....
Blocks:.....
Steals:.....
Minutes:..... 7, at Northeastern, 11/11/16

YEAR	GP-GS	MIN	AVG.	TOTAL		3-PTRS		FT-FTA	PCT.	REBOUNDS			PF-FO	A	TO	BLK	STL	PTS	AVG
				FG-FGA	PCT	FG-FGA	PCT			OFF-DEF	TOT	AVG							
2016-17	5-0	14	2.8	0-1	.000	0-1	.000	0-0	.000	0-0	0	0.0	1-0	0	0	0	0	0	0.0



33 MEGHAN GREEN

SENIOR | FORWARD | 6'0 | BEDFORD, N.H. | BISHOP GUERTIN

AS A JUNIOR IN 2015-16: Totaled eight points and rebounds in the season opener against Northeastern...Co-led the team with nine points and matched her career-high with two steals...Scored six points and grabbed five rebounds against Boston College...Recorded a double-double at Harvard with 18 points and 10 rebounds...Led the team with 8 rebounds and had six points and two blocks at Dartmouth...Had four points and five rebounds at UMass Lowell...Led the team with 15 points and six rebounds at New Hampshire...Led the team with 22 points against Marist...Had 13 points and seven rebounds at UMass...Scored eight points helped by a 6-of-10 showing from the free throw line against Vermont...Had four points and three rebounds against Holy Cross...Had 13 points, six rebounds and two assists against Lehigh...Recorded 18 points including a career-high three 3-pointers at Navy...Had four points and seven rebounds at Lafayette...Finished with 10 points, five rebounds and two steals against American...Led the team with 19 points and 11 rebounds at Loyola Md...Finished with six points, eight rebounds and a career-high four steals against Colgate...Led the team with 18 points at Bucknell...Scored seven points and had three rebounds at Lehigh...Scored 13 points and had nine rebounds against Navy...Scored a team-high 18 points and had six rebounds, a block and a steal against Lafayette...Played at American...Had three points against Loyola Maryland...Scored two points against Bucknell...Had a blocked shot at Army West Point...Had seven points, three rebounds and two assists at Holy Cross...Played against Army West Point.

PERSONAL: Born June 29, 1995 ... Daughter of Mark Green and Susan Kallio ... Has two older brothers, Chris and Connor ... Mother and father both played basketball at Colby ... Brother, Chris, plays football at Union while other brother, Connor, plays basketball at Amherst ... Enrolled in College of Communication.

CAREER HIGHS

Points:..... 23, vs. Lehigh, 1/31/15
Rebounds:..... 15, at Boston College, 11/20/14
FGs Made:..... 10, vs. Lehigh, 1/31/15
FGs Att.:..... 21, at Marist, 12/13/14
3-FGs Made:..... 3, 2x, last at Loyola, 1/16/16
3-FGs Att.:..... 7, 2x, last at Navy, 1/7/16
FTs Made:..... 7, 2x, last vs. Harvard, 11/17/14
FTs Att.:..... 10, vs. Vermont, 12/28/15
Assists:..... 4, 2x, last at Army, 2/25/15
Blocks:..... 2, 5x, last at Bucknell, 1/23/16
Steals:..... 4, vs. Colgate, 1/20/16
Minutes:..... 39, 2x, last vs. Colgate, 1/14/15

YEAR	GP-GS	MIN	AVG.	TOTAL		3-PTRS		FT-FTS		REBOUNDS									
				FG-FGA	PCT	FG-FGA	PCT	FT-FTA	PCT	OFF-DEF	TOT	AVG	PF-FO	A	TO	BLK	STL	PTS	AVG
2013-14	23-0	222	9.7	31-82	.378	4-16	.250	15-21	.714	20-30	50	2.2	34-2	10	16	4	6	81	3.5
2014-15	30-12	845	28.2	142-322	.441	8-33	.242	54-68	.794	47-148	195	6.5	83-6	42	74	15	12	346	11.5
2015-16	28-13	662	23.6	107-257	.416	20-64	.313	35-59	.593	40-92	132	4.7	55-1	22	51	15	20	269	9.6
2016-17	18-0	280	15.6	39-98	.398	4-25	.160	13-20	.650	20-37	57	3.2	22-0	9	23	2	9	95	5.3
TOTAL	99-25	2009	20.3	319-759	.420	36-138	.261	117-168	.696	127-307	434	4.4	194-9	83	164	36	47	791	8.0

4 PAYTON HAUCK

SOPHOMORE | GUARD | 5'9 | YORK, PA. | NORTHEASTERN HIGH

AS A FRESHMAN IN 2015-16: Made her collegiate debut in the season opener against Northeastern and tallied a team-high four assists...Made her first career start against Albany and tallied two points and steals...Tallied six points, an assist and a steal against Boston College...Had two points, steals and assists at Harvard...Had two points and three rebounds at Dartmouth...Played at UMass Lowell...Finished with five points, a career-best four rebounds and two assists at New Hampshire...Had a career high six rebounds against Rhode Island...Had two points and a rebound against Marist...Had three rebounds and two points and assists at UMass...Had three points and a steal against Vermont...Had three rebounds against Holy Cross...Played against Lehigh...Scored two points at Navy...Recorded her first career blocks and finished with three points and assists at Lafayette...Scored a fastbreak layup to finish with two points against American...Played at Loyola Md...Recorded a career-high 10 points, going a perfect 4-for-4 against Colgate...Scored nine points and had two blocks and assists at Bucknell...Matched her career high with two blocks and had six points at Lehigh...Finished with two points off of a steal and score play to help BU defeat Navy...Had a blocked shot and a steal at Army West Point...Played at Holy Cross...Had four points and an assist against Army West Point.

CAREER HIGHS

Points:..... 10, 3x, last vs. Lehigh, 1/28/17
Rebounds:..... 6, vs. Rhode Island, 12/9/15
FGs Made:..... 5, vs. UMass, 12/14/16
FGs Att.:..... 8, 4x, last vs. Lehigh, 1/28/17
3-FGs Made:..... 4, at Bucknell, 1/23/16
3-FGs Att.:..... 6, at Bucknell, 1/23/16
FTs Made:..... 4, vs. Lehigh, 1/28/17
FTs Att.:..... 5, vs. Lehigh, 1/28/17
Assists:..... 4, vs. Northeastern, 11/13/15
Blocks:..... 2, 3x, last at Lehigh, 1/30/16
Steals:..... 2, 8x, last vs. Navy, 1/6/17
Minutes:..... 27, vs. Boston College, 11/21/15

BEFORE BU: Two year captain at Northeastern High School...Averaged 15 points per game as a junior and was named a Second-Team All-Star...Named to Northeastern High School's Distinguished Honor Roll for the last three years.



YEAR	GP-GS	MIN	AVG.	TOTAL		3-PTRS		FT-FTS		REBOUNDS									
				FG-FGA	PCT	FG-FGA	PCT	FT-FTA	PCT	OFF-DEF	TOT	AVG	PF-FO	A	TO	BLK	STL	PTS	AVG
2015-16	25-10	370	14.8	26-84	.310	5-17	.294	17-28	.607	14-27	41	1.6	52-2	21	33	9	13	74	3.0
2016-17	19-7	254	13.4	22-60	.367	1-9	.111	8-12	.667	9-15	24	1.3	32-1	19	27	1	15	53	2.8
TOTAL	44-17	624	14.2	48-144	.333	6-26	.231	25-40	.625	23-42	65	1.5	84-3	40	60	10	28	127	2.9



12 SARAH HOPE

SENIOR | GUARD | 5'7 | MEDWAY, MASS. | MEDWAY

AS A JUNIOR IN 2015-16: Played eight minutes in the season opener against Northeastern...Hit three from long-range to co-lead the team with nine points against Albany...Had two assists against Boston College...Tallied three points and an assist at Harvard...Started off 3-for-3 from long range and finished with 11 points and a team-high three assists at Dartmouth...Matched her career high with six three-pointers at UMass Lowell...Enters the BU record book at number 10 in career three-pointers after scoring three at New Hampshire...Had a record night against Rhode Island, matching the school mark with seven 3-pointers and setting a new career high with 23 points...Scored six points off of two 3-pointers against Marist...Had three points and five assists at UMass...Totaled three points, two assists and a steal against Vermont...Had three points and a steal against Holy Cross...Led the team with 18 points on 6-of-6 shooting including 5-of-5 3-point shooting against Lehigh...Totaled eight points, three assists and two steals at Navy...Finished with nine points and four rebounds at Lafayette...Had 11 points and four assists against American...Had nine points and five assists at Loyola Md...Had three points and three assists against Colgate...Had three points and a steal at Bucknell...Went 3-of-4 from beyond the arc and dished out three assists at Lehigh...Led the team with 15 points and hit the buzzer-beating game winner against Navy that was named the SportsCenter Top-10 No. 1 play of the night...Went 4-of-8 from beyond the arc and finished with 14 points against Lafayette...Had three points and two rebounds and assists at American...Had six points and two rebounds and steals...Totaled six points and five rebounds at Colgate...Scored three points against Bucknell...Had two rebounds and an assist at Army West Point...Totaled three points and two assists at Holy Cross...Had two steals against Army West Point...Finished with five points and three assists at American in the PL First Round.

CAREER HIGHS

Points:.....23, vs. Rhode Island, 12/9/15
Rebounds:.....7, 3x, last at HC, 12/30/16
FGs Made:8, 2x, last vs. URI, 12/9/15
FGs Att.:19, at Colgate, 1/18/17
3-FGs Made:7, 2x, last vs. Navy, 1/6/17
3-FGs Att.:17, 2x, last vs. URI, 12/9/15
FTs Made:4, 2x, last vs. UMass, 12/28/14
FTs Att.:4, 7x, last vs. Loyola, 1/14/17
Assists:.....7, vs. UNH, 12/3/14
Blocks:2, at American, 1/11/17
Steals:4, 2x, last vs. Lehigh, 1/28/17
Minutes:47, at Colgate, 1/18/17

YEAR	GP-GS	MIN	AVG.	TOTAL		3-PTRS		FT-FTA	PCT.	REBOUNDS			PF-FO	A	TO	BLK	STL	PTS	AVG
				FG-FGA	PCT	FG-FGA	PCT			OFF-DEF	TOT	AVG							
2013-14	33-24	817	24.8	69-241	.286	60-207	.290	13-19	.684	11-46	57	1.7	43-0	54	27	1	16	211	6.4
2014-15	17-17	584	34.4	56-157	.357	41-113	.363	12-15	.800	6-52	58	3.4	24-1	49	41	2	10	165	9.7
2015-16	30-14	841	28.0	74-200	.370	64-172	.372	6-9	.667	2-44	46	1.5	31-0	51	49	0	21	218	7.3
2016-17	20-20	730	36.5	77-222	.347	65-170	.382	18-23	.783	5-49	54	2.7	37-0	48	61	3	26	237	11.9
TOTAL	100-75	2972	29.7	276-820	.337	230-662	.347	49-66	.742	24-191	215	2.2	135-1	202	178	6	73	831	8.3

20 NIA IRVING

FRESHMAN | FORWARD | 6'1 | FAIRFIELD, MAINE | LAWRENCE

Irving is the lone player from Maine on the roster this season but is right at home with assistant coach, Cindy Blodgett, who also played for Lawrence High School. The 2015 Maine State Gatorade Player of the Year, Irving averaged 22.5 points per game, 14.6 rebounds per game and 3.6 assists per game. She was also a three-time Kennebec Valley Athletic Conference Class A Player of the Year, KVCAC Class A First Team member, and Morning Sentinel Player of the Year.

After winning the 2015 Class A State Championship, Irving was named First Team All-State. She has also already reached 1,000 career points and rebounds going into her senior season.

CAREER HIGHS

Points:.....26, at Lehigh, 1/2/17
Rebounds:.....12, at Colgate, 1/18/17
FGs Made:7, at Lehigh, 1/2/17
FGs Att.:12, at Lehigh, 1/2/17
3-FGs Made:
3-FGs Att.:
FTs Made:.....12, at Lehigh, 1/2/17
FTs Attempted:.....13, at Lehigh, 1/2/17
Assists:.....4, vs. at Colgate, 1/18/17
Blocks:1, at American, 1/11/17
Steals:.....3, at Lehigh, 1/2/17
Minutes:39, at Colgate, 1/18/17

Off the court, Irving volunteers as a basketball coach and at a nursing home. She is also a member of the PRIDE club and is Vice President of her high school's chapter of the National Honors Society.

STEDING ON IRVING: "Nia is an excellent interior player with a big, strong frame. She's an amazing scorer and rebounder that will excel at this level because of her tenacity in everything that she does."



YEAR	GP-GS	MIN	AVG.	TOTAL		3-PTRS		FT-FTA	PCT.	REBOUNDS			PF-FO	A	TO	BLK	STL	PTS	AVG
				FG-FGA	PCT	FG-FGA	PCT			OFF-DEF	TOT	AVG							
2016-17	10-4	214	21.4	29-65	.446	0-0	.000	33-41	.805	16-41	57	5.7	28-0	9	24	1	8	91	9.1

14 COURTNEY LATHAM

SENIOR | GUARD | 5'8 | GLASTONBURY, CONN. | GLASTONBURY

AS A JUNIOR IN 2015-16: Scored 10 points on a career-best four FGs and made a personal-best five steals in the season opener against Northeastern...Started against Albany...Had two rebounds and three assists against Boston College...Grabbed six rebounds and dished out five assists at Harvard...Had three rebounds, one assist and one steal at Dartmouth...Had eight points and rebounds along with two assists at UMass Lowell...Started at New Hampshire...Had two points and four rebounds and assists against Rhode Island...Had four points, five assists and five rebounds against Marist...Co-led the team with 11 points and had six rebounds and two assists against Vermont...Had four points, rebounds and assists against Holy Cross...Totaled nine rebounds, seven assists and six points against Lehigh...Had five assists and four points and rebounds at Navy...Had three rebounds at Lafayette...Finished with six points, seven assists and eight rebounds against American...Had six points and six assists at Loyola Md...Had three assists, two steals and seven rebounds against Colgate...Had five points, seven rebounds and three assists at Bucknell...Totaled six points and rebounds at Lehigh...Had two assists and steals against Navy...Finished with nine points, five assists and two steals against Lafayette...Had eight points and three rebounds at American...Scored 10 points and had three steals against Loyola Maryland...Recorded her second double-double of the season with 11 points and a career-high 11 rebounds at Colgate...Had four points and five rebounds against Bucknell...Had three assists and two rebounds at Army West Point...Had four points and rebounds and two assists and steals at Holy Cross...Had four rebounds and two steals against Army West Point...Had six rebounds, a steal and an assist at American in the PL First Round.

CAREER HIGHS

Points:..... 17, vs. UMass Lowell, 11/26/16

Rebounds:..... 11, at Colgate, 2/17/16

FGs Made: 6 vs. Northeastern, 11/11/16

FGs Att.: 13, 3x, last at Lafayette, 1/10/15

3-FGs Made: 1, 7x, last vs. UMass, 12/8/14

3-FGs Att.: 3, 2x, last vs. Navy, 1/7/15

FTs Made:..... 7, 2x, last, vs. UML, 11/26/16

FTs Attempted:..... 9, 2x, vs. UML, 11/26/16

Assists:..... 9, 2x, last at Marist, 12/10/16

Blocks: 1, 16x, last vs. Lehigh, 1/28/17

Steals:..... 5, 2x, last vs. NU, 11/13/15

Minutes: 42, at Colgate, 1/18/17

6 points against Lehigh...Had five assists and four points and rebounds at Navy...Had three rebounds at Lafayette...Finished with six points, seven assists and eight rebounds against American...Had six points and six assists at Loyola Md...Had three assists, two steals and seven rebounds against Colgate...Had five points, seven rebounds and three assists at Bucknell...Totaled six points and rebounds at Lehigh...Had two assists and steals against Navy...Finished with nine points, five assists and two steals against Lafayette...Had eight points and three rebounds at American...Scored 10 points and had three steals against Loyola Maryland...Recorded her second double-double of the season with 11 points and a career-high 11 rebounds at Colgate...Had four points and five rebounds against Bucknell...Had three assists and two rebounds at Army West Point...Had four points and rebounds and two assists and steals at Holy Cross...Had four rebounds and two steals against Army West Point...Had six rebounds, a steal and an assist at American in the PL First Round.

PERSONAL: Born March 9, 1995 ... Daughter of Matt and Lynn Latham ... Father played football at Connecticut ... Has a younger brother, Aaron ... Enrolled in the School of Management.



YEAR	GP-GS	MIN	AVG.	TOTAL		3-PTRS		FT-FTA		REBOUNDS			PF-FO	A	TO	BLK	STL	PTS	AVG
				FG-FGA	PCT	FG-FGA	PCT	PCT	PCT	OFF-DEF	TOT	AVG							
2013-14	31-8	393	12.7	18-79	.228	4-12	.333	29-39	.744	20-43	63	2.0	35-0	25	40	1	11	69	2.2
2014-15	29-26	904	31.2	52-174	.299	4-22	.182	41-56	.732	13-133	146	5.0	55-1	93	98	5	40	149	5.1
2015-16	29-26	809	27.9	50-171	.292	0-10	.000	24-34	.706	25-105	130	4.5	53-0	81	76	4	28	124	4.3
2016-17	20-18	603	30.2	43-111	.387	0-0	.000	23-39	.590	22-78	100	5.0	51-1	74	53	6	33	109	5.5
TOTAL	109-75	2709	24.9	164-536	.306	8-44	.182	117-168	.696	80-359	439	4.0	194-2	273	267	16	112	453	4.2



52 KARA SHEFTIC

JUNIOR | FORWARD | 6'1 | ESSEX JUNCTION, VT. | ESSEX

AS A SOPHOMORE IN 2015-16: Grabbed four rebounds in the season opener against Northeastern...Started against Albany and collected four rebounds, two blocks and a steal...Led the team with nine points and six rebounds against Boston College...Had five points and two rebounds at Harvard...Started at Dartmouth...Had three points, a block and a steal at UMass Lowell...Totalled seven points, five rebounds and a career-high three steals against Rhode Island...Had a career-high 10 rebounds against Marist...Had two rebounds, an assist and a steal at UMass...Had a career-high 12 free throw attempts and finished with nine points and eight rebounds against Vermont...Had eight points and rebounds and three blocks against Holy Cross...Totaled 15 points, six rebounds, an assist and a steal against Lehigh...Had a career-high 20 points and 12 rebounds to record her first career double-double at Navy...Led the team with 16 points at Lafayette...Led the team for the third straight game with 15 points against American...Had six points and four rebounds at Loyola Md...Recorded her second career double-double with 12 points and a career-high 13 rebounds...Had seven points and rebounds and two blocks at Bucknell...Finished with six points and five rebounds at Lehigh...Had two rebounds and an assist against Navy...Finished with two points and three rebounds against Lafayette...Had four rebounds at American...Had five points and four rebounds against Loyola Maryland...Had eight points, two steals, two assists and four rebounds at Colgate...Totalled four points and two rebounds against Bucknell...Had six points, five rebounds a steal and a block at Army West Point...Had an assist at Holy Cross...Had six points, three rebounds and two blocks against Army West Point...Finished with six points and four rebounds at American in the PL First Round.

PERSONAL: Completed a bachelors of science in communications with an experience in public relations...Enrolled in the Metropolitan College Masters Program with a concentration in project management.

CAREER HIGHS

Points:.....20, at Navy, 1/7/16

Rebounds:..... 13, vs. Colgate, 1/20/16

FGs Made: ... 7, 2x, last vs. American, 1/13/16

FGs Att.: 14, 2x, last vs. Lafayette, 1/9/16

3-FGs Made:

3-FGs Att.:

FTs Made:..... 10, at Marist, 12/13/14

FTs Attempted: 12, 3x, at Albany, 11/19/16

Assists:..... 4, vs. Vermont, 11/22/14

Blocks: 4, vs. Holy Cross, 12/31/14

Steals:..... 4, at Northeastern, 11/11/16

Minutes:36, vs. Holy Cross, 12/31/14

YEAR	GP-GS	MIN	AVG.	TOTAL		3-PTRS		FT-FTA		REBOUNDS			PF-FO	A	TO	BLK	STL	PTS	AVG
				FG-FGA	PCT	FG-FGA	PCT	PCT	PCT	OFF-DEF	TOT	AVG							
2014-15	28-21	514	18.4	52-135	.385	0-0	.000	37-62	.597	40-51	91	3.3	64-3	17	34	21	6	141	5.0
2015-16	29-22	610	21.0	66-171	.386	0-0	.000	50-97	.515	71-67	138	4.8	86-2	13	55	25	14	182	6.3
2016-17	20-11	349	17.5	34-91	.374	0-0	.000	42-72	.583	25-38	63	3.2	47-2	11	20	4	12	110	5.5
TOTAL	77-54	1473	19.1	152-397	.383	0-0	.000	129-231	.558	136-156	292	3.8	197-7	41	109	50	32	433	5.6

21 LAUREN SPEARMAN

SOPHOMORE | GUARD | 5'7 | LOS ANGELES, CALIF. | MARLBOROUGH SCH.

AS A FRESHMAN IN 2015-16: Made her collegiate debut in the season opener against Northeastern and scored two points...Co-led the team with nine points against Albany and went 2-for-2 from beyond the arc...Tallied two points and rebounds against Boston College...Had two points and an assist at Dartmouth...Played at UMass Lowell...Totalled six points and an assist at New Hampshire...Had two points and rebounds against Rhode Island...Played at UMass...Played against Vermont...Played against Holy Cross...Had her first career steal and finished with seven points and an assist at Lafayette...Had two points and a steal at Loyola Md...Had an assist at Bucknell...Played at Lehigh...Played at American...Had a career-high two steals at Army West Point...Played against Army West Point.

CAREER HIGHS

Points:..... 9, vs. Albany, 11/18/15
Rebounds:..... 3, at Marist, 12/10/16
FGs Made: 3, 3x, last at Lafayette, 1/9/16
FGs Att.: 6, at New Hampshire, 12/5/15
3-FGs Made: 2, vs. Albany, 11/18/15
3-FGs Att.: 4, vs Long Beach St., 12/4/16
FTs Made: 1, 2x, last vs. UMass, 12/14/16
FTs Attempted: 2, 3x, vs UMass, 12/14/16
Assists:..... 4, at Marist, 12/10/16
Blocks:
Steals:..... 2, 3x, last at Marist, 12/10/16
Minutes: 30, at Marist, 12/10/16

BEFORE BU: Team captain...First-Team All-CIF during her freshman, junior and senior seasons.



YEAR	GP-GS	MIN	AVG.	TOTAL		3-PTRS		FT-FTA	PCT.	REBOUNDS			PF-FO	A	TO	BLK	STL	PTS	AVG
				FG-FGA	PCT	FG-FGA	PCT			OFF-DEF	TOT	AVG							
2015-16	17-0	153	9.0	14-41	.341	3-10	.300	1-3	.333	0-8	8	0.5	11-0	7	21	0	5	32	1.9
2016-17	16-0	184	11.5	8-37	.216	2-18	.111	1-4	.250	5-9	14	0.9	19-0	13	9	0	6	19	1.2
TOTAL	33-0	337	10.2	22-78	.282	5-28	.179	2-7	.286	5-17	22	0.7	30-0	20	30	0	11	51	1.5



3 NAIYAH THOMPSON

SOPHOMORE | FORWARD | 5'11 | LEONARDTOWN, MD. | ST. MARY'S RYKEN

AS A FRESHMAN IN 2015-16: Made her collegiate debut in the season opener against Northeastern and scored one point in 10 minutes...Co-led the team with nine points and collected two assists, two blocks and a steal against Albany...Scored two points and had one steal against Boston College...Started at Harvard...Went 3-for-4 from the field, finishing with six points at Dartmouth...Played at UMass Lowell...Had six points and rebounds at New Hampshire...Started against Rhode Island and finished with two rebounds and an assist...Played against Marist...Had four points and three rebounds at UMass...Had two rebounds against Vermont...Played against Holy Cross...Had three points and a rebound against Lehigh...Started at Navy and had an assist at Navy...Played at Lafayette...Played against American...Had three rebounds and a block at Loyola Md...Had one rebound at Bucknell...Played at Lehigh...Led the team with nine points at American...Had four rebounds and a steal against Loyola Maryland...Had a steal at Colgate...Had two points and a rebound against Bucknell...Had two points and four rebounds at Army West Point...Played at Holy Cross...Had two points and steals against Army West Point.

BEFORE BU: Team captain since her sophomore season...Second Team All-County and WCAC Honorable Mention in her junior season...WCAC and All-County Honorable Mention in her senior season...Member of the National Honor Society...Received the National Achievement Award for Black Americans after scoring in the top-three percent of all African-Americans on the PSAT.

CAREER HIGHS

Points:..... 17, at Colgate, 1/18/17
Rebounds:..... 9, at Lehigh, 1/2/17
FGs Made: 6, 2x, last at Colgate, 1/18/17
FGs Att.: 10, at Colgate, 1/18/17
3-FGs Made: 1, 4x, last vs. Lehigh, 1/28/17
3-FGs Att.: 3, vs. Albany, 11/18/15
FTs Made: 4, 3x, last vs. Navy, 1/6/17
FTs Att.: 6, at American, 2/10/16
Assists:..... 5, 2x, last at Colgate, 1/18/17
Blocks: 2, 4x, last at HC, 12/30/16
Steals:..... 3, 4x, last vs. Loyola, 1/14/17
Minutes: 40, at Colgate, 1/18/17

YEAR	GP-GS	MIN	AVG.	TOTAL		3-PTRS		FT-FTA	PCT.	REBOUNDS			PF-FO	A	TO	BLK	STL	PTS	AVG
				FG-FGA	PCT	FG-FGA	PCT			OFF-DEF	TOT	AVG							
2015-16	26-5	277	10.7	15-65	.231	3-13	.231	12-22	.545	15-22	37	1.4	43-2	10	30	4	8	45	1.7
2016-17	19-12	405	21.3	43-88	.489	3-12	.250	17-31	.548	30-35	65	3.4	64-2	34	49	12	25	106	5.6
TOTAL	45-17	682	15.2	58-153	.379	6-25	.240	29-53	.547	45-57	102	2.3	107-4	44	79	16	33	151	3.4



22 CORRINE WILLIAMS

JUNIOR | GUARD | 6'1 | BLOOMFIELD, CONN. | BLOOMFIELD

AS A SOPHOMORE IN 2015-16: Played her first minutes of the season at Harvard and tallied three points and rebounds...Started at Dartmouth and went 3-for-4 from the field, finishing with six points, an assist and a steal...Had six points, five rebounds and two steals at UMass Lowell...Started at New Hampshire but left the game early due to injury...Tallied nine points and five rebounds at UMass...Had a career-high six steals against Vermont...Recorded her first career double-double with 10 points and a personal best 12 rebounds against Holy Cross...Finished with four points, six rebounds and a career-high five assists against Lehigh...Had three rebounds and two blocks and steals at Navy...Finished with seven points, three assists and two rebounds at Lafayette...Had a near-double-double with 13 points and nine rebounds, going a perfect 4-for-4 from the floor against American...Led the team with a career-high 16 points against Colgate...Scored two points, grabbed four rebounds and blocked two shots at Bucknell...Had two points, five rebounds and two assists at Lehigh...Finished with six points, five rebounds and two assists and steals against Navy...Totalled 10 rebounds, eight assists and three steals against Lafayette...Had four points and three steals at American...Had five points and eight rebounds against Loyola Maryland...Had 11 points and four rebounds at Colgate...Scored eight points and set new career highs in assists (6) and blocked shots (3)...Led the team with 11 points and had four rebounds at Army West Point...Totalled 11 points and seven rebounds, going 7-for-8 from the FT line...Had 11 points and two rebounds against Army West Point... Finished with eight points, three rebounds, two assists, a block and a steal at American in the PL First Round.

PERSONAL: Has an older sister, Breeana, who plays basketball at Lasell College ... Father played basketball at Eastern Connecticut State University ... Enrolled in the College of Communication.

CAREER HIGHS

Points:..... 21, vs. Lafayette, 1/8/17

Rebounds:.....12, vs. Holy Cross, 12/30/15

FGs Made:8, vs. Lafayette, 1/8/17

FGs Att.: 12, 2x, last vs. Colgate, 1/20/16

3-FGs Made: 2, 6x, last at American, 1/11/17

3-FGs Att.: 7, at American, 1/11/17

FTs Made: 7, at Holy Cross, 2/27/16

FTs Att.: 8, at Holy Cross, 2/27/16

Assists:..... 7, vs Long Beach St., 12/4/16

Blocks: 3, 2x, last vs. Bucknell, 2/20/16

Steals: 6, vs. Vermont, 12/28/15

Minutes:39, 3x, last vs LBS, 12/4/16

YEAR	GP-GS	MIN	AVG.	TOTAL		3-PTRS				REBOUNDS			PF-FO	A	TO	BLK	STL	PTS	AVG
				FG-FGA	PCT	FG-FGA	PCT	FT-FTA	PCT.	OFF-DEF	TOT	AVG							
2014-15	28-19	635	22.7	47-138	.341	11-41	.268	41-59	.695	27-54	81	2.9	58-1	34	48	10	12	146	5.2
2015-16	24-23	676	28.2	52-142	.366	8-29	.276	51-63	.810	38-79	117	4.9	65-1	37	51	16	30	163	6.8
2016-17	12-10	346	28.8	34-71	.479	8-21	.381	14-24	.583	17-31	48	4.0	38-1	36	31	5	21	90	7.5
TOTAL	64-52	1657	25.9	133-351	.379	27-91	.297	106-146	.726	82-164	246	3.8	161-3	107	130	31	63	399	6.2

TEAM SINGLE-GAME RECORDS**Most Points**

127 - vs. Vermont, 12/9/80

Fewest Points

29 - vs. Hofstra, 1/4/00

Most Points in a First Half

61 - vs. Vermont, 12/9/80

Most Points in a Second Half

66 - vs. Vermont, 12/9/80

Largest Margin of Victory

77 - vs. Vermont, 12/9/80 (127-50)

Largest Margin of Defeat

58 - vs. UMass Dartmouth, 11/8/75 (42-100);

at Old Dominion, 12/22/80 (40-98)

Combined Points

199 - vs. Miami-Ohio, 11/19/00 (97-102)

Field Goals Made

59 - vs. Vermont, 12/9/80

Field Goals Attempted

120 - vs. Vermont, 12/9/80 (59-of-120)

Field Goal Percentage

.623 - vs. Hartford, 3/8/90 (33-of-53)

Three-Point Field Goals Made

16 - at UMBC, 3/5/08 (16-of-24)

Three-Point Field Goals Attempted

36 - at Wagner, 12/30/03 (12-of-36)

36 - at Northeastern, 11/20/12 (13-of-36)

Three-Point Field Goal Percentage

100.0 - vs. Drexel, 2/17/95 (6-of-6)

Free Throws Made

37 - vs. Miami-Ohio, 11/19/00

Free Throws Attempted

48 - vs. CCSU, 12/13/80 (33-of-48)

Free Throw Percentage

100.0 - vs. NU, 1/16/88 (7-of-7)

at Hartford, 2/15/03 (10-of-10)

vs. St. John's, 12/4/10 (7-of-7)

at Marist, 12/13/14 (11-of-11)

Rebounds

68 - vs. South Florida, 11/17/02

Assists

34 - vs. Brooklyn, 2/13/87

Steals

28 - vs. Providence, 12/22/91

Blocked Shots

14 - vs. Rhode Island, 1/28/81

Opponents Turnovers

37 - vs. Central Connecticut, 12/3/02

INDIVIDUAL SINGLE-GAME RECORDS**Points**

43 - Katie Meinhardt vs. Stony Brook

at 2005 AE Tournament, 3/9/05

Assists

14 - Andrea Higgins vs. Drexel, 2/19/93

14 - Christine Kinneary vs. NU, 11/19/07

Rebounds

30 - Debbie Miller vs. Villanova, 1/12/81

Blocks

10 - Debbie Miller vs. URI, 1/28/81

Steals

11 - Debbie Miller vs. Maine, 2/11/80

11 - Debbie Miller at CCSU, 2/13/80

Field Goals Made

15 - Debbie Miller vs. Fairleigh Dickinson

at Georgetown Tournament, 1/23/81

15 - Katie Meinhardt vs. Stony Brook

at 2005 America East Tournament, 3/9/05

Field Goals Attempted

30 - Debbie Miller vs. Queens College, 11/30/79

Free Throws Made

17 - Katie Terhune vs. Miami-Ohio, 11/19/00

Free Throws Attempted

18 - Debbie Miller vs. Syracuse, 1/4/80

18 - Katie Terhune vs. Miami-Ohio, 11/19/00

Free Throw Percentage (10 att.)

100% - Katie Terhune (12-of-12) at Hartford, 2/7/04

100% - Kara Sheftic (10-of-10), at Marist, 12/13/14

100% - Troi Melton (10-of-10), vs. Bucknell, 2/20/16

Three-Point Field Goals Made

7 - Katie Meinhardt (7-of-8) vs. Stony Brook

at 2005 America East Tournament, 3/9/05

7 - Alex Youg (7-of-9) vs. Binghamton

at 2011 America East Tournament, 3/6/11

7 - Sarah Hope (7-of-17) vs. URI, 12/9/15

7 - Sarah Hope (7-of-11) vs. Navy,**1/6/17****Three Pointers Attempted**

17 - Sarah Hope (2-of-17) at BC, 12/11/13

17 - Sarah Hope (7-of-17) vs. URI, 12/9/15

TEAM SEASON RECORDS**Points**

2,385 - 2008-09

Highest Scoring Average

76.2 - 1980-81

Field Goals Made

874 - in 1980-81

Field Goals Attempted

2,051 - 1980-81

Field Goal Percentage

.480 - 1986-87

Three-Point Field Goals Made

217 - 2012-13

Three-Point Field Goals Attempted

612 - 2009-10

Three-Point Field Goal Percentage

.356 - 2012-13

Free Throws Made

531 - 2008-09

Free Throws Attempted

754 - 2008-09

Free Throw Percentage

.769 - 2007-08

Rebounds

1,257 - 1980-81

Assists

536 - 1980-81

Steals

418 - 1979-80, 1980-81

Blocked Shots

154 - 2012-13

Most Turnovers

684 - 1999-00

Fewest Turnovers

357 - 2012-13

Most Personal Fouls

642 - 1980-81

Fewest Personal Fouls

378 - 1978-79