

BOSTON


2016-17 WOMEN'S BASKETBALL


MEDIA CONTACT: PATRICK LAWLOR | PLAWLOR@BU.EDU | OFFICE: (617) 358-0045 | CELL (857) 600-6809

BOSTON UNIVERSITY

Overall: 2-9 | PL: 0-0
Head Coach: Katy Steding
Website: GoTerriers.com

GAME 12: at HOLY CROSS

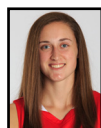
	53.7	PPG	55.9
	14.0	APG	11.5
	31.3	RPG	35.5
	39.3	FG%	35.3
	28.0	3PT FG%	28.5



HOLY CROSS

Overall: 2-9 | PL: 0-0
Head Coach: Bill Gibbons
Website: GoHolyCross.com

PROBABLE STARTERS



#12 - HOPE
PPG: 11.5
RPG: 2.4
APG: 2.45
3FG%: .339



#03 - THOMPSON
PPG: 3.7
RPG: 2.4
SPG: 0.9
FG%: .485



#14 - LATHAM
PPG: 5.6
RPG: 4.4
APG: 3.45
FG%: .393



#52 - SHEFTIC
PPG: 6.5
RPG: 3.1
SPG: 0.9
FG%: .393



#01 - BEAUDRY
PPG: 9.5
RPG: 6.2
BPG: 2.3
FG%: .488

TODAY'S GAME

WHERE: The Hart Center - Worcester, Mass.
WHEN: Dec. 30, 2016 - 1 p.m. ET
HOLY CROSS SID: Greg Celona, gcelona@holycross.edu

STORYLINES

- BU opens its conference schedule on Friday afternoon when the Terriers face Holy Cross in Worcester, Mass.
- This game is the first of the winter in the second annual Turnpike Trophy series between BU and Holy Cross.
- The Terriers own a 4-1 advantage after five fall competitions.
- BU has lost four straight against Holy Cross, with the Terriers' last win over the Crusaders coming on March 1, 2014.

A TERRIER WIN WOULD...

- ...be their fourth all-time against Holy Cross; the Crusaders hold a 14-3 all-time advantage.
- ...be their second straight win after a 64-60 triumph over UMass on Dec. 14.
- ...be their first Patriot League win since Feb. 17, 2016, at Colgate.

QUICK HITS

- BU enters its fourth season in the Patriot League and third under the command of head coach Katy Steding.
- The Terriers return 11 players from the 2015-16 season and added two during the off-season.
- This year's captains are Courtney Latham, Sarah Hope and Corrine Williams.
- Six players that started 10 or more games return for the 2016-17 season.
- BU's leading scorer and rebounder return for this season with Meghan Green (9.6 ppg) suiting up as a senior and Corrine Williams (4.9 rpg) returning for her junior season.
- The Terriers enter their 42nd season as a varsity program.

MEDIA COVERAGE

WATCH: Patriot League Network
• PatriotLeague.tv

LISTEN: Terrier Sports Radio Network
• GoTerriers.com/TSRN
• PxP: Alex Smith

FOLLOW: LIVE STATS
• Sidearmstats.com/bu/wbball/

FOLLOW: @BUGameDay
• Twitter.com/BUGameDay
• #GoBU

FOLLOW: @BostonU_WBB
• Twitter.com/BostonU_WBB
• #EarnIt



CONFERENCE CHAMPIONS: 1988, 1989, 2003
REGULAR SEASON CHAMPIONS: 1988, 2009, 2012
NCAA: 2003 | WNIT: 2009, 2010, 2012, 2013

2016-17 SCHEDULE

NOVEMBER		DECEMBER		JANUARY		FEBRUARY		MARCH	
11	at Northeastern L, 59-78	3	at Arizona State L, 42-71	2	at Lehigh* 2 PM	2	at Navy* 7 PM	1	at Army West Point* 7 PM
14	at Boston College L, 49-67	4	vs. Long Beach L, 48-61	6	NAVY* 7 PM	5	at Lafayette* 2 PM	4	PL First Round TBA
19	at Albany L, 54-69	7	DARTMOUTH L, 49-61	8	LAFAYETTE* 2 PM	8	AMERICAN* 7 PM		
22	HARVARD L, 52-65	10	at Marist L, 57-76	11	at American* 7 PM	11	at Loyola Md.* 2 PM		
26	UMASS LOWELL W, 66-56	14	MASSACHUSETTS W, 64-60	14	LOYOLA MD.* 2 PM	15	COLGATE* 7 PM		
28	NEW HAMPSHIRE L, 51-59	30	at Holy Cross* 1 PM	18	at Colgate* 7 PM	18	at Bucknell* 2 PM		
				21	BUCKNELL* 2 PM	22	ARMY WEST POINT* 7 PM		
				28	LEHIGH* 2 PM	25	HOLY CROSS* 2 PM		

*Patriot League Contest

QUICK FACTS

THE UNIVERSITY

Location.....	Boston, Mass.
Founded/Chartered.....	1939/1969
Enrollment.....	16,572
President.....	Robert A. Brown
Director of Athletics.....	Drew Marrochello
Affiliation.....	Division I
Conference.....	Patriot League
Nickname.....	Terriers
Colors.....	Scarlet and White

BASKETBALL STAFF

Head Coach.....	Katy Steding (Stanford '90)
Years at BU.....	3rd season
Record at BU.....	10-59
Career Record.....	10-59
Assistant Coach.....	Cindy Blodgett (Maine '98)
Assistant Coach.....	Jenny Thigpin (Fresno State '07)
Assistant Coach.....	Ben Chase (Emerson '08)
Dir. of Basketball Ops.....	Mike Karon (BC '06)
Office Phone.....	(617) 353-5864
Athletic Trainer.....	Stephanie Naylor
Strength & Conditioning.....	Jill Zeller
Academic Coordinator.....	Phil DeCarlo

ATHLETIC COMMUNICATIONS

Media Contact.....	Scott Ellis/Patrick Lawlor
Email.....	msellis@bu.edu/plawlor@bu.edu
Office Phone.....	(617) 353-2163
Website.....	GoTerriers.com
Press Row Phone.....	(617) 358-5685
Assistant AD/Communications.....	Brian Kelley
Email.....	bkelley@bu.edu

TEAM INFORMATION

Season.....	42nd
Overall Record.....	573-573 (.500)
Conference Record.....	252-245 (.508)
2015-16 Overall Record.....	3-27
2015-16 Patriot League Record.....	3-15
Postseason.....	Patriot League First Round
Letterwinners Returning/Lost.....	10/3
Starters Returning/Lost.....	3/2
Newcomers.....	2
Captains.....	Latham, Hope, Williams
NCAA Tournament Appearances.....	1 (2003)
WNIT Appearances.....	4 (last '13)
Conference Tournament Titles.....	1988, '89, 2003
Conf. Regular Season Titles.....	1988, 2009, '12
All-Time Best Record.....	25-8 (2008-09)

TERRIER TIDBITS

2016-17 STARTING LINEUPS..... RECORD

Beaudry, Hauck, Hope, Sheftic, Williams.....	0-2
Beaudry, Hope, Latham, Sheftic, Williams.....	0-3
Hauck, Hope, Latham, Sheftic, Williams.....	1-2
Beaudry, Hope, Latham, Sheftic, Thompson.....	1-2

GAMES LED BU IN SCORING.....SEASON/TOTAL

Sophie Beaudry.....	5/5
Meghan Doogan.....	0/2
Meghan Green.....	3/24
Sarah Hope.....	4/24
Courtney Latham.....	0/2
Kara Sheftic.....	1/7
Lauren Spearman.....	0/1
Naiyah Thompson.....	1/3
Corrine Williams.....	2/6

GAMES LED BU IN REBOUNDED...SEASON/TOTAL

Sophie Beaudry.....	6/6
Meghan Green.....	2/25
Courtney Latham.....	4/18
Kara Sheftic.....	2/12
Naiyah Thompson.....	1/2
Corrine Williams.....	2/8

GAMES LED BU IN ASSISTS.....SEASON/TOTAL

Sophie Beaudry.....	1/1
Meghan Green.....	0/2
Payton Hauck.....	2/6
Sarah Hope.....	2/40
Courtney Latham.....	5/37
Kara Sheftic.....	1/2
Lauren Spearman.....	1/1
Naiyah Thompson.....	0/1
Corrine Williams.....	3/11

CAREER DOUBLE-DOUBLES.....SEASON/TOTAL

Sophie Beaudry.....	1/1
Meghan Green.....	0/7
Courtney Latham.....	0/2
Kara Sheftic.....	0/2
Corrine Williams.....	0/1

RECAPPING THE UMASS WIN

- Trailing by as many as six points in the fourth quarter and 11 in the first half, the Terriers went on a 9-2 run to close out a 64-60 victory over UMass on Dec. 14 at Case Gym.
- Seniors Sarah Hope and Meghan Green each led BU with 16 points while sophomore Payton Hauck matched a career high with 10 points.
- Junior Sophie Beaudry matched a career high with six blocks, with the last block leading directly to sophomore Naiyah Thompson's game-winning bucket late in the fourth quarter.
- BU forced UMass into five straight misses to close the contest.

LOOKING FOR TWO IN A ROW

- With a win on Friday, BU will have recorded two straight victories for the first time since March 1-4, 2014.
- That streak started with the last Terrier victory over Holy Cross, a 67-65 win at Case Gym.
- BU then bested Loyola Maryland in the first round of the Patriot League Tournament.

HOPE NEARING A MILESTONE

- Senior Sarah Hope is one 3-pointer away from her 200th career trey.
- She needs nine more to move into a tie for third with Kristi Dini ('09), who graduated having made 208 3-pointers.
- The school record is held by Chantell Alford ('13); Alford sank 244 3-pointers during her illustrious career.
- Hope is within reach of second place, held by Alex Young ('12) at 218.

SCOUTING THE CRUSADERS

- Holy Cross also enters Friday's Turnpike Trophy tilt at 2-9 after two straight losses, including a 63-33 loss at Arizona State on Dec. 21.
- The Crusaders have gone 2-3 against opponents BU has played this year, with both teams having defeated UMass Lowell while BU has also bested UMass. Holy Cross edged Marist for its other win against a common opponent.
- Two Crusaders average double figures in scoring, led by Infiniti Thomas-Waheed (13.8 ppg). Lauren Manis is next with 11.4 ppg.
- Manis also leads the Crusaders with an average of 8.3 rebounds per game.
- Madalyn Smith is Holy Cross' top assist provider at 2.63 per game.

LAST TIME AGAINST THE CRUSADERS

- Holy Cross defeated BU, 74-50, on Feb. 27, 2016 at the Hart Center.
- Meghan Doogan recorded a game-high 19 points.
- Corrine Williams also reached double figures with 11 points in addition to a team-high seven rebounds and four assists.

BLOCK PARTY

- Junior Sophie Beaudry matched a career high with six blocks in the Terriers' win over UMass.
- She previously achieved that mark while with Monmouth, blocking six Siena shots on Jan. 22, 2015.
- The last time a BU player blocked at least five shots was on March 4, 2014, when Rashidat Agboola turned away five shots from Loyola Maryland.
- Beaudry leads the Patriot League in both total blocks (23) and blocked shots per game (2.3).
- Only one other player in the Patriot League has recorded more than six blocks in a game this season, as Navy's Kaila Clark did so (7) on Dec. 7.
- Beaudry's six blocks were part of a season-high nine-block performance from the Terriers.

HAUCK HAD A HOT HAND

- Sophomore Payton Hauck matched a career high with 10 points on Dec. 14 in the Terriers' victory over UMass.
- She had previously recorded 10 points only once, against Colgate on Jan. 20, 2016.
- Hauck also set a career high with five made field goals, besting her mark of four set in that Colgate game.

GREEN IS GOOD

- For the third time this season, senior Meghan Green either led or co-led the Terriers in scoring with her 16-point performance against UMass.
- Green also had 16 points against Harvard and 12 points against Long Beach State.
- On the season, Green has averaged 7.7 points per game, third-best on the squad.

HOPE IS A DANGEROUS THING

- Senior Sarah Hope tied Green with 16 points in the BU win over UMass, marking the fourth time Hope has either led or co-led the Terriers in scoring this season.
- Hope currently leads the Terriers with an average of 11.5 points per game, which ranks 11th in the conference.
- She is the only Patriot League player to have made over 30 3-pointers. Her 34 treys are tops in the conference, as is her average of 3.1 threes per game.
- Hope, who played all 40 minutes against UMass, is averaging a Patriot League-best 35.5 minutes per game this season.

Boston University – 2016-17 TEAM GAME HIGHS

POINTS	66	UMASS LOWELL (11/26/16)
	64	UMASS (12/14/16)
	59	at Northeastern (11/11/16)
	57	at Marist (12/10/16)
	54	at Albany (11/19/16)
FIELD GOALS MADE	24	UMASS LOWELL (11/26/16)
	23	UMASS (12/14/16)
	23	at Northeastern (11/11/16)
FIELD GOAL ATTEMPTS	60	at Marist (12/10/16)
	58	at Northeastern (11/11/16)
FIELD GOAL PCT.	.453 (24-53)	UMASS LOWELL (11/26/16)
	.442 (23-52)	UMASS (12/14/16)
3 PT FG MADE	8	at Albany (11/19/16)
	6	UMASS (12/14/16)
	6	at Marist (12/10/16)
3 PT FG ATTEMPTS	21	at Marist (12/10/16)
	21	vs. Long Beach State (12/4/16)
3 PT FG PERCENTAGE	.444 (8-18)	at Albany (11/19/16)
	.385 (5-13)	NEW HAMPSHIRE (11/28/16)
FREE THROWS MADE	15	UMASS LOWELL (11/26/16)
	12	UMASS (12/14/16)
	12	at Albany (11/19/16)
FREE THROW ATTEMPTS	24	UMASS LOWELL (11/26/16)
	19	at Albany (11/19/16)
FREE THROW PCT	1.000 (4-4)	DARTMOUTH (12/7/16)
	.714 (5-7)	at Arizona State (12/3/16)
REBOUNDS	36	at Marist (12/10/16)
	36	vs. Long Beach State (12/4/16)
	36	NEW HAMPSHIRE (11/28/16)
	36	at Northeastern (11/11/16)
ASSISTS	19	at Marist (12/10/16)
	15	UMASS LOWELL (11/26/16)
	15	at Northeastern (11/11/16)
STEALS	16	UMASS LOWELL (11/26/16)
	12	at Arizona State (12/3/16)
BLOCKED SHOTS	9	UMASS (12/14/16)
	6	vs. Long Beach State (12/4/16)
	6	at Boston College (11/14/16)
TURNOVERS	24	vs. Long Beach State (12/4/16)
	22	at Arizona State (12/3/16)
	22	at Albany (11/19/16)
FOULS	26	UMASS (12/14/16)
	25	at Albany (11/19/16)

Opponent – 2016-17 GAME HIGHS

POINTS	78	at Northeastern (11/11/16)
	76	at Marist (12/10/16)
	71	at Arizona State (12/3/16)
	69	at Albany (11/19/16)
	67	at Boston College (11/14/16)
FIELD GOALS MADE	28	at Arizona State (12/3/16)
	26	at Albany (11/19/16)
FIELD GOAL ATTEMPTS	59	at Northeastern (11/11/16)
	56	at Marist (12/10/16)
	56	NEW HAMPSHIRE (11/28/16)
FIELD GOAL PCT.	.583 (28-48)	at Arizona State (12/3/16)
	.481 (26-54)	at Albany (11/19/16)
3 PT FG MADE	14	at Marist (12/10/16)
	12	at Northeastern (11/11/16)
3 PT FG ATTEMPTS	31	at Marist (12/10/16)
	24	vs. Long Beach State (12/4/16)
	24	at Northeastern (11/11/16)
FREE THROWS MADE	23	UMASS (12/14/16)
	21	at Boston College (11/14/16)
FREE THROW ATTEMPTS	23	UMASS (12/14/16)
	29	at Boston College (11/14/16)
FREE THROW PCT.	.941 (16-17)	at Northeastern (11/11/16)
	.870 (20-23)	at Marist (12/10/16)
REBOUNDS	42	at Marist (12/10/16)
	41	UMASS LOWELL (11/26/16)
ASSISTS	18	at Marist (12/10/16)
	18	at Northeastern (11/11/16)
STEALS	16	vs. Long Beach State (12/4/16)
	11	at Arizona State (12/3/16)
BLOCKED SHOTS	6	at Albany (11/19/16)
	5	HARVARD (11/22/16)
TURNOVERS	28	UMASS LOWELL (11/26/16)
	20	HARVARD (11/22/16)
FOULS	21	UMASS LOWELL (11/26/16)
	19	at Marist (12/10/16)

Boston University – 2016-17 GAME LOWS

POINTS	42	at Arizona State (12/3/16)
	48	vs. Long Beach State (12/4/16)
	49	at Boston College (11/14/16)
	49	DARTMOUTH (12/7/16)
	51	NEW HAMPSHIRE (11/28/16)
FIELD GOALS MADE	17	at Albany (11/19/16)
	18	at Boston College (11/14/16)
	18	at Arizona State (12/3/16)
	18	vs. Long Beach State (12/4/16)
FIELD GOAL ATTEMPTS	42	at Arizona State (12/3/16)
	47	at Boston College (11/14/16)
FIELD GOAL PCT.	.347 (17-49)	at Albany (11/19/16)
	.350 (21-60)	at Marist (12/10/16)
3 PT FG MADE	1	at Arizona State (12/3/16)
	2	HARVARD (11/22/16)
3 PT FG ATTEMPTS	10	at Arizona State (12/3/16)
	11	UMASS LOWELL (11/26/16)
3 PT FG PCT.	.100 (1-10)	at Arizona State (12/3/16)
	.167 (2-12)	HARVARD (11/22/16)
FREE THROWS MADE	2	NEW HAMPSHIRE (11/28/16)
	4	DARTMOUTH (12/7/16)
FREE THROW ATTEMPTS	4	DARTMOUTH (12/7/16)
	5	NEW HAMPSHIRE (11/28/16)
FREE THROW PCT.	.400 (2-5)	NEW HAMPSHIRE (11/28/16)
	.563 (9-16)	at Marist (12/10/16)
REBOUNDS	19	at Arizona State (12/3/16)
	25	UMASS LOWELL (11/26/16)
ASSISTS	11	DARTMOUTH (12/7/16)
	12	UMASS (12/14/16)
STEALS	6	at Northeastern (11/11/16)
	6	at Boston College (11/14/16)
	6	DARTMOUTH (12/7/16)
	6	UMASS (12/14/16)
BLOCKED SHOTS	1	at Arizona State (12/3/16)
	2	NEW HAMPSHIRE (11/28/16)
TURNOVERS	14	UMASS LOWELL (11/26/16)
	14	at Marist (12/10/16)
FOULS	15	DARTMOUTH (12/7/16)
	16	at Northeastern (11/11/16)

Opponent – 2016-17 GAME LOWS

POINTS	56	UMASS LOWELL (11/26/16)
	59	NEW HAMPSHIRE (11/28/16)
	60	UMASS (12/14/16)
	61	vs. Long Beach State (12/4/16)
	61	DARTMOUTH (12/7/16)
FIELD GOALS MADE	19	DARTMOUTH (12/7/16)
	20	NEW HAMPSHIRE (11/28/16)
FIELD GOAL ATTEMPTS	46	DARTMOUTH (12/7/16)
	48	at Arizona State (12/3/16)
FIELD GOAL PCT.	.309 (17-55)	UMASS (12/14/16)
	.375 (21-56)	at Marist (12/10/16)
3 PT FG MADE	2	at Arizona State (12/3/16)
	3	UMASS (12/14/16)
3 PT FG ATTEMPTS	9	UMASS (12/14/16)
	11	at Boston College (11/14/16)
3 PT FG PCT.	.154 (2-13)	at Arizona State (12/3/16)
	.250 (4-16)	at Albany (11/19/16)
FREE THROWS MADE	9	UMASS LOWELL (11/26/16)
	10	HARVARD (11/22/16)
	10	vs. Long Beach State (12/4/16)
FREE THROW ATTEMPTS	12	UMASS LOWELL (11/26/16)
	13	HARVARD (11/22/16)
FREE THROW PCT.	.565 (13-23)	at Arizona State (12/3/16)
	.714 (10-14)	vs. Long Beach St. (12/4/16)
REBOUNDS	31	DARTMOUTH (12/7/16)
	32	at Arizona State (12/3/16)
ASSISTS	5	HARVARD (11/22/16)
	6	UMASS LOWELL (11/26/16)
	6	UMASS (12/14/16)
STEALS	4	DARTMOUTH (12/7/16)
	6	at Marist (12/10/16)
	6	UMASS (12/14/16)
BLOCKED SHOTS	1	at Northeastern (11/11/16)
	2	UMASS LOWELL (11/26/16)
TURNOVERS	14	NEW HAMPSHIRE (11/28/16)
	14	DARTMOUTH (12/7/16)
	15	at Boston College (11/14/16)
FOULS	9	NEW HAMPSHIRE (11/28/16)
	9	DARTMOUTH (12/7/16)
	14	HARVARD (11/22/16)

AROUND THE
PATRIOT LEAGUE

Recent Results

WEDNESDAY, DEC. 14
Boston University 64, UMass 60

Upcoming Schedule

FRIDAY, DEC. 30
Boston Univ. at Holy Cross - 1 p.m.
Navy at Bucknell - 6 p.m.
American at Loyola Maryland - 7 p.m.
Army West Point at Lehigh - 7 p.m.
Lafayette at Colgate - 7 p.m.

2016-17 PATRIOT LEAGUE
STANDINGS (as of 12/30)

TEAM	PL	PCT	OVL	PCT
Army	0-0	.000	9-2	.818
Bucknell	0-0	.000	8-3	.727
Navy	0-0	.000	7-4	.636
Lehigh	0-0	.000	5-6	.455
Loyola (Md.)	0-0	.000	4-7	.364
Colgate	0-0	.000	3-8	.273
American	0-0	.000	3-8	.273
Holy Cross	0-0	.000	2-9	.182
Boston Univ.	0-0	.000	2-9	.182
Lafayette	0-0	.000	1-11	.083

SERIES HISTORY VS. HOLY CROSS

HOLY CROSS LEADS, 13-3

Jan. 6, 1976	A.....	L, 49-37
Jan. 19, 1977.....	H.....	W, 47-32
Dec. 2, 1977	A.....	W, 81-26
Feb. 5, 1983.....	H.....	L, 77-69
Jan. 5, 1984	A.....	L, 67-53
Jan. 3, 1985	H.....	L, 67-54
Jan. 2, 1986	A.....	L, 82-71
Feb. 14, 1994.....	A.....	L, 57-56
Feb. 14, 1995.....	H.....	L, 60-52
Dec. 5, 1995	A.....	L, 64-48
Dec. 28, 2006.....	N.....	L, 80-62
Jan. 2, 2014	A.....	L, 69-59
March 1, 2014	H.....	W, 67-65
Dec. 31, 2014.....	H.....	L, 71-48
Feb. 28, 2015.....	A.....	L, 76-62
Dec. 30, 2015.....	H.....	L, 60-41
Feb. 27, 2016.....	A.....	L, 74-50

Official Basketball Box Score -- Game Totals -- Final Statistics Boston University vs Holy Cross 02/27/16 1:05 PM at Worcester, Mass. (Hart Center)

Boston University 50 • 3-25, 3-14 PL

##	Player	Total		3-Ptr		Rebounds			PF	TP	A	TO	Blk	Stl	Min
		FG-FGA	FG-FGA	FT-FTA	Off	Def	Tot								
02	Scannell, Clodagh	* 1-2	1-2	1-2	2	0	2	2	4	2	4	0	0	0	19
11	Doogan, Meghan	* 7-10	3-5	2-3	1	3	4	2	19	0	3	0	0	0	33
14	Latham, Courtney	* 2-5	0-0	0-2	0	4	4	2	4	2	0	0	0	2	24
22	Williams, Corrine	* 2-6	0-1	7-8	1	6	7	3	11	4	1	1	1	1	39
23	Melton, Troi	* 0-4	0-0	0-0	0	5	5	1	0	2	3	0	0	1	17
03	Thompson, Naiyah	0-0	0-0	0-0	0	0	0	0	0	0	0	0	0	0	1
04	Hauck, Payton	0-1	0-0	0-0	0	0	0	0	0	0	0	0	0	0	3
12	Hope, Sarah	1-5	1-5	0-0	0	1	1	0	3	2	2	0	0	0	26
33	Green, Meghan	3-4	0-1	1-2	0	3	3	2	7	2	0	0	0	0	20
34	Bayram, Erin	1-3	0-0	0-0	0	1	1	1	2	0	0	0	0	0	9
52	Sheftic, Kara	0-0	0-0	0-0	0	0	0	0	0	1	3	0	0	0	9
Team					1	3	4				1				
Totals		17-40	5-14	11-17	5	26	31	13	50	15	17	1	4		200

FG % 1st Half: 10-22 45.5% 2nd half: 7-18 38.9% Game: 17-40 42.5%
 3FG % 1st Half: 5-8 62.5% 2nd half: 0-6 0.0% Game: 5-14 35.7%
 FT % 1st Half: 2-4 50.0% 2nd half: 9-13 69.2% Game: 11-17 64.7%

Deadball
Rebounds
4

Holy Cross 74 • 13-15, 10-7 PL

##	Player	Total		3-Ptr		Rebounds			PF	TP	A	TO	Blk	Stl	Min
		FG-FGA	FG-FGA	FT-FTA	Off	Def	Tot								
03	I. Thomas-Waheed	* 3-8	0-4	1-2	0	6	6	2	7	5	1	0	0	6	35
05	Katie Doherty	* 6-14	4-11	1-2	0	0	0	0	17	4	0	0	0	0	30
12	Lisa Mifsud	* 8-14	2-6	3-3	0	2	2	1	21	3	0	0	0	1	34
24	Kate Gillespie	* 5-10	4-7	0-0	0	2	2	2	14	2	2	0	0	1	28
40	Molly Hourigan	* 4-8	0-0	1-5	4	5	9	4	9	2	0	0	0	1	33
11	Shannon Druck	0-0	0-0	0-0	0	0	0	0	0	1	0	0	0	0	2
15	Madelyn Ganster	1-3	0-0	0-0	2	2	4	1	2	1	2	0	0	0	12
41	Amy Hasenauer	1-4	0-0	2-4	2	1	3	4	4	0	0	0	0	0	19
55	Miranda Nixon	0-0	0-0	0-2	1	1	2	2	0	0	0	0	0	0	7
Team					4	1	5								
Totals		28-61	10-28	8-18	13	20	33	16	74	18	5	0	9		200

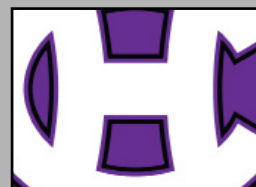
FG % 1st Half: 13-30 43.3% 2nd half: 15-31 48.4% Game: 28-61 45.9%
 3FG % 1st Half: 6-16 37.5% 2nd half: 4-12 33.3% Game: 10-28 35.7%
 FT % 1st Half: 5-7 71.4% 2nd half: 3-11 27.3% Game: 8-18 44.4%

Deadball
Rebounds
4

Officials: Jose Rodriguez (R), Elizabeth Kuzmeski, Corey Pothier
 Technical fouls: Boston University-None. Holy Cross-None.
 Attendance: 1385
 Senior Day

Score by periods	1st	2nd	3rd	4th	Total
Boston University	10	17	8	15	50
Holy Cross	22	15	17	20	74

HEAD TO HEAD



OVERALL RECORD	2-9	2-9
CURRENT STREAK	W1	L2
LAST FIVE	1-4	1-4
LAST TEN	2-8	2-8
SCORING AVERAGE	53.7	55.9
SCORING DEFENSE	65.7	64.5
SCORING MARGIN	(12.0)	(8.6)
FG PERCENTAGE OFFENSE	39.3	35.3
FG PERCENTAGE DEFENSE	42.0	39.4
3FG PERCENTAGE OFFENSE	28.0	28.5
3FG PERCENTAGE DEFENSE	37.9	29.0
3FG MADE PER GAME	4.3	5.0
FT PERCENTAGE	62.6	60.7
FT ATTEMPTS PER GAME	13.37	18.27
FT ATTEMPTS PER GAME (OPPONENT)	19.18	23.9
REBOUNDING AVERAGE	31.3	35.5
REBOUNDING AGAINST AVERAGE	35.8	41.5
REBOUNDING MARGIN	(4.5)	(6.0)
ASSISTS PER GAME	14.0	11.5
TURNOVERS PER GAME	18.9	18.5
TURNOVERS FORCED PER GAME	17.7	16.6
TURNOVER MARGIN	(1.2)	(1.8)
STEALS PER GAME	8.7	8.8
BLOCKS PER GAME	4.1	3.9

THE LAST TIME IT HAPPENED...

BY A TEAM

Overtime Game	Dec. 10, 2012, vs. Harvard, W, 68-61
Two Overtimes	March 15, 2008, vs. Vermont, W, 76-74
Won by 30+ points	31 Jan. 16, 2013, at Maine, W, 85-54
Lost by 30+ points	35 March 2, 2016, vs. Army West Point, L, 79-44
Scored 100 points	106 Feb. 13, 1987, vs. Brooklyn, W, 106-48
Allowed 100 points	110 Dec. 21, 2000, at Tulane, L, 66-110
Scored 90-99 points	95 March 8, 2009, vs. Albany, W, 95-72
Allowed 90-99 points	96 Nov. 22, 2013, at #1 UConn, L, 96-38
Scored under 40 points	38 Feb. 24, 2016, at Army West Point, L, 72-38
Allowed under 40 points	35 March 4, 2014, vs. Loyola Maryland, W, 40-35
Shot 60% or better from the field	61.4 (35-of-57), March 14, 2008 vs. UMBC, W, 88-59
Shot 50% or better from the field	53.4 (31-of-58), Jan. 25, 2014 vs. Bucknell, W, 86-58
Shot less than 30%	27.3 (15-55), Feb. 24, 2016, at Army West Point, L, 72-38
Opponent shot less than 30%	28.8 (17-of-59), Feb. 17, 2016, at Colgate, W, 71-58
Made 10+ 3-pointers	10 (10-for-28), Jan. 19, 2014, at Loyola, W, 70-60
Attempted 20+ 3-pointers	21 (6-for-21), Dec. 10, 2016, at Marist, L, 76-57
Shot 50% or better from 3-point range	53.8 (7-of-13), Feb. 17, 2016, at Colgate, W, 71-58
Attempted 40+ free throws	43 (23-of-43), Dec. 4, 2013, at UMass, W, 66-63
Made 30+ free throws	33 (24-of-33), Feb. 20, 2010 vs. SBU, W, 72-68
Had 60+ rebounds	61 Jan. 19, 2008 vs. Stony Brook, W, 89-40
50-59 rebounds	51 Dec. 9, 2014 at Rhode Island, L, 56-48
25+ assists	25 Jan. 25, 2014 vs. Bucknell, W, 86-58
15+ steals	15 Feb. 16, 2013 vs. New Hampshire, W, 59-45
Blocked 10+ shots	10 Nov. 23, 2012, at Eastern Michigan, W, 66-55
Three or more players foul out	3 Dec. 9, 2009 at Yale, L, 61-57
Five or more players scoring in double-figures	Feb. 9, 2013 at Binghamton, W, 73-51
.....	Turner (14), Agboola (13), Callahan (11), Sims (11), Alford (10)
Two players score 20 or more points	Feb. 12, 2014 vs. Colgate, W, 72-68; Agboola (25), Scanell (21)
Two or more players with double-figure rebs	Feb. 17, 2016 at Colgate, W, 71-58, Latham (11), Melton (11)
Two players record double-doubles	Feb. 17, 2016 at Colgate, W, 71-58
.....	Melton (12 pts, 11 reb), Latham (11 pts, 11 reb)
Everyone on the active roster scores	Nov. 28, 2006, at Connecticut, L, 84-51

BY A TERRIER

40 or more points	43 Katie Meinhardt vs. Stony Brook, March 9, 2005
30-39 points	30 Chantell Alford vs. No. 14 WVU, Nov. 12, 2012
Made 5 or more 3-pointers	6 Sarah Hope (6-of-15), at Marist, Dec. 10, 2016
Attempted 10+ 3-pointers	10 Sarah Hope (4-for-10), vs. UMass, Dec. 14, 2016
Attempted 10 or more free throws	10 Sophie Beaudry (6-for-10) at Marist, Dec. 10, 2016
Made 10 or more free throws	10 Kara Sheftic (10-for-10) at Marist, Dec. 13, 2014
20 or more rebounds	20 Jesyka Burks-Wiley vs. UNH, March 10, 2006
15-19 rebounds	15 Meghan Green at BC, Nov. 20, 2014
10-14 rebounds	11 Sophie Beaudry, vs. Dartmouth, Dec. 7, 2016
10 or more assists	11 Danielle Callahan vs. Bucknell, Jan. 25, 2014
5 or more steals	5 Troi Melton vs. American, March 5, 2016
5 or more blocks	6 Sophie Beaudry vs. UMass, Dec. 14, 2016
Recorded a triple-double	1 Mo Moran, vs. Yale, Nov. 12, 2010; 15 pts, 12 rebs, 11 assists

bold - occurred in 2016-17

BU'S RECORD WHEN...

Overall Record	2-9
Overtime	
At home	2-3
On the road	0-5
Neutral site	0-1
Day games	1-3
Night games	1-6
Games dec. by 5 pts or less	1-0
Games dec. by 1 point	
Outrebounded opponent	1-4
Outrebounded by opponent	1-5
Rebounds equal	

Leading after first quarter	1-4
Trailing after first quarter	1-5
Tied after first quarter	
Leading at the half	1-2
Trailing at the half	1-7
Tied at the half	
Leading after third quarter	1-0
Trailing after third quarter	1-9
Tied after third quarter	

Scoring first	1-3
Scoring second	1-6
Winning opening tip	2-5
Losing opening tip	0-4

OFFENSIVE OUTPUT

Scoring under 50 points	0-4
Scoring 50-59 points	0-5
Scoring 60-69 points	2-0
Scoring 70-79 points	
Scoring 80+ points	

STREAKS

Coming off a win	L4
Coming off a loss	W1
Longest winning streak	W1
Longest losing streak	L5

DAYS OF THE WEEK

Sunday	0-1
Monday	0-2
Tuesday	0-1
Wednesday	1-1
Thursday	
Friday	0-1
Saturday	1-3

VS. CONFERENCES

ACC	0-1
America East	1-2
Atlantic 10	1-0
Big West	0-1
Colonial	0-1
Ivy League	0-2
Metro Atlantic	0-1
Pac-12	0-1
Patriot League	

**TERRIERS BREAKDOWN
BY CLASS**

The Terriers' 13-player roster includes:

SENIORS (3)

Meghan Green
Sarah Hope
Courtney Latham

JUNIORS (5)

Erin Bayram
Sophie Beaudry
Meghan Doogan
Kara Sheftic
Corrine Williams

SOPHOMORES (3)

Milla Eskstrom
Payton Hauck
Naiyah Thompson
Lauren Spearman

FRESHMEN (2)

Vanessa Edgehill
Nia Irving

**TERRIERS BREAKDOWN
BY REGION**

The Terriers' 13-player roster includes:

CALIFORNIA (1)

Lauren Spearman

CONNECTICUT (2)

Courtney Latham
Corrinne Williams

DELAWARE (1)

Meghan Doogan

ILLINOIS (1)

Erin Bayram

MARYLAND (1)

Naiyah Thompson

MAINE (1)

Nia Irving

MASSACHUSETTS (2)

Vanessa Edgehill
Sarah Hope

NEW HAMPSHIRE (1)

Meghan Green

PENNSYLVANIA (1)

Payton Hauck

QUEBEC (1)

Sophie Beaudry

VERMONT (1)

Kara Sheftic

NUMERICAL ROSTER

No.	Name	Pos.	Ht.	Yr.	Hometown / High School
1	Sophie Beaudry	C	6-5	Jr.	Chambly, Quebec / Monmouth
3	Naiyah Thompson	F	5-11	So.	Waldorf, Md. / St. Mary's Ryken
4	Payton Hauck	G	5-9	So.	York, Pa. / Northeastern High School
11	Meghan Doogan	G	5-9	Jr.	Claymont, Del. / Concord
12	Sarah Hope	G	5-7	Sr.	Medway, Mass. / Medway
14	Courtney Latham	G	5-8	Sr.	Glastonbury, Conn. / Glastonbury
20	Nia Irving	F	6-1	Fr.	Fairfield, Maine / Lawrence
21	Lauren Spearman	G	5-7	So.	Los Angeles, Calif. / Marlborough School
22	Corrine Williams	G	6-1	Jr.	Bloomfield, Conn. / Bloomfield
30	Vanessa Edgehill	G	5-8	Fr.	Franklin, Mass. / The Rivers School
33	Meghan Green	F	6-0	Sr.	Bedford, N.H. / Bishop Guertin
34	Erin Bayram	F	6-2	Jr.	Batavia, Ill. / Batavia
52	Kara Sheftic	F	6-1	Jr.	Essex Junction, Vt. / Essex

ALPHABETICAL ROSTER

No.	Name	Pos.	Ht.	Yr.	Hometown / High School
34	Erin Bayram	F	6-2	Jr.	Batavia, Ill. / Batavia
1	Sophie Beaudry	C	6-5	Jr.	Chambly, Quebec / Monmouth
11	Meghan Doogan	G	5-9	Jr.	Claymont, Del. / Concord
30	Vanessa Edgehill	G	5-8	Fr.	Franklin, Mass. / The Rivers School
33	Meghan Green	F	6-0	Sr.	Bedford, N.H. / Bishop Guertin
4	Payton Hauck	G	5-9	So.	York, Pa. / Northeastern High School
12	Sarah Hope	G	5-7	Sr.	Medway, Mass. / Medway
20	Nia Irving	F	6-1	Fr.	Fairfield, Maine / Lawrence
14	Courtney Latham	G	5-8	Sr.	Glastonbury, Conn. / Glastonbury
52	Kara Sheftic	F	6-1	Jr.	Essex Junction, Vt. / Essex
3	Naiyah Thompson	F	5-11	So.	Waldorf, Md. / St. Mary's Ryken
21	Lauren Spearman	G	5-7	So.	Los Angeles, Calif. / Marlborough School
22	Corrine Williams	G	6-1	Jr.	Bloomfield, Conn. / Bloomfield

PRONUNCIATIONS

Erin Bayram:	Erin BAY-rum
Sophie Beaudry:	So-FEE BOW-dree
Meghan Doogan:	Meghan DOOG-in
Payton Hauck:	Payton HAWK
Nia Irving:	NYE-uh UR-ving
Courtney Latham:	Courtney LAY-thumb
Kara Sheftic:	Kara CHEF-tick
Corrine Williams:	Curr-INN Williams
Katy Steding:	KATIE Steding
Cindy Blogett:	Cindy BLAW-git
Jenny Thigpin:	Jenny THIG-pen

KATY STEDING

HEAD COACH

THIRD SEASON • STANFORD '90



Katy Steding enters her third year at the helm of the Terriers in 2016-17. The Olympic gold medalist and NCAA champion looks to improve upon the team's success with the return of 10 letterwinners and the addition of two new Terriers, including the Maine State Gatorate Player of the Year Nia Irving.

A 15-year coaching veteran, Steding came to BU after spending two seasons at California where she helped lead the Golden Bears to their first Pac-12 title and a pair of trips to the NCAA tournament. Under her guidance, the 2012-13 team posted a 32-4 overall record and earned the first Final Four berth in program history. Her main responsibilities at Cal included recruiting, working with the post players and overseeing the team's offense.

BU is Steding's second head-coaching position, as she spent seven seasons at the helm of the Warner Pacific College (NAIA) program in her native Oregon, helping it transition from a club-level program to a varsity team. During her time in Portland, Steding recorded a pair of 20-plus win seasons, leading the Knights to the NAIA Division II National Tournaments in 2004 and 2006. The 2004 selection to the national tournament marked the first postseason appearance in school history for men's or women's basketball.

Steding was named the Cascade Collegiate Conference (CCC) Coach of the Year at the conclusion of the 2005-06 season after leading the Knights to their first-ever CCC title with a 22-9 record. Throughout her seven-year stint, Steding recruited 11 All-Conference performers and 11 Academic All-Americans to Warner Pacific.

Before joining the coaching staff at Cal, Steding was an associate head coach at the University of San Francisco from 2010-12, overseeing recruiting and player and practice development in addition to opponent scouting. At USF, Steding teamed with Hall of Famer and Stanford and Olympic teammate Jennifer Azzi. The 2011-12 squad earned a win over a nationally ranked Brigham Young team.

Prior to her stint at USF, Steding served as an assistant at Columbia during the 2009-10 season. She helped the Lions achieve a top-three Ivy League finish and the highest RPI in school history while developing Columbia's first-ever Ivy

League Player of the Year, who went on to earn All-America Third Team honors.

Steding also served as an assistant coach for the WNBA's Atlanta Dream during the franchise's inaugural season in 2008.

A three-time Pac-10 All-Conference selection at Stanford, Steding was one of the most versatile players in Cardinal history. She finished her career ranked ninth in scoring with 1,586 points and fourth in rebounds with 864 boards. During her senior season she shot a conference-best 46.4 percent from beyond the arc and led Stanford to a pair of Pac-10 titles.

Steding and the Cardinal captured Stanford's first-ever NCAA championship in 1990. She was named the CBS/Chevrolet Player of the Game after scoring 18 points and grabbing seven rebounds in Stanford's 88-81 victory over Auburn in the title game.

Steding graduated from Stanford in 1990 with a degree in psychology and embarked on a professional playing career overseas with stops in Japan and Spain before returning to the states and earning a spot on U.S. National Team in 1995. Dubbed the "Women's Dream Team," Steding teamed with Teresa Edwards, Rebecca Lobo, Sheryl Swoopes and a myriad of other women's basketball superstars to compile a 60-0 record that culminated with a gold medal at the 1996 Atlanta Olympics.

After her time with Team USA, Steding became a founding player for the Portland Power of the American Basketball League before playing with Sacramento Monarchs and Seattle Storm of the WNBA. Steding retired from professional basketball in 2001.

During her time at Warner Pacific, Steding also served as Director of Marketing and College Relations from March 2006 to April 2008. Her marketing and advertising efforts resulted in a 30 percent increase in both applications and enrollment.

A native of Tualatin, Oregon, Steding was inducted into the Stanford Sports Hall of Fame in 2002 and the Oregon Sports Hall of Fame in 2004.

2016-17 TERRIER BASKETBALL

8

Official Basketball Box Score -- Game Totals -- Final Statistics Boston University vs Northeastern 11/11/16 3 p.m. at Boston, Mass. (Cabot Center)

Boston University 59 • 0-1

#	Player	Total		3-Ptr		Rebounds		PF	TP	A	TO	Blk	Stl	Min
		FG	FGA	FG	FGA	Off	Def							
01	Beaudry, Sophie	* 2-12	0-0	2-4	4	2	6	1	6	1	0	3	0	23
04	Hauck, Payton	* 1-2	0-1	0-0	1	0	1	1	2	0	4	0	1	17
12	Hope, Sarah	* 4-11	4-11	1-2	0	2	2	0	13	4	0	0	0	34
22	Williams, Corrine	* 5-6	1-1	2-3	1	3	4	3	13	3	0	0	0	29
52	Sheftic, Kara	* 3-8	0-0	2-2	1	2	3	4	8	0	2	0	4	23
03	Thompson, Naiyah	1-3	0-1	0-0	2	1	3	2	2	1	4	0	0	17
11	Doogan, Meghan	0-0	0-0	0-0	1	0	1	0	0	0	0	0	0	2
14	Latham, Courtney	6-8	0-0	0-0	4	5	9	2	12	5	2	0	1	31
30	Edgehill, Vanessa	0-0	0-0	0-0	0	0	0	1	0	0	0	0	0	7
33	Green, Meghan	1-8	0-3	1-2	2	3	5	1	3	1	2	0	0	15
34	Bayram, Erin	0-0	0-0	0-0	0	0	0	1	0	0	1	0	0	2
Team						2		0		2				
Totals		23-58	5-17	8-13	18	18	36	16	59	15	21	3	6	200
1st - FG %:		4-11	36.4%	2nd: 8-15	53.3%	3rd: 7-20	35.0%	4th: 4-12	33.3%	Game: 23-58	39.7%	Deadball		
3FG %:		1-3	33.3%	1-4	25.0%	2-6	33.3%	1-4	25.0%	5-17	29.4%	Rebounds		
FT %:		1-1	100.0%	0-2	0.0%	3-4	75.0%	4-6	66.7%	8-13	61.5%	3		

Northeastern 78 • 1-0

#	Player	Total		3-Ptr		Rebounds		PF	TP	A	TO	Blk	Stl	Min
		FG	FGA	FG	FGA	Off	Def							
01	Zwerling, Zoe	* 2-11	1-6	2-2	0	2	2	0	7	4	1	0	1	27
14	Todd, Shannon	* 0-4	0-2	0-0	2	0	2	1	0	1	1	0	1	18
20	Genco, Jess	* 9-12	7-9	2-2	0	6	6	1	27	3	4	0	1	37
24	Giacone, Gabby	* 2-4	0-1	2-2	2	3	5	5	6	1	2	0	1	21
33	Sally, Francesca	* 5-17	2-3	5-6	2	4	6	1	17	1	4	0	0	28
04	Lassiter, Loren	2-4	0-0	0-0	5	2	7	4	4	3	1	1	3	28
03	Ortiz, Claudia	3-4	1-2	3-3	0	0	0	1	10	2	3	0	1	18
04	Dublin, Ayanna	0-0	0-0	0-0	0	0	0	1	0	0	0	0	0	5
22	Eason, Te'Erica	1-2	0-0	2-2	2	0	2	1	4	3	0	0	0	8
23	Redcross, Courtney	0-0	0-0	0-0	0	0	0	0	0	0	0	0	0	2
30	Schnare, Briana	0-0	0-0	0-0	0	0	0	0	0	0	0	0	0	0+
32	Taggart, Maureen	1-1	1-1	0-0	0	0	0	0	3	0	1	0	0	8
Team						3		1		1				
Totals		25-59	12-24	16-17	16	18	34	15	78	18	18	1	8	200
1st - FG %:		7-19	36.8%	2nd: 7-12	58.3%	3rd: 6-14	42.9%	4th: 5-14	35.7%	Game: 25-59	42.4%	Deadball		
3FG %:		4-6	66.7%	2-7	28.6%	3-6	50.0%	3-5	60.0%	12-24	50.0%	Rebounds		
FT %:		5-6	100.0%	3-3	100.0%	7-8	87.5%	0-0	0.0%	16-17	94.1%	1,1		

Officials: Duane Mack, Carlos Alvarez, Danielle Bittle
Technical fouls: Boston University-None. Northeastern-None.
Attendance: 412

Score by periods	1st	2nd	3rd	4th	Total
Boston University	10	17	19	13	59
Northeastern	24	19	22	13	78

Last FG - BU 4th-03:56, NU 4th-00:46.
Largest lead - BU None, NU by 23 4th-06:02.
BU led for 00:00, NU led for 39:37. Game was tied for 00:23.

Score tied - 0 times.
Lead changed - 0 times.

Official Basketball Box Score -- Game Totals -- Final Statistics BU vs UAlbany 11/19/16 7:00 pm at Albany, N.Y.

BU 54 • 0-3

#	Player	Total		3-Ptr		Rebounds		PF	TP	A	TO	Blk	Stl	Min
		FG	FGA	FG	FGA	Off	Def							
52	Sheftic, Kara	f 0-5	0-0	8-12	1	4	5	2	8	3	2	1	0	28
01	Beaudry, Sophie	c 2-6	0-0	2-2	1	2	3	5	6	0	2	1	1	21
12	Hope, Sarah	g 7-12	6-11	0-0	0	2	2	3	20	1	4	0	1	35
14	Latham, Courtney	g 0-4	0-0	0-1	2	4	6	1	0	2	2	0	4	29
22	Williams, Corrine	g 0-1	0-0	0-0	0	1	1	4	0	1	3	0	0	16
03	Thompson, Naiyah	0-0	0-0	0-0	0	0	0	1	0	0	3	0	0	5
04	Hauck, Payton	3-4	1-2	2-2	1	1	2	4	9	3	2	0	1	23
11	Doogan, Meghan	0-4	0-3	0-0	0	0	0	1	0	0	1	1	0	10
21	Spearman, Lauren	0-1	0-0	0-2	1	0	1	0	0	3	1	0	0	13
33	Green, Meghan	5-10	1-2	0-0	0	3	3	4	11	0	1	1	1	15
34	Bayram, Erin	0-2	0-0	0-0	0	0	0	0	0	0	0	1	1	5
Team						6		2		8		1		
Totals		17-49	8-18	12-19	12	19	31	25	54	13	22	4	9	200
1st - FG %:		1-8	12.5%	2nd: 3-10	30.0%	3rd: 5-13	38.5%	4th: 8-18	44.4%	Game: 17-49	34.7%	Deadball		
3FG %:		1-4	25.0%	2-4	50.0%	0-3	0.0%	5-7	71.4%	8-18	44.4%	Rebounds		
FT %:		2-3	66.7%	4-6	66.7%	4-8	50.0%	2-2	100.0%	12-19	63.2%	5		

UAlbany 69 • 2-2

#	Player	Total		3-Ptr		Rebounds		PF	TP	A	TO	Blk	Stl	Min
		FG	FGA	FG	FGA	Off	Def							
15	Fequiere, Jessica	f 3-9	0-4	0-0	3	4	7	1	6	1	2	0	1	23
22	Forster, Heather	g 0-1	0-0	1-2	0	2	2	3	1	1	2	0	2	19
00	Trpic, Mackenzie	g 0-2	0-2	1-2	0	1	1	2	1	2	1	0	1	16
12	Tate, Imani	g 11-16	1-4	1-1	1	3	4	0	24	3	2	1	0	25
13	Aiyalogue, Bose	g 4-9	1-2	0-0	1	3	4	1	9	0	4	1	0	31
02	Hernandez, Aubrey	0-0	0-0	0-0	0	0	0	1	0	0	1	0	0	3
03	Stokes, Khepera	1-4	1-1	3-4	0	1	1	0	6	4	2	0	2	22
10	Hixson, Bailey	2-6	1-3	0-0	0	1	1	1	5	2	1	0	0	14
20	Aslan, Kumsal	0-0	0-0	0-0	0	1	1	1	0	1	1	0	0	3
24	Schecter, Alexi	1-1	0-0	0-0	1	0	1	2	2	0	2	2	0	10
33	Carter, Tiana-Jo	1-1	0-0	3-4	0	1	1	4	5	1	0	1	0	9
34	Edwards, Cassandra	3-5	0-0	4-4	3	3	6	1	10	0	0	1	3	25
Team						3		2		5				
Totals		26-54	4-16	13-17	12	22	34	17	69	15	18	6	9	200
1st - FG %:		8-15	53.3%	2nd: 9-18	50.0%	3rd: 4-13	30.8%	4th: 5-8	62.5%	Game: 26-54	48.1%	Deadball		
3FG %:		2-5	40.0%	1-4	25.0%	0-4	0.0%	1-3	33.3%	4-16	25.0%	Rebounds		
FT %:		7-9	77.8%	1-2	50.0%	2-2	100.0%	3-4	75.0%	13-17	76.5%	2		

Officials: Fidel Gonzalez, Heather Browne, Debra Garcia
Technical fouls: BU-None. UAlbany-None.
Attendance: 1119

Score by periods	1st	2nd	3rd	4th	Total
BU	5	12	14	23	54
UAlbany	25	20	10	14	69

Last FG - BU 4th-01:06, ALBANY 4th-02:24.
Largest lead - BU by 1 1st-08:12, ALBANY by 34 2nd-01:11.
BU led for 00:13, ALBANY led for 38:07. Game was tied for 01:31.

Score tied - 0 times.
Lead changed - 2 times.

Official Basketball Box Score -- Game Totals -- Final Statistics Boston University vs Boston College 11-14-16 7:05 p.m. at Silvio O. Conte Forum, Chestnut Hill, MA

Boston University 49 • 0-2

		Total		3-Ptr		Rebounds											
#	Player	FG	FGA	FG	FGA	FT	FTA	Off	Def	TP	PF	TP	A	TO	Blk	Stl	Min
52	Sheftic, Kara	f	3-8	0-0	0-0	7-12	2	1	3	5	13	0	1	0	1	1	26
01	Beaudry, Sophie	c	4-7	0-0	0-0	0-0	3	10	13	5	8	3	5	4	2	2	26
04	Hauck, Payton	a	0-3	0-0	0-0	0-0	0	0	0	2	0	1	0	0	0	0	4
12	Hope, Sarah	g	5-12	3-7	0-0	0	0	0	0	1	13	3	2	0	0	0	39
22	Williams, Corinne	g	1-2	0-0	0-0	0	2	2	2	2	2	5	2	1	1	1	35
03	Thompson, Naiyah		1-3	0-1	0-0	1	0	1	4	2	1	2	1	2	1	1	16
11	Doogan, Meghan		1-4	0-2	0-0	0	0	0	0	2	0	0	0	0	0	0	12
14	Latham, Courtney		1-3	0-0	0-0	0	3	3	3	2	1	3	0	1	1	1	23
30	Edgehill, Vanessa		0-0	0-0	0-0	0	0	0	0	0	0	0	0	0	0	0	1
33	Green, Meghan		2-5	1-4	2-2	2	2	4	1	7	0	3	0	0	0	0	18
Team						2	2	4				1					
Totals			18-47	4-14	9-14	10	20	30	23	49	14	19	6	6	200		
1st - PG %		5-13	23.1%	2nd - 6-13		63.5%	3rd - 5-11		45.5%	4th - 2-10		20.0%	Game - 10-47		38.3%	Double Blk	
3rd %		0-0	0.0%	6-3		0.0%	2-5		40.0%	2-6		33.3%	4-14		28.6%	Rebounds	
4th %		0-0	0.0%	0-0		0.0%	0-0		0.0%	0-0		0.0%	0-0		0.0%		

2016-17 TERRIER BASKETBALL

10

Official Basketball Box Score -- Game Totals -- Final Statistics Dartmouth vs Boston University 12/07/16 5:35 p.m. at Case Gym "The Roof" - Boston, Mass.

Dartmouth 61 • 3-4

#	Player	Total		3-Ptr		Rebounds			PF	TP	A TO Blk Stl				Min
		FG-FGA	FG-FGA	FT-FTA	Off Def Tot	PF	TP	A TO Blk Stl							
03	Smith, Olivia	* 1-5	0-0	4-6	1 2 3	3	6	0 1 2 1	38						
04	Mixon, Amber	* 0-0	0-0	4-4	1 1 2	1	4	3 3 0 0	25						
14	Letskewicz, Kate	* 6-12	3-5	2-2	0 12 12	2	17	0 4 0 0	36						
25	Quinones, Isalys	* 6-10	0-1	2-3	0 5 5	1	14	1 2 1 0	36						
33	Norman, Andi	* 3-9	2-6	0-0	0 2 2	1	8	1 1 0 1	22						
02	McKenna, Annie	0-3	0-2	2-2	0 0 0	1	2	3 0 0 1	15						
15	Szabo, Fanni	3-7	2-4	2-2	0 2 2	0	10	3 2 1 1	26						
32	Slagle, Emily	0-0	0-0	0-0	0 0 0	0	0	0 0 0 0	2						
Team					1 4 5			1							
Totals		19-46	7-18	16-19	3 28 31	9	61	11 14 4 4	200						

1st - FG %: 4-12 33.3% 2nd: 7-13 53.8% 3rd: 4-14 28.6% 4th: 4-7 57.1% Game: 19-46 41.3% Deadball Rebounds 0

3FG %: 2-6 33.3% 1-2 50.0% 1-2 50.0% 7-18 38.9%

FT %: 0-0 0.0% 4-4 100.0% 2-2 100.0% 10-13 76.9% 16-19 84.2%

Boston University 49 • 1-8

#	Player	Total		3-Ptr		Rebounds			PF	TP	A TO Blk Stl				Min
		FG-FGA	FG-FGA	FT-FTA	Off Def Tot	PF	TP	A TO Blk Stl							
01	Beaudry, Sophie	* 5-12	0-0	2-2	2 9 11	1	12	0 2 2 0	29						
03	Thompson, Naiyah	* 6-8	0-1	0-0	3 5 8	1	12	1 5 1 3	30						
12	Hope, Sarah	* 2-12	2-7	0-0	2 4 6	3	6	1 2 0 1	37						
14	Latham, Courtney	* 2-7	0-0	2-2	0 2 2	2	6	4 1 1 1	26						
52	Sheftic, Kara	* 1-1	0-0	0-0	0 2 2	2	2	1 2 0 0	15						
04	Hauck, Payton	1-1	0-0	0-0	0 2 2	1	2	0 1 0 0	8						
11	Doogan, Meghan	0-2	0-2	0-0	0 1 1	1	0	0 0 0 1	7						
21	Spearman, Lauren	1-5	0-1	0-0	0 0 0	2	2	1 0 0 0	17						
33	Green, Meghan	2-7	1-3	0-0	0 1 1	1	5	3 2 0 0	28						
34	Bayram, Erin	1-2	0-0	0-0	0 0 0	1	2	0 0 0 0	3						
Team					1 1 2										
Totals		21-57	3-14	4-4	8 27 35	15	49	11 15 4 6	200						

1st - FG %: 5-12 41.7% 2nd: 5-14 35.7% 3rd: 3-15 20.0% 4th: 8-16 50.0% Game: 21-57 36.8% Deadball Rebounds 0

3FG %: 1-2 50.0% 2-5 40.0% 0-3 0.0% 3-14 21.4%

FT %: 2-2 100.0% 0-0 0.0% 0-0 0.0% 2-2 100.0% 4-4 100.0%

Officials: Pastor Torres, Ryan Nunes, Michael Motta

Technical fouls: Dartmouth-None. Boston University-None.

Attendance: 363

Score by periods	1st	2nd	3rd	4th	Total
Dartmouth	10	21	11	19	61
Boston University	13	12	6	18	49

Points	In	Off	2nd	Fast	Bench
DART	14	14	6	0	12
BU	28	12	4	4	11

Last FG - DART 4th-04:08, BU 4th-00:53.
Largest lead - DART by 18 4th-04:08, BU by 6 1st-01:42.
DART led for 27:19, BU led for 11:15, Game was tied for 01:22.

Score tied - 2 times.
Lead changed - 4 times.

Official Basketball Box Score -- Game Totals -- Final Statistics UMass vs Boston University 12/14/16 7:05 p.m. at Case Gym "The Roof" - Boston, Mass.

UMass 60 • 5-6

#	Player	Total		3-Ptr		Rebounds			PF	TP	A TO Blk Stl				Min
		FG-FGA	FG-FGA	FT-FTA	Off Def Tot	PF	TP	A TO Blk Stl							
00	MULLIGAN, Maggie	c 2-9	0-0	4-6	7 8 15	4	8	0 0 0 1	39						
02	HOLDER, Ryan	g 5-17	0-0	6-8	4 3 7	4	16	2 0 1 1	32						
22	GEORGE, Jessica	g 0-0	0-0	2-2	0 0 0	0	2	2 3 0 0	27						
24	LEIDEL, Hailey	g 3-9	2-4	1-2	2 0 2	2	9	0 3 1 0	28						
25	McDERMENT, Leah	g 2-6	0-1	1-2	2 1 3	3	5	1 3 0 2	37						
03	STIFF, Alyx	3-6	1-3	2-2	1 2 3	3	9	0 4 0 1	17						
32	LAWRENCE, Alyssa	2-8	0-1	7-7	0 1 1	1	11	1 4 0 1	20						
Team					5 2 7			1							
Totals		17-55	3-9	23-29	21 17 38	17	60	6 18 2 6	200						

1st - FG %: 4-18 22.2% 2nd: 5-13 38.5% 3rd: 3-10 30.0% 4th: 5-14 35.7% Game: 17-55 30.9% Deadball Rebounds 4,1

3FG %: 1-4 25.0% 1-2 50.0% 0-1 0.0% 1-2 50.0%

FT %: 2-2 100.0% 6-8 75.0% 13-17 76.5% 2-2 100.0%

Boston University 64 • 2-9

#	Player	Total		3-Ptr		Rebounds			PF	TP	A TO Blk Stl				Min
		FG-FGA	FG-FGA	FT-FTA	Off Def Tot	PF	TP	A TO Blk Stl							
03	Thompson, Naiyah	r 3-5	0-0	2-2	2 1 3	5	8	1 2 2 1	18						
52	Sheftic, Kara	r 0-2	0-0	2-2	2 0 2	4	2	0 0 1 0	13						
01	Beaudry, Sophie	c 2-5	0-0	1-2	2 5 7	4	5	3 5 6 0	27						
12	Hope, Sarah	g 6-13	4-10	0-0	0 4 4	1	16	1 4 0 1	40						
14	Latham, Courtney	g 1-5	0-0	1-2	1 3 4	3	3	2 3 0 2	21						
04	Hauck, Payton	5-8	0-1	0-1	3 0 3	1	10	3 3 0 1	21						
11	Doogan, Meghan	0-1	0-1	0-0	0 0 0	3	0	0 1 0 0	6						
20	Irving, Nia	0-0	0-0	0-0	0 0 0	1	0	0 0 0 0	3						
21	Spearman, Lauren	1-3	1-2	1-2	1 1 2	2	4	1 1 0 0	21						
33	Green, Meghan	5-10	1-3	5-7	2 3 5	2	16	1 1 0 1	30						
Team					1 1 2										
Totals		23-52	6-17	12-18	14 18 32	26	64	12 20 9 6	200						

1st - FG %: 2-8 25.0% 2nd: 6-14 42.9% 3rd: 7-17 41.2% 4th: 8-13 61.5% Game: 23-52 44.2% Deadball Rebounds 3,1

3FG %: 1-3 33.3% 1-4 25.0% 2-7 28.6% 2-3 66.7%

FT %: 1-2 50.0% 0-1 0.0% 6-6 100.0% 5-9 55.6%

Officials: Michael Do Couto, Randall Amrey, Rachel Kimball

Technical fouls: UMass-None. Boston University-None.

Attendance: 186

Score by periods	1st	2nd	3rd	4th	Total
UMass	11	17	19	13	60
Boston University	6	13	22	23	64

Points	In	Off	2nd	Fast	Bench
UMASS	26	16	19	0	20
BU	22	15	18	0	30

Last FG - UMass 4th-03:23, BU 4th-02:06.
Largest lead - UMass by 11 2nd-03:52, BU by 4 4th-00:08.
UMASS led for 30:47, BU led for 04:34, Game was tied for 04:39.

Score tied - 2 times.
Lead changed - 7 times.

Official Basketball Box Score -- Game Totals -- Final Statistics Boston U. vs Marist 12/10/16 7:05 pm at Poughkeepsie, N.Y. (McCann Arena)

Boston U. 57 • 1-8

#	Player	Total		3-Ptr		Rebounds			PF	TP	A TO Blk Stl				Min
		FG-FGA	FG-FGA	FT-FTA	Off Def Tot	PF	TP	A TO Blk Stl							
03	Thompson, Naiyah	r 1-6	0-1	0-0	2 0 2	4	2	3 1 1 0	23						
52	Sheftic, Kara	r 2-5	0-0	2-4	3 5 8	1	6	1 1 0 2	23						
01	Beaudry, Sophie	c 7-13	0-0	6-10	2 1 3	2	20	0 2 1 2	31						
12	Hope, Sarah	g 6-17	0-0	1-2	3 18	1	1	1 1 2 39							
14	Latham, Courtney	g 1-5	0-0	1-2	1 4 5	4	3	9 2 0 0	27						
04	Hauck, Payton	0-0	0-0	0-0	0 0 0	3	0	1 1 0 0	4						
11	Doogan, Meghan	0-0	0-0	0-0	0 0 0	0	0	0 0 0 0	2						
21	Spearman, Lauren	1-5	0-4	0-0	0 3 3	3	2	4 3 0 2	30						
33	Green, Meghan	3-9	0-1	0-0	5 1 6	2	6	0 3 0 0	21						
Team					3 3 6										
Totals		21-60	6-21	9-16	17 19 36	22	57	19 14 3 8	200						

1st - FG %: 3-15 20.0% 2nd: 7-11 63.6% 3rd: 6-19 31.6% 4th: 5-16 31.3% Game: 21-60 35.0% Deadball Rebounds 4,1

3FG %: 1-3 33.3% 1-2 50.0% 2-8 25.0% 2-6 33.3%

FT %: 0-0 0.0% 2-2 100.0% 5-10 50.0% 9-16 56.3%

Marist 76 • 3-7

#	Player	Total		3-Ptr		Rebounds			PF	TP	A TO Blk Stl				Min
		FG-FGA	FG-FGA	FT-FTA	Off	Def	Tot								
06	Henningsdottir, Livi	r	5-9	3-6	0-0	0	5	5	3	13	1	2	0	1	35
10	Fitzpatrick, Maura	r	3-7	1-3	5-5	1	3	4	3	12	8	2	0	1	29
01	Oberdorf, Claire	g	2-6	2-5	5-6	4	6	10	2	11	1	1	0	0	38
20	Hand, Hannah	g	3-9	3-4	2-2	4	0	4	2	11	3	0	0	2	34
23	Hand, Rebekah	g	5-16	3-9	4-6	1	3	4	3	17	2	4	0	1	35
14	Jossart, Jordyn		0-2	0-0	0-2	1	0	1	1	2	2	3	1	0	8
15	Baah, Kencall		1-3	1-1	0-1	1	0	1	1	3	0	1	0	1	9
22	Bartner, Morgan		2-4	1-3	2-2	0	5	5	4	7	1	1	0	0	12
	Team					5	3	8			1				
Totals			21-56	14-31	20-23	17	25	42	19	76	18	15	1	6	200
1st -	PGs	7-14	50.0%	2-4	50.0%	2-4	50.0%	5-10	50.0%	2-36	37.5%	2-11	18.2%	0-0	0.0%
2nd -	PGs	4-14	28.6%	1-12	8.3%	4-14	28.6%	5-10	50.0%	2-36	37.5%	2-11	18.2%	0-0	0.0%
3rd -	PGs	4-14	28.6%	1-12	8.3%	4-14	28.6%	5-10	50.0%	2-36	37.5%	2-11	18.2%	0-0	0.0%
4th -	PGs	4-14	28.6%	1-12	8.3%	4-14	28.6%	5-10	50.0%	2-36	37.5%	2-11	18.2%	0-0	0.0%
5th -	PGs	4-14	28.6%	1-12	8.3%	4-14	28.6%	5-10	50.0%	2-36	37.5%	2-11	18.2%	0-0	0.0%
6th -	PGs	4-14	28.6%	1-12	8.3%	4-14	28.6%	5-10	50.0%	2-36	37.5%	2-11	18.2%	0-0	0.0%
7th -	PGs	4-14	28.6%	1-12	8.3%	4-14	28.6%	5-10	50.0%	2-36	37.5%	2-11	18.2%	0-0	0.0%
8th -	PGs	4-14	28.6%	1-12	8.3%	4-14	28.6%	5-10	50.0%	2-36	37.5%	2-11	18.2%	0-0	0.0%
9th -	PGs	4-14	28.6%	1-12	8.3%	4-14	28.6%	5-10	50.0%	2-36	37.5%	2-11	18.2%	0-0	0.0%
10th -	PGs	4-14	28.6%	1-12	8.3%	4-14	28.6%	5-10	50.0%	2-36	37.5%	2-11	18.2%	0-0	0.0%
11th -	PGs	4-14	28.6%	1-12	8.3%	4-14	28.6%	5-10	50.0%	2-36	37.5%	2-11	18.2%	0-0	0.0%
12th -	PGs	4-14	28.6%	1-12	8.3%	4-14	28.6%	5-10	50.0%	2-36	37.5%	2-11	18.2%	0-0	0.0%
13th -	PGs	4-14	28.6%	1-12	8.3%	4-14	28.6%	5-10	50.0%	2-36	37.5%	2-11	18.2%	0-0	0.0%
14th -	PGs	4-14	28.6%	1-12	8.3%	4-14	28.6%	5-10	50.0%	2-36	37.5%	2-11	18.2%	0-0	0.0%
15th -	PGs	4-14	28.6%	1-12	8.3%	4-14	28.6%	5-10	50.0%	2-36	37.5%	2-11	18.2%	0-0	0.0%
16th -	PGs	4-14	28.6%	1-12	8.3%	4-14	28.6%	5-10	50.0%	2-36	37.5%	2-11	18.2%	0-0	0.0%
17th -	PGs	4-14	28.6%	1-12	8.3%	4-14	28.6%	5-10	50.0%	2-36	37.5%	2-11	18.2%	0-0	0.0%
18th -	PGs	4-14	28.6%	1-12	8.3%	4-14	28.6%	5-10	50.0%	2-36	37.5%	2-11	18.2%	0-0	0.0%
19th -	PGs	4-14	28.6%	1-12	8.3%	4-14	28.6%	5-10	50.0%	2-36	37.5%	2-11	18.2%	0-0	0.0%
20th -	PGs	4-14	28.6%	1-12	8.3%	4-14	28.6%	5-10	50.0%	2-36	37.5%	2-11	18.2%	0-0	0.0%
21st -	PGs	4-14	28.6%	1-12	8.3%	4-14	28.6%	5-10	50.0%	2-36	37.5%	2-11	18.2%	0-0	0.0%
22nd -	PGs	4-14	28.6%	1-12	8.3%	4-14	28.6%	5-10	50.0%	2-36	37.5%	2-11	18.2%	0-0	0.0%
23rd -	PGs	4-14	28.6%	1-12	8.3%	4-14	28.6%	5-10	50.0%	2-36	37.5%	2-11	18.2%	0-0	0.0%
24th -	PGs	4-14	28.6%	1-12	8.3%	4-14	28.6%	5-10	50.0%	2-36	37.5%	2-11	18.2%	0-0	0.0%
25th -	PGs	4-14	28.6%	1-12	8.3%	4-14	28.6%	5-10	50.0%	2-36	37.5%	2-11	18.2%	0-0	0.0%
26th -	PGs	4-14	28.6%	1-12	8.3%	4-14	28.6%	5-10	50.0%	2-36	37.5%	2-11	18.2%	0-0	0.0%
27th -	PGs	4-14	28.6%	1-12	8.3%	4-14	28.6%	5-10	50.0%	2-36	37.5%	2-11	18.2%	0-0	0.0%
28th -	PGs	4-14	28.6%	1-12	8.3%	4-14	28.6%	5-10	50.0%	2-36	37.5%	2-11	18.2%	0-0	0.0%
29th -	PGs	4-14	28.6%	1-12	8.3%	4-14	28.6%	5-10	50.0%	2-36	37.5%	2-11	18.2%	0-0	0.0%
30th -	PGs	4-14	28.6%	1-12	8.3%	4-14	28.6%	5-10	50.0%	2-36	37.5%	2-11	18.2%	0-0	0.0%
31st -	PGs	4-14	28.6%	1-12	8.3%	4-14	28.6%	5-10	50.0%	2-36	37.5%	2-11	18.2%	0-0	0.0%
32nd -	PGs	4-14	28.6%	1-12	8.3%	4-14	28.6%	5-10	50.0%	2-36	37.5%	2-11	18.2%	0-0	0.0%
33rd -	PGs	4-14	28.6%	1-12	8.3%	4-14	28.6%	5-10	50.0%	2-36	37.5%	2-11	18.2%	0-0	0.0%
34th -	PGs	4-14	28.6%	1-12	8.3%	4-14	28.6%	5-10	50.0%	2-36	37.5%	2-11	18.2%	0-0	0.0%
35th -	PGs	4-14	28.6%	1-12	8.3%	4-14	28.6%	5-10	50.0%	2-36	37.5%	2-11	18.2%	0-0	0.0%
36th -	PGs	4-14	28.6%	1-12	8.3%	4-14	28.6%	5-10	50.0%	2-36	37.5%	2-11	18.2%	0-0	0.0%
37th -	PGs	4-14	28.6%	1-12	8.3%	4-14	28.6%	5-10	50.0%	2-36	37.5%	2-11	18.2%	0-0	0.0%
38th -	PGs	4-14	28.6%	1-12	8.3%	4-14	28.6%	5-10	50.0%	2-36	37.5%	2-11	18.2%	0-0	0.0%
39th -	PGs	4-14	28.6%	1-12	8.3%	4-14	28.6%	5-10	50.0%	2-36	37.5%	2-11	18.2%	0-0	0.0%
40th -	PGs	4-14	28.6%	1-12	8.3%	4-14	28.6%	5-10	50.0%	2-36	37.5%	2-11	18.2%	0-0	0.0%
41st -	PGs	4-14	28.6%	1-12	8.3%	4-14	28.6%	5-10	50.0%	2-36	37.5%	2-11	18.2%	0-0	0.0%
42nd -	PGs	4-14	28.6%	1-12	8.3%	4-14	28.6%	5-10	50.0%	2-36	37.5%	2-11	18.2%	0-0	0.0%
43rd -	PGs	4-14	28.6%	1-12	8.3%	4-14	28.6%	5-10	50.0%	2-36	37.5%	2-11	18.2%	0-0	0.0%
44th -	PGs	4-14	28.6%	1-12	8.3%	4-14	28.6%	5-10	50.0%	2-36	37.5%	2-11	18.2%	0-0	0.0%
45th -	PGs	4-14	28.6%	1-12	8.3%	4-14	28.6%	5-10	50.0%	2-36	37.5%	2-11	18.2%	0-0	0.0%
46th -	PGs	4-14	28.6%	1-12	8.3%	4-14	28.6%	5-10	50.0%	2-36	37.5%	2-11	18.2%	0-0	0.0%
47th -	PGs	4-14	28.6%	1-12	8.3%	4-14	28.6%	5-10	50.0%	2-36	37.5%	2-11	18.2%	0-0	0.0%
48th -	PGs	4-14	28.6%	1-12	8.3%	4-14	28.6%	5-10	50.0%	2-36	37.5%	2-11	18.2%	0-0	0.0%
49th -	PGs	4-14	28.6%	1-12	8.3%	4-14	28.6%	5-10	50.0%	2-36	37.5%	2-11	18.2%	0-0	0.0%
50th -	PGs	4-14	28.6%	1-12	8.3%	4-14	28.6%	5-10	50.0%	2-36	37.5%	2-11	18.2%	0-0	0.0%
51st -	PGs	4-14	28.6%	1-12	8.3%	4-14	28.6%	5-10	50.0%	2-36	37.5%	2-11	18.2%	0-0	0.0%
52nd -	PGs	4-14	28.6%	1-12	8.3%	4-14	28.6%	5-10	50.0%	2-36	37.5%	2-11	18.2%	0-0	0.0%
53rd -	PGs	4-14	28.6%	1-12	8.3%	4-14	28.6%	5-10	50.0%	2-36	37.5%	2-11	18.2%	0-0	0.0%
54th -	PGs	4-14	28.6%	1-12	8.3%	4-14	28.6%	5-10	50.0%	2-36	37.5%	2-11	18.2%	0-0	0.0%
55th -	PGs	4-14	28.6%	1-12	8.3%	4-14	28.6%	5-10	50.0%	2-36	37.5%	2-11	18.2%	0-0	0.0%
56th -	PGs	4-14	28.6%	1-12	8.3%	4-14	28.6%	5-10	50.0%	2-36	37.5%	2-11	18.2%	0-0	0.0%
57th -	PGs	4-14	28.6%	1-12	8.3%	4-14	28.6%	5-10	50.0%	2-36	37.5%	2-11	18.2%	0-0	0.0%
58th -	PGs	4-14	28.6%	1-12	8.3%	4-14	28.6%	5-10	50.0%	2-36	37.5%	2-11	18.2%	0-0	0.0%
59th -	PGs	4-14	28.6%	1-12	8.3%	4-14	28.6%	5-10	50.0%	2-36	37.5%	2-11	18.2%	0-0	0.0%
60th -	PGs	4-14	28.6%	1-12	8.3%	4-14	28.6%	5-10	50.0%	2-36	37.5%	2-11	18.2%	0-0	0.0%
61st -	PGs	4-14	28.6%	1-12	8.3%	4-14	28.6%	5-10	50.0%	2-36	37.5%	2-11	18.2%	0-0	0.0%
62nd -	PGs	4-14	28.6%	1-12	8.3%	4-14	28.6%	5-10	50.0%	2-36	37.5%	2-11	18.2%	0-0	0.0%
63rd -	PGs	4-14	28.6%	1-12	8.3%	4-14	28.6%	5-10	50.0%	2-36	37.5%	2-11	18.2%	0-0	0.0%
64th -	PGs	4-14	28.6%	1-12	8.3%	4-14	28.6%	5-10	50.0%	2-36	37.5%	2-11	18.2%	0-0	0.0%
65th -	PGs	4-14	28.6%	1-12	8.3%	4-14	28.6%	5-10	50.0%	2-36	37.5%	2-11	18.2%	0-0	0.0%
66th -	PGs	4-14	28.6%	1-12	8.3%	4-14	28.6%	5-10	50.0%	2-36	37.5%	2-11	18.2%	0-0	0.0%
67th -	PGs	4-14	28.6%	1-12	8.3%	4-14	28.6%	5-10	50.0%	2-36	37.5%	2-11	18.2%	0-0	0.0%
68th -	PGs	4-14	28.6%	1-12	8.3%	4-14	28.6%	5-10	50.0%	2-36	37.5%	2-11	18.2%	0-0	0.0%
69th -	PGs	4-14	28.6%	1-12	8.3%	4-14	28.6%	5-10	50.0%	2-36	37.5%	2-11	18.2%	0-0	0.0%
70th -	PGs	4-14	28.6%	1-12	8.3%	4-14	28.6%	5-10	50.0%	2-36	37.5%	2-11	18.2%	0-0	0.0%
71st -	PGs	4-14	28.6%	1-12	8.3%	4-14	28.6%	5-10	50.0%	2-36	37.5%	2-11	18.2%	0-0	0.0%
72nd -	PGs	4-14	28.6%	1-12	8.3%	4-14	28.6%	5-10	50.0%	2-36	37.5%	2-11	18.2%	0-0	0.0%
73rd -	PGs	4-14	28.6%	1-12	8.3%	4-14	28.6%	5-10	50.0%	2-36	37.5%	2-11	18.2%	0-0	0.0%
74th -	PGs	4-14	28.6%	1-12	8.3%	4-14	28.6%	5-10	50.0%	2-36	37.5%	2-11	18.2%	0-0	0.0%
75th -	PGs	4-14	28.6%	1-12	8.3%	4-14	28.6%	5-10	50.0%	2-36	37.5%	2-11	18.2%	0-0	0.0%
76th -	PGs	4-14	28.6%	1-12	8.3%	4-14	28.6%	5-10	50.0%	2-36	37.5%	2-11	18.2%	0-0	0.0%
77th -	PGs	4-14	28.6%	1-12	8.3%	4-14	28.6%	5-10	50.0%	2-36	37.5%	2-11	18.2%	0-0	0.0%
78th -	PGs	4-14	28.6%	1-12	8.3%	4-14	28.6%	5-10	50.0%	2-36	37.5%	2-11	18.2%	0-0	0.0%
79th -															

Boston University Women's Basketball
Boston University Combined Team Statistics (as of Dec 15, 2016)
All games

RECORD:	OVERALL	HOME	AWAY	NEUTRAL
ALL GAMES	2-9	2-3	0-5	0-1
CONFERENCE	0-0	0-0	0-0	0-0
NON-CONFERENCE	2-9	2-3	0-5	0-1

##	Player	gp-gs	min	avg	Total		3-Point		F-Throw		Rebounds				pf	dq	a	to	blk	stl	pts	avg
					fg-fga	fg%	3fg-fga	3fg%	ft-fa	ft%	off	def	tot	avg								
12	Hope, Sarah	11-11	390	35.5	42-124	.339	34-96	.354	8-10	.800	4	22	26	2.4	21	0	27	34	1	12	126	11.5
01	Beaudry, Sophie	10-9	242	24.2	41-84	.488	0-0	.000	13-26	.500	19	43	62	6.2	27	2	12	26	23	9	95	9.5
33	Green, Meghan	11-0	226	20.5	34-84	.405	4-22	.182	13-20	.650	17	26	43	3.9	18	0	9	20	2	7	85	7.7
22	Williams, Corrine	8-8	247	30.9	21-45	.467	3-9	.333	10-13	.769	9	18	27	3.4	25	0	24	23	4	11	55	6.9
52	Sheftic, Kara	11-11	222	20.2	22-56	.393	0-0	.000	27-42	.643	14	20	34	3.1	28	1	7	15	4	10	71	6.5
14	Latham, Courtney	11-9	310	28.2	24-61	.393	0-0	.000	14-22	.636	11	37	48	4.4	28	0	38	30	2	19	62	5.6
03	Thompson, Naiyah	10-3	158	15.8	16-33	.485	1-6	.167	4-7	.571	13	11	24	2.4	29	1	9	26	7	9	37	3.7
04	Hauck, Payton	10-4	134	13.4	13-30	.433	1-5	.200	2-3	.667	5	8	13	1.3	19	0	13	16	0	9	29	2.9
21	Spearman, Lauren	8-0	148	18.5	8-30	.267	2-15	.133	1-4	.250	3	8	11	1.4	15	0	10	7	0	5	19	2.4
11	Doogan, Meghan	10-0	79	7.9	3-19	.158	2-14	.143	0-0	.000	2	4	6	0.6	9	0	3	5	1	3	8	0.8
34	Bayram, Erin	6-0	29	4.8	2-8	.250	0-0	.000	0-0	.000	1	2	3	0.5	3	0	2	3	1	2	4	0.7
20	Irving, Nia	1-0	3	3.0	0-0	.000	0-0	.000	0-0	.000	0	0	0	0.0	1	0	0	0	0	0	0	0.0
30	Edgehill, Vanessa	4-0	12	3.0	0-1	.000	0-1	.000	0-0	.000	0	0	0	0.0	1	0	0	0	0	0	0	0.0
Team											28	19	47				3					
Total.....		11	2200		226-575	.393	47-168	.280	92-147	.626	126	218	344	31.3	224	4	154	208	45	96	591	53.7
Opponents.....		11	2200		242-576	.420	75-198	.379	164-211	.777	144	250	394	35.8	170	4	140	195	35	91	723	65.7

TEAM STATISTICS	BU	OPP	Date	Opponent	Score	Att.
SCORING	591	723	11/11/16	at Northeastern	L 59-78	412
Points per game	53.7	65.7	11/14/16	at Boston College	L 49-67	623
Scoring margin	-12.0	-	11/19/16	at UAlbany	L 54-69	1119
FIELD GOALS-ATT	226-575	242-576	11/22/16	HARVARD	L 52-65	262
Field goal pct	.393	.420	11/26/16	UMASS LOWELL	w 66-56	166
3 POINT FG-ATT	47-168	75-198	11/28/16	NEW HAMPSHIRE	L 51-59	151
3-point FG pct	.280	.379	12/03/16	at #24 Arizona State	L 42-71	1428
3-pt FG made per game	4.3	6.8	12/04/16	vs Long Beach State	L 48-61	1773
FREE THROWS-ATT	92-147	164-211	12/07/16	DARTMOUTH	L 49-61	363
Free throw pct	.626	.777	12/10/16	at Marist	L 57-76	1310
F-Throws made per game	8.4	14.9	12/14/16	UMASS	w 64-60	186
REBOUNDS	344	394	* - Conference game			
Rebounds per game	31.3	35.8				
Rebounding margin	-4.5	-				
ASSISTS	154	140				
Assists per game	14.0	12.7				
TURNOVERS	208	195				
Turnovers per game	18.9	17.7				
Turnover margin	-1.2	-				
Assist/turnover ratio	0.7	0.7				
STEALS	96	91				
Steals per game	8.7	8.3				
BLOCKS	45	35				
Blocks per game	4.1	3.2				
ATTENDANCE	1128	6665				
Home games-Avg/Game	5-226	5-978				
Neutral site-Avg/Game	-	1-1773				

Score by Periods	1st	2nd	3rd	4th	Totals
Boston University	120	132	163	176	591
Opponents	160	183	173	207	723



34 ERIN BAYRAM

JUNIOR | FORWARD | 6'2 | BATAVIA, ILL. | BATAVIA

AS A SOPHOMORE IN 2015-16: Played 16 minutes against Albany...Scored a career-high eight points and matched her personal best five rebounds against Boston College...Played at Harvard...Had two points in three minutes at Dartmouth...Played at UMass Lowell...Had one rebound in four minutes played at New Hampshire... Played against Rhode Island...Had two points and a block against Marist...Had two points at UMass...Played against Vermont...Went 3-for-3 from the floor in eight minutes played against Holy Cross...Had two points, a block and an assist against Lehigh...Had five points, four rebounds and her first career steal at Lafayette...Recorded two points and a rebound against American... Had four points, an assist and a block at Loyola Md...Played at Bucknell...Played at Lehigh...Had four points and rebounds against Navy...Totalled two points, a rebound and a block against Lafayette... Had three points and two rebounds at American...Played at Colgate... Played at Army West Point...Scored two points against Holy Cross... Scored six points against Army West Point.

PERSONAL: Born Sept. 26, 1995 ... Daughter of Mark and Katie Bayram ... Has two siblings, Kyle and Shea ... Enrolled in the School of Hospital Administration.

CAREER HIGHS

Points:..... 8, vs. Boston College, 11/21/15
Rebounds:..... 5, 2x, last vs. BC, 11/21/15
FGs Made: 3, 2x, last vs. HC, 12/30/15
FGs Att.: 4, vs. Boston College, 11/21/15
3-FGs Made:
3-FGs Att.:
FTs Made: 2, 3x, last vs. BC, 11/21/15
FTs Att.: 2, 3x, last vs. BC, 11/21/15
Assists:..... 1, 5x, last at ASU, 12/3/16
Blocks: .. 1, 7x, last vs Long Beach, 12/4/16
Steals: 1, 3x, last vs Long Beach 12/4/16
Minutes: 20, vs. Lafayette, 2/7/15

YEAR	GP-GS	MIN	AVG	TOTAL		3-PTRS		FT-FTA		REBOUNDS			PF-FO		A	TO	BLK	STL	PTS	AVG
				FG-FGA	Pct	FG-FGA	PCT	FT-FTA	PCT	OFF-DEF	TOT	AVG								
2014-15	14-0	73	5.2	5-9	.556	0-0	.000	4-6	.667	4-9	13	0.9	7-0	2	3	1	0	14	1.0	
2015-16	24-0	154	6.4	22-48	.458	0-0	.000	6-8	.750	7-16	23	1.0	16-0	2	11	5	1	50	2.1	
2016-17	6-0	29	4.8	2-8	.250	0-0	.000	0-0	.000	1-2	3	0.5	3-0	2	3	1	2	4	0.7	
TOTAL	44-0	256	5.8	29-65	.446	0-0	.000	10-14	.714	12-27	39	0.9	26-0	6	17	7	3	68	1.5	

1 SOPHIE BEAUDRY

JUNIOR | CENTER | 6'5 | CHAMBLY, QUEBEC | MONMOUTH

AS A JUNIOR IN 2015-16: Redshirted the season due to NCAA transfer rules.

AS A SOPHOMORE IN 2014-15: Started 26 of 30 games played as the Hawks' center, averaging 2.8 ppg and 2.4 rpg ... Ranked 11th in the MAAC at 1.1 blocks per game... Scored a career-high 12 points twice, vs. Rider (Feb. 13) and at Niagara (Feb. 20)... Played a career-high 30 minutes in the 20T win at Niagara (Feb. 20)... Equaled her career-high with seven rebs. against the Purple Eagles (Jan. 18) ... Had six pts., six rebs. and a career-high six blocks against Siena (Jan. 22).

CAREER HIGHS

Points:..... 20, at Marist, 12/10/16
Rebounds:.. 13, at Boston College, 11/14/16
FGs Made: 7, at Marist, 12/10/16
FGs Att.: 13, at Marist, 12/10/16
3-FGs Made: 0
3-FGs Att.: 0
FTs Made: 6, at Marist, 12/10/16
FTs Attempted: 10 at Marist, 12/10/16
Assists:..... 3, 3x, last vs. UMass, 12/14/16
Blocks: 6, 2x, last vs. UMass, 12/14/16
Steals: 3, vs. Long Beach State, 12/4/16
Minutes: 33, at Arizona St., 12/4/16

AS A FRESHMAN IN 2013-14: Saw action in 26 games off the bench, averaging 1.9 points, 2.0 rebounds and 0.6 blocks per game... Shot 48.6 percent from the floor and 68.2 percent from the free-throw line... Posted season-highs in points (10) and rebounds (7) against Siena in the regular-season finale against Siena (Mar. 2)... Scored six points at No. 1 Connecticut (Nov. 23) and at Marist (Feb. 28).

BEFORE COLLEGE: Led College Dawson to a pair of second place finishes at Nationals, while finishing first at Provincial in 2011-12 ... Averaged 8.5 points and 5.0 rebounds per game while shooting 53.8 percent from the floor in 2011-12... Also played two years for Team Canada ... In 2011, her cadet team ranked 9th at the World Championships in France and in 2012, her junior team ranked 5th at the World Championships in Chili.



YEAR	GP-GS	MIN	AVG.	TOTAL		3-PTRS		FT-FTA		REBOUNDS			PF-FO		A	TO	BLK	STL	PTS	AVG
				FG-FGA	PCT	FG-FGA	PCT	FT-FTA	PCT.	OFF-DEF	TOT	AVG								
2013-14	26-0	218	8.4	17-35	.486	0-1	.000	15-22	.682	20-31	51	2.0	34-0	5	21	15	2	49	1.9	
2014-15	30-26	409	13.6	36-75	.480	0-0	.000	13-19	.684	26-47	73	2.4	63-1	15	17	32	10	85	2.8	
2015-16										TRANSFER REDSHIRT										
2016-17	10-9	242	24.2	41-84	.488	0-0	.000	13-26	.500	19-43	62	6.2	27-2	12	26	23	9	95	9.5	
TOTAL	66-35	869	13.2	94-194	.485	0-1	.000	41-67	.612	65-121	186	2.8	124-3	32	64	70	21	229	3.5	

11 MEGHAN DOOGAN

JUNIOR | GUARD | 5'9 | CLAYMONT, DEL. | CONCORD

AS A SOPHOMORE IN 2015-16: Played 12 minutes against Albany and tallied a steal and an assist...Played against Boston College...Tallied her first points of the season at New Hampshire, finishing with two...Played at UMass...Had one rebound against Vermont...Played against Holy Cross...Played at Navy...Had two points and three rebounds at Lafayette...Played against American...Scored a career-high 11 points against Colgate...Had three points at Bucknell...Played at Lehigh...Had five points, three rebounds and two steals at American...Played against Loyola

CAREER HIGHS

Points:..... 23, at Colgate, 2/17/16
Rebounds:..... 5, 2x, last at Colgate, 2/17/16
FGs Made:..... 8, at Colgate, 2/17/16
FGs Att.:..... 14, vs. Colgate, 1/20/16
3-FGs Made:..... 5, at Colgate, 2/17/16
3-FGs Att.:..... 8, at Colgate, 2/17/16
FTs Made:..... 2, 2x, last at Holy Cross, 2/27/16
FTs Attempted:..... 4, at American, 2/10/16
Assists:..... 2, vs. Harvard, 11/22/16
Blocks:..... 1, 3x, last at Albany, 11/19/16
Steals:..... 2, 2x, at American, 2/10/16
Minutes:..... 36, at Colgate, 2/17/16

Maryland...Led the game with a career-high 23 points, going 5-of-8 at Colgate...Scored nine points and collected two rebounds and a steal against Bucknell... Had eight points and two rebounds at Army West Point...Led the team with 19 points, going 3-of-5 from beyond the arc...Started against Army West Point...Started against American in the PL First Round and totaled two points.

PERSONAL: Born Aug. 10, 1996 ... Daughter of Sean and Patty Doogan ...Has three siblings, Kelley, Siobhan and Sean ... Sister Kelley played basketball at Saint Francis University and is now on the women's basketball coaching staff at Providence ... Enrolled in the School of Management.



YEAR	GP-GS	MIN	AVG.	TOTAL		3-PTRS		FT-FTA	PCT.	REBOUNDS			PF-FO	A	TO	BLK	STL	PTS	AVG
				FG-FGA	PCT	FG-FGA	PCT			OFF-DEF	TOT	AVG							
2014-15	20-0	176	8.8	13-49	.265	8-31	.258	1-2	.500	6-14	20	1.0	19-1	3	15	1	9	35	1.8
2015-16	20-6	249	12.5	32-79	.405	14-45	.311	6-10	.600	4-22	26	1.3	19-0	3	15	2	7	84	4.2
2016-17	10-0	79	7.9	3-19	.158	2-14	.143	0-0	.000	2-4	6	0.6	9-0	3	5	1	3	8	0.8
TOTAL	50-6	504	10.1	48-147	.327	24-90	.267	7-12	.583	12-40	52	1.0	47-1	9	35	4	19	127	2.5



30 VANESSA EDGEHILL

FRESHMAN | GUARD | 5'8 | FRANKLIN, MASS. | THE RIVERS SCHOOL

Edgehill will be one of two Terriers playing in their home state next season as she joins now-junior Sarah Hope (Medway, Mass.). The Franklin, Mass. native earned All-Independent School League honors in each of her first three seasons and was named a Class A All-New England player during her junior campaign, during which she averaged 13 points per game, seven assists per game and 2.5 steals per game.

With her high school team, Edgehill made it to the Class A finals during her freshman year and Class A semifinals as a sophomore and junior. She is also a member of the Rhode Island Breakers AAU team, ranked in the top-50 nationally, which won two Massachusetts State Championships and a Deep South Championship during her tenure with the team.

Off the court, Edgehill has invested a lot of time serving her local community. She is a member of A Shot for Life, Inc., a cancer research nonprofit organization. Edgehill, along with other high school basketball players, spends her summers raising money for the organization. Additionally, she has served as a coach for the Special Olympics and volunteers for the RISE service program at Rivers that focuses on eliminating gun violence in Massachusetts.

STEDING ON EDGEHILL: "Vanessa is a sharp-shooting combo guard who can drill the three-pointer and has a high basketball-IQ. I get excited just thinking about her wearing the Scarlet and White because of the headiness she brings to the game—no matter what she always makes sure the ball gets to the right place."

CAREER HIGHS

Points:.....
Rebounds:.....
FGs Made:.....
FGs Att.:.....
3-FGs Made:.....
3-FGs Att.:.....
FTs Made:.....
FTs Attempted:.....
Assists:.....
Blocks:.....
Steals:.....
Minutes:..... 7, at Northeastern, 11/11/16

YEAR	GP-GS	MIN	AVG.	TOTAL		3-PTRS		FT-FTA	PCT.	REBOUNDS			PF-FO	A	TO	BLK	STL	PTS	AVG
				FG-FGA	PCT	FG-FGA	PCT			OFF-DEF	TOT	AVG							
2016-17	4-0	12	3.0	0-1	.000	0-1	.000	0-0	.000	0-0	0	0.0	1-0	0	0	0	0	0	0.0



33 MEGHAN GREEN

SENIOR | FORWARD | 6'0 | BEDFORD, N.H. | BISHOP GUERTIN

AS A JUNIOR IN 2015-16: Totaled eight points and rebounds in the season opener against Northeastern...Co-led the team with nine points and matched her career-high with two steals...Scored six points and grabbed five rebounds against Boston College...Recorded a double-double at Harvard with 18 points and 10 rebounds...Led the team with 8 rebounds and had six points and two blocks at Dartmouth...Had four points and five rebounds at UMass Lowell...Led the team with 15 points and six rebounds at New Hampshire...Led the team with 22 points against Marist...Had 13 points and seven rebounds at UMass...Scored eight points helped by a 6-of-10 showing from the free throw line against Vermont...Had four points and three rebounds against Holy Cross...Had 13 points, six rebounds and two assists against Lehigh...Recorded 18 points including a career-high three 3-pointers at Navy...Had four points and seven rebounds at Lafayette...Finished with 10 points, five rebounds and two steals against American...Led the team with 19 points and 11 rebounds at Loyola Md...Finished with six points, eight rebounds and a career-high four steals against Colgate...Led the team with 18 points at Bucknell...Scored seven points and had three rebounds at Lehigh...Scored 13 points and had nine rebounds against Navy...Scored a team-high 18 points and had six rebounds, a block and a steal against Lafayette...Played at American...Had three points against Loyola Maryland...Scored two points against Bucknell...Had a blocked shot at Army West Point...Had seven points, three rebounds and two assists at Holy Cross...Played against Army West Point.

PERSONAL: Born June 29, 1995 ... Daughter of Mark Green and Susan Kallio ... Has two older brothers, Chris and Connor ... Mother and father both played basketball at Colby ... Brother, Chris, plays football at Union while other brother, Connor, plays basketball at Amherst ... Enrolled in College of Communication.

CAREER HIGHS

Points:..... 23, vs. Lehigh, 1/31/15
Rebounds:..... 15, at Boston College, 11/20/14
FGs Made:..... 10, vs. Lehigh, 1/31/15
FGs Att.:..... 21, at Marist, 12/13/14
3-FGs Made:..... 3, 2x, last at Loyola, 1/16/16
3-FGs Att.:..... 7, 2x, last at Navy, 1/7/16
FTs Made:..... 7, 2x, last vs. Harvard, 11/17/14
FTs Att.:..... 10, vs. Vermont, 12/28/15
Assists:..... 4, 2x, last at Army, 2/25/15
Blocks:..... 2, 5x, last at Bucknell, 1/23/16
Steals:..... 4, vs. Colgate, 1/20/16
Minutes:..... 39, 2x, last vs. Colgate, 1/14/15

YEAR	GP-GS	MIN	AVG.	TOTAL		3-PTRS		FT-FTS		REBOUNDS									
				FG-FGA	PCT	FG-FGA	PCT	FT-FTA	PCT	OFF-DEF	TOT	AVG	PF-FO	A	TO	BLK	STL	PTS	AVG
2013-14	23-0	222	9.7	31-82	.378	4-16	.250	15-21	.714	20-30	50	2.2	34-2	10	16	4	6	81	3.5
2014-15	30-12	845	28.2	142-322	.441	8-33	.242	54-68	.794	47-148	195	6.5	83-6	42	74	15	12	346	11.5
2015-16	28-13	662	23.6	107-257	.416	20-64	.313	35-59	.593	40-92	132	4.7	55-1	22	51	15	20	269	9.6
2016-17	11-0	226	20.5	34-84	.405	4-22	.182	13-20	.650	17-26	43	3.9	18-0	9	20	2	7	85	7.7
TOTAL	92-25	1955	21.3	314-745	.421	36-135	.267	117-168	.696	124-296	420	4.6	190-9	83	161	36	45	781	8.5

4 PAYTON HAUCK

SOPHOMORE | GUARD | 5'9 | YORK, PA. | NORTHEASTERN HIGH

AS A FRESHMAN IN 2015-16: Made her collegiate debut in the season opener against Northeastern and tallied a team-high four assists...Made her first career start against Albany and tallied two points and steals...Tallied six points, an assist and a steal against Boston College...Had two points, steals and assists at Harvard...Had two points and three rebounds at Dartmouth...Played at UMass Lowell...Finished with five points, a career-best four rebounds and two assists at New Hampshire...Had a career high six rebounds against Rhode Island...Had two points and a rebound against Marist...Had three rebounds and two points and assists at UMass...Had three points and a steal against Vermont...Had three rebounds against Holy Cross...Played against Lehigh...Scored two points at Navy...Recorded her first career blocks and finished with three points and assists at Lafayette...Scored a fastbreak layup to finish with two points against American...Played at Loyola Md...Recorded a career-high 10 points, going a perfect 4-for-4 against Colgate...Scored nine points and had two blocks and assists at Bucknell...Matched her career high with two blocks and had six points at Lehigh...Finished with two points off of a steal and score play to help BU defeat Navy...Had a blocked shot and a steal at Army West Point...Played at Holy Cross...Had four points and an assist against Army West Point.

CAREER HIGHS

Points:..... 10, 2x, last vs. UMass, 12/14/16
Rebounds:..... 6, vs. Rhode Island, 12/9/15
FGs Made:..... 5, vs. UMass, 12/14/16
FGs Att.:..... 8, 3x, last vs. UMass, 12/14/16
3-FGs Made:..... 4, at Bucknell, 1/23/16
3-FGs Att.:..... 6, at Bucknell, 1/23/16
FTs Made:..... 2, 4x, last vs. Colgate, 1/20/16
FTs Att.:..... 4, 2x, last vs. URI, 12/9/15
Assists:..... 4, vs. Northeastern, 11/13/15
Blocks:..... 2, 3x, last at Lehigh, 1/30/16
Steals:..... 2, 6x, last at ASU, 12/3/16
Minutes:..... 27, vs. Boston College, 11/21/15

BEFORE BU: Two year captain at Northeastern High School...Averaged 15 points per game as a junior and was named a Second-Team All-Star...Named to Northeastern High School's Distinguished Honor Roll for the last three years.



YEAR	GP-GS	MIN	AVG.	TOTAL		3-PTRS		FT-FTS		REBOUNDS									
				FG-FGA	PCT	FG-FGA	PCT	FT-FTA	PCT	OFF-DEF	TOT	AVG	PF-FO	A	TO	BLK	STL	PTS	AVG
2015-16	25-10	370	14.8	26-84	.310	5-17	.294	17-28	.607	14-27	41	1.6	52-2	21	33	9	13	74	3.0
2016-17	10-4	134	13.4	13-30	.433	1-5	.200	2-3	.667	5-8	13	1.3	19-0	13	16	0	9	29	2.9
TOTAL	35-14	504	14.4	39-114	.342	6-22	.273	19-31	.613	19-35	54	1.5	71-2	34	49	9	22	103	2.9



12 SARAH HOPE

SENIOR | GUARD | 5'7 | MEDWAY, MASS. | MEDWAY

AS A JUNIOR IN 2015-16: Played eight minutes in the season opener against Northeastern...Hit three from long-range to co-lead the team with nine points against Albany...Had two assists against Boston College...Tallied three points and an assist at Harvard...Started off 3-for-3 from long range and finished with 11 points and a team-high three assists at Dartmouth...Matched her career high with six three-pointers at UMass Lowell...Enters the BU record book at number 10 in career three-pointers after scoring three at New Hampshire...Had a record night against Rhode Island, matching the school mark with seven 3-pointers and setting a new career high with 23 points...Scored six points off of two 3-pointers against Marist...Had three points and five assists at UMass...Totaled three points, two assists and a steal against Vermont...Had three points and a steal against Holy Cross...Led the team with 18 points on 6-of-6 shooting including 5-of-5 3-point shooting against Lehigh...Totaled eight points, three assists and two steals at Navy...Finished with nine points and four rebounds at Lafayette...Had 11 points and four assists against American...Had nine points and five assists at Loyola Md...Had three points and three assists against Colgate...Had three points and a steal at Bucknell...Went 3-of-4 from beyond the arc and dished out three assists at Lehigh...Led the team with 15 points and hit the buzzer-beating game winner against Navy that was named the SportsCenter Top-10 No. 1 play of the night...Went 4-of-8 from beyond the arc and finished with 14 points against Lafayette...Had three points and two rebounds and assists at American...Had six points and two rebounds and steals...Totaled six points and five rebounds at Colgate...Scored three points against Bucknell...Had two rebounds and an assist at Army West Point...Totaled three points and two assists at Holy Cross...Had two steals against Army West Point...Finished with five points and three assists at American in the PL First Round.

CAREER HIGHS

Points:.....23, vs. Rhode Island, 12/9/15
Rebounds:.....7, 2x, last vs. Colgate, 1/14/15
FGs Made:8, 2x, last vs. URI, 12/9/15
FGs Att.:18, vs. Rhode Island, 12/9/15
3-FGs Made:7, vs. Rhode Island, 12/9/15
3-FGs Att.:17, 2x, last vs. URI, 12/9/15
FTs Made:4, 2x, last vs. UMass, 12/28/14
FTs Att.:4, 6x, last vs. UML, 11/26/16
Assists:.....7, vs. UNH, 12/3/14
Blocks:1, 3x, last at Marist, 12/10/16
Steals:.....4, vs. UML, 11/26/16
Minutes: ... 40, 4x, last vs. UMass, 12/14/16

YEAR	GP-GS	MIN	AVG.	TOTAL		3-PTRS		FT-FTA	PCT.	REBOUNDS			PF-FO	A	TO	BLK	STL	PTS	AVG
				FG-FGA	PCT	FG-FGA	PCT			OFF-DEF	TOT	AVG							
2013-14	33-24	817	24.8	69-241	.286	60-207	.290	13-19	.684	11-46	57	1.7	43-0	54	27	1	16	211	6.4
2014-15	17-17	584	34.4	56-157	.357	41-113	.363	12-15	.800	6-52	58	3.4	24-1	49	41	2	10	165	9.7
2015-16	30-14	841	28.0	74-200	.370	64-172	.372	6-9	.667	2-44	46	1.5	31-0	51	49	0	21	218	7.3
2016-17	11-11	390	35.5	42-124	.339	34-96	.354	8-10	.800	4-22	26	2.4	21-0	27	34	1	12	126	11.5
TOTAL	91-66	2632	28.9	241-722	.334	199-588	.338	39-53	.736	23-164	187	2.1	119-1	181	151	4	59	720	7.9

20 NIA IRVING

FRESHMAN | FORWARD | 6'1 | FAIRFIELD, MAINE | LAWRENCE

Irving is the lone player from Maine on the roster this season but is right at home with assistant coach, Cindy Blodgett, who also played for Lawrence High School. The 2015 Maine State Gatorade Player of the Year, Irving averaged 22.5 points per game, 14.6 rebounds per game and 3.6 assists per game. She was also a three-time Kennebec Valley Athletic Conference Class A Player of the Year, KVCAC Class A First Team member, and Morning Sentinel Player of the Year.

After winning the 2015 Class A State Championship, Irving was named First Team All-State. She has also already reached 1,000 career points and rebounds going into her senior season.

CAREER HIGHS

Points:.....
Rebounds:.....
FGs Made:
FGs Att.:
3-FGs Made:
3-FGs Att.:
FTs Made:
FTs Attempted:
Assists:.....
Blocks:
Steals:.....
Minutes:3, vs. UMass, 12/14/16

Off the court, Irving volunteers as a basketball coach and at a nursing home. She is also a member of the PRIDE club and is Vice President of her high school's chapter of the National Honors Society.

STEDING ON IRVING: "Nia is an excellent interior player with a big, strong frame. She's an amazing scorer and rebounder that will excel at this level because of her tenacity in everything that she does."



YEAR	GP-GS	MIN	AVG.	TOTAL		3-PTRS		FT-FTA	PCT.	REBOUNDS			PF-FO	A	TO	BLK	STL	PTS	AVG
				FG-FGA	PCT	FG-FGA	PCT			OFF-DEF	TOT	AVG							
2016-17	1-0	3	3.0	0-0	.000	0-0	.000	0-0	.000	0-0	0	0.0	1-0	0	0	0	0	0	0.0

14 COURTNEY LATHAM

SENIOR | GUARD | 5'8 | GLASTONBURY, CONN. | GLASTONBURY

AS A JUNIOR IN 2015-16: Scored 10 points on a career-best four FGs and made a personal-best five steals in the season opener against Northeastern...Started against Albany...Had two rebounds and three assists against Boston College...Grabbed six rebounds and dished out five assists at Harvard...Had three rebounds, one assist and one steal at Dartmouth...Had eight points and rebounds along with two assists at UMass Lowell...Started at New Hampshire...Had two points and four rebounds and assists against Rhode Island...Had four points, five assists and five rebounds against Marist...Co-led the team with 11 points and had six rebounds and two assists against Vermont...Had four points, rebounds and assists against Holy Cross...Totaled nine rebounds, seven assists and six points against Lehigh...Had five assists and four points and rebounds at Navy...Had three rebounds at Lafayette...Finished with six points, seven assists and eight rebounds against American...Had six points and six assists at Loyola Md...Had three assists, two steals and seven rebounds against Colgate...Had five points, seven rebounds and three assists at Bucknell...Totaled six points and rebounds at Lehigh...Had two assists and steals against Navy...Finished with nine points, five assists and two steals against Lafayette...Had eight points and three rebounds at American...Scored 10 points and had three steals against Loyola Maryland...Recorded her second double-double of the season with 11 points and a career-high 11 rebounds at Colgate...Had four points and five rebounds against Bucknell...Had three assists and two rebounds at Army West Point...Had four points and rebounds and two assists and steals at Holy Cross...Had four rebounds and two steals against Army West Point...Had six rebounds, a steal and an assist at American in the PL First Round.

CAREER HIGHS

Points:..... 17, vs. UMass Lowell, 11/26/16

Rebounds:..... 11, at Colgate, 2/17/16

FGs Made: 6 vs. Northeastern, 11/11/16

FGs Att.: 13, 3x, last at Lafayette, 1/10/15

3-FGs Made: 1, 7x, last vs. UMass, 12/8/14

3-FGs Att.: 3, 2x, last vs. Navy, 1/7/15

FTs Made:..... 7, 2x, last, vs. UML, 11/26/16

FTs Attempted:..... 9, 2x, vs. UML, 11/26/16

Assists:..... 9, 2x, last at Marist, 12/10/16

Blocks:..... 1, 12x, last vs Dartmouth, 12/7/16

Steals:..... 5, 2x, last vs. NU, 11/13/15

Minutes:40, 2x, last at Lafayette, 1/10/15

PERSONAL: Born March 9, 1995 ... Daughter of Matt and Lynn Latham ... Father played football at Connecticut ... Has a younger brother, Aaron ... Enrolled in the School of Management.



YEAR	GP-GS	MIN	AVG.	TOTAL		3-PTRS		FT-FTS		REBOUNDS			PF-FO	A	TO	BLK	STL	PTS	AVG
				FG-FGA	PCT	FG-FGA	PCT	FT-FTA	PCT	OFF-DEF	TOT	AVG							
2013-14	31-8	393	12.7	18-79	.228	4-12	.333	29-39	.744	20-43	63	2.0	35-0	25	40	1	11	69	2.2
2014-15	29-26	904	31.2	52-174	.299	4-22	.182	41-56	.732	13-133	146	5.0	55-1	93	98	5	40	149	5.1
2015-16	29-26	809	27.9	50-171	.292	0-10	.000	24-34	.706	25-105	130	4.5	53-0	81	76	4	28	124	4.3
2016-17	11-9	310	28.2	24-61	.393	0-0	.000	14-22	.636	11-37	48	4.4	28-0	38	30	2	19	62	5.6
TOTAL	100-66	2416	24.2	145-486	.298	8-44	.182	108-151	.715	69-318	387	3.9	171-1	237	244	12	98	406	4.1



52 KARA SHEFTIC

JUNIOR | FORWARD | 6'1 | ESSEX JUNCTION, VT. | ESSEX

AS A SOPHOMORE IN 2015-16: Grabbed four rebounds in the season opener against Northeastern...Started against Albany and collected four rebounds, two blocks and a steal...Led the team with nine points and six rebounds against Boston College...Had five points and two rebounds at Harvard...Started at Dartmouth...Had three points, a block and a steal at UMass Lowell...Totalled seven points, five rebounds and a career-high three steals against Rhode Island...Had a career-high 10 rebounds against Marist...Had two rebounds, an assist and a steal at UMass...Had a career-high 12 free throw attempts and finished with nine points and eight rebounds against Vermont...Had eight points and rebounds and three blocks against Holy Cross...Totaled 15 points, six rebounds, an assist and a steal against Lehigh...Had a career-high 20 points and 12 rebounds to record her first career double-double at Navy...Led the team with 16 points at Lafayette...Led the team for the third straight game with 15 points against American...Had six points and four rebounds at Loyola Md...Recorded her second career double-double with 12 points and a career-high 13 rebounds...Had seven points and rebounds and two blocks at Bucknell...Finished with six points and five rebounds at Lehigh...Had two rebounds and an assist against Navy...Finished with two points and three rebounds against Lafayette...Had four rebounds at American...Had five points and four rebounds against Loyola Maryland...Had eight points, two steals, two assists and four rebounds at Colgate...Totalled four points and two rebounds against Bucknell...Had six points, five rebounds a steal and a block at Army West Point...Had an assist at Holy Cross...Had six points, three rebounds and two blocks against Army West Point...Finished with six points and four rebounds at American in the PL First Round.

PERSONAL: Completed a bachelors of science in communications with an expertise in public relations...Enrolled in the Metropolitan College Masters Program with a concentration in project management.

CAREER HIGHS

Points:.....20, at Navy, 1/7/16

Rebounds:..... 13, vs. Colgate, 1/20/16

FGs Made: ... 7, 2x, last vs. American, 1/13/16

FGs Att.: 14, 2x, last vs. Lafayette, 1/9/16

3-FGs Made:

3-FGs Att.:

FTs Made:..... 10, at Marist, 12/13/14

FTs Attempted: 12, 3x, at Albany, 11/19/16

Assists:.....4, vs. Vermont, 11/22/14

Blocks: 4, vs. Holy Cross, 12/31/14

Steals:.....4 at Northeastern, 11/11/16

Minutes:36, vs. Holy Cross, 12/31/14

YEAR	GP-GS	MIN	AVG.	TOTAL		3-PTRS		FT-FTS		REBOUNDS			PF-FO	A	TO	BLK	STL	PTS	AVG
				FG-FGA	PCT	FG-FGA	PCT	FT-FTA	PCT	OFF-DEF	TOT	AVG							
2014-15	28-21	514	18.4	52-135	.385	0-0	.000	37-62	.597	40-51	91	3.3	64-3	17	34	21	6	141	5.0
2015-16	29-22	610	21.0	66-171	.386	0-0	.000	50-97	.515	71-67	138	4.8	86-2	13	55	25	14	182	6.3
2016-17	11-11	222	20.2	22-56	.393	0-0	.000	27-42	.643	14-20	34	3.1	28-1	7	15	4	10	71	6.5
TOTAL	68-54	1346	19.8	140-362	.387	0-0	.000	114-201	.567	125-138	263	3.9	178-6	37	104	50	30	394	5.8

21 LAUREN SPEARMAN

SOPHOMORE | GUARD | 5'7 | LOS ANGELES, CALIF. | MARLBOROUGH SCH.

AS A FRESHMAN IN 2015-16: Made her collegiate debut in the season opener against Northeastern and scored two points...Co-led the team with nine points against Albany and went 2-for-2 from beyond the arc...Tallied two points and rebounds against Boston College...Had two points and an assist at Dartmouth...Played at UMass Lowell...Totalled six points and an assist at New Hampshire...Had two points and rebounds against Rhode Island...Played at UMass...Played against Vermont...Played against Holy Cross...Had her first career steal and finished with seven points and an assist at Lafayette...Had two points and a steal at Loyola Md...Had an assist at Bucknell...Played at Lehigh...Played at American...Had a career-high two steals at Army West Point...Played against Army West Point.

CAREER HIGHS

Points:..... 9, vs. Albany, 11/18/15
Rebounds:..... 3, at Marist, 12/10/16
FGs Made: 3, 3x, last at Lafayette, 1/9/16
FGs Att.: 6, at New Hampshire, 12/5/15
3-FGs Made: 2, vs. Albany, 11/18/15
3-FGs Att.: 4, vs Long Beach St., 12/4/16
FTs Made: 1, 2x, last vs. UMass, 12/14/16
FTs Attempted: 2, 3x, vs UMass, 12/14/16
Assists:..... 4, at Marist, 12/10/16
Blocks:
Steals:..... 2, 3x, last at Marist, 12/10/16
Minutes: 30, at Marist, 12/10/16

BEFORE BU: Team captain...First-Team All-CIF during her freshman, junior and senior seasons.



YEAR	GP-GS	MIN	AVG.	TOTAL		3-PTRS		FT-FTA	PCT.	REBOUNDS			PF-FO	A	TO	BLK	STL	PTS	AVG
				FG-FGA	PCT	FG-FGA	PCT			OFF-DEF	TOT	AVG							
2015-16	17-0	153	9.0	14-41	.341	3-10	.300	1-3	.333	0-8	8	0.5	11-0	7	21	0	5	32	1.9
2016-17	8-0	148	18.5	8-30	.267	2-15	.133	1-4	.250	3-8	11	1.4	15-0	10	7	0	5	19	2.4
TOTAL	25-0	301	12.0	22-71	.310	5-25	.200	2-7	.286	3-16	19	0.8	26-0	17	28	0	10	51	2.0



3 NAIYAH THOMPSON

SOPHOMORE | FORWARD | 5'11 | LEONARDTOWN, MD. | ST. MARY'S RYKEN

AS A FRESHMAN IN 2015-16: Made her collegiate debut in the season opener against Northeastern and scored one point in 10 minutes...Co-led the team with nine points and collected two assists, two blocks and a steal against Albany...Scored two points and had one steal against Boston College...Started at Harvard...Went 3-for-4 from the field, finishing with six points at Dartmouth...Played at UMass Lowell...Had six points and rebounds at New Hampshire...Started against Rhode Island and finished with two rebounds and an assist...Played against Marist...Had four points and three rebounds at UMass...Had two rebounds against Vermont...Played against Holy Cross...Had three points and a rebound against Lehigh...Started at Navy and had an assist at Navy...Played at Lafayette...Played against American...Had three rebounds and a block at Loyola Md...Had one rebound at Bucknell...Played at Lehigh...Led the team with nine points at American...Had four rebounds and a steal against Loyola Maryland...Had a steal at Colgate...Had two points and a rebound against Bucknell...Had two points and four rebounds at Army West Point...Played at Holy Cross...Had two points and steals against Army West Point.

BEFORE BU: Team captain since her sophomore season...Second Team All-County and WCAC Honorable Mention in her junior season...WCAC and All-County Honorable Mention in her senior season...Member of the National Honor Society...Received the National Achievement Award for Black Americans after scoring in the top-three percent of all African-Americans on the PSAT.

CAREER HIGHS

Points:..... 12, vs. Dartmouth, 12/7/16
Rebounds:..... 8, vs. Dartmouth, 12/7/16
FGs Made: 6, vs. Dartmouth, 12/7/16
FGs Att.: 9, at New Hampshire, 12/5/15
3-FGs Made: 1, 2x, last vs. UNH, 11/28/16
3-FGs Att.: 3, vs. Albany, 11/18/15
FTs Made: 4, 2x, last at American, 2/10/16
FTs Att.: 6, at American, 2/10/16
Assists:..... 3, at Marist, 12/10/16
Blocks: 2, 3x, last vs. UMass, 12/14/16
Steals:..... 3, 2x, last vs. Dartmouth, 12/7/16
Minutes: 30, vs. Dartmouth, 12/7/16

YEAR	GP-GS	MIN	AVG.	TOTAL		3-PTRS		FT-FTA	PCT.	REBOUNDS			PF-FO	A	TO	BLK	STL	PTS	AVG
				FG-FGA	PCT	FG-FGA	PCT			OFF-DEF	TOT	AVG							
2015-16	26-5	277	10.7	15-65	.231	3-13	.231	12-22	.545	15-22	37	1.4	43-2	10	30	4	8	45	1.7
2016-17	10-3	158	15.8	16-33	.485	1-6	.167	4-7	.571	13-11	24	2.4	29-1	9	26	7	9	37	3.7
TOTAL	36-8	435	12.1	31-98	.316	4-19	.211	16-29	.552	28-33	61	1.7	72-3	19	56	11	17	82	2.3



22 CORRINE WILLIAMS

JUNIOR | GUARD | 6'1 | BLOOMFIELD, CONN. | BLOOMFIELD

AS A SOPHOMORE IN 2015-16: Played her first minutes of the season at Harvard and tallied three points and rebounds...Started at Dartmouth and went 3-for-4 from the field, finishing with six points, an assist and a steal...Had six points, five rebounds and two steals at UMass Lowell...Started at New Hampshire but left the game early due to injury...Tallied nine points and five rebounds at UMass...Had a career-high six steals against Vermont...Recorded her first career double-double with 10 points and a personal best 12 rebounds against Holy Cross...Finished with four points, six rebounds and a career-high five assists against Lehigh...Had three rebounds and two blocks and steals at Navy...Finished with seven points, three assists and two rebounds at Lafayette...Had a near-double-double with 13 points and nine rebounds, going a perfect 4-for-4 from the floor against American...Led the team with a career-high 16 points against Colgate...Scored two points, grabbed four rebounds and blocked two shots at Bucknell...Had two points, five rebounds and two assists at Lehigh...Finished with six points, five rebounds and two assists and steals against Navy...Totalled 10 rebounds, eight assists and three steals against Lafayette...Had four points and three steals at American...Had five points and eight rebounds against Loyola Maryland...Had 11 points and four rebounds at Colgate...Scored eight points and set new career highs in assists (6) and blocked shots (3)...Led the team with 11 points and had four rebounds at Army West Point...Totalled 11 points and seven rebounds, going 7-for-8 from the FT line...Had 11 points and two rebounds against Army West Point... Finished with eight points, three rebounds, two assists, a block and a steal at American in the PL First Round.

PERSONAL: Has an older sister, Breeana, who plays basketball at Lasell College ... Father played basketball at Eastern Connecticut State University ... Enrolled in the College of Communication.

CAREER HIGHS

Points:..... 19, vs. UMass Lowell, 11/26/16

Rebounds:.....12, vs. Holy Cross, 12/30/15

FGs Made: 7, vs. UMass Lowell, 11/26/16

FGs Att.: 12, 2x, last vs. Colgate, 1/20/16

3-FGs Made:..... 2, 4x, last vs. UML, 11/26/16

3-FGs Att.:..... 4, 4x, last vs. Lafayette, 2/7/15

FTs Made:..... 7, at Holy Cross, 2/27/16

FTs Att.:..... 8, at Holy Cross, 2/27/16

Assists:..... 7, vs Long Beach St., 12/4/16

Blocks: 3, 2x, last vs. Bucknell, 2/20/16

Steals:..... 6, vs. Vermont, 12/28/15

Minutes:.....39, 3x, last vs LBS, 12/4/16

YEAR	GP-GS	MIN	AVG.	TOTAL		3-PTRS				REBOUNDS			PF-FO	A	TO	BLK	STL	PTS	AVG
				FG-FGA	PCT	FG-FGA	PCT	FT-FTA	PCT.	OFF-DEF	TOT	AVG							
2014-15	28-19	635	22.7	47-138	.341	11-41	.268	41-59	.695	27-54	81	2.9	58-1	34	48	10	12	146	5.2
2015-16	24-23	676	28.2	52-142	.366	8-29	.276	51-63	.810	38-79	117	4.9	65-1	37	51	16	30	163	6.8
2016-17	8-8	247	30.9	21-45	.467	3-9	.333	10-13	.769	9-18	27	3.4	25-0	24	23	4	11	55	6.9
TOTAL	60-50	1558	26.0	120-325	.369	22-79	.278	102-135	.756	74-151	225	3.8	148-2	95	122	30	53	364	6.1

TEAM SINGLE-GAME RECORDS**Most Points**

127 - vs. Vermont, 12/9/80

Fewest Points

29 - vs. Hofstra, 1/4/00

Most Points in a First Half

61 - vs. Vermont, 12/9/80

Most Points in a Second Half

66 - vs. Vermont, 12/9/80

Largest Margin of Victory

77 - vs. Vermont, 12/9/80 (127-50)

Largest Margin of Defeat

58 - vs. UMass Dartmouth, 11/8/75 (42-100);

at Old Dominion, 12/22/80 (40-98)

Combined Points

199 - vs. Miami-Ohio, 11/19/00 (97-102)

Field Goals Made

59 - vs. Vermont, 12/9/80

Field Goals Attempted

120 - vs. Vermont, 12/9/80 (59-of-120)

Field Goal Percentage

.623 - vs. Hartford, 3/8/90 (33-of-53)

Three-Point Field Goals Made

16 - at UMBC, 3/5/08 (16-of-24)

Three-Point Field Goals Attempted

36 - at Wagner, 12/30/03 (12-of-36)

36 - at Northeastern, 11/20/12 (13-of-36)

Three-Point Field Goal Percentage

100.0 - vs. Drexel, 2/17/95 (6-of-6)

Free Throws Made

37 - vs. Miami-Ohio, 11/19/00

Free Throws Attempted

48 - vs. CCSU, 12/13/80 (33-of-48)

Free Throw Percentage

100.0 - vs. NU, 1/16/88 (7-of-7)

at Hartford, 2/15/03 (10-of-10)

vs. St. John's, 12/4/10 (7-of-7)

at Marist, 12/13/14 (11-of-11)

Rebounds

68 - vs. South Florida, 11/17/02

Assists

34 - vs. Brooklyn, 2/13/87

Steals

28 - vs. Providence, 12/22/91

Blocked Shots

14 - vs. Rhode Island, 1/28/81

Opponents Turnovers

37 - vs. Central Connecticut, 12/3/02

INDIVIDUAL SINGLE-GAME RECORDS**Points**

43 - Katie Meinhardt vs. Stony Brook

at 2005 AE Tournament, 3/9/05

Assists

14 - Andrea Higgins vs. Drexel, 2/19/93

14 - Christine Kinneary vs. NU, 11/19/07

Rebounds

30 - Debbie Miller vs. Villanova, 1/12/81

Blocks

10 - Debbie Miller vs. URI, 1/28/81

Steals

11 - Debbie Miller vs. Maine, 2/11/80

11 - Debbie Miller at CCSU, 2/13/80

Field Goals Made

15 - Debbie Miller vs. Fairleigh Dickinson

at Georgetown Tournament, 1/23/81

15 - Katie Meinhardt vs. Stony Brook

at 2005 America East Tournament, 3/9/05

Field Goals Attempted

30 - Debbie Miller vs. Queens College, 11/30/79

Free Throws Made

17 - Katie Terhune vs. Miami-Ohio, 11/19/00

Free Throws Attempted

18 - Debbie Miller vs. Syracuse, 1/4/80

18 - Katie Terhune vs. Miami-Ohio, 11/19/00

Free Throw Percentage (10 att.)

100% - Katie Terhune (12-of-12) at Hartford, 2/7/04

100% - Kara Sheftic (10-of-10), at Marist, 12/13/14

100% - Troi Melton (10-of-10), vs. Bucknell, 2/20/16

Three-Point Field Goals Made

7 - Katie Meinhardt (7-of-8) vs. Stony Brook

at 2005 America East Tournament, 3/9/05

7 - Alex Youg (7-of-9) vs. Binghamton

at 2011 America East Tournament, 3/6/11

7 - Sarah Hope (7-of-17) vs. URI, 12/9/15

Three Pointers Attempted

17 - Sarah Hope (2-of-17) at BC, 12/11/13

17 - Sarah Hope (7-of-17) vs. URI, 12/9/15

TEAM SEASON RECORDS**Points**

2,385 - 2008-09

Highest Scoring Average

76.2 - 1980-81

Field Goals Made

874 - in 1980-81

Field Goals Attempted

2,051 - 1980-81

Field Goal Percentage

.480 - 1986-87

Three-Point Field Goals Made

217 - 2012-13

Three-Point Field Goals Attempted

612 - 2009-10

Three-Point Field Goal Percentage

.356 - 2012-13

Free Throws Made

531 - 2008-09

Free Throws Attempted

754 - 2008-09

Free Throw Percentage

.769 - 2007-08

Rebounds

1,257 - 1980-81

Assists

536 - 1980-81

Steals

418 - 1979-80, 1980-81

Blocked Shots

154 - 2012-13

Most Turnovers

684 - 1999-00

Fewest Turnovers

357 - 2012-13

Most Personal Fouls

642 - 1980-81

Fewest Personal Fouls

378 - 1978-79