



# DELTA STATE

## 2020-2021 STATESMEN BASKETBALL OFFICIAL GAME NOTES

SEVEN GULF SOUTH CONFERENCE CHAMPIONSHIPS | TWO NCAA REGIONAL TITLES | 16 NCAA TOURNAMENT APPEARANCES | 25 NCAA ALL-AMERICANS

| STATESMEN   |                | BULLDOGS  |                |
|---|----------------|---|----------------|
| 0-0<br>OVERALL  | 0-0<br>GSC     | 2-2<br>OVERALL  | 2-2<br>GSC     |
| NR<br>NABC TOP 25   |                | NR<br>NABC TOP 25   |                |
| VS  |                |   |                |
| MIKE NIENABER<br>HEAD COACH   |                | DAVID NIVEN<br>HEAD COACH   |                |
| 603-524-2<br>OVERALL  | 38th<br>SEASON | 197-141<br>OVERALL  | 12th<br>SEASON |
|  |                |  |                |

### STARTING FIVE: STATESMEN TRAVEL TO MISSISSIPPI COLLEGE TO OPEN SEASON

- ➔ **THE TIP-OFF:** After the COVID-19 pandemic forced the start of the season to be pushed back from a more normal November start, the **Delta State University Statesmen** are set to open the 2020-2021 basketball season when they host Union (Tenn.) University. Tipoff is set for 6:30 p.m. on Friday, Jan. 8, with game two of the series on Saturday, Jan. 9 at 2:30 p.m. The Voice of the Statesmen, Cody Clark, will have the call on the Statesmen Sports Network (WMJW Majic 107.5 FM) and online at GoStatesmen.com starting at 6:15 p.m. and 2:30 p.m., respectively.
- ➔ **COVID CAUSES NEW-LOOK SCHEDULE:** For the first time since the 2010-2011 season, the Gulf South Conference **will feature divisional play**. As part of a GSC-only slate, the schedule will feature single games and two-game series against the same opponents on consecutive days at the same location. The format is intended to streamline testing protocols and reduce travel costs. Additionally, **the conference will implement a mirrored schedule**, with the **men and women playing at opposite sites**. Christian Brothers University, the University of Alabama in Huntsville, Mississippi College, Union (Tenn.), and the University of West Alabama are all in Delta State's West division.
- ➔ **STREET, CARTWRIGHT NAB PRESEASON ALL-GSC HONORS:** Guards **Keyshaun Street** and **Maalik Cartwright** were each named to the GSC's Preseason All-GSC squad in the West Division. **Street**, who **led DSU with 14.9 points per game and three-point shots made (62)**, was one of six voted onto the list in the West. **Cartwright** joined his teammate after he **posted 10.7 points and 6.8 rebounds per game** in 23 games last season on his way to **winning GSC Freshman of the Year Honors**.
- ➔ **THAT'S MR. FRESHMAN OF THE YEAR TO YOU:** Guard **Maalik Cartwright** secured GSC Freshman of the Year honors last season in large part thanks to his coming out party late in the season. Cartwright **scored 18 points and ripped down 12 rebounds** in a narrow 66-64 loss to Alabama-Huntsville late in the season, and closed the year **scoring in double figures in nine straight games**, including **three 20-plus point performances**. Cartwright also **led the team (and was top 10 in the GSC) in blocks with 26**. He notched Freshman of the Week honors **five times**, the most of any honor given in the league.
- ➔ **KEYSHAUN A KEY COG:** **Keyshaun Street**, a preseason All-GSC selection, returns as the **top scorer** for the Green and White. Street, a Kingsland, Ga. native, tallied 14.9 points per game last season and also paced the squad with 62 three-pointers. He was also **second on the team with 63 assists** and **led the Statesmen with 25 steals**. Street scored in double figures **23 times**, including 12 straight to close the season and posted **seven 20-plus point games** and **one 30-point game** (vs. UAH, 123-20).
- ➔ **MR. DOUBLE-DOUBLE:** Senior forward **Airen Brooks** was the only player in the GSC to average a double-double last season, averaging **14.8 points and 10.2 rebounds** per game. The Phenix City, Ala., native and former Shelton State CC star led the Statesmen in rebounding, and **ranked first in the GSC** in that category, with 10.2 boards per game. He **totaled 276 rebounds**, which **ranked second in the GSC**, and also **led the GSC with 8.5 defensive rebounds per game and 230 defensive rebounds**. Brooks also provided a spark from three-point range, as he hit 51 three-point shots, and **posted 12 double-doubles** overall for the Green and White.
- ➔ **STARTING OFF STRONG:** The Statesmen will look to grab a win in their season opener **for the first time since the 2016-17 season**. Delta State has **fallen in its last three season openers**. The 2016-17 season saw the Statesmen snag a 73-70 season opening victory over Florida Southern College in the GSC/SSC Classic. Coincidentally, the season opener for the Statesmen is also their GSC opener. DSU **has dropped its last three GSC openers** as well, **with their last victory coming** in the 2016-17 GSC opener against Mississippi College.

### ▶ 2020-2021 SCHEDULE & RESULTS

|                        |                 |
|------------------------|-----------------|
| <b>OVERALL RECORD:</b> | <b>0-0</b>      |
| GSC:                   | 0-0             |
| NON-CONFERENCE:        | N/A             |
| HOME   AWAY   NEUTRAL: | 0-0   0-0   0-0 |

#### DECEMBER

|    |                        |     |
|----|------------------------|-----|
| 18 | @ Mississippi College* | PPD |
| 19 | @ Mississippi College* | PPD |

#### JANUARY

|    |                        |           |
|----|------------------------|-----------|
| 2  | West Alabama           | PPD       |
| 3  | West Alabama           | PPD       |
| 8  | Union (Tenn.)*         | 6:30 P.M. |
| 9  | Union (Tenn.)*         | 2:30 P.M. |
| 15 | Alabama-Huntsville*    | 6:30 P.M. |
| 16 | Alabama-Huntsville*    | 2:30 P.M. |
| 22 | at Christian Brothers* | 6 P.M.    |
| 23 | at Christian Brothers* | 2 P.M.    |
| 29 | at Alabama-Huntsville* | 6 P.M.    |
| 30 | at Alabama-Huntsville* | 3 P.M.    |

#### FEBRUARY

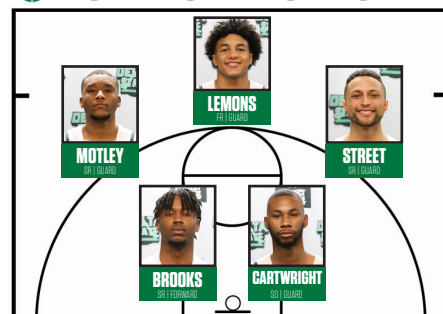
|    |                      |           |
|----|----------------------|-----------|
| 5  | Christian Brothers*  | 6:30 P.M. |
| 6  | Christian Brothers*  | 2:30 P.M. |
| 12 | at Union (Tenn.)*    | 6 P.M.    |
| 13 | at Union (Tenn.)*    | 3 P.M.    |
| 19 | Mississippi College* | 6:30 P.M. |
| 20 | Mississippi College* | 2:30 P.M. |
| 26 | @ West Alabama*      | 6 P.M.    |
| 27 | @ West Alabama*      | 2 P.M.    |

#### MARCH-APRIL | POSTSEASON

|       |                              |     |
|-------|------------------------------|-----|
| 2     | GSC Tournament Super Tuesday | TBA |
| 6-7   | GSC Final Four               | TBA |
| 11-14 | NCAA South Regional          | TBA |
| 24-27 | NCAA Elite Eight             | TBA |
| 4-6   | NCAA National Championship   | TBA |

\* - GSC Games

### PROBABLE STARTING LINEUP





# DELTA STATE UNIVERSITY MEN'S BASKETBALL GAME NOTES

SEVEN GULF SOUTH CONFERENCE CHAMPIONSHIPS | TWO NCAA REGIONAL TITLES | 16 NCAA TOURNAMENT APPEARANCES | 25 NCAA ALL-AMERICANS



**1**  
**KEYSHAUN STREET**  
Sr. • G • 5-10 • 170



**2**  
**MAALIK CARTWRIGHT**  
So. • G • 6-6 • 195



**3**  
**LEE COTTON**  
So. • G • 6-4 • 165



**4**  
**JAYLEN LEMONS**  
Fr. • G • 5-11 • 175



**5**  
**AIREN BROOKS**  
Sr. • G • 6-6 • 205



**10**  
**MICHAEL MOTLEY**  
Sr. • G • 6-3 • 200



**11**  
**BRANDON MCCURLEY**  
Fr. • F • 5-11 • 170



**13**  
**MIKHEIL ZURABASHVILI**  
Fr. • F • 6-6 • 190



**21**  
**Z'MARI MINTER**  
Sr. • G • 6-6 • 170



**22**  
**CALEB HENRY**  
Sr. • G • 5-11 • 195



**23**  
**AUSTIN LAATSCH**  
So. • G • 6-4 • 185



**25**  
**BRYSON JENKINS**  
Fr. • G • 6-2 • 185



**33**  
**SAVVAS GEORGIADIS**  
Fr. • F • 6-6 • 190



**HC**  
**MIKE NIENABER**  
Head Coach



**AC**  
**JOHN REDMAN**  
Assistant Coach



**AC**  
**JOHN WORKS**  
Graduate Assistant Coach



**SA**  
**AUSTIN BATES**  
Student Assistant Coach



**M**  
**IVORY WILLIAMS**  
Basketball Operations



**MR**  
**CODY CLARK**  
External Relations & Radio



**AT**  
**CHRISTIAN JOHNSTON**  
Athletic Training

## 2020-2021 DELTA STATE NUMERICAL ROSTER

| #  | NAME                 | P | HGT  | WGT | CL    | HOMETOWN            | PREVIOUS SCHOOL     |
|----|----------------------|---|------|-----|-------|---------------------|---------------------|
| 1  | Keyshaun Street      | G | 5-10 | 170 | Sr.   | Kingsland, Ga.      | South Georgia State |
| 2  | Maalik Cartwright    | G | 6-6  | 195 | So.   | Holly Grove, Ark.   | Clarendon HS        |
| 3  | Lee Cotton           | G | 6-4  | 165 | So.   | Cleveland, Miss.    | East Central CC     |
| 4  | Jaylen Lemons        | G | 5-11 | 175 | Fr.   | Cincinnati, Ohio    | LaSalle High School |
| 5  | Airen Brooks         | G | 6-6  | 205 | Sr.   | Phenix City, Ala.   | Shelton State CC    |
| 10 | Michael Motley       | G | 6-3  | 200 | Sr.   | Buffalo, N.Y.       | Erie CC             |
| 13 | Mikheil Zurabashvili | F | 6-6  | 190 | Fr.   | Republic of Georgia | Catholic (Va.) HS   |
| 21 | Z'Mari Minter        | F | 6-6  | 170 | Sr.   | Las Vegas, Nev.     | Northland CC        |
| 22 | Caleb Henry          | G | 5-11 | 195 | Sr.   | Olive Branch, Miss. | ASU-Midsouth        |
| 23 | Austin Laatsch       | G | 6-4  | 185 | So.   | Birmingham, Ala.    | Spain Park HS       |
| 25 | Bryson Jenkins       | G | 6-2  | 175 | R-Fr. | Gary, Ind.          | Aspire Academy      |
| 33 | Savvas Georgiadis    | G | 6-6  | 190 | So.   | Athens, Greece      | Panerythraikos      |

**Head Coach:** Mike Nienaber (38th season - 2nd at DSU)

**Assistant Coaches:** John Redman (3rd), John Works (2nd), Austin Bates (2nd)

**Manager:** Ivory Williams (2nd)

**Athletic Training:** Christian Johnston (2nd)

## QUICK FACTS • INFORMATION

|                              |                                 |
|------------------------------|---------------------------------|
| Location                     | Cleveland, Miss., 38733         |
| Founded                      | 1924                            |
| Enrollment                   | 3,789                           |
| Nickname                     | Statesmen                       |
| Colors                       | Forest Green and White          |
| National Affiliation         | NCAA Division II                |
| Conference                   | Gulf South Conference           |
| President                    | William N. LaForge              |
| Athletic Director            | Mike Kinnison                   |
| Senior Women's Administrator | Dana George                     |
| FAR:                         | Tim Colbert                     |
| Stadium (Capacity)           | Walter Sillers Coliseum (3,000) |

## COACHING STAFF

|                    |                          |
|--------------------|--------------------------|
| Head Coach         | Mike Nienaber            |
| Alma Mater/Yr      | Mississippi College/1977 |
| Record at DSU/Yrs  | 11-17/2nd                |
| Overall Record/Yrs | 603-524-2/38th           |
| Assistant Coach    | John Redman/3rd          |
| Alma Mater/Yr      | Spring Hill College/2013 |
| Graduate Assistant | John Works/2nd           |
| Alma Mater/Yr      | Belhaven University/2018 |
| Student Assistant  | Austin Bates/2nd         |

## TEAM INFORMATION

|  |       |
|--|-------|
| 2019-20 Record                         | 11-17 |
| Gulf South Conference Record           | 7-13  |
| Regular Season                         | 10th  |
| GSC Tournament                         | N/A   |
| Final 2019-20 National Ranking         | NR    |
| Starters Returning/Lost (2019-20)      | 3/2   |
| Letterwinners Returning/Lost (2019-20) | 8/3   |

## BASKETBALL HISTORY

|                          |   |
|--------------------------|---|
| First Year of Basketball | 1927                                      |
| All-time Record:         | 1,350-896-1                               |
| All-time GSC Record:     | 830-556                                   |
| NCAA Appearances/Record  | 16/16-16                                  |
| Last Appearance          | 2018-19 (NCAA South Region Quarterfinal)  |
| Place:                   | NCAA South Regional                       |
| Result:                  | L, 78-72 vs. Florida Southern             |
| Location:                | Nova Southeastern   Fort Lauderdale, Fla. |

## EXTERNAL RELATIONS | ATHLETIC COMMUNICATIONS

Delta State University's **Office of External Relations** provides a full service public relations shop to members of the media. Game day services include credentials, statistics, photography, video clips (where available), and post-game access to coaches and student-athletes. The Office of Athletic Communications is located on the second floor of Chadwick-Dickson Fieldhouse adjacent to Parker Field-McCool Stadium.

**Primary Contact** ..... **Cody Clark**

E-Mail: cclark@deltastate.edu | Cell: (662) 719-4041

**Secondary Contact** ..... **Philip Tang**

E-Mail: ptang@deltastate.edu | Cell: (731) 293-8344



## GULF SOUTH CONFERENCE STANDINGS

| SCHOOL               | CONF       | C.PCT.       | OVERALL    | PCT.         | HOME       | AWAY       | NEUTRAL    | STREAK     |
|----------------------|------------|--------------|------------|--------------|------------|------------|------------|------------|
| <b>EAST DIVISION</b> |            |              |            |              |            |            |            |            |
| Valdosta State       | 3-0        | 1.000        | 3-0        | 1.000        | 0-0        | 3-0        | 0-0        | W3         |
| Montevallo           | 1-0        | 1.000        | 1-0        | 1.000        | 0-0        | 1-0        | 0-0        | W1         |
| Shorter              | 1-1        | 0.500        | 1-1        | 0.500        | 1-1        | 0-0        | 0-0        | L1         |
| West Florida         | 1-1        | 0.500        | 1-1        | 0.500        | 1-1        | 0-0        | 0-0        | L1         |
| Auburn Montgomery    | 1-2        | 0.333        | 1-2        | 0.333        | 0-2        | 1-0        | 0-0        | W1         |
| West Georgia         | 1-3        | 0.250        | 1-3        | 0.250        | 0-2        | 1-1        | 0-0        | W1         |
| Lee                  | 0-1        | 0.000        | 0-1        | 0.000        | 0-0        | 0-1        | 0-0        | L1         |
| <b>WEST DIVISION</b> |            |              |            |              |            |            |            |            |
| Alabama Huntsville   | 4-0        | 1.000        | 4-1        | 0.800        | 2-0        | 2-1        | 0-0        | W4         |
| Union                | 2-2        | 0.500        | 2-2        | 0.500        | 0-2        | 2-0        | 0-0        | L2         |
| <b>Delta State</b>   | <b>0-0</b> | <b>0.000</b> | <b>0-0</b> | <b>0.000</b> | <b>0-0</b> | <b>0-0</b> | <b>0-0</b> | <b>---</b> |
| West Alabama         | 0-0        | 0.000        | 0-0        | 0.000        | 0-0        | 0-0        | 0-0        | ---        |
| Christian Brothers   | 0-2        | 0.000        | 0-2        | 0.000        | 0-2        | 0-0        | 0-0        | L2         |
| Mississippi College  | 0-2        | 0.000        | 0-2        | 0.000        | 0-0        | 0-2        | 0-0        | L2         |

## GULF SOUTH CONFERENCE WEEKLY HONORS

### PLAYER OF THE WEEK

|         |  |
|---------|--|
| Dec. 15 | Tarik McKelphin (UWF), East   Nathan Moore (UAH), West |
| Dec. 22 | Sam Orf (UAH), West                                    |
| Jan. 5  | Imoras Agee (VSU), East   Max Shulman (UAH), West      |
| Jan. 12 |  |
| Jan. 19 |  |
| Jan. 26 |  |
| Feb. 2  |  |
| Feb. 9  |  |
| Feb. 16 |  |
| Feb. 23 |  |

### FRESHMAN OF THE WEEK

|         |   |
|---------|---|
| Dec. 15 | Makhi McGuire (LEE), East   Nathan Moore (UAH), West  |
| Dec. 22 | Justin Debuck (Union), West                           |
| Jan. 5  | Sam Youngblood (AUM), East   Luke Burnett (UAH), West |
| Jan. 12 |   |
| Jan. 19 |   |
| Jan. 26 |   |
| Feb. 2  |   |
| Feb. 9  |   |
| Feb. 16 |   |
| Feb. 23 |   |

## NATIONAL ASSOCIATION OF BASKETBALL COACHES PRESEASON TOP 25 POLL | NOV. 17, 2020

| RANK | SCHOOL                        | 2019-20 | POINTS | PREV |
|------|-------------------------------|---------|--------|------|
| 1    | Northwest Missouri State (16) | 31-1    | 400    | 1    |
| 2    | Lincoln Memorial              | 32-1    | 367    | 2    |
| 3    | West Texas A&M                | 32-1    | 366    | 3    |
| 4    | Indiana (Pa.)                 | 28-2    | 318    | 6    |
| 5    | Florida Southern              | 29-2    | 309    | 5    |
| 6    | Nova Southeastern             | 23-6    | 295    | 20   |
| 7    | West Liberty                  | 27-4    | 282    | 7    |
| 8    | Northern State (S.D.)         | 26-6    | 255    | 17   |
| 9    | Missouri-St. Louis            | 27-6    | 240    | 19   |
| 10   | Queens (N.C.)                 | 24-7    | 223    | 23   |
| 11   | Azusa Pacific                 | 25-4    | 195    | 8    |
| 12   | St. Thomas Aquinas            | 25-5    | 190    | 11   |
| 13   | Colorado School of Mines      | 22-10   | 177    | NR   |
| 14   | Alabama Huntsville            | 26-5    | 165    | 12   |
| 15   | Ferris State                  | 27-6    | 152    | 16   |
| 16   | Point Loma                    | 24-6    | 137    | 24   |
| 17   | Augustana (S.D.)              | 19-11   | 127    | NR   |
| 18   | St. Edwards (Texas)           | 27-4    | 106    | 9    |
| 19   | Valdosta State                | 26-4    | 96     | 10   |
| 20   | Fairmont State                | 23-7    | 91     | NR   |
| 21   | Missouri Southern             | 23-8    | 84     | 21   |
| 22   | Charleston (W.Va.)            | 25-6    | 80     | NR   |
| 23   | Sioux Falls                   | 22-8    | 78     | NR   |
| 24   | Bridgeport                    | 24-4    | 50     | 13   |
| 25   | Southern Indiana              | 22-8    | 47     | 47   |

**OTHERS RECEIVING VOTES:** Augusta (Ga.) 37, Truman State 33, Saint Anselm 25, Southern Nazarene 25, Chico State 24, Findlay 24, Seattle Pacific 22, UNC Pembroke 22, Angelo State 20, Indianapolis 17, Mercyhurst 16, Lubbock Christian 13, Miles 13, Washburn 12, DBU (Texas) 11, Jefferson (Pa.) 9, Shippensburg 9, Biola (Calif.) 7, Cal Poly Pomona 6, Black Hills State 4, Western Oregon 4, Minnesota State 3, Concordia (Calif.) 2, Colorado Mesa 2, Daemen 2, Stonehill 2, Union (Tenn.) 2, Embry-Riddle 1, Fort Lewis 1, Rogers State 1, Walsh 1.



## @DELTASTATEMBB FAST FACTS

1,350

Delta State University boasts one of the richest basketball traditions in the Gulf South Conference and NCAA Division II. The Statesmen are **1,350-896-1** on the hardwood since the program began in 1927-28.

830

A founding member of the Gulf South Conference, Delta State University boasts the most **victories** in league history with **830**. Valdosta State is second with 619 followed by West Alabama (602), West Georgia (573) & UA-Huntsville (471).

32

Delta State has advanced to **32 Gulf South Conference Tournaments**. They sport seven GSC championships, 22 semifinal appearances and 14 finals appearances.

17

The Statesmen have made 17 appearances in the **NCAA Division II Tournament**, the most of any GSC member institution. Delta State has advanced to six "Sweet 16s", two "Elite Eights", and one Final Four.

7

Delta State owns seven **Gulf South Conference titles** during its storied history. The Statesmen claimed the league's first-ever team title in 1972 and followed suit in 1986, 1993, 1997, 1998, 2006 and 2019.

4

Delta State has four Statesmen playing **professional basketball**, including Devin Schmidt (Spain), Laquavious Cotton (France), Willie Readus (Argentina), and Jasper Johnson (Korea).





## NCAA DII ACTIVE WINS LEADERS:

|                                      |       |
|--------------------------------------|-------|
| 1. Herb Magee, Jefferson             | 1,123 |
| 2. Tom Klusman, Rollins              | 717   |
| 3. Richard Schmidt, Tampa            | 715   |
| 4. Steve Ridder, Embry-Riddle (Fla.) | 715   |
| 5. Keith Dickson, St. Anselm         | 664   |
| 6. Mike Nienaber, Delta State        | 603   |
| 7. Mark Corino, Caldwell             | 592   |



## MIKE NIENABER

HEAD COACH | 1ST SEASON AT DELTA STATE | MISSISSIPPI COLLEGE (1977)

## MIKE NIENABER | HEAD COACH

|                            |  |
|----------------------------|--|
| » Birthdate:               | June 23, 1955                                    |
| » Alma Mater:              | Mississippi College, 1977 (History)              |
| » Hometown:                | Cincinnati, Ohio                                 |
| » Family:                  | Wife: Vickie<br>Children: Michael, Jr. and Eddie |
| » Record at Delta State:   | 11-17 (2nd season)                               |
| » NCAA Division II Record: | 361-240-2 (22nd season)                          |
| » Overall Record:          | 603-524-2 (38th season)                          |
| » Championships:           | 2008 & 2013 Gulf South Conference                |

## CAREER NUMBERS TO KNOW

603

During his 38 seasons as a head coach, Mike Nienaber has won 603 games, ranking 6th in NCAA DII history among active head coaches.

350

In 20 seasons at Christian Brothers, Nienaber posted a 350-223-2 record while claiming the 2008 & 2013 Gulf South Conference championships.

27

He has coached 27 All-Gulf South Conference players, including GSC Player of the Year Nick Kohs and Scott Dennis.

11

During his last 14 seasons at CBU, Nienaber's teams appeared in the NABC Top 25 Poll on 11 different occasions.

5

Nienaber has made five trips to the NCAA DII National Tournament, including an Elite Eight finish in the 2008-2009 season.



## YEAR-BY-YEAR RECORD

| YEAR    | SCHOOL          | RECORD  | PCT  |
|---------|-----------------|---------|------|
| 1983-84 | BETHEL (TN)     | 15-18   | .455 |
| 1984-85 | BETHEL (TN)     | 15-17   | .469 |
| 1985-86 | BETHEL (TN)     | 15-18   | .455 |
| 1986-87 | BETHEL (TN)     | 15-18   | .455 |
| 1987-88 | BETHEL (TN)     | 15-18   | .455 |
| 1988-89 | BETHEL (TN)     | 15-17   | .469 |
| 1989-90 | BETHEL (TN)     | 15-18   | .455 |
| 1990-91 | BETHEL (TN)     | 16-18   | .471 |
| 1991-92 | BETHEL (TN)     | 15-18   | .455 |
| 1992-93 | BETHEL (TN)     | 15-17   | .469 |
| 1993-94 | BETHEL (TN)     | 15-18   | .455 |
| 1994-95 | BETHEL (TN)     | 15-18   | .455 |
| 1995-96 | BETHEL (TN)     | 15-18   | .455 |
| 1996-97 | BETHEL (TN)     | 15-18   | .455 |
| 1997-98 | BETHEL (TN)     | 16-17   | .485 |
| 1998-99 | BETHEL (TN)     | 15-18   | .455 |
| 1999-00 | CHRISTIAN BROS. | 12-14   | .462 |
| 2000-01 | CHRISTIAN BROS. | 11-15   | .423 |
| 2001-02 | CHRISTIAN BROS. | 7-19    | .269 |
| 2002-03 | CHRISTIAN BROS. | 18-11   | .621 |
| 2003-04 | CHRISTIAN BROS. | 23-6    | .793 |
| 2004-05 | CHRISTIAN BROS. | 14-13   | .519 |
| 2005-06 | CHRISTIAN BROS. | 15-13   | .536 |
| 2006-07 | CHRISTIAN BROS. | 21-7    | .750 |
| 2007-08 | CHRISTIAN BROS. | 22-10   | .688 |
| 2008-09 | CHRISTIAN BROS. | 25-7    | .781 |
| 2009-10 | CHRISTIAN BROS. | 17-10   | .630 |
| 2010-11 | CHRISTIAN BROS. | 17-11   | .607 |
| 2011-12 | CHRISTIAN BROS. | 24-6    | .781 |
| 2012-13 | CHRISTIAN BROS. | 21-9    | .700 |
| 2013-14 | CHRISTIAN BROS. | 18-11   | .621 |
| 2014-15 | CHRISTIAN BROS. | 15-12   | .556 |
| 2015-16 | CHRISTIAN BROS. | 12-17   | .414 |
| 2016-17 | CHRISTIAN BROS. | 18-13   | .581 |
| 2017-18 | CHRISTIAN BROS. | 21-9    | .700 |
| 2018-19 | CHRISTIAN BROS. | 19-10   | .655 |
| 2019-20 | DELTA STATE     | 11-17   | .392 |
| 2020-21 | DELTA STATE     | 0-0     | .000 |
| TOTALS  |                 | 603-524 | .535 |



## INDIVIDUAL GAME HIGHS

### MOST POINTS

|    |                    |                                |          |
|----|--------------------|--------------------------------|----------|
| 50 | Sammy Little       | vs. South Alabama              | 2/22/69  |
| 50 | Sammy Little       | vs. SE Louisiana               | 2/27/69  |
| 47 | Devin Schmidt      | Alabama Huntsville             | 1/14/17  |
| 43 | Sammy Little       | vs. Spring Hill                | 1/4/69   |
| 43 | Gerald Glass       | at Arkansas-Pine Bluff         | 12/18/86 |
| 42 | Gerald Glass       | at Valdosta State              | 1/24/87  |
| 38 | Brandon Dickerson  | at William Carey College       | 12/14/02 |
| 38 | Derrick Hunter     | at Mississippi Valley State    | 2/7/90   |
| 37 | Devin Schmidt      | Ecked                          | 11/12/16 |
| 37 | Devin Schmidt      | vs. Alabama-Huntsville (GSC-T) | 3/4/16   |
| 37 | Devin Schmidt      | Valdosta State                 | 2/6/16   |
| 37 | Gerald Glass       | vs. West Alabama               | 2/9/87   |
| 36 | Devin Schmidt      | Alabama-Huntsville             | 1/4/16   |
| 36 | Willie Readus      | Shorter University             | 1/6/14   |
| 36 | Charles Cole       | at Belhaven                    | 1/17/90  |
| 36 | James Burkley      | vs. UT-Martin                  | 2/27/86  |
| 36 | Gerald Glass       | vs. Dillard                    | 11/24/86 |
| 35 | Devin Schmidt      | Lee                            | 2/20/16  |
| 35 | Devin Schmidt      | at West Georgia                | 1/24/15  |
| 35 | Devin Schmidt      | West Alabama                   | 2/3/14   |
| 35 | Gerald Glass       | vs. Mississippi College        | 2/5/87   |
| 35 | Don Cooper         | vs. Mississippi College        | 2/2/70   |
| 35 | Sammy Little       | at Kentucky Wesleyan           | 2/8/69   |
| 34 | Devin Schmidt      | at North Alabama               | 2/13/16  |
| 34 | Devin Schmidt      | North Alabama                  | 1/2/16   |
| 34 | Leake, Terry       | Alabama Huntsville             | 1/19/12  |
| 34 | Richardson, Jeremy | at Central State Univ          | 2/4/06   |
| 34 | Gerald Glass       | vs. Christian Brothers         | 1/21/87  |
| 34 | Carl Brown         | vs. Troy State                 | 1/9/84   |
| 34 | Don Cooper         | vs. Samford                    | 2/18/71  |
| 33 | Devin Schmidt      | Florida Southern               | 11/11/16 |
| 33 | Devin Schmidt      | Alabama-Huntsville             | 2/12/15  |
| 33 | Turner, Phil       | Arkansas-Monticello            | 2/26/11  |
| 33 | Richardson, Jeremy | vs. Harding                    | 3/4/05   |
| 33 | Keith Parker       | vs. North Alabama              | 2/22/77  |
| 33 | Tevora Griffin     | at Union                       | 12/7/72  |
| 33 | Don Cooper         | at Arkansas-Monticello         | 1/17/70  |
| 32 | Brett Warner       | Lee                            | 12/17/16 |
| 32 | Devin Schmidt      | Shorter                        | 2/28/17  |
| 32 | Devin Schmidt      | at West Alabama                | 12/5/15  |
| 32 | Jack Madgen        | vs. Barry (NCAA)               | 3/15/14  |
| 32 | Jasper Johnson     | at Ouachita Tigers             | 1/26/06  |
| 32 | Cedric Matthews    | vs. Central Arkansas           | 1/23/95  |
| 32 | Cedric Matthews    | vs. Valdosta State             | 3/3/95   |
| 32 | Derrick Hunter     | at Troy State                  | 1/6/90   |
| 32 | Gerald Glass       | vs. West Georgia               | 2/16/87  |
| 32 | Gerald Glass       | at UT-Martin                   | 2/2/87   |
| 32 | Sammy Little       | vs. Mississippi College        | 12/12/68 |
| 32 | Sammy Little       | vs. Louisiana College          | 1/14/69  |
| 31 | Devin Schmidt      | at Lee                         | 1/9/16   |
| 31 | Devin Schmidt      | at Tarleton State              | 11/18/15 |
| 31 | Devin Schmidt      | North Alabama                  | 2/14/15  |
| 31 | Willie Readus      | at LeMoyne-Owen College        | 11/16/13 |
| 31 | Phil Turner        | Harding                        | 2/12/11  |
| 31 | Roderick Ollie     | at Loyola                      | 11/19/09 |

### MOST POINTS CONTINUED

|    |                 |                        |          |
|----|-----------------|------------------------|----------|
| 31 | Turmaine Rice   | at Ouachita Baptist    | 2/1/07   |
| 31 | Johnny Hodge    | at Dillard University  | 12/11/06 |
| 31 | Trey Sanders    | Harding                | 2/5/04   |
| 31 | Will Watson     | at CENTRAL ARKANSAS    | 1/22/04  |
| 31 | Rodney Jones    | vs. Jacksonville State | 2/15/88  |
| 31 | Gerald Glass    | vs. Arkansas Baptist   | 11/21/86 |
| 31 | James Burkley   | vs. Troy State         | 2/6/84   |
| 31 | Carl Brown      | vs. Troy State         | 2/6/84   |
| 31 | Ralph Moore     | vs. West Alabama       | 1/25/74  |
| 31 | Danny Henderson | at Nicholls State      | 1/22/73  |
| 31 | Don Cooper      | at Columbus College    | 12/18/71 |
| 31 | Don Cooper      | vs. Georgia State      | 12/6/71  |
| 31 | Alvin Ratliff   | at Mississippi College | 1/14/71  |

### FIELD GOALS MADE

|    |               |                        |          |
|----|---------------|------------------------|----------|
| 22 | Sammy Little  | vs. South Alabama      | 2/22/69  |
| 19 | Sammy Little  | vs. Spring Hill        | 1/4/69   |
| 18 | Sammy Little  | vs. SE Louisiana       | 2/27/69  |
| 18 | Gerald Glass  | at Arkansas-Pine Bluff | 12/18/86 |
| 18 | Devin Schmidt | Alabama-Huntsville     | 1/14/17  |
| 17 | Gerald Glass  | at Valdosta State      | 1/24/87  |

### MOST REBOUNDS

|    |                |                         |          |
|----|----------------|-------------------------|----------|
| 26 | Jamarkus Holt  | at Victory University   | 11/16/10 |
| 26 | Gene Kirk      | vs. Arkansas-Monticello | 1/20/68  |
| 24 | Walter Scrubbs | at Baptist Christian    | 12/28/72 |
| 23 | Alvin Ratliff  | vs. Louisiana College   | 2/7/70   |
| 23 | Alvin Ratliff  | vs. NE Louisiana        | 12/2/68  |
| 22 | Alvin Ratliff  | vs. Bethel              | 1/29/70  |
| 21 | Alvin Ratliff  | vs. Union               | 1/12/70  |
| 21 | Al Pierce      | vs. Spring Hill         | 1/4/69   |
| 20 | Tevora Griffin | vs. Mississippi College | 2/16/71  |
| 20 | Alvin Ratliff  | vs. Arkansas-Monticello | 1/17/70  |

### MOST ASSISTS

|    |                  |                          |          |
|----|------------------|--------------------------|----------|
| 16 | Shane Alexander  | vs. Arkansas-Baptist     | 1/18/03  |
| 15 | Joseph Nichols   | vs. Arkansas-Baptist     | 2/17/00  |
| 15 | Carl Brown       | vs. Park College         | 11/29/82 |
| 14 | Carl Brown       | vs. Valdosta State       | 2/5/83   |
| 14 | Mike Sibley      | vs. West Alabama         | 2/2/76   |
| 14 | Larry Magee      | vs. Jacksonville State   | 2/12/72  |
| 13 | Travis DeGroot   | at Bellarmine University | 11/22/05 |
| 12 | Chad Akins       | vs. Harding              | 01/28/10 |
| 12 | Chad Akins       | vs. Ouachita Baptist     | 02/04/10 |
| 12 | Chad Akins       | at Concordia-Selma       | 12/4/08  |
| 12 | Travis DeGroot   | vs. Miles College        | 11/18/05 |
| 12 | Marcus Greene    | vs. Puerto Rico          | 11/15/03 |
| 12 | Trey Sanders     | vs. Arkansas Monticello  | 2/12/05  |
| 12 | Scott Nagy       | vs. UT-Martin            | 2/26/87  |
| 12 | Scott Nagy       | vs. Christian Brothers   | 1/21/87  |
| 12 | Rodney Walker    | vs. Troy State           | 1/11/82  |
| 12 | Bennie Brundrage | vs. North Alabama        | 2/11/78  |
| 12 | Larry Magee      | vs. Belhaven             | 12/14/71 |



## INDIVIDUAL CAREER LEADERS

### ALL-TIME LEADING SCORERS

|                                   |       |
|-----------------------------------|-------|
| 1. Devin Schmidt (2013-2017)      | 2,594 |
| 2. Carl Brown (83-86)             | 1,799 |
| 3. Sammy Little ('66-'69)         | 1,781 |
| 4. Twentis Magee ('95-'98)        | 1,569 |
| 5. Chris Sykes ('97-'99)          | 1,539 |
| 6. Ralph Moore ('74-'77)          | 1,488 |
| 7. Brett Warner (2015-2019)       | 1,432 |
| 8. Kevie Dixon ('88-'91)          | 1,386 |
| 9. PJ Davis (2014-2018)           | 1,350 |
| 10. Alvin Ratliff ('69-'71)       | 1,308 |
| 11. Don Cooper ('70-'72)          | 1,278 |
| 12. Gerald Glass ('86-'87)        | 1,249 |
| 13. Brad Longino ('90-'93)        | 1,219 |
| 14. Mark Easley ('82-'85)         | 1,188 |
| 15. Jack Madgen ('12-'16)         | 1,163 |
| 16. Paul Davis ('90-'94)          | 1,151 |
| 17. Milton Griffin ('71-'73)      | 1,011 |
| 18. Jeremy Richardson (2004-2006) | 1,001 |

### REBOUNDS

|                                |       |
|--------------------------------|-------|
| 1. Alvin Ratliff ('69-'71)     | 1,014 |
| 2. Ralph Moore ('74-'77)       | 969   |
| 3. Chris Sykes ('97-'99)       | 925   |
| 4. Kevie Dixon ('88-'91)       | 814   |
| 5. Tevora Griffin ('71-'73)    | 778   |
| 6. PJ Davis (2014-2018)        | 746   |
| 7. Mark Easley ('82-'85)       | 719   |
| T-8. Devin Schmidt (2013-2017) | 713   |
| T-8. Norris Ashley ('65-'68)   | 713   |
| 10. John Coles ('78-'81)       | 690   |

### FIELD GOAL PERCENTAGE

|                              |      |
|------------------------------|------|
| 1. Cedric Harper (2016-2019) | .679 |
| 2. Gerald Glass ('86-'87)    | .588 |
| 3. Chris Sykes ('97-'99)     | .575 |

### ASSISTS

|                               |     |
|-------------------------------|-----|
| 1. Scott Nagy ('85-'88)       | 549 |
| 2. Chad Akins (2007-2010)     | 544 |
| 3. Carl Brown ('83-'86)       | 539 |
| 4. Devin Schmidt (2013-2017)  | 512 |
| 5. Rodney Walker ('79-'82)    | 429 |
| 6. Rodney Jones ('87-'91)     | 306 |
| T-7. David Hannan ('91-'93)   | 277 |
| T-7. Ramon Gary (2001-2003)   | 277 |
| 9. Victor Smith ('86-'89)     | 273 |
| 10. Brett Warner (2015-2019)  | 265 |
| 11. Armon Benford (2017-2019) | 262 |
| 12. Twentis Magee ('95-'98)   | 258 |

### FREE THROW PERCENTAGE

|                           |                               |
|---------------------------|-------------------------------|
| 1. Brad Longino ('90-'93) | .824 (244 made, 296 attempts) |
|---------------------------|-------------------------------|

### STEALS

|                              |     |
|------------------------------|-----|
| 1. Carl Brown ('83-'86)      | 257 |
| 2. Paul Davis ('90-'94)      | 167 |
| 3. Devin Schmidt (2013-2017) | 162 |
| 4. Twentis Magee ('95-'98)   | 159 |
| 5. Rodney Jones (87-'91)     | 150 |
| 6. Chad Akins (2007-2010)    | 143 |
| 7. Brad Longino ('90-'93)    | 134 |
| 8. Mark Easley ('82-'85)     | 130 |
| 9. Rodney Walker ('79-'82)   | 120 |
| 10. Keith Gardner ('92-'95)  | 120 |
| 11. Rod Newton (2001-2003)   | 100 |

### FIELD GOALS MADE

|                              |     |
|------------------------------|-----|
| 1. Devin Schmidt (2013-2017) | 871 |
| 2. Sammy Little ('66-'69)    | 730 |
| 3. Carl Brown ('83-'86)      | 675 |
| 4. Ralph Moore ('74-'77)     | 634 |
| 5. Twentis Magee ('95-'98)   | 599 |
| 6. Kevie Dixon ('88-'91)     | 561 |
| 7. Don Cooper ('70-'72)      | 553 |
| 8. PJ Davis (2014-2018)      | 539 |
| 9. Gerald Glass ('86-'87)    | 528 |
| 10. Alvin Ratliff ('69-'71)  | 522 |

### FIELD GOALS ATTEMPTED

|                              |       |
|------------------------------|-------|
| 1. Devin Schmidt (2013-2017) | 2,026 |
| 2. Ralph Moore ('74-'77)     | 1,408 |
| 3. Sammy Little ('66-'69)    | 1,389 |
| 4. Carl Brown ('83-'86)      | 1,372 |
| 5. Twentis Magee ('95-'98)   | 1,222 |
| 6. Brett Warner (2015-2019)  | 1,215 |
| 7. Don Cooper ('70-'72)      | 1,138 |
| 8. Alvin Ratliff ('69-'71)   | 1,113 |
| 9. Kevie Dixon ('88-'91)     | 1,037 |
| 10. Mark Easley ('82-'85)    | 989   |

### FREE THROWS MADE

|                             |     |
|-----------------------------|-----|
| 1. Chris Sykes (97-99)      | 436 |
| 2. Carl Brown (83-86)       | 434 |
| 3. Sammy Little (66-69)     | 321 |
| 4. Rodney Jones (87-91)     | 272 |
| 5. Alvin Ratliff (69-71)    | 264 |
| 6. Mark Easley (82-85)      | 262 |
| 7. Kevie Dixon (88-91)      | 261 |
| 8. PJ Davis (2014-2018)     | 260 |
| 9. Brad Longino ('90-'93)   | 244 |
| 10. Jack Madgen (2012-2016) | 240 |

### FREE THROWS ATTEMPTED

|                               |     |
|-------------------------------|-----|
| 1. Chris Sykes ('97-'99)      | 712 |
| 2. Devin Schmidt (2013-2017)  | 670 |
| 3. Carl Brown ('83-'86)       | 566 |
| 4. Mark Easley ('82-'85)      | 399 |
| 5. Alvin Ratliff ('69-'71)    | 396 |
| 6. Sammy Little ('66-'69)     | 391 |
| 7. Kevie Dixon ('88-'91)      | 383 |
| 8. PJ Davis (2014-2018)       | 378 |
| 9. Marqueys Brown (2009-2012) | 348 |
| 10. Rodney Jones ('87-'91)    | 347 |
| 11. John Coles ('78-'81)      | 340 |

### THREE POINTERS MADE

|                              |     |
|------------------------------|-----|
| 1. Devin Schmidt (2013-2017) | 307 |
| 2. Brett Warner (2015-2019)  | 201 |
| 3. Twentis Magee ('95-'98)   | 195 |
| 4. Jack Madgen (2012-2016)   | 185 |
| 5. Brad Longino ('90-'93)    | 174 |
| 6. Larry Walker ('97-'99)    | 143 |
| 7. Cedric Matthews ('95-'96) | 139 |
| 8. Joe McCray ('09-'10)      | 101 |
| 9. Rod Newton ('01-'03)      | 99  |
| 10. Ernie Ryans ('01-'03)    | 98  |
| 11. Eric Spencer ('08-'10)   | 92  |

### THREE POINTERS ATTEMPTED

|                              |     |
|------------------------------|-----|
| 1. Devin Schmidt (2013-2017) | 858 |
| 2. Brett Warner (2015-2019)  | 574 |
| 3. Twentis Magee ('95-'98)   | 481 |
| 4. Jack Madgen (2012-2016)   | 467 |
| 5. Brad Longino ('90-'93)    | 407 |
| 6. Cedric Matthews ('95-'96) | 347 |
| 7. Larry Walker ('97-'99)    | 306 |
| 8. Joe McCray ('08-'10)      | 285 |
| 9. Rod Newton ('01-'03)      | 280 |
| 10. Eric Spencer ('08-'10)   | 260 |

### BLOCKED SHOTS

|                                 |     |
|---------------------------------|-----|
| 1. PJ Davis (2014-2018)         | 199 |
| T-2. Jerrell Roberson ('94-'96) | 131 |
| T-2. Chris Sykes ('97-'99)      | 118 |
| 3. Richard Micheaux ('97-'98)   | 117 |

### GAMES PLAYED

|                               |     |
|-------------------------------|-----|
| 1. Devin Schmidt (2013-2017)  | 124 |
| T-2. PJ Davis (2014-2018)     | 122 |
| T-2. Scott Nagy ('85-'88)     | 122 |
| 3. Colby Harris (2002-05)     | 119 |
| T-4. Brett Warner (2015-2019) | 118 |
| T-4. Carl Brown ('83-'86)     | 118 |
| 5. Twentis Magee ('95-'98)    | 117 |
| 6. Jack Madgen (2012-2016)    | 116 |
| 7. Mark Easley ('82-'85)      | 114 |
| 8. Victor Smith ('86-'89)     | 113 |
| T-9. Brian Luke ('83-'86)     | 112 |
| T-9. Brad Longino ('90-'93)   | 112 |
| 10. Charlie Lowe ('87-'91)    | 111 |



**MAKE STATE YOURS™**



## TEAM & GAME RECORDS

### SCORING

|        |       |  |
|--------|-------|--|
| Game   | 50    | Sammy Little (2/22/69 vs. South Ala.   2/27/69 vs. NE La.) |
| Season | 86    | Gerald Glass, 1986-87                                      |
| Career | 2,594 | Devin Schmidt, 2013-2017                                   |

### SCORING AVERAGE

|        |      |                       |
|--------|------|-----------------------|
| Season | 28.8 | Sammy Little, 1968-69 |
| Career | 21.5 | Sammy Little, 1968-69 |

### FIELD GOALS

|        |     |                                |
|--------|-----|--------------------------------|
| Game   | 35  | Sammy Little (2/22/69) vs. USA |
| Season | 360 | Gerald Glass, 1986-87          |
| Career | 730 | Sammy Little, 1968-69          |

### FIELD GOAL ATTEMPTS

|        |       |                                |
|--------|-------|--------------------------------|
| Game   | 35    | Sammy Little (2/22/69) vs. USA |
| Season | 630   | Devin Schmidt, 2013-2017       |
| Career | 2,026 | Devin Schmidt, 2013-2017       |

### FIELD GOAL PERCENTAGE

|        |      |                          |
|--------|------|--------------------------|
| Season | .752 | Zebton Wells 2001-02     |
| Career | .679 | Cedric Harper, 2016-2019 |

### FREE THROWS

|        |     |                                |
|--------|-----|--------------------------------|
| Game   | 17  | Chris Sykes (1/28/97) vs. Lane |
| Season | 198 | Willie Readus, 2013-14         |
| Career | 545 | Devin Schmidt, 2013-2017       |

### FREE THROWS ATTEMPTED

|        |     |                                |
|--------|-----|--------------------------------|
| Game   | 35  | Sammy Little (2/22/69) vs. USA |
| Season | 276 | Chris Sykes, 1996-97           |
| Career | 712 | Chris Sykes, 1997-99           |

### FREE THROW PERCENTAGE

|        |      |                       |
|--------|------|-----------------------|
| Season | .881 | Sammy Little, 1967-68 |
| Career | .824 | Brad Longino, 1990-93 |

### THREE-POINT FIELD GOALS

|        |     |  |
|--------|-----|--|
| Game   | 10  | Larry Walker (2/13/97) vs. Auburn-Montgomery |
| Season | 112 | Devin Schmidt, 2013-2017                     |
| Career | 307 | Devin Schmidt, 2013-2017                     |

### THREE-POINT FG ATTEMPTS

|        |     |  |
|--------|-----|--|
| Game   | 14  | Larry Walker (2/13/97) vs. Auburn-Montgomery |
| Season | 307 | Devin Schmidt, 2013-2017                     |
| Career | 590 | Devin Schmidt, 2013-2017                     |

### REBOUNDS

|        |       |   |
|--------|-------|---|
| Game   | 26    | Gene Kirk (1/20/68) vs. Arkansas-Monticello |
| Season | 414   | Gerald Glass, 1986-87                       |
| Career | 1,014 | Alvin Ratliff, 1969-71                      |

### SCORING

|        |                                 |
|--------|---------------------------------|
| Game   | 155, (12.2.82) vs. Bapt. Chris. |
| Season | 2,669, 1986-87                  |

### SCORING AVERAGE

|        |               |
|--------|---------------|
| Season | 87.4, 1968-69 |
|--------|---------------|

### FIELD GOAL PERCENTAGE

|        |                                 |
|--------|---------------------------------|
| Game   | .720 vs. Ark. Baptist (2.17.00) |
| Season | .559, 1963-64                   |

### FREE THROW PERCENTAGE

|        |                          |
|--------|--------------------------|
| Game   | .923 vs. Union (2.22.14) |
| Season | .748, 1961-62            |

### THREE-POINT FIELD GOALS

|        |                                     |
|--------|-------------------------------------|
| Game   | 20, (11.21.15) vs. Johnson Bible    |
| GSC    | 13, (1.4.16) vs. Alabama Huntsville |
|        | 13, (2.8.97) vs. Ark.-Monticello    |
| Season | 235, 2015-16                        |

### THREE-POINT FG ATTEMPTS

|        |                                  |
|--------|----------------------------------|
| Game   | 37, (11.21.15) vs. Johnson Bible |
| Season | 647, 2015-16                     |

### REBOUNDS

|        |                                     |
|--------|-------------------------------------|
| Game   | 79, (12.2.82) vs. Baptist Christian |
| Season | 1346, 1986-87                       |

### REBOUNDING AVERAGE

|        |               |
|--------|---------------|
| Season | 50.7, 1965-66 |
|--------|---------------|

## REGIONAL CHAMPIONSHIPS

1948 • 1949 • 1950



## REGIONAL CHAMPIONSHIPS

1987 • 1998



## GULF SOUTH CHAMPIONSHIPS

1972 • 1986 • 1993 • 1997  
1998 • 2006 • 2019







## RECORD VERSUS ALL OPPONENTS

## GULF SOUTH CONFERENCE SCHOOLS

|                     |         |
|---------------------|---------|
| Alabama-Huntsville  | 21-20   |
| Auburn-Montgomery   | 8-12    |
| Christian Brothers  | 60-44   |
| Lee (Tenn.)         | 9-4     |
| Mississippi College | 60-37-1 |
| Montevallo          | 16-5    |
| Shorter             | 9-5     |
| Union (Tenn.)       | 41-15   |
| Valdosta State      | 24-26   |
| West Alabama        | 43-34   |
| West Georgia        | 29-21   |
| West Florida        | 16-10   |

## MISSISSIPPI SCHOOLS

|                           |       |
|---------------------------|-------|
| Alcorn State              | 7-5   |
| Belhaven College          | 18-6  |
| Blue Mountain College     | 2-0   |
| Copiah-Lincoln CC         | 0-1   |
| Holmes CC                 | 2-2   |
| Jackson State             | 0-1   |
| Millsaps College          | 24-8  |
| Mississippi               | 4-3   |
| Mississippi (Fr.)         | 1-1   |
| Mississippi College (Fr.) | 0-1   |
| Mississippi Delta CC      | 6-12  |
| Mississippi State         | 1-16  |
| Mississippi Valley State  | 14-15 |
| Northwest Mississippi CC  | 5-2   |
| Southern Mississippi      | 21-30 |
| Tougaloo                  | 13-0  |
| William Carey             | 1-0   |

## NONCONFERENCE OPPONENTS

|                          |       |
|--------------------------|-------|
| Abilene Christian        | 2-0   |
| Alabama A&M              | 0-1   |
| Alabama                  | 0-1   |
| Albany State             | 2-0   |
| Arkansas Baptist         | 21-1  |
| Arkansas College         | 6-1   |
| Arkansas Little Rock     | 4-3   |
| Arkansas Monticello      | 65-21 |
| Arkansas Pine Bluff      | 12-2  |
| Arkansas State           | 14-21 |
| Arkansas Tech            | 25-18 |
| Athens State College     | 1-0   |
| Augustana College (Ill.) | 0-1   |
| Austin Peay              | 10-6  |
| Baptist Christian        | 7-0   |
| Baptist University       | 1-0   |
| Barry University         | 1-0   |
| Bellarmine               | 4-2   |
| Belmont University       | 0-1   |
| Berry College            | 2-0   |
| Bethel College           | 13-10 |
| Birmingham Southern      | 9-4   |
| Bishop College           | 0-1   |
| Blackburn College        | 2-0   |
| Brigham Young            | 0-1   |

|                           |       |
|---------------------------|-------|
| Bryan College             | 1-0   |
| Calvin College            | 1-0   |
| Carson Newman College     | 0-1   |
| Caruthersville CC         | 0-1   |
| Central Arkansas          | 29-15 |
| Cen. Methodist College    | 1-0   |
| Central Missouri State    | 1-1   |
| Central State (Ohio)      | 2-1   |
| Champion Baptist          | 2-0   |
| Charleston                | 0-1   |
| Chicago State             | 1-0   |
| Clark-Atlanta             | 1-0   |
| Clarksdale Independents   | 2-0   |
| Cleveland Independents    | 4-2   |
| Cleveland Kelso Cleaner   | 1-0   |
| Coca Cola Bottlers        | 1-0   |
| Coca Cola Triangles       | 1-0   |
| College of Faith          | 1-0   |
| Columbus College          | 1-0   |
| Concordia-Selma           | 4-0   |
| Covenant College          | 1-0   |
| Culver Stockton College   | 0-1   |
| Cumberland (Tenn.)        | 3-1   |
| Dakota Wesleyan           | 1-0   |
| David Lipscomb            | 1-0   |
| Delta All Stars           | 1-0   |
| Dillard University        | 7-0   |
| District of Columbia      | 1-0   |
| Dr. Pepper All-Stars      | 1-0   |
| Drury College             | 4-2   |
| Earle Independents        | 0-2   |
| East Tennessee State      | 1-1   |
| East Texas Baptist        | 0-1   |
| Ecclesia College          | 1-0   |
| Eckerd                    | 5-4   |
| Emporia State             | 0-1   |
| Evangel College           | 1-1   |
| Evansville                | 0-1   |
| Fisk                      | 1-0   |
| Florida Southern          | 3-9   |
| Fort Valley State         | 0-1   |
| Fredonia State            | 1-0   |
| Freed-Hardeman            | 2-0   |
| Georgetown College        | 2-0   |
| Georgia College and State | 0-2   |
| Georgia Southern          | 1-1   |
| Georgia State             | 2-0   |
| Harding University        | 13-9  |
| Henderson State           | 24-23 |
| Hendrix College           | 0-3   |
| Hodges Brother            | 1-0   |
| Hollandale Independents   | 7-1   |
| Huston-Tillotson College  | 1-0   |
| Indiana Southeast         | 1-0   |
| Indiana State             | 0-2   |
| Indianola Independents    | 0-2   |
| John Brown                | 1-1   |
| Jacksonville State        | 25-27 |
| Keesler AFB               | 3-0   |

|                                  |       |
|----------------------------------|-------|
| Kentucky Wesleyan                | 2-9   |
| Lake Superior State              | 1-0   |
| Lamar                            | 1-0   |
| Lambuth College                  | 7-12  |
| Lane College                     | 6-5   |
| LeMoyné-Owen                     | 8-5   |
| Lenoir-Rhyne                     | 1-0   |
| Lincoln Memorial                 | 1-2   |
| Louisiana Christian              | 1-0   |
| Louisiana College                | 14-10 |
| Louisiana-Monroe                 | 15-23 |
| Louisiana Tech                   | 3-0   |
| Lovola University                | 3-2   |
| Luther College                   | 0-1   |
| Lynn University                  | 1-0   |
| McDonald Scots                   | 1-0   |
| McNeese State                    | 0-1   |
| Marvcrest College                | 0-1   |
| Memphis                          | 20-17 |
| Memphis Navy                     | 3-1   |
| Memphis YMCA                     | 2-0   |
| Mercer University                | 0-1   |
| Mexico University                | 2-0   |
| Middle Tennessee State           | 4-0   |
| Midwestern State (Texas)         | 0-1   |
| Miles College                    | 9-3   |
| Milligan College                 | 0-1   |
| Missouri Baptist College         | 2-0   |
| Missouri Southern State          | 1-0   |
| Missouri Western State           | 0-1   |
| Mississippi University for Women | 1-0   |
| Morehouse College                | 0-1   |
| Murray State                     | 6-18  |
| New Mexico State                 | 1-0   |
| New Paltz State                  | 1-0   |
| New York Celtics                 | 0-2   |
| Nicholls State                   | 3-11  |
| North Alabama                    | 47-42 |
| North Central Illinois           | 2-0   |
| North Texas                      | 1-0   |
| Northeast Missouri State         | 0-2   |
| Northeastern Oklahoma            | 1-0   |
| Northwest Missouri State         | 1-1   |
| Northwestern State (La.)         | 5-12  |
| Nova Southeastern                | 1-0   |
| Oakwood                          | 1-0   |
| Oglethorpe University            | 1-1   |
| Ohio Southern                    | 1-0   |
| Oliver College                   | 1-0   |
| Quachita Baptist                 | 31-10 |
| Pace Independents                | 3-0   |
| Palm Beach Atlantic              | 1-0   |
| Park University                  | 1-0   |
| Pensacola Christian              | 1-0   |
| Pfeiffer College                 | 1-0   |
| Philander Smith                  | 3-0   |
| Phillips College                 | 1-0   |
| Quincy College                   | 0-1   |
| Rhodes College                   | 20-4  |
| Rollins College                  | 0-1   |
| St. Andrews Presbyterian         | 1-0   |
| St. Cloud State                  | 1-0   |

|                                |       |
|--------------------------------|-------|
| St. Leo                        | 1-1   |
| St. Mary's (Wis.)              | 0-1   |
| St. Paul's (Va.)               | 1-0   |
| Salem International            | 0-1   |
| Sam Houston State              | 1-1   |
| Samford                        | 8-3   |
| San Diego                      | 0-1   |
| Selma University               | 7-0   |
| Shaw Independents              | 1-0   |
| Sheboygan                      | 0-1   |
| Shepherd Tech                  | 2-1   |
| Simpson College                | 1-0   |
| Sioux Falls College            | 1-0   |
| South Alabama                  | 2-1   |
| Southeast Missouri State       | 9-10  |
| Southeastern Louisiana         | 17-14 |
| Southeastern Oklahoma          | 3-1   |
| Southern Illinois-Carbondale   | 2-1   |
| Southern Illinois-Edwardsville | 3-1   |
| Southern Arkansas              | 32-9  |
| Southern Indiana               | 0-1   |
| Southern Tech (Ga.)            | 1-0   |
| Southern University (La.)      | 1-0   |
| Southwest Baptist (Mo.)        | 0-1   |
| Southwest Missouri State       | 1-1   |
| Southwestern Louisiana         | 4-1   |
| Spring Hill                    | 24-13 |
| Stetson University             | 1-0   |
| Stillman College               | 1-0   |
| Tampa                          | 2-0   |
| Tarleton State                 | 1-1   |
| Tennessee-Chattanooga          | 0-1   |
| Tennessee-Martin               | 39-28 |
| Tennessee-Martin CC            | 0-2   |
| Tennessee State                | 0-1   |
| Tennessee Tech                 | 4-2   |
| Tennessee Temple               | 5-0   |
| Tennessee Wesleyan             | 0-1   |
| Texas College                  | 2-0   |
| Texas A&M-Commerce             | 3-1   |
| Texas El Paso                  | 0-1   |
| Texas Wesleyan                 | 0-1   |
| Transylvania University        | 1-1   |
| Trinity University (Texas)     | 0-1   |
| Troy                           | 21-19 |
| Tupelo Independents            | 2-1   |
| Tuskegee                       | 1-1   |
| U.S. Merchant Marine           | 2-0   |
| Union College                  | 1-0   |
| Victory University             | 3-0   |
| Virginia Union                 | 0-2   |
| Wayland Baptist                | 1-0   |
| West Texas A&M                 | 0-1   |
| Western Kentucky               | 0-6   |
| William Mayfield               | 0-1   |
| Wisconsin-Parkside             | 1-0   |
| Wisconsin-Superior             | 1-0   |
| Wofford College                | 1-0   |
| Xavier University (La.)        | 4-2   |