



## OVC CHAMPS NCAA TOURNEY

1995 • 1996 • 1997 1999  
1998 • 1999 • 2019 2019  
2021 • 2023

Jeff Honza, Associate Director of Athletics for Strategic Communications  
Office: (573) 651-2933 | Cell: (618) 528-1145  
Email: jhonza@semo.edu, redhawk1@me.com

## SCHEDULE

### February (4-9)

9	vs. Stony Brook !	W, 7-5
9	at Florida International ! ESPN+	W, 7-4 (8)
10	vs. Ohio State !	L, 0-13 (5)
10	at Florida International !	L, 0-1
11	Stony Brook	W, 5-4
16	vs. Maryland \$	L, 1-9 (6)
17	vs. Syracuse \$	L, 0-3
17	at Southeastern Louisiana \$	L, 2-10 (6)
18	vs. Maryland \$	W, 9-3
23	at #24 Auburn ^ SECN+	L, 0-8 (5)
24	vs. Northern Iowa ^	L, 3-5
24	at #24 Auburn ^	L, 5-13 (5)
25	vs. Northern Iowa ^	L, 6-9

### March (8-11, 7-5 OVC)

1	vs. South Dakota State &	L, 0-9 (5)
1	at #16 Arkansas & SECN+	L, 0-5
2	vs. South Dakota State &	L, 1-9 (5)
2	vs. Florida Atlantic &	L, 3-8
3	at #16 Arkansas & SECN+	L, 5-6 (8)
9	<b>Eastern Illinois* (DH) ESPN+</b>	<b>L, 4-7 (12); W, 9-4</b>
10	<b>Eastern Illinois* ESPN+</b>	<b>L, 1-2</b>
12	<b>Bradley (DH) ESPN+</b>	<b>W, 6-2; L, 1-5</b>
16	at SIU Edwardsville* (DH) ESPN+	W, 3-0; W, 3-2
17	at SIU Edwardsville* ESPN+	W, 7-4
23	<b>Tennessee State* (DH) ESPN+</b>	<b>L, 3-4; W, 11-2 (5)</b>
24	<b>Tennessee State* ESPN+</b>	<b>W, 4-3</b>
29	at Southern Indiana* (DH) ESPN+	L, 1-2; W, 6-0
30	at Southern Indiana* ESPN+	L, 4-5

### April (9-2, 8-1 OVC)

3	at #11 Missouri	W, 1-0
6	<b>Tennessee Tech* (DH) ESPN+</b>	<b>W, 5-3; W, 4-1</b>
7	<b>Tennessee Tech* ESPN+</b>	<b>L, 8-10</b>
10	<b>Saint Louis ESPN+</b>	<b>Canceled</b>
14	at Morehead State* (DH) ESPN+	W, 10-1; W, 14-4 (6)
15	at Morehead State* ESPN+	W, 13-3 (6)
20	<b>Lindenwood* (DH) ESPN+</b>	<b>W, 1-0; W, 4-0</b>
21	<b>Lindenwood* ESPN+</b>	<b>W, 1-0</b>
23	at Murray State	L, 3-6
26	<b>Western Illinois* (DH) ESPN+</b>	<b>12 p.m.</b>
27	<b>Western Illinois* ESPN+</b>	<b>12 p.m.</b>

### May (0-0, 0-0 OVC)

4	at UT Martin* (DH)	1 p.m.
5	at UT Martin*	1 p.m.
8-11	OVC Tournament	Peoria, Ill.

! - Felsberg Invitational (Miami, Fla.); \$ - Lion Classic (Hammond, La.); ^ - Auburn Tournament (Auburn, Ala.); & - Wooo Pig Classic (Fayetteville, Ark.); Home Games in **Bold**; \* - Ohio Valley Conference Game



### Southeast Missouri or SEMO

is the preferred reference for Southeast Missouri State University athletic teams. Southeastern Missouri State is **NOT** an acceptable reference.



## GAMES 44-46 // WESTERN ILLINOIS vs. SOUTHEAST MISSOURI

Apr. 26-27 // 12 p.m. (DH)/12 p.m., CT // Cape Girardeau, Mo. // Southeast Softball Complex // Series: WIU leads, 2-1-1  
Video: ESPN+ // Live Stats: SEMORedhawks.com // X (formerly Twitter): @SEMOSoftball



**14-29**

4-17 OVC



**21-22**

15-6 OVC

### WESTERN ILLINOIS LEATHERNECKS

Head Coach ..... Alisa Goler  
Career Record (Yrs.) ..... 47-131 (3)  
Record at WIU (Yrs.) ..... 47-131 (3)  
OVC Record ..... 4-17

### SEMO REDHAWKS

Head Coach ..... Mark Redburn  
Career Record (Yrs.) ..... 473-456 (20)  
Record at SEMO (Yrs.) ..... 259-207 (10)  
OVC Record ..... 136-79

### // Redhawks Host Western Illinois

Southeast Missouri (21-22, 15-6) hosts Western Illinois (14-29, 4-17) in its final home series of the season this weekend. SEMO and WIU will play a 12 p.m. doubleheader Friday followed by a 12 p.m., CT matchup Saturday.

Redhawks won that contest by a score of 2-1.

### // Awesome April

The Redhawks are 9-2 overall and 8-1 in Ohio Valley Conference play so far this month. Southeast Missouri is hitting .305 and outscoring its opponents by a +36 margin (64-28) in April.

### // Follow the Redhawks

Live stats will be available online at SEMORedhawks.com. Video can be accessed at ESPN+. Updates will be provided on X @SEMOSoftball.

### // Senior Salute

Seven seniors, including Paige Halliwill, Paytience Holman, Marissa Peek, Abigail Rickermann, Kat Sackett, Zoe Schulte and Kynzie Wrigley will suit up for their last home games at the Southeast Softball Complex this weekend.

### // Schedule Altered

Due to rain in the forecast in Cape Girardeau, this weekend's series between Southeast Missouri and Western Illinois has been moved to Friday and Saturday. Start time will be 12 p.m. for a doubleheader Friday and 12 p.m. for a single game Saturday. The teams were initially supposed to play Saturday and Sunday.

### // Second in the OVC

With its series sweep of Lindenwood (Apr. 20-21), Southeast Missouri took over sole possession of second place in the Ohio Valley Conference standings. The Redhawks are 15-6 and right behind Eastern Illinois (16-5) with six conference games remaining. After this weekend, SEMO concludes regular-season play at UT Martin (May 4-5).

### // Series History

Southeast Missouri faces Western Illinois for the fourth time on the softball diamond. WIU, which is in its first year as an Ohio Valley Conference member, holds a 2-1-1 edge in the all-time series. These teams last played six years ago at the Frost Classic in Chattanooga, Tennessee. The

FOLLOW THE REDHAWKS AT **SEMOREDHAWKS.COM**



# 2024 SOUTHEAST MISSOURI SOFTBALL NOTES

## WESTERN ILLINOIS // APR. 26-27

### // Red-Hot Redhawks

Southeast Missouri is on a six-game Ohio Valley Conference winning streak and has heated up to win eight of its last nine league contests. SEMO's six-game winning streak is currently tied with Tennessee State for the longest in conference action. The Redhawks are 8-4 in OVC games at home.

### // Program Record

The Redhawks broke a program record for most runs in a series when they put up 37 in three games at Morehead State (Apr. 14-15). Southeast Missouri outscored MSU, 37-8, in its series sweep. SEMO scored double-digit runs in all three of those contests. The previous record was 30 runs vs. Tennessee Tech (2023) and at Tennessee State (2002).

### // Series Sweep

Southeast Missouri posted its third series sweep of the season when it beat Lindenwood (Apr. 20-21) by scores of 1-0, 4-0 and 1-0. SEMO also swept Morehead State (Apr. 14-15) with 10-1, 14-4 and 13-3 wins and SIU Edwardsville (Mar. 16-17) with 3-0, 3-2 and 7-4 victories. The Redhawks have a total of 35 series sweeps in conference play under Head Coach Mark Redburn.

### // Series Shutout

The Redhawks shutout Lindenwood three times en route to their series sweep on Apr. 20-21. Southeast Missouri won by scores of 1-0, 4-0 and 1-0. It was the first time under Head Coach Mark Redburn where SEMO won a series with three shutouts.

### // Great Pitching

Southeast Missouri went 25-straight innings without allowing a run until Murray State scored three runs in the bottom of the fifth on Apr. 23. In the last four games alone, SEMO pitchers boasted a 1.30 ERA with two complete game shutouts and only five earned runs allowed in 27 innings.

### // Luna Homers Again

Freshman Gracie Luna hit a three-run home run to get Southeast Missouri a 3-0 lead in the top of the fourth inning against Murray State (Apr. 23). Luna homered for the second time this season and hit her second round-tripper in four games.

### // Big Weekend for Carney

Freshman Maddie Carney won two games in Southeast Missouri's series sweep of Lindenwood. Carney threw the first complete game shutout of her career in game two allowing only two hits and striking out three in seven innings. A day later, she came out of the bullpen to throw four scoreless innings with only three hits allowed in a 1-0 victory. She is second on the team with five wins and is tied for first with 25 appearances this season.

### // Sackett's Home Run the Difference

Kat Sackett's third home run of the season was the difference in Southeast Missouri's 1-0 series opening victory over Lindenwood (Apr. 20). Sackett homered to right field in the top of the second inning for the game's only run.

### 2024 OVC Standings (as of Apr. 24)

School	Conference				Overall			
	W	L	I	Pct.	W	L	I	Pct.
Eastern Illinois	16	5	0	.762	32	13	0	.711
<b>Southeast Missouri</b>	<b>15</b>	<b>6</b>	<b>0</b>	<b>.714</b>	<b>21</b>	<b>22</b>	<b>0</b>	<b>.488</b>
Tennessee State	14	7	0	.667	23	20	0	.535
Lindenwood	12	9	0	.571	24	19	0	.558
Southern Indiana	12	9	0	.571	18	18	0	.500
UT Martin	11	10	0	.524	26	19	0	.578
Tennessee Tech	9	12	0	.429	19	20	0	.487
SIUE	7	14	0	.333	15	29	0	.341
Morehead State	5	16	0	.238	11	23	0	.324
Western Illinois	4	17	0	.190	14	29	0	.326

### 2024 OVC Preseason Poll

Team (First-Place Votes)	Points
Southeast Missouri (13)	157
Eastern Illinois (6)	148
UT Martin (1)	120
Southern Indiana	112
SIUE	111
Tennessee State	80
Lindenwood	65
Morehead State	44
Western Illinois	33
Tennessee Tech	30

(as voted on by the league's head softball coaches and communications directors)

#### 2024 OVC Players to Watch

Rachel Kaufman, P/DP, Eastern Illinois  
Amanda Weyh, P, Lindenwood  
Aubrie Shore, 1B, Southeast Missouri  
Sydney Baalman, P, SIUE  
Josie Newman, P, Southern Indiana  
Anayah Baker-Rowell, 3B/UT, Tennessee State  
Mackenzie Fitzgerald, INF, Tennessee Tech  
Kaci Fuller, OF, UT Martin  
Bella Alvarez, 1B/3B, Western Illinois

### 2024 Honors & Awards

#### OVC Player of the Week

Marissa Peek, C, Mar. 18  
Paige Halliwill, OF, Apr. 15





### // Holman Among Career Pitching Leaders

Paytience Holman ranks among Southeast Missouri's career pitching leaders in saves (t6th, 5), appearances (t7th, 103), games started (8th, 73), shutouts (t10th, 10) and strikeouts (10th, 246). Holman also has 32 wins in her career.

### // Halliwill Named OVC Co-Player of the Week

Outfielder Paige Halliwill was named Ohio Valley Conference Co-Player of the Week on Apr. 15. A native of Mogadore, Ohio, Halliwill hit .571 with four hits in seven at-bats in a doubleheader at Morehead State (Apr. 14). She finished the twin bill by going 4-for-4 with three runs scored, two home runs and three RBI in game two. Halliwill boasted a 1.429 slugging percentage, as well. For the series, she hit .700 (7-of-10) with seven runs, five RBI, two stolen bases, a 1.300 slugging percentage and .750 on-base percentage.

### // Series Wins

The Redhawks earned their fifth series win when they swept Lindenwood (Apr. 20-21). Southeast Missouri also swept Morehead State (Apr. 14-15) and SIU Edwardsville (Mar. 16-17), and took two of three against Tennessee Tech (Apr. 6-7) and Tennessee State (Mar. 23-24) for its other series wins this year.

### // First in OVC Play

Southeast Missouri leads the Ohio Valley Conference in batting average (.316), runs scored (116), slugging percentage (.444), on-base percentage (.385), hits (189), RBI (103), doubles (36), total bases (266), at-bats (599) and walks (66) through 21 league games. SEMO holds a +59 scoring margin (116-57) against OVC foes this season.

### // OVC Strong

The Redhawks' 15 Ohio Valley Conference wins are second-most in the league this year. Southeast

Missouri has won 15 or more OVC games in six-straight seasons.

### // Grand Slam for Luna

Freshman Gracie Luna's first career home run was a grand slam at Morehead State (Apr. 14). Luna hit her grand slam in her only at-bat of that game. She became the sixth Redhawk to hit a home run this season.

### // Halliwill Heats Up

Paige Halliwill hit safely in eight of her last 10 games. Halliwill had multiple hits three times in that stretch. She enters the weekend as Southeast Missouri's top hitter in Ohio Valley Conference play with a .419 batting average. Overall, she leads the Redhawks in runs (28), walks (17) and stolen bases (12).

### // 10th Win for Holman

Paytience Holman picked up her 10th win of the season when she beat Morehead State (Apr. 15). Holman allowed just one run on four hits and struck out two in four innings. She is 11-8 in the circle this year with more than 10 wins in a season for the first time in her career.

### // Redhawks Take Series Against Tennessee Tech

Southeast Missouri swept Tennessee Tech (Apr. 6-7) in a doubleheader to clinch its third series victory in Ohio Valley Conference play. SEMO won by scores of 5-3 and 4-1, winning the series 2-1. Paige Halliwill hit .571 (4-for-7) with four runs scored, two doubles, four walks and two RBI in three games against the Golden Eagles.

### // Complete Game Victory for Livesay

Freshman Tegan Livesay pitched a complete game victory against Tennessee Tech (Apr. 6). Livesay went the distance allowing just one run on five hits and struck out five in game two of the series. It was her second complete game of the season.

### // Gaining Momentum

Southeast Missouri has won 12 of its last 17 games and is 9-2 in April alone. SEMO posted series wins against Tennessee State (Mar. 23-24) and Tennessee Tech (Apr. 6-7), swept Lindenwood (Apr. 20-21), beat Southern Indiana (Apr. 29) once, upset #11 Missouri (Apr. 3) and swept Morehead State (Apr. 14-15) for its victories in that stretch.

### // Affolter Playing Well

Brittany Affolter has hit safely in 12 of her last 15 games. Affolter posted multiple hits three times during that span. She increased her batting average by 82 points from .217 to .392 since Mar. 24. Affolter also had the biggest hit of her career when she delivered a two-out RBI-double to score the only run of the game in Southeast Missouri's 1-0 victory over #11 Missouri (Apr. 3).

### // Rickermann On a Roll

Abigail Rickermann hit safely in 17 of her last 21 games and had multiple hits seven times during that span. She tied a career-high three hits vs. Tennessee Tech (Apr. 6). Rickermann leads the Redhawks with a .375 batting average and .433 on-base percentage.

### // Close to 100 Hits

Abigail Rickermann is just one hit away from reaching 100 in her career. Rickermann has 99 hits in 161 games and 87 starts in her career.

### // Huge Upset in Columbia

Southeast Missouri claimed the biggest win of its NCAA Division I era when it knocked off #11 Missouri (Apr. 3). The win was SEMO's second over a ranked opponent since it moved to the Division I ranks in 1992. This year's #11 Missouri team was the highest ranked opponent the Redhawks ever beat. It was also the first time since 1998 where SEMO upended the Tigers in Columbia.



## 2024 SOUTHEAST MISSOURI SOFTBALL NOTES

### WESTERN ILLINOIS // APR. 26-27

#### // Second Win Over Ranked Team for Redburn

The Redhawks have two wins over ranked opponents in their NCAA Division I tenure and both belong to Head Coach Mark Redburn. Southeast Missouri defeated then-#12 Arkansas, 6-1, on Feb. 22, 2019 in Fayetteville, Arkansas and took down #11 Missouri in Columbia on Apr. 3, 2024.

#### // Holman Pitches Lights Out

Paytience Holman was outstanding in the circle during her massive win over #11 Missouri (Apr. 3). Holman went the distance for her team-high fourth complete game and first shutout of the season. She allowed just three hits (all singles), struck out three and walked one in seven innings. Holman recorded 16 fly ball outs, as well. Additionally, after pitching out of a one-out bases loaded jam in the bottom of the third inning, Holman retired the last 14 hitters she faced. Missouri did not have a baserunner in the final four innings of the game.

#### // Midweek Action

Southeast Missouri dropped its final midweek game of the season, 6-3, at Murray State (Apr. 23). SEMO went 2-2 in midweek games after splitting a doubleheader with Bradley (Mar. 12), upsetting #11 Missouri (Apr. 3) and falling to Murray State. The Redhawks have 36 midweek wins with Mark Redburn as their head coach.

#### // SEC Wins for Redburn

Head Coach Mark Redburn picked up his fourth win over a Southeastern Conference opponent when his Redhawks upset #11 Missouri (Apr. 3). It was the fourth time in seven years where Southeast Missouri beat a SEC opponent. The victory was also the 15th all-time against the SEC in SEMO softball history.

#### // Redburn Gets 250th Win

With its 6-0 victory over Southern Indiana (Mar. 29), Southeast Missouri gave Mark Redburn his 250th win as the Redhawks head coach. Redburn is 259-207 in 10 years at the helm. His 259 wins are second-most all-time in program history.

#### // Nice Series for Affolter

Outfielder Brittany Affolter hit .600 (6-of-10) to lead Southeast Missouri in its series at Southern Indiana (Mar. 29-30). Affolter got a hit in all three games and posted two hits in game one and a career-best three in game three.

#### // Carney Tosses Gem

In just her third career start, freshman Maddie Carney allowed just four hits in six scoreless innings to beat Southern Indiana, 6-0, on Mar. 29. Carney had three strikeouts in her second-longest outing of the season. She is 5-5 in the circle. Carney is tied for first on the team in appearances (25), second in innings pitched (69.1) and third in strikeouts (27).

#### // One-Run Games

The Redhawks have been involved in 12 one-run games this season. Southeast Missouri is 6-6 in those contests. SEMO's one-run wins came vs. Stony Brook (5-4, Feb. 11), at SIU Edwardsville (3-2, Mar. 16), vs. Tennessee State (4-3, Mar. 24), at #11 Missouri (1-0, Apr. 3) and vs. Lindenwood (1-0, Apr. 20; 1-0, Apr. 21).

#### // Double-Digit Hits

Southeast Missouri pounded out 10 or more hits in four of its last nine games. SEMO finished with double-digit hits a total of nine times this season. The Redhawks had a season-high 14 hits vs. Tennessee State (Mar. 23) and at Morehead State (Apr. 14).

#### // Peek Power

Catcher Marissa Peek leads the Ohio Valley Conference in slugging percentage and home runs in conference games. Peek has a .851 slugging percentage

and all six of her home runs against league opponents.

#### // Over .400

Two Redhawks, including Paige Halliwill and Aubrie Shore are hitting over .400 in Ohio Valley Conference play. Halliwill is hitting .419, while Shore is hitting .410. Halliwill ranks second and Shore is sixth among league leaders in batting average in conference games.

#### // Halliwill Clears 100 Career Hits

Paige Halliwill went over 100 career hits with her two-hit performance against Tennessee State (Mar. 23). Halliwill has 122 hits in 139 career starts. She became the second player to go over 100 career hits this season joining Aubrie Shore (123).

#### // Season-High in Runs

Southeast Missouri established a new season-high when it scored 14 runs in a 14-4 win over Morehead State (Apr. 14). SEMO scored double-digit runs in four of its last nine games.

#### // Series High in Hits

The Redhawks tallied a series high 34 hits in their sweep at Morehead State (Apr. 14-15). Southeast Missouri had eight hits in game one, 14 in game two and 12 in the series finale. SEMO also had over 30 hits (33) in its series win over Tennessee State (Mar. 23-24).

#### // First Home Run for Wrigley

Kynzie Wrigley hit her first home run of the season with a solo shot to straightaway center in the bottom of the second inning during Southeast Missouri's 4-3 win over Tennessee State (Mar. 24). Wrigley became the fifth different Redhawk to hit a home run in 2024. It was the ninth home run of her career.





### // Peek Named OVC Player of the Week

Southeast Missouri senior catcher Marissa Peek won the first Ohio Valley Conference Player of the Week honor of her career on Mar. 18. A native of Wentzville, Missouri, Peek hit safely in three of four games leading SEMO to a 4-1 record the week before. She hit .556 (5-for-9) with three runs scored, three doubles, two home runs and five RBI. Peek also boasted a .556 on-base percentage and 1.556 slugging percentage. Peek hit a career-high two home runs to lead the Redhawks to their game one victory over SIU Edwardsville. She later had a pair of doubles to close out SEMO's first series sweep of the season. Tennessee State's Caitlyn Manus was tabbed OVC Pitcher of the Week to round out the honorees.

### // Carney Gets Career Firsts

Freshman Maddie Carney earned her first career win and save in the Redhawks series sweep of SIU Edwardsville (Mar. 16-17). Carney threw a total of 5.1 scoreless innings to go 1-0 with two saves against the Cougars. She worked four shutout innings with a strikeout to pick up her first career win in game one of a doubleheader on Mar. 16. Carney then recorded the final two outs in each of the Redhawks last two games of the series to get the save.

### // Dennis Delivers

Second baseman Sydney Dennis matched a career-high three hits when she went 3-for-3 against Tennessee State (Mar. 23). Dennis had three singles and scored two runs in that game.

### // .300 Hitters

Four Redhawks are hitting over .300 through 43 games this season. Abigail Rickermann leads the way hitting .375. Tori Bradley (.349), Aubrie Shore (.331) and Paige Halliwill (.325) are the others.

### // OVC Road Success

The Redhawks are 15-3 in their last 18 Ohio Valley Conference road games going back to the 2023 season. Southeast Missouri posted series sweeps at Tennessee Tech, Lindenwood, SIU Edwardsville and Morehead State for 12 of those victories.

### // Holman Among OVC Leaders

Paytience Holman ranks among the top 10 Ohio Valley Conference pitchers in earned run average (8th, 2.57), innings (7th, 109.0), strikeouts (10th, 62), strikeouts looking (18th, 15), wins (5th, 11) and games started (12nd, 20). Holman is 7-3 with 12 starts in OVC play.

### // Marathon Game

Southeast Missouri's Ohio Valley Conference opener against Eastern Illinois went 12 innings and lasted three hours and 25 minutes before the Panthers won, 7-4. In terms of innings played, it matched the longest game in SEMO's NCAA Division I era.

### // Shore Reaches New Season-Highs

Aubrie Shore started Southeast Missouri's series against Eastern Illinois by going 3-for-6 with three runs scored, two doubles and one RBI on Mar. 9. Shore reached season-highs in hits, runs and doubles during that contest. It was the third two-double game of her career, as well.

### // 100 OVC Wins in Seven Years

Southeast Missouri's 9-4 win over Eastern Illinois (Mar. 9) marked the Redhawks 100th Ohio Valley Conference victory since the 2017 season. SEMO averaged 14 OVC wins per season in that span.

### // First Career Win for Livesay

Freshman Tegan Livesay picked up her first career win in the circle when she beat Eastern Illinois (Mar. 9). Livesay worked five innings, allowing four runs on four hits. She also struck out one in

her second-longest start of the season to date.

### // 136 OVC Wins

Mark Redburn currently has 136 Ohio Valley Conference wins, most among the league's 10 active head coaches. Redburn is 136-79 all-time in OVC play with three conference regular-season titles (2019, 2021, 2023), one OVC Tournament crown (2019) and one NCAA Tournament appearance (2019). He led the Redhawks to five-straight winning seasons in league action. Redburn's 2021 (23-6) and 2023 clubs (20-2) won the most conference games in a season.

### // 30-Game Home Winning Streak Ends

Southeast Missouri's program record 30-game home winning streak ended with a 12-inning 7-4 loss to Eastern Illinois (Mar. 9). SEMO is 39-5 in its last 44 games at the Southeast Softball Complex. The Redhawks went undefeated at home in 2022 (14-0) and 2023 (13-0).

### // Battle Tested

A tough 18-game stretch over four different tournaments prepared the Redhawks for their Ohio Valley Conference season. Southeast Missouri played two ranked opponents (#24 Auburn, #16 Arkansas), five Power Four teams (Ohio State, Maryland, Syracuse, Auburn, Arkansas), the Summit League preseason favorite (South Dakota State) and Missouri Valley Conference preseason favorite (Northern Iowa) in 2024. SEMO has played the toughest schedule in the OVC and presently the 67th toughest schedule among the nation's 307 NCAA Division I softball programs.



## 2024 SOUTHEAST MISSOURI SOFTBALL NOTES

### WESTERN ILLINOIS // APR. 26-27

#### // Tournament Play

The Redhawks wrapped up tournament play at the Arkansas Wooo Pig Classic (Mar. 1-3). Southeast Missouri also competed at the Florida International Felsberg Invitational (Feb. 9-11), Southeastern Louisiana Lion Classic (Feb. 16-18) and Auburn Plainsman Invitational (Feb. 23-25).

#### // Let's Turn Two

Southeast Missouri turned an Ohio Valley Conference leading 16 double plays through 43 games this season. SEMO's defense had a season-high two double plays at Arkansas (Mar. 1).

#### // Go Ahead I Dare You

Catcher Marissa Peek has thrown out seven runners on the basepaths this season. Peek is tied for second in the Ohio Valley Conference in caught stealing by.

#### // Among OVC Home Run Leaders

Marissa Peek ranks among the Ohio Valley Conference's home run leaders. Peek is tied for fourth with six home runs. As a team, Southeast Missouri is tied for second in the OVC with 19 round-trippers.

#### // Shore Third in OVC in Doubles

Aubrie Shore is third in the Ohio Valley Conference in doubles. Shore has 15 doubles through 43 starts this season. She is seventh among Southeast Missouri's all-time career leaders with 38 doubles.

#### // Shore Goes Over 100 Hits

With her six hits in Southeast Missouri's series against Eastern Illinois (Mar. 9-10), Aubrie Shore went over 100 hits in her career. Shore currently has 123 hits in 139 games and 136 starts. She is one of three players on this year's roster with over 100 hits joining Kynzie Wrigley (131) and Paige Halliwill (122).

#### // Nice Tournament for Wrigley

Kynzie Wrigley singled in three of five starts at the Wooo Pig Classic last weekend. Wrigley had a base hit in three-straight games at Arkansas (Mar. 1), vs. South Dakota State (Mar. 2) and vs. Florida Atlantic (Mar. 2).

#### // Redhawks Beat Maryland for Power Four Win

The Redhawks upended Big Ten Conference member Maryland, 9-3, in the final day of the Lion Classic on Feb. 18. Southeast Missouri took its first lead of the game in the bottom of the second inning and never turned back. SEMO blew things open with four runs two innings later. Three-straight hits by Tatum Gerwitz, Sophie Schupp and Sydney Dennis loaded the bases with one out. Brittany Affolter and Paige Halliwill each walked in a run and Aubrie Shore scored Dennis on a sacrifice fly. Halliwill stole second and a throwing error allowed Brittany Affolter to score giving the Redhawks a 7-1 advantage.

#### // Power Four Schools

Southeast Missouri faced six Power Four teams this season. SEMO went 2-7 against such teams with wins over Big Ten Conference foe Maryland (Feb. 18) and #11 Missouri (Apr. 3).

#### // Success Against Power Four

Southeast Missouri has had its share of success against Power Four teams under Head Coach Mark Redburn. In fact, SEMO has 10 Power Four wins with Redburn at the helm. The Redhawks beat Maryland and Missouri (2024), Ole Miss (2023), Iowa (2022), Texas Tech (2021), Arkansas (2019), Kansas (2019, two wins), Missouri (2018) and Georgia Tech (2017) during Redburn's career. SEMO has picked up a Power Four win in four-straight seasons.

#### // Every Game Starter

Aubrie Shore is the only player who has started every game for Southeast Missouri this season. Shore made all 43 of her starts at first base.

#### // First Career Hits for the Freshmen

Freshmen Brooklyn Saysoff, Gracie Luna and Sophie Schupp each recorded their first career hits at the Lion Classic last weekend. All three had a hit in Southeast Missouri's win over Maryland (Feb. 18). Saysoff and Luna each had one hit and Schupp led the Redhawks with two.

#### // Season-Openers

Southeast Missouri won its 2024 season-opener with a 7-5 victory over Stony Brook (Feb. 9). SEMO improved to 17-16 in season-opening games during its NCAA Division I era. This year marks SEMO's 33rd as an NCAA Division I program. The Redhawks are 5-5 in season-openers under Head Coach Mark Redburn.

#### // Freshman Experience

All 10 of the Redhawks freshmen have played this season. Brooklyn Saysoff, Gracie Luna, Tegan Livesay and Maddie Carney saw the most action of the group thus far. Saysoff started 24 games between second base (4), third base (9) and shortstop (11), while Luna has made seven of her 11 starts as designated player. Carney is tied for first on the team with 25 appearances, including 21 in relief, while Livesay started 13 of her 20 appearances.

#### // Extra Base Hits

Southeast Missouri registered 82 extra base hits in its first 43 games this season. SEMO has 62 doubles, one triple and 19 home runs thus far.

#### // Freshmen Pitching

True freshmen pitchers Willow Van Haren, Maddie Carney and Tegan Livesay combined for four shutout no-hit innings to nail down the Redhawks 5-4 victory over Stony Brook (Feb. 11).



Van Haren threw one scoreless inning before giving way to Carney in the fifth. She pitched perfect innings in the fifth and sixth. Livesay took over in the seventh and tossed a 1-2-3 inning to earn her first career save. Van Haren claimed her first career victory when she beat Florida International (Feb. 9).

### // 139 and Counting

Paige Halliwill has started 139 games during her Southeast Missouri career. Halliwill had a streak of 119 consecutive starts end in game two of the Redhawks doubleheader vs. Bradley (Mar. 12). It was the only game Halliwill did not play at SEMO.

### // About Western Illinois

First-year Ohio Valley Conference member Western Illinois is last in the conference with an overall record of 14-29 and 4-17 in league play. WIU comes to Cape Girardeau on an eight-game losing streak and does not have a series win in OVC play. Rylee Boone is the Leathernecks' top hitter with a .333 batting average. Emily Price leads WIU in the circle with seven wins and 112 strikeouts in 124.2 innings. The Leathernecks are 1-8 in April with their lone win during that stretch coming at SIU Edwardsville (Apr. 5).

### // On Deck

Southeast Missouri wraps up its regular-season schedule at UT Martin on May 4-5.

### // OVC Preseason Favorite

Reigning Ohio Valley Conference regular-season champion Southeast Missouri was tabbed the league's preseason favorite ahead of the 2024 season. SEMO collected 13 of the possible 20 first-place votes and tallied 157 points in the overall voting by the conference's head softball coaches and communications directors. Eastern Illinois, which won the OVC Tournament title and advanced to the NCAA Tournament in 2023, was picked second with 148 points and six first-place nods. UT Martin earned the remaining first-place

vote and is third with 120 points, while Southern Indiana (112 pts.) and SIU Edwardsville (111 pts.) round out the top half. Tennessee State (80 pts.), Lindenwood (65 pts.), Morehead State (44 pts.), first-year OVC member Western Illinois (33 pts.) and Tennessee Tech (30 pts.) complete the predicted order of finish.

### // Senior Driven

The Redhawks have seven seniors on their 2024 roster. Paige Halliwill, Zoe Schulte, Abigail Rickermann, Paytience Holman, Kat Sackett, Kynzie Wrigley and Marissa Peek are Southeast Missouri's veterans. They have combined for 105 wins during their careers. Holman, Rickermann and Wrigley have been a part of two Ohio Valley Conference Championship teams (2021, 2023).

### // Pitching Depth

Southeast Missouri has five pitchers on this year's team giving Mark Redburn the most depth he's had inside the circle as the Redhawks head coach. First-Team All-Ohio Valley Conference honoree Delaney Kell returns as well as fifth-year senior Paytience Holman. Kell went 14-3 in 26 games and 16 starts a year ago. She went undefeated at 9-0 with a 1.94 ERA in league play alone. Kell led the Redhawks with 73 strikeouts in 109.2 innings. Holman recorded six wins in 23 appearances and 14 starts. She struck out 46 in 96.2 innings and tied for first on the team with three saves last season. Freshmen Willow Van Haren (LHP), Tegan Livesay (RHP) and Maddie Carney (RHP) will make their college debuts in 2024.

### // Top Four Hitters Back

The Redhawks top four hitters in Zoe Schulte, Paige Halliwill, Aubrie Shore and Abigail Rickermann are back for a Southeast Missouri offense which led the Ohio Valley Conference with a .308 batting average in 2023. Schulte led the Redhawks with a .371 clip, while Halliwill hit .352, Shore hit .347 and Rickermann hit .338. Halliwill topped SEMO in runs (31) and

hits (44), while Shore led the team in home runs (7) and RBI (33). As a team, the Redhawks also led the OVC in on-base percentage (.388) and triples (13).

### // Returning All-OVC Performers

Five All-Ohio Valley Conference performers from a year ago return to this year's team. First baseman Aubrie Shore is the league's reigning Player of the Year. Shore also earned first-team honors and was named NFCA Third-Team All-Mideast Region in 2023. Catcher Kat Sackett, pitcher Delaney Kell and outfielder Paige Halliwill joined Shore as first-team selections. Second baseman Sydney Dennis claimed Second-Team All-OVC accolades and outfielder Zoe Schulte landed a spot on the 12-member OVC All-Newcomer Team.

### // Redburn in 10th Year

Mark Redburn is in his 10th year as Southeast Missouri's head coach. Redburn has orchestrated an outstanding turnaround that has seen the Redhawks win 30 or more games in four of the last six seasons, claim three Ohio Valley Conference regular-season titles (2019, 2021, 2023), win one OVC Tournament crown (2019) and earn one NCAA Tournament berth (2019). He is 259-207 overall and 136-79 in the OVC at the SEMO helm.

### // Six-Straight Winning Seasons

The Redhawks had winning seasons in six-straight years. Southeast Missouri posted 30 or more wins in four of those seasons (2018, 2019, 2021, 2022). SEMO went 29-14 overall and 20-2 in the Ohio Valley Conference in 2023. The 20 OVC wins were the Redhawks second-most in a season in program history.



# 2024 SOUTHEAST MISSOURI SOFTBALL NOTES

## NUMERICAL & ALPHABETICAL ROSTER

### Numerical

No.	Name	Pos.	Ht.	B-T	Cl.	Hometown	High School/College
1	Sophie Schupp	INF	5-5	R-R	Fr.	Columbia, Mo.	Rock Bridge H.S.
2	Paige Halliwill	OF	5-7	L-L	Sr.	Mogadore, Ohio	Mogadore H.S./Marshall
3	Willow Van Haren	P	5-7	L-L	Fr.	Holdenville, Okla.	Moss H.S./Northeastern St.
4	Kinley Wilkins	OF	5-7	L-L	Fr.	Lawson, Mo.	Lawson H.S.
5	Brooklyn Saysoff	INF	5-4	R-R	Fr.	Blue Springs, Mo.	Blue Springs H.S.
6	Tegan Livesay	P	5-11	R-R	Fr.	Newton, Kan.	Newton H.S./Fairmont H.S.
7	Gracie Luna	C	5-6	R-R	Fr.	Peoria, Ill.	East Peoria H.S.
8	Sydney Melton	C	5-8	R-R	Jr.	Eddyville, Ky.	Lyon County H.S.
9	Maddie Carney	P	5-9	R-R	Fr.	St. Louis, Mo.	Marquette H.S.
10	Tatum Gerwitz	OF	5-9	L-R	Jr.	O'Fallon, Mo.	Fort Zumwalt West H.S.
11	Tori Bradley	C	5-7	L-R	Jr.	Blue Springs, Mo.	Blue Springs South H.S.
12	Zoe Schulte	OF	5-6	L-R	Sr.	Wentzville, Mo.	Timberland H.S./Iowa
14	Brittany Affolter	OF	5-6	L-R	So.	Odessa, Mo.	Odessa H.S.
15	Delaney Kell	P	5-6	R-R	Jr.	Salem, Ill.	Salem H.S.
16	Abigail Rickermann	INF	5-6	L-R	Sr.	Festus, Mo.	Festus H.S.
17	Taryn Coon	INF	5-4	R-R	So.	Dodge City, Kan.	Dodge City H.S.
18	Sydney Dennis	INF	5-5	L-R	Jr.	Eureka, Mo.	Eureka H.S.
19	Paytience Holman	P	5-8	R-R	Sr.	Mexico, Mo.	Mexico H.S.
20	Kat Sackett	C	6-0	L-L	Sr.	Erie, Colo.	Erie H.S./Marshall
21	Abby Robbins	INF	5-6	R-R	R-Fr.	Farmington, Mo.	Farmington H.S.
22	Mary Tutwiler	OF	5-6	R-R	Fr.	Oakville, Mo.	Oakville H.S.
24	Kynzie Wrigley	INF	5-4	L-R	Sr.	Mt. Zion, Ill.	Mt. Zion H.S.
26	Aubrie Shore	INF	5-6	R-R	Jr.	Mahomet, Ill.	Mahomet-Seymour H.S.
27	Hailey Burnett	INF	6-0	R-R	Fr.	Cape Girardeau, Mo.	Notre Dame H.S.
28	Marissa Peek	C	5-8	R-R	Sr.	Wentzville, Mo.	Wentzville-Holt H.S./Iowa

### Alphabetical

No.	Name	Pos.	Ht.	B-T	Cl.	Hometown	High School/College
14	Brittany Affolter	OF	5-6	L-R	So.	Odessa, Mo.	Odessa H.S.
11	Tori Bradley	C	5-7	L-R	Jr.	Blue Springs, Mo.	Blue Springs South H.S.
27	Hailey Burnett	INF	6-0	R-R	Fr.	Cape Girardeau, Mo.	Notre Dame H.S.
9	Maddie Carney	P	5-9	R-R	Fr.	St. Louis, Mo.	Marquette H.S.
17	Taryn Coon	INF	5-4	R-R	So.	Dodge City, Kan.	Dodge City H.S.
18	Sydney Dennis	INF	5-5	L-R	Jr.	Eureka, Mo.	Eureka H.S.
10	Tatum Gerwitz	OF	5-9	L-R	Jr.	O'Fallon, Mo.	Fort Zumwalt West H.S.
2	Paige Halliwill	OF	5-7	L-L	Sr.	Mogadore, Ohio	Mogadore H.S./Marshall
19	Paytience Holman	P	5-8	R-R	Sr.	Mexico, Mo.	Mexico H.S.
15	Delaney Kell	P	5-6	R-R	Jr.	Salem, Ill.	Salem H.S.
6	Tegan Livesay	P	5-11	R-R	Fr.	Newton, Kan.	Newton H.S./Fairmont H.S.
7	Gracie Luna	C	5-6	R-R	Fr.	Peoria, Ill.	East Peoria H.S.
8	Sydney Melton	C	5-8	R-R	Jr.	Eddyville, Ky.	Lyon County H.S.
28	Marissa Peek	C	5-8	R-R	Sr.	Wentzville, Mo.	Wentzville-Holt H.S./Iowa
16	Abigail Rickermann	INF	5-6	L-R	Sr.	Festus, Mo.	Festus H.S.
21	Abby Robbins	INF	5-6	R-R	R-Fr.	Farmington, Mo.	Farmington H.S.
20	Kat Sackett	C	6-0	L-L	Sr.	Erie, Colo.	Erie H.S./Marshall
5	Brooklyn Saysoff	INF	5-4	R-R	Fr.	Blue Springs, Mo.	Blue Springs H.S.
1	Sophie Schupp	INF	5-5	R-R	Fr.	Columbia, Mo.	Rock Bridge H.S.
12	Zoe Schulte	OF	5-6	L-R	Sr.	Wentzville, Mo.	Timberland H.S./Iowa
26	Aubrie Shore	INF	5-6	R-R	Jr.	Mahomet, Ill.	Mahomet-Seymour H.S.
22	Mary Tutwiler	OF	5-6	R-R	Fr.	Oakville, Mo.	Oakville H.S.
3	Willow Van Haren	P	5-7	L-L	Fr.	Holdenville, Okla.	Moss H.S./Northeastern St.
4	Kinley Wilkins	OF	5-7	L-L	Fr.	Lawson, Mo.	Lawson H.S.
24	Kynzie Wrigley	INF	5-4	L-R	Sr.	Mt. Zion, Ill.	Mt. Zion H.S.

**Head Coach:** Mark Redburn (10th Year/Missouri-St. Louis, 1993)

**Associate Head Coach:** Kristen Jones (Ninth Year/Augusta State, 2012)

**Assistant Coach:** Ashley Ellis (Second Year/Southeast Missouri, 2021)

### Roster Breakdown

Total Squad Members	25
Seniors	7
Juniors	6
Sophomores	2
Freshmen	10

### Pronunciation Guide

Tatum Gerwitz	GURR-witz
Paige Halliwill	HAL-ih-will
Tegan Livesay	TEE-gun live (like live on TV) - say
Sophie Schupp	shoop
Mary Tutwiler	tut-WHY-lurr

### Geographical Breakdown

Colorado	1
Kat Sackett	Erie
Illinois	4
Delaney Kell	Salem
Gracie Luna	Peoria
Aubrie Shore	Mahomet
Kynzie Wrigley	Mt. Zion
Kansas	2
Taryn Coon	Dodge City
Tegan Livesay	Newton
Kentucky	1
Sydney Melton	Eddyville
Missouri	15
Brittany Affolter	Odessa
Tori Bradley	Blue Springs
Hailey Burnett	Cape Girardeau
Maddie Carney	St. Louis
Sydney Dennis	Eureka
Tatum Gerwitz	O'Fallon
Paytience Holman	Mexico
Marissa Peek	Wentzville
Abigail Rickermann	Festus
Abby Robbins	Farmington
Brooklyn Saysoff	Blue Springs
Sophie Schupp	Columbia
Zoe Schulte	Wentzville
Mary Tutwiler	Oakville
Kinley Wilkins	Lawson
Ohio	1
Paige Halliwill	Mogadore
Oklahoma	1
Willow Van Haren	Holdenville







**1**  
**Sophie Schupp**  
INF / 5-5 / R-R / Fr.  
Columbia, Mo.



**2**  
**Paige Halliwill**  
OF / 5-7 / Sr. / L/L  
Mogadore, Ohio



**3**  
**Willow Van Haren**  
P / 5-7 / L-L / Fr.  
Holdenville, Okla.



**4**  
**Kinley Wilkins**  
OF / 5-7 / L-L / Fr.  
Lawson, Mo.



**5**  
**Brooklyn Saysoff**  
INF / 5-4 / R-R / Fr.  
Blue Springs, Mo.



**6**  
**Tegan Livesay**  
P / 5-11 / R-R / Fr.  
Newton, Kan.



**7**  
**Gracie Luna**  
C / 5-6 / R-R / Fr.  
Peoria, Ill.



**8**  
**Sydney Melton**  
C / 5-8 / Jr. / R/R  
Eddyville, Ky.



**9**  
**Maddie Carney**  
P / 5-9 / R-R / Fr.  
St. Louis, Mo.



**10**  
**Tatum Gerwitz**  
OF / 5-9 / Jr. / L-R  
O'Fallon, Mo.



**11**  
**Tori Bradley**  
C / 5-7 / Jr. / L-R  
Blue Springs, Mo.



**12**  
**Zoe Schulte**  
OF / 5-6 / Sr. / L-R  
Wentzville, Mo.



**14**  
**Brittany Affolter**  
OF / 5-6 / So. / L-R  
Odessa, Mo.



**15**  
**Delaney Kell**  
P / 5-6 / Jr. / R-R  
Salem, Ill.



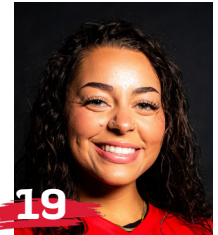
**16**  
**Abigail Rickermann**  
INF / 5-6 / Sr. / L-R  
Festus, Mo.



**17**  
**Taryn Coon**  
INF / 5-4 / R-Fr. / R-R  
Dodge City, Kan.



**18**  
**Sydney Dennis**  
INF / 5-5 / Jr. / L-R  
Eureka, Mo.



**19**  
**Paytience Holman**  
P / 5-8 / Sr. / R-R  
Mexico, Mo.



**20**  
**Kat Sackett**  
C / 6-0 / Sr. / L-L  
Erie, Colo.



**21**  
**Abby Robbins**  
INF / 5-6 / R-Fr. / R/R  
Farmington, Mo.



**22**  
**Mary Tutwiler**  
OF / 5-6 / Fr. / R-R  
Oakville, Mo.



**24**  
**Kynzie Wrigley**  
INF / 5-4 / Sr. / L-R  
Mt. Zion, Ill.



**26**  
**Aubrie Shore**  
INF / 5-6 / Jr. / R-R  
Mahomet, Ill.



**27**  
**Hailey Burnett**  
INF / 6-0 / Fr. / R-R  
Cape Girardeau, Mo.



**28**  
**Marissa Peek**  
C / 5-9 / Sr. / R-R  
Wentzville, Mo.



**Mark Redburn**  
Head Coach  
10th Year



**Kristen Jones**  
Associate Head Coach  
Ninth Year



**Ashley Ellis**  
Assistant Coach  
Second Year



## 2024 SOUTHEAST MISSOURI SOFTBALL NOTES

### HEAD COACH MARK REDBURN



## MARK REDBURN

// Head Coach // 10th Year // Missouri-St. Louis, 1993

**M**ark Redburn enters his 10th year as Southeast Missouri's head softball coach in 2024.

Redburn has orchestrated an outstanding turnaround that has seen the Redhawks win 30 or more games in four of the last six seasons, claim three Ohio Valley Conference regular-

season titles (2019, 2021, 2023), win one OVC Tournament crown (2019) and earn one NCAA Tournament berth (2019).

In the last six seasons alone, SEMO has won a total of 180 games for an average of 30 per year during that span. The Redhawks notched a program record 46 wins in 2019 and

won 30 games in back-to-back seasons (2021, 2022) for the second time in Redburn's tenure. In terms of winning percentage, softball has been the winningest program in SEMO Athletics with a .581 clip in the last eight years. Over that time, the Redhawks accumulated 219 victories and boasted a .641 winning percentage with 109 wins in OVC play.

During the first nine years with Redburn at the helm, SEMO has produced one National Fastpitch Coaches Association All-American, eight NFCA All-Region selections, 27 All-OVC picks, two OVC Players of the Year, one OVC Pitcher of the Year, one OVC Tournament Most Valuable Player and two College Sports Communicators (CSC) Academic All-Americans.

Academically, SEMO has been just as impressive with Redburn in charge. Most recently, the softball team achieved a 3.61 cumulative grade point average during the 2022-23 academic year.

In 2023, Redburn led SEMO to its eighth OVC regular-season championship in program history and third since the 2019 campaign. Along the way, Redburn was named OVC Coach of the Year for the third time in that span.

The Redhawks went undefeated at home (13-0) for the second-straight season posting unbeaten records at home in back-to-back years for the first time ever. SEMO is on a 30-game winning streak at

the Southeast Softball Complex dating back to the end of the 2021 season.

SEMO concluded the year with a 29-14 overall record and 20-2 mark in OVC play. The Redhawks claimed series sweeps against six of their eight league opponents en route to their second-best conference season in program history.

The Redhawks ripped through the conference portion of their schedule outscoring OVC foes by a staggering +107 margin (149-42). SEMO led the conference in batting average (.358), on-base percentage (.441), slugging percentage (.547), runs (149), hits (209), triples (12), doubles (41), RBI (138) and total bases in OVC games only. Additionally, the Redhawks had a 16-game conference winning streak from Mar. 18-Apr. 30.

Overall, SEMO topped the OVC with a .311 batting average, 2.70 ERA, 13 triples and a .230 opposing batting average. Redhawk pitchers also had the fewest hits (244), runs (128), earned runs (107) and walks (82) allowed in the league.

First baseman Aubrie Shore shared the 2023 OVC Player of the Year honor with Southern Indiana's Allie Goodin. Shore, also a First-Team All-OVC pick, became the sixth SEMO player to win the coveted award. Paige Halliwill, Delaney Kell and Kat Sackett joined Shore as first-team picks. Alyson Tucker and Sydney Dennis earned Second-Team All-OVC accolades, while







Zoe Schulte landed a spot on the league's All-Newcomer Team. Sackett later made the OVC All-Tournament team, as well.

SEMO's 2022 club became the first in program history to go undefeated at home with a 14-0 record. Overall, the Redhawks compiled a 30-24 mark and placed fourth in the OVC. As the #4 seed in the league's postseason tournament, SEMO advanced to the semifinals where it dropped a close one-run game to #2 seed Belmont. The Redhawks won 17-consecutive games at home dating back to the 2021 season.

The 2022 campaign marked SEMO's fifth OVC Tournament appearance in eight years with Redburn as its coach.

As a team, SEMO ranked among the top three in the OVC in doubles (t3rd, 67), stolen bases (2nd, 58), steal attempts (73), opposing batting average (3rd, .244), batters struck out (2nd, 323), batters struck out looking (1st, 84), saves (t3rd, 5) and fielding percentage (2nd, .967).

The 2022 team ranked among SEMO's all-time single-season leaders in slugging percentage (8th, .413), runs (t5th, 270), doubles (t10th, 67), home runs (t7th, 38), RBI (5th, 238), total bases (8th, 581), sacrifice flies (10th, 12), stolen bases (t7th, 58), stolen base attempts (t6th, 73), opposing batting average (3rd, .244), strikeouts per seven innings (t1st, 6.51), saves (t8th, 5), innings pitched (7th, 374.2),

strikeouts (2nd, 323), strikeouts looking (3rd, 84) and fielding percentage (3rd, .967). SEMO came from behind to upend Big Ten Conference member Iowa, 3-2, on Mar. 15 marking the first time the Redhawks beat a Big Ten opponent in 21 years.

In 2021, Redburn carried the Redhawks to another 30-win campaign. SEMO finished 30-17 overall and registered a program record 23 OVC wins en route to its second-straight regular-season conference title. The Redhawks headed into the OVC Tournament as the #1 seed and ended the year with a pair of one-run losses to Eastern Kentucky.

SEMO led the league in on-base percentage (.369), opposing batting average (.213), strikeouts looking (69), saves (8), fewest hits allowed (247), fewest runs allowed (139) and fewest earned runs allowed (121).

All of the Redhawks success during the 2021 campaign culminated with Redburn claiming his second-straight OVC Coach of the Year honor. Additionally, Rachel Rook was tabbed OVC Pitcher of the Year becoming only the second player in program history to win the coveted award.

Offensively, SEMO outscored its opponents by a +100 (165-65) margin in conference games. The Redhawks' 165 runs were the most scored by any OVC team in conference play.

The year before in 2020, SEMO was off to a great start



and had all the makings for a big season, but a global COVID-19 pandemic abruptly shut things down only 17 games in.

The Redhawks won nine in a row and posted a 9-1 record in their first 10 games of the season. SEMO finished with an overall record of 12-5 and did not get a chance to play any OVC games when play was cancelled.

Although the 2020 season lasted just 23 days (Feb. 14-Mar. 8), the Redhawks accomplished a lot in that short time.

SEMO led the OVC in slugging percentage (.528), on-base percentage (.411), triples (14), stolen bases (41), hits allowed (84) and earned runs allowed

(40). The Redhawks also rated second in the league in batting average (.310), home runs (19), opposing batting average (.204), runs allowed (51), stolen bases per game (2.4) and triples per game (0.8).

Nationally, SEMO was among the top 25 in triples per game (2nd), stolen bases per game (8th, 2.4), scoring (16th, 6.7), slugging percentage (21st) and on-base percentage (24th).

Individually, Rachel Anderson led the OVC in batting average (.480), slugging percentage (.880), on-base percentage (.541) and triples (5) following a season that culminated with her winning the league's Player of the Year honor. Anderson,



## 2024 SOUTHEAST MISSOURI SOFTBALL NOTES

### HEAD COACH MARK REDBURN

who didn't strike out all year, capped her 2020 campaign as only the sixth player in program history to claim First-Team CoSIDA Academic All-America accolades.

Pitcher Rachel Rook was atop the OVC in earned run average (0.70) and opposing batting average (.119), while Ashley Ellis ended the year as the league's leader in home runs (8). Redburn guided SEMO to its first OVC regular-season and tournament championship, and NCAA Regional appearance in 20 years the year before that in 2019. Rook left SEMO as her program's all-time career strikeout leader with 621 Ks.

What a year 2019 was for SEMO which set an all-time program record with 46 wins, the only 40-win season in the school's entire NCAA Division I era. The Redhawks went 46-18 overall and 17-5 in the OVC before going 1-2 at the NCAA Regional in Oxford, Mississippi.

SEMO had so much to celebrate over the course of its magical 2019 campaign.

Redburn and his staff were honored as the NFCA Mid-east Region Coaching Staff of the Year. For Redburn himself, he was voted OVC Coach of the Year for the first time in his career.

Four players earned All-OVC honors, three claimed NFCA All-Region accolades and one garnered NFCA All-America distinction. Outfielder Rachel Anderson became SEMO's first All-American in 28 years

and the program's first All-American in the NCAA Division I tenure. TEAM 43 was also recognized by the NFCA for achieving the fourth highest grade point average among all NCAA Division I schools. SEMO recorded a team GPA of 3.678 with 17 players securing NFCA All-America Scholar-Athlete honors.

Statistically, SEMO's 2019 team broke a total of 17 single-season records in slugging percentage (.510), on-base percentage (.382), game played (64), runs (363), hits (501), home runs (74), RBI (318), total bases (850), walks (180), stolen bases (89), stolen base attempts (117), wins (46), saves (11), batters struck out (331), batters struck out looking (90), innings pitched (414) and putouts (1242).

In 2018, the Redhawks finished at 33-20 overall and fourth in the OVC with a 15-7 mark. SEMO locked down its first winning campaign in seven years.

The Redhawks heated up to win 11 of their final 14 regular-season games and advanced to the eight-team OVC Tournament.

SEMO's 2018 club finished with a 74 RPI among the nation's 296 NCAA Division I softball teams, quite a jump from its 173 ranking in 2017. The Redhawks collected eight doubleheader sweeps along the way.

Defensively, SEMO improved tremendously. After ranking eighth in the OVC in fielding percentage a year ago, the

Redhawks were the league's second-best fielding team in 2018. SEMO had 43 errors and committed 16 less than it did in 2017. The Redhawks went error free in 25 games equating to 47 percent of their entire season.

Prior to that, SEMO finished the 2017 campaign among the school's top single-season leaders in slugging percentage (6th, .427), on-base percentage (5th, .356), triples (4th, 21), home runs (9th, 31), total bases (9th, 567), stolen bases (2nd, 65), stolen base attempts (1st, 88), opponent batting average (7th, .282), strikeouts/7 innings (7th, 4.17), strikeouts (10th, 194), strikeouts looking (3rd, 61) fewest doubles allowed (8th, 49), fielding percentage (8th, .960), fewest errors (7th, 59) and fewest stolen bases against (3rd, 38).

Redburn picked up his 200th career victory when SEMO beat Austin Peay, 7-4, on Apr. 30, 2016. His 2016 club ranked among the school's top-10 teams in doubles (6th, 69), stolen bases (3rd, 58), walks (8th, 138), home runs (6th, 35) and slugging percentage (6th, .412).

In his first season, Redburn led the Redhawks to an overall record of 19-27 and 12-12 in OVC play during 2015. His 19 victories came after SEMO won no more than 15 games in each of the previous two seasons. Redburn's first club at Southeast also had 12 OVC wins, a +9 increase from the 2014 campaign. In addition, the Redhawks made the OVC

Tournament, snapping a streak of three years where they missed the event.

Not only did Redburn earn his 100th career NCAA Division I win in his inaugural season with the Redhawks, but he coached three All-OVC selections and one NFCA All-Region honoree.

Statistically, SEMO finished among the top-five OVC teams in batting average (3rd), slugging percentage (5th), on-base percentage (5th) and hits (5th). The 2015 Redhawks also broke two single-season records with Kayla Fortner in home runs and single-game mark and set a single-game school record with six home runs, as well.

In 19 years as a head coach between the NCAA Division I and National Junior College Athletic Association (NJCAA) ranks, Redburn has been to nine postseason tournaments, including one trip to the NJCAA National Tournament (2003), one to the Missouri Valley Conference Tournament (2013), five to the OVC Tournament (2015, 2018, 2019, 2021, 2022, 2023) and one to the NCAA Division I Tournament (2019). He has also accumulated 452 wins all-time as a head coach.

The fourth head coach in Redhawk softball history, Redburn won 90 games in five years as head coach at the University of Evansville before accepting the job at SEMO on June 26, 2014.

In 2014, Redburn coached a UE team with five starters that were underclassmen,





including four freshmen and one sophomore. The Purple Aces achieved their highest batting average since 2007. Additionally, UE had a freshman lead the team in stolen bases and home runs.

Despite a season that allowed 53 games, the 2013 team had its best season in Redburn's five years at UE. Entering the Missouri Valley Conference Tournament as the No. 7 seed, the Purple Aces beat the No. 6, No. 3 and No. 2 seeds to make their first MVC Championship appearance since 2003. UE finished second with three players garnering All-Tournament team honors.

The 2013 campaign resulted in the most overall wins in a season since 2008 and the best regular-season and conference tournament finish since Redburn's arrival. UE continued its aggressive baserunning with 89 stolen bases, ranking second in the MVC. The pitching staff also rated fourth in the conference.

Redburn's 2012 club saw improvement as well, winning more games than it had the previous season. The Purple Aces stole 79 bases and had two all-conference and one National Fastpitch Coaches Association All-Region selection that year.

In 2011, Redburn exposed a young and inexperienced team to some of the top programs in the nation as UE played one of its most difficult schedules. Tennessee, Georgia Tech, Missouri, Ohio State, Texas

Tech, South Alabama and Chattanooga were among the stiff competition.

Redburn quickly started to transform the UE program during his first year in 2010. The Purple Aces secured a berth in the MVC Tournament after winning 10 conference games. UE led the MVC with 31 doubles and hit 36 home runs, while producing two all-conference picks.

Academically, Redburn's teams consistently enjoyed success. In fact, each of his last four UE teams accumulated a 3.1 or higher grade point average. He had several student-athletes obtain over a 3.5 GPA and earn academic recognition along the way.

Prior to UE, Redburn spent three years as an assistant coach at the University of Missouri working primarily with the pitchers and catchers, and serving as recruiting coordinator.

He was part of a coaching staff that compiled an overall record of 137-53. The Tigers registered a school record for victories (50), won the Big 12 Conference Tournament, won their Regional and defeated host UCLA in the Super Regional to advance to the College World Series in 2009. Overall, Redburn coached four all-conference pitchers, including USA National Team Pitcher Chelsea Thomas at Missouri.

Redburn began his collegiate coaching career as head coach at St. Charles (Mo.) Community

College from 2001-04. He led the 2003 team to its first Region 16 championship and a seventh-place finish at the National Junior College Athletic Association Division I National Tournament. His 2004 squad set a school record with 33 victories.

Following his stay at St. Charles CC, Redburn spent two seasons as head coach of the new softball program at Jefferson College. In the program's first year of competition, 2006, he led Jefferson to a 49-16 record, Region 16 championship and ninth-place finish at the NJCAA Division I National Tournament. Redburn was honored as the Midwest Community College Athletic Conference Coach of the Year following that season.

A native of St. Charles, Missouri, Redburn graduated from the University of Missouri-St. Louis in 1993 and received his master's degree in Athletics/Activities Administration from William Woods University.

He is a member of the NCAA Division I Head Coaches Committee and serves as the OVC Head Coach Representative for the NFCA. Redburn was also the OVC representative for the Top-25 Poll until the 2023 season.

Redburn and his wife, Tracy, have two sons, Joe and Jack.





## 2024 SOUTHEAST MISSOURI SOFTBALL NOTES

### HEAD COACH MARK REDBURN

#### Redburn's Year-by-Year Records

Year	School	Assignment	Record	Conference Finish	Postseason
2002	St. Charles CC	Head Coach	16-21	3rd	Region XVI Runner-Up
2003	St. Charles CC	Head Coach	26-21	2nd	Region XVI Champions 7th NJCAA National Tournament
2004	St. Charles CC	Head Coach	33-16	1st	3rd in Region XVI
2005	Jefferson College	Head Coach	-	Program Preparation Year	-
2006	Jefferson College	Head Coach	49-16	1st Region 16	-
2007	Missouri	Assistant Coach	40-23, 13-4	3rd Big 12	-
2008	Missouri	Assistant Coach	47-17, 11-6	3rd Big 12	-
2009	Missouri	Assistant Coach	50-12, 12-6	2nd Big 12	1st Big 12 Tournament NCAA Midwest Regional Champions NCAA Super Regional Champions 8th in College World Series
2010	Evansville	Head Coach	18-34, 10-16	t7th MVC	-
2011	Evansville	Head Coach	12-42, 6-21	9th MVC	-
2012	Evansville	Head Coach	18-37, 8-19	8th MVC	-
2013	Evansville	Head Coach	23-30, 11-12	7th MVC	2nd MVC Tournament
2014	Evansville	Head Coach	19-32, 7-19	10th MVC	-
2015	Southeast Missouri	Head Coach	19-27, 12-12	7th OVC	8th OVC Tournament
2016	Southeast Missouri	Head Coach	16-33, 10-17	10th OVC	-
2017	Southeast Missouri	Head Coach	23-27, 8-14	9th OVC	-
2018	Southeast Missouri	Head Coach	33-20, 15-7	4th OVC	7th OVC Tournament
2019	Southeast Missouri	Head Coach	46-18, 17-5	1st OVC	1st OVC Tournament 3rd NCAA Regional
2020*	Southeast Missouri	Head Coach	12-5	-	-
2021	Southeast Missouri	Head Coach	30-17, 23-6	1st OVC	2nd OVC Tournament
2022	Southeast Missouri	Head Coach	30-24, 16-10	4th OVC	3rd OVC Tournament
2023	Southeast Missouri	Head Coach	29-14, 20-2	1st OVC	4th OVC Tournament
2024	Southeast Missouri	Head Coach	21-22, 15-6		

\* Season ended due to a global COVID-19 pandemic

**Overall Record as a Collegiate Coach:** 610-508 (23 years)

**Overall Record as a Head Coach:** 473-456 (20 years)

Record at Southeast Missouri, 259-207, 136-79 Ohio Valley Conference (10 years)

Record at Evansville, 90-175, 42-87 Missouri Valley Conference (5 years)

Record at Jefferson College, 49-16 (1 year)

Record at St. Charles CC: 75-58 (3 years)

Record as Assistant Coach at Missouri: 137-52 (3 years)

# 2024 SOUTHEAST MISSOURI SOFTBALL NOTES

## 2024 STATISTICS



Record: 21-22 Home: 9-5 Away: 9-8 Neutral: 3-9 OVC: 15-6

Player	avg	gp-gs	ab	r	h	2b	3b	hr	rbi	tb	slg%	bb	hp	so	gdp	ob%	sf	sh	sb-att	po	a	e	fld%
16 RICKERMANN, Abigail	.375	38-27	88	16	33	4	0	0	7	37	.420	9	0	5	0	.433	0	1	8-8	44	37	3	.964
11 BRADLEY, Tori	.349	27-11	43	3	15	0	0	0	7	15	.349	5	0	6	0	.417	0	0	0-0	3	1	0	1.000
26 SHORE, Aubrie	.331	43-43	127	17	42	15	0	2	25	63	.496	12	0	23	1	.378	4	0	1-2	288	7	4	.987
2 HALLIWILL, Paige	.325	42-42	117	29	38	4	1	5	22	59	.504	17	4	13	0	.418	3	2	12-13	74	5	0	1.000
14 AFFOLTER, Brittany	.292	39-37	96	13	28	1	0	0	13	29	.302	9	1	17	0	.355	1	4	4-6	48	0	2	.960
28 PEEK, Marissa	.282	37-28	78	13	22	9	0	6	23	49	.628	7	0	20	1	.337	1	1	1-1	88	11	4	.961
20 SACKETT, Kat	.277	37-34	94	12	26	9	0	3	15	44	.468	5	1	18	0	.317	1	0	3-3	52	6	4	.935
5 SAYSOFF, Brooklyn	.257	35-24	70	7	18	5	0	0	6	23	.329	13	0	16	0	.373	0	0	2-3	24	63	16	.845
18 DENNIS, Sydney	.247	43-38	93	22	23	3	0	0	5	26	.280	10	0	12	0	.320	0	2	2-5	51	61	7	.941
24 WRIGLEY, Kynzie	.226	40-35	93	9	21	2	0	1	11	26	.280	4	1	21	1	.263	1	1	2-3	25	60	5	.944
12 SCHULTE, Zoe	.206	34-23	63	10	13	1	0	0	1	14	.222	4	0	17	1	.254	0	1	6-6	36	3	2	.951
10 GERWITZ, Tatum	.203	38-21	59	8	12	2	0	0	7	14	.237	5	0	12	0	.266	0	4	3-4	35	1	1	.973
7 LUNA, Gracie	.191	27-11	47	3	9	3	0	2	10	18	.383	1	2	10	0	.240	0	0	0-0	6	4	1	.909
-----																							
1 SCHUPP, Sophie	.273	32-10	33	11	9	4	0	0	7	13	.394	7	1	16	0	.415	0	2	0-0	20	18	5	.884
8 MELTON, Sydney	.143	18-2	14	2	2	0	0	0	1	2	.143	2	0	5	0	.250	0	0	0-0	20	0	0	1.000
27 BURNETT, Hailey	.000	7-0	6	0	0	0	0	0	0	0	.000	2	0	0	1	.250	0	0	0-0	20	0	0	1.000
21 ROBBINS, Abby	.000	13-1	4	4	0	0	0	0	0	0	.000	1	0	2	0	.200	0	0	0-1	2	3	1	.833
4 WILKINS, Kinley	.000	16-0	3	1	0	0	0	0	0	0	.000	1	0	2	0	.250	0	0	1-1	0	0	0	.000
17 COON, Taryn	.000	2-0	1	1	0	0	0	0	0	0	.000	0	0	1	0	.000	0	0	0-0	0	0	0	.000
22 TUTWILER, Mary	.000	2-0	0	0	0	0	0	0	0	0	.000	0	0	0	0	.000	0	0	0-0	0	0	0	.000
Totals	.275	43	1129	181	311	62	1	19	160	432	.383	114	10	216	5	.344	11	18	45-56	841	355	55	.956
Opponents	.276	43	1130	194	312	33	4	24	174	425	.376	107	13	145	10	.342	12	21	40-50	843	321	48	.960

LOB - Team (259), Opp (251). DPs turned - Team (16), Opp (12). CI - Team (2), SACKETT 1, PEEK 1. IBB - Team (1), SACKETT 1, Opp (2). Picked off - WRIGLEY 1.

### (All games Sorted by Earned run avg)

Player	era	w-l	app	gs	cg	sho	sv	ip	h	r	er	bb	so	2b	3b	hr	b/avg	wp	hp	bk	sfa	sha
19 HOLMAN, Paytience	2.57	11-8	25	20	6	2/0	0	109.0	110	51	40	26	62	12	2	9	.258	4	5	0	3	10
6 LIVESAY, Tegan	3.62	2-3	20	13	2	0/2	1	58.0	58	41	30	30	32	4	1	3	.251	10	5	0	3	4
9 CARNEY, Maddie	3.94	5-5	25	4	1	1/3	2	69.1	72	43	39	30	27	6	0	1	.267	6	2	0	1	6
-----																						
3 VAN HAREN, Willow	3.73	1-3	11	3	0	0/0	0	15.0	16	17	8	12	14	3	0	3	.262	5	1	0	2	0
15 KELL, Delaney	7.72	2-3	14	3	2	0/1	0	29.0	56	42	32	9	10	8	1	8	.397	3	0	0	3	1
Totals	3.72	21-22	43	43	11	6/3	3	280.1	312	194	149	107	145	33	4	24	.276	28	13	0	12	21
Opponents	3.49	22-21	43	43	13	6/2	5	281.0	311	181	140	114	216	62	1	19	.275	24	10	0	11	18

PB - Team (7), PEEK 3, MELTON 3, SACKETT 1, Opp (11). Pickoffs - Team (1), SACKETT 1, Opp (1). SBA/ATT - SACKETT (19-21), PEEK (13-20), CARNEY (12-14), LIVESAY (10-13), HOLMAN (10-12), KELL (6-8), MELTON (6-6), VAN HAREN (2-3), BRADLEY, T. (2-2).



# 2024 SOUTHEAST MISSOURI SOFTBALL NOTES

## 2024 SCHEDULE/RESULTS

Date	Opponent	Score	Inns	Overall	OVC	Pitcher of record	Attend	Time
! 02-09-24	vs Stony Brook	w 7-5	7	1-0-0	0-0-0	HOLMAN (W 1-0)	321	2:09
! 02-09-24	at FIU	w 7-4	(8)	2-0-0	0-0-0	VAN HAREN (W 1-0)	321	2:15
! 02-10-24	vs Ohio State	L 0-13	5	2-1-0	0-0-0	VAN HAREN (L 1-1)	0	1:50
! 02-10-24	vs FIU	L 0-1	7	2-2-0	0-0-0	LIVESAY (L 0-1)	0	1:39
! 02-11-24	vs Stony Brook	w 5-4	7	3-2-0	0-0-0	KELL (W 1-0)	0	1:57
\$ 02-16-24	vs Maryland	L 1-9	6	3-3-0	0-0-0	LIVESAY (L 0-2)	50	2:06
\$ 02-17-24	vs SYRACUSE	L 0-3	7	3-4-0	0-0-0	HOLMAN (L 1-1)	115	1:33
\$ 02-17-24	at Southeastern	L 2-10	6	3-5-0	0-0-0	KELL (L 1-1)	245	1:36
\$ 02-18-24	vs Maryland	w 9-3	7	4-5-0	0-0-0	HOLMAN (W 2-1)	87	2:00
^ 02-23-24	at #24 Auburn	L 0-8	5	4-6-0	0-0-0	KELL (L 1-2)	1533	1:18
^ 02-24-24	vs UNI	L 3-5	7	4-7-0	0-0-0	HOLMAN (L 2-2)	0	2:18
^ 02-24-24	at #24 Auburn	L 5-13	5	4-8-0	0-0-0	CARNEY (L 0-1)	1709	2:05
^ 02-25-24	vs UNI	L 6-9	7	4-9-0	0-0-0	CARNEY (L 0-4)	0	2:16
& 03-01-24	vs South Dakota St.	L 0-9	5	4-10-0	0-0-0	LIVESAY (L 0-3)	215	1:35
& 03-01-24	at #16 Arkansas	L 0-5	7	4-11-0	0-0-0	HOLMAN (L 2-3)	2000	1:45
& 03-02-24	vs South Dakota St.	L 1-9	5	4-12-0	0-0-0	KELL (L 1-3)	350	1:35
& 03-02-24	vs FAU	L 3-8	7	4-13-0	0-0-0	HOLMAN (L 2-4)	1000	2:05
& 03-03-24	at #16 Arkansas	L 5-6	(8)	4-14-0	0-0-0	HOLMAN (L 2-5)	2959	2:25
* 03-09-24	EASTERN ILLINOIS-1	L 4-7	(12)	4-15-0	0-1-0	CARNEY (L 0-3)	278	3:25
* 03-09-24	EASTERN ILLINOIS-2	w 9-4	7	5-15-0	1-1-0	LIVESAY (W 1-3)	190	2:02
* 03-10-24	EASTERN ILLINOIS	L 1-2	7	5-16-0	1-2-0	HOLMAN (L 2-6)	165	2:04
03-12-24	BRADLEY-1	w 6-2	7	6-16-0	1-2-0	HOLMAN (W 3-6)	102	1:48
03-12-24	BRADLEY-2	L 1-5	7	6-17-0	1-2-0	VAN HAREN (L 1-2)	109	1:40
* 03-16-24	at SIUE-1	w 3-0	7	7-17-0	2-2-0	CARNEY (W 1-3)	158	1:54
* 03-16-24	at SIUE-2	w 3-2	7	8-17-0	3-2-0	HOLMAN (W 4-6)	-	1:47
* 03-17-24	at SIUE	w 7-4	7	9-17-0	4-2-0	HOLMAN (W 5-6)	133	2:06
* 03-23-24	TENNESSEE STATE-1	L 3-4	7	9-18-0	4-3-0	CARNEY (L 1-4)	156	1:55
* 03-23-24	TENNESSEE STATE-2	w 11-2	5	10-18-0	5-3-0	HOLMAN (W 6-6)	167	1:31
* 03-24-24	TENNESSEE STATE	w 4-3	7	11-18-0	6-3-0	HOLMAN (W 7-6)	187	1:49
* 03-29-24	at Southern Indiana-1	L 1-2	7	11-19-0	6-4-0	HOLMAN (L 7-7)	-	1:37
* 03-29-24	at Southern Indiana-2	w 6-0	7	12-19-0	7-4-0	CARNEY (W 2-4)	217	2:05
* 03-30-24	at Southern Indiana	L 4-5	7	12-20-0	7-5-0	HOLMAN (L 7-8)	194	2:04
04-03-24	at #11 Mizzou	w 1-0	7	13-20-0	7-5-0	HOLMAN (W 8-8)	1875	1:57
* 04-06-24	TENNESSEE TECH-1	w 5-3	7	14-20-0	8-5-0	CARNEY (W 3-4)	245	1:58
* 04-06-24	TENNESSEE TECH-2	w 4-1	7	15-20-0	9-5-0	LIVESAY (W 2-3)	210	1:49
* 04-07-24	TENNESSEE TECH	L 8-10	7	15-21-0	9-6-0	VAN HAREN (L 1-3)	116	4:07
* 04-14-24	at Morehead State-1	w 10-1	7	16-21-0	10-6-0	HOLMAN (W 9-8)	-	2:12
* 04-14-24	at Morehead State-2	w 14-4	6	17-21-0	11-6-0	KELL (W 2-3)	166	1:45
* 04-15-24	at Morehead State	w 13-3	6	18-21-0	12-6-0	HOLMAN (W 10-8)	155	1:55
* 04-20-24	LINDENWOOD-1	w 1-0	7	19-21-0	13-6-0	HOLMAN (W 11-8)	200	1:45
* 04-20-24	LINDENWOOD-2	w 4-0	7	20-21-0	14-6-0	CARNEY (W 4-4)	200	1:09
* 04-21-24	LINDENWOOD	w 1-0	7	21-21-0	15-6-0	CARNEY (W 5-4)	187	1:51
04-23-24	at Murray St.	L 3-6	7	21-22-0	15-6-0	CARNEY (L 5-5)	226	2:3

\* = Conference game

! = Felsberg Invitational (Miami, Fla.)

\$ = Lion Classic (Hammond, La.)

^ = Plainsman Invitational (Auburn, Ala.)

& = Wooo Pig Classic (Fayetteville, Ark.)

() extra inning game



# 2024 SOUTHEAST MISSOURI SOFTBALL NOTES

## 2024 OVC STATISTICS



Record: 15-6 Home: 8-4 Away: 7-2 OVC: 15-6

Player	avg	gp-gs	ab	r	h	2b	3b	hr	rbi	tb	slg%	bb	hp	so	gdp	ob%	sf	sh	sb-att	po	a	e	fld%
2 HALLIWILL, Paige	.419	21-21	62	19	26	4	1	2	13	38	.613	10	1	6	0	.493	2	1	8-9	33	3	0	1.000
16 RICKERMANN, Abigail	.410	21-17	61	14	25	3	0	0	6	28	.459	5	0	2	0	.455	0	1	8-8	34	28	3	.954
26 SHORE, Aubrie	.381	21-21	63	15	24	8	0	1	10	35	.556	10	0	8	0	.453	2	0	1-2	173	5	2	.989
14 AFFOLTER, Brittany	.345	21-20	58	8	20	0	0	0	7	20	.345	3	1	8	0	.387	0	1	3-4	27	0	0	1.000
28 PEEK, Marissa	.340	19-16	47	10	16	6	0	6	22	40	.851	4	0	8	1	.385	1	1	0-0	39	3	2	.955
18 DENNIS, Sydney	.310	21-18	42	10	13	1	0	0	4	14	.333	5	0	6	0	.383	0	1	1-2	24	35	4	.937
20 SACKETT, Kat	.308	19-18	52	9	16	5	0	2	9	27	.519	5	0	8	0	.368	0	0	2-2	23	5	0	1.000
5 SAYSOFF, Brooklyn	.256	18-10	43	4	11	3	0	0	5	14	.326	5	0	7	0	.333	0	0	1-2	14	36	8	.862
24 WRIGLEY, Kynzie	.200	21-18	45	6	9	1	0	1	7	13	.289	2	1	7	0	.250	0	0	1-1	15	38	1	.981
-----																							
11 BRADLEY, Tori	.385	16-6	26	2	10	0	0	0	6	10	.385	4	0	4	0	.467	0	0	0-0	1	0	0	1.000
10 GERWITZ, Tatum	.286	18-8	28	4	8	2	0	0	4	10	.357	3	0	4	0	.355	0	0	2-3	13	0	0	1.000
1 SCHUPP, Sophie	.231	15-3	13	6	3	2	0	0	3	5	.385	3	1	8	0	.412	0	2	0-0	7	8	1	.938
8 MELTON, Sydney	.167	7-0	6	1	1	0	0	0	1	1	.167	2	0	2	0	.375	0	0	0-0	3	0	0	1.000
12 SCHULTE, Zoe	.152	18-12	33	5	5	0	0	0	1	5	.152	3	0	7	1	.222	0	1	3-3	18	3	2	.913
7 LUNA, Gracie	.125	9-1	16	1	2	1	0	1	5	6	.375	0	1	4	0	.176	0	0	0-0	1	2	0	1.000
27 BURNETT, Hailey	.000	2-0	3	0	0	0	0	0	0	0	.000	1	0	0	1	.250	0	0	0-0	10	0	0	1.000
21 ROBBINS, Abby	.000	5-0	1	2	0	0	0	0	0	0	.000	1	0	0	0	.500	0	0	0-1	0	0	0	.000
4 WILKINS, Kinley	.000	7-0	0	0	0	0	0	0	0	0	.000	0	0	0	0	.000	0	0	1-1	0	0	0	.000
Totals	.316	21	599	116	189	36	1	13	103	266	.444	66	5	89	3	.385	5	8	31-38	438	205	23	.965
Opponents	.254	21	567	57	144	16	1	6	50	180	.317	36	5	59	5	.303	2	13	13-17	423	170	27	.956

LOB - Team (144), Opp (129). DPs turned - Team (7), Opp (7). CI - Team (1), PEEK 1. IBB - Team (1), SACKETT 1, Opp (1).

### (OVC games only Sorted by Earned run avg)

Player	era	w-l	app	gs	cg	sho	sv	ip	h	r	er	bb	so	2b	3b	hr	b/avg	wp	hp	bk	sfa	sha
9 CARNEY, Maddie	1.35	5-2	13	2	1	1/3	2	46.2	38	11	9	12	13	1	0	1	.222	1	0	0	1	4
19 HOLMAN, Paytience	2.10	7-3	13	12	4	1/0	0	56.2	66	23	17	10	31	7	1	4	.284	4	2	0	0	6
6 LIVESAY, Tegan	2.60	2-0	10	6	1	0/2	0	32.1	29	16	12	13	14	3	0	1	.238	5	3	0	1	3
-----																						
15 KELL, Delaney	1.45	1-0	4	0	0	0/1	0	9.2	7	3	2	1	1	4	0	0	.200	1	0	0	0	0
3 VAN HAREN, Willow	31.50	0-1	2	1	0	0/0	0	0.2	4	4	3	0	0	1	0	0	.571	0	0	0	0	0
Totals	2.06	15-6	21	21	6	5/3	2	146.0	144	57	43	36	59	16	1	6	.254	11	5	0	2	13
Opponents	4.57	6-15	21	21	8	0/0	2	141.0	189	116	92	66	89	36	1	13	.316	14	5	0	5	8

PB - Team (3), PEEK 2, MELTON 1, Opp (5). Pickoffs - Team (1), SACKETT 1. SBA/ATT - CARNEY (6-8), PEEK (5-7), SACKETT (5-7), LIVESAY (4-6), HOLMAN (3-3), MELTON (2-2), BRADLEY, T. (1-1).



## 2024 SOUTHEAST MISSOURI SOFTBALL NOTES

### 2024 SEASON/CAREER STATISTICS

Record: 21-22 Home: 9-5 Away: 9-8 Neutral: 3-9 OVC: 15-6

Player	SEASON														CAREER													
	Avg	G-GS	AB	R	H	2B	3B	HR	RBI	BB	Hbp	SO	Sb-Att	Avg	G-GS	AB	R	H	2B	3B	HR	RBI	BB	Hbp	SO	Sb-Att	Avg	G-GS
16 RICKERMANN, Abigail	.375	38-27	88	16	33	4	0	0	7	9	0	5	8-8	.314	161-87	315	61	99	8	3	0	23	32	2	23	22-27	.314	161-87
11 BRADLEY, Tori	.349	27-11	43	3	15	0	0	0	7	5	0	6	0-0	.288	89-46	153	13	44	7	1	0	17	20	1	28	2-2	.288	89-46
26 SHORE, Aubrie	.331	43-43	127	17	42	15	0	2	25	12	0	23	1-2	.320	139-136	384	54	123	38	1	18	93	42	3	44	2-5	.320	139-136
2 HALLIWILL, Paige	.325	42-42	117	29	38	4	1	5	22	17	4	13	12-13	.311	139-139	392	95	122	22	4	15	80	46	22	47	32-35	.311	139-139
14 AFFOLTER, Brittany	.292	39-37	96	13	28	1	0	0	13	9	1	17	4-6	.303	72-46	132	20	40	3	0	0	16	11	1	25	8-10	.303	72-46
28 PEEK, Marissa	.282	37-28	78	13	22	9	0	6	23	7	0	20	1-1	.260	68-51	127	16	33	11	0	8	30	9	0	37	1-1	.260	68-51
20 SACKETT, Kat	.277	37-34	94	12	26	9	0	3	15	5	1	18	3-3	.275	131-123	338	46	93	29	0	7	56	23	7	40	9-9	.275	131-123
5 SAYSOFF, Brooklyn	.257	35-24	70	7	18	5	0	0	6	13	0	16	2-3	.257	35-24	70	7	18	5	0	0	6	13	0	16	2-3	.257	35-24
18 DENNIS, Sydney	.247	43-38	93	22	23	3	0	0	5	10	0	12	2-5	.261	133-113	306	49	80	7	5	0	34	19	0	33	15-25	.261	133-113
24 WRIGLEY, Kynzie	.226	40-35	93	9	21	2	0	1	11	4	1	21	2-3	.296	175-159	442	80	131	29	1	9	73	31	6	63	17-20	.296	175-159
12 SCHULTE, Zoe	.206	34-23	63	10	13	1	0	0	1	4	0	17	6-6	.288	75-45	125	24	36	1	1	0	8	8	1	28	9-9	.288	75-45
10 GERWITZ, Tatum	.203	38-21	59	8	12	2	0	0	7	5	0	12	3-4	.202	123-61	198	27	40	3	0	0	12	18	0	47	5-7	.202	123-61
7 LUNA, Gracie	.191	27-11	47	3	9	3	0	2	10	1	2	10	0-0	.191	27-11	47	3	9	3	0	2	10	1	2	10	0-0	.191	27-11
1 SCHUPP, Sophie	.273	32-10	33	11	9	4	0	0	7	7	1	16	0-0	.273	32-10	33	11	9	4	0	0	7	7	1	16	0-0	.273	32-10
8 MELTON, Sydney	.143	18-2	14	2	2	0	0	0	1	2	0	5	0-0	.203	66-14	69	9	14	3	1	1	10	7	5	11	3-3	.203	66-14
27 BURNETT, Hailey	.000	7-0	6	0	0	0	0	0	0	2	0	0	0-0	.000	7-0	6	0	0	0	0	0	0	2	0	0	0-0	.000	7-0
21 ROBBINS, Abby	.000	13-1	4	4	0	0	0	0	0	1	0	2	0-1	.000	13-1	4	4	0	0	0	0	0	1	0	2	0-1	.000	13-1
4 WILKINS, Kinley	.000	16-0	3	1	0	0	0	0	0	1	0	2	1-1	.000	16-0	3	1	0	0	0	0	0	1	0	2	1-1	.000	16-0
17 COON, Taryn	.000	2-0	1	1	0	0	0	0	0	0	0	1	0-0	.000	2-0	1	1	0	0	0	0	0	0	0	1	0-0	.000	2-0
22 TUTWILER, Mary	.000	2-0	0	0	0	0	0	0	0	0	0	0	0-0	.000	2-0	0	0	0	0	0	0	0	0	0	0	0-0	.000	2-0
Totals	.275	43-43	1129	181	311	62	1	19	160	114	10	216	45-56	.275	43-43	1129	181	311	62	1	19	160	114	10	216	45-56	.275	43-43
Opponents	.276	43-43	1130	194	312	33	4	24	174	107	13	145	40-50	.276	43-43	1130	194	312	33	4	24	174	107	13	145	40-50	.276	43-43

(All games Sorted by Earned run avg)

Player	SEASON														CAREER													
	ERA	W-L	App	GS	CG	Sho	Sv	IP	H	R	ER	BB	SO	ERA	W-L	App	GS	CG	Sho	Sv	IP	H	R	ER	BB	SO	ERA	W-L
19 HOLMAN, Paytience	2.57	11-8	25	20	6	2	0	109.0	110	51	40	26	62	3.15	32-33	103	73	25	10	5	413.0	418	222	186	118	246	3.15	32-33
6 LIVESAY, Tegan	3.62	2-3	20	13	2	0	1	58.0	58	41	30	30	32	3.62	2-3	20	13	2	0	1	58.0	58	41	30	30	32	3.62	2-3
9 CARNEY, Maddie	3.94	5-5	25	4	1	1	2	69.1	72	43	39	30	27	3.94	5-5	25	4	1	1	2	69.1	72	43	39	30	27	3.94	5-5
3 VAN HAREN, Willow	3.73	1-3	11	3	0	0	0	15.0	16	17	8	12	14	3.73	1-3	11	3	0	0	0	15.0	16	17	8	12	14	3.73	1-3
15 KELL, Delaney	7.72	2-3	14	3	2	0	0	29.0	56	42	32	9	10	4.27	16-7	43	20	6	2	1	142.2	165	100	87	41	84	4.27	16-7
Totals	3.72	21-22	43	43	11	6	3	280.1	312	194	149	107	145	3.72	21-22	43	43	11	6	3	280.1	312	194	149	107	145	3.72	21-22
Opponents	3.49	22-21	43	43	13	6	5	281.0	311	181	140	114	216	3.49	22-21	43	43	13	6	5	281.0	311	181	140	114	216	3.49	22-21

**Multiple-Hit Games**

Player	2	3	4	5+	Total
Aubrie Shore	7	3	-	-	10
Paige Halliwill	7	1	1	-	9
Marissa Peek	7	-	-	-	7
Abigail Rickermann	5	2	-	-	7
Kat Sackett	5	2	-	-	7
Kynzie Wrigley	4	1	-	-	5
Sydney Dennis	3	1	-	-	4
Brittany Affolter	2	1	-	-	3
Brooklyn Saysoff	2	1	-	-	3
Zoe Schulte	3	-	-	-	3
Tatum Gerwitz	2	-	-	-	2
Sophie Schupp	2	-	-	-	2
Tori Bradley	1	-	-	-	1
Gracie Luna	1	-	-	-	1

**Multiple-RBI Games**

Player	2	3	4	5+	Total
Paige Halliwill	7	1	-	-	8
Marissa Peek	2	2	2	-	6
Aubrie Shore	3	2	-	-	5
Kat Sackett	2	1	-	-	3
Brittany Affolter	1	1	-	-	2
Kynzie Wrigley	2	-	-	-	2
Tatum Gerwitz	2	-	-	-	2
Sophie Schupp	1	1	-	-	2
Tori Bradley	2	-	-	-	2
Abigail Rickermann	2	-	-	-	2
Gracie Luna	-	1	1	-	2
Brooklyn Saysoff	1	-	-	-	1

**Inning-by-Inning Summary**

Inning	SEMO	Opp.
First	41	31
Second	21	38
Third	29	32
Fourth	22	26
Fifth	21	29
Sixth	30	25
Seventh	12	7
Eighth	4	2
Ninth	0	0
Extra	1	4
Total	181	194

**Inning-by-Inning Summary (OVC Games)**

Inning	SEMO	Opp.
First	29	12
Second	17	7
Third	17	13
Fourth	8	5
Fifth	19	10
Sixth	17	5
Seventh	8	1
Eighth	0	0
Extra	1	4
Total	116	57

**Current Hitting Streaks**

Player	Games	Started
Paige Halliwill	3	4/20

**Current Reached Base Streaks**

Player	Games	Started
Paige Halliwill	10	4/6

**Career Multiple-Hit Games**

Player	2	3	4	5+	Total
Kynzie Wrigley	29	5	1	-	35
Paige Halliwill	27	4	1	-	32
Aubrie Shore	23	4	1	-	28
Abigail Rickermann	19	3	-	-	22
Kat Sackett	16	4	-	-	20
Sydney Dennis	15	4	-	-	19
Marissa Peek	9	-	-	-	9
Zoe Schulte	4	3	-	-	7
Tori Bradley	5	1	-	-	6
Tatum Gerwitz	6	-	-	-	6
Brittany Affolter	4	1	-	-	5
Brooklyn Saysoff	2	1	-	-	3
Sophie Schupp	2	-	-	-	2
Sydney Melton	1	-	-	-	1
Gracie Luna	1	-	-	-	1

**Career Multiple-RBI Games**

Player	2	3	4	5+	Total
Aubrie Shore	13	5	3	-	21
Paige Halliwill	12	6	3	-	21
Kynzie Wrigley	14	3	1	-	18
Kat Sackett	8	4	1	-	13
Sydney Dennis	6	1	-	-	7
Marissa Peek	3	2	2	-	7
Tori Bradley	5	-	-	-	5
Abigail Rickermann	3	1	-	-	4
Sydney Melton	2	1	-	-	3
Brittany Affolter	2	1	-	-	3
Sophie Schupp	1	1	-	-	2
Tatum Gerwitz	2	-	-	-	2
Gracie Luna	-	1	1	-	2
Zoe Schulte	1	-	-	-	1
Brooklyn Saysoff	1	-	-	-	1

**14 Brittany Affolter****2024 Season-Highs**

At-Bats.....	6, vs. Eastern Illinois (3/9/24)
Runs.....	2, vs. Tennessee Tech (4/7/24)
Hits.....	3, at Southern Indiana (3/30/24)
Doubles.....	1, at Missouri (4/3/24)
Triples.....	-
Home Runs.....	-
RBI.....	3, vs. Eastern Illinois (3/9/24)
Stolen Bases.....	2, at Morehead State (4/14/24)

**Career-Highs**

At-Bats.....	6, vs. Eastern Illinois (3/9/24)
Runs.....	2, 10x, last at Morehead State (4/15/24)
Hits.....	3, at Southern Indiana (3/30/24)
Doubles.....	1, 3x, last at Missouri (4/3/24)
Triples.....	-
Home Runs.....	-
RBI.....	3, vs. Eastern Illinois (3/9/24)
Stolen Bases.....	2, at Morehead State (4/14/24)

**11 Tori Bradley****2024 Season-Highs**

At-Bats.....	4, vs. Eastern Illinois (3/9/24)
Runs.....	2, vs. Eastern Illinois (3/9/24)
Hits.....	2, at SIU Edwardsville (3/16/24)
Doubles.....	-
Triples.....	-
Home Runs.....	-
RBI.....	2, 2x, last at Morehead State (4/15/24)
Stolen Bases.....	-

**Career-Highs**

At-Bats.....	4, 7x, last vs. Eastern Illinois (3/9/24)
Runs.....	2, 3x, last vs. Eastern Illinois (3/9/24)
Hits.....	3, vs. Central Michigan (2/19/22)
Doubles.....	1, 7x, last at Lindenwood (4/15/23)
Triples.....	1, vs. Central Michigan (2/19/22)
Home Runs.....	-
RBI.....	2, 5x, last at Morehead State (4/15/24)
Stolen Bases.....	1, 2x, last at Austin Peay (4/15/22)

**27 Hailey Burnett****2024 Season/Career-Highs**

At-Bats.....	2, 2x, last at Murray State (4/23/24)
Runs.....	-
Hits.....	-
Doubles.....	-
Triples.....	-
Home Runs.....	-
RBI.....	-
Stolen Bases.....	-

**9 Maddie Carney****2024 Season/Career-Highs**

Innings Pitched.....	70, vs. Lindenwood (4/20/24)
Fewest Hits.....	0, 4x, last at SIU Edwardsville (3/16/24)
Most Hits.....	9, vs. South Dakota State (3/2/24)
Fewest Runs.....	0, 12x, last vs. Lindenwood (4/21/24)
Most Runs.....	7, vs. Ohio State (2/10/24)
Fewest Walks.....	0, 11x, last vs. Lindenwood (4/21/24)
Strikeouts.....	4, 2x, last vs. South Dakota State (3/2/24)

**17 Taryn Coon****2024 Season/Career-Highs**

At-Bats.....	-
Runs.....	1, vs. Northern Iowa (2/25/24)
Hits.....	-
Doubles.....	-
Triples.....	-
Home Runs.....	-
RBI.....	-
Stolen Bases.....	-

**18 Sydney Dennis****2024 Season-Highs**

At-Bats.....	5, at Florida International (2/9/24)
Runs.....	2, 6x, last at Morehead State (4/15/24)
Hits.....	3, vs. Tennessee State (3/23/24)
Doubles.....	1, 3x, last at Southern Indiana (3/29/24)
Triples.....	-
Home Runs.....	-
RBI.....	1, 5x, last at Morehead State (4/15/24)
Stolen Bases.....	1, 2x, last at Southern Indiana (3/29/24)

**2022 Season/Career-Highs**

At-Bats.....	5, 2x, last at Florida International (2/9/24)
Runs.....	2, 10x, last at Morehead State (4/15/24)
Hits.....	3, 4x, last vs. Tennessee State (3/23/24)
Doubles.....	1, 7x, last at Southern Indiana (3/29/24)
Triples.....	1, 5x, last at Eastern Illinois (5/6/23)
Home Runs.....	-
RBI.....	3, at Tennessee Tech (3/26/22)
Stolen Bases.....	2, vs. Southern Indiana (3/25/23)

**10 Tatum Gerwitz****2024 Season-Highs**

At-Bats.....	4, vs. Eastern Illinois (3/9/24)
Runs.....	1, 8x, last at Morehead State (4/15/24)
Hits.....	2, 2x, last at Morehead State (4/14/24)
Doubles.....	1, 2x, last at Morehead State (4/14/24)
Triples.....	-
Home Runs.....	-
RBI.....	2, 2x, last at Morehead State (4/15/24)
Stolen Bases.....	1, 3x, last at Southern Indiana (3/30/24)

**Career-Highs**

At-Bats.....	5, at Saint Louis (2/19/23)
Runs.....	2, 2x, last vs. Akron (2/26/23)
Hits.....	2, 5x, last vs. Tennessee State (3/23/24)
Doubles.....	1, 3x, last at Morehead State (4/14/24)
Triples.....	-
Home Runs.....	-
RBI.....	2, 2x, last at Morehead State (4/15/24)
Stolen Bases.....	1, 5x, last at Southern Indiana (3/30/24)

**2 Paige Halliwill****2024 Season-Highs**

At-Bats.....	6, vs. Eastern Illinois (3/9/24)
Runs.....	3, at Morehead State (4/14/24)
Hits.....	4, at Morehead State (4/14/24)
Doubles.....	2, vs. Tennessee Tech (4/7/24)
Triples.....	1, vs. Eastern Illinois (3/9/24)
Home Runs.....	2, at Morehead State (4/14/24)
RBI.....	3, at Morehead State (4/14/24)
Stolen Bases.....	2, 2x, last vs. Bradley (3/12/24)

**Career-Highs**

At-Bats.....	6, 2x, last vs. Eastern Illinois (3/9/24)
Runs.....	4, at Lindenwood (4/15/23)
Hits.....	4, at Morehead State (4/14/24)
Doubles.....	2, 3x, last vs. Tennessee Tech (4/7/24)
Triples.....	1, 4x, last vs. Eastern Illinois (3/9/24)
Home Runs.....	2, 2x, last at Morehead State (4/14/24)
RBI.....	4, 3x, last at Lindenwood (4/15/23)
Stolen Bases.....	2, 3x, last vs. Bradley (3/12/24)



# 2024 SOUTHEAST MISSOURI SOFTBALL NOTES

## SEASON/CAREER-HIGHS

### 19 Paytience Holman

2024 Season-Highs	
Innings Pitched.....	7.0, 3x, last vs. Lindenwood (4/20/24)
Fewest Hits.....	0, 2x, last vs. Bradley (3/12/24)
Most Hits.....	7, 4x, last vs. Tennessee Tech (4/6/24)
Fewest Runs.....	0, 5x, last vs. Lindenwood (4/20/24)
Most Runs.....	5, 3x, last vs. Florida Atlantic (3/2/24)
Fewest Walks.....	0, 7x, last at Morehead State (4/15/24)
Strikeouts.....	8, at Morehead State (4/14/24)

Career-Highs	
Innings Pitched.....	7.0, 13x, last vs. Lindenwood (4/20/24)
Fewest Hits.....	0, 8x, last vs. Bradley (3/12/24)
Most Hits.....	10, vs. Eastern Kentucky (4/17/21)
Fewest Runs.....	0, 26x, last vs. Lindenwood (4/20/24)
Most Runs.....	8, 2x, last at Louisiana Tech (2/12/23)
Fewest Walks.....	0, 31x, last at Morehead State (4/15/24)
Strikeouts.....	14, vs. Mississippi Valley State (3/6/20)

### 15 Delaney Kell

2024 Season-Highs	
Innings Pitched.....	5.0, at Southeastern Louisiana (2/17/24)
Fewest Hits.....	0, at Southern Indiana (3/29/24)
Most Hits.....	15, at Southeastern Louisiana (2/17/24)
Fewest Runs.....	0, 4x, last at Morehead State (4/14/24)
Most Runs.....	10, at Southeastern Louisiana (2/17/24)
Fewest Walks.....	0, 8x, last at Murray State (4/23/24)
Strikeouts.....	2, 4x, last vs. Bradley (3/12/24)

Career-Highs	
Innings Pitched.....	7.1, at Saint Louis (2/19/23)
Fewest Hits.....	0, 4x, last at Southern Indiana (3/29/24)
Most Hits.....	15, at Southeastern Louisiana (2/17/24)
Fewest Runs.....	0, 14x, last at Morehead State (4/14/24)
Most Runs.....	7, 2x, last at Iowa State (4/18/23)
Fewest Walks.....	0, 18x, last at Murray State (4/23/24)
Strikeouts.....	7, vs. UT Martin (4/29/23)

### 6 Tegan Livesay

2024 Season/Career-Highs	
Innings Pitched.....	7.0, 2x, last vs. Tennessee Tech (4/6/24)
Fewest Hits.....	0, 3x, last vs. Tennessee Tech (4/7/24)
Most Hits.....	8, at Florida International (2/10/24)
Fewest Runs.....	0, 5x, last at Murray State (4/23/24)
Most Runs.....	7, vs. South Dakota State (3/1/24)
Fewest Walks.....	0, 6x, last at Murray State (4/23/24)
Strikeouts.....	6, at Auburn (2/24/24)

### 7 Gracie Luna

2024 Season/Career-Highs	
At-Bats.....	6, vs. Eastern Illinois (3/9/24)
Runs.....	1, 3x, last at Murray State (4/23/24)
Hits.....	2, vs. Northern Iowa (2/24/24)
Doubles.....	1, 3x, last vs. Eastern Illinois (3/9/24)
Triples.....	-
Home Runs.....	1, 2x, last at Murray State (4/23/24)
RBI.....	4, at Morehead State (4/14/24)
Stolen Bases.....	-

### 8 Sydney Melton

2024 Season-Highs	
At-Bats.....	2, 2x, last at Murray State (4/23/24)
Runs.....	1, 2x, last at Murray State (4/23/24)
Hits.....	1, 2x, last at Murray State (4/23/24)
Doubles.....	-
Triples.....	-
Home Runs.....	-
RBI.....	1, vs. Tennessee Tech (4/7/24)
Stolen Bases.....	-

Career-Highs	
At-Bats.....	4, at Kansas City (3/15/22)
Runs.....	1, 9x, last at Murray State (4/23/24)
Hits.....	2, at Eastern Illinois (5/6/23)
Doubles.....	1, 3x, last at Eastern Illinois (5/6/23)
Triples.....	1, at Tennessee State (3/18/23)
Home Runs.....	1, at Eastern Illinois (5/6/23)
RBI.....	3, at Eastern Illinois (5/6/23)
Stolen Bases.....	1, 3x, last at Eastern Illinois (5/6/23)

### 28 Marissa Peek

2024 Season-Highs	
At-Bats.....	4, 4x, last vs. Tennessee Tech (4/6/24)
Runs.....	2, 2x, last vs. Tennessee State (3/23/24)
Hits.....	2, 7x, last vs. Lindenwood (4/20/24)
Doubles.....	2, at SIU Edwardsville (3/17/24)
Triples.....	-
Home Runs.....	2, at SIU Edwardsville (3/16/24)
RBI.....	4, 2x, last vs. Lindenwood (4/20/24)
Stolen Bases.....	1, vs. Maryland (2/18/24)

Career-Highs	
At-Bats.....	4, 4x, last vs. Tennessee Tech (4/6/24)
Runs.....	2, 2x, last vs. Tennessee State (3/23/24)
Hits.....	2, 10x, last vs. Lindenwood (4/20/24)
Doubles.....	2, at SIU Edwardsville (3/17/24)
Triples.....	-
Home Runs.....	2, at SIU Edwardsville (3/16/24)
RBI.....	4, 2x, last vs. Lindenwood (4/20/24)
Stolen Bases.....	1, vs. Maryland (2/18/24)

### 16 Abigail Rickermann

2024 Season-Highs	
At-Bats.....	5, at Morehead State (4/14/24)
Runs.....	2, 4x, last vs. Tennessee Tech (4/6/24)
Hits.....	3, 2x, last vs. Tennessee Tech (4/6/24)
Doubles.....	1, 4x, last vs. Lindenwood (4/20/24)
Triples.....	-
Home Runs.....	-
RBI.....	2, 2x, last vs. Tennessee State (3/23/24)
Stolen Bases.....	1, 8x, last at Morehead State (4/15/24)

Career-Highs	
At-Bats.....	5, 2x, last at Morehead State (4/14/24)
Runs.....	3, 3x, last vs. Morehead State (4/7/23)
Hits.....	3, 3x, last vs. Tennessee Tech (4/6/24)
Doubles.....	1, 8x, last vs. Lindenwood (4/20/24)
Triples.....	1, 3x, last vs. SIU Edwardsville (5/11/22)
Home Runs.....	-
RBI.....	3, vs. SIU Edwardsville (5/11/22)
Stolen Bases.....	2, at Murray State (4/24/22)

### 21 Abby Robbins

2024 Season/Career-Highs	
At-Bats.....	2, vs. Stony Brook (2/11/24)
Runs.....	1, 4x, last at Morehead State (4/15/24)
Hits.....	-
Doubles.....	-
Triples.....	-
Home Runs.....	-
RBI.....	-
Stolen Bases.....	-

### 20 Kat Sackett

2024 Season-Highs	
At-Bats.....	4, 5x, last vs. Tennessee State (3/23/24)
Runs.....	2, at Morehead State (4/14/24)
Hits.....	3, 2x, last at Morehead State (4/14/24)
Doubles.....	2, 2x, last at SIU Edwardsville (3/17/24)
Triples.....	-
Home Runs.....	1, 3x, last vs. Lindenwood (4/20/24)
RBI.....	3, at Florida International (2/9/24)
Stolen Bases.....	1, 3x, last at Morehead State (4/15/24)

Career-Highs	
At-Bats.....	5, at Saint Louis (2/19/23)
Runs.....	3, vs. SIU Edwardsville (3/10/23)
Hits.....	3, 4x, last at Morehead State (4/14/24)
Doubles.....	2, 4x, last at SIU Edwardsville (3/17/24)
Triples.....	-
Home Runs.....	2, vs. Tennessee State (3/20/22)
RBI.....	4, vs. Tennessee State (3/20/22)
Stolen Bases.....	2, at Saint Louis (2/19/23)

### 5 Brooklyn Sayoff

2024 Season-Highs	
At-Bats.....	5, vs. Eastern Illinois (3/9/24)
Runs.....	1, 7x, last at Morehead State (4/14/24)
Hits.....	3, vs. Eastern Illinois (3/9/24)
Doubles.....	1, 5x, last vs. Tennessee Tech (4/7/24)
Triples.....	-
Home Runs.....	-
RBI.....	2, at SIU Edwardsville (3/17/24)
Stolen Bases.....	1, 2x, last at SIU Edwardsville (3/17/24)

### 12 Zoe Schulte

2024 Season-Highs	
At-Bats.....	3, 8x, last at Missouri (4/3/24)
Runs.....	2, vs. Bradley (3/12/24)
Hits.....	2, 3x, last vs. Bradley (3/12/24)
Doubles.....	1, at Florida International (2/10/24)
Triples.....	-
Home Runs.....	-
RBI.....	-
Stolen Bases.....	1, 6x, last vs. Tennessee Tech (4/6/24)

Career-Highs	
At-Bats.....	3, 17x, last vs. Tennessee State (3/23/24)
Runs.....	2, 2x, last vs. Bradley (3/12/24)
Hits.....	3, 3x, last vs. Morehead State (4/7/23)
Doubles.....	1, at Florida International (2/10/24)
Triples.....	1, at Ole Miss (3/5/23)
Home Runs.....	-
RBI.....	2, at Tennessee Tech (4/1/23)
Stolen Bases.....	1, 9x, last vs. Tennessee Tech (4/6/24)

### 1 Sophie Schupp

2024 Season/Career-Highs	
At-Bats.....	3, 4x, last at Murray State (4/23/24)
Runs.....	2, 2x, last at Morehead State (4/15/24)
Hits.....	2, 2x, last vs. Eastern Illinois (3/9/24)
Doubles.....	1, 4x, last vs. Tennessee Tech (4/7/24)
Triples.....	-
Home Runs.....	-
RBI.....	3, vs. Eastern Illinois (3/9/24)
Stolen Bases.....	-



**26 Aubrie Shore**

## 2024 Season-Highs

At-Bats.....	6, vs. Eastern Illinois (3/9/24)
Runs.....	3, vs. Eastern Illinois (3/9/24)
Hits.....	3, 3x, last at Morehead State (4/14/24)
Doubles.....	2, 2x, last at Morehead State (4/14/24)
Triples.....	-
Home Runs.....	1, 2x, last vs. Tennessee Tech (4/7/24)
RBI.....	3, 2x, last vs. Maryland (2/18/24)
Stolen Bases.....	1, at Southern Indiana (3/29/24)

## Hitting Career-Highs

At-Bats.....	6, vs. Eastern Illinois (3/9/24)
Runs.....	3, 2x, last vs. Eastern Illinois (3/9/24)
Hits.....	4, at Lindenwood (4/15/23)
Doubles.....	2, 4x, last at Morehead State (4/14/24)
Triples.....	1, vs. Alabama A&M (2/11/22)
Home Runs.....	2, 2x, last at Lindenwood (4/15/23)
RBI.....	5, vs. UT Martin (4/29/23)
Stolen Bases.....	1, 2x, last at Southern Indiana (3/29/24)

## Pitching Career-Highs

Innings Pitched.....	0.1, vs. Nicholls (2/12/22)
Fewest Hits.....	0, 2x, last at Western Kentucky (2/19/22)
Most Hits.....	-
Fewest Runs.....	0, vs. Nicholls (2/12/22)
Most Runs.....	1, at Western Kentucky (2/19/22)
Fewest Walks.....	0, vs. Nicholls (2/12/22)
Strikeouts.....	-

**22 Mary Tutwiler**

## 2024 Season/Career-Highs

At-Bats.....	-
Runs.....	-
Hits.....	-
Doubles.....	-
Triples.....	-
Home Runs.....	-
RBI.....	-
Stolen Bases.....	-

**3 Willow Van Haren**

## 2024 Season/Career-Highs

Innings Pitched.....	4.0, at Florida International (2/9/24)
Fewest Hits.....	0, 3x, last at Murray State (4/23/24)
Most Hits.....	5, vs. Ohio State (2/10/24)
Fewest Runs.....	0, 4x, last at Murray State (4/23/24)
Most Runs.....	6, vs. Ohio State (2/10/24)
Fewest Walks.....	0, 2x, last vs. Tennessee Tech (4/7/24)
Strikeouts.....	4, 2x, last vs. Bradley (3/12/24)

**4 Kinley Wilkins**

## 2024 Season/Career-Highs

At-Bats.....	1, vs. Bradley (3/12/24)
Runs.....	1, vs. Northern Iowa (2/24/24)
Hits.....	-
Doubles.....	-
Triples.....	-
Home Runs.....	-
RBI.....	-
Stolen Bases.....	1, at SIU Edwardsville (3/17/24)

**24 Kynzie Wrigley**

## 2024 Season-Highs

At-Bats.....	4, 4x, last at Morehead State (4/14/24)
Runs.....	2, 2x, last at Morehead State (4/14/24)
Hits.....	3, at Florida International (2/9/24)
Doubles.....	1, 2x, last at Morehead State (4/15/24)
Triples.....	-
Home Runs.....	1, vs. Tennessee State (3/24/24)
RBI.....	2, 2x, last at Morehead State (4/14/24)
Stolen Bases.....	1, 2x, last at Morehead State (4/14/24)

## Career-Highs

At-Bats.....	5, vs. Murray State (5/12/22)
Runs.....	3, 2x, last vs. Belmont (5/8/22)
Hits.....	4, vs. SIU Edwardsville (5/11/22)
Doubles.....	3, vs. Morehead State (4/3/22)
Triples.....	1, vs. UT Martin (4/27/22)
Home Runs.....	1, 9x, last vs. Tennessee State (3/24/24)
RBI.....	4, vs. UT Martin (4/27/22)
Stolen Bases.....	2, vs. Tennessee Tech (5/12/22)

**Southeast Missouri's Record**

Overall.....	21-22
At Home.....	9-5
On the Road.....	9-8
At Neutral Sites.....	3-9
Against Non-OVC Opponents.....	6-16
Against OVC Opponents.....	15-6
In Home OVC Games.....	8-4
In Away OVC Games.....	7-2
vs. Ranked Teams.....	1-4
In February.....	4-9
In March.....	8-11
In April.....	9-2
In May.....	0-0
On Mondays.....	1-0
On Tuesdays.....	1-2
On Wednesdays.....	1-0
On Thursdays.....	0-0
On Fridays.....	3-5
On Saturdays.....	8-11
On Sundays.....	7-4
In Day Games.....	21-22
In Night Games.....	0-0
In Extra Inning Games.....	1-2
When Redhawks Score First.....	17-7
When Opponents Score First.....	4-15
vs. Left-Handed Starter.....	2-3
vs. Right-Handed Starter.....	19-19
In 1-Run Games.....	6-6
In 2-Run Games.....	2-2
In 5+ Run Games.....	7-9
Shutouts.....	6-6
When Leading After Six Innings.....	16-0
When Trailing After Six Innings.....	0-13
When Tied After Six Innings.....	2-2
When Redhawks Starter Goes 6 or more Innings.....	8-2
When Redhawks Get 10 or more Hits.....	6-3
When Redhawks Outhit Opponents.....	17-3
When Redhawks Get Outhit.....	3-16
When Hits are Tied.....	1-3
When Scoring 0-2 Runs.....	3-12
When Scoring 3-5 Runs.....	7-8
When Scoring 6-9 Runs.....	7-2
When Scoring 10+ Runs.....	4-0
When Opponents Score 0-2 Runs.....	11-3
When Opponents Score 3-5 Runs.....	10-6
When Opponents Score 6-9 Runs.....	0-9
When Opponents Score 10+ Runs.....	0-4
Without Hitting a Home Run.....	11-17
When Hitting 1 Home Run.....	6-5
When Hitting 2+ Home Runs.....	4-0
Committing 0 Errors.....	11-5
Committing 1 Error.....	4-6
Committing 2+ Errors.....	6-11



## 2024 SOUTHEAST MISSOURI SOFTBALL NOTES

### GAME-BY-GAME LINEUPS

Opponent	P	C	1B	2B	3B	SS	LF	CF	RF	DP
Stony Brook	Holman	Peek	Shore	Rickermann	Wrigley	Dennis	Affolter	Halliwill	Gerwitz	Sackett
Florida International	Carney	Sackett	Shore	Rickermann	Wrigley	Dennis	Schulte	Halliwill	Gerwitz	Bradley
Ohio State	Van Haren	Sackett	Shore	Saysoff	Wrigley	Dennis	Affolter	Halliwill	Gerwitz	Peek
Florida International	Livesay	Peek	Shore	Rickermann	Wrigley	Dennis	Schulte	Halliwill	Gerwitz	Sackett
Stony Brook	Holman	Sackett	Shore	Saysoff	Robbins	Dennis	Schulte	Halliwill	Gerwitz	Wrigley
Maryland	Livesay	Sackett	Shore	Saysoff	Wrigley	Dennis	Affolter	Halliwill	Gerwitz	Luna
Syracuse	Holman	Sackett	Shore	Rickermann	Wrigley	Dennis	Affolter	Halliwill	Schulte	Bradley
Southeastern Louisiana	Kell	Peek	Shore	Rickermann	Wrigley	Dennis	Affolter	Halliwill	Gerwitz	Sackett
Maryland	Holman	Peek	Shore	Schupp	Saysoff	Dennis	Affolter	Halliwill	Gerwitz	Luna
Auburn	Kell	Sackett	Shore	Saysoff	Wrigley	Dennis	Affolter	Halliwill	Gerwitz	Luna
Northern Iowa	Holman	Peek	Shore	Luna	Saysoff	Dennis	Schulte	Halliwill	Affolter	Rickermann
Auburn	Livesay	Peek	Shore	Schupp	Saysoff	Dennis	Affolter	Halliwill	Gerwitz	Luna
Northern Iowa	Carney	Melton	Shore	Schupp	Saysoff	Dennis	Schulte	Halliwill	Wrigley	Luna
South Dakota State	Livesay	Peek	Shore	Schupp	Luna	Saysoff	Sackett	Halliwill	Wrigley	Bradley
Arkansas	Holman	Sackett	Shore	Dennis	Wrigley	Saysoff	Schulte	Halliwill	Gerwitz	Luna
South Dakota State	Kell	Peek	Shore	Dennis	Luna	Saysoff	Affolter	Halliwill	Wrigley	Rickermann
Florida Atlantic	Holman	Sackett	Shore	Dennis	Wrigley	Schupp	Affolter	Halliwill	Schulte	Bradley
Arkansas	Livesay	Peek	Shore	Dennis	Wrigley	Schupp	Affolter	Halliwill	Gerwitz	Sackett
Eastern Illinois	Holman	Peek	Shore	Dennis	Wrigley	Saysoff	Affolter	Halliwill	Gerwitz	Luna
Eastern Illinois	Livesay	Sackett	Shore	Rickermann	Saysoff	Schupp	Affolter	Halliwill	Schulte	Bradley
Eastern Illinois	Holman	Sackett	Shore	Dennis	Saysoff	Schupp	Affolter	Halliwill	Wrigley	Bradley
Bradley	Livesay	Sackett	Shore	Dennis	Wrigley	Saysoff	Affolter	Halliwill	Schulte	Bradley
Bradley	Van Haren	Melton	Shore	Dennis	Saysoff	Schupp	Schulte	Affolter	Gerwitz	Rickermann
SIU Edwardsville	Livesay	Peek	Shore	Dennis	Wrigley	Saysoff	Schulte	Halliwill	Affolter	Sackett
SIU Edwardsville	Holman	Sackett	Shore	Rickermann	Wrigley	Saysoff	Schulte	Halliwill	Gerwitz	Bradley
SIU Edwardsville	Holman	Peek	Shore	Rickermann	Saysoff	Schupp	Schulte	Halliwill	Affolter	Sackett
Tennessee State	Livesay	Sackett	Shore	Rickermann	Wrigley	Dennis	Schulte	Halliwill	Affolter	Bradley
Tennessee State	Holman	Peek	Shore	Dennis	Wrigley	Saysoff	Affolter	Halliwill	Gerwitz	Rickermann
Tennessee State	Holman	Peek	Shore	Dennis	Wrigley	Saysoff	Schulte	Halliwill	Affolter	Rickermann
Southern Indiana	Holman	Peek	Shore	Rickermann	Saysoff	Dennis	Affolter	Halliwill	Gerwitz	Sackett
Southern Indiana	Carney	Sackett	Shore	Rickermann	Wrigley	Dennis	Schulte	Halliwill	Affolter	Peek
Southern Indiana	Holman	Peek	Shore	Dennis	Wrigley	Saysoff	Affolter	Halliwill	Sackett	Bradley
Missouri	Holman	Peek	Shore	Rickermann	Wrigley	Dennis	Schulte	Halliwill	Affolter	Sackett
Tennessee Tech	Holman	Peek	Shore	Rickermann	Wrigley	Dennis	Schulte	Halliwill	Affolter	Sackett
Tennessee Tech	Livesay	Sackett	Shore	Rickermann	Wrigley	Dennis	Schulte	Halliwill	Affolter	Peek
Tennessee Tech	Van Haren	Peek	Shore	Rickermann	Wrigley	Dennis	Affolter	Halliwill	Gerwitz	Sackett
Morehead State	Holman	Peek	Shore	Rickermann	Wrigley	Dennis	Affolter	Halliwill	Gerwitz	Sackett
Morehead State	Livesay	Sackett	Shore	Rickermann	Wrigley	Dennis	Schulte	Halliwill	Affolter	Bradley
Morehead State	Holman	Peek	Shore	Rickermann	Wrigley	Dennis	Affolter	Halliwill	Gerwitz	Sackett
Lindenwood	Holman	Peek	Shore	Rickermann	Wrigley	Dennis	Affolter	Halliwill	Gerwitz	Sackett
Lindenwood	Carney	Peek	Shore	Rickermann	Wrigley	Dennis	Schulte	Halliwill	Affolter	Sackett
Lindenwood	Livesay	Sackett	Shore	Rickermann	Wrigley	Dennis	Affolter	Halliwill	Schulte	Peek
Murray State	Livesay	Peek	Shore	Rickermann	Luna	Saysoff	Affolter	Halliwill	Gerwitz	Sackett
Western Illinois										
Western Illinois										
Western Illinois										
UT Martin										
UT Martin										
UT Martin										

## 2024 SOUTHEAST MISSOURI SOFTBALL NOTES

## GAME-BY-GAME HITTING



Opponent	AB	R	H	RBI	2B	3B	HR	BB	IBB	SB	CS	HBP	SAC	SF	GDP	K	PO	A	E	Avg
Southeast Missouri	27	7	7	6	1	0	1	2	0	1	0	1	1	1	0	5	21	9	2	.259
Stony Brook	30	5	8	3	0	0	1	1	0	2	0	0	0	0	0	6	18	6	3	.267
Southeast Missouri	36	7	11	7	4	0	0	2	0	0	0	0	0	0	0	1	24	8	0	.286
Florida International	29	4	7	3	1	0	0	3	0	2	0	0	0	1	1	6	24	13	2	.254
Southeast Missouri	17	0	2	0	1	0	0	3	0	0	0	0	0	0	1	7	12	2	1	.250
Ohio State	28	13	15	12	1	0	1	2	0	2	0	0	0	0	0	4	15	3	1	.345
Southeast Missouri	24	0	4	0	2	0	0	1	0	0	0	0	0	0	0	2	21	6	0	.231
Florida International	28	1	8	1	0	0	0	0	0	3	1	0	0	0	0	2	21	8	0	.330
Southeast Missouri	24	5	5	5	0	0	2	1	0	0	0	0	0	0	0	3	21	7	3	.227
Stony Brook	25	4	5	4	0	0	0	4	0	1	0	0	1	1	1	9	18	9	1	.307
Southeast Missouri	21	1	3	1	1	0	0	1	0	0	0	0	0	1	0	4	16	5	2	.215
Maryland	22	9	7	7	1	1	0	9	0	0	1	4	1	0	0	6	18	5	1	.309
Southeast Missouri	26	0	5	0	0	0	0	1	0	1	0	1	0	0	0	8	18	5	1	.211
Syracuse	21	3	4	3	1	0	0	0	0	4	0	0	0	1	0	5	21	6	0	.295
Southeast Missouri	20	2	4	2	1	0	0	1	0	1	0	0	1	0	0	2	15	10	3	.210
Southeastern Louisiana	26	10	15	9	1	1	0	3	0	2	2	0	0	3	0	0	18	13	0	.330
Southeast Missouri	24	9	8	7	2	0	0	4	0	3	0	1	1	1	0	4	21	11	2	.224
Maryland	23	3	3	3	1	0	0	5	0	0	1	0	0	1	0	2	18	9	3	.310
Southeast Missouri	16	0	0	0	0	0	0	2	0	0	0	0	0	0	0	9	14	9	4	.209
Auburn	24	8	9	7	1	0	2	1	0	2	0	0	1	0	0	1	15	2	1	.316
Southeast Missouri	28	3	7	3	1	0	1	4	0	1	0	1	0	0	0	14	18	6	0	.213
Northern Iowa	26	5	8	5	2	0	1	4	0	0	0	0	0	0	0	7	21	3	2	.316
Southeast Missouri	19	5	6	4	3	0	0	2	0	0	0	0	2	0	0	2	14	6	3	.220
Auburn	22	13	7	11	0	0	3	8	0	2	0	1	0	1	0	6	15	6	0	.316
Southeast Missouri	30	6	9	5	0	0	1	3	0	0	0	1	0	0	0	9	21	7	2	.228
Northern Iowa	31	9	10	8	2	1	0	2	0	2	0	0	1	0	1	6	21	6	0	.316
Southeast Missouri	18	0	3	0	0	0	0	3	0	0	0	0	0	0	0	7	12	4	3	.224
South Dakota State	20	9	6	9	1	0	1	7	0	0	0	0	0	1	0	2	15	2	0	.315
Southeast Missouri	21	0	3	0	0	0	0	1	0	1	1	0	0	0	1	6	18	8	1	.219
Arkansas	24	5	7	5	2	0	2	1	0	0	0	0	0	0	1	0	21	12	0	.314
Southeast Missouri	19	1	5	1	1	0	0	2	0	0	0	0	1	0	0	5	15	4	2	.222
South Dakota State	28	9	13	8	2	0	1	1	0	1	0	0	0	0	0	4	15	5	1	.324
Southeast Missouri	29	3	8	2	1	0	0	3	0	1	0	0	0	0	0	4	18	7	1	.226
Florida Atlantic	26	8	8	7	0	0	1	7	0	1	0	1	1	0	0	2	21	8	0	.323
Southeast Missouri	29	5	7	5	2	0	0	4	0	2	0	0	1	2	0	7	23	9	2	.227
Arkansas	31	6	9	6	0	0	1	3	1	0	0	0	2	1	1	0	24	5	1	.321
Southeast Missouri	45	4	9	3	4	0	0	3	0	1	0	0	3	0	0	7	36	15	3	.224
Eastern Illinois	49	7	14	6	0	0	1	4	0	1	0	0	2	1	0	3	36	22	3	.318
Southeast Missouri	31	9	12	9	3	1	0	2	0	2	0	0	0	0	0	3	21	7	1	.234
Eastern Illinois	27	4	5	4	1	0	1	2	0	1	0	1	0	0	0	1	18	6	2	.311
Southeast Missouri	26	1	5	1	0	0	1	1	0	0	1	0	0	0	0	6	21	9	0	.232
Eastern Illinois	29	2	9	2	1	0	1	1	0	0	0	0	1	0	0	5	21	8	1	.311
Southeast Missouri	22	6	7	4	2	0	0	5	0	3	1	0	2	1	0	6	21	13	0	.236
Bradley	24	2	3	2	0	0	0	4	0	1	0	0	0	0	0	4	18	7	2	.304
Southeast Missouri	26	1	7	1	1	0	0	0	0	0	1	0	0	0	0	10	21	7	0	.237
Bradley	28	5	7	5	0	0	3	2	0	0	0	0	0	0	0	7	21	6	0	.301
Southeast Missouri	27	3	8	3	1	0	2	3	0	1	0	0	1	0	0	3	21	13	0	.240
SIU Edwardsville	27	0	7	0	1	0	0	1	0	3	1	1	0	0	0	2	21	8	0	.265
Southeast Missouri	28	3	7	2	0	0	0	4	0	1	0	0	1	0	0	3	21	13	0	.240
SIU Edwardsville	24	2	6	2	1	0	0	1	0	0	1	0	1	0	1	1	21	4	1	.263
Southeast Missouri	28	7	9	7	4	0	0	3	0	1	0	0	1	1	1	4	21	7	2	.244
SIU Edwardsville	32	4	10	3	0	0	0	0	0	0	0	0	0	0	0	2	21	13	2	.271
Southeast Missouri	30	3	10	3	1	0	0	2	0	1	0	1	0	0	0	3	21	12	1	.247
Tennessee State	24	4	5	4	0	0	0	5	0	1	0	1	1	0	2	4	21	13	0	.295
Southeast Missouri	30	11	14	11	3	0	1	1	0	2	0	0	0	0	0	1	15	8	1	.257
Tennessee State	19	2	4	2	0	0	0	0	0	0	0	0	1	0	0	3	14	5	2	.293
Southeast Missouri	24	4	9	4	1	0	2	2	0	2	1	0	1	1	0	3	21	6	4	.260
Tennessee State	29	3	7	1	2	1	0	2	1	0	0	0	0	0	0	6	18	6	0	.291
Southeast Missouri	26	1	6	1	1	0	0	2	0	0	0	0	0	0	0	10	18	11	2	.259
Southern Indiana	25	2	7	2	0	0	0	0	0	0	0	1	0	0	0	4	21	4	0	.291



## 2024 SOUTHEAST MISSOURI SOFTBALL NOTES

### GAME-BY-GAME HITTING

Opponent	AB	R	H	RBI	2B	3B	HR	BB	IBB	SB	CS	HBP	SAC	SE	GDP	K	PQ	A	E	Avg
<b>Southeast Missouri</b>	<b>29</b>	<b>6</b>	<b>9</b>	<b>5</b>	<b>3</b>	<b>0</b>	<b>0</b>	<b>5</b>	<b>0</b>	<b>6</b>	<b>0</b>	<b>0</b>	<b>0</b>	<b>1</b>	<b>0</b>	<b>3</b>	<b>21</b>	<b>7</b>	<b>0</b>	<b>.261</b>
Southern Indiana	25	0	4	0	0	0	0	2	0	1	0	0	0	0	0	3	21	10	4	.287
<b>Southeast Missouri</b>	<b>31</b>	<b>4</b>	<b>11</b>	<b>4</b>	<b>1</b>	<b>0</b>	<b>0</b>	<b>3</b>	<b>0</b>	<b>2</b>	<b>1</b>	<b>0</b>	<b>0</b>	<b>1</b>	<b>0</b>	<b>7</b>	<b>18</b>	<b>12</b>	<b>1</b>	<b>.265</b>
Southern Indiana	26	5	9	5	1	9	1	3	0	0	0	0	1	0	0	1	21	4	1	.289
<b>Southeast Missouri</b>	<b>26</b>	<b>1</b>	<b>5</b>	<b>1</b>	<b>3</b>	<b>0</b>	<b>0</b>	<b>2</b>	<b>0</b>	<b>0</b>	<b>0</b>	<b>0</b>	<b>1</b>	<b>0</b>	<b>0</b>	<b>9</b>	<b>21</b>	<b>2</b>	<b>0</b>	<b>.263</b>
Missouri	23	0	3	0	0	0	0	1	0	0	1	2	0	0	0	3	21	5	1	.285
<b>Southeast Missouri</b>	<b>24</b>	<b>5</b>	<b>7</b>	<b>5</b>	<b>0</b>	<b>0</b>	<b>0</b>	<b>6</b>	<b>0</b>	<b>1</b>	<b>1</b>	<b>0</b>	<b>0</b>	<b>0</b>	<b>0</b>	<b>4</b>	<b>21</b>	<b>16</b>	<b>0</b>	<b>.263</b>
Tennessee Tech	28	3	8	3	1	0	0	3	0	0	0	0	1	0	1	0	18	10	1	.285
<b>Southeast Missouri</b>	<b>28</b>	<b>4</b>	<b>10</b>	<b>4</b>	<b>1</b>	<b>0</b>	<b>1</b>	<b>2</b>	<b>0</b>	<b>2</b>	<b>0</b>	<b>0</b>	<b>0</b>	<b>0</b>	<b>0</b>	<b>3</b>	<b>21</b>	<b>8</b>	<b>1</b>	<b>.266</b>
Tennessee Tech	25	1	5	1	0	0	0	2	0	1	1	0	1	0	0	5	18	7	2	.282
<b>Southeast Missouri</b>	<b>29</b>	<b>8</b>	<b>10</b>	<b>8</b>	<b>5</b>	<b>0</b>	<b>1</b>	<b>5</b>	<b>0</b>	<b>0</b>	<b>0</b>	<b>0</b>	<b>0</b>	<b>1</b>	<b>1</b>	<b>4</b>	<b>21</b>	<b>10</b>	<b>4</b>	<b>.269</b>
Tennessee Tech	33	10	12	7	3	0	0	5	0	1	0	0	1	0	1	1	21	7	0	.285
<b>Southeast Missouri</b>	<b>30</b>	<b>10</b>	<b>8</b>	<b>8</b>	<b>1</b>	<b>0</b>	<b>1</b>	<b>5</b>	<b>0</b>	<b>1</b>	<b>1</b>	<b>2</b>	<b>1</b>	<b>0</b>	<b>0</b>	<b>4</b>	<b>21</b>	<b>4</b>	<b>1</b>	<b>.269</b>
Morehead State	27	1	6	1	1	0	1	1	0	2	0	1	1	0	0	8	21	13	2	.283
<b>Southeast Missouri</b>	<b>31</b>	<b>14</b>	<b>14</b>	<b>10</b>	<b>2</b>	<b>0</b>	<b>2</b>	<b>5</b>	<b>0</b>	<b>4</b>	<b>0</b>	<b>0</b>	<b>0</b>	<b>0</b>	<b>0</b>	<b>3</b>	<b>18</b>	<b>8</b>	<b>0</b>	<b>.274</b>
Morehead State	24	4	8	4	3	0	0	2	0	1	0	0	0	1	0	3	18	5	3	.285
<b>Southeast Missouri</b>	<b>29</b>	<b>13</b>	<b>12</b>	<b>10</b>	<b>1</b>	<b>0</b>	<b>0</b>	<b>9</b>	<b>0</b>	<b>3</b>	<b>1</b>	<b>2</b>	<b>0</b>	<b>0</b>	<b>1</b>	<b>2</b>	<b>18</b>	<b>5</b>	<b>2</b>	<b>.278</b>
Morehead State	25	3	6	3	1	0	1	0	0	1	0	0	0	0	0	2	18	15	2	.284
<b>Southeast Missouri</b>	<b>22</b>	<b>1</b>	<b>6</b>	<b>1</b>	<b>1</b>	<b>0</b>	<b>1</b>	<b>2</b>	<b>1</b>	<b>0</b>	<b>1</b>	<b>0</b>	<b>0</b>	<b>0</b>	<b>0</b>	<b>7</b>	<b>21</b>	<b>8</b>	<b>0</b>	<b>.278</b>
Lindenwood	24	0	4	0	0	0	0	1	0	0	0	0	1	0	0	1	18	5	0	.281
<b>Southeast Missouri</b>	<b>24</b>	<b>4</b>	<b>6</b>	<b>4</b>	<b>2</b>	<b>0</b>	<b>1</b>	<b>1</b>	<b>0</b>	<b>0</b>	<b>0</b>	<b>0</b>	<b>0</b>	<b>0</b>	<b>0</b>	<b>3</b>	<b>21</b>	<b>11</b>	<b>0</b>	<b>.277</b>
Lindenwood	23	0	2	0	0	0	0	0	0	0	0	0	0	0	0	3	18	2	0	.277
<b>Southeast Missouri</b>	<b>27</b>	<b>1</b>	<b>7</b>	<b>0</b>	<b>1</b>	<b>0</b>	<b>0</b>	<b>0</b>	<b>0</b>	<b>1</b>	<b>0</b>	<b>0</b>	<b>0</b>	<b>0</b>	<b>0</b>	<b>6</b>	<b>21</b>	<b>15</b>	<b>0</b>	<b>.277</b>
Lindenwood	22	0	6	0	0	0	0	1	0	0	1	0	1	0	0	1	19	3	1	.277
<b>Southeast Missouri</b>	<b>28</b>	<b>3</b>	<b>6</b>	<b>3</b>	<b>0</b>	<b>0</b>	<b>1</b>	<b>1</b>	<b>0</b>	<b>0</b>	<b>1</b>	<b>0</b>	<b>0</b>	<b>0</b>	<b>0</b>	<b>3</b>	<b>18</b>	<b>5</b>	<b>0</b>	<b>.275</b>
Murray State	24	6	6	6	1	0	1	3	0	2	0	0	1	0	0	4	21	12	2	.276
<b>Southeast Missouri</b>																				
Western Illinois																				
<b>Southeast Missouri</b>																				
Western Illinois																				
<b>Southeast Missouri</b>																				
Western Illinois																				
<b>Southeast Missouri</b>																				
UT Martin																				
<b>Southeast Missouri</b>																				
UT Martin																				
<b>Southeast Missouri</b>																				
UT Martin																				



# 2024 SOUTHEAST MISSOURI SOFTBALL NOTES

## GAME-BY-GAME PITCHING



Opponent	IP	H	R	ER	BB	SO	2B	3B	HR	WP	BK	HBP	DP	IBB	Score	W-L	SV	ERA
<b>Southeast Missouri</b>	<b>7.0</b>	<b>8</b>	<b>5</b>	<b>3</b>	<b>1</b>	<b>6</b>	<b>0</b>	<b>0</b>	<b>1</b>	<b>0</b>	<b>0</b>	<b>0</b>	<b>0</b>	<b>0</b>	<b>7-5</b>	<b>1-0</b>	<b>0</b>	<b>3.00</b>
Stony Brook	6.0	7	7	4	2	5	1	0	1	1	0	1	0	0	5-7	0-1	0	4.67
<b>Southeast Missouri</b>	<b>8.0</b>	<b>7</b>	<b>4</b>	<b>3</b>	<b>3</b>	<b>6</b>	<b>1</b>	<b>0</b>	<b>0</b>	<b>3</b>	<b>0</b>	<b>0</b>	<b>1</b>	<b>0</b>	<b>7-4</b>	<b>2-0</b>	<b>0</b>	<b>2.80</b>
Florida International	8.0	11	7	4	2	1	4	0	0	0	0	0	0	0	4-7	0-2	0	4.00
<b>Southeast Missouri</b>	<b>4.0</b>	<b>15</b>	<b>13</b>	<b>8</b>	<b>2</b>	<b>4</b>	<b>1</b>	<b>0</b>	<b>1</b>	<b>0</b>	<b>0</b>	<b>0</b>	<b>0</b>	<b>0</b>	<b>0-13</b>	<b>2-1</b>	<b>0</b>	<b>5.16</b>
Ohio State	5.0	2	0	0	3	7	1	0	0	0	0	0	1	0	13-0	1-2	0	2.95
<b>Southeast Missouri</b>	<b>7.0</b>	<b>8</b>	<b>1</b>	<b>1</b>	<b>0</b>	<b>2</b>	<b>0</b>	<b>0</b>	<b>0</b>	<b>1</b>	<b>0</b>	<b>0</b>	<b>1</b>	<b>0</b>	<b>0-1</b>	<b>2-2</b>	<b>0</b>	<b>4.04</b>
Florida International	7.0	4	0	0	1	2	2	0	0	0	0	0	0	0	1-0	2-2	0	2.15
<b>Southeast Missouri</b>	<b>7.0</b>	<b>5</b>	<b>4</b>	<b>3</b>	<b>4</b>	<b>9</b>	<b>0</b>	<b>0</b>	<b>0</b>	<b>0</b>	<b>0</b>	<b>0</b>	<b>1</b>	<b>0</b>	<b>5-4</b>	<b>3-2</b>	<b>1</b>	<b>3.82</b>
Stony Brook	6.0	5	5	5	1	3	0	0	2	0	0	0	0	0	4-5	2-3	0	2.84
<b>Southeast Missouri</b>	<b>5.1</b>	<b>7</b>	<b>9</b>	<b>8</b>	<b>9</b>	<b>6</b>	<b>1</b>	<b>1</b>	<b>0</b>	<b>4</b>	<b>0</b>	<b>4</b>	<b>0</b>	<b>0</b>	<b>1-9</b>	<b>3-3</b>	<b>1</b>	<b>4.75</b>
Maryland	6.0	3	1	0	1	4	1	0	0	1	0	0	0	0	9-1	3-3	1	2.39
<b>Southeast Missouri</b>	<b>6.0</b>	<b>4</b>	<b>3</b>	<b>3</b>	<b>0</b>	<b>5</b>	<b>1</b>	<b>0</b>	<b>0</b>	<b>0</b>	<b>0</b>	<b>0</b>	<b>0</b>	<b>0</b>	<b>0-3</b>	<b>3-4</b>	<b>1</b>	<b>4.58</b>
Syracuse	7.0	5	0	0	1	8	0	0	0	0	0	1	0	0	3-0	4-3	1	2.02
<b>Southeast Missouri</b>	<b>5.0</b>	<b>15</b>	<b>10</b>	<b>9</b>	<b>3</b>	<b>0</b>	<b>1</b>	<b>1</b>	<b>0</b>	<b>2</b>	<b>0</b>	<b>0</b>	<b>0</b>	<b>0</b>	<b>2-10</b>	<b>3-5</b>	<b>1</b>	<b>5.39</b>
Southeastern Louisiana	6.0	4	2	2	1	2	1	0	0	0	0	0	1	0	10-2	5-3	1	2.06
<b>Southeast Missouri</b>	<b>7.0</b>	<b>3</b>	<b>3</b>	<b>1</b>	<b>5</b>	<b>2</b>	<b>1</b>	<b>0</b>	<b>0</b>	<b>0</b>	<b>0</b>	<b>0</b>	<b>0</b>	<b>0</b>	<b>9-3</b>	<b>4-5</b>	<b>1</b>	<b>4.85</b>
Maryland	6.0	8	9	6	4	4	2	0	0	3	0	1	0	0	3-9	5-4	1	2.58
<b>Southeast Missouri</b>	<b>4.2</b>	<b>9</b>	<b>8</b>	<b>6</b>	<b>1</b>	<b>1</b>	<b>1</b>	<b>0</b>	<b>2</b>	<b>0</b>	<b>0</b>	<b>0</b>	<b>0</b>	<b>0</b>	<b>0-8</b>	<b>4-6</b>	<b>1</b>	<b>5.16</b>
Auburn	5.0	0	0	0	2	9	0	0	0	0	0	0	0	0	8-0	6-4	1	2.37
<b>Southeast Missouri</b>	<b>6.0</b>	<b>8</b>	<b>5</b>	<b>5</b>	<b>4</b>	<b>7</b>	<b>2</b>	<b>0</b>	<b>1</b>	<b>0</b>	<b>0</b>	<b>0</b>	<b>0</b>	<b>0</b>	<b>3-5</b>	<b>4-7</b>	<b>1</b>	<b>5.22</b>
Northern Iowa	7.0	7	3	3	4	14	1	0	1	0	0	1	0	0	5-3	7-4	1	2.43
<b>Southeast Missouri</b>	<b>4.2</b>	<b>7</b>	<b>13</b>	<b>10</b>	<b>8</b>	<b>6</b>	<b>0</b>	<b>0</b>	<b>3</b>	<b>1</b>	<b>0</b>	<b>1</b>	<b>0</b>	<b>0</b>	<b>5-13</b>	<b>4-8</b>	<b>1</b>	<b>5.86</b>
Auburn	5.0	6	5	5	2	2	3	0	0	1	0	0	0	0	13-5	8-4	1	2.74
<b>Southeast Missouri</b>	<b>7.0</b>	<b>10</b>	<b>9</b>	<b>6</b>	<b>2</b>	<b>6</b>	<b>2</b>	<b>1</b>	<b>0</b>	<b>1</b>	<b>0</b>	<b>0</b>	<b>1</b>	<b>0</b>	<b>6-9</b>	<b>4-9</b>	<b>1</b>	<b>5.87</b>
Northern Iowa	7.0	9	6	5	3	9	0	0	1	0	0	1	0	0	9-6	9-4	2	2.94
<b>Southeast Missouri</b>	<b>4.0</b>	<b>6</b>	<b>9</b>	<b>6</b>	<b>7</b>	<b>2</b>	<b>1</b>	<b>0</b>	<b>1</b>	<b>1</b>	<b>0</b>	<b>0</b>	<b>0</b>	<b>0</b>	<b>0-9</b>	<b>4-10</b>	<b>1</b>	<b>6.10</b>
South Dakota State	5.0	3	0	0	3	7	0	0	0	1	0	0	0	0	9-0	10-4	2	2.77
<b>Southeast Missouri</b>	<b>6.0</b>	<b>7</b>	<b>5</b>	<b>5</b>	<b>1</b>	<b>0</b>	<b>2</b>	<b>0</b>	<b>2</b>	<b>0</b>	<b>0</b>	<b>0</b>	<b>2</b>	<b>0</b>	<b>0-5</b>	<b>4-11</b>	<b>1</b>	<b>6.08</b>
Arkansas	7.0	3	0	0	1	6	0	0	0	0	0	0	2	0	5-0	11-4	2	2.56
<b>Southeast Missouri</b>	<b>5.0</b>	<b>13</b>	<b>9</b>	<b>7</b>	<b>1</b>	<b>4</b>	<b>2</b>	<b>0</b>	<b>1</b>	<b>2</b>	<b>0</b>	<b>0</b>	<b>1</b>	<b>0</b>	<b>1-9</b>	<b>4-12</b>	<b>1</b>	<b>6.28</b>
South Dakota State	5.0	5	1	1	2	5	1	0	0	0	0	0	0	0	9-1	12-4	2	2.50
<b>Southeast Missouri</b>	<b>6.0</b>	<b>8</b>	<b>8</b>	<b>6</b>	<b>7</b>	<b>2</b>	<b>0</b>	<b>0</b>	<b>1</b>	<b>0</b>	<b>0</b>	<b>1</b>	<b>1</b>	<b>0</b>	<b>3-8</b>	<b>4-13</b>	<b>1</b>	<b>6.32</b>
Florida Atlantic	7.0	8	3	3	3	4	1	0	0	1	0	0	0	0	8-3	13-4	3	2.53
<b>Southeast Missouri</b>	<b>7.2</b>	<b>9</b>	<b>6</b>	<b>4</b>	<b>3</b>	<b>0</b>	<b>0</b>	<b>0</b>	<b>1</b>	<b>0</b>	<b>0</b>	<b>0</b>	<b>1</b>	<b>1</b>	<b>5-6</b>	<b>4-14</b>	<b>1</b>	<b>6.13</b>
Arkansas	8.0	7	5	5	4	7	2	0	0	1	0	0	0	0	6-5	14-4	3	2.66
<b>Southeast Missouri</b>	<b>12.0</b>	<b>14</b>	<b>7</b>	<b>6</b>	<b>4</b>	<b>3</b>	<b>0</b>	<b>0</b>	<b>1</b>	<b>0</b>	<b>0</b>	<b>0</b>	<b>0</b>	<b>0</b>	<b>4-7</b>	<b>4-15</b>	<b>1</b>	<b>5.87</b>
Eastern Illinois	12.0	9	4	2	3	7	4	0	0	1	0	0	0	0	7-4	15-4	3	2.52
<b>Southeast Missouri</b>	<b>7.0</b>	<b>5</b>	<b>4</b>	<b>3</b>	<b>2</b>	<b>1</b>	<b>1</b>	<b>0</b>	<b>1</b>	<b>1</b>	<b>0</b>	<b>1</b>	<b>0</b>	<b>0</b>	<b>9-4</b>	<b>5-15</b>	<b>1</b>	<b>5.71</b>
Eastern Illinois	6.0	12	9	7	2	3	3	1	0	1	0	0	1	0	4-9	15-5	3	2.78
<b>Southeast Missouri</b>	<b>7.0</b>	<b>9</b>	<b>2</b>	<b>2</b>	<b>1</b>	<b>5</b>	<b>1</b>	<b>0</b>	<b>1</b>	<b>0</b>	<b>0</b>	<b>0</b>	<b>0</b>	<b>0</b>	<b>1-2</b>	<b>5-16</b>	<b>1</b>	<b>5.51</b>
Eastern Illinois	7.0	5	1	1	1	6	0	0	1	0	0	0	0	0	2-1	16-5	4	2.69
<b>Southeast Missouri</b>	<b>7.0</b>	<b>3</b>	<b>2</b>	<b>2</b>	<b>4</b>	<b>4</b>	<b>0</b>	<b>0</b>	<b>0</b>	<b>1</b>	<b>0</b>	<b>0</b>	<b>0</b>	<b>0</b>	<b>6-2</b>	<b>6-16</b>	<b>1</b>	<b>5.34</b>
Bradley	6.0	7	6	1	5	6	2	0	0	0	0	0	0	0	2-6	16-6	4	2.62
<b>Southeast Missouri</b>	<b>7.0</b>	<b>7</b>	<b>5</b>	<b>5</b>	<b>2</b>	<b>7</b>	<b>0</b>	<b>0</b>	<b>3</b>	<b>0</b>	<b>0</b>	<b>0</b>	<b>0</b>	<b>0</b>	<b>1-5</b>	<b>6-17</b>	<b>1</b>	<b>5.32</b>
Bradley	7.0	7	1	1	0	10	1	0	0	1	0	0	1	0	5-1	17-6	4	2.55
<b>Southeast Missouri</b>	<b>7.0</b>	<b>7</b>	<b>0</b>	<b>0</b>	<b>1</b>	<b>2</b>	<b>1</b>	<b>0</b>	<b>0</b>	<b>1</b>	<b>0</b>	<b>1</b>	<b>0</b>	<b>0</b>	<b>3-0</b>	<b>7-17</b>	<b>1</b>	<b>5.08</b>
SIU Edwardsville	7.0	8	3	3	3	3	1	0	2	0	0	0	0	0	0-3	17-7	4	2.57
<b>Southeast Missouri</b>	<b>7.0</b>	<b>6</b>	<b>2</b>	<b>2</b>	<b>1</b>	<b>1</b>	<b>1</b>	<b>0</b>	<b>0</b>	<b>0</b>	<b>0</b>	<b>0</b>	<b>1</b>	<b>0</b>	<b>3-2</b>	<b>8-17</b>	<b>2</b>	<b>4.95</b>
SIU Edwardsville	7.0	7	3	1	4	3	0	0	0	0	0	0	0	0	2-3	17-8	4	2.50
<b>Southeast Missouri</b>	<b>7.0</b>	<b>10</b>	<b>4</b>	<b>3</b>	<b>0</b>	<b>2</b>	<b>0</b>	<b>0</b>	<b>0</b>	<b>2</b>	<b>0</b>	<b>0</b>	<b>0</b>	<b>0</b>	<b>7-4</b>	<b>9-17</b>	<b>3</b>	<b>4.87</b>
SIU Edwardsville	7.0	9	7	5	3	4	4	0	0	0	0	0	2	0	4-7	17-9	4	2.60
<b>Southeast Missouri</b>	<b>7.0</b>	<b>5</b>	<b>4</b>	<b>4</b>	<b>5</b>	<b>4</b>	<b>0</b>	<b>0</b>	<b>0</b>	<b>0</b>	<b>0</b>	<b>1</b>	<b>2</b>	<b>0</b>	<b>3-4</b>	<b>9-18</b>	<b>3</b>	<b>4.83</b>
Tennessee State	7.0	10	3	3	2	3	1	0	0	2	0	1	1	0	4-3	18-9	4	2.62
<b>Southeast Missouri</b>	<b>5.0</b>	<b>4</b>	<b>2</b>	<b>1</b>	<b>0</b>	<b>3</b>	<b>0</b>	<b>0</b>	<b>0</b>	<b>0</b>	<b>0</b>	<b>0</b>	<b>0</b>	<b>0</b>	<b>11-2</b>	<b>10-18</b>	<b>3</b>	<b>4.74</b>
Tennessee State	4.2	14	11	7	1	1	3	0	1	0	0	0	0	0	2-11	18-10	4	2.82
<b>Southeast Missouri</b>	<b>7.0</b>	<b>7</b>	<b>3</b>	<b>1</b>	<b>2</b>	<b>6</b>	<b>2</b>	<b>1</b>	<b>0</b>	<b>0</b>	<b>0</b>	<b>0</b>	<b>0</b>	<b>1</b>	<b>4-3</b>	<b>11-18</b>	<b>3</b>	<b>4.60</b>
Tennessee State	6.0	9	4	4	2	3	1	0	2	1	0	0	0	0	3-4	18-11	4	2.88
<b>Southeast Missouri</b>	<b>6.0</b>	<b>7</b>	<b>2</b>	<b>1</b>	<b>0</b>	<b>4</b>	<b>0</b>	<b>0</b>	<b>0</b>	<b>0</b>	<b>0</b>	<b>1</b>	<b>1</b>	<b>0</b>	<b>1-2</b>	<b>11-19</b>	<b>3</b>	<b>4.49</b>
Southern Indiana	7.0	6	1	1	2	10	1	0	0	0	0	0	0	0	2-1	19-11	4	2.81



## 2024 SOUTHEAST MISSOURI SOFTBALL NOTES

### GAME-BY-GAME PITCHING

Opponent	IP	H	R	ER	BB	SO	2B	3B	HR	WP	BK	HBP	DP	IBB	Score	W-L	SV	ERA
<b>Southeast Missouri</b>	<b>7.0</b>	<b>4</b>	<b>0</b>	<b>0</b>	<b>2</b>	<b>3</b>	<b>0</b>	<b>0</b>	<b>0</b>	<b>0</b>	<b>0</b>	<b>0</b>	<b>0</b>	<b>0</b>	<b>6-0</b>	<b>12-19</b>	<b>3</b>	<b>4.33</b>
Southern Indiana	7.0	9	6	6	5	3	3	0	0	0	0	0	0	0	0-6	19-12	4	2.92
<b>Southeast Missouri</b>	<b>6.0</b>	<b>9</b>	<b>5</b>	<b>3</b>	<b>3</b>	<b>1</b>	<b>1</b>	<b>0</b>	<b>1</b>	<b>0</b>	<b>0</b>	<b>0</b>	<b>0</b>	<b>0</b>	<b>4-5</b>	<b>12-20</b>	<b>3</b>	<b>4.31</b>
Southern Indiana	7.0	11	4	4	3	7	1	0	0	0	0	0	0	0	5-4	20-12	4	2.96
<b>Southeast Missouri</b>	<b>7.0</b>	<b>3</b>	<b>0</b>	<b>0</b>	<b>1</b>	<b>3</b>	<b>0</b>	<b>0</b>	<b>0</b>	<b>0</b>	<b>0</b>	<b>2</b>	<b>0</b>	<b>0</b>	<b>1-0</b>	<b>13-20</b>	<b>3</b>	<b>4.17</b>
Missouri	7.0	5	1	0	2	9	3	0	0	0	0	0	0	0	0-1	20-13	4	2.86
<b>Southeast Missouri</b>	<b>7.0</b>	<b>8</b>	<b>3</b>	<b>3</b>	<b>3</b>	<b>0</b>	<b>1</b>	<b>0</b>	<b>0</b>	<b>1</b>	<b>0</b>	<b>0</b>	<b>1</b>	<b>0</b>	<b>5-3</b>	<b>14-20</b>	<b>3</b>	<b>4.13</b>
Tennessee Tech	6.0	7	5	5	6	4	0	0	0	0	0	0	0	0	3-5	20-14	4	2.94
<b>Southeast Missouri</b>	<b>7.0</b>	<b>5</b>	<b>1</b>	<b>1</b>	<b>2</b>	<b>5</b>	<b>0</b>	<b>0</b>	<b>0</b>	<b>2</b>	<b>0</b>	<b>0</b>	<b>0</b>	<b>0</b>	<b>4-1</b>	<b>15-20</b>	<b>3</b>	<b>4.03</b>
Tennessee Tech	6.0	10	4	1	2	3	1	0	1	0	0	0	1	0	1-4	20-15	4	2.90
<b>Southeast Missouri</b>	<b>7.0</b>	<b>12</b>	<b>10</b>	<b>6</b>	<b>5</b>	<b>1</b>	<b>3</b>	<b>0</b>	<b>0</b>	<b>1</b>	<b>0</b>	<b>0</b>	<b>1</b>	<b>0</b>	<b>8-10</b>	<b>15-21</b>	<b>3</b>	<b>4.09</b>
Tennessee Tech	7.0	10	8	8	5	4	5	0	1	1	0	0	1	0	10-8	21-15	5	3.05
<b>Southeast Missouri</b>	<b>7.0</b>	<b>6</b>	<b>1</b>	<b>1</b>	<b>1</b>	<b>8</b>	<b>1</b>	<b>0</b>	<b>1</b>	<b>1</b>	<b>0</b>	<b>1</b>	<b>0</b>	<b>0</b>	<b>10-1</b>	<b>16-21</b>	<b>3</b>	<b>4.00</b>
Morehead State	7.0	8	10	9	5	4	1	0	1	3	0	2	0	0	1-10	21-16	5	3.22
<b>Southeast Missouri</b>	<b>6.0</b>	<b>8</b>	<b>4</b>	<b>4</b>	<b>2</b>	<b>3</b>	<b>3</b>	<b>0</b>	<b>0</b>	<b>2</b>	<b>0</b>	<b>0</b>	<b>1</b>	<b>0</b>	<b>14-4</b>	<b>17-21</b>	<b>3</b>	<b>4.02</b>
Morehead State	6.0	14	14	11	5	3	2	0	2	3	0	0	0	0	4-14	21-17	5	3.45
<b>Southeast Missouri</b>	<b>6.0</b>	<b>6</b>	<b>3</b>	<b>2</b>	<b>0</b>	<b>2</b>	<b>1</b>	<b>0</b>	<b>1</b>	<b>0</b>	<b>0</b>	<b>0</b>	<b>0</b>	<b>0</b>	<b>13-3</b>	<b>18-21</b>	<b>3</b>	<b>3.98</b>
Morehead State	6.0	12	13	9	9	2	1	0	0	2	0	2	1	0	3-13	21-18	5	3.61
<b>Southeast Missouri</b>	<b>7.0</b>	<b>4</b>	<b>0</b>	<b>0</b>	<b>1</b>	<b>1</b>	<b>0</b>	<b>0</b>	<b>0</b>	<b>0</b>	<b>0</b>	<b>0</b>	<b>0</b>	<b>0</b>	<b>1-0</b>	<b>19-21</b>	<b>3</b>	<b>3.87</b>
Lindenwood	6.0	6	1	1	2	7	1	0	1	0	0	0	0	1	0-1	21-19	5	3.56
<b>Southeast Missouri</b>	<b>7.0</b>	<b>2</b>	<b>0</b>	<b>0</b>	<b>0</b>	<b>3</b>	<b>0</b>	<b>0</b>	<b>0</b>	<b>0</b>	<b>0</b>	<b>0</b>	<b>0</b>	<b>0</b>	<b>4-0</b>	<b>20-21</b>	<b>3</b>	<b>3.77</b>
Lindenwood	6.0	6	4	4	1	3	2	0	1	0	0	0	0	0	0-4	21-20	5	3.58
<b>Southeast Missouri</b>	<b>7.0</b>	<b>6</b>	<b>0</b>	<b>0</b>	<b>1</b>	<b>1</b>	<b>0</b>	<b>0</b>	<b>0</b>	<b>0</b>	<b>0</b>	<b>0</b>	<b>0</b>	<b>0</b>	<b>1-0</b>	<b>21-21</b>	<b>3</b>	<b>3.67</b>
Lindenwood	6.1	7	1	0	0	6	1	0	0	0	0	0	0	0	0-1	21-21	5	3.50
<b>Southeast Missouri</b>	<b>6.0</b>	<b>6</b>	<b>6</b>	<b>5</b>	<b>3</b>	<b>4</b>	<b>1</b>	<b>0</b>	<b>1</b>	<b>1</b>	<b>0</b>	<b>0</b>	<b>0</b>	<b>0</b>	<b>3-6</b>	<b>21-22</b>	<b>3</b>	<b>3.72</b>
Murray State	7.0	6	3	3	1	3	0	0	1	0	0	0	0	0	6-3	22-21	5	3.49
<b>Southeast Missouri</b>																		
Western Illinois																		
<b>Southeast Missouri</b>																		
Western Illinois																		
<b>Southeast Missouri</b>																		
Western Illinois																		
<b>Southeast Missouri</b>																		
UT Martin																		
<b>Southeast Missouri</b>																		
UT Martin																		
<b>Southeast Missouri</b>																		
UT Martin																		