



## OVC CHAMPS NCAA TOURNEY

1995 • 1996 • 1997 1999  
1998 • 1999 • 2019 2019  
2021 • 2023

Jeff Honza, Associate Director of Athletics for Strategic Communications  
Office: (573) 651-2933 | Cell: (618) 528-1145  
Email: jhonza@semo.edu, redhawk1@me.com

### SCHEDULE

#### February (4-9)

|    |                                  |             |
|----|----------------------------------|-------------|
| 9  | vs. Stony Brook !                | W, 7-5      |
| 9  | at Florida International ! ESPN+ | W, 7-4 (8)  |
| 10 | vs. Ohio State !                 | L, 0-13 (5) |
| 10 | at Florida International !       | L, 0-1      |
| 11 | Stony Brook                      | W, 5-4      |
| 16 | vs. Maryland \$                  | L, 1-9 (6)  |
| 17 | vs. Syracuse \$                  | L, 0-3      |
| 17 | at Southeastern Louisiana \$     | L, 2-10 (6) |
| 18 | vs. Maryland \$                  | W, 9-3      |
| 23 | at #24 Auburn ^ SECN+            | L, 0-8 (5)  |
| 24 | vs. Northern Iowa ^              | L, 3-5      |
| 24 | at #24 Auburn ^                  | L, 5-13 (5) |
| 25 | vs. Northern Iowa ^              | L, 6-9      |

#### March (8-11, 7-5 OVC)

|    |                                     |                            |
|----|-------------------------------------|----------------------------|
| 1  | vs. South Dakota State &            | L, 0-9 (5)                 |
| 1  | at #16 Arkansas & SECN+             | L, 0-5                     |
| 2  | vs. South Dakota State &            | L, 1-9 (5)                 |
| 2  | vs. Florida Atlantic &              | L, 3-8                     |
| 3  | at #16 Arkansas & SECN+             | L, 5-6 (8)                 |
| 9  | <b>Eastern Illinois* (DH) ESPN+</b> | <b>L, 4-7 (12); W, 9-4</b> |
| 10 | <b>Eastern Illinois* ESPN+</b>      | <b>L, 1-2</b>              |
| 12 | <b>Bradley (DH) ESPN+</b>           | <b>W, 6-2; L, 1-5</b>      |
| 16 | at SIU Edwardsville* (DH) ESPN+     | W, 3-0; W, 3-2             |
| 17 | at SIU Edwardsville* ESPN+          | W, 7-4                     |
| 23 | <b>Tennessee State* (DH) ESPN+</b>  | <b>L, 3-4; W, 11-2 (5)</b> |
| 24 | <b>Tennessee State* ESPN+</b>       | <b>W, 4-3</b>              |
| 29 | at Southern Indiana* (DH) ESPN+     | L, 1-2; W, 6-0             |
| 30 | at Southern Indiana* ESPN+          | L, 4-5                     |

#### April (3-1, 2-1 OVC)

|    |                                     |                       |
|----|-------------------------------------|-----------------------|
| 3  | at #11 Missouri                     | W, 1-0                |
| 6  | <b>Tennessee Tech* (DH) ESPN+</b>   | <b>W, 5-3; W, 4-1</b> |
| 7  | <b>Tennessee Tech* ESPN+</b>        | <b>L, 8-10</b>        |
| 10 | <b>Saint Louis ESPN+</b>            | <b>Canceled</b>       |
| 13 | at Morehead State* (DH) ESPN+       | 11 a.m.               |
| 14 | at Morehead State* ESPN+            | 11 a.m.               |
| 20 | <b>Lindenwood* (DH) ESPN+</b>       | <b>3 p.m.</b>         |
| 21 | <b>Lindenwood* ESPN+</b>            | <b>12 p.m.</b>        |
| 23 | at Murray State                     | 3 p.m.                |
| 27 | <b>Western Illinois* (DH) ESPN+</b> | <b>12 p.m.</b>        |
| 28 | <b>Western Illinois* ESPN+</b>      | <b>12 p.m.</b>        |

#### May (0-0, 0-0 OVC)

|      |                    |              |
|------|--------------------|--------------|
| 4    | at UT Martin* (DH) | 1 p.m.       |
| 5    | at UT Martin*      | 1 p.m.       |
| 8-11 | OVC Tournament     | Peoria, Ill. |

! - Felsberg Invitational (Miami, Fla.); \$ - Lion Classic (Hammond, La.); ^ - Auburn Tournament (Auburn, Ala.); & - Wooo Pig Classic (Fayetteville, Ark.); Home Games in **Bold**; \* - Ohio Valley Conference Game



#### Southeast Missouri or SEMO

is the preferred reference for Southeast Missouri State University athletic teams. Southeastern Missouri State is **NOT** an acceptable reference.



### GAMES 37-39 // SOUTHEAST MISSOURI at MOREHEAD STATE

Apr. 13-14 // 11 a.m. (DH)/11 a.m., CT // Morehead, Ky. // University Field // Series: SEMO leads, 70-22  
Video: ESPN+ // Live Stats: MSUEagles.com // X (formerly Twitter): @SEMOSoftball



**15-21**

9-6 OVC

#### SEMO REDHAWKS

Head Coach ..... Mark Redburn  
Career Record (Yrs.) ..... 467-455 (20)  
Record at SEMO (Yrs.) ..... 253-206 (10)  
OVC Record ..... 130-79



**10-18**

4-11 OVC

#### MOREHEAD STATE EAGLES

Head Coach ..... Megan Griffith  
Career Record (Yrs.) ..... 26-87 (3)  
Record at MSU (Yrs.) ..... 26-87 (3)  
OVC Record ..... 17-49

#### // Redhawks Make Long Trip to Morehead State This Weekend

Southeast Missouri (15-21, 9-6) travels to Morehead State (10-18, 4-11) this weekend. SEMO and MSU play a doubleheader at 11 a.m. Saturday followed by a 11 a.m., CT single game Sunday.

#### // Follow the Redhawks

Live stats will be available online at MSUEagles.com. Video can be accessed at ESPN+. Updates will be provided on X @SEMOSoftball.

#### // Series History

Southeast Missouri owns a dominating 70-22 lead in its all-time series against Morehead State. SEMO is on an 11-game winning streak in the series. The Redhawks have not lost to the Eagles since 2018. SEMO is 26-12 all-time against MSU in Morehead, Kentucky.

#### // Midweek vs. Saint Louis Canceled

The Redhawks were initially schedule to host Saint Louis in a midweek game on Apr. 10. That contest was canceled due to inclement weather. No makeup date has been set at this time.

#### // OVC Update

The Redhawks are tied for third with Lindenwood in the Ohio Valley Conference standings. Southeast Missouri clinched series wins in three of its first five three-game sets against OVC foes. The Redhawks swept SIU Edwardsville (Mar. 16-17) on the road and won two of three against Tennessee State (Mar. 23-24) and Tennessee Tech (Apr. 6-7) at home. Eastern Illinois (11-4) and Southern Indiana (10-5) are first and second in the conference, respectively.

#### // Redhawks Take Series Against Tennessee Tech

Southeast Missouri swept Tennessee Tech (Apr. 6-7) in a doubleheader to clinch its third series victory in Ohio Valley Conference play. SEMO won by scores of 5-3 and 4-1, winning the series 2-1. Paige Halliwill hit .571 (4-for-7) with four runs scored, two doubles, four walks and two RBI in three games against the Golden Eagles.

#### // Complete Game Victory for Livesay

Freshman Tegan Livesay pitched a complete game victory against Tennessee Tech (Apr. 6). Livesay went the distance allowing just one run on five hits and struck out five in game two of the series. It was her second complete game of the season.

FOLLOW THE REDHAWKS AT **SEMOREDHAWKS.COM**



# 2024 SOUTHEAST MISSOURI SOFTBALL NOTES

## MOREHEAD STATE // APR. 13-14

### // Gaining Momentum

Southeast Missouri has won six of its last 10 games and is 3-1 thus far in April. SEMO posted series wins against Tennessee State (Mar. 23-24) and Tennessee Tech (Apr. 6-7), beat Southern Indiana (Apr. 29) once and upset #11 Missouri (Apr. 3) for its victories in that stretch.

### // Affolter Playing Well

Brittany Affolter has hit safely in seven of her last eight games. Affolter posted multiple hits three times during that span. She increased her batting average by 74 points from .217 to .291 since Mar. 24. Affolter also had the biggest hit of her career when she delivered a two-out RBI-double to score the only run of the game in Southeast Missouri's 1-0 victory over #11 Missouri (Apr. 3).

### // Rickermann On a Roll

Abigail Rickermann is currently Southeast Missouri's hottest hitter. Rickermann hit safely in 12 of her last 14 games and had multiple hits six times during that stretch. She recently tied a career-high three hits vs. Tennessee Tech (Apr. 6). Rickermann leads the Redhawks with a .391 batting average and .440 on-base percentage.

### // Close to 100 Hits

Abigail Rickermann is seven hits away from reaching 100 in her career. Rickermann has 93 hits in 154 games and 80 starts in her career.

### // Huge Upset in Columbia

Southeast Missouri claimed the biggest win of its NCAA Division I era when it knocked off #11 Missouri (Apr. 3). The win was SEMO's second over a ranked opponent

since it moved to the Division I ranks in 1992. This year's #11 Missouri team was the highest ranked opponent the Redhawks ever beat. It was also the first time since 1998 where SEMO upended the Tigers in Columbia.

### // Second Win Over Ranked Team for Redburn

The Redhawks have two wins over ranked opponents in their NCAA Division I tenure and both belong to Head Coach Mark Redburn. Southeast Missouri defeated then-#12 Arkansas, 6-1, on Feb. 22, 2019 in Fayetteville, Arkansas and took down #11 Missouri in Columbia on Apr. 3, 2024.

### // Holman Pitches Lights Out

Paytience Holman was outstanding in the circle during her massive win over #11 Missouri (Apr. 3). Holman went the distance for her team-high fourth complete game and first shutout of the season. She allowed just three hits (all singles), struck out three and walked one in seven innings. Holman recorded 16 fly ball outs, as well. Additionally, after pitching out of a one-out bases loaded jam in the bottom of the third inning, Holman retired the last 14 hitters she faced. Missouri did not have a baserunner in the final four innings of the game.

### // Midweek Action

With its win over #11 Missouri (Apr. 3), Southeast Missouri improved to 2-1 in midweek games this season. The Redhawks also split a doubleheader with Missouri Valley Conference member Bradley (Apr. 12) in Cape Girardeau. SEMO plays Saint Louis (Apr. 10) at home and travels to former Ohio Valley Conference

### 2024 OVC Standings (as of Apr. 9)

| School                    | Conference |          |          |             | Overall   |           |          |             |
|---------------------------|------------|----------|----------|-------------|-----------|-----------|----------|-------------|
|                           | W          | L        | I        | Pct.        | W         | L         | I        | Pct.        |
| Eastern Illinois          | 11         | 4        | 0        | .733        | 25        | 12        | 0        | .676        |
| Southern Indiana          | 10         | 5        | 0        | .667        | 16        | 14        | 0        | .533        |
| Lindenwood                | 9          | 6        | 0        | .600        | 21        | 16        | 0        | .568        |
| <b>Southeast Missouri</b> | <b>9</b>   | <b>6</b> | <b>0</b> | <b>.600</b> | <b>15</b> | <b>21</b> | <b>0</b> | <b>.417</b> |
| Tennessee State           | 8          | 7        | 0        | .533        | 17        | 18        | 0        | .486        |
| UT Martin                 | 7          | 8        | 0        | .467        | 21        | 17        | 0        | .553        |
| Tennessee Tech            | 7          | 8        | 0        | .467        | 16        | 16        | 0        | .500        |
| SIUE                      | 6          | 9        | 0        | .400        | 14        | 23        | 0        | .378        |
| Western Illinois          | 4          | 11       | 0        | .267        | 14        | 23        | 0        | .378        |
| Morehead State            | 4          | 11       | 0        | .267        | 10        | 18        | 0        | .357        |

### 2024 OVC Preseason Poll

| Team (First-Place Votes) | Points |
|--------------------------|--------|
| Southeast Missouri (13)  | 157    |
| Eastern Illinois (6)     | 148    |
| UT Martin (1)            | 120    |
| Southern Indiana         | 112    |
| SIUE                     | 111    |
| Tennessee State          | 80     |
| Lindenwood               | 65     |
| Morehead State           | 44     |
| Western Illinois         | 33     |
| Tennessee Tech           | 30     |

(as voted on by the league's head softball coaches and communications directors)

#### 2024 OVC Players to Watch

Rachel Kaufman, P/DP, Eastern Illinois  
Amanda Weyh, P, Lindenwood  
Aubrie Shore, 1B, Southeast Missouri  
Sydney Baalman, P, SIUE  
Josie Newman, P, Southern Indiana  
Anayah Baker-Rowell, 3B/UT, Tennessee State  
Mackenzie Fitzgerald, INF, Tennessee Tech  
Kaci Fuller, OF, UT Martin  
Bella Alvarez, 1B/3B, Western Illinois

### 2024 Honors & Awards

#### OVC Player of the Week

Marissa Peek, C, Mar. 18





foe Murray State (Apr. 23) for its final midweek matchups.

### // SEC Wins for Redburn

Head Coach Mark Redburn picked up his fourth win over a Southeastern Conference opponent when his Redhawks upset #11 Missouri (Apr. 3). It was the fourth time in seven years where Southeast Missouri beat a SEC opponent. The victory was also the 15th all-time against the SEC in SEMO softball history.

### // Redburn Gets 250th Win

With its 6-0 victory over Southern Indiana (Mar. 29), Southeast Missouri gave Mark Redburn his 250th win as the Redhawks head coach. Redburn is 253-206 in 10 years at the helm. His 253 wins are second-most all-time in program history.

### // Nice Series for Affolter

Outfielder Brittany Affolter hit .600 (6-of-10) to lead Southeast Missouri in its series at Southern Indiana (Mar. 29-30). Affolter got a hit in all three games and posted two hits in game one and a career-best three in game three.

### // Carney Tosses Gem

In just her third career start, freshman Maddie Carney allowed just four hits in six scoreless innings to beat Southern Indiana, 6-0, on Mar. 29. Carney had three strikeouts in her second-longest outing of the season. She is now 2-4 in the circle. Carney is tied for first on the team in appearances (19), second in innings pitched (51.1) and third in strikeouts (23).

### // One-Run Games

The Redhawks have been involved in 10 one-run games this season. Southeast Missouri is 4-6 in those contests. SEMO's one-run wins came vs. Stony Brook (5-4, Feb. 11), at SIU Edwardsville (3-2, Mar. 16), vs. Tennessee State (4-3, Mar. 24) and at #11 Missouri (1-0, Apr. 3).

### // Double-Digit Hits

Southeast Missouri pounded out 10 or more hits in three of its last five games. SEMO finished with double-digit hits a total of seven times this season. The Redhawks had a season-high 14 hits vs. Tennessee State (Mar. 23).

### // Series Wins

The Redhawks earned their third series win when they took two of three against Tennessee Tech (Apr. 6-7). Southeast Missouri beat Tennessee State (Mar. 23-24) and swept SIU Edwardsville (Mar. 16-17) for its other series wins this season.

### // Series Sweep

Southeast Missouri swept its first Ohio Valley Conference road series with 3-0, 3-2 and 7-4 wins at SIU Edwardsville (Mar. 16-17). It was SEMO's 33rd sweep in conference play under Head Coach Mark Redburn.

### // Peek Power

Catcher Marissa Peek leads the Ohio Valley Conference in slugging percentage and home runs in conference games. Peek has a .943 slugging percentage and all five of her home runs against league opponents. Overall, she is hitting .292 as Southeast Missouri's third-leading hitter.

### // .400 or Better

Abigail Rickermann and Aubrie Shore are among the Ohio Valley Conference's top hitters in league games. Rickermann ranks fourth in the conference with a .442 batting average and Shore is seventh with a .400 clip. Rickermann (19) and Shore (18) have combined for 37 hits through 15 OVC contests.

### // Halliwill Clears 100 Career Hits

Paige Halliwill went over 100 career hits with her two-hit performance against Tennessee State (Mar. 23). Halliwill has 112 hits in 132 career starts. She became the second player to go

over 100 career hits this season joining Aubrie Shore (117).

### // New Season-Highs

Southeast Missouri scored a season-high 11 runs and pounded out a season-best 14 hits in its first run-rule victory of the season against Tennessee State (Mar. 23). It was the first time SEMO scored double-digit runs in a game this year.

### // Series High in Hits

The Redhawks tallied 33 hits in three games against Tennessee State (Mar. 23-24), their most in a series this season. Southeast Missouri had six different players get multiple hits in game two of that series.

### // First Home Run for Wrigley

Kynzie Wrigley hit her first home run of the season with a solo shot to straightaway center in the bottom of the second inning during Southeast Missouri's 4-3 win over Tennessee State (Mar. 24). Wrigley became the fifth different Redhawk to hit a home run in 2024. It was the ninth home run of her career.

### // Peek Named OVC Player of the Week

Southeast Missouri senior catcher Marissa Peek won the first Ohio Valley Conference Player of the Week honor of her career on Mar. 18. A native of Wentzville, Missouri, Peek hit safely in three of four games leading SEMO to a 4-1 record the week before. She hit .556 (5-for-9) with three runs scored, three doubles, two home runs and five RBI. Peek also boasted a .556 on-base percentage and 1.556 slugging percentage. Peek hit a career-high two home runs to lead the Redhawks to their game one victory over SIU Edwardsville. She later had a pair of doubles to close out SEMO's first series sweep of the season. Tennessee State's Caitlyn Manus was tabbed OVC Pitcher of the Week to round out the honorees.



## 2024 SOUTHEAST MISSOURI SOFTBALL NOTES

### MOREHEAD STATE // APR. 13-14

#### // Carney Gets Career Firsts

Freshman Maddie Carney earned her first career win and save in the Redhawks series sweep of SIU Edwardsville (Mar. 16-17). Carney threw a total of 5.1 scoreless innings to go 1-0 with two saves against the Cougars. She worked four shutout innings with a strikeout to pick up her first career win in game one of a doubleheader on Mar. 16. Carney then recorded the final two outs in each of the Redhawks last two games of the series to get the save.

#### // Dennis Delivers

Second baseman Sydney Dennis matched a career-high three hits when she went 3-for-3 against Tennessee State (Mar. 23). Dennis had three singles and scored two runs in that game.

#### // Over .300

Southeast Missouri has two players hitting over .300 entering this weekend's series at Morehead State. Abigail Rickermann is hitting .391 in 31 games and 20 starts. Aubrie Shore follows with a .333 average in 36 starts.

#### // OVC Road Success

The Redhawks are 12-3 in their last 15 Ohio Valley Conference road games going back to the 2023 season. Southeast Missouri posted series sweeps at Tennessee Tech, Lindenwood and SIU Edwardsville for nine of those victories.

#### // Holman Among OVC Leaders

Paytience Holman ranks among the top 10 Ohio Valley Conference pitchers in earned run average (8th, 2.92), innings (7th, 91.0), strikeouts (10th, 51), strikeouts looking (t8th, 15), wins (5th, 8) and games started (t2nd, 17). Holman is 4-3 with nine starts in OVC play.

#### // Marathon Game

Southeast Missouri's Ohio Valley Conference opener against Eastern Illinois went 12 innings and lasted

three hours and 25 minutes before the Panthers won, 7-4. In terms of innings played, it matched the longest game in SEMO's NCAA Division I era.

#### // Shore Reaches New Season-Highs

Aubrie Shore started Southeast Missouri's series against Eastern Illinois by going 3-for-6 with three runs scored, two doubles and one RBI on Mar. 9. Shore established season-highs in hits, runs and doubles during that contest. It was the third two-double game of her career, as well.

#### // Sackett Homers Again

Catcher Kat Sackett hit her second home run of the season with a solo shot to get Southeast Missouri within a run late in the series finale against Eastern Illinois (Mar. 10). Sackett finished the series strong with back-to-back two-hit games. She went 2-for-4 with a run scored, double and one RBI in game two and 2-for-3 with a run, home run and one RBI in game three. Sackett ranks tied for second on the team in home runs and second in multiple-hit games (4) this year.

#### // 100 OVC Wins in Seven Years

Southeast Missouri's 9-4 win over Eastern Illinois (Mar. 9) marked the Redhawks 100th Ohio Valley Conference victory since the 2017 season. SEMO averaged 14 OVC wins per season in that span.

#### // First Career Win for Livesay

Freshman Tegan Livesay picked up her first career win in the circle when she beat Eastern Illinois (Mar. 9). Livesay worked five innings, allowing four runs on four hits. She also struck out one in her second-longest start of the season to date.

#### // 130 OVC Wins

Mark Redburn currently has 130 Ohio Valley Conference wins, most among the league's 10 active head coaches. Redburn is 130-79 all-time in OVC play with three conference regular-season

titles (2019, 2021, 2023), one OVC Tournament crown (2019) and one NCAA Tournament appearance (2019). He led the Redhawks to five-straight winning seasons in league action. Redburn's 2021 (23-6) and 2023 clubs (20-2) won the most conference games in a season.

#### // 30-Game Home Winning Streak Ends

Southeast Missouri's program record 30-game home winning streak ended with a 12-inning 7-4 loss to Eastern Illinois (Mar. 9). SEMO is 36-5 in its last 41 games at the Southeast Softball Complex. The Redhawks went undefeated at home in 2022 (14-0) and 2023 (13-0).

#### // Battle Tested

A tough 18-game stretch over four different tournaments prepared the Redhawks for their Ohio Valley Conference season. Southeast Missouri played two ranked opponents (#24 Auburn, #16 Arkansas), five Power Four teams (Ohio State, Maryland, Syracuse, Auburn, Arkansas), the Summit League preseason favorite (South Dakota State) and Missouri Valley Conference preseason favorite (Northern Iowa) in 2024. SEMO has played the toughest schedule in the OVC and presently the 65th toughest schedule among the nation's 307 NCAA Division I softball programs.

#### // Midweek Games

The Redhawks are 2-1 in midweek games in 2024. Southeast Missouri split a doubleheader with Missouri Valley Conference member Bradley (Mar. 12). SEMO won game one, 6-2, and dropped the nightcap, 5-1. The Redhawks beat #11 Missouri (Apr. 3), 1-0, for their other midweek victory. SEMO has 36 midweek wins with Mark Redburn as its head coach.





### // Tournament Play

The Redhawks wrapped up tournament play at the Arkansas Wooo Pig Classic (Mar. 1-3). Southeast Missouri also competed at the Florida International Felsberg Invitational (Feb. 9-11), Southeastern Louisiana Lion Classic (Feb. 16-18) and Auburn Plainsman Invitational (Feb. 23-25).

### // Let's Turn Two

Southeast Missouri turned an Ohio Valley Conference leading 15 double plays through 36 games this season. SEMO's defense had a season-high two double plays at Arkansas (Mar. 1).

### // Go Ahead I Dare You

Catcher Marissa Peek has thrown out seven runners on the basepaths this season. Peek is tied for second in the Ohio Valley Conference in caught stealing by.

### // Among OVC Home Run Leaders

Marissa Peek ranks among the Ohio Valley Conference's home run leaders. Peek is tied for fourth with five home runs. As a team, Southeast Missouri is tied for second in the OVC with 13 round-trippers.

### // Shore Third in OVC in Doubles

Aubrie Shore is third in the Ohio Valley Conference in doubles. Shore has 12 doubles through 36 starts this season. She is ninth among Southeast Missouri's all-time career leaders with 35 doubles.

### // Shore Goes Over 100 Hits

With her six hits in Southeast Missouri's series against Eastern Illinois (Mar. 9-10), Aubrie Shore went over 100 hits in her career. Shore currently has 117 hits in 132 games and 129 starts. She is one of three players on this year's roster with over 100 hits joining Kynzie Wrigley (127) and Paige Halliwill (112).

### // Nice Tournament for Wrigley

Kynzie Wrigley singled in three of five starts at the Wooo Pig Classic last weekend. Wrigley had a base hit in three-straight games at Arkansas (Mar. 1), vs. South Dakota State (Mar. 2) and vs. Florida Atlantic (Mar. 2).

### // Redhawks Beat Maryland for Power Four Win

The Redhawks upended Big Ten Conference member Maryland, 9-3, in the final day of the Lion Classic on Feb. 18. Southeast Missouri took its first lead of the game in the bottom of the second inning and never turned back. SEMO blew things open with four runs two innings later. Three-straight hits by Tatum Gerwitz, Sophie Schupp and Sydney Dennis loaded the bases with one out. Brittany Affolter and Paige Halliwill each walked in a run and Aubrie Shore scored Dennis on a sacrifice fly. Halliwill stole second and a throwing error allowed Brittany Affolter to score giving the Redhawks a 7-1 advantage.

### // Power Four Schools

Southeast Missouri faced six Power Four teams this season. SEMO went 2-7 against such teams with wins over Big Ten Conference foe Maryland (Feb. 18) and #11 Missouri (Apr. 3).

### // Success Against Power Four

Southeast Missouri has had its share of success against Power Four teams under Head Coach Mark Redburn. In fact, SEMO has 10 Power Four wins with Redburn at the helm. The Redhawks beat Maryland and Missouri (2024), Ole Miss (2023), Iowa (2022), Texas Tech (2021), Arkansas (2019), Kansas (2019, two wins), Missouri (2018) and Georgia Tech (2017) during Redburn's career. SEMO has picked up a Power Four win in four-straight seasons.

### // Every Game Starter

Aubrie Shore is the only player who has started every game for Southeast Missouri this season. Shore made all 36 of her starts at first base.

### // First Career Hits for the Freshmen

Freshmen Brooklyn Saysoff, Gracie Luna and Sophie Schupp each recorded their first career hits at the Lion Classic last weekend. All three had a hit in Southeast Missouri's win over Maryland (Feb. 18). Saysoff and Luna each had one hit and Schupp led the Redhawks with two.

### // Season-Openers

Southeast Missouri won its 2024 season-opener with a 7-5 victory over Stony Brook (Feb. 9). SEMO improved to 17-16 in season-opening games during its NCAA Division I era. This year marks SEMO's 33rd as an NCAA Division I program. The Redhawks are 5-5 in season-openers under Head Coach Mark Redburn.

### // Freshman Experience

All 10 of the Redhawks freshmen have played this season. Brooklyn Saysoff, Gracie Luna, Tegan Livesay and Maddie Carney saw the most action of the group thus far. Saysoff started 23 games between second base (4), third base (9) and shortstop (10), while Luna has made seven of her 10 starts as designated player. Carney is second on the team with 21 appearances, including 18 in relief, while Livesay started 10 of her 17 appearances.

### // Extra Base Hits

Southeast Missouri registered 68 extra base hits in its first 36 games this season. SEMO has 54 doubles, one triple and 13 home runs thus far.

### // Freshmen Pitching

True freshmen pitchers Willow Van Haren, Maddie Carney and Tegan Livesay combined for four shutout no-hit innings to nail down the Redhawks



## 2024 SOUTHEAST MISSOURI SOFTBALL NOTES

### MOREHEAD STATE // APR. 13-14

5-4 victory over Stony Brook (Feb. 11). Van Haren threw one scoreless inning before giving way to Carney in the fifth. She pitched perfect innings in the fifth and sixth. Livesay took over in the seventh and tossed a 1-2-3 inning to earn her first career save. Van Haren claimed her first career victory when she beat Florida International (Feb. 9).

#### // 132 and Counting

Paige Halliwill has started 132 games during her Southeast Missouri career. Halliwill had a streak of 119 consecutive starts end in game two of the Redhawks doubleheader vs. Bradley (Mar. 12). It was the only game Halliwill did not play at SEMO.

#### // About Morehead State

Morehead State is last in the Ohio Valley Conference standings at 10-18 overall and 4-11 in league play. MSU is hitting just .226 as a team. Opponents are averaging 7.4 runs per game against the Eagles. MSU is on a four-game losing streak and went 3-12 in its last 15 games.

#### // On Deck

Southeast Missouri hosts Lindenwood in a three-game series on Apr. 20-21.

#### // OVC Preseason Favorite

Reigning Ohio Valley Conference regular-season champion Southeast Missouri was tabbed the league's preseason favorite ahead of the 2024 season. SEMO collected 13 of the possible 20 first-place votes and tallied 157 points in the overall voting by the conference's head softball coaches and communications directors. Eastern Illinois, which won the OVC Tournament title and advanced to the NCAA Tournament in 2023, was picked second with 148 points and six first-place nods. UT Martin earned the remaining first-place vote and is third with 120 points, while Southern Indiana (112 pts.) and SIU Edwardsville (111 pts.) round out the top half. Tennessee State (80 pts.), Lindenwood (65 pts.), Morehead State (44 pts.), first-year

OVC member Western Illinois (33 pts.) and Tennessee Tech (30 pts.) complete the predicted order of finish.

#### // Senior Driven

The Redhawks have seven seniors on their 2024 roster. Paige Halliwill, Zoe Schulte, Abigail Rickermann, Paytience Holman, Kat Sackett, Kynzie Wrigley and Marissa Peek are Southeast Missouri's veterans. They have combined for 105 wins during their careers. Holman, Rickermann and Wrigley have been a part of two Ohio Valley Conference Championship teams (2021, 2023).

#### // Pitching Depth

Southeast Missouri has five pitchers on this year's team giving Mark Redburn the most depth he's had inside the circle as the Redhawks head coach. First-Team All-Ohio Valley Conference honoree Delaney Kell returns as well as fifth-year senior Paytience Holman. Kell went 14-3 in 26 games and 16 starts a year ago. She went undefeated at 9-0 with a 1.94 ERA in league play alone. Kell led the Redhawks with 73 strikeouts in 109.2 innings. Holman recorded six wins in 23 appearances and 14 starts. She struck out 46 in 96.2 innings and tied for first on the team with three saves last season. Freshmen Willow Van Haren (LHP), Tegan Livesay (RHP) and Maddie Carney (RHP) will make their college debuts in 2024.

#### // Top Four Hitters Back

The Redhawks top four hitters in Zoe Schulte, Paige Halliwill, Aubrie Shore and Abigail Rickermann are back for a Southeast Missouri offense which led the Ohio Valley Conference with a .308 batting average in 2023. Schulte led the Redhawks with a .371 clip, while Halliwill hit .352, Shore hit .347 and Rickermann hit .338. Halliwill topped SEMO in runs (31) and hits (44), while Shore led the team in home runs (7) and RBI (33). As a team, the Redhawks also led the OVC in on-base percentage (.388) and triples (13).

#### // Returning All-OVC Performers

Five All-Ohio Valley Conference performers from a year ago return to this year's team. First baseman Aubrie Shore is the league's reigning Player of the Year. Shore also earned first-team honors and was named NFCA Third-Team All-Mideast Region in 2023. Catcher Kat Sackett, pitcher Delaney Kell and outfielder Paige Halliwill joined Shore as first-team selections. Second baseman Sydney Dennis claimed Second-Team All-OVC accolades and outfielder Zoe Schulte landed a spot on the 12-member OVC All-Newcomer Team.

#### // Redburn in 10th Year

Mark Redburn is in his 10th year as Southeast Missouri's head coach. Redburn has orchestrated an outstanding turnaround that has seen the Redhawks win 30 or more games in four of the last six seasons, claim three Ohio Valley Conference regular-season titles (2019, 2021, 2023), win one OVC Tournament crown (2019) and earn one NCAA Tournament berth (2019). He is 253-206 overall and 130-79 in the OVC at the SEMO helm.

#### // Six-Straight Winning Seasons

The Redhawks had winning seasons in six-straight years. Southeast Missouri posted 30 or more wins in four of those seasons (2018, 2019, 2021, 2022). SEMO went 29-14 overall and 20-2 in the Ohio Valley Conference in 2023. The 20 OVC wins were the Redhawks second-most in a season in program history.

#### // Team 48

The 2024 club is the 48th team in Southeast Missouri's softball history. This year's roster consists of 25 players, including seven seniors, six juniors, two sophomores and 10 freshmen. SEMO also returns seven starters and two starting pitchers. Three of those returning starters, including Paige Halliwill, Aubrie Shore and Kat Sackett started every game in 2023.

**// Softball Success**

In the last six seasons, Southeast Missouri softball teams have won a total of 181 games for an average of 30 per year during that span. SEMO notched a program record 46 wins in 2019 and won 30 games in back-to-back seasons (2021, 2022) for the second time in Mark Redburns head coaching tenure. In terms of winning percentage, softball has been the winningest program in SEMO Athletics with a .619 clip in the last six years. Over that time, the Redhawks accumulated 203 victories, won 99 OVC games and boasted a .692 winning percentage in conference action.

**// Reflecting on 2023**

In 2023, Southeast Missouri ranked first in the Ohio Valley Conference in batting average (.308), ERA (2.70), triples (13) and opposing batting average (.230). Pitching wise, the Redhawks gave up the fewest hits (244), runs (128), earned runs (107) and walks (82) of anyone in the league. SEMO ripped through its OVC schedule outscoring opponents by a staggering +107 margin (149-42) along the way. The Redhawks led the conference in batting average (.358), on-base percentage (.441), slugging percentage (.547), runs (149), hits (209), triples (12), doubles (41), RBI (138) and total bases (319) in league games. SEMO posted series sweeps against six of its eight conference opponents. Additionally, the Redhawks had a 16-game conference winning streak from Mar. 18-Apr. 30 that year.

**// Redhawks Sign Two for 2025**

Outfielder Selby Patberg and infielder Addisyn Martinie signed with the Southeast Missouri softball program and will join the Redhawks in 2024-25. A native of Mt. Carmel, Illinois, Patberg is a three-year starter at Mt. Carmel High School. She earned First-Team All-Conference, Second-Team All-State and Extra Innings Softball First-Team All-America honors as a junior. That year, Patberg led the team in stolen bases (27), runs scored (47), hits (49)

and triples (2). She also hit .521 and boasted a team-high .591 on-base percentage. Patberg has 96 runs scored and 54 steals in her prep career to date. She plays club softball for Matt Gerth and the Indiana Magic Gold team. Martinie, who hails from St. Joseph, Illinois, is a three-year starter at St. Joseph Ogden High School. She garnered All-Conference, All-State and All-Area accolades each of her last two seasons and was named her team's Rookie of the Year as a freshman. Martinie presently holds a .419 batting average with 34 home runs and 119 RBI in her high school career. As a junior, she hit .439 with 17 home runs and 57 RBI. Before that, Martinie hit .467 as a sophomore and .352 as a freshman. She plays club softball for the Peoria Sluggers and SEMO alum Renee (Enos) Gass.

**// 2024 OVC Softball Tournament**

The 2024 Ohio Valley Conference Softball Championship will be held May 8-11 at the Louisville Slugger Sports Complex in Peoria, Illinois. It marks the first time the event has been held at the venue.



# 2024 SOUTHEAST MISSOURI SOFTBALL NOTES

## NUMERICAL & ALPHABETICAL ROSTER

### Numerical

| No. | Name               | Pos. | Ht.  | B-T | Cl.   | Hometown            | High School/College        |
|-----|--------------------|------|------|-----|-------|---------------------|----------------------------|
| 1   | Sophie Schupp      | INF  | 5-5  | R-R | Fr.   | Columbia, Mo.       | Rock Bridge H.S.           |
| 2   | Paige Halliwill    | OF   | 5-7  | L-L | Sr.   | Mogadore, Ohio      | Mogadore H.S./Marshall     |
| 3   | Willow Van Haren   | P    | 5-7  | L-L | Fr.   | Holdenville, Okla.  | Moss H.S./Northeastern St. |
| 4   | Kinley Wilkins     | OF   | 5-7  | L-L | Fr.   | Lawson, Mo.         | Lawson H.S.                |
| 5   | Brooklyn Saysoff   | INF  | 5-4  | R-R | Fr.   | Blue Springs, Mo.   | Blue Springs H.S.          |
| 6   | Tegan Livesay      | P    | 5-11 | R-R | Fr.   | Newton, Kan.        | Newton H.S./Fairmont H.S.  |
| 7   | Gracie Luna        | C    | 5-6  | R-R | Fr.   | Peoria, Ill.        | East Peoria H.S.           |
| 8   | Sydney Melton      | C    | 5-8  | R-R | Jr.   | Eddyville, Ky.      | Lyon County H.S.           |
| 9   | Maddie Carney      | P    | 5-9  | R-R | Fr.   | St. Louis, Mo.      | Marquette H.S.             |
| 10  | Tatum Gerwitz      | OF   | 5-9  | L-R | Jr.   | O'Fallon, Mo.       | Fort Zumwalt West H.S.     |
| 11  | Tori Bradley       | C    | 5-7  | L-R | Jr.   | Blue Springs, Mo.   | Blue Springs South H.S.    |
| 12  | Zoe Schulte        | OF   | 5-6  | L-R | Sr.   | Wentzville, Mo.     | Timberland H.S./Iowa       |
| 14  | Brittany Affolter  | OF   | 5-6  | L-R | So.   | Odessa, Mo.         | Odessa H.S.                |
| 15  | Delaney Kell       | P    | 5-6  | R-R | Jr.   | Salem, Ill.         | Salem H.S.                 |
| 16  | Abigail Rickermann | INF  | 5-6  | L-R | Sr.   | Festus, Mo.         | Festus H.S.                |
| 17  | Taryn Coon         | INF  | 5-4  | R-R | So.   | Dodge City, Kan.    | Dodge City H.S.            |
| 18  | Sydney Dennis      | INF  | 5-5  | L-R | Jr.   | Eureka, Mo.         | Eureka H.S.                |
| 19  | Paytience Holman   | P    | 5-8  | R-R | Sr.   | Mexico, Mo.         | Mexico H.S.                |
| 20  | Kat Sackett        | C    | 6-0  | L-L | Sr.   | Erie, Colo.         | Erie H.S./Marshall         |
| 21  | Abby Robbins       | INF  | 5-6  | R-R | R-Fr. | Farmington, Mo.     | Farmington H.S.            |
| 22  | Mary Tutwiler      | OF   | 5-6  | R-R | Fr.   | Oakville, Mo.       | Oakville H.S.              |
| 24  | Kynzie Wrigley     | INF  | 5-4  | L-R | Sr.   | Mt. Zion, Ill.      | Mt. Zion H.S.              |
| 26  | Aubrie Shore       | INF  | 5-6  | R-R | Jr.   | Mahomet, Ill.       | Mahomet-Seymour H.S.       |
| 27  | Hailey Burnett     | INF  | 6-0  | R-R | Fr.   | Cape Girardeau, Mo. | Notre Dame H.S.            |
| 28  | Marissa Peek       | C    | 5-8  | R-R | Sr.   | Wentzville, Mo.     | Wentzville-Holt H.S./Iowa  |

### Alphabetical

| No. | Name               | Pos. | Ht.  | B-T | Cl.   | Hometown            | High School/College        |
|-----|--------------------|------|------|-----|-------|---------------------|----------------------------|
| 14  | Brittany Affolter  | OF   | 5-6  | L-R | So.   | Odessa, Mo.         | Odessa H.S.                |
| 11  | Tori Bradley       | C    | 5-7  | L-R | Jr.   | Blue Springs, Mo.   | Blue Springs South H.S.    |
| 27  | Hailey Burnett     | INF  | 6-0  | R-R | Fr.   | Cape Girardeau, Mo. | Notre Dame H.S.            |
| 9   | Maddie Carney      | P    | 5-9  | R-R | Fr.   | St. Louis, Mo.      | Marquette H.S.             |
| 17  | Taryn Coon         | INF  | 5-4  | R-R | So.   | Dodge City, Kan.    | Dodge City H.S.            |
| 18  | Sydney Dennis      | INF  | 5-5  | L-R | Jr.   | Eureka, Mo.         | Eureka H.S.                |
| 10  | Tatum Gerwitz      | OF   | 5-9  | L-R | Jr.   | O'Fallon, Mo.       | Fort Zumwalt West H.S.     |
| 2   | Paige Halliwill    | OF   | 5-7  | L-L | Sr.   | Mogadore, Ohio      | Mogadore H.S./Marshall     |
| 19  | Paytience Holman   | P    | 5-8  | R-R | Sr.   | Mexico, Mo.         | Mexico H.S.                |
| 15  | Delaney Kell       | P    | 5-6  | R-R | Jr.   | Salem, Ill.         | Salem H.S.                 |
| 6   | Tegan Livesay      | P    | 5-11 | R-R | Fr.   | Newton, Kan.        | Newton H.S./Fairmont H.S.  |
| 7   | Gracie Luna        | C    | 5-6  | R-R | Fr.   | Peoria, Ill.        | East Peoria H.S.           |
| 8   | Sydney Melton      | C    | 5-8  | R-R | Jr.   | Eddyville, Ky.      | Lyon County H.S.           |
| 28  | Marissa Peek       | C    | 5-8  | R-R | Sr.   | Wentzville, Mo.     | Wentzville-Holt H.S./Iowa  |
| 16  | Abigail Rickermann | INF  | 5-6  | L-R | Sr.   | Festus, Mo.         | Festus H.S.                |
| 21  | Abby Robbins       | INF  | 5-6  | R-R | R-Fr. | Farmington, Mo.     | Farmington H.S.            |
| 20  | Kat Sackett        | C    | 6-0  | L-L | Sr.   | Erie, Colo.         | Erie H.S./Marshall         |
| 5   | Brooklyn Saysoff   | INF  | 5-4  | R-R | Fr.   | Blue Springs, Mo.   | Blue Springs H.S.          |
| 1   | Sophie Schupp      | INF  | 5-5  | R-R | Fr.   | Columbia, Mo.       | Rock Bridge H.S.           |
| 12  | Zoe Schulte        | OF   | 5-6  | L-R | Sr.   | Wentzville, Mo.     | Timberland H.S./Iowa       |
| 26  | Aubrie Shore       | INF  | 5-6  | R-R | Jr.   | Mahomet, Ill.       | Mahomet-Seymour H.S.       |
| 22  | Mary Tutwiler      | OF   | 5-6  | R-R | Fr.   | Oakville, Mo.       | Oakville H.S.              |
| 3   | Willow Van Haren   | P    | 5-7  | L-L | Fr.   | Holdenville, Okla.  | Moss H.S./Northeastern St. |
| 4   | Kinley Wilkins     | OF   | 5-7  | L-L | Fr.   | Lawson, Mo.         | Lawson H.S.                |
| 24  | Kynzie Wrigley     | INF  | 5-4  | L-R | Sr.   | Mt. Zion, Ill.      | Mt. Zion H.S.              |

**Head Coach:** Mark Redburn (10th Year/Missouri-St. Louis, 1993)

**Associate Head Coach:** Kristen Jones (Ninth Year/Augusta State, 2012)

**Assistant Coach:** Ashley Ellis (Second Year/Southeast Missouri, 2021)

### Roster Breakdown

|                     |    |
|---------------------|----|
| Total Squad Members | 25 |
| Seniors             | 7  |
| Juniors             | 6  |
| Sophomores          | 2  |
| Freshmen            | 10 |

### Pronunciation Guide

|                 |   |
|-----------------|---|
| Tatum Gerwitz   | GURR-witz                               |
| Paige Halliwill | HAL-ih-will                             |
| Tegan Livesay   | TEE-gun<br>live (like live on TV) - say |
| Sophie Schupp   | shoop                                   |
| Mary Tutwiler   | tut-WHY-lurr                            |

### Geographical Breakdown

|                    |                |
|--------------------|----------------|
| Colorado           | 1              |
| Kat Sackett        | Erie           |
| Illinois           | 4              |
| Delaney Kell       | Salem          |
| Gracie Luna        | Peoria         |
| Aubrie Shore       | Mahomet        |
| Kynzie Wrigley     | Mt. Zion       |
| Kansas             | 2              |
| Taryn Coon         | Dodge City     |
| Tegan Livesay      | Newton         |
| Kentucky           | 1              |
| Sydney Melton      | Eddyville      |
| Missouri           | 15             |
| Brittany Affolter  | Odessa         |
| Tori Bradley       | Blue Springs   |
| Hailey Burnett     | Cape Girardeau |
| Maddie Carney      | St. Louis      |
| Sydney Dennis      | Eureka         |
| Tatum Gerwitz      | O'Fallon       |
| Paytience Holman   | Mexico         |
| Marissa Peek       | Wentzville     |
| Abigail Rickermann | Festus         |
| Abby Robbins       | Farmington     |
| Brooklyn Saysoff   | Blue Springs   |
| Sophie Schupp      | Columbia       |
| Zoe Schulte        | Wentzville     |
| Mary Tutwiler      | Oakville       |
| Kinley Wilkins     | Lawson         |
| Ohio               | 1              |
| Paige Halliwill    | Mogadore       |
| Oklahoma           | 1              |
| Willow Van Haren   | Holdenville    |







**1**  
**Sophie Schupp**  
INF / 5-5 / R-R / Fr.  
Columbia, Mo.



**2**  
**Paige Halliwill**  
OF / 5-7 / Sr. / L/L  
Mogadore, Ohio



**3**  
**Willow Van Haren**  
P / 5-7 / L-L / Fr.  
Holdenville, Okla.



**4**  
**Kinley Wilkins**  
OF / 5-7 / L-L / Fr.  
Lawson, Mo.



**5**  
**Brooklyn Saysoff**  
INF / 5-4 / R-R / Fr.  
Blue Springs, Mo.



**6**  
**Tegan Livesay**  
P / 5-11 / R-R / Fr.  
Newton, Kan.



**7**  
**Gracie Luna**  
C / 5-6 / R-R / Fr.  
Peoria, Ill.



**8**  
**Sydney Melton**  
C / 5-8 / Jr. / R/R  
Eddyville, Ky.



**9**  
**Maddie Carney**  
P / 5-9 / R-R / Fr.  
St. Louis, Mo.



**10**  
**Tatum Gerwitz**  
OF / 5-9 / Jr. / L-R  
O'Fallon, Mo.



**11**  
**Tori Bradley**  
C / 5-7 / Jr. / L-R  
Blue Springs, Mo.



**12**  
**Zoe Schulte**  
OF / 5-6 / Sr. / L-R  
Wentzville, Mo.



**14**  
**Brittany Affolter**  
OF / 5-6 / So. / L-R  
Odessa, Mo.



**15**  
**Delaney Kell**  
P / 5-6 / Jr. / R-R  
Salem, Ill.



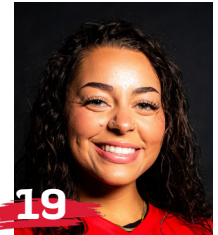
**16**  
**Abigail Rickermann**  
INF / 5-6 / Sr. / L-R  
Festus, Mo.



**17**  
**Taryn Coon**  
INF / 5-4 / R-Fr. / R-R  
Dodge City, Kan.



**18**  
**Sydney Dennis**  
INF / 5-5 / Jr. / L-R  
Eureka, Mo.



**19**  
**Paytience Holman**  
P / 5-8 / Sr. / R-R  
Mexico, Mo.



**20**  
**Kat Sackett**  
C / 6-0 / Sr. / L-L  
Erie, Colo.



**21**  
**Abby Robbins**  
INF / 5-6 / R-Fr. / R/R  
Farmington, Mo.



**22**  
**Mary Tutwiler**  
OF / 5-6 / Fr. / R-R  
Oakville, Mo.



**24**  
**Kynzie Wrigley**  
INF / 5-4 / Sr. / L-R  
Mt. Zion, Ill.



**26**  
**Aubrie Shore**  
INF / 5-6 / Jr. / R-R  
Mahomet, Ill.



**27**  
**Hailey Burnett**  
INF / 6-0 / Fr. / R-R  
Cape Girardeau, Mo.



**28**  
**Marissa Peek**  
C / 5-9 / Sr. / R-R  
Wentzville, Mo.



**Mark Redburn**  
Head Coach  
10th Year



**Kristen Jones**  
Associate Head Coach  
Ninth Year



**Ashley Ellis**  
Assistant Coach  
Second Year



## 2024 SOUTHEAST MISSOURI SOFTBALL NOTES

### HEAD COACH MARK REDBURN



## MARK REDBURN

// Head Coach // 10th Year // Missouri-St. Louis, 1993

**M**ark Redburn enters his 10th year as Southeast Missouri's head softball coach in 2024.

Redburn has orchestrated an outstanding turnaround that has seen the Redhawks win 30 or more games in four of the last six seasons, claim three Ohio Valley Conference regular-

season titles (2019, 2021, 2023), win one OVC Tournament crown (2019) and earn one NCAA Tournament berth (2019).

In the last six seasons alone, SEMO has won a total of 180 games for an average of 30 per year during that span. The Redhawks notched a program record 46 wins in 2019 and

won 30 games in back-to-back seasons (2021, 2022) for the second time in Redburn's tenure. In terms of winning percentage, softball has been the winningest program in SEMO Athletics with a .581 clip in the last eight years. Over that time, the Redhawks accumulated 219 victories and boasted a .641 winning percentage with 109 wins in OVC play.

During the first nine years with Redburn at the helm, SEMO has produced one National Fastpitch Coaches Association All-American, eight NFCA All-Region selections, 27 All-OVC picks, two OVC Players of the Year, one OVC Pitcher of the Year, one OVC Tournament Most Valuable Player and two College Sports Communicators (CSC) Academic All-Americans.

Academically, SEMO has been just as impressive with Redburn in charge. Most recently, the softball team achieved a 3.61 cumulative grade point average during the 2022-23 academic year.

In 2023, Redburn led SEMO to its eighth OVC regular-season championship in program history and third since the 2019 campaign. Along the way, Redburn was named OVC Coach of the Year for the third time in that span.

The Redhawks went undefeated at home (13-0) for the second-straight season posting unbeaten records at home in back-to-back years for the first time ever. SEMO is on a 30-game winning streak at

the Southeast Softball Complex dating back to the end of the 2021 season.

SEMO concluded the year with a 29-14 overall record and 20-2 mark in OVC play. The Redhawks claimed series sweeps against six of their eight league opponents en route to their second-best conference season in program history.

The Redhawks ripped through the conference portion of their schedule outscoring OVC foes by a staggering +107 margin (149-42). SEMO led the conference in batting average (.358), on-base percentage (.441), slugging percentage (.547), runs (149), hits (209), triples (12), doubles (41), RBI (138) and total bases in OVC games only. Additionally, the Redhawks had a 16-game conference winning streak from Mar. 18-Apr. 30.

Overall, SEMO topped the OVC with a .311 batting average, 2.70 ERA, 13 triples and a .230 opposing batting average. Redhawk pitchers also had the fewest hits (244), runs (128), earned runs (107) and walks (82) allowed in the league.

First baseman Aubrie Shore shared the 2023 OVC Player of the Year honor with Southern Indiana's Allie Goodin. Shore, also a First-Team All-OVC pick, became the sixth SEMO player to win the coveted award. Paige Halliwill, Delaney Kell and Kat Sackett joined Shore as first-team picks. Alyson Tucker and Sydney Dennis earned Second-Team All-OVC accolades, while







Zoe Schulte landed a spot on the league's All-Newcomer Team. Sackett later made the OVC All-Tournament team, as well.

SEMO's 2022 club became the first in program history to go undefeated at home with a 14-0 record. Overall, the Redhawks compiled a 30-24 mark and placed fourth in the OVC. As the #4 seed in the league's postseason tournament, SEMO advanced to the semifinals where it dropped a close one-run game to #2 seed Belmont. The Redhawks won 17-consecutive games at home dating back to the 2021 season.

The 2022 campaign marked SEMO's fifth OVC Tournament appearance in eight years with Redburn as its coach.

As a team, SEMO ranked among the top three in the OVC in doubles (t3rd, 67), stolen bases (2nd, 58), steal attempts (73), opposing batting average (3rd, .244), batters struck out (2nd, 323), batters struck out looking (1st, 84), saves (t3rd, 5) and fielding percentage (2nd, .967).

The 2022 team ranked among SEMO's all-time single-season leaders in slugging percentage (8th, .413), runs (t5th, 270), doubles (t10th, 67), home runs (t7th, 38), RBI (5th, 238), total bases (8th, 581), sacrifice flies (10th, 12), stolen bases (t7th, 58), stolen base attempts (t6th, 73), opposing batting average (3rd, .244), strikeouts per seven innings (t1st, 6.51), saves (t8th, 5), innings pitched (7th, 374.2),

strikeouts (2nd, 323), strikeouts looking (3rd, 84) and fielding percentage (3rd, .967). SEMO came from behind to upend Big Ten Conference member Iowa, 3-2, on Mar. 15 marking the first time the Redhawks beat a Big Ten opponent in 21 years.

In 2021, Redburn carried the Redhawks to another 30-win campaign. SEMO finished 30-17 overall and registered a program record 23 OVC wins en route to its second-straight regular-season conference title. The Redhawks headed into the OVC Tournament as the #1 seed and ended the year with a pair of one-run losses to Eastern Kentucky.

SEMO led the league in on-base percentage (.369), opposing batting average (.213), strikeouts looking (69), saves (8), fewest hits allowed (247), fewest runs allowed (139) and fewest earned runs allowed (121).

All of the Redhawks success during the 2021 campaign culminated with Redburn claiming his second-straight OVC Coach of the Year honor. Additionally, Rachel Rook was tabbed OVC Pitcher of the Year becoming only the second player in program history to win the coveted award.

Offensively, SEMO outscored its opponents by a +100 (165-65) margin in conference games. The Redhawks' 165 runs were the most scored by any OVC team in conference play.

The year before in 2020, SEMO was off to a great start



and had all the makings for a big season, but a global COVID-19 pandemic abruptly shut things down only 17 games in.

The Redhawks won nine in a row and posted a 9-1 record in their first 10 games of the season. SEMO finished with an overall record of 12-5 and did not get a chance to play any OVC games when play was cancelled.

Although the 2020 season lasted just 23 days (Feb. 14-Mar. 8), the Redhawks accomplished a lot in that short time.

SEMO led the OVC in slugging percentage (.528), on-base percentage (.411), triples (14), stolen bases (41), hits allowed (84) and earned runs allowed

(40). The Redhawks also rated second in the league in batting average (.310), home runs (19), opposing batting average (.204), runs allowed (51), stolen bases per game (2.4) and triples per game (0.8).

Nationally, SEMO was among the top 25 in triples per game (2nd), stolen bases per game (8th, 2.4), scoring (16th, 6.7), slugging percentage (21st) and on-base percentage (24th).

Individually, Rachel Anderson led the OVC in batting average (.480), slugging percentage (.880), on-base percentage (.541) and triples (5) following a season that culminated with her winning the league's Player of the Year honor. Anderson,



## 2024 SOUTHEAST MISSOURI SOFTBALL NOTES

### HEAD COACH MARK REDBURN

who didn't strike out all year, capped her 2020 campaign as only the sixth player in program history to claim First-Team CoSIDA Academic All-America accolades.

Pitcher Rachel Rook was atop the OVC in earned run average (0.70) and opposing batting average (.119), while Ashley Ellis ended the year as the league's leader in home runs (8). Redburn guided SEMO to its first OVC regular-season and tournament championship, and NCAA Regional appearance in 20 years the year before that in 2019. Rook left SEMO as her program's all-time career strikeout leader with 621 Ks.

What a year 2019 was for SEMO which set an all-time program record with 46 wins, the only 40-win season in the school's entire NCAA Division I era. The Redhawks went 46-18 overall and 17-5 in the OVC before going 1-2 at the NCAA Regional in Oxford, Mississippi.

SEMO had so much to celebrate over the course of its magical 2019 campaign.

Redburn and his staff were honored as the NFCA Mid-east Region Coaching Staff of the Year. For Redburn himself, he was voted OVC Coach of the Year for the first time in his career.

Four players earned All-OVC honors, three claimed NFCA All-Region accolades and one garnered NFCA All-America distinction. Outfielder Rachel Anderson became SEMO's first All-American in 28 years

and the program's first All-American in the NCAA Division I tenure. TEAM 43 was also recognized by the NFCA for achieving the fourth highest grade point average among all NCAA Division I schools. SEMO recorded a team GPA of 3.678 with 17 players securing NFCA All-America Scholar-Athlete honors.

Statistically, SEMO's 2019 team broke a total of 17 single-season records in slugging percentage (.510), on-base percentage (.382), game played (64), runs (363), hits (501), home runs (74), RBI (318), total bases (850), walks (180), stolen bases (89), stolen base attempts (117), wins (46), saves (11), batters struck out (331), batters struck out looking (90), innings pitched (414) and putouts (1242).

In 2018, the Redhawks finished at 33-20 overall and fourth in the OVC with a 15-7 mark. SEMO locked down its first winning campaign in seven years.

The Redhawks heated up to win 11 of their final 14 regular-season games and advanced to the eight-team OVC Tournament.

SEMO's 2018 club finished with a 74 RPI among the nation's 296 NCAA Division I softball teams, quite a jump from its 173 ranking in 2017. The Redhawks collected eight doubleheader sweeps along the way.

Defensively, SEMO improved tremendously. After ranking eighth in the OVC in fielding percentage a year ago, the

Redhawks were the league's second-best fielding team in 2018. SEMO had 43 errors and committed 16 less than it did in 2017. The Redhawks went error free in 25 games equating to 47 percent of their entire season.

Prior to that, SEMO finished the 2017 campaign among the school's top single-season leaders in slugging percentage (6th, .427), on-base percentage (5th, .356), triples (4th, 21), home runs (9th, 31), total bases (9th, 567), stolen bases (2nd, 65), stolen base attempts (1st, 88), opponent batting average (7th, .282), strikeouts/7 innings (7th, 4.17), strikeouts (10th, 194), strikeouts looking (3rd, 61) fewest doubles allowed (8th, 49), fielding percentage (8th, .960), fewest errors (7th, 59) and fewest stolen bases against (3rd, 38).

Redburn picked up his 200th career victory when SEMO beat Austin Peay, 7-4, on Apr. 30, 2016. His 2016 club ranked among the school's top-10 teams in doubles (6th, 69), stolen bases (3rd, 58), walks (8th, 138), home runs (6th, 35) and slugging percentage (6th, .412).

In his first season, Redburn led the Redhawks to an overall record of 19-27 and 12-12 in OVC play during 2015. His 19 victories came after SEMO won no more than 15 games in each of the previous two seasons. Redburn's first club at Southeast also had 12 OVC wins, a +9 increase from the 2014 campaign. In addition, the Redhawks made the OVC

Tournament, snapping a streak of three years where they missed the event.

Not only did Redburn earn his 100th career NCAA Division I win in his inaugural season with the Redhawks, but he coached three All-OVC selections and one NFCA All-Region honoree.

Statistically, SEMO finished among the top-five OVC teams in batting average (3rd), slugging percentage (5th), on-base percentage (5th) and hits (5th). The 2015 Redhawks also broke two single-season records with Kayla Fortner in home runs and single-game mark and set a single-game school record with six home runs, as well.

In 19 years as a head coach between the NCAA Division I and National Junior College Athletic Association (NJCAA) ranks, Redburn has been to nine postseason tournaments, including one trip to the NJCAA National Tournament (2003), one to the Missouri Valley Conference Tournament (2013), five to the OVC Tournament (2015, 2018, 2019, 2021, 2022, 2023) and one to the NCAA Division I Tournament (2019). He has also accumulated 452 wins all-time as a head coach.

The fourth head coach in Redhawk softball history, Redburn won 90 games in five years as head coach at the University of Evansville before accepting the job at SEMO on June 26, 2014.

In 2014, Redburn coached a UE team with five starters that were underclassmen,





including four freshmen and one sophomore. The Purple Aces achieved their highest batting average since 2007. Additionally, UE had a freshman lead the team in stolen bases and home runs.

Despite a season that allowed 53 games, the 2013 team had its best season in Redburn's five years at UE. Entering the Missouri Valley Conference Tournament as the No. 7 seed, the Purple Aces beat the No. 6, No. 3 and No. 2 seeds to make their first MVC Championship appearance since 2003. UE finished second with three players garnering All-Tournament team honors.

The 2013 campaign resulted in the most overall wins in a season since 2008 and the best regular-season and conference tournament finish since Redburn's arrival. UE continued its aggressive baserunning with 89 stolen bases, ranking second in the MVC. The pitching staff also rated fourth in the conference.

Redburn's 2012 club saw improvement as well, winning more games than it had the previous season. The Purple Aces stole 79 bases and had two all-conference and one National Fastpitch Coaches Association All-Region selection that year.

In 2011, Redburn exposed a young and inexperienced team to some of the top programs in the nation as UE played one of its most difficult schedules. Tennessee, Georgia Tech, Missouri, Ohio State, Texas

Tech, South Alabama and Chattanooga were among the stiff competition.

Redburn quickly started to transform the UE program during his first year in 2010. The Purple Aces secured a berth in the MVC Tournament after winning 10 conference games. UE led the MVC with 31 doubles and hit 36 home runs, while producing two all-conference picks.

Academically, Redburn's teams consistently enjoyed success. In fact, each of his last four UE teams accumulated a 3.1 or higher grade point average. He had several student-athletes obtain over a 3.5 GPA and earn academic recognition along the way.

Prior to UE, Redburn spent three years as an assistant coach at the University of Missouri working primarily with the pitchers and catchers, and serving as recruiting coordinator.

He was part of a coaching staff that compiled an overall record of 137-53. The Tigers registered a school record for victories (50), won the Big 12 Conference Tournament, won their Regional and defeated host UCLA in the Super Regional to advance to the College World Series in 2009. Overall, Redburn coached four all-conference pitchers, including USA National Team Pitcher Chelsea Thomas at Missouri.

Redburn began his collegiate coaching career as head coach at St. Charles (Mo.) Community

College from 2001-04. He led the 2003 team to its first Region 16 championship and a seventh-place finish at the National Junior College Athletic Association Division I National Tournament. His 2004 squad set a school record with 33 victories.

Following his stay at St. Charles CC, Redburn spent two seasons as head coach of the new softball program at Jefferson College. In the program's first year of competition, 2006, he led Jefferson to a 49-16 record, Region 16 championship and ninth-place finish at the NJCAA Division I National Tournament. Redburn was honored as the Midwest Community College Athletic Conference Coach of the Year following that season.

A native of St. Charles, Missouri, Redburn graduated from the University of Missouri-St. Louis in 1993 and received his master's degree in Athletics/Activities Administration from William Woods University.

He is a member of the NCAA Division I Head Coaches Committee and serves as the OVC Head Coach Representative for the NFCA. Redburn was also the OVC representative for the Top-25 Poll until the 2023 season.

Redburn and his wife, Tracy, have two sons, Joe and Jack.





## 2024 SOUTHEAST MISSOURI SOFTBALL NOTES

### HEAD COACH MARK REDBURN

#### Redburn's Year-by-Year Records

| Year  | School             | Assignment      | Record       | Conference Finish        | Postseason   |
|-------|--------------------|-----------------|--------------|--------------------------|--|
| 2002  | St. Charles CC     | Head Coach      | 16-21        | 3rd                      | Region XVI Runner-Up   |
| 2003  | St. Charles CC     | Head Coach      | 26-21        | 2nd                      | Region XVI Champions<br>7th NJCAA National Tournament  |
| 2004  | St. Charles CC     | Head Coach      | 33-16        | 1st                      | 3rd in Region XVI  |
| 2005  | Jefferson College  | Head Coach      | -            | Program Preparation Year | -  |
| 2006  | Jefferson College  | Head Coach      | 49-16        | 1st Region 16            | -  |
| 2007  | Missouri           | Assistant Coach | 40-23, 13-4  | 3rd Big 12               | -  |
| 2008  | Missouri           | Assistant Coach | 47-17, 11-6  | 3rd Big 12               | -  |
| 2009  | Missouri           | Assistant Coach | 50-12, 12-6  | 2nd Big 12               | 1st Big 12 Tournament<br>NCAA Midwest Regional Champions<br>NCAA Super Regional Champions<br>8th in College World Series |
| 2010  | Evansville         | Head Coach      | 18-34, 10-16 | t7th MVC                 | -  |
| 2011  | Evansville         | Head Coach      | 12-42, 6-21  | 9th MVC                  | -  |
| 2012  | Evansville         | Head Coach      | 18-37, 8-19  | 8th MVC                  | -  |
| 2013  | Evansville         | Head Coach      | 23-30, 11-12 | 7th MVC                  | 2nd MVC Tournament   |
| 2014  | Evansville         | Head Coach      | 19-32, 7-19  | 10th MVC                 | -  |
| 2015  | Southeast Missouri | Head Coach      | 19-27, 12-12 | 7th OVC                  | 8th OVC Tournament   |
| 2016  | Southeast Missouri | Head Coach      | 16-33, 10-17 | 10th OVC                 | -  |
| 2017  | Southeast Missouri | Head Coach      | 23-27, 8-14  | 9th OVC                  | -  |
| 2018  | Southeast Missouri | Head Coach      | 33-20, 15-7  | 4th OVC                  | 7th OVC Tournament   |
| 2019  | Southeast Missouri | Head Coach      | 46-18, 17-5  | 1st OVC                  | 1st OVC Tournament<br>3rd NCAA Regional  |
| 2020* | Southeast Missouri | Head Coach      | 12-5         | -                        | -  |
| 2021  | Southeast Missouri | Head Coach      | 30-17, 23-6  | 1st OVC                  | 2nd OVC Tournament   |
| 2022  | Southeast Missouri | Head Coach      | 30-24, 16-10 | 4th OVC                  | 3rd OVC Tournament   |
| 2023  | Southeast Missouri | Head Coach      | 29-14, 20-2  | 1st OVC                  | 4th OVC Tournament   |
| 2024  | Southeast Missouri | Head Coach      | 15-21, 9-6   |                          |  |

\* Season ended due to a global COVID-19 pandemic

**Overall Record as a Collegiate Coach:** 604-507 (23 years)

**Overall Record as a Head Coach:** 467-455 (20 years)

Record at Southeast Missouri, 253-206, 130-79 Ohio Valley Conference (10 years)

Record at Evansville, 90-175, 42-87 Missouri Valley Conference (5 years)

Record at Jefferson College, 49-16 (1 year)

Record at St. Charles CC: 75-58 (3 years)

Record as Assistant Coach at Missouri: 137-52 (3 years)

# 2024 SOUTHEAST MISSOURI SOFTBALL NOTES

## 2024 STATISTICS



Record: 15-21 Home: 6-5 Away: 6-7 Neutral: 3-9 OVC: 9-6

| Player                 | avg  | gp-gs | ab  | r   | h   | 2b | 3b | hr | rbi | tb  | slg% | bb | hp | so  | gdp | ob%  | sf | sh | sb-att | po  | a   | e  | fld%  |
|------------------------|------|-------|-----|-----|-----|----|----|----|-----|-----|------|----|----|-----|-----|------|----|----|--------|-----|-----|----|-------|
| 16 RICKERMANN, Abigail | .391 | 31-20 | 69  | 12  | 27  | 3  | 0  | 0  | 7   | 30  | .435 | 6  | 0  | 4   | 0   | .440 | 0  | 1  | 6-6    | 37  | 27  | 3  | .955  |
| 26 SHORE, Aubrie       | .333 | 36-36 | 108 | 13  | 36  | 12 | 0  | 2  | 23  | 54  | .500 | 11 | 0  | 22  | 1   | .382 | 4  | 0  | 1-1    | 246 | 7   | 4  | .984  |
| 28 PEEK, Marissa       | .292 | 31-22 | 65  | 12  | 19  | 8  | 0  | 5  | 18  | 42  | .646 | 6  | 0  | 15  | 0   | .347 | 1  | 1  | 1-1    | 73  | 10  | 4  | .954  |
| 14 AFFOLTER, Brittany  | .291 | 32-30 | 79  | 11  | 23  | 1  | 0  | 0  | 10  | 24  | .304 | 8  | 0  | 16  | 0   | .352 | 1  | 4  | 2-4    | 35  | 0   | 2  | .946  |
| 2 HALLIWILL, Paige     | .283 | 35-35 | 99  | 21  | 28  | 4  | 1  | 3  | 17  | 43  | .434 | 14 | 3  | 13  | 0   | .378 | 3  | 1  | 9-9    | 63  | 5   | 0  | 1.000 |
| 5 SAYSOFF, Brooklyn    | .267 | 28-23 | 60  | 6   | 16  | 5  | 0  | 0  | 5   | 21  | .350 | 11 | 0  | 14  | 0   | .380 | 0  | 0  | 2-2    | 23  | 57  | 16 | .833  |
| 20 SACKETT, Kat        | .247 | 30-27 | 77  | 7   | 19  | 8  | 0  | 2  | 12  | 33  | .429 | 1  | 1  | 15  | 0   | .263 | 1  | 0  | 2-2    | 47  | 3   | 4  | .926  |
| 18 DENNIS, Sydney      | .247 | 36-32 | 77  | 17  | 19  | 3  | 0  | 0  | 3   | 22  | .286 | 8  | 0  | 10  | 0   | .318 | 0  | 2  | 2-4    | 43  | 51  | 5  | .949  |
| 12 SCHULTE, Zoe        | .222 | 29-20 | 54  | 9   | 12  | 1  | 0  | 0  | 1   | 13  | .241 | 3  | 0  | 15  | 1   | .263 | 0  | 1  | 6-6    | 29  | 1   | 1  | .968  |
| 24 WRIGLEY, Kynzie     | .215 | 34-29 | 79  | 6   | 17  | 1  | 0  | 1  | 8   | 21  | .266 | 4  | 1  | 18  | 1   | .259 | 1  | 1  | 1-2    | 21  | 54  | 5  | .938  |
| 7 LUNA, Gracie         | .171 | 23-10 | 41  | 1   | 7   | 3  | 0  | 0  | 3   | 10  | .244 | 1  | 1  | 10  | 0   | .209 | 0  | 0  | 0-0    | 3   | 2   | 1  | .833  |
| 10 GERWITZ, Tatum      | .170 | 32-17 | 47  | 6   | 8   | 1  | 0  | 0  | 4   | 9   | .191 | 5  | 0  | 10  | 0   | .250 | 0  | 4  | 3-4    | 31  | 1   | 1  | .970  |
| -----                  |      |       |     |     |     |    |    |    |     |     |      |    |    |     |     |      |    |    |        |     |     |    |       |
| 11 BRADLEY, Tori       | .343 | 22-10 | 35  | 2   | 12  | 0  | 0  | 0  | 5   | 12  | .343 | 4  | 0  | 3   | 0   | .410 | 0  | 0  | 0-0    | 1   | 1   | 0  | 1.000 |
| 1 SCHUPP, Sophie       | .276 | 27-10 | 29  | 8   | 8   | 4  | 0  | 0  | 7   | 12  | .414 | 6  | 0  | 14  | 0   | .400 | 0  | 2  | 0-0    | 17  | 15  | 5  | .865  |
| 8 MELTON, Sydney       | .091 | 15-2  | 11  | 0   | 1   | 0  | 0  | 0  | 1   | 1   | .091 | 1  | 0  | 5   | 0   | .167 | 0  | 0  | 0-0    | 16  | 0   | 0  | 1.000 |
| 21 ROBBINS, Abby       | .000 | 10-1  | 4   | 2   | 0   | 0  | 0  | 0  | 0   | 0   | .000 | 0  | 0  | 2   | 0   | .000 | 0  | 0  | 0-1    | 2   | 1   | 1  | .750  |
| 27 BURNETT, Hailey     | .000 | 5-0   | 2   | 0   | 0   | 0  | 0  | 0  | 0   | 0   | .000 | 2  | 0  | 0   | 1   | .500 | 0  | 0  | 0-0    | 11  | 0   | 0  | 1.000 |
| 4 WILKINS, Kinley      | .000 | 14-0  | 2   | 1   | 0   | 0  | 0  | 0  | 0   | 0   | .000 | 0  | 0  | 2   | 0   | .000 | 0  | 0  | 1-1    | 0   | 0   | 0  | .000  |
| 22 TUTWILER, Mary      | .000 | 2-0   | 0   | 0   | 0   | 0  | 0  | 0  | 0   | 0   | .000 | 0  | 0  | 0   | 0   | .000 | 0  | 0  | 0-0    | 0   | 0   | 0  | .000  |
| 17 COON, Taryn         | .000 | 1-0   | 0   | 1   | 0   | 0  | 0  | 0  | 0   | 0   | .000 | 0  | 0  | 0   | 0   | .000 | 0  | 0  | 0-0    | 0   | 0   | 0  | .000  |
| Totals                 | .269 | 36    | 938 | 135 | 252 | 54 | 1  | 13 | 124 | 347 | .370 | 91 | 6  | 188 | 4   | .334 | 11 | 17 | 36-43  | 703 | 299 | 52 | .951  |
| Opponents              | .285 | 36    | 961 | 180 | 274 | 27 | 4  | 21 | 160 | 372 | .387 | 99 | 12 | 123 | 10  | .355 | 11 | 17 | 34-43  | 710 | 266 | 38 | .963  |

LOB - Team (219), Opp (220). DPs turned - Team (15), Opp (11). CI - Team (2), SACKETT 1, PEEK 1. IBB - Team (0), Opp (2).  
Picked off - WRIGLEY 1.

### (All games Sorted by Earned run avg)

| Player               | era  | w-l   | app | gs | cg | sho | sv | ip    | h   | r   | er  | bb | so  | 2b | 3b | hr | b/avg | wp | hp | bk | sfa | sha |
|----------------------|------|-------|-----|----|----|-----|----|-------|-----|-----|-----|----|-----|----|----|----|-------|----|----|----|-----|-----|
| 19 HOLMAN, Paytience | 2.92 | 8-8   | 22  | 17 | 4  | 1/0 | 0  | 91.0  | 96  | 49  | 38  | 24 | 51  | 11 | 2  | 7  | .267  | 3  | 4  | 0  | 3   | 8   |
| 6 LIVESAY, Tegan     | 3.62 | 2-3   | 17  | 10 | 2  | 0/1 | 1  | 50.1  | 48  | 37  | 26  | 27 | 29  | 2  | 1  | 3  | .238  | 8  | 5  | 0  | 2   | 4   |
| 9 CARNEY, Maddie     | 4.43 | 3-4   | 21  | 3  | 0  | 0/2 | 2  | 55.1  | 63  | 38  | 35  | 28 | 23  | 4  | 0  | 1  | .286  | 5  | 2  | 0  | 1   | 4   |
| -----                |      |       |     |    |    |     |    |       |     |     |     |    |     |    |    |    |       |    |    |    |     |     |
| 3 VAN HAREN, Willow  | 4.31 | 1-3   | 10  | 3  | 0  | 0/0 | 0  | 13.0  | 16  | 17  | 8   | 11 | 11  | 3  | 0  | 3  | .291  | 5  | 1  | 0  | 2   | 0   |
| 15 KELL, Delaney     | 8.51 | 1-3   | 12  | 3  | 2  | 0/1 | 0  | 24.2  | 51  | 39  | 30  | 9  | 9   | 7  | 1  | 7  | .411  | 3  | 0  | 0  | 3   | 1   |
| Totals               | 4.09 | 15-21 | 36  | 36 | 8  | 3/2 | 3  | 234.1 | 274 | 180 | 137 | 99 | 123 | 27 | 4  | 21 | .285  | 24 | 12 | 0  | 11  | 17  |
| Opponents            | 3.05 | 21-15 | 36  | 36 | 11 | 6/2 | 5  | 236.2 | 252 | 135 | 103 | 91 | 188 | 54 | 1  | 13 | .269  | 16 | 6  | 0  | 11  | 17  |

PB - Team (6), PEEK 3, MELTON 2, SACKETT 1, Opp (10). Pickoffs - Team (0), Opp (1). SBA/ATT - PEEK (12-19), SACKETT (17-18), CARNEY (10-12), LIVESAY (9-11), HOLMAN (8-10), KELL (6-8), MELTON (5-5), VAN HAREN (1-2).



# 2024 SOUTHEAST MISSOURI SOFTBALL NOTES

## 2024 SCHEDULE/RESULTS

| Date        | Opponent              | Score  | Inns | Overall | OVC   | Pitcher of record | Attend | Time |
|-------------|-----------------------|--------|------|---------|-------|-------------------|--------|------|
| ! 02-09-24  | vs Stony Brook        | w 7-5  | 7    | 1-0-0   | 0-0-0 | HOLMAN (W 1-0)    | 321    | 2:09 |
| ! 02-09-24  | at FIU                | w 7-4  | (8)  | 2-0-0   | 0-0-0 | VAN HAREN (W 1-0) | 321    | 2:15 |
| ! 02-10-24  | vs Ohio State         | L 0-13 | 5    | 2-1-0   | 0-0-0 | VAN HAREN (L 1-1) | 0      | 1:50 |
| ! 02-10-24  | vs FIU                | L 0-1  | 7    | 2-2-0   | 0-0-0 | LIVESAY (L 0-1)   | 0      | 1:39 |
| ! 02-11-24  | vs Stony Brook        | w 5-4  | 7    | 3-2-0   | 0-0-0 | KELL (W 1-0)      | 0      | 1:57 |
| \$ 02-16-24 | vs Maryland           | L 1-9  | 6    | 3-3-0   | 0-0-0 | LIVESAY (L 0-2)   | 50     | 2:06 |
| \$ 02-17-24 | vs SYRACUSE           | L 0-3  | 7    | 3-4-0   | 0-0-0 | HOLMAN (L 1-1)    | 115    | 1:33 |
| \$ 02-17-24 | at Southeastern       | L 2-10 | 6    | 3-5-0   | 0-0-0 | KELL (L 1-1)      | 245    | 1:36 |
| \$ 02-18-24 | vs Maryland           | w 9-3  | 7    | 4-5-0   | 0-0-0 | HOLMAN (W 2-1)    | 87     | 2:00 |
| ^ 02-23-24  | at #24 Auburn         | L 0-8  | 5    | 4-6-0   | 0-0-0 | KELL (L 1-2)      | 1533   | 1:18 |
| ^ 02-24-24  | vs UNI                | L 3-5  | 7    | 4-7-0   | 0-0-0 | HOLMAN (L 2-2)    | 0      | 2:18 |
| ^ 02-24-24  | at #24 Auburn         | L 5-13 | 5    | 4-8-0   | 0-0-0 | CARNEY (L 0-1)    | 1709   | 2:05 |
| ^ 02-25-24  | vs UNI                | L 6-9  | 7    | 4-9-0   | 0-0-0 | CARNEY (L 0-4)    | 0      | 2:16 |
| & 03-01-24  | vs South Dakota St.   | L 0-9  | 5    | 4-10-0  | 0-0-0 | LIVESAY (L 0-3)   | 215    | 1:35 |
| & 03-01-24  | at #16 Arkansas       | L 0-5  | 7    | 4-11-0  | 0-0-0 | HOLMAN (L 2-3)    | 2000   | 1:45 |
| & 03-02-24  | vs South Dakota St.   | L 1-9  | 5    | 4-12-0  | 0-0-0 | KELL (L 1-3)      | 350    | 1:35 |
| & 03-02-24  | vs FAU                | L 3-8  | 7    | 4-13-0  | 0-0-0 | HOLMAN (L 2-4)    | 1000   | 2:05 |
| & 03-03-24  | at #16 Arkansas       | L 5-6  | (8)  | 4-14-0  | 0-0-0 | HOLMAN (L 2-5)    | 2959   | 2:25 |
| * 03-09-24  | EASTERN ILLINOIS-1    | L 4-7  | (12) | 4-15-0  | 0-1-0 | CARNEY (L 0-3)    | 278    | 3:25 |
| * 03-09-24  | EASTERN ILLINOIS-2    | w 9-4  | 7    | 5-15-0  | 1-1-0 | LIVESAY (W 1-3)   | 190    | 2:02 |
| * 03-10-24  | EASTERN ILLINOIS      | L 1-2  | 7    | 5-16-0  | 1-2-0 | HOLMAN (L 2-6)    | 165    | 2:04 |
| 03-12-24    | BRADLEY-1             | w 6-2  | 7    | 6-16-0  | 1-2-0 | HOLMAN (W 3-6)    | 102    | 1:48 |
| 03-12-24    | BRADLEY-2             | L 1-5  | 7    | 6-17-0  | 1-2-0 | VAN HAREN (L 1-2) | 109    | 1:40 |
| * 03-16-24  | at SIUE-1             | w 3-0  | 7    | 7-17-0  | 2-2-0 | CARNEY (W 1-3)    | 158    | 1:54 |
| * 03-16-24  | at SIUE-2             | w 3-2  | 7    | 8-17-0  | 3-2-0 | HOLMAN (W 4-6)    | -      | 1:47 |
| * 03-17-24  | at SIUE               | w 7-4  | 7    | 9-17-0  | 4-2-0 | HOLMAN (W 5-6)    | 133    | 2:06 |
| * 03-23-24  | TENNESSEE STATE-1     | L 3-4  | 7    | 9-18-0  | 4-3-0 | CARNEY (L 1-4)    | 156    | 1:55 |
| * 03-23-24  | TENNESSEE STATE-2     | w 11-2 | 5    | 10-18-0 | 5-3-0 | HOLMAN (W 6-6)    | 167    | 1:31 |
| * 03-24-24  | TENNESSEE STATE       | w 4-3  | 7    | 11-18-0 | 6-3-0 | HOLMAN (W 7-6)    | 187    | 1:49 |
| * 03-29-24  | at Southern Indiana-1 | L 1-2  | 7    | 11-19-0 | 6-4-0 | HOLMAN (L 7-7)    | -      | 1:37 |
| * 03-29-24  | at Southern Indiana-2 | w 6-0  | 7    | 12-19-0 | 7-4-0 | CARNEY (W 2-4)    | 217    | 2:05 |
| * 03-30-24  | at Southern Indiana   | L 4-5  | 7    | 12-20-0 | 7-5-0 | HOLMAN (L 7-8)    | 194    | 2:04 |
| 04-03-24    | at #11 Mizzou         | w 1-0  | 7    | 13-20-0 | 7-5-0 | HOLMAN (W 8-8)    | 1875   | 1:57 |
| * 04-06-24  | TENNESSEE TECH-1      | w 5-3  | 7    | 14-20-0 | 8-5-0 | CARNEY (W 3-4)    | 245    | 1:58 |
| * 04-06-24  | TENNESSEE TECH-2      | w 4-1  | 7    | 15-20-0 | 9-5-0 | LIVESAY (W 2-3)   | 210    | 1:49 |
| * 04-07-24  | TENNESSEE TECH        | L 8-10 | 7    | 15-21-0 | 9-6-0 | VAN HAREN (L 1-3) | 116    | 4:07 |

\* = Conference game

! = Felsberg Invitational (Miami, Fla.)

\$ = Lion Classic (Hammond, La.)

^ = Plainsman Invitational (Auburn, Ala.)

& = Wooo Pig Classic (Fayetteville, Ark.)

() extra inning game



# 2024 SOUTHEAST MISSOURI SOFTBALL NOTES

## 2024 OVC STATISTICS



Record: 9-6 Home: 5-4 Away: 4-2 OVC: 9-6

| Player                 | avg  | gp-gs | ab  | r  | h   | 2b | 3b | hr | rbi | tb  | slg% | bb | hp | so | gdp | ob%  | sf | sh | sb-att | po  | a   | e  | fld%  |
|------------------------|------|-------|-----|----|-----|----|----|----|-----|-----|------|----|----|----|-----|------|----|----|--------|-----|-----|----|-------|
| 16 RICKERMANN, Abigail | .442 | 15-11 | 43  | 10 | 19  | 2  | 0  | 0  | 6   | 21  | .488 | 2  | 0  | 1  | 0   | .467 | 0  | 1  | 6-6    | 27  | 18  | 3  | .938  |
| 26 SHORE, Aubrie       | .400 | 15-15 | 45  | 11 | 18  | 5  | 0  | 1  | 8   | 26  | .578 | 9  | 0  | 7  | 0   | .482 | 2  | 0  | 1-1    | 131 | 5   | 2  | .986  |
| 2 HALLIWILL, Paige     | .378 | 15-15 | 45  | 11 | 17  | 4  | 1  | 0  | 8   | 23  | .511 | 7  | 0  | 6  | 0   | .444 | 2  | 0  | 5-5    | 22  | 3   | 0  | 1.000 |
| 14 AFFOLTER, Brittany  | .341 | 15-14 | 44  | 6  | 15  | 0  | 0  | 0  | 4   | 15  | .341 | 2  | 0  | 7  | 0   | .370 | 0  | 1  | 1-2    | 16  | 0   | 0  | 1.000 |
| -----                  |      |       |     |    |     |    |    |    |     |     |      |    |    |    |     |      |    |    |        |     |     |    |       |
| 11 BRADLEY, Tori       | .400 | 12-5  | 20  | 2  | 8   | 0  | 0  | 0  | 4   | 8   | .400 | 3  | 0  | 1  | 0   | .478 | 0  | 0  | 0-0    | 0   | 0   | 0  | .000  |
| 28 PEEK, Marissa       | .371 | 14-11 | 35  | 9  | 13  | 5  | 0  | 5  | 17  | 33  | .943 | 3  | 0  | 4  | 0   | .410 | 1  | 1  | 0-0    | 24  | 2   | 2  | .929  |
| 18 DENNIS, Sydney      | .346 | 15-12 | 26  | 5  | 9   | 1  | 0  | 0  | 2   | 10  | .385 | 3  | 0  | 4  | 0   | .414 | 0  | 1  | 1-2    | 16  | 25  | 2  | .953  |
| 20 SACKETT, Kat        | .278 | 13-12 | 36  | 4  | 10  | 4  | 0  | 1  | 6   | 17  | .472 | 1  | 0  | 5  | 0   | .297 | 0  | 0  | 1-1    | 18  | 2   | 0  | 1.000 |
| 5 SAYSOFF, Brooklyn    | .250 | 12-10 | 36  | 3  | 9   | 3  | 0  | 0  | 4   | 12  | .333 | 3  | 0  | 5  | 0   | .308 | 0  | 0  | 1-1    | 14  | 30  | 8  | .846  |
| 1 SCHUPP, Sophie       | .250 | 11-3  | 12  | 3  | 3   | 2  | 0  | 0  | 3   | 5   | .417 | 2  | 0  | 7  | 0   | .357 | 0  | 2  | 0-0    | 6   | 6   | 1  | .923  |
| 10 GERWITZ, Tatum      | .222 | 13-5  | 18  | 2  | 4   | 1  | 0  | 0  | 1   | 5   | .278 | 3  | 0  | 2  | 0   | .333 | 0  | 0  | 2-3    | 11  | 0   | 0  | 1.000 |
| 8 MELTON, Sydney       | .200 | 5-0   | 5   | 0  | 1   | 0  | 0  | 0  | 1   | 1   | .200 | 1  | 0  | 2  | 0   | .333 | 0  | 0  | 0-0    | 2   | 0   | 0  | 1.000 |
| 24 WRIGLEY, Kynzie     | .161 | 15-12 | 31  | 3  | 5   | 0  | 0  | 1  | 4   | 8   | .258 | 2  | 1  | 4  | 0   | .235 | 0  | 0  | 0-0    | 11  | 32  | 1  | .977  |
| 12 SCHULTE, Zoe        | .160 | 14-9  | 25  | 4  | 4   | 0  | 0  | 0  | 1   | 4   | .160 | 2  | 0  | 5  | 1   | .222 | 0  | 1  | 3-3    | 11  | 1   | 1  | .923  |
| 7 LUNA, Gracie         | .077 | 6-1   | 13  | 0  | 1   | 1  | 0  | 0  | 1   | 2   | .154 | 0  | 0  | 4  | 0   | .077 | 0  | 0  | 0-0    | 1   | 2   | 0  | 1.000 |
| 27 BURNETT, Hailey     | .000 | 1-0   | 1   | 0  | 0   | 0  | 0  | 0  | 0   | 0   | .000 | 1  | 0  | 0  | 1   | .500 | 0  | 0  | 0-0    | 5   | 0   | 0  | 1.000 |
| 21 ROBBINS, Abby       | .000 | 3-0   | 1   | 0  | 0   | 0  | 0  | 0  | 0   | 0   | .000 | 0  | 0  | 0  | 0   | .000 | 0  | 0  | 0-1    | 0   | 0   | 0  | .000  |
| 4 WILKINS, Kinley      | .000 | 6-0   | 0   | 0  | 0   | 0  | 0  | 0  | 0   | 0   | .000 | 0  | 0  | 0  | 0   | .000 | 0  | 0  | 1-1    | 0   | 0   | 0  | .000  |
| Totals                 | .312 | 15    | 436 | 73 | 136 | 28 | 1  | 8  | 70  | 190 | .436 | 44 | 1  | 64 | 2   | .372 | 5  | 7  | 22-26  | 318 | 154 | 20 | .959  |
| Opponents              | .265 | 15    | 422 | 49 | 112 | 11 | 1  | 4  | 42  | 137 | .325 | 31 | 4  | 41 | 5   | .321 | 1  | 10 | 9-12   | 311 | 127 | 19 | .958  |

LOB - Team (109), Opp (102). DPs turned - Team (6), Opp (6). CI - Team (1), PEEK 1. IBB - Team (0), Opp (1).

### (OVC games only Sorted by Earned run avg)

| Player               | era   | w-l | app | gs | cg | sho | sv | ip    | h   | r  | er | bb | so | 2b | 3b | hr | b/avg | wp | hp | bk | sfa | sha |
|----------------------|-------|-----|-----|----|----|-----|----|-------|-----|----|----|----|----|----|----|----|-------|----|----|----|-----|-----|
| 9 CARNEY, Maddie     | 1.66  | 3-2 | 10  | 1  | 0  | 0/2 | 2  | 33.2  | 31  | 9  | 8  | 12 | 10 | 0  | 0  | 1  | .246  | 1  | 0  | 0  | 1   | 3   |
| 19 HOLMAN, Paytience | 2.72  | 4-3 | 10  | 9  | 2  | 0/0 | 0  | 38.2  | 52  | 21 | 15 | 8  | 20 | 6  | 1  | 2  | .315  | 3  | 1  | 0  | 0   | 4   |
| -----                |       |     |     |    |    |     |    |       |     |    |    |    |    |    |    |    |       |    |    |    |     |     |
| 6 LIVESAY, Tegan     | 2.10  | 2-0 | 8   | 4  | 1  | 0/1 | 0  | 26.2  | 20  | 12 | 8  | 10 | 11 | 1  | 0  | 1  | .200  | 3  | 3  | 0  | 0   | 3   |
| 15 KELL, Delaney     | 2.21  | 0-0 | 3   | 0  | 0  | 0/1 | 0  | 6.1   | 5   | 3  | 2  | 1  | 0  | 3  | 0  | 0  | .208  | 1  | 0  | 0  | 0   | 0   |
| 3 VAN HAREN, Willow  | 31.50 | 0-1 | 2   | 1  | 0  | 0/0 | 0  | 0.2   | 4   | 4  | 3  | 0  | 0  | 1  | 0  | 0  | .571  | 0  | 0  | 0  | 0   | 0   |
| Totals               | 2.38  | 9-6 | 15  | 15 | 3  | 2/2 | 2  | 106.0 | 112 | 49 | 36 | 31 | 41 | 11 | 1  | 4  | .265  | 8  | 4  | 0  | 1   | 10  |
| Opponents            | 3.92  | 6-9 | 15  | 15 | 6  | 0/0 | 2  | 103.2 | 136 | 73 | 58 | 44 | 64 | 28 | 1  | 8  | .312  | 6  | 1  | 0  | 5   | 7   |

PB - Team (3), PEEK 2, MELTON 1, Opp (4). SBA/ATT - CARNEY (5-7), PEEK (4-6), SACKETT (3-4), LIVESAY (3-4), MELTON (2-2), HOLMAN (1-1).



## 2024 SOUTHEAST MISSOURI SOFTBALL NOTES

### 2024 SEASON/CAREER STATISTICS

Record: 15-21 Home: 6-5 Away: 6-7 Neutral: 3-9 OVC: 9-6

| Player                 | SEASON |       |     |     |     |    |    |    |     |    |     |     |        | CAREER |         |     |    |     |    |    |    |     |    |     |    |        |  |
|------------------------|--------|-------|-----|-----|-----|----|----|----|-----|----|-----|-----|--------|--------|---------|-----|----|-----|----|----|----|-----|----|-----|----|--------|--|
|                        | Avg    | G-GS  | AB  | R   | H   | 2B | 3B | HR | RBI | BB | Hbp | SO  | Sb-Att | Avg    | G-GS    | AB  | R  | H   | 2B | 3B | HR | RBI | BB | Hbp | SO | Sb-Att |  |
| 16 RICKERMANN, Abigail | .391   | 31-20 | 69  | 12  | 27  | 3  | 0  | 0  | 7   | 6  | 0   | 4   | 6-6    | .314   | 154-80  | 296 | 57 | 93  | 7  | 3  | 0  | 23  | 29 | 2   | 22 | 20-25  |  |
| 26 SHORE, Aubrie       | .333   | 36-36 | 108 | 13  | 36  | 12 | 0  | 2  | 23  | 11 | 0   | 22  | 1-1    | .321   | 132-129 | 365 | 50 | 117 | 35 | 1  | 18 | 91  | 41 | 3   | 43 | 2-4    |  |
| 28 PEEK, Marissa       | .292   | 31-22 | 65  | 12  | 19  | 8  | 0  | 5  | 18  | 6  | 0   | 15  | 1-1    | .263   | 62-45   | 114 | 15 | 30  | 10 | 0  | 7  | 25  | 8  | 0   | 32 | 1-1    |  |
| 14 AFFOLTER, Brittany  | .291   | 32-30 | 79  | 11  | 23  | 1  | 0  | 0  | 10  | 8  | 0   | 16  | 2-4    | .304   | 65-39   | 115 | 18 | 35  | 3  | 0  | 0  | 13  | 10 | 0   | 24 | 6-8    |  |
| 2 HALLIWILL, Paige     | .283   | 35-35 | 99  | 21  | 28  | 4  | 1  | 3  | 17  | 14 | 3   | 13  | 9-9    | .299   | 132-132 | 374 | 87 | 112 | 22 | 4  | 13 | 75  | 43 | 21  | 47 | 29-31  |  |
| 5 SAYSOFF, Brooklyn    | .267   | 28-23 | 60  | 6   | 16  | 5  | 0  | 0  | 5   | 11 | 0   | 14  | 2-2    | .267   | 28-23   | 60  | 6  | 16  | 5  | 0  | 0  | 5   | 11 | 0   | 14 | 2-2    |  |
| 20 SACKETT, Kat        | .247   | 30-27 | 77  | 7   | 19  | 8  | 0  | 2  | 12  | 1  | 1   | 15  | 2-2    | .268   | 124-116 | 321 | 41 | 86  | 28 | 0  | 6  | 53  | 19 | 7   | 37 | 8-8    |  |
| 18 DENNIS, Sydney      | .247   | 36-32 | 77  | 17  | 19  | 3  | 0  | 0  | 3   | 8  | 0   | 10  | 2-4    | .262   | 126-107 | 290 | 44 | 76  | 7  | 5  | 0  | 32  | 17 | 0   | 31 | 15-24  |  |
| 12 SCHULTE, Zoe        | .222   | 29-20 | 54  | 9   | 12  | 1  | 0  | 0  | 1   | 3  | 0   | 15  | 6-6    | .302   | 70-42   | 116 | 23 | 35  | 1  | 1  | 0  | 8   | 7  | 1   | 26 | 9-9    |  |
| 24 WRIGLEY, Kynzie     | .215   | 34-29 | 79  | 6   | 17  | 1  | 0  | 1  | 8   | 4  | 1   | 18  | 1-2    | .297   | 169-153 | 428 | 77 | 127 | 28 | 1  | 9  | 70  | 31 | 6   | 60 | 16-19  |  |
| 7 LUNA, Gracie         | .171   | 23-10 | 41  | 1   | 7   | 3  | 0  | 0  | 3   | 1  | 1   | 10  | 0-0    | .171   | 23-10   | 41  | 1  | 7   | 3  | 0  | 0  | 3   | 1  | 1   | 10 | 0-0    |  |
| 10 GERWITZ, Tatum      | .170   | 32-17 | 47  | 6   | 8   | 1  | 0  | 0  | 4   | 5  | 0   | 10  | 3-4    | .194   | 117-57  | 186 | 25 | 36  | 2  | 0  | 0  | 9   | 18 | 0   | 45 | 5-7    |  |
| -----                  |        |       |     |     |     |    |    |    |     |    |     |     |        |        |         |     |    |     |    |    |    |     |    |     |    |        |  |
| 11 BRADLEY, Tori       | .343   | 22-10 | 35  | 2   | 12  | 0  | 0  | 0  | 5   | 4  | 0   | 3   | 0-0    | .283   | 84-45   | 145 | 12 | 41  | 7  | 1  | 0  | 15  | 19 | 1   | 25 | 2-2    |  |
| 1 SCHUPP, Sophie       | .276   | 27-10 | 29  | 8   | 8   | 4  | 0  | 0  | 7   | 6  | 0   | 14  | 0-0    | .276   | 27-10   | 29  | 8  | 8   | 4  | 0  | 0  | 7   | 6  | 0   | 14 | 0-0    |  |
| 8 MELTON, Sydney       | .091   | 15-2  | 11  | 0   | 1   | 0  | 0  | 0  | 1   | 1  | 0   | 5   | 0-0    | .197   | 63-14   | 66  | 7  | 13  | 3  | 1  | 1  | 10  | 6  | 5   | 11 | 3-3    |  |
| 21 ROBBINS, Abby       | .000   | 10-1  | 4   | 2   | 0   | 0  | 0  | 0  | 0   | 0  | 0   | 2   | 0-1    | .000   | 10-1    | 4   | 2  | 0   | 0  | 0  | 0  | 0   | 0  | 0   | 2  | 0-1    |  |
| 27 BURNETT, Hailey     | .000   | 5-0   | 2   | 0   | 0   | 0  | 0  | 0  | 0   | 2  | 0   | 0   | 0-0    | .000   | 5-0     | 2   | 0  | 0   | 0  | 0  | 0  | 0   | 2  | 0   | 0  | 0-0    |  |
| 4 WILKINS, Kinley      | .000   | 14-0  | 2   | 1   | 0   | 0  | 0  | 0  | 0   | 0  | 0   | 2   | 1-1    | .000   | 14-0    | 2   | 1  | 0   | 0  | 0  | 0  | 0   | 0  | 0   | 2  | 1-1    |  |
| 22 TUTWILER, Mary      | .000   | 2-0   | 0   | 0   | 0   | 0  | 0  | 0  | 0   | 0  | 0   | 0   | 0-0    | .000   | 2-0     | 0   | 0  | 0   | 0  | 0  | 0  | 0   | 0  | 0   | 0  | 0-0    |  |
| 17 COON, Taryn         | .000   | 1-0   | 0   | 1   | 0   | 0  | 0  | 0  | 0   | 0  | 0   | 0   | 0-0    | .000   | 1-0     | 0   | 1  | 0   | 0  | 0  | 0  | 0   | 0  | 0   | 0  | 0-0    |  |
| Totals                 | .269   | 36-36 | 938 | 135 | 252 | 54 | 1  | 13 | 124 | 91 | 6   | 188 | 36-43  |        |         |     |    |     |    |    |    |     |    |     |    |        |  |
| Opponents              | .285   | 36-36 | 961 | 180 | 274 | 27 | 4  | 21 | 160 | 99 | 12  | 123 | 34-43  |        |         |     |    |     |    |    |    |     |    |     |    |        |  |

(All games Sorted by Earned run avg)

|                      | (All Games Sorted by Earned Run Avg) |       |     |    |    |     |    |       |     |     |     |    |     |      |        |     |    |    |     |    |       |     |     |     |     |     |  |  |
|----------------------|--------------------------------------|-------|-----|----|----|-----|----|-------|-----|-----|-----|----|-----|------|--------|-----|----|----|-----|----|-------|-----|-----|-----|-----|-----|--|--|
| Player               | SEASON                               |       |     |    |    |     |    |       |     |     |     |    |     |      | CAREER |     |    |    |     |    |       |     |     |     |     |     |  |  |
|                      | ERA                                  | W-L   | App | GS | CG | Sho | Sv | IP    | H   | R   | ER  | BB | SO  | ERA  | W-L    | App | GS | CG | Sho | Sv | IP    | H   | R   | ER  | BB  | SO  |  |  |
| 19 HOLMAN, Paytience | 2.92                                 | 8-8   | 22  | 17 | 4  | 1   | 0  | 91.0  | 96  | 49  | 38  | 24 | 51  | 3.26 | 29-33  | 100 | 70 | 23 | 9   | 5  | 395.0 | 404 | 220 | 184 | 116 | 235 |  |  |
| 6 LIVESAY, Tegan     | 3.62                                 | 2-3   | 17  | 10 | 2  | 0   | 1  | 50.1  | 48  | 37  | 26  | 27 | 29  | 3.62 | 2-3    | 17  | 10 | 2  | 0   | 1  | 50.1  | 48  | 37  | 26  | 27  | 29  |  |  |
| 9 CARNEY, Maddie     | 4.43                                 | 3-4   | 21  | 3  | 0  | 0   | 2  | 55.1  | 63  | 38  | 35  | 28 | 23  | 4.43 | 3-4    | 21  | 3  | 0  | 0   | 2  | 55.1  | 63  | 38  | 35  | 28  | 23  |  |  |
| 3 VAN HAREN, Willow  | 4.31                                 | 1-3   | 10  | 3  | 0  | 0   | 0  | 13.0  | 16  | 17  | 8   | 11 | 11  | 4.31 | 1-3    | 10  | 3  | 0  | 0   | 0  | 13.0  | 16  | 17  | 8   | 11  | 11  |  |  |
| 15 KELL, Delaney     | 8.51                                 | 1-3   | 12  | 3  | 2  | 0   | 0  | 24.2  | 51  | 39  | 30  | 9  | 9   | 4.30 | 15-7   | 41  | 20 | 6  | 2   | 1  | 138.1 | 160 | 97  | 85  | 41  | 83  |  |  |
| Totals               | 4.09                                 | 15-21 | 36  | 36 | 8  | 3   | 3  | 234.1 | 274 | 180 | 137 | 99 | 123 |      |        |     |    |    |     |    |       |     |     |     |     |     |  |  |
| Opponents            | 3.05                                 | 21-15 | 36  | 36 | 11 | 6   | 5  | 236.2 | 252 | 135 | 103 | 91 | 188 |      |        |     |    |    |     |    |       |     |     |     |     |     |  |  |

**Multiple-Hit Games**

| Player             | 2 | 3 | 4 | 5+ | Total |
|--------------------|---|---|---|----|-------|
| Aubrie Shore       | 7 | 2 | - | -  | 9     |
| Paige Halliwill    | 7 | - | - | -  | 7     |
| Marissa Peek       | 6 | - | - | -  | 6     |
| Abigail Rickermann | 4 | 2 | - | -  | 6     |
| Kat Sackett        | 4 | 1 | - | -  | 5     |
| Sydney Dennis      | 3 | 1 | - | -  | 4     |
| Brittany Affolter  | 2 | 1 | - | -  | 3     |
| Kynzie Wrigley     | 2 | 1 | - | -  | 3     |
| Zoe Schulte        | 3 | - | - | -  | 3     |
| Sophie Schupp      | 2 | - | - | -  | 2     |
| Tori Bradley       | 1 | - | - | -  | 1     |
| Gracie Luna        | 1 | - | - | -  | 1     |
| Tatum Gerwitz      | 1 | - | - | -  | 1     |

**Multiple-RBI Games**

| Player             | 2 | 3 | 4 | 5+ | Total |
|--------------------|---|---|---|----|-------|
| Paige Halliwill    | 6 | - | - | -  | 6     |
| Aubrie Shore       | 3 | 2 | - | -  | 5     |
| Marissa Peek       | 2 | 2 | 1 | -  | 5     |
| Sophie Schupp      | 1 | 1 | - | -  | 2     |
| Abigail Rickermann | 2 | - | - | -  | 2     |
| Kat Sackett        | 1 | 1 | - | -  | 2     |
| Brittany Affolter  | 1 | 1 | - | -  | 2     |
| Tori Bradley       | 1 | - | - | -  | 1     |
| Tatum Gerwitz      | 1 | - | - | -  | 1     |
| Kynzie Wrigley     | 1 | - | - | -  | 1     |
| Brooklyn Saysoff   | 1 | - | - | -  | 1     |

**Inning-by-Inning Summary**

| Inning  | SEMO | Opp. |
|---------|------|------|
| First   | 33   | 29   |
| Second  | 12   | 38   |
| Third   | 18   | 30   |
| Fourth  | 19   | 24   |
| Fifth   | 21   | 24   |
| Sixth   | 23   | 22   |
| Seventh | 4    | 7    |
| Eighth  | 4    | 2    |
| Ninth   | 0    | 0    |
| Extra   | 1    | 4    |
| Total   | 135  | 180  |

**Inning-by-Inning Summary (OVC Games)**

| Inning  | SEMO | Opp. |
|---------|------|------|
| First   | 21   | 10   |
| Second  | 8    | 7    |
| Third   | 6    | 11   |
| Fourth  | 8    | 3    |
| Fifth   | 19   | 8    |
| Sixth   | 10   | 5    |
| Seventh | 0    | 1    |
| Eighth  | 0    | 0    |
| Extra   | 1    | 4    |
| Total   | 73   | 49   |

**Current Hitting Streaks**

| Player          | Games | Started |
|-----------------|-------|---------|
| Paige Halliwill | 3     | 4/6     |
| Marissa Peek    | 3     | 4/6     |

**Current Reached Base Streaks**

| Player            | Games | Started |
|-------------------|-------|---------|
| Brittany Affolter | 8     | 3/24    |
| Aubrie Shore      | 7     | 3/29    |

**Career Multiple-Hit Games**

| Player             | 2  | 3 | 4 | 5+ | Total |
|--------------------|----|---|---|----|-------|
| Kynzie Wrigley     | 27 | 5 | 1 | -  | 33    |
| Paige Halliwill    | 27 | 3 | - | -  | 30    |
| Aubrie Shore       | 23 | 3 | 1 | -  | 27    |
| Abigail Rickermann | 18 | 3 | - | -  | 21    |
| Sydney Dennis      | 15 | 4 | - | -  | 19    |
| Kat Sackett        | 15 | 3 | - | -  | 18    |
| Marissa Peek       | 8  | - | - | -  | 8     |
| Zoe Schulte        | 4  | 3 | - | -  | 7     |
| Tori Bradley       | 5  | 1 | - | -  | 6     |
| Tatum Gerwitz      | 5  | - | - | -  | 5     |
| Brittany Affolter  | 4  | 1 | - | -  | 5     |
| Brooklyn Saysoff   | 2  | 1 | - | -  | 3     |
| Sophie Schupp      | 2  | - | - | -  | 2     |
| Sydney Melton      | 1  | - | - | -  | 1     |
| Gracie Luna        | 1  | - | - | -  | 1     |

**Career Multiple-RBI Games**

| Player             | 2  | 3 | 4 | 5+ | Total |
|--------------------|----|---|---|----|-------|
| Aubrie Shore       | 13 | 5 | 3 | 1  | 22    |
| Paige Halliwill    | 11 | 5 | 3 | -  | 19    |
| Kynzie Wrigley     | 13 | 3 | 1 | -  | 17    |
| Kat Sackett        | 7  | 4 | 1 | -  | 12    |
| Sydney Dennis      | 6  | 1 | - | -  | 7     |
| Marissa Peek       | 3  | 2 | 1 | -  | 6     |
| Tori Bradley       | 4  | - | - | -  | 4     |
| Abigail Rickermann | 3  | 1 | - | -  | 4     |
| Sydney Melton      | 2  | 1 | - | -  | 3     |
| Brittany Affolter  | 2  | 1 | - | -  | 3     |
| Sophie Schupp      | 1  | 1 | - | -  | 2     |
| Zoe Schulte        | 1  | - | - | -  | 1     |
| Tatum Gerwitz      | 1  | - | - | -  | 1     |
| Brooklyn Saysoff   | 1  | - | - | -  | 1     |

**14 Brittany Affolter****2024 Season-Highs**

|                   |   |
|-------------------|---|
| At-Bats.....      | 6, vs. Eastern Illinois (3/9/24)          |
| Runs.....         | 2, vs. Tennessee Tech (4/7/24)            |
| Hits.....         | 3, at Southern Indiana (3/30/24)          |
| Doubles.....      | 1, at Missouri (4/3/24)                   |
| Triples.....      | -   |
| Home Runs.....    | -   |
| RBI.....          | 3, vs. Eastern Illinois (3/9/24)          |
| Stolen Bases..... | 1, 2x, last vs. Tennessee State (3/24/24) |

**Career-Highs**

|                   |   |
|-------------------|---|
| At-Bats.....      | 6, vs. Eastern Illinois (3/9/24)          |
| Runs.....         | 2, vs. Tennessee Tech (4/7/24)            |
| Hits.....         | 3, at Southern Indiana (3/30/24)          |
| Doubles.....      | 1, 3x, last at Missouri (4/3/24)          |
| Triples.....      | -   |
| Home Runs.....    | -   |
| RBI.....          | 3, vs. Eastern Illinois (3/9/24)          |
| Stolen Bases..... | 1, 6x, last vs. Tennessee State (3/24/24) |

**11 Tori Bradley****2024 Season-Highs**

|                   |                                  |
|-------------------|----------------------------------|
| At-Bats.....      | 4, vs. Eastern Illinois (3/9/24) |
| Runs.....         | 2, vs. Eastern Illinois (3/9/24) |
| Hits.....         | 2, at SIU Edwardsville (3/16/24) |
| Doubles.....      | -                                |
| Triples.....      | -                                |
| Home Runs.....    | -                                |
| RBI.....          | 2, at SIU Edwardsville (3/16/24) |
| Stolen Bases..... | -                                |

**Career-Highs**

|                   |   |
|-------------------|---|
| At-Bats.....      | 4, 7x, last vs. Eastern Illinois (3/9/24) |
| Runs.....         | 2, 3x, last vs. Eastern Illinois (3/9/24) |
| Hits.....         | 3, vs. Central Michigan (2/19/22)         |
| Doubles.....      | 1, 7x, last at Lindenwood (4/15/23)       |
| Triples.....      | 1, vs. Central Michigan (2/19/22)         |
| Home Runs.....    | -   |
| RBI.....          | 2, 4x, last at SIU Edwardsville (3/16/24) |
| Stolen Bases..... | 1, 2x, last at Austin Peay (4/15/22)      |

**27 Hailey Burnett****2024 Season/Career-Highs**

|                   |   |
|-------------------|---|
| At-Bats.....      | 1, 2x, last vs. Tennessee Tech (4/7/24) |
| Runs.....         | -                                       |
| Hits.....         | -                                       |
| Doubles.....      | -                                       |
| Triples.....      | -                                       |
| Home Runs.....    | -                                       |
| RBI.....          | -                                       |
| Stolen Bases..... | -                                       |

**9 Maddie Carney****2024 Season/Career-Highs**

|                      |   |
|----------------------|---|
| Innings Pitched..... | 6.2, vs. Eastern Illinois (3/9/24)          |
| Fewest Hits.....     | 0, 4x, last at SIU Edwardsville (3/16/24)   |
| Most Hits.....       | 9, vs. South Dakota State (3/2/24)          |
| Fewest Runs.....     | 0, 10x, last vs. Tennessee Tech (4/6/24)    |
| Most Runs.....       | 7, vs. Ohio State (2/10/24)                 |
| Fewest Walks.....    | 0, 8x, last vs. Tennessee Tech (4/6/24)     |
| Strikeouts.....      | 4, 2x, last vs. South Dakota State (3/2/24) |

**17 Taryn Coon****2024 Season/Career-Highs**

|                   |                                |
|-------------------|--------------------------------|
| At-Bats.....      | -                              |
| Runs.....         | 1, vs. Northern Iowa (2/25/24) |
| Hits.....         | -                              |
| Doubles.....      | -                              |
| Triples.....      | -                              |
| Home Runs.....    | -                              |
| RBI.....          | -                              |
| Stolen Bases..... | -                              |

**18 Sydney Dennis****2024 Season-Highs**

|                   |   |
|-------------------|---|
| At-Bats.....      | 5, at Florida International (2/9/24)      |
| Runs.....         | 2, 5x, last vs. Tennessee State (3/23/24) |
| Hits.....         | 3, vs. Tennessee State (3/23/24)          |
| Doubles.....      | 1, 3x, last at Southern Indiana (3/29/24) |
| Triples.....      | -   |
| Home Runs.....    | -   |
| RBI.....          | 1, 3x, last at Southern Indiana (3/29/24) |
| Stolen Bases..... | 1, 2x, last at Southern Indiana (3/29/24) |

**2022 Season/Career-Highs**

|                   |   |
|-------------------|---|
| At-Bats.....      | 5, 2x, last at Florida International (2/9/24) |
| Runs.....         | 2, 9x, last vs. Tennessee State (3/23/24)     |
| Hits.....         | 3, 4x, last vs. Tennessee State (3/23/24)     |
| Doubles.....      | 1, 7x, last at Southern Indiana (3/29/24)     |
| Triples.....      | 1, 5x, last at Eastern Illinois (5/6/23)      |
| Home Runs.....    | -   |
| RBI.....          | 3, at Tennessee Tech (3/26/22)                |
| Stolen Bases..... | 2, vs. Southern Indiana (3/25/23)             |

**10 Tatum Gerwitz****2024 Season-Highs**

|                   |   |
|-------------------|---|
| At-Bats.....      | 4, vs. Eastern Illinois (3/9/24)          |
| Runs.....         | 1, 6x, last at Southern Indiana (3/29/24) |
| Hits.....         | 2, vs. Tennessee State (3/23/24)          |
| Doubles.....      | 1, vs. Tennessee Tech (4/6/24)            |
| Triples.....      | -   |
| Home Runs.....    | -   |
| RBI.....          | 2, at Arkansas (3/3/24)                   |
| Stolen Bases..... | 1, 3x, last at Southern Indiana (3/30/24) |

**Career-Highs**

|                   |   |
|-------------------|---|
| At-Bats.....      | 5, at Saint Louis (2/19/23)               |
| Runs.....         | 2, 2x, last vs. Akron (2/26/23)           |
| Hits.....         | 2, 5x, last vs. Tennessee State (3/23/24) |
| Doubles.....      | 1, 2x, last vs. Tennessee Tech (4/6/24)   |
| Triples.....      | -   |
| Home Runs.....    | -   |
| RBI.....          | 2, at Arkansas (3/3/24)                   |
| Stolen Bases..... | 1, 5x, last at Southern Indiana (3/30/24) |

**2 Paige Halliwill****2024 Season-Highs**

|                   |   |
|-------------------|---|
| At-Bats.....      | 6, vs. Eastern Illinois (3/9/24)        |
| Runs.....         | 2, 4x, last vs. Tennessee Tech (4/7/24) |
| Hits.....         | 2, 7x, last vs. Tennessee Tech (4/7/24) |
| Doubles.....      | 2, vs. Tennessee Tech (4/7/24)          |
| Triples.....      | 1, vs. Eastern Illinois (3/9/24)        |
| Home Runs.....    | 1, 3x, last vs. Northern Iowa (2/24/24) |
| RBI.....          | 2, 6x, last vs. Tennessee Tech (4/7/24) |
| Stolen Bases..... | 2, 2x, last vs. Bradley (3/12/24)       |

**Career-Highs**

|                   |   |
|-------------------|---|
| At-Bats.....      | 6, 2x, last vs. Eastern Illinois (3/9/24) |
| Runs.....         | 4, at Lindenwood (4/15/23)                |
| Hits.....         | 3, 2x, last at Lindenwood (4/15/23)       |
| Doubles.....      | 2, 3x, last vs. Tennessee Tech (4/7/24)   |
| Triples.....      | 1, 4x, last vs. Eastern Illinois (3/9/24) |
| Home Runs.....    | 2, vs. Tennessee State (3/20/22)          |
| RBI.....          | 4, 3x, last at Lindenwood (4/15/23)       |
| Stolen Bases..... | 2, 3x, last vs. Bradley (3/12/24)         |



# 2024 SOUTHEAST MISSOURI SOFTBALL NOTES

## SEASON/CAREER-HIGHS

### 19 Paytience Holman

#### 2024 Season-Highs

Innings Pitched.....7.0, 2x, last at Missouri (4/3/24)  
Fewest Hits.....0, 2x, last vs. Bradley (3/12/24)  
Most Hits.....7, 4x, last vs. Tennessee Tech (4/6/24)  
Fewest Runs.....0, 4x, last vs. Tennessee Tech (4/7/24)  
Most Runs.....5, 3x, last vs. Florida Atlantic (3/2/24)  
Fewest Walks.....0, 6x, last at Southern Indiana (3/30/24)  
Strikeouts.....6, 2x, last vs. Tennessee State (3/24/24)

#### Career-Highs

Innings Pitched.....7.0, 12x, last at Missouri (4/3/24)  
Fewest Hits.....0, 8x, last vs. Bradley (3/12/24)  
Most Hits.....10, vs. Eastern Kentucky (4/17/21)  
Fewest Runs.....0, 25x, last vs. Tennessee Tech (4/7/24)  
Most Runs.....8, 2x, last at Louisiana Tech (2/12/23)  
Fewest Walks.....0, 30x, last at Southern Indiana (3/30/24)  
Strikeouts.....14, vs. Mississippi Valley State (3/6/20)

### 15 Delaney Kell

#### 2024 Season-Highs

Innings Pitched.....5.0, at Southeastern Louisiana (2/17/24)  
Fewest Hits.....0, at Southern Indiana (3/29/24)  
Most Hits.....15, at Southeastern Louisiana (2/17/24)  
Fewest Runs.....0, 3x, last at Southern Indiana (3/29/24)  
Most Runs.....10, at Southeastern Louisiana (2/17/24)  
Fewest Walks.....0, 6x, last at Southern Indiana (3/29/24)  
Strikeouts.....2, 4x, last vs. Bradley (3/12/24)

#### Career-Highs

Innings Pitched.....7.1, at Saint Louis (2/19/23)  
Fewest Hits.....0, 4x, last at Southern Indiana (3/29/24)  
Most Hits.....15, at Southeastern Louisiana (2/17/24)  
Fewest Runs.....0, 13x, last at Southern Indiana (3/29/24)  
Most Runs.....7, 2x, last at Iowa State (4/18/23)  
Fewest Walks.....0, 16x, last at Southern Indiana (3/29/24)  
Strikeouts.....7, vs. UT Martin (4/29/23)

### 6 Tegan Livesay

#### 2024 Season/Career-Highs

Innings Pitched.....7.0, 2x, last vs. Tennessee Tech (4/6/24)  
Fewest Hits.....0, 3x, last vs. Tennessee Tech (4/7/24)  
Most Hits.....8, at Florida International (2/10/24)  
Fewest Runs.....0, 3x, last at Southern Indiana (3/29/24)  
Most Runs.....7, vs. South Dakota State (3/1/24)  
Fewest Walks.....0, 5x, last at Southern Indiana (3/29/24)  
Strikeouts.....6, at Auburn (2/24/24)

### 7 Gracie Luna

#### 2024 Season/Career-Highs

At-Bats.....6, vs. Eastern Illinois (3/9/24)  
Runs.....1, at Auburn (2/24/24)  
Hits.....2, vs. Northern Iowa (2/24/24)  
Doubles.....1, 3x, last vs. Eastern Illinois (3/9/24)  
Triples.....-  
Home Runs.....-  
RBI.....1, 3x, last vs. Eastern Illinois (3/9/24)  
Stolen Bases.....-

### 8 Sydney Melton

#### 2024 Season-Highs

At-Bats.....2, vs. Tennessee Tech (4/7/24)  
Runs.....-  
Hits.....1, vs. Tennessee Tech (4/7/24)  
Doubles.....-  
Triples.....-  
Home Runs.....-  
RBI.....1, vs. Tennessee Tech (4/7/24)  
Stolen Bases.....-

#### Career-Highs

At-Bats.....4, at Kansas City (3/15/22)  
Runs.....1, 7x, last at Eastern Illinois (5/6/23)  
Hits.....2, at Eastern Illinois (5/6/23)  
Doubles.....1, 3x, last at Eastern Illinois (5/6/23)  
Triples.....1, at Tennessee State (3/18/23)  
Home Runs.....1, at Eastern Illinois (5/6/23)  
RBI.....3, at Eastern Illinois (5/6/23)  
Stolen Bases.....1, 3x, last at Eastern Illinois (5/6/23)

### 28 Marissa Peek

#### 2024 Season-Highs

At-Bats.....4, 4x, last vs. Tennessee Tech (4/6/24)  
Runs.....2, 2x, last vs. Tennessee State (3/23/24)  
Hits.....2, 6x, last vs. Tennessee Tech (4/6/24)  
Doubles.....2, at SIU Edwardsville (3/17/24)  
Triples.....-  
Home Runs.....2, at SIU Edwardsville (3/16/24)  
RBI.....4, vs. Tennessee State (3/23/24)  
Stolen Bases.....1, vs. Maryland (2/18/24)

#### Career-Highs

At-Bats.....4, 4x, last vs. Tennessee Tech (4/6/24)  
Runs.....2, 2x, last vs. Tennessee State (3/23/24)  
Hits.....2, 9x, last vs. Tennessee Tech (4/6/24)  
Doubles.....2, at SIU Edwardsville (3/17/24)  
Triples.....-  
Home Runs.....2, at SIU Edwardsville (3/16/24)  
RBI.....4, vs. Tennessee State (3/23/24)  
Stolen Bases.....1, vs. Maryland (2/18/24)

### 16 Abigail Rickermann

#### 2024 Season-Highs

At-Bats.....4, 6x, last vs. Tennessee Tech (4/6/24)  
Runs.....2, 4x, last vs. Tennessee Tech (4/6/24)  
Hits.....3, 2x, last vs. Tennessee Tech (4/6/24)  
Doubles.....1, 3x, last at Southern Indiana (3/29/24)  
Triples.....-  
Home Runs.....-  
RBI.....2, 2x, last vs. Tennessee State (3/23/24)  
Stolen Bases.....1, 6x, last vs. Tennessee Tech (4/6/24)

#### Career-Highs

At-Bats.....5, vs. Murray State (5/12/22)  
Runs.....3, 3x, last vs. Morehead State (4/7/23)  
Hits.....3, 3x, last vs. Tennessee Tech (4/6/24)  
Doubles.....1, 7x, last at Southern Indiana (3/29/24)  
Triples.....1, 3x, last vs. SIU Edwardsville (5/11/22)  
Home Runs.....-  
RBI.....3, vs. SIU Edwardsville (5/11/22)  
Stolen Bases.....2, at Murray State (4/24/22)

### 21 Abby Robbins

#### 2024 Season/Career-Highs

At-Bats.....2, vs. Stony Brook (2/11/24)  
Runs.....1, 2x, last at Florida International (2/9/24)  
Hits.....-  
Doubles.....-  
Triples.....-  
Home Runs.....-  
RBI.....-  
Stolen Bases.....-

### 20 Kat Sackett

#### 2024 Season-Highs

At-Bats.....4, 5x, last vs. Tennessee State (3/23/24)  
Runs.....1, 7x, last at Southern Indiana (3/29/24)  
Hits.....3, at Florida International (2/9/24)  
Doubles.....2, 2x, last at SIU Edwardsville (3/17/24)  
Triples.....-  
Home Runs.....1, 2x, last vs. Eastern Illinois (3/10/24)  
RBI.....3, at Florida International (2/9/24)  
Stolen Bases.....1, 2x, last at Southern Indiana (3/29/24)

#### Career-Highs

At-Bats.....5, at Saint Louis (2/19/23)  
Runs.....3, vs. SIU Edwardsville (3/10/23)  
Hits.....3, 3x, last at Florida International (2/9/24)  
Doubles.....2, 4x, last at SIU Edwardsville (3/17/24)  
Triples.....-  
Home Runs.....2, vs. Tennessee State (3/20/22)  
RBI.....4, vs. Tennessee State (3/20/22)  
Stolen Bases.....2, at Saint Louis (2/19/23)

### 5 Brooklyn Sayoff

#### 2024 Season-Highs

At-Bats.....5, vs. Eastern Illinois (3/9/24)  
Runs.....1, 6x, last vs. Tennessee Tech (4/7/24)  
Hits.....3, vs. Eastern Illinois (3/9/24)  
Doubles.....1, 5x, last vs. Tennessee Tech (4/7/24)  
Triples.....-  
Home Runs.....-  
RBI.....2, at SIU Edwardsville (3/17/24)  
Stolen Bases.....1, 2x, last at SIU Edwardsville (3/17/24)

### 12 Zoe Schulte

#### 2024 Season-Highs

At-Bats.....3, 8x, last at Missouri (4/3/24)  
Runs.....2, vs. Bradley (3/12/24)  
Hits.....2, 3x, last vs. Bradley (3/12/24)  
Doubles.....1, at Florida International (2/10/24)  
Triples.....-  
Home Runs.....-  
RBI.....-  
Stolen Bases.....1, 6x, last vs. Tennessee Tech (4/6/24)

#### Career-Highs

At-Bats.....3, 17x, last vs. Tennessee State (3/23/24)  
Runs.....2, 2x, last vs. Bradley (3/12/24)  
Hits.....3, 3x, last vs. Morehead State (4/7/23)  
Doubles.....1, at Florida International (2/10/24)  
Triples.....1, at Ole Miss (3/5/23)  
Home Runs.....-  
RBI.....2, at Tennessee Tech (4/1/23)  
Stolen Bases.....1, 9x, last vs. Tennessee Tech (4/6/24)

### 1 Sophie Schupp

#### 2024 Season/Career-Highs

At-Bats.....3, 3x, last vs. Bradley (3/12/24)  
Runs.....2, vs. Maryland (2/18/24)  
Hits.....2, 2x, last vs. Eastern Illinois (3/9/24)  
Doubles.....1, 4x, last vs. Tennessee Tech (4/7/24)  
Triples.....-  
Home Runs.....-  
RBI.....3, vs. Eastern Illinois (3/9/24)  
Stolen Bases.....-



**26 Aubrie Shore**

## 2024 Season-Highs

|                   |   |
|-------------------|---|
| At-Bats.....      | 6, vs. Eastern Illinois (3/9/24)          |
| Runs.....         | 3, vs. Eastern Illinois (3/9/24)          |
| Hits.....         | 3, 2x, last at SIU Edwardsville (3/16/24) |
| Doubles.....      | 2, vs. Eastern Illinois (3/9/24)          |
| Triples.....      | -   |
| Home Runs.....    | 1, vs. Stony Brook (2/11/24)              |
| RBI.....          | 3, 2x, last vs. Maryland (2/18/24)        |
| Stolen Bases..... | 1, at Southern Indiana (3/29/24)          |

## Hitting Career-Highs

|                   |   |
|-------------------|---|
| At-Bats.....      | 6, vs. Eastern Illinois (3/9/24)          |
| Runs.....         | 3, 2x, last vs. Eastern Illinois (3/9/24) |
| Hits.....         | 4, at Lindenwood (4/15/23)                |
| Doubles.....      | 2, 3x, last vs. Eastern Illinois (3/9/24) |
| Triples.....      | 1, vs. Alabama A&M (2/11/22)              |
| Home Runs.....    | 2, 2x, last at Lindenwood (4/15/23)       |
| RBI.....          | 5, vs. UT Martin (4/29/23)                |
| Stolen Bases..... | 1, 2x, last at Southern Indiana (3/29/24) |

## Pitching Career-Highs

|                      |   |
|----------------------|---|
| Innings Pitched..... | 0.1, vs. Nicholls (2/12/22)               |
| Fewest Hits.....     | 0, 2x, last at Western Kentucky (2/19/22) |
| Most Hits.....       | -   |
| Fewest Runs.....     | 0, vs. Nicholls (2/12/22)                 |
| Most Runs.....       | 1, at Western Kentucky (2/19/22)          |
| Fewest Walks.....    | 0, vs. Nicholls (2/12/22)                 |
| Strikeouts.....      | -   |

**22 Mary Tutwiler**

## 2024 Season/Career-Highs

|                   |   |
|-------------------|---|
| At-Bats.....      | - |
| Runs.....         | - |
| Hits.....         | - |
| Doubles.....      | - |
| Triples.....      | - |
| Home Runs.....    | - |
| RBI.....          | - |
| Stolen Bases..... | - |

**3 Willow Van Haren**

## 2024 Season/Career-Highs

|                      |   |
|----------------------|---|
| Innings Pitched..... | 4.0, at Florida International (2/9/24)    |
| Fewest Hits.....     | 0, 2x, last at Southern Indiana (3/30/24) |
| Most Hits.....       | 5, vs. Ohio State (2/10/24)               |
| Fewest Runs.....     | 0, 3x, last at Southern Indiana (3/30/24) |
| Most Runs.....       | 6, vs. Ohio State (2/10/24)               |
| Fewest Walks.....    | 0, 2x, last vs. Tennessee Tech (4/7/24)   |
| Strikeouts.....      | 4, 2x, last vs. Bradley (3/12/24)         |

**4 Kinley Wilkins**

## 2024 Season/Career-Highs

|                   |                                  |
|-------------------|----------------------------------|
| At-Bats.....      | 1, vs. Bradley (3/12/24)         |
| Runs.....         | 1, vs. Northern Iowa (2/24/24)   |
| Hits.....         | -                                |
| Doubles.....      | -                                |
| Triples.....      | -                                |
| Home Runs.....    | -                                |
| RBI.....          | -                                |
| Stolen Bases..... | 1, at SIU Edwardsville (3/17/24) |

**24 Kynzie Wrigley**

## 2024 Season-Highs

|                   |   |
|-------------------|---|
| At-Bats.....      | 4, 3x, last vs. Florida Atlantic (3/2/24) |
| Runs.....         | 2, at Florida International (2/9/24)      |
| Hits.....         | 3, at Florida International (2/9/24)      |
| Doubles.....      | 1, at Florida International (2/9/24)      |
| Triples.....      | -   |
| Home Runs.....    | 1, vs. Tennessee State (3/24/24)          |
| RBI.....          | 2, vs. Northern Iowa (2/25/24)            |
| Stolen Bases..... | 1, vs. Syracuse (2/17/24)                 |

## Career-Highs

|                   |   |
|-------------------|---|
| At-Bats.....      | 5, vs. Murray State (5/12/22)             |
| Runs.....         | 3, 2x, last vs. Belmont (5/8/22)          |
| Hits.....         | 4, vs. SIU Edwardsville (5/11/22)         |
| Doubles.....      | 3, vs. Morehead State (4/3/22)            |
| Triples.....      | 1, vs. UT Martin (4/27/22)                |
| Home Runs.....    | 1, 9x, last vs. Tennessee State (3/24/24) |
| RBI.....          | 4, vs. UT Martin (4/27/22)                |
| Stolen Bases..... | 2, vs. Tennessee Tech (5/12/22)           |

**Southeast Missouri's Record**

|   |       |
|---|-------|
| Overall.....                                      | 15-21 |
| At Home.....                                      | 6-5   |
| On the Road.....                                  | 6-7   |
| At Neutral Sites.....                             | 3-9   |
| Against Non-OVC Opponents.....                    | 6-15  |
| Against OVC Opponents.....                        | 9-6   |
| In Home OVC Games.....                            | 5-4   |
| In Away OVC Games.....                            | 4-2   |
| vs. Ranked Teams.....                             | 1-4   |
| In February.....                                  | 4-9   |
| In March.....                                     | 8-11  |
| In April.....                                     | 3-1   |
| In May.....                                       | 0-0   |
| On Mondays.....                                   | 0-0   |
| On Tuesdays.....                                  | 1-1   |
| On Wednesdays.....                                | 1-0   |
| On Thursdays.....                                 | 0-0   |
| On Fridays.....                                   | 3-5   |
| On Saturdays.....                                 | 6-11  |
| On Sundays.....                                   | 4-4   |
| In Day Games.....                                 | 15-21 |
| In Night Games.....                               | 0-0   |
| In Extra Inning Games.....                        | 1-2   |
| When Redhawks Score First.....                    | 11-6  |
| When Opponents Score First.....                   | 4-15  |
| vs. Left-Handed Starter.....                      | 1-3   |
| vs. Right-Handed Starter.....                     | 14-18 |
| In 1-Run Games.....                               | 4-6   |
| In 2-Run Games.....                               | 2-2   |
| In 5+ Run Games.....                              | 4-9   |
| Shutouts.....                                     | 3-6   |
| When Leading After Six Innings.....               | 13-0  |
| When Trailing After Six Innings.....              | 0-12  |
| When Tied After Six Innings.....                  | 1-2   |
| When Redhawks Starter Goes 6 or more Innings..... | 5-2   |
| When Redhawks Get 10 or more Hits.....            | 4-3   |
| When Redhawks Outhit Opponents.....               | 11-3  |
| When Redhawks Get Outhit.....                     | 3-16  |
| When Hits are Tied.....                           | 1-2   |
| When Scoring 0-2 Runs.....                        | 1-12  |
| When Scoring 3-5 Runs.....                        | 6-7   |
| When Scoring 6-9 Runs.....                        | 7-2   |
| When Scoring 10+ Runs.....                        | 1-0   |
| When Opponents Score 0-2 Runs.....                | 7-3   |
| When Opponents Score 3-5 Runs.....                | 8-6   |
| When Opponents Score 6-9 Runs.....                | 0-8   |
| When Opponents Score 10+ Runs.....                | 0-4   |
| Without Hitting a Home Run.....                   | 9-17  |
| When Hitting 1 Home Run.....                      | 3-4   |
| When Hitting 2+ Home Runs.....                    | 3-0   |
| Committing 0 Errors.....                          | 7-4   |
| Committing 1 Error.....                           | 3-6   |
| Committing 2+ Errors.....                         | 5-11  |



## 2024 SOUTHEAST MISSOURI SOFTBALL NOTES

### GAME-BY-GAME LINEUPS

| Opponent               | P         | C       | 1B    | 2B         | 3B      | SS      | LF       | CF        | RF       | DP         |
|------------------------|-----------|---------|-------|------------|---------|---------|----------|-----------|----------|------------|
| Stony Brook            | Holman    | Peek    | Shore | Rickermann | Wrigley | Dennis  | Affolter | Halliwill | Gerwitz  | Sackett    |
| Florida International  | Carney    | Sackett | Shore | Rickermann | Wrigley | Dennis  | Schulte  | Halliwill | Gerwitz  | Bradley    |
| Ohio State             | Van Haren | Sackett | Shore | Saysoff    | Wrigley | Dennis  | Affolter | Halliwill | Gerwitz  | Peek       |
| Florida International  | Livesay   | Peek    | Shore | Rickermann | Wrigley | Dennis  | Schulte  | Halliwill | Gerwitz  | Sackett    |
| Stony Brook            | Holman    | Sackett | Shore | Saysoff    | Robbins | Dennis  | Schulte  | Halliwill | Gerwitz  | Wrigley    |
| Maryland               | Livesay   | Sackett | Shore | Saysoff    | Wrigley | Dennis  | Affolter | Halliwill | Gerwitz  | Luna       |
| Syracuse               | Holman    | Sackett | Shore | Rickermann | Wrigley | Dennis  | Affolter | Halliwill | Schulte  | Bradley    |
| Southeastern Louisiana | Kell      | Peek    | Shore | Rickermann | Wrigley | Dennis  | Affolter | Halliwill | Gerwitz  | Sackett    |
| Maryland               | Holman    | Peek    | Shore | Schupp     | Saysoff | Dennis  | Affolter | Halliwill | Gerwitz  | Luna       |
| Auburn                 | Kell      | Sackett | Shore | Saysoff    | Wrigley | Dennis  | Affolter | Halliwill | Gerwitz  | Luna       |
| Northern Iowa          | Holman    | Peek    | Shore | Luna       | Saysoff | Dennis  | Schulte  | Halliwill | Affolter | Rickermann |
| Auburn                 | Livesay   | Peek    | Shore | Schupp     | Saysoff | Dennis  | Affolter | Halliwill | Gerwitz  | Luna       |
| Northern Iowa          | Carney    | Melton  | Shore | Schupp     | Saysoff | Dennis  | Schulte  | Halliwill | Wrigley  | Luna       |
| South Dakota State     | Livesay   | Peek    | Shore | Schupp     | Luna    | Saysoff | Sackett  | Halliwill | Wrigley  | Bradley    |
| Arkansas               | Holman    | Sackett | Shore | Dennis     | Wrigley | Saysoff | Schulte  | Halliwill | Gerwitz  | Luna       |
| South Dakota State     | Kell      | Peek    | Shore | Dennis     | Luna    | Saysoff | Affolter | Halliwill | Wrigley  | Rickermann |
| Florida Atlantic       | Holman    | Sackett | Shore | Dennis     | Wrigley | Schupp  | Affolter | Halliwill | Schulte  | Bradley    |
| Arkansas               | Livesay   | Peek    | Shore | Dennis     | Wrigley | Schupp  | Affolter | Halliwill | Gerwitz  | Sackett    |
| Eastern Illinois       | Holman    | Peek    | Shore | Dennis     | Wrigley | Saysoff | Affolter | Halliwill | Gerwitz  | Luna       |
| Eastern Illinois       | Livesay   | Sackett | Shore | Rickermann | Saysoff | Schupp  | Affolter | Halliwill | Schulte  | Bradley    |
| Eastern Illinois       | Holman    | Sackett | Shore | Dennis     | Saysoff | Schupp  | Affolter | Halliwill | Wrigley  | Bradley    |
| Bradley                | Livesay   | Sackett | Shore | Dennis     | Wrigley | Saysoff | Affolter | Halliwill | Schulte  | Bradley    |
| Bradley                | Van Haren | Melton  | Shore | Dennis     | Saysoff | Schupp  | Schulte  | Affolter  | Gerwitz  | Rickermann |
| SIU Edwardsville       | Livesay   | Peek    | Shore | Dennis     | Wrigley | Saysoff | Schulte  | Halliwill | Affolter | Sackett    |
| SIU Edwardsville       | Holman    | Sackett | Shore | Rickermann | Wrigley | Saysoff | Schulte  | Halliwill | Gerwitz  | Bradley    |
| SIU Edwardsville       | Holman    | Peek    | Shore | Rickermann | Saysoff | Schupp  | Schulte  | Halliwill | Affolter | Sackett    |
| Tennessee State        | Livesay   | Sackett | Shore | Rickermann | Wrigley | Dennis  | Schulte  | Halliwill | Affolter | Bradley    |
| Tennessee State        | Holman    | Peek    | Shore | Dennis     | Wrigley | Saysoff | Affolter | Halliwill | Gerwitz  | Rickermann |
| Tennessee State        | Holman    | Peek    | Shore | Dennis     | Wrigley | Saysoff | Schulte  | Halliwill | Affolter | Rickermann |
| Southern Indiana       | Holman    | Peek    | Shore | Rickermann | Saysoff | Dennis  | Affolter | Halliwill | Gerwitz  | Sackett    |
| Southern Indiana       | Carney    | Sackett | Shore | Rickermann | Wrigley | Dennis  | Schulte  | Halliwill | Affolter | Peek       |
| Southern Indiana       | Holman    | Peek    | Shore | Dennis     | Wrigley | Saysoff | Affolter | Halliwill | Sackett  | Bradley    |
| Missouri               | Holman    | Peek    | Shore | Rickermann | Wrigley | Dennis  | Schulte  | Halliwill | Affolter | Sackett    |
| Tennessee Tech         | Holman    | Peek    | Shore | Rickermann | Wrigley | Dennis  | Schulte  | Halliwill | Affolter | Sackett    |
| Tennessee Tech         | Livesay   | Sackett | Shore | Rickermann | Wrigley | Dennis  | Schulte  | Halliwill | Affolter | Peek       |
| Tennessee Tech         | Van Haren | Peek    | Shore | Rickermann | Wrigley | Dennis  | Affolter | Halliwill | Gerwitz  | Sackett    |
| Saint Louis            |           |         |       |            |         |         |          |           |          |            |
| Morehead State         |           |         |       |            |         |         |          |           |          |            |
| Morehead State         |           |         |       |            |         |         |          |           |          |            |
| Morehead State         |           |         |       |            |         |         |          |           |          |            |
| Lindenwood             |           |         |       |            |         |         |          |           |          |            |
| Lindenwood             |           |         |       |            |         |         |          |           |          |            |
| Lindenwood             |           |         |       |            |         |         |          |           |          |            |
| Murray State           |           |         |       |            |         |         |          |           |          |            |
| Western Illinois       |           |         |       |            |         |         |          |           |          |            |
| Western Illinois       |           |         |       |            |         |         |          |           |          |            |
| Western Illinois       |           |         |       |            |         |         |          |           |          |            |
| UT Martin              |           |         |       |            |         |         |          |           |          |            |
| UT Martin              |           |         |       |            |         |         |          |           |          |            |
| UT Martin              |           |         |       |            |         |         |          |           |          |            |

## 2024 SOUTHEAST MISSOURI SOFTBALL NOTES

## GAME-BY-GAME HITTING



| Opponent                  | AB        | R         | H         | RBI       | 2B       | 3B       | HR       | BB       | IBB      | SB       | CS       | HBP      | SAC      | SE       | GDP      | K         | PQ        | A         | E        | Avg         |
|---------------------------|-----------|-----------|-----------|-----------|----------|----------|----------|----------|----------|----------|----------|----------|----------|----------|----------|-----------|-----------|-----------|----------|-------------|
| <b>Southeast Missouri</b> | <b>27</b> | <b>7</b>  | <b>7</b>  | <b>6</b>  | <b>1</b> | <b>0</b> | <b>1</b> | <b>2</b> | <b>0</b> | <b>1</b> | <b>0</b> | <b>1</b> | <b>1</b> | <b>1</b> | <b>0</b> | <b>5</b>  | <b>21</b> | <b>9</b>  | <b>2</b> | <b>.259</b> |
| Stony Brook               | 30        | 5         | 8         | 3         | 0        | 0        | 1        | 1        | 0        | 2        | 0        | 0        | 0        | 0        | 0        | 6         | 18        | 6         | 3        | .267        |
| <b>Southeast Missouri</b> | <b>36</b> | <b>7</b>  | <b>11</b> | <b>7</b>  | <b>4</b> | <b>0</b> | <b>0</b> | <b>2</b> | <b>0</b> | <b>0</b> | <b>0</b> | <b>0</b> | <b>0</b> | <b>0</b> | <b>0</b> | <b>1</b>  | <b>24</b> | <b>8</b>  | <b>0</b> | <b>.286</b> |
| Florida International     | 29        | 4         | 7         | 3         | 1        | 0        | 0        | 3        | 0        | 2        | 0        | 0        | 0        | 0        | 1        | 6         | 24        | 13        | 2        | .254        |
| <b>Southeast Missouri</b> | <b>17</b> | <b>0</b>  | <b>2</b>  | <b>0</b>  | <b>1</b> | <b>0</b> | <b>0</b> | <b>3</b> | <b>0</b> | <b>0</b> | <b>0</b> | <b>0</b> | <b>0</b> | <b>0</b> | <b>1</b> | <b>7</b>  | <b>12</b> | <b>2</b>  | <b>1</b> | <b>.250</b> |
| Ohio State                | 28        | 13        | 15        | 12        | 1        | 0        | 1        | 2        | 0        | 2        | 0        | 0        | 0        | 0        | 0        | 4         | 15        | 3         | 1        | .345        |
| <b>Southeast Missouri</b> | <b>24</b> | <b>0</b>  | <b>4</b>  | <b>0</b>  | <b>2</b> | <b>0</b> | <b>0</b> | <b>1</b> | <b>0</b> | <b>0</b> | <b>0</b> | <b>0</b> | <b>0</b> | <b>0</b> | <b>0</b> | <b>2</b>  | <b>21</b> | <b>6</b>  | <b>0</b> | <b>.231</b> |
| Florida International     | 28        | 1         | 8         | 1         | 0        | 0        | 0        | 0        | 0        | 3        | 1        | 0        | 0        | 0        | 0        | 2         | 21        | 8         | 0        | .330        |
| <b>Southeast Missouri</b> | <b>24</b> | <b>5</b>  | <b>5</b>  | <b>5</b>  | <b>0</b> | <b>0</b> | <b>2</b> | <b>1</b> | <b>0</b> | <b>0</b> | <b>0</b> | <b>0</b> | <b>0</b> | <b>0</b> | <b>0</b> | <b>3</b>  | <b>21</b> | <b>7</b>  | <b>3</b> | <b>.227</b> |
| Stony Brook               | 25        | 4         | 5         | 4         | 0        | 0        | 0        | 4        | 0        | 1        | 0        | 0        | 0        | 1        | 1        | 9         | 18        | 9         | 1        | .307        |
| <b>Southeast Missouri</b> | <b>21</b> | <b>1</b>  | <b>3</b>  | <b>1</b>  | <b>1</b> | <b>0</b> | <b>0</b> | <b>1</b> | <b>0</b> | <b>0</b> | <b>0</b> | <b>0</b> | <b>0</b> | <b>1</b> | <b>0</b> | <b>4</b>  | <b>16</b> | <b>5</b>  | <b>2</b> | <b>.215</b> |
| Maryland                  | 22        | 9         | 7         | 7         | 1        | 1        | 0        | 9        | 0        | 0        | 1        | 4        | 1        | 0        | 0        | 6         | 18        | 5         | 1        | .309        |
| <b>Southeast Missouri</b> | <b>26</b> | <b>0</b>  | <b>5</b>  | <b>0</b>  | <b>0</b> | <b>0</b> | <b>0</b> | <b>1</b> | <b>0</b> | <b>1</b> | <b>0</b> | <b>1</b> | <b>0</b> | <b>0</b> | <b>0</b> | <b>8</b>  | <b>18</b> | <b>5</b>  | <b>1</b> | <b>.211</b> |
| Syracuse                  | 21        | 3         | 4         | 3         | 1        | 0        | 0        | 0        | 0        | 4        | 0        | 0        | 0        | 1        | 0        | 5         | 21        | 6         | 0        | .295        |
| <b>Southeast Missouri</b> | <b>20</b> | <b>2</b>  | <b>4</b>  | <b>2</b>  | <b>1</b> | <b>0</b> | <b>0</b> | <b>1</b> | <b>0</b> | <b>1</b> | <b>0</b> | <b>0</b> | <b>1</b> | <b>0</b> | <b>0</b> | <b>2</b>  | <b>15</b> | <b>10</b> | <b>3</b> | <b>.210</b> |
| Southeastern Louisiana    | 26        | 10        | 15        | 9         | 1        | 1        | 0        | 3        | 0        | 2        | 2        | 0        | 0        | 3        | 0        | 0         | 18        | 13        | 0        | .330        |
| <b>Southeast Missouri</b> | <b>24</b> | <b>9</b>  | <b>8</b>  | <b>7</b>  | <b>2</b> | <b>0</b> | <b>0</b> | <b>4</b> | <b>0</b> | <b>3</b> | <b>0</b> | <b>1</b> | <b>1</b> | <b>1</b> | <b>0</b> | <b>4</b>  | <b>21</b> | <b>11</b> | <b>2</b> | <b>.224</b> |
| Maryland                  | 23        | 3         | 3         | 3         | 1        | 0        | 0        | 5        | 0        | 0        | 1        | 0        | 0        | 1        | 0        | 2         | 18        | 9         | 3        | .310        |
| <b>Southeast Missouri</b> | <b>16</b> | <b>0</b>  | <b>0</b>  | <b>0</b>  | <b>0</b> | <b>0</b> | <b>0</b> | <b>2</b> | <b>0</b> | <b>0</b> | <b>0</b> | <b>0</b> | <b>0</b> | <b>0</b> | <b>0</b> | <b>9</b>  | <b>14</b> | <b>9</b>  | <b>4</b> | <b>.209</b> |
| Auburn                    | 24        | 8         | 9         | 7         | 1        | 0        | 2        | 1        | 0        | 2        | 0        | 0        | 1        | 0        | 0        | 1         | 15        | 2         | 1        | .316        |
| <b>Southeast Missouri</b> | <b>28</b> | <b>3</b>  | <b>7</b>  | <b>3</b>  | <b>1</b> | <b>0</b> | <b>1</b> | <b>4</b> | <b>0</b> | <b>1</b> | <b>0</b> | <b>1</b> | <b>0</b> | <b>0</b> | <b>0</b> | <b>14</b> | <b>18</b> | <b>6</b>  | <b>0</b> | <b>.213</b> |
| Northern Iowa             | 26        | 5         | 8         | 5         | 2        | 0        | 1        | 4        | 0        | 0        | 0        | 0        | 0        | 0        | 0        | 7         | 21        | 3         | 2        | .316        |
| <b>Southeast Missouri</b> | <b>19</b> | <b>5</b>  | <b>6</b>  | <b>4</b>  | <b>3</b> | <b>0</b> | <b>0</b> | <b>2</b> | <b>0</b> | <b>0</b> | <b>0</b> | <b>0</b> | <b>2</b> | <b>0</b> | <b>0</b> | <b>2</b>  | <b>14</b> | <b>6</b>  | <b>3</b> | <b>.220</b> |
| Auburn                    | 22        | 13        | 7         | 11        | 0        | 0        | 3        | 8        | 0        | 2        | 0        | 1        | 0        | 1        | 0        | 6         | 15        | 6         | 0        | .316        |
| <b>Southeast Missouri</b> | <b>30</b> | <b>6</b>  | <b>9</b>  | <b>5</b>  | <b>0</b> | <b>0</b> | <b>1</b> | <b>3</b> | <b>0</b> | <b>0</b> | <b>0</b> | <b>1</b> | <b>0</b> | <b>0</b> | <b>0</b> | <b>9</b>  | <b>21</b> | <b>7</b>  | <b>2</b> | <b>.228</b> |
| Northern Iowa             | 31        | 9         | 10        | 8         | 2        | 1        | 0        | 2        | 0        | 2        | 0        | 0        | 1        | 0        | 1        | 6         | 21        | 6         | 0        | .316        |
| <b>Southeast Missouri</b> | <b>18</b> | <b>0</b>  | <b>3</b>  | <b>0</b>  | <b>0</b> | <b>0</b> | <b>0</b> | <b>3</b> | <b>0</b> | <b>0</b> | <b>0</b> | <b>0</b> | <b>0</b> | <b>0</b> | <b>0</b> | <b>7</b>  | <b>12</b> | <b>4</b>  | <b>3</b> | <b>.224</b> |
| South Dakota State        | 20        | 9         | 6         | 9         | 1        | 0        | 1        | 7        | 0        | 0        | 0        | 0        | 0        | 0        | 1        | 2         | 15        | 2         | 0        | .315        |
| <b>Southeast Missouri</b> | <b>21</b> | <b>0</b>  | <b>3</b>  | <b>0</b>  | <b>0</b> | <b>0</b> | <b>0</b> | <b>1</b> | <b>0</b> | <b>1</b> | <b>1</b> | <b>0</b> | <b>0</b> | <b>0</b> | <b>1</b> | <b>6</b>  | <b>18</b> | <b>8</b>  | <b>1</b> | <b>.219</b> |
| Arkansas                  | 24        | 5         | 7         | 5         | 2        | 0        | 2        | 1        | 0        | 0        | 0        | 0        | 0        | 0        | 0        | 1         | 21        | 12        | 0        | .314        |
| <b>Southeast Missouri</b> | <b>19</b> | <b>1</b>  | <b>5</b>  | <b>1</b>  | <b>1</b> | <b>0</b> | <b>0</b> | <b>2</b> | <b>0</b> | <b>0</b> | <b>0</b> | <b>0</b> | <b>1</b> | <b>0</b> | <b>0</b> | <b>5</b>  | <b>15</b> | <b>4</b>  | <b>2</b> | <b>.222</b> |
| South Dakota State        | 28        | 9         | 13        | 8         | 2        | 0        | 1        | 1        | 0        | 1        | 0        | 0        | 0        | 0        | 0        | 4         | 15        | 5         | 1        | .324        |
| <b>Southeast Missouri</b> | <b>29</b> | <b>3</b>  | <b>8</b>  | <b>2</b>  | <b>1</b> | <b>0</b> | <b>0</b> | <b>3</b> | <b>0</b> | <b>1</b> | <b>0</b> | <b>0</b> | <b>0</b> | <b>0</b> | <b>0</b> | <b>4</b>  | <b>18</b> | <b>7</b>  | <b>1</b> | <b>.226</b> |
| Florida Atlantic          | 26        | 8         | 8         | 7         | 0        | 0        | 1        | 7        | 0        | 1        | 0        | 1        | 1        | 0        | 0        | 2         | 21        | 8         | 0        | .323        |
| <b>Southeast Missouri</b> | <b>29</b> | <b>5</b>  | <b>7</b>  | <b>5</b>  | <b>2</b> | <b>0</b> | <b>0</b> | <b>4</b> | <b>0</b> | <b>2</b> | <b>0</b> | <b>0</b> | <b>1</b> | <b>2</b> | <b>0</b> | <b>7</b>  | <b>23</b> | <b>9</b>  | <b>2</b> | <b>.227</b> |
| Arkansas                  | 31        | 6         | 9         | 6         | 0        | 0        | 1        | 3        | 1        | 0        | 0        | 0        | 2        | 1        | 1        | 0         | 24        | 5         | 1        | .321        |
| <b>Southeast Missouri</b> | <b>45</b> | <b>4</b>  | <b>9</b>  | <b>3</b>  | <b>4</b> | <b>0</b> | <b>0</b> | <b>3</b> | <b>0</b> | <b>1</b> | <b>0</b> | <b>0</b> | <b>3</b> | <b>0</b> | <b>0</b> | <b>7</b>  | <b>36</b> | <b>15</b> | <b>3</b> | <b>.224</b> |
| Eastern Illinois          | 49        | 7         | 14        | 6         | 0        | 0        | 1        | 4        | 0        | 1        | 0        | 0        | 2        | 1        | 0        | 3         | 36        | 22        | 3        | .318        |
| <b>Southeast Missouri</b> | <b>31</b> | <b>9</b>  | <b>12</b> | <b>9</b>  | <b>3</b> | <b>1</b> | <b>0</b> | <b>2</b> | <b>0</b> | <b>2</b> | <b>0</b> | <b>0</b> | <b>0</b> | <b>0</b> | <b>0</b> | <b>3</b>  | <b>21</b> | <b>7</b>  | <b>1</b> | <b>.234</b> |
| Eastern Illinois          | 27        | 4         | 5         | 4         | 1        | 0        | 1        | 2        | 0        | 1        | 0        | 1        | 0        | 0        | 0        | 1         | 18        | 6         | 2        | .311        |
| <b>Southeast Missouri</b> | <b>26</b> | <b>1</b>  | <b>5</b>  | <b>1</b>  | <b>0</b> | <b>0</b> | <b>1</b> | <b>1</b> | <b>0</b> | <b>0</b> | <b>1</b> | <b>0</b> | <b>0</b> | <b>0</b> | <b>0</b> | <b>6</b>  | <b>21</b> | <b>9</b>  | <b>0</b> | <b>.232</b> |
| Eastern Illinois          | 29        | 2         | 9         | 2         | 1        | 0        | 1        | 1        | 0        | 0        | 0        | 0        | 1        | 0        | 0        | 5         | 21        | 8         | 1        | .311        |
| <b>Southeast Missouri</b> | <b>22</b> | <b>6</b>  | <b>7</b>  | <b>4</b>  | <b>2</b> | <b>0</b> | <b>0</b> | <b>5</b> | <b>0</b> | <b>3</b> | <b>1</b> | <b>0</b> | <b>2</b> | <b>1</b> | <b>0</b> | <b>6</b>  | <b>21</b> | <b>13</b> | <b>0</b> | <b>.236</b> |
| Bradley                   | 24        | 2         | 3         | 2         | 0        | 0        | 0        | 4        | 0        | 1        | 0        | 0        | 0        | 0        | 0        | 4         | 18        | 7         | 2        | .304        |
| <b>Southeast Missouri</b> | <b>26</b> | <b>1</b>  | <b>7</b>  | <b>1</b>  | <b>1</b> | <b>0</b> | <b>0</b> | <b>0</b> | <b>0</b> | <b>0</b> | <b>1</b> | <b>0</b> | <b>0</b> | <b>0</b> | <b>0</b> | <b>10</b> | <b>21</b> | <b>7</b>  | <b>0</b> | <b>.237</b> |
| Bradley                   | 28        | 5         | 7         | 5         | 0        | 0        | 3        | 2        | 0        | 0        | 0        | 0        | 0        | 0        | 0        | 7         | 21        | 6         | 0        | .301        |
| <b>Southeast Missouri</b> | <b>27</b> | <b>3</b>  | <b>8</b>  | <b>3</b>  | <b>1</b> | <b>0</b> | <b>2</b> | <b>3</b> | <b>0</b> | <b>1</b> | <b>0</b> | <b>0</b> | <b>1</b> | <b>0</b> | <b>0</b> | <b>3</b>  | <b>21</b> | <b>13</b> | <b>0</b> | <b>.240</b> |
| SIU Edwardsville          | 27        | 0         | 7         | 0         | 1        | 0        | 0        | 1        | 0        | 3        | 1        | 1        | 0        | 0        | 0        | 2         | 21        | 8         | 0        | .265        |
| <b>Southeast Missouri</b> | <b>28</b> | <b>3</b>  | <b>7</b>  | <b>2</b>  | <b>0</b> | <b>0</b> | <b>0</b> | <b>4</b> | <b>0</b> | <b>1</b> | <b>0</b> | <b>0</b> | <b>1</b> | <b>0</b> | <b>0</b> | <b>3</b>  | <b>21</b> | <b>13</b> | <b>0</b> | <b>.240</b> |
| SIU Edwardsville          | 24        | 2         | 6         | 2         | 1        | 0        | 0        | 1        | 0        | 0        | 1        | 0        | 1        | 0        | 1        | 1         | 21        | 4         | 1        | .263        |
| <b>Southeast Missouri</b> | <b>28</b> | <b>7</b>  | <b>9</b>  | <b>7</b>  | <b>4</b> | <b>0</b> | <b>0</b> | <b>3</b> | <b>0</b> | <b>1</b> | <b>0</b> | <b>0</b> | <b>1</b> | <b>1</b> | <b>1</b> | <b>4</b>  | <b>21</b> | <b>7</b>  | <b>2</b> | <b>.244</b> |
| SIU Edwardsville          | 32        | 4         | 10        | 3         | 0        | 0        | 0        | 0        | 0        | 0        | 0        | 0        | 0        | 0        | 0        | 2         | 21        | 13        | 2        | .271        |
| <b>Southeast Missouri</b> | <b>30</b> | <b>3</b>  | <b>10</b> | <b>3</b>  | <b>1</b> | <b>0</b> | <b>0</b> | <b>2</b> | <b>0</b> | <b>1</b> | <b>0</b> | <b>1</b> | <b>0</b> | <b>0</b> | <b>0</b> | <b>3</b>  | <b>21</b> | <b>12</b> | <b>1</b> | <b>.247</b> |
| Tennessee State           | 24        | 4         | 5         | 4         | 0        | 0        | 0        | 5        | 0        | 1        | 0        | 1        | 1        | 0        | 2        | 4         | 21        | 13        | 0        | .295        |
| <b>Southeast Missouri</b> | <b>30</b> | <b>11</b> | <b>14</b> | <b>11</b> | <b>3</b> | <b>0</b> | <b>1</b> | <b>1</b> | <b>0</b> | <b>2</b> | <b>0</b> | <b>0</b> | <b>0</b> | <b>0</b> | <b>0</b> | <b>1</b>  | <b>15</b> | <b>8</b>  | <b>1</b> | <b>.257</b> |
| Tennessee State           | 19        | 2         | 4         | 2         | 0        | 0        | 0        | 0        | 0        | 0        | 0        | 0        | 0        | 0        | 0        | 3         | 14        | 5         | 2        | .293        |
| <b>Southeast Missouri</b> | <b>24</b> | <b>4</b>  | <b>9</b>  | <b>4</b>  | <b>1</b> | <b>0</b> | <b>2</b> | <b>2</b> | <b>0</b> | <b>2</b> | <b>1</b> | <b>0</b> | <b>1</b> | <b>1</b> | <b>0</b> | <b>3</b>  | <b>21</b> | <b>6</b>  | <b>4</b> | <b>.260</b> |
| Tennessee State           | 29        | 3         | 7         | 1         | 2        | 1        | 0        | 2        | 1        | 0        | 0        | 0        | 0        | 0        | 0        | 6         | 18        | 6         | 0        | .291        |
| <b>Southeast Missouri</b> | <b>26</b> | <b>1</b>  | <b>6</b>  | <b>1</b>  | <b>1</b> | <b>0</b> | <b>0</b> | <b>2</b> | <b>0</b> | <b>0</b> | <b>0</b> | <b>0</b> | <b>0</b> | <b>0</b> | <b>0</b> | <b>10</b> | <b>18</b> | <b>11</b> | <b>2</b> | <b>.259</b> |
| Southern Indiana          | 25        | 2         | 7         | 2         | 0        | 0        | 0        | 0        | 0        | 0        | 0        | 1        | 0        | 0        | 0        | 4         | 21        | 4         | 0        | .291        |



## 2024 SOUTHEAST MISSOURI SOFTBALL NOTES

### GAME-BY-GAME HITTING

| Opponent                  | AB        | R        | H         | RBI      | 2B       | 3B       | HR       | BB       | IBB      | SB       | CS       | HBP      | SAC      | SE       | GDP      | K        | PQ        | A         | E        | Avg         |
|---------------------------|-----------|----------|-----------|----------|----------|----------|----------|----------|----------|----------|----------|----------|----------|----------|----------|----------|-----------|-----------|----------|-------------|
| <b>Southeast Missouri</b> | <b>29</b> | <b>6</b> | <b>9</b>  | <b>5</b> | <b>3</b> | <b>0</b> | <b>0</b> | <b>5</b> | <b>0</b> | <b>6</b> | <b>0</b> | <b>0</b> | <b>0</b> | <b>1</b> | <b>0</b> | <b>3</b> | <b>21</b> | <b>7</b>  | <b>0</b> | <b>.261</b> |
| Southern Indiana          | 25        | 0        | 4         | 0        | 0        | 0        | 0        | 2        | 0        | 1        | 0        | 0        | 0        | 0        | 0        | 3        | 21        | 10        | 4        | .287        |
| <b>Southeast Missouri</b> | <b>31</b> | <b>4</b> | <b>11</b> | <b>4</b> | <b>1</b> | <b>0</b> | <b>0</b> | <b>3</b> | <b>0</b> | <b>2</b> | <b>1</b> | <b>0</b> | <b>0</b> | <b>1</b> | <b>0</b> | <b>7</b> | <b>18</b> | <b>12</b> | <b>1</b> | <b>.265</b> |
| Southern Indiana          | 26        | 5        | 9         | 5        | 1        | 9        | 1        | 3        | 0        | 0        | 0        | 0        | 1        | 0        | 0        | 1        | 21        | 4         | 1        | .289        |
| <b>Southeast Missouri</b> | <b>26</b> | <b>1</b> | <b>5</b>  | <b>1</b> | <b>3</b> | <b>0</b> | <b>0</b> | <b>2</b> | <b>0</b> | <b>0</b> | <b>0</b> | <b>0</b> | <b>1</b> | <b>0</b> | <b>0</b> | <b>9</b> | <b>21</b> | <b>2</b>  | <b>0</b> | <b>.263</b> |
| Missouri                  | 23        | 0        | 3         | 0        | 0        | 0        | 0        | 1        | 0        | 0        | 1        | 2        | 0        | 0        | 0        | 3        | 21        | 5         | 1        | .285        |
| <b>Southeast Missouri</b> | <b>24</b> | <b>5</b> | <b>7</b>  | <b>5</b> | <b>0</b> | <b>0</b> | <b>0</b> | <b>6</b> | <b>0</b> | <b>1</b> | <b>1</b> | <b>0</b> | <b>0</b> | <b>0</b> | <b>0</b> | <b>4</b> | <b>21</b> | <b>16</b> | <b>0</b> | <b>.263</b> |
| Tennessee Tech            | 28        | 3        | 8         | 3        | 1        | 0        | 0        | 3        | 0        | 0        | 0        | 0        | 1        | 0        | 1        | 0        | 18        | 10        | 1        | .285        |
| <b>Southeast Missouri</b> | <b>28</b> | <b>4</b> | <b>10</b> | <b>4</b> | <b>1</b> | <b>0</b> | <b>1</b> | <b>2</b> | <b>0</b> | <b>2</b> | <b>0</b> | <b>0</b> | <b>0</b> | <b>0</b> | <b>0</b> | <b>3</b> | <b>21</b> | <b>8</b>  | <b>1</b> | <b>.266</b> |
| Tennessee Tech            | 25        | 1        | 5         | 1        | 0        | 0        | 0        | 2        | 0        | 1        | 1        | 0        | 1        | 0        | 0        | 5        | 18        | 7         | 2        | .282        |
| <b>Southeast Missouri</b> | <b>29</b> | <b>8</b> | <b>10</b> | <b>8</b> | <b>5</b> | <b>0</b> | <b>1</b> | <b>5</b> | <b>0</b> | <b>0</b> | <b>0</b> | <b>0</b> | <b>0</b> | <b>1</b> | <b>1</b> | <b>4</b> | <b>21</b> | <b>10</b> | <b>4</b> | <b>.269</b> |
| Tennessee Tech            | 33        | 10       | 12        | 7        | 3        | 0        | 0        | 5        | 0        | 1        | 0        | 0        | 1        | 0        | 1        | 1        | 21        | 7         | 0        | .285        |
| <b>Southeast Missouri</b> |           |          |           |          |          |          |          |          |          |          |          |          |          |          |          |          |           |           |          |             |
| Saint Louis               |           |          |           |          |          |          |          |          |          |          |          |          |          |          |          |          |           |           |          |             |
| <b>Southeast Missouri</b> |           |          |           |          |          |          |          |          |          |          |          |          |          |          |          |          |           |           |          |             |
| Morehead State            |           |          |           |          |          |          |          |          |          |          |          |          |          |          |          |          |           |           |          |             |
| <b>Southeast Missouri</b> |           |          |           |          |          |          |          |          |          |          |          |          |          |          |          |          |           |           |          |             |
| Morehead State            |           |          |           |          |          |          |          |          |          |          |          |          |          |          |          |          |           |           |          |             |
| <b>Southeast Missouri</b> |           |          |           |          |          |          |          |          |          |          |          |          |          |          |          |          |           |           |          |             |
| Morehead State            |           |          |           |          |          |          |          |          |          |          |          |          |          |          |          |          |           |           |          |             |
| <b>Southeast Missouri</b> |           |          |           |          |          |          |          |          |          |          |          |          |          |          |          |          |           |           |          |             |
| Lindenwood                |           |          |           |          |          |          |          |          |          |          |          |          |          |          |          |          |           |           |          |             |
| <b>Southeast Missouri</b> |           |          |           |          |          |          |          |          |          |          |          |          |          |          |          |          |           |           |          |             |
| Lindenwood                |           |          |           |          |          |          |          |          |          |          |          |          |          |          |          |          |           |           |          |             |
| <b>Southeast Missouri</b> |           |          |           |          |          |          |          |          |          |          |          |          |          |          |          |          |           |           |          |             |
| Lindenwood                |           |          |           |          |          |          |          |          |          |          |          |          |          |          |          |          |           |           |          |             |
| <b>Southeast Missouri</b> |           |          |           |          |          |          |          |          |          |          |          |          |          |          |          |          |           |           |          |             |
| Murray State              |           |          |           |          |          |          |          |          |          |          |          |          |          |          |          |          |           |           |          |             |
| <b>Southeast Missouri</b> |           |          |           |          |          |          |          |          |          |          |          |          |          |          |          |          |           |           |          |             |
| Western Illinois          |           |          |           |          |          |          |          |          |          |          |          |          |          |          |          |          |           |           |          |             |
| <b>Southeast Missouri</b> |           |          |           |          |          |          |          |          |          |          |          |          |          |          |          |          |           |           |          |             |
| Western Illinois          |           |          |           |          |          |          |          |          |          |          |          |          |          |          |          |          |           |           |          |             |
| <b>Southeast Missouri</b> |           |          |           |          |          |          |          |          |          |          |          |          |          |          |          |          |           |           |          |             |
| Western Illinois          |           |          |           |          |          |          |          |          |          |          |          |          |          |          |          |          |           |           |          |             |
| <b>Southeast Missouri</b> |           |          |           |          |          |          |          |          |          |          |          |          |          |          |          |          |           |           |          |             |
| UT Martin                 |           |          |           |          |          |          |          |          |          |          |          |          |          |          |          |          |           |           |          |             |
| <b>Southeast Missouri</b> |           |          |           |          |          |          |          |          |          |          |          |          |          |          |          |          |           |           |          |             |
| UT Martin                 |           |          |           |          |          |          |          |          |          |          |          |          |          |          |          |          |           |           |          |             |
| <b>Southeast Missouri</b> |           |          |           |          |          |          |          |          |          |          |          |          |          |          |          |          |           |           |          |             |
| UT Martin                 |           |          |           |          |          |          |          |          |          |          |          |          |          |          |          |          |           |           |          |             |



# 2024 SOUTHEAST MISSOURI SOFTBALL NOTES

## GAME-BY-GAME PITCHING



| Opponent                  | IP          | H         | R         | ER        | BB       | SO       | 2B       | 3B       | HR       | WP       | BK       | HBP      | DP       | IBB      | Score       | W-L          | SV       | ERA         |
|---------------------------|-------------|-----------|-----------|-----------|----------|----------|----------|----------|----------|----------|----------|----------|----------|----------|-------------|--------------|----------|-------------|
| <b>Southeast Missouri</b> | <b>7.0</b>  | <b>8</b>  | <b>5</b>  | <b>3</b>  | <b>1</b> | <b>6</b> | <b>0</b> | <b>0</b> | <b>1</b> | <b>0</b> | <b>0</b> | <b>0</b> | <b>0</b> | <b>0</b> | <b>7-5</b>  | <b>1-0</b>   | <b>0</b> | <b>3.00</b> |
| Stony Brook               | 6.0         | 7         | 7         | 4         | 2        | 5        | 1        | 0        | 1        | 1        | 0        | 1        | 0        | 0        | 5-7         | 0-1          | 0        | 4.67        |
| <b>Southeast Missouri</b> | <b>8.0</b>  | <b>7</b>  | <b>4</b>  | <b>3</b>  | <b>3</b> | <b>6</b> | <b>1</b> | <b>0</b> | <b>0</b> | <b>3</b> | <b>0</b> | <b>0</b> | <b>1</b> | <b>0</b> | <b>7-4</b>  | <b>2-0</b>   | <b>0</b> | <b>2.80</b> |
| Florida International     | 8.0         | 11        | 7         | 4         | 2        | 1        | 4        | 0        | 0        | 0        | 0        | 0        | 0        | 0        | 4-7         | 0-2          | 0        | 4.00        |
| <b>Southeast Missouri</b> | <b>4.0</b>  | <b>15</b> | <b>13</b> | <b>8</b>  | <b>2</b> | <b>4</b> | <b>1</b> | <b>0</b> | <b>1</b> | <b>0</b> | <b>0</b> | <b>0</b> | <b>0</b> | <b>0</b> | <b>0-13</b> | <b>2-1</b>   | <b>0</b> | <b>5.16</b> |
| Ohio State                | 5.0         | 2         | 0         | 0         | 3        | 7        | 1        | 0        | 0        | 0        | 0        | 0        | 1        | 0        | 13-0        | 1-2          | 0        | 2.95        |
| <b>Southeast Missouri</b> | <b>7.0</b>  | <b>8</b>  | <b>1</b>  | <b>1</b>  | <b>0</b> | <b>2</b> | <b>0</b> | <b>0</b> | <b>0</b> | <b>1</b> | <b>0</b> | <b>0</b> | <b>1</b> | <b>0</b> | <b>0-1</b>  | <b>2-2</b>   | <b>0</b> | <b>4.04</b> |
| Florida International     | 7.0         | 4         | 0         | 0         | 1        | 2        | 2        | 0        | 0        | 0        | 0        | 0        | 0        | 0        | 1-0         | 2-2          | 0        | 2.15        |
| <b>Southeast Missouri</b> | <b>7.0</b>  | <b>5</b>  | <b>4</b>  | <b>3</b>  | <b>4</b> | <b>9</b> | <b>0</b> | <b>0</b> | <b>0</b> | <b>0</b> | <b>0</b> | <b>0</b> | <b>1</b> | <b>0</b> | <b>5-4</b>  | <b>3-2</b>   | <b>1</b> | <b>3.82</b> |
| Stony Brook               | 6.0         | 5         | 5         | 5         | 1        | 3        | 0        | 0        | 2        | 0        | 0        | 0        | 0        | 0        | 4-5         | 2-3          | 0        | 2.84        |
| <b>Southeast Missouri</b> | <b>5.1</b>  | <b>7</b>  | <b>9</b>  | <b>8</b>  | <b>9</b> | <b>6</b> | <b>1</b> | <b>1</b> | <b>0</b> | <b>4</b> | <b>0</b> | <b>4</b> | <b>0</b> | <b>0</b> | <b>1-9</b>  | <b>3-3</b>   | <b>1</b> | <b>4.75</b> |
| Maryland                  | 6.0         | 3         | 1         | 0         | 1        | 4        | 1        | 0        | 0        | 1        | 0        | 0        | 0        | 0        | 9-1         | 3-3          | 1        | 2.39        |
| <b>Southeast Missouri</b> | <b>6.0</b>  | <b>4</b>  | <b>3</b>  | <b>3</b>  | <b>0</b> | <b>5</b> | <b>1</b> | <b>0</b> | <b>0</b> | <b>0</b> | <b>0</b> | <b>0</b> | <b>0</b> | <b>0</b> | <b>0-3</b>  | <b>3-4</b>   | <b>1</b> | <b>4.58</b> |
| Syracuse                  | 7.0         | 5         | 0         | 0         | 1        | 8        | 0        | 0        | 0        | 0        | 0        | 1        | 0        | 0        | 3-0         | 4-3          | 1        | 2.02        |
| <b>Southeast Missouri</b> | <b>5.0</b>  | <b>15</b> | <b>10</b> | <b>9</b>  | <b>3</b> | <b>0</b> | <b>1</b> | <b>1</b> | <b>0</b> | <b>2</b> | <b>0</b> | <b>0</b> | <b>0</b> | <b>0</b> | <b>2-10</b> | <b>3-5</b>   | <b>1</b> | <b>5.39</b> |
| Southeastern Louisiana    | 6.0         | 4         | 2         | 2         | 1        | 2        | 1        | 0        | 0        | 0        | 0        | 0        | 1        | 0        | 10-2        | 5-3          | 1        | 2.06        |
| <b>Southeast Missouri</b> | <b>7.0</b>  | <b>3</b>  | <b>3</b>  | <b>1</b>  | <b>5</b> | <b>2</b> | <b>1</b> | <b>0</b> | <b>0</b> | <b>0</b> | <b>0</b> | <b>0</b> | <b>0</b> | <b>0</b> | <b>9-3</b>  | <b>4-5</b>   | <b>1</b> | <b>4.85</b> |
| Maryland                  | 6.0         | 8         | 9         | 6         | 4        | 4        | 2        | 0        | 0        | 3        | 0        | 1        | 0        | 0        | 3-9         | 5-4          | 1        | 2.58        |
| <b>Southeast Missouri</b> | <b>4.2</b>  | <b>9</b>  | <b>8</b>  | <b>6</b>  | <b>1</b> | <b>1</b> | <b>1</b> | <b>0</b> | <b>2</b> | <b>0</b> | <b>0</b> | <b>0</b> | <b>0</b> | <b>0</b> | <b>0-8</b>  | <b>4-6</b>   | <b>1</b> | <b>5.16</b> |
| Auburn                    | 5.0         | 0         | 0         | 0         | 2        | 9        | 0        | 0        | 0        | 0        | 0        | 0        | 0        | 0        | 8-0         | 6-4          | 1        | 2.37        |
| <b>Southeast Missouri</b> | <b>6.0</b>  | <b>8</b>  | <b>5</b>  | <b>5</b>  | <b>4</b> | <b>7</b> | <b>2</b> | <b>0</b> | <b>1</b> | <b>0</b> | <b>0</b> | <b>0</b> | <b>0</b> | <b>0</b> | <b>3-5</b>  | <b>4-7</b>   | <b>1</b> | <b>5.22</b> |
| Northern Iowa             | 7.0         | 7         | 3         | 3         | 4        | 14       | 1        | 0        | 1        | 0        | 0        | 1        | 0        | 0        | 5-3         | 7-4          | 1        | 2.43        |
| <b>Southeast Missouri</b> | <b>4.2</b>  | <b>7</b>  | <b>13</b> | <b>10</b> | <b>8</b> | <b>6</b> | <b>0</b> | <b>0</b> | <b>3</b> | <b>1</b> | <b>0</b> | <b>1</b> | <b>0</b> | <b>0</b> | <b>5-13</b> | <b>4-8</b>   | <b>1</b> | <b>5.86</b> |
| Auburn                    | 5.0         | 6         | 5         | 5         | 2        | 2        | 3        | 0        | 0        | 1        | 0        | 0        | 0        | 0        | 13-5        | 8-4          | 1        | 2.74        |
| <b>Southeast Missouri</b> | <b>7.0</b>  | <b>10</b> | <b>9</b>  | <b>6</b>  | <b>2</b> | <b>6</b> | <b>2</b> | <b>1</b> | <b>0</b> | <b>1</b> | <b>0</b> | <b>0</b> | <b>1</b> | <b>0</b> | <b>6-9</b>  | <b>4-9</b>   | <b>1</b> | <b>5.87</b> |
| Northern Iowa             | 7.0         | 9         | 6         | 5         | 3        | 9        | 0        | 0        | 1        | 0        | 0        | 1        | 0        | 0        | 9-6         | 9-4          | 2        | 2.94        |
| <b>Southeast Missouri</b> | <b>4.0</b>  | <b>6</b>  | <b>9</b>  | <b>6</b>  | <b>7</b> | <b>2</b> | <b>1</b> | <b>0</b> | <b>1</b> | <b>1</b> | <b>0</b> | <b>0</b> | <b>0</b> | <b>0</b> | <b>0-9</b>  | <b>4-10</b>  | <b>1</b> | <b>6.10</b> |
| South Dakota State        | 5.0         | 3         | 0         | 0         | 3        | 7        | 0        | 0        | 0        | 1        | 0        | 0        | 0        | 0        | 9-0         | 10-4         | 2        | 2.77        |
| <b>Southeast Missouri</b> | <b>6.0</b>  | <b>7</b>  | <b>5</b>  | <b>5</b>  | <b>1</b> | <b>0</b> | <b>2</b> | <b>0</b> | <b>2</b> | <b>0</b> | <b>0</b> | <b>0</b> | <b>2</b> | <b>0</b> | <b>0-5</b>  | <b>4-11</b>  | <b>1</b> | <b>6.08</b> |
| Arkansas                  | 7.0         | 3         | 0         | 0         | 1        | 6        | 0        | 0        | 0        | 0        | 0        | 0        | 2        | 0        | 5-0         | 11-4         | 2        | 2.56        |
| <b>Southeast Missouri</b> | <b>5.0</b>  | <b>13</b> | <b>9</b>  | <b>7</b>  | <b>1</b> | <b>4</b> | <b>2</b> | <b>0</b> | <b>1</b> | <b>2</b> | <b>0</b> | <b>0</b> | <b>1</b> | <b>0</b> | <b>1-9</b>  | <b>4-12</b>  | <b>1</b> | <b>6.28</b> |
| South Dakota State        | 5.0         | 5         | 1         | 1         | 2        | 5        | 1        | 0        | 0        | 0        | 0        | 0        | 0        | 0        | 9-1         | 12-4         | 2        | 2.50        |
| <b>Southeast Missouri</b> | <b>6.0</b>  | <b>8</b>  | <b>8</b>  | <b>6</b>  | <b>7</b> | <b>2</b> | <b>0</b> | <b>0</b> | <b>1</b> | <b>0</b> | <b>0</b> | <b>1</b> | <b>1</b> | <b>0</b> | <b>3-8</b>  | <b>4-13</b>  | <b>1</b> | <b>6.32</b> |
| Florida Atlantic          | 7.0         | 8         | 3         | 3         | 3        | 4        | 1        | 0        | 0        | 1        | 0        | 0        | 0        | 0        | 8-3         | 13-4         | 3        | 2.53        |
| <b>Southeast Missouri</b> | <b>7.2</b>  | <b>9</b>  | <b>6</b>  | <b>4</b>  | <b>3</b> | <b>0</b> | <b>0</b> | <b>0</b> | <b>1</b> | <b>0</b> | <b>0</b> | <b>0</b> | <b>1</b> | <b>1</b> | <b>5-6</b>  | <b>4-14</b>  | <b>1</b> | <b>6.13</b> |
| Arkansas                  | 8.0         | 7         | 5         | 5         | 4        | 7        | 2        | 0        | 0        | 1        | 0        | 0        | 0        | 0        | 6-5         | 14-4         | 3        | 2.66        |
| <b>Southeast Missouri</b> | <b>12.0</b> | <b>14</b> | <b>7</b>  | <b>6</b>  | <b>4</b> | <b>3</b> | <b>0</b> | <b>0</b> | <b>1</b> | <b>0</b> | <b>0</b> | <b>0</b> | <b>0</b> | <b>0</b> | <b>4-7</b>  | <b>4-15</b>  | <b>1</b> | <b>5.87</b> |
| Eastern Illinois          | 12.0        | 9         | 4         | 2         | 3        | 7        | 4        | 0        | 0        | 1        | 0        | 0        | 0        | 0        | 7-4         | 15-4         | 3        | 2.52        |
| <b>Southeast Missouri</b> | <b>7.0</b>  | <b>5</b>  | <b>4</b>  | <b>3</b>  | <b>2</b> | <b>1</b> | <b>1</b> | <b>0</b> | <b>1</b> | <b>1</b> | <b>0</b> | <b>1</b> | <b>0</b> | <b>0</b> | <b>9-4</b>  | <b>5-15</b>  | <b>1</b> | <b>5.71</b> |
| Eastern Illinois          | 6.0         | 12        | 9         | 7         | 2        | 3        | 3        | 1        | 0        | 1        | 0        | 0        | 1        | 0        | 4-9         | 15-5         | 3        | 2.78        |
| <b>Southeast Missouri</b> | <b>7.0</b>  | <b>9</b>  | <b>2</b>  | <b>2</b>  | <b>1</b> | <b>5</b> | <b>1</b> | <b>0</b> | <b>1</b> | <b>0</b> | <b>0</b> | <b>0</b> | <b>0</b> | <b>0</b> | <b>1-2</b>  | <b>5-16</b>  | <b>1</b> | <b>5.51</b> |
| Eastern Illinois          | 7.0         | 5         | 1         | 1         | 1        | 6        | 0        | 0        | 1        | 0        | 0        | 0        | 0        | 0        | 2-1         | 16-5         | 4        | 2.69        |
| <b>Southeast Missouri</b> | <b>7.0</b>  | <b>3</b>  | <b>2</b>  | <b>2</b>  | <b>4</b> | <b>4</b> | <b>0</b> | <b>0</b> | <b>0</b> | <b>1</b> | <b>0</b> | <b>0</b> | <b>0</b> | <b>0</b> | <b>6-2</b>  | <b>6-16</b>  | <b>1</b> | <b>5.34</b> |
| Bradley                   | 6.0         | 7         | 6         | 1         | 5        | 6        | 2        | 0        | 0        | 0        | 0        | 0        | 0        | 0        | 2-6         | 16-6         | 4        | 2.62        |
| <b>Southeast Missouri</b> | <b>7.0</b>  | <b>7</b>  | <b>5</b>  | <b>5</b>  | <b>2</b> | <b>7</b> | <b>0</b> | <b>0</b> | <b>3</b> | <b>0</b> | <b>0</b> | <b>0</b> | <b>0</b> | <b>0</b> | <b>1-5</b>  | <b>6-17</b>  | <b>1</b> | <b>5.32</b> |
| Bradley                   | 7.0         | 7         | 1         | 1         | 0        | 10       | 1        | 0        | 0        | 1        | 0        | 0        | 1        | 0        | 5-1         | 17-6         | 4        | 2.55        |
| <b>Southeast Missouri</b> | <b>7.0</b>  | <b>7</b>  | <b>0</b>  | <b>0</b>  | <b>1</b> | <b>2</b> | <b>1</b> | <b>0</b> | <b>0</b> | <b>1</b> | <b>0</b> | <b>1</b> | <b>0</b> | <b>0</b> | <b>3-0</b>  | <b>7-17</b>  | <b>1</b> | <b>5.08</b> |
| SIU Edwardsville          | 7.0         | 8         | 3         | 3         | 3        | 3        | 1        | 0        | 2        | 0        | 0        | 0        | 0        | 0        | 0-3         | 17-7         | 4        | 2.57        |
| <b>Southeast Missouri</b> | <b>7.0</b>  | <b>6</b>  | <b>2</b>  | <b>2</b>  | <b>1</b> | <b>1</b> | <b>1</b> | <b>0</b> | <b>0</b> | <b>0</b> | <b>0</b> | <b>0</b> | <b>1</b> | <b>0</b> | <b>3-2</b>  | <b>8-17</b>  | <b>2</b> | <b>4.95</b> |
| SIU Edwardsville          | 7.0         | 7         | 3         | 1         | 4        | 3        | 0        | 0        | 0        | 0        | 0        | 0        | 0        | 0        | 2-3         | 17-8         | 4        | 2.50        |
| <b>Southeast Missouri</b> | <b>7.0</b>  | <b>10</b> | <b>4</b>  | <b>3</b>  | <b>0</b> | <b>2</b> | <b>0</b> | <b>0</b> | <b>0</b> | <b>2</b> | <b>0</b> | <b>0</b> | <b>0</b> | <b>0</b> | <b>7-4</b>  | <b>9-17</b>  | <b>3</b> | <b>4.87</b> |
| SIU Edwardsville          | 7.0         | 9         | 7         | 5         | 3        | 4        | 4        | 0        | 0        | 0        | 0        | 0        | 2        | 0        | 4-7         | 17-9         | 4        | 2.60        |
| <b>Southeast Missouri</b> | <b>7.0</b>  | <b>5</b>  | <b>4</b>  | <b>4</b>  | <b>5</b> | <b>4</b> | <b>0</b> | <b>0</b> | <b>0</b> | <b>0</b> | <b>0</b> | <b>1</b> | <b>2</b> | <b>0</b> | <b>3-4</b>  | <b>9-18</b>  | <b>3</b> | <b>4.83</b> |
| Tennessee State           | 7.0         | 10        | 3         | 3         | 2        | 3        | 1        | 0        | 0        | 2        | 0        | 1        | 1        | 0        | 4-3         | 18-9         | 4        | 2.62        |
| <b>Southeast Missouri</b> | <b>5.0</b>  | <b>4</b>  | <b>2</b>  | <b>1</b>  | <b>0</b> | <b>3</b> | <b>0</b> | <b>0</b> | <b>0</b> | <b>0</b> | <b>0</b> | <b>0</b> | <b>0</b> | <b>0</b> | <b>11-2</b> | <b>10-18</b> | <b>3</b> | <b>4.74</b> |
| Tennessee State           | 4.2         | 14        | 11        | 7         | 1        | 1        | 3        | 0        | 1        | 0        | 0        | 0        | 0        | 0        | 2-11        | 18-10        | 4        | 2.82        |
| <b>Southeast Missouri</b> | <b>7.0</b>  | <b>7</b>  | <b>3</b>  | <b>1</b>  | <b>2</b> | <b>6</b> | <b>2</b> | <b>1</b> | <b>0</b> | <b>0</b> | <b>0</b> | <b>0</b> | <b>0</b> | <b>1</b> | <b>4-3</b>  | <b>11-18</b> | <b>3</b> | <b>4.60</b> |
| Tennessee State           | 6.0         | 9         | 4         | 4         | 2        | 3        | 1        | 0        | 2        | 1        | 0        | 0        | 0        | 0        | 3-4         | 18-11        | 4        | 2.88        |
| <b>Southeast Missouri</b> | <b>6.0</b>  | <b>7</b>  | <b>2</b>  | <b>1</b>  | <b>0</b> | <b>4</b> | <b>0</b> | <b>0</b> | <b>0</b> | <b>0</b> | <b>0</b> | <b>1</b> | <b>1</b> | <b>0</b> | <b>1-2</b>  | <b>11-19</b> | <b>3</b> | <b>4.49</b> |
| Southern Indiana          | 7.0         | 6         | 1         | 1         | 2        | 10       | 1        | 0        | 0        | 0        | 0        | 0        | 0        | 0        | 2-1         | 19-11        | 4        | 2.81        |



## 2024 SOUTHEAST MISSOURI SOFTBALL NOTES

### GAME-BY-GAME PITCHING

| Opponent                  | IP         | H         | R         | ER       | BB       | SO       | 2B       | 3B       | HR       | WP       | BK       | HBP      | DP       | IBB      | Score       | W-L          | SV       | ERA         |
|---------------------------|------------|-----------|-----------|----------|----------|----------|----------|----------|----------|----------|----------|----------|----------|----------|-------------|--------------|----------|-------------|
| <b>Southeast Missouri</b> | <b>7.0</b> | <b>4</b>  | <b>0</b>  | <b>0</b> | <b>2</b> | <b>3</b> | <b>0</b> | <b>0</b> | <b>0</b> | <b>0</b> | <b>0</b> | <b>0</b> | <b>0</b> | <b>0</b> | <b>6-0</b>  | <b>12-19</b> | <b>3</b> | <b>4.33</b> |
| Southern Indiana          | 7.0        | 9         | 6         | 6        | 5        | 3        | 3        | 0        | 0        | 0        | 0        | 0        | 0        | 0        | 0-6         | 19-12        | 4        | 2.92        |
| <b>Southeast Missouri</b> | <b>6.0</b> | <b>9</b>  | <b>5</b>  | <b>3</b> | <b>3</b> | <b>1</b> | <b>1</b> | <b>0</b> | <b>1</b> | <b>0</b> | <b>0</b> | <b>0</b> | <b>0</b> | <b>0</b> | <b>4-5</b>  | <b>12-20</b> | <b>3</b> | <b>4.31</b> |
| Southern Indiana          | 7.0        | 11        | 4         | 4        | 3        | 7        | 1        | 0        | 0        | 0        | 0        | 0        | 0        | 0        | 5-4         | 20-12        | 4        | 2.96        |
| <b>Southeast Missouri</b> | <b>7.0</b> | <b>3</b>  | <b>0</b>  | <b>0</b> | <b>1</b> | <b>3</b> | <b>0</b> | <b>0</b> | <b>0</b> | <b>0</b> | <b>0</b> | <b>2</b> | <b>0</b> | <b>0</b> | <b>1-0</b>  | <b>13-20</b> | <b>3</b> | <b>4.17</b> |
| Missouri                  | 7.0        | 5         | 1         | 0        | 2        | 9        | 3        | 0        | 0        | 0        | 0        | 0        | 0        | 0        | 0-1         | 20-13        | 4        | 2.86        |
| <b>Southeast Missouri</b> | <b>7.0</b> | <b>8</b>  | <b>3</b>  | <b>3</b> | <b>3</b> | <b>0</b> | <b>1</b> | <b>0</b> | <b>0</b> | <b>1</b> | <b>0</b> | <b>0</b> | <b>1</b> | <b>0</b> | <b>5-3</b>  | <b>14-20</b> | <b>3</b> | <b>4.13</b> |
| Tennessee Tech            | 6.0        | 7         | 5         | 5        | 6        | 4        | 0        | 0        | 0        | 0        | 0        | 0        | 0        | 0        | 3-5         | 20-14        | 4        | 2.94        |
| <b>Southeast Missouri</b> | <b>7.0</b> | <b>5</b>  | <b>1</b>  | <b>1</b> | <b>2</b> | <b>5</b> | <b>0</b> | <b>0</b> | <b>0</b> | <b>2</b> | <b>0</b> | <b>0</b> | <b>0</b> | <b>0</b> | <b>4-1</b>  | <b>15-20</b> | <b>3</b> | <b>4.03</b> |
| Tennessee Tech            | 6.0        | 10        | 4         | 1        | 2        | 3        | 1        | 0        | 1        | 0        | 0        | 0        | 1        | 0        | 1-4         | 20-15        | 4        | 2.90        |
| <b>Southeast Missouri</b> | <b>7.0</b> | <b>12</b> | <b>10</b> | <b>6</b> | <b>5</b> | <b>1</b> | <b>3</b> | <b>0</b> | <b>0</b> | <b>1</b> | <b>0</b> | <b>0</b> | <b>1</b> | <b>0</b> | <b>8-10</b> | <b>15-21</b> | <b>3</b> | <b>4.09</b> |
| Tennessee Tech            | 7.0        | 10        | 8         | 8        | 5        | 4        | 5        | 0        | 1        | 1        | 0        | 0        | 1        | 0        | 10-8        | 21-15        | 5        | 3.05        |
| <b>Southeast Missouri</b> |            |           |           |          |          |          |          |          |          |          |          |          |          |          |             |              |          |             |
| Saint Louis               |            |           |           |          |          |          |          |          |          |          |          |          |          |          |             |              |          |             |
| <b>Southeast Missouri</b> |            |           |           |          |          |          |          |          |          |          |          |          |          |          |             |              |          |             |
| Morehead State            |            |           |           |          |          |          |          |          |          |          |          |          |          |          |             |              |          |             |
| <b>Southeast Missouri</b> |            |           |           |          |          |          |          |          |          |          |          |          |          |          |             |              |          |             |
| Morehead State            |            |           |           |          |          |          |          |          |          |          |          |          |          |          |             |              |          |             |
| <b>Southeast Missouri</b> |            |           |           |          |          |          |          |          |          |          |          |          |          |          |             |              |          |             |
| Morehead State            |            |           |           |          |          |          |          |          |          |          |          |          |          |          |             |              |          |             |
| <b>Southeast Missouri</b> |            |           |           |          |          |          |          |          |          |          |          |          |          |          |             |              |          |             |
| Lindenwood                |            |           |           |          |          |          |          |          |          |          |          |          |          |          |             |              |          |             |
| <b>Southeast Missouri</b> |            |           |           |          |          |          |          |          |          |          |          |          |          |          |             |              |          |             |
| Lindenwood                |            |           |           |          |          |          |          |          |          |          |          |          |          |          |             |              |          |             |
| <b>Southeast Missouri</b> |            |           |           |          |          |          |          |          |          |          |          |          |          |          |             |              |          |             |
| Lindenwood                |            |           |           |          |          |          |          |          |          |          |          |          |          |          |             |              |          |             |
| <b>Southeast Missouri</b> |            |           |           |          |          |          |          |          |          |          |          |          |          |          |             |              |          |             |
| Murray State              |            |           |           |          |          |          |          |          |          |          |          |          |          |          |             |              |          |             |
| <b>Southeast Missouri</b> |            |           |           |          |          |          |          |          |          |          |          |          |          |          |             |              |          |             |
| Western Illinois          |            |           |           |          |          |          |          |          |          |          |          |          |          |          |             |              |          |             |
| <b>Southeast Missouri</b> |            |           |           |          |          |          |          |          |          |          |          |          |          |          |             |              |          |             |
| Western Illinois          |            |           |           |          |          |          |          |          |          |          |          |          |          |          |             |              |          |             |
| <b>Southeast Missouri</b> |            |           |           |          |          |          |          |          |          |          |          |          |          |          |             |              |          |             |
| UT Martin                 |            |           |           |          |          |          |          |          |          |          |          |          |          |          |             |              |          |             |
| <b>Southeast Missouri</b> |            |           |           |          |          |          |          |          |          |          |          |          |          |          |             |              |          |             |
| UT Martin                 |            |           |           |          |          |          |          |          |          |          |          |          |          |          |             |              |          |             |
| <b>Southeast Missouri</b> |            |           |           |          |          |          |          |          |          |          |          |          |          |          |             |              |          |             |
| UT Martin                 |            |           |           |          |          |          |          |          |          |          |          |          |          |          |             |              |          |             |