



OVC CHAMPS NCAA TOURNEY

1995 • 1996 • 1997 1999
1998 • 1999 • 2019 2019
2021 • 2023

Jeff Honza, Associate Director of Athletics for Strategic Communications
Office: (573) 651-2933 | Cell: (618) 528-1145
Email: jhonza@semo.edu, redhawk1@me.com

SCHEDULE

February (4-9)

9	vs. Stony Brook !	W, 7-5
9	at Florida International ! ESPN+	W, 7-4 (8)
10	vs. Ohio State !	L, 0-13 (5)
10	at Florida International !	L, 0-1
11	Stony Brook	W, 5-4
16	vs. Maryland \$	L, 1-9 (6)
17	vs. Syracuse \$	L, 0-3
17	at Southeastern Louisiana \$	L, 2-10 (6)
18	vs. Maryland \$	W, 9-3
23	at #24 Auburn ^ SECN+	L, 0-8 (5)
24	vs. Northern Iowa ^	L, 3-5
24	at #24 Auburn ^	L, 5-13 (5)
25	vs. Northern Iowa ^	L, 6-9

March (7-9, 6-3 OVC)

1	vs. South Dakota State &	L, 0-9 (5)
1	at #16 Arkansas & SECN+	L, 0-5
2	vs. South Dakota State &	L, 1-9 (5)
2	vs. Florida Atlantic &	L, 3-8
3	at #16 Arkansas & SECN+	L, 5-6 (8)
9	Eastern Illinois* (DH) ESPN+	L, 4-7 (12); W, 9-4
10	Eastern Illinois* ESPN+	L, 1-2
12	Bradley (DH) ESPN+	W, 6-2; L, 1-5
16	at SIU Edwardsville* (DH) ESPN+	W, 3-0; W, 3-2
17	at SIU Edwardsville* ESPN+	W, 7-4
23	Tennessee State* (DH) ESPN+	L, 3-4; W, 11-2 (5)
24	Tennessee State* ESPN+	W, 4-3
29	at Southern Indiana* (DH) ESPN+	1 p.m.
30	at Southern Indiana* ESPN+	12 p.m.

April (0-0, 0-0 OVC)

3	at Missouri (DH)	4 p.m.
6	Tennessee Tech* (DH) ESPN+	12 p.m.
7	Tennessee Tech* ESPN+	12 p.m.
10	Saint Louis ESPN+	4 p.m.
13	at Morehead State* (DH)	11 a.m.
14	at Morehead State*	11 a.m.
20	Lindenwood* (DH) ESPN+	3 p.m.
21	Lindenwood* ESPN+	12 p.m.
23	at Murray State	3 p.m.
27	Western Illinois* (DH) ESPN+	12 p.m.
28	Western Illinois* ESPN+	12 p.m.

May (0-0, 0-0 OVC)

4	at UT Martin* (DH)	1 p.m.
5	at UT Martin*	1 p.m.
8-11	OVC Tournament	Peoria, Ill.

! - Felsberg Invitational (Miami, Fla.); \$ - Lion Classic (Hammond, La.); ^ - Auburn Tournament (Auburn, Ala.); & - Wooo Pig Classic (Fayetteville, Ark.); Home Games in **Bold**; * - Ohio Valley Conference Game



Southeast Missouri or SEMO

is the preferred reference for Southeast Missouri State University athletic teams. Southeastern Missouri State is **NOT** an acceptable reference.



GAMES 30-32 // SOUTHEAST MISSOURI at SOUTHERN INDIANA

Mar. 29-30 // 1 p.m. (DH)/12 p.m., CT // Evansville, Ind. // USI Softball Field // Series: SEMO leads, 20-2
Video: ESPN+ // Live Stats: USIScreamingEagles.com // X (formerly Twitter): @SEMOSoftball

**11-18**

6-3 OVC

SEMO REDHAWKS

Head Coach Mark Redburn
Career Record (Yrs.) 463-452 (20)
Record at SEMO (Yrs.) 249-203 (10)
OVC Record 127-76

**12-12**

6-3 OVC

SOUTHERN INDIANA SCREAMING EAGLES

Head Coach Sue Kunkle
Career Record (Yrs.) 661-455-1 (22)
Record at USI (Yrs.) 661-455-1 (22)
OVC Record 19-12

// Redhawks Head to Southern Indiana

Southeast Missouri (11-18, 6-3) travels to Southern Indiana (12-12, 6-3) for a three-game series prior to the Easter holiday. SEMO and USI play a 1 p.m. doubleheader Friday followed by a 12 p.m., CT matchup Saturday.

// Follow the Redhawks

Live stats will be available online at USIScreamingEagles.com. Video can be accessed at ESPN+. Updates will be provided on X @SEMOSoftball.

// Series History

Southeast Missouri holds a commanding 20-2 lead in its all-time series against Southern Indiana. SEMO swept USI in Cape Girardeau a year ago, the first season the Screaming Eagles competed at the NCAA Division I level. The Redhawks outscored USI, 24-9, in that series. SEMO won each of the last nine meetings between the teams.

// OVC Update

Eastern Illinois (8-1) remains atop the Ohio Valley Conference standings. EIU leads the league with a 22-9 overall record and has won seven-straight OVC games. Four teams, including Southeast Missouri, Tennessee Tech, Tennessee State and Southern Indiana

are tied for second with 6-3 conference marks.

// Series Wins

The Redhawks earned their second-straight series win when they took two of three against Tennessee State (Mar. 23-24). TSU was tied for first in the Ohio Valley Conference before Southeast Missouri dropped the Tigers into a four-way tie for second in the standings. SEMO swept SIU Edwardsville (Mar. 16-17) on the road for its other series win this year.

// Series Sweep

Southeast Missouri swept its first Ohio Valley Conference road series with 3-0, 3-2 and 7-4 wins at SIU Edwardsville (Mar. 16-17). It was SEMO's 33rd sweep in conference play under Head Coach Mark Redburn.

// Redhawks Heating Up

The Redhawks won seven of their last 10 games and are 5-1 in their previous six Ohio Valley Conference matchups. Southeast Missouri scored 18 runs in its recent series win against Tennessee State (Mar. 23-24).

FOLLOW THE REDHAWKS AT **SEMOREDHAWKS.COM**



2024 SOUTHEAST MISSOURI SOFTBALL NOTES

SOUTHERN INDIANA // MAR. 29-30

// Redburn Approaching 250 Wins at SEMO

Mark Redburn is just one win away from reaching 250 career victories as Southeast Missouri's head softball coach. Redburn is 249-203 in 10 years at the helm. His 249 wins are second-most all-time in program history.

// Rickermann On a Roll

Abigail Rickermann is currently Southeast Missouri's hottest hitter. Rickermann carries a seven-game hitting streak into this weekend's series at Southern Indiana. She hit .550 (11-for-20) with six runs scored and five RBI in that stretch. Rickermann leads the Redhawks with a .367 batting average. The seven-game hitting streak matches the longest of her career.

// Top Hitter in OVC Play

Abigail Rickermann is the presently the top hitter in Ohio Valley Conference play this season. Rickermann is hitting .462 with six runs scored, 12 hits, a double and five RBI through nine games and six starts in league action. Marissa Peek (.444) and Aubrie Shore (.414) are also hitting over .400 against OVC foes.

// Halliwill Clears 100 Career Hits

Paige Halliwill went over 100 career hits with her two-hit performance against Tennessee State (Mar. 23). Halliwill has 104 hits in 125 career starts. She became the second player to go over 100 career hits this season joining Aubrie Shore (110).

// Five in a Row for Holman

Paytience Holman is on a five-game winning streak in the circle. Holman recently tossed two complete game

victories to lead Southeast Missouri to its series win over Tennessee State (Mar. 23-24). Holman tied a season-high six strikeouts in seven innings during her last start, her longest outing of the season. She is now 7-6 with three complete games in 17 appearances and 13 starts this year.

// Peek Power

Catcher Marissa Peek has homered in three of her last six games. Peek hit a career-high two home runs at SIU Edwardsville (Mar. 16) and homered in each of the last two games of the series against Tennessee State (Mar. 23-24). She leads the team and is tied for fourth in the Ohio Valley Conference with four home runs. Peek is the OVC's home run leader in conference games alone.

// New Season-Highs

Southeast Missouri scored a season-high 11 runs and pounded out a season-best 14 hits in its first run-rule victory of the season against Tennessee State (Mar. 23). It was the first time SEMO scored double-digit runs in a game this year.

// Hits Piling Up

The Redhawks tallied 33 hits in three games against Tennessee State (Mar. 23-24), their most in a series this season. Southeast Missouri has six different players get multiple hits in game two of that series. SEMO averaged 11 hits per game over its last three contests. The Redhawks rank second in the Ohio Valley Conference with 83 hits (9.2 per game) in conference games this year.

2024 OVC Standings (as of Mar. 25)

School	Conference				Overall			
	W	L	I	Pct.	W	L	I	Pct.
Eastern Illinois	8	1	0	.889	22	9	0	.710
Tennessee Tech	6	3	0	.667	14	12	0	.538
Tennessee State	6	3	0	.667	15	14	0	.517
Southern Indiana	6	3	0	.667	12	12	0	.500
Southeast Missouri	6	3	0	.667	11	18	0	.379
UT Martin	4	5	0	.444	16	13	0	.552
Lindenwood	3	6	0	.333	14	16	0	.467
Western Illinois	2	7	0	.222	12	19	0	.387
Morehead State	2	7	0	.222	8	14	0	.364
SIUE	2	7	0	.222	10	20	0	.333

2024 OVC Preseason Poll

Team (First-Place Votes)	Points
Southeast Missouri (13)	157
Eastern Illinois (6)	148
UT Martin (1)	120
Southern Indiana	112
SIUE	111
Tennessee State	80
Lindenwood	65
Morehead State	44
Western Illinois	33
Tennessee Tech	30

(as voted on by the league's head softball coaches and communications directors)

2024 OVC Players to Watch

Rachel Kaufman, P/DP, Eastern Illinois
Amanda Weyh, P, Lindenwood
Aubrie Shore, 1B, Southeast Missouri
Sydney Baalman, P, SIUE
Josie Newman, P, Southern Indiana
Anayah Baker-Rowell, 3B/UT, Tennessee State
Mackenzie Fitzgerald, INF, Tennessee Tech
Kaci Fuller, OF, UT Martin
Bella Alvarez, 1B/3B, Western Illinois

2024 Honors & Awards

OVC Player of the Week

Marissa Peek, C, Mar. 18





// First Home Run for Wrigley

Kynzie Wrigley hit her first home run of the season with a solo shot to straightaway center in the bottom of the second inning during Southeast Missouri's 4-3 win over Tennessee State (Mar. 24). Wrigley became the fifth different Redhawk to hit a home run in 2024. It was the ninth home run of her career.

// Peek Named OVC Player of the Week

Southeast Missouri senior catcher Marissa Peek won the first Ohio Valley Conference Player of the Week honor of her career on Mar. 18. A native of Wentzville, Missouri, Peek hit safely in three of four games leading SEMO to a 4-1 record the week before. She hit .556 (5-for-9) with three runs scored, three doubles, two home runs and five RBI. Peek also boasted a .556 on-base percentage and 1.556 slugging percentage. Peek hit a career-high two home runs to lead the Redhawks to their game one victory over SIU Edwardsville. She later had a pair of doubles to close out SEMO's first series sweep of the season. Tennessee State's Caitlyn Manus was tabbed OVC Pitcher of the Week to round out the honorees.

// Carney Gets Career Firsts

Freshman Maddie Carney earned her first career win and save in the Redhawks series sweep of SIU Edwardsville (Mar. 16-17). Carney threw a total of 5.1 scoreless innings to go 1-0 with two saves against the Cougars. She worked four shutout innings with a strikeout to pick up her first career win in game one of a doubleheader on Mar. 16. Carney then recorded the final two outs in each of the Redhawks last two games of the series to get the save. She leads the team in appearances (17) and saves (2) this season.

// Dennis Delivers

Second baseman Sydney Dennis matched a career-high three hits when she went 3-for-3 against Tennessee State (Mar. 23). Dennis had three singles and scored two runs in that game.

// Over .300

Southeast Missouri has three players hitting over .300 entering this weekend's series at Southern Indiana. Abigail Rickermann is hitting .367 in 24 games and 14 starts. Aubrie Shore and Marissa Peek follow hitting .326 and .311, respectively.

// Eleven of Twelve

The Redhawks are 11-1 in their last 12 Ohio Valley Conference road games going back to the 2023 season. Southeast Missouri posted series sweeps at Tennessee Tech, Lindenwood and SIU Edwardsville for nine of those victories.

// Holman Among OVC Leaders

Paytience Holman enters the weekend ranked among the top 10 Ohio Valley Conference pitchers earned run average (8th, 2.99), innings (6th, 75.0), strikeouts (8th, 44), strikeouts looking (7th, 12), wins (5th, 7) and games started (3rd, 13). Holman is 4-1 in with a league high six starts in OVC play.

// Redhawks Deal Eastern Illinois Only Conference Loss

Southeast Missouri and Eastern Illinois, the top two teams in this year's Ohio Valley Conference Preseason Poll, met to open league action in Cape Girardeau on Mar. 9-10. SEMO outscored EIU, 14-13, in the series, and handed the Panthers their only conference loss this season. Since that 9-4 loss on Mar. 9, EIU has won seven-straight league contests.

// Marathon Game

Southeast Missouri's Ohio Valley Conference opener against Eastern Illinois went 12 innings and lasted three hours and 25 minutes before

the Panthers won, 7-4. In terms of innings played, it matched the longest game in SEMO's NCAA Division I era.

// Shore Reaches New Season-Highs

Aubrie Shore started Southeast Missouri's series against Eastern Illinois by going 3-for-6 with three runs scored, two doubles and one RBI on Mar. 9. Shore established season-highs in hits, runs and doubles during that contest. It was the third two-double game of her career, as well.

// Sackett Homers Again

Catcher Kat Sackett hit her second home run of the season with a solo shot to get Southeast Missouri within a run late in the series finale against Eastern Illinois (Mar. 10). Sackett finished the series strong with back-to-back two-hit games. She went 2-for-4 with a run scored, double and one RBI in game two and 2-for-3 with a run, home run and one RBI in game three. Sackett ranks tied for second on the team in home runs and second in multiple-hit games (4) this year.

// 100 OVC Wins in Seven Years

Southeast Missouri's 9-4 win over Eastern Illinois (Mar. 9) marked the Redhawks 100th Ohio Valley Conference victory since the 2017 season. SEMO averaged 14 OVC wins per season in that span.

// First Career Win for Livesay

Freshman Tegan Livesay picked up her first career win in the circle when she beat Eastern Illinois (Mar. 9). Livesay worked five innings, allowing four runs on four hits. She also struck out one in her second-longest start of the season to date.

// 127 OVC Wins

Mark Redburn currently has 127 Ohio Valley Conference wins, most among the league's 10 active head coaches. Redburn is 127-76 all-time in OVC play with three conference regular-season titles (2019, 2021, 2023), one OVC



2024 SOUTHEAST MISSOURI SOFTBALL NOTES

SOUTHERN INDIANA // MAR. 29-30

Tournament crown (2019) and one NCAA Tournament appearance (2019). He led the Redhawks to five-straight winning seasons in league action. Redburn's 2021 (23-6) and 2023 clubs (20-2) won the most conference games in a season.

// 30-Game Home Winning Streak Ends

Southeast Missouri's program record 30-game home winning streak ended with a 12-inning 7-4 loss to Eastern Illinois (Mar. 9). SEMO is 34-4 in its last 38 games at the Southeast Softball Complex. The Redhawks went undefeated at home in 2022 (14-0) and 2023 (13-0).

// Battle Tested

A tough 18-game stretch over four different tournaments has prepared the Redhawks for their Ohio Valley Conference season. Southeast Missouri played two ranked opponents (#24 Auburn, #16 Arkansas), five Power Four teams (Ohio State, Maryland, Syracuse, Auburn, Arkansas), the Summit League preseason favorite (South Dakota State) and Missouri Valley Conference preseason favorite (Northern Iowa) already in 2024. SEMO has played the toughest schedule in the OVC and presently the 72nd toughest schedule among the nation's 307 NCAA Division I softball programs.

// First Midweek Action

The Redhawks split a doubleheader with Missouri Valley Conference member Bradley in their first midweek action of the season on Mar. 12. Southeast Missouri won game one, 6-2, and dropped the nightcap, 5-1. SEMO has 35 midweek victories with Mark Redburn as its head coach.

// Tournament Play

The Redhawks wrapped up tournament play at the Arkansas Wooo Pig Classic (Mar. 1-3). Southeast Missouri also competed at the Florida International

Felsberg Invitational (Feb. 9-11), Southeastern Louisiana Lion Classic (Feb. 16-18) and Auburn Plainsman Invitational (Feb. 23-25).

// Let's Turn Two

Southeast Missouri turned an Ohio Valley Conference leading 12 double plays through 29 games this season. SEMO's defense had a season-high two double plays at Arkansas (Mar. 1).

// Go Ahead I Dare You

Catcher Marissa Peek has thrown out six runners on the basepaths this season. Peek is tied for first in the Ohio Valley Conference in caught stealing by.

// Among OVC Home Run Leaders

Marissa Peek and Paige Halliwill rank among the Ohio Valley Conference's home run leaders. Peek is tied for fourth with four home runs and Halliwill is tied for seventh with three. As a team, Southeast Missouri is tied for second in the OVC with 11 round-trippers.

// Shore Second in OVC in Doubles

Aubrie Shore is tied for second in the Ohio Valley Conference in doubles. Shore has 10 doubles through 29 starts this season. She is tied for ninth among Southeast Missouri's all-time career leaders with 33 doubles.

// Shore Goes Over 100 Hits

With her six hits in Southeast Missouri's series against Eastern Illinois (Mar. 9-10), Aubrie Shore went over 100 hits in her career. Shore currently has 110 hits in 125 games and 122 starts. She is one of three players on this year's roster with over 100 hits joining Kynzie Wrigley (126) and Paige Halliwill (104).

// Nice Tournament for Wrigley

Kynzie Wrigley singled in three of five starts at the Wooo Pig Classic last weekend. Wrigley had a base hit in three-straight games at Arkansas (Mar. 1), vs. South Dakota State (Mar. 2) and vs. Florida Atlantic (Mar. 2).

// Redhawks Beat Maryland for Power Four Win

The Redhawks upended Big Ten Conference member Maryland, 9-3, in the final day of the Lion Classic on Feb. 18. Southeast Missouri took its first lead of the game in the bottom of the second inning and never turned back. SEMO blew things open with four runs two innings later. Three-straight hits by Tatum Gerwitz, Sophie Schupp and Sydney Dennis loaded the bases with one out. Brittany Affolter and Paige Halliwill each walked in a run and Aubrie Shore scored Dennis on a sacrifice fly. Halliwill stole second and a throwing error allowed Brittany Affolter to score giving the Redhawks a 7-1 advantage.

// Power Four Schools

Arkansas is the fifth Power Four team Southeast Missouri faces this season. SEMO is presently 1-5 against such teams with a win and one loss against Big Ten Conference foe Maryland, a loss to fellow Big Ten member Ohio State, a loss to ACC member Syracuse and two losses to SEC member and nationally-ranked Auburn. SEMO also faces a third SEC opponent in Missouri during its 2024 campaign.

// Success Against Power Four

Southeast Missouri has had its share of success against Power Four teams under Head Coach Mark Redburn. In fact, SEMO has nine Power Four wins with Redburn at the helm. The Redhawks beat Maryland (2024), Ole Miss (2023), Iowa (2022), Texas Tech (2021), Arkansas (2019), Kansas (2019, two wins), Missouri (2018) and Georgia Tech (2017) during Redburn's career. SEMO has picked



up a Power Four win in four-straight seasons.

// Every Game Starters

Aubrie Shore is the only player who has started every game for Southeast Missouri this season. Shore made all of her starts at first base. SEMO has used a different lineup in each of its 29 games this year.

// First Career Hits for the Freshmen

Freshmen Brooklyn Saysoff, Gracie Luna and Sophie Schupp each recorded their first career hits at the Lion Classic last weekend. All three had a hit in Southeast Missouri's win over Maryland (Feb. 18). Saysoff and Luna each had one hit and Schupp led the Redhawks with two.

// Season-Openers

Southeast Missouri won its 2024 season-opener with a 7-5 victory over Stony Brook (Feb. 9). SEMO improved to 17-16 in season-opening games during its NCAA Division I era. This year marks SEMO's 33rd as an NCAA Division I program. The Redhawks are 5-5 in season-openers under Head Coach Mark Redburn.

// Freshman Experience

All 10 of the Redhawks freshmen have played this season. Brooklyn Saysoff, Gracie Luna, Tegan Livesay and Maddie Carney saw the most action of the group thus far. Saysoff started 21 games between second base (4), third base (8) and shortstop (9), while Luna has made seven of her 10 starts as designated player. Carney is first on the team with 17 appearances, including 15 in relief, while Livesay started nine of her 13 appearances.

// Extra Base Hits

Southeast Missouri registered 52 extra base hits in its first 29 games this season. SEMO has 40 doubles, one triple and 11 home runs thus far.

// Freshmen Pitching

True freshmen pitchers Willow Van Haren, Maddie Carney and Tegan Livesay combined for four shutout no-hit innings to nail down the Redhawks 5-4 victory over Stony Brook (Feb. 11). Van Haren threw one scoreless inning before giving way to Carney in the fifth. She pitched perfect innings in the fifth and sixth. Livesay took over in the seventh and tossed a 1-2-3 inning to earn her first career save. Van Haren claimed her first career victory when she beat Florida International (Feb. 9).

// 125 and Counting

Paige Halliwill has started 125 games during her Southeast Missouri career. Halliwill had a streak of 119 consecutive starts end in game two of the Redhawks doubleheader vs. Bradley (Mar. 12).

// About Southern Indiana

Southern Indiana is 12-12 overall and 6-3 in the Ohio Valley Conference during its second year at the NCAA Division I level. USI is third in the OVC with a 3.25 ERA and leads the conference in opposing batting average (.243). Josie Newman, who was voted this week's OVC Pitcher of the Week, leads the league with 118 strikeouts and 105.0 innings pitched. Newman is also second in the conference in opposing batting average (.194). She is one of two pitchers in the OVC with over 100 strikeouts this year. Offensively, Caroline Stapleton (.328) and Lexi Fair (.324) are USI's biggest threats. Stapleton leads the team with 11 runs scored and Fair has a team-high 14 RBI. As a team, the Screaming Eagles are last in the league in RBI (63), runs (68), home runs (6) and stolen bases (19). USI averages less than three runs per game (2.8).

// On Deck

Southeast Missouri travels to #16 Missouri for a midweek doubleheader on Apr. 3. First pitch is set for 4 p.m., CT in Columbia.

// OVC Preseason Favorite

Reigning Ohio Valley Conference regular-season champion Southeast Missouri was tabbed the league's preseason favorite ahead of the 2024 season. SEMO collected 13 of the possible 20 first-place votes and tallied 157 points in the overall voting by the conference's head softball coaches and communications directors. Eastern Illinois, which won the OVC Tournament title and advanced to the NCAA Tournament in 2023, was picked second with 148 points and six first-place nods. UT Martin earned the remaining first-place vote and is third with 120 points, while Southern Indiana (112 pts.) and SIU Edwardsville (111 pts.) round out the top half. Tennessee State (80 pts.), Lindenwood (65 pts.), Morehead State (44 pts.), first-year OVC member Western Illinois (33 pts.) and Tennessee Tech (30 pts.) complete the predicted order of finish.

// Senior Driven

The Redhawks have seven seniors on their 2024 roster. Paige Halliwill, Zoe Schulte, Abigail Rickermann, Paytience Holman, Kat Sackett, Kynzie Wrigley and Marissa Peek are Southeast Missouri's veterans. They have combined for 105 wins during their careers. Holman, Rickermann and Wrigley have been a part of two Ohio Valley Conference Championship teams (2021, 2023).

// Pitching Depth

Southeast Missouri has five pitchers on this year's team giving Mark Redburn the most depth he's had inside the circle as the Redhawks head coach. First-Team All-Ohio Valley Conference honoree Delaney Kell returns as well as fifth-year senior Paytience Holman. Kell went 14-3 in 26 games and 16 starts a year ago. She went undefeated at 9-0 with a 1.94 ERA in league play alone. Kell led the Redhawks with 73 strikeouts in 109.2 innings. Holman recorded six wins in 23 appearances and 14 starts. She struck out 46 in 96.2 innings and tied for first on the team with three saves last season. Freshmen Willow



2024 SOUTHEAST MISSOURI SOFTBALL NOTES

SOUTHERN INDIANA // MAR. 29-30

Van Haren (LHP), Tegan Livesay (RHP) and Maddie Carney (RHP) will make their college debuts in 2024.

// Top Four Hitters Back

The Redhawks top four hitters in Zoe Schulte, Paige Halliwill, Aubrie Shore and Abigail Rickermann are back for a Southeast Missouri offense which led the Ohio Valley Conference with a .308 batting average in 2023. Schulte led the Redhawks with a .371 clip, while Halliwill hit .352, Shore hit .347 and Rickermann hit .338. Halliwill topped SEMO in runs (31) and hits (44), while Shore led the team in home runs (7) and RBI (33). As a team, the Redhawks also led the OVC in on-base percentage (.388) and triples (13).

// Returning All-OVC Performers

Five All-Ohio Valley Conference performers from a year ago return to this year's team. First baseman Aubrie Shore is the league's reigning Player of the Year. Shore also earned first-team honors and was named NFCA Third-Team All-Mideast Region in 2023. Catcher Kat Sackett, pitcher Delaney Kell and outfielder Paige Halliwill joined Shore as first-team selections. Second baseman Sydney Dennis claimed Second-Team All-OVC accolades and outfielder Zoe Schulte landed a spot on the 12-member OVC All-Newcomer Team.

// Redburn in 10th Year

Mark Redburn is in his 10th year as Southeast Missouri's head coach. Redburn has orchestrated an outstanding turnaround that has seen the Redhawks win 30 or more games in four of the last six seasons, claim three Ohio Valley Conference regular-season titles (2019, 2021, 2023), win one OVC Tournament crown (2019) and earn one NCAA Tournament berth (2019). He is 249-203 overall and 127-76 in the OVC at the SEMO helm.

// Six-Straight Winning Seasons

The Redhawks had winning seasons in six-straight years. Southeast Missouri posted 30 or more wins in four of those seasons (2018, 2019, 2021, 2022). SEMO went 29-14 overall and 20-2 in the Ohio Valley Conference in 2023. The 20 OVC wins were the Redhawks second-most in a season in program history.

// Team 48

The 2024 club is the 48th team in Southeast Missouri's softball history. This year's roster consists of 25 players, including seven seniors, six juniors, two sophomores and 10 freshmen. SEMO also returns seven starters and two starting pitchers. Three of those returning starters, including Paige Halliwill, Aubrie Shore and Kat Sackett started every game in 2023.

// Softball Success

In the last six seasons, Southeast Missouri softball teams have won a total of 181 games for an average of 30 per year during that span. SEMO notched a program record 46 wins in 2019 and won 30 games in back-to-back seasons (2021, 2022) for the second time in Mark Redburn's head coaching tenure. In terms of winning percentage, softball has been the winningest program in SEMO Athletics with a .619 clip in the last six years. Over that time, the Redhawks accumulated 203 victories, won 99 OVC games and boasted a .692 winning percentage in conference action.

// Reflecting on 2023

In 2023, Southeast Missouri ranked first in the Ohio Valley Conference in batting average (.308), ERA (2.70), triples (13) and opposing batting average (.230). Pitching wise, the Redhawks gave up the fewest hits (244), runs (128), earned runs (107) and walks (82) of anyone in the league. SEMO ripped through its OVC schedule outscoring opponents by a staggering +107 margin (149-42) along the way. The Redhawks led the conference in batting average (.358), on-base percentage

(.441), slugging percentage (.547), runs (149), hits (209), triples (12), doubles (41), RBI (138) and total bases (319) in league games. SEMO posted series sweeps against six of its eight conference opponents. Additionally, the Redhawks had a 16-game conference winning streak from Mar. 18-Apr. 30 that year.

// Redhawks Sign Two for 2025

Outfielder Selby Patberg and infielder Addisyn Martinie signed with the Southeast Missouri softball program and will join the Redhawks in 2024-25. A native of Mt. Carmel, Illinois, Patberg is a three-year starter at Mt. Carmel High School. She earned First-Team All-Conference, Second-Team All-State and Extra Innings Softball First-Team All-America honors as a junior. That year, Patberg led the team in stolen bases (27), runs scored (47), hits (49) and triples (2). She also hit .521 and boasted a team-high .591 on-base percentage. Patberg has 96 runs scored and 54 steals in her prep career to date. She plays club softball for Matt Gerth and the Indiana Magic Gold team. Martinie, who hails from St. Joseph, Illinois, is a three-year starter at St. Joseph Ogden High School. She garnered All-Conference, All-State and All-Area accolades each of her last two seasons and was named her team's Rookie of the Year as a freshman. Martinie presently holds a .419 batting average with 34 home runs and 119 RBI in her high school career. As a junior, she hit .439 with 17 home runs and 57 RBI. Before that, Martinie hit .467 as a sophomore and .352 as a freshman. She plays club softball for the Peoria Sluggers and SEMO alum Renee (Enos) Gass.

// 2024 OVC Softball Tournament

The 2024 Ohio Valley Conference Softball Championship will be held May 8-11 at the Louisville Slugger Sports Complex in Peoria, Illinois. It marks the first time the event has been held at the venue.





2024 SOUTHEAST MISSOURI SOFTBALL NOTES

NUMERICAL & ALPHABETICAL ROSTER

Numerical

No.	Name	Pos.	Ht.	B-T	Cl.	Hometown	High School/College
1	Sophie Schupp	INF	5-5	R-R	Fr.	Columbia, Mo.	Rock Bridge H.S.
2	Paige Halliwill	OF	5-7	L-L	Sr.	Mogadore, Ohio	Mogadore H.S./Marshall
3	Willow Van Haren	P	5-7	L-L	Fr.	Holdenville, Okla.	Moss H.S./Northeastern St.
4	Kinley Wilkins	OF	5-7	L-L	Fr.	Lawson, Mo.	Lawson H.S.
5	Brooklyn Saysoff	INF	5-4	R-R	Fr.	Blue Springs, Mo.	Blue Springs H.S.
6	Tegan Livesay	P	5-11	R-R	Fr.	Newton, Kan.	Newton H.S./Fairmont H.S.
7	Gracie Luna	C	5-6	R-R	Fr.	Peoria, Ill.	East Peoria H.S.
8	Sydney Melton	C	5-8	R-R	Jr.	Eddyville, Ky.	Lyon County H.S.
9	Maddie Carney	P	5-9	R-R	Fr.	St. Louis, Mo.	Marquette H.S.
10	Tatum Gerwitz	OF	5-9	L-R	Jr.	O'Fallon, Mo.	Fort Zumwalt West H.S.
11	Tori Bradley	C	5-7	L-R	Jr.	Blue Springs, Mo.	Blue Springs South H.S.
12	Zoe Schulte	OF	5-6	L-R	Sr.	Wentzville, Mo.	Timberland H.S./Iowa
14	Brittany Affolter	OF	5-6	L-R	So.	Odessa, Mo.	Odessa H.S.
15	Delaney Kell	P	5-6	R-R	Jr.	Salem, Ill.	Salem H.S.
16	Abigail Rickermann	INF	5-6	L-R	Sr.	Festus, Mo.	Festus H.S.
17	Taryn Coon	INF	5-4	R-R	So.	Dodge City, Kan.	Dodge City H.S.
18	Sydney Dennis	INF	5-5	L-R	Jr.	Eureka, Mo.	Eureka H.S.
19	Paytience Holman	P	5-8	R-R	Sr.	Mexico, Mo.	Mexico H.S.
20	Kat Sackett	C	6-0	L-L	Sr.	Erie, Colo.	Erie H.S./Marshall
21	Abby Robbins	INF	5-6	R-R	R-Fr.	Farmington, Mo.	Farmington H.S.
22	Mary Tutwiler	OF	5-6	R-R	Fr.	Oakville, Mo.	Oakville H.S.
24	Kynzie Wrigley	INF	5-4	L-R	Sr.	Mt. Zion, Ill.	Mt. Zion H.S.
26	Aubrie Shore	INF	5-6	R-R	Jr.	Mahomet, Ill.	Mahomet-Seymour H.S.
27	Hailey Burnett	INF	6-0	R-R	Fr.	Cape Girardeau, Mo.	Notre Dame H.S.
28	Marissa Peek	C	5-8	R-R	Sr.	Wentzville, Mo.	Wentzville-Holt H.S./Iowa

Alphabetical

No.	Name	Pos.	Ht.	B-T	Cl.	Hometown	High School/College
14	Brittany Affolter	OF	5-6	L-R	So.	Odessa, Mo.	Odessa H.S.
11	Tori Bradley	C	5-7	L-R	Jr.	Blue Springs, Mo.	Blue Springs South H.S.
27	Hailey Burnett	INF	6-0	R-R	Fr.	Cape Girardeau, Mo.	Notre Dame H.S.
9	Maddie Carney	P	5-9	R-R	Fr.	St. Louis, Mo.	Marquette H.S.
17	Taryn Coon	INF	5-4	R-R	So.	Dodge City, Kan.	Dodge City H.S.
18	Sydney Dennis	INF	5-5	L-R	Jr.	Eureka, Mo.	Eureka H.S.
10	Tatum Gerwitz	OF	5-9	L-R	Jr.	O'Fallon, Mo.	Fort Zumwalt West H.S.
2	Paige Halliwill	OF	5-7	L-L	Sr.	Mogadore, Ohio	Mogadore H.S./Marshall
19	Paytience Holman	P	5-8	R-R	Sr.	Mexico, Mo.	Mexico H.S.
15	Delaney Kell	P	5-6	R-R	Jr.	Salem, Ill.	Salem H.S.
6	Tegan Livesay	P	5-11	R-R	Fr.	Newton, Kan.	Newton H.S./Fairmont H.S.
7	Gracie Luna	C	5-6	R-R	Fr.	Peoria, Ill.	East Peoria H.S.
8	Sydney Melton	C	5-8	R-R	Jr.	Eddyville, Ky.	Lyon County H.S.
28	Marissa Peek	C	5-8	R-R	Sr.	Wentzville, Mo.	Wentzville-Holt H.S./Iowa
16	Abigail Rickermann	INF	5-6	L-R	Sr.	Festus, Mo.	Festus H.S.
21	Abby Robbins	INF	5-6	R-R	R-Fr.	Farmington, Mo.	Farmington H.S.
20	Kat Sackett	C	6-0	L-L	Sr.	Erie, Colo.	Erie H.S./Marshall
5	Brooklyn Saysoff	INF	5-4	R-R	Fr.	Blue Springs, Mo.	Blue Springs H.S.
1	Sophie Schupp	INF	5-5	R-R	Fr.	Columbia, Mo.	Rock Bridge H.S.
12	Zoe Schulte	OF	5-6	L-R	Sr.	Wentzville, Mo.	Timberland H.S./Iowa
26	Aubrie Shore	INF	5-6	R-R	Jr.	Mahomet, Ill.	Mahomet-Seymour H.S.
22	Mary Tutwiler	OF	5-6	R-R	Fr.	Oakville, Mo.	Oakville H.S.
3	Willow Van Haren	P	5-7	L-L	Fr.	Holdenville, Okla.	Moss H.S./Northeastern St.
4	Kinley Wilkins	OF	5-7	L-L	Fr.	Lawson, Mo.	Lawson H.S.
24	Kynzie Wrigley	INF	5-4	L-R	Sr.	Mt. Zion, Ill.	Mt. Zion H.S.

Head Coach: Mark Redburn (10th Year/Missouri-St. Louis, 1993)

Associate Head Coach: Kristen Jones (Ninth Year/Augusta State, 2012)

Assistant Coach: Ashley Ellis (Second Year/Southeast Missouri, 2021)

Video Coordinator: Danina Marton

Roster Breakdown

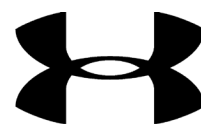
Total Squad Members	25
Seniors	7
Juniors	6
Sophomores	2
Freshmen	10

Pronunciation Guide

Tatum Gerwitz	GURR-witz
Paige Halliwill	HAL-ih-will
Sophie Schupp	shoop
Mary Tutwiler	tut-WHY-lurr

Geographical Breakdown

Colorado	1
Kat Sackett	Erie
Illinois	4
Delaney Kell	Salem
Gracie Luna	Peoria
Aubrie Shore	Mahomet
Kynzie Wrigley	Mt. Zion
Kansas	2
Taryn Coon	Dodge City
Tegan Livesay	Newton
Kentucky	1
Sydney Melton	Eddyville
Missouri	15
Brittany Affolter	Odessa
Tori Bradley	Blue Springs
Hailey Burnett	Cape Girardeau
Maddie Carney	St. Louis
Sydney Dennis	Eureka
Tatum Gerwitz	O'Fallon
Paytience Holman	Mexico
Marissa Peek	Wentzville
Abigail Rickermann	Festus
Abby Robbins	Farmington
Brooklyn Saysoff	Blue Springs
Sophie Schupp	Columbia
Zoe Schulte	Wentzville
Mary Tutwiler	Oakville
Kinley Wilkins	Lawson
Ohio	1
Paige Halliwill	Mogadore
Oklahoma	1
Willow Van Haren	Holdenville





1
Sophie Schupp
INF / 5-5 / R-R / Fr.
Columbia, Mo.



2
Paige Halliwill
OF / 5-7 / Sr. / L/L
Mogadore, Ohio



3
Willow Van Haren
P / 5-7 / L-L / Fr.
Holdenville, Okla.



4
Kinley Wilkins
OF / 5-7 / L-L / Fr.
Lawson, Mo.



5
Brooklyn Saysoff
INF / 5-4 / R-R / Fr.
Blue Springs, Mo.



6
Tegan Livesay
P / 5-11 / R-R / Fr.
Newton, Kan.



7
Gracie Luna
C / 5-6 / R-R / Fr.
Peoria, Ill.



8
Sydney Melton
C / 5-8 / Jr. / R/R
Eddyville, Ky.



9
Maddie Carney
P / 5-9 / R-R / Fr.
St. Louis, Mo.



10
Tatum Gerwitz
OF / 5-9 / Jr. / L-R
O'Fallon, Mo.



11
Tori Bradley
C / 5-7 / Jr. / L-R
Blue Springs, Mo.



12
Zoe Schulte
OF / 5-6 / Sr. / L-R
Wentzville, Mo.



14
Brittany Affolter
OF / 5-6 / So. / L-R
Odessa, Mo.



15
Delaney Kell
P / 5-6 / Jr. / R-R
Salem, Ill.



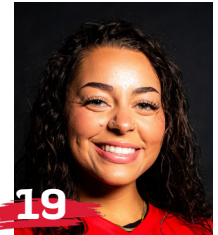
16
Abigail Rickermann
INF / 5-6 / Sr. / L-R
Festus, Mo.



17
Taryn Coon
INF / 5-4 / R-Fr. / R-R
Dodge City, Kan.



18
Sydney Dennis
INF / 5-5 / Jr. / L-R
Eureka, Mo.



19
Paytience Holman
P / 5-8 / Sr. / R-R
Mexico, Mo.



20
Kat Sackett
C / 6-0 / Sr. / L-L
Erie, Colo.



21
Abby Robbins
INF / 5-6 / R-Fr. / R/R
Farmington, Mo.



22
Mary Tutwiler
OF / 5-6 / Fr. / R-R
Oakville, Mo.



24
Kynzie Wrigley
INF / 5-4 / Sr. / L-R
Mt. Zion, Ill.



26
Aubrie Shore
INF / 5-6 / Jr. / R-R
Mahomet, Ill.



27
Hailey Burnett
INF / 6-0 / Fr. / R-R
Cape Girardeau, Mo.



28
Marissa Peek
C / 5-9 / Sr. / R-R
Wentzville, Mo.



Mark Redburn
Head Coach
10th Year



Kristen Jones
Associate Head Coach
Ninth Year



Ashley Ellis
Assistant Coach
Second Year



Danina Marton
Video Coordinator



2024 SOUTHEAST MISSOURI SOFTBALL NOTES

HEAD COACH MARK REDBURN



MARK REDBURN

// Head Coach // 10th Year // Missouri-St. Louis, 1993

Mark Redburn enters his 10th year as Southeast Missouri's head softball coach in 2024.

Redburn has orchestrated an outstanding turnaround that has seen the Redhawks win 30 or more games in four of the last six seasons, claim three Ohio Valley Conference regular-

season titles (2019, 2021, 2023), win one OVC Tournament crown (2019) and earn one NCAA Tournament berth (2019).

In the last six seasons alone, SEMO has won a total of 180 games for an average of 30 per year during that span. The Redhawks notched a program record 46 wins in 2019 and

won 30 games in back-to-back seasons (2021, 2022) for the second time in Redburn's tenure. In terms of winning percentage, softball has been the winningest program in SEMO Athletics with a .581 clip in the last eight years. Over that time, the Redhawks accumulated 219 victories and boasted a .641 winning percentage with 109 wins in OVC play.

During the first nine years with Redburn at the helm, SEMO has produced one National Fastpitch Coaches Association All-American, eight NFCA All-Region selections, 27 All-OVC picks, two OVC Players of the Year, one OVC Pitcher of the Year, one OVC Tournament Most Valuable Player and two College Sports Communicators (CSC) Academic All-Americans.

Academically, SEMO has been just as impressive with Redburn in charge. Most recently, the softball team achieved a 3.61 cumulative grade point average during the 2022-23 academic year.

In 2023, Redburn led SEMO to its eighth OVC regular-season championship in program history and third since the 2019 campaign. Along the way, Redburn was named OVC Coach of the Year for the third time in that span.

The Redhawks went undefeated at home (13-0) for the second-straight season posting unbeaten records at home in back-to-back years for the first time ever. SEMO is on a 30-game winning streak at

the Southeast Softball Complex dating back to the end of the 2021 season.

SEMO concluded the year with a 29-14 overall record and 20-2 mark in OVC play. The Redhawks claimed series sweeps against six of their eight league opponents en route to their second-best conference season in program history.

The Redhawks ripped through the conference portion of their schedule outscoring OVC foes by a staggering +107 margin (149-42). SEMO led the conference in batting average (.358), on-base percentage (.441), slugging percentage (.547), runs (149), hits (209), triples (12), doubles (41), RBI (138) and total bases in OVC games only. Additionally, the Redhawks had a 16-game conference winning streak from Mar. 18-Apr. 30.

Overall, SEMO topped the OVC with a .311 batting average, 2.70 ERA, 13 triples and a .230 opposing batting average. Redhawk pitchers also had the fewest hits (244), runs (128), earned runs (107) and walks (82) allowed in the league.

First baseman Aubrie Shore shared the 2023 OVC Player of the Year honor with Southern Indiana's Allie Goodin. Shore, also a First-Team All-OVC pick, became the sixth SEMO player to win the coveted award. Paige Halliwill, Delaney Kell and Kat Sackett joined Shore as first-team picks. Alyson Tucker and Sydney Dennis earned Second-Team All-OVC accolades, while





Zoe Schulte landed a spot on the league's All-Newcomer Team. Sackett later made the OVC All-Tournament team, as well.

SEMO's 2022 club became the first in program history to go undefeated at home with a 14-0 record. Overall, the Redhawks compiled a 30-24 mark and placed fourth in the OVC. As the #4 seed in the league's postseason tournament, SEMO advanced to the semifinals where it dropped a close one-run game to #2 seed Belmont. The Redhawks won 17-consecutive games at home dating back to the 2021 season.

The 2022 campaign marked SEMO's fifth OVC Tournament appearance in eight years with Redburn as its coach.

As a team, SEMO ranked among the top three in the OVC in doubles (t3rd, 67), stolen bases (2nd, 58), steal attempts (73), opposing batting average (3rd, .244), batters struck out (2nd, 323), batters struck out looking (1st, 84), saves (t3rd, 5) and fielding percentage (2nd, .967).

The 2022 team ranked among SEMO's all-time single-season leaders in slugging percentage (8th, .413), runs (t5th, 270), doubles (t10th, 67), home runs (t7th, 38), RBI (5th, 238), total bases (8th, 581), sacrifice flies (10th, 12), stolen bases (t7th, 58), stolen base attempts (t6th, 73), opposing batting average (3rd, .244), strikeouts per seven innings (t1st, 6.51), saves (t8th, 5), innings pitched (7th, 374.2),

strikeouts (2nd, 323), strikeouts looking (3rd, 84) and fielding percentage (3rd, .967). SEMO came from behind to upend Big Ten Conference member Iowa, 3-2, on Mar. 15 marking the first time the Redhawks beat a Big Ten opponent in 21 years.

In 2021, Redburn carried the Redhawks to another 30-win campaign. SEMO finished 30-17 overall and registered a program record 23 OVC wins en route to its second-straight regular-season conference title. The Redhawks headed into the OVC Tournament as the #1 seed and ended the year with a pair of one-run losses to Eastern Kentucky.

SEMO led the league in on-base percentage (.369), opposing batting average (.213), strikeouts looking (69), saves (8), fewest hits allowed (247), fewest runs allowed (139) and fewest earned runs allowed (121).

All of the Redhawks success during the 2021 campaign culminated with Redburn claiming his second-straight OVC Coach of the Year honor. Additionally, Rachel Rook was tabbed OVC Pitcher of the Year becoming only the second player in program history to win the coveted award.

Offensively, SEMO outscored its opponents by a +100 (165-65) margin in conference games. The Redhawks' 165 runs were the most scored by any OVC team in conference play.

The year before in 2020, SEMO was off to a great start



and had all the makings for a big season, but a global COVID-19 pandemic abruptly shut things down only 17 games in.

The Redhawks won nine in a row and posted a 9-1 record in their first 10 games of the season. SEMO finished with an overall record of 12-5 and did not get a chance to play any OVC games when play was cancelled.

Although the 2020 season lasted just 23 days (Feb. 14-Mar. 8), the Redhawks accomplished a lot in that short time.

SEMO led the OVC in slugging percentage (.528), on-base percentage (.411), triples (14), stolen bases (41), hits allowed (84) and earned runs allowed

(40). The Redhawks also rated second in the league in batting average (.310), home runs (19), opposing batting average (.204), runs allowed (51), stolen bases per game (2.4) and triples per game (0.8).

Nationally, SEMO was among the top 25 in triples per game (2nd), stolen bases per game (8th, 2.4), scoring (16th, 6.7), slugging percentage (21st) and on-base percentage (24th).

Individually, Rachel Anderson led the OVC in batting average (.480), slugging percentage (.880), on-base percentage (.541) and triples (5) following a season that culminated with her winning the league's Player of the Year honor. Anderson,



2024 SOUTHEAST MISSOURI SOFTBALL NOTES

HEAD COACH MARK REDBURN

who didn't strike out all year, capped her 2020 campaign as only the sixth player in program history to claim First-Team CoSIDA Academic All-America accolades.

Pitcher Rachel Rook was atop the OVC in earned run average (0.70) and opposing batting average (.119), while Ashley Ellis ended the year as the league's leader in home runs (8). Redburn guided SEMO to its first OVC regular-season and tournament championship, and NCAA Regional appearance in 20 years the year before that in 2019. Rook left SEMO as her program's all-time career strikeout leader with 621 Ks.

What a year 2019 was for SEMO which set an all-time program record with 46 wins, the only 40-win season in the school's entire NCAA Division I era. The Redhawks went 46-18 overall and 17-5 in the OVC before going 1-2 at the NCAA Regional in Oxford, Mississippi.

SEMO had so much to celebrate over the course of its magical 2019 campaign.

Redburn and his staff were honored as the NFCA Mid-east Region Coaching Staff of the Year. For Redburn himself, he was voted OVC Coach of the Year for the first time in his career.

Four players earned All-OVC honors, three claimed NFCA All-Region accolades and one garnered NFCA All-America distinction. Outfielder Rachel Anderson became SEMO's first All-American in 28 years

and the program's first All-American in the NCAA Division I tenure. TEAM 43 was also recognized by the NFCA for achieving the fourth highest grade point average among all NCAA Division I schools. SEMO recorded a team GPA of 3.678 with 17 players securing NFCA All-America Scholar-Athlete honors.

Statistically, SEMO's 2019 team broke a total of 17 single-season records in slugging percentage (.510), on-base percentage (.382), game played (64), runs (363), hits (501), home runs (74), RBI (318), total bases (850), walks (180), stolen bases (89), stolen base attempts (117), wins (46), saves (11), batters struck out (331), batters struck out looking (90), innings pitched (414) and putouts (1242).

In 2018, the Redhawks finished at 33-20 overall and fourth in the OVC with a 15-7 mark. SEMO locked down its first winning campaign in seven years.

The Redhawks heated up to win 11 of their final 14 regular-season games and advanced to the eight-team OVC Tournament.

SEMO's 2018 club finished with a 74 RPI among the nation's 296 NCAA Division I softball teams, quite a jump from its 173 ranking in 2017. The Redhawks collected eight doubleheader sweeps along the way.

Defensively, SEMO improved tremendously. After ranking eighth in the OVC in fielding percentage a year ago, the

Redhawks were the league's second-best fielding team in 2018. SEMO had 43 errors and committed 16 less than it did in 2017. The Redhawks went error free in 25 games equating to 47 percent of their entire season.

Prior to that, SEMO finished the 2017 campaign among the school's top single-season leaders in slugging percentage (6th, .427), on-base percentage (5th, .356), triples (4th, 21), home runs (9th, 31), total bases (9th, 567), stolen bases (2nd, 65), stolen base attempts (1st, 88), opponent batting average (7th, .282), strikeouts/7 innings (7th, 4.17), strikeouts (10th, 194), strikeouts looking (3rd, 61) fewest doubles allowed (8th, 49), fielding percentage (8th, .960), fewest errors (7th, 59) and fewest stolen bases against (3rd, 38).

Redburn picked up his 200th career victory when SEMO beat Austin Peay, 7-4, on Apr. 30, 2016. His 2016 club ranked among the school's top-10 teams in doubles (6th, 69), stolen bases (3rd, 58), walks (8th, 138), home runs (6th, 35) and slugging percentage (6th, .412).

In his first season, Redburn led the Redhawks to an overall record of 19-27 and 12-12 in OVC play during 2015. His 19 victories came after SEMO won no more than 15 games in each of the previous two seasons. Redburn's first club at Southeast also had 12 OVC wins, a +9 increase from the 2014 campaign. In addition, the Redhawks made the OVC

Tournament, snapping a streak of three years where they missed the event.

Not only did Redburn earn his 100th career NCAA Division I win in his inaugural season with the Redhawks, but he coached three All-OVC selections and one NFCA All-Region honoree.

Statistically, SEMO finished among the top-five OVC teams in batting average (3rd), slugging percentage (5th), on-base percentage (5th) and hits (5th). The 2015 Redhawks also broke two single-season records with Kayla Fortner in home runs and single-game mark and set a single-game school record with six home runs, as well.

In 19 years as a head coach between the NCAA Division I and National Junior College Athletic Association (NJCAA) ranks, Redburn has been to nine postseason tournaments, including one trip to the NJCAA National Tournament (2003), one to the Missouri Valley Conference Tournament (2013), five to the OVC Tournament (2015, 2018, 2019, 2021, 2022, 2023) and one to the NCAA Division I Tournament (2019). He has also accumulated 452 wins all-time as a head coach.

The fourth head coach in Redhawk softball history, Redburn won 90 games in five years as head coach at the University of Evansville before accepting the job at SEMO on June 26, 2014.

In 2014, Redburn coached a UE team with five starters that were underclassmen,



including four freshmen and one sophomore. The Purple Aces achieved their highest batting average since 2007. Additionally, UE had a freshman lead the team in stolen bases and home runs.

Despite a season that allowed 53 games, the 2013 team had its best season in Redburn's five years at UE. Entering the Missouri Valley Conference Tournament as the No. 7 seed, the Purple Aces beat the No. 6, No. 3 and No. 2 seeds to make their first MVC Championship appearance since 2003. UE finished second with three players garnering All-Tournament team honors.

The 2013 campaign resulted in the most overall wins in a season since 2008 and the best regular-season and conference tournament finish since Redburn's arrival. UE continued its aggressive baserunning with 89 stolen bases, ranking second in the MVC. The pitching staff also rated fourth in the conference.

Redburn's 2012 club saw improvement as well, winning more games than it had the previous season. The Purple Aces stole 79 bases and had two all-conference and one National Fastpitch Coaches Association All-Region selection that year.

In 2011, Redburn exposed a young and inexperienced team to some of the top programs in the nation as UE played one of its most difficult schedules. Tennessee, Georgia Tech, Missouri, Ohio State, Texas

Tech, South Alabama and Chattanooga were among the stiff competition.

Redburn quickly started to transform the UE program during his first year in 2010. The Purple Aces secured a berth in the MVC Tournament after winning 10 conference games. UE led the MVC with 31 doubles and hit 36 home runs, while producing two all-conference picks.

Academically, Redburn's teams consistently enjoyed success. In fact, each of his last four UE teams accumulated a 3.1 or higher grade point average. He had several student-athletes obtain over a 3.5 GPA and earn academic recognition along the way.

Prior to UE, Redburn spent three years as an assistant coach at the University of Missouri working primarily with the pitchers and catchers, and serving as recruiting coordinator.

He was part of a coaching staff that compiled an overall record of 137-53. The Tigers registered a school record for victories (50), won the Big 12 Conference Tournament, won their Regional and defeated host UCLA in the Super Regional to advance to the College World Series in 2009. Overall, Redburn coached four all-conference pitchers, including USA National Team Pitcher Chelsea Thomas at Missouri.

Redburn began his collegiate coaching career as head coach at St. Charles (Mo.) Community

College from 2001-04. He led the 2003 team to its first Region 16 championship and a seventh-place finish at the National Junior College Athletic Association Division I National Tournament. His 2004 squad set a school record with 33 victories.

Following his stay at St. Charles CC, Redburn spent two seasons as head coach of the new softball program at Jefferson College. In the program's first year of competition, 2006, he led Jefferson to a 49-16 record, Region 16 championship and ninth-place finish at the NJCAA Division I National Tournament. Redburn was honored as the Midwest Community College Athletic Conference Coach of the Year following that season.

A native of St. Charles, Missouri, Redburn graduated from the University of Missouri-St. Louis in 1993 and received his master's degree in Athletics/Activities Administration from William Woods University.

He is a member of the NCAA Division I Head Coaches Committee and serves as the OVC Head Coach Representative for the NFCA. Redburn was also the OVC representative for the Top-25 Poll until the 2023 season.

Redburn and his wife, Tracy, have two sons, Joe and Jack.





2024 SOUTHEAST MISSOURI SOFTBALL NOTES

HEAD COACH MARK REDBURN

Redburn's Year-by-Year Records

Year	School	Assignment	Record	Conference Finish	Postseason
2002	St. Charles CC	Head Coach	16-21	3rd	Region XVI Runner-Up
2003	St. Charles CC	Head Coach	26-21	2nd	Region XVI Champions 7th NJCAA National Tournament
2004	St. Charles CC	Head Coach	33-16	1st	3rd in Region XVI
2005	Jefferson College	Head Coach	-	Program Preparation Year	-
2006	Jefferson College	Head Coach	49-16	1st Region 16	-
2007	Missouri	Assistant Coach	40-23, 13-4	3rd Big 12	-
2008	Missouri	Assistant Coach	47-17, 11-6	3rd Big 12	-
2009	Missouri	Assistant Coach	50-12, 12-6	2nd Big 12	1st Big 12 Tournament NCAA Midwest Regional Champions NCAA Super Regional Champions 8th in College World Series
2010	Evansville	Head Coach	18-34, 10-16	t7th MVC	-
2011	Evansville	Head Coach	12-42, 6-21	9th MVC	-
2012	Evansville	Head Coach	18-37, 8-19	8th MVC	-
2013	Evansville	Head Coach	23-30, 11-12	7th MVC	2nd MVC Tournament
2014	Evansville	Head Coach	19-32, 7-19	10th MVC	-
2015	Southeast Missouri	Head Coach	19-27, 12-12	7th OVC	8th OVC Tournament
2016	Southeast Missouri	Head Coach	16-33, 10-17	10th OVC	-
2017	Southeast Missouri	Head Coach	23-27, 8-14	9th OVC	-
2018	Southeast Missouri	Head Coach	33-20, 15-7	4th OVC	7th OVC Tournament
2019	Southeast Missouri	Head Coach	46-18, 17-5	1st OVC	1st OVC Tournament 3rd NCAA Regional
2020*	Southeast Missouri	Head Coach	12-5	-	-
2021	Southeast Missouri	Head Coach	30-17, 23-6	1st OVC	2nd OVC Tournament
2022	Southeast Missouri	Head Coach	30-24, 16-10	4th OVC	3rd OVC Tournament
2023	Southeast Missouri	Head Coach	29-14, 20-2	1st OVC	4th OVC Tournament
2024	Southeast Missouri	Head Coach	11-18, 6-3		

* Season ended due to a global COVID-19 pandemic

Overall Record as a Collegiate Coach: 600-504 (23 years)

Overall Record as a Head Coach: 463-452 (20 years)

Record at Southeast Missouri, 249-203, 127-76 Ohio Valley Conference (10 years)

Record at Evansville, 90-175, 42-87 Missouri Valley Conference (5 years)

Record at Jefferson College, 49-16 (1 year)

Record at St. Charles CC: 75-58 (3 years)

Record as Assistant Coach at Missouri: 137-52 (3 years)

2024 SOUTHEAST MISSOURI SOFTBALL NOTES

2024 STATISTICS



Record: 11-18 Home: 4-4 Away: 4-5 Neutral: 3-9 OVC: 6-3

Player	avg	gp-gs	ab	r	h	2b	3b	hr	rbi	tb	slg%	bb	hp	so	gdp	ob%	sf	sh	sb-att	po	a	e	fld%
16 RICKERMANN, Abigail	.367	24-14	49	8	18	2	0	0	6	20	.408	4	0	2	0	.415	0	1	3-3	21	19	1	.976
26 SHORE, Aubrie	.326	29-29	89	9	29	10	0	1	19	42	.472	8	0	16	1	.370	3	0	0-0	195	4	3	.985
28 PEEK, Marissa	.311	24-15	45	9	14	6	0	4	11	32	.711	4	0	12	0	.360	1	1	1-1	63	9	4	.947
18 DENNIS, Sydney	.262	29-25	61	15	16	2	0	0	2	18	.295	6	0	6	0	.328	0	2	1-2	34	34	5	.932
2 HALLIWILL, Paige	.256	28-28	78	16	20	2	1	3	14	33	.423	10	3	9	0	.359	1	1	8-8	46	3	0	1.000
5 SAYSOFF, Brooklyn	.250	24-21	52	5	13	4	0	0	4	17	.327	11	0	12	0	.381	0	0	2-2	20	47	11	.859
12 SCHULTE, Zoe	.250	22-16	44	7	11	1	0	0	0	12	.273	1	0	11	1	.267	0	1	4-4	27	1	1	.966
24 WRIGLEY, Kynzie	.246	27-23	65	6	16	1	0	1	7	20	.308	3	1	16	1	.286	1	0	1-2	15	39	5	.915
20 SACKETT, Kat	.241	23-20	58	6	14	6	0	2	9	26	.448	1	1	11	0	.262	1	0	1-1	40	2	4	.913
14 AFFOLTER, Brittany	.217	25-23	60	8	13	0	0	0	8	13	.217	6	0	11	0	.284	1	4	2-4	30	0	2	.938

11 BRADLEY, Tori	.310	16-9	29	2	9	0	0	0	3	9	.310	2	0	3	0	.355	0	0	0-0	1	1	0	1.000
1 SCHUPP, Sophie	.269	21-10	26	5	7	3	0	0	7	10	.385	6	0	13	0	.406	0	2	0-0	15	15	5	.857
7 LUNA, Gracie	.189	21-10	37	1	7	3	0	0	3	10	.270	1	1	9	0	.231	0	0	0-0	2	0	1	.667
10 GERWITZ, Tatum	.179	26-15	39	5	7	0	0	0	3	7	.179	2	0	10	0	.220	0	4	1-2	27	1	1	.966
8 MELTON, Sydney	.000	12-2	7	0	0	0	0	0	0	0	.000	0	0	3	0	.000	0	0	0-0	14	0	0	1.000
21 ROBBINS, Abby	.000	7-1	3	2	0	0	0	0	0	0	.000	0	0	2	0	.000	0	0	0-0	2	1	1	.750
4 WILKINS, Kinley	.000	14-0	2	1	0	0	0	0	0	0	.000	0	0	2	0	.000	0	0	1-1	0	0	0	.000
27 BURNETT, Hailey	.000	4-0	1	0	0	0	0	0	0	0	.000	1	0	0	0	.500	0	0	0-0	6	0	0	1.000
17 COON, Taryn	.000	1-0	0	1	0	0	0	0	0	0	.000	0	0	0	0	.000	0	0	0-0	0	0	0	.000
22 TUTWILER, Mary	.000	2-0	0	0	0	0	0	0	0	0	.000	0	0	0	0	.000	0	0	0-0	0	0	0	.000
Totals	.260	29	745	106	194	40	1	11	96	269	.361	66	6	148	3	.322	8	16	25-30	562	233	44	.948
Opponents	.291	29	776	159	226	22	4	20	142	316	.407	83	9	106	8	.362	11	13	31-38	569	219	29	.965

LOB - Team (167), Opp (174). DPs turned - Team (12), Opp (9). CI - Team (2), SACKETT 1, PEEK 1. IBB - Team (0), Opp (2).
Picked off - WRIGLEY 1.

(All games Sorted by Earned run avg)

Player	era	w-l	app	gs	cg	sho	sv	ip	h	r	er	bb	so	2b	3b	hr	b/avg	wp	hp	bk	sfa	sha
19 HOLMAN, Paytience	2.99	7-6	17	13	3	0/0	0	75.0	76	42	32	19	44	9	2	6	.255	2	1	0	3	6
6 LIVESAY, Tegan	4.42	1-3	13	9	1	0/1	1	38.0	38	32	24	21	23	2	1	3	.245	5	5	0	2	2
9 CARNEY, Maddie	5.71	1-4	17	2	0	0/1	2	41.2	53	36	34	24	19	4	0	1	.315	5	2	0	1	4

3 VAN HAREN, Willow	2.84	1-2	8	2	0	0/0	0	12.1	12	13	5	11	11	2	0	3	.250	5	1	0	2	0
15 KELL, Delaney	9.64	1-3	10	3	2	0/0	0	20.1	47	36	28	8	9	5	1	7	.439	3	0	0	3	1
Totals	4.60	11-18	29	29	6	1/1	3	187.1	226	159	123	83	106	22	4	20	.291	20	9	0	11	13
Opponents	2.88	18-11	29	29	9	6/2	4	189.2	194	106	78	66	148	40	1	11	.260	15	6	0	8	16

PB - Team (4), PEEK 2, MELTON 1, SACKETT 1, Opp (7). Pickoffs - Team (0), Opp (1). SBA/ATT - PEEK (12-18), SACKETT (16-16), CARNEY (9-11), HOLMAN (8-9), KELL (6-8), LIVESAY (7-8), MELTON (3-3), VAN HAREN (1-2).



2024 SOUTHEAST MISSOURI SOFTBALL NOTES

2024 SCHEDULE/RESULTS

Date	Opponent	Score	Inns	Overall	OVC	Pitcher of record	Attend	Time
! 02-09-24	vs Stony Brook	w 7-5	7	1-0-0	0-0-0	HOLMAN (W 1-0)	321	2:09
! 02-09-24	at FIU	w 7-4	(8)	2-0-0	0-0-0	VAN HAREN (W 1-0)	321	2:15
! 02-10-24	vs Ohio State	L 0-13	5	2-1-0	0-0-0	VAN HAREN (L 1-1)	0	1:50
! 02-10-24	vs FIU	L 0-1	7	2-2-0	0-0-0	LIVESAY (L 0-1)	0	1:39
! 02-11-24	vs Stony Brook	w 5-4	7	3-2-0	0-0-0	KELL (W 1-0)	0	1:57
\$ 02-16-24	vs Maryland	L 1-9	6	3-3-0	0-0-0	LIVESAY (L 0-2)	50	2:06
\$ 02-17-24	vs SYRACUSE	L 0-3	7	3-4-0	0-0-0	HOLMAN (L 1-1)	115	1:33
\$ 02-17-24	at Southeastern	L 2-10	6	3-5-0	0-0-0	KELL (L 1-1)	245	1:36
\$ 02-18-24	vs Maryland	w 9-3	7	4-5-0	0-0-0	HOLMAN (W 2-1)	87	2:00
^ 02-23-24	at #24 Auburn	L 0-8	5	4-6-0	0-0-0	KELL (L 1-2)	1533	1:18
^ 02-24-24	vs UNI	L 3-5	7	4-7-0	0-0-0	HOLMAN (L 2-2)	0	2:18
^ 02-24-24	at #24 Auburn	L 5-13	5	4-8-0	0-0-0	CARNEY (L 0-1)	1709	2:05
^ 02-25-24	vs UNI	L 6-9	7	4-9-0	0-0-0	CARNEY (L 0-4)	0	2:16
& 03-01-24	vs South Dakota St.	L 0-9	5	4-10-0	0-0-0	LIVESAY (L 0-3)	215	1:35
& 03-01-24	at #16 Arkansas	L 0-5	7	4-11-0	0-0-0	HOLMAN (L 2-3)	2000	1:45
& 03-02-24	vs South Dakota St.	L 1-9	5	4-12-0	0-0-0	KELL (L 1-3)	350	1:35
& 03-02-24	vs FAU	L 3-8	7	4-13-0	0-0-0	HOLMAN (L 2-4)	1000	2:05
& 03-03-24	at #16 Arkansas	L 5-6	(8)	4-14-0	0-0-0	HOLMAN (L 2-5)	2959	2:25
* 03-09-24	EASTERN ILLINOIS-1	L 4-7	(12)	4-15-0	0-1-0	CARNEY (L 0-3)	278	3:25
* 03-09-24	EASTERN ILLINOIS-2	w 9-4	7	5-15-0	1-1-0	LIVESAY (W 1-3)	190	2:02
* 03-10-24	EASTERN ILLINOIS	L 1-2	7	5-16-0	1-2-0	HOLMAN (L 2-6)	165	2:04
03-12-24	BRADLEY-1	w 6-2	7	6-16-0	1-2-0	HOLMAN (W 3-6)	102	1:48
03-12-24	BRADLEY-2	L 1-5	7	6-17-0	1-2-0	VAN HAREN (L 1-2)	109	1:40
* 03-16-24	at SIUE-1	w 3-0	7	7-17-0	2-2-0	CARNEY (W 1-3)	158	1:54
* 03-16-24	at SIUE-2	w 3-2	7	8-17-0	3-2-0	HOLMAN (W 4-6)	-	1:47
* 03-17-24	at SIUE	w 7-4	7	9-17-0	4-2-0	HOLMAN (W 5-6)	133	2:06
* 03-23-24	TENNESSEE STATE-1	L 3-4	7	9-18-0	4-3-0	CARNEY (L 1-4)	156	1:55
* 03-23-24	TENNESSEE STATE-2	w 11-2	5	10-18-0	5-3-0	HOLMAN (W 6-6)	167	1:31
* 03-24-24	TENNESSEE STATE	w 4-3	7	11-18-0	6-3-0	HOLMAN (W 7-6)	187	1:49

* = Conference game

! = Felsberg Invitational (Miami, Fla.)

\$ = Lion Classic (Hammond, La.)

^ = Plainsman Invitational (Auburn, Ala.)

& = Wooo Pig Classic (Fayetteville, Ark.)

() extra inning game

2024 SOUTHEAST MISSOURI SOFTBALL NOTES

2024 OVC STATISTICS



Record: 6-3 Home: 3-3 Away: 3-0 OVC: 6-3

Player	avg	gp-gs	ab	r	h	2b	3b	hr	rbi	tb	slg%	bb	hp	so	gdp	ob%	sf	sh	sb-att	po	a	e	fld%
16 RICKERMANN, Abigail	.462	9-6	26	6	12	1	0	0	5	13	.500	1	0	0	0	.481	0	1	3-3	13	10	1	.958
26 SHORE, Aubrie	.414	9-9	29	7	12	4	0	0	4	16	.552	6	0	3	0	.500	1	0	0-0	82	2	1	.988
2 HALLIWILL, Paige	.321	9-9	28	6	9	2	1	0	5	13	.464	3	0	2	0	.387	0	0	4-4	12	1	0	1.000
20 SACKETT, Kat	.300	7-6	20	3	6	3	0	1	3	12	.600	1	0	1	0	.333	0	0	0-0	11	1	0	1.000
5 SAYSOFF, Brooklyn	.214	8-8	28	2	6	2	0	0	3	8	.286	3	0	3	0	.290	0	0	1-1	11	20	3	.912
14 AFFOLTER, Brittany	.214	9-8	28	3	6	0	0	0	3	6	.214	0	0	4	0	.214	0	1	1-2	12	0	0	1.000

18 DENNIS, Sydney	.500	9-6	12	3	6	0	0	0	1	6	.500	2	0	0	0	.571	0	1	0-0	9	8	2	.895
28 PEEK, Marissa	.444	8-5	18	6	8	3	0	4	10	23	1.278	1	0	2	0	.450	1	1	0-0	18	2	2	.909
11 BRADLEY, Tori	.357	6-4	14	2	5	0	0	0	2	5	.357	1	0	1	0	.400	0	0	0-0	0	0	0	.000
10 GERWITZ, Tatum	.300	7-3	10	1	3	0	0	0	0	3	.300	0	0	2	0	.300	0	0	0-1	7	0	0	1.000
1 SCHUPP, Sophie	.222	5-3	9	0	2	1	0	0	3	3	.333	2	0	6	0	.364	0	2	0-0	4	6	1	.909
24 WRIGLEY, Kynzie	.211	9-7	19	3	4	0	0	1	3	7	.368	1	1	3	0	.286	0	0	0-0	6	18	1	.960
12 SCHULTE, Zoe	.167	8-6	18	3	3	0	0	0	0	3	.167	0	0	3	1	.167	0	1	1-1	11	1	1	.923
7 LUNA, Gracie	.111	4-1	9	0	1	1	0	0	1	2	.222	0	0	3	0	.111	0	0	0-0	0	0	0	.000
8 MELTON, Sydney	.000	2-0	1	0	0	0	0	0	0	0	.000	0	0	0	0	.000	0	0	0-0	0	0	0	.000
4 WILKINS, Kinley	.000	6-0	0	0	0	0	0	0	0	0	.000	0	0	0	0	.000	0	0	1-1	0	0	0	.000
Totals	.309	9	269	45	83	17	1	6	43	120	.446	21	1	33	1	.358	2	7	11-13	198	90	12	.960
Opponents	.258	9	260	28	67	6	1	3	24	84	.323	16	3	27	3	.307	1	6	6-8	191	85	11	.962

LOB - Team (64), Opp (61). DPs turned - Team (3), Opp (4). CI - Team (1), PEEK 1. IBB - Team (0), Opp (1).

(OVC games only Sorted by Earned run avg)

Player	era	w-l	app	gs	cg	sho	sv	ip	h	r	er	bb	so	2b	3b	hr	b/avg	wp	hp	bk	sfa	sha
19 HOLMAN, Paytience	2.12	4-1	6	6	2	0/0	0	29.2	35	14	9	4	16	4	1	1	.278	2	0	0	0	2
9 CARNEY, Maddie	2.45	1-2	6	0	0	0/1	2	20.0	21	7	7	8	6	0	0	1	.284	1	0	0	1	3
6 LIVESAY, Tegan	2.93	1-0	4	3	0	0/1	0	14.1	10	7	6	4	5	1	0	1	.189	0	3	0	0	1

15 KELL, Delaney	0.00	0-0	1	0	0	0/0	0	2.0	1	0	0	0	0	1	0	0	.143	1	0	0	0	0
Totals	2.33	6-3	9	9	2	1/1	2	66.0	67	28	22	16	27	6	1	3	.258	4	3	0	1	6
Opponents	3.63	3-6	9	9	4	0/0	1	63.2	83	45	33	21	33	17	1	6	.309	5	1	0	2	7

PB - Team (1), PEEK 1, Opp (1). SBA/ATT - PEEK (4-6), CARNEY (4-6), SACKETT (2-2), LIVESAY (1-1), HOLMAN (1-1).



2024 SOUTHEAST MISSOURI SOFTBALL NOTES

2024 SEASON/CAREER STATISTICS

Record: 11-18 Home: 4-4 Away: 4-5 Neutral: 3-9 OVC: 6-3

Player	SEASON													CAREER													
	Avg	G-GS	AB	R	H	2B	3B	HR	RBI	BB	Hbp	SO	Sb-Att	Avg	G-GS	AB	R	H	2B	3B	HR	RBI	BB	Hbp	SO	Sb-Att	
16 RICKERMANN, Abigail	.367	24-14	49	8	18	2	0	0	6	4	0	2	3-3	.304	147-74	276	53	84	6	3	0	22	27	2	20	17-22	
26 SHORE, Aubrie	.326	29-29	89	9	29	10	0	1	19	8	0	16	0-0	.318	125-122	346	46	110	33	1	17	87	38	3	37	1-3	
28 PEEK, Marissa	.311	24-15	45	9	14	6	0	4	11	4	0	12	1-1	.266	55-38	94	12	25	8	0	6	18	6	0	29	1-1	
18 DENNIS, Sydney	.262	29-25	61	15	16	2	0	0	2	6	0	6	1-2	.266	119-100	274	42	73	6	5	0	31	15	0	27	14-22	
2 HALLIWILL, Paige	.256	28-28	78	16	20	2	1	3	14	10	3	9	8-8	.295	125-125	353	82	104	20	4	13	72	39	21	43	28-30	
5 SAYSOFF, Brooklyn	.250	24-21	52	5	13	4	0	0	4	11	0	12	2-2	.250	24-21	52	5	13	4	0	0	4	11	0	12	2-2	
12 SCHULTE, Zoe	.250	22-16	44	7	11	1	0	0	0	1	0	11	4-4	.321	63-38	106	21	34	1	1	0	7	5	1	22	7-7	
24 WRIGLEY, Kynzie	.246	27-23	65	6	16	1	0	1	7	3	1	16	1-2	.304	162-147	414	77	126	28	1	9	69	30	6	58	16-19	
20 SACKETT, Kat	.241	23-20	58	6	14	6	0	2	9	1	1	11	1-1	.268	117-109	302	40	81	26	0	6	50	19	7	33	7-7	
14 AFFOLTER, Brittany	.217	25-23	60	8	13	0	0	0	8	6	0	11	2-4	.260	58-32	96	15	25	2	0	0	11	8	0	19	6-8	
11 BRADLEY, Tori	.310	16-9	29	2	9	0	0	0	3	2	0	3	0-0	.273	78-44	139	12	38	7	1	0	13	17	1	25	2-2	
1 SCHUPP, Sophie	.269	21-10	26	5	7	3	0	0	7	6	0	13	0-0	.269	21-10	26	5	7	3	0	0	7	6	0	13	0-0	
7 LUNA, Gracie	.189	21-10	37	1	7	3	0	0	3	1	1	9	0-0	.189	21-10	37	1	7	3	0	0	3	1	1	9	0-0	
10 GERWITZ, Tatum	.179	26-15	39	5	7	0	0	0	3	2	0	10	1-2	.197	111-55	178	24	35	1	0	0	8	15	0	45	3-5	
8 MELTON, Sydney	.000	12-2	7	0	0	0	0	0	0	0	0	3	0-0	.194	60-14	62	7	12	3	1	1	9	5	5	9	3-3	
21 ROBBINS, Abby	.000	7-1	3	2	0	0	0	0	0	0	0	2	0-0	.000	7-1	3	2	0	0	0	0	0	0	0	2	0-0	
4 WILKINS, Kinley	.000	14-0	2	1	0	0	0	0	0	0	0	2	1-1	.000	14-0	2	1	0	0	0	0	0	0	0	2	1-1	
27 BURNETT, Hailey	.000	4-0	1	0	0	0	0	0	0	1	0	0	0-0	.000	4-0	1	0	0	0	0	0	0	1	0	0	0-0	
17 COON, Taryn	.000	1-0	0	1	0	0	0	0	0	0	0	0	0-0	.000	1-0	0	1	0	0	0	0	0	0	0	0	0-0	
22 TUTWILER, Mary	.000	2-0	0	0	0	0	0	0	0	0	0	0	0-0	.000	2-0	0	0	0	0	0	0	0	0	0	0	0-0	
Totals	.260	29-29	745	106	194	40	1	11	96	66	6	148	25-30														
Opponents	.291	29-29	776	159	226	22	4	20	142	83	9	106	31-38														

(All games Sorted by Earned run avg)

	(All games Sorted by Earned Run Avg)																											
Player	SEASON														CAREER													
	ERA	W-L	App	GS	CG	Sho	Sv	IP	H	R	ER	BB	SO	ERA	W-L	App	GS	CG	Sho	Sv	IP	H	R	ER	BB	SO		
19 HOLMAN, Paytience	2.99	7-6	17	13	3	0	0	75.0	76	42	32	19	44	3.29	28-31	95	66	22	8	5	379.0	384	213	178	111	228		
6 LIVESAY, Tegan	4.42	1-3	13	9	1	0	1	38.0	38	32	24	21	23	4.42	1-3	13	9	1	0	1	38.0	38	32	24	21	23		
9 CARNEY, Maddie	5.71	1-4	17	2	0	0	2	41.2	53	36	34	24	19	5.71	1-4	17	2	0	0	2	41.2	53	36	34	24	19		
3 VAN HAREN, Willow	2.84	1-2	8	2	0	0	0	12.1	12	13	5	11	11	2.84	1-2	8	2	0	0	0	12.1	12	13	5	11	11		
15 KELL, Delaney	9.64	1-3	10	3	2	0	0	20.1	47	36	28	8	9	4.34	15-7	39	20	6	2	1	134.0	156	94	83	40	83		
Totals	4.60	11-18	29	29	6	1	3	187.1	226	159	123	83	106															
Opponents	2.88	18-11	29	29	9	6	4	189.2	194	106	78	66	148															

**Multiple-Hit Games**

Player	2	3	4	5+	Total
Aubrie Shore	2	2	-	-	8
Marissa Peek	6	-	-	-	5
Kat Sackett	3	1	-	-	4
Sydney Dennis	3	1	-	-	4
Paige Halliwill	4	-	-	-	4
Abigail Rickermann	2	1	-	-	3
Zoe Schulte	3	-	-	-	3
Kynzie Wrigley	2	1	-	-	3
Brooklyn Saysoff	1	1	-	-	2
Sophie Schupp	2	-	-	-	2
Tori Bradley	1	-	-	-	1
Tatum Gerwitz	1	-	-	-	1
Gracie Luna	1	-	-	-	1

Multiple-RBI Games

Player	2	3	4	5+	Total
Paige Halliwill	5	-	-	-	5
Aubrie Shore	2	2	-	-	4
Marissa Peek	1	1	1	-	3
Abigail Rickermann	2	-	-	-	2
Sophie Schupp	1	1	-	-	2
Brittany Affolter	1	1	-	-	2
Brooklyn Saysoff	1	-	-	-	1
Tatum Gerwitz	1	-	-	-	1
Tori Bradley	1	-	-	-	1
Kynzie Wrigley	1	-	-	-	1
Kat Sackett	-	1	-	-	1

Inning-by-Inning Summary

Inning	SEMO	Opp.
First	28	23
Second	10	33
Third	14	25
Fourth	16	24
Fifth	12	22
Sixth	17	19
Seventh	4	7
Eighth	4	2
Ninth	0	0
Extra	1	4
Total	106	159

Inning-by-Inning Summary (OVC Games)

Inning	SEMO	Opp.
First	16	4
Second	6	2
Third	2	6
Fourth	6	3
Fifth	10	6
Sixth	4	2
Seventh	0	1
Eighth	0	0
Extra	1	4
Total	45	28

Current Hitting Streaks

Player	Games	Started
Abigail Rickermann	7	3/12
Paige Halliwill	5	3/16

Current Reached Base Streaks

Player	Games	Started
Abigail Rickermann	7	3/12
Paige Halliwill	7	3/12

Career Multiple-Hit Games

Player	2	3	4	5+	Total
Kynzie Wrigley	27	5	1	-	33
Paige Halliwill	24	3	-	-	27
Aubrie Shore	22	3	1	-	26
Sydney Dennis	15	4	-	-	19
Abigail Rickermann	16	2	-	-	18
Kat Sackett	14	3	-	-	17
Zoe Schulte	4	3	-	-	7
Marissa Peek	7	-	-	-	7
Tori Bradley	5	1	-	-	6
Tatum Gerwitz	5	-	-	-	5
Brittany Affolter	2	-	-	-	2
Sophie Schupp	2	-	-	-	2
Brooklyn Saysoff	1	1	-	-	2
Sydney Melton	1	-	-	-	1
Gracie Luna	1	-	-	-	1

Career Multiple-RBI Games

Player	2	3	4	5+	Total
Aubrie Shore	12	5	3	1	21
Paige Halliwill	10	5	3	-	18
Kynzie Wrigley	13	3	1	-	17
Kat Sackett	6	4	1	-	11
Sydney Dennis	6	1	-	-	7
Tori Bradley	4	-	-	-	4
Marissa Peek	2	1	1	-	4
Abigail Rickermann	3	1	-	-	4
Sydney Melton	2	1	-	-	3
Brittany Affolter	2	1	-	-	3
Sophie Schupp	1	1	-	-	2
Zoe Schulte	1	-	-	-	1
Tatum Gerwitz	1	-	-	-	1
Brooklyn Saysoff	1	-	-	-	1

14 Brittany Affolter**2024 Season-Highs**

At-Bats.....	6, vs. Eastern Illinois (3/9/24)
Runs.....	1, 8x, last vs. Tennessee State (3/24/24)
Hits.....	1, 13x, last vs. Tennessee State (3/24/24)
Doubles.....	-
Triples.....	-
Home Runs.....	-
RBI.....	3, vs. Eastern Illinois (3/9/24)
Stolen Bases.....	1, 2x, last vs. Tennessee State (3/24/24)

Career-Highs

At-Bats.....	6, vs. Eastern Illinois (3/9/24)
Runs.....	1, 15x, last vs. Tennessee State (3/24/24)
Hits.....	2, 2x, last at Southern Illinois (3/28/23)
Doubles.....	1, 2x, last at Southern Illinois (3/28/23)
Triples.....	-
Home Runs.....	-
RBI.....	3, vs. Eastern Illinois (3/9/24)
Stolen Bases.....	1, 6x, last vs. Tennessee State (3/24/24)

11 Tori Bradley**2024 Season-Highs**

At-Bats.....	4, vs. Eastern Illinois (3/9/24)
Runs.....	2, vs. Eastern Illinois (3/9/24)
Hits.....	2, at SIU Edwardsville (3/16/24)
Doubles.....	-
Triples.....	-
Home Runs.....	-
RBI.....	2, at SIU Edwardsville (3/16/24)
Stolen Bases.....	-

Career-Highs

At-Bats.....	4, 7x, last vs. Eastern Illinois (3/9/24)
Runs.....	2, 3x, last vs. Eastern Illinois (3/9/24)
Hits.....	3, vs. Central Michigan (2/19/22)
Doubles.....	1, 7x, last at Lindenwood (4/15/23)
Triples.....	1, vs. Central Michigan (2/19/22)
Home Runs.....	-
RBI.....	2, 4x, last at SIU Edwardsville (3/16/24)
Stolen Bases.....	1, 2x, last at Austin Peay (4/15/22)

27 Hailey Burnett**2024 Season/Career-Highs**

At-Bats.....	1, vs. Bradley (3/12/24)
Runs.....	-
Hits.....	-
Doubles.....	-
Triples.....	-
Home Runs.....	-
RBI.....	-
Stolen Bases.....	-

9 Maddie Carney**2024 Season/Career-Highs**

Innings Pitched.....	6.2, vs. Eastern Illinois (3/9/24)
Fewest Hits.....	0, 4x, last at SIU Edwardsville (3/16/24)
Most Hits.....	9, vs. South Dakota State (3/2/24)
Fewest Runs.....	0, 7x, last at SIU Edwardsville (3/17/24)
Most Runs.....	7, vs. Ohio State (2/10/24)
Fewest Walks.....	0, 7x, last at SIU Edwardsville (3/17/24)
Strikeouts.....	4, 2x, last vs. South Dakota State (3/2/24)

17 Taryn Coon**2024 Season/Career-Highs**

At-Bats.....	-
Runs.....	1, vs. Northern Iowa (2/25/24)
Hits.....	-
Doubles.....	-
Triples.....	-
Home Runs.....	-
RBI.....	-
Stolen Bases.....	-

18 Sydney Dennis**2024 Season-Highs**

At-Bats.....	5, at Florida International (2/9/24)
Runs.....	2, 5x, last vs. Tennessee State (3/23/24)
Hits.....	3, vs. Tennessee State (3/23/24)
Doubles.....	1, 2x, last vs. Bradley (3/12/24)
Triples.....	-
Home Runs.....	-
RBI.....	1, 2x, last vs. Tennessee State (3/23/24)
Stolen Bases.....	1, vs. Stony Brook (2/9/24)

2022 Season/Career-Highs

At-Bats.....	5, 2x, last at Florida International (2/9/24)
Runs.....	2, 9x, last vs. Tennessee State (3/23/24)
Hits.....	3, 4x, last vs. Tennessee State (3/23/24)
Doubles.....	1, 6x, last vs. Bradley (3/12/24)
Triples.....	1, 5x, last at Eastern Illinois (5/6/23)
Home Runs.....	-
RBI.....	3, at Tennessee Tech (3/26/22)
Stolen Bases.....	2, vs. Southern Indiana (3/25/23)

10 Tatum Gerwitz**2024 Season-Highs**

At-Bats.....	4, vs. Eastern Illinois (3/9/24)
Runs.....	1, 5x, last vs. Tennessee State (3/23/24)
Hits.....	2, vs. Tennessee State (3/23/24)
Doubles.....	-
Triples.....	-
Home Runs.....	-
RBI.....	2, at Arkansas (3/3/24)
Stolen Bases.....	1, at Arkansas (3/1/24)

Career-Highs

At-Bats.....	5, at Saint Louis (2/19/23)
Runs.....	2, 2x, last vs. Akron (2/26/23)
Hits.....	2, 5x, last vs. Tennessee State (3/23/24)
Doubles.....	1, vs. Tennessee State (3/20/22)
Triples.....	-
Home Runs.....	-
RBI.....	2, at Arkansas (3/3/24)
Stolen Bases.....	1, 3x, last at Arkansas (3/1/24)

2 Paige Halliwill**2024 Season-Highs**

At-Bats.....	6, vs. Eastern Illinois (3/9/24)
Runs.....	2, 3x, last vs. Eastern Illinois (3/9/24)
Hits.....	2, 4x, last vs. Tennessee State (3/24/24)
Doubles.....	1, 2x, last vs. Tennessee State (3/24/24)
Triples.....	1, vs. Eastern Illinois (3/9/24)
Home Runs.....	1, 3x, last vs. Northern Iowa (2/24/24)
RBI.....	2, 5x, last vs. Tennessee State (3/23/24)
Stolen Bases.....	2, 2x, last vs. Bradley (3/12/24)

Career-Highs

At-Bats.....	6, 2x, last vs. Eastern Illinois (3/9/24)
Runs.....	4, at Lindenwood (4/15/23)
Hits.....	3, 2x, last at Lindenwood (4/15/23)
Doubles.....	2, 2x, last at Tennessee Tech (4/1/23)
Triples.....	1, 4x, last vs. Eastern Illinois (3/9/24)
Home Runs.....	2, vs. Tennessee State (3/20/22)
RBI.....	4, 3x, last at Lindenwood (4/15/23)
Stolen Bases.....	2, 3x, last vs. Bradley (3/12/24)



2024 SOUTHEAST MISSOURI SOFTBALL NOTES

SEASON/CAREER-HIGHS

19 Paytience Holman

2024 Season-Highs	
Innings Pitched.....	7.0, vs. Tennessee State (3/24/24)
Fewest Hits.....	0, 2x, last vs. Bradley (3/12/24)
Most Hits.....	7, 3x, last vs. Tennessee State (3/24/24)
Fewest Runs.....	0, 2x, last vs. Bradley (3/12/24)
Most Runs.....	5, 3x, last vs. Florida Atlantic (3/2/24)
Fewest Walks.....	0, 4x, last at SIU Edwardsville (3/17/24)
Strikeouts.....	6, 2x, last vs. Tennessee State (3/24/24)

Career-Highs	
Innings Pitched.....	7.0, 11x, last vs. Tennessee State (3/24/24)
Fewest Hits.....	0, 8x, last vs. Bradley (3/12/24)
Most Hits.....	10, vs. Eastern Kentucky (4/17/21)
Fewest Runs.....	0, 23x, last vs. Bradley (3/12/24)
Most Runs.....	8, 2x, last at Louisiana Tech (2/12/23)
Fewest Walks.....	0, 28x, last at SIU Edwardsville (3/17/24)
Strikeouts.....	14, vs. Mississippi Valley State (3/6/20)

15 Delaney Kell

2024 Season-Highs	
Innings Pitched.....	5.0, at Southeastern Louisiana (2/17/24)
Fewest Hits.....	1, 3x, last vs. Eastern Illinois (3/9/24)
Most Hits.....	15, at Southeastern Louisiana (2/17/24)
Fewest Runs.....	0, 2x, last vs. Eastern Illinois (3/9/24)
Most Runs.....	10, at Southeastern Louisiana (2/17/24)
Fewest Walks.....	0, 5x, last vs. Bradley (3/12/24)
Strikeouts.....	2, 4x, last vs. Bradley (3/12/24)

Career-Highs	
Innings Pitched.....	7.1, at Saint Louis (2/19/23)
Fewest Hits.....	0, 3x, last vs. Morehead State (4/7/23)
Most Hits.....	15, at Southeastern Louisiana (2/17/24)
Fewest Runs.....	0, 12x, last vs. Eastern Illinois (3/9/24)
Most Runs.....	7, 2x, last at Iowa State (4/18/23)
Fewest Walks.....	0, 15x, last vs. Bradley (3/12/24)
Strikeouts.....	7, vs. UT Martin (4/29/23)

6 Tegan Livesay

2024 Season/Career-Highs	
Innings Pitched.....	7.0, at Florida International (2/10/24)
Fewest Hits.....	0, 2x, last vs. Northern Iowa (2/25/24)
Most Hits.....	8, at Florida International (2/10/24)
Fewest Runs.....	0, 2x, last at SIU Edwardsville (3/16/24)
Most Runs.....	7, vs. South Dakota State (3/1/24)
Fewest Walks.....	0, 4x, last at SIU Edwardsville (3/17/24)
Strikeouts.....	6, at Auburn (2/24/24)

7 Gracie Luna

2024 Season/Career-Highs	
At-Bats.....	6, vs. Eastern Illinois (3/9/24)
Runs.....	1, at Auburn (2/24/24)
Hits.....	2, vs. Northern Iowa (2/24/24)
Doubles.....	1, 3x, last vs. Eastern Illinois (3/9/24)
Triples.....	-
Home Runs.....	-
RBI.....	1, 3x, last vs. Eastern Illinois (3/9/24)
Stolen Bases.....	-

8 Sydney Melton

2024 Season-Highs	
At-Bats.....	1, 7x, last vs. Bradley (3/12/24)
Runs.....	-
Hits.....	-
Doubles.....	-
Triples.....	-
Home Runs.....	-
RBI.....	-
Stolen Bases.....	-

Career-Highs	
At-Bats.....	4, at Kansas City (3/15/22)
Runs.....	1, 7x, last at Eastern Illinois (5/6/23)
Hits.....	2, at Eastern Illinois (5/6/23)
Doubles.....	1, 3x, last at Eastern Illinois (5/6/23)
Triples.....	1, at Tennessee State (3/18/23)
Home Runs.....	1, at Eastern Illinois (5/6/23)
RBI.....	3, at Eastern Illinois (5/6/23)
Stolen Bases.....	1, 3x, last at Eastern Illinois (5/6/23)

28 Marissa Peek

2024 Season-Highs	
At-Bats.....	4, 2x, last vs. Tennessee State (3/23/24)
Runs.....	2, 2x, last vs. Tennessee State (3/23/24)
Hits.....	2, 5x, last vs. Tennessee State (3/24/24)
Doubles.....	2, at SIU Edwardsville (3/17/24)
Triples.....	-
Home Runs.....	2, at SIU Edwardsville (3/16/24)
RBI.....	4, vs. Tennessee State (3/23/24)
Stolen Bases.....	1, vs. Maryland (2/18/24)

Career-Highs	
At-Bats.....	4, 2x, last vs. Tennessee State (3/23/24)
Runs.....	2, 2x, last vs. Tennessee State (3/23/24)
Hits.....	2, 8x, last vs. Tennessee State (3/24/24)
Doubles.....	2, at SIU Edwardsville (3/17/24)
Triples.....	-
Home Runs.....	2, at SIU Edwardsville (3/16/24)
RBI.....	4, vs. Tennessee State (3/23/24)
Stolen Bases.....	1, vs. Maryland (2/18/24)

16 Abigail Rickermann

2024 Season-Highs	
At-Bats.....	4, 4x, last vs. Tennessee State (3/24/24)
Runs.....	2, 2x, last vs. Tennessee State (3/23/24)
Hits.....	3, vs. Tennessee State (3/23/24)
Doubles.....	1, 2x, last vs. Tennessee State (3/23/24)
Triples.....	-
Home Runs.....	-
RBI.....	2, 2x, last vs. Tennessee State (3/23/24)
Stolen Bases.....	1, 3x, last vs. Tennessee State (3/23/24)

Career-Highs	
At-Bats.....	5, vs. Murray State (5/12/22)
Runs.....	3, 3x, last vs. Morehead State (4/7/23)
Hits.....	3, 2x, last vs. Tennessee State (3/23/24)
Doubles.....	1, 6x, last vs. Tennessee State (3/23/24)
Triples.....	1, 3x, last vs. SIU Edwardsville (5/11/22)
Home Runs.....	-
RBI.....	3, vs. SIU Edwardsville (5/11/22)
Stolen Bases.....	2, at Murray State (4/24/22)

21 Abby Robbins

2024 Season/Career-Highs	
At-Bats.....	2, vs. Stony Brook (2/11/24)
Runs.....	1, 2x, last at Florida International (2/9/24)
Hits.....	-
Doubles.....	-
Triples.....	-
Home Runs.....	-
RBI.....	-
Stolen Bases.....	-

20 Kat Sackett

2024 Season-Highs	
At-Bats.....	4, 5x, last vs. Tennessee State (3/23/24)
Runs.....	1, 6x, last at SIU Edwardsville (3/17/24)
Hits.....	3, at Florida International (2/9/24)
Doubles.....	2, 2x, last at SIU Edwardsville (3/17/24)
Triples.....	-
Home Runs.....	1, 2x, last vs. Eastern Illinois (3/10/24)
RBI.....	3, at Florida International (2/9/24)
Stolen Bases.....	1, at Arkansas (3/3/24)

Career-Highs	
At-Bats.....	5, at Saint Louis (2/19/23)
Runs.....	3, vs. SIU Edwardsville (3/10/23)
Hits.....	3, 3x, last at Florida International (2/9/24)
Doubles.....	2, 4x, last at SIU Edwardsville (3/17/24)
Triples.....	-
Home Runs.....	2, vs. Tennessee State (3/20/22)
RBI.....	4, vs. Tennessee State (3/20/22)
Stolen Bases.....	2, at Saint Louis (2/19/23)

5 Brooklyn Sayoff

2024 Season-Highs	
At-Bats.....	5, vs. Eastern Illinois (3/9/24)
Runs.....	1, 5x, last vs. Tennessee State (3/23/24)
Hits.....	3, vs. Eastern Illinois (3/9/24)
Doubles.....	1, 4x, last at SIU Edwardsville (3/16/24)
Triples.....	-
Home Runs.....	-
RBI.....	2, at SIU Edwardsville (3/17/24)
Stolen Bases.....	1, 2x, last at SIU Edwardsville (3/17/24)

12 Zoe Schulte

2024 Season-Highs	
At-Bats.....	3, 7x, last vs. Tennessee State (3/23/24)
Runs.....	2, vs. Bradley (3/12/24)
Hits.....	2, 3x, last vs. Bradley (3/12/24)
Doubles.....	1, at Florida International (2/10/24)
Triples.....	-
Home Runs.....	-
RBI.....	-
Stolen Bases.....	1, 4x, last vs. Eastern Illinois (3/9/24)

Career-Highs	
At-Bats.....	3, 17x, last vs. Tennessee State (3/23/24)
Runs.....	2, 2x, last vs. Bradley (3/12/24)
Hits.....	3, 3x, last vs. Morehead State (4/7/23)
Doubles.....	1, at Florida International (2/10/24)
Triples.....	1, at Ole Miss (3/5/23)
Home Runs.....	-
RBI.....	2, at Tennessee Tech (4/1/23)
Stolen Bases.....	1, 7x, last vs. Eastern Illinois (3/9/24)

1 Sophie Schupp

2024 Season/Career-Highs	
At-Bats.....	3, 3x, last vs. Bradley (3/12/24)
Runs.....	2, vs. Maryland (2/18/24)
Hits.....	2, 2x, last vs. Eastern Illinois (3/9/24)
Doubles.....	1, 3x, last vs. Eastern Illinois (3/9/24)
Triples.....	-
Home Runs.....	-
RBI.....	3, vs. Eastern Illinois (3/9/24)
Stolen Bases.....	-

**26 Aubrie Shore**

2024 Season-Highs

At-Bats.....	6, vs. Eastern Illinois (3/9/24)
Runs.....	3, vs. Eastern Illinois (3/9/24)
Hits.....	3, 2x, last at SIU Edwardsville (3/16/24)
Doubles.....	2, vs. Eastern Illinois (3/9/24)
Triples.....	-
Home Runs.....	1, vs. Stony Brook (2/11/24)
RBI.....	3, 2x, last vs. Maryland (2/18/24)
Stolen Bases.....	-

Hitting Career-Highs

At-Bats.....	6, vs. Eastern Illinois (3/9/24)
Runs.....	3, 2x, last vs. Eastern Illinois (3/9/24)
Hits.....	4, at Lindenwood (4/15/23)
Doubles.....	2, 3x, last vs. Eastern Illinois (3/9/24)
Triples.....	1, vs. Alabama A&M (2/11/22)
Home Runs.....	2, 2x, last at Lindenwood (4/15/23)
RBI.....	5, vs. UT Martin (4/29/23)
Stolen Bases.....	1, vs. Charleston (3/4/22)

Pitching Career-Highs

Innings Pitched.....	0.1, vs. Nicholls (2/12/22)
Fewest Hits.....	0, 2x, last at Western Kentucky (2/19/22)
Most Hits.....	-
Fewest Runs.....	0, vs. Nicholls (2/12/22)
Most Runs.....	1, at Western Kentucky (2/19/22)
Fewest Walks.....	0, vs. Nicholls (2/12/22)
Strikeouts.....	-

22 Mary Tutwiler

2024 Season/Career-Highs

At-Bats.....	-
Runs.....	-
Hits.....	-
Doubles.....	-
Triples.....	-
Home Runs.....	-
RBI.....	-
Stolen Bases.....	-

3 Willow Van Haren

2024 Season/Career-Highs

Innings Pitched.....	4.0, at Florida International (2/9/24)
Fewest Hits.....	0, vs. Stony Brook (2/11/24)
Most Hits.....	5, vs. Ohio State (2/10/24)
Fewest Runs.....	0, 2x, last vs. Northern Iowa (2/24/24)
Most Runs.....	6, vs. Ohio State (2/10/24)
Fewest Walks.....	1, 7x, last vs. Bradley (3/12/24)
Strikeouts.....	4, 2x, last vs. Bradley (3/12/24)

4 Kinley Wilkins

2024 Season/Career-Highs

At-Bats.....	1, vs. Bradley (3/12/24)
Runs.....	1, vs. Northern Iowa (2/24/24)
Hits.....	-
Doubles.....	-
Triples.....	-
Home Runs.....	-
RBI.....	-
Stolen Bases.....	1, at SIU Edwardsville (3/17/24)

24 Kynzie Wrigley

2024 Season-Highs

At-Bats.....	4, 3x, last vs. Florida Atlantic (3/2/24)
Runs.....	2, at Florida International (2/9/24)
Hits.....	3, at Florida International (2/9/24)
Doubles.....	1, at Florida International (2/9/24)
Triples.....	-
Home Runs.....	1, vs. Tennessee State (3/24/24)
RBI.....	2, vs. Northern Iowa (2/25/24)
Stolen Bases.....	1, vs. Syracuse (2/17/24)

Career-Highs

At-Bats.....	5, vs. Murray State (5/12/22)
Runs.....	3, 2x, last vs. Belmont (5/8/22)
Hits.....	4, vs. SIU Edwardsville (5/11/22)
Doubles.....	3, vs. Morehead State (4/3/22)
Triples.....	1, vs. UT Martin (4/27/22)
Home Runs.....	1, 9x, last vs. Tennessee State (3/24/24)
RBI.....	4, vs. UT Martin (4/27/22)
Stolen Bases.....	2, vs. Tennessee Tech (5/12/22)

Southeast Missouri's Record

Overall.....	11-18
At Home.....	4-4
On the Road.....	4-5
At Neutral Sites.....	3-9
Against Non-OVC Opponents.....	5-15
Against OVC Opponents.....	6-3
In Home OVC Games.....	3-3
In Away OVC Games.....	3-0
vs. Ranked Teams.....	0-4
In February.....	4-9
In March.....	7-9
In April.....	0-0
In May.....	0-0
On Mondays.....	0-0
On Tuesdays.....	1-1
On Wednesdays.....	0-0
On Thursdays.....	0-0
On Fridays.....	2-4
On Saturdays.....	4-10
On Sundays.....	4-3
In Day Games.....	11-18
In Night Games.....	0-0
In Extra Inning Games.....	1-2
When Redhawks Score First.....	7-6
When Opponents Score First.....	4-12
vs. Left-Handed Starter.....	1-3
vs. Right-Handed Starter.....	10-15
In 1-Run Games.....	3-4
In 2-Run Games.....	1-1
In 5+ Run Games.....	3-9
Shutouts.....	1-6
When Leading After Six Innings.....	9-0
When Trailing After Six Innings.....	0-9
When Tied After Six Innings.....	1-2
When Redhawks Starter Goes 6 or more Innings.....	2-2
When Redhawks Get 10 or more Hits.....	3-1
When Redhawks Outhit Opponents.....	8-2
When Redhawks Get Outhit.....	2-14
When Hits are Tied.....	1-2
When Scoring 0-2 Runs.....	0-11
When Scoring 3-5 Runs.....	4-6
When Scoring 6-9 Runs.....	6-1
When Scoring 10+ Runs.....	0-0
When Opponents Score 0-2 Runs.....	4-2
When Opponents Score 3-5 Runs.....	7-5
When Opponents Score 6-9 Runs.....	0-8
When Opponents Score 10+ Runs.....	0-3
Without Hitting a Home Run.....	6-15
When Hitting 1 Home Run.....	2-3
When Hitting 2+ Home Runs.....	3-0
Committing 0 Errors.....	4-4
Committing 1 Error.....	2-5
Committing 2+ Errors.....	5-9



2024 SOUTHEAST MISSOURI SOFTBALL NOTES

GAME-BY-GAME LINEUPS

Opponent	P	C	1B	2B	3B	SS	LF	CF	RF	DP
Stony Brook	Holman	Peek	Shore	Rickermann	Wrigley	Dennis	Affolter	Halliwill	Gerwitz	Sackett
Florida International	Carney	Sackett	Shore	Rickermann	Wrigley	Dennis	Schulte	Halliwill	Gerwitz	Bradley
Ohio State	Van Haren	Sackett	Shore	Saysoff	Wrigley	Dennis	Affolter	Halliwill	Gerwitz	Peek
Florida International	Livesay	Peek	Shore	Rickermann	Wrigley	Dennis	Schulte	Halliwill	Gerwitz	Sackett
Stony Brook	Holman	Sackett	Shore	Saysoff	Robbins	Dennis	Schulte	Halliwill	Gerwitz	Wrigley
Maryland	Livesay	Sackett	Shore	Saysoff	Wrigley	Dennis	Affolter	Halliwill	Gerwitz	Luna
Syracuse	Holman	Sackett	Shore	Rickermann	Wrigley	Dennis	Affolter	Halliwill	Schulte	Bradley
Southeastern Louisiana	Kell	Peek	Shore	Rickermann	Wrigley	Dennis	Affolter	Halliwill	Gerwitz	Sackett
Maryland	Holman	Peek	Shore	Schupp	Saysoff	Dennis	Affolter	Halliwill	Gerwitz	Luna
Auburn	Kell	Sackett	Shore	Saysoff	Wrigley	Dennis	Affolter	Halliwill	Gerwitz	Luna
Northern Iowa	Holman	Peek	Shore	Luna	Saysoff	Dennis	Schulte	Halliwill	Affolter	Rickermann
Auburn	Livesay	Peek	Shore	Schupp	Saysoff	Dennis	Affolter	Halliwill	Gerwitz	Luna
Northern Iowa	Carney	Melton	Shore	Schupp	Saysoff	Dennis	Schulte	Halliwill	Wrigley	Luna
South Dakota State	Livesay	Peek	Shore	Schupp	Luna	Saysoff	Sackett	Halliwill	Wrigley	Bradley
Arkansas	Holman	Sackett	Shore	Dennis	Wrigley	Saysoff	Schulte	Halliwill	Gerwitz	Luna
South Dakota State	Kell	Peek	Shore	Dennis	Luna	Saysoff	Affolter	Halliwill	Wrigley	Rickermann
Florida Atlantic	Holman	Sackett	Shore	Dennis	Wrigley	Schupp	Affolter	Halliwill	Schulte	Bradley
Arkansas	Livesay	Peek	Shore	Dennis	Wrigley	Schupp	Affolter	Halliwill	Gerwitz	Sackett
Eastern Illinois	Holman	Peek	Shore	Dennis	Wrigley	Saysoff	Affolter	Halliwill	Gerwitz	Luna
Eastern Illinois	Livesay	Sackett	Shore	Rickermann	Saysoff	Schupp	Affolter	Halliwill	Schulte	Bradley
Eastern Illinois	Holman	Sackett	Shore	Dennis	Saysoff	Schupp	Affolter	Halliwill	Wrigley	Bradley
Bradley	Livesay	Sackett	Shore	Dennis	Wrigley	Saysoff	Affolter	Halliwill	Schulte	Bradley
Bradley	Van Haren	Melton	Shore	Dennis	Saysoff	Schupp	Schulte	Affolter	Gerwitz	Rickermann
SIU Edwardsville	Livesay	Peek	Shore	Dennis	Wrigley	Saysoff	Schulte	Halliwill	Affolter	Sackett
SIU Edwardsville	Holman	Sackett	Shore	Rickermann	Wrigley	Saysoff	Schulte	Halliwill	Gerwitz	Bradley
SIU Edwardsville	Holman	Peek	Shore	Rickermann	Saysoff	Schupp	Schulte	Halliwill	Affolter	Sackett
Tennessee State	Livesay	Sackett	Shore	Rickermann	Wrigley	Dennis	Schulte	Halliwill	Affolter	Bradley
Tennessee State	Holman	Peek	Shore	Dennis	Wrigley	Saysoff	Affolter	Halliwill	Gerwitz	Rickermann
Tennessee State	Holman	Peek	Shore	Dennis	Wrigley	Saysoff	Schulte	Halliwill	Affolter	Rickermann
Southern Indiana										
Southern Indiana										
Southern Indiana										
Missouri										
Missouri										
Tennessee Tech										
Tennessee Tech										
Tennessee Tech										
Saint Louis										
Morehead State										
Morehead State										
Morehead State										
Lindenwood										
Lindenwood										
Lindenwood										
Murray State										
Western Illinois										
Western Illinois										
Western Illinois										
UT Martin										
UT Martin										
UT Martin										

2024 SOUTHEAST MISSOURI SOFTBALL NOTES

GAME-BY-GAME HITTING



Opponent	AB	R	H	RBI	2B	3B	HR	BB	IBB	SB	CS	HBP	SAC	SE	GDP	K	PQ	A	E	Avg
Southeast Missouri	27	7	7	6	1	0	1	2	0	1	0	1	1	1	0	5	21	9	2	.259
Stony Brook	30	5	8	3	0	0	1	1	0	2	0	0	0	0	0	6	18	6	3	.267
Southeast Missouri	36	7	11	7	4	0	0	2	0	0	0	0	0	0	0	1	24	8	0	.286
Florida International	29	4	7	3	1	0	0	3	0	2	0	0	0	0	1	6	24	13	2	.254
Southeast Missouri	17	0	2	0	1	0	0	3	0	0	0	0	0	0	1	7	12	2	1	.250
Ohio State	28	13	15	12	1	0	1	2	0	2	0	0	0	0	0	4	15	3	1	.345
Southeast Missouri	24	0	4	0	2	0	0	1	0	0	0	0	0	0	0	2	21	6	0	.231
Florida International	28	1	8	1	0	0	0	0	0	3	1	0	0	0	0	2	21	8	0	.330
Southeast Missouri	24	5	5	5	0	0	2	1	0	0	0	0	0	0	0	3	21	7	3	.227
Stony Brook	25	4	5	4	0	0	0	4	0	1	0	0	0	1	1	9	18	9	1	.307
Southeast Missouri	21	1	3	1	1	0	0	1	0	0	0	0	0	1	0	4	16	5	2	.215
Maryland	22	9	7	7	1	1	0	9	0	0	1	4	1	0	0	6	18	5	1	.309
Southeast Missouri	26	0	5	0	0	0	0	1	0	1	0	1	0	0	0	8	18	5	1	.211
Syracuse	21	3	4	3	1	0	0	0	0	4	0	0	0	1	0	5	21	6	0	.295
Southeast Missouri	20	2	4	2	1	0	0	1	0	1	0	0	1	0	0	2	15	10	3	.210
Southeastern Louisiana	26	10	15	9	1	1	0	3	0	2	2	0	0	3	0	0	18	13	0	.330
Southeast Missouri	24	9	8	7	2	0	0	4	0	3	0	1	1	1	0	4	21	11	2	.224
Maryland	23	3	3	3	1	0	0	5	0	0	1	0	0	1	0	2	18	9	3	.310
Southeast Missouri	16	0	0	0	0	0	0	2	0	0	0	0	0	0	0	9	14	9	4	.209
Auburn	24	8	9	7	1	0	2	1	0	2	0	0	1	0	0	1	15	2	1	.316
Southeast Missouri	28	3	7	3	1	0	1	4	0	1	0	1	0	0	0	14	18	6	0	.213
Northern Iowa	26	5	8	5	2	0	1	4	0	0	0	0	0	0	0	7	21	3	2	.316
Southeast Missouri	19	5	6	4	3	0	0	2	0	0	0	0	2	0	0	2	14	6	3	.220
Auburn	22	13	7	11	0	0	3	8	0	2	0	1	0	1	0	6	15	6	0	.316
Southeast Missouri	30	6	9	5	0	0	1	3	0	0	0	1	0	0	0	9	21	7	2	.228
Northern Iowa	31	9	10	8	2	1	0	2	0	2	0	0	1	0	1	6	21	6	0	.316
Southeast Missouri	18	0	3	0	0	0	0	3	0	0	0	0	0	0	0	7	12	4	3	.224
South Dakota State	20	9	6	9	1	0	1	7	0	0	0	0	0	1	0	2	15	2	0	.315
Southeast Missouri	21	0	3	0	0	0	0	1	0	1	1	0	0	0	1	6	18	8	1	.219
Arkansas	24	5	7	5	2	0	2	1	0	0	0	0	0	0	1	0	21	12	0	.314
Southeast Missouri	19	1	5	1	1	0	0	2	0	0	0	0	1	0	0	5	15	4	2	.222
South Dakota State	28	9	13	8	2	0	1	1	0	1	0	0	0	0	0	4	15	5	1	.324
Southeast Missouri	29	3	8	2	1	0	0	3	0	1	0	0	0	0	0	4	18	7	1	.226
Florida Atlantic	26	8	8	7	0	0	1	7	0	1	0	1	1	0	0	2	21	8	0	.323
Southeast Missouri	29	5	7	5	2	0	0	4	0	2	0	0	1	2	0	7	23	9	2	.227
Arkansas	31	6	9	6	0	0	1	3	1	0	0	0	2	1	1	0	24	5	1	.321
Southeast Missouri	45	4	9	3	4	0	0	3	0	1	0	0	3	0	0	7	36	15	3	.224
Eastern Illinois	49	7	14	6	0	0	1	4	0	1	0	0	2	1	0	3	36	22	3	.318
Southeast Missouri	31	9	12	9	3	1	0	2	0	2	0	0	0	0	0	3	21	7	1	.234
Eastern Illinois	27	4	5	4	1	0	1	2	0	1	0	1	0	0	0	1	18	6	2	.311
Southeast Missouri	26	1	5	1	0	0	1	1	0	0	1	0	0	0	0	6	21	9	0	.232
Eastern Illinois	29	2	9	2	1	0	1	1	0	0	0	0	1	0	0	5	21	8	1	.311
Southeast Missouri	22	6	7	4	2	0	0	5	0	3	1	0	2	1	0	6	21	13	0	.236
Bradley	24	2	3	2	0	0	0	4	0	1	0	0	0	0	0	4	18	7	2	.304
Southeast Missouri	26	1	7	1	1	0	0	0	0	0	1	0	0	0	0	10	21	7	0	.237
Bradley	28	5	7	5	0	0	3	2	0	0	0	0	0	0	0	7	21	6	0	.301
Southeast Missouri	27	3	8	3	1	0	2	3	0	1	0	0	1	0	0	3	21	13	0	.240
SIU Edwardsville	27	0	7	0	1	0	0	1	0	3	1	1	0	0	0	2	21	8	0	.265
Southeast Missouri	28	3	7	2	0	0	0	4	0	1	0	0	1	0	0	3	21	13	0	.240
SIU Edwardsville	24	2	6	2	1	0	0	1	0	0	1	0	1	0	1	1	21	4	1	.263
Southeast Missouri	28	7	9	7	4	0	0	3	0	1	0	0	1	1	1	4	21	7	2	.244
SIU Edwardsville	32	4	10	3	0	0	0	0	0	0	0	0	0	0	0	2	21	13	2	.271
Southeast Missouri	30	3	10	3	1	0	0	2	0	1	0	1	0	0	0	3	21	12	1	.247
Tennessee State	24	4	5	4	0	0	0	5	0	1	0	1	1	0	2	4	21	13	0	.295
Southeast Missouri	30	11	14	11	3	0	1	1	0	2	0	0	0	0	0	1	15	8	1	.257
Tennessee State	19	2	4	2	0	0	0	0	0	0	0	0	1	0	0	3	14	5	2	.293
Southeast Missouri	24	4	9	4	1	0	2	2	0	2	1	0	1	1	0	3	21	6	4	.260
Tennessee State	29	3	7	1	2	1	0	2	1	0	0	0	0	0	0	6	18	6	0	.291
Southeast Missouri																				
Southern Indiana																				



2024 SOUTHEAST MISSOURI SOFTBALL NOTES

GAME-BY-GAME HITTING

Opponent	AB	R	H	RBI	2B	3B	HR	BB	IBB	SB	CS	HBP	SAC	SE	GDP	K	PQ	A	E	Avg
Southeast Missouri Southern Indiana																				
Southeast Missouri Southern Indiana																				
Southeast Missouri Missouri																				
Southeast Missouri Missouri																				
Southeast Missouri Tennessee Tech																				
Southeast Missouri Tennessee Tech																				
Southeast Missouri Tennessee Tech																				
Southeast Missouri Saint Louis																				
Southeast Missouri Morehead State																				
Southeast Missouri Morehead State																				
Southeast Missouri Morehead State																				
Southeast Missouri Lindenwood																				
Southeast Missouri Lindenwood																				
Southeast Missouri Lindenwood																				
Southeast Missouri Murray State																				
Southeast Missouri Western Illinois																				
Southeast Missouri Western Illinois																				
Southeast Missouri Western Illinois																				
Southeast Missouri UT Martin																				
Southeast Missouri UT Martin																				
Southeast Missouri UT Martin																				

2024 SOUTHEAST MISSOURI SOFTBALL NOTES

GAME-BY-GAME PITCHING



Opponent	IP	H	R	ER	BB	SO	2B	3B	HR	WP	BK	HBP	DP	IBB	Score	W-L	SV	ERA
Southeast Missouri	7.0	8	5	3	1	6	0	0	1	0	0	0	0	0	7-5	1-0	0	3.00
Stony Brook	6.0	7	7	4	2	5	1	0	1	1	0	1	0	0	5-7	0-1	0	4.67
Southeast Missouri	8.0	7	4	3	3	6	1	0	0	3	0	0	1	0	7-4	2-0	0	2.80
Florida International	8.0	11	7	4	2	1	4	0	0	0	0	0	0	0	4-7	0-2	0	4.00
Southeast Missouri	4.0	15	13	8	2	4	1	0	1	0	0	0	0	0	0-13	2-1	0	5.16
Ohio State	5.0	2	0	0	3	7	1	0	0	0	0	0	1	0	13-0	1-2	0	2.95
Southeast Missouri	7.0	8	1	1	0	2	0	0	0	1	0	0	1	0	0-1	2-2	0	4.04
Florida International	7.0	4	0	0	1	2	2	0	0	0	0	0	0	0	1-0	2-2	0	2.15
Southeast Missouri	7.0	5	4	3	4	9	0	0	0	0	0	0	1	0	5-4	3-2	1	3.82
Stony Brook	6.0	5	5	5	1	3	0	0	2	0	0	0	0	0	4-5	2-3	0	2.84
Southeast Missouri	5.1	7	9	8	9	6	1	1	0	4	0	4	0	0	1-9	3-3	1	4.75
Maryland	6.0	3	1	0	1	4	1	0	0	1	0	0	0	0	9-1	3-3	1	2.39
Southeast Missouri	6.0	4	3	3	0	5	1	0	0	0	0	0	0	0	0-3	3-4	1	4.58
Syracuse	7.0	5	0	0	1	8	0	0	0	0	0	1	0	0	3-0	4-3	1	2.02
Southeast Missouri	5.0	15	10	9	3	0	1	1	0	2	0	0	0	0	2-10	3-5	1	5.39
Southeastern Louisiana	6.0	4	2	2	1	2	1	0	0	0	0	0	1	0	10-2	5-3	1	2.06
Southeast Missouri	7.0	3	3	1	5	2	1	0	0	0	0	0	0	0	9-3	4-5	1	4.85
Maryland	6.0	8	9	6	4	4	2	0	0	3	0	1	0	0	3-9	5-4	1	2.58
Southeast Missouri	4.2	9	8	6	1	1	1	0	2	0	0	0	0	0	0-8	4-6	1	5.16
Auburn	5.0	0	0	0	2	9	0	0	0	0	0	0	0	0	8-0	6-4	1	2.37
Southeast Missouri	6.0	8	5	5	4	7	2	0	1	0	0	0	0	0	3-5	4-7	1	5.22
Northern Iowa	7.0	7	3	3	4	14	1	0	1	0	0	1	0	0	5-3	7-4	1	2.43
Southeast Missouri	4.2	7	13	10	8	6	0	0	3	1	0	1	0	0	5-13	4-8	1	5.86
Auburn	5.0	6	5	5	2	2	3	0	0	1	0	0	0	0	13-5	8-4	1	2.74
Southeast Missouri	7.0	10	9	6	2	6	2	1	0	1	0	0	1	0	6-9	4-9	1	5.87
Northern Iowa	7.0	9	6	5	3	9	0	0	1	0	0	1	0	0	9-6	9-4	2	2.94
Southeast Missouri	4.0	6	9	6	7	2	1	0	1	1	0	0	0	0	0-9	4-10	1	6.10
South Dakota State	5.0	3	0	0	3	7	0	0	0	1	0	0	0	0	9-0	10-4	2	2.77
Southeast Missouri	6.0	7	5	5	1	0	2	0	2	0	0	0	2	0	0-5	4-11	1	6.08
Arkansas	7.0	3	0	0	1	6	0	0	0	0	0	0	2	0	5-0	11-4	2	2.56
Southeast Missouri	5.0	13	9	7	1	4	2	0	1	2	0	0	1	0	1-9	4-12	1	6.28
South Dakota State	5.0	5	1	1	2	5	1	0	0	0	0	0	0	0	9-1	12-4	2	2.50
Southeast Missouri	6.0	8	8	6	7	2	0	0	1	0	0	1	1	0	3-8	4-13	1	6.32
Florida Atlantic	7.0	8	3	3	3	4	1	0	0	1	0	0	0	0	8-3	13-4	3	2.53
Southeast Missouri	7.2	9	6	4	3	0	0	0	1	0	0	0	1	1	5-6	4-14	1	6.13
Arkansas	8.0	7	5	5	4	7	2	0	0	1	0	0	0	0	6-5	14-4	3	2.66
Southeast Missouri	12.0	14	7	6	4	3	0	0	1	0	0	0	0	0	4-7	4-15	1	5.87
Eastern Illinois	12.0	9	4	2	3	7	4	0	0	1	0	0	0	0	7-4	15-4	3	2.52
Southeast Missouri	7.0	5	4	3	2	1	1	0	1	1	0	1	0	0	9-4	5-15	1	5.71
Eastern Illinois	6.0	12	9	7	2	3	3	1	0	1	0	0	1	0	4-9	15-5	3	2.78
Southeast Missouri	7.0	9	2	2	1	5	1	0	1	0	0	0	0	0	1-2	5-16	1	5.51
Eastern Illinois	7.0	5	1	1	1	6	0	0	1	0	0	0	0	0	2-1	16-5	4	2.69
Southeast Missouri	7.0	3	2	2	4	4	0	0	0	1	0	0	0	0	6-2	6-16	1	5.34
Bradley	6.0	7	6	1	5	6	2	0	0	0	0	0	0	0	2-6	16-6	4	2.62
Southeast Missouri	7.0	7	5	5	2	7	0	0	3	0	0	0	0	0	1-5	6-17	1	5.32
Bradley	7.0	7	1	1	0	10	1	0	0	1	0	0	1	0	5-1	17-6	4	2.55
Southeast Missouri	7.0	7	0	0	1	2	1	0	0	1	0	1	0	0	3-0	7-17	1	5.08
SIU Edwardsville	7.0	8	3	3	3	3	1	0	2	0	0	0	0	0	0-3	17-7	4	2.57
Southeast Missouri	7.0	6	2	2	1	1	1	0	0	0	0	0	1	0	3-2	8-17	2	4.95
SIU Edwardsville	7.0	7	3	1	4	3	0	0	0	0	0	0	0	0	2-3	17-8	4	2.50
Southeast Missouri	7.0	10	4	3	0	2	0	0	0	2	0	0	0	0	7-4	9-17	3	4.87
SIU Edwardsville	7.0	9	7	5	3	4	4	0	0	0	0	0	2	0	4-7	17-9	4	2.60
Southeast Missouri	7.0	5	4	4	5	4	0	0	0	0	0	1	2	0	3-4	9-18	3	4.83
Tennessee State	7.0	10	3	3	2	3	1	0	0	2	0	1	1	0	4-3	18-9	4	2.62
Southeast Missouri	5.0	4	2	1	0	3	0	0	0	0	0	0	0	0	11-2	10-18	3	4.74
Tennessee State	4.2	14	11	7	1	1	3	0	1	0	0	0	0	0	2-11	18-10	4	2.82
Southeast Missouri	7.0	7	3	1	2	6	2	1	0	0	0	0	0	1	4-3	11-18	3	4.60
Tennessee State	6.0	9	4	4	2	3	1	0	2	1	0	0	0	0	3-4	18-11	4	2.88

Southeast Missouri

Southern Indiana



2024 SOUTHEAST MISSOURI SOFTBALL NOTES

GAME-BY-GAME PITCHING

Opponent	IP	H	R	ER	BB	SO	2B	3B	HR	WP	BK	HBP	DP	IBB	Score	W-L	SV	ERA
Southeast Missouri Southern Indiana																		
Southeast Missouri Southern Indiana																		
Southeast Missouri Missouri																		
Southeast Missouri Missouri																		
Southeast Missouri Tennessee Tech																		
Southeast Missouri Tennessee Tech																		
Southeast Missouri Tennessee Tech																		
Southeast Missouri Saint Louis																		
Southeast Missouri Morehead State																		
Southeast Missouri Morehead State																		
Southeast Missouri Morehead State																		
Southeast Missouri Lindenwood																		
Southeast Missouri Lindenwood																		
Southeast Missouri Lindenwood																		
Southeast Missouri Murray State																		
Southeast Missouri Western Illinois																		
Southeast Missouri Western Illinois																		
Southeast Missouri Western Illinois																		
Southeast Missouri UT Martin																		
Southeast Missouri UT Martin																		
Southeast Missouri UT Martin																		