



## OVC CHAMPS NCAA TOURNEY

1995 • 1996 • 1997 1999  
1998 • 1999 • 2019 2019  
2021 • 2023

Jeff Honza, Associate Director of Athletics for Strategic Communications  
Office: (573) 651-2933 | Cell: (618) 528-1145  
Email: jhonza@semo.edu, redhawk1@me.com

## SCHEDULE

### February (4-9)

9	vs. Stony Brook !	W, 7-5
9	at Florida International ! ESPN+	W, 7-4 (8)
10	vs. Ohio State !	L, 0-13 (5)
10	at Florida International !	L, 0-1
11	Stony Brook	W, 5-4
16	vs. Maryland \$	L, 1-9 (6)
17	vs. Syracuse \$	L, 0-3
17	at Southeastern Louisiana \$	L, 2-10 (6)
18	vs. Maryland \$	W, 9-3
23	at #24 Auburn ^ SECN+	L, 0-8 (5)
24	vs. Northern Iowa ^	L, 3-5
24	at #24 Auburn ^	L, 5-13 (5)
25	vs. Northern Iowa ^	L, 6-9

### March (5-8, 4-2 OVC)

1	vs. South Dakota State &	L, 0-9 (5)
1	at #16 Arkansas & SECN+	L, 0-5
2	vs. South Dakota State &	L, 1-9 (5)
2	vs. Florida Atlantic &	L, 3-8
3	at #16 Arkansas & SECN+	L, 5-6 (8)
9	<b>Eastern Illinois* (DH) ESPN+</b>	<b>L, 4-7 (12); W, 9-4</b>
10	<b>Eastern Illinois* ESPN+</b>	<b>L, 1-2</b>
12	<b>Bradley (DH) ESPN+</b>	<b>W, 6-2; L, 1-5</b>
16	at SIU Edwardsville* (DH) ESPN+	W, 3-0; W, 3-2
17	at SIU Edwardsville* ESPN+	W, 7-4
23	<b>Tennessee State* (DH) ESPN+</b>	<b>12 p.m.</b>
24	<b>Tennessee State* ESPN+</b>	<b>12 p.m.</b>
29	at Southern Indiana* (DH)	1 p.m.
30	at Southern Indiana*	12 p.m.

### April (0-0, 0-0 OVC)

3	at Missouri (DH)	4 p.m.
6	<b>Tennessee Tech* (DH) ESPN+</b>	<b>12 p.m.</b>
7	<b>Tennessee Tech* ESPN+</b>	<b>12 p.m.</b>
10	<b>Saint Louis ESPN+</b>	<b>4 p.m.</b>
13	at Morehead State* (DH)	11 a.m.
14	at Morehead State*	11 a.m.
20	<b>Lindenwood* (DH) ESPN+</b>	<b>3 p.m.</b>
21	<b>Lindenwood* ESPN+</b>	<b>12 p.m.</b>
23	at Murray State	3 p.m.
27	<b>Western Illinois* (DH) ESPN+</b>	<b>12 p.m.</b>
28	<b>Western Illinois* ESPN+</b>	<b>12 p.m.</b>

### May (0-0, 0-0 OVC)

4	at UT Martin* (DH)	1 p.m.
5	at UT Martin*	1 p.m.
8-11	OVC Tournament	Peoria, Ill.

! - Felsberg Invitational (Miami, Fla.); \$ - Lion Classic (Hammond, La.); ^ - Auburn Tournament (Auburn, Ala.); & - Woood Pig Classic (Fayetteville, Ark.); Home Games in **Bold**; \* - Ohio Valley Conference Game



### Southeast Missouri or SEMO

is the preferred reference for Southeast Missouri State University athletic teams. Southeastern Missouri State is **NOT** an acceptable reference.



## GAMES 27-29 // TENNESSEE STATE vs. SOUTHEAST MISSOURI

Mar. 23-24 // 12 p.m. (DH)/12 p.m., CT // Cape Girardeau, Mo. // Southeast Softball Complex // Series: SEMO leads, 67-11  
Video: ESPN+ // Live Stats: SEMORedhawks.com // X (formerly Twitter): @SEMOSoftball



**14-11**

5-1 OVC

### TENNESSEE STATE TIGERS

Head Coach .....Genee McRath  
Career Record (Yrs.) ..... 67-120-1 (5)  
Record at SEMO (Yrs.) ..... 67-120-1 (5)  
OVC Record ..... 28-60



**9-17**

4-2 OVC

### SEMO REDHAWKS

Head Coach .....Mark Redburn  
Career Record (Yrs.) ..... 461-451 (20)  
Record at SEMO (Yrs.) ..... 247-202 (10)  
OVC Record ..... 125-75

### // Redhawks Host Tennessee State

Southeast Missouri (9-17, 4-2) welcomes Ohio Valley Conference co-leader Tennessee State (14-11, 5-1) for a three-game series this weekend. SEMO and TSU play a 12 p.m. doubleheader Saturday followed by a 12 p.m., CT matchup Sunday.

### // Follow the Redhawks

Live stats will be available online at SEMORedhawks.com. Video can be accessed at ESPN+. Updates will be provided on X @SEMOSoftball.

### // Series History

Southeast Missouri has a big 67-11 lead in its all-time series against Tennessee State. SEMO is 16-1 in its last 17 meetings with the Tigers. The only loss in that span came a year ago when TSU beat the Redhawks, 3-0, in Nashville.

### // OVC Update

Eastern Illinois (5-1) and Tennessee State (5-1) are tied for first in the Ohio Valley Conference standings. EIU and TSU are on winning streaks of four and five games, respectively. Three teams, including Tennessee Tech (4-2), Southern Indiana (4-2) and Southeast Missouri (4-2) are locked in a three-way tie for second. USI has won four in a row and SEMO enters the weekend on a three-game winning streak.

### // Series Sweep

The Redhawks picked up their first series win and sweep of the season when they beat SIU Edwardsville three times during their first Ohio Valley Conference road series of the season. Southeast Missouri won by scores of 3-0, 3-2 and 7-4. It was SEMO's 33rd sweep in conference play under Head Coach Mark Redburn.

### // Redhawks Heating Up

Southeast Missouri is presently on its longest winning streak of the season at three games. SEMO won five of its last seven contests. The Redhawks averaged 5.6 runs per game in their victories over that stretch.

### // Redburn Approaching 250 Wins at SEMO

Mark Redburn is three wins away from reaching 250 career victories as Southeast Missouri's head softball coach. Redburn is 247-202 in 10 years at the helm. His 247 wins are second-most all-time in program history.

### // Peek Named OVC Player of the Week

Southeast Missouri senior catcher Marissa Peek won the first Ohio Valley Conference Player of the Week honor of her career on Mar. 18. A native of Wentzville, Missouri, Peek hit safely in three of four games leading SEMO to a 4-1

FOLLOW THE REDHAWKS AT **SEMOREDHAWKS.COM**



## 2024 SOUTHEAST MISSOURI SOFTBALL NOTES

### TENNESSEE STATE // MAR. 23-24

record the week before. She hit .556 (5-for-9) with three runs scored, three doubles, two home runs and five RBI. Peek also boasted a .556 on-base percentage and 1.556 slugging percentage. Peek hit a career-high two home runs to lead the Redhawks to their game one victory over SIU Edwardsville. She later had a pair of doubles to close out SEMO's first series sweep of the season. Tennessee State's Caitlyn Manus was tabbed OVC Pitcher of the Week to round out the honorees.

#### // Carney Gets Career Firsts

Freshman Maddie Carney earned her first career win and save in the Redhawks series sweep of SIU Edwardsville (Mar. 16-17). Carney threw a total of 5.1 scoreless innings to go 1-0 with two saves against the Cougars. She worked four shutout innings with a strikeout to pick up her first career win in game one of a doubleheader on Mar. 16. Carney then recorded the final two outs in each of the Redhawks last two games of the series to get the save. She leads the team in appearances (16) and saves (2) this season.

#### // Three Wins in a Row for Holman

Veteran pitcher Paytience Holman won in three-straight appearances in the circle. Holman beat Bradley (Mar. 12) when she came out of the bullpen to throw 1.2 scoreless innings. She then won in both of her starts at SIU Edwardsville. Holman tossed 6.1 innings with one strikeout in game two and worked four innings with another strikeout in the series finale. At 5-6, she leads the Redhawks in wins, strikeouts (35),

starts (11) and innings pitched (63.0).

#### // Halliwill Close to 100 Hits

Paige Halliwill needs only one more hit to reach 100 in her career as a Redhawk. Halliwill has 99 hits in 122 career starts. She is on pace to become the second player to go over 100 career hits this season. Aubrie Shore (107) was the other.

#### // Defense Improving

Defensively, the Redhawks have gone five of their last six games without committing an error. Southeast Missouri ranks second in the Ohio Valley Conference with a .972 fielding percentage in league games. SEMO committed six errors against OVC foes, third-fewest in the conference.

#### // Hitting Streaks

Abigail Rickermann is presently on a team-best four-game hitting streak. Rickermann singled in three of those contests and had a season-high two hits at SIU Edwardsville (Mar. 16). She boosted her batting average to .316 and ranks third on the team with that mark. Tori Bradley is close behind Rickermann with a three-game hitting streak.

#### // Dennis Delivers

Second baseman Sydney Dennis matched a season-high two hits when she went 2-for-3 with two runs scored and the go-ahead RBI-double in Southeast Missouri's 6-2 win over Bradley (Mar. 12). Dennis' double broke a 2-2 tie and sparked a decisive four-run sixth inning for the Redhawks. It was her second multiple-hit game of the season.

### 2024 OVC Standings (as of Mar. 19)

School	Conference				Overall			
	W	L	I	Pct.	W	L	I	Pct.
Eastern Illinois	5	1	0	.833	17	8	0	.680
Tennessee State	5	1	0	.833	14	11	0	.560
Tennessee Tech	4	2	0	.667	12	9	0	.571
Southern Indiana	4	2	0	.667	10	11	0	.476
Southeast Missouri	4	2	0	.667	9	17	0	.346
UT Martin	2	4	0	.333	14	12	0	.538
Lindenwood	2	4	0	.333	12	14	0	.462
Western Illinois	2	4	0	.333	12	15	0	.444
Morehead State	1	5	0	.167	7	11	0	.389
SIUE	1	5	0	.167	9	17	0	.346

### 2024 OVC Preseason Poll

Team (First-Place Votes)	Points
Southeast Missouri (13)	157
Eastern Illinois (6)	148
UT Martin (1)	120
Southern Indiana	112
SIUE	111
Tennessee State	80
Lindenwood	65
Morehead State	44
Western Illinois	33
Tennessee Tech	30

(as voted on by the league's head softball coaches and communications directors)

#### 2024 OVC Players to Watch

Rachel Kaufman, P/DP, Eastern Illinois  
Amanda Weyh, P, Lindenwood  
Aubrie Shore, 1B, Southeast Missouri  
Sydney Baalman, P, SIUE  
Josie Newman, P, Southern Indiana  
Anayah Baker-Rowell, 3B/UT, Tennessee State  
Mackenzie Fitzgerald, INF, Tennessee Tech  
Kaci Fuller, OF, UT Martin  
Bella Alvarez, 1B/3B, Western Illinois

### 2024 Honors & Awards

#### OVC Player of the Week

Marissa Peek, C, Mar. 18





### // Over .300

Southeast Missouri has three players hitting over .300 entering this weekend's series against Tennessee State. Tori Bradley is hitting .346 in 15 games and eight starts. Aubrie Shore had a .325 batting average and Abigail Rickermann is hitting .316.

### // Eleven of Twelve

The Redhawks are 11-1 in their last 12 Ohio Valley Conference road games going back to the 2023 season. Southeast Missouri posted series sweeps at Tennessee Tech, Lindenwood and SIU Edwardsville for nine of those victories.

### // Holman Among OVC Leaders

Paytience Holman enters the weekend ranked among Ohio Valley Conference pitchers in innings (6th, 63), strikeouts (9th, 35), wins (t6th, 5) and games started (t2nd, 11).

### // OVC Opening Weekend

Southeast Missouri and Eastern Illinois, the top two teams in this year's Ohio Valley Conference Preseason Poll, met to open league action in Cape Girardeau on Mar. 9-10. SEMO outscored EIU, 14-13, in the series, but the Panthers won two of three contests. EIU clinched the series win with a 2-1 victory on Mar. 10. Aubrie Shore hit .462 with six hits, four runs scored and three doubles to lead the Redhawks. Freshman Brooklyn Saysoff also had a nice OVC debut adding four hits in three starts.

### // Marathon Game

Southeast Missouri's Ohio Valley Conference opener against Eastern Illinois went 12 innings and lasted three hours and 25 minutes before the Panthers won, 7-4. In terms of innings played, it matched the longest game in SEMO's NCAA Division I era.

### // Shore Reaches New Season-Highs

Aubrie Shore started Southeast Missouri's series against Eastern Illinois by going 3-for-6 with three runs scored, two doubles and one RBI on Mar. 9. Shore established season-highs in hits, runs and doubles during that contest. It was the third two-double game of her career, as well.

### // Sackett Homers Again

Catcher Kat Sackett hit her second home run of the season with a solo shot to get Southeast Missouri within a run late in the series finale against Eastern Illinois (Mar. 10). Sackett finished the series strong with back-to-back two-hit games. She went 2-for-4 with a run scored, double and one RBI in game two and 2-for-3 with a run, home run and one RBI in game three. Sackett ranks tied for second on the team in home runs and second in multiple-hit games (4) this year.

### // 100 OVC Wins in Seven Years

Southeast Missouri's 9-4 win over Eastern Illinois (Mar. 9) marked the Redhawks 100th Ohio Valley Conference victory since the 2017 season. SEMO averaged 14 OVC wins per season in that span.

### // First Career Win for Livesay

Freshman Tegan Livesay picked up her first career win in the circle when she beat Eastern Illinois (Mar. 9). Livesay worked five innings, allowing four runs on four hits. She also struck out one in her second-longest start of the season to date.

### // Season-High in Hits

Southeast Missouri registered a season-high 12 hits to key its 9-4 victory over Eastern Illinois (Mar. 9). Aubrie Shore, Kat Sackett and Sophie Schupp each had two hits to pave the way. The Redhawks out-hit the Panthers, 12-5, en route to getting double-digit hits for the second time this season.

### // 125 OVC Wins

Mark Redburn currently has 122 Ohio Valley Conference wins, most among the league's 10 active head coaches. Redburn is 125-75 all-time in OVC play with three conference regular-season titles (2019, 2021, 2023), one OVC Tournament crown (2019) and one NCAA Tournament appearance (2019). He led the Redhawks to five-straight winning seasons in league action. Redburn's 2021 (23-6) and 2023 clubs (20-2) won the most conference games in a season. His 125 OVC wins are more than the rest of the league's head softball coaches league victories combined.

### // 30-Game Home Winning Streak Ends

Southeast Missouri's program record 30-game home winning streak ended with a 12-inning 7-4 loss to Eastern Illinois (Mar. 9). SEMO is 32-3 in its last 35 games at the Southeast Softball Complex. The Redhawks went undefeated at home in 2022 (14-0) and 2023 (13-0).

### // Battle Tested

A tough 18-game stretch over four different tournaments has prepared the Redhawks for their Ohio Valley Conference season. Southeast Missouri played two ranked opponents (#24 Auburn, #16 Arkansas), five Power Four teams (Ohio State, Maryland, Syracuse, Auburn, Arkansas), the Summit League preseason favorite (South Dakota State) and Missouri Valley Conference preseason favorite (Northern Iowa) already in 2024. SEMO has played the toughest schedule in the OVC and presently the 79th toughest schedule among the nation's 307 NCAA Division I softball programs.

### // First Midweek Action

The Redhawks split a doubleheader with Missouri Valley Conference member Bradley in their first midweek action of the season on Mar. 12. Southeast Missouri won game one, 6-2, and dropped the



## 2024 SOUTHEAST MISSOURI SOFTBALL NOTES

### TENNESSEE STATE // MAR. 23-24

nightcap, 5-1. SEMO has 35 midweek victories with Mark Redburn as its head coach.

#### // Tournament Play

The Redhawks wrapped up tournament play at the Arkansas Wooo Pig Classic (Mar. 1-3). Southeast Missouri also competed at the Florida International Felsberg Invitational (Feb. 9-11), Southeastern Louisiana Lion Classic (Feb. 16-18) and Auburn Plainsman Invitational (Feb. 23-25).

#### // Let's Turn Two

Southeast Missouri turned an Ohio Valley Conference leading 10 double plays through 26 games this season. SEMO's defense had a season-high two double plays at Arkansas (Mar. 1).

#### // Go Ahead I Dare You

Catcher Marissa Peek has thrown out six runners on the basepaths this season. Peek leads the Ohio Valley Conference in caught stealing by.

#### // Halliwill Fourth in the OVC in Home Runs

Paige Halliwill is tied for fourth in the Ohio Valley Conference with three home runs. Halliwill homered vs. Stony Brook twice (Feb. 9, Feb. 11), and Northern Iowa (Feb. 24). She is one of 10 players in the league with a minimum of three home runs.

#### // Shore Among OVC Leaders

Aubrie Shore ranks among the Ohio Valley Conference's top 10 leaders in hits (t9th, 26), RBI (t7th, 17), doubles (t2nd, 9), total bases (t10th, 38) and at-bats (t10th, 80). Shore leads the Redhawks with seven multi-hit games.

#### // Shore Clears 100 Hits

With her six hits in Southeast Missouri's series against Eastern Illinois (Mar. 9-10), Aubrie Shore went over 100 hits in her career. Shore currently has 107 hits in 122 games and 119 starts. She is the second

player on this year's roster with over 100 hits joining Kynzie Wrigley (122). Paige Halliwill is next closest to that mark with 99 career hits.

#### // Nice Tournament for Wrigley

Kynzie Wrigley singled in three of five starts at the Wooo Pig Classic last weekend. Wrigley had a base hit in three-straight games at Arkansas (Mar. 1), vs. South Dakota State (Mar. 2) and vs. Florida Atlantic (Mar. 2).

#### // Redhawks Beat Maryland for Power Four Win

The Redhawks upended Big Ten Conference member Maryland, 9-3, in the final day of the Lion Classic on Feb. 18. Southeast Missouri took its first lead of the game in the bottom of the second inning and never turned back. SEMO blew things open with four runs two innings later. Three-straight hits by Tatum Gerwitz, Sophie Schupp and Sydney Dennis loaded the bases with one out. Brittany Affolter and Paige Halliwill each walked in a run and Aubrie Shore scored Dennis on a sacrifice fly. Halliwill stole second and a throwing error allowed Brittany Affolter to score giving the Redhawks a 7-1 advantage.

#### // Power Four Schools

Arkansas is the fifth Power Four team Southeast Missouri faces this season. SEMO is presently 1-5 against such teams with a win and one loss against Big Ten Conference foe Maryland, a loss to fellow Big Ten member Ohio State, a loss to ACC member Syracuse and two losses to SEC member and nationally-ranked Auburn. SEMO also faces a third SEC opponent in Missouri during its 2024 campaign.

#### // Success Against Power Four

Southeast Missouri has had its share of success against Power Four teams under Head Coach Mark Redburn. In fact, SEMO has nine Power Four wins with Redburn at the helm. The Redhawks beat

Maryland (2024), Ole Miss (2023), Iowa (2022), Texas Tech (2021), Arkansas (2019), Kansas (2019, two wins), Missouri (2018) and Georgia Tech (2017) during Redburn's career. SEMO has picked up a Power Four win in four-straight seasons.

#### // Home Run Hitters

Paige Halliwill hit her team-high third home run against Northern Iowa at the Plainsman Invitational on Feb. 24. Halliwill also homered twice against Stony Brook (Feb. 9, Feb. 11). She has 13 home runs in her career. Meanwhile, Aubrie Shore has one home run this season (vs. Stony Brook, Feb. 11) and a total of 17 in her career. Shore needs one more to crack her program's Top-10 career home run list.

#### // Every Game Starters

Aubrie Shore is the only player who has started every game for Southeast Missouri this season. Shore made all of her starts at first base. SEMO has used a different lineup in each of its 26 games this year.

#### // First Career Hits for the Freshmen

Freshmen Brooklyn Saysoff, Gracie Luna and Sophie Schupp each recorded their first career hits at the Lion Classic last weekend. All three had a hit in Southeast Missouri's win over Maryland (Feb. 18). Saysoff and Luna each had one hit and Schupp led the Redhawks with two.

#### // Season-High Runs

Southeast Missouri scored a season-high nine runs in its 9-3 victory over Maryland (Feb. 18) and 9-4 win over Eastern Illinois (Mar. 9). SEMO's most runs have come in the first (17), third (13) and sixth (12) innings this 2024 campaign.

#### // Season-Openers

Southeast Missouri won its 2024 season-opener with a 7-5 victory over Stony Brook (Feb. 9). SEMO improved to 17-16 in season-opening games during its NCAA Division I era. This year marks





SEMO's 33rd as an NCAA Division I program. The Redhawks are 5-5 in season-openers under Head Coach Mark Redburn.

### // Freshman Experience

All 10 of the Redhawks freshmen have played this season. Brooklyn Saysoff, Gracie Luna, Tegan Livesay and Maddie Carney saw the most action of the group thus far. Saysoff started 19 games between second base (4), third base (8) and shortstop (7), while Luna has made seven of her 10 starts as designated player. Carney is first on the team with 16 appearances, including 14 in relief, while Livesay started eight of her 12 appearances.

### // Extra Base Hits

Southeast Missouri registered 44 extra base hits in its first 26 games this season. SEMO has 35 doubles, one triple and eight home runs thus far.

### // Freshmen Pitching

True freshmen pitchers Willow Van Haren, Maddie Carney and Tegan Livesay combined for four shutout no-hit innings to nail down the Redhawks 5-4 victory over Stony Brook (Feb. 11). Van Haren threw one scoreless inning before giving way to Carney in the fifth. She pitched perfect innings in the fifth and sixth. Livesay took over in the seventh and tossed a 1-2-3 inning to earn her first career save. Van Haren claimed her first career victory when she beat Florida International (Feb. 9).

### // 122 and Counting

Paige Halliwill has started 122 games during her Southeast Missouri career. Halliwill had a streak of 119 consecutive starts end in game two of the Redhawks doubleheader vs. Bradley (Mar. 12).

### // About Tennessee State

Tennessee State comes to Cape Girardeau as currently the hottest team in Ohio Valley Conference play. TSU, which shares the top spot in the OVC standings with Eastern Illinois, has won five-straight league games. The Tigers won the last two games of their series win over Morehead State and swept Lindenwood for those victories. Nahtali Simpson is the OVC's top hitter with a .448 batting average. Simpson also leads the conference in slugging percentage (.701) and on-base percentage (.519). Reigning OVC Pitcher of the Week Caitlyn Manus is 7-5 with four complete games and 54 strikeouts in 58 innings. Opponents are hitting just .176 against Manus in league games alone.

### // On Deck

Southeast Missouri travels to Southern Indiana for a three-game series before the Easter holiday. The Redhawks and Screaming Eagles play a doubleheader on Mar. 29 and a single game on Mar. 30.

### // OVC Preseason Favorite

Reigning Ohio Valley Conference regular-season champion Southeast Missouri was tabbed the league's preseason favorite ahead of the 2024 season. SEMO collected 13 of the possible 20 first-place votes and tallied 157 points in the overall voting by the conference's head softball coaches and communications directors. Eastern Illinois, which won the OVC Tournament title and advanced to the NCAA Tournament in 2023, was picked second with 148 points and six first-place nods. UT Martin earned the remaining first-place vote and is third with 120 points, while Southern Indiana (112 pts.) and SIU Edwardsville (111 pts.) round out the top half. Tennessee State (80 pts.), Lindenwood (65 pts.), Morehead State (44 pts.), first-year OVC member Western Illinois (33 pts.) and Tennessee Tech (30 pts.) complete the predicted order of finish.

### // Senior Driven

The Redhawks have seven seniors on their 2024 roster. Paige Halliwill, Zoe Schulte, Abigail Rickermann, Paytience Holman, Kat Sackett, Kynzie Wrigley and Marissa Peek are Southeast Missouri's veterans. They have combined for 105 wins during their careers. Holman, Rickermann and Wrigley have been a part of two Ohio Valley Conference Championship teams (2021, 2023).

### // Pitching Depth

Southeast Missouri has five pitchers on this year's team giving Mark Redburn the most depth he's had inside the circle as the Redhawks head coach. First-Team All-Ohio Valley Conference honoree Delaney Kell returns as well as fifth-year senior Paytience Holman. Kell went 14-3 in 26 games and 16 starts a year ago. She went undefeated at 9-0 with a 1.94 ERA in league play alone. Kell led the Redhawks with 73 strikeouts in 109.2 innings. Holman recorded six wins in 23 appearances and 14 starts. She struck out 46 in 96.2 innings and tied for first on the team with three saves last season. Freshmen Willow Van Haren (LHP), Tegan Livesay (RHP) and Maddie Carney (RHP) will make their college debuts in 2024.

### // Top Four Hitters Back

The Redhawks top four hitters in Zoe Schulte, Paige Halliwill, Aubrie Shore and Abigail Rickermann are back for a Southeast Missouri offense which led the Ohio Valley Conference with a .308 batting average in 2023. Schulte led the Redhawks with a .371 clip, while Halliwill hit .352, Shore hit .347 and Rickermann hit .338. Halliwill topped SEMO in runs (31) and hits (44), while Shore led the team in home runs (7) and RBI (33). As a team, the Redhawks also led the OVC in on-base percentage (.388) and triples (13).



## 2024 SOUTHEAST MISSOURI SOFTBALL NOTES

### TENNESSEE STATE // MAR. 23-24

#### // Returning All-OVC Performers

Five All-Ohio Valley Conference performers from a year ago return to this year's team. First baseman Aubrie Shore is the league's reigning Player of the Year. Shore also earned first-team honors and was named NFCA Third-Team All-Mideast Region in 2023. Catcher Kat Sackett, pitcher Delaney Kell and outfielder Paige Halliwill joined Shore as first-team selections. Second baseman Sydney Dennis claimed Second-Team All-OVC accolades and outfielder Zoe Schulte landed a spot on the 12-member OVC All-Newcomer Team.

#### // Redburn in 10th Year

Mark Redburn is in his 10th year as Southeast Missouri's head coach. Redburn has orchestrated an outstanding turnaround that has seen the Redhawks win 30 or more games in four of the last six seasons, claim three Ohio Valley Conference regular-season titles (2019, 2021, 2023), win one OVC Tournament crown (2019) and earn one NCAA Tournament berth (2019). He is 247-202 overall and 125-75 in the OVC at the SEMO helm.

#### // Six-Straight Winning Seasons

The Redhawks had winning seasons in six-straight years. Southeast Missouri posted 30 or more wins in four of those seasons (2018, 2019, 2021, 2022). SEMO went 29-14 overall and 20-2 in the Ohio Valley Conference in 2023. The 20 OVC wins were the Redhawks second-most in a season in program history.

#### // Team 48

The 2024 club is the 48th team in Southeast Missouri's softball history. This year's roster consists of 25 players, including seven seniors, six juniors, two sophomores and 10 freshmen. SEMO also returns seven starters and two starting pitchers. Three of those returning starters, including Paige Halliwill, Aubrie Shore and Kat Sackett started every game in 2023.

#### // Softball Success

In the last six seasons, Southeast Missouri softball teams have won a total of 181 games for an average of 30 per year during that span. SEMO notched a program record 46 wins in 2019 and won 30 games in back-to-back seasons (2021, 2022) for the second time in Mark Redburn's head coaching tenure. In terms of winning percentage, softball has been the winningest program in SEMO Athletics with a .619 clip in the last six years. Over that time, the Redhawks accumulated 203 victories, won 99 OVC games and boasted a .692 winning percentage in conference action.

#### // Reflecting on 2023

In 2023, Southeast Missouri ranked first in the Ohio Valley Conference in batting average (.308), ERA (2.70), triples (13) and opposing batting average (.230). Pitching wise, the Redhawks gave up the fewest hits (244), runs (128), earned runs (107) and walks (82) of anyone in the league. SEMO ripped through its OVC schedule outscoring opponents by a staggering +107 margin (149-42) along the way. The Redhawks led the conference in batting average (.358), on-base percentage (.441), slugging percentage (.547), runs (149), hits (209), triples (12), doubles (41), RBI (138) and total bases (319) in league games. SEMO posted series sweeps against six of its eight conference opponents. Additionally, the Redhawks had a 16-game conference winning streak from Mar. 18-Apr. 30 that year.

#### // Redhawks Sign Two for 2025

Outfielder Selby Patberg and infielder Addisyn Martinie signed with the Southeast Missouri softball program and will join the Redhawks in 2024-25. A native of Mt. Carmel, Illinois, Patberg is a three-year starter at Mt. Carmel High School. She earned First-Team All-Conference, Second-Team All-State and Extra Innings Softball First-Team All-America honors as a junior. That year, Patberg led the team in stolen bases (27), runs scored (47), hits (49)

and triples (2). She also hit .521 and boasted a team-high .591 on-base percentage. Patberg has 96 runs scored and 54 steals in her prep career to date. She plays club softball for Matt Gerth and the Indiana Magic Gold team. Martinie, who hails from St. Joseph, Illinois, is a three-year starter at St. Joseph Ogden High School. She garnered All-Conference, All-State and All-Area accolades each of her last two seasons and was named her team's Rookie of the Year as a freshman. Martinie presently holds a .419 batting average with 34 home runs and 119 RBI in her high school career. As a junior, she hit .439 with 17 home runs and 57 RBI. Before that, Martinie hit .467 as a sophomore and .352 as a freshman. She plays club softball for the Peoria Sluggers and SEMO alum Renee (Enos) Gass.

#### // 2024 OVC Softball Tournament

The 2024 Ohio Valley Conference Softball Championship will be held May 8-11 at the Louisville Slugger Sports Complex in Peoria, Illinois. It marks the first time the event has been held at the venue.





# 2024 SOUTHEAST MISSOURI SOFTBALL NOTES

## NUMERICAL & ALPHABETICAL ROSTER

### Numerical

No.	Name	Pos.	Ht.	B-T	Cl.	Hometown	High School/College
1	Sophie Schupp	INF	5-5	R-R	Fr.	Columbia, Mo.	Rock Bridge H.S.
2	Paige Halliwill	OF	5-7	L-L	Sr.	Mogadore, Ohio	Mogadore H.S./Marshall
3	Willow Van Haren	P	5-7	L-L	Fr.	Holdenville, Okla.	Moss H.S./Northeastern St.
4	Kinley Wilkins	OF	5-7	L-L	Fr.	Lawson, Mo.	Lawson H.S.
5	Brooklyn Saysoff	INF	5-4	R-R	Fr.	Blue Springs, Mo.	Blue Springs H.S.
6	Tegan Livesay	P	5-11	R-R	Fr.	Newton, Kan.	Newton H.S./Fairmont H.S.
7	Gracie Luna	C	5-6	R-R	Fr.	Peoria, Ill.	East Peoria H.S.
8	Sydney Melton	C	5-8	R-R	Jr.	Eddyville, Ky.	Lyon County H.S.
9	Maddie Carney	P	5-9	R-R	Fr.	St. Louis, Mo.	Marquette H.S.
10	Tatum Gerwitz	OF	5-9	L-R	Jr.	O'Fallon, Mo.	Fort Zumwalt West H.S.
11	Tori Bradley	C	5-7	L-R	Jr.	Blue Springs, Mo.	Blue Springs South H.S.
12	Zoe Schulte	OF	5-6	L-R	Sr.	Wentzville, Mo.	Timberland H.S./Iowa
14	Brittany Affolter	OF	5-6	L-R	So.	Odessa, Mo.	Odessa H.S.
15	Delaney Kell	P	5-6	R-R	Jr.	Salem, Ill.	Salem H.S.
16	Abigail Rickermann	INF	5-6	L-R	Sr.	Festus, Mo.	Festus H.S.
17	Taryn Coon	INF	5-4	R-R	So.	Dodge City, Kan.	Dodge City H.S.
18	Sydney Dennis	INF	5-5	L-R	Jr.	Eureka, Mo.	Eureka H.S.
19	Paytience Holman	P	5-8	R-R	Sr.	Mexico, Mo.	Mexico H.S.
20	Kat Sackett	C	6-0	L-L	Sr.	Erie, Colo.	Erie H.S./Marshall
21	Abby Robbins	INF	5-6	R-R	R-Fr.	Farmington, Mo.	Farmington H.S.
22	Mary Tutwiler	OF	5-6	R-R	Fr.	Oakville, Mo.	Oakville H.S.
24	Kynzie Wrigley	INF	5-4	L-R	Sr.	Mt. Zion, Ill.	Mt. Zion H.S.
26	Aubrie Shore	INF	5-6	R-R	Jr.	Mahomet, Ill.	Mahomet-Seymour H.S.
27	Hailey Burnett	INF	6-0	R-R	Fr.	Cape Girardeau, Mo.	Notre Dame H.S.
28	Marissa Peek	C	5-8	R-R	Sr.	Wentzville, Mo.	Wentzville-Holt H.S./Iowa

### Alphabetical

No.	Name	Pos.	Ht.	B-T	Cl.	Hometown	High School/College
14	Brittany Affolter	OF	5-6	L-R	So.	Odessa, Mo.	Odessa H.S.
11	Tori Bradley	C	5-7	L-R	Jr.	Blue Springs, Mo.	Blue Springs South H.S.
27	Hailey Burnett	INF	6-0	R-R	Fr.	Cape Girardeau, Mo.	Notre Dame H.S.
9	Maddie Carney	P	5-9	R-R	Fr.	St. Louis, Mo.	Marquette H.S.
17	Taryn Coon	INF	5-4	R-R	So.	Dodge City, Kan.	Dodge City H.S.
18	Sydney Dennis	INF	5-5	L-R	Jr.	Eureka, Mo.	Eureka H.S.
10	Tatum Gerwitz	OF	5-9	L-R	Jr.	O'Fallon, Mo.	Fort Zumwalt West H.S.
2	Paige Halliwill	OF	5-7	L-L	Sr.	Mogadore, Ohio	Mogadore H.S./Marshall
19	Paytience Holman	P	5-8	R-R	Sr.	Mexico, Mo.	Mexico H.S.
15	Delaney Kell	P	5-6	R-R	Jr.	Salem, Ill.	Salem H.S.
6	Tegan Livesay	P	5-11	R-R	Fr.	Newton, Kan.	Newton H.S./Fairmont H.S.
7	Gracie Luna	C	5-6	R-R	Fr.	Peoria, Ill.	East Peoria H.S.
8	Sydney Melton	C	5-8	R-R	Jr.	Eddyville, Ky.	Lyon County H.S.
28	Marissa Peek	C	5-8	R-R	Sr.	Wentzville, Mo.	Wentzville-Holt H.S./Iowa
16	Abigail Rickermann	INF	5-6	L-R	Sr.	Festus, Mo.	Festus H.S.
21	Abby Robbins	INF	5-6	R-R	R-Fr.	Farmington, Mo.	Farmington H.S.
20	Kat Sackett	C	6-0	L-L	Sr.	Erie, Colo.	Erie H.S./Marshall
5	Brooklyn Saysoff	INF	5-4	R-R	Fr.	Blue Springs, Mo.	Blue Springs H.S.
1	Sophie Schupp	INF	5-5	R-R	Fr.	Columbia, Mo.	Rock Bridge H.S.
12	Zoe Schulte	OF	5-6	L-R	Sr.	Wentzville, Mo.	Timberland H.S./Iowa
26	Aubrie Shore	INF	5-6	R-R	Jr.	Mahomet, Ill.	Mahomet-Seymour H.S.
22	Mary Tutwiler	OF	5-6	R-R	Fr.	Oakville, Mo.	Oakville H.S.
3	Willow Van Haren	P	5-7	L-L	Fr.	Holdenville, Okla.	Moss H.S./Northeastern St.
4	Kinley Wilkins	OF	5-7	L-L	Fr.	Lawson, Mo.	Lawson H.S.
24	Kynzie Wrigley	INF	5-4	L-R	Sr.	Mt. Zion, Ill.	Mt. Zion H.S.

**Head Coach:** Mark Redburn (10th Year/Missouri-St. Louis, 1993)

**Associate Head Coach:** Kristen Jones (Ninth Year/Augusta State, 2012)

**Assistant Coach:** Ashley Ellis (Second Year/Southeast Missouri, 2021)

**Video Coordinator:** Danina Marton

### Roster Breakdown

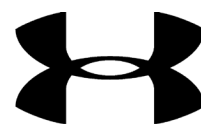
Total Squad Members	25
Seniors	7
Juniors	6
Sophomores	2
Freshmen	10

### Pronunciation Guide

Tatum Gerwitz	GURR-witz
Paige Halliwill	HAL-ih-will
Sophie Schupp	shoop
Mary Tutwiler	tut-WHY-lurr

### Geographical Breakdown

Colorado	1
Kat Sackett	Erie
Illinois	4
Delaney Kell	Salem
Gracie Luna	Peoria
Aubrie Shore	Mahomet
Kynzie Wrigley	Mt. Zion
Kansas	2
Taryn Coon	Dodge City
Tegan Livesay	Newton
Kentucky	1
Sydney Melton	Eddyville
Missouri	15
Brittany Affolter	Odessa
Tori Bradley	Blue Springs
Hailey Burnett	Cape Girardeau
Maddie Carney	St. Louis
Sydney Dennis	Eureka
Tatum Gerwitz	O'Fallon
Paytience Holman	Mexico
Marissa Peek	Wentzville
Abigail Rickermann	Festus
Abby Robbins	Farmington
Brooklyn Saysoff	Blue Springs
Sophie Schupp	Columbia
Zoe Schulte	Wentzville
Mary Tutwiler	Oakville
Kinley Wilkins	Lawson
Ohio	1
Paige Halliwill	Mogadore
Oklahoma	1
Willow Van Haren	Holdenville







**1**  
**Sophie Schupp**  
INF / 5-5 / R-R / Fr.  
Columbia, Mo.



**2**  
**Paige Halliwill**  
OF / 5-7 / Sr. / L/L  
Mogadore, Ohio



**3**  
**Willow Van Haren**  
P / 5-7 / L-L / Fr.  
Holdenville, Okla.



**4**  
**Kinley Wilkins**  
OF / 5-7 / L-L / Fr.  
Lawson, Mo.



**5**  
**Brooklyn Saysoff**  
INF / 5-4 / R-R / Fr.  
Blue Springs, Mo.



**6**  
**Tegan Livesay**  
P / 5-11 / R-R / Fr.  
Newton, Kan.



**7**  
**Gracie Luna**  
C / 5-6 / R-R / Fr.  
Peoria, Ill.



**8**  
**Sydney Melton**  
C / 5-8 / Jr. / R/R  
Eddyville, Ky.



**9**  
**Maddie Carney**  
P / 5-9 / R-R / Fr.  
St. Louis, Mo.



**10**  
**Tatum Gerwitz**  
OF / 5-9 / Jr. / L-R  
O'Fallon, Mo.



**11**  
**Tori Bradley**  
C / 5-7 / Jr. / L-R  
Blue Springs, Mo.



**12**  
**Zoe Schulte**  
OF / 5-6 / Sr. / L-R  
Wentzville, Mo.



**14**  
**Brittany Affolter**  
OF / 5-6 / So. / L-R  
Odessa, Mo.



**15**  
**Delaney Kell**  
P / 5-6 / Jr. / R-R  
Salem, Ill.



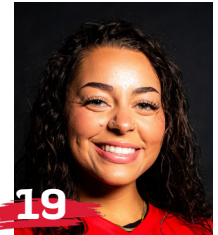
**16**  
**Abigail Rickermann**  
INF / 5-6 / Sr. / L-R  
Festus, Mo.



**17**  
**Taryn Coon**  
INF / 5-4 / R-Fr. / R-R  
Dodge City, Kan.



**18**  
**Sydney Dennis**  
INF / 5-5 / Jr. / L-R  
Eureka, Mo.



**19**  
**Paytience Holman**  
P / 5-8 / Sr. / R-R  
Mexico, Mo.



**20**  
**Kat Sackett**  
C / 6-0 / Sr. / L-L  
Erie, Colo.



**21**  
**Abby Robbins**  
INF / 5-6 / R-Fr. / R/R  
Farmington, Mo.



**22**  
**Mary Tutwiler**  
OF / 5-6 / Fr. / R-R  
Oakville, Mo.



**24**  
**Kynzie Wrigley**  
INF / 5-4 / Sr. / L-R  
Mt. Zion, Ill.



**26**  
**Aubrie Shore**  
INF / 5-6 / Jr. / R-R  
Mahomet, Ill.



**27**  
**Hailey Burnett**  
INF / 6-0 / Fr. / R-R  
Cape Girardeau, Mo.



**28**  
**Marissa Peek**  
C / 5-9 / Sr. / R-R  
Wentzville, Mo.



**Mark Redburn**  
Head Coach  
10th Year



**Kristen Jones**  
Associate Head Coach  
Ninth Year



**Ashley Ellis**  
Assistant Coach  
Second Year



**Danina Marton**  
Video Coordinator





## 2024 SOUTHEAST MISSOURI SOFTBALL NOTES

### HEAD COACH MARK REDBURN



## MARK REDBURN

// Head Coach // 10th Year // Missouri-St. Louis, 1993

**M**ark Redburn enters his 10th year as Southeast Missouri's head softball coach in 2024.

Redburn has orchestrated an outstanding turnaround that has seen the Redhawks win 30 or more games in four of the last six seasons, claim three Ohio Valley Conference regular-

season titles (2019, 2021, 2023), win one OVC Tournament crown (2019) and earn one NCAA Tournament berth (2019).

In the last six seasons alone, SEMO has won a total of 180 games for an average of 30 per year during that span. The Redhawks notched a program record 46 wins in 2019 and

won 30 games in back-to-back seasons (2021, 2022) for the second time in Redburn's tenure. In terms of winning percentage, softball has been the winningest program in SEMO Athletics with a .581 clip in the last eight years. Over that time, the Redhawks accumulated 219 victories and boasted a .641 winning percentage with 109 wins in OVC play.

During the first nine years with Redburn at the helm, SEMO has produced one National Fastpitch Coaches Association All-American, eight NFCA All-Region selections, 27 All-OVC picks, two OVC Players of the Year, one OVC Pitcher of the Year, one OVC Tournament Most Valuable Player and two College Sports Communicators (CSC) Academic All-Americans.

Academically, SEMO has been just as impressive with Redburn in charge. Most recently, the softball team achieved a 3.61 cumulative grade point average during the 2022-23 academic year.

In 2023, Redburn led SEMO to its eighth OVC regular-season championship in program history and third since the 2019 campaign. Along the way, Redburn was named OVC Coach of the Year for the third time in that span.

The Redhawks went undefeated at home (13-0) for the second-straight season posting unbeaten records at home in back-to-back years for the first time ever. SEMO is on a 30-game winning streak at

the Southeast Softball Complex dating back to the end of the 2021 season.

SEMO concluded the year with a 29-14 overall record and 20-2 mark in OVC play. The Redhawks claimed series sweeps against six of their eight league opponents en route to their second-best conference season in program history.

The Redhawks ripped through the conference portion of their schedule outscoring OVC foes by a staggering +107 margin (149-42). SEMO led the conference in batting average (.358), on-base percentage (.441), slugging percentage (.547), runs (149), hits (209), triples (12), doubles (41), RBI (138) and total bases in OVC games only. Additionally, the Redhawks had a 16-game conference winning streak from Mar. 18-Apr. 30.

Overall, SEMO topped the OVC with a .311 batting average, 2.70 ERA, 13 triples and a .230 opposing batting average. Redhawk pitchers also had the fewest hits (244), runs (128), earned runs (107) and walks (82) allowed in the league.

First baseman Aubrie Shore shared the 2023 OVC Player of the Year honor with Southern Indiana's Allie Goodin. Shore, also a First-Team All-OVC pick, became the sixth SEMO player to win the coveted award. Paige Halliwill, Delaney Kell and Kat Sackett joined Shore as first-team picks. Alyson Tucker and Sydney Dennis earned Second-Team All-OVC accolades, while





Zoe Schulte landed a spot on the league's All-Newcomer Team. Sackett later made the OVC All-Tournament team, as well.

SEMO's 2022 club became the first in program history to go undefeated at home with a 14-0 record. Overall, the Redhawks compiled a 30-24 mark and placed fourth in the OVC. As the #4 seed in the league's postseason tournament, SEMO advanced to the semifinals where it dropped a close one-run game to #2 seed Belmont. The Redhawks won 17-consecutive games at home dating back to the 2021 season.

The 2022 campaign marked SEMO's fifth OVC Tournament appearance in eight years with Redburn as its coach.

As a team, SEMO ranked among the top three in the OVC in doubles (t3rd, 67), stolen bases (2nd, 58), steal attempts (73), opposing batting average (3rd, .244), batters struck out (2nd, 323), batters struck out looking (1st, 84), saves (t3rd, 5) and fielding percentage (2nd, .967).

The 2022 team ranked among SEMO's all-time single-season leaders in slugging percentage (8th, .413), runs (t5th, 270), doubles (t10th, 67), home runs (t7th, 38), RBI (5th, 238), total bases (8th, 581), sacrifice flies (10th, 12), stolen bases (t7th, 58), stolen base attempts (t6th, 73), opposing batting average (3rd, .244), strikeouts per seven innings (t1st, 6.51), saves (t8th, 5), innings pitched (7th, 374.2),

strikeouts (2nd, 323), strikeouts looking (3rd, 84) and fielding percentage (3rd, .967). SEMO came from behind to upend Big Ten Conference member Iowa, 3-2, on Mar. 15 marking the first time the Redhawks beat a Big Ten opponent in 21 years.

In 2021, Redburn carried the Redhawks to another 30-win campaign. SEMO finished 30-17 overall and registered a program record 23 OVC wins en route to its second-straight regular-season conference title. The Redhawks headed into the OVC Tournament as the #1 seed and ended the year with a pair of one-run losses to Eastern Kentucky.

SEMO led the league in on-base percentage (.369), opposing batting average (.213), strikeouts looking (69), saves (8), fewest hits allowed (247), fewest runs allowed (139) and fewest earned runs allowed (121).

All of the Redhawks success during the 2021 campaign culminated with Redburn claiming his second-straight OVC Coach of the Year honor. Additionally, Rachel Rook was tabbed OVC Pitcher of the Year becoming only the second player in program history to win the coveted award.

Offensively, SEMO outscored its opponents by a +100 (165-65) margin in conference games. The Redhawks' 165 runs were the most scored by any OVC team in conference play.

The year before in 2020, SEMO was off to a great start



and had all the makings for a big season, but a global COVID-19 pandemic abruptly shut things down only 17 games in.

The Redhawks won nine in a row and posted a 9-1 record in their first 10 games of the season. SEMO finished with an overall record of 12-5 and did not get a chance to play any OVC games when play was cancelled.

Although the 2020 season lasted just 23 days (Feb. 14-Mar. 8), the Redhawks accomplished a lot in that short time.

SEMO led the OVC in slugging percentage (.528), on-base percentage (.411), triples (14), stolen bases (41), hits allowed (84) and earned runs allowed

(40). The Redhawks also rated second in the league in batting average (.310), home runs (19), opposing batting average (.204), runs allowed (51), stolen bases per game (2.4) and triples per game (0.8).

Nationally, SEMO was among the top 25 in triples per game (2nd), stolen bases per game (8th, 2.4), scoring (16th, 6.7), slugging percentage (21st) and on-base percentage (24th).

Individually, Rachel Anderson led the OVC in batting average (.480), slugging percentage (.880), on-base percentage (.541) and triples (5) following a season that culminated with her winning the league's Player of the Year honor. Anderson,





## 2024 SOUTHEAST MISSOURI SOFTBALL NOTES

### HEAD COACH MARK REDBURN

who didn't strike out all year, capped her 2020 campaign as only the sixth player in program history to claim First-Team CoSIDA Academic All-America accolades.

Pitcher Rachel Rook was atop the OVC in earned run average (0.70) and opposing batting average (.119), while Ashley Ellis ended the year as the league's leader in home runs (8). Redburn guided SEMO to its first OVC regular-season and tournament championship, and NCAA Regional appearance in 20 years the year before that in 2019. Rook left SEMO as her program's all-time career strikeout leader with 621 Ks.

What a year 2019 was for SEMO which set an all-time program record with 46 wins, the only 40-win season in the school's entire NCAA Division I era. The Redhawks went 46-18 overall and 17-5 in the OVC before going 1-2 at the NCAA Regional in Oxford, Mississippi.

SEMO had so much to celebrate over the course of its magical 2019 campaign.

Redburn and his staff were honored as the NFCA Mid-east Region Coaching Staff of the Year. For Redburn himself, he was voted OVC Coach of the Year for the first time in his career.

Four players earned All-OVC honors, three claimed NFCA All-Region accolades and one garnered NFCA All-America distinction. Outfielder Rachel Anderson became SEMO's first All-American in 28 years

and the program's first All-American in the NCAA Division I tenure. TEAM 43 was also recognized by the NFCA for achieving the fourth highest grade point average among all NCAA Division I schools. SEMO recorded a team GPA of 3.678 with 17 players securing NFCA All-America Scholar-Athlete honors.

Statistically, SEMO's 2019 team broke a total of 17 single-season records in slugging percentage (.510), on-base percentage (.382), game played (64), runs (363), hits (501), home runs (74), RBI (318), total bases (850), walks (180), stolen bases (89), stolen base attempts (117), wins (46), saves (11), batters struck out (331), batters struck out looking (90), innings pitched (414) and putouts (1242).

In 2018, the Redhawks finished at 33-20 overall and fourth in the OVC with a 15-7 mark. SEMO locked down its first winning campaign in seven years.

The Redhawks heated up to win 11 of their final 14 regular-season games and advanced to the eight-team OVC Tournament.

SEMO's 2018 club finished with a 74 RPI among the nation's 296 NCAA Division I softball teams, quite a jump from its 173 ranking in 2017. The Redhawks collected eight doubleheader sweeps along the way.

Defensively, SEMO improved tremendously. After ranking eighth in the OVC in fielding percentage a year ago, the

Redhawks were the league's second-best fielding team in 2018. SEMO had 43 errors and committed 16 less than it did in 2017. The Redhawks went error free in 25 games equating to 47 percent of their entire season.

Prior to that, SEMO finished the 2017 campaign among the school's top single-season leaders in slugging percentage (6th, .427), on-base percentage (5th, .356), triples (4th, 21), home runs (9th, 31), total bases (9th, 567), stolen bases (2nd, 65), stolen base attempts (1st, 88), opponent batting average (7th, .282), strikeouts/7 innings (7th, 4.17), strikeouts (10th, 194), strikeouts looking (3rd, 61) fewest doubles allowed (8th, 49), fielding percentage (8th, .960), fewest errors (7th, 59) and fewest stolen bases against (3rd, 38).

Redburn picked up his 200th career victory when SEMO beat Austin Peay, 7-4, on Apr. 30, 2016. His 2016 club ranked among the school's top-10 teams in doubles (6th, 69), stolen bases (3rd, 58), walks (8th, 138), home runs (6th, 35) and slugging percentage (6th, .412).

In his first season, Redburn led the Redhawks to an overall record of 19-27 and 12-12 in OVC play during 2015. His 19 victories came after SEMO won no more than 15 games in each of the previous two seasons. Redburn's first club at Southeast also had 12 OVC wins, a +9 increase from the 2014 campaign. In addition, the Redhawks made the OVC

Tournament, snapping a streak of three years where they missed the event.

Not only did Redburn earn his 100th career NCAA Division I win in his inaugural season with the Redhawks, but he coached three All-OVC selections and one NFCA All-Region honoree.

Statistically, SEMO finished among the top-five OVC teams in batting average (3rd), slugging percentage (5th), on-base percentage (5th) and hits (5th). The 2015 Redhawks also broke two single-season records with Kayla Fortner in home runs and single-game mark and set a single-game school record with six home runs, as well.

In 19 years as a head coach between the NCAA Division I and National Junior College Athletic Association (NJCAA) ranks, Redburn has been to nine postseason tournaments, including one trip to the NJCAA National Tournament (2003), one to the Missouri Valley Conference Tournament (2013), five to the OVC Tournament (2015, 2018, 2019, 2021, 2022, 2023) and one to the NCAA Division I Tournament (2019). He has also accumulated 452 wins all-time as a head coach.

The fourth head coach in Redhawk softball history, Redburn won 90 games in five years as head coach at the University of Evansville before accepting the job at SEMO on June 26, 2014.

In 2014, Redburn coached a UE team with five starters that were underclassmen,





including four freshmen and one sophomore. The Purple Aces achieved their highest batting average since 2007. Additionally, UE had a freshman lead the team in stolen bases and home runs.

Despite a season that allowed 53 games, the 2013 team had its best season in Redburn's five years at UE. Entering the Missouri Valley Conference Tournament as the No. 7 seed, the Purple Aces beat the No. 6, No. 3 and No. 2 seeds to make their first MVC Championship appearance since 2003. UE finished second with three players garnering All-Tournament team honors.

The 2013 campaign resulted in the most overall wins in a season since 2008 and the best regular-season and conference tournament finish since Redburn's arrival. UE continued its aggressive baserunning with 89 stolen bases, ranking second in the MVC. The pitching staff also rated fourth in the conference.

Redburn's 2012 club saw improvement as well, winning more games than it had the previous season. The Purple Aces stole 79 bases and had two all-conference and one National Fastpitch Coaches Association All-Region selection that year.

In 2011, Redburn exposed a young and inexperienced team to some of the top programs in the nation as UE played one of its most difficult schedules. Tennessee, Georgia Tech, Missouri, Ohio State, Texas

Tech, South Alabama and Chattanooga were among the stiff competition.

Redburn quickly started to transform the UE program during his first year in 2010. The Purple Aces secured a berth in the MVC Tournament after winning 10 conference games. UE led the MVC with 31 doubles and hit 36 home runs, while producing two all-conference picks.

Academically, Redburn's teams consistently enjoyed success. In fact, each of his last four UE teams accumulated a 3.1 or higher grade point average. He had several student-athletes obtain over a 3.5 GPA and earn academic recognition along the way.

Prior to UE, Redburn spent three years as an assistant coach at the University of Missouri working primarily with the pitchers and catchers, and serving as recruiting coordinator.

He was part of a coaching staff that compiled an overall record of 137-53. The Tigers registered a school record for victories (50), won the Big 12 Conference Tournament, won their Regional and defeated host UCLA in the Super Regional to advance to the College World Series in 2009. Overall, Redburn coached four all-conference pitchers, including USA National Team Pitcher Chelsea Thomas at Missouri.

Redburn began his collegiate coaching career as head coach at St. Charles (Mo.) Community

College from 2001-04. He led the 2003 team to its first Region 16 championship and a seventh-place finish at the National Junior College Athletic Association Division I National Tournament. His 2004 squad set a school record with 33 victories.

Following his stay at St. Charles CC, Redburn spent two seasons as head coach of the new softball program at Jefferson College. In the program's first year of competition, 2006, he led Jefferson to a 49-16 record, Region 16 championship and ninth-place finish at the NJCAA Division I National Tournament. Redburn was honored as the Midwest Community College Athletic Conference Coach of the Year following that season.

A native of St. Charles, Missouri, Redburn graduated from the University of Missouri-St. Louis in 1993 and received his master's degree in Athletics/Activities Administration from William Woods University.

He is a member of the NCAA Division I Head Coaches Committee and serves as the OVC Head Coach Representative for the NFCA. Redburn was also the OVC representative for the Top-25 Poll until the 2023 season.

Redburn and his wife, Tracy, have two sons, Joe and Jack.





## 2024 SOUTHEAST MISSOURI SOFTBALL NOTES

### HEAD COACH MARK REDBURN

#### Redburn's Year-by-Year Records

Year	School	Assignment	Record	Conference Finish	Postseason
2002	St. Charles CC	Head Coach	16-21	3rd	Region XVI Runner-Up
2003	St. Charles CC	Head Coach	26-21	2nd	Region XVI Champions 7th NJCAA National Tournament
2004	St. Charles CC	Head Coach	33-16	1st	3rd in Region XVI
2005	Jefferson College	Head Coach	-	Program Preparation Year	-
2006	Jefferson College	Head Coach	49-16	1st Region 16	-
2007	Missouri	Assistant Coach	40-23, 13-4	3rd Big 12	-
2008	Missouri	Assistant Coach	47-17, 11-6	3rd Big 12	-
2009	Missouri	Assistant Coach	50-12, 12-6	2nd Big 12	1st Big 12 Tournament NCAA Midwest Regional Champions NCAA Super Regional Champions 8th in College World Series
2010	Evansville	Head Coach	18-34, 10-16	t7th MVC	-
2011	Evansville	Head Coach	12-42, 6-21	9th MVC	-
2012	Evansville	Head Coach	18-37, 8-19	8th MVC	-
2013	Evansville	Head Coach	23-30, 11-12	7th MVC	2nd MVC Tournament
2014	Evansville	Head Coach	19-32, 7-19	10th MVC	-
2015	Southeast Missouri	Head Coach	19-27, 12-12	7th OVC	8th OVC Tournament
2016	Southeast Missouri	Head Coach	16-33, 10-17	10th OVC	-
2017	Southeast Missouri	Head Coach	23-27, 8-14	9th OVC	-
2018	Southeast Missouri	Head Coach	33-20, 15-7	4th OVC	7th OVC Tournament
2019	Southeast Missouri	Head Coach	46-18, 17-5	1st OVC	1st OVC Tournament 3rd NCAA Regional
2020*	Southeast Missouri	Head Coach	12-5	-	-
2021	Southeast Missouri	Head Coach	30-17, 23-6	1st OVC	2nd OVC Tournament
2022	Southeast Missouri	Head Coach	30-24, 16-10	4th OVC	3rd OVC Tournament
2023	Southeast Missouri	Head Coach	29-14, 20-2	1st OVC	4th OVC Tournament
2024	Southeast Missouri	Head Coach	9-17, 4-2		

\* Season ended due to a global COVID-19 pandemic

**Overall Record as a Collegiate Coach:** 598-503 (23 years)

**Overall Record as a Head Coach:** 461-451 (20 years)

Record at Southeast Missouri, 247-202, 122-75 Ohio Valley Conference (10 years)

Record at Evansville, 90-175, 42-87 Missouri Valley Conference (5 years)

Record at Jefferson College, 49-16 (1 year)

Record at St. Charles CC: 75-58 (3 years)

Record as Assistant Coach at Missouri: 137-52 (3 years)

# 2024 SOUTHEAST MISSOURI SOFTBALL NOTES

## 2024 STATISTICS



Record: 9-17 Home: 2-3 Away: 4-5 Neutral: 3-9 OVC: 4-2

Player	avg	gp-gs	ab	r	h	2b	3b	hr	rbi	tb	slg%	bb	hp	so	gdp	ob%	sf	sh	sb-att	po	a	e	fld%
11 BRADLEY, Tori	.346	15-8	26	2	9	0	0	0	3	9	.346	2	0	3	0	.393	0	0	0-0	1	1	0	1.000
26 SHORE, Aubrie	.325	26-26	80	7	26	9	0	1	17	38	.475	7	0	15	1	.371	2	0	0-0	174	3	2	.989
16 RICKERMANN, Abigail	.316	21-11	38	5	12	1	0	0	2	13	.342	3	0	2	0	.366	0	1	1-1	17	18	0	1.000
5 SAYSOFF, Brooklyn	.283	22-19	46	4	13	4	0	0	4	17	.370	10	0	11	0	.411	0	0	2-2	18	44	9	.873
28 PEEK, Marissa	.270	21-13	37	6	10	5	0	2	6	21	.568	4	0	11	0	.333	1	1	1-1	53	9	3	.954
1 SCHUPP, Sophie	.269	21-10	26	5	7	3	0	0	7	10	.385	6	0	13	0	.406	0	2	0-0	15	15	5	.857
20 SACKETT, Kat	.259	22-19	54	6	14	6	0	2	9	26	.481	1	1	10	0	.281	1	0	1-1	37	1	4	.905
12 SCHULTE, Zoe	.256	20-14	39	7	10	1	0	0	0	11	.282	1	0	10	1	.275	0	1	4-4	24	0	0	1.000
2 HALLIWILL, Paige	.221	25-25	68	14	15	0	1	3	11	26	.382	10	3	8	0	.341	1	1	6-6	43	2	0	1.000
14 AFFOLTER, Brittany	.212	22-20	52	7	11	0	0	0	8	11	.212	6	0	11	0	.288	1	4	1-3	27	0	2	.931
24 WRIGLEY, Kynzie	.211	24-20	57	4	12	1	0	0	4	13	.228	2	0	15	1	.233	1	0	1-2	12	29	5	.891
18 DENNIS, Sydney	.204	26-22	54	12	11	2	0	0	1	13	.241	5	0	6	0	.271	0	1	1-2	30	31	5	.924
7 LUNA, Gracie	.194	20-10	36	1	7	3	0	0	3	10	.278	1	1	9	0	.237	0	0	0-0	2	0	1	.667
10 GERWITZ, Tatum	.114	24-14	35	4	4	0	0	0	3	4	.114	2	0	10	0	.162	0	4	1-1	26	1	1	.964
-----																							
8 MELTON, Sydney	.000	12-2	7	0	0	0	0	0	0	0	.000	0	0	3	0	.000	0	0	0-0	14	0	0	1.000
21 ROBBINS, Abby	.000	7-1	3	2	0	0	0	0	0	0	.000	0	0	2	0	.000	0	0	0-0	2	1	1	.750
4 WILKINS, Kinley	.000	13-0	2	1	0	0	0	0	0	0	.000	0	0	2	0	.000	0	0	1-1	0	0	0	.000
27 BURNETT, Hailey	.000	4-0	1	0	0	0	0	0	0	0	.000	1	0	0	0	.500	0	0	0-0	6	0	0	1.000
17 COON, Taryn	.000	1-0	0	1	0	0	0	0	0	0	.000	0	0	0	0	.000	0	0	0-0	0	0	0	.000
22 TUTWILER, Mary	.000	2-0	0	0	0	0	0	0	0	0	.000	0	0	0	0	.000	0	0	0-0	0	0	0	.000
Totals	.244	26	661	88	161	35	1	8	78	222	.336	61	5	141	3	.309	7	15	20-24	505	207	38	.949
Opponents	.298	26	704	150	210	20	3	20	135	296	.420	76	8	93	6	.368	11	11	30-37	516	195	27	.963

LOB - Team (146), Opp (158). DPs turned - Team (10), Opp (8). CI - Team (2), PEEK 1, SACKETT 1. IBB - Team (0), Opp (1).  
Picked off - WRIGLEY 1.

### (All games Sorted by Earned run avg)

Player	era	w-l	app	gs	cg	sho	sv	ip	h	r	er	bb	so	2b	3b	hr	b/avg	wp	hp	bk	sfa	sha
3 VAN HAREN, Willow	2.84	1-2	8	2	0	0/0	0	12.1	12	13	5	11	11	2	0	3	.250	5	1	0	2	0
19 HOLMAN, Paytience	3.33	5-6	15	11	1	0/0	0	63.0	65	37	30	17	35	7	1	6	.260	2	1	0	3	5
6 LIVESAY, Tegan	4.53	1-3	12	8	1	0/1	1	34.0	37	30	22	19	21	2	1	3	.259	5	4	0	2	1
9 CARNEY, Maddie	5.79	1-3	16	2	0	0/1	2	38.2	49	34	32	21	17	4	0	1	.314	5	2	0	1	4
15 KELL, Delaney	9.64	1-3	10	3	2	0/0	0	20.1	47	36	28	8	9	5	1	7	.439	3	0	0	3	1
Totals	4.87	9-17	26	26	4	1/1	3	168.1	210	150	117	76	93	20	3	20	.298	20	8	0	11	11
Opponents	2.60	17-9	26	26	7	6/2	4	172.0	161	88	64	61	141	35	1	8	.244	12	5	0	7	15

PB - Team (4), PEEK 2, MELTON 1, SACKETT 1, Opp (7). Pickoffs - Team (0), Opp (1). SBA/ATT - PEEK (12-18), SACKETT (15-15), CARNEY (8-10), HOLMAN (8-9), KELL (6-8), LIVESAY (7-8), MELTON (3-3), VAN HAREN (1-2).



## 2024 SOUTHEAST MISSOURI SOFTBALL NOTES

### 2024 SCHEDULE/RESULTS

Date	Opponent	Score	Inns	Overall	OVC	Pitcher of record	Attend	Time
! 02-09-24	vs Stony Brook	w 7-5	7	1-0-0	0-0-0	HOLMAN (W 1-0)	321	2:09
! 02-09-24	at FIU	w 7-4	(8)	2-0-0	0-0-0	VAN HAREN (W 1-0)	321	2:15
! 02-10-24	vs Ohio State	L 0-13	5	2-1-0	0-0-0	VAN HAREN (L 1-1)	0	1:50
! 02-10-24	vs FIU	L 0-1	7	2-2-0	0-0-0	LIVESAY (L 0-1)	0	1:39
! 02-11-24	vs Stony Brook	w 5-4	7	3-2-0	0-0-0	KELL (W 1-0)	0	1:57
\$ 02-16-24	vs Maryland	L 1-9	6	3-3-0	0-0-0	LIVESAY (L 0-2)	50	2:06
\$ 02-17-24	vs SYRACUSE	L 0-3	7	3-4-0	0-0-0	HOLMAN (L 1-1)	115	1:33
\$ 02-17-24	at Southeastern	L 2-10	6	3-5-0	0-0-0	KELL (L 1-1)	245	1:36
\$ 02-18-24	vs Maryland	w 9-3	7	4-5-0	0-0-0	HOLMAN (W 2-1)	87	2:00
^ 02-23-24	at #24 Auburn	L 0-8	5	4-6-0	0-0-0	KELL (L 1-2)	1533	1:18
^ 02-24-24	vs UNI	L 3-5	7	4-7-0	0-0-0	HOLMAN (L 2-2)	0	2:18
^ 02-24-24	at #24 Auburn	L 5-13	5	4-8-0	0-0-0	CARNEY (L 0-1)	1709	2:05
^ 02-25-24	vs UNI	L 6-9	7	4-9-0	0-0-0	CARNEY (L 0-4)	0	2:16
& 03-01-24	vs South Dakota St.	L 0-9	5	4-10-0	0-0-0	LIVESAY (L 0-3)	215	1:35
& 03-01-24	at #16 Arkansas	L 0-5	7	4-11-0	0-0-0	HOLMAN (L 2-3)	2000	1:45
& 03-02-24	vs South Dakota St.	L 1-9	5	4-12-0	0-0-0	KELL (L 1-3)	350	1:35
& 03-02-24	vs FAU	L 3-8	7	4-13-0	0-0-0	HOLMAN (L 2-4)	1000	2:05
& 03-03-24	at #16 Arkansas	L 5-6	(8)	4-14-0	0-0-0	HOLMAN (L 2-5)	2959	2:25
* 03-09-24	EASTERN ILLINOIS-1	L 4-7	(12)	4-15-0	0-1-0	CARNEY (L 0-3)	278	3:25
* 03-09-24	EASTERN ILLINOIS-2	w 9-4	7	5-15-0	1-1-0	LIVESAY (W 1-3)	190	2:02
* 03-10-24	EASTERN ILLINOIS	L 1-2	7	5-16-0	1-2-0	HOLMAN (L 2-6)	165	2:04
03-12-24	BRADLEY-1	w 6-2	7	6-16-0	1-2-0	HOLMAN (W 3-6)	102	1:48
03-12-24	BRADLEY-2	L 1-5	7	6-17-0	1-2-0	VAN HAREN (L 1-2)	109	1:40
* 03-16-24	at SIUE-1	w 3-0	7	7-17-0	2-2-0	CARNEY (W 1-3)	158	1:54
* 03-16-24	at SIUE-2	w 3-2	7	8-17-0	3-2-0	HOLMAN (W 4-6)	-	1:47
* 03-17-24	at SIUE	w 7-4	7	9-17-0	4-2-0	HOLMAN (W 5-6)	133	2:06

\* = Conference game

! = Felsberg Invitational (Miami, Fla.)

\$ = Lion Classic (Hammond, La.)

^ = Plainsman Invitational (Auburn, Ala.)

& = Wooo Pig Classic (Fayetteville, Ark.)

() extra inning game



# 2024 SOUTHEAST MISSOURI SOFTBALL NOTES

## 2024 OVC STATISTICS



Record: 4-2 Home: 1-2 Away: 3-0 OVC: 4-2

Player	avg	gp-gs	ab	r	h	2b	3b	hr	rbi	tb	slg%	bb	hp	so	gdp	ob%	sf	sh	sb-att	po	a	e	fld%
11 BRADLEY, Tori	.455	5-3	11	2	5	0	0	0	2	5	.455	1	0	1	0	.500	0	0	0-0	0	0	0	.000
26 SHORE, Aubrie	.450	6-6	20	5	9	3	0	0	2	12	.600	5	0	2	0	.560	0	0	0-0	61	1	0	1.000
16 RICKERMANN, Abigail	.400	6-3	15	3	6	0	0	0	1	6	.400	0	0	0	0	.400	0	1	1-1	9	9	0	1.000
28 PEEK, Marissa	.400	5-3	10	3	4	2	0	2	5	12	1.200	1	0	1	0	.417	1	1	0-0	8	2	1	.909
20 SACKETT, Kat	.375	6-5	16	3	6	3	0	1	3	12	.750	1	0	0	0	.412	0	0	0-0	8	0	0	1.000
5 SAYSOFF, Brooklyn	.273	6-6	22	1	6	2	0	0	3	8	.364	2	0	2	0	.333	0	0	1-1	9	17	1	.963
2 HALLIWILL, Paige	.222	6-6	18	4	4	0	1	0	2	6	.333	3	0	1	0	.333	0	0	2-2	9	0	0	1.000
14 AFFOLTER, Brittany	.200	6-5	20	2	4	0	0	0	3	4	.200	0	0	4	0	.200	0	1	0-1	9	0	0	1.000
12 SCHULTE, Zoe	.154	6-4	13	3	2	0	0	0	0	2	.154	0	0	2	1	.154	0	1	1-1	8	0	0	1.000
24 WRIGLEY, Kynzie	.000	6-4	11	1	0	0	0	0	0	0	.000	0	0	2	0	.000	0	0	0-0	3	8	1	.917
-----																							
1 SCHUPP, Sophie	.222	5-3	9	0	2	1	0	0	3	3	.333	2	0	6	0	.364	0	2	0-0	4	6	1	.909
18 DENNIS, Sydney	.200	6-3	5	0	1	0	0	0	0	1	.200	1	0	0	0	.333	0	0	0-0	5	5	2	.833
7 LUNA, Gracie	.125	3-1	8	0	1	1	0	0	1	2	.250	0	0	3	0	.125	0	0	0-0	0	0	0	.000
10 GERWITZ, Tatum	.000	5-2	6	0	0	0	0	0	0	0	.000	0	0	2	0	.000	0	0	0-0	6	0	0	1.000
8 MELTON, Sydney	.000	2-0	1	0	0	0	0	0	0	0	.000	0	0	0	0	.000	0	0	0-0	0	0	0	.000
4 WILKINS, Kinley	.000	5-0	0	0	0	0	0	0	0	0	.000	0	0	0	0	.000	0	0	1-1	0	0	0	.000
Totals	.270	6	185	27	50	12	1	3	25	73	.395	16	0	26	1	.327	1	6	6-7	141	64	6	.972
Opponents	.271	6	188	19	51	4	0	3	17	64	.340	9	2	14	1	.310	1	4	5-7	138	61	9	.957

LOB - Team (43), Opp (45). DPs turned - Team (1), Opp (3). CI - Team (1), PEEK 1.

### (OVC games only Sorted by Earned run avg)

Player	era	w-l	app	gs	cg	sho	sv	ip	h	r	er	bb	so	2b	3b	hr	b/avg	wp	hp	bk	sfa	sha
9 CARNEY, Maddie	2.06	1-1	5	0	0	0/1	2	17.0	17	5	5	5	4	0	0	1	.274	1	0	0	1	3
6 LIVESAY, Tegan	2.71	1-0	3	2	0	0/1	0	10.1	9	5	4	2	3	1	0	1	.220	0	2	0	0	0
19 HOLMAN, Paytience	2.77	2-1	4	4	0	0/0	0	17.2	24	9	7	2	7	2	0	1	.308	2	0	0	0	1
-----																						
15 KELL, Delaney	0.00	0-0	1	0	0	0/0	0	2.0	1	0	0	0	0	1	0	0	.143	1	0	0	0	0
Totals	2.38	4-2	6	6	0	1/1	2	47.0	51	19	16	9	14	4	0	3	.271	4	2	0	1	4
Opponents	2.89	2-4	6	6	2	0/0	1	46.0	50	27	19	16	26	12	1	3	.270	2	0	0	1	6

PB - Team (1), PEEK 1, Opp (1). SBA/ATT - PEEK (4-6), CARNEY (3-5), SACKETT (1-1), LIVESAY (1-1), HOLMAN (1-1).



## 2024 SOUTHEAST MISSOURI SOFTBALL NOTES

### 2024 SEASON/CAREER STATISTICS

Record: 9-17 Home: 2-3 Away: 4-5 Neutral: 3-9 OVC: 4-2

Player	SEASON													CAREER													
	Avg	G-GS	AB	R	H	2B	3B	HR	RBI	BB	Hbp	SO	Sb-Att	Avg	G-GS	AB	R	H	2B	3B	HR	RBI	BB	Hbp	SO	Sb-Att	
11 BRADLEY, Tori	.346	15-8	26	2	9	0	0	0	3	2	0	3	0-0	.279	77-43	136	12	38	7	1	0	13	17	1	25	2-2	
26 SHORE, Aubrie	.325	26-26	80	7	26	9	0	1	17	7	0	15	0-0	.318	122-119	337	44	107	32	1	17	85	37	3	36	1-3	
16 RICKERMANN, Abigail	.316	21-11	38	5	12	1	0	0	2	3	0	2	1-1	.294	144-71	265	50	78	5	3	0	18	26	2	20	15-20	
5 SAYSOFF, Brooklyn	.283	22-19	46	4	13	4	0	0	4	10	0	11	2-2	.283	22-19	46	4	13	4	0	0	4	10	0	11	2-2	
28 PEEK, Marissa	.270	21-13	37	6	10	5	0	2	6	4	0	11	1-1	.244	52-36	86	9	21	7	0	4	13	6	0	28	1-1	
1 SCHUPP, Sophie	.269	21-10	26	5	7	3	0	0	7	6	0	13	0-0	.269	21-10	26	5	7	3	0	0	7	6	0	13	0-0	
20 SACKETT, Kat	.259	22-19	54	6	14	6	0	2	9	1	1	10	1-1	.272	116-108	298	40	81	26	0	6	50	19	7	32	7-7	
12 SCHULTE, Zoe	.256	20-14	39	7	10	1	0	0	0	1	0	10	4-4	.327	61-36	101	21	33	1	1	0	7	5	1	21	7-7	
2 HALLIWILL, Paige	.221	25-25	68	14	15	0	1	3	11	10	3	8	6-6	.289	122-122	343	80	99	18	4	13	69	39	21	42	26-28	
14 AFFOLTER, Brittany	.212	22-20	52	7	11	0	0	0	8	6	0	11	1-3	.261	55-29	88	14	23	2	0	0	11	8	0	19	5-7	
24 WRIGLEY, Kynzie	.211	24-20	57	4	12	1	0	0	4	2	0	15	1-2	.300	159-144	406	75	122	28	1	8	66	29	5	57	16-19	
18 DENNIS, Sydney	.204	26-22	54	12	11	2	0	0	1	5	0	6	1-2	.255	116-97	267	39	68	6	5	0	30	14	0	27	14-22	
7 LUNA, Gracie	.194	20-10	36	1	7	3	0	0	3	1	1	9	0-0	.194	20-10	36	1	7	3	0	0	3	1	1	9	0-0	
10 GERWITZ, Tatum	.114	24-14	35	4	4	0	0	0	3	2	0	10	1-1	.184	109-54	174	23	32	1	0	0	8	15	0	45	3-4	
-----																											
8 MELTON, Sydney	.000	12-2	7	0	0	0	0	0	0	0	0	3	0-0	.194	60-14	62	7	12	3	1	1	9	5	5	9	3-3	
21 ROBBINS, Abby	.000	7-1	3	2	0	0	0	0	0	0	0	2	0-0	.000	7-1	3	2	0	0	0	0	0	0	0	2	0-0	
4 WILKINS, Kinley	.000	13-0	2	1	0	0	0	0	0	0	0	2	1-1	.000	13-0	2	1	0	0	0	0	0	0	0	2	1-1	
27 BURNETT, Hailey	.000	4-0	1	0	0	0	0	0	0	1	0	0	0-0	.000	4-0	1	0	0	0	0	0	0	1	0	0	0-0	
17 COON, Taryn	.000	1-0	0	1	0	0	0	0	0	0	0	0	0-0	.000	1-0	0	1	0	0	0	0	0	0	0	0	0-0	
22 TUTWILER, Mary	.000	2-0	0	0	0	0	0	0	0	0	0	0	0-0	.000	2-0	0	0	0	0	0	0	0	0	0	0	0-0	
Totals	.244	26-26	661	88	161	35	1	8	78	61	5	141	20-24														
Opponents	.298	26-26	704	150	210	20	3	20	135	76	8	93	30-37														

(All games Sorted by Earned run avg)

Player	SEASON														CAREER													
	ERA	W-L	App	GS	CG	Sho	Sv	IP	H	R	ER	BB	SO	ERA	W-L	App	GS	CG	Sho	Sv	IP	H	R	ER	BB	SO		
3 VAN HAREN, Willow	2.84	1-2	8	2	0	0	0	12.1	12	13	5	11	11	2.84	1-2	8	2	0	0	0	12.1	12	13	5	11	11		
19 HOLMAN, Paytience	3.33	5-6	15	11	1	0	0	63.0	65	37	30	17	35	3.36	26-31	93	64	20	8	5	367.0	373	208	176	109	219		
6 LIVESAY, Tegan	4.53	1-3	12	8	1	0	1	34.0	37	30	22	19	21	4.53	1-3	12	8	1	0	1	34.0	37	30	22	19	21		
9 CARNEY, Maddie	5.79	1-3	16	2	0	0	2	38.2	49	34	32	21	17	5.79	1-3	16	2	0	0	2	38.2	49	34	32	21	17		
15 KELL, Delaney	9.64	1-3	10	3	2	0	0	20.1	47	36	28	8	9	4.34	15-7	39	20	6	2	1	134.0	156	94	83	40	83		
Totals	4.87	9-17	26	26	4	1	3	168.1	210	150	117	76	93															
Opponents	2.60	17-9	26	26	7	6	4	172.0	161	88	64	61	141															

**Multiple-Hit Games**

Player	2	3	4	5+	Total
Aubrie Shore	5	2	-	-	7
Kat Sackett	3	1	-	-	4
Zoe Schulte	3	-	-	-	3
Marissa Peek	3	-	-	-	3
Sophie Schupp	2	-	-	-	2
Kynzie Wrigley	1	1	-	-	2
Brooklyn Saysoff	1	1	-	-	2
Paige Halliwill	2	-	-	-	2
Sydney Dennis	2	-	-	-	2
Tori Bradley	1	-	-	-	1
Abigail Rickermann	1	-	-	-	1
Gracie Luna	1	-	-	-	1

**Multiple-RBI Games**

Player	2	3	4	5+	Total
Paige Halliwill	4	-	-	-	4
Aubrie Shore	2	2	-	-	4
Sophie Schupp	1	1	-	-	2
Marissa Peek	1	1	-	-	2
Brittany Affolter	1	1	-	-	2
Brooklyn Saysoff	1	-	-	-	1
Tatum Gerwitz	1	-	-	-	1
Kynzie Wrigley	1	-	-	-	1
Tori Bradley	1	-	-	-	1
Kat Sackett	-	1	-	-	1

**Inning-by-Inning Summary**

Inning	SEMO	Opp.
First	23	22
Second	8	32
Third	13	24
Fourth	12	23
Fifth	6	17
Sixth	17	19
Seventh	4	7
Eighth	4	2
Ninth	0	0
Extra	1	4
Total	88	150

**Inning-by-Inning Summary (OVC Games)**

Inning	SEMO	Opp.
First	11	3
Second	4	1
Third	1	5
Fourth	2	2
Fifth	4	1
Sixth	4	2
Seventh	0	1
Eighth	0	0
Extra	1	4
Total	27	19

**Current Hitting Streaks**

Player	Games	Started
Abigail Rickermann	4	3/12
Tori Bradley	3	3/16

**Current Reached Base Streaks**

Player	Games	Started
Abigail Rickermann	4	3/12
Paige Halliwill	4	3/12
Marissa Peek	4	3/12

**Career Multiple-Hit Games**

Player	2	3	4	5+	Total
Kynzie Wrigley	26	5	1	-	32
Paige Halliwill	22	3	-	-	25
Aubrie Shore	21	3	1	-	25
Sydney Dennis	14	3	-	-	17
Kat Sackett	14	3	-	-	17
Abigail Rickermann	15	1	-	-	16
Zoe Schulte	4	3	-	-	7
Tori Bradley	5	1	-	-	6
Marissa Peek	5	-	-	-	5
Tatum Gerwitz	4	-	-	-	4
Brittany Affolter	2	-	-	-	2
Sophie Schupp	2	-	-	-	2
Brooklyn Saysoff	1	1	-	-	2
Sydney Melton	1	-	-	-	1
Gracie Luna	1	-	-	-	1

**Career Multiple-RBI Games**

Player	2	3	4	5+	Total
Aubrie Shore	12	5	3	1	21
Kynzie Wrigley	13	3	1	-	17
Paige Halliwill	9	5	3	-	17
Kat Sackett	6	4	1	-	11
Sydney Dennis	6	1	-	-	7
Tori Bradley	4	-	-	-	4
Sydney Melton	2	1	-	-	3
Brittany Affolter	2	1	-	-	3
Marissa Peek	2	1	-	-	3
Sophie Schupp	1	1	-	-	2
Abigail Rickermann	1	1	-	-	2
Zoe Schulte	1	-	-	-	1
Tatum Gerwitz	1	-	-	-	1
Brooklyn Saysoff	1	-	-	-	1

**14 Brittany Affolter****2024 Season-Highs**

At-Bats.....	6, vs. Eastern Illinois (3/9/24)
Runs.....	1, 7x, last at SIU Edwardsville (3/17/24)
Hits.....	1, 11x, last at SIU Edwardsville (3/17/24)
Doubles.....	-
Triples.....	-
Home Runs.....	-
RBI.....	3, vs. Eastern Illinois (3/9/24)
Stolen Bases.....	1, at Arkansas (3/3/24)

**Career-Highs**

At-Bats.....	6, vs. Eastern Illinois (3/9/24)
Runs.....	1, 14x, last at SIU Edwardsville (3/17/24)
Hits.....	2, 2x, last at Southern Illinois (3/28/23)
Doubles.....	1, 2x, last at Southern Illinois (3/28/23)
Triples.....	-
Home Runs.....	-
RBI.....	3, vs. Eastern Illinois (3/9/24)
Stolen Bases.....	1, 5x, last at Arkansas (3/3/24)

**11 Tori Bradley****2024 Season-Highs**

At-Bats.....	4, vs. Eastern Illinois (3/9/24)
Runs.....	2, vs. Eastern Illinois (3/9/24)
Hits.....	2, at SIU Edwardsville (3/16/24)
Doubles.....	-
Triples.....	-
Home Runs.....	-
RBI.....	2, at SIU Edwardsville (3/16/24)
Stolen Bases.....	-

**Career-Highs**

At-Bats.....	4, 7x, last vs. Eastern Illinois (3/9/24)
Runs.....	2, 3x, last vs. Eastern Illinois (3/9/24)
Hits.....	3, vs. Central Michigan (2/19/22)
Doubles.....	1, 7x, last at Lindenwood (4/15/23)
Triples.....	1, vs. Central Michigan (2/19/22)
Home Runs.....	-
RBI.....	2, 4x, last at SIU Edwardsville (3/16/24)
Stolen Bases.....	1, 2x, last at Austin Peay (4/15/22)

**27 Hailey Burnett****2024 Season/Career-Highs**

At-Bats.....	1, vs. Bradley (3/12/24)
Runs.....	-
Hits.....	-
Doubles.....	-
Triples.....	-
Home Runs.....	-
RBI.....	-
Stolen Bases.....	-

**9 Maddie Carney****2024 Season/Career-Highs**

Innings Pitched.....	6.2, vs. Eastern Illinois (3/9/24)
Fewest Hits.....	0, 4x, last at SIU Edwardsville (3/16/24)
Most Hits.....	9, vs. South Dakota State (3/2/24)
Fewest Runs.....	0, 7x, last at SIU Edwardsville (3/17/24)
Most Runs.....	7, vs. Ohio State (2/10/24)
Fewest Walks.....	0, 7x, last at SIU Edwardsville (3/17/24)
Strikeouts.....	4, 2x, last vs. South Dakota State (3/2/24)

**17 Taryn Coon****2024 Season/Career-Highs**

At-Bats.....	-
Runs.....	1, vs. Northern Iowa (2/25/24)
Hits.....	-
Doubles.....	-
Triples.....	-
Home Runs.....	-
RBI.....	-
Stolen Bases.....	-

**18 Sydney Dennis****2024 Season-Highs**

At-Bats.....	5, at Florida International (2/9/24)
Runs.....	2, 4x, last vs. Bradley (3/12/24)
Hits.....	2, 2x, last vs. Bradley (3/12/24)
Doubles.....	1, 2x, last vs. Bradley (3/12/24)
Triples.....	-
Home Runs.....	-
RBI.....	1, vs. Bradley (3/12/24)
Stolen Bases.....	1, vs. Stony Brook (2/9/24)

**2022 Season/Career-Highs**

At-Bats.....	5, 2x, last at Florida International (2/9/24)
Runs.....	2, 8x, last vs. Bradley (3/12/24)
Hits.....	3, 3x, last vs. Morehead State (4/7/23)
Doubles.....	1, 6x, last vs. Bradley (3/12/24)
Triples.....	1, 5x, last at Eastern Illinois (5/6/23)
Home Runs.....	-
RBI.....	3, at Tennessee Tech (3/26/22)
Stolen Bases.....	2, vs. Southern Indiana (3/25/23)

**10 Tatum Gerwitz****2024 Season-Highs**

At-Bats.....	4, vs. Eastern Illinois (3/9/24)
Runs.....	1, 4x, last vs. Bradley (3/12/24)
Hits.....	1, 4x, last at Arkansas (3/3/24)
Doubles.....	-
Triples.....	-
Home Runs.....	-
RBI.....	2, at Arkansas (3/3/24)
Stolen Bases.....	1, at Arkansas (3/1/24)

**Career-Highs**

At-Bats.....	5, at Saint Louis (2/19/23)
Runs.....	2, 2x, last vs. Akron (2/26/23)
Hits.....	2, 4x, last vs. Western Michigan (2/25/23)
Doubles.....	1, vs. Tennessee State (3/20/22)
Triples.....	-
Home Runs.....	-
RBI.....	2, at Arkansas (3/3/24)
Stolen Bases.....	1, 3x, last at Arkansas (3/1/24)

**2 Paige Halliwill****2024 Season-Highs**

At-Bats.....	6, vs. Eastern Illinois (3/9/24)
Runs.....	2, 3x, last vs. Eastern Illinois (3/9/24)
Hits.....	2, 2x, last at SIU Edwardsville (3/16/24)
Doubles.....	-
Triples.....	1, vs. Eastern Illinois (3/9/24)
Home Runs.....	1, 3x, last vs. Northern Iowa (2/24/24)
RBI.....	2, 4x, last vs. Eastern Illinois (3/9/24)
Stolen Bases.....	2, 2x, last vs. Bradley (3/12/24)

**Career-Highs**

At-Bats.....	6, 2x, last vs. Eastern Illinois (3/9/24)
Runs.....	4, at Lindenwood (4/15/23)
Hits.....	3, 2x, last at Lindenwood (4/15/23)
Doubles.....	2, 2x, last at Tennessee Tech (4/1/23)
Triples.....	1, 4x, last vs. Eastern Illinois (3/9/24)
Home Runs.....	2, vs. Tennessee State (3/20/22)
RBI.....	4, 3x, last at Lindenwood (4/15/23)
Stolen Bases.....	2, 3x, last vs. Bradley (3/12/24)



# 2024 SOUTHEAST MISSOURI SOFTBALL NOTES

## SEASON/CAREER-HIGHS

### 19 Paytience Holman

2024 Season-Highs	
Innings Pitched.....	6.2, at Arkansas (3/3/24)
Fewest Hits.....	0, 2x, last vs. Bradley (3/12/24)
Most Hits.....	7, 2x, last vs. Eastern Illinois (3/9/24)
Fewest Runs.....	0, 2x, last vs. Bradley (3/12/24)
Most Runs.....	5, 3x, last vs. Florida Atlantic (3/2/24)
Fewest Walks.....	0, 4x, last at SIU Edwardsville (3/17/24)
Strikeouts.....	6, vs. Northern Iowa (2/24/24)

Career-Highs	
Innings Pitched.....	7.0, 10x, last vs. UT Martin (4/30/23)
Fewest Hits.....	0, 8x, last vs. Bradley (3/12/24)
Most Hits.....	10, vs. Eastern Kentucky (4/17/21)
Fewest Runs.....	0, 23x, last vs. Bradley (3/12/24)
Most Runs.....	8, 2x, last at Louisiana Tech (2/12/23)
Fewest Walks.....	0, 28x, last at SIU Edwardsville (3/17/24)
Strikeouts.....	14, vs. Mississippi Valley State (3/6/20)

### 15 Delaney Kell

2024 Season-Highs	
Innings Pitched.....	5.0, at Southeastern Louisiana (2/17/24)
Fewest Hits.....	1, 3x, last vs. Eastern Illinois (3/9/24)
Most Hits.....	15, at Southeastern Louisiana (2/17/24)
Fewest Runs.....	0, 2x, last vs. Eastern Illinois (3/9/24)
Most Runs.....	10, at Southeastern Louisiana (2/17/24)
Fewest Walks.....	0, 5x, last vs. Bradley (3/12/24)
Strikeouts.....	2, 4x, last vs. Bradley (3/12/24)

Career-Highs	
Innings Pitched.....	7.1, at Saint Louis (2/19/23)
Fewest Hits.....	0, 3x, last vs. Morehead State (4/7/23)
Most Hits.....	15, at Southeastern Louisiana (2/17/24)
Fewest Runs.....	0, 12x, last vs. Eastern Illinois (3/9/24)
Most Runs.....	7, 2x, last at Iowa State (4/18/23)
Fewest Walks.....	0, 15x, last vs. Bradley (3/12/24)
Strikeouts.....	7, vs. UT Martin (4/29/23)

### 6 Tegan Livesay

2024 Season/Career-Highs	
Innings Pitched.....	7.0, at Florida International (2/10/24)
Fewest Hits.....	0, 2x, last vs. Northern Iowa (2/25/24)
Most Hits.....	8, at Florida International (2/10/24)
Fewest Runs.....	0, 2x, last at SIU Edwardsville (3/16/24)
Most Runs.....	7, vs. South Dakota State (3/1/24)
Fewest Walks.....	0, 4x, last at SIU Edwardsville (3/17/24)
Strikeouts.....	6, at Auburn (2/24/24)

### 7 Gracie Luna

2024 Season/Career-Highs	
At-Bats.....	6, vs. Eastern Illinois (3/9/24)
Runs.....	1, at Auburn (2/24/24)
Hits.....	2, vs. Northern Iowa (2/24/24)
Doubles.....	1, 3x, last vs. Eastern Illinois (3/9/24)
Triples.....	-
Home Runs.....	-
RBI.....	1, 3x, last vs. Eastern Illinois (3/9/24)
Stolen Bases.....	-

### 8 Sydney Melton

2024 Season-Highs	
At-Bats.....	1, 7x, last vs. Bradley (3/12/24)
Runs.....	-
Hits.....	-
Doubles.....	-
Triples.....	-
Home Runs.....	-
RBI.....	-
Stolen Bases.....	-

Career-Highs	
At-Bats.....	4, at Kansas City (3/15/22)
Runs.....	1, 7x, last at Eastern Illinois (5/6/23)
Hits.....	2, at Eastern Illinois (5/6/23)
Doubles.....	1, 3x, last at Eastern Illinois (5/6/23)
Triples.....	1, at Tennessee State (3/18/23)
Home Runs.....	1, at Eastern Illinois (5/6/23)
RBI.....	3, at Eastern Illinois (5/6/23)
Stolen Bases.....	1, 3x, last at Eastern Illinois (5/6/23)

### 28 Marissa Peek

2024 Season-Highs	
At-Bats.....	4, at Arkansas (3/3/24)
Runs.....	2, at SIU Edwardsville (3/16/24)
Hits.....	2, 3x, last at SIU Edwardsville (3/17/24)
Doubles.....	2, at SIU Edwardsville (3/17/24)
Triples.....	-
Home Runs.....	2, at SIU Edwardsville (3/16/24)
RBI.....	3, at SIU Edwardsville (3/17/24)
Stolen Bases.....	1, vs. Maryland (2/18/24)

Career-Highs	
At-Bats.....	3, 8x, last vs. Northern Iowa (2/24/24)
Runs.....	2, at SIU Edwardsville (3/16/24)
Hits.....	2, 6x, last 2, at SIU Edwardsville (3/17/24)
Doubles.....	2, at SIU Edwardsville (3/17/24)
Triples.....	-
Home Runs.....	2, at SIU Edwardsville (3/16/24)
RBI.....	3, at SIU Edwardsville (3/17/24)
Stolen Bases.....	1, vs. Maryland (2/18/24)

### 16 Abigail Rickermann

2024 Season-Highs	
At-Bats.....	4, 2x, last at SIU Edwardsville (3/16/24)
Runs.....	2, at SIU Edwardsville (3/17/24)
Hits.....	2, at SIU Edwardsville (3/16/24)
Doubles.....	1, vs. Bradley (3/12/24)
Triples.....	-
Home Runs.....	-
RBI.....	1, 2x, last at SIU Edwardsville (3/17/24)
Stolen Bases.....	1, vs. Eastern Illinois (3/9/24)

Career-Highs	
At-Bats.....	5, vs. Murray State (5/12/22)
Runs.....	3, 3x, last vs. Morehead State (4/7/23)
Hits.....	3, at Lindenwood (4/16/23)
Doubles.....	1, 5x, last vs. Bradley (3/12/24)
Triples.....	1, 3x, last vs. SIU Edwardsville (5/11/22)
Home Runs.....	-
RBI.....	3, vs. SIU Edwardsville (5/11/22)
Stolen Bases.....	2, at Murray State (4/24/22)

### 21 Abby Robbins

2024 Season/Career-Highs	
At-Bats.....	2, vs. Stony Brook (2/11/24)
Runs.....	1, 2x, last at Florida International (2/9/24)
Hits.....	-
Doubles.....	-
Triples.....	-
Home Runs.....	-
RBI.....	-
Stolen Bases.....	-

### 20 Kat Sackett

2024 Season-Highs	
At-Bats.....	4, 4x, last at SIU Edwardsville (3/17/24)
Runs.....	1, 6x, last at SIU Edwardsville (3/17/24)
Hits.....	3, at Florida International (2/9/24)
Doubles.....	2, 2x, last at SIU Edwardsville (3/17/24)
Triples.....	-
Home Runs.....	1, 2x, last vs. Eastern Illinois (3/10/24)
RBI.....	3, at Florida International (2/9/24)
Stolen Bases.....	1, at Arkansas (3/3/24)

Career-Highs	
At-Bats.....	5, at Saint Louis (2/19/23)
Runs.....	3, vs. SIU Edwardsville (3/10/23)
Hits.....	3, 3x, last at Florida International (2/9/24)
Doubles.....	2, 4x, last at SIU Edwardsville (3/17/24)
Triples.....	-
Home Runs.....	2, vs. Tennessee State (3/20/22)
RBI.....	4, vs. Tennessee State (3/20/22)
Stolen Bases.....	2, at Saint Louis (2/19/23)

### 5 Brooklyn Saysoff

2024 Season-Highs	
At-Bats.....	5, vs. Eastern Illinois (3/9/24)
Runs.....	1, 4x, last vs. Eastern Illinois (3/9/24)
Hits.....	3, vs. Eastern Illinois (3/9/24)
Doubles.....	1, 4x, last at SIU Edwardsville (3/16/24)
Triples.....	-
Home Runs.....	-
RBI.....	2, at SIU Edwardsville (3/17/24)
Stolen Bases.....	1, 2x, last at SIU Edwardsville (3/17/24)

### 12 Zoe Schulte

2024 Season-Highs	
At-Bats.....	3, 6x, last at SIU Edwardsville (3/17/24)
Runs.....	2, vs. Bradley (3/12/24)
Hits.....	2, 3x, last vs. Bradley (3/12/24)
Doubles.....	1, at Florida International (2/10/24)
Triples.....	-
Home Runs.....	-
RBI.....	-
Stolen Bases.....	1, 4x, last vs. Eastern Illinois (3/9/24)

Career-Highs	
At-Bats.....	3, 16x, last at SIU Edwardsville (3/17/24)
Runs.....	2, 2x, last vs. Bradley (3/12/24)
Hits.....	3, 3x, last vs. Morehead State (4/7/23)
Doubles.....	1, at Florida International (2/10/24)
Triples.....	1, at Ole Miss (3/5/23)
Home Runs.....	-
RBI.....	2, at Tennessee Tech (4/1/23)
Stolen Bases.....	1, 7x, last vs. Eastern Illinois (3/9/24)

### 1 Sophie Schupp

2024 Season/Career-Highs	
At-Bats.....	3, 3x, last vs. Bradley (3/12/24)
Runs.....	2, vs. Maryland (2/18/24)
Hits.....	2, 2x, last vs. Eastern Illinois (3/9/24)
Doubles.....	1, 3x, last vs. Eastern Illinois (3/9/24)
Triples.....	-
Home Runs.....	-
RBI.....	3, vs. Eastern Illinois (3/9/24)
Stolen Bases.....	-



**26 Aubrie Shore**

## 2024 Season-Highs

At-Bats.....	6, vs. Eastern Illinois (3/9/24)
Runs.....	3, vs. Eastern Illinois (3/9/24)
Hits.....	3, 2x, last at SIU Edwardsville (3/16/24)
Doubles.....	2, vs. Eastern Illinois (3/9/24)
Triples.....	-
Home Runs.....	1, vs. Stony Brook (2/11/24)
RBI.....	3, 2x, last vs. Maryland (2/18/24)
Stolen Bases.....	-

## Hitting Career-Highs

At-Bats.....	6, vs. Eastern Illinois (3/9/24)
Runs.....	3, 2x, last vs. Eastern Illinois (3/9/24)
Hits.....	4, at Lindenwood (4/15/23)
Doubles.....	2, 3x, last vs. Eastern Illinois (3/9/24)
Triples.....	1, vs. Alabama A&M (2/11/22)
Home Runs.....	2, 2x, last at Lindenwood (4/15/23)
RBI.....	5, vs. UT Martin (4/29/23)
Stolen Bases.....	1, vs. Charleston (3/4/22)

## Pitching Career-Highs

Innings Pitched.....	0.1, vs. Nicholls (2/12/22)
Fewest Hits.....	0, 2x, last at Western Kentucky (2/19/22)
Most Hits.....	-
Fewest Runs.....	0, vs. Nicholls (2/12/22)
Most Runs.....	1, at Western Kentucky (2/19/22)
Fewest Walks.....	0, vs. Nicholls (2/12/22)
Strikeouts.....	-

**22 Mary Tutwiler**

## 2024 Season/Career-Highs

At-Bats.....	-
Runs.....	-
Hits.....	-
Doubles.....	-
Triples.....	-
Home Runs.....	-
RBI.....	-
Stolen Bases.....	-

**3 Willow Van Haren**

## 2024 Season/Career-Highs

Innings Pitched.....	4.0, at Florida International (2/9/24)
Fewest Hits.....	0, vs. Stony Brook (2/11/24)
Most Hits.....	5, vs. Ohio State (2/10/24)
Fewest Runs.....	0, 2x, last vs. Northern Iowa (2/24/24)
Most Runs.....	6, vs. Ohio State (2/10/24)
Fewest Walks.....	1, 7x, last vs. Bradley (3/12/24)
Strikeouts.....	4, 2x, last vs. Bradley (3/12/24)

**4 Kinley Wilkins**

## 2024 Season/Career-Highs

At-Bats.....	1, vs. Bradley (3/12/24)
Runs.....	1, vs. Northern Iowa (2/24/24)
Hits.....	-
Doubles.....	-
Triples.....	-
Home Runs.....	-
RBI.....	-
Stolen Bases.....	1, at SIU Edwardsville (3/17/24)

**24 Kynzie Wrigley**

## 2024 Season-Highs

At-Bats.....	4, 3x, last vs. Florida Atlantic (3/2/24)
Runs.....	2, at Florida International (2/9/24)
Hits.....	3, at Florida International (2/9/24)
Doubles.....	1, at Florida International (2/9/24)
Triples.....	-
Home Runs.....	-
RBI.....	2, vs. Northern Iowa (2/25/24)
Stolen Bases.....	1, vs. Syracuse (2/17/24)

## Career-Highs

At-Bats.....	5, vs. Murray State (5/12/22)
Runs.....	3, 2x, last vs. Belmont (5/8/22)
Hits.....	4, vs. SIU Edwardsville (5/11/22)
Doubles.....	3, vs. Morehead State (4/3/22)
Triples.....	1, vs. UT Martin (4/27/22)
Home Runs.....	1, 8x, last at Eastern Illinois (5/6/23)
RBI.....	4, vs. UT Martin (4/27/22)
Stolen Bases.....	2, vs. Tennessee Tech (5/12/22)

**Southeast Missouri's Record**

Overall.....	9-17
At Home.....	2-3
On the Road.....	4-5
At Neutral Sites.....	3-9
Against Non-OVC Opponents.....	5-15
Against OVC Opponents.....	4-2
In Home OVC Games.....	1-2
In Away OVC Games.....	3-0
vs. Ranked Teams.....	0-4
In February.....	4-9
In March.....	5-8
In April.....	0-0
In May.....	0-0
On Mondays.....	0-0
On Tuesdays.....	1-1
On Wednesdays.....	0-0
On Thursdays.....	0-0
On Fridays.....	2-4
On Saturdays.....	3-9
On Sundays.....	3-3
In Day Games.....	9-17
In Night Games.....	0-0
In Extra Inning Games.....	1-2
When Redhawks Score First.....	6-5
When Opponents Score First.....	3-12
vs. Left-Handed Starter.....	1-3
vs. Right-Handed Starter.....	8-14
In 1-Run Games.....	2-3
In 2-Run Games.....	1-1
In 5+ Run Games.....	2-9
Shutouts.....	1-6
When Leading After Six Innings.....	8-0
When Trailing After Six Innings.....	0-8
When Tied After Six Innings.....	1-2
When Redhawks Starter Goes 6 or more Innings.....	1-2
When Redhawks Get 10 or more Hits.....	2-0
When Redhawks Outhit Opponents.....	6-1
When Redhawks Get Outhit.....	2-14
When Hits are Tied.....	1-2
When Scoring 0-2 Runs.....	0-11
When Scoring 3-5 Runs.....	3-5
When Scoring 6-9 Runs.....	6-1
When Scoring 10+ Runs.....	0-0
When Opponents Score 0-2 Runs.....	3-2
When Opponents Score 3-5 Runs.....	6-4
When Opponents Score 6-9 Runs.....	0-8
When Opponents Score 10+ Runs.....	0-3
Without Hitting a Home Run.....	6-14
When Hitting 1 Home Run.....	1-3
When Hitting 2+ Home Runs.....	2-0
Committing 0 Errors.....	4-4
Committing 1 Error.....	1-4
Committing 2+ Errors.....	4-9



## 2024 SOUTHEAST MISSOURI SOFTBALL NOTES

### GAME-BY-GAME LINEUPS

Opponent	P	C	1B	2B	3B	SS	LF	CF	RF	DP
Stony Brook	Holman	Peek	Shore	Rickermann	Wrigley	Dennis	Affolter	Halliwill	Gerwitz	Sackett
Florida International	Carney	Sackett	Shore	Rickermann	Wrigley	Dennis	Schulte	Halliwill	Gerwitz	Bradley
Ohio State	Van Haren	Sackett	Shore	Saysoff	Wrigley	Dennis	Affolter	Halliwill	Gerwitz	Peek
Florida International	Livesay	Peek	Shore	Rickermann	Wrigley	Dennis	Schulte	Halliwill	Gerwitz	Sackett
Stony Brook	Holman	Sackett	Shore	Saysoff	Robbins	Dennis	Schulte	Halliwill	Gerwitz	Wrigley
Maryland	Livesay	Sackett	Shore	Saysoff	Wrigley	Dennis	Affolter	Halliwill	Gerwitz	Luna
Syracuse	Holman	Sackett	Shore	Rickermann	Wrigley	Dennis	Affolter	Halliwill	Schulte	Bradley
Southeastern Louisiana	Kell	Peek	Shore	Rickermann	Wrigley	Dennis	Affolter	Halliwill	Gerwitz	Sackett
Maryland	Holman	Peek	Shore	Schupp	Saysoff	Dennis	Affolter	Halliwill	Gerwitz	Luna
Auburn	Kell	Sackett	Shore	Saysoff	Wrigley	Dennis	Affolter	Halliwill	Gerwitz	Luna
Northern Iowa	Holman	Peek	Shore	Luna	Saysoff	Dennis	Schulte	Halliwill	Affolter	Rickermann
Auburn	Livesay	Peek	Shore	Schupp	Saysoff	Dennis	Affolter	Halliwill	Gerwitz	Luna
Northern Iowa	Carney	Melton	Shore	Schupp	Saysoff	Dennis	Schulte	Halliwill	Wrigley	Luna
South Dakota State	Livesay	Peek	Shore	Schupp	Luna	Saysoff	Sackett	Halliwill	Wrigley	Bradley
Arkansas	Holman	Sackett	Shore	Dennis	Wrigley	Saysoff	Schulte	Halliwill	Gerwitz	Luna
South Dakota State	Kell	Peek	Shore	Dennis	Luna	Saysoff	Affolter	Halliwill	Wrigley	Rickermann
Florida Atlantic	Holman	Sackett	Shore	Dennis	Wrigley	Schupp	Affolter	Halliwill	Schulte	Bradley
Arkansas	Livesay	Peek	Shore	Dennis	Wrigley	Schupp	Affolter	Halliwill	Gerwitz	Sackett
Eastern Illinois	Holman	Peek	Shore	Dennis	Wrigley	Saysoff	Affolter	Halliwill	Gerwitz	Luna
Eastern Illinois	Livesay	Sackett	Shore	Rickermann	Saysoff	Schupp	Affolter	Halliwill	Schulte	Bradley
Eastern Illinois	Holman	Sackett	Shore	Dennis	Saysoff	Schupp	Affolter	Halliwill	Wrigley	Bradley
Bradley	Livesay	Sackett	Shore	Dennis	Wrigley	Saysoff	Affolter	Halliwill	Schulte	Bradley
Bradley	Van Haren	Melton	Shore	Dennis	Saysoff	Schupp	Schulte	Affolter	Gerwitz	Rickermann
SIU Edwardsville	Livesay	Peek	Shore	Dennis	Wrigley	Saysoff	Schulte	Halliwill	Affolter	Sackett
SIU Edwardsville	Holman	Sackett	Shore	Rickermann	Wrigley	Saysoff	Schulte	Halliwill	Gerwitz	Bradley
SIU Edwardsville	Holman	Peek	Shore	Rickermann	Saysoff	Schupp	Schulte	Halliwill	Affolter	Sackett
Tennessee State										
Tennessee State										
Tennessee State										
Southern Indiana										
Southern Indiana										
Southern Indiana										
Missouri										
Missouri										
Tennessee Tech										
Tennessee Tech										
Tennessee Tech										
Saint Louis										
Morehead State										
Morehead State										
Morehead State										
Lindenwood										
Lindenwood										
Lindenwood										
Murray State										
Western Illinois										
Western Illinois										
Western Illinois										
UT Martin										
UT Martin										
UT Martin										

# 2024 SOUTHEAST MISSOURI SOFTBALL NOTES

## GAME-BY-GAME HITTING



Opponent	AB	R	H	RBI	2B	3B	HR	BB	IBB	SB	CS	HBP	SAC	SE	GDP	K	PQ	A	E	Avg
<b>Southeast Missouri</b>	<b>27</b>	<b>7</b>	<b>7</b>	<b>6</b>	<b>1</b>	<b>0</b>	<b>1</b>	<b>2</b>	<b>0</b>	<b>1</b>	<b>0</b>	<b>1</b>	<b>1</b>	<b>1</b>	<b>0</b>	<b>5</b>	<b>21</b>	<b>9</b>	<b>2</b>	<b>.259</b>
Stony Brook	30	5	8	3	0	0	1	1	0	2	0	0	0	0	0	6	18	6	3	.267
<b>Southeast Missouri</b>	<b>36</b>	<b>7</b>	<b>11</b>	<b>7</b>	<b>4</b>	<b>0</b>	<b>0</b>	<b>2</b>	<b>0</b>	<b>0</b>	<b>0</b>	<b>0</b>	<b>0</b>	<b>0</b>	<b>0</b>	<b>1</b>	<b>24</b>	<b>8</b>	<b>0</b>	<b>.286</b>
Florida International	29	4	7	3	1	0	0	3	0	2	0	0	0	0	1	6	24	13	2	.254
<b>Southeast Missouri</b>	<b>17</b>	<b>0</b>	<b>2</b>	<b>0</b>	<b>1</b>	<b>0</b>	<b>0</b>	<b>3</b>	<b>0</b>	<b>0</b>	<b>0</b>	<b>0</b>	<b>0</b>	<b>0</b>	<b>1</b>	<b>7</b>	<b>12</b>	<b>2</b>	<b>1</b>	<b>.250</b>
Ohio State	28	13	15	12	1	0	1	2	0	2	0	0	0	0	0	4	15	3	1	.345
<b>Southeast Missouri</b>	<b>24</b>	<b>0</b>	<b>4</b>	<b>0</b>	<b>2</b>	<b>0</b>	<b>0</b>	<b>1</b>	<b>0</b>	<b>0</b>	<b>0</b>	<b>0</b>	<b>0</b>	<b>0</b>	<b>0</b>	<b>2</b>	<b>21</b>	<b>6</b>	<b>0</b>	<b>.231</b>
Florida International	28	1	8	1	0	0	0	0	0	3	1	0	0	0	0	2	21	8	0	.330
<b>Southeast Missouri</b>	<b>24</b>	<b>5</b>	<b>5</b>	<b>5</b>	<b>0</b>	<b>0</b>	<b>2</b>	<b>1</b>	<b>0</b>	<b>0</b>	<b>0</b>	<b>0</b>	<b>0</b>	<b>0</b>	<b>0</b>	<b>3</b>	<b>21</b>	<b>7</b>	<b>3</b>	<b>.227</b>
Stony Brook	25	4	5	4	0	0	0	4	0	1	0	0	0	1	1	9	18	9	1	.307
<b>Southeast Missouri</b>	<b>21</b>	<b>1</b>	<b>3</b>	<b>1</b>	<b>1</b>	<b>0</b>	<b>0</b>	<b>1</b>	<b>0</b>	<b>0</b>	<b>0</b>	<b>0</b>	<b>0</b>	<b>1</b>	<b>0</b>	<b>4</b>	<b>16</b>	<b>5</b>	<b>2</b>	<b>.215</b>
Maryland	22	9	7	7	1	1	0	9	0	0	1	4	1	0	0	6	18	5	1	.309
<b>Southeast Missouri</b>	<b>26</b>	<b>0</b>	<b>5</b>	<b>0</b>	<b>0</b>	<b>0</b>	<b>0</b>	<b>1</b>	<b>0</b>	<b>1</b>	<b>0</b>	<b>1</b>	<b>0</b>	<b>0</b>	<b>0</b>	<b>8</b>	<b>18</b>	<b>5</b>	<b>1</b>	<b>.211</b>
Syracuse	21	3	4	3	1	0	0	0	0	4	0	0	0	1	0	5	21	6	0	.295
<b>Southeast Missouri</b>	<b>20</b>	<b>2</b>	<b>4</b>	<b>2</b>	<b>1</b>	<b>0</b>	<b>0</b>	<b>1</b>	<b>0</b>	<b>1</b>	<b>0</b>	<b>0</b>	<b>1</b>	<b>0</b>	<b>0</b>	<b>2</b>	<b>15</b>	<b>10</b>	<b>3</b>	<b>.210</b>
Southeastern Louisiana	26	10	15	9	1	1	0	3	0	2	2	0	0	3	0	0	18	13	0	.330
<b>Southeast Missouri</b>	<b>24</b>	<b>9</b>	<b>8</b>	<b>7</b>	<b>2</b>	<b>0</b>	<b>0</b>	<b>4</b>	<b>0</b>	<b>3</b>	<b>0</b>	<b>1</b>	<b>1</b>	<b>1</b>	<b>0</b>	<b>4</b>	<b>21</b>	<b>11</b>	<b>2</b>	<b>.224</b>
Maryland	23	3	3	3	1	0	0	5	0	0	1	0	0	1	0	2	18	9	3	.310
<b>Southeast Missouri</b>	<b>16</b>	<b>0</b>	<b>0</b>	<b>0</b>	<b>0</b>	<b>0</b>	<b>0</b>	<b>2</b>	<b>0</b>	<b>0</b>	<b>0</b>	<b>0</b>	<b>0</b>	<b>0</b>	<b>0</b>	<b>9</b>	<b>14</b>	<b>9</b>	<b>4</b>	<b>.209</b>
Auburn	24	8	9	7	1	0	2	1	0	2	0	0	1	0	0	1	15	2	1	.316
<b>Southeast Missouri</b>	<b>28</b>	<b>3</b>	<b>7</b>	<b>3</b>	<b>1</b>	<b>0</b>	<b>1</b>	<b>4</b>	<b>0</b>	<b>1</b>	<b>0</b>	<b>1</b>	<b>0</b>	<b>0</b>	<b>0</b>	<b>14</b>	<b>18</b>	<b>6</b>	<b>0</b>	<b>.213</b>
Northern Iowa	26	5	8	5	2	0	1	4	0	0	0	0	0	0	0	7	21	3	2	.316
<b>Southeast Missouri</b>	<b>19</b>	<b>5</b>	<b>6</b>	<b>4</b>	<b>3</b>	<b>0</b>	<b>0</b>	<b>2</b>	<b>0</b>	<b>0</b>	<b>0</b>	<b>0</b>	<b>2</b>	<b>0</b>	<b>0</b>	<b>2</b>	<b>14</b>	<b>6</b>	<b>3</b>	<b>.220</b>
Auburn	22	13	7	11	0	0	3	8	0	2	0	1	0	1	0	6	15	6	0	.316
<b>Southeast Missouri</b>	<b>30</b>	<b>6</b>	<b>9</b>	<b>5</b>	<b>0</b>	<b>0</b>	<b>1</b>	<b>3</b>	<b>0</b>	<b>0</b>	<b>0</b>	<b>1</b>	<b>0</b>	<b>0</b>	<b>0</b>	<b>9</b>	<b>21</b>	<b>7</b>	<b>2</b>	<b>.228</b>
Northern Iowa	31	9	10	8	2	1	0	2	0	2	0	0	1	0	1	6	21	6	0	.316
<b>Southeast Missouri</b>	<b>18</b>	<b>0</b>	<b>3</b>	<b>0</b>	<b>0</b>	<b>0</b>	<b>0</b>	<b>3</b>	<b>0</b>	<b>0</b>	<b>0</b>	<b>0</b>	<b>0</b>	<b>0</b>	<b>0</b>	<b>7</b>	<b>12</b>	<b>4</b>	<b>3</b>	<b>.224</b>
South Dakota State	20	9	6	9	1	0	1	7	0	0	0	0	0	1	0	2	15	2	0	.315
<b>Southeast Missouri</b>	<b>21</b>	<b>0</b>	<b>3</b>	<b>0</b>	<b>0</b>	<b>0</b>	<b>0</b>	<b>1</b>	<b>0</b>	<b>1</b>	<b>1</b>	<b>0</b>	<b>0</b>	<b>0</b>	<b>1</b>	<b>6</b>	<b>18</b>	<b>8</b>	<b>1</b>	<b>.219</b>
Arkansas	24	5	7	5	2	0	2	1	0	0	0	0	0	0	1	0	21	12	0	.314
<b>Southeast Missouri</b>	<b>19</b>	<b>1</b>	<b>5</b>	<b>1</b>	<b>1</b>	<b>0</b>	<b>0</b>	<b>2</b>	<b>0</b>	<b>0</b>	<b>0</b>	<b>0</b>	<b>1</b>	<b>0</b>	<b>0</b>	<b>5</b>	<b>15</b>	<b>4</b>	<b>2</b>	<b>.222</b>
South Dakota State	28	9	13	8	2	0	1	1	0	1	0	0	0	0	0	4	15	5	1	.324
<b>Southeast Missouri</b>	<b>29</b>	<b>3</b>	<b>8</b>	<b>2</b>	<b>1</b>	<b>0</b>	<b>0</b>	<b>3</b>	<b>0</b>	<b>1</b>	<b>0</b>	<b>0</b>	<b>0</b>	<b>0</b>	<b>0</b>	<b>4</b>	<b>18</b>	<b>7</b>	<b>1</b>	<b>.226</b>
Florida Atlantic	26	8	8	7	0	0	1	7	0	1	0	1	1	0	0	2	21	8	0	.323
<b>Southeast Missouri</b>	<b>29</b>	<b>5</b>	<b>7</b>	<b>5</b>	<b>2</b>	<b>0</b>	<b>0</b>	<b>4</b>	<b>0</b>	<b>2</b>	<b>0</b>	<b>0</b>	<b>1</b>	<b>2</b>	<b>0</b>	<b>7</b>	<b>23</b>	<b>9</b>	<b>2</b>	<b>.227</b>
Arkansas	31	6	9	6	0	0	1	3	1	0	0	0	2	1	1	0	24	5	1	.321
<b>Southeast Missouri</b>	<b>45</b>	<b>4</b>	<b>9</b>	<b>3</b>	<b>4</b>	<b>0</b>	<b>0</b>	<b>3</b>	<b>0</b>	<b>1</b>	<b>0</b>	<b>0</b>	<b>3</b>	<b>0</b>	<b>0</b>	<b>7</b>	<b>36</b>	<b>15</b>	<b>3</b>	<b>.224</b>
Eastern Illinois	49	7	14	6	0	0	1	4	0	1	0	0	2	1	0	3	36	22	3	.318
<b>Southeast Missouri</b>	<b>31</b>	<b>9</b>	<b>12</b>	<b>9</b>	<b>3</b>	<b>1</b>	<b>0</b>	<b>2</b>	<b>0</b>	<b>2</b>	<b>0</b>	<b>0</b>	<b>0</b>	<b>0</b>	<b>0</b>	<b>3</b>	<b>21</b>	<b>7</b>	<b>1</b>	<b>.234</b>
Eastern Illinois	27	4	5	4	1	0	1	2	0	1	0	1	0	0	0	1	18	6	2	.311
<b>Southeast Missouri</b>	<b>26</b>	<b>1</b>	<b>5</b>	<b>1</b>	<b>0</b>	<b>0</b>	<b>1</b>	<b>1</b>	<b>0</b>	<b>0</b>	<b>1</b>	<b>0</b>	<b>0</b>	<b>0</b>	<b>0</b>	<b>6</b>	<b>21</b>	<b>9</b>	<b>0</b>	<b>.232</b>
Eastern Illinois	29	2	9	2	1	0	1	1	0	0	0	0	1	0	0	5	21	8	1	.311
<b>Southeast Missouri</b>	<b>22</b>	<b>6</b>	<b>7</b>	<b>4</b>	<b>2</b>	<b>0</b>	<b>0</b>	<b>5</b>	<b>0</b>	<b>3</b>	<b>1</b>	<b>0</b>	<b>2</b>	<b>1</b>	<b>0</b>	<b>6</b>	<b>21</b>	<b>13</b>	<b>0</b>	<b>.236</b>
Bradley	24	2	3	2	0	0	0	4	0	1	0	0	0	0	0	4	18	7	2	.304
<b>Southeast Missouri</b>	<b>26</b>	<b>1</b>	<b>7</b>	<b>1</b>	<b>1</b>	<b>0</b>	<b>0</b>	<b>0</b>	<b>0</b>	<b>0</b>	<b>1</b>	<b>0</b>	<b>0</b>	<b>0</b>	<b>0</b>	<b>10</b>	<b>21</b>	<b>7</b>	<b>0</b>	<b>.237</b>
Bradley	28	5	7	5	0	0	3	2	0	0	0	0	0	0	0	7	21	6	0	.301
<b>Southeast Missouri</b>	<b>27</b>	<b>3</b>	<b>8</b>	<b>3</b>	<b>1</b>	<b>0</b>	<b>2</b>	<b>3</b>	<b>0</b>	<b>1</b>	<b>0</b>	<b>0</b>	<b>1</b>	<b>0</b>	<b>0</b>	<b>3</b>	<b>21</b>	<b>13</b>	<b>0</b>	<b>.240</b>
SIU Edwardsville	27	0	7	0	1	0	0	1	0	3	1	1	0	0	0	2	21	8	0	.265
<b>Southeast Missouri</b>	<b>28</b>	<b>3</b>	<b>7</b>	<b>2</b>	<b>0</b>	<b>0</b>	<b>0</b>	<b>4</b>	<b>0</b>	<b>1</b>	<b>0</b>	<b>0</b>	<b>1</b>	<b>0</b>	<b>0</b>	<b>3</b>	<b>21</b>	<b>13</b>	<b>0</b>	<b>.240</b>
SIU Edwardsville	24	2	6	2	1	0	0	1	0	0	1	0	1	0	1	1	21	4	1	.263
<b>Southeast Missouri</b>	<b>28</b>	<b>7</b>	<b>9</b>	<b>7</b>	<b>4</b>	<b>0</b>	<b>0</b>	<b>3</b>	<b>0</b>	<b>1</b>	<b>0</b>	<b>0</b>	<b>1</b>	<b>1</b>	<b>1</b>	<b>4</b>	<b>21</b>	<b>7</b>	<b>2</b>	<b>.244</b>
SIU Edwardsville	32	4	10	3	0	0	0	0	0	0	0	0	0	0	0	2	21	13	2	.271
<b>Southeast Missouri</b>																				
Tennessee State																				
<b>Southeast Missouri</b>																				
Tennessee State																				
<b>Southeast Missouri</b>																				
Tennessee State																				
<b>Southeast Missouri</b>																				
Southern Indiana																				



## 2024 SOUTHEAST MISSOURI SOFTBALL NOTES

### GAME-BY-GAME HITTING

Opponent	AB	R	H	RBI	2B	3B	HR	BB	IBB	SB	CS	HBP	SAC	SE	GDP	K	PQ	A	E	Avg
<b>Southeast Missouri</b> Southern Indiana																				
<b>Southeast Missouri</b> Southern Indiana																				
<b>Southeast Missouri</b> Missouri																				
<b>Southeast Missouri</b> Missouri																				
<b>Southeast Missouri</b> Tennessee Tech																				
<b>Southeast Missouri</b> Tennessee Tech																				
<b>Southeast Missouri</b> Tennessee Tech																				
<b>Southeast Missouri</b> Saint Louis																				
<b>Southeast Missouri</b> Morehead State																				
<b>Southeast Missouri</b> Morehead State																				
<b>Southeast Missouri</b> Morehead State																				
<b>Southeast Missouri</b> Lindenwood																				
<b>Southeast Missouri</b> Lindenwood																				
<b>Southeast Missouri</b> Lindenwood																				
<b>Southeast Missouri</b> Murray State																				
<b>Southeast Missouri</b> Western Illinois																				
<b>Southeast Missouri</b> Western Illinois																				
<b>Southeast Missouri</b> Western Illinois																				
<b>Southeast Missouri</b> UT Martin																				
<b>Southeast Missouri</b> UT Martin																				
<b>Southeast Missouri</b> UT Martin																				



## 2024 SOUTHEAST MISSOURI SOFTBALL NOTES

## GAME-BY-GAME PITCHING



Opponent	IP	H	R	ER	BB	SO	2B	3B	HR	WP	BK	HBP	DP	IBB	Score	W-L	SV	ERA
<b>Southeast Missouri</b>	<b>7.0</b>	<b>8</b>	<b>5</b>	<b>3</b>	<b>1</b>	<b>6</b>	<b>0</b>	<b>0</b>	<b>1</b>	<b>0</b>	<b>0</b>	<b>0</b>	<b>0</b>	<b>0</b>	<b>7-5</b>	<b>1-0</b>	<b>0</b>	<b>3.00</b>
Stony Brook	6.0	7	7	4	2	5	1	0	1	1	0	1	0	0	5-7	0-1	0	4.67
<b>Southeast Missouri</b>	<b>8.0</b>	<b>7</b>	<b>4</b>	<b>3</b>	<b>3</b>	<b>6</b>	<b>1</b>	<b>0</b>	<b>0</b>	<b>3</b>	<b>0</b>	<b>0</b>	<b>1</b>	<b>0</b>	<b>7-4</b>	<b>2-0</b>	<b>0</b>	<b>2.80</b>
Florida International	8.0	11	7	4	2	1	4	0	0	0	0	0	0	0	4-7	0-2	0	4.00
<b>Southeast Missouri</b>	<b>4.0</b>	<b>15</b>	<b>13</b>	<b>8</b>	<b>2</b>	<b>4</b>	<b>1</b>	<b>0</b>	<b>1</b>	<b>0</b>	<b>0</b>	<b>0</b>	<b>0</b>	<b>0</b>	<b>0-13</b>	<b>2-1</b>	<b>0</b>	<b>5.16</b>
Ohio State	5.0	2	0	0	3	7	1	0	0	0	0	0	1	0	13-0	1-2	0	2.95
<b>Southeast Missouri</b>	<b>7.0</b>	<b>8</b>	<b>1</b>	<b>1</b>	<b>0</b>	<b>2</b>	<b>0</b>	<b>0</b>	<b>0</b>	<b>1</b>	<b>0</b>	<b>0</b>	<b>1</b>	<b>0</b>	<b>0-1</b>	<b>2-2</b>	<b>0</b>	<b>4.04</b>
Florida International	7.0	4	0	0	1	2	2	0	0	0	0	0	0	0	1-0	2-2	0	2.15
<b>Southeast Missouri</b>	<b>7.0</b>	<b>5</b>	<b>4</b>	<b>3</b>	<b>4</b>	<b>9</b>	<b>0</b>	<b>0</b>	<b>0</b>	<b>0</b>	<b>0</b>	<b>0</b>	<b>1</b>	<b>0</b>	<b>5-4</b>	<b>3-2</b>	<b>1</b>	<b>3.82</b>
Stony Brook	6.0	5	5	5	1	3	0	0	2	0	0	0	0	0	4-5	2-3	0	2.84
<b>Southeast Missouri</b>	<b>5.1</b>	<b>7</b>	<b>9</b>	<b>8</b>	<b>9</b>	<b>6</b>	<b>1</b>	<b>1</b>	<b>0</b>	<b>4</b>	<b>0</b>	<b>4</b>	<b>0</b>	<b>0</b>	<b>1-9</b>	<b>3-3</b>	<b>1</b>	<b>4.75</b>
Maryland	6.0	3	1	0	1	4	1	0	0	1	0	0	0	0	9-1	3-3	1	2.39
<b>Southeast Missouri</b>	<b>6.0</b>	<b>4</b>	<b>3</b>	<b>3</b>	<b>0</b>	<b>5</b>	<b>1</b>	<b>0</b>	<b>0</b>	<b>0</b>	<b>0</b>	<b>0</b>	<b>0</b>	<b>0</b>	<b>0-3</b>	<b>3-4</b>	<b>1</b>	<b>4.58</b>
Syracuse	7.0	5	0	0	1	8	0	0	0	0	0	1	0	0	3-0	4-3	1	2.02
<b>Southeast Missouri</b>	<b>5.0</b>	<b>15</b>	<b>10</b>	<b>9</b>	<b>3</b>	<b>0</b>	<b>1</b>	<b>1</b>	<b>0</b>	<b>2</b>	<b>0</b>	<b>0</b>	<b>0</b>	<b>0</b>	<b>2-10</b>	<b>3-5</b>	<b>1</b>	<b>5.39</b>
Southeastern Louisiana	6.0	4	2	2	1	2	1	0	0	0	0	0	1	0	10-2	5-3	1	2.06
<b>Southeast Missouri</b>	<b>7.0</b>	<b>3</b>	<b>3</b>	<b>1</b>	<b>5</b>	<b>2</b>	<b>1</b>	<b>0</b>	<b>0</b>	<b>0</b>	<b>0</b>	<b>0</b>	<b>0</b>	<b>0</b>	<b>9-3</b>	<b>4-5</b>	<b>1</b>	<b>4.85</b>
Maryland	6.0	8	9	6	4	4	2	0	0	3	0	1	0	0	3-9	5-4	1	2.58
<b>Southeast Missouri</b>	<b>4.2</b>	<b>9</b>	<b>8</b>	<b>6</b>	<b>1</b>	<b>1</b>	<b>1</b>	<b>0</b>	<b>2</b>	<b>0</b>	<b>0</b>	<b>0</b>	<b>0</b>	<b>0</b>	<b>0-8</b>	<b>4-6</b>	<b>1</b>	<b>5.16</b>
Auburn	5.0	0	0	0	2	9	0	0	0	0	0	0	0	0	8-0	6-4	1	2.37
<b>Southeast Missouri</b>	<b>6.0</b>	<b>8</b>	<b>5</b>	<b>5</b>	<b>4</b>	<b>7</b>	<b>2</b>	<b>0</b>	<b>1</b>	<b>0</b>	<b>0</b>	<b>0</b>	<b>0</b>	<b>0</b>	<b>3-5</b>	<b>4-7</b>	<b>1</b>	<b>5.22</b>
Northern Iowa	7.0	7	3	3	4	14	1	0	1	0	0	1	0	0	5-3	7-4	1	2.43
<b>Southeast Missouri</b>	<b>4.2</b>	<b>7</b>	<b>13</b>	<b>10</b>	<b>8</b>	<b>6</b>	<b>0</b>	<b>0</b>	<b>3</b>	<b>1</b>	<b>0</b>	<b>1</b>	<b>0</b>	<b>0</b>	<b>5-13</b>	<b>4-8</b>	<b>1</b>	<b>5.86</b>
Auburn	5.0	6	5	5	2	2	3	0	0	1	0	0	0	0	13-5	8-4	1	2.74
<b>Southeast Missouri</b>	<b>7.0</b>	<b>10</b>	<b>9</b>	<b>6</b>	<b>2</b>	<b>6</b>	<b>2</b>	<b>1</b>	<b>0</b>	<b>1</b>	<b>0</b>	<b>0</b>	<b>1</b>	<b>0</b>	<b>6-9</b>	<b>4-9</b>	<b>1</b>	<b>5.87</b>
Northern Iowa	7.0	9	6	5	3	9	0	0	1	0	0	1	0	0	9-6	9-4	2	2.94
<b>Southeast Missouri</b>	<b>4.0</b>	<b>6</b>	<b>9</b>	<b>6</b>	<b>7</b>	<b>2</b>	<b>1</b>	<b>0</b>	<b>1</b>	<b>1</b>	<b>0</b>	<b>0</b>	<b>0</b>	<b>0</b>	<b>0-9</b>	<b>4-10</b>	<b>1</b>	<b>6.10</b>
South Dakota State	5.0	3	0	0	3	7	0	0	0	1	0	0	0	0	9-0	10-4	2	2.77
<b>Southeast Missouri</b>	<b>6.0</b>	<b>7</b>	<b>5</b>	<b>5</b>	<b>1</b>	<b>0</b>	<b>2</b>	<b>0</b>	<b>2</b>	<b>0</b>	<b>0</b>	<b>0</b>	<b>2</b>	<b>0</b>	<b>0-5</b>	<b>4-11</b>	<b>1</b>	<b>6.08</b>
Arkansas	7.0	3	0	0	1	6	0	0	0	0	0	0	2	0	5-0	11-4	2	2.56
<b>Southeast Missouri</b>	<b>5.0</b>	<b>13</b>	<b>9</b>	<b>7</b>	<b>1</b>	<b>4</b>	<b>2</b>	<b>0</b>	<b>1</b>	<b>2</b>	<b>0</b>	<b>0</b>	<b>1</b>	<b>0</b>	<b>1-9</b>	<b>4-12</b>	<b>1</b>	<b>6.28</b>
South Dakota State	5.0	5	1	1	2	5	1	0	0	0	0	0	0	0	9-1	12-4	2	2.50
<b>Southeast Missouri</b>	<b>6.0</b>	<b>8</b>	<b>8</b>	<b>6</b>	<b>7</b>	<b>2</b>	<b>0</b>	<b>0</b>	<b>1</b>	<b>0</b>	<b>0</b>	<b>1</b>	<b>1</b>	<b>0</b>	<b>3-8</b>	<b>4-13</b>	<b>1</b>	<b>6.32</b>
Florida Atlantic	7.0	8	3	3	3	4	1	0	0	1	0	0	0	0	8-3	13-4	3	2.53
<b>Southeast Missouri</b>	<b>7.2</b>	<b>9</b>	<b>6</b>	<b>4</b>	<b>3</b>	<b>0</b>	<b>0</b>	<b>0</b>	<b>1</b>	<b>0</b>	<b>0</b>	<b>0</b>	<b>1</b>	<b>1</b>	<b>5-6</b>	<b>4-14</b>	<b>1</b>	<b>6.13</b>
Arkansas	8.0	7	5	5	4	7	2	0	0	1	0	0	0	0	6-5	14-4	3	2.66
<b>Southeast Missouri</b>	<b>12.0</b>	<b>14</b>	<b>7</b>	<b>6</b>	<b>4</b>	<b>3</b>	<b>0</b>	<b>0</b>	<b>1</b>	<b>0</b>	<b>0</b>	<b>0</b>	<b>0</b>	<b>0</b>	<b>4-7</b>	<b>4-15</b>	<b>1</b>	<b>5.87</b>
Eastern Illinois	12.0	9	4	2	3	7	4	0	0	1	0	0	0	0	7-4	15-4	3	2.52
<b>Southeast Missouri</b>	<b>7.0</b>	<b>5</b>	<b>4</b>	<b>3</b>	<b>2</b>	<b>1</b>	<b>1</b>	<b>0</b>	<b>1</b>	<b>1</b>	<b>0</b>	<b>1</b>	<b>0</b>	<b>0</b>	<b>9-4</b>	<b>5-15</b>	<b>1</b>	<b>5.71</b>
Eastern Illinois	6.0	12	9	7	2	3	3	1	0	1	0	0	1	0	4-9	15-5	3	2.78
<b>Southeast Missouri</b>	<b>7.0</b>	<b>9</b>	<b>2</b>	<b>2</b>	<b>1</b>	<b>5</b>	<b>1</b>	<b>0</b>	<b>1</b>	<b>0</b>	<b>0</b>	<b>0</b>	<b>0</b>	<b>0</b>	<b>1-2</b>	<b>5-16</b>	<b>1</b>	<b>5.51</b>
Eastern Illinois	7.0	5	1	1	1	6	0	0	1	0	0	0	0	0	2-1	16-5	4	2.69
<b>Southeast Missouri</b>	<b>7.0</b>	<b>3</b>	<b>2</b>	<b>2</b>	<b>4</b>	<b>4</b>	<b>0</b>	<b>0</b>	<b>0</b>	<b>1</b>	<b>0</b>	<b>0</b>	<b>0</b>	<b>0</b>	<b>6-2</b>	<b>6-16</b>	<b>1</b>	<b>5.34</b>
Bradley	6.0	7	6	1	5	6	2	0	0	0	0	0	0	0	2-6	16-6	4	2.62
<b>Southeast Missouri</b>	<b>7.0</b>	<b>7</b>	<b>5</b>	<b>5</b>	<b>2</b>	<b>7</b>	<b>0</b>	<b>0</b>	<b>3</b>	<b>0</b>	<b>0</b>	<b>0</b>	<b>0</b>	<b>0</b>	<b>1-5</b>	<b>6-17</b>	<b>1</b>	<b>5.32</b>
Bradley	7.0	7	1	1	0	10	1	0	0	1	0	0	1	0	5-1	17-6	4	2.55
<b>Southeast Missouri</b>	<b>7.0</b>	<b>7</b>	<b>0</b>	<b>0</b>	<b>1</b>	<b>2</b>	<b>1</b>	<b>0</b>	<b>0</b>	<b>1</b>	<b>0</b>	<b>1</b>	<b>0</b>	<b>0</b>	<b>3-0</b>	<b>7-17</b>	<b>1</b>	<b>5.08</b>
SIU Edwardsville	7.0	8	3	3	3	3	1	0	2	0	0	0	0	0	0-3	17-7	4	2.57
<b>Southeast Missouri</b>	<b>7.0</b>	<b>6</b>	<b>2</b>	<b>2</b>	<b>1</b>	<b>1</b>	<b>1</b>	<b>0</b>	<b>0</b>	<b>0</b>	<b>0</b>	<b>0</b>	<b>1</b>	<b>0</b>	<b>3-2</b>	<b>8-17</b>	<b>2</b>	<b>4.95</b>
SIU Edwardsville	7.0	7	3	1	4	3	0	0	0	0	0	0	0	0	2-3	17-8	4	2.50
<b>Southeast Missouri</b>	<b>7.0</b>	<b>10</b>	<b>4</b>	<b>3</b>	<b>0</b>	<b>2</b>	<b>0</b>	<b>0</b>	<b>0</b>	<b>2</b>	<b>0</b>	<b>0</b>	<b>0</b>	<b>0</b>	<b>7-4</b>	<b>9-17</b>	<b>3</b>	<b>4.87</b>
SIU Edwardsville	7.0	9	7	5	3	4	4	0	0	0	0	0	2	0	4-7	17-9	4	2.60
<b>Southeast Missouri</b>																		
Tennessee State																		
<b>Southeast Missouri</b>																		
Tennessee State																		
<b>Southeast Missouri</b>																		
Tennessee State																		
<b>Southeast Missouri</b>																		
Southern Indiana																		



2024 SOUTHEAST MISSOURI SOFTBALL NOTES

GAME-BY-GAME PITCHING

Opponent	IP	H	R	ER	BB	SO	2B	3B	HR	WP	BK	HBP	DP	IBB	Score	W-L	SV	ERA
<b>Southeast Missouri</b> Southern Indiana																		
<b>Southeast Missouri</b> Southern Indiana																		
<b>Southeast Missouri</b> Missouri																		
<b>Southeast Missouri</b> Missouri																		
<b>Southeast Missouri</b> Tennessee Tech																		
<b>Southeast Missouri</b> Tennessee Tech																		
<b>Southeast Missouri</b> Tennessee Tech																		
<b>Southeast Missouri</b> Saint Louis																		
<b>Southeast Missouri</b> Morehead State																		
<b>Southeast Missouri</b> Morehead State																		
<b>Southeast Missouri</b> Morehead State																		
<b>Southeast Missouri</b> Lindenwood																		
<b>Southeast Missouri</b> Lindenwood																		
<b>Southeast Missouri</b> Lindenwood																		
<b>Southeast Missouri</b> Murray State																		
<b>Southeast Missouri</b> Western Illinois																		
<b>Southeast Missouri</b> Western Illinois																		
<b>Southeast Missouri</b> Western Illinois																		
<b>Southeast Missouri</b> UT Martin																		
<b>Southeast Missouri</b> UT Martin																		
<b>Southeast Missouri</b> UT Martin																		