

SOUTHEAST MISSOURI STATE UNIVERSITY REDHAWKS

VOLLEYBALL

2011 VOLLEYBALL GUIDE





SOUTHEAST MISSOURI STATE UNIVERSITY REDHAWKS
2011 VOLLEYBALL GUIDE



SOUTHEAST MISSOURI STATE UNIVERSITY REDHAWKS VOLLEYBALL

TABLE OF CONTENTS

GENERAL INFORMATION

Media Information	2-3
Houck Fieldhouse	4-5
Strength & Conditioning	6-7
Sports Medicine	8-9
Success Center	10-11

SEASON PREVIEW

Preview	14-15
Roster Breakdown	16-17
Roster	18

COACHING STAFF

Julie Folliard	20-21
Kayani Turner	22
Nikki Buchholz	23
2011 Staff Picture	24

PLAYER PROFILES

Pagie Dossey	26
Holly Reynolds	27
Brittney Kalinoski	28
Smanatha Lowman	29
Karlee Lursen	30
Andrea Baylin	31
Emily Coon	32
Berkley Idel	33
Julie Shives	34
Colleen Yarber	35
Erica Beck	36
Kelsey Keeve	36
Melissa Macellari	37
Meredith Stranges	37

OPPONENTS

Tournaments	40
ASU/EIU/SIUE	41
MUR/JSU/TTU	42
UTM/APSU/TSU	43
EKU/MSU	44
All-Time vs. Opponents	45-51
KFVS Schedule	52

RECORD BOOK

Team Records	54
Individual Match Records	55
Individual Season Records	56-57
Individual Career Records	58-60
Year-by-Year Results	61
All OVC/ All-Region	62-64
Hall of Fame	65

DIG FOR LIFE

Dig For Life	68-70
--------------	-------

THIS IS THE OVC

This is the OVC	72-76
-----------------	-------

THIS IS SOUTHEAST

Academics	78-83
Dr. Dobbins	84
Cindy Gannon	85
Support Staff	86

VIRTUAL GUIDE CREDITS: This guide is a publication of Southeast Missouri State University Sports Information Department. It was designed and edited by Nick Seeman, Jeff Honza and the University Relations Department. Photography by Patrick Clark, Bo Bunton, Marcus Mahnke and Kent Phillips. Assistance provided by Maria Nerviani and Chante Ahamefule.



SOUTHEAST MISSOURI STATE UNIVERSITY REDHAWKS VOLLEYBALL

MEDIA INFORMATION



Jeff Honza, Director

Football, Men's Basketball,
Women's Tennis

Office: (573) 651-2933
Cell: (618) 528-1145
E-Mail: jhonza@semo.edu



Chad Twaro, Assistant Director

Soccer, Women's Basketball,
Gymnastics, Softball,
Outdoor Track & Field

Office: (573) 651-2937
Cell: (989) 964-9307
E-Mail: ctwaro@semo.edu

SOUTHEAST MISSOURI STATE UNIVERSITY REDHAWKS VOLLEYBALL

MEDIA INFORMATION



Nick Seeman, Assistant

Volleyball, Baseball, Indoor Track

Office: (573) 651-2294

Cell: (612) 741-0550

Email: nseeman@semo.edu

CREDENTIALS

Credentials are required for entrance to the court (for photographers). To request season or single-match credentials, please contact the Southeast Missouri State Sports Information Office by phone at (573) 651-2294 or e-mail at nseeman@semo.edu.

VOLLEYBALL E-MAIL LIST

If you would like to be added to the Redhawk Volleyball e-mail list to receive breaking news about the team, please e-mail Nick Seeman. The official website, GoSoutheast.com, is the best source for up-to-date information about the team.

INTERVIEWS DURING THE WEEK

Student-athletes and coaches are available upon request during the season. Team policy requires interviews conducted 30 minutes prior to practice time. Please let the sports information office know if you plan to attend practice.

KFVS VIDEOSTREAM

KFVS12 will provide live webcasting for selected Southeast Missouri home volleyball matches this season. Fans can watch all webcasts free of charge online at kfvs12.com.



SOUTHEAST MISSOURI STATE UNIVERSITY REDHAWKS VOLLEYBALL

HOUCK FIELDHOUSE

Houck Fieldhouse is home to the So program and serves as the home venue for building features a three year old sports c Fieldhouse also has the ability to fit two f Show Me Center was completed, the field 1995 to better accommodate women's vol

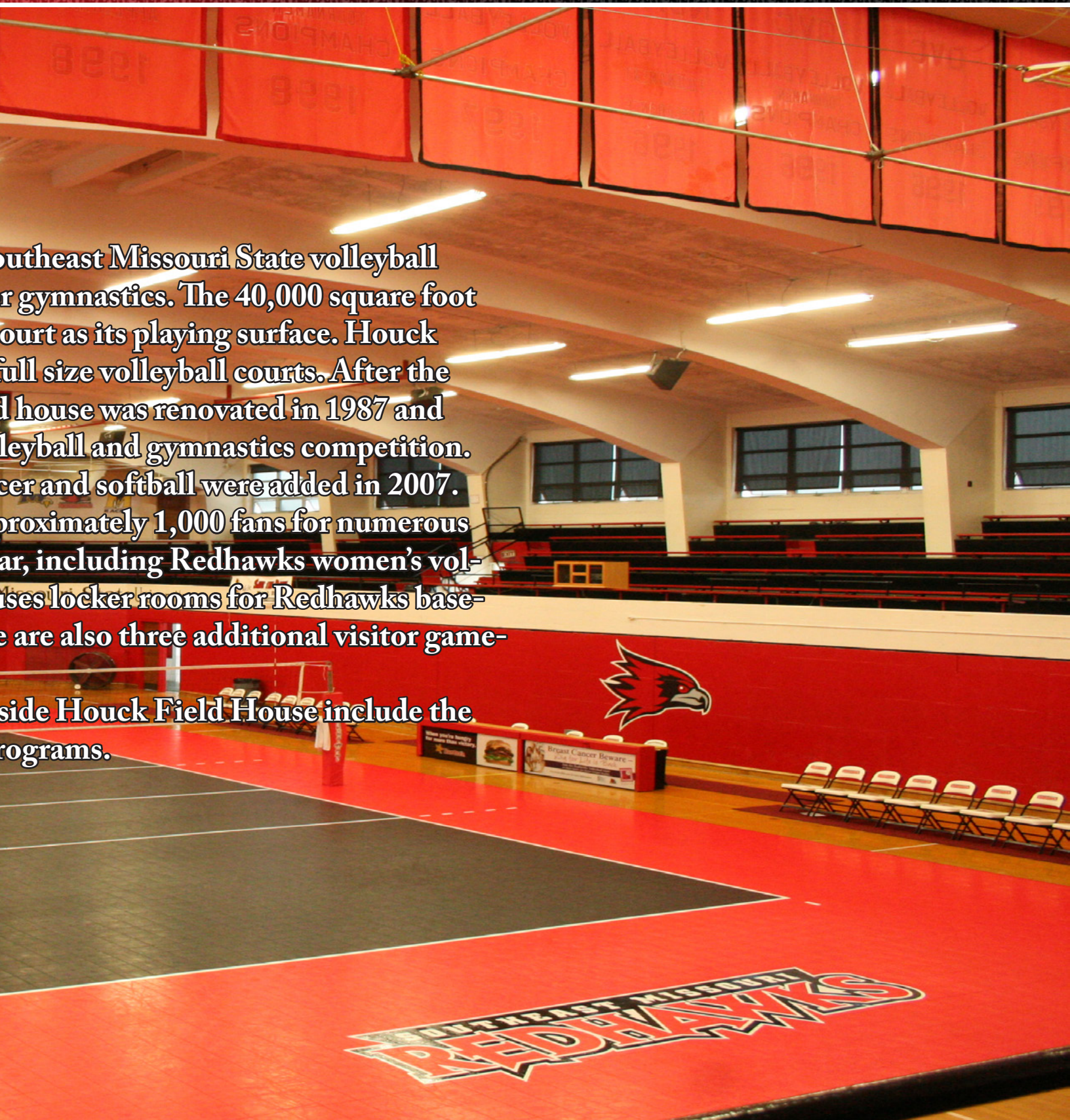
Brand new locker rooms for women's soc Today, Houck Field House seats app athletics competitions throughout the ye leyball and gymnastics. The building hou ball, volleyball, soccer, and softball. There day locker rooms.

Staff and coaching offices located in volleyball, baseball, softball and tennis pr

SOUTHEAST MISSOURI STATE UNIVERSITY REDHAWKS VOLLEYBALL

Southeast Missouri State volleyball
r gymnastics. The 40,000 square foot
court as its playing surface. Houck
full size volleyball courts. After the
house was renovated in 1987 and
volleyball and gymnastics competition.
er and softball were added in 2007.
approximately 1,000 fans for numerous
ar, including Redhawks women's vol-
ises locker rooms for Redhawks base-
e are also three additional visitor game-

side Houck Field House include the
programs.





SOUTHEAST MISSOURI STATE UNIVERSITY REDHAWKS VOLLEYBALL

STRENGTH AND CONDITION

We are very proud of the tradition of excellence we are building here at Southeast Missouri State University and demand a lot from our student-athletes.

Honesty, integrity, unrelenting effort and attention to detail are the pillars of our training program. Simply put, our goal is to outwork every opponent we go up against, and learn to rely on one another to achieve a common goal. We may not be the fastest, strongest or most talented, but we certainly have the attitude that, together, we can take on the world.

In the weight room, we take a comprehensive approach to training. Programs are ground-based, founded on the Olympic Lifts (Clean, Jerk, etc.) and traditional strength training (Front/Back Squat, Dead Lift, Pressing and Pulling). The concept is simple. Find something heavy and move it in a way that mimics the actions of your sport as fast as you can.

In the training arena, we strive to take the foundational strength and power we have developed and refine it into sport-specific movements and skills. We start by emphasizing correct motor skill and muscle recruitment patterns in order to maximize athletic potential and minimize the risk of injury. We drill tirelessly on proper movement patterns so that agility and change of direction are razor sharp.

We spend a lot of time on movements that require quickness, accuracy, and coordination in a way that is specific to our sport.

It is our goal to learn in sport-specific movements and develop the leadership skills of our student-athletes.



SOUTHEAST MISSOURI STATE UNIVERSITY REDHAWKS VOLLEYBALL

ING

and a great deal of time on both explosive
and body control to develop first step
acceleration/deceleration, balance and
. Lastly, we condition our minds and bodies
mimics game simulation.
hope that through the countless lessons
ort and competition, we are helping to de-
nders of tomorrow.





SOUTHEAST MISSOURI STATE UNIVERSITY REDHAWKS VOLLEYBALL

ATHLETIC TRAINING

Prevention. Treatment. Rehabilitation. Education. Those are the four primary phases of athletic training, and the Southeast Missouri State University Athletic Training staff strive to fulfill all of those areas when working with the student-athletes on a daily basis.

Southeast student-athletes are offered the best care possible by the Athletic Training staff. Head Athletic Trainer, Alfred Castillo, directs the Sports Medicine department which includes four full-time athletic trainers, six graduate assistants and several student assistants. The department serves student-athletes around-the-clock at numerous facilities on campus.

The Athletic Trainers begin treatments and rehabilitation starting as early as 6:00 a.m. and are available until the last student-athlete is through. There are currently four athletic training facilities on campus. The staff treats out of Rosengarten Athletic Complex, where the primary athletic training room is located. There are two other satellite athletic training rooms, including one at Houck Field House and one at the Show Me Center.

The Southeast Athletic Training rooms are equipped with stationary bikes, hand weights, and various therapeutic modalities, and the latest physical therapy equipment. Each component is strategically designed to not only give the student-athlete the best care, but also to aid in returning them to competition as quickly as possible.

Southeast Athletic Training has strong working relationships with local physicians and two hospitals located within Cape Girardeau. It is from these hospitals that the Athletic Training department is assisted by four orthopedic physicians.

The Southeast Athletic Training program prides and commits itself to providing the most comprehensive, personalized and efficient health care to its student-athletes. Delivery of health care focuses on the prevention and management of athletic-related injuries or illnesses, while adhering to the National Athletic Trainers' Board of Certification Standards of Professional Practice. Our high quality of athletic healthcare is provided in combination with the education of athletic training students.

SOUTHEAST MISSOURI STATE UNIVERSITY REDHAWKS VOLLEYBALL

ses of
ives to

ng staff.
cludes
e staff

.m., and
aining
mary
cluding

heights,
strategi-
ng to

and the
Training

the best
f health-
while
onal
ucation of



Southeast Missouri State Athletic Training is under the direction of Alfred Castillo. He is entering his sixth season with the Redhawks.



SOUTHEAST MISSOURI STATE UNIVERSITY REDHAWKS VOLLEYBALL

SUCCESS CENTER

The Redhawks Success Center offers Southeast Missouri State student-athletes a place to study and develop as students and campus leaders.

The Redhawks Success Center is located in Student Recreation Center, just south of Houck Stadium. The facility offers a computer lab with 18 computer work terminals, study areas and rooms for group meetings.

The area is under the guidance of Cindy Gannon, Interim Director of Athletics, with assistance from Director of Academic Services Sharon Burgard and two graduate assistants - Kelly Benecka and Israel Kirk.

The beautiful facility has enhanced the outstanding work in the classroom already enjoyed by Southeast student-athletes. During the 2009 fall semester, the Southeast athletic programs combined for a 3.12 grade point average, its highest for a fall term. Eleven of the Redhawks 15 programs recorded a team GPA of 3.0 or better. In all, 207 student-athletes recorded at least a 3.0 GPA. Of that group, 50 finished the fall term with a perfect 4.0.

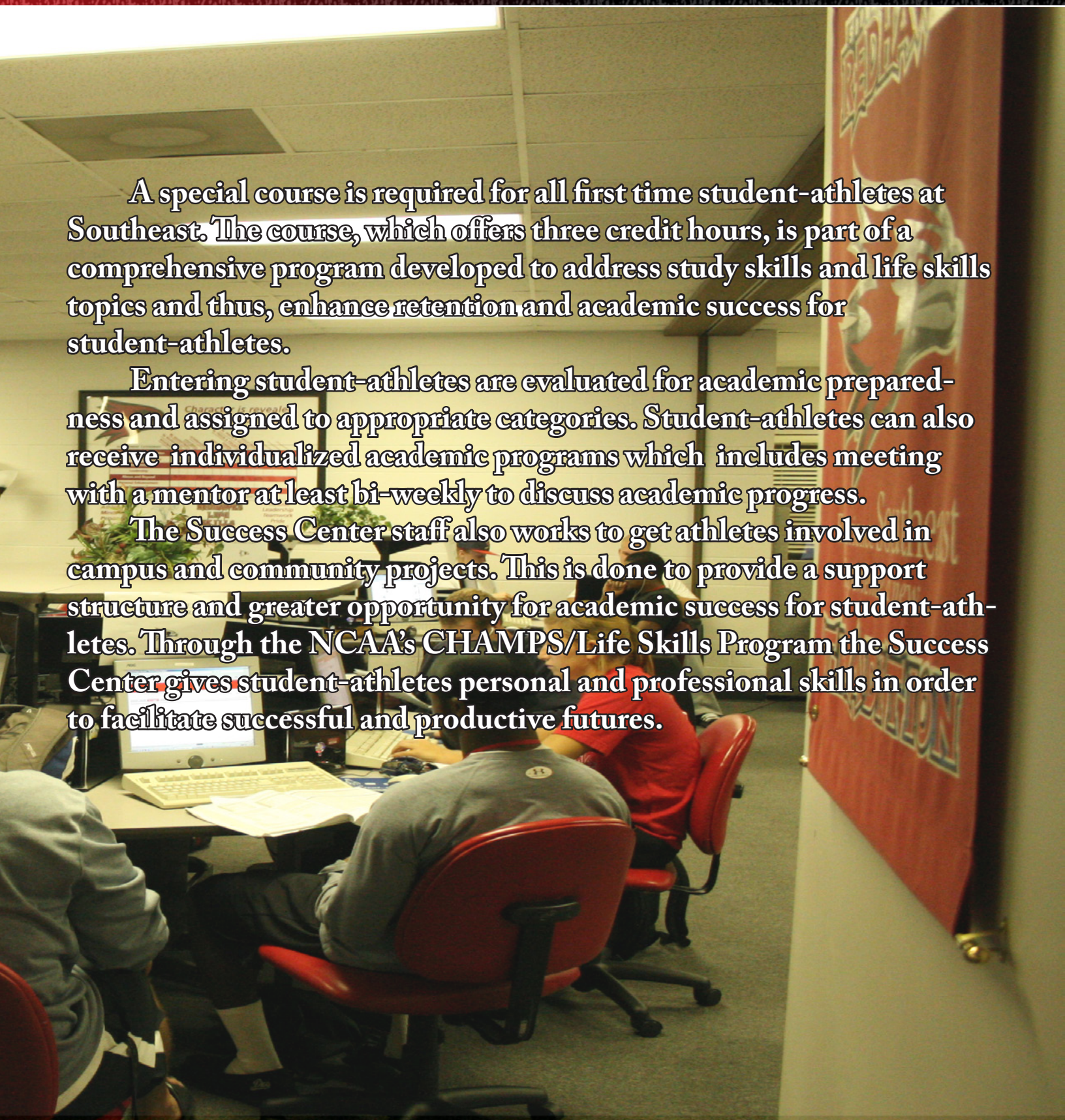
Tutors are available for all student-athletes as needed. In addition, both attendance and academic progress are monitored through regular checks with faculty.

SOUTHEAST MISSOURI STATE UNIVERSITY REDHAWKS VOLLEYBALL

A special course is required for all first time student-athletes at Southeast. The course, which offers three credit hours, is part of a comprehensive program developed to address study skills and life skills topics and thus, enhance retention and academic success for student-athletes.

Entering student-athletes are evaluated for academic preparedness and assigned to appropriate categories. Student-athletes can also receive individualized academic programs which includes meeting with a mentor at least bi-weekly to discuss academic progress.

The Success Center staff also works to get athletes involved in campus and community projects. This is done to provide a support structure and greater opportunity for academic success for student-athletes. Through the NCAA's CHAMPS/Life Skills Program the Success Center gives student-athletes personal and professional skills in order to facilitate successful and productive futures.





SOUTHEAST MISSOURI STATE UNIVERSITY REDHAWKS VOLLEYBALL

MISSION STATEMENT

The Southeast Missouri State University Department of Athletics recognizes the University's responsibility for the advancement and transmission of knowledge and the preparation of leaders in all segments of society.

The Department of Athletics supports the educational objectives, academic progress and general welfare of student-athletes. It offers assistance and encouragement for student-athletes to maintain appropriate academic progress and to achieve their individual educational goals.

It provides an atmosphere which supports equitable opportunity for all students and staff, including women and minorities. The Department of Athletics offers student-athletes opportunities to excel in their particular sport, while embracing the NCAA's principles of sportsmanship and ethical conduct.





SOUTHEAST MISSOURI STATE UNIVERSITY REDHAWKS
SEASON PREVIEW





SOUTHEAST MISSOURI STATE UNIVERSITY REDHAWKS VOLLEYBALL

2011 SEASON PREVIEW



Julie Folliard is in her first season as head coach at Southeast. Folliard comes to Southeast after a five year tenor as associate head coach at Southern Illinois University.

The Redhawks return 10 letter winners and four starters from the 2010 squad that went 7-22 overall and 4-14 in the Ohio Valley Conference.

The 2011 roster features 14 players. The Redhawks return two seniors, three juniors, and five Sophmores. Southeast welcomes four new players to it's roster this season,. The group includes: one transfer and three true freshman.

This year's crop of returners features Sophomore Emily Coon, who was named Preseason All-OVC after a stellar freshman season. Coon was named to the OVC All-Newcomer Team last season. Coon accounted for 168 kills in 2010. She also contributed defensively with a team-high 80 blocks.

The group of returnees are also anchored by Karlee Lursen and Paige Dossey.

Lursen ranked second on the Redhawks in kills last season with 189 and also added 204 digs. Dossey added 112 kills in 2010 to go along with 41 blocks.

Sophomore Julie Shives is also back this season. Shives posted 942 set assists last season. She also contributed defensively with 323 digs ranking second on the team in that category. Fellow Sophomore Andrea Baylin returns this season to help anchor the Redhawks defensively. Baylin added 157 digs a season ago.

Here is a potential breakdown of the 2011 Southeast Missouri volleyball team:

MIDDLE BLOCKERS

Coach Folliard looks for the middle blockers to play an expanded role in the team's offense this season. **Sophomore Emily Coon (Imperial, Mo.)** will look to add to her list of accomplishments this season as she headlines the Redhawk's middle blockers.

Last Season, Coon had a season-high 14 kills against Bradley on Aug. 28th at the Bradley Invitational. She posted 13 kills and eight blocks against Eastern Kentucky on Sept. 24.

"We look for Emily to be a big contributor in our offense this season," said coach Folliard.

Senior Holly Reynolds is also back this season. The Ozark, Mo. native appeared in 43 sets last season and added 33 kills and 24 blocks.

Freshman Kelsey Keeve will look to add depth in the middle for the Redhawks. Keeve, garnered All-State honors a season ago at Lyons Township High School in LaGrange, Ill. Keeve led Lyons Township to a state championship and a national ranking of fourth from prepvolleyball.com.

"Reynolds and Keeve will keep our offense diversified this season," said coach Folliard.

OUTSIDE HITTERS

Southeast will feature depth at outside hitter this season **Karlee Lursen (Apple Valley, Minn.)** leads the returners this season. Lursen was second on the team in kills a season ago with 189 in 21 starts. In 2010 she posted a career-high 20 kills against Eastern Kentucky on Sept. 24

Fellow junior Brittney Kalinoski added 33 kills a season ago. "Brittney has had an outstanding off season and will surprise teams this season with her ability to terminate the ball," coach Folliard exclaimed.

A pair of sophomores will also battle for playing time at outside hitter this season. **Andrea Baylin (Dublin, Ohio)** had a solid freshman campaign in 2010 with 111 kills (.142 per set). Baylin also added 2.01 digs per set in 2010.

"Andrea is a very smart player that can add intensity to our offense and defense," Folliard stated.



SOUTHEAST MISSOURI STATE UNIVERSITY REDHAWKS VOLLEYBALL

2011 SEASON PREVIEW



Sophomore Colleen Yarber (Smithton, Ill.) Appeared in 28 sets and added 31 kills in 2010. "Colleen has an extremely heavy armswing that will help her find time on the court," Folliard said.

RIGHTSIDE HITTERS

Senior Paige Dossey (Avon, Ind.) returns to help solidify the rightside hitters this season. Dossey had 112 kills a season ago averaging 1.30 kills per set. She also added 41 blocks.

"Paige is one of the most well rounded athletes on the team, she is a very consistent passer and has the ability to terminate the ball when given the opportunity," Folliard stated.

Freshman Meredith Stranges (Dublin, Ohio) will add depth on the right side this season. Stranges had 266 kills a season ago at Dublin Coffman HS in Dublin, Ohio.

SETTERS

Julie Shives (Hillard, Ohio) will look to set the table this year for the Redhawks. Shives accumulated 942 set

assist a season ago. She currently ranks eighth on the career set assists chart at Southeast. Shives was named OVC Setter of the Week on August 27, after her performance at the Bradley Invitational. She also contributes on the defensive side with 323 digs in 2010.

"Julie makes great decisions when running the offense and contributes as an offensive threat herself. Her quickness and ability to get to the ball will keep our offense dynamic," said Folliard.

Melissa Macellari (Granger, Ind.) is a freshman that will add depth at setter this season. Macellari earned All-North Indiana Conference honors in 2009, 2010, and 2011.

"Melissa Macellari adds some height to this position and her ability to block will help her contend for playing time," said Folliard.

LIBEROS

The Redhawks have three player contending for playing time at libero this season. **Junior Samantha Lowman (Lincoln, Ill.)** will add a veteran presence to the position. Lowman saw action in 56 sets a season ago. She accumulated 55 digs and added five service aces in 2010.

"Samantha has experience and knowledge of the game that will help her gain playing time," Folliard said. **Berkley Idel (Wildwood, Mo.)** also returns this season, the sophomore appeared in 57 sets with 45 digs.

"Berkley has the aggressive attitude on defense that we need in a libero," Folliard said.

Erica Beck (West Bend, Wisc...) will contend for playing time this season. Beck came to Southeast after redshirting at Youngstown State in 2010. She will be a freshman this season.

"Beck will also contend for playing time with her ability to serve receive efficiently," Folliard stated.

SCHEDULE

The Redhawks will play 31 games this season. Southeast will play in three tournaments: Memphis Invitational, Indiana Tournament and Evansville Tournament.

Southeast will play 20 OVC matches. The Redhawks first 13 matches will be on the road this season.

The Redhawks will play 10 matches at Houck Fieldhouse in 2011 with the first match taking place on Sept. 20th against Murray State at 6:30 p.m.

2011 OVC PRESEASON POLL

Southeast Missouri was picked ninth in the 2011 Ohio Valley Conference Preseason Poll. OVC coaches and sports information directors gave the Redhawks 71 points in this year's poll, which is headlined by defending regular-season champion Morehead State who received 192 points and 13 first-place votes.

Austin Peay the defending conference tournament champions were picked second with five first-place votes and 172 points. Jacksonville State received 141 points and three first-place votes in third and Tennessee Tech rounds out the top four teams with one first-place vote and 130 points.





SOUTHEAST MISSOURI STATE UNIVERSITY REDHAWKS VOLLEYBALL

2011 ROSTER BREAKDOWN

Letter Winners Returning
- 10

Letter Winners Lost
- 5

Newcomers
- 4

Starters Returning
- 4

Starters Returning
- Baylin
- Coon
- Dossey
- Shives

Starters Lost
- 3

Starters Lost
- Kelly Benecka (Libero)
- Emily Hughes
- Claire Keaton

Squad Breakdown

Total	14
Seniors	2
Juniors	3
Sophomores	5
Freshmen	3
Redshirt	1

Geographical Breakdown

Illinois	3
Indiana	2
Kansas	1
Minnesota	1
Missouri	3
Ohio	3
Wisconsin	1



SOUTHEAST MISSOURI STATE UNIVERSITY REDHAWKS VOLLEYBALL





SOUTHEAST MISSOURI STATE UNIVERSITY REDHAWKS VOLLEYBALL

2011 REDHAWK VOLLEYBALL ROSTER



NUMERICAL

<u>NO</u>	<u>NAME</u>	<u>HT</u>	<u>POS</u>	<u>YR</u>	<u>HOMETOWN/LAST SCHOOL</u>
1	Brittney Kalinoski	5-11	OH	Jr.	Overland Park, Kan./Olathe East
2	Andrea Baylin	6-1	OH	So.	Dublin, Ohio/Dublin
3	Samantha Lowman	5-7	L	Jr.	Lincoln, Ill./Lincoln Community
4	Erica Beck	5-7	Lib.	R-Fr.	West Bend, Wisc./Youngstown St.
5	Emily Coon	6-2	MB	So.	Imperial, Mo./Seckman
6	Julie Shives	5-8	S	So.	Hilliard, Ohio/Hilliard Davidson
7	Karlee Lursen	5-9	OH	Jr.	Apple Valley, Minn./Eastview
8	Meredith Stranges	6-1	RS	Fr.	Dublin, Ohio/Coffman
10	Paige Dossey	5-10	OH	Sr.	Avon, Ind./Avon
11	Berkley Idel	5-11	OH/L	So.	Wildwood, Mo./Lafayette
12	Colleen Yarber	6-1	OH	So.	Smithton, Ill./Freeburg
13	Kelsey Keeve	6-1	MB	Fr.	La Grange, Ill./Lyons Township
14	Holly Reynolds	6-0	MB	Sr.	Ozark, Mo./Jefferson College
16	Melissa Macellari	6-0	Set.	Fr.	Granger, Ind./St. Joesph's

ALPHABETICAL

<u>NO</u>	<u>NAME</u>	<u>HT</u>	<u>POS</u>	<u>YR</u>	<u>HOMETOWN/LAST SCHOOL</u>
2	Andrea Baylin	6-1	OH	So.	Dublin, Ohio/Dublin
4	Erica Beck	5-7	Lib.	R-Fr.	West Bend, Wisc./Youngstown St.
5	Emily Coon	6-2	MB	So.	Imperial, Mo./Seckman
10	Paige Dossey	5-10	OH	Sr.	Avon, Ind./Avon
11	Berkley Idel	5-11	OH/L	So.	Wildwood, Mo./Lafayette
1	Brittney Kalinoski	5-11	OH	Jr.	Overland Park, Kan./Olathe East
13	Kelsey Keeve	6-1	MB	Fr.	La Grange, Ill./Lyons Township
3	Samantha Lowman	5-7	L	Jr.	Lincoln, Ill./Lincoln Community
7	Karlee Lursen	5-9	OH	Jr.	Apple Valley, Minn./Eastview
16	Melissa Macellari	6-0	Set.	Fr.	Granger, Ind./St. Joesph's
14	Holly Reynolds	6-0	MB	Sr.	Ozark, Mo./Jefferson College
6	Julie Shives	5-8	S	So.	Hilliard, Ohio/Hilliard Davidson
8	Meredith Stranges	6-1	RS	Fr.	Dublin, Ohio/Coffman
12	Colleen Yarber	6-1	OH	So.	Smithton, Ill./Freeburg

COACHING STAFF

Head Coach - Julie Folliard (Wisconsin-Milwaukee, 2002)

Assistant Coaches - Kayani Turner (Illinois, 2008), Nikki Buchholz (Franklin Pierce, 2009)



**SOUTHEAST MISSOURI STATE UNIVERSITY REDHAWKS
COACHING STAFF**





SOUTHEAST MISSOURI STATE UNIVERSITY
REDHAWKS VOLLEYBALL

HEAD COACH JULIE FOLLIARD



COACHING BACKGROUND

ASSOCIATE HEAD COACH
SOUTHERN ILLINOIS UNIVERSITY
2006 - 2010

ASSISTANT HEAD COACH
GEORGIA STATE
2004 - 2006



SOUTHEAST MISSOURI STATE UNIVERSITY REDHAWKS VOLLEYBALL

Julie Folliard is in her first season as head coach at Southeast Missouri State. Folliard comes to Southeast after serving as associate head coach for five seasons at Southern Illinois University in Carbondale, Ill.

Folliard began her time at Southern Illinois in 2006. She was recruiting coordinator for the Salukis during her time in Carbondale. Folliard also served as the coordinator of the teams defense, as well as coach of the outside and right side hitters where she coached four-time All-Missouri Valley Conference player Jennifer Berwanger.

Folliard was also in charge of scouting, equipment, team travel, video breakdown and analysis. She also served as manager of home match management at SIU.

Prior to SIU, Folliard spent two seasons at Georgia State in Atlanta, Georgia serving as the top assistant coach for the Panthers. At Georgia State Folliard coached the outside hitters and handled team travel, tape exchange and equipment. Folliard also assisted in the recruiting, scouting and practice planning. While at Georgia State, Folliard earned her master's degree in sports administration.

Folliard is a 2002 graduate of the University of Wisconsin-Milwaukee earning a bachelor's degree in business administration with a focus in finance and human resource management.

During her time at the University of Wisconsin-Milwaukee Folliard was a steady performer for the Panthers volleyball team from 1998-2001. During Folliard's time she was part of the winningest class in school history going 93-23 in her four seasons with the Panthers. Folliard, also excelled in the classroom being named to the Horizon League All-Academic Team in 1999 and 2001.

Folliard is a native of Waukesha, Wisconsin. She attended Catholic Memorial High School and was a stand-out volleyball player leading her team a WISAA State championship her senior season. Folliard was also part of the Milwaukee Sting Club Volleyball Club from 1996-1998.

Folliard is married to Steven Folliard.





SOUTHEAST MISSOURI STATE UNIVERSITY REDHAWKS VOLLEYBALL

ASSISTANT COACH KAYANI TURNER



COACHING BACKGROUND

**GRADUATE ASSISTANT COACH
WESTERN ILLINOIS UNIVERSITY
2009 - 2010**



Kayani Turner is in her first season as assistant coach at Southeast Missouri. She will serve as the primary coach for the outside hitters and serve as recruiting coordinator. Turner will also assist in the scouting of opponents, film breakdown and practice planning.

Turner comes to Southeast after serving as graduate assistant coach at Western Illinois University from 2009-2010. Turner was in charge of pregame and postgame administrative duties for the Leathernecks. Turner also served the scout for Western Illinois' serve receptions and opponents' serving tendencies.

Turner also has a coaching background in the club volleyball ranks serving as head coach of the Prime Time Volleyball Club in Champaign, Ill. She also served as a camp coach at the University of Illinois Volleyball Camps from 2005-11. Turner also worked as a camp coach at Precision Volleyball Camp during the summer of 2009.

Prior to her time at Western Illinois, Turner was a standout volleyball player at the University of Illinois. During her sophomore season in 2006 she lead the Illini in kills with 391, which ranked fifth in the Big Ten Conference.

After sitting out her junior season due to injury Turner returned to the court and played in 21 matches and helped lead the Illini to the Sweet 16 of the NCAA Tournament. During her three years at Illinois she appeared in 72 matches and recorded 642 kills.

Turner was a standout high school player at John Carroll High School in Baltimore, Maryland. Tuner led John Carroll to 38-1 record in her junior and senior seasons. She lead the Baltimore metro area in Kills during her junior and senior campaigns.

Turner is a graduate of the University of Illinois majoring in communication. She recently earned her master's degree in sports management from Western Illinois.

SOUTHEAST MISSOURI STATE UNIVERSITY REDHAWKS VOLLEYBALL

ASSISTANT COACH NIKKI BUCHHOLZ



COACHING BACKGROUND

**GRADUATE ASSISTANT COACH
EAST STROUDSBURG UNIVERSITY
2009**



Nikki Buchholz is in her second season as an assistant coach at Southeast Missouri. Buchholz will coach the middle blockers for this upcoming season and will also be in charge of team travel, tape exchange and equipment. She will also assist with scouting opponents, film breakdown, and practice planning.

Prior to Southeast, Buchholz served as a graduate assistant coach at East Stroudsburg University in Pennsylvania during the 2009 season.

Buchholz graduated from Franklin Pierce University, a Division II school in New Hampshire, where she was a four-time All-Northeast 10 Conference player.

During her junior year, she was named to the All-Region Second Team in 2007. She was the first player to ever be named to an All-Region Team in Franklin Pierce's 20-year program history.

Her 159 total blocks led the Northeast-10 Conference, as did her 1.26 blocks per game.

At the completion of her four-year career at Franklin Pierce, Buchholz had guided the Ravens to four consecutive Northeast-10 Conference Championship appearances. She was also named conference player of the week five times and owns the school career record for kills with 1,271 and blocks with 493.

Aside from her statistics being atop of the record books, she was also a top-notch mentor. She was a two-time captain of the Franklin Pierce team that won 35 matches in two years under her leadership.

Buchholz also excelled in the classroom, as she graduated cum Laude with a Bachelor of Arts in Mass Communications. She was a three-time First Team Academic All-Conference selection.



SOUTHEAST MISSOURI STATE UNIVERSITY
REDHAWKS VOLLEYBALL

2011 VOLLEYBALL COACHING STAFF





SOUTHEAST MISSOURI STATE UNIVERSITY REDHAWKS
PLAYER PROFILES





SOUTHEAST MISSOURI STATE UNIVERSITY REDHAWKS VOLLEYBALL



10

PAIGE DOSSEY

SR

**SENIOR
OUTSIDE HITTER
HEIGHT- 5-9
HOMETOWN- AVON, IND.
MAJOR- EXCEPTIONAL CHILD
NICKNAME- P-DUB**



2010: Started in 19 matches and played in 27...finished with 112 kills, 29 assists, 29 digs and 41 blocks...smashed a season-high 14 kills on 27 attempts with just two errors against Saint Louis on October 12...had ten kills against UT Martin on October 14 and also had three assists, two digs and two blocks in the match...recorded six blocks against Eastern Kentucky on September 24...posted 13 blocks in a four game span from September 11-28...excelled in the classroom earning CoSIDA/ESPN The Magazine Academic All-District Team Second Team honors...OVC Medal of Honor recipient...OVC Commissioner's Honor Roll...Southeast Scholar Athlete.

2009: Played in 27 matches with 14 starts...averaged 1.17 kills and 1.44 points per set...recorded 78 digs for a 0.93 per set average...fourth on the team with 27 blocks...averaged 1.24 kills per set in home matches...in away matches, averaged 1.18 digs per set...recorded four matches with three blocks...set a career-high with ten kills vs. Samford...against SIUE, recorded a career-high ten digs and two service aces...matched career-high with two assists at Belmont, vs. Samford and at Morehead State...tied career-high with two service aces vs. Eastern Illinois...had nine kills vs. Tennessee State...had nine kills, eight digs, a career-high .444 attack percentage and 11 points at Tennessee State...finished with nine digs at Austin Peay...OVC Medal of Honor recipient...OVC Commissioner's Honor Roll...Southeast Scholar Athlete.

2008: Played in 24 matches with 11 starts as a true freshman...fourth on the team in blocks per game with 0.42...recorded 57 kills, including a season-high seven against Eastern Illinois...recorded 80 points on the season, including a season-high 8.5 against Eastern Illinois...averaged 0.89 kills per set in non-conference matches...three matches of six kills or more...season high four blocks against nationally ranked Middle Tennessee...season-high two solo blocks against Tennessee State...tallied six kills, two blocks and one assist in her first collegiate match...attempted season-high 27 attacks at SIUC...only two receiving errors all season...OVC Medal of Honor recipient...OVC Commissioner's Honor Roll...Southeast Scholar Athlete.

Prep/Club: Four-year letterwinner and starter at Avon High School...coached by Scott McQueen...led team to a 34-3 mark that included winning sectional and county championships...averaged 2.52 kills and 1.5 digs per game as a senior captain...ranked among the state leaders in kills...earned First Team All-West and All-Conference accolades...competed on the South team in the Indiana All-Star match...played for the Circle City Volleyball Club.

PAIGE DOSSEY-CAREER STATS

Season	SP	MP	K	K/S	E	TA	PCT	A	A/S	SA	SE	DIG	D/S	RE	BS	BA	TB	B/S	BE	BHE	POINTS	PTS/S
2008	72	24	57	0.79	41	190	.084	7	0.10	4	7	37	0.51	2	8	22	30	0.42	4	0	80.0	1.11
2009	84	27	98	1.17	59	363	.107	10	0.12	9	3	78	0.93	7	1	26	27	0.32	6	2	121.0	1.44
2010	86	27	112	1.30	69	396	.109	29	0.34	0	0	29	0.34	1	2	39	41	0.48	2	0	133.5	1.55
TOTAL	242	78	267	1.08	169	949	.352	46	0.18	13	10	144	0.59	10	11	87	57	0.41	12	2	111.5	1.36

SOUTHEAST MISSOURI STATE UNIVERSITY REDHAWKS VOLLEYBALL



HOLLY REYNOLDS



2010: Played in 19 matches, starting in nine...had 33 kills, 20 digs, 24 total blocks, three assists and two aces on the season...had a season-high five kills in first game of the season against USC-Upstate on August 27...had a season-high five total blocks against Jacksonville State on October 9...averaged 1.12 points per set, playing in 43 sets throughout the season.

2008-09 (Jefferson College): Two-time letterwinner as the team's starting middle blocker...appeared in 30 matches in 2009...finished with 168 kills for a 1.81 per set average in 2009...also recorded 92 blocks for a 0.99 per set average...double-digit kills in five matches...five or more blocks in seven matches...had two aces in five matches...recorded 12 kills, ten blocks and seven digs against Snow College...had a season-high 14 kills vs. Mineral Area College and New Mexico Military Institute...finished with ten blocks vs. Illinois Central College...helped her team finish 12th nationally in the NJCAA rankings in 2008 with a record of 30-11...led team to back-to-back conference titles and Region XVI runner-up finishes...First Team All-Region XVI selection in 2008...First Team All-Conference selection in 2008...led the team with 52 aces in 2008...recorded 212 kills and 72 blocks in 2008...named to the Iowa Western All-Tournament Team...two-time Junior College Academic All-Region...named to the Dean's List as a freshman and sophomore.

Prep/Club: Played at Ozark High School in Ozark, Mo....coached by Becky Justis...First Team All-Conference and All-District...Second Team All-Southwest Region selection...Team MVP as a senior...led team in kills, blocks and attack percentage as a senior...also played basketball and track...honor roll student...graduated Cum Laude. Back-to-back State champs in basketball during freshman and sophomore seasons...fourth place at State track class 4 in 4x800 meter relay freshman year...eighth place at state track class 4 in 4x800 meter relay sophomore year.

SENIOR
MIDDLE BLOCKER
HEIGHT- 6-0
HOMETOWN- OZARK, MO.
MAJOR- ATHLETIC TRAINING
NICKNAME- HOLLS



HOLLY REYNOLDS-CAREER STATS

Season	SP	MP	K	K/S	E	TA	PCT	A	A/S	SA	SE	DIG	D/S	RE	BS	BA	TB	B/S	BE	BHE	POINTS	PTS/S
2010	43	19	33	0.77	26	128	.055	3	0.07	2	1	20	0.47	0	2	22	24	0.56	3	0	48.0	1.12
TOTAL	43	19	33	0.77	26	128	.055	3	0.07	2	1	20	0.47	0	2	22	24	0.56	3	0	48.0	1.12



SOUTHEAST MISSOURI STATE UNIVERSITY REDHAWKS VOLLEYBALL



1 BRITTNEY KALINOSKI JR

2010: Played in 22 matches and started in seven...had 33 kills, 17 assists, 11 digs and nine blocks in 47 sets played...recorded season-high seven kills and three digs against Ohio on September 4...had a season-high six assists against Bradley on August 28...had five kills against Bradley.

2009: Played in 14 matches with five starts...averaged 1.17 kills and 1.25 points per set...recorded 60 digs for a 1.67 per set average...averaged 2.15 digs per set in OVC play...in home matches averaged 3.50 digs per set...in non-conference matches, averaged 1.52 kills and 1.59 points per set...made first career start vs. Central Arkansas...had season-highs of nine kills and 35 attempts vs. Clemson...recorded eight kills and a season-high .238 attack percentage vs. Ole Miss...set a season-high with 12 digs vs. Ole Miss...finished with seven kills at Georgia Tech...had nine digs and first career ace vs. Austin Peay...recorded eight digs vs. Central Arkansas and at Eastern Kentucky...had two assists vs. Clemson...OVC Commissioner's Honor Roll...Southeast Scholar Athlete.

Prep/Club: Outside hitter at Olathe East High School...two-time All-State selection...two-time All-Conference selection...Kansas City Star All-Metro Team honorable mention...All-Sun County Team...member of the Olathe East Hall of Fame...school record-holder in single season and career blocks and kills...two-time team captain...member of KC Extreme Volleyball Club which placed 5th at Junior Olympics in 2007 and 21st in 2008...received 2008 All-Sunflower and Tonganoxie Tournament MVP honors.

JUNIOR
OUTSIDE HITTER
HEIGHT- 5-11
HOMETOWN- OVERLAND PARK, KAN.
MAJOR- ACCOUNTING
NICKNAME- BK



BRITTNEY KALINOSKI-CAREER STATS

Season	SP	MP	K	K/S	E	TA	PCT	A	A/S	SA	SE	DIG	D/S	RE	BS	BA	TB	B/S	BE	BHE	POINTS	PTS/S
2009	36	14	42	1.17	29	172	.076	5	0.14	1	3	60	1.67	6	0	5	5	0.14	0	0	45.5	1.25
2010	47	22	33	0.70	34	161	-.006	17	0.36	0	0	11	0.23	0	0	9	9	0.19	2	0	37.5	0.80
Career	83	36	75	0.935	63	333	.035	22	0.25	1	3	71	0.95	6	0	14	14	0.165	2	0	41.5	1.025

SOUTHEAST MISSOURI STATE UNIVERSITY REDHAWKS VOLLEYBALL



3 SAMANTHA LOWMAN JR

2010: Played in 23 matches and 56 sets...finished the season with six service aces, and 55 digs...season-high 19 digs against Southern Illinois Edwardsville on October 19...season-high two service aces on September 24 against Eastern Kentucky...picked up seven digs against UT Martin on September 28 and also had a service ace.

2009: Played in 16 matches...nine of her appearances came in non-conference matches...recorded seven digs and three aces...recorded five digs for a 0.28 per set average in non-conference matches...made first appearance at Belmont...appeared in a season-high four sets vs. Samford...had a season-high three digs vs. Clemson...had two aces at Georgia Tech...recorded an ace vs. Ole Miss...recorded first collegiate kill vs. Central Arkansas.

Prep/Club: Libero from Lincoln Community High School...First Team All-Conference selection in 2008...career record-holder in digs with 865 and single-season with 343...three-time letterwinner...helped team to three IHSA Regional Championships and back-to-back Sweet Sixteen appearances her junior and senior year...two-time All-Tournament Team selection in 2007-2008 at the Moldenhauer-Boilermaker Classic and Bradley-Bourbonnais Community High School Tournament...member of the Illini Elite Volleyball club...3rd place finisher at the 2009 JVDA volleyball championships...four-year Honor Roll Student...received the prestigious Foundation Leadership Award...member of the Illini Elite Volleyball Club that earned a third-place finish at the 2009 JVDA Volleyball championships.

**JUNIOR
LIBERO
HEIGHT- 5-7
HOMETOWN- LINCOLN, ILL.
MAJOR- AGRIBUSINESS**



SAMANTHA LOWMAN-CAREER STATS

Season	SP	MP	K	K/S	E	TA	PCT	A	A/S	SA	SE	DIG	D/S	RE	BS	BA	TB	B/S	BE	BHE	POINTS	PTS/S
2009	28	16	1	0.04	0	1	1.000	0	0.00	3	9	7	0.25	2	0	0	0	0.00	0	0	4.0	0.14
2010	56	23	0	0.00	0	1	.000	2	0.04	6	14	55	0.98	9	0	0	0	0.00	0	0	6.0	0.11
Career	84	39	1	0.02	0	2	0.5	2	0.02	9	23	62	0.615	11	0	0	0	0.00	0	0	5.0	0.125



SOUTHEAST MISSOURI STATE UNIVERSITY REDHAWKS VOLLEYBALL



KARLEE LURSEN



2010: Started in 21 matches and played in 26...second on the team with 189 kills...posted 204 digs, 31 blocks and 20 assists on the season...had four kill-dig double-doubles...posted season-high 20 kills against Eastern Kentucky on September 24 and also had 16 digs...had 14 kills and 15 digs against Bradley on August 28...posted 12 kills and 12 digs with three blocks against Southern Illinois on September 11...had 11 kills, three assists and 10 digs against Austin Peay on October 1...posted 14 kills and four blocks against Jacksonville State on October 9...had 56 kills and 37 digs in a three-match span from September 11-24...recorded four consecutive double digit digs from September 24-October 1...finished the season with ten or more kills in seven matches...finished the season with nine matches of ten or more digs.

2009: Played in 23 matches with seven starts...started first five matches of the season...averaged 1.33 kill and 1.45 points per set...recorded 93 digs for a 1.69 per set average...averaged 2.15 digs per set in OVC play...in non-conference matches averaged 1.72 kills and 2.19 digs per set...recorded two double-doubles...recorded double-digit digs in four matches...recorded double-digit kills in two matches...in season opener vs. Arkansas State, recorded first career double-double with season-highs of 11 kills and 13 digs...finished with ten kills and matched season-high with 13 digs vs. Evansville...had eight kills, eight digs and first collegiate ace at Tennessee Tech...finished with 11 digs at Belmont...recorded two blocks vs. Central Arkansas and at Eastern Illinois...recorded a season best attack percentage of .750 at Murray State...OVC Commissioner's Honor Roll...Southeast Scholar Athlete.

Prep/Club: Outside hitter from Eastview High School...led her team to a 28-5 record as a senior...two-time Minnesota All-Star selection...2008 All-State selection...2008 All-Conference selection...led her team with 311 kills, 78 blocks, 42 service aces and 263 digs her senior season...three-time letter-winner...led Eastview to their first sectional championship and a runner-up finish in the Minnesota State Volleyball Tournament.

JUNIOR
OUTSIDE HITTER
HEIGHT- 5-9
HOMETOWN- APPLE VALLEY, MINN.
MAJOR- BROADCAST JOURNALISM
NICKNAME- KJ



KARLEE LURSEN-CAREER STATS

Season	SP	MP	K	K/S	E	TA	PCT	A	A/S	SA	SE	DIG	D/S	RE	BS	BA	TB	B/S	BE	BHE	POINTS	PTS/S
2009	55	23	73	1.30	54	266	.071	5	0.09	2	18	93	1.66	5	1	8	9	0.16	1	1	80.0	1.45
2010	85	26	189	2.22	153	747	.048	20	0.24	10	11	204	2.40	15	2	29	31	0.36	1	0	215.5	2.54
Career	140	49	262	1.76	207	1013	.0595	25	0.165	12	29	297	2.0									

SOUTHEAST MISSOURI STATE UNIVERSITY REDHAWKS VOLLEYBALL



ANDREA BAYLIN



2010: Started in 10 matches and played in 25...finished season with 111 kills, 15 assists, nine service aces, 157 digs and nine blocks...recorded four double-doubles...season-high 17 kills and also had 11 digs against Tennessee State on November 5...recorded a season-high 19 digs against Eastern Kentucky on October 30 and Tennessee State on October 2...season-high four service aces against Jacksonville State on October 9...season-high two blocks against Eastern Illinois on November 2 and Jacksonville State on November 12...had 14 kills and 19 digs against Eastern Kentucky on October 30...had 84 kills and 81 digs in final ten matches.

Prep/Club: Played at Dublin Coffman High School in Dublin, Ohio... coached by Mary Anne Souder...honorable mention selection on the American Volleyball Coaches Association (AVCA)/Under Armour Girls High School All-American Team...Prepvolleyball.com All-American Team selection...led her team to a 29-1 record and a final national ranking of 25th as a senior...team finished as state runner-ups...team was ranked as high as 6th nationally...four-year starter...two-time All-State selection...Gatorade Player of the Year finalist as a senior...two-time Conference and District Player of the Year...two-time team MVP...named PrepVolleyball.com "Senior Ace" as one of the top-100 seniors in the country...as a senior led the team with 287 kills, 3.82 kills per set, 71 aces, 244 digs, 3.25 digs per set and seven double-doubles...also recorded 28 blocks and a .498 attack percentage...recorded seven aces in one match...had a season-high 21 kills in a match...led team to a 25-2 record as a junior...Second Team All-Conference and honorable mention All-District as a sophomore...led the team in blocks and digs as a sophomore...started at middle blocker as a freshman...honorable mention All-Conference selection as a freshman...led the team .588 attack percentage as a freshman...also played on the girl's basketball team...member of the Columbus Volleyball Academy club team...helped team qualify for the Junior Olympics National Championships... coached by Gweyn Zechman...teammate of Julie Shives and Meredith Stranges.

**SOPHMORE
OUTSIDE HITTER
HEIGHT- 6-1
HOMETOWN- DUBLIN, OHIO
MAJOR- PSYCHOLOGY
NICKNAME- BAYLZ**



ANDREA BAYLIN-CAREER STATS

Season	SP	MP	K	K/S	E	TA	PCT	A	A/S	SA	SE	DIG	D/S	RE	BS	BA	TB	B/S	BE	BHE	POINTS	PTS/S
2010	78	25	111	1.42	68	449	.096	15	0.19	9	14	157	2.01	15	1	8	9	0.12	1	1	125.0	1.60
Career	78	25	111	1.42	68	449	.096	15	0.19	9	14	157	2.01	15	1	8	9	0.12	1	1	125.0	1.60



SOUTHEAST MISSOURI STATE UNIVERSITY REDHAWKS VOLLEYBALL



EMILY COON



SOPHMORE
MIDDLE BLOCKER
HEIGHT- 6-2
HOMETOWN- IMPERIAL, MO.
MAJOR- UNDECLARED
NICKNAME- COON



2010: Started in 21 of the 29 matches...third on the team with 168 kills and lead the team with 80 total blocks, 12 solo and 68 block assists... finished the season with a .213 attack percentage, the highest on the team...Named to the 2010 Ohio Valley Conference All-Newcomer Team...Named to the Bradley Kickoff Classic All-Tournament Team after posting 23 kills on 44 attacks with just seven errors and had 13 total blocks...recorded season-high 14 kills in the Tournament Championship game against Bradley on August 28...had 13 kills and eight blocks against Eastern Kentucky on September 24...posted 10 kills on 18 attacks and no errors against Murray State on October 15...drilled 10 kills with just one error on 19 attacks against Tennessee Tech on November 13...had 10 kills against Southern Illinois on September 11...finished the season with a .213 attack percentage, the highest on the team...had 30 kills and 16 blocks in a three-game span from September 11-24...posted 10 or more kills in five matches.

Prep/Club: Played at Seckman High School in Imperial, Mo....coached by Shannon Ehlmann...First Team All-District...First Team All-Conference...conference and team leader in kills and blocks as a senior...named team captain as a senior...three-year starter...led team with 89 blocks (1.17 per set) as a junior...recorded 173 kills for a 2.28 per set average as a junior...led team to a the District semifinals in 2008...also competed on the girl's basketball and track teams...member of the Rockwood Thunder club team...coached by Shane Allen...club team has made four-straight Nationals appearances and two Open Nationals appearances...teammate of Berkley Idel.

EMILY COON-CAREER STATS

Season	SP	MP	K	K/S	E	TA	PCT	A	A/S	SA	SE	DIG	D/S	RE	BS	BA	TB	B/S	BE	BHE	POINTS	PTS/S
2010	91	26	168	1.85	78	422	.213	6	0.07	0	2	24	0.26	1	12	68	80	0.88	14	1	214.0	2.35
Career	91	26	168	1.85	78	422	.213	6	0.07	0	2	24	0.26	1	12	68	80	0.88	14	1	214.0	2.35

SOUTHEAST MISSOURI STATE UNIVERSITY REDHAWKS VOLLEYBALL



BERKLEY IDEL



2010: Berkley played in 23 matches as a true freshman...posted 45 digs and finished second on the team with 11 service aces...against Morehead State on October 29, she had 19 digs and one assist...aced four serves against Murray State on October 15...recorded 32 digs in the final seven matches

Prep/Club: Played at Lafayette High School in St. Louis, Mo....coached by Steve Burkard...Second Team All-State selection...First Team All-Region selection...First Team All-District and All-Conference selection...led team to a 23-6-1 record...team MVP...named team captain as a senior...led team with 326 kills and a 4.06 kills per set average... led the Suburban West Conference with 4.36 kills per set in league matches...recorded six double-doubles... recorded a .318 attack percentage...recorded 19 kills in a match...four-year letterwinner...three-year starter...started at middle blocker as a sophomore... helped team to a third place finish at State Tournament as a sophomore... member of the Rockwood Thunder club team...coached by Shane Allen...club team has made four-straight Nationals appearances and two Open Nationals appearances...teammate of Emily Coon.

SOPHMORE
LIBERO
HEIGHT- 5-10
HOMETOWN- WILDWOOD, MO.
MAJOR- COMPUTER-MULTIMEDIA GRAPHICS
NICKNAME- BERK BALL



BERKLEY IDEL - CAREER STATS

Season	SP	MP	K	K/S	E	TA	PCT	A	A/S	SA	SE	DIG	D/S	RE	BS	BA	TB	B/S	BE	BHE	POINTS	PTS/S
2010	57	23	0	0.00	1	9	-.111	1	0.02	11	5	45	0.79	6	0	0	0	0.00	0	1	11.0	0.19
Career	57	23	0	0.00	1	9	-.111	1	0.02	11	5	45	0.79	6	0	0	0	0.00	0	1	11.0	0.19



SOUTHEAST MISSOURI STATE UNIVERSITY REDHAWKS VOLLEYBALL

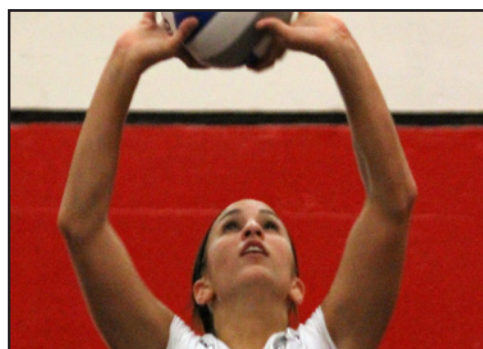


JULIE SHIVES



2010: Named OVC Setter of the Week for the Week of August 27...Named to the Bradley Kickoff Classic All-Tournament Team...started in team-high 28 of the 29 matches this season...posted a team-high 942 assists and had 323 digs with 98 kills...led the team with 24 service aces...broke onto the scene in the first tournament, posting 114 assists in three matches with 35 digs, three blocks, seven aces and 14 kills...had 49 assists and 14 digs in tournament Championship game against Bradley on August 28...had 17 assist/dig double-doubles...season-high 52 assists against Tennessee State on October 2...had 40 assists and 15 digs in six games...had 176 assists and 62 digs in a five match span from October 9-19...season-high eight kills against Southern Illinois on September 11...recorded a service ace in four consecutive matches to start the season...posted a season-high 19 attacks against Eastern Kentucky on September 24.

**SOPHMORE
SETTER
HEIGHT- 5-8
HOMETOWN- HILLIARD, OHIO
MAJOR- UNDECLARED**



Prep/Club: Played at Hilliard Davidson High School in Hilliard, Ohio....coached by Betty Cameron...started at setter...First Team All-District...First Team All-Conference...led team in assists, aces and digs as a senior...team MVP...named team captain as a senior...led team to the Central District Finals Championships...member of the track & field team...Ohio Capital Conference Scholar Athlete...selected to play at the prestigious Ohio State All-Star Match...played first three years of volleyball at Central Crossing...coached by Julie Peters...three-year starter...First Team All-District and All-Conference as a junior...Second Team All-Conference as a sophomore...Honorable Mention All-Conference as a freshman...team captain as a junior...led team in assists and aces as a junior...helped team to District Sectional Title as a junior...led team in kills and aces as a sophomore...member of the gymnastics and track & field teams at Central Crossing...member of the Columbus Volleyball Academy club team...helped team qualify for the Junior Olympics National Championships...coached by Gweyn Zechman...teammate of Baylin.

JULIE SHIVES-CAREER STATS

Season	SP	MP	K	K/S	E	TA	PCT	A	A/S	SA	SE	DIG	D/S	RE	BS	BA	TB	B/S	BE	BHE	POINTS	PTS/S
2010	112	29	98	0.88	37	345	.177	942	8.41	24	21	323	2.88	0	1	20	21	0.19	5	20	133.0	1.19
Career	112	29	98	0.88	37	345	.177	942	8.41	24	21	323	2.88	0	1	20	21	0.19	5	20	133.0	1.19

SOUTHEAST MISSOURI STATE UNIVERSITY REDHAWKS VOLLEYBALL



12

COLLEEN YARBER

30

2010: Played in 16 matches, starting in two...posted 31 kills, 35 digs and ten total blocks in 28 sets...averaged .36 blocks/set...had season-high 11 kills and just two errors in 24 attempts against Western Illinois on August 28 and also posted a season-high three blocks...had a season-high 11 digs against Southern Illinois Edwardsville on October 19, while posting five kills and one assist.

Prep/Club: Played at Freeburg High School in Freeburg, Ill....coached by Lesa Bolt...named to the Prepvolleyball.com Highest Honorable Mention All-American Team...two-time All-State selection...two-time First Team All-Conference selection...led her team to back-to-back state titles as a senior and junior...team went 38-2 including winning their final 21 matches as a senior...recorded 227 kills and a team-high 254 digs as a senior...named MVP of the state title match...had a match-high 14 kills and seven digs in state title match...named team co-captain as a senior...led team to a 36-5 record as a junior...named MVP of the state title match as a junior...First Team Metro-East All-Area and Second Team All-Metro selection as a junior...named to the All-Tournament Team at the Tiger Classic...led the team in kills as a junior...four-year letterwinner...also played on the girl[apos]s basketball and softball teams...member of Southwest Illinois Volleyball Club team...club team advanced to back-to-back Nationals appearances including a 5th place finish in the 2009 Open Division qualifier.

SOPHMORE
OUTSIDE HITTER
HEIGHT- 6-1
HOMETOWN- SMITHTON, ILL.
MAJOR- UNDECLARED
NICKNAME- YARBIE



COLLEEN YARBER-CAREER STATS

Season	SP	MP	K	K/S	E	TA	PCT	A	A/S	SA	SE	DIG	D/S	RE	BS	BA	TB	B/S	BE	BHE	POINTS	PTS/S
2010	28	16	31	1.11	25	150	.040	3	0.11	0	0	35	1.25	5	2	8	10	0.36	1	1	37.0	1.32
2010	28	16	31	1.11	25	150	.040	3	0.11	0	0	35	1.25	5	2	8	10	0.36	1	1	37.0	1.32



SOUTHEAST MISSOURI STATE UNIVERSITY REDHAWKS VOLLEYBALL



ERICA BECK



Prior to Southeast: Redshirted at Youngstown State University during the 2010 season.

Prep: Earned three letters at West Bend East High School...Led her team to two state tournament appearances and two conference championships...Was named to the AVCA All-American watch list during her senior season... As a junior was part of a JVDA 16's National championship Team...During her junior season she recorded 76 aces and 269 digs...Participated in softball for two seasons during her high school career...Was a member of the Wisconsin Sting Volleyball club.

REDSHIRT FRESHMAN
LIBERO
HEIGHT- 5-7
HOMETOWN- WEST BEND, WISC.
MAJOR- NURSING



KELSEY KEEVE



Prep: Guided Lyons Township High School to a Class 4A State Title...Lyons Township High School was ranked as high as fourth in the country by prepvolleyball.com in 2010...Keeve finished the season with 150 kills, 80 blocks, 25 aces and 80 digs. She was named to the All-Star team in 2010...Keeve was also named All-State, All-Conference and All-Area...she also excels in the classroom being named to the All-Academic team her senior season...As a junior, Keeve helped the Lions finish second in the state with a 37-5 record.

FRESHMAN
MIDDLE BLOCKER
HEIGHT- 6 -1
HOMETOWN- LAGRANGE, ILL.
MAJOR- SECONDARY EDUCATION

SOUTHEAST MISSOURI STATE UNIVERSITY REDHAWKS VOLLEYBALL



16 MELISSA MACELLARI FR

Prep: Macellari earned Northern Indiana All-Conference honors in 2009, 2010 and 2011, and was named to the Second Team All-State...She was named the team's Most Valuable Player this season, as well as garnering the same honors as a junior...In track and field, she owns the school record for Shot Put and Discus. She is the All-City Shot Put and Discus Champion, while qualifying for the State Championships in Discus... Melissa is a National Honors Society member as well as High Honor Roll. She was also honored with the Theology Excellence Award.

FRESHMAN
SETTER
HEIGHT- 6-0
HOMETOWN- GRANGER, IND.
MAJOR- ELEMENTARY EDUCATION
NICKNAME- MEL



8 MEREDITH STRANGES FR

Prep: Guided her team to two Division I State Runner Up finish in the Ohio State Tournament ... started all four years during her prep career, and helped guide the team to a 105-8 record ...During her senior year, she had 266 kills and had 38 aces, with 210 digs. She earned first team All- Central District, first team All-Conference and third team All-Ohio District I... As a junior, Stranges had 155 kills and 159 digs, while serving 23 aces... She was a second team All-Conference selection and voted to the second team All-Central District I...Her team won the District and Conference Title all four years, and finished as the state runners up both her junior and senior seasons... She was also a four year varsity letter winner in basketball, earning first team All-Conference all four years.

FRESHMAN
RIGHT SIDE HITTER
HEIGHT- 6-0
HOMETOWN- DUBLIN, OHIO
MAJOR- UNDECLARED
NICKNAME- MERE



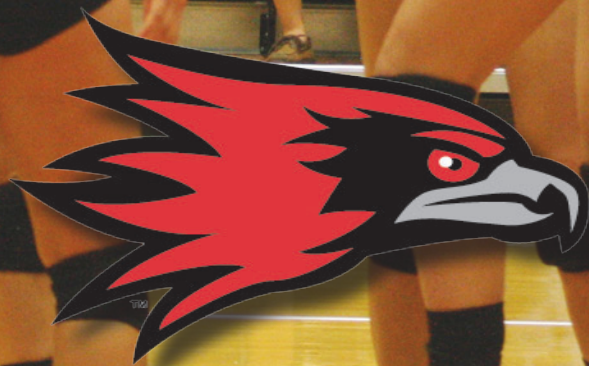
SOUTHEAST MISSOURI STATE UNIVERSITY REDHAWKS VOLLEYBALL

AVCA TEAM ACADEMIC AWARD

The American Volleyball Coaches Association announced the winners of the AVCA Team Academic Award for the 2010-11 season and Southeast Missouri was named to the list for the seventh consecutive season.

The Redhawks posted an impressive 3.386 GPA during 2010-11 season. Southeast Missouri was one of 92 NCAA Division I Institutions to receive the award and one of three teams in the Ohio Valley Conference named to the list.

The award, which was initiated in the 1992-93 academic year, honors collegiate and high school volleyball teams that displayed excellence in the classroom during the school year by maintaining at least a 3.30 cumulative team grade-point average on a 4.0 scale or a 4.10 cumulative team GPA on a 5.0 scale.





SOUTHEAST MISSOURI STATE UNIVERSITY REDHAWKS
OPPONENTS





SOUTHEAST MISSOURI STATE UNIVERSITY REDHAWKS VOLLEYBALL

TOURNAMENT PLAY

MEMPHIS INVITATIONAL

AUGUST 26-28

Location: Memphis, Tenn.
Host School: University of Memphis
Arena Name: Elma Roane Fieldhouse
Capacity: N/A
Conference: Conference USA

GEORGIA STATE

Location: Atlanta, Ga.
Nickname: Panthers
Conference: Colonial Athletic Association (CAA)
2010 Record: 14-14
Returns/Lost: 8/4
Head Coach: Tami Audia
Career Record: 14-14(2)
At School: 14-14(2)
Assistant Coaches: Kelly Audia, Beth Van Fleet, Dun Hahn

AUG. 26, 2:00 P.M.

MEMPHIS

Location: Memphis, Tenn.
Nickname: Tigers
Conference: Conference USA
2010 Record: 16-16
Returns/Lost: 4/10
Head Coach: April Jauregui
Career Record: 40-54(3)
At School: 40-54(3)
Assistant Coaches: James Onikeku, Marko Majstorovic

AUG. 26, 7:00 P.M.

ALABAMA A&M

Location: Huntsville, Ala.
Nickname: Bulldogs
Conference: SWAC
2010 Record: 16-11
Returns/Lost: N/A
Head Coach: Nedra Brown
Career Record: 186-156 (13)
At School: 67-51 (4)
Assistant Coaches: N/A

AUG. 27, 10:00 A.M.

ARK.-LITTLE ROCK

Location: Little Rock, Ark.
Nickname: Trojans
Conference: Sun Belt
2010 Record: 7-19
Returns/Lost: 5/4
Head Coach: Van Compton
Career Record: 400-289
At School: 400-289
Assistant Coaches: Todd Bourdo

AUG. 27, 4:00 P.M.

INDIANA TOURNAMENT

SEPTEMBER 2-3

Location: Bloomington, Ind.
Host School: Indiana University
Arena Name: University Gym
Capacity: 2,000
Conference: Big Ten

INDIANA

Location: N/A
Nickname: N/A
Conference: N/A
2010 Record: N/A
Returns/Lost: N/A
Head Coach: N/A
Career Record: N/A
At School: N/A
Assistant Coaches: N/A

SEPT. 2, 6:00 P.M.

BUFFALO

Location: Buffalo, Ny.
Nickname: Bulls
Conference: Mid-American
2010 Record: 18-16
Returns/Lost: 6/6
Head Coach: Todd Kress
Career Record: 289-191(16)
At School: 34-12(2)
Assistant Coaches: Jennifer Horvath, Andreza Santos

SEPT. 3, 9:00 A.M.

YOUNGSTOWN STATE

Location: Youngstown, Ohio
Nickname: Penguins
Conference: Horizon League
2010 Record: 2-27
Returns/Lost: 8/5
Head Coach: Krista Burrows
Career Record: 166-86(7)
At School: 2-27(2)
Assistant Coaches: Ben Rodeffer

SEPT. 3, 4:30 P.M.

EVANSVILLE TOURNAMENT

SEPTEMBER 9-10

Location: Evansville, Ind.
Host School: University of Evansville
Arena Name: Carson Center
Capacity: 500
Conference: Missouri Valley

EVANSVILLE

Location: Evansville, Ind.
Nickname: Purple Aces
Conference: Missouri Valley
2010 Record: 17-13
Returns/Lost: 10/2
Head Coach: Mike Swan
Career Record: 488-373(25)
At School: 101-143(9)
Assistant Coaches: Josh Wielebnicki

SEPT. 9, 4:00 P.M.

ARIZONA

Location: Tucson, Ariz.
Nickname: Wildcats
Conference: Pac-12
2010 Record: 20-12
Returns/Lost: N/A
Head Coach: David Rubio
Career Record: 482-278(24)
At School: 360-212(19)
Assistant Coaches: Steve Walker, Melissa Walker

SEPT. 10, 12:00 PM

ILLINOIS-CHICAGO

Location: Chicago, Ill.
Nickname: Flames
Conference: Horizon League
2010 Record: 13-18
Returns/Lost: 7/4
Head Coach: Katie Schumacher-Cawley
Career Record: 30-37(2)
At School: 30-37(2)
Assistant Coaches: Ellen Hayes, Dan Buehring

SEPT. 10, 3:00 P.M.

SOUTHEAST MISSOURI STATE UNIVERSITY REDHAWKS VOLLEYBALL

NON-CONFERENCE AND OHIO VALLEY OPPONENTS

ARKANSAS STATE



General Information

Location: Jonesboro, Ark.
Enrollment: 13,239
Nickname: Red Wolves
Colors: Scarlet & Black
Conference: Sun Belt
President: Dr. Charles Welch
Athletic Director: Dr. Dean Lee

Coaching Staff

Head Coach: Justin Ingram
Career Record: 39-23(2)
Record at school: 39-23(2)
Assistant Coach: Shawn Taylor

Team Information

2010 Record: 17-12
Sunbelt Record/Place: 11-5/T-1st West
Starters Returning: 6 + Libero
Starters Lost: 0
Letterwinners Returning: 11
Letterwinners Lost: 1

Sports Information

Contact: Nonie Wiggins
Office Phone: (870) 972-3880
Email:

DATE
Sept. 13

SITE
Jonesboro, Ark.

TIME
6 p.m.

EASTERN ILLINOIS PANTHERS



General Information

Location: Charleston, Ill.
Enrollment: 11,630
Nickname: Panthers
Colors: Royal Blue & Gray
Conference: Ohio Valley
President: Dr. William L. Perry
Athletic Director: Barbara Burke

Coaching Staff

Head Coach: Kate Price
Career Record: 15-16(2)
Record at school: 15-16(2)
Assistant Coach: Ryan Sweitzer

Team Information

2010 Record: 15-16
OVC Record/Place: 7-11/T-7th
Starters Returning: 3 + Libero
Starters Lost: 3
Letterwinners Returning: 6
Letterwinners Lost: 5

Sports Information

Contact: Bart Rettberg
Office Phone: (217) 581-6408
Email: bvrettberg@eiu.edu

DATE
Sept. 16
Oct. 4

SITE
Charleston, Ill.
Cape Girardeau, Mo.

TIME
7:00 p.m.
6:30 p.m.

SIU EDWARDSVILLE COUGARS



General Information

Location: Edwardsville, Ill.
Enrollment: 14,133
Nickname: Cougars
Colors: Red and White
Conference: Ohio Valley
President: Dr. Vaughn Vandegrift
Athletic Director: Dr. Bradley Hewitt

Coaching Staff

Head Coach: Leah Johnson
Career Record: First season
Record at school: First season
Assistant Coach: Kevin Buhr,

Team Information

2010 Record: 14-15
OVC Record/Place: N/A
Starters Returning: 4 + Libero
Starters Lost: 2
Letterwinners Returning: 10
Letterwinners Lost: 3

Sports Information

Contact: Eric J. Hess
Office Phone: (618) 650-3608
Email:

DATE
Sept. 17
Nov. 8

SITE
Edwardsville, Ill.
Cape Girardeau, Mo.

TIME
2:00 p.m.
6:30 p.m.



SOUTHEAST MISSOURI STATE UNIVERSITY REDHAWKS VOLLEYBALL

OHIO VALLEY OPPONENTS

MURRAY STATE RACERS



DATE
Sept. 20
Oct. 25

SITE
Cape Girardeau, Mo.
Murray, Ky.

TIME
6:30 p.m.
7:00 p.m.

General Information

Location: Murray, Ky.
Enrollment: 10,078
Nickname: Racers
Colors: Navy & Gold
Conference: Ohio Valley
President: Dr. Randy Dunn
Athletic Director: Allen Ward

Sports Information

Contact: Teri LaJeunesse
Office Phone: (270) 809-3351
Email: teri.lajeunesse@murraystate.edu

Coaching Staff

Head Coach: David Schwepker
Career Record: 193-262(16)
Record at school: 180-184(13)
Assistant Coach: DongPing Fang

Team Information

2010 Record: 15-17
OVC Record/Place: 9-9/T-4th
Starters Returning: 3 + Libero
Starters Lost: 3
Letterwinners Returning: 9
Letterwinners Lost: 3

JACKSONVILLE STATE GAMECOCKS



DATE
Sept. 23
Oct. 22

SITE
Cape Girardeau, Mo.
Jacksonville, Ala.

TIME
6:30 p.m.
2:00 p.m.

General Information

Location: Jacksonville, Ala.
Enrollment: 9,504
Nickname: Gamecocks
Colors: Red & White
Conference: Ohio Valley
President: Dr. William Meehan
Athletic Director: Warren Koegel

Sports Information

Contact: Josh Underwood
Office Phone: (256) 782-5915
Email: underwood@jsu.edu

Coaching Staff

Head Coach: Joseph Goodson
Career Record: First year
Record at school: First year
Assistant Coach: Morgan Salow

Team Information

2010 Record: 16-14
OVC Record/Place: 11-7/3rd
Starters Returning: 2 + Libero
Starters Lost: 4
Letterwinners Returning: 7
Letterwinners Lost: 5

TENNESSEE TECH GOLDEN EAGLES



DATE
Sept. 24
Oct. 21

SITE
Cape Girardeau, Mo.
Cookeville, Tenn.

TIME
2:00 p.m.
7:00 p.m.

General Information

Location: Cookeville, Tenn.
Enrollment: 10,796
Nickname: Golden Eagles
Colors: Purple & Gold
Conference: Ohio Valley
President: Dr. Robert Bell
Athletic Director:

Sports Information

Contact: N/A
Office Phone: N/A
Email: N/A

Coaching Staff

Head Coach: John Blair
Career Record: 373-501(31)
Record at school: 99-140(8)
Assistant Coach: TBA

Team Information

2010 Record: 11-20
OVC Record/Place: 8-10/6th
Starters Returning: N/A
Starters Lost: N/A
Letterwinners Returning: N/A
Letterwinners Lost: N/A

SOUTHEAST MISSOURI STATE UNIVERSITY REDHAWKS VOLLEYBALL

OHIO VALLEY OPPONENTS

UT MARTIN SKYHAWKS



General Information

Location: Martin, Tenn.
Enrollment: 8,469
Nickname: Skyhawks
Colors: Navy Blue & Orange
Conference: Ohio Valley
President: Dr. Thomas A. Rakes
Athletic Director: Phil Dane

Coaching Staff

Head Coach: Darrin McClure
Career Record: 23-69(3)
Record at school: 23-69(3)
Assistant Coach: TBA

Team Information

2010 Record: 6-24
OVC Record/Place: 4-14/10th
Starters Returning: 4 + Libero
Starters Lost: 2
Letterwinners Returning: 9
Letterwinners Lost: 3

Sports Information

Contact: Joe Lofaro
Office Phone: (731) 881-7632
Email: jlofaro@utm.edu

DATE
Sept. 3
Oct. 29

SITE
Martin, Tenn.
Cape Girardeau, Mo.

TIME
6:00 p.m.
2:00 p.m.

AUSTIN PEAY GOVERNORS



General Information

Location: Clarksville, Tenn.
Enrollment: 10,723
Nickname: Lady Gobs
Colors: Red & White
Conference: Ohio Valley
President: Tim Hall
Athletic Director: Dave Loos

Coaching Staff

Head Coach: Bill Egbert
Career Record: First year
Record at school: First year
Assistant Coach: Lora Sarich

Team Information

2010 Record: 26-8
OVC Record/Place: 14-4/2nd
Starters Returning: 4 + Libero
Starters Lost: 3
Letterwinners Returning: 10
Letterwinners Lost: 3

Sports Information

Contact: Cody Bush
Office Phone: (931) 221-7561
Email:

DATE
Oct. 7
Nov. 11

SITE
Clarksville, Tenn.
Cape Girardeau, Mo.

TIME
7:00 p.m.
6:30 p.m.

TENNESSEE STATE TIGERS



General Information

Location: Nashville, Tenn.
Enrollment: 8,824
Nickname: Tigers
Colors: Royal Blue & White
Conference: Ohio Valley
President: Dr. Portia H. Shields
Athletic Director: Teresa L. Phillips

Coaching Staff

Head Coach: Kathy Roulhac
Career Record: 250-306
Record at school: 88-131(7)
Assistant Coach: Tony Howell

Team Information

2010 Record: 9-18
OVC Record/Place: 7-11/T-8th
Starters Returning: 3 + Libero
Starters Lost: 3
Letterwinners Returning: 6
Letterwinners Lost: 5

Sports Information

Contact: Zekeya Anderson
Office Phone: (615) 963-1867
Email: zanderson01@tnstate.edu

DATE
Oct. 8
Nov. 12

SITE
Nashville, Tenn.
Cape Girardeau, Mo.

TIME
2:00 p.m.
5:00 p.m.



SOUTHEAST MISSOURI STATE UNIVERSITY REDHAWKS VOLLEYBALL

OHIO VALLEY OPPONENTS

EASTERN KENTUCKY COLONELS



DATE
Oct. 14
Nov. 5

SITE
Cape Girardeau, Mo.
Richmond, Ky.

TIME
6:30 p.m.
1:00 p.m.

General Information

Location: Richmond, Kentucky
Enrollment: 16,515
Nickname: Colonels
Colors: Maroon & White
Conference: Ohio Valley
President: Dr. Doug Whitlock
Athletic Director: Mark Sandy

Sports Information

Contact: Kevin Britton
Office Phone: (859) 622-2006
Email: kevin.britton@eku.edu

Coaching Staff

Head Coach: Lori Duncan
Career Record: 196-322 (18)
Record at school: 167-222 (13)
Assistant Coach: Liz Sellers

Team Information

2010 Record: 11-18
OVC Record/Place: 9-9/T-4th
Starters Returning: 3
Starters Lost: 4 + Libero
Letterwinners Returning: 8
Letterwinners Lost: 7

MOREHEAD STATE EAGLES



DATE
Oct. 15
Nov. 4

SITE
Cape Girardeau, Mo.
Morehead, Ky.

TIME
2:00 p.m.
6:00 p.m.

General Information

Location: Morehead, Kentucky
Enrollment: 9,046
Nickname: Eagles
Colors: Blue & Gold
Conference: Ohio Valley
President: Dr. Wayne D. Andrews
Athletic Director: Brian Hutchinson

Sports Information

Contact: Matt Schabert
Office Phone: (606) 783-2556
Email: m.schabert@moreheadstate.edu

Coaching Staff

Head Coach: Jaime Gordon
Career Record: 229-135(11)
Record at school: 149-108(8)
Assistant Coach: Greg Goral,
Katelyn Barbour

Team Information

2010 Record: 25-8
OVC Record/Place: 17-1/1st
Starters Returning: N/A
Starters Lost: N/A
Letterwinners Returning: 8
Letterwinners Lost: 3



SOUTHEAST MISSOURI STATE UNIVERSITY REDHAWKS VOLLEYBALL

ALL-TIME RECORDS VS OPPONENTS

Air Force (1-0)			Arkansas State (19-16)			Austin Peay (30-16)			Bellarmino (5-0)			Carroll (0-1)		
2005	Sept. 2	Win 3-2	1978	Oct. 17	Loss 2-0	1977	Oct. 3	Win 2-0	1982		Win 3-0	1986		Loss 3-1
Akron (0-1)			1981	Sept. 26	Win 2-1	1986		Win 2-0	1984		Win 3-0	Central Arkansas (1-1)		
1998	Sept. 5	Loss 3-0	1982	Oct. 23	Loss 3-1	1991	Sept. 24	Win 3-2	1988		Win 3-0	1981	Sept. 26	Win 3-0
Alabama (1-0)					Loss 3-2		Oct. 29	Win 3-0	1990	Nov. 2	Win 3-0	2009	Sept. 5	Loss 3-0
1996	Sept. 6	Win 3-0	1983		Win 3-2	1992	Sept. 12	Loss 3-1	Belmont (1-1)			Central Florida (0-1)		
Albany (0-1)					Loss 3-1		Oct. 6	Loss 3-0	2005	Sept. 9	Win 3-1	1994	Nov. 26	Loss 3-0
2004	Sept. 4	Loss 3-0	1984		Loss 3-1	1993	Oct. 5	Win 3-1	2009	Sept. 4	Loss 3-0	Central Michigan (1-0)		
Ambrose (0-1)					Win 2-1	1994	Oct. 4	Win 3-0	Benedictine (2-0-1)			1999	Sept. 18	Win 3-0
1981	Oct. 3	Loss 2-1	1985		Win 2-0	1995	Oct. 3	Win 3-1	1980		Tie 1-1	Central Missouri State (1-23)		
Angelo State (0-1)			1986		Loss 3-0	1996	Oct. 1	Win 3-0	1982		Win 2-0	1977	Sept. 24	Loss 2-0
1983		Loss 2-0	1987		Win 3-2	1997	Oct. 17	Win 3-0	1983		Win 2-0	1978	Oct. 27	Loss 2-0
Appalachian State (1-1)			1988		Win 3-0	1998	Oct. 14	Win 3-0	Bethany Nazarene (1-0)				Nov. 3	Loss 2-0
1987		Win 2-0	1989		Loss 3-1	1999	Oct. 20	Win 3-0	1981	Sept. 11	Win 2-0	1980		Loss 2-1
		Loss 2-1	1990	Sept. 11	Win 3-2	2000	Nov. 6	Loss 3-1	Bethal (2-3)			1981	Sept. 12	Win 2-1
Arkansas (1-2)			1991	Oct. 25	Loss 3-1	2001	Sept. 24	Loss 3-1	1980		Loss 2-0		Oct. 9	Loss 2-0
1999	Oct. 27	Win 3-0	1992	Sept. 10	Loss 3-0	2002	Oct. 26	Win 3-0	1981	Sept. 12	Loss 2-0	1982		Loss 2-0
2002	Aug. 30	Loss 3-1	1993	Nov. 19	Loss 3-1	2003	Nov. 20	Win 3-0	1982		Win 2-0			Loss 2-0
2006	Sept. 2	Loss 3-0	1994	Nov. 12	Loss 3-0	2004	Nov. 17	Win 3-0	1983		Win 2-1			Loss 2-0
Arkansas-Little Rock (4-4)			1995	Sept. 10	Loss 3-0	2005	Sept. 18	Win 3-0	Bradley (4-3)			1984		Loss 2-1
1989		Win 3-1	1996	Sept. 2	Loss 3-0	2006	Oct. 23	Loss 3-2	1982		Win 2-0	1985		Loss 2-0
1992	Sept. 12	Win 3-2	1997	Sept. 12	Win 3-2	2007	Nov. 16	Win 3-1	1994	Oct. 8	Loss 3-0	1986		Loss 3-0
1993	Sept. 4	Loss 3-2	1998	Oct. 7	Win 3-2	2008	Oct. 12	Win 3-1	1995	Sept. 1	Win 3-0	1987		Loss 3-0
1994	Nov. 11	Win 3-1	1999	Oct. 6	Win 3-1	2009	Nov. 7	Win 3-1	2002	Sept. 6	Loss 3-0	1988		Loss 3-0
1996	Nov. 9	Loss 3-2	2000	Nov. 10	Loss 3-1	2010	Nov. 21	Win 3-0	2005	Sept. 9	Loss 3-1			Loss 3-1
2005	Aug. 27	Loss 3-2	2001	Sept. 1	Loss 3-0		Sept. 26	Loss 3-1	2006	Sept. 20	Win 3-1	1989		Loss 3-0
2006	Aug. 26	Loss 3-1	2002	Sept. 3	Win 3-1		Oct. 11	Loss 3-0	2007	Aug. 28	Win 3-1	1990	Sept. 15	Loss 3-2
	Sept. 8	Win 3-2	2003	Sept. 16	Loss 3-0		Sept. 24	Loss 3-2					Oct. 19	Loss 3-0
			2004	Sept. 7	Loss 3-0		Oct. 9	Win 3-2						
			2005	Sept. 20	Loss 3-1		Nov. 20	Loss 3-1						
				Oct. 18	Win 3-1		Oct. 29	Win 3-1						
			2008	Sept. 12	Win 3-2		Oct. 28	Win 3-0						
			2009	Aug. 28	Win 3-1		Oct. 4	Win 3-2						
							Nov. 9	Win 3-0						
							Oct. 11	Loss 3-0						
							Nov. 14	Loss 3-0						
							Nov. 20	Loss 3-0						
							Sept. 25	Loss 3-0						
							Oct. 24	Loss 3-0						
							Oct. 1	Loss 3-0						
							Nov. 6	Loss 3-0						

DID YOU KNOW

The Redhawks defeated Indiana State four times in 1984 all by the scores of 3-0. The 1984 team holds the single season record for wins in a season with 40.





SOUTHEAST MISSOURI STATE UNIVERSITY REDHAWKS VOLLEYBALL

ALL-TIME RECORDS VS OPPONENTS

Cincinnati (0-1) 1997 Sept. 6 Loss 3-1	East Montana (1-0) 1986 Win 2-0	Eastern Kentucky (28-6) 1991 Sept. 13 Win 3-1 Oct. 19 Loss 3-2 1992 Oct. 2 Loss 3-1 Oct. 30 Win 3-0 1993 Oct. 2 Win 3-1 Oct. 29 Win 3-2 1994 Oct. 1 Win 3-1 Oct. 28 Win 3-1 Nov. 19 Win 3-2 1995 Oct. 7 Win 3-1 Nov. 3 Win 3-0 1996 Oct. 4 Win 3-1 Nov. 16 Win 3-1 1997 Sept. 27 Win 3-0 Nov. 14 Win 3-0 1998 Sept. 13 Win 3-0 Oct. 2 Win 3-0 1999 Oct. 1 Win 3-0 Oct. 30 Win 3-0 2000 Oct. 7 Win 3-0 Nov. 3 Win 3-0 2001 Sept. 21 Win 3-2 Oct. 27 Win 3-0 2002 Sept. 20 Win 3-0 Oct. 26 Win 3-0 2004 Nov. 5 Loss 3-0 2005 Sept. 30 Loss 3-0 Nov. 19 Loss 3-0 2006 Sept. 29 Win 3-0 2007 Sept. 29 Win 3-1 Oct. 26 Win 3-1 2008 Sept. 19 Win 3-2 Oct. 25 Win 3-0 2009 Oct. 2 Loss 3-2 Nov. 8 Win 3-1 2010 Sept. 24 Win 3-2 Oct. 30 Win 3-2	Evansville (15-4) 1983 Loss 3-1 1984 Win 2-0 1985 Win 3-2 Win 3-1 1986 Win 3-0 Win 3-0 1987 Win 3-1 Win 3-2 1988 Win 3-1 Win 3-1 1989 Loss 3-2 Win 3-2 1990 Oct. 5 Win 3-1 1991 Sept. 20 Loss 3-2 Oct. 15 Win 3-0 1992 Nov. 13 Win 3-0 1993 Oct. 14 Win 3-0 2000 Oct. 9 Win 3-1 2009 Aug. 29 Loss 3-1	Fort Lewis (1-0) 1986 Win 3-0
Clemson (0-1) 2009 Sept. 12 Loss 3-0	East Tennessee State (2-1) 1991 Nov. 8 Loss 3-2 1993 Sept. 17 Win 3-0 1997 Sept. 13 Win 3-0			Fresno State (1-0) 2000 Sept. 23 Win 3-1
Colorado (0-1) 2003 Aug. 29 Loss 3-2	Eastern Illinois (21-17-1) 1977 Sept. 10 Loss 2-0 Sept. 17 Loss 3-0 Oct. 20 Loss 2-0 1978 Oct. 16 Tie 1-1 1981 Oct. 16 Tie 1-1 1991 Sept. 21 Loss 3-0 1994 Nov. 11 Win 3-2 1995 Oct. 21 Loss 3-1 Sept. 17 Win 3-1 1996 Oct. 22 Win 3-1 Nov. 24 Win 3-1 1997 Sept. 30 Win 3-2 Nov. 4 Win 3-0 Nov. 22 Loss 3-1 1998 Sept. 22 Loss 3-0 Oct. 22 Loss 3-1 Nov. 21 Win 3-0 1999 Oct. 12 Win 3-1 Nov. 9 Win 3-0 2000 Sept. 20 Win 3-0 Oct. 12 Win 3-1 2001 Oct. 10 Loss 3-1 Nov. 1 Loss 3-0 2002 Oct. 8 Win 3-1 Nov. 15 Win 3-0 2003 Oct. 1 Loss 3-1 Oct. 30 Win 3-0 2004 Oct. 1 Loss 3-1 Oct. 27 Loss 3-1 2005 Oct. 5 Loss 3-2 Nov. 2 Win 3-0 Nov. 18 Win 3-2 2006 Oct. 4 Win 3-1 Nov. 1 Win 3-1 2007 Sept. 18 Win 3-2 Oct. 23 Win 3-2 2008 Oct. 2 Win 3-0 Oct. 31 Win 3-1 Oct. 16 Win 3-0 2009 Oct. 16 Win 3-0 Nov. 13 Loss 3-2 2010 Oct. 22 Loss 3-0 Nov. 2 Loss 3-0			George Washington (1-1) 1997 Sept. 12 Win 3-1 1999 Sept. 5 Loss 3-2
Colorado State (0-2) 1998 Sept. 26 Loss 3-0 1999 Sept. 4 Loss 3-2				Georgia (0-1) 1996 Sept. 13 Loss 3-1
Culver-Stockton (0-1) 1984 Loss 2-1				Georgia Tech (0-1) 2009 Sept. 12 Loss 3-1
Dalton (0-1) 1981 Oct. 3 Loss 2-1				Graceland (1-1) 1980 Loss 2-1 1982 Win 2-0
Dayton (0-2) 1978 Oct. 6 Loss 2-0 1994 Sept. 9 Loss 3-2				Grand Valley (1-0) 1989 Win 3-1
DePaul (0-3) 1983 Loss 2-0 2001 Sept. 8 Loss 3-0 2003 Sept. 13 Loss 3-0				Greenville (1-0) 1980 Win 2-0
Drake (3-1) 1993 Oct. 18 Loss 3-2 2001 Sept. 8 Win 3-2 2003 Sept. 12 Win 3-1 2004 Oct. 31 Win 3-0				Harris Stowe (2-0) 1981 Oct. 20 Win 3-0 Nov. 6 Win 2-0
Drury (3-1) 1982 Win 2-0 Win 2-0 1987 Loss 2-0 1988 Win 3-2				Henderson (1-0) 1981 Sept. 26 Win 2-0
East Carolina (1-0) 1999 Sept. 10 Win 3-0				Hofstra (2-0) 1998 Sept. 25 Win 3-0 1999 Sept. 18 Win 3-0
East Central Comm. College (1-0) 1977 Oct. 15 Win 2-1				Huntington (3-0) 1987 Win 2-1 Win 3-0 1988 Win 3-0
		Eastern Michigan (0-1) 1991 Sept. 6 Loss 3-2	Ferris State (0-1) 1990 Sept. 14 Loss 3-2	
		Eastern Washington (0-1) 1995 Sept. 17 Loss 3-0	Florida (0-1) 2000 Dec. 1 Loss 3-0	
		Elmhurst (1-0) 1984 Win 2-1	Florida Atlantic (1-0) 1988 Win 3-1	
			Florida Southern (0-4) 1987 Loss 3-1 1989 Loss 3-0 Loss 3-0 1990 Oct. 14 Loss 3-2	
			Florida State (0-1) 2000 Sept. 8 Loss 3-0	
			Florissant Valley Comm. College (2-3) 1977 Oct. 7 Loss 2-0 Oct. 22 Loss 2-0 1978 Oct. 9 Loss 3-0 1980 Win 2-0 1981 Sept. 28 Win 3-0	

SOUTHEAST MISSOURI STATE UNIVERSITY REDHAWKS VOLLEYBALL

ALL-TIME RECORDS VS OPPONENTS

Idaho (0-2)				Jacksonville State (9-11)				Kentucky (1-0)				Loyola (0-8)				Memphis (4-10)			
1995	Sept. 16	Loss	3-1					1999	Sept. 17	Win	3-0	1981	Oct. 2	Loss	2-0	1977	Oct. 11	Loss	3-1
2008	Aug. 30	Loss	3-1	1986		Win	2-0					1982		Loss	3-0		Oct. 31	Loss	2-0
Illinois (0-2)				1987		Win	2-0	Kentucky Wesleyan (1-0)				1983		Loss	3-2	1978	Oct. 24	Loss	2-0
				1988		Win	3-0					1993	Nov. 13	Loss	3-0		Nov. 1	Loss	2-0
1977	Sept. 10	Loss	2-0	2003	Oct. 17	Loss	3-1					1994	Oct. 7	Loss	3-0	1983		Loss	3-0
1998	Sept. 4	Loss	3-0	2004	Oct. 15	Loss	3-2	1986		Win	2-0	1997	Sept. 6	Loss	3-1			Loss	3-1
Illinois State (0-2)				2005	Oct. 21	Win	3-1	Lamar (0-1)				1999	Sept. 3	Loss	3-0	1984		Loss	3-0
					Nov. 10	Loss	3-0						Dec. 2	Loss	3-2	1992	Sept. 11	Loss	3-1
				2006	Oct. 20	Loss	3-0	Maine (1-1)				MacMurray (1-0)				1994	Nov. 12	Loss	3-0
1992	Sept. 4	Loss	3-0		Nov. 11	Loss	3-1	2001	Sept. 1	Loss	3-0					1996	Nov. 9	Win	3-0
2004	Sept. 11	Loss	3-0		Nov. 18	Loss	3-0	Lambruth (1-0)				1981	Sept. 19	Win	3-0	2003	Oct. 5	Loss	3-1
Illinois Wesleyan (1-0)				2007	Oct. 13	Win	3-1					Mesa (0-1)				2006	Sept. 8	Win	3-0
					Nov. 2	Win	3-2	1980		Win	2-0					2007	Sept. 26	Win	3-2
				2008	Sept. 26	Win	3-0	Lewis (0-1)				2003	Aug. 29	Loss	3-2	2009	Aug. 29	Win	3-0
1984		Win	2-0		Nov. 8	Loss	3-0					2007	Aug. 25	Win	3-0	1986		Loss	2-1
Indiana (0-1)				2009	Sept. 19	Loss	3-0	1984		Loss	3-1	Mankato (1-0)				Metro (1-0)			
				Oct. 9		Loss	3-0	Lincoln (10-0)				1990	Sept. 14	Win	3-2	1990	Sept. 15	Win	3-0
2003	Sept. 6	Loss	3-1	2010	Oct. 9	Win	3-2					Marquette (2-1)				Michigan Tech (1-0)			
					Nov. 12	Loss	3-1	1982		Win	2-0					1985		Win	2-0
Indiana State (5-3)				Jefferson College (1-6)						Win	3-0	Mckendree (12-2)				Middle Tennessee State (14-1)			
				1977	Oct. 22	Loss	2-1	1983		Win	2-0	1982		Win	2-0				
1984		Win	3-0	1978	Sept. 13	Loss	2-0			Win	2-0	1994	Sept. 2	Win	3-1				
		Win	3-0		Nov. 1	Loss	2-0	1984		Win	2-0	2002	Sept. 14	Loss	3-0	Mesa (0-1)			
		Win	3-0	1980		Win	2-0			Win	2-0	McNeese State (2-1)				Michigan Tech (1-0)			
		Loss	3-0			Loss	3-0	1985		Win	3-0	Mckendree (12-2)				Middle Tennessee State (14-1)			
1989		Loss	3-0	1981	Sept. 9	Loss	3-0	1986		Win	3-0	1980		Win	3-0	1978	Oct. 24	Win	2-0
1991	Oct. 5	Win	3-0		Oct. 6	Loss	3-1	1987		Win	3-0			Win	2-0	1986		Win	2-0
1992	Sept. 5	Loss	3-2	John Brown (1-0)				Lipscomb (1-0)				1981	Sept. 19	Win	3-0	1988		Win	3-0
1994	Oct. 7	Loss	3-0					2006	Sept. 9	Win	3-1	1983		Win	2-1	1989		Win	3-0
Iowa State (1-3)				1982		Win	2-0	Loras (1-0)				1984		Win	2-0	1991	Sept. 28	Loss	3-2
				Johnson (1-0)				Louisiana Tech (1-0)				1985		Win	3-0		Oct. 26	Win	3-0
1977	Oct. 8	Win	2-0	1981	Oct. 9	Win	2-0	1982		Win	3-0	1986		Loss	2-0	1992	Sept. 25	Win	3-2
1992	Sept. 5	Loss	3-0	Kansas (0-4)				Louisville (0-1)				1987		Win	3-2		Oct. 23	Win	3-2
	Sept. 18	Loss	3-0	1977	Oct. 8	Loss	2-0	1982		Win	3-0	1988		Loss	2-1	1993	Sept. 25	Win	3-0
1994	Sept. 3	Loss	3-0	1993	Sept. 11	Loss	3-1	Louisville Tech (1-1)				1989		Win	2-0		Oct. 23	Win	3-1
IUPUI (1-2)				1996	Sept. 7	Loss	3-2	1996	Sept. 14	Loss	3-0	1980		Win	3-0	1994	Nov. 19	Win	3-1
				2002	Sept. 13	Loss	3-0	McNeese State (2-1)				1981		Win	3-0	1994	Sept. 23	Win	3-1
Jackson State (1-0)				Kansas State (0-1)				2006	Sept. 9	Win	3-1	1983		Win	3-0	1995	Oct. 21	Win	3-2
				1978	Oct. 6	Loss	2-0	Louisville (0-1)				1984		Win	2-0	1996	Sept. 30	Win	3-0
				Kearney (0-1)				Louisville Tech (1-1)				1985		Win	3-2		Oct. 27	Win	3-1
				1990	Nov. 3	Loss	3-1	1996	Sept. 14	Loss	3-0	1987		Loss	2-1	1997	Oct. 11	Win	3-0
Jacksonville (0-1)				1980		Loss	2-1	Louisville Tech (1-1)				1988		Win	3-0	1998	Nov. 1	Win	3-1
								2001	Sept. 1	Win	3-0	1989		Win	3-0	1997	Sept. 18	Win	3-0
								2003	Sept. 13	Loss	3-0	1995	Sept. 1	Win	3-2		Oct. 26	Win	3-0
																1998	Sept. 18	Win	3-0
																	Oct. 31	Win	3-0
																2005	Oct. 8	Loss	3-0
																2008	Aug. 30	Loss	3-0



SOUTHEAST MISSOURI STATE UNIVERSITY REDHAWKS VOLLEYBALL

ALL-TIME RECORDS VS OPPONENTS

Mineral Area Comm. College (2-0)

1977 Oct. 15 Win 2-1
1978 Sept. 16 Win 3-2

Minnesota- Duluth (0-1)

1989 Loss 3-0

Mississippi (0-3)

1991 Sept. 7 Loss 3-0
2006 Aug. 25 Loss 3-0
2009 Sept. 11 Loss 3-1

Mississippi State (1-0)

2010 Sept. 11 Win 3-0

Mississippi College (1-0)

1986 Win 2-0

Mississippi Uni- versity for Wom- en (2-4)

1980 Loss 2-0
1985 Loss 2-0
1987 Loss 3-0
1988 Loss 3-0
1988 Win 3-2
1989 Win 3-1

Missouri Baptist (6-0)

1984 Win 3-0
Win 3-0
1985 Win 3-0
Win 2-0
1986 Win 3-0
1987 Win 3-2

Missouri- Kansas City (6-0)

1990 Oct. 6 Win 3-0
1993 Sept. 4 Win 3-2
Oct. 9 Win 3-1
1995 Sept. 9 Win 3-0
1996 Sept. 27 Win 3-1
1997 Oct. 10 Win 3-0

Missouri- St. Louis (27-25)

1977 Sept. 20 Loss 2-1
Nov. 4 Loss 2-0
1978 Sept. 30 Win 2-0
Oct. 3 Loss 2-0
Oct. 20 Loss 2-0

1980 Win 2-1
Win 3-0
Loss 3-0
1981 Sept. 29 Win 3-1
Oct. 20 Loss 3-2
1982 Loss 2-1
Loss 2-0
Win 3-0

1983 Win 2-0
Win 2-0
Win 2-1
Win 3-0
Win 2-0
1984 Win 2-0
Win 2-0
Win 2-0
Win 2-0
Win 3-0
Win 2-0

1985 Win 3-0
Win 3-1
1986 Win 3-1
Win 2-0
Loss 2-1
1987 Loss 3-2
Win 3-0
Loss 2-1
Loss 2-0
Loss 3-1

1988 Loss 3-2
Loss 3-2
Win 3-2
Loss 3-1

1989 Loss 3-0
Loss 3-1
Loss 3-0
Loss 3-2
Loss 3-1
Loss 3-1
Loss 3-0

1990 Sept. 8 Loss 3-2
Oct. 20 Win 3-0
Nov. 3 Win 3-0
Nov. 10 Loss 3-2
1991 Sept. 1 Win 3-0
1995 Sept. 5 Win 3-1

Missouri (3-10)

1978 Sept. 23 Loss
Sept. 23 Loss
1991 Nov. 1 Loss 3-0
1992 Nov. 14 Loss 3-0
1993 Oct. 8 Loss 3-1
1994 Sept. 20 Win 3-2
1995 Oct. 18 Loss 3-1
1996 Aug. 30 Win 3-0
1999 Sept. 11 Win 3-0
2000 Sept. 11 Loss 3-0
2001 Sept. 24 Loss 3-1
2002 Oct. 31 Loss 3-0
2004 Sept. 21 Loss 3-0

Missouri State (2-8)

1978 Nov. 3 Loss 2-0
1997 Aug. 30 Win 3-1
1998 Sept. 26 Win 3-0
2000 Sept. 2 Loss 3-1
2001 Oct. 7 Loss 3-1
2002 Aug. 31 Loss 3-0
2004 Sept. 1 Loss 3-2
2005 Aug. 28 Loss 3-0
2006 Oct. 10 Loss 3-0
2010 Sept. 4 Loss 3-0

Missouri Southern (6-2-1)

1980 Win 2-0
1981 Oct. 10 Win 2-0
1982 Tie 1-1
1983 Loss 2-1
1984 Loss 2-1
1989 Win 3-1
Win 3-0
Win 3-1
1990 Sept. 22 Win 3-1

Missouri Western (5-2-1)

1980 Loss 2-1
Loss 2-0
1981 Sept. 12 Win 2-0
1982 Tie 1-1
1989 Win 3-1
Win 3-1
Win 3-1
1990 Sept. 21 Win 3-0

Morehead State (25-15)

1991 Sept. 14 Win 3-1
Oct. 18 Win 3-2
1992 Oct. 3 Loss 3-2

Oct. 31 Win 3-1
1993 Oct. 1 Win 3-1
Oct. 30 Win 3-0
Nov. 21 Loss 3-1
1994 Sept. 30 Win 3-2
Oct. 29 Win 3-1
1995 Oct. 6 Loss 3-1
Nov. 4 Win 3-1
Nov. 19 Loss 3-2
1996 Oct. 5 Win 3-1
Nov. 15 Win 3-0
1997 Sept. 26 Win 3-0
Nov. 15 Win 3-0
1998 Sept. 12 Loss 3-1
Oct. 3 Win 3-0
Nov. 20 Win 3-0
1999 Oct. 2 Win 3-0
Oct. 29 Win 3-0
2000 Oct. 6 Win 3-0
Nov. 4 Win 3-0
2001 Sept. 22 Win 3-1
Oct. 26 Loss 3-0
2002 Sept. 21 Loss 3-0
Oct. 25 Loss 3-2
Nov. 22 Win 3-0
2004 Nov. 6 Win 3-2
2005 Oct. 1 Win 3-0
2006 Sept. 30 Loss 3-1
2007 Sept. 28 Loss 3-0
Oct. 27 Loss 3-1
2008 Sept. 20 Loss 3-0
Oct. 24 Win 3-1
2009 Oct. 3 Loss 3-0
Nov. 6 Win 3-2
2010 Sept. 25 Loss 3-1
Oct. 29 Loss 3-0

Montevallo (0-2)

1983 Loss 3-2
1985 Loss 3-0

Morningside (1-0)

1990 Nov. 3 Win 3-0

Murray State (44-20)

1977 Oct. 3 Loss 2-1
Oct. 22 Win 2-0
1978 Sept. 26 Win 3-1
Oct. 11 Win 3-0
1983 Win 2-0
1984 Win 3-1
Win 2-0
1985 Win 3-0
Win 2-0
1986 Win 3-0
Win 3-1

1987 Win 3-0
Win 2-0
Win 3-2
1988 Win 3-0
Loss 3-0
1989 Win 3-0
Loss 3-1
1990 Sept. 26 Win 3-0
Oct. 23 Win 3-0
1991 Oct. 1 Win 3-0
Nov. 12 Win 3-2
1992 Oct. 13 Loss 3-2
Nov. 10 Win 3-0
Nov. 21 Loss 3-2
1993 Oct. 12 Win 3-1
Nov. 9 Win 3-1
1994 Oct. 11 Loss 3-1
Nov. 8 Win 3-2
Nov. 19 Win 3-0
1995 Oct. 10 Win 3-0
Nov. 7 Win 3-1
1996 Oct. 8 Win 3-1
Nov. 5 Win 3-2
Nov. 23 Win 3-0
1997 Oct. 2 Loss 3-2
Oct. 21 Loss 3-1
1998 Oct. 13 Win 3-0
Nov. 13 Win 3-0
1999 Oct. 15 Win 3-1
Nov. 2 Win 3-0
Nov. 19 Win 3-0
2000 Sept. 17 Win 3-0
Oct. 21 Win 3-0
2001 Sept. 28 Win 3-0
Oct. 20 Win 3-2
2002 Sept. 28 Win 3-2
Oct. 18 Win 3-1
2003 Oct. 21 Win 3-0
Nov. 14 Loss 3-2
Nov. 20 Loss 3-0
2004 Oct. 23 Win 3-0
Nov. 12 Win 3-1
2005 Sept. 24 Win 3-1
Oct. 14 Win 3-0
2006 Sept. 23 Loss 3-1
Oct. 13 Loss 3-2
Nov. 16 Win 3-2
2007 Sept. 21 Loss 3-0
Oct. 2 Loss 3-0
2008 Oct. 17 Loss 3-2
Oct. 28 Win 3-2
2009 Oct. 30 Loss 3-1
Nov. 10 Loss 3-1
2010 Oct. 15 Loss 3-1
Oct. 26 Loss 3-1

SOUTHEAST MISSOURI STATE UNIVERSITY REDHAWKS VOLLEYBALL

ALL-TIME RECORDS VS OPPONENTS

Nebraska (0-3) 1978 Sept. 30 Loss 2-0 1985 Loss 2-0 1989 Loss 3-0	Northern Iowa (1-1) 1997 Sept. 5 Win 3-1 2005 Sept. 10 Loss 3-0	Oral Roberts (0-4) 1978 Sept. 30 Loss 2-0 1995 Sept. 16 Loss 3-0 1997 Oct. 11 Loss 3-0 1998 Sept. 5 Loss 3-1	Rollins (1-0) 1990 Oct. 12 Win 3-0	Southern California (0-2) 1996 Nov. 4 Loss 3-0 Dec. 4 Loss 3-0
New Haven (0-1) 1990 Nov. 23 Loss 3-1	Northern Kentucky (1-0) 1984 Win 3-2	Penn State (0-1) 2003 Aug. 30 Loss 3-0	Sacramento State (0-1) 2006 Sept. 1 Loss 3-0	University of the South (1-0) 1981 Oct. 31 Win 2-0
New Mexico State (1-0) 1999 Sept. 11 Win 3-1	Northwestern (0-1) 1994 Sept. 16 Loss 3-1	Pittsburgh (0-1) 2006 Aug. 25 Loss 3-0	Samford (10-0) 1987 Win 3-0 2003 Oct. 18 Win 3-1 2004 Oct. 16 Win 3-1 2005 Oct. 22 Win 3-2 Nov. 11 Win 3-0 2006 Oct. 21 Win 3-1 Nov. 10 Win 3-0 2007 Oct. 12 Win 3-1 Nov. 3 Win 3-1 2009 Sept. 5 Win 3-2	South Florida (0-4) 1991 Nov. 9 Loss 3-1 2001 Nov. 3 Loss 3-0 2004 Sept. 10 Loss 3-0 2010 Sept. 10 Loss 3-0
North Alabama (4-0) 1988 Win 3-0 Win 3-0 1989 Win 3-0 1990 Nov. 2 Win 3-0	Northwest Missouri State (16-7) 1977 Sept. 23 Win 2-0 1980 Loss 2-0 1981 Nov. 7 Loss 3-1 1982 Loss 3-0 Win 2-0 Win 2-0 Win 2-1 1984 Loss 2-0 1985 Loss 3-2 Loss 3-1 1986 Win 3-1 Loss 2-0 Win 3-0 1987 Win 3-0 Win 3-0 1988 Win 3-0 1989 Win 3-0 Win 3-1 Win 3-0 1990 Oct. 19 Win 3-1 Nov. 9 Win 3-0	Pittsburgh State (4-1) 1980 Loss 3-0 1981 Sept. 11 Win 2-0 1983 Win 2-0 1989 Win 3-0 1990 Oct. 20 Win 3-0	Sam Houston State (0-1) 1983 Loss 2-0	Southern Illinois-Edwardsville (2-1) 2009 Oct. 13 Win 3-0 Nov. 3 Win 3-1 2010 Oct. 19 Loss 3-0
North Carolina (1-1) 2000 Nov. 30 Win 3-2 2010 Sept. 3 Loss 3-1		Portland State (0-1) 1990 Sept. 8 Loss 3-2	San Diego (0-1) 2000 Sept. 22 Loss 3-0	Southern Illinois-Carbondale (8-15) 1977 Sept. 10 Loss 2-0 Sept. 20 Loss 2-0 1978 Sept. 20 Loss 3-0 Oct. 17 Loss 2-0 1991 Sept. 7 Loss 3-0 1992 Sept. 15 Loss 3-1 1993 Nov. 13 Loss 3-2 1994 Sept. 13 Win 3-2 1996 Sept. 3 Loss 3-2 1997 Sept. 9 Loss 3-2 1998 Sept. 29 Win 3-0 Oct. 17 Win 3-1 1999 Oct. 5 Win 3-0 2000 Sept. 26 Win 3-0 2002 Sept. 10 Win 3-1 2003 Sept. 23 Loss 3-2 2004 Sept. 14 Win 3-0 2005 Oct. 25 Loss 3-2 2006 Sept. 12 Loss 3-0 2007 Oct. 9 Win 3-1 2008 Sept. 13 Loss 3-1 2009 Oct. 20 Loss 3-1 2010 Sept. 11 Loss 3-1
North Carolina-Greensboro (1-0) 1988 Win 3-1		Principia College (1-0) 1978 Oct. 6 Win 2-1	Santa Clara (0-1) 2000 Sept. 22 Loss 3-0	
North Colorado (0-1) 1986 Loss 2-1		Purdue (1-0) 2002 Sept. 13 Win 3-1	School of the Ozarks (0-1-1) 1983 Tie 1-1 Loss 2-1	
North Dakota State (1-1) 1984 Loss 2-0 1990 Sept. 15 Win 3-2		Quincy (3-1) 1984 Loss 2-0 1987 Win 2-0 1989 Win 3-1 1990 Sept. 7 Win 3-0	South Alabama (1-0) 2002 Sept. 7 Win 3-0	
North Florida (1-0) 2007 Aug. 31 Win 3-1	Oakland City (1-0) 1985 Win 2-0	Regis (0-1) 1989 Loss 3-1	South Carolina (2-0) 1991 Nov. 9 Win 3-1 1993 Sept. 17 Win 3-0	
Northeastern Illinois (5-1-1) 1981 Oct. 17 Tie 1-1 1984 Win 2-0 1989 Win 3-0 1992 Oct. 10 Win 3-0 1993 Sept. 10 Win 3-0 1994 Sept. 17 Loss 3-1 1996 Oct. 20 Win 3-0	Oakland (1-0) 2005 Sept. 10 Win 3-0	Rhode Island (0-1) 2003 Aug. 31 Loss 3-1	South Dakota State (0-1) 2008 Aug. 29 Loss 3-1	
	Ohio (0-1) 2010 Sept. 14 Win 3-0	Rhodes (1-0) 1985 Win 2-0		
	Ohio State (0-1) 2007 Aug. 24 Loss 3-0	Rockhurst (1-0) 1983 Win 2-0		

[illegible]

SOUTHEAST MISSOURI STATE UNIVERSITY REDHAWKS VOLLEYBALL

ALL-TIME RECORDS VS OPPONENTS

Tennessee Tech (34-11)

1980	Loss	2-1
1991	Sept. 21	Win 3-0
	Sept. 27	Win 3-1
	Oct. 26	Win 3-0
1992	Sept. 26	Win 3-0
	Oct. 24	Win 3-0
1993	Sept. 24	Loss 3-0
	Oct. 22	Win 3-0
	Nov. 20	Win 3-0
1994	Sept. 24	Win 3-1
	Oct. 22	Win 3-1
1995	Sept. 29	Loss 3-1
	Oct. 28	Win 3-0
1996	Oct. 12	Win 3-0
	Nov. 2	Win 3-1
1997	Sept. 21	Win 3-1
	Oct. 25	Win 3-1
1998	Sept. 19	Win 3-0
	Nov. 1	Loss 3-2
	Nov. 20	Win 3-0
1999	Oct. 23	Win 3-0
	Nov. 13	Win 3-1
2000	Sept. 29	Win 3-0
	Oct. 29	Win 3-1
2001	Oct. 12	Win 3-1
	Nov. 10	Win 3-0
2002	Oct. 11	Win 3-1
	Nov. 9	Win 3-0
2003	Sept. 27	Win 3-0
	Oct. 11	Win 3-0
2004	Sept. 25	Loss 3-1
	Oct. 8	Win 3-2
2005	Oct. 7	Loss 3-2
	Nov. 5	Win 3-2
2006	Oct. 6	Win 3-1
	Nov. 4	Loss 3-1
2007	Sept. 15	Win 3-2
	Oct. 19	Win 3-1
	Nov. 15	Loss 3-1
2008	Sept. 27	Loss 3-0
	Nov. 7	Win 3-1
2009	Sept. 18	Win 3-2
	Oct. 10	Loss 3-2
2010	Oct. 8	Loss 3-1
	Nov. 13	Win 3-2

Texas- El Paso (0-1)

2000	Sept. 9	Loss 3-1
------	---------	----------

Texas- San Antonio (1-1)

1995	Sept. 2	Win 3-0
2007	Sept. 1	Loss 3-1

Texas Womens University (1-2)

1985	Loss	2-0
	Loss	2-1
1987	Win	3-1

Thomas Moore (1-1)

1985	Win	2-0
------	-----	-----

Truman State (13-10)

1977	Sept. 23	Win 2-0
1978	Oct. 27	Loss 2-0
	Nov. 3	Loss 2-0
1980		Loss 2-1
		Loss 2-0
1981	Sept. 22	Win 2-1
	Nov. 6	Win 2-0
1982		Loss 2-0
1983		Loss
200		2-0
Loss		2-1
		Loss 2-1
1984		Win 2-0
		Win 2-1
1985		Win 2-0
		Loss 3-1
1986		Win 3-1
1987		Win 3-2
		Loss 3-2
1988		Win 3-0
		Win 3-0
		Win 3-0
1989		Win 3-0
1990	Sept. 22	Win 3-0

Tulsa (2-1)

1986	Win	2-0
	Loss	2-0
1987	Win	

3-2		
1991	Nov. 2	Win 3-0
1992	Sept. 10	Win 3-1

USC Upstate (1-0)

2010	Aug. 27	Loss 3-1
------	---------	----------

Utah State (0-1)

2002	Aug. 31	Loss 3-0
------	---------	----------

Valparaiso (2-4)

1991	Oct. 5	Loss 3-0
1994	Sept. 3	Win 3-2
	Oct. 8	Loss 3-0
1995	Sept. 9	Loss 3-0
1996	Nov. 29	Win 3-1
2004	Sept. 3	Loss 3-0

Virginia Tech (1-0)

1993	Sept. 18	Win 3-1
------	----------	---------

Washburn (4-0)

1989		Win 3-2
		Win 3-0
		Win 3-0
1990	Sept. 21	Win 3-0

Washington State (0-1)

1995	Sept. 14	Loss 3-0
------	----------	----------

Wayne State (1-0)

1989		Win 3-0
------	--	---------

Weber State (0-2)

2005	Sept. 3	Loss 3-0
2007	Sept. 1	Loss 3-0

West Georgia College (2-0)

1985		Win 2-0
1988		Win 3-0

West North Iowa (0-1)

1981	Oct. 9	Loss 2-0
------	--------	----------

West Virginia (2-0)

1994	Sept. 2	Win 3-2
1998	Oct. 17	Win 3-0

Western Carolina (1-0)

2006	Aug. 26	Win 3-0
------	---------	---------

Western Illinois (6-1)

1977	Nov. 5	Loss 2-0
1994	Sept. 10	Win 3-1
1996	Aug. 31	Win 3-0
1997	Aug. 30	Win 3-0
2001	Oct. 2	Win 3-0
2008	Sept. 13	Win 3-2
2010	Aug. 28	Win 3-1

Western Kentucky (5-3)

1985		Win 2-0
		Win 2-0
1986		Win 2-1
		Win 2-0
1991	Oct. 17	Loss 3-0
	Nov. 2	Loss 3-1
1992	Nov. 13	Win 3-1
2004	Sept. 11	Loss 3-0

Wheaton (1-0)

1984		Win 2-0
------	--	---------

Wichita State University (0-4)

1977	Sept. 24	Loss 2-1
1992	Oct. 10	Loss 3-0
1998	Sept. 25	Loss 3-2
2001	Aug. 31	Loss 3-2

William Woods (6-1)

1980		Loss 2-0
		Win 3-0
1981	Sept. 22	Win 2-1
1982		Win 2-0
1983		Win 2-0
1984		Win 2-0
		Win 3-1

Wisconsin (0-2-1)

1977	Nov. 5	Loss 2-0
1982		Tie 1-1
		Loss 2-0

Wisconsin- Green Bay (1-1)

1995	Sept. 8	Win 3-0
2003	Sept. 5	Loss 3-0

Wisconsin- Milwaukee (1-2)

1978	Oct. 20	Loss 2-0
1994	Sept. 16	Win 3-0
2001	Sept. 7	Loss 3-0

Xavier (Ohio). (0-1)

1991	Oct. 4	Loss 3-0
------	--------	----------

DID YOU KNOW

The Redhawks won 22 straight matches against Eastern Kentucky from 1992 to 2002. From 1997 to 2000 Southeast took eight straight matches by scores of 3-0.



DID YOU KNOW

During the 1999 campaign the Redhawks accumulated 28 wins. Southeast defeated both Missouri and Kentucky by scores of 3-0.



SOUTHEAST MISSOURI STATE UNIVERSITY
REDHAWKS VOLLEYBALL

2011 KFVS BROADCAST SCHEDULE

SEPT. 20, VS. MURRAY STATE, 6:30 P.M.

OCT. 4, VS. EASTERN ILLINOIS, 6:30 P.M.

OCT. 29, VS. UT MARTIN, 2 P.M.

NOV. 8, VS. SIUE, 6:30 P.M.





**SOUTHEAST MISSOURI STATE UNIVERSITY REDHAWKS
RECORD BOOK**





SOUTHEAST MISSOURI STATE UNIVERSITY REDHAWKS VOLLEYBALL

TEAM RECORD BOOK

SINGLE SEASON RECORDS



Wins----- 28 (1993, '96, '99)
 Winning Pct.----- .824 (1999)
 OVC Wins-----18 (1996)
 OVC Winning Pct.-----1.000 (1996, '00)
 Matches Played-----41 (1994)
 Games Played-----159 (1994)
 Kills-----2,117 (1996)
 Kills per Game-----17.21 (1996)
 Errors-----906 (1994)
 Total Attacks-----5,663 (1994)
 Hitting Pct.-----.292 (1999)

Assists-----1,879 (1994)
 Service Aces-----319 (1993)
 Service Errors-----462 (1993)
 Reception Errors-----385 (1996)
 Digs-----2,506 (1994)
 Block Solo-----133 (1996)
 Block Assists-----438 (1993)
 Team Blocks-----343.5 (1996)
 Blocks per Game-----2.51 (1996)
 Blocking Errors-----171 (1991)
 Ball Handling Errors-----110 (1991)

TEAM MATCH RECORDS

Kills-----96 at Murray State 10/15/99
 Total Attacks-----277 vs. EIU 9/30/97
 Hitting Pct.-----.568 vs. TSU 10/21/94
 Assists-----88 vs. Murray State 10/15/99
 Service Aces-----17 vs. TTU 9/24/94
 Digs-----153 vs. EIU 9/30/97
 Block Solo-----11 at UTM 10/9/91
 Team Blocks-----19 vs. Morehead 11/18/95

Longest Match-----2:41 vs.
 Stephen F. Austin 9/1/00
 Largest Home Attendance-----1,168
 vs. Murray State 11/9/93
 Largest Away Attendance-----1,789
 at Stanford
 (NCAA Tourney) 12/4/98



1996 REDHAWKS

The 1996 team was the first OVC team to go undefeated in conference play, winning 18 straight OVC matches. The team also holds school records for wins in a season, OVC wins, team kills and team blocks.

SOUTHEAST MISSOURI STATE UNIVERSITY REDHAWKS VOLLEYBALL

INDIVIDUAL MATCH RECORDS



Kills	-----	36 by Krista Haukap vs. North Carolina (NCAA Tourney) 11/30/00
Total Attacks	-----	83 by Krista Haukap at Murray State, 10/15/99
Hitting Pct.	-----	1.000 by Jackie Dewort vs. Tennessee State, 10/10/98
Assists	-----	82 by Tuba Meto at Murray State, 11/5/96
Service Aces	-----	8 by Ceylan Tokcan vs. Arkansas-Little Rock, 11/11/94
Digs	-----	43 by Kelly Benecka at Tennessee State, 10/2/10
Block Solo	-----	7 by Erin Willrich at Tennessee Tech, 11/2/96
Blocks Assists	-----	11 by Angie Aschoff vs. Loyola Marymount, 12/2/99
Total Blocks	-----	12 by Erin Willrich vs. Morehead, 11/18/95/ vs. Valparaiso 11/29/96 Angie Aschoff vs. Loyola Marymount 12/2/99



KELLY BENECKA

Kelly Benecka finished her career with 1,130 digs from 2007-2010. Last Season, the Algonquin, Illinois native recorded 43 digs at Tennessee State on October 2nd in Nashville. The 43 dig performance broke Molly Davis' record of 39 against Ole Miss in 2009.



SOUTHEAST MISSOURI STATE UNIVERSITY REDHAWKS VOLLEYBALL

INDIVIDUAL RECORDS FOR A SEASON

KILLS

1. 753	Lori Kramper	1988
2. 634	Pam Kirsch	1993
3. 625	Jennifer Dolan	1989
4. 617	Ceylan Tokcan	1993
5. 609	Pam Kirsch	1992
6. 581	Krista Haukap	2000
7. 565	Lea Beckemeyer	2000
8. 562	Shelley Kennedy	1989
9. 548	Krista Haukap	1999
10. 547	Shelley Kennedy	1990

ASSISTS

1. 1,714	Laura Dill	1990
2. 1,567	Tuba Meto	1997
3. 1,555	Tuba Meto	1996
4. 1,524	Tuba Meto	1995
5. 1,517	Tracie Gordon	1993
6. 1,511	Amy Henken	1999
7. 1,507	Laura Dill	1988
8. 1,469	Amy Henken	1998
9. 1,453	Emily Scannell	2000
10. 1,451	Emily Scannell	2002

ATTACK ATTEMPTS

1. 1,648	Lori Kramper	1988
2. 1,424	Jennifer Dolan	1989
3. 1,422	Ceylan Tokcan	1993
4. 1,382	Jessica Koeper	2005
5. 1,381	Pam Kirsch	1993
6. 1,358	Pam Kirsch	1992
7. 1,324	Jill Stephens	1988
8. 1,321	Krista Haukap	2000
9. 1,308	Shelley Kennedy	1989
10. 1,302	Shelley Kennedy	1990

HITTING PERCENTAGE

1. .468	Kim Lance	1984
2. .466	Rachaelle Hayes	1984
3. .431	LeAnn Powers	1985
4. .429	Noly Broadnax	1982
5. .401	Lori Kramper	1987
6. .390	Judy Scheller	1986
7. .386	Rachaelle Hayes	1983
8. .384	Angie Aschoff	1999
9. .381	Judy Scheller	1985
10. .377	Kim Lance	1986

DIGS

1. 849	Leslie Caughman	1987
2. 684	Jill Stephens	1987
3. 637	Molly Davis	2007
4. 621	Jill Stephens	1988
5. 616	Lauren Scannell	2005
6. 611	Lisa Thornton	1989
7. 602	Leslie Caughman	1988
8. 599	Molly Davis	2009
9. 584	Donna Thiele	1987
10. 583	Kelly Benecka	2010



SOUTHEAST MISSOURI STATE UNIVERSITY REDHAWKS VOLLEYBALL

INDIVIDUAL RECORDS FOR A SEASON

SERVICE ACES

1.	89	Lisa Chatron	1984
2.	81	Ceylan Tokcan	1993
		Cathy Hanna	1982
4.	71	Janet Bucheit	1991
5.	69	LeAnn Powers	1986
6.	68	Sandy Seiler	1992
7.	64	Jamie Baumstark	2005
		Ceylan Tokcan	1994
9.	63	Kim Lance	1986
10.	61	Tuba Meto	1994

BLOCKS SOLO

1.	180	Lori Kramper	1988
2.	152	Lori Kramper	1987
3.	127	Noly Broadnax	1982
4.	122	Jennifer Dolan	1989
5.	119	Rachaelle Hayes	1984
6.	107	Kathy Day	1984
7.	106	Nancy Scheller	1987
8.	97	Lori Kramper	1985
9.	91	Jennifer Dolan	1988
10.	89	Lori Kramper	1986

BLOCK ASSISTS

1.	292	Jennifer Dolan	1989
2.	263	Lori Kramper	1987
3.	257	Lori Kramper	1986
4.	209	Lori Kramper	1988
5.	189	Tina Thomas	1989
6.	179	Nancy Scheller	1987
7.	177	Judy Scheller	1986
8.	175	Jennifer Dolan	1988
9.	171	Jill Stephens	1989
10.	166	Mary Vaughn	1986

TOTAL BLOCKS

1.	415	Lori Kramper	1987
2.	414	Jennifer Dolan	1989
3.	389	Lori Kramper	1988
4.	346	Lori Kramper	1986
5.	285	Nancy Scheller	1987
6.	266	Jennifer Dolan	1988
7.	253	Lori Kramper	1985
8.	234	Judy Scheller	1986
9.	233	Tina Thomas	1989
10.	232	Rachaelle Hayes	1984



LORI KRAMPER

Lori Kramper finished in the top 10 all four years in solo blocks, total blocks, and three of four years in block assists.



SOUTHEAST MISSOURI STATE UNIVERSITY REDHAWKS VOLLEYBALL

INDIVIDUAL RECORDS FOR A CAREER

KILLS

1.	2,070	Krista Haukap	1997-00
2.	1,675	Jennifer Dolan	1987-90
3.	1,639	Lori Kramper	1985-88
4.	1,561	Jessica Koeper	2003-06
5.	1,487	Pam Kirsch	1990-93
6.	1,405	Lea Beckemeyer	1998-00
7.	1,275	Angi Aschoff	1996-99
8.	1,271	Rachaelle Hayes	1981-84
9.	1,266	Jill Stephens	1981-84
10.	1,244	Nancy Scheller	1987-91

ASSISTS

1.	5,641	Laura Dill	1987-90
2.	5,406	Tracie Gordon	1991-94
3.	5,313	Emily Scannell	2000-03
4.	5,003	Tuba Meto	1994-97
5.	3,473	Jamie Baumstark	2003-06
6.	2,980	Amy Henken	1998-99
7.	2,846	Sarah Barth	2006-09
8.	942	Julie Shives	2010-Present
9.	661	Gwyn Mincher	1988-89
10.	553	Alyssa Aston	2005-08

ATTACK ATTEMPTS

1.	4,921	Krista Haukap	1997-00
2.	4,510	Jessica Koeper	2003-06
3.	3,861	Jennifer Dolan	1987-90
4.	3,756	Susie Thompson	1993-96
5.	3,709	Lori Kramper	1985-88
6.	3,452	Lea Beckemeyer	1998-00
7.	3,364	Pam Kirsch	1990-93
8.	3,247	Nancy Scheller	1987-91
9.	3,215	Theresa Sebacher	1993-96
10.	3,162	Leanna Huffman	1993-96

HITTING PERCENTAGE

1.	.386	Judy Scheller	1985-86
2.	.372	Rachaelle Hayes	1981-84
3.	.366	Kim Lance	1983-86
4.	.345	Lisa Chatron	1981-84
5.	.339	Lori Kramper	1985-88
6.	.332	Angie Aschoff	1996-99
7.	.329	Tracie Gordon	1991-94
		Noly Broadnax	1981-82
9.	.321	Kathy Day	1983-84
10.	.302	Pam Kirsch	1990-93

LAURA DILL

Laura Dill set up 1,714 kills during the 1990 season. She also holds the career records with 5,641 assists.



SOUTHEAST MISSOURI STATE UNIVERSITY REDHAWKS VOLLEYBALL

INDIVIDUAL RECORDS FOR A CAREER

DIGS

1.	2,223	Molly Davis	2006-09
2.	1,637	Leslie Caughman	1986-88
3.	1,627	Jill Stephens	1985-88
4.	1,521	Tuba Meto	1994-97
5.	1,482	Laura Dill	1987-90
6.	1,465	Krista Haukap	1997-00
7.	1,451	Jill Miller	2002-05
8.	1,437	Donna Thiele	1986-89
9.	1,416	Theresa Sebacher	1993-96
10.	1,329	Susie Thompson	1993-96

SERVICE ACES

1.	243	Lisa Chatron	1981-84
2.	197	Jamie Baumstark	2003-06
3.	192	Tuba Meto	1994-97
4.	185	Tracie Gordon	1991-94
5.	178	Emily Scannell	2000-03
		Kim Lance	1983-86
7.	168	Cathy Hanna	1980-83
8.	165	Susie Thompson	1993-96
9.	160	Laura Dill	1987-90
		Lisa Thompson	1987-90



TUBA METO

Tuba Meto was inducted into the Southeast Missouri State Hall of Fame for her dominate four year career from 1994-97. Her head coach Cindy Gannon saw Meto place herself into the top 10 in seven different season and career records.





SOUTHEAST MISSOURI STATE UNIVERSITY REDHAWKS VOLLEYBALL

INDIVIDUAL RECORDS FOR A CAREER

KILL

1.	518	Lori Kramper	1985-88
2.	296	Jennifer Dolan	1987-90
3.	290	Nancy Scheller	1987-91
4.	265	Rachaelle Hayes	1984-86
5.	206	Lisa Chatron	1981-84
6.	184	Jill Stephens	1985-88
7.	177	Noly Broadnax	1981-82
8.	164	Kathy Day	1983-84
9.	159	Erin Willrich	1993-96
10.	158	LeAnn Powers	1984-86

ATTACK ATTEMPTS

1.	885	Lori Kramper	1985-88
2.	728	Jennifer Dolan	1987-90
3.	543	Nancy Scheller	1987-90
4.	496	Laura Dill	1987-90
5.	463	Jill Stephens	1985-88
6.	360	Brenna Schlader	2004-07
7.	358	LeAnn Powers	1985-86
8.	347	Angie Aschoff	1996-99
9.	328	Theresa Sebacher	1993-96
10.	300	Kim Lance	1983-86

ATTACK ATTEMPTS

1.	1,403	Lori Kramper	1985-88
2.	1,024	Jennifer Dolan	1987-90
3.	833	Nancy Scheller	1987-91
4.	647	Jill Stephens	1985-88
5.	635	Laura Dill	1987-90
6.	516	LeAnn Powers	1984-86
7.	496	Rachaelle Hayes	1982-84
8.	463	Erin Willrich	1993-96
9.	438	Brenna Schlader	2004-07
10.	429	Angie Aschoff	1996-99



KRISTA HAUKAP

Krista Haukap amassed 2,070 kills in her career that spanned from 1997-2000, as Haukap is the all-time leader in kills and attack attempts for the Redhawks.



SOUTHEAST MISSOURI STATE UNIVERSITY REDHAWKS VOLLEYBALL

YEAR BY YEAR COACHING RESULTS

Year	Coach	Record	Pct.	Conf.	Pct.	Finish
1974	Marjorie Parker	7-3	.700	N/A	N/A	N/A
1975	Marjorie Parker	15-7	.682	N/A	N/A	N/A
1976	Donna Enlow	6-21	.222	N/A	N/A	N/A
1977	Donna Enlow	10-24	.294	N/A	N/A	N/A
1978	Kris Burns	8-27	.229	N/A	N/A	N/A
1979	Kris Burns	1-16	.059	N/A	N/A	N/A
1980	Kerri Harris	13-18-1	.406	N/A	N/A	N/A
1981	Kerri Harris	29-15-1	.644	N/A	N/A	N/A
1982	Lana Flynn (Richmond)	18-14-3	.537	1-9	.100	Sixth
1983	Lana Flynn (Richmond)	22-18-1	.537	10-5	.667	Third
1984	Lana Flynn (Richmond)	40-11	.784	9-3	.750	Third
1985	Lana Flynn (Richmond)	26-13	.667	4-3	.571	Fourth
1986	Lana Flynn (Richmond)	37-9	.804	5-2	.714	Third
1987	Lana Flynn (Richmond)	27-12	.692	4-4	.500	Fourth
1988	Lana Flynn (Richmond)	33-14	.702	7-3	.700	Third
1989	Cindy Gannon	31-21	.596	7-2	.778	Third
1990	Cindy Gannon	31-12	.721	9-2	.818	Third
1991	Cindy Gannon	20-17	.571	12-1	.923	First-tie
1992	Cindy Gannon	19-18	.514	11-5	.722	Third
1993	Cindy Gannon	28-11	.718	15-1	.938	First
1994	Cindy Gannon	27-14	.659	15-1	.938	First
1995	Cindy Gannon	24-12	.667	14-2	.875	First
1996	Cindy Gannon	28-8	.778	18-0	1.000	First
1997	Cindy Gannon	26-9	.743	15-3	.833	First
1998	Cindy Gannon	24-12	.667	13-5	.722	Third
1999	Cindy Gannon	28-6	.823	17-1	.944	First
2000	Cindy Gannon	23-9	.719	16-0	1.000	First
2001	Cindy Gannon	15-14	.517	10-6	.625	Fourth
2002	Cindy Gannon	20-12	.625	13-3	.825	Third
2003	Cindy Gannon	11-19	.367	10-6	.625	Third-tie
2004	Cindy Gannon	11-17	.393	9-7	.562	Fourth-tie
2005	Renata Nowacki (Heard)	16-16	.500	11-5	.687	Fifth
2006	Renata Nowacki (Heard)	16-18	.471	8-8	.500	Sixth
2007	Renata Nowacki (Heard)	20-12	.625	15-5	.750	First-tie
2008	Renata Nowacki (Heard)	13-14	.481	11-7	.611	Fifth
2009	Renata Nowacki (Heard)	13-17	.433	8-10	.444	Seventh
2010	Reneta Nowacki (Heard)	7-22	.241	4-14	.222	Ninth
Overall Record		743-532-6	.577			
OVC Record				245-91	.729	
Division I Record		389-259	.600			



CINDY GANNON

Coach Cindy Gannon is the all-time wins leader with 366 wins and 211 losses. Her teams have won eight conference titles, including five in a row.



SOUTHEAST MISSOURI STATE UNIVERSITY REDHAWKS VOLLEYBALL

OHIO VALLEY HONORS

ALL-OVC SELECTIONS

1st TEAM ALL-OVC

1991 - Janet Bucheit
1992 - Pam Kirsch
Sandy Seiler
1993 - Tracie Gordon
Pam Kirsch
Ceylon Tokan
1994 - Ceylon Tekon
1995 - Leanne Huffman
Tuba Meto
1996 - Tuba Meto
Theresa Sebacher
Erin Willrich
1997 - Jackie Derwort
Tuba Meto
1998 - Angie Aschoff
1999 - Angie Aschoff
Krista Haukap
Amy Henken
2000 - Lea Beckenmeyer
Krista Haukap
2002 - Emily Johnson
Emily Scannell
2003 - Emily Scannell
2005 - Jessica Koeper
2006 - Jessica Koeper
2007 - Karleigh DeLong
2008 - Aubrey Dondlinger
2009 - Karleigh DeLong

2nd TEAM ALL-OVC

1991 - Sandy Seiler
1992 - Tracie Gordon
1994 - Tracie Gordon
Ami Mitchell
1995 - Theresa Sebacher
1996 - Leanne Huffman

1997 - Angie Aschoff
1998 - Jackie Derwort
Krista Haukap
Amy Henken
1999 - Lea Beckenmeyer
2000 - Rachelle Knapp
2001 - Jessica Houpt
Bobbi Carlile
Emily Scannell
2002 - Bobbi Carlile
2003 - Suzanne Gundlach
2004 - Jessica Koeper
2005 - Jamie Baumstark
2008 - Claire Keaton

HONORABLE MENTION

1995 - Susie Thompson

ALL-FRESHMAN ALL-NEWCOMER TEAM

1991 - Tracie Gordon
1992 - Yvette Luyten
1994 - Theresa Sebacher
1995 - Cathy Pritchard
1996 - Angie Aschoff
1997 - Krista Haukap
1998 - Amy Henken
1999 - Emily Johnson
2000 - Emily Scannell
2001 - Jessica Houpt
2002 - Jill Miller
2003 - Jessica Wilfong
2007 - Aubrey Dondlinger
2010- Emily Coon



PAM KIRSCH

Kirsch was named First Team All-OVC in 1992 and 1993. Kirsch was named OVC Player of the Week five times in 1993.



TUBA METO

Meto was named First Team All-OVC in 1995, 1996 and 1997. During her time as a Redhawk she was named OVC Player of the Week three times.



AMY HENKEN

Henken was named to the 1998 OVC All-Newcomer Team and was also named First Team-All OVC in 1999.



EMILY SCANNELL

Scannell was named First Team All-OVC in 2000 and 2002 and made Second Team All-OVC in 2001.



KRISTA HUKAP

Haukap was named First Team All-OVC in 1999 and 2000. She was named OVC Offensive Player of the Week three times.

SOUTHEAST MISSOURI STATE UNIVERSITY REDHAWKS VOLLEYBALL

OHIO VALLEY HONORS



PLAYER OF THE WEEK HONORS

1991	1996	Freshman	2006
9/24 Sandy Seiler	10/7 Theresa Sebacher	10/25 Emily Johnson	Offensive
10/22 Janet Bucheit	10/14 Tuba Meto	2000	9/11 Jessica Koeper
10/29 Janet Bucheit	11/11 Tuba Meto		9/25 Jessica Koeper
11/5 Janet Bucheit	Freshman	Offensive	2007
11/19 Nancy Scheller	9/30 Angie Aschoff	9/18 Lea Beckemeyer	Offensive
	10/21 Angie Aschoff	10/9 Krista Haukap	10/1 Karleigh DeLong
		10/16 Krista Haukap	2008
1992	1997	Defensive	Offensive
9/9 Pam Kirsch	Offensive	10/16 Lea Beckemeyer	9/15 Claire Keaton
9/22 Pam Kirsch	9/15 Tuba Meto	10/23 Emily Johnson	10/27 Aubrey Dondlinger
10/27 Pam Kirsch	10/6 Tuba Meto	Freshman	
11/3 Pam Kirsch	10/27 Jackie Derwort	9/18 Emily Scannell	Defensive
11/17 Pam Kirsch	Defensive	2001	9/15 Milly Davis
Freshman	10/6 Jackie Derwort	Offensive	Setter
10/13 Yvette Luyten	11/17 Jackie Derwort	9/24 Bobbi Carlile	9/15 Alyssa Aston
11/3 Yvette Luyten	Freshman	2002	11/3 Sarah Barth
11/17 Yvette Luyten	9/15 Krista Haukap	9/9 Emily Scannell	11/17 Sarah Barth
1993	9/22 Krista Haukap	10/14 Emily Johnson	2009
9/6 Pam Kirsch	1998	10/21 Emily Scannell	Offensive
9/20 Ceylan Tokcan	Offensive	11/11 Emily Johnson	8/31 Emily Hughes
10/11 Pam Kirsch	9/21 Jackie Derwort	2003	10/19 Emily Hughes
10/25 Ceylan Tokcan	9/28 Angie Aschoff	Offensive	11/2 Karleigh DeLong
11/15 Pam Kirsch	10/12 Jackie Derwort	10/27 Emily Scannell	Defensive
Freshman	10/19 Angie Aschoff	Defensive	9/14 Molly Davis
10/11 Ceylan Tokcan	Defensive	11/10 Jill Miller	9/21 Molly Davis
11/1 Ceylan Tokcan	11/6 Jackie Dewort	2004	9/28 Molly Davis
11/15 Ceylan Tokcan	1999	Defensive	Setter
1994	Offensive	8/31 Sarah Barth	11/2 Sarah Barth
9/6 Ceylan Tokcan	9/13 Amy Henken	2005	2009
10/3 Ceylan Tokcan	9/20 Krista Haukap	Offensive	Offensive
11/14 Ceylan Tokcan	10/18 Amy Henken	8/29 Jamie Baumstark	8/31 Emily Hughes
Freshman	10/25 Lea Beckemeyer	10/24 Jessica Koeper	2010
9/26 Tuba Meto	11/1 Angie Aschoff	11/7 Jamie Baumstark	Setter
1995	Defensive	Defensive	8/30 Julie Shives
10/2 Erin Willrich	10/11 Kristen Campbell	10/3 Lauren Scannell	
11/6 Tuba Meto	10/18 Angie Aschoff		
11/14 Erin Willrich	11/1 Krista Haukap		
Freshman	11/15 Angie Aschoff		
10/16 Cathy Prichard			
10/30 Cathy Prichard			



SOUTHEAST MISSOURI STATE UNIVERSITY REDHAWKS VOLLEYBALL

POST SEASON HONORS

OVC ALL-TOURNAMENT

TEAM

1991

Jill Doty
Tracie Gordon

1992

Sandy Seiler

1993

Tracie Gordon
Pam Kirsch
Ceylan Tokcan

1994

Tracie Gordon- MVP
Ceylan Tokcan

1995

Theresa Sebacher

1996

Tuba Meto- MVP
Theresa Sebacher
Susie Thompson

1997

Jackie Derwort

1998

Jackie Derwort- MVP
Amy Henken
Krista Haukap

1999

Krista Haukap- MVP
Lea Beckemeyer
Amy Henken

2000

Lea Beckemeyer- MVP
Krista Haukap
Emily Scannell

2001

Emily Johnson

2002

Bobbi Carlile
Emily Scannell

2005

Jill Miller

2006

Jamie Baumstark
Jessica Koeper

COSIDA ACADEMIC

ALL-DISTRICT

1st Team

1992

Pam Kirsch

1993

Pam Kirsch

2000

Krista Haukap

2008

Molly Davis

2009

Molly Davis

2nd Team

2010

Paige Dossey

COSIDA ACADEMIC

ALL-AMERICAN

1st Team

2009

Molly Davis

3rd Team

1993

Pam Kirsch

2000

Krista Haukap

2008

Molly Davis

AVCA ALL-REGION

1996

Tuba Meto
Theresa Sebacher

1997

Tuba Meto

1999

Angie Aschoff
Krista Haukap

2000

Lea Beckemeyer
Krista Haukap

2002

Emily Scannell

2007

Karleigh DeLong



SOUTHEAST MISSOURI STATE UNIVERSITY REDHAWKS VOLLEYBALL

SOUTHEAST ATHLETIC HALL OF FAME



TUBA METO 1994-1997

The starting setter for Southeast from 1995-1997, Meto led the Redhawks to a record of 105-43 during the span including a 62-6 record in OVC play. Southeast won the OVC title in each of her four seasons and made two NCAA Tournament appearances. She was the OVC Player of the Year in 1996 and 1997 and continues to play professionally in Turkey. She holds a spot in seven different Top-10 categories, including assists, and digs. She holds the All-Time assists record in a match with 82.



KRISTA HAUKAP 1997-2000

Krista Haukap was inducted into the Southeast Missouri State Hall of Fame in 2010 after a dominate career in the late 90's. She recorded 36 kills against North Carolina in the NCAA Tournament, which is a Redhawk record. She owns the top spot in kills and total attempts in a career with 2,070 and 4,921, respectively. Uncoincidentally, the Redhawks went undefeated in the OVC in 2000, and had the winningest season in school history during her tenure.





SOUTHEAST MISSOURI STATE UNIVERSITY
REDHAWKS VOLLEYBALL

BY THE NUMBERS

58 ALL-OVC ATHLETES

8 COSDIA ACADEMIC ALL-AMERICANS

14 OVC MEDAL OF HONOR ATHLETES

5 OVC PLAYERS OF THE YEAR





SOUTHEAST MISSOURI STATE UNIVERSITY REDHAWKS
DIG FOR LIFE





SOUTHEAST MISSOURI STATE UNIVERSITY REDHAWKS VOLLEYBALL

DIG FOR LIFE CAMPAIGN



The Southeast Missouri State volleyball team announced the raising of \$20,100 in their annual Dig for Life campaign, which assists in the early detection and treatment of breast cancer. The Redhawks and assistant coach Nikki Buchholz presented a check in the amount raised to the Saint Francis Medical Center prior to the Southeast men's basketball game against Tennessee Tech on Saturday, January 29 at the Show Me Center.

The annual campaign runs during the month of October and coincides with National Breast Cancer Awareness Month. Members of the Southeast volleyball team secured pledges per dig that were tallied through October home matches at Houck Field House. The money raised is then allocated to Saint Francis Medi-

cal Center for the campaign's purpose of educating women in the Southeast Missouri area about breast cancer awareness, providing early detection opportunities and improving prevention efforts. The Redhawks produced a record 352 digs in five home matches this past October.

The Dig for Life campaign was started in 2000 by former volleyball head coach and current Associate Athletic Director Cindy Gannon and sponsored by the Saint Francis Medical Center to help educate women about breast cancer. The campaign also raises money to provide mammograms for women. In 2010, Dig for Life was able to provide mammograms to nearly 200 area women who could not receive this screening due to lack of adequate health insurance, high deductible, unemployment or inability to pay. Since its inception the program has funded over 1,200 free mammograms.

The university's Athletics department continues to embrace the Dig for Life campaign and other sports have joined the volleyball team's efforts during their respective seasons, including gymnastics, softball and baseball.

"I am so thankful to Saint Francis Medical Center and the Southeast volleyball team for all their efforts in the Dig for Life campaign," said Gannon. "This program began in memory of my mother and thanks to the hard work and generosity of so many people, her memory lives on and we are potentially saving the lives of many women. I feel very fortunate to be associated with such wonderful and caring individuals."

DIG FOR LIFE

SOUTHEAST MISSOURI STATE UNIVERSITY
REDHAWKS VOLLEYBALL

DIG FOR LIFE CAMPAIGN

**352
TEAM DIGS
IN OCTOBER OF 2010**





SOUTHEAST MISSOURI STATE UNIVERSITY REDHAWKS VOLLEYBALL

DIG FOR LIFE CAMPAIGN



OCTOBER 2010 DIGS

KELLY BENECKA	89
MEAGAN WEBB	58
JULIE SHIVES	53
CLARE KEATON	46
KARLEE LURSEN	30
ANDREA BAYLIN	24
PAIGE DOSSEY	9
EMILY COON	8
HOLLY REYNOLDS	8
COLLEEN YARBER	8
EMILY HUGHES	6
SAMANTHA LOWMAN	5
KACIE RITTER	5



SOUTHEAST MISSOURI STATE UNIVERSITY REDHAWKS
THIS IS THE OVC





SOUTHEAST MISSOURI STATE UNIVERSITY REDHAWKS VOLLEYBALL

Entering its 64th year, the Ohio Valley Conference continues to build on the success that has made it the nation's eighth-oldest NCAA Division I conference.

In May 2011 the Conference expanded for the second time in four years, adding Belmont University which will begin competition in the 2012-13 academic year. The addition of Belmont will give the OVC 12 members, the most the league has had at one time in its illustrious history. The move added a second team in the city of Nashville and was the first addition to the league since Southern Illinois University Edwardsville joined in 2008. SIUE will begin regular season competition this season (2011-12) and be eligible for postseason the same year Belmont joins the league.

The 2009-10 school year saw a change in leadership as Beth DeBauche was named the seventh full-time Commissioner in league history on July 28, 2009. She is currently one of just five females to be the head of a Division I conference, and one of just eight to lead a Division I conference all-time. The last three commissioners of the OVC have moved onto jobs as the commissioner of the Big Ten, Big 12 and the Mid-American Conferences.

The OVC's proud history past dates back to 1948, but seeds for the new league were actually planted in 1941. It was then that Roy Stewart, the athletics director at Murray State, Charles (Turkey) Hughes, the athletics director at Eastern Kentucky, and Kelly Thompson, the public relations director at Western Kentucky, first broached the idea of forming a new conference. Discussions were put on hold by World War II, but reemerged Feb. 27-28, 1948 at the Kentucky Hotel in Louisville as the three original institutions combined with Morehead State, Louisville and Evansville to form the OVC.

In the 1950s, the OVC became a pioneer on a much more significant scale socially. During times of racial segregation, league member Morehead State became one of the first non-traditionally black mid-southern institutions to accept a black student. In 1958, Marshall Banks earned athletically-related aid at Morehead, which signed a second black athlete, Howard Murphy, a year later. In 1961, Murphy earned all-conference recognition as a halfback in football. With racial barriers broken, the rest of the institutions in the league began to provide educational and athletic opportunities to African-Americans.

Through the past 63 years, 15 teams have won or shared the league's football title. The list is led by Eastern Kentucky, winner of 20 outright or shared football crowns, including both the 2007 and 2008 championships, as they

compiled a 15-1 league record over that time period. Only one other Football Championship Subdivision school (UMass) has won more Conference titles than the Colonels. Among OVC teams, former member Middle Tennessee is next with 11 titles, followed by Tennessee Tech with nine, and Murray State and former member Western Kentucky with eight apiece. Eastern Illinois has claimed five football crowns (including the 2009 title) while Jacksonville State, Morehead State, Tennessee State and former members Evansville and East Tennessee State have captured two apiece. Austin Peay, Southeast Missouri (which captured its first crown in 2010), UT Martin and former member Youngstown State have one title apiece.

Murray State and Evansville tied for the initial football championship, and the Racers participated in the first-ever bowl game by an OVC team, tying Sul Ross State 21-21 in the 1948 Tangerine Bowl. From 1948 to 1975, OVC teams played in 15 bowl games, winning eight of them. Eastern Kentucky and Western Kentucky were also participants in the NCAA Division II playoffs in the early and mid-1970s prior to the NCAA's reclassification of football programs into Division I-AA. The term "I-AA" lasted until the end of the 2006 season when it was changed to Division I Football Championship Subdivision (FCS).

The first Division I-AA/FCS football playoff was held in 1978 with only four teams, which is the only year through present day that the OVC did not field a playoff representative. In 1979, four of the nation's top teams were invited to the playoffs, and two of them - Eastern Kentucky and Murray State - were from the OVC. Murray dropped its semifinal game to Lehigh, but the Colonels nipped Nevada-Reno in double overtime and claimed the national championship a week later with a 30-7 victory over Lehigh. ECU was coached by former all-America quarterback Roy Kidd, who was in his 16th year at the helm of his alma mater and who skipped the Colonels to a second national title three years later. Following the 2002 season, Kidd retired after 39 years at ECU; upon retirement, he ranked sixth all-time among Division I coaches with 315 victories, earning him a spot in the College Football Hall of Fame. ECU's 19 FCS playoff appearances are the second for the most all-time (behind only Montana).

In addition to Kidd, other coaching legends in the OVC include Charles (Bubber) Murphy, who coached at Middle Tennessee from 1947-1968, Western Kentucky's Jimmy Feix (1968-83), Wilburn Tucker (1954-67) and Don Wade (1968-82) of Tennessee Tech,

Bill Ferguson (1967-77) of Murray State, Guy Penny (1959-67) of Morehead State and Boots Donnelly (1977-78 at Austin Peay; 1979-1998 at Middle Tennessee). Current Eastern Illinois head coach Bob Spoo has compiled 90 wins, while his program has been a member of the OVC which ranks him fifth all-time in league history while his 67 Conference victories are fourth all-time; Spoo will retire following the conclusion of the 2011 season, his 25th with the program.

A sampling of former OVC football stars, some of whom were All-Americans during their collegiate careers before achieving stardom at the professional ranks, include Jim Youngblood and Larry Schreiber (Tennessee Tech), Phil Simms (Morehead State), Virgil Livers and Dale Lindsey (Western Kentucky), Myron Guyton and Chad Bratzke (Eastern Kentucky), Cortland Finnegan (Samford) and Tony Romo (Eastern Illinois). In 2008, former Tennessee State standout Dominique Rodgers-Cromartie became just the fourth NFL First Round draft pick in OVC history when he was selected 16th overall by the Arizona Cardinals. He would break into the starting lineup halfway through his rookie season and started at cornerback for the Cardinals in Super Bowl XLIII. The OVC has had at least one former player named a NFL Pro Bowl selection in four of the past five seasons.

The 2007 season marked a return to scholarship football and the OVC for the Austin Peay Governors. Following the 1996 season the Governors dropped scholarship football and competed as both an independent (1997-00, 2006) and as a member of the Pioneer Football League (2001-05).

The 2007 season also brought new vernacular to the Ohio Valley Conference and the division formerly known as I-AA. Beginning with the 2006 National Championship game the term I-AA was changed to NCAA Football Championship Subdivision (FCS) in a decision by the Division I Board of Directors. The new label was chosen to communicate in a positive and clear manner the unique differences between Division I football categories (chiefly, the post-season opportunity) while still defining them within the Division I experience. The FCS includes programs that compete in an effort to participate in the NCAA championship postseason structure (one of 89 NCAA national championships) as opposed to the Football Bowl Subdivision (FBS) which competes in an effort to participate in the postseason bowl system (the 35 NCAA-licensed events which includes the Bowl Championship Series).

In 2010 Southeast Missouri State, picked to

SOUTHEAST MISSOURI STATE UNIVERSITY REDHAWKS VOLLEYBALL

THIS IS THE OHIO VALLEY CONFERENCE

finish seventh in the preseason poll, compiled a 7-1 Conference record on the way to its first OVC Championship since joining the league in 1991. Overall the Redhawks were 9-2 during the regular season and earned a berth in the FCS Playoffs, its first playoff berth at any level in the program's 104-year history. Southeast would lose to eventual national champion Eastern Washington in the second round of the playoffs. Head coach Tony Samuel capped the year by winning the Sports Network's Eddie Robinson Award, given to the National Coach of the Year. Samuel was the second OVC coach to win the award (joining Murray State's Houston Nutt who won the award in 1995).

Football wasn't the only sport in which the OVC was quickly gaining respect. In 1955, the OVC became only the second six-member league nationally to earn an automatic bid to the prestigious NCAA Men's Basketball Tournament, which, at that time, was limited to only 24 participants. The Conference quickly proved worthy of that bid, as Morehead State defeated Marshall (107-92) and Wayne State (95-84) in the 1956 tournament.

Fifteen years later, former OVC member Western Kentucky became the first and only Conference team to reach the Final Four. The Hilltoppers defeated Jacksonville, Kentucky and Ohio State before losing to Villanova in double overtime. WKU went on to finish in third place after beating Kansas 77-75 in the consolation game.

Since that time, the OVC has recorded some of the biggest upsets in the history of the NCAA Tournament. Perhaps the most famous moment came in 1987, when Austin Peay came from fourth place in the regular season to win the OVC Tournament and earn the league's automatic bid. The Governors drew powerful Illinois, and were such big underdogs, that ESPN broadcaster Dick Vitale promised to stand on his head if APSU won the game. After a 68-67 victory over the Illini, and a narrow 90-87 overtime loss to eventual Final Four participant Providence in the second round, Vitale made good on his promise in a visit to Clarksville two months later.

Murray State added to the OVC's string of upsets in 1988 when it knocked off 14th-ranked North Carolina State, 78-75. The Racers' M&M Boys - Jeff Martin and Don Mann - combined for 39 points in the win. MSU nearly went on to the Sweet 16 that year, losing to eventual national champion Kansas, 61-58. A bank shot by Mann that would've given the Racers a one-point lead rolled off the rim with three seconds left. In 1990 as a No. 16 seed, Murray State took No. 1 seed Michigan

State into overtime before falling 75-71; that game still marks the closest a No. 16 seed has come to knocking off a No. 1 in men's tournament action. More recently, Murray State has dominated the OVC Tournament, reaching the championship game every year in the 1990's. The Racers' 14 OVC Tournament Championships are the most among all OVC schools.

After former member Middle Tennessee State won a first round game in 1989, the league had a drought as no other OVC team won a NCAA Tournament game for the next 19 years. But Morehead State, coming off a thrilling double overtime OVC Tournament victory over Austin Peay, topped Alabama State 58-43 in the Opening Round game at Flyer Arena in Dayton, Ohio. The game was played in front of an Opening Round record crowd of 11,346; that crowd included many MSU fans who made the three-hour drive from Morehead for the game. The Eagles season would come to three days later when they lost to No. 1 overall seed Louisville, despite playing the Cardinals close for a majority of the game.

In 2009-10, Murray State made OVC history by winning a record 31 games (31-5) on its way to the league's regular season and tournament championship. In the first round of the NCAA Tournament, the No. 13 seed Racers topped Vanderbilt in thrilling fashion when senior Danero Thomas hit a jumper as time expired to lift MSU to a 66-65 victory. It marked the first OVC team to advance to the second round of the NCAA Tournament since 1989, and snapped a skid of 71-straight losses to Southeastern Conference foes (dating back to 2000-01). In the second round the Racers pushed eventual national runner-up Butler to the brink before losing 54-52.

In 2010-11 Morehead State would make it three NCAA Tournament wins in as many years for the league and got a bit of revenge for the 2009 tournament loss to Louisville in the process. After finishing second in the regular season and winning the OVC Tournament Championship, the No. 13 seeded Eagles were shipped to Denver to play its in-state foe Cardinals. MSU jumped out to a 15-2 advantage but were down four points (61-57) with just over a minute to play in regulation. After two free throws from two-time OVC Player of the Year Kenneth Faried, the Eagles held for one final shot attempt and senior Demonte Harper pulled up off a cross-over dribble to nail a 3-pointer with 4.3 seconds left that gave Morehead State a 62-61 lead. UofL had one last attempt but Faried blocked the Cardinals last shot, giving MSU the win, its first over Louisville since the 1956-57 season.

The OVC has now won NCAA Tournament games in three-straight seasons, something that has happened in the league only twice previously (1960-62 and 1987-89). Over that time period (2009-11) the OVC is one of just 10 conferences nationally to win a NCAA Tournament game in each season and one of only four non-BCS leagues (joining the Atlantic 10, Horizon and WCC) to do so.

During the 2010-11 year Faried, the nation's leading rebounder during the season, became the NCAA's Modern Era (since 1973) career rebounding leader, totaling 1,673 rebounds which passed Tim Duncan for the record (he is 11th all-time in NCAA history). Faried also finished his career with 86 double-doubles, second all-time to only Duncan. He is one of only six players in NCAA history to finish with 2,000-plus career points (2,009) and 1,600-plus career rebounds. Faried was drafted 22nd overall by the Denver Nuggets in the 2011 NBA Draft, becoming the first OVC player selected in the first round since Tennessee State's Carlos Rogers 1994.

Through its 63 years, 12 teams have won or shared the league's regular season men's basketball title. Murray State heads the list with a Conference-record 22 outright or shared basketball crowns. Other past champions include former member Western Kentucky (19), Morehead State (9), Austin Peay (8), Eastern Kentucky (6), Tennessee Tech (5), former member Middle Tennessee (5), Tennessee State (2), former member East Tennessee State (2), Southeast Missouri State (1), UT Martin (who won its first in 2008-09) and former member Akron (1).

Among the coaching greats in men's basketball have been Western Kentucky's E.A. Diddle, who retired with 759 victories and 10 OVC titles; John Oldham, who was a member of the very first All-OVC squad and went on to win seven OVC crowns during his coaching tenure at Tennessee Tech and Western Kentucky; Paul McBrayer, who guided Eastern Kentucky to 219 wins and three OVC crowns; and Cal Luther, who is the only person in Conference history to win men's basketball Coach of the Year honors at two league schools - Murray State and UT Martin. Current Austin Peay head coach Dave Loos became the winningest coach in OVC history in 2009-10, netting his 319th victory and passing Luther on the all-time list. Loos enters the 2011-12 season with 351 victories.

There have been an equal number of great players including Western Kentucky's Clem Haskins, who is the only three-time OVC Player of the Year. Several players have won



SOUTHEAST MISSOURI STATE UNIVERSITY REDHAWKS VOLLEYBALL

OVC Player of the Year honors twice: Western Kentucky's Jim McDaniels (1969-70 and 1970-71), Murray State's Les Taylor (1971-72, 1972-73), Jeff Martin (1987-88, 1988-89), Popeye Jones (1989-90, 1990-91) and Marcus Brown (1994-95, 1995-96), Austin Peay's Otis Howard (1976-77, 1977-78), Middle Tennessee's Jerry Beck (1980-81, 1981-82), Akron's Joe Jakubick (1982-83, 1983-84), Tennessee State's Carlos Rogers (1992-93, 1993-94), UT Martin's Lester Hudson (2007-08, 2008-09) and Morehead State's Kenneth Faried (2009-10, 2010-11).

The OVC also has the honor of being the only conference to boast the nation's leaders in scoring, rebounding and assists all in one season. That feat was accomplished in 1991-92 by Morehead State's Brett Roberts (28.1 ppg), Murray State's Popeye Jones (14.4 rpg) and Tennessee Tech's Van Usher (8.8 apg).

In 2007-08, UT Martin guard Lester Hudson became the first men's Division I player to record a quadruple-double in a game, when he registered 25 points, 12 rebounds, 10 assists and 10 steals in a victory over Central Baptist College. Hudson, who ranked fourth in scoring nationally as a junior, returned for his senior season in 2008-09 and was second nationally in scoring (behind Davidson's Stephen Curry) at 27.5 points a contest. Hudson earned numerous honors (including OVC Player of the Year and OVC Male Athlete of the Year in each 2008 and 2009 and All-American status from several outlets) before being drafted by the Boston Celtics with the No. 58 pick of the 2009 NBA Draft.

In the late 1970s, women's athletics began somewhat of a rebirth on the national scene as the NCAA began sponsoring and marketing women's sports. Recognizing the need to provide increased opportunities for female athletes, the OVC established women's championships in the sports of basketball, tennis and track in 1977, with cross country and volleyball added over the next four years. Those sports were initially governed by the Association of Intercollegiate Athletics for Women (AIAW), but the overall strength of women's programs in the league was demonstrated by the automatic bids the OVC instantly received when the NCAA became the governing body in 1982.

Women's basketball in the OVC has been dominated by Tennessee Tech, which has won or shared 17 regular-season titles and owns nine OVC Tournament crowns. In fact, the Golden Eagles have reached the championship game of the OVC Tournament 20 times in the past 30 years. Although Tennessee Tech remains the standard-bearer, five other teams have won 13 of the last 18 OVC Tournamen-

ments. UT Martin became the latest program to add its name to the list, capturing its first OVC Tournament title in 2011. Austin Peay leads the group with seven crowns including four-straight from 2000-03 and back-to-back titles in 2009 and 2010, while Tennessee State, Eastern Kentucky, Murray State and Southeast Missouri each have won titles during that span.

Several coaches have made their mark in the relatively short history of OVC women's basketball. Former Tennessee Tech coach Marynell Meadors posted an amazing 363-139 (72.3%) record at Tech, becoming the first woman in NCAA or AIAW history to win 300 games at the same institution, while former Tennessee State skipper Teresa Phillips earned National Coach of the Year honors from USA Today in 1990 for turning around the Lady Tigers' program before going on to lead TSU to the NCAA Tournament in 1994 and 1995. Tennessee Tech coach Bill Worrell capped a stellar 20-year career in 2005-06 and was inducted into the OVC Hall of Fame in 2007; he compiled a 408-190 record while leading the Golden Eagles to an unprecedented 16 OVC regular-season titles and eight NCAA Tournament appearances, including five straight from 1989-93. Eastern Kentucky's Larry Joe Inman, who retired at the conclusion of the 2007-08 season and was inducted into the OVC Hall of Fame in 2009, won more than 100 games at both Middle Tennessee and ECU, and earned OVC Coach of the Year honors a record eight times - five times at ECU and three at MTSU. He finished his career with 480 career victories.

Many great players have graced the hardwood over the years, including former OVC Players of the Year Brooke Armistead and Gerlonda Hardin from Austin Peay, Pam Chambers, Jerilyn Harper, Cheryl Taylor, Angela Moorehead, Roschelle Vaughn, Diane Seng, Janet Holt and Emily Christian from Tennessee Tech; Morehead State's Donna Murphy, Priscilla Blackford and Chynna Bozeman; Eastern Kentucky's Kim Mays; Southeast Missouri's Gray C. Harris; and Murray State's Ashley Hayes.

Bozeman finished her collegiate career in 2010-11 by winning her second consecutive OVC Player of the Year award. Her 2,170 points ranks her eighth all-time in OVC history, her 377 made career 3-pointers is first in OVC history and sixth in NCAA history and her 1,096 career 3-point attempts ranks first in OVC history and second in NCAA history.

Morehead State center Brittany Pittman set new school, league and NCAA standards for blocked shots in 2008-09. Pittman swatted 164 shots during the season, setting a new NCAA

single-season record (which has since been broken). During the campaign, only her second with the Eagles, she also set career block records for both Morehead State and the OVC (287).

The league also had another historical moment in November 2008 when the NCAA awarded Nashville the 2014 NCAA Women's Division I Final Four. The OVC will serve as the host of the prestigious event, which is one of the biggest sporting events the city of Nashville can host. The event will be held at Bridgestone Arena in downtown Nashville.

Over its 63 years, OVC teams have garnered national championships and bowl games in football, along with national team or individual titles in the sports of rifle, cross country, track and golf.

The OVC has also produced several Olympic athletes, including Murray State's Morgan Hicks, who was a member of the 2004 United States Olympic Rifle Team and Morehead State's Brian Shimer who competed in five Winter Olympics in bobsled (winning a bronze medal in 2002) and coached the 2010 United States bobsled team to its first gold medal since 1948. In addition, some of the greatest players in professional sports were educated at OVC institutions. The list includes former greats such as football's Phil Simms (Morehead State), basketball's Clem Haskins (Western Kentucky) and Bubba Wells (Austin Peay) and two-sport star Steve Hamilton (Morehead State) to present-day standouts like basketball player Trenton Hassell (Austin Peay), football player Tony Romo (Eastern Illinois) and baseball players George Sherrill (Austin Peay) and Jon Rauch (Morehead State). Hamilton is the only athlete to ever play in the NCAA Basketball Championship, a Major League Baseball World Series (New York Yankees) and a NBA Championship Series (Los Angeles Lakers).

The OVC's first volleyball tournament was held in 1981, the same year Eastern Kentucky began a string of six straight tournament crowns. Former ECU skipper Dr. Geri Polvino compiled a 627-439 record in 32 seasons as head coach of the Colonels, earning OVC Coach of the Year honors eight times. More recently, former Austin Peay coach Cheryl Holt and former Southeast Missouri skipper Cindy Gannon also earned their peers' recognition multiple times with four awards each.

Throughout the last 28 years, 10 different teams have won an OVC regular-season or tournament volleyball crown. Since joining the league in 1991, Southeast Missouri has dominated the scene, winning seven of its eight regular-season titles during the 1990's, including five straight from 1993-97. The Redhawks

SOUTHEAST MISSOURI STATE UNIVERSITY REDHAWKS VOLLEYBALL

THIS IS THE OHIO VALLEY CONFERENCE

have also won five tournament crowns (1994, 1996, 1998, 1999 and 2000). Jacksonville State won back-to-back OVC Tournament Championships (2005, 2006) including going through the OVC undefeated (16-0) in 2006 and winning a NCAA Tournament match in 2010, the league's first NCAA victory since 2000.

Following the 2007 season, Jacksonville State's Abbey Breit was named the OVC Offensive Player of the Year for the third straight season, becoming the first player in OVC history to accomplish that feat. Four other individuals - Eastern Kentucky's Angela Boykins (1985-86), Morehead State's Dayle Hammontree (1988-89), Southeast Missouri's Tuba Meto (1996-97) and Morehead State's Amy Almond (2001-02) - were back-to-back winners of the award.

In 2007, Eastern Kentucky's Jacob Korir won his fourth straight Conference cross country title becoming just the third OVC student-athlete and 13th athlete nationally to accomplish that feat. Korir was a three-time All-American in cross country, earning two top-10 finishes at the NCAA Cross Country Championship. The Nairobi, Kenya, native was also named a track and field All-American twice during his career, was selected as the OVC Male Athlete of the Year in 2006-07 and received the NCAA post graduate scholarship in 2008.

In 2007 the Conference had two teams in the NCAA Women's Soccer Tournament for the first time in league history, as former OVC member Samford earned an at-large selection while Southeast Missouri was the Conference's automatic bid.

In 2009 it was OVC softball that accomplished several firsts as UT Martin (tournament champion) and Jacksonville State (at-large) were each selected for the NCAA Championship. Jacksonville State would take it a step farther by winning the Knoxville Regional (beating No. 13 national seed Tennessee along the way) to become the first OVC softball program to advance to a Super Regional. Jax State would fall to No. 4 Alabama in that Super Regional but finished the season 43-16 (19-2 OVC) and ranked 21st nationally in the ESPN.com/USA Softball poll and 24th nationally in the USA Today/NFCA poll.

The league's baseball presence has continued to evolve since its inception. The OVC baseball tournament moved to a neutral site for the first time in 2001 with Paducah, Ky. and Brooks Stadium hosting the tournament in front of raucous crowds. The success of the tournament led to Jackson, Tenn. and Pringles Park - the home of the Seattle Mariner's Class AA af-

filiate - hosting the event for the first time in 2010; Pringles Park is under contract to host the 2012 championship as well.

The OVC also has made a statement in the NCAA Baseball Championship in recent years, with its teams involved in several memorable contests in the last decade. Tennessee Tech surprised Wake Forest in the opening round of the 2001 tournament and Southeast Missouri stunned host Alabama in the opening round of the 2002 championship. Five years later, Austin Peay captured the collegiate baseball world's attention by taking Vanderbilt, the 2007 No. 1 overall seed, to extra innings. Eastern Illinois pushed host Nebraska to the limit in 2008 followed by Tennessee Tech's memorable contest against host Clemson in 2009.

After not making the OVC Tournament field in either 2009 or 2010, Austin Peay, who was picked to finish seventh in the preseason poll, won the regular season and tournament championships to garner its fourth NCAA Tournament appearance. In the first game of NCAA Regional play the Gobs knocked off host and No. 1 seed Georgia Tech 2-1.

A first in the OVC occurred in 2008, when the league had a first round draft pick in both the NFL (Tennessee State's Dominique Rodgers-Cromartie) and Major League Baseball (Eastern Kentucky's Christian Friedrich) Drafts in the same school year. A year later (2009) the league had a Major League Baseball First Round Compensation Round pick (Eastern Illinois' Tyler Kehr who was No. 48 overall) and NBA Second Round pick (UT Martin's Lester Hudson) in the same season.

In 2010 a record 13 OVC baseball players were selected in Major League Baseball's First-Year Player Draft.

The playing field is not the only place where OVC athletes are working hard. The league also recognizes excellence in the classroom. Six Scholar-Athlete Awards are presented yearly to male and female athletes, while others are commended for their academic success by being Medal of Honor recipients or earning a spot on the Commissioner's Honor Roll. Additionally, the league annually presents one institutional Academic Achievement Award, as well as separate team awards in each Conference-sponsored sport. Since the College Sports Information Directors of America (CoSIDA) Academic All-America program began, the Ohio Valley Conference has had 202 student-athletes honored with the award, including 35 over the last three years (2008-09, 2009-10, 2010-11).

Through the early years of the league, administrators wrestled with fan behavior due to

the close proximity of the Conference members and the intense rivalries which developed. Just as it did decades ago, the OVC took the leadership role on what has become a national issue. In 1995, the OVC implemented a first-of-its-kind "Sportsmanship Statement," a policy which promotes principles of fair play, ethical conduct and respect for one's opponent. The statement has become a model for others to follow across the nation, and has answered the challenge of the NCAA Presidents Commission to improve sportsmanship in collegiate athletics.

Additionally, the OVC annually presents the Steve Hamilton Sportsmanship Award, in honor of the former Morehead State student-athlete, coach and athletics director, to a junior or senior student-athlete with significant athletic contributions who best exemplifies the characteristics of sportsmanship and citizenship. Most recently, the Conference has also implemented the OVC Institutional and Team Sportsmanship Awards, which are presented to one institution and 18 sport-specific teams voted by their peers to have best exhibited the standards of sportsmanship and ethical conduct as outlined by the OVC and NCAA.

The vision of leadership demonstrated by the Founding Fathers in 1948 remains alive today as the Ohio Valley Conference prepares for the future. One example is in regard to the current trend in collegiate athletics administration for increased involvement of university presidents in setting policies and making rules. The presidents of OVC institutions, however, have always governed the Conference, long before presidential governance became a national theme.

The Ohio Valley Conference sponsors the following sports: baseball, basketball, cross country, football, golf, tennis and track for men, and basketball, cross country, golf, soccer, softball, tennis, track and volleyball for women. In addition, the OVC also sponsors the combined men's and women's sport of rifle.

Now in its seventh decade of competition, the Ohio Valley Conference has grown significantly from its humble beginnings while increasing the number of athletics opportunities it provides for students. Current league representatives include charter members Eastern Kentucky University, Morehead State University and Murray State University, along with Austin Peay State University, Eastern Illinois University, Jacksonville State University, Southeast Missouri State University, Southern Illinois University Edwardsville, Tennessee State University, Tennessee Technological University and the University of Tennessee at Martin. Belmont University will become the league's 12th member on July 1, 2012.



SOUTHEAST MISSOURI STATE UNIVERSITY REDHAWKS VOLLEYBALL





SOUTHEAST MISSOURI STATE UNIVERSITY REDHAWKS
THIS IS SOUTHEAST





SOUTHEAST MISSOURI

*The college experience of a lifetime. The job of your dreams.
A life that is amazing.*

That is what most students and parents want from a college education. At Southeast, we want the same for you. We want you to learn your profession, gain the experience or internship you need, and get that first paycheck!

The growing—and changing—student body has had an impact on everything and everyone. The physical changes of the campus are the most visible. Two new residence halls. The River Campus. The polytechnic building. An information commons in the library. And so on.

Students and faculty are experiencing change of a different kind. Classroom activity has reached a new level of productivity, as students are brighter and more prepared than ever. Enrollment is at an all-time high. The impact on the honors program has been dramatic with more students than ever choosing to participate in and complete the honors curriculum. The number participating tripled in five years!

All of this means that Southeast has become Missouri's most academically competitive regional university.

2009—InsideCollege.com experts single out our honors program as an effective way to make a large school seem smaller with a more personal approach to learning.

2010—Computer science receives prestigious national accreditation.

**Safest
Campus
in Missouri**

StateUniversity.com



2010—Consumer watchdog group GetEducated.com ranks Southeast #1 on its list of "Top 10 Ranked Best Values Online MBAs—AACSB Accredited."

2010—Southeast is named the safest campus in Missouri and among the safest in the nation by StateUniversity.com.



STATE UNIVERSITY



We have...

- ▶ Small classes with 98 percent of courses having fewer than 50 students
- ▶ Faculty with PhDs—not teaching assistants—who teach most classes
- ▶ More than 200 areas of study
- ▶ Wired (and wireless) classrooms and best-of-class technology
- ▶ Internships and real-world learning offered in 100 percent of programs
- ▶ Study abroad opportunities that take you almost anywhere

We are...

- ▶ NCAA Division I Athletics
- ▶ Listed among the Midwest's top universities
- ▶ One of the safest college campuses in the nation
- ▶ Conveniently located 115 miles south of St. Louis
- ▶ A medium-sized university with more than 11,000 students
- ▶ Comprised of ten colleges and schools

We provide...

- ▶ Choices in the University Studies (general education) classes
- ▶ Some of the newest residence halls in Missouri
- ▶ 150 organizations that keep you busy after class
- ▶ Each student with two advisors—academic and career
- ▶ Fraternities and sororities that are productive and fun
- ▶ One of a kind student aquatic center in one of our two recreation centers

2011—U.S. News & World Report names Southeast a "Best Midwest Regional University."



2011—For seven consecutive years, Princeton Review includes Harrison College of Business on its list of "Best Business Schools."



2011—Princeton Review again names Southeast as one of the "Best in the Midwest," representing only about 25 percent of the nation's four-year colleges.



2012—U.S. News & World Report lists both nursing and communication disorders on its list of top graduate programs in health.



SOUTHEAST MISSOURI

Donald L. Harrison College of Business

Our increasingly popular business programs have made us one of the major colleges of business in the Midwest. The Donald L. Harrison College of Business is accredited by AACSB International—the gold standard of business school accreditation—an honor held by only 5 percent of institutions offering business degrees worldwide.

- ▶ Employers and students value our techno-savvy environment. In a recent survey of 98 nationally known business programs, Southeast ranked in the top 7 percent in learning to use and manage technology.
- ▶ Our entrepreneurial studies program is Missouri's most comprehensive, offering options for both BSBA and MBA degrees. The Douglas C. Greene Center for Innovation and Entrepreneurship is one of the most comprehensive entrepreneurship-focused university centers in the Midwest.
- ▶ Southeast students have access to more than 30 international exchange and study abroad opportunities in London, Paris, Spain, Portugal and North Africa.
- ▶ One hundred percent of our students have the opportunity to participate in internship programs with companies nationwide.
- ▶ Doctoral level professors make learning interactive with classrooms that have Internet, cable TV, direct satellite feed and electronic presentation capability.
- ▶ St. Louis employers rate the "St. Louis Interview Days" as the best recruiting event in which they participate in the Midwest.
- ▶ Our accounting curriculum prepares students for the Certified Public Accountant (CPA) and Certified Internal Auditor (CIA) designations. Students may go to work directly into an accounting field or go on to complete the 150 hours required by Missouri, and other states, to sit for the CPA examination. Our first-time pass rates on the CPA exam continue to be well above the national average.
- ▶ Business programs are housed in Dempster Hall, a wireless Internet environment featuring an electronic presentation lab and more than 400 networked computers with the latest software.



College of Education

If you are considering teaching as a profession, you are looking at the right university. For more than a century, Southeast has been preparing and sustaining some of the nation's brightest and best teachers. Moreover, we have a record of accomplishment to prove it.

- ▶ Most importantly, our education program is fully accredited by the National Council of Teacher Education (NCATE), which sets the highest standards for teacher education programs nationwide.
- ▶ In the 2010 reaccreditation process, 12 of the 13 specialty professional association reports submitted by the College of Education received national recognition, and four are being used as examples of best practices in education nationwide.
- ▶ Because you begin assisting and observing in area classrooms starting in your first year, you accumulate more teaching practice and knowledge than graduates from other universities.
- ▶ The American Association of State Colleges and Universities (AASCU) featured Southeast as one of 20 national model programs.
- ▶ The American Association of Colleges for Teacher Education (AACTE) presented the college with the "Best Practice Award for Global and International Teacher Education."
- ▶ Southeast is one of only 33 institutions nationwide selected to be part of the White House Conference on Education, an honor no other Missouri institution has received.
- ▶ Our program was accepted into the prestigious Renaissance Group of Institutions.



STATE UNIVERSITY

College of Health and Human Services

Although there are diverse academic offerings in the College of Health and Human Services, all programs potentially lead to a career that significantly and positively impact the lives of individuals and families.

- ▶ Students in our nationally accredited nursing program consistently have a high pass rate on the state licensing exam and routinely enjoy a 100 percent placement rate after graduation.
- ▶ The recreation program is accredited by the Council on Accreditation for Recreation, Park Resources and Leisure Services.
- ▶ Our sport management program is one of 53 nationwide approved by the Sport Management Review Council and one of only a few in the Midwest.
- ▶ Students can participate in one of three state licensed centers—one for senior adults, a child enrichment center and our center for disabled adults.
- ▶ Air Force ROTC juniors and seniors can join the Professional Officer Corps, which allows you to assume commanding positions over members of the General Military Cadets.
- ▶ Our nationally accredited social work program requires students to complete 448 hours of field education under the supervision of experienced social workers.
- ▶ Southeast has a strong connection with the Law Enforcement Academy and has more than 30 years of partnerships in all branches of criminal justice at the federal, state and local levels. Our students intern with the U.S. Marshals Service; the ATF; the U.S. Secret Service; Federal Probation; Missouri Division of Probation and Parole; Missouri Youth Services and other law enforcement agencies.
- ▶ The dietetics program is accredited by the Commission on Accreditation for Dietetics Education and the American Dietetic Association. Our graduates have a success rate of nearly 100 percent on the national exam to become a registered dietitian.



College of Liberal Arts

An education in the liberal arts gives you broad-based training for careers in business, the arts, media, education and the legal profession.

- ▶ Southeast's mass communication program is accredited by the Accrediting Council on Education in Journalism and Mass Communications (ACEJMC). Only one other institution in Missouri has this elite accreditation. Our public relations program is one of only 28 institutions—none in Missouri—that holds certification by the Public Relations Society of America (PRSA). Only 12 other institutions in the world have recognition from both ACEJMC and PRSA for their mass communication program.
- ▶ Students can work at two campus radio stations (NPR affiliate KRCU 90.9 FM and KDMC 103.7), the *Arrow* student newspaper and "U2" cable television station.
- ▶ Our certified historic preservation program is one of a few U.S. programs that offer a four-year degree and is among a small number to have full membership in the National Council for Preservation of Education.
- ▶ During the last five years, Southeast's pre-law students have exceeded the national LSAT average score, and their placement rate in law school approaches 100 percent.
- ▶ Students majoring in philosophy have a 100 percent acceptance rate to graduate and law school.
- ▶ Our students make politics come alive by working on political campaigns and by serving as interns. Each year approximately 30 students from a variety of majors around the University travel to Washington, D.C. to conference with some of the nation's top scholars at the Center for Strategic and International Studies.





SOUTHEAST MISSOURI

College of

Science and Mathematics

The foundation of success in Southeast's College of Science and Mathematics is a faculty of teacher-scholars supported by well equipped laboratories and the latest technology, which offer our students personalized study and research opportunities during their undergraduate studies.

- ▶ Our popular computer science bachelor's program is nationally accredited by the Computing Accreditation Commission of the Accreditation Board of Engineering Technology.
- ▶ Our popular marine biology program is one of the only inland programs in the U. S., creating an opportunity for students to combine a traditional college experience with the study of marine life because of our collaboration with the Gulf Coast Research Laboratory in Ocean Springs, Miss.
- ▶ Southeast's pre-med curriculum prepares students for the MCAT (Medical College Admission Test). Our students are accepted to medical school at a rate that is well above the national average.
- ▶ Our chemistry graduates consistently score at or above the 70th percentile on the Major Field Achievement Test in Chemistry.
- ▶ Our engineering physics program is nationally accredited by the Accrediting Board of Engineering and Technology (ABET), the sole accrediting body of engineering programs. Southeast is one of only 20 similarly named engineering programs nationwide with this accreditation.



Graduates in
science and mathematics
enjoy a nearly
100%
placement rate.



School of

Polytechnic Studies

Today's industrial and agricultural environment is dynamic and highly dependent on technology. The Otto and Della Seabaugh Polytechnic Building features modern classrooms and laboratory space, teleconferencing and interactive television capabilities, fully networked computer labs, and an industrial space for training and research.

- ▶ All of the bachelor of science programs in the Department of Industrial and Engineering Technology are nationally accredited.
- ▶ Southeast is a designated Center of Excellence in Advanced Manufacturing Technology.
- ▶ In addition to a 252-acre David M. Barton Agriculture Research Center, there is a 110-acre rice research station, a new irrigated turf plot facility, and a modern soil fertility laboratory.
- ▶ The School of Polytechnic Studies operates the 11,000-square-foot, climate-controlled Charles L. Hutson Horticulture Greenhouse.
- ▶ Our new cybersecurity program is the only one of its kind in Missouri. The U.S. Department of Labor estimates there will be 135,000 new jobs in this field by 2018—a 21 percent increase in Missouri alone.
- ▶ The innovative sustainable energy systems management major responds to world needs to address global warming, air pollution and ecosystem destruction.



STATE UNIVERSITY

Earl and Margie Holland School of Visual and Performing Arts

Classic beauty and modern technology converge at Southeast's River Campus—Missouri's only campus dedicated exclusively to art, dance, music and theatre. Overlooking the Mississippi River, a Cultural Arts Center and transformed Seminary Building are now home to the Earl and Margie Holland School of Visual and Performing Arts. With the coming of this magnificent facility, the number of new students planning to major in the visual and performing arts doubled in one year.

- ▶ Art students have five interconnected art studios for painting, drawing, printmaking, fibers and design plus two computerized looms, as well as two presses in the printmaking studio and a computer design lab with the latest hardware and software available.
- ▶ Students find internships and professional experience at the Berkshire Theatre Festival, the Lucille Lortel Theatre in New York, the McLeod Summer Theatre or the University of Connecticut Summer Theatre and more.
- ▶ In 2008, the Golden Eagles Marching Band performed at the Edinburgh Military Tattoo in Scotland becoming only the second American university marching band to perform there twice.
- ▶ In addition to performances throughout the season, featuring world famous guest artists, the Southeast Missouri Symphony Orchestra exchanged music as well as culture in China when they performed concerts in Shanghai and Beijing in 2009.
- ▶ The River Campus gives students the opportunity to show their work in a variety of first-class venues: the 950-seat Donald C. Bedell Performance Hall is a proscenium theatre with spacious stage and backstage areas. The 200-seat Wendy Kurka Rust Flexible Theatre can be configured in unlimited ways for "black box" productions. The 200-seat Robert F. and Gertrude L. Shuck Music Recital Hall features nearly perfect acoustics. a student/faculty art gallery features technology that allows for the display of 3-D animation, as well as painting, prints, ceramics and sculpture. The Rosemary Berkel and Harry L. Crisp II Museum has an interactive educational theatre, art gallery for changing exhibitions and a permanent display featuring southeast Missouri.



Living on Campus

Southeast offers students 11 residence halls from which to choose. Each room has Internet access and cable TV. Nine dining areas are available with a variety of options. And, with more than 150 diverse organizations, students find plenty of opportunities to get involved.





SOUTHEAST MISSOURI STATE UNIVERSITY REDHAWKS VOLLEYBALL



Dr. Kenneth W. Dobbins became the seventeenth president of Southeast Missouri State University on July 1, 1999 after serving as the University's Vice President of Finance and Administration from 1991 to 1993, and Executive Vice President from 1993 until his appointment as president. He previously held several positions in higher education administration at Kent State University in Ohio.

During his tenure at Southeast, academic programs have been enhanced, including establishment of a School of Polytechnic Studies and the Earl and Margie Holland School of Visual and Performing Arts which opened in Fall 2007 on the new River Campus. A comprehensive review of all academic and non-academic programs has been accomplished to maintain quality and minimize student fee increases in the face of significant state appropriation reductions. Southeast continues to be recognized nationally for many of its outstanding

accredited academic programs. For the seventh year in a row, Princeton Review recognized the Master of Business Administration program on its list of "Best Business Schools." GetEducated.com listed Southeast #1 on the list of "Top 10 Ranked Best Values Online MBAs-AACSB-Accredited"; Southeast is recognized in the top tier of the Midwest best regional universities in U.S. News Best Colleges for 2011; and Southeast was again named among the "Best in the Midwest" by Princeton Review. Additionally, StateUniversity.com ranked Southeast the safest college campus in Missouri.

Enrollment has increased significantly since a 20-year-low in 1994 when some 7,900 students attended Southeast. In Fall 2005, enrollment topped 10,000 for the first time, and stood at more than 11,200 in 2010. Additionally, record enrollments in higher education have occurred in the University's 25-county service region during his tenure due to the establishment of new regional campuses in Sikeston and Kennett and a higher education center at Perryville serving place-bound students in and near those rural communities.

During Dr. Dobbins' presidency, more than \$250 million in capital construction and building improvement projects have enhanced the University. The Seabaugh Polytechnic Building and the \$50 million River Campus were constructed. An innovation center and business incubator to promote entrepreneurship and enhance the region's economy opened on the campus in 2005; Southeast dedicated its new, state-of-the-art David M. Barton Agriculture Research Center in 2009; two new 300-bed residence halls were constructed in 2002 and 2009; and the University currently is in the midst of \$58 million in capital renovation, maintenance and repair projects including the renovation of the historic 105-year-old Academic Hall.

Dr. Dobbins has served a two-year term as president of the Missouri Council on Public Higher Education (COPHE), the organization for presidents

and chancellors of Missouri's public colleges and universities. In 2007, he was selected to serve a three-year term on the American Association of State Colleges and Universities (AASCU) Board of Directors, an organization which represents over 420 public college and university members and more than 3.7 million students or 56 percent of the enrollment at all public four-year institutions. He was elected Secretary-Treasurer of the organization in 2008, and currently serves as chair of the AASCU Board. Also, for the past seven years, he has served as one of five faculty members for the AASCU New Presidents' Academy. He previously served three years as president of the Ohio Valley Conference and is currently a member of the Conference finance subcommittee. In addition, he is a vice president of the executive board of the Greater St. Louis Council, Boy

Scouts of America, and in 2010, he was awarded the Silver Beaver Award, the highest honor bestowed upon a Boy Scout volunteer by a council.

He earned his B.S. degree in accounting from the University of Akron (Ohio) in 1971 and served as a commissioned officer and civilian executive in the U.S. Air Force for almost 10 years. He received the M.B.A. degree in 1979 from Old Dominion University (Virginia), and the Ph.D. in higher education administration in 1987 from Kent State. He is also a Certified Public Accountant in Ohio.

Dr. Dobbins and his wife, Jeanine Larson Dobbins, Founder and Director Emeritus of the Missouri Statewide Early Literacy Intervention Program based at Southeast, have a son, Paul, and a daughter-in-law, Stacey, who are both Southeast graduates, and a grandson, Lincoln Kenneth Dobbins.

Board of Regents



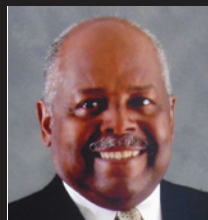
Donald "Brad" Bedell
President



Albert Spradling
Vice President



Daren Todd



Reginald Dickson



Doyle Privett



James P. Limbaugh



Brian Kelly
Student Member



SOUTHEAST MISSOURI STATE UNIVERSITY REDHAWKS VOLLEYBALL



Cindy Gannon has been part of Southeast Missouri State University Athletics for more than 20 years.

In 2011-12, Gannon will serve as interim Director of Athletics in addition to continuing her role as Senior Woman Administrator. Gannon was named to the position for the second time in her career after John Shafer announced his retirement following three years of service.

Gannon officially began her duties as interim Director of Athletics on July 1 after completing her sixth year as Associate Director of Athletics and Senior Woman Administrator.

As Southeast's Associate Director of Athletics and Senior Woman Administrator, Gannon was in charge of event management, sports supervision, personnel recruitment and monitoring the department's compliance with gender equity, while serving as an institutional representative to the Ohio Valley Conference.

Gannon also led the efforts for the department's NCAA third-cycle recertification. This certification process evaluates the Athletic Department's commitment to three operating principles outlined by the NCAA, including governance and commitment to rules; academic integrity; and gender/diversity issues and student-athlete

well-being. Southeast delivered a report on its progress to the NCAA in April.

Gannon has been the driving force behind other major events such as the Women's Walk and Dig for Life which continue to grow each year.

The Fourth Annual Women's Walk reached record numbers and raised \$30,000 for the Redhawk Athletics Scholarship Fund in 2011.

Meanwhile, Dig for Life, which is a month-long campaign during the Redhawks volleyball season, brought in a record \$22,000 a year ago. Gannon started this special foundation in 2000 after losing her mother to breast cancer. The campaign raises money to fund 200 local women for mammogram screening, who otherwise could not afford it.

In addition, Gannon recently finished her fourth year as a member of the National NCAA Division I Volleyball Committee.

A native of De Soto, Mo., Gannon started working at Southeast as a graduate assistant with the volleyball team. Three years later, she took over as head coach.

Gannon was at the helm of the volleyball program from 1989-2004, where she compiled a 366-211 record and led Southeast to eight OVC Championships and four NCAA Tournament Appearances. Gannon was also named OVC Coach of the Year four times.

Following her coaching career, Gannon remained at Southeast to work in athletic administration. She was last appointed interim Director of Athletics in October, 2008.

Recognized by not only her peers for her exceptional coaching, Gannon was a recipient of the Southeast Missouri State University College of Education

Young Alumni Merit Award in 1998. She was recognized by her junior college alma mater when Mineral Area College selected her as an "Outstanding Alum." Gannon was also inducted into the De Soto High School Athletics Hall of Fame in 2009.

Gannon is a former member of the American Volleyball Coaches Association (AVCA) and National Association of Collegiate Women

Athletics Administrators (NAC-WAA). In 2000, she chaired Southeast's Midwest Region and was a member of the AVCA Division I Top-25 Selection and All-America Committees.

Gannon received her undergraduate degree in physical education (1985) and master's in higher education (1987) from Southeast. She resides in Cape Girardeau.



INTERIM DIRECTOR OF ATHLETICS CINDY GANNON



SOUTHEAST MISSOURI STATE UNIVERSITY REDHAWKS VOLLEYBALL



Torry Rollins
Assistant Director of Athletics
Finance



Brady Barke
Assistant Director of Athletics
Compliance



Joyce Penny
Ticket Manager
Student Accountant



Marcia Hendrix
Assistant Ticket Manager
Insurance



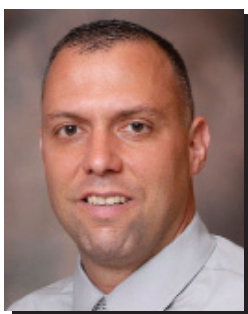
Sharon Burgard
Director of Academic
Services



Kent Phillips
Coordinator of Facilities and
Event Management



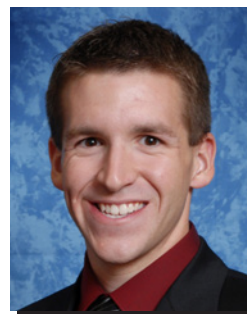
Alfred Castillo
Head Athletic Trainer



Jeff Honza
Sports Information Director



Rachel Blunt
Compliance Assistant



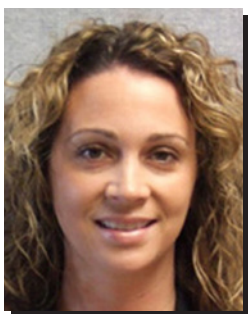
Nate Saverino
Coordinator of Marketing
and Promotions



Jan Onderdonk
Senior Administrative
Assistant



Ryan Johnson
Strength and Conditioning
Coach



Amanda Martin
Assistant Athletic Trainer



Maria Dominguez
Assistant Athletic Trainer



Robbie Rasco
Equipment Manager



Natalie Williams
Academic Services Assistant



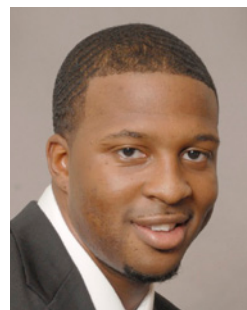
Nick Seeman
Sports Information Assistant



Phil Lady
Graduate Assistant
Marketing



Kelly Benecka
Graduate Assistant
Academic Services



Israel Kirk
Graduate Assistant
Academic Services



2011 SCHEDULE

Aug. 26	Memphis Invitational vs. Georgia State vs. Memphis	2 p.m./7 p.m.
Aug. 27	Memphis Invitational vs. Alabama A & M vs. Arkansas-Little Rock	10 a.m./4 p.m.
Sept. 2	Indiana University Tournament vs. Indiana	6 p.m.
Sept. 3	Indiana University Tournament vs. Buffalo vs. Youngstown State	9 a.m./4:30 p.m.
Sept. 9	Evansville Tournament vs. Evansville	4 p.m.
Sept. 10	Evansville Tournament vs. Arizona vs. Illinois-Chicago	Noon/3 p.m.
Sept. 13	Arkansas State	6 p.m.
Sept. 16	Eastern Illinois*	7 p.m.
Sept. 17	SIU Edwardsville*	2 p.m.
SEPT. 20	MURRAY STATE*	6:30 P.M.
SEPT. 23	JACKSONVILLE STATE*	6:30 P.M.
SEPT. 24	TENNESSEE TECH*	2 P.M.
Sept. 30	UT Martin*	6 p.m.
OCT. 4	EASTERN ILLINOIS*	6:30 P.M.
Oct. 7	Austin Peay*	7 p.m.
Oct. 8	Tennessee State*	2 p.m.
OCT. 14	EASTERN KENTUCKY*	6:30 P.M.
OCT. 15	MOREHEAD STATE*	2 P.M.
Oct. 21	Tennessee Tech*	7 p.m.
Oct. 22	Jacksonville State*	2 p.m.
Oct. 25	Murray State*	7 p.m.
OCT. 29	UT MARTIN*	2 P.M.
Nov. 4	Morehead State*	6 p.m.
Nov. 5	Eastern Kentucky*	1 p.m.
NOV. 8	SIU EDWARDSVILLE*	6:30 P.M.
NOV. 11	AUSTIN PEAY*	6:30 P.M.
NOV. 12	TENNESSEE STATE*	5 P.M.
Nov. 17-21	OVC Tournament	TBA
Dec. 1-4	NCAA First and Second Rounds	TBA



All Times Central
Home matches in **BOLD**
* Conference Match

Home Matches at Houck Field House

GO SOUTHEAST.COM
(573) 651-2113 or (866) SEMO-TIK