



Southeast Missouri Redhawks  
**TENNIS GUIDE**  
2015 SEASON





# Southeast

Missouri State University™

## Located

- ▶ Cape Girardeau, Mo.

## Enrollment

- ▶ 12,087

## Class Size

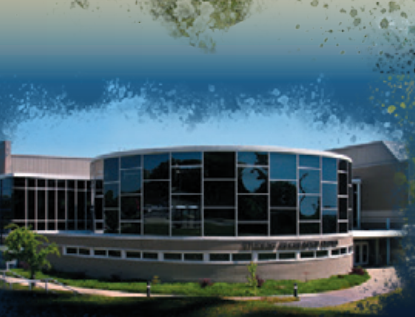
- ▶ Small classes with 98 percent of courses having fewer than 50 students

## Academic Programs

- ▶ More than 200 areas of study including business, education, nursing, agriculture, science and technology, visual and performing arts

## Athletics

- ▶ 15 NCAA Division I Teams







# SOUTHEAST MISSOURI STATE REDHAWKS

## TABLE OF CONTENTS

### Intro to Redhawk Tennis

Media Information.....	2
Redhawks Tennis Complex.....	3
Success Center.....	4-5
Community Service.....	6-7
Strength & Conditioning.....	8
Sports Medicine.....	9
President Dr. Kenneth W. Dobbins.....	10-11
Director of Athletics Mark Alnutt.....	12-13
Athletics Staff.....	14-16

### Season Preview

Season Outlook.....	18
2014-15 Roster.....	19
2014-15 Schedule.....	20

### Profiles

Head Coach Leah Killen.....	22
Katy Brady.....	23
Melissa Martin.....	24-25
Annisa Warasanti.....	26
Mariya Kostyuk.....	27
Anna Makhneva.....	27
Maria Montenegro.....	28
Viviana Ortiz.....	28
Kateryna Stoianova.....	28

### Year in Review

2013-14 Final Statistics.....	30
2013-14 OVC Statistics.....	31
Match-by-Match Results.....	32-38

### Records & History

Records.....	40-41
Southeast Missouri State University.....	42-47
Mission Statement.....	48



### Credits

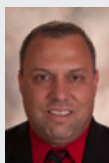
The 2014-15 Southeast Missouri Women's Tennis Guide was written, edited and designed by Sports Information Director Jeff Honza. Cover design by Veda Barnett, Moll Printing. Additional graphics assistance provided by Tonya Wells and Krista Mayfield. Photography by Marcus Painton, Marc Mahnke, Keith Hente, Pat Patterson, Josh Russell, Aaron Eisenhauer, UT Martin Athletics, Tyler Koonce and Sean Stevenson.



# SOUTHEAST MISSOURI STATE REDHAWKS

## Southeast Missouri Sports Information

One University Plaza MS 0200  
Cape Girardeau, MO 63701  
Phone: (573) 651-2294  
Fax: (573) 651-2810



Jeff Honza  
Director



Tyler Koonce  
Assistant  
Director



Sean Stevenson  
Assistant  
Director



## 2014-15 Sport Assignments

### Jeff Honza, Director

Football, Men's Basketball,  
Women's Tennis, Softball  
Office: (573) 651-2933  
Cell: (618) 528-1145  
Email: jhonza@semo.edu;  
redhawk1@me.com

### Tyler Koonce, Assistant Director

Secondary Football,  
Women's Soccer,  
Women's Basketball,  
Gymnastics, Outdoor  
Track & Field  
Office: (573) 651-2937

### Sean Stevenson, Assistant

Cross Country, Volleyball,  
Indoor Track & Field, Baseball  
Office: (573) 651-2294  
Cell: (314) 620-0855  
Email: sstevenson@semo.edu

**GoSoutheast.com**



## Interviews

All Southeast Missouri women's tennis practices are open to the media. Please contact the Sports Information Office to arrange all interviews.

## Email List

If you would like to be added to the Redhawk women's tennis email list to receive breaking news about the team, please email Jeff Honza.

## Home Matches

All of Southeast Missouri's home matches are held at the Redhawks Tennis Complex. The Redhawks Tennis Complex is located on the north side of campus at the intersection of Bertling and North Sprigg.

## GoSoutheast.com

GoSoutheast.com, the official athletics website of Southeast Missouri Athletics,

is the best source for the most up-to-date information on the Redhawk women's tennis team.

## Credentials

Credentials are required for entrance to the Redhawks Tennis Complex. To request credentials, please contact Southeast Missouri Sports Information by phone at (573) 651-2933 or email at jhonza@semo.edu/redhawk1@me.com.

**SOCIAL MEDIA**



Facebook.com/GoSoutheast



@GoSoutheast



YouTube.com/  
GoSoutheast Redhawks







The Redhawks Tennis Complex serves as the home court for the Southeast Missouri women's tennis team.

The complex, which was built in 2000, features eight courts, all of which are lighted. Courts were re-surfaced and new bathroom facilities were added within the last year. The Redhawks Tennis Complex is located on the north side of campus at the intersection of Bertling and North Sprigg.







# SOUTHEAST MISSOURI STATE REDHAWKS



The Redhawk Success Center offers Southeast Missouri student-athletes a place to study and develop as students and campus leaders.

It is located in the Student Recreation Center, just south of Houck Stadium. The Redhawk Success Center offers a computer lab with 18 work terminals, study areas and rooms for group meetings.

The area is under the guidance of Director of Academic Services Sharon Burgard, Assistant Coordinator Sandy Wiemers and Graduate Assistants Karley Evans and Bethany Pfeiffer.

The beautiful facility has enhanced the outstanding work in the classroom already enjoyed by Southeast student-athletes. Last year,

the Redhawks combined for a 3.17 cumulative grade point average in the fall and spring semesters. Over 60 percent of all student-athletes recorded a 3.0 or higher GPA. Thirteen of Southeast's 15 intercollegiate athletic teams recorded a team GPA over 3.0. Additionally, Southeast student-athletes logged over 3,000 hours of community service over the 2013-14 academic year.

Tutors are available for all student-athletes as needed. In addition, both attendance and academic progress is monitored through regular checks with faculty.

A special course is required for all first time student-athletes at Southeast. The course, which offers three credit hours, is part of a comprehensive program developed to address study

skills and life skills topics, and thus, enhance retention and academic success for student-athletes.

Entering student-athletes are evaluated for academic preparedness and assigned to appropriate categories. Student-athletes can also receive individualized academic programs which include meeting with a mentor bi-weekly to discuss academic progress.

The Success Center

staff works to get athletes involved in campus and community projects, as well. This is done to provide a support structure and greater opportunity for academic success. Through the NCAA's CHAMPS/Life Skills Program, the Success Center gives student-athletes personal and professional skills in order to facilitate successful and productive futures.

## ACADEMIC EXCELLENCE





## 2013-14 Notables

- Southeast Missouri finished third in the Ohio Valley Conference Commissioner's Cup for the second-straight year in 2013-14. The third-place finish matched the Redhawks highest in school history. Southeast accumulated a total of 107.5 points, a +3.25 increase in its point total from the previous year.
- Southeast Missouri's student-athletes finished the 2013-14 academic year with a 3.17 grade point average and had 13 teams maintain a 3.0 the entire year. In all, 197 individuals finished the year with a 3.0 or higher cumulative GPA accounting for 62.5 percent of the student-athlete population.
- A total of 60 student-athletes received their degrees, including 19 in the fall and 41 in the spring.
- For the fifth time in seven years, Southeast's women's gymnastics team posted the highest cumulative GPA among all NCAA programs as announced by the National Association of Collegiate Gymnastics Coaches/ Women (NACGC/W). The Redhawks 3.81 mark edged Western Michigan's 3.80 GPA.
- Southeast student-athletes logged over 3,000 community service hours in 2013-14. Redhawk student-athletes participated in a number of community service activities, including Feed My Starving Children, Pink Up Cape, Read to Succeed, Special Olympics, American Cancer Society benefit dinner and the SEMO Food Bank's Party for the Good.
- Southeast teams combined for five conference championships in 2013-14. The Redhawks won the OVC men's indoor track, men's and women's outdoor track titles, and baseball crown. Meanwhile, the women's gymnastics team won the Midwest Independent Conference championship.





# SOUTHEAST MISSOURI STATE REDHAWKS



**S**tudent-athletes and coaches at Southeast Missouri are dedicated to giving back to the community that so generously supports them.

Redhawk tennis student-athletes have opportunities to participate in a variety of community service activities each year. Community involvement helps provide a support structure and greater opportunity for academic success.

We are proud of the level of commitment shown by our student-athletes and always encourage them to participate in community service projects here at Southeast.







## SOCIAL DEVELOPMENT







# SOUTHEAST MISSOURI STATE REDHAWKS



**S**outheast Missouri's Strength and Conditioning program is committed to developing the total student-athlete through their experiences within a competitive training environment.

This will be accomplished by focusing on reducing the risk of injury and maximizing athletic potential through individual evaluation and program design.

The Southeast Missouri Strength and Conditioning program is under the direction of Ryan Johnson.

Redhawk student-athletes use various training facilities located inside the Student Recreation Center South.

## **Training Principles for Southeast Athletes:**

1. Reduce the risk of injuries
  - If a student-athlete is injured, he/she will not be able to compete at practice or games.
2. Ensure the athletes are optimally prepared to compete
  - It is our responsibility to best manage all stressors that are placed on the student-athletes body in order to achieve the best results on the playing field.
3. Maximize athletic ability
  - We challenge each athlete, both physically and mentally, in order to achieve optimal results.

## **Exercises for Southeast Athletes are based on the following Principles:**

1. Ground Based Movements
  - Athletes compete with their feet on the ground, and therefore, should train that way. The ability to produce force against the ground determines how fast athletes can run and how high they can jump.
2. Three-Dimensional Movements
  - Athletes must be able to stabilize themselves in all planes of movement. A fancy way of saying we use free weights (barbells/dumbbells vs. machines).
3. Multi-Joint Movements
  - Very rarely in sport do athletes isolate one single joint at a time. Athletes can train more muscle mass at the same time.

## COMPETITIVE SUCCESS



**P**revention. Treatment. Rehabilitation.

Education. Those are the four primary phases of athletic training, and the Southeast Missouri athletic training staff strives to fulfill all of those areas when working with student-athletes on a daily basis.

Southeast student-athletes are offered the best care possible by the athletic training staff. The Sports Medicine department includes five full-time athletic trainers, six graduate assistants and several student assistants. The staff serves student-

athletes around-the-clock at numerous facilities on campus.

The athletic trainers begin treatments and rehabilitation starting as early as 6 a.m., and are available until the last student-athlete is through.

There are currently four athletic training facilities on campus. The staff treats out of the Rosengarten Athletic Complex, where the primary training room is located. There are two other satellite athletic training rooms, including one at Houck Field House and one at the Show Me Center.

The Southeast athletic training rooms are equipped with stationary bikes, hand weights, therapeutic modalities and the latest physical therapy equipment. Each component is strategically designed to not only give the student-athlete the best care, but also to aid in returning to competition as quickly as possible.

Southeast Athletic Training has strong working relationships with local physicians and two hospitals in Cape Girardeau. It is from these hospitals that the Athletic Training department is assisted by four orthopedic

physicians.

The Southeast Athletic Training program prides and commits itself to providing the best comprehensive, personalized and efficient healthcare to its student-athletes. Delivery of healthcare focuses on the prevention and management of athletic-related injuries or illnesses, while adhering to the National Athletic Trainers' Board of Certification Standards of Professional Practice.

## ATHLETIC PERFORMANCE







# SOUTHEAST MISSOURI STATE REDHAWKS



PRESIDENT DR. KENNETH W. DOBBINS

**D**r. Kenneth W. Dobbins became the seventeenth president of Southeast Missouri State University on July 1, 1999 after serving as the University's Vice President of Finance and Administration from 1991 to 1993, and Executive Vice President from 1993 until his appointment as president. He previously held several positions in higher education administration at Kent State University in Ohio.

During his tenure at Southeast, academic programs have been enhanced including the establishment of the College of Science, Technology, and Agriculture and the Earl and Margie Holland School of Visual and Performing Arts which opened in fall 2007 on the new River

Campus. A comprehensive review of all academic and non-academic programs has been accomplished to maintain quality and minimize student fee increases in the face of significant state appropriation reductions. Southeast continues to be recognized nationally for many of its outstanding accredited academic programs. For the 11th year in a row, Princeton Review recognized the Master of Business Administration program on its list of "Best Business Schools." GetEducated.com listed Southeast #1 on the list of "Top 10 Ranked Best Values Online MBAs-AACSB-Accredited"; Southeast is recognized in the top tier of the Midwest best regional universities in U.S. News Best Colleges for 2014; and South-

east was again named among the "Best in the Midwest" by Princeton Review. Additionally, Militaryfriendlyschools.com lists Southeast among the top schools that embrace veterans as students, and recent freshmen survey data indicate that new students applied only to Southeast at a rate three times the national average.

Enrollment has increased significantly since a 20-year-low in 1994 when approximately 7,900 students attended Southeast. In fall 2005, enrollment topped 10,000 for the first time, and stood at more than 11,900 in 2013. Additionally, record enrollments in higher education have occurred in the University's 25-county service region during his tenure due to the establishment of

new regional campuses in Sikeston and Kennett and a higher education center at Perryville serving place-bound students in and near those rural communities.

During Dr. Dobbins' presidency more than \$400 million in capital construction and building improvement projects have enhanced the University. The Seabaugh Polytechnic Building and the \$58 million River Campus were constructed. In 2005, the Douglas C. Greene Center for Innovation and Entrepreneurship was opened, followed by the dedication of the state-of-the-art David M. Barton Agriculture Research Center in 2009, and the University's Autism Center for Diagnosis and Treatment in 2010. Southeast is known throughout the Midwest



for its modern and student-friendly residence halls. Vandiver Hall was completed in 2002; Merick Hall in 2009; and LaFerla Hall was dedicated in the fall of 2013. More than \$90 million in capital renovation projects were completed in 2013, including the renovation of the historic 108-year-old Academic Hall, and the remodeling and upgrades to the Magill and Rhodes sciences complex. Additionally, the University will open the River Campus Center, a new academic and residence hall center, at the River Campus in fall 2014.

Dr. Dobbins has served a two-year term as president of the Missouri Council on Public Higher Education (COPHE), the organization for presidents and chancellors of Missouri's public colleges and universities, and is the senior member of the organization. In 2007, he was selected to serve a three-year term on the American Association of State Colleges and Universities (AASCU) Board of Directors, an organization which represents over 420 U.S. public college and university members and more than 3.7 million students or 56 percent of the enrollment at all public four-year institutions. He was elected Secretary-Treasurer of the organization in 2008, chaired the organization in 2010-2011, and again serves on the AASCU Board. Also, for the past ten years, he has served as one of four faculty members for the week-long AASCU New Presidents' Academy, and currently chairs the Finance Committee of the American Aca-

demic Leadership Institute. He previously served three years as president of the Ohio Valley Conference and is currently a member of the Conference finance subcommittee. In addition, he is the vice president for membership on the executive board of the Greater St. Louis Council, Boy Scouts of America, and was elected by local council associates to serve on the National Council, Boy Scouts of America. In 2010, he was awarded the Silver Beaver Award, the highest honor bestowed upon a Boy Scout volunteer by a council.

He earned his B.S. degree in accounting from the University of Akron (Ohio) in 1971 and served as a commissioned officer and civilian executive in the U.S. Air Force for almost 10 years. He received the M.B.A. degree in 1979 from Old Dominion University (Virginia) where he was awarded the 2001 Distinguished Alumni Award, and the Ph.D. in higher education administration in 1987 from Kent State, where in 2011, he was awarded the Alumni Leadership Award for the College of Education, Health and Human Services Annual Hall of Fame Awards. He is also a Certified Public Accountant in Ohio.

Dr. Dobbins and his wife, Jeanine Larson Dobbins, Founder and Director Emeritus of the Missouri Statewide Early Literacy Intervention Program based at Southeast, have a son, Paul, and a daughter-in-law, Stacey, who are both Southeast graduates, and two grandsons, Lincoln Kenneth and Brady Larson Dobbins.

## Board of Regents



**Doyle L. Privett**  
President



**Kendra Neely-Martin**  
Vice President



**Donald G. LaFerla**



**Daren Todd**



**Thomas M. Meyer**



**Jay B. Knudtson**



**Austin Cordell**  
Student Representative





# SOUTHEAST MISSOURI STATE REDHAWKS



## DIRECTOR OF ATHLETICS MARK ALNUTT

**S**outheast Missouri's Department of Athletics is thriving under the leadership of Mark Alnutt.

Southeast Athletics operates on the three core values of its mission -- Academic Excellence, Social Development and Competitive Success. As a result, the Redhawks are soaring in all of those areas.

Academically, Southeast student-athletes have combined for over a 3.1 cumulative grade point average in the fall and spring semesters each year with Alnutt at the helm. The 2013-14 campaign saw a total of 197 individuals achieve a 3.0 or higher cumulative GPA accounting for 62.5 percent of the student-athlete population. That success led to the Department of Athletics securing a 3.17 GPA with 13 teams maintaining a 3.0 or better the entire year.

Prior to that, the Redhawks accumulated a 3.12 GPA with 192 student-athletes getting a 3.0 or higher mark in 2012-13.

In line with academics, Alnutt strongly encourages coaches, administrators and student-athletes to be visible in the community. That being said, student-athletes have logged over 4,000 hours of community service in Alnutt's term as Director of Athletics. Pink Up Cape, Feed My Starving Children, Project Homeless Connect, Cape Girardeau Adopt-A-Street, Read to Succeed and Special Olympics are among the many community service opportunities the Redhawks have actively participated in.

Another valuable piece of Southeast's growth in athletics has been Alnutt's Redhawks Road Trip. The Redhawks Road Trip features a series of outreach events to give fans, alumni, supporters

and community members the chance to meet select coaches, student-athletes and administration from Southeast Athletics. Last year, the Redhawks made 11 different stops along the "I-55 Corridor," that stretch between St. Louis and Memphis which is so important from a branding, recruiting and fundraising standpoint.

Athletically, Southeast finished third in the Ohio Valley Conference Commissioner's Cup for the second-straight year in 2013-14. The Redhawks tallied 107.5 points, a +3.25 increase from the previous season. Those third-place finishes are the best in school history.

Southeast nearly had a clean sweep of the OVC track & field championships, winning the men's indoor and men's and women's outdoor crowns. The Redhawks also won the OVC baseball title and Midwest

Independent Conference women's gymnastics championship during the 2013-14 campaign. In all, Southeast teams have won six conference titles in Alnutt's first two years as Director of Athletics.

Alnutt was the driving force behind securing the first-ever NCAA football game at Busch Stadium in St. Louis. Longstanding regional-rivals Southeast Missouri and Southern Illinois met in the College Classic on Sept. 21, 2013.

Alnutt has made some new coaching hires as well. He introduced Tom Matukewicz as the Redhawks head football coach on Dec. 18, 2013 and Mark Redburn as the school's next head softball coach on June 26, 2014.

Since Alnutt officially took over as Director of Athletics on April 19, 2012, total giving to athletics has increased by



more than xx percent. As a result, the department raised over \$780,000 through various fundraising initiatives.

Prior to accepting his first job as Director of Athletics, Alnutt served as the Senior Associate Athletics Director at the University of Missouri.

Alnutt was the administrative liaison for football; supervised track and field, cross country, gymnastics and golf; spearheaded the department's project management team; served as the primary point person for the Athletic Department, overseeing all aspects of facility project master planning, development, management and implementation; and was involved with external department operations, including development, game operations, marketing, media relations, Mizzou Sports Properties and ticket operations.

Alnutt also managed postseason travel arrangements for each of the University of Missouri's 20 intercollegiate sport programs. He oversaw Missouri's Nike contract, the Big Wheels and Flying Tiger programs and the department's relationship with Old Hawthorne Golf Club. In 2009, he managed a \$5 million video board project through the University of Missouri Sports Complex with the centerpiece being a new board at Faurot Field. He also oversaw the design and construction of the new Golden Girls/Gymnastics practice facility in the fall of 2011. Alnutt was actively involved in the solicitation and stewardship efforts of capital gift giving, as well.

Alnutt spent six years at the University of Missouri as director of football operations, adding an assistant athletic

director title prior to the 2005-2006 season. In that role, his duties included coordinating the team's travel plans, overseeing the football budget, handling compliance issues, scheduling of facilities, assisting with recruiting operations and managing the day-to-day operations of the football program.

He coordinated public relations and community service events for football, and oversaw all organizational aspects for the University of Missouri's trips to the 2003 and 2005 Independence Bowl games played in Shreveport, La. He also represented the football program as part of the design team that planned the \$16 million expansion and renovation project which turned the Tom Taylor Building into the Missouri Athletics Training Complex.

Alnutt was a three-year letterman for the University of Missouri as a linebacker and tight end from 1993-1995 and was voted the team's champion of the year as a senior. He earned a degree in sociology in 1995 and went to work for Major Brands as a senior salesman in Kansas City from February 1996 to August 1997.

He returned to the University of Missouri to pursue a master's degree in public administration with an emphasis on sports psychology. He joined the Missouri football staff in 1998 as an administrative/video graduate assistant. Alnutt completed his master's degree in May 2000 and took over as director of football operations that August.

A native of Kansas City, Alnutt served as president of the board of directors for Big Brothers/Big Sisters of Boone County and was selected to participate in the 2002-2003

NCAA Leadership Institute for Ethnic Minority Males. In June 2005, he was recognized by Columbia Business Times as one of the Columbia's 40-Under-40 business leaders for his work in the community.

He has participated in the Division I-A Athletic Director's Institute, attended the NACDA Mentoring Institute and chaired the NCAA Women's Gymnastics committee. In 2010, he was the recipient of an Outstanding Chancellor's Staff recognition and the Barbara S. Uehling Award for Administrative Excellence at the University of Missouri.

Alnutt was selected to serve a four-year term on the NCAA Minority Opportunities and Interests Committee, effective Sept. 1, 2013.

The NCAA Minority Opportunities and Interests Committee (MOIC) was formed by the Association in January 1990 to review issues related to the interests of ethnic minorities and women. These issues focus on the education

and welfare of minority student-athletes, as well as the enhancement of opportunities for ethnic minorities and women in coaching, athletics, administration, officiating and the NCAA governance structure.

A year later, Alnutt was appointed to serve a four-year term on the NCAA Football Playing Rules Committee that will begin Sept. 1, 2014.

The mission of the NCAA Football Rules Committee is to govern the playing rules of collegiate football by: Acknowledging the traditions of sport; Soliciting input from various college constituencies; Examining existing regulations and making necessary modifications to create safe, practical, concise and enforceable rules; and influencing the long term vision and direction of NCAA football.

Alnutt and his wife, the former Kate Hankins, are the parents of four children, Jaren, Kinleigh, Mason and Aidan.







# SOUTHEAST MISSOURI STATE REDHAWKS



**Cindy Gannon**  
Senior Associate  
Director of  
Athletics/Senior Woman  
Administrator



**Rachel Blunt**  
Assistant Director of  
Athletics/Compliance



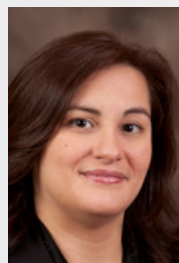
**Nate Saverino**  
Assistant Director of  
Athletics/External  
Affairs



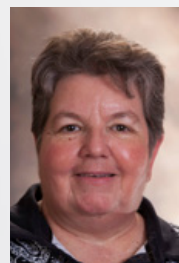
**Sara Cummings**  
Administrative Assistant



**Sharon Burgard**  
Academic Services  
Coordinator



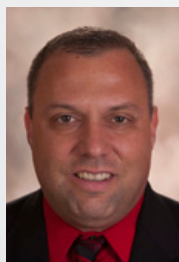
**Elizabeth Brucker**  
Director of Business  
Operations



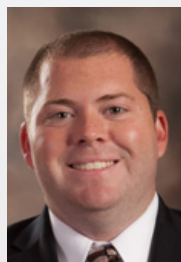
**Barb Kinsey**  
Administrative  
Assistant/Development



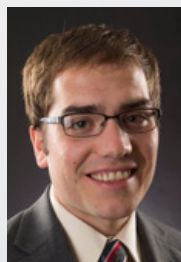
**Kent Phillips**  
Coordinator of Facilities  
& Event Management



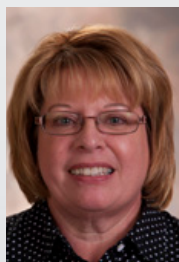
**Jeff Honza**  
Sports Information  
Director



**Phillip Lady**  
Coordinator of  
Marketing &  
Promotions



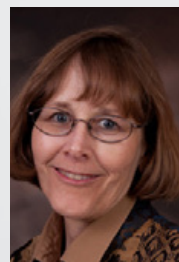
**Alan Savage**  
Ticket Manager/Student  
Accountant



**Marcia Hendrix**  
Assistant Ticket Man-  
ager/Insurance



**Tyler Koonce**  
Assistant Sports  
Information Director



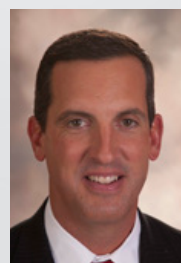
**Beth Easter**  
Faculty Athletics  
Representative



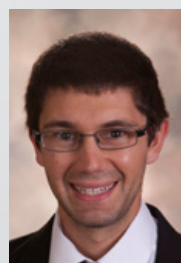
**Steve Bieser**  
Head Baseball Coach



**Tom Matukewicz**  
Head Football Coach



**Ty Margenthaler**  
Head Women's  
Basketball Coach



**Ryan Lane**  
Head Cross Country/  
Assistant Track & Field  
Coach



**Kristi Ewasko**  
Head Women's  
Gymnastics Coach



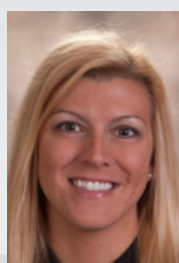
**Heather Nelson**  
Head Women's  
Soccer Coach



**Mark Redburn**  
Head Softball Coach



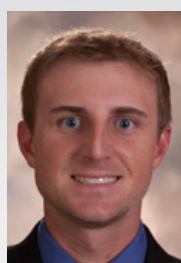
**Eric Crumpecker**  
Head Track & Field  
Coach



**Julie Yankus**  
Head Volleyball Coach



**Dillon Lawson**  
Assistant Baseball  
Coach



**Lance Rhodes**  
Assistant Baseball  
Coach



**Cameron Tucker**  
Assistant Women's  
Basketball Coach



**Heather Ezell**  
Assistant Women's  
Basketball Coach



**Lavesa Glover**  
Assistant Women's  
Basketball Coach





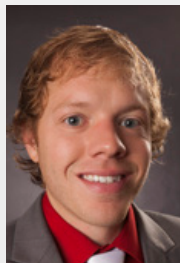
**Sarah Brown**  
Assistant Women's  
Gymnastics Coach



**Chris Bogantes**  
Assistant Women's  
Gymnastics Coach



**Paul Nelson**  
Associate Head  
Women's Soccer Coach



**Adam Kleman**  
Assistant Women's  
Soccer Coach



**Matt Koelling**  
Assistant Track &  
Field Coach



**Miles Smith**  
Assistant Track &  
Field Coach



**Madalyn Stichnot**  
Assistant Track &  
Field Coach



**Bryce Saia**  
Assistant Football Coach



**Sherard Poteete**  
Assistant Football Coach



**Jon Wiemers**  
Assistant Football Coach



**Matt Martin**  
Assistant Football Coach



**Eric Burrow**  
Assistant Football Coach



**Ricky Coon**  
Assistant Football Coach



**Salim Powell**  
Assistant Football Coach



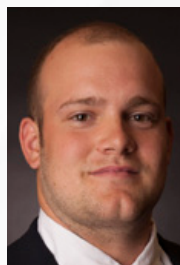
**Melvin Rice**  
Assistant Football Coach



**Steve Hendry**  
Defensive Assistant  
Football Coach



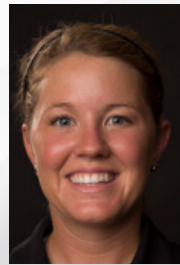
**Joe Uhls**  
Assistant Football  
Coach/Football  
Operations



**Tyler French**  
Offensive Assistant  
Football Coach



**Jared Diekmann**  
Football Video  
Coordinator



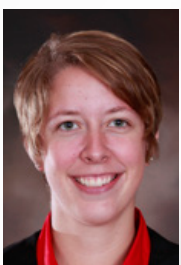
**Stephanie Winter**  
Assistant Softball  
Coach



**Kerry Shaw**  
Assistant Softball  
Coach



**Kayani Turner**  
Assistant Volleyball  
Coach



**Nikki Buchholz**  
Assistant Volleyball  
Coach



**Kodie Bennett**  
Cheerleading Coach



**Tatianna Parham**  
Sundancers Coach



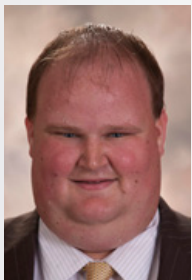




# SOUTHEAST MISSOURI STATE REDHAWKS



**Sandy Wiemers**  
Assistant Academic  
Services Coordinator



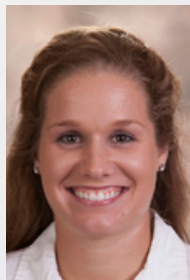
**Ben Fox**  
Assistant Athletic  
Trainer



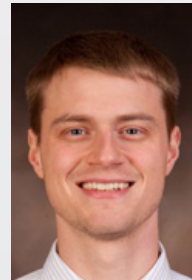
**Ashley Angerer**  
Assistant Athletic  
Trainer



**Ryan Johnson**  
Strength & Conditioning  
Coach



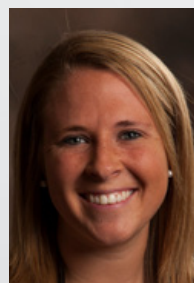
**Megan Rottler**  
Strength & Conditioning  
Specialist



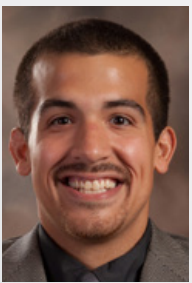
**Andrew Salter**  
Graduate Assistant  
Strength & Conditioning



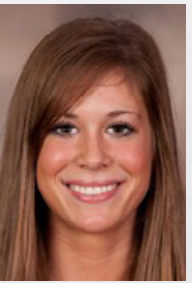
**Phil Baier**  
Graduate Assistant  
Strength & Conditioning



**Leah Ginn**  
Graduate Assistant  
Athletic Trainer



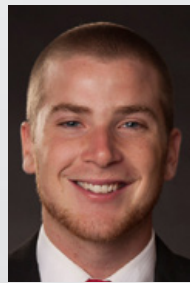
**Jamie Jetton**  
Graduate Assistant  
Athletic Trainer



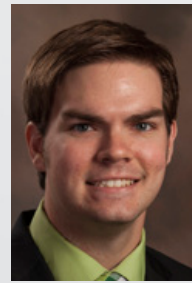
**Karley Evans**  
Graduate Assistant  
Academic Services



**Bethany Pfeiffer**  
Graduate Assistant  
Academic Services



**Alex Lais**  
Graduate Assistant  
Marketing &  
Promotions



**Sean Stevenson**  
Sports Information  
Assistant





# SEASON PREVIEW



Returnees Annisa Warasanti, Melissa Martin and Katy Brady combined for 31 singles victories last season. That accounted for nearly 40 percent of Southeast's wins in singles play.





# SOUTHEAST MISSOURI STATE UNIVERSITY

**S**outheast Missouri had its share of successes a year ago and looks for even bigger things as it enters its 2014-15 season.

Southeast is in its second season under head coach Leah Killen, who led the Redhawks to nine victories last year, their most in a season since 2006-07.

"We are looking forward to competing this season," said Killen. "We have a young team with lots of desire to improve. I am proud of how these ladies have been working on the court and in the weight room. They are excited about our upcoming spring season."

Five of the eight players on the 2014-15 roster are freshmen. The Redhawks also bring back returnees Melissa Martin, Annisa Warasanti and Katy Brady, who combined for nearly 40 percent of the team's singles victories last season.

The top of the singles lineup will feature an entirely new look with freshmen **Viviana Ortiz (Guayaquil, Ecuador)**, **Mariya Kostyuk (Kiev, Ukraine)** and **Kateryna Stoianova (Kiev, Ukraine)**.

Ortiz saw action in five singles matches and six doubles bouts this past fall. Her six doubles matches were second-most on the team. Ortiz recorded her first win in tournament



play with a 6-3, 6-4, straight-set victory over Missouri State's Ekaterina Donetckova.

"Viviana has aggressive ground strokes," said Killen. "She is a mart player who fights hard to win every point."

Kostyuk made her Southeast debut with a 6-1 singles record last fall. Her only loss came against Middle Tennessee's Sarah Sediri. Kostyuk finished the fall season on a three-match winning streak, as four of her wins were decided in three sets.

"Mariya is great anywhere on the court," commented Killen. "She has a variety of shots and is very accurate."

Stoianova tied for third on the team with four singles wins and competed in a team-high seven doubles matches in the fall. She was victorious in three of her first five doubles bouts to start the year.

"Kateryna knows how to apply pressure to her opponents and loves to compete," said Killen.

**Anna Makhneva (Zarechniy, Russia)**, **Annisa Warasanti (Bandung, Indonesia)**, **Melissa Martin (Wolverhampton, England)**, **Katy Brady (Farmington, Mo.)** and **Maria Montenegro (Guayaquil, Ecuador)** form the rest of the lineup.

A freshman, Makhneva competed in seven singles matches last fall. She won the first singles match she played with a straight-set, 6-1, 6-1, victory over North Alabama's Sydney Childers. Makhneva also saw action in doubles play with partner Montenegro, winning her first match over UT Martin's Tamara Klimek and Maria Sadusky, 8-7.

"Anna is feisty and aggressive," quoted Killen. "She has been an excellent leader and wants to be a strong competitor."

Warasanti tied a team-high 15 singles victories as a freshman last season. Six of her wins came at the No. 5 position. She notched three wins in Ohio Valley Conference play and played all of her doubles matches at the No. 3 spot. Warasanti began her rookie campaign with a five-match singles winning streak.



"Annisa can hit aggressive shots from both sides," said Killen. "She is looking to step up and help lead the team."

Martin, the lone senior on this year's roster, fashioned a 14-6 singles record. Her 14 wins tied for second-most on the team last season. She led the Redhawks with a 7-2 record in OVC play. Martin primarily competed at No. 6, where she earned all but three of her victories.

"Melissa is ready for her senior year," said Killen. "She is looking to be a steady player and finish her career with a great record."

Brady competed in a total of four matches at the No. 6 singles position a year ago. She registered a dual record of 2-2 and played in six doubles contests. Brady did not allow a point in three of her first four sets of the 2013-14 season.

"Katy has been an excellent leader and keeps the team motivated," said Killen. "She is very competitive."

Montenegro rounds out this year's squad. She played in 10 singles matches, recording four victories during the fall. Montenegro tied for third on the team in singles wins. She picked up an additional two victories in doubles play.

Maria is a solid player with hard shots," said Killen. "She has a willingness to fight for every ball."

## Season Outlook



Name	Class	Hometown	Last School
Katy Brady	Junior	Farmington, Mo.	Farmington H.S.
Mariya Kostyuk	Freshman	Kiev, Ukraine	International School
Anna Makhneva	Freshman	Zarechniy, Russia	Secondary School of General Education No. 1
Melissa Martin	Senior	Wolverhampton, England	Idsall School
Maria Montenegro	Freshman	Guayaquil, Ecuador	Logos Academy
Viviana Ortiz	Freshman	Guayaquil, Ecuador	Logos Academy
Kateryna Stoianova	Freshman	Kiev, Ukraine	Secondary Comprehensive School No. 328
Annisa Warasanti	Sophomore	Bandung, Indonesia	Bandung Public H.S. No. 2

**Head Coach:** Leah Killen (Second Year)

#### Breakdown by Class

##### Seniors (1)

Melissa Martin

##### Juniors (1)

Katy Brady

##### Sophomores (1)

Annisa Warasanti

##### Freshmen (5)

Mariya Kostyuk  
Anna Makhneva  
Maria Montenegro  
Viviana Ortiz  
Kateryna Stoianova



[Roster](#)



# SOUTHEAST MISSOURI STATE UNIVERSITY

## 2014 Fall Season

<u>Date</u>	<u>Opponent</u>	<u>Location</u>
Friday, September 12	UT Martin Tournament	Martin, Tenn.
Saturday, September 13	UT Martin Tournament	Martin, Tenn.
Friday, September 19	Austin Peay Invitational	Clarksville, Tenn.
Saturday, September 20	Austin Peay Invitational	Clarksville, Tenn.
Friday, November 7	Arkansas State Invitational	Jonesboro, Ark.
Saturday, November 8	Arkansas State Invitational	Jonesboro, Ark.

## 2015 Spring Season

<u>Date</u>	<u>Opponent</u>	<u>Location</u>	<u>Time</u>
Friday, January 30	at Northern Kentucky	Highland Heights, Ky.	5:30 p.m.
Saturday, January 31	at Wright State	Dayton, Ohio	5 p.m.
Friday, February 6	at Arkansas State	Jonesboro, Ark.	10 a.m.
Saturday, February 7	at Central Arkansas	Conway, Ark.	11 a.m.
Tuesday, February 10	at Saint Louis	St. Clair, Mo.	Noon
Friday, February 20	at Northern Illinois	DeKalb, Ill.	2 p.m.
Saturday, February 21	at Chicago State	Chicago, Ill.	9 a.m.
Sunday, February 22	at Illinois-Chicago	Chicago, Ill.	11 a.m.
Saturday, March 7	at Southern Illinois	Carbondale, Ill.	10 a.m.
Friday, March 13	at Murray State*	Murray, Ky.	2 p.m.
Saturday, March 14	at Austin Peay*	Clarksville, Tenn.	11 a.m.
Tuesday, March 17	at Nicholls State	Thibodaux, La.	2 p.m.
Wednesday, March 18	at Southeastern La.	Hammond, La.	1 p.m.
Thursday, March 19	at Northwestern State	Natchitoches, La.	2 p.m.
<b>Sunday, March 22</b>	<b>Jacksonville State*</b>	<b>Cape Girardeau, Mo.</b>	<b>Noon</b>
<b>Friday, March 27</b>	<b>SIU Edwardsville*</b>	<b>Cape Girardeau, Mo.</b>	<b>3 p.m.</b>
<b>Saturday, March 28</b>	<b>Eastern Illinois*</b>	<b>Cape Girardeau, Mo.</b>	<b>Noon</b>
Friday, April 3	at Morehead State*	Morehead, Ky.	10 a.m.
Saturday, April 4	at Eastern Kentucky*	Richmond, Ky.	9 a.m.
<b>Tuesday, April 7</b>	<b>UT Martin*</b>	<b>Cape Girardeau, Mo.</b>	<b>3 p.m.</b>
<b>Friday, April 10</b>	<b>Belmont*</b>	<b>Cape Girardeau, Mo.</b>	<b>3 p.m.</b>
<b>Saturday, April 11</b>	<b>Tennessee State*</b>	<b>Cape Girardeau, Mo.</b>	<b>1 p.m.</b>
Friday, April 17	OVC Tournament	To Be Determined	TBA
Saturday, April 18	OVC Tournament	To Be Determined	TBA
Sunday, April 19	OVC Tournament	To Be Determined	TBA

Home matches in **Bold**

\* Denotes Ohio Valley Conference match

All times Central and subject to change



# PROFILES



Southeast's 2014-15 roster is dominated by six underclassmen, including five freshmen. The Redhawks also return three players from a year ago.







## LEAH KILLEN

Head Coach  
Second Year  
Texas A&M, 2002

**L**eah Killen is in her second year as Southeast Missouri's women's tennis coach.

Director of Athletics Mark Alnutt introduced Killen as the eighth head coach in the program's history on Sept. 5, 2013.

In her first year at the helm, Killen guided Southeast to a 9-13 overall record. The Redhawks nine victories marked the most in a season since 2006-07. In addition, Southeast saw a +5 increase in the win column after going 4-11 in 2012-13.

Under Killen's direction, Southeast won a season-long five-straight matches from Mar. 9-22 during her first year.

Killen previously worked as an assistant coach for both the men's and women's tennis programs at the University of Dayton in 2012-13.

Prior to Dayton, Killen coached both nationally and sectionally ranked juniors for eight years at the Weymouth Club in Weymouth, Mass. and also at the Sportsmen's Tennis Club in Dorchester. During her time at Weymouth, she led a USTA Junior Team to the National Championship. In 2008, Killen coached a Varsity girl's tennis team at Fontbonne Academy in Milton, Mass., where she improved its record from 1-18 to 9-10.

On the collegiate level, Killen coached at Wellesley College, a Division III top-20 team during the 2011 and 2012 seasons.

Killen earned her Bachelor's Degree in Business Administration from Texas A&M where she was also a member of the tennis team for four years.



## Leah Killen File

**Hometown:** Detroit, Mich.

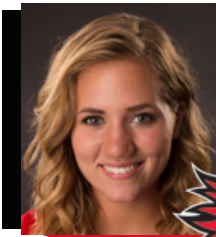
**Alma Mater:** Texas A&M, 2002

### Coaching Experience

Year(s)	School	Position	Overall	Conference
2008	Fontbonne Academy	Varsity Girls	-	-
2003-10	Weymouth Club	-	-	-
2011-12	Wellesley College	Assistant Coach	-	-
2012-13	Dayton	Assistant Coach	-	-
2013-14	Southeast Missouri	Head Coach	9-13	3-7
	Record		9-13	3-7

### Honors

- Led USTA Junior Team to National Championship at Weymouth
- Wellesley College was a Top-20 team in 2011-12
- Fontbonne Academy improved from 1-18 to 9-10 during 2008 season



## KATY BRADY

Junior • 5-5  
Farmington, Mo.  
Farmington H.S.



**Fall (2014):** Did not see action.

**2013-14:** Competed in a total of four matches at the No. 6 singles spot... Registered a dual record of 2-2... Saw action in six doubles matches, including five in Ohio Valley Conference play... Did not allow a point in three of her first four sets of the season... Began the year with a two-match winning streak, beating Arkansas-Pine Bluff's Destiny Jones and Western Illinois' Jamee Hale... Made her OVC singles debut against Austin Peay's Isabela Jovanovic... Southeast Scholar-Athlete and OVC Commissioner's Honor Roll selection.

**Prior to Southeast:** Attended Farmington High School, where she compiled a 16-5 singles record and 9-1 doubles mark as a senior...

### Brady's Career Singles Records at Southeast Missouri

	Overall	Dual	Tour	OVC	1	2	3	4	5	6
2013-14	2-2	2-2	0-0	0-1	-	-	-	-	-	2-2

### Brady's Career Doubles Records at Southeast Missouri

	Overall	Dual	Tour	OVC	1	2	3
2013-14	0-6	0-6	0-0	0-5	-	-	0-6

Earned All-Conference and All-District honors... Varsity captain as a senior and had her team's highest GPA... Went 10-3 in singles play and 9-3 in doubles action as a junior... Also played soccer.

**Personal:** Born March 23, 1994... Majoring in Mass Communication... Daughter of Jeff and Robin Brady.



### 2013-14 Match-by-Match Results

#### Singles

Date	Team/School	Pos.	Opponent	Score
03-09-14	at Arkansas-Pine Bluff	6	Destiny Jones	Won, 6-0, 6-0
03-11-14	WESTERN ILLINOIS	6	Jamee Hale	Won, 7-6, 6-0
04-11-14	#31 NORTHEASTERN ST.	6	Barbora Jirickova	Lost, 0-6, 0-6
04-13-14	AUSTIN PEAY*	6	Isabela Jovanovic	Lost, 1-6, 0-6

#### Doubles

Date	Team/School	Pos.	Opponent	Score/Partner
04-05-14	SIU EDWARDSVILLE*	3	Frogner/Donner	Lost, 1-8/Warasanti
04-06-14	at Eastern Illinois*	3	Iden/Stadalninkaite	Lost, 2-8/Warasanti
04-07-14	vs. Jacksonville State*	3	Kerindi/Crnijic	Lost, 2-8/Warasanti
04-11-14	#31 NORTHEASTERN ST.	3	Bellamine/Lodge	Lost, 1-8/Warasanti
04-12-14	MURRAY STATE*	3	Suga/Blue	Lost, 0-8/Warasanti
04-13-14	AUSTIN PEAY*	3	Tatlock/Karac	Lost, 0-8/Warasanti

Meet the Redhawks



# SOUTHEAST MISSOURI STATE UNIVERSITY



## MELISSA MARTIN

Senior • 5-9  
Wolverhampton, England  
Idsall School



**Fall (2014):** Had a hand in three of Southeast's six doubles victories... Registered a 3-2 doubles record.

**2013-14:** Fashioned a 14-6 singles mark, tying for second on the team in singles wins... Led the team with a 7-2 record in Ohio Valley Conference play... Her seven OVC wins were the most on the team... Primarily competed in the No. 6 spot, going 11-5... Went 7-7 in doubles action, with all of her wins coming at the No. 2 position... Won 12 of her final 14 singles matches of the season.

**2012-13:** Registered a 3-6 singles record and paired up with Jessica Courtneil for a team-best 8-5 doubles mark... Earned two of her singles victories at the No. 5 spot... Went 2-4 in singles play during the fall... Finished with a 4-3 doubles record in dual competition and went 2-1 in OVC action... Posted three of those victories in the No. 3 doubles position... Defeated SIU Edwardsville's Amanda Miller, 6-2, 2-6, 10-5, Rend Lake College's Taylor Adams, 8-0, and Alabama A&M's Quanda Jarrett, 6-1, 6-1, for her singles wins.

**2011-12:** Went 13-9 in singles play, posting an 11-6 mark during the dual season... Primary lineup spot was No. 4 singles, where she went

10-4... Went 4-5 against OVC opponents... Was 8-14 in doubles play, going 5-1 during the fall... Won four-straight singles matches to start dual play and was victorious in seven of her first eight dual singles bouts... Responsible for the Redhawks' lone point against Arkansas State in their season opener, coming back to defeat Arkansas State's Biljana Miloshevska (3-6, 7-6, 10-7) on Feb. 11... Won her last three singles matches of the year, all against OVC opponents... Named a Southeast Scholar-Athlete and OVC Commissioner's Honor Roll selection.

**Prep:** Attended Idsall School... Represented her state on two occasions in the under 14s Road to Wimbledon Tournament... Primarily played the No. 1 and No. 2 singles positions and competed for the Sutton Coldfield Tennis Club in the National Junior Club League Finals.

**Personal:** Born June 25, 1993... Undecided on her major... Daughter of Lesley and Christopher Martin.

### Martin's Career Singles Records at Southeast Missouri

	Overall	Dual	Tour	OVC	1	2	3	4	5	6
2011-12	13-9	11-6	2-3	4-5	-	-	1-2	10-4	-	-
2012-13	3-6	2-4	1-2	0-2	-	-	-	0-1	2-3	-
2013-14	14-6	14-6	0-0	7-2	-	-	-	-	3-1	11-5
Totals	30-21	27-16	3-5	11-9	-	-	1-2	10-5	5-4	11-5

### Martin's Career Doubles Records at Southeast Missouri

	Overall	Dual	Tour	OVC	1	2	3
2011-12	8-14	3-13	5-1	2-7	2-8	1-4	0-1
2012-13	8-5	4-3	4-2	2-1	-	1-1	3-2
2013-14	7-9	7-9	0-0	3-3	-	7-7	0-2
Totals	23-28	14-25	9-3	7-11	2-8	9-12	3-5



### 2013-14 Match-by-Match Results

#### Singles

Date	Team/School	Pos.	Opponent	Score
01-23-14	at Nebraska-Omaha	6	Jacqueline Baude	Won, 5-7, 6-1, 10-5
01-24-14	at Northern Iowa	6	Sydney Wolfe	Lost, 2-6, 6-0, 0-1
02-07-14	at Butler	6	Jocelyn Koester	Lost, 4-6, 3-6
02-08-14	at IUPUI	6	Abbey Neff	Lost, 2-6, 1-6
02-09-14	vs. Western Kentucky	6	Alex Crofford	Won, 6-2, 6-2
02-22-14	at Saint Louis	6	Madison Cook	Lost, 1-6, 6-4, 0-1
02-23-14	at Southern Illinois	6	Lola Garcia	Won, 7-6, 6-3
03-08-14	at Arkansas State	6	Victoria Pisani	Won, 7-5, 6-4
03-09-14	at Arkansas-Pine Bluff	5	Fabiola Cardoso	Won, 6-2, 6-2
03-11-14	WESTERN ILLINOIS	5	Ese Davis	Won, 6-2, 6-0
03-15-14	at Belmont*	6	Ann Lauren Fiepeke	Won, 6-2, 6-4
03-22-14	MOREHEAD STATE*	6	Hayley Wild	Won, 7-6, 2-6, 6-4
03-23-14	EASTERN KENTUCKY*	6	Marcela Jimenez	Lost, 3-6, 1-6
03-26-14	at UT Martin*	6	Katie McCall	Won, 6-1, 6-1
04-05-14	SIU EDWARDSVILLE*	6	McKenzie Thomas	Won, 7-5, 7-6
04-06-14	at Eastern Illinois*	6	K. Stadalninkaita	Won, 6-0, 6-2
04-07-14	vs. Jacksonville State*	6	Zoe Bizinos	Won, 7-5, 6-2
04-11-14	#31 NORTHEASTERN ST.	5	Lucia Cerchlanova	Won, 6-3, 6-4
04-12-14	MURRAY STATE*	6	Erin Patton	Won, 6-2, 7-5
04-13-14	AUSTIN PEAY*	5	Hannah Tatlock	Lost, 6-7, 2-6

#### Doubles

Date	Team/School	Pos.	Opponent	Score/Partner
01-23-14	at Nebraska-Omaha	3	Matricardi/Hottman	Lost, 1-6/Warasanti
01-24-14	at Iowa State	3	Hauge-Anderson/Green	Lost, 0-6/Warasanti
01-24-14	at Northern Iowa	2	Lopez/Santos	Lost, 2-6/Donetckova
02-07-14	at Butler	2	Adami/Qin	Won, 6-0/Robinson
02-08-14	at IUPUI	2	Bridegroom/Modesto	Won, 6-6, 1-0/Robinson
02-09-14	vs. Western Kentucky	2	Przystawski/Barboza	Unfinished/Robinson

Meet the Redhawks

02-22-14	at Saint Louis	2	Cervin/Moreno	Lost, 4-6/Robinson
02-23-14	at Southern Illinois	2	Lee/Love	Lost, 2-8/Robinson
03-08-14	at Arkansas State	2	Miloshevska/Gauguery	Lost, 4-8/Robinson
03-09-14	at Arkansas-Pine Bluff	2	Cabane/Cardoso	Won, 8-5/Robinson
03-11-14	WESTERN ILLINOIS	2	Callahan/Johnson	Won, 8-0/Robinson
03-15-14	at Belmont*	2	Kancheva/Maciell	Won, 8-1/Robinson
03-16-14	at Tennessee State*	2	Daniels/Pressley	Won, 1-0, retired/Robinson
03-22-14	MOREHEAD STATE*	2	Beaule/McLean	7-5, unfinished/Robinson
03-23-14	EASTERN KENTUCKY*	2	Oscosz/Rodriguez	5-7, unfinished/Robinson
03-26-14	at UT Martin*	2	Tari/Naito	Lost, 1-8/Robinson
04-05-14	SIU EDWARDSVILLE*	2	Aranda/Ilciewicz	Lost, 7-8/Nagovitchina
04-06-14	at Eastern Illinois*	2	Foster/Kimbrough	2-7, unfinished/Nagovitchina
04-07-14	vs. Jacksonville State*	2	Nguyen/Bizinos	7-6, unfinished/Nagovitchina
04-11-14	#31 NORTHEASTERN ST.	2	Savchenkov/Jirickova	6-7, unfinished/Nagovitchina
04-12-14	MURRAY STATE*	2	Eskauriatza/Patton	Lost, 1-8/Nagovitchina
04-13-14	AUSTIN PEAY*	2	Tavares/Jovanovic	Won, 8-3/Nagovitchina

## 2012-13 Match-by-Match Results

### Singles

Date	Team/School	Pos.	Opponent	Score
9/28-9/30, 2012	vs. SIU Edwardsville	-	Amanda Miller	Won 6-2, 2-6, 10-5
9/28-9/30, 2012	vs. UT Martin	-	Alice Laing	Lost 3-6, 2-6
9/28-9/30, 2012	vs. Austin Peay	-	Julie Covington	Lost 1-6, 0-6
02-16-13	ARKANSAS STATE	4	Biljana Miloshevska	Lost 4-6, 4-6
02-23-13	REND LAKE COLLEGE	5	Taylor Adams	Won 8-0
03-01-13	at Jackson State	5	Kesica Jayapalan	Lost 1-6, retired
03-02-13	at Alabama A&M	5	Quanda Jarrett	Won 6-1, 6-1
03-17-13	at SIU Edwardsville*	5	Haley Ilciewicz	Lost 0-6, 2-6
03-20-13	at Jacksonville State*	5	Danielle Kerindi	Lost 0-1, retired

### Doubles

Date	Team/School	Pos.	Opponent	Score/Partner
9/28-9/30, 2012	vs. UT Martin	-	Nicole/Silva	Won 9-7/Courtneil
9/28-9/30, 2012	vs. UT Martin	-	Herbold/Simic	Lost 1-8/Courtneil
11/2-11/4, 2012	vs. UT Martin	-	McCall/Van Zyl	Won 10-8/Courtneil
11/2-11/4, 2012	vs. Arkansas State	-	Heeps-Eriksen/Krsmanovic	Won 9-7/Courtneil
11/2-11/4, 2012	vs. Central Arkansas	-	Buyukyan/Horsikyan	Lost 8-9/Courtneil
11/2-11/4, 2012	vs. Murray State	-	Huerth/Stoltz	Won 8-2/Courtneil
02-16-13	ARKANSAS STATE	2	Sljipecevic/Miloshevska	Lost 5-8/Courtneil
02-23-13	REND LAKE COLLEGE	2	Williams/Moore	Won 8-0/Courtneil
03-01-13	at Jackson State	3	Condorelli/Martinez	Lost 4-8/Courtneil
03-02-13	at Alabama A&M	3	Cherry/Kennemore	Won 8-2/Courtneil
03-16-13	EASTERN ILLINOIS*	3	Foster/Laird	Lost 5-8/Courtneil
03-17-13	at SIU Edwardsville*	3	Miller/Raymond	Won 8-3/Courtneil
03-20-13	at Jacksonville State*	3	Lefton/Cmilijic	Won 8-3/Courtneil

## 2011-12 Match-by-Match Results

### Singles

Date	Team/School	Pos.	Opponent	Score
10/7-10/9, 2011	vs. Arkansas State	-	Ceara Howey	Lost retired
10/7-10/9, 2011	vs. Arkansas-Little Rock	-	Evgeniya Gracheva	Won 6-1, 2-6, 6-4
10/7-10/9, 2011	vs. Western Kentucky	-	Alex Crofford	Lost 2-6, 4-6
10/21-10/22, 2011	vs. Lipscomb	-	Sam Bowman	Lost 1-6, 3-6
10/21-10/22, 2011	vs. Lipscomb	-	Deahna Welcher	Won 6-3, 6-4
02-11-12	at Arkansas State	4	Biljana Miloshevska	Won 3-6, 7-6, 10-7
02-12-12	at Central Arkansas	4	Allison Hartman	Won 6-3, 6-3
02-25-12	vs. South Dakota	4	Nina Barudzio	Won 6-4, 6-1
02-26-12	at Bradley	4	Carly Miles	Won 6-1, 6-2
03-06-12	SOUTHERN ILLINOIS	4	Natasha Tomishima	Lost 2-6, 3-6

03-10-12	at IPFW	4	Alex Forsyth	Won 6-1, 6-2
03-11-12	at Dayton	4	Erin Filbrandt	Won 6-3, 6-2
03-14-12	at Missouri-St. Louis	3	Sai Pujitha Bandi	Won 6-3, 6-1
03-18-12	at UT Martin*	4	Ivon Simic	Lost 4-6, 0-6
03-24-12	at Austin Peay*	4	Andra Cornea	Lost 0-6, 6-0, 5-7
03-25-12	MURRAY STATE*	4	Carla Suga	Lost 2-6, 6-3, 4-6
03-31-12	at Tennessee State*	4	Kryston Mason	Won 6-0, 6-0
04-01-12	at Jacksonville State*	3	Raphaela Lima	Lost 3-6, 3-6
04-06-12	EASTERN KENTUCKY*	3	Saioa Oscosz	Lost 1-6, 5-7
04-07-12	MOREHEAD STATE*	4	Jessica Montemayor	Won 6-3, 6-5
04-14-12	EASTERN ILLINOIS*	4	Jennifer Kim	Won 6-2, 6-2
04-15-12	at SIU Edwardsville*	4	Lindsey Raymond	Won 6-3, 6-3

### Doubles

Date	Team/School	Pos.	Opponent	Score/Partner
10/7-10/9, 2011	vs. Central Arkansas	-	Ruocco/Siegried	Won retired/Courtneil
10/7-10/9, 2011	vs. Arkansas State	-	Fung/Sljipecevic	Won 9-7/Courtneil
10/7-10/9, 2011	vs. Central Arkansas	-	Kravchuk/Gonzalez	Won 8-6/Courtneil
10/21-10/22, 2011	vs. Northern Alabama	-	Rees/Patey	Won 8-6/Courtneil
10/21-10/22, 2011	vs. UT Martin	-	McCall/Simic	Lost 7-9/Courtneil
10/21-10/22, 2011	vs. Northern Alabama	-	Alfonso/Franco	Won 8-2/Courtneil
02-12-12	at Central Arkansas	3	Horsikyan/Ruocco	Lost 3-8/Schaper
02-25-12	vs. South Dakota	2	Barudzio/Elkin	Lost 6-8/Courtneil
02-26-12	at Bradley	2	Mattson/Miles	Won 8-6/Courtneil
03-06-12	SOUTHERN ILLINOIS	2	Tomishima/Dien	Lost 7-8, 2-7/Courtneil
03-10-12	at IPFW	1	Huck/Kiefer	Lost 5-8/Courtneil
03-11-12	at Dayton	1	McNulty/Stevens	Lost 6-8/Courtneil
03-14-12	at Missouri-St. Louis	1	Werner/Pujitha Bandi	Lost 6-8/Courtneil
03-18-12	at UT Martin*	2	Herbold/Laing	Lost 4-8/Courtneil
03-24-12	at Austin Peay*	2	Cornea/Di Salvo	Lost 1-8/Courtneil
03-25-12	MURRAY STATE*	1	Canty/Cunitz	Lost 2-8/Novikova
03-31-12	at Tennessee State*	1	Thomas/Thomas	Won 8-3/Novikova
04-01-12	at Jacksonville State*	1	Guasti/Lima	Lost 0-8/Novikova
04-06-12	EASTERN KENTUCKY*	1	Labeja/Gerritsen	Lost 6-8/Novikova
04-07-12	MOREHEAD STATE*	1	Cran/Helms	Lost 2-8/Novikova
04-14-12	EASTERN ILLINOIS*	1	Prisner/Whitley	Lost 4-8/Novikova
04-15-12	at SIU Edwardsville	1	Connors/Horning	Won 8-4/Novikova

Meet the Redhawks

2015 TENNIS GUIDE



# SOUTHEAST MISSOURI STATE UNIVERSITY



## ANNISA WARASANTI

Sophomore • 5-5  
Bandung, Indonesia  
Bandung Public High School No. 2



**Fall (2014):** Ranked second on the team with five singles victories... Went 5-4 as one of only two Redhawks with winning singles records this past fall...Earned one win in doubles play...Notched victories in four of the first five singles matches she played...Paired with Maria Montenegro to get her first doubles win against Missouri State.

**2013-14:** Tied a team-high 15 singles victories as a freshman...Turned in an even 15-15 record in such contests...Six of her victories came at the No. 5 position in the lineup...Posted a 3-1 mark in No. 4 singles...Notched three wins in Ohio Valley Conference play...Played all of her doubles matches at No. 3...Began her rookie season with a five-match winning streak in singles play...Picked up her first career OVC singles win at Tennessee State (3/16)...Southeast

Scholar-Athlete and OVC Commissioner's Honor Roll selection.

**Prior to Southeast:** Ranked as high as No. 4 in her country...Won national championships as an individual and as part of a team at both the Inter-Province and Inter-City levels...Attended Bandung Public High School in addition to representing her province and city during several other tournaments...Signed a national letter of intent with Southeast Missouri on Apr. 25, 2013.

**Personal:** Born January 17, 1995...Majoring in Business Administration.



### 2013-14 Match-by-Match Results

#### Singles

Date	Team/School	Pos.	Opponent	Score
09-21-13	vs. Murray State	-	Erin Patton	Won, 3-6, 6-4, 10-8
09-21-13	vs. Western Kentucky	-	Madeline Phillips	Won, 5-6, 6-1, 10-6
09-22-13	vs. Austin Peay	-	Jovana Karac	Won, 6-3, 4-6, 10-4
09-22-13	vs. Murray State	-	Verginie Tchakarova	Won, 6-3, 0-6, 10-6
10-11-13	vs. UT Martin	-	Florence Nicole	Won, 7-6, 6-1
10-11-13	vs. Morehead State	-	Dominique McLean	Lost, 6-1, 2-6, 4-10
10-12-13	vs. Morehead State	-	L. Pacheco-Brousseau	Lost, 1-6, 4-6
10-26-13	vs. Arkansas State	-	Victoria Pisani	Won, 6-3, 6-3
01-23-14	at Nebraska-Omaha	5	Kenzie Hill	Won, 4-6, 6-2, 10-8
01-24-14	at Iowa State	5	Lydia Green	Lost, 1-6, 3-6
01-24-14	at Northern Iowa	5	Krissy Lankelma	Won, 3-6, 6-3, 1-0
02-07-14	at Butler	5	Grace Hyde	Won, 0-6, 6-2, 1-0
02-08-14	at IUPUI	5	Rachael Bridegroom	Won, 2-6, 6-4, 1-0
02-09-14	vs. Western Kentucky	5	Gabby Crofford	Lost, 6-2, 5-7, 0-1
02-22-14	at Saint Louis	5	Maria Toro Moreno	Lost, 5-7, 7-6, 0-1
02-23-14	at Southern Illinois	5	Polina Dozortseva	Lost, 5-7, 4-6
03-08-14	at Arkansas State	5	Jess Heeps-Eriksen	Lost, 1-6, 0-6
03-09-14	at Arkansas-Pine Bluff	4	Khadijah Kenyatte	Won, 6-0, 6-0
03-11-14	WESTERN ILLINOIS	4	Andriana Johnson	Won, 6-0, 6-0
03-15-14	at Belmont*	5	Abbie Mather	Lost, 4-6, 0-6
03-16-14	at Tennessee State*	5	Adrienne Pressley	Won, 1-0, retired
03-22-14	MOREHEAD STATE*	5	Sandrine Beaule	Won, 7-5, 6-3
03-23-14	EASTERN KENTUCKY*	5	Milena Poffo	Lost, 1-6, 2-6
03-26-14	at UT Martin*	5	Jessica Silva	Lost, 2-6, 7-6, 6-7
04-05-14	SIU EDWARDSVILLE*	5	Haley Ilcewicz	Lost, 6-4, 4-6, 0-1
04-06-14	at Eastern Illinois*	5	Hannah Kimbrough	Lost, 3-6, 1-6
04-07-14	vs. Jacksonville State*	5	Danielle Kerindi	Lost, 0-6, 0-6
04-11-14	#31 NORTHEASTERN ST.	4	Houda Bellamine	Lost, 5-7, 3-6
04-12-14	MURRAY STATE*	5	Verginie Tchakarova	Lost, 3-6, 1-6
04-13-14	AUSTIN PEAY*	4	Jovana Karac	Won, 6-4, 6-2

#### Warasanti's Career Singles Records at Southeast Missouri

	Overall	Dual	Tour	OVC	1	2	3	4	5	6
2013-14	15-15	9-13	6-2	3-7	-	-	-	3-1	6-12	-

#### Warasanti's Career Doubles Records at Southeast Missouri

	Overall	Dual	Tour	OVC	1	2	3
2013-14	4-18	4-15	0-3	0-8	-	-	4-15

Meet the Redhawks

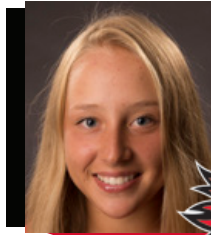
## Doubles

Date	Team/School	Pos.	Opponent	Score/Partner
09-21-13	vs. Murray State	-	Tchakarova/Tchakarova	Lost, 1-6/Smith
10-11-13	vs. Morehead State	-	Womack/Beaule	Lost, 2-8/Smith
10-12-13	vs. Morehead State	-	Womack/McLean	Lost, 4-8/Smith
01-23-14	at Nebraska-Omaha	3	Matricardi/Hottman	Lost, 1-6/Martin
01-24-14	at Iowa State	3	Hauge-Andersen/Green	Lost, 0-6/Martin
01-24-14	at Northern Iowa	3	Lankelma/Wolfe	Unfinished/Nagovitscina
02-07-14	at Butler	3	Hyde/Koester	Won, 6-2/Nagovitscina
02-08-14	at IUPUI	3	Brockman/Neff	Lost, 4-6/Nagovitscina
02-09-14	vs. Western Kentucky	3	A. Crofford/G. Crofford	Won, 6-1/Nagovitscina
02-22-14	at Saint Louis	3	Yacaman/Cook	Lost, 3-6/Nagovitscina
02-23-14	at Southern Illinois	3	Dozortseva/Cairo Baza	Lost, 2-8/Nagovitscina
03-08-14	at Arkansas State	3	Heeps-Eriksen/Pisani	Lost, 7-8/Nagovitscina
03-09-14	at Arkansas-Pine Bluff	3	Kenyatte/Jones	Won, 8-0/Nagovitscina
03-11-14	WESTERN ILLINOIS	3	Davis/Alger	Won, 8-0/Nagovitscina
03-15-14	at Belmont*	3	Mather/Gilley	Lost, 5-8/Nagovitscina
03-22-14	MOREHEAD STATE*	3	Wild/LeBlanc	Lost, 5-8/Nagovitscina
03-23-14	EASTERN KENTUCKY*	3	Faouzi/Poffo	Lost, 3-8/Nagovitscina
03-26-14	at UT Martin*	3	McCall/Silva	5-5, unfinished/Nagovitscina
04-05-14	SIU EDWARDSVILLE*	3	Frogner/Donner	Lost, 1-8/Brady
04-06-14	at Eastern Illinois*	3	Iden/Stadalninkaite	Lost, 2-8/Brady
04-07-14	vs. Jacksonville State*	3	Kerindi/Crnijic	Lost, 2-8/Brady
04-11-14	#31 NORTHEASTERN ST.	3	Bellamine/Lodge	Lost, 1-8/Brady
04-12-14	MURRAY STATE*	3	Suga/Blue	Lost, 0-8/Brady
04-13-14	AUSTIN PEAY*	3	Tatlock/Karac	Lost, 0-8/Brady



## ANNA MAKHNEVA

Freshman • 5-0  
Zarechniy, Russia  
Secondary School of General Education No. 1



## MARIYA KOSTYUK

Freshman • 5-9  
Kiev, Ukraine  
International School



**Fall (2014):** Led the Redhawks with a 6-1 singles record...Finished the fall on a three-match winning streak in singles play...Only loss came against Middle Tennessee's Sarah Sediri... Four of her wins came in three sets... Rallied to win three matches after dropping the second set...Paired up with Melissa Martin to secure her only doubles win vs. North Alabama.

**Prior to Southeast:** Attended International School.

**Personal:** Born November 3, 1996... Undeclared on her major...Daughter of Oleg Kostyuk and Talyna Beyko.

**Fall (2014):** Recorded one win in singles play and one in doubles action...Played in seven singles contests...Won the first singles bout she played with a straight set, 6-1, 6-1, victory over North Alabama's Sydney Childers...Also posted a victory in her first doubles match when she teamed up with Maria Montenegro to beat UT Martin's Tamara Klimek and Maria Sadusky, 8-7.

**Prior to Southeast:** Attended Secondary School of General Education No. 1 in Zarechniy, Russia.

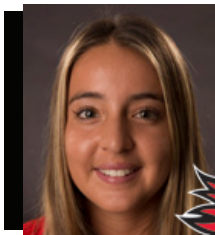
**Personal:** Born October 6, 1996... Majoring in Engineering Technology...Daughter of Konstantin and Kristina Makhneva.



Meet the Redhawks



# SOUTHEAST MISSOURI STATE UNIVERSITY



## MARIA MONTENEGRO

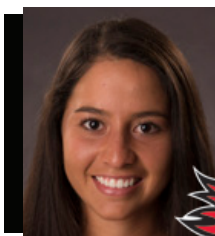
Freshman • 5-2  
Guayaquil, Ecuador  
Logos Academy



**Fall (2014):** Played in 10 singles matches, recording four victories... Tied for third on the team in singles wins... Added two wins in doubles play... Began the fall with victories in two of her first three singles bouts... Defeated North Alabama's Alexa Knight, UT Martin's Maria Sadusky and Sarah Candeloro, and Missouri

State's Abbey Belote for her singles victories.

**Personal:** Born September 15, 1995... Majoring in Environmental Science... Daughter of Egar Montenegro and Ma Beatriz Molina.



## VIVIANA ORTIZ

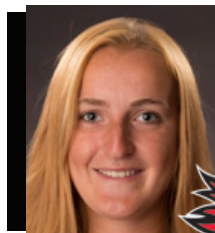
Freshman • 5-3  
Guayaquil, Ecuador  
Logos Academy



**Fall (2014):** Saw action in five matches during singles play... Played in six doubles contests, second-most on the team... Won her first singles match against Missouri State's Ekaterina Donetckova in straight sets, 6-3, 6-4... Her other win came against Murray State's Megan Blue... Paired with Kateryna Stoianova to earn her only doubles win over North

Alabama's Natalia Barragan and Avery King by a score of 8-7.

**Personal:** Born April 10, 1996... Majoring in Environmental Science... Daughter of Octavio Ortiz and Margarita Barcia.



## KATERYNA STOIANOVA

Freshman • 5-8  
Kiev, Ukraine  
Secondary Comprehensive School No. 328



**Fall (2014):** Tied for third on the team with four singles wins... Played a team-high seven doubles matches, recording a team-best three victories... Posted her first singles win with a 6-2, 6-3, victory over Austin Peay's Vanessa Tavares... Held a three-match winning streak in singles action... Won three of her first five doubles bouts.

**Personal:** Born July 28, 1997... Majoring in Environmental Science... Daughter of Dmytro Stoyanov and Larysa Savochkina.



Meet the Redhawks

# YEAR IN REVIEW



Southeast Missouri recorded nine wins in 2013-14, its most in a season since 2006-07. The Redhawks held a season-long five-match winning streak from Mar. 9-22.





# SOUTHEAST MISSOURI STATE UNIVERSITY

**Overall: 9-13 • OVC: 3-7 • Home: 2-5 • Away: 6-7 • Neutral: 1-1**

SINGLES	Overall	Dual	Tour	OVC	1	2	3	4	5	6	Strk	Last 10
Katy Brady	2-2	2-2	0-0	0-1	---	---	---	---	---	2-2	L2	2-2
Ekaterina Donetckova	8-18	6-16	2-2	1-9	---	---	6-16	---	---	---	L9	1-9
Valeriia Kashina	9-18	8-14	1-4	3-7	7-13	1-1	---	---	---	---	L3	2-8
Melissa Martin	14-6	14-6	0-0	7-2	---	---	---	---	3-1	11-5	L1	7-2
Valeriia Nagovitscina	15-12	14-8	1-4	6-4	1-1	13-7	---	---	---	---	W1	6-4
Heather Robinson	14-12	8-10	6-2	2-7	---	---	---	8-10	---	---	L6	2-8
Maya Smith	0-3	0-0	0-3	0-0	---	---	---	---	---	---	L3	0-3
Annisa Warasanti	15-15	9-13	6-2	3-7	---	---	---	3-1	6-12	---	W1	3-7
<b>Totals</b>	<b>78-86</b>	<b>62-69</b>	<b>16-17</b>	<b>23-37</b>	<b>8-14</b>	<b>14-8</b>	<b>6-16</b>	<b>11-11</b>	<b>9-13</b>	<b>14-7</b>		
<b>Percentage</b>	<b>.476</b>	<b>.473</b>	<b>.485</b>	<b>.383</b>	<b>.364</b>	<b>.636</b>	<b>.273</b>	<b>.500</b>	<b>.409</b>	<b>.667</b>		

DOUBLES	Overall	Dual	Tour	OVC	1	2	3	Strk	Last 10
Nagovitscina/Robinson	4-4	0-2	4-2	0-0	---	0-2	---	L2	4-4
Donetckova/Kashina	9-12	8-10	1-2	3-6	8-10	---	---	L4	3-7
Smith/Warasanti	0-3	0-0	0-3	0-0	---	---	---	L3	0-3
Martin/Warasanti	0-2	0-2	0-0	0-0	---	---	0-2	L2	0-2
Kashina/Robinson	0-1	0-1	0-0	0-0	0-1	---	---	L1	0-1
Donetckova/Martin	0-1	0-1	0-0	0-0	---	0-1	---	L1	0-1
Martin/Robinson	6-4	6-4	0-0	2-1	---	6-4	---	L1	6-4
Nagovitscina/Warasanti	4-7	4-7	0-0	0-3	---	---	4-7	L3	3-7
Martin/Nagovitscina	1-2	1-2	0-0	1-2	---	1-2	---	W1	1-2
Brady/Warasanti	0-6	0-6	0-0	0-5	---	---	0-6	L6	0-6
<b>Totals</b>	<b>25-42</b>	<b>20-35</b>	<b>5-7</b>	<b>7-17</b>	<b>8-11</b>	<b>7-9</b>	<b>5-15</b>		
<b>Percentage</b>	<b>.373</b>	<b>.364</b>	<b>.417</b>	<b>.292</b>	<b>.421</b>	<b>.438</b>	<b>.250</b>		



Date	Opponent	Score	Overall	OVC
01-23-14	at Nebraska-Omaha	W 4-3	1-0	0-0
01-24-14	at Iowa State	L 0-6	1-1	0-0
01-24-14	at Northern Iowa	L 3-4	1-2	0-0
02-07-14	at Butler	W 5-2	2-2	0-0
02-08-14	at IUPUI	W 5-2	3-2	0-0
02-09-14	vs. Western Kentucky	W 5-2	4-2	0-0
02-22-14	at Saint Louis	L 1-6	4-3	0-0
02-23-14	at Southern Illinois	L 3-4	4-4	0-0
03-08-14	at Arkansas State	L 2-5	4-5	0-0
03-09-14	at Arkansas-Pine Bluff	W 7-0	5-5	0-0
03-11-14	WESTERN ILLINOIS	W 7-0	6-5	0-0
03-15-14	at Belmont*	W 4-3	7-5	1-0
03-16-14	at Tennessee State*	W 7-0	8-5	2-0
03-22-14	MOREHEAD STATE*	W 4-3	9-5	3-0
03-23-14	EASTERN KENTUCKY*	L 0-7	9-6	3-1
03-26-14	at UT Martin*	L 1-6	9-7	3-2
04-05-14	SIU EDWARDSVILLE*	L 2-5	9-8	3-3
04-06-14	at Eastern Illinois*	L 2-5	9-9	3-4
04-07-14	vs. Jacksonville State*	L 2-5	9-10	3-5
04-11-14	#31 NORTHEASTERN ST.	L 2-5	9-11	3-5
04-12-14	MURRAY STATE*	L 1-6	9-12	3-6
04-13-14	AUSTIN PEAY*	L 2-5	9-13	3-7



\* - Denotes Ohio Valley Conference match | Home matches in all CAPS

## 2013-14 Final Statistics

Overall: 3-7 • OVC: 3-7 • Home: 1-4 • Away: 2-2 • Neutral: 0-1

SINGLES	Overall	Dual	Tour	OVC	1	2	3	4	5	6	Strk	Last 10
Katy Brady	0-1	0-1	0-0	0-1	---	---	---	---	---	0-1	L1	0-1
Ekaterina Donetckova	1-9	1-9	0-0	1-9	---	---	1-9	---	---	---	L8	1-9
Valeriia Kashina	3-7	3-7	0-0	3-7	2-7	1-0	---	---	---	---	L2	3-7
Melissa Martin	7-2	7-2	0-0	7-2	---	---	---	---	0-1	7-1	L1	7-2
Valeriia Nagovitchina	6-4	6-4	0-0	6-4	0-1	6-3	---	---	---	---	W1	6-4
Heather Robinson	2-7	2-7	0-0	2-7	---	---	---	2-7	---	---	L6	2-7
Annisa Warasanti	3-7	3-7	0-0	3-7	---	---	---	1-0	2-7	---	W1	3-7
Totals	23-37	23-37	0-0	23-37	2-8	7-3	1-9	3-7	2-8	8-2		
Percentage	.383	.383	.000	.383	.200	.700	.100	.300	.200	.800		

DOUBLES	Overall	Dual	Tour	OVC	1	2	3	Strk	Last 10
Donetckova/Kashina	3-6	3-6	0-0	3-6	3-6	---	---	L3	3-6
Martin/Robinson	2-1	2-1	0-0	2-1	---	2-1	---	L1	2-1
Nagovitchina/Warasanti	0-3	0-3	0-0	0-3	---	---	0-3	L3	0-3
Martin/Nagovitchina	1-2	1-2	0-0	1-2	---	1-2	---	W1	1-2
Brady/Warasanti	0-5	0-5	0-0	0-5	---	---	0-5	L5	0-5
Totals	7-17	7-17	0-0	7-17	3-6	3-3	1-8		
Percentage	.292	.292	.000	.292	.333	.500	.111		



Date	Opponent		Score	Overall	OVC
03-15-14	at Belmont	W	4-3	1-0	1-0
03-16-14	at Tennessee State	W	7-0	2-0	2-0
03-22-14	MOREHEAD STATE	W	4-3	3-0	3-0
03-23-14	EASTERN KENTUCKY	L	0-7	3-1	3-1
03-26-14	at UT Martin	L	1-6	3-2	3-2
04-05-14	SIU EDWARDSVILLE	L	2-5	3-3	3-3
04-06-14	at Eastern Illinois	L	2-5	3-4	3-4
04-07-14	vs. Jacksonville State	L	2-5	3-5	3-5
04-12-14	MURRAY STATE	L	1-6	3-6	3-6
04-13-14	AUSTIN PEAY	L	2-5	3-7	3-7

Home matches in all CAPS



2013-14 OVC Statistics

2015 TENNIS GUIDE



# SOUTHEAST MISSOURI STATE UNIVERSITY

## Katy Brady

SINGLES	Team/School	Position	Opponent	Result	Score
03-09-14	at Arkansas Pine-Bluff	6	Destiny Jones	Won	6-0, 6-0
03-11-14	WESTERN ILLINOIS	6	Jamee Hale	Won	7-6, 6-0
04-11-14	#31 NORTHEASTERN STATE	6	Barbora Jirickova	Lost	0-6, 0-6
04-13-14	AUSTIN PEAY*	6	Isabela Jovanovic	Lost	1-6, 0-6

DOUBLES	Team/School	Position	Opponent	Result	Score/Partner
04-05-14	SIU EDWARDSVILLE*	3	Mia Frogner/Kali Donner	Lost	1-8/Warasanti
04-06-14	at Eastern Illinois*	3	Kelly Iden/K. Stadalninkaite	Lost	2-8/Warasanti
04-07-14	vs. Jacksonville State*	3	Danielle Kerindi/Aleksandra Crniljic	Lost	2-8, Warasanti
04-11-14	#31 NORTHEASTERN STATE	3	Houda Bellamine/Maria Lodge	Lost	1-8/Warasanti
04-12-14	MURRAY STATE*	3	Carla Suga/Megan Blue	Lost	0-8/Warasanti
04-13-14	AUSTIN PEAY*	3	Hannah Tatlock/Jovana Karac	Lost	0-8/Warasanti

## Ekaterina Donetckova

SINGLES	Team/School	Position	Opponent	Result	Score
09-21-13	vs. Southeast Missouri	-	Valeriia Kashina	Won	4-6, 6-2, 10-8
09-21-13	vs. Murray State	-	Megan Blue	Lost	0-6, 4-6
10-11-13	vs. UT Martin	-	Jessica Silva	Lost	2-6, 7-5, 9-11
10-11-13	vs. UT Martin	-	Katie McCall	Won	7-5, 5-7, 10-7
10-12-13	vs. Morehead State	-	Kennedy Womack	-	1-6, 6-1 (11-0)
01-23-14	at Nebraska-Omaha	3	Hylan Miller	Won	3-6, 6-3, 10-6
01-24-14	at Iowa State	3	Meghan Cassens	Lost	2-6, 2-6
01-24-14	at Northern Iowa	3	Elvira Lopez	Lost	2-6, 1-6
02-07-14	at Butler	3	Kailey Eaton	Won	6-4, 6-3
02-08-14	at IUPUI	3	Vanessa White	Lost	6-4, 2-6, 0-1
02-09-14	vs. Western Kentucky	3	Emily Przystawski	Won	6-2, 6-4
02-22-14	at Saint Louis	3	Natalia Yacaman	Lost	5-7, 3-6
02-23-14	at Southern Illinois	3	Anita Lee	Lost	0-6, 0-6
03-08-14	at Arkansas State	3	Julie Gauguery	Lost	1-6, 1-6
03-09-14	at Arkansas Pine-Bluff	3	Monica Arcos	Won	6-3, 6-4
03-11-14	WESTERN ILLINOIS	3	Jessica Callahan	Won	6-0, 6-0
03-15-14	at Belmont*	3	Nikki Maciel	Lost	4-6, 5-7
03-16-14	at Tennessee State*	3	Jade Daniels	Won	6-0, 6-1
03-22-14	MOREHEAD STATE*	3	Dominique McLean	Lost	1-6, 2-6
03-23-14	EASTERN KENTUCKY*	3	Melissa Gerritsen	Lost	4-6, 2-6
03-26-14	at UT Martin*	3	Sarah Candeloro	Lost	0-6, 2-6
04-05-14	SIU EDWARDSVILLE*	3	Mia Frogner	Lost	3-6, 3-6
04-06-14	at Eastern Illinois*	3	Sephora Boulbahaieim	Lost	3-6, 0-6
04-07-14	vs. Jacksonville State*	3	Claudia Marsala	Lost	0-6, 0-6
04-11-14	#31 NORTHEASTERN STATE	3	Valeriia Efimenko	Lost	4-6, 5-7
04-12-14	MURRAY STATE*	3	Eleonore Tchakarova	Lost	2-6, 1-6
04-13-14	AUSTIN PEAY*	3	Vanessa Tavares	Lost	4-6, 2-6

DOUBLES	Team/School	Position	Opponent	Result	Score/Partner
09-21-13	vs. Murray State	-	Megan Blue/Erin Patton	Lost	1-6/Kashina
10-11-13	vs. Morehead State	-	Briar Preston/Andrea LeBlanc	Lost	2-8/Kashina
10-12-13	vs. Morehead State	-	Hayley Wild/Sandrine Beaulé	Won	8-2/Kashina
01-23-14	at Nebraska-Omaha	1	Alex Tran/Jacqueline Baude	Lost	2-7/Kashina
01-24-14	at Iowa State	1	Ksenia Pronina/Samantha Budai	Lost	2-6/Kashina
01-24-14	at Northern Iowa	2	Elvira Lopez/Astrid Santos	Lost	2-6/Martin
02-07-14	at Butler	1	S. McLoughlin/Kalley Eaton	Won	6-2/Kashina
02-08-14	at IUPUI	1	Vanessa Whyte/Rachel Smartwood	Won	6-1/Kashina

## Match-by-Match Results

02-09-14	vs. Western Kentucky	1	Madeline Phillips/Monta Reinfelde	Won	6-3/Kashina
02-22-14	at Saint Louis	1	Stephanie Hollis/Brooke Urzendowski	Won	6-3/Kashina
02-23-14	at Southern Illinois	1	Natasha Tomishima/Meagan Monaghan	-	Unfinished/Kashina
03-08-14	at Arkansas State	1	Tamara Slijepcevic/Janie Nowland	Lost	7-8/Kashina
03-09-14	at Arkansas-Pine Bluff	1	E. Perez-Rodriguez/Monica Arcos	Won	8-3/Kashina
03-11-14	WESTERN ILLINOIS	1	Jenna Wallace/Nicole Jones	-	Unfinished/Kashina
03-15-14	at Belmont*	1	Kendall Warren/L. Van Eeckhoudt	Won	8-5/Kashina
03-16-14	at Tennessee State*	1	Victoria Haynes/Trinity Rudolph	Won	8-2/Kashina
03-22-14	MOREHEAD STATE*	1	Briar Preston/Alex Tachovsky	Lost	5-8/Kashina
03-23-14	EASTERN KENTUCKY*	1	Kristian Labeja/Melissa Gerritsen	Lost	5-8/Kashina
03-26-14	at UT Martin*	1	Ivon Simic/Sarah Caneloro	Lost	2-8/Kashina
04-05-14	SIU EDWARDSVILLE*	1	Sierra Halverson/Monique Krutak	Won	8-5/Kashina
04-06-14	at Eastern Illinois*	1	Janelle Prisner/Sephora Boulbahaem	Lost	1-8/Kashina
04-07-14	vs. Jacksonville State*	1	Raisa Guasti/Claudia Marsala	Lost	6-8/Kashina
04-11-14	#31 NORTHEASTERN STATE	1	Valeriia Eflmenko/Martina Bruzikova	Lost	4-8/Kashina
04-12-14	MURRAY STATE*	1	Eleonore Tchakarova/Verginie Tchakarova	-	5-7, unfinished/Kashina
04-13-14	AUSTIN PEAY*	1	Ornella Di Salvo/Andra Cornea	Lost	7-8/Kashina

### Valeriia Kashina

SINGLES	Team/School	Position	Opponent	Result	Score
09-21-13	vs. Southeast Missouri	-	Ekaterina Donetckova	Lost	6-4, 2-6, 8-10
10-11-13	vs. UT Martin	-	Burcu Tari	Lost	1-6, 2-6
10-11-13	vs. UT Martin	-	Sarah Caneloro	Lost	4-6, 3-6
10-12-13	vs. Morehead State	-	Andrea LeBlanc	Lost	6-7, 1-6
10-26-13	vs. Belmont	-	Sandra Kancheva	Won	6-2, 6-3
01-23-14	at Nebraska-Omaha	1	Alex Tran	Lost	4-6, 2-6
01-24-14	at Iowa State	1	Ksenia Pronina	Lost	0-6, 2-6
01-24-14	at Northern Iowa	1	Erica Medlin	Won	6-2, 6-3
02-07-14	at Butler	1	S. McLoughlin	Lost	5-7, 6-4, 0-1
02-08-14	at IUPUI	1	Bobbi Modesto	Won	6-4, 4-6, 1-0
02-09-14	vs. Western Kentucky	1	Monta Reinfelde	Lost	3-6, 0-6
02-22-14	at Saint Louis	1	Aspen Cervin	Lost	4-6, 6-4, 0-1
02-23-14	at Southern Illinois	1	Natasha Tomishima	Lost	6-7, 1-6
03-08-14	at Arkansas State	1	Tamara Slijepcevic	Won	1-6, 6-4, 1-0
03-09-14	at Arkansas Pine-Bluff	1	E. Rodriguez-Perez	Won	3-6, 6-4, 1-0
03-11-14	WESTERN ILLINOIS	1	Jenna Wallace	Won	6-3, 6-3
03-15-14	at Belmont*	1	Sandra Kancheva	Won	6-3, 6-4
03-16-14	at Tennessee State*	1	Victoria Haynes	Won	6-4, 6-1
03-22-14	MOREHEAD STATE*	1	Briar Preston	Lost	1-6, 0-6
03-23-14	EASTERN KENTUCKY*	1	Kristina Labeja	Lost	2-6, 1-6
03-26-14	at UT Martin*	1	Ivon Simic	Lost	7-6, 1-6, 0-6
04-05-14	SIU EDWARDSVILLE*	1	Lexi Aranda	Lost	3-6, 2-6
04-06-14	at Eastern Illinois*	1	Janelle Prisner	Lost	6-7, 7-5, 0-1
04-07-14	vs. Jacksonville State*	2	Olivia Nguyen	Won	4-6, 6-1, 1-0
04-11-14	#31 NORTHEASTERN STATE	2	Martina Bruzikova	Lost	4-6, 3-6
04-12-14	MURRAY STATE*	1	Andrea Eskauriatza	Lost	4-6, 6-7
04-13-14	AUSTIN PEAY*	1	Ornella Di Salvo	Lost	2-6, 1-6

DOUBLES	Team/School	Position	Opponent	Result	Score/Partner
09-21-13	vs. Murray State	-	Megan Blue/Erin Patton	Lost	1-6/Donetckova
10-11-13	vs. Morehead State	-	Briar Preston/Andrea LeBlanc	Lost	2-8/Donetckova
10-12-13	vs. Morehead State	-	Hayley Wild/Sandrine Beaulé	Won	8-2/Donetckova
01-23-14	at Nebraska-Omaha	1	Alex Tran/Jacqueline Baude	Lost	2-7/Donetckova
01-24-14	at Iowa State	1	Ksenia Pronina/Samantha Budai	Lost	2-6/Donetckova

## Match-by-Match Results



# SOUTHEAST MISSOURI STATE UNIVERSITY

01-24-14	at Northern Iowa	1	Erica Medlin/Jieke Stroobant	Lost	3-6/Robinson
02-07-14	at Butler	1	S. McLoughlin/Kalley Eaton	Won	6-2/Donetckova
02-08-14	at IUPUI	1	Vanessa Whyte/Rachel Swartwood	Won	6-1/Donetckova
02-09-14	vs. Western Kentucky	1	Madeline Phillips/Monta Reinfelde	Won	6-3/Donetckova
02-22-14	at Saint Louis	1	Stephanie Hollis/Brooke Urzendowski	Won	6-3/Donetckova
02-23-14	at Southern Illinois	1	Natasha Tomishima/Meagan Monaghan	-	Unfinished/Donetckova
03-08-14	at Arkansas State	1	Tamara Slijepcevic/Janie Nowland	Lost	7-8/Donetckova
03-09-14	at Arkansas-Pine Bluff	1	E. Perez-Rodriguez/Monica Arcos	Won	8-3/Donetckova
03-11-14	WESTERN ILLINOIS	1	Jenna Wallace/Nicole Jones	-	Unfinished/Donetckova
03-15-14	at Belmont*	1	Kendall Warren/L. Van Eeckhoudt	Won	8-5/Donetckova
03-16-14	at Tennessee State*	1	Victoria Haynes/Trinity Randolph	Won	8-2/Donetckova
03-22-14	MOREHEAD STATE*	1	Briar Preston/Alex Tachovsky	Lost	5-8/Donetckova
03-23-14	EASTERN KENTUCKY*	1	Kristian Labeja/Melissa Gerritsen	Lost	5-8/Donetckova
03-26-14	at UT Martin*	1	Ivon Simic/Sarah Candeloro	Lost	2-8/Donetckova
04-05-14	SIU EDWARDSVILLE*	1	Sierra Halverson/Monique Krutak	Won	8-5/Donetckova
04-06-14	at Eastern Illinois*	1	Janelle Prisner/Sephora Boulbahaem	Lost	1-8/Donetckova
04-07-14	vs. Jacksonville State*	1	Raisa Guasti/Claudia Marsala	Lost	6-8/Donetckova
04-11-14	#31 NORTHEASTERN STATE	1	Valeriia Eflmenko/Martina Bruzikova	Lost	4-8/Donetckova
04-12-14	MURRAY STATE*	1	Eleonore Tchakarova/Verginie Tchakarova	-	5-7, unfinished/Donetckova
04-13-14	AUSTIN PEAY*	1	Ornella Di Salvo/Andra Cornea	Lost	7-8/Donetckova

## Melissa Martin

SINGLES	Team/School	Position	Opponent	Result	Score
01-23-14	at Nebraska-Omaha	6	Jacqueline Baude	Won	5-7, 6-1, 10-5
01-24-14	at Northern Iowa	6	Sydney Wolfe	Lost	2-6, 6-0, 0-1
02-07-14	at Butler	6	Jocelyn Koester	Lost	4-6, 3-6
02-08-14	at IUPUI	6	Abbey Neff	Lost	2-6, 1-6
02-09-14	vs. Western Kentucky	6	Alex Crofford	Won	6-2, 6-2
02-22-14	at Saint Louis	6	Madison Cook	Lost	1-6, 6-4, 0-1
02-23-14	at Southern Illinois	6	Lola Garcia	Won	7-6, 6-3
03-08-14	at Arkansas State	6	Victoria Pisani	Won	7-5, 6-4
03-09-14	at Arkansas-Pine Bluff	5	Fabiola Cardoso	Won	6-2, 6-2
03-11-14	WESTERN ILLINOIS	5	Ese Davis	Won	6-2, 6-0
03-15-14	at Belmont*	6	Ann Lauren Fiepk	Won	6-2, 6-4
03-22-14	MOREHEAD STATE*	6	Hayley Wild	Won	7-6, 2-6, 6-4
03-23-14	EASTERN KENTUCKY*	6	Marcela Jimenez	Lost	3-6, 1-6
03-26-14	at UT Martin*	6	Katie McCall	Won	6-1, 6-1
04-05-14	SIU EDWARDSVILLE*	6	McKenzie Thomas	Won	7-5, 7-6
04-06-14	at Eastern Illinois*	6	K. Stadalninkaite	Won	6-0, 6-2
04-07-14	vs. Jacksonville State*	6	Zoe Bizinos	Won	7-5, 6-2
04-11-14	#31 NORTHEASTERN STATE	5	Lucia Cerchianova	Won	6-3, 6-4
04-12-14	MURRAY STATE*	6	Erin Patton	Won	6-2, 7-5
04-13-14	AUSTIN PEAY*	5	Hannah Tatlock	Lost	6-7, 2-6

DOUBLES	Team/School	Position	Opponent	Result	Score/Partner
01-23-14	at Nebraska-Omaha	3	Molly Matricardi/Tiffany Hottman	Lost	1-6/Warasanti
01-24-14	at Iowa State	3	C. Hauge-Anderson/Lydia Green	Lost	0-6/Warasanti
01-24-14	at Northern Iowa	2	Elvira Lopez/Astrid Santos	Lost	2-6/Donetckova
02-07-14	at Butler	2	Konstantina Adami/Angelina Qin	Won	6-0/Robinson
02-08-14	at IUPUI	2	Rachael Bridegroom/Bobbi Modesto	Won	6-6, 1-0/Robinson
02-09-14	vs. Western Kentucky	2	Emily Przystawski/Carolina Barboza	-	Unfinished/Robinson
02-22-14	at Saint Louis	2	Aspen Cervin/Maria Toro Moreno	Lost	4-6/Robinson
02-23-14	at Southern Illinois	2	Anita Lee/Korey Love	Lost	2-8/Robinson
03-08-14	at Arkansas State	2	Biljana Miloshevska/Julie Gauguery	Lost	4-8/Robinson

## Match-by-Match Results

03-09-14	at Arkansas-Pine Bluff	2	Maria Cabane/Fabiola Cardoso	Won	8-5/Robinson
03-11-14	WESTERN ILLINOIS	2	Jessica Callahan/Andriana Johnson	Won	8-0/Robinson
03-15-14	at Belmont*	2	Sandra Kancheva/Nikki Maciel	Won	8-1/Robinson
03-16-14	at Tennessee State*	2	Jade Daniels/Adrianne Pressley	Won	1-0, retired/Robinson
03-22-14	MOREHEAD STATE*	2	Sandrine Beaule/Dominique McLean	-	7-5, unfinished/Robinson
03-23-14	EASTERN KENTUCKY*	2	Saioa Oscoz/Carmen Rodriguez	-	5-7, unfinished/Robinson
03-26-14	at UT Martin*	2	Burcu Tari/Hitomi Naito	Lost	1-8/Robinson
04-05-14	SIU EDWARDSVILLE*	2	Lexi Aranda/Haley Ilcewicz	Lost	7-8/Nagovitchina
04-06-14	at Eastern Illinois*	2	Ali Foster/Hannah Kimbrough	-	2-7, unfinished/Nagovitchina
04-07-14	vs. Jacksonville State*	2	Olivia Nguyen/Zoe Bizinos	-	7-6, unfinished/Nagovitchina
04-11-14	#31 NORTHEASTERN STATE	2	Kristina Savchenkov/Barbora Jirickova	-	6-7, unfinished/Nagovitchina
04-12-14	MURRAY STATE*	2	Andrea Eskauriatza/Erin Patton	Lost	1-8/Nagovitchina
04-13-14	AUSTIN PEAY*	2	Vanessa Tavares/Isabela Jovanovic	Won	8-3/Nagovitchina

### Valeriia Nagovitchina

SINGLES	Team/School	Position	Opponent	Result	Score
09-21-13	vs. Austin Peay	-	Ornella Di Salvo	Lost	3-6, 1-6
10-11-13	vs. UT Martin	-	Sarah Candeloro	Lost	5-7, 5-7
10-11-13	vs. UT Martin	-	Burcu Tari	Lost	2-6, 1-6
10-12-13	vs. Morehead State	-	Briar Preston	Lost	0-6, 1-6
10-26-13	vs. Southern Illinois	-	Polina Dozortseva	Won	6-3, 6-3
01-23-14	at Nebraska-Omaha	2	Molly Matricardi	Lost	7-5, 5-7, 7-10
01-24-14	at Iowa State	2	Samantha Budai	Lost	2-6, 3-6
01-24-14	at Northern Iowa	2	Jieke Stroobant	Won	6-1, 6-3
02-07-14	at Butler	2	Konstantina Adami	Won	6-2, 6-2
02-08-14	at IUPUI	2	Rachel Swartwood	Won	6-1, 6-3
02-09-14	vs. Western Kentucky	2	Madeline Phillips	Won	6-4, 6-0
02-22-14	at Saint Louis	2	Stephanie Hollis	Lost	4-6, 3-6
02-23-14	at Southern Illinois	2	Meagan Monaghan	Won	6-4, 7-5
03-08-14	at Arkansas State	2	Janie Nowland	Lost	3-6, 1-6
03-09-14	at Arkansas-Pine Bluff	2	Maria Cabane	Won	6-1, 6-1
03-11-14	WESTERN ILLINOIS	2	Nicole Jones	Won	6-2, 6-0
03-15-14	at Belmont*	2	L. Van Eeckhoudt	Won	3-6, 6-4, 6-2
03-16-14	at Tennessee State*	2	Trinity Randolph	Won	6-0, 6-3
03-22-14	MOREHEAD STATE*	2	Andrea LeBlanc	Won	1-6, 7-6, 6-3
03-23-14	EASTERN KENTUCKY*	2	Amandine Faouzi	Lost	3-6, 2-6
03-26-14	at UT Martin*	2	Hitomi Naito	Lost	3-6, 7-5, 1-6
04-05-14	SIU EDWARDSVILLE*	2	Monique Krutak	Won	3-6, 6-4, 6-3
04-06-14	at Eastern Illinois*	2	Kelly Iden	Won	6-1, 6-1
04-07-14	vs. Jacksonville State*	1	Raisa Guasti	Lost	2-6, 3-6
04-11-14	#31 NORTHEASTERN STATE	1	Kristina Savchenkov	Won	6-2, 6-4
04-12-14	MURRAY STATE*	2	Carla Suga	Lost	4-6, 4-6
04-13-14	AUSTIN PEAY*	2	Andra Cornea	Won	4-6, 6-3, 1-0

DOUBLES	Team/School	Position	Opponent	Result	Score/Partner
09-21-13	vs. UT Martin	-	Jessica Silva/Florence Nicole	Won	6-0/Robinson
10-11-13	vs. Morehead State	-	L. Pacheco-Brousseau/Hayley Wild	Lost	6-8/Robinson
10-12-13	vs. Morehead State	-	Briar Preston/Andrea LeBlanc	Lost	4-8/Robinson
10-26-13	vs. Southern Illinois	-	Polina Dozortseva/Lauren Hoekstra	Won	8-7/Robinson
10-26-13	vs. Belmont	-	Sandra Kancheva/Nikki Maciel	Won	8-4/Robinson
10-26-13	vs. Arkansas State	-	Victoria Pisani/Jess Heeps-Eriksen	Won	8-6/Robinson
01-23-14	at Nebraska-Omaha	2	Hylan Miller/Kenzie Hill	Lost	4-6/Robinson
01-24-14	at Iowa State	2	Ana Gasparovic/Meghan Cassens	Lost	1-6/Robinson
01-24-14	at Northern Iowa	3	Krissy Lankelma/Sydney Wolfe	-	Unfinished/Varasanti

## Match-by-Match Results



# SOUTHEAST MISSOURI STATE UNIVERSITY

02-07-14	at Butler	3	Grace Hyde/Jocelyn Koester	Won	6-2/Warasanti
02-08-14	at IUPUI	3	Julie Brockman/Abbey Neff	Lost	4-6/Warasanti
02-09-14	vs. Western Kentucky	3	Alex Crofford/Gabby Crofford	Won	6-1/Warasanti
02-22-14	at Saint Louis	3	Natalia Yacaman/Madison Cook	Lost	3-6/Warasanti
02-23-14	at Southern Illinois	3	Polina Dozortseva/Ariadna Cairo Baza	Lost	2-8/Warasanti
03-08-14	at Arkansas State	3	Jess Heeps-Eriksen/Victoria Pisani	Lost	7-8/Warasanti
03-09-14	at Arkansas-Pine Bluff	3	Khadijah Kenyatte/Destiny Jones	Won	8-0/Warasanti
03-11-14	WESTERN ILLINOIS	3	Ese Davis/Melissa Alger	Won	8-0/Warasanti
03-15-14	at Belmont*	3	Abbie Mather/Maddie Gilley	Lost	5-8/Warasanti
03-22-14	MOREHEAD STATE*	3	Hayley Wild/Andrea LeBlanc	Lost	5-8/Warasanti
03-23-14	EASTERN KENTUCKY*	3	Amandine Faouzi/Milena Poffo	Lost	3-8/Warasanti
03-26-14	at UT Martin*	3	Katie McCall/Jessica Silva	-	5-5, unfinished/Warasanti
04-05-14	SIU EDWARDSVILLE*	2	Lexi Aranda/Haley Ilcewicz	Lost	7-8/Martin
04-06-14	at Eastern Illinois*	2	Ali Foster/Hannah Kimbrough	-	2-7, unfinished/Martin
04-07-14	vs. Jacksonville State*	2	Olivia Nguyen/Zoe Bizinos	-	7-6, unfinished/Martin
04-11-14	#31 NORTHEASTERN STATE	2	Kristina Savchenkov/Barbora Jirickova	-	6-7, unfinished/Martin
04-12-14	MURRAY STATE*	2	Andra Eskauriatza/Erin Patton	Lost	1-8/Martin
04-13-14	AUSTIN PEAY*	2	Vanessa Tavares/Isabela Jovanovic	Won	8-3/Martin

## Heather Robinson

SINGLES	Team/School	Position	Opponent	Result	Score
09-21-13	vs. UT Martin	-	Jessic Silva	Won	6-4, 6-4
09-21-13	vs. Western Kentucky	-	Carolina Barboza	Lost	2-6, 5-6
10-11-13	vs. UT Martin	-	Katie McCall	Won	6-2, 6-0
10-11-13	vs. UT Martin	-	Jessica Silva	Won	5-7, 6-4, 10-8
10-12-13	vs. Morehead State	-	Dominique McLean	Won	6-4, 6-3
10-26-13	vs. Central Arkansas	-	Kristina Horsikyan	Won	6-4, 6-4
10-26-13	vs. Arkansas State	-	Biljana Miloshevska	Won	6-0, 6-3
10-26-13	vs. Murray State	-	Eleonore Tchakarova	Lost	3-6, 2-6
01-23-14	at Nebraska-Omaha	4	Lindsay Weideman	Won	6-4, 6-2
01-24-14	at Iowa State	4	Ana Gasparovic	Lost	1-6, 4-6
01-24-14	at Northern Iowa	4	Astrid Santos	Lost	5-7, 0-6
02-07-14	at Butler	4	Angelina Qin	Won	1-6, 6-4, 1-0
02-08-14	at IUPUI	4	Julie Brockman	Won	6-3, 6-0
02-09-14	vs. Western Kentucky	4	Carolina Barboza	Won	4-6, 6-2, 1-0
02-22-14	at Saint Louis	4	Brooke Urzendowski	Won	6-3, 7-5
02-23-14	at Southern Illinois	4	Ariadna Cairo Baza	Won	3-6, 7-6, 1-0
03-08-14	at Arkansas State	4	Biljana Miloshevska	Lost	5-7, 2-6
03-15-14	at Belmont*	4	Kendall Warren	Lost	1-6, 0-6
03-16-14	at Tennessee State*	4	Attallah Eiland	Won	1-0, retired
03-22-14	MOREHEAD STATE*	4	Alex Tachovsky	Won	7-6, 6-7, 6-4
03-23-14	EASTERN KENTUCKY*	4	Saioa Oscoz	Lost	3-6, 3-6
03-26-14	at UT Martin*	4	Burcu Tari	Lost	0-6, 1-6, retired
04-05-14	SIU EDWARDSVILLE*	4	Kali Donner	Lost	0-6, 0-6
04-06-14	at Eastern Illinois*	4	Ali Foster	Lost	3-6, 6-7
04-07-14	vs. Jacksonville State*	4	Isidora Knezevic	Lost	3-6, 6-1, 0-1
04-12-14	MURRAY STATE*	4	Megan Blue	Lost	0-1, retired

DOUBLES	Team/School	Position	Opponent	Result	Score/Partner
09-21-13	vs. UT Martin	-	Jessica Silva/Florence Nicole	Won	6-0/Nagovitchina
10-11-13	vs. Morehead State	-	L. Pacheco-Brousseau/Hayley Wild	Lost	6-8/Nagovitchina
10-12-13	vs. Morehead State	-	Briar Preston/Andrea LeBlanc	Lost	4-8/Nagovitchina
10-26-13	vs. Southern Illinois	-	Polina Dozortseva/Lauren Hoekstra	Won	8-7/Nagovitchina
10-26-13	vs. Belmont	-	Sandra Kancheva/Nikki Maciel	Won	8-4/Nagovitchina

## Match-by-Match Results

10-26-13	vs. Arkansas State	-	Victoria Pisani/Jess Heeps-Eriksen	Won	8-6/Nagovitchina
01-23-14	at Nebraska-Omaha	2	Hylan Miller/Kenzie Hill	Lost	4-6/Nagovitchina
01-24-14	at Iowa State	2	Ana Gasparovic/Meghan Cassens	Lost	1-6/Nagovitchina
01-24-14	at Northern Iowa	1	Erica Medlin/Jieke Stroobant	Lost	3-6/Kashina
02-07-14	at Butler	2	Konstantina Adami/Angelina Qin	Won	6-0/Martin
02-08-14	at IUPUI	2	Rachael Bridegroom/Bobbi Modesto	Won	6-6, 1-0/Martin
02-09-14	vs. Western Kentucky	2	Emily Przystawski/Carolina Barboza	-	Unfinished/Martin
02-22-14	at Saint Louis	2	Aspen Cervin/Maria Toro Moreno	Lost	4-6/Martin
02-23-14	at Southern Illinois	2	Anita Lee/Korey Love	Lost	2-8/Martin
03-08-14	at Arkansas State	2	Biljana Miloshevska/Julie Gauguery	Lost	4-8/Martin
03-09-14	at Arkansas-Pine Bluff	2	Maria Cabane/Fabiola Cardoso	Won	8-5/Martin
03-11-14	WESTERN ILLINOIS	2	Jessica Callahan/Andriana Johnson	Won	8-0/Martin
03-15-14	at Belmont*	2	Sandra Kancheva/Nikki Maciel	Won	8-1/Martin
03-16-14	at Tennessee State*	2	Jade Daniels/Adrianne Pressley	Won	1-0, retired/Martin
03-22-14	MOREHEAD STATE*	2	Sandrine Beaule/Dominique McLean	-	7-5, unfinished/Martin
03-23-14	EASTERN KENTUCKY*	2	Saioa Osoz/Carmen Rodriguez	-	5-7, unfinished/Martin
03-26-14	at UT Martin*	2	Burcu Tari/Hitomi Naito	Lost	1-8/Martin

### Maya Smith

SINGLES	Team/School	Position	Opponent	Result	Score
09-21-13	vs. Western Kentucky	-	Emily Przystawski	Lost	0-6, 0-6
10-11-13	vs. UT Martin	-	Florence Nicole	Lost	5-6, 5-7
10-12-13	vs. Morehead State	-	Hayley Wild	Lost	1-6, 2-6

DOUBLES	Team/School	Position	Opponent	Result	Score/Partner
09-21-13	vs. Murray State	-	E. Tchakarova/V. Tchakarova	Lost	1-6/Warasanti
10-11-13	vs. Morehead State	-	Kennedy Womack/Sandrine Beaule	Lost	2-8/Warasanti
10-12-13	vs. Morehead State	-	Kennedy Womack/Dominique McLean	Lost	4-8/Warasanti

### Annisa Warasanti

SINGLES	Team/School	Position	Opponent	Result	Score
09-21-13	vs. Murray State	-	Erin Patton	Won	3-6, 6-4, 10-8
09-21-13	vs. Western Kentucky	-	Madeline Phillips	Won	5-6, 6-1, 10-6
09-22-13	vs. Austin Peay	-	Jovana Karac	Won	6-3, 4-6, 10-4
09-22-13	vs. Murray State	-	Verginie Tchakarova	Won	6-3, 0-6, 10-6
10-11-13	vs. UT Martin	-	Florence Nicole	Won	7-6, 6-1
10-11-13	vs. Morehead State	-	Dominique McLean	Lost	6-0, 2-6, 4-10
10-12-13	vs. Morehead State	-	L. Pacheco-Brousseau	Lost	1-6, 4-6
10-26-13	vs. Arkansas State	-	Victoria Pisani	Won	6-3, 6-3
01-23-14	at Nebraska-Omaha	5	Kenzie Hill	Won	4-6, 6-2, 10-8
01-24-14	at Iowa State	5	Lydia Green	Lost	1-6, 3-6
02-07-14	at Butler	5	Grace Hyde	Won	0-6, 6-2, 1-0
02-08-14	at IUPUI	5	Rachael Bridegroom	Won	2-6, 6-1, 1-0
02-09-14	vs. Western Kentucky	5	Gabby Crofford	Lost	6-2, 5-7, 0-1
02-22-14	at Saint Louis	5	Maria Toro Moreno	Lost	5-7, 7-6, 0-1
02-23-14	at Southern Illinois	5	Polina Dozortseva	Lost	5-7, 4-6
03-08-14	at Arkansas State	5	Jess Heeps-Eriksen	Lost	1-6, 0-6
03-09-14	at Arkansas-Pine Bluff	5	Khadijah Kenyatte	Won	6-0, 6-0
03-11-14	WESTERN ILLINOIS	4	Andriana Johnson	Won	6-0, 6-0
03-15-14	at Belmont*	5	Abbie Mather	Lost	3-6, 0-6
03-16-14	at Tennessee State*	5	Adrianne Pressley	Won	1-0, retired
03-22-14	MOREHEAD STATE*	5	Sandrine Beaule	Won	7-5, 6-3
03-23-14	EASTERN KENTUCKY*	5	Milena Poffo	Lost	1-6, 2-6
03-26-14	at UT Martin*	5	Jessica Silva	Lost	2-6, 7-6, 6-7

## Match-by-Match Results

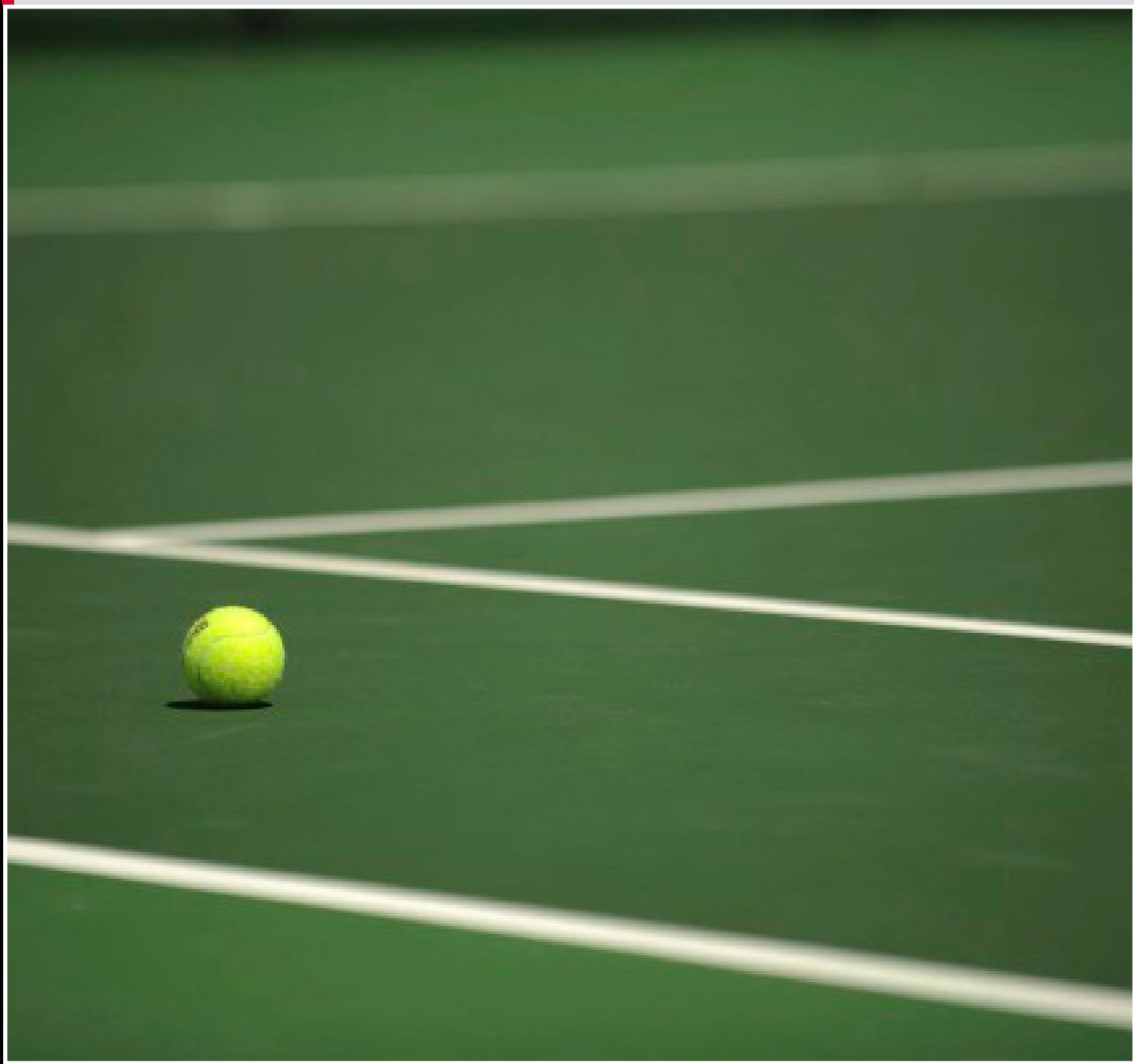


# SOUTHEAST MISSOURI STATE UNIVERSITY

04-05-14	SIU EDWARDSVILLE*	5	Haley Ilcewicz	Lost	6-4, 4-6, 0-1
04-06-14	at Eastern Illinois*	5	Hannah Kimbrough	Lost	3-6, 1-6
04-07-14	vs. Jacksonville State*	5	Danielle Kerindi	Lost	0-6, 0-6
04-11-14	#31 NORTHEASTERN STATE	4	Houda Bellamine	Lost	5-7, 3-6
04-12-14	MURRAY STATE*	5	Verginie Tchakarova	Lost	3-6, 1-6
04-13-14	AUSTIN PEAY*	4	Jovana Karac	Won	6-4, 6-2

DOUBLES	Team/School	Position	Opponent	Result	Score/Partner
09-21-13	vs. Murray State	-	E. Tchakarova/V. Tchakarova	Lost	1-6/Smith
10-11-13	vs. Morehead State	-	Kennedy Womack/Sandrine Beaule	Lost	2-8/Smith
10-12-13	vs. Morehead State	-	Kennedy Womack/Dominique McLean	Lost	4-8/Smith
01-23-14	at Nebraska-Omaha	3	Molly Matricardi/Tiffany Hoffman	Lost	1-6/Martin
01-24-14	at Iowa State	3	C. Hauge-Andersen/Lydia Green	Lost	0-6/Martin
01-24-14	at Northern Iowa	3	Krissy Lankelma/Sydney Wolfe	-	Unfinished/Nagovitcina
02-07-14	at Butler	3	Grace Hyde/Jocelyn Koester	Won	6-2/Nagovitcina
02-08-14	at IUPUI	3	Julie Brockman/Abbey Neff	Lost	4-6/Nagovitcina
02-09-14	vs. Western Kentucky	3	Alex Crofford/Gabby Crofford	Won	6-1/Nagovitcina
02-22-14	at Saint Louis	3	Natalia Yacaman/Madison Cook	Lost	3-6/Nagovitcina
02-23-14	at Southern Illinois	3	Polina Dozortseva/Ariadna Cairo Baza	Lost	2-8/Nagovitcina
03-08-14	at Arkansas State	3	Jess Heeps-Eriksen/Victoria Pisani	Lost	7-8/Nagovitcina
03-09-14	at Arkansas-Pine Bluff	3	Khadijah Kenyatte/Destiny Jones	Won	8-0/Nagovitcina
03-11-14	WESTERN ILLINOIS	3	Ese Davis/Melissa Alger	Won	8-0/Nagovitcina
03-15-14	at Belmont*	3	Abbie Mather/Maddie Gilley	Lost	5-8/Nagovitcina
03-22-14	MOREHEAD STATE*	3	Hayley Wild/Andrea LeBlanc	Lost	5-8/Nagovitcina
03-23-14	EASTERN KENTUCKY*	3	Amandine Faouzi/Milena Poffo	Lost	3-8/Nagovitcina
03-26-14	at UT Martin*	3	Katie McCall/Jessica Silva	-	5-5, unfinished/Nagovitcina
04-05-14	SIU EDWARDSVILLE*	3	Mia Frogner/Kali Donner	Lost	1-8/Brady
04-06-14	at Eastern Illinois*	3	Kelly Iden/K. Stadalninkaite	Lost	2-8/Brady
04-07-14	vs. Jacksonville State*	3	Danielle Kerindi/Aleksandra Crniljic	Lost	2-8/Brady
04-11-14	#31 NORTHEASTERN STATE	3	Houda Bellamine/Maria Lodge	Lost	1-8/Brady
04-12-14	MURRAY STATE*	3	Carla Suga/Megan Blue	Lost	0-8/Brady
04-13-14	AUSTIN PEAY*	3	Hannah Tatlock/Jovana Karac	Lost	0-8/Brady

# RECORDS & HISTORY



The 2014-15 campaign marks Southeast Missouri's 24th season at the NCAA Division I level. The Redhawks women's tennis team joined the NCAA Division I ranks in 1991-92.





# SOUTHEAST MISSOURI STATE UNIVERSITY

## Singles Records

### Best Single Season Records (Min. 10 matches)

Izabela Slowikowska, 1995-96 .....	14-0
Valerie Vanderstappen, 1995-96.....	16-3
Elena Novikova, 1995-96.....	15-3
Elena Novikova, 1992-93.....	25-4
Julia Masotti, 2005-06.....	18-5

### Best Career Records (Min. 2 Seasons)

Tracey Hopkins, 1991-93 .....	40-15
Donna Fields, 1991-93 .....	40-16
Elena Novikova, 1992-96.....	59-25
Valerie Vanderstappen, 1992-96.....	53-25

### Most Wins in Single Season

Donna Fields, 1992-93 .....	26
Elena Novikova, 1992-93.....	25
Julia Masotti, 2005-06.....	18
Bryce Kristal, 2006-07.....	17
Traci Hopkins, 1991-92.....	16
Valerie Vanderstappen, 1995-96.....	16

### Most Wins in Career

Elena Novikova, 1992-96.....	59
Valerie Vanderstappen, 1992-96.....	53
Bryce Kristal, 2004-08.....	52
Julia Masotti, 2005-09.....	41
Tracey Hopkins, 1991-93 .....	40
Donna Fields, 1991-93 .....	40

## Doubles Records

### Best Single Season Records (Min. 10 matches)

Fields-Vanderstappen, 1992-93.....	16-4
Binder-Hopkins, 1991-92.....	14-4
Wood-Gruber, 1995-96.....	9-5
B. Kristal-D. Kristal, 2005-06.....	17-6
Vanderstappen-Novikova, 1995-96.....	13-6
Novikova-Letsatle, 1993-94 .....	12-6
Slowikowska-Thomas, 1996-97.....	12-6

### Best Career Records (Min. 2 Seasons)

Fields-Letsatle, 1991-93.....	9-2
Hunter-Letsatle, 1991-93.....	5-4
Novikova-Letsatle, 1993-95 .....	22-16
B. Kristal-D. Kristal, 2004-08.....	50-34

### Most Wins in Single Season

B. Kristal-D. Kristal, 2005-06.....	17
Fields-Vanderstappen, 1992-93.....	16
B. Kristal-D. Kristal, 2006-07.....	15
Binder-Hopkins, 1991-92.....	14
Vanderstappen-Novikova, 1995-96.....	13

### Most Wins in Career

B. Kristal-D. Kristal, 2004-08.....	50
Novikova-Letsatle, 1993-95 .....	22
Fields-Vanderstappen, 1992-93.....	16
Binder-Hopkins, 1991-92.....	14
Vanderstappen-Novikova, 1995-96.....	13

## Series Records vs. All Opponents

Air Force.....	0-1	Drury College.....	1-2	Middle Tennessee .....	0-6
Alabama A&M.....	1-0	Eastern Illinois.....	4-14	Millersville .....	0-1
Alabama Birmingham.....	2-0	Eastern Kentucky.....	5-14	Milwaukee.....	2-0
Alabama State.....	1-0	Evansville.....	4-3	Minnesota.....	0-1
American University.....	0-1	Fairleigh-Dickinson.....	3-0	Missouri.....	3-5
Arkansas-Little Rock.....	0-6	Florida Southern .....	1-0	Missouri-Kansas City.....	4-4
Arkansas-Pine Bluff.....	1-0	Harding.....	6-9	Missouri State.....	1-0
Arkansas State.....	1-14	Henderson State.....	1-0	Morehead State.....	10-10
Austin Peay .....	11-13	Hope.....	1-0	Murray State.....	1-22
Belmont.....	1-4	Huntington.....	1-0	Nebraska-Omaha.....	1-0
Bowling Green.....	0-1	Illinois State.....	0-2	Niagara .....	1-0
Bradley .....	6-4	Indiana State.....	0-2	Northeastern State.....	0-1
Brescia College.....	1-0	Iowa State.....	0-1	Northern Iowa.....	0-4
Bucknell .....	0-1	IPFW.....	2-5	Northwest Missouri State.....	1-1
Butler.....	2-0	IUPUI.....	1-0	Oakland University.....	1-0
BYU-Hawaii.....	0-1	Jackson State.....	0-1	Oral Roberts.....	1-0
Calvin.....	1-0	Jacksonville State.....	2-8	Quinnipiac.....	0-1
Carson-Newman.....	0-1	Lehigh .....	1-0	Rend Lake College.....	1-0
Central Arkansas.....	1-1	Lipscomb .....	2-2	Saint Louis.....	2-10
Cleveland State.....	1-0	Longwood.....	0-1	Samford .....	0-3
Connecticut College.....	1-0	Louisiana-Monroe.....	0-1	Sioux Falls .....	1-0
Creighton.....	0-5	Louisiana Tech.....	1-1	Southern Arkansas.....	1-0
Dayton.....	1-1	Louisville .....	0-2	Southern Illinois.....	1-7
Detroit.....	0-1	Memphis.....	1-2	SIU Edwardsville .....	3-5
Dickinson College.....	1-0	Middlebury.....	0-1	Southern Utah .....	0-1

## Records

Southwest Baptist.....	1-1
Spring Hill .....	0-1
St. Mary's .....	1-0
Tampa.....	1-0
Truman State .....	1-0
Tennessee State .....	19-2
Tennessee Tech.....	4-11
Texas-El Paso .....	0-1
Trinity College.....	0-2
Troy State .....	0-1
UT Martin .....	1-25
Western Carolina.....	1-0
West Florida .....	0-1
Western Illinois.....	3-2
Western Kentucky.....	2-4
Wichita State.....	0-2
Wright State.....	0-1

#### All-OVC Selections

1994	Mmaphala Letsatle
1996	Elena Novikova Valerie Vanderstappen
2007	Bryce Kristal, Second-Team
2008	Bryce Kristal, First-Team
2010	Nikole Novikova, Second-Team
2011	Nikole Novikova, First-Team Elizabeth Nyenwe, First-Team

#### OVC Freshman of the Year

2011	Elizabeth Nyenwe
------	------------------

#### OVC Medal of Honor

1994-95	Lindsey Brandon
1995-96	Lindsey Brandon Elena Novikova
1997-98	Michelle Gruber
2000-01	Kay Ehlke
2001-02	Kay Ehlke
2002-03	Kay Ehlke
2003-04	Kay Ehlke
2004-05	Puja Paul Kim Roberts
2005-06	Kimberly Anderson
2006-07	Kim Anderson
2009-10	Elise Nattier Nikole Novikova Sarah Pettigrew
2010-11	Sarah Pettigrew
2012-13	Nikole Novikova

#### OVC Commissioner's Honor Roll

1993-94	Meghan Boettler Elena Novikova Valerie Vanderstappen
1994-95	Lindsey Brandon Elena Novikova Shannon Salabay Valerie Vanderstappen

1995-96	Lindsey Brandon Michelle Gruber Elena Novikova Shannon Salabay Valerie Vanderstappen Vicky Wood
1996-97	Michelle Gruber Izabella Slowikowska Vicky Wood
1997-98	Michelle Gruber Izabella Slowikowska Vicky Wood
1998-99	Michelle Gruber Izabella Slowikowska Amanda Walker
1999-00	Mary Akins Andrea Aldana Melinda Thomas Amanda Walker
2000-01	Kay Ehlke Jennifer Kirk Melinda Thomas
2001-02	Andrea Aldana Kay Ehlke Cassie Foster Tyla Wells
2002-03	Andrea Aldana Kay Ehlke Julie Jarrell Amanda Walker
2003-04	Kay Ehlke
2004-05	Kim Anderson Drew Kristal Puja Paul Miranda Petrea Kim Roberts
2005-06	Elizabeth Welpely Madina Mambetova Terin Roof Lucia Vojtkova Layla Abby Marcia Barnes Erin Higgs Heather Butt Anna Lask Kim Anderson
2006-07	Kim Anderson Bryce Kristal Julia Massotti Elise Nattier
2007-08	Alyce Kelly Bryce Kristal Drew Kristal Elise Nattier Taylor Orahood
2009-10	Elise Nattier
2010-11	Laura Garcia Nikole Novikova Sarah Pettigrew

2011-12	Jessica Courtnell Laura Garcia Melissa Martin Elizabeth Nyenwe Heather Robinson
2012-13	Jessica Courtnell Nikole Novikova Elizabeth Nyenwe Heather Robinson
2013-14	Katy Brady Valeriia Kashina Valeriia Nagovitchina Heather Robinson Annisa Warasanti

#### Coaching History

1991-92	Dr. Allen Hope
1992-93	Dr. Allen Hope
1993-94	Dr. Allen Hope
1994-95	Marla Reid
1995-96	Marla Reid
1996-97	Marla Reid
1997-98	Donna Ryan
1998-99	Donna Ryan
1999-00	Donna Ryan
2000-01	Donna Ryan
2001-02	Donna Ryan
2002-03	Mike Stevens
2003-04	Jay Pacelli
2004-05	Jay Pacelli
2005-06	Jay Pacelli
2006-07	Mark Elliott
2007-08	Mark Elliott
2008-09	Mark Elliott
2009-10	Mark Elliott
2010-11	Mark Elliott
2011-12	Mark Elliott
2012-13	Josh Moore
2013-14	Leah Killen

#### Year-by-Year Records

	Overall	OVC	Fin.
1991-92	13-7	5-2	4th
1992-93	17-6	6-1	6th
1993-94	4-11	3-5	6th
1994-95	4-11	3-5	6th
1995-96	11-8	5-3	3rd
1996-97	12-7	6-4	6th
1997-98	6-8	4-5	6th
1998-99	0-11	0-8	9th
1999-00	3-12	1-6	8th
2000-01	5-13	0-7	9th
2001-02	2-17	1-5	8th
2002-03	4-11	3-7	7th
2003-04	1-21	1-7	9th
2004-05	6-13	2-6	7th
2005-06	12-11	4-6	t6th
2006-07	11-14	5-6	6th
2007-08	5-15	2-8	9th

2008-09	1-19	1-8	9th
2009-10	3-19	1-8	9th
2010-11	2-14	1-7	8th
2011-12	5-12	2-7	9th
2012-13	4-11	1-9	10th
2013-14	9-13	3-7	t8th

\* Prior to 2006, the OVC Tournament Champion was declared the only champion of the season. Beginning in 2006, the Conference also awarded a regular-season championship in addition to the tournament championship. Southeast last made the OVC Tennis Tournament in 2007.

#### OVC Team Champions (since Southeast joined the league)

1992	Middle Tennessee
1993	Middle Tennessee
1994	UT Martin
1995	UT Martin
1996	Middle Tennessee
1997	Middle Tennessee
1998	Middle Tennessee
1999	Tennessee Tech
2000	Middle Tennessee
2001	Murray State
2002	Murray State
2003	Murray State
2004	Samford
2005	UT Martin
2006	UT Martin (season) Samford (tournament)
2007	Samford (season) Murray State (tournament)
2008	Samford (season) Samford (tournament)
2009	Eastern Kentucky (season) Eastern Ky. (tournament)
2010	Jacksonville State (season) Austin Peay (tournament)
2011	UT Martin (season) Jacksonville State (tournament)
2012	Eastern Kentucky (season) Eastern Kentucky (tournament)
2013	Eastern Kentucky (season) Eastern Kentucky (tournament)
2014	Murray State (season) Murray State (tournament)

Records





# SOUTHEAST MISSOURI STATE UNIVERSITY

## SHOW ME

WHAT AN EDUCATION AT SOUTHEAST CAN DO.





*U.S. News & World Report*  
consistently names  
Southeast a "Best Midwest  
Regional University."

## SOUTHEAST MISSOURI STATE UNIVERSITY AT-A-GLANCE

**Founded:** 1873

**Location:** Main Campus & River Campus – Cape Girardeau, MO

**Distance from Major Cities:** St. Louis-1.45 hours; Memphis-2.5 hours; Chicago-5 hours.

**Regional campuses:** Sikeston, Malden, Kennett and Perryville

**Population Cape Girardeau County:** approximately 74,000

**Campus size:** 328 acres

**Enrollment:** Undergraduate: 10,755; Graduate: 1,162

**Student Body:** 78.8% from Missouri. Out-of-state from almost all 50 states; 16% Multicultural population; 950 international students from 60 countries

**Student-Faculty Ratio:** 21-to-1

**Average Class Size:** 30-35

**Areas of Study:** more than 200

**Athletic Conference:** NCAA Division I, Ohio Valley Conference

**Varsity Sports:** Men's – baseball, basketball, cross country, football and track (indoor/outdoor), Women's – basketball, cross country, gymnastics, soccer, softball, tennis, track (indoor/outdoor) and volleyball

**Student Organizations:** 150+

**Average ACT score:** 23

**Average GPA:** 3.3 entering freshman

**Number of study abroad programs Southeast offers:** 30+

Office of Admissions  
Southeast Missouri State University  
One University Plaza  
Cape Girardeau, MO 63701-4710  
admissions@semo.edu  
573-651-2590

**Follow Us** at /SEMissouriState



Download the official Southeast App.  
Available in the App Store and Android Market.

**98%**  
OF ALL CLASSES  
HAVE FEWER THAN  
50 STUDENTS





# SOUTHEAST MISSOURI STATE UNIVERSITY

## SHOW ME

POWERFUL ACADEMICS

## SHOW ME UNLIMITED OPTIONS

A broad and nearly infinite range of possible futures—that's what Southeast's more than 200 academic programs open up for you. You get a classic education, balanced by traditional disciplines. You master innovation in programs matching 21st Century needs. You become knowledgeable, adaptable and thoroughly prepared.



## GIVE ME BREADTH, DEPTH & BRAIN MUSCLE

Southeast offers the best of all possible academic worlds: An education that will give you knowledge and sharpen your critical thinking. An education that will give you practical experience that will put your thinking into action. You'll discover academic programs accredited by the highest standards, such as the AACSB ranking that places our Business School among a select few. You'll study in wired classrooms on a fully wireless campus. You'll achieve.

# 200+

AREAS OF STUDY

GRADUATES OF SOUTHEAST'S  
EDUCATION PROGRAM LAND JOBS  
WITH THE SOUGHT AFTER TEACH  
FOR AMERICA PROGRAM.

*"I'm conducting original  
scientific research, mastering  
lab equipment and collaborating  
with a real scholar in the field.  
Where else could this happen?"*

— Easin Nasib  
Biochemistry  
Gagipur, Bangladesh





# SOUTHEAST MISSOURI STATE UNIVERSITY

**SHOW ME**  
FACULTY WHO REALLY CARE



## GIVE ME EXPERIENCED TEACHERS

Southeast faculty bring their experience from out in the world into your classroom. They've performed in New York theatre, conducted applied research on biological conservation, taught in India and earned PhDs at prestigious schools like The Boston Conservatory of Music.

## GIVE ME LIFELONG VALUE

- Southeast is consistently noted for excellence by The Princeton Review, InsideCollege.com, Network of International Business Schools and U.S. News & World Report.
- Southeast is one of the Midwest's most affordable 4-year comprehensive universities, costing as much as \$25,000 per year less than comparable public institutions.
- Southeast Missouri State University offers more than \$17 million in scholarship awards annually.
- As a testament to how well it takes care of students, Southeast's average freshman-to-sophomore retention rate is 73.7%.

# 90%+

OF SOUTHEAST STUDENTS ON INTERNSHIPS,  
CLINICAL OPPORTUNITIES, STUDENT  
TEACHING, RESEARCH ASSISTANTSHIPS,  
STUDYING ABROAD

*"My four years at Southeast were exceedingly positive in every way. My professors cared deeply about my education and future success. My education prepared me just as well or better than my law school classmates. My closest friends are alums I met there."*

— Adam E. Hanna  
Criminal Justice  
Attorney, Bradshaw, Steele, Cochrane & Berens, L.C.

GRADUATES OF SOUTHEAST'S BIOMEDICAL SCHOLAR'S PROGRAM GET ADMITTED INTO SUCH WELL-KNOWN MEDICAL SCHOOLS AS HARVARD, UNIVERSITY OF MINNESOTA AND VANDERBILT—AND THEY DO IT AT A RATE ABOVE THE NATIONAL AVERAGE.

OUR BUSINESS GRADUATES WORK FOR GLOBALLY RECOGNIZED COMPANIES, SUCH AS AMERICAN AIRLINES, AT&T, KMPG INTERNATIONAL, PROCTER & GAMBLE, PRICEWATERHOUSECOOPERS, AMONG MANY OTHERS.

GRADUATES OF SOUTHEAST'S PHILOSOPHY PROGRAM HAVE AN ALMOST 100 PERCENT ACCEPTANCE RATE INTO LAW SCHOOL.

SOUTHEAST HAS 100 PERCENT PLACEMENT OF GRADUATES IN CYBERSECURITY, ENGINEERING TECHNOLOGY, NURSING, ENVIRONMENTAL SCIENCE, COMMUNICATION DISORDERS AND MEDICAL TECHNOLOGY TO NAME A FEW.

5 SOUTHEAST STUDENTS HAVE INTERNSHIPS IN THE STATE CAPITAL IN JEFFERSON CITY: ONE IN THE GOVERNOR'S OFFICE; TWO FOR SENATORS; TWO FOR STATE REPRESENTATIVES.

STUDENTS IN CYBERSECURITY LAND JOB OFFERS BEFORE THEY'VE FINISHED THE PROGRAM.

ENTREPRENEURSHIP EDUCATION AT SOUTHEAST CHALLENGES ALL STUDENTS TO USE CREATIVITY, INNOVATION AND ENTREPRENEURSHIP TO CREATE ECONOMIC AND SOCIAL VALUE FOR THEMSELVES AND THEIR COMMUNITIES.



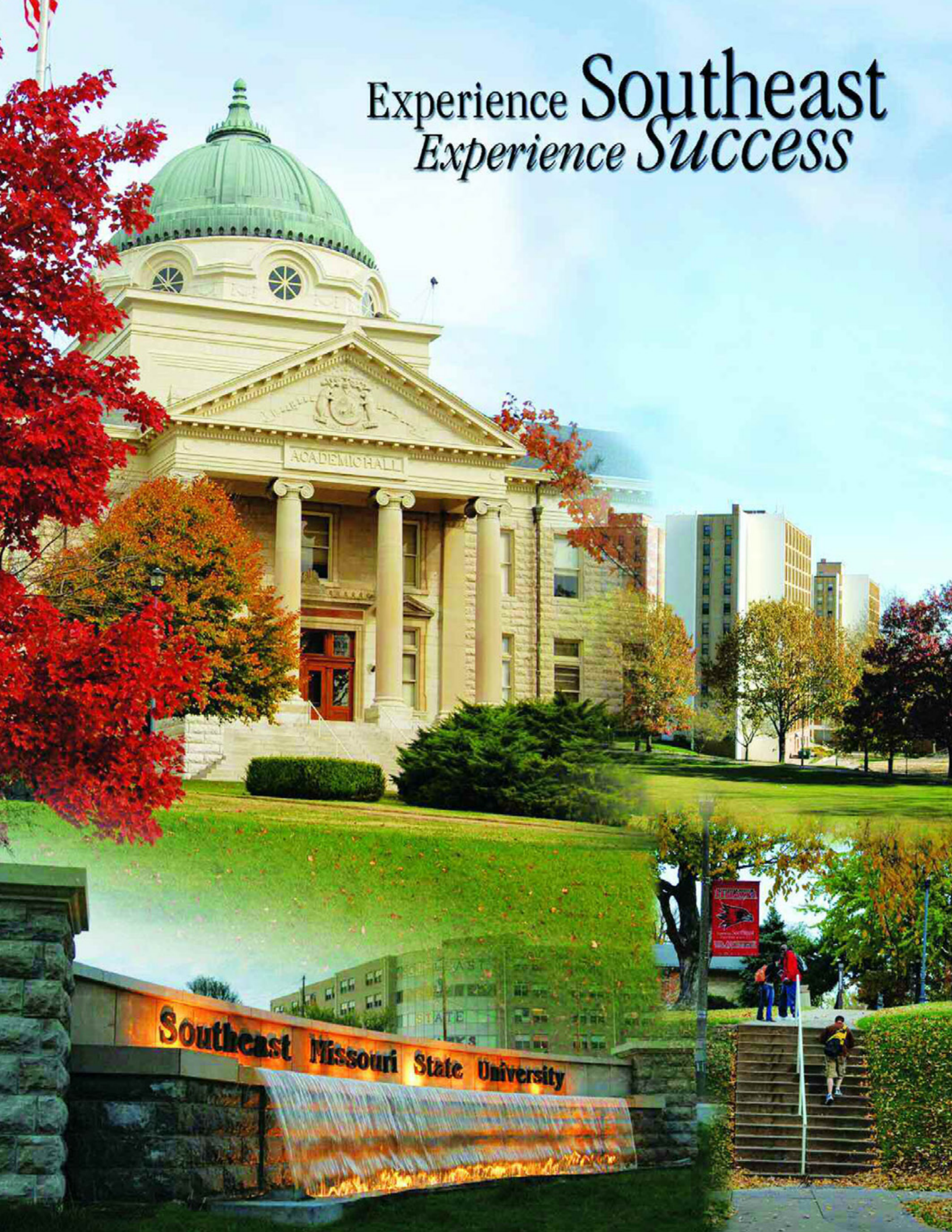


The mission of Southeast Missouri State University Department of Athletics is to provide a first class, student-athlete centered collegiate experience emphasizing the core values of academic excellence, social development, and competitive success. The Department of Athletics strives to compete at the highest possible level in the Ohio Valley Conference and other conference affiliations. The principles of integrity, student welfare, sportsmanship, ethical conduct, rules compliance, equity and diversity, and the prudent management of resources are the foundation on which we operate.





Experience Southeast  
*Experience Success*







## Southeast Missouri Redhawks **TENNIS SCHEDULE**



Jan. 30	5:30 p.m.	Northern Kentucky	Highland Heights, Ky.
Jan. 31	5 p.m.	Wright State	Dayton, Ohio
Feb. 6	10 a.m.	Arkansas State	Jonesboro, Ark.
Feb. 7	11 a.m.	Central Arkansas	Conway, Ark.
Feb. 10	12 p.m.	Saint Louis	St. Clair, Mo.
Feb. 20	2 p.m.	Northern Illinois	DeKalb, Ill.
Feb. 21	9 a.m.	Chicago State	Chicago, Ill.
Feb. 22	11 a.m.	Illinois-Chicago	Chicago, Ill.
Mar. 6	10 a.m.	Southern Illinois	Carbondale, Ill.
Mar. 13	2 p.m.	Murray State*	Murray, Ky.
Mar. 14	11 a.m.	Austin Peay*	Clarksville, Tenn.
Mar. 17	2 p.m.	Nicholls State	Thibodaux, La.
Mar. 18	1 p.m.	Southeastern Louisiana	Hammond, La.
Mar. 19	2 p.m.	Northwestern State	Natchitoches, La.
<b>Mar. 22</b>	<b>12 p.m.</b>	<b>Jacksonville State*</b>	<b>Cape Girardeau, Mo.</b>
<b>Mar. 27</b>	<b>3 p.m.</b>	<b>SIU Edwardsville*</b>	<b>Cape Girardeau, Mo.</b>
<b>Mar. 28</b>	<b>12 p.m.</b>	<b>Eastern Illinois*</b>	<b>Cape Girardeau, Mo.</b>
Apr. 3	10 a.m.	Morehead State*	Morehead, Ky.
Apr. 4	9 a.m.	Eastern Kentucky*	Richmond, Ky.
<b>Apr. 7</b>	<b>3 p.m.</b>	<b>UT Martin*</b>	<b>Cape Girardeau, Mo.</b>
<b>Apr. 10</b>	<b>3 p.m.</b>	<b>Belmont*</b>	<b>Cape Girardeau, Mo.</b>
<b>Apr. 11</b>	<b>1 p.m.</b>	<b>Tennessee State*</b>	<b>Cape Girardeau, Mo.</b>
Apr. 17-19	TBA	OVC Tournament	Site To Be Determined

**GoSoutheast.com**

Home matches played at Southeast Tennis Complex on the corner of Sprigg & Bertling