

# SOUTHEAST MISSOURI STATE UNIVERSITY REDHAWKS



## 2013 TENNIS GUIDE



# Southeast

Missouri State University™

## Located

- ▶ Cape Girardeau, Mo.

## Enrollment

- ▶ 11,510

## Class Size

- ▶ Small classes with 98 percent of courses having fewer than 50 students

## Academic Programs

- ▶ More than 200 areas of study including business, education, nursing, agriculture, science and technology, visual and performing arts

## Athletics

- ▶ 15 NCAA Division I Teams







#### Intro to Redhawk Tennis

Media Information.....	2
Redhawks Tennis Complex .....	3
Sports Medicine .....	4
Strength & Conditioning.....	5
Success Center.....	6-7
President Kenneth W. Dobbins.....	8-9
Director of Athletics Mark Alnutt .....	10-11
Mission Statement .....	12

#### Season Preview Section

Season Outlook.....	14-15
Roster/Schedule .....	16

#### Coaching Staff Section

Head Coach Josh Moore.....	18
----------------------------	----

#### Player Profiles Section

Jessica Courtnell.....	20-21
Melissa Martin .....	22-23
Nikole Novikova.....	24-25
Elizabeth Nyenwe .....	26-27
Heather Robinson .....	28-29
Lauren Schaper .....	30-31
Celebrating 40 Years of Title IX.....	32

#### Year in Review Section

2012 Results .....	34
2012 OVC Results .....	35
2012 Dual Results .....	36-42

#### Records & University Section

Records.....	44-45
University Guide .....	46-51
Athletics Staff.....	52

#### Credits

The 2013 Southeast Missouri Tennis Guide was written, edited and designed by Assistant Sports Information Director Chad Twaro. Cover design and additional graphics assistance provided by Tonya Wells and Krista Mayfield. Photography by Marcus Painton, Marc Mahnke, Pat Patterson and Keith Hente. Other editorial assistance by Sports Information Director Jeff Honza and Sports Information Assistant Nick Seeman.

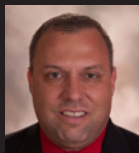




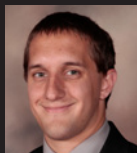
## » Media Information

### Southeast Missouri Sports Information

One University Plaza MS 0200  
Cape Girardeau, MO 63701  
Phone: (573) 651-2294 | Fax: (573) 651-2810  
Press Box: (573) 651-2191  
Website: GoSoutheast.com



**Jeff Honza**  
Director



**Chad Twaro**  
Assistant Director



**Nick Seeman**  
Assistant

### 2012-13 Sport Assignments

#### Jeff Honza, Director

Football, Men's Basketball,  
Women's Tennis  
**Office:** (573) 651-2933  
**Cell:** (618) 528-1145  
**E-Mail:** jhonza@semo.edu

#### Chad Twaro, Assistant Director

Women's Soccer, Women's Basketball,  
Gymnastics, Outdoor Track & Field  
**Office:** (573) 651-2937  
**Cell:** (573) 979-4307  
**E-Mail:** ctwaro@semo.edu

#### Nick Seeman, Assistant

Volleyball, Indoor Track & Field, Baseball  
**Office:** (573) 651-2294  
**Cell:** (612) 741-0550  
**E-Mail:** nseeman@semo.edu

#### Sean Stevenson, Student Assistant

Cross Country, Softball  
**Office:** (573) 651-2294  
**E-Mail:** spstevenson1s@semo.edu

## Follow the Redhawks on the World Wide Web

GoSoutheast.com

### Tennis E-Mail List

If you would like to be added to the Redhawk women's tennis e-mail list to receive breaking news about the team, please e-mail Jeff Honza.

### Home Matches

All of Southeast Missouri's home women's tennis matches are held at the Redhawk Tennis Complex. The Redhawk Tennis Complex is located on the north side of campus at the intersection of Berling and North Sprigg.

### GoSoutheast.com

GoSoutheast.com is the best source for the most up-to-date information on the

Southeast Missouri women's tennis team.

### Credentials

Credentials are required for entrance to the Redhawk Tennis Complex. To request credentials, please contact Southeast Missouri Sports Information by phone at (573) 651-2933 or e-mail at jhonza@semo.edu.

### Interviews

Coaches and student-athletes are available for interviews. Please contact the Southeast Sports Information Office with requests.



**Facebook**  
Facebook.com/GoSoutheast



**Twitter**  
Twitter.com/GoSoutheast



**YouTube**  
YouTube.com/GoSoutheastRedhawks



**Pinterest**  
Pinterest.com/GoRedhawks



The Redhawks Tennis Complex serves as the home court for the Southeast Missouri State women's tennis team. The complex, which was built in 2000, features eight courts, all of which are lighted. The courts are a joint venture with the city of Cape Girardeau and are free to be used by the public when not in use by the Redhawks. The Redhawk Tennis Complex is located on the north side of campus at the intersection of Bertling and North Sprigg.







**P**revention. Treatment. Rehabilitation. Education. Those are the four primary phases of athletic training, and the Southeast Missouri athletic training staff strives to fulfill all of those areas when working with student-athletes on a daily basis.

Southeast student-athletes are offered the best care possible by the athletic training staff. Head Athletic Trainer Alfred Castillo directs the Sports Medicine department which includes four full-time athletic trainers, six graduate assistants and several student assistants. The staff serves student-athletes around-the-clock at numerous facilities on campus.

The athletic trainers begin treatments and rehabilitation starting as early as 6 a.m., and are available until the last student-athlete is through. There are currently four athletic training facilities on campus. The staff treats out of the Rosengarten Athletic Complex, where the primary training room is located. There are two other satellite athletic training rooms, including one at Houck Field House and one at the Show Me Center.

The Southeast athletic training rooms are equipped with stationary bikes, hand weights, therapeutic modalities and the latest physical therapy equipment. Each

component is strategically designed to not only give the student-athlete the best care, but also to aid in returning to competition as quickly as possible.

Southeast Athletic Training has strong working relationships with local physicians and two hospitals in Cape Girardeau. It is from these hospitals that the Athletic Training department is assisted by four orthopedic physicians.

The Southeast Athletic Training program prides and commits itself

to providing the best comprehensive, personalized and efficient healthcare to its student-athletes. Delivery of healthcare focuses on the prevention and management of athletic-related injuries or illnesses, while adhering to the National Athletic Trainers' Board of Certification Standards of Professional Practice. Our high quality of athletic healthcare is provided in combination with the education of athletic training students.







**S**outheast Missouri's Strength and Conditioning program is committed to developing the total student-athlete through their experiences within a competitive training environment.

This will be accomplished by focusing on reducing the risk of injury and maximizing athletic potential through individual evaluation and program design.

#### Training Principles for Southeast Athletes:

1. *Reduce the risk of injuries*
  - If a student-athlete is injured, he/she will not be able to compete at practice or games.
2. *Maximize athletic ability*
  - We challenge each athlete, both physically and mentally, in order to achieve optimal results.

#### Exercises for Southeast Athletes are based on the following Principles:

1. *Ground Based Movements*
  - Athletes compete with their feet on the ground, and therefore, should train that way. The ability to produce force against the ground determines how fast athletes can

run and how high they can jump.

2. *Three-Dimensional Movements*
  - Athletes must be able to stabilize themselves in all planes of movement. A fancy way of saying we use free weights (barbells/ dumbbells vs. machines).
3. *Multi-Joint Movements*
  - Very rarely in sport do athletes

isolate one single joint at a time. Athletes can train more muscle mass at the same time.

The Southeast Missouri Strength and Conditioning program is under the direction of Ryan Johnson.

Redhawk student-athletes use various training facilities located inside the Student Recreation Center South.







The Redhawk Success Center offers Southeast Missouri student-athletes a place to study and develop as students and campus leaders.

It is located in the Student Recreation Center, just south of Houck Stadium. The Redhawk Success Center offers a computer lab with 18 work terminals, study areas and rooms for group meetings.

The area is under the guidance of Associate Director of Athletics Brady Barke, with assistance from Director of Academic Services Sharon Burgard and Graduate Assistants Emily Obergöenner and Kelly Benacka.

The beautiful facility has enhanced the outstanding work in the classroom already enjoyed by Southeast student-athletes. Last year, a school record 62.2 percent of Southeast's student-athletes achieved a 3.0 or better grade point average. Eleven of the Redhawks 15 intercollegiate athletic teams recorded a team GPA over 3.0. The gymnastics team posted the best overall mark with a 3.82. In all, 19 student-athletes recorded a perfect 4.0 GPA.

Tutors are available for all student-athletes as needed. In addition, both attendance and academic progress is monitored through regular checks with faculty.

A special course is required for all first

time student-athletes at Southeast. The course, which offers three credit hours, is part of a comprehensive program developed to address study skills and life skills topics, and thus, enhance retention and academic success for student-athletes.

Entering student-athletes are evaluated for academic preparedness and assigned to appropriate categories. Student-athletes can also receive individualized academic programs which include meeting with a mentor bi-weekly to discuss academic

progress.

The Success Center staff works to get athletes involved in campus and community projects, as well. This is done to provide a support structure and greater opportunity for academic success. Through the NCAA's CHAMPS/Life Skills Program, the Success Center gives student-athletes personal and professional skills in order to facilitate successful and productive futures.





## Recent Academic Highlights

- » A school record 62.2 percent of Southeast Missouri student-athletes achieved a 3.0 or higher grade point average during the 2011-12 academic year. Nineteen student-athletes had a perfect 4.0.
- » Eleven of Southeast's 15 intercollegiate athletic teams recorded a team GPA over 3.0. The Redhawk gymnastics team had the best overall mark with a 3.82 GPA.
- » The Redhawk men's cross country and women's gymnastics teams received NCAA Division I Academic Progress Rate Public Recognition Awards. Both programs registered scores of 1,000 for the 2010-11 academic year.
- » Southeast Missouri's Department of Athletics earned a number of quality rankings in the NCAA's last Academic Progress Rate (APR) report. The Redhawk men's cross country, gymnastics, baseball, volleyball, women's tennis and softball teams exceeded the national average in the multi-year APR.
- » Thirty-Eight student-athletes were part of the largest graduating class in the history of Southeast Missouri State University last spring. A total of 1,322 students -- 1,052 undergraduates and 270 graduate students -- received degrees.
- » The Southeast gymnastics team was named the 2011 Academic National Champion by the National Association of Collegiate Gymnastics Coaches/Women. The achievement marked the third time in four years that the team has garnered the coveted honor. The Redhawks team grade point average was an impressive 3.91 during the 2010-11 academic year. It tied the highest GPA for a team in the history of the award.
- » Three Redhawk student-athletes earned Academic All-District honors during the 2011-12 season. Volleyball's Paige Dossey also garnered Third-Team Capital One Academic All-American accolades. In addition, the men's and women's cross country teams each finished among the top-10 teams in the country in grade point average.







**D**r. Kenneth W. Dobbins became the seventeenth president of Southeast Missouri State University on July 1, 1999 after serving as the University's Vice President of Finance and Administration from 1991 to 1993, and Executive Vice President from 1993 until his appointment as president. He previously held several positions in higher education administration at Kent State University in Ohio.

During his tenure at Southeast, academic programs have been enhanced including the establishment of the College of Science, Technology, and Agriculture and the Earl and Margie Holland School of Visual and Performing Arts which opened in Fall 2007 on the new River Campus. A comprehensive review of all academic and non-academic programs has been accomplished to maintain quality and minimize student fee increases in the face of significant state appropriation reductions. Southeast continues to be recognized nationally for many of its outstanding accredited academic programs. For the eighth year in a row, Princeton Review recognized the Master of Business Administration program on its list of "Best Business Schools." GetEducated.com listed Southeast #1 on the list of "Top 10 Ranked Best Values Online MBAs-AACSB-Accredited"; Southeast is recognized in the top tier of the Midwest best regional universities in U.S. News Best Colleges for 2012; and Southeast was again named among the "Best in the Midwest" by Princeton Review. Additionally, StateUniversity.com ranked Southeast the safest public college campus

in Missouri, Militaryfriendlyschools.com lists Southeast among the top schools that embrace veterans as students, and recent freshmen survey data indicate that new students applied only to Southeast at a rate three times the national average.

Enrollment has increased significantly since a 20-year-low in 1994 when some 7,900 students attended Southeast. In Fall 2005, enrollment topped 10,000 for the first time, and stood at more than 11,500 in 2011. Additionally, record enrollments in higher education have occurred in the University's 25-county service region during his tenure due to the establishment of new regional campuses in Sikeston and Kennett and a higher education center at Perryville serving place-bound students in and near those rural communities.

During Dr. Dobbins' presidency, more than \$300 million in capital construction and building improvement projects have enhanced the University. The Seabaugh Polytechnic Building and the \$58 million River Campus were constructed. Additionally, The Douglas C. Greene Center for Innovation and Entrepreneurship to promote entrepreneurship and enhance the region's economy opened on the campus in 2005; Southeast dedicated its new, state-of-the-art David M. Barton Agriculture Research Center in 2009; two new 300-bed residence halls were constructed in 2002 and 2009; and the University

currently is in the midst of more than \$90 million in capital renovation for maintenance and repair projects including the renovation of the historic 106-year-old Academic Hall, the remodeling and upgrades to the Magill and Rhodes sciences complex and a new residence hall.

Dr. Dobbins has served a two-year term as president of the Missouri Council on Public Higher Education (COPHE), the organization for presidents and chancellors of Missouri's public colleges and universities, and is the senior member of the organization. In 2007, he was selected to serve a three-year term on the American Association of State Colleges and Universities (AASCU) Board of Directors, an organization which represents over 420 U.S. public college and university members and more than 3.7 million students or 56 percent of the enrollment at all public four-year institutions. He was elected Secretary-Treasurer of the organization in 2008, chaired the organization in 2010-2011, and currently serves on the executive committee as past chair of the AASCU Board. Also, for the past eight years, he has served as one of four faculty members for the week-long AASCU New Presidents' Academy, and currently chairs the Finance Committee of the American Academic Leadership Institute. He previously served three years as president of the Ohio Valley Conference and is currently a member of





the Conference finance subcommittee. In addition, he is a vice president of the executive board of the Greater St. Louis Council, Boy Scouts of America, and in 2010, he was awarded the Silver Beaver Award, the highest honor bestowed upon a Boy Scout volunteer by a council.

He earned his B.S. degree in accounting from the University of Akron (Ohio) in 1971 and served as a commissioned officer and civilian executive in the U.S. Air Force for almost 10 years. He received the M.B.A. degree in 1979 from Old Dominion University (Virginia), and the Ph.D. in higher education administration in 1987 from Kent State, where in 2011, he was awarded the Alumni Leadership Award for the College of Education, Health and Human Services Annual Hall of Fame Awards. He is also a Certified Public Accountant in Ohio.

Dr. Dobbins and his wife, Jeanine Larson Dobbins, Founder and Director Emeritus of the Missouri Statewide Early Literacy Intervention Program based at Southeast, have a son, Paul, and a daughter-in-law, Stacey, who are both Southeast graduates, and a grandson, Lincoln.



### Board of Regents



**Doyle L. Privett**  
President



**Donald "Brad" Bedell**



**Jay Knudtson**



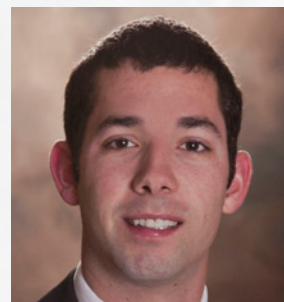
**Tom M. Meyer**



**Kendra Neely-Martin**



**Daren K. Todd**



**Kevin J. Magnan**  
Student Representative





**M**ark Alnutt, senior associate director for administration at the University of Missouri, was named director of athletics at Southeast Missouri State University.

The announcement was made April 19 during a news conference in the Aleen Wehking Alumni Center at Southeast.

Alnutt participated in an off-campus interview April 12 in St. Louis and was on campus for final interviews the day he was introduced as the Redhawks new director of athletics. He was among two finalists for the position following a national search conducted by a search committee including representatives from the Board of Regents, faculty, staff and the community.

Alnutt began his new duties at Southeast on May 21. He replaced John Shafer who retired last June. Cindy Gannon served as interim director of athletics since that time.

"Mark brings with him a tremendous breadth of experience and the caliber of credentials to move our program forward and into the future," said Kenneth W. Dobbins, president of Southeast Missouri State University.

Alnutt served as senior associate athletics director for administration at the University of Missouri after spending three years as the associate athletics director for administration.

Mike Alden, director of athletics at the University of Missouri, said, "I think Southeast Missouri State University is getting a terrific leader in Mark Alnutt. We will miss him here, but our loss is Southeast's gain and all of us here are very proud of Mark and all that he has accomplished."

In his previous role, Alnutt served as the administrative liaison for football; supervised track and field, cross country, gymnastics and golf; spearheaded the department's project management team; served as the primary point person for the Athletic Department, overseeing all aspects of facility project master planning, development, management and implementation; and was involved with external department operations, including development, game operations, marketing, media relations, Mizzou Sports Properties and ticket operations.

Alnutt also managed postseason travel arrangements for each of the University of Missouri's 20 intercollegiate sport programs. He was in charge of Missouri's Nike contract, the Big Wheels and Flying Tiger programs and the department's relationship with Old Hawthorne Golf Club. In 2009, he oversaw a \$5 million video board project through the University of Missouri Sports Complex with the centerpiece being a new board at Faurot Field. He also oversaw the design and construction of the new Golden Girls/Gymnastics

practice facility completed last fall.

Additionally, Alnutt was actively involved in the solicitation and stewardship efforts of capital gift giving.

Alnutt spent the previous six years at the University of Missouri as director of football operations, adding an assistant athletic director title prior to the 2005-06 season. In that role, his duties included coordinating the team's travel plans, oversight of the football budget, handling compliance issues, scheduling of facilities, assisting with the recruiting operations and managing the day-to-day operations of the football program.

He coordinated public relations and community service events for football, and oversaw all organizational aspects for the University of Missouri's trips to the 2003 and 2005 Independence Bowl games played in Shreveport, La. He also represented the football program as part of the design team that planned the \$16 million expansion and renovation project which turned the Tom Taylor Building into the Missouri Athletics Training Complex.

Alnutt was a three-year letterman for the University of Missouri as a linebacker



*Mark Alnutt was introduced as Southeast Missouri's new director of athletics on April 19, 2012.*



and tight end from 1993-1995 and was voted the team's champion of the year as a senior. He earned a degree in sociology in 1995 and went to work for Major Brands as a senior salesman in Kansas City from February 1996 to August 1997. Alnutt returned to the University of Missouri to pursue a master's degree in public administration with an emphasis on sports psychology. He joined the Missouri football staff in 1998 as an administrative/video graduate assistant. Alnutt completed his master's degree in May 2000 and took over as director of football operations that August.

A native of Kansas City, Alnutt served as president of the board of directors for Big Brothers/Big Sisters of Boone County and was selected to participate in the 2002-2003 NCAA Leadership Institute for Ethnic Minority Males. In June 2005, he was recognized by Columbia Business Times as one of Columbia's 40-Under-40 business leaders for his work in the community.

He has participated in the Division I-A Athletic Director's Institute, attended the NACDA Mentoring Institute and was



chair of the NCAA Women's Gymnastics committee. In 2010, he was the recipient of an Outstanding Chancellor's Staff recognition and the Barbara S. Uehling Award for Administrative Excellence at the University of Missouri.

Alnutt and his wife, the former Kate Hankins, are the parents of four children, Jaren, Kinleigh, Mason and Aidan.







The Southeast Missouri State University Department of Intercollegiate Athletics is an integral part of the University community and accordingly adheres to Southeast Missouri State University's overall institutional mission, one of providing a quality education and college experience for the students and communities we serve. The mission of the Department

of Athletics is to enhance the collegiate experience for all students through the development and operation of a sound intercollegiate athletics program. The Athletics Department is a NCAA Division I program, and therefore is committed to the highest standards of integrity in athletic and academic achievement. The athletic teams of the

University are committed to compete at the highest possible level in the Ohio Valley Conference or other conference affiliations. The Department of Athletics is committed to the principles of equitable access, diversity, student welfare, sportsmanship, ethical conduct, rules compliance, and the prudent management of resources in all endeavors.







# 2013 Season Preview

FEATURING...

- » 2013 Outlook
- » 2013 Redhawks







## 2013 Outlook

**S**outheast Missouri tennis begins a new era with first-year head coach Josh Moore at the helm for the 2013 season.

The Redhawks enter the season with six returning players and they are banking on that experience to move them up the Ohio Valley Conference standings. Southeast posted five dual victories and two conference wins, its most since the 2008 season, but missed the OVC Tournament for the fifth-straight season a year ago.

Despite the overall results, Southeast found itself competitive in several duals. Five of its setbacks coming in 4-3 decisions, including two OVC duals.

"This is a close knit team that gets along well together," Moore said. "They have a desire to do well and now we're trying to make that happen. The culture needed to change, we've had some rough seasons. We need to make sure we don't go into matches with a defeated attitude. During the fall, we showed good competitiveness and we're hoping that carries over to the spring."

### Singles

Southeast will tweak its lineup a little from years past thanks to improved play from junior **Heather Robinson (Durham, England/Durham Johnston HS)**. After spending most of the season playing in the No. 5 spot, Robinson's 13-4 record (7-2 in the OVC) has vaulted her into the No. 1 position in the singles lineup. She adapted well during fall play, posting a respectable 2-3 mark while squaring off against the top players from opposing schools.

"Heather is probably our biggest competitor," Moore said. "She's always the one you hear shouting after a point, both for and against. She was our No. 5 last year and we think she will play No. 1 singles for us. Having someone like her step up is great, it allows us to bump everyone else down a spot in the lineup and really improve our results throughout each dual."

Junior **Elizabeth Nyenwe (London, England/Ursuline HS)** and senior **Nikole Novikova (Bellevue, Wash./Bellevue HS)** will also be mainstays in the top half of the Redhawks' lineup. Nyenwe led the team with 14 singles victories a year ago, going 14-10 overall and 11-6 in dual

play from the No. 2 spot in the lineup. She is a former OVC Freshman of the Year and somebody who the team is counting on to take another step forward this season.

Novikova has played all but one dual at the No. 1 spot during her career. After struggling to a 4-13 dual mark a year ago, Southeast believes having someone of her experience at the No. 2 or No. 3 spot in the lineup will yield positive results this season.

"Elizabeth has as much talent as anyone in the conference," Moore said. "Anytime she steps on the court, she can overpower opponents. She is a big hitter, which you need at the top of the lineup. Nikole will be in the top half of our singles lineup as well. She brings a lot of leadership as someone who has been around awhile."

The Redhawks will rely on senior **Jessica Courtneil's (Newcastle, England/Durham)** experience to anchor the bottom half of their lineup this spring. The bulk of her 2012 season was spent in the third position of the singles lineup, but she will open the year bolstering the lineup at No. 4 singles.

Sophomore **Melissa Martin (Wolverhampton, England/Idsaal School)** will also provide depth to Southeast's lineup. Martin posted a strong 13-9 singles record a year ago, going 11-6 in dual play and 10-4 at the No. 4 position. Moving her down another spot is another potential chance to add more team points this season.

"Jess had a good showing in the fall during her only tournament," Moore said. "Melissa struggled through injury, but she still performed well in the fall as well."



Elizabeth Nyenwe

Rounding out the lineup is junior **Lauren Schaper (Wildwood, Mo./Lafayette HS)**, who will open the year at No. 6. Schaper played in five duals last year, including one OVC tilt.

### Doubles

The Redhawks hope to see stronger performances out of their doubles lineup than last year's 15-33 mark during the dual season.

During fall play, the duo of Courtneil and Martin stood out and amassed a 4-2 record during tournament play. Those two will likely open the year as the No. 3 squad after leading the Redhawks with six doubles victories in 2012.

"Doubles has been a sore spot for this team in the past," Moore said. "We think we'll be much more competitive here this season. One of the big stories for us right now is Melissa Martin and Jess Courtneil having a big doubles season."

The other initial pairings this season appear set. Nyenwe and Novikova will likely start the year at the top spot while Robinson and Schaper pair up





## 2013 Outlook

at No. 2 doubles.

### Schedule

Southeast opens up its dual season at home when it brings Arkansas State to the Redhawks Tennis Complex on Feb. 16. A week later (Feb. 23), the Redhawks host Rend Lake to conclude their season-opening home stand.

The Redhawks move in to March with road duals at Jackson State (March 1) and Alabama A&M (March 2) before opening up conference play two weeks later. There are two more non-conference duals on the docket as Southeast travels to Bethel (March 30) and Brescia College (April 5).

Six of Southeast's 10 OVC duals come at home this year. The Redhawks open league play with four-straight home dates, taking on Eastern Illinois (March 16), SIU Edwardsville (March 17), UT Martin (March 22) and Jacksonville State (March 24).

The Redhawks follow that with four-straight road conference tilts, going to Austin Peay (March 29), Murray State (March 30), Eastern Kentucky (April 6) and Morehead State (April 7). Southeast's dual season concludes with home tilts against Tennessee State (April 13) and Belmont (April 14).

The 2013 OVC Tournament will be held April 19-21 in Paducah, Ky. The top six teams in the final OVC standings qualify for the tournament.







## 2013 Redhawks

### Alphabetical Roster

Name	Cl.	Hometown	Last School
Jessica Courtnell	Sr.	Newcastle, England	South Alabama
Melissa Martin	So.	Wolverhampton, England	Idsall School
Nikole Novikova	Sr.	Bellevue, Wash.	Bellevue
Elizabeth Nyenwe	Jr.	London, England	Ursuline
Heather Robinson	Jr.	Witton Gilbert, England	Campbell University
Lauren Schaper	Jr.	Wildwood, Mo.	Lafayette

**Head Coach:** Josh Moore (First Season)

#### Breakdown By Class:

##### Sophomores (1)

Melissa Martin

##### Juniors (3)

Elizabeth Nyenwe  
Heather Robinson  
Lauren Schaper

##### Seniors (2)

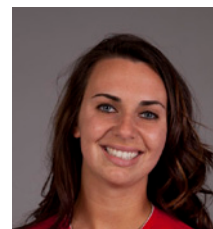
Jessica Courtnell  
Nikole Novikova



Jessica Courtnell



Melissa Martin



Nikole Novikova



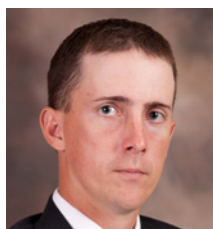
Elizabeth Nyenwe



Heather Robinson



Lauren Schaper



Head Coach Josh Moore

### 2013 Schedule

Date	Opponent	Location	Time
February 16	Arkansas State	Cape Girardeau, Mo.	1 p.m.
February 23	Rend Lake	Cape Girardeau, Mo.	1 p.m.
March 1	at Jackson State	Jackson, Miss.	9:30 a.m.
March 2	at Alabama A&M	Normal, Ala.	11 a.m.
March 16	Eastern Illinois*	Cape Girardeau, Mo.	1 p.m.
March 17	SIU Edwardsville*	Cape Girardeau, Mo.	Noon
March 22	UT Martin*	Cape Girardeau, Mo.	3 p.m.
March 24	Jacksonville State*	Cape Girardeau, Mo.	10 a.m.
March 29	at Austin Peay*	Clarksville, Tenn.	3 p.m.
March 30	at Murray State*	Murray, Ky.	9 a.m.
March 30	at Bethel	McKenzie, Tenn.	3 p.m.
April 5	at Brescia College	Owensboro, Ky.	TBA
April 6	at Eastern Kentucky*	Richmond, Ky.	3 p.m.
April 7	at Morehead State*	Morehead, Ky.	9 a.m.
April 13	Tennessee State*	Cape Girardeau, Mo.	2 p.m.
April 14	Belmont*	Cape Girardeau, Mo.	11 a.m.
April 19	OVC Tournament	Padukah, Ky.	TBA
April 20	OVC Tournament	Padukah, Ky.	TBA
April 21	OVC Tournament	Padukah, Ky.	TBA



Jessica Courtnell





## Coach Bio

FEATURING...

» Head Coach Josh Moore Bio







## Head Coach Bio



# Josh Moore

» Head Coach » First Year » Howard Payne, 2007

Southeast Missouri hired Josh Moore as its women's tennis coach on Aug. 29, 2012.

Moore was previously head coach at Texas A&M University-Kingsville in 2012 during its first season of competition. Texas A&M-Kingsville is an NCAA Division II affiliate which competes in the Lone Star Conference.

Moore's responsibilities at Texas A&M-Kingsville included recruiting scholarship players and walk-ons, managing the budget, scheduling, endurance training, strength training, equipment, working with admissions and international student services to help students with their admission process and managing multiple assistants.

A former collegiate tennis player, Moore initially joined the Javelinas staff from the John Newcombe Tennis Ranch where he was a Tennis Professional. He is a certified United States Professional Tennis Association (USPTA) Professional 1.

Moore has worked with a number of top tennis coaches in the United States throughout his playing days and time at the John Newcombe Tennis Academy. During that time, he also worked with some top players, including Ryler Dehart (former NCAA #1 Singles Player, who made it to the second round of the 2001 US Open), Kevin Anderson (semi-final victory over Novak Djokovic in the summer of 2008) and Jeroen Joling, a former top-20 junior player in the Netherlands.

Moore has been involved in numerous tennis camps, including USA Junior Team Tennis and as the Tennis Instructor for the City of Brownwood, Texas.

He graduated from Howard Payne University with a B.S. in Exercise and Sport Management. Moore played at both Howard Payne and Cloud County Community College.





# Player Bios

FEATURING...

- » Player Bios
- » Celebrating 40 Years of Title IX







## Athlete Bios/Statistics



# Jessica Courtnell

”Sr. ”Newcastle, England ”Durham HS

*Posted a team-best 4-2 doubles record during the fall.*

**2012:** Posted a 7-14 overall singles record (4-12 during the dual season) ... posted a team-best 10 doubles victories, going 10-12 overall, including a 5-1 mark during the fall tournament season ... split the dual season partnered with Melissa Martin (1-7) and Heather Robinson (4-4) in doubles play ... spent most of the dual season playing No. 3 singles, where she went 3-11 ... went 3-6 in OVC duals, winning consecutive matches against Tennessee State's London Thomas (6-0, 6-1) on March 31 and Jacksonville State's Zoe Bizinos (6-3, 6-1) on April 1 ... other dual victory came in three sets against Morehead State's Victoria Cran (7-6, 5-7, 12-10) on April 7 ... won four of her last seven doubles matches while playing with Heather Robinson ... named a Southeast Scholar-Athlete ... placed on the OVC Commissioner's Honor Roll.

**South Alabama:** Fashioned a 4-14 singles record and 9-8 doubles mark a year ago ... three of her singles victories were at the No. 4 position ... seven of her doubles wins came at the No. 2 spot ... Posted a 5-9 record at No. 2 doubles as a true freshman.

**Prep:** Attended Durham High School ... participated in tennis (2000-09) and netball (2000-04) ... team won region title from 2005-09 ... school won excellence in sport trophy five years in a row ... played at No. 1 flight for Durham and Cleveland County club team from 2001-09.

**Personal:** Born April 23, 1991 ... majoring in Marketing ... daughter of Les and Diane Courtnell.

**Courtnell's Career Singles Record at Southeast Missouri**

	Overall	Dual	Tour	OVC	1	2	3	4	5	6
2011-12	7-14	4-12	3-2	3-6	---	---	3-11	1-1	---	---
<b>TOTAL</b>	<b>7-14</b>	<b>4-12</b>	<b>3-2</b>	<b>3-6</b>	<b>---</b>	<b>---</b>	<b>3-11</b>	<b>1-1</b>	<b>---</b>	<b>---</b>

**Courtnell's Career Doubles Record at Southeast Missouri**

	Overall	Dual	Tour	OVC	1	2	3
2011-12	10-12	5-11	5-1	4-5	0-3	5-8	---
<b>TOTAL</b>	<b>10-12</b>	<b>5-11</b>	<b>5-1</b>	<b>4-5</b>	<b>0-3</b>	<b>5-8</b>	<b>---</b>





## Courtneil's Career Match-by-Match

2011-12

SINGLES	Team/School	Pos	Opponent	Singles score
10/7-9, 2011	vs Murray State	t-QF	Carolyn Huerth	Lost 1-6, 2-6
10/7-9, 2011	vs Arkansas-Little Rock	con	Alina Kolegova	Won 6-2, 6-3
10/7-9, 2011	vs Arkansas-Pine Bluff	con	Martha Villacis	Won 6-2, 6-1
10/21-22, 2011	vs Lipscomb		Jenny Borck	Lost 2-6, 2-6
10/21-22, 2011	vs Lipscomb		Sam Bowman	Won 6-1, 6-1
02-11-12	at Arkansas State	3	Janie Nowland	Lost 4-6, 2-6
02-12-12	at Central Arkansas	3	Murphy, Allison	Lost 4-6, 1-6
02-25-12	vs South Dakota	3	Shadi Soleymani	Lost 6-7, 6-1, 2-6
02-26-12	at Bradley	3	Meredith McDonagh	Won 6-0, 6-2
03-06-12	SOUTHERN ILLINOIS	3	Jennifer Dien	Lost 3-6, 4-6
03-10-12	at IPFW	3	Raquel Vescovi	Lost 6-2, 4-6, 4-6
03-11-12	at Dayton	3	Sammi Hornbarger	Lost 5-6, 3-6
* 03-18-12	at UT Martin	3	Anna Winkelmann	Lost 7-6, 4-7, 5-7
* 03-24-12	at Austin Peay	3	CARRE, Alison	Lost 1-6, 0-6
* 03-25-12	MURRAY STATE	3	KLEIN, Jordana	Lost 3-6, 2-6
* 03-31-12	at Tennessee State	3	London Thomas	Won 6-0, 6-1
* 04-01-12	at Jacksonville State	4	Zoe Bizinos	Won 6-3, 6-1
* 04-06-12	EASTERN KENTUCKY	4	GERRITSEN,	Lost 2-6, 3-6
* 04-07-12	MOREHEAD STATE	3	Victoria Cran	Won 7-6, 5-7, 12-10
* 04-14-12	vs Eastern Illinois	3	Amanda Dibbs	Lost 4-6, 2-6
* 04-15-12	at SIU Edwardsville	3	Rachel Webb	Lost 2-6, 2-6

DOUBLES	Team/School	Pos	Opponent	Doubles score/Partner
10/7-9, 2011	vs Central Arkansas	t-QF	Sasha Ruocco/Maribelle Siegried	Won retired/Martin
10/7-9, 2011	vs Arkansas State	t-SF	Janelle Fung/Tamara Slijepcevic	Won 9-7/Martin
10/7-9, 2011	vs Central Arkansas	t-F	Alla Kravchuk/Stephanie Gonzalez	Won 8-6/Martin
10/21-22, 2011	vs Northern Alabama		Victoria Rees/Madison Patey	Won 8-6/Martin
10/21-22, 2011	vs UT Martin		Katie McCall/Ivon Simic	Lost 7-9/Martin
10/21-22, 2011	vs Northern Alabama		Ashley Alfonso/Teresa Franco	Won 8-2/Martin
02-12-12	at Central Arkansas	2	Horsikyan, Simona/Otani, Kazumi	Lost 4-8/Robinson
02-25-12	vs South Dakota	2	Nina Barudzio/Michelle Elkin	Lost 6-8/Martin
02-26-12	at Bradley	2	Corey Mattson/Carly Miles	Won 8-6/Martin
03-06-12	SOUTHERN ILLINOIS	2	Natasha Tomishima/Jennifer Dien	Lost 7-8/Martin
03-10-12	at IPFW	1	Marcy Huck/Caterina Kiefer	Lost 5-8/Martin
03-11-12	at Dayton	1	Claire McNulty/Maureen Stevens	Lost 6-8/Martin
03-14-12	at Missouri-St. Louis	1	Louisa Werner/Sai Pujitha Bandi	Lost 6-8/Martin
* 03-18-12	at UT Martin	2	Anna Marie Herbold/Alice Laing	Lost 4-8/Martin
* 03-24-12	at Austin Peay	2	CORNEA, Andra/DiSALVO, Ornella	Lost 1-8/Martin
* 03-25-12	MURRAY STATE	2	SUGA, Carla/HUERTH, Carolyn	Won 8-5/Robinson
* 03-31-12	at Tennessee State	2	Melynda Simmons/Kryston Mason	Won 8-0/Robinson
* 04-01-12	at Jacksonville State	2	Rafaela Wenzel/Zoe Bizinos	Won 8-6/Robinson
* 04-06-12	EASTERN KENTUCKY	2	OSCOZ, Saioa/POFFO, Milena	Lost 7-8/Robinson
* 04-07-12	MOREHEAD STATE	2	Alexis Garrett/Alix Young	Lost 5-8/Robinson
* 04-14-12	vs Eastern Illinois	2	Jennifer Kim/Sephora Boulbahi	Won 8-3/Robinson
* 04-15-12	at SIU Edwardsville	2	Lindsey Raymond/Kali Donner	Lost 5-8/Robinson





## Athlete Bios/Statistics



# Melissa Martin

”So. ”Wolverhampton, England ”Idsall School

*Posted a team-best 4-2 doubles record during the fall.*

**2012:** Went 13-9 in singles play, posting an 11-6 mark during the dual season . . . primary lineup spot was No. 4 singles, where she went 10-4 . . . went 4-5 against OVC opponents . . . went 8-14 in doubles play, going 5-1 while during the fall while partnered with Jessica Courtneil . . . won four-straight singles matches to start dual play and was victorious in seven of her first eight dual singles matches . . . responsible for the Redhawks' lone point against Arkansas State in their season opener, coming back to defeat Arkansas State's Biljana Miloshevska (3-6, 7-6, 10-7) on Feb. 11 . . . won her last three singles matches of the year, all against OVC opponents . . . named a Southeast Scholar-Athlete . . . placed on the OVC Commissioner's Honor Roll.

**Prep:** Went to Idsall School . . . represented her state on two occasions in the under 14s Road to Wimbledon Tournament . . . she primarily played the No. 1 and No. 2 singles positions and competed for the Sutton Coldfield Tennis Club in the National Junior Club League Finals.

**Personal:** Born June 25, 1993 . . . undecided on her major . . . daughter of Lesley and Christopher Martin.

**Martin's Career Singles Record at Southeast Missouri**

	Overall	Dual	Tour	OVC	1	2	3	4	5	6
2011-12	13-9	11-6	2-3	4-5	---	---	1-2	10-4	---	---
<b>TOTAL</b>	<b>13-9</b>	<b>11-6</b>	<b>2-3</b>	<b>4-5</b>	<b>---</b>	<b>---</b>	<b>1-2</b>	<b>10-4</b>	<b>---</b>	<b>---</b>

**Martin's Career Doubles Record at Southeast Missouri**

	Overall	Dual	Tour	OVC	1	2	3
2011-12	8-14	3-13	5-1	2-7	2-8	1-4	0-1
<b>TOTAL</b>	<b>8-14</b>	<b>3-13</b>	<b>5-1</b>	<b>2-7</b>	<b>2-8</b>	<b>1-4</b>	<b>0-1</b>





## Martin's Career Match-by-Match

2011-12

SINGLES	Team/School	Pos	Opponent	Singles score
10/7-9, 2011	vs Arkansas State	t-QF	Ceara Howey	Lost retired
10/7-9, 2011	vs Arkansas-Little Rock	con	Evgeniya Gracheva	Won 6-1, 2-6, 6-4
10/7-9, 2011	vs Western Kentucky	con	Alex Crofford	Lost 2-6, 4-6
10/21-22, 2011	vs Lipscomb		Sam Bowman	Lost 1-6, 3-6
10/21-22, 2011	vs Lipscomb		Deahna Welcher	Won 6-3, 6-4
02-11-12	at Arkansas State	4	Biljana Miloshevska	Won 3-6, 7-6, 10-7
02-12-12	at Central Arkansas	4	Hartman, Allison	Won 6-3, 6-3
02-25-12	vs South Dakota	4	Nina Barudzio	Won 6-4, 6-1
02-26-12	at Bradley	4	Carly Miles	Won 6-1, 6-2
03-06-12	SOUTHERN ILLINOIS	4	Natasha Tomishima	Lost 2-6, 3-6
03-10-12	at IPFW	4	Alex Forsyth	Won 6-1, 6-2
03-11-12	at Dayton	4	Erin Filbrandt	Won 6-3, 6-2
03-14-12	at Missouri-St. Louis	3	Sai Pujitha Bandi	Won 6-3, 6-1
* 03-18-12	at UT Martin	4	Ivon Simic	Lost 4-6, 0-6
* 03-24-12	at Austin Peay	4	CORNEA, Andra	Lost 0-6, 6-0, 5-7
* 03-25-12	MURRAY STATE	4	SUGA, Carla	Lost 2-6, 6-3, 4-6
* 03-31-12	at Tennessee State	4	Kryston Mason	Won 6-0, 6-0
* 04-01-12	at Jacksonville State	3	Raphaela Lima	Lost 3-6, 3-6
* 04-03-12	EASTERN KENTUCKY	3	OSCOZ, Saioa	Lost 1-6, 5-7
* 04-07-12	MOREHEAD STATE	4	Jessica Montemayor	Won 6-3, 6-5
* 04-14-12	vs Eastern Illinois	4	Jennifer Kim	Won 6-2, 6-2
* 04-15-12	at SIU Edwardsville	4	Lindsay Raymond	Won 6-3, 6-3

## DOUBLES

10/7-9, 2011	vs Central Arkansas
10/7-9, 2011	vs Arkansas State
10/7-9, 2011	vs Central Arkansas
10/21-22, 2011	vs Northern Alabama
10/21-22, 2011	vs UT Martin
10/21-22, 2011	vs Northern Alabama
02-12-12	at Central Arkansas
02-25-12	vs South Dakota
02-26-12	at Bradley
03-06-12	SOUTHERN ILLINOIS
03-10-12	at IPFW
03-11-12	at Dayton
03-14-12	at Missouri-St. Louis
* 03-18-12	at UT Martin
* 03-24-12	at Austin Peay
* 03-25-12	MURRAY STATE
* 03-31-12	at Tennessee State
* 04-01-12	at Jacksonville State
* 04-03-12	EASTERN KENTUCKY
* 04-07-12	MOREHEAD STATE
* 04-14-12	vs Eastern Illinois
* 04-15-12	at SIU Edwardsville

Pos	Opponent	Doubles score/Partner
t-QF	Sasha Ruocco/Maribelle Siegfried	Won retired/Courtneil
t-SF	Janelle Fung/Tamara Slijepcevic	Won 9-7/Courtneil
t-F	Alla Kravchuk/Stephanie Gonzalez	Won 8-6/Courtneil
	Victoria Rees/Madison Patey	Won 8-6/Courtneil
	Katie McCall/Ivon Simic	Lost 7-9/Courtneil
	Ashley Alfonso/Teresa Franco	Won 8-2/Courtneil
3	Horsikyan, Kristina/Ruocco, Sasha	Lost 3-8/Schaper
2	Nina Barudzio/Michelle Elkin	Lost 6-8/Courtneil
2	Corey Mattson/Carly Miles	Won 8-6/Courtneil
2	Natasha Tomishima/Jennifer Dien	Lost 7-8/Courtneil
1	Marcy Huck/Caterina Kiefer	Lost 5-8/Courtneil
1	Claire McNulty/Maureen Stevens	Lost 6-8/Courtneil
1	Louisa Werner/Sai Pujitha Bandi	Lost 6-8/Courtneil
2	Anna Marie Herbold/Alice Leing	Lost 4-8/Courtneil
2	CORNEA, Andra/DISALVO, Omella	Lost 1-3/Courtneil
1	CANTY, Ashley/GUNITZ, Cassidy	Lost 2-8/Novikova
1	Lauren Thomas/London Thomas	Won 8-8/Novikova
1	Raisa Guasti/Raphaela Lima	Lost 0-8/Novikova
1	LABEJA, Kristina/GERRITSEN	Lost 6-8/Novikova
1	Victoria Gran/Brooke Helms	Lost 2-8/Novikova
1	Janelle Prisner/Merritt Whitley	Lost 4-8/Novikova
1	Carli Connors/Laura Horning	Won 8-4/Novikova





## Athlete Bios/Statistics



# Nikole Novikova

»Sr. »Bellevue, Wash. »Bellevue HS

*Won two singles matches, the second most on the team, during the fall.*

**2012:** Played the entire season at No. 1 singles and No. 1 doubles ... posted a 6-17 singles record (4-13 during the spring) and 9-11 doubles mark ... finished 2-7 in OVC singles matches, defeating Tennessee State's Melynda Simmons (6-0, 6-1) on March 31 and Morehead State's Alix Young (6-2, 6-1) on April 7 ... posted her best doubles record with Heather Robinson (3-2) ... won three-straight doubles matches paired with Robinson from March 10-14 ... named a Southeast Scholar-Athlete.

**2011:** First-team All-Ohio Valley Conference selection ... compiled an overall record of 8-8 at No. 1 singles, ranking second on the team and sixth in the OVC in victories ... ended the year with wins in six of her last 10 singles bouts ... partnered with Elizabeth Nyenwe to get a team-high five wins at No. 1 doubles ... was victorious in three of her final four doubles matches of the season ... picked up her first OVC singles win of the season against Murray State's Cassidy Cunitz (Apr. 2) ... named to OVC Commissioner's Honor Roll ... Southeast Scholar-Athlete.

**2010:** Named second-team All-OVC, becoming the first Redhawk to garner All-Conference honors since 2008 ... led the team and ranked fourth in the OVC with seven singles victories at the No. 1 position ... ranked second on the team with four doubles wins, including two at both the No. 1 and No. 2 spots ... won three of her first five singles matches of the year.

**Prep:** Two-time Most Valuable Player and Team Captain (2006, 2008) at Bellevue High School ... went undefeated at 22-0 in singles competition and won the state title in 2006 ... competed in over 30 matches and was ranked as the number one singles player in the Pacific Northwest as a junior in 2008 ... qualified for the state tournament ... suffered a shoulder injury, which forced her to miss her entire senior year ... was also on the gymnastics and track & field teams ... achieved a 3.5 grade point average.

**Personal:** Born Dec. 10, 1990 ... majors in Biomedical Sciences ... daughter of Ivetta Lobovikov and Igor Novikova ... aspires to be an Archeologist.

Novikova's Career Singles Record at Southeast Missouri										
	Overall	Dual	Tour	OVC	1	2	3	4	5	6
2009-10	7-11	7-11	0-0	3-5	7-10	0-1	---	---	---	---
2010-11	8-8	8-8	0-0	3-5	8-8	---	---	---	---	---
2011-12	6-17	4-13	2-4	2-7	4-13	---	---	---	---	---
<b>TOTAL</b>	<b>21-36</b>	<b>19-32</b>	<b>2-4</b>	<b>8-17</b>	<b>19-31</b>	<b>0-1</b>	<b>---</b>	<b>---</b>	<b>---</b>	<b>---</b>

Novikova's Career Doubles Record at Southeast Missouri							
	Overall	Dual	Tour	OVC	1	2	3
2009-10	4-14	4-14	0-0	1-5	2-9	0-4	2-1
2010-11	5-10	5-10	0-0	2-5	5-10	---	---
2011-12	9-11	6-10	3-1	2-7	3-10	3-0	---
<b>TOTAL</b>	<b>18-35</b>	<b>15-34</b>	<b>3-1</b>	<b>5-17</b>	<b>10-29</b>	<b>3-4</b>	<b>2-1</b>



## Novikova's Career Match-by-Match

2011-12

SINGLES	Team/School	Pos	Opponent	Singles score
10/7-9, 2011	vs Murray State	t-QF	Ashley Canty	Lost 3-6, 6-1, 2-6
10/7-9, 2011	vs Western Kentucky	con	McKinley Mason	Won 6-0, 6-1
10/7-9, 2011	vs Arkansas-Little Rock	con	Viktoriia Plyuta	Lost 1-6, 2-6
10/21-22, 2011	vs Northern Alabama		MacKenzie Bishop	Lost 7-5, 2-6, 5-10
10/21-22, 2011	vs UT Martin		Anna Winkelmann	Lost 4-6, 1-6
10/21-22, 2011	vs Lipscomb		Alyssa Bellini	Won 6-0, 7-5
02-11-12	at Arkansas State	1	Mariana Rong	Lost 5-7, 0-6
02-12-12	at Central Arkansas	1	Horsikyan, Simona	Lost 4-6, 3-6
02-25-12	vs South Dakota	1	Michelle Elkin	Won 6-2, 6-0
02-26-12	at Bradley	1	Sarah Rodelfeld	Won 7-5, 6-2
03-06-12	SOUTHERN ILLINOIS	1	Melanie Delsart	Lost 3-6, 1-6
03-10-12	at IPFW	1	Anita Henestrosa	Lost 2-6, 1-6
03-11-12	at Dayton	1	Claire McNulty	Lost 6-8, 4-6, 8-10
03-14-12	at Missouri-St. Louis	1	Louisa Werner	Lost 5-7, 4-6
*03-18-12	at UT Martin	1	Jodie Tilley	Lost 1-6, 4-6
*03-24-12	at Austin Peay	1	TOMIC, Vanja	Lost 0-6, 3-6
*03-25-12	MURRAY STATE	1	CUNITZ, Cassidy	Lost 1-6, 2-6
*03-31-12	at Tennessee State	1	Melynda Simmons	Won 6-0, 6-1
*04-01-12	at Jacksonville State	1	Raisa Guastl	Lost 4-6, 4-6
*04-06-12	EASTERN KENTUCKY	1	FAOUZI, Amandine	Lost 4-6, 0-6
*04-07-12	MOREHEAD STATE	1	Alix Young	Won 6-2, 6-1
*04-14-12	vs Eastern Illinois	1	Janelle Prisner	Lost 4-6, 6-4, 6-7
*04-15-12	at SIU Edwardsville	1	Carli Connors	Lost 2-6, 6-4, 6-7

DOUBLES	Team/School	Pos	Opponent	Doubles score/Partner
10/7-9, 2011	vs Arkansas-Little Rock	t-QF	Viktoriia Plyuta/Alina Kologova	Won 8-4/Nyenwe
10/7-9, 2011	vs Western Kentucky	t-SF	McKinley Mason/Alex Grofford	Won 8-0/Nyenwe
10/7-9, 2011	vs Central Arkansas	t-F	Allison Hartman/Allison Murphy	Won 8-6/Nyenwe
10/21-22, 2011	vs Lipscomb		Alyssa Bellini/Deahna Walcher	Lost 5-8/Nyenwe
02-12-12	at Central Arkansas	1	Hartman, Allison/Murphy, Allison	Won 8-4/Nyenwe
02-25-12	vs South Dakota	1	Alena Sergeychik/Shadi Soleymani	Lost 7-8/Nyenwe
02-26-12	at Bradley	1	Sarah Rodelfeld/Meredith McDonagh	Lost 6-8/Nyenwe
03-06-12	SOUTHERN ILLINOIS	1	Melanie Delsart/Korey Love	Lost 4-8/Nyenwe
03-10-12	at IPFW	2	Alex Forsyth/Anita Henestrosa	Won 9-8/Robinson
03-11-12	at Dayton	2	Sammil Hornbarger/Victoria Marchant	Won 8-3/Robinson
03-14-12	at Missouri-St. Louis	2	Leanne Cantalupo/Danielle Henkel	Won 8-4/Robinson
*03-18-12	at UT Martin	1	Ivon Simic/Jodie Tilley	Lost 2-8/Robinson
*03-24-12	at Austin Peay	1	TOMIC, Vanja/CARRE, Alison	Lost 4-8/Robinson
*03-25-12	MURRAY STATE	1	CANTY, Ashley/CUNITZ, Cassidy	Lost 2-8/Martin
*03-31-12	at Tennessee State	1	Lauren Thomas/London Thomas	Won 8-3/Martin
*04-01-12	at Jacksonville State	1	Raisa Guastl/Raphaela Lima	Lost 0-8/Martin
*04-06-12	EASTERN KENTUCKY	1	LABEAU, Kristina/GERRITSEN, Melissa	Lost 6-8/Martin
*04-07-12	MOREHEAD STATE	1	Victoria Gran/Brooke Helms	Lost 2-8/Martin
*04-14-12	vs Eastern Illinois	1	Janelle Prisner/Merritt Whitley	Lost 4-8/Martin
*04-15-12	at SIU Edwardsville	1	Carli Connors/Laura Horning	Won 8-4/Martin

2010-11

SINGLES	Team/School	Pos	Opponent	Singles score
01-22-11	vs UMKC	1	Eva Dalvai	Won 7-5, 6-4
01-23-11	at Missouri	1	Kaitlyn Ritchie	Lost 0-6, 1-6
02-03-11	BRADLEY	1	Nicole Miller	Won 6-2, 6-3
*02-09-11	MOREHEAD STATE	1	Alix Young	Lost 3-6, 5-6
*03-05-11	AUSTIN PEAY	1	Vanja Tomic	Lost 2-6, 6-4, 4-6
03-07-11	vs BYU-Hawaii	1	Hsuan Hwang	Lost 0-6, 0-6
03-08-11	at Alabama State	1	Amelie Buhl	Won 6-0, 6-0
03-12-11	IPFW	1	Amy Recht	Lost 6-4, 3-6, 7-10
03-13-11	WESTERN KENTUCKY	1	Monta Reinfelde	Won 7-6, 4-6, 10-5
*04-02-11	at Murray State	1	Cassidy Cunitz	Won 6-1, 6-1
*04-04-11	at Jacksonville State	1	VIVANE, Marani	Lost 2-6, 3-6
*04-05-11	UT MARTIN	1	Jodie Tilley	Lost 3-6, 0-6

*04-07-11	TENNESSEE STATE	1	Kryston Mason	Won 6-0, 6-0
*04-08-11	EASTERN KENTUCKY	1	Jessica Albuquerque	Lost 3-6, 2-6
04-09-11	vs Creighton	1	Anna Kirshenbaum	Won 6-0, 6-0
*04-10-11	at Eastern Illinois	1	Janelle Prisner	Won 6-3, 0-6, 11-9

DOUBLES	Team/School	Pos	Opponent	Doubles score/Partner
01-22-11	vs UMKC	1	Eva Dalvai/Chelsea Horner	Lost 4-8/Nyenwe
01-23-11	at Missouri	1	Kaitlyn Ritchie/Mallory Weber	Lost 1-8/Nyenwe
02-03-11	BRADLEY	1	Nicole Miller/Sarah Rodelfeld	Lost 6-8/Nyenwe
*02-19-11	MOREHEAD STATE	1	Lauren Delaney/Madeleine Antero	Lost 6-8/Nyenwe
*03-05-11	AUSTIN PEAY	1	Vanja Tomic/Kimberly Loo	Lost 2-8/Nyenwe
03-07-11	vs BYU-Hawaii	1	Hsuan Hwang/Yuan Jia	Lost 1-8/Nyenwe
03-08-11	at Alabama State	1	Sheniece Rawlins/Amelie Buhl	Won 8-4/Nyenwe
03-12-11	IPFW	1	Ingrid Ballus/Amy Recht	Lost 5-8/Nyenwe
03-13-11	WESTERN KENTUCKY	1	Monta Reinfelde/McKinley Mason	Won 8-4/Nyenwe
*04-02-11	at Murray State	1	Cassidy Cunitz/Ashley Canty	Lost 6-8/Nyenwe
*04-04-11	at Jacksonville State	1	DESSBESELL, Martina/VIVANE, Marani	-/Nyenwe
*04-05-11	UT MARTIN	1	Jodie Tilley/Anna Marie Harbold	Lost 7-8/Nyenwe
*04-07-11	TENNESSEE STATE	1	Kryston Mason/Shardel Suber	Won 8-0/Nyenwe
*04-08-11	EASTERN KENTUCKY	1	Jessica Albuquerque/Saioa Oscoz	Won 8-4/Nyenwe
04-09-11	vs Creighton	1	Anna Kirshenbaum/Analese Snyder	Won 8-6/Nyenwe
*04-10-11	at Eastern Illinois	1	Janelle Prisner/Cara Huck	Lost 1-8/Nyenwe

2009-10

SINGLES	Team/School	Pos	Opponent	Singles score
01-30-10	vs Saint Louis	2	Casey Miller	Lost 5-7, 6-3, 6-10
02-03-10	at SIU Edwardsville	1	Carli Connors	Won 6-2, 6-2
02-13-10	vs Wright State	1	Kenisha Webb	Won 6-2, 7-6, 7-5
02-20-10	at IPFW	1	Amy Recht	Lost 0-6, 2-6
02-21-10	vs Niagara	1	Hilary Hansen	Won 6-1, 7-6, 7-3
02-27-10	at Bradley	1	Nicole Miller	Lost 5-7, 4-6
*03-11-10	MURRAY STATE	1	MCGAHEE, Angela	Lost 5-7, 4-6
*03-12-10	at Tennessee State	1	HAYNES, Meagan	Won 6-0, 6-0
03-13-10	at Missouri-Kansas City	1	Eva Dalvai	Lost 6-7, 2-6
*03-23-10	TENNESSEE TECH	1	ZORA, Leydi	Won 7-6, 1-6, 11-9
03-24-10	at Southern Illinois	1	Melanie Delsart	Lost 2-6, 0-6, retired
*03-26-10	at Eastern Kentucky	1	ALBUQUERQUE, Jessica	Lost 4-6, 6-4, 4-6
*03-27-10	at Morehead State	1	Alix Young	Lost 4-6, 1-6
*03-30-10	at Austin Peay	1	TOMIC, Vanja	Lost retired
*04-06-10	EASTERN ILLINOIS	1	HUCK, Cara	Won 6-4, 6-3
04-08-10	ARKANSAS STATE	1	Barnard, Elne	Lost 0-6, retired
*04-09-10	at UT Martin	1	Martie Wahl	Lost 4-6, 3-6
04-10-10	vs Harding	1	Ling Chan	Won 2-6, 6-0, 6-1

DOUBLES	Team/School	Pos	Opponent	Doubles score/Partner
01-30-10	vs Saint Louis	1	Casey Miller/Sarah Septein	Lost 3-8/Kelly
02-03-10	at SIU Edwardsville	1	Carli Connors/Maggie Boeckman	Lost 4-8/Kelly
02-13-10	vs Wright State	1	Kenisha Webb/Masha Peresetsky	Won 8-6/Kelly
02-20-10	at IPFW	1	Amy Recht/Ingrid Ballus	Lost 4-8/Kelly
02-21-10	vs Niagara	1	Hilary Hansen/Alyssa Lucas	Lost 8-9/Kelly
02-21-10	vs Detroit	1	Sophie Sundstrom/Amanda Cornwell	Lost 5-8/Kelly
02-27-10	at Bradley	1	Nicole Miller/Emily Regenold	Lost 5-8/Garcia
*03-11-10	MURRAY STATE	1	MCGAHEE, Angela/WISEMAN, Lindsay	Lost 2-8/Garcia
*03-12-10	at Tennessee State	1	HAYNES, Meagan/JOHNSON, Penelope	Won 8-4/Garcia
03-13-10	at Missouri-Kansas City	1	Eva Dalvai/Chelsea Horner	Lost 1-8/Garcia
*03-23-10	TENNESSEE TECH	1	KAHL, Frederike/GRAN, Victoria	Lost 4-8/Garcia
03-24-10	at Southern Illinois	2	Jennifer Dien/Jessica Flannery	Lost 4-8/Garcia
*03-26-10	at Eastern Kentucky	3	BRANCO, Catarina/GHEISARY, Esmira	Lost 4-8/Garcia
*03-27-10	at Morehead State	2	Alexandra Rydberg/Alix Young	Lost 3-8/Donoslovic
*03-30-10	at Austin Peay	2	WEIKARD, Carolin/NAKAMURA, Yuki	Lost 1-8/Donoslovic
04-10-10	vs Southern Arkansas	3	Caroline Colvin/Elizabeth Colvin	Won 8-4/Garcia
04-10-10	vs Harding	3	Katherine Golik/Lola Pardo	Won 8-5/Garcia
04-11-10	at Arkansas-Little Rock	2	Lopez, Fanny/Garay, Nathalia	Lost 5-8/Garcia





## Athlete Bios/Statistics



# Elizabeth Nyenwe

» Jr. » London, England » Ursuline HS

*Went a team-best 5-3 on the singles court during the fall.*

**2012:** Went 14-10 in singles play, the most wins on the team, while posting an 11-6 singles mark during dual competition, playing exclusively at the No. 2 slot ... went 5-4 against OVC opponents, one of only two Redhawks with a winning conference record ... eight of her 24 singles matches went to three sets and she went 5-3 in those instances ... posted a 7-13 record in doubles play, paired mostly with Lauren Schaper (3-9) ... started dual play 7-2 ... won four of her last six singles matches ... named a Southeast Scholar-Athlete ... placed on the OVC Commissioner's Honor Roll.

**2011:** Named Ohio Valley Conference Freshman of the Year, becoming the first Redhawk to receive the prestigious honor ... first-team All-OVC selection ... led the team and ranked fourth in the OVC with nine singles wins at No. 2 ... boasted a 7-1 singles record in conference play ... her six conference wins at No. 2 singles ranked second most in OVC play ... went 7-3 in her last 10 singles matches of the season ... teamed up with Nikole Novikova to earn a team-high five wins at No. 1 doubles.

**Prep:** Is out of Ursuline High School and was part of the prestigious Wimbledon developmental program ... winner of the Under 16 County Closed and was runner-up in the Under 18s as part of that program.

**Personal:** Born Nov. 11, 1991 ... majors in Business and Sport Management ... daughter of Rose Nyenwe.

Nyenwe's Career Singles Record at Southeast Missouri									
	Overall	Dual	Tour	OVC	1	2	3	4	5
2010-11	9-7	9-7	0-0	7-1	---	9-7	---	---	---
2011-12	14-10	11-6	3-4	5-4	---	11-6	---	---	---
<b>TOTAL</b>	<b>23-17</b>	<b>20-13</b>	<b>3-4</b>	<b>12-5</b>	<b>---</b>	<b>20-13</b>	<b>---</b>	<b>---</b>	<b>---</b>

Nyenwe's Career Doubles Record at Southeast Missouri							
	Overall	Dual	Tour	OVC	1	2	3
2010-11	5-10	5-10	0-0	2-5	5-10	---	---
2011-12	7-13	4-12	3-1	1-8	1-3	---	3-9
<b>TOTAL</b>	<b>12-23</b>	<b>9-22</b>	<b>3-1</b>	<b>3-13</b>	<b>6-13</b>	<b>---</b>	<b>3-9</b>



## Nyenwe's Career Match-by-Match

2011-12

SINGLES	Team/School	Pos	Opponent	Singles score
10/7-9, 2011	vs Western Kentucky	t-QF	Caroline Barboza	Won 6-3, 6-3
10/7-9, 2011	vs Arkansas State	t-SF	Biljana Milosevska	Lost 5-7, 3-6
10/7-9, 2011	vs Arkansas-Little Rock	con	Micaela McShane	Lost 4-6, 3-6
10/21-22, 2011	vs Northern Alabama		Bruna Vieira	Won 6-4, 3-6, 10-6
10/21-22, 2011	vs UT Martin		Alice Laing	Won 6-2, 6-0
10/21-22, 2011	vs Lipscomb		Jenny Borck	Lost 3-6, 7-5, 7-10
10/21-22, 2011	vs Northern Alabama		Victoria Rees	Lost 6-4, 1-6, 9-11
02-11-12	at Arkansas State	2	Tamara Slijepcevic	Lost 2-6, 1-6
02-12-12	at Central/Arkansas	2	Horsikyan, Kristina	Won 6-3, 6-4
02-25-12	vs South Dakota	2	Alena Sergeychik	Won 6-2, 6-0
02-26-12	at Bradley	2	Adele Henke	Won 5-7, 6-2, 6-3
03-06-12	SOUTHERN ILLINOIS	2	Anita Lee	Lost 1-6, 5-7
03-10-12	at IPFW	2	Marcy Huck	Won 6-4, 6-0
03-11-12	at Dayton	2	Maureen Stevens	Won 6-4, 3-6, 10-7
03-14-12	at Missouri-St. Louis	2	Leanne Cantalupo	Won 6-1, 7-5
*03-18-12	at UT Martin	2	Johanie Van Zyl	Won 6-3, 7-6
*03-24-12	at Austin Peay	2	Di SALVO, Ornella	Lost 4-6, 1-6
*03-25-12	MURRAY STATE	2	CANTY, Ashley	Lost 3-6, 6-1, 1-6
*03-31-12	at Tennessee State	2	Lauren Thomas	Won 6-0, 6-2
*04-01-12	at Jacksonville State	2	Rafaela Wenzel	Won 7-5, 6-1
*04-06-12	EASTERN KENTUCKY	2	LABEJA, Kristina	Lost 0-6, 3-6
*04-07-12	MOREHEAD STATE	2	Alexis Garrett	Won 6-1, 3-6, 7-5
*04-14-12	vs Eastern Illinois	2	Merritt Whitley	Lost 3-6, 4-6
*04-15-12	at SIU Edwardsville	2	Kali Donner	Won 6-3, 3-6, 7-6

DOUBLES	Team/School	Pos	Opponent	Doubles score/Partner
10/7-9, 2011	vs Arkansas-Little Rock	t-QF	Viktoriya Plyuta/Alina Kolegova	Won 8-4/Novikova
10/7-9, 2011	vs Western Kentucky	t-SF	McKinley Mason/Alex Crofford	Won 8-0/Novikova
10/7-9, 2011	vs Central/Arkansas	t-F	Allison Hartman/Allison Murphy	Won 8-6/Novikova
10/21-22, 2011	vs Lipscomb		Alyssa Bellini/Deahna Welcher	Lost 5-8/Novikova
02-12-12	at Central/Arkansas	1	Hartman, Allison/Murphy, Allison	Won 8-4/Novikova
02-25-12	vs South Dakota	1	Alena Sergeychik/Shadi Soleymani	Lost 7-8/Novikova
02-26-12	at Bradley	1	Sarah Rodefied/Meredith McDonagh	Lost 6-8/Novikova
03-06-12	SOUTHERN ILLINOIS	1	Melanie Delsart/Korey Love	Lost 4-8/Novikova
03-10-12	at IPFW	3	Frederique Sunstrum/Raquel Vescovi	Lost 2-8/Schaper
03-11-12	at Dayton	3	Erin Filbrandt/Georgia Lammers	Won retired/Schaper
03-14-12	at Missouri-St. Louis	3	Katie Rynkiewicz/Leticia Garcia	Won 8-6/Schaper
*03-18-12	at UT Martin	3	Katie McCall/Johanie Van Zyl	Lost 5-8/Schaper
*03-24-12	at Austin Peay	3	KARAK, Jovana/TAVAREZ, Vanessa	Lost 4-8/Schaper
*03-25-12	MURRAY STATE	3	PIERSON, Ashley/KLEIN, Jordana	Lost 3-8/Schaper
*03-31-12	at Tennessee State	3	Shardel Suber/Khadijah Williams	Won 8-1/Schaper
*04-01-12	at Jacksonville State	3	Kelly Tomlin/Aleksandra Gmilijic	Lost 7-9/Schaper
*04-06-12	EASTERN KENTUCKY	3	FAOUZI, Amandine/JIMENEZ, Marcela	Lost 3-8/Schaper
*04-07-12	MOREHEAD STATE	3	Jessica Montemayor/Shilpa Naruka	Lost 7-8/Schaper
*04-14-12	vs Eastern Illinois	3	Amanda Dibbs/Annie Egan	Lost 5-8/Schaper
*04-15-12	at SIU Edwardsville	3	Joanna Corkern/Amanda Miller	Lost 4-8/Schaper

2010-11

SINGLES

Team/School	Pos	Opponent	Singles score
01-22-11	2	vs UMKC	Lost 3-6, 0-6
01-23-11	2	at Missouri	Lost 2-6, 1-6
02-05-11	2	BRADLEY	Lost 4-6, 3-6
*02-19-11	2	MOREHEAD STATE	Won 6-3, 6-1
*03-05-11	2	AUSTIN PEAY	Won 7-6, 6-4
03-07-11	2	vs BYU-Hawaii	Lost 4-6, 4-6
03-08-11	2	at Alabama State	Won 6-1, 6-0
03-12-11	2	IPFW	Lost 3-6, 1-6
03-19-11	2	WESTERN KENTUCKY	Won 6-3, 4-6, 10-4
*04-02-11	2	at Murray State	Won 6-1, 6-4
*04-04-11	2	at Jacksonville State	DESSBESELL, Martina
*04-05-11	2	UT MARTIN	Alice Laing
*04-07-11	2	TENNESSEE STATE	Shardel Suber
*04-08-11	2	EASTERN KENTUCKY	Myriem Mhirit
04-09-11	2	vs Creighton	Kelsey Schmidt
*04-10-11	2	at Eastern Illinois	Cara Huck

DOUBLES

Team/School	Pos	Opponent	Doubles score/Partner
01-22-11	1	vs UMKC	Eva Dalvai/Chelsea Horner
01-23-11	1	at Missouri	Kaitlyn Ritchie/Mallory Weber
02-05-11	1	BRADLEY	Nicole Miller/Sarah Rodefied
*02-19-11	1	MOREHEAD STATE	Lauren Delaney/Madeleine Antero
*03-05-11	1	AUSTIN PEAY	Vanja Tomic/Kimberly Loo
03-07-11	1	vs BYU-Hawaii	Hsuan Hwang/Yuan Jia
03-08-11	1	at Alabama State	Sheniece Rawlins/Amelie Buhl
03-12-11	1	IPFW	Ingrid Ballus/Amy Recht
03-19-11	1	WESTERN KENTUCKY	Monta Reinfelde/McKinley Mason
*04-02-11	1	at Murray State	Cassidy Cunitz/Ashley Canty
*04-04-11	1	at Jacksonville State	DESSBESELL, Martina/VIVANE, Marani
*04-05-11	1	UT MARTIN	Jodie Tiley/Anna Marie Herbold
*04-07-11	1	TENNESSEE STATE	Kryston Mason/Shardel Suber
*04-08-11	1	EASTERN KENTUCKY	Jessica Albuquerque/Saioa Osoez
04-09-11	1	vs Creighton	Anna Kirshenbaum/Analese Snyder
*04-10-11	1	at Eastern Illinois	Janelle Prisner/Cara Huck





## Athlete Bios/Statistics



# Heather Robinson

» Jr. » Durham, England » Durham Johnston HS

*Went 2-3 in singles play during the fall.*

**2012:** Posted a team-best 13-4 singles record, playing mostly at the No. 5 spot (11-3) ... also notched a team-best 7-2 singles record in OVC duals ... won 12 of her last 14 singles matches ... won at least three-straight matches on three occasions with a season-best five-match winning streak from Feb. 26-March 14 ... posted an 8-8 doubles record while playing with four different partners ... spent her most time in doubles play with Jessica Courtneil, where the pair went 4-4 (4-3 in OVC play) ... named a Southeast Scholar-Athlete ... placed on the OVC Commissioner's Honor Roll.

**Campbell University:** Went 10-11 in singles play, with her 10 victories tying for fourth on the team during the 2011 season ... competed mainly at the No. 4 singles spot where she earned seven victories ... teamed up with three different players to register an 11-10 record in doubles play ... five of those wins came at the No. 3 position.

**Personal:** Born Jan. 21, 1992 ... majoring in General Studies ... daughter of Jonathon and Sheryll Robinson.

**Robinson's Career Singles Record at Southeast Missouri**

	Overall	Dual	Tour	OVC	1	2	3	4	5	6
2011-12	13-4	13-4	0-0	7-2	---	---	---	1-0	11-3	1-1
<b>TOTAL</b>	<b>13-4</b>	<b>13-4</b>	<b>0-0</b>	<b>7-2</b>	<b>---</b>	<b>---</b>	<b>---</b>	<b>1-0</b>	<b>11-3</b>	<b>1-1</b>

**Robinson's Career Doubles Record at Southeast Missouri**

	Overall	Dual	Tour	OVC	1	2	3
2011-12	8-8	8-8	0-0	4-5	0-2	7-4	1-2
<b>TOTAL</b>	<b>8-8</b>	<b>8-8</b>	<b>0-0</b>	<b>4-5</b>	<b>0-2</b>	<b>7-4</b>	<b>1-2</b>





## Robinson's Career Match-by-Match

2011-12

### SINGLES

	Team/School	Pos	Opponent (Rank Nat/Reg)
02-11-12	at Arkansas State	6	Ceara Howey
02-12-12	at Central Arkansas	6	Otani, Kazumi
02-25-12	vs South Dakota	5	Veronika Makashov
02-26-12	at Bradley	5	Corey Mattson
03-06-12	SOUTHERN ILLINOIS	5	Ariadna Cairo Baza
03-10-12	at IPFW	5	Caterina Kiefer
03-11-12	at Dayton	5	Victoria Marchant
03-14-12	at Missouri-St. Louis	4	Danielle Henkel
*03-18-12	at UT Martin	5	Anna Marie Herbold
*03-24-12	at Austin Peay	5	TAVAREZ, Vanessa
*03-25-12	MURRAY STATE	5	HUERTH, Carolyn
*03-31-12	at Tennessee State	5	Shardel Suber
*04-01-12	at Jacksonville State	5	Danielle Kerindi
*04-06-12	EASTERN KENTUCKY	5	POFFO, Milena
*04-07-12	MOREHEAD STATE	5	Brooke Helms
*04-14-12	vs Eastern Illinois	5	Sephora Boulbahaiem
*04-15-12	at SIU Edwardsville	5	Laura Horning

### Singles score

Lost 3-6, 2-6
Won 4-6, 6-3, 10-2
Lost 2-6, 3-6
Won 3-6, 6-4, 6-3
Won 6-4, 6-4
Won 7-5, 4-6, 11-9
Won 6-1, 6-1
Won 6-0, 6-0
Lost 3-6, 4-6
Won 6-0, 6-0
Won 6-3, 6-1
Won 6-0, 6-1
Won 6-1, 6-1
Lost 1-6, 6-4, 8-10
Won 6-1, 6-0
Won 7-5, 6-2
Won 6-0, 6-2

### DOUBLES

02-12-12	at Central Arkansas
02-25-12	vs South Dakota
02-26-12	at Bradley
03-03-12	SOUTHERN ILLINOIS
03-10-12	at IPFW
03-11-12	at Dayton
03-14-12	at Missouri-St. Louis
*03-18-12	at UT Martin
*03-24-12	at Austin Peay
*03-25-12	MURRAY STATE
*03-31-12	at Tennessee State
*04-01-12	at Jacksonville State
*04-06-12	EASTERN KENTUCKY
*04-07-12	MOREHEAD STATE
*04-14-12	vs Eastern Illinois
*04-15-12	at SIU Edwardsville

Pos	Opponent	Doubles score/Partner
2	Horsikyan, Simona/Otani, Kazumi	Lost 4-8/Courtneil
3	Veronika Makashov/Yamini Reddy	Lost 0-8/Garcia
3	E. Przystawski/Ashley Roth	Won 8-3/Garcia
3	Ariadna Cairo Baza/Gisela Cairo Baza	Lost 3-8/Schaper
2	Alex Forsyth/Anita Henestrosa	Won 9-3, 8-6/Novikova
2	Sammil Hornbarger/Victoria Marchant	Won 8-3/Novikova
2	Leanne Cantalupo/Danielle Henkel	Won 8-4/Novikova
1	Ivon Simic/Jodie Tiley	Lost 2-8/Novikova
1	TOMIC, Vanja/CARRE, Alison	Lost 4-8/Novikova
2	SUGA, Carla/HUERTH, Carolyn	Won 8-5/Courtneil
2	Melynda Simmons/Kryston Mason	Won 8-0/Courtneil
2	Rafaela Wenzel/Zoe Bizinos	Won 8-6/Courtneil
2	OSCOZ, Saioa/POFFO, Milena	Lost 7-8/Courtneil
2	Alexis Garrett/Alix Young	Lost 5-8/Courtneil
2	Jennifer Kim/Sephora Boulbahaiem	Won 8-3/Courtneil
2	Lindsey Raymond/Kalii Donner	Lost 5-8/Courtneil





## Athlete Bios/Statistics



# Lauren Schaper

”Jr. ”Wildwood, Mo. ”Lafayette HS

**2012:** Posted a 1-4 singles record while playing in the No. 6 slot in each appearance ... regular in the doubles lineup, where she went 3-11 ... paired with Elizabeth Nyenwe for all but two doubles matches, going 3-9 at the No. 3 spot ... named a Southeast Scholar-Athlete.

**2011:** Won three matches at No. 5 singles ... posted her first career Ohio Valley Conference victory when she beat Tennessee State's Kwatema Mensah, 6-1, 6-1, on Apr. 7 ... also won against Bradley (Feb. 5) and Alabama State (Mar. 8) in singles play ... recorded two doubles wins with Sarah Pettigrew at the No. 3 spot.

**Prep:** Went undefeated (16-0) in No. 2 doubles as a senior at Lafayette High School ... competed in No. 4 singles ... four-year letterwinner ... also lettered two years in basketball.

**Personal:** Born Sept. 6, 1991 ... majors in Graphic Design and Spanish ... daughter of Kim Schaper.

Schaper's Career Singles Record at Southeast Missouri

	Overall	Dual	Tour	OVC	1	2	3	4	5	6
2010-11	3-13	3-13	0-0	1-7	---	---	---	0-2	3-11	---
2011-12	1-4	1-4	0-0	0-1	---	---	---	---	---	1-4
<b>TOTAL</b>	<b>4-17</b>	<b>4-17</b>	<b>0-0</b>	<b>1-8</b>	<b>---</b>	<b>---</b>	<b>---</b>	<b>0-2</b>	<b>3-11</b>	<b>1-4</b>

Schaper's Career Doubles Record at Southeast Missouri

	Overall	Dual	Tour	OVC	1	2	3
2010-11	2-12	2-12	0-0	1-6	---	0-2	2-10
2011-12	3-11	3-11	0-0	1-8	---	---	3-11
<b>TOTAL</b>	<b>5-23</b>	<b>5-23</b>	<b>0-0</b>	<b>2-14</b>	<b>---</b>	<b>0-2</b>	<b>5-21</b>



## Schaper's Career Match-by-Match

2011-12

SINGLES	Team/School	Pos	Opponent	Singles score
03-06-12	SOUTHERN ILLINOIS	6	Anastacia Simons	Lost 1-6, 1-6
03-10-12	at IPFW	6	Frederique Sunstrum	Lost 1-6, 0-6
03-11-12	at Dayton	6	Georgia Lammers	Won retired
03-14-12	at Missouri-St. Louis	6	Leticia Garcia	Lost 2-6, 0-6
*04-15-12	at SIU Edwardsville	6	Joanna Corkern	Lost 1-6, 0-6

DOUBLES	Team/School	Pos	Opponent	Doubles score/Partner
02-12-12	at Central Arkansas	3	Horsikyan, Kristina/Ruocco, Sasha	Lost 3-8/Martin
03-06-12	SOUTHERN ILLINOIS	3	Ariadna Cairo Baza/Gisela Cairo Baza	Lost 3-8/Robinson
03-10-12	at IPFW	3	Frederique Sunstrum/Raquel Vescovi	Lost 2-8/Nyenwe
03-11-12	at Dayton	3	Erin Filbrandt/Georgia Lammers	Won retired/Nyenwe
03-14-12	at Missouri-St. Louis	3	Katie Rynkiewicz/Leticia Garcia	Won 8-6/Nyenwe
*03-18-12	at UT Martin	3	Katie McCall/Johanie Van Zyl	Lost 5-8/Nyenwe
*03-24-12	at Austin Peay	3	KARAK, Jovana/TAVAREZ, Vanessa	Lost 4-8/Nyenwe
*03-25-12	MURRAY STATE	3	PIERSON, Ashley/KLEIN, Jordana	Lost 3-8/Nyenwe
*03-31-12	at Tennessee State	3	Shardel Stuber/Khadjah Williams	Won 8-1/Nyenwe
*04-01-12	at Jacksonville State	3	Kelly Tomlin/Aleksandra Gmiljic	Lost 7-9/Nyenwe
*04-06-12	EASTERN KENTUCKY	3	FAOUZI, Amandine/JIMENEZ, Marcela	Lost 3-8/Nyenwe
*04-07-12	MOREHEAD STATE	3	Jessica Montemayor/Shilpa Naruka	Lost 7-8/Nyenwe
*04-14-12	vs Eastern Illinois	3	Amanda Dibbs/Annie Egan	Lost 5-8/Nyenwe
*04-15-12	at SIU Edwardsville	3	Joanna Corkern/Amanda Miller	Lost 4-8/Nyenwe

2010-11

SINGLES	Team/School	Pos	Opponent	Singles score
01-22-11	vs UMKC	5	Gabriela Pintos	Lost 1-6, 2-6
01-28-11	at Missouri	5	Rachel Stuhlmann	Lost 0-6, 0-6
02-05-11	BRADLEY	5	Brigitte Graf	Won 7-6, 6-4

*02-19-11	MOREHEAD STATE	5	Jessica Montemayor	Lost 0-6, 0-6
*03-05-11	AUSTIN PEAY	5	Rachel Margolies	Lost 0-6, 1-6
03-07-11	vs BYU-Hawaii	5	Sophia Simmons	Lost 0-6, 0-6
03-08-11	at Alabama State	5	Beoncia Dunn	Won 6-4, 6-0
03-12-11	IPFW	5	Yuka Kobayashi	Lost 1-6, 0-6
03-19-11	WESTERN KENTUCKY	5	Carrie True	Lost 0-6, 0-6
*04-02-11	at Murray State	5	Carla Suga	Lost 0-6, 0-6
*04-04-11	at Jacksonville State	5	RENESTO, Juliana	Lost 0-6, 0-6
*04-05-11	UT MARTIN	5	Johanie Van Zyl	Lost 0-6, 0-6
*04-07-11	TENNESSEE STATE	5	Kwatema Mensah	Won 6-1, 6-1
*04-08-11	EASTERN KENTUCKY	5	Milena Poffo	Lost 0-2, retired
04-09-11	vs Creighton	4	Lauren Mastro	Lost 0-6, 0-6
*04-10-11	at Eastern Illinois	4	Amanda Dibbs	Lost 2-6, 0-6

DOUBLES	Team/School	Pos	Opponent	Doubles score/Partner
01-22-11	vs UMKC	3	Gabriela Pintos/Jessica Ball	Lost 1-8/Pettigrew
01-28-11	at Missouri	3	Maria Christensen/Jamie Mera	Lost 0-8/Pettigrew
02-05-11	BRADLEY	3	Brigitte Graf/Ashley Roth	Won 8-5/Pettigrew
*02-19-11	MOREHEAD STATE	3	Alexandra Rydberg/Alix Young	Lost 0-8/Pettigrew
03-07-11	vs BYU-Hawaii	3	Sophia Simmons/Kaylin Bristol	Lost 1-8/Henderson
03-12-11	IPFW	3	Yuka Kobayashi/Raquel Vescovi	Lost 2-8/Henderson
03-19-11	WESTERN KENTUCKY	3	Morgan Freeman/Carrie True	Lost 2-8/Pettigrew
*04-02-11	at Murray State	3	Lindsey Wiseman/Taylor Vick	Lost 0-8/Pettigrew
*04-04-11	at Jacksonville State	3	RENESTO, Juliana/WENZEL, Rafaela	Lost 0-8/Pettigrew
*04-05-11	UT MARTIN	3	Johanie Van Zyl/Katie McCall	Lost 0-8/Pettigrew
*04-07-11	TENNESSEE STATE	3	Kwatema Mensah/Brittany Dawson	Won 8-4/Pettigrew
*04-08-11	EASTERN KENTUCKY	3	Anouk Faure/Sophie O'Neill	Lost 1-8/Pettigrew
04-09-11	vs Creighton	2	Mary McMullan/Kelsey Schmidt	Lost 4-8/Hartley
*04-10-11	at Eastern Illinois	2	Amanda Dibbs/Shannon Brooks	Lost 2-8/Hartley



# Because Pioneers Lead The Way

## Those They Lead Are Limitless



Dr. Kala Stroup  
14th President  
Southeast Missouri State University



Cindy Gannon  
Senior Associate Director of  
Athletics & Senior Woman Administrator  
Southeast Missouri State University



Lana Richmond  
Head Softball Coach  
Southeast Missouri State University



Georganne Syler  
Former Faculty Athletics Representative  
& Registered Dietitian  
Southeast Missouri State University



Linda Wells  
Former Olympic Coach, Six-Time Hall of  
Fame Inductee and Southeast Missouri  
State University Alumnae



# CELEBRATING 40 YEARS OF TITLE IX





# 2012 Season Review

## FEATURING...

- » 2012 Final Results
- » 2012 OVC Results
- » Match-by-Match Results







## 2012 Final Results

Overall: 5-12 • OVC: 2-7 • Home: 1-3 • Away: 4-7 • Neutral: 0-2

SINGLES	Overall	Dual	Tour	OVC	1	2	3	4	5	6	Streak	Last10
Jessica Courtneil	7-14	4-12	3-2	3-6	---	---	3-11	1-1	---	---	L 2	3-7
Laura Garcia	2-18	1-12	1-6	1-7	---	---	---	---	0-3	1-9	L 4	1-9
Melissa Martin	13-9	11-6	2-3	4-5	---	---	1-2	10-4	---	---	W 3	5-5
Nikole Novikova	6-17	4-13	2-4	2-7	4-13	---	---	---	---	---	L 2	2-8
Elizabeth Nyenwe	14-10	11-6	3-4	5-4	---	11-6	---	---	---	---	W 1	6-4
Heather Robinson	13-4	13-4	0-0	7-2	---	---	---	1-0	11-3	1-1	W 3	8-2
Lauren Schaper	1-4	1-4	0-0	0-1	---	---	---	---	---	1-4	L 2	1-4
<b>Totals</b>	<b>56-76</b>	<b>45-57</b>	<b>11-19</b>	<b>22-32</b>	<b>4-13</b>	<b>11-6</b>	<b>4-13</b>	<b>12-5</b>	<b>11-6</b>	<b>3-14</b>		
<b>Percentage</b>	<b>.424</b>	<b>.441</b>	<b>.367</b>	<b>.407</b>	<b>.235</b>	<b>.647</b>	<b>.235</b>	<b>.706</b>	<b>.647</b>	<b>.176</b>		

DOUBLES	Overall	Dual	Tour	OVC	1	2	3	Strk	Last 10
Novikova/Nyenwe	4-4	1-3	3-1	0-0	1-3	---	---	L 3	4-4
Courtneil/Martin	6-8	1-7	5-1	0-2	0-3	1-4	---	L 6	2-8
Courtneil/Robinson	4-4	4-4	0-0	4-3	---	4-4	---	L 1	4-4
Martin/Schaper	0-1	0-1	0-0	0-0	---	---	0-1	L 1	0-1
Garcia/Robinson	1-1	1-1	0-0	0-0	---	---	1-1	W 1	1-1
Robinson/Schaper	0-1	0-1	0-0	0-0	---	---	0-1	L 1	0-1
Novikova/Robinson	3-2	3-2	0-0	0-2	0-2	3-0	---	L 2	3-2
Nyenwe/Schaper	3-9	3-9	0-0	1-8	---	---	3-9	L 5	2-8
Martin/Novikova	2-5	2-5	0-0	2-5	2-5	---	---	W 1	2-5
<b>Totals</b>	<b>23-35</b>	<b>15-33</b>	<b>8-2</b>	<b>7-20</b>	<b>3-13</b>	<b>8-8</b>	<b>4-12</b>		
<b>Percentage</b>	<b>.397</b>	<b>.312</b>	<b>.800</b>	<b>.259</b>	<b>.188</b>	<b>.500</b>	<b>.250</b>		



Date	Opponent	Score	Overall	OVC
02-11-12	at Arkansas State	L 1-5	0-1	0-0
02-12-12	at Central Arkansas	L 3-4	0-2	0-0
02-25-12	vs South Dakota	L 3-4	0-3	0-0
02-26-12	at Bradley	W 6-1	1-3	0-0
03-06-12	SOUTHERN ILLINOIS	L 1-6	1-4	0-0
03-10-12	at IPFW	L 3-4	1-5	0-0
03-11-12	at Dayton	W 5-2	2-5	0-0
03-14-12	at Missouri-St. Louis	W 5-4	3-5	0-0
*03-18-12	at UT Martin	L 1-6	3-6	0-1
*03-24-12	at Austin Peay	L 1-6	3-7	0-2
*03-25-12	MURRAY STATE	L 1-6	3-8	0-3
*03-31-12	at Tennessee State	W 7-0	4-8	1-3
*04-01-12	at Jacksonville State	L 3-4	4-9	1-4
*04-06-12	EASTERN KENTUCKY	L 0-7	4-10	1-5
*04-07-12	MOREHEAD STATE	W 5-2	5-10	2-5
*04-14-12	vs Eastern Illinois	L 2-5	5-11	2-6
*04-15-12	at SIU Edwardsville	L 3-4	5-12	2-7

\* - Denotes Ohio Valley Conference match  
Home matches in all CAPS







## 2012 OVC Results

Overall: 2-7 • Home: 1-2 • Away: 1-5 • Neutral: 0-1

SINGLES	Overall	Dual	Tour	OVC	1	2	3	4	5	6	Strk	Last 10
Jessica Courtneil	3-6	3-6	0-0	3-6	---	---	2-5	1-1	---	---	L 2	3-6
Laura Garcia	1-7	1-7	0-0	1-7	---	---	---	---	---	1-7	L 4	1-7
Melissa Martin	4-5	4-5	0-0	4-5	---	---	0-2	4-3	---	---	W 3	4-5
Nikole Novikova	2-7	2-7	0-0	2-7	2-7	---	---	---	---	---	L 2	2-7
Elizabeth Nyenwe	5-4	5-4	0-0	5-4	---	5-4	---	---	---	---	W 1	5-4
Heather Robinson	7-2	7-2	0-0	7-2	---	---	---	---	7-2	---	W 3	7-2
Lauren Schaper	0-1	0-1	0-0	0-1	---	---	---	---	---	0-1	L 1	0-1
Totals	22-32	22-32	0-0	22-32	2-7	5-4	2-7	5-4	7-2	1-8		
Percentage	.407	.407	.000	.407	.222	.556	.222	.556	.778	.111		

DOUBLES	Overall	Dual	Tour	OVC	1	2	3	Strk	Last 10
Novikova/Robinson	0-2	0-2	0-0	0-2	0-2	---	---	L 2	0-2
Courtneil/Martin	0-2	0-2	0-0	0-2	---	0-2	---	L 2	0-2
Nyenwe/Schaper	1-8	1-8	0-0	1-8	---	---	1-8	L 5	1-8
Martin/Novikova	2-5	2-5	0-0	2-5	2-5	---	---	W 1	2-5
Courtneil/Robinson	4-3	4-3	0-0	4-3	---	4-3	---	L 1	4-3
Totals	7-20	7-20	0-0	7-20	2-7	4-5	1-8		
Percentage	.259	.259	.000	.259	.222	.444	.111		

Date	Opponent	Score	Overall	OVC
*03-18-12	at UT Martin	L 1-6	3-6	0-1
*03-24-12	at Austin Peay	L 1-6	3-7	0-2
*03-25-12	MURRAY STATE	L 1-6	3-8	0-3
*03-31-12	at Tennessee State	W 7-0	4-8	1-3
*04-01-12	at Jacksonville State	L 3-4	4-9	1-4
*04-06-12	EASTERN KENTUCKY	L 0-7	4-10	1-5
*04-07-12	MOREHEAD STATE	W 5-2	5-10	2-5
*04-14-12	vs Eastern Illinois	L 2-5	5-11	2-6
*04-15-12	at SIU Edwardsville	L 3-4	5-12	2-7



Heather Robinson





## Match-by-Match Results

### Arkansas State 5, Southeast Missouri State 1 02-11-12 at Jonesboro, Arkansas

#### Singles competition

1. Mariana Rong (ASU) def. Nikole Novikova (SEMO) 7-5, 6-0
2. Tamara Slijepcevic (ASU) def. Elizabeth Nyenwe (SEMO) 6-2, 6-1
3. Janie Nowland (ASU) def. Jessica Courtneil (SEMO) 6-4, 6-2
4. Melissa Martin (SEMO) def. Biljana Miloshevska (ASU) 3-6, 7-6, 10-7
5. Ioana Teu (ASU) def. Laura Garcia (SEMO) 6-0, 6-0
6. Ceara Howey (ASU) def. Heather Robinson (SEMO) 6-3, 6-2

### Central Arkansas 4, Southeast Missouri 3 02-12-12 at Conway, Ark.

#### Singles competition

1. Horsikyan, Simona (UCA) def. Nikole Novikova (SEMO) 6-4, 6-3
2. Elizabeth Nyenwe (SEMO) def. Horsikyan, Kristina (UCA) 6-3, 6-4
3. Murphy, Allison (UCA) def. Jessica Courtneil (SEMO) 6-4, 6-1
4. Melissa Martin (SEMO) def. Hartman, Allison (UCA) 6-3, 6-3
5. Ruocco, Sasha (UCA) def. Laura Garcia (SEMO) 6-0, 6-1
6. Heather Robinson (SEMO) def. Otani, Kazumi (UCA) 4-6, 6-3, 10-2

#### Doubles competition

1. Nikole Novikova/Elizabeth Nyenwe (SEMO) def. Hartman, Allison/Murphy, Allison (UCA) 8-4
2. Horsikyan, Simona/Otani, Kazumi (UCA) def. Jessica Courtneil/Heather Robinson (SEMO) 8-4
3. Horsikyan, Kristina/Ruocco, Sasha (UCA) def. Melissa Martin/Lauren Schaper (SEMO) 8-3

### South Dakota 4, Southeast Missouri 3 02-25-12 at Peoria, Ill.

#### Singles competition

1. Nikole Novikova (SEMO) def. Michelle Elkin (USD) 6-2, 6-0
2. Elizabeth Nyenwe (SEMO) def. Alena Sergeychik (USD) 6-2, 6-0
3. Shadi Soleymani (USD) def. Jessica Courtneil (SEMO) 7-6, 1-6, 6-2
4. Melissa Martin (SEMO) def. Nina Barudzio (USD) 6-4, 6-1
5. Veronika Makashov (USD) def. Heather Robinson (SEMO) 6-2, 6-3
6. Yamini Reddy (USD) def. Laura Garcia (SEMO) 6-2, 6-2

#### Doubles competition

1. Alena Sergeychik/Shadi Soleymani (USD) def. Nikole Novikova/Elizabeth Nyenwe (SEMO) 8-7
2. Nina Barudzio/Michelle Elkin (USD) def. Jessica Courtneil/Melissa Martin (SEMO) 8-6
3. Veronika Makashov/Yamini Reddy (USD) def. Heather Robinson/Laura Garcia (SEMO) 8-0

### Southeast Missouri 6, Bradley 1 02-26-12 at Peoria, Ill.

#### Singles competition

1. Nikole Novikova (SEMO) def. Sarah Rodefald (BU) 7-5, 6-2
2. Elizabeth Nyenwe (SEMO) def. Adele Henke (BU) 5-7, 6-2, 6-3
3. Jessica Courtneil (SEMO) def. Meredith McDonagh (BU) 6-0, 6-2
4. Melissa Martin (SEMO) def. Carly Miles (BU) 6-1, 6-2
5. Heather Robinson (SEMO) def. Corey Mattson (BU) 3-6, 6-4, 6-3
6. Cassia Wojtalik (BU) def. Laura Garcia (SEMO) 6-2, 6-0

#### Doubles competition

1. Sarah Rodefald/Meredith McDonagh (BU) def. Nikole Novikova/Elizabeth Nyenwe (SEMO) 8-6
2. Jessica Courtneil/Melissa Martin (SEMO) def. Corey Mattson/Carly Miles (BU) 8-6
3. Heather Robinson/Laura Garcia (SEMO) def. E. Przyslawski/Ashley Roth (BU) 8-6





## Match-by-Match Results

### **Southern Illinois 6, Southeast Missouri 1** **03-06-12 at Cape Girardeau, Mo.**

#### **Singles competition**

1. Melanie Delsart (SIU) def. Nikole Novikova (SEMO) 6-3, 6-1
2. Anita Lee (SIU) def. Elizabeth Nyenwe (SEMO) 6-1, 7-5
3. Jennifer Dien (SIU) def. Jessica Courtneil (SEMO) 6-3, 6-4
4. Natasha Tomishima (SIU) def. Melissa Martin (SEMO) 6-2, 6-3
5. Heather Robinson (SEMO) def. Ariadna Cairo Baza (SIU) 6-4, 6-4
6. Anastacia Simons (SIU) def. Lauren Schaper (SEMO) 6-1, 6-1

#### **Doubles competition**

1. Melanie Delsart/Korey Love (SIU) def. Nikole Novikova/Elizabeth Nyenwe (SEMO) 8-4
2. Natasha Tomishima/Jennifer Dien (SIU) def. Jessica Courtneil/Melissa Martin (SEMO) 8-7, 7-2
3. Ariadna Cairo Baza/Gisela Cairo Baza (SIU) def. Heather Robinson/Lauren Schaper (SEMO) 8-3

### **IPFW 4, Southeast Missouri 3** **03-10-12 at Warsaw, Ind.**

#### **Singles competition**

1. Anita Henestrosa (IPFW) def. Nikole Novikova (SEMO) 6-2, 6-1
2. Elizabeth Nyenwe (SEMO) def. Marcy Huck (IPFW) 6-4, 6-0
3. Raquel Vescovi (IPFW) def. Jessica Courtneil (SEMO) 2-6, 6-4, 6-4
4. Melissa Martin (SEMO) def. Alex Forsyth (IPFW) 6-1, 6-2
5. Heather Robinson (SEMO) def. Caterina Kiefer (IPFW) 7-5, 4-6, 11-9
6. Frederique Sunstrum (IPFW) def. Lauren Schaper (SEMO) 6-1, 6-0

#### **Doubles competition**

1. Marcy Huck/Caterina Kiefer (IPFW) def. Jessica Courtneil/Melissa Martin (SEMO) 8-5
2. Nikole Novikova/Heather Robinson (SEMO) def. Alex Forsyth/Anita Henestrosa (IPFW) 9-8, 8-6
3. Frederique Sunstrum/Raquel Vescovi (IPFW) def. Elizabeth Nyenwe/Lauren Schaper (SEMO) 8-2

### **Southeast Missouri 5, Dayton 2** **03-11-12 at Dayton, Ohio**

#### **Singles competition**

1. Claire McNulty (UD) def. Nikole Novikova (SEMO) 3-6, 6-4, 10-8
2. Elizabeth Nyenwe (SEMO) def. Maureen Stevens (UD) 6-4, 3-6, 10-7
3. Sammi Hornbarger (UD) def. Jessica Courtneil (SEMO) 6-5, 6-3
4. Melissa Martin (SEMO) def. Erin Filbrandt (UD) 6-3, 6-2
5. Heather Robinson (SEMO) def. Victoria Marchant (UD) 6-1, 6-1
6. Lauren Schaper (SEMO) def. Georgia Lammers (UD) retired

#### **Doubles competition**

1. Claire McNulty/Maureen Stevens (UD) def. Jessica Courtneil/Melissa Martin (SEMO) 8-6
2. Nikole Novikova/Heather Robinson (SEMO) def. Sammi Hornbarger/Victoria Marchant (UD) 8-3
3. Elizabeth Nyenwe/Lauren Schaper (SEMO) def. Erin Filbrandt/Georgia Lammers (UD) retired





## Match-by-Match Results

### **Southeast Missouri 5, Missouri-St. Louis 4** **03-14-12 at St. Louis, Mo.**

#### **Singles competition**

1. Louisa Werner (UMSL) def. Nikole Novikova (SEMO) 7-5, 6-4
2. Elizabeth Nyenwe (SEMO) def. Leanne Cantalupo (UMSL) 6-1, 7-5
3. Melissa Martin (SEMO) def. Sai Pujitha Bandi (UMSL) 6-3, 6-1
4. Heather Robinson (SEMO) def. Danielle Henkel (UMSL) 6-0, 6-0
5. Katie Rynkiewicz (UMSL) def. Laura Garcia (SEMO) 6-1, 3-6, 6-1
6. Leticia Garcia (UMSL) def. Lauren Schaper (SEMO) 6-2, 6-0

#### **Doubles competition**

1. Louisa Werner/Sai Pujitha Bandi (UMSL) def. Jessica Courtneil/Melissa Martin (SEMO) 8-6
2. Heather Robinson/Nikole Novikova (SEMO) def. Leanne Cantalupo/Danielle Henkel (UMSL) 8-4
3. Elizabeth Nyenwe/Lauren Schaper (SEMO) def. Katie Rynkiewicz/Leticia Garcia (UMSL) 8-6

### **UT Martin 6, Southeast Missouri 1** **03-18-12 at Martin, Tenn.**

#### **Singles competition**

1. Jodie Tiley (UTM) def. Nikole Novikova (SEMO) 6-1, 6-4
2. Elizabeth Nyenwe (SEMO) def. Johanie Van Zyl (UTM) 6-3, 7-6
3. Anna Winkelmann (UTM) def. Jessica Courtneil (SEMO) 6-7, 7-4, 7-5
4. Ivon Simic (UTM) def. Melissa Martin (SEMO) 6-4, 6-0
5. Anna Marie Herbold (UTM) def. Heather Robinson (SEMO) 6-3, 6-4
6. Alice Laing (UTM) def. Laura Garcia (SEMO) 6-4, 6-1

#### **Doubles competition**

1. Ivon Simic/Jodie Tiley (UTM) def. Nikole Novikova/Heather Robinson (SEMO) 8-2
2. Anna Marie Herbold/Alice Laing (UTM) def. Jessica Courtneil/Melissa Martin (SEMO) 8-4
3. Katie McCall/Johanie Van Zyl (UTM) def. Elizabeth Nyenwe/Lauren Schaper (SEMO) 8-5

### **Austin Peay 6, Southeast Missouri 1** **03-24-12 at Clarksville, Tenn.**

#### **Singles competition**

1. TOMIC, Vanja (APSU) def. Nikole Novikova (SEMO) 6-0, 6-3
2. Di SALVO, Ornella (APSU) def. Elizabeth Nyenwe (SEMO) 6-4, 6-1
3. CARRE, Alison (APSU) def. Jessica Courtneil (SEMO) 6-1, 6-0
4. CORNEA, Andra (APSU) def. Melissa Martin (SEMO) 6-0, 0-6, 7-5
5. Heather Robinson (SEMO) def. TAVAREZ, Vanessa (APSU) 6-0, 6-0
6. KARAK, Jovana (APSU) def. Laura Garcia (SEMO) 6-1, 6-3

#### **Doubles competition**

1. TOMIC, Vanja/CARRE, Alison (APSU) def. Nikole Novikova/Heather Robinson (SEMO) 8-4
2. CORNEA, Andra/Di SALVO, Ornella (APSU) def. Jessica Courtneil/Melissa Martin (SEMO) 8-1
3. KARAK, Jovana/TAVAREZ, Vanessa (APSU) def. Elizabeth Nyenwe/Lauren Schaper (SEMO) 8-4





## Match-by-Match Results

### **Murray State 6, Southeast Missouri 1** **03-25-12 at Cape Girardeau, Mo.**

#### **Singles competition**

1. CUNITZ, Cassidy (MUR) def. Nikole Novikova (SEMO) 6-1, 6-2
2. CANTY, Ashley (MUR) def. Elizabeth Nyenwe (SEMO) 6-3, 1-6, 6-1
3. KLEIN, Jordana (MUR) def. Jessica Courtneil (SEMO) 6-3, 6-2
4. SUGA, Carla (MUR) def. Melissa Martin (SEMO) 6-2, 3-6, 6-4
5. Heather Robinson (SEMO) def. HUERTH, Carolyn (MUR) 6-3, 6-1
6. PIERSON, Ashley (MUR) def. Laura Garcia (SEMO) 6-4, 6-2

#### **Doubles competition**

1. CANTY, Ashley/CUNITZ, Cassidy (MUR) def. Nikole Novikova/Melissa Martin (SEMO) 8-2
2. Heather Robinson/Jessica Courtneil (SEMO) def. SUGA, Carla/HUERTH, Carolyn (MUR) 8-5
3. PIERSON, Ashley/KLEIN, Jordana (MUR) def. Elizabeth Nyenwe/Lauren Schaper (SEMO) 8-3

### **Southeast Missouri 7, Tennessee State 0** **03-31-12 at Nashville, Tenn.**

#### **Singles competition**

1. Nikole Novikova (SEMO) def. Melynda Simmons (TSU) 6-0, 6-1
2. Elizabeth Nyenwe (SEMO) def. Lauren Thomas (TSU) 6-0, 6-2
3. Jessica Courtneil (SEMO) def. London Thomas (TSU) 6-0, 6-1
4. Melissa Martin (SEMO) def. Kryston Mason (TSU) 6-0, 6-0
5. Heather Robinson (SEMO) def. Shardel Suber (TSU) 6-0, 6-1
6. Laura Garcia (SEMO) def. Khadijah Williams (TSU) 6-0, 6-1

#### **Doubles competition**

1. Nikole Novikova/Melissa Martin (SEMO) def. Lauren Thomas/London Thomas (TSU) 8-3
2. Jessica Courtneil/Heather Robinson (SEMO) def. Melynda Simmons/Kryston Mason (TSU) 8-0
3. Elizabeth Nyenwe/Lauren Schaper (SEMO) def. Shardel Suber/Khadijah Williams (TSU) 8-1

### **Jacksonville State 4, Southeast Missouri 3** **04-01-12 at Jacksonville, Ala.**

#### **Singles competition**

1. Raissa Guasti (JSU) def. Nikole Novikova (SEMO) 6-4, 6-4
2. Elizabeth Nyenwe (SEMO) def. Rafaela Wenzel (JSU) 7-5, 6-1
3. Raphaela Lima (JSU) def. Melissa Martin (SEMO) 6-3, 6-3
4. Jessica Courtneil (SEMO) def. Zoe Bizinos (JSU) 6-3, 6-1
5. Heather Robinson (SEMO) def. Danielle Kerindi (JSU) 6-1, 6-1
6. Aleksandra Cmiliijc (JSU) def. Laura Garcia (SEMO) 6-1, 6-1

#### **Doubles competition**

1. Raissa Guasti/Raphaela Lima (JSU) def. Nikole Novikova/Melissa Martin (SEMO) 8-0
2. Jessica Courtneil/Heather Robinson (SEMO) def. Rafaela Wenzel/Zoe Bizinos (JSU) 8-6
3. Kelly Tomlin/Aleksandra Cmiliijc (JSU) def. Elizabeth Nyenwe/Lauren Schaper (SEMO) 9-7





## Match-by-Match Results

### Eastern Kentucky 7, Southeast Missouri 0 04-06-12 at Cape Girardeau, Mo.

#### Singles competition

1. FAOUZI, Amandine (EKU) def. Nikole Novikova (SEMO) 6-4, 6-0
2. LABEJA, Kristina (EKU) def. Elizabeth Nyenwe (SEMO) 6-0, 6-3
3. OSCOZ, Saioa (EKU) def. Melissa Martin (SEMO) 6-1, 7-5
4. GERRITSEN, Melissa (EKU) def. Jessica Courtneil (SEMO) 6-2, 6-3
5. POFFO, Milena (EKU) def. Heather Robinson (SEMO) 6-1, 4-6, 10-8
6. RODRIGUEZ, Carmen (EKU) def. Laura Garcia (SEMO) 6-0, 6-1

#### Doubles competition

1. LABEJA, Kristina/GERRITSEN, Melissa (EKU) def. Nikole Novikova/Melissa Martin (SEMO) 8-6
2. OSCOZ, Saioa/POFFO, Milena (EKU) def. Jessica Courtneil/Heather Robinson (SEMO) 8-7
3. FAOUZI, Amandine/JIMENEZ, Marcela (EKU) def. Elizabeth Nyenwe/Lauren Schaper (SEMO) 8-3

### Southeast Missouri 5, Morehead State 2 04-07-12 at Cape Girardeau, Mo.

#### Singles competition

1. Nikole Novikova (SEMO) def. Alix Young (MOR) 6-2, 6-1
2. Elizabeth Nyenwe (SEMO) def. Alexis Garrett (MOR) 6-1, 3-6, 7-5
3. Jessica Courtneil (SEMO) def. Victoria Cran (MOR) 7-6, 5-7, 12-10
4. Melissa Martin (SEMO) def. Jessica Montemayor (MOR) 6-3, 6-5
5. Heather Robinson (SEMO) def. Brooke Helms (MOR) 6-1, 6-0
6. Shilpa Naruka (MOR) def. Laura Garcia (SEMO) 6-0, 6-0

#### Doubles competition

1. Victoria Cran/Brooke Helms (MOR) def. Nikole Novikova/Melissa Martin (SEMO) 8-2
2. Alexis Garrett/Alix Young (MOR) def. Jessica Courtneil/Heather Robinson (SEMO) 8-5
3. Jessica Montemayor/Shilpa Naruka (MOR) def. Elizabeth Nyenwe/Lauren Schaper (SEMO) 8-7

### Eastern Illinois 5, Southeast Missouri 2 04-14-12 at Terre Haute, Ind.

#### Singles competition

1. Janelle Prisner (EIU) def. Nikole Novikova (SEMO) 6-4, 4-6, 7-6
2. Merritt Whitley (EIU) def. Elizabeth Nyenwe (SEMO) 6-3, 6-4
3. Amanda Dibbs (EIU) def. Jessica Courtneil (SEMO) 6-4, 6-2
4. Melissa Martin (SEMO) def. Jennifer Kim (EIU) 6-2, 6-2
5. Heather Robinson (SEMO) def. Sephora Boulbahaïem (EIU) 7-5, 6-2
6. Kristen Laird (EIU) def. Laura Garcia (SEMO) 8-1

#### Doubles competition

1. Janelle Prisner/Merritt Whitley (EIU) def. Nikole Novikova/Melissa Martin (SEMO) 8-4
2. Jessica Courtneil/Heather Robinson (SEMO) def. Jennifer Kim/Sephora Boulbahaïem (EIU) 8-3
3. Amanda Dibbs/Annie Egan (EIU) def. Elizabeth Nyenwe/Lauren Schaper (SEMO) 8-5

### SIU Edwardsville 4, Southeast Missouri 3 04-15-12 at Edwardsville, Ill.

#### Singles competition

1. Carli Connors (SIUE) def. Nikole Novikova (SEMO) 6-2, 4-6, 7-6
2. Elizabeth Nyenwe (SEMO) def. Kali Donner (SIUE) 6-3, 3-6, 7-6
3. Rachel Webb (SIUE) def. Jessica Courtneil (SEMO) 6-2, 6-2
4. Melissa Martin (SEMO) def. Lindsey Raymond (SIUE) 6-3, 6-3
5. Heather Robinson (SEMO) def. Laura Horning (SIUE) 6-0, 6-2
6. Joanna Corkern (SIUE) def. Lauren Schaper (SEMO) 6-1, 6-0

#### Doubles competition

1. Nikole Novikova/Melissa Martin (SEMO) def. Carli Connors/Laura Horning (SIUE) 8-4
2. Lindsey Raymond/Kali Donner (SIUE) def. Jessica Courtneil/Heather Robinson (SEMO) 8-5
3. Joanna Corkern/Amanda Miller (SIUE) def. Elizabeth Nyenwe/Lauren Schaper (SEMO) 8-4





# Records / University

FEATURING...

- » Records
- » University Section
- » Athletics Staff







## Records

### Singles Records

#### Best Single Season Records (Min. 10 matches)

Izabela Slowikowska, 1995-96	14-0
Valerie Vanderstappen, 1995-96	16-3
Elena Novikova, 1995-96	15-3
Elena Novikova, 1992-93	25-4
Julia Masotti, 2005-06	18-5

#### Best Career Records (Min. 2 Seasons)

Tracey Hopkins, 1991-93	40-15
Donna Fields, 1991-93	40-16
Elena Novikova, 1992-96	59-25
Valerie Vanderstappen, 1992-96	53-25
Julia Masotti 2005-09	41-43

#### Most Wins in Single Season

Donna Fields, 1992-93	26
Elena Novikova, 1992-93	25
Julia Masotti, 2005-06	18
Bryce Kristal, 2006-07	17
Traci Hopkins, 1991-92	16
Valerie Vanderstappen, 1995-96	16

#### Most Wins in Career

Elena Novikova, 1992-96	59
Valerie Vanderstappen, 1992-96	53
Bryce Kristal, 2004-08	52
Julia Masotti, 2005-09	41
Tracey Hopkins, 1991-93	40
Donna Fields, 1991-93	40

### Doubles Records

#### Best Single Season Records (Min. 10 matches)

Fields-Vanderstappen, 1992-93	16-4
Binder-Hopkins, 1991-92	14-4
Wood-Gruber, 1995-96	9-5
B. Kristal-D. Kristal, 2005-06	17-6
Vanderstappen-Novikova, 1995-96	13-6
Novikova-Letsatle, 1993-94	12-6
Slowikowska-Thomas, 1996-97	12-6

#### Best Career Records (Min. 2 Seasons)

Fields-Letsatle, 1991-93	9-2
Hunter-Letsatle, 1991-93	5-4
Novikova-Letsatle, 1993-95	22-16
B. Kristal-D. Kristal, 2004-08	50-34

#### Most Wins in Single Season

B. Kristal-D. Kristal, 2005-06	17
Fields-Vanderstappen, 1992-93	16
B. Kristal-D. Kristal, 2006-07	15
Binder-Hopkins, 1991-92	14
Vanderstappen-Novikova, 1995-96	13

#### Most Wins in Career

B. Kristal-D. Kristal, 2004-08	50
Novikova-Letsatle, 1993-95	22
Fields-Vanderstappen, 1992-93	16
Binder-Hopkins, 1991-92	14
Vanderstappen-Novikova, 1995-96	13

### Series Records vs. All Opponents (2013 Opponents in Bold)

Air Force	0-1
Alabama Birmingham	2-0
Alabama State	1-0
American University	0-1
Arkansas-Little Rock	0-6
<b>Arkansas State</b>	<b>1-12</b>
<b>Austin Peay</b>	<b>11-11</b>
<b>Belmont</b>	<b>0-3</b>
Bowling Green	0-1
Bradley	6-4
Bucknell	0-1
Butler	1-0
BYU-Hawaii	0-1
Calvin	1-0
Carson-Newman	0-1
Central Arkansas	1-1
Cleveland State	1-0
Connecticut College	1-0
Creighton	0-5

Dayton	2-1
Detroit	0-1
Dickinson College	1-0
Drury College	1-2
<b>Eastern Illinois</b>	<b>4-12</b>
<b>Eastern Kentucky</b>	<b>5-12</b>
Evansville	4-3
Fairleigh-Dickinson	3-0
Florida Southern	1-0
Harding	6-9
Henderson State	1-0
Hope	1-0
Huntington	1-0
Illinois State	0-2
Indiana State	0-2
IPFW	2-5
<b>Jacksonville State</b>	<b>2-6</b>
Lehigh	1-0
Lipscomb	2-2

Longwood	0-1
Louisiana-Monroe	0-1
Louisiana Tech	1-1
Louisville	0-2
Memphis	1-2
Middlebury	0-1
Middle Tennessee	0-6
Millersville	0-1
Milwaukee	2-0
Minnesota	0-1
Missouri	3-5
Missouri-Kansas City	4-4
Missouri-St. Louis	1-0
Missouri State	1-0
<b>Morehead State</b>	<b>9-9</b>
<b>Murray State</b>	<b>1-20</b>
Niagara	1-0
Northern Iowa	0-3
Northwest Missouri State	1-1





## Records

Oakland .....	1-0
Oral Roberts .....	1-0
Quinnipiac.....	0-1
Saint Louis.....	2-9
Samford .....	0-3
Sioux Falls.....	1-0
South Dakota.....	0-1
Southern Arkansas .....	1-0
Southern Illinois .....	1-6
<b>SIU Edwardsville.....</b>	<b>3-3</b>
Southern Utah .....	0-1
Southwest Baptist.....	1-1
Spring Hill .....	0-1
St. Mary's.....	1-0
Tampa.....	1-0
Truman State .....	1-0
<b>Tennessee State .....</b>	<b>17-2</b>
Tennessee Tech.....	4-11
Texas-El Paso.....	0-1
Trinity College.....	0-2
Troy State .....	0-1
<b>UT Martin .....</b>	<b>1-23</b>
Western Carolina.....	1-0
West Florida .....	0-1
Western Illinois .....	2-2
Western Kentucky .....	1-4
Wichita State .....	0-2
Wright State.....	0-1

### All-OVC Selections

1994	Mmaphala Letsatle
1996	Elena Novikova Valerie Vanderstappen
2007	Bryce Kristal, Second-Team
2008	Bryce Kristal, First-Team
2010	Nikole Novikova, Second-Team
2011	Nikole Novikova, First-Team Elizabeth Nyenwe, First-Team

### OVC Freshman of the Year

2011	Elizabeth Nyenwe
------	------------------

### OVC Medal of Honor

1994-95	Lindsey Brandon
1995-96	Lindsey Brandon Elena Novikova
1997-98	Michelle Gruber
2000-01	Kay Ehlke
2001-02	Kay Ehlke
2002-03	Kay Ehlke
2003-04	Kay Ehlke
2004-05	Puja Paul Kim Roberts
2005-06	Kimberly Anderson

2006-07	Kim Anderson
2009-10	Elise Nattier Nikole Novikova Sarah Pettigrew
2010-11	Sarah Pettigrew

### OVC Commissioner's Honor Roll

1993-94	Meghan Boettler Elena Novikova Valerie Vanderstappen
1994-95	Lindsey Brandon Elena Novikova Shannon Salabay Valerie Vanderstappen
1995-96	Lindsey Brandon Michelle Gruber Elena Novikova Shannon Salabay Valerie Vanderstappen Vicky Wood
1996-97	Michelle Gruber Izabella Slowikowska Vicky Wood
1997-98	Michelle Gruber Izabella Slowikowska Vicky Wood
1998-99	Michelle Gruber Izabella Slowikowska Amanda Walker
1999-00	Mary Akins Andrea Aldana Melinda Thomas Amanda Walker
2000-01	Kay Ehlke Jennifer Kirk Melinda Thomas
2001-02	Andrea Aldana Kay Ehlke Cassie Foster Tyla Wells
2002-03	Andrea Aldana Kay Ehlke Julie Jarrell Amanda Walker
2003-04	Kay Ehlke
2004-05	Kim Anderson Drew Kristal Puja Paul Miranda Petrea Kim Roberts
2005-06	Elizabeth Welpley Madina Mambetova Terin Roof

2006-07	Lucia Vojtkova Layla Abby Marcia Barnes Erin Higgs Heather Butt Anna Lask Kim Anderson Kim Anderson Bryce Kristal Julia Massotti Elise Nattier Alyce Kelly Bryce Kristal Drew Kristal Elise Nattier Taylor Orahoud Elise Nattier
2007-08	Laura Garcia Nikole Novikova Sarah Pettigrew
2009-10	
2010-11	

### Coaching History

1991-92	Dr. Allen Hope
1992-93	Dr. Allen Hope
1993-94	Dr. Allen Hope
1994-95	Marla Reid
1995-96	Marla Reid
1996-97	Marla Reid
1997-98	Donna Ryan
1998-99	Donna Ryan
1999-00	Donna Ryan
2000-01	Donna Ryan
2001-02	Donna Ryan
2002-03	Mike Stevens
2003-04	Jay Pacelli
2004-05	Jay Pacelli
2005-06	Jay Pacelli
2006-07	Mark Elliott
2007-08	Mark Elliott
2008-09	Mark Elliott
2009-10	Mark Elliott
2010-11	Mark Elliott
2011-12	Mark Elliott

### Year-by-Year Records

	Overall	OVC	Fin.
1991-92	13-7	5-2	4th
1992-93	17-6	6-1	6th
1993-94	4-11	3-5	6th
1994-95	4-11	3-5	6th
1995-96	11-8	5-3	3rd
1996-97	12-7	6-4	6th
1997-98	6-8	4-5	6th
1998-99	0-11	0-8	9th

1999-00	3-12	1-6	8th
2000-01	5-13	0-7	9th
2001-02	2-17	1-5	8th
2002-03	4-11	3-7	7th
2003-04	1-21	1-7	9th
2004-05	6-13	2-6	7th
2005-06	12-11	4-6	16th
2006-07	11-14	5-6	6th
2007-08	5-15	2-8	9th
2008-09	1-19	1-8	9th
2009-10	3-19	1-8	9th
2010-11	2-14	1-7	8th
2011-12	5-12	2-7	9th

\* Prior to 2006, the OVC Tournament Champion was declared the only champion of the season. Beginning in 2006, the Conference also awarded a regular-season championship in addition to the tournament championship. Southeast last made the OVC Tennis Tournament in 2007.

### OVC Team Champions (since Southeast joined the league)

1992	Middle Tennessee
1993	Middle Tennessee
1994	UT Martin
1995	UT Martin
1996	Middle Tennessee
1997	Middle Tennessee
1998	Middle Tennessee
1999	Tennessee Tech
2000	Middle Tennessee
2001	Murray State
2002	Murray State
2003	Murray State
2004	Samford
2005	UT Martin
2006	UT Martin (season) Samford (tournament)
2007	Samford (season) Murray State (tournament)
2008	Samford (season) Samford (tournament)
2009	Eastern Kentucky (season) Eastern Kentucky (tournament)
2010	Jacksonville State (season) Austin Peay (tournament)
2011	UT Martin (season) Jacksonville State (tournament)
2012	Eastern Kentucky (season) Eastern Kentucky (tournament)





# SOUTHEAST MISSOURI STATE UNIVERSITY REDHAWKS ATHLETICS

*The college experience of a lifetime. The job of your dreams.  
A life that is amazing.*

That is what most students and parents want from a college education. At Southeast, we want the same for you. We want you to learn your profession, gain the experience or internship you need, and get that first paycheck!

The growing—and changing—student body has had an impact on everything and everyone. The physical changes of the campus are the most visible. Two new residence halls. The River Campus. The polytechnic building. An information commons in the library. And so on.

Students and faculty are experiencing change of a different kind. Classroom activity has reached a new level of productivity, as students are brighter and more prepared than ever. Enrollment is at an all-time high. The impact on the honors program has been dramatic with more students than ever choosing to participate in and complete the honors curriculum. The number participating tripled in five years!

All of this means that Southeast has become Missouri's most academically competitive regional university.

**2009**—InsideCollege.com experts single out our honors program as an effective way to make a large school seem smaller with a more personal approach to learning.

**2010**—Computer science receives prestigious national accreditation.

**Safest  
Campus  
in Missouri**

StateUniversity.com



**2010**—Consumer watchdog group GetEducated.com ranks Southeast #1 on its list of "Top 10 Ranked Best Values Online MBAs—AACSB Accredited."

**2010**—Southeast is named the safest campus in Missouri and among the safest in the nation by StateUniversity.com.





# SOUTHEAST MISSOURI STATE UNIVERSITY REDHAWKS ATHLETICS

## *We have...*

- ▶ Small classes with 98 percent of courses having fewer than 50 students
- ▶ Faculty with PhDs—not teaching assistants—who teach most classes
- ▶ More than 200 areas of study
- ▶ Wired (and wireless) classrooms and best-of-class technology
- ▶ Internships and real-world learning offered in 100 percent of programs
- ▶ Study abroad opportunities that take you almost anywhere

## *We are...*

- ▶ NCAA Division I Athletics
- ▶ Listed among the Midwest's top universities
- ▶ One of the safest college campuses in the nation
- ▶ Conveniently located 115 miles south of St. Louis
- ▶ A medium-sized university with more than 11,000 students
- ▶ Comprised of ten colleges and schools

## *We provide...*

- ▶ Choices in the University Studies (general education) classes
- ▶ Some of the newest residence halls in Missouri
- ▶ 150 organizations that keep you busy after class
- ▶ Each student with two advisors—academic and career
- ▶ Fraternities and sororities that are productive and fun
- ▶ One of a kind student aquatic center in one of our two recreation centers

2011—U.S. News & World Report names Southeast a "Best Midwest Regional University."



2011—For seven consecutive years, Princeton Review includes Harrison College of Business on its list of "Best Business Schools."



2011—Princeton Review again names Southeast as one of the "Best in the Midwest," representing only about 25 percent of the nation's four-year colleges.



2012—U.S. News & World Report lists both nursing and communication disorders on its list of top graduate programs in health.





# SOUTHEAST MISSOURI STATE UNIVERSITY REDHAWKS ATHLETICS

## Donald L. Harrison College of Business

Our increasingly popular business programs have made us one of the major colleges of business in the Midwest. The Donald L. Harrison College of Business is accredited by AACSB International—the gold standard of business school accreditation—an honor held by only 5 percent of institutions offering business degrees worldwide.

- ▶ Employers and students value our techno-savvy environment. In a recent survey of 98 nationally known business programs, Southeast ranked in the top 7 percent in learning to use and manage technology.
- ▶ Our entrepreneurial studies program is Missouri's most comprehensive, offering options for both BSBA and MBA degrees. The Douglas C. Greene Center for Innovation and Entrepreneurship is one of the most comprehensive entrepreneurship-focused university centers in the Midwest.
- ▶ Southeast students have access to more than 30 international exchange and study abroad opportunities in London, Paris, Spain, Portugal and North Africa.
- ▶ One hundred percent of our students have the opportunity to participate in internship programs with companies nationwide.
- ▶ Doctoral level professors make learning interactive with classrooms that have Internet, cable TV, direct satellite feed and electronic presentation capability.
- ▶ St. Louis employers rate the "St. Louis Interview Days" as the best recruiting event in which they participate in the Midwest.
- ▶ Our accounting curriculum prepares students for the Certified Public Accountant (CPA) and Certified Internal Auditor (CIA) designations. Students may go to work directly into an accounting field or go on to complete the 150 hours required by Missouri, and other states, to sit for the CPA examination. Our first-time pass rates on the CPA exam continue to be well above the national average.
- ▶ Business programs are housed in Dempster Hall, a wireless Internet environment featuring an electronic presentation lab and more than 400 networked computers with the latest software.



## College of Education

If you are considering teaching as a profession, you are looking at the right university. For more than a century, Southeast has been preparing and sustaining some of the nation's brightest and best teachers. Moreover, we have a record of accomplishment to prove it.

- ▶ Most importantly, our education program is fully accredited by the National Council of Teacher Education (NCATE), which sets the highest standards for teacher education programs nationwide.
- ▶ The Missouri Department of Elementary and Secondary Education approved 28 initial teacher preparation programs and all 12 graduate programs.
- ▶ Because you begin assisting and observing in area classrooms starting in your first year, you accumulate more teaching practice and knowledge than graduates from other universities.
- ▶ The College of Education maintained national recognition through a rigorous review process from 11 specialized professional associations.
- ▶ Our counseling program is now one of only three in Missouri to be accredited by the Council for the Accreditation of Counseling and Related Educational Programs.





# SOUTHEAST MISSOURI STATE UNIVERSITY REDHAWKS ATHLETICS

## College of Health and Human Services

Although there are diverse academic offerings in the College of Health and Human Services, all programs potentially lead to a career that significantly and positively impacts the lives of individuals and families.

- ▶ All nursing programs (nurse and nurse practitioner) are accredited by the Commission on Collegiate Nursing Education.
- ▶ The recreation program is accredited by the Council on Accreditation for Recreation, Park Resources and Leisure Services.
- ▶ The Communications Disorders program allows students to receive clinical experience with children and adults who have speech, language or hearing disorders.
- ▶ Aerospace Studies offers a path to leadership for those intending to pursue officer positions in the United States Air Force. During a summer field training course for the Professional Officer Corps, students experience survival training, aircraft and air crew orientation, physical training and the inner operations of an Air Force base.
- ▶ Our nationally accredited social work program requires students to complete 480 hours of field education under the supervision of experienced social workers.
- ▶ Southeast has a strong connection with the Law Enforcement Academy and has more than 30 years of partnerships in all branches of criminal justice at the federal, state and local levels. Our students intern with the U.S. Marshals Service; the ATF; the U.S. Secret Service; Federal Probation; Missouri Division of Probation and Parole; Missouri Youth Services and other law enforcement agencies.
- ▶ The dietetics program is accredited by the American Dietetic Association Commission. Our graduates have a success rate of nearly 100 percent on the national exam to become a registered dietitian.



## College of Liberal Arts

An education in the liberal arts gives you broad-based training for careers in business, the arts, media, education and the legal profession.

- ▶ Southeast's mass communication program is accredited by the Accrediting Council on Education in Journalism and Mass Communications (ACEJMC). Only one other institution in Missouri has this elite accreditation. Our public relations program is one of only 28 institutions—none in Missouri—that holds certification by the Public Relations Society of America (PRSA). Only 12 other institutions in the world have recognition from both ACEJMC and PRSA for their mass communication program.
- ▶ Students can work at two campus radio stations (NPR affiliate KRCU 90.9 FM and KDMC 103.7), the *Arrow* student newspaper and "U2" cable television station.
- ▶ Our certified historic preservation program is one of a few U.S. programs that offer a four-year degree and is among a small number to have full membership in the National Council for Preservation of Education.
- ▶ During the last five years, Southeast's pre-law students have exceeded the national LSAT average score, and their placement rate in law school approaches 100 percent.
- ▶ Students majoring in philosophy have a 100 percent acceptance rate to graduate and law school.
- ▶ Our students make politics come alive by working on political campaigns and by serving as interns. Each year approximately 30 students from a variety of majors around the University travel to Washington, D.C. to conference with some of the nation's top scholars at the Center for Strategic and International Studies.







# SOUTHEAST MISSOURI STATE UNIVERSITY REDHAWKS ATHLETICS

College of

## Science, Technology and Agriculture

The foundation of success in Southeast's College of Science, Technology and Agriculture is a faculty of teacher-scholars supported by well equipped laboratories and the latest technology, which offer our students personalized study and research opportunities during their undergraduate studies.

- ▶ Our popular computer science bachelor's program is nationally accredited by the Computing Accreditation Commission of the Accreditation Board of Engineering Technology.
- ▶ Our popular marine biology program is one of the only inland programs in the U. S., creating an opportunity for students to combine a traditional college experience with the study of marine life because of our collaboration with the Gulf Coast Research Laboratory in Ocean Springs, Miss.
- ▶ Southeast's pre-med curriculum prepares students for the MCAT (Medical College Admission Test). Our students are accepted to medical school at a rate that is well above the national average.
- ▶ Our chemistry graduates consistently score at or above the 70th percentile on the Major Field Achievement Test in Chemistry.
- ▶ Our engineering physics program is nationally accredited by the Accrediting Board of Engineering and Technology (ABET), the sole accrediting body of engineering programs, which means that graduates of the program are eligible to become registered professional engineers.
- ▶ All of the bachelor of science programs in the Department of Industrial and Engineering Technology are nationally accredited.
- ▶ In addition to a 252-acre David M. Barton Agriculture Research Center, Agriculture students study at a 110-acre rice research station, a new irrigated turf plot facility, and a modern soil fertility laboratory.
- ▶ The School of Polytechnic Studies operates the 11,000-square-foot, climate-controlled Charles L. Hutson Horticulture Greenhouse.
- ▶ Our new cybersecurity program is the only one of its kind in Missouri. The U.S. Department of Labor estimates there will be 135,000 new jobs in this field by 2018—a 21 percent increase in Missouri alone.
- ▶ The innovative sustainable energy systems management major responds to world needs to address global warming, air pollution and ecosystem destruction.
- ▶ Southeast's pre-veterinary medicine program prepares students for admission to the College of Veterinary Medicine at the University of Missouri-Columbia.
- ▶ Mathematics faculty are actively involved in research and design projects of interest to students.



Graduates in  
science and mathematics  
enjoy a nearly  
**100%**  
placement rate.





# SOUTHEAST MISSOURI STATE UNIVERSITY REDHAWKS ATHLETICS

Earl and Margie Holland School of

## Visual and Performing Arts

Classic beauty and modern technology converge at Southeast's River Campus—Missouri's only campus dedicated exclusively to art, dance, music and theatre. Overlooking the Mississippi River, a Cultural Arts Center and transformed Seminary Building are now home to the Earl and Margie Holland School of Visual and Performing Arts. With the coming of this magnificent facility, the number of new students planning to major in the visual and performing arts doubled in one year.

- ▶ Art students have five interconnected art studios for painting, drawing, printmaking, fibers and design plus two computerized looms, as well as two presses in the printmaking studio and a computer design lab with the latest hardware and software available.
- ▶ Students find internships and professional experience at the Berkshire Theatre Festival, the Lucille Lortel Theatre in New York, the McLeod Summer Theatre or the University of Connecticut Summer Theatre and more.
- ▶ In 2008, the Golden Eagles Marching Band performed at the Edinburgh Military Tattoo in Scotland becoming only the second American university marching band to perform there twice.
- ▶ In addition to performances throughout the season, featuring world famous guest artists, the Southeast Missouri Symphony Orchestra exchanged music as well as culture in China when they performed concerts in Shanghai and Beijing in 2009.
- ▶ The River Campus gives students the opportunity to show their work in a variety of first-class venues: the 950-seat Donald C. Bedell Performance Hall is a proscenium theatre with spacious stage and backstage areas. The 200-seat Wendy Kurka Rust Flexible Theatre can be configured in unlimited ways for "black box" productions. The 200-seat Robert F. and Gertrude L. Shuck Music Recital Hall features nearly perfect acoustics. a student/faculty art gallery features technology that allows for the display of 3-D animation, as well as painting, prints, ceramics and sculpture. The Rosemary Berkel and Harry L. Crisp II Museum has an interactive educational theatre, art gallery for changing exhibitions and a permanent display featuring southeast Missouri.



## Living on Campus

Southeast offers students 11 residence halls from which to choose. Each room has Internet access and cable TV. Nine dining areas are available with a variety of options. And, with more than 150 diverse organizations, students find plenty of opportunities to get involved.







## Athletics Staff



**Cindy Gannon**  
Senior Associate AD  
Senior Woman Administrator



**Brady Barke**  
Interim Associate AD  
Compliance & Eligibility



**Joyce Penny**  
Ticket Manager  
Student Accountant



**Marcia Hendrix**  
Assistant Ticket Manager  
Insurance



**Sharon Burgard**  
Director of Academic  
Services



**Kent Phillips**  
Coordinator of Facilities and  
Event Management



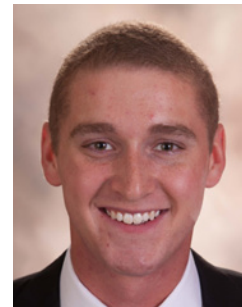
**Alfred Castillo**  
Head Athletic Trainer



**Elizabeth Maldonado**  
Director of Business  
Operations



**Nate Saverino**  
Coordinator of Marketing  
and Promotions



**Ricky Zum Mallen**  
Graduate Assistant  
Marketing



**Barb Kinsey**  
Athletic Development



**Dr. Beth Easter**  
Faculty Athletics  
Representative



**Ryan Johnson**  
Strength & Conditioning  
Coach



**Robby Rasco**  
Equipment Manager



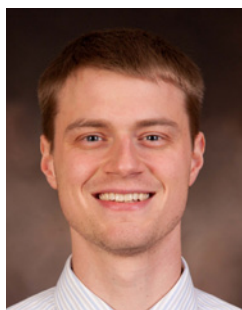
**Sara Cummings**  
Administrative Assistant



**Kelly Benacka**  
Graduate Assistant  
Academic Services



**Emily Obergonner**  
Graduate Assistant  
Academic Services



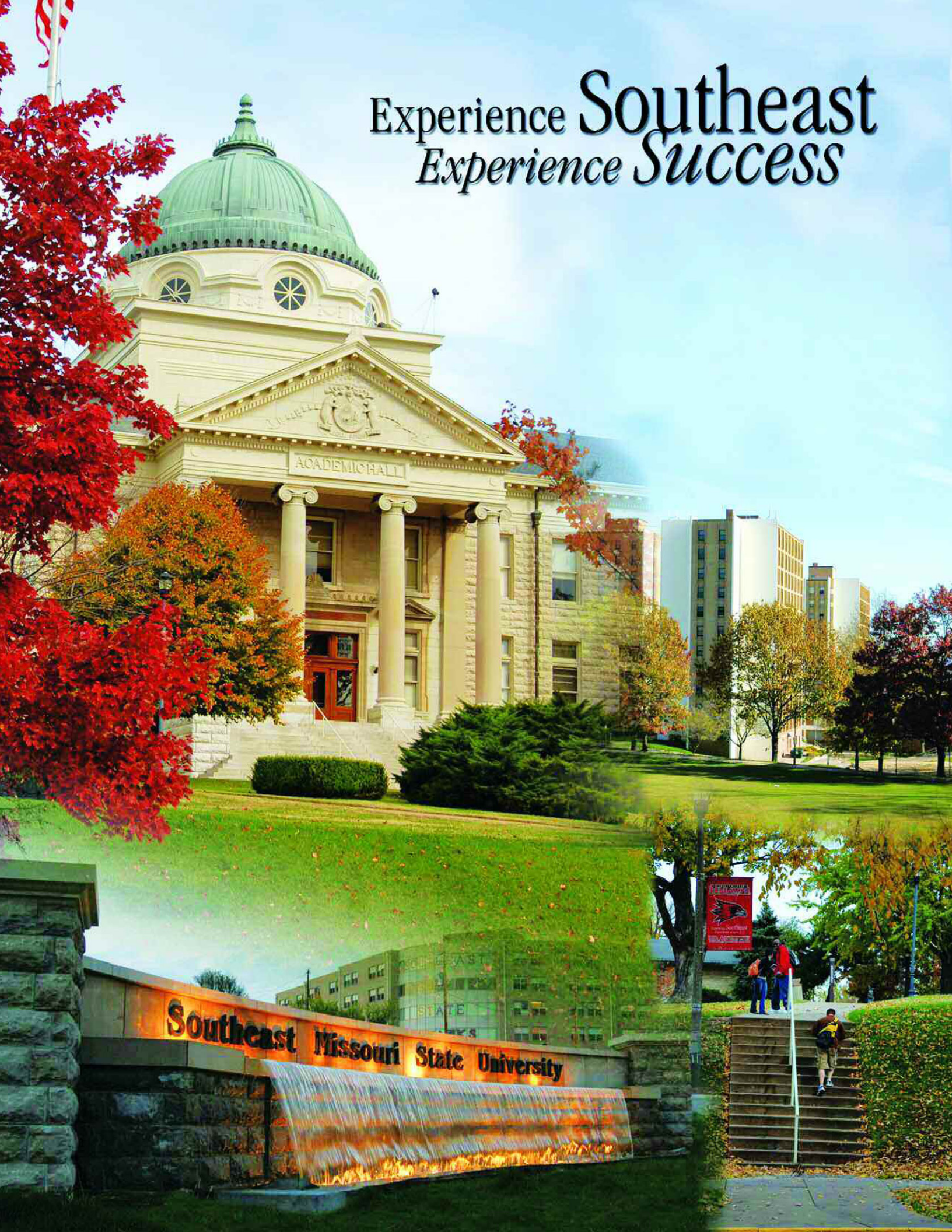
**Andrew Salter**  
Graduate Assistant  
Strength & Conditioning



**Megan Rottler**  
Graduate Assistant  
Strength & Conditioning



# Experience Southeast *Experience Success*







DATE	OPPONENT	TIME
FEB. 9-10	REDHAWKS INDOOR OPEN	ALL DAY
FEB. 16	ARKANSAS STATE (INDOORS)	1 P.M.
FEB. 23	REND LAKE COLLEGE	1 P.M.
<i>KIDS DAY: FREE KIDS CLINIC FROM 11 A.M. TO NOON</i>		
March 1	Jackson State	9:30 a.m.
March 2	Alabama A&M	11 a.m.
<b>MARCH 16</b>	<b>EASTERN ILLINOIS*</b>	<b>1 P.M.</b>
<b>MARCH 17</b>	<b>SIU EDWARDSVILLE*</b>	<b>NOON</b>
<b>MARCH 22</b>	<b>UT MARTIN*</b>	<b>3 P.M.</b>
<b>MARCH 24</b>	<b>JACKSONVILLE STATE*</b>	<b>10 A.M.</b>
March 29	Austin Peay*	3 p.m.
March 30	Murray State*	9 a.m.
March 30	Bethel University	3 p.m.
April 5	Brescia University	3 p.m.
April 6	Eastern Kentucky*	3 p.m.
April 7	Morehead State*	9 a.m.
<b>APRIL 13</b>	<b>TENNESSEE STATE*</b>	<b>2 P.M.</b>
<b>APRIL 14</b>	<b>BELMONT*</b>	<b>11 A.M.</b>
April 19-21	OVC Tournament (Paducah, Ky.)	



**GoSoutheast.com | (573) 651-2113 or (866) SEMO-TIK**

All Times Central | Home Matches in **BOLD**

Home matches played at the Redhawks Tennis Complex | \* Conference Match