



OVC CHAMPS 2000 NCAA TOURNEY 2000



SOUTHEAST MISSOURI BASKETBALL

SEMORedhawks.com // @SEMOMBB

Contact: Jeff Honza, Associate AD Strategic Communications // Office: (573) 651-2933 // redhawk1@me.com

SCHEDULE

November (3-0)

7	at South Florida	ESP+ W, 64-61
12	Lyon College	ESP+ W, 83-46
16	at Evansville	ESP+ W, 67-61
19	at Bradley	ESP+ 3 p.m.
22	William Woods	ESP+ 6:30 p.m.
26	vs. Boston !	1 p.m.
27	vs. UC Davis !	12 p.m.
28	at Milwaukee !	7 p.m.

December (0-0, 0-0 OVC)

4	at Missouri	3 p.m.
7	Purdue Fort Wayne	ESP+ 7 p.m.
14	at Arkansas State	7 p.m.
17	at Iowa	BTN 7:30 p.m.
21	Southern Illinois	ESP+ 6:30 p.m.
29	at Southern Indiana*	ESP+ 7:30 p.m.
31	SIU Edwardsville*	ESP+ 2 p.m.

January (0-0, 0-0 OVC)

5	at UT Martin*	ESP+ 8 p.m.
7	at Little Rock*	ESP+ 3:30 p.m.
12	Lindenwood*	ESP+ 7 p.m.
14	at Morehead State*	ESP+ 2 p.m.
19	UT Martin*	ESP+ 7 p.m.
21	Tennessee Tech*	ESP+ 4 p.m.
26	Tennessee State*	ESP+ 7 p.m.
28	at Eastern Illinois*	ESP+ 3:30 p.m.

February (0-0, 0-0 OVC)

2	Little Rock*	ESP+ 7 p.m.
4	at Tennessee Tech*	ESP+ 3 p.m.
9	at Tennessee State*	ESP+ 8 p.m.
11	Morehead State*	ESP+ 4 p.m.
16	Eastern Illinois*	ESP+ 7 p.m.
18	Southern Indiana*	ESP+ 4 p.m.
23	at Lindenwood*	ESP+ 8 p.m.
25	at SIU Edwardsville*	ESP+ 3:30 p.m.

March

1	OVC Tournament	First Round	Evansville, Ind.
2	OVC Tournament	Quarterfinals	Evansville, Ind.
3	OVC Tournament	Semifinals	Evansville, Ind.
4	OVC Tournament	Championship	Evansville, Ind.

All games broadcast live on the radio at Real Rock 99.3 FM. All times Central and Subject to Change; Home Games in **Bold**; * - Denotes OVC Game ! - Incarnate Word Tournament (Milwaukee, Wis.)



Southeast Missouri or SEMO

is the preferred reference for Southeast Missouri State University athletic teams. Southeastern Missouri State is **NOT** an acceptable reference.

GAME 4 // SOUTHEAST MISSOURI at BRADLEY

Nov. 19 // 3 p.m., CT // Carver Arena (11,060) // Peoria, Ill. // Series: BU leads, 9-2

Listen: ESPN 93.5 FM & 1220 AM // Watch: ESPN+ // Live Stats: BUBraves.com // Twitter: @SEMOMBB



3-0
0-0 OVC

SEMO REDHAWKS

Head Coach	Brad Korn
Career Record (Yrs.)	28-34 (3)
Record at SEMO (Yrs.)	28-34 (3)
OVC Record	17-20



2-1
0-0 MVC

BRADLEY BRAVES

Head Coach	Brian Wardle
Career Record (Yrs.)	201-175 (13)
Record at BU (Yrs.)	112-116 (8)
MVC Record	56-70

// Redhawks Face Bradley Saturday

Southeast Missouri (3-0) completes its two-game road swing against Missouri Valley Conference teams when it heads to Bradley (2-1) Saturday. Tip-off is set for 3 p.m., CT at Carver Arena.

// Follow the Redhawks

Fans can listen live on the radio at SEMO ESPN 93.5 FM & 1220 AM. Rusty Hendricks will be on the call. Watch on ESPN+. Live stats are available at BUBraves.com and Twitter updates will be provided @SEMOMBB.

// Series History

Bradley holds a 9-2 lead in the all-time series against Southeast Missouri. BU won each of the last seven meetings between the teams. SEMO's last win over the Braves came on Dec. 22, 1999 (65-60) in Peoria, Illinois. BU and SEMO last played each other on Nov. 10, 2018. The Braves won that contest by a score of 68-57 at Carver Arena.

// Road Trippin'

Southeast Missouri is on the road for six of seven games leading up to December. SEMO visits Evansville (Nov. 16), Bradley (Nov. 19) and Missouri (Dec. 4), and heads to the Milwaukee Tournament to

face Boston (Nov. 26), UC Davis (Nov. 27) and host Milwaukee (Nov. 28).

// Strong 2022-23 Start

The Redhawks are off to a 3-0 start this young 2022-23 season after beating South Florida (64-61, Nov. 7) and Evansville (67-61, Nov. 16) on the road and Lyon College (83-46, Nov. 12) at home. Southeast Missouri is 3-0 to begin a season for the first time since 1999-2000. That year, SEMO began the season at 5-0 before going on to make its only NCAA Tournament appearance in program history.

// Missouri Valley Teams

Bradley is the second of three Missouri Valley Conference schools Southeast Missouri will face in non-conference action this season. SEMO also hosts longtime rival Southern Illinois in its non-league finale on Dec. 21.

// Against the Missouri Valley

The Redhawks are 133-275 all-time against the Missouri Valley Conference. Southeast Missouri has played Missouri State (147 games) and Southern Illinois (119 games) the most out of the Valley.
vs. Southern Illinois 46-73
vs. Drake 0-2
vs. Evansville 7-11
vs. Bradley 2-9



2022-23 SOUTHEAST MISSOURI BASKETBALL NOTES

BRADLEY // NOV. 19

vs. Illinois State1-8
vs. Indiana State1-3
vs. Missouri State55-92
vs. Murray State21-65
vs. Belmont0-12

// Korn vs. the MVC

Brad Korn is currently 3-4 vs. the Missouri Valley Conference as a head coach. Korn's wins came against Missouri State Evansville (2 wins). He is no stranger to the MVC having played at Southern Illinois (1999-2004) and coached at both SIU (2004-12) and Missouri State (2013-16).

// Undefeated Teams Remaining

Southeast Missouri is one of 94 undefeated teams remaining in NCAA Division I basketball this young season. SEMO and Tennessee State are the only unbeaten teams left in the Ohio Valley Conference.

// Redhawks Beat Evansville

Chris Harris scored 14 points to lead Southeast Missouri to a 67-61 road win at Evansville (Nov. 16). SEMO trailed just once in the game, which saw Brad Korn get his first win against the Purple Aces at the Ford Center. The Redhawks used a 15-3 run to get a double-digit lead and led, 36-23, at the half. SEMO withstood an early second-half run by UE and held off the Purple Aces down the stretch.

// Russell Sees Double

Point guard Phillip Russell scored double figures in all three games this season. Russell scored 11 points at South Florida (Nov. 7) and Evansville (Nov. 16), and dropped in 23 vs. Lyon College (Nov. 12). He leads the Redhawks in scoring (15 ppg), 3-pointers made (9), assists (9) and steals (8). Russell is tied for fifth in the Ohio Valley Conference in scoring.

// Home-Opening Win

With its 83-46 victory over Lyon College (Nov. 12), Southeast Missouri improved to 24-8 all-time in home-openers since

joining the NCAA Division I ranks in 1991-92. SEMO opened its home slate with a win for the eighth time in 11 years and posted The Redhawks won their home-opener in their home-opener in five of their last seven seasons.

// Largest Win for Korn

Southeast Missouri gave Brad Korn his largest win since he took over as head coach with an 83-46 victory over Lyon College (Nov. 12). The 37-point victory surpassed SEMO's 29-point wins at Eastern Illinois (87-58) and vs. SIU Edwardsville (76-47) last season.

// Earley Success

Josh Earley has come off the bench to average 11 points and eight rebounds in his first three games as a Redhawk. A transfer from Tulsa, Earley scored double figures in each of his last two contests with 11 points vs. Lyon College (Nov. 12) and 13 at Evansville (Nov. 16). He also had 12 rebounds against Lyon College for his first double-double of the year. Earley enters the weekend ranked third on the team in scoring (11 ppg) and second in rebounding (8 rpg).

// Rebounding Tandem

Kobe Clark and Josh Earley rank second and third in the Ohio Valley Conference in rebounding with 10 and eight rebounds per game, respectively. As a team,

Southeast Missouri is second in the league in rebounding offense (42 rpg) and rebounding margin (+7.7).

// Nice Defense

The Redhawks lead the Ohio Valley Conference in scoring defense through three games this season. Southeast Missouri is allowing just 56 points per contest. SEMO held both South Florida (Nov. 7) and Evansville (Nov. 16) to 61 points on the road.

// OVC Leader

Southeast Missouri leads the Ohio Valley Conference in scoring defense (56 ppg allowed), field goal percentage defense (.358) and 3-point field goal percentage defense (.206). Kobe Clark is tied for first in the league in offensive rebounds (4 rpg).

// Affecting the Three

The Ohio Valley Conference leader in 3-point field goal percentage defense, Southeast Missouri has held its last two opponents to a combined 20.4 percent from beyond the arc. Opponents shot 9-of-44 from 3-point range in those matchups. SEMO's opponents are a mere 1-of-24 from long range in the first half this season.

2022-23 OVC Standings (as of Nov. 17)

	OVC					Overall					
	Record	Pct.	Home	Away	Streak	Record	Pct.	Home	Away	Neutral	Streak
Southeast Missouri	0-0	.000	0-0	0-0	-	3-0	1.000	1-0	2-0	0-0	W3
Tennessee State	0-0	.000	0-0	0-0	-	3-0	1.000	3-0	0-0	0-0	W3
Morehead State	0-0	.000	0-0	0-0	-	2-2	.500	2-0	0-2	0-0	L1
UT Martin	0-0	.000	0-0	0-0	-	2-2	.500	2-0	0-2	0-0	W2
Lindenwood	0-0	.000	0-0	0-0	-	1-2	.333	1-0	0-2	0-0	L1
Little Rock	0-0	.000	0-0	0-0	-	1-2	.333	1-0	0-2	0-0	L1
SIUE	0-0	.000	0-0	0-0	-	1-2	.333	1-0	0-2	0-0	L2
Southern Indiana	0-0	.000	0-0	0-0	-	1-2	.333	1-0	0-2	0-0	L1
Tennessee Tech	0-0	.000	0-0	0-0	-	1-2	.333	1-0	0-2	0-0	L1
Eastern Illinois	0-0	.000	0-0	0-0	-	0-4	.000	0-1	0-3	0-0	L4



// Against Non-Division I

Southeast Missouri ran its winning streak to 32 victories against non-Division I foes with its 83-46 drubbing of Lyon College (Nov. 12). Lyon College is the only non-Division I opponent on SEMO's 31-game schedule this year.

// Redhawks Take Down South Florida

Southeast Missouri began its 2022-23 campaign with a 64-61 road win at American Athletic Conference foe South Florida on Nov. 7. SEMO opened a season with a win for the third year in a row. The Redhawks were one of three Ohio Valley Conference schools that won on the opening night of this year's college basketball season.

// Season-Openers

With its win over South Florida (Nov. 7), Southeast Missouri improved to 3-0 in season-openers under Head Coach Brad Korn. SEMO opened its season away from home for the 16th time in 17 years this 2022-23 campaign. The Redhawks won three-straight season-openers outside of Cape Girardeau for the first time in program history.

// What a Game!

The Redhawks and South Florida went back-and-forth to eight ties and 15 lead changes in their season-opener that resulted in Southeast Missouri posting a close 64-61 win on Nov. 7. Phillip Russell

buried a huge pull up 3-pointer with 29 seconds left and made two free throws 37 seconds earlier to help get SEMO a 63-58 advantage. USF's desperation 3-pointer at the buzzer missed and the Redhawks held on.

// Harris Starts Strong

Chris Harris finished with double-digit points in two of his first three starts this season. Harris scored 16 points at South Florida (Nov. 7) and 14 at Evansville (Nov. 16). He is Southeast Missouri's second-leading scorer with 12.3 points per game.

// Redhawk Debuts

Five players saw action in their first career game at Southeast Missouri during this year's season-opener at South Florida (Nov. 7). Kobe Clark and Aquan Smart each made their first career start, while Adam Larson, Tevin Gowins and Josh Earley came off the bench. Clark finished with eight points and eight rebounds, while Earley added nine points and eight boards.

// 3-Point Advantage

Southeast Missouri outscored South Florida by a count of 30-12 from 3-point range on Nov. 7. SEMO buried 10 three-pointers with Adam Larson (2), Aquan Smart (2), Chris Harris (2) and Phillip Russell (3) accounting for nine.

2021-22

Stats Comparison

SEMO	BU
3-0.....Record.....	2-1
0-0.....Conference Record.....	0-0
71.3.....Points Per Game.....	81.3
56.0.....Opp. Points Per Game.....	68.0
+15.3.....Scoring Margin.....	+13.3
.418.....Field Goal Percentage.....	.480
.358.....Opp. Field Goal Percentage.....	.429
.312.....3-Point Field Goal Percentage.....	.387
.206.....Opp. 3-Point Field Goal Percentage.....	.323
.704.....Free Throw Percentage.....	.692
.600.....Opp. Free Throw Percentage.....	.841
42.0.....Rebounds Per Game.....	33.0
34.3.....Opp. Rebounds Per Game.....	35.7
+7.7.....Rebounding Margin.....	-2.7
11.7.....Assists Per Game.....	12.3
16.0.....Turnovers Per Game.....	9.0
+1.7.....Turnover Margin.....	+6.7
2.3.....Blocks Per Game.....	.3.7
7.7.....Steals Per Game.....	10.3

This Week's OVC Schedule

Monday, November 14

Marshall 91, Tennessee Tech 65
Central Arkansas 82, Little Rock 71
Tennessee State 87, Alabama A&M 76

Tuesday, November 15

UT Martin 96, Harris-Stowe 53
West Virginia 75, Morehead State 57
Missouri 105, SIU Edwardsville 80

Wednesday, November 16

Southeast Missouri 67, Evansville 61
Notre Dame 82, Southern Indiana 70
Ohio State 65, Eastern Illinois 43

Thursday, November 17

Little Rock at East Tennessee State, 6 p.m., CT
Tennessee State at Southern Illinois, 7 p.m., CT
Coppin State at Tennessee Tech, 7:30 p.m., CT

Friday, November 18

Morehead State at Vanderbilt, TBA
Lindenwood at Lamar, 3 p.m., CT
SIUE at Fairleigh Dickinson, 6:30 p.m., CT
Loras College at Southern Indiana, 7 p.m., CT
UT Martin at Ole Miss, 6:30 p.m., CT

Saturday, November 19

Lindenwood at McNeese, 1 p.m., CT
Southeast Missouri at Bradley, 3 p.m., CT
SIUE at VMI, 6:30 p.m., CT

Sunday, November 20

Lindenwood at Western Carolina, 12 p.m., CT
SIUE at Longwood, 12:30 p.m., CT
East Tennessee State at Tennessee Tech, 3 p.m., CT
Jackson State at Little Rock, 6:30 p.m., CT
Prairie View A&M at UT Martin, 2 p.m., CT

Southeast Missouri Probable Starters



1

Phillip Russell
G / 5-10 / 165 / So.
St. Louis, Mo.



3

Aquan Smart
G / 6-3 / 175 / So.
Evanston, Ill.



5

Chris Harris
G / 6-3 / 2-5 / Sr.
Antioch, Ill.



14

Nate Johnson
F / 6-9 / 250 / Sr.
Broward County, Fla.



24

Kobe Clark
F / 6-6 / 180 / So.
St. Louis, Mo.



2022-23 SOUTHEAST MISSOURI BASKETBALL NOTES

BRADLEY // NOV. 19

// Season 116

Southeast Missouri begins its 16th season of basketball when it heads to the Sunshine State Monday. This year marks SEMO's 32nd as an NCAA Division I program. The Redhawks are 371-539 since joining the Division I ranks in 1991-92. SEMO has a total of eight winning seasons as an NCAA Division I program with its last coming in 2013-14 (18-14).

// Lots of New Faces

Southeast Missouri's 2022-23 roster consists of five returnees and 10 newcomers. Guards Phillip Russell and Dylan Branson are the only returning starters back from a year ago. SEMO added four Division I transfers in Aquan Smart (Florida International), Kobe Clark (Georgetown), Josh Earley (Tulsa) and Gavyn Elkamil (Tulsa). The Redhawks also have a pair of 7-footers with centers David Idada (Netherlands) and Mason Hanback (Jackson, Tenn.) joining the team. Idada, however, is currently not eligible due to NCAA Division I regulations.

// Redhawks Sign Two Talented Guards

Southeast Missouri signed talented guards Marqueas Bell and BJ Ward for the 2023-24 season on Nov. 10. A native of Kansas City, Missouri, Bell was named to the Missouri Basketball Coaches Association Class 6 All-State Team after leading Park Hill High School to its second consecutive 16-win season a year ago. He averaged 19.7 points per game and made 39 percent of his 3-pointers. Bell comes from a talented athletic family that includes Ronnie Bell, a star wide receiver at the University of Michigan, and his twin brother, Kendrick Bell, who received an offer from the Wolverines. His younger sister, Iaila, also holds an offer from Michigan. Ward, who hails from St. Louis, averaged 11.8 points, 3.2 rebounds and 4.5 assists leading the Red Devils to a 23-9 record and fourth-place finish in the state tournament as a junior. He spent the summer playing for Brad Beal Elite's 17U team. Ward will enter his third season as

the starting point guard for Chaminade College Preparatory School, which made back-to-back trips to the Final Four of the Class 6 State Tournament.

Ward is one of the top point guards in the state of Missouri who is currently ranked seventh in the Class of 2023 according to Prep Hoops Missouri.

// Russel and Harris Named Preseason All-OVC

Guards Phillip Russell and Chris Harris earned Preseason All-Ohio Valley Conference honors ahead of the 2022-23 campaign. A native of St. Louis, Russell claimed Second-Team All-OVC accolades in his first year at Southeast Missouri in 2021-22. He ranked second on the team in scoring with 13.4 points per game in 30 starts. Russell led the team with 95 assists and 37 steals. He rated ninth in the OVC in scoring, 10th in assists (3.2 apg), 11th in free throw percentage (.733), 12th in steals (1.2 spg), 13th in 3-point field goals made (1.6 per game), 10th in assist/turnover ratio (1.5) and 15th in minutes played (30.4 mpg). Harris, who hails from Antioch, Illinois, secured Preseason All-OVC laurels for the second-straight year. He was SEMO's third-leading scorer with 9.4 points per game last season. Harris also ranked second on the team with 76 assists and tied for fourth with 20 steals. He was 13th in the league in assists (2.7 apg), eighth in free throw percentage (.763) and 14th in 3-point field goal percentage (.347).

// Redhawks Fourth in OVC Preseason Poll

Southeast Missouri was picked fourth in the Ohio Valley Conference Preseason Poll selected by the league's Coaches and Communication Directors. SEMO accumulated a total of 115 points and two first-place votes. Morehead State is the preseason favorite with 138 points and seven first-place nods. Tennessee State (130 pts., 2 first-place votes) and UT Martin (120 pts., 7 first-place votes) were also picked ahead of the Redhawks.

// 2022-23 Honors & Awards

Preseason All-OVC

Chris Harris, G

Phillip Russell, G



SIU Edwardsville (111 pts., 2 first-place votes), Little Rock (102 pts.), Southern Indiana (68 pts.), Tennessee Tech (62 pts.), Eastern Illinois (31 pts.) and Lindenwood (23 pts.) completed the predicted order of finish.

// Korn in Third Year

Brad Korn has the Southeast Missouri basketball program trending in the right direction entering his third year as head coach in 2022-23. Korn guided SEMO to its first Ohio Valley Conference Tournament semifinal appearance in 17 years and fourth in program history last season. The Redhawks finished fourth in the OVC with an overall record of 14-18 and 8-9 against league foes. SEMO's win total increased by a +3 margin from 11 (2021-22) to 14 (2022-23) victories since Korn took over the helm. Statistically, the Redhawks finished in the top three in the OVC in scoring offense (3rd, 75.6 ppg), free throw percentage (2nd, .732), turnover margin (3rd, +0.41) and 3-point field goals made (1st, .281).

// 3-Point Accurate

The Redhawks led the Ohio Valley Conference with 281 three-pointers made in 2021-22. Southeast Missouri fell just nine 3-pointers made of breaking its program record (289, 2017-18). SEMO brings back two of its top three 3-point shooters in Phillip Russell and Chris Harris. Russell (48) and Harris (35) accounted for 83 made threes.

// Redhawks Win Two Exhibition Games

Southeast Missouri went 2-0 in exhibition play with wins over Fontbonne (67-52, Oct. 25) and Aurora University (84-51, Oct. 30). Chris Harris led SEMO in both games with 18 and 15 points, respectively. Phillip Russell also scored double figures in each of those preseason contests.

// 2022-23 Schedule

Southeast Missouri's 2022-23 schedule includes 31 games with 13 at the Show Me Center. SEMO tips off its third season under Head Coach Brad Korn at South Florida on Nov. 7. The Redhawks start a season in the Sunshine State for the first time in their NCAA Division I era. SEMO last faced a Florida school in 2018-19 (at Florida State). The Redhawks four home non-conference matchups include non-Division I foes Lyon College (Nov. 12) and William Woods (Nov. 22) along with Purdue Fort Wayne (Dec. 7) and longtime rival Southern Illinois (Dec. 21). SEMO and SIU square off for the 120th time on the hardwood in 2022-23, while PFW comes to Cape Girardeau on the back end of a home-and-home series. The rest of the Redhawks non-league games feature trips to Missouri Valley Conference members Evansville (Nov. 16) and Bradley (Nov. 19), SEC opponent and in-state foe Missouri (Dec. 4), Arkansas State (Dec. 14) and Big Ten affiliate Iowa (Dec. 17). SEMO also plays three games at the Milwaukee Tournament over Thanksgiving weekend (Nov. 26-28). Iowa is the only team on SEMO's 2022-23 schedule that made the NCAA Tournament a year ago. The Hawkeyes went 26-10 overall and finished fourth in the Big Ten. The 2022-23 campaign, which is the 75th year of competition in the Ohio Valley Conference, marks the first in the league for Lindenwood, Little Rock and Southern Indiana who became official members on July 1. They join Eastern Illinois, Morehead State, SEMO, SIU Edwardsville, Tennessee State, Tennessee Tech and UT Martin to make up the 10-team league. Each school will play an 18-game schedule which will begin on Thursday, December 29 and conclude on Saturday, February 25. SEMO begins OVC play when at Southern Indiana on Dec. 29. The 2023 OVC Men's and Women's Basketball Tournament is slated for March 1-4 at the Ford Center in Evansville, Indiana. It marks the sixth year in a row the event will be held at the venue. Each OVC school is eligible to compete and win the OVC Tournament

Championship, including Lindenwood and Southern Indiana, who are beginning the reclassification process to Division I. It was previously announced that should a transitioning school win an OVC Tournament Championship, the AQ shall be awarded to the tournament runner-up. Should the tournament runner-up also be a transitioning school, the AQ representative shall be the highest seed going into the tournament. All Conference games and home non-conference contests can be seen on ESPN networks, with the majority of games broadcast on ESPN+. Additional linear exposures on ESPNU and ESPN2 will be announced at a later date.

// Up Next

Southeast Missouri returns to Cape Girardeau to host William Woods prior to the Thanksgiving holiday Tuesday. Tip-off is set for 6:30 p.m., CT at the Show Me Center.



2022-23 SOUTHEAST MISSOURI BASKETBALL NOTES

NUMERICAL & ALPHABETICAL ROSTER

Numerical

No.	Name	Pos.	Ht.	Wt.	Cl.	Hometown (High School/College)
0	Israel Barnes	G	6-4	185	R-Sr.	Wichita, Kan. (Wichita Southeast/Newman University)
1	Phillip Russell	G	5-10	165	So.	St. Louis, Mo. (Vashon/Saint Louis)
3	Aquan Smart	G	6-3	175	So.	Evanston, Ill. (Niles North/Florida International)
4	Adam Larson	F	6-9	180	R-Fr.	Fennimore, Wis. (Fennimore)
5	Chris Harris	G	6-3	205	R-Sr.	Antioch, Ill. (Lake Forest Academy/John A. Logan College)
10	David Idada	C	7-0	250	Fr.	Barendrecht, Netherlands (Golden State Prep)
11	Evan Eursher	G	6-2	177	Fr.	Hendersonville, Tenn. (The Webb School)
12	Tevin Gowins	G	5-9	167	Fr.	Florissant, Mo. (Hazelwood Central)
14	Nate Johnson	F	6-9	250	Sr.	Broward County, Fla. (American Heritage/Seminole State CC)
15	Josh Mitchell	F	6-8	215	So.	Tupelo, Miss. (Tupelo/Northeast Mississippi CC)
21	Josh Earley	F	6-7	242	Jr.	Shawnee Mission, Kan. (Bishop Miege/Tulsa)
22	Gavyn Elkamil	G	6-5	190	So.	Pittsburg, Kan. (Link Prep Academy/Tulsa)
24	Kobe Clark	F	6-6	180	So.	St. Louis, Mo. (Vashon/Georgetown)
33	Dylan Branson	G	6-5	220	So.	St. Louis, Mo. (Mehlville)
35	Mason Hanback	C	7-0	245	Fr.	Jackson, Tenn. (Tennessee Prep)

Alphabetical

No.	Name	Pos.	Ht.	Wt.	Cl.	Hometown (High School/College)
0	Israel Barnes	G	6-4	185	R-Sr.	Wichita, Kan. (Wichita Southeast/Newman University)
33	Dylan Branson	G	6-5	220	So.	St. Louis, Mo. (Mehlville)
24	Kobe Clark	F	6-6	180	So.	St. Louis, Mo. (Vashon/Georgetown)
21	Josh Earley	F	6-7	242	Jr.	Shawnee Mission, Kan. (Bishop Miege/Tulsa)
22	Gavyn Elkamil	G	6-5	190	So.	Pittsburg, Kan. (Link Prep Academy/Tulsa)
11	Evan Eursher	G	6-2	177	Fr.	Hendersonville, Tenn. (The Webb School)
12	Tevin Gowins	G	5-9	167	Fr.	Florissant, Mo. (Hazelwood Central)
35	Mason Hanback	C	7-0	245	Fr.	Jackson, Tenn. (Tennessee Prep)
5	Chris Harris	G	6-3	205	R-Sr.	Antioch, Ill. (Lake Forest Academy/John A. Logan College)
10	David Idada	C	7-0	250	Fr.	Barendrecht, Netherlands (Golden State Prep)
14	Nate Johnson	F	6-9	250	Sr.	Broward County, Fla. (American Heritage/Seminole State CC)
4	Adam Larson	F	6-9	180	R-Fr.	Fennimore, Wis. (Fennimore)
15	Josh Mitchell	F	6-8	215	So.	Tupelo, Miss. (Tupelo/Northeast Mississippi CC)
1	Phillip Russell	G	5-10	165	So.	St. Louis, Mo. (Vashon/Saint Louis)
3	Aquan Smart	G	6-3	175	So.	Evanston, Ill. (Niles North/Florida International)

Head Coach: Brad Korn, Third Year (Southern Illinois, 2004)

Assistant Coach: Keith Pickens, Fifth Year (Missouri State, 2013)

Assistant Coach: J.R. Reynolds, First Year (Eastern Illinois, 2004)

Assistant Coach: Connor Wheeler, First Year (SIU Edwardsville, 2016)

Director of Operations: LaDon Champagnie, Second Year (Missouri Baptist, 2013)

» Breakdown by Class

Total Squad Members.....	15
Seniors	3
Juniors	1
Sophomores.....	6
Freshmen.....	5

» Geographical Breakdown

Florida	1
Illinois.....	2
Kansas.....	3
Mississippi	1
Missouri.....	4
Netherlands	1
Tennessee.....	2
Wisconsin.....	1

» Breakdown by Position

Guard	8
Forward	5
Center.....	2

» Pronunciation Guide

David Idada	eye-dah-dah
Gavyn Elkamil.....	elk-uh-mill
Evan Eursher	urr-sure
Mason Hanback	hand-back

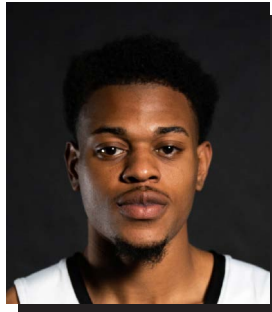
2022-23 SOUTHEAST MISSOURI BASKETBALL NOTES
RADIO/TV ROSTER



0 | **Israel Barnes**
G / 6-4 / 185 / R-Sr.
Wichita, Kan.



1 | **Phillip Russell**
G / 5-10 / 165 / So.
St. Louis, Mo.



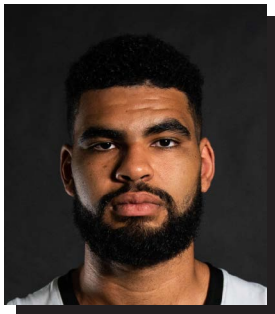
3 | **Aquan Smart**
G / 6-3 / 175 / So.
Evanston, Ill.



4 | **Adam Larson**
F / 6-9 / 180 / R-Fr.
Fennimore, Wis.



5 | **Chris Harris**
G / 6-3 / 205 / R-Sr.
Antioch, Ill.



10 | **David Idada**
C / 7-0 / 250 / Fr.
Barendrecht, Netherlands



11 | **Evan Eursher**
G / 6-2 / 177 / Fr.
Hendersonville, Tenn.



12 | **Tevin Gowins**
G / 5-9 / 167 / Fr.
Florissant, Mo.



14 | **Nate Johnson**
F / 6-9 / 250 / Sr.
Broward County, Fla.



15 | **Josh Mitchell**
F / 6-8 / 215 / So.
Tupelo, Miss.



21 | **Josh Earley**
F / 6-7 / 242 / Jr.
Shawnee Mission, Kan.



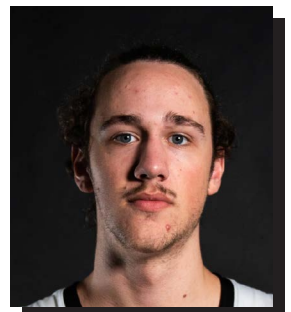
22 | **Gavyn Elkamil**
G / 6-5 / 190 / So.
Pittsburg, Kan.



24 | **Kobe Clark**
F / 6-6 / 180 / So.
St. Louis, Mo.



33 | **Dylan Branson**
G / 6-5 / 220 / So.
St. Louis, Mo.



35 | **Mason Hanback**
C / 7-0 / 245 / Fr.
Jackson, Tenn.



Brad Korn
Head Coach
Third Year



Keith Pickens
Assistant Coach
Fifth Year



J.R. Reynolds
Assistant Coach
First Year



Connor Wheeler
Assistant Coach
First Year



LaDon Champagnie
Director of Operations
Second Year



2022-23 SOUTHEAST MISSOURI BASKETBALL NOTES

HEAD COACH BRAD KORN



BRAD KORN

Head Coach

Third Year // Southern Illinois, 2004



REDHAWK BASKETBALL

Brad Korn has the Southeast Missouri basketball program trending in the right direction entering his third year as head coach in 2022-23.

Korn guided SEMO to its first Ohio Valley Conference Tournament semifinal appearance in 17 years and fourth in program history a year ago. The Redhawks finished fourth in the OVC with an overall record of 14-18 and 8-9 against league foes.

SEMO had a pair of All-OVC performers in Eric Reed, Jr. (First-Team) and Phillip Russell (Second-Team). It marked the first time the Redhawks had a player on both the OVC first and second teams in a season since 2016-17.

The Redhawks win total increased by a +3 margin from 11 (2021-22) to 14 (2022-23) victories since Korn took over the helm.

Statistically, SEMO finished its 2022-23 campaign ranked among the top three in the OVC in scoring offense (3rd, 75.6 ppg), free throw percentage (2nd, .732), turnover margin (3rd, +0.41) and 3-point field goals made (1st, 281). SEMO's 281 three-point field goals made were second-most in a season in

program history.

Korn's first head coaching job has been anything but easy as he took over at SEMO in the middle of a global COVID-19 pandemic.

Throughout all the challenges and uncertainties during an unprecedented 2020-21 season, Korn led his first SEMO team to an overall record of 11-16 and seventh-place finish in the OVC.

The Redhawks made the OVC Tournament for the first time since 2016-17 and saw a +4 improvement in total wins and a +6 jump in OVC victories from the year before. SEMO's nine (9-11) conference victories matched the program's most in a season in 20 years.

SEMO ranked among the top five in the OVC in 3-point field goal percentage (5th, .352), rebounding margin (5th, +2.2), defensive rebounds (5th, 25.6 per game) and defensive rebound percentage (1st, .764).

Korn was officially introduced as SEMO's head coach on Mar. 23, 2020 and is the seventh head coach in SEMO's NCAA Division I era (since 1991-92).

Prior to arriving in Cape Girardeau, Korn spent five years at Big 12 Conference member Kansas State working the four seasons as an

assistant coach and one as the program's Director of Operations.

In his final four years back at K-State after returning following a three-year stint at Missouri State (2013-16), Korn helped the Wildcats to 82 wins and three-straight NCAA Tournament appearances. K-State posted back-to-back 25-win campaigns for the first time in school history (2017-18, 2018-19).

During his first year back in 2016-17, the squad won 21 games, including eight over teams that advanced to the postseason, and knocked off Wake Forest in the NCAA First Four before losing to #18

Cincinnati in the NCAA South Regional First Round.

Working primarily with the post players, Korn was a big influence on the development of two-time All-Big 12 First Team selection Dean Wade, who became the fourth Wildcat to earn All-Big 12 First-Team honors in 2018 and just the second to do so in back-to-back seasons. Wade is one of just three players to rank in the school's Top 10 in both career scoring (1,510) and rebounding (685). He was instrumental in the progress of Makol Mawien, who has started all 103 games in his K-State career and emerged as one of the top big men in the





Big 12.

Korn was also key in the growth of All-Big 12 selections Wesley Iwundu and D.J. Johnson during his first season as an assistant coach in 2016-17. Iwundu, who was twice named Third Team All-Big 12, became the first Wildcat since 2008 to be taken in the NBA Draft when he was selected with 33rd overall pick by the Orlando Magic. Johnson, an honorable mention all-league selection, broke the career field goal percentage record at 59.5 percent, while setting the single-season mark for the second consecutive season at 62.3 percent in 2016-17.

Korn spent one season on Bruce Weber's inaugural staff at K-State as Director of Operations in 2012-13, helping the Wildcats to a 27-8 overall record and their first-ever Big 12 regular-season title. It was the school's first conference title since 1977, while the 27 wins rated second-most in school history.

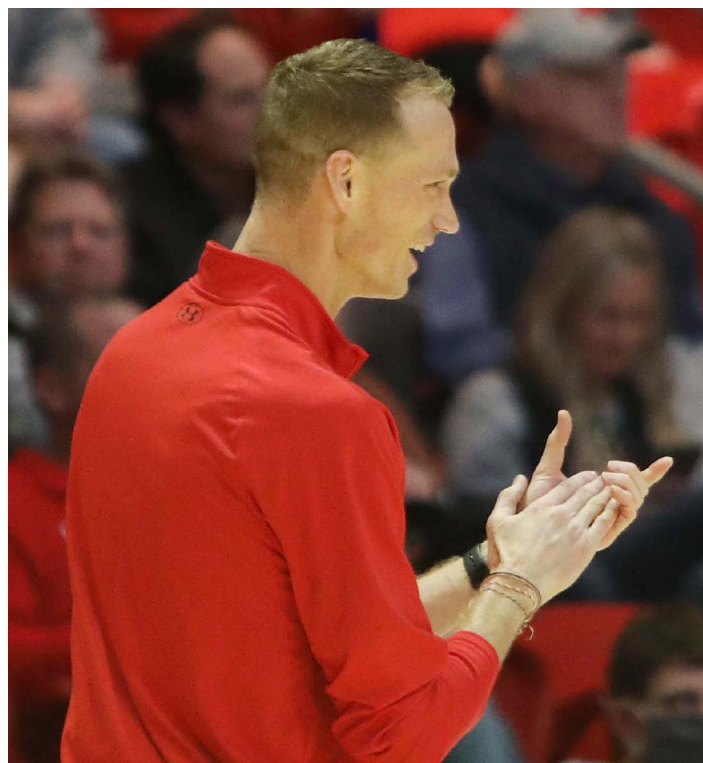
Overall, he has 15 years of Division I experience, which includes time at his alma mater – Southern Illinois (2004-12). Korn has extensive ties to Weber after playing his first four years (1999-2003) for him at Southern Illinois. He redshirted in 1999-2000 before playing the next three years for Weber. He concluded his playing career for (current Purdue head coach) Matt Painter in 2003-04 before spending the next eight years (2004-12) at SIU as an assistant for then-Saluki head coach and current K-State associate head

coach Chris Lowery.

Korn returned to Manhattan in May 2016 after three seasons at Missouri State, where he served as an assistant coach to then-head coach Paul Lusk from 2013-16. At MSU, he helped the Bears to 44 wins, including a 20 -win season and a trip to the CollegiateInsider.com Tournament in 2013-14.

Korn helped mentor a number of All-Missouri Valley honorees during his stay at Missouri State, including 2014 All-MVC Second-Team selection Jarmar Gulley and 2016 MVC Newcomer of the Year Dequon Miller. In addition, he coached three MVC All-Freshman Team honorees in Austin Ruder in 2014 and Obediah Church and Jarred Dixon in 2016 as well as two Most Improved Team members (Dorrian Williams in 2015 and Chris Kendrix in 2016).

Prior to his first stint at K-State, Korn spent eight years (2004-12) at Southern Illinois, including his final six years as a full-time assistant under Lowery. He helped the Salukis post a 145-116 (.556) overall record with four postseason appearances, two Missouri Valley Conference championships and one State Farm Missouri Valley Conference Tournament title. The squad won 20 or more games and advanced to the NCAA Tournament on three occasions (2005, 2006, 2007) during his tenure as an assistant coach, including a 2007 trip to the Sweet 16. He was a graduate assistant at SIU his first two years before being elevated to a full-time assistant coach on Jan.



31, 2006.

A native of Plano, Illinois, Korn helped the Salukis through one of their greatest periods of success from 1999 to 2004. The squad went from 16 wins his redshirt-freshman season to three consecutive NCAA Tournament appearances under Weber and Painter. He was also a part of three Missouri Valley regular season championships as a player.

The 6-foot-9 forward saw action in 121 games in his career, averaging 5.2 points and 2.3 rebounds in 14.5 minutes per

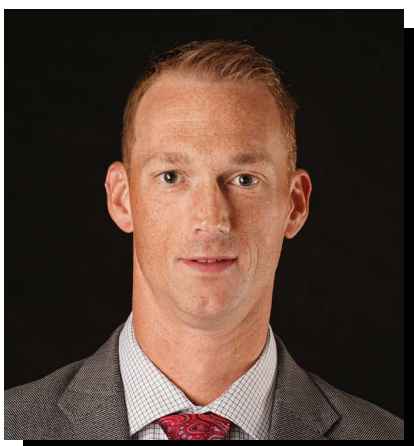
game. As a senior, he averaged 9.7 points on 41 percent shooting with four rebounds and 1.9 assists in helping SIU to 25 wins and a 17-1 mark in MVC play. He was named to the league's Most Improved Team.

Korn earned a bachelor's degree in Marketing from Southern Illinois in 2004 and his master's degree in Administrative Studies from Missouri State in 2016. He resides in Cape Girardeau with his wife, Kristin, and daughters Brielyn and Ashtyn.



2022-23 SOUTHEAST MISSOURI BASKETBALL NOTES

HEAD COACH BRAD KORN



■ The Korn File

Experience:

18th Year (Third at SEMO)

Hometown:

Plano, Ill.

Birthdate:

August 22, 1981

Alma Mater:

Southern Illinois, 2004

Education:

BB.A. Marketing (Southern Illinois)

Master's Administrative Studies (Missouri State)

Date Hired:

March 23, 2020

Family:

Wife - Kristin

Children - Brielyn, Ashtyn

Playing Experience:

Southern Illinois, 1999-04

Coaching Experience:

Southern Illinois, Graduate Asst., 2004-06

Southern Illinois, Assistant Coach, 2006-12

Kansas State, Dir. of Operations, 2012-13

Missouri State, Assistant Coach, 2013-16

Kansas State, Assistant Coach, 2016-20

Southeast Missouri, 2020-pr.

Korn Year-by-Year Records

Year	School	Assignment	Record	Conference/Finish	Postseason
2004-05	Southern Illinois	Graduate Assistant	27-8	15-3/1st	NCAA Second Round
2005-06	Southern Illinois	Graduate Assistant	22-11	12-6/2nd	NCAA First Round
2006-07	Southern Illinois	Assistant Coach	29-7	15-3/1st	NCAA Sweet 16
2007-08	Southern Illinois	Assistant Coach	18-15	11-7/3rd	NIT Second Round
2008-09	Southern Illinois	Assistant Coach	13-18	8-10/5th	-
2009-10	Southern Illinois	Assistant Coach	15-15	6-12/9th	-
2010-11	Southern Illinois	Assistant Coach	13-19	5-13/8th	-
2011-12	Southern Illinois	Assistant Coach	8-23	5-13/9th	-
2012-13	Kansas State	Director of Operations	27-8	14-4/1st	NCAA Second Round
2013-14	Missouri State	Assistant Coach	20-13	9-9/4th	CollegelInsider.com Tourn. (CIT)
2014-15	Missouri State	Assistant Coach	11-20	5-13/8th	-
2015-16	Missouri State	Assistant Coach	13-19	8-10/7th	-
2016-17	Kansas State	Assistant Coach	21-14	8-10/6th	NCAA First Round
2017-18	Kansas State	Assistant Coach	25-12	10-8/4th	NCAA Elite Eight
2018-19	Kansas State	Assistant Coach	25-9	14-4/1st	NCAA First Round
2019-20	Kansas State	Assistant Coach	11-21	3-15/10th	-
2020-21	Southeast Missouri	Head Coach	11-16	9-11/7th	-
2021-22	Southeast Missouri	Head Coach	14-18	8-9/4th	-
2022-23	Southeast Missouri	Head Coach	3-0		

Overall Record: 28-34

Record at Southeast Missouri, 28-34, 17-20 Ohio Valley Conference (3 years)

Record as a College Assistant: 222-205

Record as a Graduate Assistant: 49-19



2022-23 SOUTHEAST MISSOURI BASKETBALL NOTES

2022-23 STATISTICS



RECORD:	OVERALL	HOME	AWAY	NEUTRAL
ALL GAMES	3-0	1-0	2-0	0-0
CONFERENCE	0-0	0-0	0-0	0-0
NON-CONFERENCE	3-0	1-0	2-0	0-0

#	Player	gp-gs	min	avg	Total		3-Point		F-Throw		Rebounds				pf	dq	a	to	blk	stl	pts	avg
					fg-fga	fg%	3fg-fga	3fg%	ft-fa	ft%	off	def	tot	avg								
01	RUSSELL, Phillip	3-3	79	26.3	15-40	.375	9-27	.333	6-7	.857	1	10	11	3.7	8	0	9	10	0	8	45	15.0
05	HARRIS, Chris	3-3	96	32.0	10-35	.286	5-17	.294	12-14	.857	4	12	16	5.3	6	0	6	11	0	4	37	12.3
21	EARLEY, Josh	3-0	58	19.3	12-25	.480	0-0	.000	9-18	.500	6	18	24	8.0	2	0	0	2	2	0	33	11.0
24	CLARK, Kobe	3-3	94	31.3	12-21	.571	1-4	.250	4-4	1.000	12	18	30	10.0	7	0	9	6	2	3	29	9.7
04	LARSON, Adam	3-0	69	23.0	8-18	.444	3-12	.250	2-4	.500	4	7	11	3.7	9	0	1	0	1	1	21	7.0
03	SMART, Aquan	3-3	66	22.0	6-16	.375	2-6	.333	3-4	.750	1	6	7	2.3	12	2	9	6	1	7	17	5.7
35	HANBACK, Mason	1-0	10	10.0	2-2	1.000	0-0	.000	1-1	1.000	0	1	1	1.0	1	0	0	1	0	0	5	5.0
14	JOHNSON, Nate	3-3	48	16.0	7-13	.538	0-1	.000	1-2	.500	5	6	11	3.7	9	1	0	3	1	0	15	5.0
12	GOWINS, Tevin	3-0	53	17.7	3-5	.600	3-4	.750	0-0	.000	2	3	5	1.7	6	0	0	2	0	0	9	3.0
11	EURSHER, Evan	2-0	25	12.5	1-7	.143	1-6	.167	0-0	.000	0	1	1	0.5	2	0	1	2	0	0	3	1.5
15	MITCHELL, Josh	1-0	2	2.0	0-0	.000	0-0	.000	0-0	.000	0	0	0	0.0	0	0	0	1	0	0	0	0.0
Team											3	6	9					4				
Total.....		3	600		76-182	.418	24-77	.312	38-54	.704	38	88	126	42.0	62	3	35	48	7	23	214	71.3
Opponents.....		3	600		58-162	.358	13-63	.206	39-65	.600	28	75	103	34.3	50	-	19	53	6	15	168	56.0

TEAM STATISTICS

	SEMO	OPP
SCORING	214	168
Points per game	71.3	56.0
Scoring margin	+15.3	-
FIELD GOALS-ATT	76-182	58-162
Field goal pct	.418	.358
3 POINT FG-ATT	24-77	13-63
3-point FG pct	.312	.206
3-pt FG made per game	8.0	4.3
FREE THROWS-ATT	38-54	39-65
Free throw pct	.704	.600
F-Throws made per game	12.7	13.0
REBOUNDS	126	103
Rebounds per game	42.0	34.3
Rebounding margin	+7.7	-
ASSISTS	35	19
Assists per game	11.7	6.3
TURNOVERS	48	53
Turnovers per game	16.0	17.7
Turnover margin	+1.7	-
Assist/turnover ratio	0.7	0.4
STEALS	23	15
Steals per game	7.7	5.0
BLOCKS	7	6
Blocks per game	2.3	2.0
ATTENDANCE	683	7802
Home games-Avg/Game	1-683	2-3901
Neutral site-Avg/Game	-	0-0

Date	Opponent		Score	Att.
11-07-22	at South Fla.	w	64-61	4046
11-12-22	LYON	w	83-46	683
11-16-22	at Evansville	w	67-61	3756

* - Conference game

Score by Periods	1st	2nd	Totals
Southeast Missouri	100	114	214
Opponents	66	102	168



2022-23 SOUTHEAST MISSOURI BASKETBALL NOTES

2022-23 STATISTICS

Comparison Game-by-Game (SEMO/Opponent)

Opponent	1st	2nd	Score	Mar	Total FG	FG Pct	3-Pointers	3FG Pct	Free Throws	FT Pct	Rebounds (Mar)	Assist	T/Over	Block	Steal	Fouls
South Florida	30/30	34/31	64-61	+3	20-56/24-52	.357/.462	10-26/4-19	.385/.211	14-22/9-19	.636/.474	39/38 +1	10/8	15/16	2/3	6/6	21/19
Lyon College	34/13	49/33	83-46	+37	33-71/14-48	.465/.292	8-33/6-22	.242/.273	9-16/12-15	.563/.800	49/21 +28	17/7	19/25	4/1	14/3	17/12
Evansville	36/23	31/38	67-61	+6	23-55/20-62	.418/.323	6-18/3-22	.333/.136	15-16/18-31	.938/.581	38/44 (6)	8/4	14/12	1/2	3/6	24/19
Bradley																
William Woods																
Boston																
UC Davis																
Milwaukee																
Missouri																
Purdue Fort Wayne																
Arkansas State																
Iowa																
Southern Illinois																
Southern Indiana																
SIU Edwardsville																
UT Martin																
Little Rock																
Lindenwood																
Morehead State																
UT Martin																
Tennessee Tech																
Tennessee State																
Eastern Illinois																
Little Rock																
Tennessee Tech																
Tennessee State																
Morehead State																
Eastern Illinois																
Southern Indiana																
Lindenwood																
SIU Edwardsville																

Points in the Paint, Second Chance Points, Points Off Turnovers, Fastbreak Points, Bench Points

Opponent	W/L	POINTS IN THE PAINT		2ND CHANCE POINTS		POINTS OFF TURNOVERS		FAST BREAK POINTS		BENCH POINTS	
		SEMO	OPP.	SEMO	OPP.	SEMO	OPP.	SEMO	OPP.	SEMO	OPP.
South Florida	W	14	36	14	7	12	11	4	6	18	20
Lyon College	W	48	14	22	3	30	16	18	8	30	24
Evansville	W	24	34	8	15	10	11	15	16	23	9
Bradley											
William Woods											
Boston											
UC Davis											
Milwaukee											
Missouri											
Purdue Fort Wayne											
Arkansas State											
Iowa											
Southern Illinois											
Southern Indiana											
SIU Edwardsville											
UT Martin											
Little Rock											
Lindenwood											
Morehead State											
UT Martin											
Tennessee Tech											
Tennessee State											
Eastern Illinois											
Little Rock											
Tennessee Tech											
Tennessee State											
Morehead State											
Eastern Illinois											
Southern Indiana											
Lindenwood											
SIU Edwardsville											

2022-23 SOUTHEAST MISSOURI BASKETBALL NOTES

2022-23 STATISTICS



Game-by-Game Leaders

<u>Opponent</u>	<u>W/L</u>	<u>Score</u>	<u>Points</u>	<u>Rebounds</u>	<u>Assists</u>	<u>Blocks</u>	<u>Steals</u>
South Florida	W	64-61	Harris - 16	Clark, Earley - 8	Clark, Russell - 3	Earley, Larson - 1	Smart - 3
Lyon College	W	83-46	Russell - 23	Clark - 16	Smart - 6	Clark - 2	Russell - 5
Evansville	W	67-61	Harris - 14	Clark, Russell, Harris - 6	Harris - 3	Smart, Clark, Larson - 1	Russell, Smart, Harris - 1
Bradley							
William Woods							
Boston							
UC Davis							
Milwaukee							
Missouri							
Purdue Fort Wayne							
Arkansas State							
Iowa							
Southern Illinois							
Southern Indiana							
SIU Edwardsville							
UT Martin							
Little Rock							
Lindenwood							
Morehead State							
UT Martin							
Tennessee Tech							
Tennessee State							
Eastern Illinois							
Little Rock							
Tennessee Tech							
Tennessee State							
Morehead State							
Eastern Illinois							
Southern Indiana							
Lindenwood							
SIU Edwardsville							

Game-by-Game Starters

<u>Opponent</u>	<u>W/L</u>	<u>Score</u>	<u>Guard</u>	<u>Guard</u>	<u>Guard</u>	<u>Guard/Forward</u>	<u>Center</u>	<u>First Man Off the Bench</u>
South Florida	W	64-61	Russell	Harris	Smart	Clark, F	Johnson	Earley, 9 pts., 8 reb., 20 min.
Lyon College	W	83-46	Russell	Harris	Smart	Clark, F	Johnson	Larson, 8 pts., 4 reb., 21 min.
Evansville	W	67-61	Russell	Harris	Smart	Clark, F	Johnson	Earley, 13 pts., 4 reb., 22 min.
Bradley								
William Woods								
Boston								
UC Davis								
Milwaukee								
Missouri								
Purdue Fort Wayne								
Arkansas State								
Iowa								
Southern Illinois								
Southern Indiana								
SIU Edwardsville								
UT Martin								
Little Rock								
Lindenwood								
Morehead State								
UT Martin								
Tennessee Tech								
Tennessee State								
Eastern Illinois								
Little Rock								
Tennessee Tech								
Tennessee State								
Morehead State								
Eastern Illinois								
Southern Indiana								
Lindenwood								
SIU Edwardsville								

Starting Lineup Combinations

<u>Record</u>	<u>Guard</u>	<u>Guard</u>	<u>Guard</u>	<u>Guard/Forward</u>	<u>Center</u>
3-0	Russell	Harris	Smart	Clark, F	Johnson



2022-23 SOUTHEAST MISSOURI BASKETBALL NOTES

2022-23 TEAM GAME-BY-GAME STATISTICS

	Score	FG-A	Pct.	3FG-A	Pct.	FT-A	Pct.	OFF	DEF	Total	E	A	TO	B	S
Southeast Missouri	W, 64-61	20-56	.357	10-26	.385	14-22	.636	11	28	39	21	10	15	2	6
South Florida	-	24-52	.462	4-19	.211	9-19	.474	8	30	38	19	8	16	3	6
Southeast Missouri	W, 83-46	33-71	.465	8-33	.242	9-16	.563	20	29	49	17	17	19	4	14
Lyon College		14-48	.292	6-22	.273	12-15	.800	2	19	21	12	7	25	1	3
Southeast Missouri	W, 67-61	23-55	.418	6-18	.333	15-16	.938	7	31	38	24	8	14	1	3
Evansville		20-62	.323	3-22	.136	18-31	.581	18	26	44	19	4	12	2	6
Southeast Missouri															
Bradley															
Southeast Missouri															
William Woods															
Southeast Missouri															
Boston															
Southeast Missouri															
UC Davis															
Southeast Missouri															
Milwaukee															
Southeast Missouri															
Missouri															
Southeast Missouri															
Purdue Fort Wayne															
Southeast Missouri															
Arkansas															
Southeast Missouri															
Iowa															
Southeast Missouri															
Southern Illinois															
Southeast Missouri															
Southern Indiana															
Southeast Missouri															
SIU Edwardsville															
Southeast Missouri															
UT Martin															
Southeast Missouri															
Little Rock															
Southeast Missouri															
Lindenwood															
Southeast Missouri															
Morehead State															
Southeast Missouri															
UT Martin															
Southeast Missouri															
Tennessee Tech															
Southeast Missouri															
Tennessee State															
Southeast Missouri															
Eastern Illinois															
Southeast Missouri															
Little Rock															
Southeast Missouri															
Tennessee Tech															
Southeast Missouri															
Tennessee State															
Southeast Missouri															
Morehead State															
Southeast Missouri															
Eastern Illinois															
Southeast Missouri															
Southern Indiana															
Southeast Missouri															
Lindenwood															
Southeast Missouri															
SIU Edwardsville															


**2022-23 Game-by-Game Leaders
Summary (# of Games)**
Points

Chris Harris.....	2
Phillip Russell.....	1

Rebounds

Kobe Clark.....	3
Josh Earley.....	1
Phillip Russell.....	1
Chris Harris.....	1

Assists

Phillip Russell.....	1
Kobe Clark.....	1
Aquan Smart.....	1
Chris Harris.....	1

Blocks

Adam Larson.....	2
Kobe Clark.....	2
Aquan Smart.....	1

Steals

Aquan Smart.....	2
Phillip Russell.....	2
Chris Harris.....	1

Dunks (# for 2022-23 Season)

Kobe Clark.....	1
Adam Larson.....	1
Mason Hanback.....	1
Josh Earley.....	1

Games Played/Started

	<u>2022-23</u>	<u>Career</u>
Chris Harris	3/3	60/35
Dylan Branson	-	59/33
Nate Johnson	3/3	39/3
Phillip Russell	3/3	33/33
Kobe Clark	3/3	3/3
Aquan Smart	3/3	3/3
Adam Larson	3/0	3/0
Tevin Gowins	3/0	3/0
Josh Earley	3/0	3/0
Evan Eursher	2/0	2/0
Josh Mitchell	1/0	1/0
Mason Hanback	1/0	1/0

Career Ledger
Double-Digit Point Games

	<u>2022-23</u>	<u>Career</u>
Chris Harris.....	2	36
Phillip Russell.....	3	23
Nate Johnson.....	-	2
Dylan Branson.....	-	2
Josh Earley.....	2	2
Kobe Clark.....	1	1

Double-Digit Rebound Games

	<u>2022-23</u>	<u>Career</u>
DQ Nicholas.....	-	1
Phillip Russell.....	-	1
Kobe Clark.....	1	1
Josh Earley.....	1	1

20+ Point Games

	<u>2022-23</u>	<u>Career</u>
Phillip Russell.....	1	7
Chris Harris.....	-	3

30-Point Games

	<u>2022-23</u>	<u>Career</u>
Eric Reed, Jr.	-	2
Phillip Russell.....	-	1

8+ Rebound Games

	<u>2022-23</u>	<u>Career</u>
Kobe Clark.....	2	2
Josh Earley.....	2	2
Eric Reed, Jr.	-	1
Phillip Russell.....	-	1
Chris Harris.....	-	1

5+ Assist Games

	<u>2022-23</u>	<u>Career</u>
Chris Harris.....	-	12
Phillip Russell.....	-	4
Dylan Branson.....	-	2
Aquan Smart.....	1	1
Kobe Clark.....	1	1

3+ Steal Games

	<u>2022-23</u>	<u>Career</u>
Phillip Russell.....	1	4
Chris Harris.....	-	3
Aquan Smart.....	2	2
Kobe Clark.....	1	1

Double-Doubles

	<u>2022-23</u>	<u>Career</u>
Phillip Russell.....	-	1
Josh Earley.....	1	1

SEMO's 2022-23 Record:

At Home.....	1-0
On the Road.....	2-0
At Neutral Sites.....	0-0
In Ohio Valley Conference Games.....	0-0
In November.....	3-0
In December.....	0-0
In January.....	0-0
In February.....	0-0
In March.....	0-0
Leading at the Half.....	2-0
Trailing at the Half.....	0-0
Tied at the Half.....	1-0
In Overtime Games.....	0-0
The Redhawks Score First.....	1-0
In 1-4 Point Games.....	1-0
In 5-9 Point Games.....	1-0
In 10-14 Point Games.....	0-0
In 15+ Point Games.....	1-0
Leading with Five Minutes Left in Regulation.....	2-0
Trailing with Five Minutes Left in Regulation.....	1-0
Tied with Five Minutes Left in Regulation.....	0-0
Scoring Less than 50 Points.....	0-0
Scoring 50-59 Points.....	0-0
Scoring 60-69 Points.....	2-0
Scoring 70-79 Points.....	0-0
Scoring 80-89 Points.....	1-0
Scoring 90-99 Points.....	0-0
Scoring 100 or more Points.....	0-0
Giving up Less Than 50 Points.....	1-0
Giving up 50-59 Points.....	0-0
Giving up 60-69 Points.....	2-0
Giving up 70-79 Points.....	0-0
Giving up 80-89 Points.....	0-0
Giving up 90-99 Points.....	0-0
Giving up 100 or more Points.....	0-0
Shooting 50% or Better from the Field.....	0-0
Shooting Less Than 50% from the Field.....	3-0
Opponent Shoots 50% or Better from the Field.....	0-0
Opponent Shoots Less Than 50% from the Field.....	3-0
Outshooting Opponent.....	2-0
Outshot by Opponent.....	1-0
Field Goal Percentage is Tied.....	0-0
Shooting 50% or Better from 3-Point Range.....	0-0
Shooting Less Than 50% from 3-Point Range.....	3-0
Opponent Shoots 50% or Better from 3-Point Range.....	0-0
Opponent Shoots Less Than 50% from 3-Point Range.....	3-0
Shooting 50% or Better from the Free Throw Line.....	3-0
Shooting Less Than 50% from the Free Throw Line.....	0-0
Opponent Shoots 50% or Better from the Free Throw Line.....	2-0
Opponent Shoots Less Than 50% from the Free Throw Line.....	1-0
Shooting More Free Throws Than Opponent.....	2-0
Shooting Less Free Throws Than Opponent.....	1-0
Free Throws are Tied.....	0-0
SEMO's Starters Outscore Opponent's Starters.....	2-0
Opponent's Starters Outscore SEMO's Starters.....	1-0
Starter Scoring is Tied.....	0-0
Bench Outscores Opponent.....	2-0
Opponent Bench Outscores SEMO.....	1-0
Bench Scoring is Tied.....	0-0
Bench Contributes Double Figures in Points.....	3-0
No Redhawk Players Score Double Figures.....	0-0
Two Redhawk Players Score Double Figures.....	2-0
3+ Redhawk Players Score Double Figures.....	1-0
Outrebounding an Opponent.....	2-0
Opponent Outrebounds SEMO.....	1-0
Rebounds are Tied.....	0-0
Getting 10+ Assists.....	2-0
Getting 10+ Steals.....	1-0
Getting 5+ Blocks.....	0-0
Forcing more Turnovers than Opponent.....	2-0
Committing more Turnovers than Opponent.....	1-0
Turnovers are Tied.....	0-0



2022-23 SOUTHEAST MISSOURI BASKETBALL NOTES

2021-22 OHIO VALLEY CONFERENCE STATISTICS

RECORD:	OVERALL	HOME	AWAY	NEUTRAL
ALL GAMES	8-9	5-3	3-6	0-0
CONFERENCE	8-9	5-3	3-6	0-0
NON-CONFERENCE	0-0	0-0	0-0	0-0

#	Player	gp-gs	min	avg	Total		3-Point		F-Throw		Rebounds				pf	dq	a	to	blk	stl	pts	avg
					fg-fga	fg%	3fg-fga	3fg%	ft-fga	ft%	off	def	tot	avg								
03	REED, JR., Eric	16-15	521	32.6	88-202	.436	40-105	.381	61-73	.836	21	40	61	3.8	30	0	34	29	3	15	277	17.3
01	RUSSELL, Phillip	15-15	476	31.7	63-163	.387	20-75	.267	59-76	.776	11	27	38	2.5	34	1	57	37	0	19	205	13.7
10	PATTERSON, Manny	16-13	300	18.8	63-101	.624	1-1	1.000	27-35	.771	32	37	69	4.3	48	0	3	21	14	9	154	9.6
21	AKENTEN, Nana	15-0	281	18.7	49-106	.462	29-74	.392	10-19	.526	13	54	67	4.5	30	0	12	11	8	6	137	9.1
05	HARRIS, Chris	14-0	298	21.3	34-92	.370	22-51	.431	28-38	.737	2	36	38	2.7	18	0	34	22	2	9	118	8.4
25	RUSSELL, Nygal	17-17	443	26.1	49-125	.392	25-73	.342	13-24	.542	26	73	99	5.8	46	1	42	23	3	10	136	8.0
11	NICHOLAS, DQ	15-2	340	22.7	31-69	.449	14-27	.519	37-51	.725	7	46	53	3.5	30	0	25	18	0	11	113	7.5
14	JOHNSON, Nate	1-0	7	7.0	2-2	1.000	0-0	.000	1-2	.500	0	0	0	0.0	3	0	0	0	0	0	5	5.0
20	THOMPSON, Sam	15-4	200	13.3	28-48	.583	0-1	.000	10-14	.714	13	18	31	2.1	37	2	5	22	11	5	66	4.4
02	THOMPSON, Chase	12-2	165	13.8	12-27	.444	3-10	.300	12-17	.706	3	13	16	1.3	18	1	9	5	2	6	39	3.3
33	BRANSON, Dylan	17-17	294	17.3	15-43	.349	5-23	.217	20-28	.714	14	33	47	2.8	46	1	32	26	4	10	55	3.2
13	LONG, Parker	10-0	100	10.0	6-15	.400	5-11	.455	3-4	.750	3	4	7	0.7	4	0	7	2	0	3	20	2.0
Team											16	17	33					4				
Total.....		17	3425		440-993	.443	164-451	.364	281-381	.738	161	398	559	32.9	344	6	260	220	47	103	1325	77.9
Opponents.....		17	3425		457-1000	.457	126-372	.339	277-387	.716	171	415	586	34.5	340	-	219	228	52	113	1317	77.5

TEAM STATISTICS	SEMO	OPP	Date	Opponent	Score	Att.
SCORING	1325	1317	* 12-30-21	at Murray St.	L 81-106	3630
Points per game	77.9	77.5	* 01-01-22	AUSTIN PEAY	W 98-79	580
Scoring margin	+0.5	-	* 01-06-22	at Belmont	L 62-102	278
FIELD GOALS-ATT	440-993	457-1000	* 01-08-22	at Tennessee St.	L 84-95	269
Field goal pct	.443	.457	* 01-20-22	TENNESSEE ST.	W 85-63	640
3 POINT FG-ATT	164-451	126-372	* 01-22-22	at Eastern Ill.	W 87-58	869
3-point FG pct	.364	.339	* 01-27-22	MOREHEAD ST.	Lot 73-74	1325
3-pt FG made per game	9.6	7.4	* 01-29-22	SIUE	W 85-77	935
FREE THROWS-ATT	281-381	277-387	* 02-03-22	at UT Martin	L 63-84	506
Free throw pct	.738	.716	* 02-05-22	EASTERN ILL.	W 63-56	924
F-Throws made per game	16.5	16.3	* 02-07-22	at SIUE	W 76-47	565
REBOUNDS	559	586	* 02-10-22	at Austin Peay	L 66-74	1253
Rebounds per game	32.9	34.5	* 02-12-22	BELMONT	L 72-81	1469
Rebounding margin	-1.6	-	* 02-17-22	at Tennessee Tech	L 94-98	1009
ASSISTS	260	219	* 02-19-22	at Morehead State	W 92-84	2511
Assists per game	15.3	12.9	* 02-24-22	UT MARTIN	W 76-69	742
TURNOVERS	220	228	* 02-26-22	MURRAY ST.	L 68-70	2934
Turnovers per game	12.9	13.4				
Turnover margin	+0.5	-				
Assist/turnover ratio	1.2	1.0				
STEALS	103	113				
Steals per game	6.1	6.6				
BLOCKS	47	52				
Blocks per game	2.8	3.1				
ATTENDANCE	9549	10890				
Home games-Avg/Game	8-1194	9-1210				
Neutral site-Avg/Game	-	0-0				

* = Conference game

! = Incarnate Word Thanksgiving Invitational (San Antonio, Texas)

Score by Periods	1st	2nd	OT	Totals
Southeast Missouri	641	675	9	1325
Opponents	617	690	10	1317



0

Guard

ISRAEL BARNES

R-Sr. // 6-4 // 185 // Wichita, Kan. // Newman University

REDHAWK BASKETBALL

// 2022-23: -

Barnes' Game-by-Game Statistics

2022-23	FG	3P	FT	O/D	REB	F	PTS	A	TO	B	S	M
at South Florida	DNP	-	-	-	-	-	-	-	-	-	-	-
Lyon College	DNP	-	-	-	-	-	-	-	-	-	-	-
at Evansville	DNP	-	-	-	-	-	-	-	-	-	-	-
at Bradley												
William Woods												
vs. Boston												
vs. UC Davis												
at Milwaukee												
at Missouri												
Purdue Fort Wayne												
at Arkansas State												
at Iowa												
Southern Illinois												
at Southern Indiana												
SIU Edwardsville												
at UT Martin												
at Little Rock												
Lindenwood												
at Morehead State												
UT Martin												
Tennessee Tech												
Tennessee State												
at Eastern Illinois												
Little Rock												
at Tennessee Tech												
at Tennessee State												
Morehead State												
Eastern Illinois												
Southern Indiana												
at Lindenwood												
at SIU Edwardsville												
Totals	0-0	0-0	0-0	0/0	0	0	0	0	0	0	0	0

• - Game Started

2022-23 Season/Career-Highs

Points	-
Total Rebounds	-
Offensive	-
Defensive	-
FG Made	-
FG Attempted	-
3-Point FG Made	-
3-Point FG Attempted	-
FT Made	-
FT Attempted	-
Assists	-
Blocks	-
Steals	-
Minutes	-

Barnes' Career Statistics at Southeast Missouri

		Overall																
Season	G-GS	Min	Avg	FG-FGA	Pct	3FG-3FGA	Pct	FT-FTA	Pct	Off	Def	Tot	Avg	PE	FO	A	TO	Blk
2022-23																		
		Ohio Valley Conference Games Only																
Season	G-GS	Min	Avg	FG-FGA	Pct	3FG-3FGA	Pct	FT-FTA	Pct	Off	Def	Tot	Avg	PE	FO	A	TO	Blk
2022-23																		



2022-23 SOUTHEAST MISSOURI BASKETBALL NOTES

PLAYER PROFILES

33

Guard

DYLAN BRANSON

So. // 6-5 // 220 // St. Louis, Mo. // Mehlville H.S.

REDHAWK BASKETBALL

// 2022-23: Missed the season-opener at South Florida due to an ankle injury...Is expected to return in late November.

Branson's Game-by-Game Statistics

2022-23	FG	3P	FT	O/D	REB	E	PTS	A	TO	B	S	M
at South Florida	DNP	-	-	-	-	-	-	-	-	-	-	-
Lyon College	DNP	-	-	-	-	-	-	-	-	-	-	-
at Evansville	DNP	-	-	-	-	-	-	-	-	-	-	-
at Bradley												
William Woods												
vs. Boston												
vs. UC Davis												
at Milwaukee												
at Missouri												
Purdue Fort Wayne												
at Arkansas State												
at Iowa												
Southern Illinois												
at Southern Indiana												
SIU Edwardsville												
at UT Martin												
at Little Rock												
Lindenwood												
at Morehead State												
UT Martin												
Tennessee Tech												
Tennessee State												
at Eastern Illinois												
Little Rock												
at Tennessee Tech												
at Tennessee State												
Morehead State												
Eastern Illinois												
Southern Indiana												
at Lindenwood												
at SIU Edwardsville												
Totals	0-0	0-0	0-0	0/0	0	0	0	0	0	0	0	0

• - Game Started

2022-23 Season-Highs

Points.....	-
Total Rebounds.....	-
Offensive.....	-
Defensive.....	-
FG Made.....	-
FG Attempted.....	-
3-Point FG Made.....	-
3-Point FG Attempted.....	-
FT Made.....	-
FT Attempted.....	-
Assists.....	-
Blocks.....	-
Steals.....	-
Minutes.....	-

Career-Highs

Points.....	12	at Eastern Illinois (1/22/22)
Total Rebounds.....	6	3x, last vs. Tennessee State (3/3/22)
Offensive.....	3	vs. Eastern Illinois (2/5/22)
Defensive.....	5	3x, last at Murray State (12/30/21)
FG Made.....	5	at Eastern Illinois (1/22/22)
FG Attempted.....	8	at Eastern Illinois (1/22/22)
3-Point FG Made.....	2	3x, last at Eastern Illinois (1/22/22)
3-Point FG Attempted.....	4	2x, last at Eastern Illinois (1/22/22)
FT Made.....	4	vs. Austin Peay (1/1/22)
FT Attempted.....	6	vs. Austin Peay (1/1/22)
Assists.....	6	vs. Austin Peay (1/1/22)
Blocks.....	1	7x, last vs. UT Martin (2/24/22)
Steals.....	2	3x, last at Austin Peay (2/10/22)
Minutes.....	30	at Pepperdine (12/18/21)

Branson's Career Statistics at Southeast Missouri

Season	G-GS	Min	Avg	FG-FGA	Pct	3FG-3FGA	Pct	FT-FTA	Pct	Off	Def	Tot	Avg	PF	FO	A	TO	Blk	Stl	Pts	Avg
2020-21	27-2	426	15.8	27-52	.519	14-27	.519	14-15	.933	20	45	65	2.4	54	2	34	40	4	8	82	3.0
2021-22	32-25	566	17.7	29-79	.367	10-41	.244	20-31	.645	20	70	90	2.8	76	2	50	46	7	16	88	2.8
2022-23																					
Totals	59-27	992	16.8	56-131	.427	24-68	.353	34-46	.739	40	115	155	2.6	130	4	84	86	11	24	170	2.9
Ohio Valley Conference Games Only																					
Season	G-GS	Min	Avg	FG-FGA	Pct	3FG-3FGA	Pct	FT-FTA	Pct	Off	Def	Tot	Avg	PF	FO	A	TO	Blk	Stl	Pts	Avg
2020-21	20-2	346	17.3	21-43	.488	10-21	.476	11-11	1.000	18	38	56	2.8	41	2	26	31	4	7	63	3.2
2021-22	17-17	294	17.3	15-43	.349	5-23	.217	20-28	.714	14	33	47	2.8	46	1	32	26	4	10	55	3.2
2022-23																					
Totals	37-19	640	17.3	36-86	.419	15-44	.341	31-39	.795	32	71	103	2.8	87	3	58	57	8	17	118	3.2



24 Forward
KOBE CLARK

So. // 6-6 // 180 // St Louis, Mo. // Georgetown



REDHAWK BASKETBALL

// 2022-23: Leads Southeast Missouri in rebounding with 10 per game after three starts...Ranks fourth on the team in scoring with 9.7 points per game... Pitched in double figures for the first time when he recorded 13 points at Evansville (11/16)...Scored eight points and grabbed eight rebounds in first career start at South Florida (11/7)...Shot 4-of-5 from the field and dished out three assists in 30 minutes against the Bulls...Had eight points and pulled down a game-high 16 rebounds vs. Lyon College (11/12).

Clark's Game-by-Game Statistics

2022-23	FG	3P	FT	O/D	REB	F	PTS	A	TO	B	S	M
at South Florida*	4-5	0-1	0-0	4/4	8	3	8	3	3	0	0	30
Lyon College*	4-7	0-1	0-0	6/10	16	1	8	5	3	2	3	33
at Evansville*	4-9	1-2	4-4	2/4	6	3	13	1	0	0	0	31
at Bradley												
William Woods												
vs. Boston												
vs. UC Davis												
at Milwaukee												
at Missouri												
Purdue Fort Wayne												
at Arkansas State												
at Iowa												
Southern Illinois												
at Southern Indiana												
SIU Edwardsville												
at UT Martin												
at Little Rock												
Lindenwood												
at Morehead State												
UT Martin												
Tennessee Tech												
Tennessee State												
at Eastern Illinois												
Little Rock												
at Tennessee Tech												
at Tennessee State												
Morehead State												
Eastern Illinois												
Southern Indiana												
at Lindenwood												
at SIU Edwardsville												
Totals	12-21	1-4	4-4	12/18	30	7	29	9	6	2	3	94

• - Game Started

2022-23 Season/Career-Highs

Points	13	at Evansville (11/16/22)
Total Rebounds	16	vs. Lyon College (11/12/22)
Offensive	6	vs. Lyon College (11/12/22)
Defensive	10	vs. Lyon College (11/12/22)
FG Made	4	3x, last at Evansville (11/16/22)
FG Attempted	9	at Evansville (11/16/22)
3-Point FG Made	1	at Evansville (11/16/22)
3-Point FG Attempted	2	at Evansville (11/16/22)
FT Made	4	at Evansville (11/16/22)
FT Attempted	4	at Evansville (11/16/22)
Assists	5	vs. Lyon College (11/12/22)
Blocks	2	vs. Lyon College (11/12/22)
Steals	3	vs. Lyon College (11/12/22)
Minutes	33	vs. Lyon College (11/12/22)

Clark's Career Statistics at Southeast Missouri

		Overall																	
Season	G-GS	Min	Avg	FG-FGA	Pct	3FG-3FGA	Pct	FT-FTA	Pct	Off	Def	Tot	Avg	PF	FO	A	TO	Blk	Stl
2022-23	3-3	94	31.3	12-21	.571	1-4	.250	4-4	1.000	12	18	30	10.0	7	0	9	6	2	3
		Ohio Valley Conference Games Only																	
Season	G-GS	Min	Avg	FG-FGA	Pct	3FG-3FGA	Pct	FT-FTA	Pct	Off	Def	Tot	Avg	PF	FO	A	TO	Blk	Stl
2022-23																			



2022-23 SOUTHEAST MISSOURI BASKETBALL NOTES

PLAYER PROFILES

21

Forward

JOSH
EARLEY

Jr. // 6-7 // 242 // Shawnee Mission, Kan. // Tulsa

REDHAWK BASKETBALL

// 2022-23: Is averaging a 11 points and eight rebounds in three games... Came off the bench in each of those matchups...Ranks third on the team in scoring and second in rebounding...Scored nine points and pull down eight rebounds in his first career game with Southeast Missouri at South Florida (11/7)...Shot 5-of-10 free throws and contributed 20 minutes in that contest... Registered his first career double-double with 11 points and 12 boards vs. Lyon College (11/12)...Scored double figures in each of his last two contests with a season-high 13 at Evansville (11/16).

Earley's Game-by-Game Statistics

2022-23	FG	3P	FT	O/D	REB	F	PTS	A	TO	B	S	M
at South Florida	2-6	0-0	5-10	1/7	8	1	9	0	2	1	0	20
Lyon College	5-7	0-0	1-4	5/7	12	0	11	0	0	1	0	16
at Evansville	5-12	0-0	3-4	0/4	4	1	13	0	0	0	0	22
at Bradley												
William Woods												
vs. Boston												
vs. UC Davis												
at Milwaukee												
at Missouri												
Purdue Fort Wayne												
at Arkansas State												
at Iowa												
Southern Illinois												
at Southern Indiana												
SIU Edwardsville												
at UT Martin												
at Little Rock												
Lindenwood												
at Morehead State												
UT Martin												
Tennessee Tech												
Tennessee State												
at Eastern Illinois												
Little Rock												
at Tennessee Tech												
at Tennessee State												
Morehead State												
Eastern Illinois												
Southern Indiana												
at Lindenwood												
at SIU Edwardsville												
Totals	12-25	0-0	9-18	6/18	24	2	33	0	2	2	0	58

• - Game Started

2022-23 Season/Career-Highs

Points	13	at Evansville (11/16/22)
Total Rebounds	12	vs. Lyon College (11/12/22)
Offensive	5	vs. Lyon College (11/12/22)
Defensive	7	2x, last vs. Lyon College (11/12/22)
FG Made	5	2x, last at Evansville (11/16/22)
FG Attempted	12	at Evansville (11/16/22)
3-Point FG Made	-	-
3-Point FG Attempted	-	-
FT Made	5	at South Florida (11/7/22)
FT Attempted	10	at South Florida (11/7/22)
Assists	-	-
Blocks	1	2x, last vs. Lyon College (11/12/22)
Steals	-	-
Minutes	22	at Evansville (11/16/22)

Earley's Career Statistics at Southeast Missouri

		Overall																	
Season	G-GS	Min	Avg	FG-FGA	Pct	3FG-3FGA	Pct	FT-FTA	Pct	Off	Def	Tot	Avg	PF	FO	A	TO	Blk	Stl
2022-23	3-0	58	19.3	12-25	.480	0-0	.000	9-18	.500	6	18	24	8.0	2	0	0	2	2	0
		Ohio Valley Conference Games Only																	
Season	G-GS	Min	Avg	FG-FGA	Pct	3FG-3FGA	Pct	FT-FTA	Pct	Off	Def	Tot	Avg	PF	FO	A	TO	Blk	Stl
2022-23																			





22

Guard

GAVYN ELKAMIL

So. // 6-5 // 190 // Pittsburg, Kan. // Tulsa





REDHAWK BASKETBALL

// 2022-23: Will miss the entire season due to a shoulder injury.

Elkamil's Game-by-Game Statistics

2022-23	FG	3P	FT	O/D	REB	F	PTS	A	TO	B	S	M
at South Florida	DNP	-	-	-	-	-	-	-	-	-	-	-
Lyon College	DNP	-	-	-	-	-	-	-	-	-	-	-
at Evansville	DNP	-	-	-	-	-	-	-	-	-	-	-
at Bradley												
William Woods												
vs. Boston												
vs. UC Davis												
at Milwaukee												
at Missouri												
Purdue Fort Wayne												
at Arkansas State												
at Iowa												
Southern Illinois												
at Southern Indiana												
SIU Edwardsville												
at UT Martin												
at Little Rock												
Lindenwood												
at Morehead State												
UT Martin												
Tennessee Tech												
Tennessee State												
at Eastern Illinois												
Little Rock												
at Tennessee Tech												
at Tennessee State												
Morehead State												
Eastern Illinois												
Southern Indiana												
at Lindenwood												
at SIU Edwardsville												
Totals	0-0	0-0	0-0	0/0	0	0	0	0	0	0	0	0

• - Game Started

2022-23 Season/Career-Highs

Points	-
Total Rebounds	-
Offensive	-
Defensive	-
FG Made	-
FG Attempted	-
3-Point FG Made	-
3-Point FG Attempted	-
FT Made	-
FT Attempted	-
Assists	-
Blocks	-
Steals	-
Minutes	-

Elkamil's Career Statistics at Southeast Missouri

Season	G-GS	Min	Avg	FG-FGA	Pct	3FG-3FGA	Pct	FT-FTA	Pct	Off	Def	Tot	Avg	PE	FO	A	TO	Blk	Stl	Pts	Avg
2022-23																					
Overall																					
Season	G-GS	Min	Avg	FG-FGA	Pct	3FG-3FGA	Pct	FT-FTA	Pct	Off	Def	Tot	Avg	PE	FO	A	TO	Blk	Stl	Pts	Avg
2022-23																					
Ohio Valley Conference Games Only																					
Season	G-GS	Min	Avg	FG-FGA	Pct	3FG-3FGA	Pct	FT-FTA	Pct	Off	Def	Tot	Avg	PE	FO	A	TO	Blk	Stl	Pts	Avg
2022-23																					



2022-23 SOUTHEAST MISSOURI BASKETBALL NOTES

PLAYER PROFILES

11

Guard

EVAN EURSHER

Fr. // 6-2 // 177 // Hendersonville, Tenn. // The Webb School

REDHAWK BASKETBALL

// 2022-23: Played in two games...Scored three points off the bench in his first career game vs. Lyon College (11/12)...Played 20 minutes in that contest.

Eursher's Game-by-Game Statistics

2022-23	FG	3P	FT	O/D	REB	E	PTS	A	TO	B	S	M
at South Florida	DNP	-	-	-	-	-	-	-	-	-	-	-
Lyon College	1-7	1-6	0-0	0/1	1	2	3	1	2	0	0	20
at Evansville	0-0	0-0	0-0	0/0	0	0	0	0	0	0	0	5
at Bradley												
William Woods												
vs. Boston												
vs. UC Davis												
at Milwaukee												
at Missouri												
Purdue Fort Wayne												
at Arkansas State												
at Iowa												
Southern Illinois												
at Southern Indiana												
SIU Edwardsville												
at UT Martin												
at Little Rock												
Lindenwood												
at Morehead State												
UT Martin												
Tennessee Tech												
Tennessee State												
at Eastern Illinois												
Little Rock												
at Tennessee Tech												
at Tennessee State												
Morehead State												
Eastern Illinois												
Southern Indiana												
at Lindenwood												
at SIU Edwardsville												
Totals	1-7	1-6	0-0	0/1	1	2	3	1	2	0	0	25

• - Game Started

2022-23 Season/Career-Highs

Points	3	vs. Lyon College (11/12/22)
Total Rebounds	1	vs. Lyon College (11/12/22)
Offensive	-	
Defensive	1	vs. Lyon College (11/12/22)
FG Made	1	vs. Lyon College (11/12/22)
FG Attempted	7	vs. Lyon College (11/12/22)
3-Point FG Made	1	vs. Lyon College (11/12/22)
3-Point FG Attempted	6	vs. Lyon College (11/12/22)
FT Made	-	
FT Attempted	-	
Assists	1	vs. Lyon College (11/12/22)
Blocks	-	
Steals	-	
Minutes	20	vs. Lyon College (11/12/22)

Eursher's Career Statistics at Southeast Missouri

Overall																	
Season	G-GS	Min	Avg	FG-FGA	Pct	3FG-3FGA	Pct	FT-FTA	Pct	Off	Def	Tot	Avg	PF	FO	A	TO
2022-23	2-0	25	12.5	1-7	.143	1-6	.167	0-0	.000	0	1	1	0.5	2	0	1	2
Ohio Valley Conference Games Only																	
Season	G-GS	Min	Avg	FG-FGA	Pct	3FG-3FGA	Pct	FT-FTA	Pct	Off	Def	Tot	Avg	PF	FO	A	TO
2022-23																	





12

Guard

TEVIN GOWINS

Fr. // 5-9 // 167 // Florissant, Mo. // Hazelwood Central H.S.



REDHAWK BASKETBALL

// 2022-23: Averages three points and 1.7 rebounds in three games off the bench...Scored his first career points on a 3-pointer and had four rebounds in 24 minutes off the bench at South Florida (11/7)...Added three points vs. Lyon College (11/12)...Made a 3-pointer in all three games.

Gowins' Game-by-Game Statistics

2022-23	FG	3P	FT	O/D	REB	F	PTS	A	TO	B	S	M
at South Florida	1-3	1-2	0-0	2/2	4	3	3	0	0	0	0	24
Lyon College	1-1	1-1	0-0	0/0	0	1	3	0	2	0	0	9
at Evansville	1-1	1-1	0-0	0/1	1	2	3	0	0	0	0	20
at Bradley												
William Woods												
vs. Boston												
vs. UC Davis												
at Milwaukee												
at Missouri												
Purdue Fort Wayne												
at Arkansas State												
at Iowa												
Southern Illinois												
at Southern Indiana												
SIU Edwardsville												
at UT Martin												
at Little Rock												
Lindenwood												
at Morehead State												
UT Martin												
Tennessee Tech												
Tennessee State												
at Eastern Illinois												
Little Rock												
at Tennessee Tech												
at Tennessee State												
Morehead State												
Eastern Illinois												
Southern Indiana												
at Lindenwood												
at SIU Edwardsville												
Totals	3-5	3-4	0-0	2/3	5	6	9	0	2	0	0	53

• - Game Started

2022-23 Season/Career-Highs

Points	3	3x, last at Evansville (11/16/22)
Total Rebounds	4	at South Florida (11/7/22)
Offensive	2	at South Florida (11/7/22)
Defensive	2	at South Florida (11/7/22)
FG Made	1	3x, last at Evansville (11/16/22)
FG Attempted	3	at South Florida (11/7/22)
3-Point FG Made	1	3x, last at Evansville (11/16/22)
3-Point FG Attempted	2	at South Florida (11/7/22)
FT Made	-	-
FT Attempted	-	-
Assists	-	-
Blocks	-	-
Steals	-	-
Minutes	24	at South Florida (11/7/22)

Gowins' Career Statistics at Southeast Missouri

Overall																			
Season	G-GS	Min	Avg	FG-FGA	Pct	3FG-3FGA	Pct	FT-FTA	Pct	Off	Def	Tot	Avg	PE	FO	A	TO	Blk	Stl
2022-23	3-0	53	17.7	3-5	.600	3-4	.750	0-0	.000	2	3	5	1.7	6	0	0	2	0	9
Ohio Valley Conference Games Only																			
Season	G-GS	Min	Avg	FG-FGA	Pct	3FG-3FGA	Pct	FT-FTA	Pct	Off	Def	Tot	Avg	PE	FO	A	TO	Blk	Stl
2022-23																			



2022-23 SOUTHEAST MISSOURI BASKETBALL NOTES

PLAYER PROFILES



35 Center
MASON HANBACK

Fr. // 7-0 // 245 // Jackson, Tenn. // Tennessee Prep



REDHAWK BASKETBALL

// 2022-23: Came off the bench to score five points and grab one rebound in 10 minutes during his first career game vs. Lyon College (11/12).

Hanback's Game-by-Game Statistics

2022-23	FG	3P	FT	O/D	REB	F	PTS	A	TO	B	S	M
at South Florida	DNP	-	-	-	-	-	-	-	-	-	-	-
Lyon College	2-2	0-0	1-1	0/1	1	1	5	0	1	0	0	10
at Evansville	DNP	-	-	-	-	-	-	-	-	-	-	-
at Bradley												
William Woods												
vs. Boston												
vs. UC Davis												
at Milwaukee												
at Missouri												
Purdue Fort Wayne												
at Arkansas State												
at Iowa												
Southern Illinois												
at Southern Indiana												
SIU Edwardsville												
at UT Martin												
at Little Rock												
Lindenwood												
at Morehead State												
UT Martin												
Tennessee Tech												
Tennessee State												
at Eastern Illinois												
Little Rock												
at Tennessee Tech												
at Tennessee State												
Morehead State												
Eastern Illinois												
Southern Indiana												
at Lindenwood												
at SIU Edwardsville												
Totals	2-2	0-0	1-1	0/1	1	1	5	0	1	0	0	10

• - Game Started

2022-23 Season/Career-Highs

Points	5	vs. Lyon College (11/12/22)
Total Rebounds	1	vs. Lyon College (11/12/22)
Offensive	-	
Defensive	1	vs. Lyon College (11/12/22)
FG Made	2	vs. Lyon College (11/12/22)
FG Attempted	2	vs. Lyon College (11/12/22)
3-Point FG Made	-	
3-Point FG Attempted	-	
FT Made	1	vs. Lyon College (11/12/22)
FT Attempted	1	vs. Lyon College (11/12/22)
Assists	-	
Blocks	-	
Steals	-	
Minutes	10	vs. Lyon College (11/12/22)

Hanback's Career Statistics at Southeast Missouri

Overall																		
Season	G-GS	Min	Avg	FG-FGA	Pct	3FG-3FGA	Pct	FT-FTA	Pct	Off	Def	Tot	Avg	PF	FO	A	TO	Blk
2022-23	1-0	10	10.0	2-2	1.000	0-0	.000	1-1	1.000	0	1	1	1.0	1	0	0	1	0
Ohio Valley Conference Games Only																		
Season	G-GS	Min	Avg	FG-FGA	Pct	3FG-3FGA	Pct	FT-FTA	Pct	Off	Def	Tot	Avg	PF	FO	A	TO	Blk
2022-23																		



5 Guard
CHRIS HARRIS

R-Sr. // 6-3 // 205 // Antioch, Ill. // John A. Logan College



REDHAWK BASKETBALL

2022-23 Preseason All-Ohio Valley Conference selection.

// 2022-23: Ranks second on the team in scoring with 12.3 points per game through three starts...Leads the team in free throws going 12-of-14 at the line...Made five 3-pointers, second-most on the team...Led Southeast Missouri with 16 points in its season-opening win at South Florida (11/7)...Made a near-perfect 6-of-7 free throws and logged 38 minutes against the Bulls...Finished with seven points vs. Lyon College (11/12)...Scored 14 points to lead four players in double figures at Evansville (11/16).

2022-23 Season-Highs

Points	16
Total Rebounds	6
Offensive	2
Defensive	5
FG Made	5
FG Attempted	16
3-Point FG Made	2
3-Point FG Attempted	7
FT Made	6
FT Attempted	7
Assists	3
Blocks	-
Steals	2
Minutes	38

Career-Highs

Points	23
Total Rebounds	8
Offensive	2
Defensive	8
FG Made	9
FG Attempted	18
3-Point FG Made	4
3-Point FG Attempted	10
FT Made	10
FT Attempted	14
Assists	9
Blocks	2
Steals	4
Minutes	43

at South Florida (11/7/22)
2x, last at Evansville (11/16/22)
vs. Lyon College (11/12/22)
2x, last at Evansville (11/16/22)
at Evansville (11/16/22)
at South Florida (11/7/22)
2x, last at Evansville (11/16/22)
at South Florida (11/7/22)
at South Florida (11/7/22)
at South Florida (11/7/22)
at Evansville (11/16/22)
-
vs. Lyon College (11/12/22)
at South Florida (11/7/22)

vs. UT Martin (12/18/20)
vs. UT Martin (2/24/22)
2x, last vs. Lyon College (11/12/22)
vs. UT Martin (2/24/22)
vs. Morehead State (1/27/22)
vs. Tennessee State (1/2/21)
4x, last vs. Morehead State (1/27/22)
vs. Tennessee State (1/2/21)
vs. Tennessee State (1/19/21)
vs. SIU Edwardsville (1/29/22)
at Eastern Illinois (2/25/21)
2x, last vs. Webster (12/4/21)
vs. Eastern Kentucky (2/22/21)
vs. Tennessee State (1/2/21)

Harris' Game-by-Game Statistics

2022-23	FG	3P	FT	O/D	REB	F	PTS	A	TO	B	S	M
at South Florida*	4-16	2-7	6-7	1/5	6	3	16	2	4	0	1	38
Lyon College*	1-8	1-6	4-5	2/2	4	1	7	1	1	0	2	25
at Evansville*	5-11	2-4	2-2	1/5	6	2	14	3	6	0	1	33
at Bradley												
William Woods												
vs. Boston												
vs. UC Davis												
at Milwaukee												
at Missouri												
Purdue Fort Wayne												
at Arkansas State												
at Iowa												
Southern Illinois												
at Southern Indiana												
SIU Edwardsville												
at UT Martin												
at Little Rock												
Lindenwood												
at Morehead State												
UT Martin												
Tennessee Tech												
Tennessee State												
at Eastern Illinois												
Little Rock												
at Tennessee Tech												
at Tennessee State												
Morehead State												
Eastern Illinois												
Southern Indiana												
at Lindenwood												
at SIU Edwardsville												
Totals	10-35	5-17	12-14	4/12	16	6	37	6	11	0	4	96

• - Game Started

Harris' Career Statistics at Southeast Missouri

Season	G-GS	Min	Avg	FG-FGA	Pct	3FG-3FGA	Pct	FT-FTA	Pct	Off	Def	Tot	Avg	PF	FO	A	TO	Blk	Stl	Pts	Avg
2019-20	2-0	54	27.0	9-15	.600	5-7	.714	8-10	.800	0	6	6	3.0	5	0	2	5	1	0	31	15.5
2020-21	26-26	786	30.2	93-262	.355	38-134	.284	97-132	.735	7	53	60	2.3	50	1	88	64	2	25	321	12.3
2021-22	29-6	698	24.1	83-219	.379	35-101	.347	71-93	.763	4	79	83	2.9	45	0	76	61	4	20	272	9.4
2022-23	3-3	96	32.0	10-35	.286	5-17	.294	12-14	.857	4	12	16	5.3	6	0	6	11	0	4	37	12.3
Totals	60-35	1634	27.2	195-531	.367	83-259	.320	188-249	.755	15	150	165	2.8	106	1	172	141	7	49	661	11.0
Ohio Valley Conference Games Only																					
Season	G-GS	Min	Avg	FG-FGA	Pct	3FG-3FGA	Pct	FT-FTA	Pct	Off	Def	Tot	Avg	PF	FO	A	TO	Blk	Stl	Pts	Avg
2020-21	19-19	574	30.2	59-178	.331	25-95	.263	76-96	.792	4	41	45	2.4	35	0	70	46	2	23	219	11.5
2021-22	14-0	298	21.3	34-92	.370	22-51	.431	28-38	.737	2	36	38	2.7	18	0	34	22	2	9	118	8.4
2022-23																					
Totals	33-19	872	26.4	93-270	.344	47-146	.322	104-134	.776	6	77	83	2.5	53	0	104	68	4	32	337	10.2



2022-23 SOUTHEAST MISSOURI BASKETBALL NOTES

PLAYER PROFILES

10

Center

DAVID IDADA

Fr. // 7-0 // 250 // Barendrecht, Netherlands // Golden State Prep

REDHAWK BASKETBALL

// **2022-23:** Will not play the 2022-23 season due to NCAA Division I regulations.

Idada's Game-by-Game Statistics

2022-23	FG	3P	FT	O/D	REB	F	PTS	A	TO	B	S	M
at South Florida	DNP	-	-	-	-	-	-	-	-	-	-	-
Lyon College	DNP	-	-	-	-	-	-	-	-	-	-	-
at Evansville	DNP	-	-	-	-	-	-	-	-	-	-	-
at Bradley												
William Woods												
vs. Boston												
vs. UC Davis												
at Milwaukee												
at Missouri												
Purdue Fort Wayne												
at Arkansas State												
at Iowa												
Southern Illinois												
at Southern Indiana												
SIU Edwardsville												
at UT Martin												
at Little Rock												
Lindenwood												
at Morehead State												
UT Martin												
Tennessee Tech												
Tennessee State												
at Eastern Illinois												
Little Rock												
at Tennessee Tech												
at Tennessee State												
Morehead State												
Eastern Illinois												
Southern Indiana												
at Lindenwood												
at SIU Edwardsville												
Totals	0-0	0-0	0-0	0/0	0	0	0	0	0	0	0	0

• - Game Started

2022-23 Season/Career-Highs

Points	-
Total Rebounds	-
Offensive	-
Defensive	-
FG Made	-
FG Attempted	-
3-Point FG Made	-
3-Point FG Attempted	-
FT Made	-
FT Attempted	-
Assists	-
Blocks	-
Steals	-
Minutes	-

Idada's Career Statistics at Southeast Missouri

Season	G-GS	Min	Avg	FG-FGA	Pct	3FG-3FGA	Pct	FT-FTA	Pct	Off	Def	Tot	Avg	PF	FO	A	TO	Blk	Stl	Pts	Avg
2022-23																					
Ohio Valley Conference Games Only																					
Season	G-GS	Min	Avg	FG-FGA	Pct	3FG-3FGA	Pct	FT-FTA	Pct	Off	Def	Tot	Avg	PF	FO	A	TO	Blk	Stl	Pts	Avg
2022-23																					





14

Forward

NATE JOHNSON

Sr. // 6-9 // 250 // Broward County, Fla. // Seminole State College




REDHAWK BASKETBALL

// 2022-23: Averages five points and 3.7 rebounds in three starts...Finished with three points and one rebound in his first career start at South Florida (11/7)...Played 20 minutes in that game...Had eight points and six rebounds vs. Lyon College (11/12).

Johnson's Game-by-Game Statistics

2022-23	FG	3P	FT	O/D	REB	F	PTS	A	TO	B	S	M
at South Florida*	1-3	0-0	1-2	0/1	1	0	3	0	0	0	0	20
Lyon College*	4-6	0-0	0-0	4/2	6	4	8	0	3	1	0	12
at Evansville*	2-4	0-1	0-0	1/3	4	5	4	0	0	0	0	16
at Bradley												
William Woods												
vs. Boston												
vs. UC Davis												
at Milwaukee												
at Missouri												
Purdue Fort Wayne												
at Arkansas State												
at Iowa												
Southern Illinois												
at Southern Indiana												
SIU Edwardsville												
at UT Martin												
at Little Rock												
Lindenwood												
at Morehead State												
UT Martin												
Tennessee Tech												
Tennessee State												
at Eastern Illinois												
Little Rock												
at Tennessee Tech												
at Tennessee State												
Morehead State												
Eastern Illinois												
Southern Indiana												
at Lindenwood												
at SIU Edwardsville												
Totals	7-13	0-1	1-2	5/6	11	9	15	0	3	1	0	48

• - Game Started

2022-23 Season-Highs

Points	8	vs. Lyon College (11/12/22)
Total Rebounds	6	vs. Lyon College (11/12/22)
Offensive	4	vs. Lyon College (11/12/22)
Defensive	3	at Evansville (11/16/22)
FG Made	4	vs. Lyon College (11/12/22)
FG Attempted	6	vs. Lyon College (11/12/22)
3-Point FG Made	-	-
3-Point FG Attempted	1	at Evansville (11/16/22)
FT Made	1	at South Florida (11/7/22)
FT Attempted	2	at South Florida (11/7/22)
Assists	-	-
Blocks	1	vs. Lyon College (11/12/22)
Steals	-	-
Minutes	20	at South Florida (11/7/22)

Career-Highs

Points	14	at Incarnate Word (11/26/21)
Total Rebounds	5	2x, last vs. Austin Peay (2/16/21)
Offensive	3	4x, last vs. Webster (12/4/21)
Defensive	4	vs. Austin Peay (2/16/21)
FG Made	7	at Incarnate Word (11/26/21)
FG Attempted	10	at Eastern Illinois (2/25/21)
3-Point FG Made	-	-
3-Point FG Attempted	1	at Evansville (11/16/22)
FT Made	4	at California Baptist (12/21/21)
FT Attempted	5	at California Baptist (12/21/21)
Assists	2	vs. Kansas City (11/28/20)
Blocks	3	vs. Murray State (2/1/21)
Steals	2	at Incarnate Word (11/26/21)
Minutes	20	at South Florida (11/7/22)

Johnson's Career Statistics at Southeast Missouri

Season	G-GS	Min	Avg	FG-FGA	Pct	3FG-3FGA	Pct	FT-FTA	Pct	Off	Def	Tot	Avg	PE	FO	A	TO	Blk	Stl	Pts	Avg
2020-21	25-0	224	9.0	28-54	.519	0-0	.000	9-22	.409	20	32	52	2.1	33	0	8	17	10	4	65	2.6
2021-22	11-0	111	10.1	24-35	.686	0-0	.000	6-12	.500	8	9	17	1.5	22	0	2	12	4	3	54	4.9
2022-23	3-3	48	16.0	7-13	.538	0-1	.000	1-2	.500	5	6	11	3.7	9	1	0	3	1	0	15	5.0
Totals	39-3	383	9.8	59-102	.578	0-1	.000	16-36	.444	33	47	80	2.1	64	1	10	32	15	7	134	3.4
Ohio Valley Conference Games Only																					
Season	G-GS	Min	Avg	FG-FGA	Pct	3FG-3FGA	Pct	FT-FTA	Pct	Off	Def	Tot	Avg	PE	FO	A	TO	Blk	Stl	Pts	Avg
2020-21	18-0	149	8.3	21-41	.512	0-0	.000	7-19	.368	11	22	33	1.8	24	0	3	14	7	4	49	2.7
2021-22	1-0	7	7.0	2-2	1.000	0-0	.000	1-2	.500	0	0	0	0.0	3	0	0	0	0	0	5	5.0
2022-23																					
Totals	19-0	156	8.2	23-43	.535	0-0	.000	8-21	.381	11	22	33	1.7	27	0	3	14	7	4	54	2.8



2022-23 SOUTHEAST MISSOURI BASKETBALL NOTES

PLAYER PROFILES



4 Forward
ADAM LARSON

R-Fr. // 6-9 // 180 // Fennimore, Wis. // Fennimore H.S.



R E D H A W K B A S K E T B A L L

// 2022-23: Is averaging seven points and 3.7 rebounds in three games off the bench...Dropped in a pair of 3-pointers and added four rebounds in 24 minutes during his first career Division I game at South Florida (11/7)... Finished with eight points in 21 minutes vs. Lyon College (11/12).

Larson's Game-by-Game Statistics

2022-23	FG	3P	FT	O/D	REB	F	PTS	A	TO	B	S	M
at South Florida	2-4	2-4	0-0	1/3	4	2	6	0	0	1	0	24
Lyon College	4-9	0-4	0-2	3/1	4	4	8	0	0	0	1	21
at Evansville	2-5	1-4	2-2	0/3	3	3	7	1	0	1	0	24
at Bradley												
William Woods												
vs. Boston												
vs. UC Davis												
at Milwaukee												
at Missouri												
Purdue Fort Wayne												
at Arkansas State												
at Iowa												
Southern Illinois												
at Southern Indiana												
SIU Edwardsville												
at UT Martin												
at Little Rock												
Lindenwood												
at Morehead State												
UT Martin												
Tennessee Tech												
Tennessee State												
at Eastern Illinois												
Little Rock												
at Tennessee Tech												
at Tennessee State												
Morehead State												
Eastern Illinois												
Southern Indiana												
at Lindenwood												
at SIU Edwardsville												
Totals	8-18	3-12	2-4	4/7	11	9	21	1	0	2	1	69

• - Game Started

2022-23 Season/Career-Highs

Points	8	vs. Lyon College (11/12/22)
Total Rebounds	4	2x, last vs. Lyon College (11/12/22)
Offensive	3	vs. Lyon College (11/12/22)
Defensive	3	2x, last at Evansville (11/16/22)
FG Made	4	vs. Lyon College (11/12/22)
FG Attempted.....	9	vs. Lyon College (11/12/22)
3-Point FG Made.....	2	at South Florida (11/7/22)
3-Point FG Attempted.....	4	3x, last at Evansville (11/16/22)
FT Made.....	2	at Evansville (11/16/22)
FT Attempted.....	2	2x, last at Evansville (11/16/22)
Assists	1	at Evansville (11/16/22)
Blocks.....	1	at South Florida (11/7/22)
Steals.....	1	vs. Lyon College (11/12/22)
Minutes	24	2x, last at Evansville (11/16/22)

Larson's Career Statistics at Southeast Missouri

Overall																		
Season	G-GS	Min	Avg	FG-FGA	Pct	3FG-3FGA	Pct	FT-FTA	Pct	Off	Def	Tot	Avg	PF	FO	A	TO	Blk
2021-22	-	Redshirted	-	-	-	-	-	-	-	-	-	-	-	-	-	-	-	-
2022-23	3-0	69	23.0	8-18	.444	3-12	.250	2-4	.500	4	7	11	3.7	9	0	1	0	1
Totals	3-0	69	23.0	8-18	.444	3-12	.250	2-4	.500	4	7	11	3.7	9	0	1	0	1
Ohio Valley Conference Games Only																		
Season	G-GS	Min	Avg	FG-FGA	Pct	3FG-3FGA	Pct	FT-FTA	Pct	Off	Def	Tot	Avg	PF	FO	A	TO	Blk
2021-22	-	Redshirted	-	-	-	-	-	-	-	-	-	-	-	-	-	-	-	-
2022-23	-	-	-	-	-	-	-	-	-	-	-	-	-	-	-	-	-	-
Totals	-	-	-	-	-	-	-	-	-	-	-	-	-	-	-	-	-	-



15

Forward

JOSH MITCHELL

So. // 6-8 // 215 // Tupelo, Miss. // Northeast Mississippi CC

REDHAWK BASKETBALL

// 2022-23: Played two minutes off the bench in his first career game vs. Lyon College (11/12).

Mitchell's Game-by-Game Statistics

2022-23	FG	3P	FT	O/D	REB	F	PTS	A	TO	B	S	M
at South Florida	DNP	-	-	-	-	-	-	-	-	-	-	-
Lyon College	0-0	0-0	0-0	0/0	0	0	0	0	1	0	0	2
at Evansville	DNP	-	-	-	-	-	-	-	-	-	-	-
at Bradley												
William Woods												
vs. Boston												
vs. UC Davis												
at Milwaukee												
at Missouri												
Purdue Fort Wayne												
at Arkansas State												
at Iowa												
Southern Illinois												
at Southern Indiana												
SIU Edwardsville												
at UT Martin												
at Little Rock												
Lindenwood												
at Morehead State												
UT Martin												
Tennessee Tech												
Tennessee State												
at Eastern Illinois												
Little Rock												
at Tennessee Tech												
at Tennessee State												
Morehead State												
Eastern Illinois												
Southern Indiana												
at Lindenwood												
at SIU Edwardsville												
Totals	0-0	0-0	0-0	0/0	0	0	0	0	1	0	0	2

• - Game Started

2022-23 Season/Career-Highs

Points	-
Total Rebounds	-
Offensive	-
Defensive	-
FG Made	-
FG Attempted	-
3-Point FG Made	-
3-Point FG Attempted	-
FT Made	-
FT Attempted	-
Assists	-
Blocks	-
Steals	-
Minutes	2

vs. Lyon College (11/12/22)

Mitchell's Career Statistics at Southeast Missouri

		Overall																			
Season	G-GS	Min	Avg	FG-FGA	Pct	3FG-3FGA	Pct	FT-FTA	Pct	Off	Def	Tot	Avg	PE	FO	A	TO	Blk	Stl	Pts	Avg
2022-23	1-0	2	2.0	0-0	.000	0-0	.000	0-0	.000	0	0	0	0.0	0	0	0	1	0	0	0	0.0
		Ohio Valley Conference Games Only																			
Season	G-GS	Min	Avg	FG-FGA	Pct	3FG-3FGA	Pct	FT-FTA	Pct	Off	Def	Tot	Avg	PE	FO	A	TO	Blk	Stl	Pts	Avg
2022-23																					



2022-23 SOUTHEAST MISSOURI BASKETBALL NOTES

PLAYER PROFILES

1

Guard

PHILLIP RUSSELL

So. // 5-10 // 265 // St. Louis, Mo. // Saint Louis University

REDHAWK BASKETBALL

2022-23 Preseason All-Ohio Valley Conference selection.

// 2022-23: Leads the Redhawks with 15 points per game...Made a team-high nine 3-pointers in three starts...Also tops the team with eight steals and nine assists...Notched 11 points and made a huge 3-pointer with 29 seconds left that held up big in the Redhawks season-opening win at South Florida (11/7)...Matched a career-high five 3-pointers made and scored 23 points vs. Lyon College (11/12)...Scored double figures in all three games.

Russell's Game-by-Game Statistics

2022-23	FG	3P	FT	O/D	REB	E	PTS	A	TO	B	S	M
at South Florida*	3-11	3-9	2-3	1/1	2	4	11	3	2	0	2	26
Lyon College*	9-18	5-12	0-0	0/3	3	1	23	4	2	0	5	25
at Evansville*	3-11	1-6	4-4	0/6	6	3	11	2	6	0	1	28
at Bradley												
William Woods												
vs. Boston												
vs. UC Davis												
at Milwaukee												
at Missouri												
Purdue Fort Wayne												
at Arkansas State												
at Iowa												
Southern Illinois												
at Southern Indiana												
SIU Edwardsville												
at UT Martin												
at Little Rock												
Lindenwood												
at Morehead State												
UT Martin												
Tennessee Tech												
Tennessee State												
at Eastern Illinois												
Little Rock												
at Tennessee Tech												
at Tennessee State												
Morehead State												
Eastern Illinois												
Southern Indiana												
at Lindenwood												
at SIU Edwardsville												
Totals	15-40	9-27	6-7	1/10	11	8	45	9	10	0	8	79

• - Game Started

2022-23 Season-Highs

Points.....	23	vs. Lyon College (11/12/22)
Total Rebounds.....	6	at Evansville (11/16/22)
Offensive.....	1	at South Florida (11/7/22)
Defensive.....	6	at Evansville (11/16/22)
FG Made.....	9	vs. Lyon College (11/12/22)
FG Attempted.....	18	vs. Lyon College (11/12/22)
3-Point FG Made.....	5	vs. Lyon College (11/12/22)
3-Point FG Attempted.....	12	vs. Lyon College (11/12/22)
FT Made.....	4	at Evansville (11/16/22)
FT Attempted.....	4	at Evansville (11/16/22)
Assists.....	4	vs. Lyon College (11/12/22)
Blocks.....	-	-
Steals.....	5	vs. Lyon College (11/12/22)
Minutes.....	28	at Evansville (11/16/22)

Career-Highs

Points.....	35	at SIU Edwardsville (2/7/22)
Total Rebounds.....	10	at SIU Edwardsville (2/7/22)
Offensive.....	3	at California Baptist (12/21/21)
Defensive.....	8	at SIU Edwardsville (2/7/22)
FG Made.....	10	vs. Evansville (12/8/21)
FG Attempted.....	20	at SIU Edwardsville (2/7/22)
3-Point FG Made.....	5	2x, last vs. Lyon College (11/12/22)
3-Point FG Attempted.....	12	vs. Lyon College (11/12/22)
FT Made.....	14	at SIU Edwardsville (2/7/22)
FT Attempted.....	15	at SIU Edwardsville (2/7/22)
Assists.....	8	at Eastern Illinois (1/22/22)
Blocks.....	1	vs. Montana State (11/28/21)
Steals.....	5	2x, last vs. Lyon College (11/12/22)
Minutes.....	39	at SIU Edwardsville (2/7/22)

Russell's Career Statistics at Southeast Missouri

Overall

Season	G-GS	Min	Avg	FG-FGA	Pct	3FG-3FGA	Pct	FT-FTA	Pct	Off	Def	Tot	Avg	PF	FO	A	TO	Blk	Stl	Pts	Avg
2021-22	30-30	913	30.4	127-303	.419	48-143	.336	99-135	.733	26	50	76	2.5	74	2	95	65	1	37	401	13.4
2022-23	3-3	79	26.3	15-40	.375	9-27	.333	6-7	.857	1	10	11	3.7	8	0	9	10	0	8	45	15.0
Totals	33-33	992	30.1	142-343	.414	57-170	.335	105-142	.739	27	60	87	2.6	82	2	104	75	1	45	446	13.5

Ohio Valley Conference Games Only

Season	G-GS	Min	Avg	FG-FGA	Pct	3FG-3FGA	Pct	FT-FTA	Pct	Off	Def	Tot	Avg	PF	FO	A	TO	Blk	Stl	Pts	Avg
2021-22	15-15	476	31.7	63-163	.387	20-75	.267	59-76	.776	11	27	38	2.5	34	1	57	37	0	19	205	13.7
2022-23																					
Totals																					





3

Guard

AQUAN SMART

So. // 6-3 // 175 // Evanston, Ill. // Florida International





REDHAWK BASKETBALL

// 2022-23: Averages 5.7 points and 2.3 rebounds per game...Started three contests...Contributed eight points and three rebounds in first career start at South Florida (11/7)...Made a pair of 3-pointers and added three steals in 18 minutes...Posted seven points, six assists and three steals vs. Lyon College (11/12).

Smart's Game-by-Game Statistics

2022-23	FG	3P	FT	O/D	REB	F	PTS	A	TO	B	S	M
at South Florida*	3-8	2-3	0-0	1/2	3	5	8	2	2	0	3	18
Lyon College*	2-6	0-3	3-4	0/2	2	2	7	6	4	0	3	27
at Evansville*	1-2	0-0	0-0	0/2	2	5	2	1	0	1	1	21
at Bradley												
William Woods												
vs. Boston												
vs. UC Davis												
at Milwaukee												
at Missouri												
Purdue Fort Wayne												
at Arkansas State												
at Iowa												
Southern Illinois												
at Southern Indiana												
SIU Edwardsville												
at UT Martin												
at Little Rock												
Lindenwood												
at Morehead State												
UT Martin												
Tennessee Tech												
Tennessee State												
at Eastern Illinois												
Little Rock												
at Tennessee Tech												
at Tennessee State												
Morehead State												
Eastern Illinois												
Southern Indiana												
at Lindenwood												
at SIU Edwardsville												
Totals	6-16	2-6	3-4	1/6	7	12	17	9	6	1	7	66

• - Game Started

2022-23 Season/Career-Highs

Points	8	at South Florida (11/7/22)
Total Rebounds	3	at South Florida (11/7/22)
Offensive	1	at South Florida (11/7/22)
Defensive	2	3x, last at Evansville (11/16/22)
FG Made	3	at South Florida (11/7/22)
FG Attempted	8	at South Florida (11/7/22)
3-Point FG Made	2	at South Florida (11/7/22)
3-Point FG Attempted	3	2x, last vs. Lyon College (11/12/22)
FT Made	3	vs. Lyon College (11/12/22)
FT Attempted	4	vs. Lyon College (11/12/22)
Assists	6	vs. Lyon College (11/12/22)
Blocks	1	at Evansville (11/16/22)
Steals	3	2x, last vs. Lyon College (11/12/22)
Minutes	27	vs. Lyon College (11/12/22)

Smart's Career Statistics at Southeast Missouri

Overall															
Season	G-GS	Min	Avg	FG-FGA	Pct	3FG-3FGA	Pct	FT-FTA	Pct	Off	Def	Tot	Avg	PF	FO
2022-23	3-3	66	22.0	6-16	.375	2-6	.333	3-4	.750	1	6	7	2.3	12	2
Ohio Valley Conference Games Only															
Season	G-GS	Min	Avg	FG-FGA	Pct	3FG-3FGA	Pct	FT-FTA	Pct	Off	Def	Tot	Avg	PF	FO
2022-23															



2022-23 SOUTHEAST MISSOURI BASKETBALL NOTES

GAME SUMMARIES

Game 1

Southeast Missouri 64 South Florida 61

November 7, 2022 • Yuengling Center • Tampa, Fla.



TAMPA, Fla.

Chris Harris scored 16 points and Phillip Russell added 11 and

buried a huge pull up 3-pointer with 29 seconds left to lead Southeast Missouri to a 64-61 season-opening win over South Florida.

Russell, after making two free throws 37 seconds earlier, knocked down his decisive three after USF pulled to within two to give SEMO a 63-58 lead, its largest of the night.

Ryan Conwell split two free throws and Tyler Harris scored following two missed free throws by Josh Earley to cut the Redhawks lead to 63-61 with four seconds to go.

After Harris split his two free throws for SEMO, Conwell's 3-point-er at the buzzer missed and SEMO celebrated its third-straight season-opening victory. The Redhawks improved to 3-0 in season-opening games under Head Coach Brad Korn and won three-consecutive season-openers away from home for the first time in program history.

The back-and-forth game featured eight ties and 15 lead changes.

Harris made four field goals, a pair of 3-pointers and hit a near-perfect 6-of-7 free throws to lead SEMO. He also had six rebounds and two assists in 38 minutes.

Russell scored eight of his points in the second half.

Game 2

Lyon College 46 Southeast Missouri 83

November 12, 2022 • Show Me Center • Cape Girardeau, Mo.



CAPE

GIRARDEAU, MO.

Southeast Missouri defeated Lyon College in its home opener by a score

of 83-46.

SEMO led by point guard Phillip Russell who dropped in 23 points and had four assists.

The Redhawks opened with an 8-0 lead and utilized a 15-0 run to increase their margin to 32-8 with 3:16 remaining in the opening half.

Russell capped the run with back-to-back triples and a lay-up. He led the Redhawks with 15 points at the break, going 6-for-12 including 3-for-8 from beyond the arc.

The Redhawks would then head to the locker room with a 34-13

advantage.

Kobe Clark grabbed 10 rebounds to go with eight points in the initial 20 minutes. He finished with 16 rebounds, eight points, and led the Redhawks in minutes played with 33.

In the second half, the Redhawks were deadly from three, shooting a 45 percent clip (5-11) compared to just 13 percent in the first half.

SEMO opened the second half with a great defensive play from center Nate Johnson. Johnson blocked the shot of Lyon's Nikola Sasaroga, and on the other end scored the first basket of the second half off a Russell assist, to give SEMO a 23-point advantage.

Southeast Mo. St. 64 • 1-0,0-0 OVC

#	Player	Total		3-Ptr		Rebounds		PF	TP	A	TO	Blk	Stl	Min
		FG-FGA	FG-FGA	FT-FTA	Off Def Tot									
24	CLARK, Kobe	4-5	0-1	0-0	4 4 8	3	8	3	3	0	0	0	0	30
14	JOHNSON, Nate	1-3	0-0	1-2	0 1 1	0	3	0	0	0	0	0	0	20
01	RUSSELL, Phillip	3-11	3-9	2-3	1 1 2	4	11	3	2	0	2	2	2	26
03	SMART, Aquan	3-8	2-3	0-0	1 2 3	5	8	2	2	0	3	1	8	18
05	HARRIS, Chris	4-16	2-7	6-7	1 5 6	3	16	2	4	0	1	3	8	38
04	LARSON, Adam	2-4	2-4	0-0	1 3 4	2	6	0	0	1	0	2	4	24
12	GOWINS, Tevin	1-3	1-2	0-0	2 2 4	3	3	0	0	0	0	0	2	24
21	EARLEY, Josh	2-6	0-0	5-10	1 7 8	1	9	0	2	1	0	0	2	20
Team														200
Totals		20-56	10-26	14-22	11 28 39	21	64	10	15	2	6	3	26	

FG % 1st Half: 11-30 36.7% 2nd half: 9-26 34.6% Game: 20-56 35.7%
3FG % 1st Half: 5-12 41.7% 2nd half: 5-14 35.7% Game: 10-26 38.5%
FT % 1st Half: 3-6 50.0% 2nd half: 11-16 68.8% Game: 14-22 63.6%

Deadball
Rebounds
3

South Fla. 61 • 0-1,0-0 AAC

#	Player	Total		3-Ptr		Rebounds		PF	TP	A	TO	Blk	Stl	Min
		FG-FGA	FG-FGA	FT-FTA	Off Def Tot									
01	Selton Miguel	2-6	0-0	0-0	0 4 4	2	4	1	2	0	0	0	0	19
23	Keyshawn Bryant	7-11	3-5	2-4	2 3 5	3	19	0	3	1	1	2	27	26
54	Russel Tchewa	1-4	0-0	1-4	2 7 9	1	3	1	2	1	0	0	0	27
02	Tyler Harris	4-15	0-8	1-2	0 3 3	3	9	1	3	0	2	3	20	39
24	Jamir Chaplin	3-5	0-2	0-0	0 6 6	1	6	2	0	0	0	2	29	20
00	Ryan Conwell	2-5	1-4	4-6	1 2 3	2	9	0	0	1	0	0	21	10
03	DJ Patrick	0-0	0-0	0-0	0 0 0	1	0	1	0	0	0	0	0	10
05	Jake Boggs	0-0	0-0	1-2	0 1 1	0	1	0	0	0	0	0	3	8
10	Serrel Smith Jr.	0-0	0-0	0-0	0 0 0	1	0	0	0	0	0	0	2	12
11	Trey Moss	1-1	0-0	0-0	0 0 0	1	2	0	1	0	1	1	8	12
15	Corey Walker Jr.	2-2	0-0	0-1	0 0 0	2	4	1	3	0	0	0	9	13
20	Sam Hines Jr.	2-3	0-0	0-0	1 1 2	2	4	1	2	0	0	0	13	2
Team														200
Totals		24-52	4-19	9-19	8 30 38	19	61	8	16	3	6	3	26	

FG % 1st Half: 13-28 46.4% 2nd half: 11-24 45.8% Game: 24-52 46.2%
3FG % 1st Half: 1-9 11.1% 2nd half: 3-10 30.0% Game: 4-19 21.1%
FT % 1st Half: 3-7 42.9% 2nd half: 6-12 50.0% Game: 9-19 47.4%

Deadball
Rebounds
2

Officials: Nathan Bemis, Shane Land, Bharat Ramnani

Technical fouls: Southeast Mo. St.-None. South Fla.-None.

Attendance: 4046

2022-23 Men's Basketball. Round: 0. South Fla. vs Southeast Mo. St.. Played at

Score by periods	1st	2nd	Total
Southeast Mo. St.	30	34	64
South Fla.	30	31	61

	In	Off	2nd	Fast	Break	Bench
Points	14	12	14	4	18	20
SEMO	36	11	7	6		
USF						

Lyon 46 • 0-0,0-0 DIII Ind

#	Player	Total		3-Ptr		Rebounds		PF	TP	A	TO	Blk	Stl	Min
		FG-FGA	FG-FGA	FT-FTA	Off Def Tot									
02	Delvonte McCloud	1-4	0-0	0-0	0 3 3	2	2	1	3	0	0	0	0	26
12	John Paul Morgan	1-3	0-0	1-2	0 2 2	0	3	0	1	0	0	0	0	15
25	Nikola Sasaroga	4-7	1-2	0-1	0 2 2	1	9	1	2	0	1	2	1	24
30	Sando Hill	0-3	0-2	0-0	0 5 5	3	0	3	8	0	0	0	0	23
24	Trenton Bell	2-9	2-6	2-2	0 0 0	2	8	1	1	0	0	0	0	14
00	Davion Henry	0-1	0-1	0-0	0 0 0	0	0	0	0	0	0	0	0	4
01	Israel Palmer	2-6	0-1	4-4	2 0 2	1	8	1	4	0	2	2	25	9
03	Donovonn Lewis	2-5	2-5	0-0	0 0 0	0	6	0	0	0	0	0	0	9
05	Devan Halford	0-0	0-0	0-1	0 1 1	0	0	0	1	0	0	0	0	10
10	John Michael Stastny	0-2	0-0	0-0	0 2 2	2	0	0	1	0	0	0	7	11
11	Luke Bridges	1-3	0-0	0-0	0 0 0	0	2	0	0	1	0	0	0	11
22	Juwaun Clifton	1-4	1-4	5-5	0 2 2	1	8	0	0	0	0	0	0	13
33	Isaac Ragland	0-1	0-1	0-0	0 0 0	0	0	0	0	0	0	0	0	10
35	Gavin Brunson	0-0	0-0	0-0	0 2 2	0	0	0	0	0	0	0	0	9
Team														200
Totals		14-48	6-22	12-15	2 19 21	12	46	7	25	1	3	2	20	

FG % 1st Half: 5-24 20.8% 2nd half: 9-24 37.5% Game: 14-48 29.2%
3FG % 1st Half: 0-8 0.0% 2nd half: 6-14 42.9% Game: 6-22 27.3%
FT % 1st Half: 3-4 75.0% 2nd half: 9-11 81.8% Game: 12-15 80.0%

Deadball
Rebounds
4,2

Southeast Mo. St. 83 • 2-0,0-0 OVC

#	Player	Total		3-Ptr		Rebounds		PF	TP	A	TO	Blk	Stl	Min
		FG-FGA	FG-FGA	FT-FTA	Off Def Tot									
24	CLARK, Kobe	4-7	0-1	0-0	6 10 16	1	8	5	3	2	3	3	33	12
14	JOHNSON, Nate	4-6	0-0	0-0	4 2 6	4	8	0	3	1	0	0	5	25
01	RUSSELL, Phillip	9-18	5-12	0-0	0 3 3	1	23	4	2	0	5	25	27	20
03	SMART, Aquan	2-6	0-3	3-4	0 2 2	2	7	6	4	0	3	27	25	21
05	HARRIS, Chris	1-8	1-6	4-5	2 2 4	1	7	1	1	0	2	25	20	12
04	LARSON, Adam	4-9	0-4	0-2	3 1 4	4	8	0	0	0	1	21	9	20
11	EURSHER, Evan	1-7	1-6	0-0	0 1 1	2	3	1	2	0	0	0	9	12
12	GOWINS, Tevin	1-1	1-1	0-0	0 0 0	1	3	0	2	0	0	0	9	2
15	MITCHELL, Josh	0-0	0-0	0-0	0 0 0	0	0	0	0	1	0	0	2	16
21	EARLEY, Josh	5-7	0-0	1-4	5 7 12	0	11	0	0	1	0	0	16	10
35	HANBACK, Mason	2-2	0-0	1-1	0 1 1	1	5	0	1	0	0	0	10	2
Team														200
Totals		33-71	8-33	9-16	20 29 49	17	83	17	19	4	14	24	30	

FG % 1st Half: 14-40 35.0% 2nd half: 19-31 61.3% Game: 33-71 46.5%
3FG % 1st Half: 3-22 13.6% 2nd half: 5-11 45.5% Game: 8-33 24.2%
FT % 1st Half: 3-4 75.0% 2nd half: 6-12 50.0% Game: 9-16 56.3%

Deadball
Rebounds
4,2

Officials: Tyer Kumpf, Andrew Walton, Alex Manuel

Technical fouls: Lyon-None. Southeast Mo. St.-None.

Attendance: 683

2022-23 Men's Basketball. Round: 0. Southeast Mo. St. vs Lyon. Played at Show

Score by periods	1st	2nd	Total
Lyon	13	33	46
Southeast Mo. St.	34	49	83

	In	Off	2nd	Fast	Break	Bench
Points	14	16	3	8	24	30
LU	48	30	22	18		
SEMO						



Game 3

Southeast Missouri 67 Evansville 61

November 16, 2022 • Ford Center • Evansville, Ind.



EVANSVILLE, Ind.

Chris Harris scored 14 points to lead four players in double figures as Southeast Missouri

beat Evansville, 67-61, at the Ford Center.

SEMO won its third-straight game and is undefeated through its first three games of a season for the first time since 1999-2000.

Ahead, 11-9, SEMO went on a 15-3 run to get a double-digit lead.

Adam Larson found Josh Earley for a layup and Harris drove the lane for a layup before Phillip Russell drained a 3-pointer for a quick seven-point swing to ignite the surge. Nate Johnson's basket stretched

SEMO's lead to 26-12 with 6:07 remaining in the first half.

Tevin Gowins' 3-pointer gave the Redhawks their largest lead of the half at 32-17 with a little under three minutes to go before SEMO led, 36-23, at the intermission.

Earley led all SEMO scorers with 11 points in the first half. UE shot just 26.1 percent (6-of-23) from the field and had more free throws (11) than it did field goals made in the game's opening 20 minutes.

The Redhawks withstood an early second-half run by the Purple Aces and finished strong down the stretch to pull away.

Southeast Mo. St. 67 • 3-0,0-0 OVC

#	Player		Total		3-Ptr	Rebounds			PF	TP	A	TO	Blk	Stl	Min
			FG-FGA	FG-FGA	FT-FTA	Off	Def	Tot							
24	CLARK, Kobe	r	4-9	1-2	4-4	2	4	6	3	13	1	0	0	0	31
14	JOHNSON, Nate	c	2-4	0-1	0-0	1	3	4	5	4	0	0	0	0	16
01	RUSSELL, Phillip	g	3-11	1-6	4-4	0	6	6	3	11	2	6	0	1	28
03	SMART, Aquan	g	1-2	0-0	0-0	0	2	2	5	2	1	0	1	1	21
05	HARRIS, Chris	g	5-11	2-4	2-2	1	5	6	2	14	3	6	0	1	33
04	LARSON, Adam		2-5	1-4	2-2	0	3	3	3	7	1	0	0	0	24
11	EURSHER, Evan		0-0	0-0	0-0	0	0	0	0	0	0	0	0	0	5
12	GOWINS, Tevin		1-1	1-1	0-0	0	1	1	2	3	0	0	0	0	20
21	EARLEY, Josh		5-12	0-0	3-4	0	4	4	1	13	0	0	0	0	22
	Team					3	3	6							
	Totals		23-55	6-18	15-16	7	31	38	24	67	8	14	1	3	200

FG % 1st Half: 15-32 46.9% 2nd half: 8-23 34.8% Game: 23-55 41.8% Deadball
3FG % 1st Half: 3-11 27.3% 2nd half: 3-7 42.9% Game: 6-18 33.3% Rebounds
FT % 1st Half: 3-4 75.0% 2nd half: 12-12 100.0 Game: 15-16 93.8% 0,1

Evansville 61 • 1-2,0-0 MVC

#	Player		Total		3-Ptr	Rebounds			PF	TP	A	TO	Blk	Stl	Min
			FG-FGA	FG-FGA	FT-FTA	Off	Def	Tot							
10	Yacine Toumi	f	5-10	0-1	3-7	4	3	7	2	13	1	1	0	0	31
22	Sekou Kalle	f	2-5	0-0	2-4	6	6	12	4	6	0	2	1	1	29
00	Gage Bobe	g	2-9	0-5	1-2	1	2	3	0	5	0	1	0	2	23
04	Marvin Coleman	g	1-8	0-2	4-6	2	10	12	4	6	2	2	0	1	37
20	Kenny Strawbridge	g	7-17	1-5	7-10	1	1	2	4	22	0	3	0	1	29
01	Antoine Smith Jr.		1-5	0-4	0-0	1	0	1	2	2	0	1	1	1	18
13	Blaise Beauchamp		2-8	2-5	0-0	0	1	1	1	6	0	0	0	0	21
21	Gabe Spinelli		0-0	0-0	1-2	0	0	0	0	1	1	1	0	0	6
24	Preston Phillips		0-0	0-0	0-0	1	0	1	2	0	0	1	0	0	6
	Team					2	3	5							
Totals			20-62	3-22	18-31	18	26	44	19	61	4	12	2	6	200

FG % 1st Half: 6-23 26.1% 2nd half: 14-39 35.9% Game: 20-62 32.3% Deadball
3FG % 1st Half: 0-7 0.0% 2nd half: 3-15 20.0% Game: 3-22 13.6% Rebounds
FT % 1st Half: 11-18 61.1% 2nd half: 7-13 53.8% Game: 18-31 58.1% 5

Officials: Amy Bonner, Bret Smith, Gary Maxwell
Technical fouls: Southeast Mo. St.-RUSSELL, Phillip; HARRIS, Chris.
Evansville-None.

Attendance: 3756

2022-23 Men's Basketball. Round: 0. Evansville vs Southeast Mo. St.. Played at

Score by periods	1st	2nd	Total
Southeast Mo. St.	36	31	67
Evansville	23	38	61

	In	Off	2nd	Fast	Bench
Points	Paint	T/O	Chance	Break	
SEMO	24	10	8	15	23
Evans	34	11	15	16	9