



OVC CHAMPS 2000 NCAA TOURNEY 2000

SCHEDULE

November (1-0)

| | | | |
|----|----------------------|-------|-----------|
| 7 | at South Florida | ESPN+ | W, 64-61 |
| 12 | Lyon College | ESPN+ | 4 p.m. |
| 16 | at Evansville | ESPN+ | 6 p.m. |
| 19 | at Bradley | ESPN3 | 3 p.m. |
| 22 | William Woods | ESPN+ | 6:30 p.m. |
| 26 | vs. Boston! | | 1 p.m. |
| 27 | vs. UC Davis! | | 12 p.m. |
| 28 | at Milwaukee! | | 7 p.m. |

December (0-0, 0-0 OVC)

| | | | |
|----|--------------------------|-------|-----------|
| 4 | at Missouri | | 3 p.m. |
| 7 | Purdue Fort Wayne | ESPN+ | 7 p.m. |
| 14 | at Arkansas State | | 7 p.m. |
| 17 | at Iowa | BTN | 7:30 p.m. |
| 21 | Southern Illinois | ESPN+ | 6:30 p.m. |
| 29 | at Southern Indiana* | ESPN+ | 7:30 p.m. |
| 31 | SIU Edwardsville* | ESPN+ | 2 p.m. |

January (0-0, 0-0 OVC)

| | | | |
|----|-------------------------|-------|-----------|
| 5 | at UT Martin* | ESPN+ | 8 p.m. |
| 7 | at Little Rock* | ESPN+ | 3:30 p.m. |
| 12 | Lindenwood* | ESPN+ | 7 p.m. |
| 14 | at Morehead State* | ESPN+ | 2 p.m. |
| 19 | UT Martin* | ESPN+ | 7 p.m. |
| 21 | Tennessee Tech* | ESPN+ | 4 p.m. |
| 26 | Tennessee State* | ESPN+ | 7 p.m. |
| 28 | at Eastern Illinois* | ESPN+ | 3:30 p.m. |

February (0-0, 0-0 OVC)

| | | | |
|----|--------------------------|-------|-----------|
| 2 | Little Rock* | ESPN+ | 7 p.m. |
| 4 | at Tennessee Tech* | ESPN+ | 3 p.m. |
| 9 | at Tennessee State* | ESPN+ | 8 p.m. |
| 11 | Morehead State* | ESPN+ | 4 p.m. |
| 16 | Eastern Illinois* | ESPN+ | 7 p.m. |
| 18 | Southern Indiana* | ESPN+ | 4 p.m. |
| 23 | at Lindenwood* | ESPN+ | 8 p.m. |
| 25 | at SIU Edwardsville* | ESPN+ | 3:30 p.m. |

March

| | | | |
|---|----------------|---------------|------------------|
| 1 | OVC Tournament | First Round | Evansville, Ind. |
| 2 | OVC Tournament | Quarterfinals | Evansville, Ind. |
| 3 | OVC Tournament | Semifinals | Evansville, Ind. |
| 4 | OVC Tournament | Championship | Evansville, Ind. |

All games broadcast live on the radio at Real Rock 99.3 FM. All times Central and Subject to Change;
Home Games in **Bold**; * - Denotes OVC Game
! - Incarnate Word Tournament (Milwaukee, Wis.)



Southeast Missouri or SEMO

is the preferred reference for Southeast Missouri State University athletic teams. Southeastern Missouri State is **NOT** an acceptable reference.



SOUTHEAST MISSOURI BASKETBALL

SEMORedhawks.com // @SEMOMBB

Contact: Jeff Honza, Associate AD Strategic Communications // Office: (573) 651-2933 // redhawk1@me.com

GAME 2 // LYON COLLEGE AT SOUTHEAST MISSOURI

Nov. 12 // 4 p.m., CT // Show Me Center (7,000) // Cape Girardeau, Mo. // Series: SEMO leads, 1-0
Listen: Real Rock 99.3 FM // Watch: ESPN+ // Live Stats: SEMORedhawks.com // Twitter: @SEMOMBB



0-1
0-0 AMC

LYON COLLEGE SCOTS



1-0
0-0 OVC

SEMO REDHAWKS

Head Coach Rodney Mayes
Career Record (Yrs.) 10-23 (2)
Record at SEMO (Yrs.) 10-23 (2)
AMC Record 4-11

Head Coach Brad Korn
Career Record (Yrs.) 26-34 (3)
Record at SEMO (Yrs.) 26-34 (3)
OVC Record 17-20

// Redhawks Host Lyon College

Southeast Missouri (1-0) plays host to NAIA member Lyon College (0-1) in its home-opener Saturday. Tip-off is set for 4 p.m., CT at the Show Me Center.

// Follow the Redhawks

Fans can listen live on the radio at Real Rock 99.3 FM. Rusty Hendricks will be on the call. Watch on ESPN+. Live stats are available at SEMORedhawks.com and Twitter updates will be provided @SEMOMBB.

// Series History

Southeast Missouri faces Lyon College for the second time in its basketball history. SEMO holds a 1-0 lead in the all-time series after beating the Scots, 89-61, on Nov. 12, 2012. That game was also played at the Show Me Center. Saturday's matchup is exhibition for Lyon College.

// Against Non-Division I

Lyon College is the lone non-Division I opponent on Southeast Missouri's 31-game schedule this season. SEMO has a 31-game winning streak against non-Division I foes. The Redhawks extended their winning streak with a 71-63 victory over Missouri Baptist on Nov. 22, 2021.

// Redhawks Take Down South Florida

Southeast Missouri began its 2022-23 campaign with a 64-61 road win at American Athletic Conference foe South Florida on Nov. 7. SEMO opened a season with a win for the third year in a row. The Redhawks were one of three Ohio Valley Conference schools that won on the opening night of this year's college basketball season.

// Season-Openers

With its win over South Florida (Nov. 7), Southeast Missouri improved to 3-0 in season-openers under Head Coach Brad Korn. SEMO opened its season away from home for the 16th time in 17 years this 2022-23 campaign. The Redhawks won three-straight season-openers outside of Cape Girardeau for the first time in program history.

// What a Game!

The Redhawks and South Florida went back-and-forth to eight ties and 15 lead changes in their season-opener that resulted in Southeast Missouri posting a close 64-61 win on Nov. 7. Phillip Russell buried a huge pull up 3-pointer with 29 seconds left and made two free throws 37 seconds earlier to help get SEMO a 63-58 advantage. USF's desperation 3-pointer at the buzzer missed and the Redhawks held on.



2022-23 SOUTHEAST MISSOURI BASKETBALL NOTES

LYON COLLEGE // NOV. 12

// Home-Openers

Southeast Missouri is 23-8 all-time in home-openers since joining the NCAA Division I ranks in 1991-92. SEMO opened its home slate with a win in seven of the last 10 years and posted victories in 14 of its previous 17 home-opening contests. The Redhawks won their home-opener in four of their last six seasons.

// Harris Starts Strong

Chris Harris began the 2022-23 season strong leading Southeast Missouri with 16 points at South Florida (Nov. 7). Harris made a near-perfect 6-of-7 free throws, grabbed six rebounds, dished out two assists and collected a steal in 38 minutes. It was the 35th double-digit scoring game of his career.

// Redhawk Debuts

Five players saw action in their first career game at Southeast Missouri during this year's season-opener at South Florida (Nov. 7). Kobe Clark and Aquan Smart each made their first career start, while Adam Larson, Tevin Gowins and Josh Earley came off the bench. Clark finished with eight points and eight rebounds, while Earley added nine points and eight boards.

// 3-Point Advantage

Southeast Missouri outscored South Florida by a count of 30-12 from 3-point range on Nov. 7. SEMO buried 10 three-pointers with Adam Larson (2), Aquan Smart (2), Chris Harris (2) and Phillip Russell (3) accounting for nine. The Redhawks made 10 or more 3-pointers in five of their last seven games dating back to last season.

// Season 116

Southeast Missouri begins its 16th season of basketball when it heads to the Sunshine State Monday. This year marks SEMO's 32nd as an NCAA Division I program. The Redhawks are 369-539 since joining the Division I ranks in 1991-92. SEMO has a total of eight winning seasons as an NCAA

Division I program with its last coming in 2013-14 (18-14).

// Lots of New Faces

Southeast Missouri's 2022-23 roster consists of five returnees and 10 newcomers. Guards Phillip Russell and Dylan Branson are the only returning starters back from a year ago. SEMO added four Division I transfers in Aquan Smart (Florida International), Kobe Clark (Georgetown), Josh Earley (Tulsa) and Gavyn Elkamil (Tulsa). The Redhawks also have a pair of 7-footers with centers David Idada (Netherlands) and Mason Hanback (Jackson, Tenn.) joining the team. Idada, however, is currently not eligible due to NCAA Division I regulations.

// Redhawks Sign Two Talented Guards

Southeast Missouri signed talented guards Marqueas Bell and BJ Ward for the 2023-24 season on Nov. 10. A native of Kansas City, Missouri, Bell was named to the Missouri Basketball Coaches Association Class 6 All-State Team after leading Park Hill High School to its second consecutive 16-win season a year ago. He averaged 19.7 points per game and made 39 percent of his 3-pointers. Bell comes from a talented athletic family that includes Ronnie Bell, a star wide receiver at the University of Michigan, and his twin brother, Kendrick Bell, who received an offer from the Wolverines. His younger

sister, Iaila, also holds an offer from Michigan. Ward, who hails from St. Louis, averaged 11.8 points, 3.2 rebounds and 4.5 assists leading the Red Devils to a 23-9 record and fourth-place finish in the state tournament as a junior. He spent the summer playing for Brad Beal Elite's 17U team. Ward will enter his third season as the starting point guard for Chaminade College Preparatory School, which made back-to-back trips to the Final Four of the Class 6 State Tournament. Ward is one of the top point guards in the state of Missouri who is currently ranked seventh in the Class of 2023 according to Prep Hoops Missouri.

// Russel and Harris Named Preseason All-OVC

Guards Phillip Russell and Chris Harris earned Preseason All-Ohio Valley Conference honors ahead of the 2022-23 campaign. A native of St. Louis, Russell claimed Second-Team All-OVC accolades in his first year at Southeast Missouri in 2021-22. He ranked second on the team in scoring with 13.4 points per game in 30 starts. Russell led the team with 95 assists and 37 steals. He rated ninth in the OVC in scoring, 10th in assists (3.2 apg), 11th in free throw percentage (.733), 12th in steals (1.2 spg), 13th in 3-point field goals made (1.6 per game), 10th in assist/turnover ratio (1.5) and 15th in minutes played (30.4 mpg). Harris, who

2022-23 OVC Standings (as of Nov. 10)

| | OVC | | | | | Overall | | | | | |
|---------------------------|------------|-------------|------------|------------|----------|------------|--------------|------------|------------|------------|-----------|
| | Record | Pct. | Home | Away | Streak | Record | Pct. | Home | Away | Neutral | Streak |
| SIUE | 0-0 | .000 | 0-0 | 0-0 | - | 1-0 | 1.000 | 1-0 | 0-0 | 0-0 | W1 |
| Southeast Missouri | 0-0 | .000 | 0-0 | 0-0 | - | 1-0 | 1.000 | 0-0 | 1-0 | 0-0 | W1 |
| Tennessee State | 0-0 | .000 | 0-0 | 0-0 | - | 1-0 | 1.000 | 1-0 | 0-0 | 0-0 | W1 |
| Eastern Illinois | 0-0 | .000 | 0-0 | 0-0 | - | 0-1 | .000 | 0-0 | 0-1 | 0-0 | L1 |
| Lindenwood | 0-0 | .000 | 0-0 | 0-0 | - | 0-1 | .000 | 0-0 | 0-1 | 0-0 | L1 |
| Little Rock | 0-0 | .000 | 0-0 | 0-0 | - | 0-1 | .000 | 0-0 | 0-1 | 0-0 | L1 |
| Morehead State | 0-0 | .000 | 0-0 | 0-0 | - | 0-1 | .000 | 0-0 | 0-1 | 0-0 | L1 |
| Southern Indiana | 0-0 | .000 | 0-0 | 0-0 | - | 0-1 | .000 | 0-0 | 0-1 | 0-0 | L1 |
| Tennessee Tech | 0-0 | .000 | 0-0 | 0-0 | - | 0-1 | .000 | 0-0 | 0-1 | 0-0 | L1 |
| UT Martin | 0-0 | .000 | 0-0 | 0-0 | - | 0-2 | .000 | 0-0 | 0-2 | 0-0 | L2 |



hails from Antioch, Illinois, secured Preseason All-OVC laurels for the second-straight year. He was SEMO's third-leading scorer with 9.4 points per game last season. Harris also ranked second on the team with 76 assists and tied for fourth with 20 steals. He was 13th in the league in assists (2.7 apg), eighth in free throw percentage (.763) and 14th in 3-point field goal percentage (.347).

// Redhawks Fourth in OVC Preseason Poll

Southeast Missouri was picked fourth in the Ohio Valley Conference Preseason Poll selected by the league's Coaches and Communication Directors. SEMO accumulated a total of 115 points and two first-place votes. Morehead State is the preseason favorite with 138 points and seven first-place nods. Tennessee State (130 pts., 2 first-place votes) and UT Martin (120 pts., 7 first-place votes) were also picked ahead of the Redhawks. SIU Edwardsville (111 pts., 2 first-place votes), Little Rock (102 pts.), Southern Indiana (68 pts.), Tennessee Tech (62 pts.), Eastern Illinois (31 pts.) and Lindenwood (23 pts.) completed the predicted order of finish.

// Korn Enters Third Year

Brad Korn has the Southeast Missouri basketball program trending in the right direction entering his third year

as head coach in 2022-23. Korn guided SEMO to its first Ohio Valley Conference Tournament semifinal appearance in 17 years and fourth in program history last season. The Redhawks finished fourth in the OVC with an overall record of 14-18 and 8-9 against league foes. SEMO's win total increased by a +3 margin from 11 (2021-22) to 14 (2022-23) victories since Korn took over the helm. Statistically, the Redhawks finished in the top three in the OVC in scoring offense (3rd, 75.6 ppg), free throw percentage (2nd, .732), turnover margin (3rd, +0.41) and 3-point field goals made (1st, .281).

// 3-Point Accurate

The Redhawks led the Ohio Valley Conference with 281 three-pointers made in 2021-22. Southeast Missouri fell just nine 3-pointers made of breaking its program record (289, 2017-18). SEMO brings back two of its top three 3-point shooters in Phillip Russell and Chris Harris. Russell (48) and Harris (35) accounted for 83 made threes.

// Redhawks Win Two Exhibition Games

Southeast Missouri went 2-0 in exhibition play with wins over Fontbonne (67-52, Oct. 25) and Aurora University (84-51, Oct. 30). Chris Harris led SEMO in both games with 18 and 15 points, respectively. Phillip Russell also scored double figures in each of those preseason contests.

2021-22 Stats Comparison

| LYON | SEMO |
|--|------|
| 0-1.....Record | 1-0 |
| 0-0.....Conference Record..... | 0-0 |
| 76.0.....Points Per Game..... | 64.0 |
| 79.0.....Opp. Points Per Game..... | 61.0 |
| -3.0.....Scoring Margin..... | +3.0 |
| .509.....Field Goal Percentage..... | .357 |
| .500.....Opp. Field Goal Percentage..... | .462 |
| .200.....3-Point Field Goal Percentage..... | .385 |
| .250.....Opp. 3-Point Field Goal Percentage..... | .211 |
| .625.....Free Throw Percentage..... | .636 |
| .708.....Opp. Free Throw Percentage..... | .474 |
| 33.0.....Rebounds Per Game..... | 39.0 |
| 54.0.....Opp. Rebounds Per Game..... | 38.0 |
| -21.0.....Rebounding Margin..... | +1.0 |
| 15.0.....Assists Per Game..... | 10.0 |
| 11.0.....Turnovers Per Game..... | 15.0 |
| +0.7.....Turnover Margin..... | +1.0 |
| 3.0.....Blocks Per Game..... | 2.0 |
| 3.0.....Steals Per Game..... | 6.0 |

This Week's OVC Schedule

Monday, November 7

Dayton 73, Lindenwood 46

Tennessee 75, Tennessee Tech 43

Indiana 88, Morehead State 53

Missouri 97, Southern Indiana 91

Southeast Missouri 64, South Florida 61

Southern Illinois 94, Little Rock 63

SIU Edwardsville 85, Harris-Stowe 57

Illinois 87, Eastern Illinois 57

Tennessee State 85, Fisk 75

Pitt 80, UT Martin 58

Wednesday, November 9

Youngstown State 90, UT Martin 72

Thursday, November 10

Campbellsville-Harrodsburg at Morehead State, 5 p.m., CT

Tennessee Wesleyan at Tennessee Tech, 6 p.m., CT

Hannibal-LaGrange at Lindenwood, 7 p.m., CT

Illinois State at Eastern Illinois, 7 p.m., CT

Arkansas Baptist at Little Rock, 7:30 p.m., CT

Saturday, November 12

South Carolina State at Tennessee State, 11 a.m., CT

SIU Edwardsville at Purdue Fort Wayne, 12 p.m., CT

Champion Christian at UT Martin, 2 p.m., CT

Lyon College at Southeast Missouri, 4 p.m., CT

Bellarmine at Morehead State, 7 p.m., CT

Sunday, November 13

Eastern Illinois at Central Michigan, 1 p.m., CT

Southern Illinois at Southern Indiana, 3 p.m., CT

Lindenwood at Missouri, 5 p.m., CT

Southeast Missouri Probable Starters



1

Phillip Russell
G / 5-10 / 165 / So.
St. Louis, Mo.



3

Aquan Smart
G / 6-3 / 175 / So.
Evanston, Ill.



5

Chris Harris
G / 6-3 / 2-5 / Sr.
Antioch, Ill.



14

Nate Johnson
F / 6-9 / 250 / Sr.
Broward County, Fla.



24

Kobe Clark
F / 6-6 / 180 / So.
St. Louis, Mo.



2022-23 SOUTHEAST MISSOURI BASKETBALL NOTES

LYON COLLEGE // NOV. 12

// 2022-23 Schedule

Southeast Missouri's 2022-23 schedule includes 31 games with 13 at the Show Me Center. SEMO tips off its third season under Head Coach Brad Korn at South Florida on Nov. 7. The Redhawks start a season in the Sunshine State for the first time in their NCAA Division I era. SEMO last faced a Florida school in 2018-19 (at Florida State). The Redhawks four home non-conference matchups include non-Division I foes Lyon College (Nov. 12) and William Woods (Nov. 22) along with Purdue Fort Wayne (Dec. 7) and longtime rival Southern Illinois (Dec. 21). SEMO and SIU square off for the 120th time on the hardwood in 2022-23, while PFW comes to Cape Girardeau on the back end of a home-and-home series. The rest of the Redhawks non-league games feature trips to Missouri Valley Conference members Evansville (Nov. 16) and Bradley (Nov. 19), SEC opponent and in-state foe Missouri (Dec. 4), Arkansas State (Dec. 14) and Big Ten affiliate Iowa (Dec. 17). SEMO also plays three games at the Milwaukee Tournament over Thanksgiving weekend (Nov. 26-28). Iowa is the only team on SEMO's 2022-23 schedule that made the NCAA Tournament a year ago. The Hawkeyes went 26-10 over all and finished fourth in the Big Ten. The 2022-23 campaign, which is the 75th year of competition in the Ohio Valley Conference, marks the first in the league for Lindenwood, Little Rock and Southern Indiana who became official members on July 1. They join Eastern Illinois, Morehead State, SEMO, SIU Edwardsville, Tennessee State, Tennessee Tech and UT Martin to make up the 10-team league. Each school will play an 18-game schedule which will begin on Thursday, December 29 and conclude on Saturday, February 25. SEMO begins OVC play when at Southern Indiana on Dec. 29. The 2023 OVC Men's and Women's Basketball Tournament is slated for March 1-4 at the Ford Center in Evansville, Indiana. It marks the sixth year in a row the event will be held at the venue. Each OVC school is eligible to compete and win the OVC Tournament

Championship, including Lindenwood and Southern Indiana, who are beginning the reclassification process to Division I. It was previously announced that should a transitioning school win an OVC Tournament Championship, the AQ shall be awarded to the tournament runner-up. Should the tournament runner-up also be a transitioning school, the AQ representative shall be the highest seed going into the tournament. All Conference games and home non-conference contests can be seen on ESPN networks, with the majority of games broadcast on ESPN+. Additional linear exposures on ESPNU and ESPN2 will be announced at a later date.

// Up Next

Southeast Missouri hits the road for a two-game road swing against Missouri Valley Conference opponents. SEMO travels to Evansville on Nov. 16 and Bradley on Nov. 19.

// 2022-23 Honors & Awards

Preseason All-OVC

Chris Harris, G

Phillip Russell, G





2022-23 SOUTHEAST MISSOURI BASKETBALL NOTES

NUMERICAL & ALPHABETICAL ROSTER

Numerical

| No. | Name | Pos. | Ht. | Wt. | Cl. | Hometown (High School/College) |
|-----|-----------------|------|------|-----|-------|--|
| 0 | Israel Barnes | G | 6-4 | 185 | R-Sr. | Wichita, Kan. (Wichita Southeast/Newman University) |
| 1 | Phillip Russell | G | 5-10 | 165 | So. | St. Louis, Mo. (Vashon/Saint Louis) |
| 3 | Aquan Smart | G | 6-3 | 175 | So. | Evanston, Ill. (Niles North/Florida International) |
| 4 | Adam Larson | F | 6-9 | 180 | R-Fr. | Fennimore, Wis. (Fennimore) |
| 5 | Chris Harris | G | 6-3 | 205 | R-Sr. | Antioch, Ill. (Lake Forest Academy/John A. Logan College) |
| 10 | David Idada | C | 7-0 | 250 | Fr. | Barendrecht, Netherlands (Golden State Prep) |
| 11 | Evan Eursher | G | 6-2 | 177 | Fr. | Hendersonville, Tenn. (The Webb School) |
| 12 | Tevin Gowins | G | 5-9 | 167 | Fr. | Florissant, Mo. (Hazelwood Central) |
| 14 | Nate Johnson | F | 6-9 | 250 | Sr. | Broward County, Fla. (American Heritage/Seminole State CC) |
| 15 | Josh Mitchell | F | 6-8 | 215 | So. | Tupelo, Miss. (Tupelo/Northeast Mississippi CC) |
| 21 | Josh Earley | F | 6-7 | 242 | Jr. | Shawnee Mission, Kan. (Bishop Miege/Tulsa) |
| 22 | Gavyn Elkamil | G | 6-5 | 190 | So. | Pittsburg, Kan. (Link Prep Academy/Tulsa) |
| 24 | Kobe Clark | F | 6-6 | 180 | So. | St. Louis, Mo. (Vashon/Georgetown) |
| 33 | Dylan Branson | G | 6-5 | 220 | So. | St. Louis, Mo. (Mehlville) |
| 35 | Mason Hanback | C | 7-0 | 245 | Fr. | Jackson, Tenn. (Tennessee Prep) |

Alphabetical

| No. | Name | Pos. | Ht. | Wt. | Cl. | Hometown (High School/College) |
|-----|-----------------|------|------|-----|-------|--|
| 0 | Israel Barnes | G | 6-4 | 185 | R-Sr. | Wichita, Kan. (Wichita Southeast/Newman University) |
| 33 | Dylan Branson | G | 6-5 | 220 | So. | St. Louis, Mo. (Mehlville) |
| 24 | Kobe Clark | F | 6-6 | 180 | So. | St. Louis, Mo. (Vashon/Georgetown) |
| 21 | Josh Earley | F | 6-7 | 242 | Jr. | Shawnee Mission, Kan. (Bishop Miege/Tulsa) |
| 22 | Gavyn Elkamil | G | 6-5 | 190 | So. | Pittsburg, Kan. (Link Prep Academy/Tulsa) |
| 11 | Evan Eursher | G | 6-2 | 177 | Fr. | Hendersonville, Tenn. (The Webb School) |
| 12 | Tevin Gowins | G | 5-9 | 167 | Fr. | Florissant, Mo. (Hazelwood Central) |
| 35 | Mason Hanback | C | 7-0 | 245 | Fr. | Jackson, Tenn. (Tennessee Prep) |
| 5 | Chris Harris | G | 6-3 | 205 | R-Sr. | Antioch, Ill. (Lake Forest Academy/John A. Logan College) |
| 10 | David Idada | C | 7-0 | 250 | Fr. | Barendrecht, Netherlands (Golden State Prep) |
| 14 | Nate Johnson | F | 6-9 | 250 | Sr. | Broward County, Fla. (American Heritage/Seminole State CC) |
| 4 | Adam Larson | F | 6-9 | 180 | R-Fr. | Fennimore, Wis. (Fennimore) |
| 15 | Josh Mitchell | F | 6-8 | 215 | So. | Tupelo, Miss. (Tupelo/Northeast Mississippi CC) |
| 1 | Phillip Russell | G | 5-10 | 165 | So. | St. Louis, Mo. (Vashon/Saint Louis) |
| 3 | Aquan Smart | G | 6-3 | 175 | So. | Evanston, Ill. (Niles North/Florida International) |

Head Coach: Brad Korn, Third Year (Southern Illinois, 2004)

Assistant Coach: Keith Pickens, Fifth Year (Missouri State, 2013)

Assistant Coach: J.R. Reynolds, First Year (Eastern Illinois, 2004)

Assistant Coach: Connor Wheeler, First Year (SIU Edwardsville, 2016)

Director of Operations: LaDon Champagnie, Second Year (Missouri Baptist, 2013)

» Breakdown by Class

| | |
|--------------------------|----|
| Total Squad Members..... | 15 |
| Seniors | 3 |
| Juniors | 1 |
| Sophomores..... | 6 |
| Freshmen..... | 5 |

» Geographical Breakdown

| | |
|-------------------|---|
| Florida | 1 |
| Illinois..... | 2 |
| Kansas..... | 3 |
| Mississippi | 1 |
| Missouri..... | 4 |
| Netherlands | 1 |
| Tennessee..... | 2 |
| Wisconsin..... | 1 |

» Breakdown by Position

| | |
|---------------|---|
| Guard | 8 |
| Forward | 5 |
| Center..... | 2 |

» Pronunciation Guide

| | |
|---------------------|-------------|
| David Idada | eye-dah-dah |
| Gavyn Elkamil..... | elk-uh-mill |
| Evan Eursher | urr-sure |
| Mason Hanback | hand-back |

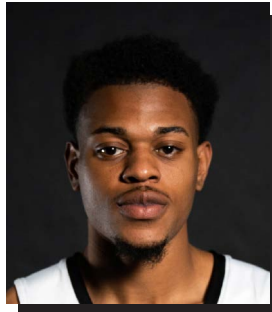
2022-23 SOUTHEAST MISSOURI BASKETBALL NOTES
RADIO/TV ROSTER



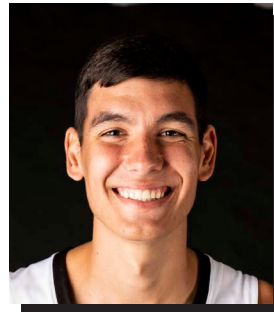
0 | **Israel Barnes**
G / 6-4 / 185 / R-Sr.
Wichita, Kan.



1 | **Phillip Russell**
G / 5-10 / 165 / So.
St. Louis, Mo.



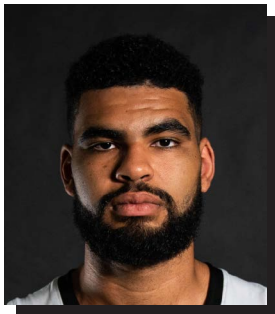
3 | **Aquan Smart**
G / 6-3 / 175 / So.
Evanston, Ill.



4 | **Adam Larson**
F / 6-9 / 180 / R-Fr.
Fennimore, Wis.



5 | **Chris Harris**
G / 6-3 / 205 / R-Sr.
Antioch, Ill.



10 | **David Idada**
C / 7-0 / 250 / Fr.
Barendrecht, Netherlands



11 | **Evan Eursher**
G / 6-2 / 177 / Fr.
Hendersonville, Tenn.



12 | **Tevin Gowins**
G / 5-9 / 167 / Fr.
Florissant, Mo.



14 | **Nate Johnson**
F / 6-9 / 250 / Sr.
Broward County, Fla.



15 | **Josh Mitchell**
F / 6-8 / 215 / So.
Tupelo, Miss.



21 | **Josh Earley**
F / 6-7 / 242 / Jr.
Shawnee Mission, Kan.



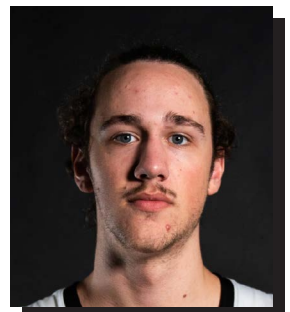
22 | **Gavyn Elkamil**
G / 6-5 / 190 / So.
Pittsburg, Kan.



24 | **Kobe Clark**
F / 6-6 / 180 / So.
St. Louis, Mo.



33 | **Dylan Branson**
G / 6-5 / 220 / So.
St. Louis, Mo.



35 | **Mason Hanback**
C / 7-0 / 245 / Fr.
Jackson, Tenn.



Brad Korn
Head Coach
Third Year



Keith Pickens
Assistant Coach
Fifth Year



J.R. Reynolds
Assistant Coach
First Year



Connor Wheeler
Assistant Coach
First Year



LaDon Champagnie
Director of Operations
Second Year



2022-23 SOUTHEAST MISSOURI BASKETBALL NOTES

HEAD COACH BRAD KORN



BRAD KORN

Head Coach

Third Year // Southern Illinois, 2004



REDHAWK BASKETBALL

Brad Korn has the Southeast Missouri basketball program trending in the right direction entering his third year as head coach in 2022-23.

Korn guided SEMO to its first Ohio Valley Conference Tournament semifinal appearance in 17 years and fourth in program history a year ago. The Redhawks finished fourth in the OVC with an overall record of 14-18 and 8-9 against league foes.

SEMO had a pair of All-OVC performers in Eric Reed, Jr. (First-Team) and Phillip Russell (Second-Team). It marked the first time the Redhawks had a player on both the OVC first and second teams in a season since 2016-17.

The Redhawks win total increased by a +3 margin from 11 (2021-22) to 14 (2022-23) victories since Korn took over the helm.

Statistically, SEMO finished its 2022-23 campaign ranked among the top three in the OVC in scoring offense (3rd, 75.6 ppg), free throw percentage (2nd, .732), turnover margin (3rd, +0.41) and 3-point field goals made (1st, 281). SEMO's 281 three-point field goals made were second-most in a season in

program history.

Korn's first head coaching job has been anything but easy as he took over at SEMO in the middle of a global COVID-19 pandemic.

Throughout all the challenges and uncertainties during an unprecedented 2020-21 season, Korn led his first SEMO team to an overall record of 11-16 and seventh-place finish in the OVC.

The Redhawks made the OVC Tournament for the first time since 2016-17 and saw a +4 improvement in total wins and a +6 jump in OVC victories from the year before. SEMO's nine (9-11) conference victories matched the program's most in a season in 20 years.

SEMO ranked among the top five in the OVC in 3-point field goal percentage (5th, .352), rebounding margin (5th, +2.2), defensive rebounds (5th, 25.6 per game) and defensive rebound percentage (1st, .764).

Korn was officially introduced as SEMO's head coach on Mar. 23, 2020 and is the seventh head coach in SEMO's NCAA Division I era (since 1991-92).

Prior to arriving in Cape Girardeau, Korn spent five years at Big 12 Conference member Kansas State working the four seasons as an

assistant coach and one as the program's Director of Operations.

In his final four years back at K-State after returning following a three-year stint at Missouri State (2013-16), Korn helped the Wildcats to 82 wins and three-straight NCAA Tournament appearances. K-State posted back-to-back 25-win campaigns for the first time in school history (2017-18, 2018-19).

During his first year back in 2016-17, the squad won 21 games, including eight over teams that advanced to the postseason, and knocked off Wake Forest in the NCAA First Four before losing to #18

Cincinnati in the NCAA South Regional First Round.

Working primarily with the post players, Korn was a big influence on the development of two-time All-Big 12 First Team selection Dean Wade, who became the fourth Wildcat to earn All-Big 12 First-Team honors in 2018 and just the second to do so in back-to-back seasons. Wade is one of just three players to rank in the school's Top 10 in both career scoring (1,510) and rebounding (685). He was instrumental in the progress of Makol Mawien, who has started all 103 games in his K-State career and emerged as one of the top big men in the





Big 12.

Korn was also key in the growth of All-Big 12 selections Wesley Iwundu and D.J. Johnson during his first season as an assistant coach in 2016-17. Iwundu, who was twice named Third Team All-Big 12, became the first Wildcat since 2008 to be taken in the NBA Draft when he was selected with 33rd overall pick by the Orlando Magic. Johnson, an honorable mention all-league selection, broke the career field goal percentage record at 59.5 percent, while setting the single-season mark for the second consecutive season at 62.3 percent in 2016-17.

Korn spent one season on Bruce Weber's inaugural staff at K-State as Director of Operations in 2012-13, helping the Wildcats to a 27-8 overall record and their first-ever Big 12 regular-season title. It was the school's first conference title since 1977, while the 27 wins rated second-most in school history.

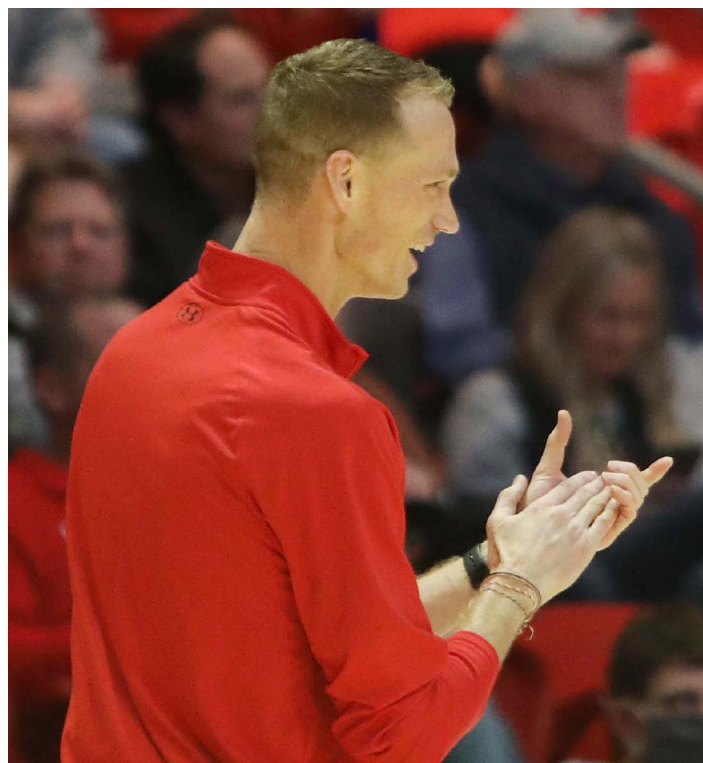
Overall, he has 15 years of Division I experience, which includes time at his alma mater – Southern Illinois (2004-12). Korn has extensive ties to Weber after playing his first four years (1999-2003) for him at Southern Illinois. He redshirted in 1999-2000 before playing the next three years for Weber. He concluded his playing career for (current Purdue head coach) Matt Painter in 2003-04 before spending the next eight years (2004-12) at SIU as an assistant for then-Saluki head coach and current K-State associate head

coach Chris Lowery.

Korn returned to Manhattan in May 2016 after three seasons at Missouri State, where he served as an assistant coach to then-head coach Paul Lusk from 2013-16. At MSU, he helped the Bears to 44 wins, including a 20 -win season and a trip to the CollegiateInsider.com Tournament in 2013-14.

Korn helped mentor a number of All-Missouri Valley honorees during his stay at Missouri State, including 2014 All-MVC Second-Team selection Jarmar Gulley and 2016 MVC Newcomer of the Year Dequon Miller. In addition, he coached three MVC All-Freshman Team honorees in Austin Ruder in 2014 and Obediah Church and Jarred Dixon in 2016 as well as two Most Improved Team members (Dorrian Williams in 2015 and Chris Kendrix in 2016).

Prior to his first stint at K-State, Korn spent eight years (2004-12) at Southern Illinois, including his final six years as a full-time assistant under Lowery. He helped the Salukis post a 145-116 (.556) overall record with four postseason appearances, two Missouri Valley Conference championships and one State Farm Missouri Valley Conference Tournament title. The squad won 20 or more games and advanced to the NCAA Tournament on three occasions (2005, 2006, 2007) during his tenure as an assistant coach, including a 2007 trip to the Sweet 16. He was a graduate assistant at SIU his first two years before being elevated to a full-time assistant coach on Jan.



31, 2006.

A native of Plano, Illinois, Korn helped the Salukis through one of their greatest periods of success from 1999 to 2004. The squad went from 16 wins his redshirt-freshman season to three consecutive NCAA Tournament appearances under Weber and Painter. He was also a part of three Missouri Valley regular season championships as a player.

The 6-foot-9 forward saw action in 121 games in his career, averaging 5.2 points and 2.3 rebounds in 14.5 minutes per

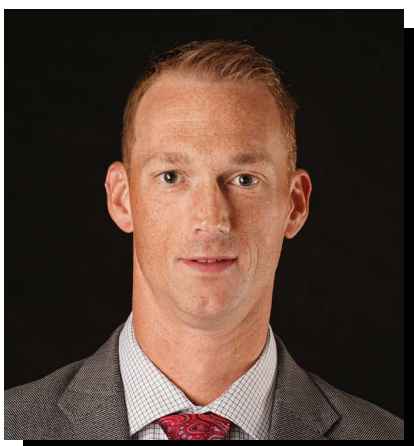
game. As a senior, he averaged 9.7 points on 41 percent shooting with four rebounds and 1.9 assists in helping SIU to 25 wins and a 17-1 mark in MVC play. He was named to the league's Most Improved Team.

Korn earned a bachelor's degree in Marketing from Southern Illinois in 2004 and his master's degree in Administrative Studies from Missouri State in 2016. He resides in Cape Girardeau with his wife, Kristin, and daughters Brielyn and Ashtyn.



2022-23 SOUTHEAST MISSOURI BASKETBALL NOTES

HEAD COACH BRAD KORN



■ The Korn File

Experience:

18th Year (Third at SEMO)

Hometown:

Plano, Ill.

Birthdate:

August 22, 1981

Alma Mater:

Southern Illinois, 2004

Education:

BB.A. Marketing (Southern Illinois)

Master's Administrative Studies (Missouri State)

Date Hired:

March 23, 2020

Family:

Wife - Kristin

Children - Brielyn, Ashtyn

Playing Experience:

Southern Illinois, 1999-04

Coaching Experience:

Southern Illinois, Graduate Asst., 2004-06

Southern Illinois, Assistant Coach, 2006-12

Kansas State, Dir. of Operations, 2012-13

Missouri State, Assistant Coach, 2013-16

Kansas State, Assistant Coach, 2016-20

Southeast Missouri, 2020-pr.

Korn Year-by-Year Records

| Year | School | Assignment | Record | Conference/Finish | Postseason |
|---------|--------------------|------------------------|--------|-------------------|----------------------------------|
| 2004-05 | Southern Illinois | Graduate Assistant | 27-8 | 15-3/1st | NCAA Second Round |
| 2005-06 | Southern Illinois | Graduate Assistant | 22-11 | 12-6/2nd | NCAA First Round |
| 2006-07 | Southern Illinois | Assistant Coach | 29-7 | 15-3/1st | NCAA Sweet 16 |
| 2007-08 | Southern Illinois | Assistant Coach | 18-15 | 11-7/3rd | NIT Second Round |
| 2008-09 | Southern Illinois | Assistant Coach | 13-18 | 8-10/5th | - |
| 2009-10 | Southern Illinois | Assistant Coach | 15-15 | 6-12/9th | - |
| 2010-11 | Southern Illinois | Assistant Coach | 13-19 | 5-13/8th | - |
| 2011-12 | Southern Illinois | Assistant Coach | 8-23 | 5-13/9th | - |
| 2012-13 | Kansas State | Director of Operations | 27-8 | 14-4/1st | NCAA Second Round |
| 2013-14 | Missouri State | Assistant Coach | 20-13 | 9-9/4th | CollegelInsider.com Tourn. (CIT) |
| 2014-15 | Missouri State | Assistant Coach | 11-20 | 5-13/8th | - |
| 2015-16 | Missouri State | Assistant Coach | 13-19 | 8-10/7th | - |
| 2016-17 | Kansas State | Assistant Coach | 21-14 | 8-10/6th | NCAA First Round |
| 2017-18 | Kansas State | Assistant Coach | 25-12 | 10-8/4th | NCAA Elite Eight |
| 2018-19 | Kansas State | Assistant Coach | 25-9 | 14-4/1st | NCAA First Round |
| 2019-20 | Kansas State | Assistant Coach | 11-21 | 3-15/10th | - |
| 2020-21 | Southeast Missouri | Head Coach | 11-16 | 9-11/7th | - |
| 2021-22 | Southeast Missouri | Head Coach | 14-18 | 8-9/4th | - |
| 2022-23 | Southeast Missouri | Head Coach | 1-0 | | |

Overall Record: 26-34

Record at Southeast Missouri, 26-34, 17-20 Ohio Valley Conference (3 years)

Record as a College Assistant: 222-205

Record as a Graduate Assistant: 49-19



2022-23 SOUTHEAST MISSOURI BASKETBALL NOTES

2022-23 STATISTICS



| RECORD: | OVERALL | HOME | AWAY | NEUTRAL |
|----------------|---------|------|------|---------|
| ALL GAMES | 1-0 | 0-0 | 1-0 | 0-0 |
| CONFERENCE | 0-0 | 0-0 | 0-0 | 0-0 |
| NON-CONFERENCE | 1-0 | 0-0 | 1-0 | 0-0 |

| # | Player | gp-gs | min | avg | Total | | 3-Point | | F-Throw | | Rebounds | | | | pf | dq | a | to | blk | stl | pts | avg |
|----------------|------------------|-------|-----|------|--------|------|---------|------|---------|------|----------|-----|-----|------|----|----|----|----|-----|-----|-----|------|
| | | | | | fg-fga | fg% | 3fg-fga | 3fg% | ft-fga | ft% | off | def | tot | avg | | | | | | | | |
| 01 | RUSSELL, Phillip | 1-1 | 26 | 26.0 | 3-11 | .273 | 3-9 | .333 | 2-3 | .667 | 1 | 1 | 2 | 2.0 | 4 | 0 | 3 | 2 | 0 | 2 | 11 | 11.0 |
| 03 | SMART, Aquan | 1-1 | 18 | 18.0 | 3-8 | .375 | 2-3 | .667 | 0-0 | .000 | 1 | 2 | 3 | 3.0 | 5 | 1 | 2 | 2 | 0 | 3 | 8 | 8.0 |
| 04 | LARSON, Adam | 1-0 | 24 | 24.0 | 2-4 | .500 | 2-4 | .500 | 0-0 | .000 | 1 | 3 | 4 | 4.0 | 2 | 0 | 0 | 0 | 1 | 0 | 6 | 6.0 |
| 05 | HARRIS, Chris | 1-1 | 38 | 38.0 | 4-16 | .250 | 2-7 | .286 | 6-7 | .857 | 1 | 5 | 6 | 6.0 | 3 | 0 | 2 | 4 | 0 | 1 | 16 | 16.0 |
| 12 | GOWINS, Tevin | 1-0 | 24 | 24.0 | 1-3 | .333 | 1-2 | .500 | 0-0 | .000 | 2 | 2 | 4 | 4.0 | 3 | 0 | 0 | 0 | 0 | 0 | 3 | 3.0 |
| 14 | JOHNSON, Nate | 1-1 | 20 | 20.0 | 1-3 | .333 | 0-0 | .000 | 1-2 | .500 | 0 | 1 | 1 | 1.0 | 0 | 0 | 0 | 0 | 0 | 0 | 3 | 3.0 |
| 21 | EARLEY, Josh | 1-0 | 20 | 20.0 | 2-6 | .333 | 0-0 | .000 | 5-10 | .500 | 1 | 7 | 8 | 8.0 | 1 | 0 | 0 | 2 | 1 | 0 | 9 | 9.0 |
| 24 | CLARK, Kobe | 1-1 | 30 | 30.0 | 4-5 | .800 | 0-1 | .000 | 0-0 | .000 | 4 | 4 | 8 | 8.0 | 3 | 0 | 3 | 3 | 0 | 0 | 8 | 8.0 |
| Team | | | | | | | | | | | 0 | 3 | 3 | | | | 2 | | | | | |
| Total..... | | 1 | 200 | | 20-56 | .357 | 10-26 | .385 | 14-22 | .636 | 11 | 28 | 39 | 39.0 | 21 | 1 | 10 | 15 | 2 | 6 | 64 | 64.0 |
| Opponents..... | | 1 | 200 | | 24-52 | .462 | 4-19 | .211 | 9-19 | .474 | 8 | 30 | 38 | 38.0 | 19 | - | 8 | 16 | 3 | 6 | 61 | 61.0 |

| TEAM STATISTICS | SEMO | OPP | Date | Opponent | Score | Att. |
|------------------------|-------|--------|---------------------|---------------|---------|------|
| SCORING | 64 | 61 | 11-07-22 | at South Fla. | w 64-61 | 4046 |
| Points per game | 64.0 | 61.0 | * - Conference game | | | |
| Scoring margin | +3.0 | - | | | | |
| FIELD GOALS-ATT | 20-56 | 24-52 | | | | |
| Field goal pct | .357 | .462 | | | | |
| 3 POINT FG-ATT | 10-26 | 4-19 | | | | |
| 3-point FG pct | .385 | .211 | | | | |
| 3-pt FG made per game | 10.0 | 4.0 | | | | |
| FREE THROWS-ATT | 14-22 | 9-19 | | | | |
| Free throw pct | .636 | .474 | | | | |
| F-Throws made per game | 14.0 | 9.0 | | | | |
| REBOUNDS | 39 | 38 | | | | |
| Rebounds per game | 39.0 | 38.0 | | | | |
| Rebounding margin | +1.0 | - | | | | |
| ASSISTS | 10 | 8 | | | | |
| Assists per game | 10.0 | 8.0 | | | | |
| TURNOVERS | 15 | 16 | | | | |
| Turnovers per game | 15.0 | 16.0 | | | | |
| Turnover margin | +1.0 | - | | | | |
| Assist/turnover ratio | 0.7 | 0.5 | | | | |
| STEALS | 6 | 6 | | | | |
| Steals per game | 6.0 | 6.0 | | | | |
| BLOCKS | 2 | 3 | | | | |
| Blocks per game | 2.0 | 3.0 | | | | |
| ATTENDANCE | 0 | 4046 | | | | |
| Home games-Avg/Game | 0-0 | 1-4046 | | | | |
| Neutral site-Avg/Game | - | 0-0 | | | | |

| Score by Periods | 1st | 2nd | Totals |
|--------------------|-----|-----|--------|
| Southeast Missouri | 30 | 34 | 64 |
| Opponents | 30 | 31 | 61 |



2022-23 SOUTHEAST MISSOURI BASKETBALL NOTES

2022-23 STATISTICS

Comparison Game-by-Game (SEMO/Opponent)

| Opponent | 1st | 2nd | Score | Mar | Total FG | FG Pct | 3-Pointers | 3FG Pct | Free Throws | FT Pct | Rebounds (Mar) | Assist | T/Over | Block | Steal | Fouls |
|-------------------|-------|-------|-------|-----|-------------|-----------|------------|-----------|-------------|-----------|----------------|--------|--------|-------|-------|-------|
| South Florida | 30/30 | 34/31 | 64-61 | +3 | 20-56/24-52 | .357/.462 | 10-26/4-19 | .385/.211 | 14-22/9-19 | .636/.474 | 39/38 +1 | 10/8 | 15/16 | 2/3 | 6/6 | 21/19 |
| Lyon College | | | | | | | | | | | | | | | | |
| Evansville | | | | | | | | | | | | | | | | |
| Bradley | | | | | | | | | | | | | | | | |
| William Woods | | | | | | | | | | | | | | | | |
| Boston | | | | | | | | | | | | | | | | |
| UC Davis | | | | | | | | | | | | | | | | |
| Milwaukee | | | | | | | | | | | | | | | | |
| Missouri | | | | | | | | | | | | | | | | |
| Purdue Fort Wayne | | | | | | | | | | | | | | | | |
| Arkansas State | | | | | | | | | | | | | | | | |
| Iowa | | | | | | | | | | | | | | | | |
| Southern Illinois | | | | | | | | | | | | | | | | |
| Southern Indiana | | | | | | | | | | | | | | | | |
| SIU Edwardsville | | | | | | | | | | | | | | | | |
| UT Martin | | | | | | | | | | | | | | | | |
| Little Rock | | | | | | | | | | | | | | | | |
| Lindenwood | | | | | | | | | | | | | | | | |
| Morehead State | | | | | | | | | | | | | | | | |
| UT Martin | | | | | | | | | | | | | | | | |
| Tennessee Tech | | | | | | | | | | | | | | | | |
| Tennessee State | | | | | | | | | | | | | | | | |
| Eastern Illinois | | | | | | | | | | | | | | | | |
| Little Rock | | | | | | | | | | | | | | | | |
| Tennessee Tech | | | | | | | | | | | | | | | | |
| Tennessee State | | | | | | | | | | | | | | | | |
| Morehead State | | | | | | | | | | | | | | | | |
| Eastern Illinois | | | | | | | | | | | | | | | | |
| Southern Indiana | | | | | | | | | | | | | | | | |
| Lindenwood | | | | | | | | | | | | | | | | |
| SIU Edwardsville | | | | | | | | | | | | | | | | |

Points in the Paint, Second Chance Points, Points Off Turnovers, Fastbreak Points, Bench Points

| Opponent | W/L | POINTS IN THE PAINT | | 2ND CHANCE POINTS | | POINTS OFF TURNOVERS | | FAST BREAK POINTS | | BENCH POINTS | |
|-------------------|-----|---------------------|------|-------------------|------|----------------------|------|-------------------|------|--------------|------|
| | | SEMO | OPP. | SEMO | OPP. | SEMO | OPP. | SEMO | OPP. | SEMO | OPP. |
| South Florida | W | 14 | 36 | 14 | 7 | 12 | 11 | 4 | 6 | 18 | 20 |
| Lyon College | | | | | | | | | | | |
| Evansville | | | | | | | | | | | |
| Bradley | | | | | | | | | | | |
| William Woods | | | | | | | | | | | |
| Boston | | | | | | | | | | | |
| UC Davis | | | | | | | | | | | |
| Milwaukee | | | | | | | | | | | |
| Missouri | | | | | | | | | | | |
| Purdue Fort Wayne | | | | | | | | | | | |
| Arkansas State | | | | | | | | | | | |
| Iowa | | | | | | | | | | | |
| Southern Illinois | | | | | | | | | | | |
| Southern Indiana | | | | | | | | | | | |
| SIU Edwardsville | | | | | | | | | | | |
| UT Martin | | | | | | | | | | | |
| Little Rock | | | | | | | | | | | |
| Lindenwood | | | | | | | | | | | |
| Morehead State | | | | | | | | | | | |
| UT Martin | | | | | | | | | | | |
| Tennessee Tech | | | | | | | | | | | |
| Tennessee State | | | | | | | | | | | |
| Eastern Illinois | | | | | | | | | | | |
| Little Rock | | | | | | | | | | | |
| Tennessee Tech | | | | | | | | | | | |
| Tennessee State | | | | | | | | | | | |
| Morehead State | | | | | | | | | | | |
| Eastern Illinois | | | | | | | | | | | |
| Southern Indiana | | | | | | | | | | | |
| Lindenwood | | | | | | | | | | | |
| SIU Edwardsville | | | | | | | | | | | |

2022-23 SOUTHEAST MISSOURI BASKETBALL NOTES

2022-23 STATISTICS



Game-by-Game Leaders

| <u>Opponent</u> | <u>W/L</u> | <u>Score</u> | <u>Points</u> | <u>Rebounds</u> | <u>Assists</u> | <u>Blocks</u> | <u>Steals</u> |
|-------------------|------------|--------------|---------------|-------------------|--------------------|--------------------|---------------|
| South Florida | W | 64-61 | Harris - 16 | Clark, Earley - 8 | Clark, Russell - 3 | Earley, Larson - 1 | Smart - 3 |
| Lyon College | | | | | | | |
| Evansville | | | | | | | |
| Bradley | | | | | | | |
| William Woods | | | | | | | |
| Boston | | | | | | | |
| UC Davis | | | | | | | |
| Milwaukee | | | | | | | |
| Missouri | | | | | | | |
| Purdue Fort Wayne | | | | | | | |
| Arkansas State | | | | | | | |
| Iowa | | | | | | | |
| Southern Illinois | | | | | | | |
| Southern Indiana | | | | | | | |
| SIU Edwardsville | | | | | | | |
| UT Martin | | | | | | | |
| Little Rock | | | | | | | |
| Lindenwood | | | | | | | |
| Morehead State | | | | | | | |
| UT Martin | | | | | | | |
| Tennessee Tech | | | | | | | |
| Tennessee State | | | | | | | |
| Eastern Illinois | | | | | | | |
| Little Rock | | | | | | | |
| Tennessee Tech | | | | | | | |
| Tennessee State | | | | | | | |
| Morehead State | | | | | | | |
| Eastern Illinois | | | | | | | |
| Southern Indiana | | | | | | | |
| Lindenwood | | | | | | | |
| SIU Edwardsville | | | | | | | |

Game-by-Game Starters

| <u>Opponent</u> | <u>W/L</u> | <u>Score</u> | <u>Guard</u> | <u>Guard</u> | <u>Guard</u> | <u>Guard/Forward</u> | <u>Center</u> | <u>First Man Off the Bench</u> |
|-------------------|------------|--------------|--------------|--------------|--------------|----------------------|---------------|---------------------------------|
| South Florida | W | 64-61 | Russell | Harris | Smart | Clark, F | Johnson | Earley, 9 pts., 8 reb., 20 min. |
| Lyon College | | | | | | | | |
| Evansville | | | | | | | | |
| Bradley | | | | | | | | |
| William Woods | | | | | | | | |
| Boston | | | | | | | | |
| UC Davis | | | | | | | | |
| Milwaukee | | | | | | | | |
| Missouri | | | | | | | | |
| Purdue Fort Wayne | | | | | | | | |
| Arkansas State | | | | | | | | |
| Iowa | | | | | | | | |
| Southern Illinois | | | | | | | | |
| Southern Indiana | | | | | | | | |
| SIU Edwardsville | | | | | | | | |
| UT Martin | | | | | | | | |
| Little Rock | | | | | | | | |
| Lindenwood | | | | | | | | |
| Morehead State | | | | | | | | |
| UT Martin | | | | | | | | |
| Tennessee Tech | | | | | | | | |
| Tennessee State | | | | | | | | |
| Eastern Illinois | | | | | | | | |
| Little Rock | | | | | | | | |
| Tennessee Tech | | | | | | | | |
| Tennessee State | | | | | | | | |
| Morehead State | | | | | | | | |
| Eastern Illinois | | | | | | | | |
| Southern Indiana | | | | | | | | |
| Lindenwood | | | | | | | | |
| SIU Edwardsville | | | | | | | | |

Starting Lineup Combinations

| <u>Record</u> | <u>Guard</u> | <u>Guard</u> | <u>Guard</u> | <u>Guard/Forward</u> | <u>Center</u> |
|---------------|--------------|--------------|--------------|----------------------|---------------|
| 1-0 | Russell | Harris | Smart | Clark, F | Johnson |



2022-23 SOUTHEAST MISSOURI BASKETBALL NOTES

2022-23 TEAM GAME-BY-GAME STATISTICS

| | Score | FG-A | Pct. | 3FG-A | Pct. | FT-A | Pct. | OFF | DEF | Total | F | A | TO | B | S |
|---------------------------|-----------------|--------------|-------------|--------------|-------------|--------------|-------------|-----------|-----------|-----------|-----------|-----------|-----------|----------|----------|
| Southeast Missouri | W, 64-61 | 20-56 | .357 | 10-26 | .385 | 14-22 | .636 | 11 | 28 | 39 | 21 | 10 | 15 | 2 | 6 |
| South Florida | - | 24-52 | .462 | 4-19 | .211 | 9-19 | .474 | 8 | 30 | 38 | 19 | 8 | 16 | 3 | 6 |
| Southeast Missouri | | | | | | | | | | | | | | | |
| Lyon College | | | | | | | | | | | | | | | |
| Southeast Missouri | | | | | | | | | | | | | | | |
| Evansville | | | | | | | | | | | | | | | |
| Southeast Missouri | | | | | | | | | | | | | | | |
| Bradley | | | | | | | | | | | | | | | |
| Southeast Missouri | | | | | | | | | | | | | | | |
| William Woods | | | | | | | | | | | | | | | |
| Southeast Missouri | | | | | | | | | | | | | | | |
| Boston | | | | | | | | | | | | | | | |
| Southeast Missouri | | | | | | | | | | | | | | | |
| UC Davis | | | | | | | | | | | | | | | |
| Southeast Missouri | | | | | | | | | | | | | | | |
| Milwaukee | | | | | | | | | | | | | | | |
| Southeast Missouri | | | | | | | | | | | | | | | |
| Missouri | | | | | | | | | | | | | | | |
| Southeast Missouri | | | | | | | | | | | | | | | |
| Purdue Fort Wayne | | | | | | | | | | | | | | | |
| Southeast Missouri | | | | | | | | | | | | | | | |
| Arkansas | | | | | | | | | | | | | | | |
| Southeast Missouri | | | | | | | | | | | | | | | |
| Iowa | | | | | | | | | | | | | | | |
| Southeast Missouri | | | | | | | | | | | | | | | |
| Southern Illinois | | | | | | | | | | | | | | | |
| Southeast Missouri | | | | | | | | | | | | | | | |
| Southern Indiana | | | | | | | | | | | | | | | |
| Southeast Missouri | | | | | | | | | | | | | | | |
| SIU Edwardsville | | | | | | | | | | | | | | | |
| Southeast Missouri | | | | | | | | | | | | | | | |
| UT Martin | | | | | | | | | | | | | | | |
| Southeast Missouri | | | | | | | | | | | | | | | |
| Little Rock | | | | | | | | | | | | | | | |
| Southeast Missouri | | | | | | | | | | | | | | | |
| Lindenwood | | | | | | | | | | | | | | | |
| Southeast Missouri | | | | | | | | | | | | | | | |
| Morehead State | | | | | | | | | | | | | | | |
| Southeast Missouri | | | | | | | | | | | | | | | |
| UT Martin | | | | | | | | | | | | | | | |
| Southeast Missouri | | | | | | | | | | | | | | | |
| Tennessee Tech | | | | | | | | | | | | | | | |
| Southeast Missouri | | | | | | | | | | | | | | | |
| Tennessee State | | | | | | | | | | | | | | | |
| Southeast Missouri | | | | | | | | | | | | | | | |
| Eastern Illinois | | | | | | | | | | | | | | | |
| Southeast Missouri | | | | | | | | | | | | | | | |
| Little Rock | | | | | | | | | | | | | | | |
| Southeast Missouri | | | | | | | | | | | | | | | |
| Tennessee Tech | | | | | | | | | | | | | | | |
| Southeast Missouri | | | | | | | | | | | | | | | |
| Tennessee State | | | | | | | | | | | | | | | |
| Southeast Missouri | | | | | | | | | | | | | | | |
| Morehead State | | | | | | | | | | | | | | | |
| Southeast Missouri | | | | | | | | | | | | | | | |
| Eastern Illinois | | | | | | | | | | | | | | | |
| Southeast Missouri | | | | | | | | | | | | | | | |
| Southern Indiana | | | | | | | | | | | | | | | |
| Southeast Missouri | | | | | | | | | | | | | | | |
| Lindenwood | | | | | | | | | | | | | | | |
| Southeast Missouri | | | | | | | | | | | | | | | |
| SIU Edwardsville | | | | | | | | | | | | | | | |


**2022-23 Game-by-Game Leaders
Summary (# of Games)**
Points

Chris Harris.....1

Rebounds

Kobe Clark.....1

Josh Earley.....1

Assists

Phillip Russell.....1

Kobe Clark.....1

Blocks

Adam Larson.....1

Steals

Aquan Smart.....1

Dunks (# for 2022-23 Season)

Kobe Clark.....1

Games Played/Started

| | <u>2022-23</u> | <u>Career</u> |
|-----------------|----------------|---------------|
| Chris Harris | 1/1 | 58/33 |
| Dylan Branson | - | 59/33 |
| Nate Johnson | 1/1 | 37/1 |
| Phillip Russell | 1/1 | 31/31 |
| Kobe Clark | 1/1 | 1/1 |
| Aquan Smart | 1/1 | 1/1 |
| Adam Larson | 1/0 | 1/0 |
| Tevin Gowins | 1/0 | 1/0 |
| Josh Earley | 1/0 | 1/0 |

Career Ledger
Double-Digit Point Games

| | <u>2022-23</u> | <u>Career</u> |
|----------------------|----------------|---------------|
| Chris Harris..... | 1 | 35 |
| Phillip Russell..... | 1 | 21 |
| Nate Johnson..... | - | 2 |
| Dylan Branson..... | - | 2 |

Double-Digit Rebound Games

| | <u>2022-23</u> | <u>Career</u> |
|----------------------|----------------|---------------|
| DQ Nicholas..... | - | 1 |
| Phillip Russell..... | - | 1 |

20+ Point Games

| | <u>2022-23</u> | <u>Career</u> |
|----------------------|----------------|---------------|
| Phillip Russell..... | - | 6 |
| Chris Harris..... | - | 3 |

30-Point Games

| | <u>2022-23</u> | <u>Career</u> |
|----------------------|----------------|---------------|
| Eric Reed, Jr. | - | 2 |
| Phillip Russell..... | - | 1 |

8+ Rebound Games

| | <u>2022-23</u> | <u>Career</u> |
|----------------------|----------------|---------------|
| Eric Reed, Jr. | - | 1 |
| Phillip Russell..... | - | 1 |
| Chris Harris..... | - | 1 |
| Kobe Clark..... | 1 | 1 |
| Josh Earley..... | 1 | 1 |

5+ Assist Games

| | <u>2022-23</u> | <u>Career</u> |
|----------------------|----------------|---------------|
| Chris Harris..... | - | 12 |
| Phillip Russell..... | - | 4 |
| Dylan Branson..... | - | 2 |

3+ Steal Games

| | <u>2022-23</u> | <u>Career</u> |
|----------------------|----------------|---------------|
| Chris Harris..... | - | 3 |
| Phillip Russell..... | - | 3 |
| Aquan Smart..... | 1 | 1 |

Double-Doubles

| | <u>2022-23</u> | <u>Career</u> |
|----------------------|----------------|---------------|
| Phillip Russell..... | - | 1 |

SEMO's 2022-23 Record:

| | |
|---|-----|
| At Home..... | 0-0 |
| On the Road..... | 1-0 |
| At Neutral Sites..... | 0-0 |
| In Ohio Valley Conference Games..... | 0-0 |
| In November..... | 1-0 |
| In December..... | 0-0 |
| In January..... | 0-0 |
| In February..... | 0-0 |
| In March..... | 0-0 |
| Leading at the Half..... | 0-0 |
| Trailing at the Half..... | 0-0 |
| Tied at the Half..... | 1-0 |
| In Overtime Games..... | 0-0 |
| The Redhawks Score First..... | 0-0 |
| In 1-4 Point Games..... | 1-0 |
| In 5-9 Point Games..... | 0-0 |
| In 10-14 Point Games..... | 0-0 |
| In 15+ Point Games..... | 0-0 |
| Leading with Five Minutes Left in Regulation..... | 0-0 |
| Trailing with Five Minutes Left in Regulation..... | 1-0 |
| Tied with Five Minutes Left in Regulation..... | 0-0 |
| Scoring Less than 50 Points..... | 0-0 |
| Scoring 50-59 Points..... | 0-0 |
| Scoring 60-69 Points..... | 1-0 |
| Scoring 70-79 Points..... | 0-0 |
| Scoring 80-89 Points..... | 0-0 |
| Scoring 90-99 Points..... | 0-0 |
| Scoring 100 or more Points..... | 0-0 |
| Giving up Less Than 50 Points..... | 0-0 |
| Giving up 50-59 Points..... | 0-0 |
| Giving up 60-69 Points..... | 1-0 |
| Giving up 70-79 Points..... | 0-0 |
| Giving up 80-89 Points..... | 0-0 |
| Giving up 90-99 Points..... | 0-0 |
| Giving up 100 or more Points..... | 0-0 |
| Shooting 50% or Better from the Field..... | 0-0 |
| Shooting Less Than 50% from the Field..... | 1-0 |
| Opponent Shoots 50% or Better from the Field..... | 0-0 |
| Opponent Shoots Less Than 50% from the Field..... | 1-0 |
| Outshooting Opponent..... | 0-0 |
| Outshot by Opponent..... | 1-0 |
| Field Goal Percentage is Tied..... | 0-0 |
| Shooting 50% or Better from 3-Point Range..... | 0-0 |
| Shooting Less Than 50% from 3-Point Range..... | 1-0 |
| Opponent Shoots 50% or Better from 3-Point Range..... | 0-0 |
| Opponent Shoots Less Than 50% from 3-Point Range..... | 1-0 |
| Shooting 50% or Better from the Free Throw Line..... | 1-0 |
| Shooting Less Than 50% from the Free Throw Line..... | 0-0 |
| Opponent Shoots 50% or Better from the Free Throw Line..... | 0-0 |
| Opponent Shoots Less Than 50% from the Free Throw Line..... | 1-0 |
| Shooting More Free Throws Than Opponent..... | 1-0 |
| Shooting Less Free Throws Than Opponent..... | 0-0 |
| Free Throws are Tied..... | 0-0 |
| SEMO's Starters Outscore Opponent's Starters..... | 1-0 |
| Opponent's Starters Outscore SEMO's Starters..... | 0-0 |
| Starter Scoring is Tied..... | 0-0 |
| Bench Outscores Opponent..... | 0-0 |
| Opponent Bench Outscores SEMO..... | 1-0 |
| Bench Scoring is Tied..... | 0-0 |
| Bench Contributes Double Figures in Points..... | 1-0 |
| No Redhawk Players Score Double Figures..... | 0-0 |
| Two Redhawk Players Score Double Figures..... | 1-0 |
| 3+ Redhawk Players Score Double Figures..... | 0-0 |
| Outrebounding an Opponent..... | 1-0 |
| Opponent Outrebounds SEMO..... | 0-0 |
| Rebounds are Tied..... | 0-0 |
| Getting 10+ Assists..... | 1-0 |
| Getting 10+ Steals..... | 0-0 |
| Getting 5+ Blocks..... | 0-0 |
| Forcing more Turnovers than Opponent..... | 1-0 |
| Committing more Turnovers than Opponent..... | 0-0 |
| Turnovers are Tied..... | 0-0 |



2022-23 SOUTHEAST MISSOURI BASKETBALL NOTES

2021-22 OHIO VALLEY CONFERENCE STATISTICS

| RECORD: | OVERALL | HOME | AWAY | NEUTRAL |
|----------------|---------|------|------|---------|
| ALL GAMES | 8-9 | 5-3 | 3-6 | 0-0 |
| CONFERENCE | 8-9 | 5-3 | 3-6 | 0-0 |
| NON-CONFERENCE | 0-0 | 0-0 | 0-0 | 0-0 |

| # | Player | gp-gs | min | avg | Total | | 3-Point | | F-Throw | | Rebounds | | | | pf | dq | a | to | blk | stl | pts | avg |
|----------------|------------------|-------|------|------|----------|-------|---------|-------|---------|------|----------|-----|-----|------|-----|----|-----|-----|-----|-----|------|------|
| | | | | | fg-fga | fg% | 3fg-fga | 3fg% | ft-fga | ft% | off | def | tot | avg | | | | | | | | |
| 03 | REED, JR., Eric | 16-15 | 521 | 32.6 | 88-202 | .436 | 40-105 | .381 | 61-73 | .836 | 21 | 40 | 61 | 3.8 | 30 | 0 | 34 | 29 | 3 | 15 | 277 | 17.3 |
| 01 | RUSSELL, Phillip | 15-15 | 476 | 31.7 | 63-163 | .387 | 20-75 | .267 | 59-76 | .776 | 11 | 27 | 38 | 2.5 | 34 | 1 | 57 | 37 | 0 | 19 | 205 | 13.7 |
| 10 | PATTERSON, Manny | 16-13 | 300 | 18.8 | 63-101 | .624 | 1-1 | 1.000 | 27-35 | .771 | 32 | 37 | 69 | 4.3 | 48 | 0 | 3 | 21 | 14 | 9 | 154 | 9.6 |
| 21 | AKENTEN, Nana | 15-0 | 281 | 18.7 | 49-106 | .462 | 29-74 | .392 | 10-19 | .526 | 13 | 54 | 67 | 4.5 | 30 | 0 | 12 | 11 | 8 | 6 | 137 | 9.1 |
| 05 | HARRIS, Chris | 14-0 | 298 | 21.3 | 34-92 | .370 | 22-51 | .431 | 28-38 | .737 | 2 | 36 | 38 | 2.7 | 18 | 0 | 34 | 22 | 2 | 9 | 118 | 8.4 |
| 25 | RUSSELL, Nygal | 17-17 | 443 | 26.1 | 49-125 | .392 | 25-73 | .342 | 13-24 | .542 | 26 | 73 | 99 | 5.8 | 46 | 1 | 42 | 23 | 3 | 10 | 136 | 8.0 |
| 11 | NICHOLAS, DQ | 15-2 | 340 | 22.7 | 31-69 | .449 | 14-27 | .519 | 37-51 | .725 | 7 | 46 | 53 | 3.5 | 30 | 0 | 25 | 18 | 0 | 11 | 113 | 7.5 |
| 14 | JOHNSON, Nate | 1-0 | 7 | 7.0 | 2-2 | 1.000 | 0-0 | .000 | 1-2 | .500 | 0 | 0 | 0 | 0.0 | 3 | 0 | 0 | 0 | 0 | 0 | 5 | 5.0 |
| 20 | THOMPSON, Sam | 15-4 | 200 | 13.3 | 28-48 | .583 | 0-1 | .000 | 10-14 | .714 | 13 | 18 | 31 | 2.1 | 37 | 2 | 5 | 22 | 11 | 5 | 66 | 4.4 |
| 02 | THOMPSON, Chase | 12-2 | 165 | 13.8 | 12-27 | .444 | 3-10 | .300 | 12-17 | .706 | 3 | 13 | 16 | 1.3 | 18 | 1 | 9 | 5 | 2 | 6 | 39 | 3.3 |
| 33 | BRANSON, Dylan | 17-17 | 294 | 17.3 | 15-43 | .349 | 5-23 | .217 | 20-28 | .714 | 14 | 33 | 47 | 2.8 | 46 | 1 | 32 | 26 | 4 | 10 | 55 | 3.2 |
| 13 | LONG, Parker | 10-0 | 100 | 10.0 | 6-15 | .400 | 5-11 | .455 | 3-4 | .750 | 3 | 4 | 7 | 0.7 | 4 | 0 | 7 | 2 | 0 | 3 | 20 | 2.0 |
| Team | | | | | | | | | | | 16 | 17 | 33 | | | | | 4 | | | | |
| Total..... | | 17 | 3425 | | 440-993 | .443 | 164-451 | .364 | 281-381 | .738 | 161 | 398 | 559 | 32.9 | 344 | 6 | 260 | 220 | 47 | 103 | 1325 | 77.9 |
| Opponents..... | | 17 | 3425 | | 457-1000 | .457 | 126-372 | .339 | 277-387 | .716 | 171 | 415 | 586 | 34.5 | 340 | - | 219 | 228 | 52 | 113 | 1317 | 77.5 |

| TEAM STATISTICS | SEMO | OPP | Date | Opponent | Score | Att. |
|------------------------|---------|----------|------------|-------------------|-----------|------|
| SCORING | 1325 | 1317 | * 12-30-21 | at Murray St. | L 81-106 | 3630 |
| Points per game | 77.9 | 77.5 | * 01-01-22 | AUSTIN PEAY | W 98-79 | 580 |
| Scoring margin | +0.5 | - | * 01-06-22 | at Belmont | L 62-102 | 278 |
| FIELD GOALS-ATT | 440-993 | 457-1000 | * 01-08-22 | at Tennessee St. | L 84-95 | 269 |
| Field goal pct | .443 | .457 | * 01-20-22 | TENNESSEE ST. | W 85-63 | 640 |
| 3 POINT FG-ATT | 164-451 | 126-372 | * 01-22-22 | at Eastern Ill. | W 87-58 | 869 |
| 3-point FG pct | .364 | .339 | * 01-27-22 | MOREHEAD ST. | Lot 73-74 | 1325 |
| 3-pt FG made per game | 9.6 | 7.4 | * 01-29-22 | SIUE | W 85-77 | 935 |
| FREE THROWS-ATT | 281-381 | 277-387 | * 02-03-22 | at UT Martin | L 63-84 | 506 |
| Free throw pct | .738 | .716 | * 02-05-22 | EASTERN ILL. | W 63-56 | 924 |
| F-Throws made per game | 16.5 | 16.3 | * 02-07-22 | at SIUE | W 76-47 | 565 |
| REBOUNDS | 559 | 586 | * 02-10-22 | at Austin Peay | L 66-74 | 1253 |
| Rebounds per game | 32.9 | 34.5 | * 02-12-22 | BELMONT | L 72-81 | 1469 |
| Rebounding margin | -1.6 | - | * 02-17-22 | at Tennessee Tech | L 94-98 | 1009 |
| ASSISTS | 260 | 219 | * 02-19-22 | at Morehead State | W 92-84 | 2511 |
| Assists per game | 15.3 | 12.9 | * 02-24-22 | UT MARTIN | W 76-69 | 742 |
| TURNOVERS | 220 | 228 | * 02-26-22 | MURRAY ST. | L 68-70 | 2934 |
| Turnovers per game | 12.9 | 13.4 | | | | |
| Turnover margin | +0.5 | - | | | | |
| Assist/turnover ratio | 1.2 | 1.0 | | | | |
| STEALS | 103 | 113 | | | | |
| Steals per game | 6.1 | 6.6 | | | | |
| BLOCKS | 47 | 52 | | | | |
| Blocks per game | 2.8 | 3.1 | | | | |
| ATTENDANCE | 9549 | 10890 | | | | |
| Home games-Avg/Game | 8-1194 | 9-1210 | | | | |
| Neutral site-Avg/Game | - | 0-0 | | | | |

* = Conference game

! = Incarnate Word Thanksgiving Invitational (San Antonio, Texas)

| Score by Periods | 1st | 2nd | OT | Totals |
|--------------------|-----|-----|----|--------|
| Southeast Missouri | 641 | 675 | 9 | 1325 |
| Opponents | 617 | 690 | 10 | 1317 |



0

Guard

ISRAEL BARNES

R-Sr. // 6-4 // 185 // Wichita, Kan. // Newman University

REDHAWK BASKETBALL

// 2022-23: -

Barnes' Game-by-Game Statistics

| 2022-23 | FG | 3P | FT | O/D | REB | F | PTS | A | TO | B | S | M |
|---------------------|-----|----|----|-----|-----|---|-----|---|----|---|---|---|
| at South Florida | DNP | - | - | - | - | - | - | - | - | - | - | - |
| Lyon College | | | | | | | | | | | | |
| at Evansville | | | | | | | | | | | | |
| at Bradley | | | | | | | | | | | | |
| William Woods | | | | | | | | | | | | |
| vs. Boston | | | | | | | | | | | | |
| vs. UC Davis | | | | | | | | | | | | |
| at Milwaukee | | | | | | | | | | | | |
| at Missouri | | | | | | | | | | | | |
| Purdue Fort Wayne | | | | | | | | | | | | |
| at Arkansas State | | | | | | | | | | | | |
| at Iowa | | | | | | | | | | | | |
| Southern Illinois | | | | | | | | | | | | |
| at Southern Indiana | | | | | | | | | | | | |
| SIU Edwardsville | | | | | | | | | | | | |
| at UT Martin | | | | | | | | | | | | |
| at Little Rock | | | | | | | | | | | | |
| Lindenwood | | | | | | | | | | | | |
| at Morehead State | | | | | | | | | | | | |
| UT Martin | | | | | | | | | | | | |
| Tennessee Tech | | | | | | | | | | | | |
| Tennessee State | | | | | | | | | | | | |
| at Eastern Illinois | | | | | | | | | | | | |
| Little Rock | | | | | | | | | | | | |
| at Tennessee Tech | | | | | | | | | | | | |
| at Tennessee State | | | | | | | | | | | | |
| Morehead State | | | | | | | | | | | | |
| Eastern Illinois | | | | | | | | | | | | |
| Southern Indiana | | | | | | | | | | | | |
| at Lindenwood | | | | | | | | | | | | |
| at SIU Edwardsville | | | | | | | | | | | | |
| Totals | | | | | | | | | | | | |

• - Game Started

2022-23 Season/Career-Highs

| | |
|----------------------------|---|
| Points | - |
| Total Rebounds | - |
| Offensive | - |
| Defensive | - |
| FG Made | - |
| FG Attempted | - |
| 3-Point FG Made | - |
| 3-Point FG Attempted | - |
| FT Made | - |
| FT Attempted | - |
| Assists | - |
| Blocks | - |
| Steals | - |
| Minutes | - |

Barnes' Career Statistics at Southeast Missouri

| | | Overall | | | | | | | | | | | | | | | | |
|---------|------|-----------------------------------|-----|--------|-----|----------|-----|--------|-----|-----|-----|-----|-----|----|----|---|----|-----|
| Season | G-GS | Min | Avg | FG-FGA | Pct | 3FG-3FGA | Pct | FT-FTA | Pct | Off | Def | Tot | Avg | PE | FO | A | TO | Blk |
| 2022-23 | | | | | | | | | | | | | | | | | | |
| | | Ohio Valley Conference Games Only | | | | | | | | | | | | | | | | |
| Season | G-GS | Min | Avg | FG-FGA | Pct | 3FG-3FGA | Pct | FT-FTA | Pct | Off | Def | Tot | Avg | PE | FO | A | TO | Blk |
| 2022-23 | | | | | | | | | | | | | | | | | | |



2022-23 SOUTHEAST MISSOURI BASKETBALL NOTES

PLAYER PROFILES

33

Guard

DYLAN BRANSON

So. // 6-5 // 220 // St. Louis, Mo. // Mehlville H.S.

REDHAWK BASKETBALL

// 2022-23: Missed the season-opener at South Florida due to an ankle injury...Is expected to return in late November.

Branson's Game-by-Game Statistics

| 2022-23 | FG | 3P | FT | O/D | REB | E | PTS | A | TO | B | S | M |
|---------------------|-----|----|----|-----|-----|---|-----|---|----|---|---|---|
| at South Florida | DNP | - | - | - | - | - | - | - | - | - | - | - |
| Lyon College | | | | | | | | | | | | |
| at Evansville | | | | | | | | | | | | |
| at Bradley | | | | | | | | | | | | |
| William Woods | | | | | | | | | | | | |
| vs. Boston | | | | | | | | | | | | |
| vs. UC Davis | | | | | | | | | | | | |
| at Milwaukee | | | | | | | | | | | | |
| at Missouri | | | | | | | | | | | | |
| Purdue Fort Wayne | | | | | | | | | | | | |
| at Arkansas State | | | | | | | | | | | | |
| at Iowa | | | | | | | | | | | | |
| Southern Illinois | | | | | | | | | | | | |
| at Southern Indiana | | | | | | | | | | | | |
| SIU Edwardsville | | | | | | | | | | | | |
| at UT Martin | | | | | | | | | | | | |
| at Little Rock | | | | | | | | | | | | |
| Lindenwood | | | | | | | | | | | | |
| at Morehead State | | | | | | | | | | | | |
| UT Martin | | | | | | | | | | | | |
| Tennessee Tech | | | | | | | | | | | | |
| Tennessee State | | | | | | | | | | | | |
| at Eastern Illinois | | | | | | | | | | | | |
| Little Rock | | | | | | | | | | | | |
| at Tennessee Tech | | | | | | | | | | | | |
| at Tennessee State | | | | | | | | | | | | |
| Morehead State | | | | | | | | | | | | |
| Eastern Illinois | | | | | | | | | | | | |
| Southern Indiana | | | | | | | | | | | | |
| at Lindenwood | | | | | | | | | | | | |
| at SIU Edwardsville | | | | | | | | | | | | |
| Totals | | | | | | | | | | | | |

• - Game Started

2022-23 Season-Highs

| | |
|---------------------------|---|
| Points..... | - |
| Total Rebounds..... | - |
| Offensive..... | - |
| Defensive..... | - |
| FG Made..... | - |
| FG Attempted..... | - |
| 3-Point FG Made..... | - |
| 3-Point FG Attempted..... | - |
| FT Made..... | - |
| FT Attempted..... | - |
| Assists..... | - |
| Blocks..... | - |
| Steals..... | - |
| Minutes..... | - |

Career-Highs

| | | |
|---------------------------|----|--|
| Points..... | 12 | at Eastern Illinois (1/22/22) |
| Total Rebounds..... | 6 | 3x, last vs. Tennessee State (3/3/22) |
| Offensive..... | 3 | vs. Eastern Illinois (2/5/22) |
| Defensive..... | 5 | 3x, last at Murray State (12/30/21) |
| FG Made..... | 5 | at Eastern Illinois (1/22/22) |
| FG Attempted..... | 8 | at Eastern Illinois (1/22/22) |
| 3-Point FG Made..... | 2 | 3x, last at Eastern Illinois (1/22/22) |
| 3-Point FG Attempted..... | 4 | 2x, last at Eastern Illinois (1/22/22) |
| FT Made..... | 4 | vs. Austin Peay (1/1/22) |
| FT Attempted..... | 6 | vs. Austin Peay (1/1/22) |
| Assists..... | 6 | vs. Austin Peay (1/1/22) |
| Blocks..... | 1 | 7x, last vs. UT Martin (2/24/22) |
| Steals..... | 2 | 3x, last at Austin Peay (2/10/22) |
| Minutes..... | 30 | at Pepperdine (12/18/21) |

Branson's Career Statistics at Southeast Missouri

| Season | G-GS | Min | Avg | FG-FGA | Pct | 3FG-3FGA | Pct | FT-FTA | Pct | Off | Def | Tot | Avg | PF | FO | A | TO | Blk | Stl | Pts | Avg |
|-----------------------------------|-------|-----|------|--------|------|----------|------|--------|-------|-----|-----|-----|-----|-----|----|----|----|-----|-----|-----|-----|
| | | | | | | | | | | | | | | | | | | | | | |
| 2020-21 | 27-2 | 426 | 15.8 | 27-52 | .519 | 14-27 | .519 | 14-15 | .933 | 20 | 45 | 65 | 2.4 | 54 | 2 | 34 | 40 | 4 | 8 | 82 | 3.0 |
| 2021-22 | 32-25 | 566 | 17.7 | 29-79 | .367 | 10-41 | .244 | 20-31 | .645 | 20 | 70 | 90 | 2.8 | 76 | 2 | 50 | 46 | 7 | 16 | 88 | 2.8 |
| 2022-23 | | | | | | | | | | | | | | | | | | | | | |
| Totals | 59-27 | 992 | 16.8 | 56-131 | .427 | 24-68 | .353 | 34-46 | .739 | 40 | 115 | 155 | 2.6 | 130 | 4 | 84 | 86 | 11 | 24 | 170 | 2.9 |
| Ohio Valley Conference Games Only | | | | | | | | | | | | | | | | | | | | | |
| Season | G-GS | Min | Avg | FG-FGA | Pct | 3FG-3FGA | Pct | FT-FTA | Pct | Off | Def | Tot | Avg | PF | FO | A | TO | Blk | Stl | Pts | Avg |
| 2020-21 | 20-2 | 346 | 17.3 | 21-43 | .488 | 10-21 | .476 | 11-11 | 1.000 | 18 | 38 | 56 | 2.8 | 41 | 2 | 26 | 31 | 4 | 7 | 63 | 3.2 |
| 2021-22 | 17-17 | 294 | 17.3 | 15-43 | .349 | 5-23 | .217 | 20-28 | .714 | 14 | 33 | 47 | 2.8 | 46 | 1 | 32 | 26 | 4 | 10 | 55 | 3.2 |
| 2022-23 | | | | | | | | | | | | | | | | | | | | | |
| Totals | 37-19 | 640 | 17.3 | 36-86 | .419 | 15-44 | .341 | 31-39 | .795 | 32 | 71 | 103 | 2.8 | 87 | 3 | 58 | 57 | 8 | 17 | 118 | 3.2 |





24

Forward

KOBÉ CLARK

So. // 6-6 // 180 // St Louis, Mo. // Georgetown





REDHAWK BASKETBALL

// 2022-23: Scored eight points and grabbed eight rebounds in first career start at South Florida (11/7)...Shot 4-of-5 from the field and dished out three assists in 30 minutes against the Bulls.

Clark's Game-by-Game Statistics

| 2022-23 | FG | 3P | FT | O/D | REB | F | PTS | A | TO | B | S | M |
|---------------------|-----|-----|-----|-----|-----|---|-----|---|----|---|---|----|
| at South Florida* | 4-5 | 0-1 | 0-0 | 4/4 | 8 | 3 | 8 | 3 | 3 | 0 | 0 | 30 |
| Lyon College | | | | | | | | | | | | |
| at Evansville | | | | | | | | | | | | |
| at Bradley | | | | | | | | | | | | |
| William Woods | | | | | | | | | | | | |
| vs. Boston | | | | | | | | | | | | |
| vs. UC Davis | | | | | | | | | | | | |
| at Milwaukee | | | | | | | | | | | | |
| at Missouri | | | | | | | | | | | | |
| Purdue Fort Wayne | | | | | | | | | | | | |
| at Arkansas State | | | | | | | | | | | | |
| at Iowa | | | | | | | | | | | | |
| Southern Illinois | | | | | | | | | | | | |
| at Southern Indiana | | | | | | | | | | | | |
| SIU Edwardsville | | | | | | | | | | | | |
| at UT Martin | | | | | | | | | | | | |
| at Little Rock | | | | | | | | | | | | |
| Lindenwood | | | | | | | | | | | | |
| at Morehead State | | | | | | | | | | | | |
| UT Martin | | | | | | | | | | | | |
| Tennessee Tech | | | | | | | | | | | | |
| Tennessee State | | | | | | | | | | | | |
| at Eastern Illinois | | | | | | | | | | | | |
| Little Rock | | | | | | | | | | | | |
| at Tennessee Tech | | | | | | | | | | | | |
| at Tennessee State | | | | | | | | | | | | |
| Morehead State | | | | | | | | | | | | |
| Eastern Illinois | | | | | | | | | | | | |
| Southern Indiana | | | | | | | | | | | | |
| at Lindenwood | | | | | | | | | | | | |
| at SIU Edwardsville | | | | | | | | | | | | |
| Totals | 4-5 | 0-1 | 0-0 | 4/4 | 8 | 3 | 8 | 3 | 3 | 0 | 0 | 30 |

• - Game Started

2022-23 Season/Career-Highs

| | | |
|----------------------------|----|----------------------------|
| Points | 8 | at South Florida (11/7/22) |
| Total Rebounds | 8 | at South Florida (11/7/22) |
| Offensive | 4 | at South Florida (11/7/22) |
| Defensive | 4 | at South Florida (11/7/22) |
| FG Made | 4 | at South Florida (11/7/22) |
| FG Attempted | 5 | at South Florida (11/7/22) |
| 3-Point FG Made | - | - |
| 3-Point FG Attempted | 1 | at South Florida (11/7/22) |
| FT Made | - | - |
| FT Attempted | - | - |
| Assists | 3 | at South Florida (11/7/22) |
| Blocks | - | - |
| Steals | - | - |
| Minutes | 30 | at South Florida (11/7/22) |

Clark's Career Statistics at Southeast Missouri

| Overall | | | | | | | | | | | | | | | | | | | |
|-----------------------------------|------|-----|------|--------|------|----------|------|--------|------|-----|-----|-----|-----|----|----|---|----|-----|-----|
| Season | G-GS | Min | Avg | FG-FGA | Pct | 3FG-3FGA | Pct | FT-FTA | Pct | Off | Def | Tot | Avg | PF | FO | A | TO | Blk | Stl |
| 2022-23 | 1-1 | 30 | 30.0 | 4-5 | .800 | 0-1 | .000 | 0-0 | .000 | 4 | 4 | 8 | 8.0 | 3 | 0 | 3 | 3 | 0 | 0 |
| Ohio Valley Conference Games Only | | | | | | | | | | | | | | | | | | | |
| Season | G-GS | Min | Avg | FG-FGA | Pct | 3FG-3FGA | Pct | FT-FTA | Pct | Off | Def | Tot | Avg | PF | FO | A | TO | Blk | Stl |
| 2022-23 | | | | | | | | | | | | | | | | | | | |



2022-23 SOUTHEAST MISSOURI BASKETBALL NOTES

PLAYER PROFILES

21

Forward

JOSH EARLEY

Jr. // 6-7 // 242 // Shawnee Mission, Kan. // Tulsa

REDHAWK BASKETBALL

// 2022-23: Came off the bench to score nine points and pull down eight rebounds in his first career game with Southeast Missouri at South Florida (11/7)...Shot 5-of-10 free throws and contributed 20 minutes in that contest.

Earley's Game-by-Game Statistics

| 2022-23 | FG | 3P | FT | O/D | REB | F | PTS | A | TO | B | S | M |
|---------------------|-----|-----|------|-----|-----|---|-----|---|----|---|---|----|
| at South Florida | 2-6 | 0-0 | 5-10 | 1/7 | 8 | 1 | 9 | 0 | 2 | 1 | 0 | 20 |
| Lyon College | | | | | | | | | | | | |
| at Evansville | | | | | | | | | | | | |
| at Bradley | | | | | | | | | | | | |
| William Woods | | | | | | | | | | | | |
| vs. Boston | | | | | | | | | | | | |
| vs. UC Davis | | | | | | | | | | | | |
| at Milwaukee | | | | | | | | | | | | |
| at Missouri | | | | | | | | | | | | |
| Purdue Fort Wayne | | | | | | | | | | | | |
| at Arkansas State | | | | | | | | | | | | |
| at Iowa | | | | | | | | | | | | |
| Southern Illinois | | | | | | | | | | | | |
| at Southern Indiana | | | | | | | | | | | | |
| SIU Edwardsville | | | | | | | | | | | | |
| at UT Martin | | | | | | | | | | | | |
| at Little Rock | | | | | | | | | | | | |
| Lindenwood | | | | | | | | | | | | |
| at Morehead State | | | | | | | | | | | | |
| UT Martin | | | | | | | | | | | | |
| Tennessee Tech | | | | | | | | | | | | |
| Tennessee State | | | | | | | | | | | | |
| at Eastern Illinois | | | | | | | | | | | | |
| Little Rock | | | | | | | | | | | | |
| at Tennessee Tech | | | | | | | | | | | | |
| at Tennessee State | | | | | | | | | | | | |
| Morehead State | | | | | | | | | | | | |
| Eastern Illinois | | | | | | | | | | | | |
| Southern Indiana | | | | | | | | | | | | |
| at Lindenwood | | | | | | | | | | | | |
| at SIU Edwardsville | | | | | | | | | | | | |
| Totals | 2-6 | 0-0 | 5-10 | 1/7 | 8 | 1 | 9 | 0 | 2 | 1 | 0 | 20 |

• - Game Started

2022-23 Season/Career-Highs

| | | |
|----------------------------|----|----------------------------|
| Points | 9 | at South Florida (11/7/22) |
| Total Rebounds | 8 | at South Florida (11/7/22) |
| Offensive | 1 | at South Florida (11/7/22) |
| Defensive | 7 | at South Florida (11/7/22) |
| FG Made | 2 | at South Florida (11/7/22) |
| FG Attempted | 6 | at South Florida (11/7/22) |
| 3-Point FG Made | - | - |
| 3-Point FG Attempted | - | - |
| FT Made | 5 | at South Florida (11/7/22) |
| FT Attempted | 10 | at South Florida (11/7/22) |
| Assists | - | - |
| Blocks | 1 | at South Florida (11/7/22) |
| Steals | - | - |
| Minutes | 20 | at South Florida (11/7/22) |

Earley's Career Statistics at Southeast Missouri

| Overall | | | | | | | | | | | | | | | | | |
|-----------------------------------|------|-----|------|--------|------|----------|------|--------|------|-----|-----|-----|-----|----|----|---|----|
| Season | G-GS | Min | Avg | FG-FGA | Pct | 3FG-3FGA | Pct | FT-FTA | Pct | Off | Def | Tot | Avg | PF | FO | A | TO |
| 2022-23 | 1-0 | 24 | 24.0 | 1-3 | .333 | 1-2 | .500 | 0-0 | .000 | 2 | 2 | 4 | 4.0 | 3 | 0 | 0 | 0 |
| Ohio Valley Conference Games Only | | | | | | | | | | | | | | | | | |
| Season | G-GS | Min | Avg | FG-FGA | Pct | 3FG-3FGA | Pct | FT-FTA | Pct | Off | Def | Tot | Avg | PF | FO | A | TO |
| 2022-23 | | | | | | | | | | | | | | | | | |





22

Guard

GAVYN ELKAMIL

So. // 6-5 // 190 // Pittsburg, Kan. // Tulsa





REDHAWK BASKETBALL

// 2022-23: Will miss the entire season due to a shoulder injury.

Elkamil's Game-by-Game Statistics

| 2022-23 | FG | 3P | FT | O/D | REB | F | PTS | A | TO | B | S | M |
|---------------------|-----|----|----|-----|-----|---|-----|---|----|---|---|---|
| at South Florida | DNP | - | - | - | - | - | - | - | - | - | - | - |
| Lyon College | | | | | | | | | | | | |
| at Evansville | | | | | | | | | | | | |
| at Bradley | | | | | | | | | | | | |
| William Woods | | | | | | | | | | | | |
| vs. Boston | | | | | | | | | | | | |
| vs. UC Davis | | | | | | | | | | | | |
| at Milwaukee | | | | | | | | | | | | |
| at Missouri | | | | | | | | | | | | |
| Purdue Fort Wayne | | | | | | | | | | | | |
| at Arkansas State | | | | | | | | | | | | |
| at Iowa | | | | | | | | | | | | |
| Southern Illinois | | | | | | | | | | | | |
| at Southern Indiana | | | | | | | | | | | | |
| SIU Edwardsville | | | | | | | | | | | | |
| at UT Martin | | | | | | | | | | | | |
| at Little Rock | | | | | | | | | | | | |
| Lindenwood | | | | | | | | | | | | |
| at Morehead State | | | | | | | | | | | | |
| UT Martin | | | | | | | | | | | | |
| Tennessee Tech | | | | | | | | | | | | |
| Tennessee State | | | | | | | | | | | | |
| at Eastern Illinois | | | | | | | | | | | | |
| Little Rock | | | | | | | | | | | | |
| at Tennessee Tech | | | | | | | | | | | | |
| at Tennessee State | | | | | | | | | | | | |
| Morehead State | | | | | | | | | | | | |
| Eastern Illinois | | | | | | | | | | | | |
| Southern Indiana | | | | | | | | | | | | |
| at Lindenwood | | | | | | | | | | | | |
| at SIU Edwardsville | | | | | | | | | | | | |
| Totals | | | | | | | | | | | | |

• - Game Started

2022-23 Season/Career-Highs

| | |
|----------------------------|---|
| Points | - |
| Total Rebounds | - |
| Offensive | - |
| Defensive | - |
| FG Made | - |
| FG Attempted | - |
| 3-Point FG Made | - |
| 3-Point FG Attempted | - |
| FT Made | - |
| FT Attempted | - |
| Assists | - |
| Blocks | - |
| Steals | - |
| Minutes | - |

Elkamil's Career Statistics at Southeast Missouri

| | | Overall | | | | | | | | | | | | | | | | | |
|---------|------|-----------------------------------|-----|--------|-----|----------|-----|--------|-----|-----|-----|-----|-----|----|----|---|----|-----|-----|
| Season | G-GS | Min | Avg | FG-FGA | Pct | 3FG-3FGA | Pct | FT-FTA | Pct | Off | Def | Tot | Avg | PE | FO | A | TO | Blk | Stl |
| 2022-23 | | | | | | | | | | | | | | | | | | | |
| | | Ohio Valley Conference Games Only | | | | | | | | | | | | | | | | | |
| Season | G-GS | Min | Avg | FG-FGA | Pct | 3FG-3FGA | Pct | FT-FTA | Pct | Off | Def | Tot | Avg | PE | FO | A | TO | Blk | Stl |
| 2022-23 | | | | | | | | | | | | | | | | | | | |



2022-23 SOUTHEAST MISSOURI BASKETBALL NOTES

PLAYER PROFILES

11

Guard

EVAN EURSHER

Fr. // 6-2 // 177 // Hendersonville, Tenn. // The Webb School

REDHAWK BASKETBALL

// 2022-23: -

Eursher's Game-by-Game Statistics

| 2022-23 | FG | 3P | FT | O/D | REB | F | PTS | A | TO | B | S | M |
|---------------------|-----|----|----|-----|-----|---|-----|---|----|---|---|---|
| at South Florida | DNP | - | - | - | - | - | - | - | - | - | - | - |
| Lyon College | | | | | | | | | | | | |
| at Evansville | | | | | | | | | | | | |
| at Bradley | | | | | | | | | | | | |
| William Woods | | | | | | | | | | | | |
| vs. Boston | | | | | | | | | | | | |
| vs. UC Davis | | | | | | | | | | | | |
| at Milwaukee | | | | | | | | | | | | |
| at Missouri | | | | | | | | | | | | |
| Purdue Fort Wayne | | | | | | | | | | | | |
| at Arkansas State | | | | | | | | | | | | |
| at Iowa | | | | | | | | | | | | |
| Southern Illinois | | | | | | | | | | | | |
| at Southern Indiana | | | | | | | | | | | | |
| SIU Edwardsville | | | | | | | | | | | | |
| at UT Martin | | | | | | | | | | | | |
| at Little Rock | | | | | | | | | | | | |
| Lindenwood | | | | | | | | | | | | |
| at Morehead State | | | | | | | | | | | | |
| UT Martin | | | | | | | | | | | | |
| Tennessee Tech | | | | | | | | | | | | |
| Tennessee State | | | | | | | | | | | | |
| at Eastern Illinois | | | | | | | | | | | | |
| Little Rock | | | | | | | | | | | | |
| at Tennessee Tech | | | | | | | | | | | | |
| at Tennessee State | | | | | | | | | | | | |
| Morehead State | | | | | | | | | | | | |
| Eastern Illinois | | | | | | | | | | | | |
| Southern Indiana | | | | | | | | | | | | |
| at Lindenwood | | | | | | | | | | | | |
| at SIU Edwardsville | | | | | | | | | | | | |
| Totals | | | | | | | | | | | | |

• - Game Started

2022-23 Season/Career-Highs

| | |
|----------------------------|---|
| Points | - |
| Total Rebounds | - |
| Offensive | - |
| Defensive | - |
| FG Made | - |
| FG Attempted | - |
| 3-Point FG Made | - |
| 3-Point FG Attempted | - |
| FT Made | - |
| FT Attempted | - |
| Assists | - |
| Blocks | - |
| Steals | - |
| Minutes | - |

Eursher's Career Statistics at Southeast Missouri

| Season | G-GS | Min | Avg | FG-FGA | Pct | 3FG-3FGA | Pct | FT-FTA | Pct | Off | Def | Tot | Avg | PF | FO | A | TO | Blk | Stl | Pts | Avg |
|-----------------------------------|------|-----|-----|--------|-----|----------|-----|--------|-----|-----|-----|-----|-----|----|----|---|----|-----|-----|-----|-----|
| | | | | | | | | | | | | | | | | | | | | | |
| 2022-23 | | | | | | | | | | | | | | | | | | | | | |
| Overall | | | | | | | | | | | | | | | | | | | | | |
| Season | G-GS | Min | Avg | FG-FGA | Pct | 3FG-3FGA | Pct | FT-FTA | Pct | Off | Def | Tot | Avg | PF | FO | A | TO | Blk | Stl | Pts | Avg |
| | | | | | | | | | | | | | | | | | | | | | |
| 2022-23 | | | | | | | | | | | | | | | | | | | | | |
| Ohio Valley Conference Games Only | | | | | | | | | | | | | | | | | | | | | |





12

Guard

TEVIN GOWINS

Fr. // 5-9 // 167 // Florissant, Mo. // Hazelwood Central H.S.




REDHAWK BASKETBALL

// 2022-23: Scored his first career points on a 3-pointer and had four rebounds in 24 minutes off the bench at South Florida (11/7).

Gowins' Game-by-Game Statistics

| 2022-23 | FG | 3P | FT | O/D | REB | F | PTS | A | TO | B | S | M |
|---------------------|-----|-----|-----|-----|-----|---|-----|---|----|---|---|----|
| at South Florida | 1-3 | 1-2 | 0-0 | 2/2 | 4 | 3 | 3 | 0 | 0 | 0 | 0 | 24 |
| Lyon College | | | | | | | | | | | | |
| at Evansville | | | | | | | | | | | | |
| at Bradley | | | | | | | | | | | | |
| William Woods | | | | | | | | | | | | |
| vs. Boston | | | | | | | | | | | | |
| vs. UC Davis | | | | | | | | | | | | |
| at Milwaukee | | | | | | | | | | | | |
| at Missouri | | | | | | | | | | | | |
| Purdue Fort Wayne | | | | | | | | | | | | |
| at Arkansas State | | | | | | | | | | | | |
| at Iowa | | | | | | | | | | | | |
| Southern Illinois | | | | | | | | | | | | |
| at Southern Indiana | | | | | | | | | | | | |
| SIU Edwardsville | | | | | | | | | | | | |
| at UT Martin | | | | | | | | | | | | |
| at Little Rock | | | | | | | | | | | | |
| Lindenwood | | | | | | | | | | | | |
| at Morehead State | | | | | | | | | | | | |
| UT Martin | | | | | | | | | | | | |
| Tennessee Tech | | | | | | | | | | | | |
| Tennessee State | | | | | | | | | | | | |
| at Eastern Illinois | | | | | | | | | | | | |
| Little Rock | | | | | | | | | | | | |
| at Tennessee Tech | | | | | | | | | | | | |
| at Tennessee State | | | | | | | | | | | | |
| Morehead State | | | | | | | | | | | | |
| Eastern Illinois | | | | | | | | | | | | |
| Southern Indiana | | | | | | | | | | | | |
| at Lindenwood | | | | | | | | | | | | |
| at SIU Edwardsville | | | | | | | | | | | | |
| Totals | 1-3 | 1-2 | 0-0 | 2/2 | 4 | 3 | 3 | 0 | 0 | 0 | 0 | 24 |

• - Game Started

2022-23 Season/Career-Highs

| | | |
|----------------------------|----|----------------------------|
| Points | 3 | at South Florida (11/7/22) |
| Total Rebounds | 4 | at South Florida (11/7/22) |
| Offensive | 2 | at South Florida (11/7/22) |
| Defensive | 2 | at South Florida (11/7/22) |
| FG Made | 1 | at South Florida (11/7/22) |
| FG Attempted | 3 | at South Florida (11/7/22) |
| 3-Point FG Made | 1 | at South Florida (11/7/22) |
| 3-Point FG Attempted | 2 | at South Florida (11/7/22) |
| FT Made | - | - |
| FT Attempted | - | - |
| Assists | - | - |
| Blocks | - | - |
| Steals | - | - |
| Minutes | 24 | at South Florida (11/7/22) |

Gowins' Career Statistics at Southeast Missouri

| Overall | | | | | | | | | | | | | | | | | | | |
|-----------------------------------|------|-----|------|--------|------|----------|------|--------|------|-----|-----|-----|-----|----|----|---|----|-----|-----|
| Season | G-GS | Min | Avg | FG-FGA | Pct | 3FG-3FGA | Pct | FT-FTA | Pct | Off | Def | Tot | Avg | PE | FO | A | TO | Blk | Stl |
| 2022-23 | 1-0 | 24 | 24.0 | 1-3 | .333 | 1-2 | .500 | 0-0 | .000 | 2 | 2 | 4 | 4.0 | 3 | 0 | 0 | 0 | 0 | 3 |
| Ohio Valley Conference Games Only | | | | | | | | | | | | | | | | | | | |
| Season | G-GS | Min | Avg | FG-FGA | Pct | 3FG-3FGA | Pct | FT-FTA | Pct | Off | Def | Tot | Avg | PE | FO | A | TO | Blk | Stl |
| 2022-23 | | | | | | | | | | | | | | | | | | | |



2022-23 SOUTHEAST MISSOURI BASKETBALL NOTES

PLAYER PROFILES



35 **Center**
MASON
HANBACK

Fr. // 7-0 // 245 // Jackson, Tenn. // Tennessee Prep



REDHAWK BASKETBALL

// 2022-23: -

Hanback's Game-by-Game Statistics

| 2022-23 | FG | 3P | FT | O/D | REB | F | PTS | A | TO | B | S | M |
|---------------------|-----|----|----|-----|-----|---|-----|---|----|---|---|---|
| at South Florida | DNP | - | - | - | - | - | - | - | - | - | - | - |
| Lyon College | | | | | | | | | | | | |
| at Evansville | | | | | | | | | | | | |
| at Bradley | | | | | | | | | | | | |
| William Woods | | | | | | | | | | | | |
| vs. Boston | | | | | | | | | | | | |
| vs. UC Davis | | | | | | | | | | | | |
| at Milwaukee | | | | | | | | | | | | |
| at Missouri | | | | | | | | | | | | |
| Purdue Fort Wayne | | | | | | | | | | | | |
| at Arkansas State | | | | | | | | | | | | |
| at Iowa | | | | | | | | | | | | |
| Southern Illinois | | | | | | | | | | | | |
| at Southern Indiana | | | | | | | | | | | | |
| SIU Edwardsville | | | | | | | | | | | | |
| at UT Martin | | | | | | | | | | | | |
| at Little Rock | | | | | | | | | | | | |
| Lindenwood | | | | | | | | | | | | |
| at Morehead State | | | | | | | | | | | | |
| UT Martin | | | | | | | | | | | | |
| Tennessee Tech | | | | | | | | | | | | |
| Tennessee State | | | | | | | | | | | | |
| at Eastern Illinois | | | | | | | | | | | | |
| Little Rock | | | | | | | | | | | | |
| at Tennessee Tech | | | | | | | | | | | | |
| at Tennessee State | | | | | | | | | | | | |
| Morehead State | | | | | | | | | | | | |
| Eastern Illinois | | | | | | | | | | | | |
| Southern Indiana | | | | | | | | | | | | |
| at Lindenwood | | | | | | | | | | | | |
| at SIU Edwardsville | | | | | | | | | | | | |
| Totals | | | | | | | | | | | | |

• - Game Started

2022-23 Season/Career-Highs

| | |
|----------------------------|---|
| Points | - |
| Total Rebounds | - |
| Offensive | - |
| Defensive | - |
| FG Made | - |
| FG Attempted | - |
| 3-Point FG Made | - |
| 3-Point FG Attempted | - |
| FT Made | - |
| FT Attempted | - |
| Assists | - |
| Blocks | - |
| Steals | - |
| Minutes | - |

Hanback's Career Statistics at Southeast Missouri

| | | Overall | | | | | | | | | | | | | | | | | | | |
|---------|------|-----------------------------------|-----|--------|-----|----------|-----|--------|-----|-----|-----|-----|-----|----|----|---|----|-----|-----|-----|-----|
| Season | G-GS | Min | Avg | FG-FGA | Pct | 3FG-3FGA | Pct | FT-FTA | Pct | Off | Def | Tot | Avg | PF | FO | A | TO | Blk | Stl | Pts | Avg |
| 2022-23 | | | | | | | | | | | | | | | | | | | | | |
| | | Ohio Valley Conference Games Only | | | | | | | | | | | | | | | | | | | |
| Season | G-GS | Min | Avg | FG-FGA | Pct | 3FG-3FGA | Pct | FT-FTA | Pct | Off | Def | Tot | Avg | PF | FO | A | TO | Blk | Stl | Pts | Avg |
| 2022-23 | | | | | | | | | | | | | | | | | | | | | |





5

Guard

CHRIS HARRIS

R-Sr. // 6-3 // 205 // Antioch, Ill. // John A. Logan College





REDHAWK BASKETBALL

2022-23 Preseason All-Ohio Valley Conference selection.

// 2022-23: Led Southeast Missouri with 16 points in its season-opening win at South Florida (11/7)...Made a near-perfect 6-of-7 free throws and logged 38 minutes against the Bulls.

Harris' Game-by-Game Statistics

| 2022-23 | FG | 3P | FT | O/D | REB | F | PTS | A | TO | B | S | M |
|---------------------|------|-----|-----|-----|-----|---|-----|---|----|---|---|----|
| at South Florida* | 4-16 | 2-7 | 6-7 | 1/5 | 6 | 3 | 16 | 2 | 4 | 0 | 1 | 38 |
| Lyon College | | | | | | | | | | | | |
| at Evansville | | | | | | | | | | | | |
| at Bradley | | | | | | | | | | | | |
| William Woods | | | | | | | | | | | | |
| vs. Boston | | | | | | | | | | | | |
| vs. UC Davis | | | | | | | | | | | | |
| at Milwaukee | | | | | | | | | | | | |
| at Missouri | | | | | | | | | | | | |
| Purdue Fort Wayne | | | | | | | | | | | | |
| at Arkansas State | | | | | | | | | | | | |
| at Iowa | | | | | | | | | | | | |
| Southern Illinois | | | | | | | | | | | | |
| at Southern Indiana | | | | | | | | | | | | |
| SIU Edwardsville | | | | | | | | | | | | |
| at UT Martin | | | | | | | | | | | | |
| at Little Rock | | | | | | | | | | | | |
| Lindenwood | | | | | | | | | | | | |
| at Morehead State | | | | | | | | | | | | |
| UT Martin | | | | | | | | | | | | |
| Tennessee Tech | | | | | | | | | | | | |
| Tennessee State | | | | | | | | | | | | |
| at Eastern Illinois | | | | | | | | | | | | |
| Little Rock | | | | | | | | | | | | |
| at Tennessee Tech | | | | | | | | | | | | |
| at Tennessee State | | | | | | | | | | | | |
| Morehead State | | | | | | | | | | | | |
| Eastern Illinois | | | | | | | | | | | | |
| Southern Indiana | | | | | | | | | | | | |
| at Lindenwood | | | | | | | | | | | | |
| at SIU Edwardsville | | | | | | | | | | | | |
| Totals | 4-16 | 2-7 | 6-7 | 1/5 | 6 | 3 | 16 | 2 | 4 | 0 | 1 | 38 |

• - Game Started

2022-23 Season-Highs

| | | |
|---------------------------|----|----------------------------|
| Points..... | 16 | at South Florida (11/7/22) |
| Total Rebounds..... | 6 | at South Florida (11/7/22) |
| Offensive..... | 1 | at South Florida (11/7/22) |
| Defensive..... | 5 | at South Florida (11/7/22) |
| FG Made..... | 4 | at South Florida (11/7/22) |
| FG Attempted..... | 16 | at South Florida (11/7/22) |
| 3-Point FG Made..... | 2 | at South Florida (11/7/22) |
| 3-Point FG Attempted..... | 7 | at South Florida (11/7/22) |
| FT Made..... | 6 | at South Florida (11/7/22) |
| FT Attempted..... | 7 | at South Florida (11/7/22) |
| Assists..... | 2 | at South Florida (11/7/22) |
| Blocks..... | - | - |
| Steals..... | 1 | at South Florida (11/7/22) |
| Minutes..... | 38 | at South Florida (11/7/22) |

Career-Highs

| | | |
|---------------------------|----|---------------------------------------|
| Points..... | 23 | vs. UT Martin (12/18/20) |
| Total Rebounds..... | 8 | vs. UT Martin (2/24/22) |
| Offensive..... | 2 | at SIU Edwardsville (2/27/21) |
| Defensive..... | 8 | vs. UT Martin (2/24/22) |
| FG Made..... | 9 | vs. Morehead State (1/27/22) |
| FG Attempted..... | 18 | vs. Tennessee State (1/2/21) |
| 3-Point FG Made..... | 4 | 4x, last vs. Morehead State (1/27/22) |
| 3-Point FG Attempted..... | 10 | vs. Tennessee State (1/2/21) |
| FT Made..... | 10 | vs. Tennessee State (1/19/21) |
| FT Attempted..... | 14 | vs. SIU Edwardsville (1/29/22) |
| Assists..... | 9 | at Eastern Illinois (2/25/21) |
| Blocks..... | 2 | 2x, last vs. Webster (12/4/21) |
| Steals..... | 4 | vs. Eastern Kentucky (2/22/21) |
| Minutes..... | 43 | vs. Tennessee State (1/2/21) |

Harris' Career Statistics at Southeast Missouri

| Season | G-GS | Min | Avg | FG-FGA | Pct | 3FG-3FGA | Pct | FT-FTA | Pct | Off | Def | Tot | Avg | PE | FO | A | TO | Blk | Stl | Pts | Avg |
|-----------------------------------|-------|------|------|---------|------|----------|------|---------|------|-----|-----|-----|-----|-----|----|-----|-----|-----|-----|-----|------|
| | | | | | | | | | | | | | | | | | | | | | |
| 2019-20 | 2-0 | 54 | 27.0 | 9-15 | .600 | 5-7 | .714 | 8-10 | .800 | 0 | 6 | 6 | 3.0 | 5 | 0 | 2 | 5 | 1 | 0 | 31 | 15.5 |
| 2020-21 | 26-26 | 786 | 30.2 | 93-262 | .355 | 38-134 | .284 | 97-132 | .735 | 7 | 53 | 60 | 2.3 | 50 | 1 | 88 | 64 | 2 | 25 | 321 | 12.3 |
| 2021-22 | 29-6 | 698 | 24.1 | 83-219 | .379 | 35-101 | .347 | 71-93 | .763 | 4 | 79 | 83 | 2.9 | 45 | 0 | 76 | 61 | 4 | 20 | 272 | 9.4 |
| 2022-23 | 1-1 | 38 | 38.0 | 4-16 | .250 | 2-7 | .286 | 6-7 | .857 | 1 | 5 | 6 | 6.0 | 3 | 0 | 2 | 4 | 0 | 1 | 16 | 16.0 |
| Totals | 58-33 | 1576 | 27.2 | 189-512 | .369 | 80-249 | .321 | 182-242 | .752 | 12 | 143 | 155 | 2.7 | 103 | 1 | 168 | 134 | 7 | 46 | 640 | 11.0 |
| Ohio Valley Conference Games Only | | | | | | | | | | | | | | | | | | | | | |
| Season | G-GS | Min | Avg | FG-FGA | Pct | 3FG-3FGA | Pct | FT-FTA | Pct | Off | Def | Tot | Avg | PE | FO | A | TO | Blk | Stl | Pts | Avg |
| 2020-21 | 19-19 | 574 | 30.2 | 59-178 | .331 | 25-95 | .263 | 76-96 | .792 | 4 | 41 | 45 | 2.4 | 35 | 0 | 70 | 46 | 2 | 23 | 219 | 11.5 |
| 2021-22 | 14-0 | 298 | 21.3 | 34-92 | .370 | 22-51 | .431 | 28-38 | .737 | 2 | 36 | 38 | 2.7 | 18 | 0 | 34 | 22 | 2 | 9 | 118 | 8.4 |
| 2022-23 | | | | | | | | | | | | | | | | | | | | | |
| Totals | 33-19 | 872 | 26.4 | 93-270 | .344 | 47-146 | .322 | 104-134 | .776 | 6 | 77 | 83 | 2.5 | 53 | 0 | 104 | 68 | 4 | 32 | 337 | 10.2 |



2022-23 SOUTHEAST MISSOURI BASKETBALL NOTES

PLAYER PROFILES

10

Center

DAVID IDADA

Fr. // 7-0 // 250 // Barendrecht, Netherlands // Golden State Prep

REDHAWK BASKETBALL

// 2022-23: -

Idada's Game-by-Game Statistics

| 2022-23 | FG | 3P | FT | O/D | REB | F | PTS | A | TO | B | S | M |
|---------------------|-----|----|----|-----|-----|---|-----|---|----|---|---|---|
| at South Florida | DNP | - | - | - | - | - | - | - | - | - | - | - |
| Lyon College | | | | | | | | | | | | |
| at Evansville | | | | | | | | | | | | |
| at Bradley | | | | | | | | | | | | |
| William Woods | | | | | | | | | | | | |
| vs. Boston | | | | | | | | | | | | |
| vs. UC Davis | | | | | | | | | | | | |
| at Milwaukee | | | | | | | | | | | | |
| at Missouri | | | | | | | | | | | | |
| Purdue Fort Wayne | | | | | | | | | | | | |
| at Arkansas State | | | | | | | | | | | | |
| at Iowa | | | | | | | | | | | | |
| Southern Illinois | | | | | | | | | | | | |
| at Southern Indiana | | | | | | | | | | | | |
| SIU Edwardsville | | | | | | | | | | | | |
| at UT Martin | | | | | | | | | | | | |
| at Little Rock | | | | | | | | | | | | |
| Lindenwood | | | | | | | | | | | | |
| at Morehead State | | | | | | | | | | | | |
| UT Martin | | | | | | | | | | | | |
| Tennessee Tech | | | | | | | | | | | | |
| Tennessee State | | | | | | | | | | | | |
| at Eastern Illinois | | | | | | | | | | | | |
| Little Rock | | | | | | | | | | | | |
| at Tennessee Tech | | | | | | | | | | | | |
| at Tennessee State | | | | | | | | | | | | |
| Morehead State | | | | | | | | | | | | |
| Eastern Illinois | | | | | | | | | | | | |
| Southern Indiana | | | | | | | | | | | | |
| at Lindenwood | | | | | | | | | | | | |
| at SIU Edwardsville | | | | | | | | | | | | |
| Totals | | | | | | | | | | | | |

• - Game Started

2022-23 Season/Career-Highs

| | |
|----------------------------|---|
| Points | - |
| Total Rebounds | - |
| Offensive | - |
| Defensive | - |
| FG Made | - |
| FG Attempted | - |
| 3-Point FG Made | - |
| 3-Point FG Attempted | - |
| FT Made | - |
| FT Attempted | - |
| Assists | - |
| Blocks | - |
| Steals | - |
| Minutes | - |

Idada's Career Statistics at Southeast Missouri

| Season | G-GS | Min | Avg | FG-FGA | Pct | 3FG-3FGA | Pct | FT-FTA | Pct | Off | Def | Tot | Avg | PF | FO | A | TO | Blk | Stl | Pts | Avg |
|-----------------------------------|------|-----|-----|--------|-----|----------|-----|--------|-----|-----|-----|-----|-----|----|----|---|----|-----|-----|-----|-----|
| | | | | | | | | | | | | | | | | | | | | | |
| 2022-23 | | | | | | | | | | | | | | | | | | | | | |
| Overall | | | | | | | | | | | | | | | | | | | | | |
| Season | G-GS | Min | Avg | FG-FGA | Pct | 3FG-3FGA | Pct | FT-FTA | Pct | Off | Def | Tot | Avg | PF | FO | A | TO | Blk | Stl | Pts | Avg |
| 2022-23 | | | | | | | | | | | | | | | | | | | | | |
| Ohio Valley Conference Games Only | | | | | | | | | | | | | | | | | | | | | |
| Season | G-GS | Min | Avg | FG-FGA | Pct | 3FG-3FGA | Pct | FT-FTA | Pct | Off | Def | Tot | Avg | PF | FO | A | TO | Blk | Stl | Pts | Avg |
| 2022-23 | | | | | | | | | | | | | | | | | | | | | |





14

Forward

NATE JOHNSON

Sr. // 6-9 // 250 // Broward County, Fla. // Seminole State College




REDHAWK BASKETBALL

// 2022-23: Finished with three points and one rebound in his first career start at South Florida (11/7)...Played 20 minutes in that game.

Johnson's Game-by-Game Statistics

| 2022-23 | FG | 3P | FT | O/D | REB | F | PTS | A | TO | B | S | M |
|---------------------|-----|-----|-----|-----|-----|---|-----|---|----|---|---|----|
| at South Florida* | 1-3 | 0-0 | 1-2 | 0/1 | 1 | 0 | 3 | 0 | 0 | 0 | 0 | 20 |
| Lyon College | | | | | | | | | | | | |
| at Evansville | | | | | | | | | | | | |
| at Bradley | | | | | | | | | | | | |
| William Woods | | | | | | | | | | | | |
| vs. Boston | | | | | | | | | | | | |
| vs. UC Davis | | | | | | | | | | | | |
| at Milwaukee | | | | | | | | | | | | |
| at Missouri | | | | | | | | | | | | |
| Purdue Fort Wayne | | | | | | | | | | | | |
| at Arkansas State | | | | | | | | | | | | |
| at Iowa | | | | | | | | | | | | |
| Southern Illinois | | | | | | | | | | | | |
| at Southern Indiana | | | | | | | | | | | | |
| SIU Edwardsville | | | | | | | | | | | | |
| at UT Martin | | | | | | | | | | | | |
| at Little Rock | | | | | | | | | | | | |
| Lindenwood | | | | | | | | | | | | |
| at Morehead State | | | | | | | | | | | | |
| UT Martin | | | | | | | | | | | | |
| Tennessee Tech | | | | | | | | | | | | |
| Tennessee State | | | | | | | | | | | | |
| at Eastern Illinois | | | | | | | | | | | | |
| Little Rock | | | | | | | | | | | | |
| at Tennessee Tech | | | | | | | | | | | | |
| at Tennessee State | | | | | | | | | | | | |
| Morehead State | | | | | | | | | | | | |
| Eastern Illinois | | | | | | | | | | | | |
| Southern Indiana | | | | | | | | | | | | |
| at Lindenwood | | | | | | | | | | | | |
| at SIU Edwardsville | | | | | | | | | | | | |
| Totals | 1-3 | 0-0 | 1-2 | 0/1 | 1 | 0 | 3 | 0 | 0 | 0 | 0 | 20 |

• - Game Started

2022-23 Season-Highs

| | | |
|----------------------------|----|----------------------------|
| Points | 3 | at South Florida (11/7/22) |
| Total Rebounds | 1 | at South Florida (11/7/22) |
| Offensive | - | - |
| Defensive | 1 | at South Florida (11/7/22) |
| FG Made | 1 | at South Florida (11/7/22) |
| FG Attempted | 3 | at South Florida (11/7/22) |
| 3-Point FG Made | - | - |
| 3-Point FG Attempted | - | - |
| FT Made | 1 | at South Florida (11/7/22) |
| FT Attempted | 2 | at South Florida (11/7/22) |
| Assists | - | - |
| Blocks | - | - |
| Steals | - | - |
| Minutes | 20 | at South Florida (11/7/22) |

Career-Highs

| | | |
|----------------------------|----|------------------------------------|
| Points | 14 | at Incarnate Word (11/26/21) |
| Total Rebounds | 5 | 2x, last vs. Austin Peay (2/16/21) |
| Offensive | 3 | 4x, last vs. Webster (12/4/21) |
| Defensive | 4 | vs. Austin Peay (2/16/21) |
| FG Made | 7 | at Incarnate Word (11/26/21) |
| FG Attempted | 10 | at Eastern Illinois (2/25/21) |
| 3-Point FG Made | - | - |
| 3-Point FG Attempted | - | - |
| FT Made | 4 | at California Baptist (12/21/21) |
| FT Attempted | 5 | at California Baptist (12/21/21) |
| Assists | 2 | vs. Kansas City (11/28/20) |
| Blocks | 3 | vs. Murray State (2/1/21) |
| Steals | 2 | at Incarnate Word (11/26/21) |
| Minutes | 20 | at South Florida (11/7/22) |

Johnson's Career Statistics at Southeast Missouri

| Season | G-GS | Min | Avg | FG-FGA | Pct | 3FG-3FGA | Pct | FT-FTA | Pct | Off | Def | Tot | Avg | PE | FO | A | TO | Blk | Stl | Pts | Avg |
|-----------------------------------|------|-----|------|--------|-------|----------|------|--------|------|-----|-----|-----|-----|----|----|----|----|-----|-----|-----|-----|
| | | | | | | | | | | | | | | | | | | | | | |
| 2020-21 | 25-0 | 224 | 9.0 | 28-54 | .519 | 0-0 | .000 | 9-22 | .409 | 20 | 32 | 52 | 2.1 | 33 | 0 | 8 | 17 | 10 | 4 | 65 | 2.6 |
| 2021-22 | 11-0 | 111 | 10.1 | 24-35 | .686 | 0-0 | .000 | 6-12 | .500 | 8 | 9 | 17 | 1.5 | 22 | 0 | 2 | 12 | 4 | 3 | 54 | 4.9 |
| 2022-23 | 1-1 | 20 | 20.0 | 1-3 | .333 | 0-0 | .000 | 1-2 | .500 | 0 | 1 | 1 | 1.0 | 0 | 0 | 0 | 0 | 0 | 0 | 3 | 3.0 |
| Totals | 37-1 | 355 | 9.6 | 53-92 | .576 | 0-0 | .000 | 16-36 | .444 | 28 | 42 | 70 | 1.9 | 55 | 0 | 10 | 29 | 14 | 7 | 122 | 3.3 |
| Ohio Valley Conference Games Only | | | | | | | | | | | | | | | | | | | | | |
| Season | G-GS | Min | Avg | FG-FGA | Pct | 3FG-3FGA | Pct | FT-FTA | Pct | Off | Def | Tot | Avg | PE | FO | A | TO | Blk | Stl | Pts | Avg |
| 2020-21 | 18-0 | 149 | 8.3 | 21-41 | .512 | 0-0 | .000 | 7-19 | .368 | 11 | 22 | 33 | 1.8 | 24 | 0 | 3 | 14 | 7 | 4 | 49 | 2.7 |
| 2021-22 | 1-0 | 7 | 7.0 | 2-2 | 1.000 | 0-0 | .000 | 1-2 | .500 | 0 | 0 | 0 | 0.0 | 3 | 0 | 0 | 0 | 0 | 0 | 5 | 5.0 |
| 2022-23 | | | | | | | | | | | | | | | | | | | | | |
| Totals | 19-0 | 156 | 8.2 | 23-43 | .535 | 0-0 | .000 | 8-21 | .381 | 11 | 22 | 33 | 1.7 | 27 | 0 | 3 | 14 | 7 | 4 | 54 | 2.8 |



2022-23 SOUTHEAST MISSOURI BASKETBALL NOTES

PLAYER PROFILES



4 Forward
ADAM LARSON

R-Fr. // 6-9 // 180 // Fennimore, Wis. // Fennimore H.S.



REDHAWK BASKETBALL

// 2022-23: Dropped in a pair of 3-pointers and added four rebounds in 24 minutes off the bench during his first career Division I game at South Florida (11/7).

Larson's Game-by-Game Statistics

| 2022-23 | FG | 3P | FT | O/D | REB | F | PTS | A | TO | B | S | M |
|---------------------|-----|-----|-----|-----|-----|---|-----|---|----|---|---|----|
| at South Florida | 2-4 | 2-4 | 0-0 | 1/3 | 4 | 2 | 6 | 0 | 0 | 1 | 0 | 24 |
| Lyon College | | | | | | | | | | | | |
| at Evansville | | | | | | | | | | | | |
| at Bradley | | | | | | | | | | | | |
| William Woods | | | | | | | | | | | | |
| vs. Boston | | | | | | | | | | | | |
| vs. UC Davis | | | | | | | | | | | | |
| at Milwaukee | | | | | | | | | | | | |
| at Missouri | | | | | | | | | | | | |
| Purdue Fort Wayne | | | | | | | | | | | | |
| at Arkansas State | | | | | | | | | | | | |
| at Iowa | | | | | | | | | | | | |
| Southern Illinois | | | | | | | | | | | | |
| at Southern Indiana | | | | | | | | | | | | |
| SIU Edwardsville | | | | | | | | | | | | |
| at UT Martin | | | | | | | | | | | | |
| at Little Rock | | | | | | | | | | | | |
| Lindenwood | | | | | | | | | | | | |
| at Morehead State | | | | | | | | | | | | |
| UT Martin | | | | | | | | | | | | |
| Tennessee Tech | | | | | | | | | | | | |
| Tennessee State | | | | | | | | | | | | |
| at Eastern Illinois | | | | | | | | | | | | |
| Little Rock | | | | | | | | | | | | |
| at Tennessee Tech | | | | | | | | | | | | |
| at Tennessee State | | | | | | | | | | | | |
| Morehead State | | | | | | | | | | | | |
| Eastern Illinois | | | | | | | | | | | | |
| Southern Indiana | | | | | | | | | | | | |
| at Lindenwood | | | | | | | | | | | | |
| at SIU Edwardsville | | | | | | | | | | | | |
| Totals | 2-4 | 2-4 | 0-0 | 1/3 | 4 | 2 | 6 | 0 | 0 | 1 | 0 | 24 |

• - Game Started

2022-23 Season/Career-Highs

| | | |
|----------------------------|----|----------------------------|
| Points | 6 | at South Florida (11/7/22) |
| Total Rebounds | 4 | at South Florida (11/7/22) |
| Offensive | 1 | at South Florida (11/7/22) |
| Defensive | 3 | at South Florida (11/7/22) |
| FG Made | 2 | at South Florida (11/7/22) |
| FG Attempted | 4 | at South Florida (11/7/22) |
| 3-Point FG Made | 2 | at South Florida (11/7/22) |
| 3-Point FG Attempted | 4 | at South Florida (11/7/22) |
| FT Made | - | - |
| FT Attempted | - | - |
| Assists | - | - |
| Blocks | 1 | at South Florida (11/7/22) |
| Steals | - | - |
| Minutes | 24 | at South Florida (11/7/22) |

Larson's Career Statistics at Southeast Missouri

| Overall | | | | | | | | | | | | | | | | | |
|-----------------------------------|------|------------|------|--------|------|----------|------|--------|------|-----|-----|-----|-----|----|----|---|----|
| Season | G-GS | Min | Avg | FG-FGA | Pct | 3FG-3FGA | Pct | FT-FTA | Pct | Off | Def | Tot | Avg | PF | FO | A | TO |
| 2021-22 | - | Redshirted | - | - | - | - | - | - | - | - | - | - | - | - | - | - | - |
| 2022-23 | 1-0 | 24 | 24.0 | 2-4 | .500 | 2-4 | .500 | 0-0 | .000 | 1 | 3 | 4 | 4.0 | 2 | 0 | 0 | 0 |
| Totals | 1-0 | 24 | 24.0 | 2-4 | .500 | 2-4 | .500 | 0-0 | .000 | 1 | 3 | 4 | 4.0 | 2 | 0 | 0 | 0 |
| Ohio Valley Conference Games Only | | | | | | | | | | | | | | | | | |
| Season | G-GS | Min | Avg | FG-FGA | Pct | 3FG-3FGA | Pct | FT-FTA | Pct | Off | Def | Tot | Avg | PF | FO | A | TO |
| 2021-22 | - | Redshirted | - | - | - | - | - | - | - | - | - | - | - | - | - | - | - |
| 2022-23 | - | - | - | - | - | - | - | - | - | - | - | - | - | - | - | - | - |
| Totals | - | - | - | - | - | - | - | - | - | - | - | - | - | - | - | - | - |



15

Forward

JOSH MITCHELL

So. // 6-8 // 215 // Tupelo, Miss. // Northeast Mississippi CC

REDHAWK BASKETBALL

// 2022-23: -

Mitchell's Game-by-Game Statistics

| 2022-23 | FG | 3P | FT | O/D | REB | F | PTS | A | TO | B | S | M |
|---------------------|-----|----|----|-----|-----|---|-----|---|----|---|---|---|
| at South Florida | DNP | - | - | - | - | - | - | - | - | - | - | - |
| Lyon College | | | | | | | | | | | | |
| at Evansville | | | | | | | | | | | | |
| at Bradley | | | | | | | | | | | | |
| William Woods | | | | | | | | | | | | |
| vs. Boston | | | | | | | | | | | | |
| vs. UC Davis | | | | | | | | | | | | |
| at Milwaukee | | | | | | | | | | | | |
| at Missouri | | | | | | | | | | | | |
| Purdue Fort Wayne | | | | | | | | | | | | |
| at Arkansas State | | | | | | | | | | | | |
| at Iowa | | | | | | | | | | | | |
| Southern Illinois | | | | | | | | | | | | |
| at Southern Indiana | | | | | | | | | | | | |
| SIU Edwardsville | | | | | | | | | | | | |
| at UT Martin | | | | | | | | | | | | |
| at Little Rock | | | | | | | | | | | | |
| Lindenwood | | | | | | | | | | | | |
| at Morehead State | | | | | | | | | | | | |
| UT Martin | | | | | | | | | | | | |
| Tennessee Tech | | | | | | | | | | | | |
| Tennessee State | | | | | | | | | | | | |
| at Eastern Illinois | | | | | | | | | | | | |
| Little Rock | | | | | | | | | | | | |
| at Tennessee Tech | | | | | | | | | | | | |
| at Tennessee State | | | | | | | | | | | | |
| Morehead State | | | | | | | | | | | | |
| Eastern Illinois | | | | | | | | | | | | |
| Southern Indiana | | | | | | | | | | | | |
| at Lindenwood | | | | | | | | | | | | |
| at SIU Edwardsville | | | | | | | | | | | | |
| Totals | | | | | | | | | | | | |

• - Game Started

2022-23 Season/Career-Highs

| | |
|----------------------------|---|
| Points | - |
| Total Rebounds | - |
| Offensive | - |
| Defensive | - |
| FG Made | - |
| FG Attempted | - |
| 3-Point FG Made | - |
| 3-Point FG Attempted | - |
| FT Made | - |
| FT Attempted | - |
| Assists | - |
| Blocks | - |
| Steals | - |
| Minutes | - |

Mitchell's Career Statistics at Southeast Missouri

| | | Overall | | | | | | | | | | | | | | | | | |
|---------|------|-----------------------------------|-----|--------|-----|----------|-----|--------|-----|-----|-----|-----|-----|----|----|---|----|-----|-----|
| Season | G-GS | Min | Avg | FG-FGA | Pct | 3FG-3FGA | Pct | FT-FTA | Pct | Off | Def | Tot | Avg | PE | FO | A | TO | Blk | Stl |
| 2022-23 | | | | | | | | | | | | | | | | | | | |
| | | Ohio Valley Conference Games Only | | | | | | | | | | | | | | | | | |
| Season | G-GS | Min | Avg | FG-FGA | Pct | 3FG-3FGA | Pct | FT-FTA | Pct | Off | Def | Tot | Avg | PE | FO | A | TO | Blk | Stl |
| 2022-23 | | | | | | | | | | | | | | | | | | | |



2022-23 SOUTHEAST MISSOURI BASKETBALL NOTES

PLAYER PROFILES

1

Guard

PHILLIP RUSSELL

So. // 5-10 // 165 // St. Louis, Mo. // Vashon H.S. // Saint Louis University
So. // 5-10 // 265 // St. Louis, Mo. // Saint Louis University

RED HAWK BASKETBALL

2022-23 Preseason All-Ohio Valley Conference selection.

// 2022-23: Notched 11 points and made a huge 3-pointer with 29 seconds left that held up big in the Redhawks season-opening win at South Florida (11/7)...Scored nine of his points from 3-point range.

Russell's Game-by-Game Statistics

| 2022-23 | FG | 3P | FT | O/D | REB | E | PTS | A | TO | B | S | M |
|---------------------|------|-----|-----|-----|-----|---|-----|---|----|---|---|----|
| at South Florida* | 3-11 | 3-9 | 2-3 | 1/1 | 2 | 4 | 11 | 3 | 2 | 0 | 2 | 26 |
| Lyon College | | | | | | | | | | | | |
| at Evansville | | | | | | | | | | | | |
| at Bradley | | | | | | | | | | | | |
| William Woods | | | | | | | | | | | | |
| vs. Boston | | | | | | | | | | | | |
| vs. UC Davis | | | | | | | | | | | | |
| at Milwaukee | | | | | | | | | | | | |
| at Missouri | | | | | | | | | | | | |
| Purdue Fort Wayne | | | | | | | | | | | | |
| at Arkansas State | | | | | | | | | | | | |
| at Iowa | | | | | | | | | | | | |
| Southern Illinois | | | | | | | | | | | | |
| at Southern Indiana | | | | | | | | | | | | |
| SIU Edwardsville | | | | | | | | | | | | |
| at UT Martin | | | | | | | | | | | | |
| at Little Rock | | | | | | | | | | | | |
| Lindenwood | | | | | | | | | | | | |
| at Morehead State | | | | | | | | | | | | |
| UT Martin | | | | | | | | | | | | |
| Tennessee Tech | | | | | | | | | | | | |
| Tennessee State | | | | | | | | | | | | |
| at Eastern Illinois | | | | | | | | | | | | |
| Little Rock | | | | | | | | | | | | |
| at Tennessee Tech | | | | | | | | | | | | |
| at Tennessee State | | | | | | | | | | | | |
| Morehead State | | | | | | | | | | | | |
| Eastern Illinois | | | | | | | | | | | | |
| Southern Indiana | | | | | | | | | | | | |
| at Lindenwood | | | | | | | | | | | | |
| at SIU Edwardsville | | | | | | | | | | | | |
| Totals | 3-11 | 3-9 | 2-3 | 1/1 | 2 | 4 | 11 | 3 | 2 | 0 | 2 | 26 |

• - Game Started

2022-23 Season-Highs

| | | |
|----------------------|----|----------------------------|
| Points | 11 | at South Florida (11/7/22) |
| Total Rebounds | 2 | at South Florida (11/7/22) |
| Offensive | 1 | at South Florida (11/7/22) |
| Defensive | 1 | at South Florida (11/7/22) |
| FG Made | 3 | at South Florida (11/7/22) |
| FG Attempted | 11 | at South Florida (11/7/22) |
| 3-Point FG Made | 3 | at South Florida (11/7/22) |
| 3-Point FG Attempted | 9 | at South Florida (11/7/22) |
| FT Made | 2 | at South Florida (11/7/22) |
| FT Attempted | 3 | at South Florida (11/7/22) |
| Assists | 3 | at South Florida (11/7/22) |
| Blocks | - | - |
| Steals | 2 | at South Florida (11/7/22) |
| Minutes | 26 | at South Florida (11/7/22) |

Career-Highs

| | | |
|----------------------|----|----------------------------------|
| Points | 35 | at SIU Edwardsville (2/7/22) |
| Total Rebounds | 10 | at SIU Edwardsville (2/7/22) |
| Offensive | 3 | at California Baptist (12/21/21) |
| Defensive | 8 | at SIU Edwardsville (2/7/22) |
| FG Made | 10 | vs. Evansville (12/8/21) |
| FG Attempted | 20 | at SIU Edwardsville (2/7/22) |
| 3-Point FG Made | 5 | vs. Austin Peay (1/1/22) |
| 3-Point FG Attempted | 10 | at SIU Edwardsville (2/7/22) |
| FT Made | 14 | at SIU Edwardsville (2/7/22) |
| FT Attempted | 15 | at SIU Edwardsville (2/7/22) |
| Assists | 8 | at Eastern Illinois (1/22/22) |
| Blocks | 1 | vs. Montana State (11/28/21) |
| Steals | 5 | at SIU Edwardsville (2/7/22) |
| Minutes | 39 | at SIU Edwardsville (2/7/22) |

Russell's Career Statistics at Southeast Missouri

| Overall | | | | | | | | | | | | | | | | | |
|-----------------------------------|-------|-----|------|---------|------|----------|------|---------|------|-----|-----|-----|-----|----|----|----|----|
| Season | G-GS | Min | Avg | FG-FGA | Pct | 3FG-3FGA | Pct | FT-FTA | Pct | Off | Def | Tot | Avg | PE | FO | A | TO |
| 2021-22 | 30-30 | 913 | 30.4 | 127-303 | .419 | 48-143 | .336 | 99-135 | .733 | 26 | 50 | 76 | 2.5 | 74 | 2 | 95 | 65 |
| 2022-23 | 1-1 | 26 | 26.0 | 3-11 | .273 | 3-9 | .333 | 2-3 | .667 | 1 | 1 | 2 | 2.0 | 4 | 0 | 3 | 2 |
| Totals | 31-31 | 939 | 30.3 | 130-314 | .414 | 51-152 | .336 | 101-138 | .732 | 27 | 51 | 78 | 2.5 | 78 | 2 | 98 | 67 |
| Ohio Valley Conference Games Only | | | | | | | | | | | | | | | | | |
| Season | G-GS | Min | Avg | FG-FGA | Pct | 3FG-3FGA | Pct | FT-FTA | Pct | Off | Def | Tot | Avg | PE | FO | A | TO |
| 2021-22 | 15-15 | 476 | 31.7 | 63-163 | .387 | 20-75 | .267 | 59-76 | .776 | 11 | 27 | 38 | 2.5 | 34 | 1 | 57 | 37 |
| 2022-23 | | | | | | | | | | | | | | | | | |
| Totals | | | | | | | | | | | | | | | | | |





3

Guard

AQUAN SMART

So. // 6-3 // 175 // Evanston, Ill. // Florida International





REDHAWK BASKETBALL

// 2022-23: Contributed eight points and three rebounds in first career start at South Florida (11/7)...Made a pair of 3-pointers and added three steals in 18 minutes.

Smart's Game-by-Game Statistics

| 2022-23 | FG | 3P | FT | O/D | REB | F | PTS | A | TO | B | S | M |
|---------------------|-----|-----|-----|-----|-----|---|-----|---|----|---|---|----|
| at South Florida* | 3-8 | 2-3 | 0-0 | 1/2 | 3 | 5 | 8 | 2 | 2 | 0 | 3 | 18 |
| Lyon College | | | | | | | | | | | | |
| at Evansville | | | | | | | | | | | | |
| at Bradley | | | | | | | | | | | | |
| William Woods | | | | | | | | | | | | |
| vs. Boston | | | | | | | | | | | | |
| vs. UC Davis | | | | | | | | | | | | |
| at Milwaukee | | | | | | | | | | | | |
| at Missouri | | | | | | | | | | | | |
| Purdue Fort Wayne | | | | | | | | | | | | |
| at Arkansas State | | | | | | | | | | | | |
| at Iowa | | | | | | | | | | | | |
| Southern Illinois | | | | | | | | | | | | |
| at Southern Indiana | | | | | | | | | | | | |
| SIU Edwardsville | | | | | | | | | | | | |
| at UT Martin | | | | | | | | | | | | |
| at Little Rock | | | | | | | | | | | | |
| Lindenwood | | | | | | | | | | | | |
| at Morehead State | | | | | | | | | | | | |
| UT Martin | | | | | | | | | | | | |
| Tennessee Tech | | | | | | | | | | | | |
| Tennessee State | | | | | | | | | | | | |
| at Eastern Illinois | | | | | | | | | | | | |
| Little Rock | | | | | | | | | | | | |
| at Tennessee Tech | | | | | | | | | | | | |
| at Tennessee State | | | | | | | | | | | | |
| Morehead State | | | | | | | | | | | | |
| Eastern Illinois | | | | | | | | | | | | |
| Southern Indiana | | | | | | | | | | | | |
| at Lindenwood | | | | | | | | | | | | |
| at SIU Edwardsville | | | | | | | | | | | | |
| Totals | 3-8 | 2-3 | 0-0 | 1/2 | 3 | 5 | 8 | 2 | 2 | 0 | 3 | 18 |

• - Game Started

2022-23 Season/Career-Highs

| | | |
|----------------------------|----|----------------------------|
| Points | 8 | at South Florida (11/7/22) |
| Total Rebounds | 3 | at South Florida (11/7/22) |
| Offensive | 1 | at South Florida (11/7/22) |
| Defensive | 2 | at South Florida (11/7/22) |
| FG Made | 3 | at South Florida (11/7/22) |
| FG Attempted | 8 | at South Florida (11/7/22) |
| 3-Point FG Made | 2 | at South Florida (11/7/22) |
| 3-Point FG Attempted | 3 | at South Florida (11/7/22) |
| FT Made | - | - |
| FT Attempted | - | - |
| Assists | 2 | at South Florida (11/7/22) |
| Blocks | - | - |
| Steals | 3 | at South Florida (11/7/22) |
| Minutes | 18 | at South Florida (11/7/22) |

Smart's Career Statistics at Southeast Missouri

| Overall | | | | | | | | | | | | | | | | | | | | | |
|-----------------------------------|------|-----|------|--------|------|----------|------|--------|------|-----|-----|-----|-----|----|----|---|----|-----|-----|-----|-----|
| Season | G-GS | Min | Avg | FG-FGA | Pct | 3FG-3FGA | Pct | FT-FTA | Pct | Off | Def | Tot | Avg | PF | FO | A | TO | Blk | Stl | Pts | Avg |
| 2022-23 | 1-1 | 18 | 18.0 | 3-8 | .375 | 2-3 | .667 | 0-0 | .000 | 1 | 2 | 3 | 3.0 | 5 | 1 | 2 | 2 | 0 | 3 | 8 | 8.0 |
| Ohio Valley Conference Games Only | | | | | | | | | | | | | | | | | | | | | |
| Season | G-GS | Min | Avg | FG-FGA | Pct | 3FG-3FGA | Pct | FT-FTA | Pct | Off | Def | Tot | Avg | PF | FO | A | TO | Blk | Stl | Pts | Avg |
| 2022-23 | | | | | | | | | | | | | | | | | | | | | |



2022-23 SOUTHEAST MISSOURI BASKETBALL NOTES

GAME SUMMARIES

Game 1

Southeast Missouri 64 South Florida 61

November 7, 2022 • Yuengling Center • Tampa, Fla.



TAMPA, Fla.

Chris Harris scored 16 points and Phillip Russell added 11 and

buried a huge pull up 3-pointer with 29 seconds left to lead Southeast Missouri to a 64-61 season-opening win over South Florida.

Russell, after making two free throws 37 seconds earlier, knocked down his decisive three after USF pulled to within two to give SEMO a 63-58 lead, its largest of the night.

Ryan Conwell split two free throws and Tyler Harris scored following two missed free throws by Josh Earley to cut the Redhawks lead to 63-61 with four seconds to go.

After Harris split his two free throws for SEMO, Conwell's 3-point-er at the buzzer missed and SEMO celebrated its third-straight season-opening victory. The Redhawks improved to 3-0 in season-opening games under Head Coach Brad Korn and won three-consecutive season-openers away from home for the first time in program history.

The back-and-forth game featured eight ties and 15 lead changes.

Harris made four field goals, a pair of 3-pointers and hit a near-perfect 6-of-7 free throws to lead SEMO. He also had six rebounds and two assists in 38 minutes.

Russell scored eight of his points in the second half.

Southeast Mo. St. 64 • 1-0,0-0 OVC

| # | Player | | Total | | 3-Ptr | | Rebounds | | | PF | TP | A | TO | Blk | Stl | Min |
|----------------------------|------------------|---|-----------------------|--------|--------|-------------------|----------|-----|----------|----|----|----|----|-----|-----|-----|
| | | | FG-FGA | FG-FGA | FT-FTA | Off | Def | Tot | | | | | | | | |
| 24 | CLARK, Kobe | f | 4-5 | 0-1 | 0-0 | 4 | 4 | 8 | 3 | 8 | 3 | 3 | 0 | 0 | 0 | 30 |
| 14 | JOHNSON, Nate | c | 1-3 | 0-0 | 1-2 | 0 | 1 | 1 | 0 | 3 | 0 | 0 | 0 | 0 | 0 | 20 |
| 01 | RUSSELL, Phillip | g | 3-11 | 3-9 | 2-3 | 1 | 1 | 2 | 4 | 11 | 3 | 2 | 0 | 2 | 2 | 26 |
| 03 | SMART, Aquan | g | 3-8 | 2-3 | 0-0 | 1 | 2 | 3 | 5 | 8 | 2 | 2 | 0 | 3 | 1 | 18 |
| 05 | HARRIS, Chris | g | 4-16 | 2-7 | 6-7 | 1 | 5 | 6 | 3 | 16 | 2 | 4 | 0 | 1 | 3 | 38 |
| 04 | LARSON, Adam | g | 2-4 | 2-4 | 0-0 | 1 | 3 | 4 | 2 | 6 | 0 | 0 | 1 | 0 | 0 | 24 |
| 12 | GOWINS, Tevin | g | 1-3 | 1-2 | 0-0 | 2 | 2 | 4 | 3 | 3 | 0 | 0 | 0 | 0 | 0 | 24 |
| 21 | EARLEY, Josh | g | 2-6 | 0-0 | 5-10 | 1 | 7 | 8 | 1 | 9 | 0 | 2 | 1 | 0 | 0 | 20 |
| | Team | | | | | 0 | 3 | 3 | | | | | | | | |
| Totals | | | 20-56 | 10-26 | 14-22 | 11 | 28 | 39 | 21 | 64 | 10 | 15 | 2 | 6 | 20 | |
| FG % 1st Half: 11-30 36.7% | | | 2nd half: 9-26 34.6% | | | Game: 20-56 35.7% | | | Deadball | | | | | | | |
| 3FG % 1st Half: 5-12 41.7% | | | 2nd half: 5-14 35.7% | | | Game: 10-26 38.5% | | | Rebounds | | | | | | | |
| FT % 1st Half: 3-6 50.0% | | | 2nd half: 11-16 68.8% | | | Game: 14-22 63.6% | | | | | | | | | | |

South Fla. 61 • 0-1,0-0 AAC

| # | Player | | Total | | 3-Ptr | | Rebounds | | | PF | TP | A | TO | Blk | Stl | Min |
|----------------------------|------------------|---|-----------------------|--------|--------|-------------------|----------|-----|----------|----|----|----|----|-----|-----|-----|
| | | | FG-FGA | FG-FGA | FT-FTA | Off | Def | Tot | | | | | | | | |
| 01 | Selton Miguel | f | 2-6 | 0-0 | 0-0 | 0 | 4 | 4 | 2 | 4 | 1 | 2 | 0 | 0 | 0 | 19 |
| 23 | Keyshawn Bryant | f | 7-11 | 3-5 | 2-4 | 2 | 3 | 5 | 3 | 19 | 0 | 3 | 1 | 1 | 1 | 26 |
| 54 | Russel Tchewa | c | 1-4 | 0-0 | 1-4 | 2 | 7 | 9 | 1 | 3 | 1 | 2 | 1 | 0 | 0 | 27 |
| 02 | Tyler Harris | g | 4-15 | 0-8 | 1-2 | 0 | 3 | 3 | 3 | 9 | 1 | 3 | 0 | 2 | 3 | 30 |
| 24 | Jamir Chaplin | g | 3-5 | 0-2 | 0-0 | 0 | 6 | 6 | 1 | 6 | 2 | 0 | 0 | 2 | 2 | 29 |
| 00 | Ryan Conwell | | 2-5 | 1-4 | 4-6 | 1 | 2 | 3 | 2 | 9 | 0 | 0 | 1 | 0 | 0 | 21 |
| 03 | DJ Patrick | | 0-0 | 0-0 | 0-0 | 0 | 0 | 0 | 1 | 0 | 1 | 0 | 0 | 0 | 0 | 10 |
| 05 | Jake Boggs | | 0-0 | 0-0 | 1-2 | 0 | 1 | 1 | 0 | 1 | 0 | 0 | 0 | 0 | 0 | 3 |
| 10 | Serrel Smith Jr. | | 0-0 | 0-0 | 0-0 | 0 | 0 | 0 | 1 | 0 | 0 | 0 | 0 | 0 | 0 | 2 |
| 11 | Trey Moss | | 1-1 | 0-0 | 0-0 | 0 | 0 | 0 | 1 | 2 | 0 | 1 | 0 | 1 | 1 | 8 |
| 15 | Corey Walker Jr. | | 2-2 | 0-0 | 0-1 | 0 | 0 | 0 | 2 | 4 | 1 | 3 | 0 | 0 | 0 | 12 |
| 20 | Sam Hines Jr. | | 2-3 | 0-0 | 0-0 | 1 | 1 | 2 | 2 | 4 | 1 | 2 | 0 | 0 | 0 | 13 |
| | Team | | | | | 2 | 3 | 5 | | | | | | | | |
| Totals | | | 24-52 | 4-19 | 9-19 | 8 | 30 | 38 | 19 | 61 | 8 | 16 | 3 | 6 | 200 | |
| FG % 1st Half: 13-28 46.4% | | | 2nd half: 11-24 45.8% | | | Game: 24-52 46.2% | | | Deadball | | | | | | | |
| 3FG % 1st Half: 1-9 11.1% | | | 2nd half: 3-10 30.0% | | | Game: 4-19 21.1% | | | Rebounds | | | | | | | |
| FT % 1st Half: 3-7 42.9% | | | 2nd half: 6-12 50.0% | | | Game: 9-19 47.4% | | | | | | | | | | |

Officials: Nathan Bemis, Shane Land, Bharat Ramnaran

Technical fouls: Southeast Mo. St.-None. South Fla.-None.

Attendance: 4046

2022-23 Men's Basketball. Round: 0. South Fla. vs Southeast Mo. St.. Played at

| Score by periods | 1st | 2nd | Total |
|-------------------|-----|-----|-------|
| Southeast Mo. St. | 30 | 34 | 64 |
| South Fla. | 30 | 31 | 61 |

| Points | In | Off | 2nd | Fast |
|--------|----|-----|-----|------|
| SEMO | 14 | 12 | 14 | 4 |
| USF | 36 | 11 | 7 | 6 |
| | | | | 18 |
| | | | | 20 |