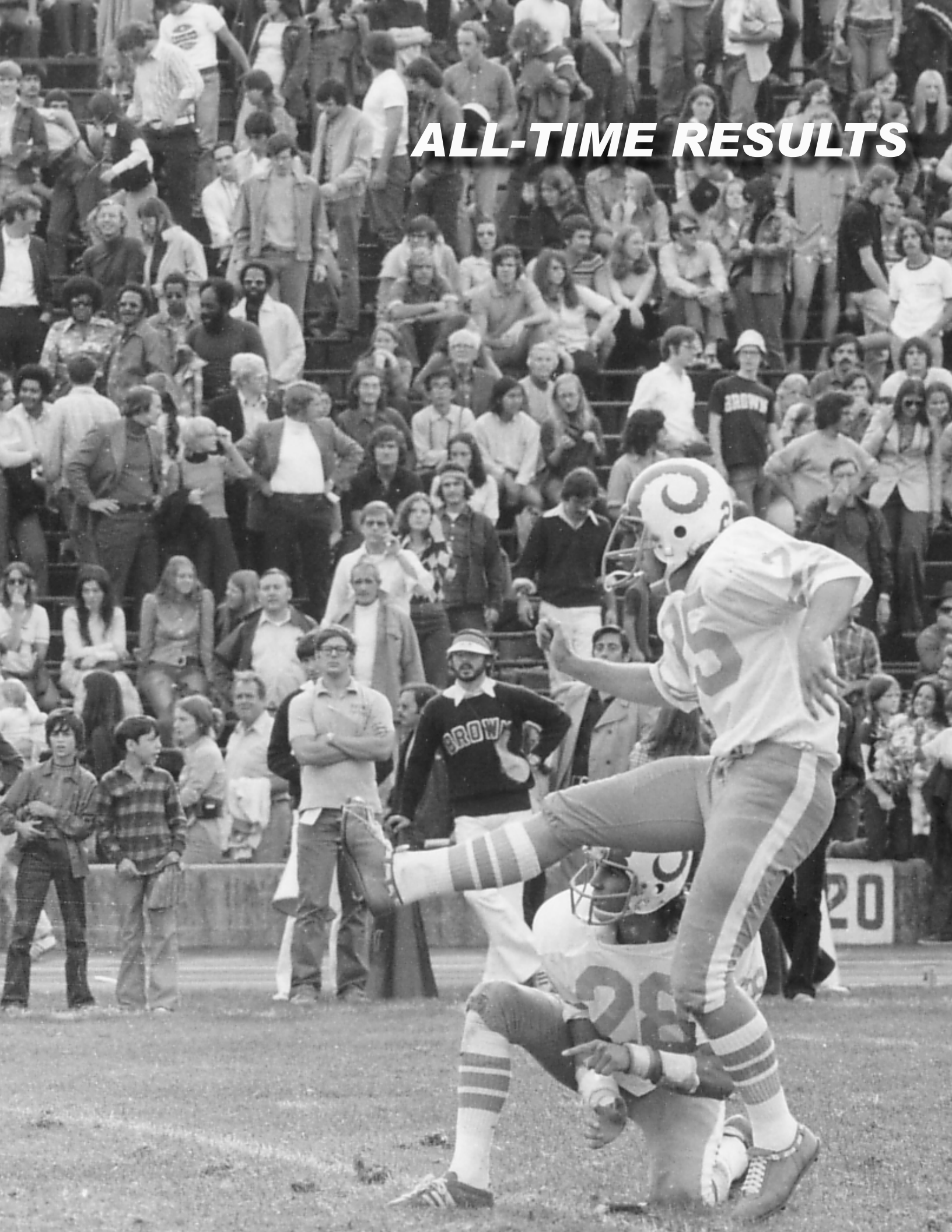


# ***ALL-TIME RESULTS***



# ALL-TIME SCORES

## 1895 (1-1)

1-0 home, 0-1 away

No coach

10/24 6-0 W PAWTUCKET HIGH SCHOOL  
11/16 0-10 L at Friends School

## 1896 (0-4)

0-3 home, 0-1 away

No coach

10/11 0-8 L FRIENDS SCHOOL  
10/18 0-8 L CAMP STREET ATHLETICS  
10/25 0-2 L PROVIDENCE HIGH SCHOOL 1  
1/15 6-18 L at Friends School

## 1897 (1-2)

1-0 home, 0-2 away

No coach

10/16 0-6 L at New London High School  
10/23 8-22 L at Storrs (University of Connecticut)\*  
11/13 22-0 W PAWTUCKET HIGH SCHOOL

\*- First game versus collegiate competition



### Marshall Tyler (1898-08) 23-22-8 in 10 seasons

Marshall Henry (Tip) Tyler, an all-American at Amherst, became the first Rhode Island coach in 1898. He went 24-21-7 in 10 years while he concentrated first on heading up the remedial Preparatory Department and then on teaching math. He also coached baseball and women's hoops. Tyler was a math professor from 1906 until his death in 1942, becoming one of the most beloved figures on

campus. Not one but two buildings have been named for him, including the current home of math and computer science.

## 1898 (5-0)

5-0 home, 0-0 away

Coach Marshall Tyler

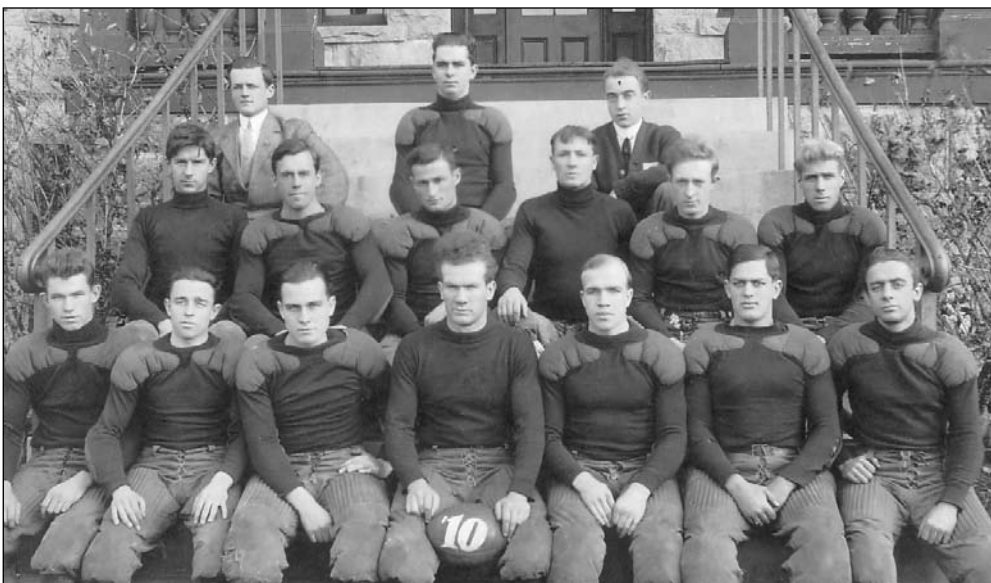
10/7 12-6 W WESTERLY HIGH SCHOOL  
10/15 33-0 W WESTERLY ATHLETIC ASSOC.  
10/29 16-0 W PROVIDENCE HIGH SCHOOL  
11/5 5-0 W BROWN FRESHMEN  
11/12 2-0 W EAST GREENWICH ACADEMY

## 1899 (2-3-1)

2-2-1 home, 0-1 away

Coach Marshall Tyler

10/1 11-0 W DEAN ACADEMY  
10/14 5-6 L BROWN FRESHMEN  
10/18 0-0 T WESTERLY HIGH SCHOOL  
11/8 22-0 W SOUTH KINGSTOWN HIGH SCHOOL  
11/11 6-27 L FRIENDS SCHOOL  
11/18 0-17 L at Storrs (University of Connecticut)



1910: George Cobb's Rams finished 5-1-1 allowing just five points during the season.

## 1900 (0-2-1)

0-1 home, 0-1-1 away

Coach Marshall Tyler

10/14 5-5 T at Rogers High School  
10/21 0-43 L CONNECTICUT  
10/28 0-0 T at Friends School

## 1901 (0-2)

0-1 home, 0-1 away

Coach Marshall Tyler

11/3 0-27 L at Connecticut  
11/17 0-10 L BROWN SOPHOMORES

## 1902 No team

## 1903 (2-4-1)

Coach Marshall Tyler

10/3 0-0 T Fall River High School  
10/14 0-46 L Massachusetts  
10/17 0-22 L Brown Freshmen  
10/24 5-0 W Friends School (forfeit)  
10/31 0-45 L Worcester Tech  
11/7 0-30 L Dean Academy  
11/14 11-6 W Connecticut

## 1904 (3-3-1)

Coach Marshall Tyler

9/28 54-0 W Westerly High School  
10/1 0-27 L Springfield  
10/8 28-0 W Durfee High School  
10/15 32-0 W Thibodeau Academy  
10/29 0-28 L Dean Academy  
11/12 0-7 L Brown Freshmen  
11/19 10-10 T Connecticut

## 1905 (3-3-1)

Coach Marshall Tyler

9/23 0-6 L at New Hampshire  
10/4 10-0 W EAST GREENWICH ACADEMY  
10/7 0-11 L Massachusetts  
10/21 5-5 T Brown Seconds  
10/28 40-0 W Brown Freshmen  
11/4 34-0 W Brown Sophomores  
11/11 12-29 L Trinity

## 1906 (1-2-1)

Coach Marshall Tyler

10/6 0-0 T Brown Seconds  
10/13 0-33 L Springfield  
10/20 0-20 L New Hampshire  
11/3 14-0 W Bryant & Stratton

## 1907 (3-1-2)

2-0-1 home, 1-1-1 away

Coach Marshall Tyler

10/5 0-11 L at Massachusetts

10/12 0-0 T DEAN ACADEMY  
10/19 14-0 W at Worcester Tech  
11/2 6-6 T at New Hampshire  
11/9 6-0 W ST. ANDREW'S  
11/26 42-0 W CONNECTICUT

## 1908 (4-2)

3-1 home, 1-1 away

Coach Marshall Tyler

9/25 0-2 L at Massachusetts  
10/10 0-4 L WORCESTER TECH  
10/17 21-0 W ST. ANDREW'S  
10/24 6-0 W BRYANT & STRATTON  
11/14 12-0 W NEW HAMPSHIRE  
11/20 12-10 W at Connecticut



### George Cobb (1909-11, 1913-14) 17-16-5 in six seasons

George R. Cobb, a former Massachusetts standout athlete, took over the football and baseball coaching reins from Marshall Tyler when he arrived in 1909 as an instructor in horticulture and physical education. He toughened up the schedule, taking on the Brown varsity for the first time in his very first game. Cobb gave up the coaching reins in 1912 to coach the junior varsity squad but

returned to coach the varsity in 1913. His teams suffered 10 shutouts in his final 16 games posting a combined 4-9-3 mark in 1913 and 1914.

## 1909 (3-4)

3-1 home, 0-3 away

Coach George Cobb

9/29 0-6 L at Brown  
10/9 0-7 L NEW YORK UNIVERSITY  
10/16 9-0 W BOSTON COLLEGE  
10/30 0-11 L at Worcester Tech  
11/6 13-0 W ST. ANDREW'S  
11/13 5-11 L at New Hampshire  
11/20 51-0 W CONNECTICUT

## 1910 (5-1-1)

3-0 home, 2-1-1 away

Coach George Cobb

9/24 0-0 T at Massachusetts  
10/1 5-0 W at Tufts  
10/5 0-5 L at Brown  
10/22 22-0 W ST. ANDREW'S  
10/29 33-0 W at Connecticut  
11/5 10-0 W WORCESTER TECH  
11/12 6-0 W NEW HAMPSHIRE

## 1911 (5-2-1)

2-0 home, 3-2-1 away

Coach George Cobb

9/23 5-0 W at Massachusetts  
9/30 3-0 W at Maine  
10/4 0-12 L at Brown  
10/14 3-0 W NORWICH  
10/21 0-0 T at New York University  
10/28 9-8 W at New Hampshire  
11/4 0-3 L at Worcester Tech 1  
1/11 25-0 W BOSTON COLLEGE

## Robert W. Bingham (1912)

6-3 in one season



Standing in for George R. Cobb for one season, Robert W. Bingham led Rhode Island to a 6-3 mark in 1912, his only season in Kingston. A 1911 graduate of Brown, Bingham was just 23 years old when he took over the head coaching reins of the Rhode Island program. His squad posted five shutouts and outscored the opposition 105-52 for the season. After his departure from the sidelines, it would be 14 seasons (1927) until Rhode Island would again post a

winning season (5-3).

## 1912 (6-3)

4-0 home, 2-3 away

Coach Robert Bingham

9/21 7-0 W at Massachusetts  
9/28 20-0 W PAWTUCKET ATHLETIC CLUB

10/5	0-14	L	at Brown
10/12	0-18	L	at Maine
10/19	6-0	W	at Fordham
10/26	27-0	W	WORCESTER TECH
11/2	25-0	W	NEW HAMPSHIRE
11/9	14-6	W	FORT GREBLE
11/16	7-14	L	at New York University

### 1913 (2-6)

2-0 home, 0-6 away  
Coach George Cobb

9/27	0-10	L	at Amherst
10/4	0-19	L	at Brown
10/11	0-44	L	at Maine
10/18	6-10	L	at Colby
10/25	13-0	W	FORT ADAMS
11/1	0-13	L	at New Hampshire
11/8	19-0	W	ROGERS HIGH SCHOOL
11/15	0-27	L	at Boston College

### 1914 (2-3-3)

2-1-1 home, 0-2-2 away  
Coach George Cobb

9/26	0-0	T	at Wesleyan
10/3	0-20	L	at Brown
10/10	0-21	L	BOSTON COLLEGE
10/17	6-0	W	EAST GREENWICH ACADEMY
10/24	0-21	L	at Fordham
10/31	7-0	W	NEW HAMPSHIRE
11/7	6-6	T	WORCESTER TECH
11/14	0-0	T	at New Hampshire

### Jim Baldwin (1915-16)

6-9-1 in two seasons



As the college neared its 25th anniversary, it hired James A. Baldwin as its first athletic director and head football, basketball and baseball coach. In two years, Baldwin's teams went 6-9-1 in football, 5-11 in basketball and 8-6 in baseball. The Gridders went scoreless in nine of 16 games but took out their frustration on Fort Adams with a 69-0 blowout in 1916, the second highest point total in school history. Baldwin left in 1917 to direct a YMCA program for American troops

fighting in France.

### 1915 (3-5)

2-0 home, 1-5 away  
Coach Jim Baldwin

9/25	0-38	L	at Brown
10/2	0-12	L	at Wesleyan
10/16	0-6	L	at Worcester Tech
10/23	9-7	W	at Connecticut
10/30	0-3	L	at Union
11/6	47-0	W	ST. STEPHENS
11/13	0-7	L	at Fordham
11/22	10-0	W	NEW HAMPSHIRE

### 1916 (3-4-1)

2-0 home, 1-4-1 away  
Coach Jim Baldwin

9/23	69-0	W	FORT ADAMS
9/30	0-18	L	at Brown
10/7	3-3	T	at Wesleyan
10/14	13-0	W	at Maine
10/21	0-33	L	at Colgate
10/28	13-6	W	CONNECTICUT
11/4	0-39	L	at Boston College
11/18	0-12	L	at New Hampshire

### Fred Murray (1917, 1919)

2-11-3 in two seasons



Fred J. Murray, the third in a series of athletic directors to last three years or less, struggled to keep the program afloat after America entered World War I in 1917. Most able-bodied junior and senior men left for military service or agricultural work, leaving a skeleton crew for sports. Murray's first squad went 2-4-2 in '17, but the college failed to field a team the following year. In 1919 the Rams scored just 31 points in a winless season, leaving Murray 2-11-3 for his brief career.

### 1917 (2-4-2)

1-0-1 home, 1-4-1 away  
Coach Fred Murray

9/29	0-27	L	at Brown
10/6	0-0	T	at Wesleyan
10/13	30-0	W	at Worcester Tech
10/20	0-0	T	NEW HAMPSHIRE
10/27	0-13	L	at Holy Cross
11/3	0-48	L	at Boston College
11/10	6-9	L	at New York University
11/17	12-0	W	FORT KEARNEY

### 1918 No team due to World War I

### 1919 (0-7-1)

0-2 home, 0-5-1 away  
Coach Fred Murray

9/27	0-27	L	at Brown
10/11	0-35	L	at Wesleyan
10/18	6-14	L	at Boston University
10/25	2-31	L	at St. Stephens
11/1	3-29	L	at Holy Cross
11/8	11-19	L	MASSACHUSETTS
11/15	6-6	T	at Worcester Tech
11/22	3-7	L	CONNECTICUT

### Frank Keaney (1920-40)

70-87-12 in 21 seasons



Frank W. Keaney is such an exalted figure as a Hall of Fame basketball coach that his two decades in football (70-87-2) are often overlooked. His teams were .500 or better 10 times in his final 14 years and beat Brown for the first time (1935). As a basketball coach, he invented the fast break and took the Rams to the 1946 NIT final, losing to Kentucky by a point in what was then considered the national title game. And as a chemistry professor, he invented Rhode Island's distinctive light blue color.

### 1920 (0-4-4)

0-2 home, 0-2-4 away  
Coach Frank Keaney

9/25	0-25	L	at Brown
10/2	0-20	L	at Wesleyan
10/16	7-7	T	at Maine
10/23	0-7	L	BOSTON UNIVERSITY
10/30	7-7	T	at Union
11/6	7-7	T	at Massachusetts
11/13	0-7	L	WORCESTER TECH
11/20	0-0	T	at Connecticut

### 1921 (3-5)

2-0 home, 1-5 away  
Coach Frank Keaney

9/17	0-13	L	at New London Sub Base
9/24	0-6	L	at Brown
10/1	0-9	L	at Bowdoin
10/15	3-7	L	at Maine
10/22	27-0	W	at Worcester Tech
10/29	0-14	L	at Boston University
11/5	7-2	W	MASSACHUSETTS
11/12	Canceled-snow	at Bates	
11/19	27-21	W	CONNECTICUT

### 1922 (4-4)

2-2 home, 2-2 away  
Coach Frank Keaney

9/23	12-0	W	at Coast Guard Academy
9/30	0-27	L	at Brown
10/14	6-7	L	ST. STEPHENS
10/21	7-0	W	DELAWARE
10/28	7-23	L	at New York University
11/4	19-0	W	WORCESTER TECH
11/11	3-6	L	LOWELL TEXTILE
11/18	12-7	W	at Connecticut

### 1923 (1-5-1)

1-1 home, 0-4-1 away  
Coach Frank Keaney

9/22	0-14	L	at Maine
10/6	0-35	L	at Harvard

10/13	0-13	L	at New Hampshire
10/27	0-21	L	at New York University
11/3	0-0	T	at Worcester Tech
11/10	13-0	W	COAST GUARD ACADEMY
11/17	0-7	L	CONNECTICUT

### 1924 (0-7)

0-4 home, 0-3 away  
Coach Frank Keaney

9/27	0-37	L	MAINE
10/11	6-17	L	NEW HAMPSHIRE
10/18	0-6	L	LOWELL TEXTILE
10/25	0-13	L	at CCNY
11/1	9-14	L	WORCESTER TECH (HC)*
11/8	7-13	L	at Bates
11/15	0-22	L	at Connecticut

\*- First Homecoming

### 1925 (2-5-1)

2-1-1 home, 0-4 away  
Coach Frank Keaney

9/26	0-33	L	at Brown
10/3	0-7	L	at Western Maryland
10/10	12-0	W	LOWELL TEXTILE
10/17	0-26	L	at New Hampshire
10/24	12-0	W	CCNY
10/31	18-26	L	at Worcester Tech
11/7	0-13	L	BATES
11/14	0-0	T	CONNECTICUT (HC)

### 1926 (1-6)

1-2 home, 0-4 away  
Coach Frank Keaney

9/26	0-14	L	at Brown
10/2	0-7	L	MAINE
10/9	0-7	L	at Lowell Textile
10/16	6-7	L	NEW HAMPSHIRE (HC)
10/23	0-29	L	at CCNY
11/6	26-7	W	WORCESTER TECH
11/13	0-33	L	at Connecticut

### 1927 (5-3)

3-1 home, 2-2 away  
Coach Frank Keaney

9/24	0-27	L	at Brown
10/1	0-27	L	at Maine
10/8	26-0	W	LOWELL TEXTILE
10/15	20-18	W	at New Hampshire
10/22	19-20	L	CCNY
10/29	20-14	W	at Worcester Tech
11/5	14-6	W	COAST GUARD ACADEMY
11/12	12-0	W	CONNECTICUT (HC)

### 1928 (2-7)

2-3 home, 0-4 away  
Coach Frank Keaney

9/22	0-7	L	COAST GUARD DESTROYER*
9/29	6-20	L	at Maine
10/6	6-0	W	COAST GUARD ACADEMY
10/13	0-12	L	NEW HAMPSHIRE (HC)
10/20	7-0	W	NEWPORT NAVAL TRAINING STATION 10/27
0-21	L	at Lowell Textile	
11/10	0-13	L	WORCESTER TECH
11/17	0-24	L	at Connecticut
11/24	7-33	L	at Brown

\*-First game in Meade Field

### 1929 (5-2-1)

3-0 home, 2-2-1 away  
Coach Frank Keaney

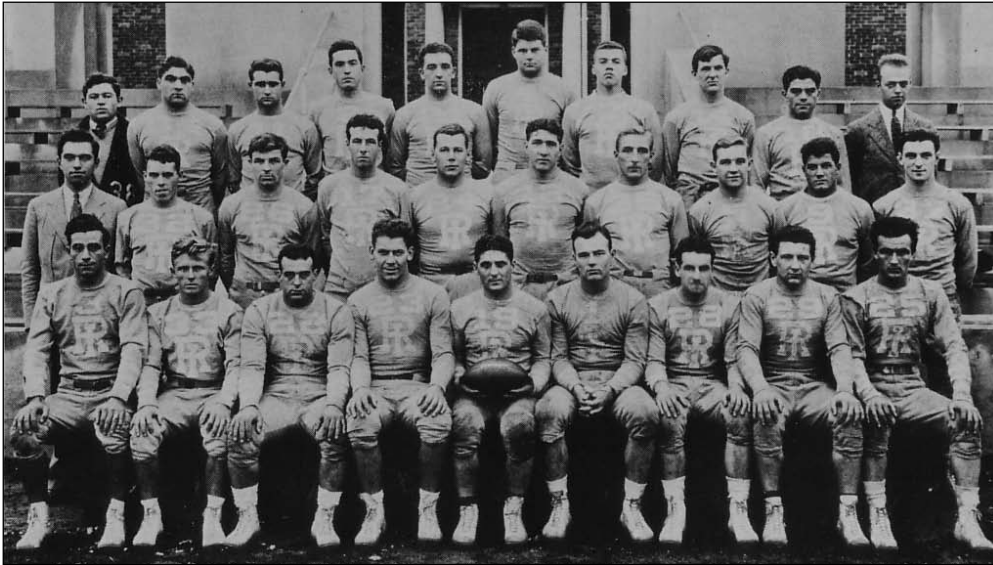
9/21	19-0	W	ARNOLD
9/28	0-6	L	at Maine
10/5	6-14	L	at Brown
10/19	6-6	T	at Bates
10/26	26-7	W	LOWELL TEXTILE
11/2	26-0	W	at Coast Guard Academy
11/9	39-0	W	at Worcester Tech
11/16	19-6	W	CONNECTICUT (HC)

### 1930 (5-2-1)

5-0 home, 0-2-1 away  
Coach Frank Keaney

9/20	38-0	W	ARNOLD
------	------	---	--------

# ALL-TIME SCORES



1935: The Rams compiled a 4-4-1 record under head coach Frank Keaney.

9/27	0-7	L	at Brown
10/4	12-13	L	at Maine
10/18	14-0	W	BATES
10/25	27-0	W	COAST GUARD ACADEMY
11/1	14-0	W	BOSTON UNIVERSITY
11/8	45-0	W	WORCESTER TECH (HC)
11/15	0-0	T	at Connecticut

**1931 (4-4)**  
2-0 home, 2-4 away  
Coach Frank Keaney

9/26	8-7	W	at Maine
10/3	0-18	L	at Brown
10/17	0-3	L	at Bates
10/24	33-7	W	COAST GUARD ACADEMY (HC)
10/31	7-25	L	at Boston University
11/7	34-0	W	at Worcester Tech
10/14	14-0	W	CONNECTICUT
10/28	0-6	L	at Providence

**1932 (2-5-1)**  
1-3 home, 1-2-1 away  
Coach Frank Keaney

9/24	0-12	L	at Maine
10/1	0-19	L	at Brown
10/8	0-7	L	BOSTON UNIVERSITY
10/15	0-6	L	BATES
10/22	6-0	W	ARNOLD
10/29	13-0	W	at Coast Guard Academy
11/5	0-12	L	WORCESTER TECH (HC)
11/12	19-19	T	at Connecticut

**1933 (6-2)**  
4-1 home, 2-1 away  
Coach Frank Keaney

9/23	12-0	W	BROOKLYN
9/30	6-0	W	at Maine
10/7	0-26	L	at Brown
10/14	13-6	W	ARNOLD
10/21	12-14	L	MASSACHUSETTS
10/28	20-12	W	COAST GUARD ACADEMY
11/4	20-7	W	at Worcester Tech
11/11	20-7	W	CONNECTICUT (HC)

**1934 (6-3)**  
2-1 home, 4-2 away  
Coach Frank Keaney

9/22	31-0	W	BROOKLYN
9/29	6-0	W	at Maine
10/6	0-13	L	at Brown
10/13	0-6	L	NORTHEASTERN
10/20	7-0	W	at Massachusetts
10/27	19-0	W	at Coast Guard Academy
11/3	44-0	W	WORCESTER TECH (HC) (1,500)
11/10	19-0	W	at Connecticut
11/17	7-21	L	at Providence

**1935 (4-4-1)**  
2-1 home, 2-3-1 away  
Coach Frank Keaney

9/21	0-32	L	at Holy Cross
9/28	0-7	L	at Maine
10/5	13-7	W	at Brown
10/12	6-6	T	at Northeastern
10/19	6-7	L	MASSACHUSETTS
10/26	13-7	W	COAST GUARD ACADEMY
11/2	23-6	W	at Worcester Tech
11/9	7-0	W	CONNECTICUT (HC)
11/16	0-13	L	at Providence

**1936 (5-4)**  
3-0 home, 2-4 away  
Coach Frank Keaney

9/19	38-0	W	AMERICAN INTERNATIONAL
9/26	7-0	W	at Maine
10/3	6-7	L	at Brown
10/10	7-0	W	TUFTS
10/17	8-13	L	at Massachusetts (N)
10/24	12-15	L	at Northeastern
10/31	19-0	W	WORCESTER TECH (HC) (2,000)
11/7	0-33	L	at Connecticut
11/13	19-0	W	at Providence (N)*

\*-Night game at Cranston Stadium

**1937 (3-4-1)**  
1-2 home, 2-2-1 away  
Coach Frank Keaney

9/25	0-0	T	at Maine
10/2	6-13	L	at Brown
10/9	14-7	W	at Tufts
10/16	12-6	W	MASSACHUSETTS
10/23	6-8	L	NORTHEASTERN
10/30	2-12	L	at Worcester Tech
11/6	7-13	L	CONNECTICUT (HC)
11/12	13-3	W	at Providence (N)*

\*-Night game at Cranston Stadium

**1938 (4-4)**  
1-1 home, 3-3 away  
Coach Frank Keaney

9/24	14-6	W	at Maine
10/1	13-48	L	at Holy Cross
10/8	31-0	W	AMERICAN INT'NATIONAL
10/15	20-0	W	at Massachusetts
10/22	21-40	L	at Brown
10/29	14-19	L	WORCESTER TECH (HC) (2,000)
11/5	21-20	W	at Connecticut
11/11	7-19	L	at Providence (N)*

\*-Night game at Cranston Stadium

**1939 (3-4-1)**  
2-1 home, 1-3-1 away  
Coach Frank Keaney

9/22	0-6	L	at Providence (N)*
9/30	0-34	L	at Brown
10/7	0-14	L	at Maine
10/14	40-0	W	BROOKLYN
10/21	23-20	W	MASSACHUSETTS
10/28	7-6	W	at Northeastern
11/4	7-7	T	at Worcester Tech
11/11	14-20	L	CONNECTICUT (HC) (3,500)

\*-Night game at Cranston Stadium

**1940 (5-3)**  
3-0 home, 2-3 away  
Coach Frank Keaney

9/21	10-0	W	NORTHEASTERN
9/28	0-7	L	at Maine
10/5	17-20	L	at Brown (14,000)
10/12	48-0	W	LOWELL TEXTILE
10/19	9-3	W	at Massachusetts
10/23	0-25	L	at Providence
11/2	18-0	W	WORCESTER TECH (HC) (100)
11/9	13-12	W	at Connecticut



**Bill Beck (1941, 1946-49)**  
**12-22-2 in five seasons**

A former player under Frank Keaney, William M.H. Beck was a football coach who is best remembered for another sport. He coached the baseball team for six years (1954-59), and Bill Beck Field was renamed in his memory in 1966. Beck was a campus fixture as teacher, coach and administrator from 1934 to 1960. After seven years as a Keaney aide, he became head football coach in

1941. The Rams went 5-2-1 in his first season, but served in World War II until '46. He went 12-22-2 overall in five seasons.

**1941 (5-2-1)**  
3-0 home, 2-2-1 away  
Coach Bill Beck

9/20	0-38	L	at Coast Guard Academy
9/27	20-13	W	at Maine
10/4	39-0	W	LOWELL TEXTILE
10/11	7-14	L	at Brown
10/18	34-6	W	MASSACHUSETTS
10/22	0-0	T	at Providence (N) (12,000)*
11/1	6-0	W	at Worcester Tech
11/8	6-0	W	CONNECTICUT (HC)

\*- Night game at Cranston Stadium

**Paul Cieurzo (1942, 1945)**  
**5-4-0 in two seasons**



Paul F. Cieurzo '31 became the first Rhode Island alumnus to head the football program when he stepped in for Bill Beck, who left to serve in World War II. He led the Rams to a 5-4 mark in two seasons before returning to his role as a jack-of-all-trades. Beginning in 1936, Cieurzo served the college for four decades as an assistant basketball coach, head golf, track and field coach, professor of physical education and assistant athletic director. He was inducted into the school's

Hall of Fame in 1976.

**1942 (3-3)**  
1-0 home, 2-3 away  
Coach Paul Cieurzo

9/26	70-13	W	at Vermont
10/3	0-28	L	at Brown (9,000)
10/17	21-6	W	at Massachusetts
10/24	13-14	L	at New Hampshire (6,000)
10/31	66-13	W	WORCESTER TECH (HC)
11/7	6-13	L	at Connecticut

**1943-1944**  
No team due to World War II

**1945 (2-1)**  
 1-0 home, 1-1 away  
 Coach Paul Cieurzo  
 10/13 10-7 W at Maine (4,500)  
 10/20 7-39 L at Rutgers (5,000)  
 11/3 30-0 W BOSTON UNIVERSITY (2,500)

**1946 (2-4)**  
 0-1 home, 2-3 away  
 Coach Bill Beck  
 9/28 14-13 W at Maine  
 10/5 12-25 L at New Hampshire  
 10/12 0-29 L at Brown (20,000)  
 10/19 14-6 W at Massachusetts  
 10/26 6-29 L at Boston University  
 11/9 0-33 L CONNECTICUT (HC) (5,000)

**1947 (3-4)**  
 1-3 (4th) in Yankee Conference 2-2 home, 1-2 away  
 Coach Bill Beck  
 9/27 13-33 L MAINE (4,000)  
 10/4 7-33 L NEW HAMPSHIRE (HC) (3,000)  
 10/11 6-55 L at Brown (15,000)  
 10/18 20-13 W at Massachusetts (5,000)  
 10/25 27-7 W COAST GUARD ACADEMY (4,000)  
 11/1 38-13 W MASSACHUSETTS (4,000)  
 11/8 0-23 L at Connecticut

**1948 (2-4-1)**  
 1-3 (4th) in Yankee Conference 2-1 home, 0-3-1 away  
 Coach Bill Beck  
 9/18 56-0 W QUONSET AIR STATION (4,000)  
 9/25 7-13 L at Maine (6,000)  
 10/2 7-19 L at New Hampshire (6,500)  
 10/9 0-33 L at Brown (11,000)  
 10/16 19-12 W MASSACHUSETTS (2,500)  
 10/30 21-21 T at Springfield (6,000)  
 11/6 6-28 L CONNECTICUT (HC) (4,500)

**1949 (0-8)**  
 0-4 (4th) in Yankee Conference 0-4 home, 0-4 away  
 Coach Bill Beck  
 9/24 7-19 L MAINE (3,000)  
 10/1 20-28 L NEW HAMPSHIRE (4,000)  
 10/8 0-46 L at Brown (8,000)  
 10/15 19-32 L at Massachusetts  
 10/22 6-47 L at Temple (15,000)  
 10/29 13-34 L SPRINGFIELD (HC) (4,400)  
 11/5 0-23 L at Connecticut (6,500)  
 11/12 7-39 L BUFFALO (4,000)

**Hal Kopp (1950, 1952-55)**

**28-11-2 in five seasons**



With a .707 winning percentage (28-11-2), Harold W. Kopp is the most successful coach in school history. He took a 0-8 team and went 7-1 in just his second season, capping his five-year stay with an undefeated regular season and the school's only bowl bid in 1955. He was named New England Coach of the Year before leaving for Brigham Young. An Army major in World War II, he was recalled to service for one year in 1951. Prior to coming to Rhode Island, he served as line coach at five different schools.

**1950 (3-5)**  
 2-3 (3rd) in Yankee Conference 3-0 home, 0-5 away  
 Coach Hal Kopp  
 9/23 34-7 W BATES (3,500)  
 9/30 0-13 L at Maine  
 10/7 14-27 L at New Hampshire (5,600)  
 10/14 13-55 L at Brown (12,000)  
 10/21 38-27 W MASSACHUSETTS (3,000)  
 10/28 12-33 L at Buffalo (2,500)  
 11/4 0-32 L at Springfield (2,500)  
 11/18 14-7 W CONNECTICUT (HC) (4,712)

**Ed Doherty (1951)**  
**3-5-0 in one season**

Edward A. Doherty arrived from Arizona State College (now University) to fill in for Hal Kopp during his Korean War military call-up. Kopp wound up being stationed in Germany and returned just a year later. The Rams went 3-5 in their only season under Doherty, a former



**1954: Coach Hal Kopp led the Rams to a 6-2 record.**

all-American quarterback at Boston College and an assistant at his alma mater and Notre Dame. In four seasons as head coach of the Sun Devils, the team went 25-17 and played in the 1950 Salad Bowl, leading the nation in total offense.

**1951 (3-5)**  
 1-3 (4th) in Yankee Conference 3-1 home, 0-4 away  
 Coach Ed Doherty  
 9/22 0-21 L at Northeastern (2,500)  
 9/29 0-12 L MAINE (4,000)  
 10/6 27-0 W NEW HAMPSHIRE (3,200)  
 10/13 13-20 L at Brown (8,000)  
 10/20 7-40 L at Massachusetts (6,500)  
 11/3 25-19 W SPRINGFIELD (HC) (5,000)  
 11/10 52-0 W BROOKLYN (4,000)  
 11/17 6-21 L at Connecticut (12,000)

**1952 (7-1)**  
 3-1 (tie-1st) in Yankee Conference 3-0 home, 4-1 away  
 Coach Hal Kopp  
 9/20 32-0 W NORTHEASTERN (3,712)  
 9/27 0-13 L at Maine (4,000)  
 10/4 27-7 W at New Hampshire (4,000)  
 10/11 7-6 W at Brown (17,000)  
 10/18 26-7 W MASSACHUSETTS (4,000)  
 11/1 40-20 W at Springfield  
 11/8 55-7 W at Brooklyn  
 11/15 28-25 W CONNECTICUT (HC) (8,000)

**1953 (6-2)**  
 3-1 (tie-1st) in Yankee Conference 2-1 home, 4-1 away  
 Coach Hal Kopp  
 9/20 13-7 W at Northeastern  
 9/27 13-6 W MAINE (4,000)  
 10/3 13-14 L NEW HAMPSHIRE (HC) (5,000)  
 10/10 19-13 W at Brown  
 10/17 41-14 W at Massachusetts  
 10/24 12-27 L at Hofstra (3,200)  
 10/31 18-6 W SPRINGFIELD (4,000)  
 11/14 19-13 W at Connecticut

**1954 (6-2)**  
 3-1 (2nd) in Yankee Conference 4-0 home, 2-2 away  
 Coach Hal Kopp  
 9/18 13-7 W NORTHEASTERN (4,200)  
 9/25 14-7 W at Maine (5,000)  
 10/2 7-33 L at New Hampshire (6,000)  
 10/9 0-35 L at Brown (15,000)  
 10/16 52-6 W MASSACHUSETTS (5,500)  
 10/23 46-14 W HOFSTRA (4,000)  
 10/30 13-9 W at Springfield  
 11/13 20-0 W CONNECTICUT (HC) (2,500)

**1955 (6-1-2)**  
 4-0-1 (1st) in Yankee Conference 2-0-1 home, 4-0-1 away, 0-1 neutral  
 Coach Hal Kopp  
 9/17 13-13 T at Northeastern  
 9/24 7-0 W MAINE (4,000)  
 10/1 13-13 T NEW HAMPSHIRE (4,000)

10/8 16-0 W at Vermont (5,000)  
 10/15 39-15 W at Massachusetts (4,500)  
 10/22 19-7 W at Brown (16,000)  
 10/29 20-7 W SPRINGFIELD (HC) (4,500)  
 11/12 25-0 W at Connecticut (14,500)  
 12/4 10-12 L Jacksonville State (N) (8,500) (RB)  
 RB- Refrigerator Bowl (Evansville, Ind.)

**Herb Maack (1956-60)**

**17-22-2 in five seasons**



Herbert H. Maack, a line coach on Hal Kopp's last three teams, was named head coach in 1956 after Kopp left for Brigham Young. His teams posted a 17-22-2 record in five seasons. After completing his coaching career, he remained at the University, serving in various posts until his retirement. Maack, a three-time all-East tackle at Columbia (1939-41), returned from World War II to play a year with Brooklyn of the All-American Conference. As line coach at Bucknell (1947-52), he helped the Bison win 17 straight games in 1951-52.

**1956 (2-6)**  
 1-4 (6th) in Yankee Conference 2-2 home, 0-4 away  
 Coach Herb Maack  
 9/22 13-12 W NORTHEASTERN (3,318)  
 9/29 7-40 L at Maine (6,100)  
 10/6 7-13 L at New Hampshire (6,000)  
 10/13 13-39 L VERMONT (4,500)  
 10/20 34-13 W MASSACHUSETTS (5,000)  
 10/27 7-27 L at Brown (15,000)  
 11/3 0-40 L at Springfield (4,000)  
 11/17 6-51 L CONNECTICUT (HC) (6,000)

**1957 (5-2-1)**  
 3-0-1 (tie-1st) Yankee Conference 2-1 home, 3-1-1 away  
 Coach Herb Maack  
 9/21 12-7 W at Northeastern (3,700)  
 9/28 25-7 W MAINE (4,000)  
 10/5 28-13 W NEW HAMPSHIRE (3,000)  
 10/12 32-7 W at Brandeis (3,000)  
 10/19 27-13 W at Massachusetts (7,500)  
 10/26 0-21 L at Brown (18,500)  
 11/2 0-14 L SPRINGFIELD (HC) (1,000)  
 11/16 0-0 T at Connecticut (12,000)

**1958 (4-4)**  
 2-2 (3rd) in Yankee Conference 2-2 home, 2-2 away  
 Coach Herb Maack  
 9/20 6-26 L NORTHEASTERN (2,301)  
 9/27 8-37 L at Maine (4,000)  
 10/4 20-13 W at New Hampshire  
 10/11 52-22 W BRANDEIS (4,000)  
 10/18 24-8 W MASSACHUSETTS (2,800)  
 10/25 6-47 L at Brown (9,000)  
 11/1 28-14 W at Springfield (2,500)  
 11/15 8-36 L CONNECTICUT (HC) (5,000)

# ALL-TIME SCORES

## 1959 (3-5-1)

1-2-1 (tie-4th) Yankee Conference, 0-2-1 home, 3-3 away  
Coach Herb Maack

9/19	8-6	W	at Northeastern (4,350)
9/26	0-0	T	MAINE (3,500)
10/3	0-45	L	NEW HAMPSHIRE (3,000)
10/10	20-0	W	at Brandeis
10/17	30-6	W	at Massachusetts (6,500)
10/24	0-6	L	at Brown (7,000)
10/31	0-21	L	SPRINGFIELD (HC) (6,000)
11/7	6-41	L	at Buffalo
11/14	0-34	L	at Connecticut (10,352)

## 1960 (3-5)

1-4 (5th) in Yankee Conference, 2-1 home, 1-4 away  
Coach Herb Maack

9/17	20-0	W	NORTHEASTERN (3,500)
9/24	0-7	L	at Maine (5,000)
10/1	6-13	L	at New Hampshire (4,800)
10/8	48-8	W	VERMONT (2,200)
10/15	16-34	L	MASSACHUSETTS (HC) (5,000)
10/22	14-36	L	at Brown (10,000)
10/29	22-10	W	at Springfield (3,000)
11/12	6-42	L	at Connecticut (12,194)

## John Chironna (1961-62)

### 4-11-3 in two seasons



John F. Chironna, who played for Herb Maack at Bucknell and later coached under him at Rhode Island, posted a 4-11-3 record in two seasons. After serving in the Navy, Chironna played guard, tackle and halfback at Bucknell (1951-53). In 1952, while helping the Bison go undefeated, he was named Unsung Hero of the Week by the Associated Press at all three positions. He also hit .369 in baseball, winning team MVP honors. He also coached baseball, where his teams

were 16-15-1 in two seasons (1960-61).

## 1961 (2-6-1)

1-4 (5th) in Yankee Conference 0-3-1 home, 2-3 away  
Coach John Chironna

9/23	13-26	L	at Northeastern (5,100)
9/30	20-22	L	MAINE (3,200)
10/7	0-20	L	NEW HAMPSHIRE (3,200)
10/14	18-6	W	at Vermont (3,500)
10/21	0-25	L	at Massachusetts (8,412)
10/28	12-9	W	at Brown (11,000)
11/4	6-6	T	SPRINGFIELD (4,000)
11/11	0-12	L	at Hofstra (4,233)
11/18	0-27	L	CONNECTICUT (HC) (6,000)

## 1962 (2-5-2)

1-3 (tie-4th) in Yankee Conference 0-4 home, 2-1-2 away  
Coach John Chironna

9/22	0-28	L	NORTHEASTERN (3,000)
9/29	14-7	W	at Maine
10/6	6-6	T	at New Hampshire (1,000)
10/13	12-21	L	VERMONT (5,000)
10/20	8-42	L	MASSACHUSETTS (HC) (7,444)
10/27	12-12	T	at Brown (12,284)
11/3	24-13	W	at Springfield (1,000)
11/10	8-20	L	HOFSTRA (3,500)
11/17	0-27	L	at Connecticut

## Jack Zilly (1963-69)

### 21-41-2 in seven seasons



John L. Zilly, a former NFL end with the Rams and Eagles, inherited a program with only 35 players and nine returning lettermen. He installed a pro offense but had just one winning season in seven years, finishing 21-41-2. Zilly earned all-American honors as Notre Dame won the 1946 national crown. He played for the Los Angeles Rams in three straight NFL title games, finally winning the ring in 1951. After injuries cut short his career, he was an assistant at Notre Dame (1956-58) and

Brown (1959-62).

## 1963 (4-5)

2-3 (4th) in Yankee Conference 3-1 home, 1-4 away  
Coach Jack Zilly

9/21	13-28	L	at Northeastern
9/28	20-16	W	MAINE (2,500)
10/5	13-25	L	NEW HAMPSHIRE (HC) (6,000)
10/12	6-21	L	at Vermont
10/19	0-57	L	at Massachusetts (10,233)
10/26	7-33	L	at Brown
11/2	21-20	W	SPRINGFIELD (3,000)
11/9	23-7	W	at Hofstra (1,100)
11/16	13-12	W	CONNECTICUT (4,000)

## 1964 (3-7)

1-4 (5th) in Yankee Conference 1-3 home, 2-4 away  
Coach Jack Zilly

9/18	20-11	W	NORTHEASTERN (8,500)*
9/26	15-23	L	at Maine (5,200)
10/3	22-8	W	at New Hampshire (4,500)
10/10	8-16	L	VERMONT (HC) (10,000)
10/17	0-7	L	MASSACHUSETTS (5,500)
10/24	14-30	L	at Brown (14,700)
10/31	21-15	W	at Springfield
11/7	7-28	L	HOFSTRA (3,000)
11/14	7-28	L	at Connecticut (11,825)
11/21	13-20	L	at Boston University (25,100)

\*at Providence City Stadium

## 1965 (2-7)

1-4 (5th) in Yankee Conference 1-3 home, 1-4 away  
Coach Jack Zilly

9/25	14-6	W	at Brown (8,300)
10/2	23-6	W	NEW HAMPSHIRE (2,800)
10/9	6-26	L	at Vermont (7,000)
10/16	0-30	L	at Massachusetts (16,100)
10/23	0-36	L	MAINE (HC) (10,000)
10/30	6-7	L	SPRINGFIELD (3,500)
11/6	0-28	L	at Temple
11/13	0-14	L	CONNECTICUT (3,700)
11/20	3-28	L	at Boston University (8,000)

## 1966 (1-7-1)

1-3-1 (5th) in Yankee Conference 0-4 home, 1-3-1 away  
Coach Jack Zilly

9/24	27-40	L	at Brown (10,000)
10/1	17-6	W	at New Hampshire
10/8	7-21	L	VERMONT (HC) (11,700)
10/15	9-14	L	MASSACHUSETTS (5,000)
10/22	6-21	L	at Maine (8,894)
10/29	7-33	L	at Bucknell (6,243)
11/5	19-21	L	TEMPLE (N) (4,200)
11/12	0-0	T	at Connecticut (9,073)
11/19	14-30	L	BOSTON UNIVERSITY (2,500)

## 1967 (6-2-1)

2-2-1 (3rd) in Yankee Conference 3-1 home, 3-1-1 away  
Coach Jack Zilly

9/23	28-17	W	at Delaware (10,894)
9/30	12-8	W	at Brown (8,400)
10/7	13-6	W	NEW HAMPSHIRE (HC) (11,000)
10/14	0-0	T	at Vermont (6,500)
10/21	24-28	L	at Massachusetts (16,100)
10/28	27-7	W	BUCKNELL (8,000)
11/4	7-6	W	at Boston University (4,000)
11/11	34-12	W	MAINE (7,500)
11/18	18-26	L	CONNECTICUT (4,700)

## 1968 (3-6)

2-3 (tie-3rd) in Yankee Conference 3-1 home, 0-5 away  
Coach Jack Zilly

9/21	0-28	L	at Temple (11,000)
9/28	9-10	L	at Brown
10/5	33-8	W	SOUTHERN CONNECTICUT (4,300)
10/12	52-10	W	VERMONT (HC) (10,000)
10/19	14-9	W	MASSACHUSETTS (3,500)
10/26	14-21	L	at Maine (8,000)
11/2	6-27	L	at New Hampshire (13,000)
11/9	3-20	L	BOSTON UNIVERSITY (4,500)
11/16	6-35	L	at Connecticut (11,384)

## 1969 (2-7)

1-4 (tie-5th) in Yankee Conference 2-3 home, 0-4 away  
Coach Jack Zilly

9/20	3-47	L	TEMPLE (5,500)
9/27	0-21	L	at Brown (16,000)
10/4	7-35	L	MAINE (HC) (11,000)
10/11	14-41	L	at Vermont (7,500)
10/18	9-21	L	at Massachusetts (16,200)
10/25	13-3	W	CORTLAND STATE (3,000)
11/1	14-6	W	NEW HAMPSHIRE (3,300)
11/8	13-27	L	at Boston University (5,240)
11/15	15-25	L	CONNECTICUT (3,700)

## Jack Gregory (1970-75)

### 22-33-3 in six seasons



Jack Gregory came to Rhode Island with an unbroken record of success in Delaware high school, in the College Division at East Stroudsburg (Pa.) State, and in three years as head coach at Villanova, where he went 6-3 in 1969. He had just one winning season and a 22-33-3 mark in six years with the Rams. He capped seven years at East Stroudsburg (1959-65) with an unbeaten season and a 69-28-2 career mark. In 1965 he was named NCAA College Division Coach

of the Year and NAIA Middle Atlantic Coach of the Year.

## 1970 (3-5)

3-2 (tie-3rd) in Yankee Conference 2-1 home, 1-4 away  
Coach Jack Gregory

9/26	14-21	L	at Brown (14,200)
10/3	23-6	W	at Maine (7,315)
10/10	40-13	W	VERMONT (6,100)
10/17	14-7	W	MASSACHUSETTS (HC) (12,000)
10/24	0-21	L	BOSTON UNIVERSITY (10,000)
10/31	7-59	L	at New Hampshire (10,053)
11/7	15-18	L	at Temple (8,000)
11/14	12-33	L	at Connecticut (16,464)

## 1971 (3-6)

2-3 (tie-4th) in Yankee Conference 0-4 home, 3-2 away  
Coach Jack Gregory

9/18	22-36	L	at Northeastern (6,720)
9/25	34-21	W	at Brown (17,134)
10/2	7-21	L	MAINE (HC) (10,000)
10/9	34-22	W	at Vermont (6,100)
10/16	31-3	W	at Massachusetts (13,500)
10/23	7-28	L	at Boston University (6,646)
10/30	0-26	L	NEW HAMPSHIRE (9,327)
11/6	13-40	L	TEMPLE (6,000)
11/13	6-10	L	CONNECTICUT (11,500)

## 1972 (3-7)

0-5 (6th) in Yankee Conference 2-2 home, 1-5 away  
Coach Jack Gregory

9/10	27-0	W	HAMPTON (N) (9,000)*
9/23	27-7	W	NORTHEASTERN (4,600)
9/30	21-17	W	at Brown (9,000)
10/7	7-10	L	at Maine (4,600)
10/14	13-14	L	VERMONT (HC) (7,642)
10/21	7-42	L	MASSACHUSETTS (5,857)
10/28	13-31	L	at Boston University (N) (5,510)
11/4	10-14	L	at New Hampshire (9,327)
11/11	0-22	L	at Temple (8,569)
11/18	21-42	L	at Connecticut (11,500)

\*-First night game in Kingston

## 1973 (6-2-2)

4-1-1 (2nd) in Yankee Conference 2-1-1 home, 4-1-1 away  
Coach Jack Gregory

9/22	35-7	W	at Northeastern (5,732)
9/29	20-20	T	at Brown (10,200)
10/6	7-20	L	MAINE (5,000)
10/13	15-14	W	at Vermont (7,432)
10/20	41-35	W	at Massachusetts (14,500)
10/27	14-9	W	BOSTON UNIVERSITY (8,350)
11/3	40-16	W	NEW HAMPSHIRE (HC) (9,473)
11/10	0-43	L	at Temple (10,904)
11/17	7-7	T	CONNECTICUT (12,092)
11/22	34-6	W	Air Force-Europe (16,000)*

\*-Turkey Bowl, Frankfurt, Germany



1972: Bob Griffin took over as head coach en route to a school-record 79 victories.

### 1974 (5-5)

3-3 (tie-3rd) in Yankee Conference 4-2 home, 1-3 away

Coach Jack Gregory

9/14	7-38	L	TEMPLE (4,812)
9/21	48-36	W	NORTHEASTERN (2,642)
9/28	15-45	L	at Brown (9,200)
10/5	19-29	L	at Maine (4,900)
10/12	14-0	W	VERMONT (HC) (5,212)
10/19	7-17	L	MASSACHUSETTS (7,134)
10/26	13-7	W	BOSTON UNIVERSITY (3,112)
11/2	14-29	L	at New Hampshire (9,912)
11/9	45-8	W	BRIDGEPORT (3,624)
11/16	14-13	W	at Connecticut (11,270)

### 1975 (2-8)

1-4 (4th) in Yankee Conference 1-4 home, 1-4 away

Coach Jack Gregory

9/13	33-0	W	ST. MARY'S (N) (5,111)*
9/20	16-21	L	at Northeastern (6,214)
9/27	20-41	L	at Brown (10,572)
10/4	14-23	L	MAINE (HC) (7,132)
10/11	0-3	L	C.W. POST (2,110)
10/18	7-23	L	at Massachusetts (5,500)
10/24	21-6	W	at Boston University (N) (3,330)
11/1	6-23	L	NEW HAMPSHIRE (6,132)
11/8	6-45	L	at Temple (11,491)
11/15	10-21	L	CONNECTICUT (4,723)

\*- at Cranston Stadium

### Bob Griffin (1976-92)

79-107-1 in 17 seasons

Robert L. Griffin, Rhode Island's second longest-serving head coach, won a school record 79 games (79-101-1), led the Rams to their only three NCAA play-off berths (1981, '84 and '85) with the highest national rankings in history (final rankings of No. 2 in '84 and No. 7 in '85). Griffin was a Ram assistant under Jack Zilly (1966-69) and led Bishop Hendricken High to a 9-1 mark in 1970 before becoming offensive coordinator at Idaho State. Named head coach in 1972, he led Idaho State to two 7-3 records in four years.



### 1976 (3-5)

2-3 (tie-3rd) in Yankee Conference 1-2 home, 2-3 away

Coach Bob Griffin

9/18	15-14	W	NORTHEASTERN (3,760)
9/25	0-3	L	at Brown (12,500)
10/2	14-9	W	at Maine (7,500)
10/16	7-14	L	MASSACHUSETTS (8,359)
10/23	0-36	L	BOSTON UNIVERSITY (HC) (6,133)
10/30	14-33	L	at Holy Cross (11,951)
11/6	6-31	L	at New Hampshire (11,500)
11/13	17-14	W	at Connecticut (5,880)

### 1977 (6-5)

4-1 (2nd) in Yankee Conference 4-1 home, 2-4 away

Coach Bob Griffin

9/10	12-21	L	at Northeastern (4,812)
9/17	14-0	W	HOLY CROSS (5,742)
9/24	10-28	L	at Brown (7,400)
10/1	28-0	W	MAINE (HC) (8,457)
10/8	16-42	L	LEHIGH (4,115)
10/15	6-37	L	at Massachusetts (10,500)
10/22	31-22	W	at Boston University (3,120)
10/29	21-20	W	NEW HAMPSHIRE (8,813)
11/5	27-3	W	at Kings Point (2,900)
11/12	14-7	W	CONNECTICUT (5,312)
11/19	7-20	L	at VMI (5,200)

### 1978 (7-3)

3-2 (tie-2nd) in Yankee Conference 4-1 home, 3-2 away

Coach Bob Griffin

9/9	0-37	L	at Delaware (18,854)
9/16	27-13	W	NORTHEASTERN (1,750)*
9/30	17-3	W	at Brown (8,500)
10/7	47-0	W	at Maine (7,600)
10/14	3-0	W	VIRGINIA UNION (2,178)**
10/21	17-19	L	MASSACHUSETTS (HC) (7,595)
10/28	7-6	W	BOSTON UNIVERSITY (8,033)
11/4	19-14	W	at New Hampshire (9,730)
11/11	34-7	W	KINGS POINT (6,161)
11/18	6-31	L	at Connecticut (7,038)

\*- Brown Stadium, Providence, R.I.

\*\*- First game at renovated Meade Stadium

### 1979 (1-9-1)

1-4 (5th) in Yankee Conference 1-3-1 home, 0-6 away

Coach Bob Griffin

9/8	14-34	L	DELAWARE (7,141)
9/15	7-17	L	at Northeastern (3,567)
9/22	6-35	L	at Holy Cross (6,121)
9/29	13-31	L	at Brown (11,250)
10/6	10-0	W	MAINE (HC) (8,158)
10/20	0-24	L	at Massachusetts (13,500)
10/27	0-7	L	at Boston University (5,378)
11/3	6-21	L	NEW HAMPSHIRE (1,754)
11/10	24-24	T	KINGS POINT (1,250)
11/17	9-10	L	CONNECTICUT (5,938)
12/1	6-16	L	at Florida A&M (8,273)

### 1980 (2-9)

0-5 (6th) in Yankee Conference 2-2 home, 0-7 away

Coach Bob Griffin

9/6	14-21	L	at Holy Cross (11,131)
9/13	24-19	W	NORTHEASTERN (6,230)
9/20	11-14	L	at Maine (4,200)
10/4	8-26	L	MASSACHUSETTS (HC) (10,443)
10/18	13-24	L	BOSTON UNIVERSITY (3,280)
10/25	7-6	W	SOUTHERN CONNECTICUT (500)
11/8	10-23	L	at Lehigh (10,000)
11/15	30-56	L	at Connecticut (5,500)
11/22	3-9	L	at Brown (7,200)

\*-Largest crowd to ever witness a Rhode Island football game

### 1981 (6-6)

4-1 (tie-1st) in Yankee Conference 5-1 home, 1-5 away

Coach Bob Griffin

9/12	8-33	L	at Boise State (N) (19,437)
9/19	21-10	W	MAINE (6,222)
9/26	23-12	W	KINGS POINT (4,607)
10/3	16-10	W	at Massachusetts (11,905)
10/10	33-0	W	NORTHEASTERN (HC) (9,842)
10/17	21-27	L	at Boston University (8,249)
10/24	15-35	L	at Delaware (20,135)
10/31	14-12	W	NEW HAMPSHIRE (9,624)
11/7	8-10	L	BROWN (9,737)
11/14	34-29	W	CONNECTICUT (10,000)
11/21	6-41	L	at Florida A&M (N) (3,871)
12/5	0-51	L	at Idaho State (12,153)*

\*- NCAA I-AA Playoff

### 1982 (7-4)

2-3 (5th) in Yankee Conference 3-2 home, 4-2 away

Coach Bob Griffin

9/11	20-10	W	at Lafayette (9,500)
9/18	58-55	W	at Maine (6 OT) (6,250)
9/25	20-24	L	at Brown (14,800)
10/2	7-17	L	MASSACHUSETTS (9,433)
10/9	14-13	W	at Northeastern (1,200)
10/16	16-26	L	BOSTON UNIVERSITY (HC) (10,230)
10/23	41-14	W	SOUTHERN CONNECTICUT (4,611)
10/30	23-20	W	at New Hampshire (6,235)
11/6	20-16	W	LEHIGH (7,526)
11/13	21-26	L	at Connecticut (3,063)
11/20	24-0	W	SPRINGFIELD (5,232)

### 1983 (6-4)

2-3 (tie-4th) in Yankee Conference 4-2 home, 2-2 away

Coach Bob Griffin

9/3	26-42	L	at Ball State (5,695)
9/17	24-16	W	MAINE (8,456)
9/24	30-16	W	at Brown (13,700)
10/1	13-3	W	at Massachusetts (6,831)
10/8	30-10	W	NORTHEASTERN (HC) (12,211)
10/15	22-24	L	at Boston University (N) (7,343)
10/22	17-7	W	SOUTHERN CONNECTICUT (9,841)
10/29	13-14	L	NEW HAMPSHIRE (5,890)
11/5	19-9	W	DELAWARE (5,307)
11/12	17-18	L	CONNECTICUT (6,764)

### 1984 (10-3)

4-1 (tie-1st) in Yankee Conference 5-0 home, 5-3 away

Coach Bob Griffin

9/1	31-21	W	HOWARD (3,520)
9/8	31-10	W	LAFAYETTE (6,858)
9/15	0-19	L	at Holy Cross (9,911)
9/22	27-0	W	at Maine (8,000)
9/29	34-13	W	at Brown (12,523)
10/6	20-19	W	MASSACHUSETTS (10,227)
10/13	30-22	W	at Northeastern (4,650)
10/20	22-7	W	BOSTON UNIVERSITY (HC) (13,052)*
10/27	24-16	W	at Lehigh (12,500)
11/3	12-14	L	at New Hampshire (14,335)
11/17	29-19	W	at Connecticut (4,799)
12/1	23-17	W	RICHMOND (10,446)**
12/8	20-32	L	at Montana State (12,697)**

\*-Largest crowd in Meade Stadium history

\*\*- NCAA I-AA Playoffs

### 1985 (10-3)

5-0 (1st) in Yankee Conference) 7-0 home, 3-3 away

Coach Bob Griffin

9/7	13-29	L	at Delaware (15,465)
9/14	46-0	W	HOWARD (6,628)
9/21	34-14	W	MAINE (9,442)
9/28	27-32	L	at Brown (10,399)
10/5	7-3	W	at Massachusetts (6,871)
10/12	45-38	W	at Lehigh (13,500)
10/19	34-19	W	at Boston University (4,164)
10/26	41-19	W	LAFAYETTE (HC) (12,933)
11/2	30-20	W	NEW HAMPSHIRE (10,114)
11/9	34-21	W	NORTHEASTERN (9,421)
11/16	56-42	W	CONNECTICUT (8,897)
11/30	35-27	W	AKRON (7,317)*
12/7	15-59	L	at Furman (9,454)*

\*- NCAA I-AA Playoffs

# ALL-TIME SCORES

**1986 (1-10)**  
0-7 (8th) in Yankee Conference 1-5 home, 0-5 away  
Coach Bob Griffin

9/6 10-44 L at Delaware (17,337)  
9/13 14-35 L TOWSON STATE (6,967)  
9/20 14-34 L at Maine (7,200)  
9/27 7-27 L BROWN (9,515)  
10/4 17-31 L MASSACHUSETTS (6,356)  
10/18 0-17 L BOSTON UNIVERSITY (HC) (9,882)  
10/25 14-28 L RICHMOND (7,944)  
11/1 24-28 L at New Hampshire (10,350)  
11/8 34-18 W SOUTHERN CONNECTICUT (2,543)  
11/15 14-21 L at Connecticut (OT) (3,769)  
11/22 9-36 L at Northeastern (3,100)

**1987 (1-10)**  
1-6 (8th) in Yankee Conference 1-4 home, 0-6 away  
Coach Bob Griffin

9/5 0-38 L at James Madison (N) (3,300)  
9/12 26-13 W DELAWARE (7,028)  
9/19 20-24 L MAINE (6,858)  
9/26 15-17 L at Brown (13,500)  
10/3 7-42 L at Massachusetts (9,801)  
10/17 13-16 L at Boston University (11,552)  
10/24 14-27 L at Richmond (17,029)  
10/31 14-28 L NEW HAMPSHIRE (HC) (11,231)  
11/7 3-21 L NORTHEASTERN (6,994)  
11/14 7-52 L CONNECTICUT (3,906)  
11/21 6-19 L at Towson State (587)

**1988 (4-7) 3-5**  
(tie-7th) in Yankee Conference 2-3 home, 2-4 away  
Coach Bob Griffin

9/3 7-49 L at Holy Cross (12,441)  
9/10 16-41 L BOSTON UNIVERSITY (6,782)  
9/17 23-17 W at Delaware (16,903)  
9/24 17-10 W BROWN (7,455)  
10/1 14-20 L at Villanova (13,400)  
10/8 7-26 L MASSACHUSETTS (5,117)  
10/15 14-28 L at Maine (10,014)  
10/22 14-10 W RICHMOND (HC) (5,980)  
11/5 19-24 L at Northeastern (6,712)  
11/12 9-17 L NEW HAMPSHIRE (3,669)  
11/19 21-19 W at Connecticut (3,184)

**1989 (3-8)**  
1-7 (8th) Yankee Conference 0-4 home, 3-3 away, 0-1 neutral  
Coach Bob Griffin

9/9 45-14 W at Richmond (12,854)  
9/16 12-21 L DELAWARE (6,218)  
9/23 0-17 L NORTHEASTERN (5,662)  
9/30 18-13 W at Brown (8,500)  
10/7 6-31 L at Massachusetts (10,102)  
10/14 21-47 L MAINE (HC) (8,847)  
10/21 31-34 L at Boston University (2 OT) (5,545)  
10/28 25-28 L VILLANOVA (5,000)\*  
11/4 19-6 W at Towson State (4,619)  
11/11 0-25 L at New Hampshire (4,184)  
11/18 28-35 L CONNECTICUT (5,045)  
\*-at Milan, Italy

**1990 (5-6)**  
2-6 (tie-7th) in Yankee Conference 4-2 home, 1-4 away  
Coach Bob Griffin

9/8 40-21 W TOWSON STATE (6,297)  
9/15 37-0 W RICHMOND (5,321)  
9/22 23-3 W BROWN (7,413)  
9/29 19-24 L at Delaware (12,341)  
10/6 13-16 L MASSACHUSETTS (9,407)  
10/13 17-24 L at Maine (6,103)  
10/20 13-15 L BOSTON UNIVERSITY (HC) (10,228)  
10/27 7-14 L at Villanova (9,257)  
11/3 31-11 W at Northeastern (6,200)  
11/10 24-14 W NEW HAMPSHIRE (500)  
11/17 21-51 L at Connecticut (6,215)

**1991 (6-5)**  
3-5 (tie-4th) in Yankee Conference 3-2 home, 3-3 away  
Coach Bob Griffin

9/14 10-19 L at Richmond (6,078)  
9/21 7-42 L DELAWARE (7,871)  
9/28 45-25 W at Towson State (2,846)  
10/5 38-36 W at Brown (8,200)  
10/12 17-14 W at Massachusetts (9,427)

10/19 52-30 W MAINE (HC) (10,145)  
10/26 0-43 L at Boston University (5,475)  
11/2 14-49 L VILLANOVA (3,052)  
11/9 28-20 W NORTHEASTERN (6,603)  
11/16 35-42 L at New Hampshire (6,639)  
11/23 20-10 W CONNECTICUT (6,448)

**1992 (1-10)**  
0-8 (9th) in Yankee Conference 1-4 home, 0-6 away  
Coach Bob Griffin

9/12 36-19 W TOWSON STATE (5,852)  
9/19 14-31 L at Delaware (15,673)  
9/26 14-46 L RICHMOND (2,695)  
10/2 18-28 L at Hofstra (N) (3,782)  
10/10 7-32 L MASSACHUSETTS (6,141)  
10/17 9-21 L at Maine (8,842)  
10/24 21-34 L BOSTON UNIVERSITY (HC) (7,097)  
10/31 3-34 L at Villanova (5,441)  
11/7 26-35 L at Northeastern (6,500)  
11/14 13-20 L NEW HAMPSHIRE (2,218)  
11/21 0-38 L at Connecticut (3,472)

**Floyd Keith (1993-99)**  
**23-53-0 in seven seasons**



Floyd A. Keith, the first black coach in Yankee Conference (formerly the Atlantic 10) history, turned in one winning season in eight years at Rhode Island (23-53), going 7-4 in 1995 and winning the league's New England Division. He led Howard to a 23-17-2 mark in four years as head coach (1979-82), then joined Bill Mallory's staff at Indiana, where the Hoosiers reached five bowl games in his nine years (1984-91). Before going to Howard, he coached under Mallory for four years at Miami of Ohio and five at Colorado.

**1993 (4-7)**  
2-6 (4th) in Yankee Conference New England Division  
3-2 home, 1-5 away  
Coach Floyd Keith

9/4 10-31 L at Boise State (17,618)  
9/11 37-32 W HOFSTRA (4,470)  
9/18 11-32 L DELAWARE (TSN #3) (3,556)  
9/25 15-13 W NORTHEASTERN (3,133)  
10/2 30-7 W at Brown (4,429)  
10/9 14-36 L at Massachusetts (6,141)  
10/16 23-26 W\* MAINE (2 OT) (HC) (6,879)  
10/23 15-48 L at Boston Univ. (TSN #15) (11,052)  
10/30 10-14 L at Villanova (1,256)  
11/6 9-41 L CONNECTICUT (3,472)  
11/13 33-51 L at New Hampshire (4,347)  
\*- Maine forfeited for using ineligible players

**1994 (2-9)**  
2-6 (tie-5th) in Yankee Conference New England Division  
0-5 home, 2-4 away  
Coach Floyd Keith

9/3 17-38 L WILLIAM & MARY (TSN #21) (3,383)  
9/10 28-21 W at Maine (4,013)  
9/17 27-20 W at Northeastern (4,050)  
9/24 29-32 L BROWN (5,692)  
10/1 12-22 L at Massachusetts (10,812)  
10/8 23-45 L BOSTON UNIV. (TSN #12) (3,714)  
10/22 16-33 L at Connecticut (13,119)  
10/29 7-13 L NEW HAMPSHIRE (HC) (TSN #25) (5,239)  
11/4 16-42 L at Hofstra (TSN #23) (5,081)  
11/12 26-28 L DELAWARE STATE (3,009)  
11/19 7-26 L at Delaware (11,646)

**1995 (7-4)**  
6-2 (1st) in Yankee Conference New England Division  
4-2 home, 3-2 away  
Coach Floyd Keith

9/2 17-14 W at Delaware State (3,982)  
9/9 17-13 W MAINE (4,124)  
9/16 10-7 W at New Hampshire (TSN #22) (5,077)  
9/23 28-31 L at Brown (4,052)  
9/30 34-0 W MASSACHUSETTS (5,005)  
10/7 14-23 L at William & Mary (TSN #17) (7,230)  
10/14 22-19 W at Boston University (8,201)  
10/21 24-19 W CONNECTICUT (HC) (TSN #15) (7,237)  
11/4 27-10 W VILLANOVA (8,044)  
11/11 3-37 L HOFSTRA (TSN #8) (5,837)

11/18 19-24 L DELAWARE (TSN #8) (7,890)

**1996 (4-6)**  
2-5 (4th) in Yankee Conference New England Division  
4-2 home, 0-4 away  
Coach Floyd Keith

8/31 49-3 W AMERICAN INTERNATIONAL (3,719)  
9/7 16-23 L WILLIAM & MARY (2,131)  
9/14 26-35 L NEW HAMPSHIRE (2,570)  
9/21 19-58 L at Maine (3,525)  
9/28 28-13 W BROWN (3,750)  
10/5 41-21 W MASSACHUSETTS (5,390)  
10/19 Canceled\* at Connecticut  
10/26 38-7 W BOSTON UNIVERSITY (HC) (5,000)  
11/2 16-34 L at Villanova (TSN #16) (7,648)  
11/16 27-43 L at Delaware (TSN #13) (14,341)  
11/23 0-21 L at Hofstra (2,451)  
\*-Ruled "no contest" by NCAA, a forfeit by Yankee Conference

**1997 (2-9)**  
2-6 (tie-4th) in Yankee Conference New England Division  
1-4 home, 1-5 away  
Coach Floyd Keith

9/6 14-30 L MAINE (4,670)  
9/13 35-21 W NEW HAMPSHIRE (2,680)  
9/20 13-41 L NORTHEASTERN (2,639)  
9/27 14-18 L at Massachusetts (8,218)  
10/4 21-28 L HOFSTRA (HC) (5,178)  
10/11 20-17 W at Boston University (1,281)  
10/18 15-23 L at Brown (4,922)  
10/25 21-37 L at Connecticut (5,139)  
11/1 15-37 L VILLANOVA (TSN #1) (2,297)  
11/8 11-27 L at Richmond (5,918)  
11/15 37-39 L at James Madison (3 OT) (6,800)

**1998 (3-8)**  
2-6 (5th) in Atlantic 10 Conference New England Division  
2-3 home, 1-5 away  
Coach Floyd Keith

9/5 13-21 L WILLIAM & MARY (TSN #14) (3,713)  
9/17 17-20 L RICHMOND (OT) (2,519)  
9/26 17-24 L at Northeastern (4,866)  
10/3 44-16 W BROWN (HC) (7,214)  
10/10 18-17 W at Maine (3,271)  
10/17 30-48 L at Hofstra (TSN #25) (7,452)  
10/24 17-31 L at Connecticut (TSN #10) (12,572)  
10/31 28-21 W JAMES MADISON (2,389)  
11/7 13-23 L MASSACHUSETTS (TSN #12) (5,036)  
11/14 7-9 L at New Hampshire (3,335)  
11/21 15-27 L at Villanova (5,214)

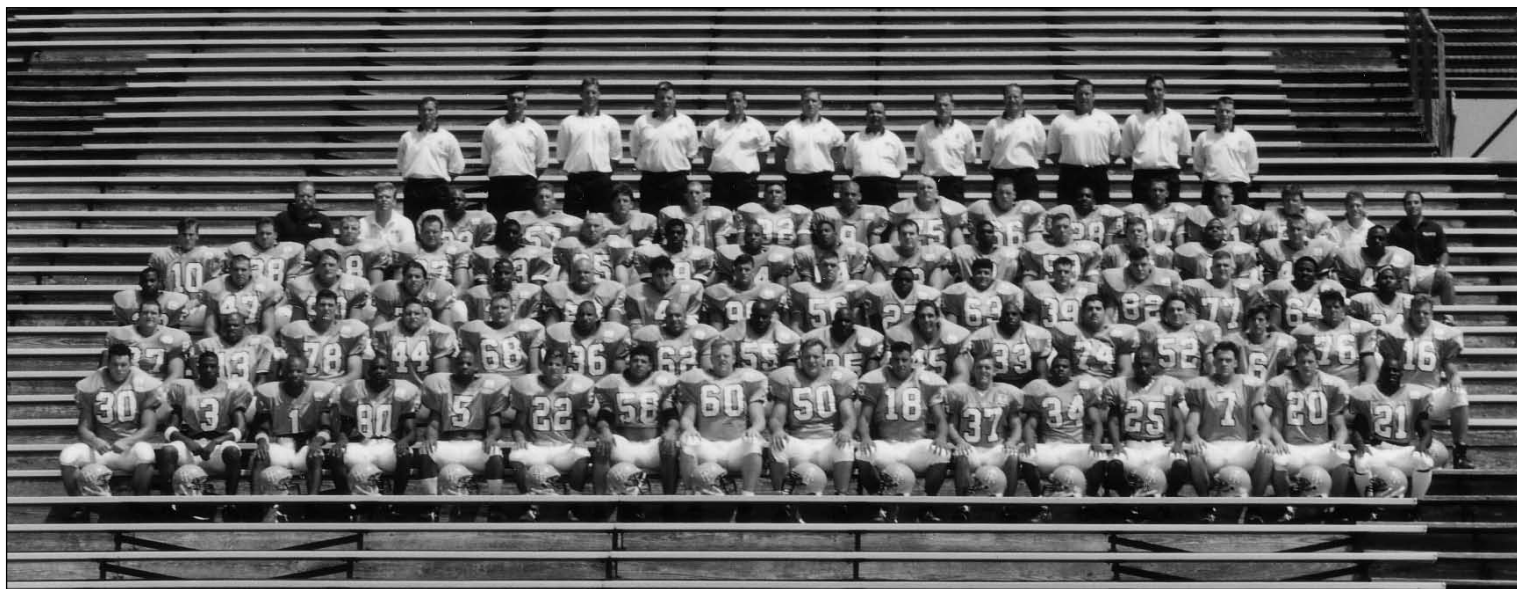
**1999 (1-10)**  
1-7 (tie-10th) Atlantic 10 Conference  
1-5 home, 0-5 away  
Coach Floyd Keith

9/4 14-37 L NEW HAMPSHIRE (2,419)  
9/18 13-28 L HOFSTRA (TSN #7) (2,691)  
9/25 21-24 L MORGAN STATE (2,067)  
10/2 9-20 L at Connecticut (11,769)  
10/9 38-41 L at Richmond (5,179)  
10/16 25-27 L at Brown (7,032)  
10/23 23-14 W MAINE (HC) (4,458)  
10/30 9-31 L at Massachusetts (TSN #20) (13,879)  
11/6 6-24 L WILLIAM & MARY (6,130)  
11/13 0-35 L at Delaware (TSN #25) (17,227)  
11/20 10-20 L NORTHEASTERN (2,398)

**Tim Stowers (2000-present)**  
**30-49 in seven seasons**



Tim Stowers' seven-year mark at Rhode Island is somewhat misleading, considering he inherited a 1-10 team and went 3-8, then 8-3 in just his second season. In 2001, he led the Rams to their first winning season in six years and their first national ranking (No. 20) since 1985. The Rams have played 29 nationally-ranked teams in his seven years at the helm. A former Auburn lineman (1977-78) and assistant (1979-83), he joined the Georgia Southern staff in 1985 and helped win three I-AA (now FCS) titles in five years. Named head coach in 1990, he guided the Eagles to a national crown in his first season and was 51-23 in six years.



1995: Floyd Keith led the Rams first place in the Yankee Conference with a 7-4 record.

### 2000 (3-8)

2-7 in Atlantic 10 Conference 1-4 home, 2-4 away

Coach Tim Stowers

9/2	7-29	L	DELAWARE (TSN #16) (3,016)
9/9	12-13	L	at New Hampshire (3,403)
9/23	12-30	L	at Hofstra (TSN #12) (3,209)
9/30	19-29	L	BROWN (4,173)
10/7	16-26	L	at William & Mary (5,358)
10/14	7-6	W	JAMES MADISON (HC) (TSN #8) (4,914)
10/21	38-24	W	at Northeastern (3,233)
10/28	7-37	L	at Maine (4,745)
11/4	10-13	L	RICHMOND (OT) (TSN #13) (3,681)
11/11	26-21	W	at Connecticut (9,591)
11/18	21-29	L	MASSACHUSETTS (3,876)

### 2001 (8-3)

6-3 (5th) in Atlantic 10 Conference

4-1 home, 4-2 away

Coach Tim Stowers

8/30	10-7	W	at Delaware (TSN #4) (20,794)
9/8	35-26	W	HOFSTRA (TSN #4) (4,309)
9/22	16-12	W	at James Madison (10,200)
9/29	42-38	W	at Brown (9,365)
10/6	56-7	W	at Hampton (1,802)
10/13	34-31	W	WILLIAM & MARY (TSN #25) (5,301)
10/20	31-27	W	NEW HAMPSHIRE (HC) (5,687)
10/27	0-28	L	at Richmond (7,479)
11/3	14-26	L	MAINE (TSN #24) (5,803)
11/17	7-24	L	at Massachusetts (6,085)
11/24	27-26	W	NORTHEASTERN (3,206)

### 2002 (3-9)

1-8 (11th) in Atlantic 10 Conference

3-3 home, 0-6 away

Coach Tim Stowers

8/31	28-0	W	BRYANT (3,346)
9/7	19-37	L	at Hofstra (TSN #20) (3,333)
9/14	17-63	L	at Syracuse (43,089)
9/28	14-31	L	at Maine (TSN #3) (7,034)
10/5	38-28	W	BROWN (3,990)
10/12	13-38	L	at Northeastern (1,004)
10/19	17-14	W	DELAWARE (2 OT) (HC) (5,791)
10/26	0-26	L	RICHMOND (1,451)
11/2	11-15	L	JAMES MADISON (3,966)
11/9	6-44	L	at William & Mary (TSN #20) (5,502)
11/16	3-45	L	at Villanova (TSN #4) (5,019)
11/23	21-48	L	MASSACHUSETTS (2,501)

### 2003 (4-8)

3-6 (tie, 8th) in Atlantic 10 Conference

2-4 home, 2-4 away

Coach Tim Stowers

9/6	28-63	L	FORDHAM (TSN #13) (4,311)
9/13	39-42	L	NORTHEASTERN (TSN #6) (2,970)
9/20	55-40	W	NEW HAMPSHIRE (3,261)
9/27	17-13	W	at Richmond (8,270)
10/4	27-9	W	at Brown (5,728)
10/11	17-21	L	VILLANOVA (HC) (TSN #3) (3,623)
10/18	10-55	L	at Delaware (TSN #4) (20,795)
10/25	24-37	L	WILLIAM & MARY (4,098)
11/1	27-39	L	at James Madison (13,885)
11/8	24-31	L	at Cincinnati (14,006)
11/15	24-0	W	HOFSTRA (2,523)
11/22	17-31	L	at Massachusetts (TSN #7) (7,087)

### 2004 (4-7)

2-6 (6th) in Atlantic 10 Conference North Division

2-4 home, 2-4 away

Coach Tim Stowers

9/4	37-36	W	at Fordham (4,460)
9/11	39-7	W	CENTRAL CONN. ST. (2,865)
9/25	43-62	L	at Hofstra (5,180)
10/2	13-20	L	BROWN (3,551)
10/9	28-16	W	TOWSON (7,102)
10/16	24-31	L	at William & Mary (TSN #16) (8,774)
10/23	27-24	W	MASSACHUSETTS (HC) (4,376)
10/30	9-48	L	VILLANOVA (TSN #23) (2,236)
11/6	3-27	L	NEW HAMPSHIRE (TSN #18) (4,595)
11/14	28-42	L	MAINE (2,068)
11/20	14-42	L	at Northeastern (2,672)

### 2005 (4-7)

2-6 (6th) in Atlantic 10 Conference North Division

2-3 home, 2-4 away

Coach Tim Stowers

9/3	34-20	W	FORDHAM (1,867)
9/10	56-10	W	at Central Connecticut St. (3,259)
9/17	48-29	W	WILLIAM & MARY (TSN #7) (3,303)
9/24	6-14	L	at Massachusetts (TSN #24) (15,314)
10/1	35-45	L	at Brown (6,152)
10/8	14-23	L	TOWSON (HC) (2,508)
10/15	9-53	L	at New Hampshire (TSN #8) (5,596)
10/22	48-30	W	at Villanova (5,109)
10/29	24-38	L	HOFSTRA (3,987)
11/12	24-27	L	at Maine (OT) (5,050)
11/19	14-17	L	NORTHEASTERN (2,570)

### 2006 (4-7)

2-6 (5th) in Atlantic 10 Conference North Division

3-3 home, 1-4 away

Coach Tim Stowers

8/31	7-52	L	at Connecticut (36,227)
9/9	42-7	W	MERRIMACK (3,392)
9/23	17-24	L	DELAWARE (TSN #18) (2,577)
9/30	28-21	W	BROWN (3,467)
10/7	23-35	L	at James Madison (TSN #13) (14,679)
10/14	6-31	L	RICHMOND (TSN #10) (HC) (3,403)
10/21	16-41	L	at Massachusetts (TSN #6) (15,522)
10/28	3-0	W	MAINE (TSN #15) (3,250)
11/4	20-13	W	at Hofstra (4,755)
11/11	21-63	L	NEW HAMPSHIRE (TSN #9) (2,937)
11/17	31-45	L	at Northeastern (3,212)

# COACHING RECORDS

## All-time Coaching Records

Head Coach	Seasons	Years	Won	Lost	Tied	Pct.
No coach	1895-97	3	2	7	0	.222
Marshall Tyler	1898-08	10	23	22	8	.509
George Cobb	1909-14	5	17	16	5	.513
Robert Bingham	1912	1	6	3	0	.667
Jim Baldwin	1915-16	2	6	9	1	.406
Fred Murray	1917, 1919	2	2	11	3	.219
Frank Keaney	1920-40	21	70	87	12	.450
Bill Beck	1941, 1946-49	5	12	22	2	.361
Paul Cieurzo	1942, 1945	2	5	4	0	.556
Hal Kopp	1950, 1952-55	5	28	11	2	.707
Ed Doherty	1951	1	3	5	0	.375
Herb Maack	1956-1960	5	17	22	2	.439
John Chironna	1961-62	2	4	11	3	.306
Jack Zilly	1963-69	7	21	41	2	.344
Jack Gregory	1970-75	6	22	33	3	.404
Bob Griffin	1976-92	17	79	107	1	.425
Floyd Keith	1992-99	7	23	53	0	.303
Tim Stowers	2000-present	7	30	49	0	.380
<b>Totals</b>	<b>107 seasons</b>		<b>370</b>	<b>513</b>	<b>43</b>	<b>.423</b>



Bob Griffin is the winningest coach in URI history, capturing 79 games at the helm of the Rams football program

## Year-by-Year Record

Year	Record	Pct.	Head Coach	Year	Record	Pct.	Head Coach	Year	Record	Pct.	Head Coach
1895	1-1-0	.500	No coach	1933	6-2-0	.750	Frank Keaney	1971	3-6-0	.333	Jack Gregory
1896	0-4-0	.000	No coach	1934	6-3-0	.667	Frank Keaney	1972	3-7-0	.300	Jack Gregory
1897	1-2-0	.333	No coach	1935	4-4-1	.500	Frank Keaney	1973	6-2-2	.700	Jack Gregory
1898	5-0-0	1.00	Marshall Tyler	1936	5-4-0	.556	Frank Keaney	1974	5-5-0	.500	Jack Gregory
1899	2-3-1	.417	Marshall Tyler	1937	3-4-1	.438	Frank Keaney	1975	2-8-0	.200	Jack Gregory
1900	0-2-1	.167	Marshall Tyler	1938	4-4-0	.500	Frank Keaney	1976	3-5-0	.375	Bob Griffin
1901	0-2-0	.000	Marshall Tyler	1939	3-4-1	.438	Frank Keaney	1977	6-5-0	.545	Bob Griffin
1902			No team	1940	5-3-0	.625	Frank Keaney	1978	7-3-0	.700	Bob Griffin
1903	2-4-1	.357	Marshall Tyler	1941	5-2-1	.688	Bill Beck	1979	1-9-1	.137	Bob Griffin
1904	3-3-1	.500	Marshall Tyler	1942	3-3-0	.500	Paul Cieurzo	1980	2-9-0	.182	Bob Griffin
1905	3-3-1	.500	Marshall Tyler	1943			No team due to World War II	1981	6-6-0	.500	Bob Griffin
1906	1-2-1	.375	Marshall Tyler	1944			No team due to World War II	1982	7-4-0	.636	Bob Griffin
1907	3-1-2	.667	Marshall Tyler	1945	2-1-0	.667	Paul Cieurzo	1983	6-4-0	.600	Bob Griffin
1908	4-2-0	.667	Marshall Tyler	1946	2-4-0	.333	Bill Beck	1984	10-3-0	.769	Bob Griffin
1909	3-4-0	.429	George Cobb	1947	3-4-0	.429	Bill Beck	1985	10-3-0	.769	Bob Griffin
1910	5-1-1	.786	George Cobb	1948	2-4-1	.357	Bill Beck	1986	1-10-0	.091	Bob Griffin
1911	5-2-1	.688	George Cobb	1949	0-8-0	.000	Bill Beck	1987	1-10-0	.091	Bob Griffin
1912	6-3-0	.667	Robert Bingham	1950	3-5-0	.375	Hal Kopp	1988	4-7-0	.363	Bob Griffin
1913	2-6-0	.250	George Cobb	1951	3-5-0	.375	Ed Doherty	1989	3-8-0	.273	Bob Griffin
1914	2-3-3	.438	George Cobb	1952	7-1-0	.875	Hal Kopp	1990	5-6-0	.454	Bob Griffin
1915	3-5-0	.375	Jim Baldwin	1953	6-2-0	.750	Hal Kopp	1991	6-5-0	.545	Bob Griffin
1916	3-4-1	.438	Jim Baldwin	1954	6-2-0	.750	Hal Kopp	1992	1-10-0	.091	Bob Griffin
1917	2-4-2	.375	Fred Murray	1955	6-1-2	.778	Hal Kopp	1993	4-7-0	.364	Floyd Keith
1918			No team due to World War I	1956	2-6-0	.333	Herb Maack	1994	2-9-0	.182	Floyd Keith
1919	0-7-1	.063	Fred Murray	1957	5-2-1	.688	Herb Maack	1995	7-4-0	.636	Floyd Keith
1920	0-4-4	.125	Frank Keaney	1958	4-4-0	.500	Herb Maack	1996	4-6-0	.400	Floyd Keith
1921	3-5-0	.375	Frank Keaney	1959	3-5-1	.389	Herb Maack	1997	2-9-0	.182	Floyd Keith
1922	4-4-0	.500	Frank Keaney	1960	3-5-0	.375	Herb Maack	1998	3-8-0	.273	Floyd Keith
1923	1-5-1	.214	Frank Keaney	1961	2-6-1	.278	John Chironna	1999	1-10-0	.091	Floyd Keith
1924	0-7-0	.000	Frank Keaney	1962	2-5-2	.333	John Chironna	2000	3-8-0	.273	Tim Stowers
1925	2-5-1	.313	Frank Keaney	1963	4-5-0	.444	Jack Zilly	2001	8-3	.727	Tim Stowers
1926	1-6-0	.143	Frank Keaney	1964	3-7-0	.300	Jack Zilly	2002	3-9	.250	Tim Stowers
1927	5-3-0	.625	Frank Keaney	1965	2-7-0	.222	Jack Zilly	2003	4-8	.333	Tim Stowers
1928	2-7-0	.222	Frank Keaney	1966	1-7-1	.167	Jack Zilly	2004	4-7	.364	Tim Stowers
1929	5-2-1	.688	Frank Keaney	1967	6-2-1	.722	Jack Zilly	2005	4-7	.364	Tim Stowers
1930	5-2-1	.688	Frank Keaney	1968	3-6-0	.333	Jack Zilly	2006	4-7	.364	Tim Stowers
1931	4-4-0	.500	Frank Keaney	1969	2-7-0	.222	Jack Zilly				
1932	2-5-1	.313	Frank Keaney	1970	3-5-0	.222	Jack Gregory				