

UNIVERSITY OF EVANSVILLE WOMEN'S BASKETBALL

SID: Michael Robertson

Email: MR328@Evansville.edu

Phone: (812) 488-2238

Twitter: @UEAthleticsWBB, #ForTheAces



2021-22 GAME NOTES



DES MOINES, IOWA



2 PM



KNAPP CENTER



ESPN+

GAME 11

TODAY'S GAME

AT DRAKE



PURPLE ACES

6-4	0-0	211
OVERALL	MVC	NET
2-3	2-3	L, 67-75
LAST 5	ROAD	LAST GAME

AT



BULLDOGS

8-4	0-1	70
OVERALL	MVC	NET
3-2	5-3	L, 70-78
LAST 5	HOME	LAST GAME

SERIES AT A GLANCE

All-Time Series: Drake leads, 46-14

First Meeting: Jan. 26, 1995, Des Moines, Iowa, L, 68-110

Last Meeting: Jan. 8, 2021, Evansville, Ind., L, 43-76

Last UE Win: March 13, 2015, St. Charles, Mo., UE W, 84-79 (OT)

Last DU Win: Jan. 8, 2021, Evansville, Ind., DU W, 76-43

Streak: DU, W13

Largest UE Win: 13 Points, Twice

Largest DU Win: 108-44, Des Moines, Iowa, Jan. 19, 2020

LAST 10 VS. DRAKE (0-10)

DATE	H/A/N	RESULT	DATE	H/A/N	RESULT
1/8/21	H	L, 43-76	1/27/19	H	L, 47-78
1/7/21	H	L, 50-74	2/9/18	H	L, 50-101
2/13/20	H	L, 51-66	1/14/18	A	L, 66-107
1/19/20	A	L, 44-108	2/5/17	H	L, 48-73
2/22/19	A	L, 39-66	1/6/17	A	L, 65-82

2021-22 SCHEDULE & RESULTS

Date	Opponent	Time/Result
Nov. 9	Austin Peay	W, 62-52
Nov. 14	Oakland City	W, 100-59
Nov. 17	Eastern Kentucky	W, 67-57
Nov. 20	at Eastern Illinois	L, 74-85 (2OT)
Nov. 24	at Purdue Fort Wayne	W, 84-71
Nov. 30	Murray State	L, 77-85
Dec. 4	at Miami (Ohio)	L, 73-81
Dec. 7	at Bellarmine	W, 89-83
Dec. 11	Morehead State	W, 79-49
Dec. 19	at Chicago State	CANCELED
Dec. 22	at Butler	L, 67-75
Dec. 30	at Northern Iowa	POSTPONED
Jan. 1	at Drake	2 PM
Jan. 2	at No. 21 Iowa	11 AM
Jan. 7	Bradley	6 PM
Jan. 9	Illinois State	1 PM
Jan. 13	at Indiana State	TBA
Jan. 21	at Loyola Chicago	7 PM
Jan. 23	at Valparaiso	Noon
Jan. 27	Missouri State	6 PM
Jan. 29	Southern Illinois	1 PM
Feb. 4	at Illinois State	6 PM
Feb. 6	at Bradley	2 PM
Feb. 12	Indiana State	TBA
Feb. 18	Valparaiso	6 PM
Feb. 20	Loyola Chicago	1 PM
Feb. 24	at Missouri State	7 PM
Feb. 26	at Southern Illinois	2 PM
Mar. 3	Drake	6 PM
Mar. 5	Northern Iowa	1 PM

2022 Hoops in the Heartland (Moline, Ill.)

March 10-13

WE ARE UE

There are several ways to reference the University of Evansville. Generally, the first reference should always be "University of Evansville" or "Purple Aces". Later references to our team may be "Aces" as well as just using the word "Evansville".

Our school abbreviation is "UE". Under no circumstances is it acceptable to use "EU".

The "UE" logo below is our primary and the "Aces" is our secondary. Both are acceptable to use at any time.



GAMEDAY NOTES

• Saturday's meeting is the 61st in series history between the Aces and Bulldogs with Drake owning a 46-14 advantage in the all-time series.

• The two sides last met in a pair of back-to-back contests in Evansville on January 7 and 8 of 2021 with the Bulldogs taking both.

• Drake has won 13-straight games in the series with Evansville's last win over the Bulldogs coming in St. Charles, Mo. on March 13, 2015. Evansville's last win over Drake in Des Moines came on Jan. 12, 2014 in a 71-67 triumph.

• The Aces six wins in non-conference play represented their best start since the 2008-09 season, the last time Evansville won six non-conference contests. The 2008-09 Aces would go on to win the MVC Tournament and advance to the NCAA Tournament.

• Drake enters this weekend's matchup as the 70th team in NET rankings, the highest team in NET ranking that the Aces will have faced this season.

• After Thursday's game against UNI was postponed due to COVID-19, the Aces were approached by 21st-ranked Iowa to play a game on Sunday at 11 AM in Iowa City, filling-out the weekend slate for Evansville.

PROBABLE STARTERS

Pos.	Name	Yr.	PPG	RPG	APG
F	Celine Dupont	R-So.	4.2	3.9	0.5
F	Abby Feit	Jr.	18.9	10.2	2.0
G	Anna Newman	Sr.	6.4	2.7	3.6
G	Je'Naiya Davis	Jr.	20.6	4.1	1.4
G	Myia Clark	Sr.	13.1	4.9	1.3

BY THE NUMBERS

11

Number of straight games that Abby Feit has recorded a made three-pointer.

21

Where newcomer Je'Naiya Davis ranks in the nation in points per game, averaging 20.6 per contest.

11

Statistical categories in which Evansville sits in the top 100 in the nation.

7.5

Average margin of victory for the Aces in their 10 non-conference games.

21

Days between Evansville's game against Morehead State and Drake game, in which the Aces only played one game; at Butler on Dec. 22 in Indianapolis.

Notes

Played 32 minutes at Butler, most in a regulation game this season.

Missed the Aces last game at Butler on Dec. 22.

Tied a season-high with four steals against Butler.

Notched her third contest this season with 24-or-more points against BU.

Joins Dupont as one of two players to play and start all 10 games.

TEAM NOTES

PICKING-UP THE PACE

One of the hallmarks of the Aces system under head coach Robyn Scherr-Wells has been the team's penchant for getting up the floor quickly. Through nine games in the Scherr-Wells' era, the Aces are 30th in the nation in pace, averaging 76.2 possessions per 40 minutes.

HIGH-POWERED OFFENSE

Evansville's offense has been much-improved this season, ranking inside the top 50 in points per game. The Aces are averaging 74.7 points per contest, the 46th-highest average in the nation. Heading into Saturday, the Aces have scored 70-plus in seven of their 10 games this season.

INCREASING THE PRESSURE

Along with an increased pace of play, Evansville has also put pressure on its opponents defensively this season. The Aces have forced the 35th-most turnovers per game in the nation, averaging 21.0 opponent turnovers per contest. UE also sits 44th in turnover margin with a +4.9 margin on the season.

THE ONE AND ONLY

Evansville's offense this season has been powered by three scoring threats in Je'Naiya Davis, Abby Feit, and Myia Clark. The Aces are the only team in NCAA DI to have three players with a scoring performance of 26-points-or-more.

IMPORTANCE OF DISTANCE

Not necessarily the first aspect that is keyed on in the new look Aces offense, three-point shooting has been one of the most important factors in determining whether Evansville wins or loses this season. In games where the Aces have hit six triples or less, Evansville is just 2-4, while going 4-1 in games with seven-or-more three-point makes.

HOME VS. AWAY

As the non-conference campaign winds to a close, let's take a look at the difference between the Aces performances at Meeks Family Fieldhouse and on the road.

Team Statistics	Home	Road
Points Scored	77.0	77.4
Points Allowed	60.4	79.0
FG%	44.9%	40.8%
Opponent FG%	33.2%	44.5%
Rebound Margin	-6.2	-5.0
Three-Point Attempts	21.8	24.6
Three-Point Percentage	34.9%	28.5%

INDIVIDUAL NOTES

JE'NAIYA DOES IT AGAIN

A key addition to the Aces this season, junior guard Je'Naiya Davis has shown a penchant for high-scoring outings. In her first seven games as an Ace, Davis has 24-or-more points in three games, including 35 points against Purdue Fort Wayne on Nov. 24, the most in program history in a regulation game.

UNSUNG HERO

Despite not topping the stat sheet, the impact that senior guard Anna Newman makes on the team is seen when watching the Aces offense. Newman sits in the top 200 in the nation in assist/turnover ratio (1.50) and assists per game (3.6) and while running the point has been crucial to Evansville's rise in pace of play and scoring offense.

A REBOUNDBING FORCE

One of the most impactful additions of the offseason was senior guard Myia Clark, who has come in and immediately made an impact like her backcourt companion, Je'Naiya Davis. Along with finding herself in the top three in scoring, three-point makes, and assists, Clark has also contributed an important presence on the glass for the Aces. At 5'7", Clark cleans-up the boards at an impressive rate, sitting second on the team with 4.9 rebounds per game.

JOSSIE JUMPS IN

Making a spot start against Butler, junior Jossie Hudson showcased her importance to the team's depth. Against the Bulldogs, Hudson played a season-high 22 minutes, scoring seven points, and filling an important role defensively at the four position.

FEIT REACHES MILESTONE

With her seven first-half rebounds at Bellarmine on Dec. 7, Abby Feit became the 15th Ace in program history to reach 500 career rebounds, doing so in just 60 career games. Feit is also nearing another milestone, sitting just 90 points away from the 1,000 point mark.

ONE OF THE MOST VALUABLE

If you could not tell by just looking at the season stat sheet, HerHoopStats.com clearly lays out how valuable Abby Feit is to the Aces success this season. Feit sits in the top 100 in the nation in a pair of player value categories, including 56th in PER*Minutes, a category that analyzes an estimation of the total value created by a player in their minutes played, and 70th in win shares.

TEAM STAT COMPARISONS (NCAA RANKINGS)

Aces



NCAA Team Rankings (as of Dec. 29, 2021)

Team Statistics	Aces	Bulldogs
Scoring Offense	77.2 (31st)	81.3 (14th)
Scoring Defense	69.7 (286th)	70.4 (295th)
Scoring Margin	+7.5 (125th)	+10.9 (89th)
FG %	42.8% (97th)	48.8% (2nd)
FG % Defense	39.1 (161st)	38.2% (141st)
3-Pt FG Per Game	7.3 (69th)	9.3 (17th)
3-Pt. FG %	31.5% (147th)	37.5% (15th)
3-Pt. FG % Defense	26.8% (69th)	34.3 (305th)
Rebound Margin	-5.6 (300th)	+8.8 (34th)
Assists Per Game	14.0 (130th)	20.0 (2nd)
Assist/Turnover Ratio	0.86 (150th)	1.06 (61st)
Blocks Per Game	4.3 (62nd)	3.6 (124th)
Steals Per Game	10.1 (62nd)	7.8 (200th)
Turnover Margin	4.90 (44th)	-3.64 (312th)
Free Throws Made	155 (57th)	136 (123rd)
Free Throws Attempted	222 (58th)	178 (169th)
Free Throw %	69.8% (170th)	76.4% (36th)

DOUBLE-FIGURE SCORING PERFORMANCES

	2021-22		Career	
	No.	Record	No.	Record
Abby Feit	9	6-3	49	14-35
Je'Naiya Davis	7	3-4	7	3-4
Myia Clark	6	4-2	6	4-2
A'Niah Griffin	4	3-1	20	9-11
Anna Newman	3	3-0	13	7-6
Elly Morgan	2	1-1	2	1-1
Kodie Myszk	1	1-0	1	1-0
Rylie Stephens	0	0-0	5	0-5
Sydney Thurwalker	0	0-0	4	1-3
Jossie Hudson	0	0-0	3	3-0

TEAM SPECIAL STATS (2021-22)

Opponent	Largest Lead	Largest Deficit	Lead Changes	Bench Scoring	Pts. Off TOs
APSU	14	7	2	9	25
OCU	45	-	-	29	29
EKU	16	8	4	33	16
at EIU	4	11	9	30	13
at Purdue FW	13	11	8	49	23
Murray State	6	12	2	16	19
at Miami (OH)	3	14	1	11	29
at Bellarmine	15	7	4	28	16
Morehead St.	35	-	-	22	17
at Butler	-	-	-	-	-

LAST TIME OUT

INDIANAPOLIS, Ind. - After an early cold stretch, the University of Evansville women's basketball team battled, but ultimately fell to Butler, 75-67, inside Hinkle Fieldhouse in Indianapolis, Ind.

"That was a frustrating loss. I know we are capable of playing better," said Aces head women's basketball coach Robyn Scherr-Wells. "We got good looks on offense and we didn't knock down shots. We let the game be at their pace in the first half. It took a lot of energy to fight back from a double digit deficit at halftime."

For the third time this season, junior Je'Naiya Davis was the leading scorer for the Aces, pouring-in 24 points, along with seven rebounds. Six other Aces finished the game with six or more points in the contest. Butler was led by Celena Taborn, who recorded a game-high 26 points on 11-13 shooting from the field.

Both offenses struggled to find any traction early as Butler held a 2-0 lead with over three minutes gone by in the opening quarter. The Bulldogs began to find their rhythm just shy of the midway point of the first period, building its game-opening lead to 10-0. Evansville began its push to trim the deficit with just under four minutes remaining in the first on a pair of free throws by Elly Morgan. Over the final four minutes, Evansville would utilize a 10-5 run capped-off by a last second lay-up by Je'Naiya Davis to close the period.

A jumper by Celine Dupont to open the second quarter pushed the Aces back within three, but Butler immediately responded with a run. The Bulldogs' lead would grow as large as 15, topping-out in the final minute of the contest. Just before the break, Evansville gained a bit of momentum with a three from Jossie Hudson with three seconds left that narrowed the Butler lead to 34-22 at the half.

Maybe one of the best 10-minute stretches of the season so far unfolded for Evansville in the third quarter as the Aces raced back into the contest. After Butler's lead hit 14 again with six minutes left in the period, Evansville went on a 10-0 run to trim its deficit to just four. The run was keyed by a more aggressive approach for the Aces, getting to the line three separate times during the stretch. With just over a minute remaining in the quarter, Evansville got within three on a pair of free throws by Myia Clark as the game moved into the fourth quarter.

Right from the start in the fourth, Evansville continued its momentum as Davis got to the basket for a lay-in and was fouled, hitting the ensuing free throw to tie the game. Butler retook the lead with a three 30 seconds later on a jumper by Trinity White. The Aces stayed within a possession through much of the fourth, but could never draw closer in the Bulldogs' 75-67 win.

"I'm proud of the fight we showed in the second half and that we were able to give ourselves a chance to win despite missing some players," said Scherr-Wells. "We had Butler on the ropes and credit to them, they made a couple of big buckets down the stretch to stop our momentum. We'll grow from this game and be ready for conference play after Christmas!"



Official Basketball Box Score - Final
Evansville at Butler
12/22/21 Hinkle Fieldhouse, Indianapolis
2021-22 Women's Basketball

Game Time: 1:00 PM
Game Duration: 1:58
Attendance: 698

Officials: Louis Gonzalez, John Capolino, Britt White

Evansville - 67 Record: 6-4

NO.	Name	Min	FG	3P	FT	Rebounds	Fouls	TP	AS	TO	ST	Blocks	BA	+/
			M-A	M-A	M-A	OR DR TOT	PF FD					BS		
12	Celine Dupont	F 31:59	3-8	0-3	1-2	0 7 7	2 1	7	1	0	0	1	1	3
22	Jossie Hudson	F 21:37	3-6	1-2	0-0	0 2 2	2 0	7	0	3	1	0	1	-2
1	Anna Newman	G 28:06	1-3	1-2	3-4	1 2 3	2 5	6	0	2	4	0	0	2
24	Je'Naiya Davis	G 30:58	8-17	2-6	6-7	2 5 7	5 6	24	1	3	0	0	0	-7
32	Myia Clark	G 34:53	2-13	0-8	4-5	1 6 7	3 3	8	5	3	0	0	0	-17
2	NaTaya Partee	07:20	1-2	0-0	0-0	1 0 1	3 0	2	0	1	0	0	0	-11
11	Elly Morgan	22:09	1-4	1-1	3-4	0 1 1	3 4	6	1	1	1	0	0	-2
3	Gala Camarena	04:36	0-1	0-1	0-0	0 1 1	1 0	0	1	1	0	0	0	-3
21	A'Niah Griffin	18:22	3-7	0-3	1-1	3 1 4	0 2	7	0	0	1	0	1	-3
Team						1 0 1				0	1			
Totals			22-61	5-26	18-23	9 25 34	21 21	67	9	15	7	1	3	-8

Technical Fouls: NONE

Shooting By Period		
1 st FG%	2-10	20.0%
3PT%	0-5	0.0%
FT%	6-8	75%
2 nd FG%	5-15	33.3%
3PT%	1-7	14.3%
FT%	1-1	100%
3 rd FG%	7-19	36.8%
3PT%	2-7	28.6%
FT%	6-9	66.7%
4 th FG%	8-17	47.1%
3PT%	2-7	28.6%
FT%	5-5	100%
GM FG%	22-61	36.1%
3PT%	5-26	19.2%
FT%	18-23	78.3%

Dead Ball Rebounds: 3, 0

Butler - 75 Record: 1-10

NO.	Name	Min	FG	3P	FT	Rebounds	Fouls	TP	AS	TO	ST	Blocks	BA	+/
			M-A	M-A	M-A	OR DR TOT	PF FD					BS		
0	Celena Taborn	F 23:56	11-13	0-0	4-6	4 2 6	3 4	26	2	1	0	0	0	7
32	Sydney Jaynes	F 21:29	3-8	0-0	0-0	3 2 5	4 1	6	3	0	1	2	0	2
10	Trinity White	G 15:10	1-3	1-1	0-0	1 5 6	2 3	3	1	4	0	0	0	-1
13	Zoe Jackson	G 36:18	4-8	1-4	2-4	0 2 2	2 4	11	4	2	2	0	0	11
55	Kendall Winger	G 33:38	3-9	2-6	1-1	0 5 5	2 2	9	1	4	1	0	0	19
20	Alex Richard	20:14	3-9	0-0	4-4	0 2 2	2 3	10	4	2	2	1	1	7
5	Emilia Sexton	18:36	0-6	0-5	0-0	0 2 2	3 0	0	0	1	2	0	0	1
11	Tenley Dowell	24:05	2-4	0-2	6-6	2 7 9	1 3	10	1	1	1	0	0	1
25	Ellen Ross	02:30	0-2	0-1	0-0	0 1 1	1 1	0	0	1	0	0	0	-6
30	Abby Stoddard	02:48	0-0	0-0	0-0	1 3 4	1 0	0	0	0	0	0	0	1
34	Katie Tanner	01:16	0-0	0-0	0-0	0 0 0	0 0	0	0	0	0	0	0	-2
Team						2 1 3				0	0			
Totals			27-62	4-19	17-21	13 32 45	21 21	75	16	16	9	3	1	8

Technical Fouls: NONE

Dead Ball Rebounds: 1, 0

EVA		BUT		Points from		EVA		BUT		Period by Period Scoring				
Biggest lead		0 (1 st 10:00)		15 (2 nd 0:29)		Turnovers		10 17		1 st 2 nd 3 rd 4 th TOT				
Best Scoring Run		10 (3 rd 3:18)		10 (1 st 4:11)		Paint		30 42		EVA 10 12 22 23 67				
Lead Changes		0		0		Second Chance		4 19						
Times Tied		1		0		Fast Breaks		4 4		BUT 15 19 13 28 75				
Time with Lead		00:00		38:32		Bench		15 20						



75



67

December 22, 2021
Hinkle Fieldhouse
Indianapolis, Ind.

LAST MEETING

EVANSVILLE - In a game that featured a plethora of turnovers for both sides, the University of Evansville women's basketball could not overcome its giveaways in a 76-43 loss to Drake in the series finale on Friday evening inside Meeks Family Fieldhouse.

Freshman Rylie Stephens led the way for Evansville for the second-straight game, scoring 14 points. Sophomore Abby Feit also finished in double figures with 12 points, adding three rebounds and an assist. Recording a game-high 27 points was Drake's Grace Berg, who hit 10-16 shots from the field and six of her seven free-throw attempts.

Both teams struggled to find their scoring early as Evansville and Drake went the first 4:51 without scoring before Jossie Hudson hit a layup to give the Aces a 2-0 lead. After Evansville captured an 8-6 lead to close the first quarter, Drake ran out to a 33-16 lead at the half after out-scoring the Aces 27-8 in the second period. Drake's hot-shooting continued in the third as the Bulldogs hit 69.3% from the field in the period, pushing their lead to 60-26 with 10 minutes to play. Evansville finished the game strong, out-scoring the Bulldogs in the final stanza as Drake captured the 76-43 win.

Evansville and Drake combined for 54 turnovers on the evening with each team recording 27 giveaways in the game. Rebounds proved to be important in the contest as Drake grabbed 39 rebounds, including 13 on the offensive end, while the Aces finished with 20 boards.



Official Basketball Box Score - Final
Drake at Evansville
01/08/21 Meeks Family Fieldhouse, Evansville
2020-21 Women's Basketball

Game Time: 6:00 PM
Game Duration: 1:37

Officials: Erika Herriman-Camarota, Brad Maxey, Trey Miles

Drake - 76

Record: 5-6 (3-1)

NO.	Name		Min	FG	M-A	3P	M-A	FT	M-A	Rebounds	OR	DR	TOT	Fouls	PF	FD	TP	AS	TO	ST	Blocks	BS	BA	+/-
15	Allie Wooldridge	F	28:19	2-4	2-2	0-0	3-3	6-0	0-0	3-3	6-0	0-0	0-0	0-0	6-0	0-0	6-0	5-4	2-0	0-0	21	0-0	0-0	0-0
31	Monica Burich	F	16:00	1-3	1-1	1-2	0-2	2-2	0-0	0-2	2-2	0-0	0-0	3-1	4-0	0-0	2-0	2-0	0-0	0-0	40	0-0	0-0	0-0
43	Grace Berg	F	28:20	10-16	1-2	6-7	4-2	6-1	5-27	1-5	27-1	2-0	0-0	0-0	0-0	0-0	0-0	0-0	0-0	0-0	4	0-0	0-0	0-0
2	Maddie Monahan	G	20:50	2-4	1-2	2-2	0-4	4-0	1-7	4-2	2-2	0-0	0-0	0-1	7-4	2-2	0-0	0-0	0-0	30	0-0	0-0	0-0	
11	Kierra Collier	G	29:28	4-7	0-3	0-0	1-0	1-0	0-2	8-6	7-2	0-0	0-0	0-2	8-6	7-2	0-0	0-0	0-0	27	0-0	0-0	0-0	
23	Maggie Negaard		18:02	1-2	1-2	0-0	0-1	1-1	0-0	3-4	4-0	0-0	0-0	0-3	4-4	0-0	0-0	0-0	9	0-0	0-0	0-0	0-0	
42	Maggie Bair		20:49	4-8	0-1	0-0	1-5	6-3	0-0	3-0	8-1	3-3	3-0	19	3-3	3-0	19	0-0	0-0	12	0-0	0-0	0-0	
32	Courtney Becker		19:04	3-5	1-3	0-0	2-3	5-2	1-7	2-1	7-2	1-2	0-0	12	2-1	2-0	0-0	0-0	12	0-0	0-0	0-0	0-0	
34	Sarah Beth Guelnder		14:48	2-7	2-7	0-0	1-1	2-1	1-6	1-1	2-0	0-0	0-0	2	1-1	2-0	0-0	0-0	-2	0-0	0-0	0-0	0-0	
40	Mya Mertz		04:20	0-0	0-0	0-0	0-2	2-0	0-1	0-1	0-0	0-0	0-0	1	0-1	0-0	0-0	0-0	0-0	1	0-0	0-0	0-0	
Team							1	3	4				0		0		1							
Totals				29:56	9:23	9:11	13	26	39	10	12	76	25	27	15	3	0	33						

Technical Fouls: NONE

Shooting By Period		
1st	FG%	2-15 13.3%
3PT%	2-9 22.2%	
FT%	0-0 0%	
2nd	FG%	11-15 73.3%
3PT%	4-6 66.7%	
FT%	1-2 50%	
3rd	FG%	9-13 69.2%
3PT%	3-4 75.0%	
FT%	6-7 85.7%	
4th	FG%	7-13 53.8%
3PT%	0-4 0.0%	
FT%	2-2 100%	
GM FG%	29-56 51.8%	
GM 3PT%	9-23 39.1%	
FT%	9-11 81.8%	

Dead Ball Rebounds: 2, 2

Evansville - 43

Record: 4-5 (0-4)

NO.	Name		Min	FG M-A	3P M-A	FT M-A	Rebounds OR DR TOT	Fouls PF TD	TP	AS	TO	ST	Blocks BS BA	+/-
5	Jada Poland	F	14:38	2-6	0-1	0-0	1 1 2	1 2 4	2	5	2	0	0	-27
14	Abby Feit	F	32:20	4-10	0-4	4-5	0 3 3	0 5 12	1	2	0	0	1	-32
22	Jossie Hudson	F	22:33	1-4	0-0	0-1	1 2 3	0 2 2	0	3	1	0	0	-3
1	Anna Newman	G	21:31	1-5	1-4	0-0	0 2 2	2 1 3	3	6	3	0	0	-16
32	Kayla Casteel	G	19:57	0-4	0-4	0-0	0 0 0	1 0 1	0	0	0	1	0	-22
23	Sydney Thurwalker		30:41	1-6	0-2	0-0	2 5 7	2 0 2	2	5	4	0	0	-21
3	Lola Reed		28:54	3-4	0-1	0-0	1 0 1	2 0 6	6	2	3	0	0	-25
30	Rylie Stephens		24:58	5-11	1-4	3-4	1 2 3	1 2 14	1	0	2	0	2	-19
Team							1 0 1			0	3			
Totals				17:50	2:20	7:9	6 14 20	12 10 43	11	27	16	0	3	-33

Technical Fouls: NONE

Shooting By Period		
1st	FG%	4-13 30.8%
3PT%	0-5 0.0%	
FT%	0-0 0%	
2nd	FG%	4-10 40.0%
3PT%	0-2 0.0%	
FT%	0-0 0%	
3rd	FG%	4-16 25.0%
3PT%	1-8 12.5%	
FT%	1-1 100%	
4th	FG%	5-11 45.5%
3PT%	1-5 20.0%	
FT%	6-8 75%	
GM FG%	17-50 34.0%	
GM 3PT%	2-20 10.0%	
FT%	7-9 77.8%	

Dead Ball Rebounds: 1, 0

	DRA	EVA	Points from	DRA	EVA	Period by Period Scoring					
Biggest lead	38 (4 th 2:46)	4 (1 st 4:19)	Turnovers	29	17	1st	2nd	3rd	4th	TOT	
Best Scoring Run	11 (3 rd 6:48)	5 (4 th 0:29)	Paint	32	28	DRA	6	27	27	16	76
Lead Changes	1		Second Chance	14	2	EVA	8	8	10	17	43
Times Tied	2		Fast Breaks	19	4						
Time with Lead	29:10	04:28	Bench	24	22						



76



43

January 8, 2021
Meeks Family Fieldhouse
Evansville, Ind.

2021-22 EVANSVILLE BROADCAST ROSTER



#1 Anna Newman
Jr. // 5-4 // G
Evansville, Ind.



#2 NaTaya Partee
Jr. // 6-2 // F
Grandview, Mo.



#3 Gala Camarena
Fr. // 5-6 // G
Valencia, Spain



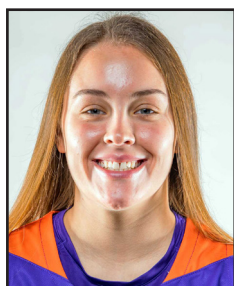
#4 Elly Morgan
Fr. // 5-10 // G
Melbourne, Australia



#12 Celine DuPont
R-So. // 6-4 // F
Almelo, Netherlands



#13 Kodie Myszk
Fr. // 6-1 // F
Melbourne, Australia



#14 Abby Feit
Jr. // 6-1 // G/F
Normal, Ill.



#21 A'Niah Griffin
Sr. // 6-1 // G
Louisville, Ky.



#22 Jossie Hudson
Jr. // 6-1 // F
Evansville, Ind.



#23 Sydney Thurwalker
Jr. // 5-11 // G/F
Belleville, Ill.



#24 Je'Naiya Davis
Jr. // 5-8 // G
St. Louis, Mo.



#30 Rylie Stephens
So. // 5-11 // G
Fairland, Ind.



#32 Myia Clark
Sr. // 5-7 // G
Schaumburg, Ill.



#42 Maycee Lange
Fr. // 6-0 // F
Vincennes, Ind.

PRONUNCIATIONS

#2 NaTaya Partee	Nuh-tay-uh Par-TEE
#3 Gala Camarena	Gah-luh Cah-muh-ray-nuh
#12 Celine Dupont	Suh-leen Dew-pawnt
#13 Kodie Myszk	Like "Cody" Miz-kuh
#14 Abby Feit	Like "Fight"
#21 A'Niah Griffin	Uh-nye-uh
#24 Je'Naiya Davis	Juh-nye-uh
#30 Rylie Stephens	Like "Stevens"
#32 Myia Clark	Mye-uh
#42 Maycee Lange	May-cee Lang
HC Robyn Scherr-Wells	Like "Share"
AC Kara Carlson	Care-uh
AC Tori Jarosz	Yah-rose
AC Tanaeya BoClair	Tuh-nay-uh
GA Felicia Aiyeotan	Eye-oh-tan

ROSTER

Num	Player	Pos	Ht	Cl	Hometown/ Previous School
1	Anna Newman	G	5-4	Sr.	Evansville, Ind. / North HS
2	NaTaya Partee	F	6-2	Sr.	Grandview, Mo. / Johnson County CC
3	Gala Camarena	G	5-6	Fr.	Tavernes de la Valldigna, Valencia, Spain
11	Elly Morgan	G	5-10	Fr.	Melbourne, Australia / Dandenong Rangers
12	Celine DuPont	F	6-4	R-So.	Almelo, The Netherlands / New Mexico
13	Kodie Myszk	F	6-1	Fr.	Melbourne, Australia / Dandenong Rangers
14	Abby Feit	G/F	6-1	Jr.	Normal, Ill. / Normal Community HS
21	A'Niah Griffin	G	6-1	Jr.	Louisville, Ky. / Louisville Manual HS
22	Jossie Hudson	F	6-1	Jr.	Evansville, Ind. / Mater Dei HS
23	Sydney Thurwalker	G/F	5-11	Jr.	Belleville, Ill. / Dodge City CC (Kan.)
24	Je'Naiya Davis	G	5-8	Jr.	St. Louis, Mo. / Wabash Valley College (Ill.)
30	Rylie Stephens	G	5-11	So.	Fairland, Ind. / Triton Central HS
32	Myia Clark	G	5-7	Sr.	Schaumburg, Ill. / Saint Louis
42	Maycee Lange	F	6-0	Fr.	Vincennes, Ind. / Vincennes Lincoln HS

Head Coach: Robyn Scherr-Wells (First Season | Michigan '01)

Assistant Coach: Kara Carlson (First Season | Concordia '16)

Assistant Coach: Tori Jarosz (First Season | Marist '16)

Assistant Coach: Tanaeya BoClair (Second Season | Utah '19)

Graduate Assistant Coach: Felicia Aiyeotan (Second Season | Virginia '20)

Director of Basketball Ops: Max Ethridge (First Season | Wisconsin '18)

The Last Time...

"An Evansville player ..."

"Scored 25 points	Dec. 7, 2021 (Je'Naiya Davis, 29, at Bellarmine)"
"Scored 30 points	Nov. 24, 2021 (Je'Naiya Davis, 35, at Purdue Fort Wayne)"
"Scored 35 points	Nov. 24, 2021 (Je'Naiya Davis, 35, at Purdue Fort Wayne)"
"Scored 40 points	Never"
"Recorded 15 rebounds	Dec. 7, 2021 (Abby Feit, 18, at Bellarmine)"
"Recorded 20 rebounds	Jan. 8, 2012 (Briyana Blair, 20, Bradley)"
"Recorded 10 assists	Feb. 20, 2021 (Anna Newman, 11, at Valparaiso)"
"Recorded five steals	Dec. 4, 2021 (Abby Feit, 5, at Miami (Ohio))"
"Recorded five blocks	March, 8, 2018 (Kaylan Coffman, 5, Bradley)"
"Made five three-pointers	Dec. 15, 2019 (Abby Feit, 5, at Illinois)"
"Made 10 free throws	Dec. 7, 2021 (Je'Naiya Davis, 12, at Bellarmine)"

"An Evansville team ..."

"Scored 100+ points	Nov. 14, 2021 (100, Oakland City)"
"Scored 90+ points	Nov. 14, 2021 (100, Oakland City)"
"Scored 50 points or less	March 6, 2021 (44, Missouri State)"
"Scored 40 points or less	Feb. 27, 2021 (31, at UNI)"
"Shot 60% from the field	Nov. 21, 2019 (.639 at Austin Peay)"
"Shot 55% from the field	Dec. 5, 2020 (.558, Purdue Fort Wayne)"
"Shot 50% from the field	Nov. 14, 2021 (.548, Oakland City)"
"Won three games in a row	Nov. 9 - Nov. 17, 2021 (3)"
"Won five games in a row	Feb. 17 - March 4, 2017 (5)"
"Won 10 games in a row	Jan. 12 - Feb. 14, 2008 (10)"
"Lost five games in a row	"Feb. 24, 2021 - March 13, 2021 (6)"
"Won consecutive MVC games	Feb. 17 - March 4, 2017 (5)"
"Gave up 100+ points	Jan. 19, 2020 (108, at Drake)"
"Gave up 90+ points	Feb. 28, 2021 (96, at UNI)"
"Gave up 60 points or less	Nov. 14, 2021 (59, Oakland City)"
"Gave up 50 points or less	Dec. 11, 2021 (49, Morehead State)"
"Gave up 40 points or less	Jan. 1, 2017 (36, Loyola)"
"Had five players score in double figures	Dec. 14, 2017 (6, vs. Oakland City)"
"Had two players score at least 20 points	Dec. 5, 2020 (Abby Feit, 20/ A'Niah Griffin, 20, Purdue Fort Wayne)"

"An opposing player ..."

"Scored 30 points	Dec. 13, 2019 (Hannah Albrecht, 30, Purdue Fort Wayne)"
"Scored 40 points	Dec. 21, 2015 (Nathalie Fontaine, 43, Ball State)"
"Recorded 15 rebounds	Dec. 15, 2019 (Kennedi Myles, 20, at Illinois)"
"Recorded 20 rebounds	Dec. 15, 2019 (Kennedi Myles, 20, at Illinois)"
"Recorded 10 assists	Dec. 21, 2018 (Kendra Van Leeuwen, 11, at Wisconsin)"
"Recorded 15 assists	March 3, 2016 (Caitlin Ingle, 15, Drake)"
"Made five three-pointers	Nov. 30, 2021 (Macey Turley, 5, Murray State)"
"Made 10 free throws	Nov. 30, 2021 (Macey Turley, 10, Murray State)"

"An opposing team ..."

"Shot 60% from the field	Feb. 9, 2018 (.691, vs. Drake)"
"Shot 55%+ from the field	Feb. 23, 2020 (.587, at SIU)"
"Shot 50%+ from the field	Feb. 28, 2021 (.517, UNI)"
"Shot 30% or lower from the field	Nov. 9, 2021 (.273, Austin Peay)"
"Had five players score in double figures	Nov. 20, 2021 (5, Eastern Illinois)"
"Had two players score at least 20 points	Nov. 30, 2021 (Macey Turley, 29, and Katelyn Young, 28, Murray State)"

UE's Record when....

Winning the tip	4-1
Losing the tip	2-2
Leading after one quarter	4-0
Trailing after one quarter	2-4
Tied after one quarter	0-0
Leading at the half	5-1
Trailing at the half	1-3
Tied at the half	0-0
Leading after three quarters	5-0
Trailing after three quarters	1-4
Tied after three quarters	0-0
Leading with five minutes remaining	5-0
Trailing with five minutes remaining	0-4
Tied with five minutes remaining	1-0
In overtime	0-1
UE out-rebounds opponent	4-0
Opponent out-rebounds UE	2-4
Same amount of rebounds	0-0
UE commits more turnovers	0-1
Opponent commits more turnovers	6-3
Same amount of turnovers	0-0
UE shoots 50% or better	1-0
Opponent shoots 50% or better	0-0
UE shoots less than 50%	5-4
Opponent shoots less than 50%	6-4
UE shoots better than opponent	4-0
Opponent shoots better than UE	2-4
Same shooting percentage	0-0
UE has more free throw attempts	5-2
Opponent has more free throw attempts	0-2
Same amount of free throw attempts	1-0
UE bench outscores opponent's bench	4-2
Opponent's bench outscores UE's bench	1-2
Benches score the same	1-0
UE scores less than 50	0-0
UE scores between 50-59	0-0
UE scores between 60-69	2-1
UE scores between 70-79	1-3
UE scores between 80-89	2-0
UE scores 90 or more	1-0
Opponent scores less than 50	1-0
Opponent scores between 50-59	3-0
Opponent scores between 60-69	0-0
Opponent scores between 70-79	1-1
Opponent scores between 80-89	1-3
Opponent scores 90 or more	0-0
November	4-2
In December	2-2
In January	0-0
In February	0-0
In March	0-0
On Monday	0-0
On Tuesday	2-1
On Wednesday	2-1
On Thursday	0-0
On Friday	0-0
On Saturday	1-2
On Sunday	1-0
Afternoon	3-2
Night	3-2

2021-22 Evansville Starting Lineups

Austin Peay	Newman	Clark	Morgan	Feit	Dupont
Oakland City	Newman	Clark	Morgan	Feit	Dupont
Eastern Kentucky	Camarena	Clark	Morgan	Feit	Dupont
at Eastern Illinois	Newman	Clark	Morgan	Feit	Dupont
at Purdue Ft Wayne	Newman	Clark	Morgan	Feit	Dupont
Murray State	Newman	Clark	Morgan	Feit	Dupont
at Miami (Ohio)	Newman	Clark	Davis	Feit	Dupont
at Bellarmine	Newman	Clark	Davis	Feit	Dupont
Morehead State	Newman	Clark	Davis	Feit	Dupont
at Butler	Newman	Clark	Davis	Hudson	Dupont

Aces Leaders

Jump balls controlled

Evansville 5
Opponent 5

Scored UE's first points

Myia Clark 3
Celine Dupont 2
Abby Feit 2
Elly Morgan 2
Je'Naiya Davis 1

First off UE bench

A'Niah Griffin 4
Kodie Myszkla 4
NaTaya Partee 3
Je'Naiya Davis 2
Gala Camarena 1

Scoring leader

Abby Feit 5
Myia Clark 3
Je'Naiya Davis 3

Three-point leader

Abby Feit 6
Je'Naiya Davis 3
Myia Clark 1
A'Niah Griffin 1

Rebounding leader

Abby Feit 7
Myia Clark 2
Je'Naiya Davis 2
Celine Dupont 1
Kodie Myszkla 1

Steals leader

Abby Feit 3
Anna Newman 3
Elly Morgan 2
Myia Clark 1
Je'Naiya Davis 1
Kodie Myszkla 1

Assists leader

Gala Camarena 3
Myia Clark 2
Anna Newman 2
Abby Feit 2
Elly Morgan 2

Blocks leader

Abby Feit 6
Celine Dupont 2
Kodie Myszkla 2
Elly Morgan 1
NaTaya Partee 1
Rylie Stephens 1

10+ points

Abby Feit 9
Je'Naiya Davis 7
Myia Clark 6
A'Niah Griffin 4
Anna Newman 3
Elly Morgan 2
Kodie Myszkla 1

15+ points

Abby Feit 7
Myia Clark 5
Je'Naiya Davis 4

20+ points

Je'Naiya Davis 3
Abby Feit 3
Myia Clark 1

25+ points

Je'Naiya Davis 2
Abby Feit 2
Myia Clark 1

10+ rebounds

Abby Feit 5

15+ rebounds

Abby Feit 1

5+ assists

Anna Newman 5
Gala Camarena 2
Abby Feit 1

Double-doubles

Abby Feit 6

Free throws in final five min.

Je'Naiya Davis 14-16
Abby Feit 7-11
Anna Newman 8-12
Jossie Hudson 1-2
Kodie Myszkla 3-6
Gala Camarena 1-2
Myia Clark 1-2
Jossie Hudson 1-2
NaTaya Partee 1-2
A'Niah Griffin 0-1

TEAM 37-55 (67.3%)



ROBYN SCHERR-WELLS

HEAD COACH (FIRST SEASON)



TWITTER

@COACHRSW



ALMA MATER

MICHIGAN, '01



RECORD

150-87

Robyn Scherr-Wells, who has shown a knack for revitalizing programs and developing talent, was named as the 11th head coach in Evansville women's basketball program history on April 20, 2021.

Scherr-Wells comes to the River City with head coaching experience, coaching for seven seasons in the NAIA with Roosevelt University and Davenport University, winning six conference championships, while also helping rebuild programs at Florida International University and Davidson College as an assistant coach at the NCAA Division I level. Scherr-Wells spent the 2020-21 season as assistant coach at Florida International University, where she was part of a staff that helped lead the Panthers to their best record in nearly a decade.

The Panthers advanced to the postseason last season, earning a berth in the Women's Basketball Invitational, advancing all the way to the consolation final where FIU captured a 59-58 win over Manhattan on a pair of free throws with less than one second remaining.

Scherr-Wells' Panthers squad was one of the best offensive teams in the NCAA, averaging 73.7 points per game. FIU finished the 2020-21 season 41st in the nation in scoring offense. Aiding to the Panthers high-scoring offense was an excellent effort from beyond the arc, while also finishing inside the top 25 in NCAA Division I in three-point field goal attempts, total makes, three-point field goals made per game.

Previous to FIU, Scherr-Wells spent three years as the top assistant at Davidson College where she helped rebuild a program that finished 12th in the Atlantic 10 prior to her arrival to a fourth-place finish in just her second year and aided the program to their first winning season and post-season berth (WBI) in six seasons in 2018-19. At Davidson, she recruited and coached six Atlantic 10 All-Conference Team selections, as well as one Most Improved Player, one Sixth Woman of the Year, and one Rookie of the Year.

A native of Glen Ellyn, Illinois, Scherr-Wells attended the University of Michigan where she joined the women's basketball team. With the Wolverines, Scherr-Wells started as a manager/practice player during her freshman season and eventually earned an athletic scholarship as a sophomore for her role in that capacity for the squad.

As a member of the Wolverines, Scherr-Wells was part of a team that earned three NCAA Tournament berths and made the postseason in each of her four seasons.

A 2001 graduate of the University of Michigan, Scherr-Wells finished with distinction and earned a Bachelor's Degree in Movement Science and Athletic Training. She went on to earn a Master's Degree of Business Administration from Roosevelt in 2014. She is married to Ryan Wells and the two have one son, Jett, who was born just prior to the 2021-22 season.

ABOUT SCHERR-WELLS

COACHING EXPERIENCE

2021 - Present:	Evansville, Head Coach
2020-21:	FIU, Asst. Coach
2017-20:	Davidson, Asst. Coach
2015-17:	Davenport, Head Coach
2009-15:	Roosevelt, Head Coach

COACHING RECORD

At UE:	6-4
In the MVC:	0-0
Home:	4-1
Road:	2-3
Neutral:	0-0
MVC Tournament:	0-0

2021-22 UE WOMEN'S BASKETBALL COACHING STAFF



Kara Carlson
Assistant Coach



Tori Jarosz
Assistant Coach



Tanaeya BoClair
Assistant Coach



Max Ethridge
Dir. of Basketball Ops



Felicia Aiyeotan
Grad. Assistant Coach

Individual Records

Points

Game: 37, Sara Dickey at Murray State (12/3/14)

Season: 602, Sara Dickey (2014-15)

Career: 2,099, Sara Dickey (2013-17)

Field Goals Made

Game: 14, five times by four players

Season: 225, Debbie Roberts-Shultz (1987-88)

Career: 718, Shelly Brand-Adlard (1982-85)

Field Goal Percentage

Season: .596, Jenna Hayes (127-213), 2000-01

Career: .550, Arlene Peters (213-387), 1986-88

Three-Point Field Goals Made

Game: 8, Courtney Felke at Morehead St. (11/19/07)

Season: 86, Amy Lefever (1993-94)

Career: 205, Courtney Felke (2004-08)

Free Throws Made

Game: 15, Anna Newman (2/19/21)

Season: 149, Latasha Austin (2001-02)

Career: 407, Rebekah Parker (2004-08)

Free Throw Percentage

Season: .949, Mallory Ladd (74-78), 2012-13

Career: .864, Mallory Ladd (232-269), 2012-15

Rebounds

Game: 27, Lana Korff vs. IU-Southeast (1977-78)

Season: 383, Christy Greis (1991-92)

Career: 1,286, Christy Greis (1990-93)

Steals

Game: 11, Shinko Ono, vs. Eastern Illinois (11/24/98)

Season: 108, Latasha Austin (2001-02)

Career: 290, Latasha Austin (1998-02)

Assists:

Game: 17, Angie McGrew vs. Oral Roberts (1986-87)

Season: 182, Angie McGrew (1987-88)

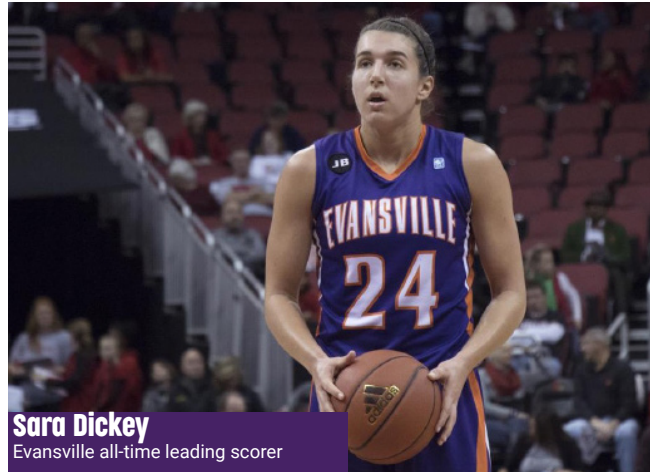
Career: 594, Angie McGrew (1986-89)

Blocked Shots

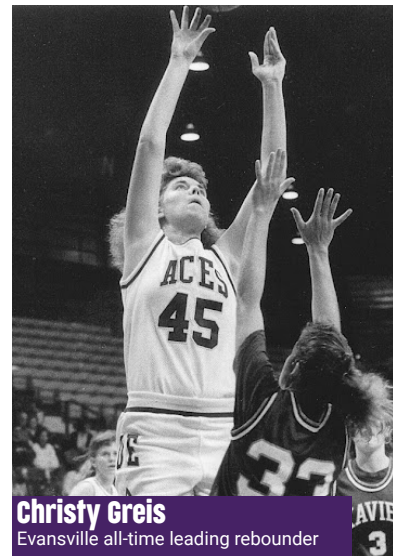
Game: 9, Christy Greis vs. Louisville (1989-90)

Season: 77, Christy Greis (1991-92)

Career: 241, Christy Greis (1990-93)



Sara Dickey
Evansville all-time leading scorer



Christy Greis
Evansville all-time leading rebounder

ANNA NEWMAN

SENIOR - GUARD - 5-4
EVANSVILLE, IND. - NORTH HS



ACES INFO

2020-21

- Served as Evansville's primary starter at point guard, playing in 20 games, making 18 starts as a junior.
- Averaged 5.8 points per game, tying a career-high with 17 points in a road victory over Valpo.
- Broke Evansville's program record for free-throws made, knocking-down 15 of 18 attempts against Valpo on Feb. 19.
- Led the team in assists and finished sixth in The Valley in assists per game with 3.7 per contest.
- Became the first Ace in more than a decade to recorded 10-or-more assists when she dished-out 12 assists against Bellarmine on Dec. 29.

2019-20

- Played in all 29 games for the Aces, making 26 starts as the team's primary point guard.
- Averaged 5.8 points and 2.9 rebounds per game, improving upon her averages as a freshman.
- Set a new career-high with 17 points against Loyola on Jan. 10, going 7-10 from the field and hitting both of her attempts from beyond the arc.
- Led the team in assists as a sophomore, recording 95 assists (3.3 per game) on the season. Dished-out a career-high eight assists at SIUE on Nov. 13.

2018-19

- Appeared in all 30 games for Evansville, making 17 starts, in 2018-19.
- Averaged 5.7 points, 2.1 rebounds, and 2.1 assists per contest as a freshman.
- Recorded a career-high 16 points in Evansville's 77-65 win over Valparaiso on Feb. 15.
- Finished in double-figures in back-to-back games against Bradley (14 points) and Valparaiso (16) on Feb. 10 and 15.
- Secured a career-high seven rebounds against Bradley on Jan. 11.

Prior to UE

- 2018 Indiana All-Star
- Averaged a career-best 18.2 points per contest as a senior at North HS
- All-time leadig scorer at North HS with 1,417 points in her career
- Led the Huskiers to a school-record 20 wins as a junior in 2016-17

2021-22 SEASON HIGHS

Points: 13 vs. ECU (11/17/21)
Rebounds: 5, Three times
Assists: 6, Twice
Steals: 4, Twice
Blocks: 1 at Bellarmine (12/7/21)
FG made: 3, Three times
FG attempts: 4, Five times
3FG Made: 1, Four times
3FG attempts: 2, Three times
FT made: 6 vs. ECU (11/17/21)
FT attempts: 8 vs. Murray State (11/30/21)

CAREER HIGHS

Points: 17 vs. Loyola (1/10/20)
Rebounds: 7 vs. Bradley (1/11/19)
Assists: 12 vs. Bellarmine (12/29/20)
Steals: 4, Three times
Blocks: 1, Four times
FG made: 7 vs. Loyola (1/10/20)
FG attempts: 14, Twice
3FG Made: 3 at Indiana State (2/24/21)
3FG attempts: 8 at Dayton (12/15/18)
FT made: 15 at Valparaiso (2/19/21)
FT attempts: 18 at Valparaiso (2/19/21)

GAME-BY-GAME

Opponent	Date	GS	MIN	Total		3-Pointers		Free throws		Rebounds		PF	A	TO	BLK	STL	PTS	AVG
				FG-FGA	PCT	3FG-3FGA	PCT	FT-FTA	PCT	OFF	DEF							
Austin Peay	11/09/2021	*	30:09	1-4	.250	0-0	.000	2-3	.667	0	0	0	0	0	0	1	4	4.0
Oakland City	11/14/2021	*	22:21	3-3	1.000	1-1	1.000	5-5	1.000	0	0	0	0	0	0	3	6	8.0
Eastern Ky.	11/17/2021	*	29:12	3-4	.750	1-1	1.000	6-6	1.000	2	3	5	1	2	5	3	0	13.9
at Eastern Ill.	11/20/2021	*	46:29	2-4	.500	0-1	.000	3-4	.750	0	4	4	2	3	4	5	4	7.9
at Purdue Fort Wayne	11/24/2021	*	27:57	0-3	.000	0-2	.000	3-4	.750	1	3	4	2	6	4	4	0	3.8
Murray St.	11/30/2021	*	37:34	1-4	.250	0-1	.000	3-8	.375	2	3	5	3	0	4	2	0	5.3
at Miami (OH)	12/04/2021	*	26:42	0-0	.000	0-0	.000	1-4	.250	0	0	0	2	6	3	2	5	0
at Bellarmine	12/07/2021	*	27:49	1-4	.250	0-1	.000	0-0	.000	2	3	5	2	9	5	6	4	1
Morehead St.	12/11/2021	*	25:35	3-5	.600	1-2	.500	4-4	1.000	0	1	1	2	7	0	3	2	0
at Butler	12/22/2021	*	28:06	1-3	.333	1-2	.500	3-4	.750	1	2	3	2	7	2	0	2	0
Totals			9	301:54	15-34	.441	4-11	.364	30-42	.714	8	19	27	27	28	36	24	1

Player Averages

Games Played	Minutes/game	Points/game	FG Pct	3FG Pct	FT Pct	Rebounds/game	Assists/game	Turnovers/game	Assist/Turnover ratio	Steals/game	Blocks/game
10	30.2	6.4	44.1	36.4	71.4	2.7	3.6	2.4	1.5	1.8	0.1

CAREER STATS

SEASON	TEAM	GP-GS	MIN/AVG	Field Goals		3-Point		F-Throws		Rebounds				Scoring			
				FG-FGA	FG%	3FG-3FGA	3FG%	FT-FTA	FT%	OFF	DEF	TOT	AVG	PF-FO	A	TO	BLK
2018-19	Evans	30-17	699/23.3	52-201	.259	14-70	.200	54-65	.831	3	59	62	2.1	93-4	63	76	1
2019-20	Evans	29-26	759/26.2	63-155	.406	9-49	.184	32-52	.615	11	72	83	2.9	62-0	95	75	2
2020-21	Evans	20-18	620/31.0	27-108	.250	10-31	.323	51-68	.750	5	54	59	3.0	47-0	73	65	0
2021-22	Evans	10-9	302/30.2	15-34	.441	4-11	.364	30-42	.714	8	19	27	2.7	28-1	36	24	1
TOTAL		89-70	2380/26.7	157-498	.315	37-161	.230	167-227	.736	27	204	231	2.6	230-5	267	240	4

NATAYA PARTEE

SENIOR - FORWARD - 6-2

GRANDVIEW, MO. - GRANDVIEW HS



2

ACES INFO

2020-21

- Appeared in 21 games for the Aces, seeing the floor for 7.3 minutes per contest.
- Recorded 32 points on the season, scoring a season-high five against Southern Illinois on Jan. 1.
- Pulled-down a total of 13 boards with a season-best five in a Feb. 13 matchup with Loyola.
- Led the team in field-goal percentage, shooting 46.2% from the field as a junior.

2019-20

- Played in 22 contests for Evansville, making one start.
- Recorded season-highs in points and rebounds against SEMO on Nov. 10, scoring nine points and tallying seven rebounds in 19 minutes.
- Saw the floor for double-digit minutes in five games, including a season-high 23 minutes in the opener against Brescia.

PRIOR TO UE

- Spent one season with Johnson County Community College in 2017-18.
- Scored 25 points and pulled down 47 rebounds in 24 games with the Cavaliers as a freshman.

PREP

- Played for Grandview High School in Grandview, Mo.
- Averaged 9.3 points and 8.5 rebounds during her four-year prep career at Grandview High School.

2021-22 SEASON HIGHS

Points:	6 vs. Oakland City (11/14/21)
Rebounds:	6 vs. ECU (11/17/21)
Assists:	1, Three times
Steals:	
Blocks:	2 vs. ECU (11/17/21)
FG made:	2 vs. Oakland City (11/14/21)
FG attempts:	2, Three times
3FG Made:	
3FG attempts:	
FT made:	2, Twice
FT attempts:	4, Twice

CAREER HIGHS

Points:	9 at SEMO (11/10/19)
Rebounds:	7 at SEMO (11/10/19)
Assists:	1, 12 times
Steals:	3 vs. Missouri State (3/6/21)
Blocks:	2, Twice
FG made:	2, Seven times
FG attempts:	5, Twice
3FG Made:	1 at Illinois State (1/21/21)
3FG attempts:	2 at Illinois State (1/21/21)
FT made:	5 at SEMO (11/10/19)
FT attempts:	6 at SEMO (11/10/19)

GAME-BY-GAME

Opponent	Date	GS	MIN	Total		3-Pointers		Free throws		Rebounds				PF	A	TO	BLK	STL	PTS	AVG	
				FG-FGA	PCT	3FG-3FGA	PCT	FT-FTA	PCT	OFF	DEF	TOT	AVG								
Austin Peay	11/09/2021		04:47	0-0	.000	0-0	.000	0-0	.000	0	1	1	1.0	1	0	1	0	0	0.0		
Oakland City	11/14/2021		09:58	2-2	1.000	0-0	.000	2-4	.500	1	0	1	1.0	4	1	0	1	0	6	3.0	
Eastern Ky.	11/17/2021		17:12	1-2	.500	0-0	.000	1-4	.250	1	5	6	2.7	0	1	0	2	0	3	3.0	
at Eastern Ill.	11/20/2021		07:46	0-0	.000	0-0	.000	0-0	.000	0	1	1	2.3	1	0	1	0	0	0	2.3	
at Purdue Fort Wayne	11/24/2021		07:29	0-1	.000	0-0	.000	0-0	.000	0	0	0	1.8	1	0	1	0	0	0	1.8	
Murray St.	11/30/2021		19:47	0-1	.000	0-0	.000	0-0	.000	3	1	4	2.2	4	1	0	1	0	0	1.5	
at Miami (OH)	12/04/2021		07:29	0-0	.000	0-0	.000	0-0	.000	2	0	2	2.1	1	1	0	0	0	0	1.3	
at Bellarmine	12/07/2021		07:37	0-1	.000	0-0	.000	2-2	1.000	0	0	0	1.9	1	0	1	0	0	2	1.4	
Morehead St.	12/11/2021		08:24	0-0	.000	0-0	.000	0-0	.000	0	1	1	1.8	1	0	0	0	0	0	1.2	
at Butler	12/22/2021		07:20	1-2	.500	0-0	.000	0-0	.000	1	0	1	1.7	3	0	1	0	0	2	1.3	
Totals			0	97:49	4-9	.444	0-0	.000	5-10	.500	8	9	17	1.7	17	4	6	4	0	13	1.3

Player Averages

Games Played	Minutes/game	Points/game	FG Pct	3FG Pct	FT Pct	Rebounds/game	Assists/game	Turnovers/game	Assist/Turnover ratio	Steals/game	Blocks/game
10	9.8	1.3	44.4	0.0	50.0	1.7	0.4	0.6	0.7	0.0	0.4

CAREER STATS

				Field Goals		3-Point		F-Throws		Rebounds				Scoring						
SEASON	TEAM	GP-GS	MIN/AVG	FG-FGA	FG%	3FG-3FGA	3FG%	FT-FTA	FT%	OFF	DEF	TOT	AVG	PF-FO	A	TO	BLK	STL	PTS	AVG
2019-20	Evans	22-1	159/7.2	10-26	.385	0-1	.000	10-14	.714	14	19	33	1.5	23-0	5	16	4	5	30	1.4
2020-21	Evans	21-0	157/7.5	12-26	.462	1-2	.500	7-9	.778	6	13	19	0.9	10-0	4	11	5	6	32	1.5
2021-22	Evans	10-0	98/9.8	4-9	.444	0-0	.000	5-10	.500	8	9	17	1.7	17-0	4	6	4	0	13	1.3
TOTAL		53-1	414/7.8	26-61	.426	1-3	.333	22-33	.667	28	41	69	1.3	50-0	13	33	13	11	75	1.4

GALA CAMARENA

FRESHMAN - GUARD - 5-6

TAVERNES DE LA VALLDIGNA, VALENCIA, SPAIN



ACES INFO

PREP

- A native of Tavernes de la Valldigna, Valencia, Spain.
- Played most recently for CB TerrAlfas in Valencia, averaging 15 points, while adding five boards and six assists.
- Also appeared for her hometown club, CB Tavernes, and played five seasons for Valencia Basket.
- Has played on the international stage, being selected to the Spanish u15 National Team.

2021-22 SEASON HIGHS

Points: 9 at Bellarmine (12/7/21)
Rebounds: 5 vs. Oakland City (11/14/21)
Assists: 7 vs. Oakland City (11/14/21)
Steals: 2, Twice
Blocks:
FG made: 3 at Bellarmine (12/7/21)
FG attempts: 3, Three times
3FG Made: 2 at Bellarmine (12/7/21)
3FG attempts: 2, Twice
FT made: 2, Twice
FT attempts: 2, Three times

CAREER HIGHS

Points: 9 at Bellarmine (12/7/21)
Rebounds: 5 vs. Oakland City (11/14/21)
Assists: 7 vs. Oakland City (11/14/21)
Steals: 2, Twice
Blocks:
FG made: 3 at Bellarmine (12/7/21)
FG attempts: 3, Three times
3FG Made: 2 at Bellarmine (12/7/21)
3FG attempts: 2, Twice
FT made: 2, Twice
FT attempts: 2, Three times

CAREER STATS

				Field Goals		3-Point		F-Throws		Rebounds				Scoring						
SEASON	TEAM	GP-GS	MIN/AVG	FG-FGA	FG%	3FG-3FGA	3FG%	FT-FTA	FT%	OFF	DEF	TOT	AVG	PF-FO	A	TO	BLK	STL	PTS	AVG
2021-22	Evans	9-1	95/10.5	5-16	.313	3-8	.375	5-6	.833	2	8	10	1.1	12-0	23	10	0	7	18	2.0
TOTAL		9-1	95/10.5	5-16	.313	3-8	.375	5-6	.833	2	8	10	1.1	12-0	23	10	0	7	18	2.0

GAME-BY-GAME

Opponent	Date	GS	MIN	Total		3-Pointers		Free throws		Rebounds				PF	A	TO	BLK	STL	PTS	AVG
				FG-FGA	PCT	3FG-3FGA	PCT	FT-FTA	PCT	OFF	DEF	TOT	AVG							
Austin Peay	11/09/2021		09:51	1-2	.500	0-0	.000	0-0	.000	0	0	0	0.0	1	1	1	0	2	2	2.0
Oakland City	11/14/2021		17:39	0-3	.000	0-2	.000	2-2	1.000	1	4	5	2.5	3	7	1	0	1	2	2.0
Eastern Ky.	11/17/2021	*	07:27	0-1	.000	0-1	.000	2-2	1.000	0	1	1	2.0	0	1	0	0	0	2	2.0
at Eastern Ill.	11/20/2021		03:20	0-0	.000	0-0	.000	0-0	.000	0	0	0	1.5	0	2	0	0	0	0	1.5
at Purdue Fort Wayne	11/24/2021		12:03	0-1	.000	0-0	.000	0-0	.000	0	0	0	1.2	0	5	2	0	2	0	1.2
at Miami (OH)	12/04/2021		13:18	1-3	.333	1-1	1.000	0-0	.000	1	1	2	1.3	2	2	1	0	0	3	1.5
at Bellarmine	12/07/2021		12:11	3-3	1.000	2-2	1.000	1-2	.500	0	0	0	1.1	3	2	1	0	1	9	2.6
Morehead St.	12/11/2021		14:06	0-2	.000	0-1	.000	0-0	.000	0	1	1	1.1	2	2	3	0	1	0	2.3
at Butler	12/22/2021		04:36	0-1	.000	0-1	.000	0-0	.000	0	1	1	1.1	1	1	1	0	0	0	2.0
Totals			1 94:32	5-16	.313	3-8	.375	5-6	.833	2	8	10	1.1	12	23	10	0	7	18	2.0

Player Averages

Games Played	Minutes/game	Points/game	FG Pct	3FG Pct	FT Pct	Rebounds/game	Assists/game	Turnovers/game	Assist/Turnover ratio	Steals/game	Blocks/game
9	10.5	2.0	31.3	37.5	83.3	1.1	2.6	1.1	2.3	0.8	0.0

ELLY MORGAN

FRESHMAN - GUARD - 5-10

MELBOURNE, AUSTRALIA - DANDENONG RANGERS



11

ACES INFO

PREP

- Most recently played for Dandenong Rangers NBL1 team, where she played with UE team-mate Kodie Myszka.
- Averaged nearly four points per contest, including a season-high 10 points in an overtime win over Mount Gambier on May 8, 2021.
- In addition to competing in the NBL1 league, averaged 12 points, four rebounds, and nearly four assists with Dandenong in the youth league, recording a 23-point, seven-assist, and six-rebound effort against Ballarat.
- Also represented Victoria in the U20 Australian Championships, capturing bronze.

2021-22 SEASON HIGHS

Points: 12 vs. Murray State (11/30/21)
Rebounds: 3 vs. Oakland City (11/14/21)
Assists: 4 vs. Oakland City (11/14/21)
Steals: 4 vs. Austin Peay (11/9/21)
Blocks: 1 at Miami (Ohio) (12/4/21)
FG made: 5 vs. Austin Peay (11/9/21)
FG attempts: 9 vs. Austin Peay (11/9/21)
3FG Made: 2 vs. Murray State (11/30/21)
3FG attempts: 4, Twice
FT made: 3 at Butler (12/22/21)
FT attempts: 4, Twice

CAREER HIGHS

Points: 12 vs. Murray State (11/30/21)
Rebounds: 3 vs. Oakland City (11/14/21)
Assists: 4 vs. Oakland City (11/14/21)
Steals: 4 vs. Austin Peay (11/9/21)
Blocks: 1 at Miami (Ohio) (12/4/21)
FG made: 5 vs. Austin Peay (11/9/21)
FG attempts: 9 vs. Austin Peay (11/9/21)
3FG Made: 2 vs. Murray State (11/30/21)
3FG attempts: 4, Twice
FT made: 3 at Butler (12/22/21)
FT attempts: 4, Twice

CAREER STATS

				Field Goals		3-Point		F-Throws		Rebounds				Scoring						
SEASON	TEAM	GP-GS	MIN/AVG	FG-FGA	FG%	3FG-3FGA	3FG%	FT-FTA	FT%	OFF	DEF	TOT	AVG	PF-FO	A	TO	BLK	STL	PTS	AVG
2021-22	Evans	10-6	207/20.7	22-53	.415	6-20	.300	7-14	.500	4	6	10	1.0	30-2	14	22	1	12	57	5.7
TOTAL		10-6	207/20.7	22-53	.415	6-20	.300	7-14	.500	4	6	10	1.0	30-2	14	22	1	12	57	5.7

GAME-BY-GAME

Opponent	Date	GS	MIN	Total		3-Pointers		Free throws		Rebounds				PF	A	TO	BLK	STL	PTS	AVG	
				FG-FGA	PCT	3FG-3FGA	PCT	FT-FTA	PCT	OFF	DEF	TOT	AVG								
Austin Peay	11/09/2021	*	30:13	5-9	.556	1-3	.333	0-0	.000	0	0	0	0.0	5	3	2	0	4	11	11.0	
Oakland City	11/14/2021	*	27:23	4-8	.500	1-4	.250	0-0	.000	1	2	3	1.5	3	4	3	0	0	9	10.0	
Eastern Ky.	11/17/2021	*	29:07	3-8	.375	1-4	.250	0-4	.000	1	1	2	1.7	4	2	5	0	1	7	9.0	
at Eastern Ill.	11/20/2021	*	22:19	1-5	.200	0-1	.000	0-0	.000	0	1	1	1.5	3	1	3	0	3	2	7.3	
at Purdue Fort Wayne	11/24/2021	*	15:59	2-5	.400	0-2	.000	0-1	.000	0	1	1	1.4	0	0	3	0	2	4	6.6	
Murray St.	11/30/2021	*	20:24	4-7	.571	2-3	.667	2-3	.667	0	0	0	1.2	5	2	0	0	0	12	7.5	
at Miami (OH)	12/04/2021		14:04	0-1	.000	0-0	.000	0-0	.000	1	0	1	1.1	2	0	3	1	0	0	6.4	
at Bellarmine	12/07/2021		08:31	0-1	.000	0-1	.000	2-2	1.000	0	0	0	1.0	2	0	1	0	0	2	5.9	
Morehead St.	12/11/2021		16:34	2-5	.400	0-1	.000	0-0	.000	1	0	1	1.0	3	1	1	0	1	4	5.7	
at Butler	12/22/2021		22:09	1-4	.250	1-1	1.000	3-4	.750	0	1	1	1.0	3	1	1	0	1	6	5.7	
Totals			6	206:44	22-53	.415	6-20	.300	7-14	.500	4	6	10	1.0	30	14	22	1	12	57	5.7

Player Averages

Games Played	Minutes/ game	Points/ game	FG Pct	3FG Pct	FT Pct	Rebounds/ game	Assists/ game	Turnovers/ game	Assist/Turnover ratio	Steals/ game	Blocks/ game
10	20.7	5.7	.415	.300	.500	1.0	1.4	2.2	0.6	1.2	0.1

CELINE DUPONT

REDSHIRT SOPHOMORE - FORWARD - 6-4
ALMELO, THE NETHERLANDS - NEW MEXICO



ACES INFO

2020-21 (New Mexico)

- Played in 10 contests for the Lobos, seeing 40 total minutes on the floor...Made her first collegiate appearance on November 4 against Midwestern State.

2019-20 (New Mexico)

- Redshirted in her first season.

PREP

- Enjoyed an impressive prep career, most recently playing for Parkendaal Lyceum.
- Appeared in the Dutch National Women's U20 Basketball League with Binnenland, averaging a double-double with 14.6 points and 10.0 rebounds, while helping them win the national supercup in 2018 and advance to the final four in 2019.
- Has also logged international experience, playing for the Dutch U16 and U18 national teams in FIBA European Championships.

2021-22 SEASON HIGHS

Points: 7, Three times
Rebounds: 9 at Eastern Illinois (11/20/21)
Assists: 2 vs. Murray State (11/30/21)
Steals: 2 vs. Oakland City (11/14/21)
Blocks: 1, Four times
FG made: 3, Twice
FG attempts: 8 at Butler (12/22/21)
3FG Made: 1, Three times
3FG attempts: 3 at Butler (12/22/21)
FT made: 4 vs. Murray State (11/30/21)
FT attempts: 4, Twice

CAREER HIGHS

Points: 7, Three times
Rebounds: 9 at Eastern Illinois (11/20/21)
Assists: 2 vs. Murray State (11/30/21)
Steals: 2 vs. Oakland City (11/14/21)
Blocks: 1, Four times
FG made: 3, Twice
FG attempts: 8 at Butler (12/22/21)
3FG Made: 1, Three times
3FG attempts: 3 at Butler (12/22/21)
FT made: 4 vs. Murray State (11/30/21)
FT attempts: 4, Twice

GAME-BY-GAME

Opponent	Date	GS	MIN	Total		3-Pointers		Free throws		Rebounds		PF	A	TO	BLK	STL	PTS	AVG		
				FG-FGA	PCT	3FG-3FGA	PCT	FT-FTA	PCT	OFF	DEF								TOT	AVG
Austin Peay	11/09/2021	*	14:01	1-5	.200	0-2	.000	0-0	.000	2	1	3	3.0	3	1	2	0	1	2.0	
Oakland City	11/14/2021	*	18:54	1-5	.200	0-0	.000	2-4	.500	1	3	4	3.5	5	0	3	1	2	4.0	
Eastern Ky.	11/17/2021	*	07:52	0-3	.000	0-0	.000	0-0	.000	2	1	3	3.3	1	0	2	0	0	2.0	
at Eastern Ill.	11/20/2021	*	34:16	1-4	.250	0-0	.000	0-0	.000	5	4	9	4.8	4	1	2	1	1	2.0	
at Purdue Fort Wayne	11/24/2021	*	10:04	1-5	.200	1-1	1.000	2-2	1.000	1	1	2	4.2	1	0	1	0	0	5.6	
Murray St.	11/30/2021	*	11:48	1-4	.250	1-2	.500	4-4	1.000	2	0	2	3.8	4	2	0	1	0	7.3	
at Miami (OH)	12/04/2021	*	23:27	1-1	1.000	0-0	.000	2-2	1.000	4	1	5	4.0	1	0	1	0	0	4.3	
at Bellarmine	12/07/2021	*	11:22	3-4	.750	1-2	.500	0-0	.000	0	3	3	3.9	2	0	0	0	0	7.3	
Morehead St.	12/11/2021	*	13:25	2-4	.500	0-1	.000	0-0	.000	0	1	1	3.6	0	0	0	0	0	4.3	
at Butler	12/22/2021	*	31:60	3-8	.375	0-3	.000	1-2	.500	0	7	7	3.9	2	1	0	1	0	7.4	
Totals			10	177:09	14-43	.326	3-11	.273	11-14	.786	17	22	39	3.9	23	5	11	4	42	4.2

Player Averages

Games Played	Minutes/game	Points/game	FG Pct	3FG Pct	FT Pct	Rebounds/game	Assists/game	Turnovers/game	Assist/Turnover ratio	Steals/game	Blocks/game
10	17.7	4.2	32.6	27.3	78.6	3.9	0.5	1.1	0.5	0.4	0.4

CAREER STATS

				Field Goals		3-Point		F-Throws		Rebounds				Scoring						
SEASON	TEAM	GP-GS	MIN/AVG	FG-FGA	FG%	3FG-3FGA	3FG%	FT-FTA	FT%	OFF	DEF	TOT	AVG	PF-FO	A	TO	BLK	STL	PTS	AVG
2020-21	UNM	10-0	40/4.0	0-11	.000	0-8	.000	0-0	.000	0	1	1	0.1	3-0	1	2	0	1	0	0.0
2021-22	Evans	10-10	177/17.7	14-43	.326	3-11	.273	11-14	.786	17	22	39	3.9	23-1	5	11	4	4	42	4.2
TOTAL FOR Evans		10-10	177/17.7	14-43	.326	3-11	.273	11-14	.786	17	22	39	3.9	23-1	5	11	4	4	42	4.2
TOTAL		20-10	217/10.9	14-54	.259	3-19	.158	11-14	.786	17	23	40	2.0	26-1	6	13	4	5	42	2.1

KODIE MYSZKA

FRESHMAN - FORWARD - 6-1

MELBOURNE, AUSTRALIA - DANDENONG RANGERS



13

ACES INFO

PREP

- Promoted to the Dandenong Rangers Seniors, an NBL1 squad, just before signing with UE, playing in four games, while seeing a best of 27 minutes against Diamond Valley Eagles on April 17.
- Scored seven points and pulled down four rebounds in the Rangers 79-65 victory.
- In NBL1 competition, played along with and competed against players with extensive experience, including former NCAA Division I players and an Olympian. Impressed with Dandenong Rangers in the Youth Championship Women's League, averaging 10.3 points and seven rebounds per contest, adding just over three assists per game.
- Has also been selected to represent her state of Victoria at the U20 Australian Junior Championships.

2021-22 SEASON HIGHS

Points: 10 vs. Oakland City (11/14/21)
Rebounds: 7 vs. ECU (11/17/21)
Assists: 1, Three times
Steals: 3 vs. Oakland City (11/14/21)
Blocks: 3, Twice
FG made: 3 vs. Oakland City (11/14/21)
FG attempts: 5, Twice
3FG Made:
3FG attempts: 2 at Eastern Illinois (11/20/21)
FT made: 4 vs. Oakland City (11/14/21)
FT attempts: 6 vs. Oakland City (11/14/21)

CAREER HIGHS

Points: 10 vs. Oakland City (11/14/21)
Rebounds: 7 vs. ECU (11/17/21)
Assists: 1, Three times
Steals: 3 vs. Oakland City (11/14/21)
Blocks: 3, Twice
FG made: 3 vs. Oakland City (11/14/21)
FG attempts: 5, Twice
3FG Made:
3FG attempts: 2 at Eastern Illinois (11/20/21)
FT made: 4 vs. Oakland City (11/14/21)
FT attempts: 6 vs. Oakland City (11/14/21)

CAREER STATS

				Field Goals		3-Point		F-Throws		Rebounds				Scoring						
SEASON	TEAM	GP-GS	MIN/AVG	FG-FGA	FG%	3FG-3FGA	3FG%	FT-FTA	FT%	OFF	DEF	TOT	AVG	PF-FO	A	TO	BLK	STL	PTS	AVG
2021-22	Evans	9-0	133/14.8	12-26	.462	0-6	.000	7-16	.438	17	17	34	3.8	21-0	3	9	10	4	31	3.4
TOTAL		9-0	133/14.8	12-26	.462	0-6	.000	7-16	.438	17	17	34	3.8	21-0	3	9	10	4	31	3.4

GAME-BY-GAME

Opponent	Date	GS	MIN	Total		3-Pointers		Free throws		Rebounds				PF	A	TO	BLK	STL	PTS	AVG
				FG-FGA	PCT	3FG-3FGA	PCT	FT-FTA	PCT	OFF	DEF	TOT	AVG							
Austin Peay	11/09/2021		21:12	1-2	.500	0-1	.000	1-2	.500	2	3	5	5.0	4	0	2	3	0	3	3.0
Oakland City	11/14/2021		16:22	3-5	.600	0-1	.000	4-6	.667	2	2	4	4.5	4	1	2	3	3	10	6.5
Eastern Ky.	11/17/2021		18:12	1-2	.500	0-0	.000	1-2	.500	4	3	7	5.3	3	0	2	2	0	3	5.3
at Eastern Ill.	11/20/2021		12:40	1-4	.250	0-2	.000	0-0	.000	1	1	2	4.5	4	1	0	0	0	2	4.5
at Purdue Fort Wayne	11/24/2021		22:27	2-5	.400	0-0	.000	0-2	.000	4	2	6	4.8	2	1	1	1	0	4	4.4
Murray St.	11/30/2021		07:01	0-1	.000	0-1	.000	0-0	.000	0	1	1	4.2	1	0	0	0	0	0	3.7
at Miami (OH)	12/04/2021		03:25	0-0	.000	0-0	.000	0-0	.000	1	0	1	3.7	0	0	0	0	0	0	3.1
at Bellarmine	12/07/2021		21:01	2-3	.667	0-0	.000	1-4	.250	1	4	5	3.9	2	0	1	1	0	5	3.4
Morehead St.	12/11/2021		10:47	2-4	.500	0-1	.000	0-0	.000	2	1	3	3.8	1	0	1	0	1	4	3.4
Totals		0	133:07	12-26	.462	0-6	.000	7-16	.438	17	17	34	3.8	21	3	9	10	4	31	3.4

Player Averages

Games Played	Minutes/game	Points/game	FG Pct	3FG Pct	FT Pct	Rebounds/game	Assists/game	Turnovers/game	Assist/Turnover ratio	Steals/game	Blocks/game
9	14.8	3.4	46.2	0.0	43.8	3.8	0.3	1.0	0.3	0.4	1.1

ABBY FEIT

JUNIOR - GUARD/FORWARD - 6-1
NORMAL, ILL. - NORMAL COMMUNITY HS



14

ACES INFO

2020-21 MVC Honorable Mention
2020-21 MVC Scholar-Athlete Honorable Mention
MVC Player of the Week (Dec. 21, 2020)
2019-20 MVC Freshman of the Year
MVC Newcomer of the Week (Nov. 12, 2019)

2020-21

- Received All-MVC Honorable Mention recognition for the second-straight season.
- Honored for her work in the classroom, being named MVC Scholar-Athlete Honorable Mention with a 3.49 GPA in Clinical Laboratory Science.
- Started and played in all 20 games for Evansville.
- Led the team with 14.8 points (4th in MVC) and 8.0 rebounds per game (2nd in MVC).
- Got it done on the defensive end, where she tied for third in The Valley with 1.2 blocks per contest.
- Her 28 point, 14 rebounds, six steal, and four blocks performance against Oakland City is the only such single-game effort in NCAA DI women's basketball since at least 2014-15.

2019-20

- Named MVC Freshman of the Year after an incredible first collegiate season for the Aces, becoming just the third Ace to earn the honor along with Sara Dickey (2013) and Shinko Ono (1999)
- Started all 29 contests for the Aces, the only Evansville player to do so in 2019-20.
- Averaged a team-best 13.7 points and 8.4 rebounds per game.
- Scored in double-figures a team-high 23 times as a freshman.
- Tallied five double-doubles on the season and finished a point and/or rebound away from four more double-doubles.
- Averaged 36.6 minutes per game in her first collegiate season, 40th most in the nation and second-most among all freshman in the country.
- Opened her career with a 26-point, 18-rebound performance against Brescia on Nov. 5, the most points in a freshman debut in Evansville history and believed to be the most in MVC history.

PRIOR TO UE

- Played all four years of prep basketball at Normal Community High School in Normal, Ill.
- Averaged 14.1 points and 7.5 rebounds per contest as a senior, helping lead the Lady Iron to a 23-11 record, capturing a regional championship and reaching the sectional semifinals.
- Earned team MVP honors in 2018-19 and 2017-18...Tallied seven double-doubles as a senior, including a career-best 16 rebounds, twice.
- Scored a career-high 32 points as a sophomore in a 62-54 win over Belleville East.

2021-22 SEASON HIGHS

Points: 29 at Eastern Illinois (11/20/21)
Rebounds: 18 at Bellarmine (12/7/21)
Assists: 5 at Bellarmine (12/7/21)
Steals: 5 at Miami (Ohio) (12/4/21)
Blocks: 4, Twice
FG made: 12 at Eastern Illinois (11/20/21)
FG attempts: 24 at Eastern Illinois (11/20/21)
3FG Made: 4 vs. Oakland City (11/14/21)
3FG attempts: 9 at Eastern Illinois (11/20/21)
FT made: 8 vs. Oakland City (11/14/21)
FT attempts: 9 vs. Oakland City (11/14/21)

CAREER HIGHS

Points: 29, Twice
Rebounds: 18, Twice
Assists: 5, Three times
Steals: 6 vs. Oakland City (12/16/20)
Blocks: 4, Five times
FG made: 13 vs. Brescia (11/5/19)
FG attempts: 24 at Eastern Illinois (11/20/21)
3FG Made: 5 at Illinois (12/15/19)
3FG attempts: 11 at Illinois (12/15/19)
FT made: 9 vs. Murray State (12/3/19)
FT attempts: 13 vs. Murray State (12/3/19)

CAREER STATS

				Field Goals		3-Point		F-Throws		Rebounds				Scoring						
SEASON	TEAM	GP-GS	MIN/AVG	FG-FGA	FG%	3FG-3FGA	3FG%	FT-FTA	FT%	OFF	DEF	TOT	AVG	PF-FO	A	TO	BLK	STL	PTS	AVG
2019-20	Evans	29-29	1059/36.5	149-339	.440	45-129	.349	54-80	.675	41	204	245	8.4	60-2	59	84	42	43	397	13.7
2020-21	Evans	23-23	802/34.9	119-284	.419	33-106	.311	72-97	.742	21	159	180	7.8	36-0	29	65	25	33	343	14.9
2021-22	Evans	9-9	317/35.2	61-126	.484	21-53	.396	27-36	.750	18	74	92	10.2	20-1	18	17	17	21	170	18.9
TOTAL		61-61	2178/35.7	329-749	.439	99-288	.344	153-213	.718	80	437	517	8.5	116-3	106	166	84	97	910	14.9

GAME-BY-GAME

Opponent	Date	GS	MIN	Total		3-Pointers		Free throws		Rebounds				PF	A	TO	BLK	STL	PTS	AVG
				FG-FGA	PCT	3FG-3FGA	PCT	FT-FTA	PCT	OFF	DEF	TOT	AVG							
Austin Peay	11/09/2021	*	37:21	8-16	.500	2-4	.500	3-5	.600	2	9	11	11.0	1	1	2	4	2	21	21.0
Oakland City	11/14/2021	*	29:03	8-15	.533	4-7	.571	8-9	.889	2	8	10	10.5	1	1	4	2	2	28	24.5
Eastern Ky.	11/17/2021	*	36:44	8-11	.727	2-4	.500	0-1	.000	0	3	3	8.0	3	2	3	0	2	18	22.3
at Eastern Ill.	11/20/2021	*	45:33	12-24	.500	2-9	.222	3-3	1.000	1	12	13	9.3	4	1	0	1	2	29	24.0
at Purdue Fort Wayne	11/24/2021	*	36:25	4-9	.444	3-7	.429	1-2	.500	1	11	12	9.8	1	1	2	2	3	12	21.6
Murray St.	11/30/2021	*	32:59	6-11	.545	3-7	.429	3-3	1.000	1	8	9	9.7	5	1	0	4	1	18	21.0
at Miami (OH)	12/04/2021	*	36:58	5-18	.278	2-8	.250	2-2	1.000	4	7	11	9.9	1	3	2	1	5	14	20.0
at Bellarmine	12/07/2021	*	37:12	5-13	.385	1-3	.333	4-8	.500	6	12	18	10.9	2	5	3	3	4	15	19.4
Morehead St.	12/11/2021	*	24:24	5-9	.556	2-4	.500	3-3	1.000	1	4	5	10.2	2	3	1	0	0	15	18.9
Totals	9	316:38	61-126	.484	21-53	.396	27-36	.750	18	74	92	10.2	20	18	17	21	17	210	18.9	

Player Averages

Games Played	Minutes/game	Points/game	FG Pct	3FG Pct	FT Pct	Rebounds/game	Assists/game	Turnovers/game	Assist/Turnover ratio	Steals/game	Blocks/game
9	35.2	18.9	48.4	39.6	75.0	10.2	2.0	1.9	1.1	2.3	1.9

A'NIAH GRIFFIN

SENIOR - GUARD - 6-1

LOUISVILLE, KY. - MANUAL HS



21

ACES INFO

2020-21

- Played in 19 contests, starting 13 games as a junior.
- Finished second on the team in scoring average with 8.7 points per contest.
- Scored a career-high 20 points in a 70-60 win over Purdue Fort Wayne on Dec. 5.
- Tallied a career-best six assists against Oakland City on Dec. 16.

2019-20

- Appeared in 23 games for the Aces, making 12 starts.
- Saw an average of 21.7 minutes per game, scoring 7.6 points and grabbing 2.4 rebounds per contest.
- Recorded a career-high 17 points against Indiana State on Feb. 28.
- Hit two-or-more three-pointers eight times as a sophomore, including five times during MVC play.
- Finished tied for second on the team in three-pointers made, hitting 25 on the year.
- Returned to the floor for the first time since Jan. 6 when she started against SIUE on Nov. 13, scoring 16 points.

2018-19:

- Played in 11 games, including seven starts, as a freshman.
- Recorded 5.6 points and 2.9 rebounds per contest in her first collegiate season.
- Scored a career-high 12 points against Missouri State on Jan. 6. adding a career-best six rebounds.
- Played a season-high 29 minutes in back-to-back games against Morehead State and SEMO.

PREP

- Helped lead DuPont Manual High School (Louisville, Ky.) to the final eight of the 2018 Kentucky High School Sports Association Girls Basketball Tournament.
- Averaged 6.4 points per game as a junior at Manual, as the Rams advanced to the first round of the Sweet 16 of the KHSAA Tournament.

GAME-BY-GAME

2021-22 SEASON HIGHS

Points:	14, Twice
Rebounds:	4 at Butler (12/22/21)
Assists:	2 at Eastern Illinois (11/20/21)
Steals:	3 vs. ECU (11/17/21)
Blocks:	2 vs. Austin Peay (11/9/21)
FG made:	6 vs. ECU (11/17/21)
FG attempts:	15 vs. ECU (11/17/21)
3FG Made:	2, Twice
3FG attempts:	6 vs. ECU (11/17/21)
FT made:	4 at Eastern Illinois (11/20/21)
FT attempts:	5 at Eastern Illinois (11/20/21)

Opponent	Date	GS	MIN	Total FG-FGA PCT	3-Pointers 3FG-3FGA PCT	Free throws FT-FTA PCT	Rebounds OFF DEF TOT AVG	PF	A	TO	BLK	STL	PTS	AVG
Austin Peay	11/09/2021		06:27	1-2 .500	0-0 .000	1-1 1.000	0 0 0 0.0	0	0	2	0	3	3.0	
Eastern Ky.	11/17/2021		20:25	6-15 .400	1-6 .167	1-4 .250	0 2 2 1.0	3	0	3	1	3	14	8.5
at Eastern Ill.	11/20/2021		28:01	4-8 .500	2-4 .500	4-5 .800	0 3 3 1.7	5	2	3	0	0	14	10.3
at Purdue Fort Wayne	11/24/2021		13:38	4-11 .364	2-4 .500	0-0 .000	0 0 0 1.3	1	0	2	0	0	10	10.3
Murray St.	11/30/2021		14:11	1-9 .111	1-3 .333	0-2 .000	0 0 0 1.0	2	0	1	0	0	3	8.8
at Miami (OH)	12/04/2021		09:58	3-7 .429	1-2 .500	0-0 .000	0 1 1 1.0	4	0	2	0	2	7	8.5
at Bellarmine	12/07/2021		12:06	5-11 .455	0-3 .000	0-1 .000	0 1 1 1.0	4	0	2	0	0	10	8.7
Morehead St.	12/11/2021		11:39	0-2 .000	0-1 .000	2-2 1.000	0 2 2 1.1	1	0	1	0	0	2	7.9
at Butler	12/22/2021		18:22	3-7 .429	0-3 .000	1-1 1.000	3 1 4 1.4	0	0	0	0	1	7	7.8
Totals		0	134:47	27-72 .375	7-26 .269	9-16 .563	3 10 13 1.4	20	2	14	3	6	70	7.8

Player Averages

Games Played	Minutes/game	Points/game	FG Pct	3FG Pct	FT Pct	Rebounds/game	Assists/game	Turnovers/game	Assist/Turnover ratio	Steals/game	Blocks/game
9	15.0	7.8	37.5	26.9	56.3	1.4	0.2	1.6	0.1	0.7	0.3

CAREER HIGHS

Points:	20 vs. Purdue Fort Wayne (12/5/20)
Rebounds:	8, Three times
Assists:	6 vs. Oakland City (12/16/20)
Steals:	3, Five times
Blocks:	2, Twice
FG made:	8 vs. Purdue Fort Wayne (12/5/20)
FG attempts:	18 at Marshall (11/24/19)
3FG Made:	3, Twice
3FG attempts:	12 at SIUE (11/13/19)
FT made:	8 vs. Marshall (11/24/19)
FT attempts:	10 vs. Marshall (11/24/19)

CAREER STATS

				Field Goals		3-Point		F-Throws		Rebounds								Scoring		
SEASON	TEAM	GP-GS	MIN/AVG	FG-FGA	FG%	3FG-3FGA	3FG%	FT-FTA	FT%	OFF	DEF	TOT	AVG	PF-FO	A	TO	BLK	STL	PTS	AVG
2018-19	Evans	11-7	207/18.8	24-50	.480	2-13	.154	12-14	.857	6	26	32	2.9	19-0	4	4	7	12	62	5.6
2019-20	Evans	23-12	499/21.7	57-173	.329	25-95	.263	36-49	.735	4	51	55	2.4	53-0	10	41	4	20	175	7.6
2020-21	Evans	19-13	485/25.5	60-158	.380	12-45	.267	34-48	.708	2	57	59	3.1	33-0	21	54	1	15	166	8.7
2021-22	Evans	9-0	135/15.0	27-72	.375	7-26	.269	9-16	.563	3	10	13	1.4	20-1	2	14	3	6	70	7.8
TOTAL		62-32	1325/21.4	168-453	.371	46-179	.257	91-127	.717	15	144	159	2.6	125-1	37	113	15	53	473	7.6

JOSSIE HUDSON

JUNIOR - FORWARD - 6-1
EVANSVILLE, IND. - MATER DEI HS



ACES INFO

2020-21

- Saw action in 22 contests, making 15 starts for Evansville in her second season.
- Averaged 4.9 points per game.
- Scored a career-high 14 points on a five-for-seven shooting effort on Dec. 29 in a 72-62 win over Bellarmine.
- Totaled 62 rebounds on the season, including a season-best eight boards against Oakland City on Dec. 16.
- Finished fifth on the team in minutes per game, averaging 24.6 minutes per contest.

2019-20

- Played in all 29 games, starting 15 of them as a freshman for the Aces, one of just four players to see the floor in every game during the 2019-20 season.
- Averaged 3.3 points and 2.3 rebounds on the year, scoring five-or-more points in 10 games
- Scored 10 points in her collegiate debut on Nov. 5 against Brescia.
- Played a season-high 34 minutes twice as a freshman against Missouri State (Jan. 26) and Loyola (Feb. 8).

PREP

- Appeared in 80 games over four seasons at Mater Dei High School in Evansville.
- Recorded averages of 12.9 points and 5.2 rebounds per game as a senior for the Wildcats.
- Helped lead Mater Dei to the semit-state of the IHSAA 2A State Tournament.
- Scored a career-high 22 points against Mt. Vernon on Dec. 4, 2018.

2021-22 SEASON HIGHS

Points: 8 vs. Morehead State (12/11/21)
 Rebounds: 5 vs. Morehead State (12/11/21)
 Assists: 1, Twice
 Steals: 1, Three times
 Blocks: 1 vs. Oakland City (11/14/21)
 FG made: 3, Three times
 FG attempts: 6 at Butler (12/22/21)
 3FG Made: 1, Twice
 3FG attempts: 2 at Butler (12/22/21)
 FT made: 2 vs. Morehead State (12/11/21)
 FT attempts: 2, Three times

CAREER HIGHS

Points: 14 vs. Bellarmine (12/29/20)
 Rebounds: 8 vs. Oakland City (12/16/20)
 Assists: 5 vs. Oakland City (12/16/20)
 Steals: 3, Twice
 Blocks: 3 vs. Bellarmine (12/29/20)
 FG made: 5 vs. Bellarmine (12/29/20)
 FG attempts: 10 at Missouri State (2/21/20)
 3FG Made: 1, Five times
 3FG attempts: 4 at Missouri State (2/21/20)
 FT made: 7 vs. Oakland City (12/16/20)
 FT attempts: 10 vs. Bellarmine (12/29/20)

CAREER STATS

				Field Goals		3-Point		F-Throws		Rebounds										Scoring	
SEASON	TEAM	GP-GS	MIN/AVG	FG-FGA	FG%	3FG-3FGA	3FG%	FT-FTA	FT%	OFF	DEF	TOT	AVG	PF-FO	A	TO	BLK	STL	PTS	AVG	
2019-20	Evans	29-15	561/19.3	38-100	.380	4-24	.167	16-37	.432	27	40	67	2.3	61-2	17	45	9	16	96	3.3	
2020-21	Evans	22-15	545/24.8	41-89	.461	0-1	.000	26-46	.565	23	39	62	2.8	52-0	18	43	11	11	108	4.9	
2021-22	Evans	8-1	79/9.9	9-18	.500	2-5	.400	4-6	.667	3	13	16	2.0	13-0	2	8	1	3	24	3.0	
TOTAL		59-31	1185/20.1	88-207	.425	6-30	.200	46-89	.517	53	92	145	2.5	126-2	37	96	21	30	228	3.9	

GAME-BY-GAME

Opponent	Date	GS	MIN	Total		3-Pointers		Free throws		Rebounds				PF	A	TO	BLK	STL	PTS	AVG
				FG-FGA	PCT	3FG-3FGA	PCT	FT-FTA	PCT	OFF	DEF	TOT	AVG							
Austin Peay	11/09/2021		09:23	0-0	.000	0-0	.000	1-2	.500	0	2	2	2.0	1	0	2	0	1	1	1.0
Oakland City	11/14/2021		19:56	3-4	.750	1-1	1.000	0-0	.000	0	4	4	3.0	3	1	0	1	0	7	4.0
Eastern Ky.	11/17/2021		03:29	0-1	.000	0-1	.000	0-0	.000	1	1	2	2.7	1	0	1	0	1	0	2.7
at Purdue Fort Wayne	11/24/2021		03:35	0-0	.000	0-0	.000	0-0	.000	0	0	0	2.0	2	0	0	0	0	0	2.0
at Miami (OH)	12/04/2021		02:34	0-0	.000	0-0	.000	1-2	.500	0	0	0	1.6	0	0	0	0	0	1	1.8
at Bellarmine	12/07/2021		02:48	0-2	.000	0-0	.000	0-0	.000	0	1	1	1.5	1	0	0	0	0	0	1.5
Morehead St.	12/11/2021		15:36	3-5	.600	0-1	.000	2-2	1.000	2	3	5	2.0	3	1	2	0	0	8	2.4
at Butler	12/22/2021	*	21:37	3-6	.500	1-2	.500	0-0	.000	0	2	2	2.0	2	0	3	0	1	7	3.0
Totals			1 78:58	9-18	.500	2-5	.400	4-6	.667	3	13	16	2.0	13	2	8	1	3	24	3.0

Player Averages

Games Played	Minutes/game	Points/game	FG Pct	3FG Pct	FT Pct	Rebounds/game	Assists/game	Turnovers/game	Assist/Turnover ratio	Steals/game	Blocks/game
8	9.9	3.0	50.0	40.0	66.7	2.0	0.3	1.0	0.3	0.4	0.1

SYDNEY THURWALKER

JUNIOR - GUARD/FORWARD - 5-11
BELLEVILLE, ILL. - DODGE CITY CC (KAN.)



ACES INFO

- 2020-21**
- Made 21 appearances and 10 starts in her first season in white & purple.
 - Finished tied for second on the team in rebounding average, pulling-down 4.6 boards per game.
 - Reached double-figures in rebounds twice as a sophomore, tallying 10 boards against Drake (Jan. 7) and Loyola (Feb. 13).
 - Completed the season averaging five points per game, putting-up a season-high 11 on the road at Southern Illinois on Jan. 2.
 - Saw increased playing time during MVC play, averaging 20.2 minutes per game.

- PRIOR TO UE**
- Played one season at Dodge City Community College in Kansas.
 - Reeled-in the individual honors during her freshman season with the Conquistadors.
 - Named NJCAA All-Region VI honorable mention, while capturing KJCCC second-team honors.
 - Averaged 13.6 points and nine rebounds per game, while shooting just shy of 50% from the field.

- PREP**
- Played her high school basketball for O'Fallon High School in O'Fallon, Illinois.
 - Averaged 11.7 points and 8.7 boards per contest as a senior at O'Fallon HS.
 - Helped lead the Panthers to a 25-5 record in her senior season.

2021-22 SEASON HIGHS

- Points: 4 vs. Morehead State (12/11/21)
Rebounds: 4 vs. Morehead State (12/11/21)
Assists:
Steals:
Blocks:
FG made: 2 vs. Morehead State (12/11/21)
FG attempts: 4 vs. Morehead State (12/11/21)
3FG Made:
3FG attempts:
FT made:
FT attempts:

CAREER HIGHS

- Points: 11 at SIU (1/2/21)
Rebounds: 10, Twice
Assists: 2, Four times
Steals: 4 vs. Drake (1/8/21)
Blocks: N/A
FG made: 4, Three times
FG attempts: 9 at UNI (2/27/21)
3FG Made: 1, Four times
3FG attempts: 3 vs. Drake (1/7/21)
FT made: 6 at SIU (1/2/21)
FT attempts: 10 at SIU (1/2/21)

GAME-BY-GAME

Opponent	Date	GS	MIN	Total		3-Pointers		Free throws		Rebounds				PF A TO BLK STL PTS AVG						
				FG-FGA	PCT	3FG-3FGA	PCT	FT-FTA	PCT	OFF	DEF	TOT	AVG	P	A	T	B	S	P	A
at Miami (OH)	12/04/2021		01:19	0-0	.000	0-0	.000	0-0	.000	0	0	0	0.0	0	0	0	0	0	0	0.0
Morehead St.	12/11/2021		07:24	2-4	.500	0-0	.000	0-0	.000	3	1	4	2.0	0	0	1	0	0	4	2.0
Totals		0	08:43	2-4	.500	0-0	.000	0-0	.000	3	1	4	2.0	0	0	1	0	0	4	2.0

Player Averages

Games Played	Minutes/game	Points/game	FG Pct	3FG Pct	FT Pct	Rebounds/game	Assists/game	Turnovers/game	Assist/Turnover ratio	Steals/game	Blocks/game
2	4.4	2.0	50.0	0.0	0.0	2.0	0.0	0.5	0.0	0.0	0.0

CAREER STATS

				Field Goals		3-Point		F-Throws		Rebounds										Scoring	
SEASON	TEAM	GP-GS	MIN/AVG	FG-FGA	FG%	3FG-3FGA	3FG%	FT-FTA	FT%	OFF	DEF	TOT	AVG	PF-FO	A	TO	BLK	STL	PTS	AVG	
2020-21	Evans	21-10	414/19.7	33-95	.347	4-17	.235	34-59	.576	32	65	97	4.6	27-0	13	28	0	15	104	5.0	
2021-22	Evans	2-0	9/4.4	2-4	.500	0-0	.000	0-0	.000	3	1	4	2.0	0-0	0	1	0	0	4	2.0	
TOTAL		23-10	423/18.4	35-99	.354	4-17	.235	34-59	.576	35	66	101	4.4	27-0	13	29	0	15	108	4.7	

JE'NAIYA DAVIS

JUNIOR - GUARD - 5-8

ST. LOUIS, MO. - WABASH VALLEY COLLEGE



24

ACES INFO

2020-21 (Wabash Valley College)

- A prolific scorer at Wabash Valley College in Mount Carmel, Ill., helping lead the Warriors to a 21-4 mark in 2020-21, earning the No. 10 seed in the NJCAA National Tournament.
- Led WVC with 20 points per contest, the ninth-highest scoring average in NJCAA Division I.
- Poured in a season-high 34 points in a win over Vincennes on March 3 and surpassed 30-or-more points three times as a sophomore.

2019-20 (Alabama A&M)

- Opened her collegiate career at NCAA Division I member Alabama A&M.
- Played in 22 of 30 contests, compiling nearly 100 points.

PREP

- Played for Parkway North High School in St. Louis, Mo.
- Averaged 21 points and just shy of nine boards as a senior.
- Guided Parkway North to three state quarterfinals and a pair of conference championships.
- Broke the single-season scoring record at Parkway North and reached the 1,000-point career mark during her senior campaign.

2021-22 SEASON HIGHS

Points: 35 at Purdue Fort Wayne (11/24/21)
Rebounds: 7 at Butler (12/22/21)
Assists: 3 vs. Murray State (11/30/21)
Steals: 4 at Miami (Ohio) (12/4/21)
Blocks:
FG made: 13 at Purdue Fort Wayne (11/24/21)
FG attempts: 17, Twice
3FG Made: 4 at Purdue Fort Wayne (11/24/21)
3FG attempts: 7 at Purdue Fort Wayne (11/24/21)
FT made: 12 at Bellarmine (12/7/21)
FT attempts: 13 at Bellarmine (12/7/21)

CAREER HIGHS

Points: 35 at Purdue Fort Wayne (11/24/21)
Rebounds: 7 at Butler (12/22/21)
Assists: 3, Three times
Steals: 4 at Miami (Ohio) (12/4/21)
Blocks: 1, Four times
FG made: 13 at Purdue Fort Wayne (11/24/21)
FG attempts: 17, Twice
3FG Made: 4 at Purdue Fort Wayne (11/24/21)
3FG attempts: 7, Three times
FT made: 12 at Bellarmine (12/7/21)
FT attempts: 13 at Bellarmine (12/7/21)

CAREER STATS

				Field Goals		3-Point		F-Throws		Rebounds								Scoring		
SEASON	TEAM	GP-GS	MIN/AVG	FG-FGA	FG%	3FG-3FGA	3FG%	FT-FTA	FT%	OFF	DEF	TOT	AVG	PF-FO	A	TO	BLK	STL	PTS	AVG
2019-20	AAMU	23-0	292/12.7	29-100	.290	15-55	.273	21-29	.724	12	32	44	1.9	25-0	14	23	3	9	94	4.1
2021-22	Evans	7-4	189/27.1	50-100	.500	14-30	.467	30-37	.811	5	24	29	4.1	19-2	10	15	0	12	144	20.6
TOTAL FOR Evans		7-4	189/27.1	50-100	.500	14-30	.467	30-37	.811	5	24	29	4.1	19-2	10	15	0	12	144	20.6
TOTAL		30-4	482/16.1	79-200	.395	29-85	.341	51-66	.773	17	56	73	2.4	44-2	24	38	3	21	238	7.9

GAME-BY-GAME

Opponent	Date	GS	MIN	Total		3-Pointers		Free throws		Rebounds				PF	A	TO	BLK	STL	PTS	AVG
				FG-FGA	PCT	3FG-3FGA	PCT	FT-FTA	PCT	OFF	DEF	TOT	AVG							
at Eastern Ill.	11/20/2021		25:15	5-15	.333	0-3	.000	4-4	1.000	0	3	3	3.0	5	0	4	0	0	14	14.0
at Purdue Fort Wayne	11/24/2021		22:27	13-17	.765	4-7	.571	5-7	.714	1	3	4	3.5	4	1	1	0	1	35	24.5
Murray St.	11/30/2021		27:49	5-12	.417	2-3	.667	1-2	.500	2	2	4	3.7	1	3	3	0	2	13	20.7
at Miami (OH)	12/04/2021	*	26:34	7-15	.467	1-4	.250	2-4	.500	0	3	3	3.5	1	2	2	0	4	17	19.8
at Bellarmine	12/07/2021	*	34:47	7-15	.467	3-5	.600	12-13	.923	0	2	2	3.2	2	1	1	0	3	29	21.6
Morehead St.	12/11/2021	*	21:39	5-9	.556	2-2	1.000	0-0	.000	0	6	6	3.7	1	2	1	0	2	12	20.0
at Butler	12/22/2021	*	30:58	8-17	.471	2-6	.333	6-7	.857	2	5	7	4.1	5	1	3	0	0	24	20.6
Totals		4	189:29	50-100	.500	14-30	.467	30-37	.811	5	24	29	4.1	19	10	15	0	12	144	20.6

Player Averages

Games Played	Minutes/game	Points/game	FG Pct	3FG Pct	FT Pct	Rebounds/game	Assists/game	Turnovers/game	Assist/Turnover ratio	Steals/game	Blocks/game
7	27.1	20.6	50.0	46.7	81.1	4.1	1.4	2.1	0.7	1.7	0.0

RYLIE STEPHENS

SOPHOMORE - GUARD - 5-11
FAIRLAND, IND. - TRITON CENTRAL HS



ACES INFO

- 2020-21**
- Appeared in 21 contests, making 10 starts.
 - Finished third on the team in scoring, averaging 8.7 points per game.
 - Scored a season-high 17 points on Jan. 15 against Bradley.
 - Became the fourth-straight freshman to lead Evansville in scoring in the season opener, recording a team-high 14 points against Murray State on Dec. 1 in her college debut.
 - Recorded the highest rebounding average amongst guards, tallying 3.6 boards per game.
 - Grabbed a season-best seven rebounds in four games.
 - Scored in double-figures in 10 games, including four in MVC play.

- PREP**
- Joins the Aces after playing prep basketball for Triton Central High School in Fairland, Ind.
 - Averaged 16.4 points and nearly eight rebounds per game, while adding four steals and three assists per contest as a senior and helped lead the Tigers to a 26-1 record.
 - Tallied nearly 15 points and six rebounds per contest as a junior.

GAME-BY-GAME

Opponent	Date	GS	MIN	Total		3-Pointers		Free throws		Rebounds				PF	A	TO	BLK	STL	PTS	AVG
				FG-FGA	PCT	3FG-3FGA	PCT	FT-FTA	PCT	OFF	DEF	TOT	AVG							
Austin Peay	11/09/2021		02:44	0-2	.000	0-1	.000	0-0	.000	0	0	0	0.0	0	0	0	0	0	0	0.0
Oakland City	11/14/2021		13:06	2-6	.333	0-1	.000	0-0	.000	0	1	1	0.5	1	0	1	1	0	4	2.0
at Miami (OH)	12/04/2021		00:41	0-0	.000	0-0	.000	0-0	.000	0	1	1	0.7	1	0	0	1	0	0	1.3
Morehead St.	12/11/2021		05:49	0-2	.000	0-2	.000	0-0	.000	0	1	1	0.8	0	0	0	0	1	0	1.0
Totals			0 22:20	2-10	.200	0-4	.000	0-0	.000	0	3	3	0.8	2	0	1	2	1	4	1.0

Player Averages														Games Played	Minutes/ game	Points/ game	FG Pct	3FG Pct	FT Pct	Rebounds/ game	Assists/ game	Turnovers/ game	Assist/Turnover ratio	Steals/ game	Blocks/ game
														4	5.6	1.0	20.0	0.0	0.0	0.8	0.0	0.3	0.0	0.3	0.5

2021-22 SEASON HIGHS

- Points: 4 vs. Oakland City (11/14/21)
Rebounds: 1, Three times
Assists:
Steals: 1 vs. Morehead State (12/11/21)
Blocks: 1, Twice
FG made: 2 vs. Oakland City (11/14/21)
FG attempts: 6 vs. Oakland City (11/14/21)
3FG Made:
3FG attempts: 2 vs. Morehead State (12/11/21)
FT made:
FT attempts:

CAREER HIGHS

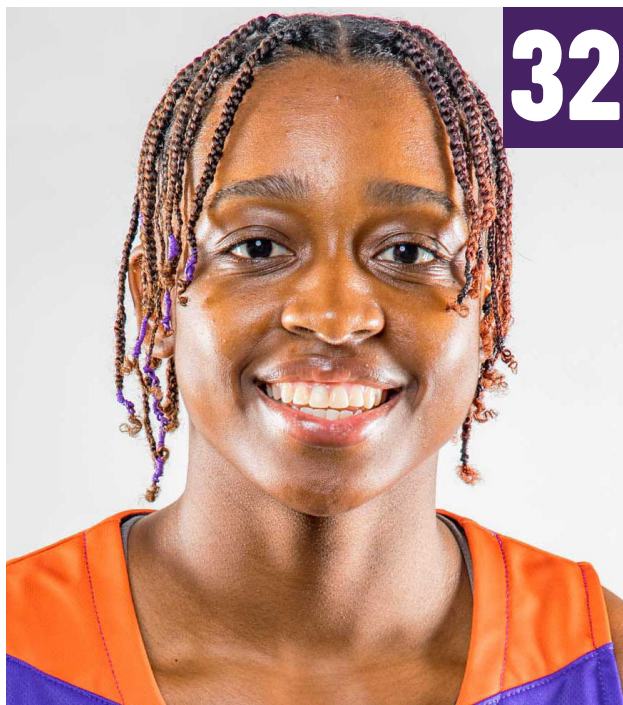
- Points: 17 vs. Bradley (1/15/21)
Rebounds: 7, Four times
Assists: 3 at Illinois State (1/21/21)
Steals: 3 vs. Drake (1/7/21)
Blocks: 1, Five times
FG made: 7 vs. Bradley (1/15/21)
FG attempts: 12 vs. Bradley (1/15/21)
3FG Made: 2, Three times
3FG attempts: 4, Five times
FT made: 3 vs. Drake (1/8/21)
FT attempts: 4, Twice

CAREER STATS

				Field Goals		3-Point		F-Throws		Rebounds										Scoring	
SEASON	TEAM	GP-GS	MIN/AVG	FG-FGA	FG%	3FG-3FGA	3FG%	FT-FTA	FT%	OFF	DEF	TOT	AVG	PF-FO	A	TO	BLK	STL	PTS	AVG	
2020-21	Evans	23-9	479/20.8	57-145	.393	14-51	.275	17-24	.708	21	61	82	3.6	25-0	16	40	4	18	145	6.3	
2021-22	Evans	4-0	22/5.6	2-10	.200	0-4	.000	0-0	.000	0	3	3	0.8	2-0	0	1	2	1	4	1.0	
TOTAL		27-9	501/18.6	59-155	.381	14-55	.255	17-24	.708	21	64	85	3.1	27-0	16	41	6	19	149	5.5	

MYIA CLARK

SENIOR - GUARD - 5-7
SCHAUMBURG, ILL. - SAINT LOUIS



32

2021-22 SEASON HIGHS

Points: 26 at Miami (Ohio) (12/4/21)
Rebounds: 7, Twice
Assists: 5 at Butler (12/22/21)
Steals: 3 at Miami (Ohio) (12/4/21)
Blocks:
FG made: 9 at Miami (Ohio) (12/4/21)
FG attempts: 20 vs. Murray State (11/30/21)
3FG Made: 3, Twice
3FG attempts: 9 vs. Murray State (11/30/21)
FT made: 7 at Miami (Ohio) (12/4/21)
FT attempts: 8 at Miami (Ohio) (12/4/21)

CAREER HIGHS

Points: 26 at Miami (Ohio) (12/4/21)
Rebounds: 11 vs. SIUE (12/1/18)
Assists: 6 vs. Bradley (12/6/20)
Steals: 3, Three times
Blocks: 1, Twice
FG made: 9 at Miami (Ohio) (12/4/21)
FG attempts: 20 vs. Murray State (11/30/21)
3FG Made: 4, 6 times
3FG attempts: 11 vs. UMass (3/13/21)
FT made: 8 vs. St. Bonaventure (1/15/20)
FT attempts: 11 vs. St. Bonaventure (1/15/20)

CAREER STATS

				Field Goals		3-Point		F-Throws		Rebounds									Scoring	
SEASON	TEAM	GP-GS	MIN/AVG	FG-FGA	FG%	3FG-3FGA	3FG%	FT-FTA	FT%	OFF	DEF	TOT	AVG	PF-FO	A	TO	BLK	STL	PTS	AVG
2018-19	SLU	31-12	578/18.7	49-135	.363	24-68	.353	16-27	.593	29	78	107	3.5	56-1	20	41	0	18	138	4.5
2019-20	SLU	32-32	905/28.3	83-246	.337	37-117	.316	74-88	.841	28	76	104	3.3	53-1	54	48	0	19	277	8.7
2020-21	SLU	19-19	505/26.6	45-144	.313	20-74	.270	23-30	.767	19	54	73	3.8	31-1	27	20	2	6	133	7.0
2021-22	Evans	10-10	288/28.8	49-125	.392	13-58	.224	20-25	.800	13	36	49	4.9	17-0	23	21	0	13	131	13.1
TOTAL FOR Evans		10-10	288/28.8	49-125	.392	13-58	.224	20-25	.800	13	36	49	4.9	17-0	23	21	0	13	131	13.1
TOTAL		92-73	2276/24.7	226-650	.348	94-317	.297	133-170	.782	89	244	333	3.6	157-3	124	130	2	56	679	7.4

ACES INFO

2020-21 (SLU)

- Played and started in all 19 games.
- Posted a season-high 20 points, including four 3-pointers in the WNIT first round win over DePaul.
- Connected on four 3-pointers on her way to 16 points, two rebounds and one assist in the A-10 Championship semifinals against UMass.
- Went 5-for-7 from the field at Dayton, scoring 14 points, along with two rebounds, two assists and one block.
- Drained a perfect 4-for-4 three pointers against Dayton, on her way to 16 points, two rebounds and one assist.
- Posted her first career double-double against Bradley, recording 13 points and 10 rebounds, while also adding a career-high six assists.

2019-20 (SLU)

- Started in all 32 games.
- Held a streak of 37 consecutive made free throws at one point in the season.
- Had career highs in points (24) and free throws (8-for-11) in the win over St. Bonaventure.
- Played a career-high 39 minutes against Davidson, recording nine points and a season-high seven rebounds.
- Led the team with 15 points, including 7-of-8 from the line, in the road win over Cincinnati.
- Led SLU five times in steals, four times in points and assists and once in rebounds.
- Recorded nine double-digit scoring efforts.
- Atlantic 10 Commissioner's Honor Roll.

2018-19 (SLU)

- Atlantic 10 Rookie of the Week Dec. 10.
- Played in all 31 games and started 12.
- Paced the Billikens with 18 points vs. No. 1 Connecticut, hitting 4-of-8 from 3-point range, and tied for the team rebounding lead with four.
- Grabbed a team-high 11 rebounds vs. SIUE and a team-high five boards vs. Missouri.

PREP

- Scored 1,695 career points, more than any other player (male or female) in Saint Viator history.
- Averaged 15.0 points and 7.0 rebounds as a senior and was selected to the Illinois High School Association 3A All-State second team and the Illinois Basketball Coaches Association 3A/4A All-State second team.
- A four-time Daily Herald All-Area selection and a three-time All-Conference choice.
- State qualifier in the IHSA's Queen of the Hill 3-point shooting competition as a sophomore.

GAME-BY-GAME

Opponent	Date	GS	MIN	Total		3-Pointers		Free throws		Rebounds				PF	A	TO	BLK	STL	PTS	AVG	
				FG-FGA	PCT	3FG-3FGA	PCT	FT-FTA	PCT	OFF	DEF	TOT	AVG								
Austin Peay	11/09/2021	*	33:52	6-14	.429	1-6	.167	2-3	.667	2	3	5	5.0	0	2	3	0	2	15	15.0	
Oakland City	11/14/2021	*	25:18	8-11	.727	2-5	.400	0-0	.000	1	4	5	5.0	2	4	0	0	2	18	16.5	
Eastern Ky.	11/17/2021	*	30:19	3-9	.333	1-4	.250	0-0	.000	0	3	3	4.3	4	4	3	0	2	7	13.3	
at Eastern Ill.	11/20/2021	*	24:21	2-11	.182	0-5	.000	0-0	.000	1	3	4	4.3	0	1	5	0	1	4	11.0	
at Purdue Fort Wayne	11/24/2021	*	27:56	4-11	.364	3-6	.500	0-0	.000	3	4	7	4.8	3	3	1	0	0	11	11.0	
Murray St.	11/30/2021	*	28:27	7-20	.350	2-9	.222	3-4	.750	2	4	6	5.0	1	0	0	0	0	19	12.3	
at Miami (OH)	12/04/2021	*	33:31	9-17	.529	1-7	.143	7-8	.875	0	1	1	4.4	1	0	3	0	3	26	14.3	
at Bellarmine	12/07/2021	*	24:36	4-10	.400	0-4	.000	0-0	.000	1	4	5	4.5	3	2	2	0	1	8	13.5	
Morehead St.	12/11/2021	*	24:38	4-9	.444	3-4	.750	4-5	.800	2	4	6	4.7	0	2	1	0	2	15	13.7	
at Butler	12/22/2021	*	34:53	2-13	.154	0-8	.000	4-5	.800	1	6	7	4.9	3	5	3	0	0	8	13.1	
Totals			10	287:50	49-125	.392	13-58	.224	20-25	.800	13	36	49	4.9	17	23	21	0	13	131	13.1

Player Averages

Games Played	Minutes/game	Points/game	FG Pct	3FG Pct	FT Pct	Rebounds/game	Assists/game	Turnovers/game	Assist/Turnover ratio	Steals/game	Blocks/game
10	28.8	13.1	39.2	22.4	80.0	4.9	2.3	2.1	1.1	1.3	0.0

MAYCEE LANGE

FRESHMAN - FORWARD - 6-0
VINCENNES, IND. - LINCOLN HS



ACES INFO

PREP

- A two-time All-State honoree.
- Selected to the Indiana Junior All-Star team after averaging nearly a double-double in her third prep season.
- Recorded 15.7 points and 9.9 rebounds per contest.
- Eclipsed the 1,000 point mark becoming just the second Lady Alice to reach the milestone.
- Played a starring role in the 2019-20 campaign for Vincennes Lincoln, helping the Lady Alices to a 19-5 record.

2021-22 SEASON HIGHS

Points:
Rebounds:
Assists:
Steals:
Blocks:
FG made:
FG attempts:
3FG Made:
3FG attempts:
FT made:
FT attempts:

CAREER HIGHS

Points:
Rebounds:
Assists:
Steals:
Blocks:
FG made:
FG attempts:
3FG Made:
3FG attempts:
FT made:
FT attempts:

GAME-BY-GAME

CAREER STATS



2021-22 Evansville Women's Basketball Combined Team Statistics All games

Page 1/1
as of Dec 24, 2021

Game Records

Record	Overall	Home	Away	Neutral
ALL GAMES	6-4	4-1	2-3	0-0
CONFERENCE	0-0	0-0	0-0	0-0
NON-CONFERENCE	6-4	4-1	2-3	0-0

Score by Periods

Team	1st	2nd	3rd	4th	OT	TOT
Evansville	175	185	199	203	10	772
Opponents	162	167	177	170	21	697

Team Box Score

No.	Player				Total		3-Point		F-Throw		Rebounds											
		GP-GS	MIN	AVG	FG-FGA	FG%	3FG-3FGA	3FG%	FT-FTA	FT%	OFF	DEF	TOT	AVG	PF	DQ	A	TO	BLK	STL	PTS	AVG
24	DAVIS, Je'Naiya	7-4	189:29	27.1	50-100	.500	14-30	.467	30-37	.811	5	24	29	4.1	19	2	10	15	0	12	144	20.6
14	FEIT, Abby	9-9	316:38	35.2	61-126	.484	21-53	.396	27-36	.750	18	74	92	10.2	20	1	18	17	17	21	170	18.9
32	CLARK, Myia	10-10	287:50	28.8	49-125	.392	13-58	.224	20-25	.800	13	36	49	4.9	17	1	23	21	0	13	131	13.1
21	GRIFFIN, A'Niah	9-0	134:47	15.0	27-72	.375	7-26	.269	9-16	.563	3	10	13	1.4	20	1	2	14	3	6	70	7.8
01	NEWMAN, Anna	10-9	301:54	30.2	15-34	.441	4-11	.364	30-42	.714	8	19	27	2.7	28	1	36	24	1	18	64	6.4
11	MORGAN, Elly	10-6	206:44	20.7	22-53	.415	6-20	.300	7-14	.500	4	6	10	1.0	30	2	14	22	1	12	57	5.7
12	DUPONT, Celine	10-10	177:09	17.7	14-43	.326	3-11	.273	11-14	.786	17	22	39	3.9	23	1	5	11	4	4	42	4.2
13	MYSZKA, Kodie	9-0	133:07	14.8	12-26	.462	0-6	.000	7-16	.438	17	17	34	3.8	21	0	3	9	10	4	31	3.4
22	HUDSON, Jossie	8-1	78:58	9.9	9-18	.500	2-5	.400	4-6	.667	3	13	16	2.0	13	0	2	8	1	3	24	3.0
23	THURWALKER, Sydney	2-0	08:43	4.4	2-4	.500	0-0	.000	0-0	.000	3	1	4	2.0	0	0	0	1	0	0	4	2.0
3	CAMARENA, Gala	9-1	94:32	10.5	5-16	.313	3-8	.375	5-6	.833	2	8	10	1.1	12	0	23	10	0	7	18	2.0
2	PARTEE, NaTaya	10-0	97:49	9.8	4-9	.444	0-0	.000	5-10	.500	8	9	17	1.7	17	1	4	6	4	0	13	1.3
30	STEPHENS, Rylie	4-0	22:20	5.6	2-10	.200	0-4	.000	0-0	.000	0	3	3	0.8	2	0	0	1	2	1	4	1.0
Team											14	24	38					3				
Total		10	2050		272-636	.428	73-232	.315	155-222	.698	115	266	381	38.1	222	10	140	162	43	101	772	77.2
Opponents		10	2050		243-622	.391	56-209	.268	155-215	.721	150	287	437	43.7	199	8	125	211	24	78	697	69.7

Team Statistics

	EVANS	OPP
Scoring	772	697
Points per game	77.2	69.7
Scoring margin	+7.5	-
Field goals-att	272-636	243-622
Field goal pct	.428	.391
3 point fg-att	73-232	56-209
3-point FG pct	.315	.268
3-pt FG made per game	7.3	5.6
Free throws-att	155-222	155-215
Free throw pct	.698	.721
F-Throws made per game	15.5	15.5
Rebounds	381	437
Rebounds per game	38.1	43.7
Rebounding margin	-5.6	-
Assists	140	125
Assists per game	14.0	12.5
Turnovers	162	211
Turnovers per game	16.2	21.1
Turnover margin	+4.9	-
Assist/turnover ratio	0.9	0.6
Steals	101	78
Steals per game	10.1	7.8
Blocks	43	24
Blocks per game	4.3	2.4
Winning streak	0	-
Home win streak	1	-
Attendance	1594	1892
Home games-Avg/Game	5-319	5-378
Neutral site-Avg/Game	-	0-0

Team Results

Date	Opponent		Score	Att.
11/09/2021	Austin Peay	W	62-52	0
11/14/2021	Oakland City	W	100-59	311
11/17/2021	Eastern Ky.	W	67-57	601
11/20/2021	at Eastern Ill.	Lot2	74-85	250
11/24/2021	at Purdue Fort Wayne	W	84-71	315
11/30/2021	Murray St.	L	77-85	374
12/04/2021	at Miami (OH)	L	73-81	341
12/07/2021	at Bellarmine	W	89-83	288
12/11/2021	Morehead St.	W	79-49	308
12/22/2021	at Butler	L	67-75	698