

GOPHER WOMEN'S HOCKEY

Seven-Time National Champions · 2000, 2004, 2005, 2012, 2013, 2015, 2016



2022-23 GOPHER HOCKEY SCHEDULE

Record: 10-3-2

WCHA Record: 9-1-2 (SoW: 1), 29 points (2nd)

| DATE | OPPONENT | TIME (CT)/RESULT |
|-------|----------------------------|--------------------|
| 10/7 | Bemidji State | W, 6-0 |
| 10/8 | Bemidji State | W, 4-1 |
| 10/14 | at Minnesota State | W, 11-0 |
| 10/15 | Minnesota State | W, 9-4 |
| 10/21 | at St. Cloud State | W, 4-2 |
| 10/22 | St. Cloud State | W, 2-1 |
| 10/28 | at #1 Ohio State | W, 4-2 |
| 10/29 | at #1 Ohio State | T, 4-4 |
| 11/4 | #5 Minnesota Duluth | W, 3-2 (OT) |
| 11/5 | #5 Minnesota Duluth | W, 5-3 |
| 11/7 | at RV St. Cloud State | L, 4-1 |
| 11/19 | at #3 Wisconsin | T, 3-3 |
| 11/20 | at #3 Wisconsin | L, 4-1 |
| 11/25 | vs. #12 Penn State* | W, 5-1 |
| 11/26 | vs. #5 Yale* | L, 4-3 |
| 12/2 | Minnesota State | 6:00 pm |
| 12/3 | at Minnesota State | 2:00 pm |
| 12/9 | St. Cloud State | 6:00 pm |
| 12/10 | at St. Cloud State | 3:00 pm |
| 1/6 | Merrimack ^ | 6:00 pm |
| 1/7 | New Hampshire ^ | 4:30 pm |
| 1/13 | St. Thomas | 6:00 pm |
| 1/14 | St. Thomas | 2:00 pm |
| 1/20 | at Bemidji State | 3:00 pm |
| 1/21 | at Bemidji State | 2:00 pm |
| 1/27 | at Minnesota Duluth | 3:00 pm |
| 1/28 | at Minnesota Duluth | 3:00 pm |
| 2/3 | Ohio State | 6:00 pm |
| 2/4 | Ohio State | 2:00 pm |
| 2/10 | Wisconsin | 6:00 pm |
| 2/11 | Wisconsin | 7:30 pm |
| 2/17 | at St. Thomas | 6:00 pm |
| 2/18 | at St. Thomas | 6:00 pm |

Home games in **BOLD** at Ridder Arena.

All times Central.

Rankings reflect USCHO.com poll at time of game.

* Henderson Collegiate Hockey Showcase

^ East/West Showcase

NO. 5 MINNESOTA GOLDEN GOPHERS

2022-23 Record (WCHA)..... 10-3-2 (9-1-2)
 National Ranking (USCHO/USA Today)..... 5/5
 Head Coach..... Brad Frost
 HC Record 452-96-38 (16th Season)
 HC Record Against Minnesota State 65-1-1



MINNESOTA STATE MAVERICKS

2022-23 Record (CHA)..... 7-7-0 (5-7-0)
 National Ranking (USCHO/USA Today)..... NR/NR
 Head Coach..... John Harrington
 HC Record 64-160-24 (8th year w/MSU)
 HC Record Against Minnesota 1-29-0



GAME ONE INFORMATION

Game 1: Minnesota vs. Minnesota State

Date: Friday, Dec. 2, 2022

Time: 6:00 p.m.

Location: Ridder Arena

Stream: B1G+ (\$)

Audio: GopherSports.com

Twitter: @GopherWHockey

Facebook: Facebook.com/GopherWHockey

GAME TWO INFORMATION

Game 2: Minnesota at Minnesota State

Date: Saturday, Dec. 3, 2022

Time: 2:00 p.m.

Location: Mayo Clinic Health System
 Event Center (Mankato, Minn.)

TV: FOX9+

Stream: B1G+ (\$)

Audio: GopherSports.com

Twitter: @GopherWHockey

The No. 5 Golden Gopher women's hockey team (10-3-2) returns to Minnesota and conference play with a home-and-home series with Minnesota State (7-7-0). Friday's game will take place at 6:00 pm at Ridder Arena while Saturday's is set for 2:00 pm in Mankato, Minn. Saturday's contest will be broadcast on FOX9+ locally.

Last Time Out

Last weekend, the Gophers travelled to Henderson, Nev., to compete in the Henderson Collegiate Hockey Showcase. Minnesota defeated Penn State 5-1 on Friday behind goals from Madison Kaiser, Taylor Heise, Peyton Hemp, Grace Zumwinkle and Ella Huber. On Saturday, the third-ranked Gophers fell to No. 5 Yale by a score of 4-3 for the first time in program history. Minnesota fell to 1-2-0 in non-conference play this year.

Rematch Against the Mavericks

Minnesota faces Minnesota State in a home-and-home series for the second time this season. In October, the Gophers trounced the Mavericks 11-0 in Mankato and 9-4 at Ridder Arena. 20 goals are the most scored by the Gophers in a single series since 2009. Freshman forward Josefin Bouveng tallied five points, including her first-career hat trick, in the series. Skylar Vetter notched her second-career shutout in game one of that series.

Since They Last Met

Since the Gophers' sweep over Minnesota State, the Mavericks have posted a 7-1 record with five straight wins. The successful stretch of play has MSU back to receiving votes in the USA Today/USA Hockey national poll this week. The Mavericks are lead in points by junior forward Jamie

2022-23 SITUATIONAL RECORDS

| | |
|---|--------|
| Overall record | 10-3-2 |
| In home games | 6-0-0 |
| In road games | 3-1-2 |
| In neutral-site games | 1-2-0 |
| Against USCHO.com poll ranked opponents | 4-2-2 |
| Against WCHA opponents | 9-2-2 |
| Against ECAC Hockey teams | 0-1-0 |
| Against CHA teams | 1-0-0 |
| Against Hockey East teams | 0-0-0 |
| In non-conference games | 1-2-0 |
| In overtime games | 1-0-2 |
| In day games (4:01 p.m. or earlier) | 7-2-2 |
| In night games | 3-1-0 |
| Minnesota scores first | 9-0-1 |
| Opponent scores first | 1-3-1 |
| Minnesota leads at 1st intermission | 9-0-1 |
| Minnesota trails at 1st intermission | 0-2-0 |
| Tied at 1st intermission | 1-1-1 |
| Minnesota leads at 2nd intermission | 7-0-2 |
| Minnesota trails at 2nd intermission | 1-3-0 |
| Tied at 2nd intermission | 2-0-0 |
| Minnesota leads in shots | 9-2-0 |
| Minnesota trails in shots | 1-1-1 |
| Shots are even | 0-0-1 |
| Minnesota has 0-19 shots | 0-0-0 |
| Minnesota has 20-29 shots | 0-1-0 |
| Minnesota has 30-39 shots | 6-2-1 |
| Minnesota has 40-49 shots | 3-0-1 |
| Minnesota has 50 or more shots | 1-0-0 |
| Minnesota allows 0-19 shots | 3-1-0 |
| Minnesota allows 20-29 shots | 6-0-0 |
| Minnesota allows 30-39 shots | 0-0-1 |
| Minnesota allows 40-49 shots | 1-1-1 |
| Minnesota allows 50 or more shots | 0-0-0 |
| Minnesota scores on power play | 4-2-1 |
| Minnesota is scoreless on power play | 5-1-1 |
| Opponent scores on power play | 4-2-1 |
| Opponent is scoreless on power play | 6-1-1 |
| Scoring 1 goal | 0-2-0 |
| Scoring 2 goals | 1-0-0 |
| Scoring 3 goals | 1-1-1 |
| Scoring 4 goals | 3-0-1 |
| Scoring 5 goals | 2-0-0 |
| Scoring 6 goals | 1-0-0 |
| Scoring 7 or more goals | 2-0-0 |
| Allowing 1 goal | 3-0-0 |
| Allowing 2 goals | 3-0-0 |
| Allowing 3 goals | 1-0-1 |
| Allowing 4 goals | 1-3-1 |
| Allowing 5 goals | 0-0-0 |
| Allowing 6 or more goals | 0-0-0 |
| In one-goal games | 2-1-0 |
| In two-goal games | 3-0-0 |
| In three-goal games | 1-2-0 |
| After a loss | 1-0-1 |
| On Monday | 0-1-0 |
| On Tuesday | 0-0-0 |
| On Wednesday | 0-0-0 |
| On Thursday | 0-0-0 |
| On Friday | 6-0-0 |
| On Saturday | 4-1-2 |
| On Sunday | 0-1-0 |
| In September | 0-0-0 |
| In October | 7-0-1 |
| In November | 3-3-1 |
| In December | 0-0-0 |
| In January | 0-0-0 |
| In February | 0-0-0 |
| In March | 0-0-0 |
| Current streak | L1 |
| Current home streak | W6 |
| Current road streak | L1 |

Nelson (4g-10a), senior forward Claire Butorac (3g-6a) and junior forward Madison Mashuga (2g-7a). Freshman forward Taylor Otremba is currently on a five-game goal streak with two WCHA Rookie of the Week honors so far this season.

Race for the WCHA

Minnesota currently sits in second place in the WCHA regular season standings with a 9-1-2 record (29 points in 12 conference games). The 'U' trails only Ohio State (37 points in 14 games) in the race for the Julianne Bye Cup. Wisconsin currently sits in third place (25 points in 10 conference games) as the only other team with a conference record above .500.

Zumwinkle Ties Cameranesi

After her goal on Friday, fifth-year forward Grace Zumwinkle now sits at 93 career goals, which is tied for seventh in program history with Dani Cameranesi. The Excelsior, Minn., native leads the team in points (20) and has found the scoresheet in 13/15 games this season. Zumwinkle also sits at second place in program history in career shots with 702, trailing only Nadine Muzerall (726).

Behind the Bench

Head coach Brad Frost is back for his 16th season as the bench boss of Gopher Women's Hockey. Under Frost's guidance, the program has posted a 452-96-37 record with four national titles and seven conference titles. Natalie Darwitz is back behind the bench for her fourth season as assistant coach and is joined by Jessica Scott, who served as the program's Director of Operations for the last three seasons.

Quest for Eighth National Title

Minnesota has won seven national championships (2000, 2004, 2005, 2012, 2013, 2015, and 2016) and looks for a historic eighth title national crown in 2022-23.

2022-23 GOPHER WOMEN'S HOCKEY SUPERLATIVES

| | |
|--|--|
| FASTEST GOAL SCORED IN A PERIOD | |
| Gophers | 0:18 of the third period (W, 4-2, at Ohio State, Oct. 28, 2022) |
| Opponent | 0:23 of the second period (L, 4-1, vs. St. Cloud State, Nov. 7, 2022) |
| FASTEST FIRST GOAL SCORED IN A GAME | |
| Gophers | 0:25 of the first period (W, 5-3, vs. Minnesota Duluth, Nov. 5, 2022) |
| Opponent | 00:54 of the first period (W, 2-1, vs. St. Cloud State, Oct. 22, 2022) |
| LATEST GOAL SCORED IN A PERIOD | |
| Gophers | 19:35 of the first period (W, 11-0, at Minnesota State, Oct. 14, 2022) |
| Opponent | 19:51 of the second period (W, 4-2, at St. Cloud State, Oct. 21, 2022) |
| MOST GOALS SCORED IN A PERIOD | |
| Gophers | 5, (third period, W, 11-0, at Minnesota State, Oct. 14, 2022) |
| Opponent | 4, (first period, L, 4-3, vs. Yale, Nov. 26, 2022) |
| Combined | 6, (first period, L, 4-3, vs. Yale, Nov. 26, 2022) |
| MOST GOALS SCORED IN A GAME | |
| Gophers | 11, (W, 11-0, at Minnesota State, Oct. 14, 2022) |
| Opponent | 4, (5X, last - L, 4-3, vs. Yale, Nov. 26, 2022) |
| Combined | 13, (W, 9-4, vs. Minnesota State, Oct. 15, 2022) |

| | | |
|--------------------------------|--------------|-------------------|
| POINT STREAKS (2022-23) | | |
| Player | Games | Start Date |
| Hemp, Peyton | 2 | 11/25/22 |
| Huber, Ella | 2 | 11/25/22 |

2022-23 GOPHER SCORING MARKS
MULTI-POINT GAMES

| | |
|----------------------|---|
| Heise, Taylor | 6 |
| Murphy, Abbey | 5 |
| Hemp, Peyton | 4 |
| Skaja, Catie | 4 |
| Zumwinkle, Grace | 4 |
| Boreen, Abigail | 3 |
| Huber, Ella | 3 |
| Bouvang, Josefín | 2 |
| Kaiser, Madison | 2 |
| Laitinen, Nelli | 2 |
| Oden, Emily | 2 |
| Ostertag, Gracie | 2 |
| Wethington, Madeline | 2 |
| Hengler, Crystallyn | 1 |
| Norcross, Savannah | 1 |
| Norton, Lizi | 1 |

MINNESOTA SINGLE GAME RECORDS

| | |
|---------|---|
| Goals | 5 - 2x, MR: Brandt vs. BSU (11/14/15) |
| Assists | 6 - 2x, MR: Brandt vs. SCSU (12/5/14) |
| Points | 7 - 3x, MR: S. Potomak vs. MSU (11/27/15) |
| S.O.G | 14 - 2x, MR: Cameranesi vs. UMD (3/4/17) |
| PPG | 3 - 3x, MR: Ross vs. OSU (11/4/05) |
| SHG | 2 - 5x, MR: Ross vs. UMD (10/26/07) |
| +/- | +8 - Baldwin & Wolfe vs. SCSU (10/10/15) |
| Pen. | 6 - Stephens vs. SCSU (10/16/04) |
| PIM | 19 - C. Kennedy vs. MSU (1/15/00) |
| Saves | 51 - 2x, MR: Raty (3/5/11) |

MULTI-GOAL GAMES

| | |
|------------------|---|
| Murphy, Abbey | 3 |
| Hemp, Peyton | 2 |
| Bouvang, Josefín | 1 |
| Boreen, Abigail | 1 |
| Huber, Ella | 1 |
| Skaja, Catie | 1 |
| Zumwinkle, Grace | 1 |

MINNESOTA SINGLE SEASON RECORDS

| | | |
|--------------------|-----|--|
| Goals | 49 | Muzerall (1999-00) |
| Assists | 72 | Darwitz (2004-05) |
| Points | 114 | Darwitz (2004-05) |
| Points by Rookie | 82 | Brandt (2012-13) |
| Goals by Rookie | 39 | M. Lamoreaux (2008-09) |
| Points by Defender | 57 | Bozek (2012-13) |
| Goals by Defender | 20 | Bozek (2012-13) |
| Power-Play Goals | 16 | Stephens (2004-05), Muzerall (1999-00) |
| Shorthanded Goals | 7 | Wendell (2004-05) |
| Game-Winning Goals | 10 | West (2009-10) |

GOPHERS IN THE NATIONAL RANKINGS

| | | |
|-----------------------------|---------------------------|-------------------|
| Points Per Game | GP | Points PPG |
| 17. Grace Zumwinkle | 15 | 20 1.33 |
| 22. Taylor Heise | 15 | 19 1.27 |
| Goals Per Game | GP | Goals GPG |
| T-19. Abbey Murphy | 15 | 9 0.60 |
| T-19. Grace Zumwinkle | 15 | 9 0.60 |
| Power Play Goals | GP | PPG |
| T3. Abbey Murphy | 15 | 4 |
| Game Winning Goals | GP | GWG |
| T3. Grace Zumwinkle | 15 | 4 |
| Power Play % | Goals/Attempts | Pct. |
| 5. Minnesota | 12/48 | .250 |
| Penalty Kill % | Goals Allowed/Att. | Pct. |
| 30. Minnesota | 9/45 | .791 |
| Goals Per Game | Games | Goals GPG |
| 3. Minnesota | 15 | 65 4.33 |
| Scoring Defense | Games | GA GAPG |
| 17. Minnesota | 15 | 35 2.33 |
| Tm Shorthanded Goals | Games | SHG |
| 17. Minnesota | 15 | 4 |
| Winning Percentage | Games | Wins Win% |
| 8. Minnesota | 15 | 10 .733 |

2022-23 STAT LEADERS

| | |
|------------------------------|------------------------------|
| Goals | Murphy/G.Zumwinkle, 9 |
| Assists | Heise/G.Zumwinkle, 11 |
| Points | G. Zumwinkle, 20 |
| Shots | G. Zumwinkle, 84 |
| Shot % | Hemp, .258 |
| +/- | E. Zumwinkle, +12 |
| Penalties | Murphy, 11 |
| PIM | Murphy, 25 |
| Power-play Goals | Murphy, 4 |
| Shorthanded Goals | Bouvang/Heise/Hemp/Murphy, 1 |
| Game-Winning Goals | G. Zumwinkle, 4 |
| Goals-Against-Average | Pahl, 1.75 |
| Save Percentage | Pahl, .922 |
| Shutouts | Pahl/Vetter, 1 |

2022-23 GOPHER AWARD WINNERS

WCHA WEEKLY/MONTHLY AWARDS

WCHA Forward of the Week - Zumwinkle (10/17), Heise (10/31, 11/7)
WCHA Goalie of the Week - Vetter (10/17, 10/31, 11/7)
WCHA Rookie of the Week - Kaiser (11/28)
WCHA Forward of the Month - Murphy (Oct.)
WCHA Goalie of the Month - Vetter (Oct.)

2022-23 WCHA REGULAR-SEASON STANDINGS

| Team | WCHA | | | | Overall | | | | Pts% |
|---------------------|-----------|-----------|--------------|----------|--------------|-----------|---------------|--|-------------|
| | Pts | GP | W-L-T | SW | GF-GA | GP | W-L-T | | |
| 1. Ohio State | 37 | 14 | 12-1-1 | 1 | 61-24 | 16 | 13-1-2 | | .881 |
| 2. Minnesota | 29 | 12 | 9-1-2 | 1 | 56-26 | 15 | 10-3-2 | | .806 |
| 3. Wisconsin | 25 | 10 | 8-1-1 | 0 | 49-13 | 14 | 11-2-1 | | .833 |
| 4. Minn. State | 16 | 12 | 5-7-0 | 0 | 24-35 | 14 | 7-7-0 | | .444 |
| 5. UMD | 15 | 10 | 5-5-0 | 0 | 25-21 | 16 | 11-5-0 | | .500 |
| 6. SCSU | 13 | 12 | 4-8-0 | 0 | 23-34 | 17 | 9-8-0 | | .361 |
| 7. Bemidji State | 3 | 12 | 1-11-0 | 0 | 8-55 | 18 | 4-13-1 | | .083 |
| 8. St. Thomas | 0 | 10 | 0-10-0 | 0 | 4-42 | 14 | 3-11-0 | | .000 |

USCHO.COM DIVISION I WOMEN'S POLL

Week 11 Poll: November 28, 2022

| Rk. | Team (1st pl. votes) | Record | Pts. | Last Rk. |
|---------------------|----------------------|------------|----------|----------|
| 1. | Ohio State (14) | 13-1-2 | 287 | 1 |
| 2. | Wisconsin (3) | 11-2-1 | 271 | 2 |
| 3. | Yale (3) | 8-0-0 | 264 | 5 |
| 4. | Quinnipiac | 14-1-0 | 250 | 4 |
| 5. Minnesota | 10-3-2 | 221 | 3 | |
| 6. | Colgate | 13-2-1 | 194 | 6 |
| 7. | Northeastern | 16-2-1 | 177 | 8 |
| 8. | Minnesota Duluth | 11-5-0 | 176 | 7 |
| 9. | Providence | 13-4-1 | 116 | 11 |
| 10. | Cornell | 6-3-1 | 112 | 9 |
| 11. | Clarkson | 14-5-1 | 106 | 10 |
| 12. | Penn State | 11-8-1 | 80 | 12 |
| 13. | Vermont | 10-5-1 | 64 | 12 |
| 14. | Connecticut | 11-7-2 | 34 | 15 |
| 15. | Princeton | 4-5-1 | 29 | 14 |

Others receiving votes: St. Cloud State 16, Boston College 3

USA TODAY/USA HOCKEY MAGAZINE POLL

Week 11 Poll: November 29, 2022

| Rk. | Team (1st pl. votes) | Record | Pts. | Last Rk. |
|---------------------|----------------------|------------|----------|----------|
| 1. | Ohio State (11) | 13-1-2 | 272 | 1 |
| 2. | Wisconsin (4) | 11-2-1 | 259 | 2 |
| 3. | Yale (3) | 8-0-0 | 246 | 5 |
| 4. | Quinnipiac | 14-1-0 | 234 | 4 |
| 5. Minnesota | 10-3-2 | 200 | 3 | |
| 6. | Colgate | 13-2-1 | 186 | 6 |
| 7. | Northeastern (1) | 16-2-1 | 173 | 8 |
| 8. | Minnesota Duluth | 11-5-0 | 167 | 7 |
| 9. | Providence | 13-4-1 | 109 | 11 |
| 10. | Cornell | 6-3-1 | 107 | 9 |
| 11. | Clarkson | 14-5-1 | 97 | 10 |
| 12. | Penn State | 11-8-1 | 79 | 12 |
| 13. | Vermont | 10-5-1 | 60 | 13 |
| 14. | Connecticut | 11-7-2 | 25 | 15 |
| 15. | Princeton | 4-5-1 | 25 | 14 |

Others receiving votes: St. Cloud State 19, Boston College 8, St. Lawrence 2, Long Island 1, Mercyhurst 1, Minnesota State 1

THE LAST TIME MINNESOTA...

Won at home.....vs. Minnesota Duluth (W, 5-3), Nov. 5, 2022
 Lost at home.....vs. Minnesota Duluth (L, 2-1), March 12, 2022
 Tied at home.....vs. Wisconsin (T, 2-2, OT), Feb. 6, 2021
 Won on the road.....at Ohio State (W, 4-2), Oct. 28, 2022
 Lost on the road.....at Wisconsin (L, 4-1), Nov. 20, 2022
 Tied on the road.....at Wisconsin (T, 3-3), Nov. 19, 2022
 Won at a neutral site.....vs. Mercyhurst at Nashville, Tenn. (W, 4-0), Nov. 26, 2021
 Lost at a neutral site.....vs. St. Cloud State in Andover, Minn. (L, 4-1), Nov. 7, 2022
 Tied at a neutral site.....vs. Boston College at Nashville, Tenn. (T, 2-2, OT), Nov. 29, 2019
 Swept a regular-season home series.....vs. Minnesota Duluth (W, 3-2(OT); W, 5-3), Nov. 4-5, 2022
 Was swept in a regular-season home series.....vs. Ohio State (L, 4-2; L, 4-1), Oct. 1-2, 2021
 Swept a regular-season road series.....at Bemidji State (W, 5-2; W, 3-2), Oct. 29-30, 2021
 Was swept in a regular-season road series.....at Wisconsin (L, 5-0; L, 6-3), Jan. 15-16, 2021
 Won a WCHA regular-season game.....vs. Minnesota Duluth (W, 5-3), Nov. 5, 2022
 Lost a WCHA regular-season game.....at Wisconsin (L, 4-1), Nov. 20, 2022
 Tied a WCHA regular-season game.....at Wisconsin (T, 3-3), Nov. 19, 2022
 Won a non-conference game.....vs. Minnesota Duluth (W, 5-1), March 5, 2022
 Lost a non-conference game.....vs. St. Cloud State (L, 4-1), Nov. 7, 2022
 Tied a non-conference game.....vs. Boston College (T, 2-2, OT), Nov. 29, 2019
 Won in overtime.....vs. Minnesota Duluth (W, 3-2, OT), Nov. 4, 2022
 Lost in overtime.....vs. Ohio State (L, 3-2, OT), March 6, 2022
 Won a shootout.....at Wisconsin (T, 3-3, OT; SO-W, 1-0), Nov. 19, 2022
 Lost a shootout.....at Ohio State (T, 4-4, OT; SO-L, 2-1), Oct. 29, 2022
 Defeated a USCHO-ranked opponent.....vs. No. 5 Minnesota Duluth (W, 5-3), Nov. 5, 2022
 Scored in first 2:00.....C. Skaja (0:25) vs. Minnesota Duluth (W, 5-3), Nov. 5, 2022
 Allowed a goal in first 2:00.....E. Gentry (0:54) vs. St. Cloud St. (W, 2-1), Oct. 22, 2022
 Shut out an opponent.....at Minnesota State (W, 11-0), Oct. 14, 2022
 Was shut out.....at Wisconsin (L, 5-0), Jan. 15, 2021
 Scored one goal.....at Wisconsin (L, 4-1), Nov. 20, 2022
 Scored two goals.....vs. St. Cloud State (W, 2-1), Oct. 22, 2022
 Scored three goals.....at Wisconsin (T, 3-3), Nov. 19, 2022
 Scored four goals.....vs. St. Cloud State (L, 4-1), Nov. 7, 2022
 Scored five goals.....vs. Minnesota Duluth (W, 5-3), Nov. 5, 2022
 Scored six goals.....vs. Bemidji State (W, 6-0), Oct. 7, 2022
 Scored seven goals.....vs. St. Thomas (W, 7-1), Feb. 19, 2022
 Scored eight goals.....at St. Thomas (W, 8-2), Jan. 9, 2022
 Scored nine goals.....vs. Minnesota State (W, 9-4), Oct. 15, 2022
 Scored 10 or more goals.....at Minnesota State (W, 11-0), Oct. 14, 2022
 Allowed one goal.....vs. St. Cloud State (W, 2-1), Oct. 22, 2022
 Allowed two goals.....vs. Minnesota Duluth (W, 3-2, OT), Nov. 4, 2022
 Allowed three goals.....at Wisconsin (T, 3-3), Nov. 19, 2022
 Allowed four goals.....at Wisconsin (L, 4-1), Nov. 20, 2022
 Allowed five goals.....vs. Minnesota State (L, 5-4, OT), Jan. 15, 2022
 Allowed six goals.....at Wisconsin (L, 6-3), Jan. 16, 2021
 Allowed seven goals.....at Minnesota Duluth (L, 7-1), Feb. 17, 2007
 Allowed eight goals.....at Wisconsin (L, 8-2), Dec. 4, 2016
 Allowed nine or more goals.....vs. Beatrice Aeros (L, 9-0), Jan. 31, 1999
 Scored one power-play goal.....(1/3) at Wisconsin (L, 4-1), Nov. 20, 2022
 Scored two power-play goals.....(2/6) vs. Bemidji State (W, 6-0), Oct. 7, 2022
 Scored three power-play goals.....(3/5) at Minnesota State (W, 11-0), Oct. 14, 2022
 Scored four or more power-play goals.....(4/5) vs. Bemidji State (W, 7-1), Nov. 15, 2019
 Allowed one power-play goal.....(1/3) at Wisconsin (L, 4-1), Nov. 20, 2022
 Allowed two power-play goals.....(2/4) vs. Minnesota Duluth (W, 5-3), Nov. 5, 2022
 Allowed three power-play goals.....(3/6) vs. North Dakota (W, 6-3), Jan. 12, 2013
 Allowed four or more power-play goals.....(4/8) vs. Ohio State (W, 9-5), Nov. 4, 2005
 Scored a shorthanded goal.....P. Hemp Wisconsin (T, 3-3), Nov. 19, 2022
 Allowed a shorthanded goal.....at St. Thomas (L. Bianchi), (W, 8-2), Jan. 9, 2022
 Scored an empty-net goal.....E. Oden vs. Bemidji State (W, 4-1), Oct. 8, 2022
 Allowed an empty-net goal.....vs. Ohio State (Levis) (L, 4-2), Oct. 1, 2021
 Scored a hat trick.....J. Bouveng vs. Minnesota State (W, 9-4), Oct. 15, 2022
 Scored a natural hat trick.....A. Potomak vs. Minnesota Duluth (W, 5-0), Jan. 31, 2020
 Allowed a hat trick.....at Bemidji State (Hunt), (W, 6-3) Feb. 8, 2020
 Individual scored four goals.....Brandt vs. St. Cloud State, Oct. 10, 2015
 Individual scored five or more goals.....Brandt vs. Bemidji State, Nov. 14, 2015
 Had five different goal scorers.....vs. Minnesota Duluth (W, 5-1), March 6, 2022
 Had six different goal scorers.....vs. Minnesota State (W, 9-4), Oct. 15, 2022
 Had seven different goal scorers.....vs. RIT (W, 7-1), Nov. 13, 2021
 Had eight different goal scorers.....at Bemidji State (W, 9-1), Feb. 20, 2021
 Had nine different goal scorers.....at Minnesota State (W, 11-0), Oct. 14, 2022
 Had 10 or more different goal scorers.....vs. Wisconsin (W, 10-0), Feb. 7, 1998
 Scored on a penalty shot.....West vs. Wisconsin, March 18, 2012
 Attempted a penalty shot.....Zumwinkle at St. Cloud State, Feb. 2, 2018
 Allowed a penalty shot goal.....at Lindenwood (Girard), (W, 4-3, OT), Nov. 26, 2017
 Opponent attempted a penalty shot.....at St. Cloud State (Tylke), (W, 4-3, OT), Nov. 17, 2018
 Goaltender made 50 or more saves.....Räty (50) vs. North Dakota, March 16, 2013
 Opponent made 50 or more saves.....vs. St. Thomas (Maurer, 52), (W, 5-1), Feb. 26, 2022

MINNESOTA QUICK FACTS

UNIVERSITY INFORMATION

| | |
|---|-------------------------------|
| School: | University of Minnesota |
| Location: | Minneapolis, Minn. 55455 |
| Founded: | 1851 |
| Enrollment: | 52,017 |
| Nickname: | Golden Gophers |
| Colors: | Maroon and Gold |
| Conference: | Big Ten/WCHA (women's hockey) |
| Division: | NCAA I |
| President: | Joan T.A. Gabel |
| Director of Athletics: | Mark Coyle |
| Associate Athletics Director - W. Hockey: | Tom McGinnis |

TEAM INFORMATION

| | |
|---------------------------------|---------------------|
| 2022-23 Overall record: | 10-3-2 |
| 2022-23 WCHA record (Position): | 9-1-2 (W-L-T) (2nd) |
| 2021-22 WCHA Tournament: | 2nd |
| 2021-22 NCAA Tournament: | Lost in QF |
| 2021-22 Players returning/lost: | 20/5 |
| 2022-23 Newcomers: | 5 |

PROGRAM HISTORY

| | |
|--|---------------------------------------|
| First season: | 1997-98 |
| All-time record: | 729-160-60 (.802) |
| WCHA record: | 467-98-46-17 (.803) |
| WCHA postseason record: | 54-18-0 (.750) |
| WCHA regular season titles: | 11 (01,02,04,05,09,10,13,14,15,19,22) |
| WCHA tournament titles: | 7 (2002,04,05,12,13,14,18) |
| NCAA berths: | 19 |
| National titles: | 7 (2000,04,05,12,13,15,16) |
| NCAA postseason record (since 2000-01): | 26-13-1 |
| NCAA Frozen Four record (since 2000-01): | 15-9-1 |

COACHING STAFF

| | |
|----------------------------|-----------------------------------|
| Head Coach: | Brad Frost (14 seasons) |
| Alma Mater: | Bethel, 1996 |
| Career Record: | 452-96-38 (.808) |
| WCHA Record: | 310-67-34 (.798) |
| Assistant Coach: | Natalie Darwitz (Minnesota, 2007) |
| Assistant Coach: | Jessica Scott (St. Thomas, 2004) |
| Volunteer Assistant Coach: | Chris Esposito (Columbia, 2015) |
| Director of Operations: | Jessica Scott (St. Thomas, 2004) |
| Athletic Training: | Erin Moore (Purdue, 2011) |
| Strength & Conditioning: | Cal Dietz (Findlay, 1996) |

FACILITY INFORMATION

| | |
|------------------|--|
| Home Rink: | Ridder Arena |
| Capacity: | 3,400 |
| Opened: | 2002 |
| Address: | 1901 4th St. SE Minneapolis, MN 55455 |
| Press Box Phone: | 612-625-6900 |

ATHLETIC COMMUNICATIONS

| | |
|---------------------------------|--|
| Assistant Director (W. Hockey): | Daniel Galarneau |
| Cell Phone: | 651-208-6490 |
| Mailing Address: | 275 Bierman Field Athletic Building 516 15th Ave. SE, Minneapolis, MN 55455 |
| Email: | galar042@umn.edu |

CONNECT WITH GOPHER WOMEN'S HOCKEY ONLINE

| | |
|-------------------|----------------------------------|
| Official website: | GopherSports.com |
| Twitter: | @GopherWHockey |
| Facebook: | Facebook.com/GopherWomensHockey |
| Instagram: | @gopherwhockey |
| YouTube: | YouTube.com/user/GopherAthletics |

HEAD COACH BRAD FROST

The 2022-23 season marks head coach Brad Frost's 16th season at the helm of Gopher women's hockey. Frost has brought the program to the pinnacle of the collegiate hockey world by advancing to six-straight NCAA Women's Frozen Fours from 2011-12 to 2016-17. Frost's Gophers won four national titles in six years, including back-to-back titles in 2012 and 2013 and again in 2015 and 2016. After joining the program in 2001 as an assistant coach and later holding the interim head coach title during the 2007-08, Frost was named the program's second head coach on April 16, 2008.

In 15 seasons leading the Gophers, the Bethel University graduate has guided the Gophers to four NCAA national championships, nine NCAA Frozen Four appearances, seven WCHA regular season titles, and four WCHA Final Faceoff championships. Frost ended the 2021-22 season with a career record of 442-93-36 (.806) and has not had a team finish lower than fourth in the WCHA.

COACHING EXCELLENCE

Frost, who has won four national titles, is considered one of the best and most respected coaches in college hockey. In his 14 seasons, he has been named an AHCA Coach of the Year Finalist nine times and has won the national honor twice (2013 and 2014). Frost has been named WCHA Coach of the Year four times (2008, 2009, 2013, and 2014). Under his tutelage, the Gophers have tallied seven seasons with 30 or more wins. In 2013, Frost led the Gophers to the NCAA's first-ever perfect season (41-0-0).

PLAYER DEVELOPMENT

Over the last 15 years, Frost has coached some of the top talent not only in the nation but also in the world. He has seen 12 players (Megan Bozek, Hannah Brandt, Dani Cameranesi, Mira Jalosuo, Amanda Kessel, Gigi Marvin, Abbey Murphy, Kelly Pannek, Noora Rätty, Anne Schleper, Lee Stecklein, and Grace Zumwinkle) represent their respective countries in the Olympics. He also aided the development of former Gophers and Olympians Natalie Darwitz, Kelly Stephens, Lyndsay Wall, and Krissy Wendell while a Minnesota assistant coach. Frost has coached a total of 15 players to a combined 25 All-American honors. Among those All-Americans is 2022 Patty Kazmaier Memorial Award winner Taylor Heise. A total of 14 Minnesota student-athletes have been named Top-10 Patty Kaz finalists 22 times under Frost's tutelage.

ACADEMIC SUCCESS

Under Frost's guidance, the Gophers have recorded a 3.0 or higher grade point average and increased the team's Academic Progress Rating (APR). Minnesota has accumulated 174 WCHA All-Academic Team awards (15 in 2020-21), 77 WCHA Scholar Athlete honors (13 in 2020-21) and three WCHA Outstanding Student-Athlete of the Year award recipients (Alex Woken, 2020; Gigi Marvin, 2009; Kelly Terry, 2014) since Frost took reign.

INTERNATIONAL COACHING EXPERIENCE

Frost has served USA Hockey by working development camps and serving as a coach for various U.S. teams. In 2006, he was an assistant coach of the U.S. Under-22 Team, and from 2008-09, he was an assistant coach for the U.S. National Team.

PERSONAL LIFE

Frost grew up in Burlington, Ontario, and attended Aldershot High School. After graduating from Aldershot, he decided to attend college at Bethel University, which is where his parents originally met. While at Bethel, he studied Physical & Health Education and was a two-sport athlete, competing in hockey and golf. Frost was a four-year letterwinner in hockey and completed his career ranked eighth on Bethel's career scoring list. In 1994 and 1995, he was voted the team's Most Valuable Player and Most Inspirational. He also captained the Royals his junior and senior seasons. At Bethel, Frost met his wife Dayna. They now reside in Cottage Grove, Minn., and have three sons: Micah, Jonah and Josiah.



BRAD FROST
16TH YEAR AT MINNESOTA
BETHEL, 1996

2022-23 MINNESOTA WOMEN'S HOCKEY ROSTER

| No. | Name | Yr. | Pos. | Ht. | Hometown (High School/Last Team) |
|-----|---------------------|-------|------|------|--|
| 1 | Olivia King | Sr. | G | 5-6 | Garrison, Minn. (Brainerd HS) |
| 3 | Catie Skaja | 5th | F | 5-7 | New Prague, Minn. (New Prague Senior HS) |
| 4 | Audrey Wethington | Jr. | F | 5-7 | Edina, Minn. (Blake School) |
| 5 | Madeline Wethington | Sr. | D | 5-10 | Edina, Minn. (Blake School) |
| 6 | Gracie Ostertag | 5th | D | 5-7 | Shakopee, Minn. (Shattuck-St. Mary's) |
| 7 | Nelli Laitinen | Fr. | D | 5-7 | Lohja, Finland (Kiekko-Espoo) |
| 8 | Sadie Lindsay | So. | F | 5-7 | Minnetonka, Minn. (Breck School) |
| 9 | Taylor Heise | 5th | F | 5-10 | Lake City, Minn. (Red Wing HS) |
| 10 | Emily Zumwinkle | So. | D | 5-9 | Excelsior, Minn. (Breck School) |
| 11 | Josefin Bouveng | Fr. | F | 5-9 | Vassunda, Sweden (Brynas IF) |
| 12 | Grace Zumwinkle | 5th | F | 5-9 | Excelsior, Minn. (Breck School) |
| 13 | Crystalyn Hengler | 5th | D | 5-8 | Eden Prairie, Minn. (Eden Prairie HS) |
| 14 | Maggie Nicholson | Jr. | D | 5-9 | Minnetonka, Minn. (Minnetonka HS) |
| 15 | Peyton Hemp | So. | F | 5-5 | Andover, Minn. (Andover HS) |
| 16 | Allie Franco | Fr. | F/D | 5-7 | Oakdale, Minn. (Hill-Murray School) |
| 17 | Josey Dunne | Jr. | F | 5-10 | O'Fallon, Mo. (Heritage Christian Academy/Chicago Mission) |
| 18 | Abbey Murphy | R-So. | F | 5-5 | Evergreen Park, Ill. (Mother McAuley HS/Chicago Mission) |
| 20 | Emma Conner | So. | F | 5-8 | Edina, Minn. (Edina HS) |
| 21 | Emily Oden | 5th | F | 5-8 | Edina, Minn. (Edina HS) |
| 22 | Abigail Boreen | 5th | F | 5-8 | Somerset, Wis. (Hill-Murray School) |
| 23 | Tristana Tatur | So. | F | 5-8 | Maple Grove, Minn. (Maple Grove HS) |
| 26 | Ella Huber | So. | F | 5-6 | Northfield, Ill. (New Trier HS/Chicago Mission) |
| 27 | Savannah Norcross | 5th | F | 5-7 | Lynn, Mass. (New Hampton School/Boston College) |
| 28 | Lizi Norton | 5th | D | 5-6 | Orono, Minn. (Orono HS/Minnesota Duluth) |
| 29 | Madison Kaiser | Fr. | F | 5-7 | Andover, Minn. (Holy Family Catholic HS) |
| 31 | Skylar Vetter | So. | G | 5-8 | Lakeville, Minn. (Lakeville North HS) |
| 33 | Makayla Pahl | Sr. | G | 5-11 | Rochester, Minn. (Rochester Mayo HS) |

Head Coach: Brad Frost (Bethel, 1996)

Assistant Coaches: Natalie Darwitz (Minnesota, 2007), Jessica Scott (St. Thomas, 2004), Chris Esposito (Columbia, 2007) - Volunteer

ROSTER BREAKDOWN

BY CLASS:

Freshmen (4)

Josefin Bouveng
Allie Franco
Madison Kaiser
Nelli Laitinen

Sophomores (8)

Emma Conner
Peyton Hemp
Ella Huber
Sadie Lindsay
Abbey Murphy
Tristana Tatur
Skylar Vetter
Emily Zumwinkle

Juniors (3)

Josey Dunne
Maggie Nicholson
Audrey Wethington

Seniors (3)

Olivia King
Makayla Pahl
Madeline Wethington

5th-Year (9)

Abigail Boreen
Taylor Heise
Crystalyn Hengler
Savannah Norcross
Lizi Norton
Emily Oden
Gracie Ostertag
Catie Skaja
Grace Zumwinkle

BY STATE/COUNTRY:

Minnesota (20)

Emma Conner
Allie Franco
Taylor Heise
Peyton Hemp
Crystalyn Hengler
Sadie Lindsay
Madison Kaiser
Olivia King
Maggie Nicholson
Lizi Norton
Emily Oden
Gracie Ostertag
Makayla Pahl
Catie Skaja
Tristana Tatur
Skylar Vetter
Audrey Wethington
Madeline Wethington
Emily Zumwinkle
Grace Zumwinkle

Illinois (2)

Ella Huber
Abbey Murphy

Massachusetts(1)

Savannah Norcross

Missouri (1)

Josey Dunne

Wisconsin (1)

Abigail Boreen

Sweden (1)

Josefin Bouveng

Finland (1)

Nelli Laitinen

PRONUNCIATION GUIDE

NAME

Boreen, Abigail
Bouveng, Josefin
Dunne, Josey
Heise, Taylor
Hengler, Crystalyn
Huber, Ella
Laitinen, Nelli
Oden, Emily
Ostertag, Gracie
Pahl, Makayla
Skaja, Catie
Tatur, Tristana
Zumwinkle, Emily
Zumwinkle, Grace

PRONUNCIATION

BORE-een
YO-suh-fin BOO-veng
done
Hi-zee
CRYSTAL-in HANG-glur
HEW-bur
LIGHT-inen
OH-din
AHH-stir-tag
paul
Katie SKY-ah
TAY-ter
ZUM-winkle
ZUM-winkle

2022-23 MINNESOTA WOMEN'S HOCKEY PHOTO ROSTER



22 | **ABIGAIL BOREEN**
SOMERSET, WISC.



11 | **JOSEFIN BOUVENG**
VASSUNDA, SWEDEN



20 | **EMMA CONNER**
EDINA, MINN.



17 | **JOSEY DUNNE**
O'FALLON, MO.



16 | **ALLIE FRANCO**
OAKDALE, MINN.



9 | **TAYLOR HEISE**
LAKE CITY, MINN.



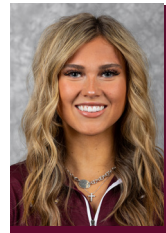
15 | **PEYTON HEMP**
ANDOVER, MINN.



13 | **CRYSTALYN HENGLER**
EDEN PRAIRIE, MINN.



26 | **ELLA HUBER**
NORTHFIELD, ILL.



29 | **MADISON KAISER**
ANDOVER, MINN.



1 | **OLIVIA KING**
GARISON, MINN.



7 | **NELLI LAITINEN**
LOHJA, FINLAND



8 | **SADIE LINDSAY**
MINNETONKA, MINN.



14 | **MAGGIE NICHOLSON**
MINNETONKA, MINN.



27 | **SAVANNAH NORCROSS**
LYNN, MASS.



28 | **LIZI NORTON**
ORONO, MINN.



21 | **EMILY ODEN**
EDINA, MINN.



6 | **GRACIE OSTERTAG**
SHAKOPEE, MINN.



33 | **MAKAYLA PAHL**
ROCHESTER, MINN.



3 | **CATIE SKAJA**
NEW PRAGUE, MINN.



23 | **TRISTANA TATUR**
MAPLE GROVE, MINN.



31 | **SKYLAR VETTER**
LAKEVILLE, MINN.



4 | **AUDREY WETHINGTON**
EDINA, MINN.



5 | **MADELINE WETHINGTON**
EDINA, MINN.



10 | **EMILY ZUMWINKLE**
EXCELSIOR, MINN.



12 | **GRACE ZUMWINKLE**
EXCELSIOR MINN.



BRAD FROST
HEAD COACH



JESSICA SCOTT
ASSISTANT COACH



NATALIE DARWITZ
ASSISTANT COACH



CHRIS ESPOSITO
VOL. ASSISTANT COACH

Tough · Grateful · Disciplined · Devoted

GOPHER CAREER-BESTS (AT MINNESOTA): GAME & SERIES HIGHS

#1 Olivia KING

Saves: 8 vs. RIT, 11/12/21
Shots Faced: 8 vs. RIT, 11/12/21

Series Saves: 10 vs. RIT, 11/12-13/21
Series Shots Faced: 11 vs. RIT, 11/12-13/21

#3 Catie SKAJA

Goals: 2 (6X, last vs. UMD, 11/5/22)
Assists: 3 vs. SCSU, 11/20/21
Points: 3 (3X, last at SCSU, 2/11/22)

Series Goals: 3 at vs. SCSU, 2/11-12/22
Series Assists: 4 at vs. SCSU, 11/19-20/21
Series Points: 5 at vs. SCSU, 2/11-12/22

#4 Audrey WETHINGTON

Goals: 1 (11X, last vs. MSU, 10/15/2022)
Assists: 3 at MSU, 1/14/22
Points: 3 at MSU, 1/14/2022

Series Goals: 2 vs. UST, 2/25-26/2022
Series Assists: 3 (2X, last at vs. MSU, 1/14-15/2022)
Series Points: 3 (4X, last vs. UST, 2/25-26/22)

#5 Madeline WETHINGTON

Goals: 1 (16X, last at UST, 2/17/22)
Assists: 3 vs. BSU, 10/7/22
Points: 3 (5X, last vs. BSU, 10/7/22)

Series Goals: 2 at SCSU, 1/10-11/20
Series Assists: 4 (2X, last vs BSU, 10/7-8/22)
Series Points: 5 vs./at UST, 1/8-9/22

#6 Gracie OSTERTAG

Goals: 1 (5X, last vs. SCSU, 11/20/21)
Assists: 3 at OSU, 10/29/22
Points: 3 at OSU, 10/29/22

Series Goals: 2 (2X, last at vs. SCSU, 11/19-20/2021)
Series Assists: 3 at OSU, 10/28-29/22
Series Points: 3 at OSU, 10/28-29/22

#7 Nelli LAITINEN

Goals: 1 (2X, last at OSU, 10/28/22)
Assists: 2 (2X, last at MSU, 10/14/22)
Points: 3 vs. MSU, 10/14/22

Series Goals: 1 (2X, last at OSU, 10/28-29/22)
Series Assists: 2 (2X, last at vs. MSU, 10/14-15/22)
Series Points: 3 at vs. MSU, 10/14-15/22

#8 Sadie LINDSAY

Goals: ---
Assists: 2 vs. RIT, 11/12/21
Points: 2 vs. RIT, 11/12/21

Series Goals: ---
Series Assists: 2 vs. RIT, 11/12-13/21
Series Points: 2 vs. RIT, 11/12-13/21

#9 Taylor HEISE

Goals: 3 (2X, last vs. RIT, 11/12/21)
Assists: 3 (5X, last at SCSU, 2/11/22)
Points: 5 vs. RIT, 11/12/21

Series Goals: 4 (2X, last vs. RIT, 11/12-13/21)
Series Assists: 5 vs./at UST, 1/8-9/22
Series Points: 7 vs. RIT, 11/12-13/21

#10 Emily ZUMWINKLE

Goals: 1 (4X, last at MSU, 1/14/22)
Assists: 1 (6X, last at OSU, 10/29/22)
Points: 1 (9X, last at OSU, 10/29/22)

Series Goals: 1 (4X, last at vs. MSU, 1/14-15/22)
Series Assists: 1 (6X, last at OSU, 10/28-29/22)
Series Points: 2 (2X, last vs./at UST, 1/8-9/22)

#11 Josefin BOUVENG

Goals: 3 vs. MSU, 10/15/22
Assists: 2 at MSU, 10/14/22
Points: 3 vs. MSU, 10/15/22

Series Goals: 3 at vs. MSU, 10/14-15/22
Series Assists: 2 (2x, last at vs. MSU, 10/14-15/22)
Series Points: 5 at vs. MSU, 10/14-15/22

#12 Grace ZUMWINKLE

Goals: 3 (4X, last at MSU, 10/14-15/22)
Assists: 3 (2X, last at BSU, 2/20/21)
Points: 5 at Yale, 11/30/18

Series Goals: 4 (2X, last at vs. MSU, 10/14-15/22)
Series Assists: 4 at BSU, 2/19-20/21
Series Points: 8 at BSU, 2/19-20/21

#13 Crystalyn HENGLER

Goals: 1 (11X, last vs. MSU, 10/15/22)
Assists: 2 (6X, last vs. PSU, 11/25/22)
Points: 3 vs. RIT, 11/12/21

Series Goals: 2 at BSU, 2/19-20/21
Series Assists: 3 vs. RIT, 11/12-13/21
Series Points: 4 vs. RIT, 11/12-13/21

#14 Maggie NICHOLSON

Goals: 1 at OSU, 1/29/22
Assists: 2 vs. UST, 1/8/22
Points: 2 vs. UST, 1/8/22

Series Goals: 1 at OSU, 1/28-29/22
Series Assists: 2 vs./at UST, 1/8-9/22
Series Points: 2 vs./at UST, 1/8-9/22

#15 Peyton HEMP

Goals: 2 (3X, last at WIS., 11/19/22)
Assists: 3 at UMD, 10/9/21
Points: 3 at UMD, 10/9/21

Series Goals: 2 (6X, last at WIS., 11/19-20/22)
Series Assists: 4 at UMD, 10/8-9/21
Series Points: 4 (2X, last vs. RIT, 11/12-13/21)

#16 Allie FRANCO

Goals: ---
Assists: ---
Points: ---

Series Goals: ---
Series Assists: ---
Series Points: ---

#17 Josey DUNNE

Goals: 1 (4X, last vs. RIT, 11/12/21)
Assists: 1 (3X, last at UST, 2/17/22)
Points: 1 (7X, last at UST, 2/17/22)

Series Goals: 1 (4X, vs. RIT, 11/12-13/21)
Series Assists: 1 (2X, last at vs. UST, 2/17-19/22)
Series Points: 1 (6X, last at vs. UST, 2/17-19/22)

#18 Abbey MURPHY

Goals: 2 (5X, last at OSU, 10/29/22)
Assists: 3 at SCSU, 1/10/21
Points: 3 (4X, last vs. MSU, 10/15/22)

Series Goals: 3 (2X, last at vs. MSU, 10/14-15/22)
Series Assists: 3 (3X, last at vs. MSU, 10/14-15/22)
Series Points: 6 (2X, last at vs. MSU, 10/14-15/22)

#20 Emma CONNER

Goals: 1 (2X, last at MSU, 1/14/22)
Assists: 2 vs. RIT, 11/13/21
Points: 3 vs. RIT, 11/13/21

Series Goals: 1 vs. RIT, 11/12-13/21
Series Assists: 3 vs. RIT, 11/12-13/21
Series Points: 4 vs. RIT, 11/12-13/21

#21 Emily ODEN

Goals: 2 (2X, last at OSU, 1/25/19)
Assists: 2 (10X, last vs. MSU, 10/15/22)
Points: 4 at OSU, 1/25/19

Series Goals: 2 (3X, last at UMD, 10/8-9/21)
Series Assists: 4 at vs. MSU, 10/14-15/22
Series Points: 4 (3x, last at vs. MSU, 10/14-15/22)

#22 Abigail BOREEN

Goals: 3 (2X, last at SCSU, 2/11/22)
Assists: 3 (3X, last at UST, 2/17/22)
Points: 5 at SCSU, 2/11/22

Series Goals: 5 vs./at UST, 1/8-9/2022
Series Assists: 5 at vs. UST, 2/17-19/22
Series Points: 6 (2X, last at vs. UST, 2/17-19/22)

#23 Tristana TATUR

Goals: ---
Assists: 1 vs. UST, 1/8/22
Points: 1 vs. UST, 1/8/22

Series Goals: ---
Series Assists: 1 vs. UST, 1/8-9/22
Series Points: 1 vs. UST, 1/8-9/22

#26 Ella HUBER

Goals: 2 (2X, last vs. Yale, 11/26/22)
Assists: 3 vs. MSU, 10/15/21
Points: 3 (2X, last vs. UST, 2/19/22)

Series Goals: 2 (2X, last at vs. UST, 2/17-19/22)
Series Assists: 4 vs./at MSU, 10/15-16/21
Series Points: 4 vs./at MSU, 10/15-16/21

#27 Savannah NORCROSS

Goals: 2 (2X, last vs. UST, 2/19/22)
Assists: 3 at MSU, 1/14/22
Points: 3 (2X, last at MSU, 1/14/22)

Series Goals: 2 (3X, last at vs. UST, 2/17-19/22)
Series Assists: 3 (2X, last vs. UST, 2/25-26/22)
Series Points: 4 (3X, last vs. BSU, 2/4-5/22)

#28 Lizi NORTON

Goals: 1 (2X, last vs. UMD, 11/5/22)
Assists: 2 vs. MSU, 10/15/22
Points: 2 vs. MSU, 10/15/22

Series Goals: 1 (2X last vs. UMD, 11/4-5/22)
Series Assists: 3 at vs. MSU, 10/14-15/22
Series Points: 3 at vs. MSU, 10/14-15/22

#29 Madison KAISER

Goals: 1 (3X, last vs. PSU, 11/25/22)
Assists: 1 (2X, last vs. PSU, 11/25/22)
Points: 2 (2X, last vs. PSU, 11/25/22)

Series Goals: 1 (2X, last at vs. SCSU, 10/21-22/22)
Series Assists: 1 at vs. MSU, 10/14-15/22
Series Points: 2 at vs. MSU, 10/14-15/22

#31 Skylar VETTER

Saves: 43 at OSU, 10/28/22
Shots Faced: 45 at OSU, 10/28/22

Series Saves: 70 at OSU, 10/28-29/22
Series Shots Faced: 76 at OSU, 10/28-29/22

#33 Makayla PAHL

Saves: 41 at OSU, 1/30/21
Shots Faced: 44 at OSU, 1/30/21

Series Saves: 44 at OSU, 1/29-30/21
Series Shots Faced: 44 at OSU, 1/29-30/21

2022-23 MINNESOTA SCHEDULE/RESULTS

| Date | Opponent | Time/Result | Goals (Season Totals) | Goaltender, Saves | Attendance |
|-------|---------------------|-------------|---|--------------------|------------|
| 10/7 | BEMIDJI STATE | W, 6-0 | Boreen (1,2), Hemp (1,2), Murphy (1,2) | Pahl, 17 | 1,209 |
| 10/8 | BEMIDJI STATE | W, 4-1 | Norton (1), G.Zumwinkle (1), Skaja (1), Oden (1) | Vetter, 15 | 1,259 |
| 10/14 | RV Minnesota State | W, 11-0 | G.Zumwinkle (2,3,4), Skaja (2), Norcross (1), Laitinen (1), Murphy (3), Heise (1), Hemp (3) Kaiser (1), Huber (1) | Vetter, 17 | 105 |
| 10/15 | RV MINNESOTA STATE | W, 9-4 | Murphy (4,5), Skaja (3), Bouveng (1,2,3), A.Wethington (1), Hengler (1), G.Zumwinkle (5) | Pahl, 18/Vetter, 2 | 1,225 |
| 10/21 | St. Cloud State | W, 4-2 | Murphy (6), Boreen (3), G.Zumwinkle (6), Heise (2) | Vetter, 20 | 437 |
| 10/22 | ST. CLOUD STATE | W, 2-1 | Kaiser (2), G.Zumwinkle (7) | Vetter, 20 | 1,553 |
| 10/28 | #1 Ohio State | W, 4-2 | Laitinen (2), Heise (3), Hemp (4), Boreen (4) | Vetter, 43 | 421 |
| 10/29 | #1 Ohio State | T, 4-4 | Murphy (7,8), Bouveng (4), Heise (4) | Vetter, 27 | 319 |
| 11/4 | #5 MINNESOTA DULUTH | W, 3-2 (OT) | Huber (2), Norton (2), Heise (5) | Vetter, 27 | 2,032 |
| 11/5 | #5 MINNESOTA DULUTH | W, 5-3 | Skaja (4,5), Murphy (9), Bouveng (5), Boreen (5) | Vetter, 23 | 2,280 |
| 11/7 | RV St. Cloud State | L, 4-1 | Heise (6) | Vetter, 15 | 1,250 |
| 11/19 | #3 Wisconsin | T, 3-3 | Hemp (5,6), G.Zumwinkle (8) | Vetter, 40 | 2,273 |
| 11/20 | #3 Wisconsin | L, 4-1 | Heise (7) | Vetter, 36 | 2,273 |
| 11/25 | # 12Penn State# | W, 5-1 | Kaiser (3), Heise (8), Hemp (7), G.Zumwinkle (9) Huber (3) | Vetter, 9/Pahl, 17 | 250 |
| 11/26 | #5 Yale# | L, 4-3 | Hemp (8), Huber (4,5) | Vetter, 8/Pahl, 7 | 400 |
| 12/2 | MINNESOTA STATE | 6:00 PM | | | |
| 12/3 | Minnesota State | 2:00 PM | | | |
| 12/9 | ST. CLOUD STATE | 6:00 PM | | | |
| 12/10 | St. Cloud State | 3:00 PM | | | |
| 1/6 | MERRIMACK+ | 6:00 PM | | | |
| 1/7 | NEW HAMPSHIRE+ | 4:30 PM | | | |
| 1/13 | ST. THOMAS | 6:00 PM | | | |
| 1/14 | ST. THOMAS | 2:00 PM | | | |
| 1/20 | Bemidji State | 3:00 PM | | | |
| 1/21 | Bemidji State | 2:00 PM | | | |
| 1/27 | Minnesota Duluth | 3:00 PM | | | |
| 1/28 | Minnesota Duluth | 3:00 PM | | | |
| 2/3 | OHIO STATE | 6:00 PM | | | |
| 2/4 | OHIO STATE | 2:00 PM | | | |
| 2/10 | WISCONSIN | 6:00 PM | | | |
| 2/11 | WISCONSIN | 7:30 PM | | | |
| 2/17 | St. Thomas | 6:00 PM | | | |
| 2/18 | St. Thomas | 6:00 PM | | | |

* WCHA Final Faceoff • % WCHA First Round (Campus sites) • # Henderson Collegiate Hockey Showcase • + East/West Showcase

Home games in **BOLD CAPS** at Ridder Arena. All times are Central.

Note: goal; (#) denotes individual season goals

MINNESOTA 2022-23 STATISTICS: INDIVIDUAL



2022-23 Minnesota Women's Ice Hockey Overall Individual Statistics All games

Page 1/2
as of Dec 01, 2022

Game Records

| Overall | Conference | Home | Away | Neutral |
|------------|------------|-----------|-----------|-----------|
| 10 - 3 - 2 | 9 - 2 - 2 | 6 - 0 - 0 | 3 - 1 - 2 | 1 - 2 - 0 |

| | | | Shots | | | | | | Penalties | | | | | Goals | | | | | | | | | | |
|-----------|----------------------|----|-------|-----|-----|-----|------|------|-----------|-----|-----|-----|----|-------|----|----|----|----|----|----|----|-----|--|--|
| # | Player | GP | G | A | PTS | SH | SH% | +/- | PEN-MIN | MIN | MAJ | OTH | PP | SH | FG | GW | GT | OT | HT | PN | UA | BLK | | |
| 12 | Zumwinkle, Grace | 15 | 9 | 11 | 20 | 84 | .107 | +9 | 0-0 | 0 | 0 | 0 | 1 | 0 | 1 | 4 | 0 | 0 | 1 | 0 | 0 | 6 | | |
| 9 | Heise, Taylor | 15 | 8 | 11 | 19 | 53 | .151 | +4 | 3-6 | 3 | 0 | 0 | 2 | 1 | 0 | 2 | 0 | 1 | 0 | 0 | 1 | 6 | | |
| 18 | Murphy, Abbey | 15 | 9 | 7 | 16 | 49 | .184 | +11 | 11-25 | 10 | 1 | 0 | 4 | 1 | 3 | 0 | 0 | 0 | 0 | 0 | 1 | 10 | | |
| 3 | Skaja, Catie | 15 | 5 | 9 | 14 | 33 | .152 | +5 | 3-6 | 3 | 0 | 0 | 2 | 0 | 1 | 0 | 0 | 0 | 0 | 0 | 0 | 4 | | |
| 26 | Huber, Ella | 15 | 5 | 8 | 13 | 30 | .167 | +7 | 5-10 | 5 | 0 | 0 | 1 | 0 | 1 | 0 | 0 | 0 | 0 | 0 | 0 | 5 | | |
| 15 | Hemp, Peyton | 15 | 8 | 4 | 12 | 31 | .258 | +11 | 2-4 | 2 | 0 | 0 | 1 | 1 | 0 | 1 | 0 | 0 | 0 | 0 | 0 | 3 | | |
| 22 | Boreen, Abigail | 13 | 5 | 5 | 10 | 47 | .106 | +7 | 3-6 | 3 | 0 | 0 | 1 | 0 | 1 | 1 | 0 | 0 | 0 | 0 | 1 | 4 | | |
| 11 | Bouveng, Josefin | 14 | 5 | 4 | 9 | 29 | .172 | +8 | 0-0 | 0 | 0 | 0 | 0 | 1 | 0 | 2 | 0 | 0 | 1 | 0 | 0 | 3 | | |
| 21 | Oden, Emily | 15 | 1 | 8 | 9 | 28 | .036 | +10 | 0-0 | 0 | 0 | 0 | 0 | 0 | 0 | 0 | 0 | 0 | 0 | 0 | 0 | 9 | | |
| 7 | Laitinen, Nelli | 11 | 2 | 6 | 8 | 13 | .154 | +7 | 2-4 | 2 | 0 | 0 | 0 | 0 | 1 | 0 | 0 | 0 | 0 | 0 | 0 | 11 | | |
| 5 | Wethington, Madeline | 15 | 0 | 8 | 8 | 30 | .000 | +9 | 6-12 | 6 | 0 | 0 | 0 | 0 | 0 | 0 | 0 | 0 | 0 | 0 | 0 | 16 | | |
| 28 | Norton, Lizi | 15 | 2 | 5 | 7 | 18 | .111 | +11 | 4-8 | 4 | 0 | 0 | 0 | 0 | 1 | 0 | 0 | 0 | 0 | 0 | 0 | 11 | | |
| 29 | Kaiser, Madison | 15 | 3 | 3 | 6 | 21 | .143 | +2 | 4-8 | 4 | 0 | 0 | 0 | 0 | 1 | 0 | 0 | 0 | 0 | 0 | 0 | 1 | | |
| 13 | Hengler, Crystalyn | 15 | 1 | 5 | 6 | 30 | .033 | +5 | 3-6 | 3 | 0 | 0 | 0 | 0 | 0 | 0 | 0 | 0 | 0 | 0 | 0 | 8 | | |
| 6 | Ostertag, Gracie | 14 | 0 | 6 | 6 | 18 | .000 | +10 | 1-2 | 1 | 0 | 0 | 0 | 0 | 0 | 0 | 0 | 0 | 0 | 0 | 0 | 18 | | |
| 27 | Norcross, Savannah | 14 | 1 | 3 | 4 | 13 | .077 | -1 | 0-0 | 0 | 0 | 0 | 0 | 0 | 0 | 0 | 0 | 0 | 0 | 0 | 0 | 5 | | |
| 4 | Wethington, Audrey | 15 | 1 | 2 | 3 | 17 | .059 | -2 | 0-0 | 0 | 0 | 0 | 0 | 0 | 0 | 0 | 0 | 0 | 0 | 0 | 0 | 3 | | |
| 10 | Zumwinkle, Emily | 15 | 0 | 2 | 2 | 14 | .000 | +12 | 0-0 | 0 | 0 | 0 | 0 | 0 | 0 | 0 | 0 | 0 | 0 | 0 | 0 | 15 | | |
| 20 | Conner, Emma | 10 | 0 | 1 | 1 | 7 | .000 | +3 | 1-2 | 1 | 0 | 0 | 0 | 0 | 0 | 0 | 0 | 0 | 0 | 0 | 0 | 7 | | |
| 8 | Lindsay, Sadie | 2 | 0 | 1 | 1 | 3 | .000 | +1 | 0-0 | 0 | 0 | 0 | 0 | 0 | 0 | 0 | 0 | 0 | 0 | 0 | 0 | 0 | | |
| 31 | Vetter, Skylar | 14 | 0 | 1 | 1 | 0 | .000 | 0 | 0-0 | 0 | 0 | 0 | 0 | 0 | 0 | 0 | 0 | 0 | 0 | 0 | 0 | 0 | | |
| 16 | Franco, Allie | 3 | 0 | 0 | 0 | 1 | .000 | 0 | 0-0 | 0 | 0 | 0 | 0 | 0 | 0 | 0 | 0 | 0 | 0 | 0 | 0 | 0 | | |
| 33 | Pahl, Makayla | 4 | 0 | 0 | 0 | 0 | .000 | 0 | 0-0 | 0 | 0 | 0 | 0 | 0 | 0 | 0 | 0 | 0 | 0 | 0 | 0 | 0 | | |
| TM | TEAM | 15 | 0 | 0 | 0 | 0 | .000 | 0 | 4-8 | 0 | 0 | 0 | 0 | 0 | 0 | 0 | 0 | 0 | 0 | 0 | 0 | 0 | | |
| Totals | | 15 | 65 | 110 | 175 | 569 | .114 | +129 | 52-107 | 51 | 1 | 0 | 12 | 4 | 10 | 10 | 0 | 1 | 2 | 0 | 3 | 145 | | |
| Opponents | | 15 | 35 | 63 | 98 | 396 | .088 | -133 | 59-118 | 59 | 0 | 0 | 9 | 0 | 5 | 3 | 2 | 0 | 0 | 0 | 1 | 278 | | |

| # Player | GP-GS | Goal Average | | | Saves | | Record | | | | Goals Allowed | | | | |
|-------------------|-----------|---------------|-----------|-------------|------------|-------------|-----------|-----------|----------|----------|---------------|----------|----------|----------|----------|
| | | MINUTES | GA | AVG | SAVES | PCT | W | L | T | SHO | PP | SH | EN | PEN | SOG |
| 31 Vetter, Skylar | 14-13 | 735:21 | 30 | 2.45 | 302 | .910 | 8 | 3 | 2 | 1 | 8 | 0 | 0 | 0 | 2 |
| 33 Pahl, Makayla | 4-2 | 171:51 | 5 | 1.75 | 59 | .922 | 2 | 0 | 0 | 1 | 1 | 0 | 0 | 0 | 0 |
| TM EMPTY NET | - | 03:03 | 0 | 0.00 | 0 | .000 | 0 | 0 | 0 | 0 | 0 | 0 | 0 | 0 | 0 |
| Totals | 15 | 910:15 | 35 | 2.31 | 361 | .912 | 10 | 3 | 2 | 2 | 9 | 0 | 0 | 0 | 2 |
| Opponents | 15 | 910:15 | 65 | 4.28 | 504 | .886 | 3 | 10 | 2 | 0 | 12 | 4 | 1 | 0 | 2 |



2022-23 Minnesota Women's Ice Hockey
Overall Team Statistics
All games

Page 1/2
as of Dec 01, 2022

Team statistics

| | MINN | OPP |
|-----------------------------|--------|--------|
| SHOT STATISTICS | | |
| Goals-Shot attempts | 65-569 | 35-396 |
| Shot pct. | .114 | .088 |
| Goals/Game | 4.33 | 2.33 |
| Shots/Game | 37.93 | 26.40 |
| Assists | 110 | 63 |
| POWER PLAYS | | |
| Goals-Power Plays | 12-48 | 9-43 |
| Conversion Percent | .250 | .209 |
| Shot Attempts | 95 | 57 |
| Shot Percent | .126 | .158 |
| SHORT-HANDED | | |
| Goals-Shot attempts | 4-14 | 0-7 |
| Shot Percent | .286 | .000 |
| GOAL BREAKDOWN | | |
| Total Goals | 65 | 35 |
| Power Play | 12 | 9 |
| Short-handed | 4 | 0 |
| Empty net | 1 | 0 |
| Penalty | 0 | 0 |
| Unassisted | 3 | 1 |
| Overtime | 1 | 0 |
| Delayed Penalty | 0 | 0 |
| Game winning | 10 | 3 |
| First Goal | 10 | 5 |
| Game Tying Goal | 0 | 2 |
| Extra Attacker | 0 | 2 |
| BLOCKS | | |
| Blocks | 145 | 278 |
| Blocks/Game | 9.67 | 18.53 |
| PENALTIES | | |
| Number | 52 | 59 |
| Minutes | 107 | 118 |
| Penalties/Game | 3.47 | 3.93 |
| Penalty minutes/Game | 7.13 | 7.87 |
| Minor | 51 | 59 |
| Major | 1 | 0 |
| 10-minute Misconduct | 0 | 0 |
| Game Misconduct | 0 | 0 |
| Gross Misconduct | 0 | 0 |
| Match | 0 | 0 |
| FACEOFFS (W-L) | | |
| Faceoff W-L pct. | .541 | .459 |
| SHOOTOUTS (Made-Att) | | |
| 2-7 | 2-7 | |
| ATTENDANCE | | |
| Total | 8349 | 5828 |
| Dates/Avg Per Date | 6/1392 | 6/971 |
| Neutral Site #/Avg | 3/500 | - |

Goals by Periods

| Team | 1st | 2nd | 3rd | OT | TOTAL |
|-----------|-----|-----|-----|----|-------|
| MINN | 28 | 16 | 20 | 1 | 65 |
| Opponents | 12 | 12 | 11 | 0 | 35 |

Shots by Periods

| Team | 1st | 2nd | 3rd | OT | TOTAL |
|-----------|-----|-----|-----|----|-------|
| MINN | 181 | 179 | 196 | 13 | 569 |
| Opponents | 134 | 136 | 119 | 7 | 396 |

Saves by Periods

| Team | 1st | 2nd | 3rd | OT | TOTAL |
|-----------|-----|-----|-----|----|-------|
| MINN | 122 | 124 | 108 | 7 | 361 |
| Opponents | 153 | 163 | 176 | 12 | 504 |

MINNESOTA 2022-23 STATISTICS: GAME-BY-GAME TEAM



2022-23 Minnesota Women's Ice Hockey Team Game-by-Game All games

Page 1/1
as of Dec 01, 2022

| Date | Opponent | Score | G | A | PTS | SHOTS | SH% | +/- | PEN-MIN | PP | SH | EN | GW | GT | HAT | UA | BLK |
|------------------|------------------|-------|-----------|------------|------------|------------|-------------|-------------|---------------|-----------|----------|----------|-----------|----------|----------|----------|------------|
| 10/07/2022 | Bemidji St. | 6-0 | 6 | 11 | 17 | 46 | .130 | +20 | 0-0 | 2 | 0 | 0 | 1 | 0 | 0 | 0 | 5 |
| 10/08/2022 | Bemidji St. | 4-1 | 4 | 7 | 11 | 37 | .108 | +15 | 4-8 | 0 | 0 | 1 | 1 | 0 | 0 | 0 | 9 |
| 10/14/2022 | at Minnesota St. | 11-0 | 11 | 15 | 26 | 60 | .183 | +40 | 5-10 | 3 | 0 | 0 | 1 | 0 | 1 | 2 | 5 |
| 10/15/2022 | Minnesota St. | 9-4 | 9 | 15 | 24 | 46 | .196 | +28 | 5-10 | 0 | 2 | 0 | 1 | 0 | 1 | 0 | 6 |
| 10/21/2022 | at St. Cloud St. | 4-2 | 4 | 8 | 12 | 36 | .111 | +5 | 4-8 | 1 | 0 | 0 | 1 | 0 | 0 | 0 | 7 |
| 10/22/2022 | St. Cloud St. | 2-1 | 2 | 4 | 6 | 45 | .044 | +5 | 5-10 | 0 | 0 | 0 | 1 | 0 | 0 | 0 | 6 |
| 10/28/2022 | at Ohio St. | 4-2 | 4 | 7 | 11 | 32 | .125 | +15 | 2-4 | 0 | 0 | 0 | 1 | 0 | 0 | 0 | 15 |
| 10/29/2022 | at Ohio St. | 4-4 | 4 | 8 | 12 | 31 | .129 | +4 | 6-12 | 1 | 1 | 0 | 0 | 0 | 0 | 0 | 23 |
| 11/04/2022 | Minn. Duluth | 3-2 | 3 | 6 | 9 | 32 | .094 | +8 | 2-4 | 0 | 0 | 0 | 1 | 0 | 0 | 0 | 6 |
| 11/05/2022 | Minn. Duluth | 5-3 | 5 | 8 | 13 | 32 | .156 | +15 | 4-8 | 1 | 0 | 0 | 1 | 0 | 0 | 1 | 12 |
| 11/07/2022 | vs St. Cloud St. | 1-4 | 1 | 2 | 3 | 35 | .029 | -15 | 2-4 | 1 | 0 | 0 | 0 | 0 | 0 | 0 | 6 |
| 11/19/2022 | at Wisconsin | 3-3 | 3 | 4 | 7 | 41 | .073 | -1 | 2-4 | 0 | 1 | 0 | 0 | 0 | 0 | 0 | 18 |
| 11/20/2022 | at Wisconsin | 1-4 | 1 | 2 | 3 | 29 | .034 | -15 | 4-8 | 1 | 0 | 0 | 0 | 0 | 0 | 0 | 13 |
| 11/25/2022 | vs Penn St. | 5-1 | 5 | 8 | 13 | 35 | .143 | +20 | 4-11 | 0 | 0 | 0 | 1 | 0 | 0 | 0 | 5 |
| 11/26/2022 | vs Yale | 3-4 | 3 | 5 | 8 | 32 | .094 | -15 | 3-6 | 2 | 0 | 0 | 0 | 0 | 0 | 0 | 9 |
| MINN | | | 65 | 110 | 175 | 569 | .114 | +129 | 52-107 | 12 | 4 | 1 | 10 | 0 | 2 | 3 | 145 |
| Opponents | | | 35 | 63 | 98 | 396 | .088 | -133 | 59-118 | 9 | 0 | 0 | 3 | 2 | 0 | 1 | 278 |

TEAM PER-GAME

| Games played | Shots per game | Goals per game | Assists per game | Points per game |
|--------------|----------------|----------------|------------------|-----------------|
| 15 | 37.93 | 4.33 | 7.33 | 11.67 |

| Date | Opponent | Score | MINUTES | GA | GAAVG | SAVES | SAVES% | W | L | T | PP | SH | EN | PN | SO |
|------------------|------------------|-------|---------------|-----------|-------------|------------|-------------|-----------|-----------|----------|-----------|----------|----------|----------|----------|
| 10/07/2022 | Bemidji St. | 6-0 | 60:00 | 0 | 0.00 | 17 | 1.000 | 1 | 0 | 0 | 0 | 0 | 0 | 0 | 0 |
| 10/08/2022 | Bemidji St. | 4-1 | 60:00 | 1 | 0.50 | 15 | .970 | 1 | 0 | 0 | 0 | 0 | 0 | 0 | 0 |
| 10/14/2022 | at Minnesota St. | 11-0 | 60:00 | 0 | 0.33 | 17 | .980 | 1 | 0 | 0 | 0 | 0 | 0 | 0 | 0 |
| 10/15/2022 | Minnesota St. | 9-4 | 60:00 | 4 | 1.25 | 20 | .932 | 1 | 0 | 0 | 1 | 0 | 0 | 0 | 0 |
| 10/21/2022 | at St. Cloud St. | 4-2 | 60:00 | 2 | 1.40 | 20 | .927 | 1 | 0 | 0 | 0 | 0 | 0 | 0 | 0 |
| 10/22/2022 | St. Cloud St. | 2-1 | 60:00 | 1 | 1.33 | 20 | .932 | 1 | 0 | 0 | 0 | 0 | 0 | 0 | 0 |
| 10/28/2022 | at Ohio St. | 4-2 | 60:00 | 2 | 1.43 | 43 | .938 | 1 | 0 | 0 | 1 | 0 | 0 | 0 | 0 |
| 10/29/2022 | at Ohio St. | 4-4 | 65:00 | 4 | 1.73 | 27 | .927 | 0 | 0 | 1 | 2 | 0 | 0 | 0 | 2 |
| 11/04/2022 | Minn. Duluth | 3-2 | 60:15 | 2 | 1.76 | 27 | .928 | 1 | 0 | 0 | 1 | 0 | 0 | 0 | 0 |
| 11/05/2022 | Minn. Duluth | 5-3 | 60:00 | 3 | 1.88 | 23 | .923 | 1 | 0 | 0 | 2 | 0 | 0 | 0 | 0 |
| 11/07/2022 | vs St. Cloud St. | 1-4 | 60:00 | 4 | 2.07 | 15 | .914 | 0 | 1 | 0 | 1 | 0 | 0 | 0 | 0 |
| 11/19/2022 | at Wisconsin | 3-3 | 65:00 | 3 | 2.14 | 40 | .916 | 0 | 0 | 1 | 0 | 0 | 0 | 0 | 0 |
| 11/20/2022 | at Wisconsin | 1-4 | 60:00 | 4 | 2.28 | 36 | .914 | 0 | 1 | 0 | 1 | 0 | 0 | 0 | 0 |
| 11/25/2022 | vs Penn St. | 5-1 | 60:00 | 1 | 2.19 | 26 | .918 | 1 | 0 | 0 | 0 | 0 | 0 | 0 | 0 |
| 11/26/2022 | vs Yale | 3-4 | 60:00 | 4 | 2.31 | 15 | .912 | 0 | 1 | 0 | 0 | 0 | 0 | 0 | 0 |
| MINN | | | 910:15 | 35 | 2.31 | 361 | .912 | 10 | 3 | 2 | 9 | 0 | 0 | 0 | 2 |
| Opponents | | | 910:15 | 65 | 4.28 | 504 | .886 | 3 | 10 | 2 | 12 | 4 | 1 | 0 | 2 |

MINNESOTA 2022-23 STATISTICS: CATEGORY LEADERS



2022-23 Minnesota Women's Ice Hockey Category Leaders All games

Page 1/2
as of Dec 01, 2022

Points

| # | Player | GP | G | A | PTS | SH |
|----|------------------|----|---|----|-----|----|
| 12 | Zumwinkle, Grace | 15 | 9 | 11 | 20 | 84 |
| 9 | Heise, Taylor | 15 | 8 | 11 | 19 | 53 |
| 18 | Murphy, Abbey | 15 | 9 | 7 | 16 | 49 |
| 3 | Skaja, Catie | 15 | 5 | 9 | 14 | 33 |
| 26 | Huber, Ella | 15 | 5 | 8 | 13 | 30 |
| 15 | Hemp, Peyton | 15 | 8 | 4 | 12 | 31 |
| 22 | Boreen, Abigail | 13 | 5 | 5 | 10 | 47 |
| 11 | Bouveng, Josefin | 14 | 5 | 4 | 9 | 29 |
| 21 | Oden, Emily | 15 | 1 | 8 | 9 | 28 |
| 7 | Laitinen, Nelli | 11 | 2 | 6 | 8 | 13 |

Assists

| # | Player | GP | G | A | PTS | SH |
|----|----------------------|----|---|----|-----|----|
| 9 | Heise, Taylor | 15 | 8 | 11 | 19 | 53 |
| 12 | Zumwinkle, Grace | 15 | 9 | 11 | 20 | 84 |
| 3 | Skaja, Catie | 15 | 5 | 9 | 14 | 33 |
| 21 | Oden, Emily | 15 | 1 | 8 | 9 | 28 |
| 26 | Huber, Ella | 15 | 5 | 8 | 13 | 30 |
| 5 | Wethington, Madeline | 15 | 0 | 8 | 8 | 30 |
| 18 | Murphy, Abbey | 15 | 9 | 7 | 16 | 49 |
| 7 | Laitinen, Nelli | 11 | 2 | 6 | 8 | 13 |
| 6 | Ostertag, Gracie | 14 | 0 | 6 | 6 | 18 |
| 13 | Hengler, Crystalyn | 15 | 1 | 5 | 6 | 30 |

Goals

| # | Player | GP | G | A | PTS | SH |
|----|------------------|----|---|----|-----|----|
| 12 | Zumwinkle, Grace | 15 | 9 | 11 | 20 | 84 |
| 18 | Murphy, Abbey | 15 | 9 | 7 | 16 | 49 |
| 9 | Heise, Taylor | 15 | 8 | 11 | 19 | 53 |
| 15 | Hemp, Peyton | 15 | 8 | 4 | 12 | 31 |
| 3 | Skaja, Catie | 15 | 5 | 9 | 14 | 33 |
| 22 | Boreen, Abigail | 13 | 5 | 5 | 10 | 47 |
| 26 | Huber, Ella | 15 | 5 | 8 | 13 | 30 |
| 11 | Bouveng, Josefin | 14 | 5 | 4 | 9 | 29 |
| 29 | Kaiser, Madison | 15 | 3 | 3 | 6 | 21 |
| 28 | Norton, Lizi | 15 | 2 | 5 | 7 | 18 |

Shots

| # | Player | GP | G | A | PTS | SH | SH% |
|----|----------------------|----|---|----|-----|----|------|
| 12 | Zumwinkle, Grace | 15 | 9 | 11 | 20 | 84 | .107 |
| 9 | Heise, Taylor | 15 | 8 | 11 | 19 | 53 | .151 |
| 18 | Murphy, Abbey | 15 | 9 | 7 | 16 | 49 | .184 |
| 22 | Boreen, Abigail | 13 | 5 | 5 | 10 | 47 | .106 |
| 3 | Skaja, Catie | 15 | 5 | 9 | 14 | 33 | .152 |
| 15 | Hemp, Peyton | 15 | 8 | 4 | 12 | 31 | .258 |
| 26 | Huber, Ella | 15 | 5 | 8 | 13 | 30 | .167 |
| 5 | Wethington, Madeline | 15 | 0 | 8 | 8 | 30 | .000 |
| 13 | Hengler, Crystalyn | 15 | 1 | 5 | 6 | 30 | .033 |
| 11 | Bouveng, Josefin | 14 | 5 | 4 | 9 | 29 | .172 |

Power-Play Goals

| # | Player | GP | PPG |
|----|------------------|----|-----|
| 18 | Murphy, Abbey | 15 | 4 |
| 3 | Skaja, Catie | 15 | 2 |
| 9 | Heise, Taylor | 15 | 2 |
| 12 | Zumwinkle, Grace | 15 | 1 |
| 22 | Boreen, Abigail | 13 | 1 |
| 15 | Hemp, Peyton | 15 | 1 |
| 26 | Huber, Ella | 15 | 1 |

Shot Pct.

| # | Player | GP | G | A | PTS | SH | SH% |
|----|------------------|----|---|----|-----|----|------|
| 15 | Hemp, Peyton | 15 | 8 | 4 | 12 | 31 | .258 |
| 18 | Murphy, Abbey | 15 | 9 | 7 | 16 | 49 | .184 |
| 11 | Bouveng, Josefin | 14 | 5 | 4 | 9 | 29 | .172 |
| 26 | Huber, Ella | 15 | 5 | 8 | 13 | 30 | .167 |
| 7 | Laitinen, Nelli | 11 | 2 | 6 | 8 | 13 | .154 |
| 3 | Skaja, Catie | 15 | 5 | 9 | 14 | 33 | .152 |
| 9 | Heise, Taylor | 15 | 8 | 11 | 19 | 53 | .151 |
| 29 | Kaiser, Madison | 15 | 3 | 3 | 6 | 21 | .143 |
| 28 | Norton, Lizi | 15 | 2 | 5 | 7 | 18 | .111 |
| 12 | Zumwinkle, Grace | 15 | 9 | 11 | 20 | 84 | .107 |

2023 NCAA WOMEN'S FROZEN FOUR**March 18-20, 2022 | State College**

Pegula Ice Arena in State College, Pa. is the site for the 2022 NCAA National Collegiate Women's Ice Hockey Championship, hosted by Penn State.

The two semifinal contests will take place on Friday, March 18, while the national championship game is scheduled for Sunday, March 20.

This will be the first time that Penn State and Pegula Arena will host the Women's Frozen Four. It will be the first new Women's Frozen Four site since St. Charles, MO. in 2017.

Criteria for selecting the NCAA Frozen Four host sites includes creating what will be an exceptional experience for the student-athletes, along with adherence to NCAA bid specifications. Specifications can include, but are not limited to, providing optimal facilities; ease of travel to the location and ample lodging; and adherence to NCAA principles, which include providing an atmosphere that is safe and respects the dignity of all attendees.

FUTURE FROZEN FOUR SITES**2023****AMSOIL Arena, Duluth, Minn.****Host: Minnesota Duluth****2024****Whittamore Center, Durham, NH.****Host: University of New Hampshire****2025****Ridder Arena, Minneapolis, Minn.****Host: University of Minnesota****2026****Pegula Ice Arena, State College, Pa.****Host: Penn State****GOPHERS IN THE NCAA TOURNAMENT**

| | |
|-------------------------------------|---------|
| Overall record | 26-13-1 |
| Home games | 15-5-1 |
| Road games | 1-2-0 |
| Neutral-site games | 10-6-0 |
| At the NCAA Frozen Four | 15-9-1 |
| In NCAA national semifinal games | 9-5-0 |
| In NCAA national championship games | 6-3-0 |

Records since 2000-01 season.

GOPHERS IN THE NATIONAL TOURNAMENT

| Year | Opponent | Round | Location | Result |
|------------------------|---------------------------|--------------|-------------------------|---------------|
| March 12, 2022 | Minnesota Duluth | Quarterfinal | Ridder Arena | L, 2-1 |
| March 14, 2020 | Ohio State | Quarterfinal | Ridder Arena | CANCELED |
| March 16, 2019 | Princeton | Quarterfinal | Ridder Arena | W, 5-2 |
| March 22, 2019 | Cornell | Semifinal | Hamden, Conn. | W, 2-0 |
| March 24, 2019 | Wisconsin | Final | Hamden, Conn. | L, 2-0 |
| March 10, 2018 | at Wisconsin | Quarterfinal | Madison, Wis. | L, 4-0 |
| March 11, 2017 | at Minnesota Duluth | Quarterfinal | Duluth, Minn. | W, 1-0 |
| March 17, 2017 | vs. Clarkson | Semifinal | St. Charles, Mo. | L, 4-3 |
| March 12, 2016 | Princeton | Quarterfinal | Ridder Arena | W, 6-2 |
| March 18, 2016 | vs. Wisconsin | Semifinal | Durham, N.H. | W, 3-2 (OT) |
| March 20, 2016 | vs. Boston College | Final | Durham, N.H. | W, 3-1 |
| March 14, 2015 | RIT | Quarterfinal | Ridder Arena | W, 6-2 |
| March 20, 2015 | Wisconsin | Semifinal | Ridder Arena | W, 3-1 |
| March 22, 2015 | Harvard | Final | Ridder Arena | W, 4-1 |
| March 15, 2014 | Boston University | Quarterfinal | Ridder Arena | W, 5-1 |
| March 21, 2014 | vs. Wisconsin | Semifinal | Hamden, Conn. | W, 5-3 |
| March 23, 2014 | vs. Clarkson | Final | Hamden, Conn. | L, 5-4 |
| March 16, 2013 | North Dakota | Quarterfinal | Ridder Arena | W, 3-2 (3OT) |
| March 22, 2013 | Boston College | Semifinal | Ridder Arena | W, 3-2 (OT) |
| March 22, 2013 | Boston University | Final | Ridder Arena | W, 6-3 |
| March 10, 2012 | North Dakota | Quarterfinal | Ridder Arena | W, 5-1 |
| March 16, 2012 | vs. Cornell | Semifinal | Duluth, Minn. | W, 3-1 |
| March 18, 2012 | vs. Wisconsin | Final | Duluth, Minn. | W, 4-2 |
| March 12, 2011 | at Boston College | Quarterfinal | Boston, Mass. | L, 4-1 |
| March 13, 2010 | Clarkson | Quarterfinal | Ridder Arena | W, 3-2 (OT) |
| March 19, 2010 | Minnesota Duluth | Semifinal | Ridder Arena | L, 3-2 |
| March 14, 2009 | Boston College | Quarterfinal | Ridder Arena | W, 4-3 |
| March 20, 2009 | vs. Mercyhurst | Semifinal | Boston, Mass. | L, 5-4 |
| March 15, 2008 | Wisconsin | Quarterfinal | Ridder Arena | L, 3-2 (OT) |
| March 17, 2006 | Princeton | Quarterfinal | Ridder Arena | W, 4-0 |
| March 24, 2006 | New Hampshire | Semifinal | Mariucci Arena | W, 5-4 |
| March 26, 2006 | Wisconsin | Final | Mariucci Arena | L, 3-0 |
| March 18, 2005 | Providence | Quarterfinal | Ridder Arena | W, 6-1 |
| March 25, 2005 | vs. Dartmouth | Semifinal | Durham, N.H. | W, 7-2 |
| March 27, 2005 | vs. Harvard | Final | Durham, N.H. | W, 4-3 |
| March 26, 2004 | Dartmouth | Semifinal | Providence, R.I. | W, 5-1 |
| March 28, 2004 | Harvard | Final | Providence, R.I. | W, 6-2 |
| March 21, 2003 | vs. Harvard | Semifinal | Duluth, Minn. | L, 6-1 |
| March 23, 2003 | vs. Dartmouth | Third-Place | Duluth, Minn. | L, 4-2 |
| March 22, 2002 | Brown | Semifinal | Mariucci Arena | L, 2-1 |
| March 24, 2002 | Niagara | Third-Place | Mariucci Arena | T, 2-2 |
| March 24, 2000* | vs. Minn. Duluth | Semifinal | Boston, Mass. | W, 3-2 |
| March 25, 2000* | Brown | Final | Boston, Mass. | W, 4-2 |
| March 26, 1999* | New Hampshire | Semifinal | Mariucci Arena | L, 3-2 (OT) |
| March 27, 1999* | Brown | Third-Place | Mariucci Arena | W, 3-2 |
| March 20, 1998* | vs. New Hampshire | Semifinal | Boston, Mass. | L, 4-1 |
| March 21, 1998* | Northeastern | Third-Place | Boston, Mass. | L, 4-0 |

* ACHA National Tournament | 7 national championships in **bold**

AWCHA National Tournament from 1998-2000; NCAA took over the national tournament in 2001. From 2001 through 2004, the tournament consisted of a Final Four. The tournament expanded to eight teams in 2005.

RIDDER ARENA: HOME OF GOPHER WOMEN'S HOCKEY

SERIES RECORDS AT RIDDER ARENA

| OPPONENT | RECORD | LAST |
|-------------------|------------------|------------------------|
| Bemidji State | 42-5-3 | W, 4-1, 10/8/22 |
| Boston College | 3-0-1 | W, 3-2 (OT), 3/22/13 |
| Boston University | 4-0-0 | W, 5-2, 10/4/14 |
| Brown | 5-0-0 | W, 3-0, 11/13/05 |
| Clarkson | 3-0-0 | W, 3-2 (OT), 3/13/10 |
| Colgate | 4-0-0 | W, 8-1, 9/28/19 |
| Connecticut | 1-0-0 | W, 3-0, 10/7/05 |
| Dartmouth | 1-1-0 | W, 7-3, 2/8/04 |
| Harvard | 6-0-0 | W, 4-1, 3/22/15 |
| Lindenwood | 2-0-0 | W, 6-2 (10/1/16) |
| Maine | 1-0-0 | W, 5-2, 10/6/06 |
| Mercyhurst | 4-0-0 | W, 5-0, 9/29/18 |
| Merrimack | 1-1-0 | W, 4-1, 10/1/17 |
| Minnesota Duluth | 35-11-4 | W, 5-3, 11/5/22 |
| Minnesota State | 42-2-0 | W, 9-4, 10/15/22 |
| New Hampshire | 2-1-0 | W, 6-1, 11/19/11 |
| Niagara | 2-0-0 | W, 3-1, 11/12/06 |
| North Dakota | 29-4-1 | W, 6-2, 2/11/17 |
| Northeastern | 1-0-0 | W, 5-3, 10/5/07 |
| Ohio State | 36-12-4 | L, 3-2 (OT), 3/6/22 |
| Penn State | 1-0-0 | W, 8-0, 10/3/14 |
| Princeton | 5-0-0 | W, 5-2, 3/16/19 |
| RIT | 3-0-0 | W, 7-1, 11/13/21 |
| Robert Morris | 3-1-0 | W, 5-0, 12/8/18 |
| St. Cloud State | 48-0-2 | W, 2-1, 10/22/22 |
| St. Lawrence | 2-1-0 | W, 5-1, 1/6/15 |
| St. Thomas | 4-0-0 | W, 5-1, 2/26/22 |
| Syracuse | 3-0-0 | W, 4-0, 10/1/11 |
| Union | 1-0-0 | W, 6-1, 9/30/11 |
| Vermont | 1-1-0 | W, 6-1, 1/13/18 |
| Wayne State | 1-0-0 | W, 1-0, 10/9/10 |
| Wisconsin | 23-20-8 | W, 4-3, 1/22/22 |
| Yale | 4-0-0 | W, 4-1, 1/5/20 |
| Overall | 324-60-23 | W, 5-3, 11/5/22 |

YEAR-BY-YEAR AT RIDDER ARENA

| SEASON | OVERALL | WCHA |
|--------------------|-------------------------|-------------------------|
| 2002-03 | 10-2-1 (.808) | 8-2-1 (.773) |
| 2003-04 | 16-3-0 (.842) | 11-2-0 (.846) |
| 2004-05 | 18-0-1 (.974) | 12-0-1 (.923) |
| 2005-06 | 15-7-0 (.681) | 8-5-0 (.615) |
| 2006-07 | 16-6-0 (.727) | 10-4-0 (.714) |
| 2007-08 | 16-2-3 (.761) | 11-1-2 (.857) |
| 2008-09 | 18-3-2 (.826) | 11-1-2 (.857) |
| 2009-10 | 20-3-1 (.854) | 12-1-1 (.893) |
| 2010-11 | 16-4-1 (.786) | 10-3-1 (.750) |
| 2011-12 | 18-1-2 (.905) | 11-1-2 (.857) |
| 2012-13 | 23-0-0 (1.000) | 14-0-0 (1.000) |
| 2013-14 | 16-1-1 (.917) | 11-1-1 (.885) |
| 2014-15 | 19-1-3 (.891) | 10-1-3 (.821) |
| 2015-16 | 19-1-1 (.929) | 13-0-1 (.964) |
| 2016-17 | 15-2-3 (.825) | 11-0-3 (.893) |
| 2017-18 | 13-6-2 (.667) | 6-4-2 (.583) |
| 2018-19 | 17-4-0 (.810) | 9-3-0 (.750) |
| 2019-20 | 14-3-1 (.806) | 8-2-1 (.773) |
| 2020-21 | 4-5-1 (.400) | 4-5-1 (.400) |
| 2021-22 | 15-6-0 (.714) | 13-5-0 (.722) |
| 2022-23 | 6-0-0 (1.000) | 6-0-0 (1.000) |
| 21st Season | 324-60-23 (.794) | 209-41-22 (.765) |



RIDDER ARENA: HOME OF GOPHER WOMEN'S HOCKEY

The first-ever facility built specifically for women's hockey, Ridder Arena is home to the seven-time national champion Gopher women's hockey program. Since its opening in 2002, Ridder Arena has been a regular host of WCHA Championships, NCAA Regionals, and NCAA Frozen Fours. A new center-hung video board was installed during the 2011-12 season.

- Site of the 2010, 2013, 2015, and 2018 NCAA Women's Frozen Fours
- First facility in the nation dedicated solely to women's ice hockey
- Seating capacity of 3,400, including a club room with 210 seats and nine suites with seating for 14 apiece
- Houses 11 locker rooms, a training room, and full weightroom
- Ice sheet size is 200' x 85'
- Built adjacent to 10,000-seat Mariucci Arena, connected via tunnels
- Practice site for several visiting NHL teams, men's college programs and the IIHF Under-18 Worlds pre-tournament camp
- Hosted the Minnesota Girls State Hockey Tournament
- First game on October 19, 2002 drew 3,239 fans
- Set an attendance record of 3,400 with its first sold-out crowd on Dec. 1, 2012
- Has hosted seven sold-out Gopher women's hockey games
- Hosted 15 WCHA conference championships (2004, 2005, 2006, 2007, 2009, 2010, 2011, 2013, 2016, 2017, 2018, 2019, 2020, 2021, and 2022)

TOP RIDDER ARENA GOPHER WOMEN'S HOCKEY CROWDS

| ATTENDANCE | DATE | OPPONENT | RESULT | NOTES |
|------------|----------|-------------------|-------------|---------------------------|
| T1. 3,400 | 1/19/19 | Wisconsin | W, 3-1 | --- |
| T1. 3,400 | 2/18/17 | Wisconsin | T, 1-1 (OT) | --- |
| T1. 3,400 | 3/22/15 | Harvard | W, 4-1 | Sixth national title |
| T1. 3,400 | 3/20/15 | Wisconsin | W, 3-1 | Frozen Four semifinal |
| T1. 3,400 | 3/24/13 | Boston University | W, 6-3 | Fifth national title |
| T1. 3,400 | 3/22/13 | Boston College | W, 3-2 (OT) | Frozen Four semifinal |
| T1. 3,400 | 12/1/12 | Wisconsin | W, 4-1 | First Ridder sellout |
| 8. 3,288 | 2/19/16 | Wisconsin | W, 4-0 | --- |
| 9. 3,283 | 11/2/19 | Wisconsin | W, 4-2 | --- |
| 10. 3,251 | 1/6/07 | Wisconsin | L, 4-1 | --- |
| 11. 3,239 | 10/19/02 | St. Cloud State | W, 8-0 | First game at Ridder |
| 12. 3,196 | 1/18/19 | Wisconsin | L, 2-1 | --- |
| 13. 3,150 | 11/17/13 | North Dakota | L, 3-2 | End of 62-game win streak |