

# GOPHER WOMEN'S HOCKEY

Seven-Time National Champions · 2000, 2004, 2005, 2012, 2013, 2015, 2016



## 2022-23 GOPHER HOCKEY SCHEDULE

Record: 7-0-1

WCHA Record: 7-0-1 (SoW: 0), 22 points (2nd)

DATE	OPPONENT	TIME (CT)/RESULT
10/7	<b>Bemidji State</b>	<b>W, 6-0</b>
10/8	<b>Bemidji State</b>	<b>W, 4-1</b>
10/14	at Minnesota State	W, 11-0
10/15	<b>Minnesota State</b>	<b>W, 9-4</b>
10/21	at St. Cloud State	W, 4-2
10/22	<b>St. Cloud State</b>	<b>W, 2-1</b>
10/28	at #1 Ohio State	W, 4-2
10/29	at #1 Ohio State	T, 4-4
11/4	<b>#5 Minnesota Duluth</b>	<b>6:00 pm</b>
11/5	<b>#5 Minnesota Duluth</b>	<b>2:00 pm</b>
11/7	at St. Cloud State	7:00 pm
11/19	at #3 Wisconsin	2:00 pm
11/20	at #3 Wisconsin	2:00 pm
11/25	vs. #11 Penn State*	6:00 pm
11/26	vs. BU/ #8 Yale*	TBD
12/2	<b>Minnesota State</b>	<b>6:00 pm</b>
12/3	at Minnesota State	2:00 pm
12/9	<b>St. Cloud State</b>	<b>6:00 pm</b>
12/10	at St. Cloud State	3:00 pm
1/6	<b>Merrimack ^</b>	<b>6:00 pm</b>
1/7	<b>New Hampshire ^</b>	<b>4:30 pm</b>
1/13	<b>St. Thomas</b>	<b>6:00 pm</b>
1/14	<b>St. Thomas</b>	<b>2:00 pm</b>
1/20	at Bemidji State	3:00 pm
1/21	at Bemidji State	2:00 pm
1/27	at #5 Minnesota Duluth	3:00 pm
1/28	at #5 Minnesota Duluth	3:00 pm
2/3	<b>#2 Ohio State</b>	<b>6:00 pm</b>
2/4	<b>#2 Ohio State</b>	<b>2:00 pm</b>
2/10	<b>#3 Wisconsin</b>	<b>6:00 pm</b>
2/11	<b>#3 Wisconsin</b>	<b>7:30 pm</b>
2/17	at St. Thomas	6:00 pm
2/18	at St. Thomas	6:00 pm

Home games in **BOLD** at Ridder Arena.

All times Central.

Rankings reflect USCHO.com poll at time of game.

\* Las Vegas Showcase

^ East/West Showcase

## NO. 1 MINNESOTA GOLDEN GOPHERS

2022-23 Record (WCHA)..... 7-0-1 (7-0-1)  
 National Ranking (USCHO/USA Today)..... 1/1  
 Head Coach..... Brad Frost  
 HC Record ..... 449-93-37 (16th Season)  
 HC Record Against Minnesota Duluth ..... 46-16-6



## NO. 5 MINNESOTA DULUTH BULLDOGS

2022-23 Record (WCHA)..... 7-3-0 (3-3-0)  
 National Ranking (USCHO/USA Today)..... 5/5  
 Head Coach..... Maura Crowell  
 HC Record ..... 134-94-21 (8th Season)  
 HC Record Against Minnesota ..... 8-21-3



### GAME ONE INFORMATION

**Game 1: Minnesota vs. Minnesota Duluth**

**Date:** Friday, Nov. 4, 2022

**Time:** 6:00 p.m. CT

**Location:** Ridder Arena

**Stream:** B1G+ (\$)

**Audio:** GopherSports.com

**Twitter:** @GopherWHockey

**Facebook:** Facebook.com/GopherWHockey

### GAME TWO INFORMATION

**Game 2: Minnesota vs. Minnesota Duluth**

**Date:** Saturday, Nov. 5, 2022

**Time:** 2:00 p.m. CT

**Location:** Ridder Arena

**Stream:** B1G+ (\$)

**Audio:** GopherSports.com

**Twitter:** @GopherWHockey

**Facebook:** Facebook.com/GopherWHockey

The No. 1 Golden Gopher women's hockey team returns home to take on No. 5 Minnesota Duluth on Friday and Saturday at Ridder Arena. Friday's puck drop is scheduled for 6:00 pm and Saturday's is slated for 2:00 pm.

### Besting the Buckeyes

Last weekend, the Gophers travelled to Columbus, Ohio and took four-of-six possible conference points from the then-top-ranked Ohio State Buckeyes. Minnesota tallied three goals in the third period to win 4-2 and hand the Buckeyes their first loss of the season on Friday. On Saturday, neither team could find an overtime winner, resulting in the first tie of the season for the Gophers. Ohio State earned the extra point in the shootout. Taylor Heise and Abbey Murphy each tallied two goals in the series. Goaltender Skylar Vetter recorded 70 saves over the weekend, including a career-high 43 on Friday, to move her record this season to 5-0-1. The Gophers moved to 18-2-2 in their last 22 road contests with both losses coming in overtime. Both Vetter and Heise were honored as WCHA weekly award winners on Monday.

### Scouting the Bulldogs

No. 5 Minnesota Duluth (7-3-0) is coming off back-to-back series against Ohio State and Wisconsin. After getting swept in Columbus, the Bulldogs earned a split against the Badgers in Duluth. Prior to those series, UMD has recorded a victory over Minnesota State twice, LIU twice, Penn State and St. Lawrence. The Bulldogs are led by fifth-year forward Gabbie Hughes (3g-11a), fifth-year defender Ashton Bell (6g-4a) and senior forward Mannon McMahon (3g-5a). Fifth-year goaltender Emma Soderberg has started all 10 games this season, posting a 7-3-0 record

**2022-23 SITUATIONAL RECORDS**

Overall record	7-0-1
In home games	4-0-0
In road games	3-0-1
In neutral-site games	0-0-0
Against USCHO.com poll ranked opponents	1-0-1
Against WCHA opponents	7-0-1
Against ECAC Hockey teams	0-0-0
Against CHA teams	0-0-0
Against Hockey East teams	0-0-0
In non-conference games	0-0-0
In overtime games	0-0-1
In day games (4:01 p.m. or earlier)	5-0-1
In night games	2-0-0
Minnesota scores first	6-0-1
Opponent scores first	1-0-0
Minnesota leads at 1st intermission	6-0-1
Minnesota trails at 1st intermission	0-0-0
Tied at 1st intermission	1-0-0
Minnesota leads at 2nd intermission	4-0-1
Minnesota trails at 2nd intermission	1-0-0
Tied at 2nd intermission	2-0-0
Minnesota leads in shots	6-0-0
Minnesota trails in shots	1-0-0
Shots are even	0-0-1
Minnesota has 0-19 shots	0-0-0
Minnesota has 20-29 shots	0-0-0
Minnesota has 30-39 shots	3-0-1
Minnesota has 40-49 shots	3-0-0
Minnesota has 50 or more shots	1-0-0
Minnesota allows 0-19 shots	3-0-0
Minnesota allows 20-29 shots	3-0-0
Minnesota allows 30-39 shots	0-0-1
Minnesota allows 40-49 shots	1-0-0
Minnesota allows 50 or more shots	0-0-0
Minnesota scores on power play	3-0-1
Minnesota is scoreless on power play	3-0-0
Opponent scores on power play	2-0-1
Opponent is scoreless on power play	5-0-0
Scoring 1 goal	0-0-0
Scoring 2 goals	1-0-0
Scoring 3 goals	0-0-0
Scoring 4 goals	3-0-1
Scoring 5 goals	0-0-0
Scoring 6 goals	1-0-0
Scoring 7 or more goals	2-0-0
Allowing 1 goal	2-0-0
Allowing 2 goals	2-0-0
Allowing 3 goals	0-0-0
Allowing 4 goals	1-0-1
Allowing 5 goals	0-0-0
Allowing 6 or more goals	0-0-0
In one-goal games	1-0-0
In two-goal games	2-0-0
In three-goal games	1-0-0
After a loss	0-0-0
On Monday	0-0-0
On Tuesday	0-0-0
On Wednesday	0-0-0
On Thursday	0-0-0
On Friday	4-0-0
On Saturday	3-0-1
On Sunday	0-0-0
In September	0-0-0
In October	7-0-1
In November	0-0-0
In December	0-0-0
In January	0-0-0
In February	0-0-0
In March	0-0-0
Current streak	T1
Current home streak	W4
Current road streak	T1

with 1.52 GAA and a .928 Sv%.

**Rivalry Week**

Last season, the Gophers and Bulldogs split the season series with three wins apiece. The two WCHA rivals split both regular season series in Duluth and Minneapolis. The Gophers defeated Minnesota Duluth 5-1, the largest margin of victory in the season series, to advance to the WCHA Final Faceoff Championship on March 5. The Bulldogs flipped the script with a 2-1 win to advance to the Frozen Four one week later. Minnesota leads the all-time series 66-32-10 with only three regulation losses in the last 24 matchups.

**On Top Again**

Minnesota, the only unbeaten team in the WCHA, moved into first place in both national polls this week. The Gophers were ranked first from Jan. 31 – March 7 last season. The Maroon and Gold received 18/20 first place votes in the latest USCHO national poll.

**Zumwinkle Climbs the Ranks**

Fifth-year forward Grace Zumwinkle currently sits at 91 career goals, good for eighth in program history. She trails fellow-Olympian Dani Cameranesi (93) by two goals for seventh. The Excelsior, Minn., native has is tied for the team lead in points (14) and has notched a point in all eight games this season – the only Gopher to do so. After recording 15 shots over the weekend, Zumwinkle now sits in second place in program history in career shots with 667.

**WCHA Monthly Honors**

Two Gophers were honored with their first WCHA monthly awards after strong performances throughout October. Sophomore Abbey Murphy was named WCHA Forward of the Month after recording 14 points (8g-6a) with four power-play goals. Her 1.75 points-per-game is tied with Zumwinkle for first in the conference. Sophomore Skylar Vetter was named WCHA Goaltender of the Month after

posting a 5-0-1 record with a 1.57 GAA and a .935 Sv%. Vetter also notched her second-career shutout on Oct. 14 at Minnesota State.

**Scoring Milestones on the Horizon**

Fifth-year forward Taylor Heise continues to climb the program ranks as Minnesota's active career scoring leader with 171 career points (71g-100a) in 142 career games. Fifth-year forwards Abigail Boreen (43g-55a), Emily Oden (28g-67a) and Catie Skaja (36g-53a) are the closest active skaters to the century mark.

**Behind the Bench**

Head coach Brad Frost is back for his 16th season as the bench boss of Gopher Women's Hockey. Under Frost's guidance, the program has posted a 449-93-36 record with four national titles and seven conference titles. Natalie Darwitz is back behind the bench for her fourth season as assistant coach and is joined by newly promoted Jessica Scott, who served as the program's Director of Operations for the last three seasons.

**Quest for Eighth National Title**

Minnesota has won seven national championships (2000, 2004, 2005, 2012, 2013, 2015, and 2016) and looks for a historic eighth title national crown in 2022-23.

2022-23 GOPHER WOMEN'S HOCKEY SUPERLATIVES

FASTEST GOAL SCORED IN A PERIOD

Gophers	0:18 of the third period (W, 4-2, at Ohio State, Oct. 28, 2022)
Opponent	0:24 of the second period (W, 9-4, vs. Minnesota State, Oct. 15, 2022)

FASTEST FIRST GOAL SCORED IN A GAME

Gophers	1:05 of the first period (W, 4-2, at St. Cloud State, Oct. 21, 2022)
Opponent	00:54 of the first period (W, 2-1, vs. St. Cloud State, Oct. 22, 2022)

LATEST GOAL SCORED IN A PERIOD

Gophers	19:35 of the first period (W, 11-0, at Minnesota State, Oct. 14, 2022)
Opponent	19:51 of the second period (W, 4-2, at St. Cloud State, Oct. 21, 2022)

MOST GOALS SCORED IN A PERIOD

Gophers	5, (third period, W, 11-0, at Minnesota State, Oct. 14, 2022)
Opponent	3, (third period, T, 4-4, at Ohio State, Oct. 29, 2022)
Combined	5, (3X, last - third period, T, 4-4, at Ohio State, Oct. 29, 2022)

MOST GOALS SCORED IN A GAME

Gophers	11, (W, 11-0, at Minnesota State, Oct. 14, 2022)
Opponent	4, (2X, last - T, 4-4, at Ohio State, Oct. 29, 2022)
Combined	13, (W, 9-4, vs. Minnesota State, Oct. 15, 2022)

POINT STREAKS (2022-23)

Player	Games	Start Date
Zumwinkle, Grace	8	10/7/22
Heise, Taylor	2	10/28/22
Hemp, Peyton	2	10/28/22
Murphy, Abbey	2	10/28/22
Skaja, Catie	2	10/28/22

2022-23 GOPHER SCORING MARKS

MULTI-POINT GAMES

Murphy, Abbey	5
Heise, Taylor	4
Boreen, Abigail	3
Skaja, Catie	3
Zumwinkle, Grace	3
Bouveng, Josefin	2
Hemp, Peyton	2
Laitinen, Nelli	2
Oden, Emily	2
Wethington, Madeline	2
Huber, Ella	1
Kaiser, Madison	1
Norcross, Savannah	1
Norton, Lizi	1
Ostertag, Gracie	1

MINNESOTA SINGLE GAME RECORDS

Goals	5 - 2x, MR: Brandt vs. BSU (11/14/15)
Assists	6 - 2x, MR: Brandt vs. SCSU (12/5/14)
Points	7 - 3x, MR: S. Potomak vs. MSU (11/27/15)
S.O.G	14 - 2x, MR: Cameranesi vs. UMD (3/4/17)
PPG	3 - 3x, MR: Ross vs. OSU (11/4/05)
SHG	2 - 5x, MR: Ross vs. UMD (10/26/07)
+/-	+8 - Baldwin & Wolfe vs. SCSU (10/10/15)
Pen.	6 - Stephens vs. SCSU (10/16/04)
PIM	19 - C. Kennedy vs. MSU (1/15/00)
Saves	51 - 2x, MR: Raty (3/5/11)

MULTI-GOAL GAMES

Murphy, Abbey	3
Bouveng, Josefin	1
Boreen, Abigail	1
Hemp, Peyton	1
Zumwinkle, Grace	1

MINNESOTA SINGLE SEASON RECORDS

Goals	49	Muzerall (1999-00)
Assists	72	Darwitz (2004-05)
Points	114	Darwitz (2004-05)
Points by Rookie	82	Brandt (2012-13)
Goals by Rookie	39	M. Lamoreaux (2008-09)
Points by Defender	57	Bozek (2012-13)
Goals by Defender	20	Bozek (2012-13)
Power-Play Goals	16	Stephens (2004-05), Muzerall (1999-00)
Shorthanded Goals	7	Wendell (2004-05)
Game-Winning Goals	10	West (2009-10)

GOPHERS IN THE NATIONAL RANKINGS

Points Per Game	GP	Points PPG
T3. Grace Zumwinkle	8	14 1.75
T3. Abbey Murphy	8	14 1.75

Goals Per Game	GP	Goals GPG
T1. Abbey Murphy	8	8 1.00
T9. Grace Zumwinkle	8	7 0.88

Power Play Goals	GP	PPG
T2. Abbey Murphy	8	4

Game Winning Goals	GP	GWG
T1. Grace Zumwinkle	8	4

Goals Against Average	GP	GAA
17. Skylar Vetter	7	1.57

Save Percentage	GP	Sv%
18. Skylar Vetter	7	.935

Power Play %	Goals/Attempts	Pct.
9. Minnesota	7/31	.226

Penalty Kill %	Goals Allowed/Att.	Pct.
16. Minnesota	4/26	.846

Goals Per Game	Games	Goals GPG
2. Minnesota	8	44 5.50

Scoring Defense	Games	GA	GAPG
10. Minnesota	8	14	1.75

2022-23 STAT LEADERS

Goals	Murphy, 8
Assists	Heise/G.Zumwinkle, 7
Points	Murphy/G. Zumwinkle, 14
Shots	G. Zumwinkle, 49
Shot %	Murphy, .308
+/-	M.Wethington, +13
Penalties	Murphy, 5
PIM	Murphy, 10
Power-play Goals	Murphy, 4
Shorthanded Goals	Bouveng/Heise/Murphy, 1
Game-Winning Goals	G. Zumwinkle, 4
Goals-Against-Average	Vetter, 1.57
Save Percentage	Vetter, .935
Shutouts	Pahl/Vetter, 1

2022-23 GOPHER AWARD WINNERS

WCHA WEEKLY/MONTHLY AWARDS

WCHA Forward of the Week - Grace Zumwinkle (Oct. 17)  
WCHA Goalie of the Week - Skylar Vetter (Oct. 17)

NATIONAL AWARDS

## 2022-23 WCHA REGULAR-SEASON STANDINGS

Team	WCHA				Overall				Pts%
	Pts	GP	W-L-T	SW	GF-GA	GP	W-L-T		
1. Ohio State	25	10	8-1-1	1	39-23	10	8-1-1		.833
<b>2. Minnesota</b>	<b>22</b>	<b>8</b>	<b>7-0-1</b>	<b>0</b>	<b>44-14</b>	<b>8</b>	<b>7-0-1</b>		<b>0.917</b>
3. Wisconsin	21	8	7-1-0	0	42-9	12	10-2-0		.875
4. Minn. State	9	10	3-7-0	0	19-34	10	3-7-0		.300
5. UMD	8	6	3-3-0	0	13-12	10	7-3-0		.444
6. SCSU	7	8	2-6-0	0	17-26	10	4-6-0		.292
7. Bemidji State	3	8	1-7-0	0	6-38	12	3-8-1		.125
8. St. Thomas	0	6	0-6-0	0	3-27	8	1-7-0		.000

## USCHO.COM DIVISION I WOMEN'S POLL

Week 7 Poll: October 31, 2022

Rk.	Team (1st pl. votes)	Record	Pts.	Last Rk.
<b>1.</b>	<b>Minnesota (18)</b>	<b>7-0-1</b>	<b>298</b>	<b>2</b>
2.	Ohio State (1)	8-1-1	278	1
3.	Wisconsin	10-2-0	242	3
4.	Quinnipiac (1)	9-0-0	231	7
5.	Minnesota Duluth	7-3-0	226	5
6.	Colgate	10-1-0	211	4
7.	Northeastern	8-1-1	182	6
8.	Yale	2-0-0	145	9
9.	Cornell	3-1-0	132	8
10.	Clarkson	10-1-1	122	10
11.	Penn State	7-4-1	95	12
12.	Providence	7-2-1	92	13
13.	Vermont	5-4-1	54	14
14.	Princeton	0-2-0	44	10
15.	Boston College	6-3-1	31	15

Others receiving votes: St. Lawrence 11, Harvard 3, Connecticut 2, Maine 1

## USA TODAY/USA HOCKEY MAGAZINE POLL

Week 7 Poll: November 1, 2022

Rk.	Team (1st pl. votes)	Pts.	Last Rk.	Record
<b>1.</b>	<b>Minnesota (17)</b>	<b>283</b>	<b>2</b>	<b>7-0-1</b>
2.	Ohio State (1)	264	1	8-1-1
3.	Wisconsin	233	3	10-2-0
4.	Quinnipiac (1)	221	7	9-0-0
5.	Minnesota Duluth	204	6	7-3-0
6.	Colgate	187	4	10-1-0
7.	Northeastern	181	5	8-1-1
8.	Yale	152	8	2-0-0
9.	Cornell	129	10	3-1-0
10.	Clarkson	116	11	10-1-1
11.	Penn State	87	12	7-4-1
12.	Providence	73	13	7-2-1
13.	Princeton	55	10	0-2-0
14.	Vermont	45	14	5-4-1
15.	Boston College	28	15	6-3-1

Others receiving votes: St. Lawrence 5, Harvard 3, Connecticut 2, Maine 2

## THE LAST TIME MINNESOTA...

Won at home.....vs. St. Cloud State (W, 2-1), Oct. 22, 2022  
 Lost at home.....vs. Minnesota Duluth (L, 2-1), March 12, 2022  
 Tied at home.....vs. Wisconsin (T, 2-2, OT), Feb. 6, 2021  
 Won on the road.....at Ohio State (W, 4-2), Oct. 28, 2022  
 Lost on the road.....at Ohio State (L, 2-1, OT), Jan. 28, 2022  
 Tied on the road.....at Ohio State (T, 4-4), Oct. 29, 2022  
 Won at a neutral site.....vs. Mercyhurst at Nashville, Tenn. (W, 4-0), Nov. 26, 2021  
 Lost at a neutral site.....vs. Colgate at Nashville, Tenn. (L, 2-1), Nov. 27, 2021  
 Tied at a neutral site.....vs. Boston College at Nashville, Tenn. (T, 2-2, OT), Nov. 29, 2019  
 Swept a regular-season home series.....vs. Bemidji State (W, 6-0; W, 4-1), Oct. 7-8, 2022  
 Was swept in a regular-season home series.....vs. Ohio State (L, 4-2; L, 4-1), Oct. 1-2, 2021  
 Swept a regular-season road series.....at Bemidji State (W, 5-2; W, 3-2), Oct. 29-30, 2021  
 Was swept in a regular-season road series.....at Wisconsin (L, 5-0; L, 6-3), Jan. 15-16, 2021  
 Won a WCHA regular-season game.....at Ohio State (W, 4-2), Oct. 28, 2022  
 Lost a WCHA regular-season game.....at Ohio State (L, 2-1, OT), Jan. 28, 2022  
 Tied a WCHA regular-season game.....at Ohio State (T, 4-4), Oct. 29, 2022  
 Won a non-conference game.....vs. Minnesota Duluth (W, 5-1), March 5, 2022  
 Lost a non-conference game.....vs. Minnesota Duluth (L, 2-1), March 12, 2022  
 Tied a non-conference game.....vs. Boston College (T, 2-2, OT), Nov. 29, 2019  
 Won in overtime.....at Robert Morris (W, 4-3, OT), Oct. 11, 2019  
 Lost in overtime.....vs. Ohio State (L, 3-2, OT), March 6, 2022  
 Won a shootout.....at Wisconsin (T, 2-2, OT; SO-W, 3-2), Dec. 4, 2021  
 Lost a shootout.....at Ohio State (T, 4-4, OT; SO-L, 2-1), Oct. 29, 2022  
 Defeated a USCHO-ranked opponent.....at No. 1 Ohio State (W, 4-2), Oct. 28, 2022  
 Scored in first 2:00.....A. Murphy (1:05) at St. Cloud State (W, 4-2), Oct. 21, 2022  
 Allowed a goal in first 2:00.....E. Gentry (0:54) vs. St. Cloud St. (W, 2-1), Oct. 22, 2022  
 Shut out an opponent.....at Minnesota State (W, 11-0), Oct. 14, 2022  
 Was shut out.....at Wisconsin (L, 5-0), Jan. 15, 2021  
 Scored one goal.....vs. Minnesota Duluth (L, 2-1), March 12, 2022  
 Scored two goals.....vs. St. Cloud State (W, 2-1), Oct. 22, 2022  
 Scored three goals.....at Wisconsin (W, 3-2), Dec. 3, 2021  
 Scored four goals.....at Ohio State (T, 4-4), Oct. 29, 2022  
 Scored five goals.....vs. Minnesota Duluth (W, 5-1), March 5, 2022  
 Scored six goals.....vs. Bemidji State (W, 6-0), Oct. 7, 2022  
 Scored seven goals.....vs. St. Thomas (W, 7-1), Feb. 19, 2022  
 Scored eight goals.....at St. Thomas (W, 8-2), Jan. 9, 2022  
 Scored nine goals.....vs. Minnesota State (W, 9-4), Oct. 15, 2022  
 Scored 10 or more goals.....at Minnesota State (W, 11-0), Oct. 14, 2022  
 Allowed one goal.....vs. St. Cloud State (W, 2-1), Oct. 22, 2022  
 Allowed two goals.....at St. Cloud State (W, 4-2), Oct. 21, 2022  
 Allowed three goals.....vs. Ohio State (L, 3-2), March 6, 2022  
 Allowed four goals.....at Ohio State (T, 4-4), Oct. 29, 2022  
 Allowed five goals.....vs. Minnesota State (L, 5-4, OT), Jan. 15, 2022  
 Allowed six goals.....at Wisconsin (L, 6-3), Jan. 16, 2021  
 Allowed seven goals.....at Minnesota Duluth (L, 7-1), Feb. 17, 2007  
 Allowed eight goals.....at Wisconsin (L, 8-2), Dec. 4, 2016  
 Allowed nine or more goals.....vs. Beatrice Aeros (L, 9-0), Jan. 31, 1999  
 Scored one power-play goal.....(1/5) at Ohio State (T, 4-4), Oct. 29, 2022  
 Scored two power-play goals.....(2/6) vs. Bemidji State (W, 6-0), Oct. 7, 2022  
 Scored three power-play goals.....(3/5) at Minnesota State (W, 11-0), Oct. 14, 2022  
 Scored four or more power-play goals.....(4/5) vs. Bemidji State (W, 7-1), Nov. 15, 2019  
 Allowed one power-play goal.....(1/2) at Ohio State (W, 4-2), Oct. 28, 2022  
 Allowed two power-play goals.....(2/4) at Ohio State (T, 4-4), Oct. 29, 2022  
 Allowed three power-play goals.....(3/6) vs. North Dakota (W, 6-3), Jan. 12, 2013  
 Allowed four or more power-play goals.....(4/8) vs. Ohio State (W, 9-5), Nov. 4, 2005  
 Scored a shorthanded goal.....T. Heise at Ohio State (T, 4-4), Oct. 29, 2022  
 Allowed a shorthanded goal.....at St. Thomas (L, Bianchi), (W, 8-2), Jan. 9, 2022  
 Scored an empty-net goal.....E. Oden vs. Bemidji State (W, 4-1), Oct. 8, 2022  
 Allowed an empty-net goal.....vs. Ohio State (Levis) (L, 4-2), Oct. 1, 2021  
 Scored a hat trick.....J. Bouveng vs. Minnesota State (W, 9-4), Oct. 15, 2022  
 Scored a natural hat trick.....A. Potomak vs. Minnesota Duluth (W, 5-0), Jan. 31, 2020  
 Allowed a hat trick.....at Bemidji State (Hunt), (W, 6-3) Feb. 8, 2020  
 Individual scored four goals.....Brandt vs. St. Cloud State, Oct. 10, 2015  
 Individual scored five or more goals.....Brandt vs. Bemidji State, Nov. 14, 2015  
 Had five different goal scorers.....vs. Minnesota Duluth (W, 5-1), March 6, 2022  
 Had six different goal scorers.....vs. Minnesota State (W, 9-4), Oct. 15, 2022  
 Had seven different goal scorers.....vs. RIT (W, 7-1), Nov. 13, 2021  
 Had eight different goal scorers.....at Bemidji State (W, 9-1), Feb. 20, 2021  
 Had nine different goal scorers.....at Minnesota State (W, 11-0), Oct. 14, 2022  
 Had 10 or more different goal scorers.....vs. Wisconsin (W, 10-0), Feb. 7, 1998  
 Scored on a penalty shot.....West vs. Wisconsin, March 18, 2012  
 Attempted a penalty shot.....Zumwinkle at St. Cloud State, Feb. 2, 2018  
 Allowed a penalty shot goal.....at Lindenwood (Girard), (W, 4-3, OT), Nov. 26, 2017  
 Opponent attempted a penalty shot.....at St. Cloud State (Tylke), (W, 4-3, OT), Nov. 17, 2018  
 Goaltender made 50 or more saves.....Räty (50) vs. North Dakota, March 16, 2013  
 Opponent made 50 or more saves.....vs. St. Thomas (Maurer, 52), (W, 5-1), Feb. 26, 2022



## MINNESOTA QUICK FACTS

## UNIVERSITY INFORMATION

School:	University of Minnesota
Location:	Minneapolis, Minn. 55455
Founded:	1851
Enrollment:	52,017
Nickname:	Golden Gophers
Colors:	Maroon and Gold
Conference:	Big Ten/WCHA (women's hockey)
Division:	NCAA I
President:	Joan T.A. Gabel
Director of Athletics:	Mark Coyle
Associate Athletics Director - W. Hockey:	Tom McGinnis

## TEAM INFORMATION

2022-23 Overall record:	7-0-1
2022-23 WCHA record (Position):	7-0-1 (W-L-T) (2nd)
2021-22 WCHA Tournament:	2nd
2021-22 NCAA Tournament:	Lost in QF
2021-22 Players returning/lost:	20/5
2022-23 Newcomers:	5

## PROGRAM HISTORY

First season:	1997-98
All-time record:	726-157-59 (.802)
WCHA record:	465-97-45-16 (.803)
WCHA postseason record:	54-18-0 (.750)
WCHA regular season titles:	11 (01,02,04,05,09,10,13,14,15,19,22)
WCHA tournament titles:	7 (2002,04,05,12,13,14,18)
NCAA berths:	19
National titles:	7 (2000,04,05,12,13,15,16)
NCAA postseason record (since 2000-01):	26-13-1
NCAA Frozen Four record (since 2000-01):	15-9-1

## COACHING STAFF

Head Coach:	Brad Frost (14 seasons)
Alma Mater:	Bethel, 1996
Career Record:	449-93-37 (.808)
WCHA Record:	308-66-33 (.798)
Assistant Coach:	Natalie Darwitz (Minnesota, 2007)
Assistant Coach:	Jessica Scott (St. Thomas, 2004)
Volunteer Assistant Coach:	Chris Esposito (Columbia, 2015)
Director of Operations:	Jessica Scott (St. Thomas, 2004)
Athletic Training:	Erin Moore (Purdue, 2011)
Strength & Conditioning:	Cal Dietz (Findlay, 1996)

## FACILITY INFORMATION

Home Rink:	Ridder Arena
Capacity:	3,400
Opened:	2002
Address:	1901 4th St. SE Minneapolis, MN 55455
Press Box Phone:	612-625-6900

## ATHLETIC COMMUNICATIONS

Assistant Director (W. Hockey):	Daniel Galarneau
Cell Phone:	651-208-6490
Mailing Address:	275 Bierman Field Athletic Building 516 15th Ave. SE, Minneapolis, MN 55455
Email:	galar042@umn.edu

## CONNECT WITH GOPHER WOMEN'S HOCKEY ONLINE

Official website:	GopherSports.com
Twitter:	@GopherWHockey
Facebook:	Facebook.com/GopherWomensHockey
Instagram:	@gopherwhockey
YouTube:	YouTube.com/user/GopherAthletics

## HEAD COACH BRAD FROST

The 2022-23 season marks head coach Brad Frost's 16th season at the helm of Gopher women's hockey. Frost has brought the program to the pinnacle of the collegiate hockey world by advancing to six-straight NCAA Women's Frozen Fours from 2011-12 to 2016-17. Frost's Gophers won four national titles in six years, including back-to-back titles in 2012 and 2013 and again in 2015 and 2016. After joining the program in 2001 as an assistant coach and later holding the interim head coach title during the 2007-08, Frost was named the program's second head coach on April 16, 2008.

In 15 seasons leading the Gophers, the Bethel University graduate has guided the Gophers to four NCAA national championships, nine NCAA Frozen Four appearances, seven WCHA regular season titles, and four WCHA Final Faceoff championships. Frost ended the 2020-21 season with a career record of 413-84-35 (.776) and has not had a team finish lower than fourth in the WCHA.

## COACHING EXCELLENCE

Frost, who has won four national titles, is considered one of the best and most respected coaches in college hockey. In his 14 seasons, he has been named an AHCA Coach of the Year Finalist nine times and has won the national honor twice (2013 and 2014). Frost has been named WCHA Coach of the Year four times (2008, 2009, 2013, and 2014). Under his tutelage, the Gophers have tallied seven seasons with 30 or more wins. In 2013, Frost led the Gophers to the NCAA's first-ever perfect season (41-0-0).

## PLAYER DEVELOPMENT

Over the last 15 years, Frost has coached some of the top talent not only in the nation but also in the world. He has seen 12 players (Megan Bozek, Hannah Brandt, Dani Cameranesi, Mira Jalosuo, Amanda Kessel, Gigi Marvin, Abbey Murphy, Kelly Pannek, Noora Rätty, Anne Schleper, Lee Stecklein, and Grace Zumwinkle) represent their respective countries in the Olympics. He also aided the development of former Gophers and Olympians Natalie Darwitz, Kelly Stephens, Lyndsay Wall, and Krissy Wendell while a Minnesota assistant coach. Frost has coached a total of 15 players to a combined 25 All-American honors. Among those All-Americans is 2022 Patty Kazmaier Memorial Award winner Taylor Heise. A total of 14 Minnesota student-athletes have been named Top-10 Patty Kaz finalists 22 times under Frost's tutelage.

## ACADEMIC SUCCESS

Under Frost's guidance, the Gophers have recorded a 3.0 or higher grade point average and increased the team's Academic Progress Rating (APR). Minnesota has accumulated 174 WCHA All-Academic Team awards (15 in 2020-21), 77 WCHA Scholar Athlete honors (13 in 2020-21) and three WCHA Outstanding Student-Athlete of the Year award recipients (Alex Woken, 2020; Gigi Marvin, 2009; Kelly Terry, 2014) since Frost took reign.

## INTERNATIONAL COACHING EXPERIENCE

Frost has served USA Hockey by working development camps and serving as a coach for various U.S. teams. In 2006, he was an assistant coach of the U.S. Under-22 Team, and from 2008-09, he was an assistant coach for the U.S. National Team.

## PERSONAL LIFE

Frost grew up in Burlington, Ontario, and attended Aldershot High School. After graduating from Aldershot, he decided to attend college at Bethel University, which is where his parents originally met. While at Bethel, he studied Physical & Health Education and was a two-sport athlete, competing in hockey and golf. Frost was a four-year letterwinner in hockey and completed his career ranked eighth on Bethel's career scoring list. In 1994 and 1995, he was voted the team's Most Valuable Player and Most Inspirational. He also captained the Royals his junior and senior seasons. At Bethel, Frost met his wife Dayna. They now reside in Cottage Grove, Minn., and have three sons: Micah, Jonah and Josiah.



**BRAD FROST**  
16TH YEAR AT MINNESOTA  
BETHEL, 1996

## 2022-23 MINNESOTA WOMEN'S HOCKEY ROSTER

No.	Name	Yr.	Pos.	Ht.	Hometown (High School/Last Team)
1	Olivia King	Sr.	G	5-6	Garrison, Minn. (Brainerd HS)
3	Catie Skaja	5th	F	5-7	New Prague, Minn. (New Prague Senior HS)
4	Audrey Wethington	Jr.	F	5-7	Edina, Minn. (Blake School)
5	Madeline Wethington	Sr.	D	5-10	Edina, Minn. (Blake School)
6	Gracie Ostertag	5th	D	5-7	Shakopee, Minn. (Shattuck-St. Mary's)
7	Nelli Laitinen	Fr.	D	5-7	Lohja, Finland (Kiekko-Espoo)
8	Sadie Lindsay	So.	F	5-7	Minnetonka, Minn. (Breck School)
9	Taylor Heise	5th	F	5-10	Lake City, Minn. (Red Wing HS)
10	Emily Zumwinkle	So.	D	5-9	Excelsior, Minn. (Breck School)
11	Josefin Bouveng	Fr.	F	5-9	Vassunda, Sweden (Brynas IF)
12	Grace Zumwinkle	5th	F	5-9	Excelsior, Minn. (Breck School)
13	Crystalyn Hengler	5th	D	5-8	Eden Prairie, Minn. (Eden Prairie HS)
14	Maggie Nicholson	Jr.	D	5-9	Minnetonka, Minn. (Minnetonka HS)
15	Peyton Hemp	So.	F	5-5	Andover, Minn. (Andover HS)
16	Allie Franco	Fr.	F/D	5-7	Oakdale, Minn. (Hill-Murray School)
17	Josey Dunne	Jr.	F	5-10	O'Fallon, Mo. (Heritage Christian Academy/Chicago Mission)
18	Abbey Murphy	R-So.	F	5-5	Evergreen Park, Ill. (Mother McAuley HS/Chicago Mission)
20	Emma Conner	So.	F	5-8	Edina, Minn. (Edina HS)
21	Emily Oden	5th	F	5-8	Edina, Minn. (Edina HS)
22	Abigail Boreen	5th	F	5-8	Somerset, Wis. (Hill-Murray School)
23	Tristana Tatur	So.	F	5-8	Maple Grove, Minn. (Maple Grove HS)
26	Ella Huber	So.	F	5-6	Northfield, Ill. (New Trier HS/Chicago Mission)
27	Savannah Norcross	5th	F	5-7	Lynn, Mass. (New Hampton School/Boston College)
28	Lizi Norton	5th	D	5-6	Orono, Minn. (Orono HS/Minnesota Duluth)
29	Madison Kaiser	Fr.	F	5-7	Andover, Minn. (Holy Family Catholic HS)
31	Skylar Vetter	So.	G	5-8	Lakeville, Minn. (Lakeville North HS)
33	Makayla Pahl	Sr.	G	5-11	Rochester, Minn. (Rochester Mayo HS)

**Head Coach:** Brad Frost (Bethel, 1996)

**Assistant Coaches:** Natalie Darwitz (Minnesota, 2007), Jessica Scott (St. Thomas, 2004), Chris Esposito (Columbia, 2007) - Volunteer

## ROSTER BREAKDOWN

## BY CLASS:

**Freshmen (4)**

Josefin Bouveng  
Allie Franco  
Madison Kaiser  
Nelli Laitinen

**Sophomores (8)**

Emma Conner  
Peyton Hemp  
Ella Huber  
Sadie Lindsay  
Abbey Murphy  
Tristana Tatur  
Skylar Vetter  
Emily Zumwinkle

**Juniors (3)**

Josey Dunne  
Maggie Nicholson  
Audrey Wethington

**Seniors (3)**

Olivia King  
Makayla Pahl  
Madeline Wethington

**5th-Year (9)**

Abigail Boreen  
Taylor Heise  
Crystalyn Hengler  
Savannah Norcross  
Lizi Norton  
Emily Oden  
Gracie Ostertag  
Catie Skaja  
Grace Zumwinkle

## BY STATE/COUNTRY:

**Minnesota (20)**

Emma Conner  
Allie Franco  
Taylor Heise  
Peyton Hemp  
Crystalyn Hengler  
Sadie Lindsay  
Madison Kaiser  
Olivia King  
Maggie Nicholson  
Lizi Norton  
Emily Oden  
Gracie Ostertag  
Makayla Pahl  
Catie Skaja  
Tristana Tatur  
Skylar Vetter  
Audrey Wethington  
Madeline Wethington  
Emily Zumwinkle  
Grace Zumwinkle

**Illinois (2)**

Ella Huber  
Abbey Murphy

**Massachusetts(1)**  
Savannah Norcross

**Missouri (1)**  
Josey Dunne

**Wisconsin (1)**

Abigail Boreen

**Sweden (1)**

Josefin Bouveng

**Finland (1)**

Nelli Laitinen

## PRONUNCIATION GUIDE

**NAME**

Boreen, Abigail  
Bouveng, Josefin  
Dunne, Josey  
Heise, Taylor  
Hengler, Crystalyn  
Huber, Ella  
Laitinen, Nelli  
Oden, Emily  
Ostertag, Gracie  
Pahl, Makayla  
Skaja, Catie  
Tatur, Tristana  
Zumwinkle, Emily  
Zumwinkle, Grace

**PRONUNCIATION**

BORE-een  
YO-suh-fin BOO-veng  
done  
Hi-zee  
CRYSTAL-in HANG-glur  
HEW-bur  
LIGHT-inen  
OH-din  
AHH-stir-tag  
paul  
Katie SKY-ah  
TAY-ter  
ZUM-winkle  
ZUM-winkle

## 2022-23 MINNESOTA WOMEN'S HOCKEY PHOTO ROSTER



**22** | **ABIGAIL BOREEN**  
SOMERSET, WISC.



**11** | **JOSEFIN BOUVENG**  
VASSUNDA, SWEDEN



**20** | **EMMA CONNER**  
EDINA, MINN.



**17** | **JOSEY DUNNE**  
O'FALLON, MO.



**16** | **ALLIE FRANCO**  
OAKDALE, MINN.



**9** | **TAYLOR HEISE**  
LAKE CITY, MINN.



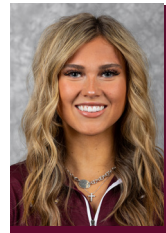
**15** | **PEYTON HEMP**  
ANDOVER, MINN.



**13** | **CRYSTALYN HENGLER**  
EDEN PRAIRIE, MINN.



**26** | **ELLA HUBER**  
NORTHFIELD, ILL.



**29** | **MADISON KAISER**  
ANDOVER, MINN.



**1** | **OLIVIA KING**  
GARISON, MINN.



**7** | **NELLI LAITINEN**  
LOHJA, FINLAND



**8** | **SADIE LINDSAY**  
MINNETONKA, MINN.



**14** | **MAGGIE NICHOLSON**  
MINNETONKA, MINN.



**27** | **SAVANNAH NORCROSS**  
LYNN, MASS.



**28** | **LIZI NORTON**  
ORONO, MINN.



**21** | **EMILY ODEN**  
EDINA, MINN.



**6** | **GRACIE OSTERTAG**  
SHAKOPEE, MINN.



**33** | **MAKAYLA PAHL**  
ROCHESTER, MINN.



**3** | **CATIE SKAJA**  
NEW PRAGUE, MINN.



**23** | **TRISTANA TATUR**  
MAPLE GROVE, MINN.



**31** | **SKYLAR VETTER**  
LAKEVILLE, MINN.



**4** | **AUDREY WETHINGTON**  
EDINA, MINN.



**5** | **MADELINE WETHINGTON**  
EDINA, MINN.



**10** | **EMILY ZUMWINKLE**  
EXCELSIOR, MINN.



**12** | **GRACE ZUMWINKLE**  
EXCELSIOR MINN.



**BRAD FROST**  
HEAD COACH



**JESSICA SCOTT**  
ASSISTANT COACH



**NATALIE DARWITZ**  
ASSISTANT COACH



**CHRIS ESPOSITO**  
VOL. ASSISTANT COACH

Tough • Grateful • Disciplined • Devoted



## GOPHER CAREER-BESTS (AT MINNESOTA): GAME 6 SERIES HIGHS

## #1 Olivia KING

Saves: 8 vs. RIT, 11/12/21  
Shots Faced: 8 vs. RIT, 11/12/21

Series Saves: 10 vs. RIT, 11/12-13/21  
Series Shots Faced: 11 vs. RIT, 11/12-13/21

## #3 Catie SKAJA

Goals: 2 (5X, last vs. UST, 2/26/22)  
Assists: 3 vs. SCSU, 11/20/21  
Points: 3 (3X, last at SCSU, 2/11/22)

Series Goals: 3 at/vs. SCSU, 2/11-12/22  
Series Assists: 4 at/vs. SCSU, 11/19-20/21  
Series Points: 5 at/vs. SCSU, 2/11-12/22

## #4 Audrey WETHINGTON

Goals: 1 (11X, last vs. MSU, 10/15/2022)  
Assists: 3 at MSU, 1/14/22  
Points: 3 at MSU, 1/14/2022

Series Goals: 2 vs. UST, 2/25-26/2022  
Series Assists: 3 (2X, last at/vs. MSU, 1/14-15/2022)  
Series Points: 3 (4X, last vs. UST, 2/25-26/22)

## #5 Madeline WETHINGTON

Goals: 1 (16X, last at UST, 2/17/22)  
Assists: 3 vs. BSU, 10/7/22  
Points: 3 (5X, last vs. BSU, 10/7/22)

Series Goals: 2 at SCSU, 1/10-11/20  
Series Assists: 4 (2X, last vs BSU, 10/7-8/22)  
Series Points: 5 vs./at UST, 1/8-9/22

## #6 Gracie OSTERTAG

Goals: 1 (5X, last vs. SCSU, 11/20/21)  
Assists: 3 at OSU, 10/29/22  
Points: 3 at OSU, 10/29/22

Series Goals: 2 (2X, last at/vs. SCSU, 11/19-20/2021)  
Series Assists: 3 at OSU, 10/28-29/22  
Series Points: 3 at OSU, 10/28-29/22

## #7 Nelli LAITINEN

Goals: 1 (2X, last at OSU, 10/28/22)  
Assists: 2 (2X, last at MSU, 10/14/22)  
Points: 3 vs. MSU, 10/14/22

Series Goals: 1 (2X, last at OSU, 10/28-29/22)  
Series Assists: 2 (2X, last at/vs. MSU, 10/14-15/22)  
Series Points: 3 at/vs. MSU, 10/14-15/22

## #8 Sadie LINDSAY

Goals: ---  
Assists: 2 vs. RIT, 11/12/21  
Points: 2 vs. RIT, 11/12/21

Series Goals: ---  
Series Assists: 2 vs. RIT, 11/12-13/21  
Series Points: 2 vs. RIT, 11/12-13/21

## #9 Taylor HEISE

Goals: 3 (2X, last vs. RIT, 11/12/21)  
Assists: 3 (5X, last at SCSU, 2/11/22)  
Points: 5 vs. RIT, 11/12/21

Series Goals: 4 (2X, last vs. RIT, 11/12-13/21)  
Series Assists: 5 vs./at UST, 1/8-9/22  
Series Points: 7 vs. RIT, 11/12-13/21

## #10 Emily ZUMWINKLE

Goals: 1 (4X, last at MSU, 1/14/22)  
Assists: 1 (6X, last at OSU, 10/29/22)  
Points: 1 (9X, last at OSU, 10/29/22)

Series Goals: 1 (4X, last at/vs. MSU, 1/14-15/22)  
Series Assists: 1 (6X, last at OSU, 10/28-29/22)  
Series Points: 2 (2X, last vs./at UST, 1/8-9/22)

## #11 Josefin BOUVENG

Goals: 3 vs. MSU, 10/15/22  
Assists: 2 at MSU, 10/14/22  
Points: 3 vs. MSU, 10/15/22

Series Goals: 3 at/vs. MSU, 10/14-15/22  
Series Assists: 2 (2x, last at/vs. MSU, 10/14-15/22)  
Series Points: 5 at/vs. MSU, 10/14-15/22

## #12 Grace ZUMWINKLE

Goals: 3 (4X, last at MSU, 10/14-15/22)  
Assists: 3 (2X, last at BSU, 2/20/21)  
Points: 5 at Yale, 11/30/18

Series Goals: 4 (2X, last at/vs. MSU, 10/14-15/22)  
Series Assists: 4 at BSU, 2/19-20/21  
Series Points: 8 at BSU, 2/19-20/21

## #13 Crystalyn HENGLER

Goals: 1 (11X, last vs. MSU, 10/15/22)  
Assists: 2 (5X, last at SCSU, 2/11/22)  
Points: 3 vs. RIT, 11/12/21

Series Goals: 2 at BSU, 2/19-20/21  
Series Assists: 3 vs. RIT, 11/12-13/21  
Series Points: 4 vs. RIT, 11/12-13/21

## #14 Maggie NICHOLSON

Goals: 1 at OSU, 1/29/22  
Assists: 2 vs. UST, 1/8/22  
Points: 2 vs. UST, 1/8/22

Series Goals: 1 at OSU, 1/28-29/22  
Series Assists: 2 vs./at UST, 1/8-9/22  
Series Points: 2 vs./at UST, 1/8-9/22

## #15 Peyton HEMP

Goals: 2 (2X, last vs. BSU, 10/7/22)  
Assists: 3 at UMD, 10/9/21  
Points: 3 at UMD, 10/9/21

Series Goals: 2 (5X, last vs. BSU, 10/7-8/22)  
Series Assists: 4 at UMD, 10/8-9/21  
Series Points: 4 (2X, last vs. RIT, 11/12-13/21)

## #16 Allie FRANCO

Goals: ---  
Assists: ---  
Points: ---

Series Goals: ---  
Series Assists: ---  
Series Points: ---

## #17 Josey DUNNE

Goals: 1 (4X, last vs. RIT, 11/12/21)  
Assists: 1 (3X, last at UST, 2/17/22)  
Points: 1 (7X, last at UST, 2/17/22)

Series Goals: 1 (4X, vs. RIT, 11/12-13/21)  
Series Assists: 1 (2X, last at/vs. UST, 2/17-19/22)  
Series Points: 1 (6X, last at/vs. UST, 2/17-19/22)

## #18 Abbey MURPHY

Goals: 2 (5X, last at OSU, 10/29/22)  
Assists: 3 at SCSU, 1/10/21  
Points: 3 (4X, last vs. MSU, 10/15/22)

Series Goals: 3 (2X, last at/vs. MSU, 10/14-15/22)  
Series Assists: 3 (3X, last at/vs. MSU, 10/14-15/22)  
Series Points: 6 (2X, last at/vs. MSU, 10/14-15/22)

## #20 Emma CONNER

Goals: 1 (2X, last at MSU, 1/14/22)  
Assists: 2 vs. RIT, 11/13/21  
Points: 3 vs. RIT, 11/13/21

Series Goals: 1 vs. RIT, 11/12-13/21  
Series Assists: 3 vs. RIT, 11/12-13/21  
Series Points: 4 vs. RIT, 11/12-13/21

## #21 Emily ODEN

Goals: 2 (2X, last at OSU, 1/25/19)  
Assists: 2 (10X, last vs. MSU, 10/15/22)  
Points: 4 at OSU, 1/25/19

Series Goals: 2 (3X, last at UMD, 10/8-9/21)  
Series Assists: 4 at/vs. MSU, 10/14-15/22  
Series Points: 4 (3x, last at/vs. MSU, 10/14-15/22)

## #22 Abigail BOREEN

Goals: 3 (2X, last at SCSU, 2/11/22)  
Assists: 3 (3X, last at UST, 2/17/22)  
Points: 5 at SCSU, 2/11/22

Series Goals: 5 vs./at UST, 1/8-9/2022  
Series Assists: 5 at/vs. UST, 2/17-19/22  
Series Points: 6 (2X, last at/vs. UST, 2/17-19/22)

## #23 Tristana TATUR

Goals: ---  
Assists: 1 vs. UST, 1/8/22  
Points: 1 vs. UST, 1/8/22

Series Goals: ---  
Series Assists: 1 vs. UST, 1/8-9/22  
Series Points: 1 vs. UST, 1/8-9/22

## #26 Ella HUBER

Goals: 2 vs. UST, 2/29/22  
Assists: 3 vs. MSU, 10/15/21  
Points: 3 (2X, last vs. UST, 2/19/22)

Series Goals: 2 (2X, last at/vs. UST, 2/17-19/22)  
Series Assists: 4 vs./at MSU, 10/15-16/21  
Series Points: 4 vs./at MSU, 10/15-16/21

## #27 Savannah NORCROSS

Goals: 2 (2X, last vs. UST, 2/19/22)  
Assists: 3 at MSU, 1/14/22  
Points: 3 (2X, last at MSU, 1/14/22)

Series Goals: 2 (3X, last at/vs. UST, 2/17-19/22)  
Series Assists: 3 (2X, last vs. UST, 2/25-26/22)  
Series Points: 4 (3X, last vs. BSU, 2/4-5/22)

## #28 Lizi NORTON

Goals: 1 vs. BSU, 10/8/22  
Assists: 2 vs. MSU, 10/15/22  
Points: 2 vs. MSU, 10/15/22

Series Goals: 1 vs. BSU, 10/7-8/22  
Series Assists: 3 at/vs. MSU, 10/14-15/22  
Series Points: 3 at/vs. MSU, 10/14-15/22

## #29 Madison KAISER

Goals: 1 (2X, last vs. SCSU, 10/22/22)  
Assists: 1 at MSU, 10/14/22  
Points: 2 at MSU, 10/14/22

Series Goals: 1 (2X, last at/vs. SCSU, 10/21-22/22)  
Series Assists: 1 at/vs. MSU, 10/14-15/22  
Series Points: 2 at/vs. MSU, 10/14-15/22

## #31 Skylar VETTER

Saves: 43 at OSU, 10/28/22  
Shots Faced: 45 at OSU, 10/28/22

Series Saves: 70 at OSU, 10/28-29/22  
Series Shots Faced: 76 at OSU, 10/28-29/22

## #33 Makayla PAHL

Saves: 41 at OSU, 1/30/21  
Shots Faced: 44 at OSU, 1/30/21

Series Saves: 44 at OSU, 1/29-30/21  
Series Shots Faced: 44 at OSU, 1/29-30/21



## 2022-23 MINNESOTA SCHEDULE/RESULTS

Date	Opponent	Time/Result	Goals (Season Totals)	Goaltender, Saves	Attendance
10/7	BEMIDJI STATE	W, 6-0	Boreen (1,2), Hemp (1,2), Murphy (1,2)	Pahl, 17	1,209
10/8	BEMIDJI STATE	W, 4-1	Norton (1), G.Zumwinkle (1), Skaja (1), Oden (1)	Vetter, 15	1,259
10/14	Minnesota State	W, 11-0	G.Zumwinkle (2,3,4), Skaja (2), Norcross (1), Laitinen (1), Murphy (3), Heise (1), Hemp (3) Kaiser (1), Huber (1)	Vetter, 17	105
10/15	MINNESOTA STATE	W, 9-4	Murphy (4,5), Skaja (3), Bouveng (1,2,3), A.Wethington (1), Hengler (1), G.Zumwinkle (5)	Pahl, 18/Vetter, 2	1,225
10/21	St. Cloud State	W, 4-2	Murphy (6), Boreen (3), G.Zumwinkle (6), Heise (2)	Vetter, 20	437
10/22	ST. CLOUD STATE	W, 2-1	Kaiser (2), G.Zumwinkle (7)	Vetter, 20	1,553
10/28	#1 Ohio State	W, 4-2	Laitinen (2), Heise (3), Hemp (4), Boreen (4)	Vetter, 43	421
10/29	#1 Ohio State	T, 4-4	Murphy (7,8), Bouveng (4), Heise (4)	Vetter, 27	319
11/4	MINNESOTA DULUTH	6:00 PM			
11/5	MINNESOTA DULUTH	2:00 PM			
11/7	St. Cloud State	7:00 PM			
11/19	Wisconsin	2:00 PM			
11/20	Wisconsin	2:00 PM			
11/25	Penn State#	6:00 PM			
11/26	Boston U/Yale#	TBD			
12/2	MINNESOTA STATE	6:00 PM			
12/3	Minnesota State	2:00 PM			
12/9	ST. CLOUD STATE	6:00 PM			
12/10	St. Cloud State	3:00 PM			
1/6	MERRIMACK+	6:00 PM			
1/7	NEW HAMPSHIRE+	4:30 PM			
1/13	ST. THOMAS	6:00 PM			
1/14	ST. THOMAS	2:00 PM			
1/20	Bemidji State	3:00 PM			
1/21	Bemidji State	2:00 PM			
1/27	Minnesota Duluth	3:00 PM			
1/28	Minnesota Duluth	3:00 PM			
2/3	OHIO STATE	6:00 PM			
2/4	OHIO STATE	2:00 PM			
2/10	WISCONSIN	6:00 PM			
2/11	WISCONSIN	7:30 PM			
2/17	St. Thomas	6:00 PM			
2/18	St. Thomas	6:00 PM			

\* WCHA Final Faceoff • % WCHA First Round (Campus sites) • # Las Vegas Showcase • + East/West Showcase

Home games in **BOLD CAPS** at Ridder Arena. All times are Central.

Note: goal; (#) denotes individual season goals

# MINNESOTA 2022-23 STATISTICS: INDIVIDUAL



## 2022-23 Minnesota Women's Ice Hockey Overall Individual Statistics All games

Page 1/2  
as of Oct 31, 2022

### Game Records

Overall	Conference	Home	Away	Neutral
7 - 0 - 1	7 - 0 - 1	4 - 0 - 0	3 - 0 - 1	0 - 0 - 0

			Shots						Penalties				Goals										
#	Player	GP	G	A	PTS	SH	SH%	+/-	PEN-MIN	MIN	MAJ	OTH	PP	SH	FG	GW	GT	OT	HT	PN	UA	BLK	
18	Murphy, Abbey	8	8	6	14	26	.308	+9	5-10	5	0	0	4	1	3	0	0	0	0	0	1	5	
12	Zumwinkle, Grace	8	7	7	14	49	.143	+11	0-0	0	0	0	1	0	1	4	0	0	1	0	0	1	
9	Heise, Taylor	8	4	7	11	29	.138	+6	0-0	0	0	0	0	1	0	0	0	0	0	0	1	2	
22	Boreen, Abigail	8	4	5	9	35	.114	+6	2-4	2	0	0	1	0	1	1	0	0	0	0	0	4	
3	Skaja, Catie	8	3	6	9	23	.130	+6	2-4	2	0	0	1	0	0	0	0	0	0	0	0	2	
11	Bouveng, Josefin	8	4	4	8	21	.190	+9	0-0	0	0	0	0	1	0	1	0	0	1	0	0	2	
15	Hemp, Peyton	7	4	3	7	20	.200	+8	1-2	1	0	0	0	0	0	1	0	0	0	0	0	1	
21	Oden, Emily	8	1	6	7	20	.050	+10	0-0	0	0	0	0	0	0	0	0	0	0	0	0	6	
7	Laitinen, Nelli	8	2	4	6	7	.286	+6	2-4	2	0	0	0	0	1	0	0	0	0	0	0	8	
5	Wethington, Madeline	8	0	6	6	21	.000	+13	4-8	4	0	0	0	0	0	0	0	0	0	0	0	9	
26	Huber, Ella	8	1	4	5	14	.071	+7	2-4	2	0	0	0	0	0	0	0	0	0	0	0	1	
6	Norton, Lizi	8	1	3	4	11	.091	+9	3-6	3	0	0	0	0	1	0	0	0	0	0	0	5	
27	Norcross, Savannah	7	1	3	4	7	.143	+1	0-0	0	0	0	0	0	0	0	0	0	0	0	0	1	
6	Ostertag, Gracie	8	0	4	4	11	.000	+9	0-0	0	0	0	0	0	0	0	0	0	0	0	0	10	
29	Kaiser, Madison	8	2	1	3	10	.200	+3	4-8	4	0	0	0	0	0	0	0	0	0	0	0	1	
13	Hengler, Crystallyn	8	1	2	3	13	.077	+6	3-6	3	0	0	0	0	0	0	0	0	0	0	0	4	
4	Wethington, Audrey	8	1	2	3	7	.143	0	0-0	0	0	0	0	0	0	0	0	0	0	0	0	2	
10	Zumwinkle, Emily	8	0	2	2	9	.000	+12	0-0	0	0	0	0	0	0	0	0	0	0	0	0	8	
1	King, Olivia	2	0	0	0	0	.000	0	0-0	0	0	0	0	0	0	0	0	0	0	0	0	0	
31	Vetter, Skylar	7	0	0	0	0	.000	0	0-0	0	0	0	0	0	0	0	0	0	0	0	0	0	
33	Pahl, Makayla	3	0	0	0	0	.000	0	0-0	0	0	0	0	0	0	0	0	0	0	0	0	0	
20	Conner, Emma	6	0	0	0	0	.000	+1	0-0	0	0	0	0	0	0	0	0	0	0	0	0	4	
TM	TEAM	8	0	0	0	0	.000	0	3-6	0	0	0	0	0	0	0	0	0	0	0	0	0	
Totals		8	44	75	119	333	.132	+132	31-62	31	0	0	7	3	7	7	0	0	2	0	2	76	
Opponents		8	14	24	38	193	.073	-136	37-74	37	0	0	4	0	1	0	1	0	0	0	0	161	

#	Player	GP-GS	Goal Average			Saves		Record				Goals Allowed				
			MINUTES	GA	AVG	SAVES	PCT	W	L	T	SHO	PP	SH	EN	PEN	SOG
31	Vetter, Skylar	7-6	381:22	10	1.57	144	.935	5	0	1	1	3	0	0	0	2
33	Pahl, Makayla	3-2	103:31	4	2.32	35	.897	2	0	0	1	1	0	0	0	0
TM	EMPTY NET	-	00:07	0	0.00	0	.000	0	0	0	0	0	0	0	0	0
<b>Totals</b>		<b>8</b>	<b>485:00</b>	<b>14</b>	<b>1.73</b>	<b>179</b>	<b>.927</b>	<b>7</b>	<b>0</b>	<b>1</b>	<b>2</b>	<b>4</b>	<b>0</b>	<b>0</b>	<b>0</b>	<b>2</b>
<b>Opponents</b>		<b>8</b>	<b>485:00</b>	<b>44</b>	<b>5.44</b>	<b>289</b>	<b>.868</b>	<b>0</b>	<b>7</b>	<b>1</b>	<b>0</b>	<b>7</b>	<b>3</b>	<b>1</b>	<b>0</b>	<b>1</b>



**2022-23 Minnesota Women's Ice Hockey**  
**Overall Team Statistics**  
**All games**

Page 1/2  
as of Oct 31, 2022

**Team statistics**

	MINN	OPP
<b>SHOT STATISTICS</b>		
Goals-Shot attempts	44-333	14-193
Shot pct.	.132	.073
Goals/Game	5.50	1.75
Shots/Game	41.63	24.13
Assists	75	24
<b>POWER PLAYS</b>		
Goals-Power Plays	7-31	4-26
Conversion Percent	.226	.154
Shot Attempts	59	31
Shot Percent	.119	.129
<b>SHORT-HANDED</b>		
Goals-Shot attempts	3-9	0-4
Shot Percent	.333	.000
<b>GOAL BREAKDOWN</b>		
Total Goals	44	14
Power Play	7	4
Short-handed	3	0
Empty net	1	0
Penalty	0	0
Unassisted	2	0
Overtime	0	0
Delayed Penalty	0	0
Game winning	7	0
First Goal	7	1
Game Tying Goal	0	1
Extra Attacker	0	0
<b>BLOCKS</b>		
Blocks	76	161
Blocks/Game	9.50	20.13
<b>PENALTIES</b>		
Number	31	37
Minutes	62	74
Penalties/Game	3.88	4.63
Penalty minutes/Game	7.75	9.25
Minor	31	37
Major	0	0
10-minute Misconduct	0	0
Game Misconduct	0	0
Gross Misconduct	0	0
Match	0	0
<b>FACEOFFS (W-L)</b>		
Faceoff W-L pct.	.566	.434
<b>SHOOTOUTS (Made-Att)</b>		
	1-4	2-4
<b>ATTENDANCE</b>		
Total	4037	1282
Dates/Avg Per Date	4/1009	4/321
Neutral Site #/Avg	0/0	-

**Goals by Periods**

Team	1st	2nd	3rd	OT	TOTAL
MINN	16	9	19	0	44
Opponents	3	7	4	0	14

**Shots by Periods**

Team	1st	2nd	3rd	OT	TOTAL
MINN	107	107	112	7	333
Opponents	61	76	54	2	193

**Saves by Periods**

Team	1st	2nd	3rd	OT	TOTAL
MINN	58	69	50	2	179
Opponents	91	98	93	7	289

# MINNESOTA 2022-23 STATISTICS: GAME-BY-GAME TEAM



## 2022-23 Minnesota Women's Ice Hockey Team Game-by-Game All games

Page 1/1  
as of Oct 31, 2022

Date	Opponent	Score	G	A	PTS	SHOTS	SH%	+/-	PEN-MIN	PP	SH	EN	GW	GT	HAT	UA	BLK
10/07/2022	Bemidji St.	6-0	6	11	17	46	.130	+20	0-0	2	0	0	1	0	0	0	5
10/08/2022	Bemidji St.	4-1	4	7	11	37	.108	+15	4-8	0	0	1	1	0	0	0	9
10/14/2022	at Minnesota St.	11-0	11	15	26	60	.183	+40	5-10	3	0	0	1	0	1	2	5
10/15/2022	Minnesota St.	9-4	9	15	24	46	.196	+28	5-10	0	2	0	1	0	1	0	6
10/21/2022	at St. Cloud St.	4-2	4	8	12	36	.111	+5	4-8	1	0	0	1	0	0	0	7
10/22/2022	St. Cloud St.	2-1	2	4	6	45	.044	+5	5-10	0	0	0	1	0	0	0	6
10/28/2022	at Ohio St.	4-2	4	7	11	32	.125	+15	2-4	0	0	0	1	0	0	0	15
10/29/2022	at Ohio St.	4-4	4	8	12	31	.129	+4	6-12	1	1	0	0	0	0	0	23
<b>MINN</b>			<b>44</b>	<b>75</b>	<b>119</b>	<b>333</b>	<b>.132</b>	<b>+132</b>	<b>31-62</b>	<b>7</b>	<b>3</b>	<b>1</b>	<b>7</b>	<b>0</b>	<b>2</b>	<b>2</b>	<b>76</b>
<b>Opponents</b>			<b>14</b>	<b>24</b>	<b>38</b>	<b>193</b>	<b>.073</b>	<b>-136</b>	<b>37-74</b>	<b>4</b>	<b>0</b>	<b>0</b>	<b>0</b>	<b>1</b>	<b>0</b>	<b>0</b>	<b>161</b>

### TEAM PER-GAME

Games played	Shots per game	Goals per game	Assists per game	Points per game
8	41.63	5.50	9.38	14.88

Date	Opponent	Score	MINUTES	GA	GA AVG	SAVES	SAVES%	W	L	T	PP	SH	EN	PN	SO
10/07/2022	Bemidji St.	6-0	60:00	0	0.00	17	1.000	1	0	0	0	0	0	0	0
10/08/2022	Bemidji St.	4-1	60:00	1	0.50	15	.970	1	0	0	0	0	0	0	0
10/14/2022	at Minnesota St.	11-0	60:00	0	0.33	17	.980	1	0	0	0	0	0	0	0
10/15/2022	Minnesota St.	9-4	60:00	4	1.25	20	.932	1	0	0	1	0	0	0	0
10/21/2022	at St. Cloud St.	4-2	60:00	2	1.40	20	.927	1	0	0	0	0	0	0	0
10/22/2022	St. Cloud St.	2-1	60:00	1	1.33	20	.932	1	0	0	0	0	0	0	0
10/28/2022	at Ohio St.	4-2	60:00	2	1.43	43	.938	1	0	0	1	0	0	0	0
10/29/2022	at Ohio St.	4-4	65:00	4	1.73	27	.927	0	0	1	2	0	0	0	2
<b>MINN</b>			<b>485:00</b>	<b>14</b>	<b>1.73</b>	<b>179</b>	<b>.927</b>	<b>7</b>	<b>0</b>	<b>1</b>	<b>4</b>	<b>0</b>	<b>0</b>	<b>0</b>	<b>2</b>
<b>Opponents</b>			<b>485:00</b>	<b>44</b>	<b>5.44</b>	<b>289</b>	<b>.868</b>	<b>0</b>	<b>7</b>	<b>1</b>	<b>7</b>	<b>3</b>	<b>1</b>	<b>0</b>	<b>1</b>



# MINNESOTA 2022-23 STATISTICS: CATEGORY LEADERS



## 2022-23 Minnesota Women's Ice Hockey Category Leaders All games

Page 1/2  
as of Oct 31, 2022

### Points

#	Player	GP	G	A	PTS	SH
18	Murphy, Abbey	8	8	6	14	26
12	Zumwinkle, Grace	8	7	7	14	49
9	Heise, Taylor	8	4	7	11	29
22	Boreen, Abigail	8	4	5	9	35
3	Skaja, Catie	8	3	6	9	23
11	Bouveng, Josefin	8	4	4	8	21
15	Hemp, Peyton	7	4	3	7	20
21	Oden, Emily	8	1	6	7	20
7	Laitinen, Nelli	8	2	4	6	7
5	Wethington, Madeline	8	0	6	6	21

### Assists

#	Player	GP	G	A	PTS	SH
9	Heise, Taylor	8	4	7	11	29
12	Zumwinkle, Grace	8	7	7	14	49
21	Oden, Emily	8	1	6	7	20
5	Wethington, Madeline	8	0	6	6	21
3	Skaja, Catie	8	3	6	9	23
18	Murphy, Abbey	8	8	6	14	26
22	Boreen, Abigail	8	4	5	9	35
11	Bouveng, Josefin	8	4	4	8	21
26	Huber, Ella	8	1	4	5	14
7	Laitinen, Nelli	8	2	4	6	7

### Goals

#	Player	GP	G	A	PTS	SH
18	Murphy, Abbey	8	8	6	14	26
12	Zumwinkle, Grace	8	7	7	14	49
22	Boreen, Abigail	8	4	5	9	35
9	Heise, Taylor	8	4	7	11	29
15	Hemp, Peyton	7	4	3	7	20
11	Bouveng, Josefin	8	4	4	8	21
3	Skaja, Catie	8	3	6	9	23
29	Kaiser, Madison	8	2	1	3	10
7	Laitinen, Nelli	8	2	4	6	7
27	Norcross, Savannah	7	1	3	4	7

### Shots

#	Player	GP	G	A	PTS	SH	SH%
12	Zumwinkle, Grace	8	7	7	14	49	.143
22	Boreen, Abigail	8	4	5	9	35	.114
9	Heise, Taylor	8	4	7	11	29	.138
18	Murphy, Abbey	8	8	6	14	26	.308
3	Skaja, Catie	8	3	6	9	23	.130
11	Bouveng, Josefin	8	4	4	8	21	.190
5	Wethington, Madeline	8	0	6	6	21	.000
21	Oden, Emily	8	1	6	7	20	.050
15	Hemp, Peyton	7	4	3	7	20	.200
26	Huber, Ella	8	1	4	5	14	.071

### Power-Play Goals

#	Player	GP	PPG
18	Murphy, Abbey	8	4
12	Zumwinkle, Grace	8	1
3	Skaja, Catie	8	1
22	Boreen, Abigail	8	1

### Shot Pct.

#	Player	GP	G	A	PTS	SH	SH%
18	Murphy, Abbey	8	8	6	14	26	.308
7	Laitinen, Nelli	8	2	4	6	7	.286
15	Hemp, Peyton	7	4	3	7	20	.200
29	Kaiser, Madison	8	2	1	3	10	.200
11	Bouveng, Josefin	8	4	4	8	21	.190
27	Norcross, Savannah	7	1	3	4	7	.143
4	Wethington, Audrey	8	1	2	3	7	.143
12	Zumwinkle, Grace	8	7	7	14	49	.143
9	Heise, Taylor	8	4	7	11	29	.138
3	Skaja, Catie	8	3	6	9	23	.130

**2023 NCAA WOMEN'S FROZEN FOUR****March 18-20, 2022 | State College**

Pegula Ice Arena in State College, Pa. is the site for the 2022 NCAA National Collegiate Women's Ice Hockey Championship, hosted by Penn State.

The two semifinal contests will take place on Friday, March 18, while the national championship game is scheduled for Sunday, March 20.

This will be the first time that Penn State and Pegula Arena will host the Women's Frozen Four. It will be the first new Women's Frozen Four site since St. Charles, MO. in 2017.

Criteria for selecting the NCAA Frozen Four host sites includes creating what will be an exceptional experience for the student-athletes, along with adherence to NCAA bid specifications. Specifications can include, but are not limited to, providing optimal facilities; ease of travel to the location and ample lodging; and adherence to NCAA principles, which include providing an atmosphere that is safe and respects the dignity of all attendees.

**FUTURE FROZEN FOUR SITES****2023****AMSOIL Arena, Duluth, Minn.****Host: Minnesota Duluth****2024****Whittemore Center, Durham, NH.****Host: University of New Hampshire****2025****Ridder Arena, Minneapolis, Minn.****Host: University of Minnesota****2026****Pegula Ice Arena, State College, Pa.****Host: Penn State****GOPHERS IN THE NCAA TOURNAMENT**

Overall record	26-13-1
Home games	15-5-1
Road games	1-2-0
Neutral-site games	10-6-0
At the NCAA Frozen Four	15-9-1
In NCAA national semifinal games	9-5-0
In NCAA national championship games	6-3-0

Records since 2000-01 season.

**GOPHERS IN THE NATIONAL TOURNAMENT**

Year	Opponent	Round	Location	Result
March 12, 2022	Minnesota Duluth	Quarterfinal	Ridder Arena	L, 2-1
March 14, 2020	Ohio State	Quarterfinal	Ridder Arena	CANCELED
March 16, 2019	Princeton	Quarterfinal	Ridder Arena	W, 5-2
March 22, 2019	Cornell	Semifinal	Hamden, Conn.	W, 2-0
March 24, 2019	Wisconsin	Final	Hamden, Conn.	L, 2-0
March 10, 2018	at Wisconsin	Quarterfinal	Madison, Wis.	L, 4-0
March 11, 2017	at Minnesota Duluth	Quarterfinal	Duluth, Minn.	W, 1-0
March 17, 2017	vs. Clarkson	Semifinal	St. Charles, Mo.	L, 4-3
March 12, 2016	Princeton	Quarterfinal	Ridder Arena	W, 6-2
March 18, 2016	vs. Wisconsin	Semifinal	Durham, N.H.	W, 3-2 (OT)
<b>March 20, 2016</b>	<b>vs. Boston College</b>	<b>Final</b>	<b>Durham, N.H.</b>	<b>W, 3-1</b>
March 14, 2015	RIT	Quarterfinal	Ridder Arena	W, 6-2
March 20, 2015	Wisconsin	Semifinal	Ridder Arena	W, 3-1
<b>March 22, 2015</b>	<b>Harvard</b>	<b>Final</b>	<b>Ridder Arena</b>	<b>W, 4-1</b>
March 15, 2014	Boston University	Quarterfinal	Ridder Arena	W, 5-1
March 21, 2014	vs. Wisconsin	Semifinal	Hamden, Conn.	W, 5-3
March 23, 2014	vs. Clarkson	Final	Hamden, Conn.	L, 5-4
March 16, 2013	North Dakota	Quarterfinal	Ridder Arena	W, 3-2 (3OT)
March 22, 2013	Boston College	Semifinal	Ridder Arena	W, 3-2 (OT)
<b>March 22, 2013</b>	<b>Boston University</b>	<b>Final</b>	<b>Ridder Arena</b>	<b>W, 6-3</b>
March 10, 2012	North Dakota	Quarterfinal	Ridder Arena	W, 5-1
March 16, 2012	vs. Cornell	Semifinal	Duluth, Minn.	W, 3-1
<b>March 18, 2012</b>	<b>vs. Wisconsin</b>	<b>Final</b>	<b>Duluth, Minn.</b>	<b>W, 4-2</b>
March 12, 2011	at Boston College	Quarterfinal	Boston, Mass.	L, 4-1
March 13, 2010	Clarkson	Quarterfinal	Ridder Arena	W, 3-2 (OT)
March 19, 2010	Minnesota Duluth	Semifinal	Ridder Arena	L, 3-2
March 14, 2009	Boston College	Quarterfinal	Ridder Arena	W, 4-3
March 20, 2009	vs. Mercyhurst	Semifinal	Boston, Mass.	L, 5-4
March 15, 2008	Wisconsin	Quarterfinal	Ridder Arena	L, 3-2 (OT)
March 17, 2006	Princeton	Quarterfinal	Ridder Arena	W, 4-0
March 24, 2006	New Hampshire	Semifinal	Mariucci Arena	W, 5-4
March 26, 2006	Wisconsin	Final	Mariucci Arena	L, 3-0
March 18, 2005	Providence	Quarterfinal	Ridder Arena	W, 6-1
March 25, 2005	vs. Dartmouth	Semifinal	Durham, N.H.	W, 7-2
<b>March 27, 2005</b>	<b>vs. Harvard</b>	<b>Final</b>	<b>Durham, N.H.</b>	<b>W, 4-3</b>
March 26, 2004	Dartmouth	Semifinal	Providence, R.I.	W, 5-1
<b>March 28, 2004</b>	<b>Harvard</b>	<b>Final</b>	<b>Providence, R.I.</b>	<b>W, 6-2</b>
March 21, 2003	vs. Harvard	Semifinal	Duluth, Minn.	L, 6-1
March 23, 2003	vs. Dartmouth	Third-Place	Duluth, Minn.	L, 4-2
March 22, 2002	Brown	Semifinal	Mariucci Arena	L, 2-1
March 24, 2002	Niagara	Third-Place	Mariucci Arena	T, 2-2
March 24, 2000*	vs. Minn. Duluth	Semifinal	Boston, Mass.	W, 3-2
<b>March 25, 2000*</b>	<b>Brown</b>	<b>Final</b>	<b>Boston, Mass.</b>	<b>W, 4-2</b>
March 26, 1999*	New Hampshire	Semifinal	Mariucci Arena	L, 3-2 (OT)
March 27, 1999*	Brown	Third-Place	Mariucci Arena	W, 3-2
March 20, 1998*	vs. New Hampshire	Semifinal	Boston, Mass.	L, 4-1
March 21, 1998*	Northeastern	Third-Place	Boston, Mass.	L, 4-0

\* ACHA National Tournament | 7 national championships in **bold**

AWCHA National Tournament from 1998-2000; NCAA took over the national tournament in 2001. From 2001 through 2004, the tournament consisted of a Final Four. The tournament expanded to eight teams in 2005.

## RIDDER ARENA: HOME OF GOPHER WOMEN'S HOCKEY

### SERIES RECORDS AT RIDDER ARENA

OPPONENT	RECORD	LAST
Bemidji State	42-5-3	W, 4-1, 10/8/22
Boston College	3-0-1	W, 3-2 (OT), 3/22/13
Boston University	4-0-0	W, 5-2, 10/4/14
Brown	5-0-0	W, 3-0, 11/13/05
Clarkson	3-0-0	W, 3-2 (OT), 3/13/10
Colgate	4-0-0	W, 8-1, 9/28/19
Connecticut	1-0-0	W, 3-0, 10/7/05
Dartmouth	1-1-0	W, 7-3, 2/8/04
Harvard	6-0-0	W, 4-1, 3/22/15
Lindenwood	2-0-0	W, 6-2 (10/1/16)
Maine	1-0-0	W, 5-2, 10/6/06
Mercyhurst	4-0-0	W, 5-0, 9/29/18
Merrimack	1-1-0	W, 4-1, 10/1/17
Minnesota Duluth	33-11-4	L, 2-1, 3/12/22
Minnesota State	42-2-0	W, 9-4, 10/15/22
New Hampshire	2-1-0	W, 6-1, 11/19/11
Niagara	2-0-0	W, 3-1, 11/12/06
North Dakota	29-4-1	W, 6-2, 2/11/17
Northeastern	1-0-0	W, 5-3, 10/5/07
Ohio State	36-12-4	L, 3-2 (OT), 3/6/22
Penn State	1-0-0	W, 8-0, 10/3/14
Princeton	5-0-0	W, 5-2, 3/16/19
RIT	3-0-0	W, 7-1, 11/13/21
Robert Morris	3-1-0	W, 5-0, 12/8/18
St. Cloud State	48-0-2	W, 2-1, 10/22/22
St. Lawrence	2-1-0	W, 5-1, 1/6/15
St. Thomas	4-0-0	W, 5-1, 2/26/22
Syracuse	3-0-0	W, 4-0, 10/1/11
Union	1-0-0	W, 6-1, 9/30/11
Vermont	1-1-0	W, 6-1, 1/13/18
Wayne State	1-0-0	W, 1-0, 10/9/10
Wisconsin	23-20-8	W, 4-3, 1/22/22
Yale	4-0-0	W, 4-1, 1/5/20
<b>Overall</b>	<b>322-60-23</b>	<b>W, 2-1, 10/22/22</b>

### YEAR-BY-YEAR AT RIDDER ARENA

SEASON	OVERALL	WCHA
2002-03	10-2-1 (.808)	8-2-1 (.773)
2003-04	16-3-0 (.842)	11-2-0 (.846)
2004-05	18-0-1 (.974)	12-0-1 (.923)
2005-06	15-7-0 (.681)	8-5-0 (.615)
2006-07	16-6-0 (.727)	10-4-0 (.714)
2007-08	16-2-3 (.761)	11-1-2 (.857)
2008-09	18-3-2 (.826)	11-1-2 (.857)
2009-10	20-3-1 (.854)	12-1-1 (.893)
2010-11	16-4-1 (.786)	10-3-1 (.750)
2011-12	18-1-2 (.905)	11-1-2 (.857)
2012-13	23-0-0 (1.000)	14-0-0 (1.000)
2013-14	16-1-1 (.917)	11-1-1 (.885)
2014-15	19-1-3 (.891)	10-1-3 (.821)
2015-16	19-1-1 (.929)	13-0-1 (.964)
2016-17	15-2-3 (.825)	11-0-3 (.893)
2017-18	13-6-2 (.667)	6-4-2 (.583)
2018-19	17-4-0 (.810)	9-3-0 (.750)
2019-20	14-3-1 (.806)	8-2-1 (.773)
2020-21	4-5-1 (.400)	4-5-1 (.400)
2021-22	15-6-0 (.714)	13-5-0 (.722)
2022-23	4-0-0 (1.000)	4-0-0 (1.000)
<b>21st Season</b>	<b>322-60-23 (.794)</b>	<b>207-41-22 (.765)</b>



## RIDDER ARENA: HOME OF GOPHER WOMEN'S HOCKEY

The first-ever facility built specifically for women's hockey, Ridder Arena is home to the seven-time national champion Gopher women's hockey program. Since its opening in 2002, Ridder Arena has been a regular host of WCHA Championships, NCAA Regionals, and NCAA Frozen Fours. A new center-hung video board was installed during the 2011-12 season.

- Site of the 2010, 2013, 2015, and 2018 NCAA Women's Frozen Fours
- First facility in the nation dedicated solely to women's ice hockey
- Seating capacity of 3,400, including a club room with 210 seats and nine suites with seating for 14 apiece
- Houses 11 locker rooms, a training room, and full weightroom
- Ice sheet size is 200' x 85'
- Built adjacent to 10,000-seat Mariucci Arena, connected via tunnels
- Practice site for several visiting NHL teams, men's college programs and the IIHF Under-18 Worlds pre-tournament camp
- Hosted the Minnesota Girls State Hockey Tournament
- First game on October 19, 2002 drew 3,239 fans
- Set an attendance record of 3,400 with its first sold-out crowd on Dec. 1, 2012
- Has hosted seven sold-out Gopher women's hockey games
- Hosted 15 WCHA conference championships (2004, 2005, 2006, 2007, 2009, 2010, 2011, 2013, 2016, 2017, 2018, 2019, 2020, 2021, and 2022)

### TOP RIDDER ARENA GOPHER WOMEN'S HOCKEY CROWDS

ATTENDANCE	DATE	OPPONENT	RESULT	NOTES
T1. 3,400	1/19/19	Wisconsin	W, 3-1	---
T1. 3,400	2/18/17	Wisconsin	T, 1-1 (OT)	---
T1. 3,400	3/22/15	Harvard	W, 4-1	Sixth national title
T1. 3,400	3/20/15	Wisconsin	W, 3-1	Frozen Four semifinal
T1. 3,400	3/24/13	Boston University	W, 6-3	Fifth national title
T1. 3,400	3/22/13	Boston College	W, 3-2 (OT)	Frozen Four semifinal
T1. 3,400	12/1/12	Wisconsin	W, 4-1	First Ridder sellout
8. 3,288	2/19/16	Wisconsin	W, 4-0	---
9. 3,283	11/2/19	Wisconsin	W, 4-2	---
10. 3,251	1/6/07	Wisconsin	L, 4-1	---
11. 3,239	10/19/02	St. Cloud State	W, 8-0	First game at Ridder
12. 3,196	1/18/19	Wisconsin	L, 2-1	---
13. 3,150	11/17/13	North Dakota	L, 3-2	End of 62-game win streak