

GOPHER WOMEN'S HOCKEY

Seven-Time National Champions · 2000, 2004, 2005, 2012, 2013, 2015, 2016



2022-23 GOPHER HOCKEY SCHEDULE

Record: 9-2-2

WCHA Record: 9-1-2 (SoW: 1), 29 points (2nd)

DATE	OPPONENT	TIME (CT)/RESULT
10/7	Bemidji State	W, 6-0
10/8	Bemidji State	W, 4-1
10/14	at Minnesota State	W, 11-0
10/15	Minnesota State	W, 9-4
10/21	at St. Cloud State	W, 4-2
10/22	St. Cloud State	W, 2-1
10/28	at #1 Ohio State	W, 4-2
10/29	at #1 Ohio State	T, 4-4
11/4	#5 Minnesota Duluth	W, 3-2 (OT)
11/5	#5 Minnesota Duluth	W, 5-3
11/7	at RV St. Cloud State	L, 4-1
11/19	at #3 Wisconsin	T, 3-3
11/20	at #3 Wisconsin	L, 4-1
11/25	vs. #12 Penn State*	6:00 pm
11/26	vs. BU/ #5 Yale*	TBD
12/2	Minnesota State	6:00 pm
12/3	at Minnesota State	2:00 pm
12/9	St. Cloud State	6:00 pm
12/10	at St. Cloud State	3:00 pm
1/6	Merrimack ^	6:00 pm
1/7	New Hampshire ^	4:30 pm
1/13	St. Thomas	6:00 pm
1/14	St. Thomas	2:00 pm
1/20	at Bemidji State	3:00 pm
1/21	at Bemidji State	2:00 pm
1/27	at #7 Minnesota Duluth	3:00 pm
1/28	at #7 Minnesota Duluth	3:00 pm
2/3	#1 Ohio State	6:00 pm
2/4	#1 Ohio State	2:00 pm
2/10	#2 Wisconsin	6:00 pm
2/11	#2 Wisconsin	7:30 pm
2/17	at St. Thomas	6:00 pm
2/18	at St. Thomas	6:00 pm

Home games in **BOLD** at Ridder Arena.

All times Central.

Rankings reflect USCHO.com poll at time of game.

* Henderson Collegiate Hockey Showcase

^ East/West Showcase

NO. 3 MINNESOTA GOLDEN GOPHERS

2022-23 Record (WCHA)..... 9-2-2 (9-1-2)
 National Ranking (USCHO/USA Today)..... 3/3
 Head Coach.....Brad Frost
 HC Record.....451-95-38 (16th Season)
 HC Record Against Penn State.....3-0-0



NO. 12 PENN STATE NITTANY LIONS

2022-23 Record (CHA)..... 10-7-1 (7-1-0)
 National Ranking (USCHO/USA Today)..... 12/12
 Head Coach.....Jeff Kampersal
 HC Record.....407-325-94 (27th Season, 6th w/PSU)
 HC Record Against Minnesota w/PSU.....0-0-0



GAME ONE INFORMATION

Game 1: Minnesota vs. Penn State

Date: Friday, Nov. 25, 2022

Time: 6:00 p.m. CT

Location: Lifeguard Arena (Henderson, Nev.)

Audio: GopherSports.com

Twitter: @GopherWHockey

Facebook: Facebook.com/GopherWHockey

GAME TWO INFORMATION

Game 2: Minnesota vs. BU/#5 Yale

Date: Saturday, Nov. 26, 2022

Time: 3:00/6:00 p.m. CT

Location: Dollar Loan Center (Henderson, Nev.)

Stream: B1G+ (\$)

Audio: GopherSports.com

Twitter: @GopherWHockey

Facebook: Facebook.com/GopherWHockey

The No. 3 Golden Gopher women's hockey team (9-2-2) heads out west for its first taste of non-conference action in the Henderson Collegiate Hockey Showcase this weekend in Henderson, Nev. Friday's game against No. 12 Penn State (10-7-1) will take place at 6:00 pm CT at Lifeguard Arena with no streaming option. Minnesota will face either Boston University (6-8-0) or No. 5 Yale (6-0-0) on Saturday at 3pm or 6pm CT at the Dollar Loan Center on B1G+.

Last Time Out

Last weekend, the Gophers traveled to Madison, Wis., and earned 2/6 points against the third-ranked Wisconsin Badgers (11-2-1). On Friday, Minnesota and Wisconsin battled to a 3-3 tie, with the Maroon and Gold earning the extra point in the shootout. Peyton Hemp recorded her second two-goal game of the season and Skylar Vetter stopped 40 shots. Abbey Murphy's lone goal in the shootout proved to be the difference. On Saturday, Wisconsin snapped Minnesota's five-game unbeaten streak over the Badgers with a 4-1 win. Taylor Heise was the lone goalscorer in game two – extending her point streak to seven games.

Non-Conference Action in Nevada

After losing its lone non-conference game of the year, Minnesota is set to face some unfamiliar non-conference opponents in Henderson, Nev. On Friday, Minnesota will matchup with Penn State for the fourth time in program history and first since 2015. In the only regular season series between the Gophers and Nittany Lions, Minnesota travelled to University Park and blanked the hosts 2-0 and 5-0 on Oct. 1-2, 2015. On Saturday, the Gophers will face Boston University (5-1-0 record against) or Yale (9-0-0 record against) at the Dollar Loan Center. The 'U' is 44-5-1 in its last 50 non-conference contests.

2022-23 SITUATIONAL RECORDS

Overall record	9-2-2
In home games	6-0-0
In road games	3-1-2
In neutral-site games	0-1-0
Against USCHO.com poll ranked opponents	3-1-2
Against WCHA opponents	9-2-2
Against ECAC Hockey teams	0-0-0
Against CHA teams	0-0-0
Against Hockey East teams	0-0-0
In non-conference games	0-1-0
In overtime games	1-0-2
In day games (4:01 p.m. or earlier)	6-1-2
In night games	3-1-0
Minnesota scores first	8-0-1
Opponent scores first	1-2-1
Minnesota leads at 1st intermission	8-0-1
Minnesota trails at 1st intermission	0-1-0
Tied at 1st intermission	1-1-1
Minnesota leads at 2nd intermission	6-0-2
Minnesota trails at 2nd intermission	1-2-0
Tied at 2nd intermission	2-0-0
Minnesota leads in shots	8-1-0
Minnesota trails in shots	1-1-1
Shots are even	0-0-1
Minnesota has 0-19 shots	0-0-0
Minnesota has 20-29 shots	0-1-0
Minnesota has 30-39 shots	5-1-1
Minnesota has 40-49 shots	3-0-1
Minnesota has 50 or more shots	1-0-0
Minnesota allows 0-19 shots	3-1-0
Minnesota allows 20-29 shots	5-0-0
Minnesota allows 30-39 shots	0-0-1
Minnesota allows 40-49 shots	1-1-1
Minnesota allows 50 or more shots	0-0-0
Minnesota scores on power play	4-1-1
Minnesota is scoreless on power play	4-1-1
Opponent scores on power play	4-2-1
Opponent is scoreless on power play	5-0-1
Scoring 1 goal	0-2-0
Scoring 2 goals	1-0-0
Scoring 3 goals	1-0-1
Scoring 4 goals	3-0-1
Scoring 5 goals	1-0-0
Scoring 6 goals	1-0-0
Scoring 7 or more goals	2-0-0
Allowing 1 goal	2-0-0
Allowing 2 goals	3-0-0
Allowing 3 goals	1-0-1
Allowing 4 goals	1-2-1
Allowing 5 goals	0-0-0
Allowing 6 or more goals	0-0-0
In one-goal games	2-0-0
In two-goal games	3-0-0
In three-goal games	1-2-0
After a loss	0-0-1
On Monday	0-1-0
On Tuesday	0-0-0
On Wednesday	0-0-0
On Thursday	0-0-0
On Friday	5-0-0
On Saturday	4-0-2
On Sunday	0-1-0
In September	0-0-0
In October	7-0-1
In November	2-2-1
In December	0-0-0
In January	0-0-0
In February	0-0-0
In March	0-0-0
Current streak	L1
Current home streak	W6
Current road streak	L1

Poll Watching

Minnesota fell to No. 3 in the USCHO and USA Today/USA Hockey national polls this week – the lowest ranking so far this season. Ohio State, Wisconsin and Minnesota make up the all-WCHA top three.

Neutral Site Tourney Numbers

In Minnesota's three previous midseason neutral site tournaments, the Gophers are 4-1-1. Last season the Maroon and Gold defeated Mercyhurst before falling to Colgate in the Smashville Showcase in Nashville, Tenn. In 2019, the Gophers won the Country Classic after defeating Boston College (officially marked as a tie) and Harvard in Nashville, Tenn. In 2018, Minnesota swept the Windjammer Classic in Burlington, Vt., with wins over St Lawrence and Vermont.

Zumwinkle Climbs the Ranks

After her goal on Friday, fifth-year forward Grace Zumwinkle now sits at 92 career goals, good for eighth in program history. She trails fellow-Olympian Dani Cameranesi (93) by one goal for seventh. The Excelsior, Minn., native leads the team in points (19) and has found the scoresheet in 12/13 games this season. Zumwinkle also sits at second place in program history in career shots with 696, trailing only Nadine Muzerall (726).

Behind the Bench

Head coach Brad Frost is back for his 16th season as the bench boss of Gopher Women's Hockey. Under Frost's guidance, the program has posted a 451-95-37 record with four national titles and seven conference titles. Natalie Darwitz is back behind the bench for her fourth season as assistant coach and is joined by Jessica Scott, who served as the program's Director of Operations for the last three seasons.

Quest for Eighth National Title

Minnesota has won seven national championships (2000, 2004, 2005, 2012, 2013, 2015, and 2016) and looks for a historic eighth title national crown in 2022-23.

2022-23 GOPHER WOMEN'S HOCKEY SUPERLATIVES

FASTEST GOAL SCORED IN A PERIOD

Gophers	0:18 of the third period (W, 4-2, at Ohio State, Oct. 28, 2022)
Opponent	0:23 of the second period (L, 4-1, vs. St. Cloud State, Nov. 7, 2022)

FASTEST FIRST GOAL SCORED IN A GAME

Gophers	0:25 of the first period (W, 5-3, vs. Minnesota Duluth, Nov. 5, 2022)
Opponent	00:54 of the first period (W, 2-1, vs. St. Cloud State, Oct. 22, 2022)

LATEST GOAL SCORED IN A PERIOD

Gophers	19:35 of the first period (W, 11-0, at Minnesota State, Oct. 14, 2022)
Opponent	19:51 of the second period (W, 4-2, at St. Cloud State, Oct. 21, 2022)

MOST GOALS SCORED IN A PERIOD

Gophers	5, (third period, W, 11-0, at Minnesota State, Oct. 14, 2022)
Opponent	3, (third period, T, 4-4, at Ohio State, Oct. 29, 2022)
Combined	5, (3X, last - third period, T, 4-4, at Ohio State, Oct. 29, 2022)

MOST GOALS SCORED IN A GAME

Gophers	11, (W, 11-0, at Minnesota State, Oct. 14, 2022)
Opponent	4, (4X, last - L, 4-1, at Wisconsin, Nov. 20, 2022)
Combined	13, (W, 9-4, vs. Minnesota State, Oct. 15, 2022)

POINT STREAKS (2022-23)

Player	Games	Start Date
Heise, Taylor	7	10/28/22
Zumwinkle, Grace	2	11/19/22

2022-23 GOPHER SCORING MARKS

MULTI-POINT GAMES

Heise, Taylor	6
Murphy, Abbey	5
Skaja, Catie	4
Zumwinkle, Grace	4
Boreen, Abigail	3
Hemp, Peyton	3
Bouvang, Josefin	2
Huber, Ella	2
Laitinen, Nelli	2
Oden, Emily	2
Wethington, Madeline	2
Kaiser, Madison	1
Norcross, Savannah	1
Norton, Lizi	1
Ostertag, Gracie	1

MINNESOTA SINGLE GAME RECORDS

Goals	5 - 2x, MR: Brandt vs. BSU (11/14/15)
Assists	6 - 2x, MR: Brandt vs. SCSU (12/5/14)
Points	7 - 3x, MR: S. Potomak vs. MSU (11/27/15)
S.O.G	14 - 2x, MR: Cameranesi vs. UMD (3/4/17)
PPG	3 - 3x, MR: Ross vs. OSU (11/4/05)
SHG	2 - 5x, MR: Ross vs. UMD (10/26/07)
+/-	+8 - Baldwin & Wolfe vs. SCSU (10/10/15)
Pen.	6 - Stephens vs. SCSU (10/16/04)
PIM	19 - C. Kennedy vs. MSU (1/15/00)
Saves	51 - 2x, MR: Raty (3/5/11)

MULTI-GOAL GAMES

Murphy, Abbey	3
Hemp, Peyton	2
Bouvang, Josefin	1
Boreen, Abigail	1
Skaja, Catie	1
Zumwinkle, Grace	1

MINNESOTA SINGLE SEASON RECORDS

Goals	49	Muzerall (1999-00)
Assists	72	Darwitz (2004-05)
Points	114	Darwitz (2004-05)
Points by Rookie	82	Brandt (2012-13)
Goals by Rookie	39	M. Lamoreaux (2008-09)
Points by Defender	57	Bozek (2012-13)
Goals by Defender	20	Bozek (2012-13)
Power-Play Goals	16	Stephens (2004-05), Muzerall (1999-00)
Shorthanded Goals	7	Wendell (2004-05)
Game-Winning Goals	10	West (2009-10)

GOPHERS IN THE NATIONAL RANKINGS

Points Per Game	GP	Points PPG
11. Grace Zumwinkle	11	17 1.55
15. Taylor Heise	11	16 1.45

Goals Per Game	GP	Goals GPG
4. Abbey Murphy	11	9 0.82

Power Play Goals	GP	PPG
T2. Abbey Murphy	11	4

Game Winning Goals	GP	GWG
T2. Grace Zumwinkle	11	4

Goals Against Average	GP	GAA
18. Skylar Vetter	10	2.03

Save Percentage	GP	Sv%
31. Skylar Vetter	10	.917

Power Play %	Goals/Attempts	Pct.
9. Minnesota	9/37	.243

Penalty Kill %	Goals Allowed/Att.	Pct.
35. Minnesota	8/33	.758

Goals Per Game	Games	Goals GPG
2. Minnesota	11	53 4.82

Scoring Defense	Games	GA GAPG
12. Minnesota	11	23 2.09

2022-23 STAT LEADERS

Goals	Murphy, 9
Assists	Heise/G.Zumwinkle, 11
Points	G. Zumwinkle, 19
Shots	G. Zumwinkle, 76
Shot %	Hemp, .214
+/-	Norton/E. Zumwinkle, +11
Penalties	Murphy, 9
PIM	Murphy, 18
Power-play Goals	Murphy, 4
Shorthanded Goals	Bouvang/Heise/Hemp/Murphy, 1
Game-Winning Goals	G. Zumwinkle, 4
Goals-Against-Average	Vetter, 2.28
Save Percentage	Vetter, .916
Shutouts	Pahl/Vetter, 1

2022-23 GOPHER AWARD WINNERS

WCHA WEEKLY/MONTHLY AWARDS

WCHA Forward of the Week - Zumwinkle (10/17), Heise (10/31, 11/7)
WCHA Goalie of the Week - Vetter (10/17, 10/31, 11/7)
WCHA Forward of the Month - Murphy (Oct.)
WCHA Goalie of the Month - Vetter (Oct.)

2022-23 WCHA REGULAR-SEASON STANDINGS

Team	WCHA				Overall				Pts%
	Pts	GP	W-L-T	SW	GF-GA	GP	W-L-T		
1. Ohio State	31	12	10-1-1	1	49-23	12	10-1-1		.861
2. Minnesota	27	10	9-0-1	0	52-19	11	9-1-1		0.900
3. Wisconsin	21	8	7-1-0	0	42-9	12	10-2-0		.875
4. UMD	15	10	5-5-0	0	25-21	14	9-5-0		.500
5. SCSU	13	12	4-8-0	0	23-34	15	7-8-0		.361
6. Minn. State	10	10	3-7-0	0	19-34	12	5-7-0		.333
7. Bemidji State	3	10	1-9-0	0	7-43	14	3-10-1		.100
8. St. Thomas	0	8	0-8-0	0	3-37	12	3-9-0		.000

USCHO.COM DIVISION I WOMEN'S POLL

Week 10 Poll: November 21, 2022

Rk.	Team (1st pl. votes)	Record	Pts.	Last Rk.
1.	Ohio State (12)	12-1-1	286	2
2.	Wisconsin (5)	11-2-1	274	3
3.	Minnesota (1)	9-2-2	257	1
4.	Quinnipiac	12-1-0	229	5
5.	Yale (2)	6-0-0	218	6
6.	Colgate	13-1-0	217	4
7.	Minnesota Duluth	11-5-0	191	7
8.	Northeastern	14-2-1	154	8
9.	Cornell	6-2-0	138	9
10.	Clarkson	13-4-1	116	10
11.	Providence	12-4-1	103	13
12.	Penn State	10-7-1	70	11
12.	Vermont	10-5-1	70	14
14.	Princeton	4-4-0	28	15
15.	Connecticut	10-6-2	24	12

Others receiving votes: St. Cloud State 9, St. Lawrence 8, Boston College 6, Mercyhurst 2

USA TODAY/USA HOCKEY MAGAZINE POLL

Week 10 Poll: November 22, 2022

Rk.	Team (1st pl. votes)	Pts.	Last Rk.	Record
1.	Ohio State (13)	280	1	12-1-1
2.	Wisconsin (4)	263	3	11-2-1
3.	Minnesota	245	2	9-2-2
4.	Quinnipiac	217	5	12-1-0
5.	Yale (2)	207	6	6-0-0
6.	Colgate	206	4	13-1-0
7.	Minnesota Duluth	172	8	11-5-0
8.	Northeastern	154	7	14-2-1
9.	Cornell	126	9	6-2-0
10.	Clarkson	114	10	13-4-1
11.	Providence	97	13	12-4-1
12.	Penn State	76	11	10-7-1
13.	Vermont	60	14	10-5-1
14.	Princeton	23	15	4-4-0
15.	Connecticut	17	12	10-6-2

Others receiving votes: St. Cloud State 11, Boston College 9, St. Lawrence 5, Minnesota State 3, Mercyhurst 2, Boston University 1, Long Island 1

THE LAST TIME MINNESOTA...

Won at home.....vs. Minnesota Duluth (W, 5-3), Nov. 5, 2022
 Lost at home.....vs. Minnesota Duluth (L, 2-1), March 12, 2022
 Tied at home.....vs. Wisconsin (T, 2-2, OT), Feb. 6, 2021
 Won on the road.....at Ohio State (W, 4-2), Oct. 28, 2022
 Lost on the road.....at Wisconsin (L, 4-1), Nov. 20, 2022
 Tied on the road.....at Wisconsin (T, 3-3), Nov. 19, 2022
 Won at a neutral site.....vs. Mercyhurst at Nashville, Tenn. (W, 4-0), Nov. 26, 2021
 Lost at a neutral site.....vs. St. Cloud State in Andover, Minn. (L, 4-1), Nov. 7, 2022
 Tied at a neutral site.....vs. Boston College at Nashville, Tenn. (T, 2-2, OT), Nov. 29, 2019
 Swept a regular-season home series.....vs. Minnesota Duluth (W, 3-2(OT); W, 5-3), Nov. 4-5, 2022
 Was swept in a regular-season home series.....vs. Ohio State (L, 4-2; L, 4-1), Oct. 1-2, 2021
 Swept a regular-season road series.....at Bemidji State (W, 5-2; W, 3-2), Oct. 29-30, 2021
 Was swept in a regular-season road series.....at Wisconsin (L, 5-0; L, 6-3), Jan. 15-16, 2021
 Won a WCHA regular-season game.....vs. Minnesota Duluth (W, 5-3), Nov. 5, 2022
 Lost a WCHA regular-season game.....at Wisconsin (L, 4-0), Nov. 20, 2022
 Tied a WCHA regular-season game.....at Wisconsin (T, 3-3), Nov. 19, 2022
 Won a non-conference game.....vs. Minnesota Duluth (W, 5-1), March 5, 2022
 Lost a non-conference game.....vs. St. Cloud State (L, 4-1), Nov. 7, 2022
 Tied a non-conference game.....vs. Boston College (T, 2-2, OT), Nov. 29, 2019
 Won in overtime.....vs. Minnesota Duluth (W, 3-2, OT), Nov. 4, 2022
 Lost in overtime.....vs. Ohio State (L, 3-2, OT), March 6, 2022
 Won a shootout.....at Wisconsin (T, 3-3, OT; SO-W, 1-0), Nov. 19, 2022
 Lost a shootout.....at Ohio State (T, 4-4, OT; SO-L, 2-1), Oct. 29, 2022
 Defeated a USCHO-ranked opponent.....vs. No. 5 Minnesota Duluth (W, 5-3), Nov. 5, 2022
 Scored in first 2:00.....C. Skaja (0:25) vs. Minnesota Duluth (W, 5-3), Nov. 5, 2022
 Allowed a goal in first 2:00.....E. Gentry (0:54) vs. St. Cloud St. (W, 2-1), Oct. 22, 2022
 Shut out an opponent.....at Minnesota State (W, 11-0), Oct. 14, 2022
 Was shut out.....at Wisconsin (L, 5-0), Jan. 15, 2021
 Scored one goal.....at Wisconsin (L, 4-1), Nov. 20, 2022
 Scored two goals.....vs. St. Cloud State (W, 2-1), Oct. 22, 2022
 Scored three goals.....at Wisconsin (T, 3-3), Nov. 19, 2022
 Scored four goals.....vs. St. Cloud State (L, 4-1), Nov. 7, 2022
 Scored five goals.....vs. Minnesota Duluth (W, 5-3), Nov. 5, 2022
 Scored six goals.....vs. Bemidji State (W, 6-0), Oct. 7, 2022
 Scored seven goals.....vs. St. Thomas (W, 7-1), Feb. 19, 2022
 Scored eight goals.....at St. Thomas (W, 8-2), Jan. 9, 2022
 Scored nine goals.....vs. Minnesota State (W, 9-4), Oct. 15, 2022
 Scored 10 or more goals.....at Minnesota State (W, 11-0), Oct. 14, 2022
 Allowed one goal.....vs. St. Cloud State (W, 2-1), Oct. 22, 2022
 Allowed two goals.....vs. Minnesota Duluth (W, 3-2, OT), Nov. 4, 2022
 Allowed three goals.....at Wisconsin (T, 3-3), Nov. 19, 2022
 Allowed four goals.....at Wisconsin (L, 4-1), Nov. 20, 2022
 Allowed five goals.....vs. Minnesota State (L, 5-4, OT), Jan. 15, 2022
 Allowed six goals.....at Wisconsin (L, 6-3), Jan. 16, 2021
 Allowed seven goals.....at Minnesota Duluth (L, 7-1), Feb. 17, 2007
 Allowed eight goals.....at Wisconsin (L, 8-2), Dec. 4, 2016
 Allowed nine or more goals.....vs. Beatrice Aeros (L, 9-0), Jan. 31, 1999
 Scored one power-play goal.....(1/3) at Wisconsin (L, 4-1), Nov. 20, 2022
 Scored two power-play goals.....(2/6) vs. Bemidji State (W, 6-0), Oct. 7, 2022
 Scored three power-play goals.....(3/5) at Minnesota State (W, 11-0), Oct. 14, 2022
 Scored four or more power-play goals.....(4/5) vs. Bemidji State (W, 7-1), Nov. 15, 2019
 Allowed one power-play goal.....(1/3) at Wisconsin (L, 4-1), Nov. 20, 2022
 Allowed two power-play goals.....(2/4) vs. Minnesota Duluth (W, 5-3), Nov. 5, 2022
 Allowed three power-play goals.....(3/6) vs. North Dakota (W, 6-3), Jan. 12, 2013
 Allowed four or more power-play goals.....(4/8) vs. Ohio State, (W, 9-5), Nov. 4, 2005
 Scored a shorthanded goal.....P. Hemp Wisconsin (T, 3-3), Nov. 19, 2022
 Allowed a shorthanded goal.....at St. Thomas (L. Bianchi), (W, 8-2), Jan. 9, 2022
 Scored an empty-net goal.....E. Oden vs. Bemidji State (W, 4-1), Oct. 8, 2022
 Allowed an empty-net goal.....vs. Ohio State (Levis) (L, 4-2), Oct. 1, 2021
 Scored a hat trick.....J. Bouveng vs. Minnesota State (W, 9-4), Oct. 15, 2022
 Scored a natural hat trick.....A. Potomak vs. Minnesota Duluth (W, 5-0), Jan. 31, 2020
 Allowed a hat trick.....at Bemidji State (Hunt), (W, 6-3) Feb. 8, 2020
 Individual scored four goals.....Brandt vs. St. Cloud State, Oct. 10, 2015
 Individual scored five or more goals.....Brandt vs. Bemidji State, Nov. 14, 2015
 Had five different goal scorers.....vs. Minnesota Duluth (W, 5-1), March 6, 2022
 Had six different goal scorers.....vs. Minnesota State (W, 9-4), Oct. 15, 2022
 Had seven different goal scorers.....vs. RIT (W, 7-1), Nov. 13, 2021
 Had eight different goal scorers.....at Bemidji State (W, 9-1), Feb. 20, 2021
 Had nine different goal scorers.....at Minnesota State (W, 11-0), Oct. 14, 2022
 Had 10 or more different goal scorers.....vs. Wisconsin (W, 10-0), Feb. 7, 1998
 Scored on a penalty shot.....West vs. Wisconsin, March 18, 2012
 Attempted a penalty shot.....Zumwinkle at St. Cloud State, Feb. 2, 2018
 Allowed a penalty shot goal.....at Lindenwood (Girard), (W, 4-3, OT), Nov. 26, 2017
 Opponent attempted a penalty shot.....at St. Cloud State (Tylke), (W, 4-3, OT), Nov. 17, 2018
 Goaltender made 50 or more saves.....Räty (50) vs. North Dakota, March 16, 2013
 Opponent made 50 or more saves.....vs. St. Thomas (Maurer, 52), (W, 5-1), Feb. 26, 2022

MINNESOTA QUICK FACTS

UNIVERSITY INFORMATION

School:	University of Minnesota
Location:	Minneapolis, Minn. 55455
Founded:	1851
Enrollment:	52,017
Nickname:	Golden Gophers
Colors:	Maroon and Gold
Conference:	Big Ten/WCHA (women's hockey)
Division:	NCAA I
President:	Joan T.A. Gabel
Director of Athletics:	Mark Coyle
Associate Athletics Director - W. Hockey:	Tom McGinnis

TEAM INFORMATION

2022-23 Overall record:	9-2-2
2022-23 WCHA record (Position):	9-1-2 (W-L-T) (2nd)
2021-22 WCHA Tournament:	2nd
2021-22 NCAA Tournament:	Lost in QF
2021-22 Players returning/lost:	20/5
2022-23 Newcomers:	5

PROGRAM HISTORY

First season:	1997-98
All-time record:	728-159-60 (.802)
WCHA record:	467-98-46-17 (.803)
WCHA postseason record:	54-18-0 (.750)
WCHA regular season titles:	11 (01,02,04,05,09,10,13,14,15,19,22)
WCHA tournament titles:	7 (2002,04,05,12,13,14,18)
NCAA berths:	19
National titles:	7 (2000,04,05,12,13,15,16)
NCAA postseason record (since 2000-01):	26-13-1
NCAA Frozen Four record (since 2000-01):	15-9-1

COACHING STAFF

Head Coach:	Brad Frost (14 seasons)
Alma Mater:	Bethel, 1996
Career Record:	451-95-38 (.808)
WCHA Record:	310-67-34 (.798)
Assistant Coach:	Natalie Darwitz (Minnesota, 2007)
Assistant Coach:	Jessica Scott (St. Thomas, 2004)
Volunteer Assistant Coach:	Chris Esposito (Columbia, 2015)
Director of Operations:	Jessica Scott (St. Thomas, 2004)
Athletic Training:	Erin Moore (Purdue, 2011)
Strength & Conditioning:	Cal Dietz (Findlay, 1996)

FACILITY INFORMATION

Home Rink:	Ridder Arena
Capacity:	3,400
Opened:	2002
Address:	1901 4th St. SE Minneapolis, MN 55455
Press Box Phone:	612-625-6900

ATHLETIC COMMUNICATIONS

Assistant Director (W. Hockey):	Daniel Galarneau
Cell Phone:	651-208-6490
Mailing Address:	275 Bierman Field Athletic Building 516 15th Ave. SE, Minneapolis, MN 55455
Email:	galar042@umn.edu

CONNECT WITH GOPHER WOMEN'S HOCKEY ONLINE

Official website:	GopherSports.com
Twitter:	@GopherWHockey
Facebook:	Facebook.com/GopherWomensHockey
Instagram:	@gopherwhockey
YouTube:	YouTube.com/user/GopherAthletics

HEAD COACH BRAD FROST

The 2022-23 season marks head coach Brad Frost's 16th season at the helm of Gopher women's hockey. Frost has brought the program to the pinnacle of the collegiate hockey world by advancing to six-straight NCAA Women's Frozen Fours from 2011-12 to 2016-17. Frost's Gophers won four national titles in six years, including back-to-back titles in 2012 and 2013 and again in 2015 and 2016. After joining the program in 2001 as an assistant coach and later holding the interim head coach title during the 2007-08, Frost was named the program's second head coach on April 16, 2008.

In 15 seasons leading the Gophers, the Bethel University graduate has guided the Gophers to four NCAA national championships, nine NCAA Frozen Four appearances, seven WCHA regular season titles, and four WCHA Final Faceoff championships. Frost ended the 2020-21 season with a career record of 413-84-35 (.776) and has not had a team finish lower than fourth in the WCHA.

COACHING EXCELLENCE

Frost, who has won four national titles, is considered one of the best and most respected coaches in college hockey. In his 14 seasons, he has been named an AHCA Coach of the Year Finalist nine times and has won the national honor twice (2013 and 2014). Frost has been named WCHA Coach of the Year four times (2008, 2009, 2013, and 2014). Under his tutelage, the Gophers have tallied seven seasons with 30 or more wins. In 2013, Frost led the Gophers to the NCAA's first-ever perfect season (41-0-0).

PLAYER DEVELOPMENT

Over the last 15 years, Frost has coached some of the top talent not only in the nation but also in the world. He has seen 12 players (Megan Bozek, Hannah Brandt, Dani Cameranesi, Mira Jalosuo, Amanda Kessel, Gigi Marvin, Abbey Murphy, Kelly Pannek, Noora Rätty, Anne Schleper, Lee Stecklein, and Grace Zumwinkle) represent their respective countries in the Olympics. He also aided the development of former Gophers and Olympians Natalie Darwitz, Kelly Stephens, Lyndsay Wall, and Krissy Wendell while a Minnesota assistant coach. Frost has coached a total of 15 players to a combined 25 All-American honors. Among those All-Americans is 2022 Patty Kazmaier Memorial Award winner Taylor Heise. A total of 14 Minnesota student-athletes have been named Top-10 Patty Kaz finalists 22 times under Frost's tutelage.

ACADEMIC SUCCESS

Under Frost's guidance, the Gophers have recorded a 3.0 or higher grade point average and increased the team's Academic Progress Rating (APR). Minnesota has accumulated 174 WCHA All-Academic Team awards (15 in 2020-21), 77 WCHA Scholar Athlete honors (13 in 2020-21) and three WCHA Outstanding Student-Athlete of the Year award recipients (Alex Woken, 2020; Gigi Marvin, 2009; Kelly Terry, 2014) since Frost took reign.

INTERNATIONAL COACHING EXPERIENCE

Frost has served USA Hockey by working development camps and serving as a coach for various U.S. teams. In 2006, he was an assistant coach of the U.S. Under-22 Team, and from 2008-09, he was an assistant coach for the U.S. National Team.

PERSONAL LIFE

Frost grew up in Burlington, Ontario, and attended Aldershot High School. After graduating from Aldershot, he decided to attend college at Bethel University, which is where his parents originally met. While at Bethel, he studied Physical & Health Education and was a two-sport athlete, competing in hockey and golf. Frost was a four-year letterwinner in hockey and completed his career ranked eighth on Bethel's career scoring list. In 1994 and 1995, he was voted the team's Most Valuable Player and Most Inspirational. He also captained the Royals his junior and senior seasons. At Bethel, Frost met his wife Dayna. They now reside in Cottage Grove, Minn., and have three sons: Micah, Jonah and Josiah.



BRAD FROST
16TH YEAR AT MINNESOTA
BETHEL, 1996

2022-23 MINNESOTA WOMEN'S HOCKEY ROSTER

No.	Name	Yr.	Pos.	Ht.	Hometown (High School/Last Team)
1	Olivia King	Sr.	G	5-6	Garrison, Minn. (Brainerd HS)
3	Catie Skaja	5th	F	5-7	New Prague, Minn. (New Prague Senior HS)
4	Audrey Wethington	Jr.	F	5-7	Edina, Minn. (Blake School)
5	Madeline Wethington	Sr.	D	5-10	Edina, Minn. (Blake School)
6	Gracie Ostertag	5th	D	5-7	Shakopee, Minn. (Shattuck-St. Mary's)
7	Nelli Laitinen	Fr.	D	5-7	Lohja, Finland (Kiekko-Espoo)
8	Sadie Lindsay	So.	F	5-7	Minnetonka, Minn. (Breck School)
9	Taylor Heise	5th	F	5-10	Lake City, Minn. (Red Wing HS)
10	Emily Zumwinkle	So.	D	5-9	Excelsior, Minn. (Breck School)
11	Josefin Bouveng	Fr.	F	5-9	Vassunda, Sweden (Brynas IF)
12	Grace Zumwinkle	5th	F	5-9	Excelsior, Minn. (Breck School)
13	Crystalyn Hengler	5th	D	5-8	Eden Prairie, Minn. (Eden Prairie HS)
14	Maggie Nicholson	Jr.	D	5-9	Minnetonka, Minn. (Minnetonka HS)
15	Peyton Hemp	So.	F	5-5	Andover, Minn. (Andover HS)
16	Allie Franco	Fr.	F/D	5-7	Oakdale, Minn. (Hill-Murray School)
17	Josey Dunne	Jr.	F	5-10	O'Fallon, Mo. (Heritage Christian Academy/Chicago Mission)
18	Abbey Murphy	R-So.	F	5-5	Evergreen Park, Ill. (Mother McAuley HS/Chicago Mission)
20	Emma Conner	So.	F	5-8	Edina, Minn. (Edina HS)
21	Emily Oden	5th	F	5-8	Edina, Minn. (Edina HS)
22	Abigail Boreen	5th	F	5-8	Somerset, Wis. (Hill-Murray School)
23	Tristana Tatur	So.	F	5-8	Maple Grove, Minn. (Maple Grove HS)
26	Ella Huber	So.	F	5-6	Northfield, Ill. (New Trier HS/Chicago Mission)
27	Savannah Norcross	5th	F	5-7	Lynn, Mass. (New Hampton School/Boston College)
28	Lizi Norton	5th	D	5-6	Orono, Minn. (Orono HS/Minnesota Duluth)
29	Madison Kaiser	Fr.	F	5-7	Andover, Minn. (Holy Family Catholic HS)
31	Skylar Vetter	So.	G	5-8	Lakeville, Minn. (Lakeville North HS)
33	Makayla Pahl	Sr.	G	5-11	Rochester, Minn. (Rochester Mayo HS)

Head Coach: Brad Frost (Bethel, 1996)

Assistant Coaches: Natalie Darwitz (Minnesota, 2007), Jessica Scott (St. Thomas, 2004), Chris Esposito (Columbia, 2007) - Volunteer

ROSTER BREAKDOWN

BY CLASS:

Freshmen (4)

Josefin Bouveng
Allie Franco
Madison Kaiser
Nelli Laitinen

Sophomores (8)

Emma Conner
Peyton Hemp
Ella Huber
Sadie Lindsay
Abbey Murphy
Tristana Tatur
Skylar Vetter
Emily Zumwinkle

Juniors (3)

Josey Dunne
Maggie Nicholson
Audrey Wethington

Seniors (3)

Olivia King
Makayla Pahl
Madeline Wethington

5th-Year (9)

Abigail Boreen
Taylor Heise
Crystalyn Hengler
Savannah Norcross
Lizi Norton
Emily Oden
Gracie Ostertag
Catie Skaja
Grace Zumwinkle

BY STATE/COUNTRY:

Minnesota (20)

Emma Conner
Allie Franco
Taylor Heise
Peyton Hemp
Crystalyn Hengler
Sadie Lindsay
Madison Kaiser
Olivia King
Maggie Nicholson
Lizi Norton
Emily Oden
Gracie Ostertag
Makayla Pahl
Catie Skaja
Tristana Tatur
Skylar Vetter
Audrey Wethington
Madeline Wethington
Emily Zumwinkle
Grace Zumwinkle

Illinois (2)

Ella Huber
Abbey Murphy

Massachusetts(1)

Savannah Norcross

Missouri (1)

Josey Dunne

Wisconsin (1)

Abigail Boreen

Sweden (1)

Josefin Bouveng

Finland (1)

Nelli Laitinen

PRONUNCIATION GUIDE

NAME

Boreen, Abigail
Bouveng, Josefin
Dunne, Josey
Heise, Taylor
Hengler, Crystalyn
Huber, Ella
Laitinen, Nelli
Oden, Emily
Ostertag, Gracie
Pahl, Makayla
Skaja, Catie
Tatur, Tristana
Zumwinkle, Emily
Zumwinkle, Grace

PRONUNCIATION

BORE-een
YO-suh-fin BOO-veng
done
Hi-zee
CRYSTAL-in HANG-glur
HEW-bur
LIGHT-inen
OH-din
AHH-stir-tag
paul
Katie SKY-ah
TAY-ter
ZUM-winkle
ZUM-winkle

2022-23 MINNESOTA WOMEN'S HOCKEY PHOTO ROSTER



22 | **ABIGAIL BOREEN**
SOMERSET, WISC.



11 | **JOSEFIN BOUVENG**
VASSUNDA, SWEDEN



20 | **EMMA CONNER**
EDINA, MINN.



17 | **JOSEY DUNNE**
O'FALLON, MO.



16 | **ALLIE FRANCO**
OAKDALE, MINN.



9 | **TAYLOR HEISE**
LAKE CITY, MINN.



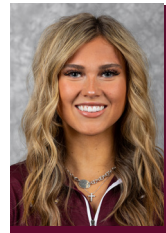
15 | **PEYTON HEMP**
ANDOVER, MINN.



13 | **CRYSTALYN HENGLER**
EDEN PRAIRIE, MINN.



26 | **ELLA HUBER**
NORTHFIELD, ILL.



29 | **MADISON KAISER**
ANDOVER, MINN.



1 | **OLIVIA KING**
GARISON, MINN.



7 | **NELLI LAITINEN**
LOHJA, FINLAND



8 | **SADIE LINDSAY**
MINNETONKA, MINN.



14 | **MAGGIE NICHOLSON**
MINNETONKA, MINN.



27 | **SAVANNAH NORCROSS**
LYNN, MASS.



28 | **LIZI NORTON**
ORONO, MINN.



21 | **EMILY ODEN**
EDINA, MINN.



6 | **GRACIE OSTERTAG**
SHAKOPEE, MINN.



33 | **MAKAYLA PAHL**
ROCHESTER, MINN.



3 | **CATIE SKAJA**
NEW PRAGUE, MINN.



23 | **TRISTANA TATUR**
MAPLE GROVE, MINN.



31 | **SKYLAR VETTER**
LAKEVILLE, MINN.



4 | **AUDREY WETHINGTON**
EDINA, MINN.



5 | **MADELINE WETHINGTON**
EDINA, MINN.



10 | **EMILY ZUMWINKLE**
EXCELSIOR, MINN.



12 | **GRACE ZUMWINKLE**
EXCELSIOR MINN.



BRAD FROST
HEAD COACH



JESSICA SCOTT
ASSISTANT COACH



NATALIE DARWITZ
ASSISTANT COACH



CHRIS ESPOSITO
VOL. ASSISTANT COACH

Tough • Grateful • Disciplined • Devoted

GOPHER CAREER-BESTS (AT MINNESOTA): GAME & SERIES HIGHS

#1 Olivia KING

Saves: 8 vs. RIT, 11/12/21
Shots Faced: 8 vs. RIT, 11/12/21

Series Saves: 10 vs. RIT, 11/12-13/21
Series Shots Faced: 11 vs. RIT, 11/12-13/21

#3 Catie SKAJA

Goals: 2 (6X, last vs. UMD, 11/5/22)
Assists: 3 vs. SCSU, 11/20/21
Points: 3 (3X, last at SCSU, 2/11/22)

Series Goals: 3 at/vs. SCSU, 2/11-12/22
Series Assists: 4 at/vs. SCSU, 11/19-20/21
Series Points: 5 at/vs. SCSU, 2/11-12/22

#4 Audrey WETHINGTON

Goals: 1 (11X, last vs. MSU, 10/15/2022)
Assists: 3 at MSU, 1/14/22
Points: 3 at MSU, 1/14/2022

Series Goals: 2 vs. UST, 2/25-26/2022
Series Assists: 3 (2X, last at/vs. MSU, 1/14-15/2022)
Series Points: 3 (4X, last vs. UST, 2/25-26/22)

#5 Madeline WETHINGTON

Goals: 1 (16X, last at UST, 2/17/22)
Assists: 3 vs. BSU, 10/7/22
Points: 3 (5X, last vs. BSU, 10/7/22)

Series Goals: 2 at SCSU, 1/10-11/20
Series Assists: 4 (2X, last vs BSU, 10/7-8/22)
Series Points: 5 vs./at UST, 1/8-9/22

#6 Gracie OSTERTAG

Goals: 1 (5X, last vs. SCSU, 11/20/21)
Assists: 3 at OSU, 10/29/22
Points: 3 at OSU, 10/29/22

Series Goals: 2 (2X, last at/vs. SCSU, 11/19-20/2021)
Series Assists: 3 at OSU, 10/28-29/22
Series Points: 3 at OSU, 10/28-29/22

#7 Nelli LAITINEN

Goals: 1 (2X, last at OSU, 10/28/22)
Assists: 2 (2X, last at MSU, 10/14/22)
Points: 3 vs. MSU, 10/14/22

Series Goals: 1 (2X, last at OSU, 10/28-29/22)
Series Assists: 2 (2X, last at/vs. MSU, 10/14-15/22)
Series Points: 3 at/vs. MSU, 10/14-15/22

#8 Sadie LINDSAY

Goals: ---
Assists: 2 vs. RIT, 11/12/21
Points: 2 vs. RIT, 11/12/21

Series Goals: ---
Series Assists: 2 vs. RIT, 11/12-13/21
Series Points: 2 vs. RIT, 11/12-13/21

#9 Taylor HEISE

Goals: 3 (2X, last vs. RIT, 11/12/21)
Assists: 3 (5X, last at SCSU, 2/11/22)
Points: 5 vs. RIT, 11/12/21

Series Goals: 4 (2X, last vs. RIT, 11/12-13/21)
Series Assists: 5 vs./at UST, 1/8-9/22
Series Points: 7 vs. RIT, 11/12-13/21

#10 Emily ZUMWINKLE

Goals: 1 (4X, last at MSU, 1/14/22)
Assists: 1 (6X, last at OSU, 10/29/22)
Points: 1 (9X, last at OSU, 10/29/22)

Series Goals: 1 (4X, last at/vs. MSU, 1/14-15/22)
Series Assists: 1 (6X, last at OSU, 10/28-29/22)
Series Points: 2 (2X, last vs./at UST, 1/8-9/22)

#11 Josefin BOUVENG

Goals: 3 vs. MSU, 10/15/22
Assists: 2 at MSU, 10/14/22
Points: 3 vs. MSU, 10/15/22

Series Goals: 3 at/vs. MSU, 10/14-15/22
Series Assists: 2 (2x, last at/vs. MSU, 10/14-15/22)
Series Points: 5 at/vs. MSU, 10/14-15/22

#12 Grace ZUMWINKLE

Goals: 3 (4X, last at MSU, 10/14-15/22)
Assists: 3 (2X, last at BSU, 2/20/21)
Points: 5 at Yale, 11/30/18

Series Goals: 4 (2X, last at/vs. MSU, 10/14-15/22)
Series Assists: 4 at BSU, 2/19-20/21
Series Points: 8 at BSU, 2/19-20/21

#13 Crystalyn HENGLER

Goals: 1 (11X, last vs. MSU, 10/15/22)
Assists: 2 (5X, last at SCSU, 2/11/22)
Points: 3 vs. RIT, 11/12/21

Series Goals: 2 at BSU, 2/19-20/21
Series Assists: 3 vs. RIT, 11/12-13/21
Series Points: 4 vs. RIT, 11/12-13/21

#14 Maggie NICHOLSON

Goals: 1 at OSU, 1/29/22
Assists: 2 vs. UST, 1/8/22
Points: 2 vs. UST, 1/8/22

Series Goals: 1 at OSU, 1/28-29/22
Series Assists: 2 vs./at UST, 1/8-9/22
Series Points: 2 vs./at UST, 1/8-9/22

#15 Peyton HEMP

Goals: 2 (3X, last at WIS., 11/19/22)
Assists: 3 at UMD, 10/9/21
Points: 3 at UMD, 10/9/21

Series Goals: 2 (6X, last at WIS., 11/19-20/22)
Series Assists: 4 at UMD, 10/8-9/21
Series Points: 4 (2X, last vs. RIT, 11/12-13/21)

#16 Allie FRANCO

Goals: ---
Assists: ---
Points: ---

Series Goals: ---
Series Assists: ---
Series Points: ---

#17 Josey DUNNE

Goals: 1 (4X, last vs. RIT, 11/12/21)
Assists: 1 (3X, last at UST, 2/17/22)
Points: 1 (7X, last at UST, 2/17/22)

Series Goals: 1 (4X, vs. RIT, 11/12-13/21)
Series Assists: 1 (2X, last at/vs. UST, 2/17-19/22)
Series Points: 1 (6X, last at/vs. UST, 2/17-19/22)

#18 Abbey MURPHY

Goals: 2 (5X, last at OSU, 10/29/22)
Assists: 3 at SCSU, 1/10/21
Points: 3 (4X, last vs. MSU, 10/15/22)

Series Goals: 3 (2X, last at/vs. MSU, 10/14-15/22)
Series Assists: 3 (3X, last at/vs. MSU, 10/14-15/22)
Series Points: 6 (2X, last at/vs. MSU, 10/14-15/22)

#20 Emma CONNER

Goals: 1 (2X, last at MSU, 1/14/22)
Assists: 2 vs. RIT, 11/13/21
Points: 3 vs. RIT, 11/13/21

Series Goals: 1 vs. RIT, 11/12-13/21
Series Assists: 3 vs. RIT, 11/12-13/21
Series Points: 4 vs. RIT, 11/12-13/21

#21 Emily ODEN

Goals: 2 (2X, last at OSU, 1/25/19)
Assists: 2 (10X, last vs. MSU, 10/15/22)
Points: 4 at OSU, 1/25/19

Series Goals: 2 (3X, last at UMD, 10/8-9/21)
Series Assists: 4 at/vs. MSU, 10/14-15/22
Series Points: 4 (3x, last at/vs. MSU, 10/14-15/22)

#22 Abigail BOREEN

Goals: 3 (2X, last at SCSU, 2/11/22)
Assists: 3 (3X, last at UST, 2/17/22)
Points: 5 at SCSU, 2/11/22

Series Goals: 5 vs./at UST, 1/8-9/2022
Series Assists: 5 at/vs. UST, 2/17-19/22
Series Points: 6 (2X, last at/vs. UST, 2/17-19/22)

#23 Tristana TATUR

Goals: ---
Assists: 1 vs. UST, 1/8/22
Points: 1 vs. UST, 1/8/22

Series Goals: ---
Series Assists: 1 vs. UST, 1/8-9/22
Series Points: 1 vs. UST, 1/8-9/22

#26 Ella HUBER

Goals: 2 vs. UST, 2/29/22
Assists: 3 vs. MSU, 10/15/21
Points: 3 (2X, last vs. UST, 2/19/22)

Series Goals: 2 (2X, last at/vs. UST, 2/17-19/22)
Series Assists: 4 vs./at MSU, 10/15-16/21
Series Points: 4 vs./at MSU, 10/15-16/21

#27 Savannah NORCROSS

Goals: 2 (2X, last vs. UST, 2/19/22)
Assists: 3 at MSU, 1/14/22
Points: 3 (2X, last at MSU, 1/14/22)

Series Goals: 2 (3X, last at/vs. UST, 2/17-19/22)
Series Assists: 3 (2X, last vs. UST, 2/25-26/22)
Series Points: 4 (3X, last vs. BSU, 2/4-5/22)

#28 Lizi NORTON

Goals: 1 (2X, last vs. UMD, 11/5/22)
Assists: 2 vs. MSU, 10/15/22
Points: 2 vs. MSU, 10/15/22

Series Goals: 1 (2X last vs. UMD, 11/4-5/22)
Series Assists: 3 at/vs. MSU, 10/14-15/22
Series Points: 3 at/vs. MSU, 10/14-15/22

#29 Madison KAISER

Goals: 1 (2X, last vs. SCSU, 10/22/22)
Assists: 1 at MSU, 10/14/22
Points: 2 at MSU, 10/14/22

Series Goals: 1 (2X, last at/vs. SCSU, 10/21-22/22)
Series Assists: 1 at/vs. MSU, 10/14-15/22
Series Points: 2 at/vs. MSU, 10/14-15/22

#31 Skylar VETTER

Saves: 43 at OSU, 10/28/22
Shots Faced: 45 at OSU, 10/28/22

Series Saves: 70 at OSU, 10/28-29/22
Series Shots Faced: 76 at OSU, 10/28-29/22

#33 Makayla PAHL

Saves: 41 at OSU, 1/30/21
Shots Faced: 44 at OSU, 1/30/21

Series Saves: 44 at OSU, 1/29-30/21
Series Shots Faced: 44 at OSU, 1/29-30/21

2022-23 MINNESOTA SCHEDULE/RESULTS

Date	Opponent	Time/Result	Goals (Season Totals)	Goaltender, Saves	Attendance
10/7	BEMIDJI STATE	W, 6-0	Boreen (1,2), Hemp (1,2), Murphy (1,2)	Pahl, 17	1,209
10/8	BEMIDJI STATE	W, 4-1	Norton (1), G.Zumwinkle (1), Skaja (1), Oden (1)	Vetter, 15	1,259
10/14	RV Minnesota State	W, 11-0	G.Zumwinkle (2,3,4), Skaja (2), Norcross (1), Laitinen (1), Murphy (3), Heise (1), Hemp (3) Kaiser (1), Huber (1)	Vetter, 17	105
10/15	RV MINNESOTA STATE	W, 9-4	Murphy (4,5), Skaja (3), Bouveng (1,2,3), A.Wethington (1), Hengler (1), G.Zumwinkle (5)	Pahl, 18/Vetter, 2	1,225
10/21	St. Cloud State	W, 4-2	Murphy (6), Boreen (3), G.Zumwinkle (6), Heise (2)	Vetter, 20	437
10/22	ST. CLOUD STATE	W, 2-1	Kaiser (2), G.Zumwinkle (7)	Vetter, 20	1,553
10/28	#1 Ohio State	W, 4-2	Laitinen (2), Heise (3), Hemp (4), Boreen (4)	Vetter, 43	421
10/29	#1 Ohio State	T, 4-4	Murphy (7,8), Bouveng (4), Heise (4)	Vetter, 27	319
11/4	#5 MINNESOTA DULUTH	W, 3-2 (OT)	Huber (2), Norton (2), Heise (5)	Vetter, 27	2,032
11/5	#5 MINNESOTA DULUTH	W, 5-3	Skaja (4,5), Murphy (9), Bouveng (5), Boreen (5)	Vetter, 23	2,280
11/7	RV St. Cloud State	L, 4-1	Heise (6)	Vetter, 15	1,250
11/19	#3 Wisconsin	T, 3-3	Hemp (5,6), G.Zumwinkle (8)	Vetter, 40	2,273
11/20	#3 Wisconsin	L, 4-1	Heise (7)	Vetter, 36	2,273
11/25	# 12Penn State#	6:00 PM			
11/26	Boston U/ #5 Yale#	TBD			
12/2	MINNESOTA STATE	6:00 PM			
12/3	Minnesota State	2:00 PM			
12/9	ST. CLOUD STATE	6:00 PM			
12/10	St. Cloud State	3:00 PM			
1/6	MERRIMACK+	6:00 PM			
1/7	NEW HAMPSHIRE+	4:30 PM			
1/13	ST. THOMAS	6:00 PM			
1/14	ST. THOMAS	2:00 PM			
1/20	Bemidji State	3:00 PM			
1/21	Bemidji State	2:00 PM			
1/27	Minnesota Duluth	3:00 PM			
1/28	Minnesota Duluth	3:00 PM			
2/3	OHIO STATE	6:00 PM			
2/4	OHIO STATE	2:00 PM			
2/10	WISCONSIN	6:00 PM			
2/11	WISCONSIN	7:30 PM			
2/17	St. Thomas	6:00 PM			
2/18	St. Thomas	6:00 PM			

* WCHA Final Faceoff • % WCHA First Round (Campus sites) • # Henderson Collegiate Hockey Showcase • + East/West Showcase

Home games in **BOLD CAPS** at Ridder Arena. All times are Central.

Note: goal; (#) denotes individual season goals

MINNESOTA 2022-23 STATISTICS: INDIVIDUAL



2022-23 Minnesota Women's Ice Hockey Overall Individual Statistics All games

Page 1/2
as of Nov 22, 2022

Game Records

Overall	Conference	Home	Away	Neutral
9 - 2 - 2	9 - 2 - 2	6 - 0 - 0	3 - 1 - 2	0 - 1 - 0

			Shots						Penalties					Goals										
#	Player	GP	G	A	PTS	SH	SH%	+/-	PEN-MIN	MIN	MAJ	OTH	PP	SH	FG	GW	GT	OT	HT	PN	UA	BLK		
12	Zumwinkle, Grace	13	8	11	19	76	.105	+10	0-0	0	0	0	1	0	1	4	0	0	1	0	0	6		
9	Heise, Taylor	13	7	11	18	42	.167	+6	2-4	2	0	0	2	1	0	1	0	1	0	0	1	5		
18	Murphy, Abbey	13	9	7	16	44	.205	+10	9-18	9	0	0	4	1	3	0	0	0	0	0	1	8		
3	Skaja, Catie	13	5	9	14	32	.156	+6	2-4	2	0	0	2	0	1	0	0	0	0	0	0	4		
22	Boreen, Abigail	13	5	5	10	47	.106	+7	3-6	3	0	0	1	0	1	1	0	0	0	0	1	4		
15	Hemp, Peyton	13	6	3	9	28	.214	+9	2-4	2	0	0	0	1	0	1	0	0	0	0	0	2		
11	Bouveng, Josefin	13	5	4	9	28	.179	+8	0-0	0	0	0	0	1	0	2	0	0	1	0	0	3		
26	Huber, Ella	13	2	7	9	22	.091	+7	4-8	4	0	0	0	0	1	0	0	0	0	0	0	5		
7	Laitinen, Nelli	11	2	6	8	13	.154	+7	2-4	2	0	0	0	0	1	0	0	0	0	0	0	11		
21	Oden, Emily	13	1	7	8	27	.037	+9	0-0	0	0	0	0	0	0	0	0	0	0	0	0	7		
5	Wethington, Madeline	13	0	7	7	29	.000	+9	5-10	5	0	0	0	0	0	0	0	0	0	0	0	13		
6	Norton, Lizi	13	2	4	6	16	.125	+11	4-8	4	0	0	0	0	1	0	0	0	0	0	0	11		
29	Kaiser, Madison	13	2	2	4	15	.133	0	4-8	4	0	0	0	0	0	0	0	0	0	0	0	1		
13	Hengler, Crystalyn	13	1	3	4	23	.043	+5	3-6	3	0	0	0	0	0	0	0	0	0	0	0	8		
27	Norcross, Savannah	12	1	3	4	10	.100	0	0-0	0	0	0	0	0	0	0	0	0	0	0	0	4		
6	Ostertag, Gracie	12	0	4	4	17	.000	+10	0-0	0	0	0	0	0	0	0	0	0	0	0	0	16		
4	Wethington, Audrey	13	1	2	3	15	.067	-2	0-0	0	0	0	0	0	0	0	0	0	0	0	0	2		
10	Zumwinkle, Emily	13	0	2	2	13	.000	+11	0-0	0	0	0	0	0	0	0	0	0	0	0	0	14		
20	Conner, Emma	9	0	0	0	4	.000	+1	1-2	1	0	0	0	0	0	0	0	0	0	0	0	7		
16	Franco, Allie	2	0	0	0	1	.000	0	0-0	0	0	0	0	0	0	0	0	0	0	0	0	0		
31	Vetter, Skylar	12	0	0	0	0	.000	0	0-0	0	0	0	0	0	0	0	0	0	0	0	0	0		
33	Pahl, Makayla	2	0	0	0	0	.000	0	0-0	0	0	0	0	0	0	0	0	0	0	0	0	0		
TM	TEAM	13	0	0	0	0	.000	0	4-8	0	0	0	0	0	0	0	0	0	0	0	0	0		
Totals		13	57	97	154	502	.114	+124	45-90	45	0	0	10	4	9	9	0	1	2	0	3	131		
Opponents		13	30	53	83	350	.086	-128	51-102	51	0	0	9	0	4	2	2	0	0	0	1	234		

# Player	GP-GS	Goal Average			Saves		Record				Goals Allowed				
		MINUTES	GA	AVG	SAVES	PCT	W	L	T	SHO	PP	SH	EN	PEN	SOG
31 Vetter, Skylar	12-11	684:05	26	2.28	285	.916	7	2	2	1	8	0	0	0	2
33 Pahl, Makayla	2-2	103:31	4	2.32	35	.897	2	0	0	1	1	0	0	0	0
TM EMPTY NET	-	02:39	0	0.00	0	.000	0	0	0	0	0	0	0	0	0
Totals	13	790:15	30	2.28	320	.914	9	2	2	2	9	0	0	0	2
Opponents	13	790:15	57	4.33	445	.886	2	9	2	0	10	4	1	0	2



**2022-23 Minnesota Women's Ice Hockey
Overall Team Statistics
All games**

Page 1/2
as of Nov 22, 2022

Team statistics

	MINN	OPP
SHOT STATISTICS		
Goals-Shot attempts	57-502	30-350
Shot pct.	.114	.086
Goals/Game	4.38	2.31
Shots/Game	38.62	26.92
Assists	97	53
POWER PLAYS		
Goals-Power Plays	10-41	9-37
Conversion Percent	.244	.243
Shot Attempts	79	45
Shot Percent	.127	.200
SHORT-HANDED		
Goals-Shot attempts	4-11	0-6
Shot Percent	.364	.000
GOAL BREAKDOWN		
Total Goals	57	30
Power Play	10	9
Short-handed	4	0
Empty net	1	0
Penalty	0	0
Unassisted	3	1
Overtime	1	0
Delayed Penalty	0	0
Game winning	9	2
First Goal	9	4
Game Tying Goal	0	2
Extra Attacker	0	2
BLOCKS		
Blocks	131	234
Blocks/Game	10.08	18.00
PENALTIES		
Number	45	51
Minutes	90	102
Penalties/Game	3.46	3.92
Penalty minutes/Game	6.92	7.85
Minor	45	51
Major	0	0
10-minute Misconduct	0	0
Game Misconduct	0	0
Gross Misconduct	0	0
Match	0	0
FACEOFFS (W-L)		
Faceoff W-L pct.	.541	.459
SHOOTOUTS (Made-Att)		
	2-7	2-7
ATTENDANCE		
Total	8349	5828
Dates/Avg Per Date	6/1392	6/971
Neutral Site #/Avg	1/1250	-

Goals by Periods

Team	1st	2nd	3rd	OT	TOTAL
MINN	22	15	19	1	57
Opponents	8	11	11	0	30

Shots by Periods

Team	1st	2nd	3rd	OT	TOTAL
MINN	156	158	175	13	502
Opponents	114	123	106	7	350

Saves by Periods

Team	1st	2nd	3rd	OT	TOTAL
MINN	106	112	95	7	320
Opponents	134	143	156	12	445

MINNESOTA 2022-23 STATISTICS: GAME-BY-GAME TEAM



2022-23 Minnesota Women's Ice Hockey Team Game-by-Game All games

Page 1/1
as of Nov 22, 2022

Date	Opponent	Score	G	A	PTS	SHOTS	SH%	+/-	PEN-MIN	PP	SH	EN	GW	GT	HAT	UA	BLK
10/07/2022	Bemidji St.	6-0	6	11	17	46	.130	+20	0-0	2	0	0	1	0	0	0	5
10/08/2022	Bemidji St.	4-1	4	7	11	37	.108	+15	4-8	0	0	1	1	0	0	0	9
10/14/2022	at Minnesota St.	11-0	11	15	26	60	.183	+40	5-10	3	0	0	1	0	1	2	5
10/15/2022	Minnesota St.	9-4	9	15	24	46	.196	+28	5-10	0	2	0	1	0	1	0	6
10/21/2022	at St. Cloud St.	4-2	4	8	12	36	.111	+5	4-8	1	0	0	1	0	0	0	7
10/22/2022	St. Cloud St.	2-1	2	4	6	45	.044	+5	5-10	0	0	0	1	0	0	0	6
10/28/2022	at Ohio St.	4-2	4	7	11	32	.125	+15	2-4	0	0	0	1	0	0	0	15
10/29/2022	at Ohio St.	4-4	4	8	12	31	.129	+4	6-12	1	1	0	0	0	0	0	23
11/04/2022	Minn. Duluth	3-2	3	6	9	32	.094	+8	2-4	0	0	0	1	0	0	0	6
11/05/2022	Minn. Duluth	5-3	5	8	13	32	.156	+15	4-8	1	0	0	1	0	0	1	12
11/07/2022	vs St. Cloud St.	1-4	1	2	3	35	.029	-15	2-4	1	0	0	0	0	0	0	6
11/19/2022	at Wisconsin	3-3	3	4	7	41	.073	-1	2-4	0	1	0	0	0	0	0	18
11/20/2022	at Wisconsin	1-4	1	2	3	29	.034	-15	4-8	1	0	0	0	0	0	0	13
MINN			57	97	154	502	.114	+124	45-90	10	4	1	9	0	2	3	131
Opponents			30	53	83	350	.086	-128	51-102	9	0	0	2	2	0	1	234

TEAM PER-GAME

Games played	Shots per game	Goals per game	Assists per game	Points per game
13	38.62	4.38	7.46	11.85

Date	Opponent	Score	MINUTES	GA	GAAVG	SAVES	SAVES%	W	L	T	PP	SH	EN	PN	SO
10/07/2022	Bemidji St.	6-0	60:00	0	0.00	17	1.000	1	0	0	0	0	0	0	0
10/08/2022	Bemidji St.	4-1	60:00	1	0.50	15	.970	1	0	0	0	0	0	0	0
10/14/2022	at Minnesota St.	11-0	60:00	0	0.33	17	.980	1	0	0	0	0	0	0	0
10/15/2022	Minnesota St.	9-4	60:00	4	1.25	20	.932	1	0	0	1	0	0	0	0
10/21/2022	at St. Cloud St.	4-2	60:00	2	1.40	20	.927	1	0	0	0	0	0	0	0
10/22/2022	St. Cloud St.	2-1	60:00	1	1.33	20	.932	1	0	0	0	0	0	0	0
10/28/2022	at Ohio St.	4-2	60:00	2	1.43	43	.938	1	0	0	1	0	0	0	0
10/29/2022	at Ohio St.	4-4	65:00	4	1.73	27	.927	0	0	1	2	0	0	0	2
11/04/2022	Minn. Duluth	3-2	60:15	2	1.76	27	.928	1	0	0	1	0	0	0	0
11/05/2022	Minn. Duluth	5-3	60:00	3	1.88	23	.923	1	0	0	2	0	0	0	0
11/07/2022	vs St. Cloud St.	1-4	60:00	4	2.07	15	.914	0	1	0	1	0	0	0	0
11/19/2022	at Wisconsin	3-3	65:00	3	2.14	40	.916	0	0	1	0	0	0	0	0
11/20/2022	at Wisconsin	1-4	60:00	4	2.28	36	.914	0	1	0	1	0	0	0	0
MINN			790:15	30	2.28	320	.914	9	2	2	9	0	0	0	2
Opponents			790:15	57	4.33	445	.886	2	9	2	10	4	1	0	2

MINNESOTA 2022-23 STATISTICS: CATEGORY LEADERS



2022-23 Minnesota Women's Ice Hockey Category Leaders All games

Page 1/2
as of Nov 22, 2022

Points

#	Player	GP	G	A	PTS	SH
12	Zumwinkle, Grace	13	8	11	19	76
9	Heise, Taylor	13	7	11	18	42
18	Murphy, Abbey	13	9	7	16	44
3	Skaja, Catie	13	5	9	14	32
22	Boreen, Abigail	13	5	5	10	47
15	Hemp, Peyton	13	6	3	9	28
11	Bouveng, Josefin	13	5	4	9	28
26	Huber, Ella	13	2	7	9	22
7	Laitinen, Nelli	11	2	6	8	13
21	Oden, Emily	13	1	7	8	27

Assists

#	Player	GP	G	A	PTS	SH
9	Heise, Taylor	13	7	11	18	42
12	Zumwinkle, Grace	13	8	11	19	76
3	Skaja, Catie	13	5	9	14	32
21	Oden, Emily	13	1	7	8	27
26	Huber, Ella	13	2	7	9	22
5	Wethington, Madeline	13	0	7	7	29
18	Murphy, Abbey	13	9	7	16	44
7	Laitinen, Nelli	11	2	6	8	13
22	Boreen, Abigail	13	5	5	10	47
6	Ostertag, Gracie	12	0	4	4	17

Goals

#	Player	GP	G	A	PTS	SH
18	Murphy, Abbey	13	9	7	16	44
12	Zumwinkle, Grace	13	8	11	19	76
9	Heise, Taylor	13	7	11	18	42
15	Hemp, Peyton	13	6	3	9	28
3	Skaja, Catie	13	5	9	14	32
22	Boreen, Abigail	13	5	5	10	47
11	Bouveng, Josefin	13	5	4	9	28
6	Norton, Lizi	13	2	4	6	16
26	Huber, Ella	13	2	7	9	22
29	Kaiser, Madison	13	2	2	4	15

Shots

#	Player	GP	G	A	PTS	SH	SH%
12	Zumwinkle, Grace	13	8	11	19	76	.105
22	Boreen, Abigail	13	5	5	10	47	.106
18	Murphy, Abbey	13	9	7	16	44	.205
9	Heise, Taylor	13	7	11	18	42	.167
3	Skaja, Catie	13	5	9	14	32	.156
5	Wethington, Madeline	13	0	7	7	29	.000
15	Hemp, Peyton	13	6	3	9	28	.214
11	Bouveng, Josefin	13	5	4	9	28	.179
21	Oden, Emily	13	1	7	8	27	.037
13	Hengler, Crystalyn	13	1	3	4	23	.043

Power-Play Goals

#	Player	GP	PPG
18	Murphy, Abbey	13	4
3	Skaja, Catie	13	2
9	Heise, Taylor	13	2
12	Zumwinkle, Grace	13	1
22	Boreen, Abigail	13	1

Shot Pct.

#	Player	GP	G	A	PTS	SH	SH%
15	Hemp, Peyton	13	6	3	9	28	.214
18	Murphy, Abbey	13	9	7	16	44	.205
11	Bouveng, Josefin	13	5	4	9	28	.179
9	Heise, Taylor	13	7	11	18	42	.167
3	Skaja, Catie	13	5	9	14	32	.156
7	Laitinen, Nelli	11	2	6	8	13	.154
29	Kaiser, Madison	13	2	2	4	15	.133
6	Norton, Lizi	13	2	4	6	16	.125
22	Boreen, Abigail	13	5	5	10	47	.106
12	Zumwinkle, Grace	13	8	11	19	76	.105

2023 NCAA WOMEN'S FROZEN FOUR**March 18-20, 2022 | State College**

Pegula Ice Arena in State College, Pa. is the site for the 2022 NCAA National Collegiate Women's Ice Hockey Championship, hosted by Penn State.

The two semifinal contests will take place on Friday, March 18, while the national championship game is scheduled for Sunday, March 20.

This will be the first time that Penn State and Pegula Arena will host the Women's Frozen Four. It will be the first new Women's Frozen Four site since St. Charles, MO. in 2017.

Criteria for selecting the NCAA Frozen Four host sites includes creating what will be an exceptional experience for the student-athletes, along with adherence to NCAA bid specifications. Specifications can include, but are not limited to, providing optimal facilities; ease of travel to the location and ample lodging; and adherence to NCAA principles, which include providing an atmosphere that is safe and respects the dignity of all attendees.

FUTURE FROZEN FOUR SITES**2023****AMSOIL Arena, Duluth, Minn.****Host: Minnesota Duluth****2024****Whittamore Center, Durham, NH.****Host: University of New Hampshire****2025****Ridder Arena, Minneapolis, Minn.****Host: University of Minnesota****2026****Pegula Ice Arena, State College, Pa.****Host: Penn State****GOPHERS IN THE NCAA TOURNAMENT**

Overall record	26-13-1
Home games	15-5-1
Road games	1-2-0
Neutral-site games	10-6-0
At the NCAA Frozen Four	15-9-1
In NCAA national semifinal games	9-5-0
In NCAA national championship games	6-3-0

Records since 2000-01 season.

GOPHERS IN THE NATIONAL TOURNAMENT

Year	Opponent	Round	Location	Result
March 12, 2022	Minnesota Duluth	Quarterfinal	Ridder Arena	L, 2-1
March 14, 2020	Ohio State	Quarterfinal	Ridder Arena	CANCELED
March 16, 2019	Princeton	Quarterfinal	Ridder Arena	W, 5-2
March 22, 2019	Cornell	Semifinal	Hamden, Conn.	W, 2-0
March 24, 2019	Wisconsin	Final	Hamden, Conn.	L, 2-0
March 10, 2018	at Wisconsin	Quarterfinal	Madison, Wis.	L, 4-0
March 11, 2017	at Minnesota Duluth	Quarterfinal	Duluth, Minn.	W, 1-0
March 17, 2017	vs. Clarkson	Semifinal	St. Charles, Mo.	L, 4-3
March 12, 2016	Princeton	Quarterfinal	Ridder Arena	W, 6-2
March 18, 2016	vs. Wisconsin	Semifinal	Durham, N.H.	W, 3-2 (OT)
March 20, 2016	vs. Boston College	Final	Durham, N.H.	W, 3-1
March 14, 2015	RIT	Quarterfinal	Ridder Arena	W, 6-2
March 20, 2015	Wisconsin	Semifinal	Ridder Arena	W, 3-1
March 22, 2015	Harvard	Final	Ridder Arena	W, 4-1
March 15, 2014	Boston University	Quarterfinal	Ridder Arena	W, 5-1
March 21, 2014	vs. Wisconsin	Semifinal	Hamden, Conn.	W, 5-3
March 23, 2014	vs. Clarkson	Final	Hamden, Conn.	L, 5-4
March 16, 2013	North Dakota	Quarterfinal	Ridder Arena	W, 3-2 (3OT)
March 22, 2013	Boston College	Semifinal	Ridder Arena	W, 3-2 (OT)
March 22, 2013	Boston University	Final	Ridder Arena	W, 6-3
March 10, 2012	North Dakota	Quarterfinal	Ridder Arena	W, 5-1
March 16, 2012	vs. Cornell	Semifinal	Duluth, Minn.	W, 3-1
March 18, 2012	vs. Wisconsin	Final	Duluth, Minn.	W, 4-2
March 12, 2011	at Boston College	Quarterfinal	Boston, Mass.	L, 4-1
March 13, 2010	Clarkson	Quarterfinal	Ridder Arena	W, 3-2 (OT)
March 19, 2010	Minnesota Duluth	Semifinal	Ridder Arena	L, 3-2
March 14, 2009	Boston College	Quarterfinal	Ridder Arena	W, 4-3
March 20, 2009	vs. Mercyhurst	Semifinal	Boston, Mass.	L, 5-4
March 15, 2008	Wisconsin	Quarterfinal	Ridder Arena	L, 3-2 (OT)
March 17, 2006	Princeton	Quarterfinal	Ridder Arena	W, 4-0
March 24, 2006	New Hampshire	Semifinal	Mariucci Arena	W, 5-4
March 26, 2006	Wisconsin	Final	Mariucci Arena	L, 3-0
March 18, 2005	Providence	Quarterfinal	Ridder Arena	W, 6-1
March 25, 2005	vs. Dartmouth	Semifinal	Durham, N.H.	W, 7-2
March 27, 2005	vs. Harvard	Final	Durham, N.H.	W, 4-3
March 26, 2004	Dartmouth	Semifinal	Providence, R.I.	W, 5-1
March 28, 2004	Harvard	Final	Providence, R.I.	W, 6-2
March 21, 2003	vs. Harvard	Semifinal	Duluth, Minn.	L, 6-1
March 23, 2003	vs. Dartmouth	Third-Place	Duluth, Minn.	L, 4-2
March 22, 2002	Brown	Semifinal	Mariucci Arena	L, 2-1
March 24, 2002	Niagara	Third-Place	Mariucci Arena	T, 2-2
March 24, 2000*	vs. Minn. Duluth	Semifinal	Boston, Mass.	W, 3-2
March 25, 2000*	Brown	Final	Boston, Mass.	W, 4-2
March 26, 1999*	New Hampshire	Semifinal	Mariucci Arena	L, 3-2 (OT)
March 27, 1999*	Brown	Third-Place	Mariucci Arena	W, 3-2
March 20, 1998*	vs. New Hampshire	Semifinal	Boston, Mass.	L, 4-1
March 21, 1998*	Northeastern	Third-Place	Boston, Mass.	L, 4-0

* ACHA National Tournament | 7 national championships in **bold**

AWCHA National Tournament from 1998-2000; NCAA took over the national tournament in 2001. From 2001 through 2004, the tournament consisted of a Final Four. The tournament expanded to eight teams in 2005.

RIDDER ARENA: HOME OF GOPHER WOMEN'S HOCKEY

SERIES RECORDS AT RIDDER ARENA

OPPONENT	RECORD	LAST
Bemidji State	42-5-3	W, 4-1, 10/8/22
Boston College	3-0-1	W, 3-2 (OT), 3/22/13
Boston University	4-0-0	W, 5-2, 10/4/14
Brown	5-0-0	W, 3-0, 11/13/05
Clarkson	3-0-0	W, 3-2 (OT), 3/13/10
Colgate	4-0-0	W, 8-1, 9/28/19
Connecticut	1-0-0	W, 3-0, 10/7/05
Dartmouth	1-1-0	W, 7-3, 2/8/04
Harvard	6-0-0	W, 4-1, 3/22/15
Lindenwood	2-0-0	W, 6-2 (10/1/16)
Maine	1-0-0	W, 5-2, 10/6/06
Mercyhurst	4-0-0	W, 5-0, 9/29/18
Merrimack	1-1-0	W, 4-1, 10/1/17
Minnesota Duluth	35-11-4	W, 5-3, 11/5/22
Minnesota State	42-2-0	W, 9-4, 10/15/22
New Hampshire	2-1-0	W, 6-1, 11/19/11
Niagara	2-0-0	W, 3-1, 11/12/06
North Dakota	29-4-1	W, 6-2, 2/11/17
Northeastern	1-0-0	W, 5-3, 10/5/07
Ohio State	36-12-4	L, 3-2 (OT), 3/6/22
Penn State	1-0-0	W, 8-0, 10/3/14
Princeton	5-0-0	W, 5-2, 3/16/19
RIT	3-0-0	W, 7-1, 11/13/21
Robert Morris	3-1-0	W, 5-0, 12/8/18
St. Cloud State	48-0-2	W, 2-1, 10/22/22
St. Lawrence	2-1-0	W, 5-1, 1/6/15
St. Thomas	4-0-0	W, 5-1, 2/26/22
Syracuse	3-0-0	W, 4-0, 10/1/11
Union	1-0-0	W, 6-1, 9/30/11
Vermont	1-1-0	W, 6-1, 1/13/18
Wayne State	1-0-0	W, 1-0, 10/9/10
Wisconsin	23-20-8	W, 4-3, 1/22/22
Yale	4-0-0	W, 4-1, 1/5/20
Overall	324-60-23	W, 5-3, 11/5/22

YEAR-BY-YEAR AT RIDDER ARENA

SEASON	OVERALL	WCHA
2002-03	10-2-1 (.808)	8-2-1 (.773)
2003-04	16-3-0 (.842)	11-2-0 (.846)
2004-05	18-0-1 (.974)	12-0-1 (.923)
2005-06	15-7-0 (.681)	8-5-0 (.615)
2006-07	16-6-0 (.727)	10-4-0 (.714)
2007-08	16-2-3 (.761)	11-1-2 (.857)
2008-09	18-3-2 (.826)	11-1-2 (.857)
2009-10	20-3-1 (.854)	12-1-1 (.893)
2010-11	16-4-1 (.786)	10-3-1 (.750)
2011-12	18-1-2 (.905)	11-1-2 (.857)
2012-13	23-0-0 (1.000)	14-0-0 (1.000)
2013-14	16-1-1 (.917)	11-1-1 (.885)
2014-15	19-1-3 (.891)	10-1-3 (.821)
2015-16	19-1-1 (.929)	13-0-1 (.964)
2016-17	15-2-3 (.825)	11-0-3 (.893)
2017-18	13-6-2 (.667)	6-4-2 (.583)
2018-19	17-4-0 (.810)	9-3-0 (.750)
2019-20	14-3-1 (.806)	8-2-1 (.773)
2020-21	4-5-1 (.400)	4-5-1 (.400)
2021-22	15-6-0 (.714)	13-5-0 (.722)
2022-23	6-0-0 (1.000)	6-0-0 (1.000)
21st Season	324-60-23 (.794)	209-41-22 (.765)



RIDDER ARENA: HOME OF GOPHER WOMEN'S HOCKEY

The first-ever facility built specifically for women's hockey, Ridder Arena is home to the seven-time national champion Gopher women's hockey program. Since its opening in 2002, Ridder Arena has been a regular host of WCHA Championships, NCAA Regionals, and NCAA Frozen Fours. A new center-hung video board was installed during the 2011-12 season.

- Site of the 2010, 2013, 2015, and 2018 NCAA Women's Frozen Fours
- First facility in the nation dedicated solely to women's ice hockey
- Seating capacity of 3,400, including a club room with 210 seats and nine suites with seating for 14 apiece
- Houses 11 locker rooms, a training room, and full weightroom
- Ice sheet size is 200' x 85'
- Built adjacent to 10,000-seat Mariucci Arena, connected via tunnels
- Practice site for several visiting NHL teams, men's college programs and the IIHF Under-18 Worlds pre-tournament camp
- Hosted the Minnesota Girls State Hockey Tournament
- First game on October 19, 2002 drew 3,239 fans
- Set an attendance record of 3,400 with its first sold-out crowd on Dec. 1, 2012
- Has hosted seven sold-out Gopher women's hockey games
- Hosted 15 WCHA conference championships (2004, 2005, 2006, 2007, 2009, 2010, 2011, 2013, 2016, 2017, 2018, 2019, 2020, 2021, and 2022)

TOP RIDDER ARENA GOPHER WOMEN'S HOCKEY CROWDS

ATTENDANCE	DATE	OPPONENT	RESULT	NOTES
T1. 3,400	1/19/19	Wisconsin	W, 3-1	---
T1. 3,400	2/18/17	Wisconsin	T, 1-1 (OT)	---
T1. 3,400	3/22/15	Harvard	W, 4-1	Sixth national title
T1. 3,400	3/20/15	Wisconsin	W, 3-1	Frozen Four semifinal
T1. 3,400	3/24/13	Boston University	W, 6-3	Fifth national title
T1. 3,400	3/22/13	Boston College	W, 3-2 (OT)	Frozen Four semifinal
T1. 3,400	12/1/12	Wisconsin	W, 4-1	First Ridder sellout
8. 3,288	2/19/16	Wisconsin	W, 4-0	---
9. 3,283	11/2/19	Wisconsin	W, 4-2	---
10. 3,251	1/6/07	Wisconsin	L, 4-1	---
11. 3,239	10/19/02	St. Cloud State	W, 8-0	First game at Ridder
12. 3,196	1/18/19	Wisconsin	L, 2-1	---
13. 3,150	11/17/13	North Dakota	L, 3-2	End of 62-game win streak