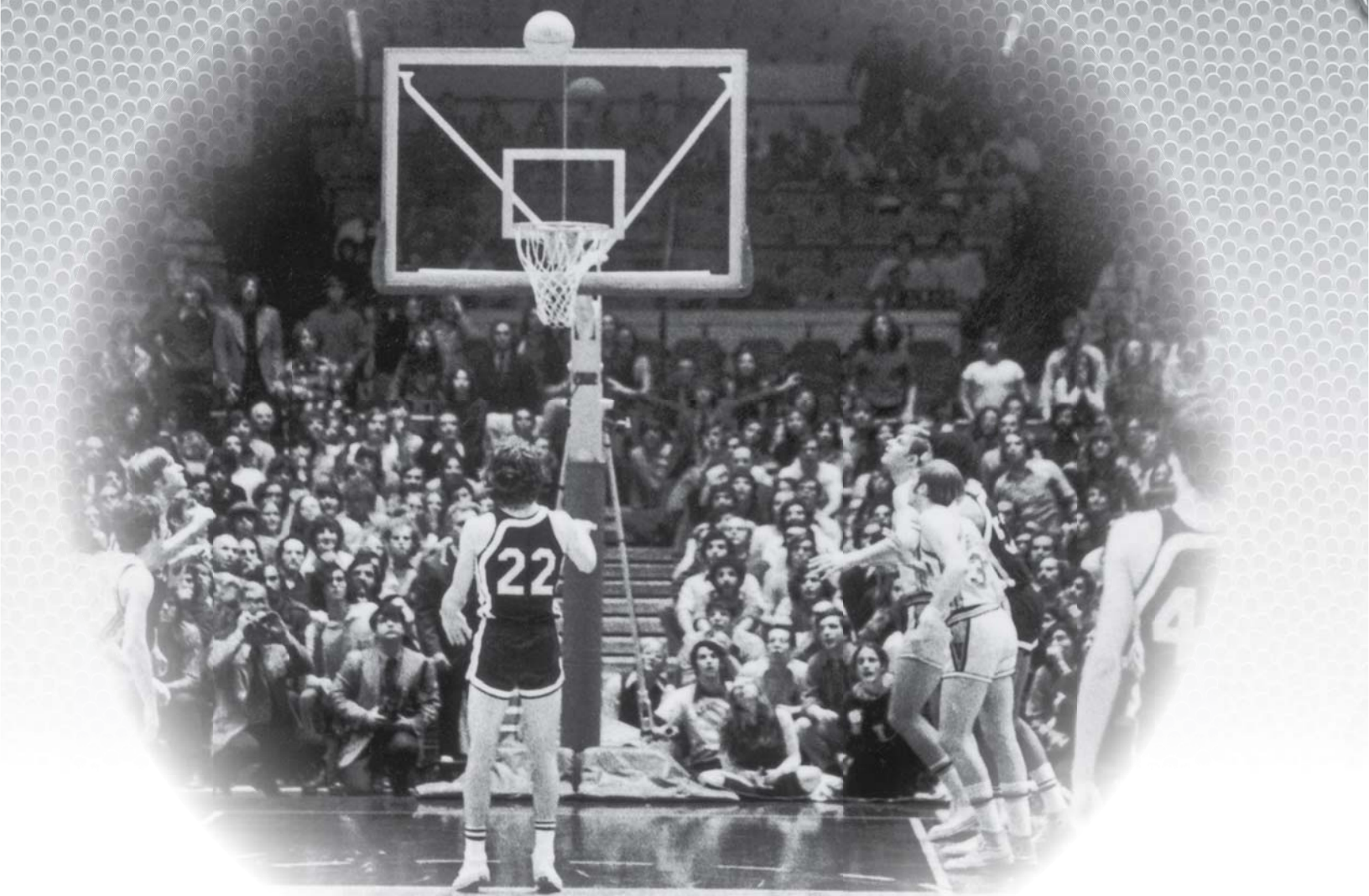


TRADITION



LAFAYETTE BASKETBALL...TIMELINE

Jan., 1901 — The student newspaper carried the following editorial: "Dr. S.B. Newton (head football coach) suggests that inter-class basketball games be arranged and one evening of each week be set apart for the different classes out of which a varsity will be selected which will practice on Friday evenings, Saturday evenings being devoted to scheduled games with other teams. Let the various classes organize teams at once. These contests will furnish sports and pleasant pastime during the long evenings of this winter team."

Feb. 1, 1901 — A six-member varsity squad plays its first game versus the Allentown (Pa.) Y.M.C.A. Ed Haldeman scored the first basket after seven minutes and Lafayette went on to win, 12-4. Admission was 25 cents.



Senior guard Jay Mottola '72 beats Virginia in the 1972 National Invitation Tournament with a free throw.

Feb. 16, 1901 — Walt Haldeman was the first person to score in double figures with 10 points in Lafayette's 34-7 win over Mauch Chunk Y.M.C.A.

Mar. 6, 1901 — Ed Haldeman scores a basket to give Lafayette an 18-16 win over Princeton in its first overtime game.

1904 — Dr. Updegrave, head of the gymnasium, refuses to let the basketball team practice in the physical education building and the sport is disbanded until 1913.

Nov. 13, 1913 — Lafayette faculty decides that basketball should be inaugurated as a minor sport that must be self-supporting. Games were to be played at the Easton Armory.

Jan. 23, 1914 — Lafayette basketball was resumed with a 44-13 win over Muhlenberg.

Feb. 6, 1914 — George Troxel scores 21 points (first to top 20 or more points for Lafayette) in Leopards' 26-23 loss to Lehigh.

Feb. 4, 1919 — Bill Anderson hits for 37 points and Lafayette scores its biggest win to date, a 63-20 decision over Albright.

1919 — Bill Anderson becomes Lafayette's first 1,000-point scorer. He finished the season with 1,211 career points.

Jan., 1920 — Bill MacAvoy named Lafayette's first non-student coach. He was a former football and baseball player for the Leopards.

Dec. 6, 1924 — The Lafayette basketball team's first game in Alumni Gym was a 19-4 win over Schuylkill Seminary.

Mar. 7, 1949 — Veteran coach Bill Anderson leads his team to the school's first 20-win season. The Leopards win at Boston University, 43-41, to record their 20th victory.

Jan. 8, 1955 — Leopards record first 100-point game in school history with a 104-63 win over visiting Wilkes in Alumni Gym.

Mar. 12, 1955 — Lafayette plays its first ever postseason game. Coach Butch van Breda Kolff and Leopards lose to Niagara, 83-70, in National Invitation Tournament at Madison Square Garden.

Mar. 17, 1956 — For the second consecutive year, Lafayette makes an appear-

ance in the N.I.T. The Leopards fall to St. Francis (NY), 85-74, at Madison Square Garden in the first round of the tourney.

Mar. 15-16, 1957 — Lafayette makes its first appearance in the NCAA tournament at the East Regionals held at the Palestra in Philadelphia. The Leopards lose to Syracuse, 75-71, in the first round and drop a 82-76 decision to Canisius in the consolation game.

Feb. 22, 1958 — Leopards record 500th all-time victory in program history with a 67-64 win at Gettysburg.

Mar. 5, 1958 — Bob Mantz reaches 1,000 career points with a 47-point effort in 109-56 rout of Wilkes in the final game of the season. His single-game scoring mark will stand for 41 seasons.

Feb. 8, 1961 — The Leopards lose to Lehigh, 60-58, to snap a 34-game winning streak over the Engineers dating back to March 4, 1944.

Mar. 17, 1972 — Senior Jay Mottola's free throw with :03 remaining gives Lafayette its only post-season victory to date, a 72-71 triumph over Virginia in the first round of the N.I.T. at Madison Square Garden. The Leopards were eliminated from the tournament three days later by Jacksonville University, 87-76.

1972 — Tracy Tripucka caps an outstanding career with 1,973 points in only three years of varsity basketball. He remains the school's leading all-time scorer to this day.

Dec. 1, 1973 — Lafayette celebrates the opening of Allan P. Kirby Field House with a 79-70 win over Gettysburg.

Mar. 15, 1975 — Coach Tom Davis directs his team to its fourth N.I.T. bid, but loses at Madison Square Garden to St. John's, 94-76, in the first round.

Mar. 5, 1980 — Head coach Roy Chipman leads the Leopards to their sixth post-season appearance, but loses in the first round of the N.I.T. to Virginia, 67-56, in Charlottesville, Va.

Nov. 24, 1984 — For the start of the 1984-85 season, Butch van Breda Kolff returns to Lafayette 29 years after he first coached at the school from 1951-55. He will move on to Hofstra after the 1987-88 season.

Jan. 4, 1988 — Junior Otis Ellis scores a career-high 35 points and grabs 10



Fans, players and coaches crowd the Kirby Field House floor in celebration of the Leopards' first berth into the NCAA Tournament in 42 years.

rebounds to lead the Leopards to a nationally-televised 83-68 upset of eventual NCAA Tournament participant Notre Dame.

Mar. 7, 1989 — In his first season as head coach, John Leone leads his club to the title game of the East Coast Conference Tournament in Towson, Md., only to lose to Bucknell, 71-65 and narrowly miss an automatic NCAA Tournament bid. Senior Otis Ellis finishes his career in second place on the school's all-time scoring list, 103 points behind Tracy Tripucka.

Nov. 25, 1989 — Sophomore forward Craig White executes three slam dunks in a span of only 0:09 as the Leopards wallop Colgate University, 97-71, in the season opener at Kirby Field House.

Dec. 10, 1990 — Sophomore guard Larry Spigner drops in a 45-foot shot at the final buzzer to give Lafayette a 71-68 win over Drexel University at Kirby Field House.

Jan. 10, 1991 — Lafayette plays its first official league contest as a member of the Patriot League in Worcester, Mass., losing to Holy Cross, 92-83.

Jan. 14, 1991 — Playing at Miami Arena, senior guard Tom Kresge sinks 7-of-8 shots from three-point range as the Leopards roll over the Miami Hurricanes by a 73-57 count.

Dec. 1, 1992 — Lafayette plays Princeton in its first game on its new maple hardwood basketball floor after playing 19 seasons on a Tartan surface in Kirby Field House.

Dec. 7, 1993 — The Leopards notch their 1,000th men's basketball victory in the 84th season of the program with a 70-53 win over visiting Columbia University at Kirby Field House.

Dec. 28, 1993 — Trailing by 20 points at halftime, the Leopards storm back led by senior guard Keith Brazzo who finishes the night with a career-high 32 points to stun Iona, hosts of their own tournament, 88-80.

March 3-4, 1994 — No. 7-seeded Lafayette wins its first league tournament game since 1989 by easily defeating No. 2-seeded Fordham, 83-65, in the opening round of the Patriot League Tournament in Annapolis, Md. The next day, the Leopards play a classic battle with No. 3-seeded Colgate—in a game that features 23 lead changes—before seeing Craig Kowadla's potential game-tying 3-point shot bounce off the iron at the final buzzer en route to a 76-73 loss.

Feb. 27, 1998 — Lafayette posted the most wins for the program (19) in 10 years, en route to winning a share of its first regular season Patriot League crown. At the league tournament banquet, Lafayette becomes the first team, men's or women's, to sweep the major postseason awards. Stefan Ciosici is named the Player of the Year, Tyson Whitfield earns league Rookie of the Year, while Head Coach Fran O'Hanlon is chosen the Coach of the Year.

Mar. 5, 1998 — After earning the No. 1 seed in the Patriot League Tournament for the first time in school history, Lafayette advances to the Patriot League Championship Game against Navy. The Leopards battled back from a 23-point deficit to tie the game in the second half in the final two minutes, but still fell to Mids, 93-85.

Feb. 21, 1999 — In front of a packed Kirby Field House, Lafayette claims its first outright Patriot League regular-season title. In his last regular-season game at home, senior Ted Cole explodes for a career-high 27 points to lead Lafayette to the win.

Mar. 5, 1999 — Nearly two weeks after claiming the Patriot League regular-season title, Lafayette adds a Patriot League Tournament title to its list of accolades. Tyson Whitfield gave the overflow Kirby Field House crowd and ESPN's national television audience an extraordinary moment, hitting a three-quarter court shot to end the first half. All-Patriot League Tournament Team member Tim

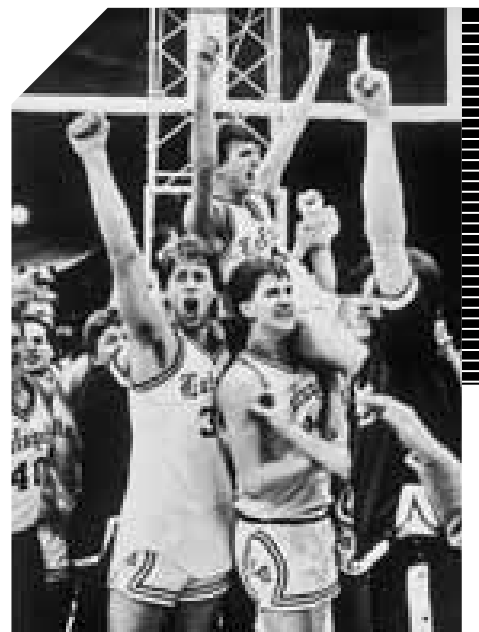
Bieg and Patriot League Tournament MVP Brian Ehlers each make a pair of free throws under 20 seconds left to seal the 67-63 win. A frenzied celebration follows the final buzzer, as the Zoo Crew joins the players and coaches in celebration of an NCAA Tournament berth.

Mar. 12, 1999 — Lafayette makes its first appearance in the NCAA Tournament since the 1956-57 season, snapping the second-longest drought in the nation between NCAA Tournament appearances. The Leopards face off with No. 2 seeded Miami, Fla. at the FleetCenter in Boston, Mass. Lafayette loses the game 75-54.

Mar. 10, 2000 — Lafayette wins back to back Patriot League Tournaments with a convincing 87-61 win over Navy in the finals. An overflow crowd of 4,021 and millions of viewers on ESPN see the Leopards set a new school record with its 24th win. Player of the Year Brian Ehlers scores 19 points and grabbed 10 rebounds.

March 17, 2000 — Lafayette makes its second straight appearance in the NCAA Tournament. The Leopards square-off with No. 2 seeded Temple at the HSBC Arena in Buffalo, N.Y. Lafayette loses the game 73-47.

March 9, 2006 — The Lafayette trustees unanimously approved a plan to offer athletic scholarships in men's basketball beginning with the Class of 2010, revising a financial aid policy that had previously assigned aid based solely on need.



The Leopards celebrate their 15-point win over Notre Dame on Jan. 4, 1988.



RECORDS...TEAM & INDIVIDUAL

Team Records

—SINGLE GAME—

Most Points Scored:

117, vs. Bucknell, 1/15/55

Most Points Allowed:

113, vs. Rutgers, 1/26/76

Fewest Points Scored:

6, vs. Jefferson Medical School,
2/2/1901

Fewest Points Allowed:

4, by Allentown Y.M.C.A., 1/24/1903

Most Points Both Teams:

210 (Laf. 117, Bucknell 93), 1/15/55

Largest Margin of Victory:

66 points, vs. Drexel (96-30),
2/28/45

Largest Margin of Defeat:

62 points, at Connecticut (48-110),
11/25/94

—SEASON—

Most Victories:

24 (24-7), 1999-00

23 (23-3), 1954-55

23 (23-8), 1977-78

Fewest Victories:

2 (2-25), 1994-95

Most Consecutive Wins:

20, 1954-55

Most Consecutive Losses:

22, 1994-95

Most Points Scored:

2,342 (27 games), 1971-72

Most Points Allowed:

2,349 (27 games), 1994-95

Highest Scoring Avg.:

86.7 (2,342, 27 games), 1971-72

Highest Scoring Avg. by Opponents:

87.0 (2,349 pts, 27 games) 1994-95

Most Field Goals Made:

902, 1977-78

Most Field Goals Attempted:

1,968, 1949-50

Highest Field Goal %:

52.7 (813/1,544), 1986-87

Most 3-pt. Field Goals Made:

256, 2006-07

Most 3-pt. Field Goals Attempted:

713, 2006-07

Highest 3-pt. Field Goal Percentage:

45.5 (85/187), 1987-88

Most Free Throws Made:

656 (844 Att.), 1971-72

Most Free Throws Attempted:

947, 1954-55

Highest Free Throw Percentage:

78.4 (461/588), 1989-90

Most Rebounds:

1,494, 1956-57

Individual Records

—SINGLE Game—

Most Points Scored:

47, Bob Mantz vs. Wilkes, 3/5/58

Most Field Goals Made:

19, Bob Mantz vs. Wilkes, 3/5/58

Most Field Goals Attempted:

31, Charlie Ross vs. Georgetown,
2/14/59

Most 3-pt. Field Goals Made:

8, Larry Spigner vs. Yale, 12/3/91

8, Tyson Whitfield vs. La Salle,
12/29/00

8, Andrew Brown at Holy Cross
2/28/06

Most 3-pt. Field Goals Attempted:

19, vs. La Salle, 12/29/00

Highest 3-pt. FG % (min. 7 att.):

87.5 (7/8), Tom Kresge vs. Miami,
1/14/91

Most Free Throws Made:

22, Dave Brown vs. Gettysburg,
2/12/66

Most Free Throws Attempted:

24, Dave Brown vs. Gettysburg,
2/12/66

Highest FT % (min. 13 att.):

100% (13/13), Todd Tripucka vs. Army,
1/3/76

Most Rebounds:

33, Ron Moyer vs. Gettysburg, 12/9/70

Most Assists:

17, Gerry Kavanaugh vs. Columbia,
1/20/76

—SEASON—

Most Points Scored:

679, Todd Tripucka, 1975-76

Highest Scoring Average:

26.1, Todd Tripucka, 1975-76

Most Field Goals Made:

263, Tracy Tripucka, 1971-72

Most Field Goals Attempted:

520, Todd Tripucka, 1975-76

Highest FG % (min. 150 att.):

65.5 (154/262), Stefan Ciosici,
1997-98

Most 3-pt. Field Goals Made:

91, Tyson Whitfield, 1999-2000

Most 3-pt. Field Goals Attempted:

218, Tyson Whitfield, 2000-01

Highest 3-pt. FG % (min. 40 att.):

49.0 (47/96), Andy Wescoe, 1989-90

Most Free Throws Made:

177, Dave Brown, 1965-66

Most Free Throws Attempted:

212, Dave Brown, 1965-66

Highest FT % (min. 100 att.):

91.0 (91/100), Jamaal Hilliard 2004-05

Most Rebounds:

450, Jim Radcliffe, 1954-55

Most Assists:

192, Tony Duckett, 1983-84

—CAREER—

Most Points Scored:

1,973, Tracy Tripucka, 1969-72

Highest Scoring Average:

25.0, Tracy Tripucka, 1969-72

Most Field Goals Made:

760, Tracy Tripucka, 1969-72

Most Field Goals Attempted:

1,474, Tracy Tripucka, 1969-72

Highest FG % (min. 600 att.):

59.4 (656/1,104), Phil Ness, 1974-78

Most 3-pt. Field Goals Made:

271, Tyson Whitfield, 1997-2001

Most 3-pt. Field Goals Attempted:

719, Tyson Whitfield, 1997-2001

Highest 3-pt. FG % (min. 100 att.):

47.1 (128/272), Andy Wescoe, 1986-90

Most Free Throws Made:

453, Tracy Tripucka, 1969-72

Most Free Throws Attempted:

543, Tracy Tripucka, 1969-72

Highest FT % (min. 300 att.):

87.4 (262-339),
Brian Burke, 1998-2002

Most Rebounds:

1262, Bob Mantz 1955-58

Most Assists:

622, Tony Duckett, 1981-85



RECORDS...SCORING

CAREER SCORING

| Player | Points | Seasons |
|-----------------------|--------|---------|
| 1. Tracy Tripucka | 1973 | 1969-72 |
| 2. Otis Ellis* | 1870 | 1985-89 |
| 3. Brian Ehlers* | 1836 | 1996-00 |
| 4. Phil Ness* | 1634 | 1974-78 |
| 5. Stefan Ciosici* | 1496 | 1995-00 |
| 6. Todd Tripucka | 1445 | 1973-76 |
| 7. Gary Bennett* | 1419 | 1982-86 |
| 8. Craig Kowadla | 1413 | 1992-96 |
| 9. Walt Kocubinski | 1401 | 1970-73 |
| 10. Justin DeBerry* | 1378 | 2000-04 |
| 11. Keith Brazzo* | 1323 | 1990-94 |
| 12. Bruce Stankavage* | 1317 | 1987-91 |
| 13. Tyson Whitfield* | 1249 | 1997-01 |
| 14. Craig White* | 1241 | 1988-92 |
| 15. Ron Reynolds* | 1233 | 1983-87 |
| 16. Bill Anderson* | 1211 | 1915-19 |
| 17. "Chip" Lundy | 1180 | 1959-62 |
| 18. Stu Murray | 1177 | 1954-57 |
| 19. Mike Whitman* | 1176 | 1978-82 |
| 20. Bob Falconiero* | 1169 | 1976-80 |
| 21. Chet Brightful* | 1162 | 1980-84 |
| 22. Charley Ross | 1137 | 1958-61 |
| 23. Matt Roberts* | 1127 | 1986-90 |
| 24. Mike Bellamy* | 1108 | 1974-78 |
| 25. Preston Denby | 1095 | 1962-65 |
| 26. Dave Brown | 1070 | 1963-66 |
| 27. Marty Zippel* | 1067 | 1945-49 |
| 28. Tony Duckett* | 1063 | 1981-85 |
| 29. Jim Radcliffe | 1059 | 1954-57 |
| 30. Andy Wescoe* | 1044 | 1986-90 |
| 31. Jay Mottola | 1040 | 1969-72 |
| 32. Stan Morse* | 1038 | 1981-85 |
| 33. Dan Kristoff | 1035 | 1962-65 |
| 34. Bob Mantz | 1005 | 1955-58 |

*=four-year varsity career

SINGLE-GAME SCORING

| Pts. Player / Opponent | Date |
|-----------------------------------|----------|
| 47 Bob Mantz vs. Wilkes | 3/5/58 |
| 44 Bob Mantz vs. Lehigh | 2/19/58 |
| 43 Brian Burke vs. Lehigh | 2/20/02 |
| 42 Todd Tripucka vs. St. Joseph's | 12/3/75 |
| 41 Tracy Tripucka vs. Syracuse | 1/14/69 |
| 41 Tracy Tripucka vs. Gettysburg | 12/8/71 |
| 40 Stu Murray vs. Moravian | 1/3/57 |
| 39 Larry Spigner vs. Yale | 12/3/91 |
| 38 Todd Walker vs. Wilkes | 1/9/55 |
| 38 Tracy Tripucka vs. Colgate | 2/7/70 |
| 38 Tracy Tripucka vs. Colgate | 2/5/72 |
| 37 Tracy Tripucka vs. Moravian | 12/1/69 |
| 36 Stefan Ciosici vs. Lehigh | 1/7/98 |
| 36 John Alviggi vs. C.C.N.Y. | 12/12/53 |
| 36 Tracy Tripucka vs. Delaware | 2/11/70 |
| 36 Tracy Tripucka vs. Columbia | 1/11/72 |
| 35 Otis Ellis vs. Notre Dame | 1/4/88 |
| 35 Craig Kowadla at Cornell | 1/4/95 |

Year-By-Year SCORING Leaders (since 1960)

| Year | Player | Pts | Games | Avg | High |
|----------------|--------------------|------------|-----------|-------------|-----------|
| 1960-61 | Harold Lundy | 445 | 24 | 18.5 | 28 |
| 1961-62 | Harold Lundy | 420 | 24 | 17.5 | 30 |
| 1962-63 | Preston Denby | 340 | 21 | 16.2 | 27 |
| 1963-64 | Preston Denby | 418 | 23 | 17.7 | 31 |
| 1964-65 | Preston Denby | 337 | 20 | 16.9 | 26 |
| 1965-66 | Dave Brown | 505 | 20 | 25.3 | 38 |
| 1966-67 | Nick Azzolina | 271 | 21 | 12.9 | 28 |
| 1967-68 | Bob Clements | 315 | 24 | 13.1 | 23 |
| 1968-69 | Mike Miller | 441 | 25 | 17.6 | 34 |
| 1969-70 | Tracy Tripucka | 628 | 26 | 24.2 | 38 |
| 1970-71 | Tracy Tripucka | 675 | 26 | 26.0 | 41 |
| 1971-72 | Tracy Tripucka | 670 | 27 | 24.8 | 41 |
| 1972-73 | Walt Kocubinski | 484 | 26 | 18.6 | 32 |
| 1973-74 | Frank DiLeo | 357 | 26 | 13.7 | 30 |
| | Earl Brown | 357 | 26 | 13.7 | 27 |
| 1974-75 | Todd Tripucka | 523 | 27 | 19.4 | 33 |
| 1975-76 | Todd Tripucka | 679 | 26 | 26.1 | 42 |
| 1976-77 | Phil Ness | 493 | 27 | 18.3 | 33 |
| 1977-78 | Phil Ness | 569 | 31 | 18.4 | 30 |
| 1978-79 | Bob Falconiero | 374 | 28 | 13.4 | 28 |
| 1979-80 | Bob Falconiero | 412 | 29 | 14.2 | 31 |
| 1980-81 | Thomas Best | 427 | 28 | 15.2 | 27 |
| 1981-82 | Mike Whitman | 416 | 27 | 15.4 | 33 |
| 1982-83 | Stan Morse | 324 | 25 | 13.0 | 25 |
| 1983-84 | Stan Morse | 290 | 23 | 12.6 | 29 |
| 1984-85 | Tony Duckett | 421 | 28 | 15.0 | 28 |
| 1985-86 | Gary Bennett | 519 | 29 | 17.9 | 28 |
| 1986-87 | Otis Ellis | 610 | 29 | 21.0 | 32 |
| 1987-88 | Otis Ellis | 492 | 29 | 17.0 | 35 |
| 1988-89 | Otis Ellis | 410 | 29 | 14.1 | 24 |
| 1989-90 | Andy Wescoe | 358 | 24 | 14.9 | 24 |
| 1990-91 | B. Stankavage | 510 | 28 | 18.2 | 29 |
| 1991-92 | Craig White | 413 | 25 | 16.5 | 28 |
| 1992-93 | Keith Brazzo | 473 | 27 | 17.5 | 25 |
| 1993-94 | Keith Brazzo | 446 | 24 | 18.6 | 32 |
| 1994-95 | Craig Kowadla | 293 | 16 | 18.3 | 35 |
| 1995-96 | Craig Kowadla | 498 | 27 | 18.4 | 31 |
| 1996-97 | Stefan Ciosici | 384 | 28 | 13.7 | 31 |
| 1997-98 | Stefan Ciosici | 459 | 27 | 17.0 | 36 |
| 1998-99 | Brian Ehlers | 542 | 30 | 18.1 | 31 |
| 1999-00 | Brian Ehlers | 535 | 31 | 17.3 | 29 |
| 2000-01 | Tyson Whitfield | 392 | 26 | 15.1 | 30 |
| 2001-02 | Brian Burke | 443 | 29 | 15.5 | 43 |
| 2002-03 | Justin DeBerry | 474 | 29 | 16.3 | 29 |
| 2003-04 | Justin DeBerry | 415 | 28 | 14.8 | 26 |
| 2004-05 | Sean Knitter | 293 | 28 | 10.9 | 21 |
| 2005-06 | Andrei Capusan | 672 | 28 | 12.0 | 22 |
| 2006-07 | Matt Betley | 328 | 30 | 10.9 | 19 |

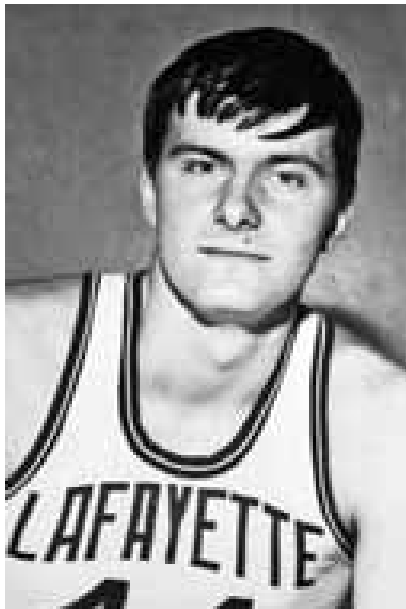


Bob Mantz '58, the school record holder for most points in a game with 47 vs. Wilkes on March 5, 1958.



Tracy Tripucka '72, is the all-time leading scorer in Lafayette history.

RECORDS...REBOUNDING



(Top) Jim Radcliffe '57 ranks second in career rebounding with 1,148. (Bottom) Ron Moyer '71, is the school record holder for rebounds in a game with 33 vs. Gettysburg on Dec. 9, 1970.

CAREER REBOUNDING

| | Player | Reb. | Seasons |
|-----|-----------------|------|---------|
| 1. | Bob Mantz | 1262 | 1955-58 |
| 2. | Jim Radcliff | 1148 | 1954-57 |
| 3. | Harold Lundy | 1054 | 1959-62 |
| 4. | Otis Ellis | 903 | 1985-89 |
| 5. | Ron Moyer | 859 | 1968-71 |
| 6. | Stefan Ciosici | 831 | 1995-00 |
| 7. | Phil Ness | 787 | 1974-78 |
| 8. | Earl Brown | 754 | 1971-74 |
| 9. | Walt Kocubinski | 744 | 1970-73 |
| 10. | Kris Grundberg | 725 | 1974-77 |
| 11. | Gary Bennett | 684 | 1982-86 |
| 12. | Craig White | 610 | 1988-92 |
| 13. | Henry Horne | 588 | 1972-75 |
| 14. | Brian Ehlers | 572 | 1996-00 |
| 15. | Preston Denby | 570 | 1962-65 |
| 16. | Mike Farrell | 565 | 2000-04 |
| 17. | Billy Hughes | 537 | 1984-88 |
| 18. | Dave Brown | 537 | 1963-66 |
| 19. | Matt Roberts | 516 | 1986-90 |
| 20. | Ted Cole | 512 | 1995-99 |
| 21. | Bob Clements | 474 | 1965-68 |
| 22. | Tracy Tripucka | 470 | 1996-72 |
| 23. | Jim Portray | 468 | 1971-74 |
| 24. | John Coalmon | 467 | 1981-85 |
| 25. | Morris Boyer | 465 | 1958-61 |
| 26. | Charley Ross | 465 | 1957-60 |
| 27. | Mike Miller | 463 | 1967-70 |
| 28. | Mike McHale | 449 | 1960-63 |
| 29. | Tyson Whitfield | 427 | 1997-01 |
| 30. | Frank Barr | 427 | 1998-01 |
| 31. | Bob Spadafora | 419 | 1976-79 |

SINGLE-SEASON REBOUNDING

| | Player | Reb. | Year |
|-----|----------------|------|---------|
| 1. | Bob Mantz | 438 | 1956-57 |
| 2. | Harold Lundy | 437 | 1961-62 |
| 3. | Bob Mantz | 423 | 1957-58 |
| 4. | Bob Mantz | 401 | 1956-57 |
| 5. | Henry Horne | 319 | 1974-75 |
| 6. | Jim Radcliff | 317 | 1956-57 |
| 7. | Harold Lundy | 315 | 1960-61 |
| 8. | Earl Brown | 315 | 1973-74 |
| 9. | Harold Lundy | 302 | 1959-60 |
| 10. | Ron Moyer | 301 | 1970-71 |
| 11. | Ron Moyer | 295 | 1968-69 |
| 12. | Kris Grundberg | 294 | 1975-76 |
| 13. | Ron Moyer | 293 | 1969-70 |
| 14. | Kris Grundberg | 279 | 1976-77 |
| 15. | Earl Brown | 275 | 1972-73 |

SINGLE-GAME REBOUNDING

| Reb. | Player / Opponent | Date |
|------|----------------------------|---------|
| 33 | Ron Moyer vs. Gettysburg | 12/9/70 |
| 27 | Bob Mantz vs. Scranton | 12/7/57 |
| 21 | Michael Emig vs. Upsala | 12/3/63 |
| 21 | Walt Kocubinski vs. Lehigh | 2/9/72 |
| 21 | Earl Brown vs. Lehigh | 2/23/72 |

YEAR-BY-YEAR REBOUNDING LEADERS (since 1960)

| Year | Player | Reb. | Games | Avg. | High |
|---------|--------------------|------------|-----------|------------|-----------|
| 1960-61 | Harry Lundy | 315 | 24 | 13.1 | — |
| 1961-62 | Harry Lundy | 437 | 24 | 18.2 | — |
| 1962-63 | Mike McHale | 205 | 24 | 8.5 | — |
| 1963-64 | Preston Denby | 224 | 23 | 9.7 | — |
| 1964-65 | Preston Denby | 178 | 20 | 8.9 | — |
| 1965-66 | Dave Brown | 211 | 20 | 10.6 | — |
| 1966-67 | Bob Clements | 172 | 25 | 6.5 | — |
| 1967-68 | Bob Clements | 217 | 24 | 9.0 | — |
| 1968-69 | Ron Moyer | 295 | 26 | 11.3 | — |
| 1969-70 | Ron Moyer | 263 | 23 | 11.4 | — |
| 1970-71 | Ron Moyer | 301 | 26 | 11.5 | 33 |
| 1971-72 | Walt Kocubinski | 272 | 27 | 10.0 | 21 |
| 1972-73 | Earl Brown | 275 | 26 | 10.6 | — |
| 1973-74 | Earl Brown | 315 | 26 | 12.1 | — |
| 1974-75 | Henry Horne | 319 | 28 | 11.4 | — |
| 1975-76 | Kris Grundberg | 294 | 26 | 11.3 | — |
| 1976-77 | Kris Grundberg | 279 | 27 | 10.3 | — |
| 1977-78 | Phil Ness | 210 | 31 | 6.8 | — |
| 1978-79 | Bob Spadafora | 197 | 28 | 7.0 | — |
| 1979-80 | Thomas Best | 227 | 27 | 8.4 | 12 |
| 1980-81 | Thomas Best | 164 | 28 | 5.8 | 10 |
| 1981-82 | Allen Goetz | 115 | 24 | 4.8 | 11 |
| 1982-83 | Gary Bennett | 134 | 28 | 4.8 | 11 |
| 1983-84 | Gary Bennett | 201 | 29 | 6.9 | 16 |
| 1984-85 | John Coalmon | 155 | 27 | 5.7 | 15 |
| 1985-86 | Otis Ellis | 176 | 23 | 7.6 | 12 |
| 1986-87 | Otis Ellis | 273 | 29 | 9.4 | 13 |
| 1987-88 | Otis Ellis | 237 | 29 | 8.2 | 14 |
| 1988-89 | Otis Ellis | 217 | 29 | 7.5 | 16 |
| 1989-90 | Craig White | 169 | 28 | 6.0 | 9 |
| 1990-91 | Jeff Antolick | 185 | 28 | 6.6 | 11 |
| 1991-92 | Craig White | 172 | 25 | 6.9 | 11 |
| 1992-93 | Keith Brazzo | 163 | 27 | 6.0 | 14 |
| 1993-94 | Jon Norton | 160 | 27 | 5.9 | 11 |
| 1994-95 | Dana Doran | 123 | 27 | 4.6 | 11 |
| 1995-96 | Stefan Ciosici | 205 | 27 | 7.6 | 16 |
| 1996-97 | Stefan Ciosici | 210 | 28 | 7.5 | 12 |
| 1997-98 | Stefan Ciosici | 213 | 27 | 7.9 | 17 |
| 1998-99 | Brian Ehlers | 173 | 30 | 5.8 | 10 |
| 1999-00 | Stefan Ciosici | 203 | 31 | 6.5 | 16 |
| 2000-01 | Frank Barr | 191 | 28 | 6.8 | 15 |
| 2001-02 | Mike Farrell | 136 | 29 | 4.7 | 9 |
| 2002-03 | Mike Farrell | 192 | 29 | 6.6 | 14 |
| 2003-04 | Mike Farrell | 162 | 28 | 5.8 | 10 |
| 2004-05 | Jamaal Douglas | 196 | 28 | 7.0 | 17 |
| 2005-06 | Andrei Capusan | 114 | 28 | 4.1 | 18 |
| 2006-07 | Matt Betley | 144 | 30 | 4.8 | 12 |

RECORDS...ASSISTS, STEALS, BLOCKS

CAREER ASSISTS

| Player | AST. | Years |
|---------------------------|------------|--------------|
| 1. Tony Duckett | 622 | 1981-85 |
| 2. Craig Kowadla | 435 | 1992-96 |
| 3. Matt Roberts | 408 | 1986-90 |
| 4. Mike Whitman | 382 | 1978-82 |
| 5. Justin DeBerry | 378 | 2000-04 |
| 6. Bob Falconiero | 372 | 1976-80 |
| 7. Brian Burke | 308 | 1998-02 |
| 8. Brian Ehlers | 307 | 1996-00 |
| 9. Tim Bieg | 305 | 1997-01 |
| 10. Jay Mottola | 297 | 1969-72 |
| 11. Bruce Stankavage | 291 | 1987-91 |
| 12. Ron Reynolds | 287 | 1983-87 |
| 13. Otis Ellis | 248 | 1985-89 |
| 14. Keith Brazzo | 238 | 1990-94 |
| 15. Mike Bellamy | 231 | 1974-78 |
| 16. Jim Lundy | 221 | 1973-77 |
| 17. Ross Harms | 217 | 1995-99 |
| 18. Craig White | 214 | 1988-92 |
| 19. Bilal Abdullah | 212 | 2004- |
| 20. Kevin Davis | 208 | 1985-89 |
| 21. Larry Spigner | 200 | 1989-93 |
| 22. Gary Kavanaugh | 194 | 1972-76 |
| 23. Tyson Whitfield | 193 | 1997-01 |
| 24. Andrew Pleick | 189 | 2002-03 |
| 25. Dana Mead | 183 | 1978-82 |
| 26. Andrew Brown | 177 | 2005- |
| 27. Andy Wescoe | 172 | 1986-90 |
| 28. Chet Brightful | 165 | 1980-84 |
| 29. Frank DiLeo | 162 | 1972-75 |

SINGLE-SEASON ASSISTS

| Player | AST. | Years |
|--------------------|------|---------|
| 1. Tony Duckett | 192 | 1983-84 |
| 2. Tony Duckett | 189 | 1984-85 |
| 3. Craig Kowadla | 161 | 1993-94 |
| Jim Lundy | 161 | 1975-76 |
| 5. Jay Mottola | 159 | 1971-72 |
| 6. Tony Duckett | 152 | 1982-83 |
| 7. Justin DeBerry | 144 | 2000-04 |
| 8. Jay Mottola | 138 | 1970-71 |
| 9. Bob Falconiero | 137 | 1979-80 |
| Tim Bannon | 137 | 1976-77 |
| 11. Mike Whitman | 135 | 1980-81 |
| 12. Andrew Pleick | 134 | 2002-03 |
| 13. Matt Roberts | 128 | 1989-90 |
| Brian Burke | 128 | 2001-02 |
| 15. Sam Gilbert | 127 | 1996-97 |
| 16. Bob Falconiero | 119 | 1977-78 |
| 17. Matt Roberts | 115 | 1988-89 |
| 18. Bob Falconiero | 111 | 1978-79 |

Note: Assists first became an official NCAA statistics in the 1971-72 season

CAREER STEALS

| Player | Steals | Seasons |
|---------------------------|-----------|--------------|
| 1. Tim Bieg | 194 | 1997-01 |
| 2. Tony Duckett | 192 | 1981-85 |
| 3. Justin DeBerry | 161 | 1999-04 |
| 4. Brian Ehlers | 156 | 1996-00 |
| 5. Otis Ellis | 151 | 1985-89 |
| 6. Keith Brazzo | 149 | 1990-94 |
| 7. Bruce Stankavage | 148 | 1987-91 |
| 8. Matt Roberts | 143 | 1986-90 |
| 9. Tyson Whitfield | 140 | 1997-01 |
| 10. Chet Brightful | 133 | 1980-84 |
| 11. Mike Whitman | 127 | 1978-82 |
| 12. Craig Kowadla | 126 | 1992-96 |
| 13. Craig White | 120 | 1988-92 |
| 14. Reggie Guy | 108 | 1998-02 |
| 15. Ross Harms | 105 | 1995-99 |
| 16. Bilal Abdullah | 98 | 2004- |
| 17. Ron Reynolds | 91 | 1983-87 |
| 18. Ted Detmer | 90 | 2004- |
| Gary Bennett | 90 | 1982-86 |
| 20. Mike Bellamy | 87 | 1974-78 |
| 21. Stan Morse | 85 | 1981-85 |
| 22. Billy Hughes | 84 | 1984-88 |
| 23. Andy Wescoe | 83 | 1986-90 |
| 24. Brian Burke | 80 | 1998-02 |
| 25. Matt Betley | 78 | 2004- |
| 26. Winston Davis | 77 | 2000-04 |
| 27. Andrew Pleick | 76 | 2002-03 |
| 28. Dana Mead | 72 | 1978-82 |
| 29. John Coalmon | 70 | 1981-85 |
| 30. Andrew Brown | 69 | 2005- |
| 31. Ted Cole | 68 | 1995-99 |
| 32. Mike Homer | 66 | 1996-00 |
| Kevin Davis | 66 | 1985-89 |

SINGLE-SEASON STEALS

| Player | Steals | Year |
|-------------------|--------|---------|
| 1. Mike Bellamy | 87 | 1977-78 |
| 2. Mike Whitman | 75 | 1980-81 |
| 3. Tony Duckett | 62 | 1983-84 |
| 4. Don Griffin | 60 | 1977-78 |
| Thomas Best | 60 | 1980-81 |
| 6. Tim Bieg | 57 | 1999-00 |
| 7. Tony Duckett | 55 | 1984-85 |
| 8. Keith Brazzo | 54 | 1991-92 |
| Tyson Whitfield | 54 | 1999-00 |
| 10. Brian Ehlers | 53 | 1999-00 |
| 11. Mike Whitman | 52 | 1981-82 |
| 12. Keith Brazzo | 51 | 1992-93 |
| 13. Otis Ellis | 50 | 1986-87 |
| 14. Craig Kowadla | 48 | 1995-96 |
| Tim Bieg | 48 | 1998-99 |

Note: Steals first became an official NCAA statistic in the 1971-72 season, and are not available from the 1978-79 or 1979-80 season.

CAREER BLOCKS

| Player | Blocks | Years |
|---------------------------|-----------|--------------|
| 1. Rob Dill | 191 | 2000-04 |
| 2. Frank Barr | 160 | 1998-01 |
| 3. Otis Ellis | 108 | 1985-89 |
| 4. Ted Cole | 82 | 1995-99 |
| 5. Stefan Ciosici | 79 | 1995-00 |
| 6. Ross Harms | 65 | 1995-99 |
| 7. Craig White | 63 | 1988-92 |
| 8. Chet Brightful | 56 | 1980-84 |
| Andrei Capusan | 52 | 2002-06 |
| 10. Phil Ness | 47 | 1974-78 |
| 11. Jamie Hughes | 46 | 2001-05 |
| 12. Tony Duckett | 44 | 1981-84 |
| 13. Matt Roberts | 44 | 1985-89 |
| 14. Mick Kuberka | 41 | 1998-02 |
| 15. Ted Detmer | 40 | 2004- |
| Dana Doran | 40 | 1993-96 |
| 17. Dave Klaus | 38 | 1995-99 |
| 18. Winston Davis | 36 | 2000-04 |
| 19. Brian Ehlers | 33 | 1996-00 |
| 20. John Coalmon | 31 | 1981-84 |
| 21. Ron Reynolds | 30 | 1983-87 |
| Richard Soto | 30 | 1986-90 |
| Mike Farrell | 30 | 2000-04 |
| 24. Bilal Abdullah | 28 | 2004- |
| Nate Scott | 28 | 1992-94 |
| 26. Dan King | 27 | 1977-81 |
| 27. Billy Hughes | 27 | 1984-89 |

SINGLE-SEASON BLOCKS

| Player | Blocks | Year |
|-----------------------|-----------|----------------|
| 1. Rob Dill | 79 | 2003-04 |
| 2. Frank Barr | 58 | 2000-01 |
| 3. Rob Dill | 54 | 2002-03 |
| 4. Frank Barr | 55 | 1999-00 |
| 5. Phil Ness | 47 | 1977-78 |
| Frank Barr | 47 | 1998-99 |
| 7. Otis Ellis | 39 | 1987-88 |
| 8. Otis Ellis | 36 | 1986-87 |
| 9. Stefan Ciosici | 33 | 1995-96 |
| 10. Rob Dill | 31 | 2000-01 |
| 11. Rob Dill | 27 | 2001-02 |
| 12. Ross Harms | 28 | 1997-98 |
| Jamaal Douglas | 28 | 2004-05 |
| 14. Craig White | 24 | 1990-91 |
| 15. Ted Detmer | 23 | 2006-07 |

Note: Blocked shots were first kept in the 1977-78 season and are not available from the 1979-80 season.

RECORDS...THREE POINT

CAREER

—3-POINT FIELD GOALS—

| Player | 3FG | Years |
|---------------------------|------------|--------------|
| 1. Tyson Whitfield | 271 | 1997-01 |
| 2. Justin DeBerry | 201 | 2000-04 |
| 3. Tim Bieg | 167 | 1997-01 |
| 4. Brian Ehlers | 162 | 1996-00 |
| 5. Craig Kowadla | 147 | 1992-96 |
| 6. Winston Davis | 134 | 2000-04 |
| 7. Andy Wescoe | 128 | 1986-90 |
| 8. Brian Burke | 127 | 1998-02 |
| 9. Paul Cummins | 126 | 2004- |
| 10. Andrew Brown | 120 | 2004- |
| 11. Larry Spigner | 110 | 1989-93 |
| 12. Mike Homer | 108 | 1996-00 |
| Marcus Harley | 108 | 2003-07 |
| 14. Bilal Abdullah | 96 | 2004- |
| 15. Keith Brazzo | 86 | 1990-94 |
| Pat Betley | 86 | 2002-06 |
| 17. Bruce Stankavage | 76 | 1987-91 |
| 18. Joe Marshall | 73 | 1992-95 |
| 19. Matt Betley | 67 | 2004- |
| 20. Tom Kresge | 66 | 1987-92 |
| 21. Ben Saxton | 59 | 1999-01 |
| 22. Sean Knitter | 57 | 2003-05 |
| 23. Geoff Schoeneck | 53 | 1991-96 |
| L.J. Bennett | 53 | 1993-96 |
| 25. Mick Kuberka | 52 | 2001-03 |
| 26. Paul Staubi | 50 | 1984-88 |
| 27. Jamall Hilliard | 49 | 2003-07 |
| 28. Ralph Carter | 48 | 1992-96 |

—3-POINT ATTEMPTS—

| Player | ATT. | Years |
|---------------------------|------------|--------------|
| 1. Tyson Whitfield | 719 | 1997-01 |
| 2. Justin DeBerry | 519 | 2000-04 |
| 3. Tim Bieg | 464 | 1997-01 |
| 4. Brian Ehlers | 457 | 1996-00 |
| 5. Craig Kowadla | 415 | 1992-96 |
| 6. Paul Cummins | 359 | 2004- |
| Brian Burke | 359 | 1998-02 |
| 8. Mike Homer | 353 | 1996-00 |
| 9. Marcus Harley | 337 | 2003-07 |
| 10. Andrew Brown | 334 | 2005- |
| 11. Winston Davis | 333 | 2000-04 |
| 12. Bilal Abdullah | 291 | 2004- |
| 13. Larry Spigner | 289 | 1989-93 |
| 14. Andy Wescoe | 272 | 1986-90 |
| 15. Pat Betley | 244 | 2002-06 |
| 16. Joe Marshall | 227 | 1992-95 |
| 17. Keith Brazzo | 214 | 1990-94 |
| 18. Matt Betley | 212 | 2004- |
| 19. Bruce Stankavage | 203 | 1987-91 |
| 20. L.J. Bennett | 186 | 1993-96 |
| 21. Dave Klaus | 171 | 1995-99 |
| 22. Tom Kresge | 161 | 1987-91 |
| 23. Sean Knitter | 160 | 2003-05 |
| 24. Ralph Carter | 157 | 1992-96 |
| 25. Andrew Pleick | 156 | 2001-03 |
| 26. Geoff Schoeneck | 154 | 1991-96 |
| 27. Michael Kuberka | 150 | 1998-02 |
| Ben Saxton | 150 | 1999-01 |
| 29. Ross Harms | 142 | 1995-99 |

—3-POINT SHOOTING PERCENTAGE—

| Player | Percentage | Years |
|---------------------------|------------------------|--------------|
| 1. Ron Reynolds | 48.9% (45-92) | 1983-87 |
| 2. Paul Staubi | 47.6% (50-105) | 1984-88 |
| 3. Andy Wescoe | 47.1% (128-272) | 1986-90 |
| 4. Tom Kresge | 41.0% (66-161) | 1987-91 |
| 5. Jamaal Hilliard | 40.5% (49-121) | 2003-07 |
| 6. Winston Davis | 40.2% (134-333) | 1999-04 |
| Keith Brazzo | 40.2% (86-214) | 1990-94 |
| 8. Dave Klaus | 39.8% (68-171) | 1995-99 |
| 9. Michael Kuberka | 39.5% (52-150) | 1998-02 |
| 10. Ben Saxton | 39.3% (59-150) | 1999-01 |
| 11. Justin DeBerry | 39.1% (89-211) | 2000-04 |
| 12. Larry Spigner | 38.1% (110-289) | 1989-93 |
| 13. Bruce Stankavage | 37.4% (76-203) | 1987-91 |
| 14. Tim Bieg | 36.0% (167-464) | 1997-01 |
| 15. Andrew Brown | 35.9% (120-334) | 2005- |
| 16. Sean Knitter | 35.6% (37-160) | 2003-05 |
| 17. Matt Goltko | 35.5% (27-76) | 2003-95 |
| 18. Brian Ehlers | 35.4% (162-457) | 1996-00 |
| Craig Kowadla | 35.4% (147-415) | 1992-96 |
| 19. Brian Burke | 35.3% (127-359) | 1998-00 |
| 20. Pat Betley | 35.2% (86-244) | 2006-06 |
| 21. Paul Cummins | 35.1% (126-359) | 2004- |
| 22. Pat Betley | 34.7% (43-124) | 2002-06 |
| 23. Kerry Kenny | 34.6% (9-26) | 2004-07 |
| 24. Bilal Abdullah | 33.0% (96-291) | 2004- |
| 25. Geoff Schoeneck | 34.4% (53-154) | 1991-96 |
| 26. Greg Bishop | 33.7% (26-77) | 1986-90 |
| 27. Tyson Whitfield | 32.5% (271-719) | 1997-01 |
| 28. Joe Marshall | 32.2% (73-227) | 1992-95 |
| 29. Marcus Harley | 32.0% (108-337) | 2003-07 |
| Sam Gilbert | 32.0% (26-81) | 1996-98 |
| 31. Matt Betley | 31.6% (67-212) | 2004- |
| 32. Mike Homer | 30.6% (108-353) | 1996-00 |
| Ralph Carter | 30.6% (48-157) | 1992-96 |

(minimum 2 seasons)

Players listed in **bold** are still active
Note: Three-point line first used in 1986-87 season

SINGLE SEASON

—3-POINT FIELD GOALS—

| Player | 3FG | Year |
|-------------------------|-----------|----------------|
| 1. Tyson Whitfield | 91 | 1999-00 |
| 2. Craig Kowadla | 82 | 1995-96 |
| 3. Tyson Whitfield | 77 | 2000-01 |
| 4. Andrew Brown | 69 | 2006-07 |
| Justin DeBerry | 69 | 2002-03 |
| 6. Mike Homer | 62 | 1996-97 |
| 7. Winston Davis | 58 | 2002-03 |
| 8. Winston Davis | 56 | 2003-04 |
| 9. Larry Spigner | 54 | 1991-92 |
| 10. Tyson Whifield | 53 | 1998-99 |
| 11. Tim Bieg | 52 | 1999-00 |
| 12. Brian Ehlers | 51 | 1999-00 |
| Paul Cummins | 51 | 2005-06 |
| 14. Tyson Whitfield | 50 | 1997-98 |
| Tim Bieg | 50 | 1998-99 |
| 16. Tom Kresge | 48 | 1990-91 |
| Brian Ehlers | 48 | 1998-99 |
| Justin DeBerry | 48 | 2003-04 |
| 19. Paul Cummins | 47 | 2006-07 |
| Andy Wescoe | 47 | 1989-90 |
| 21. Marcus Harley | 44 | 2004-05 |
| Brian Burke | 44 | 1998-02 |
| 23. Ron Reynolds | 45 | 1986-87 |

—3-POINT FIELD GOAL ATTEMPTS—

| Player | ATT | Year |
|-------------------------|------------|----------------|
| 1. Tyson Whifield | 218 | 2000-01 |
| 2. Tyson Whifield | 213 | 1999-00 |
| 3. Craig Kowadla | 203 | 1995-95 |
| 4. Justin DeBerry | 189 | 2002-03 |
| 5. Mike Homer | 179 | 1996-97 |
| 6. Andrew Brown | 167 | 2006-07 |
| Andrew Brown | 167 | 2005-06 |
| 8. Winston Davis | 153 | 2002-03 |
| 9. Marcus Harley | 152 | 2004-05 |
| 10. Tyson Whifield | 151 | 1998-99 |
| 11. Brian Burke | 147 | 2001-02 |
| 12. Tim Bieg | 144 | 1998-99 |
| 13. Tim Bieg | 143 | 1999-00 |
| 14. Larry Spigner | 142 | 1991-92 |
| 15. Winston Davis | 139 | 2003-04 |
| 16. Tyson Whifield | 137 | 1997-98 |
| 17. Paul Cummins | 133 | 2005-06 |
| 18. Andrew Pleick | 125 | 2002-03 |
| 19. Brian Ehlers | 123 | 1998-99 |
| Joe Marshall | 123 | 1993-94 |
| 21. Brian Ehlers | 122 | 1999-00 |
| Ralph Carter | 122 | 1995-96 |
| 23. Pat Betley | 120 | 2005-06 |
| 24. Justin DeBerry | 119 | 2003-04 |
| 25. Tom Kresge | 115 | 1990-91 |
| 26. Craig Kowadla | 113 | 1993-94 |

RECORDS...FREE THROW

CAREER

—FREE THROWS—

| Player | FT | Years |
|---------------------|-----|---------|
| 1. Otis Ellis | 505 | 1985-89 |
| 2. Brian Ehlers | 456 | 1996-00 |
| 3. Tracy Tripucka | 453 | 1969-72 |
| 4. Stefan Ciosici | 404 | 1995-00 |
| 5. Walt Kocubinski | 387 | 1970-73 |
| 6. Preston Denby | 349 | 1962-65 |
| 7. Bruce Stankavage | 343 | 1987-91 |
| 8. Dave Brown | 342 | 1963-66 |
| 9. Keith Brazzo | 325 | 1990-94 |
| 10. Phil Ness | 322 | 1974-78 |
| 11. Gary Bennett | 317 | 1982-86 |
| 12. Jay Mottola | 304 | 1969-72 |
| 13. Brian Burke | 292 | 1998-02 |
| 14. Bob Falconiero | 291 | 1976-80 |
| Pete Pavia | 291 | 1958-61 |
| 16. Bob Mantz | 288 | 1956-59 |
| 17. Ted Cole | 281 | 1995-99 |
| 18. Tony Duckett | 279 | 1981-85 |
| 19. Mike Miller | 273 | 1967-70 |
| 20. Billy Hughes | 272 | 1984-88 |
| 21. Matt Roberts | 267 | 1986-90 |
| 22. Craig White | 266 | 1988-92 |
| 23. Todd Tripucka | 261 | 1973-76 |
| 24. Frank DiLeo | 260 | 1972-75 |
| 25. Gene Denehan | 255 | 1960-63 |
| 26. Harold Lundy | 242 | 1959-62 |

—Free Throw Attempts—

| Player | ATT | Years |
|------------------------|-----|---------|
| 1. Otis Ellis | 671 | 1985-89 |
| 2. Stefan Ciosici | 667 | 1995-00 |
| 3. Tracy Tripucka | 543 | 1969-72 |
| 4. Brian Ehlers | 540 | 1996-00 |
| 5. Walt Kocubinski | 506 | 1971-73 |
| 6. Gary Bennett | 489 | 1982-86 |
| 7. Bruce Stankavage | 462 | 1987-91 |
| 8. Phil Ness | 449 | 1974-78 |
| 9. Ted Cole | 435 | 1995-99 |
| 10. Preston Denby | 434 | 1962-65 |
| 11. Dave Brown | 419 | 1963-66 |
| 12. Keith Brazzo | 411 | 1990-94 |
| Todd Tripucka | 411 | 1973-76 |
| 14. Pete Pavia | 396 | 1958-61 |
| 15. Mike Miller | 395 | 1967-70 |
| 16. Jay Mottola | 382 | 1969-72 |
| 17. Craig White | 379 | 1988-92 |
| 18. Harry "Chip" Lundy | 376 | 1959-62 |
| 19. Tony Duckett | 373 | 1981-85 |
| 20. Chet Brightful | 369 | 1980-84 |
| 22. Gene Denehan | 367 | 1960-63 |
| 22. Billy Hughes | 352 | 1984-88 |
| 23. Bob Falconiero | 347 | 1976-80 |
| 24. Matt Roberts | 334 | 1986-90 |
| 25. Frank DiLeo | 327 | 1972-75 |

—FREE THROW SHOOTING PERCENTAGE—

| Player | Percentage | Years |
|---------------------------|------------------------|--------------|
| 1. Brian Burke | 87.4% (262-339) | 1998-02 |
| 2. Jamaal Hilliard | 85.7% (197-230) | 2003-07 |
| 3. Brian Ehlers | 84.4% (456-540) | 1996-00 |
| 4. Bob Falconiero | 83.9% (291-347) | 1976-80 |
| 5. Tracy Tripucka | 83.4% (453-543) | 1969-72 |
| 6. Dave Brown | 81.6% (342-419) | 1963-66 |
| 7. Justin DeBerry | 81.4% (241-296) | 2000-04 |
| 8. Preston Denby | 80.4% (349-434) | 1962-65 |
| 9. Matt Roberts | 79.9% (267-334) | 1986-90 |
| 10. Jay Mottola | 79.6% (304-382) | 1969-72 |
| 11. Frank DiLeo | 79.5% (260-327) | 1972-75 |
| 12. Keith Brazzo | 79.1% (325-411) | 1990-94 |
| 13. Bilal Abdullah | 77.5% (220-284) | 2004- |
| 14. Billy Hughes | 77.3% (272-352) | 1984-88 |
| 15. Walt Kocubinski | 76.5% (387-506) | 1970-73 |
| 16. Craig Kowadla | 75.7% (218-288) | 1992-96 |
| 17. Otis Ellis | 75.3% (505-671) | 1985-89 |
| 18. Tony Duckett | 74.8% (279-373) | 1981-85 |
| 19. Bruce Stankavage | 74.2% (343-462) | 1987-91 |
| 20. Pete Pavia | 73.5% (291-396) | 1958-61 |
| 21. Charley Ross | 73.5% (216-294) | 1957-60 |
| 22. Mike Farrell | 72.8% (217-298) | 2000-04 |
| 23. Phil Ness | 71.7% (322-449) | 1974-78 |
| 24. Scot Lewis | 71.2% (193-271) | 1985-89 |
| 25. George Lefkowski | 71.0% (206-290) | 1966-69 |

Note: Minimum 270 attempts

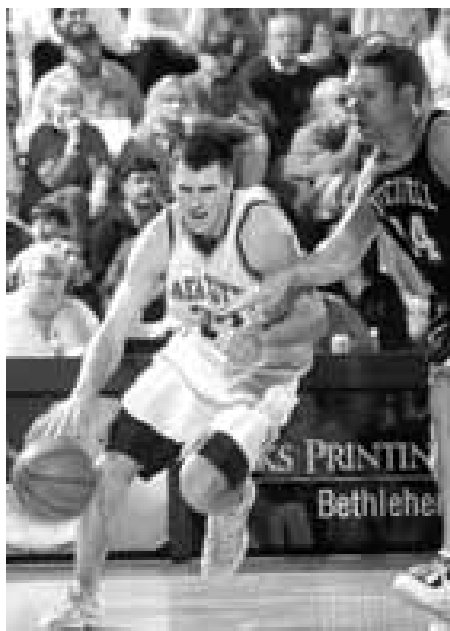
SINGLE SEASON

—FREE THROWS—

| Player | FT | Season |
|----------------------|-----|---------|
| 1. Dave Brown | 177 | 1965-66 |
| 2. Otis Ellis | 173 | 1986-87 |
| 3. Tracy Tripucka | 169 | 1970-71 |
| 4. Todd Tripucka | 197 | 1975-76 |
| 5. Anthony Mack | 161 | 1956-57 |
| 6. Gary Bennett | 155 | 1985-86 |
| 7. Anthony Mack | 146 | 1956-57 |
| 8. Walt Kocubinski | 145 | 1971-72 |
| 9. Walt Kocubinski | 144 | 1972-73 |
| 10. Tracy Tripucka | 144 | 1971-72 |
| 11. Bruce Stankavage | 142 | 1990-91 |
| 12. Brian Ehlers | 140 | 1999-00 |
| 13. Tracy Tripucka | 140 | 1969-70 |
| 14. Preston Denby | 140 | 1963-64 |
| 15. Stefan Ciosici | 139 | 1998-99 |
| 16. Mike Miller | 137 | 1968-69 |
| 17. Brian Burke | 131 | 1998-99 |
| 18. Brian Ehlers | 130 | 1998-99 |

—FREE THROWS ATTEMPTED—

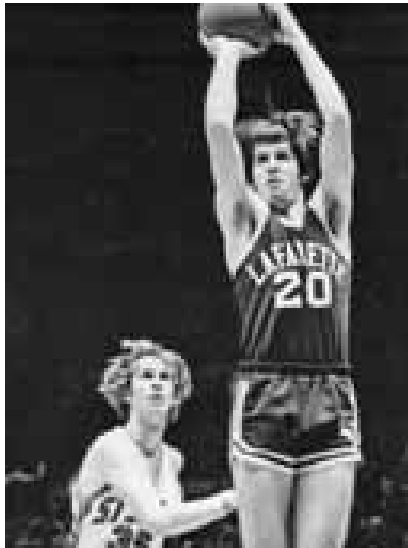
| Player | FT ATT | Year |
|----------------------|--------|---------|
| 1. Todd Tripucka | 270 | 1975-76 |
| 2. Anthony Mack | 234 | 1956-57 |
| 3. Otis Ellis | 226 | 1986-87 |
| 4. Gary Bennett | 216 | 1985-86 |
| 5. Stefan Ciosici | 215 | 1997-98 |
| 6. Dave Brown | 212 | 1965-66 |
| 7. Anthony Mack | 211 | 1956-57 |
| 8. Tracy Tripucka | 210 | 1970-71 |
| 9. Mike Miller | 192 | 1968-69 |
| 10. Bruce Stankavage | 191 | 1990-91 |
| 11. Walt Kocubinski | 181 | 1971-72 |
| 12. Stefan Ciosici | 185 | 1996-97 |
| 13. Walt Kocubinski | 181 | 1972-73 |
| 14. Ted Cole | 174 | 1998-99 |
| 15. Pete Pavia | 170 | 1959-60 |
| 16. Tracy Tripucka | 167 | 1971-72 |
| Bob Mantz | 167 | 1957-58 |



Brian Ehlers ranks second in career free-throw shooting at Lafayette. The two-time Patriot League Player of the Year shot 84.4 percent from the line from 1996 to 2000.



RECORDS...KIRBY SPORTS CENTER



Team Records

Most Points by Lafayette:

115 vs. Albright (93), 12/13/76

Most Points by Opponent:

113, Rutgers vs. Lafayette (79), 1/24/76

Most Points Both Teams:

215, Lafayette 111, Lehigh 104 (OT), 1/23/04

Fewest Points by Lafayette:

36, vs. Princeton (45), 11/27/90

Fewest Points by Opponent:

37, Haverford vs. Lafayette (88), 12/20/96

Largest Margin of Victory for Lafayette:

51, Lafayette vs. Haverford (88-37), 12/20/96

Largest Margin of Victory for Opponent:

35, Pennsylvania vs. Lafayette (92-57), 1/23/95

Individual Records

Most Points:

43, Brian Burke (Lafayette) vs. Lehigh, 2/20/02

43, Chris Spatola (Army) vs. Lafayette, 1/27/01

42, Todd Tripucka (Lafayette) vs. St. Joseph's, 12/3/75

Most Field Goals Made:

16, Brian Burke (Lafayette) vs. Lehigh, 2/20/02

15, Rich Laurel (Hofstra) vs. LaSalle, 3/5/77

15, Russell "Boo" Bowers (American) vs. Lafayette, 12/13/80

15, Stefan Ciosici (Lafayette) vs. Lehigh, 1/7/98

Most Field Goal Attempts:

31, Rich Laurel (Hofstra) vs. LaSalle, 3/5/77

Best Field Goal Percentage (Min. 10):

100.0 (10-10), Kris Grundberg (Lafayette) vs. Muhlenberg, 11/27/76

Most 3-pt. Field Goals Made:

9, Brian Lloyd (Brown) vs. Lafayette, 1/9/95

Most 3-pt. Field Goal Attempts:

16, Chris Spatola (Army) 1/27/01

Best 3-pt. Field Goal Percentage (Min. 5):

100 (5-5), Brian Burke (Lafayette) vs. Albright, 11/27/00

85.7 (6-7), Ron Simpson (Rider) vs. Lafayette, 2/11/87

Most Free Throws Made:

17, Keith Brazzo (Lafayette) vs. Army, 2/27/93

Most Free Throw Attempts:

20, Keith Brazzo (Lafayette) vs. Army, 2/27/93

Best Free Throw Percentage (Min. 11):

100 (13-13), Todd Tripucka (Lafayette) vs. Army, 1/3/76,

(11-11) Jamaal Hilliard (Lafayette) vs. American 2/19/05,

(11-11) Brian Burke (Lafayette) vs. Colgate 1/26/02,

(11-11) Keith Brazzo (Lafayette) vs. Colgate 2/5/94

Most Rebounds:

22, Henry Horne (Lafayette) vs. Albright, 2/11/74

Most Assists:

17, Gerry Kavanaugh (Lafayette) vs. Columbia, 1/20/76



(Top) Todd Tripucka '76 holds the Kirby record for free throw percentage, making 13-of-13 attempts vs. Army on Jan. 3, 1976. (Center) Brian Burke sports the best single-game scoring effort at Kirby Sports Center with 43 points versus Lehigh on Feb. 20, 2002. (Bottom) Keith Brazzo, '94 is the Kirby record holder for free throws, hitting 17 of 20 attempts vs. Army on Feb. 27, 1993.

RECORDS...ALL-TIME COACHING

| Coach | Seasons | Years | Won | Lost | Pct. |
|-------------------------|-----------|---------------------|-------------|-------------|-------------|
| B.J. Myers (manager) | 1 | 1900-01 | 4 | 3 | .571 |
| J.L. Baker (manager) | 1 | 1901-02 | 5 | 5 | .500 |
| W.S. Haldeman (manager) | 1 | 1902-03 | 18 | 16 | .529 |
| | 10 | 1904-12 | — no team — | | |
| J. Craft (manager) | 1 | 1913-14 | 5 | 7 | .417 |
| Joe Fogerty | 1 | 1914-15 | 4 | 10 | .286 |
| W.G. Crowell (manager) | 1 | 1915-16 | 7 | 9 | .438 |
| J.B. Quig (manager) | 1 | 1916-17 | 15 | 9 | .625 |
| W.F. MacAvoy | 1 | 1919-20 | 3 | 7 | .300 |
| M.A. Miller | 4 | 1925-29 | 25 | 46 | .352 |
| H.A. Lorenz | 6 | 1929-35 | 37 | 56 | .398 |
| P.M. Shellenberger | 1 | 1935-36 | 7 | 9 | .438 |
| Michael Michalske | 2 | 1936-38 | 15 | 21 | .417 |
| Richard Madison | 4 | 1938-42 | 29 | 41 | .414 |
| Art Winters | 3 | 1942-45 | 30 | 11 | .732 |
| Bill Anderson | 11 | 1917-19,20-25,45-49 | 139 | 82 | .629 |
| Ray Stanley | 2 | 1949-51 | 32 | 17 | .653 |
| George Davidson | 12 | 1955-67 | 170 | 116 | .594 |
| Hal Wissel | 4 | 1967-71 | 43 | 59 | .422 |
| Tom Davis | 6 | 1971-77 | 116 | 44 | .725 |
| Roy Chipman | 3 | 1977-80 | 60 | 28 | .682 |
| Will Rackley | 4 | 1980-84 | 46 | 66 | .411 |
| Butch van Breda Kolff | 8 | 1951-55, 84-88 | 132 | 85 | .608 |
| John Leone | 7 | 1988-95 | 68 | 128 | .347 |
| Fran O'Hanlon | 12 | 1995-present | 171 | 173 | .499 |
| Totals | 97 | 1900-present | 1181 | 1048 | .530 |



The second winningest coach in Lafayette history, George Davidson '51 posted 170 career victories.



Current Maryland head coach Gary Williams (left) and former Iowa head coach Tom Davis (right) coached at Lafayette early on in their careers. Williams was Davis' assistant.



Fran O'Hanlon, the winningest coach in Lafayette history, has been the Leopards' mentor since 1995, leading the program to two NCAA berths.



Butch van Breda Kolff (pictured with Bruce Stankavage '91) coached the Leopards to 132 wins in two different stints as head coach.

ALL-TIME ROSTER

A

Abdullah, Bilal '08
 Ablo, Nash '01
 Abramowitch, Jay '64
 Adams, John Quincy '31
 Ahl, Carry '54
 Albanese, Pat '55
 Alexander, Neil '54
 Allen, Thomas '25
 Alviggi, John '54
 Anderson, Bill '19
 Anderson, Brad '05
 Andersson, Jesper '10
 Anderson, William '19
 Anewalt, Sam '30
 Antolick, Jeff '93
 Ash, Bill '50
 Atkinson, William '28
 Azzinaro, Joe '93
 Azzolina, Nick '67

B

Bailey, Bob '50
 Balch, Crawford '31
 Baldwin, Dick '37
 Baldwin, Greg '75
 Bannon, Tim '77
 Barkauskas, Joseph '72
 Barnes, Travis '98
 Barr, Frank '01
 Barr, Harold '50
 Barstler, Roscoe 1906
 Bartko, John '67
 Barton, Jeb '97
 Baum, Ryan '07
 Baylor, Butch '84
 Beddall, Joseph S. '16
 Beeken, Valdemar '26
 Bellamy, Mike '78
 Benbow, Darian '11
 Benjamin, Walt '38
 Bennet, Doug '84
 Bennett, Gary '86
 Bennett, L.J. '97
 Best, Thomas '83
 Betley, Matt '08
 Betley, Pat '06
 Bieg, Tim '01
 Bilyea, Carl '44
 Bird, John '50
 Bishop, Greg '90
 Blackburn, Paul '16
 Blackfan '25
 Blank, Pete '39
 Blass, Ron '73
 Bluestein, Sanfurd '42
 Bobbe, Christopher '20
 Boddorff, Dean '39
 Bohlander, Paul '80
 Bolmer, Joseph '50

Boltz, Dewey '47
 Bonney, David '03
 Boyer, Morris '61
 Boylan, Joe '60
 Brazzo, Keith '94
 Brennan '23
 Brennan, John '92
 Brett, Tom '58
 Brightful, Chet '84
 Brogan, Pat '89
 Brown, Andrew '09
 Brown, David '66
 Brown, Earl '74
 Brown, John '64
 Bruhn, Russell '42
 Bruinooge, David '97
 Bungeroth, William '68
 Burgess, Dick '69
 Burke, Brian 2002
 Burke, Terry '92
 Burns, Jim '67
 Burns, Tom '61
 Butler, General '01
 Butterer, Albert J. '34

C

Cacioppe, Ronald '66
 Campbell, Pete '90
 Canning, Charles 1904
 Caola, Victor '69
 Capusan, Andrei '06
 Carlson, Norm '49
 Carrick, David '73
 Carril, Pete '52
 Carter, Ralph '95
 Cary 1901
 Cawthra, Henry '23
 Chiusano, John '07
 Ciosici, Stefan '00
 Clark, Ron '97
 Clements, Bob '68
 Clouser, Carl '30
 Coalman, John '85
 Cohan, Allen '46
 Cohen, Abe '33
 Colao, Joe '53
 Cole, Robert '69
 Cole, Ted '99
 Collini, Charley '36
 Collins, Peter '35
 Colonna, Scott '97
 Colton, John '32
 Congo, Rich '83
 Connor, Winston '43
 Cook, Alan '32
 Cook, Andrew '63
 Corrodino, Tom '35
 Corvino, Dominick '77
 Costigan, Pat '73
 Covelman, Kenneth '69

Crate, Douglas '25
 Crean, Gerald '58
 Cullen, Nicholas '64
 Cummins, Paul '08

D

Davidson, George '51
 Davis, Kevin '89
 Davis, Winston '04
 Dawes, Jeffrey '64
 Dawson, Drew '03
 Day, Louis '66
 DeBerry, Justin '04
 Denahan, Gene '63
 Denby, Preston '65
 DeRevere, Edward '34
 Detmer, Ted '08
 Devlin, Tony '79
 DiLeo, Frank '75
 Dill, Rob '04
 Dimmerling, George A. 30
 Dinsmore, Arthur '34
 Doerrmann, Ed '55
 Dopirak, Josh '98
 Doran, Dana '96
 Dorfman, Martin '44
 Douglas, Jamaal '07
 Drusedum, Mark '81
 Duckett, Tony '85
 Duffy, Robert '26
 Duym, Wade '49

E

Eckenfelder, Don '62
 Ehlers, Brian '00
 Ellis, Jonathan '98
 Ellis, Otis '89
 Ellman, Charles '50
 Emig, Michael '64
 Emmet, Bill '47
 English, Willaim J. '15
 Erickson, Frank '40
 Everson, Steve '87
 Eyer, Charles '54

F

Falconiero, Bob '80
 Farrell, James '41
 Farrell, Mike '04
 Fischetti, Art '75
 Fitzpatrick, James '40
 Flis, Bill '68
 Fogelson, Sanford '41
 Fontaine, Elliot '94
 Fox, Jack '50
 Frank, David '96
 Frank, Ernest '59
 Freedman, Brian '01
 Friel, Bob '77
 Friesell, William '66

Furey, Tony '83
 Furey, Tony '83

G

Galtere, Gordon '57
 Garritone, Rudy '52
 Gearhart, Scott '03
 Geitner, Clem '87
 George, Danny '62
 Geosits, Eddie '79
 Gibbon, Gilpin '48
 Gilbert, Sam '99
 Gilchrest, Kenneth '31
 Gillings, Joe '63
 Gladstone, Fred '51
 Glover, Robert '43
 Godwin, Ricky '81
 Goetz, Allen '84
 Goetz, Mike '67
 Golitko, Matt '97
 Goodman, Tom '77
 Graham, Joey '87
 Grant, Kenny '05
 Greenip, William '44
 Gremelspacher, Ronald '71
 Greville, William '32
 Griffin, Don '79
 Griffith, Theodore '32
 Grube, Franklin '27
 Grundberg, Kris '77
 Gruner, Michael '10
 Grynkewich, Serge '33
 Guerra, James '73
 Gurgo, Michael '42
 Gustafson, Ron '58
 Gutwillig, Barry '63
 Guy, Reggie '02

H

Haff, John '30
 Haldeman, Edward C. 1903
 Haldeman, Walter S. 1903
 Hall, Brian '89
 Hammer, Edgar T. '15
 Hancock, Elmer '43
 Hanlon, Robert '42
 Harbers, Bob '51
 Harley, Marcus '07
 Harms, Ross '99
 Harris, Jeff '85
 Hart, Devin '87
 Hatcher, Neal '71
 Hauser, Walter '48
 Heckendorn, Derek '09
 Hennon, Rob '86
 Henry, Norman '34
 Hilliard, Jamaal '07
 Hindman, James '38

Hines, Andre '10
 Hock, Erwin '26
 Hoerrner, George '60
 Homer, Mike '00
 Horne, Henry '75
 Houser, Harry '29
 Howarth, Cooley '45
 Howell, Ehret '24
 Hubbard '26
 Huber, Ray '51
 Hudson, George '76
 Hughes, Billy '88
 Hughes, Ed '68
 Hughes, Jamie '05
 Harley, Marcus '07
 Hurst, James '60
 Hutnik, Jim '78
 Hynson, James '20

I

Iszard, John 1904

J

Jack, Richard '68
 Jackson, Stony '53
 Jens, Matt '93
 Jerome, Mark '90
 Jerz, Michael '00
 Johnson, Edward '56
 Johnson, Sedgwick K. '16
 Johnson, Ted '84
 Jones, Dan '81
 Jones, David '57
 Jones, Joseph '53
 Jordan, Warren '49

K

Karetsky, Al '58
 Karetsky, Alfred '58
 Kauffman, Bob '62
 Kaulkin, Marv '54
 Kavanaugh, Gerry '76
 Kearney, Edward '24
 Keating, Paul '19
 Keller, Chaz '83
 Kenny, Kerry '06
 Keuch, Don '54
 Killea, John '77
 Killinger, Bill '50
 King, Dan '81
 King, Raymond '22
 Kiriloff, Robert '69
 Klarberg, Joseph '65
 Klaus, Dave '99
 Kline, Russ '54
 Klinger, Karl '85
 Klinkhammer, Nate '00
 Knapp, Ed '56
 Knitter, Sean '05

LAFAYETTE LEOPARDS

Kocubinski, Walt '73
Kohler, Dick '59
Koltun, Marek '10
Kowadla, Craig '95
Kranser, Harry '49
Krempa, Walter '72
Kresge, Tom '92
Kristoff, Daniel '65
Kuberka, Mick '02
Kulaitis, Stanley '41

L

Lathrop, R.H. '34
Lautensack, Robert '39
Leacy, Dave '98
Lefkowski, George '69
Lehr, Henry '19
Leininger, Allison '20
Leisenring, Hazard '29
Lentz, George '39
Leone, Jason '98
Leszczynski, Tom '09
Levenson, Lloyd '67
Lewis, Albert '33
Lewis, Scot '89
Lipetz, Benjamin '30
Longaker, John '23
Lordon, Donald '65
Love, Barry '51
Low, Mark '79
Lowden, Clarence '17
Lucas, Jason '00
Luff, William '49
Luhr, John F. '16
Lundy, Harry "Chip" '62
Lundy, Jim '77

M

MacDonald, William '60
Mack, Anthony '57
MacLean, Matt '97
MacVeigh, Jack '49
Mann, Dave '62
Mantz, Robert '58
Manuel, Walter '66
Marshall, Joe '96
Martini, Donald '59
Matarazzo, Dan '68
Maurer, Andy '04
McAllister, Alfred '98
McCabe, Thomas '42
McCleary, Greg '03
McCrea, Allan '35
McDonnell, Albert '23
McGuire, Cornelius '28
McHale, Mike '63
McKnight, William '43
McMorris, Blake '74
McSween, Mike '78
Mead, Dana '82
Megargel, Willard '34
Messinger, Norman '28
Miklas, Henry '76

Miller, Charles '65
Miller, J.J.
Miller, James G. '34
Miller, Leon '53
Miller, Leon '54
Miller, Michael '70
Millman, Robert '26
Millsbaugh, J.S. '34
Millspau, Stanley '33
Milne, Jack '49
Mintz, Jared '11
Miskey, Harold 1904
Mitchell, Peter '72
Mixsell, C.K.
Moore, Walter '26
Moran, Jack '74
Morgan, William 1904
Morse, Stan '85
Mosenson, Dave '79
Moss, Frank '53
Mottola, Jay '72
Moyer, Ronald '71
Mugavero, Eric '05
Muldoon, Brian '82
Munson, Sean '04
Murray, Stuart '57

N

Naddaff, Charlie '80
Nauman, George '50
Ness, Phil '78
Nevolo, Anthony '55
Newman, Robert '70
Nolan, Nick '07
Norton, Jon '94
Nowell, Richard '71

O

O'Neill, Brian '34
Ochs, Erie 1906
Ofori, Dennis '98
Omanovic, Miran '06

P

Panko, Jamison '94
Parry, Rhinard DeLance '39
Parsons, Harvey 1905
Patton, Walter E. '35
Pavia, Pete '61
Pendleton, Andre '98
Permesley, Harry '37
Peskin, Roger '64
Peters, Ernie '56
Phillips, Frank '35
Pleick, Andrew '03
Portray, James '74
Powers, Jim '33
Present, David '36
Proce, Greg '73
Pualson, Carl '17

Q

Quigg, Charles '54

Quinn, Gene '51

R

Radcliff, James '57
Rambo, Samuel 30
Reaser, William 30
Recknagel, Reed '42
Reeves, Howard '22
Repa, Joseph '24
Reynolds, Ron '87
Richter, Henry 1903
Roberts, Daryl '80
Roberts, Matt '90
Robins, Donald '40
Rockwell, Paul '41
Rogers, Braeden '00
Rohrbacker, David '02
Ronk, Frank 1906
Rookstool, Karl '73
Rorvig, Paul '04
Rose, Carlton '72
Rosenthal, Bernard '17
Ross, Charles '60
Rossiter, Gordon '38
Russell, Sam '51

S

Sabol, Kenneth '70
Sanz, Lorenzo '95
Sargent, Gerry '39
Sarni, Caesar 29
Saunders, Chris '04
Saurman, Ira '36
Sawyer, Jim '83
Saxton, Ben 2004
Saylor, Todd
Scardino, Peter '72
Schmidt, Everest '08
Schoeneck, Geoff '95
Schweyer, Robert '35
Schwilk, Gene '62
Scott, Ian '19
Scott, Nate '96
Seaburg, Adam '07
Searles, Brinton '41
Semko, Paul '48
Shaw, Chris '00
Sheeliagh, Ken '51
Shellenberger, John '29
Sherman, M.
Sherratt, Doug '68
Sherwood, William 30
Shevell, John '79
Shimer, Don '51
Shincovich, Mike '87
Shirer, Samuel '28
Shor, Gil '52
Shreen, Fritz '16
Shreen, Edward '40
Sickles, Russ '98
Siegel, Martin '55
Simmons, Donald '44
Skillman, Kenneth '70

Skuchas, Edward '71
Skvoretz, Andrew '47
Smith, Dave '09
Smith, E.H. '28
Smith, Hervey '25
Smith, Oliver '50
Snyder, Bill '41
Snyder, Ward M. '14
Soles, Harold '31
Soles, Thomas 1904
Soto, Richard '90
Souder, John '87
Spadafora, Bob '79
Spagnolo, Bob '90
Spigner, Larry '93
Stalevicz, Joseph '69
Stanczak, Frank '49
Stankavage, Bruce '92
Staubi, Paul '88
Steinhardt, Joe '36
Sterlein, Joe '59
Stinson, Leo '06
Stitzer, James 1904
Stolberg, Harry '18
Stone, Russell '16
Struck, Ken '76
Styer, John '43
Sullivan, Jim '76
Sullivan, John J. '32
Sumner, Greg '97
Svenson, John '43
Sweet, William '34
Swint, Phil '87
Sysko, Ryan '97

T

Taylor '18
Taylor, William '43
Thomas, Charles '16
Thomas, John S. '33
Thompson, Mike '81
Thon, Fred '39
Tierney, John '50
Toomer, Ray '97
Toulon, Even '86
Tram, Kit '85
Tripucka, Todd '76
Tripucka, Tracy '72
Troeber, William '40
Troxell, George '16
Turk, Charlie '62
Tweardy, William '68

V

Van Auken, Keith '92
Van Derbeck, Holmes '33
Van Siclen, Pete '01
Vernon, Ferol '38
Visockas, Deirunas '11

W

Walker, Todd '56
Wall, William '53

Wallace, Mike '60
Waller, Robert '70
Warrick, Duane '50
Weaver, George '72
Weidman, Joel '56
Weissenborn, Rick '54
Weldon, John '18
Wermuth, Harold '33
Werner, Bob '56
Wescoe, Andy '90
West, Alphonso '26
Wetmore, Andy '97
Wheeler, Ben '11
White, Craig '92
Whiteman, Edward '45
Whitfield, Tyson '01
Whitman, Mike '82
Wild, William '37
Wilde, Thomas '38
Wilkins, John '97
Winder, Wilbur 1903
Windsor, Joel '89
Wissel, Paul '93
Wolff, Bob '82
Wolff, Robert C. '37
Woods, Archie '16
Woolcock, Daniel '44
Worthington, Rob '02
Wright, Harrison '49
Wright, William '70
Wydra, Zac '94

Y

Yerger, Brower '53
Young, Brian '09
Young, George '56

Z

Zackowitz
Zembron, John '74
Ziegler, Don '52
Zilli, Jim '51
Zippel, Marty '49
Zirinsky, Walter '42
Zochowski, Leo '39



MAROON CLUB HALL OF FAME

| Name | Accomplishments | Inducted | Name | Accomplishments | Inducted |
|----------------------------------|--|----------|---------------------------------|---|----------|
| William H. "Bill" Anderson '19 | Standout basketball player and coach | 1976-77 | Erik Marsh '95 | All-American football player | 2001-02 |
| Walter E. "Scrappy" Bachman 1902 | All-American football player | 1977-78 | George McCaa 1910 | 2-time All-American football player | 1985-86 |
| David B. Baird '59 | Standout track athlete | 2002-03 | G. Herbert McCracken | Football coach for 12 years with 59 victories | 1976-77 |
| Ed Baker '70 | Standout football player | 1996-97 | George L. McGaughey | Intramurals Director, assistant football coach, 32 years | 1982-83 |
| George "Rose" Barclay 1898 | Standout football player | 1984-85 | Maureen McKenna '83 | Standout basketball and softball player | 1992-93 |
| Jon Barnes '68 | Standout cross country and track athlete | 1997-98 | William McKnight '43 | Standout in football, basketball, and baseball | 1993-94 |
| Frank Baur '90 | Standout football player | 1999-00 | Maureen "Mo" McManus '87 | Standout women's basketball player | 1996-97 |
| Liz Bagley-Stankavage '92 | All-American lacrosse and standout field hockey player | 2004-05 | Mike Miller '70 | Standout football and basketball player | 1994-95 |
| Harold Bellis '40 | Standout football and baseball player | 1986-87 | Thomas Morgan '58 | All-American baseball player | 1987-88 |
| Charles F. "Charlie" Berry '25 | All-American football player | 1976-77 | Joseph "Jay" Mottola '72 | Standout basketball and golf athlete | 1983-84 |
| Steve Biale '82 | All-American football player | 2007-08 | Beth Mowins '89 | Standout basketball player | 2005-06 |
| Joe Bozik '58 | Standout football, wrestling, and baseball player | 1993-94 | George "Sammy" Moyer '41 | Standout football player | 1985-86 |
| Fred Braun '55 | Standout wrestler | 1994-95 | Janet Murray '80 | Standout field hockey, basketball, and softball player | 1986-87 |
| David W. Brown '66 | Standout football and basketball player | 1991-92 | Stuart A. Murray '57 | Standout basketball player | 1989-90 |
| Harold Anson Bruce | Track coach for 15 years | 1986-87 | Edward E. "Hook" Mylin | Football coach with 2 undefeated seasons | 1977-78 |
| Al Caesar '58 | Standout football and baseball player | 1999-00 | Phillip E. Ness, Jr. '78 | Standout basketball player | 1990-91 |
| Stacy Cagenello '87 | Standout basketball and softball player | 1993-94 | Mark Neumann '85 | Standout soccer player | 1993-94 |
| Peter J. Carril '52 | All-American basketball player | 1980-81 | Phillip Ng '88 | Standout football player; All-America honorable mention | 2006-07 |
| Heidi Caruso '94 | Standout basketball player and soccer player | 2001-02 | Donald J. Nikles '60 | 2-time All-M.A.C. football player | 1977-78 |
| William P. "Bill" Coughlin | Baseball coach for 23 years with 269 wins | 1976-77 | Frank Novak '84 | Standout football player | 1995-96 |
| Robert Crawford 1922 | Cross country Olympian in 1922 | 1983-84 | Robert T. Paul '23 | All-American soccer player | 1977-78 |
| Alison Cuthbert-Bronico '85 | Standout women's lacrosse and field hockey player | 1997-98 | Ernie Peters '56 | Standout basketball and baseball player | 1988-89 |
| George E. Davidson '51 | Standout basketball player and coach | 1977-78 | David Pletcher '78 | Standout wrestling athlete | 1984-85 |
| Dr. Tom Davis | Men's basketball coach for six seasons | 1999-00 | Ryan Priest '87 | Standout football player | 1998-99 |
| Preston Denby '65 | Standout basketball and baseball player | 1994-95 | John M. Quigg '40 | Standout football player | 1990-91 |
| Evan Deoul '84 | Standout men's lacrosse player | 1996-97 | James V. Radcliff '57 | 2-time All-American basketball player | 1978-79 |
| Frank Downing '51 | Standout football player | 1997-98 | David Leroy Reeves 1896 | Athletic Administrator for 25 years | 1977-78 |
| Tony Duckett '85 | Standout basketball player | 2001-02 | Charles Rinehart 1898 | All-American football player | 1976-77 |
| Mark Dutkewych '96 | All-American soccer player | 2007-08 | Frederick M. "Peck" Robbins '49 | All-American baseball player | 1978-79 |
| James L. Dyson '33 | All-American lacrosse player | 1982-83 | Bill Russo | All-time winningest football coach | 2007-08 |
| Jon Ellis '54 | Standout track athlete | 1998-99 | Don Sayenga '56 | 2-time Middle Atlantic Conference wrestling champion | 1976-77 |
| Otis Ellis '89 | Standout basketball player | 1995-96 | Horace "Tod" Saylor '45 | Standout football, basketball, wrestling, and baseball player | 1995-96 |
| Bob Falconiero '80 | Standout basketball player | 2004-05 | Frank J. "Dutch" Schwab '23 | 2-time All-American football player | 1976-77 |
| Edwin J. Fager, Jr. 1913 | Standout baseball pitcher | 1982-83 | Joseph A. Skladany '82 | 2-time All-American football player | 1990-91 |
| James T. Farrell '41 | Standout in football, basketball, and baseball | 1989-90 | Jen Smith '89 | Standout field hockey and lacrosse player | 1999-00 |
| Suzi Farrell-Greene '92 | All-American field hockey player | 2003-04 | Frank Stanczak '49 | Standout football, basketball and baseball player | 2003-04 |
| James Finnen | Public Address announcer | 1998-99 | John "Jock" Sutherland | Football coach with one national championship | 1987-88 |
| Pat Fisher | Women's basketball coach who won 295 games | 2006-07 | George L. Tiger '81 | Standout soccer player | 1991-92 |
| Mike Gazzella '23 | Standout football and baseball player | 1977-78 | F. Tracy Tripucka '72 | 3-time All-American basketball player | 1978-79 |
| Charles M. "Charlie" Gelbert | Baseball coach for 21 years with 297 wins | 1976-77 | Todd Tripucka '76 | Standout basketball player | 1988-89 |
| Tim Gerhart | All-American football player | 2002-03 | Bill "Butch" van Breda Kolff | Basketball coach for 8 years with 132 wins | 2001-02 |
| Tony Giglio '74 | 2-time All-American football player | 1981-82 | James Van Der Beek '72 | Three-time MAC First-Team selection in baseball | 2006-07 |
| Sharon L. Gish | 1st women's Athletic Administrator and coach | 1990-91 | George B. "Mike" Wilson '29 | 2-time All-American football player | 1978-79 |
| Tony Green '83 | 2-time All-American football player | 1992-93 | Arthur R. Winters | Athletic Administrator for 22 years | 1980-81 |
| Frank Grube '27 | Standout football, basketball, and baseball player | 2002-03 | Tracey Wright '88 | All-American field hockey and lacrosse player | 1994-95 |
| Harold Hageman '39 | Standout football and baseball player | 1998-99 | Monica Yurconic '92 | Standout tennis player | 2002-03 |
| Dick Hammer | Lafayette radio broadcaster for 35+ years | 2006-07 | Martin Zippel '49 | All-American basketball player | 1977-78 |
| Frank W. Hiller '43 | Standout baseball player | 1981-82 | Walter Zirinsky '42 | Standout football player | 1976-77 |
| David Hubinger '53 | Standout tennis player | 2004-05 | | | |
| Ed Hudak '93 | All-American football player | 2005-06 | | | |
| Fred Morgan Kirby '42 | Standout football, swimming and wrestling athlete | 2007-08 | | | |
| Frank Kirkleski '27 | Standout football player | 2001-02 | | | |
| W. Gehret Kleinspehn '18 | All-American track athlete | 1977-78 | | | |
| Walt Kocubinski | Standout basketball player | 1987-88 | | | |
| Olav Kollevoll | Athletic Director for 25 years | 1992-93 | | | |
| William Kovalczyk '78 | Standout indoor and outdoor track athlete | 1989-90 | | | |
| J. Alfred LeConey '23 | All-American and Olympic track athlete | 1976-77 | | | |
| Peter Lerner '88 | All-American soccer player | 2003-04 | | | |
| Sharon Lukenda-Parker '86 | Standout cross country and track athlete | 1995-96 | | | |
| Harry "Chip" Lundy '62 | Standout basketball and track athlete | 1985-86 | | | |
| Pamela S. MacColl '80 | Standout field hockey and lacrosse player | 1991-92 | | | |
| Robert Mantz '58 | Standout basketball player | 1984-85 | | | |
| Walt Manuel '66 | Standout basketball and baseball player | 1992-93 | | | |



YEAR-BY-YEAR...RESULTS

1900-01 (4-3)

| | |
|---------------------------|---------|
| Manager: B.J. Myers | |
| 2/2 Allentown Y.M.C.A. | 12-4 W |
| 2/9 Lafayette Juniors | 28-17 W |
| 2/10 Mauch Chunk Y.M.C.A. | 34-7 W |
| at Germantown Academy | 14-35 L |
| at Central H.S. | 11-35 L |
| 2/27 at Princeton | 9-22 L |
| 3/6 Princeton | 18-16 W |

1901-02 (5-5)

| | |
|--------------------------|---------|
| Manager: J.L. Baker | |
| 12/4 Allentown Y.M.C.A. | 13-16 L |
| 1/11 Medico-Chi Hospital | 40-16 W |
| 1/17 at Wyoming Seminary | 11-19 L |
| 1/27 at Lehigh | 13-46 L |
| 2/1 Wyoming Seminary | 26-22 W |
| 2/6 Albright | 13-17 L |
| 2/8 Princeton | 61-18 W |
| 2/15 Allentown Y.M.C.A. | 46-15 W |
| 2/19 at Princeton | 13-33 L |
| 2/21 Brown | 48-25 W |

1902-03 (18-16)

| | |
|--------------------------------|---------|
| Manager: W.S. Haldeman | |
| 11/29 Allentown H.S. | 38-9 W |
| 12/3 at Allentown Prof. | 10-12 L |
| 12/6 Jefferson Med. School | 16-14 W |
| 12/27 at West Chester Normal | 26-15 W |
| 12/28 at West End Ath. Assn. | 29-19 W |
| 12/29 at Washington Light Inf. | 15-21 L |
| 12/30 at Washington Light Inf. | 15-31 L |
| 1/10 at Brown | 12-14 L |
| 1/17 La Salle | 18-14 W |
| 1/22 Franklin & Marshall | 34-20 W |
| 1/24 at Jefferson Med. School | 6-14 L |
| 1/28 Muhlenberg | 20-10 W |
| 1/31 at Catholic Institute | 17-31 L |
| 2/1 at Brighton Ath. Assn. | 13-22 L |
| 2/3 Nativity Ath. Club | 36-6 W |
| 2/5 at Co. E., 13th Regiment | 29-9 W |
| 2/6 at Wyoming Seminary | 9-11 L |
| 2/7 at Ninth Regiment | 12-15 L |
| 2/12 at Franklin & Marshall | 35-28 W |
| 2/13 at Gettysburg | 16-41 L |
| 2/18 Swarthmore | 35-19 W |
| 2/25 at Muhlenberg | 13-12 W |
| 2/26 at Nativity Ath. Club | 15-7 W |
| 2/27 Reading Y.M.C.A. | 30-18 W |
| 3/4 at Lehigh | 9-20 L |
| 3/7 Scranton Stars | 13-15 L |
| 3/14 Wyoming Seminary | 29-12 W |
| 3/21 at Flushing | 13-49 L |
| 3/23 at Pottsville | 7-13 L |
| 3/24 at Tamaqua | 13-9 W |
| 3/25 at Bloomsburg | 13-10 W |
| 3/26 at Williamsport Y.M.C.A. | 13-20 L |
| 3/27 at Shenandoah | 20-9 W |
| 3/26 at Ashland | 12-20 L |

Between 1903-1904 and 1912-1913
Lafayette did not have an organized team

1913-14 (5-7)

| | |
|-----------------------------|---------|
| Manager: J. Craft | |
| 1/23 Muhlenberg | 44-13 W |
| 1/28 at Lebanon Valley | 21-28 L |
| 1/30 at Swarthmore | 12-27 L |
| 2/4 at Franklin & Marshall | 42-27 W |
| 2/6 at Lehigh | 23-26 L |
| 2/11 Moravian | 26-11 W |
| 2/14 at Lehigh | 23-29 L |
| 2/21 at Muhlenberg | 20-26 L |
| 2/25 at Lebanon Valley | 38-22 W |
| 2/28 at Franklin & Marshall | 32-31 W |
| 3/4 at Moravian | 16-21 L |
| 3/6 Albright | 23-38 L |

1914-15 (4-10)

| | |
|-----------------------|---------|
| Manager: J.J. Waygood | |
| 1/8 at Manhattan | 11-32 L |
| 19 at C.C.N.Y. | 18-24 L |
| 1/12 Muhlenberg | 30-31 L |
| 1/20 vs. Lehigh* | 23-15 W |
| 1/21 at Muhlenberg | 23-29 L |
| 1/25 at Susquehanna | 16-25 L |
| 1/26 at Bucknell | 32-33 L |

| | |
|--------------------|---------|
| 1/29 Albright | 26-27 L |
| 2/4 at Pittsburgh | 24-31 L |
| 2/11 Gettysburg | 35-20 W |
| 2/13 Swarthmore | 24-17 W |
| 2/22 at Lehigh | 21-28 L |
| 2/25 at Muhlenberg | 29-26 W |
| 2/26 at Swarthmore | 16-33 L |

* = at Phillipsburg, NJ

1915-16 (7-9)

| | |
|-----------------------|---------|
| Manager: W.G. Crowell | |
| 1/5 at Juniata | 30-28 W |
| 1/6 at Duquesne | 24-26 L |
| 1/7 at Pittsburgh | 23-34 L |
| 1/8 at Penn State | 26-30 L |
| 1/10 at Princeton | 10-17 L |
| 1/15 Temple | 48-16 W |
| 1/21 at Swarthmore | 23-40 L |
| 2/5 Riverton | 31-24 W |
| 2/10 Pittsburgh | 23-25 L |
| 2/16 at Lehigh | 21-17 W |
| 2/22 at Albright | 54-15 W |
| 2/25 vs. Colgate* | 34-23 W |
| 2/29 at Lehigh | 16-25 L |
| 3/3 at Penn State | 14-22 L |
| 3/4 at Ursinus | 21-22 L |
| 1/22 at Temple | 32-27 W |

1916-17 (15-9)

| | |
|---------------------------|---------|
| Manager: J.B. Quig | |
| 1/3 at Dartmouth | 24-14 W |
| 1/5 at Seton Hall | 26-39 L |
| 1/6 at N.Y.U. | 25-39 L |
| 1/11 Seton Hall | 30-32 L |
| 1/13 Delaware State | 29-15 W |
| 1/17 at Phillipsburg H.S. | 26-35 L |
| 1/20 Lehigh | 40-25 W |
| 1/27 Juniata | 25-24 W |
| 2/3 Pennsylvania | 17-23 L |
| 2/8 Pittsburgh | 29-33 L |
| 2/10 Albright | 61-25 W |
| 2/14 at Juniata | 33-28 W |
| 2/15 at Pittsburgh | 25-27 L |
| 2/16 at Allegheny | 21-20 W |
| 2/17 at Westinghouse | 31-29 W |
| 2/19 Phillipsburg H.S. | 32-20 W |
| 2/21 Lebanon Valley | 31-29 W |
| 2/23 at Swarthmore | 27-26 W |
| 2/24 at Rutgers | 33-19 W |
| 2/28 Gettysburg | 37-31 W |
| 3/2 Penn State | 31-39 L |
| 3/3 Franklin & Marshall | 49-34 W |
| 3/7 at Lehigh | 20-31 L |
| 3/10 Phillipsburg H.S. | 41-22 W |

1917-18 (15-7)

| | |
|-------------------------------|---------|
| Coach: Bill Anderson | |
| 12/15 Moravian | 28-44 L |
| 12/19 at St. John's | 38-32 W |
| 12/20 at Brooklyn Poly. Tech. | 31-38 L |
| 12/21 at N.Y.U. | 36-29 W |
| 1/5 at U.S.A. Ath. Club | 26-25 W |
| 1/8 Lebanon Valley | 49-33 W |
| 1/11 at Manhattan | 42-32 W |
| 1/12 at Rutgers | 33-38 L |
| 1/15 Muhlenberg | 48-22 W |
| 1/19 Lehigh | 37-32 W |
| 1/26 Brooklyn Poly. Tech. | 28-17 W |
| 2/8 Georgetown | 36-26 W |
| 2/12 Bucknell | 49-31 W |
| 2/14 Pittsburgh | 37-31 W |
| 2/15 Swarthmore | 29-33 L |
| 2/20 at Pennsylvania | 24-30 L |
| 2/21 at Delaware State | 25-23 W |
| 2/22 at Catholic U. | 18-15 W |
| 2/23 at Georgetown | 28-43 L |
| 3/2 Rutgers | 35-30 W |
| 3/3 St. John's | 50-44 W |
| 3/9 at Lehigh | 21-27 L |

1918-19 (12-4)

| | |
|------------------------------|---------|
| Coach: Bill Anderson | |
| 1/4 Muhlenberg | 32-6 W |
| 1/8 Ursinus | 42-12 W |
| 1/11 at Pennsylvania | 23-35 L |
| 1/15 at Brooklyn Poly. Tech. | 29-28 W |
| 1/18 Lehigh | 27-23 W |

| | |
|--------------------------------|---------|
| 1/25 at Muhlenberg | 18-35 L |
| 1/31 at Penn State | 33-25 W |
| 2/4 Albright | 63-20 W |
| 2/7 St. John's | 54-17 W |
| 2/13 Bucknell | 35-28 W |
| 2/19 at Juniata | 31-23 W |
| 2/20 at Pittsburgh | 32-30 W |
| 2/21 at Washington & Jefferson | 27-24 W |
| 2/22 at Carnegie Tech | 32-38 L |
| 3/1 Swarthmore | 26-18 W |
| 3/5 at Lehigh | 23-36 L |

1919-20 (3-7)

| | |
|-----------------------------|---------|
| Coach: W.F. MacAvoy | |
| 12/13 Ursinus | 27-26 W |
| 12/10 Muhlenberg | 29-19 W |
| 1/8 at Delaware State | 19-27 L |
| 1/9 at Catholic U. | 22-24 L |
| 1/10 at Navy | 23-30 L |
| 1/14 Lehigh | 28-22 W |
| 1/17 at Pennsylvania | 10-36 L |
| 2/7 Swarthmore | 25-35 L |
| 2/14 at Penn State | 11-46 L |
| 2/27 Washington & Jefferson | 22-47 L |

1920-21 (11-4)

| | |
|----------------------|---------|
| Coach: Bill Anderson | |
| Albright | 30-31 L |
| 1/7 Moravian | 24-15 W |
| 1/8 at Navy | 13-27 L |
| 1/12 Temple | 27-17 W |
| 1/15 Lehigh | 18-15 W |
| 1/21 St. John's | 44-25 W |
| 1/29 at Pennsylvania | 12-31 L |
| 2/9 Lebanon Valley | 33-19 W |
| 2/11 Swarthmore | 23-16 W |
| 2/18 Delaware | 21-13 W |
| at Muhlenberg | 32-21 W |
| at Pittsburgh | 37-33 W |
| at Heinz Club | 26-38 L |
| at Carnegie Tech | 26-23 W |
| 3/5 at Lehigh | 15-14 W |

1921-22 (11-7)

| | |
|---------------------------|---------|
| Coach: Bill Anderson | |
| 12/10 Ursinus | 34-13 W |
| 12/14 Muhlenberg | 33-10 W |
| 12/17 Susquehanna | 32-16 W |
| 12/20 Moravian | 42-12 W |
| 1/12 at Wash. & Jefferson | 24-27 L |
| 1/13 at Duquesne | 37-30 W |
| 1/14 at Carnegie Tech | 36-55 L |
| 1/18 Temple | 33-24 W |
| 1/28 at Rutgers | 22-38 L |
| 2/9 Bucknell | 29-26 W |
| 2/11 Lehigh | 25-17 W |
| 2/15 at Pennsylvania | 21-27 L |
| 2/17 Wash. & Jefferson | 29-21 W |
| 2/22 Fordham | 24-25 L |
| 2/25 Haverford | 33-21 W |
| 3/4 at Swarthmore | 24-26 L |
| 3/8 at Muhlenberg | 26-27 L |
| 3/11 at Lehigh | 24-18 W |

1922-23 (12-8)

| | |
|------------------------------|---------|
| Coach: Bill Anderson | |
| 12/9 Dickinson | 26-36 L |
| 12/13 Villanova | 36-33 W |
| 12/16 Lebanon Valley | 36-17 W |
| 1/10 Swarthmore | 27-23 W |
| 1/13 Niagara | 30-21 W |
| 1/18 at Catholic U. | 15-27 L |
| 1/19 at Georgetown | 30-34 L |
| 1/20 at Navy | 28-45 L |
| 2/7 Bucknell | 28-21 W |
| 2/9 Rutgers | 16-22 L |
| 2/15 Wash. & Jefferson | 22-17 W |
| 2/17 at Lehigh | 17-20 L |
| 2/22 at Trinity | 30-22 W |
| 2/23 at Amherst | 27-36 L |
| 2/24 at Williams | 34-47 L |
| 2/28 at Brooklyn Poly. Tech. | 37-17 W |
| 3/3 Albright | 33-20 W |
| 3/7 Muhlenberg | 25-21 W |
| 3/10 Lehigh | 32-22 W |
| 3/14 at Lehigh | 21-17 W |

1923-24 (6-14)

| | |
|------------------------------|---------|
| Coach: Bill Anderson | |
| 12/12 at Brooklyn Youth Club | 30-25 W |
| 12/15 at Rutgers | 20-33 L |
| 1/12 at Cooper Union | 36-23 W |
| 1/17 at Catholic U. | 18-24 L |
| 1/18 at Georgetown | 12-27 L |
| 1/19 at Navy | 23-47 L |
| 1/26 at Pennsylvania | 16-27 L |
| 2/2 Swarthmore | 33-12 W |
| 2/6 Rutgers | 27-19 W |
| 2/8 Pittsburgh | 17-18 L |
| 2/12 Muhlenberg | 19-28 L |
| 2/14 Washington & Jefferson | 15-18 L |
| 2/16 Lehigh | 26-33 L |
| 2/27 at Rochester | 24-33 L |
| 2/28 at Niagara | 17-16 W |
| 2/29 at Buffalo | 23-29 L |
| 3/1 at Lehigh | 19-22 L |
| 3/4 at Muhlenberg | 25-27 L |
| 3/7 at Bucknell | 20-19 W |
| 3/8 at Penn State | 15-34 L |

1924-25 (8-11)

| | |
|----------------------------|---------|
| Coach: Bill Anderson | |
| 12/6 Schuylkill | 19-5 W |
| 12/10 Penn State Forest | 47-20 W |
| 12/13 at Pennsylvania | 21-27 L |
| 12/17 Ursinus | 30-22 W |
| 1/7 Moravian | 33-14 W |
| 1/9 at Seton Hall | 27-29 L |
| 1/10 at Stevens Institute | 27-20 W |
| 1/14 at Navy | 22-24 L |
| 1/15 at Maryland | 24-30 L |
| 1/17 Rutgers | 21-28 L |
| 2/4 Muhlenberg | 19-30 L |
| 2/7 at Rutgers | 28-35 L |
| 2/11 at Muhlenberg | 20-21 L |
| 2/14 Pennsylvania Military | 25-29 L |
| 2/18 Albright | 37-22 W |
| 2/21 at Lehigh | 23-30 L |
| 2/25 Lebanon Valley | 35-27 W |
| 2/28 Lehigh | 29-19 W |
| 3/7 Pennsylvania | 13-24 L |

1925-26 (6-13)

| | |
|-----------------------------|---------|
| Coach: M.A. Miller | |
| 12/5 Schuylkill | 32-13 W |
| 12/9 Moravian | 31-13 W |
| 12/12 at Pennsylvania | 12-19 L |
| 12/16 N.Y.U. | 19-27 L |
| 1/9 Rutgers | 23-18 W |
| 1/12 at Georgetown | 21-20 W |
| 1/13 at Navy | 9-39 L |
| 1/14 at George Washington | 24-22 W |
| 2/2 at Fordham | 11-43 L |
| 2/3 at Army | 9-44 L |
| 2/10 Muhlenberg | 24-25 L |
| 2/12 at Rutgers | 38-35 L |
| 2/13 Lehigh | 24-31 L |
| 2/17 at Newark Ath. Club | 19-20 L |
| 2/20 at Lehigh | 16-28 L |
| 2/24 Gettysburg | 25-21 W |
| 2/27 Washington & Jefferson | 24-36 L |
| 3/6 at Muhlenberg | 15-40 L |
| 3/10 Lehigh | 7-24 L |

1926-27 (3-14)

| | |
|--------------------------------|---------|
| Coach: M.A. Miller | |
| 12/8 Schuylkill | 16-13 W |
| 12/11 at Navy | 16-23 L |
| 12/15 at Princeton | 24-26 L |
| 1/8 Temple | 11-27 L |
| 1/12 at Manhattan | 27-42 L |
| 1/15 N.Y.U. | 30-36 L |
| 1/19 at Pennsylvania | 16-27 L |
| 1/20 at Pennsylvania Ath. Club | 28-30 L |
| 1/22 Muhlenberg | 28-17 W |
| 2/9 Swarthmore | 37-20 W |
| 2/12 at Muhlenberg | 37-41 L |
| 2/16 Rutgers | 14-17 L |
| 2/19 at Lehigh | 23-45 L |
| 2/23 at Rutgers | 25-35 L |
| 2/26 Lehigh | 26-42 L |
| 3/2 Lebanon Valley | 22-28 L |
| 3/5 at Lehigh | 20-39 L |

1927-28 (10-7)

| | |
|----------------------------|---------|
| Coach: M.A. Miller | |
| 12/10 Drexel | 27-22 W |
| 12/13 at Western Maryland | 15-29 L |
| 12/14 at Navy | 29-27 W |
| 12/16 at Princeton | 32-14 W |
| 1/7 Moravian | 64-23 W |
| 1/11 Rutgers | 26-29 L |
| 1/13 at Upsala | 24-29 L |
| 1/14 at C.C.N.Y. | 8-29 L |
| 1/18 Muhlenberg | 24-12 W |
| 1/21 at Lehigh | 24-23 W |
| 2/8 Penn State Forest | 53-17 W |
| 2/11 at Rutgers | 30-46 L |
| 2/15 Hahnemann Med. School | 55-17 W |
| 2/18 Lehigh | 38-31 W |
| 2/22 Franklin & Marshall | 32-18 W |
| 2/25 at Muhlenberg | 23-24 L |
| 3/3 Lehigh | 30-37 L |

1928-29 (6-12)

| | |
|------------------------|---------|
| Coach: M.A. Miller | |
| 12/12 Upsala | 39-26 W |
| 12/14 at Johns Hopkins | 27-31 L |
| 12/15 at Georgetown | 24-47 L |
| 1/5 Ursinus | 27-30 L |
| 1/8 N.Y.U. | 25-29 L |
| 1/12 Seton Hall | 21-18 W |
| 12/16 Muhlenberg | 29-30 L |
| 1/17 at Wesleyan | 32-41 L |
| 1/18 at Trinity | 26-31 L |
| 1/19 at Williams | 30-53 L |
| 2/6 Rutgers | 34-36 L |
| 2/9 at Muhlenberg | 25-36 L |
| 2/13 Phila. Osteopathy | 58-14 W |
| 2/16 at Rutgers | 30-38 L |
| 2/20 Albright | 36-30 W |
| 2/23 Lehigh | 25-21 W |
| 2/27 Schuylkill | 43-20 W |
| 3/2 at Lehigh | 32-45 L |

1929-30 (9-11)

| | |
|--------------------------|---------|
| Coach: H.A. Lorenz | |
| 12/4 Phila. Osteopathy | 37-28 W |
| 12/7 at C.C.N.Y. | 24-52 L |
| 12/11 Delaware | 30-23 W |
| 12/14 at N.Y.U. | 16-33 L |
| 12/17 at St. John's (MD) | 29-34 L |
| 12/18 at Navy | 24-58 L |
| 1/6 Moravian | 56-28 W |
| 1/7 at Cornell | 41-25 W |
| 1/8 at Buffalo | 21-39 L |
| 1/11 at Temple | 23-38 L |
| 1/16 Bucknell | 39-23 W |
| 1/18 at Muhlenberg | 23-28 L |
| 2/6 Wash. & Jefferson | 27-12 W |
| 2/8 Muhlenberg | 32-20 W |
| 2/12 at Rutgers | 20-40 L |
| 2/15 at Princeton | 29-26 W |
| 2/19 Upsala | 51-18 W |
| 2/22 at Lehigh | 26-37 L |
| 2/26 Rutgers | 22-40 L |
| 3/1 Lehigh | 22-30 L |

1930-31 (8-12)

| | |
|-----------------------|---------|
| Coach: H.A. Lorenz | |
| 12/3 East Stroudsburg | 36-31 W |
| 12/6 St. Joseph's | 23-25 L |
| 12/10 Albright | 43-38 W |
| 12/13 N.Y.U. | 15-37 L |
| 12/16 at Loyola | 27-31 L |
| 12/17 at Navy | 27-35 L |
| 1/7 Ursinus | 28-22 W |
| 1/10 Lebanon Valley | 29-27 W |
| 1/14 at Penn State | 27-16 W |
| 1/15 at Bucknell | |

1931-32 (10-4)
 Coach: H.A. Lorenz

| | |
|-----------------------------|---------|
| 12/5 East Stroudsburg | 32-30 W |
| 12/9 at Navy | 23-35 L |
| 12/10 at St. John's (MD) | 30-18 W |
| 1/9 Swarthmore | 34-29 W |
| 1/16 Bucknell | 36-26 W |
| 1/23 at Muhlenberg | 26-20 W |
| 2/10 Muhlenberg | 31-25 W |
| 2/12 at Rutgers | 28-16 W |
| 2/17 Rutgers | 20-22 L |
| 2/20 Washington & Jefferson | 38-27 W |
| 2/24 Colgate | 21-26 L |
| 2/27 at Lehigh | 35-34 W |
| 3/1 at Princeton | 29-34 L |
| 3/5 Lehigh | 29-22 W |

1932-33 (2-10)
 Coach: H.A. Lorenz

| | |
|-------------------------|---------|
| 1/7 Moravian | 26-27 L |
| 1/14 Haverford | 41-19 W |
| 1/17 at St. John's (MD) | 18-24 L |
| 1/18 at Navy | 28-49 L |
| 1/21 Swarthmore | 30-33 L |
| 2/8 at Penn State | 25-48 L |
| 2/11 at Princeton | 18-56 L |
| 2/14 at Colgate | 24-49 L |
| 2/18 at Rutgers | 22-39 L |
| 2/22 at Muhlenberg | 23-38 L |
| 2/25 Lehigh | 30-33 L |
| 3/4 at Lehigh | 38-30 W |

1933-34 (3-9)
 Coach: H.A. Lorenz

| | |
|----------------------------|---------|
| 1/6 Moravian | 27-18 W |
| 1/10 Upsala | 34-32 W |
| 1/13 at Stevens Institute | 12-35 L |
| 1/17 Pennsylvania Military | 18-30 L |
| 1/20 at Swarthmore | 31-36 L |
| 2/7 at Muhlenberg | 18-29 L |
| 2/10 at Rutgers | 21-44 L |
| 2/14 Haverford | 23-20 W |
| 2/17 Rutgers | 28-39 L |
| 2/21 Muhlenberg | 23-29 L |
| 2/24 at Lehigh | 29-52 L |
| 3/3 Lehigh | 29-32 L |

1934-35 (5-10)
 Coach: H.A. Lorenz

| | |
|----------------------|---------|
| 12/8 at Pennsylvania | 19-38 L |
| 12/11 at Princeton | 26-27 L |
| 1/19 at N.Y.U. | 39-59 L |
| 1/9 St. Joseph's | 26-48 L |
| 1/12 Muhlenberg | 10-30 L |
| 1/16 at Army | 23-30 L |
| 1/19 Upsala | 40-37 W |
| 2/6 Moravian | 53-13 W |
| 2/9 Rutgers | 19-29 L |
| 2/13 at Stevens | 10-24 L |
| 2/16 at Rutgers | 34-39 L |
| 2/20 at Haverford | 28-26 W |
| 2/23 Lehigh | 33-35 L |
| 2/27 at Muhlenberg | 37-36 W |
| 3/2 at Lehigh | 29-25 W |

1935-36 (7-9)
 Coach: P.M. Shellenberger

| | |
|------------------------|---------|
| 12/7 at Pennsylvania | 37-41 L |
| 12/11 at Princeton | 21-30 L |
| 12/14 at Upsala | 40-29 W |
| 1/8 Moravian | 28-38 L |
| 1/11 Bucknell | 37-38 L |
| 1/15 Stevens Institute | 36-21 W |
| 1/18 at St. Joseph's | 30-34 L |
| 2/5 Haverford | 43-18 W |
| 2/8 Seton Hall | 42-25 W |
| 2/12 Muhlenberg | 30-28 W |
| 2/15 at Rutgers | 33-47 L |
| 2/22 Rutgers | 37-32 W |
| 2/26 at Villanova | 26-35 L |
| 2/29 Villanova | 22-35 L |
| 3/4 at Muhlenberg | 34-35 L |
| 3/6 Swarthmore | 35-25 W |

1936-37 (6-13)
 Coach: Michael Michalske

| | |
|----------------------------|---------|
| 12/2 at Pratt Institute | 50-56 L |
| 12/5 at Pennsylvania | 22-28 L |
| 12/9 at Princeton | 24-41 L |
| 12/12 at Stevens Institute | 39-29 W |
| 1/6 Albright | 29-19 W |
| 1/9 Muhlenberg | 42-28 W |
| 1/13 at Penn State | 15-46 L |

| | |
|-----------------------------|---------|
| 1/14 at Bucknell | 27-43 L |
| 1/16 Pennsylvania Ath. Club | 16-39 L |
| 1/22 at Haverford | 28-17 W |
| 1/23 at Navy | 33-63 L |
| 2/10 Upsala | 33-32 W |
| 2/12 at Swarthmore | 24-34 L |
| 2/13 Rutgers | 27-46 L |
| 2/17 Villanova | 31-44 L |
| 2/22 at Rutgers | 31-47 L |
| 2/27 at Lehigh | 30-27 W |
| 3/3 at Muhlenberg | 25-33 L |
| 3/6 Lehigh | 26-33 L |

1937-38 (9-8)
 Coach: Michael Michalske

| | |
|--------------------------|---------|
| 12/4 at Upsala | 24-19 W |
| 12/11 at Princeton | 25-31 L |
| 12/16 at Seton Hall | 23-40 L |
| 12/17 at Pratt Institute | 24-38 L |
| 12/18 at Brooklyn | 44-41 W |
| 1/7 at Albright | 40-39 W |
| 1/8 Muhlenberg | 30-27 W |
| 1/12 at Army | 27-52 L |
| 1/15 at Rutgers | 26-35 L |
| 1/19 Haverford | 38-27 W |
| 2/9 Rutgers | 27-29 L |
| 2/12 at Muhlenberg | 39-48 L |
| 2/16 Moravian | 53-41 W |
| 2/19 Swarthmore | 26-34 L |
| 2/23 Stevens Institute | 41-37 W |
| 2/26 at Lehigh | 49-44 W |
| 3/5 Lehigh | 35-29 W |

1938-39 (6-11)
 Coach: Richard Madison

| | |
|---------------------------|---------|
| 12/10 Upsala | 36-24 W |
| 12/14 at Princeton | 27-41 L |
| 12/15 at Yale | 27-37 L |
| 12/16 at Wesleyan | 29-32 L |
| 1/7 Muhlenberg | 26-30 L |
| 1/12 Alfred | 33-24 W |
| 1/14 at Rutgers | 28-34 L |
| 1/18 at Army | 30-51 L |
| 1/20 at Swarthmore | 27-41 L |
| 1/21 Haverford | 47-32 W |
| 2/10 Albright | 29-31 L |
| 2/11 at Muhlenberg | 34-35 L |
| 2/15 Rutgers | 36-13 W |
| 2/18 at Stevens Institute | 27-30 L |
| 2/22 Moravian | 37-19 W |
| 2/25 at Lehigh | 29-44 L |
| 3/4 Lehigh | 38-31 W |

1939-40 (11-8)
 Coach: Richard Madison

| | |
|-------------------------------|---------|
| 12/9 Upsala | 52-34 W |
| 12/13 Wittenberg | 31-47 L |
| 12/16 at Cornell | 26-47 L |
| 12/18 at Colgate | 34-64 L |
| 1/6 Moravian | 37-29 W |
| 1/8 at Muhlenberg | 19-33 L |
| 1/10 Stevens Institute | 44-21 W |
| 1/13 at Army | 37-31 W |
| 1/17 at Pennsylvania Military | 49-51 L |
| 1/20 Swarthmore | 29-31 L |
| 2/7 Mexico City Y.M.C.A. | 44-26 W |
| 2/9 at West Virginia | 20-52 L |
| 2/14 Rutgers | 36-33 W |
| 2/17 at Drexel | 43-25 W |
| 2/19 Muhlenberg | 39-35 W |
| 2/21 at Rutgers | 46-45 W |
| 2/24 at Lehigh | 40-57 L |
| 2/28 Albright | 36-33 W |
| 3/2 Lehigh | 58-31 W |

1940-41 (8-10)
 Coach: Richard Madison

| | |
|---------------------------|---------|
| 12/11 Upsala | 49-19 W |
| 12/13 Colgate | 20-29 L |
| 12/14 at Cornell | 21-57 L |
| 12/17 at Princeton | 30-57 L |
| 12/19 at Wesleyan | 46-39 W |
| 12/20 at Brown | 34-49 L |
| 1/11 at Muhlenberg | 40-52 L |
| 1/15 Drexel | 48-33 W |
| 1/18 Rutgers | 37-34 W |
| 2/5 Moravian | 40-64 L |
| 2/8 Pennsylvania Military | 49-31 W |
| 2/12 at Rutgers | 27-41 L |
| 2/15 at Stevens Institute | 36-27 W |
| 2/19 Muhlenberg | 31-39 L |
| 2/21 at Lehigh | 42-40 W |
| 2/26 at Army | 31-53 L |

| | |
|-------------------|---------|
| 3/1 Lehigh | 45-43 W |
| 3/5 at Swarthmore | 33-42 L |

1941-42 (4-12)
 Coach: Richard Madison

| | |
|------------------------|---------|
| 12/13 Upsala | 50-34 W |
| 12/16 at Princeton | 20-47 L |
| 1/7 Camp Dix | 67-23 W |
| 1/10 at Pennsylvania | 29-45 L |
| 1/14 at Army | 42-47 L |
| 1/17 at Rutgers | 44-46 L |
| 2/4 Ordinance Training | 43-49 L |
| 2/7 at Drexel | 32-39 L |
| 2/11 Rutgers | 50-42 W |
| 2/14 Gettysburg | 42-48 L |
| 2/18 Muhlenberg | 30-55 L |
| 2/21 at N.Y.U. | 34-57 L |
| 2/25 Stevens Institute | 28-29 L |
| 2/28 Lehigh | 35-41 L |
| 3/4 at Lehigh | 35-53 L |
| 3/7 at Swarthmore | 53-52 W |

1942-43 (7-6)
 Coach: Art Winters

| | |
|---------------------|---------|
| 1/8 Bucknell | 36-25 W |
| 1/9 at Pennsylvania | 27-42 L |
| 1/16 Rutgers | 51-50 W |
| 1/23 Lebanon Valley | 56-45 W |
| 1/25 at Moravian | 47-49 L |
| 2/6 Drexel | 57-43 W |
| 2/10 at Rutgers | 28-48 L |
| 2/16 Moravian | 51-44 W |
| 2/20 Fort Monmouth | 44-35 W |
| 2/24 at Muhlenberg | 56-69 L |
| 2/27 at Lehigh | 47-49 L |
| 3/3 at Swarthmore | 45-55 L |
| 3/6 Lehigh | 49-28 W |

1943-44 (7-3)
 Coach: Art Winters

| | |
|------------------|---------|
| 12/15 Temple | 25-36 L |
| 12/18 Lehigh | 43-30 W |
| 1/19 at Lehigh | 46-44 W |
| 1/25 Rider | 47-27 W |
| 1/29 at Lehigh | 37-48 L |
| 2/12 Haverford | 49-40 W |
| 2/23 Newark | 54-32 W |
| 2/25 vs. Rider* | 33-42 L |
| 3/1 at Haverford | 57-51 W |
| 3/4 Lehigh | 60-42 W |

* = at Trenton, N.J.

1944-45 (16-2)
 Coach: Art Winters

| | |
|---------------------------|---------|
| 12/9 at C.C.N.Y. | 34-60 L |
| 12/16 at Lehigh | 67-36 W |
| 12/20 La Salle | 52-45 W |
| 1/10 at Drew | 61-42 W |
| 1/13 Stevens Institute | 47-40 W |
| 1/17 Lehigh | 48-28 W |
| 1/20 Swarthmore | 43-35 W |
| 1/24 at Swarthmore | 39-42 L |
| 1/27 at Rutgers | 51-50 W |
| 1/31 Drew | 44-36 W |
| 2/3 Ursinus | 61-39 W |
| 2/10 at Stevens Institute | 48-34 W |
| 2/14 Rutgers | 41-29 W |
| 2/16 at Ursinus | 59-48 W |
| 2/21 at Lehigh | 48-47 W |
| 2/24 Rider | 71-51 W |
| 2/28 Drexel | 96-30 W |
| 3/2 Lehigh | 70-40 W |

1945-46 (17-3)
 Coach: Bill Anderson

| | |
|--------------------------|---------|
| 12/8 Swarthmore | 54-35 W |
| 12/15 St. Joseph's | 42-46 L |
| 1/5 East Stroudsburg | 65-43 W |
| 1/9 Scranton | 56-24 W |
| 1/12 at Bucknell | 39-28 W |
| 1/16 at Muhlenberg | 48-59 L |
| 1/19 La Salle | 57-49 W |
| 1/26 Gettysburg | 59-54 W |
| 2/2 at Stevens Institute | 44-36 W |
| 2/6 at Columbia | 46-48 L |
| 2/9 at Niagara | 67-41 W |
| 2/13 Muhlenberg | 47-45 W |
| 2/16 at Gettysburg | 47-41 W |
| 2/20 Bucknell | 56-35 W |
| 2/23 at Lehigh | 73-48 W |
| 2/27 Rutgers | 60-51 W |
| 3/2 Lehigh | 61-28 W |
| 3/6 at Rutgers | 51-49 W |

| | |
|------------------|---------|
| 3/11 Muhlenberg* | 59-58 W |
| 3/12 Rutgers* | 52-39 W |

* = at Bethlehem, Pa.

1946-47 (15-7)
 Coach: Bill Anderson

| | |
|-------------------------|---------|
| 12/11 Stevens Institute | 46-43 W |
| 12/14 Scranton | 64-36 W |
| 12/18 Lebanon Valley | 72-56 W |
| 1/4 East Stroudsburg | 70-47 W |
| 1/8 Columbia | 52-43 W |
| 1/11 Upsala | 69-46 W |
| 1/15 Muhlenberg | 40-47 L |
| 1/18 at Gettysburg | 46-43 W |
| 1/25 Lehigh | 87-43 W |
| 2/1 at Cornell | 36-52 L |
| 2/4 vs. Holy Cross* | 40-50 L |
| 2/6 at Lehigh | 55-54 W |
| 2/8 at Bucknell | 49-48 W |
| 2/12 at Muhlenberg | 53-68 L |
| 2/15 Gettysburg | 62-48 W |
| 2/19 Bucknell | 49-40 W |
| 2/22 at Pennsylvania | 61-73 L |
| 2/26 at Rutgers | 61-64 L |
| 3/1 Drexel | 83-52 W |
| 3/4 Rutgers | 41-39 W |
| 3/6 at C.C.N.Y. | 40-42 L |
| 3/8 at Swarthmore | 47-43 W |

* = at Boston, Mass.

1947-48 (12-9)
 Coach: Bill Anderson

| | |
|---------------------------|---------|
| 12/10 at Princeton | 46-50 L |
| 12/13 East Stroudsburg | 44-30 W |
| 12/17 Swarthmore | 60-31 W |
| 12/20 Lebanon Valley | 38-36 W |
| 1/7 La Salle | 39-43 L |
| 1/10 Rider | 59-64 L |
| 1/14 at Muhlenberg | 42-57 L |
| 1/17 Gettysburg | 56-53 W |
| 1/24 Stevens Institute | 44-38 W |
| 1/31 at Pennsylvania | 43-51 L |
| 2/4 at Duquesne | 36-48 L |
| 2/7 Bucknell | 61-45 W |
| 2/9 at Lehigh | 82-50 W |
| 2/11 Brooklyn Poly. Tech. | 63-34 W |
| 2/14 at Gettysburg | 46-53 L |
| 2/18 Muhlenberg | 51-57 L |
| 2/21 at Bucknell | 84-53 W |
| 2/15 Rutgers | 65-52 W |
| 3/1 Lehigh | 50-33 W |
| 3/4 at C.C.N.Y. | 31-57 L |
| 3/6 at Rutgers | 60-59 W |

1948-49 (20-9)
 Coach: Bill Anderson

| | |
|-----------------------------|---------|
| 12/4 at Siena* | 50-48 W |
| 12/8 East Stroudsburg | 55-41 W |
| 12/11 at Swarthmore | 67-43 W |
| 12/14 at Princeton | 42-48 L |
| 12/16 Lebanon Valley | 71-42 W |
| 12/18 at Stevens Institute | 48-33 W |
| 12/22 at New York Ath. Club | 62-47 W |
| 12/27 at Buffalo | 59-65 L |
| 12/29 at St. Bonaventure | 41-47 L |
| 12/30 at Rochester | 63-49 W |
| 1/1 at Temple | 45-34 W |
| 1/8 Seton Hall | 46-57 L |
| 1/12 Muhlenberg | 46-41 W |
| 1/15 at Gettysburg | 58-60 L |
| 1/17 Georgetown | 56-48 W |
| 1/19 Lehigh | 81-37 W |
| 1/22 at Pennsylvania | 54-62 L |
| 1/29 Rider | 63-30 W |
| 2/5 at Bucknell | 63-46 W |
| 2/9 at Rutgers | 58-69 L |
| 2/12 Gettysburg | 71-62 W |
| 2/16 at Muhlenberg | 44-58 L |
| 2/19 at Lehigh | 74-69 W |
| 2/21 at La Salle | 37-61 L |
| 2/24 Scranton | 61-39 W |
| 2/26 Brooklyn Poly. Tech. | 55-40 W |
| 3/2 Bucknell | 68-37 W |
| 3/5 Rutgers | 81-48 W |
| 3/7 at Boston II. | 43-41 W |

* = at Albany, N.Y.

1949-50 (18-6)
 Coach: Ray Stanley

| | |
|-------------------|---------|
| 11/30 Puerto Rico | 82-40 W |
| 12/3 at C.C.N.Y. | 44-76 L |
| 12/7 Upsala | 78-44 W |
| 12/10 Princeton | 48-35 W |

| | |
|---------------------|---------|
| 12/14 Swarthmore | 84-62 W |
| 12/17 at Scranton | 65-57 W |
| 1/4 Wilkes | 78-56 W |
| 1/7 at Pennsylvania | 57-73 L |
| 1/11 at Muhlenberg | 69-83 L |
| 1/14 Gettysburg | 78-51 W |
| 1/16 Temple | 64-41 W |
| 1/18 at Lehigh | 67-45 W |
| 1/28 Rider | 57-45 W |
| 2/1 at Georgetown | 50-59 L |
| 2/4 Bucknell | 61-49 W |
| 2/8 at St. Joseph's | 52-54 L |
| 2/11 Rutgers | 62-60 W |
| 2/15 Muhlenberg | 72-42 W |
| 2/18 at Bucknell | 66-61 W |
| 2/20 at Seton Hall | 59-50 W |
| 2/22 Lehigh | 76-53 W |
| 2/25 at Buffalo | 67-46 W |
| 3/1 St. Joseph's | 60-59 W |
| 3/4 at Rutgers | 62-67 L |

1950-51 (14-11)
 Coach: Ray Stanley

| | |
|-----------------------------|---------|
| 12/2 Upsala | 83-66 W |
| 12/6 at Princeton | 45-56 L |
| 12/9 at Swarthmore | 75-57 W |
| 12/13 St. Joseph's | 60-54 W |
| 12/16 at Siena | 46-62 L |
| 12/18 Ithaca | 64-41 W |
| 12/29 at New York Ath. Club | 65-54 W |
| 1/3 Delaware | 68-56 W |
| 1/6 at Bucknell | 61-46 W |
| 1/10 Muhlenberg | 76-77 L |
| 1/13 at Gettysburg | 65-62 W |
| 1/16 at Lehigh | 63-36 W |
| 1/20 Scranton | 75-62 W |
| 1/27 Rider | 63-45 W |
| 2/3 at La Salle | 64-71 L |
| 2/7 Albright | 59-64 L |
| 2/10 at Rutgers | 51-54 L |
| 2/14 at Muhlenberg | 61-53 W |
| 2/17 at Buffalo | 55-69 L |
| 2/22 at C.C.N.Y. | 48-67 L |
| 2/27 La Salle | 59-66 L |
| 3/2 Lehigh | 75-56 W |
| 3/3 at St. Joseph's | 68-73 L |
| 3/7 Bucknell | 65-58 W |
| 3/10 Rutgers | 49-53 L |

1951-52 (15-9)
 Coach: Butch van Breda Kolff

| | |
|-----------------------------|---------|
| 12/5 Upsala | 65-55 W |
| 12/8 Swarthmore | 71-46 W |
| 12/12 at La Salle | 52-62 L |
| 12/15 at Albright | 65-70 L |
| 12/18 at St. Joseph's | 42-52 L |
| 12/28 at New York Ath. Club | 73-71 W |
| 12/29 at Siena | 33-51 L |
| 1/2 at Scranton | 58-57 W |
| 1/5 at N.Y.U. | 49-59 L |
| 1/9 at Muhlenberg | 67-57 W |
| 1/12 Bucknell | 80-64 W |
| 1/15 at Lehigh | 64-51 W |
| 1/19 Wilkes | 83-69 W |
| 1/26 Rider | 69-61 W |
| 2/2 at Bucknell | 81-68 W |
| 2/6 C.C.N.Y. | 58-49 W |
| 2/9 Rutgers | 59-49 W |
| 2/13 Muhlenberg | 83-74 W |
| 2/16 at Delaware | 67-68 L |
| 2/20 Fort Dix | 57-68 L |
| 2/23 at Buffalo | 67-61 W |
| 2/27 Lehigh | 90-59 W |
| 3/5 St. Joseph's | 63-72 L |
| 3/8 Princeton | 52-61 L |

1952-53 (13-12)
 Coach: Butch van Breda Kolff

| | |
|-------------|---------|
| 12/3 Upsala | 63-45 W |
|-------------|---------|

LAFAYETTE LEOPARDS

| | | | | |
|--|--|---|---|--|
| <p>1/31 Albright 66-61 W 2/7 at Iona 39-63 L 2/11 at Muhlenberg 62-67 L 2/14 at Rutgers 53-64 L 2/18 Bucknell 73-48 W 2/21 at Buffalo 58-55 W 2/25 La Salle 50-56 L 2/28 Gettysburg 56-54 W 3/4 at Lehigh 72-61 W 3/7 at St. Joseph's 57-85 L 3/11 Rutgers 62-57 W</p> <p>1953-54 (17-10) Coach: Butch van Breda Kolff</p> <p>12/3 at St. John's 61-66 L 12/5 Swarthmore 78-49 W 12/9 Princeton 69-61 W 12/12 C.C.N.Y. 84-57 W 12/16 at La Salle 70-88 L 12/19 at Iona 61-73 L 12/21 at St. Joseph's 57-59 L 12/26 vs. Cortland State* 60-76 L vs. Wesleyan* 73-64 W Hofstra 71-55 W 1/2 Moravian 83-80 W 1/5 at Wilkes 87-59 W 1/9 Rider 83-56 W 1/12 at Lehigh 57-56 W 1/16 Scranton 77-49 W 1/20 Muhlenberg 64-67 L 1/23 Bucknell 75-49 W 1/30 at Albright 64-74 L 2/5 at Delaware 63-41 W 2/10 at Bucknell 89-77 W 2/13 Rutgers 70-87 L 2/17 at Muhlenberg 65-68 L 2/20 at Buffalo 76-63 W 2/24 Lehigh 58-56 W 2/27 at Gettysburg 58-70 L 3/2 St. Joseph's 70-60 W 3/6 at Rutgers 83-60 W</p> <p>* = at Hempstead, N.Y.</p> <p>1954-55 (23-3) Coach: Butch van Breda Kolff</p> <p>12/4 at Swarthmore 93-54 W 12/8 at Princeton 85-74 W 12/11 Delaware 86-62 W 12/15 La Salle 60-76 L 12/18 at Iona 68-101 L 12/22 at St. Peter's 78-54 W 12/29 at Marietta 89-69 W 12/30 at Hofstra 75-72 W 1/5 Moravian 90-61 W 1/8 Wilkes 104-63 W 1/12 Lehigh 61-45 W 1/15 at Bucknell 117-93 W 1/19 at Muhlenberg 84-70 W 1/22 at St. Joseph's 69-62 W 1/29 Albright 88-71 W 2/3 at Rider 81-49 W 2/7 at Scranton 70-54 W 2/9 Bucknell 81-72 W 2/12 at Rutgers 93-75 W 2/16 Muhlenberg 81-70 W 2/19 N.Y.U. 99-71 W 2/23 at Lehigh 49-48 W 2/26 Gettysburg 94-74 W 13/2 Rutgers 101-69 W 3/5 St. Joseph's 83-67 W N.I.T.</p> <p>3/12 vs. Niagara* 70-83 L * = at Madison Square Garden</p> <p>1955-56 (20-7) Coach: George Davidson</p> <p>12/3 Swarthmore 73-41 W 12/6 Princeton 85-83 W 12/9 at Delaware 97-86 W 12/10 vs. Manhattan* 76-81 L 12/14 at La Salle 81-95 L 12/17 C.C.N.Y. 83-71 W 12/29 at Canisius 70-91 L 12/31 vs. Westminster# 71-63 W 1/2 vs. Niagara# 69-89 L 1/4 at Moravian 80-76 W 1/7 Rider 77-73 W 1/11 at Lehigh 66-40 W 1/14 Bucknell 98-45 W 1/18 Muhlenberg 87-81 W 1/21 Scranton 76-62 W 1/28 at Albright 78-74 W 2/3 at St. Joseph's 79-68 W</p> | <p>2/6 at Wilkes 84-65 W 2/11 Rutgers 110-63 W 2/15 at Muhlenberg 58-57 W 2/18 Temple 65-66 L 2/22 Lehigh 80-67 W 2/24 at Bucknell 63-62 W 2/25 at Gettysburg 103-76 W 3/3 at Rutgers 111-69 W 3/6 St. Joseph's 80-84 L N.I.T.</p> <p>3/17 vs. St. Francis (NY)* 74-85 L * = at Madison Square Garden # = at Buffalo, N.Y.</p> <p>1956-57 (22-5) Coach: George Davidson</p> <p>12/1 at Swarthmore 93-53 W 12/5 at Princeton 55-64 L 12/8 at N.Y.U. 88-79 W 12/11 La Salle 84-75 W 12/15 at St. Joseph's 60-67 L 12/27 vs. William & Mary* 85-72 W 12/28 vs. Washington & Lee* 73-69 W 12/29 vs. Penn State* 64-59 W 1/3 Moravian 99-84 W 1/5 at Pittsburgh 59-69 L 1/9 Lehigh 100-59 W 1/12 at Bucknell 68-60 W 1/16 at Muhlenberg 82-76 W 1/19 Seton Hall 72-69 W 1/23 at Rider 70-58 W 1/26 St. Joseph's 94-87 W 2/2 Bucknell 87-65 W 2/6 at Scranton 91-70 W 2/9 at Rutgers 77-67 W 2/13 Muhlenberg 80-68 W 2/20 at Lehigh 73-60 W 2/23 Gettysburg 83-43 W 2/27 at Albright 75-69 W 2/28 Delaware 99-77 W 3/2 Rutgers 89-82 W N.C.A.A. East Regional</p> <p>3/15 vs. Syracuse# 71-75 L 3/16 vs. Canisius# 76-82 L</p> <p>1957-58 (16-10) Coach: George Davidson</p> <p>12/4 at Princeton 72-75 L 12/7 Scranton 79-59 W 12/11 at La Salle 74-82 L 12/14 at N.Y.U. 71-63 W 12/17 Albright 68-57 W 12/19 vs. L.S.U.* 72-80 L 12/20 vs. Clemson* 65-78 L 12/21 at Davidson* 67-46 W 1/4 at Moravian 74-69 W 1/8 at Lehigh 66-57 W 1/11 Temple 66-83 L 1/15 at Muhlenberg 75-58 W 1/18 Bucknell 74-71 W 1/25 at Seton Hall 75-76 L 1/29 St. Joseph's 97-98 L 1/31 at Iona 74-81 W 2/5 at Delaware 72-50 W 2/8 at Rutgers 62-53 W 2/12 Muhlenberg 79-66 W 2/15 Rider 49-48 W 2/19 Lehigh 83-49 W 2/21 at Bucknell 57-67 L 2/22 at Gettysburg 67-64 W 2/26 at Temple 54-77 L 3/1 Rutgers 81-61 W 3/5 Wilkes 109-56 W</p> <p>* = at Syracuse, N.Y.</p> <p>1958-59 (13-8) Coach: George Davidson</p> <p>12/3 at Rider 65-43 W 12/6 Princeton 72-62 W 12/10 La Salle 77-84 L 12/17 Delaware 58-60 L 12/20 at Scranton 71-104 L 1/3 Moravian 79-46 W 1/7 Lehigh 75-61 W 1/10 at Temple 76-89 L 1/17 at Muhlenberg 88-92 L 1/24 Seton Hall 80-71 W 1/30at St. Joseph's 71-79 L 2/4 Wilkes 107-75 W 2/7 Rutgers 80-68 W 2/11 at Lehigh 76-59 W 2/14 Georgetown 109-94 W 2/18 Muhlenberg 78-77 W</p> | <p>2/21 Gettysburg 87-68 W 2/25 at Bucknell 89-80 W 2/28 Temple 81-75 W 3/3 at Rutgers 72-77 L 3/5 at Manhattan 62-93 L</p> <p>1959-60 (12-13) Coach: George Davidson</p> <p>12/1 Upsala 91-66 W 12/5 at Princeton 68-69 L 12/9 Scranton 98-67 W 12/11 Albright 68-74 L 12/12 vs. N.Y.U.* 59-87 L 12/16 at La Salle 73-81 L 12/18 at Delaware 77-63 W 12/28 vs. William & Mary# 81-63 W 12/29 vs. South Carolina# 85-86 L 1/2 at Moravian 77-76 W 1/6 at Lehigh 69-65 W 1/9 at Temple 70-82 L 1/13 Muhlenberg 85-69 W 1/13 Bucknell 69-83 L 1/23 Rider 75-59 W 2/1 at Wilkes 70-65 W 2/3 at Rutgers 58-63 L 2/6 at Seton Hall 68-92 L 2/10 Lehigh 76-61 W 2/13 at Georgetown 60-69 L 2/17 at Muhlenberg 78-74 W 2/20 at Gettysburg 84-95 L 2/24 Temple 67-70 L 2/27 Rutgers 99-86 W 3/2 St. Joseph's 66-78 L</p> <p>* = at Madison Square Garden # = at Richmond, Va.</p> <p>1960-61 (16-8) Coach: George Davidson</p> <p>12/1 at Rider 90-64 W 12/3 at Princeton 50-69 L 12/7 Upsala 66-55 W 12/9 vs. Manhattan* 64-59 W 12/14 Temple 50-69 L 12/17 Moravian 74-50 W 12/29 vs. Temple# 51-63 L 12/30 vs. Lehigh# 62-49 W 1/4 Lehigh 64-53 W 1/7 Rutgers 86-77 W 1/11 at Muhlenberg 63-59 W 1/14 Georgetown 71-65 W 1/28 Seton Hall 105-78 W 1/30 at Scranton 88-77 W 2/1 at Albright 53-52 W 2/8 at Lehigh 58-60 L 2/11 at St. Joseph's 77-93 L 2/15 Muhlenberg 91-73 W 2/18 Gettysburg 76-80 L 2/22 La Salle 86-104 L 2/25 at Rutgers 82-74 W 3/1 Wilkes 100-74 W 3/3 at Temple 68-88 L 3/7 at Bucknell 95-79 W</p> <p>* = at Madison Square Garden # = at Washington, D.C.</p> <p>1961-62 (18-6) Coach: George Davidson</p> <p>12/2 Princeton 55-63 L 12/5 at Upsala 75-59 W 12/7 Bucknell 59-51 W 12/14 Colgate 73-62 W 12/16 at Moravian 77-60 W 12/22 at Columbia 69-54 W 12/28 at American International 82-59 W 12/29 vs. Assumption* 46-61 L 12/30 vs. Amherst* 57-48 W 1/3 Lehigh 65-44 W 1/6 at Rutgers 67-64 W 1/9 Rider 83-69 W 1/20 Albright 58-46 W 1/27 at Muhlenberg 69-59 W 1/31 at Scranton 77-57 W 2/2 at American 72-84 L 2/7 at Lehigh 65-59 W 2/10 Temple 60-75 L 2/14 Muhlenberg 68-51 W 2/17 at Gettysburg 73-51 W 2/21 at La Salle 73-69 W 2/24 Rutgers 69-62 W 3/3 Delaware 56-57 L 3/6 St. Joseph's 68-78 L</p> <p>* = at Springfield, Mass.</p> | <p>1962-63 (13-11) Coach: George Davidson</p> <p>12/1 at Princeton 60-68 L 12/5 La Salle 59-95 L 12/8 Scranton 85-75 W 12/12 Moravian 45-44 W 12/15 Columbia 48-54 L 12/18 N.Y.U. 59-67 L 12/28 vs. Ohio Wesleyan* 73-68 W 12/29 at Loyola (MD) 69-64 W 1/3 at Lehigh 74-64 W 1/5 Rutgers 80-70 W 1/9 at Temple 62-83 L 1/12 American 74-63 W 1/26 vs. Rider# 63-94 L 1/29 at Bucknell 79-67 W 1/31 at Rutgers 83-90 L 2/2 at Albright 57-69 L 2/6 Lehigh 54-68 L 2/8 at St. Joseph's 60-78 L 2/13 at Muhlenberg 81-57 W 2/16 Gettysburg 74-70 W 2/20 at Georgetown 58-89 L 2/23 Upsala 98-67 W 2/27 Muhlenberg 72-58 W 3/2 at Delaware 72-61 W</p> <p>* = at Baltimore, Md. # = at Trenton, N.J.</p> <p>1963-64 (15-8) Coach: George Davidson</p> <p>12/3 at Upsala 82-71 W 12/9 at Moravian 71-64 W 12/11 Princeton 64-69 L 12/16 at Columbia 68-75 L 12/18 Albright 74-69 W 12/20 Bucknell 76-64 W 12/27 vs. Boston U.* 76-82 L 12/28 vs. Lehigh* 56-46 W 1/4 at Rutgers 82-74 W 1/8 at La Salle 86-100 L 1/11 Colgate 81-79 W 1/18 Rider 67-75 L 1/28 at American 74-55 W 1/31 at Scranton 83-74 W 2/1 at Colgate 85-81 W 2/5 Lehigh 74-56 W 2/8 Temple 60-69 L 2/12 at Lehigh 71-58 W 2/15 at Gettysburg 47-52 L 2/19 St. Joseph's 69-111 L 2/22 Rutgers 90-50 W 2/29 Delaware 112-86 W 3/4 Muhlenberg 91-59 W</p> <p>* = at West Chester, Pa.</p> <p>1964-65 (12-8) Coach: George Davidson</p> <p>12/2 at Princeton 74-83 L 12/5 Columbia 90-86 W 12/8 American 89-54 W 12/12 Delaware 98-71 W 1/16 at St. Joseph's 68-82 L 1/21 Moravian 109-65 W 1/23 at Colgate 76-92 L 1/26 La Salle 73-91 L 1/28 at Muhlenberg 72-70 W 1/30 Rutgers 72-90 L 2/3 at Lehigh 59-39 W 2/6 at Bucknell 58-45 W 2/10 at Delaware 79-63 W 2/13 at Gettysburg 66-48 W 2/17 Lehigh 66-53 W 2/20 Bucknell 66-49 W 2/24 at Temple 54-79 L 2/27 at Rutgers 67-74 L 3/4 Gettysburg 84-63 W 3/6 at Albright 67-73 L</p> <p>1965-66 (9-11) Coach: George Davidson</p> <p>12/1 Princeton 68-77 L 12/4 at Columbia 93-109 L 12/8 Bucknell 78-84 L 12/11 at Delaware 74-82 L 1/17 Delaware 107-70 W 1/19 at Moravian 61-64 L 1/22 Rider 87-86 W 1/26 Temple 65-81 L 1/29 at Rutgers 78-88 L 2/2 Lehigh 67-64 W 2/5 Colgate 85-72 W 2/9 at La Salle 93-81 W</p> | <p>2/12 Gettysburg 86-74 W 2/16 at Lehigh 59-57 W 2/19 at Bucknell 74-67 W 2/23 St. Joseph's 80-108 L 2/26 Rutgers 66-77 L 2/12 Moravian 70-63 W 3/8 at Colgate 95-105 L 3/9 Albright 83-90 L</p> <p>1966-67 (4-21) Coach: George Davidson</p> <p>12/1 at Princeton 59-108 L 12/3 Delaware 80-72 W 12/7 at Bucknell 63-66 L 12/9 vs. Rider* 64-72 L 12/10 vs. C.C.N.Y.* 62-69 L 12/29 vs. Iona# 58-65 L 12/20 vs. Maine# 62-67 L 1/7 at Delaware 48-78 L 1/11 at Pittsburgh 47-58 L 1/12 at Gettysburg 58-80 L 1/18 Moravian 48-43 W 1/21 at Colgate 71-86 L 1/23 American 69-76 L 1/25 at Temple 49-78 L 1/28 Rutgers 58-90 L 2/2 Scranton 66-59 W 2/4 Upsala 65-66 L 2/8 Colgate 62-75 L 2/11 Gettysburg 66-76 L 2/15 at Lehigh 61-66 L 2/18 Bucknell 37-73 L 2/22 Muhlenberg 79-68 W 2/25 at Rutgers 40-59 L 3/1 La Salle 72-85 L 3/4 Lehigh 55-61 L</p> <p>* = at Trenton, N.J. # = at Syracuse, N.Y.</p> <p>1967-68 (5-19) Coach: Harold Wissel</p> <p>12/2 Delaware 82-99 L 12/9 at Bucknell 82-81 W 12/16 Rider 60-63 L 12/28 vs. King's* 53-70 L 12/29 vs. Cortland State* 73-53 W 12/30 vs. Muhlenberg* 72-74 L 1/4 at Muhlenberg 70-103 L 1/6 at Delaware 62-83 L 1/10 at American 54-74 L 1/13 Gettysburg 52-57 L 1/17 at Moravian 98-80 W 1/20 at Colgate 76-80 L 1/24 Upsala 105-69 W 1/27 at Rutgers 47-81 L 2/1 Scranton 72-69 W 2/3 Colgate 62-68 L 2/7 at La Salle 45-74 L 2/10 Pittsburgh 70-74 L 2/14 at Gettysburg 61-66 L 2/17 Bucknell 59-63 L 2/21 at Lehigh 63-68 L 2/24 Rutgers 78-82 L 2/28 Temple 59-88 L 3/2 Lehigh 54-77 L</p> <p>* = at East Stroudsburg, Pa.</p> <p>1968-69 (9-17) Coach: Harold Wissel</p> <p>11/30 at Boston U. 45-73 L 12/4 vs. Rider* 60-71 L 12/7 Delaware 89-91 L 12/14 Upsala 78-56 W 12/26 Wilkes# 65-49 W 12/27 vs. King's# 80-68 W 12/28 vs. Muhlenberg# 70-59 W 1/6 at Bucknell 49-77 L 1/8 at Pittsburgh 51-41 W 1/10 at Scranton 60-68 L 1/15 at Delaware 60-65 L 1/18 at Colgate 54-68 L 1/22 Moravian 56-59 L 1/25 Rutgers 56-98 L 1/28 American 75-71 W 1/30 N.Y.U. 65-80 L 2/1 Colgate 62-71 L 2/5 La Salle 65-97 L 2/7 at Temple 53-72 L 2/10 Muhlenberg 76-75 W 2/12 at Gettysburg 62-79 L 2/15 Bucknell 50-80 L 2/19 at Lehigh 59-81 L 2/22 at Rutgers 48-75 L</p> |
|--|--|---|---|--|



2/26 Gettysburg 75-69 W
 3/1 Lehigh 68-54 W
 * = at Trenton, N.J.
 # = at East Stroudsburg, Pa.

1969-70 (12-14)

Coach: Harold Wissel
 12/1 at Moravian 114-81 W
 12/3 Gettysburg 91-67 W
 12/5 at Muhlenberg 85-75 W
 12/6 vs. Seton Hall* 78-88 L
 12/29 vs. American# 62-72 L
 12/30 vs. F.D.U.-Madison# 86-71 W
 1/3 vs. Rider\$ 53-62 L
 1/5 at Stetson 78-82 L
 1/6 vs. Florida A&M% 84-88 L
 1/10 at Bucknell 80-76 W
 1/13 at Colgate 91-104 L
 1/14 at Syracuse 89-100 L
 1/17 Rider 68-83 L
 1/28 Temple 60-69 L
 1/29 at N.Y.U. 72-75 L
 1/31 Delaware 90-84 W
 2/4 at La Salle 73-102 L
 2/6 Pittsburgh 80-74 W
 2/7 Colgate 99-92 W
 2/10 at Delaware 79-66 W
 2/12 Rutgers 77-89 L
 2/14 Bucknell 105-73 W
 2/18 Lehigh 80-63 W
 2/21 at Gettysburg 83-74 W
 2/24 at Lehigh 68-88 L
 2/25 vs. Lehigh@ 83-86 L
 * = at Madison Square Garden
 # = at Wilkes-Barre, Pa.
 \$ = at Trenton, N.J.
 % = at DeLand, Fla.
 @ = at Allentown, Pa.

1970-71 (17-9)

Coach: Harold Wissel
 12/1 Moravian 109-66 W
 12/5 Muhlenberg 97-79 W
 12/9 at Gettysburg 90-79 W
 12/12 at Fordham 84-106 L
 12/29 vs. Boston U.* 86-61 W
 12/30 at LeMoyne 89-75 W
 1/5 vs. Rider# 73-79 L
 1/9 at Tampa 85-83 W
 1/11 at Miami (FL) 75-78 L
 1/14 at Syracuse 92-106 L
 1/16 Rider 62-60 W
 1/20 America 79-68 W
 1/23 La Salle 82-93 L
 1/27 N.Y.U. 80-65 W
 1/30 Delaware 84-62 W
 2/2 at Bucknell 87-73 W
 2/4 Seton Hall 67-59 W
 2/6 at Colgate 83-84 L
 2/9 at Lehigh 92-74 W
 2/13 Bucknell 73-57 W
 2/17 at Pittsburgh 72-88 L
 2/20 Gettysburg 82-68 W
 12/24 Lehigh 115-83 W
 2/27 at Delaware 75-71 W
 3/2 at Rutgers 68-92 L
 3/5 at La Salle 71-74 L
 * = at Syracuse, N.Y.
 # = at Trenton, N.J.

1971-72 (21-6)

Coach: Tom Davis
 12/1 at Moravian 105-78 W
 12/4 at Muhlenberg 89-71 W
 12/8 Gettysburg 108-83 W
 12/11 at Fordham 75-81 L
 12/29 vs. American* 88-76 W
 12/30 vs. George Washington* 85-74 W
 1/5 at Seton Hall 75-74 W
 1/8 at La Salle 86-66 W
 1/12 at Columbia 100-64 W
 1/15 Rider 83-92 L
 1/18 at West Virginia 87-83 W
 1/20 Albright 95-71 W
 1/22 Rutgers 81-70 W
 1/26 Pittsburgh 91-78 W
 1/29 at Delaware 70-83 L
 2/1 Bucknell 85-66 W
 2/4 Boston U. 104-89 W
 2/5 Colgate 111-85 W
 2/9 at Lehigh 87-74 W
 2/12 at Bucknell 84-74 W

2/16 vs. Rider* 84-87 L
 2/21 at Gettysburg 87-78 W
 2/23 Lehigh 95-90 W
 2/26 Delaware 64-63 W
 3/3 at Temple 75-87 L
 N.I.T.
 3/17 vs. Virginia# 72-71 W
 3/20 vs. Jacksonville# 76-87 L
 * = at Trenton, N.J.
 # = at Madison Square Garden

1972-73 (16-10)

Coach: Tom Davis
 11/29 Moravian 78-54 W
 12/2 Muhlenberg 108-90 W
 12/6 at Gettysburg 72-58 W
 12/9 Seton Hall 84-58 W
 12/12 Fordham 70-82 L
 12/29 vs. Buffalo* 71-72 L
 12/30 vs. Bucknell* 74-72 W
 1/3 at South Carolina 48-81 L
 1/6 at Army 66-73 L
 1/10 at Colgate 79-80 L
 1/13 Syracuse 74-86 L
 1/16 La Salle 77-68 W
 1/17 at Albright 75-68 W
 1/20 at Rutgers 94-92 W
 1/23 at West Virginia 61-60 W
 1/25 at Columbia 77-64 W
 1/27 at Delaware 68-70 L
 1/31 at Bucknell 86-52 W
 2/3 Rider 58-60 L
 2/7 at Lehigh 74-72 W
 2/10 Gettysburg 79-62 W
 2/15 vs. Rider# 70-60 W
 2/17 Bucknell 49-51 L
 2/21 Lehigh 52-51 W
 2/24 Delaware 72-52 W
 3/2 vs. Temple\$ 80-88 L
 * = at Erie, Pa.
 # = at Madison Square Garden
 \$ = at Newark, Del.

1973-74 (17-9)

Coach: Tom Davis
 12/1 Gettysburg 79-70 W
 12/3 at Muhlenberg 74-69 W
 12/5 at Dickinson 99-69 W
 12/8 vs. Fordham* 68-62 W
 12/10 Moravian 63-43 L
 12/13 Rutgers 60-64 L
 12/28 Buffalo 85-73 W
 12/29 American 70-78 L
 1/5 at Army 73-61 W
 1/9 at South Carolina 63-84 L
 1/12 at Brown 67-81 L
 1/15 Colgate 70-54 W
 1/19 at La Salle 66-87 L
 1/23 Columbia 59-52 W
 1/26 at Delaware 62-56 W
 1/30 at Bucknell 60-49 W
 2/2 Rider 70-71 L
 2/6 Lehigh 92-63 W
 2/9 at Gettysburg 55-49 W
 2/11 Albright 84-60 W
 2/13 vs. Rider# 51-54 L
 2/16 Bucknell 83-79 W
 2/20 at Lehigh 87-88 L
 2/23 Delaware 91-62 W
 2/26 American 59-55 W
 3/1 at St. Joseph's 61-64 L
 * = at Madison Square Garden
 # = at Trenton, N.J.

1974-75 (22-6)

Coach: Tom Davis
 11/30 Muhlenberg 83-77 W
 12/4 Dickinson 75-47 W
 12/7 at Gettysburg 76-54 W
 12/9 Brown 75-71 W
 12/11 La Salle 58-71 L
 12/26 vs. Baylor* 105-84 W
 12/27 vs. Furman* 81-89 L
 1/2 Vermont 72-65 W
 1/3 Catholic 108-74 W
 1/7 Princeton 73-67 W
 1/11 at Army 79-77 W
 1/15 at Fordham 72-74 L
 1/18 at Rutgers 72-66 W
 1/21 at Columbia 90-72 W
 1/25 at Delaware 97-82 W
 1/30 at Moravian 90-72 W

2/1 Rider 82-61 W
 2/4 at Lehigh 74-57 W
 2/6 vs. Colgate# 66-65 W
 2/8 Gettysburg 103-68 W
 2/15 at Bucknell 65-73 L
 2/19 Lehigh 73-60 W
 2/22 Delaware 82-69 W
 2/26 vs. Rider\$ 68-64 W
 3/1 Bucknell 96-64 W
 3/7 Rider 79-68 W
 3/8 La Salle 85-92 L
 N.I.T.
 3/15 vs. St. John's# 76-94 L
 11/29 Moravian 92-60 W
 12/2 Muhlenberg 112-66 W
 12/3 St. Joseph's 95-88 W
 12/6 at Princeton 65-84 L
 12/8 at Gettysburg 95-75 W
 12/11 St. Francis (NY) 92-65 W
 1/2-3 Rochester 91-68 W
 1/2-3 Army 74-61 W
 1/7 at Missouri 77-90 L
 1/10 at Brown 97-73 W
 1/14 at Albright 74-80 L
 1/17 Fordham 74-70 W
 1/20 Columbia 95-72 W
 1/24 Rutgers 79-113 L
 1/29 at West Chester 103-96 W
 2/15 vs. Rider# 99-87 W
 2/3 at Bucknell 74-66 W
 2/7 Rider 70-55 W
 2/11 at Lehigh 99-79 W
 2/12 vs. Connecticut* 79-86 L
 2/14 West Chester 66-53 W
 2/18 at Delaware 77-75 W
 2/21 Bucknell 101-78 W
 2/25 vs. Rider# 89-92 L
 2/28 Lehigh 77-75 W
 3/5 vs. Hofstra\$ 72-77 L
 * = at Madison Square Garden
 # = at Trenton, N.J.
 \$ = at The Palestra

1975-76 (19-7)

Coach: Tom Davis
 11/29 Moravian 92-60 W
 12/1 at Muhlenberg 112-66 W
 12/3 St. Joseph's 95-88 W
 12/6 at Princeton 65-84 L
 12/8 at Gettysburg 95-75 W
 12/11 St. Francis (NY) 92-65 W
 1/2-3 Rochester 91-68 W
 1/2-3 Army 74-61 W
 1/7 at Missouri 77-90 L
 1/10 at Brown 97-73 W
 1/14 at Albright 74-80 L
 1/17 Fordham 74-70 W
 1/20 Columbia 95-72 W
 1/24 Rutgers 79-113 L
 1/29 at West Chester 103-96 W
 2/15 vs. Rider# 99-87 W
 2/3 at Bucknell 74-66 W
 2/7 Rider 70-55 W
 2/11 at Lehigh 99-79 W
 2/12 vs. Connecticut* 79-86 L
 2/14 West Chester 66-53 W
 2/18 at Delaware 77-75 W
 2/21 Bucknell 101-78 W
 2/25 vs. Rider# 89-92 L
 2/28 Lehigh 77-75 W
 3/5 vs. Hofstra\$ 72-77 L
 * = at Madison Square Garden
 # = at Trenton, N.J.
 \$ = at The Palestra

1976-77 (21-6)

Coach: Tom Davis
 11/27 Muhlenberg 94-68 W
 11/30 at Moravian 84-73 W
 12/4 at Colgate 75-77 L
 12/7 at St. Joseph's 70-74 L
 12/11 Wagner 89-51 W
 12/13 Albright 115-93 W
 12/28 Catholic U. 72-68 W
 12/29 Bucknell 71-56 W
 1/4 Yale 90-59 W
 1/8 at Army 76-62 W
 1/10 at Duke 77-86 L
 1/15 Brown 94-86 W
 1/18 at Columbia 91-74 W
 1/20 Gettysburg 96-57 W
 1/22 at Rutgers 75-88 L
 1/26 West Chester 94-79 W
 1/29 at Delaware 90-92 L
 2/2 Bucknell 81-63 W
 2/5 Rider 81-63 W
 2/9 at Lehigh 91-80 W
 2/12 at West Chester 86-74 W
 2/15 Delaware 98-72 W
 2/17 vs. Fordham* 79-65 W
 2/19 at Bucknell 86-78 W
 2/23 at Rider 69-65 W
 2/26 Lehigh 98-71 W
 N.I.T.
 3/4 La Salle 80-86 L
 * = at Madison Square Garden

1977-78 (23-8)

Coach: Roy Chipman
 11/25 at St. John's 60-66 L
 11/26 vs. Niagara* 71-60 W
 11/29 at Yale 66-52 W
 12/2 Columbia 55-56 L
 12/5 at Notre Dame 42-76 L
 12/7 at Muhlenberg 88-70 W
 12/10 Colgate 77-52 W
 12/12 at Wagner 83-76 W

12/14 Moravian 75-57 W
 12/27 vs. Providence# 59-70 L
 12/28 at Hawaii 69-61 W
 12/30 vs. Rhode Island# 60-64 L
 1/4 New Hampshire 83-64 W
 1/6 Army 65-62 W
 1/11 at American 76-64 W
 1/14 at St. Joseph's 64-66 L
 1/18 Upsala 85-71 W
 1/21 Rutgers 70-84 L
 1/25 Lehigh 83-68 W
 1/28 at West Chester 96-67 W
 1/31 Delaware 74-73 W
 2/2 at Fordham 79-76 W
 2/4 at Bucknell 56-52 W
 2/8 vs. Rider\$ 60-43 W
 2/11 at Lehigh 65-64 W
 2/15 West Chester 75-60 W
 2/18 at Delaware 81-66 W
 2/22 Bucknell 96-82 W
 2/25 Rider 78-65 W
 2/27 Lehigh 76-65 W
 3/1 Temple 70-71 L
 * = at New York, N.Y.
 # = at Rainbow Classic, Hawaii
 \$ = at Trenton, N.J.

1978-79 (16-12)

Coach: Roy Chipman
 11/25 Muhlenberg 92-84 W
 12/1 vs. Colgate* 74-62 W
 12/2 at Rutgers 77-70 W
 12/9 American 62-63 L
 12/12 at Hofstra 71-58 W
 12/15 at Army 44-64 L
 12/29 Buffalo 81-49 W
 12/30 Drexel 61-69 L
 1/3 at Moravian 64-46 W
 1/6 at La Salle 80-95 L
 1/8 at Drexel 58-70 L
 1/13 Temple 51-72 L
 1/16 at Notre Dame 66-91 L
 1/18 at Columbia 60-56 W
 1/20 St. Joseph's 44-65 L
 1/24 at Lehigh 79-63 W
 1/27 West Chester 96-62 W
 1/31 at Delaware 64-59 W
 2/3 Bucknell 68-74 L
 2/7 at Rider 62-75 L
 2/10 Lehigh 76-64 W
 2/13 at West Chester 58-51 W
 2/15 Fordham 73-61 W
 2/17 Delaware 79-63 W
 2/21 at Bucknell 63-65 L
 2/24 Rider 93-69 W
 3/2 Delaware 91-70 W
 3/3 at Temple 50-53 L
 * = at New Brunswick, N.J.

1979-80 (21-8)

Coach: Roy Chipman
 12/1 East Stroudsburg 79-57 W
 12/5 Marist 104-87 W
 12/10 at American 81-79 W
 12/13 Hofstra 85-75 W
 12/26 at St. John's 58-68 L
 12/28 vs. Georgetown* 60-65 L
 1/2 Drexel 63-61 W
 1/5 Moravian 73-58 W
 1/7 at Muhlenberg 94-71 W
 1/10 Army 60-58 W
 1/12 at Temple 47-49 L
 1/15 Columbia 61-64 L
 1/16 La Salle 81-80 W
 1/19 at St. Joseph's 41-54 L
 1/22 at Navy 64-52 W
 1/24 at Rider 39-36 W
 1/26 at Lehigh 95-80 W
 1/30 at West Chester 73-64 W
 2/2 Delaware 75-46 W
 2/6 at Bucknell 54-55 W
 2/9 Rider 65-57 W
 2/11 at Colgate 68-59 W
 2/13 Lehigh 82-76 W
 2/16 West Chester 109-82 W
 2/20 at Delaware 84-71 W
 2/23 Bucknell 92-79 W
 2/27 Rider 80-68 W
 2/29 at La Salle 62-70 L
 N.I.T.
 3/5 at Virginia 56-67 L
 * = at Madison Square Garden

1980-81 (15-13)

Coach: Will Rackley
 11/28 vs. Va. Comm.* 40-44 L
 11/29 vs. Bucknell* 69-47 W
 11/29 Drew 83-51 W
 12/3 at Hofstra 56-53 W
 12/6 at Tennessee 42-72 L
 12/9 American 77-78 L
 12/13 at Detroit 61-67 L
 12/27 at La Salle 60-69 L
 1/3 vs. Penn State# 42-53 L
 1/5 at Moravian 76-57 W
 1/10 Kutztown 77-55 W
 1/13 St. Joseph's 41-59 L
 1/17 Temple 50-56 L
 1/21 Navy 77-60 W
 1/24 at Drexel 64-73 L
 1/28 at Rider 70-72 L
 1/31 Lehigh 81-68 W
 2/2 Colgate 83-61 W
 2/4 at West Chester 67-60 W
 2/7 at Delaware 65-53 W
 2/11 Bucknell 53-56 L
 2/14 Rider 65-55 W
 2/18 at Lehigh 62-68 L
 2/21 West Chester 91-70 W
 2/25 Delaware 65-64 W
 2/28 at Bucknell 68-60 W
 3/4 Lehigh 74-58 W
 3/16 at St. Joseph's 63-73 L
 * = at Charlottesville, Va.
 # = at Hershey, Pa.

1981-82 (12-15)

Coach: Will Rackley
 11/27 Drew 68-49 W
 11/29 at Maryland 58-82 L
 12/4 vs. Columbia* 66-60 W
 12/5 at Richmond 51-57 L
 12/8 vs. Penn State# 62-63 L
 12/10 Moravian 60-50 W
 12/12 at Rutgers 60-67 L
 1/2 New Hampshire 73-68 W
 1/6 at St. Joseph's 57-81 L
 1/9 La Salle 67-65 W
 1/13 Hofstra 55-61 L
 1/16 Kutztown 53-49 W
 1/18 at American 54-63 L
 1/20 at Navy 58-76 L
 1/23 Drexel 64-68 L
 1/27 at Bucknell 61-56 W
 1/30 at Rider 74-79 L
 2/3 at Lehigh 83-75 W
 2/6 West Chester 69-61 W
 2/10 Delaware 59-55 W
 2/13 Bucknell 67-66 W
 2/16 at Temple 66-76 L
 2/18 Rider 58-60 L
 2/20 Lehigh 69-66 W
 2/24 West Chester 60-71 L
 2/27 at Delaware 60-70 L
 3/1 Hofstra 64-71 L
 * = at Richmond, Va.
 # = at Hershey, Pa.

1982-83 (7-21)

Coach: Will Rackley
 11/29 at Moravian 60-51 W
 11/30 Drew 68-63 W
 12/3 at Stanford 54-80 L
 12/4 vs. Rhode Island* 56-92 L
 12/8 at Hofstra 61-66 L
 12/11 Rutgers 50-57 L
 12/28 vs. Texas A&M# 66-78 L
 12/29 vs. Air Force# 63-61 W
 1/8 at Pittsburgh 52-65 L
 1/10 at Colgate 39-36 W
 1/13 New Hampshire 63-64 L
 1/15 William & Mary 61-69 L
 1/17 at Notre Dame 40-51 L
 1/19 Navy 69-71 L
 1/22 at Drexel 47-49 L
 1/26 Bucknell 59-61 L
 1/29 at Rider 55-60 L
 2/2 Lehigh 76-69 W
 2/5 American 68-76 L
 2/9 at Delaware 70-69 W
 2/14 at Manhattan 59-81 L
 2/16 Rider 62-76 L
 2/19 at Lehigh 45-62 L
 2/21 at Bucknell 59-60 L
 2/23 at La Salle 61-79 L

LAFAYETTE LEOPARDS

2/26 Delaware 49-48 W
 3/5 Towson State 68-71 L
 3/7 Lehigh 61-62 L
 * = at Stanford, Calif.
 # = at Hartford, Conn.

1983-84 (12-17)

Coach: Will Rackley
 11/25 at Virginia 59-71 L
 11/26 vs. Richmond* 49-65 L
 11/28 Moravian 70-58 W
 11/30 Pittsburgh 55-70 L
 12/3 at Princeton 38-56 L
 12/10 at Rutgers 59-73 L
 12/26 vs. Rider# 71-92 L
 12/28 at Hofstra 54-60 L
 1/4 at Drexel 58-61 L
 1/9 at American 56-45 W
 1/11 at Towson State 63-67 L
 1/14 Colgate 63-59 W
 1/16 at Notre Dame 39-65 L
 1/18 at Navy 67-76 L
 1/21 Drexel 73-78 L
 1/25 at Bucknell 56-64 L
 1/28 Rider 83-81 W
 2/1 at Lehigh 70-52 W
 2/4 American 77-67 W
 2/6 at William & Mary 57-67 L
 2/8 Delaware 68-62 W
 2/11 Bucknell 66-65 W
 2/18 Lehigh 67-53 W
 2/20 Manhattan 45-47 L
 2/25 at Delaware 61-58 W
 2/28 Hofstra 62-67 L
 3/3 Towson State 77-61 W
 3/8 vs. Hofstra§ 69-49 W
 3/9 vs. Bucknell§ 44-46 L
 * = at Charlottesville, Va.
 # = at East Rutherford, N.J.
 § = at Towson, Md.

1984-85 (15-13)

Coach: Butch van Breda Kolf
 11/24 at Ohio State 67-85 L
 11/26 Moravian 72-63 W
 11/28 Kutztown 72-57 W
 11/30 at St. John's 47-93 L
 12/1 vs. St. Francis (NY)* 67-42 W
 12/3 at Pittsburgh 66-80 L
 12/6 Princeton 45-43 W
 12/11 Manhattan 53-52 W
 12/27 at Tennessee 58-77 L
 1/2 at Colgate 47-40 W
 1/5 at Hofstra 64-75 L
 1/7 at Drexel 58-55 W
 1/9 Lehigh 65-68 L
 1/12 at Towson State 75-59 W
 1/16 Navy 71-74 L
 1/19 at Rider 63-67 L
 1/21 at William & Mary 57-58 L
 1/23 at Bucknell 80-77 W
 1/26 at Delaware 49-51 L
 1/30 Drexel 69-59 W
 2/2 Harvard 61-57 W
 2/6 Hofstra 85-62 W
 2/9 at Lehigh 63-59 W
 2/13 Towson State 57-56 W
 2/20 Rider 52-59 L
 2/23 Bucknell 75-77 L
 2/27 Delaware 70-65 W
 3/2 vs. Hofstra# 74-75 L
 * = at Jamaica, N.Y.
 # = at Towson, Md.

1985-86 (14-15)

Coach: Butch van Breda Kolf
 11/26 Kutztown 72-60 W
 11/30 Colgate 51-42 W
 12/2 Moravian 77-68 W
 12/4 Pittsburgh 64-95 L
 12/6 at Iona 59-75 L
 12/7 vs. Howard* 66-57 W
 12/9 at Columbia 59-70 L
 12/21 at Manhattan 82-70 W
 1/2 at Harvard 58-68 L
 1/4 at Rider 66-70 L
 1/7 at Princeton 49-62 L
 1/11 at Lehigh 72-82 L
 1/15 at Navy 56-71 L
 1/18 Delaware 101-77 W
 1/22 Towson State 70-61 W
 1/24 Pennsylvania 69-80 L
 1/25 Bucknell 78-59 W

1/29 at Hofstra 43-67 L
 2/1 at Drexel 67-78 L
 2/5 vs. Rider# 72-55 W
 2/8 Lehigh 80-79 W
 2/12 at Delaware 87-77 W
 2/15 at Towson State 72-51 W
 2/19 at Bucknell 43-44 L
 2/22 Hofstra 94-88 W
 2/24 Drexel 61-65 L
 2/26 William & Mary 54-69 L
 3/1 vs. Lehigh§ 58-57 W
 3/2 vs. Drexel§ 69-78 L
 * = at New Rochelle, N.Y.
 § = at East Rutherford, N.J.
 § = at Towson, Md.

1986-87 (16-13)

Coach: Butch van Breda Kolf
 11/29 at Colgate 66-62 W
 12/1 Harvard 80-75 W
 12/3 at Rutgers 66-67 L
 12/5 vs. Brown* 92-79 W
 12/6 at Marist 64-65 L
 12/8 Columbia 65-68 L
 12/20 Manhattan 78-64 W
 12/27 vs. St. Peter's# 61-63 L
 12/28 vs. Central Conn.# 78-67 W
 12/30 at Boston College 84-90 L
 1/7 at Drexel 85-90 L
 1/12 at Yale 63-69 L
 1/14 Navy 71-75 L
 1/17 at Rider 84-79 W
 1/20 at Pennsylvania 64-80 L
 1/24 at Delaware 65-64 W
 1/28 at Towson State 66-48 W
 1/31 at Bucknell 67-70 L
 2/2 Lehigh 77-83 L
 2/4 Hofstra 93-70 W
 2/7 Drexel 79-64 W
 2/11 Rider 87-82 W
 2/14 at Lehigh 78-79 L
 2/18 Delaware 81-73 W
 2/21 Towson State 73-58 W
 2/25 Bucknell 85-80 W
 2/28 at Hofstra 83-60 W
 3/6 vs. Hofstra§ 81-76 W
 3/7 at Towson State 66-70 L
 * = at Poughkeepsie, N.Y.
 # = at Loudonville, N.Y.
 § = at Towson, Md.

1987-88 (19-10)

Coach: Butch van Breda Kolf
 11/28 Colgate 76-61 W
 11/30 Moravian 73-60 W
 12/2 at Rutgers 46-48 L
 12/5 vs. Yale* 70-56 W
 12/6 at Seton Hall 73-98 L
 12/8 at Columbia 63-64 L
 12/12 at Manhattan 57-65 L
 1/4 Notre Dame 83-68 W
 1/6 at Navy 53-70 L
 1/9 Brown 75-74 W
 1/11 at Iowa 68-109 L
 1/13 East Stroudsburg 96-60 W
 1/19 Cornell 84-43 W
 1/21 Drexel 80-71 W
 1/23 at Rider 84-93 L
 1/27 at Lehigh 66-64 W
 1/30 Delaware 64-53 W
 2/3 Towson State 73-60 W
 2/6 Bucknell 77-62 W
 2/10 at Hofstra 72-52 W
 2/13 at Drexel 48-55 L
 2/15 at Bucknell 69-67 W
 2/17 Rider 70-57 W
 2/20 Lehigh 73-68 W
 2/22 Hofstra 59-45 W
 2/24 at Delaware 66-71 L
 2/27 at Towson State 71-63 W
 3/5 vs. Hofstra# 84-54 W
 3/6 vs. Lehigh# 65-67 L
 * = at South Orange, N.J.
 # = at Towson, Md.

1988-89 (20-10)

Coach: John Leone
 11/26 at Colgate 70-63 W
 11/28 Moravian 63-47 W
 11/29 at Army 68-61 W
 12/3 at Providence 46-75 L
 12/6 Columbia 73-50 W
 12/10 at Ohio State 62-84 L

12/22 Davidson 87-50 W
 12/31 at Rutgers 60-55 W
 1/2 at Fordham 61-67 L
 1/9 at Brown 82-74 W
 1/11 Pennsylvania 61-57 W
 1/14 at Delaware 62-56 W
 1/18 Towson State 59-58 W
 1/21 at Lehigh 75-65 W
 1/23 at Cornell 64-46 W
 1/25 Drexel 70-76 L
 1/28 Rider 70-66 W
 1/30 Holy Cross 64-63 W
 2/1 at Bucknell 64-77 L
 2/4 Hofstra 70-58 W
 2/8 Delaware 72-68 W
 2/11 at Towson State 66-99 L
 2/15 Lehigh 82-69 W
 2/18 at Drexel 70-63 W
 2/22 at Rider 68-77 L
 2/25 Bucknell 50-69 L
 2/27 at Hofstra 58-63 L
 3/4 vs. Delaware* 72-70 W
 3/5 at Towson State 80-79 W
 3/7 vs. Bucknell* 65-71 L
 * = at Towson, Md.

1989-90 (15-13)

Coach: John Leone
 11/25 Colgate 97-71 W
 11/27 Moravian 59-55 W
 11/30 at Rutgers 69-78 L
 12/2 Fordham 67-66 W
 12/5 at Columbia 81-73 W
 12/9 Yale 76-59 W

12/22 at Notre Dame 71-86 L
 12/28 at Syracuse 64-85 L
 12/30 Army 75-65 W
 1/3 Navy 72-65 W
 1/6 Brown 70-61 W
 1/8 at Rider 63-73 L
 1/13 at Hofstra 64-71 L
 1/17 Delaware 79-76 W
 1/20 at Towson State 65-68 L
 1/22 at Holy Cross 62-64 L
 1/24 at Pennsylvania 53-69 L
 1/27 at Drexel 84-74 W
 1/29 Lehigh 74-69 W
 2/3 Bucknell 66-55 W
 2/7 Hofstra 64-63 W
 2/10 at Delaware 58-89 L
 2/14 Towson State 83-70 W
 2/17 at Lehigh 65-69 L
 2/21 Drexel 61-70 L
 2/24 Rider 85-68 W
 2/26 at Bucknell 60-62 L
 3/3 vs. Delaware* 54-57 L
 * = at Towson, Md.

1990-91 (7-21, 1-11 Patriot League)

Coach: John Leone
 11/23 vs. Boston U.* 80-55 W
 11/24 at Providence 63-98 L
 11/27 Princeton 36-45 L
 12/1 at Brown 74-77 L
 12/7 at Yale 41-65 L
 12/10 Drexel 71-68 W
 12/22 at Maryland 48-64 L
 12/28 at Connecticut 57-59 L
 12/29 vs. William & Mary# 67-65 W
 1/2 at Navy 75-78 L
 1/5 at Drexel 65-85 L
 1/10 at Holy Cross 83-92 L
 1/14 at Miami (FL) 73-57 W
 1/16 Army 57-64 L
 1/19 Fordham 65-69 L
 1/23 at Colgate 65-74 L
 1/26 Lehigh 69-76 L
 1/28 Pennsylvania 83-72 W
 1/31 Rider 66-73 L
 2/2 at Bucknell 66-87 L
 2/4 Widener 77-44 W
 2/6 Holy Cross 75-77 L
 2/9 at Army 52-54 L
 2/13 at Fordham 71-79 L
 2/16 Colgate 86-78 W
 2/20 at Lehigh 75-97 L
 2/25 Bucknell 62-66 L
 2/28 vs. Lehigh§ 65-69 L
 * = at Providence, R.I.
 # = at Hartford, Conn.
 § = at Worcester, Mass.

1991-92 (8-20, 6-8 Patriot League)

Coach: John Leone
 11/25 Vermont 51-69 L
 11/30 at Princeton 49-72 L
 12/3 Yale 76-83 L
 12/7 at Rider 75-79 L
 12/9 Swarthmore 89-47 W
 12/21 at Syracuse 58-87 L
 12/28 at California-Irvine 56-64 L
 12/30 at Pepperdine 63-76 L
 1/4 at Drexel 46-67 L
 1/9 Brown 68-80 L
 1/11 Holy Cross 85-92 L
 1/14 at Army 49-47 W
 1/18 at Fordham 52-80 L
 1/22 Colgate 73-74 L
 1/25 at Lehigh 64-78 L
 1/27 at Pennsylvania 56-67 L
 1/29 at Navy 75-62 W
 2/1 Bucknell 71-80 L
 2/5 at Holy Cross 75-85 L
 2/8 Army 81-49 W
 2/12 Fordham 74-60 W
 2/15 at Colgate 61-70 L
 2/18 Columbia 75-69 W
 2/20 at Penn State 59-77 L
 2/22 Navy 77-67 W
 2/26 Lehigh 82-76 W
 2/29 at Bucknell 68-78 L
 3/7 vs. Holy Cross* 71-87 L
 * = at Bethlehem, Pa.

1992-93 (7-20, 4-10 Patriot League)

Coach: John Leone
 12/1 Princeton 48-65 L
 12/3 at Yale 42-53 L
 12/5 at Kansas State 63-86 L
 12/8 Rider 56-72 L
 12/11 at Marist 60-62 L
 12/12 vs. V.M.I.* 56-62 L
 12/28 at Columbia 77-72 W
 12/30 at Wake Forest 47-74 L
 1/4 Vermont 89-79 W
 1/9 Drexel 58-72 L
 1/11 Swarthmore 89-75 W
 1/13 Colgate 73-76 L
 1/16 at Bucknell 74-87 L
 1/20 at Navy 50-53 L
 1/23 Holy Cross 79-95 L
 1/27 at Fordham 71-83 L
 1/30 at Army 57-60 L
 2/1 Pennsylvania 65-89 L
 2/3 Lehigh 99-82 W
 2/6 at Colgate 55-68 L
 2/10 Bucknell 65-84 L
 2/13 Navy 65-60 W
 2/17 at Holy Cross 68-95 L
 2/20 Fordham 78-74 W
 2/24 at Lehigh 70-83 L
 2/27 Army 77-67 W
 3/3 at Fordham 73-84 L
 * = at Poughkeepsie, N.Y.

1993-94 (9-19, 4-10 Patriot League)

Coach: John Leone
 11/27 Vermont 72-79 L
 12/1 at Princeton 43-73 L
 12/4 at Brown 85-88 L
 12/7 Columbia 70-53 W
 12/11 at Rider 75-87 L
 12/13 at Syracuse 75-104 L
 12/28 at Iona 88-80 W
 12/29 vs. George Mason* 83-99 L
 1/2 at Florida State 87-105 L
 1/6 Yale 85-69 W
 1/10 Swarthmore 85-59 W
 1/15 Bucknell 67-90 L
 1/17 at Pennsylvania 71-88 L
 1/19 Navy 77-76 W
 1/22 at Holy Cross 83-95 L
 1/26 Fordham 82-75 W
 1/29 Army 95-74 W
 2/2 at Lehigh 80-85 L
 2/5 Colgate 72-76 L
 2/9 at Bucknell 76-100 L
 2/12 at Navy 68-63 W
 2/16 Holy Cross 90-99 L
 2/19 at Fordham 68-73 L
 2/21 at Colgate 63-84 L
 2/23 Lehigh 74-81 L

2/26 at Army 57-79 L
 3/4 vs. Fordham# 83-65 W
 3/5 vs. Colgate# 73-76 L
 * = at New Rochelle, N.Y.
 # = at Annapolis, Md.

1994-95 (2-25, 0-14 Patriot League)

Coach: John Leone
 11/25 at Connecticut 48-110 L
 11/28 Swarthmore 87-62 W
 11/30 Princeton 52-70 L
 12/3 at Vermont 69-108 L
 12/5 at Columbia 78-75 W
 12/7 at Yale 69-82 L
 12/10 at Georgia Tech 84-112 L
 12/29 vs. Davidson* 81-96 L
 12/30 vs. Bucknell* 56-90 L
 1/4 at Cornell 83-87 L
 1/7 Holy Cross 82-91 L
 1/9 Brown 68-95 L
 1/11 at Navy 62-78 L
 1/14 Army 66-84 L
 1/18 Fordham 62-69 L
 1/21 at Lehigh 51-86 L
 1/23 Pennsylvania 57-92 L
 1/25 Bucknell 61-83 L
 1/28 Colgate 62-86 L
 2/1 at Holy Cross 76-91 L
 2/4 Navy 70-84 L
 2/7 at Army (ot) 69-72 L
 2/11 at Fordham (ot) 78-87 L
 2/15 Lehigh 75-97 L
 2/18 at Bucknell 49-71 L
 2/25 at Colgate 71-104 L
 3/4 vs. Colgate# 67-87 L
 * = at Boise, Idaho
 # = at West Point, N.Y.

1995-96 (7-20, 4-8 Patriot League)

Coach: Fran O'Hanlon
 11/25 at Syracuse 63-87 L
 11/27 Cornell (ot) 78-69 W
 11/29 at Princeton 47-62 L
 12/2 at Harvard 44-64 L
 12/6 Swarthmore 69-70 L
 12/12 Columbia 64-51 W
 12/29 vs. Richmond‡ 47-63 L
 12/30 vs. Alaska Anchorage‡ 75-82 L
 1/2 at Davidson 68-93 L
 1/6 at UNC-Charlotte 58-88 L
 1/8 at Brown 73-81 L
 1/10 at Holy Cross* 82-85 L
 1/13 Navy* 64-73 L
 1/17 at Army* 79-83 L
 1/20 Dartmouth 71-72 L
 1/22 at Pennsylvania 57-74 L
 1/24 Lehigh* 84-64 W
 1/27 at Bucknell* 71-79 L
 1/31 at Colgate* 76-91 L
 2/3 Holy Cross* 92-85 W
 2/7 at Navy* 59-61 L
 2/10 Army* 77-72 W
 2/14 Yale 67-58 W
 2/17 at Lehigh* 67-70 L
 2/21 Bucknell* 73-52 W
 2/24 Colgate* 72-85 L
 3/2 vs. Bucknell# (ot) 55-56(OT) L
 * = Patriot League
 ‡ = at Charleston, S.C.
 # = at Worcester, Mass.

1996-97 (11-17, 5-7 Patriot League)

Coach: Fran O'Hanlon
 11/24 at Dartmouth 50-71 L
 11/26 Harvard 68-89 L
 12/1 Brown 64-59 W
 12/3 Princeton 54-75 L
 12/6 at Marist 76-63 L
 12/7 vs. Yale‡ 72-77 L
 12/10 Swarthmore 86-49 W
 12/20 Haverford 88-37 W
 12/23 at Maryland 67-108 L
 12/28 at Tulane 73-92 L
 12/30 at Louisiana State 43-64 L
 1/6 at Cornell 59-69 L
 1/8 at Lehigh* 90-87 W
 1/13 at Yale 50-81 L
 1/15 Bucknell* 58-59 L
 1/18 at Navy* 55-60 L
 1/22 Holy Cross* 58-69 L
 1/25 Army* 79-77 W
 1/27 Pennsylvania 83-79 W
 1/29 at Colgate* 71-85 L



| | |
|---------------------------|---------|
| 2/1 Lehigh* | 80-70 W |
| 2/8 at Bucknell* | 59-77 L |
| 2/12 Navy* | 72-74 L |
| 2/15 at Holy Cross* | 71-72 L |
| 2/18 at Army* | 71-64 W |
| 2/22 Colgate* | 79-68 W |
| 3/1 vs. Holy Cross* | 70-65 W |
| 3/2 vs. Navy* | 57-96 L |
| * = Patriot League | |
| z = at Poughkeepsie, N.Y. | |
| c = at Bethlehem, Pa. | |

1997-98 (19-9, 10-2 Patriot League)

| | |
|--|----------|
| Coach: Fran O'Hanlon | |
| 11/15 at St. John's | 49-72 L |
| 11/17 CORNELL | 69-53 W |
| 11/19 at Columbia | 60-55 W |
| 11/23 DARTMOUTH | 63-51 W |
| 11/29 at Fla. International ^o | 63-78 L |
| 11/30 vs. Brown ^o | 74-57 W |
| 12/6 at Princeton | 48-73 L |
| 12/8 HAVERFORD | 81-44 W |
| 12/10 SWARTHMORE | 104-47 W |
| 12/22 at Pittsburgh | 66-67 L |
| 12/29 vs. Tennessee St.~ | 71-59 W |
| 12/30 at Wisconsin-Green Bay~ | 52-72 L |
| 1/3 at Brown | 82-71 W |
| 1/7 LEHIGH* | 79-76 W |
| 1/12 at Pennsylvania | 68-74 L |
| 1/14 at Bucknell* | 77-91 L |
| 1/17 NAVY* | 74-78 L |
| 1/20 at Holy Cross* | 95-68 W |
| 1/25 at Army* | 89-70 W |
| 1/28 COLGATE* | 90-85 W |
| 1/31 at Lehigh* | 81-66 W |
| 2/7 BUCKNELL* | 80-74 W |
| 2/11 at Navy* | 66-65 W |
| 2/15 HOLY CROSS* | 78-65 W |
| 2/18 ARMY* | 92-57 W |
| 2/21 at Colgate* | 77-66 W |
| 3/1 vs. Colgate% | 83-77 W |
| 3/5 at Navy% | 85-93 L |
| ^o = Miami, FL | |
| ~ = at Green Bay, Wis. | |
| % = at Annapolis, Md. | |

1998-99 (22-8, 10-2 Patriot League)

| | |
|---------------------------|---------|
| Coach: Fran O'Hanlon | |
| 11/14 at Dartmouth | 56-41 W |
| 11/18 PRINCETON | 63-47 W |
| 11/22 at Purdue (No. 15) | 67-72 L |
| 11/29 at St. Peter's | 76-66 W |
| 12/2 SWARTHMORE | 75-56 W |
| 12/5 at Howard | 68-55 W |
| 12/10 COLUMBIA | 81-61 W |
| 12/12 vs. Delawarez | 78-92 L |
| 12/22 at Towson | 76-69 W |
| 12/29 vs. Troy State* | 80-77 W |
| 12/30 at Utah State* | 67-85 L |
| 1/5 PENNSYLVANIA | 62-74 L |
| 1/9 at Navy* | 72-66 W |
| 1/13 HOLY CROSS* | 76-64 W |
| 1/16 ARMY* | 82-78 W |
| 1/18 at Cornell | 72-54 W |
| 1/20 at Lehigh* | 73-70 W |
| 1/23 COLGATE* | 57-65 L |
| 1/25 at Rutgers | 64-84 L |
| 1/27 at Bucknell* | 66-65 W |
| 2/1 HAVERFORD | 96-62 W |
| 2/3 NAVY* | 74-71 W |
| 2/6 at Holy Cross* | 79-65 W |
| 2/10 at Army* | 89-59 W |
| 2/14 LEHIGH* | 85-49 W |
| 2/17 at Colgate* | 46-47 L |
| 2/21 BUCKNELL* | 93-84 W |
| 2/28 vs. Colgatec | 73-71 W |
| 3/5 BUCKNELL | 67-63 W |
| NCAA TOURNAMENT | |
| 3/12 vs. Miami, FL (#10)s | 54-75 L |
| * = Patriot League | |
| z = Albany, N.Y. | |
| * = at Logan, Utah | |
| c = at West Point, N.Y. | |
| s = at Boston, Mass. | |

1999-2000 (24-7, 11-1 Patriot League)

| | |
|----------------------|---------|
| Coach: Fran O'Hanlon | |
| 11/20 at Columbia | 59-52 W |
| 11/23 at Villanova | 70-74 L |
| 11/29 CORNELL | 65-54 W |
| 12/1 at Howard | 64-55 W |
| 12/6 TOWSON | 57-59 L |
| 12/11 ST. PETER'S | 81-69 W |

| | |
|---------------------------|---------------|
| 12/21 GETTYSBURG | 82-52 W |
| 12/29 vs. St. Joseph's^ | 81-83 (2OT) L |
| 12/30 vs. Alabama State | 88-54 W |
| 1/2 at Georgia Tech | 64-75 L |
| 1/5 DELAWARE VALLEY | 76-58 W |
| 1/8 at Princeton | 70-69 (OT) W |
| 1/11 at Pennsylvania | 76-80 L |
| 1/16 NAVY* | 80-74 W |
| 1/19 at Holy Cross* | 77-70 W |
| 1/22 at Army* | 77-55 W |
| 1/26 LEHIGH* | 87-68 W |
| 1/29 at Colgate* | 64-58 W |
| 2/2 BUCKNELL* | 75-73 W |
| 2/7 ALBANY | 90-70 W |
| 2/9 at Navy* | 66-94 L |
| 2/12 HOLY CROSS* | 77-66 W |
| 2/14 at Stony Brook | 71-69 W |
| 2/16 ARMY* | 69-43 W |
| 2/19 at Lehigh* | 77-63 W |
| 2/23 COLGATE* | 92-51 W |
| 2/27 at Bucknell* | 74-59 W |
| 3/4 ARMYz | 71-45 W |
| 3/5 LEHIGHz | 66-60 W |
| 3/10 NAVYz | 87-61 W |
| NCAA TOURNAMENT | |
| 3/17 vs. Temple (No. 5) s | 47-73 L |
| ^ = Albuquerque, N.M. | |
| z = Easton, Pa. | |
| s = Buffalo, N.Y. | |
| * = Patriot League | |

2000-01 (12-16, 4-8 Patriot League)

| | |
|----------------------|----------------|
| Coach: Fran O'Hanlon | |
| 11/18 at Cornell | 72-62 W |
| 11/21 at Rutgers | 65-72 L |
| 11/25 at St. Peter's | 71-76 L |
| 11/27 ALBRIGHT | 81-60 W |
| 11/29 COLUMBIA | 60-50 W |
| 12/2 at Rider | 69-77 L |
| 12/6 PRINCETON | 80-73 W |
| 12/11 at Fordham | 83-96 L |
| 12/20 SCRANTON | 89-81 L |
| 12/29 vs. La Salle# | 78-81 (OT) L |
| 12/30 vs. Yale# | 85-77 W |
| 1/3 at Marist | 80-82 (OT) L |
| 1/10 LEHIGH* | 80-90 L |
| 1/13 BUCKNELL* | 71-74 (OT) L |
| 1/17 at Navy* | 67-89 L |
| 1/20 PENNSYLVANIA | 74-82 L |
| 1/24 HOLY CROSS* | 82-67 W |
| 1/27 ARMY* | 103-104 (OT) L |
| 1/31 at Colgate* | 66-79 L |
| 2/3 at Lehigh* | 59-69 L |
| 2/7 at Bucknell* | 62-60 W |
| 2/11 NAVY* | 87-78 W |
| 2/14 at Albany | 78-65 W |
| 2/17 at Holy Cross* | 62-78 L |
| 2/19 STONY BROOK | 80-76 (OT) W |
| 2/21 at Army* | 89-62 W |
| 2/24 COLGATE* | 72-80 L |
| 3/3 Lehigh+ | 71-83 L |
| # = Berkeley, Calif. | |
| + = Annapolis, Md. | |
| * = Patriot League | |

2001-02 (15-14, 8-6 Patriot League)

| | |
|----------------------|--------------|
| Coach: Fran O'Hanlon | |
| 11/17 at Albany | 80-72 W |
| 11/21 at Penn State | 75-66 L |
| 11/24 at Miami, Fla. | 79-69 L |
| 11/27 ST. PETER'S | 69-66 W |
| 11/29 MARIST | 86-80 L |
| 12/1 at Columbia | 52-48 L |
| 12/5 at Drexel | 88-84 W |
| 12/8 CORNELL | 73-44 W |
| 12/19 SCRANTON | 90-47 W |
| 12/21 at Princeton | 67-61 L |
| 12/30 HOWARD | 93-84 W |
| 1/2 RIDER | 86-66 L |
| 1/9 at Bucknell* | 65-64 L |
| 1/12 HOLY CROSS* | 64-58 W |
| 1/16 at American* | 57-52 W |
| 1/19 at Army* | 85-72 L |
| 1/21 at Pennsylvania | 73-66 L |
| 1/23 at Navy* | 92-79 W |
| 1/26 COLGATE* | 71-67 L |
| 1/30 at Lehigh* | 68-63 W |
| 2/2 BUCKNELL* | 74-68 W |
| 2/6 at Holy Cross* | 76-70 (OT) L |
| 2/9 AMERICAN* | 77-74 W |
| 2/13 ARMY* | 78-69 L |
| 2/16 NAVY* | 80-72 W |

| | |
|------------------------|---------|
| 2/20 LEHIGH* | 98-93 W |
| 2/24 at Colgate* | 85-73 L |
| 3/2 vs. Colgate + | 74-71 W |
| 3/3 vs. American + | 66-58 L |
| * = Patriot League | |
| + = Upper Marlboro, Md | |

2002-03 (13-16, 6-8 Patriot League)

| | |
|-------------------------|---------|
| Coach: Fran O'Hanlon | |
| 11/20 at Binghamton | 77-68 L |
| 11/26 at La Salle | 70-66 L |
| 11/30 at Arizona State | 85-62 L |
| 12/3 DREXEL | 65-47 L |
| 12/7 PRINCETON | 89-75 L |
| 12/17 URSINUS | 87-70 W |
| 12/19 at St. Peter's | 64-53 W |
| 12/21 at Massachusetts | 54-52 W |
| 12/30 ALBANY | 83-75 W |
| 1/2 COLUMBIA | 61-52 W |
| 1/5 at Cornell | 80-73 L |
| 1/7 CENTENARY | 97-42 W |
| 1/11 at Colgate* | 66-64 L |
| 1/15 at Army* | 73-59 W |
| 1/18 HOLY CROSS* | 76-70 L |
| 1/21 PENN | 76-66 L |
| 1/24 at Lehigh* | 85-73 L |
| 1/26 at Bucknell* | 68-48 L |
| 1/31 AMERICAN | 67-66 W |
| 2/2 NAVY* | 70-52 W |
| 2/7 COLGATE* | 60-56 W |
| 2/13 ARMY* | 57-43 W |
| 2/15 at Holy Cross* | 73-65 L |
| 2/21 BUCKNELL* | 70-53 L |
| 2/23 LEHIGH* | 86-68 W |
| 2/27 at Navy* | 79-74 L |
| 3/1 at American | 79-62 L |
| 3/8 vs. Colgate+ | 89-76 W |
| 3/9 vs. American+ | 74-55 L |
| * = Patriot League | |
| + = Upper Marlboro, Md. | |

2003-04 (18-10, 9-5 Patriot League)

| | |
|---------------------------|----------------|
| Coach: Fran O'Hanlon | |
| 11/22 at Rutgers | 71-65 L |
| 11/24 ST. PETER'S | 74-71 W |
| 11/29 LA SALLE | 83-63 W |
| 12/2 at Drexel | 69-68 W |
| 12/5 CENTENARY | 96-54 W |
| 12/7 BINGHAMTON | 77-72 W |
| 12/17 LYCOMING | 84-73 W |
| 12/20 CORNELL | 87-79 W |
| 12/28 at USC | 81-59 L |
| 12/30 at C. S. Northridge | 99-76 W |
| 1/3 at Columbia | 82-73 W |
| 1/7 at Penn | 88-68 L |
| 1/10 COLGATE* | 97-86 W |
| 1/14 ARMY* | 76-40 W |
| 1/17 at Holy Cross* | 60-58 (OT) W |
| 1/23 LEHIGH* | 111-104 (OT) W |
| 1/25 BUCKNELL* | 81-72 W |
| 1/30 at American* | 86-83 (OT) W |
| 2/1 at Navy* | 65-50 W |
| 2/6 at Colgate* | 75-66 L |
| 2/11 at Army* | 78-70 W |
| 2/14 HOLY CROSS* | 78-72 W |
| 2/20 at Bucknell* | 79-61 L |
| 2/22 at Lehigh* | 78-73 L |
| 2/26 NAVY* | 75-71 L |
| 2/28 AMERICAN* | 90-82 L |
| 3/6 vs. Colgate+ | 67-66 (OT) L |
| * = Patriot League | |
| + = Upper Marlboro, Md. | |

2004-05 (9-19, 5-9 Patriot League)

| | |
|---------------------------|--------------|
| 11/20 at Duquesne | 85-71 W |
| 11/23 at Saint Peter's | 81-64 L |
| 11/27 PRINCETON | 40-38 L |
| 11/30 DREXEL | 78-67 L |
| 12/4 at Louisville (17) | 98-57 L |
| 12/6 at Cornell | 75-72 L |
| 12/10 at Marist | 83-79 L |
| 12/13 C.S. NORTHBRIDGE | 95-89 (OT) W |
| 12/22 MORAVIAN | 73-56 W |
| 12/28 at Georgia Tech (9) | 92-58 L |
| 1/02 COLUMBIA | 65-62 W |
| 1/04 at St. Francis, N.Y. | 79-64 L |
| 1/08 NAVY* | 90-80 W |
| 1/12 at Lehigh* | 63-55 W |
| 1/15 at American* | 76-74 L |
| 1/18 PENN | 85-63 L |
| 1/21 at Bucknell* | 71-54 L |
| 1/23 at Colgate* | 80-72 L |

| | |
|---------------------|--------------|
| 1/28 HOLY CROSS* | 74-57 L |
| 1/30 ARMY* | 66-49 W |
| 2/4 BUCKNELL* | 89-69 L |
| 2/6 COLGATE* | 62-61 L |
| 2/11 at Holy Cross* | 81-60 L |
| 2/13 at Army* | 76-73 W |
| 2/19 AMERICAN* | 93-89 (OT) W |
| 2/23 at Navy* | 76-57 L |
| 2/26 LEHIGH* | 81-56 W |
| 3/4 at Bucknell | 70-34 L |
| * = Patriot League | |

2005-06 (11-17, 5-9 Patriot League)

| | |
|-------------------------|--------------|
| 11/18 at Saint Joseph's | 70-47 L |
| 11/20 at Notre Dame | 84-66 L |
| 11/22 ALVERNIA | 86-80 W |
| 11/27 at Princeton | 57-46 W |
| 11/29 CORNELL | 47-43 W |
| 12/1 ST. PETER'S | 79-76 L |
| 12/3 MARIST | 92-84 L |
| 12/6 ST. FRANCIS, NY | 89-81 (OT) W |
| 12/10 at Columbia | 71-67 L |
| 12/20 DICKINSON | 72-52 W |
| 12/31 at Fordham | 71-52 L |
| 1/3 at Mount St. Mary's | 76-63 W |
| 1/7 at Holy Cross* | 86-57 L |
| 1/11 COLGATE* | 85-74 W |
| 1/14 NAVY* | 80-67 W |
| 1/16 at Penn | 105-73 L |
| 1/18 at Bucknell* | 62-32 L |
| 1/21 LEHIGH* | 76-58 L |
| 1/25 at Army* | 82-61 W |
| 1/28 at American* | 74-56 L |
| 2/4 HOLY CROSS* | 77-61 L |
| 2/8 at Colgate* | 63-55 W |
| 2/11 at Navy* | 89-69 L |
| 2/15 BUCKNELL* (24) | 69-49 L |
| 2/19 at Lehigh* | 82-64 L |
| 2/22 ARMY* | 73-64 W |
| 2/25 AMERICAN* | 87-67 L |
| 3/3 vs. American+ | 75-62 L |
| * = Patriot League | |
| + = Lewisburg, Pa. | |

2006-07 (9-21, 3-11 Patriot League)

| | |
|--------------------------|--------------|
| 11/10 at Wagner | 76-70 W |
| 11/13 vs. Indiana+ | 91-66 L |
| 11/14 vs. Notre Dame+ | 62-80 L |
| 11/17 ST. JOSEPH'S | 81-73 L |
| 11/21 at UMBC | 86-51 L |
| 11/25 at Miami (Fla.) | 98-66 L |
| 11/28 PRINCETON | 44-42 L |
| 12/2 at St. Peter's | 72-69 W |
| 12/4 at NJIT | 76-57 W |
| 12/7 LYCOMING | 72-54 W |
| 12/11 COLUMBIA | 75-58 L |
| 12/20 KING'S | 89-80 W |
| 12/22 MOUNT ST. MARY'S | 58-56 W |
| 12/28 at Temple | 96-73 L |
| 12/30 at San Diego State | 78-68 L |
| 1/6 HOLY CROSS* | 84-74 L |
| 1/10 at Colgate* | 71-65 W |
| 1/13 at Navy* | 60-44 L |
| 1/17 BUCKNELL* | 67-61 L |
| 1/20 at Lehigh* | 77-69 L |
| 1/24 ARMY* | 76-68 W |
| 1/27 AMERICAN* | 73-59 W |
| 2/3 at Holy Cross* | 74-52 L |
| 2/7 COLGATE* | 54-51 L |
| 2/10 NAVY* | 70-63 L |
| 2/15 at Bucknell* | 76-58 L |
| 2/18 LEHIGH* | 75-71 (OT) W |
| 2/21 at Army* | 83-65 L |
| 2/23 at American* | 78-67 L |
| 2/28 at Holy Cross | 83-58 L |
| + = NIT Season Tip-Off | |
| * = Patriot League | |

97 seasons (1900-01 to 2006-07):
1181-1048 (.530)

Patriot League Record
Regular Season: 96-128 (.429)
Tournament: 10-15 (.400)

