

# MONTANA BASKETBALL



Game Notes #9 | Dec. 15, 2018 | Contact: Nic Hallisey, Assistant SID | 970/231-4789 | nic.hallisey@umontana.edu

## SCHEDULE

Date	Opponent	Time/Result
Nov. 9	Georgia State	W, 81-74
Nov. 12	Montana Tech	W, 79-55
Nov. 16	vs. Incarnate Word <sup>5</sup>	W, 93-66
Nov. 17	vs. Miami (Ohio) <sup>5</sup>	W, 73-71
Nov. 18	vs. Georgia Southern <sup>5</sup>	L, 80-77
Nov. 28	at Creighton	L, 98-72
Dec. 3	College of Idaho	W, 80-52
Dec. 8	at UC Irvine	L, 60-51
Dec. 17	North Dakota State	7 p.m.
Dec. 19	at Arizona	6:30 p.m.
Dec. 22	at South Dakota State	6 p.m.
Dec. 29	at Northern Arizona*	2 p.m.
Dec. 31	at Southern Utah*	6:30 p.m.
Jan. 3	Sacramento State*	7 p.m.
Jan. 5	Portland State*	7 p.m.
Jan. 10	at Eastern Washington*	7 p.m.
Jan. 12	at Northern Colorado*	2 p.m.
Jan. 19	at Idaho*	8 p.m.
Jan. 24	Idaho State*	7 p.m.
Jan. 26	Weber State*	7 p.m.
Feb. 2	at Montana State*	7 p.m.
Feb. 7	Idaho*	7 p.m.
Feb. 9	Eastern Washington*	7 p.m.
Feb. 14	at Weber State*	7 p.m.
Feb. 16	at Idaho State*	7 p.m.
Feb. 23	Montana State*	7 p.m.
Feb. 25	Northern Colorado*	7 p.m.
March 2	Southern Utah*	7 p.m.
March 4	Northern Arizona*	7 p.m.
March 7	at Portland State*	8 p.m.
March 9	at Sacramento State*	8 p.m.
March 13	Big Sky Championship [First Round] <sup>^</sup>	TBD
March 14	Big Sky Championship [Quarterfinals] <sup>^</sup>	TBD
March 15	Big Sky Championship [Semifinals] <sup>^</sup>	TBD
March 16	Big Sky Championship [Finals] <sup>^</sup>	6 p.m.

All start times listed as Mountain Time

<sup>5</sup> Islands of the Bahamas Showcase (Nassau, Bahamas)

\* Big Sky Conference game

<sup>^</sup> Big Sky Championship (Boise, Idaho)

## MONTANA VS. NORTH DAKOTA STATE

MONDAY, DEC. 17 / 7 P.M. / MISSOULA, MONT. / DAHLBERG ARENA (7,322)



### MONTANA GRIZZLIES

2018-19 Record ..... 5-3 (0-0 Big Sky)  
 2017-18 Record ..... 26-8 (16-2 Big Sky)  
 2017-18 Record ..... NCAA First Round  
 Head Coach ..... Travis DeCuire (5th Season)  
 Record at UM ..... 88-52 (55-17 BSC)  
 Career Record ..... Same

### STATISTICAL LEADERS

Minutes/Game ..... M. Oguine (31.6)  
 Points/Game ..... M. Oguine (15.1)  
 Rebounds/Game ..... J. Akoh (8.0)  
 Three-Pointers ... K. Manuel/A. Rorie (14)  
 Assists ..... A. Rorie (31)  
 Blocks ..... M. Oguine (7)  
 Steals ..... S. Pridgett (14)



### NORTH DAKOTA STATE BISON

2018-19 Record ..... 4-7 (0-0 Summit)  
 2017-18 Record ..... 15-17 (5-9 Summit)  
 2017-18 Postseason ... Summit League Semis  
 Head Coach ..... David Richman, 5th Season  
 Record at NDSU ..... 81-58  
 Career Record ..... Same

### STATISTICAL LEADERS

Minutes/Game ..... V. Shahid (30.5)  
 Points/Game ..... V. Shahid (12.5)  
 Rebounds/Game ..... T. Ward (5.0)  
 Three-Pointers ..... V. Shahid (19)  
 Assists ..... V. Shahid (30)  
 Blocks ..... D. Geu (12)  
 Steals ..... V. Shahid/T. Ward (8)

## BY THE NUMBERS

MONTANA			North Dakota State		
Rank	Avg	Category	Avg	Rank	
162	75.8	Points/Game	71.5	260	
138	69.5	Opp. Points/Game	77.0	289	
138	+6.3	Scoring Margin	+5.5	306	
7	.512	FG%	.433	274	
141	.424	Opp. FG%	.492	340	
102	.365	3FG%	.331	238	
294	.370	Opp. 3FG%	.359	308	
320	.630	FT%	.758	23	
336	31.1	Rebounds/Game	30.1	341	
331	-1.7	Rebounding Margin	-4.6	324	
173	13.9	Assists/Game	11.5	285	
206	13.9	Turnovers/Game	11.8	31	
138	+1.3	Turnover Margin	-0.6	190	
185	1.0	Assist-Turnover Ratio	1.0	161	
103	7.4	Steals/Game	4.9	325	
127	3.9	Blocks/Game	2.5	272	

## GAME COVERAGE

**TV:** SWX Montana

..... PxP: Shaun Rainey

..... Color: Ryan Tootell

**Stream:** Pluto TV (ch. 237)

..... [www.WatchBigSky.com](http://www.WatchBigSky.com)

**Audio:** Montana Grizzly Radio Network

..... PxP: Riley Corcoran

..... KGVO (1290 AM/98.3 FM)

..... [bit.ly/grizlisten](http://bit.ly/grizlisten) or [TuneIn](http://TuneIn) app

**Live Stats:** GoGriz.com

**Twitter:** @MontanaGrizBB

## SERIES HISTORY

**Overall:** 6-3

**In Missoula:** 5-0

**In Fargo:** 1-3

**Neutral:** 0-0

## GRIZ HOOPS ROSTER

No.	Name	Year	Pos.	Ht.	Wt.	Hometown (Previous School)	GP-GS	PPG	RPG	AST	BLK	STL
0	Michael Oguine	Sr.	G	6-2	180	Los Angeles, Calif. (Chaminade Prep H.S.)	8-8	15.1	5.6	24	7	10
1	Timmy Falls	So.	G	6-2	165	Dublin, Calif. (Dublin H.S.)	6-3	5.5	1.3	16	2	8
2	Donaven Dorsey	R-Sr.	G	6-7	216	Lacey, Wash. (Washington/Timberline H.S.)	7-2	6.0	1.1	4	2	3
3	Freddy Brown III	Fr.	G	6-2	164	Seattle, Wash. (Nathan Hale H.S.)	5-0	0.6	0.2	0	0	0
4	Sayeed Pridgett	Jr.	G	6-5	200	Oakland, Calif. (El Cerrito H.S.)	8-8	14.3	4.4	12	5	14
10	Eddy Egun	Fr.	G	6-4	185	Woodland Hills, Calif. (El Camino Real H.S.)	--	--	--	--	--	--
12	Kendal Manuel	R-Jr.	G	6-4	177	Billings, Mont. (Oregon State/Skyview H.S.)	8-0	8.9	2.4	10	0	6
13	Ben Carter	Fr.	F	6-10	282	Adelaide, Australia (Sacred Heart College)	3-0	1.3	1.3	0	0	1
14	Ahmaad Rorie	R-Sr.	G	6-1	183	Tacoma, Wash. (Oregon/Lincoln H.S.)	8-8	14.8	3.4	31	1	7
15	Jamar Akoh	R-Sr.	F	6-8	253	Rancho Cucamonga, Calif. (Cal State Fullerton/Los Osos H.S.)	2-2	14.0	8.0	2	0	3
23	Mack Anderson	Fr.	F	6-9	202	Bozeman, Mont. (Bozeman H.S.)	5-0	3.6	2.0	2	3	0
24	Bobby Moorehead	Sr.	G	6-7	192	Tacoma, Wash. (Stadium H.S.)	8-8	5.4	3.9	8	6	6
32	Peter Jones	R-Fr.	F	6-8	218	Seattle, Wash. (O'Dea H.S.)	4-0	0.0	0.5	0	0	0
33	Kelby Kramer	R-Fr.	C	6-10	237	Rock Springs, Wyo. (Rock Springs H.S.)	7-1	1.6	1.7	2	5	1
34	Tony Miller	Jr.	F	6-6	215	Woodinville, Wash. (Seattle Pacific/Woodinville H.S.)	--	--	--	--	--	--

**Head Coach:** Travis DeCuire (Montana, '94), Fifth Season

**Associate Head Coach:** Chris Cobb (Menlo College, '09), Fifth Season

**Assistant Coach:** Jay Flores (Chico State, '12), Third Season

**Assistant Coach:** Rachi Wortham (Eastern Washington, '06), Third Season

**Graduate Assistants:** Jesse Bartels, Anderson Clarke



## MONTANA BASKETBALL

**Michael Oguine**

Sr. • G • 6-2/180  
Los Angeles, Calif.  
Chaminade Prep H.S.

**0****Timmy Falls**

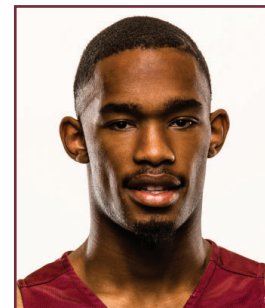
So. • G • 6-2/165  
Dublin, Calif.  
Dublin H.S.

**1****Donaven Dorsey**

R-Sr. • G • 6-7/216  
Lacey, Wash.  
Washington/Timberline H.S.

**2****Freddy Brown III**

Fr. • G • 6-2/164  
Seattle, Wash.  
Nathan Hale H.S.

**3****Sayeed Pridgett**

Jr. • G • 6-5/200  
Oakland, Calif.  
El Cerrito H.S.

**4****Eddy Egun**

Fr. • G • 6-4/185  
Woodland Hills, Calif.  
El Camino Real H.S.

**10****Kendal Manuel**

R-Jr. • G • 6-4/177  
Billings, Mont.  
Oregon State/Skyview H.S.

**12****Ben Carter**

Fr. • F • 6-10/282  
Adelaide, Australia  
Sacred Heart College

**13****Ahmaad Rorie**

R-Sr. • G • 6-1/183  
Tacoma, Wash.  
Oregon/Lincoln H.S.

**14****Jamar Akoh**

R-JS. • F • 6-8/253  
Rancho Cucamonga, Calif.  
Cal State Fullerton/Los Osos H.S.

**15****Mack Anderson**

Fr. • F • 6-9/202  
Bozeman, Mont.  
Bozeman H.S.

**23****Bobby Moorehead**

Sr. • G • 6-7/192  
Tacoma, Wash.  
Stadium H.S.

**24****Peter Jones**

R-Fr. • F • 6-8/218  
Seattle, Wash.  
O'Dea H.S.

**32****Kelby Kramer**

R-Fr. • C • 6-10/237  
Rock Springs, Wyo.  
Rock Springs H.S.

**33****Tony Miller**

Jr. • F • 6-6/215  
Woodinville, Wash.  
Seattle Pacific/Woodinville H.S.

**34****Travis DeCuire**

Head Coach  
5th Season  
Montana, 1994

**Chris Cobb**

Associate Head Coach  
5th Season  
Menlo College, 2009

**Jay Flores**

Assistant Coach  
3rd Season  
Chico State, 2012

**Rachi Wortham**

Assistant Coach  
3rd Season  
Eastern Washington, 2006





## MONTANA BASKETBALL



## THE LAST TIME OUT...

## Game #8

Dec. 8, 2018

Irvine, Calif.

## Montana 51 • 5-3

#	Player	Total		3-Ptr		Rebounds			PF	TP	A	TO	Blk	Stl	Min
		FG-FGA	FG-FGA	FT-FTA	FT-FTA	Off	Def	Tot							
15	AKOH, Jamar	3-6	0-0	0-2	0-2	3	5	8	4	6	1	3	0	1	28
00	Michael Oguine	4-9	3-6	5-6	5-6	2	3	5	4	16	1	5	0	3	36
04	Sayeed Pridgett	6-12	1-3	0-1	0-1	2	1	3	4	13	1	2	0	3	37
14	RORIE, Ahmaad	3-11	1-4	0-0	0-0	0	4	4	3	7	2	3	0	0	33
24	MOOREHEAD, Bobby	1-6	1-5	0-0	0-0	0	2	2	0	3	1	2	3	1	31
01	Timmy Falls	0-2	0-2	2-2	2-2	0	1	1	3	2	2	2	0	0	14
12	MANUEL, Kendal	0-1	0-1	2-2	2-2	0	1	1	0	2	0	0	0	0	9
13	CARTER, Ben	1-2	0-1	0-0	0-0	0	2	2	4	2	0	0	0	1	10
33	KRAMER, Kelby	0-1	0-0	0-0	0-0	1	0	1	2	0	0	0	0	0	2
Team															
Totals		18-50	6-22	9-13	9-13	13	20	33	24	51	8	18	3	9	200

FG % 1st Half: 9-24 37.5% 2nd half: 9-26 34.6% Game: 18-50 36.0%  
 3FG % 1st Half: 4-12 33.3% 2nd half: 2-10 20.0% Game: 6-22 27.3%  
 FT % 1st Half: 4-5 80.0% 2nd half: 5-8 62.5% Game: 9-13 69.2%

Deadball  
Rebounds  
1,1

## UC Irvine 60 • 9-2

#	Player	Total		3-Ptr		Rebounds			PF	TP	A	TO	Blk	Stl	Min
		FG-FGA	FG-FGA	FT-FTA	FT-FTA	Off	Def	Tot							
05	Jonathan Galloway	1-2	0-0	4-6	4-6	2	5	7	2	6	0	1	1	0	22
11	John Edgar Jr.	0-2	0-0	0-0	0-0	2	1	3	1	0	0	1	0	0	18
42	Tommy Rutherford	4-9	0-1	1-2	1-2	5	2	7	0	9	1	2	2	0	19
02	Max Hazzard	2-8	1-3	0-0	0-0	1	1	2	1	5	3	0	0	3	25
24	Eyassu Worku	3-8	0-0	1-2	1-2	0	0	0	2	7	1	3	0	0	27
03	Robert Cartwright	0-3	0-1	4-4	4-4	0	0	0	2	4	1	1	1	4	19
14	Evan Leonard	5-9	5-7	3-4	0-0	0	4	4	2	18	1	3	0	3	30
25	Spencer Rivers	0-0	0-0	1-2	0-0	0	0	0	0	1	0	1	0	0	3
40	Collin Welp	2-2	0-0	0-0	0-0	0	3	3	2	4	1	1	0	0	11
50	Elston Jones	3-6	0-0	0-2	0-2	3	2	5	3	6	1	2	1	0	26
Team															
Totals		20-49	6-12	14-22	14-22	14	21	35	15	60	9	15	5	10	200

FG % 1st Half: 9-21 42.9% 2nd half: 11-28 39.3% Game: 20-49 40.8%  
 3FG % 1st Half: 5-8 62.5% 2nd half: 1-4 25.0% Game: 6-12 50.0%  
 FT % 1st Half: 4-8 50.0% 2nd half: 10-14 71.4% Game: 14-22 63.6%

Deadball  
Rebounds  
2,1

Officials: Mark Fulton, Jeff Ketchu, Daryl Gellinas  
 Technical fouls: Montana-None. UC Irvine-None.  
 Attendance: 1237

Score by periods	1st	2nd	Total
Montana	26	25	51
UC Irvine	27	33	60

Points	In	Off	2nd	Fast	Bench
UM	22	20	13	7	6
UCI	26	20	12	10	33

Last FG - UM 2nd-00:14, UCI 2nd-00:51.  
 Largest lead - UM by 10 1st-14:35, UCI by 9 2nd-00:34.  
 UM led for 21:00. UCI led for 12:43. Game was tied for 06:17.

Score tied - 8 times.  
 Lead changed - 15 times.



## LATE UC IRVINE RUN CLIPS GRIZZLIES

**IRVINE, Calif.**—Montana held a 49-48 lead with 3 minutes, 20 seconds to play on Saturday night before UC Irvine closed the game on a 12-2 run to defeat the Grizzlies, 60-51, at the Bren Events Center.

The contest was hotly contested throughout, with neither team leading by more than a single possession for 18 consecutive minutes. That changed when Michael Oguine hit a clutch three-pointer to extend the Grizzlies' second-half run to 9-2 and give Montana a six-point lead (35-29 with 15:10 to play). Montana would lead by as many as six points multiple times in the second half and didn't relinquish its lead until a cold stretch gave the Anteaters a 41-39 advantage with 7:09 to play.

An Oguine free throw with just over 3 minutes to play put the Grizzlies on top once again, but UC Irvine scored the game's next 10 points to put the game out of reach. Montana never trailed by more than three points until the final 85 seconds of the contest.

Head coach Travis DeCuire stated all week that rebounding would be a key factor. UC Irvine ranks in the top 15 percent of the nation for rebounding, but Montana out-rebounded the home team, 20-11, in the first half. That changed in the second half, as UC Irvine totaled 24 boards (to Montana's 13), including a 12-3 advantage on the offensive glass.

## Game Notables

- After missing the past six games with a wrist injury, senior forward Jamar Akoh made his return to the lineup, earning the start and playing 28 minutes. He finished the night with six points and eight rebounds.
- Freshman Ben Carter saw his first action against a Division-I opponent, totaling 10 minutes down low, also scoring two points, two rebounds and one steal.
- Oguine led the Griz with 16 points and three steals. Sayeed Pridgett had 13 points and three steals.
- Bobby Moorehead had a career-high three blocked shots, while Pridgett played 37 minutes, one shy of his career high.
- The Grizzlies led for more than 21 minutes, compared to just 12:43 for UC Irvine.
- Montana was held to season lows for points and field-goal percentage (36.0) and turned the ball over a season-high 18 times.
- Montana opened the game on a 10-0 run, holding the Anteaters without a point for the first 5:50 (0-for-6 shooting).
- Montana opened the game 4-of-8 from three-point range, before going just 2-of-14 after.
- After leading by six, 39-33, with 11:15 to play, Montana missed six consecutive shots, allowing the Anteaters to go on an 8-0 run and regain the lead.
- Montana's game plan was altered down the stretch due to foul trouble. Akoh picked up his fourth foul with 12 minutes to play. Carter, Oguine and Pridgett also had four fouls, while Timmy Falls and Ahmaad Rorie finished with three.

## Quoting DeCuire

*(on the game during the stretch)*

"You get to the last 8 minutes of the game, there's nothing that can be said in the huddle. Neither team was scoring outside of their sets; both teams were defending very well. It came down to who's going to make a tough shot, and they made a couple open threes, they killed us on the glass, and they got the loose balls."

*(on what went wrong during an offensive cold stretch)*

"We weren't playing together. We talked about coming to jump stops and then finding the open man. We shot a lot of contested shots. When the going got tough, we lost sight of the scout."

*(on having Akoh back on the floor)*

"When he's on the floor we're just way better defensively. Our defensive execution got better, our ball-screen coverage, our ability to rebound. We put people in places they needed to be. The issue on the offensive end, though, is we need patience and we need to play together."

*(on his message to the team)*

"We beat ourselves. Our lack of discipline and ability to play together on offense cost us. We have to have patience and not foul guys."



# MONTANA BASKETBALL



## GRIZZLIES FINDING THEIR WAY THROUGH TRIALS

Final exams are on the back burner and now, for the next four weeks, the Grizzlies can focus strictly on basketball. After an eight-day layoff, Montana returns to the court on Monday night to host North Dakota State.

NDSU is 4-7 on the year, but is coming off of back-to-back wins over Eastern Washington and Missouri State. Two of their losses have come on the road to powerhouse programs Iowa State and then-No. 1 Gonzaga, making them a more dangerous team than their record may initially indicate.

The Bison have a balanced scoring offense that Montana head coach Travis DeCuire said will challenge his team's patience.

"They're pretty methodical offensively," DeCuire said. "Their ball goes side to side until you break down, so they're going to challenge your mental toughness. We're going to have to be patient on both sides of the floor."

While the Grizzlies haven't played the Bison in three seasons, they have a bit of advanced scouting on NDSU. Both teams participated in the Islands of the Bahamas Showcase last month, and if NDSU would have beat Miami (Ohio), the two teams would have met up in the semifinals. Montana's coaching staff watched film on the Bison in preparation for the tournament, and saw them play live in Nassau, but DeCuire said their style of play has changed a bit over the past month, causing them to break down new film this week.

The Grizzlies are coming off of a 60-51 loss at UC Irvine last Saturday, a team that is 10-2 on the year and the runaway favorites to win the Big West Conference. An early-season loss to a stacked mid-major program on the road isn't bad in the grand scheme of things, but Montana also feels like it gave away a potential signature win.

Montana led by as many as six points in the second half and held a lead with 3 minutes to play, before Irvine closed the game on a 12-2 run. The Grizzlies led for 21 minutes of action and never trailed by more than a single possession until the final 85 seconds.

"We'd like to have a couple of those games back," DeCuire said, noting that his team needs to find the ability to close out games. "Overall, though, I think we're in a good spot."

Montana's three losses have come to teams with a combined record of 23-9. In all three, the Grizzlies were short-handed.

After using the same starting lineup for all 34 games a year ago, Montana has already used four different lineups this year. Despite being a veteran-laden roster with plenty of returning talent, seven players have made their Griz debuts this season, including several freshmen filling minutes that are trying now but will have value in the long run.

Now, though, Montana is starting to get back to full strength. The biggest absence has been all-conference big man Jamar Akoh, who missed six games with a wrist injury before making a return at Irvine. He scored six points and collected a team-high eight rebounds while battling foul trouble and working back to full strength.

"I think we're playing at a high level, we just need to hang in there and ride it out, and once we're all together see what happens," DeCuire

said. "There are times where you have to handle adversity, and we're in the midst of that. We're headed in the right direction, though. When everyone is ready to go and on the floor, we can be a very good basketball team."

## SCOUTING NORTH DAKOTA STATE

- NDSU is 4-7 on the year, but is coming off of back-to-back wins over Eastern Washington and Missouri State. The Bison are 0-4 on the road.
- Four Bison average at least 9.5 points per game, led by Western Nebraska Community College transfer Vinnie Shahid (12.5). Shahid also leads the team for minutes, three-pointers, free-throw shooting assists and steals.
- Junior guard Tyson Ward, who leads the team for rebounding, was named to the preseason All-Summit League second team in October.
- The Bison rank 23rd nationally, converting more than 75 percent of their free-throw attempts.
- While NDSU has a negative turnover margin, its 11.6 turnovers-per-game average ranks 31st nationally.
- Opponents are scoring on nearly half of their shots (49.2 percent). Overall, the Bison rank in the bottom 15 in the NCAA for field-goal defense and rebounding.
- David Richman is in his fifth season in Fargo. During his first season, he helped NDSU to a conference title and NCAA tournament appearance.

## SERIES VS. THE BISON

Montana is 6-3 all-time vs. North Dakota State, including a perfect 5-0 on its home court. The Grizzlies have won five of the past six meetings in the series, but lost the most-recent game, a 73-53 road loss in 2015-16. The year prior, Travis DeCuire's team was victorious at home. DeCuire is 1-1 vs. NDSU. Both Michael Oguine (5 points, 6 rebounds, 1 block) and Bobby Moorehead (5 points, 1 block, 1 steal) saw action in the 2015-16 meeting vs. the Bison.

## HOME COOKING

Montana owns the nation's fourth-longest active home winning streak. The Grizzlies have won 18 consecutive home games dating back to the 2016-17 season.

## HOME STREAKS

1.	South Dakota State	26
2.	Houston	22
3.	College of Charleston	21
4.	<b>Montana</b>	<b>18</b>
	Utah Valley	18

Montana went a perfect 14-0 at home last season, marking the first time in 26 seasons and just the fifth time ever a Grizzlies team has gone undefeated at home (also: 1991-92 (18-0), 1949-50 (15-0), 1983-84 (14-0) and 1974-75 (12-0)). The Grizzlies boast one of the nation's best home-court advantages, going 703-245 (.742) in their home arena, including 121-25 (.829) over the past decade.



# MONTANA BASKETBALL



## NO PROBLEM IN NON-CONFERENCE

A win on Monday would guarantee Montana a winning non-conference record for the second season in a row. Prior to last year (7-5), Montana hadn't posted a winning record through non-conference play since 2011-12.

Since the turn of the century, Montana has had a winning non-conference record five times (2005-06, 2009-10, 2010-11, 2011-12, 2017-18), advancing to the NCAA tournament in four of those seasons and the CBI in the other.

## HOT SHOOTING

Montana made at least half of its shots in six consecutive games from Nov. 12 through Dec. 3, and on the season is connecting on 51.2 percent of its attempts. The Grizzlies led the nation a week ago in field-goal shooting, and still rank in the top 10 (seventh).

The Grizzlies have a pair of shooters who rank in the top 10 in the Big Sky for shooting, led by Sayeed Pridgett's .641 clip (24th in NCAA). Michael Oguine (.567; ninth) is also in the top 10, while big men Jamar Akoh (.714), Ben Carter (.667), Kelby Kramer (.625) and Mack Anderson (.583) have each made more than half of their shot attempts, but don't meet the minimum shots required to rank among the Big Sky leaders.

## THREE-POINT SUCCESS

One of Montana's only Achilles' heels during the 2017-18 season was its lack of ability to shoot from deep. The Grizzlies made just 5.5 treys a year ago, a figure which ranked 331st nationally. A year later, Montana is now averaging 8.3 threes per game and is hitting at a .365 clip (102nd). The Grizzlies have made at least eight three-pointers in six of eight games this season. The team reached that total just four times in all of 2017-18.

## WINNING NOVEMBER

Montana posted a 4-2 record during the opening month of the season, the program's best November winning percentage since also going 4-2 in 2011-12. That year, the Grizzlies finished the year 26-7 and in the NCAA tournament.

## OFFENSIVE WEAPONS

Not only does Montana hold one of the nation's top field-goal percentages, but the Grizzlies are also getting production from multiple weapons. Montana is the only school to have three players rank in the top 15 in the Big Sky for scoring: Michael Oguine (15.1), Ahmaad Rorie (14.8) and Sayeed Pridgett (14.3). Jamar Akoh is averaging 14.0 points per game and would rank 16th in the league, if he had enough games to qualify.

Montana is also the only team to have three individuals rank in the top 15 in the Big Sky for assists, as well as blocked shots.

## 2018-19 BIG SKY CONFERENCE STANDINGS

School	Overall	Pct.	Home	Away	Neutral	Streak
Northern Colorado	6-2	.750	3-0	3-2	0-0	L1
Sacramento State	6-2	.750	4-0	1-2	1-0	W2
<b>Montana</b>	<b>5-3</b>	<b>.625</b>	<b>3-0</b>	<b>0-2</b>	<b>2-1</b>	<b>L1</b>
Southern Utah	5-3	.625	3-0	2-3	0-0	W1
Idaho State	4-3	.571	2-1	2-2	0-0	W2
Portland State	5-5	.500	4-1	0-3	1-1	L2
Weber State	5-5	.500	3-1	0-2	2-2	L3
Montana State	3-6	.333	2-1	0-5	1-0	W2
Idaho	3-7	.300	2-3	1-2	0-2	L3
Northern Arizona	2-6	.250	1-1	1-5	0-0	L5
Eastern Washington	1-8	.111	1-1	0-7	0-0	L5

Through games played on Saturday, Dec. 15

## PRONUNCIATION GUIDE

Jamar Akoh ..... uh-KOH  
 Eddy Egun ..... ee-gun  
 Kendal Manuel ..... man-WELL  
 Michael Oguine .. oh-GEE-nay (G like go)  
 Sayeed Pridgett ..... sigh-EED prid-jit  
 Ahmaad Rorie ..... uh-MOD ROAR-ee

Travis DeCuire ..... duh-cure  
 Rachi Wortham ... rah-SHEE WORTH-am  
 Jay Flores ..... floor-es

## BSC PRESEASON POLL

### COACHES' POLL

Place	Team	Points
1.	Montana	100 (10)
2.	Weber State	90 (1)
3.	Northern Colorado	70
4.	Eastern Washington	63
5.	Portland State	55
T6.	Montana State	53
	Southern Utah	53
8.	Idaho State	50
9.	Idaho	34
10.	Sacramento State	27
11.	Northern Arizona	10

### MEDIA POLL

Place	Team	Points
1.	Montana	383 (33)
2.	Weber State	346 (2)
3.	Northern Colorado	280
4.	Eastern Washington	261
5.	Montana State	194
6.	Idaho	192
7.	Portland State	189
8.	Idaho State	176
9.	Southern Utah	128
10.	Sacramento State	115
11.	Northern Arizona	46

Number in parenthesis denotes first-place votes

### PRESEASON ALL-CONFERENCE TEAM

Player	Year	Pos.	School
<b>Ahmaad Rorie</b> (MVP)	<b>Sr.</b>	<b>G</b>	<b>UM</b>
Jerrick Harding	Jr.	G	WSU
Tyler Hall	Sr.	G	MSU
Jordan Davis	Sr.	G	UNC
<b>Michael Oguine</b>	<b>Sr.</b>	<b>G</b>	<b>UM</b>
Holland Woods	So.	G	PSU





# MONTANA BASKETBALL



## GRIZ TRACKS

- Montana's .512 field-goal percentage ranks No. 7 nationally. The Grizzlies have made at least half of their shots in six games.
- Montana has made at least eight three-pointers six times this season. The Grizzlies hit that number just four times in 2017-18.
- Five different players have led Montana for scoring.
- Montana posted its best November record (4-2) since 2011-12.
- Montana leads the Big Sky for shooting, ranks second for scoring defense and third for field-goal defense.
- After being one of two teams to use the same starting lineup for every game in 2017-18, the Grizzlies have used four different combinations through eight games in 2018-19.
- After posting a +4.6 rebounding margin (47th in NCAA), Montana has been out-rebounded five times this season. While Montana's 31.3 rebounding average is last in the Big Sky, the Grizzlies rank in the upper third for blocked shots, steals, field-goal defense and scoring defense.
- Montana's 4-0 start was its best since 1995-96.
- Montana owns the nation's fourth-longest home winning streak, winning 18 consecutive games inside Dahlberg Arena.
- Seven players have made their collegiate or Grizzly debuts.
- Montana's three losses have come to opponents with a combined record of 23-9 (.719).

## #0 MICHAEL OGUINE

- Led Montana for scoring at UC Irvine (16), and moved into the top 10 in school history with more than 1,300 career points scored.
- Has scored in double figures against all six Division-I opponents.
- The do-it-all senior ranks in the top 10 in the Big Sky for scoring (15.1; ninth), shooting (.567; ninth), assists (3.0; 10th), blocked shots (0.9; ninth), assist-to-turnover ratio (1.6; seventh) and minutes played (31.6; ninth). He also leads the Griz for rebounding and ranks second on the team for steals.
- Scored 25 points vs. Incarnate Word (the most by a Grizzly this season) on 10-of-11 shooting.
- Had a double-double with 15 points and 10 rebounds vs. Georgia State.
- Played in his 100th career game vs. College of Idaho. Overall, he has made 97 starts, including 62 in a row.
- Active leader in the Big Sky for career steals.

## #1 TIMMY FALLS

- Missed two games (Georgia Southern and Creighton), but returned to the court vs. College of Idaho, scoring 11 points on 4-of-5 shooting, in addition to three assists and three steals.
- His 2.7 assist-per-game average ranks 15th in the Big Sky.
- Ranks third on the team for steals (8), despite missing two games.

## #2 DONAVEN DORSEY

- Earned back-to-back starts (vs. Georgia Southern at Creighton).
- Appearance vs. Georgia State was his first game since March 2016. He scored two points, his first in 975 days, after missing the 2016-17 season due to transfer rules and 2017-18 due to hip surgery.
- Scored 14 points vs. Miami (Ohio), knocking down three three-pointers.

## #4 SAYEED PRIDGETT

- Ranks 24th in the NCAA with a .641 shooting percentage.
- Team's biggest breakout player, averaging 14.3 points per game after averaging 8.4 off the bench in 2017-18. His current scoring figure ranks 15th in the Big Sky.

- Has a team-most 14 steals (ninth in Big Sky), leading the Grizzlies four times, including a career high five at Creighton.
- Has scored at least eight points in every game, including 23 at Creighton (21 in the first half).
- Played a team-high 37 minutes at UC Irvine, his fourth game with 30+ minutes this season. He reached that figure just once a year ago, in an overtime win at Pitt.
- During his first two seasons, he made four total three-pointers, the same number he had in the first half vs. the Bluejays (4-of-5).

## #12 KENDAL MANUEL

- Received a waiver from the NCAA to play this year, despite transferring from Oregon State.
- Leads Montana with 14 three-pointers made, making at least two in six of eight games this season.
- His .438 three-point field-goal percentage ranks 12th in the Big Sky.
- Had a team-high 17 points on 5-of-5 shooting vs. Montana Tech. Recorded 16 points vs. Miami (Ohio).

## #13 BEN CARTER

- Played a career-high 10 minutes at UC Irvine, recording two rebounds and one steal, and showing the ability to clog up the paint down low. It was his first action against a Division-I team.

## #14 AHMAAD RORIE

- Is averaging 3.9 assists per game (sixth in Big Sky) and holds a 2.1 assist-to-turnover ratio (fourth).
- Ranks second on the team with 14.8 points per game (11th in Big Sky).
- Has led UM for scoring three times and for assists six times.
- Has scored in double figures six times, including 20 vs. Montana Tech.
- Biggest moment came vs. Miami (Ohio), when he made three three-pointers in the final 3 minutes of the game, including one with 13 seconds to play to give Montana a 71-69 lead.

## #15 JAMAR AKOH

- Returned to the court at UC Irvine after missing the previous six games with a wrist injury. Pulled down a team-high eight rebounds and scored six points, despite battling foul trouble.
- Scored a team-high 22 points in Montana's season-opening win over Georgia State.

## #23 MACK ANDERSON

- Was expected to redshirt, but instead made his collegiate debut Nov. 16 vs. Incarnate Word, scoring seven points on 3-of-4 shooting.

## #24 BOBBY MOOREHEAD

- Missed his first 13 field-goal attempts to begin the season, but since is 15-of-32 (.469), including a 5-of-9 performance vs. College of Idaho (season-high 14 points).
- Ranks third on the team with 3.9 rebounds per game, including a team-high nine rebounds vs. Incarnate Word.
- Ranks second on the team with six blocks, half of them coming at UC Irvine.

## #33 KELBY KRAMER

- Ranks 11th in the Big Sky with 0.7 blocks per game, despite averaging just 9.4 minutes per contest.
- Earned his first career start vs. College of Idaho, tallying career highs for blocks (3) and rebounds (6).



# MONTANA BASKETBALL



## MOVING UP THE LADDER

Michael Oguine (1,331) and Ahmaad Rorie (1,249) both joined the 1,000-point scoring club last year, and continue to move up the school's all-time scoring list. Both are expected to finish their careers in the top five, with Oguine joining the top-10 ranks in his most-recent game.

Montana is one of 12 schools nationally who have two 1,000-point scorers on its current roster.

## STARTING STRONG

Montana opened the year with four consecutive victories for the first time since 1995-96. It was tied for the ninth-best start in school history.

## GRIZ IN PARADISE

Montana went 2-1 at the Islands of the Bahamas Showcase (Nov. 16-18), defeating Incarnate Word and Miami (Ohio) before falling to Georgia Southern, 80-77, in the championship game.

- Montana shot better than 50 percent from the field in all three games, including 62.3 percent vs. Incarnate Word, the team's highest percentage since March 2016.
- Senior Ahmaad Rorie was named to the all-tournament team, averaging 17.3 points on .500 shooting, in addition to 4.7 assists over three games. His biggest impact came against Miami (Ohio), when he knocked down three three-pointers over the final 3 minutes, including a clutch shot as the shot clock was winding down, from way past NBA range, to give Montana a 71-69 lead with 13 seconds to play.
- Senior Michael Oguine averaged 18.7 points, 4.3 rebounds and 3.7 assists per game during the tournament, including 25 points vs. Incarnate Word (10-of-11 shooting from the floor).
- Freshman Mack Anderson made his collegiate debut vs. Incarnate Word, scoring seven points on 3-of-4 shooting. Fellow freshman Freddy Brown III made his first collegiate basket, a three-pointer.
- Donaven Dorsey had his best game as a Griz, scoring 14 points on 4-of-6 shooting (3-of-5 from deep) vs. Miami (Ohio).
- Montana trailed Georgia Southern by 20 points at the half before fighting back to get within a single point. The Grizzlies had two shots in the final seconds to try and tie the game.

## STARTING THE YEAR WITH A WIN

Montana opened the 2018-19 season with a win over fellow NCAA tournament team Georgia State (Nov. 9):

- Montana broke a 58-58 tie with just under 6 minutes to play, using a 9-2 run. The Grizzlies led by at least three points from that point forward.
- The two teams were tied at 33-33 at halftime, despite Montana holding the lead for 18:51 of the first half.
- Georgia State used a 22-7 run, extending across both halves, to lead by as many as seven points. Montana responded with 12 of the next 16 points to regain the lead 3:33 later.

## TOP-15 SCORERS

1.	Larry Krystkowiak (1982-86) ...	2,017
2.	M.R. Richardson (1974-78) .....	1,827
3.	Bob Cope (1946-50) .....	1,810
4.	Kareem Jamar (2010-14) .....	1,673
5.	Kevin Criswell (2002-06) .....	1,663
6.	Andrew Strait (2005-09) .....	1,617
7.	Wayne Tinkle (1985-89) .....	1,500
8.	Will Cherry (2009-13) .....	1,484
9.	Jordan Hasquet (2005-09) .....	1,396
10.	<b>Michael Oguine (2015-19) ....</b>	<b>1,331</b>
11.	Ken McKenzie (1972-75) .....	1,321
12.	Shawn Samuelson (1992-96) ..	1,293
13.	Derrick Pope (1979-83) .....	1,289
14.	<b>Ahmaad Rorie (2016-19) .....</b>	<b>1,249</b>
15.	Lou Rocheleau (1945-49) .....	1,235

- The Grizzlies shot 63.3 percent from inside the arc.
- Senior Jamar Akoh led all Grizzlies with 22 points on 7-of-8 shooting, in addition to eight free throws. The senior also had eight rebounds.
- In addition to his 15 points, senior Michael Oguine had a team-high 10 rebounds and a team-high-tying four assists and two blocks.
- Senior Ahmaad Rorie scored 14 points, dished out four assists and stole a pass, but the lasting images from the game were his two thunderous dunks.
- Sophomore Timmy Falls tallied 10 points and a team-high-tying four assists.
- Three players made their Griz debuts: Donaven Dorsey, Kelby Kramer and Kendal Manuel. For Kramer, it was his first collegiate contest.

## TALENT IN MISSOULA

Nov. 9 vs. Georgia State marked the first time in four years that an NCAA tournament team from the previous season played a non-conference game in Missoula. Overall, it was the 37th time it has ever happened, including the fourth time in the past decade.

Even rarer, it marked the ninth time in Dahlberg Arena history that two NCAA tournament teams played each other, and the first time since 2012-13.

## COLLEGE INSIDER MID-MAJOR TOP 25

Rank	Team	Record	Points	Prev.	Conference
1.	Gonzaga (28)	9-1	771	1	West Coast
2.	Buffalo (2)	9-0	746	2	Mid-American
3.	Furman (1)	10-0	715	3	Southern
4.	Belmont	7-1	634	4	Ohio Valley
5.	UNC Greensboro	8-2	624	6	Southern
6.	Toledo	9-1	588	9	Mid-American
7.	Wofford	8-3	550	5	Southern
8.	Lipscomb	7-2	533	7	Atlantic Sun
9.	Loyola Marymount	9-1	458	11	West Coast
10.	South Dakota State	8-3	448	8	Summit
11.	Murray State	8-1	441	12	Ohio Valley
12.	Charleston	5-1	383	13	Colonial
13.	UC Irvine	9-2	379	18	Big West
14.	BYU	7-4	367	15	West Coast
15.	Stony Brook	8-2	354	14	America East
16.	Louisiana	6-3	230	19	Sun Belt
17.	San Francisco	8-1	226	22	West Coast
18.	Georgia Southern	6-2	190	21	Sun Belt
19.	<b>Montana</b>	<b>5-3</b>	<b>188</b>	<b>17</b>	<b>Big Sky</b>
20.	Penn	8-2	138	NR	Ivy League
21.	Radford	6-3	127	16	Big South
22.	San Diego	8-2	121	NR	West Coast
23.	Georgia State	6-3	106	NR	Sun Belt
24.	Liberty	7-2	97	24	Atlantic Sun
25.	New Mexico State	7-2	92	25	Western Athletic

**RECEIVING VOTES:** Saint Mary's 90, Kent State 88, Texas State 56, Southern Illinois 54, Loyola Chicago 50, Vermont 49, Yale 46, Northeastern 24, Ball State 15, Samford 15, Northern Kentucky 13, Howard 11, UIC 10, Bradley 9, Stephen F. Austin 9, Central Michigan 8, Ohio 8, Harvard 3, Seattle 3, Illinois State 2, Abilene Christian 1, Brown 1, Drake 1, ETSU, IUPUI 1, NJIT, Northern Colorado 1.



# MONTANA BASKETBALL



## HOME OPENERS

The Grizzlies are 16-3 in home openers since the turn of the century, including 4-1 under head coach Travis DeCuire.

## RETURNING PRODUCTION

Montana graduated just one player a year ago, returning six of the team's seven rotation players. The group was responsible for the majority of Montana's production, including more than 86 percent of its scoring. Out of 353 Division-I teams, just 20 returned a higher percentage of its scoring from 2017-18.

Category	% Returning
Minutes	81.3
Scoring	85.2
Rebounding	71.4
Assists	85.2
Blocks	70.2
Steals	86.0

## LOFTY EXPECTATIONS

With so much returning production, it came as no surprise when Montana was named the overwhelming favorite to repeat as Big Sky champions by both the league's coaches and media members. Among the coaches, Montana earned 10 of 11 first-place votes (coaches weren't allowed to vote for their own team), with Weber State earning the other top vote. In the media poll, Montana garnered 33 of 35 first-place picks.

"Survival mode is hard to sustain when the bullseye is on your back," said Travis DeCuire, the 2018 Big Sky Conference Coach of the Year. "We have to find ways in practice every day to compete in a competitive environment that forces us to get better. You know our motto: Compete with desperation every day."

The last time a team earned as many first-place votes was Weber State in 2013-14. The last time Montana was picked to win the league was in 2015-16 (first in the media poll, tied for first in the coaches').

## HIGH PRAISE

If they didn't before, the league's head coaches have now fully appreciated the value of Montana guards Ahmaad Rorie and Michael Oguine. And why wouldn't they? The duo combined for 33 points per game while leading Montana to a Big Sky title in 2017-18.

Rorie and Oguine were two of six players recognized on the preseason all-conference team in October, with Rorie earning Big Sky Conference preseason player-of-the-year honors and Oguine being named to the preseason all-conference team. Voting was conducted by the league's head coaches, sports information directors and media members.

An All-Big Sky first-team honoree a season ago, Rorie earned a spot on his second consecutive preseason team after finishing seventh in the league for scoring last season with 17.2 points per game and ranking third for assists (3.7) and eighth for steals (1.2). He also came in third with a 2.1 assist-to-turnover ratio during league games, and made 85 percent of his attempts from the free-throw line. Rorie was named a Big Sky Championship all-tournament team selection as he helped the top-seeded Grizzlies earn a NCAA tournament berth by claiming the Big Sky Championship, finishing the season with a 26-8 overall record and 16-2 conference mark. He also captured NABC All-District 6 first-team honors.



Oguine was just as valuable to the Grizzlies, being named the Big Sky Conference Defensive Player of the Year and earning Big Sky Championship MVP honors, helping the Grizzlies knock off North Dakota, Northern Colorado and Eastern Washington on consecutive nights to earn a trip to March Madness. On the season, Oguine averaged 15.8 points per game while ranking fifth in the league with 1.4 steals. He was the only player in the Big Sky to rank in the top 20 during league play for scoring, steals and rebounding.



Since the league introduced the preseason poll prior to the 2015-16 season, no team has had more selections than Montana (five). This is the first time a Grizzly has been selected as the preseason player of the year.

## ALSO BACK

- **Jamar Akoh** – All-Big Sky Conference third team... Started all 34 games... Led UM with 6.6 rebounds... One of two Big Sky players to rank in the top 15 for scoring, rebounding and field-goal percentage.
- **Bobby Moorehead** – Started all 34 contests... Led UM with 27 steals in Big Sky play... Ranked second for three-pointers made and was in the top four for steals, blocked shots and assists.
- **Sayed Pridgett** – Ranked 11th in the Big Sky with 1.2 steals per conference game... Ranked in the top five on the team for rebounding, assists, blocked shots and steals.
- **Timmy Falls** – Led UM with a .407 shooting percentage from beyond the arc... Held the team's best assist-per-minute average (one assist every 9.1 minutes).
- **Donaven Dorsey** – Back after missing the past two seasons (redshirt and injury).
- **Kelby Kramer** – Redshirted in 2017-18.
- **Peter Jones** – Redshirted in 2017-18.

## FRESH FACES

While Montana returns the bulk of last year's production, the team welcomed six new players to its roster.

- Bozeman, Mont., native **Mack Anderson** earned numerous all-state honors as a senior, including the USA Today All-USA Montana Boys Basketball First Team. He led the state with 12.9 rebounds and 3.3 blocks per game, also adding 16.6 points and helping the Hawks to a third consecutive state-title game appearance.
- Freshman guard **Freddy Brown III** won a national championship as a junior, playing alongside McDonald's All-American/first-round NBA Draft pick Michael Porter, Jr. As a senior, Brown moved into the spotlight and dominated, averaging 28.7 points, 8.4 rebounds, 5.4 assists and 2.4 steals for Nathan Hale High School in Seattle.
- Montana's Australian pipeline continued with the signing of **Ben Carter**, a 6-10 big man from Adelaide. He competed on several national teams abroad, including winning a silver medal at the under-20 Australian National Championship in March 2018, where he averaged 11.0 points and 9.0 rebounds per game.
- **Eddy Egun** was a two-time All-CIF Los Angeles City Section Boys' Basketball Team selection, playing in one of southern California's top conferences. As a team captain, the guard led El Camino Real High School to the state tournament, where he scored 27 points. He was selected to several postseason all-star games, including being named MVP of the Collision All-Star Game.





# MONTANA BASKETBALL



- Billings native **Kendal Manuel** returned to his home state after three seasons at Oregon State. As a redshirt freshman in 2016-17, he started 25 games and knocked down 52 three-pointers – the second-most ever by a Beaver freshman.
- **Tony Miller** will also have to sit out this season after transferring from Seattle Pacific, where he led the Falcons for points per game in back-to-back seasons. The forward was named the 2016-17 Great Northwest Athletic Conference Freshman of the Year, nearly averaging a double-double.

## CHALLENGING SCHEDULE

At first glance, Montana's schedule may lack the "big names" that littered the team's slate a year ago, including trips to Penn State, Pitt, Stanford, UCLA and Washington. However, when looking a bit deeper, this year's lineup may be even more challenging.

Arizona finished last season with an RPI of 17, Creighton was at 50. Even more startling, South Dakota State, which owns the nation's longest home winning streak, was at 48, ahead of three of the Power-5 teams from last year's schedule. The Jackrabbits were picked to win the Summit League and return to the NCAA tournament. North Dakota State was picked to finish third. UC Irvine, which returned all five starters and 94 percent of its offense, was picked to win the Big West. Last year's Sun Belt champion Georgia State is the unanimous favorite to win again.

Of the 68 NCAA tournament teams from 2018, just seven are scheduled to play more tournament teams in non-conference than Montana (four: Arizona, Creighton, Georgia State, South Dakota State).

## 2017-18 HIGHLIGHTS

The 2017-18 men's basketball season was record-setting on many levels:

- Montana's 26 wins were the third-most in school history, and the most in 26 seasons.
- The Grizzlies won the Big Sky Conference regular-season and tournament titles, advancing to the NCAA tournament for the first time since 2013.
- It marked the fifth time in program history that a Montana team has won both the regular-season championship and tournament title.
- Montana reached 20 wins for the third time in DeCuire's four seasons. The Grizzlies have finished at least .500 all four seasons, advancing to three postseason tournaments.
- The Grizzlies won their first 13 conference games. The winning streak was one game shy of tying a school record and was the third-longest active streak in the NCAA at the time.
- Montana set a school record with seven consecutive true road wins from Dec. 28 through Feb. 3.
- Montana finished its home slate undefeated (14-0). It marked the first time in 26 seasons, and the fifth time ever, that the Grizzlies have posted a perfect home record.
- Montana finished the regular season ranked No. 14 in the College Insider Mid-Major Top 25.
- Montana posted its first winning non-conference record since 2011-12, including a win at Pitt – its first over a Power-5 program since 2010 and first over an ACC team since 1966.
- DeCuire was named the Big Sky Conference Coach of the Year after leading Montana to a 16-2 mark and an outright league title.
- DeCuire became the fastest coach in Big Sky history to win 50 conference games, needing just 65 games.
- The Grizzlies had three of the 15 players named to the All-Big Sky Conference teams: Ahmaad Rorie (first team), Michael Oguine

(second team) and Jamar Akoh (third team).

- Rorie also earned NABC All-District 6 first-team honors, while Oguine was named the Big Sky Conference Defensive Player of the Year and Big Sky Championship Most Outstanding Player.
- Montana was the only Big Sky team to have three players rank in the top 15 for scoring.
- Both Oguine (32nd member) and Rorie (33rd) joined Montana's 1,000-point scoring club.
- The Grizzlies were one of 17 schools nationally to rank in the top 100 for scoring offense (78.1; 67th) and scoring defense (68.7; 80th).
- Montana's defense ranked in the top 25 nationally for turnovers forced (15.4; 21st), steals (7.8; 22nd) and turnover margin (+3.0; 27th).

## IN THE RANKINGS [2017-18]

- Montana ranked in the top 15 percent nationally with a +8.7 scoring margin.
- The Grizzlies were one of 17 teams nationally to rank in the top 100 for both scoring offense (77.2 points per game; 78th) and scoring defense (68.5; 73rd).
- Montana ranked in the top 100 nationally for rebounding (37.0 per game; 92nd), including a +4.6 rebounding margin (47th).
- The Grizzlies forced at least nine turnovers in every game last season, averaging 12.4 per contest. That led to the nation's 23rd-best steals-per-game average (7.8; 23rd) and 29th-best turnover margin (+3.0).
- Montana ranked in the top 10 percent of all NCAA Division-I teams for getting to the free-throw line, averaging 23.3 free throws per game (27th in NCAA) and making an average of 16.5 (30th).

## LEADING THE BIG SKY [2017-18]

It's clear to see why Montana went 16-2 and won the Big Sky Conference regular-season title in 2018 – the Grizzlies are among the best statistical teams on both sides of the ball. They finished the regular season ranked first for:

- Scoring defense (67.1)
- Scoring margin (+13.3)
- Field-goal percentage defense (.402)
- Steals (8.2)
- Turnover margin (+3.1)

Additionally, Montana ranked second in the conference for three-point field-goal defense (.330), rebounding (37.9), rebounding margin (+5.0) and offensive rebounds (11.1), and ranked third for scoring offense (80.4), field-goal percentage (.487), assists (13.7), and assist-to-turnover ratio (1.2).

## LOOKING AHEAD

Montana will close its non-conference slate on the road, with games at Arizona and South Dakota State. Arizona is receiving top-25 consideration while South Dakota State owns the nation's longest home winning streak and nearly knocked off No. 7 Nevada on Saturday night.



## 2018-19 MONTANA GRIZZLIES ROSTER

No.	Name	Year	Pos.	Ht.	Wt.	Exp.	Hometown (Previous School)
0	Michael Oguine	Sr.	G	6-2	171	3L	Los Angeles, Calif. (Chaminade Prep H.S.)
1	Timmy Falls	So.	G	6-2	171	1L	Dublin, Calif. (Dublin H.S.)
2	Donaven Dorsey	R-Sr.	G	6-7	214	TR	Lacey, Wash. (Washington/Timberline H.S.)
3	Freddy Brown III	Fr.	G	6-2	170	HS	Seattle, Wash. (Nathan Hale H.S.)
4	Sayeed Pridgett	Jr.	G	6-5	195	2L	Oakland, Calif. (El Cerrito H.S.)
10	Eddy Egun	Fr.	G	6-4	160	HS	Woodland Hills, Calif. (El Camino Real H.S.)
12	Kendal Manuel	R-Jr.	G	6-4	180	TR	Billings, Mont. (Oregon State/Skyview H.S.)
13	Ben Carter	Fr.	F	6-10	275	HS	Adelaide, Australia (Sacred Heart College)
14	Ahmaad Rorie	R-Sr.	G	6-1	175	2L	Tacoma, Wash. (Oregon/Lincoln H.S.)
15	Jamar Akoh	R-Sr.	F	6-8	253	1L	Rancho Cucamonga, Calif. (Cal State Fullerton/Los Osos H.S.)
23	Mack Anderson	Fr.	F	6-9	210	HS	Bozeman, Mont. (Bozeman H.S.)
24	Bobby Moorehead	Sr.	G	6-7	182	3L	Tacoma, Wash. (Stadium H.S.)
32	Peter Jones	R-Fr.	F	6-8	225	RS	Seattle, Wash. (O'Dea H.S.)
33	Kelby Kramer	R-Fr.	C	6-10	220	RS	Rock Springs, Wyo. (Rock Springs H.S.)
34	Tony Miller	Jr.	F	6-6	210	TR	Woodinville, Wash. (Seattle Pacific/Woodinville H.S.)

## STARTERS RETURNING (4)

No.	Name	GP/GS	MPG	PPG	RPG	AST	BLK	STL	FG%	3FG%	FT%
0	Michael Oguine	34/34	32.2	15.8	5.5	67	18	48	.461	.357	.737
14	Ahmaad Rorie	34/34	35.8	17.2	3.9	125	5	42	.422	.339	.850
15	Jamar Akoh	34/34	25.9	12.8	6.6	37	23	30	.570	.200	.667
24	Bobby Moorehead	34/34	31.9	7.4	5.1	41	18	41	.381	.352	.714

## OTHER PLAYERS RETURNING (5)

No.	Name	GP/GS	MPG	PPG	RPG	AST	BLK	STL	FG%	3FG%	FT%
1	Timmy Falls	33/0	17.1	4.4	1.0	51	2	25	.414	.407	.722
2	Donaven Dorsey	-/-	--	----	--	--	--	--	--	--	--
4	Sayeed Pridgett	34/0	22.6	8.4	4.3	44	14	41	.462	.188	.656
32	Peter Jones	-/-	--	----	--	--	--	--	--	--	--
33	Kelby Kramer	-/-	--	----	--	--	--	--	--	--	--

## NEWCOMERS (6)

No.	Name	Year	Pos.	Notes
3	Freddy Brown III	Fr.	G	Won national championship as junior; averaged 28.7 ppg, 8.4 rpg, 5.4 apg, 2.4 spg as senior
10	Eddy Egun	Fr.	G	Twice named to All-CIF Los Angeles City Section Boys' Basketball Team
12	Kendal Manuel	R-Jr.	G	Started 25 games as a freshman at Oregon State (2016-17), averaging 7.8 ppg, 2.4 rpg, 1.6 apg
13	Ben Carter	Fr.	F	Competed on multiple national teams, winning silver at U20 Australian National Championship
23	Mack Anderson	Fr.	F	First-team all-state, helping the Hawks to three consecutive state title game appearances.
34	Tony Miller	Jr.	F	Averaged 18.7 ppg and 8.5 rpg in two seasons at Seattle Pacific; GNAC Freshman of Year in 2018

## STARTERS LOST (1)

No.	Name	GP/GS	MPG	PPG	RPG	AST	BLK	STL	FG%	3FG%	FT%
20	Fabijan Krslovic	34/34	24.9	7.4	5.1	48	19	30	.564	.000	.713

## OTHER PLAYERS LOST (5)

No.	Name	GP/GS	MPG	PPG	RPG	AST	BLK	STL	FG%	3FG%	FT%
3	Niko Bevens	15/0	1.6	0.2	0.1	1	0	1	.250	.333	--
5	Karl Nicholas	30/0	9.6	3.5	2.3	5	12	6	.603	--	.333
10	Lars Espe	17/0	2.5	0.4	0.2	5	1	0	.333	.333	.200
13	Trevar Spoja	20/0	2.8	0.5	0.2	3	1	0	.176	.143	.500
40	Admir Besovic	18/0	1.7	0.7	0.3	1	1	0	.667	--	1.000



## MONTANA BASKETBALL



## 2018-19 SEASON STATISTICS - ALL GAMES

RECORD:	OVERALL	HOME	AWAY	NEUTRAL
ALL GAMES	5-3	3-0	0-2	2-1
CONFERENCE	0-0	0-0	0-0	0-0
NON-CONFERENCE	5-3	3-0	0-2	2-1

##	Player	gp-gs	min	avg	Total		3-Point		F-Throw		Rebounds				pf	dq	a	to	blk	stl	pts	avg
					fg-fga	fg%	3fg-fga	3fg%	ft-fa	ft%	off	def	tot	avg								
00	OGUINE, Michael	8-8	253	31.6	38-67	.56	10-24	.41	35-53	.66	15	30	45	5.6	21	0	24	15	7	10	121	15.1
14	RORIE, Ahmaad	8-8	249	31.1	44-93	.47	14-42	.33	16-20	.80	3	24	27	3.4	16	0	31	15	1	7	118	14.8
04	PRIDGETT, Sayee	8-8	218	27.3	50-78	.64	6-10	.60	8-18	.44	15	20	35	4.4	23	0	12	19	5	14	114	14.3
15	AKOH, Jamar	2-2	61	30.5	10-14	.71	0-0	.00	8-15	.53	5	11	16	8.0	8	0	2	5	0	3	28	14.0
12	MANUEL, Kendal	8-0	174	21.8	22-48	.45	14-32	.43	13-17	.76	1	18	19	2.4	7	0	10	12	0	6	71	8.9
02	DORSEY, Donave	7-2	130	18.6	14-29	.48	8-21	.38	6-9	.66	0	8	8	1.1	13	1	4	6	2	3	42	6.0
01	FALLS, Timmy	6-3	134	22.3	11-27	.40	5-16	.31	6-6	1.000	0	8	8	1.3	15	0	16	17	2	8	33	5.5
24	MOOREHEAD, Bo	8-8	213	26.6	15-44	.34	8-33	.24	5-9	.55	3	28	31	3.9	16	0	8	10	6	6	43	5.4
23	ANDERSON, Mac	5-0	66	13.2	7-12	.58	0-0	.00	4-9	.44	2	8	10	2.0	14	0	2	5	3	0	18	3.6
33	KRAMER, Kelby	7-1	66	9.4	5-8	.62	0-0	.00	1-5	.20	4	8	12	1.7	13	1	2	3	5	1	11	1.6
13	CARTER, Ben	3-0	18	6.0	2-3	.66	0-1	.00	0-1	.00	0	4	4	1.3	7	0	0	2	0	1	4	1.3
03	BROWN, Freddy	5-0	12	2.4	1-5	.20	1-2	.50	0-0	.00	1	0	1	0.2	2	0	0	1	0	0	3	0.6
32	JONES, Peter	4-0	6	1.5	0-0	.00	0-0	.00	0-0	.00	0	2	2	0.5	1	0	0	0	0	0	0	0.0
Team											19	12	31		1		1					
Total.....		0	1600		219-428	.51	66-181	.36	102-162	.63	68	181	249	0.0	157	2	111	111	31	59	606	0.0
Opponents.....		0	1600		186-439	.42	57-154	.37	127-174	.73	95	168	263	0.0	161	-	82	121	17	50	556	0.0

TEAM STATISTICS	UM	OPP
SCORING	606	556
Points per game	75.8	69.5
Scoring margin	+6.3	-
FIELD GOALS-ATT	219-428	186-439
Field goal pct	.512	.424
3 POINT FG-ATT	66-181	57-154
3-point FG pct	.365	.370
3-pt FG made per gam	8.3	7.1
FREE THROWS-ATT	102-162	127-174
Free throw pct	.630	.730
F-Throws made per ga	12.8	15.9
REBOUNDS	249	263
Rebounds per game	31.1	32.9
Rebounding margin	-1.7	-
ASSISTS	111	82
Assists per game	13.9	10.3
TURNOVERS	111	121
Turnovers per game	13.9	15.1
Turnover margin	+1.3	-
Assist/turnover ratio	1.0	0.7
STEALS	59	50
Steals per game	7.4	6.3
BLOCKS	31	17
Blocks per game	3.9	2.1
ATTENDANCE	10385	18871
Home games-Avg/Gam	3-3462	2-8847
Neutral site-Avg/Game	-	3-392

Date	Opponent		Score	Att.
11/9/18	GEORGIA STATE	W	81-74	4321
11/12/18	MONTANA TECH	W	79-55	3024
11/16/18	vs Incarnate Word	W	93-66	0
11/17/18	vs Miami (Ohio)	W	73-71	543
11/18/18	vs Georgia Southern	L	77-80	634
11/28/18	at Creighton	L	72-98	16457
12/3/18	COLLEGE OF IDAHO	W	80-52	3040
12/8/18	at UC Irvine	L	51-60	1237

\* - Conference game

Score by Periods	1st	2nd	Totals
Montana	292	314	606
Opponents	272	284	556





## 2018-19 SEASON STATISTICS - HOME GAMES

#	Player	gp-gs	min	avg	Total		3-Point		F-Throw		Rebounds				pf	dq	a	to	blk	stl	pts	avg
					fg-fga	fg%	3fg-fga	3fg%	ft-fa	ft%	off	def	tot	avg								
15	AKOH, Jamar	1-1	33	33.0	7-8	.87	0-0	.00	8-13	.61	2	6	8	8.0	4	0	1	2	0	2	22	22.0
14	RORIE, Ahmaad	3-3	88	29.3	19-34	.55	5-15	.33	8-10	.80	0	13	13	4.3	3	0	11	3	0	5	51	17.0
04	PRIDGETT, Sayee	3-3	66	22.0	17-26	.65	0-1	.00	3-6	.50	8	8	16	5.3	5	0	4	10	2	1	37	12.3
01	FALLS, Timmy	3-1	76	25.3	11-21	.52	5-11	.45	4-4	1.000	0	5	5	1.7	9	0	10	11	1	5	31	10.3
12	MANUEL, Kendal	3-0	60	20.0	9-19	.47	6-14	.42	7-8	.87	0	7	7	2.3	0	0	5	4	0	2	31	10.3
00	OGUINE, Michael	3-3	83	27.7	7-16	.43	1-5	.20	13-21	.61	5	13	18	6.0	6	0	10	2	6	5	28	9.3
24	MOOREHEAD, Bo	3-3	66	22.0	5-19	.26	3-16	.18	3-6	.50	0	13	13	4.3	6	0	4	2	2	2	16	5.3
23	ANDERSON, Mac	1-0	16	16.0	2-4	.50	0-0	.00	1-3	.33	0	1	1	1.0	1	0	0	2	3	0	5	5.0
02	DORSEY, Donave	3-0	54	18.0	5-11	.45	2-8	.25	1-3	.33	0	5	5	1.7	0	0	0	0	0	0	13	4.3
33	KRAMER, Kelby	3-1	39	13.0	2-3	.66	0-0	.00	0-2	.00	3	7	10	3.3	5	0	1	0	4	1	4	1.3
13	CARTER, Ben	2-0	8	4.0	1-1	1.000	0-0	.00	0-1	.00	0	2	2	1.0	3	0	0	2	0	0	2	1.0
32	JONES, Peter	2-0	4	2.0	0-0	.00	0-0	.00	0-0	.00	0	1	1	0.5	1	0	0	0	0	0	0	0.0
03	BROWN, Freddy	2-0	7	3.5	0-4	.00	0-1	.00	0-0	.00	1	0	1	0.5	1	0	0	0	0	0	0	0.0
Team											9	6	15									
Total.....		3	600		85-166	.51	22-71	.31	48-77	.62	28	87	115	38.3	44	0	46	38	18	23	240	80.0
Opponents.....		3	600		66-187	.35	20-68	.29	29-43	.67	41	71	112	37.3	70	-	28	48	6	23	181	60.3

## 2018-19 SEASON STATISTICS - ROAD GAMES

#	Player	gp-gs	min	avg	Total		3-Point		F-Throw		Rebounds				pf	dq	a	to	blk	stl	pts	avg
					fg-fga	fg%	3fg-fga	3fg%	ft-fa	ft%	off	def	tot	avg								
00	OGUINE, Michael	2-2	69	34.5	12-20	.60	5-9	.55	8-13	.61	5	9	14	7.0	5	0	3	8	0	3	37	18.5
04	PRIDGETT, Sayee	2-2	74	37.0	15-25	.60	5-8	.62	1-3	.33	3	3	6	3.0	8	0	2	3	1	8	36	18.0
14	RORIE, Ahmaad	2-2	58	29.0	5-19	.26	1-6	.16	4-4	1.000	0	4	4	2.0	5	0	6	5	0	0	15	7.5
15	AKOH, Jamar	1-1	28	28.0	3-6	.50	0-0	.00	0-2	.00	3	5	8	8.0	4	0	1	3	0	1	6	6.0
02	DORSEY, Donave	1-1	20	20.0	1-3	.33	1-2	.50	2-2	1.000	0	0	0	0.0	2	0	0	1	1	2	5	5.0
23	ANDERSON, Mac	1-0	12	12.0	2-2	1.000	0-0	.00	0-0	.00	0	2	2	2.0	2	0	1	0	0	0	4	4.0
12	MANUEL, Kendal	2-0	37	18.5	2-7	.28	1-5	.20	2-4	.50	0	2	2	1.0	3	0	2	3	0	1	7	3.5
24	MOOREHEAD, Bo	2-2	59	29.5	2-9	.22	1-6	.16	1-2	.50	0	4	4	2.0	4	0	3	4	3	1	6	3.0
01	Timmy Falls	1-0	14	14.0	0-2	.00	0-2	.00	2-2	1.000	0	1	1	1.0	3	0	2	2	0	0	2	2.0
13	CARTER, Ben	1-0	10	10.0	1-2	.50	0-1	.00	0-0	.00	0	2	2	2.0	4	0	0	0	0	1	2	2.0
33	KRAMER, Kelby	2-0	15	7.5	1-2	.50	0-0	.00	1-3	.33	1	0	1	0.5	7	1	1	2	1	0	3	1.5
03	BROWN, Freddy	1-0	2	2.0	0-0	.00	0-0	.00	0-0	.00	0	0	0	0.0	1	0	0	0	0	0	0	0.0
32	JONES, Peter	1-0	2	2.0	0-0	.00	0-0	.00	0-0	.00	0	1	1	1.0	0	0	0	0	0	0	0	0.0
Team											6	2	8									
Total.....		2	400		44-97	.45	14-39	.35	21-35	.60	18	35	53	26.5	48	1	21	32	6	17	123	61.5
Opponents.....		2	400		52-102	.51	19-36	.52	35-52	.67	26	43	69	34.5	34	-	26	27	6	16	158	79.0

## 2018-19 SEASON STATISTICS - NEUTRAL-SITE GAMES

#	Player	gp-gs	min	avg	Total		3-Point		F-Throw		Rebounds				pf	dq	a	to	blk	stl	pts	avg
					fg-fga	fg%	3fg-fga	3fg%	ft-fa	ft%	off	def	tot	avg								
00	OGUINE, Michael	3-3	101	33.7	19-31	.61	4-10	.40	14-19	.73	5	8	13	4.3	10	0	11	5	1	2	56	18.7
14	RORIE, Ahmaad	3-3	103	34.3	20-40	.50	8-21	.38	4-6	.66	3	7	10	3.3	8	0	14	7	1	2	52	17.3
04	PRIDGETT, Sayee	3-3	78	26.0	18-27	.66	1-1	1.000	4-9	.44	4	9	13	4.3	10	0	6	6	2	5	41	13.7
12	MANUEL, Kendal	3-0	77	25.7	11-22	.50	7-13	.53	4-5	.80	1	9	10	3.3	4	0	3	5	0	3	33	11.0
02	DORSEY, Donave	3-1	56	18.7	8-15	.53	5-11	.45	3-4	.75	0	3	3	1.0	11	1	4	5	1	1	24	8.0
24	MOOREHEAD, Bo	3-3	88	29.3	8-16	.50	4-11	.36	1-1	1.000	3	11	14	4.7	6	0	1	4	1	3	21	7.0
23	ANDERSON, Mac	3-0	38	12.7	3-6	.50	0-0	.00	3-6	.50	2	5	7	2.3	11	0	1	3	0	0	9	3.0
33	KRAMER, Kelby	2-0	12	6.0	2-3	.66	0-0	.00	0-0	.00	0	1	1	0.5	1	0	0	1	0	0	4	2.0
03	BROWN, Freddy	2-0	3	1.5	1-1	1.000	1-1	1.000	0-0	.00	0	0	0	0.0	0	0	0	1	0	0	3	1.5
32	JONES, Peter	1-0	0	0.0	0-0	.00	0-0	.00	0-0	.00	0	0	0	0.0	0	0	0	0	0	0	0	0.0
01	FALLS, Timmy	2-2	44	22.0	0-4	.00	0-3	.00	0-0	.00	0	2	2	1.0	3	0	4	4	1	3	0	0.0
Team											4	4	8									
Total.....		3	600		90-165	.54	30-71	.42	33-50	.66	22	59	81	27.0	65	1	44	41	7	19	243	81.0
Opponents.....		3	600		68-150	.45	18-50	.36	63-79	.79	28	54	82	27.3	57	-	28	46	5	11	217	72.3



## MONTANA BASKETBALL



## 2018-19 GAME-BY-GAME COMPARISONS

Opponent	1st	2nd	Score	Total FG	FG Pct.	3-Pointers	3FG Pct.	Free Throws	FT Pct.	RBs	Assists	TOs	Blocks	Steals	Fouls
GEORGIA STATE	33/33	48/41	81-74	24-55/28-72	.436/.389	5-25/6-19	.200/.316	28-43/12-24	.651/.500	43/46	13/8	14/12	5/5	6/11	20/31
MONTANA TECH	40/21	39/34	79-55	29-55/19-51	.527/.373	8-23/7-22	.348/.318	13-21/10-10	.619/1.000	34/29	15/14	12/20	3/0	11/5	16/24
vs. Incarnate Word	42/36	51/30	93-66	38-61/21-48	.623/.438	12-26/8-16	.462/.500	5-9/16-23	.556/.696	33/19	20/9	10/12	3/0	7/5	17/14
vs. Miami (Ohio)	32/33	41/38	73-71	23-46/19-48	.500/.396	9-19/5-18	.474/.278	18-26/28-33	.692/.848	22/33	11/8	15/16	0/3	4/2	24/28
vs. Georgia Southern	31/51	46/29	77-80	29-58/28-54	.500/.519	9-26/5-16	.346/.313	10-15/19-23	.667/.826	26/30	13/11	16/18	4/2	8/4	24/15
at Creighton	40/49	32/49	72-98	26-47/32-53	.553/.604	8-17/13-24	.471/.542	12-22/21-30	.545/.700	20/34	13/17	14/12	3/1	8/6	24/19
COLLEGE OF IDAHO	48/22	32/30	80-52	32-56/19-64	.571/.297	9-23/7-27	.391/.259	7-13/7-9	.538/.778	38/37	18/6	12/16	10/1	6/7	8/15
at UC Irvine	26/27	25/33	51-60	18-50/20-49	.360/.408	6-22/6-12	.273/.500	9-13/14-22	.692/.636	33/35	8/9	18/15	3/5	9/10	24/15

## 2018-19 GAME-BY-GAME STATISTICS

Opponent	Date	Score	W/L	--TOTAL--		--3-PTRS--		----FTS----		--REBOUNDS--					Pts	Avg				
				FG-A	Pct.	3FG-A	Pct.	FT-A	Pct.	Off	Def	Tot	Avg	PF			A	TO	Blk	Stl
GEORGIA STATE	11/9/18	81-74	W	24-55	.436	5-25	.200	28-43	.651	15	28	43	43.0	20	13	14	5	6	81	81.0
MONTANA TECH	11/12/18	79-55	W	29-55	.527	8-23	.348	13-21	.619	6	28	34	38.5	16	15	12	3	11	79	80.0
vs. Incarnate Word	11/16/18	93-66	W	38-61	.623	12-26	.462	5-9	.556	9	24	33	36.7	17	20	10	3	7	93	84.3
vs. Miami (Ohio)	11/17/18	73-71	W	23-46	.500	9-19	.474	18-26	.692	6	16	22	33.0	24	11	15	0	4	73	81.5
vs. Georgia Southern	11/18/18	77-80	L	29-58	.500	9-26	.346	10-15	.667	7	19	26	31.6	24	13	16	4	8	77	80.6
at Creighton	11/28/18	72-98	L	26-47	.553	8-17	.471	12-22	.545	5	15	20	29.7	24	13	14	3	8	72	79.2
COLLEGE OF IDAHO	12/3/18	80-52	W	32-56	.571	9-23	.391	7-13	.538	7	31	38	30.9	8	18	12	10	6	80	79.3
at UC Irvine	12/8/18	51-60	L	18-50	.360	6-22	.273	9-13	.692	13	20	33	31.1	24	8	18	3	9	51	75.8
MONTANA		606		219-428	.512	66-181	.365	102-162	.630	68	181	249	31.1	157	111	111	31	59	606	75.8
OPPONENTS		556		186-439	.424	57-154	.370	127-174	.730	95	168	263	32.9	161	82	121	17	50	556	69.5

## 2018-19 STARTING LINEUPS

Date	Opponent	1	2	3	4	5
11/9/18	Georgia State	Rorie	Oguine	Pridgett	Moorehead	Akoh
11/12/18	Montana Tech	Rorie	Oguine	Falls	Moorehead	Pridgett
11/16/18	vs. Incarnate Word	Rorie	Oguine	Falls	Moorehead	Pridgett
11/17/18	vs. Miami (Ohio)	Rorie	Oguine	Falls	Moorehead	Pridgett
11/18/18	vs. Georgia Southern	Rorie	Oguine	Dorsey	Moorehead	Pridgett
11/28/18	at Creighton	Rorie	Oguine	Dorsey	Moorehead	Pridgett
12/3/18	vs. College of Idaho	Rorie	Oguine	Pridgett	Moorehead	Kramer
12/8/18	at UC Irvine	Rorie	Oguine	Pridgett	Moorehead	Akoh





## 2018 STATISTICS - MATCH-BY-MATCH LEADERS

DATE	OPPONENT	MINUTES	POINTS	REBOUNDS	ASSISTS	BLOCKS	STEALS
11/9	GEORGIA STATE	Oguine (36) Rorie (36)	Akoh (22)	Oguine (10)	Falls (4) Oguine (4) Rorie (4)	Moorehead (2) Oguine (2)	Akoh (2)
11/12	MONTANA TECH	Dorsey (29)	Rorie (20)	Rorie (6)	Oguine (5)	Kramer (1) Oguine (1) Pridgett (1)	Oguine (4)
11/16	vs. Incarnate Word	Falls (33)	Oguine (25)	Moorehead (9)	Pridgett (5) Rorie (5)	Falls (1) Oguine (1) Rorie (1)	Falls (3)
11/17	vs. Miami (Ohio)	Rorie (39)	Manuel (16)	Manuel (4) Rorie (4)	Oguine (4)	--	Pridgett (2)
11/18	vs. Georgia Southern	Oguine (36)	Rorie (19)	Manuel (6) Pridgett (6)	Rorie (6)	Pridgett (2)	Manuel (2) Pridgett (2)
11/28	at Creighton	Pridgett (37)	Pridgett (23)	Oguine (9)	Rorie (4)	Dorsey (1) Kramer (1) Pridgett (1)	Pridgett (5)
12/3	COLLEGE OF IDAHO	Falls (29) Rorie (29)	Pridgett (17) Rorie (17)	Pridgett (8)	Rorie (7)	Anderson (3) Kramer (3) Oguine (3)	Falls (3)
12/8	at UC Irvine	Pridgett (37)	Oguine (16)	Akoh (8)	Falls (2) Rorie (2)	Moorehead (3)	Oguine (3) Pridgett (3)
TOTALS (INCLUDING TIES)		RORIE (3) FALLS (2) OGUINE (2) PRIDGETT (2) DORSEY (1)	RORIE (3) OGUINE (2) PRIDGETT (2) AKOH (1) MANUEL (1)	MANUEL (2) OGUINE (2) PRIDGETT (2) RORIE (2) AKOH (1) MOOREHEAD (1)	RORIE (6) OGUINE (3) FALLS (2) PRIDGETT (1)	OGUINE (4) KRAMER (3) PRIDGETT (3) MOOREHEAD (2) ANDERSON (1) DORSEY (1) FALLS (1) RORIE (1)	PRIDGETT (4) FALLS (2) OGUINE (2) AKOH (1) MANUEL (1)





# MONTANA BASKETBALL



## TEAM GAME HIGHS - MONTANA

<b>POINTS</b>	93	vs. Incarnate Word (11/16/18)
	81	GEORGIA STATE (11/9/18)
	80	COLLEGE OF IDAHO (12/3/18)
	79	MONTANA TECH (11/12/18)
	77	vs. Georgia Southern (11/18/18)
<b>FGS MADE</b>	38	vs. Incarnate Word (11/16/18)
	32	COLLEGE OF IDAHO (12/3/18)
<b>FGS ATT.</b>	61	vs. Incarnate Word (11/16/18)
	58	vs. Georgia Southern (11/18/18)
<b>FG PCT.</b>	.623	vs. Incarnate Word (11/16/18)
	.571	COLLEGE OF IDAHO (12/3/18)
<b>3-POINT FGS MADE</b>	12	vs. Incarnate Word (11/16/18)
	9	Three times
<b>3-POINT FGS ATT.</b>	26	vs. Incarnate Word (11/16/18)
	26	vs. Georgia Southern (11/18/18)
<b>3-POINT FG PCT.</b>	.474	vs. Miami (Ohio) (11/17/18)
	.471	at Creighton (11/28/18)
<b>FREE THROWS MADE</b>	28	GEORGIA STATE (11/9/18)
	18	vs. Miami (Ohio) (11/17/18)
<b>FREE THROWS ATT.</b>	43	GEORGIA STATE (11/9/18)
	26	vs. Miami (Ohio) (11/17/18)
<b>FREE THROW PCT.</b>	.692	vs. Miami (Ohio) (11/17/18)
	.692	at UC Irvine (12/8/18)
<b>REBOUNDS</b>	43	GEORGIA STATE (11/9/18)
	38	COLLEGE OF IDAHO (12/3/18)
<b>ASSISTS</b>	20	vs. Incarnate Word (11/16/18)
	18	COLLEGE OF IDAHO (12/3/18)
<b>STEALS</b>	11	MONTANA TECH (11/12/18)
	9	at UC Irvine (12/8/18)
<b>BLOCKED SHOTS</b>	10	COLLEGE OF IDAHO (12/3/18)
	5	GEORGIA STATE (11/9/18)
	4	vs. Georgia Southern (11/17/18)
<b>TURNOVERS</b>	18	at UC Irvine (12/8/18)
	16	vs. Georgia Southern (11/18/18)
	15	vs. Miami (Ohio) (11/17/18)
<b>FOULS</b>	24	Four times

## TEAM GAME LOWS - MONTANA

<b>POINTS</b>	51	at UC Irvine (12/8/18)
	72	at Creighton (11/28/18)
	73	vs. Miami (Ohio) (11/17/18)
	77	vs. Georgia Southern (11/18/18)
	79	MONTANA TECH (11/12/18)
<b>FGS MADE</b>	18	at UC Irvine (12/8/18)
	23	vs. Miami (Ohio) (11/17/18)
<b>FGS ATT.</b>	46	vs. Miami (Ohio) (11/17/18)
	47	at Creighton (11/28/18)
<b>FG PCT.</b>	.360	at UC Irvine (12/8/18)
	.436	GEORGIA STATE (11/9/18)
<b>3-POINT FGS MADE</b>	5	GEORGIA STATE (11/9/18)
	6	at UC Irvine (12/8/18)
<b>3-POINT FGS ATT.</b>	17	at Creighton (11/28/18)
	19	vs. Miami (Ohio) (11/17/18)
<b>3-POINT FG PCT.</b>	.200	GEORGIA STATE (11/9/18)
	.273	at UC Irvine (12/8/18)
<b>FREE THROWS MADE</b>	5	vs. Incarnate Word (11/16/18)
	7	COLLEGE OF IDAHO (12/3/18)
<b>FREE THROWS ATT.</b>	9	vs. Incarnate Word (11/16/18)
	13	COLLEGE OF IDAHO (12/3/18)
	13	at UC Irvine (12/8/18)
<b>FREE THROW PCT.</b>	.538	COLLEGE OF IDAHO (12/3/18)
	.545	at Creighton (11/28/18)
<b>REBOUNDS</b>	20	at Creighton (11/28/18)
	22	vs. Miami (Ohio) (11/17/18)
<b>ASSISTS</b>	8	at UC Irvine (12/8/18)
	11	vs. Miami (Ohio) (11/17/18)
<b>STEALS</b>	4	vs. Miami (Ohio) (11/17/18)
	6	GEORGIA STATE (11/9/18)
	6	COLLEGE OF IDAHO (12/3/18)
<b>BLOCKED SHOTS</b>	0	vs. Miami (Ohio) (11/17/18)
	3	Four times
<b>TURNOVERS</b>	10	vs. Incarnate Word (11/16/18)
	12	MONTANA TECH (11/12/18)
	12	COLLEGE OF IDAHO (12/3/18)
<b>FOULS</b>	8	COLLEGE OF IDAHO (12/3/18)
	16	MONTANA TECH (11/12/18)



# MONTANA BASKETBALL



## INDIVIDUAL GAME HIGHS - MONTANA

### POINTS

25	OGUINE, Michael vs. Incarnate Word (11/16/18)
23	PRIDGETT, Sayeed at Creighton (11/28/18)
22	AKOH, Jamar vs. Georgia State (11/9/18)
21	OGUINE, Michael at Creighton (11/28/18)
20	RORIE, Ahmaad vs. Montana Tech (11/12/18)

### FIELD GOALS MADE

10	OGUINE, Michael vs. Incarnate Word (11/16/18)
9	PRIDGETT, Sayeed at Creighton (11/28/18)
8	Four times

### FIELD GOAL PERCENTAGE (MIN. 5 MAKES)

1.000 (5-5)	MANUEL, Kendal vs. Montana Tech (11/12/18)
.909 (10-11)	OGUINE, Michael vs. Incarnate Word (11/16/18)
.889 (8-9)	PRIDGETT, Sayeed vs. Incarnate Word (11/16/18)
.875 (7-8)	AKOH, Jamar vs. Georgia State (11/9/18)
.800 (8-10)	PRIDGETT, Sayeed vs. College of Idaho (12/3/18)

### THREE-POINT FIELD GOALS MADE

4	OGUINE, Michael vs. Incarnate Word (11/16/18)
4	PRIDGETT, Sayeed at Creighton (11/28/18)
3	Eight times

### FREE THROWS MADE

10	OGUINE, Michael vs. Georgia State (11/9/18)
8	AKOH, Jamar vs. Georgia State (11/9/18)
7	OGUINE, Michael vs. Miami (Ohio) (11/17/18)
6	RORIE, Ahmaad vs. Georgia State (11/9/18)
6	OGUINE, Michael vs. Georgia Southern (11/18/18)

### REBOUNDS

10	OGUINE, Michael vs. Georgia State (11/9/18)
9	MOOREHEAD, Bobby vs. Incarnate Word (11/16/18)
9	OGUINE, Michael at Creighton (11/28/18)
8	AKOH, Jamar vs. Georgia State (11/9/18)
8	PRIDGETT, Sayeed vs. College of Idaho (12/3/18)
8	AKOH, Jamar at UC Irvine (12/8/18)

### ASSISTS

7	RORIE, Ahmaad vs. College of Idaho (12/3/18)
6	RORIE, Ahmaad vs. Georgia Southern (11/18/18)
5	OGUINE, Michael vs. Montana Tech (11/12/18)
5	PRIDGETT, Sayeed vs. Incarnate Word (11/16/18)
5	RORIE, Ahmaad vs. Incarnate Word (11/16/18)

### STEALS

5	PRIDGETT, Sayeed at Creighton (11/28/18)
4	OGUINE, Michael vs. Montana Tech (11/12/18)
3	Five times

### BLOCKED SHOTS

3	ANDERSON, Mack vs. College of Idaho (12/3/18)
3	KRAMER, Kelby vs. College of Idaho (12/3/18)
3	OGUINE, Michael vs. College of Idaho (12/3/18)
3	MOOREHEAD, Bobby at UC Irvine (12/8/18)

### MINUTES PLAYED

39	RORIE, Ahmaad vs. Miami (Ohio) (11/17/18)
38	OGUINE, Michael vs. Miami (Ohio) (11/17/18)
37	PRIDGETT, Sayeed at Creighton (11/28/18)
37	PRIDGETT, Sayeed at UC Irvine (12/8/18)
36	Four times

## INDIVIDUAL GAME HIGHS - OPPONENTS

### POINTS

30	Simonds, D'Marcus, Georgia State (11/9/18)
22	Brown, Tookie, Georgia Southern (11/18/18)
18	JEFFERSON, Damien, Creighton (11/28/18)
18	LEONARD, Evan, UC Irvine (12/8/18)
17	KRAMPELJ, Martin, Creighton (11/28/18)
17	Williams, Kane, Georgia State (11/9/18)

### FIELD GOALS MADE

11	Simonds, D'Marcus, Georgia State (11/9/18)
7	Brown, Tookie, Georgia Southern (11/18/18)
5	Eight times

### FIELD GOAL PERCENTAGE (MIN. 5 MAKES)

.833 (5-6)	Glenn, Montae, Georgia Southern (11/18/18)
.714 (5-7)	KRAMPELJ, Martin, Creighton (11/28/18)
.714 (5-7)	BALLOCK, Mitch, Creighton (11/28/18)
.555 (5-9)	MCCADDEN, Elijah, Georgia Southern (11/18/18)
.555 (5-9)	ALEXANDER, Ty-Shon, Creighton (11/28/18)
.555 (5-9)	LEONARD, Evan, UC Irvine (12/8/18)

### THREE-POINT FIELD GOALS MADE

5	LEONARD, Evan, UC Irvine (12/8/18)
4	BALLOCK, Mitch, Creighton (11/28/18)
3	Five times

### FREE THROWS MADE

8	Brown, Tookie, Georgia Southern (11/18/18)
8	Sibande, Nike, Miami (Ohio) (11/17/18)
8	Bowman, Bam, Miami (Ohio) (11/17/18)
8	Peevy, Christian, Incarnate Word (11/16/18)
7	JEFFERSON, Damien, Creighton (11/28/18)

### REBOUNDS

8	MEYERS, Matt, College of Idaho (12/3/18)
7	Six times

### ASSISTS

6	ZEGAROWSKI, Marcus at Creighton (11/28/18)
5	Williams, Kane, Georgia State (11/9/18)
4	Four times

### STEALS

4	CARTWRIGHT, Robert, UC Irvine (12/8/18)
3	Taylor, Morgan, Incarnate Word (11/16/18)
3	HAZZARD, Max, UC Irvine (12/8/18)
3	LEONARD, Evan, UC Irvine (12/8/18)

### BLOCKED SHOTS

2	Clerkley, Chris, Georgia State (11/9/18)
2	Simonds, D'Marcus, Georgia State (11/9/18)
2	RUTHERFORD, Tommy, UC Irvine (12/8/18)









## MONTANA BASKETBALL



## 2017-18 SEASON STATISTICS - ALL GAMES

RECORD:	OVERALL	HOME	AWAY	NEUTRAL
ALL GAMES	26-8	14-0	8-6	4-2
CONFERENCE	16-2	9-0	7-2	0-0
NON-CONFERENCE	10-6	5-0	1-4	4-2

#	Player	gp-gs	min	avg	Total		3-Point		F-Throw		Rebounds				pf dq		a	to	blk	stl	pts	avg
					fg-fga	fg%	3fg-fga	3fg%	ft-fa	ft%	off	def	tot	avg								
14	RORIE, Ahmaad	34-34	121	35.8	206-488	.42	59-174	.33	113-133	.85	32	101	133	3.9	64	0	125	67	5	42	584	17.2
00	OGUINE, Michael	34-34	109	32.2	177-384	.46	46-129	.35	137-186	.73	73	115	188	5.5	95	2	67	45	18	48	537	15.8
15	AKOH, Jamar	34-34	881	25.9	158-277	.57	1-5	.20	118-177	.66	80	145	225	6.6	113	4	37	71	23	30	435	12.8
04	PRIDGETT, Sayee	34-0	770	22.6	122-264	.46	3-16	.18	40-61	.65	35	111	146	4.3	102	2	44	65	14	41	287	8.4
20	KRSLOVIC, Fabija	34-34	847	24.9	92-163	.56	0-6	.00	67-94	.71	52	120	172	5.1	95	3	48	50	19	30	251	7.4
24	MOOREHEAD, Bo	34-34	108	31.9	82-215	.38	51-145	.35	35-49	.71	27	147	174	5.1	75	1	41	39	18	41	250	7.4
01	FALLS, Timmy	33-0	563	17.1	48-116	.41	22-54	.40	26-36	.72	7	25	32	1.0	78	3	51	41	2	25	144	4.4
05	NICHOLAS, Karl	30-0	287	9.6	47-78	.60	0-0	.00	12-36	.33	31	37	68	2.3	70	1	5	29	12	6	106	3.5
40	BESOVIC, Admir	18-0	31	1.7	6-9	.66	0-0	.00	1-1	1.000	2	3	5	0.3	10	0	1	2	1	0	13	0.7
13	SPOJA, Trever	20-0	56	2.8	3-17	.17	2-14	.14	1-2	.50	1	2	3	0.2	8	0	3	3	1	0	9	0.5
10	ESPE, Lars	17-0	42	2.5	2-6	.33	1-3	.33	1-5	.20	2	1	3	0.2	4	0	5	2	1	0	6	0.4
03	BEVENS, Niko	15-0	24	1.6	1-4	.25	1-3	.33	0-0	.00	1	0	1	0.1	2	0	1	1	0	1	3	0.2
Team											59	48	107				7					
Total.....		34	6900		944-202	.46	186-549	.33	551-780	.70	402	855	125	37.0	716	16	428	422	114	264	262	77.2
Opponents.....		34	6901		784-182	.43	209-584	.35	552-764	.72	299	803	110	32.4	675	-	343	524	129	168	232	68.5

TEAM STATISTICS	UM	OPP
SCORING	2625	2329
Points per game	77.2	68.5
Scoring margin	+8.7	-
FIELD GOALS-ATT	944-2021	784-1825
Field goal pct	.467	.430
3 POINT FG-ATT	186-549	209-584
3-point FG pct	.339	.358
3-pt FG made per gam	5.5	6.1
FREE THROWS-ATT	551-780	552-764
Free throw pct	.706	.723
F-Throws made per ga	16.2	16.2
REBOUNDS	1257	1102
Rebounds per game	37.0	32.4
Rebounding margin	+4.6	-
ASSISTS	428	343
Assists per game	12.6	10.1
TURNOVERS	422	524
Turnovers per game	12.4	15.4
Turnover margin	+3.0	-
Assist/turnover ratio	1.0	0.7
STEALS	264	168
Steals per game	7.8	4.9
BLOCKS	114	129
Blocks per game	3.4	3.8
ATTENDANCE	56568	55538
Home games-Avg/Gam	14-4041	14-2659
Neutral site-Avg/Game	-	6-3053

Score by Periods	1st	2nd	OT	Totals
Montana	1197	1391	37	2625
Opponents	1089	1210	30	2329

Date	Opponent		Score	Att.
11/10/17	WHITWORTH	W	72-60	3056
11/13/17	at Pitt	Wot	83-78	3102
11/15/17	at Penn State	L	57-70	5854
11/20/17	vs Oral Roberts	W	69-64	1682
11/21/17	vs UC Santa Barbara	L	73-80	1239
11/26/17	CARROLL	W	86-75	2804
11/29/17	at Stanford	L	54-70	3145
12/3/17	CSUN	W	86-68	2734
12/9/17	at Georgia State	L	68-71	1224
12/17/17	UC RIVERSIDE	W	77-61	2817
12/19/17	UC IRVINE	W	86-68	3106
12/22/17	at Washington	L	63-66	5915
* 12/28/17	at Northern Arizona	W	87-69	604
* 12/30/17	at Southern Utah	W	79-49	1263
* 1/4/18	NORTH DAKOTA	W	109-79	3220
* 1/6/18	NORTHERN COLORADO	W	89-80	4119
* 1/11/18	at Sacramento State	W	78-66	721
* 1/13/18	at Portland State	W	92-89	925
* 1/20/18	at Montana State	W	67-52	6772
* 1/25/18	SOUTHERN UTAH	W	71-47	4040
* 1/27/18	NORTHERN ARIZONA	W	82-64	5108
* 2/1/18	at Northern Colorado	W	88-79	1413
* 2/3/18	at North Dakota	W	72-67	2089
* 2/8/18	PORTLAND STATE	W	80-60	4082
* 2/10/18	SACRAMENTO STATE	Wot	71-69	4592
* 2/15/18	at Eastern Washington	L	65-74	2354
* 2/17/18	at Idaho	Lot	77-79	1839
* 2/24/18	MONTANA STATE	W	90-63	7256
* 3/1/18	WEBER STATE	W	75-57	4922
* 3/3/18	IDAHO STATE	W	75-64	4712
3/8/18	vs North Dakota	W	84-76	0
3/9/18	vs Northern Colorado	Wot	91-89	0
3/10/18	vs Eastern Washington	W	82-65	1378
3/15/18	vs Michigan	L	47-61	14019



## MONTANA BASKETBALL



## 2017-18 SEASON STATISTICS - BIG SKY GAMES

RECORD:	OVERALL	HOME	AWAY	NEUTRAL
ALL GAMES	16-2	9-0	7-2	0-0
CONFERENCE	16-2	9-0	7-2	0-0
NON-CONFERENCE	0-0	0-0	0-0	0-0

##	Player	gp-gs	min	avg	Total		3-Point		F-Throw		Rebounds				pf	dq	a	to	blk	stl	pts	avg
					fg-fga	fg%	3fg-fga	3fg%	ft-fa	ft%	off	def	tot	avg								
14	RORIE, Ahmaad	18-18	619	34.4	106-244	.43	30-81	.37	50-53	.94	15	48	63	3.5	31	0	66	32	3	19	292	16.2
00	OGUINE, Michael	18-18	557	30.9	94-195	.48	28-72	.38	70-91	.76	36	67	103	5.7	47	1	35	19	5	26	286	15.9
15	AKOH, Jamar	18-18	484	26.9	96-166	.57	0-2	.00	78-114	.68	42	84	126	7.0	64	4	17	42	10	17	270	15.0
20	KRSLOVIC, Fabija	18-18	460	25.6	58-92	.63	0-1	.00	40-57	.70	28	67	95	5.3	51	1	32	28	8	15	156	8.7
04	PRIDGETT, Sayee	18-0	399	22.2	63-132	.47	1-5	.20	23-35	.65	15	57	72	4.0	52	1	25	28	4	21	150	8.3
24	MOOREHEAD, Bo	18-18	545	30.3	36-99	.36	23-65	.35	18-24	.75	11	86	97	5.4	40	0	21	19	6	27	113	6.3
01	FALLS, Timmy	18-0	351	19.5	32-76	.42	16-37	.43	23-31	.74	3	16	19	1.1	49	2	40	24	1	18	103	5.7
05	NICHOLAS, Karl	17-0	155	9.1	24-39	.61	0-0	.00	8-20	.40	11	24	35	2.1	38	1	4	12	10	5	56	3.3
40	BESOVIC, Admir	8-0	17	2.1	4-6	.66	0-0	.00	1-1	1.000	0	0	0	0.0	5	0	1	1	0	0	9	1.1
10	ESPE, Lars	8-0	26	3.3	2-4	.50	1-1	1.000	1-3	.33	1	1	2	0.3	1	0	4	0	1	0	6	0.8
13	SPOJA, Trever	10-0	26	2.6	2-8	.25	1-5	.20	1-2	.50	1	2	3	0.3	5	0	1	1	0	0	6	0.6
03	BEVENS, Niko	6-0	11	1.8	0-0	.00	0-0	.00	0-0	.00	0	0	0	0.0	1	0	0	0	0	0	0	0.0
Team											37	29	66					3				
Total.....		18	3650		517-106	.48	100-269	.37	313-431	.72	200	481	681	37.8	384	10	246	209	48	148	144	80.4
Opponents.....		18	3650		401-997	.40	113-342	.33	292-401	.72	179	413	592	32.9	375	-	179	264	61	80	120	67.1

TEAM STATISTICS	UM	OPP
SCORING	1447	1207
Points per game	80.4	67.1
Scoring margin	+13.3	-
FIELD GOALS-ATT	517-1061	401-997
Field goal pct	.487	.402
3 POINT FG-ATT	100-269	113-342
3-point FG pct	.372	.330
3-pt FG made per gam	5.6	6.3
FREE THROWS-ATT	313-431	292-401
Free throw pct	.726	.728
F-Throws made per ga	17.4	16.2
REBOUNDS	681	592
Rebounds per game	37.8	32.9
Rebounding margin	+4.9	-
ASSISTS	246	179
Assists per game	13.7	9.9
TURNOVERS	209	264
Turnovers per game	11.6	14.7
Turnover margin	+3.1	-
Assist/turnover ratio	1.2	0.7
STEALS	148	80
Steals per game	8.2	4.4
BLOCKS	48	61
Blocks per game	2.7	3.4
ATTENDANCE	42051	17980
Home games-Avg/Gam	9-4672	9-1998
Neutral site-Avg/Game	-	0-0

Date	Opponent	Score	Att.
* 12/28/17	at Northern Arizona	w 87-69	604
* 12/30/17	at Southern Utah	w 79-49	1263
* 1/4/18	NORTH DAKOTA	w 109-79	3220
* 1/6/18	NORTHERN COLORADO	w 89-80	4119
* 1/11/18	at Sacramento State	w 78-66	721
* 1/13/18	at Portland State	w 92-89	925
* 1/20/18	at Montana State	w 67-52	6772
* 1/25/18	SOUTHERN UTAH	w 71-47	4040
* 1/27/18	NORTHERN ARIZONA	w 82-64	5108
* 2/1/18	at Northern Colorado	w 88-79	1413
* 2/3/18	at North Dakota	w 72-67	2089
* 2/8/18	PORTLAND STATE	w 80-60	4082
* 2/10/18	SACRAMENTO STATE	wot 71-69	4592
* 2/15/18	at Eastern Washington	L 65-74	2354
* 2/17/18	at Idaho	Lot 77-79	1839
* 2/24/18	MONTANA STATE	w 90-63	7256
* 3/1/18	WEBER STATE	w 75-57	4922
* 3/3/18	IDAHO STATE	w 75-64	4712

\* - Conference game

Score by Periods	1st	2nd	OT	Totals
Montana	663	768	16	1447
Opponents	545	646	16	1207



## MONTANA BASKETBALL



## 2017-18 SEASON STATISTICS - HOME GAMES

#	Player	gp-gs	min	avg	Total		3-Point		F-Throw		Rebounds				pf	dq	a	to	blk	stl	pts	avg
					fg-fga	fg%	3fg-fga	3fg%	ft-fa	ft%	off	def	tot	avg								
14	RORIE, Ahmaad	14-14	472	33.7	82-193	.42	20-62	.32	49-62	.79	15	43	58	4.1	25	0	49	24	2	18	233	16.6
00	OGUINE, Michael	14-14	448	32.0	73-157	.46	22-57	.38	54-77	.70	36	55	91	6.5	29	0	28	24	10	17	222	15.9
15	AKOH, Jamar	14-14	367	26.2	76-124	.61	0-0	.00	65-94	.69	34	62	96	6.9	48	3	23	33	13	6	217	15.5
04	PRIDGETT, Sayee	14-0	320	22.9	61-119	.51	1-5	.20	16-22	.72	14	55	69	4.9	36	1	21	25	6	18	139	9.9
24	MOOREHEAD, Bo	14-14	429	30.6	33-72	.45	18-43	.41	13-16	.81	11	56	67	4.8	26	0	17	11	5	21	97	6.9
01	FALLS, Timmy	13-0	234	18.0	26-59	.44	14-31	.45	16-20	.80	4	12	16	1.2	41	2	17	14	0	10	82	6.3
20	KRSLOVIC, Fabija	14-14	323	23.1	30-59	.50	0-3	.00	19-27	.70	18	39	57	4.1	36	2	26	16	7	10	79	5.6
05	NICHOLAS, Karl	12-0	128	10.7	23-29	.79	0-0	.00	5-16	.31	12	19	31	2.6	30	0	3	17	9	4	51	4.3
40	BESOVIC, Admir	11-0	19	1.7	5-8	.62	0-0	.00	1-1	1.000	1	2	3	0.3	5	0	1	1	1	0	11	1.0
13	SPOJA, Trevor	11-0	44	4.0	3-13	.23	2-10	.20	1-2	.50	1	2	3	0.3	6	0	3	2	1	0	9	0.8
10	ESPE, Lars	10-0	28	2.8	2-3	.66	1-1	1.000	1-5	.20	1	1	2	0.2	2	0	5	1	1	0	6	0.6
03	BEVENS, Niko	7-0	13	1.9	1-1	1.000	1-1	1.000	0-0	.00	0	0	0	0.0	2	0	0	1	0	0	3	0.4
Team											23	27	50					3				
Total.....		14	2825		415-837	.49	79-213	.37	240-342	.70	170	373	543	38.8	286	8	193	172	55	104	114	82.1
Opponents.....		14	2825		308-760	.40	84-246	.34	215-302	.71	121	313	434	31.0	292	-	124	220	50	61	915	65.4

## 2017-18 SEASON STATISTICS - ROAD GAMES

#	Player	gp-gs	min	avg	Total		3-Point		F-Throw		Rebounds				pf	dq	a	to	blk	stl	pts	avg
					fg-fga	fg%	3fg-fga	3fg%	ft-fa	ft%	off	def	tot	avg								
14	RORIE, Ahmaad	14-14	516	36.9	86-205	.42	26-78	.33	38-40	.95	10	40	50	3.6	30	0	49	32	2	14	236	16.9
00	OGUINE, Michael	14-14	437	31.2	69-157	.43	16-53	.30	55-73	.75	26	37	63	4.5	46	1	25	14	5	22	209	14.9
15	AKOH, Jamar	14-14	371	26.5	62-115	.53	1-4	.25	47-72	.65	35	61	96	6.9	51	1	9	30	8	19	172	12.3
20	KRSLOVIC, Fabija	14-14	366	26.1	43-68	.63	0-3	.00	31-43	.72	23	58	81	5.8	44	0	20	26	9	15	117	8.4
24	MOOREHEAD, Bo	14-14	469	33.5	38-109	.34	25-75	.33	15-21	.71	10	69	79	5.6	31	0	19	19	7	18	116	8.3
04	PRIDGETT, Sayee	14-0	312	22.3	39-91	.42	1-5	.20	20-34	.58	16	36	52	3.7	49	1	15	28	6	16	99	7.1
01	FALLS, Timmy	14-0	235	16.8	15-42	.35	7-19	.36	10-16	.62	2	8	10	0.7	24	0	29	19	1	11	47	3.4
05	NICHOLAS, Karl	14-0	110	7.9	13-33	.39	0-0	.00	6-12	.50	12	16	28	2.0	32	1	1	8	3	2	32	2.3
40	BESOVIC, Admir	4-0	9	2.3	1-1	1.000	0-0	.00	0-0	.00	1	0	1	0.3	4	0	0	1	0	0	2	0.5
03	BEVENS, Niko	5-0	6	1.2	0-0	.00	0-0	.00	0-0	.00	0	0	0	0.0	0	0	0	0	0	0	0	0.0
10	ESPE, Lars	4-0	10	2.5	0-2	.00	0-1	.00	0-0	.00	1	0	1	0.3	1	0	0	1	0	0	0	0.0
13	SPOJA, Trevor	7-0	9	1.3	0-3	.00	0-3	.00	0-0	.00	0	0	0	0.0	2	0	0	1	0	0	0	0.0
Team											29	16	45					4				
Total.....		14	2850		366-826	.44	76-241	.31	222-311	.71	165	341	506	36.1	314	4	167	183	41	117	103	73.6
Opponents.....		14	2850		322-747	.43	79-231	.34	256-346	.74	135	343	478	34.1	270	-	150	219	62	77	979	69.9

## 2017-18 SEASON STATISTICS - NEUTRAL-SITE GAMES

#	Player	gp-gs	min	avg	Total		3-Point		F-Throw		Rebounds				pf	dq	a	to	blk	stl	pts	avg
					fg-fga	fg%	3fg-fga	3fg%	ft-fa	ft%	off	def	tot	avg								
14	RORIE, Ahmaad	6-6	230	38.3	38-90	.42	13-34	.38	26-31	.83	7	18	25	4.2	9	0	27	11	1	10	115	19.2
00	OGUINE, Michael	6-6	211	35.2	35-70	.50	8-19	.42	28-36	.77	11	23	34	5.7	20	1	14	7	3	9	106	17.7
20	KRSLOVIC, Fabija	6-6	158	26.3	19-36	.52	0-0	.00	17-24	.70	11	23	34	5.7	15	1	2	8	3	5	55	9.2
04	PRIDGETT, Sayee	6-0	138	23.0	22-54	.40	1-6	.16	4-5	.80	5	20	25	4.2	17	0	8	12	2	7	49	8.2
15	AKOH, Jamar	6-6	143	23.8	20-38	.52	0-1	.00	6-11	.54	11	22	33	5.5	14	0	5	8	2	5	46	7.7
24	MOOREHEAD, Bo	6-6	187	31.2	11-34	.32	8-27	.29	7-12	.58	6	22	28	4.7	18	1	5	9	6	2	37	6.2
05	NICHOLAS, Karl	4-0	49	12.3	11-16	.68	0-0	.00	1-8	.12	7	2	9	2.3	8	0	1	4	0	0	23	5.8
01	FALLS, Timmy	6-0	94	15.7	7-15	.46	1-4	.25	0-0	.00	1	5	6	1.0	13	1	5	8	1	4	15	2.5
13	SPOJA, Trevor	2-0	3	1.5	0-1	.00	0-1	.00	0-0	.00	0	0	0	0.0	0	0	0	0	0	0	0	0.0
40	BESOVIC, Admir	3-0	3	1.0	0-0	.00	0-0	.00	0-0	.00	0	1	1	0.3	1	0	0	0	0	0	0	0.0
10	ESPE, Lars	3-0	4	1.3	0-1	.00	0-1	.00	0-0	.00	0	0	0	0.0	1	0	0	0	0	0	0	0.0
03	BEVENS, Niko	3-0	5	1.7	0-3	.00	0-2	.00	0-0	.00	1	0	1	0.3	0	0	1	0	0	1	0	0.0
Team											7	6	13									
Total.....		6	1225		163-358	.45	31-95	.32	89-127	.70	67	142	209	34.8	116	4	68	67	18	43	446	74.3
Opponents.....		6	1226		154-318	.48	46-107	.43	81-116	.69	43	147	190	31.7	113	-	69	85	17	30	435	72.5





## MONTANA BASKETBALL



## 2017-18 GAME-BY-GAME STATISTICS

				--TOTAL--		--3-PTRS--		----FTS-----		--REBOUNDS--													
Opponent	Date	Score	W/L	FG-A	Pct.	3FG-A	Pct.	FT-A	Pct.	Off	Def	Tot	Avg	PF	A	TO	Blk	Stl	Pts	Avg			
WHITWORTH	11/10/17	72-60	W	25-62	.403	7-20	.350	15-25	.600	10	23	33	33.0	23	11	11	6	7	72	72.0			
at Pitt	11/13/17	83-78	W (ot)	30-66	.455	7-24	.292	16-25	.640	14	25	39	36.0	23	15	15	6	7	83	77.5			
at Penn State	11/15/17	57-70	L	22-56	.393	6-21	.286	7-15	.467	10	24	34	35.3	22	9	15	5	9	57	70.7			
vs. Oral Roberts	11/20/17	69-64	W	24-56	.429	4-22	.182	17-22	.773	12	22	34	35.0	18	18	10	4	10	69	70.2			
vs. UC Santa Barbara	11/21/17	73-80	L	27-63	.429	6-22	.273	13-21	.619	17	15	32	34.4	28	12	17	3	8	73	70.8			
CARROLL	11/26/17	86-75	W	33-59	.559	5-13	.385	15-27	.556	14	19	33	34.2	19	13	16	2	9	86	73.3			
at Stanford	11/29/17	54-70	L	19-65	.292	4-25	.160	12-17	.706	14	20	34	34.1	27	7	11	5	6	54	70.6			
CSUN	12/3/17	86-68	W	31-60	.517	4-12	.333	20-25	.800	13	23	36	34.4	22	15	12	6	5	86	72.5			
at Georgia State	12/9/17	68-71	L	21-58	.362	5-22	.227	21-26	.808	14	26	40	35.0	21	10	15	5	11	68	72.0			
UC RIVERSIDE	12/17/17	77-61	W	24-48	.500	5-18	.278	24-31	.774	11	29	40	35.5	18	7	20	5	7	77	72.5			
UC IRVINE	12/19/17	86-68	W	32-61	.525	7-15	.467	15-25	.600	15	22	37	35.6	22	15	11	2	6	86	73.7			
at Washington	12/22/17	63-66	L	27-67	.403	5-15	.333	4-6	.667	20	21	41	36.1	19	12	20	6	6	63	72.8			
at Northern Arizona	12/28/17	87-69	W	29-65	.446	7-17	.412	22-29	.759	16	26	42	36.5	26	13	11	4	11	87	73.9			
at Southern Utah	12/30/17	79-49	W	31-63	.492	4-16	.250	13-14	.929	6	32	38	36.6	23	13	6	1	8	79	74.3			
NORTH DAKOTA	1/4/18	109-79	W	40-65	.615	8-14	.571	21-30	.700	8	31	39	36.8	25	21	8	3	10	109	76.6			
NORTHERN COLO.	1/6/18	89-80	W	29-57	.509	3-7	.429	28-33	.848	14	26	40	37.0	22	13	13	4	8	89	77.4			
at Sacramento State	1/11/18	78-66	W	26-57	.456	7-13	.538	19-22	.864	15	21	36	36.9	22	13	12	0	14	78	77.4			
at Portland State	1/13/18	92-89	W	27-49	.551	5-11	.455	33-47	.702	11	27	38	37.0	25	13	19	1	7	92	78.2			
at Montana State	1/20/18	67-52	W	26-58	.448	4-12	.333	11-16	.688	9	27	36	36.9	23	10	8	3	7	67	77.6			
SOUTHERN UTAH	1/25/18	71-47	W	22-52	.423	7-12	.583	20-28	.714	8	28	36	36.9	23	7	9	4	9	71	77.3			
NORTHERN ARIZONA	1/27/18	82-64	W	34-62	.548	12-28	.429	2-6	.333	11	17	28	36.5	22	14	15	2	9	82	77.5			
at Northern Colo.	2/1/18	88-79	W	32-58	.552	5-9	.556	19-32	.594	13	29	42	36.7	25	10	12	2	5	88	78.0			
at North Dakota	2/3/18	72-67	W	27-56	.482	5-18	.278	13-19	.684	7	24	31	36.5	21	17	13	1	8	72	77.7			
PORTLAND STATE	2/8/18	80-60	W	28-61	.459	2-11	.182	22-29	.759	15	32	47	36.9	20	15	10	7	7	80	77.8			
SACRAMENTO STATE	2/10/18	71-69	W (ot)	24-63	.381	7-22	.318	16-21	.762	10	31	41	37.1	17	14	9	5	5	71	77.6			
at Eastern Washington	2/15/18	65-74	L	22-51	.431	6-22	.273	15-19	.789	7	20	27	36.7	17	14	15	1	9	65	77.1			
at Idaho	2/17/18	77-79	L (ot)	27-57	.474	6-16	.375	17-24	.708	9	19	28	36.4	20	11	11	1	9	77	77.1			
MONTANA STATE	2/24/18	90-63	W	35-66	.530	5-15	.333	15-24	.625	13	33	46	36.7	24	18	12	3	10	90	77.5			
IDAHO STATE	3/3/18	75-64	W	27-63	.429	3-17	.176	18-24	.750	17	28	45	37.2	12	8	11	4	5	75	77.4			
vs. Northern Colo.	3/9/18	91-89	W (ot)	35-73	.479	1-6	.167	20-29	.690	15	22	37	37.3	24	8	7	4	7	91	78.0			
vs. Eastern Washington	3/10/18	82-65	W	29-49	.592	9-18	.500	15-20	.750	5	25	30	37.1	11	13	8	2	7	82	78.1			
VS MICHIGAN	3/15/18	47-61	L	18-56	.321	3-15	.200	8-11	.727	8	25	33	37.0	21	7	12	2	7	47	77.2			
MONTANA		2625		944-2021	.467	186-549	.339	551-780	.706	402	855	1257	37.0	716	428	422	114	264	2625	77.2			
OPPONENTS		2329		784-1825	.430	209-584	.358	552-764	.723	299	803	1102	32.4	675	343	524	129	168	2329	68.5			



## MONTANA BASKETBALL



## 2017-18 GAME-BY-GAME COMPARISONS

Opponent	1st	2nd	Score	Total FG	FG Pct.	3-Pointers	3FG Pct.	Free Throws	FT Pct.	RBs	Assists	TOs	Blocks	Steals	Fouls
WHITWORTH	32/29	40/31	72-60	25-62/19-47	.403/.404	7-20/4-12	.350/.333	15-25/18-26	.600/.692	33/42	11/5	11/24	6/3	7/3	23/21
at Pitt	37/35	36/38	83-78	30-66/27-61	.455/.443	7-24/6-15	.292/.400	16-25/18-24	.640/.750	39/38	15/12	15/19	6/3	7/4	23/22
at Penn State	29/34	28/36	57-70	22-56/25-50	.393/.500	6-21/6-12	.286/.500	7-15/14-24	.467/.583	34/32	9/12	15/15	5/9	9/3	22/15
vs. Oral Roberts	31/24	38/40	69-64	24-56/23-52	.429/.442	4-22/8-16	.182/.500	17-22/10-15	.773/.667	34/31	18/13	10/16	4/3	10/6	18/18
vs. UC Santa Barbara	27/38	46/42	73-80	27-63/23-41	.429/.561	6-22/6-14	.273/.429	13-21/28-35	.619/.800	32/30	12/11	17/21	3/8	8/5	28/24
CARROLL	46/42	40/33	86-75	33-59/25-45	.559/.556	5-13/8-12	.385/.667	15-27/17-20	.556/.850	33/22	13/14	16/20	2/5	9/6	19/24
at Stanford	25/30	29/40	54-70	19-65/21-48	.292/.438	4-25/3-11	.160/.273	12-17/25-33	.706/.758	34/47	7/12	11/18	5/5	6/5	27/14
CSUN	41/36	45/32	86-68	31-60/25-52	.517/.481	4-12/4-12	.333/.333	20-25/14-23	.800/.609	36/27	15/11	12/16	6/3	5/4	22/20
at Georgia State	26/43	42/28	68-71	21-58/23-55	.362/.418	5-22/5-20	.227/.250	21-26/20-26	.808/.769	40/33	10/9	15/14	5/6	11/9	21/17
UC RIVERSIDE	33/21	44/40	77-61	24-48/20-52	.500/.385	5-18/5-17	.278/.294	24-31/16-23	.774/.696	40/23	7/6	20/16	5/2	7/6	18/22
UC IRVINE	39/29	47/39	86-68	32-61/21-49	.525/.429	7-15/6-15	.467/.400	15-25/20-27	.600/.741	37/29	15/10	11/15	2/4	6/6	22/18
at Washington	32/33	31/33	63-66	27-67/23-51	.403/.451	5-15/3-9	.333/.333	4-6/17-21	.667/.810	41/27	12/4	20/18	6/11	6/12	19/14
at Northern Arizona	42/30	45/39	87-69	29-65/16-49	.446/.327	7-17/7-17	.412/.412	22-29/30-35	.759/.857	42/33	13/10	11/19	4/7	11/4	26/22
at Southern Utah	39/20	40/29	79-49	31-63/15-57	.492/.263	4-16/4-15	.250/.267	13-14/15-21	.929/.714	38/42	13/7	6/15	1/3	8/2	23/14
NORTH DAKOTA	50/29	59/50	109-79	40-65/24-63	.615/.381	8-14/8-31	.571/.258	21-30/23-26	.700/.885	39/33	21/8	8/13	3/3	10/4	25/26
NORTHERN COLO.	43/28	46/52	89-80	29-57/25-57	.509/.439	3-7/14-26	.429/.538	28-33/16-21	.848/.762	40/25	13/15	13/15	4/5	8/7	22/25
at Sacramento State	32/35	46/31	78-66	26-57/21-40	.456/.525	7-13/7-14	.538/.500	19-22/17-27	.864/.630	36/22	13/10	12/17	0/3	14/6	22/20
at Portland State	42/48	50/41	92-89	27-49/33-77	.551/.429	5-11/5-24	.455/.208	33-47/18-22	.702/.818	38/35	13/13	19/14	1/2	7/11	25/32
at Montana State	33/33	34/19	67-52	26-58/16-50	.448/.320	4-12/3-16	.333/.188	11-16/17-26	.688/.654	36/41	10/9	8/13	3/3	7/3	23/18
SOUTHERN UTAH	30/21	41/26	71-47	22-52/15-49	.423/.306	7-12/1-11	.583/.091	20-28/16-27	.714/.593	36/35	7/4	9/17	4/3	9/1	23/22
NORTHERN ARIZONA	31/24	51/40	82-64	34-62/20-48	.548/.417	12-28/7-16	.429/.438	2-6/17-21	.333/.810	28/32	14/5	15/22	2/0	9/2	22/14
at Northern Colorado	37/37	51/42	88-79	32-58/24-56	.552/.429	5-9/8-26	.556/.308	19-32/23-28	.594/.821	42/32	10/13	12/12	2/2	5/1	25/25
at North Dakota	39/31	33/36	72-67	27-56/24-53	.482/.453	5-18/3-17	.278/.176	13-19/16-23	.684/.696	31/35	17/10	13/14	1/2	8/7	21/17
PORTLAND STATE	34/29	46/31	80-60	28-61/21-67	.459/.313	2-11/6-27	.182/.222	22-29/12-20	.759/.600	47/38	15/9	10/13	7/4	7/4	20/24
SACRAMENTO STATE	34/31	27/30	71-69	24-63/25-58	.381/.431	7-22/8-13	.318/.615	16-21/11-16	.762/.688	41/37	14/14	9/11	5/5	5/3	17/20
at Eastern Washington	32/35	33/39	65-74	22-51/27-48	.431/.563	6-22/7-16	.273/.438	15-19/13-18	.789/.722	27/30	14/15	15/15	1/3	9/6	17/18
at Idaho	35/35	36/36	77-79	27-57/27-52	.474/.519	6-16/12-19	.375/.632	17-24/13-18	.708/.722	28/31	11/14	11/16	1/3	9/4	20/22
MONTANA STATE	37/21	53/42	90-63	35-66/19-61	.530/.311	5-15/6-24	.333/.250	15-24/19-29	.625/.655	46/39	18/8	12/16	3/2	10/3	24/21
WEBER STATE	36/29	39/28	75-57	31-58/22-54	.534/.407	4-9/2-11	.444/.182	9-14/11-16	.643/.688	42/25	22/3	15/10	2/5	7/5	17/15
IDAHO STATE	37/29	38/35	75-64	27-63/27-58	.429/.466	3-17/5-19	.176/.263	18-24/5-7	.750/.714	45/27	8/12	11/12	4/6	5/7	12/20
vs. North Dakota	42/42	42/34	84-76	30-61/27-59	.492/.458	8-12/11-26	.667/.423	16-24/11-15	.667/.733	43/28	10/12	13/10	3/1	4/10	14/17
vs. Northern Colorado	37/37	43/43	91-89	35-73/33-59	.479/.559	1-6/7-11	.167/.636	20-29/16-26	.690/.615	37/39	8/12	7/15	4/2	7/2	24/23
vs. Eastern Washington	29/40	53/25	82-65	29-49/27-60	.592/.450	9-18/9-24	.500/.375	15-20/2-3	.750/.667	30/26	13/10	8/9	2/0	7/3	11/17
vs. Michigan	28/31	19/30	47-61	18-56/21-47	.321/.447	3-15/5-16	.200/.313	8-11/14-22	.727/.636	33/36	7/11	12/14	2/3	7/4	21/14



## THE GRIZZLIES' 2017-18 RECORD WHEN...

## GAME LOCATION

At Dahlberg Arena .....	14-0
On the Road .....	8-6
Neutral Site .....	4-2

## TOP-25 OPPONENT (AP POLL)

At Dahlberg Arena .....	0-0
On the Road .....	0-0
Neutral Site .....	0-1

## ON TV

At Dahlberg Arena .....	6-0
On the Road .....	3-3
Neutral Site .....	3-1

## OVERTIME

At Dahlberg Arena .....	1-0
On the Road .....	1-1
Neutral Site .....	1-0

## HALFTIME SCORE

Leading at the Half .....	19-0
Trailing at the Half .....	3-7
Tied at the Half .....	4-1

## FINAL MARGIN

1-4 .....	3-3
5-9 .....	6-2
10+ .....	17-3

## GRIZ SCORING

<50 .....	0-1
50-59 .....	0-2
60-69 .....	2-3
70-79 .....	9-2
80-89 .....	11-0
90+ .....	4-0

## OPPONENT SCORING

<50 .....	2-0
50-59 .....	2-0
60-69 .....	14-2
70-79 .....	5-5
80-89 .....	3-1
90+ .....	0-0

## FIELD-GOAL PERCENTAGE

Better Field-Goal Percentage .....	20-0
Worse Field-Goal Percentage .....	6-8

UM Shoots <.400 .....	1-4
UM Shoots .400-.449 .....	6-3
UM Shoots .450-.499 .....	7-1
UM Shoots .500+ .....	12-0

Opponent Shoots <.400 .....	8-0
Opponent Shoots .400-.449 .....	11-3
Opponent Shoots .450-.499 .....	4-1
Opponent Shoots .500+ .....	3-4

## 3-POINT SHOOTING

Better 3-Point FG Percentage .....	13-0
Worse 3-Point FG Percentage .....	11-7
Same 3-Point FG Percentage .....	2-1

UM Makes 0-4 .....	9-2
UM Makes 5-7 .....	13-6
UM makes 8+ .....	4-0

Opponent Makes 0-4 .....	7-2
Opponent Makes 5-7 .....	11-5
Opponent Makes 8+ .....	8-1

## FREE-THROW SHOOTING

Better Free-Throw Percentage .....	13-3
Worse Free-Throw Percentage .....	13-5

UM Shoots More FTs .....	16-3
UM Shoots Fewer FTs .....	10-4
UM Shoots Same FTs .....	0-1

UM Makes More FTs .....	13-3
UM Makes Fewer FTs .....	13-5
UM Makes Same FTs .....	0-0

## REBOUNDING

More Rebounds than Opponent .....	20-4
Fewer Rebounds than Opponent .....	6-4
Same Rebounds as Opponent .....	0-0

## ASSISTS

More Assists than Opponent .....	18-3
Fewer Assists than Opponent .....	6-5
Same Assists as Opponent .....	2-0

## TURNOVERS

Fewer Turnovers than Opponent .....	19-4
More Turnovers than Opponent .....	6-2
Same Turnovers as Opponent .....	1-2

UM Makes < 10 .....	7-0
UM Makes 10-15 .....	16-6
UM Makes 16+ .....	3-2

Opponent Makes < 10 .....	1-0
Opponent Makes 10-15 .....	14-4
Opponent Makes 16+ .....	11-4

## TIME OF DAY

Day Game .....	5-1
Night Game .....	21-7

## DAY OF THE WEEK

Monday .....	2-0
Tuesday .....	1-1
Wednesday .....	0-2
Thursday .....	8-2
Friday .....	2-1
Saturday .....	10-2
Sunday .....	3-0

## MONTH

November .....	4-3
December .....	5-2
January .....	7-0
February .....	5-2
March .....	5-1

## UNIFORMS

Gray .....	4-3
Maroon .....	7-5
White .....	15-0

## GRIZ VS. OPPOSING CONFERENCES

ACC .....	1-0
Big Sky .....	19-2
Big Ten .....	0-2
Big West .....	3-1
Pac-12 .....	0-2
Summit League .....	1-0
Sunbelt .....	0-1
West Coast .....	0-0
Non-Division I .....	2-0

## GRIZ IN THE STATE OF

Arizona .....	1-0
California .....	2-2
Colorado .....	1-0
Georgia .....	0-1
Idaho .....	0-1
Kansas .....	0-1
Montana .....	15-0
Nevada .....	3-0
North Dakota .....	1-0
Oregon .....	1-0
Pennsylvania .....	1-1
Utah .....	1-0
Washington .....	0-2



# MONTANA BASKETBALL



## GENERAL

Name of School: ..... University of Montana  
 Abbreviation: ..... UM  
 City/Zip: ..... Missoula, MT 59812  
 Founded: ..... Feb. 17, 1893  
 Enrollment: ..... 12,500  
 Nickname: ..... Grizzlies, Griz  
 School Colors: ..... Maroon (PMS 209) & Silver (PMS 8 C)  
 Arena Name: ..... Dahlberg Arena (7,322)  
 Affiliation: ..... NCAA Division I  
 Conference: ..... Big Sky Conference (Inaugural, 1963)  
 President: ..... Seth Bodnar  
 Athletics Director: ..... Kent Haslam  
 Online Tickets: ..... www.griztix.com  
 Ticket Office Phone: ..... 1-888-MONTANA

## COACHING STAFF

Head Coach: ..... Travis DeCuire  
*Alma Mater, Year:* ..... Montana, 1994  
*Record at UM:* ..... 88-52, 5th Season  
*Career Record* ..... Same  
*Big Sky Conference Record:* ..... 55-17  
*Office Phone:* ..... (406) 243-5334  
*Twitter:* ..... @CoachDeCuire  
 Associate Head Coach: ..... Chris Cobb  
*Alma Mater (Year):* ..... Menlo College, 2009  
*Seasons at UM:* ..... 5th Season  
 Assistant Coach: ..... Rachi Wortham  
*Alma Mater (Year):* ..... Eastern Washington, 2006  
*Seasons at UM:* ..... 3rd Season  
 Assistant Coach: ..... Jay Flores  
*Alma Mater (Year):* ..... Chico State, 2012  
*Seasons at UM:* ..... 3rd Season  
 Graduate Assistant: ..... Jesse Bartels  
 Graduate Assistant: ..... Anderson Klarke  
 Program Coordinator: ..... Julie Tonkin

## HISTORY

First Year of Basketball: ..... 1901-02  
 All-Time Record: ..... 1,468-1,242-1 (.542)  
 All-Time Big Sky Record: ..... 486-316 (.606)  
 All-Time Home Record: ..... 983-406 (.708)  
 Record at Dahlberg Arena (Since 1953): ..... 703-245 (.742)  
 Big Sky Tournament Titles: ..... 10 (Last: 2018)  
 Big Sky Regular-Season Titles: ..... 11 (Last: 2018)  
 Big Sky Runners-Up: ..... 10  
 NCAA Tournament Berths: ..... 11  
 NCAA Tournament Record: ..... 2-12  
 Last NCAA Tournament Berth: ..... 2018 (1st Round vs. Michigan)  
 Last NCAA Tournament Win: ..... 2006 (87-79 vs. #5 Nevada)  
 NIT Berths: ..... 4  
 Last NIT Berth: ..... 2015 (1st Round vs. Texas A&M)

## TEAM INFORMATION

2017-18 Overall Record: ..... 26-8 (.765)  
 2017-18 Big Sky Record: ..... 16-2 (.889)  
 2017-18 Home Record: ..... 14-0 (1.000)  
 2017-18 Away Record: ..... 8-6 (.571)  
 2017-18 Neutral-Site Record: ..... 4-2 (.667)  
 2017-18 Regular Season Finish: ..... 1st  
 Big Sky Tournament Result: ..... 3-0 (1st)  
 2017-18 Postseason: ..... NCAA Tournament First round  
 Starters Returning/Lost: ..... 4/1  
 Letterwinners Returning/Lost: ..... 6/6  
 Newcomers: ..... 6  
 2017-18 Starts Returning: ..... 80.0%  
 2017-18 Minutes Returning: ..... 81.3%  
 2017-18 Points Per Game Returning: ..... 85.2%  
 2017-18 Rebounds Per Game Returning: ..... 71.4%  
 2017-18 Assists Per Game Returning: ..... 85.2%  
 2017-18 Steals Per Game Returning: ..... 86.0%  
 2017-18 Blocks Per Game Returning: ..... 70.2%



### NIC HALLISEY

**Assistant Director of Communications**  
**Men's Basketball, Volleyball, Track & Field**

Email: nic.hallisey@umontana.edu  
 Cell Phone: (970) 231-4789  
 Mailing Address: 32 Campus Dr.  
 Missoula, MT 59812  
 Website: www.GoGriz.com  
 Press Row Phone: (406) 243-4281

**Services:** The UM sports information department provides rosters, releases and updated statistics prior to every game at the Dahlberg Arena press row. Printed box scores will also be available for media during and immediately following the completion of home games. A complete box score will be emailed to media outlets and competing schools after the conclusion of each match.

**Interviews:** All player and coaching staff interviews must be made through Nic Hallisey at least one day in advance to assure a time slot. Players and coaches are not available prior to games.

**Parking:** Parking passes will be issued to media upon request. Please request parking from Nic Hallisey.

**Photographers:** Photographers are limited to the marked areas along sidelines and baselines in accordance with NCAA guidelines. Photographers will not be allowed in team bench areas or behind the official scorer's table.

**Practices:** Media is allowed at Griz basketball practice when proper notice has been given. Please call Nic Hallisey to check practice status (open or closed), as well as time and location.

**Postgame:** Following a cooling-off period, head coach Travis DeCuire and selected UM basketball players will be available to the media. Interviews are to take place on the Dahlberg Arena floor unless otherwise noted. A member of the UM sports information department will be available to assist in arranging postgame interviews as needed.



### Twitter

@MontanaGrizBB #GrizHoops  
 @UMGrizzlies #GoGriz  
 #MontanaTough



### Facebook

@MontanaGrizBB  
 @UMGrizzlies



### Instagram

@UMGrizzlies



### YouTube

Griz TV





## MONTANA BASKETBALL



## TRAVIS DECUIRE

Head Coach | Fourth Season | Montana, 1994

Travis DeCure continues to rewrite Montana's record books as he enters his fifth season as head coach in 2018-19. During his four seasons, the former Griz player has led Montana to three postseason appearances and 20-win seasons, including 2017-18 campaign that featured Big Sky Conference regular-season and tournament titles and an appearance in the NCAA tournament.

DeCure (pronounced: duh-CURE) was tabbed as coach of the year by the Big Sky Conference and the NABC (District 6) in 2018, and made league history by becoming the fastest

coach ever to win 50 games (50-15). His current Big Sky winning percentage (55-17, .764) ranks third in league history and is best among coaches with at least 40 wins.

The 2017-18 season was historic on many levels, with Montana posting 26 victories (third in program history), winning both the Big Sky Conference regular-season and tournament titles, and advancing to the NCAA tournament. The 26-8 record included a 14-0 mark on their home court. In late December, Montana closed its non-conference slate with a winning record for the first time in six seasons – featuring a signature victory at Pitt – before beginning Big Sky play 13-0. The 13-game winning streak was the third-longest in school history, in addition to the third-longest active streak in the NCAA at the time. The stretch also featured a program-record seven consecutive road victories.

The Grizzlies finished the season ranked No. 14 in the final College Insider Mid-Major Top 25 poll. Montana had three representatives on the All-Big Sky teams, including first-team selection Ahmaad Rorie and Defensive Player of the Year Michael Oguine. During the 2017-18 season, both guards surpassed 1,000 career points, becoming the 32nd and 33rd players to join UM's exclusive list. Rorie became just the third in UM history to reach the milestone in just his second season.

Montana used the same starting lineup for all 34 contests, leading to a balanced effort. The Grizzlies led the Big Sky in five statistical categories and ranked in the top three in 14. Nationally, the Grizzlies ranked in the top 80 nationally for both scoring offense (78th) and defense (73rd) – one of 15 schools to do so. On offense, Montana shot better than 50 percent a dozen times, ranking 68th nationally at .467 on

## DECUIRE AT A GLANCE

## Personal

Hometown: Seattle, Wash.

Wife: Sabrina

Daughters: Brianna (24), Tamia (5)

## Education

Montana, 1994

Bachelor's: Business Marketing

## Coaching Capsule

Years	School	Position
2014-Pres.	Montana	Head Coach
2012-14	California	Associate Head Coach
2008-12	California	Assistant Coach
2003-08	Old Dominion	Assistant Coach
2001-03	Green River C.C.	Head Coach

## Head Coaching Capsule

Year	Overall	BSC	Place	Postseason
2014-15	20-13	14-4	1st	NIT
2015-16	21-12	14-4	2nd	CBI
2016-17	16-16	11-7	5th	BSC Tour.
2017-18	26-8	16-2	1st	NCAA
2018-19	5-3	0-0	--	--
<b>TOTALS</b>	<b>88-52</b>	<b>55-17</b>	<b>--</b>	<b>--</b>



## MONTANA BASKETBALL



the year. On defense, the Grizzlies were even better. They ranked in the top 30 nationally for turnovers forced (15.4, 22nd), steals (7.8, 23rd) and turnover margin (+3.0, 29th).

In his first season at the helm of a program with a rich history of success, DeCuire's Griz started the year picked to finish eighth in the conference. Led by future European professional Jordan Gregory, UM would go on to defy expectations and win the Big Sky regular-season championship and advance to the National Invitational Tournament (NIT) before finishing the season 20-13 (14-4 BSC).

At the time, he became only the second coach in UM history to notch 20 victories in his first season at the helm – a feat also accomplished by Blaine Taylor in 1991-92 (27-4).

In DeCuire's second year, he followed up with another 20-win season and another trip to the Big Sky championship game, this time led by future European professional Martin Breunig. DeCuire's Grizzlies would once again advance to the postseason, competing in the first round of the CBI tournament against Nevada, finishing with a 21-12 (14-4 BSC) record. He is the only coach in UM history to win at least 20 games in each of his first two seasons.

Paced by 10 underclassmen and just two seniors who played significant time, the Grizzlies went 16-16 (11-7 BSC) in 2016-17, earning a first-round bye in the Big Sky tournament. During the season, DeCuire became the second-fastest UM head coach to reach 50 wins (doing so in 84 contests).

The 2016-17 season was also the second consecutive year in which the Grizzlies have posted a team grade-point average above 3.0, earning NABC Team Academic Excellence recognition both seasons.

Prior to returning to his alma mater as head coach, DeCuire spent six seasons (2008-09 through 2013-14) on the University of California coaching staff – including the final four as associate head coach. Regarded as one of the top tutors in the game, DeCuire helped former Montana mentor Mike Montgomery – a member of the National Collegiate Basketball Hall of Fame – transform Cal into one of the winningest programs in the Pac-12 during his time in Berkeley. The Bears reached the postseason all six years he was on the staff, including the NCAA tournament four times. The Golden Bears boasted 130 wins in his six seasons – the best six-year stretch in school history – winning the 2010 Pac-10 championship. He coached numerous all-conference selections, including conference players of the year Jerome Randle (2010) and Jorge Gutierrez (2012).

DeCuire he spent five seasons (2003-04 through 2007-08) as an as-

sistant coach at Old Dominion, under former Griz head coach and player Blaine Taylor. There, he helped the Monarchs to a combined record of 117-53. The mark included 94 wins during his final four seasons – the most in school history over a four-year stretch. ODU reached the postseason each of those four seasons and advanced to the NCAA tournament in both 2005 and 2007 – winning a school-record 28 contests in 2005. Additionally, the Monarchs reached the NIT semifinals in 2006 and the quarterfinals of the College Basketball Invitational in 2008.

DeCuire, from Seattle, Wash., also has head coaching experience from stints at Sammamish High School and Green River Community College in Washington. At GRCC, DeCuire took over a last-place program and guided it to a conference championship and its first 20-win season in more than 20 years, earning league coach-of-the-year honors in 2003 – his second season. At Sammamish High School in Bellevue, DeCuire led his team to a pair of conference titles, a state tournament appearance and three consecutive trips to the district tournament.

As a point guard for Montana from 1992-94 DeCuire was named All-Big Sky Conference as a junior and senior. He set a school record in just three seasons with 435 career assists. He also established UM's single-season mark with 199 assists as a senior in 1993-94, when he was ranked 12th in the nation, averaging 7.1 assists a game. He was the recipient of the Grizzlies' Carl Dragstedt Award (MVP) as a junior and senior, and received the John Eaheart Award (Outstanding Defensive Player) following his senior year.

As a freshman at Chaminade-Hawaii, he was a starter and team MVP in 1990. He then transferred to Montana and redshirted in 1991. DeCuire attended Mercer Island High School (Wash.), where he was a three-year starter and all-state, team MVP, and a McDonald's All-America honorable mention pick as a senior.

He has a strong commitment to community service and founded and acted as president of the Fastbreak Basketball Association – an organization that assists in teaching life lessons and building self-esteem through basketball to more than 500 students in the Seattle-Tacoma area. Additionally, he has extensive experience in counseling at the Echo Glen Children's Center in Snoqualmie, Wash., from 1996-98, and with the Ryther Children's Center in North Seattle, from 1995-97.

DeCuire graduated from Montana in 1994 with a degree in business marketing. He and his wife, Sabrina, have two daughters – Brianna (24) and Tamia (5).





## MONTANA BASKETBALL



# O | MICHAEL OGUINE

Senior | Guard | 6-2 | 180 | Los Angeles, Calif. (Chaminade Prep H.S.)

**MINUTES**

 Season ..... 38, vs. Miami (Ohio) (11/17/18)  
 Career ..... 44, on two occasions

**STEALS**

 Season ..... 4, vs. Montana Tech (11/12/18)  
 Career ..... 5, on two occasions

**POINTS**

 Season ..... 25, vs. Incarnate Word (11/16/18)  
 Career ..... 39, at Portland State (1/13/18)

**FIELD GOALS**

 Season ..... 10, vs. Incarnate Word (11/16/18)  
 Career ..... 12, at Portland State (1/13/18)

**REBOUNDS**

 Season ..... 10, vs. Georgia State (11/9/18)  
 Career ..... 15, vs. Idaho State (3/3/18)

**FIELD-GOAL ATTEMPTS**

 Season ..... 12, vs. Georgia Southern (11/18/18)  
 Career ..... 22, at Pitt (11/13/17)

**ASSISTS**

 Season ..... 5, vs. Montana Tech (11/12/18)  
 Career ..... 5, on five occasions

**THREE-POINTERS**

 Season ..... 4, vs. Incarnate Word (11/16/18)  
 Career ..... 7, vs. Northern Arizona (1/27/18)

**BLOCKS**

 Season ..... 3, vs. College of Idaho (12/3/18)  
 Career ..... 4, vs. Carroll (11/21/15)

**FREE THROWS**

 Season ..... 10, vs. Georgia State (11/9/18)  
 Career ..... 12, at Portland State (1/13/18)

## 2018-19 GAME-BY-GAME STATISTICS

Date	Opponent	START	MIN	Total		3-Pointers		Free-Throws		Rebounds			PF	A	TO	BLK	STL	PTS	AVG
				FG-FGA	PCT	3FG-FGA	PCT	FT-FTA	PCT	OFF	DEF	TOT							
11/9	Georgia State	*	36	2-4	.500	1-2	.500	10-15	.667	2	8	10	3	4	0	2	1	15	15.0
11/12	Montana Tech	*	24	2-6	.333	0-1	.000	3-4	.750	1	3	4	1	5	1	1	4	7	11.0
11/16	vs. Incarnate Word	*	27	10-11	.909	4-5	.800	1-1	1.000	3	2	5	3	3	2	1	1	25	15.7
11/17	vs. Miami (Ohio)	*	38	3-8	.375	0-2	.000	7-11	.636	0	3	3	4	4	1	0	0	13	15.0
11/18	vs. Georgia Southern	*	36	6-12	.500	0-3	.000	6-7	.857	2	3	5	3	4	2	0	1	18	15.6
11/28	at Creighton	*	33	8-11	.727	2-3	.667	3-7	.429	3	6	9	1	2	3	0	0	21	16.5
12/3	College of Idaho	*	23	3-6	.500	0-2	.000	0-2	.000	2	2	4	2	1	1	3	0	6	15.0
12/8	at UC Irvine	*	36	4-9	.444	3-6	.500	5-6	.833	2	3	5	4	1	5	0	3	16	15.1
12/17	North Dakota State																		
12/19	at Arizona																		
12/22	at South Dakota State																		
12/29	at Northern Arizona*																		
12/31	at Southern Utah*																		
1/3	Sacramento State*																		
1/5	Portland State*																		
1/10	at Eastern Washington*																		
1/12	at Northern Colorado*																		
1/19	at Idaho*																		
1/24	Idaho State*																		
1/26	Weber State*																		
2/2	at Montana State*																		
2/7	Idaho*																		
2/9	Eastern Washington*																		
2/14	at Weber State*																		
2/16	at Idaho State*																		
2/23	Montana State*																		
2/25	Northern Colorado*																		
3/2	Southern Utah*																		
3/4	Northern Arizona*																		
3/7	at Portland State*																		
3/9	at Sacramento State*																		

## OGUINE'S CAREER STATISTICS

SEASON	GP	GS	MIN	AVG	FG	FGA	PCT	3FG	3FGA	PCT	FT	FTA	PCT	OFF	DEF	TOT	AVG	PF	FO	AST	T/O	BLK	STL	PTS	AVG
2015-16	33	30	1010	30.6	117	290	.403	31	99	.313	98	140	.700	21	125	146	4.4	97	2	61	62	13	34	363	11.0
2016-17	26	25	739	28.4	99	206	.481	19	51	.373	93	123	.756	52	104	156	6.0	91	7	43	32	8	37	310	11.9
2017-18	34	34	1096	32.2	177	384	.461	46	129	.357	137	186	.737	73	115	188	5.5	95	2	67	45	18	48	537	15.8
2018-19	8	8	253	31.6	38	67	.567	10	24	.417	35	53	.660	15	30	45	5.6	21	0	24	15	7	10	121	15.1
<b>TOTAL</b>	<b>101</b>	<b>97</b>	<b>3098</b>	<b>30.7</b>	<b>431</b>	<b>947</b>	<b>.455</b>	<b>106</b>	<b>303</b>	<b>.350</b>	<b>363</b>	<b>502</b>	<b>.723</b>	<b>161</b>	<b>374</b>	<b>535</b>	<b>5.3</b>	<b>304</b>	<b>11</b>	<b>195</b>	<b>154</b>	<b>46</b>	<b>129</b>	<b>1331</b>	<b>13.2</b>



## MONTANA BASKETBALL



# 1 | TIMMY FALLS

Sophomore | Guard | 6-2 | 165 | Dublin, Calif. (Dublin H.S.)

**MINUTES**

 Season ..... 33, vs. Incarnate Word (11/16/18)  
 Career ..... Same

**STEALS**

 Season ..... 3, on two occasions  
 Career ..... 3, on two occasions

**POINTS**

 Season ..... 11, vs. College of Idaho (12/3/18)  
 Career ..... 4, on two occasions

**FIELD GOALS**

 Season ..... 4, on two occasions  
 Career ..... 5, vs. UC Irvine (12/19/17)

**REBOUNDS**

 Season ..... 3, vs. College of Idaho (12/3/18)  
 Career ..... 4, at Northern Colorado (2/1/18)

**FIELD-GOAL ATTEMPTS**

 Season ..... 10, vs. Montana Tech (11/12/18)  
 Career ..... Same

**ASSISTS**

 Season ..... 4, vs. Georgia State (11/9/18)  
 Career ..... 6, at Northern Colorado (2/1/18)

**THREE-POINTERS**

 Season ..... 2, on two occasions  
 Career ..... 4, vs. UC Irvine (12/19/17)

**BLOCKS**

 Season ..... 1, on two occasions  
 Career ..... 1, on four occasions

**FREE THROWS**

 Season ..... 2, on three occasions  
 Career ..... 4, vs. Idaho State (3/3/18)

## 2018-19 GAME-BY-GAME STATISTICS

Date	Opponent	START	MIN	Total		3-Pointers		Free-Throws		Rebounds			PF	A	TO	BLK	STL	PTS	AVG
				FG-FGA	PCT	3FG-FGA	PCT	FT-FTA	PCT	OFF	DEF	TOT							
11/9	Georgia State	-	23	3-6	.500	2-3	.667	2-2	1.000	0	0	0	4	4	3	0	0	10	10.0
11/12	Montana Tech	*	24	4-10	.400	2-6	.333	0-0	.000	0	2	2	3	3	4	0	2	10	10.0
11/16	vs. Incarnate Word	*	33	0-2	.000	0-1	.000	0-0	.000	0	2	2	2	3	1	1	3	0	6.7
11/17	vs. Miami (Ohio)	*	11	0-2	.000	0-2	.000	0-0	.000	0	0	0	1	1	3	0	0	0	5.0
11/18	vs. Georgia Southern			Did Not Play															
11/28	at Creighton			Did Not Play															
12/3	College of Idaho	-	29	4-5	.800	1-2	.500	2-2	1.000	0	3	3	2	3	4	1	3	11	6.2
12/8	at UC Irvine	-	14	0-2	.000	0-2	.000	2-2	1.000	0	1	1	3	2	2	0	0	2	5.5
12/17	North Dakota State																		
12/19	at Arizona																		
12/22	at South Dakota State																		
12/29	at Northern Arizona*																		
12/31	at Southern Utah*																		
1/3	Sacramento State*																		
1/5	Portland State*																		
1/10	at Eastern Washington*																		
1/12	at Northern Colorado*																		
1/19	at Idaho*																		
1/24	Idaho State*																		
1/26	Weber State*																		
2/2	at Montana State*																		
2/7	Idaho*																		
2/9	Eastern Washington*																		
2/14	at Weber State*																		
2/16	at Idaho State*																		
2/23	Montana State*																		
2/25	Northern Colorado*																		
3/2	Southern Utah*																		
3/4	Northern Arizona*																		
3/7	at Portland State*																		
3/9	at Sacramento State*																		

## FALLS' CAREER STATISTICS

SEASON	GP	GS	MIN	AVG	FG	FGA	PCT	3FG	3FGA	PCT	FT	FTA	PCT	OFF	DEF	TOT	AVG	PF	FO	AST	T/O	BLK	STL	PTS	AVG
2017-18	33	0	563	17.1	48	116	.414	22	54	.407	26	36	.722	7	25	32	1.0	78	3	51	41	2	25	144	4.4
2018-19	6	3	134	22.3	11	27	.407	5	16	.313	6	6	1.000	0	8	8	1.3	15	0	16	17	2	8	33	5.5
<b>TOTAL</b>	<b>39</b>	<b>3</b>	<b>697</b>	<b>17.9</b>	<b>59</b>	<b>143</b>	<b>.413</b>	<b>27</b>	<b>70</b>	<b>.386</b>	<b>32</b>	<b>42</b>	<b>.762</b>	<b>7</b>	<b>33</b>	<b>40</b>	<b>1.0</b>	<b>93</b>	<b>3</b>	<b>67</b>	<b>58</b>	<b>4</b>	<b>33</b>	<b>177</b>	<b>4.5</b>





## MONTANA BASKETBALL



## 2 | DONAVEN DORSEY

RS-Senior | Guard | 6-7 | 216 | Lacey, Wash. (Washington/Timberline H.S.)

**MINUTES**

 Season ..... 29, vs. Montana Tech (11/12/18)  
 Career .....

**POINTS**

 Season ..... 14, vs. Miami (Ohio) (11/17/18)  
 Career ..... 17, vs. San Jose State (11/27/14)

**REBOUNDS**

 Season ..... 2, on three occasions  
 Career ..... 5, on two occasions

**ASSISTS**

 Season ..... 2, on two occasions  
 Career ..... 2, on three occasions

**BLOCKS**

 Season ..... 1, on two occasions  
 Career ..... 1, on four occasions

**STEALS**

 Season ..... 2, at Creighton (11/28/18)  
 Career ..... Same

**FIELD GOALS**

 Season ..... 4, on two occasions  
 Career ..... 5, vs. San Jose State (11/27/14)

**FIELD-GOAL ATTEMPTS**

 Season ..... 7, vs. Montana Tech (11/12/18)  
 Career ..... 9, vs. Arizona State (2/15/15)

**THREE-POINTERS**

 Season ..... 3, vs. Miami (Ohio) (11/17/18)  
 Career ..... 5, vs. San Jose State (11/27/14)

**FREE THROWS**

 Season ..... 3, vs. Miami (Ohio) (11/17/18)  
 Career ..... Same

### 2018-19 GAME-BY-GAME STATISTICS

Date	Opponent	START	MIN	Total		3-Pointers		Free-Throws		Rebounds			PF	A	TO	BLK	STL	PTS	AVG
				FG-FGA	PCT	3FG-FGA	PCT	FT-FTA	PCT	OFF	DEF	TOT							
11/9	Georgia State	-	11	1-3	.333	0-2	.000	0-1	.000	0	2	2	0	0	0	0	0	2	2.0
11/12	Montana Tech	-	29	4-7	.571	2-5	.400	1-2	.500	0	2	2	0	0	0	0	0	11	6.5
11/16	vs. Incarnate Word	-	13	2-5	.400	1-3	.333	0-0	.000	0	2	2	3	2	0	0	0	5	6.0
11/17	vs. Miami (Ohio)	-	22	4-6	.667	3-5	.600	3-4	.750	0	1	1	3	2	4	0	0	14	8.0
11/18	vs. Georgia Southern	*	21	2-4	.500	1-3	.333	0-0	.000	0	0	0	5	0	1	1	1	5	7.4
11/28	at Creighton	*	20	1-3	.333	1-2	.500	2-2	1.000	0	0	0	2	0	1	1	2	5	7.0
12/3	College of Idaho	-	14	0-1	.000	0-1	.000	0-0	.000	0	1	1	0	0	0	0	0	0	6.0
12/8	at UC Irvine	----- Did Not Play -----																	
12/17	North Dakota State																		
12/19	at Arizona																		
12/22	at South Dakota State																		
12/29	at Northern Arizona*																		
12/31	at Southern Utah*																		
1/3	Sacramento State*																		
1/5	Portland State*																		
1/10	at Eastern Washington*																		
1/12	at Northern Colorado*																		
1/19	at Idaho*																		
1/24	Idaho State*																		
1/26	Weber State*																		
2/2	at Montana State*																		
2/7	Idaho*																		
2/9	Eastern Washington*																		
2/14	at Weber State*																		
2/16	at Idaho State*																		
2/23	Montana State*																		
2/25	Northern Colorado*																		
3/2	Southern Utah*																		
3/4	Northern Arizona*																		
3/7	at Portland State*																		
3/9	at Sacramento State*																		

### DORSEY'S CAREER STATISTICS

SEASON	GP	GS	MIN	AVG	FG	FGA	PCT	3FG	3FGA	PCT	FT	FTA	PCT	OFF	DEF	TOT	AVG	PF	FO	AST	T/O	BLK	STL	PTS	AVG
2014-15*	28	8	412	14.7	34	100	.340	30	89	.337	9	15	.600	8	39	47	1.7	61	1	7	12	3	3	107	3.8
2015-16*	27	0	248	9.2	21	57	.368	14	43	.326	3	7	.429	7	23	30	1.1	35	2	11	7	0	5	59	2.2
2016-17	Did Not Play - Redshirt Season																								
2017-18	Did Not Play - Injury																								
2018-19	7	2	130	18.6	14	29	.483	8	21	.381	6	9	.667	0	8	8	1.1	13	1	4	6	2	3	42	6.0
<b>UM TOTAL</b>	<b>7</b>	<b>2</b>	<b>130</b>	<b>18.6</b>	<b>14</b>	<b>29</b>	<b>.483</b>	<b>8</b>	<b>21</b>	<b>.381</b>	<b>6</b>	<b>9</b>	<b>.667</b>	<b>0</b>	<b>8</b>	<b>8</b>	<b>1.1</b>	<b>13</b>	<b>1</b>	<b>4</b>	<b>6</b>	<b>2</b>	<b>3</b>	<b>42</b>	<b>6.0</b>
<b>DI TOTAL</b>	<b>62</b>	<b>10</b>	<b>790</b>	<b>12.7</b>	<b>69</b>	<b>186</b>	<b>.371</b>	<b>52</b>	<b>153</b>	<b>.340</b>	<b>18</b>	<b>31</b>	<b>.581</b>	<b>15</b>	<b>70</b>	<b>85</b>	<b>1.4</b>	<b>109</b>	<b>4</b>	<b>22</b>	<b>25</b>	<b>5</b>	<b>11</b>	<b>208</b>	<b>3.4</b>

\* Stats are from career at Washington



## MONTANA BASKETBALL



# 3 | FREDDY BROWN III

Freshman | Guard | 6-2 | 164 | Seattle, Wash. (Nathan Hale H.S.)

**MINUTES**

 Season ..... 5, vs. Montana Tech (11/12/18)  
 Career ..... Same

**POINTS**

 Season ..... 3, vs. Incarnate Word (11/16/18)  
 Career ..... Same

**REBOUNDS**

 Season ..... 1, vs. College of Idaho (12/3/18)  
 Career ..... Same

**ASSISTS**

 Season .....  
 Career .....

**BLOCKS**

 Season .....  
 Career .....

**STEALS**

 Season .....  
 Career .....

**FIELD GOALS**

 Season ..... 1, vs. Incarnate Word (11/16/18)  
 Career ..... Same

**FIELD-GOAL ATTEMPTS**

 Season ..... 2, on two occasions  
 Career ..... Same

**THREE-POINTERS**

 Season ..... 1, vs. Incarnate Word (11/16/18)  
 Career ..... Same

**FREE THROWS**

 Season .....  
 Career .....

## 2018-19 GAME-BY-GAME STATISTICS

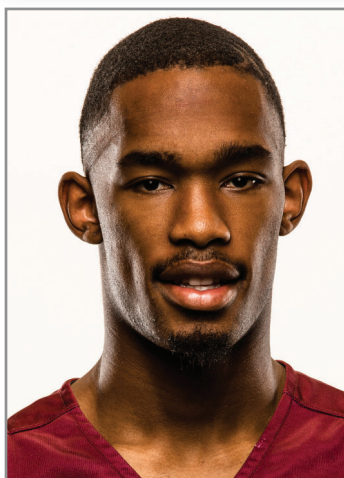
Date	Opponent	START	MIN	Total		3-Pointers		Free-Throws		Rebounds			PF	A	TO	BLK	STL	PTS	AVG
				FG-FGA	PCT	3FG-FGA	PCT	FT-FTA	PCT	OFF	DEF	TOT							
11/9	Georgia State			Did Not Play															
11/12	Montana Tech	-	5	0-2	.000	0-1	.000	0-0	.000	0	0	0	0	0	0	0	0	0	0.0
11/16	vs. Incarnate Word	-	3	1-1	1.000	1-1	1.000	0-0	.000	0	0	0	0	0	1	0	0	3	1.5
11/17	vs. Miami (Ohio)	-	0	0-0	.000	0-0	.000	0-0	.000	0	0	0	0	0	0	0	0	0	1.0
11/18	vs. Georgia Southern			Did Not Play															
11/28	at Creighton	-	2	0-0	.000	0-0	.000	0-0	.000	0	0	0	1	0	0	0	0	0	0.8
12/3	College of Idaho	-	2	0-2	.000	0-0	.000	0-0	.000	1	0	1	1	0	0	0	0	0	0.6
12/8	at UC Irvine			Did Not Play															
12/17	North Dakota State																		
12/19	at Arizona																		
12/22	at South Dakota State																		
12/29	at Northern Arizona*																		
12/31	at Southern Utah*																		
1/3	Sacramento State*																		
1/5	Portland State*																		
1/10	at Eastern Washington*																		
1/12	at Northern Colorado*																		
1/19	at Idaho*																		
1/24	Idaho State*																		
1/26	Weber State*																		
2/2	at Montana State*																		
2/7	Idaho*																		
2/9	Eastern Washington*																		
2/14	at Weber State*																		
2/16	at Idaho State*																		
2/23	Montana State*																		
2/25	Northern Colorado*																		
3/2	Southern Utah*																		
3/4	Northern Arizona*																		
3/7	at Portland State*																		
3/9	at Sacramento State*																		

## BROWN'S CAREER STATISTICS

SEASON	GP	GS	MIN	AVG	FG	FGA	PCT	3FG	3FGA	PCT	FT	FTA	PCT	OFF	DEF	TOT	AVG	PF	FO	AST	T/O	BLK	STL	PTS	AVG
2018-19	5	0	12	2.4	1	5	.200	1	2	.500	0	0	.000	1	0	1	0.2	2	0	0	1	0	0	3	0.6
TOTAL	5	0	12	2.4	1	5	.200	1	2	.500	0	0	.000	1	0	1	0.2	2	0	0	1	0	0	3	0.6



## MONTANA BASKETBALL



# 4 | SAYEED PRIDGETT

Junior | Guard | 6-5 | 200 | Oakland, Calif. (El Cerrito H.S.)

**MINUTES**

 Season ..... 37, on two occasions  
 Career ..... 38, vs. Eastern Washington (1/26/17)

**STEALS**

 Season ..... 5, at Creighton (11/28/18)  
 Career ..... Same

**POINTS**

 Season ..... 23, at Creighton (11/28/18)  
 Career ..... 28, at Sacramento State (1/21/17)

**FIELD GOALS**

 Season ..... 9, at Creighton (11/28/18)  
 Career ..... 12, at Sacramento State (1/21/17)

**REBOUNDS**

 Season ..... 8, vs. College of Idaho (12/3/18)  
 Career ..... 12, vs. CSUN (12/3/17)

**FIELD-GOAL ATTEMPTS**

 Season ..... 13, at Creighton (11/28/18)  
 Career ..... 17, at Sacramento State (1/21/17)

**ASSISTS**

 Season ..... 5, vs. Georgia Southern (11/18/18)  
 Career ..... Same

**THREE-POINTERS**

 Season ..... 4, at Creighton (11/28/18)  
 Career ..... Same

**BLOCKS**

 Season ..... 2, vs. Georgia Southern (11/18/18)  
 Career ..... 3, on three occasions

**FREE THROWS**

 Season ..... 2, on three occasions  
 Career ..... 5, on two occasions

## 2018-19 GAME-BY-GAME STATISTICS

Date	Opponent	START	MIN	Total		3-Pointers		Free-Throws		Rebounds			PF	A	TO	BLK	STL	PTS	AVG
				FG-FGA	PCT	3FG-FGA	PCT	FT-FTA	PCT	OFF	DEF	TOT							
11/9	Georgia State	*	23	5-10	.500	0-1	.000	0-2	.000	4	0	4	3	0	5	1	0	10	10.0
11/12	Montana Tech	*	19	4-6	.667	0-0	.000	2-2	1.000	2	2	4	2	1	2	1	1	10	10.0
11/16	vs. Incarnate Word	*	30	8-9	.889	1-1	1.000	2-5	.400	1	3	4	3	5	3	0	1	19	13.0
11/17	vs. Miami (Ohio)	*	16	3-6	.500	0-0	.000	2-2	1.000	1	2	3	3	0	2	0	2	8	11.8
11/18	vs. Georgia Southern	*	32	7-12	.583	0-0	.000	0-2	.000	2	4	6	4	1	1	2	2	14	12.2
11/28	at Creighton	*	37	9-13	.692	4-5	.800	1-2	.500	1	2	3	4	1	1	1	5	23	14.0
12/3	College of Idaho	*	24	8-10	.800	0-0	.000	1-2	.500	2	6	8	0	3	3	0	0	17	14.4
12/8	at UC Irvine	*	37	6-12	.500	1-3	.333	0-1	.000	2	1	3	4	1	2	0	3	13	14.3
12/17	North Dakota State																		
12/19	at Arizona																		
12/22	at South Dakota State																		
12/29	at Northern Arizona*																		
12/31	at Southern Utah*																		
1/3	Sacramento State*																		
1/5	Portland State*																		
1/10	at Eastern Washington*																		
1/12	at Northern Colorado*																		
1/19	at Idaho*																		
1/24	Idaho State*																		
1/26	Weber State*																		
2/2	at Montana State*																		
2/7	Idaho*																		
2/9	Eastern Washington*																		
2/14	at Weber State*																		
2/16	at Idaho State*																		
2/23	Montana State*																		
2/25	Northern Colorado*																		
3/2	Southern Utah*																		
3/4	Northern Arizona*																		
3/7	at Portland State*																		
3/9	at Sacramento State*																		

## PRIDGETT'S CAREER STATISTICS

SEASON	GP	GS	MIN	AVG	FG	FGA	PCT	3FG	3FGA	PCT	FT	FTA	PCT	OFF	DEF	TOT	AVG	PF	FO	AST	T/O	BLK	STL	PTS	AVG
2016-17	31	11	606	19.5	99	189	.524	1	10	.100	52	66	.788	33	88	121	3.9	79	0	44	45	16	11	251	8.1
2017-18	34	0	770	22.6	122	264	.462	3	16	.188	40	61	.656	35	111	146	4.3	102	2	44	65	14	41	287	8.4
2018-19	8	8	218	27.3	50	78	.641	6	10	.600	8	18	.444	15	20	35	4.4	23	0	12	19	5	14	114	14.3
<b>TOTAL</b>	<b>73</b>	<b>19</b>	<b>1594</b>	<b>21.8</b>	<b>271</b>	<b>531</b>	<b>.510</b>	<b>10</b>	<b>36</b>	<b>.278</b>	<b>100</b>	<b>145</b>	<b>.690</b>	<b>83</b>	<b>219</b>	<b>302</b>	<b>4.1</b>	<b>204</b>	<b>2</b>	<b>100</b>	<b>129</b>	<b>35</b>	<b>66</b>	<b>652</b>	<b>8.9</b>



## MONTANA BASKETBALL



# 10 | EDDY EGUN

Freshman | Guard | 6-4 | 185 | Woodland Hills, Calif. (El Camino Real H.S.)

**MINUTES**

 Season .....  
 Career .....

**STEALS**

 Season .....  
 Career .....

**POINTS**

 Season .....  
 Career .....

**FIELD GOALS**

 Season .....  
 Career .....

**REBOUNDS**

 Season .....  
 Career .....

**FIELD-GOAL ATTEMPTS**

 Season .....  
 Career .....

**ASSISTS**

 Season .....  
 Career .....

**THREE-POINTERS**

 Season .....  
 Career .....

**BLOCKS**

 Season .....  
 Career .....

**FREE THROWS**

 Season .....  
 Career .....

## 2018-19 GAME-BY-GAME STATISTICS

Date	Opponent	START	MIN	Total		3-Pointers		Free-Throws		Rebounds			PF	A	TO	BLK	STL	PTS	AVG
				FG-FGA	PCT	3FG-FGA	PCT	FT-FTA	PCT	OFF	DEF	TOT							
11/9	Georgia State					Did Not Play													
11/12	Montana Tech					Did Not Play													
11/16	vs. Incarnate Word					Did Not Play													
11/17	vs. Miami (Ohio)					Did Not Play													
11/18	vs. Georgia Southern					Did Not Play													
11/28	at Creighton					Did Not Play													
12/3	College of Idaho					Did Not Play													
12/8	at UC Irvine					Did Not Play													
12/17	North Dakota State																		
12/19	at Arizona																		
12/22	at South Dakota State																		
12/29	at Northern Arizona*																		
12/31	at Southern Utah*																		
1/3	Sacramento State*																		
1/5	Portland State*																		
1/10	at Eastern Washington*																		
1/12	at Northern Colorado*																		
1/19	at Idaho*																		
1/24	Idaho State*																		
1/26	Weber State*																		
2/2	at Montana State*																		
2/7	Idaho*																		
2/9	Eastern Washington*																		
2/14	at Weber State*																		
2/16	at Idaho State*																		
2/23	Montana State*																		
2/25	Northern Colorado*																		
3/2	Southern Utah*																		
3/4	Northern Arizona*																		
3/7	at Portland State*																		
3/9	at Sacramento State*																		

## EGUN'S CAREER STATISTICS

SEASON	GP	GS	MIN	AVG	FG	FGA	PCT	3FG	3FGA	PCT	FT	FTA	PCT	OFF	DEF	TOT	AVG	PF	FO	AST	T/O	BLK	STL	PTS	AVG
2018-19	0	0	0	0.0	0	0	-	0	0	-	0	0	-	0	0	0	0.0	0	0	0	0	0	0	0	0.0
TOTAL	0	0	0	0.0	0	0	-	0	0	-	0	0	-	0	0	0	0.0	0	0	0	0	0	0	0	0.0





## MONTANA BASKETBALL



# 12 | KENDAL MANUEL

RS-Junior | Guard | 6-4 | 177 | Billing, Mont. (Oregon State/Skyview H.S.)

**MINUTES**

 Season ..... 30, vs. Miami (Ohio) (11/17/18)  
 Career ..... 39, vs. Utah (2/9/17)

**POINTS**

 Season ..... 17, vs. Montana Tech (11/12/18)  
 Career ..... 20, at Washington State (1/4/17)

**REBOUNDS**

 Season ..... 6, vs. Georgia Southern (11/18/18)  
 Career ..... 8 vs. Oregon (3/4/17)

**ASSISTS**

 Season ..... 3, vs. Montana Tech (11/12/18)  
 Career ..... 5 vs. Savannah State (12/11/16)

**BLOCKS**

 Season .....  
 Career ..... 1, on four occasions

**STEALS**

 Season ..... 2, vs. Georgia Southern (11/18/18)  
 Career ..... 3, on three occasions

**FIELD GOALS**

 Season ..... 5, on two occasions  
 Career ..... 7, at Washington State (1/4/17)

**FIELD-GOAL ATTEMPTS**

 Season ..... 8, on two occasions  
 Career ..... 13, vs. Savannah State (12/11/16)

**THREE-POINTERS**

 Season ..... 3, vs. Georgia Southern (11/18/18)  
 Career ..... 6, at Washington State (1/4/17)

**FREE THROWS**

 Season ..... 5, vs. Montana Tech (11/12/18)  
 Career ..... 6, vs. California (3/8/17)

## 2018-19 GAME-BY-GAME STATISTICS

Date	Opponent	START	MIN	Total		3-Pointers		Free-Throws		Rebounds			PF	A	TO	BLK	STL	PTS	AVG
				FG-FGA	PCT	3FG-FGA	PCT	FT-FTA	PCT	OFF	DEF	TOT							
11/9	Georgia State	-	13	2-8	.250	2-6	.333	0-0	.000	0	1	1	0	0	1	0	1	6	6.0
11/12	Montana Tech	-	27	5-5	1.000	2-2	1.000	5-6	.833	0	4	4	0	3	2	0	0	17	11.5
11/16	vs. Incarnate Word	-	22	3-7	.429	2-4	.500	0-0	.000	0	0	0	0	1	0	0	0	8	10.3
11/17	vs. Miami (Ohio)	-	30	5-8	.625	2-4	.500	4-5	.800	1	3	4	1	0	1	0	1	16	11.8
11/18	vs. Georgia Southern	-	25	3-7	.429	3-5	.600	0-0	.000	0	6	6	3	2	4	0	2	9	11.2
11/28	at Creighton	-	28	2-6	.333	1-4	.250	0-2	.000	0	1	1	3	2	3	0	1	5	10.2
12/3	College of Idaho	-	20	2-6	.333	2-6	.333	2-2	1.000	0	2	2	0	2	1	0	1	8	9.9
12/8	at UC Irvine	-	9	0-1	.000	0-1	.000	2-2	1.000	0	1	1	0	0	0	0	0	2	8.9
12/17	North Dakota State																		
12/19	at Arizona																		
12/22	at South Dakota State																		
12/29	at Northern Arizona*																		
12/31	at Southern Utah*																		
1/3	Sacramento State*																		
1/5	Portland State*																		
1/10	at Eastern Washington*																		
1/12	at Northern Colorado*																		
1/19	at Idaho*																		
1/24	Idaho State*																		
1/26	Weber State*																		
2/2	at Montana State*																		
2/7	Idaho*																		
2/9	Eastern Washington*																		
2/14	at Weber State*																		
2/16	at Idaho State*																		
2/23	Montana State*																		
2/25	Northern Colorado*																		
3/2	Southern Utah*																		
3/4	Northern Arizona*																		
3/7	at Portland State*																		
3/9	at Sacramento State*																		

## MANUEL'S CAREER STATISTICS

SEASON	GP	GS	MIN	AVG	FG	FGA	PCT	3FG	3FGA	PCT	FT	FTA	PCT	OFF	DEF	TOT	AVG	PF	FO	AST	T/O	BLK	STL	PTS	AVG
2016-17*	32	25	923	28.8	86	229	.376	52	135	.385	24	34	.706	13	64	77	2.4	65	0	52	57	2	29	248	7.8
2017-18*	29	0	309	10.7	25	62	.403	14	37	.378	11	18	.611	3	32	35	1.2	27	0	8	13	2	10	75	2.6
2018-19	8	0	174	21.8	22	48	.458	14	32	.438	13	17	.765	1	18	19	2.4	7	0	10	12	0	6	71	8.9
<b>UM TOTAL</b>	<b>8</b>	<b>0</b>	<b>174</b>	<b>21.8</b>	<b>22</b>	<b>48</b>	<b>.458</b>	<b>14</b>	<b>32</b>	<b>.438</b>	<b>13</b>	<b>17</b>	<b>.765</b>	<b>1</b>	<b>18</b>	<b>19</b>	<b>2.4</b>	<b>7</b>	<b>0</b>	<b>10</b>	<b>12</b>	<b>0</b>	<b>6</b>	<b>71</b>	<b>8.9</b>
<b>DI TOTAL</b>	<b>69</b>	<b>25</b>	<b>1406</b>	<b>20.4</b>	<b>133</b>	<b>339</b>	<b>0.392</b>	<b>80</b>	<b>204</b>	<b>0.392</b>	<b>48</b>	<b>69</b>	<b>0.696</b>	<b>17</b>	<b>114</b>	<b>131</b>	<b>1.9</b>	<b>99</b>	<b>0</b>	<b>70</b>	<b>82</b>	<b>4</b>	<b>45</b>	<b>394</b>	<b>5.7</b>

\* Stats are from career at Oregon State



## MONTANA BASKETBALL



# 13 | BEN CARTER

Freshman | Forward | 6-10 | 282 | Adelaide, Australia (Sacred Heart College)

**MINUTES**

 Season ..... 10, at UC Irvine (12/8/18)  
 Career ..... Same

**STEALS**

 Season ..... 1, at UC Irvine (12/8/18)  
 Career ..... Same

**POINTS**

 Season ..... 2, on two occasions  
 Career ..... Same

**FIELD GOALS**

 Season ..... 1, on two occasions  
 Career ..... Same

**REBOUNDS**

 Season ..... 2, at UC Irvine (12/8/18)  
 Career ..... Same

**FIELD-GOAL ATTEMPTS**

 Season ..... 2, t UC Irvine (12/8/18)  
 Career ..... Same

**ASSISTS**

 Season .....  
 Career .....

**THREE-POINTERS**

 Season .....  
 Career .....

**BLOCKS**

 Season .....  
 Career .....

**FREE THROWS**

 Season .....  
 Career .....

## 2018-19 GAME-BY-GAME STATISTICS

				Total		3-Pointers		Free-Throws		Rebounds										
Date	Opponent	START	MIN	FG-FGA	PCT	3FG-FGA	PCT	FT-FTA	PCT	OFF	DEF	TOT	PF	A	TO	BLK	STL	PTS	AVG	
11/9	Georgia State			-----		Did Not Play		-----												
11/12	Montana Tech	-	7	1-1	1.000	0-0	.000	0-1	.000	0	1	1	3	0	2	0	0	2	2.0	
11/16	vs. Incarnate Word			-----		Did Not Play		-----												
11/17	vs. Miami (Ohio)			-----		Did Not Play		-----												
11/18	vs. Georgia Southern			-----		Did Not Play		-----												
11/28	at Creighton			-----		Did Not Play		-----												
12/3	College of Idaho	-	1	0-0	.000	0-0	.000	0-0	.000	0	1	1	0	0	0	0	0	0	1.0	
12/8	at UC Irvine	-	10	1-2	.500	0-1	.000	0-0	.000	0	2	2	4	0	0	0	1	2	1.3	
12/17	North Dakota State																			
12/19	at Arizona																			
12/22	at South Dakota State																			
12/29	at Northern Arizona*																			
12/31	at Southern Utah*																			
1/3	Sacramento State*																			
1/5	Portland State*																			
1/10	at Eastern Washington*																			
1/12	at Northern Colorado*																			
1/19	at Idaho*																			
1/24	Idaho State*																			
1/26	Weber State*																			
2/2	at Montana State*																			
2/7	Idaho*																			
2/9	Eastern Washington*																			
2/14	at Weber State*																			
2/16	at Idaho State*																			
2/23	Montana State*																			
2/25	Northern Colorado*																			
3/2	Southern Utah*																			
3/4	Northern Arizona*																			
3/7	at Portland State*																			
3/9	at Sacramento State*																			

## GARTER'S CAREER STATISTICS

SEASON	GP	GS	MIN	AVG	FG	FGA	PCT	3FG	3FGA	PCT	FT	FTA	PCT	OFF	DEF	TOT	AVG	PF	FO	AST	T/O	BLK	STL	PTS	AVG
2018-19	3	0	18	6.0	2	3	.667	0	1	.000	0	1	.000	0	4	4	1.3	7	0	0	2	0	1	4	1.3
TOTAL	3	0	18	6.0	2	3	.667	0	1	.000	0	1	.000	0	4	4	1.3	7	0	0	2	0	1	4	1.3



## MONTANA BASKETBALL



# 14 | AHMAAD RORIE

RS-Senior | Guard | 6-1 | 183 | Tacoma, Wash. (Oregon/Lincoln H.S.)

**MINUTES**

 Season ..... 39, vs. Miami (Ohio) (11/17/18)  
 Career ..... 44, at Pitt (11/13/17)

**POINTS**

 Season ..... 20, vs. Montana Tech (11/12/18)  
 Career ..... 30, vs. North Dakota (3/8/18)

**REBOUNDS**

 Season ..... 6, vs. Montana Tech (11/12/18)  
 Career ..... 7, on three occasions

**ASSISTS**

 Season ..... 7, vs. College of Idaho (12/3/18)  
 Career ..... 8, vs. Pepperdine (12/22/16)

**BLOCKS**

 Season ..... 1, vs. Incarnate Word (11/16/18)  
 Career ..... 2, vs. Montana State (2/4/17)

**STEALS**

 Season ..... 3, vs. Montana Tech (11/12/18)  
 Career ..... 4, vs. UC Santa Barbara (11/21/17)

**FIELD GOALS**

 Season ..... 8, vs. Montana Tech (11/12/18)  
 Career ..... 11, at Portland State (1/19/17)

**FIELD-GOAL ATTEMPTS**

 Season ..... 14, on two occasions  
 Career ..... 23, at Washington (12/22/17)

**THREE-POINTERS**

 Season ..... 3, on three occasions  
 Career ..... 5, at USC (11/11/16)

**FREE THROWS**

 Season ..... 6, vs. Georgia State (11/9/18)  
 Career ..... 11, vs. Montana State (2/4/17)

## 2018-19 GAME-BY-GAME STATISTICS

Date	Opponent	START	MIN	Total		3-Pointers		Free-Throws		Rebounds			PF	A	TO	BLK	STL	PTS	AVG
				FG-FGA	PCT	3FG-FGA	PCT	FT-FTA	PCT	OFF	DEF	TOT							
11/9	Georgia State	*	36	4-10	.400	0-5	.000	6-8	.750	0	4	4	2	4	2	0	1	14	14.0
11/12	Montana Tech	*	23	8-13	.615	2-5	.400	2-2	1.000	0	6	6	1	0	0	0	3	20	17.0
11/16	vs. Incarnate Word	*	29	7-14	.500	3-8	.375	1-1	1.000	0	3	3	2	5	2	1	0	18	17.3
11/17	vs. Miami (Ohio)	*	39	6-12	.500	3-4	.750	0-1	.000	2	2	4	3	3	2	0	1	15	16.8
11/18	vs. Georgia Southern	*	35	7-14	.500	2-9	.222	3-4	.750	1	2	3	3	6	3	0	1	19	17.2
11/28	at Creighton	*	25	2-8	.250	0-2	.000	4-4	1.000	0	0	0	2	4	2	0	0	8	15.7
12/3	College of Idaho	*	29	7-11	.636	3-5	.600	0-0	.000	0	3	3	0	7	1	0	1	17	15.9
12/8	at UC Irvine	*	33	3-11	.273	1-4	.250	0-0	.000	0	4	4	3	2	3	0	0	7	14.8
12/17	North Dakota State																		
12/19	at Arizona																		
12/22	at South Dakota State																		
12/29	at Northern Arizona*																		
12/31	at Southern Utah*																		
1/3	Sacramento State*																		
1/5	Portland State*																		
1/10	at Eastern Washington*																		
1/12	at Northern Colorado*																		
1/19	at Idaho*																		
1/24	Idaho State*																		
1/26	Weber State*																		
2/2	at Montana State*																		
2/7	Idaho*																		
2/9	Eastern Washington*																		
2/14	at Weber State*																		
2/16	at Idaho State*																		
2/23	Montana State*																		
2/25	Northern Colorado*																		
3/2	Southern Utah*																		
3/4	Northern Arizona*																		
3/7	at Portland State*																		
3/9	at Sacramento State*																		

## RORIE'S CAREER STATISTICS

SEASON	GP	GS	MIN	AVG	FG	FGA	PCT	3FG	3FGA	PCT	FT	FTA	PCT	OFF	DEF	TOT	AVG	PF	FO	AST	T/O	BLK	STL	PTS	AVG	
2014-15*	36	15	675	18.8	52	125	.416	16	48	.333	29	39	.744	14	65	79	2.2	45	0	66	36	4	6	149	4.1	
2015-16	Did Not Play - Redshirt Season																									
2016-17	31	31	1007	32.5	192	428	.449	63	164	.384	100	120	.833	25	84	109	3.5	66	0	97	47	7	26	547	17.6	
2017-18	34	34	1218	35.8	206	488	.422	59	174	.339	113	133	.850	32	101	133	3.9	64	0	125	67	5	42	584	17.2	
2018-19	8	8	249	31.1	44	93	.473	14	42	.333	16	20	.800	3	24	27	3.4	16	0	31	15	1	7	118	14.8	
UM TOTAL	73	73	2474	33.9	442	1009	.438	136	380	.358	229	273	.839	60	209	269	3.7	146	0	253	129	13	75	1249	17.1	
DI TOTAL	109	88	3149	28.9	494	1134	.436	152	428	.355	258	312	.827	74	274	348	3.2	191	0	319	165	17	81	1398	12.8	

\* Stats are from freshman season at University of Oregon



## MONTANA BASKETBALL



# 15 | JAMAR AKOH

RS-Senior | Forward | 6-8 | 253 | Rancho Cucamonga, Calif. (Cal State Fullerton/Los Osos H.S.)

**MINUTES**

 Season ..... 33, vs. Georgia State (11/9/18)  
 Career ..... 38, vs. UC Riverside (1/30/16)

**STEALS**

 Season ..... 2, vs. Georgia State (11/9/18)  
 Career ..... 3, on three occasions

**POINTS**

 Season ..... 22, vs. Georgia State (11/9/18)  
 Career ..... 34, vs. Northern Colorado (1/6/18)

**FIELD GOALS**

 Season ..... 7, vs. Georgia State (11/9/18)  
 Career ..... 11, vs. Northern Colorado (1/6/18)

**REBOUNDS**

 Season ..... 8, on two occasions  
 Career ..... 18, vs. Portland (12/19/15)

**FIELD-GOAL ATTEMPTS**

 Season ..... 8, vs. Georgia State (11/9/18)  
 Career ..... 16, vs. Northern Colorado (1/6/18)

**ASSISTS**

 Season ..... 1, on two occasions  
 Career ..... 7, at Cal Poly (2/25/16)

**THREE-POINTERS**

 Season .....  
 Career ..... 1, on two occasions

**BLOCKS**

 Season .....  
 Career ..... 3, vs. CSUN (12/3/17)

**FREE THROWS**

 Season ..... 8, vs. Georgia State (11/9/18)  
 Career ..... 13, at Northern Arizona (12/28/17)

## 2018-19 GAME-BY-GAME STATISTICS

Date	Opponent	START	MIN	Total		3-Pointers		Free-Throws		Rebounds			PF	A	TO	BLK	STL	PTS	AVG
				FG-FGA	PCT	3FG-FGA	PCT	FT-FTA	PCT	OFF	DEF	TOT							
11/9	Georgia State	*	33	7-8	.875	0-0	.000	8-13	.615	2	6	8	4	1	2	0	2	22	22.0
11/12	Montana Tech			Did Not Play															
11/16	vs. Incarnate Word			Did Not Play															
11/17	vs. Miami (Ohio)			Did Not Play															
11/18	vs. Georgia Southern			Did Not Play															
11/28	at Creighton			Did Not Play															
12/3	College of Idaho			Did Not Play															
12/8	at UC Irvine	*	28	3-6	.500	0-0	.000	0-2	.000	3	5	8	4	1	3	0	1	6	14.0
12/17	North Dakota State																		
12/19	at Arizona																		
12/22	at South Dakota State																		
12/29	at Northern Arizona*																		
12/31	at Southern Utah*																		
1/3	Sacramento State*																		
1/5	Portland State*																		
1/10	at Eastern Washington*																		
1/12	at Northern Colorado*																		
1/19	at Idaho*																		
1/24	Idaho State*																		
1/26	Weber State*																		
2/2	at Montana State*																		
2/7	Idaho*																		
2/9	Eastern Washington*																		
2/14	at Weber State*																		
2/16	at Idaho State*																		
2/23	Montana State*																		
2/25	Northern Colorado*																		
3/2	Southern Utah*																		
3/4	Northern Arizona*																		
3/7	at Portland State*																		
3/9	at Sacramento State*																		

## AKOH'S CAREER STATISTICS

SEASON	GP	GS	MIN	AVG	FG	FGA	PCT	3FG	3FGA	PCT	FT	FTA	PCT	OFF	DEF	TOT	AVG	PF	FO	AST	T/O	BLK	STL	PTS	AVG
2014-15*	30	0	431	14.4	29	74	.392	2	7	.286	18	38	.474	24	51	75	2.5	45	1	12	24	6	13	78	2.6
2015-16*	29	26	762	26.3	61	157	.389	1	8	.125	54	89	.607	58	125	183	6.3	68	2	43	54	9	13	177	6.1
2016-17	Did Not Play - Redshirt Season																								
2017-18	34	34	881	25.9	158	277	.570	1	5	.200	118	177	.667	80	145	225	6.6	113	4	37	71	23	30	435	12.8
2018-19	2	2	61	30.5	10	14	.714	0	0	.000	8	15	.533	5	11	16	8.0	8	0	2	5	0	3	28	14.0
UM TOTAL	36	36	942	26.2	168	291	.577	1	5	.200	126	192	.656	85	156	241	6.7	121	4	39	76	23	33	463	12.9
DI TOTAL	95	62	2135	22.5	258	522	0.494	4	20	0.200	198	319	0.621	167	332	499	5.3	234	7	94	154	38	59	718	7.6

\* Stats are from career at Cal State Fullerton





## MONTANA BASKETBALL



# 23 | MACK ANDERSON

Freshman | Forward | 6-9 | 202 | Bozeman, Mont. (Bozeman H.S.)

**MINUTES**

 Season ..... 16, on two occasions  
 Career ..... Same

**POINTS**

 Season ..... 7, vs. Incarnate Word (11/16/18)  
 Career ..... Same

**REBOUNDS**

 Season ..... 4, vs. Incarnate Word (11/16/18)  
 Career ..... Same

**ASSISTS**

 Season ..... 1, on two occasions  
 Career ..... Same

**BLOCKS**

 Season ..... 3, vs. College of Idaho (12/3/18)  
 Career ..... Same

**STEALS**

 Season .....  
 Career .....

**FIELD GOALS**

 Season ..... 3, vs. Incarnate Word (11/16/18)  
 Career ..... Same

**FIELD-GOAL ATTEMPTS**

 Season ..... 4, on two occasions  
 Career ..... Same

**THREE-POINTERS**

 Season .....  
 Career .....

**FREE THROWS**

 Season ..... 1, on four occasions  
 Career ..... Same

## 2018-19 GAME-BY-GAME STATISTICS

Date	Opponent	START	MIN	Total		3-Pointers		Free-Throws		Rebounds			PF	A	TO	BLK	STL	PTS	AVG
				FG-FGA	PCT	3FG-FGA	PCT	FT-FTA	PCT	OFF	DEF	TOT							
11/9	Georgia State			Did Not Play															
11/12	Montana Tech			Did Not Play															
11/16	vs. Incarnate Word	-	13	3-4	.750	0-0	.000	1-2	.500	1	3	4	4	1	0	0	0	7	7.0
11/17	vs. Miami (Ohio)	-	9	0-1	.000	0-0	.000	1-2	.500	0	0	0	4	0	0	0	0	1	4.0
11/18	vs. Georgia Southern	-	16	0-1	.000	0-0	.000	1-2	.500	1	2	3	3	0	3	0	0	1	3.0
11/28	at Creighton	-	12	2-2	1.000	0-0	.000	0-0	.000	0	2	2	2	1	0	0	0	4	3.3
12/3	College of Idaho	-	16	2-4	.500	0-0	.000	1-3	.333	0	1	1	1	0	2	3	0	5	3.6
12/8	at UC Irvine			Did Not Play															
12/17	North Dakota State																		
12/19	at Arizona																		
12/22	at South Dakota State																		
12/29	at Northern Arizona*																		
12/31	at Southern Utah*																		
1/3	Sacramento State*																		
1/5	Portland State*																		
1/10	at Eastern Washington*																		
1/12	at Northern Colorado*																		
1/19	at Idaho*																		
1/24	Idaho State*																		
1/26	Weber State*																		
2/2	at Montana State*																		
2/7	Idaho*																		
2/9	Eastern Washington*																		
2/14	at Weber State*																		
2/16	at Idaho State*																		
2/23	Montana State*																		
2/25	Northern Colorado*																		
3/2	Southern Utah*																		
3/4	Northern Arizona*																		
3/7	at Portland State*																		
3/9	at Sacramento State*																		

## ANDERSON'S CAREER STATISTICS

SEASON	GP	GS	MIN	AVG	FG	FGA	PCT	3FG	3FGA	PCT	FT	FTA	PCT	OFF	DEF	TOT	AVG	PF	FO	AST	T/O	BLK	STL	PTS	AVG
2018-19	5	0	66	13.2	7	12	.583	0	0	.000	4	9	.444	2	8	10	2.0	14	0	2	5	3	0	18	3.6
TOTAL	5	0	66	13.2	7	12	.583	0	0	.000	4	9	.444	2	8	10	2.0	14	0	2	5	3	0	18	3.6



## MONTANA BASKETBALL



## 24 | BOBBY MOOREHEAD

Senior | Guard | 6-7 | 192 | Tacoma, Wash. (Stadium H.S.)

## MINUTES

Season ..... 35, vs. Georgia Southern (11/18/18)  
 Career ..... 42, at Pitt (11/13/17)

## POINTS

Season ..... 14, vs. College of Idaho (12/3/18)  
 Career ..... 24, at Idaho State (2/25/16)

## REBOUNDS

Season ..... 9, vs. Incarnate Word (11/16/18)  
 Career ..... 12, at Montana State (1/20/18)

## ASSISTS

Season ..... 2, on three occasions  
 Career ..... 3, on five occasions

## BLOCKS

Season ..... 3, at UC Irvine (12/8/18)  
 Career ..... 2, on six occasions

## STEALS

Season ..... 2, vs. Incarnate Word (11/16/18)  
 Career ..... 4, vs. Montana State (2/24/18)

## FIELD GOALS

Season ..... 5, vs. College of Idaho (12/3/18)  
 Career ..... 8, at Idaho State (2/25/16)

## FIELD-GOAL ATTEMPTS

Season ..... 9, vs. College of Idaho (12/3/18)  
 Career ..... 17, at Stanford (11/29/17)

## THREE-POINTERS

Season ..... 3, on two occasions  
 Career ..... 8, at Idaho State (2/25/16)

## FREE THROWS

Season ..... 2, vs. Georgia State (11/9/18)  
 Career ..... 4, on two occasions

## 2018-19 GAME-BY-GAME STATISTICS

Date	Opponent	START	MIN	Total		3-Pointers		Free-Throws		Rebounds			PF	A	TO	BLK	STL	PTS	AVG
				FG-FGA	PCT	3FG-FGA	PCT	FT-FTA	PCT	OFF	DEF	TOT							
11/9	Georgia State	*	24	0-6	.000	0-6	.000	2-2	1.000	0	6	6	4	0	1	2	1	2	2.0
11/12	Montana Tech	*	23	0-4	.000	0-3	.000	0-2	.000	0	4	4	1	2	1	0	1	0	1.0
11/16	vs. Incarnate Word	*	24	2-5	.400	0-3	.000	0-0	.000	1	8	9	0	0	1	0	2	4	2.0
11/17	vs. Miami (Ohio)	*	29	2-3	.667	1-2	.500	1-1	1.000	1	2	3	4	1	1	0	0	6	3.0
11/18	vs. Georgia Southern	*	35	4-8	.500	3-6	.500	0-0	.000	1	1	2	2	0	2	1	1	11	4.6
11/28	at Creighton	*	28	1-3	.333	0-1	.000	1-2	.500	0	2	2	4	2	2	0	0	3	4.3
12/3	College of Idaho	*	19	5-9	.556	3-7	.429	1-2	.500	0	3	3	1	2	0	0	0	14	5.7
12/8	at UC Irvine	*	31	1-6	.167	1-5	.200	0-0	.000	0	2	2	0	1	2	3	1	3	5.4
12/17	North Dakota State																		
12/19	at Arizona																		
12/22	at South Dakota State																		
12/29	at Northern Arizona*																		
12/31	at Southern Utah*																		
1/3	Sacramento State*																		
1/5	Portland State*																		
1/10	at Eastern Washington*																		
1/12	at Northern Colorado*																		
1/19	at Idaho*																		
1/24	Idaho State*																		
1/26	Weber State*																		
2/2	at Montana State*																		
2/7	Idaho*																		
2/9	Eastern Washington*																		
2/14	at Weber State*																		
2/16	at Idaho State*																		
2/23	Montana State*																		
2/25	Northern Colorado*																		
3/2	Southern Utah*																		
3/4	Northern Arizona*																		
3/7	at Portland State*																		
3/9	at Sacramento State*																		

## MOOREHEAD'S CAREER STATISTICS

SEASON	GP	GS	MIN	AVG	FG	FGA	PCT	3FG	3FGA	PCT	FT	FTA	PCT	OFF	DEF	TOT	AVG	PF	FO	AST	T/O	BLK	STL	PTS	AVG
2015-16	33	0	585	17.7	65	160	.406	48	123	.390	6	11	.545	8	58	66	2.0	47	0	20	21	3	8	184	5.6
2016-17	32	10	575	18.0	41	128	.320	27	93	.290	15	22	.682	10	81	91	2.8	69	3	18	19	9	10	124	3.9
2017-18	34	34	1085	31.9	82	215	.381	51	145	.352	35	49	.714	27	147	174	5.1	75	1	41	39	18	41	250	7.4
2018-19	8	8	213	26.6	15	44	.341	8	33	.242	5	9	.556	3	28	31	3.9	16	0	8	10	6	6	43	5.4
<b>TOTAL</b>	<b>107</b>	<b>52</b>	<b>2458</b>	<b>23.0</b>	<b>203</b>	<b>547</b>	<b>.371</b>	<b>134</b>	<b>394</b>	<b>.340</b>	<b>61</b>	<b>91</b>	<b>.670</b>	<b>48</b>	<b>314</b>	<b>362</b>	<b>3.4</b>	<b>207</b>	<b>4</b>	<b>87</b>	<b>89</b>	<b>36</b>	<b>65</b>	<b>601</b>	<b>5.6</b>



## MONTANA BASKETBALL



# 32 | PETER JONES

RS-Freshman | Forward | 6-8 | 218 | Seattle, Wash. (Rock Springs H.S.)

**MINUTES**

 Season ..... 3, vs. Montana Tech (11/12/18)  
 Career ..... Same

**STEALS**

 Season .....  
 Career .....

**POINTS**

 Season .....  
 Career .....

**FIELD GOALS**

 Season .....  
 Career .....

**REBOUNDS**

 Season ..... 1, on two occasions  
 Career ..... Same

**FIELD-GOAL ATTEMPTS**

 Season .....  
 Career .....

**ASSISTS**

 Season .....  
 Career .....

**THREE-POINTERS**

 Season .....  
 Career .....

**BLOCKS**

 Season .....  
 Career .....

**FREE THROWS**

 Season .....  
 Career .....

## 2018-19 GAME-BY-GAME STATISTICS

Date	Opponent	START	MIN	Total		3-Pointers		Free-Throws		Rebounds			PF	A	TO	BLK	STL	PTS	AVG
				FG-FGA	PCT	3FG-FGA	PCT	FT-FTA	PCT	OFF	DEF	TOT							
11/9	Georgia State			Did Not Play															
11/12	Montana Tech	-	3	0-0	.000	0-0	.000	0-0	.000	0	1	1	1	0	0	0	0	0	0.0
11/16	vs. Incarnate Word			Did Not Play															
11/17	vs. Miami (Ohio)	-	0+	0-0	.000	0-0	.000	0-0	.000	0	0	0	0	0	0	0	0	0	0.0
11/18	vs. Georgia Southern			Did Not Play															
11/28	at Creighton	-	2	0-0	.000	0-0	.000	0-0	.000	0	1	1	0	0	0	0	0	0	0.0
12/3	College of Idaho	-	1	0-0	.000	0-0	.000	0-0	.000	0	0	0	0	0	0	0	0	0	0.0
12/8	at UC Irvine			Did Not Play															
12/17	North Dakota State																		
12/19	at Arizona																		
12/22	at South Dakota State																		
12/29	at Northern Arizona*																		
12/31	at Southern Utah*																		
1/3	Sacramento State*																		
1/5	Portland State*																		
1/10	at Eastern Washington*																		
1/12	at Northern Colorado*																		
1/19	at Idaho*																		
1/24	Idaho State*																		
1/26	Weber State*																		
2/2	at Montana State*																		
2/7	Idaho*																		
2/9	Eastern Washington*																		
2/14	at Weber State*																		
2/16	at Idaho State*																		
2/23	Montana State*																		
2/25	Northern Colorado*																		
3/2	Southern Utah*																		
3/4	Northern Arizona*																		
3/7	at Portland State*																		
3/9	at Sacramento State*																		

## JONES' CAREER STATISTICS

SEASON	GP	GS	MIN	AVG	FG	FGA	PCT	3FG	3FGA	PCT	FT	FTA	PCT	OFF	DEF	TOT	AVG	PF	FO	AST	T/O	BLK	STL	PTS	AVG
2017-18																									
Did Not Play - Redshirt Season																									
2018-19	4	0	6	1.5	0	0	.000	0	0	.000	0	0	.000	0	2	2	0.5	1	0	0	0	0	0	0	0.0
<b>TOTAL</b>	<b>4</b>	<b>0</b>	<b>6</b>	<b>1.5</b>	<b>0</b>	<b>0</b>	<b>.000</b>	<b>0</b>	<b>0</b>	<b>.000</b>	<b>0</b>	<b>0</b>	<b>.000</b>	<b>0</b>	<b>2</b>	<b>2</b>	<b>0.5</b>	<b>1</b>	<b>0</b>	<b>0</b>	<b>0</b>	<b>0</b>	<b>0</b>	<b>0</b>	<b>0.0</b>



## MONTANA BASKETBALL



## 33 | KELBY KRAMER

RS-Freshman | Center | 6-10 | 237 | Rock Springs, Wyo. (Rock Springs H.S.)

## MINUTES

Season ..... 22, vs. College of Idaho (12/3/18)  
 Career ..... Same

## POINTS

Season ..... 4, vs. Incarnate Word (11/16/18)  
 Career ..... Same

## REBOUNDS

Season ..... 6, vs. College of Idaho (12/3/18)  
 Career ..... Same

## ASSISTS

Season ..... 1, on two occasions  
 Career ..... Same

## BLOCKS

Season ..... 3, vs. College of Idaho (12/3/18)  
 Career ..... Same

## STEALS

Season ..... 1, vs. College of Idaho (12/3/18)  
 Career ..... Same

## FIELD GOALS

Season ..... 2, vs. Incarnate Word (11/16/18)  
 Career ..... Same

## FIELD-GOAL ATTEMPTS

Season ..... 3, vs. Incarnate Word (11/16/18)  
 Career ..... Same

## THREE-POINTERS

Season .....  
 Career ..... Same

## FREE THROWS

Season ..... 1, at Creighton (11/28/18)  
 Career ..... Same

## 2018-19 GAME-BY-GAME STATISTICS

Date	Opponent	START	MIN	Total		3-Pointers		Free-Throws		Rebounds			PF	A	TO	BLK	STL	PTS	AVG
				FG-FGA	PCT	3FG-FGA	PCT	FT-FTA	PCT	OFF	DEF	TOT							
11/9	Georgia State	-	1	0-0	.000	0-0	.000	0-0	.000	0	0	0	0	0	0	0	0	0	0.0
11/12	Montana Tech	-	16	1-1	1.000	0-0	.000	0-2	.000	2	2	4	4	1	0	1	0	2	1.0
11/16	vs. Incarnate Word	-	6	2-3	.667	0-0	.000	0-0	.000	0	0	0	0	0	0	0	0	4	2.0
11/17	vs. Miami (Ohio)	-	6	0-0	.000	0-0	.000	0-0	.000	0	1	1	1	0	1	0	0	0	1.5
11/18	vs. Georgia Southern			Did Not Play															
11/28	at Creighton	-	13	1-1	1.000	0-0	.000	1-3	.333	0	0	0	5	1	2	1	0	3	1.8
12/3	College of Idaho	*	22	1-2	.500	0-0	.000	0-0	.000	1	5	6	1	0	0	3	1	2	1.8
12/8	at UC Irvine		2	0-1	.000	0-0	.000	0-0	.000	1	0	1	2	0	0	0	0	0	1.6
12/17	North Dakota State																		
12/19	at Arizona																		
12/22	at South Dakota State																		
12/29	at Northern Arizona*																		
12/31	at Southern Utah*																		
1/3	Sacramento State*																		
1/5	Portland State*																		
1/10	at Eastern Washington*																		
1/12	at Northern Colorado*																		
1/19	at Idaho*																		
1/24	Idaho State*																		
1/26	Weber State*																		
2/2	at Montana State*																		
2/7	Idaho*																		
2/9	Eastern Washington*																		
2/14	at Weber State*																		
2/16	at Idaho State*																		
2/23	Montana State*																		
2/25	Northern Colorado*																		
3/2	Southern Utah*																		
3/4	Northern Arizona*																		
3/7	at Portland State*																		
3/9	at Sacramento State*																		

## KRAMER'S CAREER STATISTICS

SEASON	GP	GS	MIN	AVG	FG	FGA	PCT	3FG	3FGA	PCT	FT	FTA	PCT	OFF	DEF	TOT	AVG	PF	FO	AST	T/O	BLK	STL	PTS	AVG
2017-18																									
Did Not Play - Redshirt Season																									
2018-19	7	1	66	9.4	5	8	.625	0	0	.000	1	5	.200	4	8	12	1.7	13	1	2	3	5	1	11	1.6
<b>TOTAL</b>	<b>7</b>	<b>1</b>	<b>66</b>	<b>9.4</b>	<b>5</b>	<b>8</b>	<b>.625</b>	<b>0</b>	<b>0</b>	<b>.000</b>	<b>1</b>	<b>5</b>	<b>.200</b>	<b>4</b>	<b>8</b>	<b>12</b>	<b>1.7</b>	<b>13</b>	<b>1</b>	<b>2</b>	<b>3</b>	<b>5</b>	<b>1</b>	<b>11</b>	<b>1.6</b>





## MONTANA BASKETBALL



# 34 | TONY MILLER

Junior | Forward | 6-6 | 215 | Woodinville, Wash. (Seattle Pacific/Woodinville H.S.)

**MINUTES**

 Season .....  
 Career .....

**STEALS**

 Season .....  
 Career .....

**POINTS**

 Season .....  
 Career .....

**FIELD GOALS**

 Season .....  
 Career .....

**REBOUNDS**

 Season .....  
 Career .....

**FIELD-GOAL ATTEMPTS**

 Season .....  
 Career .....

**ASSISTS**

 Season .....  
 Career .....

**THREE-POINTERS**

 Season .....  
 Career .....

**BLOCKS**

 Season .....  
 Career .....

**FREE THROWS**

 Season .....  
 Career .....

## 2018-19 GAME-BY-GAME STATISTICS

Date	Opponent	START	MIN	Total		3-Pointers		Free-Throws		Rebounds			PF	A	TO	BLK	STL	PTS	AVG
				FG-FGA	PCT	3FG-FGA	PCT	FT-FTA	PCT	OFF	DEF	TOT							
11/9	Georgia State					Did Not Play													
11/12	Montana Tech					Did Not Play													
11/16	vs. Incarnate Word					Did Not Play													
11/17	vs. Miami (Ohio)					Did Not Play													
11/18	vs. Georgia Southern					Did Not Play													
11/28	at Creighton					Did Not Play													
12/3	College of Idaho					Did Not Play													
12/8	at UC Irvine					Did Not Play													
12/17	North Dakota State																		
12/19	at Arizona																		
12/22	at South Dakota State																		
12/29	at Northern Arizona*																		
12/31	at Southern Utah*																		
1/3	Sacramento State*																		
1/5	Portland State*																		
1/10	at Eastern Washington*																		
1/12	at Northern Colorado*																		
1/19	at Idaho*																		
1/24	Idaho State*																		
1/26	Weber State*																		
2/2	at Montana State*																		
2/7	Idaho*																		
2/9	Eastern Washington*																		
2/14	at Weber State*																		
2/16	at Idaho State*																		
2/23	Montana State*																		
2/25	Northern Colorado*																		
3/2	Southern Utah*																		
3/4	Northern Arizona*																		
3/7	at Portland State*																		
3/9	at Sacramento State*																		

## MILLER'S CAREER STATISTICS

SEASON	GP	GS	MIN	AVG	FG	FGA	PCT	3FG	3FGA	PCT	FT	FTA	PCT	OFF	DEF	TOT	AVG	PF	FO	AST	T/O	BLK	STL	PTS	AVG
2018-19	0	0	0	0.0	0	0	-	0	0	-	0	0	-	0	0	0	0.0	0	0	0	0	0	0	0	0.0
TOTAL	0	0	0	0.0	0	0	-	0	0	-	0	0	-	0	0	0	0.0	0	0	0	0	0	0	0	0.0



## MONTANA BASKETBALL



# 10 | EDDY EGUN

Freshman | Guard | 6-4 | 185 | Woodland Hills, Calif. (El Camino Real H.S.)

**MINUTES**

 Season .....  
 Career .....

**STEALS**

 Season .....  
 Career .....

**POINTS**

 Season .....  
 Career .....

**FIELD GOALS**

 Season .....  
 Career .....

**REBOUNDS**

 Season .....  
 Career .....

**FIELD-GOAL ATTEMPTS**

 Season .....  
 Career .....

**ASSISTS**

 Season .....  
 Career .....

**THREE-POINTERS**

 Season .....  
 Career .....

**BLOCKS**

 Season .....  
 Career .....

**FREE THROWS**

 Season .....  
 Career .....

## 2018-19 GAME-BY-GAME STATISTICS

Date	Opponent	START	MIN	Total		3-Pointers		Free-Throws		Rebounds			PF	A	TO	BLK	STL	PTS	AVG
				FG-FGA	PCT	3FG-FGA	PCT	FT-FTA	PCT	OFF	DEF	TOT							
11/9	Georgia State					Did Not Play													
11/12	Montana Tech					Did Not Play													
11/16	vs. Incarnate Word					Did Not Play													
11/17	vs. Miami (Ohio)					Did Not Play													
11/18	vs. Georgia Southern					Did Not Play													
11/28	at Creighton					Did Not Play													
12/3	College of Idaho					Did Not Play													
12/8	at UC Irvine					Did Not Play													
12/17	North Dakota State																		
12/19	at Arizona																		
12/22	at South Dakota State																		
12/29	at Northern Arizona*																		
12/31	at Southern Utah*																		
1/3	Sacramento State*																		
1/5	Portland State*																		
1/10	at Eastern Washington*																		
1/12	at Northern Colorado*																		
1/19	at Idaho*																		
1/24	Idaho State*																		
1/26	Weber State*																		
2/2	at Montana State*																		
2/7	Idaho*																		
2/9	Eastern Washington*																		
2/14	at Weber State*																		
2/16	at Idaho State*																		
2/23	Montana State*																		
2/25	Northern Colorado*																		
3/2	Southern Utah*																		
3/4	Northern Arizona*																		
3/7	at Portland State*																		
3/9	at Sacramento State*																		

## EGUN'S CAREER STATISTICS

SEASON	GP	GS	MIN	AVG	FG	FGA	PCT	3FG	3FGA	PCT	FT	FTA	PCT	OFF	DEF	TOT	AVG	PF	FO	AST	T/O	BLK	STL	PTS	AVG
2018-19	0	0	0	0.0	0	0	-	0	0	-	0	0	-	0	0	0	0.0	0	0	0	0	0	0	0	0.0
<b>TOTAL</b>	<b>0</b>	<b>0</b>	<b>0</b>	<b>0.0</b>	<b>0</b>	<b>0</b>	<b>-</b>	<b>0</b>	<b>0</b>	<b>-</b>	<b>0</b>	<b>0</b>	<b>-</b>	<b>0</b>	<b>0</b>	<b>0</b>	<b>0.0</b>	<b>0</b>	<b>0</b>	<b>0</b>	<b>0</b>	<b>0</b>	<b>0</b>	<b>0</b>	<b>0.0</b>

