



**Baylor at TCU**

02/19/22 Ed and Rae Schollmaier Arena, Fort Worth  
2021-22 Women's Basketball

Game Time: 1:00 PM  
Game Duration: 1:52  
Attendance: 2,330

Officials: Felicia Grinter, Mark Zentz, Maj Forsberg

**Baylor - 78**

**Record: 21-5 (11-3)**

NO.	Name	Min	FG			Rebounds			Fouls		TP	AS	TO	ST	Blocks		+/-
			M-A	M-A	M-A	OR	DR	TOT	PF	FD					BS	BA	
1	NaLyssa Smith	F 23:49	10-16	0-1	3-3	2	6	8	4	4	23	0	3	0	1	1	5
4	Queen Egbo	C 28:28	6-13	0-0	2-2	5	7	12	5	3	14	0	0	1	3	3	18
3	Jordan Lewis	G 31:49	3-9	2-4	4-9	2	3	5	3	7	12	4	2	1	1	0	14
21	Ja'Mee Asberry	G 29:19	0-7	0-7	4-4	0	4	4	0	2	4	3	0	5	0	0	20
24	Sarah Andrews	G 27:15	5-12	2-6	0-0	0	0	0	2	0	12	7	1	1	1	0	13
10	Jaden Owens	24:43	3-4	1-1	0-0	0	2	2	2	1	7	2	1	2	0	1	11
51	Caitlin Bickle	27:27	1-7	1-3	3-4	4	4	8	1	2	6	4	1	0	1	1	15
25	Kendra Gillispie	05:59	0-0	0-0	0-0	1	0	1	1	0	0	0	0	0	0	0	-3
11	Andrea Katramados	01:11	0-0	0-0	0-0	0	0	0	0	0	0	0	0	0	0	0	2
Team						2	1	3			0		0				
<b>Totals</b>			28-68	6-22	16-22	16	27	43	18	19	78	20	8	10	7	6	19

Technical Fouls: Egbo 3<sup>rd</sup> 2:38

Shooting By Period		
1 <sup>st</sup> FG%	6-17	35.3%
3PT%	1-3	33.3%
FT%	0-0	0%
2 <sup>nd</sup> FG%	8-19	42.1%
3PT%	2-8	25.0%
FT%	1-2	50%
3 <sup>rd</sup> FG%	9-14	64.3%
3PT%	1-3	33.3%
FT%	7-9	77.8%
4 <sup>th</sup> FG%	5-18	27.8%
3PT%	2-8	25.0%
FT%	8-11	72.7%
GM FG%	28-68	41.2%
3PT%	6-22	27.3%
FT%	16-22	72.7%

Dead Ball Rebounds: 4, 1

**TCU - 59**

**Record: 6-17 (2-12)**

NO.	Name	Min	FG			Rebounds			Fouls		TP	AS	TO	ST	Blocks		+/-
			M-A	M-A	M-A	OR	DR	TOT	PF	FD					BS	BA	
4	Okako Adika	F 34:32	7-16	4-9	5-6	2	7	9	4	5	23	2	2	1	0	1	-10
23	Michelle Berry	F 31:44	2-9	1-6	0-0	1	3	4	4	0	5	4	1	0	1	1	-16
24	Kayla Mokwuah	C 21:19	3-6	0-0	0-0	2	6	8	4	0	6	1	5	0	3	3	-5
2	Tara Manumaleuga	G 15:31	0-1	0-1	0-0	0	1	1	0	0	0	0	1	0	1	0	-10
20	Lauren Heard	G 35:58	4-10	0-0	4-6	1	1	2	2	6	12	5	4	2	0	0	-14
5	Yummy Morris	15:15	0-4	0-0	3-4	1	3	4	1	3	3	1	2	0	1	0	-9
13	Tavy Diggs	14:59	3-8	1-1	0-0	4	3	7	2	2	7	1	1	1	0	1	-6
15	Aja Holmes	13:52	1-3	1-2	0-2	0	0	0	1	0	3	0	0	0	0	1	-8
32	Patricia Morris	01:14	0-1	0-0	0-0	0	0	0	0	0	0	0	0	0	0	0	-3
0	Caroline Germond	13:27	0-2	0-0	0-0	1	0	1	1	1	0	1	0	0	0	0	-12
10	Paige Bradley	02:09	0-1	0-1	0-0	0	0	0	0	0	0	0	0	0	0	0	-2
Team						3	2	5			0		0				
<b>Totals</b>			20-61	7-20	12-18	15	26	41	19	17	59	15	16	4	6	7	-19

Technical Fouls: NONE

Shooting By Period		
1 <sup>st</sup> FG%	2-18	11.1%
3PT%	0-6	0.0%
FT%	5-6	83.3%
2 <sup>nd</sup> FG%	8-15	53.3%
3PT%	4-6	66.7%
FT%	0-0	0%
3 <sup>rd</sup> FG%	5-14	35.7%
3PT%	1-3	33.3%
FT%	2-4	50%
4 <sup>th</sup> FG%	5-14	35.7%
3PT%	2-5	40.0%
FT%	5-8	62.5%
GM FG%	20-61	32.8%
3PT%	7-20	35.0%
FT%	12-18	66.7%

Dead Ball Rebounds: 4, 0

	BAY	TCU
Biggest lead	22 (4 <sup>th</sup> 6:14)	4 (1 <sup>st</sup> 6:09)
Best Scoring Run	8 (3 <sup>rd</sup> 5:42)	6 (1 <sup>st</sup> 6:09)
Lead Changes	3	
Times Tied	4	
Time with Lead	32:13	04:48

	BAY	TCU
Points from Turnovers	18	4
Paint	28	18
Second Chance	15	11
Fast Breaks	8	2
Bench	13	13

	Period by Period Scoring				
	1st	2nd	3rd	4th	TOT
BAY	13	19	26	20	78
TCU	9	20	13	17	59



**Period 1**

**Quarter Starters:**

<b>TCU</b>	2 Manumaleuga T	4 Adika O	20 Heard L	23 Berry M	24 Mokwuah K
<b>BAY</b>	1 Smith N	3 Lewis J	4 Egbo Q	21 Asberry J	24 Andrews S

Game Time	TCU	Score	Diff	BAY
10:00	23 BERRY M jumpball lost			4 EGBO Q jumpball won
09:47				24 ANDREWS S 3pt FG , jump shot missed
09:43	defensive rebound (1)			
09:34	4 ADIKA O 2pt FG outside the paint, jump shot missed			
09:32				4 EGBO Q defensive rebound (1)
09:28				24 ANDREWS S 2pt FG in the paint, driving layup missed
09:25	24 MOKWUAH K defensive rebound (1)			
09:18	20 HEARD L 2pt FG in the paint, jump shot missed			
09:16				4 EGBO Q defensive rebound (2)
09:06				4 EGBO Q 2pt FG in the paint, layup blocked
09:06	24 MOKWUAH K block (1)			
09:06	4 ADIKA O defensive rebound (1)			
08:40	23 BERRY M 3pt FG , jump shot blocked			
08:40				1 SMITH N block (1)
08:36	24 MOKWUAH K offensive rebound (2)			
08:31	20 HEARD L foul drawn (1)			4 EGBO Q foul personal (1 - 1)
08:28	4 ADIKA O 3pt FG second chance, jump shot missed			
08:25	23 BERRY M offensive rebound (1)			
08:22	24 MOKWUAH K 2pt FG second chance in the paint, jump shot made (2)	<b>2-0</b>	<b>2</b>	
08:22	20 HEARD L assist (1)			
08:09		<b>2-2</b>	<b>0</b>	4 EGBO Q 2pt FG in the paint, layup made (2)
08:09				3 LEWIS J assist (1)
07:54	4 ADIKA O turnover 3 seconds (1)			
07:45		<b>2-4</b>	<b>-2</b>	1 SMITH N 2pt FG from turnover outside the paint, jump shot made (2)
07:45				24 ANDREWS S assist (1)
07:20	20 HEARD L 2pt FG outside the paint, jump shot made (2)	<b>4-4</b>	<b>0</b>	
07:20	23 BERRY M assist (1)			
07:01				1 SMITH N 2pt FG in the paint, jump shot missed
06:57	24 MOKWUAH K defensive rebound (3)			
06:52	20 HEARD L foul drawn (2)			1 SMITH N foul shooting (1 - 2)
06:52	20 HEARD L free throw 1 - 2 made (3)	<b>5-4</b>	<b>1</b>	
06:52	20 HEARD L free throw 2 - 2 made (4)	<b>6-4</b>	<b>2</b>	
06:32				1 SMITH N 2pt FG outside the paint, jump shot missed
06:29	24 MOKWUAH K defensive rebound (4)			
06:11	4 ADIKA O 2pt FG in the paint, layup blocked			
06:11				3 LEWIS J block (1)
06:11	4 ADIKA O offensive rebound (2)			
06:09	4 ADIKA O foul drawn (1)			24 ANDREWS S foul shooting (1 - 3)
06:09	4 ADIKA O free throw 1 - 2 made (1)	<b>7-4</b>	<b>3</b>	
06:09	4 ADIKA O free throw 2 - 2 made (2)	<b>8-4</b>	<b>4</b>	
05:54	24 MOKWUAH K foul personal (1 - 1)			4 EGBO Q foul drawn (1)
05:54	24 MOKWUAH K substitution out			



**Officials:** Felicia Grinter, Mark Zentz, Maj Forsberg

Game Time	TCU	Score	Diff	BAY
05:54	5 MORRIS Y substitution in			
05:48		<b>8-6</b>	<b>2</b>	24 ANDREWS S 2pt FG in the paint, floating jump shot made (2)
05:19	2 MANUMALEUGA T 3pt FG , jump shot missed			
05:16				4 EGBO Q defensive rebound (3)
05:05				1 SMITH N 2pt FG in the paint, layup blocked
05:05	2 MANUMALEUGA T block (1)			
05:02	5 MORRIS Y defensive rebound (1)			
04:53	5 MORRIS Y 2pt FG in the paint, jump shot missed			
04:49	4 ADIKA O offensive rebound (3)			
04:49	4 ADIKA O 2pt FG second chance in the paint, layup missed			
04:47				4 EGBO Q defensive rebound (4)
04:36				4 EGBO Q 2pt FG outside the paint, jump shot missed
04:34	5 MORRIS Y defensive rebound (2)			
04:26	23 BERRY M 3pt FG , jump shot missed			
04:25				3 LEWIS J defensive rebound (1)
04:23	4 ADIKA O foul personal (1 - 2)			3 LEWIS J foul drawn (1)
04:23	Timeout media			
04:23	4 ADIKA O substitution out			
04:23	13 DIGGS T substitution in			
04:23				4 EGBO Q substitution out
04:23				24 ANDREWS S substitution out
04:23				10 OWENS J substitution in
04:23				51 BICKLE C substitution in
04:00	13 DIGGS T steal (1)			51 BICKLE C turnover bad pass (1)
03:47	5 MORRIS Y turnover bad pass (1)			
03:39				21 ASBERRY J 3pt FG from turnover, jump shot missed
03:36	2 MANUMALEUGA T defensive rebound (1)			
03:21	13 DIGGS T 2pt FG outside the paint, jump shot missed			
03:17	13 DIGGS T offensive rebound (1)			
03:16	13 DIGGS T 2pt FG second chance in the paint, layup missed			
03:13				1 SMITH N defensive rebound (1)
03:07				3 LEWIS J 2pt FG outside the paint, jump shot missed
03:04	defensive rebound (14)			
03:02	20 HEARD L foul drawn (3)			1 SMITH N foul loose ball (2 - 4)
03:02	2 MANUMALEUGA T substitution out			
03:02	15 HOLMES A substitution in			
03:02				1 SMITH N substitution out
03:02				4 EGBO Q substitution in
02:35	23 BERRY M 3pt FG , jump shot missed			
02:32				51 BICKLE C defensive rebound (1)
02:30				10 OWENS J 2pt FG in the paint, layup blocked
02:30	23 BERRY M block (1)			
02:30				offensive rebound (8)
02:17		<b>8-9</b>	<b>-1</b>	3 LEWIS J 3pt FG second chance, jump shot made (3)
02:17				21 ASBERRY J assist (1)
01:49	13 DIGGS T 2pt FG outside the paint, jump shot blocked			
01:49				51 BICKLE C block (1)
01:45	13 DIGGS T offensive rebound (2)			



Official Basketball Play by Play - 1st Period  
**Baylor at TCU**  
 02/19/22 Ed and Rae Schollmaier Arena, Fort Worth  
 2021-22 Women's Basketball

**Game Time:** 1:00 PM  
**Game Duration:** 1:52  
**Attendance:** 2,330

**Officials:** Felicia Grinter, Mark Zentz, Maj Forsberg

Game Time	TCU	Score	Diff	BAY
01:42	13 DIGGS T 2pt FG second chance outside the paint, jump shot missed			
01:40				4 EGBO Q defensive rebound (5)
01:26				51 BICKLE C 2pt FG in the paint, layup blocked
01:26	5 MORRIS Y block (1)			
01:22	13 DIGGS T defensive rebound (3)			
01:08	15 HOLMES A 3pt FG , jump shot missed			
01:05	5 MORRIS Y offensive rebound (3)			
01:04	5 MORRIS Y 2pt FG second chance outside the paint, jump shot missed			
01:02				3 LEWIS J defensive rebound (2)
00:57	5 MORRIS Y substitution out			
00:57	32 MORRIS P substitution in			
00:56		<b>8-11</b>	<b>-3</b>	10 OWENS J 2pt FG outside the paint, jump shot made (2)
00:56				3 LEWIS J assist (2)
00:28	20 HEARD L foul drawn (4)			51 BICKLE C foul personal (1 - 5)
00:28	15 HOLMES A substitution out			
00:28	2 MANUMALEUGA T substitution in			
00:28				21 ASBERRY J substitution out
00:28				24 ANDREWS S substitution in
00:28	20 HEARD L free throw 1 - 2 missed			
00:28	offensive dead ball rebound (1)			
00:28	20 HEARD L free throw 2 - 2 made (5)	<b>9-11</b>	<b>-2</b>	
00:28	20 HEARD L substitution out			
00:28	0 GERMOND C substitution in			
00:03		<b>9-13</b>	<b>-4</b>	4 EGBO Q 2pt FG in the paint, layup made (4)
00:03				51 BICKLE C assist (1)
<b>END OF PERIOD</b>				
<b>TCU 9-13 BAY</b>				



**Baylor at TCU**

02/19/22 Ed and Rae Schollmaier Arena, Fort Worth  
2021-22 Women's Basketball

Game Time: 1:00 PM  
Game Duration: 1:52  
Attendance: 2,330

Officials: Felicia Grinter, Mark Zentz, Maj Forsberg

**Baylor - 13**

NO.	Name	F/C	Min	FG			Rebounds			Fouls		TP	AS	TO	ST	Blocks		+/-
				M-A	M-A	M-A	OR	DR	TOT	PF	FD					BS	BA	
1	NaLyssa Smith	F	06:58	1-4	0-0	0-0	0	1	1	2	0	2	0	0	0	1	1	-2
4	Queen Egbo	C	08:39	2-4	0-0	0-0	0	5	5	1	1	4	0	0	0	0	1	4
3	Jordan Lewis	G	10:00	1-2	1-1	0-0	0	2	2	0	1	3	2	0	0	1	0	4
21	Ja'Mee Asberry	G	09:32	0-1	0-1	0-0	0	0	0	0	0	0	1	0	0	0	0	3
24	Sarah Andrews	G	06:05	1-3	0-1	0-0	0	0	0	1	0	2	1	0	0	0	0	-1
10	Jaden Owens		04:23	1-2	0-0	0-0	0	0	0	0	0	2	0	0	0	0	1	6
51	Caitlin Bickle		04:23	0-1	0-0	0-0	0	1	1	1	0	0	1	1	0	1	1	6
Team							1	0	1			0		0				
<b>Totals</b>				6-17	1-3	0-0	1	9	10	5	2	13	5	1	0	3	4	4

Shooting By Period		
1st FG%	6-17	35.3%
3PT%	1-3	33.3%
FT%	0-0	0%
GM FG%	6-17	35.3%
3PT%	1-3	33.3%
FT%	0-0	0.0%

Dead Ball Rebounds: 0, 0

Technical Fouls::NONE

**TCU - 9**

NO.	Name	F/C	Min	FG			Rebounds			Fouls		TP	AS	TO	ST	Blocks		+/-
				M-A	M-A	M-A	OR	DR	TOT	PF	FD					BS	BA	
4	Okako Adika	F	05:37	0-4	0-1	2-2	2	1	3	1	1	2	0	1	0	0	1	2
23	Michelle Berry	F	10:00	0-3	0-3	0-0	1	0	1	0	0	0	1	0	0	1	1	-4
24	Kayla Mokwuah	C	04:06	1-1	0-0	0-0	1	3	4	1	0	2	0	0	0	1	0	4
2	Tara Manumaleuga	G	07:26	0-1	0-1	0-0	0	1	1	0	0	0	0	0	0	1	0	1
20	Lauren Heard	G	09:32	1-2	0-0	3-4	0	0	0	0	4	5	1	0	0	0	0	-2
5	Yummy Morris		04:56	0-2	0-0	0-0	1	2	3	0	0	0	0	1	0	1	0	-5
13	Tavy Diggs		04:23	0-4	0-0	0-0	2	1	3	0	0	0	0	0	1	0	1	-6
15	Aja Holmes		02:34	0-1	0-1	0-0	0	0	0	0	0	0	0	0	0	0	0	-5
32	Patricia Morris		00:58	0-0	0-0	0-0	0	0	0	0	0	0	0	0	0	0	0	-3
0	Caroline Germond		00:28	0-0	0-0	0-0	0	0	0	0	0	0	0	0	0	0	0	-2
Team							0	2	2			0		0				
<b>Totals</b>				2-18	0-6	5-6	7	10	17	2	5	9	2	2	1	4	3	-4

Shooting By Period		
1st FG%	2-18	11.1%
3PT%	0-6	0.0%
FT%	5-6	83.3%
GM FG%	2-18	11.1%
3PT%	0-6	0.0%
FT%	5-6	83.3%

Dead Ball Rebounds: 1, 0

Technical Fouls::NONE

	BAY	TCU
Biggest lead	4 (1 <sup>st</sup> 0:03)	4 (1 <sup>st</sup> 6:09)
Best Scoring Run	7(1 <sup>st</sup> 0:56)	6(1 <sup>st</sup> 6:09)
Lead Changes	3	
Times Tied	2	
Time with Lead	02:42	04:48

Points from	BAY	TCU
Turnovers	2	0
Paint	6	2
Second Chance	3	4
Fast Breaks	0	0
Bench	2	0

	Period by Period Scoring				
	1st	2nd	3rd	4th	TOT
BAY	13	19	26	20	78
TCU	9	20	13	17	59



**Period 2**

**Quarter Starters:**

<b>TCU</b>	0 Germond C	4 Adika O	20 Heard L	23 Berry M	24 Mokwuah K
<b>BAY</b>	3 Lewis J	4 Egbo Q	10 Owens J	24 Andrews S	51 Bickle C

Game Time	TCU	Score	Diff	BAY
10:00	2 MANUMALEUGA T substitution out			
10:00	13 DIGGS T substitution out			
10:00	32 MORRIS P substitution out			
10:00	4 ADIKA O substitution in			
10:00	20 HEARD L substitution in			
10:00	24 MOKWUAH K substitution in			
09:49	4 ADIKA O 3pt FG , jump shot made (5)	<b>12-13</b>	<b>-1</b>	
09:49	23 BERRY M assist (2)			
09:18		<b>12-16</b>	<b>-4</b>	10 OWENS J 3pt FG , jump shot made (5)
09:18				24 ANDREWS S assist (2)
08:55	24 MOKWUAH K 2pt FG in the paint, layup made (4)	<b>14-16</b>	<b>-2</b>	
08:55	4 ADIKA O assist (1)			
08:41				4 EGBO Q 2pt FG outside the paint, jump shot missed
08:39	23 BERRY M defensive rebound (2)			
08:12	23 BERRY M 2pt FG outside the paint, jump shot missed			
08:10	24 MOKWUAH K offensive rebound (5)			
08:08	24 MOKWUAH K 2pt FG second chance in the paint, layup blocked			
08:08				4 EGBO Q block (1)
08:08	offensive rebound (20)			
07:55	4 ADIKA O 2pt FG second chance in the paint, layup made (7)	<b>16-16</b>	<b>0</b>	
07:55	24 MOKWUAH K assist (1)			
07:34	0 GERMOND C foul shooting (1 - 1)			3 LEWIS J foul drawn (2)
07:34				51 BICKLE C substitution out
07:34				1 SMITH N substitution in
07:34		<b>16-17</b>	<b>-1</b>	3 LEWIS J free throw 1 - 2 made (4)
07:34				3 LEWIS J free throw 2 - 2 missed
07:33				1 SMITH N offensive rebound (2)
07:12		<b>16-19</b>	<b>-3</b>	1 SMITH N 2pt FG second chance outside the paint, jump shot made (4)
07:12				24 ANDREWS S assist (3)
06:45	23 BERRY M 3pt FG , jump shot missed			
06:42				defensive rebound (12)
06:41				3 LEWIS J substitution out
06:41				21 ASBERRY J substitution in
06:22				21 ASBERRY J 3pt FG , jump shot missed
06:17				4 EGBO Q offensive rebound (6)
06:17				4 EGBO Q 2pt FG second chance in the paint, layup missed
06:13	24 MOKWUAH K defensive rebound (6)			
06:12	24 MOKWUAH K turnover bad pass (1)			10 OWENS J steal (1)
06:06				21 ASBERRY J 3pt FG from turnover, jump shot missed
06:04	23 BERRY M defensive rebound (3)			
06:04	20 HEARD L substitution out			
06:04	15 HOLMES A substitution in			



Official Basketball Play by Play - 2nd Period  
**Baylor at TCU**  
 02/19/22 Ed and Rae Schollmaier Arena, Fort Worth  
 2021-22 Women's Basketball

**Game Time:** 1:00 PM  
**Game Duration:** 1:52  
**Attendance:** 2,330

**Officials:** Felicia Grinter, Mark Zentz, Maj Forsberg

Game Time	TCU	Score	Diff	BAY
05:51	4 ADIKA O 3pt FG , jump shot made (10)	<b>19-19</b>	<b>0</b>	
05:51	23 BERRY M assist (3)			
05:43		<b>19-21</b>	<b>-2</b>	1 SMITH N 2pt FG in the paint, driving layup made (6)
05:43				24 ANDREWS S assist (4)
05:23	24 MOKWUAH K turnover bad pass (2)			24 ANDREWS S steal (1)
05:11		<b>19-23</b>	<b>-4</b>	1 SMITH N 2pt FG from turnover outside the paint, jump shot made (8)
05:11				10 OWENS J assist (1)
04:52	24 MOKWUAH K 2pt FG outside the paint, jump shot blocked			
04:52				4 EGBO Q block (2)
04:47				10 OWENS J defensive rebound (1)
04:42				4 EGBO Q 2pt FG in the paint, hook shot missed
04:39	24 MOKWUAH K defensive rebound (7)			
04:39	Timeout 30 Sec			
04:39	Timeout media			
04:39	0 GERMOND C substitution out			
04:39	24 MOKWUAH K substitution out			
04:39	5 MORRIS Y substitution in			
04:39	20 HEARD L substitution in			
04:14	5 MORRIS Y foul offensive (1 - 2)			4 EGBO Q foul drawn (2)
04:14	5 MORRIS Y turnover offensive (2)			
04:02				21 ASBERRY J 3pt FG from turnover, jump shot missed
03:59	5 MORRIS Y defensive rebound (4)			
03:52	5 MORRIS Y 2pt FG in the paint, layup missed			
03:49				1 SMITH N defensive rebound (3)
03:40		<b>19-25</b>	<b>-6</b>	4 EGBO Q 2pt FG in the paint, layup made (6)
03:40				24 ANDREWS S assist (5)
03:29	20 HEARD L 2pt FG outside the paint, jump shot made (7)	<b>21-25</b>	<b>-4</b>	
03:26	5 MORRIS Y foul drawn (1)			4 EGBO Q foul loose ball (2 - 1)
03:26	5 MORRIS Y substitution out			
03:26	24 MOKWUAH K substitution in			
03:22	20 HEARD L 2pt FG outside the paint, jump shot missed			
03:19				21 ASBERRY J defensive rebound (1)
03:15	23 BERRY M foul personal (1 - 3)			10 OWENS J foul drawn (1)
03:15	23 BERRY M substitution out			
03:15	13 DIGGS T substitution in			
03:10				1 SMITH N 2pt FG in the paint, layup missed
03:09				4 EGBO Q offensive rebound (7)
03:09				4 EGBO Q 2pt FG second chance in the paint, layup blocked
03:09	24 MOKWUAH K block (2)			
03:09				4 EGBO Q offensive rebound (8)
03:09	jump ball situation			
03:04				24 ANDREWS S 3pt FG second chance, jump shot missed
03:03	13 DIGGS T defensive rebound (4)			
03:03	13 DIGGS T foul drawn (1)			24 ANDREWS S foul personal (2 - 2)
02:45	13 DIGGS T 2pt FG outside the paint, jump shot made (2)	<b>23-25</b>	<b>-2</b>	
02:45	20 HEARD L assist (2)			
02:34		<b>23-27</b>	<b>-4</b>	1 SMITH N 2pt FG in the paint, layup made (10)
02:34				24 ANDREWS S assist (6)



Official Basketball Play by Play - 2nd Period  
**Baylor at TCU**  
 02/19/22 Ed and Rae Schollmaier Arena, Fort Worth  
 2021-22 Women's Basketball

**Game Time:** 1:00 PM  
**Game Duration:** 1:52  
**Attendance:** 2,330

**Officials:** Felicia Grinter, Mark Zentz, Maj Forsberg

Game Time	TCU	Score	Diff	BAY
02:18	13 DIGGS T turnover lost ball (1)			21 ASBERRY J steal (1)
02:18				10 OWENS J substitution out
02:18				3 LEWIS J substitution in
02:05	20 HEARD L steal (1)			1 SMITH N turnover lost ball (1)
02:04	20 HEARD L foul drawn (5)			1 SMITH N foul personal (3 - 3)
02:04				1 SMITH N substitution out
02:04				51 BICKLE C substitution in
01:47	20 HEARD L turnover travel (1)			
01:35				21 ASBERRY J 3pt FG from turnover, jump shot missed
01:32				4 EGBO Q offensive rebound (9)
01:32		<b>23-29</b>	<b>-6</b>	4 EGBO Q 2pt FG from turnover second chance in the paint, layup made (8)
01:13	4 ADIKA O 3pt FG , jump shot made (13)	<b>26-29</b>	<b>-3</b>	
01:13	13 DIGGS T assist (1)			
01:01		<b>26-32</b>	<b>-6</b>	24 ANDREWS S 3pt FG , jump shot made (5)
01:01				3 LEWIS J assist (3)
00:27	4 ADIKA O 3pt FG , jump shot missed			
00:20	20 HEARD L offensive rebound (1)			
00:18	15 HOLMES A 3pt FG second chance, jump shot made (3)	<b>29-32</b>	<b>-3</b>	
00:18	20 HEARD L assist (3)			
00:01				24 ANDREWS S 3pt FG , jump shot missed
00:00				offensive dead ball rebound (1)
<b>END OF PERIOD</b>				
<b>TCU 29-32 BAY</b>				



**Baylor at TCU**

02/19/22 Ed and Rae Schollmaier Arena, Fort Worth  
2021-22 Women's Basketball

Game Time: 1:00 PM  
Game Duration: 1:52  
Attendance: 2,330

Officials: Felicia Grinter, Mark Zentz, Maj Forsberg

**Baylor - 19**

NO.	Name	F/C	Min	FG			Rebounds			Fouls		TP	AS	TO	ST	Blocks		+/-
				M-A	M-A	M-A	OR	DR	TOT	PF	FD					BS	BA	
1	NaLyssa Smith	F	05:30	4-5	0-0	0-0	1	1	2	1	0	8	0	1	0	0	0	4
4	Queen Egbo	C	10:00	2-6	0-0	0-0	4	0	4	1	1	4	0	0	0	2	1	-1
3	Jordan Lewis	G	05:37	0-0	0-0	1-2	0	0	0	0	1	1	1	0	0	0	0	-2
21	Ja'Mee Asberry	G	06:41	0-4	0-4	0-0	0	1	1	0	0	0	0	0	1	0	0	0
24	Sarah Andrews	G	10:00	1-3	1-3	0-0	0	0	0	1	0	3	5	0	1	0	0	-1
10	Jaden Owens		07:42	1-1	1-1	0-0	0	1	1	0	1	3	1	0	1	0	0	0
51	Caitlin Bickle		04:30	0-0	0-0	0-0	0	0	0	0	0	0	0	0	0	0	0	-5
Team							0	1	1			0		0				
<b>Totals</b>				8-19	2-8	1-2	5	4	9	3	3	19	7	1	3	2	1	-1

Shooting By Period		
2nd FG%	8-19	42.1%
3PT%	2-8	25.0%
FT%	1-2	50%
GM FG%	8-19	42.1%
3PT%	2-8	25.0%
FT%	1-2	50.0%

Dead Ball Rebounds: 1, 0

Technical Fouls::NONE

**TCU - 20**

NO.	Name	F/C	Min	FG			Rebounds			Fouls		TP	AS	TO	ST	Blocks		+/-
				M-A	M-A	M-A	OR	DR	TOT	PF	FD					BS	BA	
4	Okako Adika	F	10:00	4-5	3-4	0-0	0	0	0	0	0	11	1	0	0	0	0	1
23	Michelle Berry	F	06:45	0-2	0-1	0-0	0	2	2	1	0	0	2	0	0	0	0	0
24	Kayla Mokwuah	C	08:47	1-3	0-0	0-0	1	2	3	0	0	2	1	2	0	1	2	1
2	Tara Manumaleuga	G	00:00	0-0	0-0	0-0	0	0	0	0	0	0	0	0	0	0	0	0
20	Lauren Heard	G	08:35	1-2	0-0	0-0	1	0	1	0	1	2	2	1	1	0	0	2
0	Caroline Germond		05:21	0-0	0-0	0-0	0	0	0	1	0	0	0	0	0	0	0	0
32	Patricia Morris		00:00	0-0	0-0	0-0	0	0	0	0	0	0	0	0	0	0	0	0
15	Aja Holmes		06:04	1-1	1-1	0-0	0	0	0	0	0	3	0	0	0	0	0	0
5	Yummy Morris		01:13	0-1	0-0	0-0	0	1	1	1	1	0	0	1	0	0	0	0
13	Tavy Diggs		03:15	1-1	0-0	0-0	0	1	1	0	1	2	1	1	0	0	0	1
Team							1	0	1			0		0				
<b>Totals</b>				8-15	4-6	0-0	3	6	9	3	3	20	7	5	1	1	2	1

Shooting By Period		
2nd FG%	8-15	53.3%
3PT%	4-6	66.7%
FT%	0-0	0%
GM FG%	8-15	53.3%
3PT%	4-6	66.7%
FT%	0-0	0.0%

Dead Ball Rebounds: 0, 0

Technical Fouls::NONE

	BAY	TCU
Biggest lead	6 (2 <sup>nd</sup> 3:40)	0 (1 <sup>st</sup> 10:00)
Best Scoring Run	6(2 <sup>nd</sup> 3:40)	4(2 <sup>nd</sup> 7:55)
Lead Changes	0	
Times Tied	2	
Time with Lead	09:20	00:00

Points from	BAY	TCU
Turnovers	4	0
Paint	8	4
Second Chance	4	5
Fast Breaks	0	0
Bench	3	5

	Period by Period Scoring				
	1st	2nd	3rd	4th	TOT
BAY	13	19	26	20	78
TCU	9	20	13	17	59



**Baylor at TCU**

02/19/22 Ed and Rae Schollmaier Arena, Fort Worth  
2021-22 Women's Basketball

Game Time: 1:00 PM  
Game Duration: 1:52  
Attendance: 2,330

Officials: Felicia Grinter, Mark Zentz, Maj Forsberg

**Baylor - 32**

NO.	Name	F/C	Min	FG	3P	FT	Rebounds			Fouls		TP	AS	TO	ST	Blocks		+/-
				M-A	M-A	M-A	OR	DR	TOT	PF	FD					BS	BA	
1	NaLyssa Smith	F	12:28	5-9	0-0	0-0	1	2	3	3	0	10	0	1	0	1	1	2
4	Queen Egbo	C	18:39	4-10	0-0	0-0	4	5	9	2	2	8	0	0	0	2	2	3
3	Jordan Lewis	G	15:37	1-2	1-1	1-2	0	2	2	0	2	4	3	0	0	1	0	2
21	Ja'Mee Asberry	G	16:13	0-5	0-5	0-0	0	1	1	0	0	0	1	0	1	0	0	3
24	Sarah Andrews	G	16:05	2-6	1-4	0-0	0	0	0	2	0	5	6	0	1	0	0	-2
10	Jaden Owens		12:05	2-3	1-1	0-0	0	1	1	0	1	5	1	0	1	0	1	6
51	Caitlin Bickle		08:53	0-1	0-0	0-0	0	1	1	1	0	0	1	1	0	1	1	1
Team							1	1	2			0		0				
<b>Totals</b>				14-36	3-11	1-2	6	13	19	8	5	32	12	2	3	5	5	3

Shooting By Period		
1 <sup>st</sup> FG%	6-17	35.3%
3PT%	1-3	33.3%
FT%	0-0	0%
2 <sup>nd</sup> FG%	8-19	42.1%
3PT%	2-8	25.0%
FT%	1-2	50%
GM FG%	14-36	38.9%
3PT%	3-11	27.3%
FT%	1-2	50.0%

Dead Ball Rebounds: 1, 0

Technical Fouls::NONE

**TCU - 29**

NO.	Name	F/C	Min	FG	3P	FT	Rebounds			Fouls		TP	AS	TO	ST	Blocks		+/-
				M-A	M-A	M-A	OR	DR	TOT	PF	FD					BS	BA	
4	Okako Adika	F	15:37	4-9	3-5	2-2	2	1	3	1	1	13	1	1	0	0	1	3
23	Michelle Berry	F	16:45	0-5	0-4	0-0	1	2	3	1	0	0	3	0	0	1	1	-4
24	Kayla Mokwuah	C	12:53	2-4	0-0	0-0	2	5	7	1	0	4	1	2	0	2	2	5
2	Tara Manumaleuga	G	07:26	0-1	0-1	0-0	0	1	1	0	0	0	0	0	0	1	0	1
20	Lauren Heard	G	18:07	2-4	0-0	3-4	1	0	1	0	5	7	3	1	1	0	0	0
5	Yummy Morris		06:09	0-3	0-0	0-0	1	3	4	1	1	0	0	2	0	1	0	-5
13	Tavy Diggs		07:38	1-5	0-0	0-0	2	2	4	0	1	2	1	1	1	0	1	-5
15	Aja Holmes		08:38	1-2	1-2	0-0	0	0	0	0	0	3	0	0	0	0	0	-5
32	Patricia Morris		00:58	0-0	0-0	0-0	0	0	0	0	0	0	0	0	0	0	0	-3
0	Caroline Germond		05:49	0-0	0-0	0-0	0	0	0	1	0	0	0	0	0	0	0	-2
Team							1	2	3			0		0				
<b>Totals</b>				10-33	4-12	5-6	10	16	26	5	8	29	9	7	2	5	5	-3

Shooting By Period		
1 <sup>st</sup> FG%	2-18	11.1%
3PT%	0-6	0.0%
FT%	5-6	83.3%
2 <sup>nd</sup> FG%	8-15	53.3%
3PT%	4-6	66.7%
FT%	0-0	0%
GM FG%	10-33	30.3%
3PT%	4-12	33.3%
FT%	5-6	83.3%

Dead Ball Rebounds: 1, 0

Technical Fouls::NONE

	BAY	TCU
Biggest lead	6 (2 <sup>nd</sup> 3:40)	4 (1 <sup>st</sup> 6:09)
Best Scoring Run	7(1 <sup>st</sup> 0:56)	6(1 <sup>st</sup> 6:09)
Lead Changes	3	
Times Tied	4	
Time with Lead	12:13	04:48

Points from	BAY	TCU
Turnovers	6	0
Paint	14	6
Second Chance	7	9
Fast Breaks	0	0
Bench	5	5

	Period by Period Scoring				
	1st	2nd	3rd	4th	TOT
BAY	13	19	26	20	78
TCU	9	20	13	17	59



**Period 3**

**Quarter Starters:**

<b>TCU</b>	2 Manumaleuga T	4 Adika O	20 Heard L	23 Berry M	24 Mokwuah K
<b>BAY</b>	3 Lewis J	4 Egbo Q	21 Asberry J	24 Andrews S	51 Bickle C

Game Time	TCU	Score	Diff	BAY
10:00	13 DIGGS T substitution out			
10:00	15 HOLMES A substitution out			
10:00	2 MANUMALEUGA T substitution in			
10:00	23 BERRY M substitution in			
09:38	23 BERRY M turnover bad pass (1)			4 EGBO Q steal (1)
09:27	23 BERRY M foul shooting (2 - 1)			21 ASBERRY J foul drawn (1)
09:27		<b>29-33</b>	<b>-4</b>	21 ASBERRY J free throw 1 - 2 made (1)
09:27		<b>29-34</b>	<b>-5</b>	21 ASBERRY J free throw 2 - 2 made (2)
09:16	20 HEARD L turnover lost ball (2)			21 ASBERRY J steal (2)
09:01				51 BICKLE C 2pt FG from turnover outside the paint, jump shot missed
08:58				3 LEWIS J offensive rebound (3)
08:57				3 LEWIS J 2pt FG from turnover second chance in the paint, layup missed
08:55	4 ADIKA O defensive rebound (4)			
08:48	24 MOKWUAH K 2pt FG in the paint, layup blocked			
08:48				24 ANDREWS S block (1)
08:42				4 EGBO Q defensive rebound (10)
08:38				3 LEWIS J 2pt FG outside the paint, jump shot missed
08:35	24 MOKWUAH K defensive rebound (8)			
08:18	24 MOKWUAH K turnover bad pass (3)			21 ASBERRY J steal (3)
08:13		<b>29-36</b>	<b>-7</b>	4 EGBO Q 2pt FG fast break from turnover in the paint, layup made (10)
08:13				24 ANDREWS S assist (7)
08:08	Timeout 30 Sec			
08:08	Timeout media			
08:08	24 MOKWUAH K substitution out			
08:08	5 MORRIS Y substitution in			
07:54	4 ADIKA O 2pt FG in the paint, layup made (15)	<b>31-36</b>	<b>-5</b>	
07:54	5 MORRIS Y assist (1)			
07:32		<b>31-38</b>	<b>-7</b>	4 EGBO Q 2pt FG in the paint, layup made (12)
07:32				21 ASBERRY J assist (2)
07:21	4 ADIKA O 3pt FG , jump shot missed			
07:18				21 ASBERRY J defensive rebound (2)
07:08		<b>31-41</b>	<b>-10</b>	24 ANDREWS S 3pt FG , jump shot made (8)
07:08				51 BICKLE C assist (2)
06:44	5 MORRIS Y 2pt FG in the paint, driving layup missed			
06:42				4 EGBO Q defensive rebound (11)
06:32				3 LEWIS J turnover lost ball (1)
06:17	2 MANUMALEUGA T turnover lost ball (1)			21 ASBERRY J steal (4)
06:16	5 MORRIS Y substitution out			
06:16	15 HOLMES A substitution in			
05:59	15 HOLMES A foul shooting (1 - 2)			3 LEWIS J foul drawn (3)
05:59		<b>31-42</b>	<b>-11</b>	3 LEWIS J free throw 1 - 2 made (5)



Official Basketball Play by Play - 3rd Period  
**Baylor at TCU**  
 02/19/22 Ed and Rae Schollmaier Arena, Fort Worth  
 2021-22 Women's Basketball

**Game Time:** 1:00 PM  
**Game Duration:** 1:52  
**Attendance:** 2,330

**Officials:** Felicia Grinter, Mark Zentz, Maj Forsberg

Game Time	TCU	Score	Diff	BAY
05:59				3 LEWIS J free throw 2 - 2 missed
05:59				51 BICKLE C offensive rebound (2)
05:52				24 ANDREWS S 3pt FG second chance, jump shot missed
05:49				3 LEWIS J offensive rebound (4)
05:42		<b>31-44</b>	<b>-13</b>	24 ANDREWS S 2pt FG second chance outside the paint, jump shot made (10)
05:22	23 BERRY M 3pt FG , jump shot made (3)	<b>34-44</b>	<b>-10</b>	
05:22	20 HEARD L assist (4)			
04:55	4 ADIKA O steal (1)			24 ANDREWS S turnover lost ball (1)
04:45	4 ADIKA O foul drawn (2)			3 LEWIS J foul personal (1 - 1)
04:45	Timeout media			
04:31	20 HEARD L 2pt FG from turnover in the paint, jump shot missed			
04:29				51 BICKLE C defensive rebound (3)
04:24		<b>34-46</b>	<b>-12</b>	24 ANDREWS S 2pt FG fast break in the paint, layup made (12)
04:24				51 BICKLE C assist (3)
04:04	4 ADIKA O foul drawn (3)			3 LEWIS J foul shooting (2 - 2)
04:04	2 MANUMALEUGA T substitution out			
04:04	24 MOKWUAH K substitution in			
04:04				51 BICKLE C substitution out
04:04				1 SMITH N substitution in
04:04	4 ADIKA O free throw 1 - 2 made (16)	<b>35-46</b>	<b>-11</b>	
04:04	4 ADIKA O free throw 2 - 2 made (17)	<b>36-46</b>	<b>-10</b>	
03:48		<b>36-48</b>	<b>-12</b>	1 SMITH N 2pt FG outside the paint, jump shot made (12)
03:48				3 LEWIS J assist (4)
03:20	4 ADIKA O 3pt FG , jump shot missed			
03:18				21 ASBERRY J defensive rebound (3)
02:59		<b>36-50</b>	<b>-14</b>	1 SMITH N 2pt FG in the paint, driving layup made (14)
02:59				21 ASBERRY J assist (3)
02:39	15 HOLMES A 2pt FG in the paint, driving layup blocked			
02:39				4 EGBO Q block (3)
02:39	offensive rebound (29)			
02:38				4 EGBO Q foul player technical (3 - 3)
02:38				4 EGBO Q substitution out
02:38				24 ANDREWS S substitution out
02:38				10 OWENS J substitution in
02:38				51 BICKLE C substitution in
02:38	15 HOLMES A free throw 1 - 2 missed			
02:38	offensive dead ball rebound (2)			
02:38	15 HOLMES A free throw 2 - 2 missed			
02:38	offensive dead ball rebound (3)			
02:30	24 MOKWUAH K foul offensive (2 - 3)			1 SMITH N foul drawn (1)
02:30	24 MOKWUAH K turnover offensive (4)			
02:30	15 HOLMES A substitution out			
02:30	0 GERMOND C substitution in			
02:08		<b>36-52</b>	<b>-16</b>	1 SMITH N 2pt FG from turnover in the paint, layup made (16)
02:08				51 BICKLE C assist (4)
01:45	4 ADIKA O 2pt FG in the paint, driving layup made (19)	<b>38-52</b>	<b>-14</b>	
01:38	20 HEARD L steal (2)			3 LEWIS J turnover lost ball (2)



Official Basketball Play by Play - 3rd Period  
**Baylor at TCU**  
 02/19/22 Ed and Rae Schollmaier Arena, Fort Worth  
 2021-22 Women's Basketball

**Game Time:** 1:00 PM  
**Game Duration:** 1:52  
**Attendance:** 2,330

**Officials:** Felicia Grinter, Mark Zentz, Maj Forsberg

Game Time	TCU	Score	Diff	BAY
01:34	20 HEARD L 2pt FG fast break from turnover in the paint, driving layup made (9)	<b>40-52</b>	<b>-12</b>	
01:29	20 HEARD L foul shooting (1 - 4)			51 BICKLE C foul drawn (1)
01:29		<b>40-53</b>	<b>-13</b>	51 BICKLE C free throw 1 - 2 made (1)
01:29		<b>40-54</b>	<b>-14</b>	51 BICKLE C free throw 2 - 2 made (2)
01:14	20 HEARD L 2pt FG outside the paint, jump shot missed			
01:12				defensive dead ball rebound (2)
01:12	23 BERRY M foul loose ball (3 - 5)			3 LEWIS J foul drawn (4)
01:12				3 LEWIS J free throw 1 - 2 missed
01:12				offensive dead ball rebound (3)
01:12		<b>40-55</b>	<b>-15</b>	3 LEWIS J free throw 2 - 2 made (6)
00:56	24 MOKWUAH K 2pt FG in the paint, layup made (6)	<b>42-55</b>	<b>-13</b>	
00:56	4 ADIKA O assist (2)			
00:46				21 ASBERRY J 3pt FG , jump shot missed
00:43				1 SMITH N offensive rebound (4)
00:43		<b>42-57</b>	<b>-15</b>	1 SMITH N 2pt FG second chance in the paint, layup made (18)
00:43	24 MOKWUAH K foul shooting (3 - 6)			1 SMITH N foul drawn (2)
00:43	23 BERRY M substitution out			
00:43	13 DIGGS T substitution in			
00:43		<b>42-58</b>	<b>-16</b>	1 SMITH N free throw 1 - 1 made (19)
00:20	4 ADIKA O 2pt FG in the paint, driving layup missed			
00:18	offensive rebound (30)			
00:15	13 DIGGS T foul drawn (2)			3 LEWIS J foul personal (3 - 4)
00:15				3 LEWIS J substitution out
00:15				24 ANDREWS S substitution in
00:15	24 MOKWUAH K substitution out			
00:15	32 MORRIS P substitution in			
00:03	32 MORRIS P 2pt FG second chance in the paint, layup missed			
00:01				1 SMITH N defensive rebound (5)
<b>END OF PERIOD</b>				
<b>TCU 42-58 BAY</b>				



**Baylor at TCU**

02/19/22 Ed and Rae Schollmaier Arena, Fort Worth  
2021-22 Women's Basketball

Game Time: 1:00 PM  
Game Duration: 1:52  
Attendance: 2,330

Officials: Felicia Grinter, Mark Zentz, Maj Forsberg

**Baylor - 26**

NO.	Name	F/C	Min	FG			Rebounds			Fouls		TP	AS	TO	ST	Blocks		+/-
				M-A	M-A	M-A	OR	DR	TOT	PF	FD					BS	BA	
1	NaLyssa Smith	F	04:04	4-4	0-0	1-1	1	1	2	0	2	9	0	0	0	0	0	4
4	Queen Egbo	C	07:22	2-2	0-0	0-0	0	2	2	1	0	4	0	0	1	1	0	11
3	Jordan Lewis	G	09:44	0-2	0-0	2-4	2	0	2	3	2	2	1	2	0	0	0	13
21	Ja'Mee Asberry	G	10:00	0-1	0-1	2-2	0	2	2	0	1	2	2	0	3	0	0	13
24	Sarah Andrews	G	07:38	3-4	1-2	0-0	0	0	0	0	0	7	1	1	0	1	0	11
10	Jaden Owens		02:38	0-0	0-0	0-0	0	0	0	0	0	0	0	0	0	0	0	2
51	Caitlin Bickle		08:34	0-1	0-0	2-2	1	1	2	0	1	2	3	0	0	0	0	11
Team							0	0	0			0		0				
<b>Totals</b>				9-14	1-3	7-9	4	6	10	4	6	26	7	3	4	2	0	13

Shooting By Period		
3 <sup>rd</sup> FG%	9-14	64.3%
3PT%	1-3	33.3%
FT%	7-9	77.8%
GM FG%	9-14	64.3%
3PT%	1-3	33.3%
FT%	7-9	77.8%

Dead Ball Rebounds: 1, 1

Technical Fouls: Egbo 3<sup>rd</sup> 2:38

**TCU - 13**

NO.	Name	F/C	Min	FG			Rebounds			Fouls		TP	AS	TO	ST	Blocks		+/-
				M-A	M-A	M-A	OR	DR	TOT	PF	FD					BS	BA	
4	Okako Adika	F	10:00	2-5	0-2	2-2	0	1	1	0	2	6	1	0	1	0	0	-13
23	Michelle Berry	F	09:17	1-1	1-1	0-0	0	0	0	2	0	3	0	1	0	0	0	-12
24	Kayla Mokwuah	C	05:40	1-2	0-0	0-0	0	1	1	2	0	2	0	2	0	0	1	-8
2	Tara Manumaleuga	G	05:56	0-0	0-0	0-0	0	0	0	0	0	0	0	1	0	0	0	-9
20	Lauren Heard	G	10:00	1-3	0-0	0-0	0	0	0	1	0	2	1	1	1	0	0	-13
5	Yummy Morris		01:52	0-1	0-0	0-0	0	0	0	0	0	0	1	0	0	0	0	-3
15	Aja Holmes		03:46	0-1	0-0	0-2	0	0	0	1	0	0	0	0	0	0	1	-4
0	Caroline Germond		02:30	0-0	0-0	0-0	0	0	0	0	0	0	0	0	0	0	0	-2
13	Tavy Diggs		00:43	0-0	0-0	0-0	0	0	0	0	1	0	0	0	0	0	0	-1
32	Patricia Morris		00:16	0-1	0-0	0-0	0	0	0	0	0	0	0	0	0	0	0	0
Team							2	0	2			0		0				
<b>Totals</b>				5-14	1-3	2-4	2	2	4	6	3	13	3	5	2	0	2	-13

Shooting By Period		
3 <sup>rd</sup> FG%	5-14	35.7%
3PT%	1-3	33.3%
FT%	2-4	50%
GM FG%	5-14	35.7%
3PT%	1-3	33.3%
FT%	2-4	50.0%

Dead Ball Rebounds: 2, 0

Technical Fouls: NONE

	BAY	TCU
Biggest lead	16 (3 <sup>rd</sup> 2:08)	0 (1 <sup>st</sup> 10:00)
Best Scoring Run	8 (3 <sup>rd</sup> 5:42)	4 (3 <sup>rd</sup> 1:34)
Lead Changes	0	
Times Tied	0	
Time with Lead	09:27	00:00

	BAY	TCU
Points from		
Turnovers	7	2
Paint	12	8
Second Chance	5	0
Fast Breaks	4	2
Bench	2	0

	Period by Period Scoring				
	1st	2nd	3rd	4th	TOT
BAY	13	19	26	20	78
TCU	9	20	13	17	59



**Period 4**

**Quarter Starters:**

<b>TCU</b>	0 Germond C	4 Adika O	20 Heard L	23 Berry M	24 Mokwuah K
<b>BAY</b>	1 Smith N	10 Owens J	21 Asberry J	24 Andrews S	51 Bickle C

Game Time	TCU	Score	Diff	BAY
10:00	13 DIGGS T substitution out			
10:00	32 MORRIS P substitution out			
10:00	23 BERRY M substitution in			
10:00	24 MOKWUAH K substitution in			
09:50				1 SMITH N 2pt FG in the paint, layup missed
09:47	23 BERRY M defensive rebound (4)			
09:26	23 BERRY M 3pt FG , jump shot missed			
09:23				1 SMITH N defensive rebound (6)
09:12	0 GERMOND C foul drawn (1)			1 SMITH N foul offensive (4 - 1)
09:12				1 SMITH N turnover offensive (2)
09:03	4 ADIKA O turnover lost ball (2)			21 ASBERRY J steal (5)
08:56		<b>42-60</b>	<b>-18</b>	1 SMITH N 2pt FG fast break from turnover in the paint, driving layup made (21)
08:31	24 MOKWUAH K turnover bad pass (5)			10 OWENS J steal (2)
08:26	23 BERRY M foul shooting (4 - 1)			21 ASBERRY J foul drawn (2)
08:26				1 SMITH N substitution out
08:26				4 EGBO Q substitution in
08:26	Timeout 30 Sec			
08:26				Timeout media
08:26		<b>42-61</b>	<b>-19</b>	21 ASBERRY J free throw fast break 1 - 2 made (3)
08:26		<b>42-62</b>	<b>-20</b>	21 ASBERRY J free throw fast break 2 - 2 made (4)
08:11	23 BERRY M 2pt FG outside the paint, jump shot made (5)	<b>44-62</b>	<b>-18</b>	
08:11	0 GERMOND C assist (1)			
07:55				4 EGBO Q 2pt FG in the paint, layup blocked
07:55	24 MOKWUAH K block (3)			
07:50	4 ADIKA O defensive rebound (5)			
07:42	0 GERMOND C 2pt FG in the paint, driving layup missed			
07:39				21 ASBERRY J defensive rebound (4)
07:34				21 ASBERRY J 3pt FG , jump shot missed
07:29	20 HEARD L defensive rebound (2)			
07:23	20 HEARD L 2pt FG outside the paint, jump shot missed			
07:21				51 BICKLE C defensive rebound (4)
07:16				24 ANDREWS S 2pt FG in the paint, driving layup missed
07:14				4 EGBO Q offensive rebound (12)
07:14	24 MOKWUAH K foul shooting (4 - 2)			4 EGBO Q foul drawn (3)
07:14	23 BERRY M substitution out			
07:14	24 MOKWUAH K substitution out			
07:14	5 MORRIS Y substitution in			
07:14	13 DIGGS T substitution in			
07:14		<b>44-63</b>	<b>-19</b>	4 EGBO Q free throw 1 - 2 made (13)
07:14		<b>44-64</b>	<b>-20</b>	4 EGBO Q free throw 2 - 2 made (14)
06:54	20 HEARD L turnover travel (3)			
06:54				21 ASBERRY J substitution out



**Officials:** Felicia Grinter, Mark Zentz, Maj Forsberg

Game Time	TCU	Score	Diff	BAY
06:54				1 SMITH N substitution in
06:42				24 ANDREWS S 2pt FG from turnover in the paint, floating jump shot missed
06:39	4 ADIKA O defensive rebound (6)			
06:33	4 ADIKA O foul drawn (4)			4 EGBO Q foul personal (4 - 2)
06:33	0 GERMOND C substitution out			
06:33	15 HOLMES A substitution in			
06:28	20 HEARD L foul drawn (6)			10 OWENS J foul shooting (1 - 3)
06:28				24 ANDREWS S substitution out
06:28				3 LEWIS J substitution in
06:28	20 HEARD L free throw 1 - 2 made (10)	<b>45-64</b>	<b>-19</b>	
06:28	20 HEARD L free throw 2 - 2 missed			
06:27				51 BICKLE C defensive rebound (5)
06:14		<b>45-67</b>	<b>-22</b>	51 BICKLE C 3pt FG , jump shot made (5)
06:14				10 OWENS J assist (2)
05:59	5 MORRIS Y foul drawn (2)			4 EGBO Q foul shooting (5 - 4)
05:59				4 EGBO Q substitution out
05:59				25 GILLISPIE K substitution in
05:59	5 MORRIS Y free throw 1 - 2 made (1)	<b>46-67</b>	<b>-21</b>	
05:59	5 MORRIS Y free throw 2 - 2 missed			
05:59	13 DIGGS T offensive rebound (5)			
05:58	13 DIGGS T 2pt FG second chance in the paint, layup made (4)	<b>48-67</b>	<b>-19</b>	
05:41	20 HEARD L foul personal (2 - 3)			1 SMITH N foul drawn (3)
05:38				1 SMITH N 3pt FG , jump shot missed
05:35	4 ADIKA O defensive rebound (7)			
05:25	20 HEARD L turnover lost ball (4)			3 LEWIS J steal (1)
05:18	4 ADIKA O foul personal (2 - 4)			3 LEWIS J foul drawn (5)
05:16				3 LEWIS J 3pt FG from turnover, jump shot missed
05:13				51 BICKLE C offensive rebound (6)
05:11				51 BICKLE C 2pt FG from turnover second chance in the paint, layup missed
05:08				51 BICKLE C offensive rebound (7)
05:08				51 BICKLE C 2pt FG from turnover second chance in the paint, layup missed
05:05				51 BICKLE C offensive rebound (8)
05:05				3 LEWIS J 3pt FG from turnover second chance, jump shot missed
05:05				offensive rebound (38)
05:05	13 DIGGS T foul personal (1 - 5)			51 BICKLE C foul drawn (2)
05:05				51 BICKLE C free throw 1 - 2 missed
05:05				offensive dead ball rebound (4)
05:05	15 HOLMES A substitution out			
05:05	23 BERRY M substitution in			
05:05		<b>48-68</b>	<b>-20</b>	51 BICKLE C free throw 2 - 2 made (6)
04:48	13 DIGGS T 3pt FG , jump shot made (7)	<b>51-68</b>	<b>-17</b>	
04:48	23 BERRY M assist (4)			
04:27				10 OWENS J turnover lost ball (1)
04:25	4 ADIKA O 3pt FG from turnover, jump shot missed			
04:23				3 LEWIS J defensive rebound (5)
04:02	4 ADIKA O foul personal (3 - 6)			1 SMITH N foul drawn (4)



Official Basketball Play by Play - 4th Period  
**Baylor at TCU**  
 02/19/22 Ed and Rae Schollmaier Arena, Fort Worth  
 2021-22 Women's Basketball

**Game Time:** 1:00 PM  
**Game Duration:** 1:52  
**Attendance:** 2,330

**Officials:** Felicia Grinter, Mark Zentz, Maj Forsberg

Game Time	TCU	Score	Diff	BAY
04:02		<b>51-69</b>	<b>-18</b>	1 SMITH N free throw 1 - 2 made (22)
04:02		<b>51-70</b>	<b>-19</b>	1 SMITH N free throw 2 - 2 made (23)
03:47	23 BERRY M 2pt FG outside the paint, jump shot missed			
03:45				1 SMITH N defensive rebound (7)
03:27				1 SMITH N turnover bad pass (3)
03:18	20 HEARD L 2pt FG from turnover in the paint, jump shot made (12)	<b>53-70</b>	<b>-17</b>	
02:57		<b>53-72</b>	<b>-19</b>	3 LEWIS J 2pt FG outside the paint, floating jump shot made (8)
02:57	13 DIGGS T foul shooting (2 - 7)			3 LEWIS J foul drawn (6)
02:57		<b>53-73</b>	<b>-20</b>	3 LEWIS J free throw 1 - 1 made (9)
02:41	20 HEARD L 2pt FG outside the paint, jump shot missed			
02:39				1 SMITH N defensive rebound (8)
02:32				51 BICKLE C 3pt FG , jump shot missed
02:28				25 GILLISPIE K offensive rebound (1)
02:24				3 LEWIS J 2pt FG second chance in the paint, layup missed
02:21	4 ADIKA O defensive rebound (8)			
02:15	4 ADIKA O 3pt FG , jump shot made (22)	<b>56-73</b>	<b>-17</b>	
02:15	20 HEARD L assist (5)			
02:09	20 HEARD L substitution out			
02:09	23 BERRY M substitution out			
02:09	2 MANUMALEUGA T substitution in			
02:09	10 BRADLEY P substitution in			
01:55				51 BICKLE C 3pt FG , jump shot missed
01:53	4 ADIKA O defensive rebound (9)			
01:41	5 MORRIS Y foul drawn (3)			10 OWENS J foul shooting (2 - 5)
01:41	5 MORRIS Y free throw 1 - 2 made (2)	<b>57-73</b>	<b>-16</b>	
01:41	5 MORRIS Y free throw 2 - 2 made (3)	<b>58-73</b>	<b>-15</b>	
01:41	13 DIGGS T substitution out			
01:41	0 GERMOND C substitution in			
01:27		<b>58-75</b>	<b>-17</b>	10 OWENS J 2pt FG outside the paint, step back jump shot made (7)
01:11	4 ADIKA O foul drawn (5)			25 GILLISPIE K foul shooting (1 - 6)
01:11				1 SMITH N substitution out
01:11				11 KATRAMADOS A substitution in
01:11	4 ADIKA O free throw 1 - 2 missed			
01:11	offensive dead ball rebound (4)			
01:11	4 ADIKA O free throw 2 - 2 made (23)	<b>59-75</b>	<b>-16</b>	
01:05	4 ADIKA O foul personal (4 - 8)			3 LEWIS J foul drawn (7)
01:05	4 ADIKA O substitution out			
01:05	13 DIGGS T substitution in			
01:05				3 LEWIS J free throw 1 - 2 missed
01:05				offensive dead ball rebound (5)
01:05				3 LEWIS J free throw 2 - 2 missed
01:04	13 DIGGS T defensive rebound (6)			
00:57	10 BRADLEY P 3pt FG , jump shot missed			
00:54				10 OWENS J defensive rebound (2)
00:31		<b>59-78</b>	<b>-19</b>	3 LEWIS J 3pt FG , jump shot made (12)
00:21	0 GERMOND C 2pt FG outside the paint, jump shot missed			
00:18	0 GERMOND C offensive rebound (1)			



Official Basketball Play by Play - 4th Period  
**Baylor at TCU**  
02/19/22 Ed and Rae Schollmaier Arena, Fort Worth  
2021-22 Women's Basketball

**Game Time:** 1:00 PM  
**Game Duration:** 1:52  
**Attendance:** 2,330

**Officials:** Felicia Grinter, Mark Zentz, Maj Forsberg

Game Time	TCU	Score	Diff	BAY
00:04	13 DIGGS T 2pt FG second chance in the paint, jump shot missed			
00:03	13 DIGGS T offensive rebound (7)			
00:03	jump ball situation			
<b>END OF GAME</b>				
<b>TCU 59-78 BAY</b>				



**Baylor at TCU**

02/19/22 Ed and Rae Schollmaier Arena, Fort Worth  
2021-22 Women's Basketball

Game Time: 1:00 PM  
Game Duration: 1:52  
Attendance: 2,330

Officials: Felicia Grinter, Mark Zentz, Maj Forsberg

**Baylor - 20**

NO.	Name	F/C	Min	FG			Rebounds			Fouls		TP	AS	TO	ST	Blocks		+/-
				M-A	M-A	M-A	OR	DR	TOT	PF	FD					BS	BA	
1	NaLyssa Smith	F	07:17	1-3	0-1	2-2	0	3	3	1	2	4	0	2	0	0	0	-1
4	Queen Egbo	C	02:27	0-1	0-0	2-2	1	0	1	2	1	2	0	0	0	0	1	4
3	Jordan Lewis	G	06:28	2-5	1-3	1-3	0	1	1	0	3	6	0	0	1	0	0	-1
21	Ja'Mee Asberry	G	03:06	0-1	0-1	2-2	0	1	1	0	1	2	0	0	1	0	0	4
24	Sarah Andrews	G	03:32	0-2	0-0	0-0	0	0	0	0	0	0	0	0	0	0	0	4
10	Jaden Owens		10:00	1-1	0-0	0-0	0	1	1	2	0	2	1	1	1	0	0	3
51	Caitlin Bickle		10:00	1-5	1-3	1-2	3	2	5	0	1	4	0	0	0	0	0	3
25	Kendra Gillispie		05:59	0-0	0-0	0-0	1	0	1	1	0	0	0	0	0	0	0	-3
11	Andrea Katramados		01:11	0-0	0-0	0-0	0	0	0	0	0	0	0	0	0	0	0	2
Team							1	0	1			0		0				
<b>Totals</b>				5-18	2-8	8-11	6	8	14	6	8	20	1	3	3	0	1	3

Shooting By Period		
4 <sup>th</sup> FG%	5-18	27.8%
3PT%	2-8	25.0%
FT%	8-11	72.7%
GM FG%	5-18	27.8%
3PT%	2-8	25.0%
FT%	8-11	72.7%

Dead Ball Rebounds: 2, 0

Technical Fouls::NONE

**TCU - 17**

NO.	Name	F/C	Min	FG			Rebounds			Fouls		TP	AS	TO	ST	Blocks		+/-
				M-A	M-A	M-A	OR	DR	TOT	PF	FD					BS	BA	
4	Okako Adika	F	08:55	1-2	1-2	1-2	0	5	5	3	2	4	0	1	0	0	0	0
23	Michelle Berry	F	05:42	1-3	0-1	0-0	0	1	1	1	0	2	1	0	0	0	0	0
24	Kayla Mokwuah	C	02:46	0-0	0-0	0-0	0	0	0	1	0	0	0	1	0	1	0	-2
2	Tara Manumaleuga	G	02:09	0-0	0-0	0-0	0	0	0	0	0	0	0	0	0	0	0	-2
20	Lauren Heard	G	07:51	1-3	0-0	1-2	0	1	1	1	1	3	1	2	0	0	0	-1
32	Patricia Morris		00:00	0-0	0-0	0-0	0	0	0	0	0	0	0	0	0	0	0	0
5	Yummy Morris		07:14	0-0	0-0	3-4	0	0	0	0	2	3	0	0	0	0	0	-1
13	Tavy Diggs		06:38	2-3	1-1	0-0	2	1	3	2	0	5	0	0	0	0	0	0
15	Aja Holmes		01:28	0-0	0-0	0-0	0	0	0	0	0	0	0	0	0	0	0	1
10	Paige Bradley		02:09	0-1	0-1	0-0	0	0	0	0	0	0	0	0	0	0	0	-2
0	Caroline Germond		05:08	0-2	0-0	0-0	1	0	1	0	1	0	1	0	0	0	0	-8
Team							0	0	0			0		0				
<b>Totals</b>				5-14	2-5	5-8	3	8	11	8	6	17	3	4	0	1	0	-3

Shooting By Period		
4 <sup>th</sup> FG%	5-14	35.7%
3PT%	2-5	40.0%
FT%	5-8	62.5%
GM FG%	5-14	35.7%
3PT%	2-5	40.0%
FT%	5-8	62.5%

Dead Ball Rebounds: 1, 0

Technical Fouls::NONE

	BAY	TCU
Biggest lead	22 (4 <sup>th</sup> 6:14)	0 (1 <sup>st</sup> 10:00)
Best Scoring Run	4(4 <sup>th</sup> 8:26)	5(4 <sup>th</sup> 1:41)
Lead Changes	0	
Times Tied	0	
Time with Lead	09:50	00:00

	BAY	TCU
Points from		
Turnovers	5	2
Paint	2	4
Second Chance	3	2
Fast Breaks	4	0
Bench	6	8

	Period by Period Scoring				
	1st	2nd	3rd	4th	TOT
BAY	13	19	26	20	78
TCU	9	20	13	17	59



**Baylor at TCU**

02/19/22 Ed and Rae Schollmaier Arena, Fort Worth  
2021-22 Women's Basketball

Game Time: 1:00 PM  
Game Duration: 1:52  
Attendance: 2,330

Officials: Felicia Grinter, Mark Zentz, Maj Forsberg

**Baylor - 46**

NO.	Name	Min	FG			Rebounds			Fouls		TP	AS	TO	ST	Blocks		+/-
			M-A	M-A	M-A	OR	DR	TOT	PF	FD					BS	BA	
1	NaLyssa Smith	F 11:21	5-7	0-1	3-3	1	4	5	1	4	13	0	2	0	0	0	3
4	Queen Egbo	C 09:49	2-3	0-0	2-2	1	2	3	3	1	6	0	0	1	1	1	15
3	Jordan Lewis	G 16:12	2-7	1-3	3-7	2	1	3	3	5	8	1	2	1	0	0	12
21	Ja'Mee Asberry	G 13:06	0-2	0-2	4-4	0	3	3	0	2	4	2	0	4	0	0	17
24	Sarah Andrews	G 11:10	3-6	1-2	0-0	0	0	0	0	0	7	1	1	0	1	0	15
10	Jaden Owens	12:38	1-1	0-0	0-0	0	1	1	2	0	2	1	1	1	0	0	5
51	Caitlin Bickle	18:34	1-6	1-3	3-4	4	3	7	0	2	6	3	0	0	0	0	14
25	Kendra Gillispie	05:59	0-0	0-0	0-0	1	0	1	1	0	0	0	0	0	0	0	-3
11	Andrea Katramados	01:11	0-0	0-0	0-0	0	0	0	0	0	0	0	0	0	0	0	2
Team						1	0	1			0		0				
<b>Totals</b>			14-32	3-11	15-20	10	14	24	10	14	46	8	6	7	2	1	16

Shooting By Period		
3 <sup>rd</sup> FG%	9-14	64.3%
3PT%	1-3	33.3%
FT%	7-9	77.8%
4 <sup>th</sup> FG%	5-18	27.8%
3PT%	2-8	25.0%
FT%	8-11	72.7%
GM FG%	14-32	43.8%
3PT%	3-11	27.3%
FT%	15-20	75.0%

Dead Ball Rebounds: 3, 1

Technical Fouls: Egbo 3<sup>rd</sup> 2:38

**TCU - 30**

NO.	Name	Min	FG			Rebounds			Fouls		TP	AS	TO	ST	Blocks		+/-
			M-A	M-A	M-A	OR	DR	TOT	PF	FD					BS	BA	
4	Okako Adika	F 18:55	3-7	1-4	3-4	0	6	6	3	4	10	1	1	1	0	0	-13
23	Michelle Berry	F 14:59	2-4	1-2	0-0	0	1	1	3	0	5	1	1	0	0	0	-12
24	Kayla Mokwuah	C 08:26	1-2	0-0	0-0	0	1	1	3	0	2	0	3	0	1	1	-10
2	Tara Manumaleuga	G 08:05	0-0	0-0	0-0	0	0	0	0	0	0	0	1	0	0	0	-11
20	Lauren Heard	G 17:51	2-6	0-0	1-2	0	1	1	2	1	5	2	3	1	0	0	-14
5	Yummy Morris	09:06	0-1	0-0	3-4	0	0	0	0	2	3	1	0	0	0	0	-4
15	Aja Holmes	05:14	0-1	0-0	0-2	0	0	0	1	0	0	0	0	0	0	1	-3
0	Caroline Germond	07:38	0-2	0-0	0-0	1	0	1	0	1	0	1	0	0	0	0	-10
13	Tavy Diggs	07:21	2-3	1-1	0-0	2	1	3	2	1	5	0	0	0	0	0	-1
32	Patricia Morris	00:16	0-1	0-0	0-0	0	0	0	0	0	0	0	0	0	0	0	0
10	Paige Bradley	02:09	0-1	0-1	0-0	0	0	0	0	0	0	0	0	0	0	0	-2
Team						2	0	2			0		0				
<b>Totals</b>			10-28	3-8	7-12	5	10	15	14	9	30	6	9	2	1	2	-16

Shooting By Period		
3 <sup>rd</sup> FG%	5-14	35.7%
3PT%	1-3	33.3%
FT%	2-4	50%
4 <sup>th</sup> FG%	5-14	35.7%
3PT%	2-5	40.0%
FT%	5-8	62.5%
GM FG%	10-28	35.7%
3PT%	3-8	37.5%
FT%	7-12	58.3%

Dead Ball Rebounds: 3, 0

Technical Fouls: NONE

	BAY	TCU
Biggest lead	22 (4 <sup>th</sup> 6:14)	0 (1 <sup>st</sup> 10:00)
Best Scoring Run	8 (3 <sup>rd</sup> 5:42)	5 (4 <sup>th</sup> 1:41)
Lead Changes	0	
Times Tied	0	
Time with Lead	19:27	00:00

Points from	BAY	TCU
Turnovers	12	4
Paint	14	12
Second Chance	8	2
Fast Breaks	8	2
Bench	8	8

	Period by Period Scoring				
	1st	2nd	3rd	4th	TOT
BAY	13	19	26	20	78
TCU	9	20	13	17	59



**Baylor at TCU**

02/19/22 Ed and Rae Schollmaier Arena, Fort Worth  
2021-22 Women's Basketball

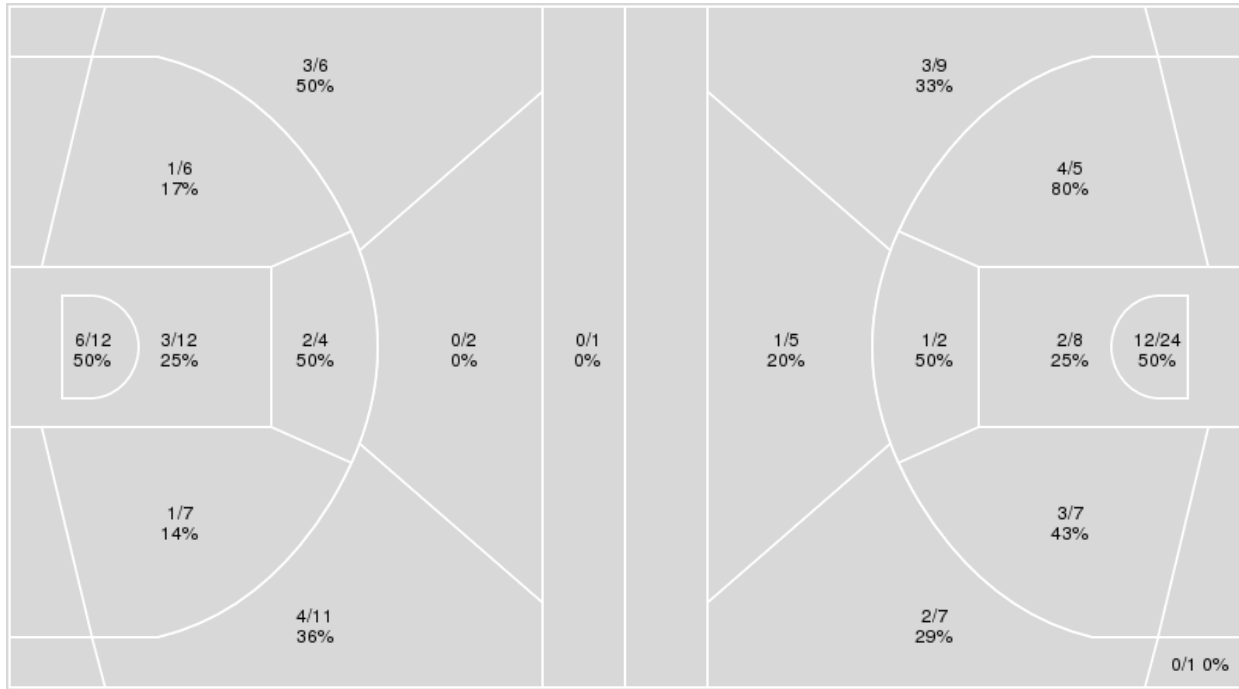
**Game Time:** 1:00 PM  
**Game Duration:** 1:52  
**Attendance:** 2,330

**Officials:** Felicia Grinter, Mark Zentz, Maj Forsberg

{ Players => 0, 1, 2, 3, 4, 5, 10, 11, 13, 14, 15, 20, 21, 23, 24, 32; } FG { Players => All; } FG Types => All; Results => All;  
Types => All; Results => All;

**TCU**

**Baylor**



TCU	M/A	%
Field Goals	20/61	33
2 Points	13/41	32
3 Points	7/20	35
Free Throws	12/18	67

Baylor	M/A	%
Field Goals	28/68	41
2 Points	22/46	48
3 Points	6/22	27
Free Throws	16/22	73



**Baylor at TCU**

02/19/22 Ed and Rae Schollmaier Arena, Fort Worth  
2021-22 Women's Basketball

**Game Time:** 1:00 PM  
**Game Duration:** 1:52  
**Attendance:** 2,330

**Officials:** Felicia Grinter, Mark Zentz, Maj Forsberg

**Baylor**

No	Name	Mins		Score		Points Diff		Points per Min		Assists		Rebounds		Steals		Turnovers	
		On	Off	On	Off	On	Off	On	Off	On	Off	On	Off	On	Off	On	Off
1	NaLyssa Smith	23:49	16:11	42 - 37	36 - 22	5	14	1.76	2.22	11	9	27	16	6	4	6	2
3	Jordan Lewis	31:49	08:11	64 - 50	14 - 9	14	5	2.01	1.71	16	4	32	11	5	5	7	1
4	Queen Egbo	28:28	11:32	57 - 39	21 - 20	18	1	2.00	1.82	19	1	30	13	7	3	3	5
10	Jaden Owens	24:43	15:17	49 - 38	29 - 21	11	8	1.98	1.90	11	9	29	14	6	4	5	3
11	Andrea Katramados	01:11	38:49	3 - 1	75 - 58	2	17	2.54	1.93	0	20	1	42	0	10	0	8
21	Ja'Mee Asberry	29:19	10:41	56 - 36	22 - 23	20	-1	1.91	2.06	16	4	31	12	9	1	6	2
24	Sarah Andrews	27:15	12:45	51 - 38	27 - 21	13	6	1.87	2.12	16	4	27	16	9	1	4	4
25	Kendra Gillispie	05:59	34:01	11 - 14	67 - 45	-3	22	1.84	1.97	0	20	9	34	1	9	2	6
51	Caitlin Bickle	27:27	12:33	57 - 42	21 - 17	15	4	2.08	1.67	11	9	29	14	7	3	7	1

**TCU**

No	Name	Mins		Score		Points Diff		Points per Min		Assists		Rebounds		Steals		Turnovers	
		On	Off	On	Off	On	Off	On	Off	On	Off	On	Off	On	Off	On	Off
0	Caroline Germond	13:27	26:33	19 - 31	40 - 47	-12	-7	1.41	1.51	6	9	14	27	1	3	5	11
2	Tara Manumaleuga	15:31	24:29	17 - 27	42 - 51	-10	-9	1.10	1.72	4	11	20	21	2	2	6	10
4	Okako Adika	34:32	05:28	58 - 68	1 - 10	-10	-9	1.68	0.18	15	0	32	9	3	1	15	1
5	Yummy Morris	15:15	24:45	19 - 28	40 - 50	-9	-10	1.25	1.62	3	12	18	23	1	3	5	11
10	Paige Bradley	02:09	37:51	3 - 5	56 - 73	-2	-17	1.40	1.48	0	15	4	37	0	4	0	16
13	Tavy Diggs	14:59	25:01	23 - 29	36 - 49	-6	-13	1.54	1.44	5	10	17	24	2	2	5	11
15	Aja Holmes	13:52	26:08	22 - 30	37 - 48	-8	-11	1.59	1.42	5	10	10	31	2	2	6	10
20	Lauren Heard	35:58	04:02	53 - 67	6 - 11	-14	-5	1.47	1.49	14	1	36	5	4	0	15	1
23	Michelle Berry	31:44	08:16	44 - 60	15 - 18	-16	-3	1.39	1.81	12	3	31	10	3	1	12	4
24	Kayla Mokwuah	21:19	18:41	36 - 41	23 - 37	-5	-14	1.69	1.23	11	4	23	18	2	2	11	5
32	Patricia Morris	01:14	38:46	1 - 4	58 - 74	-3	-16	0.81	1.50	0	15	0	41	0	4	0	16

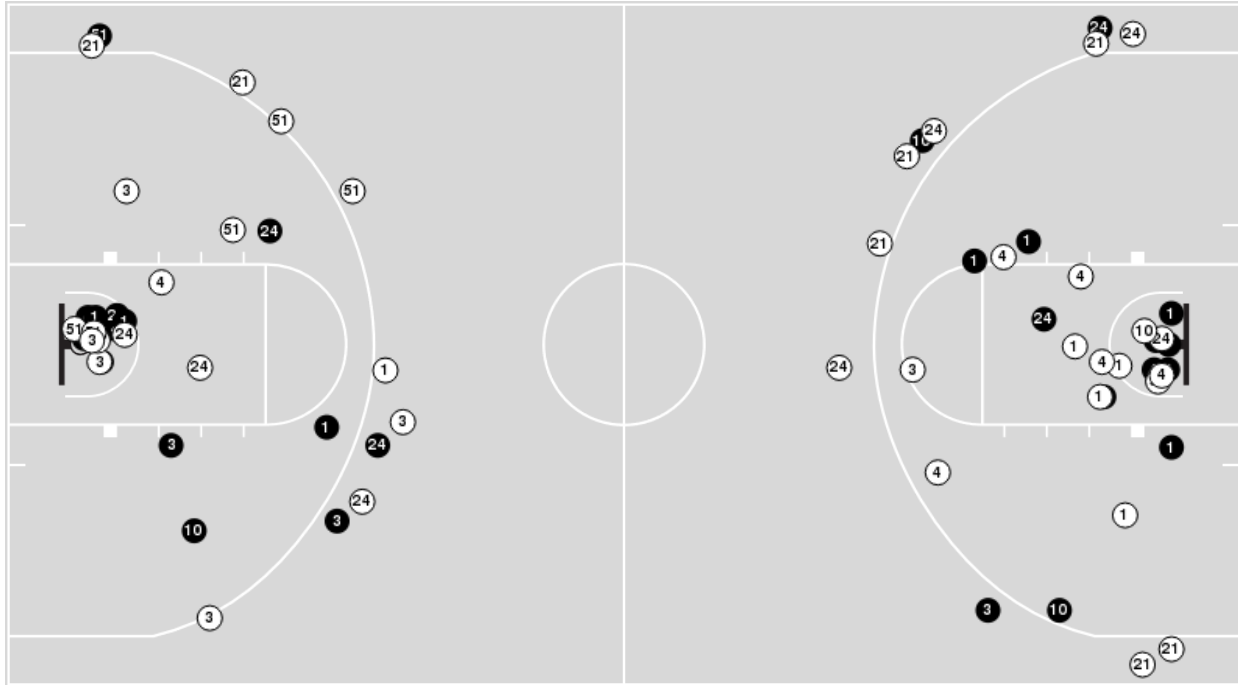


**Baylor at TCU**

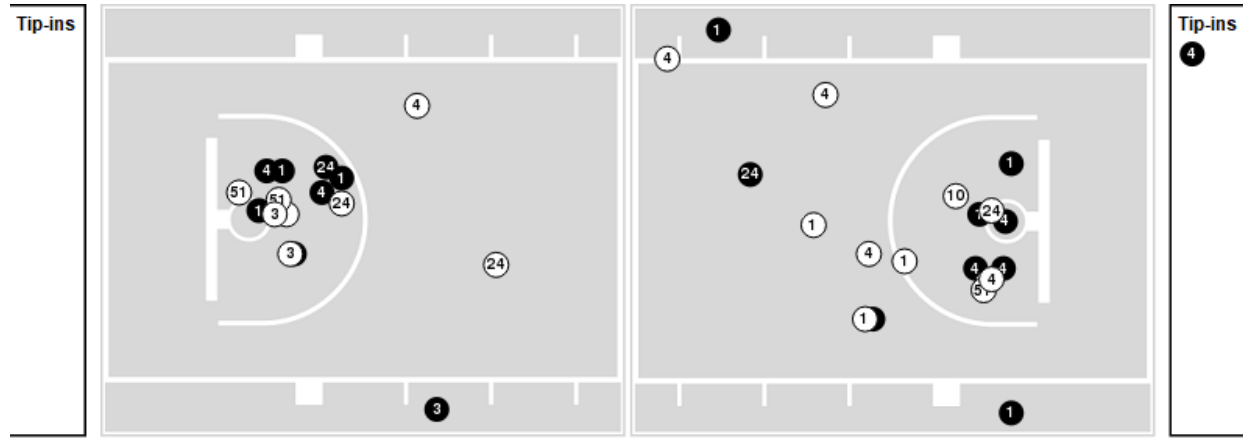
Players => AllFG Types=>AllResults=>All

**Baylor**

**All Field Goals**



**Blow Up Chart**



● Made ○ Missed N - Player Number

Baylor	M/A	%
Field Goals	28/68	41
2 Points	22/46	48
3 Points	6/22	27
Free Throws	16/22	73

Baylor	M/A	%
Points in the Paint	28 (14 / 32)	44
Fast Break Points	8 (5/5)	100
Second Chance Points	15 (9/19)	47
Effective FG%	46	



**Baylor at TCU**

02/19/22 Ed and Rae Schollmaier Arena, Fort Worth  
2021-22 Women's Basketball

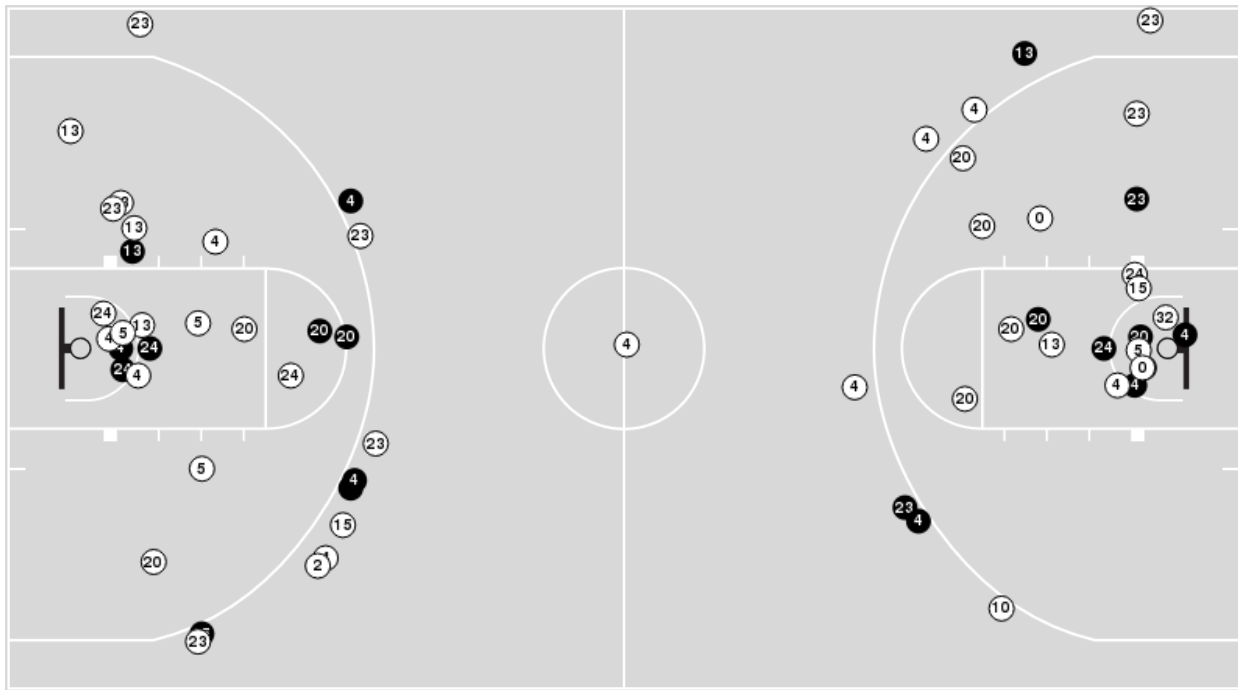
Game Time: 1:00 PM  
Game Duration: 1:52  
Attendance: 2,330

Officials: Felicia Grinter, Mark Zentz, Maj Forsberg

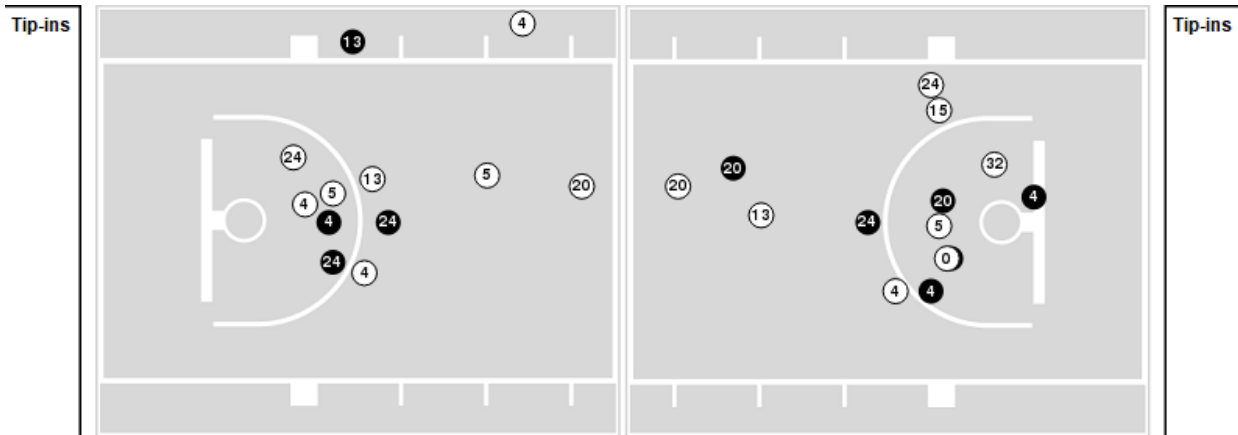
Players => 0, 1, 2, 3, 4, 5, 10, 11, 13, 14, 15, 20, 21, 23, 24, 32 FG Types=>All Results=>All

**TCU**

**All Field Goals**



**Blow Up Chart**



● Made    ○ Missed    N - Player Number

TCU	M/A	%
Field Goals	20/61	33
2 Points	13/41	32
3 Points	7/20	35
Free Throws	12/18	67

TCU	M/A	%
Points in the Paint	18 (9 / 24)	38
Fast Break Points	2 (1/1)	100
Second Chance Points	11 (6/16)	38
Effective FG%	39	



**Officials:** Felicia Grinter, Mark Zentz, Maj Forsberg

**Baylor**

Lineup	Quarter On	Time On	Quarter Off	Time Off	Time on Court	Score	Score Diff	Reb	Stl	Tov	Ass	PPP
1- Smith N/ 3- Lewis J/ 4- Egbo Q/ 21- Asberry J/ 24- Andrews S/	1	10:00	1	04:23	05:37	6-8	-2	5	0	0	2	0.6000
1- Smith N/ 3- Lewis J/ 10- Owens J/ 21- Asberry J/ 51- Bickle C/	1	04:23	1	03:02	01:21	0-0	0	1	0	1	0	0.0000
3- Lewis J/ 4- Egbo Q/ 10- Owens J/ 21- Asberry J/ 51- Bickle C/	1	03:02	1	00:28	02:34	5-0	5	4	0	0	2	1.6667
3- Lewis J/ 4- Egbo Q/ 10- Owens J/ 24- Andrews S/ 51- Bickle C/	1	00:28	2	07:34	02:54	5-8	-3	0	0	0	2	1.6667
1- Smith N/ 3- Lewis J/ 4- Egbo Q/ 10- Owens J/ 24- Andrews S/	2	07:34	2	06:41	00:53	3-0	3	2	0	0	1	3.4091
1- Smith N/ 4- Egbo Q/ 10- Owens J/ 21- Asberry J/ 24- Andrews S/	2	06:41	2	02:18	04:23	8-7	1	6	3	0	4	0.8889
1- Smith N/ 3- Lewis J/ 4- Egbo Q/ 21- Asberry J/ 24- Andrews S/	2	02:18	2	02:04	00:14	0-0	0	0	0	1	0	0.0000
3- Lewis J/ 4- Egbo Q/ 21- Asberry J/ 24- Andrews S/ 51- Bickle C/	2	02:04	3	04:04	08:00	19-11	8	8	4	2	5	1.4890
1- Smith N/ 3- Lewis J/ 4- Egbo Q/ 21- Asberry J/ 24- Andrews S/	3	04:04	3	02:38	01:26	4-2	2	1	0	0	2	2.0000
1- Smith N/ 3- Lewis J/ 10- Owens J/ 21- Asberry J/ 51- Bickle C/	3	02:38	3	00:15	02:22	8-6	2	1	0	1	1	1.5385
1- Smith N/ 10- Owens J/ 21- Asberry J/ 24- Andrews S/ 51- Bickle C/	3	00:15	4	08:26	01:50	2-0	2	2	2	1	0	0.6667
4- Egbo Q/ 10- Owens J/ 21- Asberry J/ 24- Andrews S/ 51- Bickle C/	4	08:26	4	06:54	01:32	4-2	2	3	0	0	0	1.0638
1- Smith N/ 4- Egbo Q/ 10- Owens J/ 24- Andrews S/ 51- Bickle C/	4	06:54	4	06:28	00:26	0-0	0	0	0	0	0	0.0000
1- Smith N/ 3- Lewis J/ 4- Egbo Q/ 10- Owens J/ 51- Bickle C/	4	06:28	4	05:59	00:29	3-1	2	1	0	0	1	3.0000
1- Smith N/ 3- Lewis J/ 10- Owens J/ 25- Gillispie K/ 51- Bickle C/	4	05:59	4	01:11	04:48	8-13	-5	8	1	2	0	0.8696
3- Lewis J/ 10- Owens J/ 11- Katramados A/ 25- Gillispie K/ 51- Bickle C/	4	01:11	4	00:00	01:11	3-1	2	1	0	0	0	1.5957



**Officials:** Felicia Grinter, Mark Zentz, Maj Forsberg

**TCU**

Lineup	Quarter On	Time On	Quarter Off	Time Off	Time on Court	Score	Score Diff	Reb	Stl	Tov	Ass	PPP
2- Manumaleuga T/ 4- Adika O/ 20- Heard L/ 23- Berry M/ 24- Mokwuah K/	1	10:00	1	05:54	04:06	8-4	4	8	0	1	2	1.1834
2- Manumaleuga T/ 4- Adika O/ 5- Morris Y/ 20- Heard L/ 23- Berry M/	1	05:54	1	04:23	01:31	0-2	-2	3	0	0	0	0.0000
2- Manumaleuga T/ 5- Morris Y/ 13- Diggs T/ 20- Heard L/ 23- Berry M/	1	04:23	1	03:02	01:21	0-0	0	3	1	1	0	0.0000
5- Morris Y/ 13- Diggs T/ 15- Holmes A/ 20- Heard L/ 23- Berry M/	1	03:02	1	00:57	02:04	0-3	-3	3	0	0	0	0.0000
13- Diggs T/ 15- Holmes A/ 20- Heard L/ 23- Berry M/ 32- Morris P/	1	00:57	1	00:28	00:30	0-2	-2	0	0	0	0	0.0000
2- Manumaleuga T/ 13- Diggs T/ 20- Heard L/ 23- Berry M/ 32- Morris P/	1	00:28	1	00:28	00:00	1-0	1	0	0	0	0	1.1364
0- Germond C/ 2- Manumaleuga T/ 13- Diggs T/ 23- Berry M/ 32- Morris P/	1	00:28	2	10:00	00:28	0-2	-2	0	0	0	0	0.0000
0- Germond C/ 4- Adika O/ 20- Heard L/ 23- Berry M/ 24- Mokwuah K/	2	10:00	2	06:04	03:56	7-6	1	5	0	1	3	1.4000
0- Germond C/ 4- Adika O/ 15- Holmes A/ 23- Berry M/ 24- Mokwuah K/	2	06:04	2	04:39	01:25	3-4	-1	1	0	1	1	1.0000
4- Adika O/ 5- Morris Y/ 15- Holmes A/ 20- Heard L/ 23- Berry M/	2	04:39	2	03:26	01:13	2-2	0	1	0	1	0	0.6667
4- Adika O/ 15- Holmes A/ 20- Heard L/ 23- Berry M/ 24- Mokwuah K/	2	03:26	2	03:15	00:11	0-0	0	0	0	0	0	0.0000
4- Adika O/ 13- Diggs T/ 15- Holmes A/ 20- Heard L/ 24- Mokwuah K/	2	03:15	3	10:00	03:15	8-7	1	2	1	2	3	1.6000
2- Manumaleuga T/ 4- Adika O/ 20- Heard L/ 23- Berry M/ 24- Mokwuah K/	3	10:00	3	08:08	01:52	0-4	-4	2	0	3	0	0.0000
2- Manumaleuga T/ 4- Adika O/ 5- Morris Y/ 20- Heard L/ 23- Berry M/	3	08:08	3	06:16	01:52	2-5	-3	0	0	1	1	0.5000
2- Manumaleuga T/ 4- Adika O/ 15- Holmes A/ 20- Heard L/ 23- Berry M/	3	06:16	3	04:04	02:12	3-5	-2	0	1	0	1	1.5000
4- Adika O/ 15- Holmes A/ 20- Heard L/ 23- Berry M/ 24- Mokwuah K/	3	04:04	3	02:30	01:34	2-4	-2	1	0	1	0	0.5319
0- Germond C/ 4- Adika O/ 20- Heard L/ 23- Berry M/ 24- Mokwuah K/	3	02:30	3	00:43	01:47	6-7	-1	0	1	0	1	1.5000
0- Germond C/ 4- Adika O/ 13- Diggs T/ 20- Heard L/ 24- Mokwuah K/	3	00:43	3	00:15	00:27	0-1	-1	1	0	0	0	0.0000
0- Germond C/ 4- Adika O/ 13- Diggs T/ 20- Heard L/ 32- Morris P/	3	00:15	4	10:00	00:16	0-0	0	0	0	0	0	0.0000
0- Germond C/ 4- Adika O/ 20- Heard L/ 23- Berry M/ 24- Mokwuah K/	4	10:00	4	07:14	02:46	2-4	-2	3	0	2	1	0.3333
0- Germond C/ 4- Adika O/ 5- Morris Y/ 13- Diggs T/ 20- Heard L/	4	07:14	4	06:33	00:41	0-2	-2	1	0	1	0	0.0000
4- Adika O/ 5- Morris Y/ 13- Diggs T/ 15- Holmes A/ 20- Heard L/	4	06:33	4	05:05	01:28	4-3	1	2	0	1	0	1.4493
4- Adika O/ 5- Morris Y/ 13- Diggs T/ 20- Heard L/ 23- Berry M/	4	05:05	4	02:09	02:56	8-6	2	1	0	0	2	1.3333
2- Manumaleuga T/ 4- Adika O/ 5- Morris Y/ 10- Bradley P/ 13- Diggs T/	4	02:09	4	01:41	00:28	2-0	2	1	0	0	0	2.2727
0- Germond C/ 2- Manumaleuga T/ 4- Adika O/ 5- Morris Y/ 10- Bradley P/	4	01:41	4	01:05	00:36	1-2	-1	0	0	0	0	1.1364
0- Germond C/ 2- Manumaleuga T/ 5- Morris Y/ 10- Bradley P/ 13- Diggs T/	4	01:05	4	00:00	01:05	0-3	-3	3	0	0	0	0.0000



**Baylor at TCU**

02/19/22 Ed and Rae Schollmaier Arena, Fort Worth  
2021-22 Women's Basketball

**Game Time:** 1:00 PM  
**Game Duration:** 1:52  
**Attendance:** 2,330

**Officials:** Felicia Grinter, Mark Zentz, Maj Forsberg

**Baylor**

Lineup	Time	Score	Score Diff	Pts/Min	Reb	Stl	Tov	Ass	PPP
3- Lewis J/ 4- Egbo Q/ 21- Asberry J/ 24- Andrews S/ 51- Bickle C/	08:00	19-11	8	2.3750	8	4	2	5	1.4890
1- Smith N/ 3- Lewis J/ 4- Egbo Q/ 21- Asberry J/ 24- Andrews S/	07:17	10-10	0	1.3730	6	0	1	4	0.7692
1- Smith N/ 3- Lewis J/ 10- Owens J/ 25- Gillispie K/ 51- Bickle C/	04:48	8-13	-5	1.6667	8	1	2	0	0.8696
1- Smith N/ 4- Egbo Q/ 10- Owens J/ 21- Asberry J/ 24- Andrews S/	04:23	8-7	1	1.8251	6	3	0	4	0.8889
1- Smith N/ 3- Lewis J/ 10- Owens J/ 21- Asberry J/ 51- Bickle C/	03:43	8-6	2	2.1525	2	0	2	1	0.9756
3- Lewis J/ 4- Egbo Q/ 10- Owens J/ 24- Andrews S/ 51- Bickle C/	02:54	5-8	-3	1.7241	0	0	0	2	1.6667
3- Lewis J/ 4- Egbo Q/ 10- Owens J/ 21- Asberry J/ 51- Bickle C/	02:34	5-0	5	1.9481	4	0	0	2	1.6667
1- Smith N/ 10- Owens J/ 21- Asberry J/ 24- Andrews S/ 51- Bickle C/	01:50	2-0	2	1.0909	2	2	1	0	0.6667
4- Egbo Q/ 10- Owens J/ 21- Asberry J/ 24- Andrews S/ 51- Bickle C/	01:32	4-2	2	2.6087	3	0	0	0	1.0638
3- Lewis J/ 10- Owens J/ 11- Katramados A/ 25- Gillispie K/ 51- Bickle C/	01:11	3-1	2	2.5352	1	0	0	0	1.5957
1- Smith N/ 3- Lewis J/ 4- Egbo Q/ 10- Owens J/ 24- Andrews S/	00:53	3-0	3	3.3962	2	0	0	1	3.4091
1- Smith N/ 3- Lewis J/ 4- Egbo Q/ 10- Owens J/ 51- Bickle C/	00:29	3-1	2	6.2069	1	0	0	1	3.0000
1- Smith N/ 4- Egbo Q/ 10- Owens J/ 24- Andrews S/ 51- Bickle C/	00:26	0-0	0	0.0000	0	0	0	0	0.0000



**Baylor at TCU**

02/19/22 Ed and Rae Schollmaier Arena, Fort Worth  
2021-22 Women's Basketball

**Game Time:** 1:00 PM  
**Game Duration:** 1:52  
**Attendance:** 2,330

**Officials:** Felicia Grinter, Mark Zentz, Maj Forsberg

**TCU**

Lineup	Time	Score	Score Diff	Pts/Min	Reb	Stl	Tov	Ass	PPP
0- Germond C/ 4- Adika O/ 20- Heard L/ 23- Berry M/ 24- Mokwuah K/	08:29	15-17	-2	1.7682	8	1	3	5	1.0000
2- Manumaleuga T/ 4- Adika O/ 20- Heard L/ 23- Berry M/ 24- Mokwuah K/	05:58	8-8	0	1.3408	10	0	4	2	0.7435
2- Manumaleuga T/ 4- Adika O/ 5- Morris Y/ 20- Heard L/ 23- Berry M/	03:23	2-7	-5	0.5911	3	0	1	1	0.2857
4- Adika O/ 13- Diggs T/ 15- Holmes A/ 20- Heard L/ 24- Mokwuah K/	03:15	8-7	1	2.4615	2	1	2	3	1.6000
4- Adika O/ 5- Morris Y/ 13- Diggs T/ 20- Heard L/ 23- Berry M/	02:56	8-6	2	2.7273	1	0	0	2	1.3333
2- Manumaleuga T/ 4- Adika O/ 15- Holmes A/ 20- Heard L/ 23- Berry M/	02:12	3-5	-2	1.3636	0	1	0	1	1.5000
5- Morris Y/ 13- Diggs T/ 15- Holmes A/ 20- Heard L/ 23- Berry M/	02:04	0-3	-3	0.0000	3	0	0	0	0.0000
4- Adika O/ 15- Holmes A/ 20- Heard L/ 23- Berry M/ 24- Mokwuah K/	01:45	2-4	-2	1.1429	1	0	1	0	0.4202
4- Adika O/ 5- Morris Y/ 13- Diggs T/ 15- Holmes A/ 20- Heard L/	01:28	4-3	1	2.7273	2	0	1	0	1.4493
0- Germond C/ 4- Adika O/ 15- Holmes A/ 23- Berry M/ 24- Mokwuah K/	01:25	3-4	-1	2.1176	1	0	1	1	1.0000
2- Manumaleuga T/ 5- Morris Y/ 13- Diggs T/ 20- Heard L/ 23- Berry M/	01:21	0-0	0	0.0000	3	1	1	0	0.0000
4- Adika O/ 5- Morris Y/ 15- Holmes A/ 20- Heard L/ 23- Berry M/	01:13	2-2	0	1.6438	1	0	1	0	0.6667
0- Germond C/ 2- Manumaleuga T/ 5- Morris Y/ 10- Bradley P/ 13- Diggs T/	01:05	0-3	-3	0.0000	3	0	0	0	0.0000
0- Germond C/ 4- Adika O/ 5- Morris Y/ 13- Diggs T/ 20- Heard L/	00:41	0-2	-2	0.0000	1	0	1	0	0.0000
0- Germond C/ 2- Manumaleuga T/ 4- Adika O/ 5- Morris Y/ 10- Bradley P/	00:36	1-2	-1	1.6667	0	0	0	0	1.1364
13- Diggs T/ 15- Holmes A/ 20- Heard L/ 23- Berry M/ 32- Morris P/	00:30	0-2	-2	0.0000	0	0	0	0	0.0000
0- Germond C/ 2- Manumaleuga T/ 13- Diggs T/ 23- Berry M/ 32- Morris P/	00:28	0-2	-2	0.0000	0	0	0	0	0.0000
2- Manumaleuga T/ 4- Adika O/ 5- Morris Y/ 10- Bradley P/ 13- Diggs T/	00:28	2-0	2	4.2857	1	0	0	0	2.2727
0- Germond C/ 4- Adika O/ 13- Diggs T/ 20- Heard L/ 24- Mokwuah K/	00:27	0-1	-1	0.0000	1	0	0	0	0.0000
0- Germond C/ 4- Adika O/ 13- Diggs T/ 20- Heard L/ 32- Morris P/	00:16	0-0	0	0.0000	0	0	0	0	0.0000
2- Manumaleuga T/ 13- Diggs T/ 20- Heard L/ 23- Berry M/ 32- Morris P/	00:00	1-0	1	∞	0	0	0	0	1.1364