

GAME 21

TCU HORNED FROGS (8-12, 3-12) at KANSAS STATE WILDCATS (7-15, 2-13)



Monday, March 1, 2021 | 6:30 p.m. | Manhattan, Kan. | Bramlage Coliseum



Head Coach: Raegan Pebley
at TCU: 125-90, 7th Season
Career: 281-265, 18th Season

Head Coach: Jeff Mittie
at K-State: 123-94, 7th Season
Career: 577-329, 29th Season

Brian Smoller
Missy Heidrick

Jeff Williams

GoFrogs.com
KStateSports.com

@TCUWBasketball
@TCUWBB

2020-21 SCHEDULE/RESULTS

OVERALL: 8-12 | BIG 12: 3-12

HOME: 8-5 | AWAY: 0-7 | NEUTRAL: 0-0

DATE	OPPONENT	TV	TIME/RESULTS
N25	INCARNATE WORD	ESPN+	W, 84-59
N28	CENTRAL ARKANSAS	ESPN+	W, 65-48
D2	#23 IOWA STATE*	ESPN+	L, 68-91
D6	at Missouri\$	SECN+	Canceled
D9	LAMAR	ESPN+	W, 79-53
D13	MIDDLE TENNESSEE	ESPN+	W, 83-77
D19	at Texas Tech*	ESPN+	L, 72-78
D22	ORAL ROBERTS	ESPN+	W, 62-48
J2	#7 BAYLOR*	ESPN+	L, 50-74
J6	OKLAHOMA STATE*	ESPN+	L, 53-78
J9	at Oklahoma State*	ESPN+	L, 50-69
J17	KANSAS*	ESPN+	W, 81-78 (OT)
J20	at Texas	LHN	L, 54-71
J23	TEXAS TECH*	ESPN+	W, 61-53
J26	at #9 Baylor*	TBA	L, 49-82
J30	#24 WEST VIRGINIA*	ESPN+	L, 70-79
F7	at Kansas*	TBA	L, 72-82
F10	KANSAS STATE*	ESPN+	W, 78-67
F13	at Iowa State*	ESPN+	L, 81-92
F20	at #19 West Virginia*	ESPN+	L, 78-81
F24	OKLAHOMA*	ESPN+	L, 60-76
M1	at Kansas State	ESPN+	6:30 p.m.
M4	at Oklahoma	FSOK	5 p.m.
M7	TEXAS*	ESPN+	1 p.m.

All times central | Home games in **BOLD**

* - Big 12 conference game | \$ - SEC/Big 12 Challenge

ESPN+ - Big 12 Now on ESPN+ (subscription required)

FSOK - Game on Fox Sports Oklahoma

LHN - Longhorn Network

FAST BREAKS

- The TCU Horned Frogs (8-12, 3-12) will play the first of three games in seven days when they head to Manhattan, Kan., to take on the Kansas State Wildcats (7-15, 2-13) this Monday, March 1. Tip-off is set for 6:30 p.m. inside Bramlage Coliseum.
- The Frogs are in the final week of the regular season, making up three games that were postponed earlier this season. TCU is making up its contest at Kansas City that was originally scheduled for Jan. 14. Following the quick trip to K-State, TCU will head to Norman, Okla., to take on the Sooners on Thursday, March 4, in a make-up date that was originally scheduled for Jan. 9. TCU will wrap up the regular season at home, hosting Texas this coming Sunday, March 7. The Frogs and Longhorns are making up a game that was postponed due to inclement weather, back on Feb. 17.
- Lauren Heard heads into the week needing to score 35 points to become just the eighth player in school history to score 1,500 career points. Heard currently ranks No. 8 all-time in school history with 1,465 points scored.
- Sophomore Tavy Diggs has poured in double-digit scoring efforts in three straight games. She is averaging 15.3 points per game over the past three contests. She has scored 10+ points in three straight games for the first time in her career, having poured in 16 points at Iowa State, 13 points at West Virginia and 18 points against Oklahoma.

THE STARTING FIVE (PROJECTED STARTERS)



20
LAUREN HEARD
 G | 5-9 | Sr.
 20.3 PPG



0
CAROLINE GERMONT
 G | 5-7 | Jr.
 4.0 PPG



1
AAHLIYAH JACKSON
 G | 5-10 | Gr.
 5.9 PPG



23
MICHELLE BERRY
 F | 6-2 | Sr.
 9.0 PPG



32
PATRICIA MORRIS
 F/C | 6-7 | Jr.
 3.3 PPG

BY THE NUMBERS

35

Number of points senior Lauren Heard is away from netting 1,500 points in her career.

15.3

Number of points sophomore Tavy Diggs have averaged over the past three games - 10+ points in all three dates.

6.6

Number of three-pointers the Horned Frogs make per game, which ranks third-most in the Big 12.



ROSTER BREAKDOWN

BY CLASS

Graduate Students (2)

Michelle Berry, Aahliyah Jackson

Seniors (2)

Lauren Heard, Emma Schmidt

Juniors (4)

Caroline Germond, Kayla Mokwuah, Patricia Morris, Yummy Morris

Sophomores (2)

Tavy Diggs, Maddi Puli

Freshmen (4)

Amari Conn, Aja Holmes, Aaliyah Morgan, Adhel Tac

BY POSITION

Guard (8)

Amari Conn, Tavy Diggs, Caroline Germond, Lauren Heard, Aja Holmes, Aahliyah Jackson, Maddi Puli, Emma Schmidt

Forward (6)

Michelle Berry, Aaliyah Morgan, Maddi Puli, Patricia Morris, Yummy Morris, Adhel Tac

Center (1)

Kayla Mokwuah

BY HOME STATE/COUNTRY

Arkansas (2)

Aahliyah Jackson, Yummy Morris

Australia (1)

Maddi Puli

California (1)

Patricia Morris

Florida (1)

Michelle Berry

France (1)

Caroline Germond

Iowa (1)

Emma Schmidt

Massachusetts (1)

Kayla Mokwuah

Missouri (1)

Amari Conn

Texas (5)

Tavy Diggs, Lauren Heard, Aja Holmes, Aaliyah Morgan, Adhel Tac

NUMERICAL ROSTER

NO.	NAME	POS.	HT.	YR.	HOMETOWN (PREVIOUS SCHOOL)
0	Caroline Germond	G	5-7	Jr.	Angers, France (South Plains College)
1	Aahliyah Jackson	G	5-10	Gr.	Ft. Smith, Ark. (Texas A&M)
4	Amari Conn	G	5-7	Fr.	Kansas City, Mo. (Lincoln Prep)
5	Yummy Morris	F	6-3	Jr.	North Little Rock, Ark. (North Little Rock HS)
10	Emma Schmidt	G	5-9	Sr.	Waukee, Iowa (Waukee HS)
11	Maddi Puli	G/F	6-2	So.	Werribee, Australia (Mackillop College)
12	Aaliyah Morgan	F	6-1	Fr.	Tyler, Texas (Lee HS)
13	Tavy Diggs	G	6-2	So.	Richardson, Texas (Plano East HS)
15	Aja Holmes	G	5-8	Fr.	Cibolo, Texas (Steele HS)
20	Lauren Heard	G	5-9	Sr.	Denton, Texas (Guyer HS)
22	Kayla Mokwuah	C	6-4	Jr.	Longmeadow, Mass (George Washington)
23	Michelle Berry	F	6-2	Gr.	Miami, Fla. (Virginia Tech)
24	Adhel Tac	F	5-11	Fr.	Sachse, Texas (Sachse HS)
32	Patricia Morris	F	6-7	Jr.	Duarte, Calif. (Oregon State)

ALPHABETICAL ROSTER

NO.	NAME	POS.	HT.	YR.	HOMETOWN (PREVIOUS SCHOOL)
23	Michelle Berry	F	6-2	Gr.	Miami, Fla. (Virginia Tech)
4	Amari Conn	G	5-7	Fr.	Kansas City, Mo. (Lincoln Prep)
13	Tavy Diggs	G	6-2	So.	Richardson, Texas (Plano East HS)
0	Caroline Germond	G	5-7	Jr.	Angers, France (South Plains College)
20	Lauren Heard	G	5-9	Sr.	Denton, Texas (Guyer HS)
15	Aja Holmes	G	5-8	Fr.	Cibolo, Texas (Steele HS)
1	Aahliyah Jackson	G	5-10	Gr.	Ft. Smith, Ark. (Texas A&M)
22	Kayla Mokwuah	C	6-4	Jr.	Longmeadow, Mass (George Washington)
12	Aaliyah Morgan	F	6-1	Fr.	Tyler, Texas (Lee HS)
32	Patricia Morris	F	6-7	Jr.	Duarte, Calif. (Oregon State)
5	Yummy Morris	F	6-3	Jr.	North Little Rock, Ark. (North Little Rock HS)
11	Maddi Puli	G/F	6-2	So.	Werribee, Australia (Mackillop College)
10	Emma Schmidt	G	5-9	Sr.	Waukee, Iowa (Waukee HS)
24	Adhel Tac	F	5-11	Fr.	Sachse, Texas (Sachse HS)

COACHING & SUPPORT STAFF

POSITION	NAME (YEAR AT TCU [ALMA MATER])
Head Coach	Raegan Pebley (7th Season) [Colorado, 97]
Associate Head Coach	Hanna Howard (7th Season) [Portland, 05]
Associate Coach	Britney Brown (5th Season) [Oklahoma, 07]
Assistant Coach	Abi Olajuwon (3rd Season) [Oklahoma, 10]
Player Development Coordinator	Leah Foster (3rd Season) [St. Edward's, 06]
Director of Operations	Angela Gonzaga
Graduate Assistant	Natascha Hartvich
Graduate Assistant	Karviar Shepherd
Strength & Conditioning Coach	Taylor Larson
Athletic Trainer	Alissa Schenk

PRONUNCIATION GUIDE

Amari Conn	uh - MAR - ee
Tavy Diggs	TAH - vee (sounds like taffy)
Caroline Germond	jurr - MOND
Aja Holmes	AH - zha
Aahliyah Jackson	uh - LEE - uh
Kayla Mokwuah	mock - WUH
Maddi Puli	PEW - lie
Adhel Tac	TACK (like a thumb tack)



THE MATCH-UP

- TCU and Kansas State are meeting for the 19th time overall when they square-off on Monday.
- TCU leads the all-time series 11-7 overall, which also includes a 4-4 record against the Wildcats in games played in Manhattan.
- The Frogs have won three straight and six of the past seven games against K-State.
- TCU erased an 8-point deficit to down the Wildcats, 78-67, earlier this season in Fort Worth. The Frogs have had to come from behind to defeat the Wildcats in the three previous games, which includes erasing a 12-point deficit to the Wildcats on the road last season.

SCOUTING THE WILDCATS

- The Wildcats are coming off an 85-49 defeat to Baylor this past Saturday. Prior to the loss, K-State had picked up its second Big 12 win of the season, downing Texas Tech, 86-79, back on Feb. 24.
- K-State's other Big 12 victory was a 77-66 home win over Kansas. Both of K-State's Big 12 wins came at home.
- The Wildcats are 6-7 overall at home this season.
- K-State ranks third in the Big 12 and 38th in the nation with 4.6 blocks per game. Ayoka Lee leads the way with a team-best 36 blocked shots, which ranks among the top-40 players in the nation.
- Lee also leads K-State with a 17.9 points per game average, while her .602 field goal shooting percentage ranks first in the Big 12 and No. 6 overall in the nation.

LAST TIME OUT FOR THE FROGS

- TCU allowed Oklahoma to shoot nearly 50 percent from the field and the Sooners would go on to bury 10 three-pointers en route to a 76-60 win over the Horned Frogs this past Wednesday in Fort Worth.
- Tavy Diggs was TCU's lone double-digit scorer, finishing the game with 17 points. The Frogs shot just under 40 percent from the field, 23 percent from three-point range and 58 percent from the charity stripe.
- The Frogs managed to erase a 26-point lead and get back within 11 points midway through the fourth quarter, but OU's Taylor Robertson fueled the Sooner win with her game-high 28 points on the evening.

BIG 12 CONFERENCE THIS-AND-THAT

- TCU was picked to finish ninth in the Big 12 in the preseason coaches poll.
- TCU is 66-93 all-time in Big 12 games, since moving to the league in 2012-13.
- The Horned Frogs are 41-39 in Big 12 games played in Fort Worth and 25-54 in league contests played on the road.
- The Horned Frogs registered a program-best 13-5 record in Big 12 play last season, which led to TCU's highest finish in the Big 12 standings, finishing in second-place. The Frogs were picked to finish eighth in Big 12 play last year.

BANNER DAY FOR HEARD

- Senior Lauren Heard notched her second-career 30-point performance last weekend at West Virginia, netting a career-high 38 points in a defeat to the

Mountaineers.

- Both of Heard's 30-point performances have come against West Virginia, as the Denton, Texas, native totaled what was then a new career-high 34 points the first time these two teams faced each other back on Jan. 30, in Fort Worth.
- In addition to the career-high single-game performance, Heard pushed her career points total to 1,456. She moved past Natalie Ventress (1,430) and Janice Dziuk (1,448) and into No. 8 position all-time in school history.

BREAKING THE PACE

- Lauren Heard heads into Monday's game averaging 20.3 points per game, which is on pace to tie the highest scoring average in school history.
- Emma Wilson owns the school record having scored 20.3 points per game back in 1996-97.
- Should Heard end up averaging 20+ points per game, she and Wilson would be the only two players in school history to do so.
- Heard averaged 18.4 points a season ago, which ranks No. 4 all-time in single-season history.

HEARD CLOSES IN ON OTHER TOP MARKS

- In addition to ranking among the top-10 all-time in scoring, Lauren Heard also ranks among the top-10 in multiple career statistical categories.
- Heard currently ranks No. 3 with 440 career free throws made, No. 6 with 398 career assists and No. 8 with 202 career steals.

WELCOME BACK OFFENSE

- Prior to last weeks' game against OU, over the previous five games, TCU's offense was averaging 75.8 points per game.
- Through its first 14 games of the season, TCU had averaged just 65.1 points per game, totaling 70+ points in just five of those contests.
- The Frogs had scored at least 70 points in five straight games for the first time since the 2017-18 season. That year, TCU netted 70+ points in 10 straight games from Dec. 10, 2017 thru Jan. 20, 2018.

80 JUST NOT ENOUGH

- Despite TCU's newly found offense, the Frogs scored 81 points in a tough road loss at Iowa State on Jan. 13, marking the first time this season that TCU scored 80+ points in a game and lost.
- It was just the fifth time under current head coach Raegan Pebley that a Horned Frogs team was on the other end of a loss after scoring 80+ points. TCU is 45-5 all-time when scoring 80 points or more under Pebley.
- It turns out to be the first loss TCU has notched when scoring 80+ points since an 87-83 road defeat to Texas Tech back on March 1, last season.

TWO FOR 20

- TCU's Lauren Heard and Aja Holmes both netted 20-point scoring efforts in a win over Kansas State on Feb. 10. Heard notched a game-high 27 points and Holmes totaled a career-high 20 points on the night.
- TCU had two 20-point scorers in a game for the second time this season and first since Yummy

GENERAL INFORMATION

Location.....	Fort Worth, Texas
Founded.....	1873
Enrollment.....	11,379
Colors.....	Purple and White
Nickname.....	Horned Frogs
Home Facility.....	Ed and Rae Schollmaier Arena
Opened.....	2015
Capacity.....	6,700
Conference.....	Big 12 Conference
Affiliation.....	NCAA Division I
Chancellor.....	Dr. Victor J. Boschini Jr.
Athletics Director.....	Jeremiah Donati
Senior Woman's Administrator.....	Kim Johnson
Faculty Athletics Rep.....	Rhonda Hatcher
Athletics Department Phone.....	(817) 257-5658

HISTORY

First Season.....	1977-78 (44th season)
First NCAA DI Season.....	1982-83 (38th season)
Record All-Time.....	636-668 (.488)
Record in NCAA DI.....	561-594 (.486)
Regular Season Conference Championships.....	3
Conference Tournament Championships.....	3
Years in NCAA Championships (Last).....	.9 (2010)
Record in NCAA Championships.....	5-9
Years in WNIT (Last).....	.7 (2019)
Record in WNIT.....	13-7

BASKETBALL COACHING STAFF

Head Coach.....	Raegan Pebley (Colorado, 1997)
Record at TCU.....	125-90 (7th season)
Career Record.....	281-265 (18th season)
Associate Head Coach.....	Hanna Howard (7th season)
Associate Coach.....	Britney Brown (5th season)
Assistant Coach.....	Abi Olajuwon (3rd season)
Director of Ops.....	Angela Gonzaga (7th season)
Player Development.....	Leah Foster (3rd season)
GA's.....	Natascha Hartvich (3rd season)
.....	Karviar Shepherd (2nd season)
Administrative Assistant.....	Jodi Clifton
Office Phone Number.....	(817) 257-7962

2019-20 REVIEW

Overall Record.....	22-7
.....	Home: 13-3 Away: 9-4 Neutral: 0-0
Big 12 Record (Finish).....	13-5 (2nd)
Conference Tournament.....	N/A
Postseason.....	N/A
Final AP/USA Today Ranking.....	RV/RV

2020-21 PREVIEW

Letterwinners Returning/Lost.....	5/8
Starters Returning/Lost.....	2/4
Returning Redshirts.....	0
Newcomers.....	9

ATHLETICS COMMUNICATIONS

Women's Basketball Contact.....	Dameon Myres
Cell Phone.....	(817) 897-5331
Office Phone.....	(817) 257-5367
Email.....	d.myres@tcu.edu



TOP-25 POLLS

ASSOCIATED PRESS TOP-25 (Feb. 22, 2021)

No.	Team	Rec.	Pts.	Last
1	UConn (28)	18-1	748	1
2	NC State	15-2	685	4
3	Texas A&M (1)	20-1	684	5
4	Stanford (1)	20-2	660	6
5	South Carolina	18-3	638	2
6	Louisville	20-2	599	3
7	Baylor	17-2	588	7
8	Maryland	16-2	539	9
9	Arizona	15-2	522	10
10	UCLA	13-4	459	8
11	Indiana	14-4	425	14
12	Michigan	13-2	415	11
13	South Florida	13-1	398	12
14	Oregon	13-6	294	13
15	Ohio State	13-4	287	15
16	Arkansas	17-7	276	18
17	Georgia	17-4	257	22
18	West Virginia	17-3	244	19
19	Kentucky	15-6	231	17
20	Tennessee	13-6	206	21
21	Gonzaga	19-3	186	16
22	South Dakota State	19-2	125	23
23	Missouri State	15-2	93	25
24	DePaul	13-5	85	19
25	Rutgers	10-3	50	NR

OTHERS RECEIVING VOTES: Oklahoma State 16, Northwestern 11, Florida Gulf Coast 8, Stephen F. Austin 6, Virginia Tech 5, South Dakota 3, Georgia Tech 3, Marquette 1.

USA TODAY COACHES TOP-25 (Feb. 23, 2021)

No.	Team (Record)	Pts.	Last	1st-Place Votes
1	Connecticut (18-1)	797	1	30
2	Stanford (21-2)	746	4	0
3	Texas A&M (20-1)	727	5	2
4	NC State (15-2)	695	6	0
5	Louisville (20-2)	670	2	0
6	South Carolina (18-3)	662	3	0
7	Baylor (17-2)	608	8	0
8	Maryland (16-2)	565	10	0
9	Arizona (15-3)	556	7	0
10	UCLA (13-4)	476	9	0
11	Indiana (14-4)	467	12	0
12	Michigan (13-2)	462	11	0
13	South Florida (13-1)	379	15	0
14	Ohio State (13-4)	342	13	0
15	Oregon (13-6)	330	13	0
16	Arkansas (17-7)	301	18	0
17	Kentucky (15-6)	267	17	0
18	Georgia (17-4)	232	23	0
19	Missouri State (15-2)	207	20	0
19	Gonzaga (19-3)	207	16	0
21	Tennessee (13-6)	178	21	0
22	West Virginia (17-3)	165	24	0
23	DePaul (13-5)	94	19	0
24	South Dakota State (19-2)	92	25	0
25	Northwestern (12-5)	56	22	0

OTHERS RECEIVING VOTES: Florida Gulf Coast (19-2) 45; Rutgers (10-3) 32; Iowa (12-6) 10; Oregon State (8-6) 6; Mississippi State (8-7) 6; Washington State (10-10) 5; Texas (15-6) 4; Oklahoma State (17-6) 4; Georgia Tech (13-6) 2; Dayton (12-2) 2; Rice (13-2) 1; Marquette (16-4) 1; Alabama (15-6) 1.

Morris tallied 26 points and Heard had 22 points in the season-opener against Incarnate Word.

• For Heard, it was her seventh game this season with 20+ points and the 23rd of her career. She would go onto score 20+ points against ISU later that week, for her eighth 20-point game this season and 24th of her career.

BACK-AND-FORTH WE GO

• There were 12 different lead changes in the TCU/West Virginia game on Jan. 30.
 • It marked the most lead changes in a game for TCU since eight different lead changes in a game at Texas Tech back on Dec. 19.
 • The 12 different lead changes also ranked as the most in a game for TCU since 20 different lead changes between the Frogs and Oklahoma State back on Jan. 29, 2020, in Stillwater, Okla.

DON'T EVEN THINK OF 60

• TCU has limited an opponent to under 60 points five times this season and are 5-0 in those games.
 • Under head coach Raegan Pebley, the Horned Frogs are 56-3 (.949) all-time when limiting the opposing team to score 60 points or less.
 • The Horned Frogs have won 14 straight games when limiting opposing teams to under 60 points.
 • The last time a TCU team was defeated, limiting an opponent to under 60 points, came back on April 3, 2019, against Arizona in the WNIT Semifinals. Arizona won the game 59-53.

CHARITY STRIPE GREATNESS

• TCU has shot 90 percent or better from the free throw line in its past two home games.
 • The Horned Frogs drained 10-of-11 (.909) a few weeks ago against Texas Tech, and then on Jan. 30, against West Virginia, the Frogs were 19-of-20 (.950).
 • TCU's .950 effort ranks as the second-best free throw shooting percentage in team single-game history (minimum of 15 free throws made).
 • Only TCU's 22-of-22 (1.000) effort against Texas State back on Nov. 25, 2012, ranks higher.
 • It is TCU's highest free throw shooting percentage in a game since going 23-of-25 (.920) from the free throw line against Arkansas back on March 28, 2019.

FREE THROW LINE PERFECTION

• Senior Lauren Heard and junior Patricia Morris were both perfect from the free throw line in TCU's 19-of-20 charity stripe effort against WVU.
 • Heard went 9-of-9 from the charity stripe, while Morris converted 8-of-8 free throws on the day.
 • For Heard, it was her second 100 percent effort from the free throw line this season and the sixth overall the past two seasons.
 • Morris was seeing game action for the first time since Dec. 22, and all she did was set a new single-game career-high with eight free throws made.
 • Morris' previous career-high at the free throw line was seven FT's made against Washington State back on March 5, 2020, when she was still a member of Oregon State.

FASTEST TO 100

• Lauren Heard, who scored 125 points through the first six games of the season, became the fifth different TCU player to pour in at least 100 points through her first six games of a season over the past 15 years.
 • Zahna Medley is the last player to score 100+ points in six games, having done it in both 2015-16 and 2013-14. She scored 102 points in six games back in 2015-16 and notched 116 points in six games during the 2013-14 campaign.
 • Heard joined the likes of Emily Carter (136, 2010-11), TK Lafleur (102, 2008-09) and Adrienne Ross (101, 2006-07) as the only other players to score 100+ points in six games in the past 15 seasons.

THE COMEBACK TRAIL

• TCU has erased double-digit deficits over both Middle Tennessee (11 points down) and Texas Tech (13 points) this season.
 • TCU has overcome deficits of 10 points or more four times in the past two seasons.
 • The Horned Frogs wiped out a 10-point deficit to Iowa State and a 12-point deficit to Kansas State last season. Both wins came on the road.
 • TCU has trailed by at least one point in all eight of its wins during the 2020-21 season.

YOU STOLE IT!

• TCU tallied 21 steals in its season-opening win against Incarnate Word.
 • The Horned Frogs totaled 20+ steals in a game for the first time in more than 16 seasons. It was the first 20-steal game since collecting 20 steals against Cornell back on Jan. 2, 2006.
 • The 21 steals are tied for the fourth-most in a single game by a TCU team.
 • The all-time record is 24 steals, which happened twice overall, but the last time coming against Southern Miss back in 2005.

LEAGUE HONORS

• Senior Lauren Heard was named the Big 12 Co-Player of the Week on Dec. 14, while Aja Holmes was tabbed the Freshman of the Week on Jan. 25.
 • Heard earned Big 12 Player of the Week honors for the third time in her career, after collecting a pair of POW selections last season.
 • She is the first TCU player to be named Big 12 Player of the Week three times in a career, surpassing Zahna Medley as the only other two-time Big 12 POW recipient. Medley was also tabbed a Big 12 Freshman of the Week four times.
 • Holmes is the fourth different TCU freshman to earn Big 12 Freshman accolades and the first since Mikayla Christian, who earned the honor back on Dec. 27, 2016.

A LOOK AHEAD

• TCU will wrap-up a five-day road swing taking on Oklahoma this Thursday, March 4. Following its game at K-State on Monday, TCU will travel to Norman and practice there for two days before taking on the Sooners on Thursday. The game is scheduled to tip-off at 5 p.m.



SERIES BREAKDOWN



VS.



Meeting	19th
All-Time Series	TCU leads, 11-7
Date Series Began	Dec. 11, 1999
Last Game Played	Feb. 10, 2021
Current Winning Streak	TCU, won 3
TCU at Home	6-3
TCU on the Road	4-4
TCU on a Neutral Court	1-0

SINCE TCU JOINED THE BIG 12 CONFERENCE

TCU Record in Series	10-7
TCU at Home	6-3
TCU on the Road	4-4
TCU on a Neutral Court	0-0

LAST 10 GAMES

Date	W/L	Score	Location
02/10/2021	W	78-67	Fort Worth
02/19/2020	W	54-52	Manhattan
02/01/2020	W	65-61	Fort Worth
02/23/2019	L	72-75	Fort Worth
01/30/2019	W	61-47	Manhattan
02/17/2018	W	87-70	Fort Worth
01/24/2018	W	68-63	Manhattan
02/18/2017	L	65-68	Fort Worth
01/18/2017	L	63-74	Manhattan
01/16/2016	L	49-58	Manhattan

TALE OF THE TAPE

	TCU	K-State
Record	8-12	7-15
Conference Record	2-12	2-13
Scoring	67.5	61.2
Opponent Scoring	71.8	65.9
Scoring Margin	-4.3	-4.7
Field Goal Percentage	.401	.406
Field Goal Percentage Defense	.416	.388
Three-Point Field Goal Percentage	.318	.313
Three-Point Field Goal Percentage Defense	.318	.318
Free Throw Percentage	.712	.726
Rebounding	37.0	36.3
Opponent Rebounding	38.8	34.7
Rebounding Margin	-1.9	+1.5
Assists	15.0	15.2
Turnovers	15.4	17.8
Steals	6.8	6.1
Blocks	3.3	4.6

TEAM LEADERS

	--- TCU ---		--- K-State ---	
Scoring	Heard	20.3 / gm	Lee	17.8 / gm
Rebounding	Berry	7.2 / gm	Lee	8.0 / gm
Assists	Heard	107	Ebert	62
Steals	Heard	40	Ranke	30
Blocks	Y. Morris	18	Lee	36

HEARD'S PUSH FOR THE RECORD BOOKS

CAREER RECORDS

POINTS

6. Emily Carter	2007-11	1,563
7. Jordan Moore	2015-19	1,514
8. Lauren Heard	2017-Present	1,465
9. Janice Dziuk	1986-90	1,448
10. Natalie Ventress	2011-15	1,430

FIELD GOALS MADE

8. Leah Garcia	1994-98	478
9. Amy Okonkwo	2016-19	477
10. Emily Carter	2007-11	474
-- Lauren Heard	2017-Present	459

FIELD GOAL ATTEMPTS

5. Natalie Ventress	2012-15	1,291
6. Leah Garcia	1994-98	1,262
7. Lauren Heard	2017-Present	1,224
8. Emily Carter	2007-11	1,174
9. Janice Dziuk	1986-90	1,137

FREE THROWS MADE

1. Sandora Irvin	2001-05	482
2. Helena Sverrisdottir	2007-11	469
3. Lauren Heard	2017-Present	440
4. Emily Carter	2007-11	398
5. Zahna Medley	2012-16	393

CAREER RECORDS (CONTINUED)

FREE THROW ATTEMPTS

1. Sandora Irvin	2001-05	705
2. Lauren Heard	2017-Present	612
3. Helena Sverrisdottir	2007-11	599
4. Jordan Moore	2015-19	524

ASSISTS

4. Jill Sutton	1997-2001	445
5. Kianna Ray	2016-20	401
6. Lauren Heard	2017-Present	398
7. Adrienne Ross	2003-08	387
8. Moneka Knight	2004-08	348

STEALS

6. Sandora Irvin	2001-05	224
7. Kianna Ray	2016-20	205
8. Lauren Heard	2017-Present	202
9. Andrea Boris	1989-93	195
10. Lorie Butler-Rayford	2004-08	183





BIG 12 STANDINGS

TEAM	BIG 12	PCT.	H	A	Streak	OVERALL PCT.	H	A	N	Streak	
Baylor	14-1	0.933	7-1	7-0	W11	19-2	0.905	11-1	8-1	0-0	W11
West Virginia	12-4	0.750	7-2	5-2	W1	18-4	0.818	11-2	5-2	2-0	W1
Oklahoma State	13-5	0.722	8-1	5-4	L1	17-7	0.708	11-3	6-4	0-0	L1
Iowa State	11-6	0.647	6-2	5-4	W1	15-9	0.625	9-3	6-6	0-0	W1
Texas	10-6	0.625	6-2	4-4	L1	16-7	0.696	12-3	4-4	0-0	L1
Oklahoma	7-8	0.467	2-4	5-4	W2	10-10	0.500	5-5	5-5	0-0	W2
Texas Tech	5-12	0.294	4-5	1-7	L1	10-13	0.435	9-6	1-7	0-0	L1
TCU	3-12	0.200	3-5	0-7	L3	8-12	0.400	8-5	0-7	0-0	L3
Kansas	3-13	0.188	3-5	0-8	L6	7-15	0.318	7-6	0-9	0-0	L6
Kansas State	2-13	0.133	2-5	0-8	L1	7-15	0.318	6-7	1-8	0-0	L1

BIG 12 PRESEASON HONORS

PRESEASON PLAYER OF THE YEAR

NaLyssa Smith, Baylor, F, 6-2, Jr., Converse, Texas

PRESEASON NEWCOMER OF THE YEAR

DiJonai Carrington, Baylor, G, 5-11, Gr., San Diego, Calif.

PRESEASON FRESHMAN OF THE YEAR

Sarah Andrews, Baylor, G, 5-6, Irving, Texas

PRESEASON ALL-BIG 12 TEAM

Queen Egbo, Baylor
 DiDi Richards, Baylor
 NaLyssa Smith*, Baylor
 Ashley Joens, Iowa State
 Ayoka Lee, Kansas State
 Taylor Robertson, Oklahoma
 Natasha Mack, Oklahoma State

Lauren Heard, TCU

Charli Collier, Texas
 Vivian Gray, Texas Tech

HONORABLE MENTION

Kristin Scott (Iowa State), Zakiyah Franklin (Kansas), Holly Kersgieter (Kansas), Rachel Ranke (Kansas State), Ana Llanusa (Oklahoma), Madi Williams (Oklahoma), Celeste Taylor (Texas), Chrislyn Carr (Texas Tech), Kysre Gondrezick (West Virginia) and Kari Niblack (West Virginia).

BIG 12 PRESEASON POLL

- Baylor (9) 81
- Texas (1) 73
- Iowa State 69
- Kansas State 50
- West Virginia 45
- Texas Tech 36
- Oklahoma 33
- Oklahoma State 26
- TCU 23**
- Kansas 14

BIG 12 PLAYERS OF THE WEEK

DATE	PLAYER	SCHOOL
Nov. 30	Charli Collier	Texas
Dec. 7	Ashley Joens	Iowa State
Dec. 14	Lauren Heard	TCU
	Ashley Joens	Iowa State
Dec. 21	NaLyssa Smith	Baylor
Dec. 28	Natasha Mack	Oklahoma State
Jan. 4	Madi Williams	Oklahoma
Jan. 11	Natasha Mack	Oklahoma State
Jan. 18	Ashley Joens	Iowa State
Jan. 25	Charli Collier	Texas
Feb. 1	Kysre Gondrezick	West Virginia
Feb. 8	Natasha Mack	Oklahoma State
Feb. 15	Madi Williams	Oklahoma
Feb. 22	Vivian Gray	Texas Tech

BIG 12 FRESHMAN OF THE WEEK

DATE	PLAYER	SCHOOL
Nov. 30	Ioanna Chatzileonti	Kansas
Dec. 7	Ioanna Chatzileonti	Kansas
Dec. 14	Lexi Donarski	Iowa State
Dec. 21	Hannah Gusters	Baylor
	Lexy Keys	Oklahoma State
Dec. 28	Emily Ryan	Iowa State
Jan. 4	DeYona Gaston	Texas
Jan. 11	Lexi Donarski	Iowa State
Jan. 18	Emily Ryan	Iowa State
Jan. 25	Aja Holmes	TCU
Feb. 1	Kylie Feuerbach	Iowa State
Feb. 8	Lexy Keys	Oklahoma State
Feb. 15	Lexi Donarski	Iowa State
Feb. 22	Lexi Donarski	Iowa State

TCU HONOR ROLL

LAUREN HEARD

Preseason All-Big 12 Oct. 21
 Lieberman Watch List Nov. 9
 Naismith Trophy Watch List Nov. 17
 TCU Student-Athlete of the Week Dec. 2
 Big 12 Player of the Week Dec. 14
 TCU Student-Athlete of the Week Dec. 15
 TCU Student-Athlete of the Week Jan. 26
 TCU Student-Athlete of the Week Feb. 16

YUMMY MORRIS

TCU Scholar-Athlete of the Month Dec. 2

AAHLIYAH JACKSON

TCU Scholar-Athlete of the Month Jan. 19

AJA HOLMES

Big 12 Freshman of the Week Jan. 25



ED & RAE SCHOLLMAIER ARENA | OPENED 2015-16



TCU INSIDE SCHOLLMAIER ARENA

YEAR	NC	B12	PS	OVA	PCT.
2020-21	5-0	3-5	0-0	8-5	.615
2019-20	7-0	6-3	0-0	13-3	.812
2018-19	8-0	6-3	3-0	17-3	.850
2017-18	6-1	5-4	2-0	13-5	.722
2016-17	8-1	3-6	0-0	11-7	.611
2015-16*	1-0	5-4	2-0	8-4	.667
	35-2	28-24	7-0	70-27	.721

* - **First Game:** _____ Dec. 20, 2015
TCU 76, Southern Utah 47

NC - Non-Conference
B12 - Big 12 Conference
PS - Postseason

Previously known as the Daniel-Meyer Coliseum, the facility underwent a \$72 million renovation that was completed during the 2015-16 season. The Schollmaiers provided the lead gift of \$10 million. The Daniel-Meyer name is still prominent as the entire area is known as the Daniel-Meyer Athletic Complex.

The TCU men's and women's basketball programs received new locker rooms and team meeting rooms as well as an expanded sports medicine center. There is also locker rooms for visiting teams and a new video board.

The new building facade for the Ed and Rae Schollmaier Arena architecturally complements Amon G. Carter Stadium and the TCU campus. The interior has a lower playing surface to increase courtside seating and provide a more intimate atmosphere. Wider concourses and multiple public entries have helped ease congestion. The fan experience is further enhanced by new concession stands, a food court and restrooms as well as increased points of sale. A new courtside club lounge is also located on floor level. The facility also includes offices for the athletics administrative staff as well as coaches in various sports, allowing the Ed and Rae Schollmaier Arena to be the hub of TCU Athletics.

Additional features of the Ed and Rae Schollmaier Arena are the Jane & John Justin TCU Athletics Hall of Fame on the concourse level, offices for Olympic sports and administration and a larger main ticket office to support the arena and Amon G. Carter Stadium.

ED AND RAE SCHOLLMAIER HISTORY

Ed Schollmaier is the retired CEO of Alcon Laboratories, Inc., while the late Rae Schollmaier was a dedicated civic volunteer. Through the Schollmaier Foundation, they are longtime philanthropic leaders in Fort Worth.

A TCU Trustee since 1996, Ed Schollmaier chaired the Building and Grounds Committee and served on the Executive, Fiscal Affairs and Intercollegiate Athletics committees, as well as the Committee on Trusteeship.

Ed Schollmaier was a member of the Neeley School International Board of Visitors and the recipient of Neeley's Ike Harrison Award. He has been recognized as an Honorary Alumnus and an Honorary TCU Letterman. Rae Schollmaier served on the College of Fine Arts International Board of Visitors, the Fine Arts Task Force of The Commission on the Future of TCU and the KinderFrogs School Advisory Board. For their service and generous support, the Schollmaiers were honored with TCU's Horizon Award and the Royal Purple Award.

The Schollmaiers have also supported TCU Athletics through the Ed and Rae Schollmaier Basketball Complex, which opened in 2004.





HEAD COACH | RAEGAN PEBLEY | 7TH SEASON



Raegan Pebley is in her seventh season as TCU women's basketball head coach in 2020-21. Pebley led the Horned Frogs to four postseason appearances in her first five seasons, including WNIT Semifinals appearances in both 2017-18 and 2018-19. The 2019-20 squad was on the way to making a postseason appearance prior to the NCAA Tournament being canceled due to the COVID-19 pandemic.

Pebley (pronounced Pee-blee) has had the Frogs on an upward trend over the past three seasons, as their 69 total wins during that stretch are ranked third among all Big 12 teams while its 32 conference victories also rank third.

The 2019-20 campaign saw the Frogs register a 22-7 overall record and a 13-5 mark in Big 12 play. It marked Pebley's third-consecutive 20-win season, while the 13 Big 12 wins rank most in school history. It also matches the most conference wins for TCU in any league (2000-01, WAC; 2007-08 and 2010-11, MWVC). TCU would go onto finish second-place in the Big 12 standings - the highest finish for the Frogs since joining the league in 2012-13.

The Frogs have been on an upward trend over the past three seasons. TCU notched a 24-11 record in 2018-19, coming up just one-win shy of the school's record 25 victories (2000-01, 2003-04). In addition, TCU also set program records with 17 home victories in 2018-19 and the 13 Big 12 Conference wins this past season. The Horned Frogs also managed to register its most road wins in the Pebley era, notching nine victories on the road in 2019-20.

TCU collected its first national ranking in 10 years during the 2017-18 campaign, as well, coming in as high as No. 22. The Frogs then made its way back into the WBCA Top-25 rankings during the 2019-20 season, coming in at No. 25, the week of Feb. 25.

TCU ranked among the Big 12's top teams this past season, ranking first in free throw attempts (621), third in free throws made (417), second in steals (274), first in steals per game (9.4), second in opponent three-point percentage (.273), and first in forced turnovers (18.62). Three different Horned Frogs would go onto earn All-Big 12 honors, giving TCU at least two players on the All-Big 12 team in four of its six seasons as a member of the Big 12 Conference.

Lauren Heard became just the third Horned Frog in program history to be named to the All-Big 12 First Team, joining Zahna Medley (2014, 2015, 2016) and Jordan Moore(2019). Kianna Ray would earn second team honors and Jayde Woods was named honorable mention. A total of 14 players have earned All-Big 12 honors under Pebley.

The 2019-20 campaign also saw Pebley record her 100th victory on the sidelines at TCU. She is just the second coach in school history to boast at least 100 victories at the helm of the Horned Frogs basketball program.

The Frogs went on a tear in the postseason for a second-consecutive year in 2018-19, winning four games in the WNIT before falling on the road to eventual champion Arizona in the semifinals. Pebley's squad dominated the early rounds of the tournament, winning its first four games by an average of 17 points, including three victories at home and an impressive road win at Arkansas.

TCU finished among the top-three teams in the Big 12 in several statistical categories in 2018-19, including scoring defense, blocked shots, assists, turnover margin and steals. The Frogs finished eighth in the NCAA in both total blocked shots (189) and blocked shots per game (5.4) and led the Big 12 in total steals (331), steals per game (9.5) and turnovers forced per game (17.34).

The 2018-19 season was a continuation of a successful

climb for TCU under Pebley. The Frogs won 18 games in each of her first two seasons with a WNIT Second Round appearance in 2014-15 followed by appearances in the WNIT Third Round and Semifinals in 2015-16 and 2017-18, respectively. TCU's WNIT victory in 2015 was its first postseason win in seven years.

During the 2017-18 campaign, the Frogs earned their first national ranking since 2010, claiming a spot in the top-25 for three weeks. The ranking came in the midst of a seven-game Big 12 winning streak, the Frogs' best conference winning streak since 2008. During the streak, the Frogs beat No. 7 Texas then knocked off No. 15 West Virginia on the road, marking just the second time in program history TCU won back-to-back games against ranked teams.

The Frogs went on to finish 9-9 in the Big 12 in 2017-18, capping the regular season with a win over Oklahoma in the Big 12 Championship quarterfinal and advancing to the first semifinal since the Frogs joined the Big 12.

TCU then played in its third WNIT under Pebley and made a deep run in the tournament, advancing to the semifinal where the Frogs fell on the road to eventual champion Indiana. Along the way, TCU won four games in the tournament, including a pair of road wins, pushing TCU's total to 10 wins away from home in 2017-18, the program's most since 2004-05.

In 2017-18, TCU was the only Big 12 team to finish in the Big 12's top three in field goal, 3-point and free throw percentage. The Frogs averaged 74.8 points and 16.5 assists per game, both the second best in program history, and posted a program-best 1.1 assist-turnover ratio.

Individually, numerous players have flourished in Pebley's system, perhaps none more than TCU's all-time leading scorer, Medley who earned three All-Big 12 First Team honors in her career - two under Pebley - and was the first three-time all-conference first team selection in program history.

Medley finished her career with TCU bests of 1,975 career points, a 15.6 points per game scoring average and 316 made 3-pointers. She finished second in TCU history with 633 made field goals and 510 assists.

Moore's progression throughout her TCU career is indicative of Pebley's teaching ability. The Round Rock, Texas, native finished her career as TCU's all-time leader in field goal percentage, shooting 54.7 percent in her four years in Fort Worth, as well as the single-season leader after shooting 59.0 percent in her senior campaign. She also finished seventh in the TCU record book with 1,514 points, second with 892 rebounds and third with 243 blocks.

Additionally, the Frogs have won both of their Big 12 individual awards under Pebley, most recently with Okonkwo earning the Sixth Man Award in 2017-18. Chelsea Prince was named the Big 12 Defensive Player of the Year in 2014-15, marking the fourth-straight such selection under Pebley.

Off the court, the Frogs have seen incredible success under Pebley. In her six seasons, TCU student-athletes have earned 27 Academic All-Big 12 honors, that after earning just four in the two years prior to Pebley's arrival.

Included in the 27 selections is a record four first-team selections in 2019-20. Jada Butts was one of the 2016-17 first team selections and became the first Frog to earn Academic All-Big 12 honors in four straight years, while Ray followed in her footsteps, taking home all-academic honors from 2016-20.

Pebley has not only served TCU, but also the women's basketball community as a whole. She is a member of the Kay Yow Cancer Fund Board of Directors, helping guide the Fund's mission to extend and improve the lives of all women battling cancer by raising money for research and assisting the underserved.

PEBLEY'S TIMELINE

1997-99:	George Mason	Assistant Coach
1999-2001:	Colorado State	Assistant Coach
2002-12:	Utah State	Head Coach
2012-14:	Fresno State	Head Coach
2014-present:	TCU	Head Coach

COACHING HIGHLIGHTS

HONORS (AT TCU)

- ▶ Four WNIT appearances
- ▶ 11 postseason wins
- ▶ 14 All-Big 12 selections
- ▶ Big 12 Defensive Player of the Year
- ▶ Big 12 Sixth Man of the Year
- ▶ 26 Academic All-Big 12 selections

HONORS (PRIOR TO TCU)

- ▶ Seven NCAA Tournaments (two as head coach, one as assistant coach, four as player)
- ▶ 12 overall postseason appearances (NCAA and WNIT)
- ▶ WBCA National Coach of the Year Finalist (2001)
- ▶ WAC Coach of the Year (2001)
- ▶ Rebuilt Utah State program that was reinstated in 2003 after 25-year hiatus

PLAYING HIGHLIGHTS

- ▶ 106-24 record, four NCAA Tournament appearances in four seasons at Colorado
- ▶ Elite Eight appearance as sophomore
- ▶ Two Sweet Sixteen appearances
- ▶ Finished all four seasons ranked in Associated Press Top 25; two AP top-five finishes
- ▶ 1,045 career points, 701 career rebounds
- ▶ Two-time all-conference, including second-team All-Big 12 in 1997
- ▶ 21st overall selection in 1997 WNBA Draft (Utah Starzz)
- ▶ Played in WNBA's first two seasons (Utah Starzz, Cleveland Rockers)

COACHING RECORD

YEAR	SCHOOL	OVERALL	CONF	FINISH
2003-04	Utah State	5-22	5-13	T-8th
2004-05	Utah State	14-14	9-9	6th
2005-06	Utah State	3-24	2-14	9th
2006-07	Utah State	11-18	7-9	6th
2007-08	Utah State	9-20	5-11	7th
2008-09	Utah State	16-15	9-7	T-5th
2009-10	Utah State	13-17	5-11	7th
2010-11	Utah State	18-15	10-6	3rd
2011-12	Utah State	21-10	11-3	2nd
2012-13	Fresno State	24-9	13-3	2nd
2013-14	Fresno State	22-11	13-5	2nd
2014-15	TCU	18-14	9-9	T-3rd
2015-16	TCU	18-165	8-10	T-6th
2016-17	TCU	12-18	4-14	9th
2017-18	TCU	23-13	9-9	5th
2018-19	TCU	24-11	10-8	6th
2019-20	TCU	22-7	13-5	2nd
2020-21	TCU	8-12	3-12	-

SCHOOL	YEARS	OVERALL	CONF
Utah State	9	110-155	63-94
Fresno State	2	46-20	26-8
TCU	7	125-90	56-67
	18	281-265	145-169



She is also a member of the Women's Basketball Coaches Association (WBCA) Board of Directors, helping the Association's mission to improve and advance the game of women's basketball.

TCU officially announced the hiring of Pebley as the program's seventh head coach on April 1, 2014.

Pebley arrived at TCU after spending the previous two seasons at Fresno State where she led the Bulldogs to Mountain West tournament titles and berths into the NCAA Tournament in each of her two seasons. Fresno State compiled a 46-20 (.697) overall record under the direction of Pebley, including a 26-8 (.765) mark in league play, while four Bulldogs earned All-Mountain West honors, including back-to-back Defensive Player of the Year selections.

Pebley's Fresno State squads featured one of the top defensive units in the country, as the 2012-13 Bulldogs ranked third in the NCAA in steals with 12.9 per game, doing so while only fouling 12.1 times per game to rank No. 7 nationally for the fewest fouls committed per game. The Bulldogs allowed a paltry 62.4 points per contest in the two seasons under Pebley.

The Orem, Utah, native faced a tall task in her first head coaching position, starting the Utah State women's basketball program after its reinstatement in 2003 following a 25-year hiatus. Pebley led the Aggies for nine seasons, building the program from scratch into back-to-back WNIT berths, marking the first postseason appearances in school history.

Pebley garnered WAC Coach of the Year accolades for the 2010-11 season after the Aggies advanced to their first WNIT, where they toppled Arizona, and was a WBCA National Coach of the Year finalist in 2012 after Utah State registered its first-ever 20-win season and returned to the WNIT.

In her nine seasons at Utah State, 12 Aggies earned all-conference honors, including Ashlee Brown, who was named the WAC Defensive Player of the Year in 2012, the first of four straight student-athletes to earn the league's top defensive awards under Pebley. Before taking over the Utah State program, Pebley served as an assistant coach at George Mason from 1997-99 under Jim Lewis and Debbie Taneyhill and at Colorado State from 1999-01 under Tom Collen.

At CSU, the Rams went 48-17 in her two seasons with the team reaching the second round of the NCAA Tournament in 2001 and the semifinals of the WNIT in 2000.

A standout at the University of Colorado, Pebley was selected with the 21st overall pick of the inaugural WNBA Draft in 1997, where she played two seasons with the Cleveland Rockers and Utah Starzz. She has since returned to a role within the league as she regularly serves as the color analyst on television broadcasts for the Dallas Wings.

During her collegiate career at Colorado, Pebley helped lead the Buffs to a 106-24 overall record and four conference championships, including winning the inaugural Big 12 tournament title in 1997. In her career, Pebley earned all-conference accolades twice, including a second team All-Big 12 selection in 1997. She is the first former All-Big 12 selection to return to coach in the league.

CU made two Sweet 16 appearances during her career, including a trip to the Elite Eight during her sophomore season, as the Buffs won a school-record 30 games (30-3 overall). Colorado won 25-straight games that season and finished the year ranked No. 2 in the final AP poll.

Pebley, whose maiden name is Scott, was one of nine players in CU history to score over 1,000 career points (1,045) and collect over 700 rebounds (701). Pebley played under legendary head coach Ceal Barry who was a 2018 inductee into the Women's Basketball Hall of Fame.

Pebley and her husband, Keith, have one son, Joseph, and one daughter, Harper.

PEBLEY VS. OPPONENTS

Air Force	5-1	North Dakota State	1-1
Alabama	1-0	Northern Arizona	4-0
Alcorn State	2-0	Northern Colorado	0-2
American	0-1	Northwestern State	1-0
Arizona	2-1	Ohio	1-0
Arkansas	1-0	Oklahoma	6-8
Army	2-0	Oklahoma State	6-8
Asbury	1-0	Ole Miss	1-0
Auburn	1-0	Oral Roberts	2-0
Baylor	0-15	Oregon	0-1
Boise State	13-9	Pacific	2-5
Bowling Green	0-1	Pepperdine	0-1
Butler	1-1	Portland	3-3
BYU	0-7	Portland State	0-2
Cal Maritime	1-0	Prairie View A&M	3-0
Cal Poly	3-1	Robert Morris	1-0
Cal State Bakersfield	1-0	Saint Louis	0-2
Cal State Fullerton	2-3	Saint Mary's	2-0
Cal State Northridge	4-1	Sam Houston State	4-0
California	0-1	San Diego	0-1
Central Arkansas	1-0	San Diego Christian	1-0
Cincinnati	1-0	San Diego State	4-2
Colgate	1-0	San Francisco	2-2
Colorado	0-1	San Jose State	12-4
Colorado State	4-2	Santa Clara	1-1
Cornell	1-0	Seton Hall	0-1
Dixie State	0-1	South Dakota	1-0
Duquesne	1-0	Stephen F. Austin	2-0
Eastern Michigan	1-0	SMU	6-0
Eastern Washington	2-0	South Dakota State	1-1
Fresno State	2-14	Southeastern Louisiana	1-0
Georgia	0-1	Southern	1-0
Grambling	2-0	Southern Miss	0-1
Hampton	1-0	Southern Utah	6-1
Hawaii	6-8	Stanford	0-2
Houston Baptist	1-0	Texas	3-12
Idaho	11-10	Texas A&M	0-6
Idaho State	2-7	Texas Southern	2-0
Illinois	0-1	Texas State	3-0
Incarnate Word	2-0	Texas Tech	9-6
Indiana	0-1	UC Irvine	4-3
Iowa State	8-7	UC Merced	1-0
IPFW	0-1	UC Riverside	3-2
Kansas	12-3	UC Santa Barbara	0-4
Kansas State	8-5	ULM	1-0
Lamar	3-0	UNLV	6-1
Liberty	1-0	USC	1-1
Long Beach State	1-4	UT Arlington	2-0
Louisiana Tech	2-14	Utah	1-3
LSU	0-1	Utah State	1-0
Massachusetts	0-1	Utah Valley	5-3
McNeese	1-0	UTEP	0-1
Middle Tennessee	1-1	UTRGV	2-0
Mississippi Valley State	1-0	Washington State	1-1
Missouri	0-0	Weber State	4-4
Missouri State	2-0	West Virginia	5-9
Monmouth	0-1	Western Michigan	0-1
Montana	0-4	Wyoming	3-5
Montana State	2-4	Yale	0-1
Montana State Northern	1-0		
Montana Western	1-0		
Nevada	11-10		
New Mexico	4-0		
New Mexico State	9-6		
New Orleans	1-0		
Nebraska	0-1		
Nicholls State	1-0		
Notre Dame	0-2		

2020-21 Opponents in Bold



TCU RECORD BREAKDOWN

	2020-21 RECORD	PEBLEY ERA
Overall	8-12	125-90
Big 12	3-12	56-67
Home	8-5	92-31
Away	0-7	30-52
Neutral	0-0	4-7
vs Top 25	0-5	8-44
vs Top 10	0-2	1-22
Overtime games	1-0	2-1
November	2-0	34-7
December	3-2	27-13
January	2-6	29-30
February	1-4	23-29
March	0-0	15-11
April	0-0	0-1

SCORING

TCU leads after 1st quarter	5-1	73-23*
Opponent leads after 1st quarter	3-10	30-48*
Tied after 1st quarter	0-1	4-5*
TCU leads at halftime	4-2	101-16
Opponent leads at halftime	4-10	23-68
Tied at halftime	0-0	1-6
TCU leads after 3rd quarter	5-1	90-11*
Opponent leads after 3rd quarter	2-11	16-64*
Tied after 3rd quarter	1-0	1-1*
TCU scores less than 60	0-5	8-28
TCU scores 60-69	3-2	24-28
TCU scores 70-79	2-4	48-29
TCU scores 80+	3-1	45-5
Opponent scores less than 60	5-0	56-3
Opponent scores 60-69	1-1	44-12
Opponent scores 70-79	2-6	22-35
Opponent scores 80+	0-5	4-40
Games decided by 6 points or less	2-2	30-22

REBOUNDING

TCU out-rebounds opponent	5-2	82-10
Opponent has equal/more rebounds	3-10	43-80

FIELD GOALS

TCU has higher FG%	7-2	97-12
TCU has equal/lower FG%	1-10	28-79
TCU shoots higher than 40%	7-5	99-30
TCU shoots lower than 40%	1-7	26-59
Opponent shoots higher than 40%	3-11	44-83
Opponent shoots lower than 40%	5-1	81-7

THREE-POINT FIELD GOALS

TCU makes 7 or more 3-pointers	4-7	79-43
TCU makes 6 or fewer 3-pointers	4-5	46-47
TCU has higher 3PT FG%	6-3	92-25
TCU has lower 3PT FG%	2-9	33-65

FREE THROWS

TCU attempts more FT's	6-4	88-26
TCU attempts equal/fewer FT's	2-8	37-64

* - Does not include 2014-15 season when only halves were played

TCU PERFORMANCE LIST

SCORING LEADER	SEASON	CAREER
Lauren Heard	14	36
Yummy Morris	2	3
Tavy Diggs	2	2
Michelle Berry	1	2
Aja Holmes	1	1

REBOUNDING LEADER	SEASON	CAREER
Lauren Heard	8	26
Michelle Berry	11	17
Yummy Morris	2	8
Tavy Diggs	1	1
Kayla Mokwuah	1	1

ASSISTS LEADER	SEASON	CAREER
Lauren Heard	16	50
Caroline Germond	5	5
Tavy Diggs	1	1

10+ POINTS	SEASON	CAREER
Lauren Heard	18	61
Michelle Berry	10	13
Yummy Morris	4	10
Tavy Diggs	6	6
Aahliyah Jackson	5	5
Aja Holmes	3	3
Caroline Germond	1	1
Kayla Mokwuah	1	1
Patricia Morris	1	1

15+ POINTS	SEASON	CAREER
Lauren Heard	15	39
Yummy Morris	4	5
Tavy Diggs	4	4
Michelle Berry	1	3
Aja Holmes	1	1

20+ POINTS	SEASON	CAREER
Lauren Heard	9	25
Yummy Morris	2	2
Aja Holmes	1	1

30+ POINTS	SEASON	CAREER
Lauren Heard	2	2

3+ 3-POINTERS	SEASON	CAREER
Lauren Heard	4	11
Aja Holmes	5	5
Michelle Berry	5	6
Aahliyah Jackson	4	4

10+ REBOUNDS	SEASON	CAREER
Lauren Heard	3	9
Michelle Berry	4	7

15+ REBOUNDS	SEASON	CAREER
Lauren Heard	- -	1

5+ ASSISTS	SEASON	CAREER
Lauren Heard	14	34
Caroline Germond	4	4

10+ ASSISTS	SEASON	CAREER
- -	- -	- -

3+ STEALS	SEASON	CAREER
Lauren Heard	7	28
Michelle Berry	2	4
Aahliyah Jackson	2	2
Caroline Germond	2	2
Yummy Morris	- -	1

3+ BLOCKS	SEASON	CAREER
Yummy Morris	3	8

DOUBLE-DOUBLES	SEASON	CAREER
Lauren Heard	3	7
Michelle Berry	2	4

TCU STREAKS

TEAM

Overall	0
vs. Ranked Teams	0
vs. Unranked Teams	0
Home	0
Home vs. Big 12	0
Home vs. Non-Conference	28
Home vs. Ranked	0
Home vs. Unranked	0
Home vs. Unranked Non-Conference	28
Road	0
Road vs. Big 12	0
Road vs. Non-Conference	0
Road vs. Ranked	0
Road vs. Unranked	0
Road vs. Unranked Non-Conference	0
Neutral	0
Neutral vs. Ranked	0
Neutral vs. Unranked	0

CONSECUTIVE GAMES 10+ POINTS

avy Diggs	3
-----------	---

CONSECUTIVE STARTS

Lauren Heard	77
Michelle Berry	20
Tavy Diggs	2
Aahliyah Jackson	1
Aja Holmes	1

CONSECUTIVE GAMES PLAYED

Lauren Heard	120
Michelle Berry	50
Yummy Morris	50
Tavy Diggs	21
Caroline Germond	20
Aja Holmes	20
Kayla Mokwuah	20
Patricia Morris	6
Aahliyah Jackson	1
Amari Conn	1
Emma Schmidt	1
Aahliyah Morgan	1
Adhel Tac	1



TCU 2020-21 HIGHS/LOWS

MOST 1ST QUARTER POINTS

TCU	25	vs Kansas	01/17/21
OPP	28	vs Iowa State	12/02/20

FEWEST 1ST QUARTER POINTS

TCU	8	at Oklahoma State	01/09/21
OPP	5	vs Oral Roberts	12/22/20

MOST 2ND QUARTER POINTS

TCU	22 (2x) last, at Kansas	02/07/21
OPP	26 vs Iowa State	12/02/20

FEWEST 2ND QUARTER POINTS

TCU	6 vs Central Arkansas	11/28/20
OPP	9 vs Oral Roberts	12/22/20

MOST FIRST HALF POINTS

TCU	38 vs Incarnate Word	11/25/20
OPP	54 vs Iowa State	12/02/20

FEWEST FIRST HALF POINTS

TCU	20 vs Texas Tech	01/23/21
OPP	14 vs Oral Roberts	12/22/20

MOST 3RD QUARTER POINTS

TCU	28 vs Kansas State	02/10/21
OPP	28 vs Oklahoma State	01/06/21

FEWEST 3RD QUARTER POINTS

TCU	10 vs West Virginia	01/30/21
OPP	10 vs Central Arkansas	11/28/20

MOST 4TH QUARTER POINTS

TCU	27 vs Texas Tech	01/23/21
OPP	30 at Kansas	02/07/21

FEWEST 4TH QUARTER POINTS

TCU	12 vs Baylor	01/02/21
OPP	6 at Oklahoma State	01/09/21

MOST POINTS IN A GAME

TCU	84 vs Incarnate Word	11/25/20
OPP	92 at Iowa State	02/13/21

FEWEST POINTS IN A GAME

TCU	49 at Baylor	01/26/21
OPP	48 (2x) last, vs Oral Roberts	12/22/20

BIGGEST WIN MARGIN

TCU	26 vs Lamar	12/09/20
OPP	33 at Baylor	01/26/21

CLOSEST WIN MARGIN

TCU	3 vs Kansas	01/17/21
OPP	3 at West Virginia	02/20/21

SPECIALTY STATISTICS COMPARISON (TCU-OPP)

OPPONENT	OFF T/O	IN PAINT	2ND-CHANCE	FAST BREAK	BENCH
INCARNATE WORD	33-7	60-16	11-3	20-12	16-29
CENTRAL ARKANSAS	29-13	32-24	3-7	8-7	17-21
IOWA STATE	12-17	34-38	8-17	9-12	24-28
at Missouri	-	-	canceled	-	-
LAMAR	12-7	52-14	10-6	19-12	22-12
MIDDLE TENNESSEE	24-14	30-30	10-16	23-7	21-12
at Texas Tech	20-16	28-28	8-3	8-3	14-18
ORAL ROBERTS	19-18	30-18	10-8	8-13	11-15
BAYLOR	11-13	18-24	9-16	4-9	11-18
OKLAHOMA STATE	14-23	20-40	12-13	2-19	23-6
at Oklahoma State	0-15	12-38	5-8	0-15	10-4
KANSAS	14-17	30-40	12-11	9-9	16-20
at Texas	9-24	22-28	4-13	5-0	10-10
TEXAS TECH	6-13	26-28	7-4	22-8	16-8
at Baylor	10-24	24-46	11-11	7-15	17-30
WEST VIRGINIA	6-16	28-26	2-7	7-13	15-10
at Kansas	7-18	26-20	9-13	3-4	29-36
KANSAS STATE	20-8	16-28	13-6	7-7	30-8
at Iowa State	13-11	26-26	10-16	4-6	26-8
at West Virginia	20-15	28-42	10-8	5-26	11-18
OKLAHOMA	9-17	28-26	14-9	3-5	23-10
at Kansas State					
at Oklahoma					
TEXAS					

TCU STARTERS

OPPONENT	G	G	G/F	F	F/C	RECORD
INCARNATE WORD	Heard	Germond	Jackson	Berry	Y. Morris	1-0
CENTRAL ARKANSAS	Heard	Germond	Jackson	Berry	Y. Morris	2-0
IOWA STATE	Heard	Germond	Jackson	Berry	Y. Morris	2-1
at Missouri	-	-	canceled	-	-	-
LAMAR	Heard	Diggs	Jackson	Berry	Y. Morris	1-0
MIDDLE TENNESSEE	Heard	Diggs	Jackson	Berry	Y. Morris	2-0
at Texas Tech	Heard	Diggs	Jackson	Berry	Y. Morris	2-1
ORAL ROBERTS	Heard	Jackson	Berry	Y. Morris	Mokwuah	1-0
BAYLOR	Heard	Jackson	Berry	Y. Morris	Mokwuah	1-1
OKLAHOMA STATE	Heard	Diggs	Jackson	Berry	Y. Morris	2-2
at Oklahoma State	Heard	Germond	Jackson	Berry	Mokwuah	0-1
KANSAS	Heard	Germond	Jackson	Berry	Y. Morris	3-1
at Texas	Heard	Germond	Jackson	Berry	Y. Morris	3-2
TEXAS TECH	Heard	Germond	Jackson	Berry	Y. Morris	4-2
at Baylor	Heard	Germond	Jackson	Diggs	Berry	0-1
WEST VIRGINIA	Heard	Germond	Jackson	Berry	Y. Morris	4-3
at Kansas	Heard	Germond	Jackson	Berry	Y. Morris	4-4
KANSAS STATE	Heard	Germond	Jackson	Berry	P. Morris	1-1
at Iowa State	Heard	Germond	Jackson	Berry	P. Morris	1-1
at West Virginia	Heard	Germond	Diggs	Berry	P. Morris	0-1
OKLAHOMA	Heard	Diggs	Jackson	Berry	Holmes	0-1
at Kansas State						
at Oklahoma						
TEXAS						



THE LAST TIME

... A TCU TEAM

Scored 100+ points	W, 112-62 vs. Southeastern La. (12/10/17)
Scored 100+ points in non-overtime game	W, 112-62 vs. Southeastern La. (12/10/17)
Scored 100+ points in a conference game	W, 100-96 (4OT) at Utah (2/10/10)
Scored 100+ points in a Big 12 game	None
Scored 90+ points	W, 96-71, vs. Oklahoma (03/04/20)
Scored 90+ points in a conference game	W, 96-71, vs. Oklahoma (03/04/20)
Played an overtime game	W, 81-78 (OT) vs. Kansas (01/17/21)
Won an overtime game	W, 81-78 (OT) vs. Kansas (01/17/21)
Played a two overtime game	W, 87-73 (2OT) vs. SMU (11/17/10)
Played a three overtime game	L, 111-121 (3OT) vs Hardin-Simmons (11/28/81)
Played a four overtime game	W, 100-96 (4OT) at Utah (02/10/10)
Played consecutive overtime games	None
Held a team to 40 points or less	W, 49-37, vs. Oklahoma State (02/23/20)
Held a team to 20 points or less in a half	14 (1st Half), vs. Oral Roberts (12/22/20)
Shot 60+ percent FG	60.8 (31-51), vs Lamar (03/15/18)
Shot 60+ percent FG in a half	60.0 (21-35) 1st Half, at Kansas (02/08/20)
Held a team to 20 percent FG	15.7 (8-of-51), vs Sam Houston State (11/15/16)
Held a team to 20 percent FG in a half	18.5 (5-of-27) (1st Half), vs Oral Roberts (12/22/20)
Made 10+ 3-pointers	13, vs Kansas State (02/10/21)
Made 15+ 3-pointers	18, vs Southeastern La. (12/10/17)
Did not make a 3-pointer	(0-of-9), vs UTRGV (01/05/12)
Held a team to zero 3-pointers	<i>Active streak of 295 games with a 3-pointer</i> (0-of-1), at LSU (12/04/16)
Shot 90 percent FT (min. 10 att.)	95.0 (19-of-20), vs West Virginia (01/30/21)
Attempted 35+ free throws	39, vs Oklahoma (03/03/18)
Made 30+ free throws	32, vs Oklahoma (03/03/18)
Had 30+ assists	33, vs. Southeastern La. (12/10/17)
Had 25+ assists	29, vs. Oklahoma (03/04/20)
Forced 30+ turnovers	30, vs Alcorn State (12/29/18)
Forced 25+ turnovers	28, vs Kansas State (02/01/20)
Had 20+ steals	21, vs Incarnate Word (11/25/20)
Had 15+ steals	21, vs Incarnate Word (11/25/20)
Had 15+ blocks	19, vs UAB (01/16/05)* *NCAA Record
Had 10+ blocks	11, vs. Oral Roberts (12/22/20)
Overcame a 10-point deficit to win	vs Texas Tech (01/23/21)
Overcame a 15-point deficit to win	Trailed by 13, 24-11, with 4:28 left in 2Q, won 61-53 at Texas Tech (02/06/19)
Overcame a 20-point deficit to win	Trailed by 15, 50-35, with 4:29 left in 3Q, won 70-63 vs Iowa State (10/07/15)
Had six players score in double figures	Trailed by 24, 51-27, with 16:21 left in second half, won 86-84 vs Texas Tech (01/07/18)
Had five players score in double figures	Jordan Moore (18), Amy Okonkwo (17), Kianna Ray (13), Toree Thompson (13), Lauren Heard (12), Amber Ramirez (10) vs. Kansas (01/17/21)
Had two players score 20+ points	Lauren Heard (19), Yummy Morris (16), Aahliyah Jackson (13), Michelle Berry (10), Tavy Diggs (10) vs Kansas State (02/10/21)
Had three players score 20+ points	Lauren Heard (27), Aja Holmes (20) vs Stephen F. Austin (03/19/15)
Had two players record double-doubles	Jada Butts (21), Veja Hamilton (21), Chelsea Prince (20) vs Texas Tech (01/23/21)
Beat a ranked team	Lauren Heard (23 pts, 11 reb), Michelle Berry (14 pts, 13 reb) W, 73-60, vs #25 West Virginia (01/26/20)
Beat a top-10 team	W, 79-77, vs #7 Texas (01/10/18)
Beat a top-5 team	W, 82-73, at #3 California (12/07/08)
Beat a ranked team on the road	W, 65-63, at #25 Texas (01/03/20)
Won consecutive games against ranked teams	W, 76-74 (OT), at #15 West Virginia (1/13/18), W, 79-77, vs #7 Texas (01/10/18)
Was ranked in AP Poll	No. 25 (02/24/20)
Was ranked in Coaches Poll	No. 25 (02/24/20)
Highest AP Poll ranking	13th (02/23/04)
Highest Coaches Poll ranking	15th (03/01/04)
Received votes in AP Poll	Received (2) votes (01/25/21)
Received votes in Coaches Poll	Received (7) votes (03/02/20)



THE LAST TIME

... A TCU PLAYER

Scored 40+ points	43, Emily Carter vs. SMU (11/17/10)
Scored 30+ points	38, Lauren Heard at West Virginia (02/20/21)
Scored 20+ points	38, Lauren Heard at West Virginia (02/20/21)
Scored 20+ points in half	24 (1st half), Lauren Heard at West Virginia (02/20/21)
Scored 10+ points in 10 or more consecutive games	10, Lauren Heard at Oklahoma State (01/09/21) thru at West Virginia (02/20/21)
Scored 10+ points in 15 or more consecutive games	21, Lauren Heard at SMU (11/20/19) thru at Kansas State (02/19/20)
Scored 20+ points in consecutive games	3, Lauren Heard 27, vs Kansas State (02/10/21) thru 38, at West Virginia (02/20/21)
Scored 20+ points in three or more consecutive games	3, Lauren Heard 27, vs Kansas State (02/10/21) thru 38, at West Virginia (02/20/21)
Scored 20+ points in five or more consecutive games	5, Sandora Irvin vs Oklahoma (12/09/04) thru vs Grambling (12/29/04)
Made 10+ field goals	12, Lauren Heard at West Virginia (02/20/21)
Shot 100% FG (min. 5 att.)	5-of-5, Aahliyah Jackson vs Central Arkansas (11/28/20)
Made 8+ 3-pointers	11, Amber Ramirez vs Southeastern La. (12/10/17)
Made 5+ 3-pointers	6, Aja Holmes vs Kansas State (02/10/21)
Made 15+ free throws	16, Emily Carter vs SMU (11/17/10)
Made 10+ free throws	10, Lauren Heard [10-of-15] at West Virginia (02/20/21)
Had 20+ rebounds	21, Sandora Irvin vs USF (02/09/11)
Had 15+ rebounds	15, Lauren Heard vs. Oklahoma State (02/23/20)
Had a double-double	Lauren Heard [23 points, 11 rebounds] and Michelle Berry [14 points, 13 rebounds], vs. Texas Tech (01/23/21)
Had consecutive double-doubles	3, Amy Okonkwo 36 pts, 14 reb at Arkansas (3/28/19) thru (22 pts, 11 reb) at Arizona (04/03/19)
Had double-double in three or more consecutive games	3, Amy Okonkwo 36 pts, 14 reb at Arkansas (3/28/19) thru (22 pts, 11 reb) at Arizona (04/03/19)
Had double-double in four or more consecutive games	4, Sandora Irvin at Utah (12/19/04) thru vs UT Arlington (01/02/05)
Had double-double in five or more consecutive games	15, Sandora Irvin vs Cincinnati (1/25/04) thru vs Georgia (03/22/04)
Had a triple-double	Helena Sverrisdottir (16 pts, 11 st, 10 reb) vs Oral Roberts (03/17/11) (Three in TCU history)
Had 13+ assists	13, Zahna Medley vs Oklahoma (01/09/13)
Had 10+ assists	10, Kianna Ray vs Duquesne (11/06/18)
Had 7+ steals	8, Lauren Heard at West Virginia (02/16/19)
Had 5+ steals	5, Lauren Heard vs Kansas State (02/10/21)
Had 10+ blocks	10, Latricia Lovings vs Stephen F. Austin (12/04/13)
Had 5+ blocks	5, Jordan Moore vs Kansas State (02/23/19)
Played every minute in a game	Lauren Heard (40:00), at Iowa State (02/13/21)
Played more than 40 min.	Lauren Heard (43:21), Michelle Berry (41:25), vs. Kansas (01/17/21)



LEAD/DEFICIT BREAKDOWNS

	1Q SCORE TCU-OPP	HT SCORE TCU-OPP	3Q SCORE TCU-OPP	FINAL TCU-OPP	LARGEST LEAD	LARGEST DEFICIT	TIMES TIED	LEAD CHANGES
Incarnate Word	17-19 (-2)	38-35 (+3)	61-47 (+14)	84-59 (+25)	25 (84-59, :25, 4Q)	4 (15-19, :09, 1Q)	7	4
Central Arkansas	20-12 (+8)	26-31 (-5)	50-41 (+9)	65-48 (+17)	17 (65-48, :42, 4Q)	7 (26-33, 9:47, 3Q)	6	4
Iowa State	10-28 (-18)	32-54 (-22)	52-75 (-23)	68-91 (-23)	0 (0-0, 10:00, 1Q)	27 (18-45, 4:17, 2Q)	0	0
Lamar	15-11 (+4)	33-27 (+6)	54-45 (+9)	79-53 (+26)	26 (79-53, :24, 4Q)	2 (15-17, 8:11, 2Q)	3	2
Middle Tennessee	12-18 (-6)	34-35 (-1)	61-61 (0)	83-77 (+6)	9 (72-63, 6:56, 4Q)	11 (41-52, 6:25, 3Q)	8	8
at Texas Tech	20-13 (+7)	36-31 (+5)	50-51 (-1)	27-78 (-6)	16 (20-4, 2:13, 1Q)	7 (52-59, 7:06, 4Q)	4	8
Oral Roberts	9-5 (+4)	24-14 (+10)	44-33 (+11)	62-48 (+14)	18 (32-14, 7:48, 3Q)	1 (0-1, 9:23, 1Q)	0	1
Baylor	10-20 (-10)	23-35 (-12)	38-50 (-12)	50-74 (-24)	1 (5-4, 5:47, 1Q)	24 (50-74, 0:04, 4Q)	0	2
Oklahoma State	16-22 (-6)	25-37 (+12)	40-65 (-25)	53-78 (-25)	0 (0-0, 10:00, 1Q)	30 (43-73, 6:32, 4Q)	0	0
at Oklahoma State	8-22 (-14)	22-37 (+15)	36-63 (-27)	50-69 (-19)	0 (0-0, 10:00, 1Q)	27 (36-63, 0:06, 4Q)	3	0
Kansas	25-15 (+10)	36-30 (+6)	49-54 (-5)	81-78, OT (+3)	10 (25-15, 0:03, 1Q)	7 (49-56, 9:40, 4Q)	5	3
at Texas	14-16 (-2)	24-38 (-14)	39-55 (-16)	54-71 (-17)	5 (12-7, 3:31, 1Q)	18 (44-62, 6:46, 4Q)	6	3
Texas Tech	9-10 (-1)	20-24 (-4)	34-39 (-5)	61-53 (+8)	8 (61-53, 0:14, 4Q)	13 (11-24, 4:28, 2Q)	2	5
at Baylor	13-23 (-10)	23-36 (-13)	35-60 (-25)	49-82 (-33)	0 (0-0, 10:00, 1Q)	36 (40-76, 4:32, 4Q)	2	0
West Virginia	17-18 (-1)	35-38 (-3)	45-56 (-11)	70-79 (-9)	7 (11-4, 7:09, 1Q)	14 (42-56, 0:51, 3Q)	7	12
at Kansas	11-11 (0)	33-25 (+8)	55-52 (+3)	72-82 (-10)	13 (31-18, 3:21, 2Q)	11 (77-66, 0:31, 4Q)	2	2
Kansas State	16-14 (+2)	29-34 (-5)	57-49 (+8)	78-67 (+11)	11 (78-67, 0:21, 4Q)	8 (24-32, 1:33, 2Q)	6	9
at Iowa State	18-22 (-4)	39-41 (-2)	64-68 (-4)	81-92 (-11)	8 (11-3, 6:17, 1Q)	16 (76-92, 1:34, 4Q)	8	9
at West Virginia	19-24 (-5)	38-42 (-4)	57-62 (-5)	78-81 (-3)	8 (19-11, 3:01, 1Q)	14 (42-56, 6:22, 3Q)	4	4
Oklahoma	13-16 (-3)	21-39 (-18)	39-55 (-16)	60-76 (-16)	2 (6-4, 5:55, 1Q)	26 (25-51, 6:09, 3Q)	2	2
at Kansas State								
at Oklahoma								
Texas								



CAROLINE GERMOND

5-7 | G | JR.

ANGERS, FRANCE | SOUTH PLAINS COLLEGE



2020-21 GAME-BY-GAME STATISTICS

DATE	OPPONENT	MIN	FG	%	3FG	%	FT	%	O	D	T	PF	A	TO	B	S	PT
N25	Incarnate Word	28	4-12	.333	1-4	.250	0-0	.000	0	2	2	4	3	1	0	6	9
N28	Central Arkansas	25	1-5	.200	1-3	.333	0-0	.000	1	0	1	3	2	2	0	3	3
D2	Iowa State	28	2-5	.400	1-3	.333	1-2	.500	1	2	3	3	4	0	0	1	6
D9	Lamar	18	1-2	.500	0-1	.000	0-0	.000	0	1	1	3	4	0	0	0	2
D13	Middle Tennessee	31	4-10	.400	2-4	.500	0-0	.000	0	1	1	2	7	2	0	1	10
D19	at Texas Tech	30	1-7	.143	1-5	.200	0-0	.000	2	1	3	4	4	1	0	0	3
D22	Oral Roberts	27	3-6	.500	0-1	.000	0-0	.000	1	2	3	2	5	3	0	2	6
J2	Baylor	24	1-5	.200	0-1	.000	0-0	.000	0	0	0	2	3	0	0	0	2
J6	Oklahoma State	23	0-3	.000	0-2	.000	0-0	.000	0	2	2	2	2	1	1	1	0
J9	at Oklahoma State	20	0-4	.000	0-2	.000	0-0	.000	0	2	2	0	2	4	0	0	0
J17	Kansas	28	3-10	.300	1-5	.200	0-0	.000	0	2	2	4	8	2	1	0	7
J20	at Texas	39	2-8	.250	0-2	.000	2-2	1.000	1	3	4	2	3	6	0	0	6
J23	Texas Tech	30	2-9	.222	0-4	.000	0-0	.000	0	5	5	4	4	1	1	1	4
J26	at Baylor	17	1-3	.333	0-1	.000	0-0	.000	1	1	2	3	3	1	0	1	2
J30	West Virginia	23	1-4	.250	0-1	.000	0-0	.000	0	0	0	3	4	3	0	1	2
F7	at Kansas	26	2-6	.333	1-2	.500	0-0	.000	1	2	3	4	1	3	0	0	5
F10	Kansas State	16	0-4	.000	0-3	.000	0-0	.000	0	1	1	2	2	0	0	0	0
F13	at Iowa State	25	2-6	.333	1-3	.333	0-0	.000	0	1	1	3	4	0	0	1	5
F20	at West Virginia	23	1-4	.250	1-3	.333	1-2	.500	1	2	3	2	7	4	0	0	4
F24	Oklahoma	17	1-3	.333	1-2	.500	0-0	.000	0	2	2	2	0	2	0	0	3
M1	at Kansas State																
M4	at Oklahoma																
M7	Texas																

SEASON/CAREER HIGHS

POINTS	2020-21:	10	Middle Tennessee (12/13/20)
Career:	10	Middle Tennessee (12/13/20)	

MINUTES	2020-21:	39	at Texas (01/20/21)
Career:	39	at Texas (01/20/21)	

FIELD GOALS	2020-21:	4 (2x) last, Middle Tennessee (12/13/20)
Career:	4 (2x) last, Middle Tennessee (12/13/20)	

3-POINT FIELD GOALS	2020-21:	2	Middle Tennessee (12/13/20)
Career:	2	Middle Tennessee (12/13/20)	

FREE THROWS	2020-21:	2	at Texas (01/20/21)
Career:	2	at Texas (01/20/21)	

REBOUNDS	2020-21:	5	Texas Tech (01/23/21)
Career:	5	Texas Tech (01/23/21)	

ASSISTS	2020-21:	8	Kansas (01/17/21)
Career:	8	Kansas (01/17/21)	

BLOCKS	2020-21:	1 (3x) last, Texas Tech (01/23/21)
Career:	1 (3x) last, Texas Tech (01/23/21)	

STEALS	2020-21:	6	Incarnate Word (11/25/20)
Career:	6	Incarnate Word (11/25/20)	

CAROLINE GERMOND'S CAREER STATISTICS

	GP	GS	MIN	AVG.	FG	ATT	PCT	3FG	ATT	PCT	FT	ATT	PCT	OFF	DEF	TOT	AVG.	PF	D	AST	A/G	TO	B	S	TP	AVG.
2020-21	20	13	498	24.9	32	116	.276	11	52	.212	4	6	.667	9	32	41	2.1	54	0	72	3.6	36	3	18	79	4.0
TOTAL	20	13	498	24.9	32	116	.276	11	52	.212	4	6	.667	9	32	41	2.1	54	0	72	3.6	36	3	18	79	4.0



AAHLIYAH JACKSON

5-10 | G | GR.

FT. SMITH, ARK. | NORTHSIDE HIGH SCHOOL (TEXAS A&M)

1



2020-21 GAME-BY-GAME STATISTICS

DATE	OPPONENT	MIN	FG	%	3FG	%	FT	%	O	D	T	PF	A	TO	B	S	PT
N25	Incarinate Word	29	2-7	.286	0-1	.000	3-3	1.000	2	1	3	1	3	2	0	3	7
N28	Central Arkansas	25	5-5	1.000	1-1	1.000	2-6	.333	1	1	2	4	2	1	1	1	13
D2	Iowa State	28	1-6	.167	1-2	.500	0-0	.000	0	4	4	2	3	2	1	0	3
D9	Lamar	29	4-6	.667	0-0	.000	5-6	.833	1	3	4	2	0	1	2	1	13
D13	Middle Tennessee	24	0-5	.000	0-2	.000	1-2	.500	1	1	2	4	2	2	0	1	1
D19	at Texas Tech	21	1-5	.200	0-1	.000	0-0	.000	0	1	1	4	1	1	0	0	2
D22	Oral Roberts	24	2-4	.500	1-1	1.000	0-2	.000	0	0	0	1	1	1	2	2	5
J2	Baylor	32	1-6	.167	1-4	.250	2-2	1.000	1	3	4	2	0	4	0	3	5
J6	Oklahoma State	26	1-7	.143	1-5	.200	0-0	.000	0	1	1	0	1	1	0	0	3
J9	at Oklahoma State	13	1-5	.200	1-4	.250	0-0	.000	1	1	2	2	0	1	0	0	3
J17	Kansas	39	4-12	.333	4-11	.364	1-2	.500	1	3	4	4	4	1	1	2	13
J20	at Texas	20	1-2	.500	1-2	.500	2-4	.500	0	2	2	3	1	1	0	0	5
J23	Texas Tech	36	1-8	.125	0-3	.000	0-0	.000	2	6	8	3	0	0	0	0	2
J26	at Baylor	28	0-4	.000	0-2	.000	0-0	.000	1	5	6	1	1	1	0	0	0
J30	West Virginia	37	3-6	.500	3-4	.750	0-0	.000	1	5	6	3	1	1	1	1	9
F7	at Kansas	25	3-5	.600	3-5	.600	1-2	.500	0	0	0	3	1	1	0	0	10
F10	Kansas State	35	1-6	.167	1-6	.167	0-0	.000	0	2	2	0	1	2	1	1	3
F13	at Iowa State	23	3-7	.429	3-7	.429	1-2	.500	1	3	4	5	0	1	1	1	10
F20	at West Virginia	-	-	-	-	-	-	-	DNP	-	-	-	-	-	-	-	-
F24	Oklahoma	21	2-7	.286	1-3	.333	0-2	.000	1	4	5	3	2	1	0	0	5
M1	at Kansas State																
M4	at Oklahoma																
M7	Texas																

SEASON/CAREER HIGHS

POINTS	2020-21:	13 (3x)	last, Kansas (01/17/21)
Career:	13 (3x)	last, Kansas (01/17/21)	

MINUTES	2020-21:	39	Kansas (01/17/21)
Career:	39	Kansas (01/17/21)	

FIELD GOALS	2020-21:	5	Central Arkansas (11/28/20)
Career:	5	Central Arkansas (11/28/20)	

3-POINT FIELD GOALS	2020-21:	4	Kansas (01/17/21)
Career:	4	Kansas (01/17/21)	

FREE THROWS	2020-21:	5	Lamar (12/09/20)
Career:	7	PVAMU (12/21/18)*	

REBOUNDS	2020-21:	8	Texas Tech (01/23/21)
Career:	8	Texas Tech (01/23/21)	

ASSISTS	2020-21:	4	Kansas (01/17/21)
Career:	4	Kansas (01/17/21)	

BLOCKS	2020-21:	2 (2x)	last, Oral Roberts (12/22/20)
Career:	2 (2x)	last, Oral Roberts (12/22/20)	

STEALS	2020-21:	3 (2x)	last, Baylor (01/02/21)
Career:	3 (3x)	last, Baylor (01/02/21)	

* - at Texas A&M

AAHLIYAH JACKSON'S CAREER STATISTICS (TCU STATISTICS ONLY)

	GP	GS	MIN	AVG. FG	ATT	PCT	3FG	ATT	PCT	FT	ATT	PCT	OFF	DEF	TOT	AVG.	PF	D	AST	A/G	TO	B	S	TP	AVG.
2020-21	19	19	515	27.1	36	.319	22	64	.344	18	33	.545	14	46	60	3.2	47	1	24	1.3	25	10	16	112	5.9
TOTAL	19	19	515	27.1	36	.319	22	64	.344	18	33	.545	14	46	60	3.2	47	1	24	1.3	25	10	16	112	5.9



AMARI CONN

5-7 | G | FR.

KANSAS CITY, MO. | LINCOLN PREP

4



2020-21 GAME-BY-GAME STATISTICS

DATE	OPPONENT	MIN	FG	%	3FG	%	FT	%	O	D	T	PF	A	TO	B	S	PT
N25	Incarinate Word	5	1-2	.500	0-1	.000	0-0	.000	0	1	1	0	0	1	0	0	2
N28	Central Arkansas	3	1-1	1.000	0-0	.000	0-0	.000	0	2	2	0	0	0	0	0	2
D2	Iowa State	-	-	-	-	-	-	-	DNP	-	-	-	-	-	-	-	-
D9	Lamar	2	1-1	1.000	1-1	1.000	0-0	.000	0	0	0	0	0	1	0	0	3
D13	Middle Tennessee	-	-	-	-	-	-	-	DNP	-	-	-	-	-	-	-	-
D19	at Texas Tech	-	-	-	-	-	-	-	DNP	-	-	-	-	-	-	-	-
D22	Oral Roberts	1	0-0	.000	0-0	.000	0-0	.000	0	1	1	0	0	0	0	0	0
J2	Baylor	-	-	-	-	-	-	-	DNP	-	-	-	-	-	-	-	-
J6	Oklahoma State	10	1-3	.333	1-3	.333	0-0	.000	0	2	2	0	1	2	1	1	3
J9	at Oklahoma State	13	2-3	.667	2-3	.667	0-0	.000	0	1	1	1	0	1	0	0	6
J17	Kansas	-	-	-	-	-	-	-	DNP	-	-	-	-	-	-	-	-
J20	at Texas	-	-	-	-	-	-	-	DNP	-	-	-	-	-	-	-	-
J23	Texas Tech	-	-	-	-	-	-	-	DNP	-	-	-	-	-	-	-	-
J26	at Baylor	5	0-0	.000	0-0	.000	0-0	.000	0	0	0	1	0	0	0	0	0
J30	West Virginia	-	-	-	-	-	-	-	DNP	-	-	-	-	-	-	-	-
F7	at Kansas	1	0-0	.000	0-0	.000	0-0	.000	0	0	0	0	0	0	0	0	0
F10	Kansas State	-	-	-	-	-	-	-	DNP	-	-	-	-	-	-	-	-
F13	at Iowa State	-	-	-	-	-	-	-	DNP	-	-	-	-	-	-	-	-
F20	at West Virginia	4	0-1	.000	0-0	.000	0-0	.000	0	0	0	1	0	0	0	1	0
F24	Oklahoma	17	1-1	1.000	1-1	1.000	1-2	.500	0	0	0	0	0	0	0	0	4
M1	at Kansas State																
M4	at Oklahoma																
M7	Texas																

SEASON/CAREER HIGHS

POINTS

2020-21: 6 at Oklahoma State (01/09/21)
 Career: 6 at Oklahoma State (01/09/21)

MINUTES

2020-21: 17 Oklahoma (02/24/21)
 Career: 17 Oklahoma (02/24/21)

FIELD GOALS

2020-21: 2 at Oklahoma State (01/09/21)
 Career: 2 at Oklahoma State (01/09/21)

3-POINT FIELD GOALS

2020-21: 2 at Oklahoma State (01/09/21)
 Career: 2 at Oklahoma State (01/09/21)

FREE THROWS

2020-21: 1 Oklahoma (02/24/21)
 Career: 1 Oklahoma (02/24/21)

REBOUNDS

2020-21: 2 (2x) last, Oklahoma State (01/06/21)
 Career: 2 (2x) last, Oklahoma State (01/06/21)

ASSISTS

2020-21: 1 Oklahoma State (01/06/21)
 Career: 1 Oklahoma State (01/06/21)

BLOCKS

2020-21: 1 Oklahoma State (01/06/21)
 Career: 1 Oklahoma State (01/06/21)

STEALS

2020-21: 1 (2x) last, at West Virginia (02/20/21)
 Career: 1 (2x) last, at West Virginia (02/20/21)

AMARI CONN'S CAREER STATISTICS

	GP	GS	MIN	AVG. FG	ATT	PCT	3FG	ATT	PCT	FT	ATT	PCT	OFF	DEF	TOT	AVG.	PF	D	AST	A/G	TO	B	S	TP	AVG.	
2020-21	10	0	61	6.1	7	12	.583	5	9	.556	1	2	.500	0	7	7	0.7	3	0	1	0.1	5	1	2	20	2.0
TOTAL	10	0	61	6.1	7	12	.583	5	9	.556	1	2	.500	0	7	7	0.7	3	0	1	0.1	5	1	2	20	2.0



YUMMY MORRIS

6-3 | F | JR.**NORTH LITTLE ROCK, ARK. | NORTH LITTLE ROCK HIGH SCHOOL****5****2019-20 GAME-BY-GAME STATISTICS**

DATE	OPPONENT	MIN	FG	%	3FG	%	FT	%	O	D	T	PF	A	TO	B	S	PT
N25	Incarnate Word	26	12-17	.706	0-0	.000	2-2	1.000	2	4	6	3	0	1	0	2	26
N28	Central Arkansas	22	3-5	.600	0-0	.000	0-0	.000	4	5	9	2	2	2	1	1	6
D2	Iowa State	16	0-4	.000	0-0	.000	2-2	1.000	0	3	3	1	0	2	3	0	2
D9	Lamar	23	8-11	.727	0-0	.000	4-6	.667	2	2	4	1	0	2	0	0	20
D13	Middle Tennessee	28	1-4	.250	0-0	.000	3-4	.750	3	3	6	3	1	0	2	0	5
D19	at Texas Tech	18	3-8	.375	0-0	.000	0-0	.000	2	5	7	1	1	2	1	0	6
D22	Oral Roberts	23	7-15	.467	0-0	.000	1-1	1.000	1	7	8	2	3	2	4	0	15
J2	Baylor	20	4-6	.667	0-0	.000	0-0	.000	1	2	3	4	0	2	0	0	8
J6	Oklahoma State	25	2-7	.286	0-0	.000	2-2	1.000	1	6	7	1	2	3	1	0	6
J9	at Oklahoma State	16	1-4	.250	0-0	.000	0-0	.000	0	1	1	4	1	3	0	1	2
J17	Kansas	34	6-10	.600	0-0	.000	4-4	1.000	2	6	8	4	0	3	2	1	16
J20	at Texas	14	3-4	.750	0-0	.000	0-0	.000	1	1	2	4	0	2	0	1	6
J23	Texas Tech	10	1-2	.500	0-0	.000	0-0	.000	0	3	3	0	0	0	0	0	2
J26	at Baylor	22	3-7	.429	0-0	.000	0-0	.000	2	3	5	1	0	2	0	0	6
J30	West Virginia	18	4-6	.667	0-0	.000	0-0	.000	0	4	4	3	1	1	0	0	8
F7	at Kansas	15	2-4	.500	0-0	.000	0-0	.000	2	4	6	3	0	2	3	1	4
F10	Kansas State	12	2-4	.500	0-0	.000	0-0	.000	1	2	3	3	1	1	0	1	4
F13	at Iowa State	7	1-4	.250	0-0	.000	2-2	1.000	1	2	3	1	0	1	0	0	4
F20	at West Virginia	17	1-3	.333	0-0	.000	0-0	.000	0	1	1	2	2	2	1	1	2
F24	Oklahoma	13	2-5	.400	0-0	.000	3-3	1.000	3	1	4	0	0	1	0	0	7
M1	at Kansas State																
M4	at Oklahoma																
M7	Texas																

SEASON/CAREER HIGHS**POINTS**

2020-21:	26	Incarnate Word (11/25/20)
Career:	26	Incarnate Word (11/25/20)

MINUTES

2020-21:	34	Kansas (01/17/21)
Career:	34	Kansas (01/17/21)

FIELD GOALS

2020-21:	12	Incarnate Word (11/25/20)
Career:	12	Incarnate Word (11/25/20)

3-POINT FIELD GOALS

2020-21:	--	--
Career:	--	--

FREE THROWS

2020-21:	4 (2x)	last, Kansas (01/17/21)
Career:	6	Southern (12/16/18)

REBOUNDS

2020-21:	9	Central Arkansas (11/28/20)
Career:	9 (2x)	last, Central Arkansas (11/28/20)

ASSISTS

2020-21:	3	Oral Roberts (12/22/20)
Career:	3	Oral Roberts (12/22/20)

BLOCKS

2020-21:	4	Oral Roberts (12/22/20)
Career:	4 (2x)	Oral Roberts (12/22/20)

STEALS

2020-21:	2	Incarnate Word (11/25/20)
Career:	3	MVSU (11/11/18)

YUMMY MORRIS' CAREER STATISTICS

	GP	GS	MIN	AVG.	FG	ATT	PCT	3FG	ATT	PCT	FT	ATT	PCT	OFF	DEF	TOT	AVG.	PF	D	AST	A/G	TO	B	S	TP	AVG.
2018-19	25	0	170	6.8	24	51	.471	0	0	.000	30	41	.732	19	34	53	2.1	26	0	3	0.1	22	18	6	78	3.1
2019-20	29	0	255	8.8	37	86	.430	0	0	.000	14	20	.700	37	39	76	2.6	46	0	7	0.2	27	16	13	88	3.0
2020-21	20	14	379	19.0	66	130	.508	0	0	.000	23	26	.885	28	65	93	4.7	43	0	14	0.7	34	18	9	155	7.8
TOTAL	74	14	804	10.9	127	267	.476	0	0	.000	67	87	.770	84	138	222	3.0	115	0	24	0.3	83	52	28	321	4.3



EMMA SCHMIDT

5-9 | G | SR.

WAUKEE, IOWA | WAUKEE HIGH SCHOOL

10



2020-21 GAME-BY-GAME STATISTICS

DATE	OPPONENT	MIN	FG	%	3FG	%	FT	%	O	D	T	PF	A	TO	B	S	PT
N25	Incarinate Word	2	0-0	.000	0-0	.000	0-0	.000	0	0	0	1	0	0	0	0	0
N28	Central Arkansas	1	0-0	.000	0-0	.000	0-2	.000	0	2	2	0	0	0	0	0	0
D2	Iowa State	-	-	-	-	-	-	-	DNP	-	-	-	-	-	-	-	-
D9	Lamar	1	0-0	.000	0-0	.000	0-0	.000	1	0	1	0	0	0	0	0	0
D13	Middle Tennessee	-	-	-	-	-	-	-	DNP	-	-	-	-	-	-	-	-
D19	at Texas Tech	-	-	-	-	-	-	-	DNP	-	-	-	-	-	-	-	-
D22	Oral Roberts	-	-	-	-	-	-	-	DNP	-	-	-	-	-	-	-	-
J2	Baylor	-	-	-	-	-	-	-	DNP	-	-	-	-	-	-	-	-
J6	Oklahoma State	-	-	-	-	-	-	-	DNP	-	-	-	-	-	-	-	-
J9	at Oklahoma State	-	-	-	-	-	-	-	DNP	-	-	-	-	-	-	-	-
J17	Kansas	-	-	-	-	-	-	-	DNP	-	-	-	-	-	-	-	-
J20	at Texas	-	-	-	-	-	-	-	DNP	-	-	-	-	-	-	-	-
J23	Texas Tech	-	-	-	-	-	-	-	DNP	-	-	-	-	-	-	-	-
J26	at Baylor	-	-	-	-	-	-	-	DNP	-	-	-	-	-	-	-	-
J30	West Virginia	-	-	-	-	-	-	-	DNP	-	-	-	-	-	-	-	-
F7	at Kansas	-	-	-	-	-	-	-	DNP	-	-	-	-	-	-	-	-
F10	Kansas State	-	-	-	-	-	-	-	DNP	-	-	-	-	-	-	-	-
F13	at Iowa State	-	-	-	-	-	-	-	DNP	-	-	-	-	-	-	-	-
F13	at Iowa State	-	-	-	-	-	-	-	DNP	-	-	-	-	-	-	-	-
F20	at West Virginia	-	-	-	-	-	-	-	DNP	-	-	-	-	-	-	-	-
F24	Oklahoma	1	0-1	.000	0-1	.000	0-0	.000	0	0	0	0	0	0	0	0	0
M1	at Kansas State	-	-	-	-	-	-	-	-	-	-	-	-	-	-	-	-
M4	at Oklahoma	-	-	-	-	-	-	-	-	-	-	-	-	-	-	-	-
M7	Texas	-	-	-	-	-	-	-	-	-	-	-	-	-	-	-	-

SEASON/CAREER HIGHS

POINTS	2020-21:	2020-21:	2020-21:
2020-21:	--	--	--
Career:	--	--	--

MINUTES	2020-21:	2020-21:	2020-21:
2020-21:	2	Incarinate Word (11/25/20)	
Career:	2	Incarinate Word (11/25/20)	

FIELD GOALS	2020-21:	2020-21:
2020-21:	--	--
Career:	--	--

3-POINT FIELD GOALS	2020-21:	2020-21:
2020-21:	--	--
Career:	--	--

FREE THROWS	2020-21:	2020-21:
2020-21:	--	--
Career:	--	--

REBOUNDS	2020-21:	2020-21:
2020-21:	2	Central Arkansas (11/28/20)
Career:	2	Central Arkansas (11/28/20)

ASSISTS	2020-21:	2020-21:
2020-21:	--	--
Career:	--	--

BLOCKS	2020-21:	2020-21:
2020-21:	--	--
Career:	--	--

STEALS	2020-21:	2020-21:
2020-21:	--	--
Career:	--	--

EMMA SCHMIDT'S CAREER STATISTICS

	GP	GS	MIN	AVG.	FG	ATT	PCT	3FG	ATT	PCT	FT	ATT	PCT	OFF	DEF	TOT	AVG.	PF	D	AST	A/G	TO	B	S	TP	AVG.
2020-21	4	0	5	1.3	0	1	.000	0	1	.000	0	2	.000	1	2	3	0.8	1	0	0	0.0	0	0	0	0	0.0
TOTAL	4	0	5	1.3	0	1	.000	0	1	.000	0	2	.000	1	2	3	0.8	1	0	0	0.0	0	0	0	0.0	



AALIYAH MORGAN

6-1 | F | FR.

TYLER, TEXAS | LEE HIGH SCHOOL

12



2020-21 GAME-BY-GAME STATISTICS

DATE	OPPONENT	MIN	FG	%	3FG	%	FT	%	O	D	T	PF	A	TO	B	S	PT
N25	Incarnate Word	6	0-0	.000	0-0	.000	0-0	.000	0	2	2	0	1	1	0	0	0
N28	Central Arkansas	3	0-0	.000	0-0	.000	0-0	.000	0	0	0	1	0	1	0	0	0
D2	Iowa State	2	0-0	.000	0-0	.000	0-0	.000	0	0	0	0	0	0	0	0	0
D9	Lamar	4	0-0	.000	0-0	.000	0-0	.000	0	2	2	0	1	0	0	0	0
D13	Middle Tennessee	-	-	-	-	-	-	-	DNP	-	-	-	-	-	-	-	-
D19	at Texas Tech	-	-	-	-	-	-	-	DNP	-	-	-	-	-	-	-	-
D22	Oral Roberts	-	-	-	-	-	-	-	DNP	-	-	-	-	-	-	-	-
J2	Baylor	-	-	-	-	-	-	-	DNP	-	-	-	-	-	-	-	-
J6	Oklahoma State	-	-	-	-	-	-	-	DNP	-	-	-	-	-	-	-	-
J9	at Oklahoma State	-	-	-	-	-	-	-	DNP	-	-	-	-	-	-	-	-
J17	Kansas	-	-	-	-	-	-	-	DNP	-	-	-	-	-	-	-	-
J20	at Texas	-	-	-	-	-	-	-	DNP	-	-	-	-	-	-	-	-
J23	Texas Tech	-	-	-	-	-	-	-	DNP	-	-	-	-	-	-	-	-
J26	at Baylor	6	0-2	.000	0-2	.000	0-0	.000	0	0	0	0	1	0	0	0	0
J30	West Virginia	-	-	-	-	-	-	-	DNP	-	-	-	-	-	-	-	-
F7	at Kansas	-	-	-	-	-	-	-	DNP	-	-	-	-	-	-	-	-
F10	Kansas State	-	-	-	-	-	-	-	DNP	-	-	-	-	-	-	-	-
F13	at Iowa State	-	-	-	-	-	-	-	DNP	-	-	-	-	-	-	-	-
F20	at West Virginia	1	0-0	.000	0-0	.000	0-0	.000	0	0	0	0	0	0	0	0	0
F24	Oklahoma	1	0-0	.000	0-0	.000	0-0	.000	0	0	0	0	0	0	0	0	0
M1	at Kansas State	-	-	-	-	-	-	-	-	-	-	-	-	-	-	-	-
M4	at Oklahoma	-	-	-	-	-	-	-	-	-	-	-	-	-	-	-	-
M7	Texas	-	-	-	-	-	-	-	-	-	-	-	-	-	-	-	-

SEASON/CAREER HIGHS

POINTS

2020-21:	--	--
Career:	--	--

MINUTES

2020-21:	6 (2x)	last, at Baylor (01/26/21)
Career:	6 (2x)	last, at Baylor (01/26/21)

FIELD GOALS

2020-21:	--	--
Career:	--	--

3-POINT FIELD GOALS

2020-21:	--	--
Career:	--	--

FREE THROWS

2020-21:	--	--
Career:	--	--

REBOUNDS

2020-21:	2 (2x)	last, Lamar (12/09/20)
Career:	2 (2x)	last, Lamar (12/09/20)

ASSISTS

2020-21:	1 (3x)	last, at Baylor (01/26/21)
Career:	1 (3x)	last, at Baylor (01/26/21)

BLOCKS

2020-21:	--	--
Career:	--	--

STEALS

2020-21:	--	--
Career:	--	--

AALIYAH MORGAN'S CAREER STATISTICS

	GP	GS	MIN	AVG. FG	ATT	PCT	3FG	ATT	PCT	FT	ATT	PCT	OFF	DEF	TOT	AVG.	PF	D	AST	A/G	TO	B	S	TP	AVG.	
2020-21	7	0	23	3.3	0	2	.000	0	2	.000	0	0	.000	0	4	4	0.6	1	0	3	0.4	2	0	0	0	0.0
TOTAL	7	0	23	3.3	0	2	.000	0	2	.000	0	0	.000	0	4	4	0.6	1	0	3	0.4	2	0	0	0	0.0



TAVY DIGGS

6-2 | G/F | SO.

RICHARDSON, TEXAS | PLANO EAST HIGH SCHOOL

13



2019-20 GAME-BY-GAME STATISTICS

DATE	OPPONENT	MIN	FG	%	3FG	%	FT	%	O	D	T	PF	A	TO	B	S	PT
N25	Incarinate Word	16	4-5	.800	0-0	.000	1-2	.500	2	6	8	4	4	2	0	1	9
N28	Central Arkansas	21	3-5	.600	0-0	.000	1-1	1.000	2	4	6	1	3	2	0	1	7
D2	Iowa State	35	9-17	.529	0-0	.000	1-1	1.000	2	0	2	5	2	2	1	1	19
D9	Lamar	30	2-6	.333	0-0	.000	0-0	.000	0	7	7	0	4	2	2	0	4
D13	Middle Tennessee	26	8-14	.571	2-2	1.000	0-0	.000	0	4	4	2	0	1	0	1	18
D19	at Texas Tech	28	4-10	.400	0-1	.000	1-2	.500	0	1	1	4	2	1	0	1	9
D22	Oral Roberts	17	0-1	.000	0-0	.000	1-2	.500	0	4	4	1	0	0	0	2	1
J2	Baylor	15	2-8	.250	0-1	.000	1-1	1.000	1	1	2	4	2	1	2	1	5
J6	Oklahoma State	31	4-10	.400	0-0	.000	0-2	.000	1	4	5	0	1	1	0	0	8
J9	at Oklahoma State	14	1-4	.250	0-0	.000	0-0	.000	3	1	4	2	1	1	0	0	2
J17	Kansas	16	5-7	.714	0-1	.000	0-0	.000	0	2	2	2	0	4	0	0	10
J20	at Texas	20	2-6	.333	0-1	.000	3-4	.750	2	3	5	5	1	0	0	0	7
J23	Texas Tech	16	1-1	1.000	0-0	.000	0-0	.000	0	2	2	3	0	2	0	1	2
J26	at Baylor	13	2-4	.500	0-0	.000	0-0	.000	1	1	2	4	0	2	0	0	4
J30	West Virginia	4	0-0	.000	0-0	.000	0-0	.000	0	0	0	1	0	1	0	0	0
F7	at Kansas	14	4-10	.400	0-2	.000	0-0	.000	1	1	2	4	2	1	0	1	8
F10	Kansas State	5	1-3	.333	0-0	.000	0-0	.000	0	1	1	0	3	0	0	1	2
F13	at Iowa State	22	7-11	.636	0-0	.000	2-4	.500	1	2	3	5	0	1	0	0	16
F20	at West Virginia	30	6-9	.667	0-0	.000	1-2	.500	2	5	7	3	2	2	0	0	13
F24	Oklahoma	34	7-10	.700	0-1	.000	3-4	.750	1	3	4	0	4	3	0	1	17
M1	at Kansas State																
M4	at Oklahoma																
M7	Texas																

SEASON/CAREER HIGHS

POINTS	2020-21:	19	Iowa State (12/02/20)
Career:	19	Iowa State (12/02/20)	

MINUTES	2020-21:	35	Iowa State (12/02/20)
Career:	35	Iowa State (12/02/20)	

FIELD GOALS	2020-21:	9	Iowa State (12/02/20)
Career:	9	Iowa State (12/02/20)	

3-POINT FIELD GOALS	2020-21:	2	Middle Tennessee (12/13/20)
Career:	2	Middle Tennessee (12/13/20)	

FREE THROWS	2020-21:	3 (2x)	last, Oklahoma (02/24/21)
Career:	3 (2x)	last, Oklahoma (02/24/21)	

REBOUNDS	2020-21:	8	Incarinate Word (11/25/20)
Career:	8	Incarinate Word (11/25/20)	

ASSISTS	2020-21:	4 (3x)	last, Oklahoma (02/24/21)
Career:	4 (3x)	last, Oklahoma (02/24/21)	

BLOCKS	2020-21:	2 (2x)	last, Baylor (01/02/21)
Career:	2 (2x)	last, Baylor (01/02/21)	

STEALS	2020-21:	2	Oral Roberts (12/22/20)
Career:	2	Oral Roberts (12/22/20)	

TAVY DIGGS' CAREER STATISTICS

	GP	GS	MIN	AVG. FG	ATT	PCT	3FG	ATT	PCT	FT	ATT	PCT	OFF	DEF	TOT	AVG.	PF	D	AST	A/G	TO	B	S	TP	AVG.	
2019-20	12	0	40	3.3	5	11	.455	0	0	.000	1	3	.333	2	12	14	1.2	6	0	0	0.0	8	1	1	11	0.9
2020-21	20	7	407	20.4	72	141	.511	2	9	.222	15	25	.600	19	52	71	3.6	50	3	31	1.6	29	5	12	161	8.1
TOTAL	32	7	447	14.0	77	152	.507	2	9	.222	16	28	.571	21	64	85	2.7	56	3	31	1.0	37	6	13	172	5.4



AJA HOLMES

5-8 | G | FR.

CIBOLO, TEXAS | STEELE HIGH SCHOOL

15



2020-21 GAME-BY-GAME STATISTICS

DATE	OPPONENT	MIN	FG	%	3FG	%	FT	%	O	D	T	PF	A	TO	B	S	PT
N25	Incarnate Word	17	0-3	.000	0-3	.000	0-0	.000	0	1	1	0	0	0	0	1	0
N28	Central Arkansas	17	0-6	.000	0-5	.000	0-0	.000	0	1	1	1	0	1	0	2	0
D2	Iowa State	14	0-2	.000	0-2	.000	0-0	.000	0	2	2	1	1	1	0	0	0
D9	Lamar	9	1-2	.500	0-1	.000	0-0	.000	0	0	0	0	1	0	0	1	2
D13	Middle Tennessee	12	3-6	.500	3-6	.500	0-0	.000	0	0	0	2	1	0	0	0	9
D19	at Texas Tech	7	1-2	.500	1-2	.500	0-0	.000	0	0	0	1	0	0	0	0	3
D22	Oral Roberts	9	0-2	.000	0-2	.000	0-0	.000	0	0	0	1	0	0	0	0	0
J2	Baylor	15	1-2	.500	1-2	.500	0-0	.000	0	0	0	0	0	0	0	0	3
J6	Oklahoma State	24	5-11	.455	4-10	.400	0-0	.000	0	3	3	4	2	2	0	0	14
J9	at Oklahoma State	16	0-4	.000	0-4	.000	0-0	.000	0	1	1	0	0	0	0	0	0
J17	Kansas	13	2-3	.667	2-3	.667	0-0	.000	0	0	0	0	0	1	0	0	6
J20	at Texas	12	1-3	.333	1-3	.333	0-0	.000	0	0	0	0	0	0	0	0	3
J23	Texas Tech	23	4-7	.571	4-7	.571	2-2	1.000	1	1	2	1	0	1	0	0	14
J26	at Baylor	25	1-4	.250	1-3	.333	0-0	.000	0	1	1	0	0	1	0	1	3
J30	West Virginia	19	1-6	.167	1-6	.167	2-3	.667	0	1	1	1	0	1	0	0	5
F7	at Kansas	25	3-6	.500	3-6	.500	0-0	.000	0	2	2	3	0	0	0	0	9
F10	Kansas State	28	6-12	.500	6-12	.500	2-2	1.000	0	0	0	2	0	0	0	0	20
F13	at Iowa State	32	2-5	.400	2-4	.500	0-0	.000	0	1	1	2	0	1	0	0	6
F20	at West Virginia	33	2-7	.286	2-7	.286	3-3	1.000	0	0	0	1	4	2	0	2	9
F24	Oklahoma	27	2-11	.182	2-11	.182	0-0	.000	0	1	1	1	1	1	1	0	6
M1	at Kansas State																
M4	at Oklahoma																
M7	Texas																

SEASON/CAREER HIGHS

POINTS		
2020-21:	20	Kansas State (02/10/21)
Career:	20	Kansas State (02/10/21)
MINUTES		
2020-21:	32	at Iowa State (02/13/21)
Career:	32	at Iowa State (02/13/21)
FIELD GOALS		
2020-21:	6	Kansas State (02/10/21)
Career:	6	Kansas State (02/10/21)
3-POINT FIELD GOALS		
2020-21:	6	Kansas State (02/10/21)
Career:	6	Kansas State (02/10/21)
FREE THROWS		
2020-21:	3	at West Virginia (02/20/21)
Career:	3	at West Virginia (02/20/21)
REBOUNDS		
2020-21:	3	Oklahoma State (01/06/21)
Career:	3	Oklahoma State (01/06/21)
ASSISTS		
2020-21:	4	at West Virginia (02/20/21)
Career:	4	at West Virginia (02/20/21)
BLOCKS		
2020-21:	1	Oklahoma (02/24/21)
Career:	1	Oklahoma (02/24/21)
STEALS		
2020-21:	2 (2x)	last, at West Virginia (02/20/21)
Career:	2 (2x)	last, at West Virginia (02/20/21)

AJA HOLMES' CAREER STATISTICS

	GP	GS	MIN	AVG. FG	ATT	PCT	3FG	ATT	PCT	FT	ATT	PCT	OFF	DEF	TOT	AVG.	PF	D	AST	A/G	TO	B	S	TP	AVG.	
2020-21	20	1	377	18.9	35	104	.337	33	99	.333	9	10	.900	1	15	16	0.8	21	0	10	0.5	12	1	7	112	5.6
TOTAL	20	1	377	18.9	35	104	.337	33	99	.333	9	10	.900	1	15	16	0.8	21	0	10	0.5	12	1	7	112	5.6



LAUREN HEARD

5-9 | G | SR.

DENTON, TEXAS | GUYER HIGH SCHOOL

20



2019-20 GAME-BY-GAME STATISTICS

DATE	OPPONENT	MIN	FG	%	3FG	%	FT	%	O	D	T	PF	A	TO	B	S	PT
N25	Incarinate Word	30	8-17	.471	1-4	.250	5-5	1.000	0	3	3	2	5	4	0	5	22
N28	Central Arkansas	33	5-15	.333	0-4	.000	7-9	.778	1	2	3	3	7	5	1	3	17
D2	Iowa State	31	5-14	.357	1-3	.333	7-12	.583	0	6	6	4	5	3	0	1	18
D9	Lamar	33	5-11	.455	2-3	.667	4-5	.800	1	9	10	1	5	2	0	1	16
D13	Middle Tennessee	36	8-13	.615	1-2	.500	8-9	.889	2	5	7	2	4	4	0	2	25
D19	at Texas Tech	39	8-18	.444	3-6	.500	8-9	.889	1	11	12	3	5	3	0	2	27
D22	Oral Roberts	33	3-11	.273	1-2	.500	9-14	.643	6	3	9	2	5	1	0	1	16
J2	Baylor	32	2-15	.133	1-1	1.000	9-14	.643	2	3	5	4	4	3	0	4	14
J6	Oklahoma State	24	2-12	.167	1-5	.200	1-2	.500	1	2	3	1	4	3	0	0	6
J9	at Oklahoma State	38	9-23	.391	4-11	.364	0-0	.000	0	7	7	3	5	2	0	1	22
J17	Kansas	43	6-16	.375	1-6	.167	6-11	.545	1	5	6	2	7	2	1	2	19
J20	at Texas	32	5-13	.385	2-5	.400	1-2	.500	0	5	5	2	2	7	0	3	13
J23	Texas Tech	38	8-22	.364	0-6	.000	7-7	1.000	0	11	11	0	6	2	1	0	23
J26	at Baylor	37	4-22	.182	1-6	.167	5-10	.500	2	7	9	3	4	7	0	3	14
J30	West Virginia	39	12-16	.750	1-2	.500	9-9	1.000	0	4	4	3	5	5	0	1	34
F7	at Kansas	38	6-19	.316	0-2	.000	7-11	.636	2	2	4	4	7	4	0	1	19
F10	Kansas State	39	9-16	.563	4-8	.500	5-6	.833	0	8	8	2	9	2	0	5	27
F13	at Iowa State	40	10-14	.714	0-1	.000	6-8	.750	0	7	7	0	9	3	0	1	26
F20	at West Virginia	33	12-20	.600	4-5	.800	10-15	.667	2	7	9	5	5	3	0	0	38
F24	Oklahoma	39	4-11	.364	0-2	.000	1-1	1.000	1	8	9	0	4	8	0	4	9
M1	at Kansas State																
M4	at Oklahoma																
M7	Texas																

SEASON/CAREER HIGHS

POINTS	2020-21: 38	at West Virginia (02/20/21)
Career: 38	at West Virginia (02/20/21)	
MINUTES	2020-21: 43	Kansas (01/17/21)
Career: 43	Kansas (01/17/21)	
FIELD GOALS	2020-21: 12 (2x)	last, at West Virginia (02/20/21)
Career: 12 (2x)	last, at West Virginia (02/20/21)	
3-POINT FIELD GOALS	2020-21: 4 (3x)	last, at West Virginia (02/20/21)
Career: 5 (2x)	last, at Iowa State (01/15/20)	
FREE THROWS	2020-21: 10	at West Virginia (02/20/21)
Career: 14	at Oklahoma State (01/29/20)	
REBOUNDS	2020-21: 12	at Texas Tech (12/19/20)
Career: 15	Oklahoma State (02/23/20)	
ASSISTS	2020-21: 9 (2x)	last, at Iowa State (02/13/21)
Career: 9 (2x)	last, at Iowa State (02/13/21)	
BLOCKS	2020-21: 1 (3x)	last, Texas Tech (01/23/21)
Career: 1 (9x)	last, Texas Tech (01/23/21)	
STEALS	2020-21: 5 (2x)	last, Kansas State (02/10/21)
Career: 8	at West Virginia (02/16/19)	

LAUREN HEARD'S CAREER STATISTICS

	GP	GS	MIN	AVG. FG	ATT	PCT	3FG	ATT	PCT	FT	ATT	PCT	OFF	DEF	TOT	AVG.	PF	D	AST	A/G	TO	B	S	TP	AVG.	
2017-18	36	6	709	19.7	70	.187	.374	20	.61	.328	63	.86	.733	26	81	107	3.0	75	0	61	1.7	56	1	37	223	6.2
2018-19	35	34	993	28.4	92	.293	.314	28	107	.262	91	.140	.650	33	126	159	4.5	75	1	113	3.2	84	2	63	303	8.7
2019-20	29	29	893	30.8	166	.425	.391	31	86	.360	171	.227	.753	58	134	192	6.6	80	1	117	4.0	111	3	62	534	18.4
2020-21	20	20	707	35.4	131	.318	.412	28	84	.333	115	.159	.723	22	115	137	6.9	46	1	107	5.4	73	3	40	405	20.3
TOTAL	120	89	3302	27.5	459	.375	.107	338	.317	440	.612	.719	139	456	595	5.0	276	3	398	3.3	324	9	202	1465	12.2	



KAYLA MOKWUAH

6-4 | G | JR.

LONGMEADOW, MASS. | WILBRAHAM & MONSON ACADEMY (GEORGE WASHINGTON)

22



2020-21 GAME-BY-GAME STATISTICS

DATE	OPPONENT	MIN	FG	%	3FG	%	FT	%	O	D	T	PF	A	TO	B	S	PT
N25	Incarnate Word	9	2-4	.500	0-0	.000	1-2	.500	3	0	3	4	0	0	0	1	5
N28	Central Arkansas	14	3-6	.500	0-0	.000	0-0	.000	1	0	1	1	1	0	1	0	6
D2	Iowa State	8	1-2	.500	0-0	.000	0-0	.000	1	0	1	0	0	0	0	0	2
D9	Lamar	6	3-7	.429	0-0	.000	1-1	1.000	1	1	2	4	0	1	0	0	7
D13	Middle Tennessee	7	1-1	1.000	0-0	.000	0-0	.000	0	1	1	2	0	0	0	0	2
D19	at Texas Tech	16	3-5	.600	0-0	.000	2-2	1.000	2	1	3	2	2	3	2	0	8
D22	Oral Roberts	18	5-9	.556	0-0	.000	0-0	.000	2	1	3	4	2	5	2	2	10
J2	Baylor	21	2-7	.286	0-0	.000	0-0	.000	1	5	6	2	0	2	1	0	4
J6	Oklahoma State	6	1-4	.250	0-0	.000	0-0	.000	2	0	2	5	1	0	0	0	2
J9	at Oklahoma State	16	3-9	.333	0-0	.000	0-0	.000	1	0	1	1	0	3	0	0	6
J17	Kansas	11	0-1	.000	0-0	.000	0-0	.000	0	1	1	2	0	1	2	1	0
J20	at Texas	21	0-3	.000	0-0	.000	0-0	.000	0	4	4	4	0	1	1	0	0
J23	Texas Tech	4	0-0	.000	0-0	.000	0-0	.000	1	1	2	2	0	1	0	0	0
J26	at Baylor	13	4-7	.571	0-0	.000	0-0	.000	3	2	5	1	0	0	0	1	8
J30	West Virginia	7	1-2	.500	0-0	.000	0-0	.000	0	1	1	2	0	3	1	0	2
F7	at Kansas	4	1-1	1.000	0-0	.000	0-0	.000	1	1	2	2	0	1	0	0	2
F10	Kansas State	10	2-3	.667	0-0	.000	0-0	.000	0	0	0	2	1	0	1	0	4
F13	at Iowa State	3	0-1	.000	0-0	.000	0-0	.000	0	0	0	1	0	0	0	0	0
F20	at West Virginia	5	0-1	.000	0-0	.000	0-0	.000	0	0	0	1	0	0	0	0	0
F24	Oklahoma	13	3-3	1.000	0-0	.000	2-5	.400	1	1	2	0	0	1	0	0	8
M1	at Kansas State																
M4	at Oklahoma																
M7	Texas																

SEASON/CAREER HIGHS

POINTS	2020-21: 10	Oral Roberts (12/22/20)
Career: 18 (2x)	last, Rhode Island (02/25/20)*	
MINUTES	2020-21: 21 (2x)	last, at Texas (01/20/21)
Career: 27	Georgetown (11/24/19)*	
FIELD GOALS	2020-21: 5	Oral Roberts (12/22/20)
Career: 9 (2x)	last, Rhode Island (02/25/20)*	
3-POINT FIELD GOALS	2020-21: --	--
Career: --	--	
FREE THROWS	2020-21: 2 (2x)	last, Oklahoma (02/24/21)
Career: 7	at UMass (02/20/19)	
REBOUNDS	2020-21: 6	Baylor (01/02/21)
Career: 16	at UMass (02/20/19)	
ASSISTS	2020-21: 2 (2x)	last, Oral Roberts (12/22/20)
Career: 4	at George Mason (01/04/20)	
BLOCKS	2020-21: 2 (3x)	last, Kansas (01/17/21)
Career: 2 (6x)	last, Kansas (01/17/21)	
STEALS	2020-21: 2	Oral Roberts (12/22/20)
Career: 4	at Memphis (11/17/19)*	

* - at George Washington

KAYLA MOKWUAH'S CAREER STATISTICS (TCU STATISTICS ONLY)

OVERALL	GP	GS	MIN	AVG.	FG	ATT	PCT	3FG	ATT	PCT	FT	ATT	PCT	OFF	DEF	TOT	AVG.	PF	D	AST	A/G	TO	B	S	TP	AVG.
2020-21	20	3	212	10.6	35	76	.461	0	0	.000	6	10	.600	20	20	40	2.0	42	1	7	0.4	22	11	5	76	3.8
TOTAL	20	3	212	10.6	35	76	.461	0	0	.000	6	10	.600	20	20	40	2.0	42	1	7	0.4	22	11	5	76	3.8



MICHELLE BERRY

6-2 | F | SR.

MIAMI, FLA. | MIAMI COUNTRY DAY (VIRGINIA TECH)

23



2019-20 GAME-BY-GAME STATISTICS

DATE	OPPONENT	MIN	FG	%	3FG	%	FT	%	O	D	T	PF	A	TO	B	S	PT
N25	Incarinate Word	29	2-7	.286	0-1	.000	0-0	.000	1	2	3	4	1	3	0	2	4
N28	Central Arkansas	29	4-9	.444	1-2	.500	0-0	.000	0	5	5	1	2	2	0	1	9
D2	Iowa State	31	4-10	.400	2-5	.400	5-5	1.000	2	7	9	3	0	2	0	1	15
D9	Lamar	34	2-6	.333	0-2	.000	0-0	.000	3	7	10	4	3	6	0	0	4
D13	Middle Tennessee	36	4-11	.364	3-6	.500	2-2	1.000	2	6	8	1	2	2	0	0	13
D19	at Texas Tech	37	5-10	.500	2-6	.333	2-2	1.000	2	7	9	5	4	1	0	1	14
D22	Oral Roberts	40	1-2	.500	0-0	.000	3-4	.750	1	8	9	0	2	1	1	2	5
J2	Baylor	31	3-10	.300	2-5	.400	0-1	.000	1	4	5	3	0	4	1	1	8
J6	Oklahoma State	28	2-9	.222	0-2	.000	3-4	.750	3	4	7	0	1	3	0	0	7
J9	at Oklahoma State	38	3-9	.333	3-8	.375	0-0	.000	0	8	8	0	1	1	0	2	9
J17	Kansas	41	4-9	.444	2-6	.333	0-0	.000	2	11	13	2	3	0	2	0	10
J20	at Texas	39	5-15	.333	4-8	.500	0-0	.000	1	6	7	0	2	0	0	0	14
J23	Texas Tech	40	5-14	.357	3-5	.600	1-2	.500	5	8	13	1	1	4	0	0	14
J26	at Baylor	33	4-12	.333	1-7	.143	3-3	1.000	0	4	4	3	0	1	0	2	12
J30	West Virginia	38	1-10	.100	0-7	.000	0-0	.000	2	6	8	1	1	1	0	0	2
F7	at Kansas	34	2-7	.286	1-4	.250	0-0	.000	2	8	10	1	0	1	0	2	5
F10	Kansas State	37	5-13	.385	2-4	.500	3-5	.600	2	4	6	0	5	3	0	3	15
F13	at Iowa State	37	4-9	.444	3-7	.429	2-2	1.000	0	5	5	3	2	2	0	4	13
F20	at West Virginia	37	4-9	.444	2-6	.333	0-0	.000	0	4	4	1	0	1	0	2	10
F24	Oklahoma	14	0-4	.000	0-1	.000	0-0	.000	1	0	1	1	0	0	0	0	0
M1	at Kansas State																
M4	at Oklahoma																
M7	Texas																

SEASON/CAREER HIGHS

POINTS	2020-21: 15 (2x)	last, Kansas State (02/10/21)
Career: 38	Portland State (11/13/15)*	
MINUTES	2020-21: 41	Kansas (01/17/21)
Career: 42	Wyoming (11/24/15)*	
FIELD GOALS	2020-21: 5 (4x)	last, Kansas State (02/10/21)
Career: 13	Portland State (11/13/15)*	
3-POINT FIELD GOALS	2020-21: 4	at Texas (01/20/21)
Career: 4	at Texas (01/20/21)	
FREE THROWS	2020-21: 5	Iowa State (12/02/20)
Career: 9	Portland State (11/13/15)*	
REBOUNDS	2020-21: 13 (2x)	last, Texas Tech (01/23/21)
Career: 14	Cal Poly (02/18/16)*	
ASSISTS	2020-21: 5	Kansas State (02/10/21)
Career: 6	at LBSU (01/20/16)*	
BLOCKS	2020-21: 2	Kansas (01/17/21)
Career: 2	Kansas (01/17/21)	
STEALS	2020-21: 4	at Iowa State (02/13/21)
Career: 5	at Pepperdine (11/20/15)*	

* - at Cal State Fullerton

MICHELLE BERRY'S CAREER STATISTICS (TCU STATISTICS ONLY)

	GP	GS	MIN	AVG. FG	ATT	PCT	3FG	ATT	PCT	FT	ATT	PCT	OFF	DEF	TOT	AVG.	PF	D	AST	A/G	TO	B	S	TP	AVG.	
2019-20	29	1	606	20.9	62	155	.400	18	55	.327	19	30	.633	43	111	154	5.3	46	0	25	0.9	35	5	18	161	5.6
2020-21	20	20	683	34.2	64	185	.346	31	92	.337	24	30	.800	30	114	144	7.2	34	1	30	1.5	38	4	23	183	9.2
TOTAL	49	21	1289	26.3	126	340	.371	49	147	.333	43	60	.717	73	225	298	6.1	80	1	55	1.1	73	9	41	344	7.0



**ADHEL
TAC**

5-11 | F | FR.

GARLAND, TEXAS | SACHSE HIGH SCHOOL

24



2020-21 GAME-BY-GAME STATISTICS

DATE	OPPONENT	MIN	FG	%	3FG	%	FT	%	O	D	T	PF	A	TO	B	S	PT
N25	Incarinate Word	3	0-1	.000	0-0	.000	0-0	.000	0	2	2	0	0	0	1	0	0
N28	Central Arkansas	3	0-0	.000	0-0	.000	0-0	.000	0	1	1	1	1	1	0	0	0
12/2	Iowa State	4	1-2	.500	0-1	.000	0-0	.000	0	1	1	1	0	0	0	0	2
D9	Lamar	3	1-1	1.000	0-0	.000	0-2	.000	0	2	2	2	0	1	0	0	2
D13	Middle Tennessee	-	-	-	-	-	-	-	DNP	-	-	-	-	-	-	-	-
D19	at Texas Tech	-	-	-	-	-	-	-	DNP	-	-	-	-	-	-	-	-
D22	Oral Roberts	3	1-1	1.000	0-0	.000	0-0	.000	0	0	0	0	0	0	0	0	2
J2	Baylor	10	0-2	.000	0-0	.000	1-2	.500	0	2	2	0	0	0	0	0	1
J6	Oklahoma State	3	2-2	1.000	0-0	.000	0-0	.000	2	0	2	0	0	0	0	0	4
J9	at Oklahoma State	16	0-3	.000	0-1	.000	0-0	.000	3	4	7	2	0	1	0	1	0
J17	Kansas	-	-	-	-	-	-	-	DNP	-	-	-	-	-	-	-	-
J20	at Texas	3	0-0	.000	0-0	.000	0-0	.000	0	1	1	1	0	0	0	0	0
J23	Texas Tech	3	0-0	.000	0-0	.000	0-0	.000	0	1	1	1	0	1	0	0	0
J26	at Baylor	1	0-0	.000	0-0	.000	0-0	.000	0	0	0	0	0	0	0	0	0
J30	West Virginia	-	-	-	-	-	-	-	DNP	-	-	-	-	-	-	-	-
F7	at Kansas	-	-	-	-	-	-	-	DNP	-	-	-	-	-	-	-	-
F10	Kansas State	-	-	-	-	-	-	-	DNP	-	-	-	-	-	-	-	-
F13	at Iowa State	-	-	-	-	-	-	-	DNP	-	-	-	-	-	-	-	-
F20	at West Virginia	0	0-0	.000	0-0	.000	0-0	.000	0	0	0	0	0	0	0	0	0
F24	Oklahoma	1	0-0	.000	0-0	.000	0-0	.000	0	0	0	1	0	0	0	0	0
M1	at Kansas State																
M4	at Oklahoma																
M7	Texas																

SEASON/CAREER HIGHS

POINTS
 2020-21: 4 Oklahoma State (01/06/21)
 Career: 4 Oklahoma State (01/06/21)

MINUTES
 2020-21: 16 at Oklahoma State (01/09/21)
 Career: 16 at Oklahoma State (01/09/21)

FIELD GOALS
 2020-21: 2 Oklahoma State (01/06/21)
 Career: 2 Oklahoma State (01/06/21)

3-POINT FIELD GOALS
 2020-21: -- --
 Career: -- --

FREE THROWS
 2020-21: 1 Baylor (01/02/21)
 Career: 1 Baylor (01/02/21)

REBOUNDS
 2020-21: 7 at Oklahoma State (01/09/21)
 Career: 7 at Oklahoma State (01/09/21)

ASSISTS
 2020-21: 1 Central Arkansas (11/28/20)
 Career: 1 Central Arkansas (11/28/20)

BLOCKS
 2020-21: 1 Incarnate Word (11/25/20)
 Career: 1 Incarnate Word (11/25/20)

STEALS
 2020-21: 1(2x) last, at Oklahoma State (01/09/21)
 Career: 1(2x) last, at Oklahoma State (01/09/21)

ADHEL TAC'S CAREER STATISTICS

	GP	GS	MIN	AVG. FG	ATT	PCT	3FG	ATT	PCT	FT	ATT	PCT	OFF	DEF	TOT	AVG.	PF	D	AST	A/G	TO	B	S	TP	AVG.	
2020-21	13	0	53	4.1	5	12	.417	0	2	.000	1	4	.250	5	14	19	1.5	9	0	1	0.1	4	1	2	11	0.8
TOTAL	13	0	53	4.1	5	12	.417	0	2	.000	1	4	.250	5	14	19	1.5	9	0	1	0.1	4	1	2	11	0.8



PATRICIA MORRIS

6-7 | F | JR.

DUARTE, CALIF. | DUARTE HIGH SCHOOL (OREGON STATE)

32



2020-21 GAME-BY-GAME STATISTICS

DATE	OPPONENT	MIN	FG	%	3FG	%	FT	%	O	D	T	PF	A	TO	B	S	PT
N25	Incarinate Word	-	-	-	-	-	-	-	DNP	-	-	-	-	-	-	-	-
N28	Central Arkansas	4	0-1	.000	0-0	.000	2-2	1.000	1	2	3	3	0	3	0	0	2
D2	Iowa State	3	0-0	.000	0-0	.000	1-2	.500	0	0	0	1	0	0	0	0	1
D9	Lamar	8	3-4	.750	0-0	.000	0-0	.000	0	3	3	2	0	0	1	0	6
D13	Middle Tennessee	-	-	-	-	-	-	-	DNP	-	-	-	-	-	-	-	-
D19	at Texas Tech	4	0-0	.000	0-0	.000	0-0	.000	0	0	0	1	0	0	0	0	0
D22	Oral Roberts	5	1-2	.500	0-0	.000	0-0	.000	0	1	1	5	0	4	2	0	2
J2	Baylor	-	-	-	-	-	-	-	DNP	-	-	-	-	-	-	-	-
J6	Oklahoma State	-	-	-	-	-	-	-	DNP	-	-	-	-	-	-	-	-
J9	at Oklahoma State	-	-	-	-	-	-	-	DNP	-	-	-	-	-	-	-	-
J17	Kansas	-	-	-	-	-	-	-	DNP	-	-	-	-	-	-	-	-
J20	at Texas	-	-	-	-	-	-	-	DNP	-	-	-	-	-	-	-	-
J23	Texas Tech	-	-	-	-	-	-	-	DNP	-	-	-	-	-	-	-	-
J26	at Baylor	-	-	-	-	-	-	-	DNP	-	-	-	-	-	-	-	-
J30	West Virginia	15	0-0	.000	0-0	.000	8-8	1.000	0	2	2	4	0	3	2	0	8
F7	at Kansas	18	4-6	.667	0-0	.000	2-2	1.000	1	3	4	3	0	1	3	0	10
F10	Kansas State	18	1-2	.500	0-0	.000	1-1	1.000	3	1	4	4	0	1	0	0	3
F13	at Iowa State	11	0-1	.000	0-0	.000	1-2	.500	2	1	3	1	0	2	0	1	1
F20	at West Virginia	17	1-1	1.000	0-0	.000	0-0	.000	0	3	3	2	0	1	1	0	2
F24	Oklahoma	2	0-0	.000	0-0	.000	1-2	.500	0	0	0	2	0	1	0	0	1
M1	at Kansas State																
M4	at Oklahoma																
M7	Texas																

SEASON/CAREER HIGHS

POINTS		
2020-21:	10	at Kansas (02/07/21)
Career:	13	California (01/17/20)*
MINUTES		
2020-21:	18	at Kansas (02/07/21)
Career:	18	at Kansas (02/07/21)
FIELD GOALS		
2020-21:	4	at Kansas (02/07/21)
Career:	6	California (01/17/20)*
3-POINT FIELD GOALS		
2020-21:	--	--
Career:	--	--
FREE THROWS		
2020-21:	8	West Virginia (01/30/21)
Career:	8	West Virginia (01/30/21)
REBOUNDS		
2020-21:	4 (2x)	last, Kansas State (02/10/21)
Career:	5 (2x)	last, vs. Washington St. (03/05/20)*
ASSISTS		
2020-21:	--	--
Career:	--	--
BLOCKS		
2020-21:	3	at Kansas (02/07/21)
Career:	3 (2x)	last, at Kansas (02/07/21)
STEALS		
2020-21:	1	at Iowa State (02/13/21)
Career:	1 (2x)	last, at Iowa State (02/13/21)

* - at Oregon State

PATRICIA MORRIS' CAREER STATISTICS (TCU STATISTICS ONLY)

	GP	GS	MIN	AVG. FG	ATT	PCT	3FG	ATT	PCT	FT	ATT	PCT	OFF	DEF	TOT	AVG.	PF	D	AST	A/G	TO	B	S	TP	AVG.	
2020-21	11	3	105	9.5	10	17	.588	0	0	.000	16	19	.842	7	16	23	2.1	28	1	0	0.0	16	9	1	36	3.3
TOTAL	11	3	105	9.5	10	17	.588	0	0	.000	16	19	.842	7	16	23	2.1	28	1	0	0.0	16	9	1	36	3.3



TCU BASKETBALL COMBINED STATISTICS



2020-21 TCU Women's Basketball
Combined Team Statistics
All games

Game Records

Record	Overall	Home	Away	Neutral
ALL GAMES	8-12	8-5	0-7	0-0
CONFERENCE	3-12	3-5	0-7	0-0
NON-CONFERENCE	5-0	5-0	0-0	0-0

Score by Periods

Team	1st	2nd	3rd	4th	OT	TOT
TCU	292	299	369	377	13	1350
Opponents	339	344	398	345	10	1436

Team Box Score

No.	Player	GP-GS		MIN	AVG	Total		3-Point		F-Throw		Rebounds				PF	DQ	A	TO	BLK	STL	PTS	AVG
		GP	GS			FG-FGA	FG%	3FG-FGA	3FG%	FT-FTA	FT%	OFF	DEF	TOT	AVG								
20	HEARD, Lauren	20	20	707:23	35.4	131-319	.411	28-85	.329	115-159	.723	23	115	138	6.9	46	1	107	73	3	40	405	20.3
23	BERRY, Michelle	20	20	687:59	34.4	64-185	.346	31-92	.337	24-30	.800	30	114	144	7.2	34	1	30	38	4	23	183	9.2
13	DIGGS, Tavy	20	7	405:40	20.3	72-141	.511	2-9	.222	15-25	.600	19	52	71	3.6	50	3	31	30	5	12	161	8.1
5	MORRIS, Yummy	20	14	379:16	19.0	66-130	.508	0-0	.000	23-26	.885	28	65	93	4.7	43	0	14	34	18	9	155	7.8
1	JACKSON, Aahliyah	19	19	515:09	27.1	36-113	.319	22-64	.344	18-33	.545	14	46	60	3.2	47	1	24	25	10	16	112	5.9
15	HOLMES, Aja	20	1	375:21	18.8	35-104	.337	33-99	.333	9-10	.900	1	15	16	0.8	21	0	10	12	1	7	112	5.6
0	GERMOND, Caroline	20	13	496:07	24.8	32-116	.276	11-52	.212	4-6	.667	9	32	41	2.1	54	0	72	36	3	18	79	4.0
22	MOKWUAH, Kayla	20	3	210:32	10.5	35-76	.461	0-0	.000	6-10	.600	20	20	40	2.0	42	1	7	22	11	5	76	3.8
32	MORRIS, Patricia	11	3	107:26	9.8	10-17	.588	0-0	.000	16-19	.842	7	16	23	2.1	28	1	0	16	9	1	36	3.3
4	CONN, Amari	10	0	61:07	6.1	7-12	.583	5-9	.556	1-2	.500	0	7	7	0.7	3	0	1	5	1	2	20	2.0
24	TAC, Adhel	13	0	52:22	4.0	5-12	.417	0-2	.000	1-4	.250	5	14	19	1.5	9	0	1	4	1	2	11	0.8
10	SCHMIDT, Emma	4	0	05:12	1.3	0-1	.000	0-1	.000	0-2	.000	1	2	3	0.8	1	0	0	0	0	0	0	0.0
12	MORGAN, Aaliyah	7	0	21:26	3.1	0-2	.000	0-2	.000	0-0	.000	0	4	4	0.6	1	0	3	2	0	0	0	0.0
Team												43	37	80				10					
Total		20		4025		493-1228	.401	132-415	.318	232-326	.712	200	539	739	37.0	379	8	300	307	66	135	1350	67.5
Opponents		20		4025		517-1243	.416	134-422	.318	268-353	.759	205	571	776	38.8	325	6	320	297	89	146	1436	71.8

Team Statistics

	TCU	OPP
Scoring	1350	1436
Points per game	67.5	71.8
Scoring margin	-4.3	-
Field goals-att	493-1228	517-1243
Field goal pct	.401	.416
3 point fg-att	132-415	134-422
3-point FG pct	.318	.318
3-pt FG made per game	6.6	6.7
Free throws-att	232-326	268-353
Free throw pct	.712	.759
F-Throws made per game	11.6	13.4
Rebounds	739	776
Rebounds per game	37.0	38.8
Rebounding margin	-1.9	-
Assists	300	320
Assists per game	15.0	16.0
Turnovers	307	297
Turnovers per game	15.4	14.9
Turnover margin	-0.5	-
Assist/turnover ratio	1.0	1.1
Steals	135	146
Steals per game	6.8	7.3
Blocks	66	89
Blocks per game	3.3	4.5
Winning streak	0	-
Home win streak	0	-
Attendance	11732	8282
Home games-Avg/Game	13-902	7-1183
Neutral site-Avg/Game	-	0-0

Team Results

Date	Opponent		Score	Att.
11/25/2020	Incarnate Word	W	84-59	844
11/28/2020	Central Ark.	W	65-48	802
12/02/2020	Iowa St.	L	68-91	715
12/09/2020	Lamar University	W	79-53	768
12/13/2020	Middle Tenn.	W	83-77	736
12/19/2020	at Texas Tech	L	72-78	2612
12/22/2020	Oral Roberts	W	62-48	841
01/02/2021	Baylor	L	50-74	1605
01/06/2021	Oklahoma St.	L	53-78	760
01/09/2021	at Oklahoma St.	L	50-69	1059
01/17/2021	Kansas	Wot	81-78	914
01/20/2021	at Texas	L	54-71	0
01/23/2021	Texas Tech	W	61-53	1165
01/26/2021	at Baylor	L	49-82	2261
01/30/2021	West Virginia	L	70-79	904
02/07/2021	at Kansas	L	72-82	352
02/10/2021	Kansas St.	W	78-67	824
02/13/2021	at Iowa St.	L	81-92	762
02/20/2021	at West Virginia	L	78-81	1236
02/24/2021	Oklahoma	L	60-76	854



OVERALL STATISTICS

Game Records

Record	Overall	Home	Away	Neutral
ALL GAMES	8-12	8-5	0-7	0-0
CONFERENCE	3-12	3-5	0-7	0-0
NON-CONFERENCE	5-0	5-0	0-0	0-0

Team Box Score

No.	Player	Total			3-Point		F-Throw		Rebounds				Other Stats									
		GP-GS	MIN	AVG	FG-FGA	FG%	3FG-FGA	3FG%	FT-FTA	FT%	OFF	DEF	TOT	AVG	PF	DQ	A	TO	BLK	STL	PTS	AVG
20	HEARD, Lauren	20-20	707:23	35.4	131-319	.411	28-85	.329	115-159	.723	23	115	138	6.9	46	1	107	73	3	40	405	20.3
23	BERRY, Michelle	20-20	687:59	34.4	64-185	.346	31-92	.337	24-30	.800	30	114	144	7.2	34	1	30	38	4	23	183	9.2
13	DIGGS, Tavy	20-7	405:40	20.3	72-141	.511	2-9	.222	15-25	.600	19	52	71	3.6	50	3	31	30	5	12	161	8.1
5	MORRIS, Yummy	20-14	379:16	19.0	66-130	.508	0-0	.000	23-26	.885	28	65	93	4.7	43	0	14	34	18	9	155	7.8
1	JACKSON, Aahliyah	19-19	515:09	27.1	36-113	.319	22-64	.344	18-33	.545	14	46	60	3.2	47	1	24	25	10	16	112	5.9
15	HOLMES, Aja	20-1	375:21	18.8	35-104	.337	33-99	.333	9-10	.900	1	15	16	0.8	21	0	10	12	1	7	112	5.6
0	GERMOND, Caroline	20-13	496:07	24.8	32-116	.276	11-52	.212	4-6	.667	9	32	41	2.1	54	0	72	36	3	18	79	4.0
22	MOKWUAH, Kayla	20-3	210:32	10.5	35-76	.461	0-0	.000	6-10	.600	20	20	40	2.0	42	1	7	22	11	5	76	3.8
32	MORRIS, Patricia	11-3	107:26	9.8	10-17	.588	0-0	.000	16-19	.842	7	16	23	2.1	28	1	0	16	9	1	36	3.3
4	CONN, Amari	10-0	61:07	6.1	7-12	.583	5-9	.556	1-2	.500	0	7	7	0.7	3	0	1	5	1	2	20	2.0
24	TAC, Adhel	13-0	52:22	4.0	5-12	.417	0-2	.000	1-4	.250	5	14	19	1.5	9	0	1	4	1	2	11	0.8
10	SCHMIDT, Emma	4-0	05:12	1.3	0-1	.000	0-1	.000	0-2	.000	1	2	3	0.8	1	0	0	0	0	0	0	0.0
12	MORGAN, Aaliyah	7-0	21:26	3.1	0-2	.000	0-2	.000	0-0	.000	0	4	4	0.6	1	0	3	2	0	0	0	0.0
Team											43	37	80				10					
Total		20	4025		493-1228	.401	132-415	.318	232-326	.712	200	539	739	37.0	379	8	300	307	66	135	1350	67.5
Opponents		20	4025		517-1243	.416	134-422	.318	268-353	.759	205	571	776	38.8	325	6	320	297	89	146	1436	71.8

Score by Periods

Team	1st	2nd	3rd	4th	OT	TOT
TCU	292	299	369	377	13	1350
Opponents	339	344	398	345	10	1436

BIG 12 ONLY STATISTICS

Game Records

Record	Overall	Home	Away	Neutral
ALL GAMES	3-12	3-5	0-7	0-0
CONFERENCE	3-12	3-5	0-7	0-0
NON-CONFERENCE	0-0	0-0	0-0	0-0

Team Box Score

No.	Player	Total			3-Point		F-Throw		Rebounds				Other Stats									
		GP-GS	MIN	AVG	FG-FGA	FG%	3FG-FGA	3FG%	FT-FTA	FT%	OFF	DEF	TOT	AVG	PF	DQ	A	TO	BLK	STL	PTS	AVG
20	HEARD, Lauren	15-15	542:18	36.2	102-252	.405	23-70	.329	82-117	.701	13	93	106	7.1	36	1	81	57	2	28	309	20.6
23	BERRY, Michelle	15-15	518:54	34.6	51-150	.340	27-81	.333	19-24	.792	23	86	109	7.3	24	1	20	24	3	18	148	9.9
13	DIGGS, Tavy	15-5	297:30	19.8	55-110	.500	0-7	.000	12-20	.600	15	27	42	2.8	42	3	20	23	3	7	122	8.1
15	HOLMES, Aja	15-1	311:01	20.7	31-85	.365	30-82	.366	9-10	.900	1	13	14	0.9	17	0	8	11	1	3	101	6.7
5	MORRIS, Yummy	15-9	256:36	17.1	35-78	.449	0-0	.000	13-13	1.000	16	44	60	4.0	32	0	8	27	11	6	83	5.5
1	JACKSON, Aahliyah	14-14	383:57	27.4	23-86	.267	20-59	.339	7-14	.500	9	40	49	3.5	35	1	16	18	5	8	73	5.2
0	GERMOND, Caroline	15-11	368:12	24.5	19-81	.235	7-39	.179	4-6	.667	7	26	33	2.2	40	0	51	28	3	6	49	3.3
32	MORRIS, Patricia	8-3	88:25	11.1	6-10	.600	0-0	.000	14-17	.824	6	10	16	2.0	18	0	0	9	6	1	26	3.3
22	MOKWUAH, Kayla	15-2	158:23	10.6	21-49	.429	0-0	.000	4-7	.571	13	17	30	2.0	27	1	4	16	8	2	46	3.1
4	CONN, Amari	6-0	49:24	8.2	4-8	.500	4-7	.571	1-2	.500	0	3	3	0.5	3	0	1	3	1	2	13	2.2
24	TAC, Adhel	9-0	40:19	4.5	3-9	.333	0-2	.000	1-2	.500	5	9	14	1.6	6	0	0	2	0	2	7	0.8
10	SCHMIDT, Emma	1-0	00:51	0.9	0-1	.000	0-1	.000	0-0	.000	0	0	0	0.0	0	0	0	0	0	0	0	0.0
12	MORGAN, Aaliyah	4-0	09:10	2.3	0-2	.000	0-2	.000	0-0	.000	0	0	0	0.0	0	0	1	0	0	0	0	0.0
Team											37	24	61				7					
Total		15	3025		350-921	.380	111-350	.317	166-232	.716	145	392	537	35.8	280	7	210	225	43	83	977	65.1
Opponents		15	3025		415-948	.438	98-303	.323	223-285	.782	155	449	604	40.3	225	4	260	190	74	112	1151	76.7

Score by Periods

Team	1st	2nd	3rd	4th	OT	TOT
TCU	219	217	254	274	13	977
Opponents	274	267	313	287	10	1151



TCU BASKETBALL SEASON/CAREER STATISTICS



2020-21 TCU Women's Basketball
Season/Career Statistics
All games

Page 1/1
as of Feb 11, 2021

Summary

Player	Season Statistics										Career Statistics									
	GP-GS	MIN/G	FG%	3FG%	FT%	R/G	A/G	STL	BLK	PTS/G	GP-GS	MIN/G	FG%	3FG%	FT%	R/G	A/G	STL	BLK	PTS/G
BERRY, Michelle	17-17	35.3	.344	.333	.786	7.9	1.6	17	4	9.4	46-18	26.2	.371	.331	.707	6.3	1.2	35	9	7.0
CONN, Amari	8-0	5.1	.600	.500	.000	0.9	0.1	1	1	2.0	8-0	5.1	.600	.500	.000	0.9	0.1	1	1	2.0
DIGGS, Tavy	17-5	18.8	.468	.250	.600	3.4	1.5	11	5	6.8	29-5	12.4	.467	.250	.556	2.4	0.9	12	6	4.3
GERMOND, Caroline	17-11	25.4	.272	.182	.750	2.1	3.6	17	3	3.9	17-11	25.4	.272	.182	.750	2.1	3.6	17	3	3.9
HEARD, Lauren	17-17	35.0	.383	.312	.726	6.6	5.2	35	3	19.5	117-86	27.2	.367	.311	.719	4.9	3.2	197	9	11.9
HOLMES, Aja	17-0	16.6	.358	.351	.857	0.8	0.3	5	0	5.4	17-0	16.6	.358	.351	.857	0.8	0.3	5	0	5.4
JACKSON, Aahliyah	17-17	27.7	.313	.333	.586	3.0	1.3	15	9	5.7	17-17	27.7	.313	.333	.586	3.0	1.3	15	9	5.7
MOKWUAH, Kayla	17-3	11.1	.451	.000	.800	2.2	0.4	5	11	4.0	17-3	11.1	.451	.000	.800	2.2	0.4	5	11	4.0
MORGAN, Aaliyah	5-0	4.0	.000	.000	.000	0.8	0.6	0	0	0.0	5-0	4.0	.000	.000	.000	0.8	0.6	0	0	0.0
MORRIS, Patricia	8-1	9.8	.600	.000	.933	2.1	0.0	0	8	4.0	8-1	9.8	.600	.000	.933	2.1	0.0	0	8	4.0
MORRIS, Yummy	17-14	20.1	.525	.000	.857	5.0	0.7	8	17	8.4	71-14	10.8	.482	.000	.756	3.0	0.3	27	51	4.3
SCHMIDT, Emma	3-0	1.5	.000	.000	.000	1.0	0.0	0	0	0.0	3-0	1.5	.000	.000	.000	1.0	0.0	0	0	0.0
TAC, Adhel	11-0	4.6	.417	.000	.250	1.7	0.1	2	1	1.0	11-0	4.6	.417	.000	.250	1.7	0.1	2	1	1.0

Scoring

Player	Season Statistics								Career Statistics							
	FG-FGA	FG%	3FG-3FGA	3FG%	FT-FTA	FT%	PTS	PTS/G	FG-FGA	FG%	3FG-3FGA	3FG%	FT-FTA	FT%	PTS	PTS/G
BERRY, Michelle	56-163	.344	26-78	.333	22-28	.786	160	9.4	118-318	.371	44-133	.331	41-58	.707	321	7.0
CONN, Amari	6-10	.600	4-8	.500	0-0	.000	16	2.0	6-10	.600	4-8	.500	0-0	.000	16	2.0
DIGGS, Tavy	52-111	.468	2-8	.250	9-15	.600	115	6.8	57-122	.467	2-8	.250	10-18	.556	126	4.3
GERMOND, Caroline	28-103	.272	8-44	.182	3-4	.750	67	3.9	28-103	.272	8-44	.182	3-4	.750	67	3.9
HEARD, Lauren	105-274	.383	24-77	.312	98-135	.726	332	19.5	433-1179	.367	103-331	.311	423-588	.719	1392	11.9
HOLMES, Aja	29-81	.358	27-77	.351	6-7	.857	91	5.4	29-81	.358	27-77	.351	6-7	.857	91	5.4
JACKSON, Aahliyah	31-99	.313	18-54	.333	17-29	.586	97	5.7	31-99	.313	18-54	.333	17-29	.586	97	5.7
MOKWUAH, Kayla	32-71	.451	0-0	.000	4-5	.800	68	4.0	32-71	.451	0-0	.000	4-5	.800	68	4.0
MORGAN, Aaliyah	0-2	.000	0-2	.000	0-0	.000	0	0.0	0-2	.000	0-2	.000	0-0	.000	0	0.0
MORRIS, Patricia	9-15	.600	0-0	.000	14-15	.933	32	4.0	9-15	.600	0-0	.000	14-15	.933	32	4.0
MORRIS, Yummy	62-118	.525	0-0	.000	18-21	.857	142	8.4	123-255	.482	0-0	.000	62-82	.756	308	4.3
SCHMIDT, Emma	0-0	.000	0-0	.000	0-2	.000	0	0.0	0-0	.000	0-0	.000	0-2	.000	0	0.0
TAC, Adhel	5-12	.417	0-2	.000	1-4	.250	11	1.0	5-12	.417	0-2	.000	1-4	.250	11	1.0

Totals

Player	Season Statistics									Career Statistics								
	O-REB	D-REB	TOTAL	PF	FO	A	TO	A/TO	O-REB	D-REB	TOTAL	PF	FO	A	TO	A/TO		
BERRY, Michelle	29	105	134	29	1	28	35	0.8	72	216	288	75	1	53	70	0.8		
CONN, Amari	0	7	7	2	0	1	5	0.2	0	7	7	2	0	1	5	0.2		
DIGGS, Tavy	15	42	57	42	2	25	24	1.0	17	54	71	48	2	25	32	0.8		
GERMOND, Caroline	8	27	35	47	0	61	30	2.0	8	27	35	47	0	61	30	2.0		
HEARD, Lauren	20	93	113	41	0	89	59	1.5	137	434	571	271	2	380	310	1.2		
HOLMES, Aja	1	13	14	17	0	5	8	0.6	1	13	14	17	0	5	8	0.6		
JACKSON, Aahliyah	12	39	51	39	0	22	23	1.0	12	39	51	39	0	22	23	1.0		
MOKWUAH, Kayla	19	19	38	40	1	7	21	0.3	19	19	38	40	1	7	21	0.3		
MORGAN, Aaliyah	0	4	4	1	0	3	2	1.5	0	4	4	1	0	3	2	1.5		
MORRIS, Patricia	5	12	17	23	1	0	12	0.0	5	12	17	23	1	0	12	0.0		
MORRIS, Yummy	24	61	85	40	0	12	30	0.4	80	134	214	112	0	22	79	0.3		
SCHMIDT, Emma	1	2	3	1	0	0	0	0.0	1	2	3	1	0	0	0	0.0		
TAC, Adhel	5	14	19	8	0	1	4	0.3	5	14	19	8	0	1	4	0.3		



TCU BASKETBALL GAME-BY-GAME STATISTICS



2020-21 TCU Women's Basketball
Team Game-by-Game
All games

Page 1/1
as of Feb 25, 2021

Opponent	Date	Score		Total		3-Pointers		Free throws		Rebounds				PF	A	TO	BLK	STL	PTS	AVG
				FG-FGA	PCT	3FG-FGA	PCT	FT-FTA	PCT	OFF	DEF	TOT	AVG							
Incarnate Word	11/25/2020	84-59	W	35-75	.467	2-14	.143	12-14	.857	13	26	39	39.0	23	17	15	1	21	84	84.0
Central Ark.	11/28/2020	65-48	W	25-58	.431	3-15	.200	12-20	.600	12	29	41	40.0	21	20	20	4	12	65	74.5
Iowa St.	12/02/2020	68-91	L	23-62	.371	5-16	.313	17-24	.708	8	27	35	38.3	21	15	12	5	4	68	72.3
Lamar University	12/09/2020	79-53	W	31-57	.544	3-8	.375	14-20	.700	9	39	48	40.8	19	18	16	5	3	79	74.0
Middle Tenn.	12/13/2020	83-77	W	29-64	.453	11-22	.500	14-17	.824	10	25	35	39.6	18	17	11	2	5	83	75.8
at Texas Tech	12/19/2020	72-78	L	26-66	.394	7-22	.318	13-15	.867	11	30	41	39.8	25	19	13	3	4	72	75.2
Oral Roberts	12/22/2020	62-48	W	23-53	.434	2-6	.333	14-23	.609	11	28	39	39.7	18	18	20	11	11	62	73.3
Baylor	01/02/2021	50-74	L	16-61	.262	5-14	.357	13-20	.650	11	22	33	38.9	21	9	17	4	10	50	70.4
Oklahoma St.	01/06/2021	53-78	L	20-68	.294	7-27	.259	6-10	.600	14	26	40	39.0	13	15	17	3	2	53	68.4
at Oklahoma St.	01/09/2021	50-69	L	20-68	.294	10-33	.303	0-0	.000	15	29	44	39.5	15	10	17	0	5	50	66.6
Kansas	01/17/2021	81-78	Wot	30-68	.441	10-32	.313	11-17	.647	10	31	41	39.6	20	22	14	9	6	81	67.9
at Texas	01/20/2021	54-71	L	19-54	.352	8-21	.381	8-12	.667	9	26	35	39.3	21	9	18	1	4	54	66.8
Texas Tech	01/23/2021	61-53	W	22-63	.349	7-25	.280	10-11	.909	9	38	47	39.8	15	11	14	2	2	61	66.3
at Baylor	01/26/2021	49-82	L	19-65	.292	3-21	.143	8-13	.615	11	25	36	39.6	17	9	16	0	8	49	65.1
West Virginia	01/30/2021	70-79	L	23-50	.460	5-20	.250	19-20	.950	6	23	29	38.9	21	12	19	4	3	70	65.4
at Kansas	02/07/2021	72-82	L	27-64	.422	8-21	.381	10-15	.667	13	24	37	38.8	27	11	15	6	5	72	65.8
Kansas St.	02/10/2021	78-67	W	27-63	.429	13-33	.394	11-14	.786	8	20	28	38.1	15	22	9	2	11	78	66.5
at Iowa St.	02/13/2021	81-92	L	29-58	.500	9-22	.409	14-20	.700	5	23	28	37.6	21	15	11	1	8	81	67.3
at West Virginia	02/20/2021	78-81	L	27-55	.491	9-21	.429	15-22	.682	6	25	31	37.2	18	20	15	2	6	78	67.9
Oklahoma	02/24/2021	60-76	L	22-56	.393	5-22	.227	11-19	.579	9	23	32	37.0	10	11	18	1	5	60	67.5
Total		1350		493-1228	.401	132-415	.318	232-326	.712	200	539	739	37.0	379	300	307	66	135	1350	67.5
Opponents		1436		517-1243	.416	134-422	.318	268-353	.759	205	571	776	38.8	325	320	297	89	146	1436	71.8

TCU Averages

Games Played	Points/game	FG Pct	3FG Pct	FT Pct	Rebounds/game	Assists/game	Turnovers/game	Assist/Turnover ratio	Steals/game	Blocks/game
20	67.5	40.1	31.8	71.2	37.0	15.0	15.4	1.0	6.8	3.3



TCU BASKETBALL OPPONENT GAME-BY-GAME STATISTICS



2020-21 TCU Women's Basketball
Opponents Game-by-Game
All games

Page 1/1
as of Feb 25, 2021

Opponent	Date	Score		Total		3-Pointers		Free throws		Rebounds				PF	A	TO	BLK	STL	PTS	AVG
				FG-FGA	PCT	3FG-FGA	PCT	FT-FTA	PCT	OFF	DEF	TOT	AVG							
Incarinate Word	11/25/2020	84-59	W	20-47	.426	7-23	.304	12-20	.600	2	27	29	29.0	14	14	29	1	7	59	59.0
Central Ark.	11/28/2020	65-48	W	19-53	.358	4-14	.286	6-9	.667	5	27	32	30.5	24	14	27	0	10	48	53.5
Iowa St.	12/02/2020	68-91	L	31-71	.437	11-35	.314	18-20	.900	12	33	45	35.3	18	18	12	7	6	91	66.0
Lamar University	12/09/2020	79-53	W	18-69	.261	8-27	.296	9-14	.643	13	20	33	34.8	22	6	10	5	6	53	62.8
Middle Tenn.	12/13/2020	83-77	W	28-69	.406	11-36	.306	10-13	.769	18	25	43	36.4	18	15	19	3	5	77	65.6
at Texas Tech	12/19/2020	72-78	L	24-56	.429	6-20	.300	24-30	.800	4	31	35	36.2	13	15	11	5	5	78	67.7
Oral Roberts	12/22/2020	62-48	W	17-57	.298	6-19	.316	8-12	.667	12	23	35	36.0	22	11	22	6	6	48	64.9
Baylor	01/02/2021	50-74	L	28-65	.431	4-7	.571	14-19	.737	16	36	52	38.0	20	17	17	7	7	74	66.0
Oklahoma St.	01/06/2021	53-78	L	31-70	.443	5-13	.385	11-15	.733	12	34	46	38.9	11	22	10	12	12	78	67.3
at Oklahoma St.	01/09/2021	50-69	L	28-61	.459	2-11	.182	11-15	.733	6	31	37	38.7	7	17	9	4	11	69	67.5
Kansas	01/17/2021	81-78	Wot	29-77	.377	7-29	.241	13-19	.684	19	32	51	39.8	19	17	14	1	7	78	68.5
at Texas	01/20/2021	54-71	L	23-66	.348	6-25	.240	19-24	.792	17	29	46	40.3	12	12	10	4	8	71	68.7
Texas Tech	01/23/2021	61-53	W	23-70	.329	4-23	.174	3-7	.429	9	31	40	40.3	16	15	10	4	4	53	67.5
at Baylor	01/26/2021	49-82	L	33-67	.493	4-14	.286	12-18	.667	12	36	48	40.9	12	21	12	7	12	82	68.5
West Virginia	01/30/2021	70-79	L	27-60	.450	5-18	.278	20-23	.870	12	21	33	40.3	19	21	11	2	9	79	69.2
at Kansas	02/07/2021	72-82	L	25-59	.424	7-18	.389	25-31	.806	13	25	38	40.2	16	11	12	7	4	82	70.0
Kansas St.	02/10/2021	78-67	W	24-50	.480	6-16	.375	13-15	.867	5	29	34	39.8	14	21	19	4	4	67	69.8
at Iowa St.	02/13/2021	81-92	L	29-58	.500	15-33	.455	19-20	.950	6	27	33	39.4	13	14	13	2	6	92	71.1
at West Virginia	02/20/2021	78-81	L	32-61	.525	6-11	.545	11-19	.579	7	26	33	39.1	16	22	15	4	6	81	71.6
Oklahoma	02/24/2021	60-76	L	28-57	.491	10-30	.333	10-10	1.000	5	28	33	38.8	19	17	15	4	11	76	71.8
Total		1436		517-1243	.416	134-422	.318	268-353	.759	205	571	776	38.8	325	320	297	89	146	1436	71.8
TCU		1350		493-1228	.401	132-415	.318	232-326	.712	200	539	739	37.0	379	300	307	66	135	1350	67.5

Opponents Averages

Games Played	Points/game	FG Pct	3FG Pct	FT Pct	Rebounds/game	Assists/game	Turnovers/game	Assist/Turnover ratio	Steals/game	Blocks/game
20	71.8	41.6	31.8	75.9	38.8	16.0	14.9	1.1	7.3	4.5



0 | CAROLINE GERMOND
JR | 5-7 | G
Angers, France



1 | AAHLIYAH JACKSON
GR | 5-10 | G
Ft. Smith, Ark.



4 | AMARI CONN
FR | 5-7 | G
Kansas City, Mo.



5 | YUMMY MORRIS
JR | 6-3 | F
North Little Rock, Ark.



10 | EMMA SCHMIDT
SR | 5-9 | G
Waukee, Iowa



11 | MADDI PULI
SO | 6-2 | G/F
Werrabee, Australia



12 | AALIYAH MORGAN
FR | 6-1 | F
Tyler, Texas



13 | TAVY DIGGS
SO | 6-2 | G
Richardson, Texas



15 | AJA HOLMES
FR | 5-8 | G
Cibolo, Texas



20 | LAUREN HEARD
SR | 5-9 | G
Denton, Texas



22 | KAYLA MOKWUAH
JR | 6-4 | C
Longmeadow, Mass.



23 | MICHELLE BERRY
GR | 6-2 | F
Miami, Fla.



24 | ADHEL TAC
FR | 5-11 | F
Garland, Texas



32 | PATRICIA MORRIS
JR | 6-7 | F
Duarte, Calif.

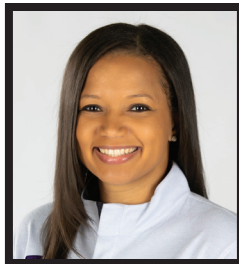
COACHING STAFF



RAEGAN PEBLEY
Head Coach
7th Season



HANNA HOWARD
Associate Head Coach
7th Season



BRITNEY BROWN
Associate Coach
5th Season



ABI OLAJUWON
Assistant Coach
3rd Season



LEAH FOSTER
Player Development
3rd Season



ANGELA GONZAGA
Director of Operations
7th Season



NATASCHA HARTVICH
Graduate Assistant
3rd Season



KARVIAR SHEPHERD
Graduate Assistant
2nd Season



KIANNA RAY
Volunteer Student Assistant
1st Season