



Texas A&M at TCU

12/12/21 Ed and Rae Schollmaier Arena, Fort Worth  
2021-22 Women's Basketball

Game Time: 1:00 PM  
Game Duration: 2:16  
Attendance: 2,371

Officials: Felicia Grinter, Brian Hall, Tiffany Bird

Texas A&M - 75

Record: 9-2

NO.	Name	Min	FG			Rebounds			Fouls		TP	AS	TO	ST	Blocks		+/-
			M-A	M-A	M-A	OR	DR	TOT	PF	FD					BS	BA	
32	Aaliyah Patty	F 05:40	0-2	0-1	0-2	0	2	2	1	1	0	1	0	0	1	0	-9
3	Destiny Pitts	G 23:54	0-4	0-3	4-4	2	1	3	2	2	4	1	2	0	0	0	-9
5	Jordan Nixon	G 34:54	5-13	2-4	1-4	0	4	4	5	5	13	7	4	2	0	0	1
11	Kayla Wells	G 31:14	5-18	0-3	10-11	2	1	3	2	9	20	0	4	1	0	1	-27
24	Sahara Jones	G 25:20	1-2	0-0	1-2	0	1	1	3	3	3	0	0	1	0	0	-11
44	Sydnee Roby	20:11	5-5	0-0	0-0	3	1	4	2	3	10	1	2	0	0	0	-34
13	Jada Malone	05:56	1-1	0-0	0-0	1	1	2	0	0	2	0	2	1	0	0	5
2	Qadashah Hoppie	24:51	6-11	1-2	4-4	0	3	3	4	2	17	3	1	1	1	1	3
23	McKinzie Green	15:08	1-2	0-0	0-0	0	0	0	4	1	2	1	0	2	0	0	-1
14	Maliyah Johnson	12:38	2-2	0-0	0-2	1	1	2	3	1	4	0	2	1	0	0	22
4	Kay Kay Green	00:14	0-0	0-0	0-0	0	0	0	0	0	0	0	0	0	0	0	0
Team						0	2	2			0		0				
<b>Totals</b>			26-60	3-13	20-29	9	17	26	26	27	75	14	17	9	2	2	-12

Technical Fouls::NONE

Shooting By Period		
1 <sup>st</sup> FG%	5-19	26.3%
3PT%	0-4	0.0%
FT%	2-2	100%
2 <sup>nd</sup> FG%	5-14	35.7%
3PT%	0-2	0.0%
FT%	0-2	0%
3 <sup>rd</sup> FG%	8-14	57.1%
3PT%	2-3	66.7%
FT%	3-6	50%
4 <sup>th</sup> FG%	8-13	61.5%
3PT%	1-4	25.0%
FT%	15-19	78.9%
GM FG%	26-60	43.3%
3PT%	3-13	23.1%
FT%	20-29	69.0%

Dead Ball Rebounds: 7, 0

TCU - 87

Record: 4-4

NO.	Name	Min	FG			Rebounds			Fouls		TP	AS	TO	ST	Blocks		+/-
			M-A	M-A	M-A	OR	DR	TOT	PF	FD					BS	BA	
4	Okako Adika	F 25:42	4-10	1-3	0-0	3	1	4	4	2	9	3	3	2	0	0	6
23	Michelle Berry	F 20:12	0-4	0-3	2-2	0	4	4	3	1	2	1	1	0	0	0	19
32	Patricia Morris	F 13:08	3-4	0-0	1-2	4	2	6	5	3	7	2	3	0	0	0	25
1	Aahliyah Jackson	G 34:30	1-6	0-3	0-0	2	6	8	4	1	2	3	3	1	0	0	12
20	Lauren Heard	G 36:15	7-12	1-2	18-21	1	4	5	2	12	33	4	6	3	1	1	8
5	Yummy Morris	13:22	2-4	0-0	1-2	2	1	3	5	2	5	1	3	0	0	0	3
2	Tara Manumaleuga	05:34	0-2	0-1	0-0	0	1	1	0	0	0	0	1	0	0	1	3
24	Kayla Mokwuah	08:27	1-2	0-0	0-0	2	1	3	0	0	2	0	1	0	1	0	-8
13	Tavy Diggs	12:25	2-3	0-0	1-2	2	2	4	2	2	5	1	2	0	0	0	-1
15	Aja Holmes	26:30	7-12	6-11	2-3	1	1	2	1	2	22	1	0	0	0	0	-8
10	Paige Bradley	01:49	0-0	0-0	0-0	0	0	0	1	0	0	0	0	0	0	0	4
0	Caroline Germond	02:06	0-0	0-0	0-0	0	0	0	0	1	0	0	2	0	0	0	-3
Team						1	4	5			0		2				
<b>Totals</b>			27-59	8-23	25-32	18	27	45	27	26	87	16	27	6	2	2	12

Technical Fouls::NONE

Shooting By Period		
1 <sup>st</sup> FG%	7-15	46.7%
3PT%	2-4	50.0%
FT%	3-4	75%
2 <sup>nd</sup> FG%	7-18	38.9%
3PT%	3-8	37.5%
FT%	6-7	85.7%
3 <sup>rd</sup> FG%	8-14	57.1%
3PT%	1-4	25.0%
FT%	2-5	40%
4 <sup>th</sup> FG%	5-12	41.7%
3PT%	2-7	28.6%
FT%	14-16	87.5%
GM FG%	27-59	45.8%
3PT%	8-23	34.8%
FT%	25-32	78.1%

Dead Ball Rebounds: 4, 0

	TAMU	TCU
Biggest lead	0 (1 <sup>st</sup> 10:00)	29 (3 <sup>rd</sup> 3:48)
Best Scoring Run	12(4 <sup>th</sup> 3:36)	14(3 <sup>rd</sup> 3:48)
Lead Changes	0	
Times Tied	0	
Time with Lead	00:00	39:40

	TAMU	TCU
Points from		
Turnovers	24	20
Paint	40	34
Second Chance	6	16
Fast Breaks	14	8
Bench	35	34

	Period by Period Scoring				
	1st	2nd	3rd	4th	TOT
TAMU	12	10	21	32	75
TCU	19	23	19	26	87



**Period 1**

**Quarter Starters:**

<b>TCU</b>	1 Jackson A	4 Adika O	20 Heard L	23 Berry M	32 Morris P
<b>TAMU</b>	3 Pitts D	5 Nixon J	11 Wells K	24 Jones S	32 Patty A

Game Time	TCU	Score	Diff	TAMU
10:00	23 BERRY M jumpball won			32 PATTY A jumpball lost
09:53	4 ADIKA O 2pt FG in the paint, jump shot missed			
09:50	1 JACKSON A offensive rebound (1)			
09:45	4 ADIKA O 3pt FG second chance, jump shot missed			
09:41	32 MORRIS P offensive rebound (1)			
09:40	32 MORRIS P 2pt FG second chance in the paint, layup made (2)	<b>2-0</b>	<b>2</b>	
09:25				11 WELLS K 2pt FG in the paint, jump shot missed
09:23	1 JACKSON A defensive rebound (2)			
09:06	20 HEARD L 2pt FG in the paint, driving layup missed			
09:03				32 PATTY A defensive rebound (1)
08:57				32 PATTY A 3pt FG , jump shot missed
08:54	4 ADIKA O defensive rebound (1)			
08:35	1 JACKSON A 2pt FG in the paint, jump shot missed			
08:33	32 MORRIS P offensive rebound (2)			
08:32	32 MORRIS P foul drawn (1)			32 PATTY A foul shooting (1 - 1)
08:32				32 PATTY A substitution out
08:32				44 ROBY S substitution in
08:32	32 MORRIS P free throw 1 - 2 made (3)	<b>3-0</b>	<b>3</b>	
08:32	32 MORRIS P free throw 2 - 2 missed			
08:31				44 ROBY S defensive rebound (1)
08:26				3 PITTS D 3pt FG , jump shot missed
08:23	32 MORRIS P defensive rebound (3)			
07:59	4 ADIKA O 2pt FG in the paint, driving layup made (2)	<b>5-0</b>	<b>5</b>	
07:42	32 MORRIS P foul personal (1 - 1)			44 ROBY S foul drawn (1)
07:42	32 MORRIS P substitution out			
07:42	5 MORRIS Y substitution in			
07:42	4 ADIKA O foul personal (1 - 2)			11 WELLS K foul drawn (1)
07:38				5 NIXON J 2pt FG outside the paint, jump shot missed
07:35	23 BERRY M defensive rebound (1)			
07:27	4 ADIKA O 3pt FG , jump shot made (5)	<b>8-0</b>	<b>8</b>	
07:27	20 HEARD L assist (1)			
07:06				5 NIXON J turnover out of bounds (1)
07:06	23 BERRY M substitution out			
07:06	2 MANUMALEUGA T substitution in			
06:52	4 ADIKA O 2pt FG from turnover in the paint, layup made (7)	<b>10-0</b>	<b>10</b>	
06:52	5 MORRIS Y assist (1)			
06:40				11 WELLS K 2pt FG outside the paint, jump shot missed
06:37	1 JACKSON A defensive rebound (3)			
06:29	20 HEARD L foul drawn (1)			5 NIXON J foul shooting (1 - 2)
06:29	4 ADIKA O substitution out			
06:29	23 BERRY M substitution in			
06:29	20 HEARD L free throw 1 - 2 made (1)	<b>11-0</b>	<b>11</b>	



Official Basketball Play by Play - 1st Period  
**Texas A&M at TCU**  
 12/12/21 Ed and Rae Schollmaier Arena, Fort Worth  
 2021-22 Women's Basketball

**Game Time:** 1:00 PM  
**Game Duration:** 2:16  
**Attendance:** 2,371

**Officials:** Felicia Grinter, Brian Hall, Tiffany Bird

Game Time	TCU	Score	Diff	TAMU
06:29	20 HEARD L free throw 2 - 2 made (2)	<b>12-0</b>	<b>12</b>	
06:22				11 WELLS K 2pt FG in the paint, layup missed
06:18				44 ROBY S offensive rebound (2)
06:18		<b>12-2</b>	<b>10</b>	44 ROBY S 2pt FG second chance in the paint, layup made (2)
06:11	5 MORRIS Y 2pt FG in the paint, layup missed			
06:06	5 MORRIS Y offensive rebound (1)			
06:06	5 MORRIS Y 2pt FG second chance in the paint, layup made (2)	<b>14-2</b>	<b>12</b>	
06:02	5 MORRIS Y foul drawn (1)			44 ROBY S foul offensive (1 - 3)
06:02				44 ROBY S turnover offensive (1)
06:02				44 ROBY S substitution out
06:02				13 MALONE J substitution in
05:51	5 MORRIS Y turnover bad pass (1)			
05:35				13 MALONE J turnover lost ball (1)
05:22	5 MORRIS Y turnover travel (2)			
05:13				11 WELLS K 2pt FG from turnover outside the paint, jump shot missed
05:10	20 HEARD L defensive rebound (1)			
05:08	5 MORRIS Y foul offensive (1 - 3)			11 WELLS K foul drawn (2)
05:08	5 MORRIS Y turnover offensive (3)			
05:08	5 MORRIS Y substitution out			
05:08	24 MOKWUAH K substitution in			
05:08				24 JONES S substitution out
05:08				2 HOPPIE Q substitution in
04:44	23 BERRY M foul shooting (1 - 4)			11 WELLS K foul drawn (3)
04:44	Timeout media			
04:44	23 BERRY M substitution out			
04:44	13 DIGGS T substitution in			
04:44		<b>14-3</b>	<b>11</b>	11 WELLS K free throw 1 - 2 made (1)
04:44		<b>14-4</b>	<b>10</b>	11 WELLS K free throw 2 - 2 made (2)
04:33	13 DIGGS T foul offensive (1 - 5)			3 PITTS D foul drawn (1)
04:33	13 DIGGS T turnover offensive (1)			
04:33	1 JACKSON A substitution out			
04:33	15 HOLMES A substitution in			
04:25		<b>14-6</b>	<b>8</b>	13 MALONE J 2pt FG from turnover in the paint, layup made (2)
04:25				2 HOPPIE Q assist (1)
04:06	2 MANUMALEUGA T turnover bad pass (1)			13 MALONE J steal (1)
03:57				11 WELLS K 2pt FG from turnover outside the paint, jump shot blocked
03:57	24 MOKWUAH K block (1)			
03:52				11 WELLS K offensive rebound (1)
03:49				2 HOPPIE Q 3pt FG from turnover second chance, jump shot missed
03:43	13 DIGGS T defensive rebound (1)			
03:41	15 HOLMES A foul drawn (1)			3 PITTS D foul personal (1 - 4)
03:34	13 DIGGS T turnover bad pass (2)			
03:22				11 WELLS K 2pt FG from turnover in the paint, pull up jump shot missed
03:18	13 DIGGS T defensive rebound (2)			
03:13	2 MANUMALEUGA T 3pt FG , jump shot missed			
03:10				5 NIXON J defensive rebound (1)



Official Basketball Play by Play - 1st Period  
**Texas A&M at TCU**  
 12/12/21 Ed and Rae Schollmaier Arena, Fort Worth  
 2021-22 Women's Basketball

**Game Time:** 1:00 PM  
**Game Duration:** 2:16  
**Attendance:** 2,371

**Officials:** Felicia Grinter, Brian Hall, Tiffany Bird

Game Time	TCU	Score	Diff	TAMU
03:06		<b>14-8</b>	<b>6</b>	5 NIXON J 2pt FG fast break in the paint, driving layup made (2)
02:51	15 HOLMES A 3pt FG , jump shot made (3)	<b>17-8</b>	<b>9</b>	
02:51	20 HEARD L assist (2)			
02:28				5 NIXON J 2pt FG outside the paint, jump shot missed
02:25				13 MALONE J offensive rebound (1)
02:21				13 MALONE J turnover lost ball (2)
02:21	2 MANUMALEUGA T substitution out			
02:21	1 JACKSON A substitution in			
02:08	20 HEARD L 2pt FG from turnover outside the paint, jump shot blocked			
02:08				2 HOPPIE Q block (1)
02:04				13 MALONE J defensive rebound (2)
01:56				11 WELLS K 2pt FG in the paint, driving layup missed
01:53	24 MOKWUAH K defensive rebound (1)			
01:40	24 MOKWUAH K 2pt FG in the paint, jump shot made (2)	<b>19-8</b>	<b>11</b>	
01:40	15 HOLMES A assist (1)			
01:26				2 HOPPIE Q 2pt FG outside the paint, jump shot missed
01:23	20 HEARD L defensive rebound (2)			
01:10	20 HEARD L turnover bad pass (1)			2 HOPPIE Q steal (1)
01:06		<b>19-10</b>	<b>9</b>	2 HOPPIE Q 2pt FG fast break from turnover in the paint, driving layup made (2)
00:44	1 JACKSON A 2pt FG in the paint, layup missed			
00:40				3 PITTS D defensive rebound (1)
00:38		<b>19-12</b>	<b>7</b>	11 WELLS K 2pt FG fast break in the paint, layup made (4)
00:38				5 NIXON J assist (1)
00:05	20 HEARD L turnover bad pass (2)			
00:05				11 WELLS K substitution out
00:05				13 MALONE J substitution out
00:05				24 JONES S substitution in
00:05				44 ROBY S substitution in
00:00				5 NIXON J 3pt FG from turnover, jump shot missed
00:00				offensive dead ball rebound (1)
<b>END OF PERIOD</b>				
<b>TCU 19-12 TAMU</b>				



**Texas A&M at TCU**

12/12/21 Ed and Rae Schollmaier Arena, Fort Worth  
2021-22 Women's Basketball

Game Time: 1:00 PM  
Game Duration: 2:16  
Attendance: 2,371

Officials: Felicia Grinter, Brian Hall, Tiffany Bird

**Texas A&M - 12**

NO.	Name	F	Min	FG			Rebounds			Fouls		TP	AS	TO	ST	Blocks		+/-
				M-A	M-A	M-A	OR	DR	TOT	PF	FD					BS	BA	
32	Aaliyah Patty	F	01:28	0-1	0-1	0-0	0	1	1	1	0	0	0	0	0	0	0	-2
3	Destiny Pitts	G	10:00	0-1	0-1	0-0	0	1	1	1	1	0	0	0	0	0	0	-7
5	Jordan Nixon	G	10:00	1-4	0-1	0-0	0	1	1	1	0	2	1	1	0	0	0	-7
11	Kayla Wells	G	09:54	1-8	0-0	2-2	1	0	1	0	3	4	0	0	0	0	1	-7
24	Sahara Jones	G	04:58	0-0	0-0	0-0	0	0	0	0	0	0	0	0	0	0	0	-12
44	Sydnee Roby		02:36	1-1	0-0	0-0	1	1	2	1	1	2	0	1	0	0	0	-10
13	Jada Malone		05:56	1-1	0-0	0-0	1	1	2	0	0	2	0	2	1	0	0	5
2	Qadashah Hoppie		05:08	1-3	0-1	0-0	0	0	0	0	0	2	1	0	1	1	0	5
Team							0	0	0		0		0					
<b>Totals</b>				5-19	0-4	2-2	3	5	8	4	5	12	2	4	2	1	1	-7

Shooting By Period		
1st FG%	5-19	26.3%
3PT%	0-4	0.0%
FT%	2-2	100%
GM FG%	5-19	26.3%
3PT%	0-4	0.0%
FT%	2-2	100.0%

Dead Ball Rebounds: 1, 0

Technical Fouls::NONE

**TCU - 19**

NO.	Name	F	Min	FG			Rebounds			Fouls		TP	AS	TO	ST	Blocks		+/-
				M-A	M-A	M-A	OR	DR	TOT	PF	FD					BS	BA	
4	Okako Adika	F	03:31	3-5	1-2	0-0	0	1	1	1	0	7	0	0	0	0	0	10
23	Michelle Berry	F	04:39	0-0	0-0	0-0	0	1	1	1	0	0	0	0	0	0	0	10
32	Patricia Morris	F	02:18	1-1	0-0	1-2	2	1	3	1	1	3	0	0	0	0	0	5
1	Aahliyah Jackson	G	07:48	0-2	0-0	0-0	1	2	3	0	0	0	0	0	0	0	0	8
20	Lauren Heard	G	10:00	0-2	0-0	2-2	0	2	2	0	1	2	2	2	0	0	1	7
5	Yummy Morris		02:34	1-2	0-0	0-0	1	0	1	1	1	2	1	3	0	0	0	7
2	Tara Manumaleuga		04:45	0-1	0-1	0-0	0	0	0	0	0	0	0	1	0	0	0	1
24	Kayla Mokwuah		05:08	1-1	0-0	0-0	0	1	1	0	0	2	0	0	0	1	0	-5
13	Tavy Diggs		04:44	0-0	0-0	0-0	0	2	2	1	0	0	0	2	0	0	0	-5
15	Aja Holmes		04:33	1-1	1-1	0-0	0	0	0	0	1	3	1	0	0	0	0	-3
Team							0	0	0		0		0					
<b>Totals</b>				7-15	2-4	3-4	4	10	14	5	4	19	4	8	0	1	1	7

Shooting By Period		
1st FG%	7-15	46.7%
3PT%	2-4	50.0%
FT%	3-4	75%
GM FG%	7-15	46.7%
3PT%	2-4	50.0%
FT%	3-4	75.0%

Dead Ball Rebounds: 0, 0

Technical Fouls::NONE

	TAMU	TCU
Biggest lead	0 (1st 10:00)	12 (1st 6:29)
Best Scoring Run	6(1st 3:06)	12(1st 6:29)
Lead Changes	0	
Times Tied	0	
Time with Lead	00:00	09:40

Points from	TAMU	TCU
Turnovers	6	2
Paint	10	10
Second Chance	2	5
Fast Breaks	6	0
Bench	6	7

	Period by Period Scoring				
	1st	2nd	3rd	4th	TOT
TAMU	12	10	21	32	75
TCU	19	23	19	26	87



**Period 2**

**Quarter Starters:**

<b>TCU</b>	1 Jackson A	4 Adika O	15 Holmes A	23 Berry M	32 Morris P
<b>TAMU</b>	2 Hoppie Q	3 Pitts D	5 Nixon J	24 Jones S	44 Roby S

Game Time	TCU	Score	Diff	TAMU
10:00	13 DIGGS T substitution out			
10:00	20 HEARD L substitution out			
10:00	24 MOKWUAH K substitution out			
10:00	4 ADIKA O substitution in			
10:00	23 BERRY M substitution in			
10:00	32 MORRIS P substitution in			
09:59	4 ADIKA O steal (1)			3 PITTS D turnover bad pass (1)
09:55	1 JACKSON A 3pt FG from turnover, jump shot missed			
09:52	32 MORRIS P offensive rebound (4)			
09:33	1 JACKSON A 3pt FG from turnover second chance, jump shot missed			
09:30	4 ADIKA O offensive rebound (2)			
09:28	15 HOLMES A 3pt FG from turnover second chance, jump shot made (6)	<b>22-12</b>	<b>10</b>	
09:28	4 ADIKA O assist (1)			
09:14		<b>22-14</b>	<b>8</b>	2 HOPPIE Q 2pt FG in the paint, driving layup made (4)
08:56	15 HOLMES A 2pt FG in the paint, floating jump shot made (8)	<b>24-14</b>	<b>10</b>	
08:41				2 HOPPIE Q 2pt FG in the paint, driving layup missed
08:37	32 MORRIS P defensive rebound (5)			
08:23	4 ADIKA O 2pt FG in the paint, layup missed			
08:20	4 ADIKA O offensive rebound (3)			
08:19	4 ADIKA O foul drawn (1)			24 JONES S foul personal (1 - 1)
08:19				3 PITTS D substitution out
08:19				11 WELLS K substitution in
08:19	15 HOLMES A substitution out			
08:19	20 HEARD L substitution in			
08:13	32 MORRIS P foul offensive (2 - 1)			44 ROBY S foul drawn (2)
08:13	32 MORRIS P turnover offensive (1)			
07:59	jump ball situation			
07:59	20 HEARD L steal (1)			11 WELLS K turnover lost ball (1)
07:49	4 ADIKA O 2pt FG from turnover in the paint, driving layup made (9)	<b>26-14</b>	<b>12</b>	
07:38				2 HOPPIE Q 2pt FG in the paint, driving layup blocked
07:38	20 HEARD L block (1)			
07:31	1 JACKSON A defensive rebound (4)			
07:15	20 HEARD L 3pt FG , jump shot made (5)	<b>29-14</b>	<b>15</b>	
07:15	4 ADIKA O assist (2)			
06:49				11 WELLS K 2pt FG in the paint, jump shot missed
06:45	23 BERRY M defensive rebound (2)			
06:37	20 HEARD L 2pt FG in the paint, driving layup made (7)	<b>31-14</b>	<b>17</b>	
06:37	20 HEARD L foul drawn (2)			5 NIXON J foul shooting (2 - 2)
06:37	32 MORRIS P substitution out			
06:37	5 MORRIS Y substitution in			
06:37				5 NIXON J substitution out



Official Basketball Play by Play - 2nd Period  
**Texas A&M at TCU**  
 12/12/21 Ed and Rae Schollmaier Arena, Fort Worth  
 2021-22 Women's Basketball

**Game Time:** 1:00 PM  
**Game Duration:** 2:16  
**Attendance:** 2,371

**Officials:** Felicia Grinter, Brian Hall, Tiffany Bird

Game Time	TCU	Score	Diff	TAMU
06:37				24 JONES S substitution out
06:37				23 GREEN M substitution in
06:37				32 PATTY A substitution in
06:37	23 BERRY M substitution out			
06:37	10 BRADLEY P substitution in			
06:37	20 HEARD L free throw 1 - 1 made (8)	<b>32-14</b>	<b>18</b>	
06:25		<b>32-16</b>	<b>16</b>	2 HOPPIE Q 2pt FG outside the paint, jump shot made (6)
06:25				44 ROBY S assist (1)
06:01	20 HEARD L 2pt FG in the paint, layup missed			
05:58				2 HOPPIE Q defensive rebound (1)
05:47	10 BRADLEY P foul personal (1 - 2)			23 GREEN M foul drawn (1)
05:45	1 JACKSON A steal (1)			2 HOPPIE Q turnover bad pass (1)
05:37	20 HEARD L 2pt FG fast break from turnover in the paint, driving layup made (10)	<b>34-16</b>	<b>18</b>	
05:37	20 HEARD L foul drawn (3)			2 HOPPIE Q foul shooting (1 - 3)
05:37				2 HOPPIE Q substitution out
05:37				24 JONES S substitution in
05:37	20 HEARD L free throw fast break 1 - 1 made (11)	<b>35-16</b>	<b>19</b>	
05:37	1 JACKSON A substitution out			
05:37	4 ADIKA O substitution out			
05:37	20 HEARD L substitution out			
05:37	2 MANUMALEUGA T substitution in			
05:37	15 HOLMES A substitution in			
05:37	23 BERRY M substitution in			
05:23				44 ROBY S turnover travel (2)
05:05	23 BERRY M foul drawn (1)			23 GREEN M foul shooting (1 - 4)
05:05	23 BERRY M free throw 1 - 2 made (1)	<b>36-16</b>	<b>20</b>	
05:05	23 BERRY M free throw 2 - 2 made (2)	<b>37-16</b>	<b>21</b>	
05:00				24 JONES S 2pt FG outside the paint, pull up jump shot missed
04:57	2 MANUMALEUGA T defensive rebound (1)			
04:49	2 MANUMALEUGA T 2pt FG in the paint, driving layup blocked			
04:49				32 PATTY A block (1)
04:48	offensive rebound (22)			
04:48	Timeout media			
04:48	2 MANUMALEUGA T substitution out			
04:48	10 BRADLEY P substitution out			
04:48	4 ADIKA O substitution in			
04:48	20 HEARD L substitution in			
04:47	15 HOLMES A 3pt FG second chance, jump shot made (11)	<b>40-16</b>	<b>24</b>	
04:47	23 BERRY M assist (1)			
04:27				32 PATTY A 2pt FG in the paint, hook shot missed
04:25				44 ROBY S offensive rebound (3)
04:23	5 MORRIS Y foul personal (2 - 3)			44 ROBY S foul drawn (3)
04:23				23 GREEN M substitution out
04:23				24 JONES S substitution out
04:23				32 PATTY A substitution out
04:23				3 PITTS D substitution in
04:23				5 NIXON J substitution in
04:23				14 JOHNSON M substitution in



Official Basketball Play by Play - 2nd Period  
**Texas A&M at TCU**  
 12/12/21 Ed and Rae Schollmaier Arena, Fort Worth  
 2021-22 Women's Basketball

**Game Time:** 1:00 PM  
**Game Duration:** 2:16  
**Attendance:** 2,371

**Officials:** Felicia Grinter, Brian Hall, Tiffany Bird

Game Time	TCU	Score	Diff	TAMU
04:21		<b>40-18</b>	<b>22</b>	11 WELLS K 2pt FG second chance outside the paint, jump shot made (6)
04:21				5 NIXON J assist (2)
04:00	15 HOLMES A 3pt FG , jump shot missed			
03:57				defensive rebound (11)
03:46	23 BERRY M foul personal (2 - 4)			11 WELLS K foul drawn (4)
03:45				3 PITTS D 2pt FG outside the paint, jump shot missed
03:40				14 JOHNSON M offensive rebound (1)
03:38				5 NIXON J 3pt FG second chance, jump shot missed
03:35	5 MORRIS Y defensive rebound (2)			
03:12	4 ADIKA O 2pt FG in the paint, jump shot missed			
03:12				defensive rebound (13)
03:10	23 BERRY M substitution out			
03:10	1 JACKSON A substitution in			
03:05				11 WELLS K 3pt FG , jump shot missed
03:02				44 ROBY S offensive rebound (4)
02:47		<b>40-20</b>	<b>20</b>	44 ROBY S 2pt FG second chance in the paint, layup made (4)
02:47				5 NIXON J assist (3)
02:32	15 HOLMES A foul drawn (2)			14 JOHNSON M foul shooting (1 - 5)
02:29	5 MORRIS Y substitution out			
02:29	24 MOKWUAH K substitution in			
02:29				14 JOHNSON M substitution out
02:29				32 PATTY A substitution in
02:29	15 HOLMES A free throw 1 - 3 made (12)	<b>41-20</b>	<b>21</b>	
02:29	15 HOLMES A free throw 2 - 3 missed			
02:29	offensive dead ball rebound (1)			
02:29	15 HOLMES A free throw 3 - 3 made (13)	<b>42-20</b>	<b>22</b>	
02:20				11 WELLS K turnover travel (2)
02:10	4 ADIKA O 2pt FG from turnover in the paint, jump shot missed			
02:08	20 HEARD L offensive rebound (3)			
01:57	1 JACKSON A turnover out of bounds (1)			
01:45		<b>42-22</b>	<b>20</b>	44 ROBY S 2pt FG from turnover in the paint, layup made (6)
01:45				32 PATTY A assist (1)
01:16	24 MOKWUAH K 2pt FG in the paint, jump shot missed			
01:13				32 PATTY A defensive rebound (2)
01:11	4 ADIKA O foul personal (2 - 5)			32 PATTY A foul drawn (1)
01:11	4 ADIKA O substitution out			
01:11	13 DIGGS T substitution in			
01:11				32 PATTY A free throw 1 - 2 missed
01:11				offensive dead ball rebound (2)
01:11				32 PATTY A free throw 2 - 2 missed
01:10	defensive rebound (25)			
00:44	15 HOLMES A 3pt FG , jump shot missed			
00:41	24 MOKWUAH K offensive rebound (2)			
00:35	15 HOLMES A 3pt FG second chance, jump shot missed			
00:31	24 MOKWUAH K offensive rebound (3)			
00:31				32 PATTY A substitution out
00:31				14 JOHNSON M substitution in
00:11	turnover shot clock (11)			



Official Basketball Play by Play - 2nd Period  
**Texas A&M at TCU**  
12/12/21 Ed and Rae Schollmaier Arena, Fort Worth  
2021-22 Women's Basketball

**Game Time:** 1:00 PM  
**Game Duration:** 2:16  
**Attendance:** 2,371

**Officials:** Felicia Grinter, Brian Hall, Tiffany Bird

Game Time	TCU	Score	Diff	TAMU
00:11	15 HOLMES A substitution out			
00:11	23 BERRY M substitution in			
00:05				5 NIXON J 2pt FG from turnover in the paint, driving layup missed
00:02				11 WELLS K offensive rebound (2)
<b>END OF PERIOD</b>				
<b>TCU 42-22 TAMU</b>				



Texas A&M at TCU

12/12/21 Ed and Rae Schollmaier Arena, Fort Worth  
2021-22 Women's Basketball

Game Time: 1:00 PM  
Game Duration: 2:16  
Attendance: 2,371

Officials: Felicia Grinter, Brian Hall, Tiffany Bird

Texas A&M - 10

NO.	Name	F	Min	FG			Rebounds			Fouls		TP	AS	TO	ST	Blocks		+/-
				M-A	M-A	M-A	OR	DR	TOT	PF	FD					BS	BA	
32	Aaliyah Patty	F	04:12	0-1	0-0	0-2	0	1	1	0	1	0	1	0	0	1	0	-7
3	Destiny Pitts	G	06:04	0-1	0-0	0-0	0	0	0	0	0	0	0	1	0	0	0	1
5	Jordan Nixon	G	07:46	0-2	0-1	0-0	0	0	0	1	0	0	2	0	0	0	0	-6
11	Kayla Wells	G	08:19	1-3	0-1	0-0	1	0	1	0	1	2	0	2	0	0	0	-10
24	Sahara Jones	G	04:37	0-1	0-0	0-0	0	0	0	1	0	0	0	0	0	0	0	-16
2	Qadashah Hoppie		04:23	2-4	0-0	0-0	0	1	1	1	0	4	0	1	0	0	1	-11
44	Sydnee Roby		10:00	2-2	0-0	0-0	2	0	2	0	2	4	1	1	0	0	0	-13
23	McKinzie Green		02:14	0-0	0-0	0-0	0	0	0	1	1	0	0	0	0	0	0	-7
14	Maliyah Johnson		02:25	0-0	0-0	0-0	1	0	1	1	0	0	0	0	0	0	0	4
Team							0	2	2			0		0				
<b>Totals</b>				5-14	0-2	0-2	4	4	8	5	5	10	4	5	0	1	1	-13

Shooting By Period		
2nd FG%	5-14	35.7%
3PT%	0-2	0.0%
FT%	0-2	0%
GM FG%	5-14	35.7%
3PT%	0-2	0.0%
FT%	0-2	0.0%

Dead Ball Rebounds: 1, 0

Technical Fouls::NONE

TCU - 23

NO.	Name	F	Min	FG			Rebounds			Fouls		TP	AS	TO	ST	Blocks		+/-
				M-A	M-A	M-A	OR	DR	TOT	PF	FD					BS	BA	
4	Okako Adika	F	08:00	1-4	0-0	0-0	2	0	2	1	1	2	2	0	1	0	0	11
23	Michelle Berry	F	06:01	0-0	0-0	2-2	0	1	1	1	1	2	1	0	0	0	0	13
32	Patricia Morris	F	03:23	0-0	0-0	0-0	1	1	2	1	0	0	0	1	0	0	0	10
1	Aahliyah Jackson	G	07:33	0-2	0-2	0-0	0	1	1	0	0	0	0	1	1	0	0	10
20	Lauren Heard	G	07:30	3-4	1-1	2-2	1	0	1	0	2	9	0	0	1	1	0	8
5	Yummy Morris		04:08	0-0	0-0	0-0	0	1	1	1	0	0	0	0	0	0	0	3
10	Paige Bradley		01:49	0-0	0-0	0-0	0	0	0	1	0	0	0	0	0	0	0	4
2	Tara Manumaleuga		00:49	0-1	0-0	0-0	0	1	1	0	0	0	0	0	0	0	1	2
15	Aja Holmes		07:07	3-6	2-5	2-3	0	0	0	0	1	10	0	0	0	0	0	4
24	Kayla Mokwuah		02:29	0-1	0-0	0-0	2	0	2	0	0	0	0	0	0	0	0	0
13	Tavy Diggs		01:11	0-0	0-0	0-0	0	0	0	0	0	0	0	0	0	0	0	0
Team							1	1	2			0		1				
<b>Totals</b>				7-18	3-8	6-7	7	6	13	5	5	23	3	3	3	1	1	13

Shooting By Period		
2nd FG%	7-18	38.9%
3PT%	3-8	37.5%
FT%	6-7	85.7%
GM FG%	7-18	38.9%
3PT%	3-8	37.5%
FT%	6-7	85.7%

Dead Ball Rebounds: 1, 0

Technical Fouls::NONE

	TAMU	TCU	Points from		Period by Period Scoring						
Biggest lead	0 (1 <sup>st</sup> 10:00)	24 (2 <sup>nd</sup> 4:47)	Turnovers	2	10	TAMU	12	10	21	32	75
Best Scoring Run	4(2 <sup>nd</sup> 2:47)	10(2 <sup>nd</sup> 6:37)	Paint	6	8						
Lead Changes	0		Second Chance	4	6	TCU	19	23	19	26	87
Times Tied	0		Fast Breaks	0	3						
Time with Lead	00:00	09:55	Bench	8	10						



Texas A&M at TCU

12/12/21 Ed and Rae Schollmaier Arena, Fort Worth  
2021-22 Women's Basketball

Game Time: 1:00 PM  
Game Duration: 2:16  
Attendance: 2,371

Officials: Felicia Grinter, Brian Hall, Tiffany Bird

Texas A&M - 22

NO.	Name	Min	FG			Rebounds			Fouls		TP	AS	TO	ST	Blocks		+/-
			M-A	M-A	M-A	OR	DR	TOT	PF	FD					BS	BA	
32	Aaliyah Patty	F 05:40	0-2	0-1	0-2	0	2	2	1	1	0	1	0	0	1	0	-9
3	Destiny Pitts	G 16:04	0-2	0-1	0-0	0	1	1	1	1	0	0	1	0	0	0	-6
5	Jordan Nixon	G 17:46	1-6	0-2	0-0	0	1	1	2	0	2	3	1	0	0	0	-13
11	Kayla Wells	G 18:13	2-11	0-1	2-2	2	0	2	0	4	6	0	2	0	0	1	-17
24	Sahara Jones	G 09:35	0-1	0-0	0-0	0	0	0	1	0	0	0	0	0	0	0	-28
44	Sydnee Roby	12:36	3-3	0-0	0-0	3	1	4	1	3	6	1	2	0	0	0	-23
13	Jada Malone	05:56	1-1	0-0	0-0	1	1	2	0	0	2	0	2	1	0	0	5
2	Qadashah Hoppie	09:31	3-7	0-1	0-0	0	1	1	1	0	6	1	1	1	1	1	-6
23	McKinzie Green	02:14	0-0	0-0	0-0	0	0	0	1	1	0	0	0	0	0	0	-7
14	Maliyah Johnson	02:25	0-0	0-0	0-0	1	0	1	1	0	0	0	0	0	0	0	4
Team						0	2	2			0		0				
<b>Totals</b>			10-33	0-6	2-4	7	9	16	9	10	22	6	9	2	2	2	-20

Shooting By Period		
1st FG%	5-19	26.3%
3PT%	0-4	0.0%
FT%	2-2	100%
2nd FG%	5-14	35.7%
3PT%	0-2	0.0%
FT%	0-2	0%
GM FG%	10-33	30.3%
3PT%	0-6	0.0%
FT%	2-4	50.0%

Dead Ball Rebounds: 2, 0

Technical Fouls::NONE

TCU - 42

NO.	Name	Min	FG			Rebounds			Fouls		TP	AS	TO	ST	Blocks		+/-
			M-A	M-A	M-A	OR	DR	TOT	PF	FD					BS	BA	
4	Okako Adika	F 11:31	4-9	1-2	0-0	2	1	3	2	1	9	2	0	1	0	0	21
23	Michelle Berry	F 10:40	0-0	0-0	2-2	0	2	2	2	1	2	1	0	0	0	0	23
32	Patricia Morris	F 05:41	1-1	0-0	1-2	3	2	5	2	1	3	0	1	0	0	0	15
1	Aahliyah Jackson	G 15:21	0-4	0-2	0-0	1	3	4	0	0	0	0	1	1	0	0	18
20	Lauren Heard	G 17:30	3-6	1-1	4-4	1	2	3	0	3	11	2	2	1	1	1	15
5	Yummy Morris	06:42	1-2	0-0	0-0	1	1	2	2	1	2	1	3	0	0	0	10
2	Tara Manumaleuga	05:34	0-2	0-1	0-0	0	1	1	0	0	0	0	1	0	0	1	3
24	Kayla Mokwuah	07:37	1-2	0-0	0-0	2	1	3	0	0	2	0	0	0	1	0	-5
13	Tavy Diggs	05:55	0-0	0-0	0-0	0	2	2	1	0	0	0	2	0	0	0	-5
15	Aja Holmes	11:40	4-7	3-6	2-3	0	0	0	0	2	13	1	0	0	0	0	1
10	Paige Bradley	01:49	0-0	0-0	0-0	0	0	0	1	0	0	0	0	0	0	0	4
Team						1	1	2			0		1				
<b>Totals</b>			14-33	5-12	9-11	11	16	27	10	9	42	7	11	3	2	2	20

Shooting By Period		
1st FG%	7-15	46.7%
3PT%	2-4	50.0%
FT%	3-4	75%
2nd FG%	7-18	38.9%
3PT%	3-8	37.5%
FT%	6-7	85.7%
GM FG%	14-33	42.4%
3PT%	5-12	41.7%
FT%	9-11	81.8%

Dead Ball Rebounds: 1, 0

Technical Fouls::NONE

	TAMU	TCU
Biggest lead	0 (1st 10:00)	24 (2nd 4:47)
Best Scoring Run	6(1st 3:06)	12(1st 6:29)
Lead Changes	0	
Times Tied	0	
Time with Lead	00:00	19:40

Points from	TAMU	TCU
Turnovers	8	12
Paint	16	18
Second Chance	6	11
Fast Breaks	6	3
Bench	14	17

	Period by Period Scoring				
	1st	2nd	3rd	4th	TOT
TAMU	12	10	21	32	75
TCU	19	23	19	26	87



**Period 3**

**Quarter Starters:**

<b>TCU</b>	1 Jackson A	4 Adika O	20 Heard L	23 Berry M	32 Morris P
<b>TAMU</b>	3 Pitts D	5 Nixon J	11 Wells K	24 Jones S	44 Roby S

Game Time	TCU	Score	Diff	TAMU
10:00	13 DIGGS T substitution out			
10:00	24 MOKWUAH K substitution out			
10:00	4 ADIKA O substitution in			
10:00	32 MORRIS P substitution in			
10:00				14 JOHNSON M substitution out
10:00				24 JONES S substitution in
09:38		<b>42-24</b>	<b>18</b>	24 JONES S 2pt FG in the paint, jump shot made (2)
09:22	20 HEARD L turnover bad pass (3)			11 WELLS K steal (1)
09:10				11 WELLS K turnover bad pass (3)
08:57	23 BERRY M 2pt FG from turnover outside the paint, jump shot missed			
08:54				5 NIXON J defensive rebound (2)
08:49				11 WELLS K 3pt FG , jump shot missed
08:46				3 PITTS D offensive rebound (2)
08:42				5 NIXON J 2pt FG second chance in the paint, driving layup missed
08:37	defensive rebound (28)			
08:20	4 ADIKA O turnover bad pass (1)			
08:11	23 BERRY M foul shooting (3 - 1)			11 WELLS K foul drawn (5)
08:11	23 BERRY M substitution out			
08:11	15 HOLMES A substitution in			
08:11		<b>42-25</b>	<b>17</b>	11 WELLS K free throw 1 - 2 made (7)
08:11				11 WELLS K free throw 2 - 2 missed
08:09	defensive rebound (29)			
07:53	4 ADIKA O turnover bad pass (2)			
07:34		<b>42-27</b>	<b>15</b>	44 ROBY S 2pt FG from turnover in the paint, layup made (8)
07:03	20 HEARD L 2pt FG in the paint, driving layup made (13)	<b>44-27</b>	<b>17</b>	
07:03	32 MORRIS P assist (1)			
06:49	20 HEARD L steal (2)			5 NIXON J turnover bad pass (2)
06:45	20 HEARD L 2pt FG fast break from turnover in the paint, driving layup made (15)	<b>46-27</b>	<b>19</b>	
06:44				Timeout 30 Sec
06:44				Timeout media
06:44	32 MORRIS P substitution out			
06:44	5 MORRIS Y substitution in			
06:44				5 NIXON J substitution out
06:44				23 GREEN M substitution in
06:30		<b>46-29</b>	<b>17</b>	44 ROBY S 2pt FG in the paint, layup made (10)
06:30				3 PITTS D assist (1)
06:15	20 HEARD L 3pt FG , jump shot missed			
06:11				11 WELLS K defensive rebound (3)
06:07	5 MORRIS Y foul shooting (3 - 2)			11 WELLS K foul drawn (6)
06:07	4 ADIKA O substitution out			
06:07	13 DIGGS T substitution in			



Official Basketball Play by Play - 3rd Period  
**Texas A&M at TCU**  
 12/12/21 Ed and Rae Schollmaier Arena, Fort Worth  
 2021-22 Women's Basketball

**Game Time:** 1:00 PM  
**Game Duration:** 2:16  
**Attendance:** 2,371

**Officials:** Felicia Grinter, Brian Hall, Tiffany Bird

Game Time	TCU	Score	Diff	TAMU
06:07		<b>46-30</b>	<b>16</b>	11 WELLS K free throw fast break 1 - 2 made (8)
06:07		<b>46-31</b>	<b>15</b>	11 WELLS K free throw fast break 2 - 2 made (9)
06:07	5 MORRIS Y substitution out			
06:07	32 MORRIS P substitution in			
05:53	32 MORRIS P 2pt FG in the paint, layup made (5)	<b>48-31</b>	<b>17</b>	
05:53	13 DIGGS T assist (1)			
05:44	1 JACKSON A foul drawn (1)			11 WELLS K foul offensive (1 - 1)
05:44				11 WELLS K turnover offensive (4)
05:25	13 DIGGS T 2pt FG from turnover in the paint, driving layup made (2)	<b>50-31</b>	<b>19</b>	
05:24	13 DIGGS T foul drawn (1)			3 PITTS D foul shooting (2 - 2)
05:24	13 DIGGS T free throw 1 - 1 missed			
05:22	1 JACKSON A offensive rebound (5)			
05:21	jump ball situation			
05:20	20 HEARD L 2pt FG in the paint, layup made (17)	<b>52-31</b>	<b>21</b>	
05:20	1 JACKSON A assist (1)			
05:20	20 HEARD L foul drawn (4)			24 JONES S foul shooting (2 - 3)
05:20				3 PITTS D substitution out
05:20				24 JONES S substitution out
05:20				2 HOPPIE Q substitution in
05:20				5 NIXON J substitution in
05:20	20 HEARD L free throw 1 - 1 missed			
05:19	13 DIGGS T offensive rebound (3)			
05:03	1 JACKSON A 2pt FG second chance outside the paint, jump shot made (2)	<b>54-31</b>	<b>23</b>	
05:03	32 MORRIS P assist (2)			
04:55				11 WELLS K 2pt FG outside the paint, jump shot missed
04:51	20 HEARD L defensive rebound (4)			
04:45	15 HOLMES A 3pt FG fast break, jump shot made (16)	<b>57-31</b>	<b>26</b>	
04:45	20 HEARD L assist (3)			
04:42				Timeout 30 Sec
04:42				Timeout media
04:29				2 HOPPIE Q 2pt FG outside the paint, jump shot missed
04:25	1 JACKSON A defensive rebound (6)			
04:14	32 MORRIS P 2pt FG outside the paint, jump shot missed			
04:11	32 MORRIS P offensive rebound (6)			
03:52	20 HEARD L 2pt FG second chance in the paint, driving layup missed			
03:49	13 DIGGS T offensive rebound (4)			
03:48	13 DIGGS T 2pt FG second chance in the paint, layup made (4)	<b>59-31</b>	<b>28</b>	
03:48	13 DIGGS T foul drawn (2)			44 ROBY S foul shooting (2 - 4)
03:48				11 WELLS K substitution out
03:48				44 ROBY S substitution out
03:48				14 JOHNSON M substitution in
03:48				24 JONES S substitution in
03:48	13 DIGGS T free throw 1 - 1 made (5)	<b>60-31</b>	<b>29</b>	
03:42		<b>60-34</b>	<b>26</b>	5 NIXON J 3pt FG , jump shot made (5)
03:42				23 GREEN M assist (1)
03:16	32 MORRIS P foul offensive (3 - 3)			24 JONES S foul drawn (1)
03:16	32 MORRIS P turnover offensive (2)			



Official Basketball Play by Play - 3rd Period  
**Texas A&M at TCU**  
 12/12/21 Ed and Rae Schollmaier Arena, Fort Worth  
 2021-22 Women's Basketball

**Game Time:** 1:00 PM  
**Game Duration:** 2:16  
**Attendance:** 2,371

**Officials:** Felicia Grinter, Brian Hall, Tiffany Bird

Game Time	TCU	Score	Diff	TAMU
03:06	32 MORRIS P foul drawn (2)			14 JOHNSON M foul offensive (2 - 5)
03:06				14 JOHNSON M turnover offensive (1)
03:06	13 DIGGS T substitution out			
03:06	4 ADIKA O substitution in			
03:04	20 HEARD L turnover lost ball (4)			
02:57		<b>60-36</b>	<b>24</b>	23 GREEN M 2pt FG from turnover in the paint, jump shot made (2)
02:28	32 MORRIS P foul offensive (4 - 4)			5 NIXON J foul drawn (1)
02:28	32 MORRIS P turnover offensive (3)			
02:28	32 MORRIS P substitution out			
02:28	24 MOKWUAH K substitution in			
02:14				23 GREEN M 2pt FG from turnover outside the paint, jump shot missed
02:14	defensive rebound (36)			
01:56	24 MOKWUAH K turnover bad pass (1)			23 GREEN M steal (1)
01:50		<b>60-39</b>	<b>21</b>	5 NIXON J 3pt FG fast break from turnover, jump shot made (8)
01:38	Timeout 30 Sec			
01:38	24 MOKWUAH K substitution out			
01:38	23 BERRY M substitution in			
01:29	23 BERRY M 3pt FG , jump shot missed			
01:26				2 HOPPIE Q defensive rebound (2)
01:21		<b>60-41</b>	<b>19</b>	5 NIXON J 2pt FG fast break in the paint, driving layup made (10)
01:21				2 HOPPIE Q assist (2)
01:17	20 HEARD L foul drawn (5)			2 HOPPIE Q foul personal (2 - 6)
01:17	20 HEARD L free throw 1 - 2 made (18)	<b>61-41</b>	<b>20</b>	
01:17	20 HEARD L free throw 2 - 2 missed			
01:17				2 HOPPIE Q defensive rebound (3)
01:04		<b>61-43</b>	<b>18</b>	2 HOPPIE Q 2pt FG outside the paint, jump shot made (8)
00:32	23 BERRY M 3pt FG , jump shot missed			
00:29				24 JONES S defensive rebound (1)
00:04	15 HOLMES A foul personal (1 - 5)			14 JOHNSON M foul drawn (1)
00:04	23 BERRY M substitution out			
00:04	13 DIGGS T substitution in			
00:04				23 GREEN M substitution out
00:04				3 PITTS D substitution in
00:04				14 JOHNSON M free throw 1 - 2 missed
00:04				offensive dead ball rebound (3)
00:04				14 JOHNSON M free throw 2 - 2 missed
00:04				3 PITTS D offensive rebound (3)
00:03				14 JOHNSON M substitution out
00:03				11 WELLS K substitution in
00:00				11 WELLS K 2pt FG second chance in the paint, driving layup missed
00:00				offensive dead ball rebound (4)

**END OF PERIOD**

**TCU 61-43 TAMU**



Texas A&M at TCU

12/12/21 Ed and Rae Schollmaier Arena, Fort Worth  
2021-22 Women's Basketball

Game Time: 1:00 PM  
Game Duration: 2:16  
Attendance: 2,371

Officials: Felicia Grinter, Brian Hall, Tiffany Bird

Texas A&M - 21

NO.	Name	F/G	Min	FG			Rebounds			Fouls		TP	AS	TO	ST	Blocks		+/-
				M-A	M-A	M-A	OR	DR	TOT	PF	FD					BS	BA	
32	Aaliyah Patty	F	00:00	0-0	0-0	0-0	0	0	0	0	0	0	0	0	0	0	0	0
3	Destiny Pitts	G	04:44	0-0	0-0	0-0	2	0	2	1	0	0	1	0	0	0	0	-1
5	Jordan Nixon	G	08:36	3-4	2-2	0-0	0	1	1	0	1	8	0	1	0	0	0	4
11	Kayla Wells	G	06:16	0-3	0-1	3-4	0	1	1	1	2	3	0	2	1	0	0	-8
24	Sahara Jones	G	08:28	1-1	0-0	0-0	0	1	1	1	1	2	0	0	0	0	0	9
44	Sydnee Roby		06:12	2-2	0-0	0-0	0	0	0	1	0	4	0	0	0	0	0	-8
23	McKinzie Green		06:40	1-2	0-0	0-0	0	0	0	0	0	2	1	0	1	0	0	1
2	Qadashah Hoppie		05:20	1-2	0-0	0-0	0	2	2	1	0	2	1	0	0	0	0	3
14	Maliyah Johnson		03:44	0-0	0-0	0-2	0	0	0	1	1	0	0	1	0	0	0	10
Team							0	0	0			0						
<b>Totals</b>				8-14	2-3	3-6	2	5	7	6	5	21	3	4	2	0	0	2

Shooting By Period		
3rd FG%	8-14	57.1%
3PT%	2-3	66.7%
FT%	3-6	50%
GM FG%	8-14	57.1%
3PT%	2-3	66.7%
FT%	3-6	50.0%

Dead Ball Rebounds: 2, 0

Technical Fouls::NONE

TCU - 19

NO.	Name	F/G	Min	FG			Rebounds			Fouls		TP	AS	TO	ST	Blocks		+/-
				M-A	M-A	M-A	OR	DR	TOT	PF	FD					BS	BA	
4	Okako Adika	F	06:59	0-0	0-0	0-0	0	0	0	0	0	0	0	2	0	0	0	-11
23	Michelle Berry	F	03:23	0-3	0-2	0-0	0	0	0	1	0	0	0	0	0	0	0	-5
32	Patricia Morris	F	06:55	1-2	0-0	0-0	1	0	1	2	1	2	2	2	0	0	0	8
1	Aahliyah Jackson	G	10:00	1-1	0-0	0-0	1	1	2	0	1	2	1	0	0	0	0	-2
20	Lauren Heard	G	10:00	3-5	0-1	1-3	0	1	1	0	2	7	1	2	1	0	0	-2
15	Aja Holmes		08:11	1-1	1-1	0-0	0	0	0	1	0	3	0	0	0	0	0	0
5	Yummy Morris		00:37	0-0	0-0	0-0	0	0	0	1	0	0	0	0	0	0	0	-4
13	Tavy Diggs		03:05	2-2	0-0	1-2	2	0	2	0	2	5	1	0	0	0	0	9
24	Kayla Mokwuah		00:50	0-0	0-0	0-0	0	0	0	0	0	0	0	1	0	0	0	-3
Team							0	3	3			0						
<b>Totals</b>				8-14	1-4	2-5	4	5	9	5	6	19	5	7	1	0	0	-2

Shooting By Period		
3rd FG%	8-14	57.1%
3PT%	1-4	25.0%
FT%	2-5	40%
GM FG%	8-14	57.1%
3PT%	1-4	25.0%
FT%	2-5	40.0%

Dead Ball Rebounds: 0, 0

Technical Fouls::NONE

	TAMU	TCU
Biggest lead	0 (1 <sup>st</sup> 10:00)	29 (3 <sup>rd</sup> 3:48)
Best Scoring Run	10 (3 <sup>rd</sup> 1:21)	14 (3 <sup>rd</sup> 3:48)
Lead Changes	0	
Times Tied	0	
Time with Lead	00:00	09:38

Points from	TAMU	TCU
Turnovers	8	4
Paint	10	12
Second Chance	0	5
Fast Breaks	7	5
Bench	8	8

	Period by Period Scoring				
	1st	2nd	3rd	4th	TOT
TAMU	12	10	21	32	75
TCU	19	23	19	26	87



**Period 4**

**Quarter Starters:**

<b>TCU</b>	1 Jackson A	4 Adika O	15 Holmes A	20 Heard L	32 Morris P
<b>TAMU</b>	2 Hoppie Q	5 Nixon J	11 Wells K	14 Johnson M	24 Jones S

Game Time	TCU	Score	Diff	TAMU
10:00	13 DIGGS T substitution out			
10:00	32 MORRIS P substitution in			
10:00				3 PITTS D substitution out
10:00				14 JOHNSON M substitution in
09:47	4 ADIKA O 3pt FG , jump shot missed			
09:46				5 NIXON J defensive rebound (3)
09:46	32 MORRIS P foul drawn (3)			14 JOHNSON M foul offensive (3 - 1)
09:46				14 JOHNSON M turnover offensive (2)
09:42	32 MORRIS P 2pt FG from turnover in the paint, layup made (7)	<b>63-43</b>	<b>20</b>	
09:42	1 JACKSON A assist (2)			
09:28	32 MORRIS P foul shooting (5 - 1)			5 NIXON J foul drawn (2)
09:28	32 MORRIS P substitution out			
09:28	5 MORRIS Y substitution in			
09:28				14 JOHNSON M substitution out
09:28				44 ROBY S substitution in
09:28				5 NIXON J free throw 1 - 2 missed
09:28				offensive dead ball rebound (5)
09:28				5 NIXON J free throw 2 - 2 missed
09:27	15 HOLMES A defensive rebound (1)			
09:20	20 HEARD L turnover lost ball (5)			
09:11		<b>63-45</b>	<b>18</b>	11 WELLS K 2pt FG from turnover in the paint, driving layup made (11)
09:11				2 HOPPIE Q assist (3)
08:59	15 HOLMES A 3pt FG , jump shot made (19)	<b>66-45</b>	<b>21</b>	
08:59	1 JACKSON A assist (3)			
08:50				5 NIXON J turnover bad pass (3)
08:50	4 ADIKA O substitution out			
08:50	23 BERRY M substitution in			
08:27	20 HEARD L 2pt FG from turnover in the paint, driving layup made (20)	<b>68-45</b>	<b>23</b>	
08:18	1 JACKSON A foul personal (1 - 2)			5 NIXON J foul drawn (3)
08:18				11 WELLS K substitution out
08:18				44 ROBY S substitution out
08:18				14 JOHNSON M substitution in
08:18				23 GREEN M substitution in
08:17				5 NIXON J 2pt FG outside the paint, jump shot missed
08:14	20 HEARD L defensive rebound (5)			
07:47	5 MORRIS Y 2pt FG outside the paint, jump shot made (4)	<b>70-45</b>	<b>25</b>	
07:47	20 HEARD L assist (4)			
07:32		<b>70-47</b>	<b>23</b>	14 JOHNSON M 2pt FG in the paint, layup made (2)
07:32				5 NIXON J assist (4)
07:21	15 HOLMES A 3pt FG , jump shot missed			
07:17				14 JOHNSON M defensive rebound (2)
07:07		<b>70-50</b>	<b>20</b>	2 HOPPIE Q 3pt FG , jump shot made (11)



Official Basketball Play by Play - 4th Period  
**Texas A&M at TCU**  
 12/12/21 Ed and Rae Schollmaier Arena, Fort Worth  
 2021-22 Women's Basketball

**Game Time:** 1:00 PM  
**Game Duration:** 2:16  
**Attendance:** 2,371

**Officials:** Felicia Grinter, Brian Hall, Tiffany Bird

Game Time	TCU	Score	Diff	TAMU
07:07				5 NIXON J assist (5)
06:44	20 HEARD L turnover lost ball (6)			23 GREEN M steal (2)
06:39				5 NIXON J 2pt FG from turnover in the paint, layup missed
06:36	23 BERRY M defensive rebound (3)			
06:28	23 BERRY M turnover bad pass (1)			14 JOHNSON M steal (1)
06:23	20 HEARD L foul shooting (1 - 3)			24 JONES S foul drawn (2)
06:23	20 HEARD L substitution out			
06:23	0 GERMOND C substitution in			
06:23		<b>70-51</b>	<b>19</b>	24 JONES S free throw fast break 1 - 2 made (3)
06:23				24 JONES S free throw fast break 2 - 2 missed
06:23	23 BERRY M defensive rebound (4)			
06:02	5 MORRIS Y foul drawn (2)			2 HOPPIE Q foul shooting (3 - 2)
06:02	23 BERRY M substitution out			
06:02	4 ADIKA O substitution in			
06:02				5 NIXON J substitution out
06:02				14 JOHNSON M substitution out
06:02				3 PITTS D substitution in
06:02				11 WELLS K substitution in
06:02	5 MORRIS Y free throw 1 - 2 missed			
06:02	offensive dead ball rebound (2)			
06:02	5 MORRIS Y free throw 2 - 2 made (5)	<b>71-51</b>	<b>20</b>	
05:57	5 MORRIS Y foul personal (4 - 4)			24 JONES S foul drawn (3)
05:53		<b>71-53</b>	<b>18</b>	11 WELLS K 2pt FG in the paint, floating jump shot made (13)
05:49	0 GERMOND C foul drawn (1)			23 GREEN M foul personal (2 - 3)
05:49	5 MORRIS Y substitution out			
05:49	13 DIGGS T substitution in			
05:31	15 HOLMES A 3pt FG , jump shot made (22)	<b>74-53</b>	<b>21</b>	
05:31	4 ADIKA O assist (3)			
05:19	13 DIGGS T foul shooting (2 - 5)			2 HOPPIE Q foul drawn (1)
05:19				23 GREEN M substitution out
05:19				5 NIXON J substitution in
05:19				3 PITTS D substitution out
05:19				14 JOHNSON M substitution in
05:19		<b>74-54</b>	<b>20</b>	2 HOPPIE Q free throw 1 - 2 made (12)
05:19		<b>74-55</b>	<b>19</b>	2 HOPPIE Q free throw 2 - 2 made (13)
05:09	0 GERMOND C turnover bad pass (1)			24 JONES S steal (1)
05:08	1 JACKSON A foul personal (2 - 6)			11 WELLS K foul drawn (7)
05:08	1 JACKSON A substitution out			
05:08	20 HEARD L substitution in			
05:08		<b>74-56</b>	<b>18</b>	11 WELLS K free throw 1 - 2 made (14)
05:08		<b>74-57</b>	<b>17</b>	11 WELLS K free throw 2 - 2 made (15)
04:53	15 HOLMES A 3pt FG , jump shot missed			
04:48	15 HOLMES A offensive rebound (2)			
04:41	Timeout 30 Sec			
04:41	Timeout media			
04:27	13 DIGGS T 2pt FG second chance in the paint, driving layup missed			
04:25	4 ADIKA O offensive rebound (4)			
04:17	0 GERMOND C turnover lost ball (2)			5 NIXON J steal (1)



Official Basketball Play by Play - 4th Period  
**Texas A&M at TCU**  
 12/12/21 Ed and Rae Schollmaier Arena, Fort Worth  
 2021-22 Women's Basketball

**Game Time:** 1:00 PM  
**Game Duration:** 2:16  
**Attendance:** 2,371

**Officials:** Felicia Grinter, Brian Hall, Tiffany Bird

Game Time	TCU	Score	Diff	TAMU
04:17	0 GERMOND C substitution out			
04:17	1 JACKSON A substitution in			
04:17				14 JOHNSON M substitution out
04:17				3 PITTS D substitution in
04:16	4 ADIKA O steal (2)			5 NIXON J turnover lost ball (4)
04:12	4 ADIKA O turnover lost ball (3)			
03:59	4 ADIKA O foul personal (3 - 7)			5 NIXON J foul drawn (4)
03:59				5 NIXON J free throw 1 - 2 missed
03:59				offensive dead ball rebound (6)
03:59		<b>74-58</b>	<b>16</b>	5 NIXON J free throw 2 - 2 made (11)
03:59				3 PITTS D substitution out
03:59				11 WELLS K substitution out
03:59				14 JOHNSON M substitution in
03:59				23 GREEN M substitution in
03:59				14 JOHNSON M substitution out
03:59				23 GREEN M substitution out
03:59				3 PITTS D substitution in
03:59				11 WELLS K substitution in
03:58	1 JACKSON A turnover (2)			
03:58	1 JACKSON A foul intentional (3 - 8)			5 NIXON J foul drawn (5)
03:58		<b>74-59</b>	<b>15</b>	3 PITTS D free throw 1 - 2 made (1)
03:58		<b>74-60</b>	<b>14</b>	3 PITTS D free throw 2 - 2 made (2)
03:53		<b>74-62</b>	<b>12</b>	11 WELLS K 2pt FG in the paint, driving layup made (17)
03:53				5 NIXON J assist (6)
03:53	20 HEARD L foul shooting (2 - 9)			11 WELLS K foul drawn (8)
03:53				3 PITTS D substitution out
03:53				23 GREEN M substitution in
03:53		<b>74-63</b>	<b>11</b>	11 WELLS K free throw 1 - 1 made (18)
03:53	13 DIGGS T substitution out			
03:53	5 MORRIS Y substitution in			
03:53				11 WELLS K substitution out
03:53				14 JOHNSON M substitution in
03:51	4 ADIKA O foul drawn (2)			24 JONES S foul personal (3 - 4)
03:40	1 JACKSON A turnover lost ball (3)			5 NIXON J steal (2)
03:36		<b>74-65</b>	<b>9</b>	14 JOHNSON M 2pt FG from turnover in the paint, layup made (4)
03:36				5 NIXON J assist (7)
03:21	20 HEARD L foul drawn (6)			5 NIXON J foul personal (3 - 5)
03:21	15 HOLMES A substitution out			
03:21	23 BERRY M substitution in			
03:21				14 JOHNSON M substitution out
03:21				23 GREEN M substitution out
03:21				3 PITTS D substitution in
03:21				11 WELLS K substitution in
03:21				24 JONES S substitution out
03:21				23 GREEN M substitution in
03:21	20 HEARD L free throw 1 - 2 made (21)	<b>75-65</b>	<b>10</b>	
03:21	20 HEARD L free throw 2 - 2 made (22)	<b>76-65</b>	<b>11</b>	
03:12				3 PITTS D 3pt FG , jump shot missed



Official Basketball Play by Play - 4th Period  
**Texas A&M at TCU**  
 12/12/21 Ed and Rae Schollmaier Arena, Fort Worth  
 2021-22 Women's Basketball

**Game Time:** 1:00 PM  
**Game Duration:** 2:16  
**Attendance:** 2,371

**Officials:** Felicia Grinter, Brian Hall, Tiffany Bird

Game Time	TCU	Score	Diff	TAMU
03:09	1 JACKSON A defensive rebound (7)			
02:56	20 HEARD L foul drawn (7)			11 WELLS K foul personal (2 - 6)
02:56	20 HEARD L free throw 1 - 2 made (23)	<b>77-65</b>	<b>12</b>	
02:56	20 HEARD L free throw 2 - 2 made (24)	<b>78-65</b>	<b>13</b>	
02:49		<b>78-67</b>	<b>11</b>	5 NIXON J 2pt FG in the paint, driving layup made (13)
02:47				Timeout 30 Sec
02:47				3 PITTS D substitution out
02:47				11 WELLS K substitution out
02:47				14 JOHNSON M substitution in
02:47				24 JONES S substitution in
02:23	20 HEARD L foul drawn (8)			23 GREEN M foul personal (3 - 7)
02:23				14 JOHNSON M substitution out
02:23				23 GREEN M substitution out
02:23				3 PITTS D substitution in
02:23				11 WELLS K substitution in
02:23	20 HEARD L free throw 1 - 2 made (25)	<b>79-67</b>	<b>12</b>	
02:23	20 HEARD L free throw 2 - 2 made (26)	<b>80-67</b>	<b>13</b>	
02:18	1 JACKSON A foul personal (4 - 10)			3 PITTS D foul drawn (2)
02:18		<b>80-68</b>	<b>12</b>	3 PITTS D free throw 1 - 2 made (3)
02:18		<b>80-69</b>	<b>11</b>	3 PITTS D free throw 2 - 2 made (4)
02:18				3 PITTS D substitution out
02:18				24 JONES S substitution out
02:18				14 JOHNSON M substitution in
02:18				23 GREEN M substitution in
01:50	1 JACKSON A 3pt FG , jump shot missed			
01:46	5 MORRIS Y offensive rebound (3)			
01:45	5 MORRIS Y 2pt FG second chance in the paint, layup missed			
01:41				5 NIXON J defensive rebound (4)
01:36	4 ADIKA O foul personal (4 - 11)			11 WELLS K foul drawn (9)
01:36		<b>80-70</b>	<b>10</b>	11 WELLS K free throw 1 - 2 made (19)
01:36		<b>80-71</b>	<b>9</b>	11 WELLS K free throw 2 - 2 made (20)
01:36				11 WELLS K substitution out
01:36				24 JONES S substitution in
01:35	20 HEARD L foul drawn (9)			23 GREEN M foul personal (4 - 8)
01:35				14 JOHNSON M substitution out
01:35				23 GREEN M substitution out
01:35				3 PITTS D substitution in
01:35				11 WELLS K substitution in
01:35	20 HEARD L free throw 1 - 2 missed			
01:35	offensive dead ball rebound (3)			
01:35	20 HEARD L free throw 2 - 2 made (27)	<b>81-71</b>	<b>10</b>	
01:29	5 MORRIS Y foul shooting (5 - 12)			2 HOPPIE Q foul drawn (2)
01:29	5 MORRIS Y substitution out			
01:29	13 DIGGS T substitution in			
01:29				11 WELLS K substitution out
01:29				23 GREEN M substitution in
01:29		<b>81-72</b>	<b>9</b>	2 HOPPIE Q free throw 1 - 2 made (14)
01:29		<b>81-73</b>	<b>8</b>	2 HOPPIE Q free throw 2 - 2 made (15)
01:27	20 HEARD L foul drawn (10)			2 HOPPIE Q foul personal (4 - 9)



Official Basketball Play by Play - 4th Period  
**Texas A&M at TCU**  
 12/12/21 Ed and Rae Schollmaier Arena, Fort Worth  
 2021-22 Women's Basketball

**Game Time:** 1:00 PM  
**Game Duration:** 2:16  
**Attendance:** 2,371

**Officials:** Felicia Grinter, Brian Hall, Tiffany Bird

Game Time	TCU	Score	Diff	TAMU
01:27				23 GREEN M substitution out
01:27				11 WELLS K substitution in
01:27	20 HEARD L free throw 1 - 2 made (28)	<b>82-73</b>	<b>9</b>	
01:27	20 HEARD L free throw 2 - 2 made (29)	<b>83-73</b>	<b>10</b>	
01:27				24 JONES S substitution out
01:27				44 ROBY S substitution in
01:27				11 WELLS K 3pt FG , jump shot missed
01:27	1 JACKSON A defensive rebound (8)			
01:14	20 HEARD L foul drawn (11)			5 NIXON J foul personal (4 - 10)
01:14				44 ROBY S substitution out
01:14				4 GREEN K substitution in
01:14	20 HEARD L free throw 1 - 2 made (30)	<b>84-73</b>	<b>11</b>	
01:14	20 HEARD L free throw 2 - 2 made (31)	<b>85-73</b>	<b>12</b>	
01:04		<b>85-75</b>	<b>10</b>	2 HOPPIE Q 2pt FG in the paint, jump shot made (17)
01:00				Timeout 60 Sec
01:00				3 PITTS D substitution out
01:00				4 GREEN K substitution out
01:00				14 JOHNSON M substitution in
01:00				24 JONES S substitution in
01:00				24 JONES S substitution out
01:00				23 GREEN M substitution in
01:00	Timeout 30 Sec			
00:44	20 HEARD L foul drawn (12)			5 NIXON J foul personal (5 - 11)
00:44				5 NIXON J substitution out
00:44				3 PITTS D substitution in
00:44	20 HEARD L free throw 1 - 2 made (32)	<b>86-75</b>	<b>11</b>	
00:44	20 HEARD L free throw 2 - 2 made (33)	<b>87-75</b>	<b>12</b>	
00:37	20 HEARD L steal (3)			3 PITTS D turnover lost ball (2)
00:09	23 BERRY M 3pt FG from turnover, jump shot missed			
00:07	offensive dead ball rebound (4)			
00:07	turnover shot clock (27)			
00:00				3 PITTS D 3pt FG from turnover, jump shot missed
00:00				offensive dead ball rebound (7)
<b>END OF GAME</b>				
<b>TCU 87-75 TAMU</b>				



Texas A&M at TCU

12/12/21 Ed and Rae Schollmaier Arena, Fort Worth  
2021-22 Women's Basketball

Game Time: 1:00 PM  
Game Duration: 2:16  
Attendance: 2,371

Officials: Felicia Grinter, Brian Hall, Tiffany Bird

Texas A&M - 32

NO.	Name	F	Min	FG			Rebounds			Fouls		TP	AS	TO	ST	Blocks		+/-
				M-A	M-A	M-A	OR	DR	TOT	PF	FD					BS	BA	
32	Aaliyah Patty	F	00:00	0-0	0-0	0-0	0	0	0	0	0	0	0	0	0	0	0	0
3	Destiny Pitts	G	03:06	0-2	0-2	4-4	0	0	0	0	1	4	0	1	0	0	0	-2
5	Jordan Nixon	G	08:32	1-3	0-0	1-4	0	2	2	3	4	3	4	2	2	0	0	10
11	Kayla Wells	G	06:45	3-4	0-1	5-5	0	0	0	1	3	11	0	0	0	0	0	-2
24	Sahara Jones	G	07:17	0-0	0-0	1-2	0	0	0	1	2	1	0	0	1	0	0	8
2	Qadashah Hoppie		10:00	2-2	1-1	4-4	0	0	0	2	2	9	1	0	0	0	0	6
14	Maliyah Johnson		06:29	2-2	0-0	0-0	0	1	1	1	0	4	0	1	1	0	0	8
44	Sydnee Roby		01:23	0-0	0-0	0-0	0	0	0	0	0	0	0	0	0	0	0	-3
23	McKinzie Green		06:14	0-0	0-0	0-0	0	0	0	3	0	0	0	0	1	0	0	5
4	Kay Kay Green		00:14	0-0	0-0	0-0	0	0	0	0	0	0	0	0	0	0	0	0
Team							0	0	0			0		0				
<b>Totals</b>				8-13	1-4	15-19	0	3	3	11	12	32	5	4	5	0	0	6

Shooting By Period		
4 <sup>th</sup> FG%	8-13	61.5%
3PT%	1-4	25.0%
FT%	15-19	78.9%
GM FG%	8-13	61.5%
3PT%	1-4	25.0%
FT%	15-19	78.9%

Dead Ball Rebounds: 3, 0

Technical Fouls::NONE

TCU - 26

NO.	Name	F	Min	FG			Rebounds			Fouls		TP	AS	TO	ST	Blocks		+/-
				M-A	M-A	M-A	OR	DR	TOT	PF	FD					BS	BA	
4	Okako Adika	F	07:12	0-1	0-1	0-0	1	0	1	2	1	0	1	1	1	0	0	-4
23	Michelle Berry	F	06:09	0-1	0-1	0-0	0	2	2	0	0	0	0	1	0	0	0	1
32	Patricia Morris	F	00:32	1-1	0-0	0-0	0	0	0	1	1	2	0	0	0	0	0	2
1	Aahliyah Jackson	G	09:09	0-1	0-1	0-0	0	2	2	4	0	0	2	2	0	0	0	-4
20	Lauren Heard	G	08:45	1-1	0-0	13-14	0	1	1	2	7	15	1	2	1	0	0	-5
15	Aja Holmes		06:39	2-4	2-4	0-0	1	1	2	0	0	6	0	0	0	0	0	-9
5	Yummy Morris		06:03	1-2	0-0	1-2	1	0	1	2	1	3	0	0	0	0	0	-3
0	Caroline Germond		02:06	0-0	0-0	0-0	0	0	0	0	1	0	0	2	0	0	0	-3
13	Tavy Diggs		03:25	0-1	0-0	0-0	0	0	0	1	0	0	0	0	0	0	0	-5
Team							0	0	0			0		1				
<b>Totals</b>				5-12	2-7	14-16	3	6	9	12	11	26	4	9	2	0	0	-6

Shooting By Period		
4 <sup>th</sup> FG%	5-12	41.7%
3PT%	2-7	28.6%
FT%	14-16	87.5%
GM FG%	5-12	41.7%
3PT%	2-7	28.6%
FT%	14-16	87.5%

Dead Ball Rebounds: 3, 0

Technical Fouls::NONE

	TAMU	TCU
Biggest lead	0 (1 <sup>st</sup> 10:00)	25 (4 <sup>th</sup> 7:47)
Best Scoring Run	12(4 <sup>th</sup> 3:36)	7(4 <sup>th</sup> 7:47)
Lead Changes	0	
Times Tied	0	
Time with Lead	00:00	09:47

	TAMU	TCU
Points from		
Turnovers	8	4
Paint	14	4
Second Chance	0	0
Fast Breaks	1	0
Bench	13	9

	Period by Period Scoring				
	1st	2nd	3rd	4th	TOT
TAMU	12	10	21	32	75
TCU	19	23	19	26	87



Texas A&M at TCU

12/12/21 Ed and Rae Schollmaier Arena, Fort Worth  
2021-22 Women's Basketball

Game Time: 1:00 PM  
Game Duration: 2:16  
Attendance: 2,371

Officials: Felicia Grinter, Brian Hall, Tiffany Bird

Texas A&M - 53

NO.	Name	Min	FG			Rebounds			Fouls		TP	AS	TO	ST	Blocks		+/-
			M-A	M-A	M-A	OR	DR	TOT	PF	FD					BS	BA	
32	Aaliyah Patty	F 00:00	0-0	0-0	0-0	0	0	0	0	0	0	0	0	0	0	0	0
3	Destiny Pitts	G 07:50	0-2	0-2	4-4	2	0	2	1	1	4	1	1	0	0	0	-3
5	Jordan Nixon	G 17:08	4-7	2-2	1-4	0	3	3	3	5	11	4	3	2	0	0	14
11	Kayla Wells	G 13:01	3-7	0-2	8-9	0	1	1	2	5	14	0	2	1	0	0	-10
24	Sahara Jones	G 15:45	1-1	0-0	1-2	0	1	1	2	3	3	0	0	1	0	0	17
23	McKinzie Green	12:54	1-2	0-0	0-0	0	0	0	3	0	2	1	0	2	0	0	6
2	Qadashah Hoppie	15:20	3-4	1-1	4-4	0	2	2	3	2	11	2	0	0	0	0	9
14	Maliyah Johnson	10:13	2-2	0-0	0-2	0	1	1	2	1	4	0	2	1	0	0	18
44	Sydnee Roby	07:35	2-2	0-0	0-0	0	0	0	1	0	4	0	0	0	0	0	-11
4	Kay Kay Green	00:14	0-0	0-0	0-0	0	0	0	0	0	0	0	0	0	0	0	0
Team						0	0	0			0		0				
<b>Totals</b>			16-27	3-7	18-25	2	8	10	17	17	53	8	8	7	0	0	8

Shooting By Period		
3 <sup>rd</sup> FG%	8-14	57.1%
3PT%	2-3	66.7%
FT%	3-6	50%
4 <sup>th</sup> FG%	8-13	61.5%
3PT%	1-4	25.0%
FT%	15-19	78.9%
GM FG%	16-27	59.3%
3PT%	3-7	42.9%
FT%	18-25	72.0%

Dead Ball Rebounds: 5, 0

Technical Fouls::NONE

TCU - 45

NO.	Name	Min	FG			Rebounds			Fouls		TP	AS	TO	ST	Blocks		+/-
			M-A	M-A	M-A	OR	DR	TOT	PF	FD					BS	BA	
4	Okako Adika	F 14:11	0-1	0-1	0-0	1	0	1	2	1	0	1	3	1	0	0	-15
23	Michelle Berry	F 09:32	0-4	0-3	0-0	0	2	2	1	0	0	0	1	0	0	0	-4
32	Patricia Morris	F 07:27	2-3	0-0	0-0	1	0	1	3	2	4	2	2	0	0	0	10
1	Aahliyah Jackson	G 19:09	1-2	0-1	0-0	1	3	4	4	1	2	3	2	0	0	0	-6
20	Lauren Heard	G 18:45	4-6	0-1	14-17	0	2	2	2	9	22	2	4	2	0	0	-7
15	Aja Holmes	14:50	3-5	3-5	0-0	1	1	2	1	0	9	0	0	0	0	0	-9
5	Yummy Morris	06:40	1-2	0-0	1-2	1	0	1	3	1	3	0	0	0	0	0	-7
13	Tavy Diggs	06:30	2-3	0-0	1-2	2	0	2	1	2	5	1	0	0	0	0	4
24	Kayla Mokwuah	00:50	0-0	0-0	0-0	0	0	0	0	0	0	0	1	0	0	0	-3
0	Caroline Germond	02:06	0-0	0-0	0-0	0	0	0	0	1	0	0	2	0	0	0	-3
Team						0	3	3			0		1				
<b>Totals</b>			13-26	3-11	16-21	7	11	18	17	17	45	9	16	3	0	0	-8

Shooting By Period		
3 <sup>rd</sup> FG%	8-14	57.1%
3PT%	1-4	25.0%
FT%	2-5	40%
4 <sup>th</sup> FG%	5-12	41.7%
3PT%	2-7	28.6%
FT%	14-16	87.5%
GM FG%	13-26	50.0%
3PT%	3-11	27.3%
FT%	16-21	76.2%

Dead Ball Rebounds: 3, 0

Technical Fouls::NONE

	TAMU	TCU
Biggest lead	0 (1 <sup>st</sup> 10:00)	29 (3 <sup>rd</sup> 3:48)
Best Scoring Run	12(4 <sup>th</sup> 3:36)	14(3 <sup>rd</sup> 3:48)
Lead Changes	0	
Times Tied	0	
Time with Lead	00:00	19:38

Points from	TAMU	TCU
Turnovers	16	8
Paint	24	16
Second Chance	0	5
Fast Breaks	8	5
Bench	21	17

	Period by Period Scoring				
	1st	2nd	3rd	4th	TOT
TAMU	12	10	21	32	75
TCU	19	23	19	26	87



**Texas A&M at TCU**

12/12/21 Ed and Rae Schollmaier Arena, Fort Worth  
2021-22 Women's Basketball

**Game Time:** 1:00 PM  
**Game Duration:** 2:16  
**Attendance:** 2,371

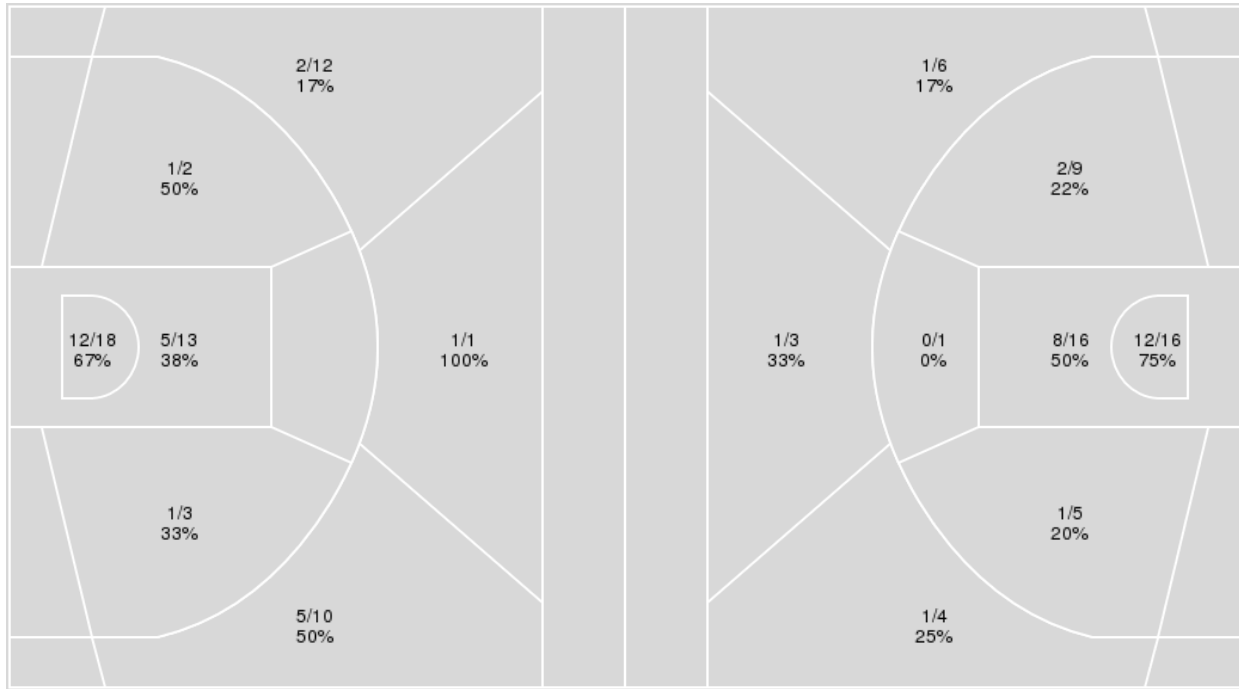
**Officials:** Felicia Grinter, Brian Hall, Tiffany Bird

{ Players => 0, 1, 2, 3, 4, 5, 10, 13, 14, 15, 20, 21, 23, 24, 32; } FG  
Types => All; Results => All;

{ Players => All; } FG Types => All; Results => All;

**TCU**

**Texas A&M**



TCU	M/A	%
Field Goals	27/59	46
2 Points	19/36	53
3 Points	8/23	35
Free Throws	25/32	78

Texas A&M	M/A	%
Field Goals	26/60	43
2 Points	23/47	49
3 Points	3/13	23
Free Throws	20/29	69



**Texas A&M at TCU**

12/12/21 Ed and Rae Schollmaier Arena, Fort Worth  
2021-22 Women's Basketball

Game Time: 1:00 PM  
Game Duration: 2:16  
Attendance: 2,371

Officials: Felicia Grinter, Brian Hall, Tiffany Bird

**Texas A&M**

No	Name	Mins		Score		Points Diff		Points per Min		Assists		Rebounds		Steals		Turnovers	
		On	Off	On	Off	On	Off	On	Off	On	Off	On	Off	On	Off	On	Off
2	Qadashah Hoppie	24:51	15:09	58 - 55	17 - 32	3	-15	2.33	1.12	10	4	13	13	8	1	9	8
3	Destiny Pitts	23:54	16:06	44 - 53	31 - 34	-9	-3	1.84	1.93	7	7	18	8	3	6	11	6
4	Kay Kay Green	00:14	39:46	2 - 2	73 - 85	0	-12	8.57	1.84	0	14	0	26	0	9	0	17
5	Jordan Nixon	34:54	05:06	67 - 66	8 - 21	1	-13	1.92	1.57	12	2	23	3	9	0	13	4
11	Kayla Wells	31:14	08:46	51 - 78	24 - 9	-27	15	1.63	2.74	9	5	21	5	5	4	15	2
13	Jada Malone	05:56	34:04	10 - 5	65 - 82	5	-17	1.69	1.91	2	12	5	21	2	7	2	15
14	Maliyah Johnson	12:38	27:22	30 - 8	45 - 79	22	-34	2.37	1.64	7	7	12	14	6	3	3	14
23	McKinzie Green	15:08	24:52	35 - 36	40 - 51	-1	-11	2.31	1.61	7	7	8	18	4	5	5	12
24	Sahara Jones	25:20	14:40	51 - 62	24 - 25	-11	-1	2.01	1.64	8	6	13	13	7	2	13	4
32	Aaliyah Patty	05:40	34:20	4 - 13	71 - 74	-9	-3	0.71	2.07	2	12	4	22	0	9	3	14
44	Sydnee Roby	20:11	19:49	23 - 57	52 - 30	-34	22	1.14	2.62	6	8	13	13	1	8	11	6

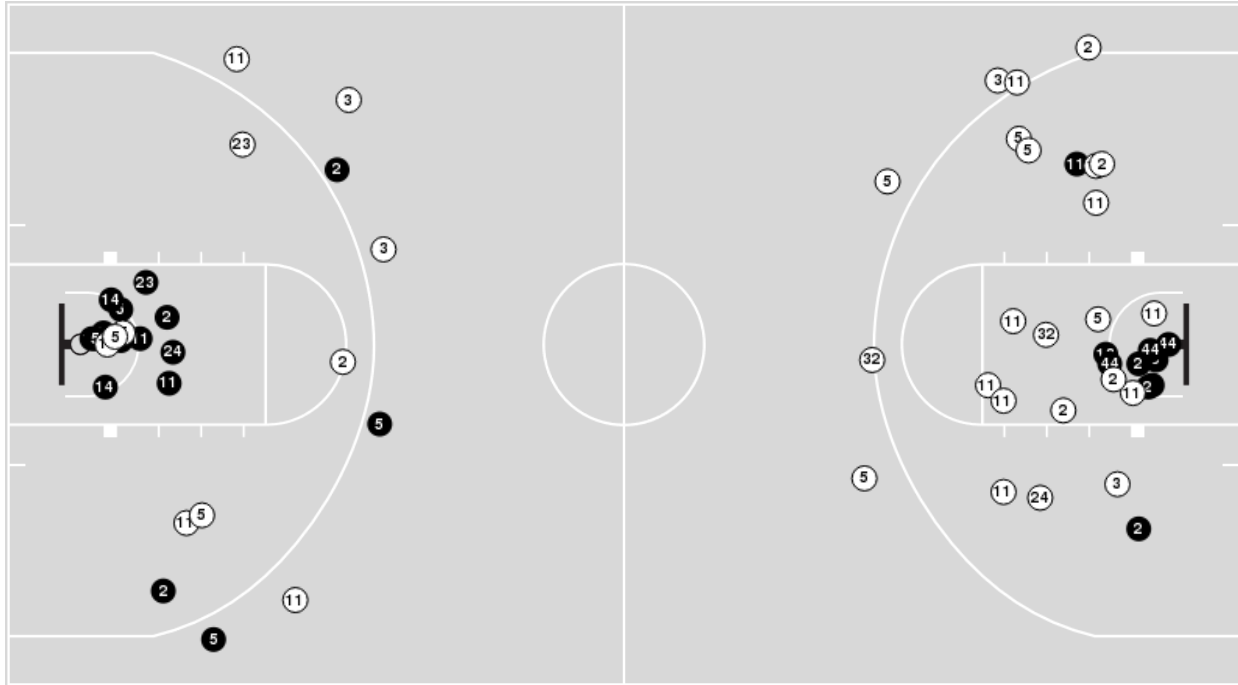
**TCU**

No	Name	Mins		Score		Points Diff		Points per Min		Assists		Rebounds		Steals		Turnovers	
		On	Off	On	Off	On	Off	On	Off	On	Off	On	Off	On	Off	On	Off
0	Caroline Germond	02:06	37:54	4 - 7	83 - 68	-3	15	1.90	2.19	1	15	3	42	0	6	2	25
1	Aahliyah Jackson	34:30	05:30	79 - 67	8 - 8	12	0	2.29	1.45	14	2	38	7	6	0	24	3
2	Tara Manumaleuga	05:34	34:26	11 - 8	76 - 67	3	9	1.98	2.21	2	14	7	38	0	6	6	21
4	Okako Adika	25:42	14:18	58 - 52	29 - 23	6	6	2.26	2.03	9	7	25	20	6	0	15	12
5	Yummy Morris	13:22	26:38	33 - 30	54 - 45	3	9	2.47	2.03	5	11	13	32	1	5	7	20
10	Paige Bradley	01:49	38:11	6 - 2	81 - 73	4	8	3.30	2.12	0	16	2	43	1	5	0	27
13	Tavy Diggs	12:25	27:35	28 - 29	59 - 46	-1	13	2.26	2.14	7	9	16	29	2	4	12	15
15	Aja Holmes	26:30	13:30	49 - 57	38 - 18	-8	20	1.85	2.81	13	3	29	16	3	3	19	8
20	Lauren Heard	36:15	03:45	76 - 68	11 - 7	8	4	2.10	2.93	14	2	38	7	5	1	26	1
23	Michelle Berry	20:12	19:48	47 - 28	40 - 47	19	-7	2.33	2.02	5	11	25	20	3	3	9	18
24	Kayla Mokwuah	08:27	31:33	7 - 15	80 - 60	-8	20	0.83	2.54	2	14	9	36	0	6	8	19
32	Patricia Morris	13:08	26:52	37 - 12	50 - 63	25	-13	2.82	1.86	8	8	20	25	3	3	7	20

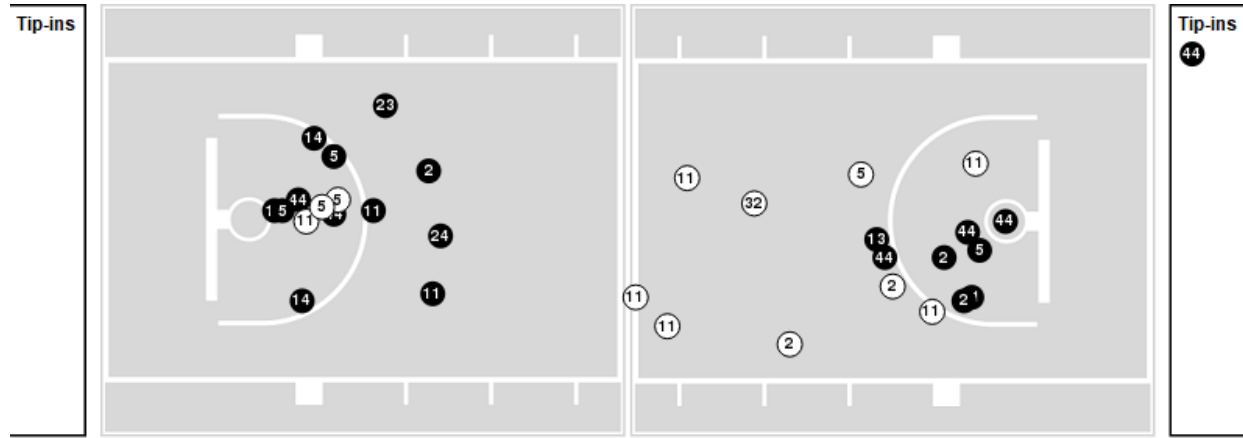


Players => AllFG Types=>AllResults=>All  
**Texas A&M**

**All Field Goals**



**Blow Up Chart**



● Made ○ Missed N - Player Number

Texas A&M	M/A	%
Field Goals	26/60	43
2 Points	23/47	49
3 Points	3/13	23
Free Throws	20/29	69

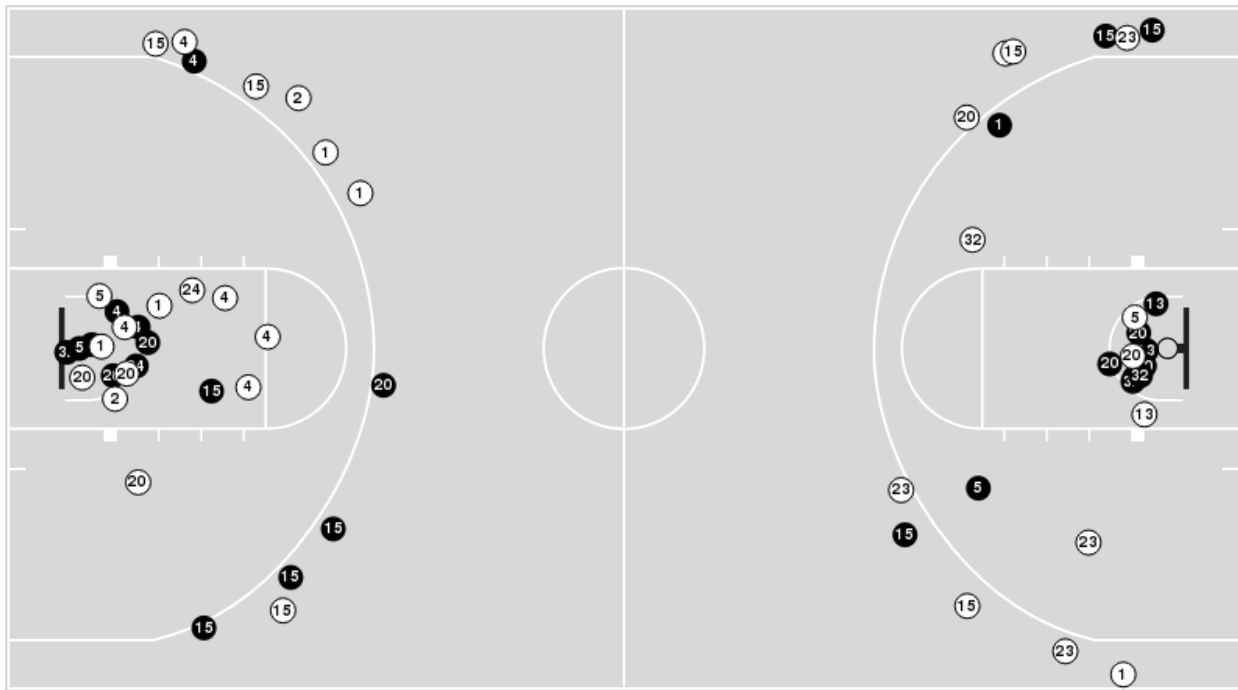
Texas A&M	M/A	%
Points in the Paint	40 (20 / 32)	63
Fast Break Points	14 (8/9)	89
Second Chance Points	6 (3/7)	43
Effective FG%	46	



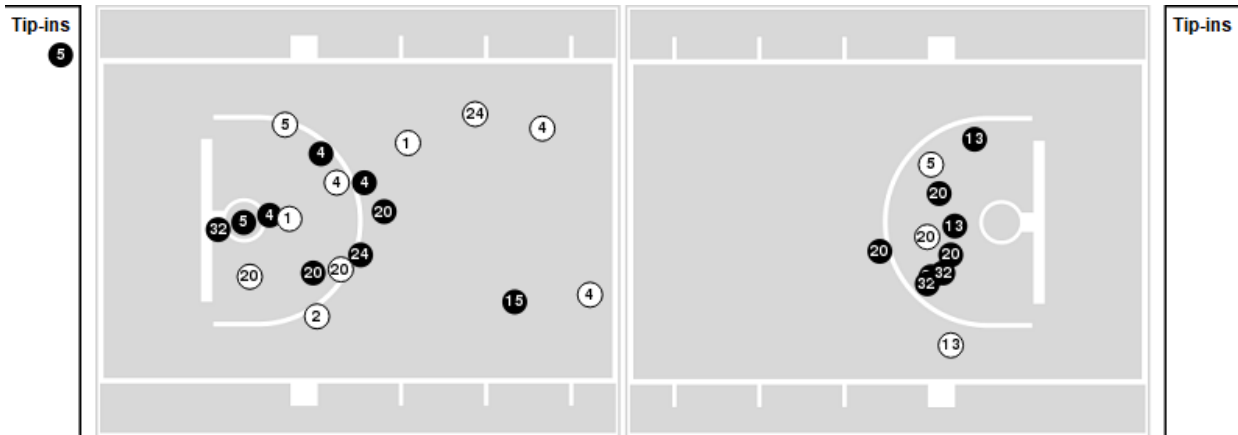
Players => 0, 1, 2, 3, 4, 5, 10, 13, 14, 15, 20, 21, 23, 24, 32 FG Types=>All Results=>All

TCU

All Field Goals



Blow Up Chart



● Made ○ Missed N - Player Number

TCU	M/A	%
Field Goals	27/59	46
2 Points	19/36	53
3 Points	8/23	35
Free Throws	25/32	78

TCU	M/A	%
Points in the Paint	34 (17 / 31)	55
Fast Break Points	8 (4/4)	100
Second Chance Points	16 (8/15)	53
Effective FG%	53	



**Officials:** Felicia Grinter, Brian Hall, Tiffany Bird

**Texas A&M**

Lineup	Quarter On	Time On	Quarter Off	Time Off	Time on Court	Score	Score Diff	Reb	Stl	Tov	Ass	PPP
3- Pitts D/ 5- Nixon J/ 11- Wells K/ 24- Jones S/ 32- Patty A/	1	10:00	1	08:32	01:28	0-2	-2	1	0	0	0	0.0000
3- Pitts D/ 5- Nixon J/ 11- Wells K/ 24- Jones S/ 44- Roby S/	1	08:32	1	06:02	02:30	2-12	-10	2	0	2	0	0.3333
3- Pitts D/ 5- Nixon J/ 11- Wells K/ 13- Malone J/ 24- Jones S/	1	06:02	1	05:08	00:54	0-0	0	0	0	1	0	0.0000
2- Hoppie Q/ 3- Pitts D/ 5- Nixon J/ 11- Wells K/ 13- Malone J/	1	05:08	1	00:05	05:02	10-5	5	5	2	1	2	1.0121
2- Hoppie Q/ 3- Pitts D/ 5- Nixon J/ 24- Jones S/ 44- Roby S/	1	00:05	2	08:19	01:47	2-5	-3	0	0	1	0	0.5000
2- Hoppie Q/ 5- Nixon J/ 11- Wells K/ 24- Jones S/ 44- Roby S/	2	08:19	2	06:37	01:42	0-7	-7	0	0	1	0	0.0000
2- Hoppie Q/ 11- Wells K/ 23- Green M/ 32- Patty A/ 44- Roby S/	2	06:37	2	05:37	01:00	2-3	-1	1	0	1	1	1.0000
11- Wells K/ 23- Green M/ 24- Jones S/ 32- Patty A/ 44- Roby S/	2	05:37	2	04:23	01:14	0-6	-6	1	0	1	0	0.0000
3- Pitts D/ 5- Nixon J/ 11- Wells K/ 14- Johnson M/ 44- Roby S/	2	04:23	2	02:29	01:54	4-0	4	4	0	0	2	1.3333
3- Pitts D/ 5- Nixon J/ 11- Wells K/ 32- Patty A/ 44- Roby S/	2	02:29	2	00:31	01:58	2-2	0	1	0	1	1	0.6944
3- Pitts D/ 5- Nixon J/ 11- Wells K/ 14- Johnson M/ 44- Roby S/	2	00:31	3	10:00	00:31	0-0	0	1	0	0	0	0.0000
3- Pitts D/ 5- Nixon J/ 11- Wells K/ 24- Jones S/ 44- Roby S/	3	10:00	3	06:44	03:16	5-4	1	2	1	2	0	0.8503
3- Pitts D/ 11- Wells K/ 23- Green M/ 24- Jones S/ 44- Roby S/	3	06:44	3	05:20	01:24	4-6	-2	1	0	1	1	1.3889
2- Hoppie Q/ 5- Nixon J/ 11- Wells K/ 23- Green M/ 44- Roby S/	3	05:20	3	03:48	01:32	0-7	-7	0	0	0	0	0.0000
2- Hoppie Q/ 5- Nixon J/ 14- Johnson M/ 23- Green M/ 24- Jones S/	3	03:48	3	00:04	03:44	12-2	10	3	1	1	2	1.7143
2- Hoppie Q/ 3- Pitts D/ 5- Nixon J/ 14- Johnson M/ 24- Jones S/	3	00:04	3	00:03	00:00	0-0	0	1	0	0	0	0.0000
2- Hoppie Q/ 3- Pitts D/ 5- Nixon J/ 11- Wells K/ 24- Jones S/	3	00:03	4	10:00	00:04	0-0	0	0	0	0	0	0.0000
2- Hoppie Q/ 5- Nixon J/ 11- Wells K/ 14- Johnson M/ 24- Jones S/	4	10:00	4	09:28	00:32	0-2	-2	1	0	1	0	0.0000
2- Hoppie Q/ 5- Nixon J/ 11- Wells K/ 24- Jones S/ 44- Roby S/	4	09:28	4	08:18	01:10	2-5	-3	0	0	1	1	0.6944
2- Hoppie Q/ 5- Nixon J/ 14- Johnson M/ 23- Green M/ 24- Jones S/	4	08:18	4	06:02	02:16	6-2	4	1	2	0	2	1.2295
2- Hoppie Q/ 3- Pitts D/ 11- Wells K/ 23- Green M/ 24- Jones S/	4	06:02	4	05:19	00:43	2-4	-2	0	0	0	0	2.0000
2- Hoppie Q/ 3- Pitts D/ 5- Nixon J/ 11- Wells K/ 24- Jones S/	4	05:19	4	05:19	00:00	0-0	0	0	0	0	0	0.0000
2- Hoppie Q/ 5- Nixon J/ 11- Wells K/ 14- Johnson M/ 24- Jones S/	4	05:19	4	04:17	01:02	4-0	4	0	2	0	0	2.2727
2- Hoppie Q/ 3- Pitts D/ 5- Nixon J/ 11- Wells K/ 24- Jones S/	4	04:17	4	03:59	00:18	1-0	1	0	0	1	0	0.5319
2- Hoppie Q/ 5- Nixon J/ 14- Johnson M/ 23- Green M/ 24- Jones S/	4	03:59	4	03:59	00:00	0-0	0	0	0	0	0	0.0000
2- Hoppie Q/ 3- Pitts D/ 5- Nixon J/ 11- Wells K/ 24- Jones S/	4	03:59	4	03:53	00:06	4-0	4	0	0	0	1	2.1277
2- Hoppie Q/ 5- Nixon J/ 11- Wells K/ 23- Green M/ 24- Jones S/	4	03:53	4	03:53	00:00	1-0	1	0	0	0	0	2.2727
2- Hoppie Q/ 5- Nixon J/ 14- Johnson M/ 23- Green M/ 24- Jones S/	4	03:53	4	03:21	00:32	2-0	2	0	1	0	1	2.0000
2- Hoppie Q/ 3- Pitts D/ 5- Nixon J/ 11- Wells K/ 24- Jones S/	4	03:21	4	03:21	00:00	0-0	0	0	0	0	0	0.0000
2- Hoppie Q/ 3- Pitts D/ 5- Nixon J/ 11- Wells K/ 23- Green M/	4	03:21	4	02:47	00:34	2-4	-2	0	0	0	0	1.0000
2- Hoppie Q/ 5- Nixon J/ 14- Johnson M/ 23- Green M/ 24- Jones S/	4	02:47	4	02:23	00:24	0-0	0	0	0	0	0	0.0000
2- Hoppie Q/ 3- Pitts D/ 5- Nixon J/ 11- Wells K/ 24- Jones S/	4	02:23	4	02:18	00:05	2-2	0	0	0	0	0	2.2727
2- Hoppie Q/ 5- Nixon J/ 11- Wells K/ 14- Johnson M/ 23- Green M/	4	02:18	4	01:36	00:42	2-0	2	1	0	0	0	2.2727
2- Hoppie Q/ 5- Nixon J/ 14- Johnson M/ 23- Green M/ 24- Jones S/	4	01:36	4	01:35	00:01	0-0	0	0	0	0	0	0.0000
2- Hoppie Q/ 3- Pitts D/ 5- Nixon J/ 11- Wells K/ 24- Jones S/	4	01:35	4	01:29	00:06	0-1	-1	0	0	0	0	0.0000
2- Hoppie Q/ 3- Pitts D/ 5- Nixon J/ 23- Green M/ 24- Jones S/	4	01:29	4	01:27	00:02	2-0	2	0	0	0	0	2.2727
2- Hoppie Q/ 3- Pitts D/ 5- Nixon J/ 11- Wells K/ 24- Jones S/	4	01:27	4	01:27	00:00	0-2	-2	0	0	0	0	0.0000
2- Hoppie Q/ 3- Pitts D/ 5- Nixon J/ 11- Wells K/ 44- Roby S/	4	01:27	4	01:14	00:13	0-0	0	0	0	0	0	0.0000
2- Hoppie Q/ 3- Pitts D/ 4- Green K/ 5- Nixon J/ 11- Wells K/	4	01:14	4	01:00	00:14	2-2	0	0	0	0	0	2.0000
2- Hoppie Q/ 5- Nixon J/ 11- Wells K/ 14- Johnson M/ 24- Jones S/	4	01:00	4	01:00	00:00	0-0	0	0	0	0	0	0.0000
2- Hoppie Q/ 5- Nixon J/ 11- Wells K/ 14- Johnson M/ 23- Green M/	4	01:00	4	00:44	00:15	0-0	0	0	0	0	0	0.0000
2- Hoppie Q/ 3- Pitts D/ 11- Wells K/ 14- Johnson M/ 23- Green M/	4	00:44	4	00:00	00:45	0-2	-2	0	0	1	0	0.0000



**Officials:** Felicia Grinter, Brian Hall, Tiffany Bird

**TCU**

Lineup	Quarter On	Time On	Quarter Off	Time Off	Time on Court	Score	Score Diff	Reb	Stl	Tov	Ass	PPP
1- Jackson A/ 4- Adika O/ 20- Heard L/ 23- Berry M/ 32- Morris P/	1	10:00	1	07:42	02:18	5-0	5	6	0	0	0	1.2887
1- Jackson A/ 4- Adika O/ 5- Morris Y/ 20- Heard L/ 23- Berry M/	1	07:42	1	07:06	00:36	3-0	3	1	0	0	1	3.0000
1- Jackson A/ 2- Manumaleuga T/ 4- Adika O/ 5- Morris Y/ 20- Heard L/	1	07:06	1	06:29	00:37	2-0	2	1	0	0	1	2.0000
1- Jackson A/ 2- Manumaleuga T/ 5- Morris Y/ 20- Heard L/ 23- Berry M/	1	06:29	1	05:08	01:21	4-2	2	2	0	3	0	0.8197
1- Jackson A/ 2- Manumaleuga T/ 20- Heard L/ 23- Berry M/ 24- Mokwuah K/	1	05:08	1	04:44	00:24	0-0	0	0	0	0	0	0.0000
1- Jackson A/ 2- Manumaleuga T/ 13- Diggs T/ 20- Heard L/ 24- Mokwuah K/	1	04:44	1	04:33	00:11	0-2	-2	0	0	1	0	0.0000
2- Manumaleuga T/ 13- Diggs T/ 15- Holmes A/ 20- Heard L/ 24- Mokwuah K/	1	04:33	1	02:21	02:12	3-4	-1	2	0	2	1	0.7500
1- Jackson A/ 13- Diggs T/ 15- Holmes A/ 20- Heard L/ 24- Mokwuah K/	1	02:21	2	10:00	02:21	2-4	-2	2	0	2	1	0.4000
1- Jackson A/ 4- Adika O/ 15- Holmes A/ 23- Berry M/ 32- Morris P/	2	10:00	2	08:19	01:41	5-2	3	4	1	0	1	2.5000
1- Jackson A/ 4- Adika O/ 20- Heard L/ 23- Berry M/ 32- Morris P/	2	08:19	2	06:37	01:42	7-0	7	2	1	1	1	1.7500
1- Jackson A/ 4- Adika O/ 5- Morris Y/ 20- Heard L/ 23- Berry M/	2	06:37	2	06:37	00:00	0-0	0	0	0	0	0	0.0000
1- Jackson A/ 4- Adika O/ 5- Morris Y/ 10- Bradley P/ 20- Heard L/	2	06:37	2	05:37	01:00	4-2	2	0	1	0	0	1.3889
2- Manumaleuga T/ 5- Morris Y/ 10- Bradley P/ 15- Holmes A/ 23- Berry M/	2	05:37	2	04:48	00:49	2-0	2	2	0	0	0	2.2727
4- Adika O/ 5- Morris Y/ 15- Holmes A/ 20- Heard L/ 23- Berry M/	2	04:48	2	03:10	01:38	3-2	1	1	0	0	1	1.0000
1- Jackson A/ 4- Adika O/ 5- Morris Y/ 15- Holmes A/ 20- Heard L/	2	03:10	2	02:29	00:41	0-2	-2	0	0	0	0	0.0000
1- Jackson A/ 4- Adika O/ 15- Holmes A/ 20- Heard L/ 24- Mokwuah K/	2	02:29	2	01:11	01:18	2-2	0	1	0	1	0	0.6024
1- Jackson A/ 13- Diggs T/ 15- Holmes A/ 20- Heard L/ 24- Mokwuah K/	2	01:11	2	00:11	01:00	0-0	0	3	0	1	0	0.0000
1- Jackson A/ 13- Diggs T/ 20- Heard L/ 23- Berry M/ 24- Mokwuah K/	2	00:11	3	10:00	00:11	0-0	0	0	0	0	0	0.0000
1- Jackson A/ 4- Adika O/ 20- Heard L/ 23- Berry M/ 32- Morris P/	3	10:00	3	08:11	01:49	0-2	-2	1	0	2	0	0.0000
1- Jackson A/ 4- Adika O/ 15- Holmes A/ 20- Heard L/ 32- Morris P/	3	08:11	3	06:44	01:27	4-3	1	1	1	1	1	1.3333
1- Jackson A/ 4- Adika O/ 5- Morris Y/ 15- Holmes A/ 20- Heard L/	3	06:44	3	06:07	00:37	0-2	-2	0	0	0	0	0.0000
1- Jackson A/ 5- Morris Y/ 13- Diggs T/ 15- Holmes A/ 20- Heard L/	3	06:07	3	06:07	00:00	0-2	-2	0	0	0	0	0.0000
1- Jackson A/ 13- Diggs T/ 15- Holmes A/ 20- Heard L/ 32- Morris P/	3	06:07	3	03:06	03:01	14-3	11	6	0	1	4	2.2152
1- Jackson A/ 4- Adika O/ 15- Holmes A/ 20- Heard L/ 32- Morris P/	3	03:06	3	02:28	00:38	0-2	-2	0	0	2	0	0.0000
1- Jackson A/ 4- Adika O/ 15- Holmes A/ 20- Heard L/ 24- Mokwuah K/	3	02:28	3	01:38	00:50	0-3	-3	1	0	1	0	0.0000
1- Jackson A/ 4- Adika O/ 15- Holmes A/ 20- Heard L/ 23- Berry M/	3	01:38	3	00:04	01:34	1-4	-3	0	0	0	0	0.3472
1- Jackson A/ 4- Adika O/ 13- Diggs T/ 15- Holmes A/ 20- Heard L/	3	00:04	4	10:00	00:04	0-0	0	0	0	0	0	0.0000
1- Jackson A/ 4- Adika O/ 15- Holmes A/ 20- Heard L/ 32- Morris P/	4	10:00	4	09:28	00:32	2-0	2	0	0	0	1	1.0000
1- Jackson A/ 4- Adika O/ 5- Morris Y/ 15- Holmes A/ 20- Heard L/	4	09:28	4	08:50	00:38	3-2	1	1	0	1	1	1.5000
1- Jackson A/ 5- Morris Y/ 15- Holmes A/ 20- Heard L/ 23- Berry M/	4	08:50	4	06:23	02:27	4-5	-1	2	0	2	1	0.8000
0- Germond C/ 1- Jackson A/ 5- Morris Y/ 15- Holmes A/ 23- Berry M/	4	06:23	4	06:02	00:21	0-1	-1	1	0	0	0	0.0000
0- Germond C/ 1- Jackson A/ 4- Adika O/ 5- Morris Y/ 15- Holmes A/	4	06:02	4	05:49	00:13	1-2	-1	0	0	0	0	1.1364
0- Germond C/ 1- Jackson A/ 4- Adika O/ 13- Diggs T/ 15- Holmes A/	4	05:49	4	05:08	00:41	3-2	1	0	0	1	1	1.5000
0- Germond C/ 4- Adika O/ 13- Diggs T/ 15- Holmes A/ 20- Heard L/	4	05:08	4	04:17	00:51	0-2	-2	2	0	1	0	0.0000
1- Jackson A/ 4- Adika O/ 13- Diggs T/ 15- Holmes A/ 20- Heard L/	4	04:17	4	03:53	00:24	0-6	-6	0	1	2	0	0.0000
1- Jackson A/ 4- Adika O/ 5- Morris Y/ 15- Holmes A/ 20- Heard L/	4	03:53	4	03:21	00:32	0-2	-2	0	0	1	0	0.0000
1- Jackson A/ 4- Adika O/ 5- Morris Y/ 20- Heard L/ 23- Berry M/	4	03:21	4	01:29	01:52	7-6	1	2	0	0	0	1.5487
1- Jackson A/ 4- Adika O/ 13- Diggs T/ 20- Heard L/ 23- Berry M/	4	01:29	4	00:00	01:29	6-4	2	1	1	1	0	1.2931



**Texas A&M at TCU**

12/12/21 Ed and Rae Schollmaier Arena, Fort Worth  
2021-22 Women's Basketball

**Game Time:** 1:00 PM  
**Game Duration:** 2:16  
**Attendance:** 2,371

**Officials:** Felicia Grinter, Brian Hall, Tiffany Bird

**Texas A&M**

Lineup	Time	Score	Score Diff	Pts/Min	Reb	Stl	Tov	Ass	PPP
2- Hoppie Q/ 5- Nixon J/ 14- Johnson M/ 23- Green M/ 24- Jones S/	06:57	20-4	16	2.8777	4	4	1	5	1.5528
3- Pitts D/ 5- Nixon J/ 11- Wells K/ 24- Jones S/ 44- Roby S/	05:46	7-16	-9	1.2139	4	1	4	0	0.5892
2- Hoppie Q/ 3- Pitts D/ 5- Nixon J/ 11- Wells K/ 13- Malone J/	05:02	10-5	5	1.9868	5	2	1	2	1.0121
2- Hoppie Q/ 5- Nixon J/ 11- Wells K/ 24- Jones S/ 44- Roby S/	02:52	2-12	-10	0.6977	0	0	2	1	0.3401
3- Pitts D/ 5- Nixon J/ 11- Wells K/ 14- Johnson M/ 44- Roby S/	02:25	4-0	4	1.6552	5	0	0	2	1.3333
3- Pitts D/ 5- Nixon J/ 11- Wells K/ 32- Patty A/ 44- Roby S/	01:58	2-2	0	1.0169	1	0	1	1	0.6944
2- Hoppie Q/ 3- Pitts D/ 5- Nixon J/ 24- Jones S/ 44- Roby S/	01:47	2-5	-3	1.1215	0	0	1	0	0.5000
2- Hoppie Q/ 5- Nixon J/ 11- Wells K/ 14- Johnson M/ 24- Jones S/	01:34	4-2	2	2.5532	1	2	1	0	1.4493
2- Hoppie Q/ 5- Nixon J/ 11- Wells K/ 23- Green M/ 44- Roby S/	01:32	0-7	-7	0.0000	0	0	0	0	0.0000
3- Pitts D/ 5- Nixon J/ 11- Wells K/ 24- Jones S/ 32- Patty A/	01:28	0-2	-2	0.0000	1	0	0	0	0.0000
3- Pitts D/ 11- Wells K/ 23- Green M/ 24- Jones S/ 44- Roby S/	01:24	4-6	-2	2.8571	1	0	1	1	1.3889
11- Wells K/ 23- Green M/ 24- Jones S/ 32- Patty A/ 44- Roby S/	01:14	0-6	-6	0.0000	1	0	1	0	0.0000
2- Hoppie Q/ 11- Wells K/ 23- Green M/ 32- Patty A/ 44- Roby S/	01:00	2-3	-1	2.0000	1	0	1	1	1.0000
2- Hoppie Q/ 5- Nixon J/ 11- Wells K/ 14- Johnson M/ 23- Green M/	00:57	2-0	2	2.1053	1	0	0	0	2.2727
3- Pitts D/ 5- Nixon J/ 11- Wells K/ 13- Malone J/ 24- Jones S/	00:54	0-0	0	0.0000	0	0	1	0	0.0000
2- Hoppie Q/ 3- Pitts D/ 11- Wells K/ 14- Johnson M/ 23- Green M/	00:45	0-2	-2	0.0000	0	0	1	0	0.0000
2- Hoppie Q/ 3- Pitts D/ 11- Wells K/ 23- Green M/ 24- Jones S/	00:43	2-4	-2	2.7907	0	0	0	0	2.0000
2- Hoppie Q/ 3- Pitts D/ 5- Nixon J/ 11- Wells K/ 24- Jones S/	00:39	7-5	2	10.7692	0	0	1	1	1.2411
2- Hoppie Q/ 3- Pitts D/ 5- Nixon J/ 11- Wells K/ 23- Green M/	00:34	2-4	-2	3.5294	0	0	0	0	1.0000
2- Hoppie Q/ 3- Pitts D/ 4- Green K/ 5- Nixon J/ 11- Wells K/	00:14	2-2	0	8.5714	0	0	0	0	2.0000
2- Hoppie Q/ 3- Pitts D/ 5- Nixon J/ 11- Wells K/ 44- Roby S/	00:13	0-0	0	0.0000	0	0	0	0	0.0000
2- Hoppie Q/ 3- Pitts D/ 5- Nixon J/ 23- Green M/ 24- Jones S/	00:02	2-0	2	60.0000	0	0	0	0	2.2727
2- Hoppie Q/ 3- Pitts D/ 5- Nixon J/ 14- Johnson M/ 24- Jones S/	00:00	0-0	0	NaN	1	0	0	0	0.0000
2- Hoppie Q/ 5- Nixon J/ 11- Wells K/ 23- Green M/ 24- Jones S/	00:00	1-0	1	∞	0	0	0	0	2.2727



**Texas A&M at TCU**

12/12/21 Ed and Rae Schollmaier Arena, Fort Worth  
2021-22 Women's Basketball

**Game Time:** 1:00 PM  
**Game Duration:** 2:16  
**Attendance:** 2,371

**Officials:** Felicia Grinter, Brian Hall, Tiffany Bird

**TCU**

Lineup	Time	Score	Score Diff	Pts/Min	Reb	Stl	Tov	Ass	PPP
1- Jackson A/ 4- Adika O/ 20- Heard L/ 23- Berry M/ 32- Morris P/	05:49	12-2	10	2.0630	9	1	3	1	1.1029
1- Jackson A/ 13- Diggs T/ 15- Holmes A/ 20- Heard L/ 24- Mokwuah K/	03:21	2-4	-2	0.5970	5	0	3	1	0.3333
1- Jackson A/ 13- Diggs T/ 15- Holmes A/ 20- Heard L/ 32- Morris P/	03:01	14-3	11	4.6409	6	0	1	4	2.2152
1- Jackson A/ 4- Adika O/ 15- Holmes A/ 20- Heard L/ 32- Morris P/	02:37	6-5	1	2.2930	1	1	3	2	0.8571
1- Jackson A/ 4- Adika O/ 5- Morris Y/ 20- Heard L/ 23- Berry M/	02:28	10-6	4	4.0541	3	0	0	1	1.8116
1- Jackson A/ 4- Adika O/ 5- Morris Y/ 15- Holmes A/ 20- Heard L/	02:28	3-8	-5	1.2162	1	0	2	1	0.7500
1- Jackson A/ 5- Morris Y/ 15- Holmes A/ 20- Heard L/ 23- Berry M/	02:27	4-5	-1	1.6327	2	0	2	1	0.8000
2- Manumaleuga T/ 13- Diggs T/ 15- Holmes A/ 20- Heard L/ 24- Mokwuah K/	02:12	3-4	-1	1.3636	2	0	2	1	0.7500
1- Jackson A/ 4- Adika O/ 15- Holmes A/ 20- Heard L/ 24- Mokwuah K/	02:08	2-5	-3	0.9375	2	0	2	0	0.4630
1- Jackson A/ 4- Adika O/ 15- Holmes A/ 23- Berry M/ 32- Morris P/	01:41	5-2	3	2.9703	4	1	0	1	2.5000
4- Adika O/ 5- Morris Y/ 15- Holmes A/ 20- Heard L/ 23- Berry M/	01:38	3-2	1	1.8367	1	0	0	1	1.0000
1- Jackson A/ 4- Adika O/ 15- Holmes A/ 20- Heard L/ 23- Berry M/	01:34	1-4	-3	0.6383	0	0	0	0	0.3472
1- Jackson A/ 4- Adika O/ 13- Diggs T/ 20- Heard L/ 23- Berry M/	01:29	6-4	2	4.0449	1	1	1	0	1.2931
1- Jackson A/ 2- Manumaleuga T/ 5- Morris Y/ 20- Heard L/ 23- Berry M/	01:21	4-2	2	2.9630	2	0	3	0	0.8197
1- Jackson A/ 4- Adika O/ 5- Morris Y/ 10- Bradley P/ 20- Heard L/	01:00	4-2	2	4.0000	0	1	0	0	1.3889
0- Germond C/ 4- Adika O/ 13- Diggs T/ 15- Holmes A/ 20- Heard L/	00:51	0-2	-2	0.0000	2	0	1	0	0.0000
2- Manumaleuga T/ 5- Morris Y/ 10- Bradley P/ 15- Holmes A/ 23- Berry M/	00:49	2-0	2	2.4490	2	0	0	0	2.2727
0- Germond C/ 1- Jackson A/ 4- Adika O/ 13- Diggs T/ 15- Holmes A/	00:41	3-2	1	4.3902	0	0	1	1	1.5000
1- Jackson A/ 2- Manumaleuga T/ 4- Adika O/ 5- Morris Y/ 20- Heard L/	00:37	2-0	2	3.2432	1	0	0	1	2.0000
1- Jackson A/ 4- Adika O/ 13- Diggs T/ 15- Holmes A/ 20- Heard L/	00:28	0-6	-6	0.0000	0	1	2	0	0.0000
1- Jackson A/ 2- Manumaleuga T/ 20- Heard L/ 23- Berry M/ 24- Mokwuah K/	00:24	0-0	0	0.0000	0	0	0	0	0.0000
0- Germond C/ 1- Jackson A/ 5- Morris Y/ 15- Holmes A/ 23- Berry M/	00:21	0-1	-1	0.0000	1	0	0	0	0.0000
0- Germond C/ 1- Jackson A/ 4- Adika O/ 5- Morris Y/ 15- Holmes A/	00:13	1-2	-1	4.6154	0	0	0	0	1.1364
1- Jackson A/ 2- Manumaleuga T/ 13- Diggs T/ 20- Heard L/ 24- Mokwuah K/	00:11	0-2	-2	0.0000	0	0	1	0	0.0000
1- Jackson A/ 13- Diggs T/ 20- Heard L/ 23- Berry M/ 24- Mokwuah K/	00:11	0-0	0	0.0000	0	0	0	0	0.0000
1- Jackson A/ 5- Morris Y/ 13- Diggs T/ 15- Holmes A/ 20- Heard L/	00:00	0-2	-2	NaN	0	0	0	0	0.0000