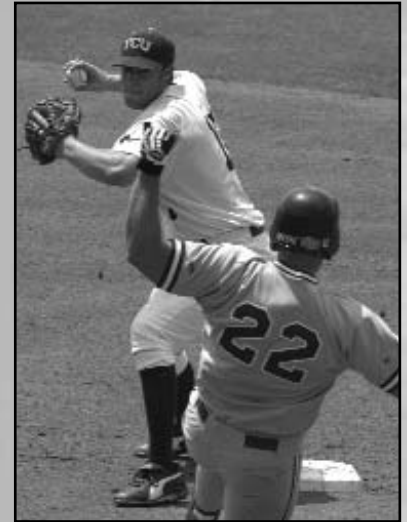


# TCU BASEBALL:



## 2006 OPPONENTS

AIR FORCE/ARIZONA STATE	.52
ARKANSAS/BAYLOR	.53
BYU/DALLAS BAPTIST	.54
FLORIDA ATLANTIC/HOUSTON	.55
NEW MEXICO/OKLAHOMA	.56
RICE/SAN DIEGO STATE	.57
STEPHEN F. AUSTIN/TAMU-CORPUS CHRISTI	.58
TEXAS STATE/TULANE	.59
UCF/UC SANTA BARBARA	.60
UNLV/UTAH	.61
UT-ARLINGTON/UT-PAN AMERICAN	.62
WRIGHT STATE	.63
SID DIRECTORY	.63
MOUNTAIN WEST TOURNAMENTS	.64



# BUILDING A TRADITION

# 2006 OPPONENTS

## AIR FORCE FALCONS

April 4 San Diego, Calif.  
April 7-9 Lupton Stadium

### University Info

Location .Air Force Academy, Colo.  
Enrollment .....4,000  
Founded .....1954  
Superintendent ...Lt. Gen. John Regni  
Ath. Director .....Dr. Hans Mueh  
Colors .....Blue and Silver  
Conference .....Mountain West  
Stadium .....Falcon Baseball Field  
Capacity .....1,000  
Dimensions .....349-400-316



Paul Pratt, Pitcher

### Team Info

Head Coach .....Mike Hutcheon  
Record at Air Force .....15-93 (2)  
Career Record .....254-233 (11)  
Assistant Coaches Ryan Thompson  
.....Scott Marchand, Marty Nelson  
2005 Record .....9-44-0  
Home .....4-16-0  
Away .....4-20-0  
Neutral .....1-8-0  
Postseason .....N/A  
Conf. Rec/Finish .....4-26/6th  
Final Ranking .....N/A  
Lettermen Returning/Lost ...18/7  
Starters Returning/Lost .....6/3



Mike Hutcheon, Coach

### Media Relations Info

Contact .....Nick Arseniak  
Office .....(719) 333-9251  
Fax .....(719) 333-3798  
Email nicholas.arseniak@usafa.af.mil  
Cell Phone .....(719) 440-5315  
Pressbox Phone ..(719) 333-3472

### Top Returning Hitters

Name	Pos.	BA	HR	RBI
Dustin Smith	UT	.320	3	21
Karl Bolt	IF	.315	12	39

### Top Returning Pitchers

Name	Thr.	W-L	ERA	K
Paul Pratt	R	3-9	9.62	41
Sam Rosener	R	1-1	7.46	17

[WWW.AIRFORCESPORTS.COM](http://WWW.AIRFORCESPORTS.COM)

### SERIES INFORMATION

Series Record .....TCU leads 6-1-0

Last Time .....TCU won series 3-0  
April 16, 1999 • TCU 14, Air Force 11  
April 17, 1999 • TCU 13, Air Force 1  
April 18, 1999 • TCU 18, Air Force 3

Home team in bold

## ARIZONA ST. SUN DEVILS

March 12 Corpus Christi, Texas  
Whataburger Classic

### University Info

Location .....Tempe, Ariz.  
Enrollment .....45,693  
Founded .....1885  
President .....Michael Crow  
Ath. Director .....Lisa Love  
Colors .....Maroon and Gold  
Conference .....Pacific-10  
Stadium .....Packard Stadium  
Capacity .....3,879  
Dimensions .....340-395-340



Colin Curtis, Outfielder

### Team Info

Head Coach .....Pat Murphy  
Record at Arizona St. 443-221-1 (12)  
Career Record .....816-392-4 (21)  
Assistant Coaches ...Jay J. Sferra  
.....Tim Esmay  
2005 Record .....42-25-0  
Home .....25-7-0  
Away .....10-15-0  
Neutral .....7-3-0  
Postseason ..College World Series  
Conf. Rec/Finish .....15-9/3rd  
Final Ranking .....3 (CB)  
Lettermen Returning/Lost ...20/9  
Starters Returning/Lost .....8/4



Pat Murphy, Coach

### Media Relations Info

Contact .....Randy Policar  
Office .....(480) 965-1237  
Fax .....(480) 965-5408  
Email ....randy.policar@asu.edu  
Cell Phone .....(480) 734-7794  
Pressbox Phone ..(480) 727-7253

### Top Returning Hitters

Name	Pos.	BA	HR	RBI
Colin Curtis	OF	.342	2	45
J.J. Sferra	OF	.311	0	22

### Top Returning Pitchers

Name	Thr.	W-L	ERA	K
Brett Bordes	L	5-7	4.24	54
P. Bresnehan	R	5-4	5.60	79

[WWW.THESUNDEVILS.COM](http://WWW.THESUNDEVILS.COM)

### SERIES INFORMATION

Series Record .Arizona St. leads 3-0-0

Last Time .Arizona St. won series 3-0  
Feb. 6, 1993 • Arizona St. 5, TCU 4  
Feb. 7, 1993 • Arizona St. 7, TCU 2  
Feb. 8, 1993 • Arizona St. 11, TCU 10

Home team in bold

# 2006 OPPONENTS

## ARKANSAS RAZORBACKS

Feb. 17     Edinburg, Texas  
UT-Pan Am Tournament

### University Info

Location ..... Fayetteville, Ark.  
Enrollment ..... 17,821  
Founded ..... 1871  
President ..... Dr. John A. White  
Ath. Director ..... Frank Broyles  
Colors ..... Cardinal and White  
Conference ..... Southeastern Conf.  
Stadium ..... Baum Stadium  
Capacity ..... 9,133  
Dimensions ..... 320-400-320

### Team Info

Head Coach ..... Dave Van Horn  
Record at Arkansas ..... 119-68-0 (3)  
Career Record ..... 704-295-0 (17)  
Assistant Coaches .. Clay Goodwin  
..... Todd Butler, Dave Jörn  
2005 Record ..... 39-22-0  
Home ..... 19-9-0  
Away ..... 17-9-0  
Neutral ..... 3-4-0  
Postseason ..... NCAA Regionals  
Conf. Rec/Finish ..... 13-17/t-5th Western  
Final Ranking ..... 28 (NCBWA)  
Lettermen Returning/Lost ..... 21/4  
Starters Returning/Lost ..... 6/2

### Media Relations Info

Contact ..... Josh Maxson  
Office ..... (479) 575-2751  
Fax ..... (479) 575-7481  
Email ..... jmaxson@uark.edu  
Cell Phone ..... (479) 841-9035  
Pressbox Phone ..... (479) 575-4141



Nick Schmidt, Pitcher



Dave Van Horn, Coach

### Top Returning Hitters

Name	Pos.	BA	HR	RBI
D. Hamblin	IF	.341	10	49
Craig Gentry	OF	.311	1	18

### Top Returning Pitchers

Name	Thr.	W-L	ERA	K
Nick Schmidt	L	8-2	2.80	89
T. Holloway	L	3-0	1.17	9

[WWW.HOGWIRED.COM](http://WWW.HOGWIRED.COM)

### SERIES INFORMATION

**Series Record** .Arkansas leads 43-23-0

**Last Time** ...Arkansas won series 3-0

March 4, 1995 • **Arkansas 9**, TCU 7  
March 5, 1995 • **Arkansas 8**, TCU 4  
March 6, 1995 • **Arkansas 3**, TCU 2

Home team in bold

## BAYLOR BEARS

March 21     Waco, Texas  
April 4     Lupton Stadium

### University Info

Location ..... Waco, Texas  
Enrollment ..... 13,975  
Founded ..... 1845  
Int. President ..... Bill Underwood  
Ath. Director ..... Ian McCaw  
Colors ..... Green and Gold  
Conference ..... Big 12  
Stadium ..... Baylor Ballpark  
Capacity ..... 5,000  
Dimensions ..... 330-400-300

### Team Info

Head Coach ..... Steve Smith  
Record at Baylor ..... 418-258-1 (11)  
Career Record ..... Same  
Assistant Coaches .. Steve Johnigan  
..... Mitch Thompson, Chris Berry  
2005 Record ..... 46-24-0  
Home ..... 25-11-0  
Away ..... 13-10-0  
Neutral ..... 8-3-0  
Postseason ..... College World Series  
Conf. Rec/Finish ..... 19-8/t-1st  
Final Ranking ..... 4 (BA)  
Lettermen Returning/Lost ..... 14/10  
Starters Returning/Lost ..... 4/5

### Media Relations Info

Contact ..... Larry Little  
Office ..... (254) 710-4389  
Fax ..... (254) 710-1369  
Email ..... Larry\_Little@baylor.edu  
Cell Phone ..... (254) 709-5147  
Pressbox Phone ..... (254) 754-5546



Ryan LaMotta, Pitcher



Steve Smith, Coach

### Top Returning Hitters

Name	Pos.	BA	HR	RBI
Zach Dillon	C	.304	2	43
Kevin Russo	IF	.286	3	36

### Top Returning Pitchers

Name	Thr.	W-L	ERA	K
Ryan LaMotta	R	5-2	2.15	82
C. VanAllen	L	8-4	4.02	68

[WWW.BAYLORBears.COM](http://WWW.BAYLORBears.COM)

### SERIES INFORMATION

**Series Record** ..Baylor leads 152-132-4

**Last Time** ..... Baylor won series 2-1

March 15, 2005 • **Baylor 4**, TCU 3  
April 19, 2005 • **TCU 2**, Baylor 1 (10)  
June 5, 2005 • **Baylor 8**, TCU 3

Home team in bold



# 2006 OPPONENTS

## FLORIDA ATLANTIC OWLS

March 3-5 Lupton Stadium

### University Info

Location . . . . . Boca Raton, Fla.  
 Enrollment . . . . . 26,000  
 Founded . . . . . 1961  
 President . . . . . Frank T. Brogan  
 Ath. Director . . . . . Craig Angelos  
 Colors . . . . . Blue and Red  
 Conference . . . . . Atlantic Sun  
 Stadium . . . . . FAU Field  
 Capacity . . . . . 2,000  
 Dimensions . . . . . 330-400-330

### Team Info

Head Coach . . . . . Kevin Cooney  
 Record at FAU . . . . . 650-403-4 (18)  
 Career Record . . . . . 790-453-9 (22)  
 Assistant Coaches . . . . . Tony Fossas  
 . . . . . John McCormack, George Roig  
 2005 Record . . . . . 37-24-0  
 Home . . . . . 19-11-0  
 Away . . . . . 15-11-0  
 Neutral . . . . . 3-2-0  
 Postseason . . . . . NCAA Regional  
 Conf. Rec/Finish . . . . . 19-11/2nd  
 Final Ranking . . . . . N/A  
 Lettermen Returning/Lost . . . . . 19/6  
 Starters Returning/Lost . . . . . 8/1

### Media Relations Info

Contact . . . . . Dawn Elston  
 Office . . . . . (561) 297-3513  
 Fax . . . . . (561) 297-3499  
 Email . . . . . delston@fau.edu  
 Cell Phone . . . . . (561) 302-0461  
 Pressbox Phone . . . . . (561) 297-3455



Mike McBryde, Outfielder



Kevin Cooney, Coach

### Top Returning Hitters

Name	Pos.	BA	HR	RBI
M. McBryde	OF	.370	5	40
Alex Fonxeca	IF	.306	3	31

### Top Returning Pitchers

Name	Thr.	W-L	ERA	K
M. Storey	R	10-1	1.70	82
Allen Knight	R	1-2	4.23	21

## HOUSTON COUGARS

Feb. 11 Houston, Texas  
 Minute Maid Classic

### University Info

Location . . . . . Houston, Texas  
 Enrollment . . . . . 35,400  
 Founded . . . . . 1927  
 President . . . . . Dr. G. Jay Gogue  
 Ath. Director . . . . . Dave Maggard  
 Colors . . . . . Scarlet and White w/ Navy  
 Conference . . . . . Conference USA  
 Stadium . . . . . Cougar Field  
 Capacity . . . . . 3,500  
 Dimensions . . . . . 330-390-330

### Team Info

Head Coach . . . . . Raynor Noble  
 Record at Houston . . . . . 390-283 (11)  
 Career Record . . . . . Same  
 Assistant Coaches . . . . . Kirk Blount  
 . . . . . Sean Allen, Jorge Garza  
 2005 Record . . . . . 29-30-0  
 Home . . . . . 16-14-0  
 Away . . . . . 10-12-0  
 Neutral . . . . . 3-4-0  
 Postseason . . . . . N/A  
 Conf. Rec/Finish . . . . . 16-13/5th  
 Final Ranking . . . . . N/A  
 Lettermen Returning/Lost . . . . . 20/5  
 Starters Returning/Lost . . . . . 7/2

### Media Relations Info

Contact . . . . . Jeff Conrad  
 Office . . . . . (713) 743-9410  
 Fax . . . . . (713) 743-9411  
 Email . . . . . jaconrad@mail.uh.edu  
 Cell Phone . . . . . (713) 557-3841  
 Pressbox Phone . . . . . (713) 743-0840



Matt Farrington, Util.



Raynor Noble, Coach

### Top Returning Hitters

Name	Pos.	BA	HR	RBI
Brad Lincoln	IF	.337	7	52
D. Kinsbury	IF	.341	6	58

### Top Returning Pitchers

Name	Thr.	W-L	ERA	K
Brad Lincoln	R	4-7	4.76	106
M. Farrington	L	8-5	3.24	60

[WWW.FAUSPORTS.COM](http://WWW.FAUSPORTS.COM)

### SERIES INFORMATION

Series Record . . . . . TCU leads 2-1-0

Last Time . . . . . TCU won series 2-1  
 Feb. 18, 2005 • TCU 10, Fla. Atlantic 9  
 Feb. 19, 2005 • Fla. Atlantic 3, TCU 1  
 Feb. 20, 2005 • TCU 7, Fla. Atlantic 3

Home team in bold

[WWW.UHCOUGARS.COM](http://WWW.UHCOUGARS.COM)

### SERIES INFORMATION

Series Record . Houston leads 51-39-2

Last Time . . . . . TCU won series 2-1  
 April 29, 2005 • TCU 7, Houston 2  
 April 30, 2005 • TCU 9, Houston 6  
 May 1, 2005 • Houston 6, TCU 1

Home team in bold

# 2006 OPPONENTS

## NEW MEXICO LOBOS

May 18-20 Albuquerque, N.M.

### University Info

Location . . . . .Albuquerque, N.M.  
Enrollment . . . . .26,500  
Founded . . . . .1899  
President . . . . .Louis Caldera  
Ath. Director . . . . .Randy Davalos  
Colors . . . . .Cherry and Silver  
Conference . . . . .Mountain West  
Stadium . . . . .Isotopes Park  
Capacity . . . . .11,124  
Dimensions . . . . .340-400-340

### Team Info

Head Coach . . . . .Rich Alday  
Record at UNM . . . . .457-454-3 (17)  
Career Record . . . . .953-674-3 (33)  
Asst. Coaches . . . . .Ken Jacome  
                  . . . . .Trent Petrie, Josh Simpson  
2005 Record . . . . .26-32-0  
Home . . . . .17-12-0  
Away . . . . .8-17-0  
Neutral . . . . .1-3-0  
Postseason . . . . .N/A  
Conf. Rec/Finish . . . . .15-15/4th  
Final Ranking . . . . .N/A  
Lettermen Returning/Lost . . . . .10/6  
Starters Returning/Lost . . . . .7/2

### Media Relations Info

Contact . . . . .RaeAnn Feenaughty  
Office . . . . .(505) 925-5851  
Fax . . . . .(505) 925-5529  
Email . . . . .feenaurm@unm.edu  
Cell Phone . . . . .(505) 715-1281  
Pressbox Phone . . . . .(505) 222-4093



Jordan Pacheco, Infield



Rich Alday, Coach

### Top Returning Hitters

Name	Pos.	BA	HR	RBI
J. Pacheco	IF	.408	15	52
C. Carlson	DH	.395	15	79

### Top Returning Pitchers

Name	Thr.	W-L	ERA	K
Jesse Perez	R	0-2	5.97	19
D. Herrera	R	8-5	6.10	67

[WWW.GOLOBOS.COM](http://WWW.GOLOBOS.COM)

### SERIES INFORMATION

Series Record . . . . .TCU leads 14-7-0

Last Time . . . . .TCU won series 3-0  
March 12, 2004 • **TCU 2**, N. Mexico 0  
March 13, 2004 • **TCU 11**, N. Mexico 3  
March 14, 2004 • **TCU 5**, N. Mexico 1

Home team in bold

## OKLAHOMA SOONERS

March 7 Lupton Stadium  
April 11 Norman, Okla.

### University Info

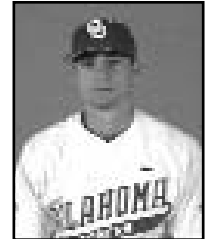
Location . . . . .Norman, Okla.  
Enrollment . . . . .31,400  
Founded . . . . .1890  
President . . . . .David Boren  
Ath. Director . . . . .Joe Castiglione  
Colors . . . . .Crimson and Cream  
Conference . . . . .Big 12  
Stadium . . . . .L. Dale Mitchell Park  
Capacity . . . . .2,700  
Dimensions . . . . .335-411-335

### Team Info

Head Coach . . . . .Sunny Galloway  
Record at Oklahoma . . . . .12-6-0 (1)  
Career Record . . . . .347-162-0 (9)  
Assistant Coaches . . . . .Fred Corral  
                  . . . . .Tim Tadlock, Andrew McGuire  
2005 Record . . . . .35-26-0  
Home . . . . .24-5-0  
Away . . . . .5-13-0  
Neutral . . . . .6-7  
Postseason . . . . .NCAA Regionals  
Conf. Rec/Finish . . . . .14-13/5th  
Final Ranking . . . . .N/A  
Lettermen Returning/Lost . . . . .19/5  
Starters Returning/Lost . . . . .8/1

### Media Relations Info

Contact . . . . .Craig Moran  
Office . . . . .(405) 325-8231  
Fax . . . . .(405) 325-7623  
Email . . . . .cmoran@ou.edu  
Cell Phone . . . . .(405) 249-8264  
Pressbox Phone . . . . .(405) 325-8363



Ryan Rohlinger, Infield



Sunny Galloway, Coach

### Top Returning Hitters

Name	Pos.	BA	HR	RBI
R. Rohlinger	IF	.345	11	53
C. Caufield	OF	.315	4	19

### Top Returning Pitchers

Name	Thr.	W-L	ERA	K
Will Savage	R	9-4	3.98	53
D. McCutchen	R	4-5	4.18	84

[WWW.SOONERSPORTS.COM](http://WWW.SOONERSPORTS.COM)

### SERIES INFORMATION

Series Record Oklahoma leads 50-23-0

Last Time . . . . .Oklahoma 2, TCU 0  
March 22, 2005 • Oklahoma 5, **TCU 4**  
April 12, 2005 • **Oklahoma 20**, TCU 10

Home team in bold

# 2006 OPPONENTS

## RICE OWLS

Feb. 12 Houston, Texas  
 March 10 Corpus Christi, Texas

### University Info

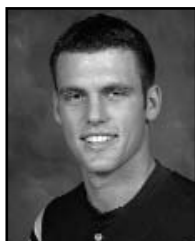
Location .....Houston, Texas  
 Enrollment .....4,785  
 Founded .....1891  
 President .....Dr. David W. Leebron  
 Ath. Director .....Bobby May  
 Colors .....Blue and Gray  
 Conference .....Conference USA  
 Stadium .....Reckling Park  
 Capacity .....4,500  
 Dimensions .....330-400-330

### Team Info

Head Coach .....Wayne Graham  
 Record at Rice .....627-257-0(14)  
 Career Record .....1,202-370-0(25)  
 Assistant Coaches .....Mike Taylor  
 .....Dave Pierce, Patrick Hallmark  
 2005 Record .....45-19-0  
 Home .....26-6-0  
 Away .....15-10-0  
 Neutral .....4-3-0  
 Postseason .NCAA Super Regionals  
 Conf. Rec/Finish .....21-9/1st  
 Final Ranking .....11 (ESPN)  
 Lettermen Returning/Lost ..20/8  
 Starters Returning/Lost .....6/3

### Media Relations Info

Contact .....John Sullivan  
 Office .....(713) 348-5636  
 Fax .....(713) 348-6019  
 Email .....jsully@rice.edu  
 Cell Phone .....(832) 250-9000  
 Pressbox Phone ..(713) 348-4931



Joe Savery, Util.



Wayne Graham, Coach

### Top Returning Hitters

Name	Pos.	BA	HR	RBI
Joe Savery	IF	.382	5	43
J. Rodriguez	IF	.345	11	54

### Top Returning Pitchers

Name	Thr.	W-L	ERA	K
Joe Savery	R	8-5	2.43	129
E. Degerman	R	8-1	3.28	117

[WWW.RICEOWLS.COM](http://WWW.RICEOWLS.COM)

### SERIES INFORMATION

Series Record ....Rice leads 116-115-1

Last Time .....Rice 2, TCU 1

March 11, 2005 • TCU 2, **Rice 1**  
 March 12, 2005 • **Rice 15**, TCU 5  
 March 13, 2005 • **Rice 2**, TCU 1

Home team in bold

## SAN DIEGO ST. AZTECS

April 1 San Diego, Calif.  
 April 28-30 San Diego, Calif.

### University Info

Location .....San Diego, Calif.  
 Enrollment .....34,171  
 Founded .....1897  
 President .....Dr. Stephen L. Weber  
 Ath. Director .....Jeff Schemmel  
 Colors .....Scarlet and Black  
 Conference .....Mountain West  
 Stadium .....Tony Gwynn Field  
 Capacity .....3,000  
 Dimensions .....340-410-340

### Team Info

Head Coach .....Tony Gwynn  
 Record at SDSU .....90-96-0 (3)  
 Career Record .....Same  
 Assistant Coaches .....Rusty Filter  
 .....Mark Martinez, Anthony Johnson  
 2005 Record .....26-35-0  
 Home .....15-16-0  
 Away .....9-17-0  
 Neutral .....2-2-0  
 Postseason .....N/A  
 Conf. Rec/Finish .....17-13/3rd  
 Final Ranking .....N/A  
 Lettermen Returning/Lost ..18/7  
 Starters Returning/Lost .....6/3

### Media Relations Info

Contact .....Dave Kuhn  
 Office .....(619) 594-5547  
 Fax .....(619) 582-6541  
 Email .....dkuhn@mail.sdsu.edu  
 Cell Phone .....(619) 957-8371  
 Pressbox Phone ..(619) 594-4103



Bruce Billings, Pitcher



Tony Gwynn, Coach

### Top Returning Hitters

Name	Pos.	BA	HR	RBI
Q. Berry	OF	.419	2	43
L. Zawadski	IF	.335	10	53

### Top Returning Pitchers

Name	Thr.	W-L	ERA	K
B. Billings	R	6-5	3.85	112
C. Campbell	R	2-0	4.20	26

[WWW.GOAZTECS.COM](http://WWW.GOAZTECS.COM)

### SERIES INFORMATION

Series Record .....TCU leads 5-2-0

Last Time .....TCU 3, SDSU 0

March 25, 1999 • TCU 8, SDSU 2  
 March 26, 1999 • TCU 6, SDSU 1  
 March 27, 1999 • TCU 8, SDSU 7

Home team in bold



# 2006 OPPONENTS

## TEXAS ST. BOBCATS

Feb. 14 Lupton Stadium  
March 14 San Marcos, Texas

### University Info

Location . . . . .San Marcos, Texas  
Enrollment . . . . .1899  
Founded . . . . .27,171  
President . . . . .Dr. Denise M. Trauth  
Ath. Director . . . . .Dr. Larry Teis  
Colors . . . . .Maroon and Gold  
Conference . . . . .Southland  
Stadium . . . . .Bobcat Field  
Capacity . . . . .1,800  
Dimensions . . . . .330-404-330

### Team Info

Head Coach . . . . .Ty Harrington  
Record at Texas St. .200-155-0 (7)  
Career Record . . . . .Same  
Asst. Coaches . . . . .Howard Bushong  
. . . . .Brian Schmitt, John Maley  
2005 Record . . . . .32-26-0  
Home . . . . .14-6-0  
Away . . . . .12-15-0  
Neutral . . . . .6-5-0  
Postseason . . . . .N/A  
Conf. Rec/Finish . . . . .15-12/3rd  
Final Ranking . . . . .N/A  
Lettermen Returning/Lost . .18/12  
Starters Returning/Los . . . . .6/3

### Media Relations Info

Contact . . . . .Steve Wilson  
Office . . . . .(512) 245-2988  
Fax . . . . .(512) 245-2967  
Email . . . . .sw38@txstate.edu  
Cell Phone . . . . .(512) 618-9514  
Pressbox Phone . .(512) 245-3654



Kyle Jones, Utility



Ty Harrington, Coach

### Top Returning Hitters

Name	Pos.	BA	HR	RBI
Kyle Jones	UT	.279	4	39
E. Babcock	UT	.273	2	21

### Top Returning Pitchers

Name	Thr.	W-L	ERA	K
Jason Baca	R	1-0	2.19	17
Chris Hill	R	2-1	2.95	36

## TULANE GREEN WAVE

Feb. 10 Houston, Texas  
Minute Maid Classic

### University Info

Location . . . . .New Orleans, La.  
Enrollment . . . . .13,214  
Founded . . . . .1834  
President . . . . .Dr. Scott Cowen  
Ath. Director . . . . .Rick Dickson  
Colors . . . . .Olive Green and Sky Blue  
Conference . . . . .Conference USA  
Stadium . . . . .Turchin Stadium  
Capacity . . . . .3,600  
Dimensions . . . . .325-400-325

### Team Info

Head Coach . . . . .Rick Jones  
Record at Tulane . . . . .523-237-1 (13)  
Career Record . . . . .799-326-2 (20)  
Assistant Coaches . . . . .Mark Kingston  
. . . . .Chad Sutter, Luke Weatherford  
2005 Record . . . . .56-12-0  
Home . . . . .36-5-0  
Away . . . . .16-5-0  
Neutral . . . . .4-2-0  
Postseason . . . . .College World Series  
Conf. Rec/Finish . . . . .24-6/1st  
Final Ranking . . . . .3 (BA/ESPN)  
Lettermen Returning/Lost . .15/8  
Starters Returning/Lost . . . . .2/7

### Media Relations Info

Contact . . . . .Richie Weaver  
Office . . . . .(504) 314-7232  
Fax . . . . .(504) 865-5512  
Email . . . . .rweaver@tulane.edu  
Cell Phone . . . . .(504) 352-5802  
Pressbox Phone . .(504) 865-8224



Nathan Southard, Outfield



Rick Jones, Coach

### Top Returning Hitters

Name	Pos.	BA	HR	RBI
N. Southard	OF	.341	12	53
Brad Emaus	IF	.321	13	56

### Top Returning Pitchers

Name	Thr.	W-L	ERA	K
J.R. Crowel	L	10-1	3.25	83
Sean Morgan	R	6-1	2.72	42

[WWW.TXSTATEBOBCATS.COM](http://WWW.TXSTATEBOBCATS.COM)

### SERIES INFORMATION

Series Record . . . . .TCU leads 17-11-0

Last Time .Texas State won series 2-0

Feb. 15, 2004 • Texas State 7, **TCU 4**

Feb. 15, 2004 • Texas State 6, **TCU 2**

Home team in bold

[WWW.TULANEGREENWAVE.COM](http://WWW.TULANEGREENWAVE.COM)

### SERIES INFORMATION

Series Record . . . . .Tulane leads 6-5-0

Last Time . . . . .Tulane won series 2-1

May 20, 2005 • **Tulane 5**, TCU 2

May 20, 2005 • TCU 6, **Tulane 0**

May 21, 2005 • **Tulane 5**, TCU 1

Home team in bold

# 2006 OPPONENTS

## UCF GOLDEN KNIGHTS

March 24-26 Lupton Stadium

### University Info

Location .....Orlando, Fla.  
 Enrollment .....44,000  
 Founded .....1963  
 President .....Dr. John C. Hitt  
 Ath. Director .....Steve Orsini  
 Colors .....Black and Gold  
 Conference .....Conference USA  
 Stadium .....Jay Bergman Field  
 Capacity .....1,980  
 Dimensions .....325-400-325

### Team Info

Head Coach .....Jay Bergman  
 Record at UCF .....917-510-3 (24)  
 Career Record .....1,133-623-3 (29)  
 Asst. Coaches .....Craig Cozart  
 .....Derek Wolfe, Rich Wallace  
 2005 Record .....42-18-0  
 Home .....28-8-0  
 Away .....12-9-0  
 Neutral .....2-1-0  
 Postseason .....N/A  
 Conf. Rec/Finish .....19-11/t-2nd  
 Final Ranking .....N/A  
 Lettermen Returning/Lost ..19/14  
 Starters Returning/Lost .....4/5

### Media Relations Info

Contact .....Jason Baum  
 Office .....(407) 823-0994  
 Fax .....(407) 823-5266  
 Email .....jbaum@mail.ucf.edu  
 Cell Phone .....(407) 405-5822  
 Pressbox Phone ..(407) 823-4487



Tim Bascom, Pitcher



Jay Bergman, Coach

### Top Returning Hitters

Name	Pos.	BA	HR	RBI
Ryan Bono	UT	.282	4	44
Matt Ray	IF	.279	3	40

### Top Returning Pitchers

Name	Thr.	W-L	ERA	K
Tim Bascom	R	10-2	3.10	113
Taylor Meier	R	6-3	2.55	56

[WWW.UCFATHLETICS.COM](http://WWW.UCFATHLETICS.COM)

### SERIES INFORMATION

First Meeting

## UC SANTA BARBARA GAUCHOS

March 17-19 Santa Barbara

### University Info

Location .....Santa Barbara, Calif.  
 Enrollment .....19,500  
 Founded .....1944  
 Chancellor .....Dr. Henry T. Yang  
 Ath. Director Dr. Gary Cunningham  
 Colors .....Blue and Gold  
 Conference .....Big West  
 Stadium ..Caesar Uyesaka Stadium  
 Capacity .....1,000  
 Dimensions .....335-400-335

### Team Info

Head Coach .....Bob Brontsema  
 Record at UCSB .....322-320-0 (13)  
 Career Record .....Same  
 Assistant Coaches ..Tomy Myers  
 .....John Kirkgard  
 2005 Record .....26-30-0  
 Home .....16-14-0  
 Away .....10-16-0  
 Neutral .....0-0-0  
 Postseason .....N/A  
 Conf. Rec/Finish .....8-13/7th  
 Final Ranking .....N/A  
 Lettermen Returning/Lost ..15/12  
 Starters Returning/Lost .....5/4

### Media Relations Info

Contact .....Tyler Geivett  
 Office .....(805) 893-3428/8603  
 Fax .....(805) 893-4537  
 Email media.relations@athletics.ucsb.edu  
 Cell Phone .....N/A  
 Pressbox Phone ..(805) 893-4671



Chris Valaika, Shortstop



Bob Brontsema, Coach

### Top Returning Hitters

Name	Pos.	BA	HR	RBI
Chris Valaika	IF	.208	0	4
Matt Aidem	C	.326	0	27

### Top Returning Pitchers

Name	Thr.	W-L	ERA	K
Justin Segal	R	1-1	4.66	23
Steve Morlock	R	7-7	5.83	43

[WWW.UCSBGAUCHOS.COM](http://WWW.UCSBGAUCHOS.COM)

### SERIES INFORMATION

First Meeting

# 2006 OPPONENTS

## UNLV REBELS

March 31 San Diego, Calif.  
April 14-16 Lupton Stadium

### University Info

Location . . . . .Las Vegas, Nev.  
Enrollment . . . . .26,000  
Founded . . . . .1957  
President . . . . .Dr. Carol C. Harter  
Ath. Director . . . . .Mike Hamrick  
Colors . . . . .Scarlet and Gray  
Conference . . . . .Mountain West  
Stadium . . . . .Earl E. Wilson Stadium  
Capacity . . . . .3,000  
Dimensions . . . . .335-400-335

### Team Info

Head Coach . . . . .Buddy Gouldsmith  
Record at UNLV . . . . .72-53-0 (2)  
Career Record . . . . .Same  
Assistant Coaches . . . . .Scott Malone  
. . . . .Nate Yeskie, Matt Fonteno  
2005 Record . . . . .35-29-0  
Home . . . . .16-15-0  
Away . . . . .15-11-0  
Neutral . . . . .4-3-0  
Postseason . . . . .NCAA Regionals  
Conf. Rec/Finish . . . . .23-7/1st  
Final Ranking . . . . .RV  
Lettermen Returning/Lost . . . . .16/11  
Starters Returning/Lost . . . . .5/4

### Media Relations Info

Contact . . . . .Bryan Haines  
Office . . . . .(702) 895-3764  
Fax . . . . .(702) 895-0989  
Email . . . . .bryan.haines@unlv.edu  
Cell Phone . . . . .(702) 528-4227  
Pressbox Phone . . . . .(702) 895-1595



Matt Luca, Pitcher



Buddy Gouldsmith, Coach

### Top Returning Hitters

Name	Pos.	BA	HR	RBI
Ryan Bird	OF	.343	6	57
Chris Bonnell	IF	.342	9	59

### Top Returning Pitchers

Name	Thr.	W-L	ERA	K
Matt Luca	R	5-7	4.94	65
Alex Chalfant	R	1-1	3.79	24

[WWW.UNLVREBELS.COM](http://WWW.UNLVREBELS.COM)

### SERIES INFORMATION

Series Record . . . . .UNLV leads 10-7

Last Time . . . . .UNLV won series 3-0

April 23, 1999 • **UNLV 9**, TCU 6  
April 24, 1999 • **UNLV 6**, TCU 2  
April 25, 1999 • **UNLV 12**, TCU 6

Home team in bold

## UTAH UTES

May 5-7 Lupton Stadium

### University Info

Location . . . . .Salt Lake City, Utah  
Enrollment . . . . .28,933  
Founded . . . . .1850  
President . . . . .Michael K. Young  
Ath. Director . . . . .Dr. Chris Hill  
Colors . . . . .Crimson and White  
Conference . . . . .Mountain West  
Stadium . . . . .Franklin Covey Field  
Capacity . . . . .15,500  
Dimensions . . . . .345-420-315

### Team Info

Head Coach . . . . .Bill Kinneberg  
Record at Utah . . . . .49-58-0 (2)  
Career Record . . . . .294-241-0 (12)  
Assistant Coaches . . . . .Bryan Conger  
. . . . .Todd Delnoce, Jake Brown  
2005 Record . . . . .19-36-0  
Home . . . . .7-15-0  
Away . . . . .12-21-0  
Neutral . . . . .0-0-0  
Postseason . . . . .N/A  
Conf. Rec/Finish . . . . .10-20/5th  
Final Ranking . . . . .N/A  
Lettermen Returning/Lost . . . . .13/8  
Starters Returning/Lost . . . . .5/4

### Media Relations Info

Contact . . . . .Andy Seeley  
Office . . . . .(801) 581-3771  
Fax . . . . .(801) 581-4358  
Email . . . . .aseeley@huntsman.utah.edu  
Cell Phone . . . . .(801) 580-4411  
Pressbox Phone . . . . .(801) 464-6969



Jay Brossman, Infield



Bill Kinneberg, Coach

### Top Returning Hitters

Name	Pos.	BA	HR	RBI
Jay Brossman	IF	.377	8	51
Joe Mozeleski	OF	.337	3	30

### Top Returning Pitchers

Name	Thr.	W-L	ERA	K
Josh Cooper	R	4-1	3.64	71
Brian Lane	R	5-6	4.15	38

[WWW.UTAHUTES.COM](http://WWW.UTAHUTES.COM)

### SERIES INFORMATION

Series Record . . . . .TCU leads 9-1-0

Last Time . . . . .TCU won series 3-0

Feb. 11, 2005 • **TCU 10**, Utah 0  
Feb. 13, 2005 • **TCU 6**, Utah 4  
Feb. 13, 2005 • **TCU 14**, Utah 7

Home team in bold

# 2006 OPPONENTS

## UT-ARLINGTON MAVERICKS

April 25     Arlington, Texas  
May 16         Lupton Stadium

### University Info

Location ..... Arlington, Texas  
Enrollment ..... 25,297  
Founded ..... 1895  
President ..... Dr. Charles A. Sorber  
Ath. Director ..... Pete Carlson  
Colors ..... Royal Blue and White  
Conference ..... Southland  
Stadium ..... Clay Gould Ballpark  
Capacity ..... 1,600  
Dimensions ..... 330-400-330

### Team Info

Head Coach ..... Jeff Curtis  
Record at UTA ..... 124-112-0 (4)  
Career Record ..... Same  
Asst. Coaches ..... Darin Thomas  
   Jay Sirianni, Tim Hunter  
2005 Record ..... 26-32-0  
Home ..... 12-15-0  
Away ..... 12-15-0  
Neutral ..... 2-2-0  
Postseason ..... N/A  
Conf. Rec/Finish ..... 14-13/5th  
Final Ranking ..... N/A  
Lettermen Returning/Lost ..... 5/14  
Starters Returning/Lost ..... 2/7

### Media Relations Info

Contact ..... John Brush  
Office ..... (817) 272-5706  
Fax ..... (817) 272-2254  
Email ..... jbrush@uta.edu  
Cell Phone ..... (817) 658-3438  
Pressbox Phone ..... (817) 462-4225



Dillon Gee, Pitcher



Jeff Curtis, Coach

### Top Returning Hitters

Name	Pos.	BA	HR	RBI
J. Stevens	C	.255	0	15
Brock Wilson	OF	.256	5	24

### Top Returning Pitchers

Name	Thr.	W-L	ERA	K
Dillon Gee	R	5-8	5.58	35

## UT-PAN AMERICAN BRONCS

Feb. 18     Edinburg, Texas  
May 12-14     Lupton Stadium

### University Info

Location ..... Edinburg, Texas  
Enrollment ..... 19,576  
Founded ..... 1927  
President ..... Dr. Blandina Cardenas  
Ath. Director ..... Scott Street  
Colors Forest Green, Orange, White  
Conference ..... Independent  
Stadium ..... Edinburg Baseball Stadium  
Capacity ..... 4,000  
Dimensions ..... 325-400-325

### Team Info

Head Coach ..... Willie Gawlik  
Record at UTPA ..... 58-103-0 (3)  
Career Record ..... 228-257-0 (11)  
Assistant Coaches ..... Justin Meccage  
   Jason Alamo  
2005 Record ..... 15-37-0  
Home ..... 13-15-0  
Away ..... 2-22-0  
Neutral ..... 0-0-0  
Postseason ..... N/A  
Conf. Rec/Finish ..... N/A  
Final Ranking ..... N/A  
Lettermen Returning/Lost ..... 13/16  
Starters Returning/Lost ..... 2/7

### Media Relations Info

Contact ..... Joe Monaco  
Office ..... (956) 381-2240  
Fax ..... (956) 381-2398  
Email ..... jmonaco@panam.edu  
Cell Phone ..... N/A  
Pressbox Phone ..... (956) 292-0695



Louie Alamia, Outfield



Willie Gawlik, Coach

### Top Returning Hitters

Name	Pos.	BA	HR	RBI
Louie Alamia	OF	.344	1	21
J. Gutierrez	IF	.165	0	10

### Top Returning Pitchers

Name	Thr.	W-L	ERA	K
Dane Mason	R	1-4	3.48	28
Tim Haines	R	2-2	4.22	37

[WWW.UTAMAVS.COM](http://WWW.UTAMAVS.COM)

### SERIES INFORMATION

Series Record ..... TCU leads 76-53-0

Last Time ..... TCU won series 2-0

April 5, 2005 • TCU 11, **UTA 2**

May 3, 2005 • TCU 12, **UTA 3**

Home team in bold

[WWW.UTPABRONCS.COM](http://WWW.UTPABRONCS.COM)

### SERIES INFORMATION

Series Record ..... TCU leads 24-13-1

Last Time ..... TCU won series 2-0

April 26, 2005 • TCU 9, **UTPA 2**

April 27, 2005 • TCU 8, **UTPA 0**

Home team in bold

## WRIGHT ST. RAIDERS

March 31 San Diego, Calif.  
April 14-16 Lupton Stadium

### University Info

Location .....Dayton, Ohio  
Enrollment .....16,729  
Founded .....1964  
President .....Dr. Kim Goldenberg  
Ath. Director ..Dr. Michael Cusack  
Colors .....Hunter Green and Gold  
Conference .....Horizon League  
Stadium .....Nischwitz Stadium  
Capacity .....750  
Dimensions .....330-400-330

### Team Info

Head Coach .....Rob Cooper  
Record at UNLV .....26-33-0 (1)  
Career Record .....Same  
Assistant Coaches ...Nate Griffin  
.....Greg Lovelady  
2005 Record .....26-33-0  
Home .....13-8-0  
Away .....9-22-0  
Neutral .....4-3-0  
Postseason .....N/A  
Conf. Rec/Finish .....11-9/4th  
Final Ranking .....N/A  
Lettermen Returning/Lost ...23/4  
Starters Returning/Lost .....7/2

### Media Relations Info

Contact .....Greg Campbell  
Office .....(937) 775-4687  
Fax .....(937) 775-2818  
Email ..campbell.77@wright.edu  
Cell Phone .....(937) 305-9559  
Pressbox Phone ..(937) 775-4707



Brian Shoup, Infield



Rob Cooper, Coach

### Top Returning Hitters

Name	Pos.	BA	HR	RBI
Brian Shoup	IF	.290	7	39
J. Wilson	OF	.339	2	24

### Top Returning Pitchers

Name	Thr.	W-L	ERA	K
R. Barrett	R	6-4	3.82	62
Joe Smith	R	1-2	1.10	42

[WWW.WSURAIDERS.COM](http://WWW.WSURAIDERS.COM)

### SERIES INFORMATION

First Meeting

## SPORTS INFORMATION DIRECTORY

### Air Force Falcons

Contact .....Nick Arseniak  
Phone .....(719) 333-9251  
Pressbox .....(719) 333-3472

### Arizona State Sun Devils

Contact.....Randy Policar  
Phone .....(480) 965-1237  
Pressbox.....(480) 727-7253

### Arkansas Razorbacks

Contact .....Josh Maxson  
Phone .....(479) 575-2751  
Pressbox.....(479)

### Baylor Bears

Contact .....Larry Little  
Phone .....(254) 710-4389  
Pressbox.....(254) 754-5546

### BYU Cougars

Contact.....Ralph Zobell  
Phone .....(801) 422-9769  
Pressbox .....(801) 422-4041

### Dallas Baptist Patriots

Contact .....Ryan Erwin  
Phone .....(214) 333-5436  
Pressbox .....(241) 333-5541

### Florida Atlantic Owls

Contact .....Dawn Elston  
Phone .....(561) 297-3513  
Pressbox .....(561) 297-3455

### Houston Cougars

Contact.....Jeff Conrad  
Phone .....(713) 743-9410  
Pressbox .....(713) 743-0840

### New Mexico Lobos

Contact..RaeAnn Feenaughty  
Phone .....(505) 925-5851  
Pressbox .....(505) 222-4093

### Oklahoma Sooners

Contact.....Craig Moran  
Phone .....(405) 325-6449  
Pressbox.....(405) 325-8363

### Rice Owls

Contact .....John Sullivan  
Phone .....(713) 348-5636  
Pressbox.....(713) 348-4931

### San Diego State Aztecs

Contact .....Dave Kuhn  
Phone .....(619) 594-5242  
Pressbox.....(619) 594-4103

### Stephen F. Austin Lumberjacks

Contact .....James Dixon  
Phone .....(936) 468-4150  
Pressbox.....(936) 468-4593

### TAMU-Corpus Christi Islanders

Contact .....Aaron Ames  
Phone .....(361) 825-3411  
Pressbox .....N/A

### Texas State Bobcats

Contact.....Steve Wilson  
Phone .....(512) 245-2988  
Pressbox.....(512) 245-9134

### Tulane Green Wave

Contact .....Richie Weaver  
Phone .....(504) 314-7232  
Pressbox.....(504) 865-8224

### UCF Golden Knights

Contact.....Jason Baum  
Phone .....(407) 823-0994  
Pressbox.....(407) 823-4487

### UC Santa Barbara Gauchos

Contact.....Tyler Geivett  
Phone .....(805) 893-3428  
Pressbox .....(805) 893-4671

### UNLV Rebels

Contact .....Bryan Haines  
Phone .....(702) 895-3764  
Pressbox.....(702) 895-195

### Utah Utes

Contact .....Andy Seeley  
Phone .....(801) 581-3441  
Pressbox.....(801) 580-4411

### UT-Arlington Mavericks

Contact.....John Brush  
Phone .....(817) 272-5706  
Pressbox.....(817) 462-4225

### UT-Pan American Broncs

Contact .....Joe Monaco  
Phone .....(956) 381-2240  
Pressbox.....(956) 292-0695

### Wright State Raiders

Contact.....Greg Campbell  
Phone .....(937) 775-4687  
Pressbox.....(937) 775-4707

# 2006 OPPONENTS

## PRESEASON TOURNEY

Mar. 29-Apr. 1 San Diego, Calif.  
Tony Gwynn Stadium

### 2006 Preseason Tournament Notes:

- All seven teams participate and each plays four contests.
- Each team will be the home team twice and the visiting team twice.
- Games count in team's overall conference record.
- Each team will have an off day in the five-day tournament.

**Host:** San Diego State

**Dates:** March 29-April 1

**Location:** Tony Gwynn Stadium

### Proposed Schedule (All times Pacific)

**Wed., March 29** (Utah, TCU, Air Force off)

5:00 UNLV @ BYU

9:00 San Diego State @ New Mexico

**Thurs., March 30** (UNLV off)

1:00 **BYU @ TCU**

5:00 New Mexico @ Air Force

9:00 Utah @ San Diego State

**Fri., March 31** (San Diego State off)

1:00 New Mexico @ BYU

5:00 Air Force @ Utah

9:00 TCU @ UNLV

**Sat., April 1** (New Mexico off)

1:00 BYU @ Utah

5:00 Air Force @ UNLV

9:00 San Diego State @ TCU

**Sun., April 2** (BYU off)

11:30 TCU @ Air Force

2:30 Utah @ New Mexico

6:00 UNLV @ San Diego State

All times Central and subject to change.

## POSTSEASON TOURNEY

May 23-27 Las Vegas, Nev.  
Earl E. Wilson Stadium



### 2006 Postseason Tournament Notes:

- All seven teams qualify
- No. 1 seed receives a bye in the first round
- Double-elimination format
- Winner earns an automatic bid into the NCAA Tournament
- Host: UNLV
- Defending Champion: UNLV

