

DUKE WOMEN'S BASKETBALL

NCAA Final Four - 1999, 2002, 2003, 2006

NCAA Finalist - 1999, 2006

ACC Champions - 2000, 2001, 2002, 2003, 2004, 2010, 2011, 2013

Lindy Brown, Senior Associate SID • Women's Basketball Contact • Office: 919-684-2664 • Cell: 919-599-9821 • lindy.brown@duke.edu
www.GoDuke.com • Twitter - @DukeWBB, @CoachPDuke • Facebook - DukeWBB • Instagram - DukeWBB

2019-20 SCHEDULE

(1-1 Overall, 0-0 ACC)

Date	DU	Opp	Opponent	Time/Results	WATCH
N5	--	--	HIGH POINT	W, 93-57	ACCNX
N10	--	6/7	at Texas A&M	L, 58-79	SECN+
N14	--	--	at UNLV	8:30 PM	Youtube
N17	--	--	NORTHWESTERN	3:00 PM	ACCN
N21	--	--	IDAHO STATE	7:00 PM	ACCNX
N24	--	--	TROY	2:00 PM	ACCNX
N27	--	--	DAVIDSON	7:00 PM	ACCNX
N29	--	--	PENN	1:00 PM	ACCNX

Big Ten/ACC Challenge (Lincoln, Neb.)

D4	--	--	at Nebraska	7:00 PM	Big Ten
----	----	----	-------------	---------	---------

D8	--	--	BOSTON COLLEGE*	2:00 PM	ACCNX
D19	--	--	at South Carolina	7:00 PM	SECN
D29	--	--	at FGCU	2:00 PM	ESPN+

J2	--	--	WAKE FOREST*	6:00 PM	ACCNX
J5	--	--	at Louisville*	2:00 PM	ACCN
J9	--	--	at Virginia*	6:00 PM	ACCN
J12	--	--	VIRGINIA TECH*	3:00 PM	RSN
J16	--	--	NOTRE DAME*	8:00 PM	ACCN
J19	--	--	at Clemson*	12:00 PM	ESPNU
J23	--	--	at Syracuse*	8:00 PM	ACCN
J26	--	--	GEORGIA TECH*	2:00 PM	ACCNX

F2	--	--	NC STATE*	2:00 PM	ACCNX
F6	--	--	NORTH CAROLINA*	6:00 PM	ACCN
F9	--	--	at Miami*	2:00 PM	E2/ACCN Flex
F13	--	--	at Pittsburgh*	6:00 PM	ACCN
F16	--	--	FLORIDA STATE*	1:00 PM	E2/ACCN Flex
F20	--	--	VIRGINIA*	7:00 PM	ACCNX
F24	--	--	at NC State*	7:00 PM	ESPN2
F27	--	--	at Virginia Tech*	7:00 PM	ACCNX
M1	--	--	at North Carolina*	2:00 PM	E2/ACCN Flex

ACC Tournament (Greensboro, N.C.)

M4-8	--	--	ACC Tournament	TBA	TBA
------	----	----	----------------	-----	-----

NCAA Tournament

M20-23	--	--	NCAA 1st & 2nd Rounds	TBA	TBA
M27-30	--	--	NCAA Regionals	TBA	TBA
A3	--	--	NCAA Final Four	TBA	TBA
A5	--	--	NCAA Championship	TBA	TBA

All times are Eastern * ACC Contest

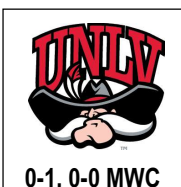
ALL CAPS - Home Games RSN - Regional Sports Network
ACCNX - ACC Network Extra

RSN, which reaches in excess of 51.4 million homes and includes Fox Sports South, Fox Sports Carolinas, Fox Sports Florida, Sun Sports, Fox Sports Indiana, Fox Sports Midwest, Comcast Sports Net Mid-Atlantic, New England Sports Network (NESN), the YES Network, the Madison Square Garden Network (MSG) in New York and Root Sports in Pennsylvania. All ACC games produced as part of the RSN package will be available via WatchESPN, but are subject to regional blackout.



1-1, 0-0 ACC

At



0-1, 0-0 MWC

DUKE BLUE DEVILS (1-1) AT UNLV (0-1)

Game 3 ■ Thursday, Nov. 14 ■ 8:30 PM (ET)

Las Vegas, Nev. ■ Youtube

Thomas & Mack Center (Tarkanian Court - 18,000)

Tickets: www.unlvtickets.com (1-866-388-FANS (3267))

Live Stats: www.GoDuke.com

Radio: Duke Sports Network

..... (620 AM, www.GoDuke.com, TuneIn app)

Radio Talent: Chris Edwards (PXP)

TV/Video: Youtube

TV Talent: Ben Wilson (PXP), Amie Callaway (Color)

Duke Head Coach: Joanne P. McCallie (Northwestern, '87)

Record: 629-244 (28)

NOTABLES

- Leonna Odom will play in her 100th career contest versus UNLV
- Two Blue Devils celebrate birthdays this week -- Haley Gorecki (Nov. 13) and special assistant Keturah Jackson (Nov. 14)
- Duke will play its second straight road contest, before heading home to play five consecutive home games

THE SERIES

- Duke and UNLV will face off for the second time in school history
- The first meeting occurred last season on Dec. 6, 2018 in Cameron Indoor Stadium with Duke claiming a 66-38 victory
- Duke owns a 6-0 record against teams from the Mountain West Conference
- Coach P is 4-1 all-time against MVC opponents

A WIN WOULD

- Move the series record to 2-0 in favor of the Blue Devils
- Improve Duke to 1-1 this season on the road
- Give the Blue Devils a 7-0 all-time mark versus Mountain West Conference teams, while Coach P would improve to 5-1

Setting the Scene...

The Duke women's basketball team (1-1) will hit the road for the second straight contest as the Blue Devils will face UNLV (0-1) Thursday, Nov. 14 at 8:30 p.m. (ET) at the Thomas & Mack Center on Tarkanian Court in Las Vegas, Nev.

The game will be aired live on Youtube with Ben Wilson (PXP) and Amie Callaway (Color) calling the action. It will also be carried on the Duke Sports Network via WDNC AM 620, TuneIn app and www.GoDuke.com with Chris Edwards (PXP) on the air beginning at 8:15 p.m. (ET).

What is Next?...

Duke will return home to Cameron Indoor Stadium as the Blue Devils will play the first of five straight home contests. First up will be Northwestern Sunday, Nov. 17 at 3 p.m., live on ACC Network.

Probable Duke Starters...

No.	Name	Pos.	PPG	RPG	APG	Notes
5	Leonna "Neah" Odom (Sr., 6-2)	F/G	13.5	2.5	1.5	Reached 1,000 points in season opener
25	Jade Williams (Jr., 6-5)	F/C	10.0	3.5	1.0	Lisa Leslie Award Candidate for top center
24	Onome Akinbode-James (So., 6-3)	F	6.0	4.5	0.5	Started final 13 contests of last year
3	Miela Goodchild (So., 5-10)	G	11.0	4.5	3.0	Freshman record 73 treys in 2018-19
2	Haley Gorecki (R-Gr., 6-0)	G	15.5	4.5	2.0	NPOY candidate

Blue Devils Off the Bench...

No.	Name	Pos.	PPG	RPG	APG	Notes
11	Azana Baines (Fr., 6-1)	G	10.0	6.5	1.5	Had 12 points at No. 6 Texas A&M
0	Jaida Patrick (Fr., 5-10)	G	4.0	1.0	1.0	Averaged 15.3 pts, 11.7 reb., 5.8 steals as senior
4	Jada Claude (Fr., 6-0)	G/F	3.0	5.5	0.5	Notched over 1,000 points & rebounds in HS
15	Kyra Lambert (Gr., 5-9)	G	2.5	1.0	0.5	Returned vs. HPU after missing 962 days
13	Uchenna Nwoke (So., 6-6)	C	0.0	1.5	0.0	Appeared in eight games as a rookie

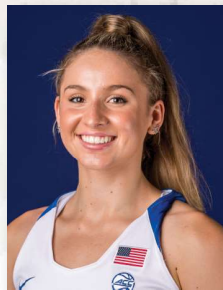
2019-20 Duke Radio/Television Roster



0 - Jaida Patrick
G/F • FR • 5-10
West Haverstraw, N.Y.
(Saddle River Day)



2 - Haley Gorecki
G • GR • 6-0
Palatine, Ill.
(William Fremd H.S.)



3 - Miela Goodchild
G • SO • 5-10
Queensland, Australia
(Moreton Bay College)



4 - Jada Claude
G/F • FR • 6-0
Fayetteville, Ga.
(Whitewater)



5 - Leaonna Odom
F • SR • 6-2
Lompoc, Calif.
(Chaminade)



11 - Azana Baines
G • FR • 6-1
Blackwood, N.J.
(Gloucester Catholic)



12 - Mikayla Boykin
G • R-FR • 5-9
Clinton, N.C.
(Clinton)



13 - Uchenna Nwoke
C • SO • 6-6
Grand Prairie, Texas
(South Grand Prairie)



15 - Kyra Lambert
G • GR • 5-9
Cibolo, Texas
(Samuel Clemens)



22 - Jennifer Ezeh
F • FR • 6-3
Nibo, Anambra State, Nigeria
(New Hope Academy [Md.])



**24 - Onome
Akinbode-James**
F/C • SO • 6-3
Abeokuta, Nigeria
(Blair Academy - Blairstown, N.J.)



25 - Jade Williams
F/C • JR • 6-5
The Colony, Texas
(The Colony)



30 - Emily Schubert
C • SR • 6-4
Elizabethton, Tenn.
(Elizabethton)



32 - Jayda Adams
G • JR • 6-0
Irvine, Calif.
(Mater Dei)



Joanne P. McCallie
Head Coach
13th Season at Duke



Sam Miller
Assistant Coach
5th Season at Duke



Jim Corrigan
Assistant Coach
3rd Season at Duke



Wanisha Smith
Assistant Coach
1st Season at Duke

Quick Facts

LocationDurham, N.C.
 Enrollment 6,994
 Founded 1838 Trinity College
 Color Duke Blue & White
 Nickname Blue Devils
 Conference ACC
 Arena Cameron Indoor Stadium (9,314)
 President Vincent Price
 Director of Athletics/Vice President ... Kevin White
 Basketball Office Phone (919) 613-7565
 Head Coach Joanne P. McCallie
 Assistant Coaches..... Sam Miller, Jim Corrigan,
 Wanisha Smith
 Athletic Trainer..... Cat Lass
 Sport Performance Coach.....Ashleigh Beaver
 Physical Therapist Jordan Busse

Basketball History

First Year of Basketball..... 1975-76
 Overall All-Time Record.....924-410 (45 Years)
 ACC Record345-223 (42 Years)
 Home Record 482-127
 Road Record 282-204
 Neutral Record 160-79
 NCAA Appearances/Last 24/2018
 NCAA Best Finish. 1999, 2006, NCAA Runner-Up
 WNIT Appearances/Last..... 1/1986
 ACC Tournament Titles '13, '11, '10, '04-00
 ACC Regular Season Title.....'13, '12, '11, '10, '07,
 '05, '04, '03, '02, '01, '99, '98

Media Information

All coach and player interviews must be arranged through the sports information office by getting in touch with senior associate sports information director Lindy Brown at 919-684-2664 or lindy.brown@duke.edu.

Sports Information Office Address:
 Duke Athletics External Operations |
 287 Scott Family Athletics Performance Center
 Box 90557 | Durham, NC 27708

Breaking Down the Numbers

**Under Head Coach Joanne P. McCallie
 2007-08 through 2019-20
 (As of 11-11-19)**

Record when Duke has:
 Given up 40 pts. or fewer: 41-0
 Given up 50 pts. or fewer: 110-0
 Given up 60 pts. or fewer: 23-12
 Given up 70 pts. or fewer: 240-41
 Given up more than 70 pts.: 16-49

**Scored 70+ points: 202-13
 Scored 80+ points: 19-4**

Three Keys...

- 1) Duke will be the first ACC team to travel to Las Vegas, Nev., to play in the Thomas & Mac Center at UNLV.
- 2) The Blue Devils will close a two-game road trip that had Duke combine to travel over 3,500 miles to College Station, Texas and Las Vegas, Nev., in a span of five days.
- 3) Graduate **Kyra Lambert** made her return to the court, after missing 962 days or two years, seven months and 18 days. Her injury occurred March 18, 2017 and made her return to the court on Nov. 5, 2019.

Storylines/Other Blue Devil Notes...

- **Haley Gorecki** owns a team-best six-game streak with double-digit scoring.
- The Blue Devils rank second in the ACC with a 77.5 free throw percentage and second in steals per game (13.0).
- **Miela Goodchild** tied a career high with four steals at Texas A&M.
- Duke will feature almost a 3-inch height advantage over UNLV, when the two teams hit the hardwood Thursday. The Aggies feature a 70.47 average height, while Duke owns a 73.21 mark. The Blue Devils are the tallest team in the ACC in 2019-20.
- The 93 points in the season opener were the third-most by a Duke team under the direction of head coach **Joanne P. McCallie** -- 104 in 2009-10 and 98 in 2016-17.
- Duke featured all five starters with double-digit scoring in the season opener against High Point. It marked the second time over the last three years the Blue Devils registered all five starters in double-digit scoring to open the season. Duke also accomplished this at Grand Canyon on Nov. 12, 2017.
- The Blue Devils return five players who started 22 or more contests a year ago.
- Duke features the fourth-tallest squad in school history standing with an average height of 73.21. The three tallest teams were in 2016-17 (73.38), 2011-12 and 2014-15 (73.25).
- Follow @DukeWBB and @CoachPDuke on Twitter to get the latest updates on Duke women's basketball. Also, "Like" Duke Women's Basketball on Facebook to get the latest videos, pictures and more. DWB is on Instagram at dukewbb.

The Series with UNLV...

On Thursday, Duke travels to Las Vegas, Nev. to take on UNLV for just the second time in program history. The Blue Devils defeated the Runnin' Rebels by a score of 66-38 at home in 2018-19, their only previous match-up. This was the only time Coach P has faced UNLV.

Thursday's contest will be the first game Duke has played in the state of Nevada.

Duke Versus the Mountain West Conference...

Albeit a small sample size, the Blue Devils are undefeated in matchups against the Mountain West Conference, having posted a 6-0 record to this point -- Colorado State (1-0), San Diego State (2-0), San Jose State (1-0), UNLV (1-0) and Wyoming (1-0).

Tale Of The Tape

Duke.....	Statistical Comparison.....	UNLV
1-1.....	Record.....	0-1
.419.....	Field Goal Percentage.....	.286
.384.....	Opponent Field Goal Percentage.....	.463
.400.....	Three-Point Field Goal Percentage.....	.259
6.0.....	Three-Pointers Per Game.....	7.0
.775.....	Free Throw Percentage.....	.714
14.5.....	Offensive Rebounds Per Game.....	21.0
40.5.....	Rebound Average.....	44.0
- 1.0.....	Rebound Margin.....	+8.0
75.5.....	Points Per Game.....	58.0
68.0.....	Points Allowed Per Game.....	64.0
+7.5.....	Point Differential.....	-6.0
5.0.....	Blocks Per Game.....	3.0
10.5.....	Assists Per Game.....	12.0
13.0.....	Steals Per Game.....	8.0
17.0.....	Turnovers Per Game.....	20.0

Coach P has a 4-1 record against Mountain West teams in her career and a 3-0 record at Duke, most recently a 66-38 home victory against UNLV last season.

Lambert Returns...

At the 2:41 mark of the first quarter during the High Point contest, graduate **Kyra Lambert** entered the contest for the first time in 962 days or two years, seven months and 18 days since she last suited up for Duke.

After tearing her ACL on March 18, 2017 in the first round of the NCAA Tournament against Hampton, Lambert had gone through three surgeries before

The Last Time Duke/UNLV Met...

December 6, 2018 at Cameron Indoor Stadium (Durham, N.C.)													
Duke	FG	3FG	FT	REB	PF	TP	A	T	B	S	Min		
Odom	f	5-7	0-0	1-3	1-5	6	1	11	2	3	1	1	29
Akinbode-James	f	1-6	0-0	1-2	3-4	7	1	3	1	2	1	0	27
Gorecki	g	3-8	1-2	5-6	0-5	5	2	12	0	7	0	1	26
Goodchild	g	5-9	4-5	0-0	1-3	4	1	14	1	3	0	0	28
Suggs	g	2-4	0-0	0-2	0-4	4	1	4	0	1	0	0	18
Roma	0	0-0	0-0	0-0	0-0	0	0	0	0	0	0	0	1
Boykin	4	8	1-3	2-2	1-3	4	0	11	6	3	0	5	20
Nwoke	0	0	0-0	0-0	0-0	0	0	0	0	0	0	0	1
Craig	0	1	0-0	1-2	1-2	0	1	1	0	1	0	0	7
Williams	2	5	0-0	0-0	2-4	6	3	4	11	1	2	0	18
Schubert	0	0	0-0	0-0	0-0	0	0	0	0	0	0	0	3
Adams	2	5	1-1	1-2	0-2	2	1	6	2	1	0	2	16
Treece	0	0	0-0	0-0	0-0	1	0	0	1	0	0	6	6
TEAM								6-17				2	
Totals		24-53	7-11	11-19	11-31	42	12	66	13	23	4	9	200
Pct.		45.3	63.6	57.9	DB: 6, 1								

FG's (1Q: 4-8, 50.0%; 2Q: 6-14, 42.9%; 3Q: 7-17, 41.2%; 4Q: 7-14, 50.0%)
3FG's (1Q: 2-2, 100.0%; 2Q: 0-0, 0.0%; 3Q: 1-4, 25.0%; 4Q: 4-5, 80.0%)
FT's (1Q: 2-2, 100.0%; 2Q: 1-4, 25.0%; 3Q: 4-7, 57.1%; 4Q: 4-6, 66.7%)

UNLV	FG	3FG	FT	REB	PF	TP	A	T	B	S	Min		
Anderson	f	1-5	1-4	0-0	1-2	3	3	3	0	1	0	0	21
Bell	f	3-8	1-2	0-0	1-3	4	7	1	3	0	1	30	
Wade	c	3-6	0-0	2-2	0-1	1	8	0	2	0	1	21	
Wheatley	g	4-11	1-1	1-2	0-4	4	10	0	2	1	4	22	
Thomas	g	2-8	0-6	0-2	0-3	2	4	2	2	0	3	40	
Smith	1	3	0-0	0-0	0-0	4	2	1	5	0	3	19	
Brown	0	1	0-0	2-2	0-2	0	2	0	3	0	0	10	
Elzy	0	1	0-0	0-0	0-0	0	0	1	0	0	0	5	
Ethridge	0	3	0-2	0-0	1-0	1	0	0	5	0	2	16	
Lee	0	0	0-0	0-0	0-0	0	0	0	0	0	0	2	
Rydalch	0	0	0-0	0-0	0-0	1	0	0	0	1	0	3	
Totals		15-51	3-15	5-8	5-20	25	18	38	5	25	3	14	200
Pct.		29.4	20.0	62.5	DB: 2								

FG's (1Q: 3-15, 20.0%; 2Q: 3-11, 27.3%; 3Q: 3-10, 30.0%; 4Q: 6-15, 40.0%)
3FG's (1Q: 2-2, 100.0%; 2Q: 0-0, 0.0%; 3Q: 1-4, 25.0%; 4Q: 4-5, 80.0%)
FT's (1Q: 2-2, 100.0%; 2Q: 1-4, 25.0%; 3Q: 4-7, 57.1%; 4Q: 4-6, 66.7%)

Officials: Denise Brooks, Robert Entlerline, Jenna Schroeder
Attendance: 2,923 • **Technical Fouls:** Duke-none. UNLV-Team.

Score by Periods	1st	2nd	3rd	4th	Total
UNLV	9	8	15	38	
Duke	12	13	19	22	66

returning to action Tuesday.

A native of Cibolo, Texas, Lambert made her presence felt quickly on the defensive end registering a steal and showcased her point guard skills that had her ranked in the top 10 nationally coming out of high school. She closed the first quarter in dramatic fashion by draining a 60-foot shot to as time expired to give Duke a 25-13 lead at the break.

Lambert finished the game with a team-high three steals, five points, one rebound and one assist in eight minutes.

Baines Stellar at No. 6 Texas A&M...

In her first road contest at No. 6 Texas A&M, freshman **Azana Baines** showcased her talent on the big stage as she totaled a career-high 12 points, five rebounds, one steal, one blocked shot and one assist. She hit 4-of-9 field goals in 28 minutes.

Over her first two collegiate games, she is averaging 10.0 points, 6.5 rebounds, 1.5 assists and 1.0 blocked shots.

First/Second Halves...

Duke has come out over the first two games outscoring opponents by a 78-62 advantage, but has been outscored 74-73 in the second.

The Blue Devils have hit 45.5 percent from the field in the first half, including 9-of-19 treys (47.4%), but in the second has hit 38.1 percent from the field and 3-of-11 from downtown (27.3%).

Haley Gorecki has averaged 10.0 points and hit 55.6 percent from the field in the second half this season.

Draining Treys...

Duke featured five different Blue Devils hit three-pointers in the season opener against High Point.

For the first time in 98 career games at Duke, senior **Leaonna Odom** drained a three-pointer. In fact, she hit both of her attempts on her way to finishing with a team-high 19 points. She had attempted four three-pointers, without a make, over her first three seasons with the Blue Devils.

Junior **Jade Williams** hit 2-of-4 attempts from downtown versus High Point, after hitting 2-of-6 three-pointers her first two seasons at Duke. She added her third three-pointer at Texas A&M on two attempts.

Freshmen Impressive in Debut...

Duke's freshman trio of **Jaida Patrick**, **Azana Baines** and **Jade Claude** combined to score 22 points, pull down 17 rebounds, dish two assists, block four shots and grab four steals in the victory versus High Point.

Baines was Duke's leading rebounder with eight, while Patrick tied for a game high with two blocked shots. Claude has pulled down 25 rebounds in three games so far -- Blue/White Scrimmage, Alaska Anchorage and High Point.

In the Month of November...

Duke has won 39 out of the last 45 true road games in the month of November over the last eight years.

Coach P owns a 64-11 record in November since arriving at Duke. In true road games in the month of November, Coach P has totaled a 22-8 record.

Odom Approaching Mark...

Senior **Leaonna Odom** reached the 1,000-point mark against High Point with her 19 points and one blocked shot away from 100 over her career.

When Odom reaches 100 blocks, she will become just the eighth Blue Devil to notch 1,000 points, 500 rebounds and 100 blocked shots.

She will join **Elizabeth Williams** (2011-15), **Chante Black** (2004-09), **Iceiss Tillis** (2000-04), **Sue Harnett** (1986-91), **Alison Bales** (2003-07), **Mistie Bass** (2002-06) and **Alana Beard** (2000-04).

Odom owns 1,015 points, 560 rebounds and 99 blocked shots over her Duke career.

Boykin, Working Her Way Back...

After missing most of the last two seasons with knee injuries, redshirt freshman **Mikayla Boykin** continues to make progress in her rehab.

No set timetable for her return has been announced.

In two seasons, Boykin has been limited to only 18 games due to injuries. She has averaged 6.7 points, 3.8 assists and 3.6 rebounds in that limited time.

Boykin last had surgery Tuesday, Jan. 22, after suffering an ACL injury. In her eight games last season, Boykin averaged 9.4 points, 4.1 rebounds, 4.5 assists and 2.0 steals. She scored a career-high 13 points at ninth-ranked NC State. She added a career-high 11 assists at Georgia Tech. The 11 assists tied a Duke freshman record.

Top Returning Scorer...

Duke graduate **Haley Gorecki** is the leading returning scorer in the ACC and is 12th among power five conference teams with her 17.2 per game average.

Power Five Conference Returning Scorers

- 24.1 Aari McDonald (Arizona)
- 23.3 Chennedy Carter (Texas A&M)
- 20.5 Chelsea Dungee (Arkansas)
- 20.0 Vivian Gray (Oklahoma State)
- 19.9 Borislava Hristova (Washington St.)
- 17.9 Sabrina Ionescu (Oregon)
- 18.3 Michaela Onyenwere (UCLA)
- 18.1 Amber Melgoza (Washington)
- 18.0 Chrislyn Carr (Texas Tech)
- 18.0 Tynice Martin (West Virginia)
- 18.0 Kaila Charles (Maryland)
- 17.2 **Haley Gorecki (Duke)**

Home in November...

After featuring two road contests over the first three games to open the 2019-20 season, Duke will return home for five straight games in Cameron Indoor Stadium.

Goodchild Helps Lead Australia to Silver...

Sophomore Miela Goodchild helped lead her home country of Australia to the silver medal at the 2019 FIBA World Cup over the summer in Bangkok,

Joanne P. McCallie
Head Coach



COACHING HONORS

National Coach of the Year

Associated Press	2005
Basketball Times	2005
Nike	2005

Conference Coach of the Year

Atlantic Coast Conference	2010, 2012, 2013
Big Ten	2005
America East	1999
North Atlantic	1995 & 1996

** First D-I coach to win Coach of the Year honors in four different conferences*

Basketball Coaches Association Michigan College Coach of the Year

Michigan State	2005
----------------------	------

COACHING HIGHLIGHTS

NCAA National Championship Game	1
..... (2005)	
NCAA Final Four	1
..... (2005)	
NCAA Elite Eight	5
..... (2005, 2010, 2011, 2012, 2013)	
NCAA Sweet Sixteen	9
..... (2005, '06, '08, '10, '11, '12, '13, '15, '18)	
NCAA Tournament Bids	21
..... (1995, '96, '97, '98, '99, 2000, '03, '04, '05, '06, '07, '08, '09, '10, '11, '12, '13, '14, '15, '17, '18)	

RECORD BREAKDOWN

Overall	629-244 (28 Years)
Record at Duke	313-96 (13 Years)
Atlantic Coast Conference	138-48 (12 Years)
ACC Tournament	20-9 (12 Appearances)
NCAA Tournament	31-21 (21 Appearances)
Record at Michigan State	149-75 (7 Years)
Big Ten (while at MSU)	68-44 (7 Years)
Record at Maine	167-73 (8 Years)
North Atlantic (while at Maine)	48-14 (4 Years)
America East (while at Maine)	61-11 (4 Years)
Home	343-79 (28 Years)
Away	205-119 (28 Years)
Neutral	81-46 (28 Years)

Streaks

Overall	Lost 1
Unranked teams anywhere	Won 5
Ranked teams anywhere	Lost 10
Home	Won 3
Home ACC	Won 2
Home non-conference	Won 15
Home unranked	Won 3
Home unranked non-conference	Won 14
Home ranked teams	Lost 2
Road	Lost 1
Road ACC	Won 1
Road ranked teams	Lost 5
Road unranked teams	Won 1
Neutral	Lost 1
Neutral ranked teams	Lost 3
Neutral unranked teams	Won 2

Consecutive Games with a 3-Pointer Made

Haley Gorecki	6
Jade Williams	2
Miela Goodchild	2
Azana Baines	1

Consecutive Free Throws Made

Mikayla Boykin	3
Kyra Lambert	3
Onome Akinbode-James	3
Jaida Patrick	2
Miela Goodchild	1
Azana Baines	1
Jade Williams	1

Consecutive Double-Figure Scoring Games

Haley Gorecki	6
Miela Goodchild	2
Azana Baines	1

Starts **Consecutive** **Career**

Leaonna Odom	19 (8-11)	75 (49-26)
Haley Gorecki	32 (16-16)	46 (27-19)
Jade Williams	19 (8-12)	33 (16-17)
Onome Akinbode-James	15 (8-7)	24 (13-10)
Miela Goodchild	13 (7-6)	24 (13-11)
Kyra Lambert		55 (44-11)
Mikayla Boykin		13 (7-6)
Jayda Adams		2 (1-1)

Games Played

Leaonna Odom	99 (68-31)
Haley Gorecki	69 (43-26)
Kyra Lambert	68 (50-18)
Jade Williams	65 (39-26)
Jayda Adams	63 (38-25)
Onome Akinbode-James	32 (16-16)
Miela Goodchild	32 (16-16)
Mikayla Boykin	18 (11-7)
Emily Schubert	11 (11-0)
Uchenna Nwoke	10 (6-4)

Rankings

In the AP Top 25	--
------------------	----

Thailand.

It marked the first time in 22 years Australia had advanced to the championship of the World Cup. Goodchild saw action in all seven contests, while averaging 4.7 points and 1.7 rebounds.

Blue Devils Return Scoring Punch...

Duke returns 94.66 percent of its scoring from a year ago, which is the second-most in school history. In 1997-98, the Blue Devils returned 97.90 percent of their scoring to lead the way.

In terms of the ACC, Duke boasts the third-highest percentage of returning scoring in the league behind Boston College and Florida State, which return 100 percent form a year ago.

Looking at the Power Five Conferences, Duke ranks sixth.

Power Five Conference Returning Scoring

100.00	Boston College
100.00	Florida State
100.00	Purdue
95.27	Arizona
94.66	Duke
94.35	Texas A&M

Gorecki on Shooting Guard List...

The Naismith Memorial Basketball Hall of Fame and the WBCA announced the 20 watch list candidates for the 2020 Ann Meyers Drysdale Award, which includes Duke graduate student **Haley Gorecki**.

Named after the first player, male or female, named to the All-America Team in four straight college seasons, the annual award in its third year recognizes the top shooting guard in women's NCAA Division I college basketball.

Gorecki, a 2019 All-ACC First Team selection, returns for her final season, after registering one of the best individual seasons in Duke history averaging 17.2 points, 7.1 rebounds, 3.9 assists and 2.6 steals. A native of Palatine, Ill., Gorecki is the highest returning scoring in the ACC and 12th among power five conferences. She became the third Blue Devil to register 500 points, 200 rebounds, 100 assists and 75 steals in a season a year ago.

The Rankings

<u>Associated Press</u> Poll (Nov. 11)	<u>USA TODAY</u> Coaches Poll (Preseason)
1. Oregon (28)	1. Oregon (24)
2. Baylor (2)	2. Baylor (8)
3. Stanford	3. Stanford
4. UConn	4. UConn
5. Texas A&M	5. Maryland
6. South Carolina	6. Oregon State
7. Oregon State	7. Texas A&M
8. Maryland	8. Mississippi State
9. Louisville	9. Louisville
10. Mississippi State	10. South Carolina
11. UCLA	11. UCLA
12. Florida State	12. NC State
13. Kentucky	13. Florida State
14. NC State	14. Notre Dame
15. Notre Dame	15. Texas
16. Michigan State	16. Kentucky
17. Miami	17. Syracuse
18. DePaul	18. Arizona State
19. Arizona State	19. Miami
20. Syracuse	20. DePaul
21. Indiana	21. Michigan State
22. Texas	22. Arkansas
23. Arkansas	23. Gonzaga
24. Michigan	24. Iowa State
25. South Florida	Michigan

Duke in the Polls

	<u>AP</u>	<u>USA TODAY</u>
Preseason	--	--
Nov. 11	--	--

The Duke Roster

No.	Name (@Twitter Handle)	Ht.	Yr.	Pos.	Exp.	Hometown (High School/Last School)
0	Jaida Patrick (@jaida_patrick)	5-10	Fr.	G/F	HS	West Haverstraw, N.Y. (Saddle River Day)
2	Haley Gorecki (@HaleyGorecki)	6-0	Gr.	G	4V	Palatine, Ill. (William Fremd)
3	Miela Goodchild (@MielaGoodchild)	5-10	So.	G	1V	Brisbane, Queensland, Australia (Moreton Bay College)
4	Jada Claude (@JadaClaude_4)	6-0	Fr.	G	HS	Fayetteville, Ga. (Whitewater)
5	Leaonna Odom	6-2	Sr.	F	3V	Lompoc, Calif. (Chaminade)
11	Azana Baines (@queenballer6)	6-1	Fr.	G	HS	Blackwood, N.J. (Gloucester Catholic)
12	Mikayla Boykin (@mikayla_niyel)	5-9	R-Fr.	G	2V	Clinton, N.C. (Clinton)
13	Uchenna Nwoke (@UchennaNwoke_)	6-6	So.	C	1V	Grand Prairie, Texas (South Grand Prairie)
15	Kyra Lambert (@bballaholic_15)	5-9	Gr.	G	4V	Cibolo, Texas (Samuel Clemens)
22	Jennifer Ezeh (@JenniferEzeh22)	6-3	Fr.	F	HS	Nibo, Anambra State, Nigeria (New Hope Academy, Md.)
24	Onome Akinbode-James (@AJ_Onome)	6-3	So.	F/C	1V	Abeokuta, Nigeria (Blair Academy - Blairstown, N.J.)
25	Jade Williams (@jadeswilliams25)	6-5	Jr.	F/C	2V	The Colony, Texas (The Colony)
30	Emily Schubert (@e_schubert35)	6-4	Sr.	C	3V	Elizabethton, Tenn. (Elizabethton)
32	Jayda Adams (@realjayadams)	6-0	Jr.	G	2V	Irvine, Calif. (Mater Dei)

Head Coach: Joanne P. McCallie (Northwestern, '87) - @CoachPDuke

Assistant Coaches: Sam Miller (Adrian College, '10) - @SamMiller906, Jim Corrigan, '80) - @jcorriga,

Wanisha Smith (Duke, '08) - @duke_im_back

Special Assistant: Keturah Jackson (Duke, '10) - @KeturahJackson

Duke Pronunciation Guide

Azana Baines Ah - az - nah
Jennifer Ezech Ae - zey
Miela Goodchild Mee-la
Haley Gorecki Gore - wreck - e
Onome Akinbode-James Ah-no-meh; Ah-ken-body
Hometown - Abeokuta, Nigeria Ah - bel - coo - TA
Uchenna Nwoke You-Chen-Nuh; Woah-kay
Leaonna Odom Lee - AH - na
Joanne P. McCallie mc - CAW - lee

Odom Named Top Power Forward Candidate...

Duke senior **Leaonna Odom** has been tabbed one of 20 preseason candidates for the Katrina McClain Award, which recognizes the top power forwards in women's NCAA Division I college basketball. The award is named after the two-time All-America and 1987 National Player of the Year, Katrina McClain.

One of the most athletic student-athletes in the collegiate game today, Odom is coming off averaging 13.1 points, 6.4 rebounds, 2.5 assists and 1.6 steals, while starting 29-of-30 contests. The 6-2 forward notched six games of 20+ scoring and five double-doubles a year ago.

Williams on Top Center Ledger...

For the second straight year, Duke junior **Jade Williams** has been selected one of 20 preseason candidates for the 2020 Lisa Leslie Award as announced Friday by the Naismith Memorial Basketball Hall of Fame and the WBCA. Named after the three-time All-American and 1994 National Player of the Year, the annual award in its third year recognizes the top centers in women's NCAA Division I college basketball.

Williams, a native of The Colony, Texas, is coming off a season where she averaged 8.4 points, 5.4 rebounds and 0.9 steals as she started 23 of her 30 contests played. The 6-5 center collected two double-doubles against North Carolina (15 points, 13 rebounds) and Florida Gulf Coast (17 points, 11 boards). Over the final 11 games, Williams scored double digits in six of those contests.

Freshmen Expected to Make Impact...

The Duke freshmen trio of **Azana Baines**, **Jada Claude** and **Jaida Patrick** are expected to make an immediate impact with the Blue Devils in 2019-20.

They showed what they are capable of in the final exhibition against Alaska Anchorage as they combined for 30 points, 21 rebounds and three steals.

Claude collected a double-double with 14 points and 12 rebounds in 19.25 minutes, while Baines added 10 points, six rebounds and one steal. Patrick played nearly 18 minutes and had six points, two assists, three rebounds, one steal and one blocked shot.

Active Female Coaching Wins...

Duke head coach **Joanne P. McCallie** enters the 2019-20 season as the seventh-highest active head coach among coaching wins with 628.

Active Female Division I Coaching Wins

1067 Tara VanDerveer, Stanford

1019	C. Vivian Stringer, Rutgers
923	Muffet McGraw, Notre Dame
756	Nancy Fahey, Illinois
752	Lisa Bluder, Iowa
633	Stephanie Gaitley, Fordham
628	Joanne P. McCallie, Duke

Standing Tall...

Duke features one of the tallest women's basketball players in school history on the roster as a sophomore in 2019-20. **Uchenna Nwoke** out of Grand Prairie, Texas and South Grand Prairie H.S., stands 6-6.

Nwoke is tied for the third tallest student-athlete in Duke women's basketball history.

Tallest Players in Duke History

1. Alison Bales (2004-07) 6-7
Lello Gebisa (2000-01) 6-7
3. Uchenna Nwoke (2018-19-present) 6-6
Azura Stevens (2015-16) 6-6
Michele Van Gorp (1998-99) 6-6

Nwoke is tied for the second-tallest player in the ACC in 2019-20.

Tallest Players in the ACC in 2019-20

1. Felicia Aiyetotan, Virginia 6-9
2. Uchenna Nwoke, Duke 6-6
Naomi Van Nes, UNC 6-6

The Name Game...

Duke features four student-athletes with similar names in 2019-20 with **Jayda Adams**, **Jada Claude**, **Jaida Patrick** and **Jade Williams**.

Coach P calls Jada Claude "JC" and Jaida Patrick "JP" to help with the similarity.

Gorecki, Lambert Graduate in May...

The 2019-20 Blue Devil squad will feature two different 2019 Duke graduates on the roster as **Kyra Lambert** and **Haley Gorecki** received their degrees last spring.

Lambert received a degree in cultural anthropology and environmental science and is currently enrolled in the Duke FUQUA School of Business in the MMS program one year program.

Gorecki earned a degree in psychology and is currently enrolled in the continuing studies program in 2019-20.

Ezeh to Miss 2019-20 Season...

Talented Duke freshman **Jennifer Ezech** will miss the 2019-20 campaign, after arriving on campus with a torn ACL and meniscus. She had surgery Sept. 13, 2019.

Ezech helped lead her New Hope Academy squad to the 2019 National Championship. She was a NACA Basketball All-America and All-Metropolitan Girls Basketball Player in 2019. As a senior, she averaged 15.5 points and 10.1 rebounds.

Duke Features Three Duke Graduates on Staff...

Head coach **Joanne P. McCallie** will feature three Duke graduates on staff this season with the addition of

Double-Doubles

Onome Akinbode-James (1)

2018-19 (1)
14 pts., 14 rebounds at Wisconsin

Haley Gorecki (9)

2018-19 (8)
21 pts., 10 assists vs. Maine
18 pts., 11 rebounds at Oregon State
26 pts., 11 rebounds vs. East Carolina
26 pts., 10 rebounds vs. Syracuse
24 pts., 14 rebounds at Boston College
16 pts., 10 reb., 10 assists vs. Pittsburgh
28 pts., 10 reb. at North Carolina
11 pts., 10 reb. vs. North Carolina

2017-18 (1)

13 pts., 10 rebounds vs. Maine

Kyra Lambert (1)

2016-17 (1)
12 pts., 13 assists at North Carolina

Leaonna Odom (9)

2018-19 (5)
14 pts., 14 reb. at Northwestern
23 pts., 10 reb. vs. Elon
19 pts., 10 reb. vs. Washington
20 pts., 11 reb. vs. Marist
22 pts., 10 reb. vs. North Carolina

2017-18 (3)

13 pts., 12 reb. at Villanova
14 pts., 10 reb. vs. Presbyterian
15 pts., 12 reb. vs. Florida State

2016-17 (1)

16 pts., 10 reb. at Pepperdine

Jade Williams (2)

2018-19 (2)
17 pts., 11 reb. vs. FGCU
15 pts., 13 reb. vs. North Carolina

Get to Know the Blue Devils

Human Interest Ideas

Haley Gorecki Coming Off Impressive Season
After seeing action in only 14 games as a freshman, before suffering a hip injury, Gorecki missed the 2016-17 season recovering, before coming back in 2017-18. After being inserted into the starting lineup, Gorecki was one of the best players in the ACC. This was before she suffered another hip injury to the other hip. She came back last season stronger than ever and turned in one of the best individual seasons in Duke and ACC history. She is an All-America candidate.

Duke & The Ronald McDonald House
Graduate **Kyra Lambert** has been volunteering at the Ronald McDonald House for a little over two years now. She tries to go once a week when her class schedule/workouts allow. She does guest services and helps out with whatever the managers need help with – answering phones, getting supplies, helping cook/clean, etc. Duke women's basketball has had a special relationship with the Durham RMH and has been going for over 20 years. The Blue Devils started a tradition where families/visitors write on ceiling tiles and it continues on today.

Wanisha Smith (2008) and **Keturah Jackson** (2009) over the summer.

Smith was hired as an assistant coach, after helping lead Towson to the NCAA Tournament in 2019. Jackson is a special assistant for the Blue Devils.

The duo joined **Jim Corrigan**, who moved from special assistant to assistant coach of the summer of 2019. He is a 1980 Duke graduate.

Duke Captains...

The Blue Devils feature three captains in 2019-20 as graduate **Haley Gorecki**, graduate **Kyra Lambert** and senior **Emily Schubert** were selected.

2019-20 Honors

Haley Gorecki

Preseason

- Meyers Drysdale Award Watch List
- Wade Watch List - National Player of the Year
- Naismith Trophy Candidate - POY
- John R. Wooden Award Candidate - POY

Leaonna Odom

Preseason

- Katrina McClain Award Watch List

Jade Williams

Preseason

- Lisa Leslie Award Watch List

Graduate Haley Gorecki

2019-20 - Graduate/Redshirt Senior Year

	Min FG-A	3G-A	FT-A	OR/TOT	PFA	T	B	S	PTS
High Point	31	4-9	1-3	6-6	0-7	1	2	0	11
at Texas A&M	39	5-13	2-6	4-6	0-2	1	2	4	0

2018-19 - Redshirt Junior Year

	Min FG-A	3G-A	FT-A	OR/TOT	PFA	T	B	S	PTS
at Northwest^	38	4-19	2-11	0-0	0-4	2	3	6	0
at Maine^	39	7-12	4-9	3-6	1-6	0	10	5	0
Elon^	32	5-15	0-6	2-3	0-5	0	3	1	4
vs. Wash.^	39	6-17	2-8	6-11	2-6	5	5	2	0
vs. Ball State^	33	8-16	3-7	0-1	0-5	3	2	0	0
vs. Missouri^	38	7-20	4-12	6-8	0-7	2	1	1	0
at Wisconsin^	38	5-17	1-6	3-3	0-4	2	2	2	0
Marist^	37	4-17	2-8	7-8	0-8	1	5	3	0
UNLV^	26	3-8	1-2	5-6	0-5	2	0	7	0
at Oregon St.^	38	6-18	1-7	5-6	1-11	2	3	2	0
East Carolina^	29	9-19	1-8	7-10	1-11	2	3	3	0
FGCU^	33	2-10	0-3	2-2	1-8	0	1	1	0
at NC State^	35	5-19	1-7	8-10	1-6	3	1	2	0
Louisville^	34	3-11	2-5	7-8	0-2	4	3	3	0
at Ga. Tech^	34	8-22	4-13	2-4	1-9	4	4	4	0
Miami^	35	2-12	0-5	2-2	4-9	2	5	5	0
at Florida St.^	39	9-18	2-5	5-7	0-6	1	6	3	0
Wake Forest^	34	5-9	1-2	3-3	1-4	2	6	2	0
Syracuse^	40	10-19	2-7	4-6	2-10	1	4	8	0
at Boston Col.^	50	6-13	3-8	9-16	1-13	2	4	4	1
Pittsburgh^	37	5-19	2-10	4-5	0-10	1	10	5	1
at UNC^	36	9-17	3-6	7-9	2-10	2	4	4	1
at Virginia^	38	5-16	3-10	0-0	0-6	1	6	8	1
Virginia Tech^	37	10-17	3-5	3-3	1-8	2	1	6	0
at Notre Dame^	36	2-9	2-3	0-0	1-2	3	5	6	2
at Wake Forest^	35	2-12	0-5	5-7	0-6	1	4	2	1
Clemson^	35	7-17	4-8	3-4	2-9	1	3	7	1
North Carolina^	38	4-18	1-8	2-4	1-10	0	3	1	0
vs. Pitt^	29	7-15	2-7	2-3	0-7	1	6	3	1
vs. Fla. State^	38	6-18	2-7	3-5	0-5	0	3	2	0

2017-18 - Redshirt Sophomore Year

	Min FG-A	3G-A	FT-A	OR/TOT	PFA	T	B	S	PTS
at GCU	7	0-1	0-0	1-2	0-0	0	1	0	0
High Point	6	0-1	0-1	3-4	0-0	0	2	0	2
at Villanova	16	2-3	0-1	1-1	0-0	0	0	0	0
at ODU	14	3-8	3-5	2-2	0-3	1	2	0	0
Oregon State	17	3-6	1-3	0-0	0-2	1	1	0	0
Presbyterian	16	1-2	0-1	2-4	1-2	1	4	1	0
Ohio State	26	3-8	2-6	3-6	0-7	1	4	3	0
at S. Carolina	13	0-2	0-1	0-0	0-2	1	2	4	0
UNCG	16	3-6	1-2	0-0	1-4	0	0	0	2
Winthrop^	29	7-11	5-7	1-2	0-3	1	4	2	0
Maine^	37	4-14	2-7	3-3	1-10	2	3	0	2
Wyoming^	36	6-16	0-4	2-2	0-9	2	3	1	5
Liberty^	34	6-12	3-7	2-5	0-1	0	4	5	1
at Miami^	37	7-15	2-5	0-2	0-3	1	3	2	0
at Louisville^	34	10-14	5-7	0-0	1-5	3	6	5	2
NC State^	32	3-8	3-4	4-4	1-4	0	6	3	0
Wake Forest^	34	1-7	1-4	2-2	0-5	3	7	5	0
Virginia^	28	3-9	1-5	1-2	0-5	1	0	2	0
at Va. Tech^	36	9-14	7-10	3-3	1-6	1	3	1	0
at UNC^	41	9-22	7-15	4-4	3-9	4	6	6	0
Boston College^	27	3-10	1-4	2-3	1-3	1	2	1	0
at Pittsburgh^	31	2-8	0-3	2-2	0-4	0	4	2	0
Georgia Tech	DNP - Injured								
Notre Dame	9	0-4	0-2	0-0	0-1	0	2	1	0
Wake Forest	DNP - Injured								
at Clemson	DNP - Injured								
at Syracuse	DNP - Injured								
Florida State	DNP - Injured								
North Carolina	DNP - Injured								
vs. NC State	DNP - Injured								
vs. Belmont	DNP - Injured								
at Georgia	DNP - Injured								
vs. UConn	DNP - Injured								

2015-16 - Freshman Year

	Min FG-A	3G-A	FT-A	OR/TOT	PFA	T	B	S	PTS
at Penn	24	2-8	0-3	1-2	1-2	2	2	1	0
Winthrop	17	1-5	1-3	1-2	1-1	0	3	0	3
Texas A&M	4	0-1	0-1	0-0	0-2	0	2	3	0
Army	DNP - Injured								
Idaho	11	1-5	1-4	0-0	0-2	1	1	3	0

Iowa State	21	3-10	3-6	0-0	2-4	0	5	0	0
Texas State	18	4-4	3-3	0-0	1-4	0	0	0	0
Minnesota	19	1-5	0-2	0-0	0-1	1	2	2	0
at S. Carolina	12	1-3	0-0	2-2	1-1	0	0	1	0
UMass^	18	0-6	0-2	0-0	1-4	0	2	0	0
Liberty	15	1-4	0-1	2-2	3-5	1	0	1	0
at Kentucky	16	1-5	0-3	0-0	0-3	0	0	0	1
WCU	18	2-7	0-2	5-5	1-5	1	0	6	1
UNCW	18	2-5	0-3	4-4	0-0	2	1	1	0
at Syracuse	16	1-4	0-3	0-0	1-3	1	0	4	0
Wake Forest	DNP - Injured								
at Louisville	DNP - Injured								
NC State	DNP - Injured								
Boston College	DNP - Injured								
at Clemson	DNP - Injured								
UNC	DNP - Injured								
at Pitt	DNP - Injured								
Notre Dame	DNP - Injured								
Virginia	DNP - Injured								
at Miami	DNP - Injured								
Florida State	DNP - Injured								
at WFU	DNP - Injured								
at Va. Tech	DNP - Injured								
Georgia Tech	DNP - Injured								
at UNC	DNP - Injured								
vs. UVA	DNP - Injured								
vs. Notre Dame	DNP - Injured								

Graduate Kyra Lambert

2019-20 - Redshirt Junior Year

	Min FG-A	3G-A	FT-A	OR/TOT	PFA	T	B	S	PTS
High Point	8	1-2	1-1	2-2	0-1	0	1	0	0
at Texas A&M	6	0-2	0-1	0-0	1-1	0	0	0	0

2018-19 - Redshirt Junior Year

	Min FG-A	3G-A	FT-A	OR/TOT	PFA	T	B	S	PTS
Applying for medical redshirt									

2017-18 - Redshirt Junior Year

Applying for medical redshirt									
-------------------------------	--	--	--	--	--	--	--	--	--

2016-17 - Sophomore Year

	Min FG-A	3G-A	FT-A	OR/TOT	PFA	T	B	S	PTS
at Liberty^	28	4-7	2-3	3-4	1-1	3	5	0	4
Penn^	33	4-6	2-3	1-1	0-4	1	2	1	0
Longwood^	25	3-8	0-0	0-3	6-6	1	4	2	0
Grand Canyon^	25	6-10	2-2	3-4	3-5	0	3	0	2
at Vanderbilt^	34	4-9	0-3	0-0	1-3	5	7	3	0
Old Dominion^	34	2-7	0-0	2-2	3-6	1	8	1	0
at L. Beach St.^	31	3-4	1-1	1-2	1-5	2	5	0	5
at Pepperdine^	26	2-5	2-4	2-2	3-6	0	6	3	0
at Rutgers^	27	4-7	0-1	1-2	0-5	0	4	2	0
South Carolina^	34	4-5	0-0	2-2	0-2	0	2	1	0
Elon^	31	0-4	0-0	2-2	0-4	3	2	2	1
Kentucky^	34	1-5	1-2	2-2	0-1	0	1	0	1
Louisville^	37	4-7	1-2	0-0	0-6	1	3	1	0
at Ga. Tech^	36	4-7	1-2	1-2	0-5	1	2	3	0
at Florida State^	33	5-12	0-2	2-2	1-2	0	2	3	1
UNC^	32	4-7	1-2	4-6	0-4	1	3	1	0
at NC State^	31	3-8	0-1	2-2	0-5	0	0	0	1
Virginia Tech^	34	4-9	2-3	0-0	0-6	1	3	2	1
at Boston Col.^	25	5-6	3-3	0-0	1-1	2	1	2	0
at Notre Dame^	34	1-8	0-1	0-0	1-3	2	4	2	0
Wake Forest^	30	1-4	0-2	0-0	1-4	2	5	3	0
Clemson^	21	1-6	0-2	0-0	1-3	2	1	4	0
at Virginia^	36	4-10	1-4	0-0	1-3	1	5	1	0
Syracuse^	29	3-7	0-2	0-0	0-2	3	5	3	1
Pitt^	24	3-10	0-2	2-4	0-2	1	1	2	0
at Wake Forest^	33	1-6	0-0	2-2	0-1	1	3	1	0
Miami^	25	1-8	0-1	3-4	2-5	0	3	2	0
at UNC^	35	5-9	1-3	1-1	1-6	1	13	2	0
vs. Syracuse^	35	1-3	1-1	0-0	0-9	2	2	2	0
vs. Miami^	27	2-5	1-3	1-2	0-3	3	3	2	0
vs. Notre Dame^	30	3-6	1-3	0-0	1-2	1	3	1	0
Hampton^	10	2-3	0-0	0-0	0-0	2	2	0	0
Oregon	DNP - Injured								

2015-16 - Freshman Year

	Min FG-A	3G-A	FT-A	OR/TOT	PFA	T	B	S	PTS
at Penn^	32	3-5	2-2	4-4	0-4	1	3	1	1
Winthrop^	22	3-7	0-2	2-3	0-1	3	4	3	0
Texas A&M^	40	2-12	1-5	3-4	1-3	4	4	1	0

Army^	35	0-4	0-2	0-0	0-3	1	1	1	1
vs. Idaho^	18	2-3	0-1	0-0	0-0	4	1	1	0
vs. Iowa State^	28	2-6	0-1	1-2	0-6	3	0		

Freshman Jaida Patrick

2019-20 - Freshman Year

	Min	FG-A	3G-A	FT-A	OR/TOT	PF	A	T	B	S	PTS
High Point	14	3-5	0-0	2-2	0-2	1	0	1	2	2	8
at Texas A&M	2	0-0	0-0	0-0	0-0	0	0	1	0	0	0

Freshman Jennifer Ezeh

2019-20 - Freshman Year

Min FG-A 3G-A FT-A OR/TOT PF A T B S PTS
Will miss 2019-20 season with torn ACL

Other Miscellaneous Statistics...

Defense Force 10-Second Violation
 Opponent.....-
 Duke

Largest Halftime Lead
 19 (48-29) vs. High Point, 11.5.19

Defense Force Shot Clock Violation
 Opponent.....-
 Duke

Largest Halftime Deficit
 3 (33-30) at Texas A&M, 11.10.19

Defense Force Five-Second Call
 Opponent.....-
 Duke

Largest Duke Lead
 36 vs. High Point, 11.5.19

Points In The Paint
 Opponent.....54
 Duke70

Largest Duke Deficit
 23 at Texas A&M, 11.10.19

Points Off Turnovers
 Opponent.....31
 Duke40

Largest Duke Win
 36 (93-57) vs. High Point, 11.5.19

Technical Fouls
 Opponent.....-
 Duke

Largest Duke Loss
 21 (79-58) at Texas A&M, 11.10.19

Jump Balls Controlled
 Opponent.....1
 Duke1

Longest Winning Streak
 1

Odom.....2

Longest Losing Streak
 1

Largest Home Crowd
 2662 vs. High Point, 11.5.19

Largest Road Crowd
 3289 at Texas A&M, 11.10.19

Highest FG% in 1st Quarter
 Duke45.5 at Texas A&M (11.10.19)
 Opp.....42.1 by Texas A&M (11.10.19)

Highest FG% in 2nd Quarter
 Duke52.6 vs. High Point (11.5.19)
 Opp.....43.8 by Texas A&M (11.10.19)

Highest FG% in 3rd Quarter
 Duke66.7 vs. High Point (11.5.19)
 Opp.....64.3 by Texas A&M (11.10.19)

Highest FG% in 4th Quarter
 Duke30.8 at Texas A&M (11.10.19)
 Opp.....52.9 by Texas A&M (11.10.19)

Lowest FG% in 1st Quarter
 Duke42.1 vs. High Point (11.5.19)
 Opp..... 15.8 by High Point (11.5.19)

Lowest FG% in 2nd Quarter
 Duke41.2 at Texas A&M (11.10.19)
 Opp..... 27.8 by High Point (11.5.19)

Lowest FG% in 3rd Quarter
 Duke35.3 at Texas A&M (11.10.19)
 Opp..... 40.9 by High Point (11.5.19)

Lowest FG% in 4th Quarter
 Duke28.6 vs. High Point (11.5.19)
 Opp..... 23.1 by High Point (11.5.19)

DUKE
Top-Five FG% in Game
 45.1 vs. High Point, 11.5.19
 37.9 at Texas A&M, 11.10.19

Top-Five Lowest FG% in Game
 45.1 vs. High Point, 11.5.19
 37.9 at Texas A&M, 11.10.19

OPPONENT
Top-Five FG% in Game
 50.0 by Texas A&M, 11.10.19
 27.8 by High Point, 11.5.19

Top-Five Lowest FG% in Game
 50.0 by Texas A&M, 11.10.19
 27.8 by High Point, 11.5.19

Duke Records Broken/Tied in 2019-20...

- TBD

More Duke Numbers, Streaks

Duke all-time record	922-411
Duke all-time ACC record (regular season only)	385-222
Duke's all-time overtime record	18-13
Consecutive games with at least one three-point FG.....	79
Consecutive games holding opponents under .500 shooting.....	0
Consecutive games holding opponents under 100 points.....	651
Consecutive games scoring at least 70 points	0

Other Miscellaneous Statistics Part II...

Date	Opponent	Result	Largest Lead				Paint		Off TOs		2nd Chance		Fastbreak		Rebounds		O. Rebounds		Bench Pts	
			Duke	Opp	Ties	LC	Duke	Opp	Duke	Opp	Duke	Opp	Duke	Opp	Duke	Opp	Duke	Opp	Duke	Opp
11/5	High Point	93-57	36	0	1	0	44	16	23	11	21	5	21	2	55	36	18	15	27	17
11/10	at Texas A&M	58-79	2	23	3	3	26	38	17	20	5	13	12	10	26	47	11	19	12	11
TOTAL:			38	23	4	3	70	54	40	31	26	18	33	12	81	83	29	34	39	28
AVG:			19	11.5	2	1.5	35	27	20	15.5	13	9	16.5	6	40.5	41.5	14.5	17	19.5	14

--

Other Miscellaneous Statistics (Season/Career)...

Player	10+ Pts.	20+ Pts.	10+ Reb.	10+ Assists	3-Pt. Plays	Double-Doubles	Charges	First Sub	Individual Game Leaders		
									Points	Rebounds	Assists
J. Adams	-/2	-/-	-/-	-/-	-/-	-/-	-/1	-/12	-/-	-/-	-/1
O. Akinbode-James	1/3	-/-	-/4	-/-	-/2	-/1	1/1	-/3	-/1	-/7	-/-
A. Baines	1/1	-/-	-/-	-/-	-/-	-/-	-/-	-/-	-/-	2/2	-/-
M. Boykin	-/5	-/-	-/-	1/1	-/2	-/-	-/5	-/3	-/-	-/1	-/8
J. Claude	-/-	-/-	-/-	-/-	-/-	-/-	1/1	2/2	-/-	-/-	-/-
M. Goodchild	2/20	-/3	-/-	-/-	-/1	-/-	1/1	-/3	-/5	-/1	1/4
H. Gorecki	2/40	-/15	-/7	2/2	-/11	-/10	-/2	-/5	1/22	-/14	1/25
K. Lambert	-/17	-/-	-/-	-/1	-/9	-/1	-/9	-/6	-/2	-/4	-/24
U. Nwoke	-/-	-/-	-/-	-/-	-/-	-/-	-/-	-/1	-/-	-/-	-/-
L. Odom	1/48	-/10	-/12	-/-	1/11	-/10	1/7	-/22	1/12	-/31	-/10
J. Patrick	-/-	-/-	-/-	-/-	-/-	-/-	-/-	-/-	-/-	-/-	-/-
E. Schubert	-/-	-/-	-/-	-/-	-/-	-/-	-/-	-/-	-/-	-/-	-/-
J. Williams	1/13	-/-	-/2	-/-	-/4	-/2	-/1	-/15	-/2	-/4	1/3

The Last Time it Happened...

Team

100 Points by a Team

By Duke 105 vs. Longwood (11/15/16)
 By Opponent 104 by Connecticut (11/13/98)

30-Point Win

By Duke 93-57 vs. High Point (11/5/19)
 By Opponent 86-50 by Syracuse (1/3/16)

65 Percent Shooting by a Team

By Duke 650 vs. Texas State (11/28/15)
 By Opponent 655 by Virginia (1/25/94)

60 Percent Shooting by a Team

By Duke 615 at Long Beach State (11/25/16)
 By Opponent 618 by Notre Dame (2/2/14)

50 Percent Shooting by a Team

By Duke 569 at North Carolina (2/7/19)
 By Opponent 500 by Texas A&M (11/10/19)

Five Starters in Double-Digit Scoring

By Duke vs. High Point (11/5/19)
 By Opponent by Connecticut (12/29/14)

30 or More Turnovers

By Duke 32 at Syracuse (1/3/16)
 By Opponent 34 by Longwood (11/15/16)

Held to Less Than 10 Points in First Half

Duke --
 Opponent 3 by Monmouth (12/30/12)

Duke Played a Ranked Opponent

Duke Win 66-40 vs. [18/17] Georgia (3/19/18)
 Duke Loss 58-79 at [6/7] Texas A&M (11/10/19)

Overtime Game

Duke Win 74-67 at [12/11] North Carolina (1/25/15)
 Duke Loss 90-92 at Boston College (1/31/19)

Home Openers

Duke Win 93-57 vs. High Point (11/5/19)
 Duke Loss 82-57 vs. UNC Greensboro (12/1/77)

Road/Neutral Openers

Duke Win 74-61 at Grand Canyon (11/12/17)
 Duke Loss 76-65 vs. [11] Notre Dame (11/17/04)

Duke Was Ranked

AP Number 1 March 12, 2007
 USA Today/ESPN Number 1 March 13, 2007
 AP Top 10 March 13, 2017 -- No. 9
 AP Top 25 October 31, 2018 - No. 21

Individual

40 Points by a Player

By Duke 43, Monique Currie at Miami (2/19/06)
 By Opponent 41, Jackie Stiles SW Missouri State (3/24/01)

30 Points by a Player

By Duke 31, Rebecca Greenwell vs. North Carolina (2/25/18)
 By Opponent 36, Paris Kea, North Carolina (1/21/18)

20 Rebounds by a Player

By Duke 20, Elizabeth Williams vs. Oklahoma
 By Opponent 22, Chelsea Nelson, NC State (3/2/18)

15 Rebounds by a Player

By Duke 15, Azurá Stevens vs. Notre Dame (3/4/16)
 By Opponent 17, Beatrice Mompremier, Miami (1/17/19)

Two Players with 20 or More Points in Same Game

By Duke Haley Gorecki [28] & Leaonna Odom [21] at North Carolina (2/7/19)
 By Opponent Simone Westbrook [20] & Aliyah Collier [20], Clemson (2/28/19)

Three Players with 20 or More Points in Same Game

By Duke... I. Tillis [23], M. Bass [21] & A. Beard [20] vs. Stephen F. Austin (11/29/03)

Two Players with 10 or More Rebs. in Same Game

By Duke Leaonna Odom [11] & Haley Gorecki [10], Maine (12/19/17)
 By Opponent N'dea Jones [12] & Ciera Johnson [12], Texas A&M (11/10/19)

Three Players with 10 or More Rebs. in Same Game

By Duke L. Odom [10], H. Gorecki [10] & O. Akinbode-James [13], UNC (3/3/19)
 By Opponent... N. Bryant [12], H. Summers [11] & S. Watts [10], UNC (1/24/16)

10 Assists by a Player

By Duke 10, Haley Gorecki vs. Pittsburgh (2/3/19)
 By Opponent 13, Lindsay Allen, Notre Dame (3/5/17)

10 Steals by a Player

By Duke 10 by Alexis Jones vs. Notre Dame (2/2/14)
 By Opponent None

Five Steals by a Player

By Duke 6, Haley Gorecki vs. Syracuse (1/27/19)
 By Opponent 7, Danielle Edwards, Clemson (2/28/19)

Five Blocked Shots by a Player

By Duke 6, Onome Akinbode-James vs. Clemson (2/28/19)
 By Opponent 5, Natasha Howard, Florida State (1/23/14)

Double-Double by a Player

By Duke Leaonna Odom [22/10 rebounds] vs. UNC (3/3/19)
 By Opponent Beatrice Mompremier [16/17 rebounds], Miami (1/17/19)

Triple-Double by a Player

By Duke Haley Gorecki (16 pts., 10 rebounds, 10 assists) vs. Pitt (2/3/19)
 By Opponent none

Duke Quarter Records - Team

Most Points Scored - 1st Quarter

1. 33 vs. Longwood, 11-15-16
2. 29 vs. Pepperdine, 11-27-16
3. 28 vs. Winthrop, 12-10-17
- 28 vs. Old Dominion, 11-22-16
5. 27 vs. Winthrop, 11-15-15
- 27 vs. Texas State, 11-28-15
7. 26 vs. Penn, 11-13-16
- 26 vs. Ohio State, 11-30-17
9. 25 vs. Minnesota, 12-13-15
- 25 vs. Western Carolina, 12-29-15

Most Points Scored - 2nd Quarter

1. 31 vs. Hampton, 3-18-17
2. 30 at North Carolina, 2-28-16
3. 29 vs. Liberty, 12-17-15
4. 27 at Pepperdine, 11-27-16
5. 26 vs. Iowa State, 11-27-15
- 26 vs. Georgia Tech, 2-1-18
7. 25 vs. FGCU, 12-30-18
- 25 at Boston College, 1-31-19
9. 24 vs. North Carolina, 1-24-16
- 24 vs. Elon, 11-18-18

Most Points Scored - 3rd Quarter

1. 34 vs. Wake Forest, 1-7-16
2. 32 vs. ECU, 12-28-18
- 32 vs. Virginia Tech, 1-19-17
4. 31 at Virginia Tech, 1-18-18
5. 29 vs. Old Dominion, 11-22-16
- 29 at Wake Forest, 2-16-17
- 29 vs. High Point, 11-5-19
8. 28 vs. Hampton, 3-18-17
9. 27 at Long Beach State, 11-25-16
10. 25 at Miami, 2-7-16
- 25 vs. Miami, 2-19-17

Most Points Scored - 4th Quarter

1. 32 at North Carolina, 2-26-17
2. 29 vs. Iowa State, 11-27-15
- 29 vs. Winthrop, 12-10-17
4. 28 vs. Connecticut, 3-24-18
5. 27 at Liberty, 11-11-16
- 27 vs. Longwood, 11-15-16
7. 26 vs. Miami, 2-19-17
- 26 vs. Pittsburgh, 3-6-19
9. 25 at North Carolina, 2-7-19
- 25 at Old Dominion, 11-22-17

Fewest Points Scored - 1st Quarter

1. 6 vs. FGCU, 12-30-18
2. 7 at Virginia, 2-10-19
3. 8 at Louisville, 1-10-16
4. 9 at Miami, 2-7-16
- 9 at Florida State, 1-8-17
6. 10 vs. Georgia Tech, 2-21-16
- 10 vs. Miami, 3-4-17
- 10 vs. Wake Forest, 2-7-18
- 10 vs. Florida State, 3-7-19
10. 11 at Penn, 11-13-15

Fewest Points Scored - 2nd Quarter

1. 2 at Louisville, 1-10-16
2. 2 at Miami, 2-7-16
3. 4 vs. NC State, 3-2-18
4. 6 at Florida State, 1-8-17
- 6 at NC State, 1-15-17
- 6 vs. Connecticut, 3-24-18
7. 8 vs. Clemson, 2-28-19
- 8 vs. Louisville, 1-2-17
- 8 at Wake Forest, 2-24-19

10. 9 at Louisville, 1-10-16

Fewest Points Scored - 3rd Quarter

1. 8 at Villanova, 11-19-17
- 8 at Wisconsin, 11-28-18
3. 9 at Louisville, 1-4-18
4. 10 at Virginia, 2-10-19
- 10 at South Carolina, 12-03-17
6. 11 at Notre Dame, 1-26-17
- 11 vs. Notre Dame, 3-4-16
- 11 vs. Miami, 12-31-17
- 11 at Pittsburgh, 1-28-18
- 11 vs. Connecticut, 3-24-18

Fewest Points Scored - 4th Quarter

1. 5 at Syracuse, 1-3-16
2. 8 vs. Liberty, 12-29-17
- 8 vs. Notre Dame, 2-4-18
4. 9 vs. Syracuse, 2-10-17
- 9 vs. Miami, 1-1-19
6. 10 vs. Miami, 12-31-17
- 10 vs. NC State, 3-2-18
- 10 vs. Florida State, 3-7-19
9. 11 at Virginia, 2-10-19
- 11 vs. Virginia, 2-4-16

Highest FG Percentage - 1st Quarter

1. 80.0 at Louisville, 1-4-18
2. 75.0 vs. Western Carolina, 12-29-15
3. 72.7 at Long Beach State, 11-25-16
4. 69.2 vs. Villanova, 12-21-16
5. 66.7 vs. Virginia, 2-4-16
- 66.7 vs. Winthrop, 12-10-17
7. 64.7 vs. Minnesota, 12-3-15
- 64.7 vs. Syracuse, 3-3-17
9. 63.2 vs. Texas State, 11-28-15
10. 62.5 at North Carolina, 2-28-16

Highest FG Percentage - 2nd Quarter

1. 80.0 at North Carolina, 2-7-19
2. 77.8 vs. Ball State, 11-24-18
3. 72.7 at Virginia, 2-10-19
- 72.7 vs. Liberty, 12-29-17
5. 69.2 vs. FGCU, 12-30-18
6. 66.7 vs. UNCW, 12-31-15
- 66.7 vs. Clemson, 2-2-17
- 66.7 vs. Hampton, 3-18-17
- 66.7 at North Carolina, 1-21-18
10. 64.7 vs. Georgia Tech, 2-1-18

Highest FG Percentage - 3rd Quarter

1. 81.3 at Virginia Tech, 1-18-18
2. 80 at Virginia Tech, 2-18-16
3. 76.5 vs. ECU, 12-28-18
4. 75 vs. Western Carolina, 12-29-15
- 75 at Long Beach State, 11-25-16
6. 71.4 at Miami, 2-7-16
- 71.4 vs. Virginia Tech, 1-19-17
8. 70.6 vs. Wake Forest, 1-7-16
9. 70 at Rutgers, 12-1-16
10. 69.2 at Maine, 11-15-18

Highest FG Percentage - 4th Quarter

1. 86.7 at North Carolina, 2-26-17
2. 77.8 vs. Georgia Tech, 2-1-18
3. 75.0 vs. Texas State, 11-28-15
4. 73.3 vs. Winthrop, 12-10-17
5. 72.7 vs. Hampton, 3-18-17
- 72.7 vs. Presbyterian, 11-26-17
7. 71.4 vs. Pittsburgh, 3-6-19
8. 70.0 at Wake Forest, 2-14-16

- 70 vs. Maine, 12-19-17
10. 69.2 vs. Ball State, 11-24-18

Lowest FG Percentage - 1st Quarter

1. 13.3 vs. FGCU, 12-30-18
2. 20.0 vs. Louisville, 1-6-19
3. 21.4 vs. Wake Forest, 2-7-18
4. 23.5 at Miami, 2-7-16
5. 25.0 at Virginia, 2-10-19
- 25.0 vs. Miami, 3-4-17
7. 26.3 vs. Notre Dame, 2-4-18
8. 26.7 vs. Notre Dame, 3-4-16
9. 27.8 at Clemson, 2-11-18
10. 28.6 vs. Virginia, 1-14-18
- 28.6 at Wisconsin, 11-28-18

Lowest FG Percentage - 2nd Quarter

1. 00.0 at Miami, 2-7-16
2. 7.1 vs. NC State, 3-2-18
3. 15.4 at FSU, 1-8-17
- 15.4 at NC State, 1-15-17
5. 17.6 at Wake Forest, 2-14-16
6. 18.8 at Notre Dame, 1-26-17
7. 20.0 vs. Notre Dame, 3-5-17
8. 21.4 vs. Clemson, 2-28-19
9. 23.1 vs. Connecticut, 3-24-18
10. 25.0 vs. Texas A&M, 11-18-15
- 25.0 vs. Penn 11-13-16

Lowest FG Percentage - 3rd Quarter

1. 21.4 at Louisville, 1-4-18
- 21.4 at Wisconsin, 11-28-18
3. 25 at Clemson, 2-11-18
- 25 vs. Florida State, 3-7-19
5. 26.7 at NC State, 1-3-19
6. 27.3 vs. Virginia, 3-3-16
7. 27.8 vs. Notre Dame, 3-4-16
- 27.8 at South Carolina, 12-3-17
- 27.8 vs. Connecticut, 3-24-18
10. 29.4 at Louisville, 1-10-16

Lowest FG Percentage - 4th Quarter

1. 12.5 at NC State, 1-3-19
2. 18.2 vs. Notre Dame, 2-4-18
3. 20.0 vs. Virginia, 3-3-16
- 20.0 at Wake Forest, 1-11-18
5. 21.4 at Miami, 2-7-16
6. 22.0 at Florida State, 1-8-17
7. 22.2 at Syracuse, 1-3-16
8. 23.1 vs. Elon, 12-8-16
9. 25.0 at Virginia, 2-10-19
- 25.0 vs. NC State, 3-2-18
- 25.0 vs. Miami, 1-17-19

Duke Quarter Records - Opponents

Most Points Scored - 1st Quarter

1. 30 Syracuse, 1-3-16
2. 27 Notre Dame, 3-15-17
- 27 Notre Dame, 2-21-19
4. 26 Louisville, 1-14-18
5. 25 Wake Forest, 1-7-16
6. 24 North Carolina, 2-7-19
- 24 NC State, 1-15-17
8. 23 Army, 11-22-15
9. 22 Notre Dame, 2-1-16
- 22 Georgia Tech, 1-5-17

Most Points Scored - 2nd Quarter

1. 27 Florida State, 1-20-19
2. 25 Notre Dame, 3-4-16
- 25 Notre Dame, 2-21-19
4. 24 North Carolina, 1-24-16
- 24 Georgia Tech, 2-21-18
6. 23 Syracuse, 2-15-18
7. 22 North Carolina, 1-21-18
- 22 ECU, 12-28-18
9. 21 Washington, 11-23-18
- 21 Georgia Tech, 1-10-19

Most Points Scored - 3rd Quarter

1. 31 Syracuse, 1-27-19
2. 28 Northwestern, 11-11-18
3. 26 Syracuse, 1-3-16
4. 26 Villanova, 11-19-17
- 25 Pennsylvania, 11-13-15
6. 23 Boston College, 1-17-16
- 23 Notre Dame, 3-4-16
- 23 Oregon State, 11-25-17
9. 22 Idaho, 11-26-15
- 22 Vanderbilt, 11-20-16

Most Points Scored - 4th Quarter

1. 26 Wake Forest, 2-4-16
2. 25 Notre Dame, 2-21-19
3. 24 Elon, 12-8-16
- 24 Florida State, 1-8-17
- 24 Wisconsin, 11-28-18
- 24 Texas A&M, 11-10-19
7. 23 Louisville, 1-6-19
- 23 Notre Dame, 2-1-16
- 23 North Carolina, 2-26-17
- 23 Northwestern, 11-11-18

Fewest Points Scored - 1st Quarter

1. 4 Pennsylvania, 11-13-15
2. 5 Georgia Tech, 2-21-16
- 5 Rutgers, 12-1-16
- 5 Winthrop, 12-10-17
- 5 NC State, 1-7-18
6. 6 Old Dominion, 11-22-17
- 6 Maine, 11-15-18
8. 7 Texas State, 11-28-15
- 7 Villanova, 12-21-16
- 7 ECU, 12-28-18

Fewest Points Scored - 2nd Quarter

1. 2 Hampton, 3-18-17
- 2 Georgia, 3-19-18
3. 4 Texas State, 11-28-15
- 4 Longwood, 11-15-16
- 4 North Carolina, 1-12-17
- 6.. Liberty, 12-17-15
- 5 Virginia, 1-14-18
8. 6 Liberty, 11-11-16
- 6 Clemson, 2-11-18
10. 7 North Carolina, 2-7-19

Fewest Points Scored - 3rd Quarter

1. 4 Syracuse, 1-27-19
2. 5 Army, 11-22-15
- 5 Wake Forest, 2-14-16
- 5 NC State, 3-2-18
5. 6 UMass, 12-14-15
- 6 North Carolina, 1-24-16
- 6 Virginia, 2-5-16
- 6 UNLV, 12-06-18
9. 7 North Carolina, 2-25-18
10. 8 NC State, 1-15-17

Fewest Points Scored - 4th Quarter

1. 2 Liberty, 11-11-16
2. 6 Winthrop, 11-15-15
- 6 FGCU, 12-30-18
4. 7 Virginia, 2-4-16
- 7 Boston College, 1-22-17
- 7 Syracuse, 3-3-17
7. 8 Rutgers, 12-1-16
- 8 Presbyterian, 11-26-17
- 8 Ohio State, 11-30-17
- 8 High Point, 11-5-19

Highest FG Percentage - 1st Quarter

1. 70.0-Virginia, 1-14-18
2. 64.3-Wake Forest, 1-7-16
- 64.3-Notre Dame, 3-5-17
4. 63.6-Pittsburgh, 1-28-16
5. 63.2-Syracuse, 1-3-16
- 61.5-Miami, 1-17-19
7. 60.0-NC State, 1-15-17
8. 58.3-Army, 11-22-15
- 58.3-Longwood, 11-15-16
- 58.3-Florida State, 2-19-18

Highest FG Percentage - 2nd Quarter

1. 63.6-Louisville, 11-4-18
- 63.6-Notre Dame, 2-4-18
3. 61.5-Washington, 11-23-18
4. 60.0-South Carolina, 12-6-15
5. 58.3-Kentucky, 12-29-16
6. 53.8-Minnesota, 12-3-15
- 53.8-Georgia Tech, 1-10-19
- 53.8-Pittsburgh, 3-6-19
9. 53.3-North Carolina, 1-21-18
10. 52.6-Georgia Tech, 2-21-16

Highest FG Percentage - 3rd Quarter

1. 71.4-Boston College, 1-17-16
2. 66.7-Syracuse, 1-27-19
3. 64.3-Pennsylvania, 11-13-15
- 64.3-Texas A&M, 11-10-19
5. 63.6-Notre Dame, 2-4-18
6. 61.5-North Carolina, 1-12-17
- 61.5-Louisville, 1-2-17
8. 58.8-Oregon, 3-20-17
- 58.3-Wake Forest, 1-24-19
10. 57.1-Vanderbilt, 11-20-16

Highest FG Percentage - 4th Quarter

1. 80.0-Wisconsin, 11-28-18
2. 72.7-Notre Dame, 3-5-17
3. 63.6-Syracuse, 2-15-18
4. 63.2-Notre Dame, 2-21-19
5. 61.5-Notre Dame, 2-1-16
6. 60.0-Connecticut, 3-24-18
- 60.0-Maine, 11-15-18
8. 58.8-Notre Dame, 3-4-16
- 58.8-Florida State, 1-8-17
10. 58.3-South Carolina, 12-6-15

Lowest FG Percentage - 1st Quarter

1. 5.9-Georgia Tech, 2-21-16
2. 11.8-Pennsylvania, 11-13-15
3. 13.3-Winthrop, 12-10-17
4. 14.3-NC State, 1-7-18
5. 15.4-Rutgers, 12-1-16
- 15.4-Old Dominion, 11-22-17
7. 15.8-Villanova, 12-21-16
- 15.8-High Point, 11-5-19
9. 16.7-Missouri, 11-25-18
10. 17.6-Villanova, 11-19-17

Lowest FG Percentage - 2nd Quarter

1. 5.3-Georgia, 3-19-18
2. 6.3-Liberty, 11-11-16
3. 7.1-North Carolina, 1-12-17
- 7.1-Hampton, 3-18-17
5. 7.7-Syracuse, 1-27-19
6. 8.3-Texas State, 11-28-15
7. 10.0-Wake Forest, 1-29-17
8. 12.5-Liberty, 12-17-15
9. 14.3-Long Beach State, 11-25-16
10. 15.0-Liberty, 12-29-17

Lowest FG Percentage - 3rd Quarter

1. 8.3-Army, 11-22-15
2. 11.1-Maine, 12-19-17
3. 11.8-North Carolina, 1-24-16
4. 12.5-NC State, 3-2-18
5. 13.3-Wake Forest, 2-14-16
6. 16.7-Clemson, 2-28-19
- 16.7-Boston College, 1-22-17
8. 17.6-Western Carolina, 12-29-15
- 17.6-Notre Dame, 2-1-16
- 17.6-Hampton, 3-18-17

Lowest FG Percentage - 4th Quarter

1. 0.0-Liberty, 11-11-16
2. 5.9-Winthrop, 11-15-15
3. 10.5-Syracuse, 2-10-17
4. 11.8-Syracuse 3-3-17
5. 14.3-FGCU, 12-30-18
6. 15-Maine, 12-19-17
7. 15.4-High Point, 11-16-17
8. 16.7-Liberty, 12-17-15
- 16.7-Iowa State, 11-27-15
10. 17.6-Kentucky, 12-29-16

Duke Quarter Records - Individual

Most Points Scored - 1st Quarter

1. 14 Rebecca Greenwell vs. Wake Forest, 1-7-16
- 14 Lexie Brown vs. Longwood, 11-15-16
- 14 Lexie Brown vs. Boston College, 1-25-18
4. 13 Lexie Brown vs. Ohio State, 11-30-17
- 13 Lexie Brown at Georgia Tech, 1-5-17
6. 12 Lexie Brown at Notre Dame, 1-26-17
- 12 Rebecca Greenwell at Grand Canyon, 11-12-17
8. 11 Rebecca Greenwell vs. Winthrop, 11-15-15
- 11 Rebecca Greenwell vs. Texas A&M, 11-18-15
- 11 Azura Stevens vs. Army, 11-22-15

Most Points Scored - 2nd Quarter

1. 13 Haley Gorecki at Louisville, 1-4-18
- 13 Lexie Brown at Wake Forest, 1-11-18
3. 12 Azura Stevens vs. Idaho, 11-26-15
- 12 Rebecca Greenwell at North Carolina, 2-28-16
- 12 Lexie Brown vs. Old Dominion, 11-22-16
- 12 Lexie Brown vs. Winthrop, 12-10-17
7. 11 Rebecca Greenwell vs. Villanova, 12-21-16
- 11 Lexie Brown vs. Notre Dame, 3-5-17
- 11 Haley Gorecki vs. ECU, 12-28-18
- 11 Miela Goodchild at Boston College, 1-31-19

Most Points Scored - 3rd Quarter

1. 15 Rebecca Greenwell vs. North Carolina, 2-25-18
2. 14 Lexie Brown vs. Florida State, 2-19-18
3. 12 Haley Gorecki vs. Clemson, 2-28-19
- 12 Lexie Brown vs. Long Beach State, 11-25-16
- 12 Rebecca Greenwell vs. Oregon State, 11-25-17
- 12 Lexie Brown vs. Wyoming, 12-21-17
- 12 Haley Gorecki at Virginia Tech, 1-18-18
- 12 Miela Goodchild at Notre Dame, 2-21-19
9. 11 Haley Gorecki at North Carolina, 2-7-19
- 11 Azura Stevens vs. Wake Forest, 1-7-16
- 11 Oderah Chidom at Miami, 2-7-16

Most Points Scored - 4th Quarter

1. 14 Rebecca Greenwell vs. Boston College, 1-17-16
2. 13 Rebecca Greenwell vs. Longwood, 11-15-16
3. 12 Kyra Lambert vs. Notre Dame, 3-4-16
- 12 Lexie Brown at Old Dominion, 11-22-17
5. 11 Rebecca Greenwell vs. South Carolina, 12-4-16
- 11 Leanna Odom vs. Marist, 12-2-18
7. 10 Leanna Odom vs. Grand Canyon, 11-17-16
- 10 Rebecca Greenwell vs. Miami, 2-19-17
- 10 Lexie Brown at Pittsburgh, 1-28-18
- 10 Haley Gorecki at Georgia Tech, 1-10-19

Most Rebounds - 1st Quarter

1. 7 Onome Akinbode-James at Wisconsin, 11-28-18
2. 6 Oderah Chidom at Pennsylvania, 11-13-15
- 6 Rebecca Greenwell vs. Notre Dame, 2-4-18
- 6 Bego Fax Dalvalos at Clemson, 2-11-18
5. 5 Amber Henson vs. North Carolina, 1-24-16
- 5 Oderah Chidom vs. Notre Dame, 2-1-16
- 5 Oderah Chidom vs. Notre Dame, 3-4-16
- 5 Rebecca Greenwell at Grand Canyon, 11-12-17
- 5 Rebecca Greenwell vs. Syracuse, 2-10-17
- 5 Leanna Odom vs. Pittsburgh, 2-12-17

Most Rebounds - 2nd Quarter

1. 7 Azura Stevens vs. Western Carolina, 12-29-15
- 6 Azura Stevens at Syracuse, 1-3-16
- 6 Azura Stevens vs. North Carolina, 1-24-16
- 6 Faith Suggs at Wake Forest, 2-14-16
- 6 Erin Mathias at Grand Canyon, 11-12-17
- 6 Erin Mathias at Georgia, 3-19-18
- 6 Leanna Odom at Northwestern, 11-11-18
8. 5 Azura Stevens vs. Minnesota, 12-3-15
- 5 Rebecca Greenwell vs. Virginia, 2-4-16
- 5 Haley Gorecki vs. ECU, 12-28-18

Most Rebounds - 3rd Quarter

1. 8 Amber Henson vs. North Carolina, 1-24-16
2. 7 Azura Stevens vs. Winthrop, 11-15-15
3. 6 Oderah Chidom vs. Virginia, 3-3-16
4. 5 Kendall Cooper vs. Idaho, 11-26-15
- 5 Amber Henson vs. Notre Dame, 2-1-16
- 5 Amber Henson at North Carolina, 2-28-16
- 5 Leanna Odom at Pepperdine, 11-27-16
- 5 Oderah Chidom vs. Notre Dame, 3-5-17
- 5 Rebecca Greenwell at Syracuse, 2-15-18
- 5 Rebecca Greenwell vs. North Carolina, 2-25-18

Most Rebounds - 4th Quarter

1. 7 Leanna Odom vs. Florida State, 2-19-18
2. 6 Azura Stevens vs. Texas A&M, 11-18-15
- 6 Azura Stevens vs. Army, 11-22-15
- 6 Azura Stevens vs. UMass, 12-14-15
5. 5 Onome Akinbode-James vs. Clemson 2-28-19
- 5 Oderah Chidom vs. Iowa State, 11-27-15
- 5 Oderah Chidom vs. Pennsylvania, 11-13-16
- 5 Erin Mathias vs. Grand Canyon, 11-17-16
- 5 Oderah Chidom at Long Beach State, 11-25-16
- 5 Jade Williams vs. UNLV, 12-06-18

Most Assists - 1st Quarter

1. 5 Lexie Brown at Pepperdine, 11-27-16
- 5 Lexie Brown vs. Syracuse, 2-10-17
3. 4 Angela Salvadores vs. Texas State, 11-28-15
- 4 Rebecca Greenwell vs. Minnesota, 12-3-15
- 4 Kyra Lambert vs. Old Dominion, 11-22-16
- 4 Kyra Lambert at Rutgers, 12-1-16
- 4 Lexie Brown vs. Hampton, 3-18-17
- 4 Lexie Brown vs. UNC-Greensboro, 12-7-17
- 4 Leanna Odom vs. Ball State, 11-24-19
- 4 Leanna Odom vs. Pittsburgh, 3-6-19

Most Assists - 2nd Quarter

1. 5 Kyra Lambert at North Carolina, 2-28-16
- 5 Lexie Brown at Clemson, 2-11-18
3. 4 Haley Gorecki at Virginia, 2-10-19
- 4 Angela Salvadores vs. Liberty, 12-17-15
- 4 Lexie Brown at Old Dominion, 11-22-17
- 4 Lexie Brown vs. Georgia Tech, 2-1-18
- 4 Mikayla Boykin vs. FGCU, 12-30-18
8. 3 Angela Salvadores vs. Iowa State, 11-27-15
- 3 Rebecca Greenwell at Liberty, 11-11-16
- 3 Kyra Lambert at Pepperdine, 11-27-16
- 3 Haley Gorecki vs. Liberty 12-29-17

Most Assists - 3rd Quarter

1. 5 Lexie Brown vs. North Carolina, 2-25-18
- 5 Haley Gorecki at Maine, 11-15-18
2. 4 Lexie Brown at Pepperdine, 11-27-16
- 4 Lexie Brown at Wake Forest, 2-16-17
- 4 Lexie Brown at Grand Canyon, 11-12-17
- 4 Lexie Brown at Louisville, 1-4-18
- 4 Jade Williams at Louisville, 1-4-18
7. 3 Jade Williams at North Carolina, 2-7-19
- 3 Angela Salvadores vs. Idaho, 11-26-15
- 3 Haley Gorecki vs. Miami, 1-17-19
- 3 Haley Gorecki vs. Pittsburgh, 3-6-19

Most Assists - 4th Quarter

1. 8 Kyra Lambert at North Carolina, 2-26-17
2. 6 Mikayla Boykin at Georgia Tech, 1-10-19
3. 4 Kyra Lambert vs. Boston College, 1-17-16
4. 3 Leanna Odom at Louisville, 1-4-18
- 3 Lexie Brown vs. North Carolina, 2-25-18
- 3 Lexie Brown vs. Connecticut, 3-24-18
- 3 Haley Gorecki vs. Marist, 12-2-18
- 3 Leanna Odom vs. Washington, 11-23-18

9. 2 Jayda Adams at North Carolina, 2-7-19
- 2 Jade Williams at North Carolina, 2-7-19

Most Blocks - 1st Quarter

1. 3 Oderah Chidom vs. Boston College, 1-17-16
- 3 Oderah Chidom at Vanderbilt, 11-27-16
- 3 Kendall Cooper vs. Pittsburgh, 2-12-17
4. 2 Amber Henson vs. Winthrop, 11-15-15
- 2 Azura Stevens at South Carolina, 12-6-15
- 2 Amber Henson vs. North Carolina, 1-24-16
- 2 Oderah Chidom vs. Virginia, 2-4-16
- 2 Amber Henson vs. Georgia Tech, 2-21-16
- 2 Azura Stevens vs. Virginia, 3-3-16
- 2 Leanna Odom vs. Clemson, 2-28-19
- 2 Onome Akinbode-James vs. Pitt, 3-6-19

Most Blocks - 2nd Quarter

1. 4 Jade Williams vs. Georgia Tech, 2-1-18
2. 3 Lexie Brown vs. Longwood, 11-15-16
- 3 Oderah Chidom vs. North Carolina, 1-12-17
- 3 Erin Mathias vs. Virginia Tech, 1-18-18
5. 2 Kendall Cooper vs. Idaho, 11-26-15
- 2 Azura Stevens vs. UMass, 12-14-15
- 2 Oderah Chidom vs. Notre Dame. 3-4-16
- 2 Erin Mathias at Wake Forest, 2-16-17
- 2 Oderah Chidom at Liberty, 11-11-16
- 2 Leanna Odom vs. Wyoming, 12-21-17

Most Blocks - 3rd Quarter

1. 4 Onome Akinbode-James vs. Clemson 2-28-19
2. 3 Leanna Odom at Notre Dame, 2-21-19
- 3 Amber Henson vs. Virginia, 2-4-16
- 3 Oderah Chidom at Liberty, 11-11-16
- 3 Oderah Chidom at Long Beach State, 11-25-16
- 3 Kendall Cooper at Pepperdine, 11-27-16
6. 2 Azura Stevens vs. Winthrop, 11-15-15
- 2 Azura Stevens vs. Iowa State, 11-27-15
- 2 Oderah Chidom vs. Western Carolina, 12-29-15
- 2 Rebecca Greenwell vs. Wake Forest, 1-7-16
- 2 Jade Williams vs. FGCU, 12-30-18
- 2 Jaida Patrick vs. High Point, 11-5-19

Most Blocks-4th Quarter

1. 3 Onome Akinbode-James vs. Elon, 11-18-18
- 3 Onome Akinbode-James at Wake Forest, 2-24-19
3. 2 Azura Stevens vs. Winthrop, 11-15-15
- 2 Amber Henson vs. Winthrop, 11-15-15
- 2 Azura Stevens at Clemson, 1-21-16
- 2 Oderah Chidom vs. Georgia Tech, 2-21-16
- 2 Oderah Chidom at North Carolina, 2-28-16
- 2 Oderah Chidom at Pepperdine, 11-27-16
- 2 Oderah Chidom at Georgia Tech, 1-5-17
- 2 Onome Akinbode-James vs. Pittsburgh, 3-6-19

Most Steals - 1st Quarter

1. 3 Kyra Lambert at Liberty, 11-11-16
- 3 Leanna Odom vs. Longwood, 11-15-16
- 3 Lexie Brown vs. High Point, 11-16-17
- 3 Lexie Brown vs. Georgia, 3-19-18
- 3 Lexie Brown vs. Connecticut, 3-24-18
6. 2 Haley Gorecki at Virginia, 2-10-19
- 2 Amber Henson vs. Boston College, 1-17-16
- 2 Faith Suggs at NC State, 1-3-19
- 2 Haley Gorecki vs. Elon, 11-18-18
- 2 Leanna Odom vs. Clemson, 2-28-19
- 2 Jade Williams vs. Clemson, 2-28-19
- 2 Kyra Lambert vs. High Point, 11-5-19

Duke Quarter Records - Individual

Most Steals - 2nd Quarter

1. 4 Lexie Brown at Georgia Tech, 1-5-17
2. 3 Lexie Brown vs. UNC-Greensboro, 12-7-17
- 3 Lexie Brown vs. Winthrop, 12-10-17
- 3 Lexie Brown vs. Boston College, 1-25-18
- 3 Rebecca Greenwell vs. Boston College, 1-17-16
- 3 Erin Mathias vs. Georgia Tech, 2-1-18
- 3 Miela Goodchild vs. Miami, 1-17-19
8. 2 Haley Gorecki at Pennsylvania, 11-13-15
- 2 Haley Gorecki at Maine, 11-15-18
- 2 Haley Gorecki vs. ECU, 12-28-18

Most Steals - 3rd Quarter

1. 4 Haley Gorecki at Maine, 11-15-18
2. 3 Oderah Chidom vs. North Carolina, 1-24-16
- 3 Oderah Chidom vs. Elon, 12-8-16
- 3 Rebecca Greenwell at Virginia, 2-15-17
- 3 Lexie Brown vs. Syracuse, 3-3-17
- 3 Lexie Brown vs. UNC-Greensboro, 12-7-17
- 3 Lexie Brown at Miami, 12-31-17
- 3 Rebecca Greenwell at Clemson, 2-11-18
- 3 Mikayla Boyking vs. UNLV, 12-06-18
- 10.2 Mikayla Boyking at NC State, 1-3-19
- 2 Haley Gorecki at NC State, 1-3-19
- 2 Jayda Adams vs. Clemson, 2-28-19

Most Steals - 4th Quarter

1. 4 Haley Gorecki vs. Syracuse, 1-27-19
2. 3 Miela Goodchild at Texas A&M, 11-10-19
3. 2 Azura Stevens vs. Winthrop, 11-15-15
- 2 Kyra Lambert vs. UMass, 12-14-15
- 2 Lynee Belton vs. Liberty, 12-17-15
- 2 Angela Salvadores at Syracuse, 1-3-16
- 2 Kyra Lambert vs. Boston College, 1-17-16
- 2 Rebecca Greenwell vs. North Carolina, 1-24-16
- 2 Angela Salvadores at Syracuse, 1-3-16
- 2 Kyra Lambert vs. Boston College, 1-17-16
- 2 Kyra Lambert at Clemson, 1-21-16
- 2 Leaonna Odom vs. High Point, 11-5-19

The Blue Devils' Record When

At home	1-0
On the road	0-1
At a neutral site	0-0
Against a top 25 opponent	0-1
Against a top 10 opponent	0-1
Against a top 5 opponent	0-0

In tournaments	0-0
On television	1-1
In white uniforms	1-0
In blue uniforms	0-1
In black uniforms	0-0
In blue/pink uniforms	0-0
In white/pink uniforms	0-0

On Sunday	0-1
On Monday	0-0
On Tuesday	1-0
On Wednesday	0-0
On Thursday	0-0
On Friday	0-0
On Saturday	0-0
Day Games	0-1
Night Games	1-0
Overtime Games	0-0

When the starters are:

Odom, Akinbode-James, Williams, Gorecki, Goodchild 1-1

Leading at the half	1-0
Trailing at the half	0-1
Tied at the half	0-0

Outrebounding opponent	1-0
Opponent outrebounds Duke	0-1
Equal rebounds	0-0
FG% equal/over .500	0-0
FG% equal/over .400	1-0
FG% below .400	0-1
Opponent FG% equal/over .400	0-1
Opponent FG% below .400	1-0

Duke has more turnovers	0-0
Opponent has more turnovers	1-1
Teams have equal turnovers	0-0
Scoring below 50 points	0-0
Scoring 50-59 points	0-1
Scoring 60-69 points	0-0
Scoring 70-79 points	0-0
Scoring 80-89 points	0-0
Scoring 90-99 points	1-0
Scoring 100+ points	0-0

When leading after 3rd period	1-0
When leading w/ 5 minutes left	1-0
When trailing after 3rd period	0-0
When trailing w/ 5 minutes left	0-0
When tied w/ 5 minutes left	0-0

Duke 93, High Point 27

#6/7 Texas A&M 79, Duke 58

November 5, 2019

at Cameron Indoor Stadium (Durham, N.C.)

Duke	FG	3FG	FT	REB	PF	TP	A	TO	B	S	Min
Odom	f 6-10	2-2	5-5	1-2-3	1	19	2	4	2	2	29:36
Akimbode-James	f 4-8	0-0	2-2	4-2-6	4	10	0	4	2	1	22:57
Williams	c 5-9	2-4	0-0	4-1-5	4	12	0	1	0	1	15:25
Gorecki	g 4-9	1-3	6-6	0-7-7	1	15	2	0	1	1	29:59
Goodchild	g 3-11	1-4	3-4	0-7-7	2	10	5	2	0	1	31:21
Claude	3-7	0-0	0-0	6-1-7	2	6	0	2	1	2	16:59
Baines	3-9	0-1	2-4	3-5-8	1	8	2	2	1	0	21:45
Lambert	1-2	1-1	2-2	0-1-1	0	5	1	0	0	3	08:12
Patrick	3-5	0-0	2-2	0-2-2	1	8	0	1	2	2	14:28
Nwoke	0-1	0-0	0-0	0-3-3	0	0	0	0	0	0	07:24
Schubert	0-0	0-0	0-0	0-2-2	0	0	0	0	0	0	01:54
TEAM	0-4-4										
Totals	32-71	7-15	22-25	18-37-55	16	93	12	16	9	13	200
Pct.	45.1	46.7	88.0	DB:3							

FG's (1Q: 8-19, 42.1%; 2Q: 10-19, 52.6%; 3Q: 8-12, 66.7%; 4Q: 6-21, 28.6%)
 3FG's (1Q: 3-5, 60%; 2Q: 2-5, 40%; 3Q: 2-2, 100%; 4Q: 0-3, 0.0%)
 FT's (1Q: 6-8, 75%; 2Q: 1-1, 100%; 3Q: 11-12, 91.7%; 4Q: 4-4, 100%)

High Point	FG	3FG	FT	REB	PF	TP	A	TO	B	S	Min
Bull	f 3-6	0-1	0-0	3-1-4	3	6	1	1	1	0	26:21
McNear	c 0-3	0-2	0-0	2-1-3	4	0	1	0	1	1	16:49
Brown	g 6-17	4-10	1-2	0-2-2	3	17	0	4	0	2	28:09
Edwards	g 1-5	0-2	4-4	2-5-7	3	6	4	2	0	1	33:40
Curran	g 4-17	3-14	0-0	0-2-2	1	11	1	3	0	0	26:31
Meadows	1-6	0-2	0-0	0-3-3	3	2	1	4	0	0	14:33
Wright	3-7	1-2	2-2	0-2-2	3	9	2	1	0	0	17:05
Deoul	1-3	1-2	0-0	1-0-1	0	3	0	3	0	0	10:23
Scheier	1-6	1-5	0-0	1-0-1	3	3	1	0	0	1	13:56
VanSlooten	0-2	0-0	0-0	1-0-1	2	0	1	1	0	0	12:33
TEAM	5-5-10										
Totals	20-72	10-40	7-8	18-37-55	16	93	12	16	9	13	200
Pct.	27.8	25.0	87.5	DB:1							

FG's (1Q: 3-19, 15.8%; 2Q: 5-18, 27.8%; 3Q: 9-22, 40.9%; 4Q: 3-3, 23.1%)
 3FG's (1Q: 2-10, 20%; 2Q: 4-15, 26.7%; 3Q: 2-8, 25%; 4Q: 2-7, 28.6%)
 FT's (1Q: 5-6, 83.3%; 2Q: 2-2, 100%; 3Q: 0-0, 0%; 4Q: 0-0, 0%)

Officials: Karen Preato, Ashley Gilpin, Saif Esho
 Attendance: 2,662 • Technical Fouls: None

Score by Periods	1st	2nd	3rd	4th	Total
High Point	13	16	20	8	57
Duke	25	23	29	16	93

November 10, 2019

at Reed Arena (College Station, Tex.)

Duke	FG	3FG	FT	REB	PF	TP	A	TO	B	S	Min
Odom	f 4-9	0-0	0-1	0-2-2	4	8	1	2	0	3	26:30
Akimbode-James	f 1-4	0-0	0-0	3-0-3	2	2	1	0	0	3	21:19
Williams	f 3-9	1-2	1-2	1-1-2	3	8	2	4	0	1	25:40
Gorecki	g 5-13	2-6	4-6	0-2-2	1	16	2	4	0	0	39:06
Goodchild	g 5-9	1-4	1-2	0-2-2	0	12	1	4	0	4	28:03
Claude	0-3	0-1	0-0	1-3-4	1	0	1	2	0	1	22:46
Baines	4-9	1-1	3-4	2-3-5	2	12	1	1	1	1	28:12
Lambert	0-2	0-1	0-0	1-0-1	0	0	0	0	0	0	5:45
Nwoke	0-0	0-0	0-0	0-0-0	0	0	0	0	0	0	1:06
Patrick	0-0	0-0	0-0	0-0-0	0	0	0	1	0	0	1:33
TEAM	3-2-5										
Totals	22-58	5-15	9-15	11-15-26	13	58	9	18	1	13	200
Pct.	37.9	33.3	60.0	DB:3							

FG's (1Q: 5-11, 45.5%; 2Q: 7-17, 41.2%; 3Q: 6-17, 35.3%; 4Q: 4-13, 30.8%)
 3FG's (1Q: 2-2, 100%; 2Q: 2-7, 28.6%; 3Q: 0-2, 0.0%; 4Q: 1-4, 25.0%)
 FT's (1Q: 0-0, 0.0%; 2Q: 2-3, 66.7%; 3Q: 2-2, 100%; 4Q: 5-10, 50.0%)

Texas A&M	FG	3FG	FT	REB	PF	TP	A	TO	B	S	Min
Jones	f 3-5	0-1	0-0	5-7-12	3	6	2	2	0	2	24:52
Johnson	c 6-10	0-0	2-2	5-7-12	3	14	0	4	2	3	34:00
Carter	g 11-25	3-9	0-2	1-3-4	4	25	0	4	0	3	38:13
Washington	g 3-8	1-1	3-3	0-1-1	3	10	9	2	0	0	36:47
Wells	g 5-11	1-3	2-2	0-2-2	2	13	3	3	0	1	29:39
Rael-Whitsitt	1-1	0-0	0-0	5-4-9	1	2	1	2	1	0	21:08
Wilson	4-6	1-3	0-0	1-1-2	1	9	1	4	0	0	13:59
Green	0-0	0-0	0-0	0-0-0	0	0	0	1	0	0	00:48
Jackson	0-0	0-0	0-0	0-0-0	1	0	0	0	0	0	00:34
TEAM	2-3-5										
Totals	33-66	6-17	7-9	19-28-47	18	79	16	22	3	9	200
Pct.	50.0	35.3	77.8	DB:1							

FG's (1Q: 8-19, 42.1%; 2Q: 7-16, 43.8%; 3Q: 9-14, 64.3%; 4Q: 9-17, 52.9%)
 3FG's (1Q: 2-4, 50.0%; 2Q: 1-4, 25.0%; 3Q: 1-5, 20.0%; 4Q: 2-4, 50.0%)
 FT's (1Q: 0-0, 0.0%; 2Q: 0-2, 0.0%; 3Q: 3-3, 100%; 4Q: 4-4, 100%)

Officials: Dee Kanter, Felicia Grinter, Meadow Overstreet
 Attendance: 0 • Technical Fouls: None

Score by Periods	1st	2nd	3rd	4th	Total
Duke	12	18	14	14	58
Texas A&M	18	15	22	24	79

Duke Basketball

Head Coach Joanne P. McCallie

13th Season at Duke

28th Year as Head Coach

Accomplishments (Heading into 2019-20)

- Collected 300 victories in only 382 games becoming the quickest ACC head coach to reach 300 wins at a school.
- Inducted into the Maine Basketball Hall of Fame in August of 2014.
- Named the ACC Coach of the Year in 2010, 2012 and 2013.
- Led the Blue Devils to the 2010, 2011 and 2013 ACC Championship, which gave Duke the eighth conference title in school history.
- Guided the Blue Devils to at least the share of the ACC regular season title in four straight years from 2010-13.
- Has led Duke to 317 overall wins and 138 league victories in her 12 years with the Blue Devils.
- Became the 15th fastest women's basketball coach to reach 600 wins, accomplishing it in only 821 games. In terms of years it took to reach this milestone, she is tied for the 10th fastest to reach 600 wins.
- Brought in back-to-back No. 1 classes in 2010 and 2011 as well as the No. 1 class in 2015, while securing the No. 2 class in 2013 and 2014.
- Had five Blue Devils taken in the first round of the WNBA Draft since arriving at Duke, while a total of 10 Duke players have been drafted over the last nine years.
- Is the third-quickest NCAA Division I head coach to reach 150 wins at an

Twitter: @DukeWBB, @CoachPDuke

institution doing so in only 182 games.

- Became the first Division I head coach to win a conference title in four different leagues - ACC, Big Ten, America East, North Atlantic.

- Won 82 games in her first three years at Duke, which is the second-most in NCAA Division I history by a coach in the first three years at a school.

- Reached 100 wins at Duke in only 122 games, the second-quickest to ever reach 100 wins at a school.

- Led Duke to its 10th 30-win season out of the last 13 years in 2012-13.

- Became only the second Division I head coach to lead two different programs to 30-win seasons and lead two different programs to a No. 1 seed in the NCAA Tournament.

- Is one of only three Division I head coaches to guide three different programs to the NCAA Tournament.

- Coach P is one of only four head coaches in Division I history to lead three different programs to 25 or more wins in a single season.

- Won a gold medal as coach of the 2006 U20 National team and the 2007 U21 World Championship team.

- In 2005, led MSU to the Big Ten regular season and tournament championships and the NCAA National Championship game.



Coach P Year-by-Year

Year	Team	Overall Record (Winning %)	League Record (Winning %)	Postseason
1992-93	Maine	9-20 (.310)	4-10 (.286)	North Atlantic Tournament Runner-up
1993-94	Maine	20-7 (.741)	12-2 (.857)	North Atlantic Regular-Season Champion
1994-95	Maine	24-6 (.800)	14-2 (.875)	*North Atlantic Champion/NCAA Tournament
1995-96	Maine	27-5 (.844)	18-0 (1.000)	*North Atlantic Champion/NCAA Tournament
1996-97	Maine	22-8 (.733)	17-1 (.944)	*America East Champion/NCAA Tournament
1997-98	Maine	21-9 (.700)	13-5 (.722)	America East Tourn. Champ/NCAA Tournament
1998-99	Maine	24-7 (.774)	17-1 (.944)	America East Regular-Season Champion/NCAA Tournament Second Round
1999-2000	Maine	20-11 (.645)	14-4 (.778)	NCAA Tournament
2000-01	Mich. State	10-18 (.357)	4-12 (.250)	N/A
2001-02	Mich. State	19-13 (.594)	6-10 (.375)	WNIT Semifinals
2002-03	Mich. State	17-12 (.586)	10-6 (.625)	NCAA Tournament
2003-04	Mich. State	22-9 (.710)	10-6 (.625)	NCAA Tournament Second Round
2004-05	Mich. State	33-4 (.892)	13-2 (.867)	*Big Ten Champion/NCAA Tournament National Finalist
2005-06	Mich. State	24-10 (.706)	11-5 (.688)	NCAA Tournament Sweet 16
2006-07	Mich. State	24-9 (.727)	14-2 (.875)	NCAA Tournament Second Round
2007-08	Duke	25-10 (.714)	10-4 (.714)	NCAA Tournament Sweet 16
2008-09	Duke	27-6 (.818)	11-3 (.786)	NCAA Tournament Second Round
2009-10	Duke	30-6 (.833)	12-2 (.857)	*ACC Champion/NCAA Tournament Elite Eight
2010-11	Duke	32-4 (.889)	12-2 (.857)	*ACC Champion/NCAA Tournament Elite Eight
2011-12	Duke	27-6 (.818)	15-1 (.938)	ACC Regular Season Champion/NCAA Tournament Elite Eight
2012-13	Duke	33-3 (.917)	17-1 (.944)	*ACC Champion/NCAA Tournament Elite Eight
2013-14	Duke	28-7 (.800)	12-4 (.750)	NCAA Tournament Second Round
2014-15	Duke	23-11 (.677)	11-5 (.688)	NCAA Tournament Sweet 16
2015-16	Duke	20-12 (.625)	8-8 (.500)	N/A
2016-17	Duke	28-6 (.824)	13-3 (.813)	NCAA Tournament Second Round
2017-18	Duke	24-9 (.727)	11-5 (.688)	NCAA Tournament Sweet 16
2018-19	Duke	15-15 (.500)	6-10 (.375)	N/A
2019-20	Duke	1-1 (.500)	--	TBD

*Regular season and tournament

Career Total (28 Years): 629-244 (.721) 317-117 (.730)..... 21 NCAA Tournament Appearances; Eight Conference Championships
Duke (13 Years): 313-96 (.765) 138-48 (.742) 10 NCAA Tournament Appearances; Three ACC Championships
Michigan St. (7 Years): 149-75 (.665) 68-44 (.607) Five NCAA Tournament Appearances; One Big Ten Championship
Maine (8 Years): 167-73 (.695) 109-25 (.813) Six NCAA Tournaments; Two America East Tournament & Two North Atlantic Champ.

**2019-20 Duke Women's Basketball
Duke Combined Team Statistics (as of Nov 10, 2019)
All games**

RECORD:	OVERALL	HOME	AWAY	NEUTRAL
ALL GAMES	1-1	1-0	0-1	0-0
CONFERENCE	0-0	0-0	0-0	0-0
NON-CONFERENCE	1-1	1-0	0-1	0-0

#	Player	gp-gs	min	avg	Total		3-Point		F-Throw		Rebounds				pf	dq	a	to	blk	stl	pts	avg
					fg-fga	fg%	3fg-fga	3fg%	ft-fta	ft%	off	def	tot	avg								
02	Haley Gorecki	2-2	70	35.0	9-22	.409	3-9	.333	10-12	.833	0	9	9	4.5	2	0	4	4	1	1	31	15.5
05	Leaonna Odom	2-2	58	29.0	10-19	.526	2-2	1.000	5-6	.833	1	4	5	2.5	5	0	3	6	2	5	27	13.5
03	Miela Goodchild	2-2	59	29.5	8-20	.400	2-8	.250	4-6	.667	0	9	9	4.5	2	0	6	6	0	5	22	11.0
25	Jade Williams	2-2	41	20.5	8-18	.444	3-6	.500	1-2	.500	5	2	7	3.5	7	0	2	5	0	2	20	10.0
11	Azana Baines	2-0	49	24.5	7-18	.389	1-2	.500	5-8	.625	5	8	13	6.5	3	0	3	3	2	1	20	10.0
24	O. Akinbode-James	2-2	43	21.5	5-12	.417	0-0	.000	2-2	1.000	7	2	9	4.5	6	0	1	4	2	4	12	6.0
00	Jaida Patrick	2-0	16	8.0	3-5	.600	0-0	.000	2-2	1.000	0	2	2	1.0	1	0	0	2	2	2	8	4.0
04	Jada Claude	2-0	40	20.0	3-10	.300	0-1	.000	0-0	.000	7	4	11	5.5	3	0	1	4	1	3	6	3.0
15	Kyra Lambert	2-0	14	7.0	1-4	.250	1-2	.500	2-2	1.000	1	1	2	1.0	0	0	1	0	0	3	5	2.5
30	Emily Schubert	1-0	2	2.0	0-0	.000	0-0	.000	0-0	.000	0	2	2	2.0	0	0	0	0	0	0	0	0.0
13	Uchenna Nwoke	2-0	8	4.0	0-1	.000	0-0	.000	0-0	.000	0	3	3	1.5	0	0	0	0	0	0	0	0.0
Team											3	6	9									
Total.....		2	400		54-129	.419	12-30	.400	31-40	.775	29	52	81	40.5	29	0	21	34	10	26	151	75.5
Opponents.....		2	400		53-138	.384	16-57	.281	14-17	.824	34	49	83	41.5	43	-	28	41	5	14	136	68.0

TEAM STATISTICS	Duke	OPP	Date	Opponent	Score	Att.
SCORING	151	136	11/05/19	HIGH POINT	W 93-57	2662
Points per game	75.5	68.0	11-10-19	at #6/7 Texas A&M	L 58-79	3289
Scoring margin	+7.5	-	* = ACC Game			
FIELD GOALS-ATT	54-129	53-138				
Field goal pct	.419	.384				
3 POINT FG-ATT	12-30	16-57				
3-point FG pct	.400	.281				
3-pt FG made per game	6.0	8.0				
FREE THROWS-ATT	31-40	14-17				
Free throw pct	.775	.824				
F-Throws made per game	15.5	7.0				
REBOUNDS	81	83				
Rebounds per game	40.5	41.5				
Rebounding margin	-1.0	-				
ASSISTS	21	28				
Assists per game	10.5	14.0				
TURNOVERS	34	41				
Turnovers per game	17.0	20.5				
Turnover margin	+3.5	-				
Assist/turnover ratio	0.6	0.7				
STEALS	26	14				
Steals per game	13.0	7.0				
BLOCKS	10	5				
Blocks per game	5.0	2.5				
ATTENDANCE	2662	3289				
Home games-Avg/Game	1-2662	1-3289				
Neutral site-Avg/Game	-	0-0				

Score by Periods	1st	2nd	3rd	4th	Totals
Duke	37	41	43	30	151
Opponents	31	31	42	32	136

2019-20 Duke Women's Basketball
Duke Team Game-by-Game Comparison (as of Nov 10, 2019)
All games

Opponent	1st	2nd	Score	Mar	Total FG	FG Pct	3-Pointers	3FG Pct	Free Throws	FT Pct	Rebounds	Assist	T/Over	Block	Steal	Fouls
HIGH POINT	48/29	45/28	93-57	+36	32-71/20-72	.451/.278	7-15/10-40	.467/.250	22-25/7-8	.880/.875	55/36 +19	12/12	16/19	9/2	13/5	16/25
#6/7 Texas A&M	30/33	28/46	58-79	(21)	22-58/33-66	.379/.500	5-15/6-17	.333/.353	9-15/7-9	.600/.778	26/47 (21)	9/16	18/22	1/3	13/9	13/18

Note: Game totals are displayed in the format TEAM/OPPONENT for each category

2019-20 Duke Women's Basketball
Duke Game-by-Game Highs (as of Nov 10, 2019)
All games

Opponent	Date	Score	Points	Rebounds	Assists	Steals	Blocked shots
HIGH POINT	11/05/19	93-57	19-Leaonna Odom	8-Azana Baines	5-Miela Goodchild	3-Kyra Lambert	2-O. Akinbode-James Leaonna Odom Jaida Patrick
at #6/7 Texas A&M	11-10-19	58-79	16-Haley Gorecki	5-Azana Baines	2-Haley Gorecki Jade Williams	4-Miela Goodchild	1-Azana Baines

2019-20 Duke Women's Basketball
Duke Points-Rebounds-Assists (as of Nov 10, 2019)
All games

Opponent	Date	Score		00	02	03	04	05	11	13
				PATRICK,JA	GORECKI,HA	GOODCHILD,	CLAUDE,JAD	ODOM,LEAON	BAINES,AZA	NWOKE,UCHE
HIGH POINT	11/05/19	93-57	w	8-2-0	15-7-2	10-7-5	6-7-0	19-3-2	8-8-2	0-3-0
at #6/7 Texas A&M	11-10-19	58-79	L	0-0-0	16-2-2	12-2-1	0-4-1	8-2-1	12-5-1	0-0-0

Opponent	Date	Score		15	24	25	30
				LAMBERT,KY	AKINBODE-J	WILLIAMS,J	SCHUBERT,E
HIGH POINT	11/05/19	93-57	w	5-1-1	10-6-0	12-5-0	0-2-0
at #6/7 Texas A&M	11-10-19	58-79	L	0-1-0	2-3-1	8-2-2	DNP

2019-20 Duke Women's Basketball
Duke Season Schedule/Results & Leaders (as of Nov 10, 2019)
All games

RECORD:	OVERALL	HOME	AWAY	NEUTRAL
ALL GAMES	1-1	1-0	0-1	0-0
CONFERENCE	0-0	0-0	0-0	0-0
NON-CONFERENCE	1-1	1-0	0-1	0-0

Date	Opponent	Score	Att.	High Points	High Rebounds
11/05/19	HIGH POINT	W 93-57	2662	(19)Leonna Odom	(8)Azana Baines
11-10-19	at #6/7 Texas A&M	58-79 L	3289	(16)Haley Gorecki	(5)Azana Baines

* = ACC Game

Attendance Summary	Games	Attend	Avg/Game
Home	1	2662	2662
Away	1	3289	3289
Neutral	0	0	0
Total	2	5951	2976

**2019-20 Duke Women's Basketball
Duke Team Game-by-Game (as of Nov 10, 2019)
All games**

TEAM STATISTICS

Opponent	Date	Score		Total		3-Pointers		Free throws		Rebounds				pf	a	t/o	blk	stl	pts	avg
				fg-fga	pct	3fg-fga	pct	ft-fa	pct	off	def	tot	avg							
HIGH POINT	11/05/19	93-57	W	32-71	.451	7-15	.467	22-25	.880	18	37	55	55.0	16	12	16	9	13	93	93.0
at #6/7 Texas A&M	11-10-19	58-79	L	22-58	.379	5-15	.333	9-15	.600	11	15	26	40.5	13	9	18	1	13	58	75.5
Duke		151		54-129	.419	12-30	.400	31-40	.775	29	52	81	40.5	29	21	34	10	26	151	75.5
Opponents		136		53-138	.384	16-57	.281	14-17	.824	34	49	83	41.5	43	28	41	5	14	136	68.0

Games played: 2
Points/game: 75.5
FG Pct: 41.9
3FG Pct: 40.0
FT Pct: 77.5

Rebounds/game: 40.5
Assists/game: 10.5
Turnovers/game: 17.0
Assist/turnover ratio: 0.6
Steals/game: 13.0
Blocks/game: 5.0



JAIDA PATRICK
 #0 • G/F • 5-10 • FR.
 West Haverstraw, N.Y.
 Saddle River Day

#0 JAIDA PATRICK

NOTES:

2019-20 Honors:

SEASON/CAREER HIGHS

PTS	8	vs. High Point (11.5.19)
REB	4	vs. High Point (11.5.19)
AST		
FG	3	vs. High Point (11.5.19)
FGA	5	vs. High Point (11.5.19)
FG%	.600	vs. High Point (11.5.19)
3FG		
3FGA		
FT	2	vs. High Point (11.5.19)
FTA	2	vs. High Point (11.5.19)
FT%	1.000 (2-2)	vs. High Point (11.5.19)
BLK	2	vs. High Point (11.5.19)
STL	2	vs. High Point (11.5.19)
MIN	14	vs. High Point (11.5.19)

MISC.

10+ PTS	
20+ PTS	
5+ REB	
10+ REB	
3+ AST	
3+ STL	
20+ MIN	
Double-Double	
Triple-Double	
Led Duke in scoring	
Led Duke in rebounding	
Charges taken	

SEASON/CAREER

2019-20 GAME-BY-GAME

DATE	OPPONENT	MIN	FG	3FG	FT	O-D-R	A	T	B	S	TP
11.5	High Point	14	3-5	0-0	2-2	0-2-2	0	1	2	2	8
11.10	at Texas A&M	2	0-0	0-0	0-0	0-0-0	0	0	0	0	0
11.14	at UNLV										
11.17	Northwestern										
11.21	Idaho State										
11.24	Troy										
11.27	Davidson										
11.29	Penn										
12.4	at Nebraska										
12.8	Boston College										
12.19	at South Carolina										
12.29	at FGCU										
1.2	Wake Forest										
1.5	at Louisville										
1.9	at Virginia										
1.12	Virginia Tech										
1.16	Notre Dame										
1.19	at Clemson										
1.23	at Syracuse										
1.26	Georgia Tech										
2.2	NC State										
2.6	North Carolina										
2.9	at Miami										
2.13	at Pitt										
2.16	Florida State										
2.20	Virginia										
2.24	at NC State										
2.27	at Virginia Tech										
3.1	at North Carolina										

* Denotes Started Game; ^ Denotes ACC Tournament; # Denotes NCAA Tournament

PATRICK CAREER STATISTICS

YEAR	GP	GS	MIN	AVG	FG	FGA	PCT	3FG	3FGA	PCT	FT	FTA	PCT	OFF	DEF	REB	AVG	PF	FO	AST	TO	BLK	STL	PTS	AVG
2019-20	2	0	16	8.0	3	5	.600	0	0	.000	2	2	1.000	0	2	2	1.0	1	0	0	2	2	2	8	4.0
TOTAL	2	0	16	8.0	3	5	.600	0	0	.000	2	2	1.000	0	2	2	1.0	1	0	0	2	2	2	8	4.0



HALEY GORECKI
 #2 • G • 6-0 • GR.
 Palatine, Ill.
 William Fremd

#2 HALEY GORECKI

NOTES:

2019-20 HONORS:

- Meyers Drysdale Award Watch List
- Naismith Trophy Watch List
- Wade Trophy Watch List
- Wooden Award Watch List
- Preseason All-ACC

CAREER HIGHS

PTS	29	at North Carolina (1.21.18)
REB	14	at Boston College (1.31.18)
AST	10	2x, last vs. Pittsburgh (2.3.19)
FG	10	3x, last vs. Virginia Tech (2.14.19)
FGA	22	2x, last at Georgia Tech (1.10.19)
FG%	1.000 (4-4)	vs. Texas State (11.28.15)
3FG	7	2x, last at North Carolina (1.21.18)
3FGA	15	at North Carolina (1.21.18)
FT	9	at Boston College (1.31.18)
FTA	16	at Boston College (1.31.18)
FT%	1.000 (6-6)	vs. High Point (11.5.19)
BLK	2	at Louisville (1.4.18)
STL	7	at Maine (11.15.18)
MIN	50	at Boston College (1.31.18)

SEASON HIGHS

PTS	16	at Texas A&M (11.10.19)
REB	7	vs. High Point (11.5.19)
AST	2	2x, last at Texas A&M (11.10.19)
FG	5	at Texas A&M (11.10.19)
FGA	13	at Texas A&M (11.10.19)
FG%	.444	vs. High Point (11.5.19)
3FG	1	vs. High Point (11.5.19)
3FGA	3	vs. High Point (11.5.19)
FT	6	vs. High Point (11.5.19)
FTA	6	vs. High Point (11.5.19)
FT%	1.000 (6-6)	vs. High Point (11.5.19)
BLK	1	vs. High Point (11.5.19)
STL	1	vs. High Point (11.5.19)
MIN	31	vs. High Point (11.5.19)

MISC.	SEASON	CAREER
10+ PTS	2	40
20+ PTS		15
5+ REB	1	36
10+ REB		8
3+ AST		36
3+ STL		21
20+ MIN	2	48
Double-Double		10
Triple-Double		1
Led Duke in scoring	1	21
Led Duke in rebounding		14
Charges taken		2

2019-20 GAME-BY-GAME

DATE	OPPONENT	MIN	FG	3FG	FT	O-D-R	A	T	B	S	TP
11.5	High Point *	31	4-9	1-3	6-6	0-7-7	2	0	1	1	15
11.10	at Texas A&M *	39	5-13	2-6	4-6	0-2-2	2	4	0	0	16
11.14	at UNLV										
11.17	Northwestern										
11.21	Idaho State										
11.24	Troy										
11.27	Davidson										
11.29	Penn										
12.4	at Nebraska										
12.8	Boston College										
12.19	at South Carolina										
12.29	at FGCU										
1.2	Wake Forest										
1.5	at Louisville										
1.9	at Virginia										
1.12	Virginia Tech										
1.16	Notre Dame										
1.19	at Clemson										
1.23	at Syracuse										
1.26	Georgia Tech										
2.2	NC State										
2.6	North Carolina										
2.9	at Miami										
2.13	at Pitt										
2.16	Florida State										
2.20	Virginia										
2.24	at NC State										
2.27	at Virginia Tech										
3.1	at North Carolina										

* Denotes Started Game; ^ Denotes ACC Tournament; # Denotes NCAA Tournament

GORECKI CAREER STATISTICS

YEAR	GP	GS	MIN	AVG	FG	FGA	PCT	3FG	3FGA	PCT	FT	FTA	PCT	OFF	DEF	REB	AVG	PF	FO	AST	TO	BLK	STL	PTS	AVG
2015-16	14	1	227	16.2	20	72	.278	8	36	.222	15	17	.882	12	25	37	2.6	9	0	15	25	1	16	63	4.5
2016-17	0	0	0	0.0	0	0	.000	0	0	.000	0	0	.000	0	0	0	0.0	0	0	0	0	0	0	0	0.0
2017-18	23	13	575	25.0	85	201	.423	44	104	.423	38	53	.717	10	79	89	3.9	24	0	66	49	4	30	252	11.0
2018-19	30	30	1080	36.0	171	469	.365	58	208	.279	115	160	.719	23	190	213	7.1	52	1	116	108	10	79	515	17.2
2019-20	2	2	70	35.0	9	22	.409	3	9	.333	11	13	.846	0	9	9	4.5	2	0	4	4	1	1	31	15.5
TOTAL	69	46	1952	28.3	285	764	.373	113	357	.317	179	243	.737	45	303	348	5.0	87	1	201	186	16	126	861	12.5



MIELA GOODCHILD
 #3 • G • 5-10 • SO.
 Queensland, Australia
 Moreton Bay College

#3 MIELA GOODCHILD

NOTES:

2019-20 Honors:

CAREER HIGHS

PTS	26	at Notre Dame (2.21.19)
REB	7	vs. High Point (11.5.19)
AST	5	vs. High Point (11.5.19)
FG	9	at Notre Dame (2.21.19)
FGA	17	at Notre Dame (2.21.19)
FG%	.800 (8-10)	at Boston College (1.31.19)
3FG	8	at Notre Dame (2.21.19)
3FGA	14	at Notre Dame (2.21.19)
FT	5	vs. ECU (12.28.18)
FTA	6	vs. ECU (12.28.18)
FT%	1.000 (4-4)	vs. Clemson (2.28.19)
BLK	1	2x, last vs. Ball State (11.24.18)
STL	4	4x, at Texas A&M (11.10.19)
MIN	49	at Boston College (1.31.19)

SEASON HIGHS

PTS	10	vs. High Point (11.5.19)
REB	7	vs. High Point (11.5.19)
AST	5	vs. High Point (11.5.19)
FG	5	at Texas A&M (11.10.19)
FGA	11	vs. High Point (11.5.19)
FG%	.556	at Texas A&M (11.10.19)
3FG	1	2x, last at Texas A&M (11.10.19)
3FGA	4	2x, last at Texas A&M (11.10.19)
FT	3	vs. High Point (11.5.19)
FTA	4	vs. High Point (11.5.19)
FT%	.750	vs. High Point (11.5.19)
BLK	-	
STL	4	at Texas A&M (11.10.19)
MIN	31	vs. High Point (11.5.19)

MISC.	SEASON	CAREER
10+ PTS	2	20
20+ PTS		3
5+ REB	1	3
10+ REB		
3+ AST	1	11
3+ STL	1	6
20+ MIN	2	29
Double-Double		
Triple-Double		
Led Duke in scoring		5
Led Duke in rebounding		
Charges taken		

2019-20 GAME-BY-GAME

DATE	OPPONENT	MIN	FG	3FG	FT	O-D-R	A	T	B	S	TP
11.5	High Point *	31	3-11	1-4	3-4	0-7-7	5	2	0	1	10
11.10	at Texas A&M *	28	5-9	1-4	1-2	0-2-2	1	4	0	4	12
11.14	at UNLV										
11.17	Northwestern										
11.21	Idaho State										
11.24	Troy										
11.27	Davidson										
11.29	Penn										
12.4	at Nebraska										
12.8	Boston College										
12.19	at South Carolina										
12.29	at FGCU										
1.2	Wake Forest										
1.5	at Louisville										
1.9	at Virginia										
1.12	Virginia Tech										
1.16	Notre Dame										
1.19	at Clemson										
1.23	at Syracuse										
1.26	Georgia Tech										
2.2	NC State										
2.6	North Carolina										
2.9	at Miami										
2.13	at Pitt										
2.16	Florida State										
2.20	Virginia										
2.24	at NC State										
2.27	at Virginia Tech										
3.1	at North Carolina										

* Denotes Started Game; ^ Denotes ACC Tournament; # Denotes NCAA Tournament

GOODCHILD CAREER STATISTICS

YEAR	GP	GS	MIN	AVG	FG	FGA	PCT	3FG	3FGA	PCT	FT	FTA	PCT	OFF	DEF	REB	AVG	PF	FO	AST	TO	BLK	STL	PTS	AVG
2018-19	30	22	926	30.9	114	252	.452	73	164	.445	27	31	.871	12	44	56	1.9	41	0	51	76	5	30	328	10.9
2019-20	2	2	59	29.5	8	20	.400	2	8	.250	4	6	.667	0	9	9	4.5	3	0	6	6	0	5	22	11.0
TOTAL	32	24	985	30.8	122	272	.449	75	172	.436	31	37	.838	12	53	65	2.0	44	0	57	82	5	35	350	10.9



JADA CLAUDE
 #4 • G/F • 6-0 • FR.
 Fayetteville, Ga.
 Whitewater

#4 JADA CLAUDE

NOTES:

2019-20 HONORS:

SEASON/CAREER HIGHS

PTS	6	vs. High Point (11.5.19)
REB	7	vs. High Point (11.5.19)
AST	1	at Texas A&M (11.10.19)
FG	3	vs. High Point (11.5.19)
FGA	7	vs. High Point (11.5.19)
FG%	.429	vs. High Point (11.5.19)
3FG	-	
3FGA	1	at Texas A&M (11.10.19)
FT	-	
FTA	-	
FT%	-	
BLK	1	vs. High Point (11.5.19)
STL	2	vs. High Point (11.5.19)
MIN	23	at Texas A&M (11.10.19)

MISC. SEASON/CAREER

10+ PTS	
20+ PTS	
5+ REB	1
10+ REB	
3+ AST	
3+ STL	
20+ MIN	1
Double-Double	
Triple-Double	
Led Duke in scoring	
Led Duke in rebounding	
Charges taken	

2019-20 GAME-BY-GAME

DATE	OPPONENT	MIN	FG	3FG	FT	O-D-R	A	T	B	S	TP
11.5	High Point	18	3-7	0-0	0-0	6-1-7	0	2	1	2	6
11.10	at Texas A&M	23	0-3	0-1	0-0	1-3-4	1	2	0	1	0
11.14	at UNLV										
11.17	Northwestern										
11.21	Idaho State										
11.24	Troy										
11.27	Davidson										
11.29	Penn										
12.4	at Nebraska										
12.8	Boston College										
12.19	at South Carolina										
12.29	at FGCU										
1.2	Wake Forest										
1.5	at Louisville										
1.9	at Virginia										
1.12	Virginia Tech										
1.16	Notre Dame										
1.19	at Clemson										
1.23	at Syracuse										
1.26	Georgia Tech										
2.2	NC State										
2.6	North Carolina										
2.9	at Miami										
2.13	at Pitt										
2.16	Florida State										
2.20	Virginia										
2.24	at NC State										
2.27	at Virginia Tech										
3.1	at North Carolina										

* Denotes Started Game; ^ Denotes ACC Tournament; # Denotes NCAA Tournament

CLAUDE CAREER STATISTICS

YEAR	GP	GS	MIN	AVG	FG	FGA	PCT	3FG	3FGA	PCT	FT	FTA	PCT	OFF	DEF	REB	AVG	PF	FO	AST	TO	BLK	STL	PTS	AVG
2019-20	2	0	41	20.5	3	10	.300	0	1	-	0	0	-	7	4	11	5.5	3	0	1	4	1	3	6	3.0
TOTAL	2	0	41	20.5	3	10	.300	0	1	-	0	0	-	7	4	11	5.5	3	0	1	4	1	3	6	3.0



LEONNA ODOM
 #5 • F • 6-2 • SR.
 Lompoc, Calif.
 Chaminade

#5 LEONNA ODOM

NOTES:

Scored her 1,000th career point against High Point, becoming 34th Duke player to reach 1,000

2019-20 HONORS:

Katrina McClain Award Watch List

CAREER HIGHS

PTS	25	vs. Belmont (3.17.18)
REB	14	at Northwestern (11.11.18)
AST	9	at Boston College (1.31.19)
FG	11	vs. Belmont (3.17.18)
FGA	19	2x, last at Boston College (1.31.19)
FG%	1.000 (5-5)	vs. Miami (3.4.17)
3FG	2	vs. High Point (11.5.19)
3FGA	2	vs. High Point (11.5.19)
FT	7	vs. Hampton (3.18.17)
FTA	8	3x, last at North Carolina (2.7.19)
FT%	1.000 (5-5)	vs. High Point (11.5.19)
BLK	4	2x, last vs. Ohio State (11.30.17)
STL	5	3x, last vs. Marist (12.2.18)
MIN	48	at Boston College (1.31.19)

SEASON HIGHS

PTS	19	vs. High Point (11.5.19)
REB	3	vs. High Point (11.5.19)
AST	2	vs. High Point (11.5.19)
FG	6	vs. High Point (11.5.19)
FGA	10	vs. High Point (11.5.19)
FG%	.600	vs. High Point (11.5.19)
3FG	2	vs. High Point (11.5.19)
3FGA	2	vs. High Point (11.5.19)
FT	5	vs. High Point (11.5.19)
FTA	5	vs. High Point (11.5.19)
FT%	1.000 (5-5)	vs. High Point (11.5.19)
BLK	2	vs. High Point (11.5.19)
STL	3	at Texas A&M (11.10.19)
MIN	30	vs. High Point (11.5.19)

MISC.	SEASON	CAREER
10+ PTS	1	46
20+ PTS		9
5+ REB		57
10+ REB		12
3+ AST		19
3+ BLK		8
20+ MIN	2	82
Double-Double		10
Triple-Double		0
Led Duke in scoring	1	12
Led Duke in rebounding		32
Charges taken		5

2019-20 GAME-BY-GAME

DATE	OPPONENT	MIN	FG	3FG	FT	O-D-R	A	T	B	S	TP
11.5	High Point *	30	6-10	2-2	5-5	1-2-3	2	4	2	2	19
11.10	at Texas A&M *	27	4-9	0-0	0-1	0-2-2	1	2	0	3	8
11.14	at UNLV										
11.17	Northwestern										
11.21	Idaho State										
11.24	Troy										
11.27	Davidson										
11.29	Penn										
12.4	at Nebraska										
12.8	Boston College										
12.19	at South Carolina										
12.29	at FGCU										
1.2	Wake Forest										
1.5	at Louisville										
1.9	at Virginia										
1.12	Virginia Tech										
1.16	Notre Dame										
1.19	at Clemson										
1.23	at Syracuse										
1.26	Georgia Tech										
2.2	NC State										
2.6	North Carolina										
2.9	at Miami										
2.13	at Pitt										
2.16	Florida State										
2.20	Virginia										
2.24	at NC State										
2.27	at Virginia Tech										
3.1	at North Carolina										

* Denotes Started Game; ^ Denotes ACC Tournament; # Denotes NCAA Tournament

ODOM CAREER STATISTICS

YEAR	GP	GS	MIN	AVG	FG	FGA	PCT	3FG	3FGA	PCT	FT	FTA	PCT	OFF	DEF	REB	AVG	PF	FO	AST	TO	BLK	STL	PTS	AVG
2016-17	34	17	784	23.1	115	212	.542	0	2	.000	46	72	.639	75	81	156	4.6	82	0	24	49	32	39	276	8.1
2017-18	33	27	987	29.9	139	263	.529	0	1	.000	40	67	.597	71	136	207	6.3	78	0	55	57	38	36	318	9.6
2018-19	30	29	1033	34.4	169	334	.506	0	1	.000	56	95	.589	54	138	192	6.4	72	1	76	94	27	49	394	13.1
2019-20	2	2	57	28.5	10	19	.600	2	2	1.000	5	6	.833	1	4	5	2.5	5	0	3	6	2	5	27	13.5
TOTAL	99	75	2861	28.9	433	828	.523	2	6	.333	147	240	.613	201	359	560	5.7	237	1	158	206	99	129	1015	10.3



AZANA BAINES
 #11 • G • 6-1 • FR.
 Blackwood, N.J.
 Gloucester Catholic

#11 AZANA BAINES

NOTES: Collected a career-high 12 points at No. 6 Texas A&M

2019-20 HONORS:

SEASON/CAREER HIGHS

PTS	12	at Texas A&M (11.10.19)
REB	8	vs. High Point (11.5.19)
AST	2	vs. High Point (11.5.19)
FG	4	at Texas A&M (11.10.19)
FGA	9	2x, last at Texas A&M (11.10.19)
FG%	.444 (4-9)	at Texas A&M (11.10.19)
3FG	1	at Texas A&M (11.10.19)
3FGA	1	2x, last at Texas A&M (11.10.19)
FT	3	at Texas A&M (11.10.19)
FTA	4	2x, last at Texas A&M (11.10.19)
FTA%	.750 (3-4)	at Texas A&M (11.10.19)
BLK	1	2x, last at Texas A&M (11.10.19)
STL	1	at Texas A&M (11.10.19)
MIN	28	at Texas A&M (11.10.19)

MISC.

	SEASON/CAREER
10+ PTS	1
20+ PTS	
5+ REB	2
10+ REB	
3+ AST	
3+ STL	
20+ MIN	2
Double-Double	
Triple-Double	
Led Duke in scoring	
Led Duke in rebounding	2
Charges taken	

2019-20 GAME-BY-GAME

DATE	OPPONENT	MIN	FG	3FG	FT	O-D-R	A	T	B	S	TP
11.5	High Point	22	3-9	0-1	2-4	3-5-8	2	2	1	0	8
11.10	at Texas A&M	28	4-9	1-1	3-4	2-3-5	1	1	1	1	12
11.14	at UNLV										
11.17	Northwestern										
11.21	Idaho State										
11.24	Troy										
11.27	Davidson										
11.29	Penn										
12.4	at Nebraska										
12.8	Boston College										
12.19	at South Carolina										
12.29	at FGCU										
1.2	Wake Forest										
1.5	at Louisville										
1.9	at Virginia										
1.12	Virginia Tech										
1.16	Notre Dame										
1.19	at Clemson										
1.23	at Syracuse										
1.26	Georgia Tech										
2.2	NC State										
2.6	North Carolina										
2.9	at Miami										
2.13	at Pitt										
2.16	Florida State										
2.20	Virginia										
2.24	at NC State										
2.27	at Virginia Tech										
3.1	at North Carolina										

* Denotes Started Game; ^ Denotes ACC Tournament; # Denotes NCAA Tournament

BAINES CAREER STATISTICS

YEAR	GP	GS	MIN	AVG	FG	FGA	PCT	3FG	3FGA	PCT	FT	FTA	PCT	OFF	DEF	REB	AVG	PF	FO	AST	TO	BLK	STL	PTS	AVG
2019-20	1	0	22	22.0	3	9	.333	0	1	-	2	4	.500	3	5	8	8.0	1	0	2	2	1	0	8	8.0
TOTAL	1	0	22	22.0	3	9	.333	0	1	-	2	4	.500	3	5	8	8.0	1	0	2	2	1	0	8	8.0



MIKAYLA BOYKIN
 #12 • G • 5-9 • RFR.
 Clinton, N.C.
 Clinton

#12 MIKAYLA BOYKIN

NOTES: Still coming back from her knee injury from last season.

2019-20 HONORS:

CAREER HIGHS

PTS	13	at NC State (1.3.19)
REB	7	vs. Winthrop (12.10.17)
AST	11	at Georgia Tech (1.10.19)
FG	5	3x, last at NC State (1.3.19)
FGA	13	2x, last at NC State (1.3.19)
FG%	1.000 (1-1)	vs. Ohio State (11.30.17)
3FG	3	at NC State (1.3.19)
3FGA	7	at NC State (1.3.19)
FT	2	4x, last vs. Louisville (1.6.19)
FTA	4	2x, last vs. FGCU (12.30.18)
FT%	1.000 (2-2)	4x, last vs. Louisville (1.6.19)
BLK		
STL	5	1 vs. UNLV (12.6.18)
MIN	37	3x, last at Georgia Tech (1.10.19)

SEASON HIGHS

PTS	
REB	
AST	
FG	
FGA	
FG%	
3FG	
3FGA	
FT	
FTA	
FT%	
BLK	
STL	
MIN	

MISC.	SEASON	CAREER
10+ PTS		5
20+ PTS		
5+ REB		5
10+ REB		
3+ AST		8
3+ BLK		2
20+ MIN		12
Double-Double		
Triple-Double		
Led Duke in scoring		
Led Duke in rebounding		1
Charges taken		5

2019-20 GAME-BY-GAME

DATE	OPPONENT	MIN	FG	3FG	FT	O-D-R	A	T	B	S	TP
11.5	High Point	dnp									
11.10	at Texas A&M	dmp									
11.14	at UNLV										
11.17	Northwestern										
11.21	Idaho State										
11.24	Troy										
11.27	Davidson										
11.29	Penn										
12.4	at Nebraska										
12.8	Boston College										
12.19	at South Carolina										
12.29	at FGCU										
1.2	Wake Forest										
1.5	at Louisville										
1.9	at Virginia										
1.12	Virginia Tech										
1.16	Notre Dame										
1.19	at Clemson										
1.23	at Syracuse										
1.26	Georgia Tech										
2.2	NC State										
2.6	North Carolina										
2.9	at Miami										
2.13	at Pitt										
2.16	Florida State										
2.20	Virginia										
2.24	at NC State										
2.27	at Virginia Tech										
3.1	at North Carolina										

* Denotes Started Game; ^ Denotes ACC Tournament; # Denotes NCAA Tournament

BOYKIN CAREER STATISTICS

YEAR	GP	GS	MIN	AVG	FG	FGA	PCT	3FG	3FGA	PCT	FT	FTA	PCT	OFF	DEF	REB	AVG	PF	FO	AST	TO	BLK	STL	PTS	AVG
2017-18	10	8	240	24.0	15	53	.283	6	18	.333	10	14	.714	13	19	32	3.2	17	0	32	20	0	12	46	4.6
2018-19	8	5	236	29.5	31	75	.413	7	26	.269	6	10	.600	6	27	33	4.1	11	0	36	27	0	16	75	9.4
2019-20	0	0	0	0.0	0	0	.000	0	0	.000	0	0	.000	0	0	0	0.0	0	0	0	0	0	0	0	0.0
TOTAL	18	13	476	26.4	46	128	.359	13	44	.295	16	24	.667	19	46	65	3.6	28	0	68	47	0	28	121	6.7



UCHENNA NWOKE
 #13 • C • 6-6 • SO.
 Grand Prairie, Texas
 South Grand Prairie

#13 UCHENNA NWOKE

NOTES:

2019-20 Honors:

CAREER HIGHS

PTS	2	vs. ECU (12.28.18)
REB	3	vs. High Point (11.5.19)
AST		
FG	1	vs. ECU (12.28.18)
FGA	3	vs. ECU (12.28.18)
FG%		
3FG		
3FGA		
FT		
FTA		
FT%		
BLK		
STL		
MIN	7	vs. High Point (11.5.19)

SEASON HIGHS

PTS		
REB	3	vs. High Point (11.5.19)
AST		
FG		
FGA	1	vs. High Point (11.5.19)
FG%		
3FG		
3FGA		
FT		
FTA		
FT%		
BLK		
STL		
MIN	7	vs. High Point (11.5.19)

MISC. SEASON CAREER

10+ PTS		
20+ PTS		
5+ REB		
10+ REB		
3+ AST		
3+ STL		
20+ MIN		
Double-Double		
Triple-Double		
Led Duke in scoring		
Led Duke in rebounding		
Charges taken		

2019-20 GAME-BY-GAME

DATE	OPPONENT	MIN	FG	3FG	FT	O-D-R	A	T	B	S	TP
11.5	High Point	7	0-1	0-0	0-0	0-3-3	0	0	0	0	0
11.10	at Texas A&M	1	0-0	0-0	0-0	0-0-0	0	0	0	0	0
11.14	at UNLV										
11.17	Northwestern										
11.21	Idaho State										
11.24	Troy										
11.27	Davidson										
11.29	Penn										
12.4	at Nebraska										
12.8	Boston College										
12.19	at South Carolina										
12.29	at FGCU										
1.2	Wake Forest										
1.5	at Louisville										
1.9	at Virginia										
1.12	Virginia Tech										
1.16	Notre Dame										
1.19	at Clemson										
1.23	at Syracuse										
1.26	Georgia Tech										
2.2	NC State										
2.6	North Carolina										
2.9	at Miami										
2.13	at Pitt										
2.16	Florida State										
2.20	Virginia										
2.24	at NC State										
2.27	at Virginia Tech										
3.1	at North Carolina										

* Denotes Started Game; ^ Denotes ACC Tournament; # Denotes NCAA Tournament

NWOKE CAREER STATISTICS

YEAR	GP	GS	MIN	AVG	FG	FGA	PCT	3FG	3FGA	PCT	FT	FTA	PCT	OFF	DEF	REB	AVG	PF	FO	AST	TO	BLK	STL	PTS	AVG
2018-19	8	0	20	2.5	1	4	.250	0	0	.000	0	0	.000	2	1	3	0.4	3	0	0	3	0	1	2	0.3
2019-20	2	0	8	4.0	0	1	.000	0	0	.000	0	0	.000	0	3	3	3.0	0	0	0	0	0	0	0	0.0
TOTAL	10	0	28	2.8	1	5	.200	0	0	.000	0	0	.000	2	4	6	0.6	3	0	0	3	0	1	2	0.2



KYRA LAMBERT
 #15 • G • 5-9 • GR.
 Cibolo, Texas
 Samuel Clemens

#15 KYRA LAMBERT

NOTES:

Played in her first game in 962 days against High Point ... sank a 60-foot shot at the buzzer of the first quarter

2019-20 HONORS:

CAREER HIGHS

PTS	17	vs. Grand Canyon (11.17.16)
REB	9	vs. Syracuse (3.3.17)
AST	13	at North Carolina (2.26.17)
FG	6	2x, last vs. GCU (11.17.16)
FGA	12	4x, last at Florida State (1.8.17)
FG%	1.000 (2-2)	vs. Western Carolina (12.29.15)
3FG	3	4x, last at Boston College (1.22.17)
3FGA	7	2x, last vs. Old Dominion (11.22.16)
FT	5	vs. Virginia (3.3.16)
FTA	8	vs. Virginia (3.3.16)
FT%	1.000 (4-4)	2x, last vs. Old Dominion (11.22.16)
BLK	2	vs. Syracuse (2.10.17)
STL	5	3x, last vs. Louisville (1.2.17)
MIN	40	vs. Texas A&M (11.18.15)

SEASON HIGHS

PTS	5	vs. High Point (11.5.19)
REB	1	2x, last at Texas A&M (11.10.19)
AST	2	vs. High Point (11.5.19)
FG	1	vs. High Point (11.5.19)
FGA	2	2x, last at Texas A&M (11.10.19)
FG%	.500 (1-2)	vs. High Point (11.5.19)
3FG	1	vs. High Point (11.5.19)
3FGA	1	vs. High Point (11.5.19)
FT	2	vs. High Point (11.5.19)
FTA	2	vs. High Point (11.5.19)
FT%	1.000 (2-2)	vs. High Point (11.5.19)
BLK		
STL	3	vs. High Point (11.5.19)
MIN	8	vs. High Point (11.5.19)

MISC.	SEASON	CAREER
10+ PTS		17
20+ PTS		0
5+ REB		17
10+ REB		0
3+ AST		35
3+ STL	1	12
20+ MIN		62
Double-Double		1
Triple-Double		0
Led Duke in scoring		2
Led Duke in rebounding		4
Charges taken		9

2019-20 GAME-BY-GAME

DATE	OPPONENT	MIN	FG	3FG	FT	O-D-R	A	T	B	S	TP
11.5	High Point	8	1-2	1-1	2-2	0-1-1	2	0	0	3	5
11.10	at Texas A&M	6	0-2	0-1	0-0	1-0-1	0	0	0	0	0
11.14	at UNLV										
11.17	Northwestern										
11.21	Idaho State										
11.24	Troy										
11.27	Davidson										
11.29	Penn										
12.4	at Nebraska										
12.8	Boston College										
12.19	at South Carolina										
12.29	at FGCU										
1.2	Wake Forest										
1.5	at Louisville										
1.9	at Virginia										
1.12	Virginia Tech										
1.16	Notre Dame										
1.19	at Clemson										
1.23	at Syracuse										
1.26	Georgia Tech										
2.2	NC State										
2.6	North Carolina										
2.9	at Miami										
2.13	at Pitt										
2.16	Florida State										
2.20	Virginia										
2.24	at NC State										
2.27	at Virginia Tech										
3.1	at North Carolina										

* Denotes Started Game; ^ Denotes ACC Tournament; # Denotes NCAA Tournament

LAMBERT CAREER STATISTICS

YEAR	GP	GS	MIN	AVG	FG	FGA	PCT	3FG	3FGA	PCT	FT	FTA	PCT	OFF	DEF	REB	AVG	PF	FO	AST	TO	BLK	STL	PTS	AVG
2015-16	32	23	874	27.3	70	184	.380	18	56	.321	40	61	.656	13	75	88	2.8	79	1	79	62	5	36	198	6.2
2016-17	33	33	992	30.1	98	225	.436	23	58	.397	39	53	.736	29	93	122	3.7	44	1	116	58	5	56	258	7.8
2017-18	-	-	-	-	-	-	-	-	-	-	-	-	-	-	-	-	-	-	-	-	-	-	-	-	-
2018-19	-	-	-	-	-	-	-	-	-	-	-	-	-	-	-	-	-	-	-	-	-	-	-	-	-
2019-20	2	0	14	7.0	1	4	.250	1	1	1.000	2	2	1.000	0	2	2	1.0	0	0	1	0	0	3	5	2.5
TOTAL	67	57	1880	28.1	169	413	.409	42	115	.365	81	116	.698	42	170	212	3.2	123	2	196	120	10	95	461	6.9



#24 ONOME AKINBODE-JAMES

NOTES:

2019-20 Honors:

ONOME AKINBODE-JAMES
 #24 • F/C • 6-3 • SO.
 Abeokuta, Nigeria
 Blair Academy - N.J.

CAREER HIGHS

PTS	14	at Wisconsin (11.28.18)
REB	14	2x, last vs. Clemson (2.28.19)
AST	2	2x, last at North Carolina (2.7.19)
FG	6	at Wisconsin (11.28.18)
FGA	12	at Wisconsin (11.28.18)
FG%	1.000 (2-2)	vs. Wake Forest (1.24.19)
3FG		
3FGA		
FT	3	at Northwestern (11.11.18)
FTA	4	2x, last vs. Wake Forest (1.24.19)
FT%	1.000 (2-2)	at Wisconsin (11.28.18)
BLK	6	vs. Clemson (2.28.19)
STL	3	2x, last at Texas A&M (11.10.19)
MIN	30	at Wisconsin (11.28.18)

SEASON HIGHS

PTS	10	vs. High Point (11.5.19)
REB	6	vs. High Point (11.5.19)
AST	1	at Texas A&M (11.10.19)
FG	4	vs. High Point (11.5.19)
FGA	8	vs. High Point (11.5.19)
FG%	.500 (4-8)	vs. High Point (11.5.19)
3FG		
3FGA		
FT	2	vs. High Point (11.5.19)
FTA	2	vs. High Point (11.5.19)
FT%	1.000 (2-2)	vs. High Point (11.5.19)
BLK	2	vs. High Point (11.5.19)
STL	3	at Texas A&M (11.10.19)
MIN	22	vs. High Point (11.5.19)

MISC.	SEASON	CAREER
10+ PTS	1	3
20+ PTS		
5+ REB	1	16
10+ REB		3
3+ AST		1
3+ BLKS		6
20+ MIN	2	19
Double-Double		1
Triple-Double		
Led Duke in scoring		1
Led Duke in rebounding		6
Charges taken		

2019-20 GAME-BY-GAME

DATE	OPPONENT	MIN	FG	3FG	FT	O-D-R	A	T	B	S	TP
11.5	High Point	22	4-8	0-0	2-2	4-2-6	0	4	2	1	10
11.10	at Texas A&M	21	1-4	0-0	0-0	3-0-3	1	0	0	3	2
11.14	at UNLV										
11.17	Northwestern										
11.21	Idaho State										
11.24	Troy										
11.27	Davidson										
11.29	Penn										
12.4	at Nebraska										
12.8	Boston College										
12.19	at South Carolina										
12.29	at FGCU										
1.2	Wake Forest										
1.5	at Louisville										
1.9	at Virginia										
1.12	Virginia Tech										
1.16	Notre Dame										
1.19	at Clemson										
1.23	at Syracuse										
1.26	Georgia Tech										
2.2	NC State										
2.6	North Carolina										
2.9	at Miami										
2.13	at Pitt										
2.16	Florida State										
2.20	Virginia										
2.24	at NC State										
2.27	at Virginia Tech										
3.1	at North Carolina										

* Denotes Started Game; ^ Denotes ACC Tournament; # Denotes NCAA Tournament

AKINBODE-JAMES CAREER STATISTICS

YEAR	GP	GS	MIN	AVG	FG	FGA	PCT	3FG	3FGA	PCT	FT	FTA	PCT	OFF	DEF	REB	AVG	PF	FO	AST	TO	BLK	STL	PTS	AVG
2018-19	30	22	625	20.8	49	109	.450	0	0	.000	22	40	.550	63	98	161	5.4	70	2	16	61	42	20	120	4.0
2019-20	2	2	43	21.5	5	12	.417	0	0	.000	2	2	.500	7	2	9	6.0	4	0	1	4	2	4	12	6.0
TOTAL	32	24	668	20.9	54	121	.446	0	0	.000	24	42	.571	70	100	170	5.4	74	2	17	65	44	24	132	4.1



JADE WILLIAMS
 #25 • F/C • 6-5 • JR.
 The Colony, Texas
 The Colony

#25 JADE WILLIAMS

NOTES:

2019-20 HONORS:
 Lisa Leslie Award Watch List

CAREER HIGHS

PTS	17	3x, last at Wake Forest (2.24.19)
REB	13	vs. North Carolina (3.3.19)
AST	6	at North Carolina (2.7.19)
FG	7	4x, last vs. North Carolina (3.3.19)
FGA	16	at Wake Forest (2.24.19)
FG%	1.000 (3-3)2x, last at North Carolina (1.21.18)	
3FG	2	vs. High Point (11.5.19)
3FGA	4	vs. High Point (11.5.19)
FT	5	vs. FGCU (12.30.18)
FTA	8	vs. FGCU (12.30.18)
FT%	1.000 (3-3)	at Florida State (1.20.19)
BLK	6	vs. Georgia Tech (2.1.18)
STL	3	vs. Washington (11.23.18)
MIN	39	at Wake Forest (2.24.19)

SEASON HIGHS

PTS	12	vs. High Point (11.5.19)
REB	5	vs. High Point (11.5.19)
AST	2	at Texas A&M (11.10.19)
FG	5	vs. High Point (11.5.19)
FGA	9	2x, last at Texas A&M (11.10.19)
FG%	.556 (5-9)	vs. High Point (11.5.19)
3FG	2	vs. High Point (11.5.19)
3FGA	4	vs. High Point (11.5.19)
FT	1	at Texas A&M (11.10.19)
FTA	2	at Texas A&M (11.10.19)
FT%	.500 (1-2)	at Texas A&M (11.10.19)
BLK		
STL	1	2x, last at Texas A&M (11.10.19)
MIN	26	at Texas A&M (11.10.19)

MISC.	SEASON	CAREER
10+ PTS	1	13
20+ PTS		
5+ REB	1	20
10+ REB		2
3+ AST		3
3+ STL		3
20+ MIN	1	34
Double-Double		2
Triple-Double		
Led Duke in scoring		2
Led Duke in rebounding		4
Charges taken		1

2019-20 GAME-BY-GAME

DATE	OPPONENT	MIN	FG	3FG	FT	O-D-R	A	T	B	S	TP
11.5	High Point *	15	5-9	2-4	0-0	4-1-5	0	1	0	1	12
11.10	at Texas A&M *	26	3-9	1-2	1-2	1-1-2	2	4	0	1	8
11.14	at UNLV										
11.17	Northwestern										
11.21	Idaho State										
11.24	Troy										
11.27	Davidson										
11.29	Penn										
12.4	at Nebraska										
12.8	Boston College										
12.19	at South Carolina										
12.29	at FGCU										
1.2	Wake Forest										
1.5	at Louisville										
1.9	at Virginia										
1.12	Virginia Tech										
1.16	Notre Dame										
1.19	at Clemson										
1.23	at Syracuse										
1.26	Georgia Tech										
2.2	NC State										
2.6	North Carolina										
2.9	at Miami										
2.13	at Pitt										
2.16	Florida State										
2.20	Virginia										
2.24	at NC State										
2.27	at Virginia Tech										
3.1	at North Carolina										

* Denotes Started Game; ^ Denotes ACC Tournament; # Denotes NCAA Tournament

WILLIAMS CAREER STATISTICS

YEAR	GP	GS	MIN	AVG	FG	FGA	PCT	3FG	3FGA	PCT	FT	FTA	PCT	OFF	DEF	REB	AVG	PF	FO	AST	TO	BLK	STL	PTS	AVG
2017-18	33	8	487	14.8	58	111	.523	0	1	.000	15	40	.375	42	58	100	3.0	66	1	20	47	40	13	131	4.0
2018-19	30	23	830	27.7	106	231	.459	2	5	.400	39	67	.582	74	87	161	5.4	94	4	28	67	20	27	253	8.4
2019-20	2	2	41	20.5	8	18	.444	3	6	.500	1	2	.500	5	2	7	3.5	7	0	2	5	0	2	20	10.0
TOTAL	65	33	1358	20.9	172	360	.478	5	12	.417	55	109	.505	121	147	268	4.1	167	5	50	119	60	42	404	6.2



#30 EMILY SCHUBERT

NOTES:

2019-20 HONORS:

EMILY SCHUBERT
 #30 • C • 6-4 • SR.
 Elizabethton, Tenn.
 Elizabethton

CAREER HIGHS

PTS		
REB	2	vs. High Point (11.5.19)
AST	1	vs. UNCG (12.7.17)
FG		
FGA	2	vs. Wake Forest (1.24.19)
FG%		
3FG		
3FGA		
FT		
FTA		
FT%		
BLK	1	2x, last vs. Presbyterian (11.26.17)
STL		
MIN	4	2x, last vs. Pittsburgh (3.6.19)

SEASON HIGHS

PTS	
REB	
AST	
FG	
FGA	
FG%	
3FG	
3FGA	
FT	
FTA	
FT%	
BLK	
STL	
MIN	

MISC.	SEASON	CAREER
10+ PTS		
20+ PTS		
5+ REB		
10+ REB		
3+ AST		
3+ STL		
20+ MIN		
Double-Double		
Triple-Double		
Led Duke in scoring		
Led Duke in rebounding		
Charges taken		

2019-20 GAME-BY-GAME

DATE	OPPONENT	MIN	FG	3FG	FT	O-D-R	A	T	B	S	TP
11.5	High Point	2	0-0	0-0	0-0	0-2-2	0	0	0	0	0
11.10	at Texas A&M	DNP - CD									
11.14	at UNLV										
11.17	Northwestern										
11.21	Idaho State										
11.24	Troy										
11.27	Davidson										
11.29	Penn										
12.4	at Nebraska										
12.8	Boston College										
12.19	at South Carolina										
12.29	at FGCU										
1.2	Wake Forest										
1.5	at Louisville										
1.9	at Virginia										
1.12	Virginia Tech										
1.16	Notre Dame										
1.19	at Clemson										
1.23	at Syracuse										
1.26	Georgia Tech										
2.2	NC State										
2.6	North Carolina										
2.9	at Miami										
2.13	at Pitt										
2.16	Florida State										
2.20	Virginia										
2.24	at NC State										
2.27	at Virginia Tech										
3.1	at North Carolina										

* Denotes Started Game; ^ Denotes ACC Tournament; # Denotes NCAA Tournament

SCHUBERT CAREER STATISTICS

YEAR	GP	GS	MIN	AVG	FG	FGA	PCT	3FG	3FGA	PCT	FT	FTA	PCT	OFF	DEF	REB	AVG	PF	FO	AST	TO	BLK	STL	PTS	AVG
2016-17	0	0	0	0.0	0	0	.000	0	0	.000	0	0	.000	0	0	0	0.0	0	0	0	0	0	0	0	0.0
2017-18	6	0	12	2.0	0	1	.000	0	0	.000	0	0	.000	0	0	0	0.0	2	0	1	0	2	0	0	0.0
2018-19	5	0	13	2.6	0	4	.000	0	0	.000	0	0	.000	0	0	0	0.0	2	0	0	1	0	0	0	0.0
2019-20	1	0	2	2.0	0	0	.000	0	0	.000	0	0	.000	0	2	2	0.0	0	0	0	0	0	0	0	0.0
TOTAL	12	0	27	2.3	0	5	.000	0	0	.000	0	0	.000	0	2	2	0.2	4	0	1	1	2	0	0	0.0



#32 JAYDA ADAMS

NOTES:

2019-20 HONORS:

JAYDA ADAMS
 #32 • G • 6-0 • JR.
 Irvine, Calif.
 Mater Dei

CAREER HIGHS

PTS	13	vs. Pittsburgh (3.6.19)
REB	4	2x, last at North Carolina (2.7.19)
AST	4	vs. Elon (11.18.18)
FG	4	2x, last vs. Pittsburgh (3.6.19)
FGA	7	vs. Wake Forest (1.24.19)
FG%	1.000 (1-1)	2x, last vs. Marist (12.2.18)
3FG	4	vs. Wake Forest (1.24.19)
3FGA	5	vs. Wake Forest (1.24.19)
FT	1	3x, last vs. UNLV (12.6.18)
FTA	3	vs. Miami (1.17.19)
FT%	1.000 (2-2)	2x, last vs. Pittsburgh (3.6.19)
BLK	2	at Wisconsin (11.28.18)
STL	2	5x, last vs. Clemson (2.28.19)
MIN	34	vs. Syracuse (1.27.19)

SEASON HIGHS

PTS	
REB	
AST	
FG	
FGA	
FG%	
3FG	
3FGA	
FT	
FTA	
FT%	
BLK	
STL	
MIN	

MISC.	SEASON	CAREER
10+ PTS		2
20+ PTS		
5+ REB		
10+ REB		
3+ AST		3
3+ STL		
20+ MIN		17
Double-Double		
Triple-Double		
Led Duke in scoring		
Led Duke in rebounding		
Charges taken		1

2019-20 GAME-BY-GAME

DATE	OPPONENT	MIN	FG	3FG	FT	O-D-R	A	T	B	S	TP
11.5	High Point	DNP - Injured									
11.10	at Texas A&M	DNP - Injured									
11.14	at UNLV										
11.17	Northwestern										
11.21	Idaho State										
11.24	Troy										
11.27	Davidson										
11.29	Penn										
12.4	at Nebraska										
12.8	Boston College										
12.19	at South Carolina										
12.29	at FGCU										
1.2	Wake Forest										
1.5	at Louisville										
1.9	at Virginia										
1.12	Virginia Tech										
1.16	Notre Dame										
1.19	at Clemson										
1.23	at Syracuse										
1.26	Georgia Tech										
2.2	NC State										
2.6	North Carolina										
2.9	at Miami										
2.13	at Pitt										
2.16	Florida State										
2.20	Virginia										
2.24	at NC State										
2.27	at Virginia Tech										
3.1	at North Carolina										

* Denotes Started Game; ^ Denotes ACC Tournament; # Denotes NCAA Tournament

YEAR	GP	GS	MIN	AVG	FG	FGA	PCT	3FG	3FGA	PCT	FT	FTA	PCT	OFF	DEF	REB	AVG	PF	FO	AST	TO	BLK	STL	PTS	AVG
2017-18	33	0	431	13.1	21	69	.304	11	41	.268	6	12	.500	6	23	29	0.9	25	0	23	34	1	6	59	1.8
2018-19	30	2	535	17.8	32	96	.333	21	57	.368	9	15	.600	16	21	37	1.2	32	0	29	27	2	19	94	3.1
2019-20																									
TOTAL	63	2	966	15.3	53	165	.321	32	98	.327	15	27	.556	22	44	66	1.0	57	0	52	61	3	25	153	2.4