



2006-07 WOMEN'S BASKETBALL GAME NOTES

Houston (0-1) at #6/5 Duke (2-0)

November 19, 2006 • 2:00 PM • Durham, N.C. • Cameron Indoor Stadium (9,314)



**University of
Houston**

At

**Duke
University**



Cougars

Game Three

Blue Devils

Duke & Houston Set To Tangle On Sunday In Cameron Indoor Stadium...

After opening the season with two straight victories, the fifth-ranked Duke Women's Basketball team will next host Houston on Sunday in Cameron Indoor Stadium at 2:00 p.m. It will mark the third contest of a four-game homestand to open the 2006-07 season for the Blue Devils.

Sunday's contest will be aired live on the Duke Radio Network with Steve Barnes (Play-by-Play) and Missy Anderson (Color) calling the action, while the game will also be aired live on the web by ACC Select (<http://duke.acselect.com>).

Duke is in the second leg of a tough stretch where the Blue Devils are playing three games in five days against Marist, Houston and Penn State before playing their first road contest after the Thanksgiving holiday at Michigan on Nov. 25.

The Blue Devils are ranked No. 5 in the latest ESPN/USA Today Coaches Poll and sixth nationally by the Associated Press.

MEDIA INFORMATION

Series Record: First Meeting
Duke Head Coach: Gail Goestenkors
Career Record: 366-97 (15th Year)
Record at Duke: Same
Houston Head Coach: Joe Curl
Career Record: 271-208 (16th Year)
Record at Houston: 133-108 (9th Year)
Radio: WDNC - AM 620
Steve Barnes (PXP), Missy Anderson (Color)
Online Video: <http://duke.acselect.com>
Online Livestats: www.GoDuke.com
Television: None
Tickets: Duke Ticket Office: (919) 681-2583
Rankings: Duke (No. 5 USA Today/ESPN; No. 6 AP)

TALE OF THE TAPE

Duke	Statistical Comparison	UH
2-0	Record	0-1
.436	Field Goal Percentage	.328
.274	Opponent Field Goal Percentage	.441
.333	Three-Point Field Goal Percentage	.417
4.5	Three-Pointers Per Game	5.0
.636	Free Throw Percentage	.600
23.5	Offensive Rebounds Per Game	12.0
56.0	Rebound Average	41.0
+25.0	Rebound Margin	+2.0
86.5	Points Per Game	51.0
49.5	Points Allowed Per Game	69.0
+37.0	Point Differential	-18.0
8.5	Blocks Per Game	1.0
17.0	Assists Per Game	11.0
17.0	Steals Per Game	6.0
16.5	Turnovers Per Game	20.0

Probable Duke Starters...

No.	Name	Ht.	Yr.	Pos.	PPG	RPG	APG	BPG	STL	FG%
30	Carrem Gay	6-2	So.	F	15.0	8.0	0.0	1.0	1.5	73.3
<i>Posted first career double-double against Marist with 14 points, 10 rebounds</i>										
43	Alison Bales	6-7	Sr.	C	10.0	8.0	1.0	4.5	0.0	33.3
<i>Needs seven blocks to move into third place on the ACC all-time blocks list</i>										
23	Wanisha Smith	5-11	Jr.	G	7.0	5.5	5.0	0.5	2.0	20.0
<i>Leads Duke with 5.0 assists per game this season</i>										
4	Abby Waner	5-10	So.	G	15.0	5.5	1.5	0.0	4.5	57.1
<i>Totaled nine steals in two contests this year</i>										
10	Lindsey Harding	5-8	R-Sr.	G	9.0	3.5	3.0	0.5	4.0	43.8
<i>2006 ACC Defensive Player of the Year; National Player of the Year Candidate</i>										

Off The Bench...

No.	Name	Ht.	Yr.	Pos.	PPG	RPG	APG	BPG	STL	FG%
15	Bridgette Mitchell	6-0	Fr.	F/G	10.0	10.0	1.5	0.5	2.0	50.0
21	Joy Cheek	6-1	Fr.	F	8.5	6.5	0.0	0.5	0.5	41.7
22	Brittany Mitch	6-2	R-Fr.	G/F	6.5	0.5	1.5	0.5	2.0	50.0
2	Emily Waner	5-8	Jr.	G	4.5	2.5	2.0	0.5	0.0	30.0
31	Keturah Jackson	6-0	R-Fr.	G	1.5	3.0	1.5	0.0	0.5	20.0
11	Chante Black	6-5	Jr.	F/C		DNP				

2006-07 DUKE SCHEDULE (2-0 Overall, 0-0 in ACC)

November

Date	Opponent	Time/Results
5	ANDERSON (EXHIB)	W, 107-37
9	PREMIER PLAYERS (EXHIB)	W, 96-47
11	NORTHEASTERN	W, 102-490
17	MARIST	W, 71-50
19	HOUSTON	2:00 PM
21	PENN STATE	7:00 PM
25	at Michigan	7:00 PM
29	OLD DOMINION	7:00 PM

December

4	at Rutgers^	7:00 PM (ESPN2)
7	VANDERBILT	7:00 PM
10	TEXAS	1:00 PM (ESPN)
19	vs. Bowling Green-	TBA
20	vs. SMU-	TBA
21	vs. Pittsburgh-	TBA
29	at Dartmouth\$	7:00 PM (CSTV)
30	vs. Dayton/Boston University	5:00/7:00 PM

January

3	MIAMI*	7:00 PM
7	at Virginia Tech*	12:30 PM (RSN)
10	GEORGIA TECH*	7:00 PM
13	MARYLAND*	12:30 PM (FSN)
18	at N.C. State*	7:00 PM
22	at Tennessee*	7:00 PM
25	at Florida State*	7:00 PM (Sun Sports)
29	VIRGINIA TECH*	7:00 PM (RSN)

February

2	at Virginia*	7:00 PM (RSN)
5	CLEMSON*	7:00 PM
8	at North Carolina*	7:00 PM (ESPN2)
11	at Wake Forest*	3:00 PM
15	BOSTON COLLEGE*	7:00 PM
18	at Maryland*	6:00 PM (FSN)
25	NORTH CAROLINA*	4:00 PM (ESPN)

March

1-4	ACC TOURNAMENT&	
17-20	NCAA Tournament First/Second Rounds	TBA
24-27	NCAA Tournament Regionals	TBA

April

1, 3	NCAA Final Four	TBA
Quicken Loans Arena - Cleveland, Ohio		

* ACC Contest

^ Jimmy V Classic (Piscataway, N.J.)

- Caribbean Classic (Cancun, Mexico)

\$ Blue Sky Resort Classic (Hanover, N.H.)

& At Greensboro Coliseum in Greensboro, N.C.

DUKE SPORTS INFORMATION

Associate SID (WBB): Lindy Brown
Office Phone: (919) 684-2664
Cell Phone: (919) 599-9821
Fax: (919) 684-2489
Press Row: (919) 684-6186

www.GoDuke.com



Houston at Duke

QUICK FACTS

Location	Durham, N.C.
Enrollment	6,558
Founded	1838 Trinity College
Color	Royal Blue & White
Nickname	Blue Devils
Conference	ACC
Arena	Cameron Indoor Stadium (9,314)
President	Dr. Richard H. Brodhead
Athletic Director	Joe Alleva
Basketball Office Phone	(919) 613-7565
Head Coach	Gail Goestenkers
Assistant Coaches	Gale Valley, Tia Jackson, Shannon Perry
Athletic Trainer	Summer McKeehan

BASKETBALL HISTORY

First Year of Basketball	1975-76
Overall All-Time Record	581-312
ACC Record	234-174
Home Record	300-106
Road Record	174-138
Neutral Record	106-56
NCAA Appearances/Last	13/2006
NCAA Best Finish . 1999, 2006, NCAA Runner-Up	
WNIT Appearances/Last	1/1986
ACC Tournament Titles	2004, '03, '02, '01, '00
ACC Regular Season Titles	2005, '04, '03, '02, '01, '00, '99, '98

TICKET INFORMATION

Ticket Office Phone	(919) 681-2583
.....	(877) 375-3853
Game Tickets	\$12 (Reserved)
.....	\$7 (General Admission - Adult)
.....	\$5 (General Admission - Youth/Senior)
.....	\$2 (Groups)

Duke students with a valid ID are admitted free to all regular season contests.

MEDIA INFORMATION

Duke head coach Gail Goestenkers is generally available in the mornings and after practice in the afternoon/early evenings. Player interviews during the week must be arranged through the Sports Information Office by getting in touch with Lindy Brown at 919-684-2664 or lbrown@duaa.duke.edu.

Phone interviews with out of town media can also be arranged. All interview requests should be made at least one day in advance and the best time for interviews is generally before or after practice.

Sports Information Office Address:
Duke Sports Information
115 Cameron Indoor Stadium
Durham, N.C. 27708

Noting Duke...

Through two contests, everyone on the Duke squad has shared minutes as no player has seen action in more than 27 minutes in a game ... all 11 players for Duke have played and scored in the first two contests ... eight of the 10 Blue Devils have blocked at least one shot in the two games.

Home Victories...

The Blue Devils reached 300 all-time wins in Cameron Indoor Stadium with the 71-50 victory over Marist on Friday. Over her 15 years at Duke, Head Coach **Gail Goestenkers** has amassed a 178-26 record at home in Cameron. Overall, Duke has totaled a 300-106 mark at home in 32 years.

Duke has won the past 55 straight home contests against unranked opponents.

A Look At Houston...

The Cougars are coming off a 69-51 loss to Texas Tech on Nov. 14. Houston was led by Ryan Bradley with 18 points, Maya Onikute with 15 points and Ryan Meyers with 16 rebounds. Head Coach Joe Curl is in his ninth season at Houston and owns a 133-108 record. The Cougars will travel with only eight players this weekend as All-America candidate Tye Jackson is expected to be out with an injury.

Both **Lindsey Harding** of Duke and Jackson of Houston played AAU ball together growing up.

Series With Houston...

Duke and Houston will be meeting on Sunday for the first time in school history.

Duke Versus The Conference USA...

Duke owns a 9-10 record against teams in the Conference USA-- East Carolina (6-9), Marshall (0-1), Tulane (1-0) and Tulsa (2-0).

Harding Player Hometown Squad...

Although Duke was never able to play a contest in Houston, Texas for senior point guard **Lindsey Harding**, the Blue Devils were able to bring Houston to Cameron Indoor Stadium this weekend. Harding, who was a track and basketball star at CY-Fair High School, averaged 25.0 points, 8.9 rebounds and 4.1 assists as a senior.

Harding did travel to South Padre Island, Texas as a freshman to play in her home state. In the two games against Detroit Mercy (W, 92-52) and Iowa State (W, 88-59), Harding averaged 5.0 assists, 2.0 rebounds and 1.5 steals in 20 minutes a contest.

Marist Game Recap...

Duke sophomore **Carrem Gay** registered her first career double-double as fifth-ranked Duke downed Marist, 71-50, on Friday evening in Cameron Indoor Stadium. Gay posted 14 points and 10 rebounds in 25 minutes of action as the Blue Devils improved to 2-0.

Sophomore **Abby Waner** added 14 points, a career-high seven rebounds and four steals, while **Alison Bales** had 12 points, five rebounds, four blocks in only 19 minutes.

Duke used a 12-2 run to build a 20-point advantage midway through the second half to take control after leading by 10 at halftime. The win was the Blue Devils' 300th at Cameron Indoor Stadium, where they have won their last 55 games against unranked opponents.

Bales, who was 1-of-10 from the field in Duke's season opener, bounced back with a 4-of-5 shooting performance. The 6-7 senior center grabbed five rebounds and blocked four shots.

Duke shot 42.4 percent from the floor, but hit just 4-of-14 three-point attempts and turned the ball over 14 times. Duke led as many as 14 in the first half, but led just 32-22 at the break despite a 25.8-percent shooting effort from Marist.

The Blue Devils scored the first 10 points of the game, jumping out to a 14-2 lead.

Duke Struggling Shooting Out Of The Gate...

After shooting 49.8 percent from the field and 39.1 percent from three-point range last season, Duke has opened the 2006-07 campaign by hitting only 43.6 percent from the field and 33.3 percent from downtown. Only four of the Blue Devils are hitting above 50.0 percent from the field so far through two contests-- **Carrem Gay** (73.3), **Abby Waner** (57.1), **Bridgette Mitchell** (50.0) and **Brittany Mitch** (50.0).

Gay Opens Season In Impressive Fashion...

In the season opener against Northeastern, sophomore **Carrem Gay** posted a career-high 16 points to go along with six rebounds, two steals and two blocks in only 21 minutes. Gay led the Blue Devils with 14 first half points, hitting 4-of-6 field goals.

Gay trumped her career high from the season opener with her first career double-double in the second game against Marist with 14 points and 10 rebounds in only 25 minutes.



She is coming off a freshman season where she was never fully healthy with a sublexed shoulder, which happened in the preseason. In the offseason, she had surgery to repair the shoulder and continues to strengthen it. Gay, who is from New York, N.Y., averaged 3.7 points and 2.4 rebounds as a freshman, while hitting 62.5 percent of her field goals.

Freshmen Spectacular In Debut...

Duke freshmen **Bridgette Mitchell** and **Joy Cheek** each made impressive college debuts on Nov. 11 against Northeastern. The duo became the first Blue Devil freshmen tandem to register double-doubles in their college debuts and the first freshmen to notch a double-double in the season opener since Monique Currie posted 17 points and 10 rebounds against Texas Tech on Nov. 11, 2001.

Mitchell, who is from Trenton, N.J., posted game-highs of 18 points and 13 rebounds in only 23 minutes, while Cheek, a product of Charlotte, N.C., added 12 points and 11 rebounds in 20 minutes. Mitchell's 11 offensive rebounds in the contest was the second-most in school history behind Carey Kauffman's 13 against UNC Asheville on Nov. 30, 1994 (offensive rebounds were not kept prior to 1986).

Black Making Progress...

Junior **Chante Black** continues to make progress from her right knee hyperextension, which occurred back on Oct. 14. She is listed as questionable for Sunday's contest against Houston, after not playing against Northeastern and Marist.

ACC Select To Air Contests...

Throughout the 2006-07 season all non-televvised women's basketball contests will be aired live on "ACC Select," which is a new broadband experience that gives you the best seat in the house for the sports you love, the team you care about and the games you can't see anywhere else. With full-screen video delivered right to your computer, you'll feel like you're actually at the event. Just head to duke.accselect.com or GoDuke.com for additional information.

The Houston, Penn State, Old Dominion and Vanderbilt games will be aired.

Duke In November...

Over the last eight years, Duke owns a 37-5 record in games played in November. Under the direction of **Gail Goestenkers**, the Blue Devils have tallied a 57-11 record in the month of November over her 15 years.

The Record Book...

As **Alison Bales** enters her final year with the Blue Devils, she is on the verge of becoming the ACC's all-time leader in blocked shots. Bales owns 292 and needs 39 to move past Virginia's DeMya Walker (330).

Bales also needs 25 rejections to move into the top-25 of the NCAA all-time blocked shots list. As a junior, Bales moved past Sarah Sullivan (212) to become Duke's all-time leader in blocked shots.

Senior **Lindsey Harding** owns 454 assists over her four years, which ranks third on Duke's all-time list. She needs 80 to move past Hilary Howard for first. On the career steals chart, Harding is seventh with 218.

Duke Ranks As One Of The Tallest...

In ranking all of the Division I women's basketball teams as far as height, Duke ranks as the sixth tallest team in the nation at 72.55. Here is the top-10: Wake Forest (73.27), Marquette (72.82), Illinois (72.75), Auburn (72.62), Texas (72.57), Duke (72.55), Florida State (72.42), UCLA (72.21), Stanford (72.11) and Purdue (72.10).

The Atlantic Coast Conference (ACC) is the tallest league with a 71.44 with the Big 10 ranking second at 71.41.

Harding, Bales Named Wooden Award Candidate...

ACC Career Blocked Shots

1.	330	DeMya Walker (UVA), 1996-99
2.	329	Dawn Royster (UNC), 1984-87
3.	298	Peggy Caple (CU), 1982-85
4.	292	Alison Bales (Duke), 2004-present
5.	245	Dolores Bootz (GT), 1985-88
6.	212	Sarah Sullivan (Duke), 1983-87
7.	209	Brooke Wyckoff (FSU), 1998-2001
8.	208	Candace Sutton (UNC), 2001-04
9.	195	Kasha Terry (GT), 2003-06
10.	186	Kris Kirchner (MD), 1978-80

GOESTENKORS POSTING IMPRESSIVE WIN PERCENTAGE

Duke Head Coach **Gail Goestenkers** has coached in 220 ACC regular season games and owns a record of 165-55, which is a 75.0 win percentage. The 75.0 percentage is higher than any men's and women's coach in ACC history with a minimum of 200 games coached. The second-best percentage is 72.8 by Dean Smith, who coached at North Carolina for 36 years.

In comparing the top six men's and women's ACC coaches in terms of ACC win percentage here is a listing - Gail Goestenkers, Duke (75.0, 165-55), Dean Smith, UNC (72.8, 364-136), Mike Krzyzewski, Duke (70.0, 264-113), Frank McGuire, UNC/USC (69.3, 142-63), Debbie Ryan, Virginia (68.5, 270-124), and Kay Yow, NCSU (64.3, 263-146). Only Goestenkers, Ryan, Krzyzewski and Yow are active coaches.

Gail Goestenkers
Head Coach



COACHING HONORS

National Coach of the Year	
WBCA/Rawlings	2003
Victor Award	2003
Naismith	2003
GBallMag.com	2002
Basketball Times	2000
Victor Award	1999
Conference Coach of the Year	
Atlantic Coast	2004
Atlantic Coast	2003
Atlantic Coast	2002
Atlantic Coast	1999
Atlantic Coast	1998
Atlantic Coast	1996
WBCA District Coach of the Year	
District II	2004
District II	2003
District II	2002
District II	2001
District III	1995

COACHING HIGHLIGHTS

NCAA National Championship Game	2
(1999, 2006)	
NCAA Final Four	4
(1999, 2002, 2003, 2006)	
NCAA Elite Eight	6
(1998, '99, '02, '03, '04, '05)	
NCAA Sweet Sixteen	9
(1998, '99, '00, '01, '02, '03, '04, '05, '06)	
NCAA Tournament Bids	12
(1995, '96, '97, '98, '99, '00, '01, '02, '03, '04, '05, '06)	

YEAR-BY-YEAR RECORD

Year	Record	ACC Record
1992-93	12-15	3-13
1993-94	16-11	7-9
1994-95	22-9	10-6
1995-96	26-7	12-4
1996-97	19-11	9-7
1997-98	24-8	13-3
1998-99	29-7	15-1
1999-00	28-6	12-4
2000-01	30-4	13-3
2001-02	31-4	16-0
2002-03	35-2	16-0
2003-04	30-4	15-1
2004-05	31-5	12-2
2005-06	31-4	12-2
2006-07	2-0	0-0
Total	366-97 (.791)	165-55 (.750)



The John R. Wooden Award announced the preseason candidates for the 2006-07 Women's Wooden Award on Nov. 1 with Duke's **Alison Bales** and **Lindsey Harding** among the top-30 selections.

These top 30 candidates are comprised of returning players, although transfers, freshmen, medical redshirts and other players who excel throughout the season will be evaluated and considered for both the Midseason Top 20 list and the National Ballot. Players not on the preseason list are eligible for the midseason list and ballot.

Blue Devils Jump One Spot To Fifth In USA Today/ESPN Coaches Poll...

Duke moved up one spot to fifth in the latest *USA Today*/ESPN Division I Top 25 Coaches poll that was released on Nov. 14. The Blue Devils remained No. 6 in the Associated Press poll as no new poll was produced. With the top-10 ranking, the Blue Devils have been listed in the top-10 of the *USA Today* ESPN Coaches Poll for 73 straight weeks, which dates back to the 2001-02 campaign.

A Look At The Exhibition Games...

Duke averaged 101.5 points and won both games by a 59.5 margin as the Blue Devils won 107-37 over Division II Anderson University and 96-47 against Premier Players. Senior **Alison Bales** notched two double-doubles and averaged 18.0 points, 10.0 rebounds, 6.0 blocks and hit 66.7 percent of her field goals.

Sophomore **Abby Waner** averaged 16.0 points, 6.0 rebounds, 3.0 steals, 1.5 assists and hit 51.9 percent of her field goals. Duke hit 43.3 percent from the floor, 28.9 percent from downtown and 67.7 percent from the charity stripe. Three other Blue Devils averaged double-figures-- freshman **Joy Cheek** (12.0), freshman **Bridgette Mitchell** (12.0) and senior **Lindsey Harding** (10.5).

Season Openers...

Head Coach **Gail Goestenkers** owns a 13-2 record in season openers over her 15 years with the Blue Devils. Overall, Duke is 24-8 in season openers over its 32 years of women's basketball.

Senior Leaders...

Duke senior co-captains **Lindsey Harding** and **Alison Bales** will lead the Blue Devils in 2006-07. The duo guided Duke to a 31-4 overall record last season and an appearance in the National Championship game. Both played some of their best basketball of their career as Bales was named Bridgeport Regional MVP, after leading the Blue Devils to victories over Michigan State and Connecticut, while Harding earned ACC Defensive Player of the Year honors.

Both Harding and Bales have been selected to the preseason "Wade Watch" list, which is comprised of the top-25 women's basketball players in the nation vying for the State Farm Wade Trophy as the National Player of the Year.

Harding & Waner Named Top Backcourt...

As part of ESPN.com's 2006-07 preview package, the site released a 20-part preview on Nov. 7 which features the question of "Who has the nation's best backcourt," with the Duke duo of senior **Lindsey Harding**

Career Double-Doubles For The 2006-07 Blue Devils

Alison Bales - 7 2005-06 (5) 18 pts., 12 rbs. vs. BSU 12 pts., 11 rbs. at USD 13 pts., 11 rbs. at HC 15 pts., 13 rbs. vs. CON 19 pts., 12 rbs. vs. MD 2004-05 (2) 13 pts., 14 rbs. vs. SFA 11 pts., 13 rbs. vs. KSU	14 pts., 13 rbs. vs. MD 12 pts., 11 rbs. vs. CAN
Joy Cheek - 1 2006-07 (1) 12 rbs., 11 reb. vs. NE	Carrem Gay - 1 2006-07 (1) 14 pts., 10 rbs. vs. MAR
Chante Black - 6 2005-06 (1) 13 pts., 14 rbs. vs. WFU 2004-05 (5) 12 pts., 10 rbs. vs. SFA 12 pts., 12 rbs. vs. HC 10 pts., 11 rbs. vs. WFU	Lindsey Harding - 1 2003-04 (1) 10 rbs., 11 ast. at MD
	Bridgette Mitchell - 1 2006-07 (1) 18 rbs., 13 reb. vs. NE
	Abby Waner - 1 2005-06 (1) 19 pts., 10 ast at SD

Winningest Active Coaches - Division I

(Updated through games of the 2005-06 season;
minimum 10 years as Head Coach)

Coach	Yrs	Won	Lost	Pct.
1. Pat Summitt, Tennessee	32	913	177	.83765
2. Geno Auriemma, Connecticut	21	589	116	.83546
3. Gail Goestenkers, Duke	14	364	97	.78959
4. Tara VanDerveer, Stanford	27	660	179	.78665
5. Wes Moore, UTC	17	390	110	.78000
6. Robin Selvig, Montana	28	645	188	.77431
7. Andy Landers, Georgia	27	657	208	.75954
8. Marsha Sharp, Texas Tech	24	572	189	.75164
9. Jody Conradt, Texas	37	882	293	.75064

Upcoming Schedule For The Blue Devils

(Subject To Change)

Nov. 13 Monday	Nov. 14 Tuesday	Nov. 15 Wednesday	Nov. 16 Thursday	Nov. 17 Friday	Nov. 18 Saturday	Nov. 19 Sunday
Practice	Practice	Practice	Off	Game Day vs. Marist 7:00 PM HOME	Practice	Game Day vs. Houston 2:00 PM HOME
Nov. 20 Monday	Nov. 21 Tuesday	Nov. 22 Wednesday	Nov. 23 Thursday	Nov. 24 Friday	Nov. 25 Saturday	Nov. 26 Sunday
Practice	Game Day vs. Penn State 7:00 PM HOME	Off	Practice	Practice and depart for Michigan	Game Day at Michigan 7:00 PM HOME	Off



Houston at Duke

2006-07 Honors

Alison Bales

- *Top-30 Wooden Award Candidate*
- *Wade Watch List for State Farm Wade Trophy*
- *Street & Smith's Honorable Mention All-America*

Lindsey Harding

- *Named ESPN.com's top backcourt tandem along with Abby Waner*
- *Top-30 Wooden Award Candidate*
- *All-ACC*
- *Wade Watch List for State Farm Wade Trophy*
- *Second Team All-America- CBS Sportsline*
- *Street & Smith's High Honorable Mention All-America*

Abby Waner

- *Named ESPN.com's top backcourt tandem along with Lindsey Harding*
- *Street & Smith's Honorable Mention All-America*

Italics Indicates Preseason Honor

and sophomore **Abby Waner** being named the most well-rounded backcourt in the country this season by ESPN.com's Graham Hays.

Preseason Rankings...

In the preseason rankings, the Blue Devils were tabbed sixth by Associated Press, ESPN/USA Today Coaches Poll, *Athlon* Magazine and seventh by *Lindy's* Magazine and *Street & Smith's*. Duke has been preseason ranked in the top-10 nationally by the Associated Press in six out of the last seven years and the past five consecutive seasons.

Duke Picked Third In ACC/Harding Named Pre-season All-ACC...

For the first time since 1999, the Duke Women's Basketball Team has been tabbed lower than first or second in the preseason Atlantic Coast Conference (ACC) poll, which was released on Oct. 26 by the league office in Greensboro, N.C. A total of 38 votes, determined by a vote of the media, sports information directors and head coaches, picked the Blue Devils third behind Maryland and North Carolina.

The Terrapins received 25 first place votes, while the Tar Heels had 13. Rounding out the preseason poll was No. 3 Duke, N.C. State, Florida State, Virginia, Boston College, Georgia Tech, Miami, Virginia Tech, Wake Forest and Clemson.

In 1999, the Blue Devils were selected fourth in the preseason poll and ended up advancing to the NCAA Final Four and National Championship game before falling to Purdue. Duke was picked No. 1 in the ACC preseason polls in 1999, 2000, 2001, 2002, 2003 and 2005, while being tabbed second in 2004.

The five-member preseason All-ACC squad was also released with Duke's **Lindsey Harding**, Ivory Latta (North Carolina), Erlana Larkins (North Carolina), Crystal Langhorne (Maryland) and Marissa Coleman (Maryland) earning honors. Latta was named Preseason Player of the Year and Virginia's Monica Wright was

tabbed Preseason Rookie of the Year.

Experience Returns...

Even though the Blue Devils lost seniors **Monique Currie**, **Mistie Williams** and **Jessica Foley**, Duke returns three starters and five players who started 12 or more contests last season. Overall, Duke will boast a roster of 11 players in 2006-07.

Lindsey Harding, **Alison Bales** and **Wanisha Smith** are the returning starters, while **Abby Waner** (15) and **Chante Black** (12) each started a number of games for Duke in 2005-06.

Also returning for the Blue Devils are sophomore **Carrem Gay**, junior **Emily Waner**, freshman **Brittany Mitch** and freshman **Keturah Jackson**. Gay, appeared in 26 contests but was injured for most of the season. Waner saw action in 23 games and hit 14 treys in those contests, while Mitch and Jackson redshirted last year.

Overall, Duke returns 61.4 percent of its scoring and 68.5 percent of its rebounding from last year.

Mitch & Jackson Healthy...

After dealing with injuries last season and taking redshirt years, **Brittany Mitch** and **Keturah Jackson** are both expected to be key members of the Blue Devil squad this season.

Mitch, a product of McLean, Va., saw action in three contests last season before suffering a hip injury. She went on to have surgery and missed the rest of the season. A Parade All-America out of high school, Mitch averaged 14.7 points, 8.6 assists, 7.8 steals, 5.8 rebounds and 1.8 blocks as a senior at St. John's College H.S. The 6-2 guard/forward can play any position on the court.

Jackson, who is from Columbia, S.C., injured her ankle in the preseason last year and never fully recovered. The 2004 Gatorade Player of the Year in South Carolina and Parade All-America, Jackson averaged

The Rankings

Associated Press Poll (11/8)	USA Today/ESPN Coaches Poll (11/14)
1. Maryland (47)	1. Maryland (28)
2. North Carolina (1)	2. North Carolina (1)
3. Oklahoma	3. Oklahoma (1)
4. Stanford	4. Tennessee (1)
5. Tennessee	5. Duke
6. Duke	6. Ohio State
7. Ohio State	7. Connecticut
8. Connecticut	8. Georgia
9. Georgia	9. LSU
10. LSU	10. Stanford
11. Purdue	11. Arizona State
12. Rutgers	12. Rutgers
13. Arizona State	13. Purdue
14. Texas A&M	14. Texas A&M
15. Kentucky	15. Vanderbilt
16. Vanderbilt	16. Baylor
17. Michigan State	17. Michigan State
18. New Mexico	18. BYU
19. Baylor	19. California
20. DePaul	20. Southern California
21. California	21. UCLA
22. Southern California	22. DePaul
23. UCLA	23. Washington
24. BYU	24. Kentucky
25. Texas	25. George Washington

Duke in the Polls

	AP	ESPN/USA Today
Preseason	No. 6	No. 6
Nov. 14	--	No. 5

The Duke Roster

No.	Name	Ht.	Yr.	Pos.	Exp.	Hometown (High School/Last School)
^2	Emily Waner	5-8	Jr.	G	1V-R	Highlands Ranch, Colo. (ThunderRidge/Colorado)
4	Abby Waner	5-10	So.	G	1V	Highlands Ranch, Colo. (ThunderRidge)
10	Lindsey Harding	5-8	Sr.	G	4V-R	Houston, Texas (CY-Fair)
11	Chante Black	6-5	Jr.	F/C	2V	Winston-Salem, N.C. (East Forsyth)
15	Bridgette Mitchell	6-0	Fr.	F/G	HS	Trenton, N.J. (The Peddie School)
21	Joy Cheek	6-1	Fr.	F	HS	Charlotte, N.C. (South Mecklenburg)
~22	Brittany Mitch	6-2	Fr.	G/F	1V-R	McLean, Va. (St. John's)
23	Wanisha Smith	5-11	Jr.	G	2V	Upper Marlboro, Md. (Riverdale Baptist)
30	Carrem Gay	6-2	So.	F	1V	New York, N.Y. (Christ The King)
~31	Keturah Jackson	6-0	Fr.	G/F	1V-R	Columbia, S.C. (Dreher)
43	Alison Bales	6-7	Sr.	C	3V	Dayton, Ohio (Beavercreek)

^ *Sat out the 2004-05 campaign due to NCAA Rules after transferring from Colorado*

~ *Redshirted the 2005-06 season*

Coaching Staff

Head Coach: Gail Goestenkors

Assistant Coaches: Gale Valley, Tia Jackson, Shannon Perry



Houston at Duke

19.8 points, 9.0 rebounds, 4.0 steals and 4.0 assists her senior year.

Seventh-Best Recruiting Class Arrives...

Duke brought in only two players for the 2006-07 season, but the class ranked seventh nationally as both **Joy Cheek** and **Bridgette Mitchell** played in the McDonald's All-America game.

Cheek, who is from Charlotte, N.C., averaged 15.5 points, 8.7 rebounds, 4.5 assists and 2.5 steals at South Mecklenburg H.S. as a senior. She was a Parade, Street & Smith's and EA Sports All-America last season.

Mitchell, a native of Trenton, N.J., averaged 19.6 points, 11.6 rebounds and 5.2 steals at The Peddie School last season. She was named the Gatorade Player of the Year for New Jersey and received the 2006 Naismith Sportsmanship Award.

Game Time Change...

Even though the contest is a long way away, the Blue Devils would like you to know about a game time change for the Feb. 25, 2007 contest against North Carolina in Cameron Indoor Stadium. The game will now be played at 4:00 p.m. on ESPN.

Goestenkers & USA Basketball...

Head Coach **Gail Goestenkers** helped lead the USA Women's World Championship team to a bronze medal over the summer in Brazil. Goestenkers served as an assistant coach under Head Coach Anne Donovan's staff, which also included Dawn Staley and Mike Thibault.

The squad included former three-time All-America and two-time National Player of the Year, **Alana Beard**.

30-Win Seasons...

Duke posted its six straight year with 30 or more wins in 2005-06, which tied an NCAA record. No other ACC school has ever posted more than two straight 30-win seasons, while the Blue Devils have won 30, 31, 35, 30, 31 and 31 over the last six years. In NCAA Division I history, only Louisiana Tech and Duke have registered six consecutive 30-win seasons. Louisiana Tech notched the feat from 1979-84 and from 1996-2001.

Wins Last Six Years...

Duke owns 188 wins over the last six years, which ranks second in the nation to Connecticut (196). Rounding out the top-10 are Tennessee (185), Stanford (163), Louisiana Tech (162), LSU (159), Baylor (157), Purdue (156), North Carolina (156) and UTC (154).

The Sister Act...

Duke features its first set of sisters playing together for the second year in a row with **Emily** and **Abby Waner** suiting up. The natives of Highlands Ranch, Colo., will be a junior and sophomore, respectively, for the Blue Devils.

Looking across the nation, the Waners will be one of 20 sets of sisters playing together this season.

NCAA Final Four...

Duke is coming off making its fourth NCAA Final Four appearance over the last eight years. The Blue Devils advanced to San Jose, Calif., in 1999, San Antonio, Texas in 2002, Atlanta, Ga., in 2003 and Boston, Mass., in 2006.

In 1999 and 2006, Duke reached the National Championship game.

In The Middle...

Rising junior **Chante Black** is looking to have a breakout year in 2006-07, after showing signs of greatness last season.

A native of Winston-Salem, N.C., Black is coming off averaging 7.9 points, 6.1 rebounds, 1.9 blocks and hit 54.0 percent of her field goals.

At Maryland in January, Black had the best game of her career with 19 points, four rebounds, three steals, one block and hit 8-of-9 field goals in 22 minutes.

Over her first two years at Duke, Black has totaled 111 blocks, which ranks seventh on the Blue Devils' all-time blocked shots list. She blocked 65 shots as a sophomore.

Last Year In The NCAA Stats...

In the final edition of the NCAA stats last year, the Blue Devils were once again dominating the categories as Duke ranked No. 1 in five of them-- scoring offense (86.0), scoring margin (27.7), blocked shots (7.6), field goal percentage (49.8) and assists (20.5). The Blue Devils were fourth in rebound margin (10.4), sixth in three-point field goal percentage (39.1) and seventh in steals (11.7).

In the individual rankings, **Alison Bales** was sixth in blocks (3.4) and **Chante Black** (1.9) was 46th.

ACC Domination...

Over the last six years in regular season action, Duke has dominated ACC action, posting an 84-8 overall record. The next closest team is North Carolina (66-21), followed by N.C. State (48-45), Virginia (43-50) and Florida State (47-45).

Streaking In ACC Play...

Over the last six years, Duke owns an 84-8 record in ACC regular season contests and an overall 98-10 mark including ACC Tournament games. The Blue Devils have only lost to North Carolina (five in last two years), Clemson (one in 2000-01), Florida State (one in 2003-04 and one in 2000-01), Maryland (one in 2005-06) and N.C. State (2000-01). Duke is 88-5 against the ACC excluding the Tar Heels during that stretch.

In 2001-02 and 2002-03, the Blue Devils went 16-0 during the ACC regular season and had an ACC-record 51-game win streak versus ACC foes from 2001-04.

Since 1997-98, Duke has dominated ACC action, notching a 125-16 regular season record. The Blue Devils won five straight ACC Tournament titles from 2000-2004 and won the ACC regular season title five consecutive years from 2001-05.

The Blue Devils have won 42 out of the last 45 home ACC contests in Cameron Indoor Stadium. Duke went undefeated in ACC play at home in 2003-04, 2002-03,

2007 Recruiting Class

Karima Christmas

5-11 • F • Houston, Texas (J. Frank Dobie H.S.)
#13 by All-Star Girls Report, #21 by BBAIX
10.8 pts., 4.7 rbs., 2.8 assists, 4.3 stls.

Jasmine Thomas

5-9 • G • Fairfax, Va. (Oakton H.S.)
#4 by Blue Star Report, #5 by All-Star Girls Report
24.6 pts., 8.1 rbs., 4.9 assists, 4.5 stls. as a junior

Krystal Thomas

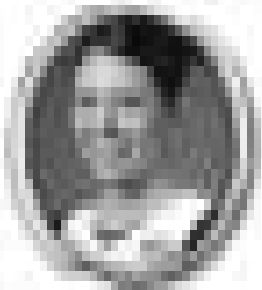
6-4 • C • Orlando, Fla. (First Academy)
#7 by Scout.com, #9 by Blue Star Report/BBAIX
16.2 pts., 16.8 rbs., 2.9 blks., 1.4 stls as a junior

How The Class Ranks

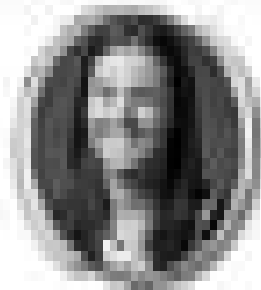
Scout.com - #2

All-Star Girls Report/Blue Star Report - #3

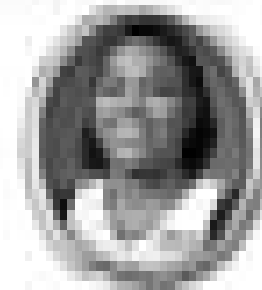
RADIO/TELEVISION CHART



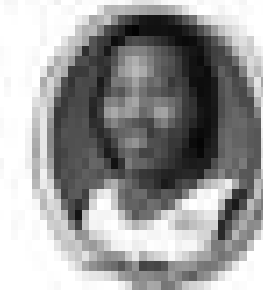
2
EMILY WANER
WY - ner
WY - ner



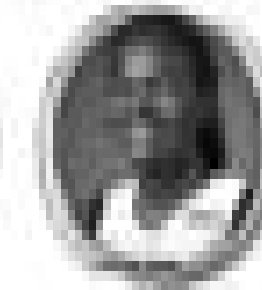
4
ABBY WANER
WY - ner
WY - ner



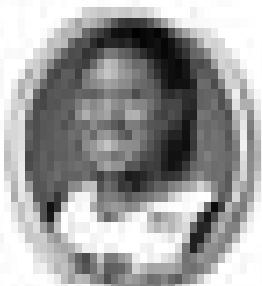
10
LANEY JACKSON
ka - TUR - ah
ka - TUR - ah



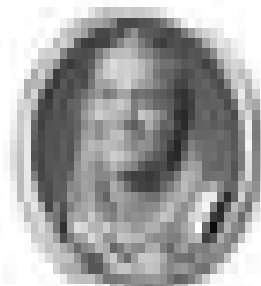
11
CHANTE BLACK
Shon - TAY
Shon - TAY



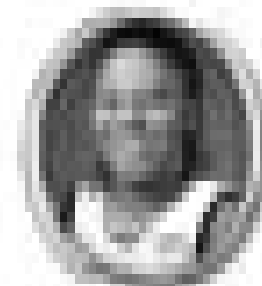
15
BRIDGETTE MITCHELL
bridge - ETT
bridge - ETT



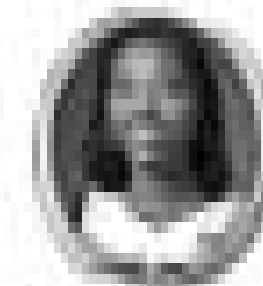
21
GAIL GOESTENKERS
GUESS - ten - course
GUESS - ten - course



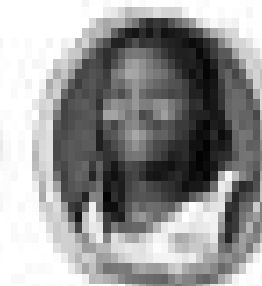
22
WANISHA SMITH
Wah - KNEE - sha
Wah - KNEE - sha



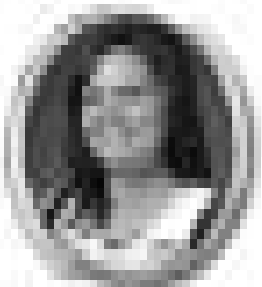
23
CARREM GAY
ker - EM
ker - EM



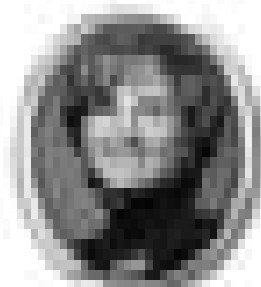
30
EMILY WANER
WY - ner
WY - ner



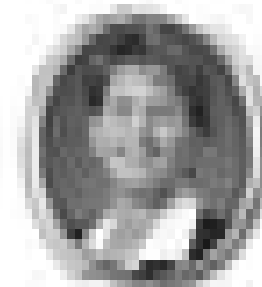
31
LANEY JACKSON
ka - TUR - ah
ka - TUR - ah



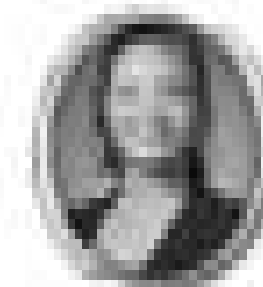
43
EMILY WANER
WY - ner
WY - ner



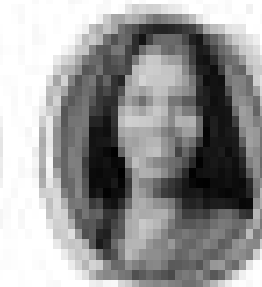
44
ABBY WANER
WY - ner
WY - ner



45
LANEY JACKSON
ka - TUR - ah
ka - TUR - ah



46
CHANTE BLACK
Shon - TAY
Shon - TAY



47
BRIDGETTE MITCHELL
bridge - ETT
bridge - ETT

PHONETIC SPELLING	
Chante Black	Shon - TAY
Carrem Gay	ker - EM
Keturah Jackson	ka - TUR - ah
Gail Goestenkers	GUESS - ten - course
Bridgette Mitchell	bridge - ETT
Wanisha Smith	Wah - KNEE - sha
Abby Waner	WY - ner
Emily Waner	WY - ner

Gail Goestenkers

Head Coach

15th Year At Duke • 366-97

In her 14 years at Duke University, Gail Goestenkers has helped lead the Blue Devils from relative obscurity to national prominence. Known as "Coach G" to players, coaches, fans and student supporters, Goestenkers has raised the level of the women's basketball program at Duke to new heights. Today, because of Coach G, Duke is mentioned in the same breath with the other elite programs in women's college basketball.

Since arriving at Duke in 1992, Goestenkers has accomplished feats that no other women's basketball coach in school history has been able to achieve. To put her success in perspective, Goestenkers has five more winning seasons (13) than there were in the 17 years prior to her arrival in Durham. The 1996, '98, '99, 2002, 2003 and 2004 ACC Coach of the Year (Duke's only multiple winner of the award and one of just two ACC coaches to earn it six times), Goestenkers led the Blue Devils to their first appearances in the Sweet Sixteen, Elite Eight, Final Four and National Championship game. Along with capturing Duke's first ACC Tournament Championship, Goestenkers' Blue Devil squads have broken numerous school, ACC and NCAA records, as well as setting a new standard for women's basketball at Duke and in the ACC.

Continuing to build upon her well-earned reputation as one of the top college basketball coaches, Goestenkers led Duke to its fourth NCAA Final Four and the National Championship game in 2005-06. The Blue Devils posted a 31-4 overall and 12-2 league mark on the year, which marked the sixth straight season with 30 or more victories. Duke joined Louisiana Tech as the only teams in NCAA history to register six straight 30-win seasons. The Blue Devils earned a No. 1 national ranking for the fourth straight year and tied their own NCAA record for blocks with 267 in back-to-back seasons.

In 2004-05, Goestenkers led Duke to its fifth-straight ACC Regular Season title and an NCAA Elite Eight appearance. The Blue Devils concluded the season with a 31-5 overall record and were ranked No. 1 in the nation for three straight weeks. For the season, Duke blocked an NCAA-record 267 shots in a year where it was possibly Goestenkers' best coaching job of her career after losing three starters off of the previous year's team.

In 2003-04, Goestenkers led Duke to its fifth-straight ACC Championship and fourth-straight ACC Regular Season title. The Blue Devils posted a 30-4 record and advanced to the NCAA Elite Eight, while Goestenkers earned ACC Coach of the Year honors for the sixth time. Duke was ranked No. 1 in the nation for five weeks and broke Connecticut's 69-game home winning streak with a 68-67 victory in Hartford, Conn.

Goestenkers led the Blue Devils to an ACC-record 35-2 ledger in 2002-03 and their second straight NCAA Final Four appearance. For the second consecutive year, Duke posted a 19-0 record against ACC opponents and broke 33 team and individual records. Once again, Goestenkers received National Coach of the Year accolades earning Naismith, WBCA/Rawlings and Victor Award honors. For the first time in school history, Alana Beard earned the Victor Award as the National Player of the Year and was named ESPN.com National Player of the Year, while both Beard and Iciss Tillis were each named to the Kodak All-America Team.

The Blue Devils earned the school's first No. 1 national ranking as Duke was tabbed No. 1 for the first 12 weeks of the season and was ranked no lower than second for the entire year in the Associated Press poll.

In 2001-02, Coach G led the Blue Devils to a 31-4 record and a NCAA Final Four appearance. Duke became the first ACC school to produce an undefeated 19-0 record in the ACC by winning the regular season and Tournament titles. The Blue Devils broke 24 school records, and Coach G was selected GBallmag.com National Coach of the Year. She did all of this with only eight players after two players transferred in December. Sophomore Alana Beard earned numerous honors including Associated Press All-America, ACC Player of the Year and *ESPN The Magazine* Shooting Guard of the Year. Sophomore Iciss Tillis earned honorable mention Associated Press All-America and freshman Monique Currie was named second team All-ACC.

In 2000-01, the Blue Devils posted a 30-4 record, a second consecutive ACC Tournament title, an ACC regular season championship and a number one seed in the NCAA Tournament. It marked the first time in school history the Blue Devils won both the ACC regular season and Tournament titles in the same season. Senior Georgia Schweitzer and freshman Alana Beard earned All-America accolades, while Schweitzer captured her second consecutive ACC Player of the Year award. Duke accomplished all of this with five freshmen on the roster, a testament to Goestenkers' coaching ability. For the excellent season, Goestenkers was named WBCA District II Coach of the Year.

The 1999-2000 season was one of Goestenkers' finest coaching jobs in her 14 years with the Blue Devils. Picked to finish fourth in the ACC preseason poll and not ranked highly in any of the national polls, Duke raced to a 16-1 start on its way to capturing its first ACC Tournament Championship. The Blue Devils finished the year 28-6 despite losing three All-ACC starters to graduation and another, Peppi Browne, to injury halfway through the season. Nonetheless, Goestenkers and Duke regrouped to advance to the Sweet Sixteen and Coach G earned *Basketball Times* National Coach of the Year.

In the 1998-99 season, the Blue Devils enjoyed one of the greatest seasons in the history of Duke women's basketball. During the season the Blue Devils recorded a 16-game winning streak, a 15-1 ACC record, and 11 wins over ranked opponents, all school records at the time.

Goestenkers' squad earned its then-highest national ranking ever, peaking at No. 2 at the end of the season. After beating three-time defending national champion Tennessee to capture the NCAA East Regional title, Duke advanced to its first Final Four, knocking off Georgia in the semifinals en route to a championship matchup with Purdue. Two more firsts for the Duke program in 1998-99 were the selection of Michele VanGorp to the prestigious Kodak All-America team and in the WNBA Draft. The 6-6 center, Duke's first-ever Kodak All-America, became the first Blue Devil to play in the WNBA as a member of the New York Liberty.

If the past eight seasons show anything, they show how effective Goestenkers' winning approach has been. Goestenkers' record for highest winning percentage (.790) in school history offers evidence of her success: 364 total wins; an 86-7 mark at home against non-conference opponents; a 34-12 record in NCAA Tournament play; six straight 30-win seasons; eleven 20-plus win seasons in the past 12 years; five ACC Tournament Championships; seven ACC regular season titles; and four NCAA Final Four appearances.

Such accomplishments have not gone unnoticed by her peers in college basketball. Aside from winning ACC Coach of the Year in 1996, '98, '99, 2002, 2003 and 2004, Goestenkers captured the Victor Award in 1999 as the National Coach of the Year, as well as being selected the 2000 *Basketball Times* National Coach of the Year, the 2002 GBallmag.com National Coach of the Year and 2003 Naismith, WBCA/Rawlings and Victor Award as the National Coach of the Year. Her coaching is so respected that Goestenkers was named to the USA Basketball Collegiate Committee in the summer of 2001, was an assistant coach on the gold medal winning 2002 USA World Championship team, was an assistant coach on the gold medal winning 2004 USA Olympic team, was the coach of the 2005 USA U19 World Championship gold medal team and was named as assistant coach to the USA World Championship team. In 2005-06, Goestenkers received the Carol Eckman Award from the WBCA, which is presented annually to an active WBCA coach who exemplifies Eckman's spirit, integrity and character through sportsmanship, commitment to the student-athlete, honesty, ethical behavior, courage and dedication to purpose. She was also named USA Basketball Coach of the Year for guiding the U19 World Championship team to the gold medal.



Duke Miscellaneous Statistics

Games as Leading Scorer

Carrem Gay	1
Bridgette Mitchell	1
Abby Waner	1

Games as Leading Rebounder

Carrem Gay	1
Bridgette Mitchell	1

Games Leading in Assists

Wanisha Smith	2
---------------------	---

Double-Doubles

Joy Cheek	1
Carrem Gay	1
Bridgette Mitchell	1

Double-Figure Scoring Games

Carrem Gay	2
Abby Waner	2
Alison Bales	1
Joy Cheek	1
Brittany Mitch	1
Bridgette Mitchell	1

20-Point Games

none

30-Point Games

none

10-Rebound Games

Alison Bales	1
Joy Cheek	1
Carrem Gay	1
Bridgette Mitchell	1

10-Assist Games

none

Charges Drawn

Opponent	2
Duke	0

Three-Point Plays

Opponent	2
Duke	0

Fast Break Points

Opponent	4
Duke	32

Defense Force Shot Clock Violation

Opponent	0
Duke	1

Defense Force Five-Second Call

Opponent	0
Duke	1

Points In The Paint

Opponent	26
Duke	78

Technical Fouls

Opponent	0
Duke	0

Jump Balls Controlled

Opponent	1
Duke	1

Alison Bales 1-1

Bench Scoring

Opponent	27
Duke	61

Duke's First Substitution

Joy Cheek	1
Bridgette Mitchell	1

Largest Halftime Lead

21 (43-22) vs. Northeastern, 11-11-06

Largest Halftime Deficit

none

Largest Duke Lead

55 (98-43) vs. Northeastern, 11-11-06

Largest Duke Deficit

2 (0-2) vs. Northeastern, 11-11-06

Largest Duke Win

53 (102-49) vs. Northeastern, 11-11-06

Most Consecutive Points Scored

14 vs. Northeastern, 11-11-06

Most Consecutive Points Allowed

2 vs. Northeastern, 11-11-06

Highest Field Goal Percentage in the 1st Half

Duke
43.3 vs. Northeastern, 11-17-06

Opp
28.1 by Northeastern, 11-11-07

Highest Field Goal Percentage in 2nd Half

Duke
51.2 vs. Northeastern, 11-11-06

Opp
31.6 by Marist, 11-17-06

Longest Winning Streak

2

Longest Losing Streak

none

Largest Home Crowd

4,465 vs. Marist, 11-17-06

Largest Road Crowd

none

Largest Neutral Crowd

none

More Duke Numbers, Streaks

Duke all-time record	581-312
Duke all-time ACC record (regular season only)	234-174
Duke's all-time overtime record	13-10
Consecutive games with at least one three-point FG	52
Consecutive games holding opponents under .500 shooting	23
Consecutive games holding opponents under 100 points	280
Consecutive games scoring at least 70 points	3

* - Duke record

Duke Miscellaneous Statistics

2006-07 Duke Game-By-Game Rebounding

Opponent	Duke	Opp.	Diff.	Result
Northeastern	63	29	+34	W
Marist	49	33	+16	W

2006-07 Duke Bench Scoring

Opponent	Duke	Opp.	+/-	Result
Northeastern	47	15	+32	W
Marist	14	12	+2	W

The Blue Devils Record When...

Athome	2-0
On the road	0-0
At a neutral site	0-0
Against a top 25 opponent	0-0
Against a top 10 opponent	0-0
Against a top 5 opponent	0-0
In tournaments	0-0
On television	0-0
In white uniforms	2-0
In blue uniforms	0-0
In black uniforms	0-0
On Sunday	0-0
On Monday	0-0
On Tuesday	0-0
On Wednesday	0-0
On Thursday	0-0
On Friday	1-0
On Saturday	1-0
Day Games	1-0
Night Games	1-0
Overtime Games	0-0

Crunch Time

In 2006-07, Duke has hit 2-of-2 free throws under the two-minute mark in regulation--

Name	FT	Percentage
Keturah Jackson	1-2	(.500)
Brittany Mitch	2-2	(1.000)

When the starters are:	
Harding, Bales, A. Waner, Smith, Gay	2-0
Leading at the half	2-0
Trailing at the half	0-0
Tied at the half	0-0
Outrebounding opponent	2-0
Opponent outrebounds Duke	0-0
Equal rebounds	0-0
FG% equal/over .500	0-0
FG% equal/over .400	2-0
FG% below .400	0-0
Opponent FG% equal/over .400	0-0
Opponent FG% below .400	2-0

Duke Career Games Played/Started

	Career Games	Career Starts	Consecutive Games	Consecutive Starts
Alison Bales	97	58	72	10
Chante Black	68	15	18	-
Joy Cheek	2	-	2	-
Carrem Gay	28	2	2	2
Lindsey Harding	108	85	37	37
Keturah Jackson	2	-	2	-
Brittany Mitch	5	-	2	-
Bridgette Mitchell	2	-	2	-
Wanisha Smith	73	57	73	21
Abby Waner	37	17	37	2
Emily Waner	25	-	2	-

Duke has more turnovers	0-0
Opponent has more turnovers	2-0
Teams have equal turnovers	0-0
Scoring below 50 points	0-0
Scoring 50-59 points	0-0
Scoring 60-69 points	0-0
Scoring 70-79 points	1-0
Scoring 80-89 points	0-0
Scoring 90-99 points	0-0
Scoring 100+ points	1-0

The Last Time It Happened ...

Team

100 Points by a Team

By Duke 102 vs. Northeastern (11/11/06)
By Opponent 104 by Connecticut (11/13/98)

30-Point Win

By Duke 102-49 vs. Northeastern (11/11/06)
By Opponent 104-74 by Connecticut (11/13/98)

65 Percent Shooting by a Team

By Duke682 vs. Arkansas State (11/26/05)
By Opponent655 by Virginia (1/25/94)

60 Percent Shooting by a Team

By Duke609 vs. Virginia Tech (2/22/06)
By Opponent636 by Maryland (1/12/97)

50 Percent Shooting by a Team

By Duke500 vs. LSU (4/2/06)
By Opponent500 by Boston College (3/22/05)

Five Starters in Double-Digit Scoring

By Duke vs. Wake Forest (1/19/05)
By Opponent by Clemson (12/9/00)

Duke Played a Ranked Opponent

Duke Win 64-45 win vs. [5] LSU (4/2/06)
Duke Loss 78-75 loss vs. [3/3] Maryland (4/4/06)

Overtime Game

Duke Win 63-61 (OT) vs. [8] Connecticut (3/28/06)
Duke Loss 78-75 loss vs. [3/3] Maryland (4/4/06)

Home Openers

Duke Win 102-49 vs. Northeastern (11/11/06)
Duke Loss 82-57 vs. UNC-Greensboro (12/1/77)

Road/Neutral Openers

Duke Win 93-67 at Penn State (11/18/05)
Duke Loss 76-65 vs. [11] Notre Dame (11/17/04)

Duke Was Ranked

AP Number 1 Feb. 20, 2006
USA Today/ESPN Number 1 Feb. 21, 2006
AP Top 10 Current, No. 6/5 in AP & ESPN/USA Today Polls
AP Top 25 Current, No. 6/5 in AP & ESPN/USA Today Polls

Individual

40 Points by a Player

By Duke 43, Monique Currie, at Miami (2/19/06)
By Opponent 41, Jackie Stiles, SW Missouri State (3/24/01)

30 Points by a Player

By Duke 43, Monique Currie, at Miami (2/19/06)
By Opponent 32, Tamara James, Miami (2/19/06)

20 Rebounds by a Player

By Duke 20, Alana Beard, vs [11] North Carolina (3/10/03)
By Opponent 23, Charlotte Smith, North Carolina (2/25/95)

15 Rebounds by a Player

By Duke 16, Chante Black vs. Clemson (2/17/05)
By Opponent 18, Janel McCarville, Minnesota (3/30/04)

Two Players with 20 or More Points in Same Game

By Duke ... Alison Bales [21] & Mistie Williams [22] vs. Wake Forest (1/19/05)
By Opponent Tamara James [32] & Melissa Knight [20], Miami (2/19/06)

Two Players with 10 or More Rebs. in Same Game

By Duke Bales (11), Cheek (11), Mitchell (11) vs. Northeastern (11/11/06)
By Opponent Amisha Carter [15] & Trina Frierson [12], Louisiana Tech (3/28/04)

10 Assists by a Player

By Duke 11, Monique Currie, Florida State (1/5/05)
By Opponent 10, Juana Brown, North Carolina (1/25/01)

Five Steals by a Player

By Duke 5, Lindsey Harding & Abby Waner, Northeastern (11/11/06)
By Opponent 9, Nikita Bell, North Carolina (2/27/05)

Five Blocked Shots by a Player

By Duke 5, Alison Bales, vs. Northeastern (11/11/06)
By Opponent 5, Jocelyn Logan-Friend, Virginia (1/18/04)

Double-Double by a Player

By Duke Carrem Gay [14/10] vs. Marist (11/17/06)
By Opponent Tasha Humphrey [16/13], Georgia (3/26/05)

Triple-Double by a Player

By Duke Monique Currie [21 pts., 12 rbs., 11 asst.], Florida State (1/5/05)
By Opponent none

In The Duke Career Record Book...

Assists

1.	533	Hilary Howard, 1996-99
2.	509	Alana Beard, 2001-04
3.	450	Lindsey Harding, 2003-pre
4.	445	Kira Orr, 1994-97
5.	428	Georgia Schweitzer, 1998-01
6.	413	Monique Currie, 2002-06
7.	409	Katie Meier, 1986-90
8.	340	Leigh Morgan, 1987-90
9.	335	Claire Rose, 1980-83
10.	310	Jessica Foley, 2003-06

Blocked Shots

1.	292	Alison Bales, 2003-pre
2.	212	Sarah Sullivan, 1983-87
3.	151	Iciss Tillis, 2000-04
4.	149	Alana Beard, 2001-04
5.	131	Mistie Williams, 2003-06
6.	130	Sue Harnett, 1987-91
7.	111	Chante Black, 2005-pre
8.	96	Tyish Hall, 1994-97
9.	78	Payton Black, 1996-99
10.	75	Monique Currie, 2002-06

Steals

1.	404	Alana Beard, 2001-04
2.	270	Iciss Tillis, 2001-04
3.	232	Katie Meier, 1986-90
4.	228	Monique Currie, 2002-06
5.	223	Maura Hertzog, 1982-85
6.	217	Peppi Browne, 1996-00
7.	213	Lindsey Harding, 2003-pre
8.	204	Kira Orr, 1994-97
9.	183	Sheana Mosch, 2000-2003
10.	171	Georgia Schweitzer, 1998-01

In The NCAA Career Record Book...

Blocked Shots

	Blks	G	Name
1.	480	127	Sandora Irvin, TCU
2.	447	111	Brooke McAfee, IUPUI
3.	428	118	Genia Miller, Cal. St. Full.
4.	413	128	Heidi Gillingham, Vanderbilt
5.	406	106	Zane Teilane, Western Ill.
6.	396	126	Rebecca Lobo, Connecticut
7.	377	122	Marita Payne, Auburn
8.	372	96	Chris Enger, San Diego
9.	370	137	Kara Wolters, Connecticut
10.	370	131	Ruth Riley, Notre Dame
11.	368	127	Angela Gorsica, Vanderbilt
12.	367	113	Trish Andrew, Michigan
13.	359	106	Denise Hogue, Col. of Char.
14.	357	107	Vanessa Hayden, Florida
15.	355	124	Ugo Oha, GWU
16.	344	128	Jordan Adams, New Mexico
17.	337	108	Cassie Hager, UNI
18.	336	113	Amy Lundquist, LMU/DePaul
19.	336	113	Teresa Jenkins, Florida A&M
20.	330	122	DeMya Walker, Virginia
21.	329	110	Dawn Royster, North Carolina
22.	326	130	Tajama Abraham, GWU
23.	322	89	Stefanie Kasperski, Oregon
24.	321	120	Lisa Leslie, Southern California
25.	317	110	Malveata Johnson, NC A&T
<i>approaching...</i>			
	292	97	Alison Bales, Duke

In The ACC Career Record Book...

Blocked Shots

1.	330	DeMya Walker (UVA), 1996-99
2.	329	Dawn Royster (UNC), 1984-87
3.	298	Peggy Caple (CU), 1982-85
4.	292	Alison Bales (Duke), 2004-pre
5.	245	Dolores Bootz (GT), 1985-88
6.	212	Sarah Sullivan (Duke), 1983-87
7.	209	Brooke Wyckoff (FSU), 1998-2001
8.	208	Candace Sutton (UNC), 2001-04
9.	195	Kasha Terry (GT), 2003-present
10.	186	Kris Kirchner (MD), 1978-80



Game 1-

Northeastern 49 #6 Duke 102

Duke freshmen **Bridgette Mitchell** and **Joy Cheek** combined to score 30 points and grab 24 rebounds as sixth-ranked Duke cruised to a 102-49 victory over Northeastern on Nov. 11 in Cameron Indoor Stadium to open the 2006-07 season. Mitchell posted a game-high 18 points to go along with 13 rebounds, while Cheek added 12 points and 11 boards to become the first freshmen tandem to register double-doubles in their first collegiate game.

Sophomore **Abby Waner** added 16 points, five steals and four rebounds, while **Alison Bales** pulled down 11 rebounds, had five blocks and scored eight points in only 21 minutes.

Each of the 10 Blue Devils who played against Northeastern made at least one basket, and five scored in double figures. Sophomore **Carrem Gay** made her first collegiate start and came away with a career-high 16 points and redshirt freshman **Brittany Mitch** added 10. Ashlee Feldman led Northwestern with 17 points and Lucia Pablos had 11.

Duke led 43-22 at the break and then opened the second half with a 15-0 run. The Blue Devils pulled away even further, outscoring Northeastern 35-7 over the first 11 minutes of the second half. Northeastern managed only one basket in the first 15:53 of the second half and ended up shooting 15-for-56. Duke hit just 36 of 81 shots from the field, but shot 22-for-43 (51.2 percent) in the second half.

Game 2-

Marist 50 #6 Duke 71

Duke sophomore Carrem Gay registered her first career double-double as the sixth-ranked Duke downed Marist, 71-50, on Friday evening in Cameron Indoor Stadium. Gay posted 14 points and 10 rebounds in 25 minutes of action as the Blue Devils improved to 2-0.

Sophomore Abby Waner added 14 points, a career-high seven rebounds and four steals, while Alison Bales had 12 points, five rebounds, four blocks in only 19 minutes.

Duke used a 12-2 run to build a 20-point advantage midway through the second half to take control after leading by 10 at halftime.

The win was the Blue Devils' 300th at Cameron Indoor Stadium, where they have won their last 55 games against unranked opponents.

Bales, who was 1-of-10 from the field in Duke's season opener, bounced back with a 4-of-5 shooting performance. The senior center grabbed five rebounds and blocked four shots.

Duke shot 42.4 percent from the floor, but hit just 4-of-14 three-point attempts and turned the ball over 14 times. Duke led as many as 14 in the first half, but led just 32-22 at the break despite a 25.8-percent shooting effort from Marist.

The Blue Devils scored the first 10 points of the game, jumping out to a 14-2 lead.

Duke 102, Northeastern 49

Game 1 • November 11, 2006
Durham, NC (Cameron Indoor Stadium)

Northeastern	MP	FG		3FG		FT		Reb		A	B	S	TP
		M-A	M-A	M-A	M-A	O-T	A	B	S				
Ausmann	7	0-3	0-1	1-2	0-2	0	2	0	1				
Hodell	31	1-7	0-0	1-2	0-6	1	1	1	3				
Burrows	30	1-3	0-0	0-0	2-5	5	0	4	2				
Feldman	36	7-18	2-10	1-1	0-2	0	0	0	17				
Pablos	20	1-4	0-0	9-9	0-0	0	0	0	11				
Smallwood	20	2-6	0-1	4-6	1-1	1	0	0	8				
Walton	22	2-4	1-2	0-0	0-2	1	3	2	5				
Thomas	6	0-0	0-0	0-0	0-1	0	1	0	0				
Gustalli	0	0-0	0-0	0-0	0-0	0	0	0	0				
McLean	8	0-4	0-1	0-0	0-0	0	0	0	0				
Carr	19	1-7	0-0	0-2	1-4	0	0	1	2				
Baker	1	0-0	0-0	0-0	0-0	0	0	0	0				
TEAM						6-7							
Totals	200	15-56	3-15	16-22	10-29	9	6	9	49				

Percentages: FG-.268 3FG-.200, FT-.727. Turnovers: 36 (Hodell 8, Burrows 6, Feldman 4, Smallwood 4, Pablos 3, Walton 2, Thomas 2, McLean 2, Ausmann 1, Gustalli 1, Carr 1, TEAM 2).
Personal Fouls: 20

DUKE	MP	FG		3FG		FT		Reb		A	B	S	TP
		M-A	M-A	M-A	M-A	O-T	A	B	S				
Gay	21	5-7	0-0	6-8	4-6	0	1	2	16				
Bales	21	1-10	0-0	6-8	5-11	0	5	0	8				
A. Waner	22	7-12	1-2	1-2	0-4	1	0	5	16				
Harding	22	4-6	0-1	1-2	0-3	4	1	5	9				
Smith	22	2-9	1-2	1-4	0-3	5	1	4	6				
E. Waner	16	2-6	1-4	0-0	2-4	3	1	0	5				
Mitchell	23	8-13	0-0	2-2	11-13	2	1	3	18				
Cheek	20	3-8	0-0	6-8	4-11	0	1	1	12				
Mitch	19	3-6	2-4	2-2	0-1	2	0	3	10				
Jackson	14	1-4	0-0	0-0	1-3	2	0	1	2				
TEAM						2-4							
Totals	200	36-81	5-13	25-36	29-63	19	11	24	102				

Percentages: FG-.444, 3FG-.385, FT-.694. Turnovers: 19 (Cheek 4, Mitchell 3, Mitch 3, Gay 2, Bales 2, A. Waner 1, Harding 1, Smith 1, E. Waner 1, Jackson 1).
Personal Fouls: 19

Duke	43	59	102
Northeastern	22	27	49

A: 3,859. Fouled Out: none. Technical Fouls: none. Officials: Sally Bell, Mark Hardcastle, and Dan Outlaw.

Duke 71, Marist 50

Game 2 • November 17, 2006
Durham, NC (Cameron Indoor Stadium)

Marist	MP	FG		3FG		FT		Reb		A	B	S	TP
		M-A	M-A	M-A	M-A	O-T	A	B	S				
Smrdel	24	1-9	0-5	3-4	1-3	0	1	1	5				
Dahlman	25	5-12	0-3	2-2	2-8	1	1	1	12				
Kresge	36	1-2	1-2	2-7	0-3	3	0	1	5				
Viani	29	1-6	1-4	3-4	1-3	3	0	0	6				
Flores	20	2-7	1-2	5-6	0-2	1	0	1	10				
Minter	7	0-3	0-3	1-2	0-1	0	0	0	1				
Engle	3	0-0	0-0	0-0	0-0	0	0	0	0				
Fitz	19	1-3	0-0	0-0	1-3	0	0	1	2				
Hein	4	1-2	1-1	0-0	0-0	0	1	1	3				
Waters	9	0-0	0-0	0-0	0-1	0	0	0	0				
Johnson	7	0-1	0-0	0-0	1-1	0	0	1	0				
Kolesar	17	2-5	2-5	0-0	0-2	1	0	1	6				
TEAM						3-6							
Totals	200	14-50	6-25	16-25	9-33	9	2	8	50				

Percentages: FG-.280 3FG-.240, FT-.640. Turnovers: 15 (Kresge 5, Viani 3, Flores 2, Smrdel 2, Dahlman 1, Kolesar 1, TEAM 1).
Personal Fouls: 20

DUKE	MP	FG		3FG		FT		Reb		A	B	S	TP
		M-A	M-A	M-A	M-A	O-T	A	B	S				
Gay	25	6-8	0-0	2-5	5-10	0	1	1	14				
Bales	19	4-5	0-0	4-6	0-5	2	4	0	12				
A. Waner	27	5-9	2-3	2-3	2-7	2	0	4	14				
Harding	27	3-10	0-2	3-4	0-4	2	0	3	9				
Smith	24	2-11	0-3	4-6	2-8	5	0	0	8				
E. Waner	15	1-4	1-3	0-0	1-1	1	0	0	3				
Mitchell	19	1-5	0-0	0-2	4-7	1	0	1	2				
Cheek	20	2-4	0-1	1-2	1-2	0	0	0	5				
Mitch	12	1-2	1-2	0-0	0-0	1	1	1	3				
Jackson	12	0-1	0-0	1-2	2-3	1	0	0	1				
TEAM						1-2							
Totals	200	25-59	4-14	17-30	18-49	15	6	10	71				

Percentages: FG-.424, 3FG-.286, FT-.587. Turnovers: 14 (Gay 3, Cheek 2, Harding 2, Mitch 2, A. Waner 2, Bales 1, Smith 1, Mitchell 1).
Personal Fouls: 19

Duke	32	39	71
Marist	22	28	50

A: 4,465. Fouled Out: Smrdel. Technical Fouls: none. Officials: Eric Brewton, Kim Watt, John Fitzpatrick.

2006-07 Duke Women's Basketball
 #6/5 Duke University Combined Team Statistics (as of Nov 17, 2006)
 All games

RECORD :	OVERALL	HOME	AWAY	NEUTRAL
ALL GAMES	(2-0)	(2-0)	(0-0)	(0-0)
CONFERENCE	(0-0)	(0-0)	(0-0)	(0-0)
NON-CONFERENCE	(2-0)	(2-0)	(0-0)	(0-0)

## Player	GP-GS	Min--Avg	---TOTAL---		---3-PTS---		---FT-FTA---		---REBOUNDS---				PF	FO	A	TO	Blk	Stl	Pts	Avg
			FG-FGA	Pct	3FG-FGA	Pct	FT-FTA	Pct	Off	Def	Tot	Avg								
04 Abby Waner.....	2-2	49 24.5	12-21	.571	3-5	.600	3-5	.600	2	9	11	5.5	5	0	3	3	0	9	30	15.0
30 Carrem Gay.....	2-2	46 23.0	11-15	.733	0-0	.000	8-13	.615	9	7	16	8.0	3	0	0	5	2	3	30	15.0
15 Bridgette Mitchell.	2-0	42 21.0	9-18	.500	0-0	.000	2-4	.500	15	5	20	10.0	2	0	3	4	1	4	20	10.0
43 Alison Bales.....	2-2	40 20.0	5-15	.333	0-0	.000	10-14	.714	5	11	16	8.0	6	0	2	3	9	0	20	10.0
10 Lindsey Harding....	2-2	49 24.5	7-16	.438	0-3	.000	4-6	.667	0	7	7	3.5	3	0	6	3	1	8	18	9.0
21 Joy Cheek.....	2-0	40 20.0	5-12	.417	0-1	.000	7-10	.700	5	8	13	6.5	5	0	0	6	1	1	17	8.5
23 Wanisha Smith.....	2-2	46 23.0	4-20	.200	1-5	.200	5-10	.500	2	9	11	5.5	3	0	10	2	1	4	14	7.0
22 Brittany Mitch.....	2-0	31 15.5	4-8	.500	3-6	.500	2-2	1.000	0	1	1	0.5	6	0	3	5	1	4	13	6.5
02 Emily Waner.....	2-0	31 15.5	3-10	.300	2-7	.286	0-0	.000	3	2	5	2.5	3	0	4	1	1	0	8	4.0
31 Keturah Jackson....	2-0	26 13.0	1-5	.200	0-0	.000	1-2	.500	3	3	6	3.0	4	0	3	1	0	1	3	1.5
TEAM.....																				
Total.....	2	400	61-140	.436	9-27	.333	42-66	.636	47	65	112	56.0	40	0	34	33	17	34	173	86.5
Opponents.....	2	400	29-106	.274	9-40	.225	32-47	.681	19	43	62	31.0	40	1	18	51	8	17	99	49.5

TEAM STATISTICS	DUKE	OPP	DATE	OPPONENT	W/L	SCORE	ATTEND
SCORING.....	173	99	11-11-06	NORTHEASTERN	W	102-49	3859
Points per game.....	86.5	49.5	11-17-06	MARIST	W	71-50	4465
Scoring margin.....	+37.0	-	* = Conference game				
FIELD GOALS-ATT.....	61-140	29-106					
Field goal pct.....	.436	.274					
3 POINT FG-ATT.....	9-27	9-40					
3-point FG pct.....	.333	.225					
3-pt FG made per game..	4.5	4.5					
FREE THROWS-ATT.....	42-66	32-47					
Free throw pct.....	.636	.681					
REBOUNDS.....	112	62					
Rebounds per game.....	56.0	31.0					
Rebounding margin.....	+25.0	-					
ASSISTS.....	34	18					
Assists per game.....	17.0	9.0					
TURNOVERS.....	33	51					
Turnovers per game....	16.5	25.5					
Turnover margin.....	+9.0	-					
Assist/turnover ratio..	1.0	0.4					
STEALS.....	34	17					
Steals per game.....	17.0	8.5					
BLOCKS.....	17	8					
Blocks per game.....	8.5	4.0					
WINNING STREAK.....	2	-					
Home win streak.....	2	-					
ATTENDANCE.....	8324	0					
Home games-Avg/Game....	2-4162	0-0					
Neutral site-Avg/Game..	-	0-0					

SCORE BY PERIODS:	1st	2nd	Total
#6/5 Duke University.....	75	98	- 173
Opponents.....	44	55	- 99

2006-07 Duke Women's Basketball
 #6/5 Duke University Team Game-by-Game (as of Nov 17, 2006)
 All games

TEAM STATISTICS

Opponent	Date	Score	W/L	---TOTAL---		--3-PTRS--		FT-FTA		Pct		----REBOUNDS----				PF		A		TO		Blk		Stl		Pts---Avg	
				FG-FGA	Pct	3FG-FGA	Pct	Pct	Pct	Off	Def	Tot	Avg														
NORTHEASTERN	11-11-06	102-49	W	36-81	.444	5-13	.385	25-36	.694	29	34	63	63.0	19	19	19	11	24	102	102.0							
MARIST	11-17-06	71-50	W	25-59	.424	4-14	.286	17-30	.567	18	31	49	56.0	21	15	14	6	10	71	86.5							
#6/5 Duke University		173		61-140	.436	9-27	.333	42-66	.636	47	65	112	56.0	40	34	33	17	34	173	86.5							
Opponents		99		29-106	.274	9-40	.225	32-47	.681	19	43	62	31.0	40	18	51	8	17	99	49.5							

Games played: 2
 Points/game: 86.5
 FG Pct: 43.6
 3FG Pct: 33.3
 FT Pct: 63.6

Rebounds/game: 56.0
 Assists/game: 17.0
 Turnovers/game: 16.5
 Assist/turnover ratio: 1.0
 Steals/game: 17.0
 Blocks/game: 8.5

2006-07 Duke Women's Basketball
 #6/5 Duke University Game-by-Game Highs (as of Nov 17, 2006)
 All games

Opponent	Date	Score	WL	POINTS	REBOUNDS	ASSISTS	STEALS	BLOCKED SHOTS
NORTHEASTERN	11-11-06	102-49	W	18-Bridgette Mit	13-Bridgette Mit	5-Wanisha Smith	5-Abby Waner Lindsey Hardi	5-Alison Bales
MARIST	11-17-06	71-50	W	14-Carrem Gay Abby Waner	10-Carrem Gay	5-Wanisha Smith	4-Abby Waner	4-Alison Bales

2006-07 Duke Women's Basketball

#6/5 Duke University Game-by-Game Points-Rebounds-Assists (as of Nov 17, 2006)

All games

Opponent	Date	Score	WL	02	04	10	15	21	22	23	30	31
				WANER,EMI	WANER,ABB	HARDING,L	MITCHELL,	CHEEK,JOY	MITCH,BRI	SMITH,WAN	GAY,CARRE	JACKSON,K
NORTHEASTERN	11-11-06	102-49	W	5- 4- 3	16- 4- 1	9- 3- 4	18-13- 2	12-11- 0	10- 1- 2	6- 3- 5	16- 6- 0	2- 3- 2
MARIST	11-17-06	71-50	W	3- 1- 1	14- 7- 2	9- 4- 2	2- 7- 1	5- 2- 0	3- 0- 1	8- 8- 5	14-10- 0	1- 3- 1

43

Opponent	Date	Score	WL	BALES,ALI
NORTHEASTERN	11-11-06	102-49	W	8-11- 0
MARIST	11-17-06	71-50	W	12- 5- 2

2006-07 Duke Women's Basketball
 #6/5 Duke University Season Schedule/Results & Leaders (as of Nov 17, 2006)
 All games

RECORD:	OVERALL	HOME	AWAY	NEUTRAL
ALL GAMES.....	(2-0)	(2-0)	(0-0)	(0-0)
CONFERENCE.....	(0-0)	(0-0)	(0-0)	(0-0)
NON-CONFERENCE.....	(2-0)	(2-0)	(0-0)	(0-0)

DATE	TIME	OPPONENT		SCORE	ATTEND	HIGH POINTS	HIGH REBOUNDS
11-11-06	2:00 PM	NORTHEASTERN	W	102-49	3859	(18)Bridgette Mitchell	(13)Bridgette Mitchell
11-17-06	7:00 PM	MARIST	W	71-50	4465	(14)Abby Waner (14)Carrem Gay	(10)Carrem Gay

* = Conference game

ATTENDANCE SUMMARY	GAMES	TOTALS	AVG/GAME
HOME.....	2	8324	4162
AWAY.....	0	0	0
NEUTRAL.....	0	0	0
TOTAL.....	2	8324	4162

2006-07 Duke Women's Basketball
 #6/5 Duke University Team Game-by-Game Comparison (as of Nov 17, 2006)
 All games

Opponent	1st	2nd	Score	Mar	Total FG	FG Pct	3-Pointers	3FG Pct	Free Throws	FT Pct	Rebounds	Assist	TOver	Block	Steal	Fouls	
NORTHEASTERN.....	43/22	59/27	102-49	+53	36-81/15-56	.444/.268	5-13/ 3-15	.385/.200	25-36/16-22	.694/.727	63/29	+34	19/9	19/36	11/6	24/9	19/20
MARIST.....	32/22	39/28	71-50	+21	25-59/14-50	.424/.280	4-14/ 6-25	.286/.240	17-30/16-25	.567/.640	49/33	+16	15/9	14/15	6/2	10/8	21/20

Note: Game totals are displayed in the format TEAM/OPPONENT for each category

2006-07 Duke Women's Basketball
 #6/5 Duke University Team High/Low Analysis (as of Nov 17, 2006)
 All games

#6/5 Duke University - TEAM GAME HIGHS

POINTS.....	102	vs Northeastern (11-11-06)
	71	vs Marist (11-17-06)
FIELD GOALS MADE.....	36	vs Northeastern (11-11-06)
	25	vs Marist (11-17-06)
FIELD GOAL ATTEMPTS.....	81	vs Northeastern (11-11-06)
	59	vs Marist (11-17-06)
FIELD GOAL PERCENTAGE.....	.444 (36-81)	vs Northeastern (11-11-06)
	.424 (25-59)	vs Marist (11-17-06)
3 PT FIELD GOALS MADE.....	5	vs Northeastern (11-11-06)
	4	vs Marist (11-17-06)
3 PT FG ATTEMPTS.....	14	vs Marist (11-17-06)
	13	vs Northeastern (11-11-06)
3 PT FG PERCENTAGE.....	.385 (5-13)	vs Northeastern (11-11-06)
	.286 (4-14)	vs Marist (11-17-06)
FREE THROWS MADE.....	25	vs Northeastern (11-11-06)
	17	vs Marist (11-17-06)
FREE THROW ATTEMPTS.....	36	vs Northeastern (11-11-06)
	30	vs Marist (11-17-06)
FREE THROW PERCENTAGE.....	.694 (25-36)	vs Northeastern (11-11-06)
	.567 (17-30)	vs Marist (11-17-06)
REBOUNDS.....	63	vs Northeastern (11-11-06)
	49	vs Marist (11-17-06)
ASSISTS.....	19	vs Northeastern (11-11-06)
	15	vs Marist (11-17-06)
STEALS.....	24	vs Northeastern (11-11-06)
	10	vs Marist (11-17-06)
BLOCKED SHOTS.....	11	vs Northeastern (11-11-06)
	6	vs Marist (11-17-06)
TURNOVERS.....	19	vs Northeastern (11-11-06)
	14	vs Marist (11-17-06)
FOULS.....	21	vs Marist (11-17-06)
	19	vs Northeastern (11-11-06)

All games

Opponent - GAME HIGHS

POINTS.....	50	vs Marist (11-17-06)
	49	vs Northeastern (11-11-06)
FIELD GOALS MADE.....	15	vs Northeastern (11-11-06)
	14	vs Marist (11-17-06)
FIELD GOAL ATTEMPTS.....	56	vs Northeastern (11-11-06)
	50	vs Marist (11-17-06)
FIELD GOAL PERCENTAGE.....	.280 (14-50)	vs Marist (11-17-06)
	.268 (15-56)	vs Northeastern (11-11-06)
3 PT FIELD GOALS MADE.....	6	vs Marist (11-17-06)
	3	vs Northeastern (11-11-06)
3 PT FG ATTEMPTS.....	25	vs Marist (11-17-06)
	15	vs Northeastern (11-11-06)
3 PT FG PERCENTAGE.....	.240 (6-25)	vs Marist (11-17-06)
	.200 (3-15)	vs Northeastern (11-11-06)
FREE THROWS MADE.....	16	vs Marist (11-17-06)
	16	vs Northeastern (11-11-06)
FREE THROW ATTEMPTS.....	25	vs Marist (11-17-06)
	22	vs Northeastern (11-11-06)
FREE THROW PERCENTAGE.....	.727 (16-22)	vs Northeastern (11-11-06)
	.640 (16-25)	vs Marist (11-17-06)
REBOUNDS.....	33	vs Marist (11-17-06)
	29	vs Northeastern (11-11-06)
ASSISTS.....	9	vs Marist (11-17-06)
	9	vs Northeastern (11-11-06)
STEALS.....	9	vs Northeastern (11-11-06)
	8	vs Marist (11-17-06)
BLOCKED SHOTS.....	6	vs Northeastern (11-11-06)
	2	vs Marist (11-17-06)
TURNOVERS.....	36	vs Northeastern (11-11-06)
	15	vs Marist (11-17-06)
FOULS.....	20	vs Marist (11-17-06)
	20	vs Northeastern (11-11-06)

#6/5 Duke University - GAME LOWS

POINTS.....	71	vs Marist (11-17-06)
	102	vs Northeastern (11-11-06)
FIELD GOALS MADE.....	25	vs Marist (11-17-06)
	36	vs Northeastern (11-11-06)
FIELD GOAL ATTEMPTS.....	59	vs Marist (11-17-06)
	81	vs Northeastern (11-11-06)
FIELD GOAL PERCENTAGE.....	.424 (25-59)	vs Marist (11-17-06)
	.444 (36-81)	vs Northeastern (11-11-06)
3 PT FIELD GOALS MADE.....	4	vs Marist (11-17-06)
	5	vs Northeastern (11-11-06)
3 PT FG ATTEMPTS.....	13	vs Northeastern (11-11-06)
	14	vs Marist (11-17-06)
3 PT FG PERCENTAGE.....	.286 (4-14)	vs Marist (11-17-06)
	.385 (5-13)	vs Northeastern (11-11-06)
FREE THROWS MADE.....	17	vs Marist (11-17-06)
	25	vs Northeastern (11-11-06)
FREE THROW ATTEMPTS.....	30	vs Marist (11-17-06)
	36	vs Northeastern (11-11-06)
FREE THROW PERCENTAGE.....	.567 (17-30)	vs Marist (11-17-06)
	.694 (25-36)	vs Northeastern (11-11-06)
REBOUNDS.....	49	vs Marist (11-17-06)
	63	vs Northeastern (11-11-06)
ASSISTS.....	15	vs Marist (11-17-06)
	19	vs Northeastern (11-11-06)
STEALS.....	10	vs Marist (11-17-06)
	24	vs Northeastern (11-11-06)
BLOCKED SHOTS.....	6	vs Marist (11-17-06)
	11	vs Northeastern (11-11-06)
TURNOVERS.....	14	vs Marist (11-17-06)
	19	vs Northeastern (11-11-06)
FOULS.....	19	vs Northeastern (11-11-06)
	21	vs Marist (11-17-06)

All games

Opponent - GAME LOWS

POINTS.....	49	vs Northeastern (11-11-06)
	50	vs Marist (11-17-06)
FIELD GOALS MADE.....	14	vs Marist (11-17-06)
	15	vs Northeastern (11-11-06)
FIELD GOAL ATTEMPTS.....	50	vs Marist (11-17-06)
	56	vs Northeastern (11-11-06)
FIELD GOAL PERCENTAGE.....	.268 (15-56)	vs Northeastern (11-11-06)
	.280 (14-50)	vs Marist (11-17-06)
3 PT FIELD GOALS MADE.....	3	vs Northeastern (11-11-06)
	6	vs Marist (11-17-06)
3 PT FG ATTEMPTS.....	15	vs Northeastern (11-11-06)
	25	vs Marist (11-17-06)
3 PT FG PERCENTAGE.....	.200 (3-15)	vs Northeastern (11-11-06)
	.240 (6-25)	vs Marist (11-17-06)
FREE THROWS MADE.....	16	vs Northeastern (11-11-06)
	16	vs Marist (11-17-06)
FREE THROW ATTEMPTS.....	22	vs Northeastern (11-11-06)
	25	vs Marist (11-17-06)
FREE THROW PERCENTAGE.....	.640 (16-25)	vs Marist (11-17-06)
	.727 (16-22)	vs Northeastern (11-11-06)
REBOUNDS.....	29	vs Northeastern (11-11-06)
	33	vs Marist (11-17-06)
ASSISTS.....	9	vs Northeastern (11-11-06)
	9	vs Marist (11-17-06)
STEALS.....	8	vs Marist (11-17-06)
	9	vs Northeastern (11-11-06)
BLOCKED SHOTS.....	2	vs Marist (11-17-06)
	6	vs Northeastern (11-11-06)
TURNOVERS.....	15	vs Marist (11-17-06)
	36	vs Northeastern (11-11-06)
FOULS.....	20	vs Northeastern (11-11-06)
	20	vs Marist (11-17-06)

2006-07 Duke Women's Basketball
 #6/5 Duke University Player High/Low Analysis (as of Nov 17, 2006)
 All games

#6/5 Duke University - INDIVIDUAL GAME HIGHS

POINTS.....	18	Bridgette Mitchell vs Northeastern (11-11-06)
	16	Abby Waner vs Northeastern (11-11-06)
	16	Carrem Gay vs Northeastern (11-11-06)
	14	Carrem Gay vs Marist (11-17-06)
	14	Abby Waner vs Marist (11-17-06)
FIELD GOALS MADE.....	8	Bridgette Mitchell vs Northeastern (11-11-06)
	7	Abby Waner vs Northeastern (11-11-06)
FIELD GOAL ATT.....	13	Bridgette Mitchell vs Northeastern (11-11-06)
	12	Abby Waner vs Northeastern (11-11-06)
FG PCT (min 5 made).....	.750 (6-8)	Carrem Gay vs Marist (11-17-06)
	.714 (5-7)	Carrem Gay vs Northeastern (11-11-06)
3 PT FG MADE.....	2	Abby Waner vs Marist (11-17-06)
	2	Brittany Mitch vs Northeastern (11-11-06)
3 PT FG ATTEMPTS.....	4	Emily Waner vs Northeastern (11-11-06)
	4	Brittany Mitch vs Northeastern (11-11-06)
3-PT FG PCT (min 2 made).....	.667 (2-3)	Abby Waner vs Marist (11-17-06)
	.500 (2-4)	Brittany Mitch vs Northeastern (11-11-06)
FREE THROWS MADE.....	6	Alison Bales vs Northeastern (11-11-06)
	6	Joy Cheek vs Northeastern (11-11-06)
	6	Carrem Gay vs Northeastern (11-11-06)
FREE THROW ATT.....	8	Carrem Gay vs Northeastern (11-11-06)
	8	Alison Bales vs Northeastern (11-11-06)
	8	Joy Cheek vs Northeastern (11-11-06)
FT PCT (min 3 made).....	.750 (6-8)	Joy Cheek vs Northeastern (11-11-06)
	.750 (6-8)	Carrem Gay vs Northeastern (11-11-06)
	.750 (6-8)	Alison Bales vs Northeastern (11-11-06)
	.750 (3-4)	Lindsey Harding vs Marist (11-17-06)
REBOUNDS.....	13	Bridgette Mitchell vs Northeastern (11-11-06)
	11	Joy Cheek vs Northeastern (11-11-06)
	11	Alison Bales vs Northeastern (11-11-06)
ASSISTS.....	5	Wanisha Smith vs Marist (11-17-06)
	5	Wanisha Smith vs Northeastern (11-11-06)
STEALS.....	5	Lindsey Harding vs Northeastern (11-11-06)
	5	Abby Waner vs Northeastern (11-11-06)
BLOCKED SHOTS.....	5	Alison Bales vs Northeastern (11-11-06)
	4	Alison Bales vs Marist (11-17-06)
TURNOVERS.....	4	Joy Cheek vs Northeastern (11-11-06)
	3	Carrem Gay vs Marist (11-17-06)
	3	Bridgette Mitchell vs Northeastern (11-11-06)
	3	Brittany Mitch vs Northeastern (11-11-06)
FOULS.....	4	Alison Bales vs Marist (11-17-06)
	4	Brittany Mitch vs Northeastern (11-11-06)

OPPONENT INDIVIDUAL GAME HIGHS

POINTS.....	17	Ashlee Feldman vs Northeastern (11-11-06)
	12	Meg Dahlman vs Marist (11-17-06)
	11	Lucia Pablos vs Northeastern (11-11-06)
	10	Nikki Flores vs Marist (11-17-06)
	8	Shaleyse Smallwood vs Northeastern (11-11-06)
FIELD GOALS MADE.....	7	Ashlee Feldman vs Northeastern (11-11-06)
	5	Meg Dahlman vs Marist (11-17-06)
FIELD GOAL ATT.....	18	Ashlee Feldman vs Northeastern (11-11-06)
	12	Meg Dahlman vs Marist (11-17-06)
FG PCT (min 5 made).....	.417 (5-12)	Meg Dahlman vs Marist (11-17-06)
	.389 (7-18)	Ashlee Feldman vs Northeastern (11-11-06)
3 PT FG MADE.....	2	Courtney Kolesar vs Marist (11-17-06)
	2	Ashlee Feldman vs Northeastern (11-11-06)
3 PT FG ATTEMPTS.....	10	Ashlee Feldman vs Northeastern (11-11-06)
	5	Courtney Kolesar vs Marist (11-17-06)
	5	Sarah Smrdel vs Marist (11-17-06)
3-PT FG PCT (min 2 made).....	.400 (2-5)	Courtney Kolesar vs Marist (11-17-06)
	.200 (2-10)	Ashlee Feldman vs Northeastern (11-11-06)
FREE THROWS MADE.....	9	Lucia Pablos vs Northeastern (11-11-06)
	5	Nikki Flores vs Marist (11-17-06)
FREE THROW ATT.....	9	Lucia Pablos vs Northeastern (11-11-06)
	7	Alisa Kresge vs Marist (11-17-06)
FT PCT (min 3 made).....	1.000 (9-9)	Lucia Pablos vs Northeastern (11-11-06)
	.833 (5-6)	Nikki Flores vs Marist (11-17-06)
REBOUNDS.....	8	Meg Dahlman vs Marist (11-17-06)
	6	Stefanie Hodell vs Northeastern (11-11-06)
ASSISTS.....	5	Jody Burrows vs Northeastern (11-11-06)
	3	Julianne Viani vs Marist (11-17-06)
	3	Alisa Kresge vs Marist (11-17-06)
STEALS.....	4	Jody Burrows vs Northeastern (11-11-06)
	2	Kendra Walton vs Northeastern (11-11-06)
BLOCKED SHOTS.....	3	Kendra Walton vs Northeastern (11-11-06)
	2	Joanna Ausmann vs Northeastern (11-11-06)
TURNOVERS.....	8	Stefanie Hodell vs Northeastern (11-11-06)
	6	Jody Burrows vs Northeastern (11-11-06)
FOULS.....	5	Sarah Smrdel vs Marist (11-17-06)
	4	Nikki Flores vs Marist (11-17-06)
	4	Stefanie Hodell vs Northeastern (11-11-06)
	4	Jody Burrows vs Northeastern (11-11-06)
	4	Joanna Ausmann vs Northeastern (11-11-06)
	4	Kim Carr vs Northeastern (11-11-06)