



COLUMBIA

WOMEN'S BASKETBALL

2017-18 GAME NOTES

Columbia Women's Basketball

@CULionsWBB

2017-18 SCHEDULE

Record: 6-6

Home: 3-2 • Away: 3-1 • Neutral: 0-3

Day	Date	Opponent	Result/Time
Fri.	Nov. 10	at Providence	W, 73-64
Sun.	Nov. 12	RICHMOND	L, 79-85
Wed.	Nov. 15	at UMass Lowell	L, 70-77
Sun.	Nov. 19	at Vermont	W, 73-66
Thurs.	Nov. 23	vs. Green Bay \$	L, 43-61
Fri.	Nov. 24	vs. (7) Mississippi State \$	L, 54-90
Sat.	Nov. 25	vs. (24) Arizona State \$	L, 48-72
Wed.	Nov. 29	BOSTON COLLEGE ^	W, 68-60
Sun.	Dec. 3	at UMBG	W, 60-44
Wed.	Dec. 6	SAINT FRANCIS (PA)	W, 94-81
Sat.	Dec. 9	BUFFALO	L, 63-65
Mon.	Dec. 11	HOFSTRA	W, 75-53
Thurs.	Dec. 28	at Houston	6 p.m.
Sat.	Dec. 30	at Rice	3 p.m.
Wed.	Jan. 3	at Hampton	6 p.m.
Fri.	Jan. 12	at Princeton *	5:30 p.m.
Sat.	Jan. 13	at Penn *	4:30 p.m.
Sat.	Jan. 20	CORNELL *	4 p.m.
Sat.	Jan. 27	at Cornell *	1 p.m.
Fri.	Feb. 2	at Harvard *	6 p.m.
Sat.	Feb. 3	at Dartmouth *	5 p.m.
Fri.	Feb. 9	YALE *	7 p.m.
Sat.	Feb. 10	BROWN *	5 p.m.
Fri.	Feb. 16	PENN *	4 p.m.
Sat.	Feb. 17	PRINCETON *	4 p.m.
Fri.	Feb. 23	at Brown *	6 p.m.
Sat.	Feb. 24	at Yale *	5 p.m.
Fri.	Mar. 2	DARTMOUTH *	7 p.m.
Sat.	Mar. 3	HARVARD *	7 p.m.
March 10-11	Ivy League Championship	TBD	

All Times Eastern (ET)

Home games in **Bold** and **CAPS**

AP Top 25 Ranking in parentheses

^ Education Day

\$ Cancun Challenge

* Ivy League Game

ATHLETICS COMMUNICATIONS

Assistant Director / WBB Contact..... Kyle Mattracion
Office.....212-851-5643
Cell.....845-416-4372
Email.....km3238@columbia.edu

Associate AD / Athletics Comm. Greg Hotchkiss
Office.....212-854-2535
Email.....gh2469@columbia.edu

Department Main Line.....212-851-2534
Fax.....212-854-8168
Press Row Phone212854-1165

Athletics Social Media@GoColumbiaLions
WBB Social Media.....@CULionsWBB

Department Mailing Address 3030 Broadway
..... New York, NY 10027

OvernightNash Building Room 305
..... 3280 Broadway
..... New York, NY 10027

GAME 13 • AT HOUSTON



AT



6-6

10-3

THURSDAY, DECEMBER 28 • 6:00 P.M. (ET)
H&PE ARENA • HOUSTON, TEXAS

MEDIA COVERAGE

Video.....Houston All-Access (Gerald Sanchez, Louis Ray)

Live Stats.....GameTracker (UHCougars.com)

GAME 14 • AT RICE



AT



6-6

9-2

SATURDAY, DECEMBER 30 • 3:00 P.M. (ET)
TUDOR FIELDHOUSE • HOUSTON, TEXAS

MEDIA COVERAGE

Video.....ESPN3 / Watch ESPN (Alex Del Barrio)

Live Stats.....GameTracker (RiceOwls.com)

OPENING TIPS

• Following a 17-day break for finals and holidays, the Columbia women's basketball team returns to game action this week for two games in the state of Texas. The first game of the trip is Thursday against Houston at 6 p.m. ET. The Lions play Rice Saturday on ESPN3 with tip slated for 3 p.m. ET before flying back to New York that evening.

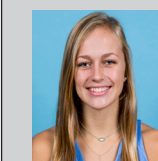
• The Lions will play their first games in Texas since December of 1999. Columbia took on TCU and North Texas, that year, including a New Year's Eve contest at North Texas on the final day of the millennium. The Lions also visited the Lone Star State in January of 1993, suffering a 10-point loss to Rice and beating UT-Pan American, 63-60.

• Columbia has won four of its last five games, including a 22-point victory over Hofstra in the team's last outing on Dec. 11 in New York. The Lions trailed 32-31 at halftime, but outscored Hofstra 24-6 in the third period to pull away. Senior Camille Zimmerman scored a game-high 24 points and pulled down a career-high 10 offensive rebounds to lead the Lions to a 21-7 advantage in second-chance points.

• Houston represents the fifth RPI Top 50 team on Columbia's schedule this season (according to the NCAA's official RPI). The Lions have also taken on defending national champion Mississippi State (No. 3), Green Bay (No. 4), Buffalo (No. 30) and Arizona State (No. 46). Columbia nearly defeated Buffalo, leading the game for almost 30 minutes and taking as large as an eight-point lead, but the Bulls hit a shot at the buzzer to steal the victory.

• Senior Paige Tippet, senior Jillian Borreson and sophomore Maya Sampleton all hail from the state of Texas. Tippet calls League City her hometown, just outside of Houston, and played three years at Clear Springs High School. The Lions practiced at Tippet's alma mater on Tuesday. Borreson is from 180 miles west of Houston in Mountain City, which sits between Austin and San Antonio. Sampleton grew up in the capital of Austin.

PROJECTED STARTERS



5 RILEY CASEY

Fr. • G • 5-8

GP: 12 • GS: 12
PTS: 10.7 • REB: 1.7
AST: 2.2 • STL: 0.5
BLK: 0.1 • MIN: 31.8



4 PAIGE TIPPET

Sr. • G • 5-8

GP: 12 • GS: 12
PTS: 4.2 • REB: 2.4
AST: 2.8 • STL: 0.3
BLK: 0.2 • MIN: 27.4



1 JANIYA CLEMMONS

So. • G • 5-9

GP: 12 • GS: 3
PTS: 6.2 • REB: 3.3
AST: 1.1 • STL: 0.4
BLK: 0.3 • MIN: 20.3



20 CAMILLE ZIMMERMAN

Sr. • G/F • 6-1

GP: 12 • GS: 12
PTS: 21.1 • REB: 8.8
AST: 3.3 • STL: 0.9
BLK: 0.7 • MIN: 34.5



32 MADISON PACK

Fr. • F/C • 6-3

GP: 12 • GS: 9
PTS: 6.8 • REB: 4.8
AST: 0.4 • STL: 0.2
BLK: 0.3 • MIN: 24.2

RESERVES

No.	Name	Pos.	Ht.	Yr.	GP-GS	Pts	Reb	Ast	Stl	Blk	Min
00	Imani Whittington	G/F	5-11	Fr.	10-1	1.2	0.3	0.1	0.1	0.0	3.5
3	Josie Little	F	6-2	Jr.	5-5	5.2	5.8	0.8	0.6	0.8	24.8
10	Andrea McCormick	G	5-8	Fr.	10-0	2.1	1.3	0.2	0.1	0.1	6.3
11	Sarah Elston	G/F	6-1	Jr.	0-0	--	--	--	--	--	--
22	Maya Sampleton	G	5-9	So.	12-3	5.0	2.8	0.6	0.7	0.3	15.9
25	Stephanie Flynn	G/F	5-9	So.	12-0	1.4	0.3	0.3	0.3	0.0	6.1
33	Abby Lee	G/F	5-10	Jr.	12-3	6.1	3.9	1.1	0.4	0.1	19.4
42	Jillian Borreson	C	6-3	Sr.	5-0	0.8	1.6	0.0	0.0	0.0	4.6



THE COLUMBIA ROSTER

NUMERICAL ROSTER

#	NAME	Pos	Ht	Yr	HOMETOWN/PREVIOUS SCHOOL
00	Imani Whittington	G/F	5-11	Fr.	London, England / Barking Abbey School
1	Janiya Clemmons	G	5-9	So.	Accokeek, Md. / Bishop Denis J. O'Connell
3	Josie Little	F	6-2	Jr.	San Francisco, Calif. / St. Ignatius College Prep
4	Paige Tippet	G	5-8	Sr.	League City, Texas / Clear Springs
5	Riley Casey	G	5-8	Fr.	Brentwood, Tenn. / Franklin Road Academy
10	Andrea McCormick	G	5-8	Fr.	Erie, Pa. / Villa Maria Academy
11	Sarah Elston	G/F	6-1	Jr.	Bannockburn, Ill. / Loyola Academy
20	Camille Zimmerman	G/F	6-1	Sr.	Tempe, Ariz. / Tempe Preparatory Academy
22	Maya Sampleton	G	5-9	So.	Austin, Texas / St. Stephen's Episcopal
25	Stephanie Flynn	G/F	5-9	So.	Hanover, Mass. / Hanover
32	Madison Pack	F/C	6-3	Fr.	Sarasota, Fla. / Sarasota
33	Abby Lee	G/F	5-10	Jr.	West Monroe, La. / West Monroe
42	Jillian Borreson	C	6-3	Sr.	Mt. City, Texas / Jack C. Hays

Head Coach:	Megan Griffith (Second Season, Columbia '07CC)
Assistant Coach:	Tyler Cordell (Second Season, Ohio Wesleyan '11)
Assistant Coach:	Greg Rosnick (First Season, Haverford College '09)
Volunteer Assistant:	Kerry Connolly (First Season, Molloy College '14)
Director of Operations:	Meghan Roxas (First Season, UMBC '16)

ALPHABETICAL ROSTER

NAME	#	Pos	Yr
Borreson, Jillian	42	C	Sr.
Casey, Riley	5	G	Fr.
Clemmons, Janiya	1	G	So.
Elston, Sarah	11	G/F	Jr.
Flynn, Stephanie	25	G/F	So.
Lee, Abby	33	G/F	Jr.
Little, Josie	3	F	Jr.
McCormick, Andrea	10	G	Fr.
Pack, Madison	32	F/C	Fr.
Sampleton, Maya	22	G	So.
Tippet, Paige	4	G	Sr.
Whittington, Imani	00	G/F	Fr.
Zimmerman, Camille	20	G/F	Sr.

ROSTER BY POSITION

POSITION	NAME
Guards (5)	Riley Casey
	Janiya Clemmons
	Andrea McCormick
	Maya Sampleton
	Paige Tippet
Guards/Forwards (5)	Sarah Elston
	Stephanie Flynn
	Abby Lee
	Imani Whittington
	Camille Zimmerman
Forwards/Centers (3)	Jillian Borreson
	Josie Little
	Madison Pack

ROSTER BY CLASS

CLASS	NAME
Seniors (3)	Jillian Borreson
	Paige Tippet
	Camille Zimmerman
Juniors (3)	Sarah Elston
	Abby Lee
	Josie Little
Sophomores (3)	Janiya Clemmons
	Stephanie Flynn
	Maya Sampleton
First-Years (4)	Riley Casey
	Andrea McCormick
	Madison Pack
	Imani Whittington

LIONS BY STATE/COUNTRY

Texas	3
England	1
Tennessee	1
Arizona	1
Louisiana	1
Illinois	1
California	1
Massachusetts	1
Maryland	1
Florida	1
Pennsylvania	1

PRONUNCIATION GUIDE

00. Imani Whittington	(e-mon-e)
1. Janiya Clemmons	(Juh-neye-uh)
4. Paige Tippet	(Tip-it)
10. Andrea McCormick	(Ann-dree-uh)
42. Jillian Borreson	(Bore-uh-sin)
Meghan Roxas	(Row-Has)



THE MATCHUP



STATISTICAL COMPARISON

STATISTICAL RANKINGS THROUGH DEC. 23

Category	Columbia (6-6)			Houston (10-3)			Rice (9-2)		
	Value	Ivy	NCAA	Value	AAC	NCAA	Value	C-USA	NCAA
Scoring Offense.....	66.7	#4	#170	75.1	#3	#58	70.9	#3	#100
Scoring Defense.....	68.2	#8	#238	69.5	#10	#263	59.7	#5	#70
Scoring Margin.....	-1.5	#7	#220	+5.6	#6	#124	+11.2	#3	#66
FG Percentage.....	41.9%	#3	#126	41.6%	#6	#136	46.6%	#1	#25
FG Pct. Defense.....	41.3%	#6	#235	39.1%	#9	#159	38.0%	#7	#110
3-PT FG Pct.....	31.3%	#6	#177	31.3%	#6	#178	38.3%	#2	#28
3-PT FG Defense.....	26.5%	#1	#37	28.1%	#3	#60	26.0%	#1	#22
FT Percentage.....	77.2%	#1	#13	65.2%	#10	#265	70.2%	#7	#145
Rebounds/Game.....	36.25	#8	#253	38.92	#8	#155	36.91	#12	#234
Rebound Margin.....	-1.7	#8	#233	-4.8	#12	#283	+4.6	#6	#95
Blocks/Game.....	2.3	#7	#288	4.1	#4	#96	2.9	#8	#209
Steals/Game.....	4.1	#8	#344	12.7	#1	#12	7.6	#8	#193
Assists/Game.....	12.3	#8	#241	14.7	#5	#118	15.1	#4	#104
Turnovers/Game.....	16.0	#4	#160	18.8	#10	#292	16.4	#5	#182
Turnover Margin.....	-2.83	#7	#287	-4.46	#1	#45	-1.73	#7	#253
Assist/Turnover Ratio....	0.77	#6	#219	0.78	#8	#211	0.92	#3	#118

COACHING COMPARISON

Head Coach.....	Megan Griffith	Ronald Hughey	Tina Langley
Alma Mater.....	Columbia '07CC	Limestone '06	West Alabama '96
Seasons at School.....	Second	Fourth	Third
Record at School.....	19-20 (.487)	34-70 (.327)	40-37 (.519)
Conference Record.....	3-11 (.214)	8-45 (.151)	15-21 (.416)
Career Seasons.....	Same	Same	Same
Career Record.....	Same	Same	Same

SERIES HISTORY

COLUMBIA VS. HOUSTON

All-Time Series Record.....	First Meeting
Record Between Coaches.....	First Meeting

COLUMBIA VS. RICE

All-Time Series Record.....	Rice leads 1-0
All-Time Series Record in Houston.....	Rice leads 1-0
First Meeting.....	Jan. 2, 1993 • Houston, Texas • Rice 71 - Columbia 61
Last Meeting.....	Same
Current Winning Streak.....	Rice • W1
Columbia's Longest Winning Streak.....	N/A
Rice's Longest Winning Streak.....	W1 (1993)
Columbia's Largest Victory.....	N/A
Rice's Largest Victory.....	10 points (71-61 • Jan. 2, 1993 • Houston, Texas)

UP NEXT...

COLUMBIA AT HAMPTON

Date:	Wednesday, Jan. 3
Time:	6:00 p.m.
Site:	Hampton, Va.
Venue:	Convocation Center
Video:	N/A



AT



COLUMBIA'S RECORD WHEN...

Overall.....	6-6
At home.....	3-2
On the road.....	3-1
At neutral sites.....	0-3
Day games.....	4-5
Night games (start 5 p.m. or later).....	2-1
vs. ACC.....	1-0
vs. America East.....	2-1
vs. American.....	0-0
vs. Atlantic 10.....	0-1
vs. BIG EAST.....	1-0
vs. CAA.....	1-0
vs. Conference USA.....	0-0
vs. Horizon League.....	0-1
vs. Ivy League.....	0-0
vs. MAC.....	0-1
vs. MEAC.....	0-0
vs. NEC.....	1-0
vs. Pac-12.....	0-1
vs. SEC.....	0-1
vs. Ranked teams.....	0-2
vs. Unranked teams.....	6-4
vs. Ivy League.....	0-0
vs. Non-Conference.....	6-6
Win the Tipoff.....	4-1
Lost the Tipoff.....	2-5
Leading at half.....	3-2
Trailing at half.....	3-3
Tied at half.....	0-1
In overtime.....	0-0
Games decided by 1-4 points.....	0-1
Games decided by 5-10 points.....	3-2
Games decided by 11-20 points.....	2-1
Games decided by 20+ points.....	1-2
Scores less than 50 points.....	0-2
Scores 50-59 points.....	0-1
Scores 60-69 points.....	2-1
Scores 70-79 points.....	3-2
Scores 80-89 points.....	0-0
Scores 90 or more points.....	1-0
Opponent scores less than 50 points.....	1-0
Opponent scores 50-59 points.....	1-0
Opponent scores 60-69 points.....	3-2
Opponent scores 70-79 points.....	0-2
Opponent scores 80-89 points.....	1-1
Opponent scores 90 or more points.....	0-1
Columbia shoots .500 and above.....	2-0
Columbia shoots .400 to .499.....	3-3
Columbia shoots .300 to .399.....	1-3
Columbia shoots less than .300.....	0-0
Opponent shoots .500 and above.....	0-0
Opponent shoots .400 to .499.....	4-4
Opponent shoots .300 to .399.....	2-2
Opponent shoots less than .300.....	0-0
Columbia shoots better from the field.....	4-2
Columbia shoots worse from the field.....	2-4
Columbia shoots more free throws.....	2-2
Opponent shoots more free throws.....	4-4
Shoots same number of free throws.....	0-0
Outrebounded the opponent.....	4-0
Outrebounded by opponent.....	2-6
Rebounds are equal.....	0-0
Commits more fouls than opponent.....	2-3
Commits fewer fouls than opponent.....	2-1
Fouls are equal.....	2-2
Has more turnovers than opponent.....	4-5
Has fewer turnovers than opponent.....	2-1
Turnovers are even.....	0-0
On Monday.....	1-0
On Tuesday.....	0-0
On Wednesday.....	2-1
On Thursday.....	0-1
On Friday.....	1-1
On Saturday.....	0-2
On Sunday.....	2-1
In November.....	3-5
In December.....	3-1
In January.....	0-0
In February.....	0-0
In March.....	0-0



COLUMBIA DOMINATES SECOND HALF TO DEFEAT HOFSTRA

Monday, December 11, 2017

HOFSTRA 53
COLUMBIA 75

NEW YORK – Columbia outscored Hofstra 24-6 in the third quarter en route to a 75-53 non-conference women's basketball win Monday evening at Levien Gymnasium. The win improved Columbia to 6-6 overall, while Hofstra falls to 5-5.

Camille Zimmerman registered her sixth double-double of the year and third straight 20-point game. The senior finished with game-highs of 24 points and 13 rebounds, 10 of which came on the offensive glass. She also tallied three assists, two steals and a block and hit all eight of her free throw attempts. First-year Riley Casey added 16 points on 50-percent shooting, while sophomore Maya Sampleton came off the bench to score a career-high 12. Sampleton also filled up the stat sheet with four boards, three steals, two assists and a block.

Columbia took control of what was a tightly contested game early in the third quarter. The Pride went up three points with the first bucket of the half, but Columbia responded with a 13-0 run and never looked back. Zimmerman started the rally with two free throws, first-year Madison Pack converted a layup, Casey hit two free throws and Pack swished home a 3-pointer. Zimmerman got back to the line for two more free throws and Sampleton closed the run with another as Columbia took a 43-34 advantage. The Lions would not trail again.

Columbia used a separate 8-0 run to go up 17 points at the conclusion of the third quarter. The Lions then scored the first seven points of the fourth to take full command. Pack's second triple of the game gave Columbia its largest lead, 70-45, with 4:10 to go.

Defensively, the Lions forced a season-high 21 Hofstra turnovers that led to a 29-9 advantage in points off turnovers. The Pride shot just 14.3 percent from 3-point land (3-21), while the Lions connected on six from deep and hit 15 of their 20 free throws. Columbia also grabbed a season-high 17 offensive rebounds that led to a 21-7 advantage in second-chance points.

A Petja Krupenko jumper with two seconds left in the second quarter gave Hofstra a 32-31 halftime lead. Columbia used a 7-0 run to go up five at the 4:41 mark, but Hofstra countered with six of the next eight points before Krupenko put her team in front heading to the locker rooms.

First-year Maya Sampleton sparked Columbia in the first quarter. Seconds after connecting on a 3-pointer, she stole the ball and used her speed to drive all alone to the hoop for two more. The Lions led 19-15 after the first period.

Hofstra was led by Kalin, who finished with 15 points and nine rebounds. Askin added 13 points and five assists and Davis finished with 11 points. Columbia outscored the Pride 44-21 in the second half.

Columbia takes 17 days off for final exams and the holidays. The Lions are back in action on Thursday, Dec. 28, when they fly to Houston to take on the Cougars. Columbia will also play Rice (Dec. 30) on the trip before flying back to New York.



Official Basketball Box Score -- Game Totals -- Final Statistics
HOFSTRA vs Columbia
12/11/17 7:00 p.m. at New York, N.Y. (Levien Gymnasium)

**HOFSTRA 53 • 5-5**

#	Player		Total	3-Ptr	FT-FTA	Rebounds			PF	TP	A	TO	Blk	Stl	Min
			FG-FGA	FG-FGA		Off	Def	Tot							
53	Kalin, Marianne	f	7-12	0-0	1-4	3	6	9	3	15	2	3	2	1	35
01	Davis, E'Lexus	g	4-9	0-3	3-3	0	6	6	3	11	4	5	0	2	33
13	Leon, Aleana	g	4-11	0-4	0-0	1	2	3	5	8	0	2	0	1	21
22	Askin, Olivia	g	4-13	3-10	2-2	0	3	3	1	13	5	3	0	1	39
54	Karsten, Sandra	g	0-4	0-1	0-0	0	1	1	2	0	2	3	0	1	29
05	Krupenko, Petja		2-3	0-1	0-0	0	1	1	1	4	0	2	0	0	22
12	Hoff, Mie		1-3	0-2	0-0	1	9	10	1	2	0	3	0	1	21
Team						3	2	5							
Totals			22-55	3-21	6-9	8	30	38	16	53	13	21	2	7	200

1st - FG %:	6-16	37.5%	2nd: 6-11	54.5%	3rd: 3-12	25.0%	4th: 7-16	43.8%	Game: 22-55	40.0%	Deadball
3FG %:	1-10	10.0%	1-4	25.0%	0-2	0.0%	1-5	20.0%	3-21	14.3%	Rebounds
FT %:	2-3	66.7%	4-4	100.0%	0-2	0.0%	0-0	0.0%	6-9	66.7%	2

Columbia 75 • 6-6

#	Player		Total	3-Ptr	FT-FTA	Rebounds			PF	TP	A	TO	Blk	Stl	Min
			FG-FGA	FG-FGA		Off	Def	Tot							
20	Zimmerman, Camille	f	8-21	0-4	8-8	10	3	13	2	24	3	2	1	2	36
32	Pack, Madison	f	3-6	2-4	0-0	1	5	6	2	8	0	2	0	0	22
01	Clemmons, Janiya	g	2-5	0-0	0-2	0	3	3	0	4	2	1	0	0	28
04	Tippet, Paige	g	0-3	0-1	0-0	1	2	3	1	0	0	4	0	0	20
05	Casey, Riley	g	5-10	2-4	4-4	1	1	2	0	16	3	1	0	0	32
00	Whittington, Imani		1-1	0-0	1-2	1	0	1	0	3	1	0	0	0	2
10	McCormick, Andrea		0-3	0-1	1-2	0	2	2	1	1	0	0	0	0	6
22	Sampleton, Maya		5-12	1-2	1-2	0	4	4	1	12	2	0	1	3	26
25	Flynn, Stephanie		0-1	0-1	0-0	0	0	0	0	0	0	0	0	0	4
33	Lee, Abby		2-6	1-2	0-0	2	4	6	1	5	2	0	0	2	22
42	Borreson, Jillian		1-2	0-0	0-0	0	0	0	0	2	0	0	0	0	2
Team						1	2	3							
Totals			27-70	6-19	15-20	17	26	43	8	75	13	10	2	7	200

1st - FG %:	7-15	46.7%	2nd: 4-20	20.0%	3rd: 8-17	47.1%	4th: 8-18	44.4%	Game: 27-70	38.6%	Deadball
3FG %:	1-3	33.3%	1-6	16.7%	1-4	25.0%	3-6	50.0%	6-19	31.6%	Rebounds
FT %:	4-6	66.7%	3-4	75.0%	7-8	87.5%	1-2	50.0%	15-20	75.0%	1

Officials: Norma Jones, Karen Preato, Bonnie Pettus
Technical fouls: HOFSTRA-None. Columbia-None.
Attendance: 325
2nd Quarter 6:33 Unsportmanlike Foul Called on Columbia #20

Score by periods	1st	2nd	3rd	4th	Total
HOFSTRA	15	17	6	15	53
Columbia	19	12	24	20	75

	In	Off	2nd	Fast	Bench
Points	Paint	T/O	Chance	Break	
HOFSTR	30	9	7	8	6
COL	26	29	21	2	23

Last FG - HOFSTRA 4th-00:59, COL 4th-00:40.
Largest lead - HOFSTRA by 3 3rd-08:43, COL by 25 4th-04:10.
HOFSTRA led for 08:32. COL led for 28:28. Game was tied for 03:00.

Score tied - 6 times.
Lead changed - 8 times.



COMBINED STATISTICS - ALL GAMES

RECORD:	OVERALL	HOME	AWAY	NEUTRAL
ALL GAMES	6-6	3-2	3-1	0-3
CONFERENCE	0-0	0-0	0-0	0-0
NON-CONFERENCE	6-6	3-2	3-1	0-3

#	Player	gp-gs	min	avg	Total		3-Point		F-Throw		Rebounds										pts	avg
					fg-fga	fg%	3fg-fga	3fg%	ft-fa	ft%	off	def	tot	avg	pf	dq	a	to	blk	stl		
20	Zimmerman, Camille	12-12	414	34.5	91-182	.500	5-22	.227	66-76	.868	49	57	106	8.8	38	1	40	44	8	11	253	21.1
05	Casey, Riley	12-12	381	31.8	46-107	.430	19-64	.297	17-19	.895	3	17	20	1.7	25	0	26	22	1	6	128	10.7
32	Pack, Madison	12-9	290	24.2	30-72	.417	16-43	.372	6-7	.857	10	48	58	4.8	31	0	5	10	3	2	82	6.8
01	Clemmons, Janiya	12-3	244	20.3	30-70	.429	0-2	.000	14-21	.667	8	31	39	3.3	11	0	13	18	3	5	74	6.2
33	Lee, Abby	12-3	233	19.4	27-76	.355	13-38	.342	6-6	1.000	14	33	47	3.9	28	1	13	14	1	5	73	6.1
03	Little, Josie	5-5	124	24.8	11-31	.355	2-8	.250	2-3	.667	8	21	29	5.8	12	0	4	13	4	3	26	5.2
22	Sampleton, Maya	12-3	191	15.9	25-65	.385	5-15	.333	5-11	.455	6	28	34	2.8	25	1	7	19	4	8	60	5.0
04	Tippet, Paige	12-12	329	27.4	13-43	.302	6-26	.231	18-24	.750	6	23	29	2.4	24	1	34	25	2	4	50	4.2
10	McCormick, Andrea	10-0	63	6.3	6-23	.261	4-13	.308	5-10	.500	2	11	13	1.3	5	0	2	7	1	1	21	2.1
25	Flynn, Stephanie	12-0	73	6.1	5-12	.417	5-10	.500	2-3	.667	1	3	4	0.3	11	0	3	1	0	3	17	1.4
00	Whittington, Imani	10-1	35	3.5	5-11	.455	1-2	.500	1-2	.500	2	1	3	0.3	10	0	1	10	0	1	12	1.2
42	Borreson, Jillian	5-0	23	4.6	2-3	.667	0-0	.000	0-2	.000	4	4	8	1.6	5	0	0	0	0	0	4	0.8
Team											15	30	45					9				
Total.....		12	2400		291-695	.419	76-243	.313	142-184	.772	128	307	435	36.2	225	4	148	192	27	49	800	66.7
Opponents.....		12	2400		306-741	.413	56-211	.265	150-228	.658	160	295	455	37.9	206	-	136	158	36	82	818	68.2

TEAM STATISTICS

	COL	OPP
SCORING	800	818
Points per game	66.7	68.2
Scoring margin	-1.5	-
FIELD GOALS-ATT	291-695	306-741
Field goal pct	.419	.413
3 POINT FG-ATT	76-243	56-211
3-point FG pct	.313	.265
3-pt FG made per game	6.3	4.7
FREE THROWS-ATT	142-184	150-228
Free throw pct	.772	.658
F-Throws made per game	11.8	12.5
REBOUNDS	435	455
Rebounds per game	36.2	37.9
Rebounding margin	-1.7	-
ASSISTS	148	136
Assists per game	12.3	11.3
TURNOVERS	192	158
Turnovers per game	16.0	13.2
Turnover margin	-2.8	-
Assist/turnover ratio	0.8	0.9
STEALS	49	82
Steals per game	4.1	6.8
BLOCKS	27	36
Blocks per game	2.3	3.0
ATTENDANCE	3743	2969
Home games-Avg/Game	5-749	4-251
Neutral site-Avg/Game	-	3-655

Date	Opponent		Score	Att.
11/10/17	at Providence	W	73-64	231
11/12/17	RICHMOND	L	79-85	418
11/15/17	at UMass Lowell	L	70-77	0
11/19/17	at Vermont	W	73-66	456
\$ 11/23/17	vs GREEN BAY	L	43-61	982
\$ 11/24/17	vs MISSISSIPPI STATE	L	54-90	0
\$ 11/25/17	vs ARIZONA STATE	L	48-72	982
11/29/17	BOSTON COLLEGE	W	68-60	2372
12/3/17	at UMBC	W	60-44	318
12/06/17	SAINT FRANCIS	W	94-81	257
12/09/17	BUFFALO	L	63-65	371
12/11/17	HOFSTRA	W	75-53	325

\$ = Cancun Challenge

* = Ivy League Game

Score by Periods	1st	2nd	3rd	4th	Totals
Columbia	196	181	218	205	800
Opponents	205	184	208	221	818



QUICK FACTS

GENERAL

Institution	Columbia University
Location	New York, N.Y. 10027
Founded	1754
Undergraduate Enrollment	8,868
President	Lee C. Bollinger
Director of Athletics.....	Peter Pilling
Colors.....	Columbia Blue & White
Nickname	Lions
Affiliation.....	NCAA Division I
Conference	Ivy League
Home Arena	Francis S. Levien Gymnasium
Capacity	2,500
Athletics Department Phone	212-851-2497
University Website.....	Columbia.edu
Athletics Website.....	GoColumbiaLions.com

PROGRAM HISTORY

First Season	1984-85
First Year in NCAA Div. I.....	1986-87
All-Time Record	305-582 (.344)
All-Time Ivy League Record	113-323 (.259)
Winningest Season	21-6 (.778)
Year	1985-86
Winningest Div. I Season	18-10 (.643)
Year	2009-10
Winningest Ivy League Season	9-5 (.643)
Year	2009-10
NCAA Tournaments.....	1 (Div. III)
Year	1985-86
Ivy League Championships.....	0
Best Ivy League Finish	3rd
Year	2009-10
All-Ivy League Selections	22

THE 2016-17 COLUMBIA LIONS

Overall Record	13-14 (.481)
Ivy League Record	3-11 (.214)
Ivy League Finish.....	T-7th
Home.....	5-7 (.533)
Away	8-7 (.533)
Neutral	0-0 (.000)
Non-Conference	10-3 (.769)

COACHING STAFF

Head Coach	Megan Griffith
Alma Mater.....	Columbia '07CC
Seasons at Columbia.....	Second
Career Coaching Record.....	19-20 (.487)
Assistant Coach.....	Tyler Cordell
Alma Mater.....	Ohio Wesleyan '11
Assistant Coach.....	Greg Rosnick
Alma Mater.....	Haverford College '09
Vol. Assistant Coach	Kerry Connolly
Alma Mater.....	Molloy College '14
Director of Operations	Meghan Roxas
Alma Mater.....	UMBC '16
Women's Basketball Office	212-851-9202

COLUMBIA WOMEN'S BASKETBALL NOTES

SCOUTING HOUSTON

• Houston (10-3) has won two straight and eight of its last nine heading into its final non-conference game. The Cougars are playing their home games at Texas Southern's H&PE Arena this season while Hofheinz Pavilion is being renovated. UH is 4-0 at its alternate home, which includes a 79-75 victory over Texas Tech on Dec. 3. Houston's lone loss over its last nine games came at Rutgers, 75-57, on Dec. 16. The loss snapped a six-game winning streak that started with victories over Liberty and Northeastern at UMass Thanksgiving Tournament. Houston fell at Boston College, 79-74, a team that Columbia defeated, 68-60, in New York. UH has been one of the top defensive teams in the country, ranking sixth in the NCAA in total steals (165), 12th in steals per game (12.7) and top-50 in turnover margin (+4.46). They lead The American Athletic Conference in each of those defensive categories. Sophomore guard Jasmyne Harris leads the Cougars with 18.0 points per game. Harris' 234 total points this season ranks fifth in the conference and 39th in the nation.

SCOUTING RICE

• Rice (9-2) has won four straight games, all by double figures, including a 20-point road victory over Prairie View A&M last Thursday. The Owls' only two losses came on the road against power conference opponents Kansas, 73-65, and then-No. 18/25 Texas A&M, 82-76. They are a perfect 4-0 at home, outscoring opponents by an average of 13.0 points per game. Columbia also represents the final game of the non-conference season for Rice. The Owls are 8-0 this season when holding opponents below 70 points. They allow just 59.7 points per game on the season and have not allowed an opponent to reach 60 points in six of their last seven victories. Redshirts sophomore Erica Ogwumike is averaging a team-best 19.1 points and 7.8 rebounds per game. Her scoring average ranks 53rd nationally and No. 3 in Conference USA. Nicole Iademarco (16.2) and sister Olivia Ogwumike (11.7) also average doubles figures for the Owls.

COLUMBIA BULLETS

• Senior Camille Zimmerman leads the Lions in points (21.1), rebounds (8.8), assists (3.3), steals (0.9) and blocks (0.7). She is Columbia's all-time leading scorer with 1,661 career points and has been named Ivy League Player of the Week twice this season.

• Senior Camille Zimmerman has scored in double figures in 39 consecutive games. She has led Columbia in scoring in all 12 games this season. She leads the Ivy League in several statistical categories, including points per game (21.1), total points (253), double-doubles (6) and field goals made (91). Zimmerman's scoring average and total points rank among the top-20 nationally. She is also 11th in the nation in free throws made (66) and top-50 in free throw percentage (86.8 pct.).

• Columbia is 13th in the NCAA in free throw percentage at 77.2 percent for the season. Senior Camille Zimmerman, junior Abby Lee and first-years Riley Casey and Madison Pack are all hitting at above 85 percent.

• Riley Casey is Columbia's second-leading scorer at 10.7 points per game. She has scored in double figures in each of her last five games, including a season-high 18 points against Buffalo (Dec. 9). She is averaging 13.8 points and shooting 53.3% (24-45) over her last five games.

ZIMMERMAN EARNS SECOND PLAYER OF THE WEEK

• Senior Camille Zimmerman was named Ivy League Player of the Week following her 24-point, 13-rebound performance in Columbia's most-recent outing, a 75-53 victory over Hofstra (Dec. 11). Zimmerman filled up the stat sheet with three assists, two steals and a block, and recorded her sixth double-double of the season. The senior pulled down 10 offensive rebounds and was also a finalist for the NCAA's Starting Five Players of the Week. The Ivy POTW selection was Zimmerman's second of the season, also earning the honors Nov. 13 after averaging 23.0 points, 7.5 rebounds and shooting 65 percent against Providence and Richmond. Zimmerman has earned the Ivy League's top weekly award nine times in her career, one behind Columbia Hall of Famer Judie Lomax (2008-10) for the most by a Lion in their career.

CASEY GOES BACK-TO-BACK AS ROOKIE OF THE WEEK

• First-year Riley Casey earned back-to-back Ivy League Rookie of the Week selections (Dec. 4, Dec. 11). A guard out of Brentwood, Tennessee, Casey averaged 11.0 points and shot 57.1 percent from the field (8-14) to earn her first selection, helping the Lions to a 2-0 week over Boston College and UMBC. She hit double figures in both games, including a 12-point performance on 5 of 9 shooting in Wednesday's 68-60 victory over Boston College. The following week, Casey averaged 15.0 points, 4.5 assists and 1.5 rebounds while shooting an impressive 52.4 percent from the field (11-21) in games against Saint Francis (PA) and Buffalo. Casey began her week with 12 points and four assists as part of Columbia's 94-81 victory over Saint Francis (PA). She went on to post career-highs of 18 points and five assists in a game that came down to the final buzzer against Buffalo. Casey connected on 6 of her 12 attempts from the field and all five of her free throws against a team that came into the game with a top-25 RPI and a top-50 scoring defense.

TAKING DOWN THE POWER CONFERENCES

• Columbia is 3-2 in its last five games against power-conference opponents, including 2-2 this season. The Lions opened the year by defeating Providence on the road, 73-64, marking their second-straight victory over the Friars. Last season, Columbia took down Providence in overtime in New York to mark its first win in program history against a BIG EAST opponent. The Lions earned their first ACC win in program history this season when they defeated Boston College, 68-60, in front of a record 2,372 fans on Education Day. Columbia also took on then-No. 7/3 Mississippi State (SEC) and then-No. 24 Arizona State (Pac-12) at the Cancun Challenge.

TOP 25 TROUBLE

• Columbia fell to 0-9 all-time against AP Top 25 opponents with back-to-back losses against No. 7 Mississippi State (Nov. 24) and No. 24 Arizona State (Nov. 25) at the Cancun Challenge. The closest the Lions have come to defeating a nationally-ranked opponent was a 19-point loss to 13th-ranked Princeton on March 7, 2015.



COLUMBIA WOMEN'S BASKETBALL NOTES

FIRST-YEAR STARTERS

• First-years Riley Casey and Madison Pack have worked their way into Columbia's starting lineup and are among the team leaders in scoring. Casey, a 5-8 guard, has started all 12 games and is second on the team in scoring with an average of 10.7 points. Pack, a 6-3 post player, has started each of the last nine games, is third on the team in scoring (6.8) and averages 4.8 rebounds. Rookies Andrea McCormick and Imani Whittington have also seen significant playing time. Whittington and McCormick have played in 10 of the 12 contests.

ADDING TO HER RECORDS

• Senior Camille Zimmerman became the 29th player in Ivy League women's basketball history to score 1,500 career points with a 10-point effort on Thanksgiving Day against Green Bay (Nov. 23). Already Columbia's all-time leading scorer, Zimmerman now has 1,661 career points, which ranks 18th in the Ivy League record books. Her career scoring average of 17.3 points per game ranks among the conference's top 10 all-time. Zimmerman now has 615 career field goals, passing Columbia Hall of Famer Kathy Gilbert '91CC, who held the record of 573 for more than 25 years. Zimmerman passed another Hall of Famer, Nora Beck '83SOA, for one of the top-five spots in career rebounds with her 12-rebound performance against Mississippi State. The senior guard-forward now has 751 career rebounds.

A CHALLENGE IN CANCUN

• Columbia played three games in three days over the Thanksgiving Weekend at the 2017 Cancun Challenge (Nov. 23-25). The Lions went up against the nation's No. 1 scoring defense, Green Bay, a reigning national finalist in then-No. 7/3 Mississippi State, and then-No. 24 Arizona State. Columbia did not come away with a victory, but hung around into the second half against both Mississippi State and Arizona State. Columbia hit 4 of 7 from 3-point range and was holding Mississippi State to just 38-percent shooting to trail by just eight points, 37-29, at halftime. The Bulldogs hit nine consecutive shot attempts in the second half to eventually pull away, 90-54. The Lions were in a seven-point game against Arizona State midway through the third period before the Sun Devils pulled away, 72-48, in the fourth quarter.

ALL-TOURNAMENT PERFORMANCE

• Senior Camille Zimmerman landed on the Mayan Division All-Tournament Team at the 2017 Cancun Challenge. Zimmerman averaged 19.7 points and 7.3 rebounds while shooting 47.7 percent from the field and 17 of 19 from the foul line against three of the nation's top programs. Her performance included a 26-point, 12-rebound effort against No. 7/3 Mississippi State, as well as 23 points on 8 of 13 shooting against No. 24 Arizona State. Zimmerman was one of six named to the Mayan Division All-Tournament Team.

ZIMMERMAN STARTS SENIOR YEAR AS IVY PLAYER OF THE WEEK

• Camille Zimmerman earned her eighth career Ivy League Player of the Week selection in the first week of the season. The senior averaged 23.0 points, 7.5 rebounds, 2.0 assists, 1.5 blocks and 1.0 steal through the first two games. She shot over 65 percent from the field (15-23) and connected on 15 of her 17 free throws. The highlight of her week came when she passed Hall of Famer Ula Lysniak '87BC as Columbia's all-time leading scorer. Zimmerman, a 6-1 guard-forward, came into the game 15 points away and scored her record-breaking 1,448th career point as part of a 21-point, 11-rebound effort against Richmond. Zimmerman also led the Lions to a thrilling season-opening win over Providence. The Tempe Preparatory Academy product scored a game-high 25 points on 9 of 12 shooting in the 73-64 road victory. She played the final 15 minutes of that game with four fouls and helped the Lions improve to 2-0 all-time against the Friars with seven fourth-quarter points.

ZIMMERMAN BECOMES NEW ALL-TIME LEADING SCORER

• Senior Camille Zimmerman passed Hall of Famer Ula Lysniak '87BC as Columbia's all-time leading scorer last Sunday against Richmond. Heading into the season, Zimmerman was just 40 points away from the record. She scored a game-high 25 in the season-opening victory at Providence, positioning herself just 15 points away heading into Sunday's home opener. Zimmerman's record-breaking points came at the free throw line with 6:55 remaining. Last season, Zimmerman broke Columbia's single-season marks in total points (608) and points per game (22.5), which were records that had stood since the 1980s. Should Zimmerman repeat her scoring performance from last season, she would become the fourth player in Ivy League women's basketball history to eclipse 2,000 career points.

PROGRAM RECORDS WATCH

CAREER

Points

1. Camille Zimmerman (2014-pres.)	1,661
2. Ula Lysniak (1983-87)	1,447
3. Tori Oliver (2013-17)	1,337
4. Kathy Gilbert (1987-91)	1,309
5. Kristina Tyer (1984-88)	1,292

Rebounds

1. Kathy Gilbert (1987-91)	937
2. Judie Lomax (2008-10)	799
3. Shawnee Pickney (1997-01)	786
4. Ula Lysniak (1983-87)	764
5. Camille Zimmerman (2014-pres.)	751
6. Nora Beck (1979-83)	690
7. Tori Oliver (2013-17)	662
8. Ellen Bossert (1984-86)	623

Field Goals Made

1. Camille Zimmerman (2014-pres.)	615
2. Kathy Gilbert (1987-91)	573
3. Kristina Tyer (1984-88)	568
4. Ula Lysniak (1983-87)	537
5. Ellen Bossert (1984-86)	435

Field Goals Attempted

1. Camille Zimmerman (2014-pres.)	1,431
2. Shawnee Pickney (1997-01)	1,263
3. Kristina Tyer (1984-88)	1,243
4. Kathy Gilbert (1987-91)	1,078
5. Tori Oliver (2013-17)	1,071

Free Throws Made

1. Tori Oliver (2013-17)	476
2. Ula Lysniak (1983-87)	373
3. Camille Zimmerman (2014-pres.)	367
4. Megan Griffith (2003-07)	256
5. Kathleen Johnson (1989-93)	247

Free Throws Attempted

1. Tori Oliver (2013-pres.)	631
2. Ula Lysniak (1983-87)	588
3. Camille Zimmerman (2014-pres.)	448
4. Shawnee Pickney (1997-01)	367
5. Patricia Kern (1999-03)	359

Free Throw Percentage (Min. 100 Made)

1. Camille Zimmerman (2014-pres.)	.819
2. Nicole Lesko (2001-05)	.815
3. Melissa Shafer (2008-12)	.807
4. Sue Altman (2002-05)	.777
5. Devon Roeper (2013-17)	.776

Blocked Shots

1. Kathy Gilbert (1987-91)	305
2. Trisha Suggs (1986-90)	146
3. Lauren Dwyer (2007-11)	137
4. Sarah Beato (2002-06)	121
5. Camille Zimmerman (2014-pres.)	88

Games Started

1. Tori Oliver (2013-17)	110
2. Lauren Dwyer (2007-11)	108
3. Patricia Kern (1999-03)	98
4. Rose Jackson (1995-99)	96
5. Courtney Bradford (2010-14)	95
Camille Zimmerman (2014-pres.)	95
7. Danielle Brown (2006-10)	93
8. Sara Yee (2006-10)	89
9. Megan O'Neill (1999-03)	88
10. Shawnee Pickney (1997-01)	82
Megan Griffith (2003-07)	82

SEASON

Points

1. Camille Zimmerman (2016-17)	608
2. Ellen Bossert (1985-86)	598
3. Judie Lomax (2009-10)	521
4. Ellen Bossert (1984-85)	470
5. Tori Oliver (2014-15)	461

Scoring Average

1. Camille Zimmerman (2016-17)	22.5
2. Ellen Bossert (1985-86)	22.1
3. Ellen Bossert (1984-85)	18.8
4. Judie Lomax (2009-10)	18.6
5. Nora Beck (1982-83)	17.6

Rebounds

1. Judie Lomax (2008-09)	401
2. Judie Lomax (2009-10)	398
3. Ellen Bossert (1984-85)	355
4. Ellen Bossert (1984-86)	335
5. Camille Zimmerman (2016-17)	260

Rebounding Average

1. Judie Lomax (2008-09)	14.3
2. Judie Lomax (2009-10)	14.2
3. Ellen Bossert (1984-85)	14.2
4. Ellen Bossert (1985-86)	12.4
5. Nora Beck (1981-82)	12.2
...	
10. Camille Zimmerman (2016-17)	9.6

Field Goals Made

1. Ellen Bossert (1985-86)	235
2. Camille Zimmerman (2016-17)	234
3. Judie Lomax (2009-10)	201
4. Ellen Bossert (1984-85)	200
5. Kristina Tyer (1990-91)	177

Field Goals Attempted

1. Camille Zimmerman (2016-17)	539
2. Shawnee Pickney (2000-01)	446
3. Ellen Bossert (1985-86)	423
4. Kristina Tyer (1987-88)	388
5. Camille Zimmerman (2014-15)	379

Free Throws Made

1. Tori Oliver (2014-15)	163
2. Ellen Bossert (1985-86)	128
3. Judie Lomax (2009-10)	119
4. Tori Oliver (2013-14)	112
5. Camille Zimmerman (2016-17)	111

Minutes Played

1. Judie Lomax (2009-10)	1,053
2. Camille Zimmerman (2016-17)	1,010
3. Tori Oliver (2014-15)	990
4. Megan Griffith (2005-06)	989
5. Judie Lomax (2008-09)	982





IVY LEAGUE STANDINGS

(Entering Wednesday, Dec. 27)

Team	IVY			OVERALL	
	W-L	Pct.	GB	W-L	Pct.
1. Brown	0-0	.000	--	10-1	.909
2. Princeton	0-0	.000	--	9-3	.750
3. Dartmouth	0-0	.000	--	8-3	.727
4. Yale	0-0	.000	--	7-4	.636
5. Harvard	0-0	.000	--	6-5	.545
6. Columbia	0-0	.000	--	6-6	.500
7. Penn	0-0	.000	--	4-4	.500
8. Cornell	0-0	.000	--	2-8	.200

Top 4 teams advance to Ivy League Tournament
(March 10-11, 2018 - The Palestra, Philadelphia, Pa.)

IVY PLAYER / ROOKIE OF THE WEEK

Columbia

Nov. 13 - Camille Zimmerman (Player)

23.0 Pts, 7.5 Reb, 2.0 Ast, 1.5 Blk, 1.0 Stl
15-23 FG (65.2%), 15-17 FT (88.2%) 2 GP

Dec. 4 - Riley Casey (Rookie)

11.0 Pts, 1.5 Reb, 1.0 Stl
8-14 FG (57.1%), 2 GP

Dec. 11 - Riley Casey (Rookie)

15.0 Pts, 4.5 Ast, 1.5 Reb
11-21 FG (52.4%), 5-5 FT, 2 GP

Dec. 18 - Camille Zimmerman (Player)

24 Pts, 13 Reb, 3 Ast, 2 Stl, 1 Blk
8-21 FG, 8-8 FT, 1 GP

IVY WEEKLY HONOR ROLL

Columbia

Nov. 13 - Riley Casey
Nov. 20 - Camille Zimmerman, Riley Casey
Nov. 27 - Camille Zimmerman
Dec. 4 - Camille Zimmerman
Dec. 11 - Camille Zimmerman
Dec. 18 - Riley Casey
Jan. 1 -
Jan. 8 -
Jan. 15 -
Jan. 22 -
Jan. 29 -
Feb. 5 -
Feb. 12 -
Feb. 19 -
Feb. 26 -
Mar. 5 -

2017-18 PRESEASON POLL

Team (1st-Place Votes)	Votes
1. Penn (17)	129
2. Princeton	120
3. Harvard	98
4. Brown	87
5. Yale	64
6. Cornell	48
7. Columbia	42
8. Dartmouth	24

COLUMBIA WOMEN'S BASKETBALL NOTES

BACK-TO-BACK BIG EAST WINS

• Columbia defeated Providence, 73-64, in the season opener to earn its second consecutive victory against an opponent from the BIG EAST. The Lions shot 53.1 percent in the contest to mark its highest shooting percentage since February of 2014. Camille Zimmerman scored a game-high 25 points, including seven in the fourth quarter, to lead the Lions to victory. First-year Riley Casey had a big collegiate debut, earning the start and scoring 14 points on 4 of 6 from beyond the arc. Columbia outscored Providence 14-5 over the final five minutes after the game was tied at 59. Last season, the Lions earned their first win in program history against the conference when they downed the Friars, 66-64, in overtime in New York. Prior to last season, Columbia was 0-8 in eight tries against the BIG EAST.

ZIMMERMAN NAMED TO KATRINA McCLAIN WATCH LIST

• Senior Camille Zimmerman was named to the 2018 Katrina McClain Award watch list on Thursday, recognizing the top power forward in all of women's college basketball. The award is presented by the Naismith Basketball Hall of Fame and the Women's Basketball Coaches Association. Zimmerman is one of 20 players nationwide to land on the 2018 Katrina McClain Award watch list. The selection committee for the Katrina McClain Award is composed of top women's college basketball personnel including media members, head coaches, sports information directors and Hall of Famers. By mid-February, the watch list of 20 players for the 2018 Katrina McClain Award will be narrowed to just 10. In March, five finalists will be presented to Ms. McClain-Pittman and the Hall of Fame's selection committee.

TOURNAMENT-TESTED SCHEDULE

• Columbia's 2017-18 schedule features five NCAA Tournament teams from a year ago. Three of those games came at the Cancun Challenge (Nov. 23-25), where Columbia met up with Green Bay, Arizona State and defending national runner-up Mississippi State. A trip to 2017 MEAC winner Hampton (Jan. 3) represents the fourth NCAA Tournament team. The Lions will also go up against Ivy League winner Penn twice during the conference season (Jan. 13, Feb. 16).

2017 CUNCUN CHALLENGE

• Columbia participated in the 2017 Cancun Challenge, Nov. 23-25, at the all-inclusive Hard Rock Hotel Riviera Maya on Mexico's Yucatan Peninsula. The 13th edition of the women's event included 10 teams split up into two divisions. The Mayan Division consisted of Columbia, Arizona State, Green Bay and Mississippi State, which broke UConn's 111-game winning streak in March at the Final Four. The Riviera Division included Indiana State, Marquette, Montana, Oklahoma State, South Dakota and Tennessee. Six of the teams (Arizona State, Green Bay, Marquette, Mississippi State, South Dakota, Tennessee) had 20 or more victories in the 2016-17 season.

LOOKING FOR NEW CONTRIBUTORS

• Entering the season, senior Camille Zimmerman accounted for more than 70 percent of Columbia's active career points and nearly 60 percent of the team's active career rebounds. Zimmerman had 1,408 points and 645 rebounds at the beginning of the season. As a team, the Lions came into the 2017-18 season with 2,011 active career points and 1,084 active career rebounds.

YOUNGEST HEAD COACHES

• Megan Griffith '07CC enters her second season as head coach of the Lions. According to data collected by the NCAA, Griffith is the third-youngest active head coach in Div. I women's basketball. Griffith played at Columbia from 2003-07 and was inducted into the Columbia University Athletics Hall of Fame on Oct. 20. She is the program's single-season assists leader (148, 2005-06), fifth in career assists (373), and one of 11 Lions in program history to score more than 1,000 career points (1,061).

Youngest Active Women's Basketball Head Coaches (DOB)

Name	D.O.B.	Age
1. Brittany Lange, Omaha	Dec. 31, 1986	30
2. Kacie Cryer, McNeese St.	April 4, 1986	31
3. Megan Griffith, Columbia	Sept. 4, 1985	32
4. Heather Jacobs, Wagner	Nov. 25, 1984	33
5. DeUnna Hendrix, High Point	Oct. 27, 1984	33

#IvyMADNESS

• The Ivy League will conduct postseason tournaments for both men's and women's basketball at The Palestra in Philadelphia on March 10-11, 2018. The four-team tournaments will determine the conference's automatic bids to the NCAA Division I Basketball Championships, and all six games will be broadcast live on ESPN's networks.



COLUMBIA WOMEN'S BASKETBALL NOTES

COMING OFF A RECORD SEASON

- Senior Camille Zimmerman has scored 608 points and averaged 22.5 points per game last season to break the program's single-season scoring marks. The previous record belonged to Hall of Famer Ellen Bossert, who scored 598 points during the 1985-86 season, which was Columbia's final year competing at the NCAA Div. III level. Bossert, who was inducted into the Columbia University Athletics Hall of Fame in 2008, averaged 22.1 points per game during her record-setting season.

- Zimmerman broke Columbia's Div. I single-season scoring record on Feb. 24 at Princeton. The previous mark was held by Hall of Famer Judie Lomax '10BC, who scored 521 points during the 2009-10 campaign. Zimmerman scored her 522nd point with a basket at the 1:35 mark of the first quarter, finishing the night with a game-high 27 points.

GRADUATING A GREAT

- Tori Oliver graduated at the end of last season as Columbia's No. 3 all-time leading scorer. Oliver was also No. 6 all-time in rebounds and was the best in Columbia history at getting to the free throw line, finishing No. 1 in free throws made (476) and attempted (631). Both of Oliver's free throw marks ranked inside the top 10 in Ivy League women's basketball history. Her career .754 career percentage ranks No. 8 all-time at Columbia.

MORE ON ZIMMERMAN'S JUNIOR CAMPAIGN

- Zimmerman became the seventh player in Ivy League women's basketball history to score 600 points in a season and ranks No. 6 on that list.

- Zimmerman was the first Ivy League player to average 20 points in a season since Harvard's Reka Cserny (20.9 in 2004-05).

- Zimmerman set a new Columbia single-season record for field goal attempts with 539. The previous mark was 446, set by Shawnee Pickney in 2000-01. Zimmerman came up one field goal shy of the single-season mark for field goals made, finishing with 234 (Ellen Bossert, 235, 1985-86).

- Zimmerman was the only player in NCAA Div. I women's basketball to lead her team in points (608, 22.5/game), rebounds (260, 9.6/game), assists (67, 2.5/game), blocks (20, 0.7/game) and steals (41 (1.5/game)).

- Zimmerman ranked among nation's Top 50 in eight statistical categories, including No. 10 in points per game (22.5), No. 11 in minutes (37.41), No. 18 in FG attempts (539), No. 22 in defensive rebounds per game (7), No. 23 in FG made (234), No. 37 in rebounds per game (9.6) and No. 38 in total points (608).

SUPERLATIVES

(Career totals in parentheses)

DOUBLE-DOUBLES

Camille Zimmerman 6 (28)

20-POINT GAMES

Camille Zimmerman 8 (39)

DOUBLE-FIGURE SCORING

Camille Zimmerman 12 (80)

Riley Casey 9 (9)

Madison Pack 3 (3)

Maya Sampleton 3 (3)

Abby Lee 2 (4)

Janiya Clemmons 2 (2)

Paige Tippet 1 (1)

DOUBLE-FIGURE REBOUNDS

Camille Zimmerman 6 (28)

Josie Little 1 (7)

GAME LEADERS

(The number of times this season a Lion has led the team in each category, including ties)

SCORING

Camille Zimmerman 12

REBOUNDS

Camille Zimmerman 9

Madison Pack 2

Abby Lee 1

Josie Little 1

ASSISTS

Camille Zimmerman 7

Paige Tippet 4

Riley Casey 4

Josie Little 1

BLOCKS

Maya Sampleton 4

Camille Zimmerman 4

Josie Little 2

Madison Pack 2

Riley Casey 1

Janiya Clemmons 1

Abby Lee 1

Paige Tippet 1

STEALS

Camille Zimmerman 5

Maya Sampleton 4

Abby Lee 2

Josie Little 2

Riley Casey 1

Janiya Clemmons 1

Stephanie Flynn 1

Madison Pack 1

Paige Tippet 1





Eight Columbia women's basketball games will be televised on SportsNet Ny (SNY) this winter as part of an agreement finalized between the network and Columbia Athletics in September. The Lions will appear on in home games against Boston College (Nov. 29), Hofstra (Dec. 11), Cornell (Jan. 20), Yale (Feb. 9), Penn (Feb. 16), Princeton (Feb. 17), Dartmouth (Mar. 2) and Harvard (Mar. 3).

With a total distribution of nearly 12 million homes, SNY is available to viewers throughout New York, New Jersey, Connecticut and Northeastern Pennsylvania for a regional reach of 8.0 million households. Combined with national coverage on DIRECTV, Verizon FiOS, Comcast Cable and AT&T U-Verse, SNY's total distribution is 12 million homes. SNY is the official television home of the New York Mets, New York Jets and all things New York sports. As New York's leader in local sports TV coverage, SNY delivers the most comprehensive access to all of the Tri-State area's professional and collegiate sports teams through several nightly sports and entertainment programs.



All of Columbia's home games, as well as all 14 of its Ivy League games, can be watched online on the Ivy League Network.

The Ivy League Network (ILN) will showcase over 200 Ivy League men's and women's basketball games this season. All broadcasts are available in HD and feature commentary, replays and statistical integration. For subscription information, [click here](#).

ILN is the home to over 1,100 live events each year and is available on desktop and tablet as well as the ILN mobile app on both Apple and Android phones. The ILN app can also be downloaded through Apple TV and Roku devices.





MEGAN GRIFFITH

HEAD COACH • SECOND SEASON
19-20 OVERALL, 3-11 IVY LEAGUE
COLUMBIA '07CC
COLUMBIA HALL OF FAME CLASS OF 2016

Megan Griffith '07CC is in her second season as head coach of the Columbia women's basketball team. She was named head coach in March of 2016 after spending the past six years at Princeton University.

In her first year back at her alma mater, Griffith coached the Lions to their best non-conference season in program history. Columbia started the year 10-3 to post its highest non-conference winning percentage (.769). The historic start included a six-game winning streak and the program's first victory over a Big East opponent, downing Providence in overtime, 66-64, at Levien Gymnasium.

Columbia ended the 2016-17 campaign 13-14 overall and won three Ivy League games. Griffith's first Ivy League victory came in history fashion, defeating Dartmouth on the road in quadruple overtime, 91-88, on January 27. The game tied for the longest in Ivy League women's basketball history and was featured that evening on SportsCenter.

Griffith's first season also saw Camille Zimmerman break the program's all-time single-season scoring record, netting 608 points and averaging 22.5 points per game. Zimmerman was unanimously chosen First Team All-Ivy League after leading the Ancient Eight in seven statistical categories including scoring and rebounding (9.6). Zimmerman was also named All-Met Division I Women's College Basketball Player of the Year by the Met Basketball Writers Association, becoming the first Lion in program history to receive the award since its inception in 1996.

Griffith spent six seasons at Princeton, including the last four as an assistant coach and the team's recruiting coordinator. She also served as the Tigers' director of basketball operations from 2010-12. The last two years, Griffith has helped Princeton make back-to-back trips to the NCAA Tournament. During that span, the Tigers posted a 54-7 overall record, including an undefeated 30-0 regular season in 2014-15, and a 26-2 mark in Ivy League play.

In Griffith's time with Princeton, the Tigers eclipsed 20 victories and reached the postseason each year, while securing five Ivy League titles. She has mentored 13 All-Ivy League players, including Blake Dietrick, who was the 2015 Ivy League Player of the Year and a WBCA Honorable Mention All-American, and 2013 Ivy League Defensive Player of the Year, Lauren Polansky.

Griffith captained the Lions for three seasons and was a two-time All-Ivy League selection (2006 and 2007). Griffith is one of nine Lions to score more than 1,000 points during her career, averaging 10.1

points per game. During her junior year, Griffith ranked 22nd in the nation in assists, averaging 5.5 per game, while chipping in 15.2 points per game. She was twice named Academic All-Ivy League and was a member of the Arthur Ashe Sports Scholar Team two straight years.

Following graduation, Griffith played three years of professional basketball in Europe. She joined FoA Nice Basketball in Forssa, Finland, during the 2007-08 season and was named the team's MVP at the end of the season. In 2008-09, Griffith led the Espoo Basket Team to the National Finnish Championship and the Finnish Cup Championship titles. During the year she was also a youth basketball coach for Honka Basketball Club.

Griffith was also a member of the Celeritas-Donar Basketball team in Groningen, Netherlands. In addition, she was named a U20 Dames 1 assistant coach and U18 Northern Selection Team assistant coach, while working as a youth coach and clinic director for Celeritas-Donar.

Griffith founded Back to Basics Basketball in 2008, an organization developed to teach basketball skills, while providing training and mentoring in her hometown of King of Prussia, Pennsylvania.

Griffith graduated from Columbia with a degree in economics in 2007.

GRIFFITH VS. OPPONENTS

Arizona State.....	0-1
Binghamton.....	1-0
Boston College.....	1-0
Brown.....	0-2
Buffalo.....	0-1
Cal State Fullerton.....	1-0
Colgate.....	1-0
Cornell.....	0-2
Dartmouth.....	2-0
Green Bay.....	0-1
Harvard.....	0-2
Hofstra.....	1-0
Long Beach State.....	0-1
LIU Brooklyn.....	1-0
Loyola Maryland.....	1-0
Mississippi State.....	0-1
NJIT.....	1-0
Penn.....	0-2
Princeton.....	0-2
Providence.....	2-0
Richmond.....	1-1
Saint Francis (PA).....	2-0
Stony Brook.....	0-1
UMBC.....	1-1
UMass Lowell.....	1-1
Vermont.....	1-0
<u>Yale.....</u>	<u>1-1</u>
TOTAL	19-20 (.487)



Griffith alongside Director of Intercollegiate Athletics & Physical Education Peter Pilling at the Columbia University Athletics Hall of Fame induction in October of 2016.





#00 IMANI WHITTINGTON

G/F • 5-11 • FIRST-YEAR
LONDON, ENGLAND • BARKING ABBEY SCHOOL
MAJOR: UNDECLARED

WHITTINGTON NOTES

2017-18

- Played in 10 of 12 games, starting one and scoring in four
- Made her collegiate debut in the season opener against Providence (Nov. 10)
- Scored her first points in the home opener against Richmond (Nov. 12)
- Scored a season-high four points, hitting both of her shot attempts in just three minutes at UMass Lowell (Nov. 15)
- Made her first start at Vermont (Nov. 19)
- Recorded her first assist and made free throw in a 75-53 victory over Hofstra (Dec. 11)

PRESEASON

- The lone international on Columbia's roster, coming to New York from London, England
- Competed on the England National Team's varying age levels every year since 2009
- Captained England's U18 for one season
- Competed in multiple FIBA European Championships, doing so for the first time with England's U16 team in 2014
- Joined Great Britain's U20 National Team in 2016-17
- Chose Columbia over Brown, William and Mary, Miami-Ohio, UMass Lowell and Utah Valley

SEASON/CAREER HIGHS

Points	3 (2x)	Last vs. Hofstra (Dec. 11)
FG Made	2	at UMass Lowell (Nov. 15)
FG Attempts	3	vs. Richmond (Nov. 12)
FG% (5 made)	N/A	
3FG Made	1	vs. Richmond (Nov. 12)
3FG Attempts	2	vs. Richmond (Nov. 12)
3FG% (3 made)	N/A	
FT Made	1	vs. Hofstra (Dec. 11)
FT Attempts	2	vs. Hofstra (Dec. 11)
FT% (5 made)	N/A	
Rebounds	1 (3x)	vs. Hofstra (Dec. 11)
Assists	1	vs. Hofstra (Dec. 11)
Blocks	N/A	
Steals	1	at UMass Lowell (Nov. 15)
Minutes	9	vs. Richmond (Nov. 12)

SEASON GAME-BY-GAME

Opponent	Date	gs	min	Total		3-Pointers		Free throws		Rebounds				pf	a	t/o	blk	stl	pts	avg
				fg-fga	pct	3fg-fga	pct	ft-fa	pct	off	def	tot	avg							
at Providence	11/10/17	5		0-0	.000	0-0	.000	0-0	.000	0	1	1	1.0	1	0	0	0	0	0	0.0
RICHMOND	11/12/17	9		1-3	.333	1-2	.500	0-0	.000	0	0	0	0.5	1	0	1	0	0	3	1.5
at UMass Lowell	11/15/17	3		2-2	1.000	0-0	.000	0-0	.000	1	0	1	0.7	3	0	3	0	1	4	2.3
at Vermont	11/19/17	*	3	0-2	.000	0-0	.000	0-0	.000	0	0	0	0.5	1	0	1	0	0	0	1.8
vs GREEN BAY	11/23/17	3		0-1	.000	0-0	.000	0-0	.000	0	0	0	0.4	1	0	1	0	0	0	1.4
vs MISSISSIPPI STATE	11/24/17	5		1-1	1.000	0-0	.000	0-0	.000	0	0	0	0.3	1	0	2	0	0	2	1.5
vs ARIZONA STATE	11/25/17	1		0-0	.000	0-0	.000	0-0	.000	0	0	0	0.3	0	0	0	0	0	0	1.3
BOSTON COLLEGE	11/29/17	1		0-0	.000	0-0	.000	0-0	.000	0	0	0	0.3	2	0	0	0	0	0	1.1
at UMBC	12/3/17	dnp		-	-	-	-	-	-	-	-	-	-	-	-	-	-	-	-	-
SAINT FRANCIS	12/06/17	3		0-1	.000	0-0	.000	0-0	.000	0	0	0	0.2	0	0	2	0	0	0	1.0
BUFFALO	12/09/17	dnp		-	-	-	-	-	-	-	-	-	-	-	-	-	-	-	-	-
HOFSTRA	12/11/17	2		1-1	1.000	0-0	.000	1-2	.500	1	0	1	0.3	0	1	0	0	0	3	1.2
Totals		1	35	5-11	.455	1-2	.500	1-2	.500	2	1	3	0.3	10	1	10	0	1	12	1.2

Games played: 10
Minutes/game: 3.5
Points/game: 1.2
FG Pct: 45.5
3FG Pct: 50.0
FT Pct: 50.0

Rebounds/game: 0.3
Assists/game: 0.1
Turnovers/game: 1.0
Assist/turnover ratio: 0.1
Steals/game: 0.1

CAREER SUMMARY

Season	gp-gs	min/avg	Total		3-Point		F-Throws		Rebounds				Scoring					
			fg-fga	pct	fg-fga	pct	ft-fa	pct	off	def	tot	avg	pf	fo	ast	to	blk	stl
2017-18	10-1	35/3.5	5-11	.455	1-2	.500	1-2	.500	2	1	3	0.3	10	0	1	10	0	1
TOTAL	10-1	35/3.5	5-11	.455	1-2	.500	1-2	.500	2	1	3	0.3	10	0	1	10	0	1





#1 JANIYA CLEMMONS

G • 5-9 • SO

ACCOKEEK, MD. • BISHOP DENIS J. O'CONNELL
MAJOR: COMPUTER SCIENCE

CLEMMONS NOTES

2017-18

- Played in all 12 games, starting the last three and scoring in double figures twice
- Averaged 10.3 points, 7.0 rebounds and 26.3 minutes during Columbia's 3-game winning streak (Nov. 29-Dec. 6)
- Scored 12 points on 6 of 9 shooting to help Columbia defeat Vermont (Nov. 19)
- Scored nine points and grabbed a career-high eight rebounds in a win over Boston College (Nov. 29)
- Made her first start of the season against Saint Francis, scoring a career-high 15 points, tying her career-high of four assists and adding six rebounds in a 94-81 victory (Dec. 6)
- Averaging over 10 minutes more per game than last season

PRESEASON

- Played in 23 games last season, starting five of the last six
- Played 230 minutes and averaged 10.0 minutes per game as a rookie, the most in her class
- Scored a season-high eight points in a win at Loyola Maryland (Nov. 30, 2016)
- Hit all three of her shot attempts and tallied a season-high four assists in a win at Cal State Fullerton (Dec. 29)
- Made her first collegiate start against Harvard (Feb. 17), scoring a season-high eight points in a season-high 23 minutes played to go with three rebounds, two steals and an assist
- Uncle, Henry Stanley, is a 2005 graduate of Columbia College

2016-17 GAME-BY-GAME

Opponent	Date	gs	min	Total		3-Pointers		Free throws		Rebounds				pf	a	t/o	blk	stl	pts	avg
				fg-fga	pct	3fg-fga	pct	ft-fa	pct	off	def	tot	avg							
at Providence	11/10/17	20	3-3	1.000	0-0	.000	2-3	.667	0	0	0	0.0	1	1	2	0	0	8	8.0	
RICHMOND	11/12/17	14	0-2	.000	0-0	.000	0-0	.000	1	0	1	0.5	1	3	0	1	1	0	4.0	
at UMass Lowell	11/15/17	10	2-4	.500	0-0	.000	0-0	.000	0	0	0	0.3	2	0	1	0	0	4	4.0	
at Vermont	11/19/17	22	6-9	.667	0-0	.000	0-0	.000	2	1	3	1.0	1	0	2	0	1	12	6.0	
vs GREEN BAY	11/23/17	15	2-5	.400	0-0	.000	2-2	1.000	0	0	0	0.8	1	0	0	1	0	6	6.0	
vs MISSISSIPPI STATE	11/24/17	14	0-6	.000	0-1	.000	1-2	.500	0	3	3	1.2	0	1	2	0	1	1	5.2	
vs ARIZONA STATE	11/25/17	15	2-5	.400	0-0	.000	0-0	.000	0	2	2	1.3	0	0	1	0	0	4	5.0	
BOSTON COLLEGE	11/29/17	21	4-9	.444	0-0	.000	1-2	.500	2	6	8	2.1	1	1	1	0	0	9	5.5	
at UMBC	12/3/17	30	2-8	.250	0-1	.000	3-4	.750	2	5	7	2.7	0	1	3	0	1	7	5.7	
SAINT FRANCIS	12/06/17	* 28	5-8	.625	0-0	.000	5-6	.833	0	6	6	3.0	2	4	2	1	0	15	6.6	
BUFFALO	12/09/17	* 27	2-6	.333	0-0	.000	0-0	.000	1	5	6	3.3	2	0	3	0	1	4	6.4	
HOFSTRA	12/11/17	* 28	2-5	.400	0-0	.000	0-2	.000	0	3	3	3.3	0	2	1	0	0	4	6.2	
Totals		3	244	30-70	.429	0-2	.000	14-21	.667	8	31	39	3.3	11	13	18	3	5	74	6.2

Games played: 12
 Minutes/game: 20.3
 Points/game: 6.2
 FG Pct: 42.9
 3FG Pct: 0.0
 FT Pct: 66.7

Rebounds/game: 3.3
 Assists/game: 1.1
 Turnovers/game: 1.5
 Assist/turnover ratio: 0.7
 Steals/game: 0.4
 Blocks/game: 0.3

CAREER HIGHS

Points	15	vs. Saint Francis (Dec. 6, 2017)
FG Made	6	at Vermont (Nov. 19, 2017)
FG Attempts	9 (2x)	Last vs. Boston College (Nov. 29, 2017)
FG% (5 made)	66.7% (6-9)	at Vermont (Nov. 19, 2017)
3FG Made	1	vs. LIU Brooklyn (Dec. 12, 2016)
3FG Attempts	1 (5x)	Last at UMBC (Dec. 3, 2017)
3FG% (3 made)	N/A	
FT Made	6	vs. UMass Lowell (Dec. 2, 2016)
FT Attempts	8	vs. UMass Lowell (Dec. 2, 2016)
FT% (5 made)	83.3% (5-6)	vs. Saint Francis (Dec. 6, 2017)
Rebounds	8	vs. Boston College (Nov. 29, 2017)
Assists	4 (2x)	Last vs. Saint Francis (Dec. 6, 2017)
Blocks	1 (6x)	Last vs. Saint Francis (Dec. 6, 2017)
Steals	2 (2x)	Last vs. Harvard (Feb. 17, 2017)
Minutes	30	at UMBC (Dec. 3, 2017)

SEASON HIGHS

Points	15	vs. Saint Francis (Dec. 6)
FG Made	6	at Vermont (Nov. 19)
FG Attempts	9 (2x)	Last vs. Boston College (Nov. 29)
FG% (5 made)	66.7% (6-9)	at Vermont (Nov. 19)
3FG Made	0	
3FG Attempts	1 (2x)	Last at UMBC (Dec. 3)
3FG% (3 made)	N/A	
FT Made	5	vs. Saint Francis (Dec. 6)
FT Attempts	6	vs. Saint Francis (Dec. 6)
FT% (5 made)	83.3% (5-6)	vs. Saint Francis (Dec. 6)
Rebounds	8	vs. Boston College (Nov. 29)
Assists	4	vs. Saint Francis (Dec. 6)
Blocks	1 (3x)	Last vs. Saint Francis (Dec. 6)
Steals	1 (5x)	Last vs. Buffalo (Dec. 9)
Minutes	30	at Vermont (Nov. 19)

CAREER SUMMARY

			Total		3-Point		F-Throws		Rebounds											Scoring	
Season	gp-gs	min/avg	fg-fga	pct	fg-fga	pct	ft-fa	pct	off	def	tot	avg	pf	fo	ast	to	blk	stl	pts	avg	
2016-17	23-5	230/10.0	19-60	.317	1-3	.333	16-23	.696	7	29	36	1.6	21	0	11	32	3	12	55	2.4	
2017-18	12-3	244/20.3	30-70	.429	0-2	.000	14-21	.667	8	31	39	3.3	11	0	13	18	3	5	74	6.2	
TOTAL	35-8	474/13.5	49-130	.377	1-5	.200	30-44	.682	15	60	75	2.1	32	0	24	50	6	17	129	3.7	





#3 JOSIE LITTLE

F • 6-2 • JR
SAN FRANCISCO, CALIF. • ST. IGNATIUS COLLEGE PREP
MAJOR: PSYCHOLOGY

LITTLE NOTES

2017-18

- Played and started in five games, scoring in all five
- Returned to the lineup for the first time in over 10 months with a season-high nine points to go with five rebounds against Green Bay at the Cancun Challenge (Nov. 23)
- Pulled down 10 rebounds as part of a 68-60 win over Boston College (Nov. 29)
- Re-injured at UMBC (Dec. 3) and has not played since.

PRESEASON

- Started 12 of the first 13 games last season before suffering an injury that sidelined her the rest of the year
- Averaged 8.0 rebounds for the 13 games she did play
- Twice named to the Ivy League Weekly Honor Roll (Dec. 5, Jan. 9)
- Recorded at least four rebounds in every game played, including three games in double figures
- Three games with a full stat sheet (points, rebounds, assists, blocks and steals)
- Ripped down a career-high 19 rebounds to help Columbia defeat Loyola Maryland (Nov. 30, 2016), including 14 in the first half
- Grabbed 13 boards and scored eight points in a victory over LIU Brooklyn (Dec. 12, 2016)
- Shot 6 for 6 to score a career-high 16 points, adding eight rebounds, in a victory at NJIT (Jan. 4, 2017)

SEASON GAME-BY-GAME

Opponent	Date	gs	min	Total		3-Pointers		Free throws		Rebounds				pf	a	t/o	blk	stl	pts	avg
				fg-fga	pct	3fg-fga	pct	ft-fa	pct	off	def	tot	avg							
at Providence	11/10/17	dnp		-	-	-	-	-	-	-	-	-	-	-	-	-	-	-	-	-
RICHMOND	11/12/17	dnp		-	-	-	-	-	-	-	-	-	-	-	-	-	-	-	-	-
at UMass Lowell	11/15/17	dnp		-	-	-	-	-	-	-	-	-	-	-	-	-	-	-	-	-
at Vermont	11/19/17	dnp		-	-	-	-	-	-	-	-	-	-	-	-	-	-	-	-	-
vs GREEN BAY	11/23/17	*	24	3-5	.600	1-2	.500	2-2	1.000	0	5	5	5.0	2	0	4	2	1	9	9.0
vs MISSISSIPPI STATE	11/24/17	*	27	3-9	.333	0-3	.000	0-1	.000	2	3	5	5.0	2	0	2	0	0	6	7.5
vs ARIZONA STATE	11/25/17	*	29	1-4	.250	0-1	.000	0-0	.000	1	1	2	4.0	3	3	2	0	0	2	5.7
BOSTON COLLEGE	11/29/17	*	27	2-8	.250	0-1	.000	0-0	.000	4	6	10	5.5	2	1	3	2	0	4	5.3
at UMBC	12/3/17	*	17	2-5	.400	1-1	1.000	0-0	.000	1	6	7	5.8	3	0	2	0	2	5	5.2
SAINT FRANCIS	12/06/17	dnp		-	-	-	-	-	-	-	-	-	-	-	-	-	-	-	-	-
BUFFALO	12/09/17	dnp		-	-	-	-	-	-	-	-	-	-	-	-	-	-	-	-	-
HOFSTRA	12/11/17	dnp		-	-	-	-	-	-	-	-	-	-	-	-	-	-	-	-	-
Totals		5	124	11-31	.355	2-8	.250	2-3	.667	8	21	29	5.8	12	4	13	4	3	26	5.2

Games played: 5
Minutes/game: 24.8
Points/game: 5.2
FG Pct: 35.5
3FG Pct: 25.0
FT Pct: 66.7

Rebounds/game: 5.8
Assists/game: 0.8
Turnovers/game: 2.6
Assist/turnover ratio: 0.3
Steals/game: 0.6
Blocks/game: 0.8

CAREER HIGHS

Points	16	at NJIT (Jan. 4, 2017)
FG Made	6	at NJIT (Jan. 4, 2017)
FG Attempts	12	at Brown (March 4, 2016)
FG% (5 made)	100% (6-6)	at NJIT (Jan. 4, 2017)
3FG Made	1 (2x)	Last at UMBC (Dec. 3, 2017)
3FG Attempts	3	vs. Mississippi State (Nov. 24, 2017)
3FG% (3 made)	N/A	
FT Made	4 (4x)	Last at NJIT (Jan. 4, 2017)
FT Attempts	6 (3x)	Last at NJIT (Jan. 4, 2017)
FT% (5 made)	N/A	
Rebounds	19	at Loyola Maryland (Nov. 30, 2016)
Assists	3	vs. Arizona State (Nov. 25, 2017)
Blocks	4 (2x)	Last vs. Yale (Feb. 5, 2016)
Steals	4	vs. Vermont (Nov. 17, 2015)
Minutes	29 (2x)	Last vs. Arizona State (Nov. 25, 2017)

SEASON HIGHS

Points	9	vs. Green Bay (Nov. 23)
FG Made	3 (2x)	Last vs. Mississippi State (Nov. 24)
FG Attempts	9	vs. Mississippi State (Nov. 24)
FG% (5 made)	N/A	
3FG Made	1 (2x)	Last at UMBC (Dec. 3)
3FG Attempts	3	vs. Mississippi State (Nov. 24)
3FG% (3 made)	N/A	
FT Made	2	vs. Green Bay (Nov. 23)
FT Attempts	2	vs. Green Bay (Nov. 23)
FT% (5 made)	N/A	
Rebounds	10	vs. Boston College (Nov. 29)
Assists	3	vs. Arizona State (Nov. 25)
Blocks	2 (2x)	Last vs. Boston College (Nov. 29)
Steals	2	at UMBC (Dec. 3)
Minutes	29	vs. Arizona State (Nov. 25)

CAREER AWARDS

- › Three-time Ivy League Rookie of the Week

CAREER SUMMARY

			Total		3-Point		F-Throws		Rebounds										Scoring	
Season	gp-gs	min/avg	fg-fga	pct	fg-fga	pct	ft-fa	pct	off	def	tot	avg	pf	fo	ast	to	blk	stl	pts	avg
2015-16	28-8	417/14.9	42-107	.393	0-0	.000	33-42	.786	39	80	119	4.3	62	3	10	55	26	18	117	4.2
2016-17	13-12	257/19.8	26-51	.510	0-0	.000	18-32	.563	29	75	104	8.0	42	2	12	28	8	11	70	5.4
2017-18	5-5	124/24.8	11-31	.355	2-8	.250	2-3	.667	8	21	29	5.8	12	0	4	13	4	3	26	5.2
TOTAL	46-25	798/17.3	79-189	.418	2-8	.250	53-77	.688	76	176	252	5.5	116	5	26	96	38	32	213	4.6





#4 PAIGE TIPPET

G • 5-8 • SR
LEAGUE CITY, TEXAS • CLEAR SPRINGS
MAJOR: PSYCHOLOGY

CAPTAIN

TIPPET NOTES

2017-18

- Started all 12 games, scoring in nine
- Three games with at least five assists, including two of the last five
- Scored eight points on a career-high 6-of-8 from the free throw line, also tallying five assists in a victory over Boston College (Nov. 29)
- Had a career game against Saint Francis, hitting career-highs in points (14) and assists (6) on a career-best 5 of 7 shooting and 4 of 5 from 3-point range (Dec. 6)

PRESEASON

- Has played in every game of her Columbia career
- One of three team captains, alongside classmates Camille Zimmerman and Jillian Borreson
- Scored 50 of her 60 points last season in the first halves of games
- Made her first start since Nov. 16, 2014 in last year's season opener against UMBC (Nov. 11, 2016)

SEASON GAME-BY-GAME

Opponent	Date	gs	min	Total		3-Pointers		Free throws		Rebounds				pf	a	t/o	blk	stl	pts	avg	
				fg-fga	pct	3fg-fga	pct	ft-fta	pct	off	def	tot	avg								
at Providence	11/10/17	*	29	0-2	.000	0-1	.000	4-4	1.000	0	0	0	0.0	1	5	2	0	0	4	4.0	
RICHMOND	11/12/17	*	29	2-5	.400	0-2	.000	2-3	.667	0	1	1	0.5	1	1	3	0	0	6	5.0	
at UMass Lowell	11/15/17	*	32	2-4	.500	1-3	.333	1-2	.500	1	4	5	2.0	3	3	2	0	3	6	5.3	
at Vermont	11/19/17	*	34	0-5	.000	0-5	.000	0-1	.000	0	4	4	2.5	0	4	1	0	1	0	4.0	
vs GREEN BAY	11/23/17	*	27	0-3	.000	0-2	.000	5-6	.833	0	0	0	2.0	1	2	0	0	0	5	4.2	
vs MISSISSIPPI STATE	11/24/17	*	29	0-0	.000	0-0	.000	0-0	.000	0	3	3	2.2	2	3	3	2	0	0	3.5	
vs ARIZONA STATE	11/25/17	*	20	1-2	.500	0-0	.000	0-0	.000	1	0	1	2.0	5	0	5	0	0	2	3.3	
BOSTON COLLEGE	11/29/17	*	36	1-6	.167	0-4	.000	6-8	.750	3	1	4	2.3	3	5	3	0	0	8	3.9	
at UMBC	12/3/17	*	25	2-5	.400	1-3	.333	0-0	.000	0	3	3	2.3	0	4	1	0	0	5	4.0	
SAINT FRANCIS	12/06/17	*	26	5-7	.714	4-5	.800	0-0	.000	0	3	3	2.4	3	6	1	0	0	14	5.0	
BUFFALO	12/09/17	*	22	0-1	.000	0-0	.000	0-0	.000	0	2	2	2.4	4	1	0	0	0	0	4.5	
HOFSTRA	12/11/17	*	20	0-3	.000	0-1	.000	0-0	.000	1	2	3	2.4	1	0	4	0	0	0	4.2	
Totals			12	329	13-43	.302	6-26	.231	18-24	.750	6	23	29	2.4	24	34	25	2	4	50	4.2

Games played: 12
 Minutes/game: 27.4
 Points/game: 4.2
 FG Pct: 30.2
 3FG Pct: 23.1
 FT Pct: 75.0

Rebounds/game: 2.4
 Assists/game: 2.8
 Turnovers/game: 2.1
 Assist/turnover ratio: 1.4
 Steals/game: 0.3
 Blocks/game: 0.2

CAREER HIGHS

Points	14	vs. Saint Francis (Dec. 6, 2017)
FG Made	5	vs. Saint Francis (Dec. 6, 2017)
FG Attempts	8	vs. Dartmouth (Jan. 29, 2016)
FG% (5 made)	71.4% (5-7)	vs. Saint Francis (Dec. 6, 2017)
3FG Made	4	vs. Saint Francis (Dec. 6, 2017)
3FG Attempts	5 (2x)	Last vs. Saint Francis (Dec. 6, 2017)
3FG% (3 made)	80.0% (4-5)	vs. Saint Francis (Dec. 6, 2017)
FT Made	6	vs. Boston College (Nov. 29, 2017)
FT Attempts	8	vs. Boston College (Nov. 29, 2017)
FT% (5 made)	88.3% (5-6)	vs. Green Bay (Nov. 23, 2017)
Rebounds	5	at UMass Lowell (Nov. 15, 2017)
Assists	6	vs. Saint Francis (Dec. 6, 2017)
Blocks	2 (3x)	Last vs. Miss. State (Nov. 24, 2017)
Steals	3	at UMass Lowell (Nov. 15, 2017)
Minutes	36	vs. Boston College (Nov. 29, 2017)

SEASON HIGHS

Points	14	vs. Saint Francis (Dec. 6)
FG Made	5	vs. Saint Francis (Dec. 6)
FG Attempts	7	vs. Saint Francis (Dec. 6)
FG% (5 made)	71.4% (5-7)	vs. Saint Francis (Dec. 6)
3FG Made	4	vs. Saint Francis (Dec. 6)
3FG Attempts	5 (2x)	Last vs. Saint Francis (Dec. 6)
3FG% (3 made)	80.0% (4-5)	vs. Saint Francis (Dec. 6)
FT Made	6	vs. Boston College (Nov. 29)
FT Attempts	8	vs. Boston College (Nov. 29)
FT% (5 made)	88.3% (5-6)	vs. Green Bay (Nov. 23)
Rebounds	5	at UMass Lowell (Nov. 15)
Assists	6	vs. Saint Francis (Dec. 6)
Blocks	2	vs. Mississippi State (Nov. 24)
Steals	3	at UMass Lowell (Nov. 15)
Minutes	36	vs. Boston College (Nov. 29)

CAREER SUMMARY

Season	gp-gs	min/avg	Total		3-Point		F-Throws		Rebounds				Scoring					
			fg-fga	pct	fg-fga	pct	ft-fa	pct	off	def	tot	avg	pf	fo	ast	to	blk	stl
2014-15	28-2	315/11.3	7-36	.194	3-8	.375	13-20	.650	6	19	25	0.9	42	3	12	41	2	5
2015-16	29-0	342/11.8	24-59	.407	7-26	.269	5-6	.833	8	12	20	0.7	36	0	28	19	5	6
2016-17	27-26	506/18.7	16-57	.281	13-41	.317	15-20	.750	8	19	27	1.0	50	0	38	22	1	7
2017-18	12-12	329/27.4	13-43	.302	6-26	.231	18-24	.750	6	23	29	2.4	24	1	34	25	2	4
TOTAL	96-40	1492/15.5	60-195	.308	29-101	.287	51-70	.729	28	73	101	1.1	152	4	112	107	10	22





#5 RILEY CASEY

G • 5-8 • FIRST-YEAR
BRENTWOOD, TENN. • FRANKLIN ROAD ACADEMY
MAJOR: UNDECLARED

CASEY NOTES

2017-18

- Started and scored in all 12 games, including nine in double figures
- Leads all Ivy League freshmen in scoring (10.7 ppg) and is Columbia's second-leading scorer
- Two-time Ivy League Rookie of the Week (Dec. 4, Dec. 11)
- Five-game double-figure scoring streak, averaging 13.8 points and shooting 53.3% (24-45) over that span
- Made 12 consecutive free throw attempts
- Started in her collegiate debut at Providence (Nov. 10), scoring 14 points (4-6 3FG) in 37 minutes
- Scored a season-high 18 points (6-12 FG, 5-5 FT) with a season-high five assists against Buffalo (Dec. 9)
- Scored 16 points (5-10 FG, 2-4 3-PT, 4-4 FT) and tallied three assists in a 75-53 victory over Hofstra (Dec. 11)

PRESEASON

- Four-year letterwinner and three-year team captain at Franklin Road Academy in Nashville, Tennessee
- Three-time Tennessee Sports Writers Association all-state team selection
- Scored a career-high 38 points with nine made 3-pointers in November of 2016 against Harpeth Hall, finishing the year with a school record 111 triples
- Cousin, Ryan Kelly, was drafted by the Los Angeles Lakers in the second round of the 2013 NBA Draft, playing three seasons with the Lakers and one with the Atlanta Hawks
- Both parents played college basketball for Hobart and William Smith Colleges
- Chose Columbia over Yale, Brown, Princeton, Penn, Cornell, Wofford, Samford, ETSU, Army, William and Mary

SEASON GAME-BY-GAME

Opponent	Date	gs	min	Total		3-Pointers		Free throws		Rebounds				pf	a	t/o	blk	stl	pts	avg	
				fg-fga	pct	3fg-fga	pct	ft-fa	pct	off	def	tot	avg								
at Providence	11/10/17	*	37	5-8	.625	4-6	.667	0-0	.000	0	2	2	2.0	4	2	1	0	0	14	14.0	
RICHMOND	11/12/17	*	34	4-14	.286	2-10	.200	2-2	1.000	1	2	3	2.5	3	4	2	1	1	12	13.0	
at UMass Lowell	11/15/17	*	37	5-14	.357	2-10	.200	0-1	.000	0	1	1	2.0	3	4	2	0	1	12	12.7	
at Vermont	11/19/17	*	35	4-12	.333	2-9	.222	3-3	1.000	0	2	2	2.0	2	3	1	0	2	13	12.8	
vs GREEN BAY	11/23/17	*	28	1-7	.143	0-4	.000	0-0	.000	0	2	2	2.0	1	1	0	0	0	2	10.6	
vs MISSISSIPPI STATE	11/24/17	*	26	2-4	.500	1-2	.500	0-0	.000	0	1	1	1.8	2	0	4	0	0	5	9.7	
vs ARIZONA STATE	11/25/17	*	31	1-3	.333	0-1	.000	0-0	.000	0	1	1	1.7	3	0	3	0	0	2	8.6	
BOSTON COLLEGE	11/29/17	*	27	5-9	.556	2-6	.333	0-1	.000	0	1	1	1.6	1	0	2	0	1	12	9.0	
at UMB	12/3/17	*	28	3-5	.600	1-3	.333	3-3	1.000	0	2	2	1.7	1	0	1	0	1	10	9.1	
SAINT FRANCIS	12/06/17	*	26	5-9	.556	2-4	.500	0-0	.000	0	1	1	1.6	3	4	0	0	0	12	9.4	
BUFFALO	12/09/17	*	40	6-12	.500	1-5	.200	5-5	1.000	1	1	2	1.6	2	5	5	0	0	18	10.2	
HOFSTRA	12/11/17	*	32	5-10	.500	2-4	.500	4-4	1.000	1	1	2	1.7	0	3	1	0	0	16	10.7	
Totals			12	381	46-107	.430	19-64	.297	17-19	.895	3	17	20	1.7	25	26	22	1	6	128	10.7

Games played: 12
 Minutes/game: 31.8
 Points/game: 10.7
 FG Pct: 43.0
 3FG Pct: 29.7
 FT Pct: 89.5

Rebounds/game: 1.7
 Assists/game: 2.2
 Turnovers/game: 1.8
 Assist/turnover ratio: 1.2
 Steals/game: 0.5
 Blocks/game: 0.1

SEASON/CAREER HIGHS

Points	18	vs. Buffalo (Dec. 9)
FG Made	6	vs. Buffalo (Dec. 9)
FG Attempts	14 (2x)	Last at UMass Lowell (Nov. 15)
FG% (5 made)	62.5% (5-8)	at Providence (Nov. 10)
3FG Made	4	at Providence (Nov. 10)
3FG Attempts	10 (2x)	Last at UMass Lowell (Nov. 15)
3FG% (3 made)	66.7% (4-6)	at Providence (Nov. 10)
FT Made	5	vs. Buffalo (Dec. 9)
FT Attempts	5	vs. Buffalo (Dec. 9)
FT% (5 made)	100% (5-5)	vs. Buffalo (Dec. 9)
Rebounds	3	vs. Richmond (Nov. 12)
Assists	5	vs. Buffalo (Dec. 9)
Blocks	1	vs. Richmond (Nov. 12)
Steals	2	at Vermont (Nov. 19)
Minutes	40	vs. Buffalo (Dec. 9)

CAREER HONORS / AWARDS

- › Two-time League Rookie of the Week (Dec. 4, Dec. 11)

CAREER SUMMARY

Season	gp-gs	min/avg	Total		3-Point		F-Throws		Rebounds				Scoring					
			fg-fga	pct	fg-fga	pct	ft-fa	pct	off	def	tot	avg	pf	fo	ast	to	blk	stl
2017-18	12-12	381/31.8	46-107	.430	19-64	.297	17-19	.895	3	17	20	1.7	25	0	26	22	1	6
TOTAL	12-12	381/31.8	46-107	.430	19-64	.297	17-19	.895	3	17	20	1.7	25	0	26	22	1	6





#10 ANDREA McCORMICK

G • 5-8 • FIRST-YEAR
ERIE, PA. • VILLA MARIA ACADEMY
MAJOR: UNDECLARED

McCORMICK NOTES

2017-18

- Played in 10 of 12 games off the bench, scoring in six
- Made her collegiate debut in the home opener against Richmond (Nov. 12), hitting each of her first two 3-point attempts and finishing with six points
- Tied her season-high of six points and grabbed a season-high four rebounds at UMass Lowell (Nov. 15)

PRESEASON

- Ranked No. 74 by ESPN Hoopsgurlz for 2017 point guards
- Four-year letterwinner in both basketball and golf at Villa Maria Academy in Erie, Pennsylvania
- Helped lead Villa's girls basketball team to region titles all four seasons, as well as three district titles and two runner-up finishes in the Pennsylvania Interscholastic Athletic Association (PIAA) Class AAA state tournament
- Played AAU basketball for Lady's First Basketball Academy and the Toledo Thunder
- Three-time first team all-region selection in golf and second team all-state as a junior
- Finished her junior year ranked No. 8 individually in golf in PIAA Class A
- Chose Columbia over several other schools, including Harvard, Dartmouth and Princeton
- Father, Matthew, played football at Canisius from 1984-85

SEASON/CAREER HIGHS

Points	6 (2x)	Last at UMass Lowell (Nov. 15)
FG Made	2 (2x)	Last at UMass Lowell (Nov. 15)
FG Attempts	6	at UMass Lowell (Nov. 15)
FG% (5 made)	N/A	
3FG Made	2	vs. Richmond (Nov. 12)
3FG Attempts	2 (5x)	Last at UMBC (Dec. 3)
3FG% (3 made)	N/A	
FT Made	3	vs. Mississippi State (Nov. 24)
FT Attempts	4	vs. Mississippi State (Nov. 24)
FT% (5 made)	N/A	
Rebounds	4	at UMass Lowell (Nov. 15)
Assists	1 (2x)	Last vs. Mississippi State (Nov. 24)
Blocks	1	vs. Green Bay (Nov. 23)
Steals	1	at UMass Lowell (Nov. 15)
Minutes	12 (2x)	Last vs. Green Bay (Nov. 23)

SEASON GAME-BY-GAME

Opponent	Date	gs	min	Total		3-Pointers		Free throws		Rebounds				pf	a	t/o	blk	stl	pts	avg
				fg-fga	pct	3fg-fga	pct	ft-fa	pct	off	def	tot	avg							
at Providence	11/10/17	dnp		-	-	-	-	-	-	-	-	-	-	-	-	-	-	-	-	-
RICHMOND	11/12/17	5	2-2	1.000	2-2	1.000	0-0	.000	0-0	0	0	0	0.0	1	0	1	0	0	6	6.0
at UMass Lowell	11/15/17	12	2-6	.333	1-2	.500	1-2	.500	1-2	1	3	4	2.0	2	1	2	0	1	6	6.0
at Vermont	11/19/17	4	0-0	.000	0-0	.000	0-0	.000	0-0	0	0	0	1.3	0	0	0	0	0	4.0	
vs GREEN BAY	11/23/17	12	1-3	.333	0-2	.000	0-2	.000	1-1	1	1	2	1.5	0	0	1	1	0	2	3.5
vs MISSISSIPPI STATE	11/24/17	7	0-4	.000	0-2	.000	3-4	.750	0-1	1	1	1	1.4	0	1	2	0	0	3	3.4
vs ARIZONA STATE	11/25/17	4	0-1	.000	0-0	.000	0-0	.000	0-0	0	0	0	1.2	0	0	1	0	0	0	2.8
BOSTON COLLEGE	11/29/17	2	1-1	1.000	1-1	1.000	0-0	.000	0-0	0	1	1	1.1	0	0	0	0	0	3	2.9
at UMBC	12/3/17	4	0-2	.000	0-2	.000	0-0	.000	0-1	1	1	1	1.1	0	0	0	0	0	0	2.5
SAINT FRANCIS	12/06/17	7	0-1	.000	0-1	.000	0-0	.000	0-0	0	2	2	1.2	1	0	0	0	0	0	2.2
BUFFALO	12/09/17	dnp		-	-	-	-	-	-	-	-	-	-	-	-	-	-	-	-	-
HOFSTRA	12/11/17	6	0-3	.000	0-1	.000	1-2	.500	0-2	2	2	2	1.3	1	0	0	0	0	1	2.1
Totals		0	63	6-23	.261	4-13	.308	5-10	.500	2	11	13	1.3	5	2	7	1	1	21	2.1

Games played: 10
 Minutes/game: 6.3
 Points/game: 2.1
 FG Pct: 26.1
 3FG Pct: 30.8
 FT Pct: 50.0

Rebounds/game: 1.3
 Assists/game: 0.2
 Turnovers/game: 0.7
 Assist/turnover ratio: 0.3
 Steals/game: 0.1
 Blocks/game: 0.1

CAREER SUMMARY

Season	gp-gs	min/avg	Total		3-Point		F-Throws		Rebounds				Scoring					
			fg-fga	pct	fg-fga	pct	ft-fa	pct	off	def	tot	avg	pf	fo	ast	to	blk	stl
2017-18	10-0	63/6.3	6-23	.261	4-13	.308	5-10	.500	2	11	13	1.3	5	0	2	7	1	1
TOTAL	10-0	63/6.3	6-23	.261	4-13	.308	5-10	.500	2	11	13	1.3	5	0	2	7	1	1





#11 SARAH ELSTON

G/F • 6-1 • JR
BANNOCKBURN, ILL. • LOYOLA ACADEMY
MAJOR: ARCHAEOLOGY

ELSTON NOTES

2017-18
• Has not appeared in any games to date

PRESEASON
• Played in two games last season after sitting out her rookie year due to medical reasons
• Made her collegiate debut against UMass Lowell (Dec. 2, 2016), playing a career-high 16 minutes and earning three rebounds and a steal
• Four-year letterwinner and three-year starter at Loyola Academy in Bannockburn, Illinois, also serving as team captain her senior season
• Loyola Academy's career record holder in blocked shots and averaged 10.9 points, 8.9 rebounds, 3.7 blocks, 2.4 assists and 2.1 steals as an upperclassman

SEASON GAME-BY-GAME

• Has not appeared in any games to date

CAREER HIGHS

Points	0
FG Made	0
FG Attempts	1 vs. UMass Lowell (Dec. 2, 2016)
FG% (5 made)	N/A
3FG Made	0
3FG Attempts	0
3FG% (3 made)	N/A
FT Made	0
FT Attempts	2 vs. UMass Lowell (Dec. 2, 2016)
FT% (5 made)	N/A
Rebounds	3 vs. UMass Lowell (Dec. 2, 2016)
Assists	0
Blocks	0
Steals	1 vs. UMass Lowell (Dec. 2, 2016)
Minutes	16 vs. UMass Lowell (Dec. 2, 2016)

SEASON HIGHS

Points	N/A
FG Made	N/A
FG Attempts	N/A
FG% (5 made)	N/A
3FG Made	N/A
3FG Attempts	N/A
3FG% (3 made)	N/A
FT Made	N/A
FT Attempts	N/A
FT% (5 made)	N/A
Rebounds	N/A
Assists	N/A
Blocks	N/A
Steals	N/A
Minutes	N/A

CAREER SUMMARY

			Total		3-Point		F-Throws		Rebounds											Scoring	
Season	gp-gs	min/avg	fg-fga	pct	fg-fga	pct	ft-fga	pct	off	def	tot	avg	pf	fo	ast	to	blk	stl	pts	avg	
2016-17	2-0	17/8.5	0-1	.000	0-0	.000	0-2	.000	0	3	3	1.5	2	0	0	1	0	1	0	0.0	
TOTAL	2-0	17/8.5	0-1	.000	0-0	.000	0-2	.000	0	3	3	1.5	2	0	0	1	0	1	0	0.0	





#20 CAMILLE ZIMMERMAN

G/F • 6-1 • SR
TEMPE, ARIZ. • TEMPE PREPARATORY ACADEMY
MAJOR: ECONOMICS

CAPTAIN

ZIMMERMAN NOTES

2017-18

- Started 68 consecutive games, including all 12 this season
- 39-game double-figure scoring streak
- Eight 20-point games, six double-doubles
- Two-time Ivy League Player of the Week (Nov. 13, Dec. 18)
- Scored 25 points on 9 of 12 shooting in a season-opening victory at Providence (Nov. 10)
- Broke the program's all-time career scoring record with a 21-point effort against Richmond (Nov. 12), passing Ula Lysniak '87BC who held the record of 1,447 since 1987
- Season-highs of 28 points and 13 rebounds in a 73-66 victory at Vermont (Nov. 19)
- Game-high 26 points and game-high 12 rebounds against then-No. 7/3 Mississippi State (Nov. 24)
- Game-high 23 points (8-13 FG) against then-No. 24 Arizona State (Nov. 25)
- Named to the Cancun Challenge All-Tournament Team (Nov. 23-25)
- Career-high seven assists in a home victory over Boston College (Nov. 29)
- Led all players with 25 points, nine rebounds and six assists in a 94-81 victory over Saint Francis (Dec. 6)
- Matched her season-high of 28 points to go with 12 rebounds and three assists against Buffalo (Dec. 9)
- Game-high 24 points, season-high 13 rebounds (10 offensive) in a 75-53 victory over Hofstra (Dec. 11)

PRESEASON

- 2018 Katrina McClain Award Watch List (nation's best power forward)
- Voted one of the team captains for a third consecutive season
- Broke Columbia's single-season records in points (608), points/game (22.5), and FG attempts (539) last season
- The only player in Div. I women's basketball to lead her team in points, rebounds, assists, blocks and steals
- Finished No. 6 in Ivy League women's basketball single-season history in total points (608), No. 5 in field goals made (234) and No. 8 in points per game (22.5)
- Scored 342 points and averaged 24.4 points in Ivy League play, both ranking No. 4 in Ivy League history

SEASON GAME-BY-GAME

Opponent	Date	gs	min	Total		3-Pointers		Free throws		Rebounds				pf	a	t/o	blk	stl	pts	avg	
				fg-fga	pct	3fg-fga	pct	ft-fta	pct	off	def	tot	avg								
at Providence	11/10/17	*	29	9-12	.750	1-2	.500	6-7	.857	1	3	4	4.0	4	2	4	0	0	25	25.0	
RICHMOND	11/12/17	*	37	6-11	.545	0-1	.000	9-10	.900	5	6	11	7.5	3	2	8	3	2	21	23.0	
at UMass Lowell	11/15/17	*	27	7-14	.500	0-2	.000	3-4	.750	5	5	10	8.3	4	4	3	0	0	17	21.0	
at Vermont	11/19/17	*	36	11-19	.579	1-2	.500	5-8	.625	4	9	13	9.5	4	0	2	1	0	28	22.8	
vs GREEN BAY	11/23/17	*	33	5-14	.357	0-0	.000	0-1	.000	2	4	6	8.8	3	2	4	0	1	10	20.2	
vs MISSISSIPPI STATE	11/24/17	*	34	8-17	.471	0-1	.000	10-11	.909	7	5	12	9.3	3	4	6	1	3	26	21.2	
vs ARIZONA STATE	11/25/17	*	40	8-13	.615	0-0	.000	7-7	1.000	2	2	4	8.6	3	1	4	0	0	23	21.4	
BOSTON COLLEGE	11/29/17	*	29	6-11	.545	0-2	.000	2-2	1.000	1	2	3	7.9	5	7	3	1	1	14	20.5	
at UMBC	12/3/17	*	37	6-13	.462	0-1	.000	0-0	.000	6	3	9	8.0	0	6	1	0	0	12	19.6	
SAINT FRANCIS	12/06/17	*	36	7-15	.467	0-2	.000	11-12	.917	1	8	9	8.1	3	6	5	0	1	25	20.1	
BUFFALO	12/09/17	*	40	10-22	.455	3-5	.600	5-6	.833	5	7	12	8.5	4	3	2	1	1	28	20.8	
HOFSTRA	12/11/17	*	36	8-21	.381	0-4	.000	8-8	1.000	10	3	13	8.8	2	3	2	1	2	24	21.1	
Totals			12	414	91-182	.500	5-22	227	66-76	.868	49	57	106	8.8	38	40	44	8	11	253	21.1

Games played: 12
Minutes/game: 34.5
Points/game: 21.1
FG Pct: 50.0
3FG Pct: 22.7
FT Pct: 86.8

Rebounds/game: 8.8
Assists/game: 3.3
Turnovers/game: 3.7
Assist/turnover ratio: 0.9
Steals/game: 0.9
Blocks/game: 0.7

CAREER HIGHS

Points	37	at Dartmouth (Jan. 27, 2017)
FG Made	12 (2x)	Last vs. Penn (Feb. 10, 2017)
FG Attempts	37	at Dartmouth (Jan. 27, 2017)
FG% (5 made)	100% (9-9)	at Brown (Dec. 31, 2015)
3FG Made	5	vs. Vermont (Nov. 17, 2015)
3FG Attempts	10	at Dartmouth (Jan. 27, 2017)
3FG% (3 made)	100% (3-3)	at NJIT (Jan. 12, 2015)
FT Made	12 (2x)	Last at Dartmouth (Jan. 27, 2017)
FT Attempts	15	at Dartmouth (Jan. 27, 2017)
FT% (5 made)	100% (Best 10-10)	at Penn (Feb. 25, 2017)
Rebounds	19 (2x)	Last at Dartmouth (Jan. 27, 2017)
Assists	7	vs. Dartmouth (Feb. 18, 2017)
Blocks	4 (4x)	Last at UMBC (Nov. 13, 2015)
Steals	4 (3x)	Last vs. Penn (Feb. 10, 2017)
Minutes	58	at Dartmouth (Jan. 27, 2017)

SEASON HIGHS

Points	28 (2x)	Last vs. Buffalo (Dec. 9)
FG Made	11	at Vermont (Nov. 19)
FG Attempts	22	vs. Buffalo (Dec. 9)
FG% (5 made)	75.0% (9-12)	at Providence (Nov. 10)
3FG Made	3	vs. Buffalo (Dec. 9)
3FG Attempts	5	vs. Buffalo (Dec. 9)
3FG% (3 made)	60.0% (3-5)	vs. Buffalo (Dec. 9)
FT Made	11	vs. Saint Francis (Dec. 6)
FT Attempts	12	vs. Saint Francis (Dec. 6)
FT% (5 made)	100% (2x, Best 8-8)	vs. Hofstra (Dec. 11)
Rebounds	13 (2x)	Last vs. Hofstra (Dec. 11)
Assists	7	vs. Boston College (Nov. 29)
Blocks	3	vs. Richmond (Nov. 12)
Steals	3	vs. Mississippi State (Nov. 24)
Minutes	40 (2x)	Last vs. Buffalo (Dec. 9)

STAT RANKINGS (Entering Dec. 24)

Category	NCAA	Ivy	Value
Free Throws Made	11th	1st	66
Total Points	18th	1st	253
Scoring Avg	19th	1st	21.1
Double-Doubles	22nd	1st	6
Off. Rebounds/Game	22nd	1st	4.1
Free Throw Attempts	23rd	1st	76
Field Goals Made	28th	1st	91
Free Throw Percentage	43rd	2nd	86.8%
Field Goal Attempts	50th	2nd	182
Total Rebounds	62nd	2nd	106
Rebounds/Game	81st	2nd	8.8
Field Goal Percentage	92nd	2nd	50.0%
Minutes Played	129th	6th	414:00

CAREER HONORS / AWARDS

- 2018 Katrina McClain Award Watch List
- 2017 Cancun Challenge All-Tournament Team
- 2016-17 All-Met Div. I WBB Player of the Year
- 2016-17 First Team All-Ivy League (unanimous)
- 2016-17 First Team All-Met
- USBWA National Player of the Week (Jan. 23-29, 2017)
- Two-time MBWA Div. I Women's Player of the Week
- 2015-16 Second Team All-Ivy League
- 2015-16 Second Team All-Met
- 2015-16 Academic All-Ivy League
- Nine-time Ivy League Player of the Week
- Six-time Ivy League Rookie of the Week

CAREER SUMMARY

			Total		3-Point		F-Throws		Rebounds											Scoring	
Season	gp-gs	min/avg	fg-fga	pct	fg-fga	pct	ft-fa	pct	off	def	tot	avg	pf	fo	ast	to	blk	stl	pts	avg	
2014-15	28-27	919/32.8	135-379	.356	13-46	.283	100-121	.826	65	108	173	6.2	95	3	41	128	26	29	383	13.7	
2015-16	29-29	876/30.2	155-331	.468	17-45	.378	90-114	.789	76	136	212	7.3	80	4	52	107	34	35	417	14.4	
2016-17	27-27	1010/37.4	234-539	.434	29-90	.322	111-137	.810	72	188	260	9.6	78	2	67	106	20	41	608	22.5	
2017-18	12-12	414/34.5	91-182	.500	5-22	.227	66-76	.868	49	57	106	8.8	38	1	40	44	8	11	253	21.1	
TOTAL	96-95	3219/33.5	615-1431	.430	64-203	.315	367-448	.819	262	489	751	7.8	291	10	200	385	88	116	1661	17.3	





#22 MAYA SAMPLETON

G • 5-9 • SO
AUSTIN, TEXAS • ST. STEPHEN'S EPISCOPAL
MAJOR: UNDECLARED

SAMPLETON NOTES

2017-18

- Played in all 12 games, scoring in seven and starting three
- Scored in double figures in three of her last five games
- Recorded her first career 10-point game (4-7 FG, 2-3 3FG) in a 68-60 victory over Boston College (Nov. 29)
- Scored 10 points and grabbed a career-high seven rebounds in a 94-81 victory over SFU (Dec. 6)
- Scored a career-high 12 points to go with career-highs of two assists and three steals vs. Hofstra (Dec. 11)

PRESEASON

- Saw a large increase in usage over the second half of last season, averaging 16 minutes per game through the last seven games (averaged just 4.7 minutes through her first 12 games)
- Played in 19 games as a rookie, including each of the last 17
- Made her collegiate debut at Stony Brook and scored her first two points on two made free throws (Nov. 22, 2016)
- Scored a season-high seven points, including her first made 3-pointer and first two blocks vs. Harvard (Feb. 17)
- Grabbed a season-high five rebounds and collected two more steals at Princeton (Feb. 24)
- Father, Lawrence, played tight end for the University of Texas before being drafted by the Philadelphia Eagles in the second round of the 1982 NFL Draft, where he played three seasons before rounding out his career with the Dolphins in 1987.

SEASON GAME-BY-GAME

Opponent	Date	gs	min	Total		3-Pointers		Free throws		Rebounds				pf	a	t/o	blk	stl	pts	avg
				fg-fga	pct	3fg-fga	pct	ft-fa	pct	off	def	tot	avg							
at Providence	11/10/17	*	21	2-6	.333	0-2	.000	2-3	.667	1	1	2	2.0	5	0	4	1	2	6	6.0
RICHMOND	11/12/17	*	21	3-9	.333	0-1	.000	0-0	.000	0	4	4	3.0	3	1	3	0	0	6	6.0
at UMass Lowell	11/15/17	*	22	3-5	.600	0-0	.000	0-0	.000	0	2	2	2.7	4	1	1	1	0	6	6.0
at Vermont	11/19/17		10	0-2	.000	0-1	.000	0-0	.000	0	2	2	2.5	1	0	0	1	0	0	4.5
vs GREEN BAY	11/23/17		7	0-3	.000	0-1	.000	0-0	.000	1	1	2	2.4	0	0	2	0	1	0	3.6
vs MISSISSIPPI STATE	11/24/17		6	0-2	.000	0-0	.000	2-2	1.000	1	0	1	2.2	1	0	0	0	0	2	3.3
vs ARIZONA STATE	11/25/17		9	0-2	.000	0-1	.000	0-2	.000	0	1	1	2.0	1	0	2	0	0	0	2.9
BOSTON COLLEGE	11/29/17		22	4-7	.571	2-3	.667	0-0	.000	2	2	4	2.3	2	1	2	0	0	10	3.8
at UMBC	12/3/17		13	4-5	.800	0-0	.000	0-0	.000	0	2	2	2.2	3	1	0	0	1	8	4.2
SAINT FRANCIS	12/06/17		22	4-8	.500	2-2	1.000	0-2	.000	0	7	7	2.7	1	1	4	0	1	10	4.8
BUFFALO	12/09/17		12	0-4	.000	0-2	.000	0-0	.000	1	2	3	2.7	3	0	1	0	0	0	4.4
HOFSTRA	12/11/17		26	5-12	.417	1-2	.500	1-2	.500	0	4	4	2.8	1	2	0	1	3	12	5.0
Totals		3	191	25-65	.385	5-15	.333	5-11	.455	6	28	34	2.8	25	7	19	4	8	60	5.0

Games played: 12
Minutes/game: 15.9
Points/game: 5.0
FG Pct: 38.5
3FG Pct: 33.3
FT Pct: 45.5

Rebounds/game: 2.8
Assists/game: 0.6
Turnovers/game: 1.6
Assist/turnover ratio: 0.4
Steals/game: 0.7
Blocks/game: 0.3

CAREER HIGHS

Points	12	vs. Hofstra (Dec. 11, 2017)
FG Made	5	vs. Hofstra (Dec. 11, 2017)
FG Attempts	12	vs. Hofstra (Dec. 11, 2017)
FG% (5 made)	41.7% (5-12)	vs. Hofstra (Dec. 11, 2017)
3FG Made	2 (2x)	Last vs. Saint Francis (Dec. 6, 2017)
3FG Attempts	3	vs. Boston College (Nov. 29, 2017)
3FG% (3 made)	N/A	
FT Made	3	at Princeton (Feb. 24, 2017)
FT Attempts	4	at Princeton (Feb. 24, 2017)
FT% (5 made)	N/A	
Rebounds	7	vs. Saint Francis (Dec. 6, 2017)
Assists	2	vs. Hofstra (Dec. 11, 2017)
Blocks	2	vs. Harvard (Feb. 17, 2017)
Steals	3 (2x)	Last vs. Hofstra (Dec. 11)
Minutes	28	vs. Brown (Mar. 3, 2017)

SEASON HIGHS

Points	12	vs. Hofstra (Dec. 11)
FG Made	5	vs. Hofstra (Dec. 11)
FG Attempts	12	vs. Hofstra (Dec. 11)
FG% (5 made)	41.7% (5-12)	vs. Hofstra (Dec. 11)
3FG Made	2 (2x)	Last vs. Saint Francis (Dec. 6)
3FG Attempts	3	vs. Boston College (Nov. 29)
3FG% (3 made)	N/A	
FT Made	2 (2x)	Last vs. Mississippi State (Nov. 24)
FT Attempts	3	at Providence (Nov. 10)
FT% (5 made)	N/A	
Rebounds	7	vs. Saint Francis (Dec. 6)
Assists	2	vs. Hofstra (Dec. 11)
Blocks	1 (4x)	vs. Hofstra (Dec. 11)
Steals	3	vs. Hofstra (Dec. 11)
Minutes	26	vs. Hofstra (Dec. 11)

CAREER SUMMARY

			Total		3-Point		F-Throws		Rebounds										Scoring	
Season	gp-gs	min/avg	fg-fga	pct	fg-fga	pct	ft-fa	pct	off	def	tot	avg	pf	fo	ast	to	blk	stl	pts	avg
2016-17	19-0	168/8.8	13-39	.333	1-6	.167	11-15	.733	4	26	30	1.6	16	0	4	17	2	8	38	2.0
2017-18	12-3	191/15.9	25-65	.385	5-15	.333	5-11	.455	6	28	34	2.8	25	1	7	19	4	8	60	5.0
TOTAL	31-3	359/11.6	38-104	.365	6-21	.286	16-26	.615	10	54	64	2.1	41	1	11	36	6	16	98	3.2





#25 STEPHANIE FLYNN

G/F • 5-9 • SO
HANOVER, MASS. • HANOVER
MAJOR: POLITICAL SCIENCE

FLYNN NOTES

2017-18

- Played in all 12 games off the bench, scoring in five
- Scored a career-high five points in the home opener against Richmond (Nov. 12)
- All five of Flynn's made baskets are from 3-point range, where she is shooting 50.0% (5-10)

PRESEASON

- Played in 14 games last season, totaling 59 minutes, including six of 14 Ivy League games
- Made her collegiate debut against Colgate (Nov. 27), playing 12 minutes off the bench, including seven in the fourth quarter, and picking up her first rebound
- Scored the first four points of her career (2-3 FG) and picked up her first block to go with a season-high four rebounds in a win over UMass Lowell (Dec. 7)

SEASON GAME-BY-GAME

Opponent	Date	gs	min	Total		3-Pointers		Free throws		Rebounds				pf	a	t/o	blk	stl	pts	avg
				fg-fga	pct	3fg-fga	pct	ft-fa	pct	off	def	tot	avg							
at Providence	11/10/17	2	1-2	.500	1-2	.500	0-0	.000	0	0	0	0.0	0	0	0	0	0	0	3	3.0
RICHMOND	11/12/17	7	1-1	1.000	1-1	1.000	2-3	.667	0	0	0	0.0	2	0	0	0	2	5	4.0	
at UMass Lowell	11/15/17	7	0-1	.000	0-0	.000	0-0	.000	0	0	0	0.0	2	0	0	0	0	0	2.7	
at Vermont	11/19/17	2	0-0	.000	0-0	.000	0-0	.000	0	0	0	0.0	2	0	0	0	0	0	2.0	
vs GREEN BAY	11/23/17	10	0-1	.000	0-1	.000	0-0	.000	0	2	2	0.4	0	0	0	0	0	0	1.6	
vs MISSISSIPPI STATE	11/24/17	11	1-2	.500	1-1	1.000	0-0	.000	0	0	0	0.3	3	1	0	0	1	3	1.8	
vs ARIZONA STATE	11/25/17	5	0-0	.000	0-0	.000	0-0	.000	0	0	0	0.3	0	2	0	0	0	0	1.6	
BOSTON COLLEGE	11/29/17	2	0-1	.000	0-1	.000	0-0	.000	0	0	0	0.3	0	0	0	0	0	0	1.4	
at UMBC	12/3/17	7	1-1	1.000	1-1	1.000	0-0	.000	1	0	1	0.3	1	0	1	0	0	3	1.6	
SAINT FRANCIS	12/06/17	7	0-0	.000	0-0	.000	0-0	.000	0	1	1	0.4	1	0	0	0	0	0	1.4	
BUFFALO	12/09/17	9	1-2	.500	1-2	.500	0-0	.000	0	0	0	0.4	0	0	0	0	0	3	1.5	
HOFSTRA	12/11/17	4	0-1	.000	0-1	.000	0-0	.000	0	0	0	0.3	0	0	0	0	0	0	1.4	
Totals		0	73	5-12	.417	5-10	.500	2-3	.667	1	3	4	0.3	11	3	1	0	3	17	1.4

Games played: 12
Minutes/game: 6.1
Points/game: 1.4
FG Pct: 41.7
3FG Pct: 50.0
FT Pct: 66.7

Rebounds/game: 0.3
Assists/game: 0.3
Turnovers/game: 0.1
Assist/turnover ratio: 3.0
Steals/game: 0.3

CAREER HIGHS

Points	5	vs. Richmond (Nov. 12, 2017)
FG Made	2	vs. UMass Lowell (Dec. 2, 2016)
FG Attempts	3 (2x)	Last vs. UMass Lowell (Dec. 2, 2016)
FG% (5 made)	N/A	
3FG Made	1 (5x)	Last at UMBC (Dec. 3, 2017)
3FG Attempts	2 (2x)	Last at Providence (Nov. 10, 2017)
3FG% (3 made)	N/A	
FT Made	2	vs. Richmond (Nov. 12, 2017)
FT Attempts	3	vs. Richmond (Nov. 12, 2017)
FT% (5 made)	N/A	
Rebounds	4	vs. UMass Lowell (Dec. 2, 2016)
Assists	1	vs. Dartmouth (Feb. 18, 2017)
Blocks	1 (2x)	Last vs. Dartmouth (Feb. 18, 2017)
Steals	2	vs. Richmond (Nov. 12, 2017)
Minutes	12 (2x)	Last vs. UMass Lowell (Dec. 2, 2016)

SEASON HIGHS

Points	5	vs. Richmond (Nov. 12)
FG Made	1 (5x)	Last vs. Buffalo (Dec. 9)
FG Attempts	2 (3x)	Last vs. Buffalo (Dec. 9)
FG% (5 made)	N/A	
3FG Made	1 (5x)	Last vs. Buffalo (Dec. 9)
3FG Attempts	2 (2x)	Last vs. Buffalo (Dec. 9)
3FG% (3 made)	N/A	
FT Made	2	vs. Richmond (Nov. 12)
FT Attempts	3	vs. Richmond (Nov. 12)
FT% (5 made)	N/A	
Rebounds	2	vs. Green Bay (Nov. 23)
Assists	1	vs. Mississippi State (Nov. 24)
Blocks	N/A	
Steals	2	vs. Richmond (Nov. 12)
Minutes	11	vs. Mississippi State (Nov. 24)

CAREER SUMMARY

Season	gp-gs	min/avg	Total		3-Point		F-Throws		Rebounds				Scoring					
			fg-fga	pct	fg-fga	pct	ft-fa	pct	off	def	tot	avg	pf	fo	ast	to	blk	stl
2016-17	14-0	59/4.2	3-12	.250	1-7	.143	1-2	.500	2	4	6	0.4	3	0	1	4	2	0
2017-18	12-0	73/6.1	5-12	.417	5-10	.500	2-3	.667	1	3	4	0.3	11	0	3	1	0	3
TOTAL	26-0	132/5.1	8-24	.333	6-17	.353	3-5	.600	3	7	10	0.4	14	0	4	5	2	3





#32 MADISON PACK

F/C • 6-3 • FIRST-YEAR
SARASOTA, FLA. • SARASOTA
MAJOR: UNDECLARED

PACK NOTES

2017-18

- Played in all 12 games, starting each of the last nine
- Has scored and grabbed at least one rebound in all 12 games
- Three double-figure scoring games
- Leads the team in 3-point shooting (37.2 pct.) (min. 10 makes)
- Scored five points with seven rebounds in her collegiate debut against Providence (Nov. 10)
- Scored a season-high 12 points to go with six rebounds in her Levien Gymnasium debut (Nov. 12)
- Made her first start against Vermont (Nov. 19), scoring eight points with five boards
- Put up double figures against No. 24 Arizona State (10) and Saint Francis (11)

PRESEASON

- 2016-17 Girls Basketball McDonald's All-American Nominee
- Ranked No. 84 in ESPN HoopsGurlz Class of 2017 forwards
- Ranked among Prospect Nation's 2017 Elite 100
- Four-year letterwinner and senior captain at Sarasota High School in Sarasota, Florida
- Led the Lady Sailors to two district titles, a region title and an appearance in the 2014 state Final Four
- Averaged 10.1 points, 6.2 rebounds and 1.6 blocks throughout her high school career, including career-highs of 12.7 points as a senior and 7.3 rebounds as a sophomore
- Standing 6-3, Pack and senior Jillian Borreson are the tallest players on the roster
- Chose Columbia over offers from Penn, Brown, Monmouth and Kennesaw State

SEASON GAME-BY-GAME

Opponent	Date	gs	min	Total		3-Pointers		Free throws		Rebounds			pf	a	t/o	blk	stl	pts	avg
				fg-fga	pct	3fg-fga	pct	ft-fa	pct	off	def	tot							
at Providence	11/10/17		26	2-7	.286	1-5	.200	0-0	.000	0	7	7	7.0	4	0	0	0	5	5.0
RICHMOND	11/12/17		22	4-5	.800	1-2	.500	3-3	1.000	0	6	6	6.5	3	0	1	0	12	8.5
at UMass Lowell	11/15/17		11	1-4	.250	0-1	.000	0-0	.000	0	3	3	5.3	2	0	0	0	2	6.3
at Vermont	11/19/17	*	29	3-6	.500	2-4	.500	0-0	.000	1	4	5	5.3	2	0	1	0	8	6.8
vs GREEN BAY	11/23/17	*	21	3-5	.600	0-1	.000	0-0	.000	2	4	6	5.4	2	0	1	0	6	6.6
vs MISSISSIPPI STATE	11/24/17	*	24	2-4	.500	2-2	1.000	0-0	.000	1	1	2	4.8	4	1	1	1	6	6.5
vs ARIZONA STATE	11/25/17	*	33	3-9	.333	2-6	.333	2-2	1.000	1	8	9	5.4	4	0	0	0	10	7.0
BOSTON COLLEGE	11/29/17	*	11	1-3	.333	1-3	.333	0-0	.000	0	3	3	5.1	1	0	0	0	3	6.5
at UMBC	12/3/17	*	29	2-7	.286	2-7	.286	0-0	.000	3	1	4	5.0	3	2	1	0	6	6.4
SAINT FRANCIS	12/06/17	*	26	4-8	.500	2-4	.500	1-2	.500	1	2	3	4.8	2	1	2	2	11	6.9
BUFFALO	12/09/17	*	36	2-8	.250	1-4	.250	0-0	.000	0	4	4	4.7	2	1	1	0	5	6.7
HOFSTRA	12/11/17	*	22	3-6	.500	2-4	.500	0-0	.000	1	5	6	4.8	2	0	2	0	8	6.8
Totals		9	290	30-72	.417	16-43	.372	6-7	.857	10	48	58	4.8	31	5	10	3	82	6.8

Games played: 12
 Minutes/game: 24.2
 Points/game: 6.8
 FG Pct: 41.7
 3FG Pct: 37.2
 FT Pct: 85.7

Rebounds/game: 4.8
 Assists/game: 0.4
 Turnovers/game: 0.8
 Assist/turnover ratio: 0.5
 Steals/game: 0.2
 Blocks/game: 0.3

SEASON/CAREER HIGHS

Points	12	vs. Richmond (Nov. 12)
FG Made	4 (2x)	Last vs. Saint Francis (Dec. 6)
FG Attempts	9	vs. Arizona State (Nov. 25)
FG% (5 made)	N/A	
3FG Made	2 (6x)	Last vs. Hofstra (Dec. 11)
3FG Attempts	7	at UMBC (Dec. 3)
3FG% (3 made)	N/A	
FT Made	3	vs. Richmond (Nov. 12)
FT Attempts	3	vs. Richmond (Nov. 12)
FT% (5 made)	N/A	
Rebounds	9	vs. Arizona State (Nov. 25)
Assists	2	at UMBC (Dec. 3)
Blocks	2	vs. Saint Francis (Dec. 6)
Steals	1 (2x)	Last vs. Buffalo (Dec. 9)
Minutes	36	vs. Buffalo (Dec. 9)

CAREER SUMMARY

Season	gp-gs	min/avg	Total		3-Point		F-Throws		Rebounds				Scoring					
			fg-fga	pct	fg-fga	pct	ft-fa	pct	off	def	tot	avg	pf	fo	ast	to	blk	stl
2017-18	12-9	290/24.2	30-72	.417	16-43	.372	6-7	.857	10	48	58	4.8	31	0	5	10	3	2
TOTAL	12-9	290/24.2	30-72	.417	16-43	.372	6-7	.857	10	48	58	4.8	31	0	5	10	3	2





#33 ABBY LEE

G/F • 5-10 • JR
WEST MONROE, LA. • WEST MONROE
MAJOR: (DOUBLE) RELIGION & PSYCHOLOGY

LEE NOTES

2017-18

- Played in all 12 games, starting three and scoring in 11
- Started the first three games of the season and averaged 9.8 points and 6.5 rebounds through the first four
- First career back-to-back double-figure scoring games against UMass Lowell (Nov. 15) & Vermont (Nov. 19)
- Averaging nearly twice the points and more than twice the rebounds she averaged last season
- Has not missed from the foul line this season (6-6)

PRESEASON

- Has missed just three games in her first two seasons, entering her the year with 53 career games played
- Primarily used off the bench, starting twice over the course of her career, but has a chance to earn herself a starting role as a junior.
- Averaged 11.2 minutes off the bench as a sophomore, playing four minutes per game more than she did as a first-year.
- Over 70% of Lee's career field goal attempts entering the season have come from beyond the arc.
- One of seven Lions to play in all 27 games last season

SEASON GAME-BY-GAME

Opponent	Date	gs	min	Total		3-Pointers		Free throws		Rebounds											
				fg-fga	pct	3fg-fga	pct	ft-fga	pct	off	def	tot	avg	pf	a	t/o	blk	stl	pts	avg	
at Providence	11/10/17	*	31	4-9	.444	0-5	.000	0-0	.000	1	7	8	8.0	3	0	1	0	0	8	8.0	
RICHMOND	11/12/17	*	20	2-9	.222	2-5	.400	2-2	1.000	5	2	7	7.5	5	1	1	0	0	8	8.0	
at UMass Lowell	11/15/17	*	31	4-12	.333	3-5	.600	0-0	.000	2	3	5	6.7	4	0	4	1	0	11	9.0	
at Vermont	11/19/17		25	4-12	.333	2-6	.333	2-2	1.000	1	5	6	6.5	2	3	0	0	0	12	9.8	
vs GREEN BAY	11/23/17		16	1-4	.250	1-2	.500	0-0	.000	0	0	0	5.2	0	0	2	0	0	3	8.4	
vs MISSISSIPPI STATE	11/24/17		10	0-2	.000	0-2	.000	0-0	.000	0	1	1	4.5	1	0	0	0	0	0	7.0	
vs ARIZONA STATE	11/25/17		13	2-5	.400	1-3	.333	0-0	.000	0	1	1	4.0	3	0	0	0	0	5	6.7	
BOSTON COLLEGE	11/29/17		22	2-5	.400	1-2	.500	0-0	.000	2	4	6	4.3	1	2	0	0	2	5	6.5	
at UMBL	12/3/17		10	2-5	.400	0-2	.000	0-0	.000	1	1	2	4.0	3	1	2	0	0	4	6.2	
SAINT FRANCIS	12/06/17		19	2-2	1.000	1-1	1.000	2-2	1.000	0	4	4	4.0	1	1	1	0	1	7	6.3	
BUFFALO	12/09/17		14	2-5	.400	1-3	.333	0-0	.000	0	1	1	3.7	4	3	3	0	0	5	6.2	
HOFSTRA	12/11/17		22	2-6	.333	1-2	.500	0-0	.000	2	4	6	3.9	1	2	0	0	2	5	6.1	
Totals			3	233	27-76	.355	13-38	.342	6-6	1.000	14	33	47	3.9	28	13	14	1	5	73	6.1

Games played: 12
Minutes/game: 19.4
Points/game: 6.1
FG Pct: 35.5
3FG Pct: 34.2
FT Pct: 100.0

Rebounds/game: 3.9
Assists/game: 1.1
Turnovers/game: 1.2
Assist/turnover ratio: 0.9
Steals/game: 0.4
Blocks/game: 0.1

CAREER HIGHS

Points	19	vs. Central Penn (Jan. 3, 2016)
FG Made	7	vs. Central Penn (Jan. 3, 2016)
FG Attempts	13	vs. Central Penn (Jan. 3, 2016)
FG% (5 made)	71.4% (5-7)	at NJIT (Jan. 4, 2017)
3FG Made	5	vs. Central Penn (Jan. 3, 2016)
3FG Attempts	10	vs. Central Penn (Jan. 3, 2016)
3FG% (3 made)	60 % (3-5)	at UMass Lowell (Nov. 15, 2017)
FT Made	2 (4x)	Last vs. Richmond (Nov. 12, 2017)
FT Attempts	3	at Providence (Nov. 10, 2017)
FT% (5 made)	N/A	
Rebounds	7 (3x)	Last vs. Richmond (Nov. 12, 2017)
Assists	3 (3x)	Last vs. Buffalo (Dec. 9, 2017)
Blocks	1 (3x)	Last at UMass Lowell (Nov. 15, 2017)
Steals	3	vs. Central Penn (Jan. 3, 2016)
Minutes	31 (2x)	Last at UMass Lowell (Nov. 15, 2017)

SEASON HIGHS

Points	12	at Vermont (Nov. 19)
FG Made	4 (3x)	Last at Vermont (Nov. 19)
FG Attempts	12 (2x)	Last at Vermont (Nov. 19)
FG% (5 made)	N/A	
3FG Made	3	at UMass Lowell (Nov. 15)
3FG Attempts	6	at Vermont (Nov. 19)
3FG% (3 made)	60% (3-5)	at UMass Lowell (Nov. 15)
FT Made	2 (3x)	Last vs. Saint Francis (Dec. 6)
FT Attempts	3	at Providence (Nov. 10)
FT% (5 made)	N/A	
Rebounds	7	vs. Richmond (Nov. 12)
Assists	3 (2x)	Last vs. Buffalo (Dec. 9)
Blocks	1	at UMass Lowell (Nov. 15)
Steals	2 (2x)	Last vs. Hofstra (Dec. 11)
Minutes	31 (2x)	Last at UMass Lowell (Nov. 15)

CAREER SUMMARY

Season	gp-gs	min/avg	Total		3-Point		F-Throws		Rebounds				Scoring					
			fg-fga	pct	fg-fga	pct	ft-fga	pct	off	def	tot	avg	pf	fo	ast	to	blk	stl
2015-16	26-0	198/7.6	23-60	.383	16-44	.364	2-2	1.000	4	26	30	1.2	16	0	13	17	1	8
2016-17	27-2	302/11.2	31-86	.360	18-59	.305	7-8	.875	11	34	45	1.7	19	0	11	24	1	6
2017-18	12-3	233/19.4	27-76	.355	13-38	.342	6-6	1.000	14	33	47	3.9	28	1	13	14	1	5
TOTAL	65-5	733/11.3	81-222	.365	47-141	.333	15-16	.938	29	93	122	1.9	63	1	37	55	3	19





#42 JILLIAN BORRESON

C • 6-3 • SR
MT. CITY, TEXAS • JACK C. HAYS
MAJOR: POLITICAL SCIENCE

CAPTAIN

BORRESON NOTES

2017-18

- Appeared in five games, averaging 4.6 minutes
- Scored two points and collected a season-high four rebounds at UMass Lowell (Nov. 12)
- Scored two points as part of a 75-53 win over Hofstra (Dec. 11)

PRESEASON

- Enters her senior campaign as one of three Columbia captains, alongside classmates Camille Zimmerman and Paige Tippet
- Standing 6-3, Borreson and first-year Madison Pack are the tallest players on Columbia's roster
- Will get to play in her home state later this season when the Lions travel to Houston, Texas to take on Houston (Dec. 28) and Rice (Dec. 30)
- Played in seven games last season, including five Ivy League games, averaging 4.7 minutes per game
- Season debut came against UMass Lowell (Dec. 2), scoring two points with two rebounds in seven minutes
- Hit season-highs of three rebounds and 12 minutes played in Columbia's Ivy home opener vs. Cornell (Jan. 21)
- Came up with a steal and two rebounds in eight minutes against Brown (March 3)

SEASON GAME-BY-GAME

Opponent	Date	gs	min	Total		3-Pointers		Free throws		Rebounds				pf	a	t/o	blk	stl	pts	avg
				fg-fga	pct	3fg-fga	pct	ft-fa	pct	off	def	tot	avg							
at Providence	11/10/17	dnp	-	-	-	-	-	-	-	-	-	-	-	-	-	-	-	-	-	-
RICHMOND	11/12/17	2	0-0	.000	0-0	.000	0-0	.000	0-0	.000	1	1	2	2.0	0	0	0	0	0	0.0
at UMass Lowell	11/15/17	8	1-1	1.000	0-0	.000	0-0	.000	0-0	.000	2	2	4	3.0	2	0	0	0	0	1.0
at Vermont	11/19/17	dnp	-	-	-	-	-	-	-	-	-	-	-	-	-	-	-	-	-	-
vs GREEN BAY	11/23/17	4	0-0	.000	0-0	.000	0-0	.000	0-0	.000	0	0	0	2.0	0	0	0	0	0	0.7
vs MISSISSIPPI STATE	11/24/17	7	0-0	.000	0-0	.000	0-0	.000	0-2	.000	1	1	2	2.0	3	0	0	0	0	0.5
vs ARIZONA STATE	11/25/17	dnp	-	-	-	-	-	-	-	-	-	-	-	-	-	-	-	-	-	-
BOSTON COLLEGE	11/29/17	dnp	-	-	-	-	-	-	-	-	-	-	-	-	-	-	-	-	-	-
at UMBC	12/3/17	dnp	-	-	-	-	-	-	-	-	-	-	-	-	-	-	-	-	-	-
SAINT FRANCIS	12/06/17	dnp	-	-	-	-	-	-	-	-	-	-	-	-	-	-	-	-	-	-
BUFFALO	12/09/17	dnp	-	-	-	-	-	-	-	-	-	-	-	-	-	-	-	-	-	-
HOFSTRA	12/11/17	2	1-2	.500	0-0	.000	0-0	.000	0-0	.000	0	0	0	1.6	0	0	0	0	2	0.8
Totals		0	23	2-3	.667	0-0	.000	0-2	.000	4	4	8	1.6	5	0	0	0	0	4	0.8

Games played: 5
Minutes/game: 4.6
Points/game: 0.8
FG Pct: 66.7
FT Pct: 0.0

Rebounds/game: 1.6

CAREER HIGHS

Points	10	vs. Central Penn (Jan. 3, 2016)
FG Made	5	vs. Central Penn (Jan. 3, 2016)
FG Attempts	15	vs. Central Penn (Jan. 3, 2016)
FG% (5 made)	33.3% (5-15)	vs. Central Penn (Jan. 3, 2016)
3FG Made	0	
3FG Attempts	0	
3FG% (3 made)	N/A	
FT Made	0	
FT Attempts	2 (2x)	Last vs. Miss. State (Nov. 24, 2017)
FT% (5 made)	N/A	
Rebounds	10	vs. Central Penn (Jan. 3, 2016)
Assists	1	vs. Central Penn (Jan. 3, 2016)
Blocks	7	vs. Central Penn (Jan. 3, 2016)
Steals	1 (2x)	Last vs. Brown (Mar. 3, 2017)
Minutes	27	vs. Central Penn (Jan. 3, 2016)

SEASON HIGHS

Points	2 (2x)	Last vs. Hofstra (Dec. 11)
FG Made	1 (2x)	Last vs. Hofstra (Dec. 11)
FG Attempts	2	vs. Hofstra (Dec. 11)
FG% (5 made)	N/A	
3FG Made	N/A	
3FG Attempts	N/A	
3FG% (3 made)	N/A	
FT Made	N/A	
FT Attempts	2	vs. Mississippi State (Nov. 24)
FT% (5 made)	N/A	
Rebounds	4	at UMass Lowell (Nov. 15)
Assists	N/A	
Blocks	N/A	
Steals	N/A	
Minutes	8	at UMass Lowell (Nov. 15)

CAREER SUMMARY

Season	gp-gs	min/avg	Total		3-Point		F-Throws		Rebounds				Scoring					
			fg-fga	pct	fg-fga	pct	ft-fa	pct	off	def	tot	avg	pf	fo	ast	to	blk	stl
2014-15	5-0	11/2.2	1-2	.500	0-0	.000	0-0	.000	1	1	2	0.4	3	0	0	0	0	0
2015-16	10-0	52/5.2	5-16	.313	0-0	.000	0-2	.000	9	5	14	1.4	8	0	1	4	7	1
2016-17	7-0	33/4.7	1-4	.250	0-0	.000	0-0	.000	2	6	8	1.1	7	0	0	5	0	1
2017-18	5-0	23/4.6	2-3	.667	0-0	.000	0-2	.000	4	4	8	1.6	5	0	0	0	0	0
TOTAL	27-0	119/4.4	9-25	.360	0-0	.000	0-4	.000	16	16	32	1.2	23	0	1	9	7	2



COLUMBIA GAME HIGHS

POINTS	94	SAINT FRANCIS (12/06/17)
	79	RICHMOND (11/12/17)
	75	HOFSTRA (12/11/17)
	73	at Vermont (11/19/17)
	73	at Providence (11/10/17)
FIELD GOALS MADE	32	SAINT FRANCIS (12/06/17)
	29	at UMass Lowell (11/15/17)
FIELD GOAL ATTEMPTS	70	HOFSTRA (12/11/17)
	67	at Vermont (11/19/17)
	67	at UMass Lowell (11/15/17)
FIELD GOAL PERCENTAGE	.542 (32-59)	SAINT FRANCIS (12/06/17)
	.531 (26-49)	at Providence (11/10/17)
3 PT FIELD GOALS MADE	11	SAINT FRANCIS (12/06/17)
	9	RICHMOND (11/12/17)
3 PT FG ATTEMPTS	27	at Vermont (11/19/17)
	26	RICHMOND (11/12/17)
3 PT FG PERCENTAGE	.579 (11-19)	SAINT FRANCIS (12/06/17)
	.346 (9-26)	RICHMOND (11/12/17)
FREE THROWS MADE	20	RICHMOND (11/12/17)
	19	SAINT FRANCIS (12/06/17)
FREE THROW ATTEMPTS	24	SAINT FRANCIS (12/06/17)
	23	RICHMOND (11/12/17)
FREE THROW PERCENTAGE	.909 (10-11)	BUFFALO (12/09/17)
	.870 (20-23)	RICHMOND (11/12/17)
REBOUNDS	43	HOFSTRA (12/11/17)
	43	BOSTON COLLEGE (11/29/17)
ASSISTS	23	SAINT FRANCIS (12/06/17)
	17	BOSTON COLLEGE (11/29/17)
STEALS	7	HOFSTRA (12/11/17)
	6	vs MISSISSIPPI STATE (11/24/17)
	6	at UMass Lowell (11/15/17)
	6	RICHMOND (11/12/17)
BLOCKED SHOTS	5	RICHMOND (11/12/17)
	4	vs MISSISSIPPI STATE (11/24/17)
	4	vs GREEN BAY (11/23/17)
TURNOVERS	22	vs MISSISSIPPI STATE (11/24/17)
	20	RICHMOND (11/12/17)
FOULS	31	at UMass Lowell (11/15/17)
	23	RICHMOND (11/12/17)
	23	at Providence (11/10/17)

COLUMBIA GAME LOWS

POINTS	43	vs GREEN BAY (11/23/17)
	48	vs ARIZONA STATE (11/25/17)
	54	vs MISSISSIPPI STATE (11/24/17)
	60	at UMBC (12/3/17)
	63	BUFFALO (12/09/17)
FIELD GOALS MADE	16	vs GREEN BAY (11/23/17)
	17	vs MISSISSIPPI STATE (11/24/17)
FIELD GOAL ATTEMPTS	44	vs ARIZONA STATE (11/25/17)
	49	at Providence (11/10/17)
FIELD GOAL PERCENTAGE	.314 (16-51)	vs GREEN BAY (11/23/17)
	.333 (17-51)	vs MISSISSIPPI STATE (11/24/17)
3 PT FIELD GOALS MADE	2	vs GREEN BAY (11/23/17)
	3	vs ARIZONA STATE (11/25/17)
3 PT FG ATTEMPTS	12	vs ARIZONA STATE (11/25/17)
	14	vs MISSISSIPPI STATE (11/24/17)
3 PT FG PERCENTAGE	.133 (2-15)	vs GREEN BAY (11/23/17)
	.250 (3-12)	vs ARIZONA STATE (11/25/17)
FREE THROWS MADE	5	at UMass Lowell (11/15/17)
	6	at UMBC (12/3/17)
FREE THROW ATTEMPTS	7	at UMBC (12/3/17)
	9	at UMass Lowell (11/15/17)
FREE THROW PERCENTAGE	.556 (5-9)	at UMass Lowell (11/15/17)
	.692 (9-13)	vs GREEN BAY (11/23/17)
	.692 (9-13)	BOSTON COLLEGE (11/29/17)
REBOUNDS	27	at Providence (11/10/17)
	27	vs ARIZONA STATE (11/25/17)
ASSISTS	5	vs GREEN BAY (11/23/17)
	6	vs ARIZONA STATE (11/25/17)
STEALS	0	vs ARIZONA STATE (11/25/17)
	2	at Providence (11/10/17)
BLOCKED SHOTS	0	vs ARIZONA STATE (11/25/17)
	0	at UMBC (12/3/17)
TURNOVERS	9	at Vermont (11/19/17)
	10	HOFSTRA (12/11/17)
FOULS	8	HOFSTRA (12/11/17)
	11	vs GREEN BAY (11/23/17)

OPPONENT GAME HIGHS

POINTS	90	vs MISSISSIPPI STATE (11/24/17)
	85	RICHMOND (11/12/17)
	81	SAINT FRANCIS (12/06/17)
	77	at UMass Lowell (11/15/17)
	72	vs ARIZONA STATE (11/25/17)
FIELD GOALS MADE	34	vs MISSISSIPPI STATE (11/24/17)
	32	SAINT FRANCIS (12/06/17)
FIELD GOAL ATTEMPTS	75	SAINT FRANCIS (12/06/17)
	73	RICHMOND (11/12/17)
FIELD GOAL PERCENTAGE	.472 (34-72)	vs MISSISSIPPI STATE (11/24/17)
	.459 (28-61)	vs GREEN BAY (11/23/17)
3 PT FIELD GOALS MADE	10	vs MISSISSIPPI STATE (11/24/17)
	8	at UMass Lowell (11/15/17)
3 PT FG ATTEMPTS	30	SAINT FRANCIS (12/06/17)
	24	at Vermont (11/19/17)
3 PT FG PERCENTAGE	.500 (8-16)	at UMass Lowell (11/15/17)
	.476 (10-21)	vs MISSISSIPPI STATE (11/24/17)
FREE THROWS MADE	24	RICHMOND (11/12/17)
	20	vs ARIZONA STATE (11/25/17)
FREE THROW ATTEMPTS	35	at UMass Lowell (11/15/17)
	30	RICHMOND (11/12/17)
FREE THROW PERCENTAGE	.800 (24-30)	RICHMOND (11/12/17)
	.800 (20-25)	vs ARIZONA STATE (11/25/17)
	.800 (8-10)	at UMBC (12/3/17)
REBOUNDS	50	at UMass Lowell (11/15/17)
	47	RICHMOND (11/12/17)
ASSISTS	19	vs MISSISSIPPI STATE (11/24/17)
	18	BUFFALO (12/09/17)
STEALS	10	vs MISSISSIPPI STATE (11/24/17)
	8	vs ARIZONA STATE (11/25/17)
	8	vs GREEN BAY (11/23/17)
BLOCKED SHOTS	7	SAINT FRANCIS (12/06/17)
	5	vs MISSISSIPPI STATE (11/24/17)
	5	vs GREEN BAY (11/23/17)
TURNOVERS	21	HOFSTRA (12/11/17)
	20	BUFFALO (12/09/17)
FOULS	23	SAINT FRANCIS (12/06/17)
	23	RICHMOND (11/12/17)

OPPONENT GAME LOWS

POINTS	44	at UMBC (12/3/17)
	53	HOFSTRA (12/11/17)
	60	BOSTON COLLEGE (11/29/17)
	61	vs GREEN BAY (11/23/17)
	64	at Providence (11/10/17)
FIELD GOALS MADE	16	at UMBC (12/3/17)
	22	at Providence (11/10/17)
	22	HOFSTRA (12/11/17)
FIELD GOAL ATTEMPTS	51	at UMBC (12/3/17)
	53	at Providence (11/10/17)
FIELD GOAL PERCENTAGE	.314 (16-51)	at UMBC (12/3/17)
	.377 (23-61)	at Vermont (11/19/17)
3 PT FIELD GOALS MADE	1	vs GREEN BAY (11/23/17)
	2	vs ARIZONA STATE (11/25/17)
	2	BOSTON COLLEGE (11/29/17)
3 PT FG ATTEMPTS	9	vs ARIZONA STATE (11/25/17)
	12	at Providence (11/10/17)
	12	vs GREEN BAY (11/23/17)
3 PT FG PERCENTAGE	.083 (1-12)	vs GREEN BAY (11/23/17)
	.143 (3-21)	HOFSTRA (12/11/17)
FREE THROWS MADE	4	vs GREEN BAY (11/23/17)
	6	HOFSTRA (12/11/17)
FREE THROW ATTEMPTS	8	vs GREEN BAY (11/23/17)
	9	HOFSTRA (12/11/17)
FREE THROW PERCENTAGE	.476 (10-21)	BOSTON COLLEGE (11/29/17)
	.500 (4-8)	vs GREEN BAY (11/23/17)
REBOUNDS	28	at UMBC (12/3/17)
	30	vs ARIZONA STATE (11/25/17)
	30	BOSTON COLLEGE (11/29/17)
ASSISTS	7	at Providence (11/10/17)
	7	BOSTON COLLEGE (11/29/17)
STEALS	3	at Providence (11/10/17)
	6	at UMass Lowell (11/15/17)
	6	BOSTON COLLEGE (11/29/17)
	6	BUFFALO (12/09/17)
BLOCKED SHOTS	0	at Providence (11/10/17)
	0	BUFFALO (12/09/17)
TURNOVERS	3	vs ARIZONA STATE (11/25/17)
	10	vs MISSISSIPPI STATE (11/24/17)
	10	SAINT FRANCIS (12/06/17)
FOULS	10	at UMBC (12/3/17)
	13	vs ARIZONA STATE (11/25/17)



INDIVIDUAL/OPPONENT GAME HIGHS

Columbia - INDIVIDUAL GAME HIGHS

Points	28	Zimmerman, Camille vs Buffalo (12/09/17)
	28	Zimmerman, Camille at Vermont (11/19/17)
	26	Zimmerman, Camille vs MISSISSIPPI STATE (11/24/17)
	25	Zimmerman, Camille vs Saint Francis (12/06/17)
	25	Zimmerman, Camille at Providence (11/10/17)
Field Goals Made	11	Zimmerman, Camille at Vermont (11/19/17)
	10	Zimmerman, Camille vs Buffalo (12/09/17)
Field Goal Att.	22	Zimmerman, Camille vs Buffalo (12/09/17)
	21	Zimmerman, Camille vs HOFSTRA (12/11/17)
FG Pct (min 5 made)	.750 (9-12)	Zimmerman, Camille at Providence (11/10/17)
	.714 (5-7)	Tippet, Paige vs Saint Francis (12/06/17)
3-Point FG Made	4	Tippet, Paige vs Saint Francis (12/06/17)
	4	Casey, Riley at Providence (11/10/17)
3-Point FG Att.	10	Casey, Riley at UMass Lowell (11/15/17)
	10	Casey, Riley vs Richmond (11/12/17)
3-Pt FG Pct (min 2 made)	1.000 (2-2)	Sampleton, Maya vs Saint Francis (12/06/17)
	1.000 (2-2)	Pack, Madison vs MISSISSIPPI STATE (11/24/17)
	1.000 (2-2)	McCormick, Andrea vs Richmond (11/12/17)
Free Throws Made	11	Zimmerman, Camille vs Saint Francis (12/06/17)
	10	Zimmerman, Camille vs MISSISSIPPI STATE (11/24/17)
Free Throw Att.	12	Zimmerman, Camille vs Saint Francis (12/06/17)
	11	Zimmerman, Camille vs MISSISSIPPI STATE (11/24/17)
FT Pct (min 3 made)	1.000 (8-8)	Zimmerman, Camille vs HOFSTRA (12/11/17)
	1.000 (7-7)	Zimmerman, Camille vs ARIZONA STATE (11/25/17)
	1.000 (5-5)	Casey, Riley vs Buffalo (12/09/17)
	1.000 (4-4)	Casey, Riley vs HOFSTRA (12/11/17)
	1.000 (4-4)	Tippet, Paige at Providence (11/10/17)
	1.000 (3-3)	Casey, Riley at UMBC (12/3/17)
	1.000 (3-3)	Casey, Riley at Vermont (11/19/17)
	1.000 (3-3)	Pack, Madison vs Richmond (11/12/17)
Rebounds	13	Sampleton, Maya vs HOFSTRA (12/11/17)
	13	Zimmerman, Camille at Vermont (11/19/17)
Assists	7	Zimmerman, Camille vs Boston College (11/29/17)
	6	Zimmerman, Camille vs Saint Francis (12/06/17)
	6	Tippet, Paige vs Saint Francis (12/06/17)
	6	Zimmerman, Camille at UMBC (12/3/17)
Steals	3	Sampleton, Maya vs HOFSTRA (12/11/17)
	3	Zimmerman, Camille vs MISSISSIPPI STATE (11/24/17)
	3	Tippet, Paige at UMass Lowell (11/15/17)
Blocked Shots	3	Zimmerman, Camille vs Richmond (11/12/17)
	2	Pack, Madison vs Saint Francis (12/06/17)
	2	Little, Josie vs Boston College (11/29/17)
	2	Tippet, Paige vs MISSISSIPPI STATE (11/24/17)
	2	Little, Josie vs GREEN BAY (11/23/17)
Turnovers	8	Zimmerman, Camille vs Richmond (11/12/17)
	6	Zimmerman, Camille vs MISSISSIPPI STATE (11/24/17)
Fouls	5	Zimmerman, Camille vs Boston College (11/29/17)
	5	Tippet, Paige vs ARIZONA STATE (11/25/17)
	5	Lee, Abby vs Richmond (11/12/17)
	5	Sampleton, Maya at Providence (11/10/17)
Minutes	40	Casey, Riley vs Buffalo (12/09/17)
	40	Zimmerman, Camille vs Buffalo (12/09/17)
	40	Zimmerman, Camille vs ARIZONA STATE (11/25/17)

OPPONENT INDIVIDUAL GAME HIGHS

Points	26	OURSLE, Cassie vs Buffalo (12/09/17)
	23	KROLL, Caitlyn vs Saint Francis (12/06/17)
	23	Victoria Vivians vs MISSISSIPPI STATE (11/24/17)
	23	PARSON, Micaela vs Richmond (11/12/17)
	22	Pineau, Georgia vs Boston College (11/29/17)
Field Goals Made	11	OURSLE, Cassie vs Buffalo (12/09/17)
	9	Victoria Vivians vs MISSISSIPPI STATE (11/24/17)
	9	Teaira McCowan vs MISSISSIPPI STATE (11/24/17)
Field Goal Att.	19	JONES, Autumn vs Buffalo (12/09/17)
	19	KOVATCH, Jessica vs Saint Francis (12/06/17)
FG Pct (min 5 made)	.889 (8-9)	Pineau, Georgia vs Boston College (11/29/17)
	.833 (5-6)	HATCHER, Dee vs Richmond (11/12/17)
3-Point FG Made	5	Victoria Vivians vs MISSISSIPPI STATE (11/24/17)
	4	Blair Schaefer vs MISSISSIPPI STATE (11/24/17)
	4	SVENNE, Linda at UMass Lowell (11/15/17)
3-Point FG Att.	11	KOVATCH, Jessica vs Saint Francis (12/06/17)
	10	Askin, Olivia vs HOFSTRA (12/11/17)
3-Pt FG Pct (min 2 made)	1.000 (2-2)	MASTELLONE, Jenna vs Saint Francis (12/06/17)
	.667 (4-6)	Blair Schaefer vs MISSISSIPPI STATE (11/24/17)
	.667 (2-3)	White, Kristina at Vermont (11/19/17)
	.667 (2-3)	STANCIEL, Cierra at UMass Lowell (11/15/17)
	.667 (2-3)	JOLIN, Maddie at Providence (11/10/17)
Free Throws Made	9	HATCHER, Dee vs Richmond (11/12/17)
	7	LOPEZ, Paula at UMass Lowell (11/15/17)
Free Throw Att.	14	LOPEZ, Paula at UMass Lowell (11/15/17)
	11	Pineau, Georgia vs Boston College (11/29/17)
FT Pct (min 3 made)	1.000 (9-9)	HATCHER, Dee vs Richmond (11/12/17)
	1.000 (6-6)	KROLL, Caitlyn vs Saint Francis (12/06/17)
	1.000 (4-4)	Russell, Kiara vs ARIZONA STATE (11/25/17)
	1.000 (4-4)	Smith, Sydney at Vermont (11/19/17)
	1.000 (3-3)	Davis, E'Lexus vs HOFSTRA (12/11/17)
Rebounds	12	LINDSTROM, Jessica vs GREEN BAY (11/23/17)
	12	DUGGAN, Amy vs Richmond (11/12/17)
Assists	8	Jazzmun Holmes vs MISSISSIPPI STATE (11/24/17)
	5	Askin, Olivia vs HOFSTRA (12/11/17)
	5	DILLARD, Cierra vs Buffalo (12/09/17)
	5	Lavelle, Katie at Vermont (11/19/17)
Steals	3	JONES, Autumn vs Buffalo (12/09/17)
	3	KROLL, Caitlyn vs Saint Francis (12/06/17)
	3	Russell, Kiara vs ARIZONA STATE (11/25/17)
	3	Victoria Vivians vs MISSISSIPPI STATE (11/24/17)
	3	LeCLAIRE, Allie vs GREEN BAY (11/23/17)
	3	WELNITZ, Jen vs GREEN BAY (11/23/17)
	3	MURPHREE, Kylie vs Richmond (11/12/17)
	3	PARSON, Alex vs Richmond (11/12/17)
Blocked Shots	3	HARRISON, Ace vs Saint Francis (12/06/17)
	3	Pineau, Georgia vs Boston College (11/29/17)
	3	JAMES, Laken vs GREEN BAY (11/23/17)
Turnovers	7	LOPEZ, Paula at UMass Lowell (11/15/17)
	6	HEMPHILL, Summer vs Buffalo (12/09/17)
Fouls	5	Leon, Aleana vs HOFSTRA (12/11/17)
	5	UPS, Katherine vs Buffalo (12/09/17)
	5	DULING, Kyasia vs Saint Francis (12/06/17)



TEAM/OPPONENT GAME-BY-GAME STATS

TEAM STATISTICS

Opponent	Date	Score		Total		3-Pointers		Free throws		Rebounds				pf	a	t/o	blk	stl	pts	avg
				fg-fga	pct	3fg-fga	pct	ft-fa	pct	off	def	tot	avg							
at Providence	11/10/17	73-64	W	26-49	.531	7-23	.304	14-17	.824	4	23	27	27.0	23	10	16	1	2	73	73.0
RICHMOND	11/12/17	79-85	L	25-61	.410	9-26	.346	20-23	.870	13	26	39	33.0	23	12	20	5	6	79	76.0
at UMass Lowell	11/15/17	70-77	L	29-67	.433	7-23	.304	5-9	.556	13	26	39	35.0	31	13	18	2	6	70	74.0
at Vermont	11/19/17	73-66	W	28-67	.418	7-27	.259	10-14	.714	10	30	40	36.2	15	10	9	2	4	73	73.8
vs GREEN BAY	11/23/17	43-61	L	16-51	.314	2-15	.133	9-13	.692	7	21	28	34.6	11	5	15	4	3	43	67.6
vs MISSISSIPPI STATE	11/24/17	54-90	L	17-51	.333	4-14	.286	16-22	.727	13	22	35	34.7	22	11	22	4	6	54	65.3
vs ARIZONA STATE	11/25/17	48-72	L	18-44	.409	3-12	.250	9-11	.818	7	20	27	33.6	22	6	19	0	0	48	62.9
BOSTON COLLEGE	11/29/17	68-60	W	26-60	.433	7-23	.304	9-13	.692	15	28	43	34.8	18	17	16	3	4	68	63.5
at UMBC	12/3/17	60-44	W	24-56	.429	6-21	.286	6-7	.857	14	27	41	35.4	14	15	12	0	5	60	63.1
SAINT FRANCIS	12/06/17	94-81	W	32-59	.542	11-19	.579	19-24	.792	7	34	41	36.0	17	23	17	3	3	94	66.2
BUFFALO	12/09/17	63-65	L	23-60	.383	7-21	.333	10-11	.909	8	24	32	35.6	21	13	18	1	3	63	65.9
HOFSTRA	12/11/17	75-53	W	27-70	.386	6-19	.316	15-20	.750	17	26	43	36.2	8	13	10	2	7	75	66.7
Columbia		800		291-695	.419	76-243	.313	142-184	.772	128	307	435	36.2	225	148	192	27	49	800	66.7
Opponents		818		306-741	.413	56-211	.265	150-228	.658	160	295	455	37.9	206	136	158	36	82	818	68.2

Games played: 12
Points/game: 66.7
FG Pct: 41.9
3FG Pct: 31.3
FT Pct: 77.2

Rebounds/game: 36.2
Assists/game: 12.3
Turnovers/game: 16.0
Assist/turnover ratio: 0.8
Steals/game: 4.1
Blocks/game: 2.3

OPPONENT STATISTICS

Opponent	Date	Score		Total		3-Pointers		Free throws		Rebounds				pf	a	t/o	blk	stl	pts	avg
				fg-fga	pct	3fg-fga	pct	ft-fa	pct	off	def	tot	avg							
at Providence	11/10/17	73-64	W	22-53	.415	5-12	.417	15-23	.652	11	20	31	31.0	17	7	15	0	3	64	64.0
RICHMOND	11/12/17	79-85	L	28-73	.384	5-16	.313	24-30	.800	21	26	47	39.0	23	9	14	3	7	85	74.5
at UMass Lowell	11/15/17	70-77	L	25-66	.379	8-16	.500	19-35	.543	23	27	50	42.7	15	10	17	3	6	77	75.3
at Vermont	11/19/17	73-66	W	23-61	.377	7-24	.292	13-17	.765	10	31	41	42.2	15	10	12	4	7	66	73.0
vs GREEN BAY	11/23/17	43-61	L	28-61	.459	1-12	.083	4-8	.500	10	28	38	41.4	17	9	12	5	8	61	70.6
vs MISSISSIPPI STATE	11/24/17	54-90	L	34-72	.472	10-21	.476	12-21	.571	21	23	44	41.8	22	19	10	5	10	90	73.8
vs ARIZONA STATE	11/25/17	48-72	L	25-57	.439	2-9	.222	20-25	.800	11	19	30	40.1	13	11	3	2	8	72	73.6
BOSTON COLLEGE	11/29/17	68-60	W	24-54	.444	2-13	.154	10-21	.476	8	22	30	38.9	18	7	13	4	6	60	71.9
at UMBC	12/3/17	60-44	W	16-51	.314	4-19	.211	8-10	.800	9	19	28	37.7	10	9	11	1	7	44	68.8
SAINT FRANCIS	12/06/17	94-81	W	32-75	.427	6-30	.200	11-15	.733	11	22	33	37.2	23	14	10	7	7	81	70.0
BUFFALO	12/09/17	63-65	L	27-63	.429	3-18	.167	8-14	.571	17	28	45	37.9	17	18	20	0	6	65	69.5
HOFSTRA	12/11/17	75-53	W	22-55	.400	3-21	.143	6-9	.667	8	30	38	37.9	16	13	21	2	7	53	68.2
Opponents		818		306-741	.413	56-211	.265	150-228	.658	160	295	455	37.9	206	136	158	36	82	818	68.2
Columbia		800		291-695	.419	76-243	.313	142-184	.772	128	307	435	36.2	225	148	192	27	49	800	66.7

Games played: 12
Points/game: 68.2
FG Pct: 41.3
3FG Pct: 26.5
FT Pct: 65.8

Rebounds/game: 37.9
Assists/game: 11.3
Turnovers/game: 13.2
Assist/turnover ratio: 0.9
Steals/game: 6.8
Blocks/game: 3.0



CATEGORY LEADERS

Points	G	Pts	Pts/G
Zimmerman, Camille	12	253	21.1
Casey, Riley	12	128	10.7
Pack, Madison	12	82	6.8
Clemmons, Janiya	12	74	6.2
Lee, Abby	12	73	6.1
Sampleton, Maya	12	60	5.0
Tippet, Paige	12	50	4.2
Little, Josie	5	26	5.2
McCormick, Andrea	10	21	2.1
Flynn, Stephanie	12	17	1.4
Whittington, Imani	10	12	1.2
Borreson, Jillian	5	4	0.8

FG Percentage	FG	Att	Pct
Borreson, Jillian	2	3	.667
Zimmerman, Camille	91	182	.500
Whittington, Imani	5	11	.455
Casey, Riley	46	107	.430
Clemmons, Janiya	30	70	.429
Pack, Madison	30	72	.417
Flynn, Stephanie	5	12	.417
Sampleton, Maya	25	65	.385
Lee, Abby	27	76	.355
Little, Josie	11	31	.355
Tippet, Paige	13	43	.302
McCormick, Andrea	6	23	.261

3-Point Percentage	3FG	Att	Pct
Flynn, Stephanie	5	10	.500
Whittington, Imani	1	2	.500
Pack, Madison	16	43	.372
Lee, Abby	13	38	.342
Sampleton, Maya	5	15	.333
McCormick, Andrea	4	13	.308
Casey, Riley	19	64	.297
Little, Josie	2	8	.250
Tippet, Paige	6	26	.231
Zimmerman, Camille	5	22	.227
Clemmons, Janiya	0	2	.000

Free Throw Percent	FG	Att	Pct
Lee, Abby	6	6	1.000
Casey, Riley	17	19	.895
Zimmerman, Camille	66	76	.868
Pack, Madison	6	7	.857
Tippet, Paige	18	24	.750
Little, Josie	2	3	.667
Clemmons, Janiya	14	21	.667
Flynn, Stephanie	2	3	.667
McCormick, Andrea	5	10	.500
Whittington, Imani	1	2	.500
Sampleton, Maya	5	11	.455
Borreson, Jillian	0	2	.000

Scoring Average	G	Pts	Avg/G
Zimmerman, Camille	12	253	21.1
Casey, Riley	12	128	10.7
Pack, Madison	12	82	6.8
Clemmons, Janiya	12	74	6.2
Lee, Abby	12	73	6.1
Little, Josie	5	26	5.2
Sampleton, Maya	12	60	5.0
Tippet, Paige	12	50	4.2
McCormick, Andrea	10	21	2.1
Flynn, Stephanie	12	17	1.4
Whittington, Imani	10	12	1.2
Borreson, Jillian	5	4	0.8

Field Goal Attempts	G	Att	Att/G
Zimmerman, Camille	12	182	15.2
Casey, Riley	12	107	8.9
Lee, Abby	12	76	6.3
Pack, Madison	12	72	6.0
Clemmons, Janiya	12	70	5.8

Field Goals Made	G	Made	Made/G
Zimmerman, Camille	12	91	7.6
Casey, Riley	12	46	3.8
Clemmons, Janiya	12	30	2.5
Pack, Madison	12	30	2.5
Lee, Abby	12	27	2.3

3-Point FG Attempts	G	Att	Att/G
Casey, Riley	12	64	5.3
Pack, Madison	12	43	3.6
Lee, Abby	12	38	3.2
Tippet, Paige	12	26	2.2
Zimmerman, Camille	12	22	1.8

3-Point FG Made	G	Made	Made/G
Casey, Riley	12	19	1.6
Pack, Madison	12	16	1.3
Lee, Abby	12	13	1.1
Tippet, Paige	12	6	0.5
Sampleton, Maya	12	5	0.4
Zimmerman, Camille	12	5	0.4
Flynn, Stephanie	12	5	0.4

Free Throw Attempts	G	Att	Att/G
Zimmerman, Camille	12	76	6.3
Tippet, Paige	12	24	2.0
Clemmons, Janiya	12	21	1.8
Casey, Riley	12	19	1.6
Sampleton, Maya	12	11	0.9

Free Throws Made	G	Made	Made/G
Zimmerman, Camille	12	66	5.5
Tippet, Paige	12	18	1.5
Casey, Riley	12	17	1.4
Clemmons, Janiya	12	14	1.2
Lee, Abby	12	6	0.5
Pack, Madison	12	6	0.5

Rebounds	G	Reb	Reb/G
Zimmerman, Camille	12	106	8.8
Pack, Madison	12	58	4.8
Lee, Abby	12	47	3.9
Clemmons, Janiya	12	39	3.3
Sampleton, Maya	12	34	2.8

Rebound Average	G	Reb	Avg/G
Zimmerman, Camille	12	106	8.8
Little, Josie	5	29	5.8
Pack, Madison	12	58	4.8
Lee, Abby	12	47	3.9
Clemmons, Janiya	12	39	3.3

Offensive Rebounds	G	No.	Avg/G
Zimmerman, Camille	12	49	4.1
Lee, Abby	12	14	1.2
Pack, Madison	12	10	0.8
Clemmons, Janiya	12	8	0.7
Little, Josie	5	8	1.6

Defensive Rebounds	G	No.	Avg/G
Zimmerman, Camille	12	57	4.8
Pack, Madison	12	48	4.0
Lee, Abby	12	33	2.8
Clemmons, Janiya	12	31	2.6
Sampleton, Maya	12	28	2.3

Fouls	G	No.	Per/G
Zimmerman, Camille	12	38	3.2
Pack, Madison	12	31	2.6
Lee, Abby	12	28	2.3
Casey, Riley	12	25	2.1
Sampleton, Maya	12	25	2.1

Fouls	G	No.
Sampleton, Maya	12	1
Lee, Abby	12	1
Zimmerman, Camille	12	1
Tippet, Paige	12	1

Assists	G	No.	Ast/G
Zimmerman, Camille	12	40	3.3
Tippet, Paige	12	34	2.8
Casey, Riley	12	26	2.2
Lee, Abby	12	13	1.1
Clemmons, Janiya	12	13	1.1

Steals	G	No.	Stl/G
Zimmerman, Camille	12	11	0.9
Sampleton, Maya	12	8	0.7
Casey, Riley	12	6	0.5
Clemmons, Janiya	12	5	0.4
Lee, Abby	12	5	0.4

Blocked Shots	G	No.	Blk/G
Zimmerman, Camille	12	8	0.7
Little, Josie	5	4	0.8
Sampleton, Maya	12	4	0.3
Clemmons, Janiya	12	3	0.3
Pack, Madison	12	3	0.3

Minutes	G	No.	Min/G
Zimmerman, Camille	12	414	34.5
Casey, Riley	12	381	31.8
Tippet, Paige	12	329	27.4
Pack, Madison	12	290	24.2
Clemmons, Janiya	12	244	20.3

Turnovers	G	No.	TO/G
Zimmerman, Camille	12	44	3.7
Tippet, Paige	12	25	2.1
Casey, Riley	12	22	1.8
Sampleton, Maya	12	19	1.6
Clemmons, Janiya	12	18	1.5



THE LAST TIME...

COLUMBIA...

Played an AP Top 10 Team	Nov. 24, 2017 vs. No. 7 Mississippi State - L, 54-90
Played an AP Top 25 Team	Nov. 25, 2017 vs. No. 24 Arizona State - L, 48-72
Scored 100 Points	Jan. 3, 2016 vs. Central Penn - W, 102-18
Scored 100 Points vs. Div. I Opp.	March 4, 1988 vs. Penn - W, 114-111 (4OT)
Scored 90-99 Points	Dec. 6, 2017 vs. Saint Francis (PA) - W, 94-81
Scored 80-89 Points	Nov. 19, 2016 at Saint Francis (PA) - W, 84-77
Shot 50% or Better	Dec. 6, 2017 vs. Saint Francis (PA) (54.2%) - W, 94-81
Shot 60% or Better	Nov. 10, 2006 vs. Loyola Maryland (62.8%) - W, 75-69
Shot 50% 3FG (min. 10 made)	Dec. 6, 2017 vs. Saint Francis (PA) (11-19, 57.9%) - W, 94-81
Shot 30% or Worse	Feb. 11, 2017 vs. Princeton (30.0%) - L, 52-62
Made 15+ 3-Pointers	Feb. 4, 2011 vs. Brown (15-33) - W, 72-49
Made 10+ 3-Pointers	Dec. 6, 2017 vs. Saint Francis (PA) (11-19) - W, 94-81
Had 60+ Rebounds	Dec. 1, 2015 vs. Saint Francis (PA) (61) - W, 82-78
Had 50+ Rebounds	Feb. 4, 2017 at Brown (51) - L, 60-69
Had 20+ Assists	Dec. 6, 2017 vs. Saint Francis (PA) (23) - W, 94-81
Had 15+ Steals	Jan. 3, 2016 vs. Central Penn (23) - W, 102-18
Had 10+ Blocks	Jan. 3, 2016 vs. Central Penn (12) - W, 102-18
Won in OT	Jan. 27, 2017 at Dartmouth - W, 91-88 (4OT)
Lost in OT	Jan. 29, 2016 vs. Dartmouth - L, 73-76 (OT)
Played a 2OT Game	Jan. 26, 2013 vs. Cornell - L, 64-71 (2OT)
Played a 3OT Game	N/A
Played a 4OT Game	Jan. 27, 2017 at Dartmouth - W, 91-88 (4OT)

THE OPPONENT...

Scored 100 Points	Nov. 16, 2014 at San Jose State - L, 76-119
Scored 90-99 Points	Nov. 24, 2017 vs. No. 7/3 Mississippi State - L, 54-90
Scored 80-89 Points	Dec. 6, 2017 vs. Saint Francis (PA) - W, 94-81
Shot 50% or Better	March 4, 2016 at Brown (54.4%) - L, 64-91
Shot 50% 3FG (min. 5 made)	Nov. 15, 2017 at UMass Lowell (50.0%) - L, 70-77
Shot 30% or Worse	Dec. 29, 2016 at Cal State Fullerton (27.1%) - W, 61-46
Made 10+ 3-Pointers	Nov. 24, 2017 vs. No. 7/3 Mississippi State - L, 54-90
Had 60+ Rebounds	Nov. 20, 2005 vs. Morgan State (65) - W, 85-78
Had 50+ Rebounds	Nov. 15, 2017 at UMass Lowell (50) - L, 70-77
Had 30+ Assists	Jan. 5, 2002 vs. Marist (30) - L, 47-104
Had 20+ Assists	Jan. 14, 2017 at Cornell (20) - L, 70-77
Had 20+ Steals	Nov. 16, 2014 at San Jose State (21) - L, 76-119
Had 15+ Steals	Nov. 19, 2016 at Saint Francis (PA) (16) - W, 84-77
Had 10+ Blocks	Nov. 27, 2016 vs. Colgate (11) - W, 75-67
Had 5 Players in Double Figures	Jan. 14, 2017 at Cornell - L, 77-70
Had 3 Players Score 15+ Points	Jan. 28, 2017 at Harvard - L, 68-70
Had 2 Players Score 20+ Points	Nov. 24, 2017 vs. No. 7/3 Mississippi State - L, 54-90 (Victoria Vivians 23, Teaira McCowan 21)

A LION...

Scored 30+ Points	Feb. 25, 2017 at Penn - L, 59-68 Camille Zimmerman (31)
Scored 35+ Points	Jan. 27, 2017 at Dartmouth - W, 91-88 (4OT) Camille Zimmerman (37)
Made 10+ Field Goals	Dec. 9, 2017 vs. Buffalo - L, 63-65 Camille Zimmerman (10-22)
Attempted 30+ Field Goals	Jan. 27, 2017 at Dartmouth - W, 91-88 (4OT) Camille Zimmerman (11-37)
Attempted 20+ Field Goals	Dec. 9, 2017 vs. Buffalo - L, 63-65 Camille Zimmerman (10-22)
Made 5+ 3-Pointers	Nov. 11, 2016 vs. UMBC - L, 56-67 Emily Surloff (5-9)
Attempted 10+ 3-Pointers	Nov. 15, 2017 at UMass Lowell - L, 70-77 Riley Casey (2-10)
Shot 100% FT (min. 10 att.)	Feb. 25, 2017 at Penn - L, 59-68 Camille Zimmerman (10-10)
Had 15+ Rebounds	Jan. 27, 2017 at Dartmouth - W, 91-88 (4OT) Camille Zimmerman (19)
Had 10+ Assists	Feb. 20, 2009 vs. Brown - W, 88-57 Danielle Brown (11)
Had 5+ Steals	Jan. 3, 2016 vs. Central Penn - W, 102-18 Kathleen Ryan (5)
Had 5+ Blocks	Jan. 3, 2016 vs. Central Penn - W, 102-18 Jillian Borreson (7)
5 Lions Scored in Double Figures	Jan. 3, 2016 vs. Central Penn - W, 102-18 Abby Lee (19), Georgia Williams (13), Kathleen Ryan (12), Josie Little (11), Jillian Borreson (10)
6 Lions Scored in Double Figures	Dec. 6, 2017 vs. Saint Francis (PA) - W, 91-84 Camille Zimmerman (25), Janiya Clemmons (15), Paige Tippet (14) Riley Casey (12), Madison Pack (11), Maya Sampleton (10)
3 Lions Scored 15+ Points	Jan. 28, 2017 at Harvard - L, 68-70 Camille Zimmerman (22), Tori Oliver (16), Devon Roeper (15)
2 Lions Scored 20+ Points	Nov. 19, 2016 at Saint Francis (PA) - W, 84-77 Tori Oliver (23) and Camille Zimmerman (20)
2 Lions Had a Double-Double	Jan. 27, 2017 at Dartmouth - W, 91-88 (4OT) Camille Zimmerman (37 Pts, 19 Reb) and Devon Roeper (18 Pts, 11 Reb)



Box Scores

GAME 1 COLUMBIA 73 - PROVIDENCE 64 Nov. 10, 2017 - PROVIDENCE, R.I.

Columbia 73 • 1-0

#	Player	Total		3-Ptr		Rebounds		PF	TP	A	To	Bk	Stl	Min
		FG	FGA	FG	FGA	Off	Def							
04	Tippet, Paige	* 0-2	0-1	4-4	0 0 0	1	4	5	2	0	0	0	0	29
05	Casey, Riley	* 5-8	4-6	0-0	0 2 2	4	14	2	1	0	0	0	0	37
20	Zimmerman, Camille	* 9-12	1-2	6-7	1 3 4	4	25	2	4	0	0	0	0	29
22	Sampleton, Maya	* 2-6	0-2	2-3	1 1 2	5	6	0	4	1	2	1	2	21
33	Lee, Abby	* 4-9	0-5	0-0	1 7 8	3	8	0	1	0	0	0	0	31
00	Whittington, Imani	0-0	0-0	0-0	0 1 1	1	0	0	0	0	0	0	0	5
01	Clemmons, Janiya	3-3	0-0	2-3	0 0 0	1	8	1	2	0	0	0	0	20
25	Flynn, Stephanie	1-2	1-2	0-0	0 0 0	0	3	0	0	0	0	0	0	2
32	Pack, Madison	2-7	1-5	0-0	0 7 7	4	5	0	0	0	0	0	0	26
Team					1 2 3		2							
Totals		26-49	7-23	14-17	4 23 27	23	73	10	16	1	2	0	0	200

1st FG %: 5-11 45.5% 2nd: 6-12 50.0% 3rd: 8-16 50.0% 4th: 7-10 70.0% Game: 26-49 53.1% Deadball
3FG %: 1-4 25.0% 3-9 33.3% 2-6 33.3% 1-4 25.0% 7-23 30.4% Rebounds
FT %: 2-2 100.0% 5-7 71.4% 2-2 100.0% 5-6 83.3% 14-17 82.4% 2

Providence 64 • 0-1

#	Player	Total		3-Ptr		Rebounds		PF	TP	A	To	Bk	Stl	Min
		FG	FGA	FG	FGA	Off	Def							
10	BOTTEGHI, Allegra	* 1-2	0-0	1-1	2 4 6	1	3	0	3	0	0	0	0	31
11	NOGIC, Jovana	* 7-14	1-3	5-6	0 0 0	3	20	1	3	0	2	3	0	33
21	JOLIN, Maddie	* 3-8	2-3	3-4	0 2 2	2	11	0	1	0	0	0	0	29
23	CHC, Clara	* 3-10	2-6	2-2	0 6 6	2	10	1	1	0	0	0	0	31
25	FRIAS, Brianna	* 1-2	0-0	0-2	4 3 7	3	2	1	0	0	0	0	0	33
02	WILLIAMS, Chanell	5-11	0-0	4-6	0 2 2	4	14	3	3	0	1	2	3	23
20	JACKSON, NyDajah	0-0	0-0	0-0	2 2 0	0	0	0	2	0	0	0	0	2
24	FRANKLIN, Ny-Asia	2-6	0-0	0-2	2 2 4	2	4	0	2	0	0	0	0	18
Team					1 1 2									
Totals		22-53	5-12	15-23	11 20 31	17	64	7	15	0	3	20	0	

1st FG %: 9-15 60.0% 2nd: 4-12 33.3% 3rd: 4-14 28.6% 4th: 5-12 41.7% Game: 22-53 41.5% Deadball
3FG %: 2-2 100.0% 1-2 50.0% 1-3 33.3% 1-5 20.0% 5-12 41.7% Rebounds
FT %: 0-0 0.0% 3-10 30.0% 7-8 87.5% 3-5 60.0% 15-23 65.2% 5

Officials: Kathleen Lynch, Fatou Cissoko-Stephens, Kareena Tobin
Technical fouls: Columbia-None. Providence-None.
Attendance: 231

Score by periods	1st	2nd	3rd	4th	Total
Columbia	13	20	20	20	73
Providence	20	14	16	14	64

Last FG - COL 4th-00:38, PC 4th-00:16.

Largest lead - COL by 10 4th-00:24, PC by 10 1st-03:08.
COL led for 18:09. PC led for 14:57. Game was tied for 06:52.

Score tied - 10 times.
Lead changed - 12 times.

GAME 2 RICHMOND 85 - COLUMBIA 79 Nov. 12, 2017 - NEW YORK, N.Y.

Richmond 85 • 2-0

#	Player	Total		3-Ptr		Rebounds		PF	TP	A	To	Bk	Stl	Min
		FG	FGA	FG	FGA	Off	Def							
15	WIKE, Karleigh	f 1-6	0-0	0-0	0 1 1	1	2	0	0	1	0	0	0	16
33	DUGGAN, Amy	f 2-7	1-3	0-0	4 8 12	2	5	1	2	2	0	0	0	29
00	MURPHREE, Kylie	g 3-7	0-1	1-4	1 1 2	4	7	4	2	0	0	0	0	28
11	PARSON, Micaela	g 8-16	1-1	6-7	5 3 8	4	23	2	4	0	0	0	0	25
30	FEI, Kailyn	g 2-10	1-5	0-0	1 0 1	3	5	0	2	0	0	0	0	17
01	HINDS-CLARKE, Jaide	2-7	0-0	2-2	2 1 3	3	6	2	1	0	0	0	0	17
03	HATCHER, Dee	5-6	0-0	9-9	0 3 3	2	19	0	0	0	0	0	0	14
13	PARSON, Alex	5-13	2-6	2-2	3 5 8	3	14	0	1	0	0	0	0	23
14	HUADALL, Alicia	0-1	0-0	3-4	3 2 5	1	3	0	1	0	1	0	0	22
22	TRUESDALE, Autumn	0-0	0-0	1-2	1 0 1	0	1	0	0	0	0	0	0	3
32	CURRY, Tonysha	0-0	0-0	0-0	0 0 0	0	0	0	1	0	0	0	0	3
Team					1 2 3									
Totals		28-73	5-16	24-30	21 26 47	23	85	9	14	3	7	20	0	

1st FG %: 10-18 55.6% 2nd: 4-17 23.5% 3rd: 6-20 30.0% 4th: 8-18 44.4% Game: 28-73 38.4% Deadball
3FG %: 3-4 75.0% 2-7 28.6% 0-3 0.0% 0-2 0.0% 5-16 31.3% Rebounds
FT %: 0-0 0.0% 5-6 83.3% 10-15 66.7% 9-9 100.0% 24-30 80.0% 4

Columbia 79 • 1-1

#	Player	Total		3-Ptr		Rebounds		PF	TP	A	To	Bk	Stl	Min
		FG	FGA	FG	FGA	Off	Def							
20	Zimmerman, Camille	f 6-11	0-1	9-10	5 6 11	3	21	2	8	3	2	0	0	37
33	Lee, Abby	f 2-9	2-5	2-2	5 2 7	5	8	1	1	0	0	0	0	29
04	Tippet, Paige	g 2-5	0-2	2-3	0 1 1	6	1	3	0	0	0	0	0	20
05	Casey, Riley	g 4-14	2-10	2-2	1 2 3	3	12	4	2	1	1	0	0	34
22	Sampleton, Maya	g 3-9	0-1	0-0	0 4 4	3	6	1	3	0	0	0	0	21
00	Whittington, Imani	1-3	1-2	0-0	0 0 0	1	3	0	1	0	0	0	0	9
01	Clemmons, Janiya	0-2	0-0	0-0	0 1 1	0	3	0	0	0	1	1	0	14
10	McCormick, Andrea	2-2	2-2	0-0	0 0 0	1	6	0	1	0	0	0	0	5
25	Flynn, Stephanie	1-1	1-1	2-3	0 0 0	0	2	0	0	0	0	0	0	2
32	Pack, Madison	4-5	1-2	3-3	0 6 6	3	12	0	1	0	0	0	0	22
42	Borreson, Jillian	0-0	0-0	0-0	1 1 2	0	0	0	0	0	0	0	0	2
Team					0 4 4									
Totals		25-61	9-26	20-23	13 26 39	23	79	12	20	5	6	20	0	

1st FG %: 9-17 52.9% 2nd: 5-12 41.7% 3rd: 5-16 31.3% 4th: 6-15 40.0% Game: 25-61 41.0% Deadball
3FG %: 4-7 57.1% 1-4 25.0% 2-7 28.6% 0-2 0.0% 9-26 34.6% Rebounds
FT %: 3-3 100.0% 3-4 75.0% 0-0 0.0% 5-6 83.3% 20-23 87.0% 0

Officials: Kevin Sparrock, Krystle Apelliz, Ryan Nunes
Technical fouls: Richmond-None. Columbia-None.
Attendance: 418

Score by periods	1st	2nd	3rd	4th	Total
Richmond	23	15	22	25	85
Columbia	25	14	21	19	79

Last FG - RICHMOND 4th-00:55, COL 4th-02:10.

Largest lead - RICHMOND by 7 4th-07:23, COL by 6 2nd-02:23.
RICHMOND led for 24:47. COL led for 12:28. Game was tied for 02:45.

Score tied - 8 times.
Lead changed - 14 times.

GAME 3 UMASS LOWELL 77 - COLUMBIA 70 Nov. 15, 2017 - LOWELL, MASS.

Columbia 70 • 1-2

#	Player	Total		3-Ptr		Rebounds		PF	TP	A	To	Bk	Stl	Min
		FG	FGA	FG	FGA	Off	Def							
04	Tippet, Paige	* 2-4	1-3	1-2	1 4 5	3	6	3	2	0	0	0	0	32
05	Casey, Riley	* 5-14	2-10	0-1	0 1 1	3	12	4	2	0	0	1	0	37
20	Zimmerman, Camille	* 7-14	0-2	3-4	5 5 10	4	17	4	3	0	0	0	0	27
22	Sampleton, Maya	* 3-5	0-0	0-0	0 2 2	4	6	1	1	1	0	0	0	22
33	Lee, Abby	* 4-12	3-5	0-0	2 3 5	4	11	0	4	1	0	0	0	31
00	Whittington, Imani	2-2	0-0	0-0	1 0 1	3	4	0	3	0	0	1	0	3
01	Clemmons, Janiya	2-4	0-0	0-0	0 0 0	2	4	0	1	0	0	0	0	10
10	McCormick, Andrea	2-6	1-2	1-2	1 3 4	2	6	1	2	0	0	1	0	12
25	Flynn, Stephanie	0-1	0-0	0-0	0 0 0	0	2	0	0	0	0	0	0	7
32	Pack, Madison	1-4	0-1	0-0	0 3 3	2	2	0	0	0	0	0	0	11
42	Borreson, Jillian	1-1	0-0	0-0	2 2 4	2	2	0	0	0	0	0	0	8
Team					1 3 4									
Totals		29-67	7-23	5-9	13 26 39	31	70	13	18	2	6	20	0	

1st FG %: 11-17 64.7% 2nd: 5-18 27.8% 3rd: 8-16 50.0% 4th: 5-16 31.3% Game: 29-67 43.3% Deadball
3FG %: 3-5 60.0% 1-2 50.0% 3-6 50.0% 2-4 50.0% 8-16 50.0% Rebounds
FT %: 0-0 0.0% 0-0 0.0% 1-3 33.3% 2-4 50.0% 5-9 55.6% 2

UMass Lowell 77 • 1-2

UMass Lowell 77 • 1-2															
#	Player	Total		3-Ptr		Rebounds		PF	TP	A	To	Bk	Stl	Min	
		FG	FGA	FG	FGA	Off	Def								
01	GIBBS, Kayla	* 3-9	0-0	0-0	6 3 9	2	6	0	1	1	0	0	0	21	
04	RUDDOLPH, Brianna	* 6-15	1-2	5-7	2 3 5	0	18	2	15	1	1	1	0	27	
10	LOPEZ, Paula	* 4-13	0-1	7-14	2 5 7	2	15	1	7	0	0	0	0	34	
11	LOURO, Jennifer	* 2-5	1-3	1-2	0 2 2	2	6	3	2	0	0	0	0	14	
34	McKIE, Katie	* 1-2	0-0	0-0	2 0 2	2	2	0	2	0	0	0	0	10	
00	JACKSON, Kierra	0-0	0-0	0-0	1 0 1	0	0	0	0	0	0	0	0	0	
05	SVENNE, Linda	5-11	4-7	0-0	1 1 2	2	14	0	2	1	0	0	0	29	
21	SCHAEKELFORD, Oda	2-4	0-0	3-6	6 5 11	3	7	2	1	0	1	0	1	19	
25	STANCIEL, Cierra	2-7	2-3	3-6	1 3 4	2	9	2	1	0	1	0	1	21	
	Team	25-6	8-16	19-35	23 27 50	15	77	10	17	3	6	0	20		
	Totals	2-7	8-16	19-35	23 27 50	15	77	10	17	3	6	0	21		
1st:	FG: 71.5	46.7%	2nd:	4-14	28.6%	3rd:	7-18	38.9%	4th:	7-19	36.8%	Game:	25-66	37.9%	Deadball
	3PG: 5	35.0	60.0%	1-2	50.0%	3-4	50.0%	1-3	33.3%	8-16	50.0%		Rebounds		
	FT: 59	55.6%	3-10	50.0%	7-10	70.0%	4-4	66.7%	19-35	54.3%					

Box Scores

GAME 7

24 ARIZONA ST. 72 - COLUMBIA 48
Nov. 25, 2017 - CANCUN, MEXICO

COLUMBIA 48 • 2-5

#	Player	Total		3-Ptr		Rebounds		PF	TP	A	TO	Bk	Stl	Min
		FG	FGA	FG	FGA	FT	FTA							
03	Little, Josie	f	1-4	0-1	0-0	1	1	2	3	2	3	2	0	29
20	Zimmerman, Camille	f	8-13	0-0	7-7	2	2	4	3	23	1	4	0	0
32	Pack, Madison	c	3-9	2-6	2-2	1	8	9	4	10	0	0	0	33
04	Tippet, Paige	g	1-2	0-0	0-0	1	0	1	5	2	0	5	0	20
05	Casey, Riley	g	1-3	0-1	0-0	0	1	1	3	2	0	3	0	31
00	Whittington, Imani	g	0-0	0-0	0-0	0	0	0	0	0	0	0	0	0
01	Clemmons, Janiya	g	2-5	0-0	0-0	0	2	2	0	4	0	1	0	15
10	McCormick, Andrea	g	0-1	0-0	0-0	0	0	0	0	0	1	0	0	4
22	Sampleton, Maya	g	0-2	0-1	0-2	0	1	1	1	0	2	0	0	9
25	Flynn, Stephanie	g	0-0	0-0	0-0	0	0	0	0	2	0	0	0	5
33	Lee, Abby	g	2-5	1-3	0-0	0	1	1	3	5	0	0	0	13
Team														
Totals			18-44	3-12	9-11	7	20	27	22	48	6	19	0	200

1st FG %:	6-13	46.2%	2nd FG %:	4-11	36.4%	3rd FG %:	3-10	30.0%	4th FG %:	18-44	40.9%	Game:	18-44	40.9%	Deadball	
3FG %:	0-1	0.0%	2-5	40.0%	1-3	33.3%	0-3	0.0%	3-12	25.0%	Rebounds					
FT %:	2-2	100.0%	0-0	0.0%	4-4	100.0%	0-5	0.0%	9-11	81.8%	Rebounds					

ARIZONA STATE 72 • 5-2

#	Player	Total		3-Ptr		Rebounds		PF	TP	A	TO	Bk	Stl	Min
		FG	FGA	FG	FGA	FT	FTA							
22	Ekmart, Courtney	f	2-6	1-3	0-0	0	2	2	1	5	1	0	0	22
42	Idis, Kianna	f	3-8	0-1	2-2	1	2	3	1	8	0	0	0	23
33	Johnson-Chapman, Cha	c	3-5	0-0	4-6	4	4	8	1	10	0	1	1	20
01	Richardson, Relii	g	0-2	0-0	2-2	0	3	3	0	2	1	0	0	21
11	Ryan, Robbi	g	6-10	0-2	0-0	1	0	1	1	12	4	0	0	32
03	Haines, Sabrina	g	3-7	0-2	2-2	1	3	4	1	8	1	2	0	25
04	Russell, Kiara	g	0-4	0-0	4-4	1	0	1	3	4	1	0	0	31
21	Elena, Sophia	g	3-3	0-0	5-7	1	2	3	2	11	0	0	0	21
52	Ruden, Jamie	g	5-12	1-1	1-2	2	2	4	0	12	1	0	1	15
Team														
Totals			25-57	2-9	20-25	11	19	30	13	72	11	3	2	200

1st FG %:	5-16	31.3%	2nd FG %:	7-17	41.2%	3rd FG %:	4-12	33.3%	4th FG %:	25-57	43.9%	Game:	25-57	43.9%	Deadball	
3FG %:	1-2	50.0%	0-4	0.0%	0-0	0.0%	1-3	33.3%	1-9	11.1%	Rebounds					
FT %:	6-8	75.0%	4-4	100.0%	4-5	80.0%	6-8	75.0%	20-25	80.0%	Rebounds					

Officials: Michelle DeBou, Talisa Green, Travis Jones

Technical fouls: COLUMBIA-None. ARIZONA STATE-None.

Attendance: 982

2017 Cancun Challenge

Score by periods	1st	2nd	3rd	4th	Total
COLUMBIA	14	12	13	9	48
ARIZONA STATE	17	18	20	17	72

Points	In	Off	2nd	Fast	Bench
COL	14	2	10	0	9
ASU	28	22	10	4	35

GAME 10

COLUMBIA 94 - SAINT FRANCIS 81
Dec. 6, 2017 - NEW YORK, N.Y.

Saint Francis 81 • 3-5

#	Player	Total		3-Ptr		Rebounds		PF	TP	A	TO	Bk	Stl	Min
		FG	FGA	FG	FGA	FT	FTA							
10	MORROW, Leah	f	2-4	0-1	0-1	2	3	5	4	4	3	2	0	1
24	DULING, Kyasia	f	4-6	0-0	2-2	2	0	2	5	10	0	1	0	19
34	HARRISON, Ace	f	3-10	0-2	0-1	2	5	7	4	6	4	0	3	34
04	KROLL, Caitlyn	g	8-17	1-7	6-6	0	3	3	2	23	3	1	1	34
23	KOVATCH, Jessica	g	7-19	2-11	2-3	0	0	4	1	18	1	2	0	24
12	SWOGER, Karson	g	0-1	0-1	0-0	0	1	1	0	0	0	0	0	4
22	MASTELONE, Jenna	g	2-2	2-2	0-0	1	1	2	3	6	0	1	0	13
15	WYNN, Maya	g	2-7	1-4	1-2	2	4	6	0	6	3	2	1	29
30	FALVEY, Jill	g	0-0	0-0	0-0	1	0	1	0	0	0	0	0	4
32	ZEZZA, Courtney	g	4-9	0-2	0-0	0	3	3	1	8	0	1	2	0
Team														
Totals			32-75	6-30	11-15	11	23	33	23	81	14	10	7	200

1st FG %:	8-16	50.0%	2nd FG %:	8-17	47.1%	3rd FG %:	6-18	33.3%	4th FG %:	10-24	41.7%	Game:	32-75	42.7%	Deadball	
3FG %:	0-5	0.0%	0-4	0.0%	0-6	0.0%	4-13	30.8%	6-30	20.0%	Rebounds					
FT %:	0-0	0.0%	2-4	50.0%	3-4	75.0%	6-7	85.7%	11-15	73.3%	Rebounds					

Columbia 94 • 5-5

#	Player	Total		3-Ptr		Rebounds		PF	TP	A	TO	Bk	Stl	Min
		FG	FGA	FG	FGA	FT	FTA							
20	Zimmerman, Camille	f	7-15	0-2	1-2	1	8	9	3	25	6	5	0	1
32	Pack, Madison	f	4-8	2-4	1-2	1	2	3	2	11	1	2	2	0
01	Clemmons, Janiya	g	5-8	0-0	5-6	0	6	6	2	15	4	2	1	0
04	Tippet, Paige	g	5-7	4-5	0-0	0	3	3	3	14	6	1	0	0
05	Casey, Riley	g	5-9	2-4	0-0	1	1	1	3	12	4	0	0	0
00	Whittington, Imani	g	0-1	0-0	0-0	0	0	0	0	0	0	2	0	0
10	McCormick, Andrea	g	0-1	0-1	0-0	0	2	2	1	0	0	0	0	0
22	Sampleton, Maya	g	4-8	2-2	0-2	0	7	7	1	10	1	4	0	1
25	Flynn, Stephanie	g	0-0	0-0	0-0	0	1	1	0	0	0	0	0	0
33	Lee, Abby	g	2-2	1-1	2-2	0	4	4	1	7	1	1	0	1
Team														
Totals			32-59	11-19	19-24	7	34	41	17	94	23	17	3	200

1st FG %:	7-11	63.6%	2nd FG %:	6-17	35.3%	3rd FG %:	12-19	63.2%	4th FG %:	7-12	58.3%	Game:	32-59	54.2%	Deadball	
3FG %:	2-5	40.0%	3-7	42.9%	3-5	60.0%	3-4	75.0%	11-19	57.9%	Rebounds					
FT %:	0-0	0.0%	9-11	81.8%	0-0	0.0%	9-12	75.0%	19-24	79.2%	Rebounds					

Officials: Anthony Reddin, Stephanie Barksdale, Jorge Martinez

Technical fouls: Saint Francis-None. Columbia-None.

Attendance: 257

Score by periods	1st	2nd	3rd	4th	Total
COLUMBIA	18	18	15	30	81
Saint Francis	17	24	27	26	94

Points	In	Off	2nd	Fast	Bench
SFU	36	16	17	6	10
Columbia	28	22	16	7	6

1st FG %:	7-11	63.6%	2nd FG %:	6-17	35.3%	3rd FG %:	12-19	63.2%	4th FG %:	7-12	58.3%	Game:	32-59	54.2%	Deadball	
3FG %:	2-5	40.0%	3-7	42.9%	3-5	60.0%	3-4	75.0%	11-19	57.9%	Rebounds					
FT %:	0-0	0.0%	9-11	81.8%	0-0	0.0%	9-12	75.0%	19-24	79.2%	Rebounds					

#ONLYHERE

GAME 8

COLUMBIA 68 - BOSTON COLLEGE 60
Nov. 29, 2017 - NEW YORK, N.Y.

Boston College 60 • 3-4

#	Player	Total		3-Ptr		Rebounds		PF	TP	A	TO	Bk	Stl	Min
		FG	FGA	FG	FGA	FT	FTA							
02	Pineau, Georgia	f	8-9	0-0	6-11	0	4	4	4	22	1	2	3	32
11	Guy, Emma	f	5-10	0-0	1-2	4	3	7	4	11	0	5	1	0
03	Anastos, Andie	g	4-6	0-0	0-1	0	5	5	1	8	1	2	0	1
04	Ortlepp, Taylor	g	0-4	0-3	0-2	0	2	2	1	0	3	1	0	0
31	Lowery, Sydney	g	3-11	1-4	1-1	1	2	3	4	8	0	0	0	1
05	Gartner, Rachel	g	0-0	0-0	0-0	0	0	0	0	0	0	0	0	1
21	Mosetti, Martina	g	1-3	0-0	0-0	0	2	2	3	2	1	0	0	0
23	Bolden-Morris, Milan	g	2-9	1-6	0-2	0	3	3	1	5	1	1	0	1
42	Quandt, Katie	g	1-2	0-0	2-2	1	0	1	0	4	0	1	0	0
Team														
Totals			24-54	2-13	10-21	8	22	30	18	60	7	13	4	200

1st FG %:	7-16	43.8%	2nd FG %:	6-10	60.0%	3rd FG %:	5-16	31.3%	4th FG %:	6-12	50.0%	Game:	24-54	44.4%	Deadball	
3FG %:	0-3	0.0%	1-2	50.0%	0-3	0.0%	1-5	20.0%	2-13	15.4%	Rebounds					

Columbia 68 • 3-5

2017-18 COLUMBIA WOMEN'S BASKETBALL



00 IMANI WHITTINGTON
G/F • 5-11 • Fr.
London, Englad
Barking Abbey School



1 JANIYA CLEMMONS
G • 5-9 • So.
Accokeek, Md.
Bishop Denis J. O'Connell



3 JOSIE LITTLE
F • 6-2 • Jr.
San Francisco, Calif.
St. Ignatius College Prep



4 PAIGE TIPPET
G • 5-8 • Sr.
League City, Texas
Clear Springs



5 RILEY CASEY
G • 5-8 • Fr.
Brentwood, Tenn.
Franklin Road Academy



10 ANDREA MCCORMICK
G • 5-8 • Fr.
Erie, Pa.
Villa Maria Academy



11 SARAH ELSTON
G/F • 6-1 • Jr.
Bannockburn, Ill.
Loyola Academy



20 CAMILLE ZIMMERMAN
G/F • 6-1 • Sr.
Tempe, Ariz.
Tempe Preparatory Acad.



22 MAYA SAMPLETON
G • 5-9 • So.
Austin, Texas
St. Stephen's Episcopal



25 STEPHANIE FLYNN
G/F • 5-9 • So.
Hanover, Mass.
Hanover



32 MADISON PACK
G/F • 5-9 • Fr.
Hanover, Mass.
Hanover



33 ABBY LEE
G/F • 5-10 • Jr.
West Monroe, La.
West Monroe



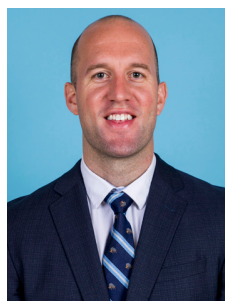
42 JILLIAN BORRESON
C • 6-3 • Sr.
Mt. City, Texas
Jack C. Hays



MEGAN GRIFFITH
Head Coach
Second Season
Columbia '07CC



TYLER CORDELL
Assistant Coach
Second Season
Ohio Wesleyan '11



GREG ROSNICK
Assistant Coach
First Season
Haverford College '09



KERRY CONNOLLY
Volunteer Assistant Coach
First Season
Molloy College '14



MEGHAN ROXAS
Director of Operations
First Season
UMBC '16